



Nebraska's Population and Economic Trends

Jerry Deichert, David Drozd
UNO Center for Public Affairs Research

Twenty-first Annual
Nebraska State Data Center Summer Conference
August 17, 2010
CPACS Collaborating Commons--UNO



Nebraska Population and Economic Trends

- **CPAR Reports**
- **Sources of Annual Data for Nebraska**
 - Estimates from the Census Bureau
 - Bureau of Economic Analysis
 - American Community Survey
- **Changes 2000-09**
 - Total population and components of change
 - Age, race, and Hispanic/Latino
- **Migration Focus**
 - Information from state and county IRS migration files
- **Economic Trends**
 - Per capita income and employment



CPAR Reports

- **2008 Nebraska Population Report**

http://www.unomaha.edu/~cpar/documents/nebpopulation_08.pdf

- **Nebraska Historical Population Report, Sept. 2007**

http://www.unomaha.edu/cpar/documents/historical_pop_report.pdf

- **Nebraska Birth Report, July 2008**

<http://www.unomaha.edu/cpar/documents/BirthReport.pdf>

- **Nebraska Migration Report, October 2009**

<http://www.unomaha.edu/cpar/documents/2008StateMigrationSummary.pdf>



Estimates from the Census Bureau

- The Population Estimates Program releases population and housing units estimates throughout the year.
- In general, the most current estimates released in a given year refer to the population on July 1 of the previous year.
- Data are provided for each year since the most recent Census.
- Most recent release supersedes data from prior releases.
- <http://www.census.gov/popest/estimates.php>



Nebraska's Population and Economic Trends

■ Main population trends

- Population is becoming more and more concentrated in state's most populous counties.
- Births have been increasing since 1994 and should continue a general uptrend until 2015.
- Net migration has been slightly negative since 2000--improving recently.
- Population is getting older and will continue to age.
- Population is becoming more racially and ethnically diverse (younger population).

■ Economic trends--per capita income & employment

- Per capita income fluctuates between 90% and 95% of US average. Recently metro has been decreasing in relation to US while nonmetro increasing.
- Employment is growing more slowly than US and growing faster than population.



Population and Population Change

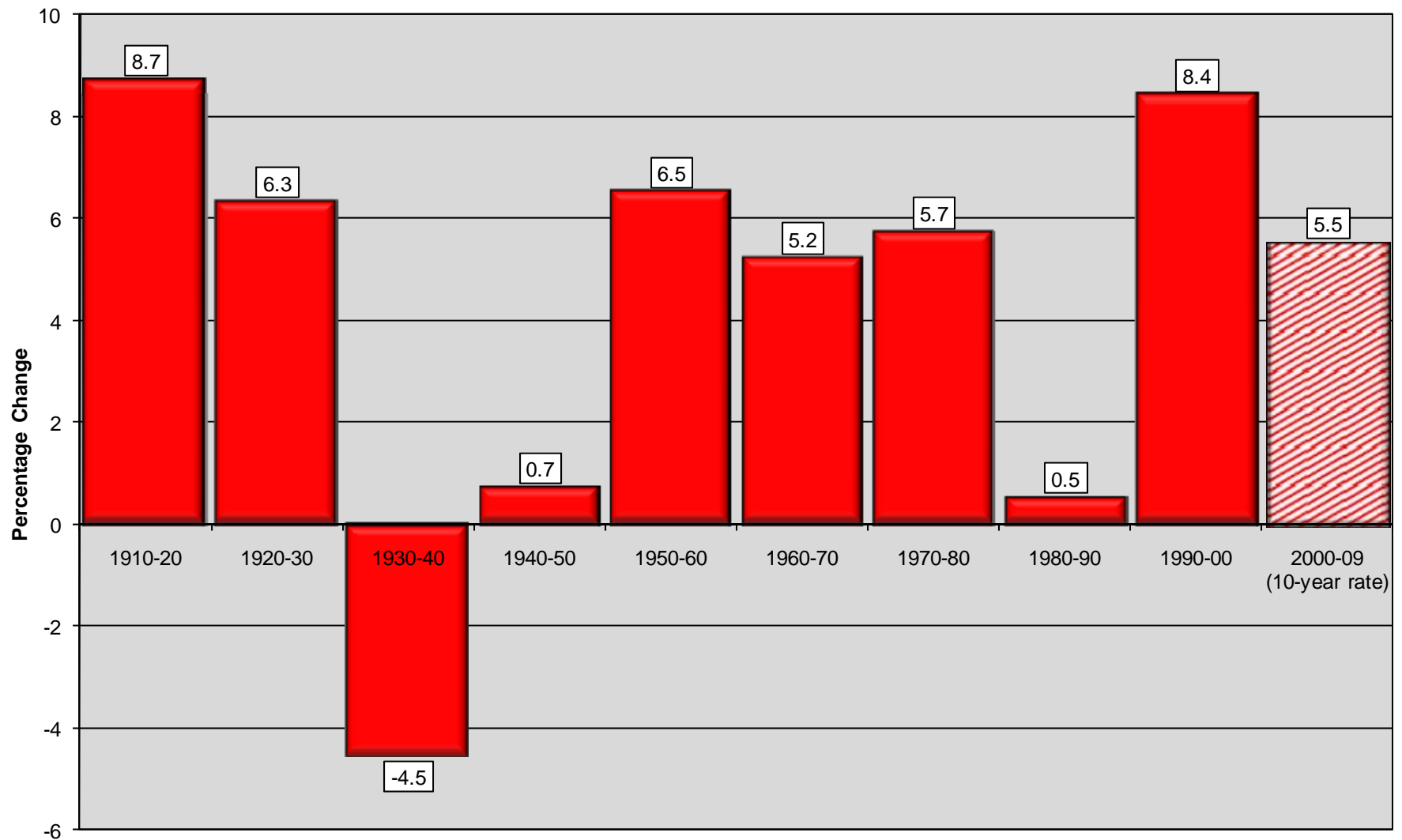


State Population

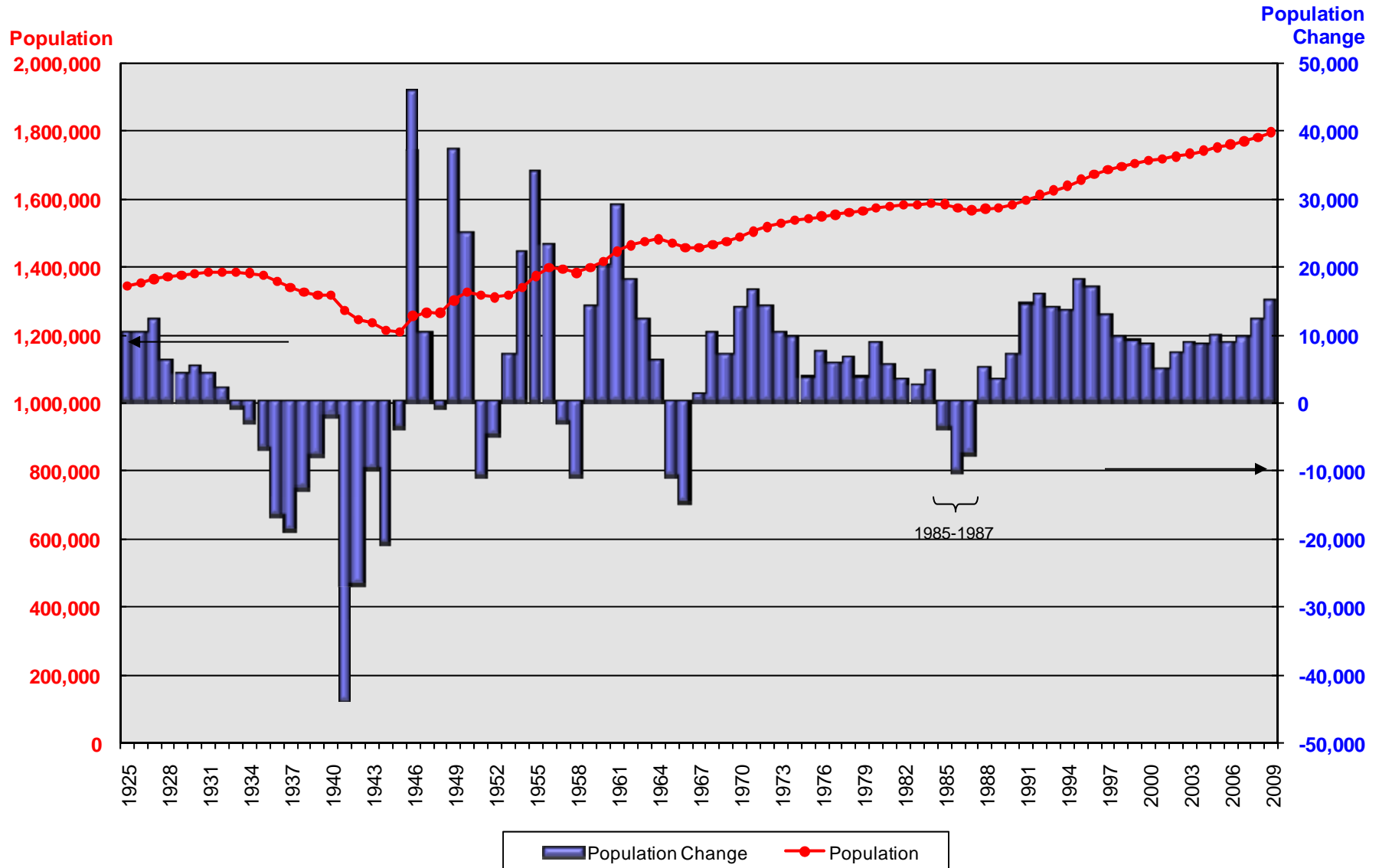
- 1990 to 2000
 - Between 1990 and 2000 the state grew at 8.4 percent
 - 1990's population growth largest since 1910-20
- 2000 to 2009
 - State added 85,354 persons between April 1, 2000 and July 1, 2009 (about 5.5 percent decade rate)
 - Growth rate ranked 33th in the US
- 2008 to 2009
 - Added 14,670 persons
 - The 2008-09 growth is the largest in percentage and number since 1995-96
 - Growth rate ranked 24th in the US



Nebraska Population Change by Decade: 1910 to 2009



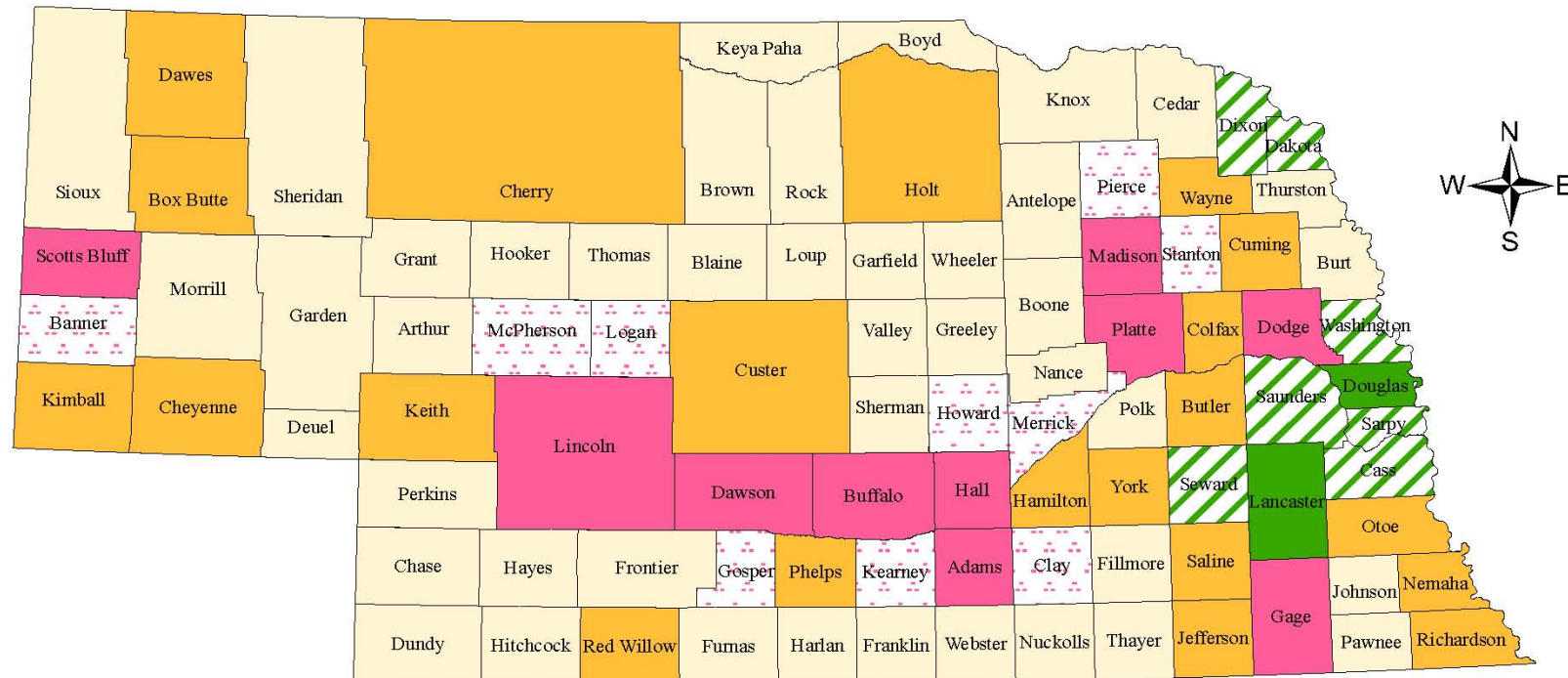
Nebraska Population and Population Change, 1925-2009









Sources: Nebraska Health and Human Services System, Vital Statistics; and US Census Bureau, Annual Estimates

Jerry Deichert, David Drozd, CPAR @ UNO

Map 1: Nebraska Counties Classified by Modified Urban Influence Code



Modified Urban Influence Classification

	Code 1: Metropolitan core county (small metro--fewer than 1 million residents)	(2)
	Code 2: Metropolitan outlying county	(7)
	Code 3: Micropolitan core county (contains a city of at least 10,000 residents)	(10)
	Code 4: Micropolitan outlying county	(10)
	Code 5: Non-Metro/Micro county with largest town of 2,500-9,999 residents	(21)
	Code 6: Non-Metro/Micro county with no towns above 2,500 residents	(43)

Source: U.S. Census Bureau, USDA Economic Research Service; Compiled by: Center for Public Affairs Research (CPAR), University of Nebraska at Omaha

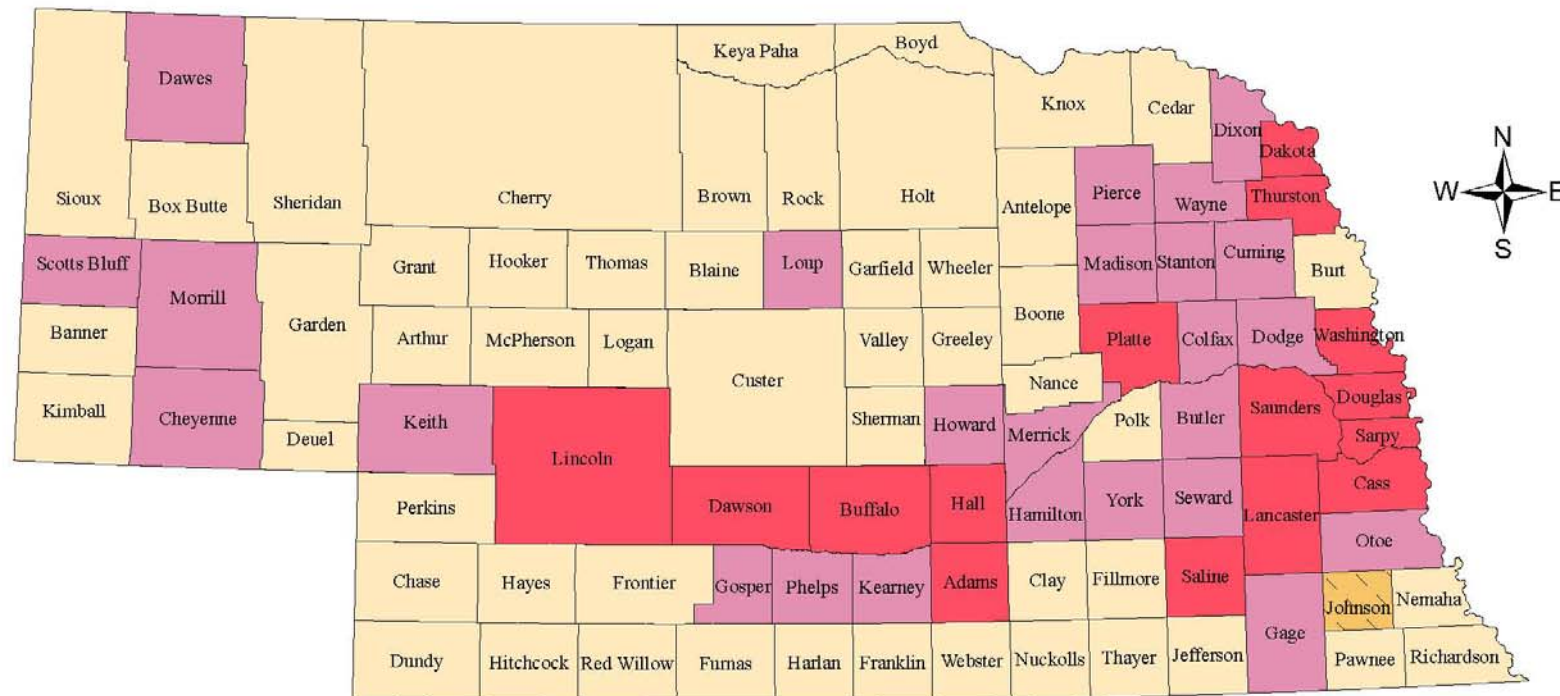
Prepared by: David Drozd, CPAR - April 12, 2006



County Population

- 1990 to 2000
 - 40 counties added population or were unchanged
 - Nebraska's population is becoming more and more concentrated in its most populous counties
 - Both metropolitan and nonmetropolitan counties added population
 - Counties with no city above 2,500 continued to decline but at a slower rate
- 2000 to 2009
 - Only 16 counties added population 2000 to 2009
 - Sarpy, Johnson, Lancaster, Douglas, Buffalo, Hall, Adams, and Washington grew 5.0 percent or more
 - Metropolitan counties added population, but nonmetropolitan counties lost population
 - Metropolitan 11.8%
 - Nonmetropolitan -3.4%
 - Micropolitan 1.9%
 - Largest city 2,500 to 9,999 persons -6.9%
 - Largest city under 2,500 persons -11.8%
 - Douglas, Lancaster, and Sarpy accounted for 52.6 percent of Nebraska's population in 2009

Map 2: Population Change in Nebraska Counties: 1990-2000 and 2000-2009



Population Change between 1990-2000 and 2000-2009

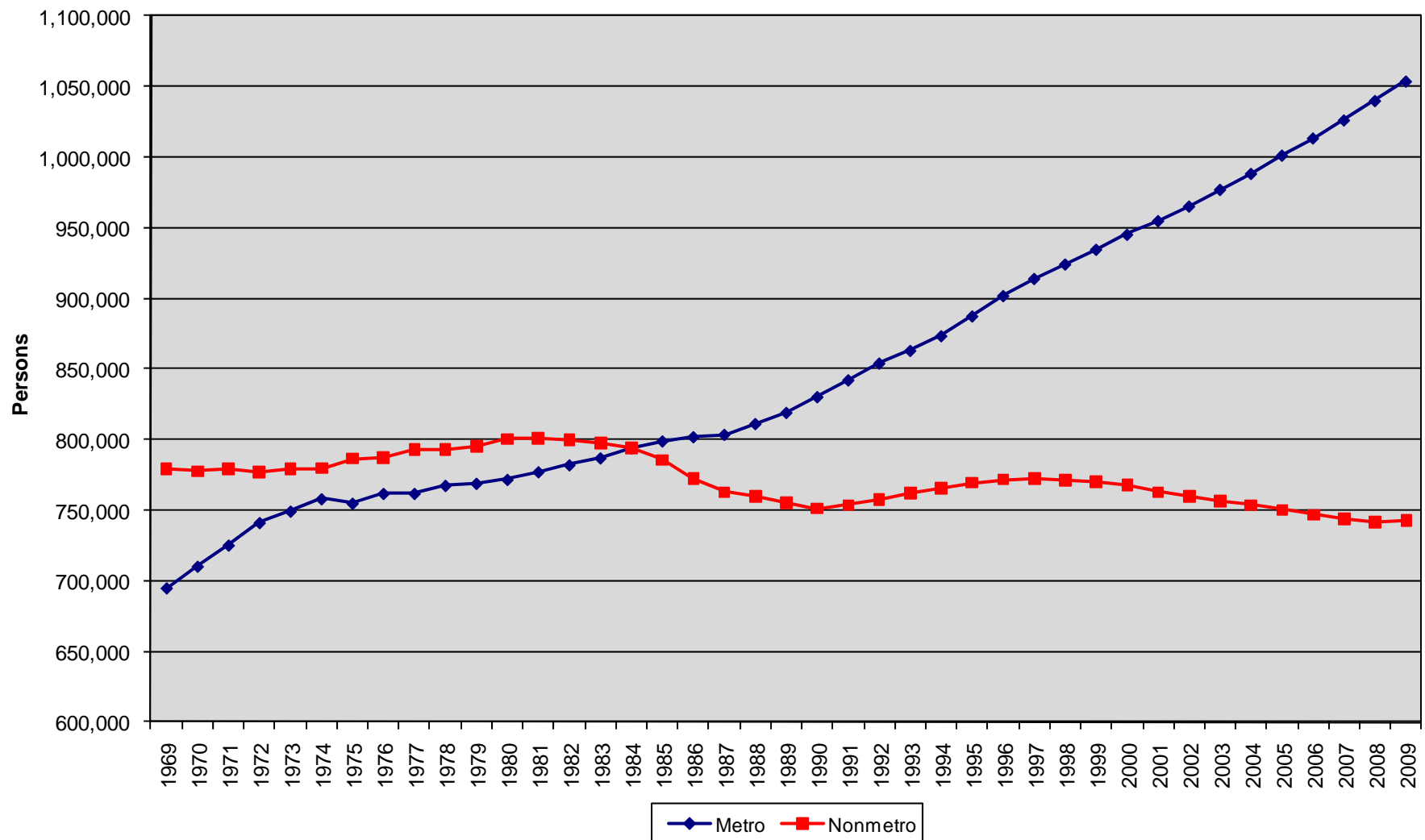
- Increased 1990-2000 and Increased 2000-2009 (15)
- Increased 1990-2000 and Decreased 2000-2009 (25)
- Decreased 1990-2000 and Increased 2000-2009 (1)
- Decreased 1990-2000 and Decreased 2000-2009 (52)

Sources: 1990 and 2000 Decennial Censuses; Population Estimates Program - 2009 estimates released March 23, 2010, U.S. Census Bureau

Prepared by: David Drozd, Center for Public Affairs Research, University of Nebraska at Omaha - April 26, 2010



Population of Nebraska Counties By Metropolitan and Nonmetropolitan Status (2003 Definitions): 1969-2009

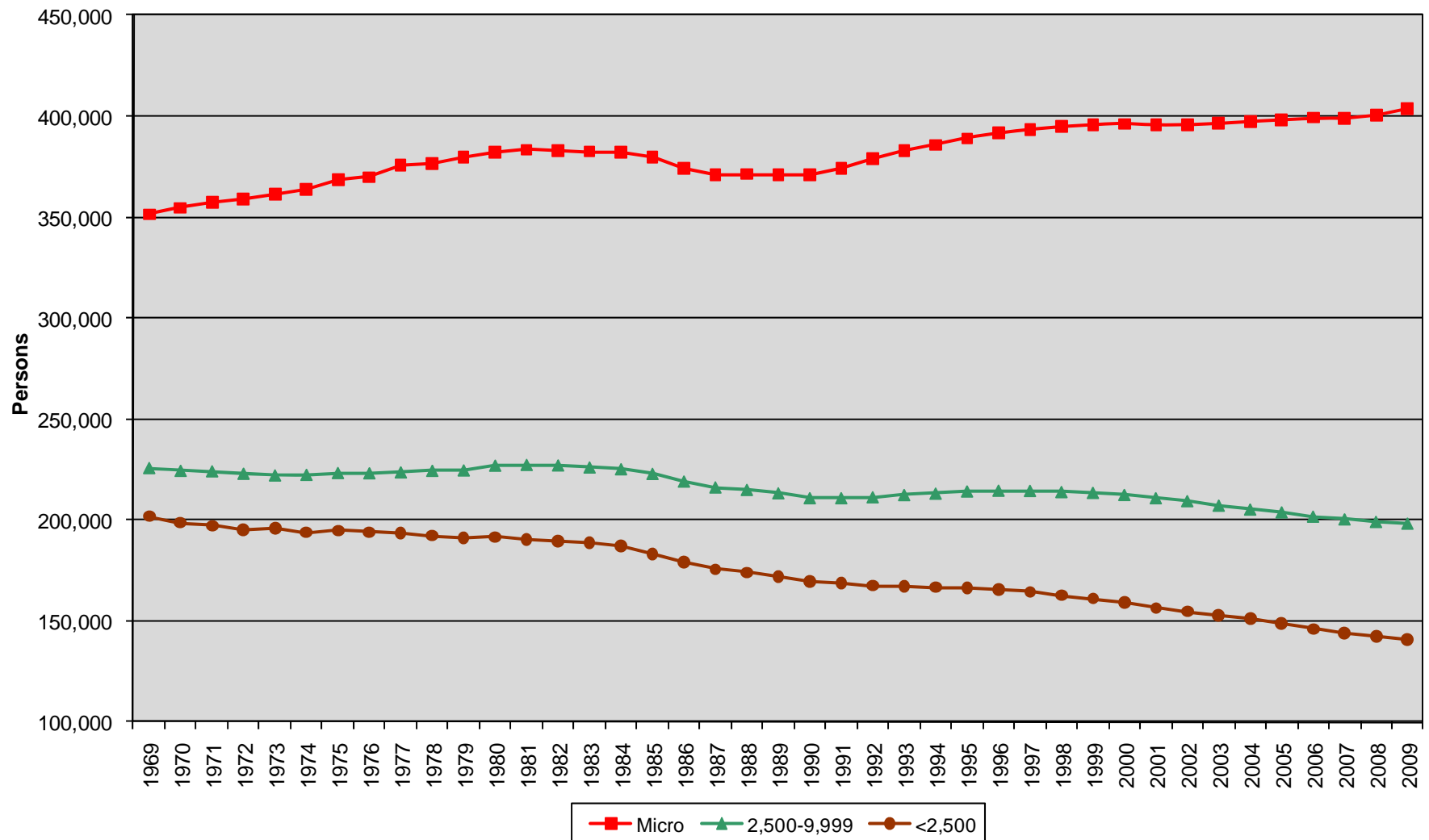


Source: US Bureau of Economic Analysis, Regional Economic Information System, and US Census Bureau, Annual Population Estimates

Jerry Deichert, David Drozd, CPAR @ UNO



Population of Nebraska Counties By Micropolitan Status (2003 Definitions) and Size of Largest City 2,500-9,999 and Under 2,500: 1969-2009



Source: US Bureau of Economic Analysis, Regional Economic Information System, and US Census Bureau, Annual Population Estimates

Jerry Deichert, David Drozd, CPAR @ UNO



Natural Change

Natural Change = Births - Deaths



Natural Change

■ 1990 to 2000

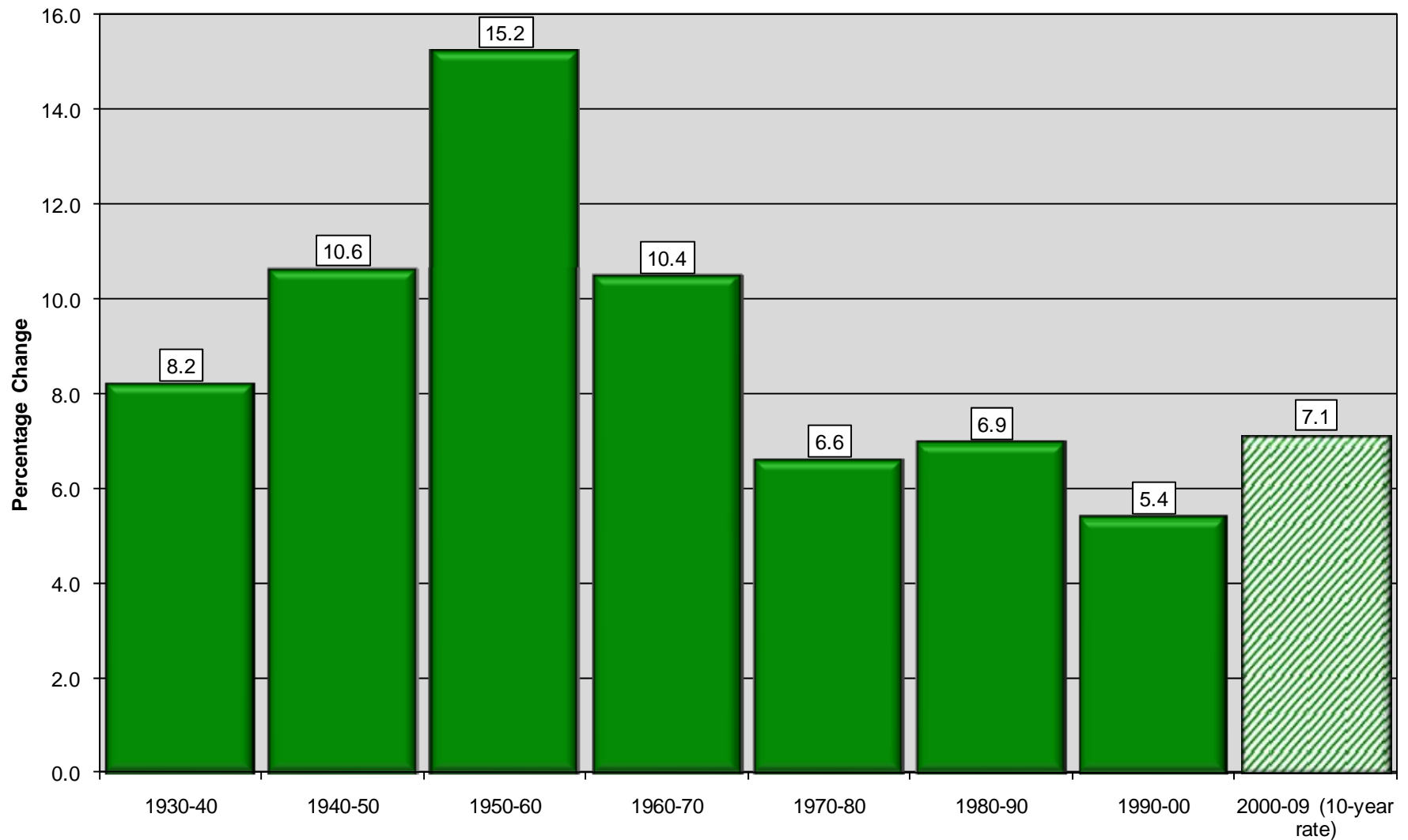
- Births leveled off and then increased slightly
- Birth rates by age of mother increased slightly from 1990
- Deaths increased slightly
- 41 counties had more deaths than births

■ 2000 to 2009

- Births in 2007, 2008, and 2009 were similar and were the highest since 1982
 - 26,935 in 2007; 26,992 in 2008; and 26,931 in 2009
 - Recent peak was 27,335 in 1980
- Number of deaths declined slightly in 2009
- Natural increase higher than any time during the 1990s
- 52 counties had more births than deaths, and 41 had more deaths than births

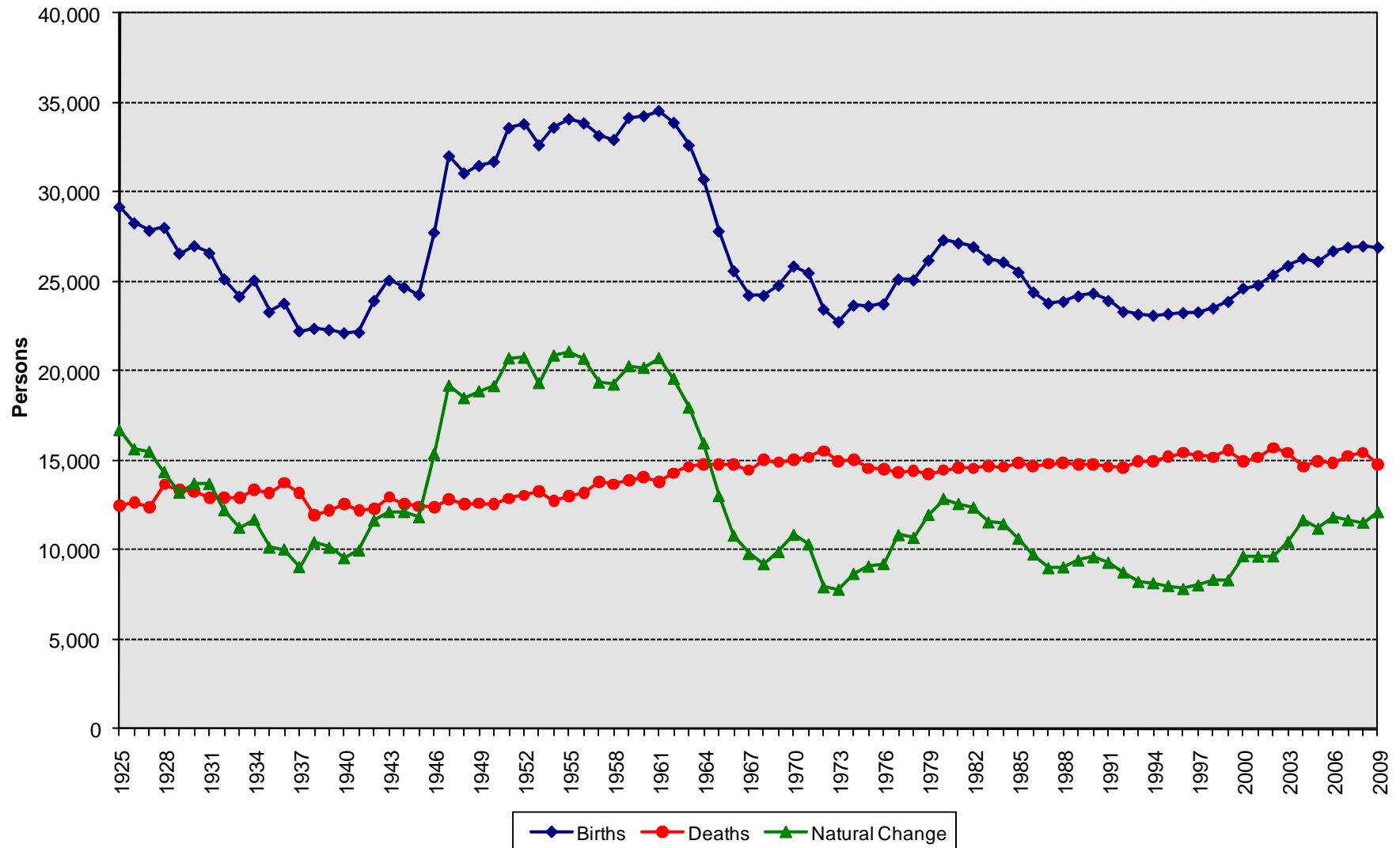


Nebraska Natural Population Change (Births - Deaths) by Decade: 1930 to 2009

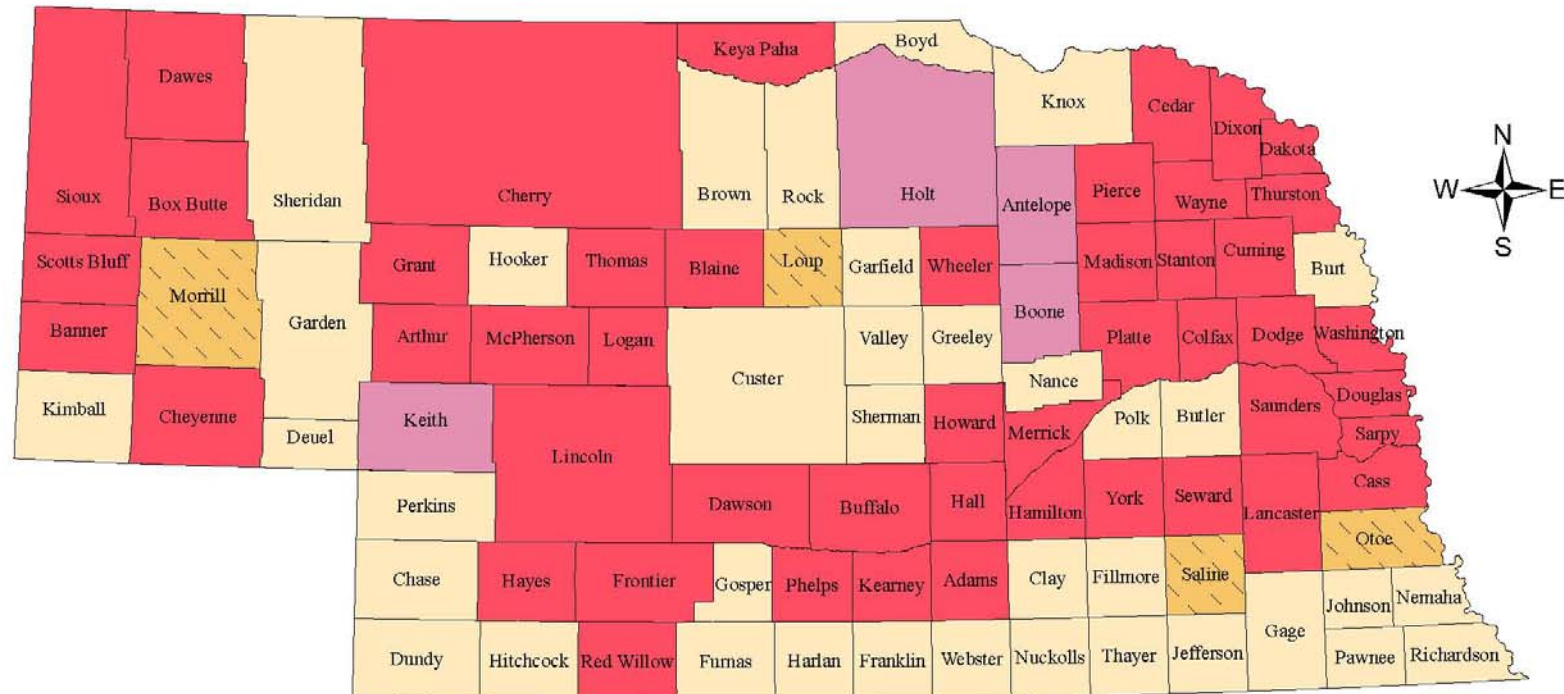


Sources: Nebraska Health and Human Services System, Vital Statistics; and US Census Bureau, Decennial Censuses and Annual Estimates
Jerry Deichert, David Drozd, CPAR @ UNO

Nebraska Births and Deaths, 1925-2009



Map 3: Natural Change in Nebraska Counties: 1990-2000 and 2000-2009



Natural Change (Births - Deaths) between 1990-2000 and 2000-2009

- Increased 1990-2000 and Increased 2000-2009 (48)
- Increased 1990-2000 and Decreased 2000-2009 (4)
- Decreased 1990-2000 and Increased 2000-2009 (4)
- Decreased 1990-2000 and Decreased 2000-2009 (37)

Sources: 1990 and 2000 Decennial Censuses; Population Estimates Program - 2009 estimates released March 23, 2010, U.S. Census Bureau

Prepared by: David Drozd, Center for Public Affairs Research, University of Nebraska at Omaha - April 26, 2010



Net Migration



Net Migration

■ 1990 to 2000

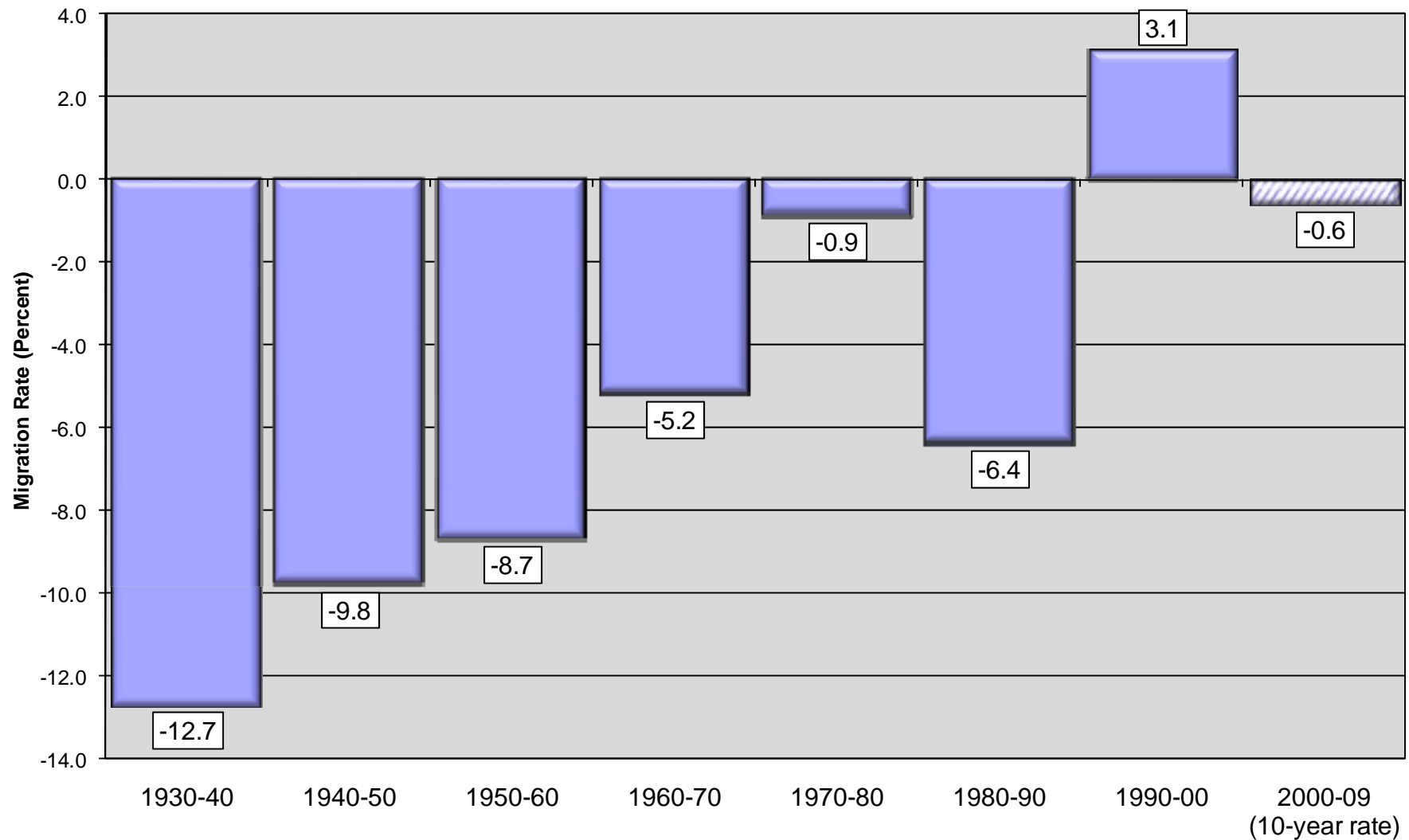
- Added about 48,000 persons during the decade (3.1 percent)
- Decade with net immigration for the first time in 6 decades
- International greater than domestic
- 42 counties had net immigration or no net outmigration

■ 2000 to 2009

- Lost 9,156 persons since 2000 for a decade rate of -0.6 percent
- Net immigration during 2008-09
- State still experiencing international immigration during each year
 - About 3,300 per year
- State experiencing domestic outmigration for each year, but has improved by 2,300 in each of the past two years
- Only 8 counties had net immigration (2000-09)
 - Johnson, Sarpy, Lancaster, Washington, and Buffalo were above 2.0 percent



Nebraska Net Migration by Decade: 1930 to 2009

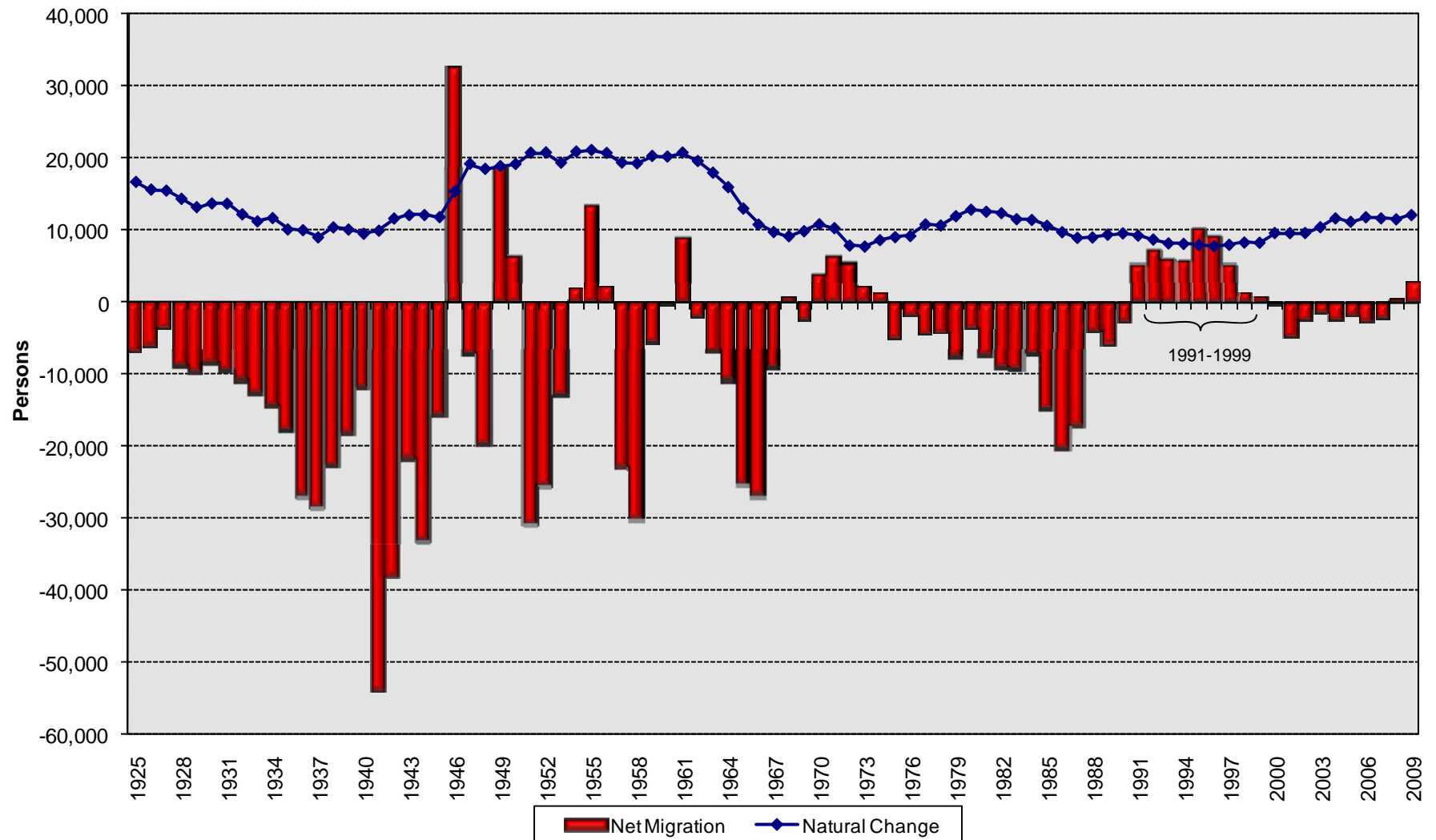


Sources: US Census Bureau, Decennial Censuses and Annual Estimates; and Nebraska Health and Human Services System, Vital Statistics





Jerry Deichert, David Drozd, CPAR @ UNO



Nebraska Components of Population Change, 1930-2009



**Net Migration (Inmovers - Outmovers) between 1990-2000 and 2000-2009**

-  Increased 1990-2000 and Increased 2000-2009 (7)
 Increased 1990-2000 and Decreased 2000-2009 (35)
 Decreased 1990-2000 and Increased 2000-2009 (1)
 Decreased 1990-2000 and Decreased 2000-2009 (50)

Sources: 1990 and 2000 Decennial Censuses; Population Estimates Program - 2009 estimates released March 23, 2010, U.S. Census Bureau

Prepared by: David Drozd, Center for Public Affairs Research, University of Nebraska at Omaha - April 26, 2010



Cities and Towns



Cities/Towns (2000-2009)

- Nearly 80.0 percent of Nebraska's population lives in an incorporated city or town
 - 79.4 percent in 2009, up from 77.0 percent in 2000
 - Population in Nebraska cities and towns grew 7.7 percent
 - Population outside of cities and towns lost 4.3 percent
- Median size town is 313 persons—Hadar (Pierce County) and Long Pine (Brown County)
- Mean (average) size town is 2,691—Ashland
- Omaha went from 44th largest city in US in 2000 to 40th largest in 2009



Cities/Towns (2000-2009)

■ Highest percentage growth

<u>City/Town</u>	<u>County</u>	<u>Percentage Change</u>
□ Gretna	Sarpy	186.0
□ Terrytown*	Scotts Bluff	87.2
□ Waterloo	Douglas	84.1
□ Hickman	Lancaster	51.8
□ Papillion	Sarpy	48.4
□ La Vista	Sarpy	44.3
□ Bennet	Lancaster	35.4
□ Waverly	Lancaster	34.9
□ Raymond	Lancaster	26.9
□ Denton	Lancaster	24.9

*Entirely due to annexation



Population Change by Size of City/Town: 2000 to 2009

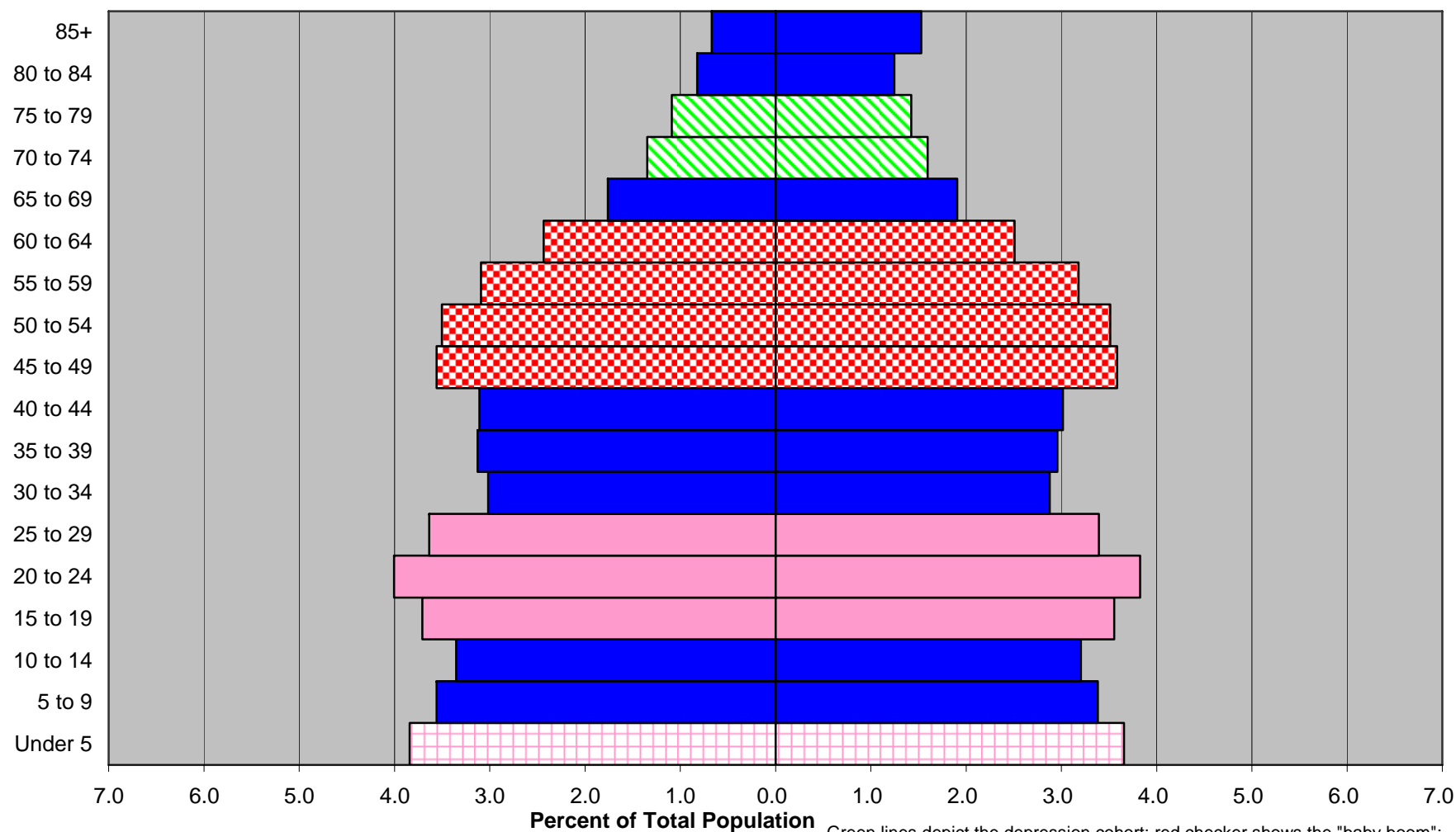
■ Size class	Percent age Change
Omaha	16.6
Lincoln	12.6
10,000 to 50,000	9.6
5,000 to 9,999	-3.1
2,500 to 4,999	-6.3
1,000 to 2,499	0.2 (-4.4 without Gretna)
500 to 999	-5.4
250 to 499	-6.9
100 to 249	-7.7
less than 100	-9.0



Age Structure



2009 Nebraska Population by Sex and Five-Year Age Group: Total Population

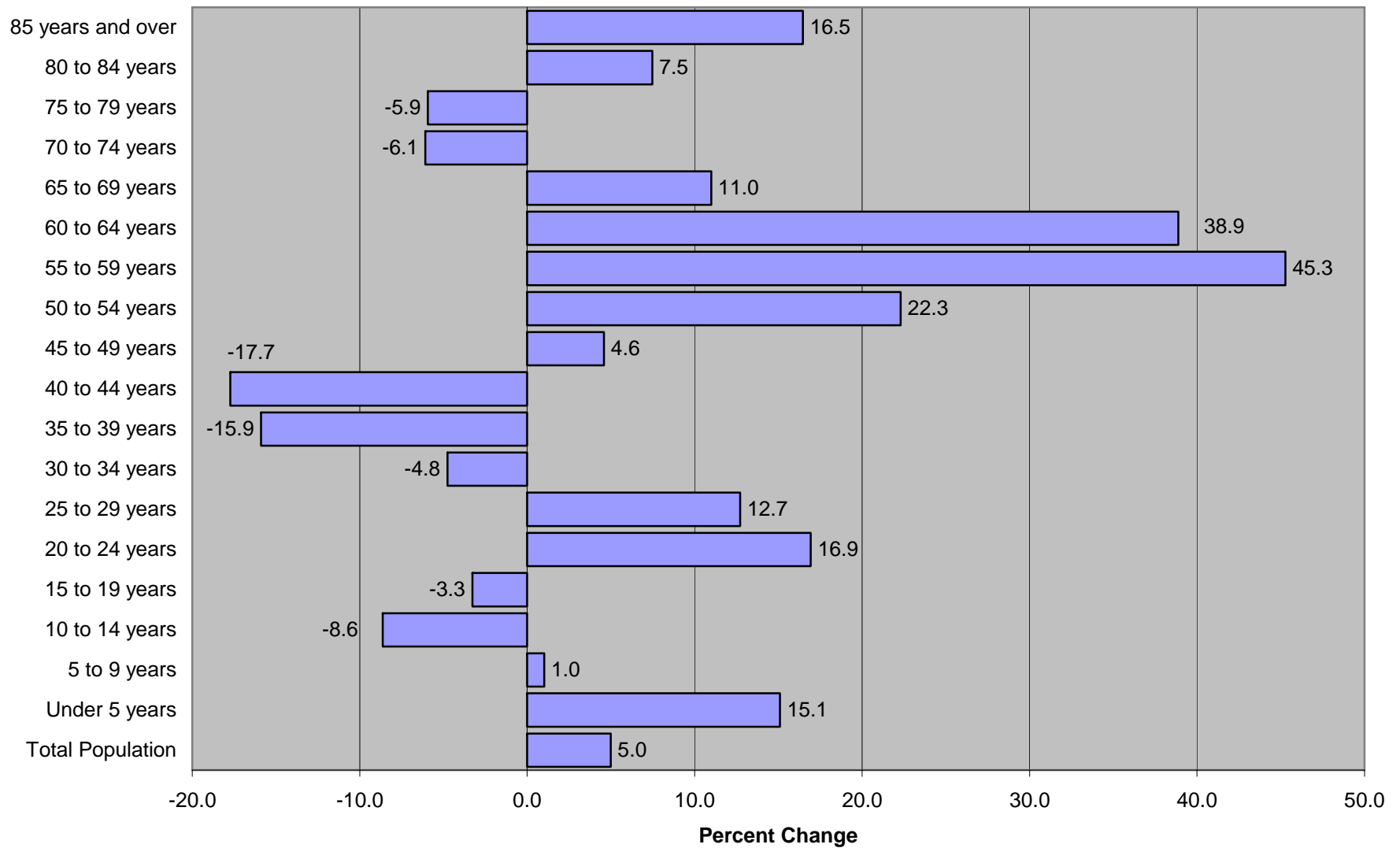


Source: Population Estimates Program, U.S. Census Bureau, released 6-10-10

Green lines depict the depression cohort; red checker shows the "baby boom"; pink represents the "baby boom echo"; pink crosshatch shows the "3rd wave"

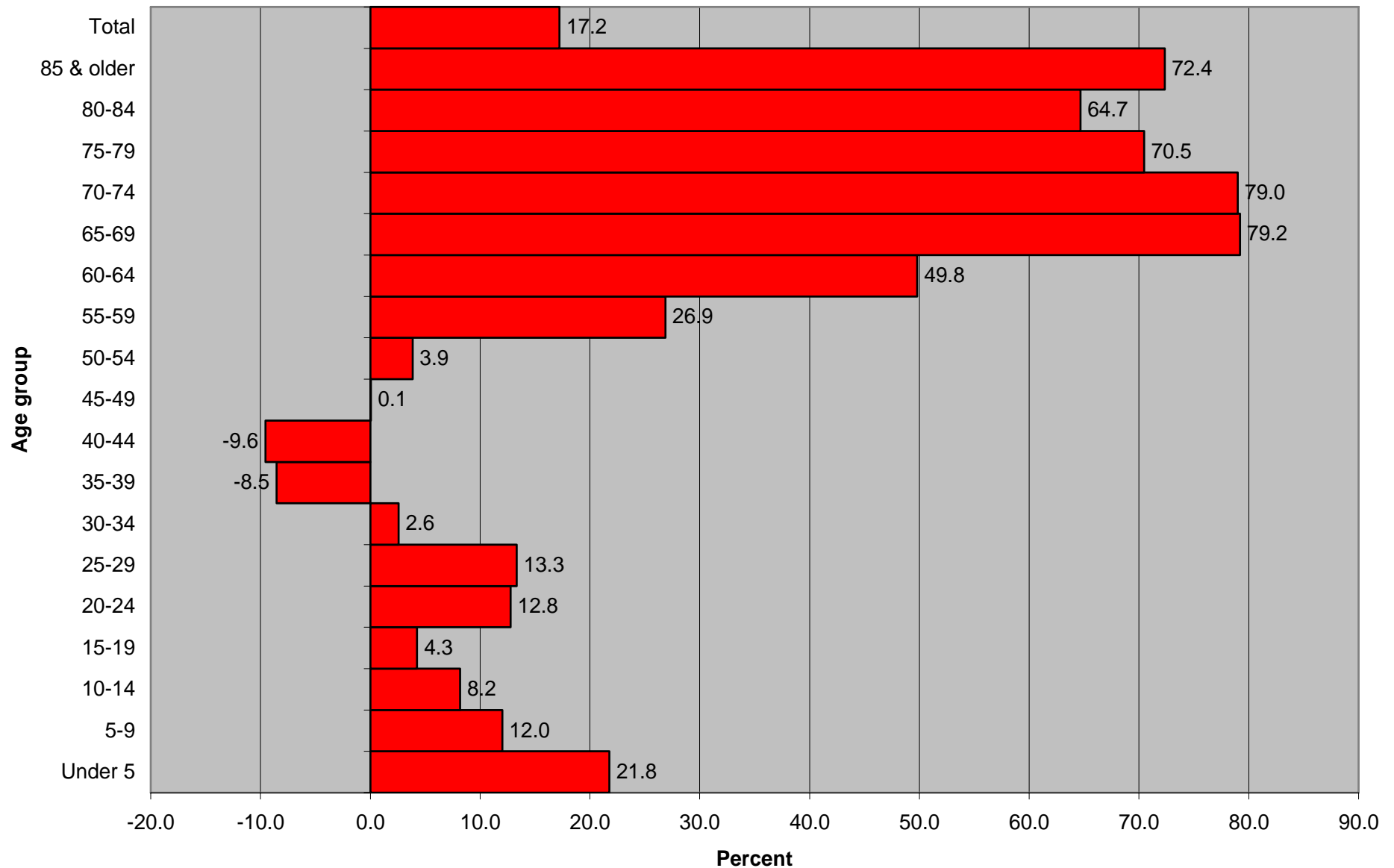


Percentage Change for 5-year Age Groups in Nebraska: 2000 to 2009





Percentage Change in Nebraska Population By 5-Year Age Group: 2000-30





Race and Hispanic/Latino Origin



Race and Hispanic/Latino Origin

■ Change 2000-2009

<input type="checkbox"/> Total	5.0 percent
<input type="checkbox"/> White alone	3.2 percent
<input type="checkbox"/> African-American or Black alone	19.1 percent
<input type="checkbox"/> American Indian and Alaska Native alone	27.9 percent
<input type="checkbox"/> Asian alone	35.4 percent
<input type="checkbox"/> Nat. Hawaiian Pac. Islander alone	69.1 percent
<input type="checkbox"/> Hispanic/Latino Origin	59.4 percent
<hr/>	
<input type="checkbox"/> White non-Hispanic	0.1 percent
<input type="checkbox"/> Minority	38.8 percent

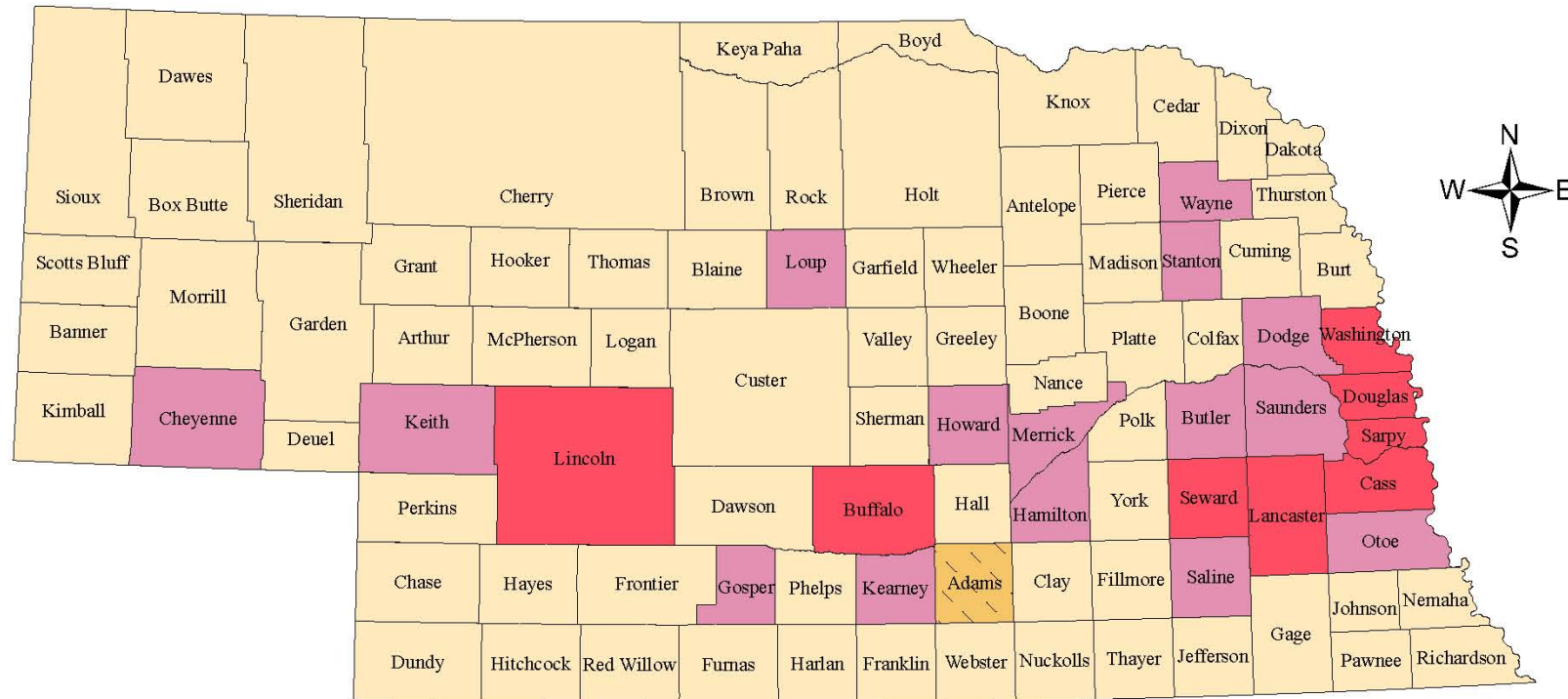
■ In 2009, Minority population was 16.5 percent of total

- ☐ Up from 12.7 in 2000 and 7.4 percent in 1990

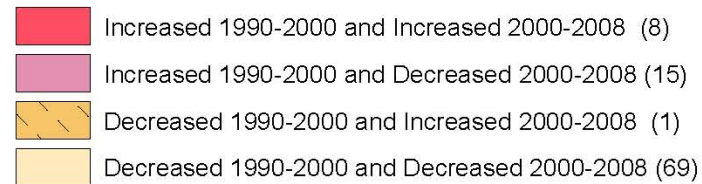
■ Minority population is much younger

- ☐ Relatively more under 40
- ☐ Relatively fewer 40+

Population Change of White non-Hispanics in Nebraska Counties: 1990-2000 and 2000-2008



Population Change between 1990-2000 and 2000-2008



Sources: 1990 and 2000 Decennial Censuses; Estimates of the Population by Sex and Race - released May 14, 2009, U.S. Census Bureau

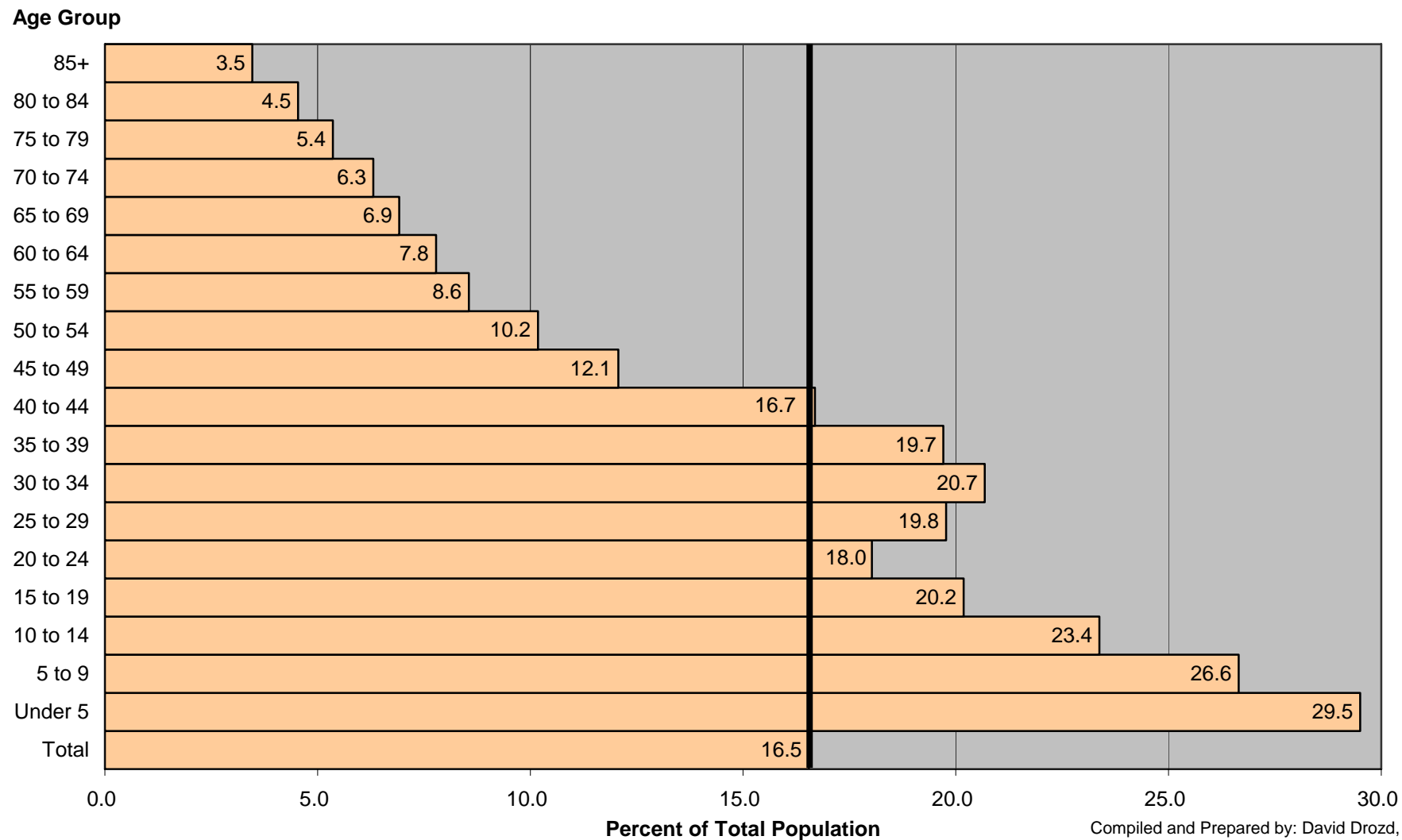
Prepared by: David Drozd, Center for Public Affairs Research, University of Nebraska at Omaha - August 12, 2009

Population Change between 2000-2008

- Majority Population Increased and Minority Population Increased (9)
- Majority Population Decreased and Minority Population Increased (79)
- Majority Population Decreased and Minority Population Decreased or No Change (5)

Prepared by: David Drozd, Center for Public Affairs Research, University of Nebraska at Omaha - August 12, 2009

2009 Nebraska Population by Five-Year Age Group: Non-White or Hispanic/Latino (Minority Population) as a Percent of State Total



Source: Population Estimates Program, U.S. Census Bureau, released 6-10-10



Population Summary

- State population is expected to increase about 4.5 to 5 percent per decade until 2030 (0.5 percent per year).
- The trend of Nebraska's population becoming concentrated in its most populous counties is expected to continue.
 - Micropolitan counties (those nonmetro counties with a town of 10,000 persons) are expected to continue their growth.
 - Together Douglas, Sarpy, and Lancaster Counties account for somewhat more than half of the state's population, and this proportion gradually will increase (about 0.4 percentage points per year in the 2000s-see handout).



Population Summary

- Since 2000, the state has experienced a slight outmigration, and it is expected to be less than 1 percent for the decade.
- Births will peak in the mid 2010s as the baby boom echo pass through their peak child bearing years and as the number of young Latina women increase through immigration.
- The state's racial and ethnic diversity will increase.
 - Most of the growth in the state's population will be in its minority populations as the white, non-Latino will grow slowly if at all.
- The minority population will continue to be much younger.

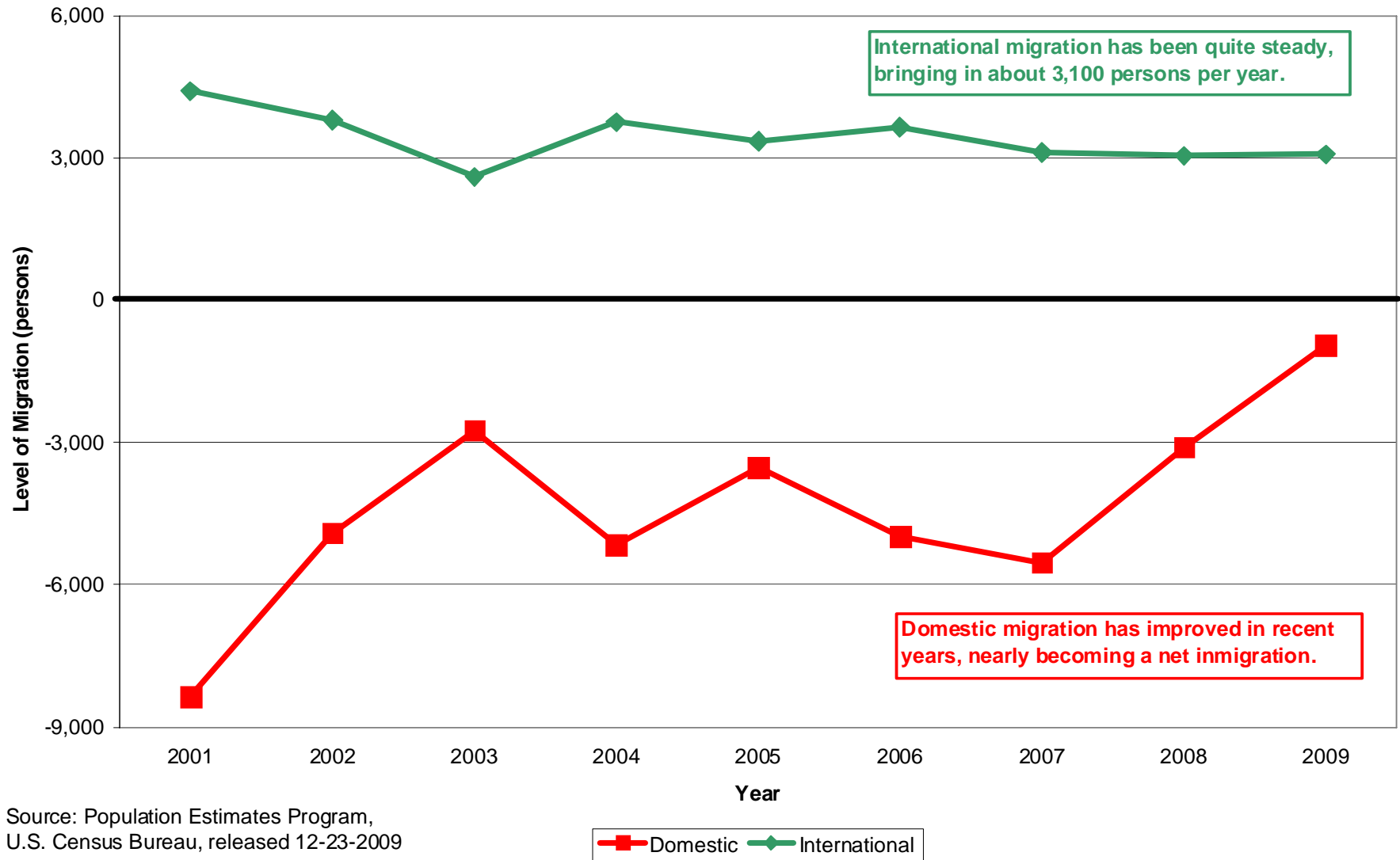


Migration Focus

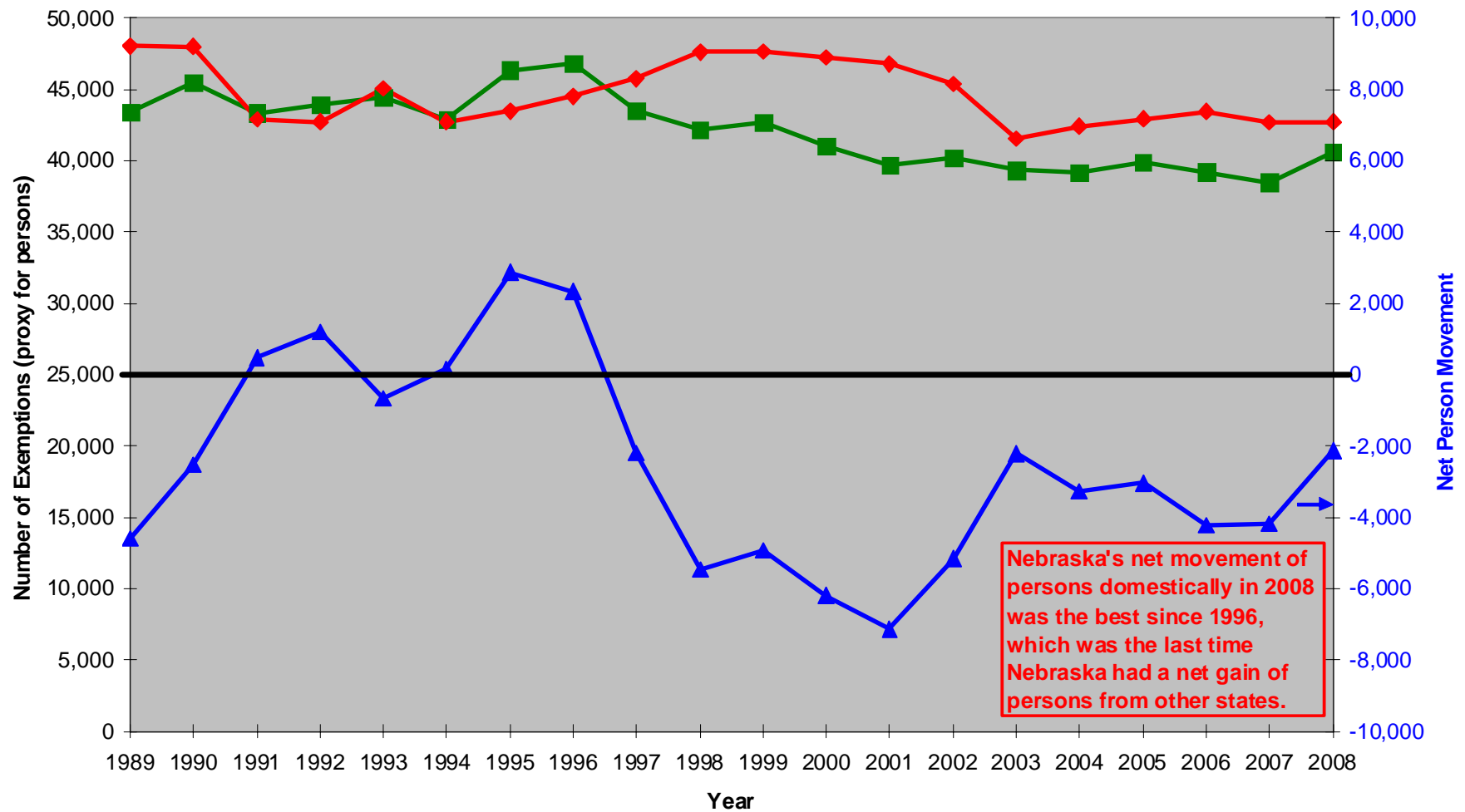
- A. Data from Census Estimates Since 2000
- B. State IRS Tax Filing Data Since 1989
- C. County IRS Tax Filing Data Since 1999



Comparison of Domestic and International Migration for Nebraska: 2001 to 2009



Comparison of Nebraska Inflows, Outflows, and Net Person Movement Based on IRS Tax Filings: 1989-2008



Source: IRS State-to-State Migration Files

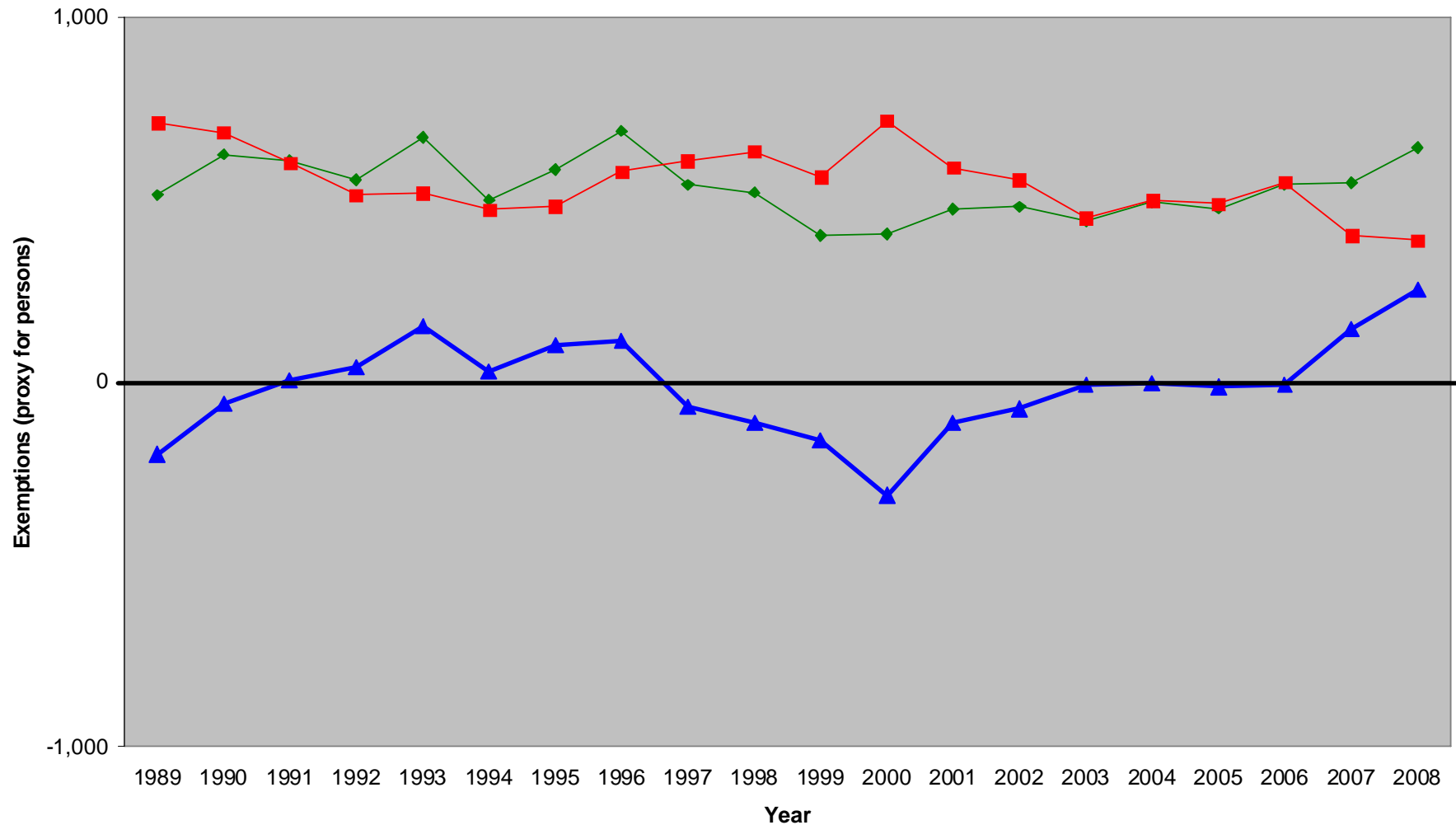
■ Total Inflow
 ◆ Total Outflow
 ▲ Total Net Flow

Compiled and Prepared by: David Drozd,
CPAR @ UNO 10-19-09

Jerry Deichert, David Drozd, CPAR @ UNO



Number of Tax Return Exemptions for Movers between Nebraska and Michigan: 1989 to 2008



Source: IRS State-to-State
Migration Files

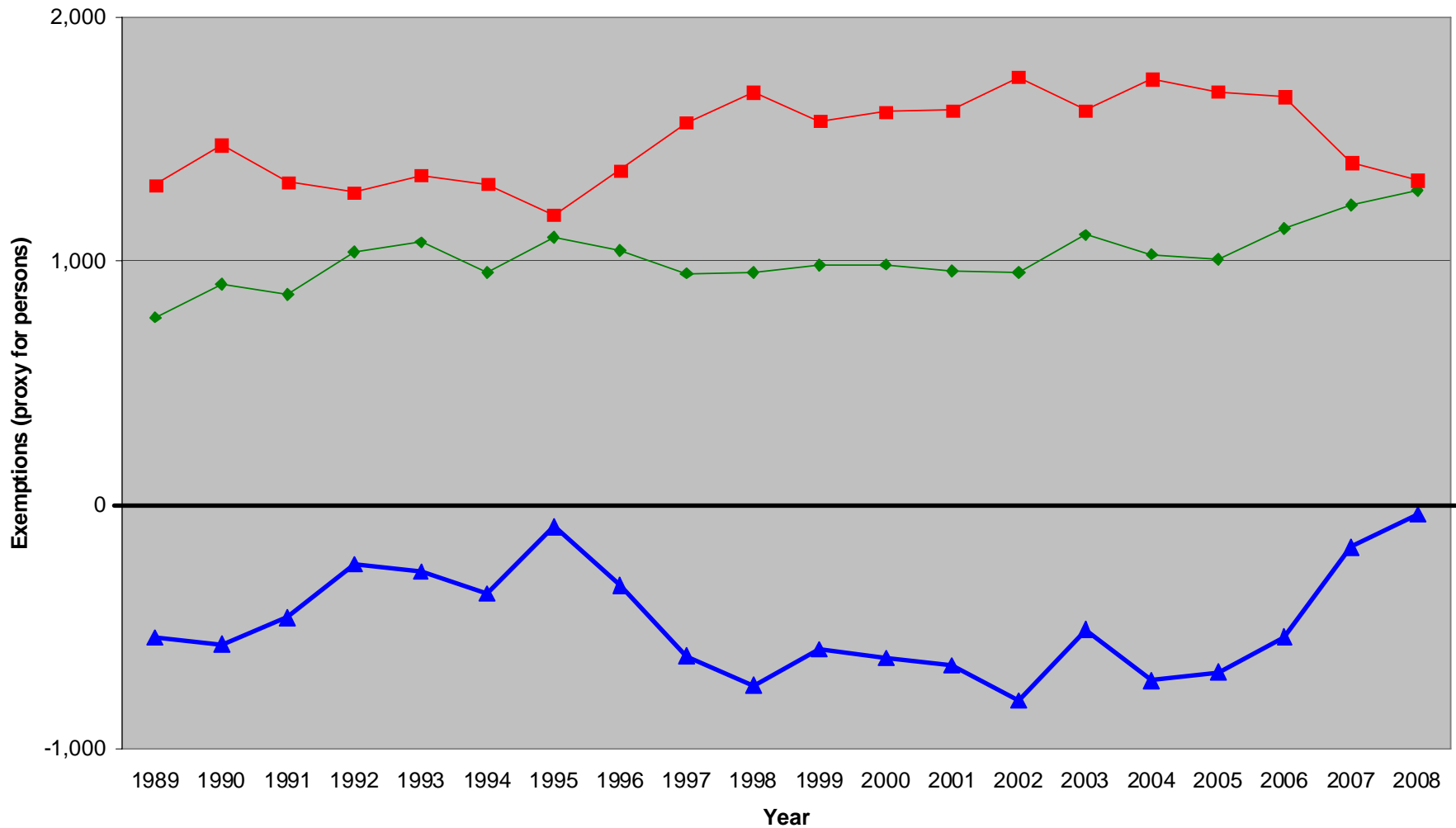
◆ Total Inflow ■ Total Outflow ▲ Total Net Flow

Compiled and Prepared by: David
Drozd, CPAR @ UNO 10-19-09

Jerry Deichert, David Drozd, CPAR @ UNO



Number of Tax Return Exemptions for Movers between Nebraska and Florida: 1989 to 2008



Source: IRS State-to-State
Migration Files

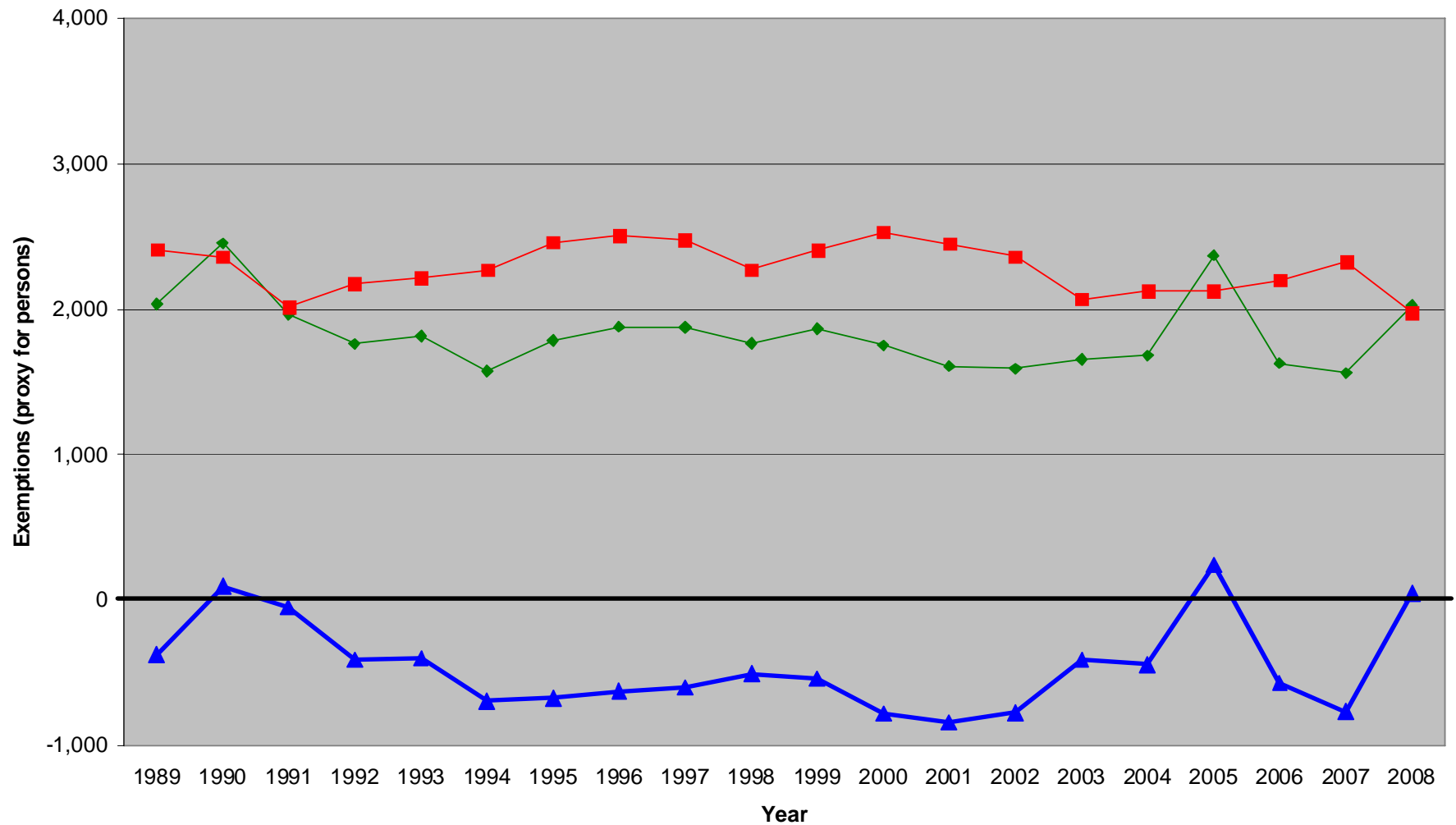
—◆— Total Inflow —■— Total Outflow —▲— Total Net Flow

Compiled and Prepared by: David
Drozd, CPAR @ UNO 10-19-09

Jerry Deichert, David Drozd, CPAR @ UNO



Number of Tax Return Exemptions for Movers between Nebraska and Missouri: 1989 to 2008



Source: IRS State-to-State
Migration Files

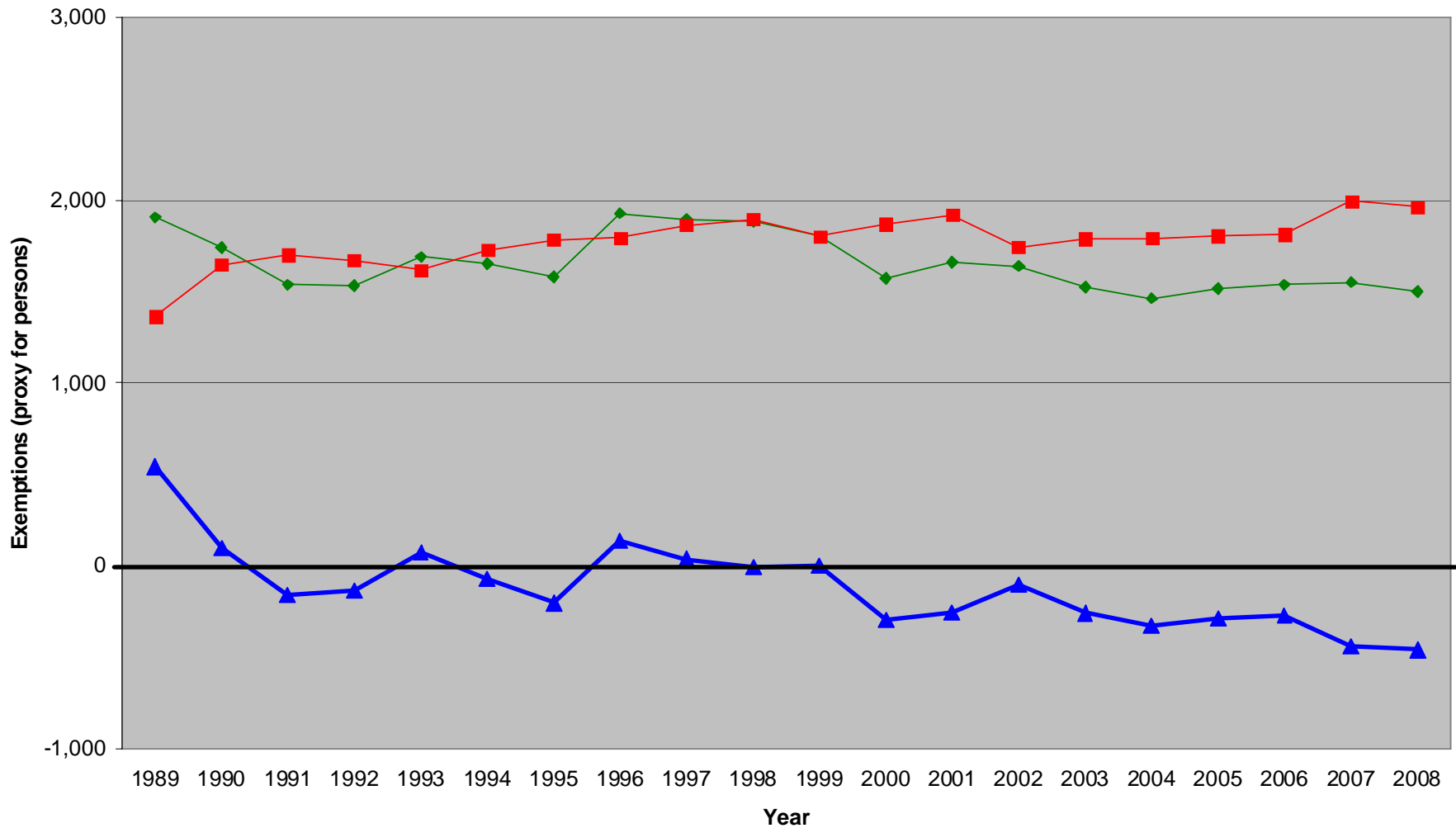
◆ Total Inflow ■ Total Outflow ▲ Total Net Flow

Compiled and Prepared by: David
Drozd, CPAR @ UNO 10-19-09

Jerry Deichert, David Drozd, CPAR @ UNO



Number of Tax Return Exemptions for Movers between Nebraska and South Dakota: 1989 to 2008



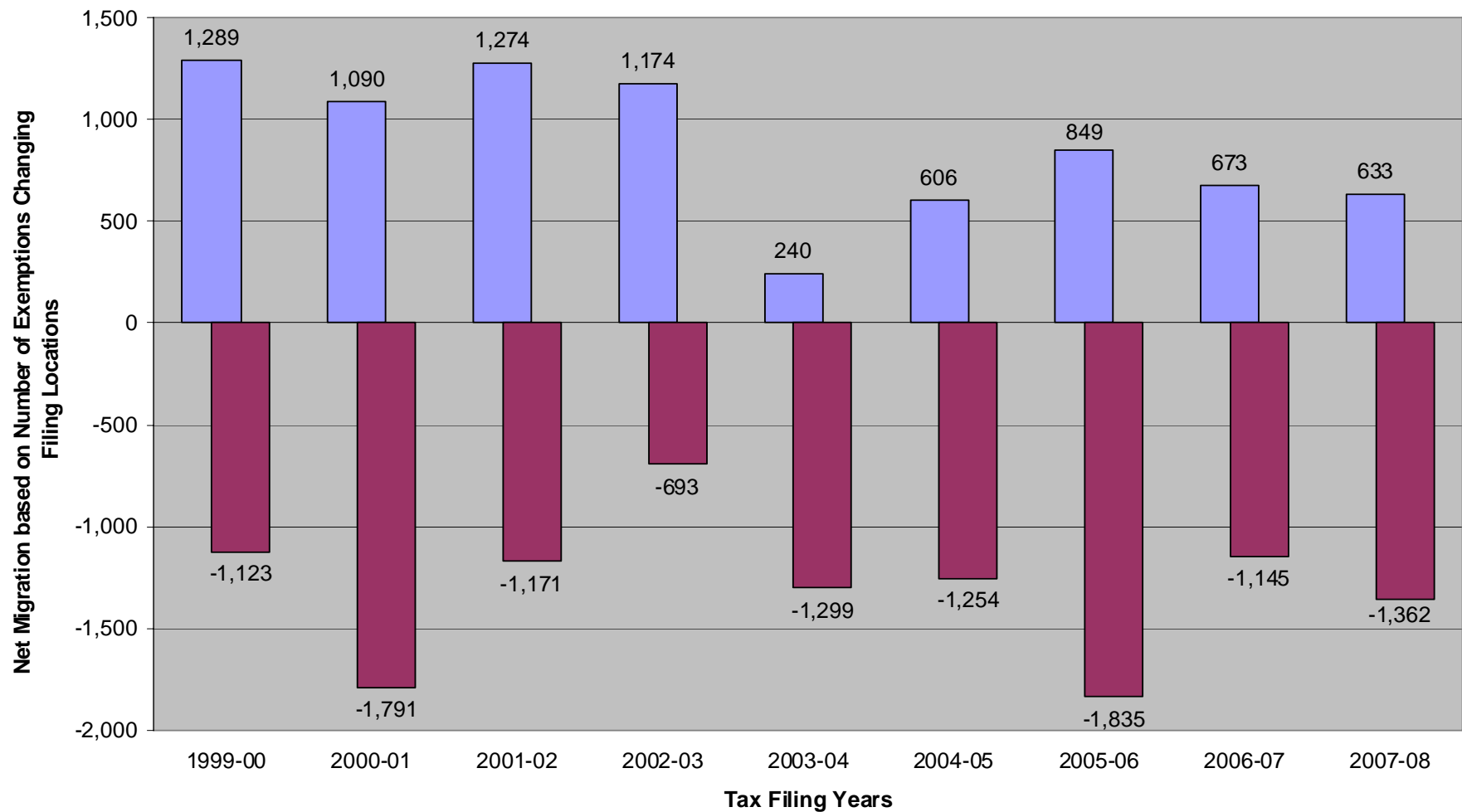
Source: IRS State-to-State
Migration Files

—◆— Total Inflow —■— Total Outflow —▲— Total Net Flow

Compiled and Prepared by: David
Drozd, CPAR @ UNO 10-19-09

Jerry Deichert, David Drozd, CPAR @ UNO

Comparison of Migration within Nebraska and Out-of-State for Lancaster County based on Changes in IRS Tax Filing Locations: 1999 to 2008



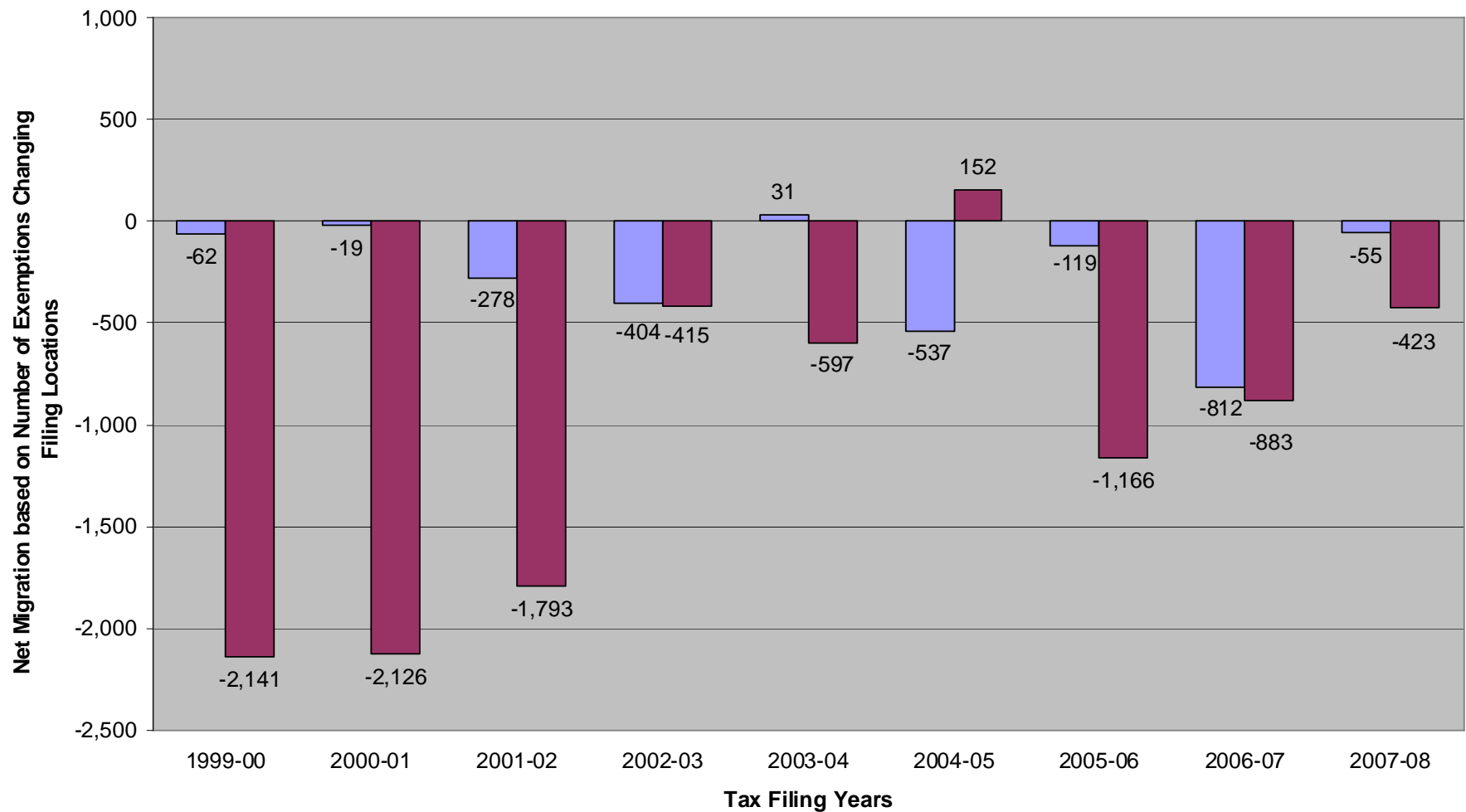
Source: IRS migration files, downloaded from Missouri State Data Center website

Same St. Different St.

Compiled and Prepared by: David Drozd,
Center for Public Affairs Research, UNO

Jerry Deichert, David Drozd, CPAR @ UNO

Comparison of Migration within Nebraska and Out-of-State for Douglas County based on Changes in IRS Tax Filing Locations: 1999 to 2008



Source: IRS migration files, downloaded from Missouri State Data Center website

Same St. Different St.

Compiled and Prepared by: David Drozd, Center for Public Affairs Research, UNO

Jerry Deichert, David Drozd, CPAR @ UNO



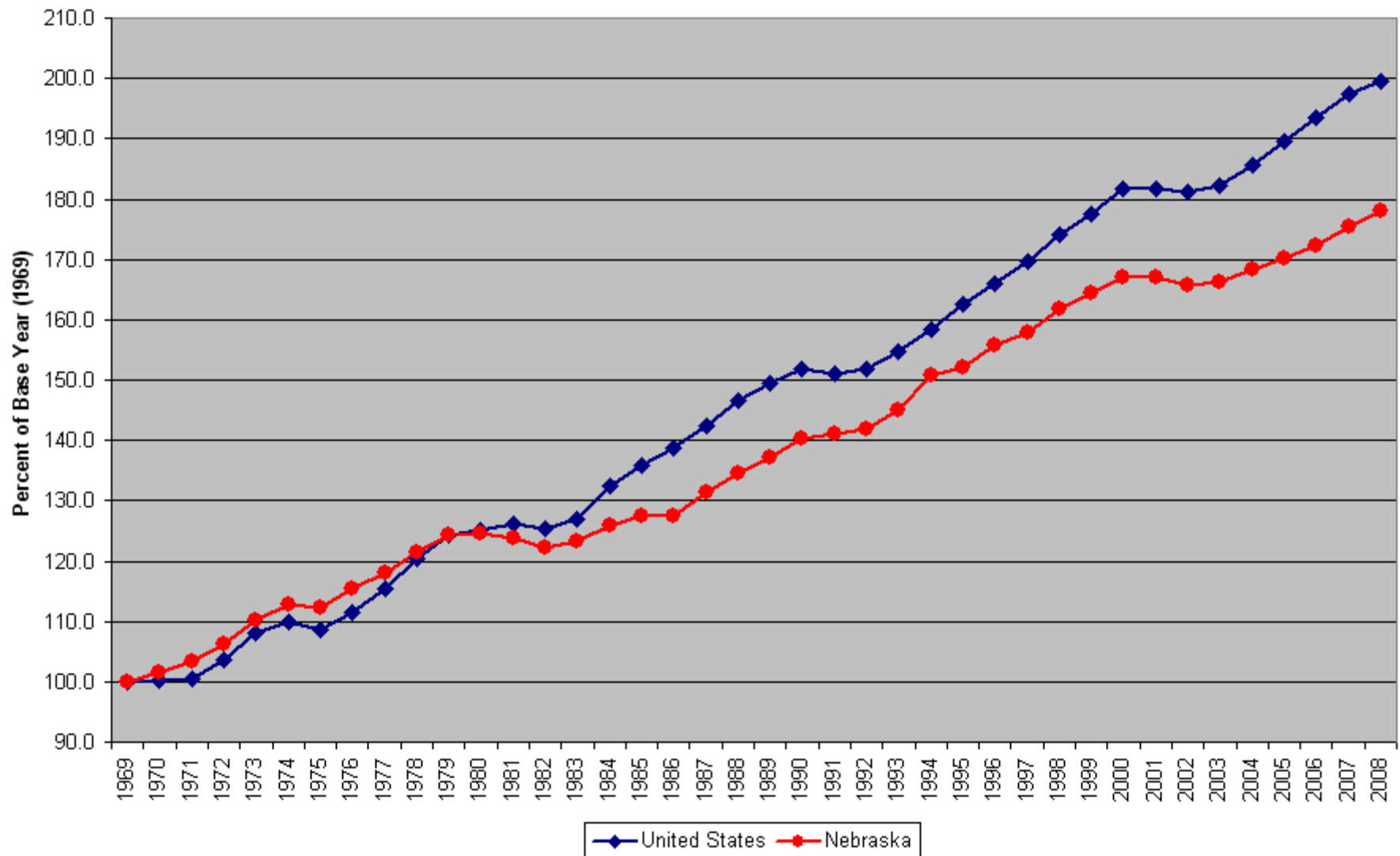
Employment and Per Capita Personal Income



Employment

- Employment grew about the same rate as the US in the 1970s, more rapidly in the early 1990s, and more slowly since 1995.
- Since 1969, the rate of growth in Nebraska's employment is 3.7 times larger than its population.

Nebraska and United States Employment: 1969-2008

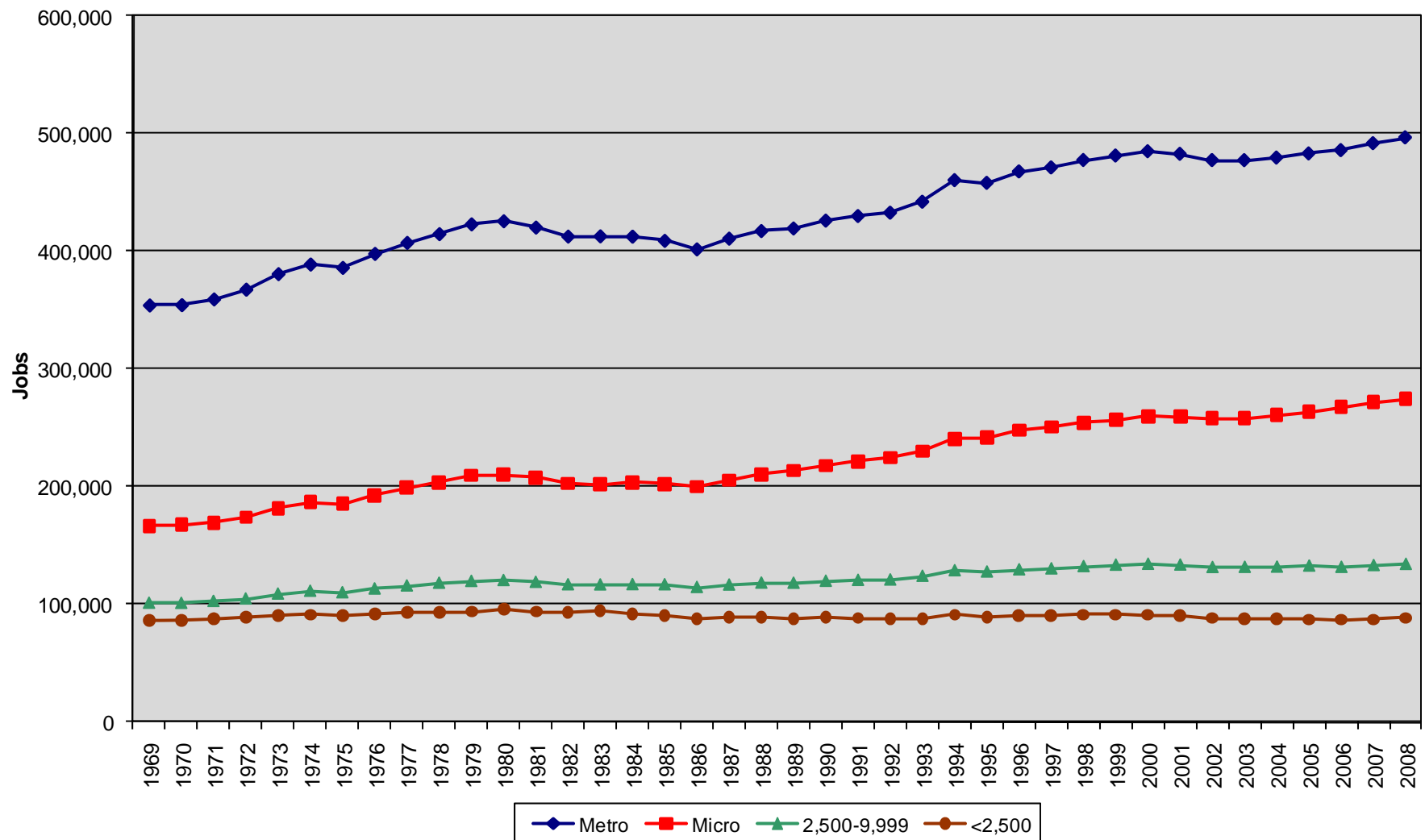


Source: US Bureau of Economic Analysis, Regional Economic Information System

Jerry Deichert, David Drozd, CPAR @ UNO



Jobs in Nebraska Counties By Metropolitan and Micropolitan Status (2003 Definitions) and Size of Largest City 2,500-9,999 and Under 2,500: 1969-2008



Source: US Bureau of Economic Analysis, Regional Economic Information System

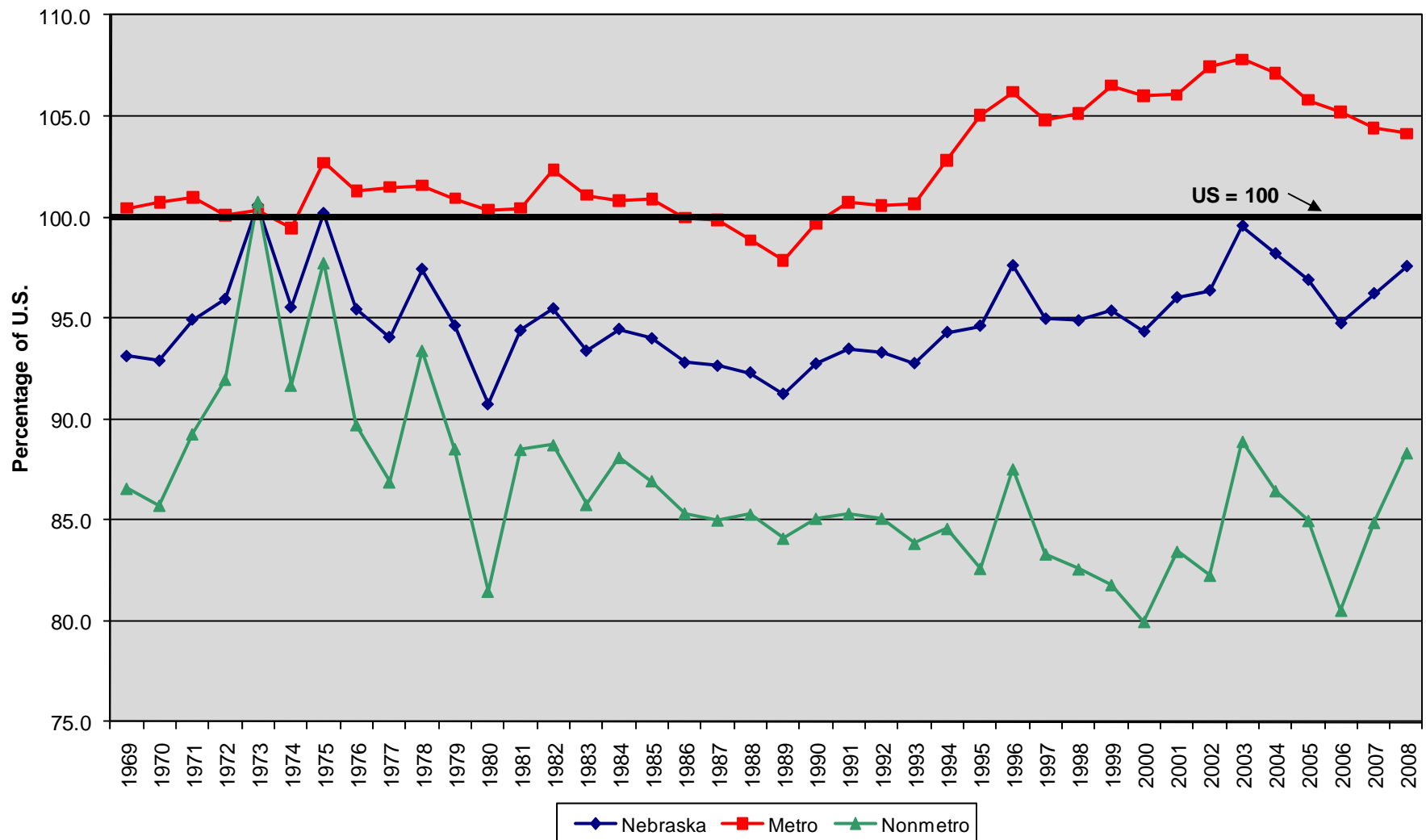
Jerry Deichert, David Drozd, CPAR @ UNO



Per Capita Income

- Per capita income declined in relation to the US between 1970 and 1980 and has fluctuated between 90 and 95 percent of the national average since then.
- Recently, metropolitan per capita income has been decreasing in relation to US while all nonmetro areas have been increasing.

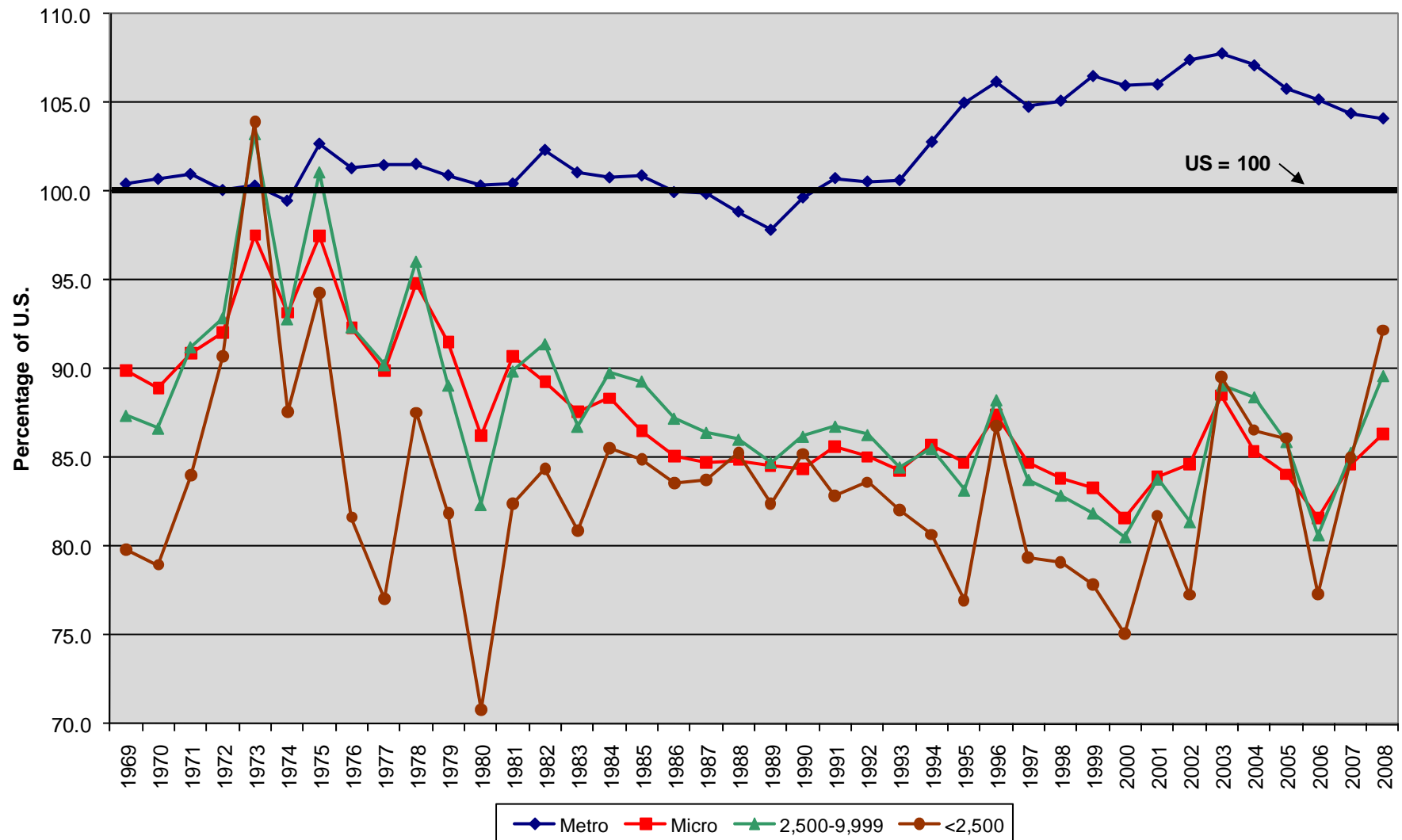
**Per Capita Personal Income of Nebraska Counties As a Percentage of the U.S. By
Metropolitan and Nonmetropolitan Status (2003 Definitions): 1969-2008**



Source: US Bureau of Economic Analysis, Regional Economic Information System

Jerry Deichert, David Drozd, CPAR @ UNO

Per Capita Personal Income of Nebraska Counties As a Percentage of the U.S .By Metropolitan and Micropolitan Status (2003 Definitions) and Size of Largest City 2,500-9,999 and Under 2,500: 1969-2008



Source: US Bureau of Economic Analysis, Regional Economic Information System

Jerry Deichert, David Drozd, CPAR @ UNO



Contact Us With Questions

- David Drozd
(402) 554-2132
ddrozd@unomaha.edu
- Jerry Deichert
(402) 554-2134
jdeicher@unomaha.edu
- Also view the CPAR website
<http://www.unomaha.edu/~cpar/>