

Local Employment Dynamics

Nebraska State Data Center
23rd Annual Data Users Conference
August 15, 2012

Jerry Deichert
UNO Center for Public Affairs Research
Michael Pippin
UNO School of Public Administration

Today's Activities

- Description of Local Employment Dynamics
- Review of two major data tools
 - OnTheMap
 - QWI Online
- Hands on exercises

Description of Local Employment Dynamics

- <http://lehd.did.census.gov/led/>

Local Employment Dynamics--OnTheMap

Firefox U.S. Census Bureau - Longitudinal Empl... lehd.did.census.gov/led/

U.S. Census Bureau
Longitudinal Employer-Household Dynamics

Home Local Employment Dynamics Data Tools Research Library About Us
Site Map Feedback Ask Census

Print Search

QUICK LINKS

- [Release Schedule](#)
- [Tools](#)
- [OnTheMap \(Help\)](#)
- [Emergency Management \(Help\)](#)
- [QWI Online \(Help\)](#)
- [Job Gains/Losses](#)
- [Industry Focus](#)
- [Older Worker Profiles](#)
- [CED HotReport](#)
- Learning**
 - [2012 Workshop](#)
 - [2011 Workshop](#)
 - [e-Learning](#)
 - [Webinars](#)
 - [Workshops](#)
- Partnership**
 - [State Partners](#)
 - [Partners Only](#)
- Data Download**
 - [VirtualRDC](#)
 - [State Only](#)
 - [OnTheMap Data \(Help\)](#)
- Data Visualization**
 - [OnTheMap](#)
 - [Many Eyes](#)
 - [Google Public Data Explorer](#)

WHAT'S NEW?


- 06/15/12: [OnTheMap Mobile and OnTheMap Version 6.1 Released](#)
- 06/15/12: [OnTheMap for Emergency Management Version 3 Released](#)
- 05/31/12: [LODES/OnTheMap Data for DC and Federal Employment \(2010\) Released](#)
- 05/24/12: [Website Maintenance Friday May 25 at 6:00 PM](#)
- 04/27/12: [OnTheMap Version 6 Downloadable Data Released](#)

[Click here to send an email to join the OnTheMap listserv.](#)

[\[more...\]](#)

OnTheMap for Emergency Management Version 3.0

- Expanded Report Content** - the addition of Decennial 2010 Demographic & Housing Characteristics; 2010 Jobs & Worker Sex Data
- New Emergency Event Data** - the addition of FEMA Disaster Declaration Areas & NWS Snowfall Probability Forecasts
- More Complete Hurricane Archives** - Capture & Archiving of all Daily NHC Storm Updates
- New Analyses & Visualizations** - New Reports with Charting & Thematic Map Overlays Showing Population & Worker Distributions
- New Interoperability** - New Tool for Exporting Event Areas to use in OnTheMap or Other GIS Applications
- Updated Interface and Help Documentation** - Improved User Interface Speed and Navigability; Improved Event Searching; Newly Updated Help Documentation



Q&A

- [What is LEHD?](#)
- [What is LEHD?](#)
- [What is the difference between LEHD and LED?](#)
- [What are the OWI?](#)

[\[more...\]](#)

DID YOU KNOW?

Private Sector Total Employment in Maryland

	2010Q2	2011Q2	Change
All			
Female	972,475	975,333	+0.3%
Male	987,215	1,000,105	+1.3%

Professional Services...

Female	102,254	102,517	+0.3%
Male	125,987	129,931	+3.1%

[Next](#)

For more details or local results, visit [QWI Online](#), U.S. Census Bureau, Local Employment Dynamics, 08/06/2012, 09:57:28 am

Please send your comments/suggestions to CES.Local.Employment.Dynamics@census.gov

[Privacy Policy](#) | [2010 Census](#) | [Data Tools](#) | [Information Quality](#) | [Product Catalog](#) | [Contact Us](#) | [Home](#)

Source: U.S. Census Bureau, Center for Economic Studies | [Contact Us](#) | Last Revised: September 13, 2011

For
more
learning

OnTheMap (Help)

- OnTheMap Version 6 is the sixth generation of OnTheMap, a web-based mapping and reporting application that shows where workers are employed and where they live. It also provides companion reports on age, earnings, industry distributions, race, ethnicity, educational attainment, and sex. See [An Overview on the LEHD Origin-Destination Employment Statistics \(LODES\)](#) [PDF, 132KB] for more information on the available data in OnTheMap.
- Race, Ethnicity, Educational Attainment, and Sex variables are made available in OnTheMap through a Beta release of data.
- OnTheMap provides an easy-to-use interface for creating, viewing, printing and downloading workforce related maps, profiles, and underlying data. Based on 2002-2010 LEHD Origin Destination Employment Statistics (LODES), OnTheMap is a unique resource for mapping the travel patterns of workers and identifying small-area workforce characteristics. Download a one page document about OnTheMap [PDF, 75KB] for more information.
- The project is supported by the Employment and Training Administration (ETA) at the U.S. Department of Labor.

Selecting Geography

Available
Geographies

States

Counties

Places

ZIP Codes

Metropolitan/
Micropolitan
Areas

Zip Codes are
the smallest
level of
geography.

The screenshot shows the OnTheMap web application interface. The browser window title is "U.S. Census Bureau - Longitudinal E...". The address bar shows "onthemap.ces.census.gov". The page has a blue header with the "OnTheMap" logo and navigation links: "LED Home", "Help and Documentation", "Reload", and "Text-Only". Below the header is a toolbar with buttons: "Save", "Load", "Feedback", "Previous Extent", and "Hide Tabs".

The left sidebar contains a "Selection" tab. Under the "Welcome to OnTheMap!" section, there is a "Search" section circled in red. It includes a text input field with "68106", a "Search" button, and a dropdown menu labeled "ZIP Codes (ZCTA)" with "68106" selected. Below the search section are "Import Geography" and "Load .OTM File" sections. The "Import Geography" section has links for "Import from KML", "Import from SHP", and "Import from GPS". The "Load .OTM File" section has a "Load" button.

The main map area shows a map of the United States with various cities labeled, including Anchorage, Seattle, Portland, Minneapolis, Milwaukee, Boston, New York, Washington, Virginia Beach, Nashville, Davidson metropolitan government, Atlanta, Jacksonville, Tampa, Miami, San Antonio, Corpus Christi, El Paso, Arlington, Phoenix, Long Beach, Oakland, Las Vegas, Denver, Omaha, Kansas City, Wichita, Tulsa, and San Juan. A scale bar at the bottom left indicates 1000 km and 1000 mi. The coordinates "-179.65787, 32.31513" are displayed at the bottom right.

Perform Analysis

The screenshot displays the OnTheMap web application interface within a Firefox browser window. The browser's address bar shows the URL `onthemap.ces.census.gov`. The application's header includes the title "OnTheMap" and navigation links: "LED Home", "Help and Documentation", "Reload", and "Text-Only". Below the header, there are tabs for "Start", "Base Map", and "Selection", with "Selection" currently active. The left sidebar contains a "Welcome to OnTheMap!" message, a "Search" section with a text input field containing "68106" and a "Search" button, and an "Import Geography" section with links for "Import from KML", "Import from SHP", and "Import from GPS". Below these is a "Load .OTM File" section with a "Load" button. The main map area shows a street map of Omaha, Nebraska, with a red diamond marker indicating the selected area. A pop-up window displays the following information: "68106", "from ZIP Codes (ZCTA)", "Selection Area: 5,060 Sq. Mi", "Census Blocks: 447", and links for "Perform Analysis on Selection Area", "Change Selection Area", and "Add Advanced Selection". The map includes a scale bar (0 to 2000 ft), a north arrow, and a coordinate display at the bottom right showing "-96.00806, 41.24353".

Firefox | U.S. Census Bureau - Longitudinal E... | OnTheMap

onthemap.ces.census.gov

OnTheMap

LED Home Help and Documentation Reload Text-Only

Start Base Map Selection

Welcome to OnTheMap!

Start an analysis by using one of the tools below (Search, Import Geography, or Load .OTM file). Hover over the Help icons located throughout the application to see Help tips for using specific functionality. Sections in the control panel can be collapsed or opened by clicking the section title.
[Read New Data Notice \(05/31/2012\)](#)

Search

68106 Search

ZIP Codes (ZCTA)

ZIP Codes (ZCTA)
68106

Import Geography

[Import from KML](#)
[Import from SHP](#)
[Import from GPS](#)

Load .OTM File

Click the "Load" button below to load a .OTM file.

Load

68106

from ZIP Codes (ZCTA)
Selection Area: 5,060 Sq. Mi
Census Blocks: 447

[Perform Analysis on Selection Area](#)

[Change Selection Area](#)
[Add Advanced Selection](#)

Omaha

68106

24

68132

6810

80

80

80

1000 m
2000 ft

-96.00806, 41.24353

Analysis Settings—Inflow/Outflow

Firefox U.S. Census Bureau - Longitudinal E... OnTheMap

onthemap.ces.census.gov

OnTheMap LED Home Help and Documentation Reload Text-Only

Start Base Map Selection Results Save Load Feedback Previous Extent Hide Tabs Hide Chart/Report

Inflow/Outflow Analysis

enter your own subtitle

Display Settings

Labor Market Segment Filter All Workers

Year 2010

Map Controls

Color Key

Flow Overlay ☒

Selection Outline ☒

Identify Zoom to Selection

Clear Overlays Animate Overlays

Report/Map Outputs

Detailed Report

Export Geography

Print Chart/Map

Legends

Note: Overlay arrows do not show directionality of worker flow from home and employment location.

- Employed and Live in Selection Area
- Employed in Selection Area, Live Outside
- Live in Selection Area, Employed Outside

Analysis Selection

Analysis Settings

Inflow/Outflow Analysis in 2010 by All Jobs

Home/Work Area
Determines whether the selection area is analyzed on where workers live ("Home") or where workers are employed ("Work").

☐ Home
☒ Work

Analysis Type
Determines the type of results that will be generated for the selected area.

☐ Area Profile
Labor Market Segment: All Workers

☐ Area Comparison
Areas to Compare: Places (Cities, CDPs, etc.)

Labor Market Segment: All Workers

☐ Distance/Direction

☐ Destination
Destination Type: Places (Cities, CDPs, etc.)

☒ Inflow/Outflow
Note: Home/Work choice does not affect results

Year
Determines the year(s) of data that will be processed in the analysis.

☒ 2010
☐ 2009
☐ 2008
☐ 2007
☐ 2006
☐ 2005
☐ 2004
☐ 2003
☐ 2002

Job Type
Determines the scope of jobs that will be processed in the analysis.

☒ All Jobs
☐ Primary Jobs
☐ All Private Jobs
☐ Private Primary Jobs

Inflow/Outflow job counts in 2010

Selection

Job Counts (Primary Jobs) 2010

Selection	Count	Share
Selection	9,203	100.0%
Selection Outside	8,709	94.6%
Living in the Selection Area	494	5.4%
Selection Area Outside	9,256	100.0%
Living and Employed in the Selection Area	8,762	94.7%
Reset Highlighting	494	5.3%

Change Settings

1000 m
2000 ft
-96.01791, 41.25991

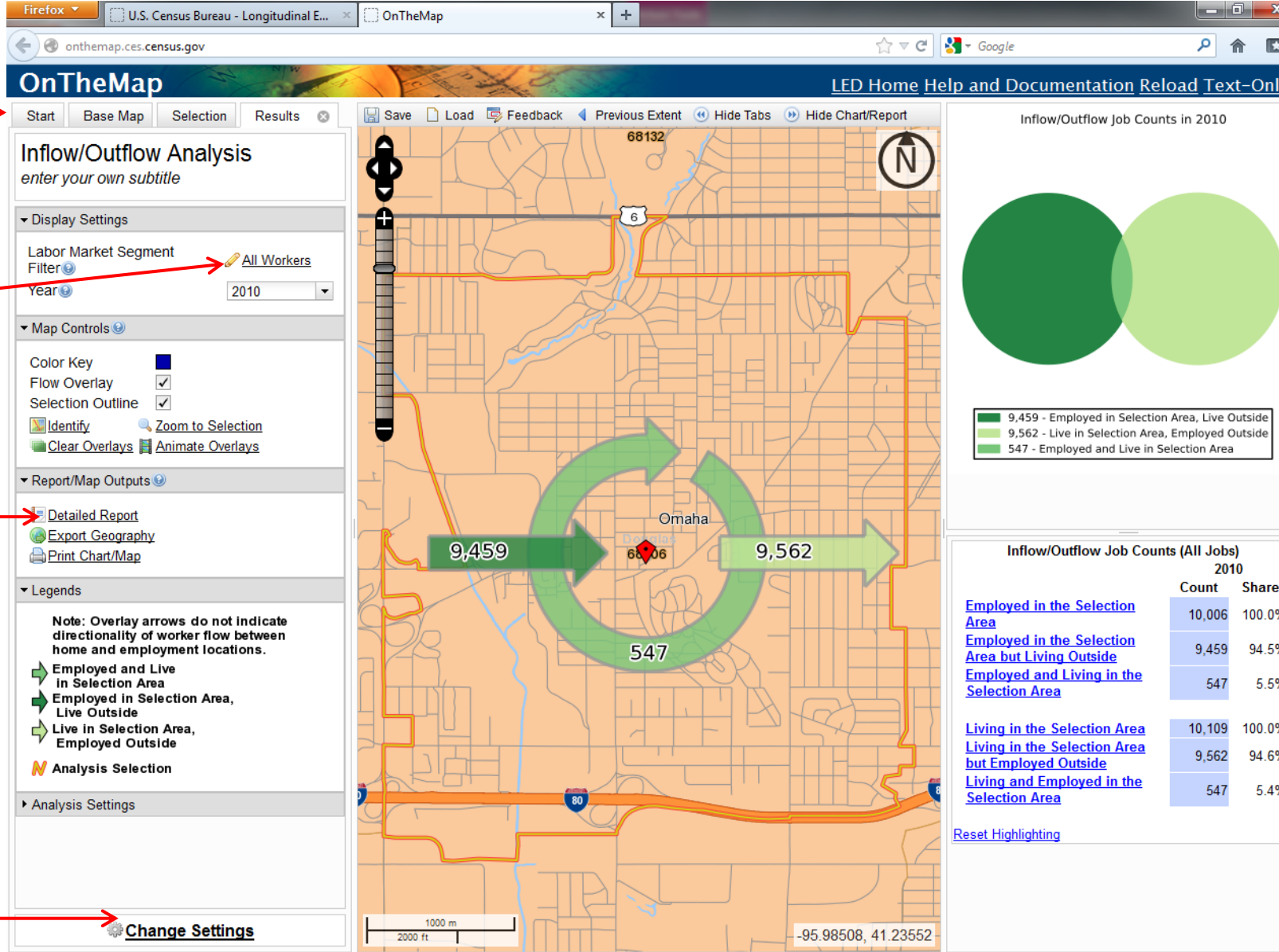
Review Results and Change Settings

Select a new area

Select a sub-category of workers

Prepare a detailed report

Change settings for existing area



Selecting a City

Firefox | U.S. Census Bureau - Longitudinal E... | U.S. Census Bureau - Longitudinal E... | OnTheMap

onthemap.ces.census.gov

OnTheMap | [LED Home](#) | [Help and Documentation](#) | [Reload](#) | [Text-Only](#)

Start | Base Map | Selection

Save | Load | Feedback | Previous Extent | Hide Tabs

▼ Welcome to OnTheMap!

Start an analysis by using one of the tools below (Search, Import Geography, or Load .OTM file). Hover over the Help icons located throughout the application to see Help tips for using specific functionality. Sections in the control panel can be collapsed or opened by clicking the section title.
[Read New Data Notice \(05/31/2012\)](#)

▼ Search

Fremont Search

Places (Cities, CDPs, etc.)

- Places (Cities, CDPs, etc.)
 - Fremont city, NE
 - Fremont town, NC
 - Fremont CDP, UT
 - Fremont city, CA
 - Fremont Hills city, MO
 - Fremont city, MI
 - Fremont city, OH
 - Fremont town, IN
 - Fremont village, WI
 - Fremont CDP, MO
 - Fremont city, IA

▼ Import Geography

- [Import from KML](#)
- [Import from SHP](#)
- [Import from GPS](#)

▼ Load .OTM File

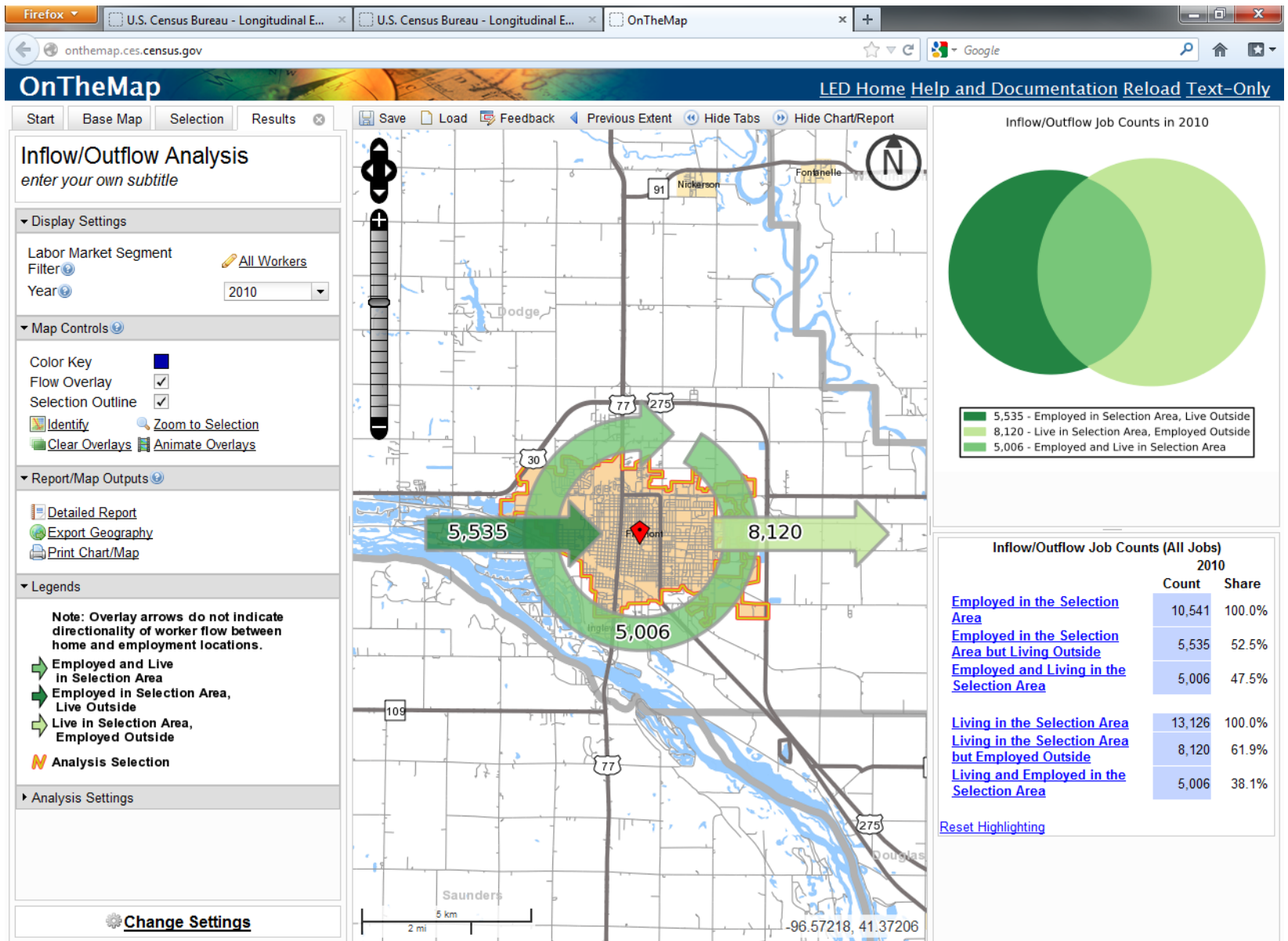
Click the "Load" button below to load a .OTM file.

Load

1000 km | 1000 mi

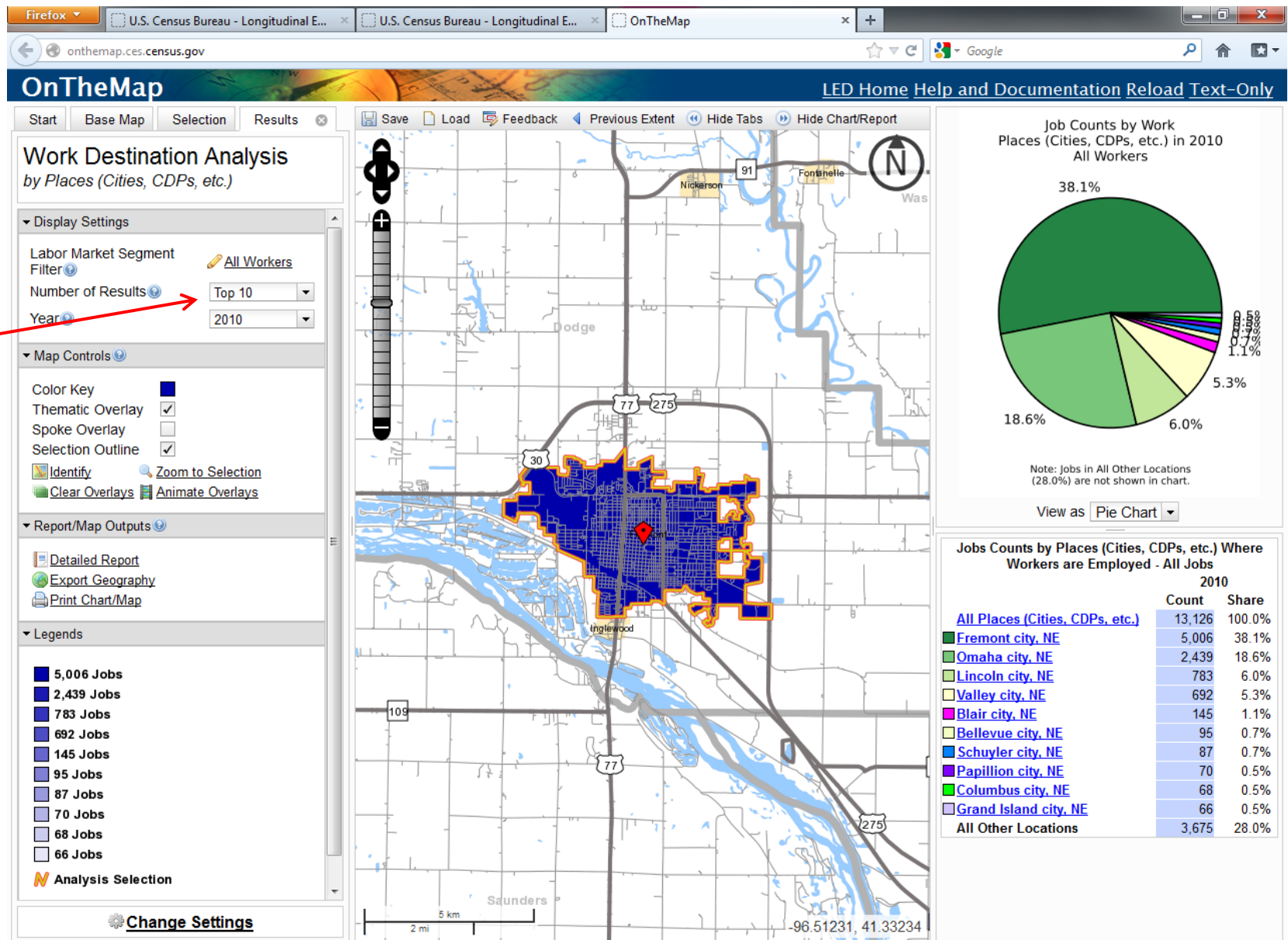
-139.09760, -20.45838

Results—Inflow/Outflow



Results—Places Where Fremont Residents Work

You can add more places



Local Employment Dynamics—QWI Online

Firefox U.S. Census Bureau - Longitudinal Empl...
lehd.did.census.gov/led/

U.S. Census Bureau
Longitudinal Employer-Household Dynamics

Home Local Employment Dynamics Data Tools Research Library About Us
Site Map Feedback Ask Census

Print Search

QUICK LINKS

- Release Schedule
- Tools
 - OnTheMap (Help)
 - Emergency Management (Help)
 - QWI Online (Help)**
 - Job Gains/Losses
 - Industry Focus
 - Older Worker Profiles
 - CED HotReport
- Learning
 - 2012 Workshop
 - 2011 Workshop
 - e-Learning
 - Webinars
 - Workshops
- Partnership
 - State Partners
 - Partners Only
- Data Download
 - VirtualRDC
 - State Only
 - OnTheMap Data (Help)
- Data Visualization
 - OnTheMap
 - Many Eyes
 - Google Public Data Explorer


WHAT'S NEW?

- 06/15/12: [OnTheMap Mobile and OnTheMap Version 6.1 Released](#)
- 06/15/12: [OnTheMap for Emergency Management Version 3 Released](#)
- 05/31/12: [LODES/OnTheMap Data for DC and Federal Employment \(2010\) Released](#)
- 05/24/12: [Website Maintenance Friday May 25 at 6:00 PM](#)
- 04/27/12: [OnTheMap Version 6 Downloadable Data Released](#)

[Click here to send an email to join the OnTheMap listserv.](#)

OnTheMap for Emergency Management Version 3.0

- Expanded Report Content** - the addition of Decennial 2010 Demographic & Housing Characteristics; 2010 Jobs & Worker Sex Data
- New Emergency Event Data** - the addition of FEMA Disaster Declaration Areas & NWS Snowfall Probability Forecasts
- More Complete Hurricane Archives** - Capture & Archiving of all Daily NHC Storm Updates
- New Analyses & Visualizations** - New Reports with Charting & Thematic Map Overlays Showing Population & Worker Distributions
- New Interoperability** - New Tool for Exporting Event Areas to use in OnTheMap or Other GIS Applications
- Updated Interface and Help Documentation** - Improved User Interface Speed and Navigability; Improved Event Searching; Newly Updated Help Documentation



Q&A

- [What is LEHD?](#)
- [What is LED?](#)
- [What is the difference between LEHD and LED?](#)
- [What are the QWI?](#)

DID YOU KNOW?

Private Sector Total Employment in Maryland

	2010Q2	2011Q2	Change
All			
Female	972,475	975,333	+0.3%
Male	987,215	1,000,105	+1.3%

Professional Services...

Female	102,254	102,517	+0.3%
Male	125,987	129,931	+3.1%

[Next](#)

For more details or local results, visit [QWI Online](#).
U.S. Census Bureau, Local Employment Dynamics,
08/06/2012, 09:57:28 am

Please send your comments/suggestions to CES.Local.Employment.Dynamics@census.gov

[Privacy Policy](#) | [2010 Census](#) | [Data Tools](#) | [Information Quality](#) | [Product Catalog](#) | [Contact Us](#) | [Home](#)

Source: U.S. Census Bureau, Center for Economic Studies | [Contact Us](#) | Last Revised: September 13, 2011

QWI Online (Help)

- The Quarterly Workforce Indicators are derived from the LED partnership and are possible because of an innovative system that merges data already collected from various sources. The state Labor Market Information (LMI) agencies supply key data from unemployment wage records and from businesses each quarter. The Census Bureau merges the data from the LMIs with current demographic information to produce the data found on the LED web site. By combining data from different administrative sources, censuses and surveys, the Census Bureau produces local employment information that was not available before.
- The Census Bureau produces thirty labor force indicators, eight of which are published in QWI Online. The eight indicators include total employment, measures of change such as job flow, new hires, and separations, and average earnings. Datasets containing the full range of thirty indicators are made available through the Cornell Virtual Research Data Center. The beginning of the published QWI time series for each state varies depending on data availability. The time series are refreshed every quarter, with the most recent data lagging the calendar quarter by about nine months.

QWI Online (continued)

- QWI Online provides
 - Detailed demographics
 - Detailed geography and state totals
 - Ownership information - private only or all ownership categories
 - NAICS sector, 3- and 4-digit industries *
 - 4-quarter rolling averages
 - Recent and historical data
- Using the Comparison Report feature in QWI Online, you can tabulate labor market information by time, geography, sex, age and other variables. You can also generate cross-sectional, or download the data to create your own custom tables and charts.
- * A link is available for historical SIC-based information from the control page. However, these aggregations are no longer updated with current data.
- Job Gains/Losses
 - Net Job Gains and Losses and Net Job Growth Rates are derived directly from QWI Online. The indicator used is the Beginning of Quarter Employment for private industries only. It covers year-over-year changes by available states, as well as download of corresponding data files.

Selecting a State

Firefox | QWI Online [NAICS] | lehd.did.census.gov/led/datatools/qwiapp.html

U.S. Census Bureau

Local Employment Dynamics | All About Jobs

Home | Local Employment Dynamics | Data Tools | Research | Library | About Us

CED HotReports | QWI Online | OnTheMap | Industry Focus | Case Studies and Examples | Data Visualization

Print

Search

QWI Online [NAICS]


Select a state from the following table to access NAICS-based statistics. Click [here](#) to access [SIC-based statistics](#). While NAICS series continue to be updated on a quarterly basis, the SIC-based QWI ceased to be updated as of the 2007Q2 data update. If a state does not have an active link, it means either it is a new partner whose data are being processed or it is not a partner in the voluntary Local Employment Dynamics (LED) partnership (state name in *italic*).

- Technical Paper No. TP-2006-01
[The LEHD Infrastructure Files and the Creation of the Quarterly Workforce Indicators](#) [PDF; File Size: 768KB]
 Date: January 2006. Author(s): John Abowd, Bryce Stephens and Lars Vilhuber
- [Detailed QWI Definitions](#) [PDF; File Size: 272KB]
 Date: January 2006. Author(s): John Abowd, Bryce Stephens and Lars Vilhuber
- [Generalized QWI Definitions: QWI 101](#) [PDF; File Size: 203KB]

The year and quarter number below each state indicate the latest complete update for that state.

Alabama (2011 Q3)	Florida (2011 Q2)	Louisiana (2010 Q4)	Nebraska (2011 Q3)	Oklahoma (2011 Q3)	Vermont (2011 Q3)
Alaska (2011 Q2)	Georgia (2011 Q2)	Maine (2011 Q2)	Nevada (2011 Q2)	Oregon (2011 Q2)	Virginia (2011 Q2)
Arizona (2011 Q3)	Hawaii (2011 Q2)	Maryland (2011 Q3)	New Hampshire (2011 Q2)	Pennsylvania (2011 Q3)	Washington (2011 Q3)
Arkansas (2011 Q3)	Idaho (2011 Q3)	<i>Massachusetts</i>	New Jersey (2011 Q2)	Rhode Island (2010 Q4)	West Virginia (2011 Q2)
California (2011 Q2)	Illinois (2011 Q3)	Michigan (2011 Q2)	New Mexico (2011 Q2)	South Carolina (2011 Q2)	Wisconsin (2011 Q3)
Colorado (2011 Q2)	Indiana (2011 Q2)	Minnesota (2011 Q3)	New York (2011 Q3)	South Dakota (2011 Q3)	Wyoming (2011 Q3)
Connecticut (2011 Q3)	Iowa (2011 Q3)	Mississippi (2011 Q2)	North Carolina (2011 Q2)	Tennessee (2011 Q3)	<i>Puerto Rico</i>
District of Columbia (2011 Q3)	Kansas (2011 Q2)	Missouri (2011 Q2)	North Dakota (2011 Q3)	Texas (2011 Q2)	<i>Virgin Islands</i>
Delaware (2011 Q3)	Kentucky (2011 Q2)	Montana (2011 Q3)	Ohio (2011 Q2)	Utah (2011 Q3)	

User Notes and Alerts:

[PDF] or  denotes a file in Adobe's [Portable Document Format](#). To view the file, you will need the [Adobe® Acrobat® Reader](#) available **free** from Adobe.

Perform Analysis

Demographic characteristics

Definitions and meaning of the measures

Firefox QWI Online [NAICS] lehnd.did.census.gov/led/datatools/qwiapp.html

U.S. Census Bureau
Local Employment Dynamics All About Jobs

[Home](#) [Local Employment Dynamics](#) [Data Tools](#) [Research](#) [Library](#) [About Us](#)
[CED HotReports](#) [QWI Online](#) [OnTheMap](#) [Industry Focus](#) [Case Studies and Examples](#) [Data Visualization](#)

Print

QWI Online [NAICS]

[AgeGroup/Sex](#) [Education/Sex](#) [Race/Ethnicity](#)

LEHD State of Nebraska County Reports - Quarterly Workforce Indicators
Select Criteria below. A new report will be created below as selections change.

Year: Geographic Grouping: or [Information by Detailed Industry](#)
Quarter: County:
Sex: Industry:
AgeGroup: Ownership:

[Download Dataset](#) [Print Table](#)

QWI Quick Facts	Adams (Q3)	Adams (Avg: Selected + 3 Prior qtrs)	Nebraska (Q3)	Nebraska (Avg: Selected + 3 Prior qtrs)
1 Total Employment	15,172	14,933	890,092	880,755
2 Net Job Flows	-45	77	-8,431	4,535
3 Job Creation	629	685	32,203	38,178
4 New Hires	2,559	1,903	133,426	115,185
5 Separations	3,538	2,383	162,246	132,033
6 Turnover	8.2%	7.6%	8.6%	7.8%
7 Avg Monthly Earnings	\$2,897.00	\$2,854.00	\$3,340.00	\$3,288.25
8 Avg New Hire Earnings	\$1,766.00	\$1,634.25	\$1,978.00	\$1,929.75

[View Detailed Comparison Reports](#)

[For more information](#)

Age Group = 14-99; County = 001 Adams; Geographic Grouping = county; Industry = All NAICS Sectors; Owner = All (1-5); Quarter = Q3; Sex = Male and Female; State = Nebraska; Year = 2011;

Exercises

1. OnTheMap

Which ZIP code provided the most workers to 68106?

In which ZIP code did the largest number of workers living in 68106 work?

How might you use this in your work?

2. QWI Online (Use the most recent data)

What was the average monthly earnings for workers with a bachelor's degree in Lancaster County?

Was this higher or lower than the comparable state value?