

Spring 2014

Enrollment Report - Spring 2014

UNO Office of Institutional Effectiveness
University of Nebraska at Omaha

Follow this and additional works at: <https://digitalcommons.unomaha.edu/oieenrollment>

 Part of the [Educational Assessment, Evaluation, and Research Commons](#), and the [Higher Education Commons](#)

Please take our feedback survey at: https://unomaha.az1.qualtrics.com/jfe/form/SV_8cchtFmpDyGfBLE

Recommended Citation

Office of Institutional Effectiveness, UNO, "Enrollment Report - Spring 2014" (2014). *Enrollment Reports*. 11.

<https://digitalcommons.unomaha.edu/oieenrollment/11>

This Report is brought to you for free and open access by the Systems Intelligence and Data Analytics (SIDA) at DigitalCommons@UNO. It has been accepted for inclusion in Enrollment Reports by an authorized administrator of DigitalCommons@UNO. For more information, please contact unodigitalcommons@unomaha.edu.

OFFICE OF INSTITUTIONAL EFFECTIVENESS

ENROLLMENT PROFILE REPORT

SPRING 2014



UNIVERSITY OF
Nebraska
Omaha



University of Nebraska at Omaha

Enrollment Profile Report:

Spring 2014

Office of Institutional Effectiveness

Institutional Research

<http://www.unomaha.edu/oie/>

January 2014

EXECUTIVE SUMMARY

This Enrollment Statistical Summary provides delivery and administrative-site information on enrollment headcount and student credit hours. Delivery site reporting counts all students, including those in UNL programs delivered at UNO, but excludes UNO programs only (including the CPACS program delivered in Lincoln).

The purpose of this summary is to provide the undergraduate and graduate enrollments and student credit hour information by college of equivalent academic unit, class, gender and ethnicity. A glossary at the end of the report provides a list of definitions for headings and categories found in the report.

Administrative-Site Campus Summary

- Spring 2014 head count enrollment is 14,162 a 2.0% increase compared to the spring 2013 enrollment of 13,884 (see Figure 1).
- Spring 2014 undergraduate head count enrollment is 11,352 a 0.8% increase compared to the spring 2013 enrollment of 11,263 (see figure 5).
- Spring 2014 graduate head count enrollment is 2,810 a 7.2% increase compared to the spring 2013 of 2,621 (see Figure 5).
- Spring 2014 student credit hours are 156,312 a 1.8% increase compared to the spring 2013 credit hours of 153,543 (see figure 6).
- Spring 2014 undergraduate credit hours are 140,547 up from spring 2013 by 1.0% (see figure 6).
- Spring 2014 graduate credit hours are 15,765 up from spring 2013 by 10.1% (see figure 6).

Delivery-Site

- Spring 2014 head count enrollment is 14,642 a 1.5% increase compared to the spring 2013 enrollment of 14,421 (see Figure 1).
- Spring 2014 undergraduate head count enrollment is 11,816 a slight increase compared to the spring 2013 enrollment of 11,788 (see figure 2).
- Spring 2014 graduate head count enrollment is 2,826 a 7.3% increase compared to the spring 2013 enrollment of 2,633 (see figure 2).
- Spring 2014 student credit hours are 159,385 a 1.5% increase compared to the spring 2013 credit hours of 157,023 (see figure 3).
- Spring 2014 undergraduate credit hours are 142,397 up from spring 2013 by 0.6% (see figure 3).
- Spring 2014 graduate credit hours are 16,988 up from spring 2013 by 9.3% (see figure 3).

Contents

Executive Summary.....i

List of Figures:

Figure 1: Delivery-Site & Administrative-Site Head Count Enrollment: Spring 1988-2014.....7

Figure 2: UNO Delivery-Site Head Count by Student Level: Spring 2004-2014.....8

Figure 3: UNO Delivery-Site Student Credit Hours by Student Level: Spring 2004-2014.....8

Figure 4: UNO Delivery-Site Head Count by Ethnicity by Gender: Spring 2014.....9

Figure 5: UNO Administrative-Site Student Credit Hours Spring 2004-201411

Figure 6: UNO Administrative-Site Student Credit Hours Spring 2004-201411

Figure 7: UNO Administrative-Site Head Count by Ethnicity by Gender Spring 2014.....12

Figure 8: College of Arts & Science Head Count Spring 2004-2014.....14

Figure 9: College of Arts & Sciences Student Credit Hours Spring 2004-2014.....14

Figure 10: College of Arts & Sciences Head Count by Ethnicity by Gender: Spring 201415

Figure 11: College of Business Administration Head Count: Spring 2004-2014.....17

Figure 12: College of Business Administration Student Credit Hours: Spring 2004-201417

Figure 13: College of Business Administration Head Count by Ethnicity by Gender: Spring 2014.....18

Figure 14: College of Communication, Fine Arts and Media Delivery-Site Head Count: Spring 2006-201420

Figure 15: College of Communication, Fine Arts and Media Delivery-Site Student Credit Hours: Spring 2006-2014
.....20

Figure 16: College of Communication, Fine Arts and Media Delivery-Site Head Count by Ethnicity by Gender:
Spring 201421

Figure 17: College of Communication, Fine Arts and Media: Administrative-Site Head Count Spring 2006-2014 ..23

Figure 18: College of Communication, Fine Arts and Media: Administrative-Site Student Credit Hours: Spring
2006-2014.....23

Figure 19: College of Communication, Fine Arts and Media: Administrative-Site Head Count by Ethnicity by
Gender Spring 2014.....24

Figure 20: College of Education Head Count: Spring 2004-2014.....26

Figure 21: College of Education Student Credit Hours: Spring 2004-201426

Figure 22: College of Education Head Count by Ethnicity by Gender: Spring 2014.....27

Figure 23: College of Information Science & Technology Head Count: Spring 2004-2014.....29

Figure 24: College of Information Science & Technology Student Credit Hours: Spring 2004-2014.....29

Figure 25: College of Information Science & Technology Head Count by Ethnicity by Gender: Spring 2014.....30

Figure 26: College of Public Affairs & Community Service Delivery-Site Head Count: Spring 2004-201432

Figure 27: College of Public Affairs & Community Service Delivery-Site Student Credit Hours: Spring 2004-2014
.....32

Figure 28: College of Public Affairs & Community Service Delivery-Site Head Count by Ethnicity by Gender:
Spring 201433

Figure 29: College of Public Affairs & Community Service Administrative-Site Head Count: Spring 2004-2014 ...35

Figure 30: College of Public Affairs & Community Service Administrative-Site Student Credit Hours: Spring 2004-2014.....	35
Figure 31: College of Public Affairs & Community Service Administrative-Site Head Count by Ethnicity by Gender: Spring 2014.....	36
Figure 32: College of CPACS, Division of Continuing Studies Head Count: Spring 2004-2014.....	38
Figure 33: College of CPACS, Division of Continuing Studies Head Count by Ethnicity by Gender: Spring 2014 ..	38
Figure 34: University Division Head Count: Spring 2004-2014	41
Figure 35: University Division Student Credit Hours: Spring 2004-2014.....	41
Figure 36: University Division Head Count by Ethnicity by Gender: Spring 2014	41
Figure 37: Non-Degree/Intercampus Special Undergraduate Students Head Count: Spring 2004-2014	43
Figure 38: Non-Degree/Intercampus Special Undergraduate Students Head Count by Ethnicity by Gender: Spring 2014.....	43
Figure 39: Non-Degree/Intercampus Special Graduate Students Head Count: Spring 2004-2014	45
Figure 40: Non-Degree/Intercampus Special Graduate Students Head Count by Ethnicity by Gender: Spring 2014.	45
Figure 41: Other Honors and Library Hours Student Credit Hours by Level of Instruction: Spring 2004-2014	47
Figure 42: College of Agriculture Delivery-Site Head Count: Spring 2004-2014	48
Figure 43: College of Agriculture Delivery-Site Student Credit Hours: Spring 2004-2014.....	48
Figure 44: College of Agriculture Delivery-Site Head Count by Ethnicity by Gender: Spring 2014	48
Figure 45: College of Architecture Delivery-Site Head Count: Spring 2004-2014.....	50
Figure 46: College of Architecture Delivery-Site Student Credit Hours: Spring 2004-2014	50
Figure 47: College of Architecture Delivery-Site Head Count by Ethnicity by Gender: Spring 2014.....	50
Figure 48: College of Engineering Delivery-Site Head Count: Spring 2004-2014	52
Figure 49: College of Engineering Delivery-Site Student Credit Hours: Spring 2004-2014.....	52
Figure 50: College of Engineering Delivery-Site Head Count by Ethnicity by Gender: Spring 2014	52
Figure 51: College of Education and Human Science Delivery-Site Head Count: Spring 2004-2014.....	54
Figure 52: College of Education and Human Sciences Delivery-Site Student Credit Hours: Spring 2004-2014.....	54
Figure 53: College of Education and Human Sciences Delivery-Site Head Count by Ethnicity by Gender: Spring 2004-2014.....	54

List of Tables:

Table 1: UNO Delivery-Site and Administrative-Site Head Count Enrollment and Comparison: Spring 2014	6
Table 2: Total Uno Delivery-Site Head Count Summary for Undergraduate and Graduate Students Full and Part-Time by Gender and Race Classification: Spring 2014	10
Table 3: Total UNO Administrative-Site Head Count Summary for Undergraduate and Graduate Students by Full and Part-Time by Gender and Race Classification: Spring 2014	13
Table 4: College of Arts & Sciences Head Count Summary for Undergraduate and Graduate Students by Full and Part-time by Gender and Race Classification: Spring 2014	16
Table 5: College of Business Administration Head Count Summary for Undergraduate and Graduate Students by Full and Part-Time by Gender and Race Classification: Spring 2014	19

Table 6: College of Communication, Fine Arts and Media Delivery-Site Head Count Summary for Undergraduate and Graduate Students by Full and Part-Time by Gender and Race Classification: Spring 2014	22
Table 7: College of Communication, Fine Arts and Media Administrative-Site Head Count Summary for Undergraduate and Graduate Students by Full and Part-Time by Gender and Race Classification: Spring 2014.....	25
Table 8: College of Education Head Count Summary for Undergraduate and Graduate Students by Full and Part-Time by Gender and Race Classification: Spring 2014.....	28
Table 9: College of Information Science and Technology Head Count Summary for Undergraduate and Graduate Summary for Full and Part-Time by Gender and Race Classification: Spring 2014	31
Table 10: College of Public Affairs & Community Service Delivery-Site Head Count for Undergraduate and Graduate Students by Full and Part-time by Gender and Race Classification: Spring 2014	34
Table 11: College of Public Affairs & Community Service Administrative-Site Head Count Summary for Undergraduate Graduate Students by Full and Part-Time by Gender and Race Classification: Spring 2014	37
Table 12: College of CPACS Division of Continuing Studies Head Count Summary for Undergraduate Students by Full and Part-Time by Gender and Race Classification: Spring 2014	39
Table 13: Cooperative Graduate Program Head Count Summary for Graduate Students by Full and Part-time by Gender and Race Classification: Spring 2014	40
Table 14: University Division Head Count Summary for Undergraduate Students by Full and Part-Time by Gender and Race Classification: Spring 2014.....	42
Table 15: Non-Degree/Intercampus Head Count Summary for Special Undergraduate Students by Full and Part-Time by Gender and Race Classification: Spring 2014.....	44
Table 16: Non-Degree/Intercampus Head Count Summary for Special Graduate Students by Full and Part-time by Gender and Race Classification: Spring 2014	46
Table 17: College of Agriculture Head Count Summary for Undergraduate Students by Full and Part-Time by Gender and Race Classification: Spring 2014	49
Table 18: College of Architecture Head Count Summary for Undergraduate Students by Full and Part-Time by Gender and Race Classification: Spring 2014	51
Table 19: College of Engineering Head count Summary for Undergraduate Students by Full and Part-Time by Gender and Race Classification: Spring 2014	53
Table 20: College of Education and Human Sciences Head Count Summary for Undergraduate Students by Full and Part-Time by Gender and Race Classification: Spring 2014	55
Glossary.....	56

Table 1: UNO Delivery-Site and Administrative-Site Head Count Enrollment and Comparison: Spring 2014

	Spring 2014		Spring 2013	Spring 13-14 Administrative-Site	
	Delivery-Site	Administrative-Site	Administrative-Site	Numerical Change	Percent Change
UNO:					
<i>Undergraduate</i>					
Arts & Science	3,274	3,274	3,388	-114	-3.4%
Business Administration	1,826	1,826	1,717	109	6.3%
Communication, Fine Arts & Media	1,013	1,013	1,033	-20	-1.9%
Education	1,451	1,451	1,470	-19	-1.3%
Information Science and Technology	704	704	613	91	14.8%
Public Affairs & Community Services	714	1,018	918	100	10.9%
Division of Continuing Studies	1,174	1,174	1,254	-80	-6.4%
Sub-total CPACS including Cont. Studies	1,888	2,192	2,172	20	0.9%
Non-Degree	273	273	261	12	4.6%
University Division	619	619	609	10	1.6%
Total Undergraduate	11,048	11,352	11,263	89	0.8%
<i>Graduate</i>					
Arts & Science	421	421	387	34	8.8%
Business Administration	378	378	398	-20	-5.0%
Communication, Fine Arts & Media	96	80	102	-22	-21.6%
Education	797	797	694	103	14.8%
Information Science and Technology	276	276	234	42	17.9%
Public Affairs & Community Services	479	479	432	47	10.9%
New Cooperative Graduate Programs	8	8	3	5	166.7%
Undeclared	371	371	371	0	0.0%
Total Graduate	2,826	2,810	2,621	189	7.2%
<i>UNO Administrative-Site Total</i>		14,162	13,884	278	2.0%
UNL:	Spring 2014		Spring 2013	Numerical Change	Percent Change
Agriculture	14		14		
Architecture	28		34		
Engineering & Technology	722		729		
Education and Human Science	4		18		
Total UNL in Omaha	768		795	-27	-3.4%
	Spring 2014		Spring 2013	Numerical Change	Percent Change
<i>UNO Delivery-Site Total</i>	14,642		14,421	221	1.5%

Figure 1: Delivery-Site & Administrative-Site Head Count Enrollment: Spring 1988-2014

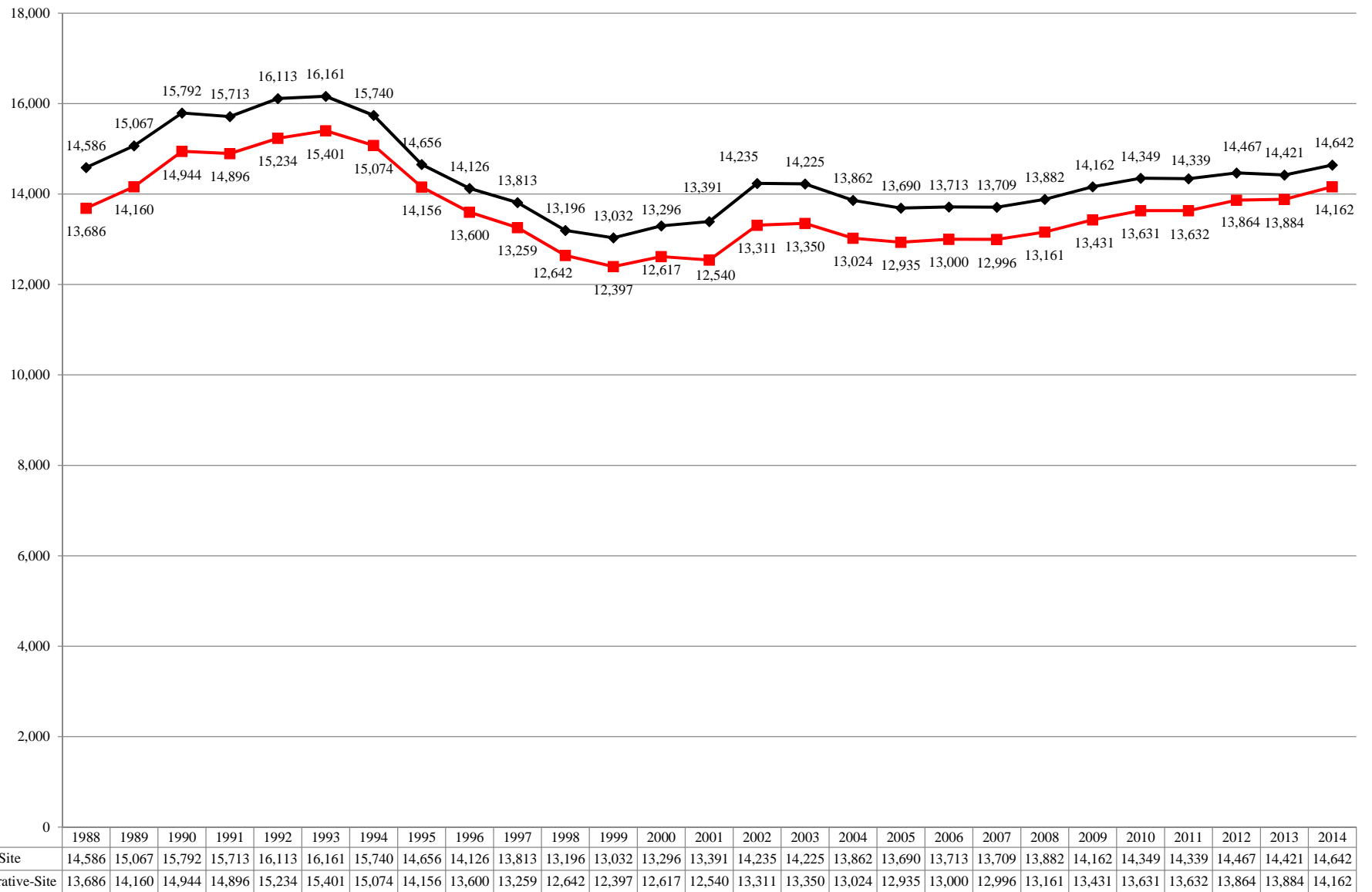


Figure 2: UNO Delivery-Site Head Count by Student Level: Spring 2004-2014

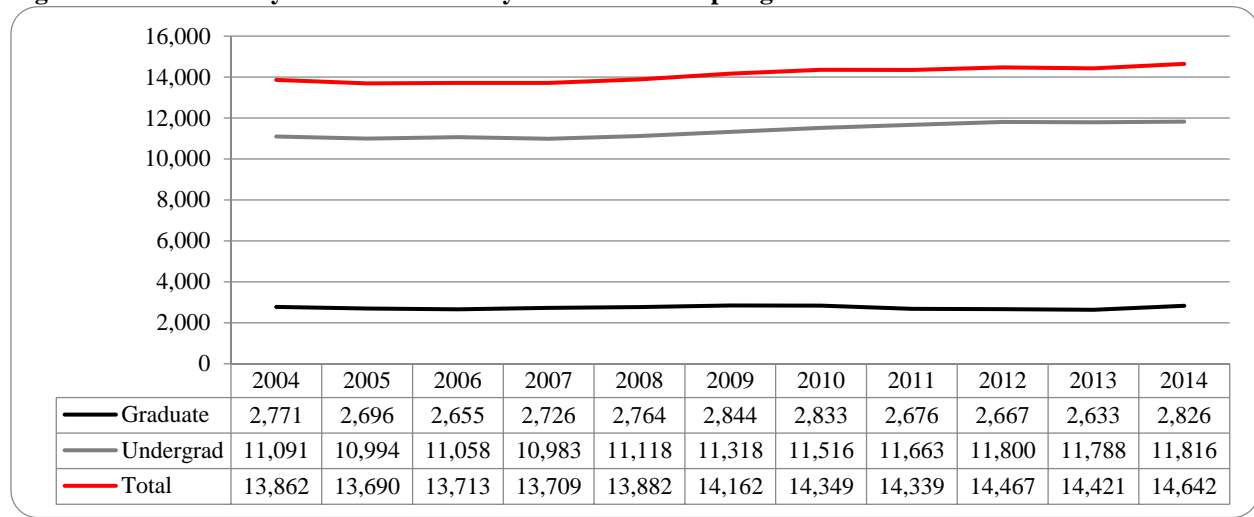


Figure 3: UNO Delivery-Site Student Credit Hours by Student Level: Spring 2004-2014

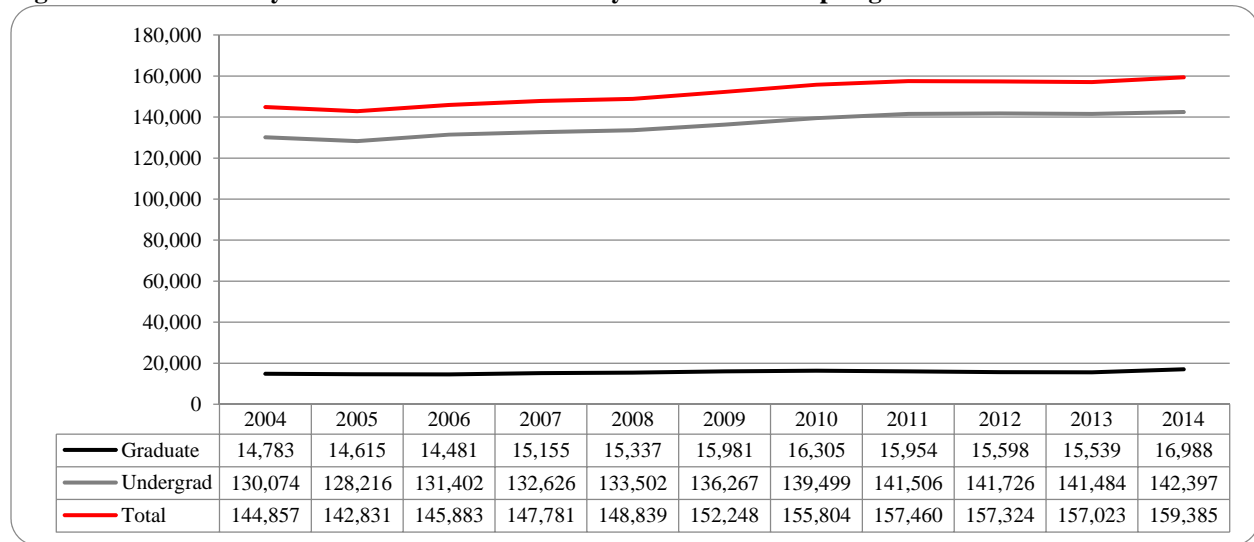


Figure 4: UNO Delivery-Site Head Count by Ethnicity by Gender: Spring 2014

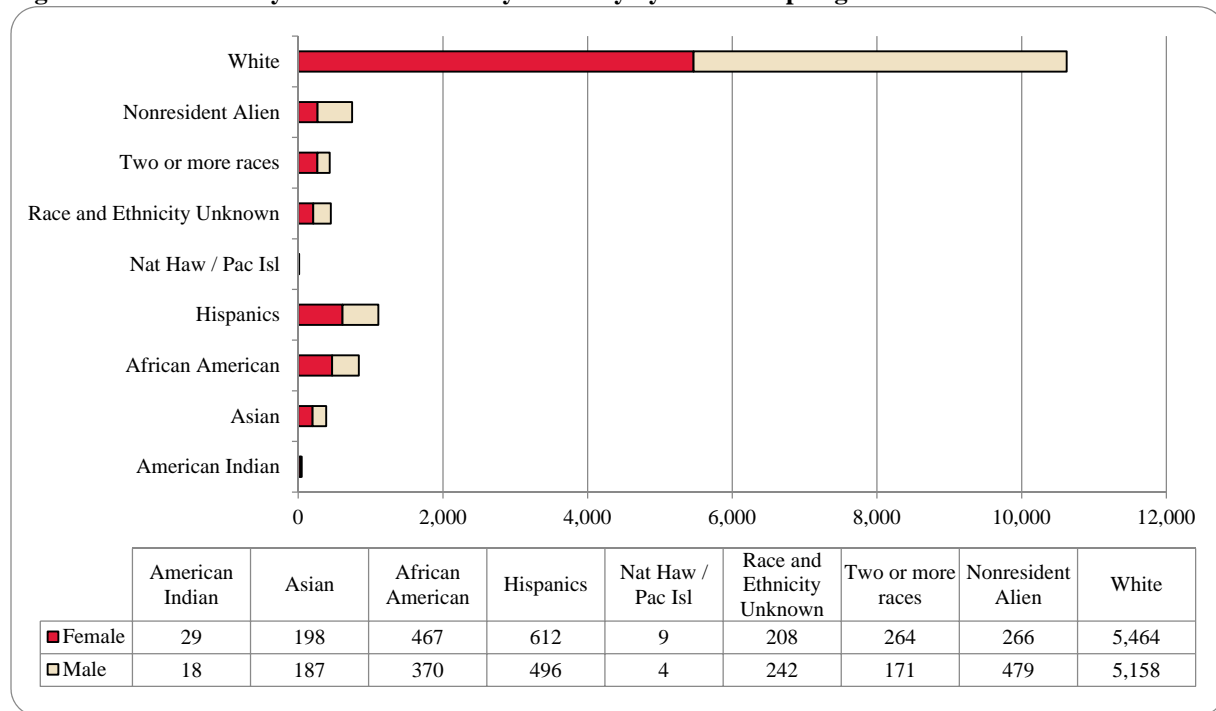


Table 2: Total Uno Delivery-Site Head Count Summary for Undergraduate and Graduate Students Full and Part-Time by Gender and Race Classification: Spring 2014

	American Indian		Asian		African American		Hispanics		Nat Haw / Pac Isl		Race Unknown		Two or more races		White		Nonresident Alien		Total			
	F	M	F	M	F	M	F	M	F	M	F	M	F	M	F	M	F	M	F	M	Total	
Undergraduate																						
Full-Time																						
First-Time Freshmen				1	1	3		1				2		2	18	20	6	19	25	48	73	
Other Freshmen	5	1	21	23	69	53	127	104	2	1	15	31	49	41	550	605	48	75	886	934	1,820	
Sophomores	2	1	42	36	61	54	111	101	2		18	18	49	34	744	753	37	71	1,066	1,068	2,134	
Juniors	5	4	26	27	84	58	102	82	2	1	57	57	50	36	870	846	17	47	1,213	1,158	2,371	
Seniors	4	4	35	30	82	54	93	65	1		38	30	30	16	981	927	21	43	1,285	1,169	2,454	
Special			2	3	2	2	2	6			2	2			48	68	3	3	59	84	143	
Total Full-Time	16	10	126	120	299	224	435	359	7	2	130	140	178	129	3,211	3,219	132	258	4,534	4,461	8,995	
Part-Time																						
First-Time Freshmen			1					1	1						2	6		5	4	12	16	
Other Freshmen	1	2	9	5	21	16	14	20	1	1	3	8	15	3	108	122	10	6	182	183	365	
Sophomores	2	1	6	9	15	11	19	23			5	9	9	4	155	183	1	6	212	246	458	
Juniors	2		8	6	23	26	26	14			10	12	7	7	247	238	3	6	326	309	635	
Seniors	3	1	7	10	43	36	47	28		1	21	32	7	4	359	443	3	8	490	563	1,053	
Special	2	1	2	5	8	10	5	10			5	7	5	4	124	101	2	3	153	141	294	
Total Part-Time	10	5	33	35	110	99	111	96	2	2	44	68	43	22	995	1,093	19	34	1,367	1,454	2,821	
Total Undergraduate	26	15	159	155	409	323	546	455	9	4	174	208	221	151	4,206	4,312	151	292	5,901	5,915	11,816	
Graduate																						
Full-Time																						
Certificate			1	1											4				5	1	6	
Masters	1	1	6	8	16	10	13	9			6	7	8	6	280	148	61	85	391	274	665	
Doctoral				1			1	1					1	1	9	10	4	13	15	26	41	
Special Graduate			1			2	1					1			12	33	9	33	23	69	92	
Total Full-Time	1	1	8	10	16	12	15	10			6	8	9	7	305	191	74	131	434	370	804	
Part-Time																						
Certificate			1	1		1	1						1		15	17	1	3	19	22	41	
Masters	2	2	23	19	28	27	37	25			19	17	26	10	719	502	30	30	884	632	1,516	
Doctoral			2		2	2	2	3			1	2	2		51	45	4	9	64	61	125	
Special Graduate			5	2	12	5	11	3			8	7	5	3	168	91	6	14	215	125	340	
Total Part-Time	2	2	31	22	42	35	51	31			28	26	34	13	953	655	41	56	1,182	840	2,022	
Total Graduate	3	3	39	32	58	47	66	41			34	34	43	20	1,258	846	115	187	1,616	1,210	2,826	
Total All Students	29	18	198	187	467	370	612	496	9	4	208	242	264	171	5,464	5,158	266	479	7,517	7,125	14,642	

Figure 5: UNO Administrative-Site Student Credit Hours Spring 2004-2014

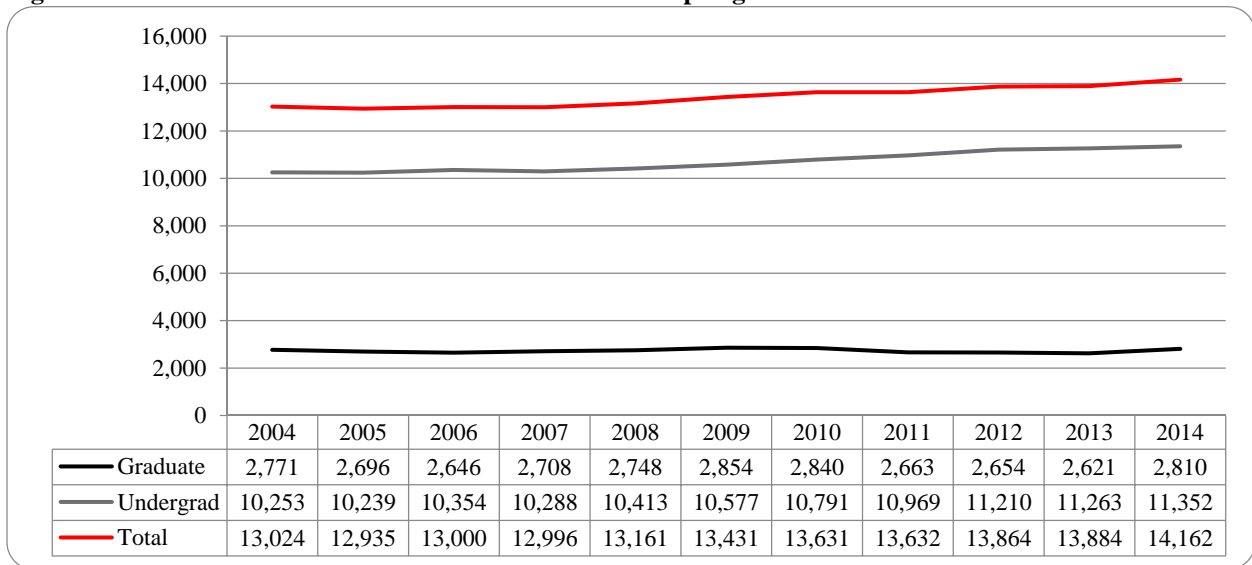


Figure 6: UNO Administrative-Site Student Credit Hours Spring 2004-2014

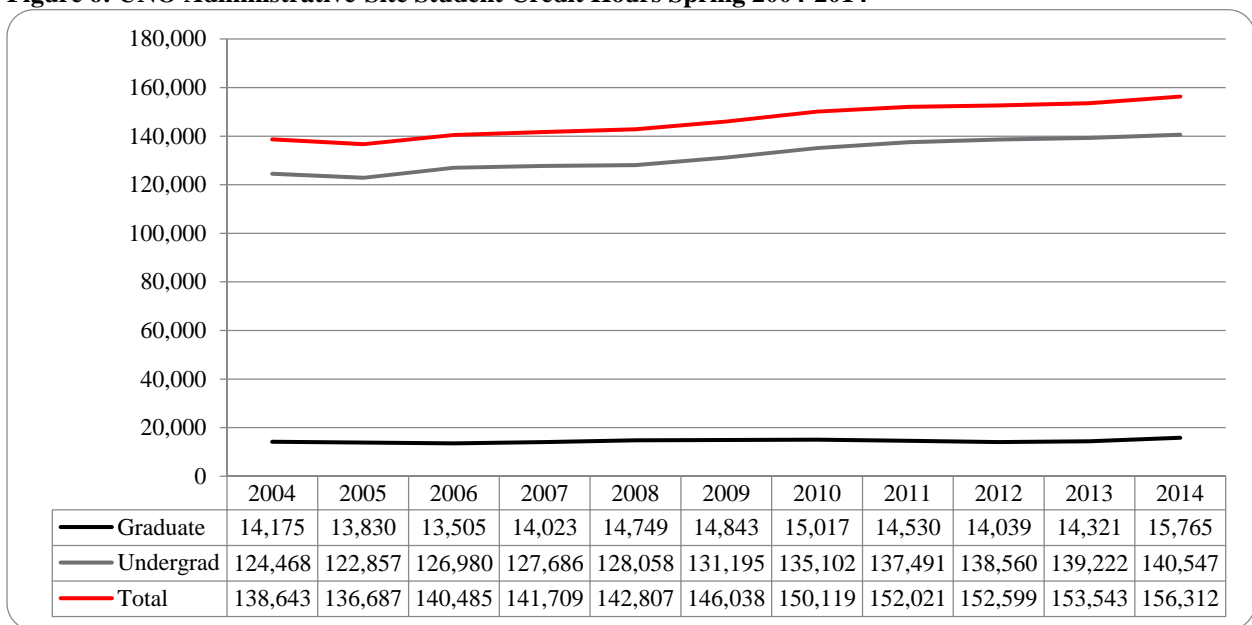


Figure 7: UNO Administrative-Site Head Count by Ethnicity by Gender Spring 2014

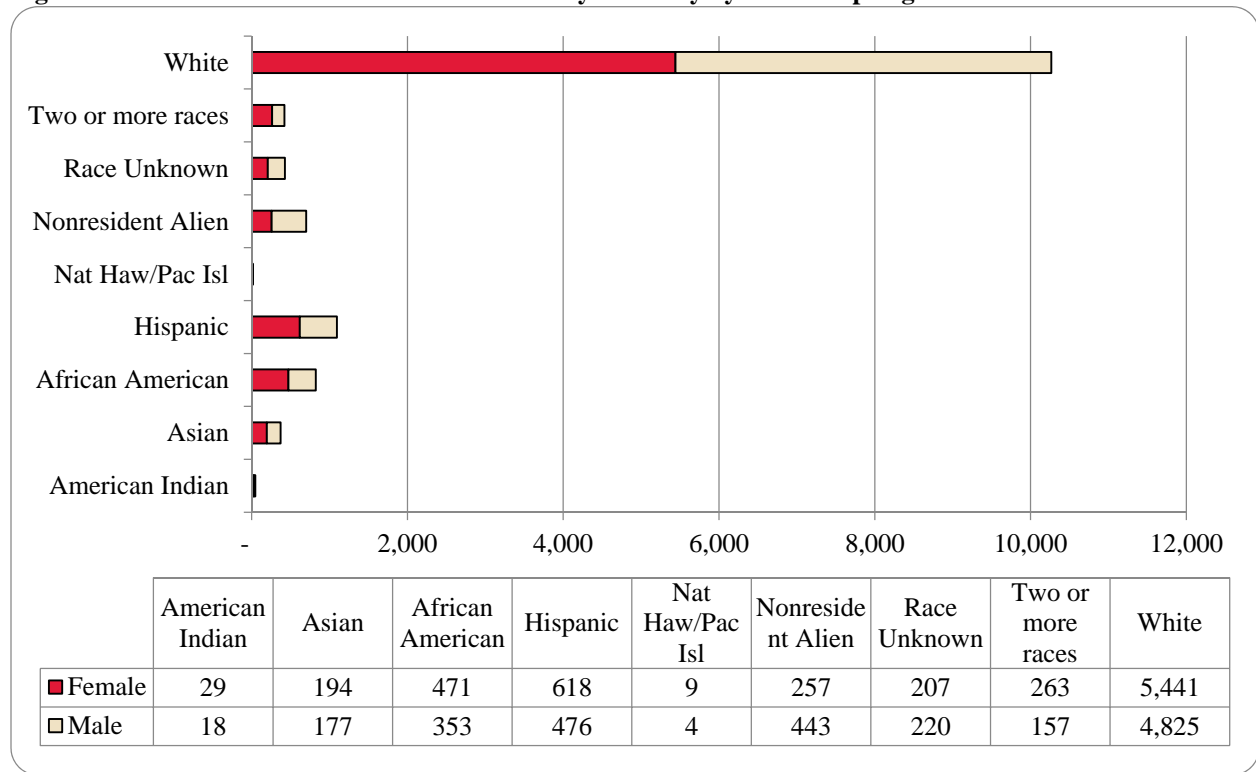


Table 3: Total UNO Administrative-Site Head Count Summary for Undergraduate and Graduate Students by Full and Part-Time by Gender and Race Classification: Spring 2014

	American Indian		Asian		African American		Hispanics		Nat Haw / Pac Isl		Race Unknown		Two or more races		White		Nonresident Alien		Total		
	F	M	F	M	F	M	F	M	F	M	F	M	F	M	F	M	F	M	F	M	Total
Undergraduate																					
Full-Time																					
First-Time Freshmen				1	1	3		1				2		2	18	16	5	17	24	42	66
Other Freshmen	5	1	21	22	73	50	130	102	2	1	15	30	48	38	549	563	48	67	891	874	1,765
Sophomores	2	1	41	33	63	55	109	98	2		18	15	50	30	736	683	31	55	1,052	970	2,022
Juniors	5	4	25	26	86	57	107	77	2	1	59	49	51	33	877	800	17	44	1,229	1,091	2,320
Seniors	4	4	35	28	80	52	95	62	1		37	26	30	14	975	850	20	40	1,277	1,076	2,353
Special			2	3	2	2	2	5			2	1			43	57	2	2	53	70	123
Total Full-Time	16	10	124	113	305	219	443	345	7	2	131	123	179	117	3,198	2,969	123	225	4,526	4,123	8,649
Part-Time																					
First-Time Freshmen			1					1	1						2	5		5	4	11	15
Other Freshmen	1	2	8	4	21	17	14	20	1	1	3	8	15	3	108	108	10	6	181	169	350
Sophomores	2	1	6	9	15	10	19	20			5	9	9	4	153	167	1	6	210	226	436
Juniors	2		8	6	23	19	24	14			9	12	6	6	246	222	3	4	321	283	604
Seniors	3	1	6	8	42	31	47	25		1	21	28	7	4	360	416	3	8	489	522	1,011
Special	2	1	2	5	8	10	5	10			5	6	5	4	122	98	2	2	151	136	287
Total Part-Time	10	5	31	32	109	87	109	90	2	2	43	63	42	21	991	1,016	19	31	1,356	1,347	2,703
Total Undergraduate	26	15	155	145	414	306	552	435	9	4	174	186	221	138	4,189	3,985	142	256	5,882	5,470	11,352
Graduate																					
Full-Time																					
Certificate			1	1											4				5	1	6
Masters	1	1	6	8	15	10	13	9			5	7	7	5	274	142	61	85	382	267	649
Doctoral				1			1	1					1	1	9	10	4	13	15	26	41
Special Graduate			1		2	1						1			12	33	9	33	23	69	92
Total Full-Time	1	1	8	10	15	12	15	10			5	8	8	6	299	185	74	131	425	363	788
Part-Time																					
Certificate			1	1	1	1							1		15	17	1	3	19	22	41
Masters	2	2	23	19	28	27	37	25			19	17	26	10	719	502	30	30	884	632	1,516
Doctoral			2		2	2	2	3			1	2	2		51	45	4	9	64	61	125
Special Graduate			5	2	12	5	11	3			8	7	5	3	168	91	6	14	215	125	340
Total Part-Time	2	2	31	22	42	35	51	31			28	26	34	13	953	655	41	56	1,182	840	2,022
Total Graduate	3	3	39	32	57	47	66	41			33	34	42	19	1,252	840	115	187	1,607	1,203	2,810
Total All Students	29	18	194	177	471	353	618	476	9	4	207	220	263	157	5,441	4,825	257	443	7,489	6,673	14,162

Figure 8: College of Arts & Science Head Count Spring 2004-2014

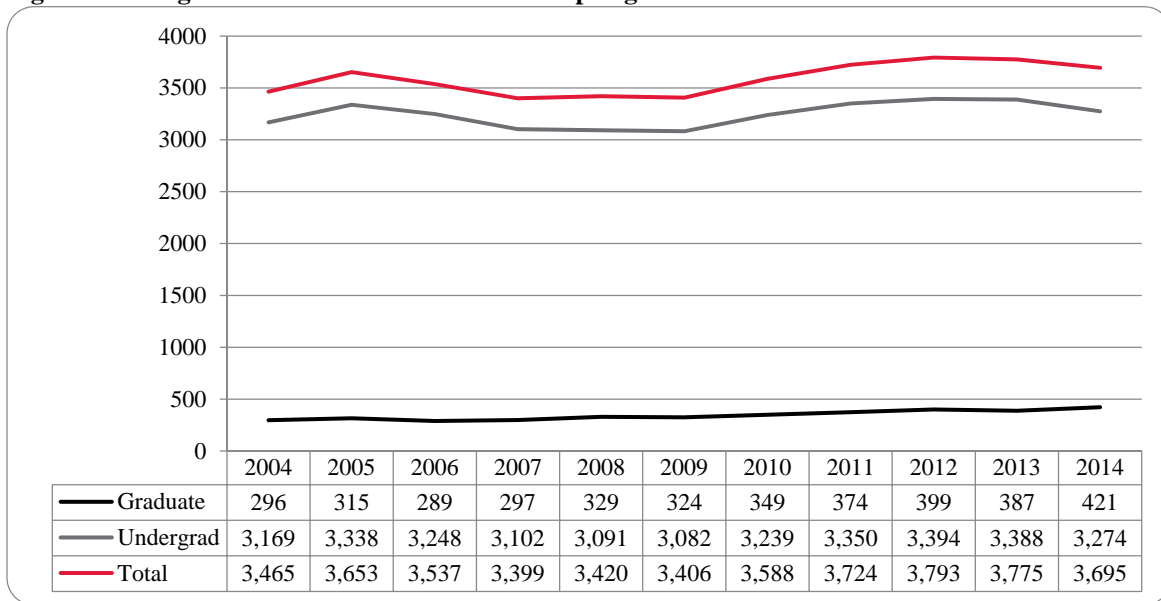


Figure 9: College of Arts & Sciences Student Credit Hours Spring 2004-2014

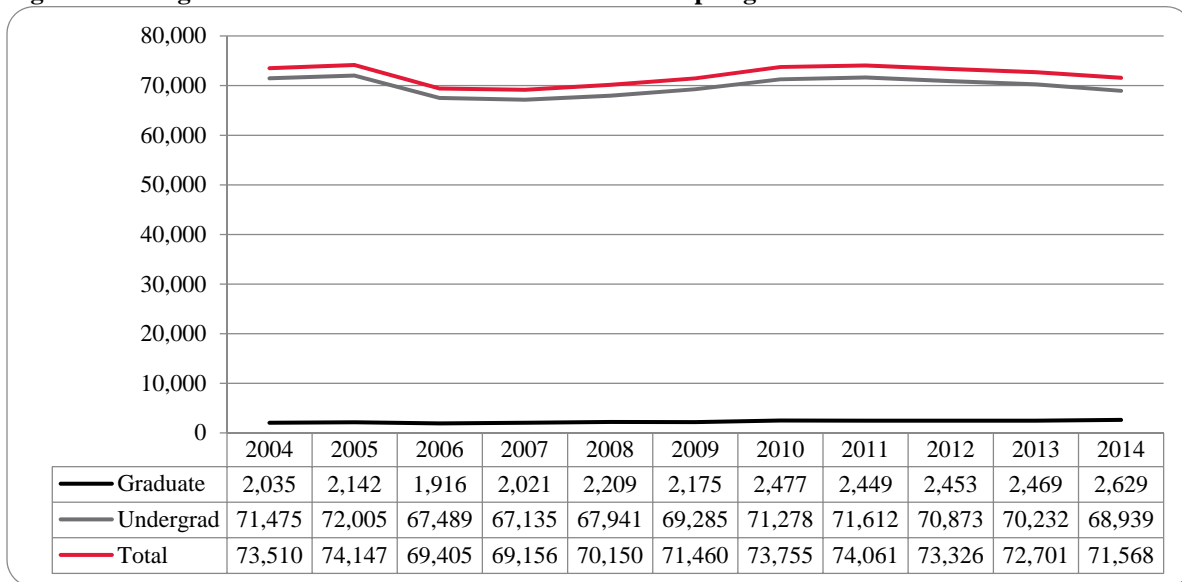


Figure 10: College of Arts & Sciences Head Count by Ethnicity by Gender: Spring 2014

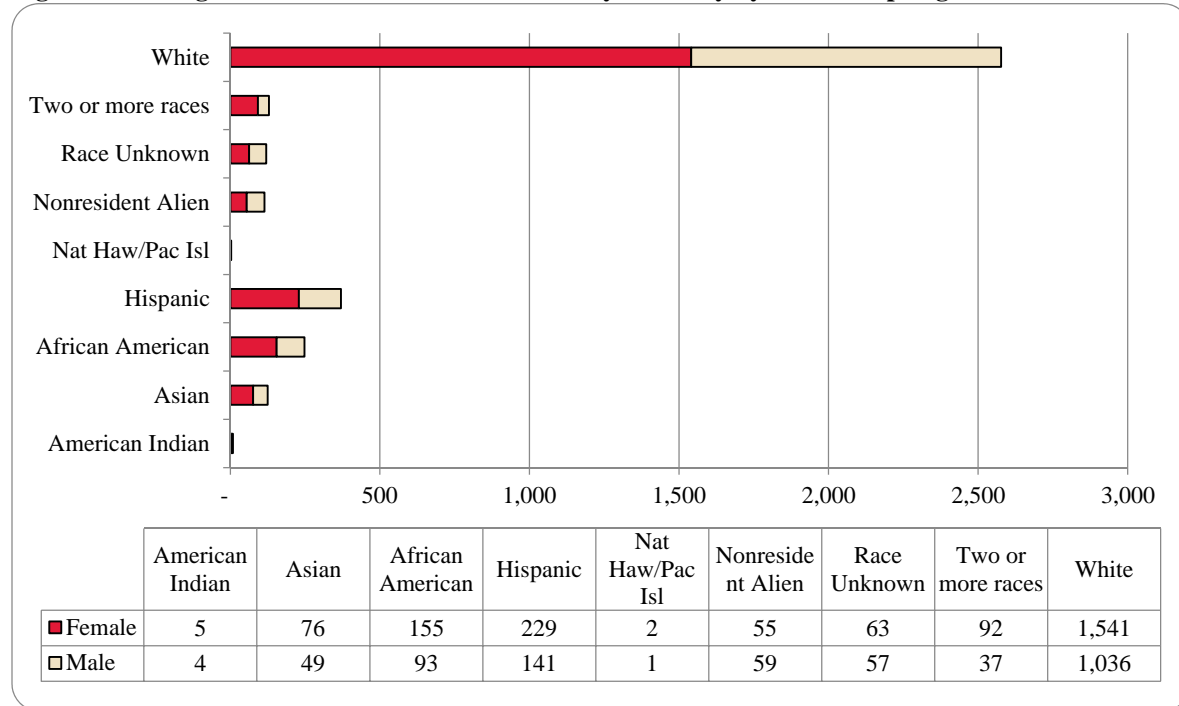


Table 4: College of Arts & Sciences Head Count Summary for Undergraduate and Graduate Students by Full and Part-time by Gender and Race Classification: Spring 2014

	American Indian		Asian		African American		Hispanics		Nat Haw / Pac Isl		Race Unknown		Two or more races		White		Nonresident Alien		Total		
	F	M	F	M	F	M	F	M	F	M	F	M	F	M	F	M	F	M	F	M	Total
Undergraduate																					
Full-Time																					
First-Time Freshmen				1							1		1	9	1	3	4	12	8	20	
Other Freshmen	1		11	3	40	14	57	25	1		2	5	17	9	190	104	16	13	335	173	508
Sophomores		1	23	13	28	20	45	40	1		7	7	21	9	310	164	7	11	442	265	707
Juniors	2	2	14	12	29	18	48	25		1	18	18	23	12	275	184	7	9	416	281	697
Seniors			12	9	19	10	36	22			12	3	6	3	271	202	8	6	364	255	619
Special			1	1	1	1	1	1				1			8	14		2	10	20	30
Total Full-Time	3	3	61	39	117	63	186	113	2	1	39	35	67	34	1,063	669	41	45	1,579	1,002	2,581
Part-Time																					
First-Time Freshmen			1											1			2	2	2	4	
Other Freshmen			2		7	4	4	3			2	2	7	28	19	1	1	51	29	80	
Sophomores			5	3	4	2	6	3			1	2	5	39	35	1	2	61	47	108	
Juniors			2	1	4	2	11				4	5	1	1	72	51	1		95	60	155
Seniors	2	1	3	3	14	7	15	9			9	5	5	107	89	1	1	156	115	271	
Special					3	4	1	2			3	1	2	39	18	2		50	25	75	
Total Part-Time	2	1	13	7	32	19	37	17			19	15	20	1	286	212	6	6	415	278	693
Total Undergraduate	5	4	74	46	149	82	223	130	2	1	58	50	87	35	1,349	881	47	51	1,994	1,280	3,274
Graduate																					
Full-Time																					
Certificate														1					1		1
Masters				1	3	1	1	2			3	2	2	1	58	29	7	5	74	41	115
Doctoral								1						3	1				3	2	5
Special Graduate																					
Total Full-Time				1	3	1	1	3			3	2	2	1	62	30	7	5	78	43	121
Part-Time																					
Certificate														4	3				4	3	7
Masters			1	2	2	10	4	6			2	4	3	1	113	116	1	3	126	142	268
Doctoral			1		1		1	2				1		13	6				16	9	25
Special																					
Total Part-Time			2	2	3	10	5	8			2	5	3	1	130	125	1	3	146	154	300
Total Graduate			2	3	6	11	6	11			5	7	5	2	192	155	8	8	224	197	421
Total All Students	5	4	76	49	155	93	229	141	2	1	63	57	92	37	1,541	1,036	55	59	2,218	1,477	3,695

Figure 11: College of Business Administration Head Count: Spring 2004-2014

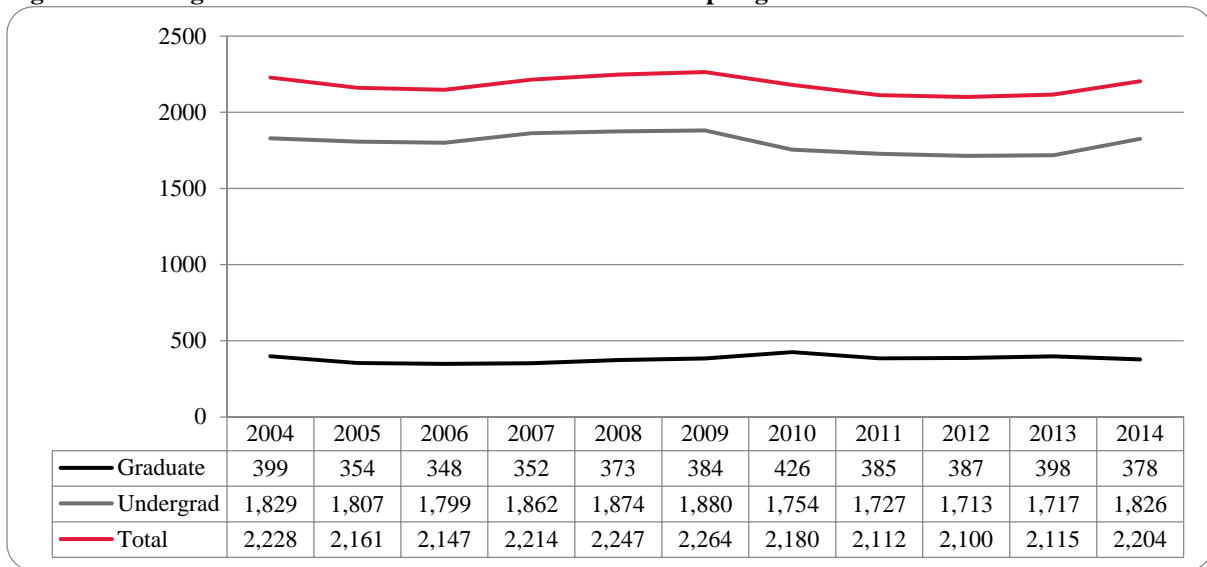


Figure 12: College of Business Administration Student Credit Hours: Spring 2004-2014

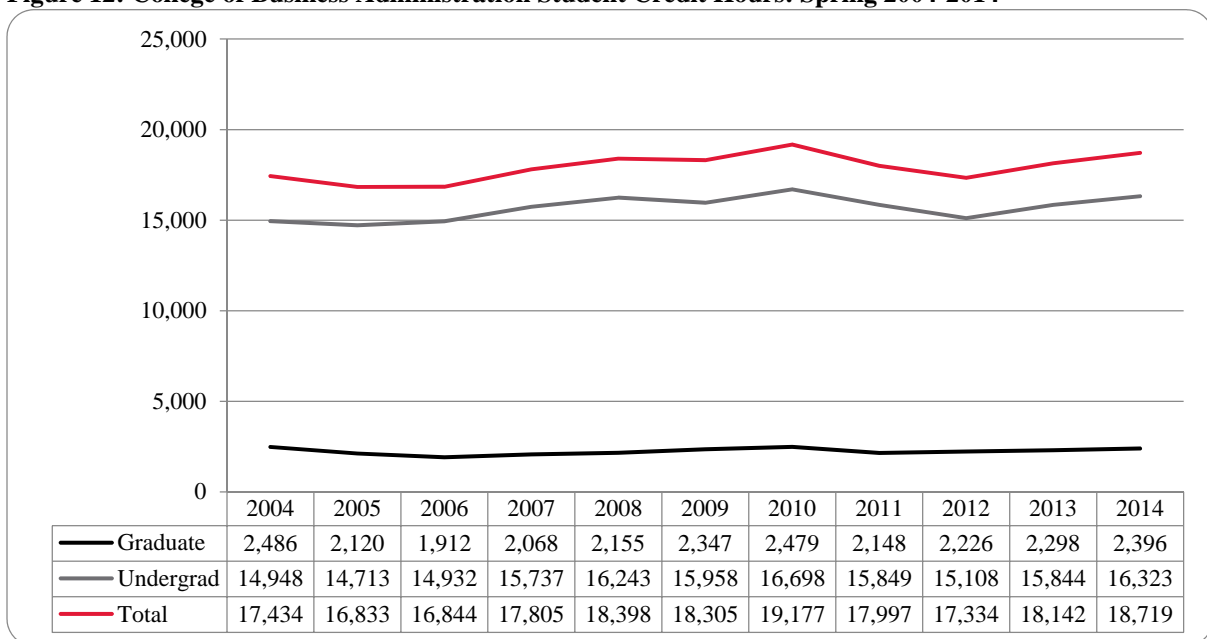


Figure 13: College of Business Administration Head Count by Ethnicity by Gender: Spring 2014

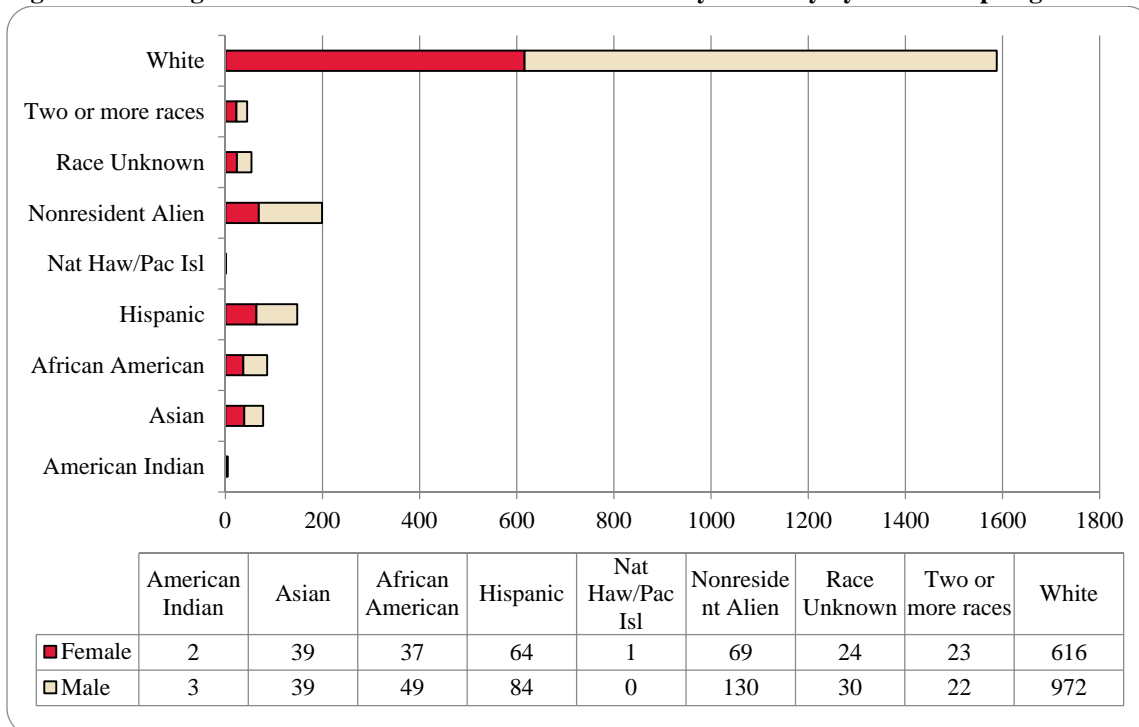


Table 5: College of Business Administration Head Count Summary for Undergraduate and Graduate Students by Full and Part-Time by Gender and Race Classification: Spring 2014

	American Indian		Asian		African American		Hispanics		Nat Haw / Pac Isl		Race Unknown		Two or more races		White		Nonresident Alien		Total			
	F	M	F	M	F	M	F	M	F	M	F	M	F	M	F	M	F	M	F	M	Total	
Undergraduate																						
Full-Time																						
First-Time Freshmen																	1	6	1	6	7	
Other Freshmen			3	6	3	5	14	15			2	3	5	4	42	85	8	18	77	136	213	
Sophomores			5	8	3	9	8	14			3	3	2	1	67	132	15	20	103	187	290	
Juniors	1	1	3	2	11	5	13	17			8	9	3	9	118	164	7	23	164	230	394	
Seniors	1		11	8	11	9	14	9			5	5	6	2	141	189	7	16	196	238	434	
Special															3	7	1		4	7	11	
Total Full-Time	2	1	22	24	28	28	49	55			18	20	16	16	371	577	39	83	545	804	1,349	
Part-Time																						
First-Time Freshmen									1									1	1	1	2	
Other Freshmen			2	1	1	1	1	4					1		5	10	5	4	15	20	35	
Sophomores			1	2	1	4	3	6					1	26	34		3	31	50	81		
Juniors			4	2	5	4	3	4			2	1	1	1	50	50	2	2	67	64	131	
Seniors			1	3	1	6	6	2			1	4		1	55	97	2	4	66	117	183	
Special		1				1	1	3			1			1	19	18			21	24	45	
Total Part-Time		1	8	8	8	16	14	19	1		4	5	2	4	155	209	9	14	201	276	477	
Total Undergraduate	2	2	30	32	36	44	63	74	1		22	25	18	20	526	786	48	97	746	1,080	1,826	
Graduate																						
Full-Time																						
Certificate																						
Masters		1		2		2	1	4				2	1		19	37	14	30	35	78	113	
Doctoral																						
Special Graduate																						
Total Full-Time		1		2		2	1	4				2	1		19	37	14	30	35	78	113	
Part-Time																						
Certificate																2		1		3	3	
Masters			9	5	1	3		6			2	3	4	2	71	147	7	2	94	168	262	
Doctoral																						
Special Graduate																						
Total Part-Time			9	5	1	3		6			2	3	4	2	71	149	7	3	94	171	265	
Total Graduate		1	9	7	1	5	1	10			2	5	5	2	90	186	21	33	129	249	378	
Total All Students	2	3	39	39	37	49	64	84	1		24	30	23	22	616	972	69	130	875	1,329	2,204	

Figure 14: College of Communication, Fine Arts and Media Delivery-Site Head Count: Spring 2006-2014

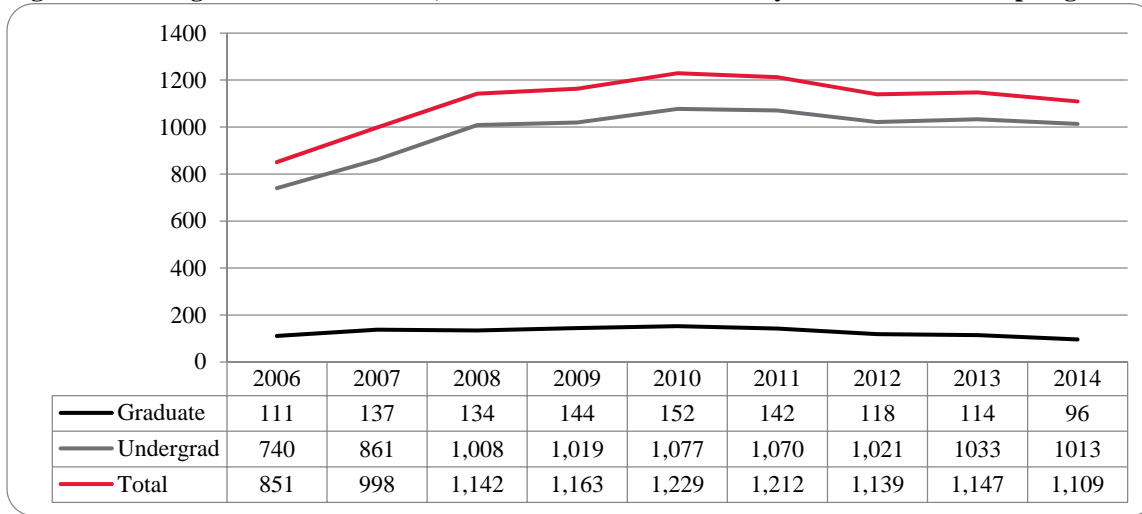


Figure 15: College of Communication, Fine Arts and Media Delivery-Site Student Credit Hours: Spring 2006-2014

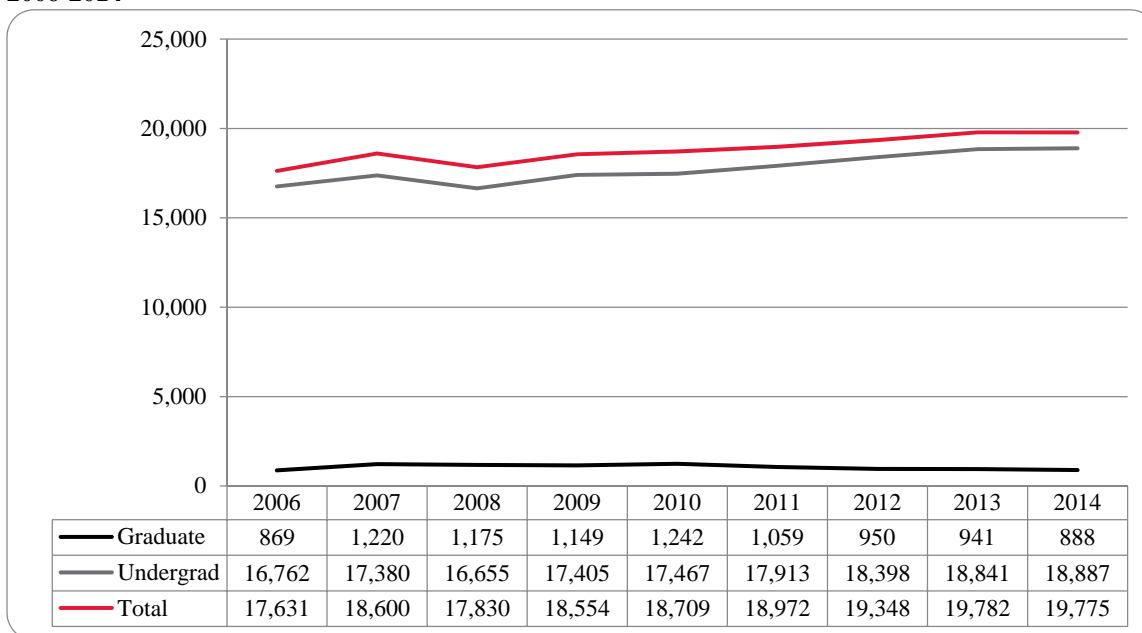


Figure 16: College of Communication, Fine Arts and Media Delivery-Site Head Count by Ethnicity by Gender: Spring 2014

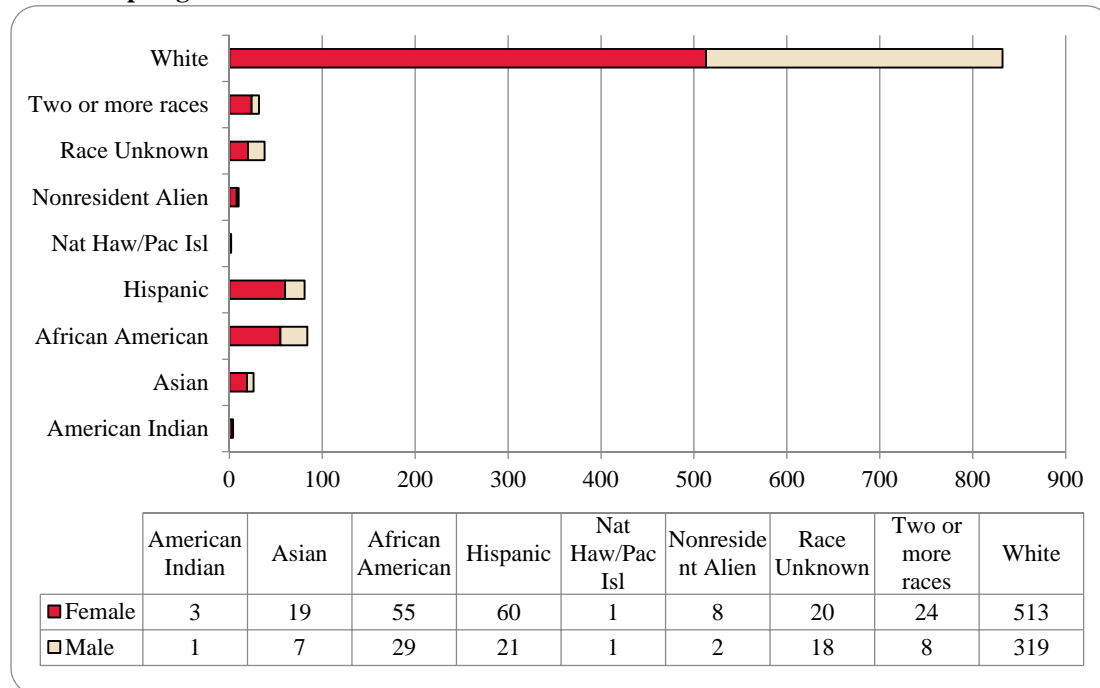


Table 6: College of Communication, Fine Arts and Media Delivery-Site Head Count Summary for Undergraduate and Graduate Students by Full and Part-Time by Gender and Race Classification: Spring 2014

	American Indian		Asian		African American		Hispanics		Nat Haw / Pac Isl		Race Unknown		Two or more races		White		Nonresident Alien		Total			
	F	M	F	M	F	M	F	M	F	M	F	M	F	M	F	M	F	M	F	M	Total	
Undergraduate																						
Full-Time																						
First-Time Freshmen																1		1			2	2
Other Freshmen	1		3		5	11	9	4			1	3	3	1	63	33	1			86	52	138
Sophomores			3	3	7	3	11	3			1		8	1	82	53	4			116	63	179
Juniors	1		3	2	12	5	8	5	1		7	2	7	1	118	72				157	87	244
Seniors	1	1	5	1	15	5	17	5			7	3	3	1	107	55				155	71	226
Special			1												1	2				2	2	4
Total Full-Time	3	1	15	6	39	24	45	17	1		16	8	21	4	371	216	5	1		516	277	793
Part-Time																						
First-Time Freshmen																						
Other Freshmen			1		3	1		1		1					3	5				7	8	15
Sophomores					2	1	2					3		1	23	17				27	22	49
Juniors			1		4	1	2					2	2	1	17	9				26	13	39
Seniors			1		3	2	9	1			3	5			45	40				61	48	109
Special				1				1							3	3				3	5	8
Total Part-Time			3	1	12	5	13	3		1	3	10	2	2	91	74				124	96	220
Total Undergraduate	3	1	18	7	51	29	58	20	1	1	19	18	23	6	462	290	5	1		640	373	1,013
Graduate																						
Full-Time																						
Certificate																						
Masters					3			1			1		1	2	21	15	1	1		27	19	46
Doctoral																						
Special Graduate																						
Total Full-Time					3			1			1		1	2	21	15	1	1		27	19	46
Part-Time																						
Certificate															1		1			2		2
Masters			1		1		2								29	14	1			34	14	48
Doctoral																						
Special Graduate																						
Total Part-Time			1		1		2								30	14	2			36	14	50
Total Graduate			1		4		2	1			1		1	2	51	29	3	1		63	33	96
Total All Students	3	1	19	7	55	29	60	21	1	1	20	18	24	8	513	319	8	2		703	406	1,109

Figure 17: College of Communication, Fine Arts and Media: Administrative-Site Head Count Spring 2006-2014

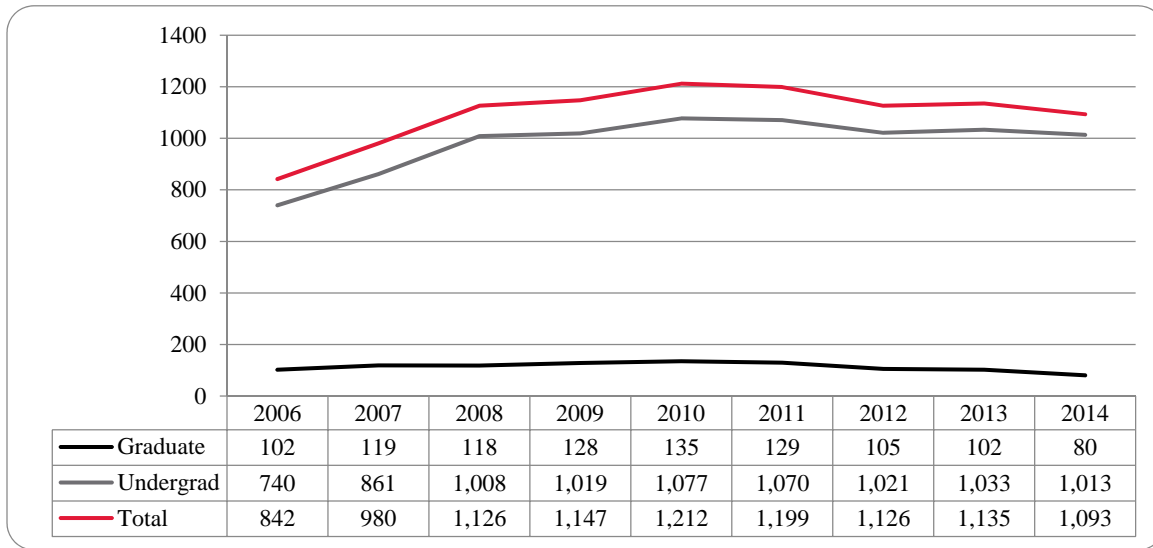


Figure 18: College of Communication, Fine Arts and Media: Administrative-Site Student Credit Hours: Spring 2006-2014

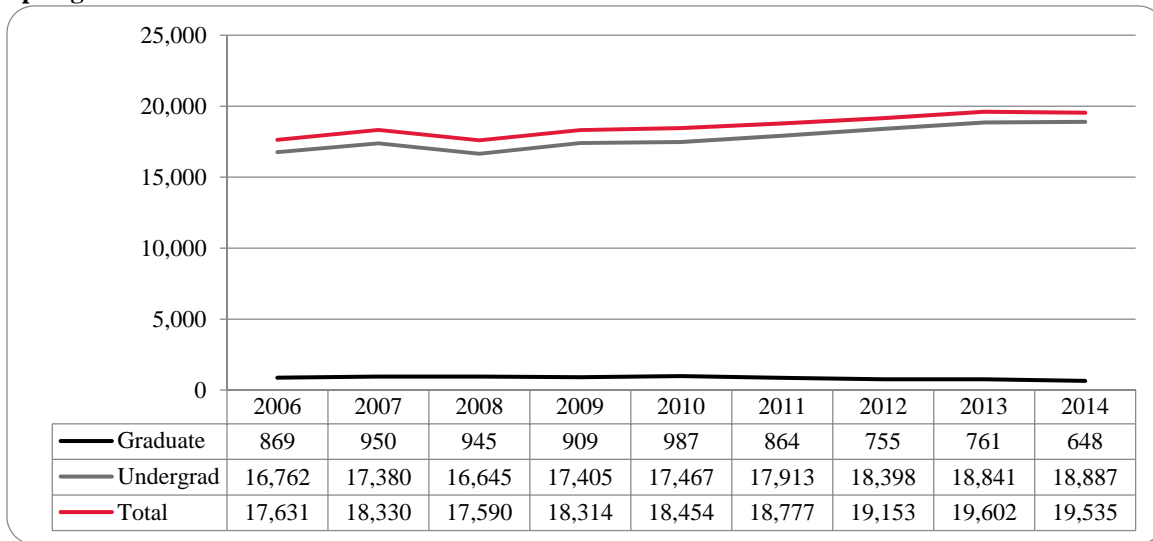


Figure 19: College of Communication, Fine Arts and Media: Administrative-Site Head Count by Ethnicity by Gender Spring 2014

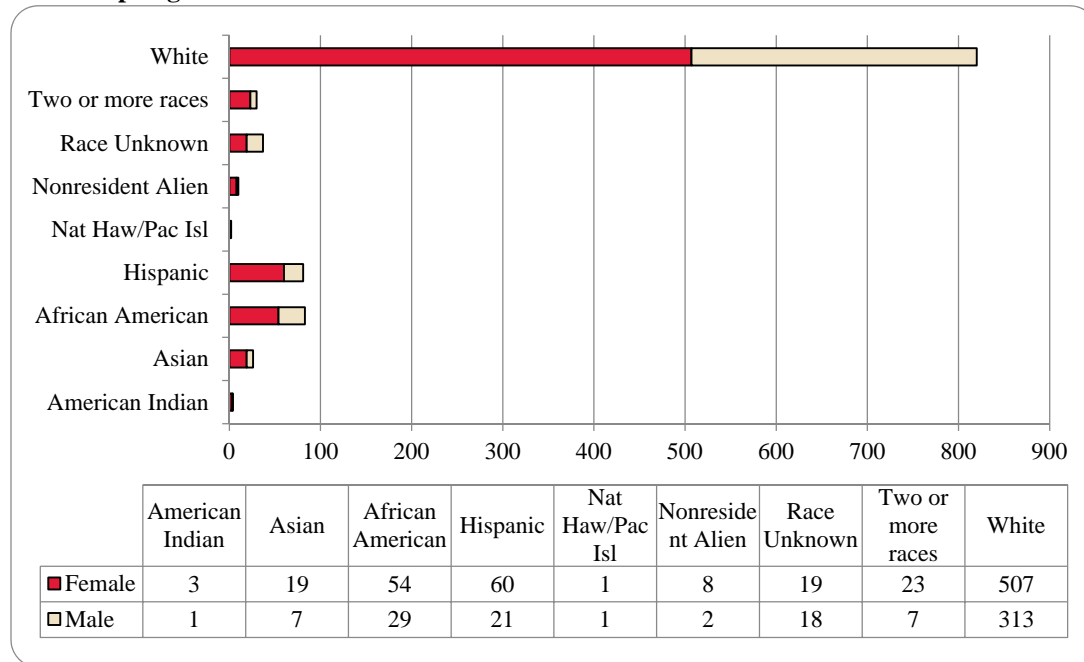


Table 7: College of Communication, Fine Arts and Media Administrative-Site Head Count Summary for Undergraduate and Graduate Students by Full and Part-Time by Gender and Race Classification: Spring 2014

	American Indian		Asian		African American		Hispanics		Nat Haw / Pac Isl		Race Unknown		Two or more races		White		Nonresident Alien		Total			
	F	M	F	M	F	M	F	M	F	M	F	M	F	M	F	M	F	M	F	M	Total	
Undergraduate																						
Full-Time																						
First-Time Freshmen															1		1			2	2	
Other Freshmen	1		3		5	11	9	4			1	3	3	1	63	33	1		86	52	138	
Sophomores			3	3	7	3	11	3			1		8	1	82	53	4		116	63	179	
Juniors	1		3	2	12	5	8	5	1		7	2	7	1	118	72			157	87	244	
Seniors	1	1	5	1	15	5	17	5			7	3	3	1	107	55			155	71	226	
Special			1												1	2			2	2	4	
Total Full-Time	3	1	15	6	39	24	45	17	1		16	8	21	4	371	216	5	1	516	277	793	
Part-Time																						
First-Time Freshmen																						
Other Freshmen			1		3	1		1		1					3	5			7	8	15	
Sophomores					2	1	2					3		1	23	17			27	22	49	
Juniors			1		4	1	2					2	2	1	17	9			26	13	39	
Seniors			1		3	2	9	1			3	5			45	40			61	48	109	
Special				1				1							3	3			3	5	8	
Total Part-Time			3	1	12	5	13	3		1	3	10	2	2	91	74			124	96	220	
Total Undergraduate	3	1	18	7	51	29	58	20	1	1	19	18	23	6	462	290	5	1	640	373	1,013	
Graduate																						
Full-Time																						
Certificate																						
Masters					2			1						1	15	9	1	1	18	12	30	
Doctoral																						
Special Graduate																						
Total Full-Time					2			1						1	15	9	1	1	18	12	30	
Part-Time																						
Certificate															1		1		2		2	
Masters			1		1		2								29	14	1		34	14	48	
Doctoral																						
Special Graduate																						
Total Part-Time			1		1		2								30	14	2		36	14	50	
Total Graduate			1		3		2	1						1	45	23	3	1	54	26	80	
Total All Students	3	1	19	7	54	29	60	21	1	1	19	18	23	7	507	313	8	2	694	399	1,093	

Figure 20: College of Education Head Count: Spring 2004-2014

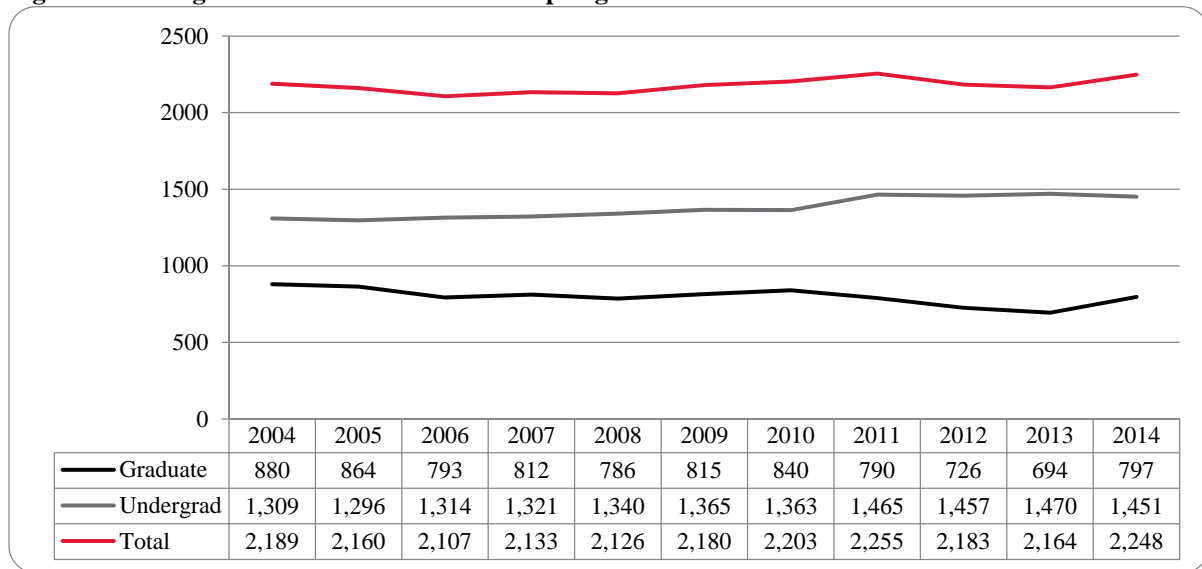


Figure 21: College of Education Student Credit Hours: Spring 2004-2014

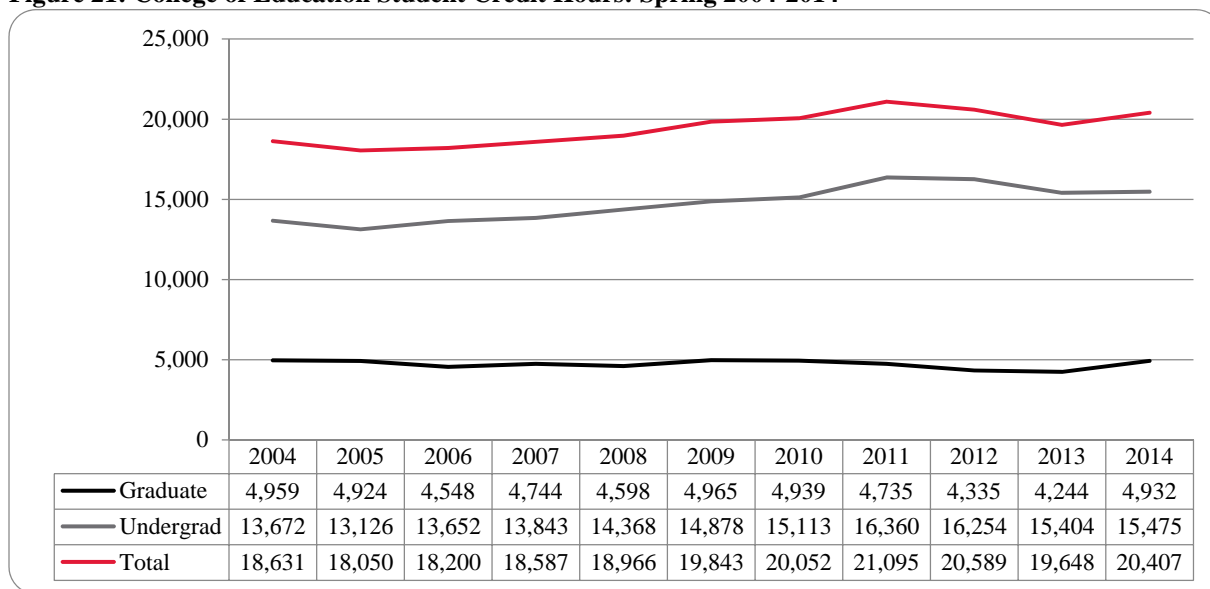


Figure 22: College of Education Head Count by Ethnicity by Gender: Spring 2014

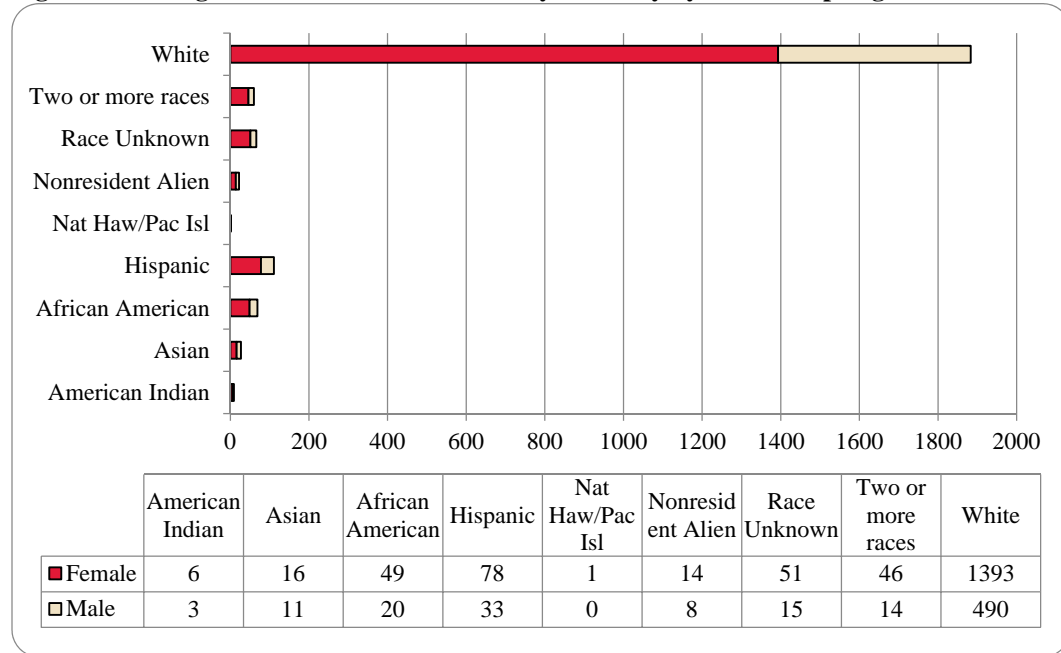


Table 8: College of Education Head Count Summary for Undergraduate and Graduate Students by Full and Part-Time by Gender and Race Classification: Spring 2014

	American Indian		Asian		African American		Hispanics		Nat Haw / Pac Isl		Race Unknown		Two or more races		White		Nonresident Alien		Total			
	F	M	F	M	F	M	F	M	F	M	F	M	F	M	F	M	F	M	F	M	Total	
Undergraduate																						
Full-Time																						
First-Time Freshmen															3	2			3	2	5	
Other Freshmen	1				4	1	7	5			4	2	6	1	80	26	1	1	103	36	139	
Sophomores			2	3	4	2	15	7	1		4		9	1	130	58	2		167	71	238	
Juniors	1	1	3		5	4	13	3			15	2	6	4	198	69	2		243	83	326	
Seniors	2	1	3	2	10	3	5	5			12	4	6	1	301	107	1	1	340	124	464	
Special					1			2							22	18	1		24	20	44	
Total Full-Time	4	2	8	5	24	10	40	22	1		35	8	27	7	734	280	7	2	880	336	1,216	
Part-Time																						
First-Time Freshmen																1				1	1	
Other Freshmen					1							2			4	1	1		6	3	9	
Sophomores					1		1				1		2		16	8			21	8	29	
Juniors			1		4	1	4	2			1	1	1		47	11			58	15	73	
Seniors	1				1		3	2			2	1			47	29			54	32	86	
Special			1		2	1	1				1				19	11		1	23	14	37	
Total Part-Time	1		2		9	2	9	4			4	5	3		133	61	1	1	162	73	235	
Total Undergraduate	5	2	10	5	33	12	49	26	1		39	13	30	7	867	341	8	3	1,042	409	1,451	
Graduate																						
Full-Time																						
Certificate																						
Masters			2	2	4	4	5	1			1	1	3	2	89	40	3	5	107	55	162	
Doctoral													1		3		1		4	1	5	
Special Graduate															3				3		3	
Total Full-Time			2	2	4	4	5	1			1	1	3	3	95	40	4	5	114	56	170	
Part-Time																						
Certificate																						
Masters	1	1	3	4	8	2	18	5			10	1	11	4	361	81	2		414	98	512	
Doctoral			1		1	2	1						1		30	21			34	23	57	
Special Graduate					3		5	1			1		1		40	7			50	8	58	
Total Part-Time	1	1	4	4	12	4	24	6			11	1	13	4	431	109	2		498	129	627	
Total Graduate	1	1	6	6	16	8	29	7			12	2	16	7	526	149	6	5	612	185	797	
Total All Students	6	3	16	11	49	20	78	33	1		51	15	46	14	1,393	490	14	8	1,654	594	2,248	

Figure 23: College of Information Science & Technology Head Count: Spring 2004-2014

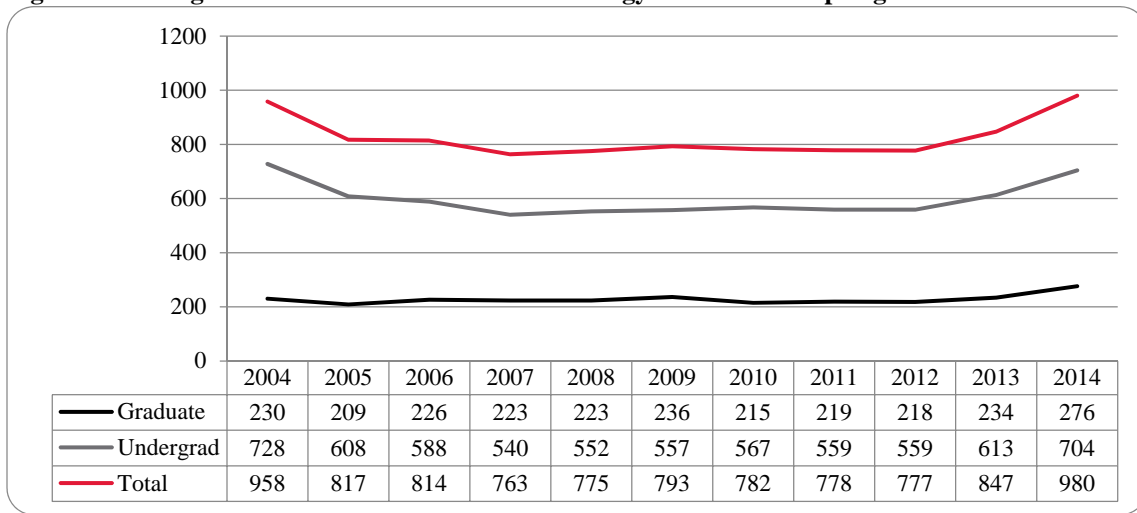


Figure 24: College of Information Science & Technology Student Credit Hours: Spring 2004-2014

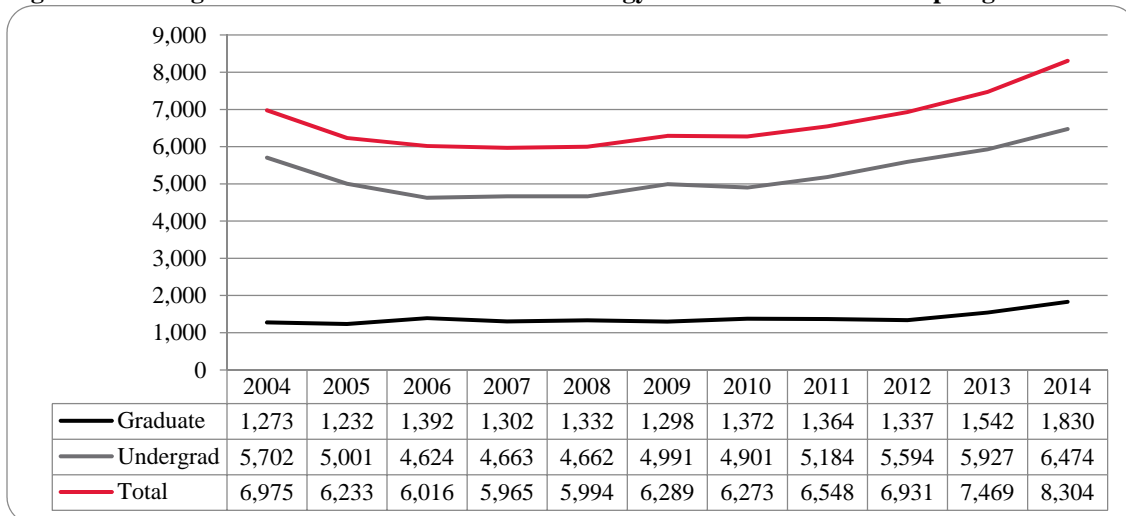


Figure 25: College of Information Science & Technology Head Count by Ethnicity by Gender: Spring 2014

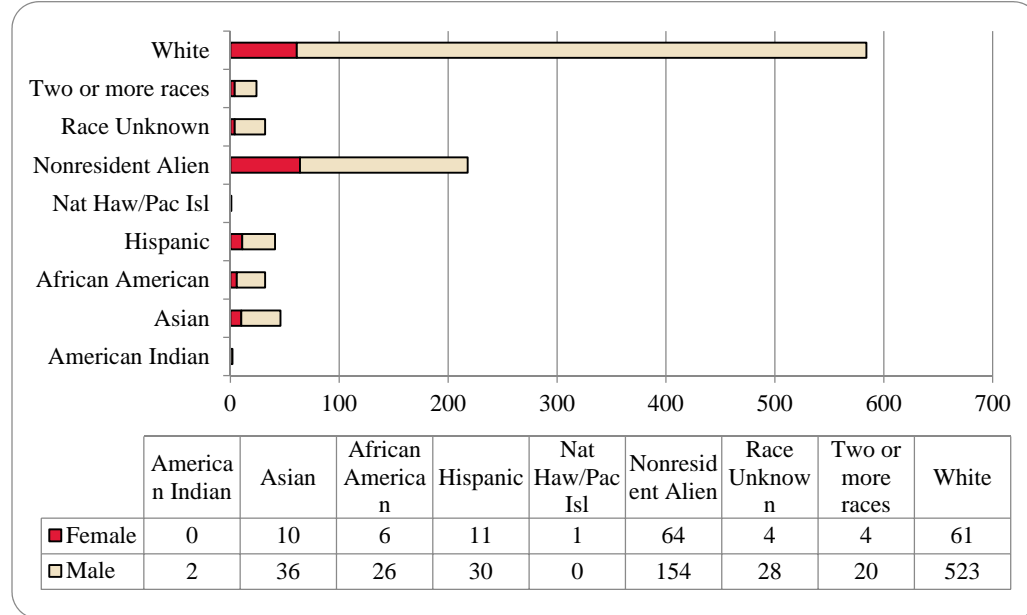


Table 9: College of Information Science and Technology Head Count Summary for Undergraduate and Graduate Summary for Full and Part-Time by Gender and Race Classification: Spring 2014

	American Indian		Asian		African American		Hispanics		Nat Haw / Pac Isl		Race Unknown		Two or more races		White		Nonresident Alien		Total			
	F	M	F	M	F	M	F	M	F	M	F	M	F	M	F	M	F	M	F	M	Total	
Undergraduate																						
Full-Time																						
First-Time Freshmen																		4		4	4	
Other Freshmen			2	6	2	2	4				3		6	5	61	3	21	12	103	115		
Sophomores				3	1	2	3				3		6	12	87	2	18	16	121	137		
Juniors				7	4	4	8			1	6	1		9	90		10	15	125	140		
Seniors		1		3	2	2	1	1	1		5	1	3	9	92	3	13	16	120	136		
Special				2		1	2			1				3	8			5	12	17		
Total Full-Time		1	2	21		9	11	18	1		2	17	2	15	38	338	8	66	64	485	549	
Part-Time																						
First-Time Freshmen															1		1		2	2		
Other Freshmen								3					1		14		1		19	19		
Sophomores				1			4				1	1		1	16		1	2	23	25		
Juniors				2	1	3	1				1	1		1	16		1	2	25	27		
Seniors					1	3	2				2			5	45		3	6	55	61		
Special				1	1	2				1	1		2	3	10			5	16	21		
Total Part-Time			4	3	8		10			2	5	1	4	9	102		7	15	140	155		
Total Undergraduate		1	2	25	3	17	11	28	1		4	22	3	19	47	440	8	73	79	625	704	
Graduate																						
Full-Time																						
Certificate			1																1	1		
Masters			2	3	2	1					1			2	7	34	42	40	54	94		
Doctoral				1											3	2	7	2	11	13		
Special Graduate																						
Total Full-Time			3	4	2	1					1			2	10	36	49	43	65	108		
Part-Time																						
Certificate						1								1	3		2	1	6	7		
Masters		1	5	7	1	7		2			5		1	10	64	18	24	34	111	145		
Doctoral												1		1	6	2	6	4	12	16		
Special Graduate																						
Total Part-Time		1	5	7	1	8		2			5	1	1	12	73	20	32	39	129	168		
Total Graduate		1	8	11	3	9		2			6	1	1	14	83	56	81	82	194	276		
Total All Students		2	10	36	6	26	11	30	1		4	28	4	20	61	523	64	154	161	819	980	

Figure 26: College of Public Affairs & Community Service Delivery-Site Head Count: Spring 2004-2014

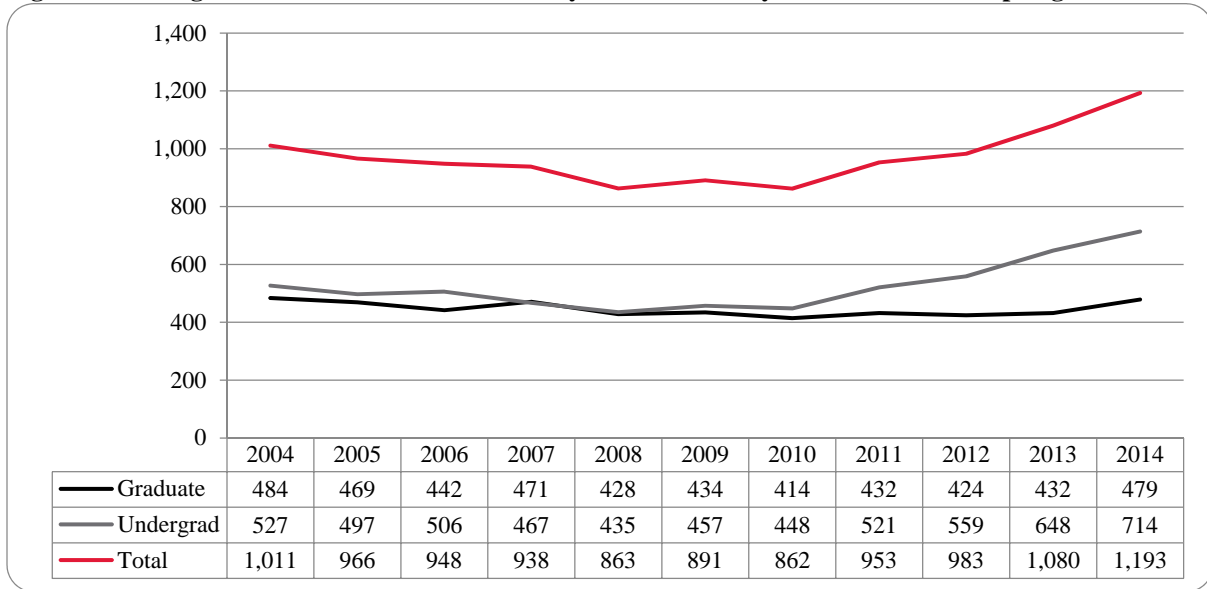


Figure 27: College of Public Affairs & Community Service Delivery-Site Student Credit Hours: Spring 2004-2014

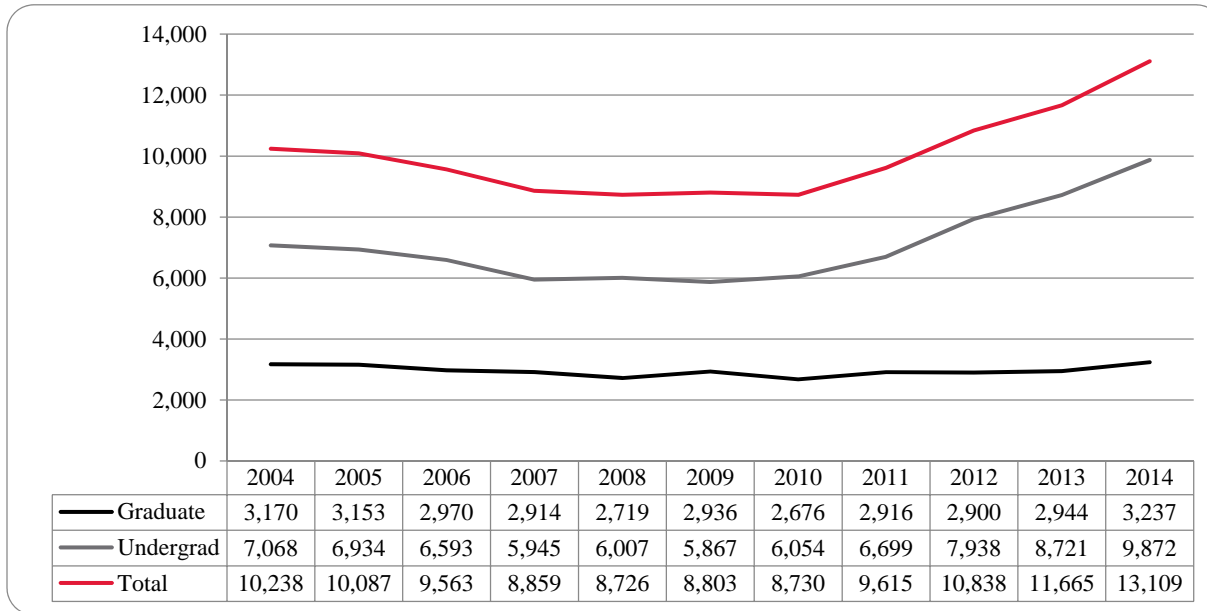


Figure 28: College of Public Affairs & Community Service Delivery-Site Head Count by Ethnicity by Gender: Spring 2014

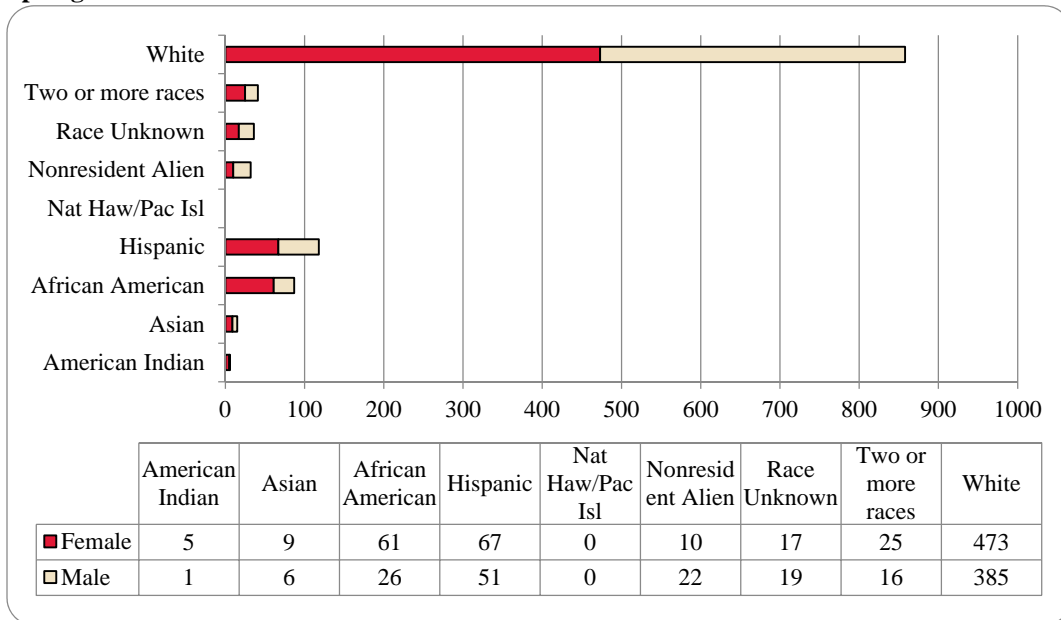


Table 10: College of Public Affairs & Community Service Delivery-Site Head Count for Undergraduate and Graduate Students by Full and Part-time by Gender and Race Classification: Spring 2014

	American Indian		Asian		African American		Hispanics		Nat Haw / Pac Isl		Race Unknown		Two or more races		White		Nonresident Alien		Total			
	F	M	F	M	F	M	F	M	F	M	F	M	F	M	F	M	F	M	F	M	Total	
Undergraduate																						
Full-Time																						
First-Time Freshmen						1									2	2	1	1	3	4	7	
Other Freshmen	1				4	1	12	7			1	3	5	2	25	39	2	1	50	53	103	
Sophomores	1		1	1	11	4	10	11			2	1	2	7	45	52	1	5	73	81	154	
Juniors					11	1	8	11			5	5	4	3	69	80		2	97	102	199	
Seniors			1	1	9	6	11	8					2	1	52	53		1	75	70	145	
Special											1				2				3		3	
Total Full-Time	2		2	2	35	13	41	37			9	9	13	13	195	226	4	10	301	310	611	
Part-Time																						
First-Time Freshmen																						
Other Freshmen		1			1		1	2			1				5	3			7	7	14	
Sophomores	1				3	1	1	1			1				6	8			11	11	22	
Juniors						1	2	2			1	1			10	9			13	13	26	
Seniors				1	2	4	2	1			1	1	1		13	13			18	20	38	
Special					1										1	1			2	1	3	
Total Part-Time	1	1		1	7	6	6	6			1	4	1		35	34			51	52	103	
Total Undergraduate	3	1	2	3	42	19	47	43			10	13	14	13	230	260	4	10	352	362	714	
Graduate																						
Full-Time																						
Certificate				1											1				1	1	2	
Masters	1		2		4	2	6	1			1	1	1	1	91	20	2	2	108	27	135	
Doctoral							1						1		3	6	1	6	6	12	18	
Special Graduate																						
Total Full-Time	1		2	1	4	2	7	1			1	1	2	1	95	26	3	8	115	40	155	
Part-Time																						
Certificate			1	1									1		6	7			8	8	16	
Masters	1		4	1	15	5	13	6			5	4	8	2	135	80	1	1	182	99	281	
Doctoral							1				1	1			7	12	2	3	10	17	27	
Special Graduate																						
Total Part-Time	1		5	2	15	5	13	7			6	5	9	2	148	99	3	4	200	124	324	
Total Graduate	2		7	3	19	7	20	8			7	6	11	3	243	125	6	12	315	164	479	
Total All Students	5	1	9	6	61	26	67	51			17	19	25	16	473	385	10	22	667	526	1,193	

Figure 29: College of Public Affairs & Community Service Administrative-Site Head Count: Spring 2004-2014

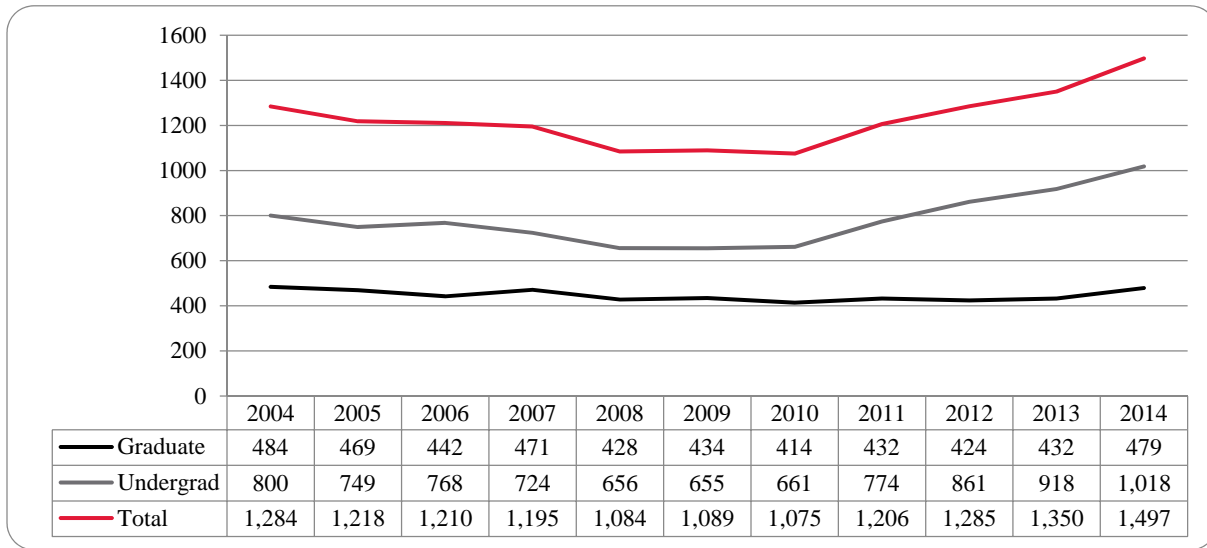


Figure 30: College of Public Affairs & Community Service Administrative-Site Student Credit Hours: Spring 2004-2014

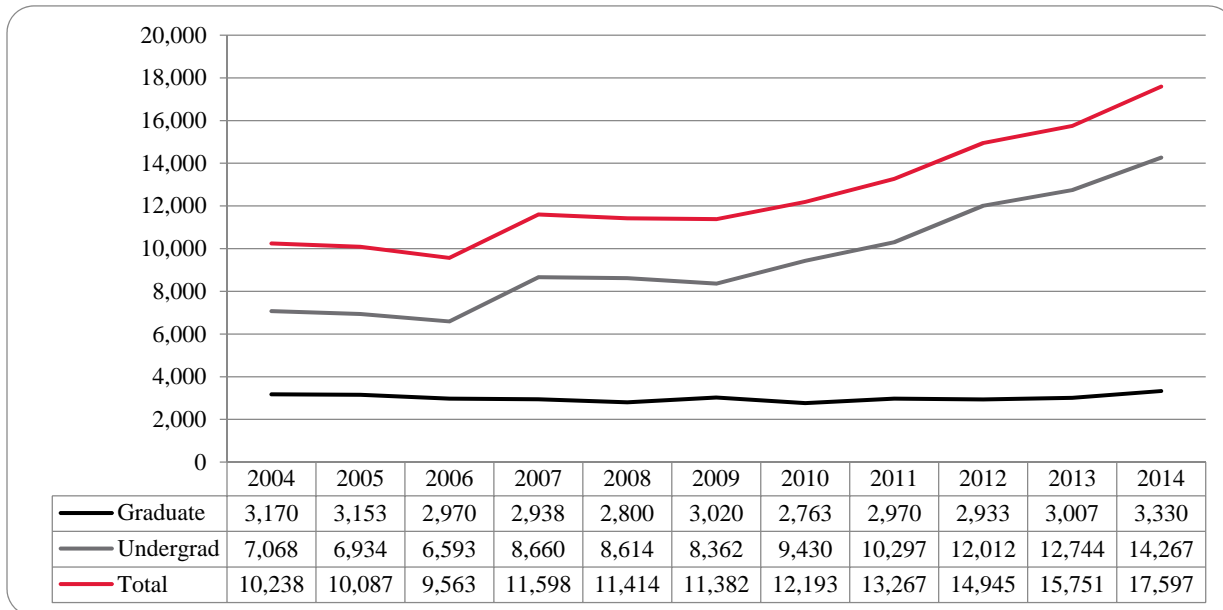


Figure 31: College of Public Affairs & Community Service Administrative-Site Head Count by Ethnicity by Gender: Spring 2014

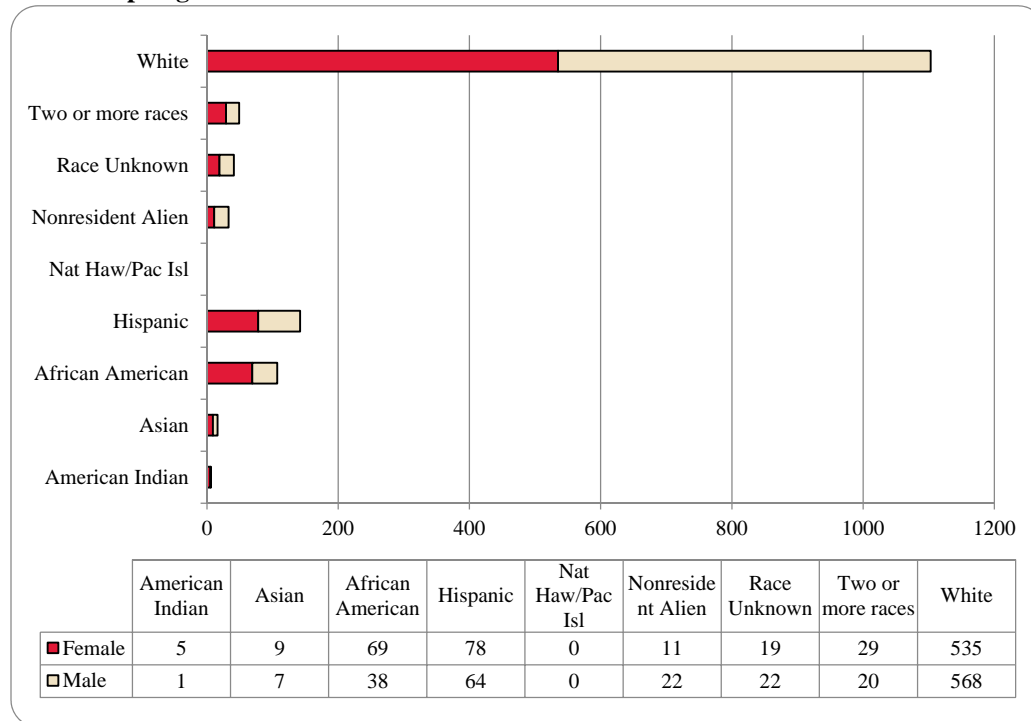


Table 11: College of Public Affairs & Community Service Administrative-Site Head Count Summary for Undergraduate Graduate Students by Full and Part-Time by Gender and Race Classification: Spring 2014

	American Indian		Asian		African American		Hispanics		Nat Haw / Pac Isl		Race Unknown		Two or more races		White		Nonresident Alien		Total			
	F	M	F	M	F	M	F	M	F	M	F	M	F	M	F	M	F	M	F	M	Total	
Undergraduate																						
Full-Time																						
First-Time Freshmen						1									2	2	1	1	3	4	7	
Other Freshmen	1			1	8	2	15	10			1	4	5	3	34	74	3	1	67	95	162	
Sophomores	1		1	1	13	6	10	14			2	1	4	8	57	78	1	5	89	113	202	
Juniors					13	6	13	14			7	6	5	4	90	140		2	128	172	300	
Seniors			1	1	9	9	14	12				1	3	2	69	109		1	96	135	231	
Special											1				2				3		3	
Total Full-Time	2		2	3	43	24	52	50			11	12	17	17	254	403	5	10	386	519	905	
Part-Time																						
First-Time Freshmen																						
Other Freshmen			1		1	1	1	2				1			5	3			7	8	15	
Sophomores	1				3	1	1	1				1			6	8			11	11	22	
Juniors						1	2	2			1	1			11	10			14	14	28	
Seniors				1	2	4	2	1				1	1		15	18			20	25	45	
Special					1										1	1			2	1	3	
Total Part-Time	1	1		1	7	7	6	6			1	4	1		38	40			54	59	113	
Total Undergraduate	3	1	2	4	50	31	58	56			12	16	18	17	292	443	5	10	440	578	1,018	
Graduate																						
Full-Time																						
Certificate				1											1				1	1	2	
Masters	1		2		4	2	6	1			1	1	1	1	91	20	2	2	108	27	135	
Doctoral							1						1		3	6	1	6	6	12	18	
Special Graduate																						
Total Full-Time	1		2	1	4	2	7	1			1	1	2	1	95	26	3	8	115	40	155	
Part-Time																						
Certificate			1	1									1		6	7			8	8	16	
Masters	1		4	1	15	5	13	6			5	4	8	2	135	80	1	1	182	99	281	
Doctoral							1				1	1			7	12	2	3	10	17	27	
Special Graduate																						
Total Part-Time	1		5	2	15	5	13	7			6	5	9	2	148	99	3	4	200	124	324	
Total Graduate	2		7	3	19	7	20	8			7	6	11	3	243	125	6	12	315	164	479	
Total All Students	5	1	9	7	69	38	78	64			19	22	29	20	535	568	11	22	755	742	1,497	

Figure 32: College of CPACS, Division of Continuing Studies Head Count: Spring 2004-2014

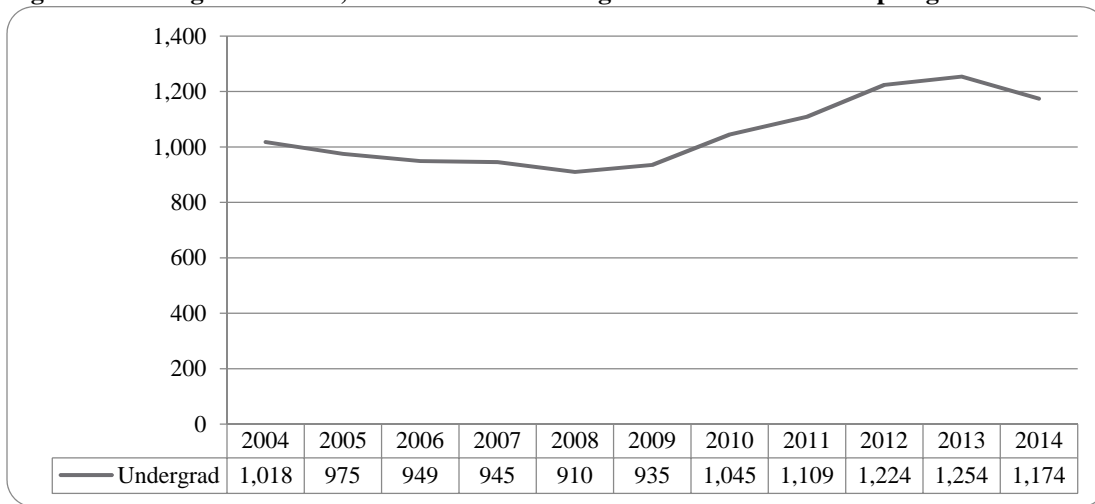


Figure 33: College of CPACS, Division of Continuing Studies Head Count by Ethnicity by Gender: Spring 2014

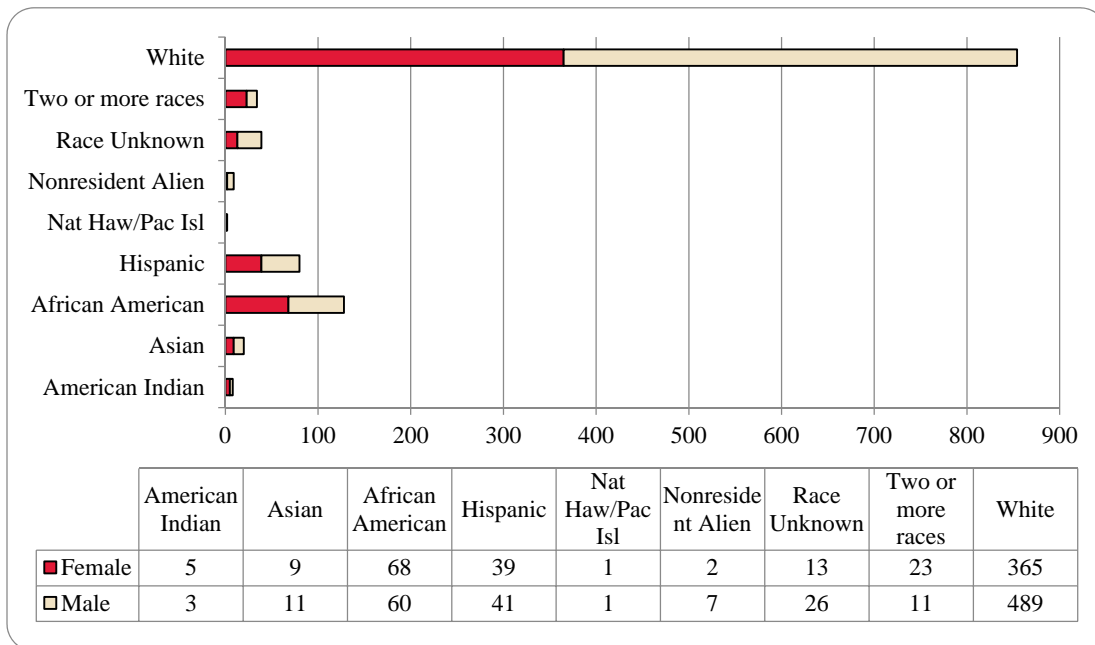


Table 12: College of CPACS Division of Continuing Studies Head Count Summary for Undergraduate Students by Full and Part-Time by Gender and Race Classification: Spring 2014

	American Indian		Asian		African American		Hispanics		Nat Haw / Pac Isl		Race Unknown		Two or more races		White		Nonresident Alien		Total			
	F	M	F	M	F	M	F	M	F	M	F	M	F	M	F	M	F	M	F	M	Total	
Undergraduate																						
Full-Time																						
First-Time Freshmen					1			1							1	1		1	2	3	5	
Other Freshmen		1		1	4	4		2			1	1	1	7	25		1	12	36	48		
Sophomores	1		3		2	5	6	9			1	4		34	66			50	81	131		
Juniors			2	3	16	15	8	5	1		3	6	6	2	65	79	1	102	110	212		
Seniors		1	3	4	16	14	7	8			1	5	5	2	76	95	1	3	109	132	241	
Special						1								3	2			3	3	6		
Total Full-Time	1	2	8	8	39	39	21	25	1		4	13	16	5	186	268	2	5	278	365	643	
Part-Time																						
First-Time Freshmen															2		1		3	3		
Other Freshmen					1	3	2	2			1	2		16	11			21	17	38		
Sophomores	1	1		2	4	2	2	2			3	2	1	1	29	33		40	43	83		
Juniors	2				5	7	2	5					1	2	43	73	1	53	88	141		
Seniors			1	1	18	8	11	7	1	6	10	1	3	83	94		120	124	244			
Special	1				1	1	1						2	8	8		13	9	22			
Total Part-Time	4	1	1	3	29	21	18	16	1	9	13	7	6	179	221		2	247	284	531		
Total Undergraduate	5	3	9	11	68	60	39	41	1	1	13	26	23	11	365	489	2	7	525	649	1,174	
Total All Students	5	3	9	11	68	60	39	41	1	1	13	26	23	11	365	489	2	7	525	649	1,174	

Table 13: Cooperative Graduate Program Head Count Summary for Graduate Students by Full and Part-time by Gender and Race Classification: Spring 2014

	American Indian		Asian		African American		Hispanics		Nat Haw / Pac Isl		Race Unknown		Two or more races		White		Nonresident Alien		Total				
	F	M	F	M	F	M	F	M	F	M	F	M	F	M	F	M	F	M	F	M	Total		
Graduate																							
Full-Time																							
Certificate															2						2	2	
Masters																							
Doctoral																							
Special Graduate																							
Total Full-Time															2						2	2	
Part-Time																							
Certificate								1							3	2					4	2	6
Masters																							
Doctoral																							
Special Graduate																							
Total Part-Time								1							3	2					4	2	6
Total Graduate								1							5	2					6	2	8
Total All Students								1							5	2					6	2	8

Figure 34: University Division Head Count: Spring 2004-2014

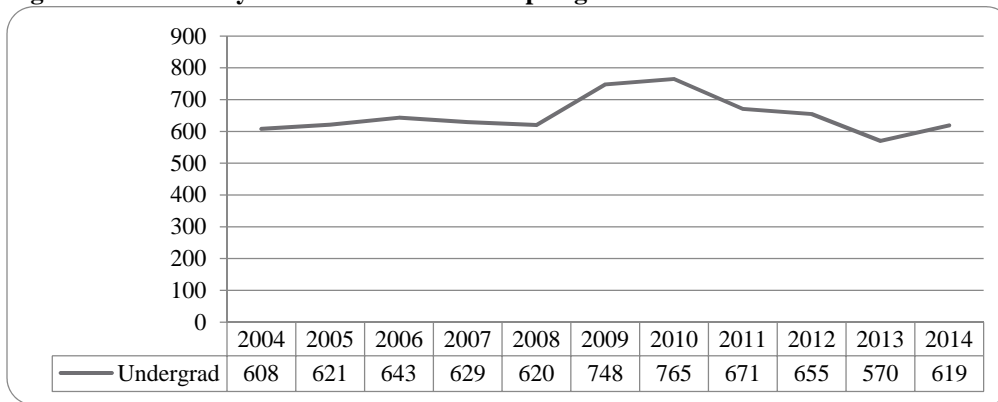


Figure 35: University Division Student Credit Hours: Spring 2004-2014

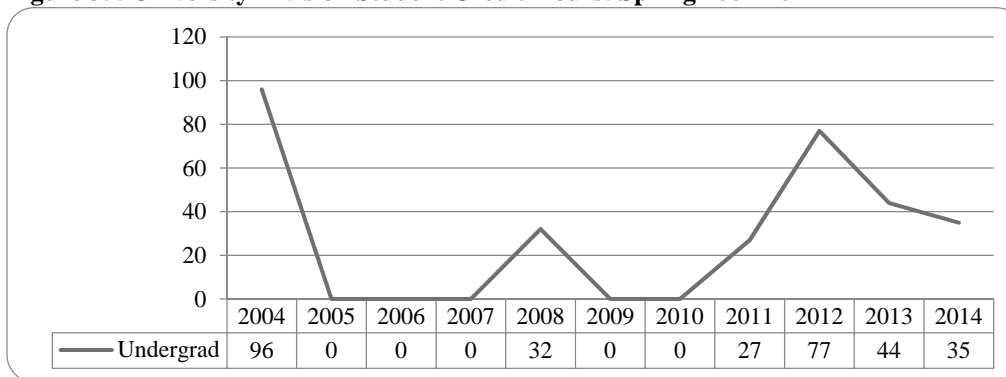


Figure 36: University Division Head Count by Ethnicity by Gender: Spring 2014

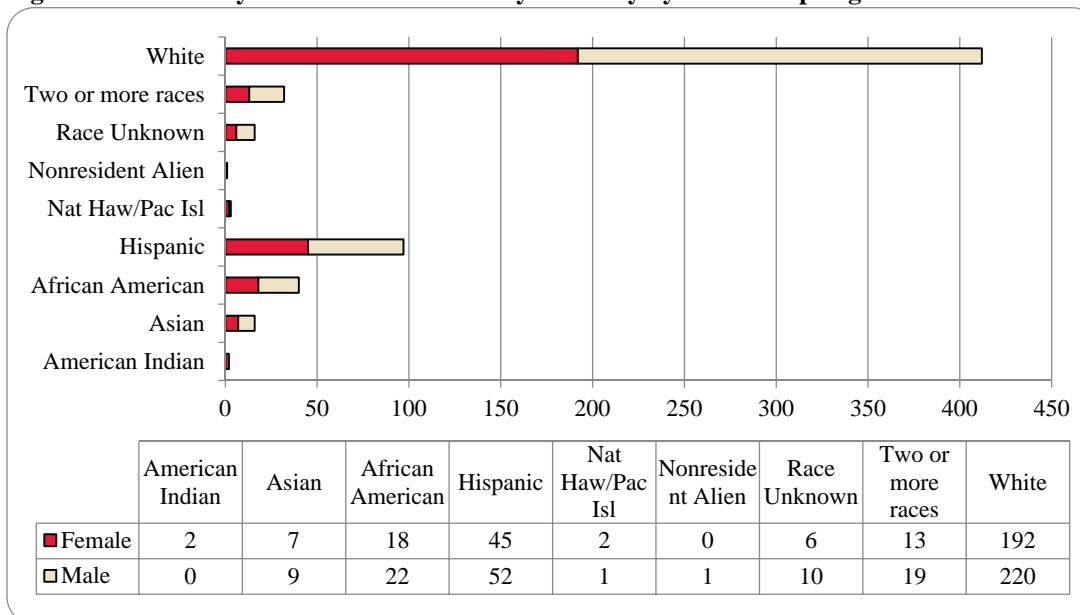


Table 14: University Division Head Count Summary for Undergraduate Students by Full and Part-Time by Gender and Race Classification: Spring 2014

	American Indian		Asian		African American		Hispanics		Nat Haw / Pac Isl		Race Unknown		Two or more races		White		Nonresident Alien		Total			
	F	M	F	M	F	M	F	M	F	M	F	M	F	M	F	M	F	M	F	M	Total	
Undergraduate																						
Full-Time																						
First-Time Freshmen						2					1		1	3	9				3	13	16	
Other Freshmen	1		2	5	8	11	26	37	1	1	5	9	11	12	119	140			173	215	388	
Sophomores			3	2	5	7	12	8			1		1	4	44	40		1	66	62	128	
Juniors															2	1			2	1	3	
Seniors																						
Special																						
Total Full-Time	1		5	7	13	20	38	45	1	1	6	10	12	17	168	190		1	244	291	535	
Part-Time																						
First-Time Freshmen								1							1				1	1	2	
Other Freshmen	1		2	2	5	2	3	4	1				1	1	13	17			26	26	52	
Sophomores							4	2						1	10	12			14	15	29	
Juniors																	1				1	
Seniors																						
Special																						
Total Part-Time	1		2	2	5	2	7	7	1				1	2	24	30			41	43	84	
Total Undergraduate	2		7	9	18	22	45	52	2	1	6	10	13	19	192	220		1	285	334	619	
Total All Students	2		7	9	18	22	45	52	2	1	6	10	13	19	192	220		1	285	334	619	

Figure 37: Non-Degree/Intercampus Special Undergraduate Students Head Count: Spring 2004-2014

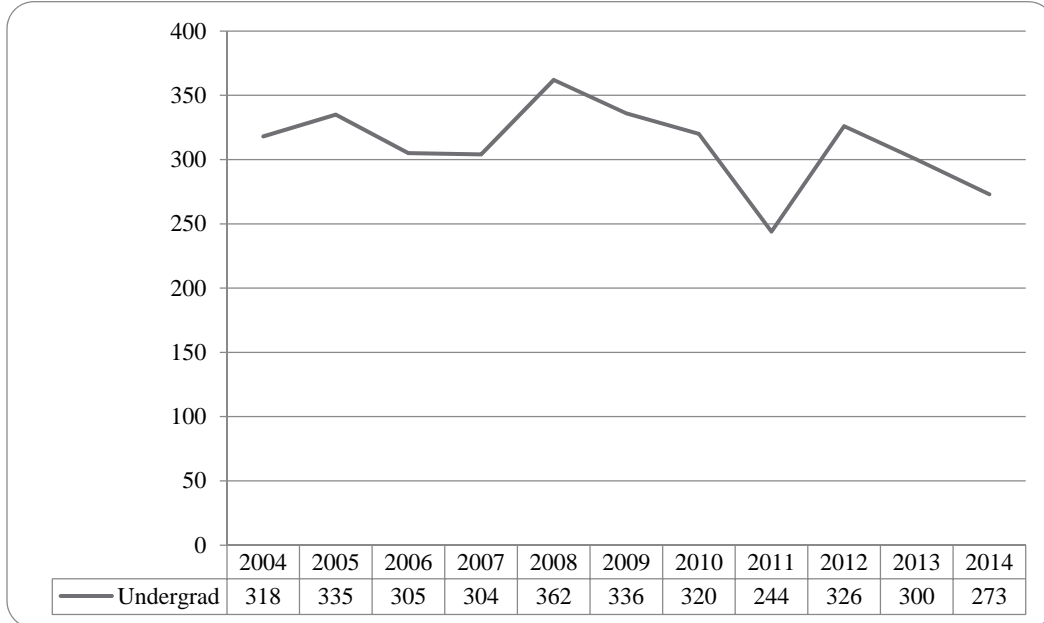


Figure 38: Non-Degree/Intercampus Special Undergraduate Students Head Count by Ethnicity by Gender: Spring 2014

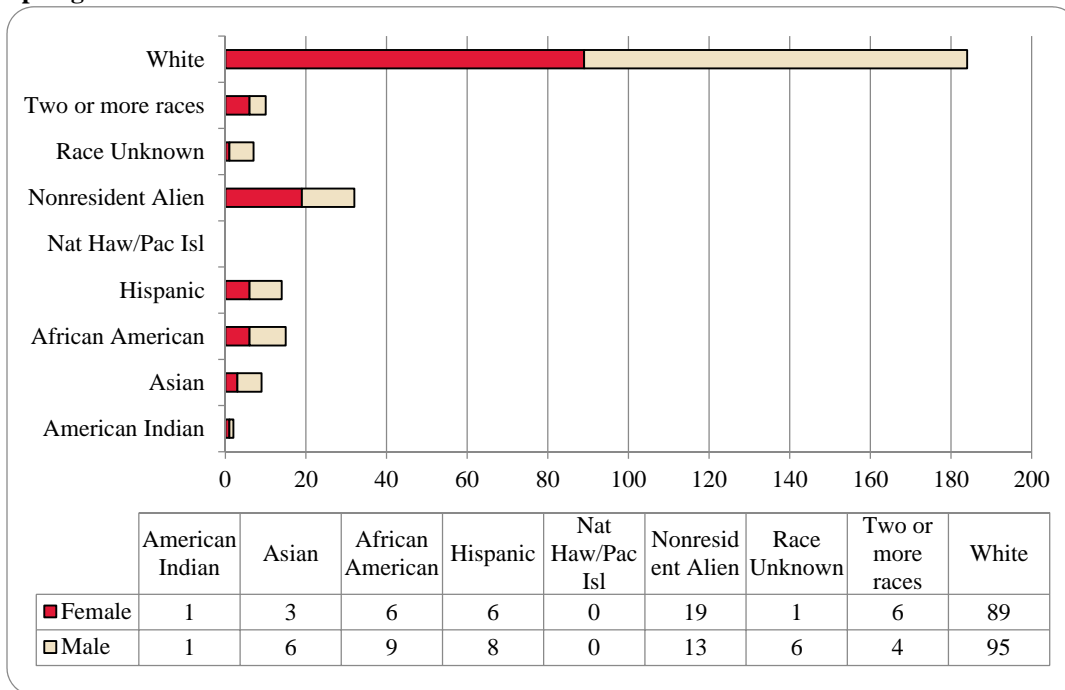


Table 15: Non-Degree/Intercampus Head Count Summary for Special Undergraduate Students by Full and Part-Time by Gender and Race Classification: Spring 2014

	American Indian		Asian		African American		Hispanics		Nat Haw / Pac Isl		Race Unknown		Two or more races		White		Nonresident Alien		Total			
	F	M	F	M	F	M	F	M	F	M	F	M	F	M	F	M	F	M	F	M	Total	
Undergraduate																						
Full-Time																						
First-Time Freshmen																						
Other Freshmen					1								1	9	15	16	12	26	28	54		
Sophomores			1		1	2							1		5			3	7	10		
Juniors													1	2	1			2	2	4		
Seniors														1	1			1	1	2		
Special							1							1	6			2	6	8		
Total Full-Time			1		2	2	1						1	2	13	28	16	12	34	44	78	
Part-Time																						
First-Time Freshmen															1				1	1		
Other Freshmen		1	1	1	2	5	3	1			1	2	4	1	34	28	3		48	39	87	
Sophomores				1				2						3	4			3	7	10		
Juniors				1							1			6	1			6	3	9		
Seniors					2	1	1	1						3	4			6	6	12		
Special	1		1	3		1	1	4			3	1	1	30	29		1	34	42	76		
Total Part-Time	1	1	2	6	4	7	5	8			1	6	5	2	76	67	3	1	97	98	195	
Total Undergraduate	1	1	3	6	6	9	6	8			1	6	6	4	89	95	19	13	131	142	273	
Total All Students	1	1	3	6	6	9	6	8			1	6	6	4	89	95	19	13	131	142	273	

Figure 39: Non-Degree/Intercampus Special Graduate Students Head Count: Spring 2004-2014

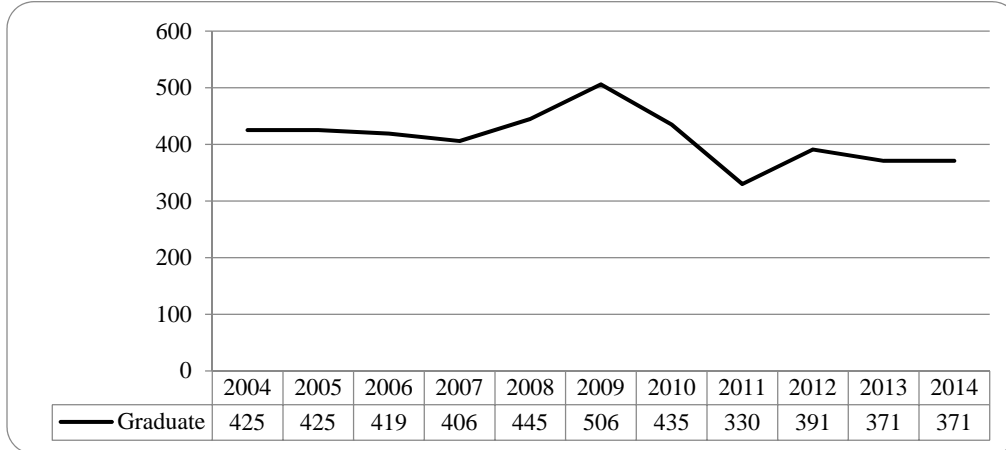


Figure 40: Non-Degree/Intercampus Special Graduate Students Head Count by Ethnicity by Gender: Spring 2014

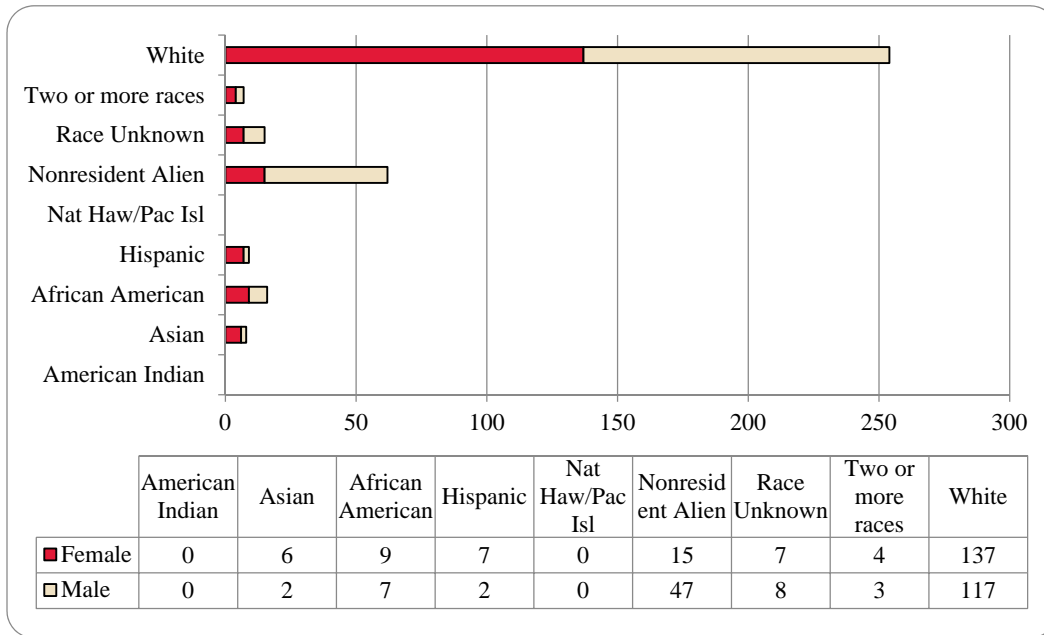


Table 16: Non-Degree/Intercampus Head Count Summary for Special Graduate Students by Full and Part-time by Gender and Race Classification: Spring 2014

	American Indian		Asian		African American		Hispanics		Nat Haw / Pac Isl		Race Unknown		Two or more races		White		Nonresident Alien		Total			
	F	M	F	M	F	M	F	M	F	M	F	M	F	M	F	M	F	M	F	M	Total	
Graduate																						
Full-Time																						
Certificate																						
Masters																						
Doctoral																						
Special Graduate			1			2	1				1			9	33	9	33	20	69	89		
Total Full-Time			1			2	1				1			9	33	9	33	20	69	89		
Part-Time																						
Certificate																						
Masters																						
Doctoral																						
Special Graduate			5	2	9	5	6	2			7	7	4	3	128	84	6	14	165	117	282	
Total Part-Time			5	2	9	5	6	2			7	7	4	3	128	84	6	14	165	117	282	
Total Graduate			6	2	9	7	7	2			7	8	4	3	137	117	15	47	185	186	371	
Total All Students			6	2	9	7	7	2			7	8	4	3	137	117	15	47	185	186	371	

Figure 41: Other Honors and Library Hours Student Credit Hours by Level of Instruction: Spring 2004-2014

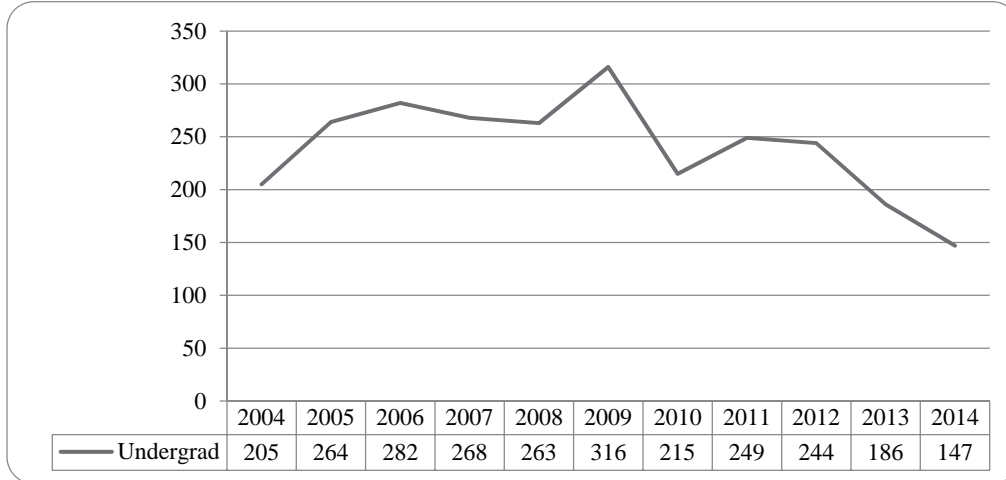


Figure 42: College of Agriculture Delivery-Site Head Count: Spring 2004-2014

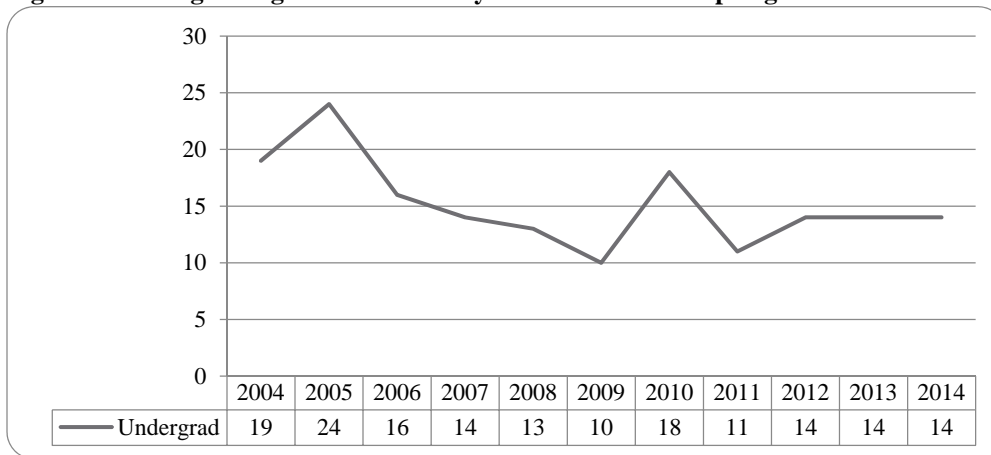


Figure 43: College of Agriculture Delivery-Site Student Credit Hours: Spring 2004-2014

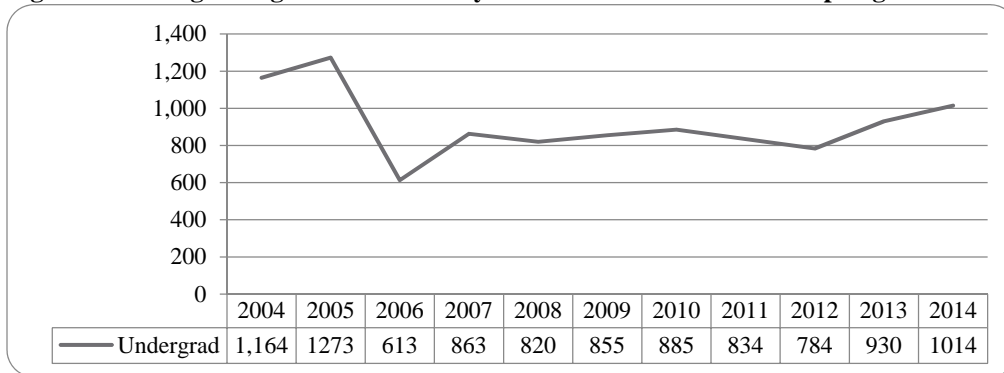


Figure 44: College of Agriculture Delivery-Site Head Count by Ethnicity by Gender: Spring 2014

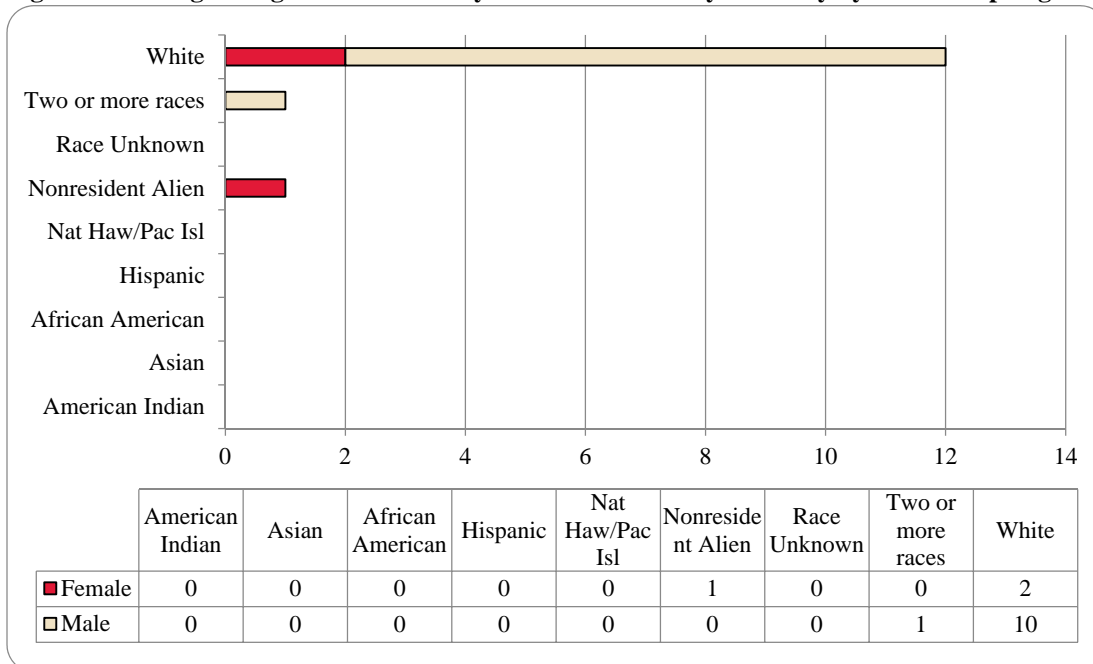


Table 17: College of Agriculture Head Count Summary for Undergraduate Students by Full and Part-Time by Gender and Race Classification: Spring 2014

	American Indian		Asian		African American		Hispanics		Nat Haw / Pac Isl		Race Unknown		Two or more races		White		Nonresident Alien		Total				
	F	M	F	M	F	M	F	M	F	M	F	M	F	M	F	M	F	M	F	M	Total		
Undergraduate																							
Full-Time																							
First-Time Freshmen																							
Other Freshmen													1		2						3	3	
Sophomores														1	2						1	2	3
Juniors																2						2	2
Seniors																							
Special																	1				1	1	1
Total Full-Time														1	1	6	1				2	7	9
Part-Time																							
First-Time Freshmen																							
Other Freshmen																	1					1	1
Sophomores																2						2	2
Juniors																							
Seniors																							
Special															1	1					1	1	2
Total Part-Time															1	4					1	4	5
Total Undergraduate														1	2	10	1				3	11	14
Total All Students														1	2	10	1				3	11	14

Figure 45: College of Architecture Delivery-Site Head Count: Spring 2004-2014

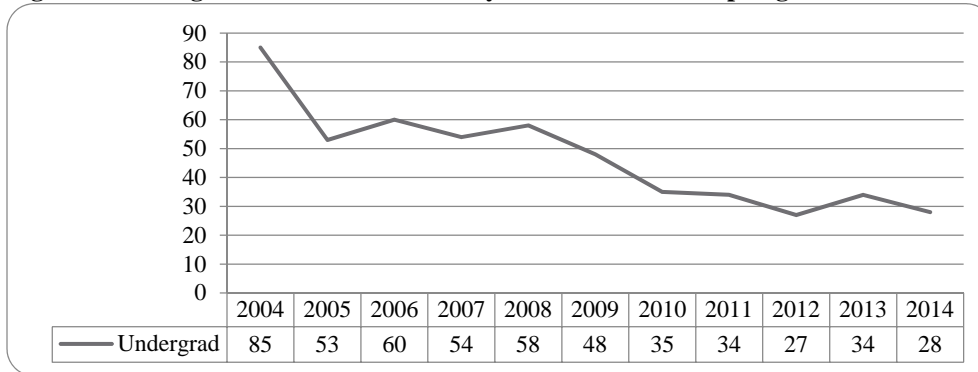


Figure 46: College of Architecture Delivery-Site Student Credit Hours: Spring 2004-2014

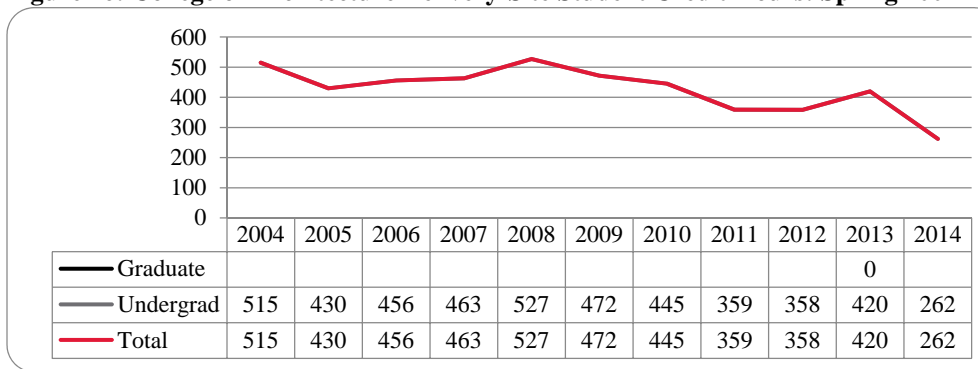


Figure 47: College of Architecture Delivery-Site Head Count by Ethnicity by Gender: Spring 2014

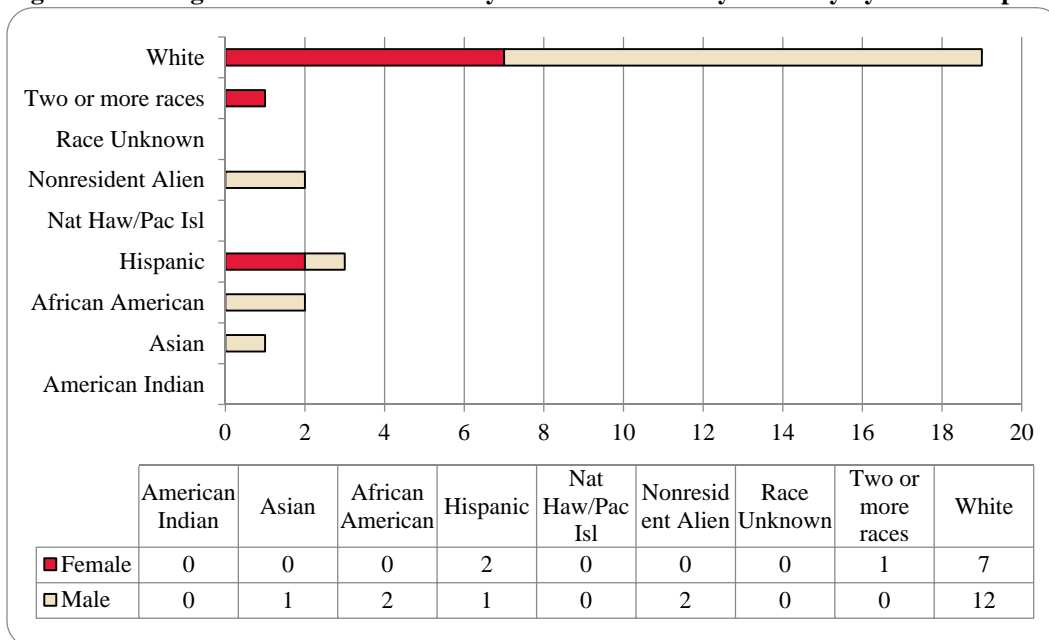


Table 18: College of Architecture Head Count Summary for Undergraduate Students by Full and Part-Time by Gender and Race Classification: Spring 2014

	American Indian		Asian		African American		Hispanics		Nat Haw / Pac Isl		Race Unknown		Two or more races		White		Nonresident Alien		Total			
	F	M	F	M	F	M	F	M	F	M	F	M	F	M	F	M	F	M	F	M	Total	
Undergraduate																						
Full-Time																						
First-Time Freshmen																						
Other Freshmen				1		2								1	3				1	6	7	
Sophomores							1							2	2		1		3	3	6	
Juniors														3	1				3	1	4	
Seniors																						
Special																						
Total Full-Time				1		2	1							6	6		1		7	10	17	
Part-Time																						
First-Time Freshmen																						
Other Freshmen															1					1	1	
Sophomores								1							1					2	2	
Juniors													1		3		1		2	4	6	
Seniors														1	1				1	1	2	
Special																						
Total Part-Time							1	1					1		6		1		3	8	11	
Total Undergraduate				1		2	2	1					1		12		2		10	18	28	
Total All Students				1		2	2	1					1		12		2		10	18	28	

Figure 48: College of Engineering Delivery-Site Head Count: Spring 2004-2014

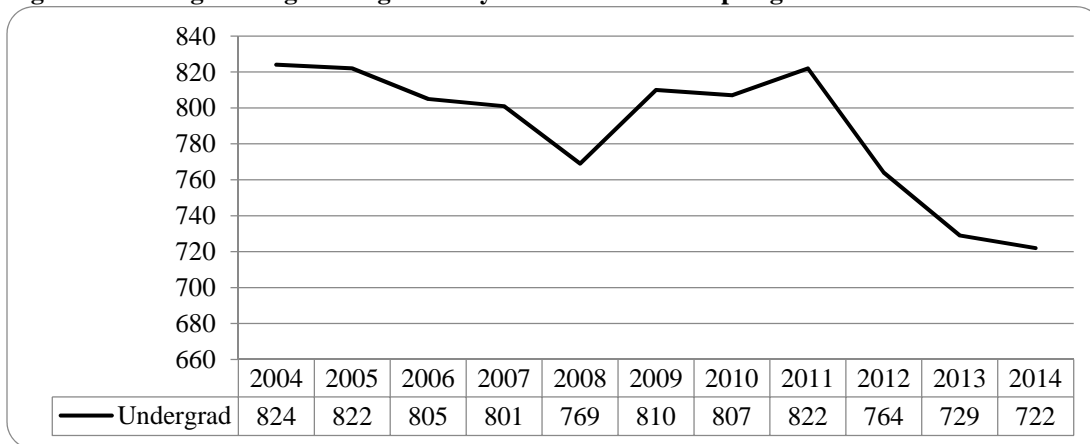


Figure 49: College of Engineering Delivery-Site Student Credit Hours: Spring 2004-2014

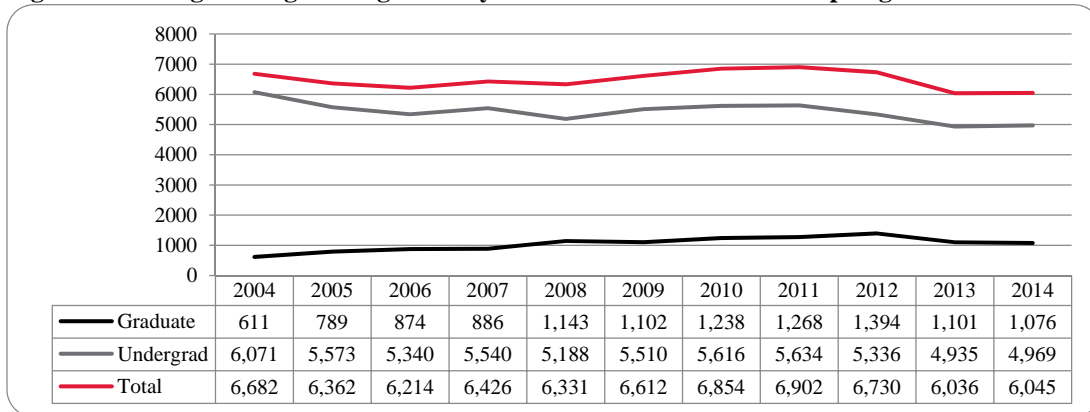


Figure 50: College of Engineering Delivery-Site Head Count by Ethnicity by Gender: Spring 2014

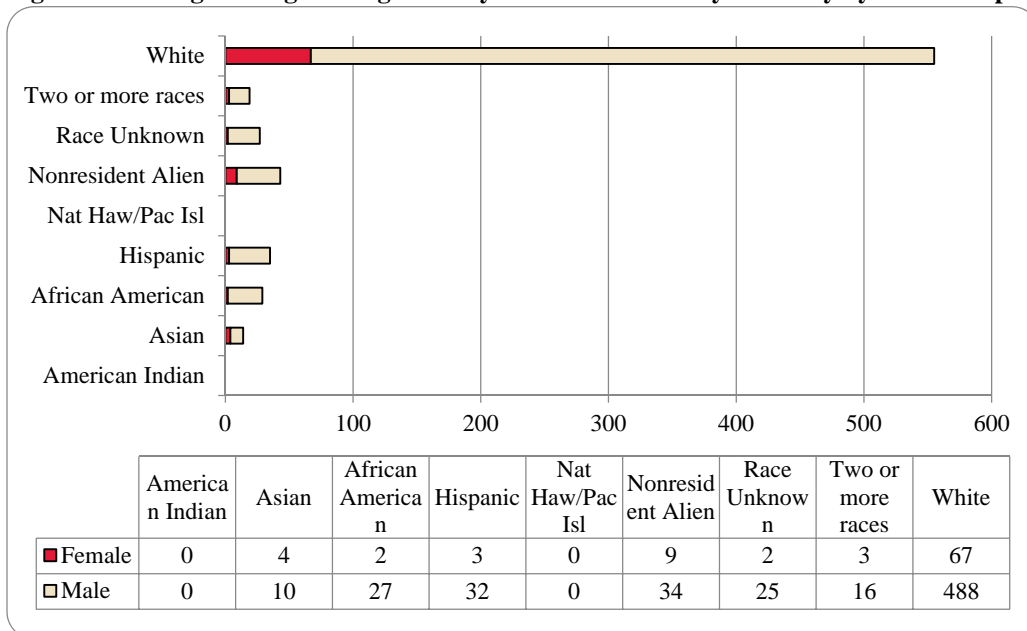


Table 19: College of Engineering Head count Summary for Undergraduate Students by Full and Part-Time by Gender and Race Classification: Spring 2014

	American Indian		Asian		African American		Hispanics		Nat Haw / Pac Isl		Race Unknown		Two or more races		White		Nonresident Alien		Total			
	F	M	F	M	F	M	F	M	F	M	F	M	F	M	F	M	F	M	F	M	Total	
Undergraduate																						
Full-Time																						
First-Time Freshmen															4		1	2		1	6	7
Other Freshmen				1		2		5				2	1	3	9	72	1	8		11	93	104
Sophomores			1	3		1	1	6				3	1	5	17	92	6	15		26	125	151
Juniors			1	1		6		8				9		4	11	103		3		12	134	146
Seniors				2	2	5	1	7			1	5	1	3	21	133	1	3		27	158	185
Special								1				1			5	11		1		5	14	19
Total Full-Time			2	7	2	14	2	27			1	20	3	15	63	415	9	32		82	530	612
Part-Time																						
First-Time Freshmen																1					1	1
Other Freshmen			1	1												12				1	13	14
Sophomores						1		2							2	13				2	16	18
Juniors						7	1				1			1	1	14		1		3	23	26
Seniors			1	2		5		3				4			31				1	45	46	
Special											1				1	2		1		1	4	5
Total Part-Time			2	3		13	1	5			1	5		1	4	73		2		8	102	110
Total Undergraduate			4	10	2	27	3	32			2	25	3	16	67	488	9	34		90	632	722
Total All Students			4	10	2	27	3	32			2	25	3	16	67	488	9	34		90	632	722

Figure 51: College of Education and Human Science Delivery-Site Head Count: Spring 2004-2014

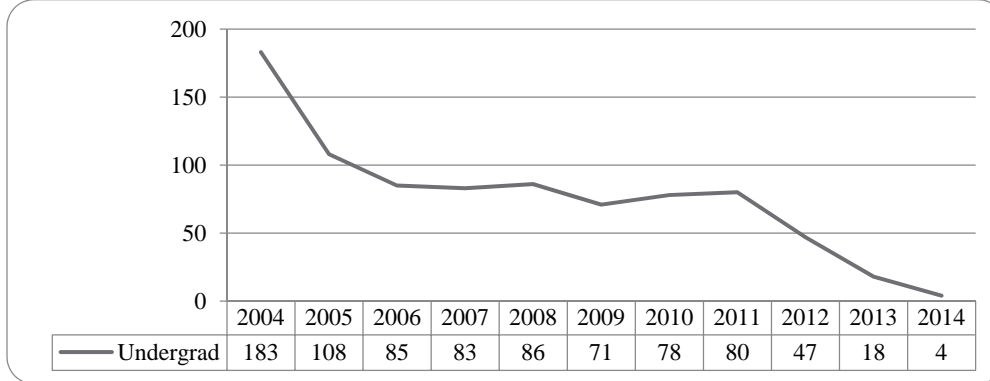


Figure 52: College of Education and Human Sciences Delivery-Site Student Credit Hours: Spring 2004-2014

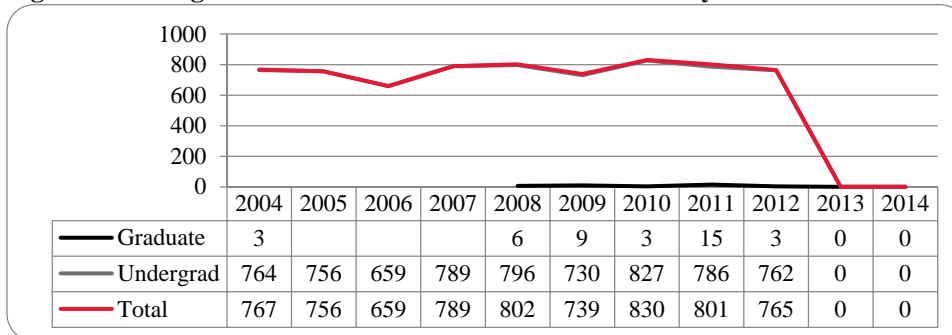


Figure 53: College of Education and Human Sciences Delivery-Site Head Count by Ethnicity by Gender: Spring 2004-2014

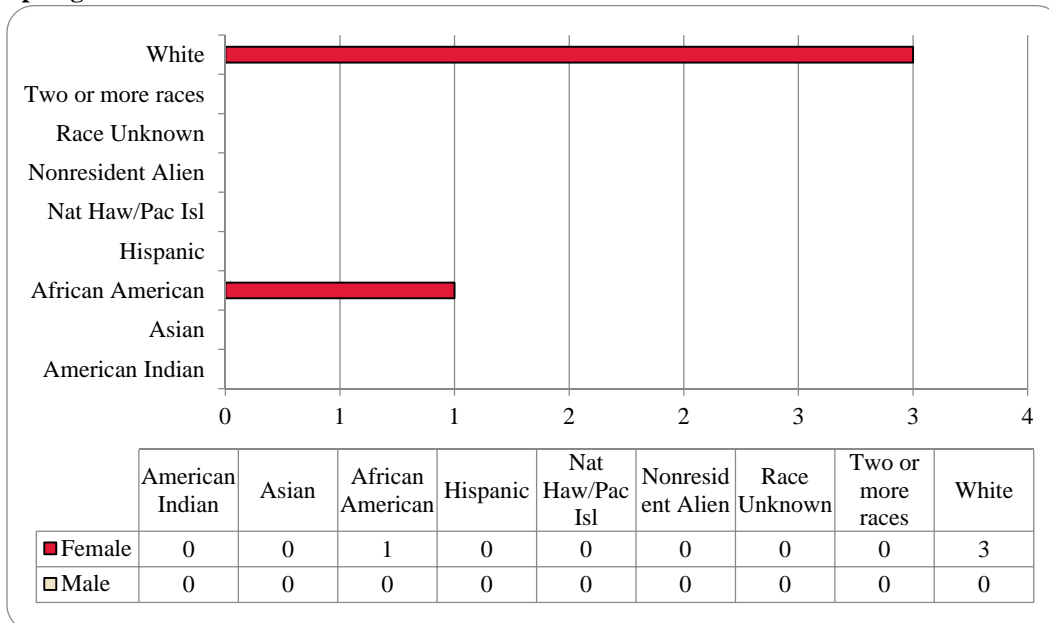


Table 20: College of Education and Human Sciences Head Count Summary for Undergraduate Students by Full and Part-Time by Gender and Race Classification: Spring 2014

	American Indian		Asian		African American		Hispanics		Nat Haw / Pac Isl		Race Unknown		Two or more races		White		Nonresident Alien		Total			
	F	M	F	M	F	M	F	M	F	M	F	M	F	M	F	M	F	M	F	M	Total	
Undergraduate																						
Full-Time																						
First-Time Freshmen																						
Other Freshmen																						
Sophomores																						
Juniors																						
Seniors															2						2	2
Special																						
Total Full-Time															2						2	2
Part-Time																						
First-Time Freshmen																						
Other Freshmen																						
Sophomores																						
Juniors															1						1	1
Seniors						1															1	1
Special																						
Total Part-Time						1									1						2	2
Total Undergraduate						1									3						4	4
Total All Students						1									3						4	4

Glossary

The total head count and student credit hours in this enrollment report are provided on both a delivery-site and administrative-site basis. Delivery-site includes enrollment in all courses taught at UNO regardless of “home” campus. This means that student credit hours are reported for courses in the colleges. Student enrollment is counted in the college declared by the student. Specifically, the delivery-site enrollment numbers include students in degree programs in the UNL Colleges of Agriculture, Architecture, Engineering and Technology, and Education and Human Science.

FIRST-TIME, Entering (freshmen) Student: Students attending any institution for the first time at the undergraduate level. For students entering the fall term, this includes students enrolled in the fall term who attended college for the first time in the prior summer term. Also included are students who entered with advanced standing, i.e. college credits earned before graduation from high school.

OTHER FRESHMEN: At the beginning of the current semester, undergraduate students who (1) are not First-Time Freshmen and (2) have less than 27 semester hours earned from all institutions of higher education attended.

SOPHOMORES: At the beginning of the current semester, undergraduate students who have at least 27, but not more than 57, semester hours earned from all institutions of higher education attended.

JUNIORS: At the beginning of the current semester, undergraduate students who have at least 58, but not more than 90, semester hours earned from all institutions of higher education attended.

SENIORS: At the beginning of the current semester, undergraduate students who have at least 91 semester hours earned from all institutions of higher education attended.

NON-DEGREE/INTER-CAMPUS/SPECIAL UNDERGRADUATES: Special undergraduates not pursuing a degree at UNO in various programs: Inter-Campus UNMC, UNK, UNL, and Non-Degree.

NON-DEGREE/INTER-CAMPUS/SPECIAL GRADUATE STUDENTS: Special graduate students not pursuing a degree at UNO in various programs: Engineering Transfer Program, Inter-Campus UNMC, UNK, UNL, Inter-Campus UNL Graduate Psychology and Non-Degree.

MASTERS/SPECIALIST: Graduate students pursuing a degree less than doctoral.

CERTIFICATE: These students are not enrolled in a degree program, but only a certificate.

DOCTORAL: Graduate students who have been accepted into a doctoral program.

FULL-TIME: In the current semester, undergraduate students enrolled for 12 or more semester hours, or graduate students enrolled for 9 or more semester hours.

PART-TIME: In the current semester, undergraduate students enrolled for less than 12 semester hours, or graduate students enrolled for less than 9 semester hours.

COOPERATIVE GRADUATE PROGRAM: Graduate students enrolled in Human Resources and Training or Global Information Operations offered cooperatively by two or more colleges.



OFFICE OF INSTITUTIONAL EFFECTIVENESS

www.unomaha.edu/oie/

402-554-2367 | 402-554-2367 (Fax)

T. Hank Robinson, Director

Jenny Liu, Director Institutional Research

Daniel O'Dell, Web & Communications Coordinator

Andrew Jacobsen, Business Analyst

Rita Sterkel, Management Information Coordinator

Jeanie Gutheil-Bykerk, Research Analyst