


Spring 2012

Enrollment Report - Spring 2012

UNO Office of Institutional Effectiveness
University of Nebraska at Omaha

Follow this and additional works at: <http://digitalcommons.unomaha.edu/oienrollment>

 Part of the [Educational Assessment, Evaluation, and Research Commons](#), and the [Higher Education Commons](#)

Recommended Citation

Office of Institutional Effectiveness, UNO, "Enrollment Report - Spring 2012" (2012). *Enrollment Reports*. Paper 10.
<http://digitalcommons.unomaha.edu/oienrollment/10>

This Report is brought to you for free and open access by the Office of Institutional Effectiveness at DigitalCommons@UNO. It has been accepted for inclusion in Enrollment Reports by an authorized administrator of DigitalCommons@UNO. For more information, please contact unodigitalcommons@unomaha.edu.



ENROLLMENT STATISTICAL SUMMARY

SPRING 2012

Office of Institutional Research

AS of January 18, 2011

EXECUTIVE SUMMARY

This Enrollment Statistical Summary provides delivery and administrative-site information on enrollment headcount and student credit hours. Delivery site reporting counts all students, including those in UNL programs delivered at UNO, but excludes UNO programs delivered in Lincoln (CPACS programs). Administrative-site reporting counts students enrolled in UNO programs only (including the CPACS programs delivered in Lincoln.)

The purpose of this summary is to provide the undergraduate and graduate enrollments and student credit hour information by college or equivalent academic unit, class, gender and ethnicity. A glossary at the end of the report provides a list of definitions for headings and categories found in the report.

Spring 2012 Delivery-Site Campus Summary

- Spring 2012 head count enrollment is 14,467, a 0.9% increase compared to the spring 2011 enrollment of 14,339 (see Figure 1).
- Spring 2012 undergraduate head count enrollment is 11,800, a 1.2% increase compared to the spring 2011 enrollment of 11,663 (see Figure 2A).
- Spring 2012 graduate head count enrollment is 2,667, a slight decrease compared to the spring 2011 enrollment of 2,676 (see Figure 2A).
- Spring 2012 student credit hours are 157,324, a slight decrease compared to the spring 2011 credit hours of 157,460 (see Figure 3A).
- Spring 2012 undergraduate credit hours are 141,726, up from spring 2011 by 0.15% (see Figure 3A).
- Spring 2012 graduate credit hours are 15,598, down from spring 2011 by 2.2% (see Figure 3A).

Administrative-Site

- Spring head count enrollment is 13,864, a 1.7% increase compared to the spring 2011 enrollment of 13,632 (see Figure 1).
- Spring 2012 undergraduate head count enrollment is 11,210, a 2.2% increase compared to the spring 2011 enrollment of 10,969 (see Figure 2B).
- Spring 2012 graduate head count enrollment is 2,654, a 0.3% decrease compared to the spring 2011 enrollment of 2,663 (see Figure 2B).
- Spring 2012 student credit hours are 152,599, a 0.4% increase compared to the spring 2011 credit hours of 152,021 (see Figure 3B).
- Spring 2012 undergraduate credit hours are 138,560, up from spring 2011 by 0.8% (see Figure 3B).
- Spring 2012 graduate credit hours are 14,039, down from spring 2011 by 3.4% (see Figure 3B).

Contents

Table 1: UNO Delivery-Site and Administrative-Site Head Count Enrollment and Comparison: Spring Semester, 2012 5

Figure 1: Delivery-Site & Administrative-Site Head Count Enrollment: Spring 1988 – 2012 6

Figure 2A: Total UNO Delivery-site Head Count by Student Level: Spring 2000 – 2012 7

Figure 3A: Total UNO Delivery-site Student Credit Hours by Student Level: Spring 2000 – 2012 7

Table 2A: Total UNO Delivery-Site Head Count Summary for Full and Part-time, Undergraduate and Graduate Students by Gender and Race Classification: Spring 2012 8

 Table 2A (continued)..... 9

Figure 2B: Total UNO Administrative-site Head Count Spring 2000 – 2012..... 10

Figure 3B: Total UNO Administrative-site Student Credit Hours Spring 2000-2012 10

Table 2B: Total UNO Administrative-site Head Count Summary for Full and Part-Time, Undergraduate and Graduate Students by Gender and Race Classification: Spring 2012 11

 Table 2B (continued)..... 12

Figure 4: College of Arts & Sciences Administrative-site Head Count Spring 2000 – 2012 13

Figure 5: College of Arts & Sciences Administrative-site Student Credit Hours Spring 2000 – 2012 13

Table 3: College of Arts & Sciences Head Count Summary for Full and Part-Time, Undergraduate and Graduate Students by Gender and Race Classification: Spring 2012 14

 Table 3 (continued)..... 15

Figure 6: College of Business Administration Administrative-site Head Count: Spring 2000 – 2012..... 16

Figure 7: College of Business Administration Administrative-site Student Credit Hours: Spring 2000..... 16

Table 4: College of Business Administration Head Count Summary for Full and Part-Time, Undergraduate and Graduate Students by Gender and Race Classification: Spring 2012 17

 Table 4 (continued)..... 18

Figure 8A: College of Communication, Fine Arts and Media Delivery-site Head Count: Spring 2006–2012 19

Figure 9A: College of Communication, Fine Arts and Media Delivery-site Student Credit Hours: Spring 2006-2012 19

Table 5A: College of Communication, Fine Arts and Media Delivery-site Head Count Summary for Full and Part-Time, Undergraduate and Graduate Students by Gender and Race Classification: Spring 2012 20

 Table 5A (continued)..... 21

Figure 8B: College of Communication, Fine Arts and Media: Administrative-site Head Count: Spring 2006-2012 22

Figure 9B: College of Communication, Fine Arts and Media: Administrative-site Student Credit Hours: Spring 2006 - 2012 22

Table 5B: College of Communication, Fine Arts and Media Administrative-Site Head Count Summary for Full and Part-Time, Undergraduate and Graduate Students by Gender and Race Classification: Spring 2012 23

 Table 5B (continued)..... 24

Figure 10: College of Education Administrative-site Head Count: Spring 2000 – 2012..... 25

Figure 11: College of Education Administrative-site Student Credit Hours: Spring 2000 – 2012..... 25

Table 6: College of Education Head Count Summary for Full and Part-Time, Undergraduate and Graduate Students by Gender and Race Classification: Spring 2012..... 26

 Table 6 (continued)..... 27

Figure 12: College of Information Science & Technology Administrative-site Head Count: Spring 2000 – 2012 28

Figure 13: College of Information Science & Technology Administrative-site Student Credit Hours: Spring 2000 – 2012 28

Table 7: College of Information Science and Technology Head Count Summary for Full and Part-Time, Undergraduate and Graduate Summary by Gender and Race Classification: Spring 2012..... 29

 Table 7 (continued)..... 30

Figure 14A: College of Public Affairs & Community Service Delivery-site Head Count: Spring 2000-2012 31

Figure 15A: College of Public Affairs & Community Service Delivery-site Student Credit Hours: Spring 2000-2012 31

Table 8A: College of Public Affairs and Community Service Delivery-site Head Count Summary for Full and Part-Time, Undergraduate and Graduate Students by Gender and Race Classification: Spring 2012 32

 Table 8A (continued)..... 33

Figure 14B: College of Public Affairs & Community Service Administrative-site Head Count: Spring 2000-2012 34

Figure 15B: College of Public Affairs & Community Service Administrative-site Student Credit Hours: Spring 2000 – 2012 34

Table 8B: College of Public Affairs & Community Service Administrative-site Head Count Summary for Full and Part-Time, Undergraduate and Graduate Students by Gender and Race Classification: Spring 2012 35

 Table 8B (continued)..... 36

Figure 16: College of CPACS, Division of Continuing Studies Administrative-site Head Count: Spring 2000 – 2012 37

Table 9: College of CPACS Division of Continuing Studies Head Count Summary for Full and Part-Time, Undergraduate Students by Gender and Race Classification: Spring 2012..... 38

Table 10: Cooperative Graduate Program Head Count Summary for Full and Part-time, Graduate Students by Gender and Race Classification: Spring 2012..... 39

Figure 17: University Division Administrative-site Head Count: Spring 2000 – 2012..... 40

Figure 18: University Division Administrative-site Student Credit Hours: Spring 2000 – 2012..... 40

Table 11: University Division Head Count Summary for Full and Part-time, Undergraduate Students by Gender and Race Classification: Spring 2012..... 41

Figure 19: Non-Degree/Intercampus Special Undergraduate Students Administrative-site Head Count: Spring 2000 – 2012 42

Table 12: Non-Degree/Intercampus Head Count Summary for Full and Part-time, Special Undergraduate Students by Gender and Race Classification: Spring 2012..... 43

Figure 20: Non-Degree/Inter-campus Special Graduate Students Administrative-Site Head Count: Spring 2000 – 2012 44

Table 13: Non-Degree/Inter-campus Head Count Summary for Full and Part-Time, Special Graduate Students by Gender and Race Classification: Spring 2012..... 45

Figure 21: College of Agriculture Delivery-site Head Count: Spring 2000 – 2012 46

Figure 22: College of Agriculture Delivery-site Student Credit Hours: Spring 2000 – 2012 46

Table 14: College of Agriculture Head Count Summary for Full and Part-time, Undergraduate Students by Gender and Race Classification: Spring 2012..... 47

Figure 23: College of Architecture Delivery-site Head Count: Spring 2000 – 2012 48

Figure 24: College of Architecture Delivery-site Student Credit Hours: Spring 2000 – 2012 48

Table 16: College of Architecture, Head Count Summary for Full and Part-Time, Undergraduate Students by Gender and Race Classification: Spring 2012..... 49

Figure 25: College of Engineering Delivery-site Head Count: Spring 2000 – 2012 50

Figure 26: College of Engineering Delivery-site Student Credit Hours: Spring 2000 – 2012 50

Table 16: College of Engineering Head Count Summary for Full and Part-time, Undergraduate Students by Gender and Race Classification: Spring 2012..... 51

Figure 27: College of Education and Human Sciences Delivery-site Head Count: Spring 2000 – 2012..... 52

Figure 28: College of Education and Human Sciences Delivery-site Student Credit Hours: Spring 2000 – 2012 52

Table 17: College of Education and Human Sciences Head Count Summary for Full and Part-time, Undergraduate Students by Gender and Race Classification: Spring 2012..... 53

Figure 29: Other Honors and Library Hours Student Credit Hours by Level of Instruction: Spring 2000 – 2012 54

GLOSSARY..... 55

Table 1: UNO Delivery-Site and Administrative-Site Head Count Enrollment and Comparison: Spring Semester, 2012

| | Delivery-Site Total | Administrative-Site Spring 2012 Total | Administrative-Site Spring 2011 Total | Admin-Site Numerical Change 2011-2012 | Admin-Site Percent Change 2011-2012 |
|---|---------------------|---------------------------------------|---------------------------------------|---------------------------------------|-------------------------------------|
| UNO: | | | | | |
| Undergraduate | | | | | |
| Arts & Sciences | 3,394 | 3,394 | 3,350 | 44 | 1.3% |
| Business Administration | 1,712 | 1,713 | 1,727 | -14 | -0.8% |
| Communication, Fine Arts & Media | 1,021 | 1,021 | 1,070 | -49 | -4.6% |
| Education | 1,457 | 1,457 | 1,465 | -8 | -0.5% |
| Information Science and Technology | 558 | 559 | 559 | 0 | 0.0% |
| Public Affairs & Community Services | 599 | 861 | 774 | 87 | 11.2% |
| Division of Continuing Studies | 1,224 | 1,224 | 1,109 | 115 | 10.4% |
| Sub-total CPACS including Cont. Studies | 1,823 | 2,085 | 1,883 | 202 | 10.7% |
| Non-Degree | 326 | 326 | 244 | 82 | 33.6% |
| University Division | 655 | 655 | 671 | -16 | -2.4% |
| Total Undergraduate | 10,946 | 11,210 | 10,969 | 241 | 2.2% |
| Graduate | | | | | |
| Arts & Sciences | 399 | 399 | 374 | 25 | 6.7% |
| Business Administration | 387 | 387 | 385 | 2 | 0.5% |
| Communication, Fine Arts & Media | 118 | 105 | 129 | -24 | -18.6% |
| Education | 726 | 726 | 790 | -64 | -8.1% |
| Information Science & Technology | 218 | 218 | 219 | -1 | -0.5% |
| Public Affairs & Community Services | 424 | 424 | 432 | -8 | -1.9% |
| New Cooperative Graduate Programs* | 4 | 4 | 4 | 0 | 0.0% |
| Undeclared/Non-Degree | 391 | 391 | 330 | 61 | 18.5% |
| Total Graduate | 2,667 | 2,654 | 2,663 | -9 | -0.3% |
| UNL: | | | | | |
| Agriculture | 14 | | | | |
| Architecture | 27 | | | | |
| Engineering & Technology | 765 | | | | |
| Education and Human Science | 48 | | | | |
| Total UNL | 854 | | | | |
| UNO Totals | 14,467 | 13,864 | 13,632 | 232 | 1.7% |

Figure 1: Delivery-Site & Administrative-Site Head Count Enrollment: Spring 1988 - 2012

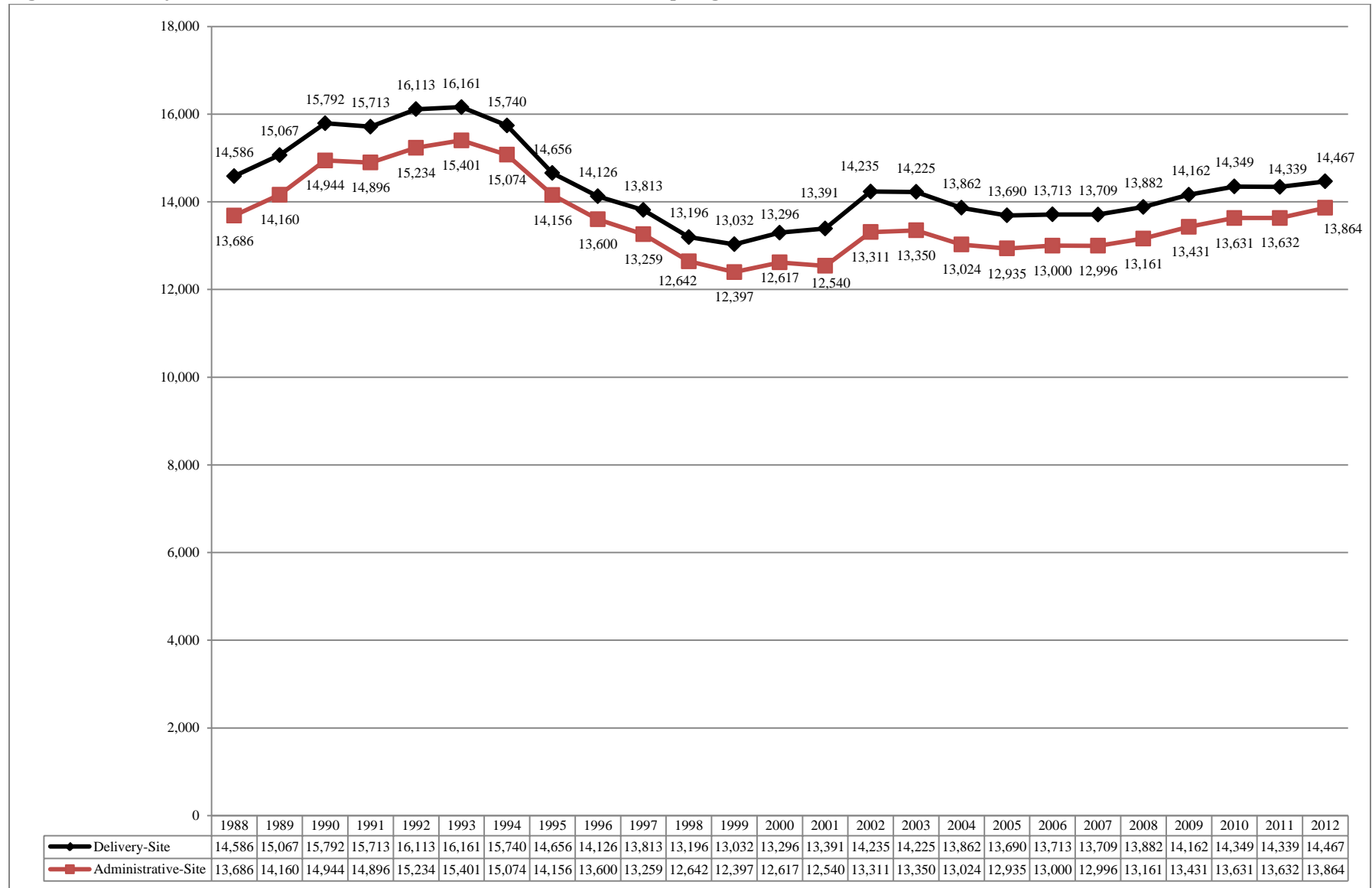


Figure 2A: Total UNO Delivery-site Head Count by Student Level: Spring 2000 – 2012

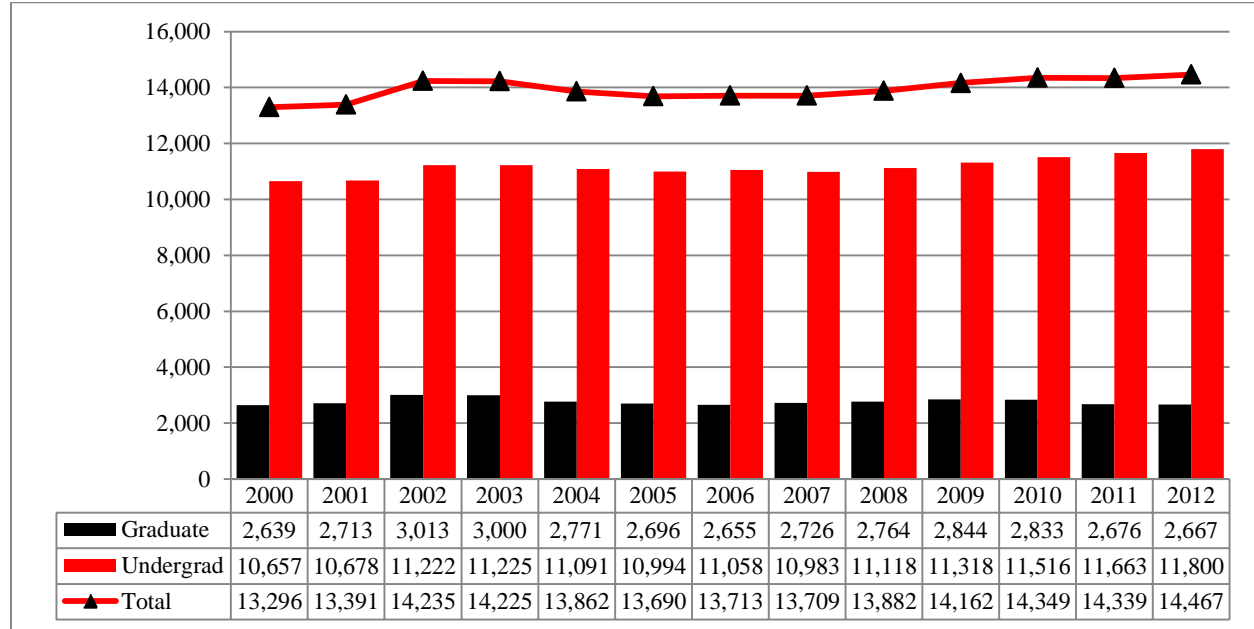


Figure 3A: Total UNO Delivery-site Student Credit Hours by Student Level: Spring 2000 – 2012

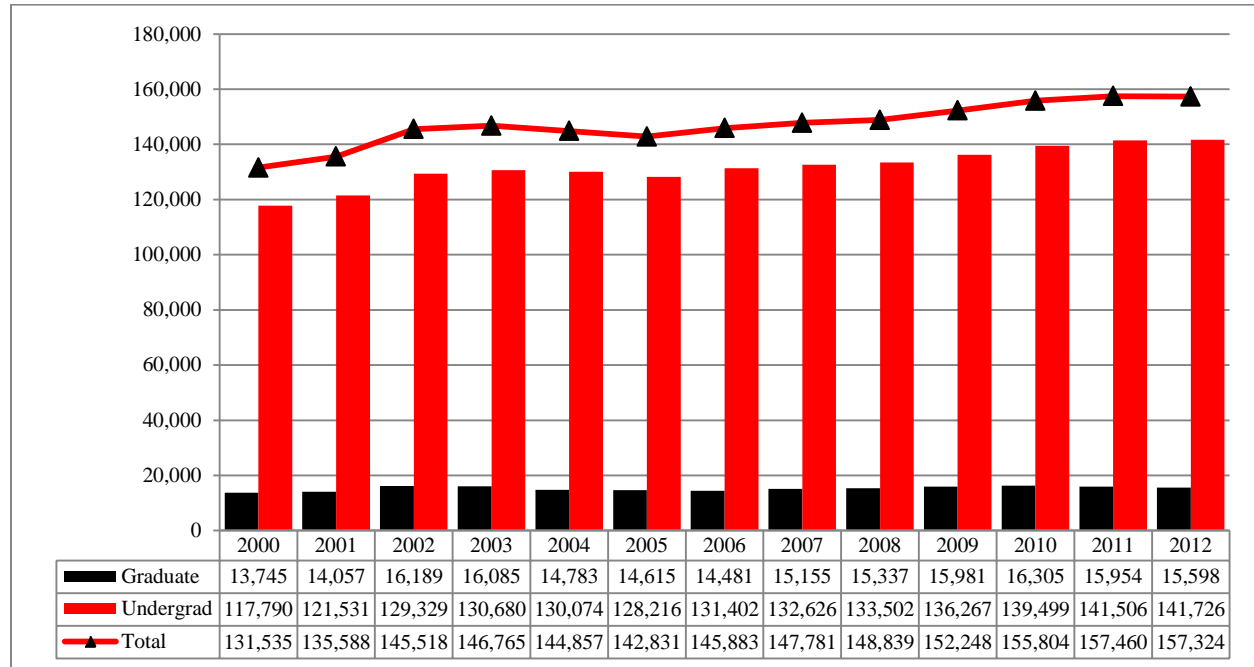


Table 2A: Total UNO Delivery-Site Head Count Summary for Full and Part-time, Undergraduate and Graduate Students by Gender and Race Classification: Spring 2012

| | White | | African American | | Hispanic | | Asian | | American Indian | | Nat Haw / Pac Isl | | Nonresident Alien | | Race Unknown | | Two or more races | | Total | | | |
|------------------------|-------|-------|------------------|-----|----------|-----|-------|-----|-----------------|----|-------------------|---|-------------------|-----|--------------|-----|-------------------|----|-------|-------|-------|--|
| | F | M | F | M | F | M | F | M | F | M | F | M | F | M | F | M | F | M | F | M | Total | |
| Full-Time | | | | | | | | | | | | | | | | | | | | | | |
| Undergraduate | | | | | | | | | | | | | | | | | | | | | | |
| First-Time Freshmen | 13 | 19 | 1 | | | 7 | | 1 | | | | | 9 | 22 | | 1 | 3 | 2 | 26 | 52 | 78 | |
| Other Freshmen | 583 | 616 | 76 | 43 | 76 | 95 | 22 | 14 | 2 | 4 | | 2 | 26 | 59 | 56 | 54 | 32 | 30 | 873 | 917 | 1,790 | |
| Sophomores | 757 | 784 | 77 | 47 | 93 | 68 | 24 | 29 | 4 | 3 | 1 | 1 | 18 | 44 | 30 | 28 | 30 | 18 | 1,034 | 1,022 | 2,056 | |
| Juniors | 879 | 883 | 80 | 58 | 77 | 60 | 28 | 19 | 9 | 3 | 1 | | 28 | 42 | 43 | 30 | 20 | 7 | 1,165 | 1,102 | 2,267 | |
| Seniors | 1,063 | 1,029 | 76 | 68 | 65 | 45 | 31 | 34 | 10 | 7 | | | 26 | 41 | 41 | 50 | 10 | 5 | 1,322 | 1,279 | 2,601 | |
| Special Undergraduate | 55 | 73 | 3 | 4 | 4 | 1 | 1 | 2 | | | 1 | | 5 | 5 | 4 | 5 | | 2 | 73 | 92 | 165 | |
| Total | 3,350 | 3,404 | 313 | 220 | 315 | 276 | 106 | 99 | 25 | 17 | 3 | 3 | 112 | 213 | 174 | 168 | 95 | 64 | 4,493 | 4,464 | 8,957 | |
| | | | | | | | | | | | | | | | | | | | | | | |
| Graduate | | | | | | | | | | | | | | | | | | | | | | |
| Certificate | 1 | 3 | | | | | | 1 | | | | | | | | | | | 2 | 3 | 5 | |
| Masters | 270 | 131 | 11 | 5 | 9 | 14 | 3 | 5 | 1 | | | | 48 | 56 | 9 | 3 | 2 | 5 | 353 | 219 | 572 | |
| Doctoral | 12 | 13 | | 1 | 1 | 2 | | | | | | | 3 | 9 | | | | | 16 | 25 | 41 | |
| Special Graduate | 16 | 42 | 2 | | | 1 | 1 | 2 | | | | | 10 | 35 | 1 | 2 | 1 | | 31 | 82 | 113 | |
| Total | 299 | 189 | 13 | 6 | 10 | 17 | 5 | 7 | 1 | 0 | 0 | 0 | 61 | 100 | 10 | 5 | 3 | 5 | 402 | 329 | 731 | |
| Total Full-Time | 3,649 | 3,593 | 326 | 226 | 325 | 293 | 111 | 106 | 26 | 17 | 3 | 3 | 173 | 313 | 184 | 173 | 98 | 69 | 4,895 | 4,793 | 9,688 | |
| | | | | | | | | | | | | | | | | | | | | | | |
| Part-Time | | | | | | | | | | | | | | | | | | | | | | |
| Undergraduate | | | | | | | | | | | | | | | | | | | | | | |
| First-Time Freshmen | 1 | 6 | | | | | | | | | | | 2 | 8 | | | 1 | | 4 | 14 | 18 | |
| Other Freshmen | 131 | 149 | 23 | 29 | 22 | 23 | 5 | 7 | | 1 | | | 2 | 12 | 14 | 4 | 7 | 6 | 204 | 231 | 435 | |
| Sophomores | 151 | 171 | 21 | 17 | 18 | 10 | 5 | 5 | | 1 | | | 4 | 5 | 10 | 13 | 6 | 3 | 215 | 225 | 440 | |
| Juniors | 231 | 235 | 23 | 16 | 14 | 14 | 8 | 7 | 3 | 2 | | | | 6 | 18 | 19 | 2 | 4 | 299 | 303 | 602 | |
| Seniors | 336 | 442 | 36 | 33 | 21 | 19 | 9 | 7 | 3 | 5 | 1 | | 11 | 11 | 22 | 23 | 2 | 2 | 441 | 542 | 983 | |
| Special Undergraduate | 154 | 141 | 13 | 7 | 4 | 5 | 9 | 4 | 1 | 1 | 1 | | 3 | | 4 | 9 | 5 | 4 | 194 | 171 | 365 | |
| Total | 1,004 | 1,144 | 116 | 102 | 79 | 71 | 36 | 30 | 7 | 10 | 2 | 0 | 22 | 42 | 68 | 68 | 23 | 19 | 1,357 | 1,486 | 2,843 | |
| | | | | | | | | | | | | | | | | | | | | | | |
| Graduate | | | | | | | | | | | | | | | | | | | | | | |
| Certificate | 21 | 15 | 1 | 2 | | | | 3 | | | | | 1 | 1 | 1 | | | | 24 | 21 | 45 | |
| Masters | 721 | 493 | 30 | 21 | 16 | 20 | 13 | 15 | 3 | 2 | | | 28 | 29 | 22 | 20 | 6 | 5 | 839 | 605 | 1,444 | |
| Doctoral | 39 | 29 | 2 | 1 | | 1 | 1 | | | | | | 7 | 7 | 2 | | | | 51 | 38 | 89 | |
| Special Graduate | 196 | 101 | 9 | 7 | 8 | 3 | 4 | 1 | 1 | | | | 10 | 10 | 5 | 2 | 1 | | 234 | 124 | 358 | |
| Total | 977 | 638 | 42 | 31 | 24 | 24 | 18 | 19 | 4 | 2 | 0 | 0 | 46 | 47 | 30 | 22 | 7 | 5 | 1,148 | 788 | 1,936 | |
| Total Part-Time | 1,981 | 1,782 | 158 | 133 | 103 | 95 | 54 | 49 | 11 | 12 | 2 | 0 | 68 | 89 | 98 | 90 | 30 | 24 | 2,505 | 2,274 | 4,779 | |

Table 2A (continued)

| | White | | African American | | Hispanic | | Asian | | American Indian | | Nat Haw / Pac Isl | | Nonresident Alien | | Race Unknown | | Two or more races | | Total | | |
|---------------------------|-------|-------|------------------|-----|----------|-----|-------|-----|-----------------|----|-------------------|---|-------------------|-----|--------------|-----|-------------------|----|-------|-------|--------|
| | F | M | F | M | F | M | F | M | F | M | F | M | F | M | F | M | F | M | F | M | Total |
| Total | | | | | | | | | | | | | | | | | | | | | |
| Undergraduate | | | | | | | | | | | | | | | | | | | | | |
| First-Time Freshmen | 14 | 25 | 1 | | | 7 | | 1 | | | | | 11 | 30 | | 1 | 4 | 2 | 30 | 66 | 96 |
| Other Freshmen | 714 | 765 | 99 | 72 | 98 | 118 | 27 | 21 | 2 | 5 | | 2 | 28 | 71 | 70 | 58 | 39 | 36 | 1,077 | 1,148 | 2,225 |
| Sophomores | 908 | 955 | 98 | 64 | 111 | 78 | 29 | 34 | 4 | 4 | 1 | 1 | 22 | 49 | 40 | 41 | 36 | 21 | 1,249 | 1,247 | 2,496 |
| Juniors | 1,110 | 1,118 | 103 | 74 | 91 | 74 | 36 | 26 | 12 | 5 | 1 | | 28 | 48 | 61 | 49 | 22 | 11 | 1,464 | 1,405 | 2,869 |
| Seniors | 1,399 | 1,471 | 112 | 101 | 86 | 64 | 40 | 41 | 13 | 12 | 1 | | 37 | 52 | 63 | 73 | 12 | 7 | 1,763 | 1,821 | 3,584 |
| Special Undergraduate | 209 | 214 | 16 | 11 | 8 | 6 | 10 | 6 | 1 | 1 | 2 | | 8 | 5 | 8 | 14 | 5 | 6 | 267 | 263 | 530 |
| Total | 4,354 | 4,548 | 429 | 322 | 394 | 347 | 142 | 129 | 32 | 27 | 5 | 3 | 134 | 255 | 242 | 236 | 118 | 83 | 5,850 | 5,950 | 11,800 |
| | | | | | | | | | | | | | | | | | | | | | |
| Graduate | | | | | | | | | | | | | | | | | | | | | |
| Certificate | 22 | 18 | 1 | 2 | | | 1 | 3 | | | | | 1 | 1 | 1 | | | | 26 | 24 | 50 |
| Masters | 991 | 624 | 41 | 26 | 25 | 34 | 16 | 20 | 4 | 2 | | | 76 | 85 | 31 | 23 | 8 | 10 | 1,192 | 824 | 2,016 |
| Doctoral | 51 | 42 | 2 | 2 | 1 | 3 | 1 | | | | | | 10 | 16 | 2 | | | | 67 | 63 | 130 |
| Special Graduate | 212 | 143 | 11 | 7 | 8 | 4 | 5 | 3 | 1 | | | | 20 | 45 | 6 | 4 | 2 | | 265 | 206 | 471 |
| Total | 1,276 | 827 | 55 | 37 | 34 | 41 | 23 | 26 | 5 | 2 | 0 | 0 | 107 | 147 | 40 | 27 | 10 | 10 | 1,550 | 1,117 | 2,667 |
| Total All Students | 5,630 | 5,375 | 484 | 359 | 428 | 388 | 165 | 155 | 37 | 29 | 5 | 3 | 241 | 402 | 282 | 263 | 128 | 93 | 7,400 | 7,067 | 14,467 |

Figure 2B: Total UNO Administrative-site Head Count Spring 2000 - 2012

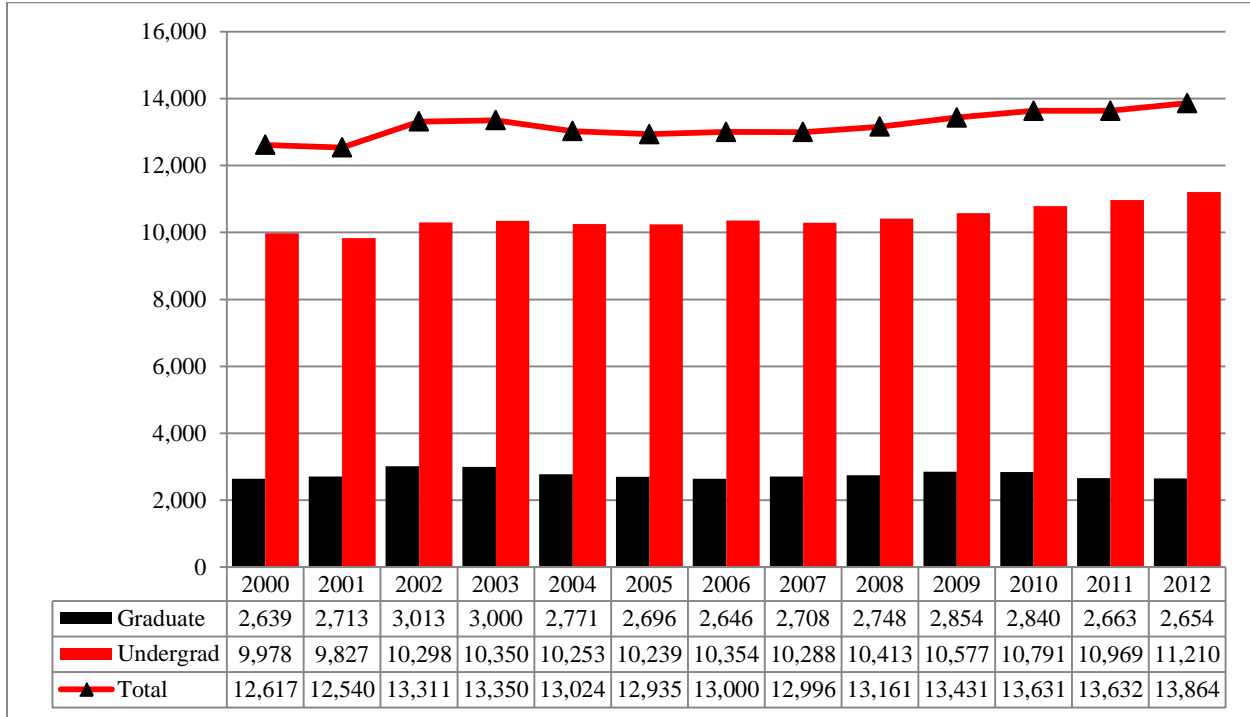


Figure 3B: Total UNO Administrative-site Student Credit Hours Spring 2000-2012

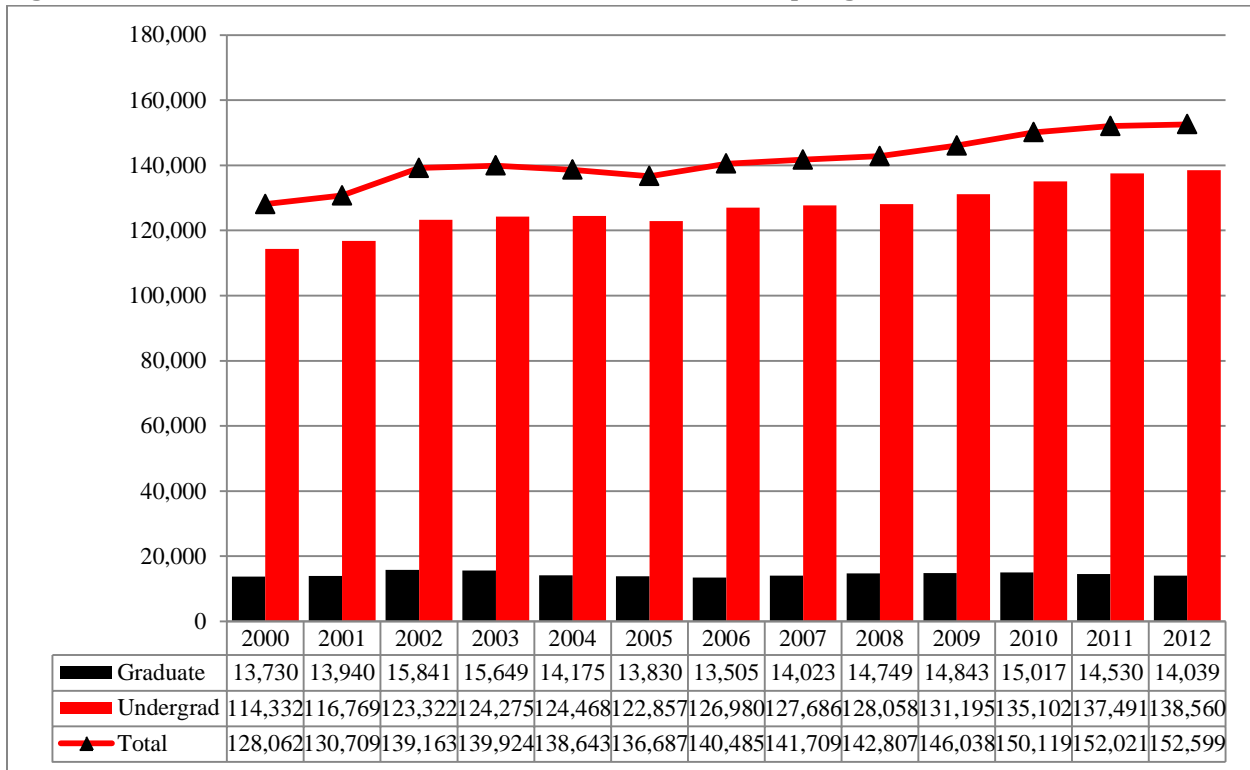


Table 2B: Total UNO Administrative-site Head Count Summary for Full and Part-Time, Undergraduate and Graduate Students by Gender and Race Classification: Spring 2012

| | White | | African American | | Hispanic | | Asian | | American Indian | | Nat Haw / Pac Isl | | Nonresident Alien | | Race Unknown | | Two or more races | | Total | | | |
|------------------------|-------|-------|------------------|-----|----------|-----|-------|----|-----------------|----|-------------------|---|-------------------|-----|--------------|-----|-------------------|----|-------|-------|-------|---|
| | F | M | F | M | F | M | F | M | F | M | F | M | F | M | F | M | F | M | F | M | Total | |
| Full-Time | | | | | | | | | | | | | | | | | | | | | | |
| Undergraduate | | | | | | | | | | | | | | | | | | | | | | |
| First-Time Freshmen | 13 | 18 | 1 | | | 7 | | 1 | | | | | 6 | 17 | | 1 | 3 | 2 | 23 | 46 | 69 | |
| Other Freshmen | 572 | 538 | 75 | 41 | 76 | 88 | 21 | 13 | 2 | 4 | | 2 | 26 | 57 | 55 | 46 | 32 | 27 | 859 | 816 | 1,675 | |
| Sophomores | 734 | 678 | 77 | 43 | 91 | 64 | 21 | 26 | 4 | 3 | 1 | 1 | 18 | 40 | 30 | 26 | 29 | 15 | 1,005 | 896 | 1,901 | |
| Juniors | 857 | 778 | 78 | 54 | 76 | 55 | 28 | 17 | 9 | 3 | 1 | | 28 | 40 | 40 | 26 | 21 | 7 | 1,138 | 980 | 2,118 | |
| Seniors | 1,019 | 878 | 74 | 54 | 62 | 35 | 30 | 30 | 10 | 7 | | | 26 | 32 | 39 | 45 | 10 | 5 | 1,270 | 1,086 | 2,356 | |
| Special Undergraduate | 52 | 54 | 3 | 3 | 4 | 1 | 1 | 2 | | | 1 | | 4 | 5 | 4 | 5 | | 2 | 69 | 72 | 141 | |
| Total | 3,247 | 2,944 | 308 | 195 | 309 | 250 | 101 | 89 | 25 | 17 | 3 | 3 | 108 | 191 | 168 | 149 | 95 | 58 | 4,364 | 3,896 | 8,260 | |
| | | | | | | | | | | | | | | | | | | | | | | |
| Graduate | | | | | | | | | | | | | | | | | | | | | | |
| Certificate | 1 | 3 | | | | | | 1 | | | | | | | | | | | | 2 | 3 | 5 |
| Masters | 263 | 127 | 11 | 5 | 9 | 13 | 3 | 5 | 1 | | | | 47 | 56 | 9 | 3 | 2 | 5 | 345 | 214 | 559 | |
| Doctoral | 12 | 13 | | 1 | 1 | 2 | | | | | | | 3 | 9 | | | | | 16 | 25 | 41 | |
| Special Graduate | 16 | 42 | 2 | | | 1 | 1 | 2 | | | | | 10 | 35 | 1 | 2 | 1 | | 31 | 82 | 113 | |
| Total | 292 | 185 | 13 | 6 | 10 | 16 | 5 | 7 | 1 | 0 | 0 | 0 | 60 | 100 | 10 | 5 | 3 | 5 | 394 | 324 | 718 | |
| Total Full-Time | 3,539 | 3,129 | 321 | 201 | 319 | 266 | 106 | 96 | 26 | 17 | 3 | 3 | 168 | 291 | 178 | 154 | 98 | 63 | 4,758 | 4,220 | 8,978 | |
| | | | | | | | | | | | | | | | | | | | | | | |
| Part-Time | | | | | | | | | | | | | | | | | | | | | | |
| Undergraduate | | | | | | | | | | | | | | | | | | | | | | |
| First-Time Freshmen | 1 | 7 | | | | 1 | | | | | | | 2 | 8 | | | 1 | | 4 | 16 | 20 | |
| Other Freshmen | 141 | 174 | 22 | 29 | 29 | 25 | 5 | 7 | | 1 | | | 1 | 11 | 16 | 5 | 8 | 6 | 222 | 258 | 480 | |
| Sophomores | 158 | 188 | 21 | 16 | 20 | 15 | 5 | 4 | | 1 | | | 2 | 4 | 10 | 12 | 6 | 2 | 222 | 242 | 464 | |
| Juniors | 240 | 259 | 23 | 14 | 14 | 16 | 7 | 6 | 3 | 2 | | | | 6 | 18 | 19 | 3 | 5 | 308 | 327 | 635 | |
| Seniors | 351 | 442 | 35 | 34 | 22 | 21 | 8 | 7 | 4 | 4 | 1 | | 11 | 11 | 23 | 19 | 2 | 2 | 457 | 540 | 997 | |
| Special Undergraduate | 150 | 135 | 13 | 7 | 4 | 4 | 9 | 4 | 1 | 1 | 1 | | 3 | | 4 | 9 | 5 | 4 | 190 | 164 | 354 | |
| Total | 1,041 | 1,205 | 114 | 100 | 89 | 82 | 34 | 28 | 8 | 9 | 2 | 0 | 19 | 40 | 71 | 64 | 25 | 19 | 1,403 | 1,547 | 2,950 | |
| | | | | | | | | | | | | | | | | | | | | | | |
| Graduate | | | | | | | | | | | | | | | | | | | | | | |
| Certificate | 21 | 15 | 1 | 2 | | | | 3 | | | | | 1 | 1 | 1 | | | | 24 | 21 | 45 | |
| Masters | 721 | 493 | 30 | 21 | 16 | 20 | 13 | 15 | 3 | 2 | | | 28 | 29 | 22 | 20 | 6 | 5 | 839 | 605 | 1,444 | |
| Doctoral | 39 | 29 | 2 | 1 | | 1 | 1 | | | | | | 7 | 7 | 2 | | | | 51 | 38 | 89 | |
| Special Graduate | 196 | 101 | 9 | 7 | 8 | 3 | 4 | 1 | 1 | | | | 10 | 10 | 5 | 2 | 1 | | 234 | 124 | 358 | |
| Total | 977 | 638 | 42 | 31 | 24 | 24 | 18 | 19 | 4 | 2 | 0 | 0 | 46 | 47 | 30 | 22 | 7 | 5 | 1,148 | 788 | 1,936 | |
| Total Part-Time | 2,018 | 1,843 | 156 | 131 | 113 | 106 | 52 | 47 | 12 | 11 | 2 | 0 | 65 | 87 | 101 | 86 | 32 | 24 | 2,551 | 2,335 | 4,886 | |

Table 2B (continued)

| | White | | African American | | Hispanic | | Asian | | American Indian | | Nat Haw / Pac Isl | | Nonresident Alien | | Race Unknown | | Two or more races | | Total | | | |
|---------------------------|-------|-------|------------------|-----|----------|-----|-------|-----|-----------------|----|-------------------|---|-------------------|-----|--------------|-----|-------------------|----|-------|-------|--------|--|
| | F | M | F | M | F | M | F | M | F | M | F | M | F | M | F | M | F | M | F | M | Total | |
| Total | | | | | | | | | | | | | | | | | | | | | | |
| Undergraduate | | | | | | | | | | | | | | | | | | | | | | |
| First-Time Freshmen | 14 | 25 | 1 | | | 8 | | 1 | | | | | 8 | 25 | | 1 | 4 | 2 | 27 | 62 | 89 | |
| Other Freshmen | 713 | 712 | 97 | 70 | 105 | 113 | 26 | 20 | 2 | 5 | | 2 | 27 | 68 | 71 | 51 | 40 | 33 | 1,081 | 1,074 | 2,155 | |
| Sophomores | 892 | 866 | 98 | 59 | 111 | 79 | 26 | 30 | 4 | 4 | 1 | 1 | 20 | 44 | 40 | 38 | 35 | 17 | 1,227 | 1,138 | 2,365 | |
| Juniors | 1,097 | 1,037 | 101 | 68 | 90 | 71 | 35 | 23 | 12 | 5 | 1 | | 28 | 46 | 58 | 45 | 24 | 12 | 1,446 | 1,307 | 2,753 | |
| Seniors | 1,370 | 1,320 | 109 | 88 | 84 | 56 | 38 | 37 | 14 | 11 | 1 | | 37 | 43 | 62 | 64 | 12 | 7 | 1,727 | 1,626 | 3,353 | |
| Special Undergraduate | 202 | 189 | 16 | 10 | 8 | 5 | 10 | 6 | 1 | 1 | 2 | | 7 | 5 | 8 | 14 | 5 | 6 | 259 | 236 | 495 | |
| Total | 4,288 | 4,149 | 422 | 295 | 398 | 332 | 135 | 117 | 33 | 26 | 5 | 3 | 127 | 231 | 239 | 213 | 120 | 77 | 5,767 | 5,443 | 11,210 | |
| | | | | | | | | | | | | | | | | | | | | | | |
| Graduate | | | | | | | | | | | | | | | | | | | | | | |
| Certificate | 22 | 18 | 1 | 2 | | | 1 | 3 | | | | | 1 | 1 | 1 | | | | 26 | 24 | 50 | |
| Masters | 984 | 620 | 41 | 26 | 25 | 33 | 16 | 20 | 4 | 2 | | | 75 | 85 | 31 | 23 | 8 | 10 | 1,184 | 819 | 2,003 | |
| Doctoral | 51 | 42 | 2 | 2 | 1 | 3 | 1 | | | | | | 10 | 16 | 2 | | | | 67 | 63 | 130 | |
| Special Graduate | 212 | 143 | 11 | 7 | 8 | 4 | 5 | 3 | 1 | | | | 20 | 45 | 6 | 4 | 2 | | 265 | 206 | 471 | |
| Total | 1,269 | 823 | 55 | 37 | 34 | 40 | 23 | 26 | 5 | 2 | 0 | 0 | 106 | 147 | 40 | 27 | 10 | 10 | 1,542 | 1,112 | 2,654 | |
| Total All Students | 5,557 | 4,972 | 477 | 332 | 432 | 372 | 158 | 143 | 38 | 28 | 5 | 3 | 233 | 378 | 279 | 240 | 130 | 87 | 7,309 | 6,555 | 13,864 | |

Figure 4: College of Arts & Sciences Administrative-site Head Count Spring 2000 – 2012

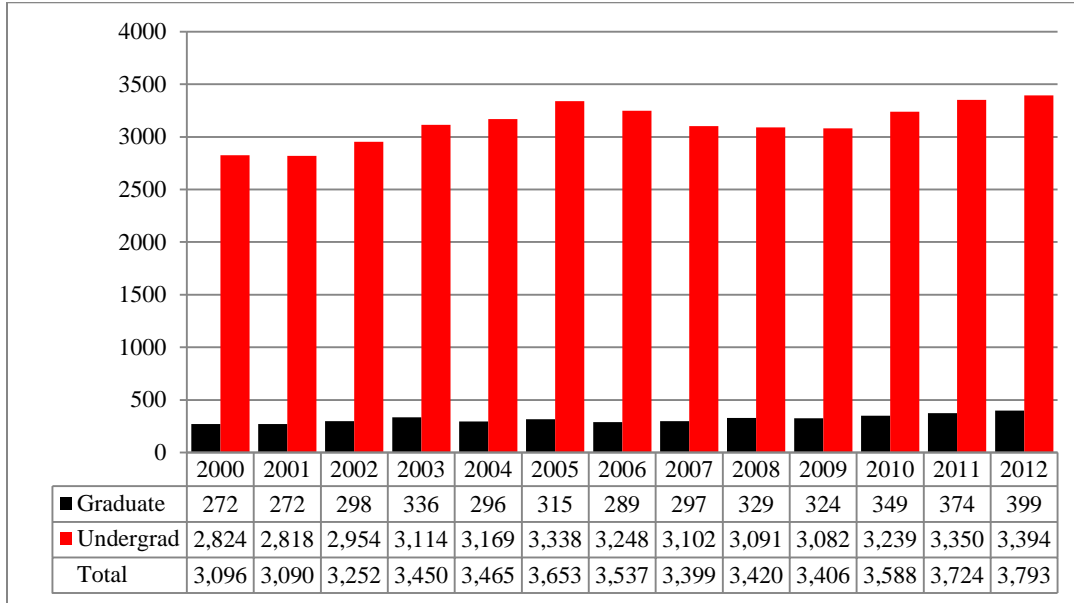


Figure 5: College of Arts & Sciences Administrative-site Student Credit Hours Spring 2000 – 2012

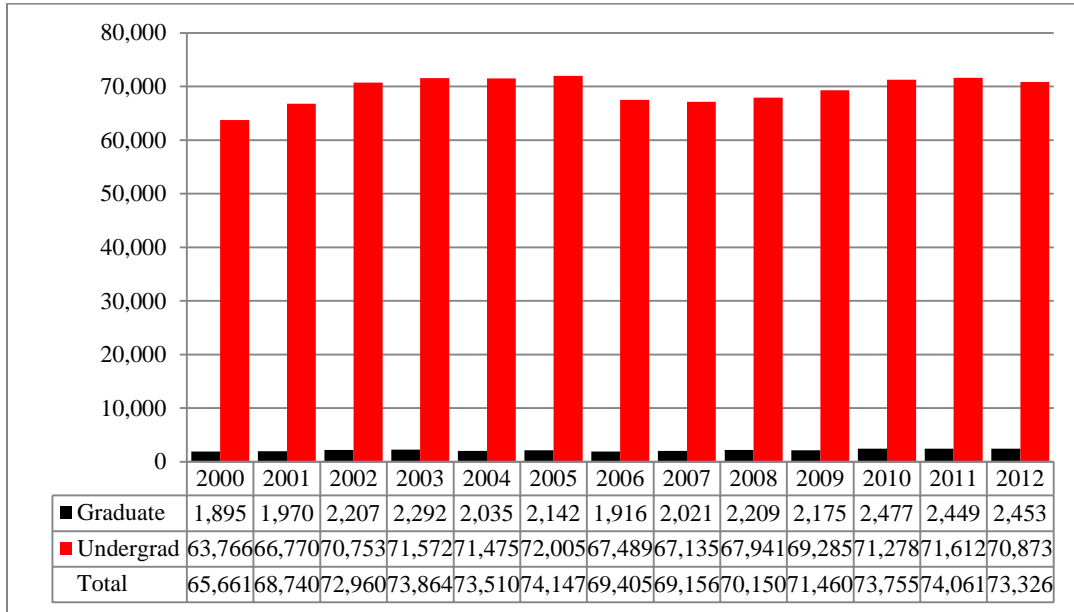


Table 3: College of Arts & Sciences Head Count Summary for Full and Part-Time, Undergraduate and Graduate Students by Gender and Race Classification: Spring 2012

| | White | | African American | | Hispanic | | Asian | | American Indian | | Nat Haw / Pac Isl | | Nonresident Alien | | Race Unknown | | Two or more races | | Total | | |
|------------------------|-------|-----|------------------|----|----------|----|-------|----|-----------------|---|-------------------|---|-------------------|----|--------------|----|-------------------|----|-------|-------|-------|
| | F | M | F | M | F | M | F | M | F | M | F | M | F | M | F | M | F | M | F | M | Total |
| Full-Time | | | | | | | | | | | | | | | | | | | | | |
| Undergraduate | | | | | | | | | | | | | | | | | | | | | |
| First-Time Freshmen | 7 | 3 | | | | 1 | | | | | | | 4 | 6 | | | 2 | | 13 | 10 | 23 |
| Other Freshmen | 232 | 122 | 31 | 10 | 37 | 27 | 12 | 4 | 1 | | | | 7 | 14 | 19 | 13 | 13 | 8 | 352 | 198 | 550 |
| Sophomores | 311 | 196 | 38 | 6 | 43 | 13 | 11 | 14 | 1 | 2 | | 1 | 8 | 1 | 14 | 6 | 12 | 2 | 438 | 241 | 679 |
| Juniors | 324 | 221 | 31 | 14 | 33 | 23 | 11 | 6 | 2 | | 1 | | 8 | 7 | 17 | 4 | 6 | 1 | 433 | 276 | 709 |
| Seniors | 302 | 218 | 20 | 16 | 20 | 13 | 9 | 10 | 2 | 3 | | | 11 | 7 | 18 | 14 | 4 | 1 | 386 | 282 | 668 |
| Special Undergraduate | 10 | 10 | | | | | | | | | | | | 2 | 1 | | | 1 | 11 | 13 | 24 |
| Total | 1,186 | 770 | 120 | 46 | 133 | 77 | 43 | 34 | 6 | 5 | 1 | 1 | 38 | 37 | 69 | 37 | 37 | 13 | 1,633 | 1,020 | 2,653 |
| | | | | | | | | | | | | | | | | | | | | | |
| Graduate | | | | | | | | | | | | | | | | | | | | | |
| Certificate | 1 | 2 | | | | | 1 | | | | | | | | | | | | 2 | 2 | 4 |
| Masters | 53 | 27 | 2 | | 1 | 5 | | | | | | | 3 | 2 | 2 | 1 | | 2 | 61 | 37 | 98 |
| Doctoral | 4 | 2 | | | 1 | 1 | | | | | | | 1 | | | | | | 6 | 3 | 9 |
| Special Graduate | | | | | | | | | | | | | | | | | | | 0 | 0 | 0 |
| Total | 58 | 31 | 2 | 0 | 2 | 6 | 1 | 0 | 0 | 0 | 0 | 0 | 4 | 2 | 2 | 1 | 0 | 2 | 69 | 42 | 111 |
| Total Full-Time | 1,244 | 801 | 122 | 46 | 135 | 83 | 44 | 34 | 6 | 5 | 1 | 1 | 42 | 39 | 71 | 38 | 37 | 15 | 1,702 | 1,062 | 2,764 |
| | | | | | | | | | | | | | | | | | | | | | |
| Part-Time | | | | | | | | | | | | | | | | | | | | | |
| Undergraduate | | | | | | | | | | | | | | | | | | | | | |
| First-Time Freshmen | | 1 | | | | | | | | | | | | 2 | 3 | | | | 2 | 4 | 6 |
| Other Freshmen | 26 | 23 | 10 | 4 | 8 | 4 | 2 | 1 | | | | | 1 | 6 | 5 | | 4 | | 56 | 38 | 94 |
| Sophomores | 48 | 45 | 10 | 4 | 7 | 3 | 3 | 2 | | | | | 1 | | 4 | 3 | 2 | 1 | 75 | 58 | 133 |
| Juniors | 79 | 58 | 7 | 3 | 7 | 2 | 2 | 1 | 2 | | | | | | 7 | 6 | 1 | | 105 | 72 | 177 |
| Seniors | 90 | 96 | 6 | 6 | 4 | 7 | 4 | 2 | | | 1 | | 9 | 2 | 9 | 5 | 1 | | 124 | 118 | 242 |
| Special Undergraduate | 43 | 30 | 5 | 1 | 1 | 1 | 2 | 1 | | | | | 1 | | 1 | 1 | 1 | 1 | 54 | 35 | 89 |
| Total | 286 | 253 | 38 | 18 | 27 | 17 | 13 | 7 | 2 | 0 | 1 | 0 | 14 | 13 | 26 | 15 | 9 | 2 | 416 | 325 | 741 |
| | | | | | | | | | | | | | | | | | | | | | |
| Graduate | | | | | | | | | | | | | | | | | | | | | |
| Certificate | 5 | 2 | | | | | | | | | | | | | | | | | 5 | 2 | 7 |
| Masters | 128 | 93 | 2 | 3 | 7 | 5 | 1 | 2 | 1 | 1 | | | 4 | 1 | 4 | 7 | 3 | | 150 | 112 | 262 |
| Doctoral | 9 | 6 | 1 | | | | | | | | | | 1 | 1 | | | | | 11 | 7 | 18 |
| Special Graduate | | 1 | | | | | | | | | | | | | | | | | 0 | 1 | 1 |
| Total | 142 | 102 | 3 | 3 | 7 | 5 | 1 | 2 | 1 | 1 | 0 | 0 | 5 | 2 | 4 | 7 | 3 | 0 | 166 | 122 | 288 |
| Total Part-Time | 428 | 355 | 41 | 21 | 34 | 22 | 14 | 9 | 3 | 1 | 1 | 0 | 19 | 15 | 30 | 22 | 12 | 2 | 582 | 447 | 1,029 |

Table 3 (continued)

| | White | | African American | | Hispanic | | Asian | | American Indian | | Nat Haw / Pac Isl | | Nonresident Alien | | Race Unknown | | Two or more races | | Total | | | |
|---------------------------|-------|-------|------------------|----|----------|-----|-------|----|-----------------|---|-------------------|---|-------------------|----|--------------|----|-------------------|----|-------|-------|-------|--|
| | F | M | F | M | F | M | F | M | F | M | F | M | F | M | F | M | F | M | F | M | Total | |
| Total | | | | | | | | | | | | | | | | | | | | | | |
| Undergraduate | | | | | | | | | | | | | | | | | | | | | | |
| First-Time Freshmen | 7 | 4 | | | | 1 | | | | | | | 6 | 9 | | | 2 | | 15 | 14 | 29 | |
| Other Freshmen | 258 | 145 | 41 | 14 | 45 | 31 | 14 | 5 | 1 | | | | 8 | 20 | 24 | 13 | 17 | 8 | 408 | 236 | 644 | |
| Sophomores | 359 | 241 | 48 | 10 | 50 | 16 | 14 | 16 | 1 | 2 | | 1 | 9 | 1 | 18 | 9 | 14 | 3 | 513 | 299 | 812 | |
| Juniors | 403 | 279 | 38 | 17 | 40 | 25 | 13 | 7 | 4 | | 1 | | 8 | 9 | 24 | 10 | 7 | 1 | 538 | 348 | 886 | |
| Seniors | 392 | 314 | 26 | 22 | 24 | 20 | 13 | 12 | 2 | 3 | 1 | | 20 | 9 | 27 | 19 | 5 | 1 | 510 | 400 | 910 | |
| Special Undergraduate | 53 | 40 | 5 | 1 | 1 | 1 | 2 | 1 | | | | | 1 | 2 | 2 | 1 | 1 | 2 | 65 | 48 | 113 | |
| Total | 1,472 | 1,023 | 158 | 64 | 160 | 94 | 56 | 41 | 8 | 5 | 2 | 1 | 52 | 50 | 95 | 52 | 46 | 15 | 2,049 | 1,345 | 3,394 | |
| Graduate | | | | | | | | | | | | | | | | | | | | | | |
| Certificate | 6 | 4 | | | | | 1 | | | | | | | | | | | | 7 | 4 | 11 | |
| Masters | 181 | 120 | 4 | 3 | 8 | 10 | 1 | 2 | 1 | 1 | | | 7 | 3 | 6 | 8 | 3 | 2 | 211 | 149 | 360 | |
| Doctoral | 13 | 8 | 1 | | 1 | 1 | | | | | | | 2 | 1 | | | | | 17 | 10 | 27 | |
| Special Graduate | | 1 | | | | | | | | | | | | | | | | | 0 | 1 | 1 | |
| Total | 200 | 133 | 5 | 3 | 9 | 11 | 2 | 2 | 1 | 1 | 0 | 0 | 9 | 4 | 6 | 8 | 3 | 2 | 235 | 164 | 399 | |
| Total All Students | 1,672 | 1,156 | 163 | 67 | 169 | 105 | 58 | 43 | 9 | 6 | 2 | 1 | 61 | 54 | 101 | 60 | 49 | 17 | 2,284 | 1,509 | 3,793 | |

Figure 6: College of Business Administration Administrative-site Head Count: Spring 2000 – 2012

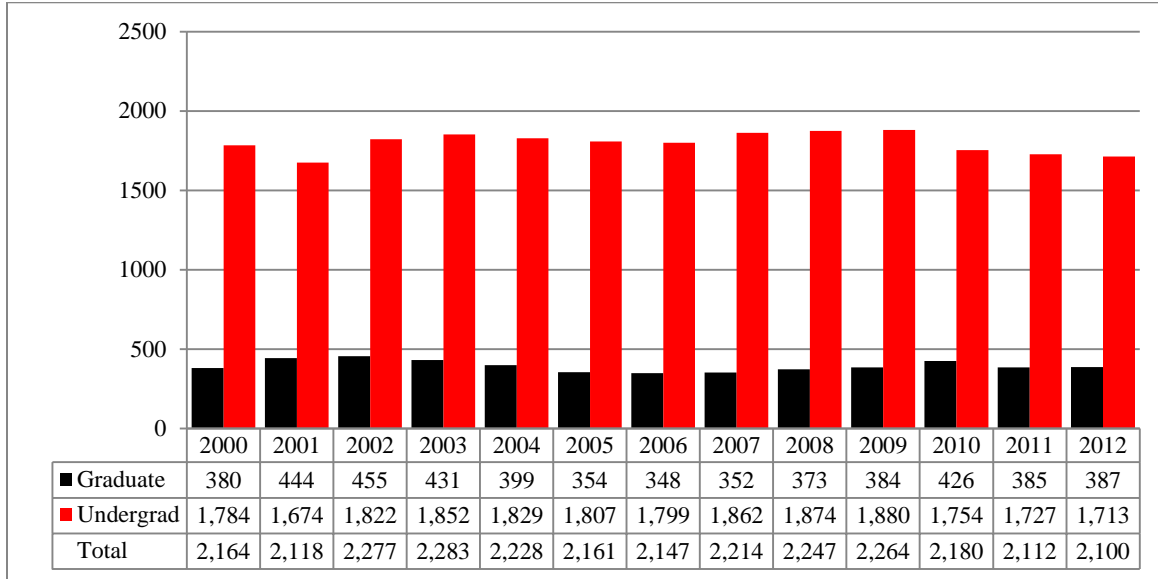


Figure 7: College of Business Administration Administrative-site Student Credit Hours: Spring 2000

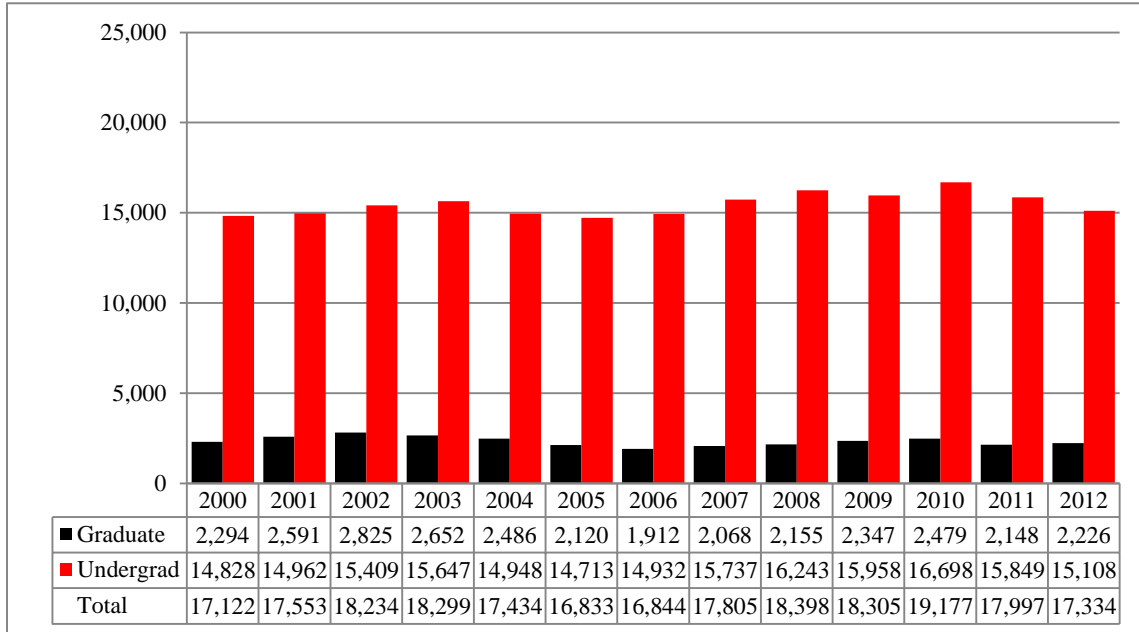


Table 4: College of Business Administration Head Count Summary for Full and Part-Time, Undergraduate and Graduate Students by Gender and Race Classification: Spring 2012

| | White | | African American | | Hispanic | | Asian | | American Indian | | Nat Haw / Pac Isl | | Nonresident Alien | | Race Unknown | | Two or more races | | Total | | | |
|------------------------|-------|-----|------------------|----|----------|----|-------|----|-----------------|---|-------------------|---|-------------------|----|--------------|----|-------------------|---|-------|-----|-------|---|
| | F | M | F | M | F | M | F | M | F | M | F | M | F | M | F | M | F | M | F | M | Total | |
| Full-Time | | | | | | | | | | | | | | | | | | | | | | |
| Undergraduate | | | | | | | | | | | | | | | | | | | | | | |
| First-Time Freshmen | | 2 | | | | 3 | | 1 | | | | | 2 | 8 | | | 1 | 2 | 15 | 17 | | |
| Other Freshmen | 66 | 85 | 7 | 4 | 12 | 10 | 3 | 2 | | | | | 5 | 21 | 4 | 4 | 4 | 1 | 101 | 127 | 228 | |
| Sophomores | 70 | 115 | 6 | 6 | 7 | 8 | 4 | 3 | | | | | 6 | 20 | 2 | 6 | 4 | 2 | 99 | 160 | 259 | |
| Juniors | 129 | 183 | 7 | 9 | 14 | 6 | 5 | 5 | 1 | 1 | | | 11 | 16 | 4 | 4 | 4 | | 175 | 224 | 399 | |
| Seniors | 141 | 172 | 10 | 12 | 8 | 4 | 4 | 7 | | 1 | | | 8 | 13 | 1 | 5 | 2 | | 174 | 214 | 388 | |
| Special Undergraduate | 1 | 6 | | 1 | 1 | | 1 | | | | | | 1 | 2 | | 1 | | | 4 | 10 | 14 | |
| Total | 407 | 563 | 30 | 32 | 42 | 31 | 17 | 18 | 1 | 2 | 0 | 0 | 33 | 80 | 11 | 20 | 14 | 4 | 555 | 750 | 1,305 | |
| | | | | | | | | | | | | | | | | | | | | | | |
| Graduate | | | | | | | | | | | | | | | | | | | | | | |
| Certificate | | | | | | | | | | | | | | | | | | | | 0 | 0 | 0 |
| Masters | 19 | 33 | 2 | 2 | | 3 | | 4 | | | | | 24 | 18 | | | | | 45 | 60 | 105 | |
| Doctoral | | | | | | | | | | | | | | | | | | | 0 | 0 | 0 | |
| Special Graduate | | | | | | | | | | | | | | | | | | | 0 | 0 | 0 | |
| Total | 19 | 33 | 2 | 2 | 0 | 3 | 0 | 4 | 0 | 0 | 0 | 0 | 24 | 18 | 0 | 0 | 0 | 0 | 45 | 60 | 105 | |
| Total Full-Time | 426 | 596 | 32 | 34 | 42 | 34 | 17 | 22 | 1 | 2 | 0 | 0 | 57 | 98 | 11 | 20 | 14 | 4 | 600 | 810 | 1,410 | |
| | | | | | | | | | | | | | | | | | | | | | | |
| Part-Time | | | | | | | | | | | | | | | | | | | | | | |
| Undergraduate | | | | | | | | | | | | | | | | | | | | | | |
| First-Time Freshmen | | | | | | | | | | | | | | 5 | | | | | 0 | 5 | 5 | |
| Other Freshmen | 8 | 11 | | | | 1 | 1 | 1 | | | | | | | | | | | 9 | 13 | 22 | |
| Sophomores | 14 | 24 | 1 | | 3 | 2 | | 1 | | | | | 1 | 4 | | 1 | | | 19 | 32 | 51 | |
| Juniors | 34 | 53 | 1 | 2 | 1 | 2 | 3 | 2 | | | | | | 1 | 3 | 4 | | 1 | 42 | 65 | 107 | |
| Seniors | 53 | 87 | 6 | 7 | 2 | 3 | 2 | 1 | | 1 | | | 1 | 5 | 4 | 2 | | 1 | 68 | 107 | 175 | |
| Special Undergraduate | 12 | 20 | 2 | 2 | 1 | | 3 | 2 | | 1 | 1 | | 1 | | 1 | 1 | 1 | | 22 | 26 | 48 | |
| Total | 121 | 195 | 10 | 11 | 7 | 8 | 9 | 7 | 0 | 2 | 1 | 0 | 3 | 15 | 8 | 8 | 1 | 2 | 160 | 248 | 408 | |
| | | | | | | | | | | | | | | | | | | | | | | |
| Graduate | | | | | | | | | | | | | | | | | | | | | | |
| Certificate | 1 | 1 | | | | | | | | | | | | 1 | | | | | 1 | 2 | 3 | |
| Masters | 69 | 160 | 1 | 8 | 1 | 4 | 4 | 8 | | | | | 7 | 7 | 2 | 3 | | 3 | 84 | 193 | 277 | |
| Doctoral | | | | | | | | | | | | | | | | | | | 0 | 0 | 0 | |
| Special Graduate | 1 | | | | | | | | | | | | 1 | | | | | | 2 | 0 | 2 | |
| Total | 71 | 161 | 1 | 8 | 1 | 4 | 4 | 8 | 0 | 0 | 0 | 0 | 8 | 8 | 2 | 3 | 0 | 3 | 87 | 195 | 282 | |
| Total Part-Time | 192 | 356 | 11 | 19 | 8 | 12 | 13 | 15 | 0 | 2 | 1 | 0 | 11 | 23 | 10 | 11 | 1 | 5 | 247 | 443 | 690 | |

Table 4 (continued)

| | White | | African American | | Hispanic | | Asian | | American Indian | | Nat Haw / Pac Isl | | Nonresident Alien | | Race Unknown | | Two or more races | | Total | | | |
|---------------------------|-------|-----|------------------|----|----------|----|-------|----|-----------------|---|-------------------|---|-------------------|-----|--------------|----|-------------------|---|-------|-------|-------|--|
| | F | M | F | M | F | M | F | M | F | M | F | M | F | M | F | M | F | M | F | M | Total | |
| Total | | | | | | | | | | | | | | | | | | | | | | |
| Undergraduate | | | | | | | | | | | | | | | | | | | | | | |
| First-Time Freshmen | | 2 | | | | 3 | | 1 | | | | | 2 | 13 | | | | 1 | 2 | 20 | 22 | |
| Other Freshmen | 74 | 96 | 7 | 4 | 12 | 11 | 4 | 3 | | | | | 5 | 21 | 4 | 4 | 4 | 1 | 110 | 140 | 250 | |
| Sophomores | 84 | 139 | 7 | 6 | 10 | 10 | 4 | 4 | | | | | 7 | 24 | 2 | 7 | 4 | 2 | 118 | 192 | 310 | |
| Juniors | 163 | 236 | 8 | 11 | 15 | 8 | 8 | 7 | 1 | 1 | | | 11 | 17 | 7 | 8 | 4 | 1 | 217 | 289 | 506 | |
| Seniors | 194 | 259 | 16 | 19 | 10 | 7 | 6 | 8 | | 2 | | | 9 | 18 | 5 | 7 | 2 | 1 | 242 | 321 | 563 | |
| Special Undergraduate | 13 | 26 | 2 | 3 | 2 | | 4 | 2 | | 1 | 1 | | 2 | 2 | 1 | 2 | 1 | | 26 | 36 | 62 | |
| Total | 528 | 758 | 40 | 43 | 49 | 39 | 26 | 25 | 1 | 4 | 1 | 0 | 36 | 95 | 19 | 28 | 15 | 6 | 715 | 998 | 1,713 | |
| Graduate | | | | | | | | | | | | | | | | | | | | | | |
| Certificate | 1 | 1 | | | | | | | | | | | | 1 | | | | | 1 | 2 | 3 | |
| Masters | 88 | 193 | 3 | 10 | 1 | 7 | 4 | 12 | | | | | 31 | 25 | 2 | 3 | | 3 | 129 | 253 | 382 | |
| Doctoral | | | | | | | | | | | | | | | | | | | 0 | 0 | 0 | |
| Special Graduate | 1 | | | | | | | | | | | | 1 | | | | | | 2 | 0 | 2 | |
| Total | 90 | 194 | 3 | 10 | 1 | 7 | 4 | 12 | 0 | 0 | 0 | 0 | 32 | 26 | 2 | 3 | 0 | 3 | 132 | 255 | 387 | |
| Total All Students | 618 | 952 | 43 | 53 | 50 | 46 | 30 | 37 | 1 | 4 | 1 | 0 | 68 | 121 | 21 | 31 | 15 | 9 | 847 | 1,253 | 2,100 | |

Figure 8A: College of Communication, Fine Arts and Media Delivery-site Head Count: Spring 2006-2012

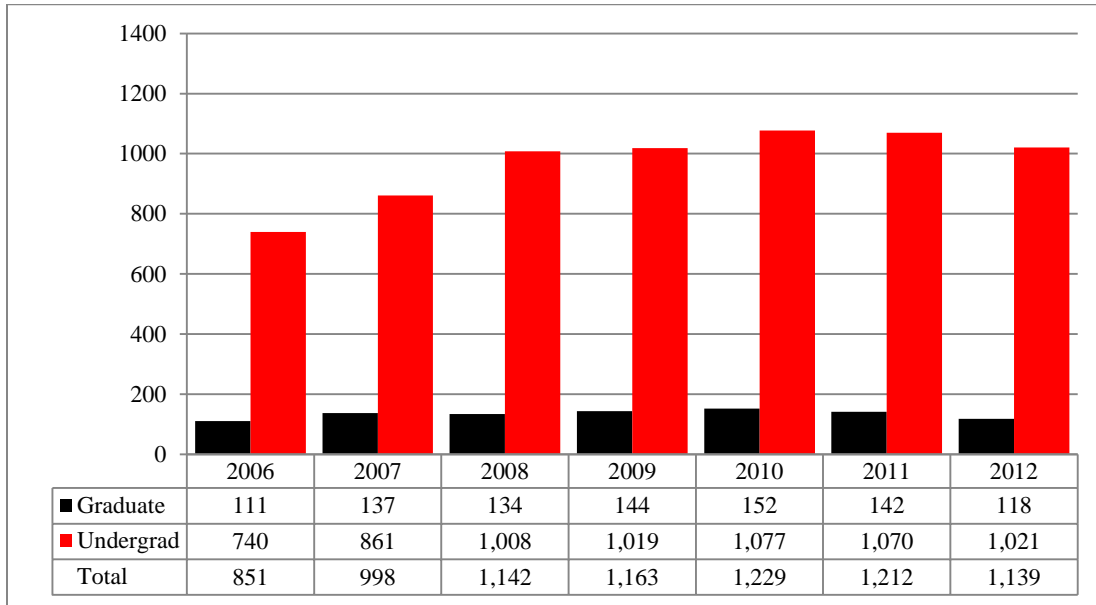


Figure 9A: College of Communication, Fine Arts and Media Delivery-site Student Credit Hours: Spring 2006-2012

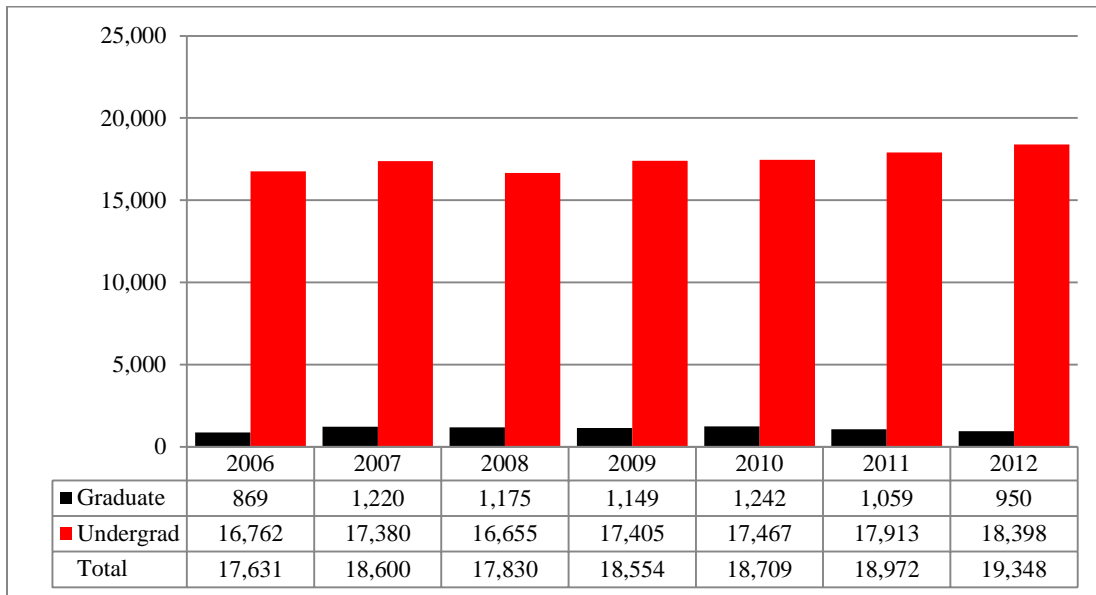


Table 5A: College of Communication, Fine Arts and Media Delivery-site Head Count Summary for Full and Part-Time, Undergraduate and Graduate Students by Gender and Race Classification: Spring 2012

| | White | | African American | | Hispanic | | Asian | | American Indian | | Nat Haw / Pac Isl | | Nonresident Alien | | Race Unknown | | Two or more races | | Total | | | |
|------------------------|-------|-----|------------------|----|----------|----|-------|---|-----------------|---|-------------------|---|-------------------|---|--------------|----|-------------------|---|-------|-----|-------|---|
| | F | M | F | M | F | M | F | M | F | M | F | M | F | M | F | M | F | M | F | M | Total | |
| Full-Time | | | | | | | | | | | | | | | | | | | | | | |
| Undergraduate | | | | | | | | | | | | | | | | | | | | | | |
| First-Time Freshmen | 3 | | | | | | | | | | | | | | | | 1 | | 4 | 0 | 4 | |
| Other Freshmen | 57 | 32 | 6 | 6 | 2 | 6 | 1 | | 1 | | | | 1 | 1 | 4 | | 7 | 2 | 79 | 47 | 126 | |
| Sophomores | 83 | 49 | 5 | 4 | 11 | 7 | 3 | 1 | | | | | 1 | 1 | 4 | 2 | 3 | 2 | 110 | 66 | 176 | |
| Juniors | 97 | 70 | 4 | 6 | 6 | 6 | 5 | 1 | 2 | 1 | | | | 1 | 6 | 3 | 4 | 1 | 124 | 89 | 213 | |
| Seniors | 122 | 104 | 7 | 8 | 8 | | 8 | 2 | 1 | | | | 3 | | 6 | 9 | | | 155 | 123 | 278 | |
| Special Undergraduate | 3 | 4 | | | | | | | | | 1 | | | | | | 1 | | 4 | 5 | 9 | |
| Total | 365 | 259 | 22 | 24 | 27 | 19 | 17 | 4 | 4 | 1 | 1 | 0 | 5 | 3 | 20 | 14 | 15 | 6 | 476 | 330 | 806 | |
| | | | | | | | | | | | | | | | | | | | | | | |
| Graduate | | | | | | | | | | | | | | | | | | | | | | |
| Certificate | | | | | | | | | | | | | | | | | | | | 0 | 0 | 0 |
| Masters | 20 | 22 | | 1 | | 2 | | | | | | | 3 | | 1 | | | 1 | 24 | 26 | 50 | |
| Doctoral | | | | | | | | | | | | | | | | | | | 0 | 0 | 0 | |
| Special Graduate | | | | | | | | | | | | | | | | | | | 0 | 0 | 0 | |
| Total | 20 | 22 | 0 | 1 | 0 | 2 | 0 | 0 | 0 | 0 | 0 | 0 | 3 | 0 | 1 | 0 | 0 | 1 | 24 | 26 | 50 | |
| Total Full-Time | 385 | 281 | 22 | 25 | 27 | 21 | 17 | 4 | 4 | 1 | 1 | 0 | 8 | 3 | 21 | 14 | 15 | 7 | 500 | 356 | 856 | |
| | | | | | | | | | | | | | | | | | | | | | | |
| Part-Time | | | | | | | | | | | | | | | | | | | | | | |
| Undergraduate | | | | | | | | | | | | | | | | | | | | | | |
| First-Time Freshmen | | | | | | | | | | | | | | | | | | | | 0 | 0 | 0 |
| Other Freshmen | 3 | 8 | 1 | | 1 | 1 | | | | | | | | | | | | 1 | 5 | 10 | 15 | |
| Sophomores | 17 | 7 | 1 | | 3 | | | | | | | | | | 1 | 2 | 1 | | 23 | 9 | 32 | |
| Juniors | 20 | 17 | 1 | 3 | 1 | 1 | 2 | | | | | | | | 1 | 3 | | | 25 | 24 | 49 | |
| Seniors | 42 | 45 | 3 | 3 | 2 | 1 | | 1 | | 1 | | | | | 5 | | | | 52 | 51 | 103 | |
| Special Undergraduate | 9 | 7 | | | | | | | | | | | | | | | | | 9 | 7 | 16 | |
| Total | 91 | 84 | 6 | 6 | 7 | 3 | 2 | 1 | 0 | 1 | 0 | 0 | 0 | 0 | 7 | 5 | 1 | 1 | 114 | 101 | 215 | |
| | | | | | | | | | | | | | | | | | | | | | | |
| Graduate | | | | | | | | | | | | | | | | | | | | | | |
| Certificate | 1 | 2 | | 1 | | | | 1 | | | | | | | | | | | 1 | 4 | 5 | |
| Masters | 37 | 17 | 4 | 3 | | | | 1 | | | | | 1 | | | | | | 42 | 21 | 63 | |
| Doctoral | | | | | | | | | | | | | | | | | | | 0 | 0 | 0 | |
| Special Graduate | | | | | | | | | | | | | | | | | | | 0 | 0 | 0 | |
| Total | 38 | 19 | 4 | 4 | 0 | 0 | 0 | 2 | 0 | 0 | 0 | 0 | 1 | 0 | 0 | 0 | 0 | 0 | 43 | 25 | 68 | |
| Total Part-Time | 129 | 103 | 10 | 10 | 7 | 3 | 2 | 3 | 0 | 1 | 0 | 0 | 1 | 0 | 7 | 5 | 1 | 1 | 157 | 126 | 283 | |

Table 5A (continued)

| | White | | African American | | Hispanic | | Asian | | American Indian | | Nat Haw / Pac Isl | | Nonresident Alien | | Race Unknown | | Two or more races | | Total | | | |
|---------------------------|-------|-----|------------------|----|----------|----|-------|---|-----------------|---|-------------------|---|-------------------|---|--------------|----|-------------------|---|-------|-----|-------|-----|
| | F | M | F | M | F | M | F | M | F | M | F | M | F | M | F | M | F | M | F | M | Total | |
| Total | | | | | | | | | | | | | | | | | | | | | | |
| Undergraduate | | | | | | | | | | | | | | | | | | | | | | |
| First-Time Freshmen | 3 | | | | | | | | | | | | | | | | 1 | | 4 | 0 | 4 | |
| Other Freshmen | 60 | 40 | 7 | 6 | 3 | 7 | 1 | | 1 | | | | 1 | 1 | 4 | | 7 | 3 | 84 | 57 | 141 | |
| Sophomores | 100 | 56 | 6 | 4 | 14 | 7 | 3 | 1 | | | | | 1 | 1 | 5 | 4 | 4 | 2 | 133 | 75 | 208 | |
| Juniors | 117 | 87 | 5 | 9 | 7 | 7 | 7 | 1 | 2 | 1 | | | | 1 | 7 | 6 | 4 | 1 | 149 | 113 | 262 | |
| Seniors | 164 | 149 | 10 | 11 | 10 | 1 | 8 | 3 | 1 | 1 | | | | 3 | | 11 | 9 | | | 207 | 174 | 381 |
| Special Undergraduate | 12 | 11 | | | | | | | | | 1 | | | | | | | 1 | 13 | 12 | 25 | |
| Total | 456 | 343 | 28 | 30 | 34 | 22 | 19 | 5 | 4 | 2 | 1 | 0 | 5 | 3 | 27 | 19 | 16 | 7 | 590 | 431 | 1,021 | |
| | | | | | | | | | | | | | | | | | | | | | | |
| Graduate | | | | | | | | | | | | | | | | | | | | | | |
| Certificate | 1 | 2 | | 1 | | | | 1 | | | | | | | | | | | 1 | 4 | 5 | |
| Masters | 57 | 39 | 4 | 4 | | 2 | | 1 | | | | | 4 | | 1 | | 1 | | 66 | 47 | 113 | |
| Doctoral | | | | | | | | | | | | | | | | | | | 0 | 0 | 0 | |
| Special Graduate | | | | | | | | | | | | | | | | | | | 0 | 0 | 0 | |
| Total | 58 | 41 | 4 | 5 | 0 | 2 | 0 | 2 | 0 | 0 | 0 | 0 | 4 | 0 | 1 | 0 | 0 | 1 | 67 | 51 | 118 | |
| Total All Students | 514 | 384 | 32 | 35 | 34 | 24 | 19 | 7 | 4 | 2 | 1 | 0 | 9 | 3 | 28 | 19 | 16 | 8 | 657 | 482 | 1,139 | |

Figure 8B: College of Communication, Fine Arts and Media: Administrative-site Head Count: Spring 2006-2012

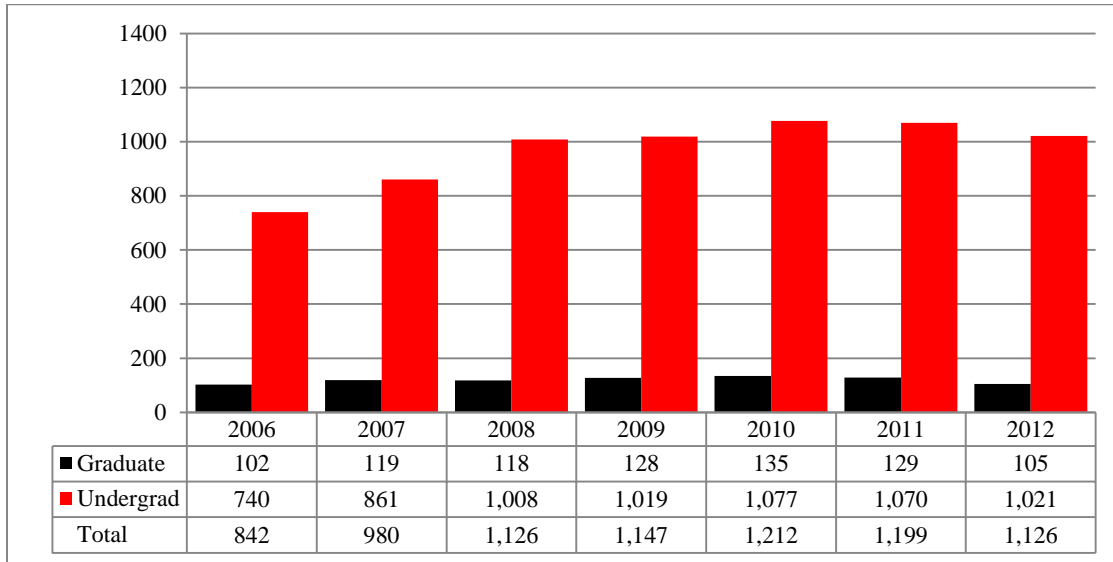


Figure 9B: College of Communication, Fine Arts and Media: Administrative-site Student Credit Hours: Spring 2006 - 2012

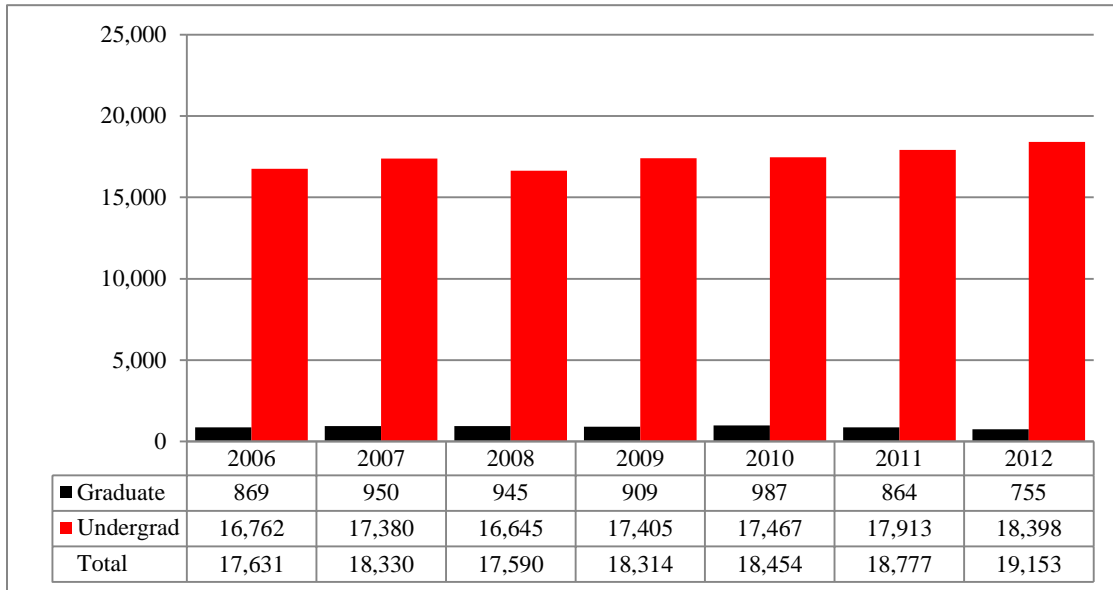


Table 5B: College of Communication, Fine Arts and Media Administrative-Site Head Count Summary for Full and Part-Time, Undergraduate and Graduate Students by Gender and Race Classification: Spring 2012

| | White | | African American | | Hispanic | | Asian | | American Indian | | Nat Haw / Pac Isl | | Nonresident Alien | | Race Unknown | | Two or more races | | Total | | | |
|------------------------|-------|-----|------------------|----|----------|----|-------|---|-----------------|---|-------------------|---|-------------------|---|--------------|----|-------------------|---|-------|-----|-------|---|
| | F | M | F | M | F | M | F | M | F | M | F | M | F | M | F | M | F | M | F | M | Total | |
| Full-Time | | | | | | | | | | | | | | | | | | | | | | |
| Undergraduate | | | | | | | | | | | | | | | | | | | | | | |
| First-Time Freshmen | 3 | | | | | | | | | | | | | | | | 1 | | 4 | 0 | 4 | |
| Other Freshmen | 57 | 32 | 6 | 6 | 2 | 6 | 1 | | 1 | | | | 1 | 1 | 4 | | 7 | 2 | 79 | 47 | 126 | |
| Sophomores | 83 | 49 | 5 | 4 | 11 | 7 | 3 | 1 | | | | | 1 | 1 | 4 | 2 | 3 | 2 | 110 | 66 | 176 | |
| Juniors | 97 | 70 | 4 | 6 | 6 | 6 | 5 | 1 | 2 | 1 | | | | 1 | 6 | 3 | 4 | 1 | 124 | 89 | 213 | |
| Seniors | 122 | 104 | 7 | 8 | 8 | | 8 | 2 | 1 | | | | | 3 | 6 | 9 | | | 155 | 123 | 278 | |
| Special Undergraduate | 3 | 4 | | | | | | | | | 1 | | | | | | | 1 | 4 | 5 | 9 | |
| Total | 365 | 259 | 22 | 24 | 27 | 19 | 17 | 4 | 4 | 1 | 1 | 0 | 5 | 3 | 20 | 14 | 15 | 6 | 476 | 330 | 806 | |
| | | | | | | | | | | | | | | | | | | | | | | |
| Graduate | | | | | | | | | | | | | | | | | | | | | | |
| Certificate | | | | | | | | | | | | | | | | | | | | 0 | 0 | 0 |
| Masters | 13 | 18 | | 1 | | 1 | | | | | | | | 2 | | 1 | | 1 | 16 | 21 | 37 | |
| Doctoral | | | | | | | | | | | | | | | | | | | | 0 | 0 | 0 |
| Special Graduate | | | | | | | | | | | | | | | | | | | | 0 | 0 | 0 |
| Total | 13 | 18 | 0 | 1 | 0 | 1 | 0 | 0 | 0 | 0 | 0 | 0 | 2 | 0 | 1 | 0 | 0 | 1 | 16 | 21 | 37 | |
| Total Full-Time | 378 | 277 | 22 | 25 | 27 | 20 | 17 | 4 | 4 | 1 | 1 | 0 | 7 | 3 | 21 | 14 | 15 | 7 | 492 | 351 | 843 | |
| | | | | | | | | | | | | | | | | | | | | | | |
| Part-Time | | | | | | | | | | | | | | | | | | | | | | |
| Undergraduate | | | | | | | | | | | | | | | | | | | | | | |
| First-Time Freshmen | | | | | | | | | | | | | | | | | | | | 0 | 0 | 0 |
| Other Freshmen | 3 | 8 | 1 | | 1 | 1 | | | | | | | | | | | | 1 | 5 | 10 | 15 | |
| Sophomores | 17 | 7 | 1 | | 3 | | | | | | | | | | 1 | 2 | 1 | | 23 | 9 | 32 | |
| Juniors | 20 | 17 | 1 | 3 | 1 | 1 | 2 | | | | | | | | 1 | 3 | | | 25 | 24 | 49 | |
| Seniors | 42 | 45 | 3 | 3 | 2 | 1 | | 1 | | 1 | | | | | 5 | | | | 52 | 51 | 103 | |
| Special Undergraduate | 9 | 7 | | | | | | | | | | | | | | | | | 9 | 7 | 16 | |
| Total | 91 | 84 | 6 | 6 | 7 | 3 | 2 | 1 | 0 | 1 | 0 | 0 | 0 | 0 | 7 | 5 | 1 | 1 | 114 | 101 | 215 | |
| | | | | | | | | | | | | | | | | | | | | | | |
| Graduate | | | | | | | | | | | | | | | | | | | | | | |
| Certificate | 1 | 2 | | 1 | | | | 1 | | | | | | | | | | | | 1 | 4 | 5 |
| Masters | 37 | 17 | 4 | 3 | | | | 1 | | | | | | 1 | | | | | 42 | 21 | 63 | |
| Doctoral | | | | | | | | | | | | | | | | | | | | 0 | 0 | 0 |
| Special Graduate | | | | | | | | | | | | | | | | | | | | 0 | 0 | 0 |
| Total | 38 | 19 | 4 | 4 | 0 | 0 | 0 | 2 | 0 | 0 | 0 | 0 | 1 | 0 | 0 | 0 | 0 | 0 | 43 | 25 | 68 | |
| Total Part-Time | 129 | 103 | 10 | 10 | 7 | 3 | 2 | 3 | 0 | 1 | 0 | 0 | 1 | 0 | 7 | 5 | 1 | 1 | 157 | 126 | 283 | |

Table 5B (continued)

| | White | | African American | | Hispanic | | Asian | | American Indian | | Nat Haw / Pac Isl | | Nonresident Alien | | Race Unknown | | Two or more races | | Total | | |
|---------------------------|-------|-----|------------------|----|----------|----|-------|---|-----------------|---|-------------------|---|-------------------|---|--------------|----|-------------------|---|-------|-----|-------|
| | F | M | F | M | F | M | F | M | F | M | F | M | F | M | F | M | F | M | F | M | Total |
| Total | | | | | | | | | | | | | | | | | | | | | |
| Undergraduate | | | | | | | | | | | | | | | | | | | | | |
| First-Time Freshmen | 3 | | | | | | | | | | | | | | | | 1 | | 4 | 0 | 4 |
| Other Freshmen | 60 | 40 | 7 | 6 | 3 | 7 | 1 | | 1 | | | | 1 | 1 | 4 | | 7 | 3 | 84 | 57 | 141 |
| Sophomores | 100 | 56 | 6 | 4 | 14 | 7 | 3 | 1 | | | | | 1 | 1 | 5 | 4 | 4 | 2 | 133 | 75 | 208 |
| Juniors | 117 | 87 | 5 | 9 | 7 | 7 | 7 | 1 | 2 | 1 | | | | 1 | 7 | 6 | 4 | 1 | 149 | 113 | 262 |
| Seniors | 164 | 149 | 10 | 11 | 10 | 1 | 8 | 3 | 1 | 1 | | | 3 | | 11 | 9 | | | 207 | 174 | 381 |
| Special Undergraduate | 12 | 11 | | | | | | | | | 1 | | | | | | | 1 | 13 | 12 | 25 |
| Total | 456 | 343 | 28 | 30 | 34 | 22 | 19 | 5 | 4 | 2 | 1 | 0 | 5 | 3 | 27 | 19 | 16 | 7 | 590 | 431 | 1,021 |
| | | | | | | | | | | | | | | | | | | | | | |
| Graduate | | | | | | | | | | | | | | | | | | | | | |
| Certificate | 1 | 2 | | 1 | | | | 1 | | | | | | | | | | | 1 | 4 | 5 |
| Masters | 50 | 35 | 4 | 4 | | 1 | | 1 | | | | | 3 | | 1 | | | 1 | 58 | 42 | 100 |
| Doctoral | | | | | | | | | | | | | | | | | | | 0 | 0 | 0 |
| Special Graduate | | | | | | | | | | | | | | | | | | | 0 | 0 | 0 |
| Total | 51 | 37 | 4 | 5 | 0 | 1 | 0 | 2 | 0 | 0 | 0 | 0 | 3 | 0 | 1 | 0 | 0 | 1 | 59 | 46 | 105 |
| Total All Students | 507 | 380 | 32 | 35 | 34 | 23 | 19 | 7 | 4 | 2 | 1 | 0 | 8 | 3 | 28 | 19 | 16 | 8 | 649 | 477 | 1,126 |

Figure 10: College of Education Administrative-site Head Count: Spring 2000 – 2012

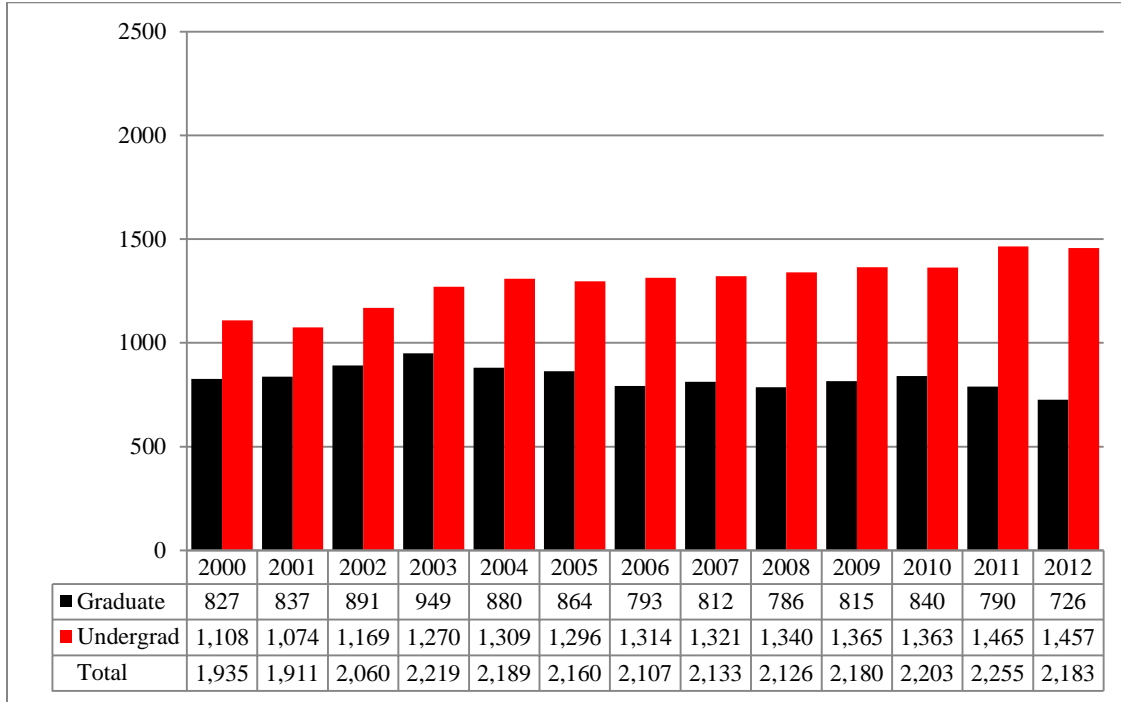


Figure 11: College of Education Administrative-site Student Credit Hours: Spring 2000 – 2012

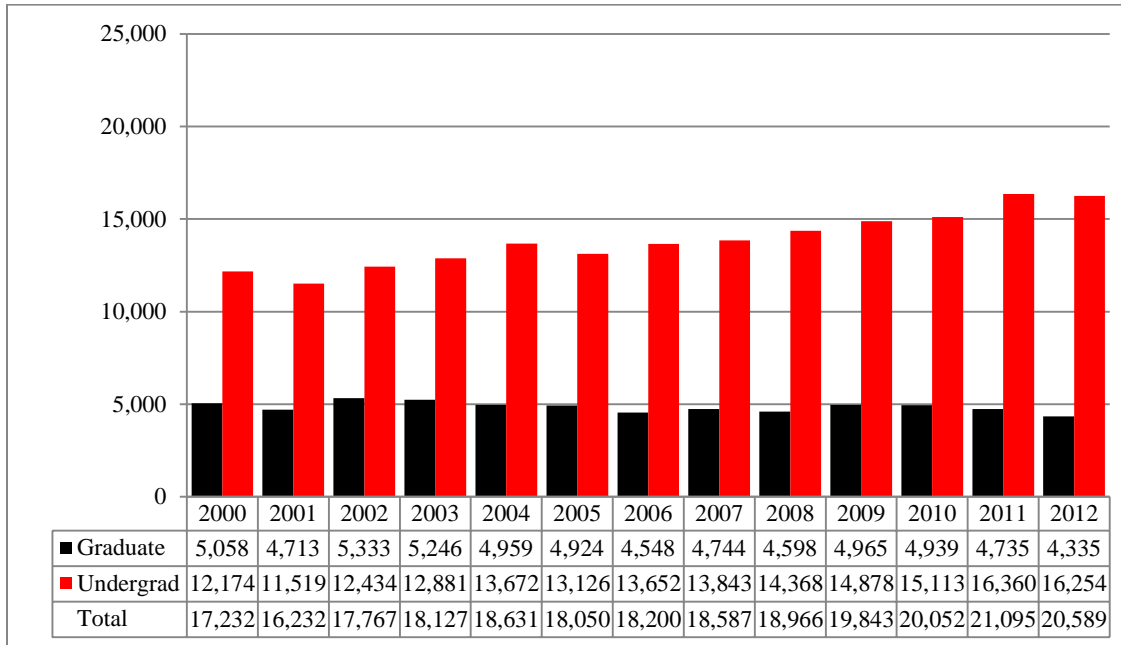


Table 6: College of Education Head Count Summary for Full and Part-Time, Undergraduate and Graduate Students by Gender and Race Classification: Spring 2012

| | White | | African American | | Hispanic | | Asian | | American Indian | | Nat Haw / Pac Isl | | Nonresident Alien | | Race Unknown | | Two or more races | | Total | | | |
|------------------------|-------|-----|------------------|---|----------|----|-------|---|-----------------|---|-------------------|---|-------------------|----|--------------|----|-------------------|-----|-------|-----|-------|--|
| | F | M | F | M | F | M | F | M | F | M | F | M | F | M | F | M | F | M | F | M | Total | |
| Full-Time | | | | | | | | | | | | | | | | | | | | | | |
| Undergraduate | | | | | | | | | | | | | | | | | | | | | | |
| First-Time Freshmen | | 1 | | | | | | | | | | | | | | | | | 0 | 1 | 1 | |
| Other Freshmen | 74 | 32 | 4 | | 5 | 5 | 2 | | | | | 1 | 1 | 13 | 4 | 5 | 2 | 103 | 45 | 148 | | |
| Sophomores | 122 | 45 | 3 | 1 | 5 | 6 | 1 | | 1 | | | | 1 | 2 | 3 | 1 | 137 | 55 | 192 | | | |
| Juniors | 184 | 66 | 8 | 2 | 10 | 1 | | | 2 | | | | | 8 | 3 | 2 | 2 | 214 | 74 | 288 | | |
| Seniors | 326 | 144 | 9 | 3 | 15 | 7 | 8 | 2 | 4 | 1 | | | 1 | 6 | 5 | 3 | 2 | 371 | 165 | 536 | | |
| Special Undergraduate | 32 | 21 | 3 | | | 1 | | | | | | | 1 | 2 | 1 | | | 38 | 23 | 61 | | |
| Total | 738 | 309 | 27 | 6 | 35 | 20 | 11 | 2 | 7 | 1 | 0 | 1 | 2 | 2 | 30 | 15 | 13 | 7 | 863 | 363 | 1,226 | |
| | | | | | | | | | | | | | | | | | | | | | | |
| Graduate | | | | | | | | | | | | | | | | | | | | | | |
| Certificate | | | | | | | | | | | | | | | | | | | 0 | 0 | 0 | |
| Masters | 97 | 24 | 3 | 1 | 2 | 1 | 2 | | 1 | | | | 1 | 2 | 3 | 1 | 1 | 1 | 110 | 30 | 140 | |
| Doctoral | 2 | 2 | | 1 | | | | | | | | | | | | | | | 2 | 3 | 5 | |
| Special Graduate | 1 | 2 | | | | | | | | | | | | | | | | | 1 | 2 | 3 | |
| Total | 100 | 28 | 3 | 2 | 2 | 1 | 2 | 0 | 1 | 0 | 0 | 0 | 1 | 2 | 3 | 1 | 1 | 1 | 113 | 35 | 148 | |
| Total Full-Time | 838 | 337 | 30 | 8 | 37 | 21 | 13 | 2 | 8 | 1 | 0 | 1 | 3 | 4 | 33 | 16 | 14 | 8 | 976 | 398 | 1,374 | |
| | | | | | | | | | | | | | | | | | | | | | | |
| Part-Time | | | | | | | | | | | | | | | | | | | | | | |
| Undergraduate | | | | | | | | | | | | | | | | | | | | | | |
| First-Time Freshmen | 1 | 1 | | | | | | | | | | | | | | | | | 1 | 1 | 2 | |
| Other Freshmen | 13 | 4 | 1 | 1 | | 1 | | | | | | | | | | | | | 14 | 6 | 20 | |
| Sophomores | 21 | 4 | | | 1 | | | | | | | | | 2 | 1 | 2 | | | 26 | 5 | 31 | |
| Juniors | 32 | 14 | 2 | | 1 | 1 | | | | | | | | 2 | | | | | 37 | 15 | 52 | |
| Seniors | 40 | 30 | 2 | 1 | 3 | | | | 1 | | | | | 1 | 4 | | | | 47 | 35 | 82 | |
| Special Undergraduate | 23 | 18 | | | 1 | 1 | | | | | | | | 1 | | | | | 25 | 19 | 44 | |
| Total | 130 | 71 | 5 | 2 | 6 | 3 | 0 | 0 | 1 | 0 | 0 | 0 | 0 | 0 | 6 | 5 | 2 | 0 | 150 | 81 | 231 | |
| | | | | | | | | | | | | | | | | | | | | | | |
| Graduate | | | | | | | | | | | | | | | | | | | | | | |
| Certificate | 4 | | | | | | | | | | | | | | | | | | 4 | 0 | 4 | |
| Masters | 342 | 86 | 9 | | 4 | 3 | 3 | | 1 | 1 | | | 1 | 8 | 3 | 1 | | | 369 | 93 | 462 | |
| Doctoral | 23 | 12 | | 1 | | 1 | | | | | | | | | | | | | 23 | 14 | 37 | |
| Special Graduate | 59 | 12 | 1 | | 2 | | | | | | | | | 1 | | | | | 63 | 12 | 75 | |
| Total | 428 | 110 | 10 | 1 | 6 | 4 | 3 | 0 | 1 | 1 | 0 | 0 | 1 | 9 | 3 | 1 | 0 | | 459 | 119 | 578 | |
| Total Part-Time | 558 | 181 | 15 | 3 | 12 | 7 | 3 | 0 | 2 | 1 | 0 | 0 | 1 | 0 | 15 | 8 | 3 | 0 | 609 | 200 | 809 | |

Table 6 (continued)

| | White | | African American | | Hispanic | | Asian | | American Indian | | Nat Haw / Pac Isl | | Nonresident Alien | | Race Unknown | | Two or more races | | Total | | | |
|---------------------------|-------|-----|------------------|----|----------|----|-------|---|-----------------|---|-------------------|---|-------------------|----|--------------|----|-------------------|-----|-------|-----|-------|--|
| | F | M | F | M | F | M | F | M | F | M | F | M | F | M | F | M | F | M | F | M | Total | |
| Total | | | | | | | | | | | | | | | | | | | | | | |
| Undergraduate | | | | | | | | | | | | | | | | | | | | | | |
| First-Time Freshmen | 1 | 2 | | | | | | | | | | | | | | | | | 1 | 2 | 3 | |
| Other Freshmen | 87 | 36 | 5 | 1 | 5 | 6 | 2 | | | | 1 | | 1 | 13 | 4 | 5 | 2 | 117 | 51 | 168 | | |
| Sophomores | 143 | 49 | 3 | 1 | 6 | 6 | 1 | | 1 | | | | 1 | 3 | 3 | 5 | 1 | 163 | 60 | 223 | | |
| Juniors | 216 | 80 | 10 | 2 | 11 | 2 | | | 2 | | | | | 10 | 3 | 2 | 2 | 251 | 89 | 340 | | |
| Seniors | 366 | 174 | 11 | 4 | 18 | 7 | 8 | 2 | 5 | 1 | | | 1 | 7 | 9 | 3 | 2 | 418 | 200 | 618 | | |
| Special Undergraduate | 55 | 39 | 3 | | 1 | 2 | | | | | | | 1 | 3 | 1 | | | 63 | 42 | 105 | | |
| Total | 868 | 380 | 32 | 8 | 41 | 23 | 11 | 2 | 8 | 1 | 0 | 1 | 2 | 2 | 36 | 20 | 15 | 7 | 1,013 | 444 | 1,457 | |
| Graduate | | | | | | | | | | | | | | | | | | | | | | |
| Certificate | 4 | | | | | | | | | | | | | | | | | | 4 | 0 | 4 | |
| Masters | 439 | 110 | 12 | 1 | 6 | 4 | 5 | | 2 | 1 | | | 2 | 2 | 11 | 4 | 2 | 1 | 479 | 123 | 602 | |
| Doctoral | 25 | 14 | | 2 | | 1 | | | | | | | | | | | | | 25 | 17 | 42 | |
| Special Graduate | 60 | 14 | 1 | | 2 | | | | | | | | | 1 | | | | 64 | 14 | 78 | | |
| Total | 528 | 138 | 13 | 3 | 8 | 5 | 5 | 0 | 2 | 1 | 0 | 0 | 2 | 2 | 12 | 4 | 2 | 1 | 572 | 154 | 726 | |
| Total All Students | 1,396 | 518 | 45 | 11 | 49 | 28 | 16 | 2 | 10 | 2 | 0 | 1 | 4 | 4 | 48 | 24 | 17 | 8 | 1,585 | 598 | 2,183 | |

Figure 12: College of Information Science & Technology Administrative-site Head Count: Spring 2000 - 2012

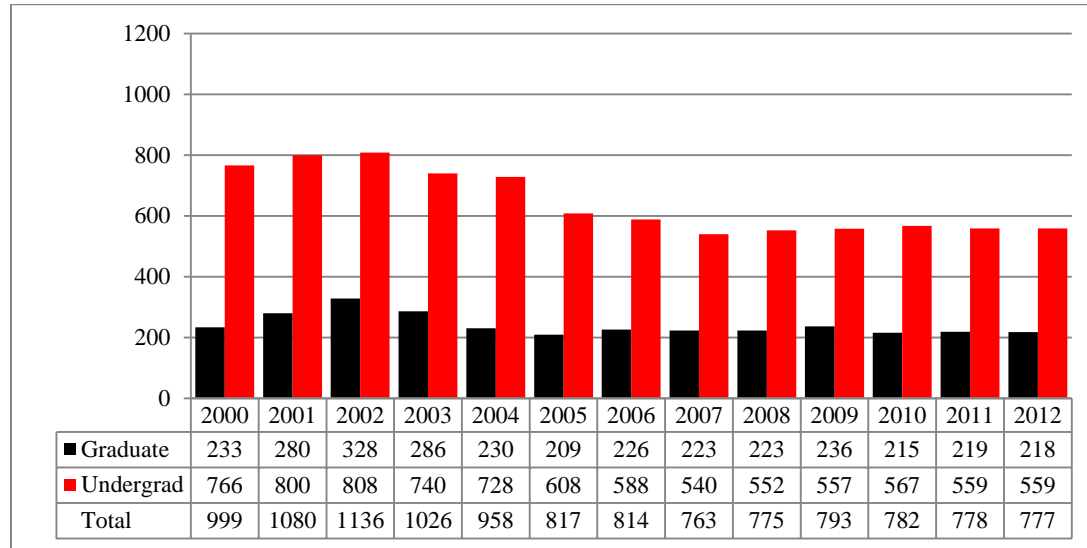


Figure 13: College of Information Science & Technology Administrative-site Student Credit Hours: Spring 2000 - 2012

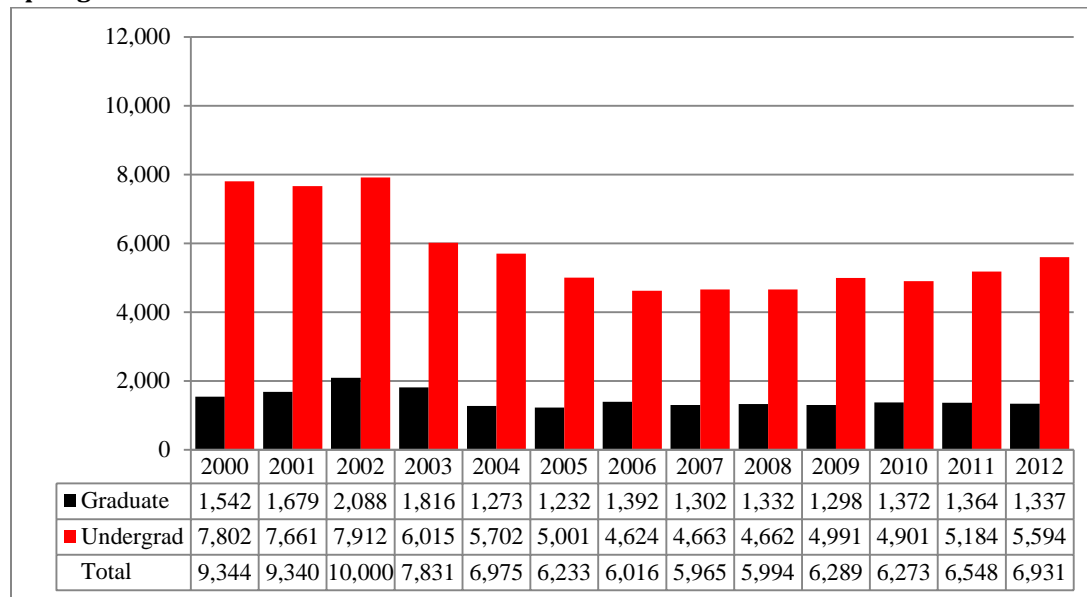


Table 7: College of Information Science and Technology Head Count Summary for Full and Part-Time, Undergraduate and Graduate Summary by Gender and Race Classification: Spring 2012

| | White | | African American | | Hispanic | | Asian | | American Indian | | Nat Haw / Pac Isl | | Nonresident Alien | | Race Unknown | | Two or more races | | Total | | | |
|------------------------|-------|-----|------------------|---|----------|----|-------|----|-----------------|---|-------------------|---|-------------------|----|--------------|----|-------------------|---|-------|-----|-------|--|
| | F | M | F | M | F | M | F | M | F | M | F | M | F | M | F | M | F | M | F | M | Total | |
| Full-Time | | | | | | | | | | | | | | | | | | | | | | |
| Undergraduate | | | | | | | | | | | | | | | | | | | | | | |
| First-Time Freshmen | | 3 | | | | | | | | | | | 3 | | | | | | 0 | 6 | 6 | |
| Other Freshmen | 2 | 45 | | | 1 | 1 | | 1 | | | | | 7 | 1 | 10 | | 1 | | 4 | 65 | 69 | |
| Sophomores | 13 | 71 | | 1 | | 7 | 1 | 1 | | 1 | 1 | | 1 | 14 | 1 | 6 | 2 | 1 | 19 | 102 | 121 | |
| Juniors | 6 | 77 | 1 | 3 | 2 | 1 | | 3 | | | | | 5 | 12 | | 3 | 1 | | 15 | 99 | 114 | |
| Seniors | 10 | 82 | 2 | 4 | 1 | 5 | | 4 | | | | | 2 | 10 | 2 | 1 | | 1 | 17 | 107 | 124 | |
| Special Undergraduate | 2 | 6 | | 1 | | | | 1 | | | | | 2 | 1 | 1 | 1 | | | 5 | 10 | 15 | |
| Total | 33 | 284 | 3 | 9 | 4 | 14 | 1 | 10 | 0 | 1 | 1 | 0 | 10 | 47 | 5 | 21 | 3 | 3 | 60 | 389 | 449 | |
| | | | | | | | | | | | | | | | | | | | | | | |
| Graduate | | | | | | | | | | | | | | | | | | | | | | |
| Certificate | | | | | | | | | | | | | | | | | | | 0 | 0 | 0 | |
| Masters | 2 | 7 | | | | | | 1 | | | | | 12 | 34 | | | | 1 | 14 | 43 | 57 | |
| Doctoral | | 5 | | | | | | | | | | | 1 | 6 | | | | | 1 | 11 | 12 | |
| Special Graduate | | | | | | | | | | | | | | | | | | | 0 | 0 | 0 | |
| Total | 2 | 12 | 0 | 0 | 0 | 0 | 0 | 1 | 0 | 0 | 0 | 0 | 13 | 40 | 0 | 0 | 0 | 1 | 15 | 54 | 69 | |
| Total Full-Time | 35 | 296 | 3 | 9 | 4 | 14 | 1 | 11 | 0 | 1 | 1 | 0 | 23 | 87 | 5 | 21 | 3 | 4 | 75 | 443 | 518 | |
| | | | | | | | | | | | | | | | | | | | | | | |
| Part-Time | | | | | | | | | | | | | | | | | | | | | | |
| Undergraduate | | | | | | | | | | | | | | | | | | | | | | |
| First-Time Freshmen | | | | | | | | | | | | | | | | | | | 0 | 0 | 0 | |
| Other Freshmen | 2 | 8 | | | | | 1 | 1 | | | | | | 4 | | | | | 2 | 14 | 16 | |
| Sophomores | 1 | 14 | 1 | 1 | 1 | | | 1 | | | | | | | | 1 | | | 3 | 17 | 20 | |
| Juniors | | 14 | | 1 | | 2 | | | | | | | | 2 | | | | | 0 | 19 | 19 | |
| Seniors | 5 | 27 | 2 | 1 | | 3 | | 1 | | | | | | 4 | | 2 | | | 7 | 38 | 45 | |
| Special Undergraduate | 1 | 5 | | | | | | | | | | | 1 | | | 1 | 1 | 1 | 3 | 7 | 10 | |
| Total | 9 | 68 | 3 | 3 | 1 | 6 | 0 | 3 | 0 | 0 | 0 | 0 | 1 | 10 | 0 | 4 | 1 | 1 | 15 | 95 | 110 | |
| | | | | | | | | | | | | | | | | | | | | | | |
| Graduate | | | | | | | | | | | | | | | | | | | | | | |
| Certificate | 3 | 5 | | | | | | 1 | | | | | | | | | | | 3 | 6 | 9 | |
| Masters | 9 | 62 | 1 | 6 | | 5 | 3 | 3 | | | | | 13 | 21 | | 5 | 1 | 1 | 27 | 103 | 130 | |
| Doctoral | 1 | 2 | | | | | | | | | | | 3 | 3 | 1 | | | | 5 | 5 | 10 | |
| Special Graduate | | | | | | | | | | | | | | | | | | | 0 | 0 | 0 | |
| Total | 13 | 69 | 1 | 6 | 0 | 5 | 3 | 4 | 0 | 0 | 0 | 0 | 16 | 24 | 1 | 5 | 1 | 1 | 35 | 114 | 149 | |
| Total Part-Time | 22 | 137 | 4 | 9 | 1 | 11 | 3 | 7 | 0 | 0 | 0 | 0 | 17 | 34 | 1 | 9 | 2 | 2 | 50 | 209 | 259 | |

Table 7 (continued)

| | White | | African American | | Hispanic | | Asian | | American Indian | | Nat Haw / Pac Isl | | Nonresident Alien | | Race Unknown | | Two or more races | | Total | | | |
|---------------------------|-------|-----|------------------|----|----------|----|-------|----|-----------------|---|-------------------|---|-------------------|-----|--------------|----|-------------------|----|-------|-----|-------|--|
| | F | M | F | M | F | M | F | M | F | M | F | M | F | M | F | M | F | M | F | M | Total | |
| Total | | | | | | | | | | | | | | | | | | | | | | |
| Undergraduate | | | | | | | | | | | | | | | | | | | | | | |
| First-Time Freshmen | | 3 | | | | | | | | | | | 3 | | | | | | 0 | 6 | 6 | |
| Other Freshmen | 4 | 53 | | | 1 | 2 | | 2 | | | | | 11 | 1 | 10 | | 1 | 6 | 79 | 85 | | |
| Sophomores | 14 | 85 | 1 | 2 | 1 | 7 | 1 | 2 | | 1 | 1 | | 1 | 14 | 1 | 7 | 2 | 1 | 22 | 119 | 141 | |
| Juniors | 6 | 91 | 1 | 4 | 2 | 3 | | 3 | | | | | 5 | 14 | | 3 | 1 | 15 | 118 | 133 | | |
| Seniors | 15 | 109 | 4 | 5 | 1 | 8 | | 5 | | | | | 2 | 14 | 2 | 3 | | 1 | 24 | 145 | 169 | |
| Special Undergraduate | 3 | 11 | | 1 | | | | 1 | | | | | 3 | 1 | 1 | 2 | 1 | 1 | 8 | 17 | 25 | |
| Total | 42 | 352 | 6 | 12 | 5 | 20 | 1 | 13 | 0 | 1 | 1 | 0 | 11 | 57 | 5 | 25 | 4 | 4 | 75 | 484 | 559 | |
| Graduate | | | | | | | | | | | | | | | | | | | | | | |
| Certificate | 3 | 5 | | | | | | 1 | | | | | | | | | | | 3 | 6 | 9 | |
| Masters | 11 | 69 | 1 | 6 | | 5 | 3 | 4 | | | | | 25 | 55 | | 5 | 1 | 2 | 41 | 146 | 187 | |
| Doctoral | 1 | 7 | | | | | | | | | | | 4 | 9 | 1 | | | | 6 | 16 | 22 | |
| Special Graduate | | | | | | | | | | | | | | | | | | | 0 | 0 | 0 | |
| Total | 15 | 81 | 1 | 6 | 0 | 5 | 3 | 5 | 0 | 0 | 0 | 0 | 29 | 64 | 1 | 5 | 1 | 2 | 50 | 168 | 218 | |
| Total All Students | 57 | 433 | 7 | 18 | 5 | 25 | 4 | 18 | 0 | 1 | 1 | 0 | 40 | 121 | 6 | 30 | 5 | 6 | 125 | 652 | 777 | |

Figure 14A: College of Public Affairs & Community Service Delivery-site Head Count: Spring 2000-2012

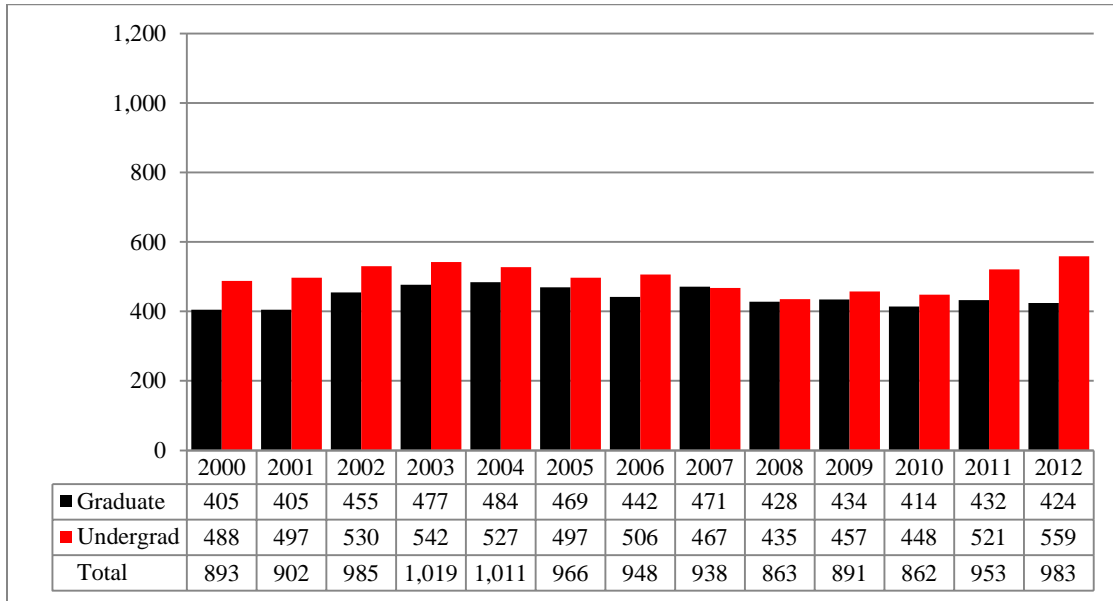


Figure 15A: College of Public Affairs & Community Service Delivery-site Student Credit Hours: Spring 2000-2012

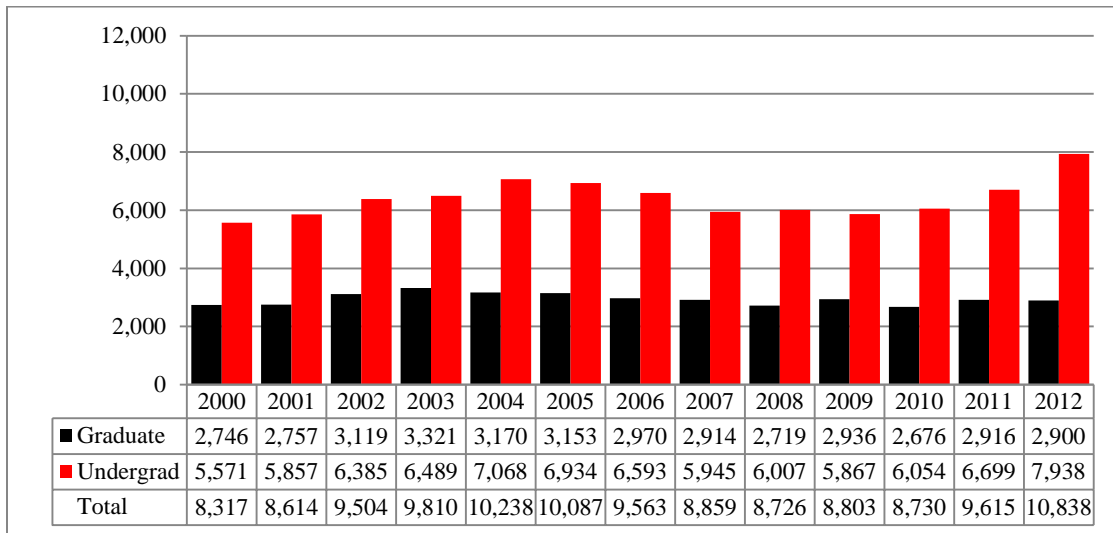


Table 8A: College of Public Affairs and Community Service Delivery-site Head Count Summary for Full and Part-Time, Undergraduate and Graduate Students by Gender and Race Classification: Spring 2012

| | White | | African American | | Hispanic | | Asian | | American Indian | | Nat Haw / Pac Isl | | Nonresident Alien | | Race Unknown | | Two or more races | | Total | | | |
|------------------------|-------|-----|------------------|----|----------|----|-------|---|-----------------|---|-------------------|---|-------------------|---|--------------|----|-------------------|-----|-------|-----|-------|--|
| | F | M | F | M | F | M | F | M | F | M | F | M | F | M | F | M | F | M | F | M | Total | |
| Full-Time | | | | | | | | | | | | | | | | | | | | | | |
| Undergraduate | | | | | | | | | | | | | | | | | | | | | | |
| First-Time Freshmen | | | | | | 2 | | | | | | | | | | | 1 | 0 | 3 | 3 | | |
| Other Freshmen | 28 | 40 | 9 | 2 | 9 | 10 | | | | 1 | | | 1 | 3 | 4 | | 6 | 49 | 64 | 113 | | |
| Sophomores | 35 | 51 | 9 | 4 | 10 | 7 | 1 | 3 | 1 | | | | 1 | 2 | | | 2 | 58 | 68 | 126 | | |
| Juniors | 52 | 64 | 8 | 4 | 2 | 11 | 3 | | 1 | | | | | 3 | 3 | 1 | 1 | 69 | 84 | 153 | | |
| Seniors | 44 | 60 | 4 | 1 | 7 | 3 | | 1 | | | | | | 2 | 3 | | | 57 | 68 | 125 | | |
| Special Undergraduate | | | | | | | | | | | | | | | | | | 0 | 0 | 0 | | |
| Total | 159 | 215 | 30 | 11 | 28 | 33 | 4 | 4 | 1 | 2 | 0 | 0 | 0 | 2 | 10 | 10 | 1 | 10 | 233 | 287 | 520 | |
| | | | | | | | | | | | | | | | | | | | | | | |
| Graduate | | | | | | | | | | | | | | | | | | | | | | |
| Certificate | | | | | | | | | | | | | | | | | | | 0 | 0 | 0 | |
| Masters | 79 | 18 | 4 | 1 | 6 | 3 | 1 | | | | | | 5 | 3 | 1 | 1 | | 99 | 23 | 122 | | |
| Doctoral | 6 | 4 | | | 1 | | | | | | | | 1 | 3 | | | | 7 | 8 | 15 | | |
| Special Graduate | | | | | | | | | | | | | | | | | | 0 | 0 | 0 | | |
| Total | 85 | 22 | 4 | 1 | 6 | 4 | 1 | 0 | 0 | 0 | 0 | 0 | 6 | 3 | 3 | 1 | 1 | 0 | 106 | 31 | 137 | |
| Total Full-Time | 244 | 237 | 34 | 12 | 34 | 37 | 5 | 4 | 1 | 2 | 0 | 0 | 6 | 5 | 13 | 11 | 2 | 10 | 339 | 318 | 657 | |
| | | | | | | | | | | | | | | | | | | | | | | |
| Part-Time | | | | | | | | | | | | | | | | | | | | | | |
| Undergraduate | | | | | | | | | | | | | | | | | | | | | | |
| First-Time Freshmen | | | | | | | | | | | | | | | | | | | 0 | 0 | 0 | |
| Other Freshmen | 1 | 5 | | | 1 | | | | | | | | | | 1 | 1 | | 3 | 6 | 9 | | |
| Sophomores | 3 | 5 | 1 | 2 | | 2 | | | | | | | | | 2 | | | 4 | 11 | 15 | | |
| Juniors | 11 | 7 | | | | 2 | | | | | | | | | | | | 11 | 9 | 20 | | |
| Seniors | 7 | 19 | 1 | 3 | 1 | | | | | | | | | | | | | 9 | 22 | 31 | | |
| Special Undergraduate | 2 | 1 | | | 1 | | | | | | | | | | | | | 3 | 1 | 4 | | |
| Total | 24 | 37 | 2 | 5 | 3 | 4 | 0 | 0 | 0 | 0 | 0 | 0 | 0 | 0 | 1 | 3 | 0 | 0 | 30 | 49 | 79 | |
| | | | | | | | | | | | | | | | | | | | | | | |
| Graduate | | | | | | | | | | | | | | | | | | | | | | |
| Certificate | 6 | 3 | 1 | | | | | 1 | | | | | | | | | | 7 | 4 | 11 | | |
| Masters | 136 | 75 | 13 | 1 | 4 | 3 | 2 | 1 | 1 | | | | 2 | 8 | 2 | 1 | 1 | 167 | 83 | 250 | | |
| Doctoral | 6 | 9 | 1 | | | | 1 | | | | | | 3 | 3 | 1 | | | 12 | 12 | 24 | | |
| Special Graduate | 2 | | | | | | | | | | | | | | | | | 2 | 0 | 2 | | |
| Total | 150 | 87 | 15 | 1 | 4 | 3 | 3 | 2 | 1 | 0 | 0 | 0 | 5 | 3 | 9 | 2 | 1 | 1 | 188 | 99 | 287 | |
| Total Part-Time | 174 | 124 | 17 | 6 | 7 | 7 | 3 | 2 | 1 | 0 | 0 | 0 | 5 | 3 | 10 | 5 | 1 | 1 | 218 | 148 | 366 | |

Table 8A (continued)

| | White | | African American | | Hispanic | | Asian | | American Indian | | Nat Haw / Pac Isl | | Nonresident Alien | | Race Unknown | | Two or more races | | Total | | | |
|---------------------------|-------|-----|------------------|----|----------|----|-------|---|-----------------|---|-------------------|---|-------------------|---|--------------|----|-------------------|----|-------|-----|-------|--|
| | F | M | F | M | F | M | F | M | F | M | F | M | F | M | F | M | F | M | F | M | Total | |
| Total | | | | | | | | | | | | | | | | | | | | | | |
| Undergraduate | | | | | | | | | | | | | | | | | | | | | | |
| First-Time Freshmen | | | | | | 2 | | | | | | | | | | | 1 | 0 | 3 | 3 | | |
| Other Freshmen | 29 | 45 | 9 | 2 | 10 | 10 | | | | 1 | | | | 1 | 4 | 5 | | 6 | 52 | 70 | 122 | |
| Sophomores | 38 | 56 | 10 | 6 | 10 | 9 | 1 | 3 | 1 | | | | | 1 | 2 | 2 | | 2 | 62 | 79 | 141 | |
| Juniors | 63 | 71 | 8 | 4 | 2 | 13 | 3 | | | 1 | | | | | 3 | 3 | 1 | 1 | 80 | 93 | 173 | |
| Seniors | 51 | 79 | 5 | 4 | 8 | 3 | | 1 | | | | | | | 2 | 3 | | | 66 | 90 | 156 | |
| Special Undergraduate | 2 | 1 | | | 1 | | | | | | | | | | | | | | 3 | 1 | 4 | |
| Total | 183 | 252 | 32 | 16 | 31 | 37 | 4 | 4 | 1 | 2 | 0 | 0 | 0 | 2 | 11 | 13 | 1 | 10 | 263 | 336 | 599 | |
| | | | | | | | | | | | | | | | | | | | | | | |
| Graduate | | | | | | | | | | | | | | | | | | | | | | |
| Certificate | 6 | 3 | 1 | | | | | 1 | | | | | | | | | | | 7 | 4 | 11 | |
| Masters | 215 | 93 | 17 | 2 | 10 | 6 | 3 | 1 | 1 | | | | | 7 | 11 | 3 | 2 | 1 | 266 | 106 | 372 | |
| Doctoral | 12 | 13 | 1 | | | 1 | 1 | | | | | | | 4 | 6 | 1 | | | 19 | 20 | 39 | |
| Special Graduate | 2 | | | | | | | | | | | | | | | | | | 2 | 0 | 2 | |
| Total | 235 | 109 | 19 | 2 | 10 | 7 | 4 | 2 | 1 | 0 | 0 | 0 | 11 | 6 | 12 | 3 | 2 | 1 | 294 | 130 | 424 | |
| Total All Students | 418 | 361 | 51 | 18 | 41 | 44 | 8 | 6 | 2 | 2 | 0 | 0 | 11 | 8 | 23 | 16 | 3 | 11 | 557 | 466 | 1,023 | |

Figure 14B: College of Public Affairs & Community Service Administrative-site Head Count: Spring 2000-2012

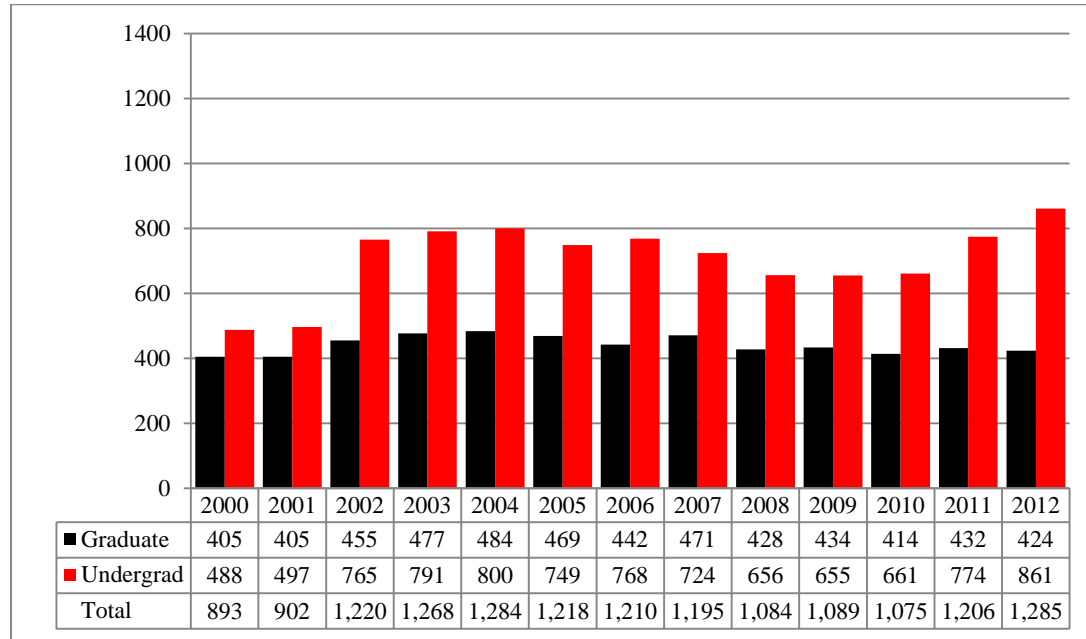


Figure 15B: College of Public Affairs & Community Service Administrative-site Student Credit Hours: Spring 2000 - 2012

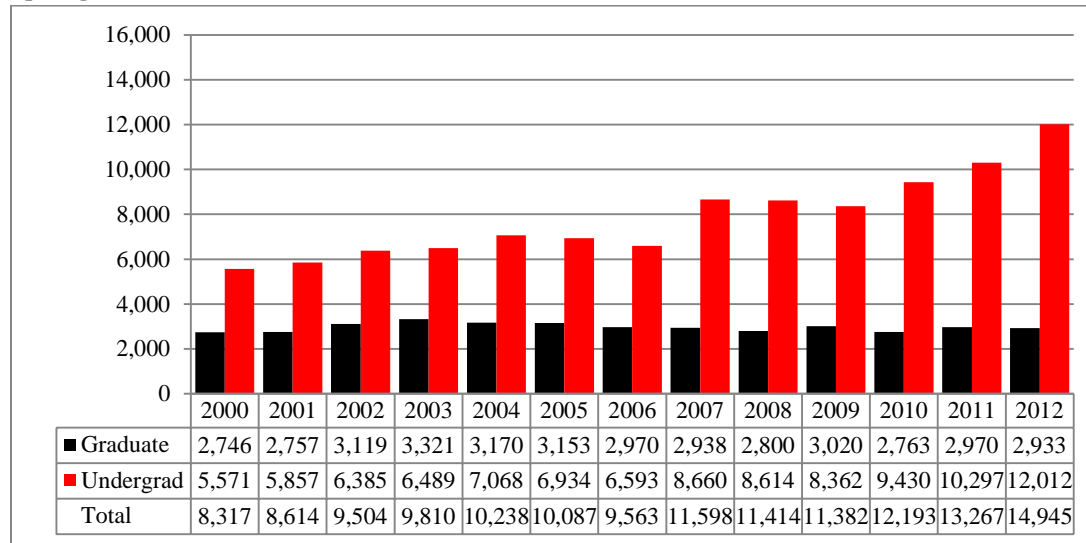


Table 8B: College of Public Affairs & Community Service Administrative-site Head Count Summary for Full and Part-Time, Undergraduate and Graduate Students by Gender and Race Classification: Spring 2012

| | White | | African American | | Hispanic | | Asian | | American Indian | | Nat Haw / Pac Isl | | Nonresident Alien | | Race Unknown | | Two or more races | | Total | | |
|------------------------|-------|-----|------------------|----|----------|----|-------|---|-----------------|---|-------------------|---|-------------------|---|--------------|----|-------------------|-----|-------|-----|-------|
| | F | M | F | M | F | M | F | M | F | M | F | M | F | M | F | M | F | M | F | M | Total |
| Full-Time | | | | | | | | | | | | | | | | | | | | | |
| Undergraduate | | | | | | | | | | | | | | | | | | | | | |
| First-Time Freshmen | | | | | | 2 | | | | | | | | | | | 1 | 0 | 3 | 3 | |
| Other Freshmen | 28 | 40 | 9 | 2 | 9 | 10 | | | 1 | | | | 1 | 3 | 4 | | 6 | 49 | 64 | 113 | |
| Sophomores | 35 | 51 | 9 | 4 | 10 | 7 | 1 | 3 | 1 | | | | 1 | 2 | | | 2 | 58 | 68 | 126 | |
| Juniors | 54 | 65 | 8 | 4 | 3 | 12 | 3 | | 1 | | | | | 3 | 3 | 2 | 1 | 73 | 86 | 159 | |
| Seniors | 47 | 70 | 4 | 1 | 7 | 3 | | 1 | | | | | | 2 | 3 | | | 60 | 78 | 138 | |
| Special Undergraduate | | | | | | | | | | | | | | | | | | 0 | 0 | 0 | |
| Total | 164 | 226 | 30 | 11 | 29 | 34 | 4 | 4 | 1 | 2 | 0 | 0 | 0 | 2 | 10 | 10 | 2 | 10 | 240 | 299 | 539 |
| | | | | | | | | | | | | | | | | | | | | | |
| Graduate | | | | | | | | | | | | | | | | | | | | | |
| Certificate | | | | | | | | | | | | | | | | | | | 0 | 0 | 0 |
| Masters | 79 | 18 | 4 | 1 | 6 | 3 | 1 | | | | | | 5 | 3 | 1 | 1 | | 99 | 23 | 122 | |
| Doctoral | 6 | 4 | | | | 1 | | | | | | | 1 | 3 | | | | 7 | 8 | 15 | |
| Special Graduate | | | | | | | | | | | | | | | | | | 0 | 0 | 0 | |
| Total | 85 | 22 | 4 | 1 | 6 | 4 | 1 | 0 | 0 | 0 | 0 | 0 | 6 | 3 | 3 | 1 | 1 | 0 | 106 | 31 | 137 |
| Total Full-Time | 249 | 248 | 34 | 12 | 35 | 38 | 5 | 4 | 1 | 2 | 0 | 0 | 6 | 5 | 13 | 11 | 3 | 10 | 346 | 330 | 676 |
| | | | | | | | | | | | | | | | | | | | | | |
| Part-Time | | | | | | | | | | | | | | | | | | | | | |
| Undergraduate | | | | | | | | | | | | | | | | | | | | | |
| First-Time Freshmen | | 1 | | | | 1 | | | | | | | | | | | | | 0 | 2 | 2 |
| Other Freshmen | 11 | 37 | 1 | 1 | 8 | 3 | | | | | | | | 3 | 3 | 1 | 1 | 24 | 45 | 69 | |
| Sophomores | 12 | 39 | 2 | 2 | 3 | 7 | | | | | | | | | 2 | | | 17 | 50 | 67 | |
| Juniors | 24 | 46 | 1 | 1 | | 4 | | | | | | | | | 2 | 1 | 1 | 26 | 54 | 80 | |
| Seniors | 23 | 59 | 2 | 7 | 2 | 3 | | 1 | 1 | | | | | 1 | 1 | | | 29 | 71 | 100 | |
| Special Undergraduate | 2 | 1 | | | 1 | | | | | | | | | | | | | 3 | 1 | 4 | |
| Total | 72 | 183 | 6 | 11 | 14 | 18 | 0 | 1 | 1 | 0 | 0 | 0 | 0 | 0 | 4 | 8 | 2 | 2 | 99 | 223 | 322 |
| | | | | | | | | | | | | | | | | | | | | | |
| Graduate | | | | | | | | | | | | | | | | | | | | | |
| Certificate | 6 | 3 | 1 | | | | | 1 | | | | | | | | | | 7 | 4 | 11 | |
| Masters | 136 | 75 | 13 | 1 | 4 | 3 | 2 | 1 | 1 | | | | 2 | 8 | 2 | 1 | 1 | 167 | 83 | 250 | |
| Doctoral | 6 | 9 | 1 | | | | 1 | | | | | | 3 | 3 | 1 | | | 12 | 12 | 24 | |
| Special Graduate | 2 | | | | | | | | | | | | | | | | | 2 | 0 | 2 | |
| Total | 150 | 87 | 15 | 1 | 4 | 3 | 3 | 2 | 1 | 0 | 0 | 0 | 5 | 3 | 9 | 2 | 1 | 1 | 188 | 99 | 287 |
| Total Part-Time | 222 | 270 | 21 | 12 | 18 | 21 | 3 | 3 | 2 | 0 | 0 | 0 | 5 | 3 | 13 | 10 | 3 | 3 | 287 | 322 | 609 |

Table 8B (continued)

| | White | | African American | | Hispanic | | Asian | | American Indian | | Nat Haw / Pac Isl | | Nonresident Alien | | Race Unknown | | Two or more races | | Total | | | |
|---------------------------|-------|-----|------------------|----|----------|----|-------|---|-----------------|---|-------------------|---|-------------------|---|--------------|----|-------------------|----|-------|-----|-------|--|
| | F | M | F | M | F | M | F | M | F | M | F | M | F | M | F | M | F | M | F | M | Total | |
| Total | | | | | | | | | | | | | | | | | | | | | | |
| Undergraduate | | | | | | | | | | | | | | | | | | | | | | |
| First-Time Freshmen | | 1 | | | | 3 | | | | | | | | | | | | 1 | 0 | 5 | 5 | |
| Other Freshmen | 39 | 77 | 10 | 3 | 17 | 13 | | | | 1 | | | | 1 | 6 | 7 | 1 | 7 | 73 | 109 | 182 | |
| Sophomores | 47 | 90 | 11 | 6 | 13 | 14 | 1 | 3 | 1 | | | | | 1 | 2 | 2 | | 2 | 75 | 118 | 193 | |
| Juniors | 78 | 111 | 9 | 5 | 3 | 16 | 3 | | | 1 | | | | | 3 | 5 | 3 | 2 | 99 | 140 | 239 | |
| Seniors | 70 | 129 | 6 | 8 | 9 | 6 | | 2 | 1 | | | | | | 3 | 4 | | | 89 | 149 | 238 | |
| Special Undergraduate | 2 | 1 | | | 1 | | | | | | | | | | | | | | 3 | 1 | 4 | |
| Total | 236 | 409 | 36 | 22 | 43 | 52 | 4 | 5 | 2 | 2 | 0 | 0 | 0 | 2 | 14 | 18 | 4 | 12 | 339 | 522 | 861 | |
| Graduate | | | | | | | | | | | | | | | | | | | | | | |
| Certificate | 6 | 3 | 1 | | | | | 1 | | | | | | | | | | | 7 | 4 | 11 | |
| Masters | 215 | 93 | 17 | 2 | 10 | 6 | 3 | 1 | 1 | | | | | 7 | 11 | 3 | 2 | 1 | 266 | 106 | 372 | |
| Doctoral | 12 | 13 | 1 | | | 1 | 1 | | | | | | | 4 | 6 | 1 | | | 19 | 20 | 39 | |
| Special Graduate | 2 | | | | | | | | | | | | | | | | | | 2 | 0 | 2 | |
| Total | 235 | 109 | 19 | 2 | 10 | 7 | 4 | 2 | 1 | 0 | 0 | 0 | 11 | 6 | 12 | 3 | 2 | 1 | 294 | 130 | 424 | |
| Total All Students | 471 | 518 | 55 | 24 | 53 | 59 | 8 | 7 | 3 | 2 | 0 | 0 | 11 | 8 | 26 | 21 | 6 | 13 | 633 | 652 | 1,285 | |

Figure 16: College of CPACS, Division of Continuing Studies Administrative-site Head Count: Spring 2000 - 2012

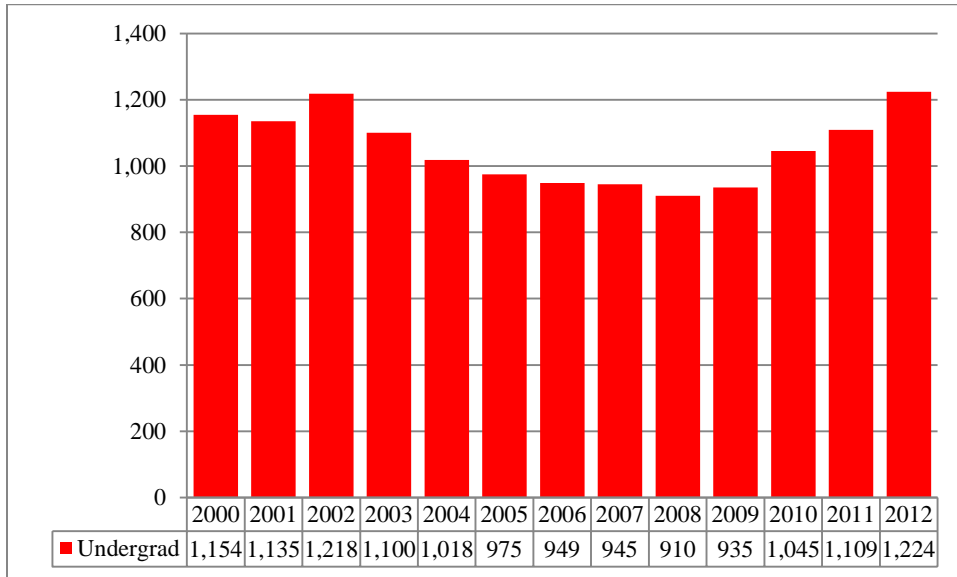


Table 9: College of CPACS Division of Continuing Studies Head Count Summary for Full and Part-Time, Undergraduate Students by Gender and Race Classification: Spring 2012

| | White | | African American | | Hispanic | | Asian | | American Indian | | Nat Haw / Pac Isl | | Nonresident Alien | | Race Unknown | | Two or more races | | Total | | |
|---------------------------|-------|-----|------------------|----|----------|----|-------|----|-----------------|---|-------------------|---|-------------------|----|--------------|----|-------------------|---|-------|-----|-------|
| | F | M | F | M | F | M | F | M | F | M | F | M | F | M | F | M | F | M | F | M | Total |
| Full-Time | | | | | | | | | | | | | | | | | | | | | |
| Undergraduate | | | | | | | | | | | | | | | | | | | | | |
| First-Time Freshmen | 2 | 2 | | | | 1 | | | | | | | | | 1 | | | | 2 | 4 | 6 |
| Other Freshmen | 14 | 34 | 4 | 5 | 2 | 3 | | | | 2 | | | 1 | 2 | | | | | 21 | 46 | 67 |
| Sophomores | 25 | 74 | 9 | 11 | 6 | 4 | | 2 | | | | | 3 | 1 | 2 | 2 | 1 | | 43 | 97 | 140 |
| Juniors | 56 | 92 | 19 | 15 | 6 | 6 | 4 | 2 | 2 | | | | 2 | 4 | 2 | 6 | 2 | 2 | 93 | 127 | 220 |
| Seniors | 70 | 88 | 22 | 10 | 3 | 3 | 1 | 4 | 3 | 2 | | | 1 | 1 | 4 | 8 | 1 | 1 | 105 | 117 | 222 |
| Special Undergraduate | 2 | 5 | | 1 | 2 | | | | | | | | | | 2 | | | | 4 | 8 | 12 |
| Total | 169 | 295 | 54 | 42 | 19 | 17 | 5 | 8 | 5 | 4 | 0 | 0 | 4 | 10 | 7 | 19 | 5 | 4 | 268 | 399 | 667 |
| Total Full-Time | 169 | 295 | 54 | 42 | 19 | 17 | 5 | 8 | 5 | 4 | 0 | 0 | 4 | 10 | 7 | 19 | 5 | 4 | 268 | 399 | 667 |
| | | | | | | | | | | | | | | | | | | | | | |
| Part-Time | | | | | | | | | | | | | | | | | | | | | |
| Undergraduate | | | | | | | | | | | | | | | | | | | | | |
| First-Time Freshmen | | 1 | | | | | | | | | | | | | | | | | 0 | 1 | 1 |
| Other Freshmen | 18 | 30 | 2 | 5 | 2 | 3 | | 1 | | 1 | | | | | | | | | 22 | 40 | 62 |
| Sophomores | 26 | 40 | 4 | 5 | 2 | 2 | 1 | | | | | | | | 2 | 1 | 1 | | 36 | 48 | 84 |
| Juniors | 47 | 52 | 10 | 4 | 4 | 4 | | 2 | 1 | 2 | | | | | 5 | 3 | 1 | 3 | 68 | 70 | 138 |
| Seniors | 93 | 94 | 13 | 9 | 9 | 2 | 2 | 1 | 2 | 2 | | | 1 | | 3 | 4 | 1 | 1 | 124 | 113 | 237 |
| Special Undergraduate | 14 | 13 | 1 | 3 | | 1 | 1 | | | | | | | | 1 | | | 1 | 17 | 18 | 35 |
| Total | 198 | 230 | 30 | 26 | 17 | 12 | 4 | 4 | 3 | 5 | 0 | 0 | 1 | 0 | 11 | 8 | 3 | 5 | 267 | 290 | 557 |
| Total Part-Time | 198 | 230 | 30 | 26 | 17 | 12 | 4 | 4 | 3 | 5 | 0 | 0 | 1 | 0 | 11 | 8 | 3 | 5 | 267 | 290 | 557 |
| | | | | | | | | | | | | | | | | | | | | | |
| Total | | | | | | | | | | | | | | | | | | | | | |
| Undergraduate | | | | | | | | | | | | | | | | | | | | | |
| First-Time Freshmen | 2 | 3 | | | | 1 | | | | | | | | | 1 | | | | 2 | 5 | 7 |
| Other Freshmen | 32 | 64 | 6 | 10 | 4 | 6 | | 1 | | 3 | | | 1 | 2 | | | | | 43 | 86 | 129 |
| Sophomores | 51 | 114 | 13 | 16 | 8 | 6 | 1 | 2 | | | | | 3 | 3 | 3 | 3 | 1 | | 79 | 145 | 224 |
| Juniors | 103 | 144 | 29 | 19 | 10 | 10 | 4 | 4 | 3 | 2 | | | 2 | 4 | 7 | 9 | 3 | 5 | 161 | 197 | 358 |
| Seniors | 163 | 182 | 35 | 19 | 12 | 5 | 3 | 5 | 5 | 4 | | | 2 | 1 | 7 | 12 | 2 | 2 | 229 | 230 | 459 |
| Special Undergraduate | 16 | 18 | 1 | 4 | 2 | 1 | 1 | | | | | | | | 1 | 2 | | 1 | 21 | 26 | 47 |
| Total | 367 | 525 | 84 | 68 | 36 | 29 | 9 | 12 | 8 | 9 | 0 | 0 | 5 | 10 | 18 | 27 | 8 | 9 | 535 | 689 | 1,224 |
| Total All Students | 367 | 525 | 84 | 68 | 36 | 29 | 9 | 12 | 8 | 9 | 0 | 0 | 5 | 10 | 18 | 27 | 8 | 9 | 535 | 689 | 1,224 |

Table 10: Cooperative Graduate Program Head Count Summary for Full and Part-time, Graduate Students by Gender and Race Classification: Spring 2012

| | White | | African American | | Hispanic | | Asian | | American Indian | | Nat Haw / Pac Isl | | Nonresident Alien | | Race Unknown | | Two or more races | | Total | | |
|---------------------------|-------|---|------------------|---|----------|---|-------|---|-----------------|---|-------------------|---|-------------------|---|--------------|---|-------------------|---|-------|---|-------|
| | F | M | F | M | F | M | F | M | F | M | F | M | F | M | F | M | F | M | F | M | Total |
| Full-Time | | | | | | | | | | | | | | | | | | | | | |
| Graduate | | | | | | | | | | | | | | | | | | | | | |
| Certificate | | | | | | | | | | | | | | | | | | | 0 | 0 | 0 |
| Masters | | | | | | | | | | | | | | | | | | | 0 | 0 | 0 |
| Doctoral | | | | | | | | | | | | | | | | | | | 0 | 0 | 0 |
| Special Graduate | | | | | | | | | | | | | | | | | | | 0 | 0 | 0 |
| Total | 0 | 0 | 0 | 0 | 0 | 0 | 0 | 0 | 0 | 0 | 0 | 0 | 0 | 0 | 0 | 0 | 0 | 0 | 0 | 0 | 0 |
| Total Full-Time | 0 | 0 | 0 | 0 | 0 | 0 | 0 | 0 | 0 | 0 | 0 | 0 | 0 | 0 | 0 | 0 | 0 | 0 | 0 | 0 | 0 |
| Part-Time | | | | | | | | | | | | | | | | | | | | | |
| Graduate | | | | | | | | | | | | | | | | | | | | | |
| Certificate | 1 | 1 | | 1 | | | | | | | | | | | 1 | | | | 2 | 2 | 4 |
| Masters | | | | | | | | | | | | | | | | | | | 0 | 0 | 0 |
| Doctoral | | | | | | | | | | | | | | | | | | | 0 | 0 | 0 |
| Special Graduate | | | | | | | | | | | | | | | | | | | 0 | 0 | 0 |
| Total | 1 | 1 | 0 | 1 | 0 | 0 | 0 | 0 | 0 | 0 | 0 | 0 | 0 | 0 | 1 | 0 | 0 | 0 | 2 | 2 | 4 |
| Total Part-Time | 1 | 1 | 0 | 1 | 0 | 0 | 0 | 0 | 0 | 0 | 0 | 0 | 0 | 0 | 1 | 0 | 0 | 0 | 2 | 2 | 4 |
| Total | | | | | | | | | | | | | | | | | | | | | |
| Graduate | | | | | | | | | | | | | | | | | | | | | |
| Certificate | 1 | 1 | | 1 | | | | | | | | | | | 1 | | | | 2 | 2 | 4 |
| Masters | | | | | | | | | | | | | | | | | | | 0 | 0 | 0 |
| Doctoral | | | | | | | | | | | | | | | | | | | 0 | 0 | 0 |
| Special Graduate | | | | | | | | | | | | | | | | | | | 0 | 0 | 0 |
| Total | 1 | 1 | 0 | 1 | 0 | 0 | 0 | 0 | 0 | 0 | 0 | 0 | 0 | 0 | 1 | 0 | 0 | 0 | 2 | 2 | 4 |
| Total All Students | 1 | 1 | 0 | 1 | 0 | 0 | 0 | 0 | 0 | 0 | 0 | 0 | 0 | 0 | 1 | 0 | 0 | 0 | 2 | 2 | 4 |

Figure 17: University Division Administrative-site Head Count: Spring 2000 – 2012

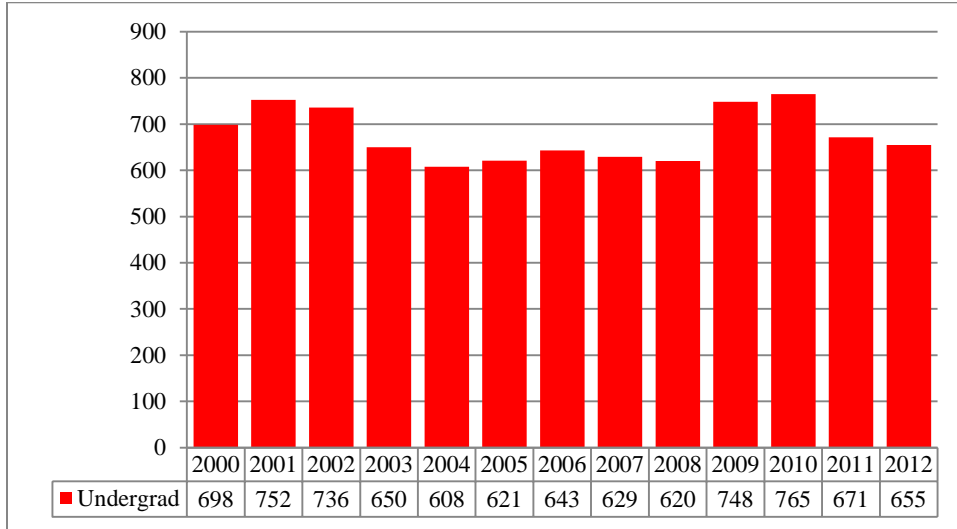


Figure 18: University Division Administrative-site Student Credit Hours: Spring 2000 – 2012

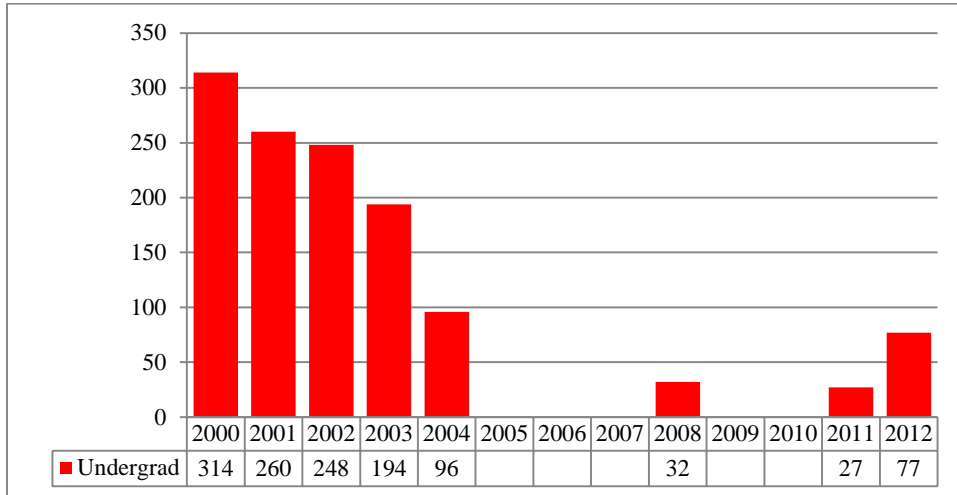


Table 11: University Division Head Count Summary for Full and Part-time, Undergraduate Students by Gender and Race Classification: Spring 2012

| | White | | African American | | Hispanic | | Asian | | American Indian | | Nat Haw / Pac Isl | | Nonresident Alien | | Race Unknown | | Two or more races | | Total | | |
|---------------------------|-------|-----|------------------|----|----------|----|-------|---|-----------------|---|-------------------|---|-------------------|---|--------------|----|-------------------|---|-------|-----|-------|
| | F | M | F | M | F | M | F | M | F | M | F | M | F | M | F | M | F | M | F | M | Total |
| Full-Time | | | | | | | | | | | | | | | | | | | | | |
| Undergraduate | | | | | | | | | | | | | | | | | | | | | |
| First-Time Freshmen | 1 | 7 | 1 | | | | | | | | | | | | | | | | 2 | 7 | 9 |
| Other Freshmen | 95 | 138 | 14 | 14 | 8 | 23 | 3 | 6 | | 1 | | 1 | | 1 | 11 | 11 | 3 | 5 | 134 | 200 | 334 |
| Sophomores | 75 | 75 | 7 | 10 | 9 | 12 | | 2 | 1 | | | | | | 5 | 2 | 3 | 4 | 100 | 105 | 205 |
| Juniors | 6 | 2 | | 1 | 1 | | | | | | | | | | | | | | 7 | 3 | 10 |
| Seniors | 1 | | | | | | | | | | | | | | | | | | 1 | 0 | 1 |
| Special Undergraduate | | | | | | | | | | | | | | | | | | | 0 | 0 | 0 |
| Total | 178 | 222 | 22 | 25 | 18 | 35 | 3 | 8 | 1 | 1 | 0 | 1 | 0 | 1 | 16 | 13 | 6 | 9 | 244 | 315 | 559 |
| Total Full-Time | 178 | 222 | 22 | 25 | 18 | 35 | 3 | 8 | 1 | 1 | 0 | 1 | 0 | 1 | 16 | 13 | 6 | 9 | 244 | 315 | 559 |
| | | | | | | | | | | | | | | | | | | | | | |
| Part-Time | | | | | | | | | | | | | | | | | | | | | |
| Undergraduate | | | | | | | | | | | | | | | | | | | | | |
| First-Time Freshmen | | 3 | | | | | | | | | | | | | | | | 1 | 1 | 3 | 4 |
| Other Freshmen | 17 | 20 | 1 | 8 | 3 | 8 | | | | | | | | | 1 | | 1 | | 23 | 36 | 59 |
| Sophomores | 13 | 11 | 2 | 3 | | 1 | | | | | | | | | | | | | 15 | 15 | 30 |
| Juniors | | | 1 | | | | | | | | | | | | | 1 | | | 1 | 1 | 2 |
| Seniors | | 1 | | | | | | | | | | | | | | | | | 0 | 1 | 1 |
| Special Undergraduate | | | | | | | | | | | | | | | | | | | 0 | 0 | 0 |
| Total | 30 | 35 | 4 | 11 | 3 | 9 | 0 | 0 | 0 | 0 | 0 | 0 | 0 | 0 | 1 | 1 | 2 | 0 | 40 | 56 | 96 |
| Total Part-Time | 30 | 35 | 4 | 11 | 3 | 9 | 0 | 0 | 0 | 0 | 0 | 0 | 0 | 0 | 1 | 1 | 2 | 0 | 40 | 56 | 96 |
| | | | | | | | | | | | | | | | | | | | | | |
| Total | | | | | | | | | | | | | | | | | | | | | |
| Undergraduate | | | | | | | | | | | | | | | | | | | | | |
| First-Time Freshmen | 1 | 10 | 1 | | | | | | | | | | | | | | | 1 | 3 | 10 | 13 |
| Other Freshmen | 112 | 158 | 15 | 22 | 11 | 31 | 3 | 6 | | 1 | | 1 | | 1 | 12 | 11 | 4 | 5 | 157 | 236 | 393 |
| Sophomores | 88 | 86 | 9 | 13 | 9 | 13 | | 2 | 1 | | | | | | 5 | 2 | 3 | 4 | 115 | 120 | 235 |
| Juniors | 6 | 2 | 1 | 1 | 1 | | | | | | | | | | | 1 | | | 8 | 4 | 12 |
| Seniors | 1 | 1 | | | | | | | | | | | | | | | | | 1 | 1 | 2 |
| Special Undergraduate | | | | | | | | | | | | | | | | | | | 0 | 0 | 0 |
| Total | 208 | 257 | 26 | 36 | 21 | 44 | 3 | 8 | 1 | 1 | 0 | 1 | 0 | 1 | 17 | 14 | 8 | 9 | 284 | 371 | 655 |
| Total All Students | 208 | 257 | 26 | 36 | 21 | 44 | 3 | 8 | 1 | 1 | 0 | 1 | 0 | 1 | 17 | 14 | 8 | 9 | 284 | 371 | 655 |

Figure 19: Non-Degree/Intercampus Special Undergraduate Students Administrative-site Head Count: Spring 2000 – 2012

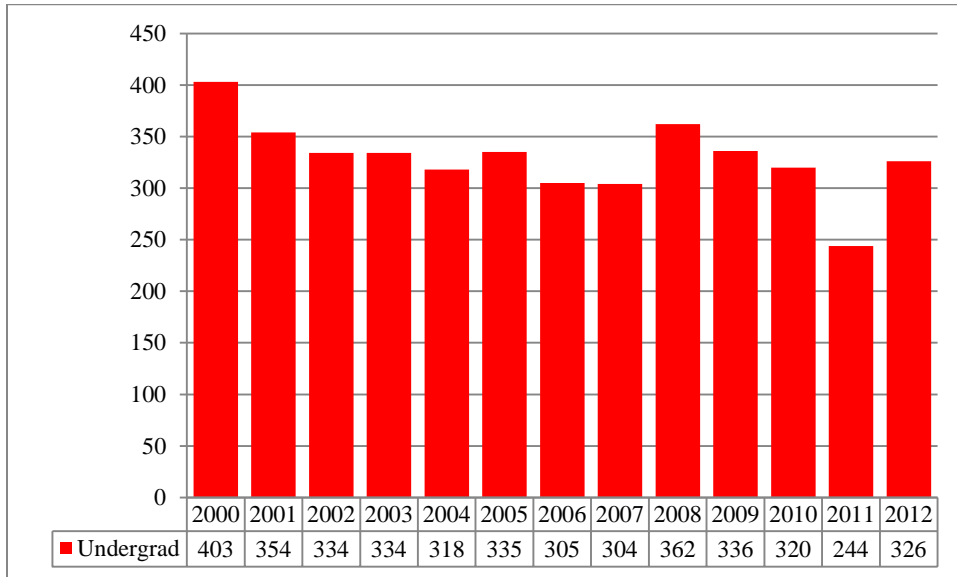


Table 12: Non-Degree/Intercampus Head Count Summary for Full and Part-time, Special Undergraduate Students by Gender and Race Classification: Spring 2012

| | White | | African American | | Hispanic | | Asian | | American Indian | | Nat Haw / Pac Isl | | Nonresident Alien | | Race Unknown | | Two or more races | | Total | | | |
|---------------------------|-------|-----|------------------|----|----------|---|-------|---|-----------------|---|-------------------|---|-------------------|----|--------------|----|-------------------|----|-------|-----|-------|---|
| | F | M | F | M | F | M | F | M | F | M | F | M | F | M | F | M | F | M | F | M | Total | |
| Full-Time | | | | | | | | | | | | | | | | | | | | | | |
| Undergraduate | | | | | | | | | | | | | | | | | | | | | | |
| First-Time Freshmen | | | | | | | | | | | | | | | | | | | | 0 | 0 | 0 |
| Other Freshmen | 4 | 10 | | | | 3 | | | | | | | 12 | 9 | | | | 2 | 16 | 24 | 40 | |
| Sophomores | | 2 | | | | | | | | | | | 1 | | | | | | 1 | 2 | 3 | |
| Juniors | 1 | 2 | | | 1 | | | | | | | | 2 | | | | | | 4 | 2 | 6 | |
| Seniors | | | | | | | | | | | | | 1 | | | | | | 1 | 0 | 1 | |
| Special Undergraduate | 2 | 2 | | | 1 | | 1 | | | | | | | | | | | | 3 | 3 | 6 | |
| Total | 7 | 16 | 0 | 0 | 2 | 3 | 0 | 1 | 0 | 0 | 0 | 0 | 16 | 9 | 0 | 0 | 0 | 2 | 25 | 31 | 56 | |
| Total Full-Time | 7 | 16 | 0 | 0 | 2 | 3 | 0 | 1 | 0 | 0 | 0 | 0 | 16 | 9 | 0 | 0 | 0 | 2 | 25 | 31 | 56 | |
| | | | | | | | | | | | | | | | | | | | | | | |
| Part-Time | | | | | | | | | | | | | | | | | | | | | | |
| Undergraduate | | | | | | | | | | | | | | | | | | | | | | |
| First-Time Freshmen | | | | | | | | | | | | | | | | | | | | 0 | 0 | 0 |
| Other Freshmen | 43 | 33 | 6 | 10 | 7 | 3 | 2 | 3 | | | | | 1 | 7 | 2 | 2 | 4 | 67 | 56 | 123 | | |
| Sophomores | 6 | 4 | | 1 | | | 1 | | | 1 | | | | | 1 | 1 | | 1 | 8 | 8 | 16 | |
| Juniors | 4 | 5 | | | | | | 1 | | | | | | | 1 | | | | 4 | 7 | 11 | |
| Seniors | 5 | 3 | 1 | | | 2 | | | | | | | | | | 1 | | | 6 | 6 | 12 | |
| Special Undergraduate | 46 | 41 | 5 | 1 | | 1 | 3 | 1 | 1 | | | | | | 6 | 2 | 1 | 57 | 51 | 108 | | |
| Total | 104 | 86 | 12 | 12 | 7 | 6 | 6 | 5 | 1 | 1 | 0 | 0 | 0 | 2 | 8 | 10 | 4 | 6 | 142 | 128 | 270 | |
| Total Part-Time | 104 | 86 | 12 | 12 | 7 | 6 | 6 | 5 | 1 | 1 | 0 | 0 | 0 | 2 | 8 | 10 | 4 | 6 | 142 | 128 | 270 | |
| | | | | | | | | | | | | | | | | | | | | | | |
| Total | | | | | | | | | | | | | | | | | | | | | | |
| Undergraduate | | | | | | | | | | | | | | | | | | | | | | |
| First-Time Freshmen | | | | | | | | | | | | | | | | | | | | 0 | 0 | 0 |
| Other Freshmen | 47 | 43 | 6 | 10 | 7 | 6 | 2 | 3 | | | | | 12 | 10 | 7 | 2 | 2 | 6 | 83 | 80 | 163 | |
| Sophomores | 6 | 6 | | 1 | | | 1 | | | 1 | | | 1 | | 1 | 1 | | 1 | 9 | 10 | 19 | |
| Juniors | 5 | 7 | | | 1 | | | 1 | | | | | 2 | 1 | | | | | 8 | 9 | 17 | |
| Seniors | 5 | 3 | 1 | | | 2 | | | | | | | 1 | | | 1 | | | 7 | 6 | 13 | |
| Special Undergraduate | 48 | 43 | 5 | 1 | 1 | 1 | 3 | 2 | 1 | | | | | | 6 | 2 | 1 | 60 | 54 | 114 | | |
| Total | 111 | 102 | 12 | 12 | 9 | 9 | 6 | 6 | 1 | 1 | 0 | 0 | 16 | 11 | 8 | 10 | 4 | 8 | 167 | 159 | 326 | |
| Total All Students | 111 | 102 | 12 | 12 | 9 | 9 | 6 | 6 | 1 | 1 | 0 | 0 | 16 | 11 | 8 | 10 | 4 | 8 | 167 | 159 | 326 | |

Figure 20: Non-Degree/Inter-campus Special Graduate Students Administrative-Site Head Count: Spring 2000 – 2012

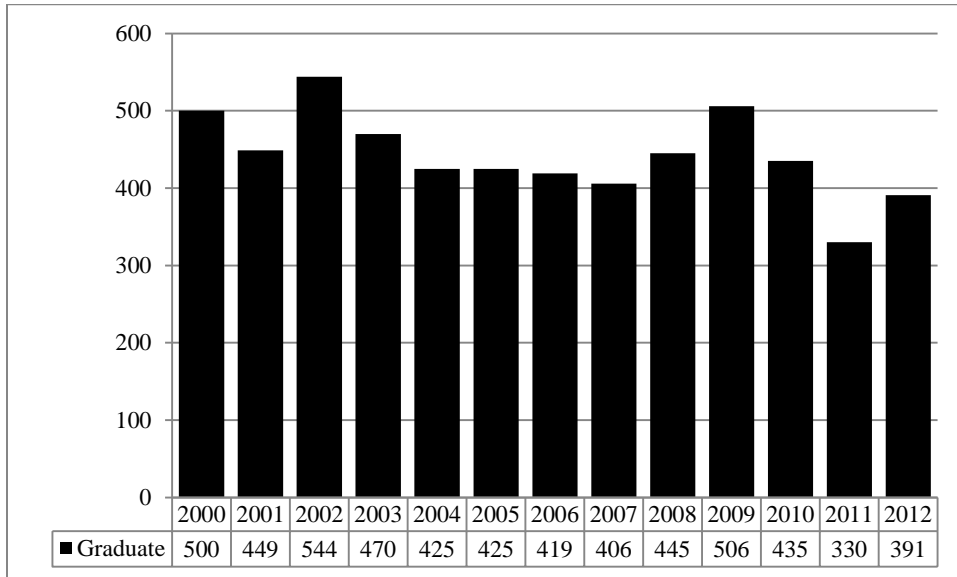


Table 13: Non-Degree/Inter-campus Head Count Summary for Full and Part-Time, Special Graduate Students by Gender and Race Classification: Spring 2012

| | White | | African American | | Hispanic | | Asian | | American Indian | | Nat Haw / Pac Isl | | Nonresident Alien | | Race Unknown | | Two or more races | | Total | | | |
|---------------------------|-------|-----|------------------|---|----------|---|-------|---|-----------------|---|-------------------|---|-------------------|----|--------------|---|-------------------|---|-------|-----|-------|---|
| | F | M | F | M | F | M | F | M | F | M | F | M | F | M | F | M | F | M | F | M | Total | |
| Full-Time | | | | | | | | | | | | | | | | | | | | | | |
| Graduate | | | | | | | | | | | | | | | | | | | | | | |
| Certificate | | 1 | | | | | | | | | | | | | | | | | | 0 | 1 | 1 |
| Masters | | | | | | | | | | | | | | | | | | | | 0 | 0 | 0 |
| Doctoral | | | | | | | | | | | | | | | | | | | | 0 | 0 | 0 |
| Special Graduate | 15 | 40 | 2 | | | 1 | 1 | 2 | | | | | 10 | 35 | 1 | 2 | 1 | | 30 | 80 | 110 | |
| Total | 15 | 41 | 2 | 0 | 0 | 1 | 1 | 2 | 0 | 0 | 0 | 0 | 10 | 35 | 1 | 2 | 1 | 0 | 30 | 81 | 111 | |
| Total Full-Time | 15 | 41 | 2 | 0 | 0 | 1 | 1 | 2 | 0 | 0 | 0 | 0 | 10 | 35 | 1 | 2 | 1 | 0 | 30 | 81 | 111 | |
| | | | | | | | | | | | | | | | | | | | | | | |
| Part-Time | | | | | | | | | | | | | | | | | | | | | | |
| Graduate | | | | | | | | | | | | | | | | | | | | | | |
| Certificate | | 1 | | | | | | | | | | | 1 | | | | | | | 1 | 1 | 2 |
| Masters | | | | | | | | | | | | | | | | | | | | 0 | 0 | 0 |
| Doctoral | | | | | | | | | | | | | | | | | | | | 0 | 0 | 0 |
| Special Graduate | 134 | 88 | 8 | 7 | 6 | 3 | 4 | 1 | 1 | | | | 9 | 10 | 4 | 2 | 1 | | 167 | 111 | 278 | |
| Total | 134 | 89 | 8 | 7 | 6 | 3 | 4 | 1 | 1 | 0 | 0 | 0 | 10 | 10 | 4 | 2 | 1 | 0 | 168 | 112 | 280 | |
| Total Part-Time | 134 | 89 | 8 | 7 | 6 | 3 | 4 | 1 | 1 | 0 | 0 | 0 | 10 | 10 | 4 | 2 | 1 | 0 | 168 | 112 | 280 | |
| | | | | | | | | | | | | | | | | | | | | | | |
| Total | | | | | | | | | | | | | | | | | | | | | | |
| Graduate | | | | | | | | | | | | | | | | | | | | | | |
| Certificate | | 2 | | | | | | | | | | | 1 | | | | | | | 1 | 2 | 3 |
| Masters | | | | | | | | | | | | | | | | | | | | 0 | 0 | 0 |
| Doctoral | | | | | | | | | | | | | | | | | | | | 0 | 0 | 0 |
| Special Graduate | 149 | 128 | 10 | 7 | 6 | 4 | 5 | 3 | 1 | | | | 19 | 45 | 5 | 4 | 2 | | 197 | 191 | 388 | |
| Total | 149 | 130 | 10 | 7 | 6 | 4 | 5 | 3 | 1 | 0 | 0 | 0 | 20 | 45 | 5 | 4 | 2 | 0 | 198 | 193 | 391 | |
| Total All Students | 149 | 130 | 10 | 7 | 6 | 4 | 5 | 3 | 1 | 0 | 0 | 0 | 20 | 45 | 5 | 4 | 2 | 0 | 198 | 193 | 391 | |

Figure 21: College of Agriculture Delivery-site Head Count: Spring 2000 – 2012

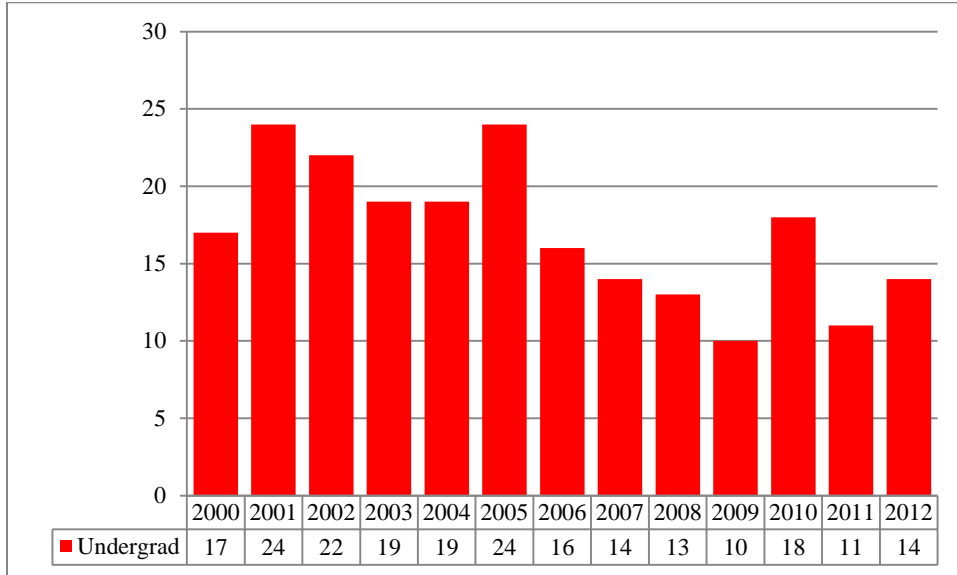


Figure 22: College of Agriculture Delivery-site Student Credit Hours: Spring 2000 – 2012

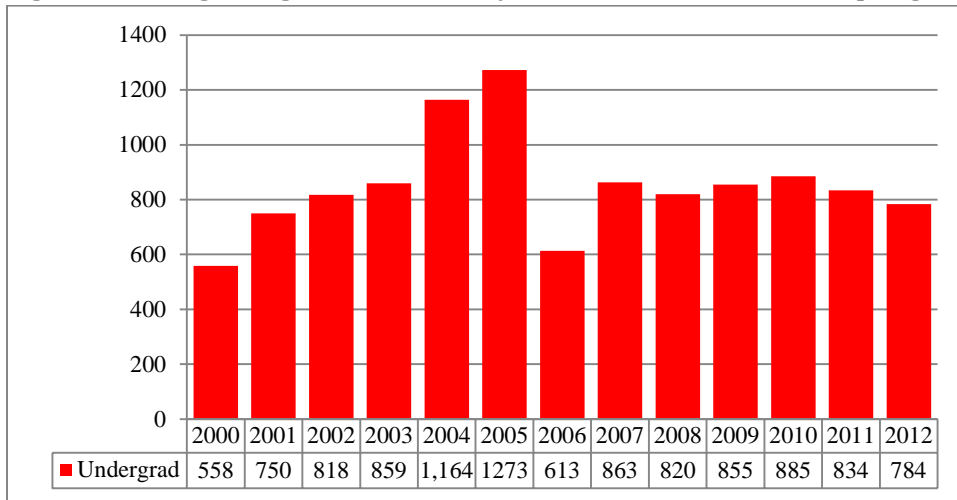


Table 14: College of Agriculture Head Count Summary for Full and Part-time, Undergraduate Students by Gender and Race Classification: Spring 2012

| | White | | African American | | Hispanic | | Asian | | American Indian | | Nat Haw / Pac Isl | | Nonresident Alien | | Race Unknown | | Two or more races | | Total | | | |
|---------------------------|-------|---|------------------|---|----------|---|-------|---|-----------------|---|-------------------|---|-------------------|---|--------------|---|-------------------|---|-------|---|-------|---|
| | F | M | F | M | F | M | F | M | F | M | F | M | F | M | F | M | F | M | F | M | Total | |
| Full-Time | | | | | | | | | | | | | | | | | | | | | | |
| Undergraduate | | | | | | | | | | | | | | | | | | | | | | |
| First-Time Freshmen | | | | | | | | | | | | | | | | | | | | 0 | 0 | 0 |
| Other Freshmen | | 2 | | | | | | | | | | | | | | | | | | 0 | 2 | 2 |
| Sophomores | 3 | 2 | | | | | | | | | | | | | | | | | | 3 | 2 | 5 |
| Juniors | | 2 | | | | | | | | | | | | | | | | | | 0 | 2 | 2 |
| Seniors | | 1 | | | | | | | | | | | | | | | | | | 0 | 1 | 1 |
| Special Undergraduate | | | | | | | | | | | | | 1 | | | | | | | 1 | 0 | 1 |
| Total | 3 | 7 | 0 | 0 | 0 | 0 | 0 | 0 | 0 | 0 | 0 | 0 | 1 | 0 | 0 | 0 | 0 | 0 | 4 | 7 | 11 | |
| Total Full-Time | 3 | 7 | 0 | 0 | 0 | 0 | 0 | 0 | 0 | 0 | 0 | 0 | 1 | 0 | 0 | 0 | 0 | 0 | 4 | 7 | 11 | |
| | | | | | | | | | | | | | | | | | | | | | | |
| Part-Time | | | | | | | | | | | | | | | | | | | | | | |
| Undergraduate | | | | | | | | | | | | | | | | | | | | | | |
| First-Time Freshmen | | | | | | | | | | | | | | | | | | | | 0 | 0 | 0 |
| Other Freshmen | | | | | | | | | | | | | | | | | | | | 0 | 0 | 0 |
| Sophomores | 1 | | | | | | | | | | | | | | | | | | | 1 | 0 | 1 |
| Juniors | | | | | | | | | | | | | | | | | | | | 0 | 0 | 0 |
| Seniors | | 1 | | | | | | | | | | | | | | 1 | | | | 0 | 2 | 2 |
| Special Undergraduate | | | | | | | | | | | | | | | | | | | | 0 | 0 | 0 |
| Total | 1 | 1 | 0 | 0 | 0 | 0 | 0 | 0 | 0 | 0 | 0 | 0 | 0 | 0 | 0 | 1 | 0 | 0 | 1 | 2 | 3 | |
| Total Part-Time | 1 | 1 | 0 | 0 | 0 | 0 | 0 | 0 | 0 | 0 | 0 | 0 | 0 | 0 | 0 | 1 | 0 | 0 | 1 | 2 | 3 | |
| | | | | | | | | | | | | | | | | | | | | | | |
| Total | | | | | | | | | | | | | | | | | | | | | | |
| Undergraduate | | | | | | | | | | | | | | | | | | | | | | |
| First-Time Freshmen | | | | | | | | | | | | | | | | | | | | 0 | 0 | 0 |
| Other Freshmen | | 2 | | | | | | | | | | | | | | | | | | 0 | 2 | 2 |
| Sophomores | 4 | 2 | | | | | | | | | | | | | | | | | | 4 | 2 | 6 |
| Juniors | | 2 | | | | | | | | | | | | | | | | | | 0 | 2 | 2 |
| Seniors | | 2 | | | | | | | | | | | | | | 1 | | | | 0 | 3 | 3 |
| Special Undergraduate | | | | | | | | | | | | | 1 | | | | | | | 1 | 0 | 1 |
| Total | 4 | 8 | 0 | 0 | 0 | 0 | 0 | 0 | 0 | 0 | 0 | 0 | 1 | 0 | 0 | 1 | 0 | 0 | 5 | 9 | 14 | |
| Total All Students | 4 | 8 | 0 | 0 | 0 | 0 | 0 | 0 | 0 | 0 | 0 | 0 | 1 | 0 | 0 | 1 | 0 | 0 | 5 | 9 | 14 | |

Figure 23: College of Architecture Delivery-site Head Count: Spring 2000 - 2012

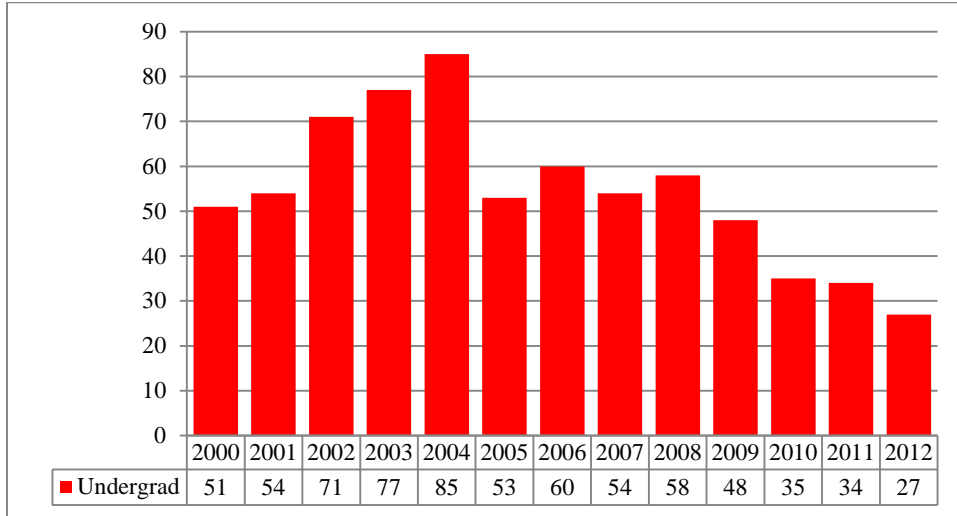


Figure 24: College of Architecture Delivery-site Student Credit Hours: Spring 2000 - 2012

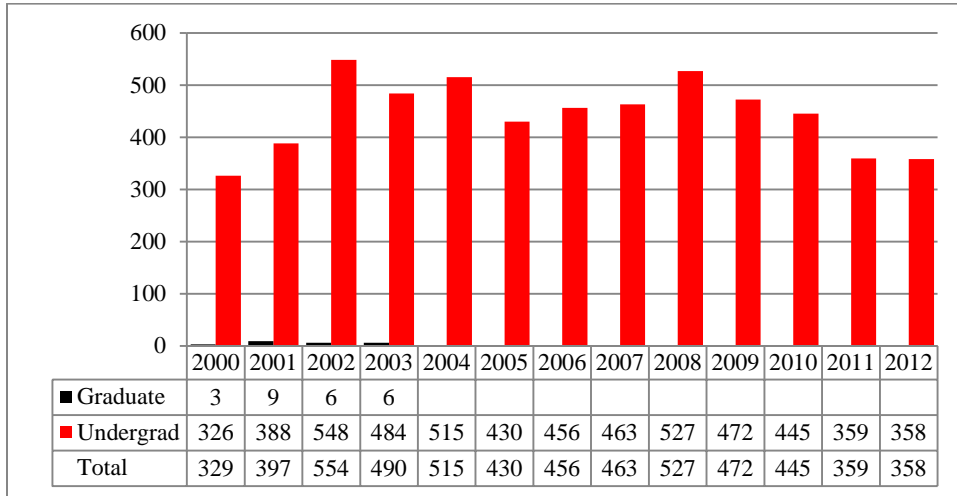


Table 16: College of Architecture, Head Count Summary for Full and Part-Time, Undergraduate Students by Gender and Race Classification: Spring 2012

| | White | | African American | | Hispanic | | Asian | | American Indian | | Nat Haw / Pac Isl | | Nonresident Alien | | Race Unknown | | Two or more races | | Total | | |
|---------------------------|-------|----|------------------|---|----------|---|-------|---|-----------------|---|-------------------|---|-------------------|---|--------------|---|-------------------|----|-------|----|-------|
| | F | M | F | M | F | M | F | M | F | M | F | M | F | M | F | M | F | M | F | M | Total |
| Full-Time | | | | | | | | | | | | | | | | | | | | | |
| Undergraduate | | | | | | | | | | | | | | | | | | | | | |
| First-Time Freshmen | | | | | | | | | | | | | | | | | | | 0 | 0 | 0 |
| Other Freshmen | 4 | 7 | | | | | | | | | | | | | | | | 4 | 7 | 11 | |
| Sophomores | 1 | 3 | | | 1 | | | | | | | | 1 | | | | | 2 | 4 | 6 | |
| Juniors | 2 | 3 | | | | | | | | | | | | 1 | | | | 3 | 3 | 6 | |
| Seniors | | | | | | | | | | | | | | | | | | 0 | 0 | 0 | |
| Special Undergraduate | | | | | | | | | | | | | | | | | | 0 | 0 | 0 | |
| Total | 7 | 13 | 0 | 0 | 1 | 0 | 0 | 0 | 0 | 0 | 0 | 0 | 1 | 1 | 0 | 0 | 0 | 9 | 14 | 23 | |
| Total Full-Time | 7 | 13 | 0 | 0 | 1 | 0 | 0 | 0 | 0 | 0 | 0 | 0 | 1 | 1 | 0 | 0 | 0 | 9 | 14 | 23 | |
| | | | | | | | | | | | | | | | | | | | | | |
| Part-Time | | | | | | | | | | | | | | | | | | | | | |
| Undergraduate | | | | | | | | | | | | | | | | | | | | | |
| First-Time Freshmen | | | | | | | | | | | | | | | | | | | 0 | 0 | 0 |
| Other Freshmen | | 1 | | | | | | | | | | | | | | | | 0 | 1 | 1 | |
| Sophomores | | | | | | | | | | | | | | | | | | 0 | 0 | 0 | |
| Juniors | 1 | | | | | | | | | | | | | | | | | 1 | 0 | 1 | |
| Seniors | | | | | | | | | | | | | | | | | | 0 | 0 | 0 | |
| Special Undergraduate | 2 | | | | | | | | | | | | | | | | | 2 | 0 | 2 | |
| Total | 3 | 1 | 0 | 0 | 0 | 0 | 0 | 0 | 0 | 0 | 0 | 0 | 0 | 0 | 0 | 0 | 0 | 3 | 1 | 4 | |
| Total Part-Time | 3 | 1 | 0 | 0 | 0 | 0 | 0 | 0 | 0 | 0 | 0 | 0 | 0 | 0 | 0 | 0 | 0 | 3 | 1 | 4 | |
| | | | | | | | | | | | | | | | | | | | | | |
| Total | | | | | | | | | | | | | | | | | | | | | |
| Undergraduate | | | | | | | | | | | | | | | | | | | | | |
| First-Time Freshmen | | | | | | | | | | | | | | | | | | | 0 | 0 | 0 |
| Other Freshmen | 4 | 8 | | | | | | | | | | | | | | | | 4 | 8 | 12 | |
| Sophomores | 1 | 3 | | | 1 | | | | | | | | 1 | | | | | 2 | 4 | 6 | |
| Juniors | 3 | 3 | | | | | | | | | | | | 1 | | | | 4 | 3 | 7 | |
| Seniors | | | | | | | | | | | | | | | | | | 0 | 0 | 0 | |
| Special Undergraduate | 2 | | | | | | | | | | | | | | | | | 2 | 0 | 2 | |
| Total | 10 | 14 | 0 | 0 | 1 | 0 | 0 | 0 | 0 | 0 | 0 | 0 | 1 | 1 | 0 | 0 | 0 | 12 | 15 | 27 | |
| Total All Students | 10 | 14 | 0 | 0 | 1 | 0 | 0 | 0 | 0 | 0 | 0 | 0 | 1 | 1 | 0 | 0 | 0 | 12 | 15 | 27 | |

Figure 25: College of Engineering Delivery-site Head Count: Spring 2000 - 2012

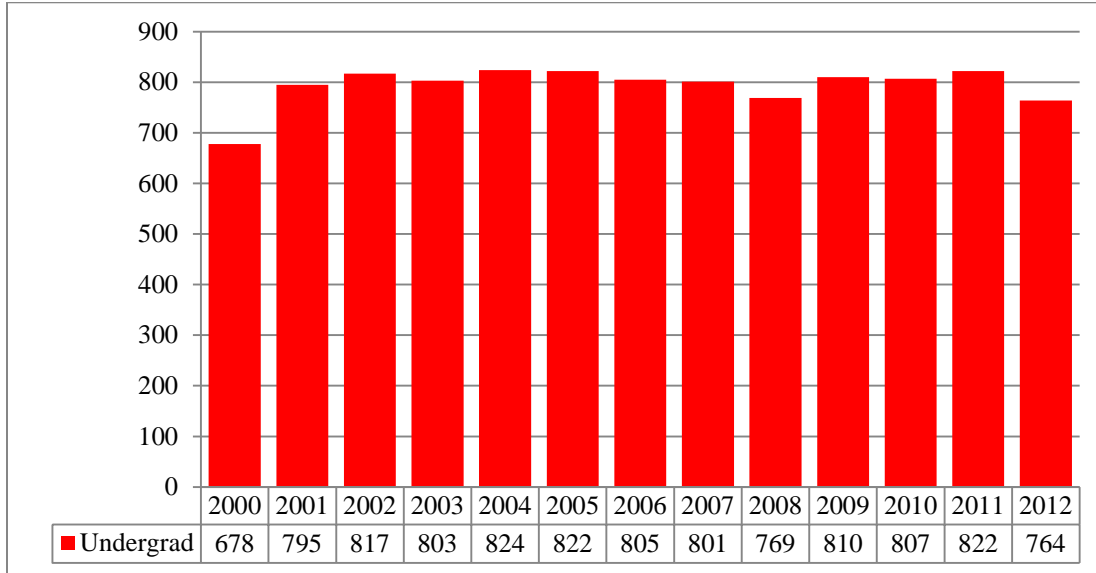


Figure 26: College of Engineering Delivery-site Student Credit Hours: Spring 2000 - 2012

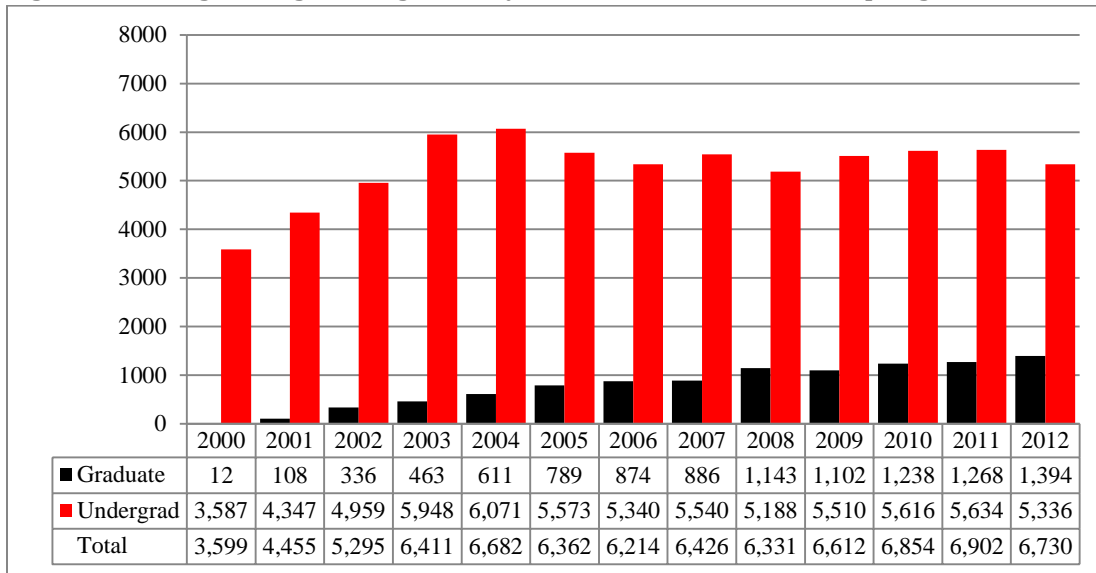


Table 16: College of Engineering Head Count Summary for Full and Part-time, Undergraduate Students by Gender and Race Classification: Spring 2012

| | White | | African American | | Hispanic | | Asian | | American Indian | | Nat Haw / Pac Isl | | Nonresident Alien | | Race Unknown | | Two or more races | | Total | | |
|---------------------------|-------|-----|------------------|----|----------|----|-------|----|-----------------|---|-------------------|---|-------------------|----|--------------|----|-------------------|----|-------|-----|-------|
| | F | M | F | M | F | M | F | M | F | M | F | M | F | M | F | M | F | M | F | M | Total |
| Full-Time | | | | | | | | | | | | | | | | | | | | | |
| Undergraduate | | | | | | | | | | | | | | | | | | | | | |
| First-Time Freshmen | | 1 | | | | | | | | | | | 3 | 5 | | | | | 3 | 6 | 9 |
| Other Freshmen | 7 | 69 | 1 | 2 | | 7 | 1 | 1 | | | | | 2 | 1 | 7 | | 3 | 10 | 91 | 101 | |
| Sophomores | 16 | 101 | | 4 | | 4 | 2 | 3 | | | | | 3 | | 2 | 1 | 3 | 19 | 120 | 139 | |
| Juniors | 14 | 101 | 1 | 4 | 2 | 6 | | 2 | | | | | 2 | 1 | 4 | | | 18 | 119 | 137 | |
| Seniors | 29 | 160 | 1 | 13 | 2 | 10 | 1 | 4 | | | | | 9 | 2 | 5 | | | 35 | 201 | 236 | |
| Special Undergraduate | 3 | 19 | | 1 | | | | | | | | | | | | | | 3 | 20 | 23 | |
| Total | 69 | 451 | 3 | 24 | 4 | 27 | 4 | 10 | 0 | 0 | 0 | 0 | 3 | 21 | 4 | 18 | 1 | 6 | 88 | 557 | 645 |
| Total Full-Time | 69 | 451 | 3 | 24 | 4 | 27 | 4 | 10 | 0 | 0 | 0 | 0 | 3 | 21 | 4 | 18 | 1 | 6 | 88 | 557 | 645 |
| | | | | | | | | | | | | | | | | | | | | | |
| Part-Time | | | | | | | | | | | | | | | | | | | | | |
| Undergraduate | | | | | | | | | | | | | | | | | | | | | |
| First-Time Freshmen | | | | | | | | | | | | | | | | | | | 0 | 0 | 0 |
| Other Freshmen | | 6 | | 1 | | 1 | | | | | | | 1 | 1 | | 1 | | 1 | 11 | 12 | |
| Sophomores | | 17 | 1 | 1 | 1 | | | 1 | | | | | 2 | 1 | | 1 | | 4 | 22 | 26 | |
| Juniors | 1 | 15 | | 3 | | | 1 | 1 | | | | | | | | 2 | | 2 | 21 | 23 | |
| Seniors | | 39 | 1 | 2 | | 1 | | 1 | | 1 | | | | | | 4 | | 1 | 48 | 49 | |
| Special Undergraduate | 2 | 6 | | | | 1 | | | | | | | | | | | | 2 | 7 | 9 | |
| Total | 3 | 83 | 2 | 7 | 1 | 3 | 1 | 3 | 0 | 1 | 0 | 0 | 3 | 2 | 0 | 8 | 0 | 2 | 10 | 109 | 119 |
| Total Part-Time | 3 | 83 | 2 | 7 | 1 | 3 | 1 | 3 | 0 | 1 | 0 | 0 | 3 | 2 | 0 | 8 | 0 | 2 | 10 | 109 | 119 |
| | | | | | | | | | | | | | | | | | | | | | |
| Total | | | | | | | | | | | | | | | | | | | | | |
| Undergraduate | | | | | | | | | | | | | | | | | | | | | |
| First-Time Freshmen | | 1 | | | | | | | | | | | 3 | 5 | | | | 3 | 6 | 9 | |
| Other Freshmen | 7 | 75 | 1 | 3 | | 8 | 1 | 1 | | | | | 1 | 3 | 1 | 8 | | 4 | 11 | 102 | 113 |
| Sophomores | 16 | 118 | 1 | 5 | 1 | 4 | 2 | 4 | | | | | 2 | 4 | | 3 | 1 | 4 | 23 | 142 | 165 |
| Juniors | 15 | 116 | 1 | 7 | 2 | 6 | 1 | 3 | | | | | | 2 | 1 | 6 | | | 20 | 140 | 160 |
| Seniors | 29 | 199 | 2 | 15 | 2 | 11 | 1 | 5 | | 1 | | | | 9 | 2 | 9 | | | 36 | 249 | 285 |
| Special Undergraduate | 5 | 25 | | 1 | | 1 | | | | | | | | | | | | | 5 | 27 | 32 |
| Total | 72 | 534 | 5 | 31 | 5 | 30 | 5 | 13 | 0 | 1 | 0 | 0 | 6 | 23 | 4 | 26 | 1 | 8 | 98 | 666 | 764 |
| Total All Students | 72 | 534 | 5 | 31 | 5 | 30 | 5 | 13 | 0 | 1 | 0 | 0 | 6 | 23 | 4 | 26 | 1 | 8 | 98 | 666 | 764 |

Figure 27: College of Education and Human Sciences Delivery-site Head Count: Spring 2000 – 2012

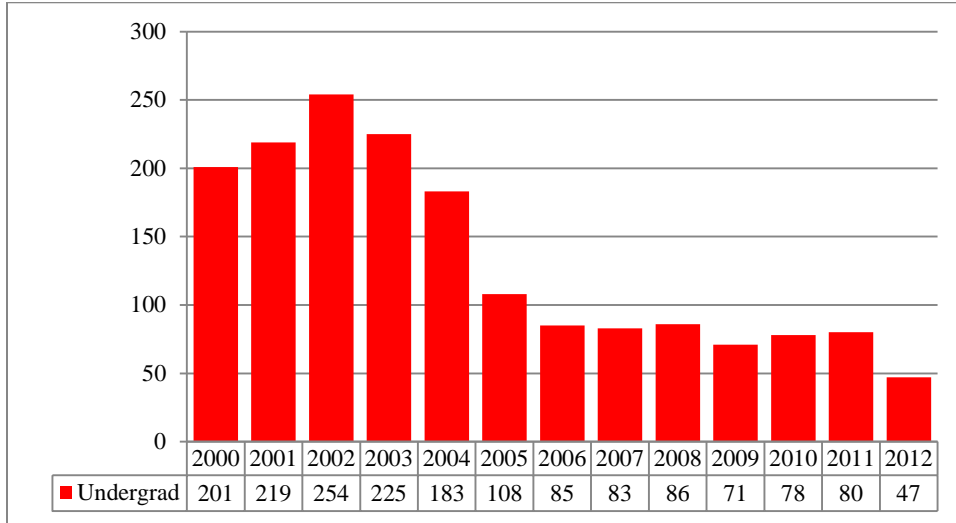


Figure 28: College of Education and Human Sciences Delivery-site Student Credit Hours: Spring 2000 – 2012

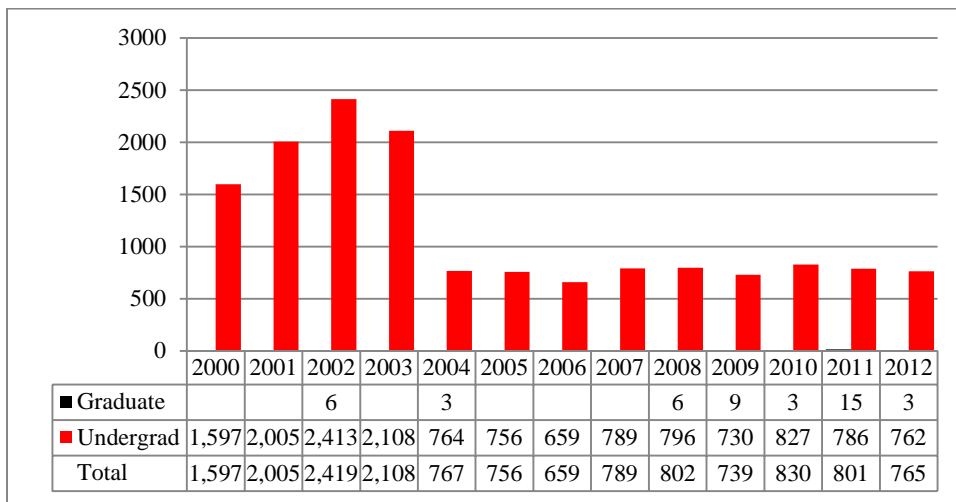
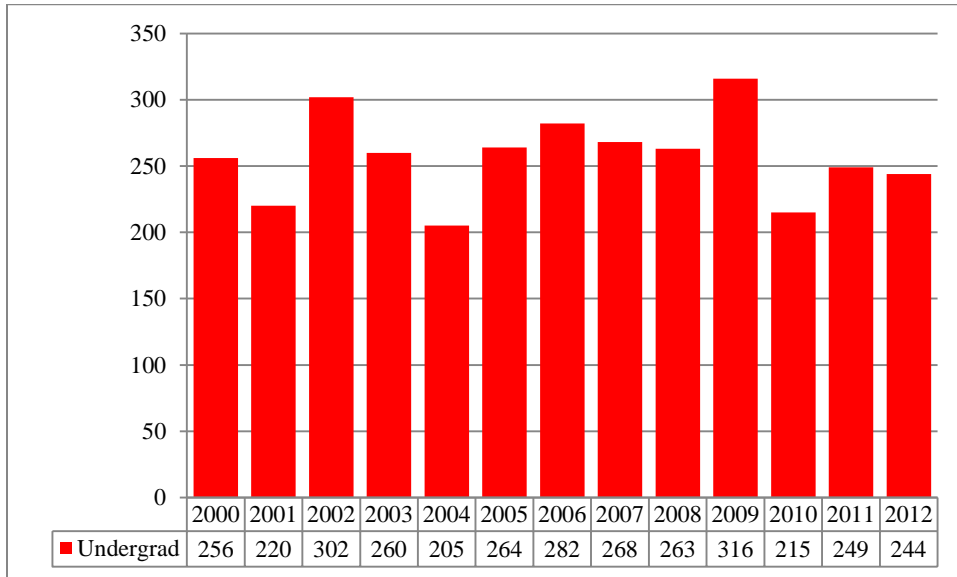


Table 17: College of Education and Human Sciences Head Count Summary for Full and Part-time, Undergraduate Students by Gender and Race Classification: Spring 2012

| | White | | African American | | Hispanic | | Asian | | American Indian | | Nat Haw / Pac Isl | | Nonresident Alien | | Race Unknown | | Two or more races | | Total | | | |
|---------------------------|-------|---|------------------|---|----------|---|-------|---|-----------------|---|-------------------|---|-------------------|---|--------------|---|-------------------|----|-------|----|-------|--|
| | F | M | F | M | F | M | F | M | F | M | F | M | F | M | F | M | F | M | F | M | Total | |
| Full-Time | | | | | | | | | | | | | | | | | | | | | | |
| Undergraduate | | | | | | | | | | | | | | | | | | | | | | |
| First-Time Freshmen | | | | | | | | | | | | | | | | | | | 0 | 0 | 0 | |
| Other Freshmen | | | | | | | | | | | | | | | | 1 | | | 0 | 1 | 1 | |
| Sophomores | 3 | | | | 1 | | 1 | | | | | | | | | | | | 5 | 0 | 5 | |
| Juniors | 8 | | 1 | | | | | | | | | | | | 1 | | | | 10 | 0 | 10 | |
| Seniors | 18 | | 1 | 1 | 1 | | | | | | | | | | | | | | 20 | 1 | 21 | |
| Special Undergraduate | | | | | | | | | | | | | | | | | | | 0 | 0 | 0 | |
| Total | 29 | 0 | 2 | 1 | 2 | 0 | 1 | 0 | 0 | 0 | 0 | 0 | 0 | 0 | 1 | 1 | 0 | 0 | 35 | 2 | 37 | |
| Total Full-Time | 29 | 0 | 2 | 1 | 2 | 0 | 1 | 0 | 0 | 0 | 0 | 0 | 0 | 0 | 1 | 1 | 0 | 0 | 35 | 2 | 37 | |
| | | | | | | | | | | | | | | | | | | | | | | |
| Part-Time | | | | | | | | | | | | | | | | | | | | | | |
| Undergraduate | | | | | | | | | | | | | | | | | | | | | | |
| First-Time Freshmen | | | | | | | | | | | | | | | | | | | 0 | 0 | 0 | |
| Other Freshmen | | | 2 | | | | | | | | | | | | | | | | 2 | 0 | 2 | |
| Sophomores | 1 | | | | | | | | | | | | | | | | | | 1 | 0 | 1 | |
| Juniors | 2 | | 1 | | | | | | | | | | | | | | | | 3 | 0 | 3 | |
| Seniors | 1 | | 1 | 1 | | | 1 | | | | | | | | | | | | 3 | 1 | 4 | |
| Special Undergraduate | | | | | | | | | | | | | | | | | | | 0 | 0 | 0 | |
| Total | 4 | 0 | 4 | 1 | 0 | 0 | 1 | 0 | 0 | 0 | 0 | 0 | 0 | 0 | 0 | 0 | 0 | 0 | 9 | 1 | 10 | |
| Total Part-Time | 4 | 0 | 4 | 1 | 0 | 0 | 1 | 0 | 0 | 0 | 0 | 0 | 0 | 0 | 0 | 0 | 0 | 0 | 9 | 1 | 10 | |
| | | | | | | | | | | | | | | | | | | | | | | |
| Total | | | | | | | | | | | | | | | | | | | | | | |
| Undergraduate | | | | | | | | | | | | | | | | | | | | | | |
| First-Time Freshmen | | | | | | | | | | | | | | | | | | | 0 | 0 | 0 | |
| Other Freshmen | | | 2 | | | | | | | | | | | | | 1 | | | 2 | 1 | 3 | |
| Sophomores | 4 | | | | 1 | | 1 | | | | | | | | | | | | 6 | 0 | 6 | |
| Juniors | 10 | | 2 | | | | | | | | | | | | 1 | | | | 13 | 0 | 13 | |
| Seniors | 19 | | 2 | 2 | 1 | | 1 | | | | | | | | | | | | 23 | 2 | 25 | |
| Special Undergraduate | | | | | | | | | | | | | | | | | | | 0 | 0 | 0 | |
| Total | 33 | 0 | 6 | 2 | 2 | 0 | 2 | 0 | 0 | 0 | 0 | 0 | 0 | 1 | 1 | 0 | 0 | 44 | 3 | 47 | | |
| Total All Students | 33 | 0 | 6 | 2 | 2 | 0 | 2 | 0 | 0 | 0 | 0 | 0 | 0 | 1 | 1 | 0 | 0 | 44 | 3 | 47 | | |

Figure 29: Other Honors and Library Hours Student Credit Hours by Level of Instruction: Spring 2000 - 2012



GLOSSARY

The total head count and student credit hours in this enrollment report are provided on both a delivery-site and administrative-site basis. Delivery-site includes enrollment in all courses taught at UNO regardless of “home” campus. This means that student credit hours are reported for courses in the colleges. Student enrollment is counted in the college declared by the student. Specifically, the delivery-site enrollment numbers include students in degree programs in the UNL Colleges of Agriculture, Architecture, Engineering and Technology, and Education and Human Science.

FIRST-TIME, Entering (freshmen) Student: Students attending any institution for the first time at the undergraduate level. For students entering the fall term, this includes students enrolled in the fall term who attended college for the first time in the prior summer term. Also included are students who entered with advanced standing, i.e. college credits earned before graduation from high school.

OTHER FRESHMEN: At the beginning of the current semester, undergraduate students who (1) are not First-Time Freshmen and (2) have less than 27 semester hours earned from all institutions of higher education attended.

SOPHOMORES: At the beginning of the current semester, undergraduate students who have at least 27, but not more than 57, semester hours earned from all institutions of higher education attended.

JUNIORS: At the beginning of the current semester, undergraduate students who have at least 58, but not more than 90, semester hours earned from all institutions of higher education attended.

SENIORS: At the beginning of the current semester, undergraduate students who have at least 91 semester hours earned from all institutions of higher education attended.

NON-DEGREE/INTER-CAMPUS/SPECIAL UNDERGRADUATES: Special undergraduates not pursuing a degree at UNO in various programs: Inter-Campus UNMC, UNK, UNL, and Non-Degree.

NON-DEGREE/INTER-CAMPUS/SPECIAL GRADUATE STUDENTS: Special graduate students not pursuing a degree at UNO in various programs: Engineering Transfer Program, Inter-Campus UNMC, UNK, UNL, Inter-Campus UNL Graduate Psychology and Non-Degree.

MASTERS/SPECIALIST: Graduate students pursuing a degree less than doctoral.

CERTIFICATE: These students are not enrolled in a degree program, but only a certificate.

DOCTORAL: Graduate students who have been accepted into a doctoral program.

FULL-TIME: In the current semester, undergraduate students enrolled for 12 or more semester hours, or graduate students enrolled for 9 or more semester hours.

PART-TIME: In the current semester, undergraduate students enrolled for less than 12 semester hours, or graduate students enrolled for less than 9 semester hours.

COOPERATIVE GRADUATE PROGRAM: Graduate students enrolled in Human Resources and Training or Global Information Operations offered cooperatively by two or more colleges.