


Spring 2013

## Enrollment Report - Spring 2013

UNO Office of Institutional Effectiveness  
*University of Nebraska at Omaha*

Follow this and additional works at: <https://digitalcommons.unomaha.edu/oieenrollment>

 Part of the [Educational Assessment, Evaluation, and Research Commons](#), and the [Higher Education Commons](#)

Please take our feedback survey at: [https://unomaha.az1.qualtrics.com/jfe/form/SV\\_8cchtFmpDyGfBLE](https://unomaha.az1.qualtrics.com/jfe/form/SV_8cchtFmpDyGfBLE)

---

### Recommended Citation

Office of Institutional Effectiveness, UNO, "Enrollment Report - Spring 2013" (2013). *Enrollment Reports*. 9. <https://digitalcommons.unomaha.edu/oieenrollment/9>

This Report is brought to you for free and open access by the Systems Intelligence and Data Analytics (SIDA) at DigitalCommons@UNO. It has been accepted for inclusion in Enrollment Reports by an authorized administrator of DigitalCommons@UNO. For more information, please contact [unodigitalcommons@unomaha.edu](mailto:unodigitalcommons@unomaha.edu).

# Enrollment Profile Report

*Spring 2013*



UNIVERSITY OF  
**Nebraska**  
Omaha





# **University of Nebraska at Omaha**

## **Enrollment Profile Report:**

**Spring 2013**

**Office of Institutional Effectiveness**

**Institutional Research**

**<http://www.unomaha.edu/oie/>**

**January, 2013**



# EXECUTIVE SUMMARY

This Enrollment Statistical Summary provides delivery and administrative-site information on enrollment headcount and student credit hours. Delivery site reporting counts all students, including those in UNL programs delivered at UNO, but excludes UNO programs delivered in Lincoln (CPACS programs). Administrative-site reporting counts students enrolled in UNO programs only (including the CPACS programs delivered in Lincoln.)

The purpose of this summary is to provide the undergraduate and graduate enrollments and student credit hour information by college or equivalent academic unit, class, gender and ethnicity. A glossary at the end of the report provides a list of definitions for headings and categories found in the report.

## Administrative-Site Campus Summary

- Spring 2013 head count enrollment is 13,884 a 0.1% increase compared to the spring 2012 enrollment of 13,864 (see Figure 1).
- Spring 2013 undergraduate head count enrollment is 11,263, a 0.5% increase compared to the spring 2012 enrollment of 2,654 (see Figure 5).
- Spring 2013 graduate head count enrollment is 2,621 a 1.2% decrease compared to the spring 2012 enrollment of 2,654 (see Figure 5).
- Spring 2013 student credit hours are 153,543 a 0.6% increase compared to the spring 2012 credit hours of 152,599 (see Figure 6).
- Spring 2013 undergraduate credit hours are 139,222 up from spring 2012 by 0.5% (see Figure 6).
- Spring 2013 graduate credit hours are 14,321 up from spring 2012 by 2.0% (see Figure 6).

## Delivery-Site

- Spring 2013 head count enrollment is 14,421 a slight decrease compared to the spring 2012 enrollment of 14,467 (see Figure 1).
- Spring 2013 undergraduate head count enrollment is 11,788 a slight decrease compared to the spring 2012 enrollment of 11,800 (see Figure 2).
- Spring 2013 graduate head count enrollment is 2,633 a 1.2% decrease compared to the spring 2012 enrollment of 2,667 (see Figure 2).
- Spring 2013 student credit hours are 157,023 a slight decrease compared to the spring 2012 credit hours of 157,324 (see Figure 3).
- Spring 2013 undergraduate credit hours are 141,484 down from spring 2012 by 0.1% (see Figure 3).
- Spring 2013 graduate credit hours are 15,539 down from spring 2012 by 0.3% (see Figure 3).



# Contents

Executive Summary.....	i
List of Figures:	
Figure 1: Delivery-Site & Administrative-Site Head Count Enrollment: Spring 1988 – 2013 .....	2
Figure 2: UNO Delivery-Site Head Count by Student Level: Spring 2004 – 2013 .....	3
Figure 3: UNO Delivery-Site Student Credit Hours by Student Level: Spring 2004 -2013 .....	3
Figure 4: UNO Delivery-Site Head Count by Ethnicity by Gender: Spring 2013.....	4
Figure 5: UNO Administrative-Site Student Credit Hours Spring 2004-2013 .....	6
Figure 6: UNO Administrative-Site Student Credit Hours Spring 2004-2013 .....	6
Figure 7: UNO Administrative-Site Head Count by Ethnicity by Gender Spring 2013.....	7
Figure 8: College of Arts & Sciences Head Count Spring 2004 -2013.....	9
Figure 9: College of Arts & Sciences Student Credit Hours Spring 2004-2013.....	9
Figure 10: College of Arts & Sciences Head Count by Ethnicity by Gender: Spring 2013.....	9
Figure 11: College of Business Administration Head Count: Spring 2004-2013.....	11
Figure 12: College of Business Administration Student Credit Hours: Spring 2004-2013.....	11
Figure 13: College of Business Administration Head Count by Ethnicity by Gender: Spring 2013 .....	11
Figure 14: College of Communication, Fine Arts and Media Delivery-Site Head Count: Spring 2006-2013.....	13
Figure 15: College of Communication, Fine Arts and Media Delivery-Site Student Credit Hours: Spring 2006-2013.....	13
Figure 16: College of Communication, Fine Arts and Media Delivery-Site Head Count by Ethnicity by Gender: Spring 2013	13
Figure 17: College of Communication, Fine Arts and Media: Administrative-Site Head Count: Spring 2006-2013 .....	15
Figure 18: College of Communication, Fine Arts and Media: Administrative-Site Student Credit Hours: Spring 2006-2013 ...	15
Figure 19: College of Communication, Fine Arts and Media: Administrative-Site Head Count by Ethnicity by Gender: Spring 2013 .....	15
Figure 20: College of Education Head Count: Spring 2004-2013.....	17
Figure 21: College of Education Student Credit Hours: Spring 2004-2013.....	17
Figure 22: College of Education Head Count by Ethnicity by Gender: Spring 2013 .....	17
Figure 23: College of Information Science & Technology Head Count: Spring 2004-2013 .....	19
Figure 24: College of Information Science & Technology Student Credit Hours: Spring 2004-2013.....	19
Figure 25: College of Information Science & Technology Head Count by Ethnicity by Gender: Spring 2013.....	19
Figure 26: College of Public Affairs & Community Service Delivery-Site Head Count: Spring 2004-2013.....	21
Figure 27: College of Public Affairs & Community Service Delivery-Site Student Credit Hours: Spring 2004-2013 .....	21
Figure 28: College of Public Affairs & Community Service Delivery-Site Head Count by Ethnicity by Gender: Spring 2013 ..	21
Figure 29: College of Public Affairs & Community Service Administrative-Site Head Count: Spring 2004-2013 .....	23
Figure 30: College of Public Affairs & Community Service Administrative-Site Student Credit Hours: Spring 2004-2013 .....	23
Figure 31: College of Public Affairs & Community Service Administrative-Site Head Count by Ethnicity by Gender: Spring 2013 .....	23
Figure 32: College of CPACS, Division of Continuing Studies Head Count: Spring 2004-2013 .....	25
Figure 33: College of CPACS, Division of Continuing Studies Head Count by Ethnicity by Gender: Spring 2013.....	25
Figure 35: University Division Student Credit Hours: Spring 2004-2013 .....	28
Figure 36: University Division Head Count by Ethnicity by Gender: Spring 2013 .....	28
Figure 37: Non-Degree/Intercampus Special Undergraduate Students Head Count: Spring 2004-2013 .....	30
Figure 38: Non-Degree/Intercampus Special Undergraduate Students Head Count by Ethnicity by Gender: Spring 2013.....	30



<b>Figure 39: Non-Degree/Intercampus Special Graduate Students Head Count: Spring 2004-2013 .....</b>	<b>32</b>
<b>Figure 40: Non-Degree/Intercampus Special Graduate Students Head Count by Ethnicity by Gender: Spring 2013 .....</b>	<b>32</b>
<b>Figure 41: Other Honors and Library Hours Student Credit Hours by Level of Instruction: Spring 2004-2013 .....</b>	<b>34</b>
<b>Figure 42: College of Agriculture Delivery-Site Head Count: Spring 2004-2013 .....</b>	<b>35</b>
<b>Figure 43: College of Agriculture Delivery-Site Student Credit Hours: Spring 2004-2013 .....</b>	<b>35</b>
<b>Figure 44: College of Agriculture Delivery-Site Head Count by Ethnicity by Gender: Spring 2013 .....</b>	<b>35</b>
<b>Figure 45: College of Architecture Delivery-Site Head Count: Spring 2004-2013.....</b>	<b>37</b>
<b>Figure 46: College of Architecture Delivery-Site Student Credit Hours: Spring 2004-2013 .....</b>	<b>37</b>
<b>Figure 47: College of Architecture Delivery-Site Head Count by Ethnicity by Gender: Spring 2013 .....</b>	<b>37</b>
<b>Figure 48: College of Engineering Delivery-Site Head Count: Spring 2004-2013.....</b>	<b>39</b>
<b>Figure 49: College of Engineering Delivery-Site Student Credit Hours: Spring 2004-2013 .....</b>	<b>39</b>
<b>Figure 50: College of Engineering Delivery-Site Head Count by Ethnicity by Gender: Spring 2013 .....</b>	<b>39</b>
<b>Figure 51: College of Education and Human Sciences Delivery-Site Head Count: Spring 2004-2013.....</b>	<b>41</b>
<b>Figure 52: College of Education and Human Sciences Delivery-Site Student Credit Hours: Spring 2004-2013 .....</b>	<b>41</b>
<b>Figure 53: College of Education and Human Sciences Delivery-Site Head Count by Ethnicity by Gender: Spring 2004-2013..</b>	<b>41</b>
<b>List of Tables:</b>	
<b>Table 1: UNO Delivery-Site and Administrative-Site Head Count Enrollment and Comparison: Spring 2013.....</b>	<b>1</b>
<b>Table 2: Total UNO Delivery-Site Head Count Summary for Undergraduate and Graduate Students Full and Part-Time by Gender and Race Classification: Spring 2013 .....</b>	<b>5</b>
<b>Table 3: Total UNO Administrative-Site Head Count Summary for Undergraduate and Graduate Students by Full and Part-Time by Gender and Race Classification: Spring 2013 .....</b>	<b>8</b>
<b>Table 4: College of Arts &amp; Sciences Head Count Summary for Undergraduate and Graduate Students by Full and Part-Time by Gender and Race Classification: Spring 2013 .....</b>	<b>10</b>
<b>Table 5: College of Business Administration Head Count Summary for Undergraduate and Graduate Students by Full and Part-Time by Gender and Race Classification: Spring 2013 .....</b>	<b>12</b>
<b>Table 6: College of Communication, Fine Arts and Media Delivery-Site Head Count Summary for Undergraduate and Graduate Students by Full and Part-Time by Gender and Race Classification: Spring 2013.....</b>	<b>14</b>
<b>Table 7: College of Communication, Fine Arts and Media Administrative-Site Head Count Summary for Undergraduate and Graduate Students by Full and Part-time by Gender and Race Classification: Spring 2013 .....</b>	<b>16</b>
<b>Table 8: College of Education Head Count Summary for Undergraduate and Graduate Students by Full and Part-Time by Gender and Race Classification: Spring 2013 .....</b>	<b>18</b>
<b>Table 9: College of Information Science and Technology Head Count Summary for Undergraduate and Graduate Summary for Full and Part-time by Gender and Race Classification: Spring 2013 .....</b>	<b>20</b>
<b>Table 10: College of Public Affairs and Community Service Delivery-Site Head Count for Undergraduate and Graduate Students by Full and Part-Time by Gender and Race Classification: Spring 2013 .....</b>	<b>22</b>
<b>Table 11: College of Public Affairs and Community Service Administrative-Site Head Count Summary for Undergraduate and Graduate Students by Full and Part-Time by Gender and Race Classification: Spring 2013 .....</b>	<b>24</b>
<b>Table 12: College of CPACS Division of Continuing Studies Head Count Summary for Undergraduate Students by Full and Part-Time by Gender and Race Classification: Spring 2013 .....</b>	<b>26</b>
<b>Table 13: Cooperative Graduate Program Head Count Summary for Graduate Students by Full and Part-Time by Gender and Race Classification: Spring 2013.....</b>	<b>27</b>
<b>Table 34: University Division Head Count: Spring 2004-2013 .....</b>	<b>28</b>
<b>Table 14: University Division Head Count Summary for Undergraduate Students by Full and Part-Time by Gender and Race Classification: Spring 2013.....</b>	<b>29</b>
<b>Table 15: Non-Degree/Intercampus Head count Summary for Special Undergraduate Students by Full and Part-Time by Gender and Race Classification: Spring 2013 .....</b>	<b>31</b>

**Table 16: Non-Degree/Intercampus Head Count Summary for Special Graduate Students by Full and Part-Time by Gender and Race Classification: Spring 2013 ..... 33**

**Table 17: College of Agriculture Head Count Summary for Undergraduate Students by Full and Part-Time by Gender and Race Classification: Spring 2013 ..... 36**

**Table 18: College of Architecture Head Count Summary for Undergraduate Students by Full and Part-Time by Gender and Race Classification: Spring 2013 ..... 38**

**Table 19: College of Engineering Head Count Summary for Undergraduate Students by Full and Part-Time by Gender and Race Classification: Spring 2013 ..... 40**

**Table 20: College of Education and Human Sciences Head Count Summary for Undergraduate Students by Full and Part-Time by Gender and Race Classification: Spring 2013 ..... 42**

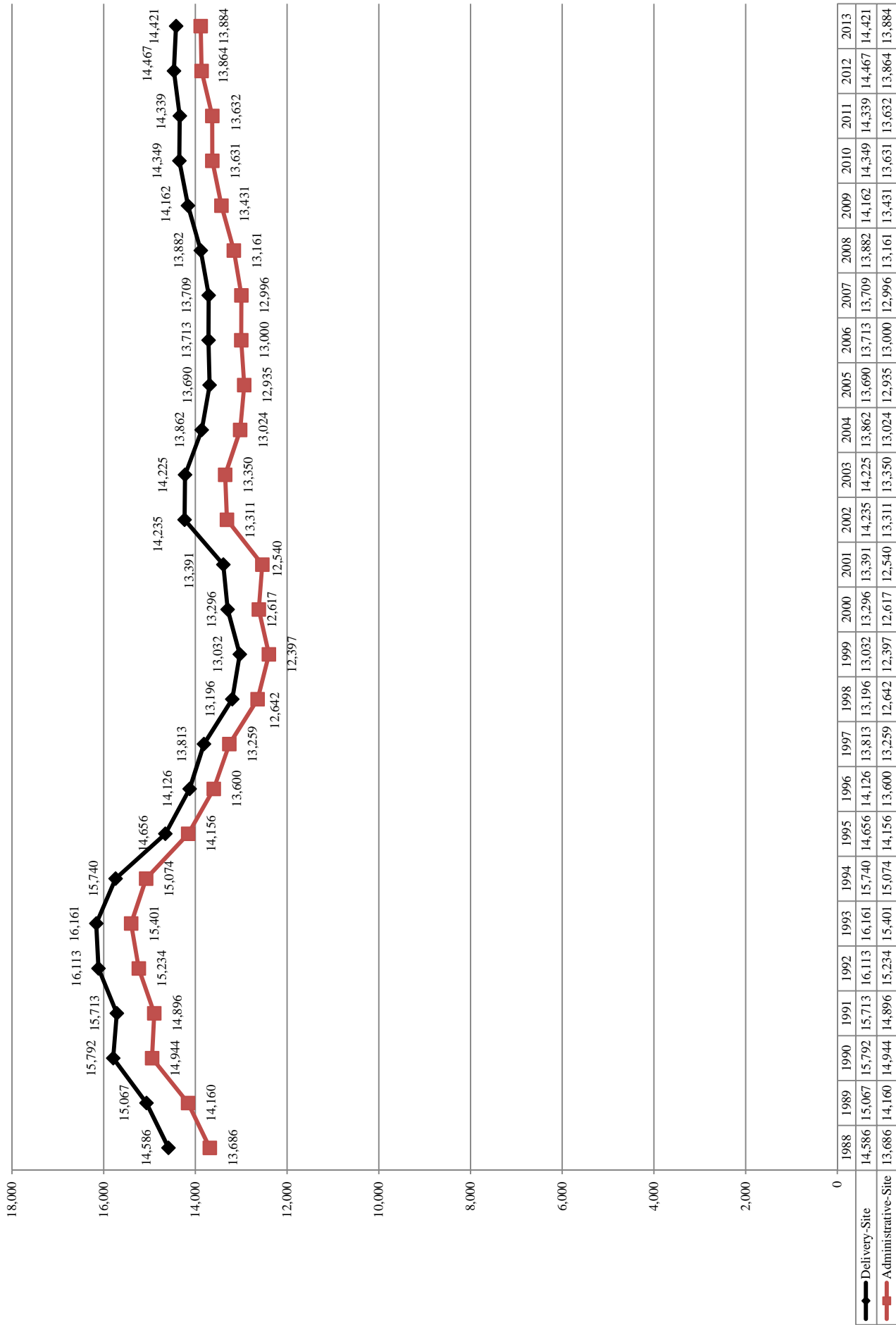
**GLOSSARY ..... 43**



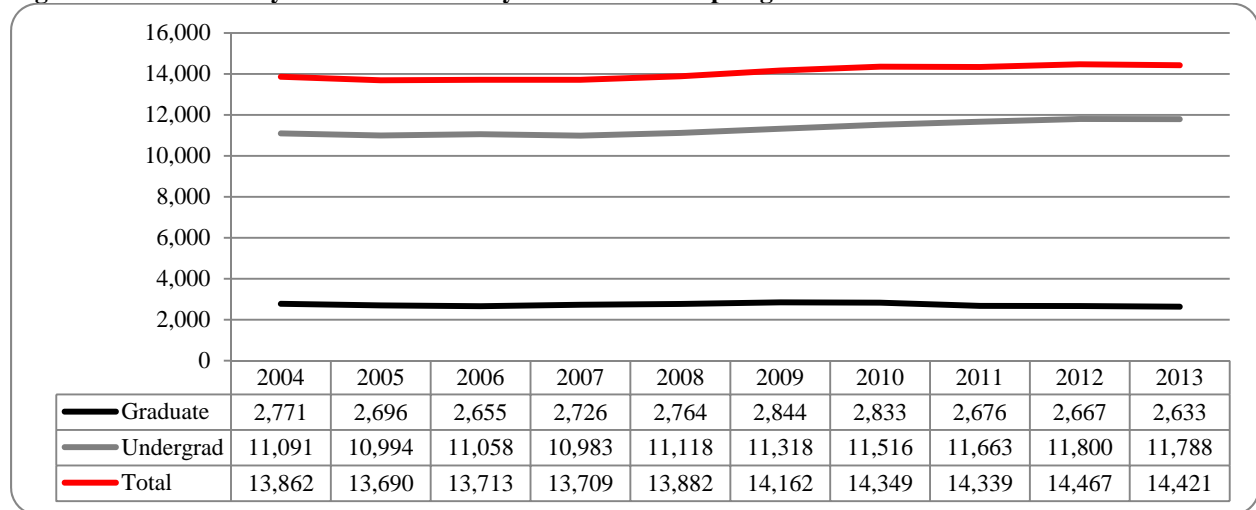
**Table 1: UNO Delivery-Site and Administrative-Site Head Count Enrollment and Comparison: Spring 2013**

	Spring 2013		Spring 2012	Spring 12-13 Administrative-Site	
	Delivery-Site	Administrative-Site	Administrative-Site	Numerical Change	Percent Change
<b>UNO:</b>					
<b><i>Undergraduate</i></b>					
Arts & Science	3,388	3,388	3,394	-6	-0.2%
Business Administration	1,717	1,717	1,713	4	0.2%
Communication, Fine Arts & Media	1,033	1,033	1,021	12	1.2%
Education	1,470	1,470	1,457	13	0.9%
Information Science and Technology	613	613	559	54	9.7%
Public Affairs & Community Services	648	918	861	57	6.6%
Division of Continuing Studies	1,254	1,254	1,224	30	2.5%
Sub-total CPACS including Cont. Studies	1,902	2,172	2,085	87	4.2%
Non-Degree	300	261	326	-65	-19.9%
University Division	570	609	655	-46	-7.0%
<b>Total Undergraduate</b>	10,993	11,263	11,210	53	0.5%
<b><i>Graduate</i></b>					
Arts & Science	387	387	399	-12	-3.0%
Business Administration	398	398	387	11	2.8%
Communication, Fine Arts & Media	114	102	105	-3	-2.9%
Education	694	694	726	-32	-4.4%
Information Science and Technology	234	234	218	16	7.3%
Public Affairs & Community Services	432	432	424	8	1.9%
New Cooperative Graduate Programs	3	3	4	-1	-25.0%
Undeclared	371	371	391	-20	-5.1%
<b>Total Graduate</b>	2,633	2,621	2,654	-33	-1.2%
<b><i>UNO Administrative-Site Total</i></b>		13,884	13,864	20	0.1%
<b>UNL:</b>	<b>Spring 2013</b>		<b>Spring 2012</b>	<b>Numerical Change</b>	<b>Percent Change</b>
Agriculture	14		14		
Architecture	34		27		
Engineering & Technology	729		765		
Education and Human Science	18		48		
<b>Total UNL in Omaha</b>	795		854	-59	-6.9%
	<b>Spring 2013</b>		<b>Spring 2012</b>	<b>Numerical Change</b>	<b>Percent Change</b>
<b><i>UNO Delivery-Site Total</i></b>	14,421		14,718	-297	-2.0%

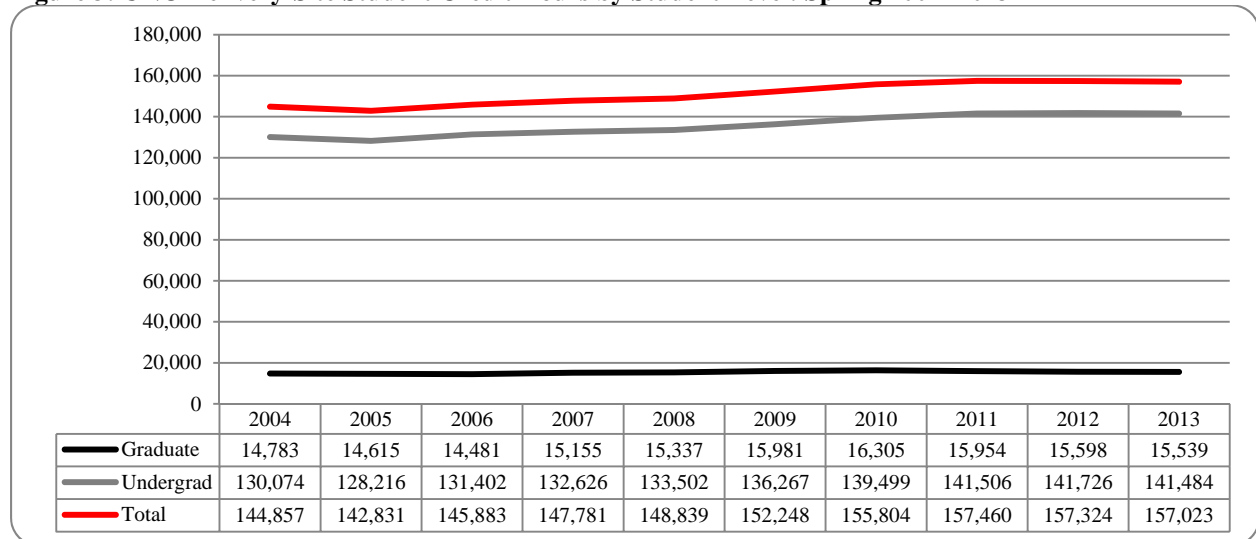
Figure 1: Delivery-Site & Administrative-Site Head Count Enrollment: Spring 1988 – 2013



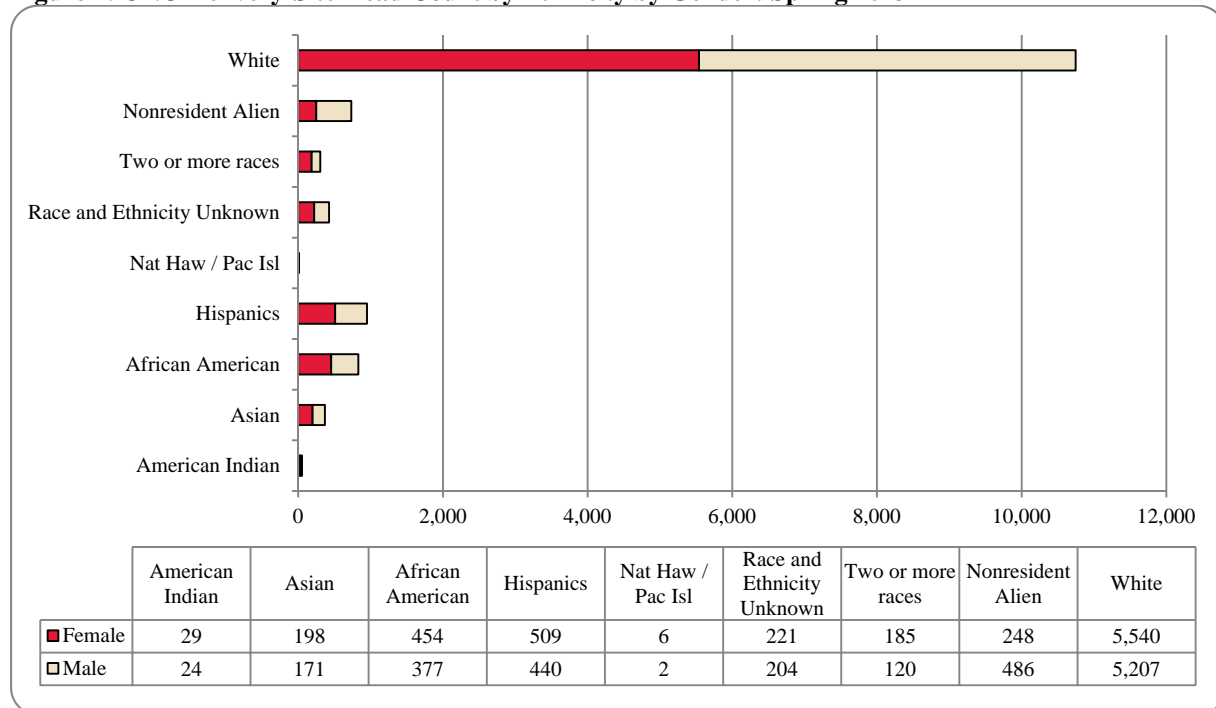
**Figure 2: UNO Delivery-Site Head Count by Student Level: Spring 2004 – 2013**



**Figure 3: UNO Delivery-Site Student Credit Hours by Student Level: Spring 2004 -2013**



**Figure 4: UNO Delivery-Site Head Count by Ethnicity by Gender: Spring 2013**

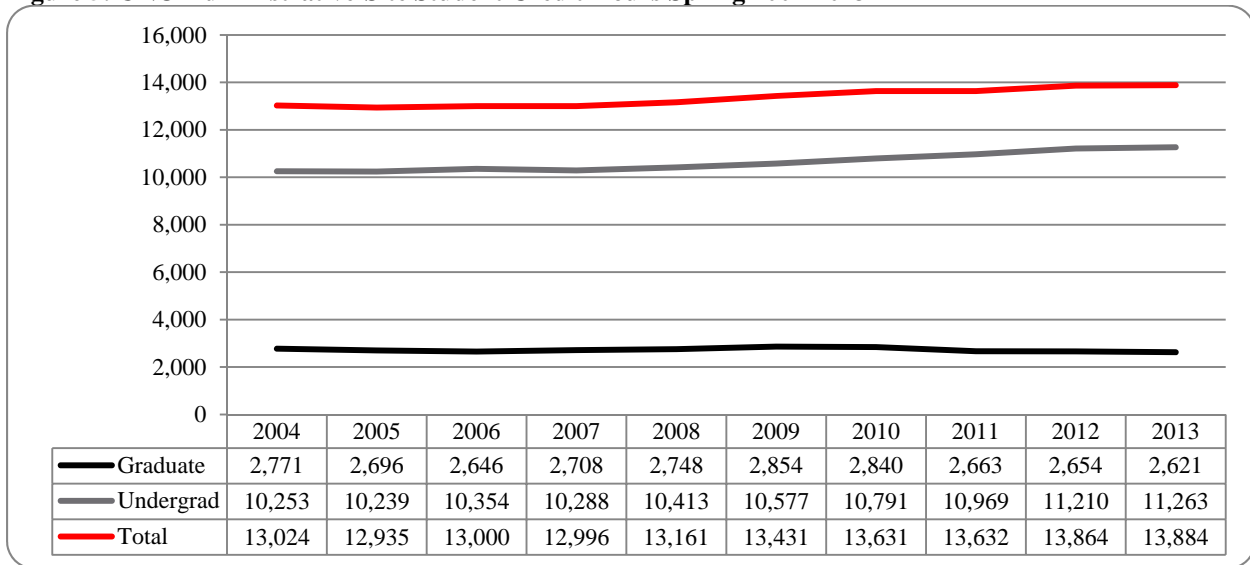


**Table 2: Total UNO Delivery-Site Head Count Summary for Undergraduate and Graduate Students Full and Part-Time by Gender and Race Classification: Spring 2013**

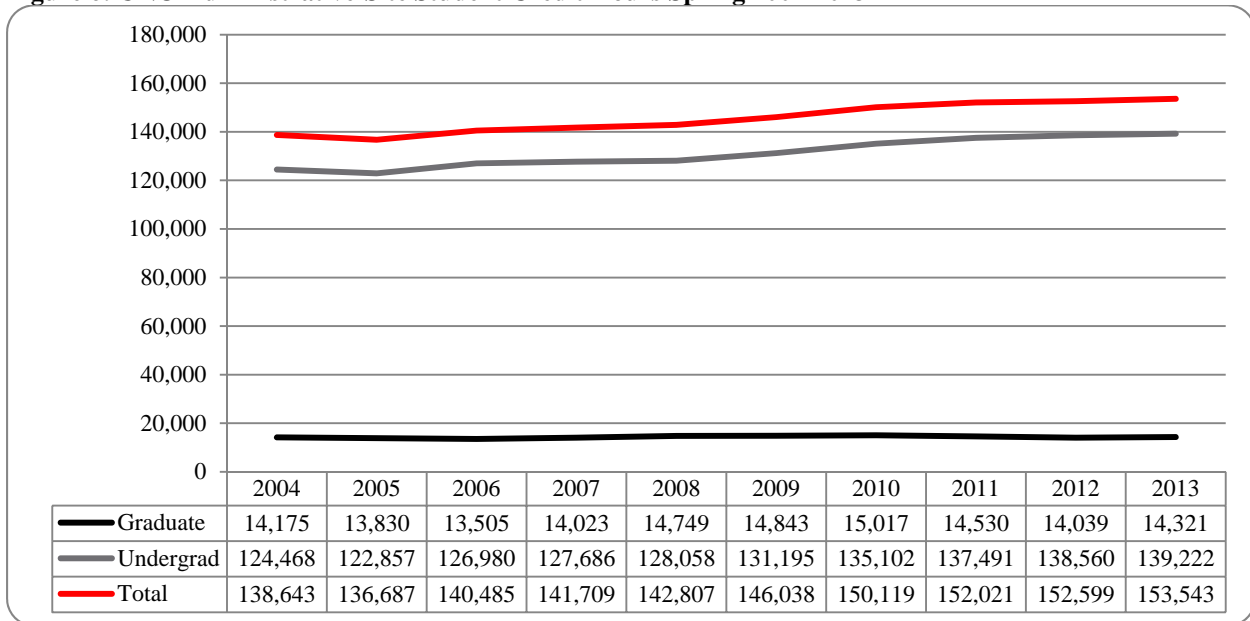
	American Indian		Asian		African American		Hispanics		Nat Haw / Pac Isl		Race Unknown		Two or more races		White		Nonresident Alien		Total		
	F	M	F	M	F	M	F	M	F	M	F	M	F	M	F	M	F	M	F	M	Total
<b>Undergraduate</b>																					
<b>Full-time</b>																					
First-Time Freshmen																					
Other Freshmen																					
Sophomores																					
Juniors																					
Seniors																					
Special																					
<b>Total Full-Time</b>	18	14	127	112	294	230	376	326	4	2	140	128	135	77	3,255	3,231	116	277	4,465	4,397	8,862
<b>Part-Time</b>																					
First-Time Freshmen																					
Other Freshmen																					
Sophomores																					
Juniors																					
Seniors																					
Special																					
<b>Total Part-Time</b>	4	9	41	32	109	109	89	72	2	2	50	56	29	33	1,069	1,156	24	42	1,417	1,509	2,926
<b>Total Undergraduate</b>	22	23	168	144	403	339	465	398	6	2	190	184	164	110	4,324	4,387	140	319	5,882	5,906	11,788
<b>Graduate</b>																					
<b>Full-Time</b>																					
Certificate																					
Masters																					
Doctoral																					
Special Graduate																					
<b>Total Full-Time</b>	2		3	8	11	7	14	12			8	1	3	2	258	149	62	61	361	240	601
<b>Part-Time</b>																					
Certificate																					
Masters																					
Doctoral																					
Special Graduate																					
<b>Total Part-time</b>	5	1	27	18	40	30	29	26			23	19	17	8	929	629	33	52	1,103	783	1,886
<b>Total Graduate</b>	7	1	30	27	51	38	44	42			31	20	21	10	1,216	820	108	167	1,508	1,125	2,633
<b>Total All Students</b>	29	24	198	171	454	377	509	440	6	2	221	204	185	120	5,540	5,207	248	486	7,390	7,031	14,421



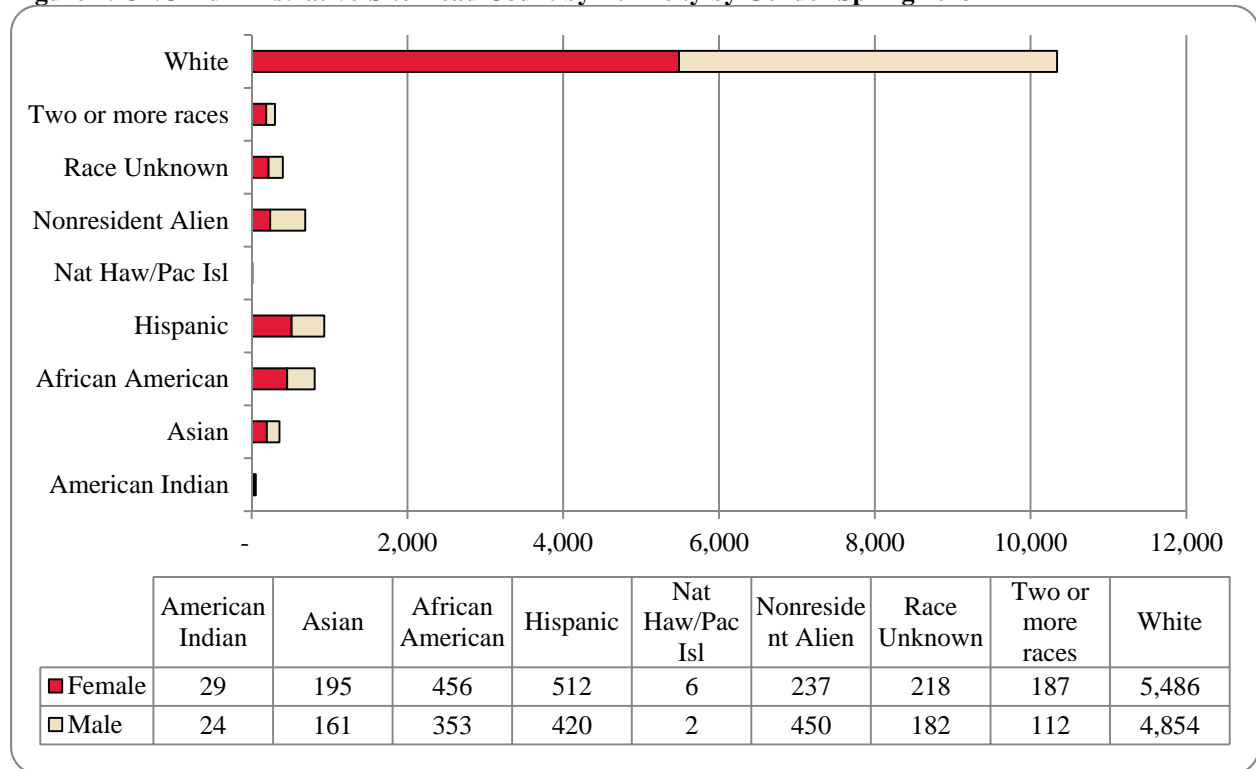
**Figure 5: UNO Administrative-Site Student Credit Hours Spring 2004-2013**



**Figure 6: UNO Administrative-Site Student Credit Hours Spring 2004-2013**



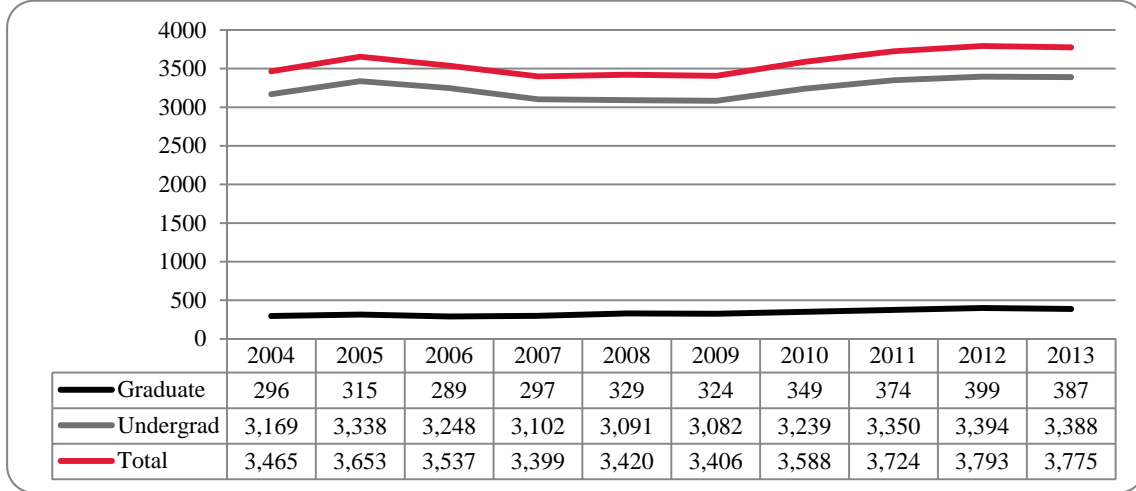
**Figure 7: UNO Administrative-Site Head Count by Ethnicity by Gender Spring 2013**



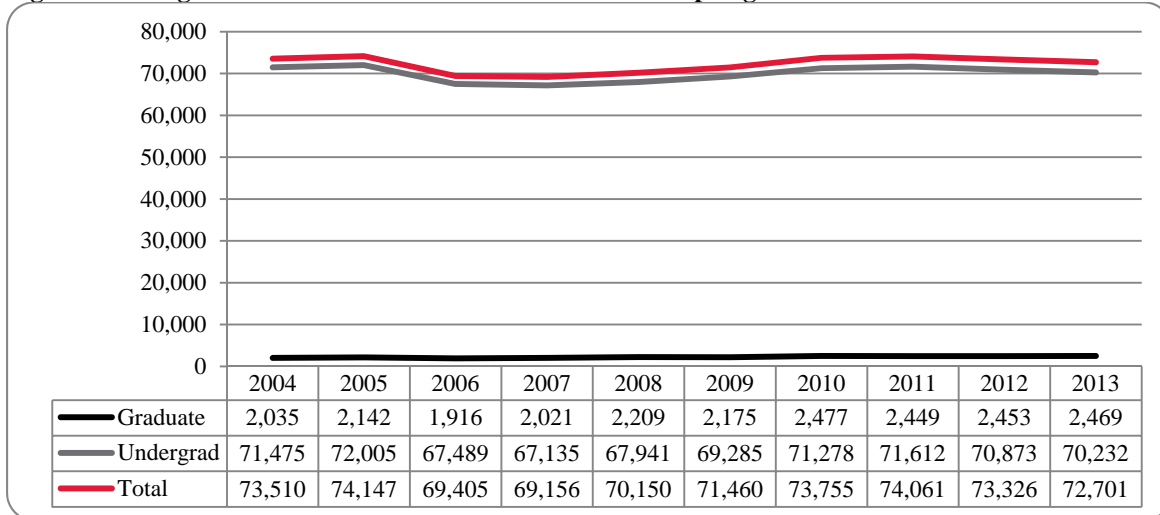
**Table 3: Total UNO Administrative-Site Head Count Summary for Undergraduate and Graduate Students by Full and Part-Time by Gender and Race Classification: Spring 2013**

	American Indian		Asian		African American		Hispanics		Nat Haw / Pac Isl		Race Unknown		Two or more races		White		Nonresident Alien		Total		
	F	M	F	M	F	M	F	M	F	M	F	M	F	M	F	M	F	M	F	M	Total
<b>Undergraduate</b>																					
<b>Full-Time</b>																					
First-Time Freshmen																					
Other Freshmen	2	4	33	31	69	60	84	89	2	1	8	8	52	24	567	570	37	81	852	866	1,718
Sophomores	4	4	28	24	66	41	107	102	1		48	36	36	22	728	660	11	48	1,029	937	1,966
Juniors	5	4	27	29	77	57	97	63	1		34	28	27	12	879	788	18	42	1,164	1,024	2,188
Seniors	8	4	32	19	79	53	89	50	1		46	35	21	10	993	859	23	49	1,292	1,079	2,371
Special	1		2	1	2	4	2	2			2	1	1		48	52	4	5	62	65	127
<b>Total Full-Time</b>	18	14	123	105	295	218	380	309	4	2	138	108	138	69	3,225	2,949	106	243	4,427	4,017	8,444
<b>Total Part-Time</b>																					
First-Time Freshmen																					
Other Freshmen			7	9	23	14	15	14			4	4	5	10	109	119	4	10	167	180	347
Sophomores	1	1	2	5	19	26	14	19			11	8	6	3	188	167	1	9	242	238	480
Juniors	2	1	5	4	28	21	17	9			8	11	10	5	233	232	1	3	304	286	590
Seniors	1	4	21	8	35	31	28	22			23	25	3	6	388	447	10	12	509	555	1,064
Special	3	3	7	3	6	4	12	5	2		4	6	3	9	131	117	5	1	170	148	318
<b>Total Part-Time</b>	4	9	42	29	111	97	88	69	2		50	54	28	33	1,052	1,088	23	40	1,400	1,419	2,819
<b>Total Undergraduates</b>	22	23	165	134	406	315	468	378	6	2	188	162	166	102	4,277	4,037	129	283	5,827	5,436	11,263
<b>Graduate</b>																					
<b>Full-Time</b>																					
Certificate																					
Masters	2		3	8	10	7	14	12			7	1	3	2	251	146	62	61	352	237	589
Doctoral							1	3							12	6	4	15	17	24	41
Special Graduate				1	1	1	1	1					1		16	36	8	39	25	78	103
<b>Total Full-Time</b>	2	3	3	9	10	8	15	16			7	1	4	2	280	188	75	115	396	339	735
<b>Part-Time</b>																					
Certificate																					
Masters	4	1	20	14	25	20	19	21			18	16	15	7	686	499	17	34	804	612	1,416
Doctoral			1	1	3	2	1	1			1	1	1		39	43	4	7	48	54	102
Special Graduate	1		6	3	11	6	9	4			3	2	2	1	190	72	10	11	232	99	331
<b>Total Part-Time</b>	5	1	27	18	40	30	29	26			23	19	17	8	929	629	33	52	1,103	783	1,886
<b>Total Graduates</b>	7	1	30	27	50	38	44	42			30	20	21	10	1,209	817	108	167	1,499	1,122	2,621
<b>Total All Students</b>	29	24	195	161	456	353	512	420	6	2	218	182	187	112	5,486	4,854	237	450	7,326	6,558	13,884

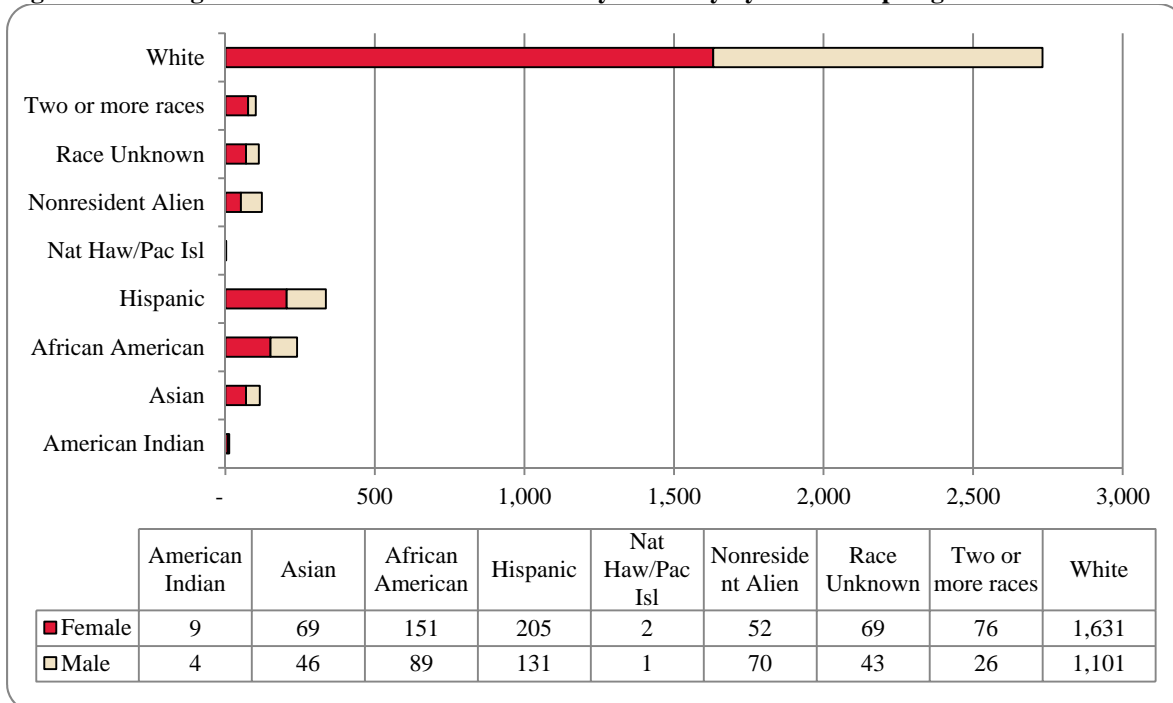
**Figure 8: College of Arts & Sciences Head Count Spring 2004 -2013**



**Figure 9: College of Arts & Sciences Student Credit Hours Spring 2004-2013**



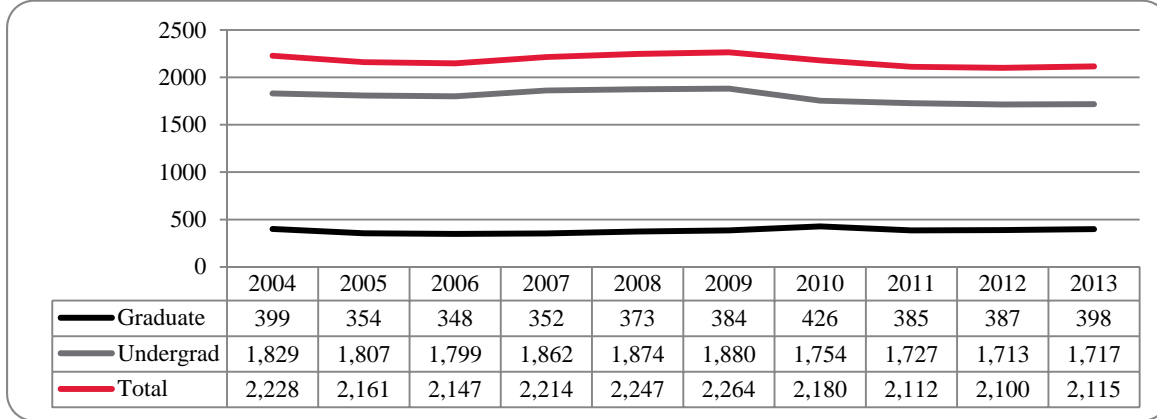
**Figure 10: College of Arts & Sciences Head Count by Ethnicity by Gender: Spring 2013**



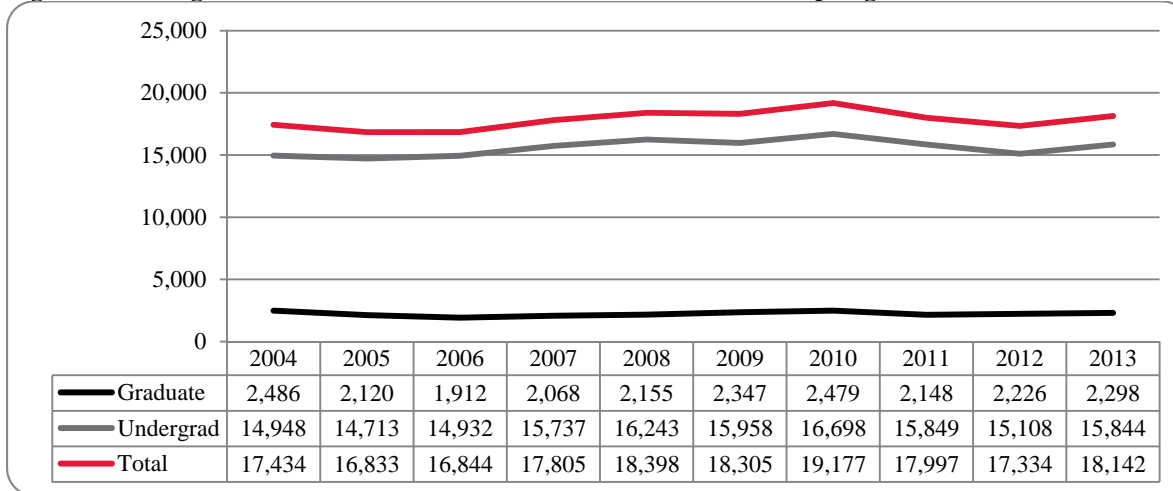
**Table 4: College of Arts & Sciences Head Count Summary for Undergraduate and Graduate Students by Full and Part-Time by Gender and Race Classification: Spring 2013**

	American Indian		Asian		African American		Hispanics		Nat Haw / Pac Isl		Race Unknown		Two or more races		White		Nonresident Alien		Total			
	F	M	F	M	F	M	F	M	F	M	F	M	F	M	F	M	F	M	F	M	Total	
<b>Undergraduate</b>																						
<b>Full-Time</b>																						
First-Time Freshmen																						
Other Freshmen																						
Sophomores																						
Juniors																						
Seniors																						
Special																						
<b>Total Full-Time</b>	6	2	53	36	111	60	167	99	2	1	46	28	62	21	1,119	730	32	53	1,598	1,030	2,628	
<b>Part-Time</b>																						
First-Time Freshmen																						
Other Freshmen																						
Sophomores																						
Juniors																						
Seniors																						
Special																						
<b>Total Part-Time</b>	2	2	14	8	35	24	32	21			19	11	11	5	317	232	14	13	444	316	760	
<b>Total Undergraduates</b>	8	4	67	44	146	84	199	120	2	1	65	39	73	26	1,436	962	46	66	2,042	1,346	3,388	
<b>Graduate</b>																						
<b>Full-Time</b>																						
Certificate																						
Masters																						
Doctoral																						
Special Graduate																						
<b>Total Full-Time</b>	1										1											
<b>Part-Time</b>																						
Certificate																						
Masters																						
Doctoral																						
Special Graduate																						
<b>Total Part-Time</b>																						
<b>Total Graduates</b>	1																					
<b>Total All Students</b>	9	4	69	46	151	89	205	131	2	1	69	43	76	26	1,631	1,101	52	70	2,264	1,511	3,775	

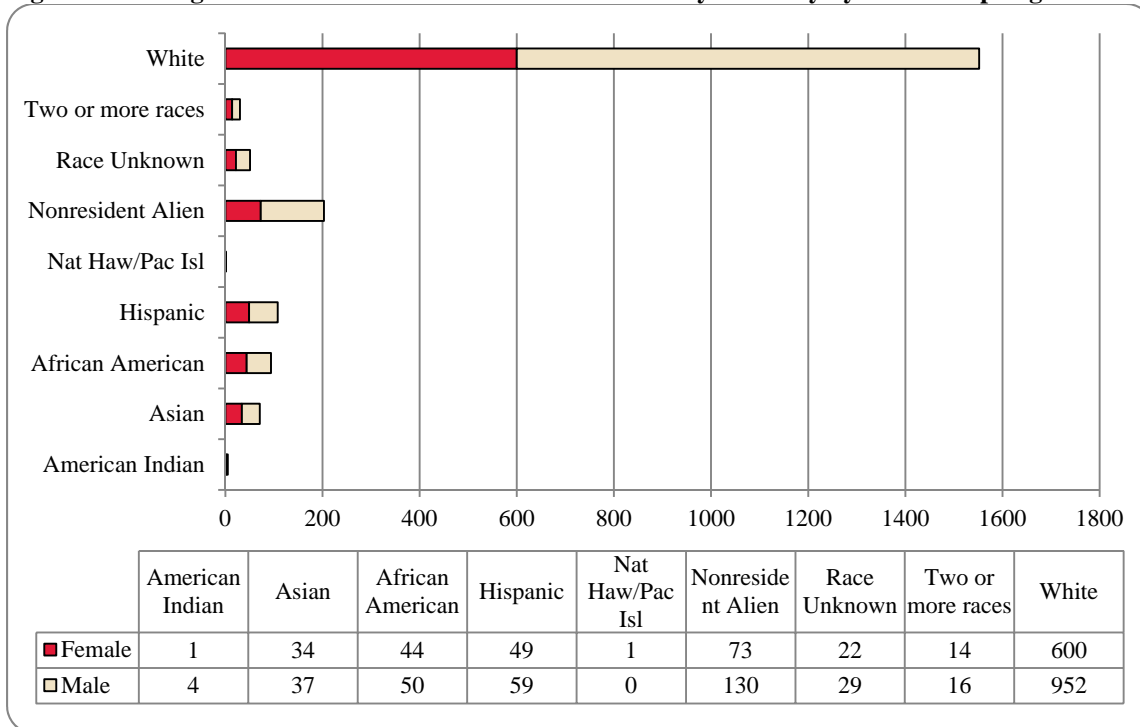
**Figure 11: College of Business Administration Head Count: Spring 2004-2013**



**Figure 12: College of Business Administration Student Credit Hours: Spring 2004-2013**



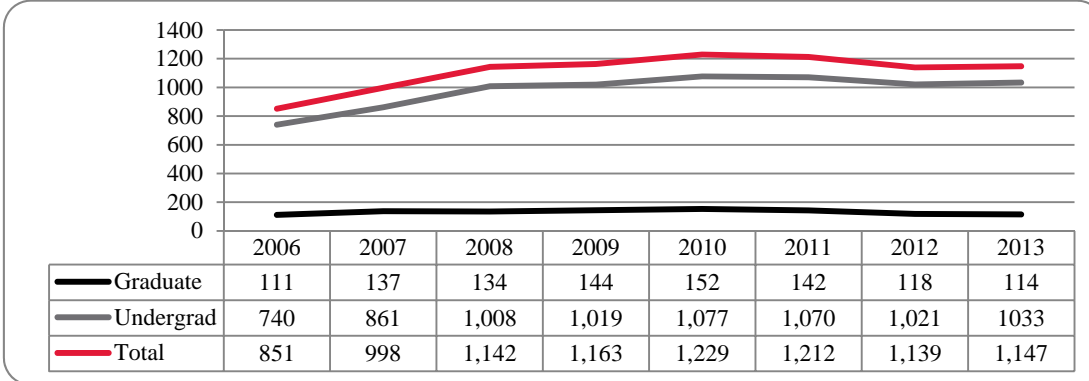
**Figure 13: College of Business Administration Head Count by Ethnicity by Gender: Spring 2013**



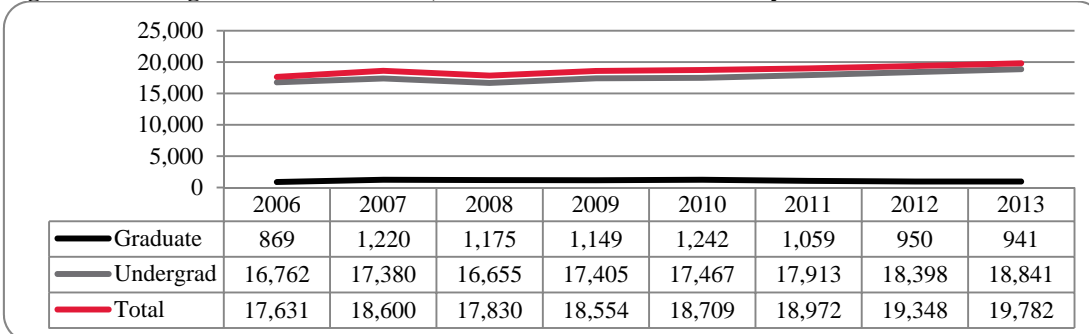
**Table 5: College of Business Administration Head Count Summary for Undergraduate and Graduate Students by Full and Part-Time by Gender and Race  
Classification: Spring 2013**

	American Indian		Asian		African American		Hispanics		Nat Haw / Pac Isl		Race Unknown		Two or more races		White		Nonresident Alien		Total		
	F	M	F	M	F	M	F	M	F	M	F	M	F	M	F	M	F	M	F	M	Total
<b>Undergraduate</b>																					
<b>Full-Time</b>																					
First-Time Freshmen																					
Other Freshmen																					
Sophomores	1		5	3	7	6	8	13			7	6	2	4	80	115	4	23	113	171	284
Juniors			7	8	12	9	12	12			3	7	5	3	122	176	9	17	170	232	402
Seniors	1		8	2	12	7	13	5			2	5	3		124	168	9	17	171	205	376
Special			1				1								6	9		1	8	10	18
<b>Total Full-Time</b>	2	23	20	20	34	26	38	39			14	19	11	10	384	544	34	85	538	745	1,283
<b>Part-Time</b>																					
First-Time Freshmen																					
Other Freshmen																					
Sophomores																					
Juniors																					
Seniors																					
Special																					
<b>Total Part-Time</b>	1	2	5	6	6	17	8	10	1	1	6	7	2	3	130	212	3	15	162	272	434
<b>Total Undergraduate</b>	1	4	28	26	40	43	46	49	1	1	20	26	13	13	514	756	37	100	700	1,017	1,717
<b>Graduate</b>																					
<b>Full-Time</b>																					
Certificate																					
Masters																					
Doctoral																					
Special Graduate																					
<b>Total Full-Time</b>	1	5	1	1	1	1	1	2			1	3	1	3	66	164	4	5	82	195	277
<b>Part-Time</b>																					
Certificate																					
Masters																					
Doctoral																					
Special Graduate																					
<b>Total Part-Time</b>	5	6	11	4	7	3	10				2	1	1	2	1	1	1	2	3		
<b>Total Graduate</b>																					
Total All Students	1	4	34	37	44	50	49	59	1	1	22	29	14	16	600	952	73	130	838	1,277	2,115

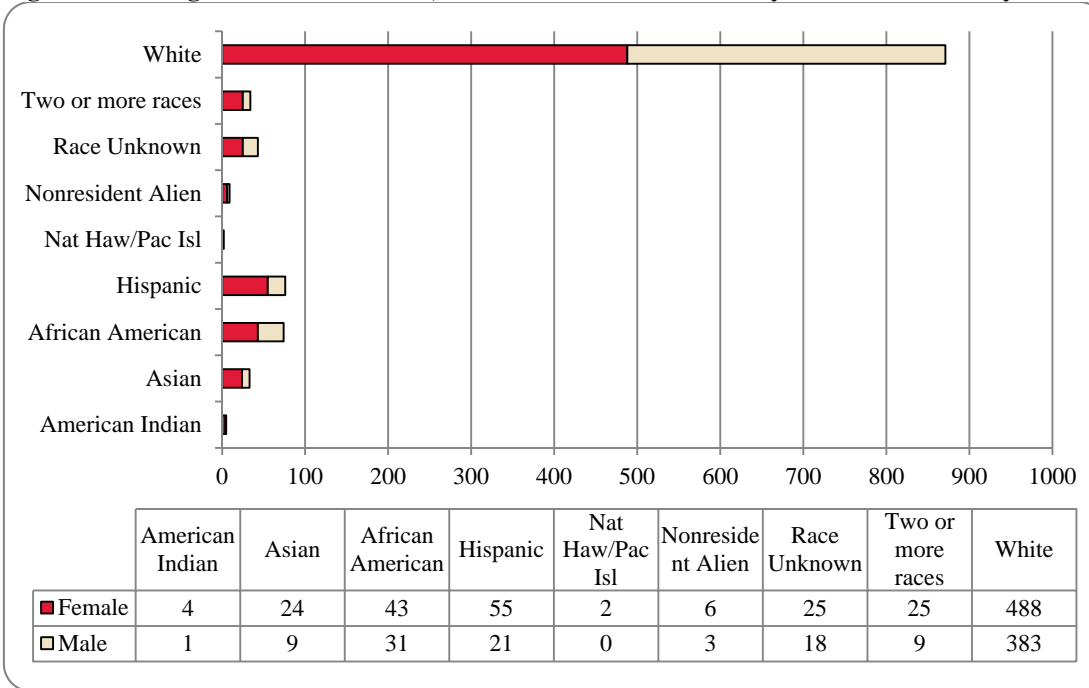
**Figure 14: College of Communication, Fine Arts and Media Delivery-Site Head Count: Spring 2006-2013**



**Figure 15: College of Communication, Fine Arts and Media Delivery-Site Student Credit Hours: Spring 2006-2013**



**Figure 16: College of Communication, Fine Arts and Media Delivery-Site Head Count by Ethnicity by Gender: Spring 2013**

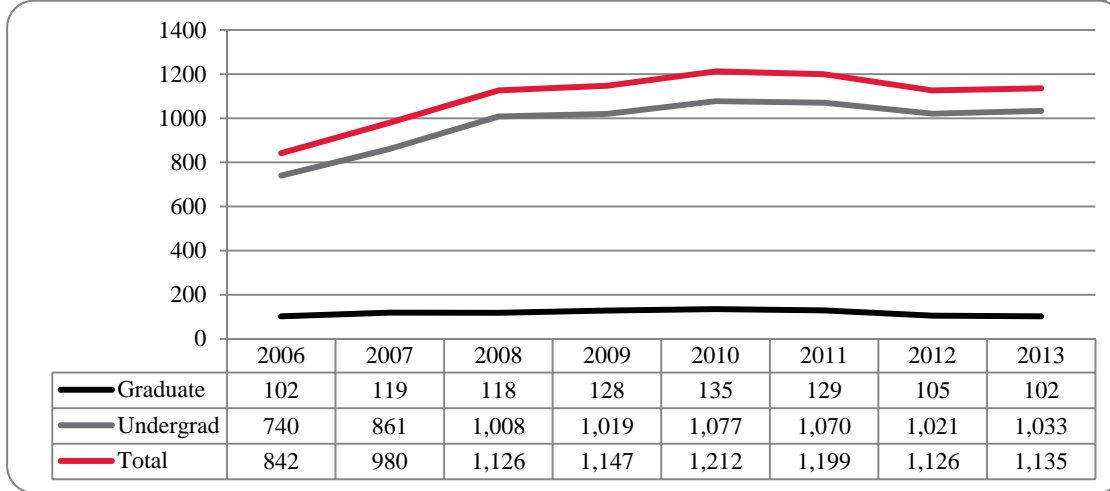




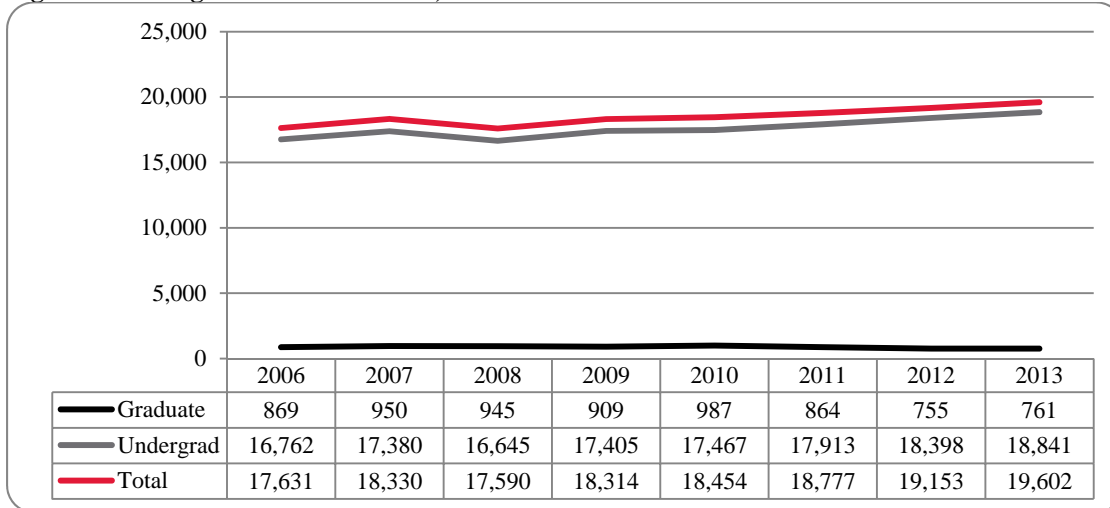
**Table 6: College of Communication, Fine Arts and Media Delivery-Site Head Count Summary for Undergraduate and Graduate Students by Full and Part-Time by Gender and Race Classification: Spring 2013**

	American Indian		Asian		African American		Hispanics		Nat Haw / Pac Isl		Race Unknown		Two or more races		White		Nonresident Alien		Total		
	F	M	F	M	F	M	F	M	F	M	F	M	F	M	F	M	F	M	F	M	Total
<b>Undergraduate</b>																					
<b>Full-Time</b>																					
First-Time Freshmen																					
Other Freshmen																					
Sophomores	1		3	2	10	5	12	7	1		3	1	6	2	76	51	112	68	180		
Juniors	2		5	2	8	6	15	4			7	4	4		120	59	1	162	76	238	
Seniors		1	6	1	6	4	15	3			7	5	2		101	76	1	138	91	229	
Special	1															1					
<b>Total Full-Time</b>	4	1	16	8	31	20	46	17	1		18	11	21	4	345	242	3	2	485	305	790
<b>Part-Time</b>																					
First-Time Freshmen																					
Other Freshmen																					
Sophomores			1		2	2	3	1					1	2	10	10			17	15	32
Juniors			1		1	1	3				1	2	1		8	14			12	17	29
Seniors			5		3	6	2	1			4	4			41	54			55	65	120
Special										1	1				8	7			9	9	18
<b>Total Part-Time</b>			7		8	9	8	3	1		5	6	3	3	87	103			119	124	243
<b>Total Undergraduate</b>	4	1	23	8	39	29	54	20	2		23	17	24	7	432	345	3	2	604	429	1,033
<b>Graduate</b>																					
<b>Full-Time</b>																					
Certificate																					
Masters					1						1		1	1	22	14	3	1	27	16	43
Doctoral																					
Special Graduate																					
<b>Total Full-Time</b>					1						1		1	1	22	14	3	1	27	16	43
<b>Part-Time</b>																					
Certificate					1																
Masters			1		3	1	1	1			1	1	1	1	34	23			41	27	68
Doctoral																					
Special Graduate																					
<b>Total Part-Time</b>			1	1	3	2	1	1			1	1	1	1	34	24			41	30	71
<b>Total Graduate</b>			1	1	4	2	1	1			2	1	1	2	56	38	3	1	68	46	114
<b>Total All Students</b>	4	1	24	9	43	31	55	21	2		25	18	25	9	488	383	6	3	672	475	1,147

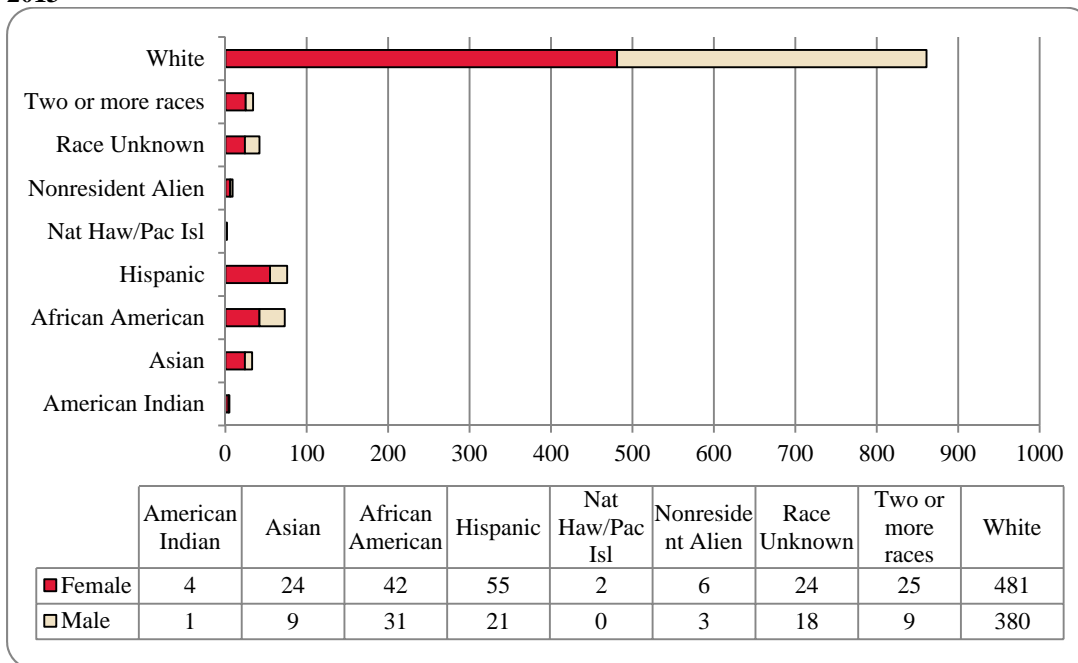
**Figure 17: College of Communication, Fine Arts and Media: Administrative-Site Head Count: Spring 2006-2013**



**Figure 18: College of Communication, Fine Arts and Media: Administrative-Site Student Credit Hours: Spring 2006-2013**



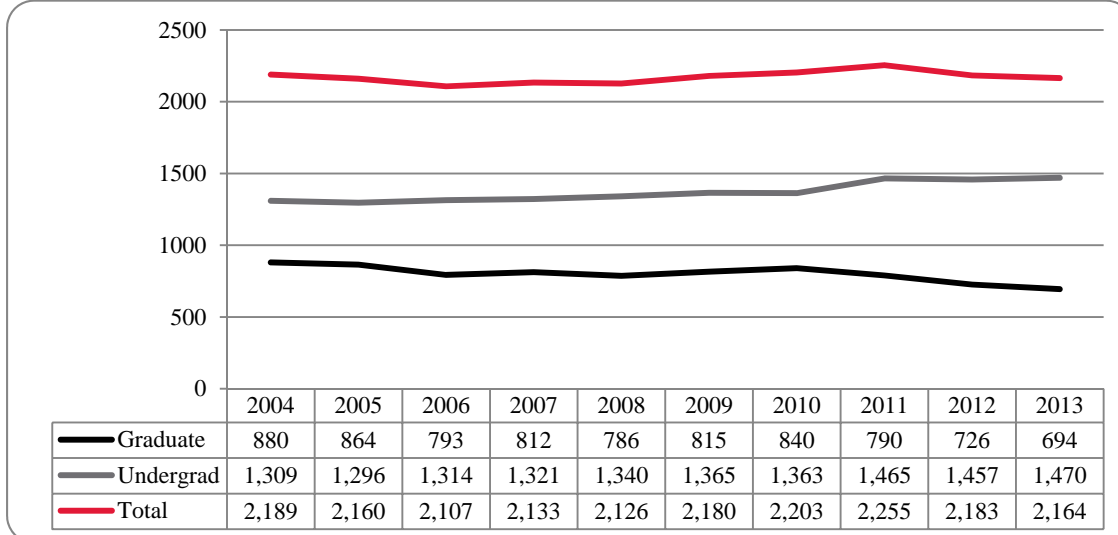
**Figure 19: College of Communication, Fine Arts and Media: Administrative-Site Head Count by Ethnicity by Gender: Spring 2013**



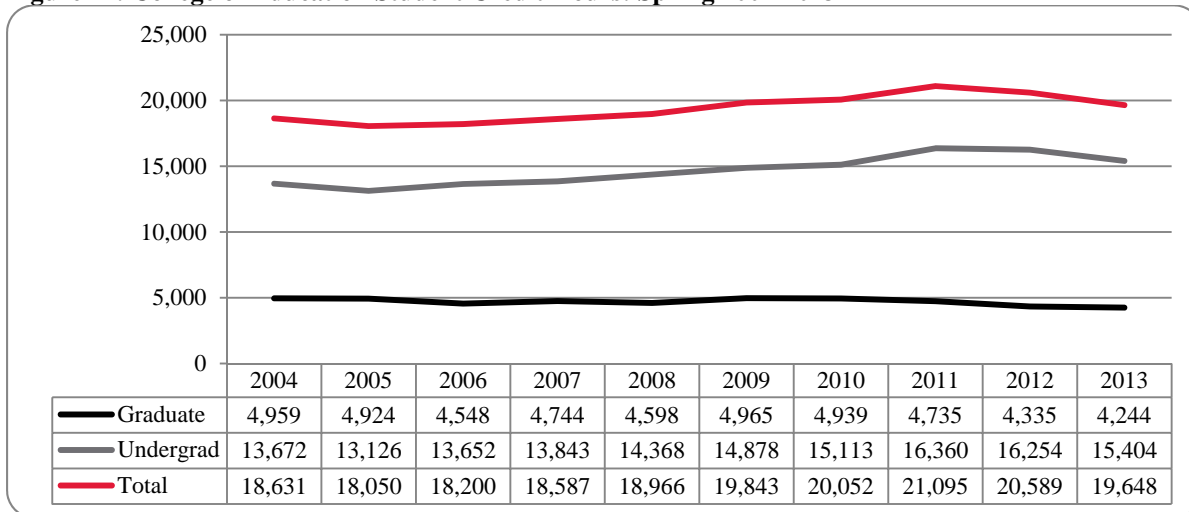
**Table 7: College of Communication, Fine Arts and Media Administrative-Site Head Count Summary for Undergraduate and Graduate Students by Full and Part-time by Gender and Race Classification: Spring 2013**

	American Indian		Asian		African American		Hispanics		Nat Haw / Pac Isl		Race Unknown		Two or more races		White		Nonresident Alien		Total		
	F	M	F	M	F	M	F	M	F	M	F	M	F	M	F	M	F	M	F	M	Total
<b>Undergraduate</b>																					
<b>Full-Time</b>																					
First-Time Freshmen																					
Other Freshmen			2	3	7	5	4	3			1	1	9	2	47	55	1		1		1
Sophomores	1		3	2	10	5	12	7	1		3	1	6	2	76	51			71	69	140
Juniors	2		5	2	8	6	15	4			7	4	4		120	59	1	1	112	68	180
Seniors		1	6	1	6	4	15	3			7	5	2		101	76	1	1	162	76	238
Special																					
<b>Total Full-Time</b>	4	1	16	8	31	20	46	17	1		18	11	21	4	345	242	3	2	485	305	790
<b>Part-Time</b>																					
First-Time Freshmen																					
Other Freshmen			1		2	2	3	1					1	2	10	10			17	15	32
Sophomores					2	1					1	2	1		8	14			12	17	29
Juniors			1		1		3						1		20	17			26	17	43
Seniors			5		3	6	2	1			4	4			41	54			55	65	120
Special														1	8	7			9	9	18
<b>Total Part-Time</b>			7		8	9	8	3	1		5	6	3	3	87	103			119	124	243
<b>Total Undergraduate</b>	4	1	23	8	39	29	54	20	2		23	17	24	7	432	345	3	2	604	429	1,033
<b>Graduate</b>																					
<b>Full-Time</b>																					
Certificate																					
Masters																					
Doctoral																					
Special Graduate																					
<b>Total Full-Time</b>																					
<b>Part-Time</b>																					
Certificate																					
Masters			1		3	1	1	1			1	1	1	1	34	23			41	27	68
Doctoral																					
Special Graduate																					
<b>Total Part-Time</b>			1		3	2	1	1			1	1	1	1	34	24			41	30	71
<b>Total Graduate</b>			1		3	2	1	1			1	1	1	2	49	35	3	1	59	43	102
<b>Total All Students</b>	4	1	24	9	42	31	55	21	2		24	18	25	9	481	380	6	3	663	472	1,135

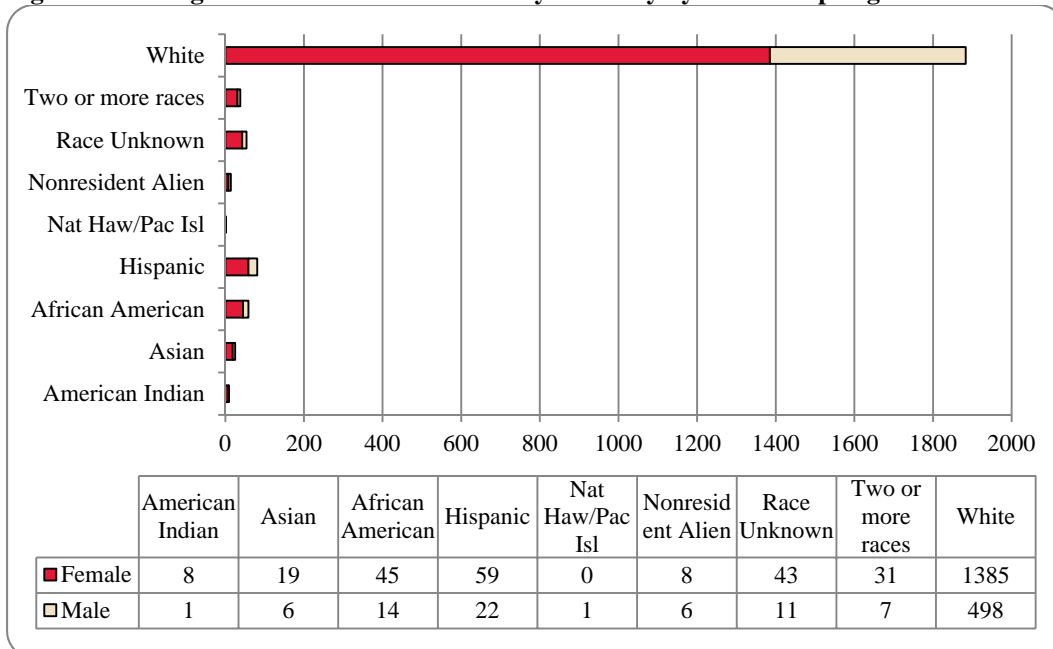
**Figure 20: College of Education Head Count: Spring 2004-2013**



**Figure 21: College of Education Student Credit Hours: Spring 2004-2013**

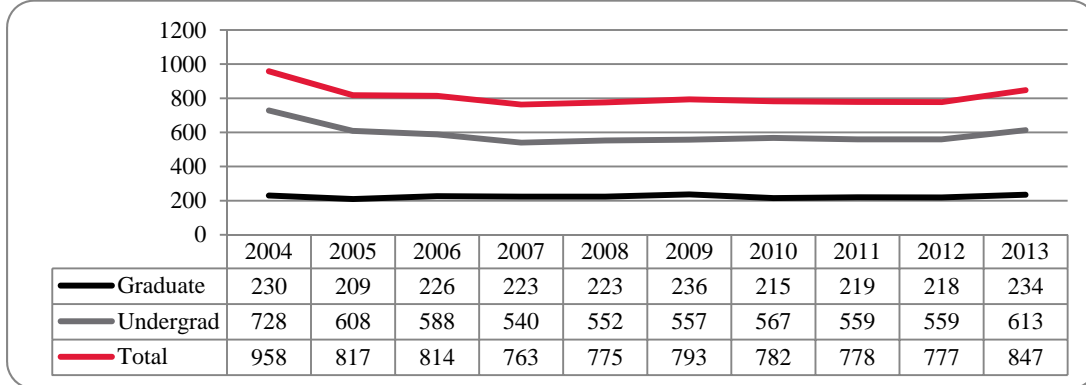


**Figure 22: College of Education Head Count by Ethnicity by Gender: Spring 2013**

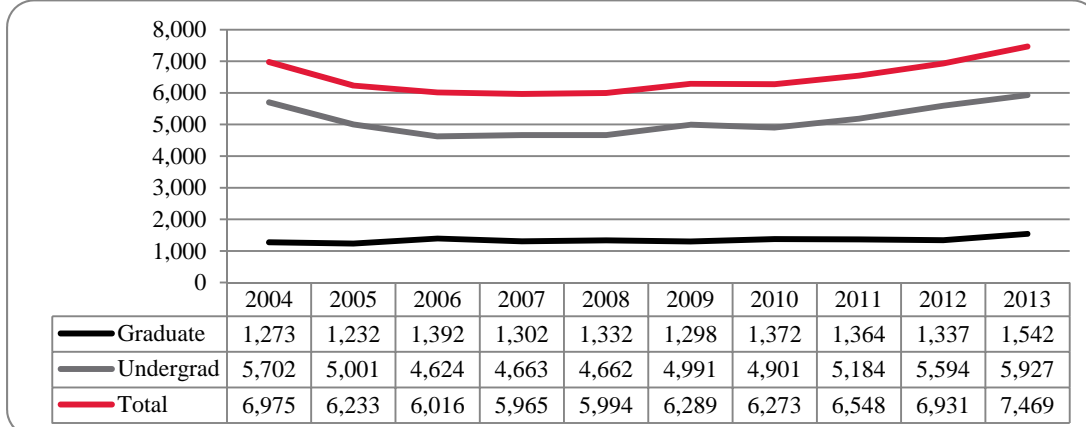


	American Indian		Asian		African American		Hispanics		Nat Haw / Pac Isl		Race Unknown		Two or more races		White		Nonresident Alien		Total			
	F	M	F	M	F	M	F	M	F	M	F	M	F	M	F	M	F	M	F	M	Total	
<b>Undergraduate</b>																						
<b>Full-Time</b>																						
First-Time Freshmen																						
Other Freshmen																						
Sophomores																						
Juniors																						
Seniors																						
Special																						
<b>Total Full-Time</b>	5	1	9	4	24	5	40	19	2	1	31	8	18	4	763	289	3	3	893	334	1,227	
<b>Part-Time</b>																						
First-Time Freshmen																						
Other Freshmen																						
Sophomores																						
Juniors																						
Seniors																						
Special																						
<b>Total Part-Time</b>																						
<b>Total Undergraduates</b>	5	1	12	5	34	9	45	20	1	35	10	23	6	898	360	3	3	1,055	415	1,470		
<b>Graduate</b>																						
<b>Full-Time</b>																						
Certificate																						
Masters																						
Doctoral																						
Special Graduate																						
<b>Total Full-Time</b>	1	1	1	1	2	3	1	1	1	1	1	2	2	91	32	4	2	102	39	141		
<b>Part-Time</b>																						
Certificate																						
Masters																						
Doctoral																						
Special Graduate																						
<b>Total Part-Time</b>																						
<b>Total Graduates</b>	3		5		7	1	9			6		6		318	80	1	1	355	83	438		
<b>Total All Students</b>	8	1	19	6	45	14	59	22	1	43	11	31	7	1,385	498	8	6	1,598	566	2,164		

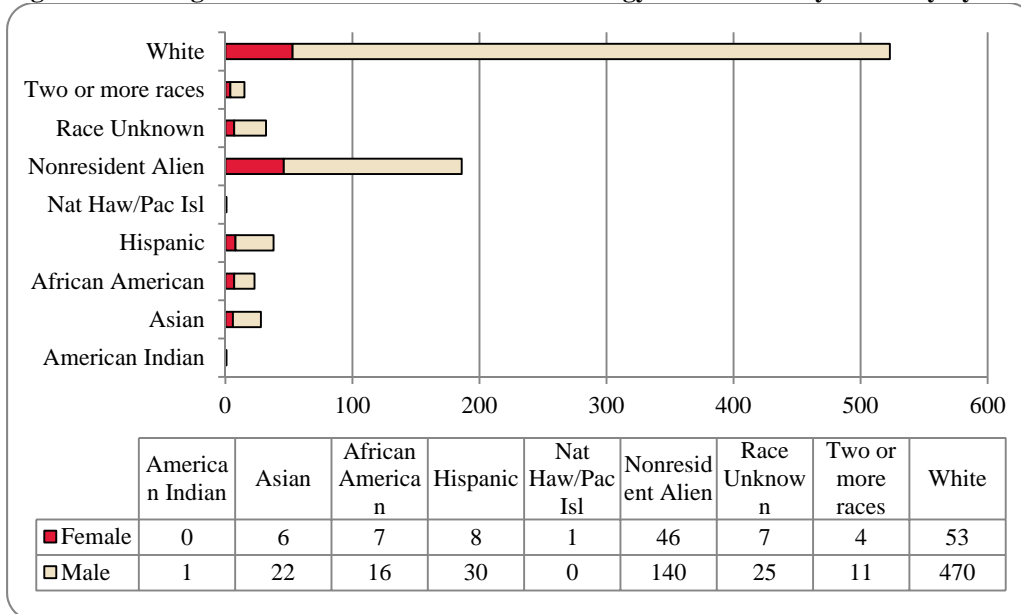
**Figure 23: College of Information Science & Technology Head Count: Spring 2004-2013**



**Figure 24: College of Information Science & Technology Student Credit Hours: Spring 2004-2013**



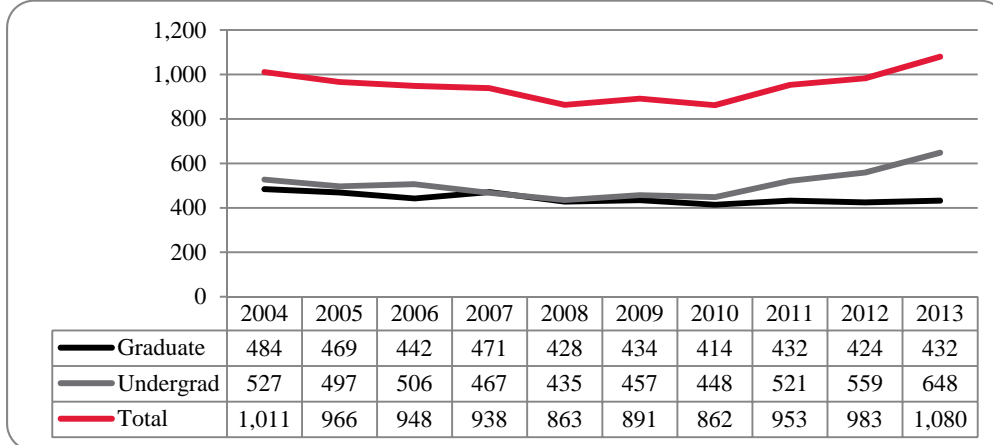
**Figure 25: College of Information Science & Technology Head Count by Ethnicity by Gender: Spring 2013**



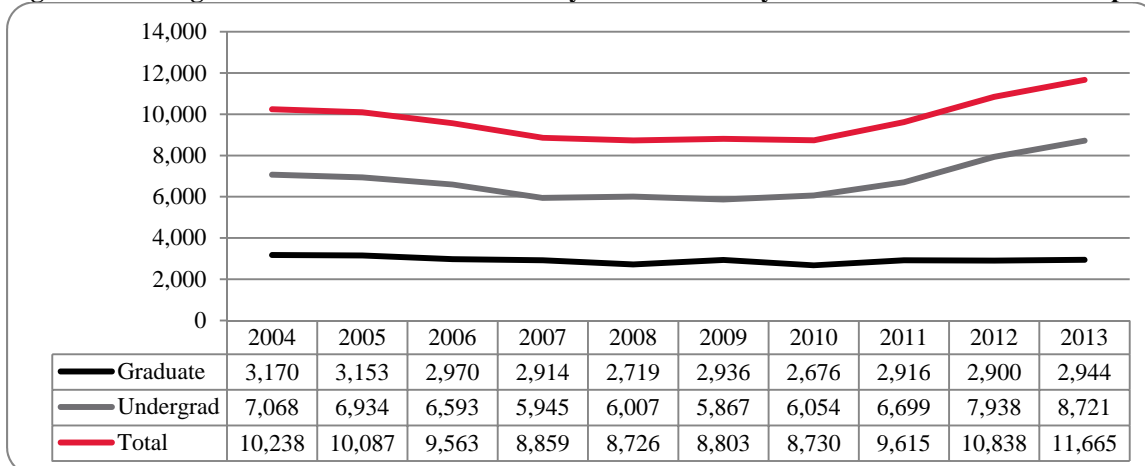
**Table 9: College of Information Science and Technology Head Count Summary for Undergraduate and Graduate Summary for Full and Part-time by Gender and Race Classification: Spring 2013**

	American Indian		Asian		African American		Hispanics		Nat Haw / Pac Isl		Race Unknown		Two or more races		White		Nonresident Alien		Total		
	F	M	F	M	F	M	F	M	F	M	F	M	F	M	F	M	F	M	F	M	Total
<b>Undergraduate</b>																					
<b>Full-Time</b>																					
First-Time Freshmen						1										1	10	1	12	13	
Other Freshmen						1		3								3	5	44	1	15	68
Sophomores						1	3	9								1	5	81	9	11	111
Juniors	1					1	2	4								2	9	81	2	14	109
Seniors						1	2	2	1							1	11	83	5	15	124
Special						1										2	7	2			136
<b>Total Full-Time</b>	1					4	9	7	18	1						4	32	297	11	63	421
																					483
<b>Part-Time</b>																					
First-Time Freshmen																					
Other Freshmen						2										1					
Sophomores						2										2	15		2		2
Juniors						1										1	14				1
Seniors						1	2	2								4	37	1	3	7	47
Special						1										1	11				4
<b>Total Part-Time</b>						1	5	2	3	1	6					2	8	87	1	6	14
<b>Total Undergraduate</b>	1					2	17	6	12	8	24	1				40	384	12	69	76	537
																					613
<b>Graduate</b>																					
<b>Full-Time</b>																					
Certificate																					
Masters																					
Doctoral																					
Special Graduate																					
<b>Total Full-Time</b>																					
<b>Part-Time</b>																					
Certificate																					
Masters																					
Doctoral																					
Special Graduate																					
<b>Total Part-Time</b>																					
<b>Total Graduate</b>																					
<b>Total All Students</b>	1					6	22	7	16	8	30	1				53	470	46	140	132	715
																					847

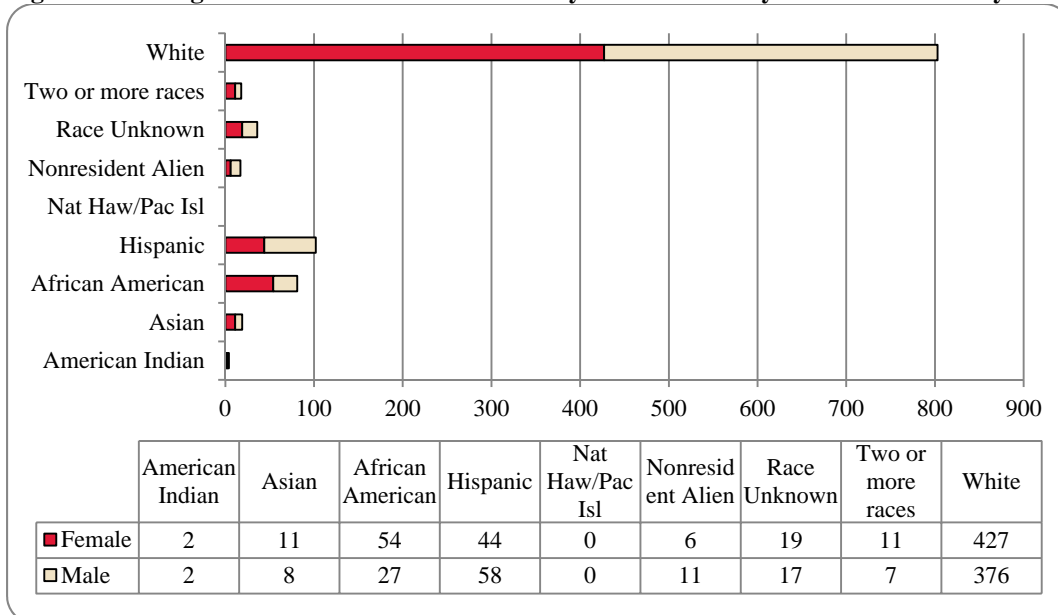
**Figure 26: College of Public Affairs & Community Service Delivery-Site Head Count: Spring 2004-2013**



**Figure 27: College of Public Affairs & Community Service Delivery-Site Student Credit Hours: Spring 2004-2013**



**Figure 28: College of Public Affairs & Community Service Delivery-Site Head Count by Ethnicity by Gender: Spring 2013**

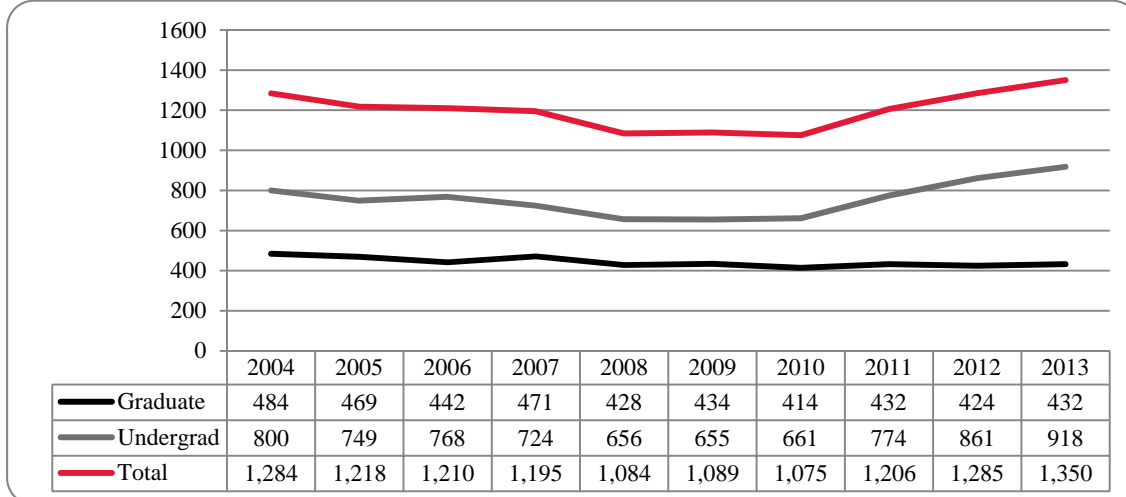




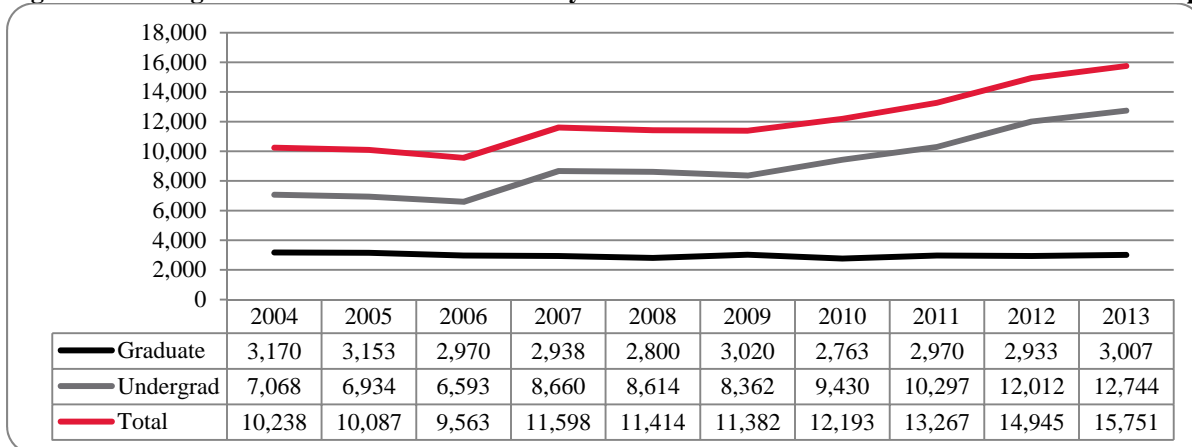
**Table 10: College of Public Affairs and Community Service Delivery-Site Head Count for Undergraduate and Graduate Students by Full and Part-Time by Gender and Race Classification: Spring 2013**

	American Indian		Asian		African American		Hispanics		Nat Haw / Pac Isl		Race Unknown		Two or more races		White		Nonresident Alien		Total		
	F	M	F	M	F	M	F	M	F	M	F	M	F	M	F	M	F	M	F	M	Total
<b>Undergraduate</b>																					
<b>Full-Time</b>																					
First-Time Freshmen																					
Other Freshmen																					
Sophomores																					
Juniors																					
Seniors																					
Special																					
<b>Total Full-Time</b>	1	6	5	32	16	44					8	7	7	6	172	217	3	252	299	551	
<b>Part-Time</b>																					
First-Time Freshmen																					
Other Freshmen																					
Sophomores																					
Juniors																					
Seniors																					
Special																					
<b>Total Part-Time</b>																					
<b>Total Undergraduate</b>	1	6	5	32	20	51					9	12	8	6	204	256	3	294	354	648	
<b>Graduate</b>																					
<b>Full-Time</b>																					
Certificate																					
Masters	1		1	8	4	3					3		1		70	28	1		93	36	129
Doctoral																					
Special Graduate																					
<b>Total Full-Time</b>	1		1	8	4	4					3		1		74	30	2	5	98	44	142
<b>Part-Time</b>																					
Certificate																					
Masters	1	1	3	2	8	3	4	3			6	4	2	1	134	71	2		160	85	245
Doctoral			1		1						1	1			6	13	1	3	10	17	27
Special Graduate																					
<b>Total Part-Time</b>	1	1	4	2	10	3	5	3			7	5	2	1	149	90	4	3	182	108	290
<b>Total Graduate</b>	2	1	5	3	18	7	13	7			10	5	3	1	223	120	6	8	280	152	432
<b>Total All Students</b>	2	2	11	8	54	27	44	58			19	17	11	7	427	376	6	11	574	506	1,080

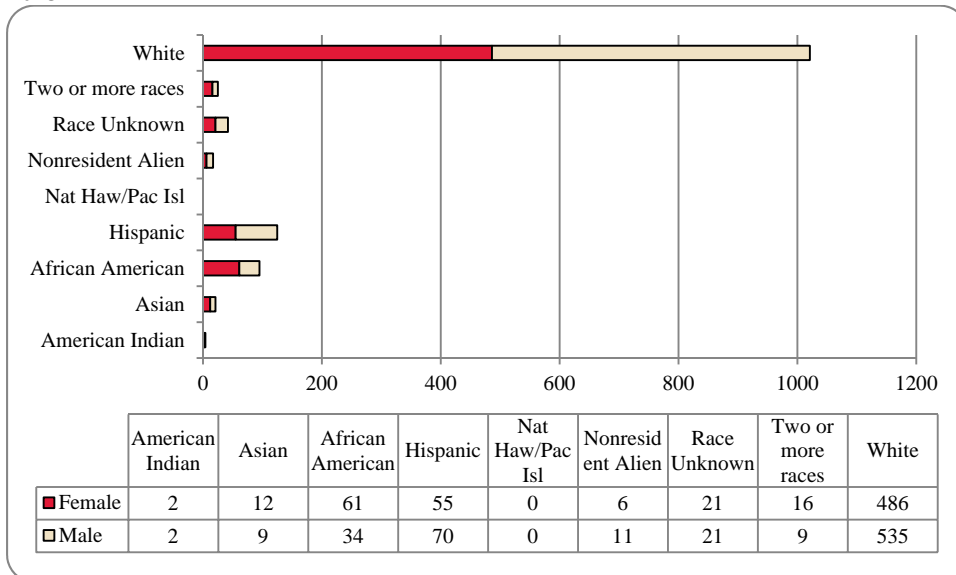
**Figure 29: College of Public Affairs & Community Service Administrative-Site Head Count: Spring 2004-2013**



**Figure 30: College of Public Affairs & Community Service Administrative-Site Student Credit Hours: Spring 2004-2013**



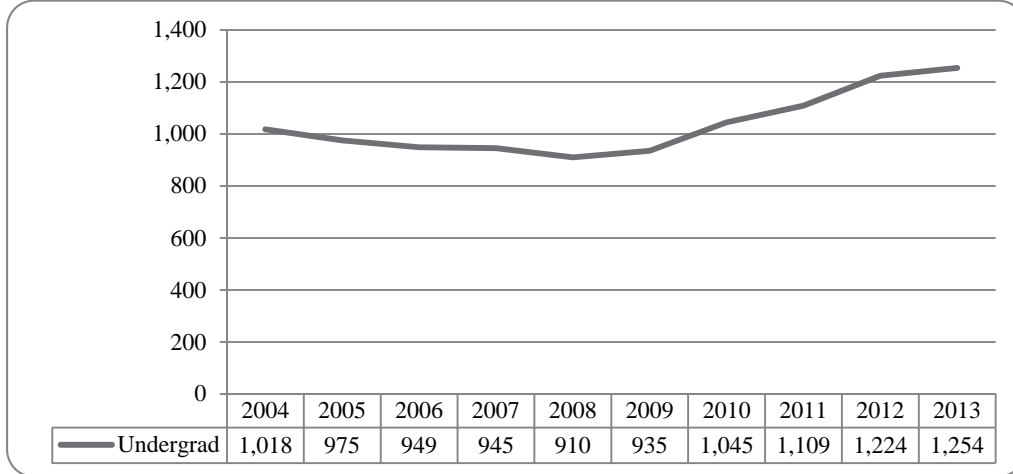
**Figure 31: College of Public Affairs & Community Service Administrative-Site Head Count by Ethnicity by Gender: Spring 2013**



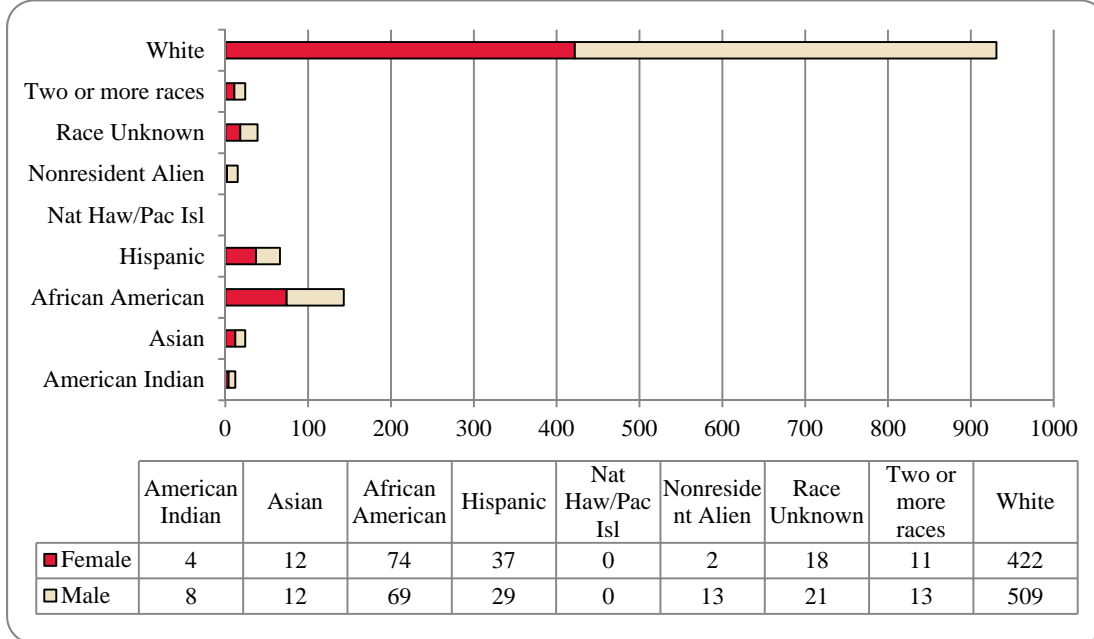
**Table 11: College of Public Affairs and Community Service Administrative-Site Head Count Summary for Undergraduate and Graduate Students by Full and Part-Time by Gender and Race Classification: Spring 2013**

	American Indian		Asian		African American		Hispanics		Nat Haw / Pac Isl		Race Unknown		Two or more races		White		Nonresident Alien		Total			
	F	M	F	M	F	M	F	M	F	M	F	M	F	M	F	M	F	M	F	M	Total	
<b>Undergraduate</b>																						
<b>Full-Time</b>																						
First-Time Freshmen																						
Other Freshmen					2	7	7	13					1	5	3	35	63	2	54	91	145	
Sophomores			1	1	11	3	13	20				4	6	3	4	50	86		82	120	202	
Juniors	1		3	1	11	8	14	11				3		2	71	119	1	104	141	245		
Seniors			2	2	8	5	4	12				3	4	2	1	68	95		87	119	206	
Special																						
<b>Total Full-Time</b>	1		6	6	37	23	38	56				10	11	12	8	225	367	3	328	475	803	
<b>Part-Time</b>																						
First-Time Freshmen																						
Other Freshmen								1				1	1		2	3						
Sophomores					2	2	1	3					1		6	5						
Juniors					2	1	1	1				1	1		6	11						
Seniors			1		1	2	1	2				1			23	29						
Special					1	1	1					1			1							
<b>Total Part-Time</b>			1		6	4	4	7				1	5	1	38	48						
<b>Total Undergraduates</b>	1		7	6	43	27	42	63				11	16	13	8	263	415	3	379	539	918	
<b>Graduate</b>																						
<b>Full-Time</b>																						
Certificate																						
Masters	1		1	1	8	4	8	3				3		1	70	28	1					
Doctoral								1							4	2	1	5	8	13		
Special Graduate																						
<b>Total Full-Time</b>	1		1	1	8	4	8	4				3		1	74	30	2	5	98	44	142	
<b>Part-Time</b>																						
Certificate					1	1	1								9	6	1					
Masters	1	1	3	2	8	3	4	3				6	4	2	134	71	2					
Doctoral			1		1							1	1		6	13	1	3	10	17	27	
Special Graduate																						
<b>Total Part-Time</b>	1	1	4	2	10	3	5	3				7	5	2	149	90	4	3	182	108	290	
<b>Total Graduate</b>	2	1	5	3	18	7	13	7				10	5	3	223	120	6	8	280	152	432	
<b>Total All Students</b>	2	2	12	9	61	34	55	70				21	21	16	9	486	535	6	11	659	691	1,350

**Figure 32: College of CPACS, Division of Continuing Studies Head Count: Spring 2004-2013**



**Figure 33: College of CPACS, Division of Continuing Studies Head Count by Ethnicity by Gender: Spring 2013**



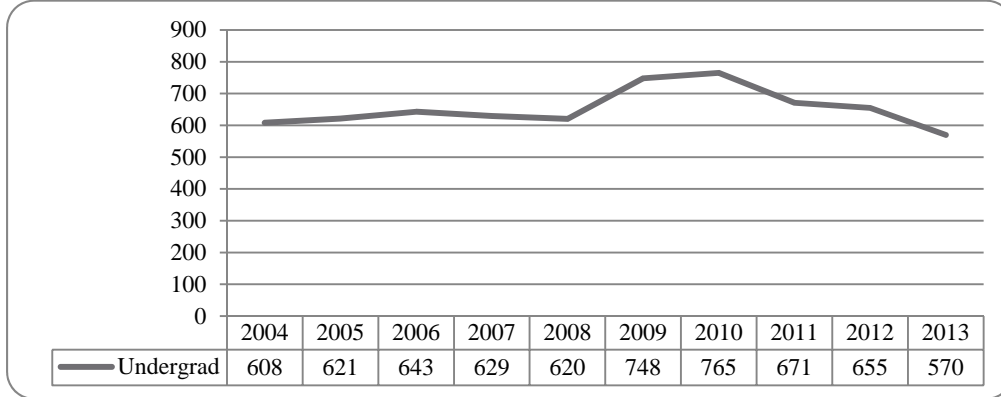
**Table 12: College of CPACS Division of Continuing Studies Head Count Summary for Undergraduate Students by Full and Part-Time by Gender and Race Classification: Spring 2013**

	American Indian		Asian		African American		Hispanics		Nat Haw/Pac Isl		Race Unknown		Two or more races		White		Nonresident Alien		Total			
	F	M	F	M	F	M	F	M	F	M	F	M	F	M	F	M	F	M	F	M	Total	
<b>Undergraduate</b>																						
<b>Full-Time</b>																						
First-Time Freshmen							1															
Other Freshmen					1	2	1	3					2		14	27		1	18	33	51	1
Sophomores	1	1	2	2	4	7	4	4			1	2	2		28	66		2	42	84	126	
Juniors	1	1	3	3	12	21	6	5			3	3	3		59	87		4	84	126	210	
Seniors	2	2	3	3	18	11	7	5			4	6	2		98	93		5	135	128	263	
Special			1			1									2	4			3	5	8	
<b>Total Full-Time</b>	3	4	7	8	35	42	18	18			8	11	9	5	201	277	1	12	282	377	659	
<b>Part-Time</b>																						
First-Time Freshmen																						
Other Freshmen																						
Sophomores	1	1			7	2	1	2				1			1	13			1	19	40	
Juniors					6	8	4	4			2				37	43			50	56	106	
Seniors			1	2	10	8	6	2			3	4	1		50	62			71	82	153	
Special			3	3	14	9	7	3			5	5			109	102			138	126	264	
<b>Total Part-Time</b>	1	4	5	4	39	27	19	11			10	10	2	8	221	232	1	1	298	297	595	
<b>Total Undergraduate</b>	4	8	12	12	74	69	37	29			18	21	11	13	422	509	2	13	580	674	1,254	
<b>Total All Students</b>	4	8	12	12	74	69	37	29			18	21	11	13	422	509	2	13	580	674	1,254	

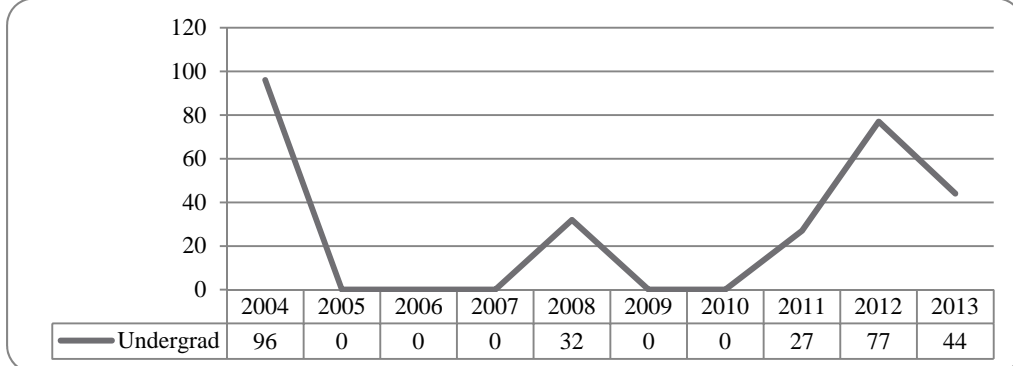
**Table 13: Cooperative Graduate Program Head Count Summary for Graduate Students by Full and Part-Time by Gender and Race Classification: Spring 2013**

	American Indian		Asian		African American		Hispanics		Nat Haw / Pac Isl		Race Unknown		Two or more races		White		Nonresident Alien		Total		
	F	M	F	M	F	M	F	M	F	M	F	M	F	M	F	M	F	M	F	M	Total
<b>Graduate</b>																					
<b>Full-time</b>																					
Certificate																					
Masters																					
Doctoral																					
Special Graduate																					
<b>Total Full-Time</b>																					
<b>Part-Time</b>																					
Certificate						1					1									1	2
Masters																					3
Doctoral																					
Special Graduate																					
<b>Total Part-Time</b>																				1	2
<b>Total All Students</b>																				1	2
																					3

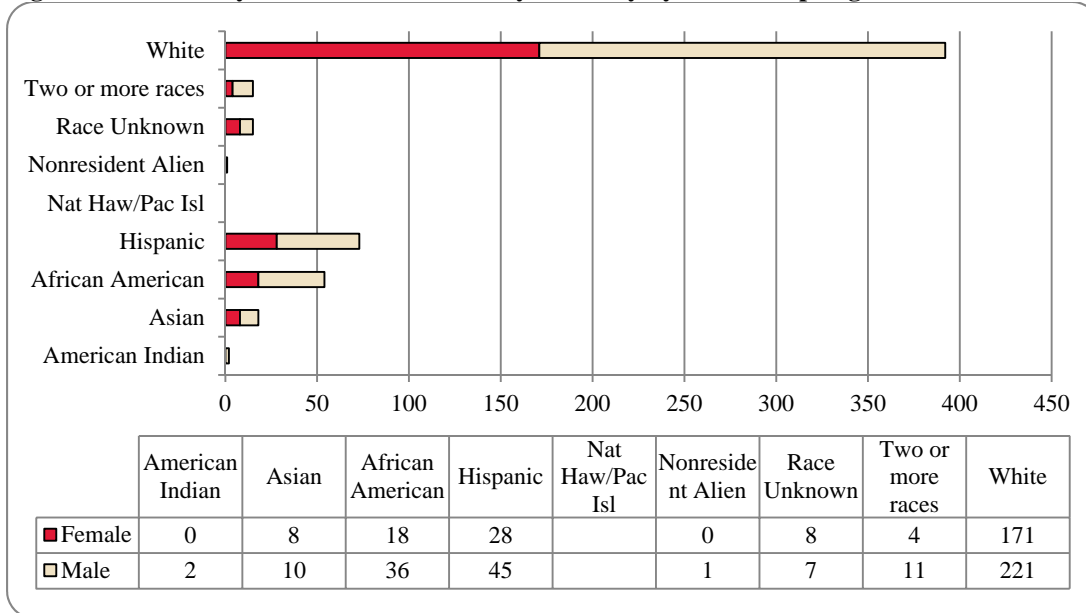
**Table 34: University Division Head Count: Spring 2004-2013**



**Figure 35: University Division Student Credit Hours: Spring 2004-2013**



**Figure 36: University Division Head Count by Ethnicity by Gender: Spring 2013**

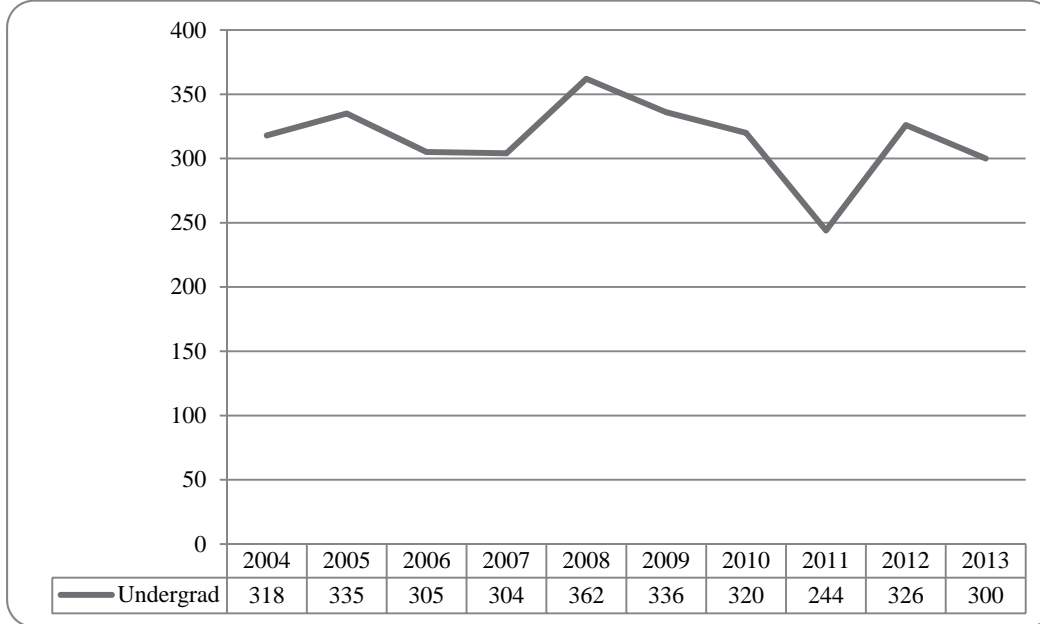


**Table 14: University Division Head Count Summary for Undergraduate Students by Full and Part-Time by Gender and Race Classification: Spring 2013**

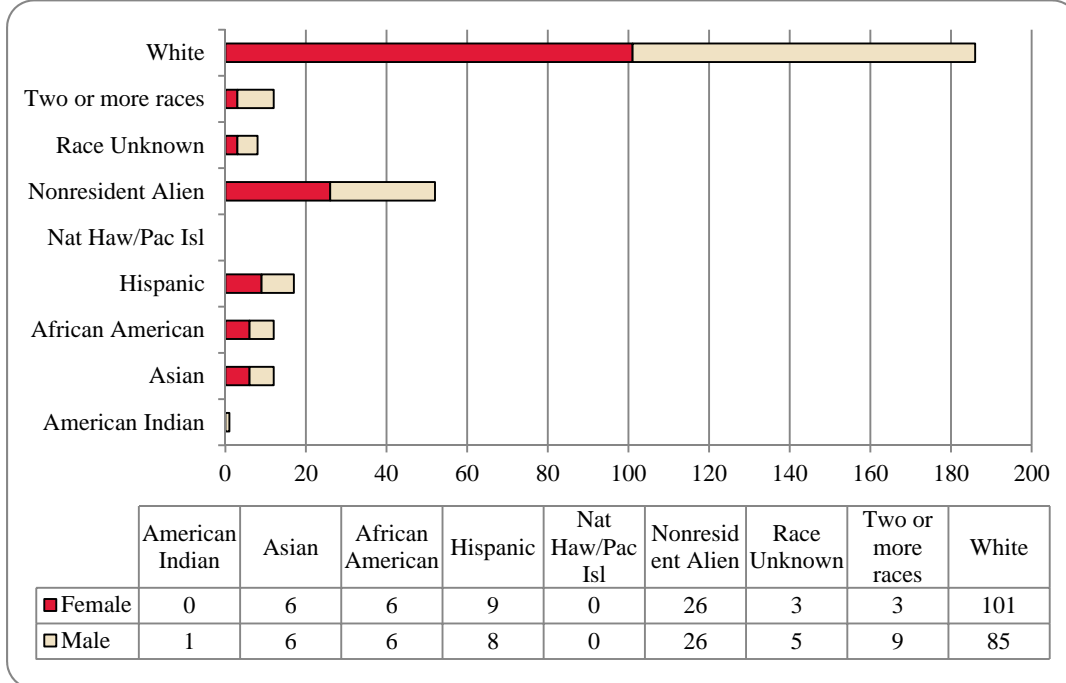
	American Indian		Asian		African American		Hispanics		Nat Haw / Pac Isl		Race Unknown		Two or more races		White		Nonresident Alien		Total		
	F	M	F	M	F	M	F	M	F	M	F	M	F	M	F	M	F	M	Total	Total	
	Undergraduate																				
Full-Time																					
First-Time Freshmen							2														
Other Freshmen	1	7	6	11	24	14	26	1	3	6	80	117	1	116	184	300					
Sophomores	1	1	4	5	5	11	11	5	3	2	65	63		87	89	176					
Juniors				1								1		1	1	2					
Seniors																					
Special																					
<b>Total Full-Time</b>	2	8	10	17	31	25	39	6	6	9	146	183	1	205	281	486					
Part-Time																					
First-Time Freshmen										1		1	1	2	1	3					
Other Freshmen				1	2	2	3	1	1	2	12	26		16	33	49					
Sophomores					3	1	3	1	1		12	11		14	18	32					
Juniors																					
Seniors																					
Special																					
<b>Total Part-time</b>				1	5	3	6	2	1	2	25	38		32	52	84					
<b>Total All Students</b>	2	8	10	18	36	28	45	8	7	11	171	221	1	237	333	570					



**Figure 37: Non-Degree/Intercampus Special Undergraduate Students Head Count: Spring 2004-2013**



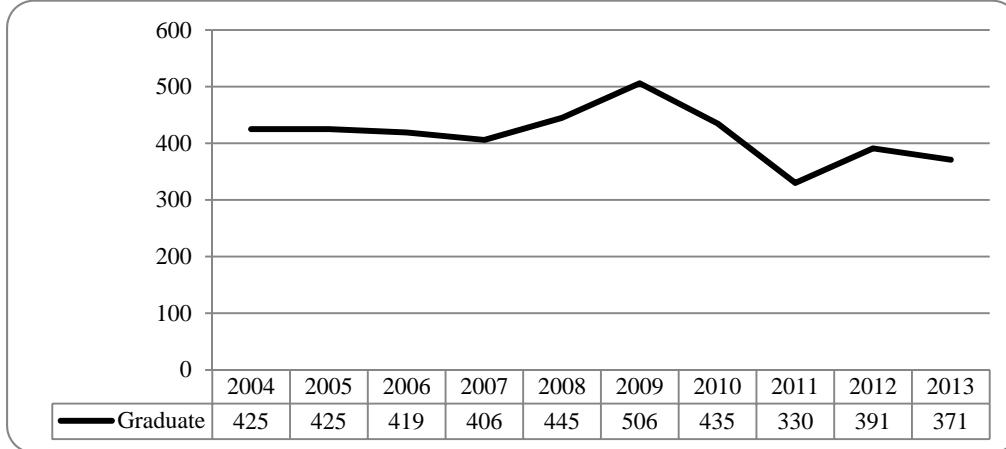
**Figure 38: Non-Degree/Intercampus Special Undergraduate Students Head Count by Ethnicity by Gender: Spring 2013**



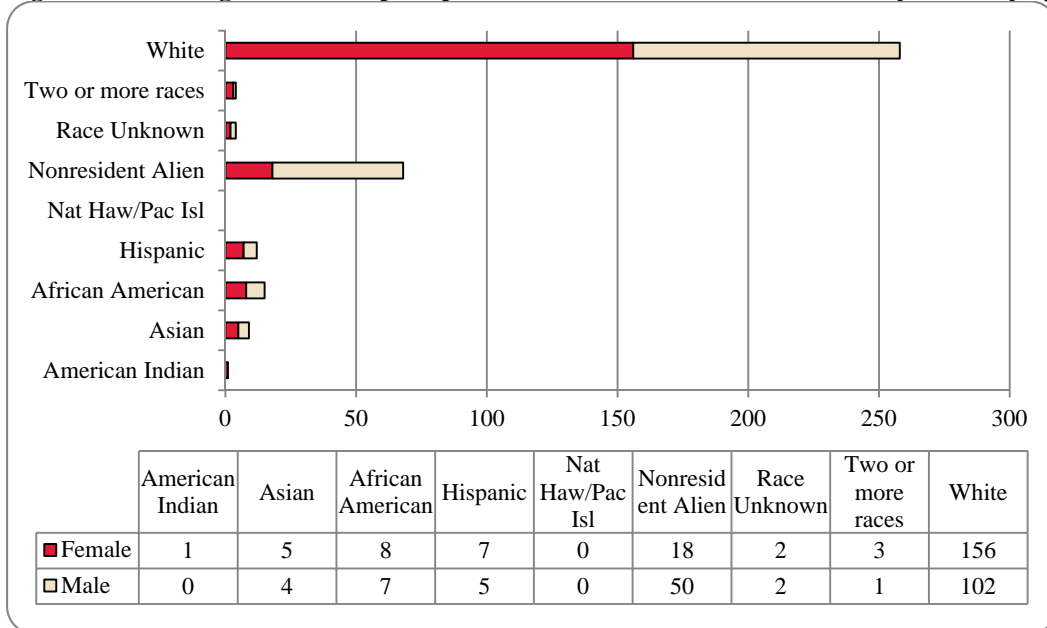
**Table 15: Non-Degree/Intercampus Head count Summary for Special Undergraduate Students by Full and Part-Time by Gender and Race Classification: Spring 2013**

	American Indian		Asian		African American		Hispanics		Nat Haw / Pac Isl		Race Unknown		Two or more races		White		Nonresident Alien		Total		
	F	M	F	M	F	M	F	M	F	M	F	M	F	M	F	M	F	M	F	M	Total
<b>Undergraduate</b>																					
<b>Full-Time</b>																					
First-Time Freshmen																					
Other Freshmen					1	2	1	1	3			1		1	6	12	18	21	4		67
Sophomores								1							1	2	1				5
Juniors															1	4					5
Seniors																					
Special															1	2					4
<b>Total Full-Time</b>					1	2	2	1	4			1		1	10	20	22	21	36	49	85
<b>Part-Time</b>																					
First-Time Freshmen																					
Other Freshmen					4	3	4	2	3	1		2	1	2	4	29	23	1	5	45	84
Sophomores									1							8	8			9	17
Juniors													1			5	2			5	8
Seniors																3	2	1		5	10
Special					1	2	2	1	3	1					3	46	30	2		54	96
<b>Total Part-Time</b>					1	6	5	4	8	4		2	5	3	8	91	65	4	5	118	215
<b>Total All Students</b>					1	6	6	6	9	8		3	5	3	9	101	85	26	26	154	300

**Figure 39: Non-Degree/Intercampus Special Graduate Students Head Count: Spring 2004-2013**



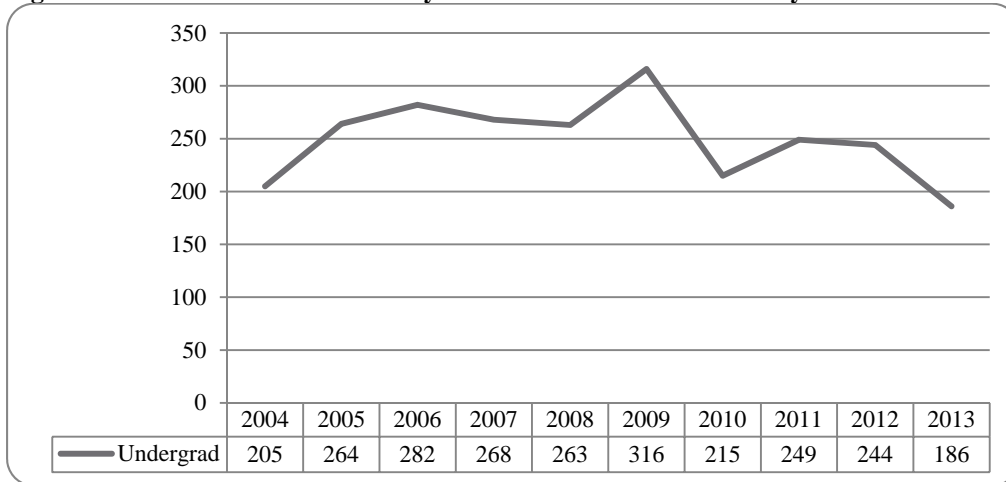
**Figure 40: Non-Degree/Intercampus Special Graduate Students Head Count by Ethnicity by Gender: Spring 2013**



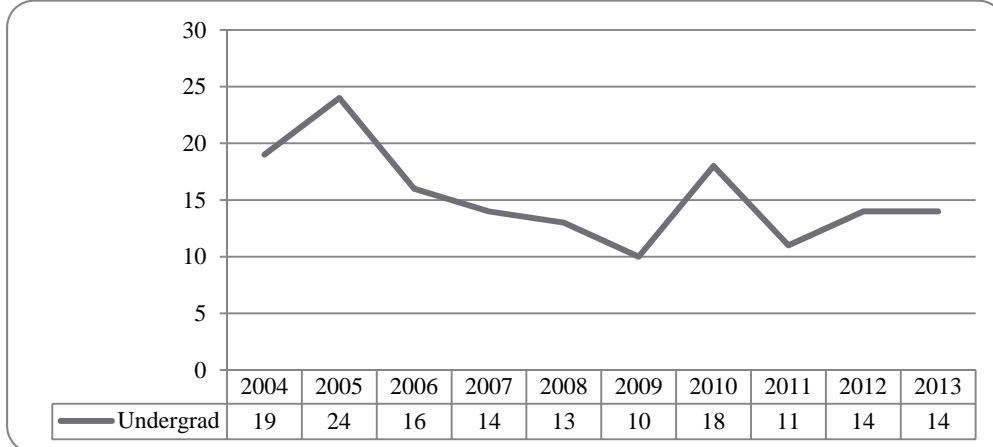
**Table 16: Non-Degree/Intercampus Head Count Summary for Special Graduate Students by Full and Part-Time by Gender and Race Classification: Spring 2013**

	American Indian		Asian		African American		Hispanics		Nat Haw / Pac Isl		Race Unknown		Two or more races		White		Nonresident Alien		Total		
	F	M	F	M	F	M	F	M	F	M	F	M	F	M	F	M	F	M	F	M	Total
<b>Graduate</b>																					
<b>Full-Time</b>																					
Certificate																					
Masters																					
Doctoral																					
Special Graduate				1		1		1					1		16	36	8	39	25	78	103
<b>Total Full-Time</b>				1		1		1					1		16	36	8	39	25	78	103
<b>Part-Time</b>																					
Certificate																					
Masters																					
Doctoral																					
Special Graduate	1		5	3	8	6	7	4			2	2	2	2	1	140	10	11	175	93	268
<b>Total Part-Time</b>	1		5	3	8	6	7	4			2	2	2	2	1	140	10	11	175	93	268
<b>Total All Students</b>	1		5	4	8	7	7	5			2	2	3	1	156	102	18	50	200	171	371

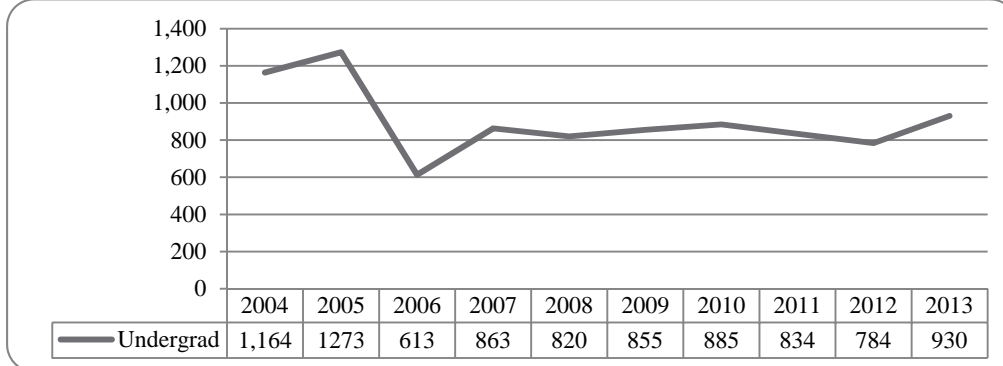
**Figure 41: Other Honors and Library Hours Student Credit Hours by Level of Instruction: Spring 2004-2013**



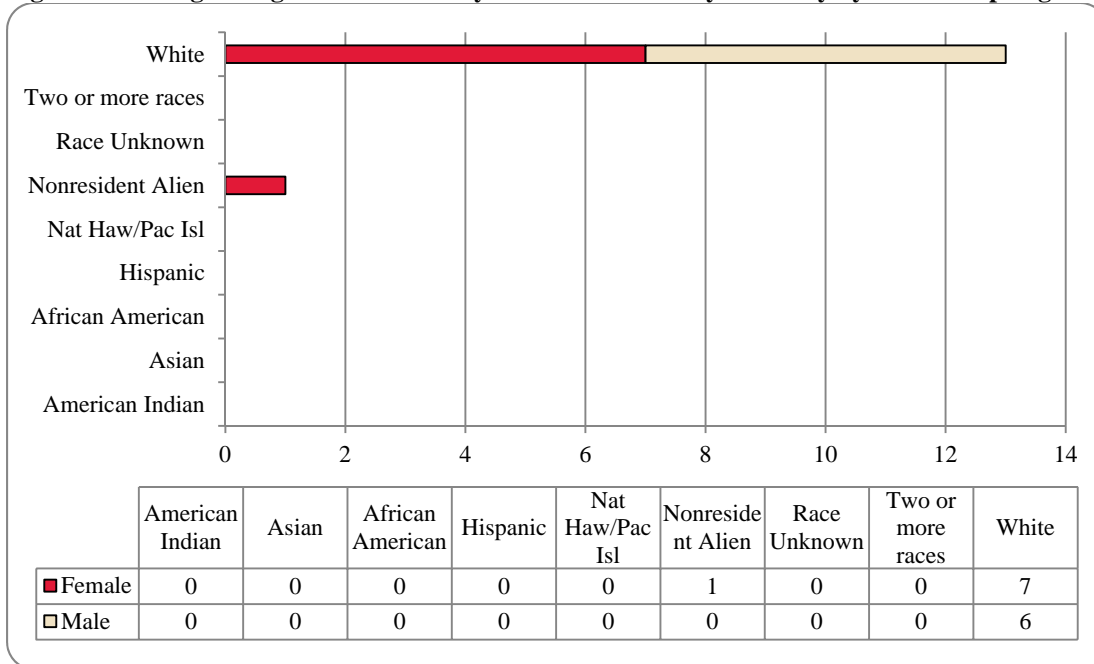
**Figure 42: College of Agriculture Delivery-Site Head Count: Spring 2004-2013**



**Figure 43: College of Agriculture Delivery-Site Student Credit Hours: Spring 2004-2013**



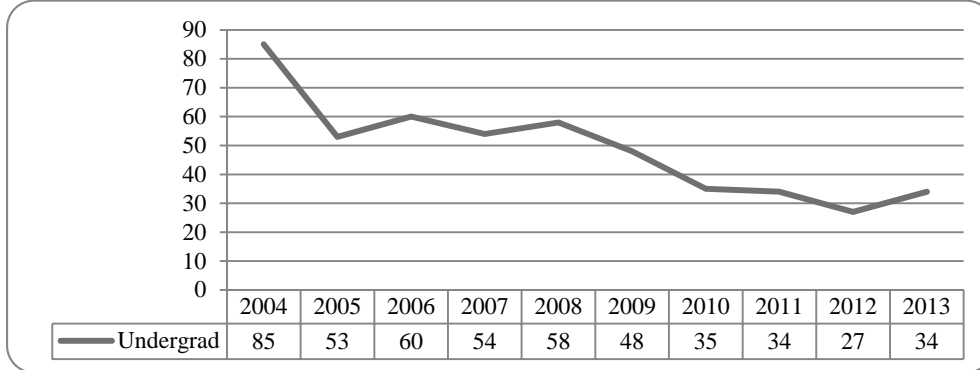
**Figure 44: College of Agriculture Delivery-Site Head Count by Ethnicity by Gender: Spring 2013**



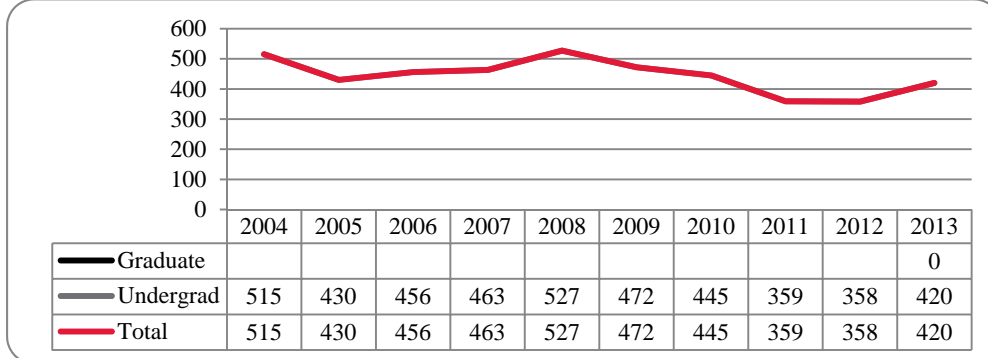
**Table 17: College of Agriculture Head Count Summary for Undergraduate Students by Full and Part-Time by Gender and Race Classification: Spring 2013**

	American Indian		Asian		African American		Hispanics		Nat Haw / Pac Isl		Race Unknown		Two or more races		White		Nonresident Alien		Total		
	F	M	F	M	F	M	F	M	F	M	F	M	F	M	F	M	F	M	F	M	Total
<b>Full-Time</b>																					
<b>Undergraduate</b>																					
First-Time Freshmen																					
Other Freshmen																					
Sophomores																					
Juniors																					
Seniors																					
Special																					
<b>Total Full-Time</b>																					
<b>Part-Time</b>																					
First-Time Freshmen																					
Other Freshmen																					
Sophomores																					
Juniors																					
Seniors																					
Special																					
<b>Total Part-Time</b>																					
<b>Total All Students</b>																					

**Figure 45: College of Architecture Delivery-Site Head Count: Spring 2004-2013**



**Figure 46: College of Architecture Delivery-Site Student Credit Hours: Spring 2004-2013**



**Figure 47: College of Architecture Delivery-Site Head Count by Ethnicity by Gender: Spring 2013**

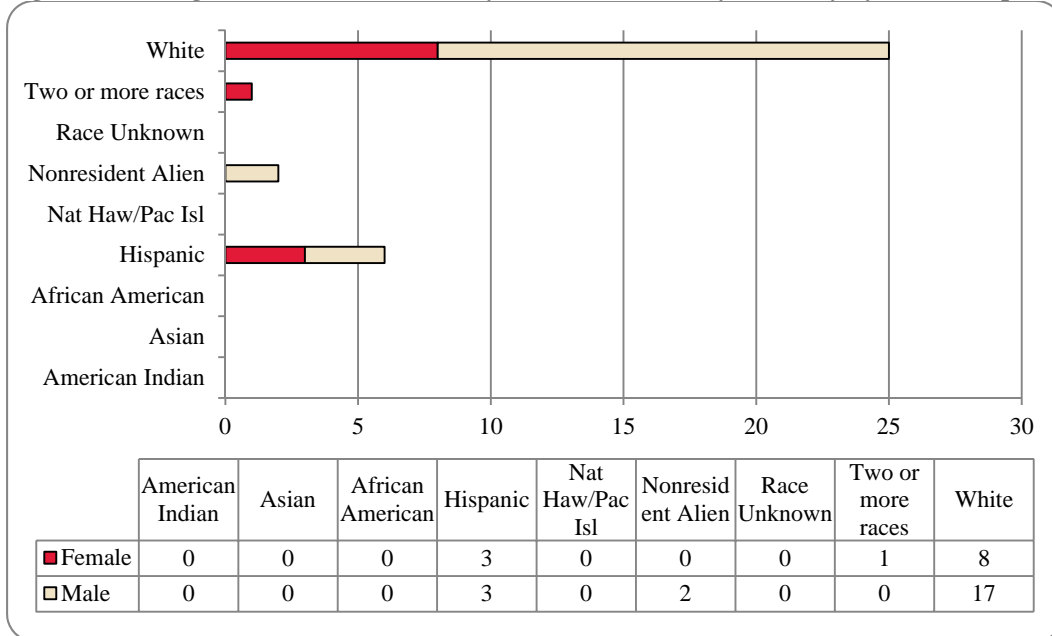
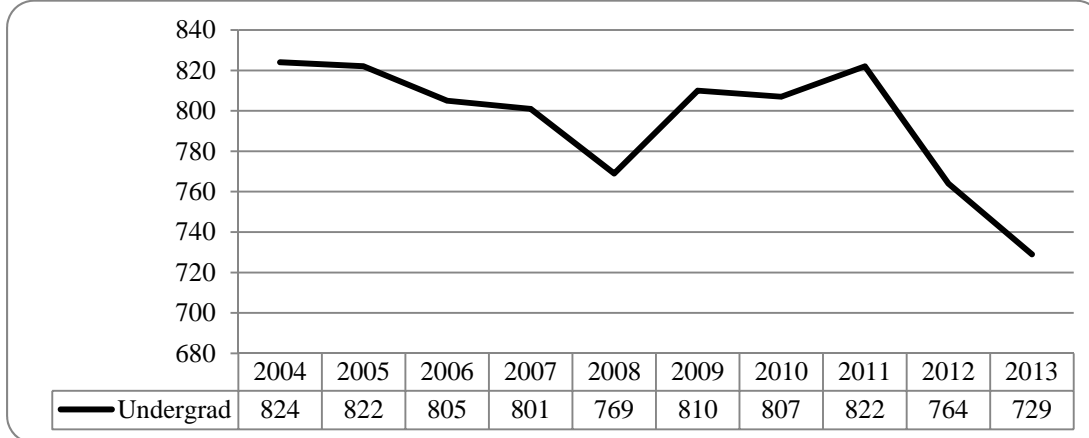




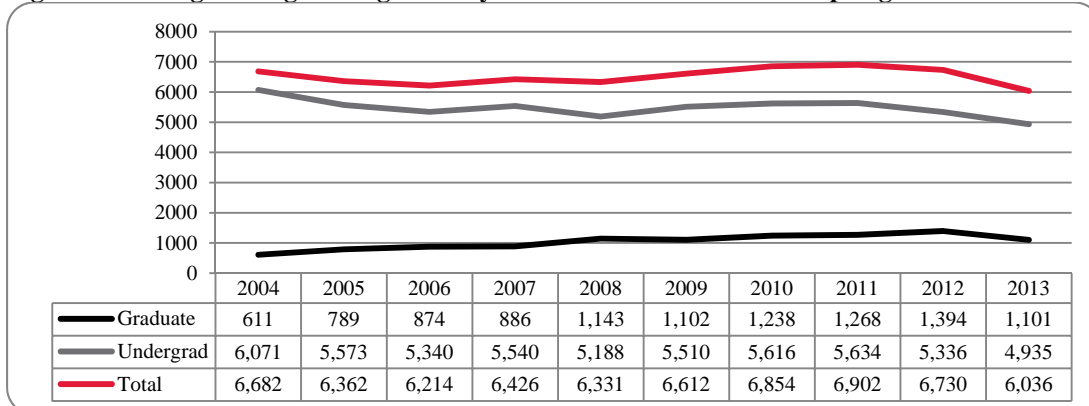
Table 18: College of Architecture Head Count Summary for Undergraduate Students by Full and Part-Time by Gender and Race Classification: Spring 2013

	American Indian		Asian		African American		Hispanics		Nat Haw / Pac Isl		Race Unknown		Two or more races		White		Nonresident Alien		Total		
	F	M	F	M	F	M	F	M	F	M	F	M	F	M	F	M	F	M	F	M	Total
<b>Full-Time</b>																					
<b>Undergraduate</b>																					
First-Time Freshmen							1											1		1	2
Other Freshmen								1							1	5			1	6	7
Sophomores								1							1	4			1	5	6
Juniors							1	1							1	1		1	1	3	4
Seniors																					
Special																					
<b>Total Full-Time</b>							2	3							2	10		2	4	15	19
<b>Part-Time</b>																					
First-Time Freshmen																					
Other Freshmen																					
Sophomores															3	4			3	4	7
Juniors							1						1		1	3			3	3	6
Seniors																					
Special															2				2		2
<b>Total Part-Time</b>							1						1		6	7			8	7	15
<b>Total All Students</b>							3	3					1		8	17		2	12	22	34

**Figure 48: College of Engineering Delivery-Site Head Count: Spring 2004-2013**



**Figure 49: College of Engineering Delivery-Site Student Credit Hours: Spring 2004-2013**



**Figure 50: College of Engineering Delivery-Site Head Count by Ethnicity by Gender: Spring 2013**

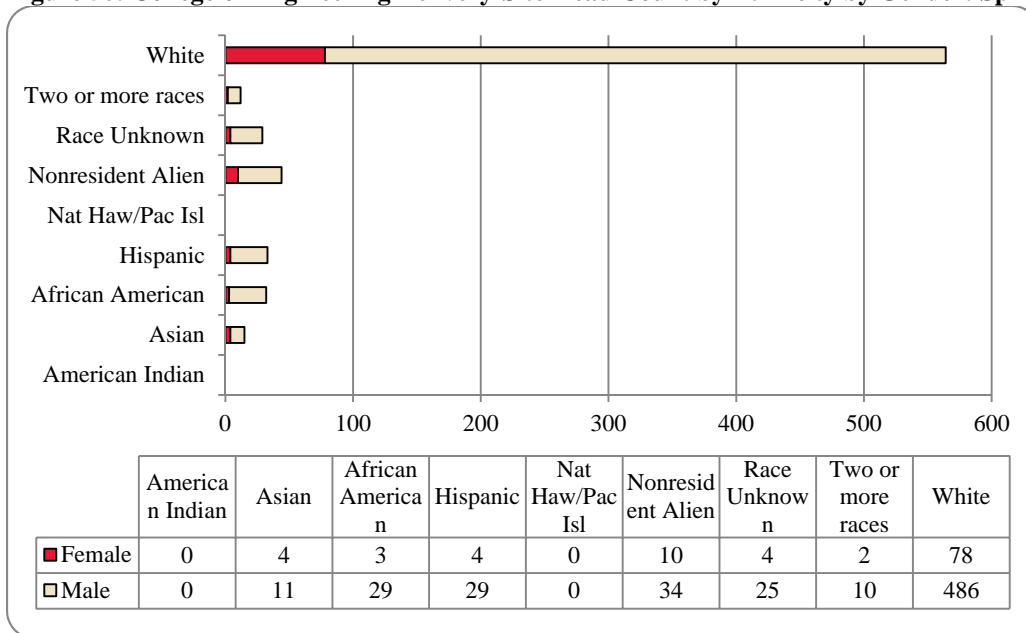
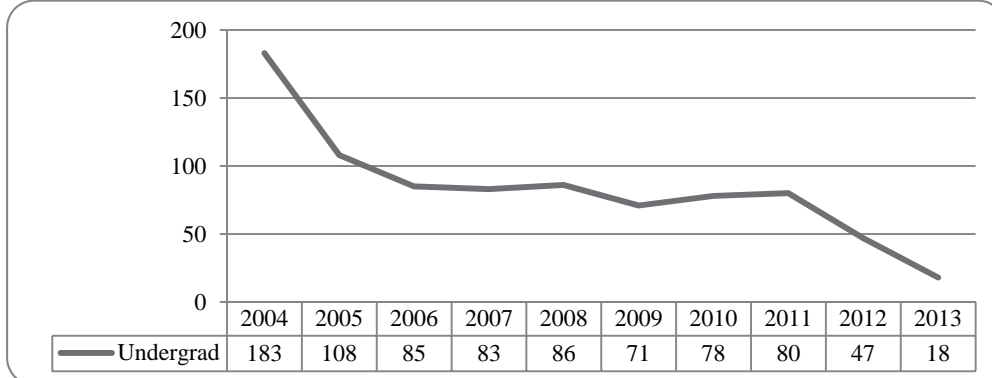


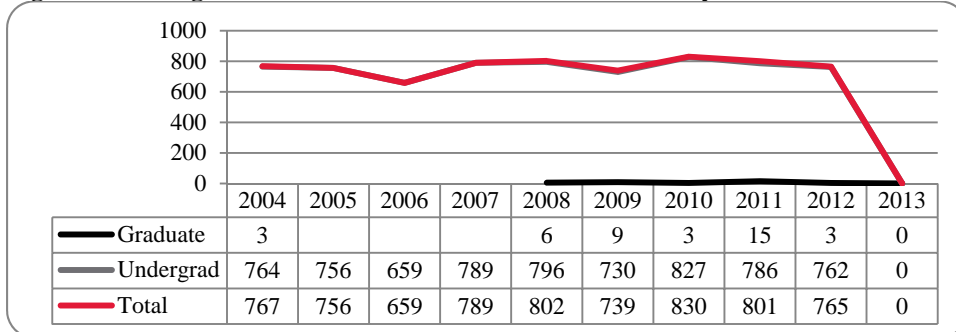
Table 19: College of Engineering Head Count Summary for Undergraduate Students by Full and Part-Time by Gender and Race Classification: Spring 2013

	American Indian		Asian		African American		Hispanics		Nat Haw / Pac Isl		Race Unknown		Two or more races		White		Nonresident Alien		Total		
	F	M	F	M	F	M	F	M	F	M	F	M	F	M	F	M	F	M	F	M	Total
<b>Undergraduate</b>																					
<b>Full-Time</b>																					
First-Time Freshmen																					
Other Freshmen			1	2			3					1	3	11	62	3	11	6	3	7	10
Sophomores			1		1	3	8				1	10	3	15	98	2	9	20	131	151	
Juniors			1	3	1	4	2	5			6	1	4	18	99	1	3	24	124	148	
Seniors			1	3	1	11	2	9			3	6		21	139		3	28	171	199	
Special								1						3	17			3	19	22	
<b>Total Full-Time</b>			4	8	3	18	4	26			4	23	2	10	68	416	9	32	94	533	627
<b>Part-Time</b>																					
First-Time Freshmen																					
Other Freshmen						2										1	9	1	2	12	14
Sophomores																1	11		1	12	13
Juniors						6		1								14				21	21
Seniors					1	2	2	2			2				6	29		2	6	38	44
Special						1									2	7			2	8	10
<b>Total Part-Time</b>						11	3	3			2				10	70	1	2	11	91	102
<b>Total All Students</b>			4	11	3	29	4	29			4	25	2	10	78	486	10	34	105	624	729

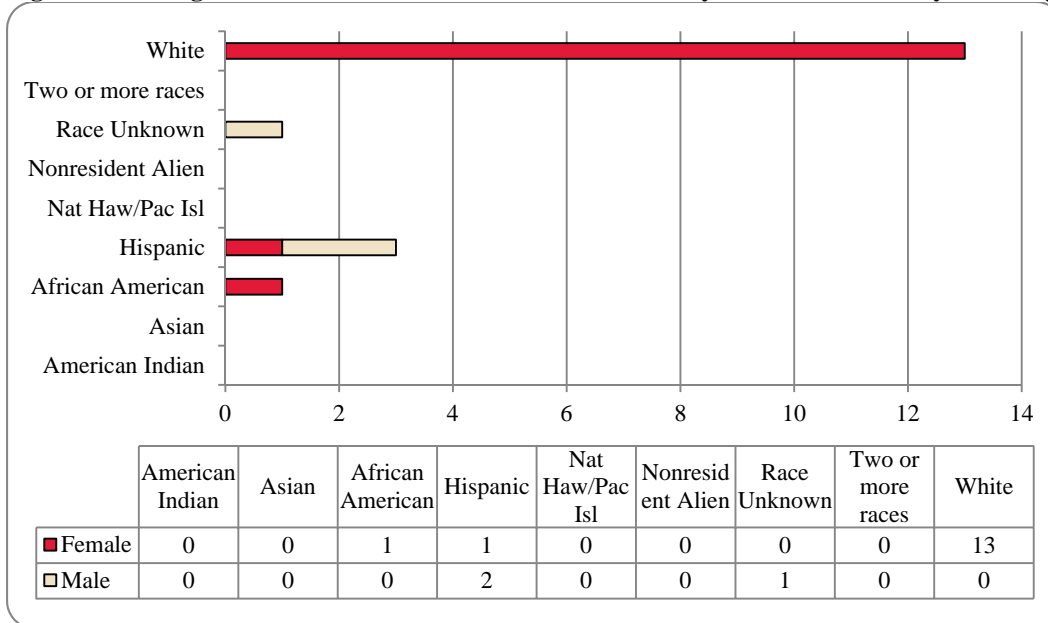
**Figure 51: College of Education and Human Sciences Delivery-Site Head Count: Spring 2004-2013**



**Figure 52: College of Education and Human Sciences Delivery-Site Student Credit Hours: Spring 2004-2013**



**Figure 53: College of Education and Human Sciences Delivery-Site Head Count by Ethnicity by Gender: Spring 2004-2013**



**Table 20: College of Education and Human Sciences Head Count Summary for Undergraduate Students by Full and Part-Time by Gender and Race Classification: Spring 2013**

	American Indian		Asian		African American		Hispanics		Nat Haw / Pac Isl		Race Unknown		Two or more races		White		Nonresident Alien		Total		
	F	M	F	M	F	M	F	M	F	M	F	M	F	M	F	M	F	M	F	M	Total
<b>Undergraduate</b>																					
<b>Full-Time</b>																					
First-Time Freshmen																					
Other Freshmen																					
Sophomores							1				1								1	1	2
Juniors															4				4		4
Seniors					1	1									4				5	1	6
Special																					
<b>Total Full-Time</b>					1	1	1	1			1				8				10	2	12
<b>Part-Time</b>																					
First-Time Freshmen																					
Other Freshmen																					
Sophomores																					
Juniors																					
Seniors						1									5				5	1	6
Special																					
<b>Total Part-Time</b>						1									5				5	1	6
<b>Total All Students</b>					1	2	1	1			1				13				15	3	18

## GLOSSARY

The total head count and student credit hours in this enrollment report are provided on both a delivery-site and administrative-site basis. Delivery-site includes enrollment in all courses taught at UNO regardless of “home” campus. This means that student credit hours are reported for courses in the colleges. Student enrollment is counted in the college declared by the student. Specifically, the delivery-site enrollment numbers include students in degree programs in the UNL Colleges of Agriculture, Architecture, Engineering and Technology, and Education and Human Science.

**FIRST-TIME, Entering (freshmen) Student:** Students attending any institution for the first time at the undergraduate level. For students entering the fall term, this includes students enrolled in the fall term who attended college for the first time in the prior summer term. Also included are students who entered with advanced standing, i.e. college credits earned before graduation from high school.

**OTHER FRESHMEN:** At the beginning of the current semester, undergraduate students who (1) are not First-Time Freshmen and (2) have less than 27 semester hours earned from all institutions of higher education attended.

**SOPHOMORES:** At the beginning of the current semester, undergraduate students who have at least 27, but not more than 57, semester hours earned from all institutions of higher education attended.

**JUNIORS:** At the beginning of the current semester, undergraduate students who have at least 58, but not more than 90, semester hours earned from all institutions of higher education attended.

**SENIORS:** At the beginning of the current semester, undergraduate students who have at least 91 semester hours earned from all institutions of higher education attended.

**NON-DEGREE/INTER-CAMPUS/SPECIAL UNDERGRADUATES:** Special undergraduates not pursuing a degree at UNO in various programs: Inter-Campus UNMC, UNK, UNL, and Non-Degree.

**NON-DEGREE/INTER-CAMPUS/SPECIAL GRADUATE STUDENTS:** Special graduate students not pursuing a degree at UNO in various programs: Engineering Transfer Program, Inter-Campus UNMC, UNK, UNL, Inter-Campus UNL Graduate Psychology and Non-Degree.

**MASTERS/SPECIALIST:** Graduate students pursuing a degree less than doctoral.

**CERTIFICATE:** These students are not enrolled in a degree program, but only a certificate.

**DOCTORAL:** Graduate students who have been accepted into a doctoral program.

**FULL-TIME:** In the current semester, undergraduate students enrolled for 12 or more semester hours, or graduate students enrolled for 9 or more semester hours.

**PART-TIME:** In the current semester, undergraduate students enrolled for less than 12 semester hours, or graduate students enrolled for less than 9 semester hours.

**COOPERATIVE GRADUATE PROGRAM:** Graduate students enrolled in Human Resources and Training or Global Information Operations offered cooperatively by two or more colleges.

Website:

<http://www.unomaha.edu/oie/>

Phone:

402-554-2367

Fax:

402-554-2367

Russell Smith  
Director

Jenny Liu  
Associate Director

Daniel O'Dell  
Web & Communications  
Coordinator

Andrew Jacobsen  
Business Analyst

Jeanie Gutheil-Bykerk  
Research Analyst

Rita Sterkel  
Management Information  
Coordinator

UNIVERSITY OF  
**Nebraska**  
Omaha

