

1997

## Summer of Service Leadership Academy & University Service Advocacy Fellowship Program: A Model of Student Leadership in Service Learning at California State University, Monterey Bay

Service Learning Institute

Follow this and additional works at: <http://digitalcommons.unomaha.edu/slceprojectsummaries>

 Part of the [Service Learning Commons](#)

### Recommended Citation

Service Learning Institute, "Summer of Service Leadership Academy & University Service Advocacy Fellowship Program: A Model of Student Leadership in Service Learning at California State University, Monterey Bay" (1997). *Project Summaries*. Paper 3.  
<http://digitalcommons.unomaha.edu/slceprojectsummaries/3>

This Report is brought to you for free and open access by the Service Learning and Community Engagement Examples at DigitalCommons@UNO. It has been accepted for inclusion in Project Summaries by an authorized administrator of DigitalCommons@UNO. For more information, please contact [unodigitalcommons@unomaha.edu](mailto:unodigitalcommons@unomaha.edu).



**Summer of Service Leadership Academy &  
University Service Advocacy Fellowship Program:  
A Model of Student Leadership in Service Learning at  
California State University, Monterey Bay**

---

---

**BACKGROUND INFORMATION**

California State University, Monterey Bay (CSUMB) opened its doors to students in August 1995 with a commitment to service learning. In keeping with its vision statement which pledges to "enable students...to cross institutional boundaries for innovative instruction...and coordinated community service" (see Attachment 1), this new public university requires all students to take service learning courses before graduating (see Attachment 2).

Recognizing that service learning requires careful preparation and monitoring to assure that community needs are addressed through service placements; faculty have a resource center for integrating service learning into their teaching; and students are properly matched and supported during the community learning experience, CSUMB developed the Service Learning Institute (SLI). During the 1995-1996 academic year, the Service Learning Institute staff worked to support 25 service learning courses which involved 384 students in contributing more than 11,000 service hours to 65 community programs (see Attachment 3).

From this experience and the anticipated growth of service learning at CSUMB, the Service Learning Institute realized the need to expand its capacity to support service learning. As such, the SLI established as a key priority for 1996-1997 the development of a student leadership program that would provide support for faculty, students and community involved in service learning and increase student involvement in service. This resulted in the development of the Summer of Service Leadership Academy (SoSLA) and the University Service Advocacy Program (USA Program).

In June 1996, the first Summer of Service Leadership Academy was piloted, involving 14 students with prior CSUMB service learning experience in a four week leadership program focused on enhancing leadership skills necessary to be effective student leaders in CSUMB's Service Learning program. Twelve of these students were selected to participate in the University Service Advocacy Program as University Service Advocates (see Attachment 4) which enabled the Service Learning Institute to expand its support to 49 service learning courses involving 643 students contributing more than 19,000 service hours to 112 community programs in the 1996-1997 academic year (see Attachment 3).

Based on faculty, student and community satisfaction with the increased support made available by the University Service Advocates, the Service Learning Institute is continuing to develop its student leadership program in support of service learning, both course based and cocurricular experiences. Another group of 14 students will participate in the second Summer of Service Leadership Academy which has an improved curriculum (see Attachment 5) focusing on student leadership development specific to service learning. The Service Learning Institute expects to have several of the SoSLA participants continue their involvement in service learning as University Service Advocates.

For more information on student leadership in service learning at CSUMB, contact:

Michelle Slade, Program Coordinator  
Service Learning Institute  
California State University, Monterey Bay  
100 Campus Center  
Seaside, CA 93955-8001  
email: Michelle\_Slade@monterey.edu  
(408) 582-3631/FAX (408) 582-3568

NSLC  
c/o ETR Associates  
4 Carbonero Way  
Scotts Valley, CA 95066

# SUMMER OF SERVICE LEADERSHIP ACADEMY '97 (SoSLA '97)

---

## VISION

To assist in the development of responsible citizens who realize and act upon their leadership potential for the good of the community.

## GOALS

- To provide CSUMB students leadership training and development opportunities necessary to act upon a lifelong commitment to community participation; and
- To develop a skilled applicant pool of student leaders for participation in the University Service Advocacy Fellowship Program and other Service Learning Institute, CSUMB, and/or community activities.

## PARTICIPANT LEARNING OUTCOMES

- To develop a greater understanding about community participation through service, particularly regarding issues of service learning, charity and social change;
- To increase knowledge and awareness of community assets, issues and models of community building in Monterey County, with particular emphasis on the cities bordering CSUMB: Salinas, Seaside and Marina;
- To increase personal awareness of strengths/weaknesses, motivations, passions, commitment and life goals as related to leadership;
- To develop leadership skills in the following areas:
  - Reflection
  - Cultural Awareness & Sensitivity
  - Communication (active listening, facilitating reflection, and making effective presentations)
  - Conflict Management
  - Project Planning & Implementation
  - Team Building
  - Stress Management

## CURRICULUM

The curriculum of the Summer of Service Leadership Academy '97 (SoSLA '97) has been designed to:

- assess and build upon participants' leadership knowledge and experience;
- access the community as a resource for participant skill building and learning;
- provide opportunities for participants to experience and practice concepts and information introduced during SoSLA '97;
- allow ample opportunity for processing and reflection, both structured and informal; and
- build a team of motivated and committed student leaders involved in service.

## KEY COMPONENTS

- **Community Voice Speakers Bureau**

The Service Learning Institute considers Community Voice essential to the effectiveness of its programs and realizes the wealth of knowledge and experience in the community. With this philosophy in mind, the SoSLA curriculum has been developed to access members of the community willing to share their invaluable information with CSUMB students resulting in the Community Voice Speakers Bureau. Some of the topics community members will be sharing information and their perspectives on include *Introduction to the Monterey Peninsula, Models of Community Building, and The Role of Service in Non-Profits Organizations*

- **Skill Building Workshops**

Keeping with the philosophy of Community Voice, Community trainers/facilitators have been identified to assist SoSLA participants in developing their leadership skills. Skill Building Workshop topics include *Creative Leadership, Using Your Passion to Make Your Visions A Reality, Stress Management and Working With the Media.*

- **Service Projects**

Service Projects have been scheduled throughout SoSLA '97 to provide participants with an experiential opportunity to visit an organization and learn more about the services it provides to the community. Preparation, evaluation and reflection activities are an integral part of the service projects. Projects include: chaperoning youth to Great America with the Boys & Girls Club of the Monterey Peninsula, planting a winter garden with children at Children's Services International, restoring native landscaping with the Watershed Institute, serving with Dorothy's Hospitality Center and the Society for the Prevention of Cruelty to Animals of Monterey County in various activities.

- **Action Planning**

SoSLA '97 participants are required to form teams to plan a project of their choice for implementation during the 1997-1998 academic year that will directly benefit the community. The Action Planning component of SoSLA '97 provides participants an opportunity to comprehensively apply learnings from the program.

## LENGTH

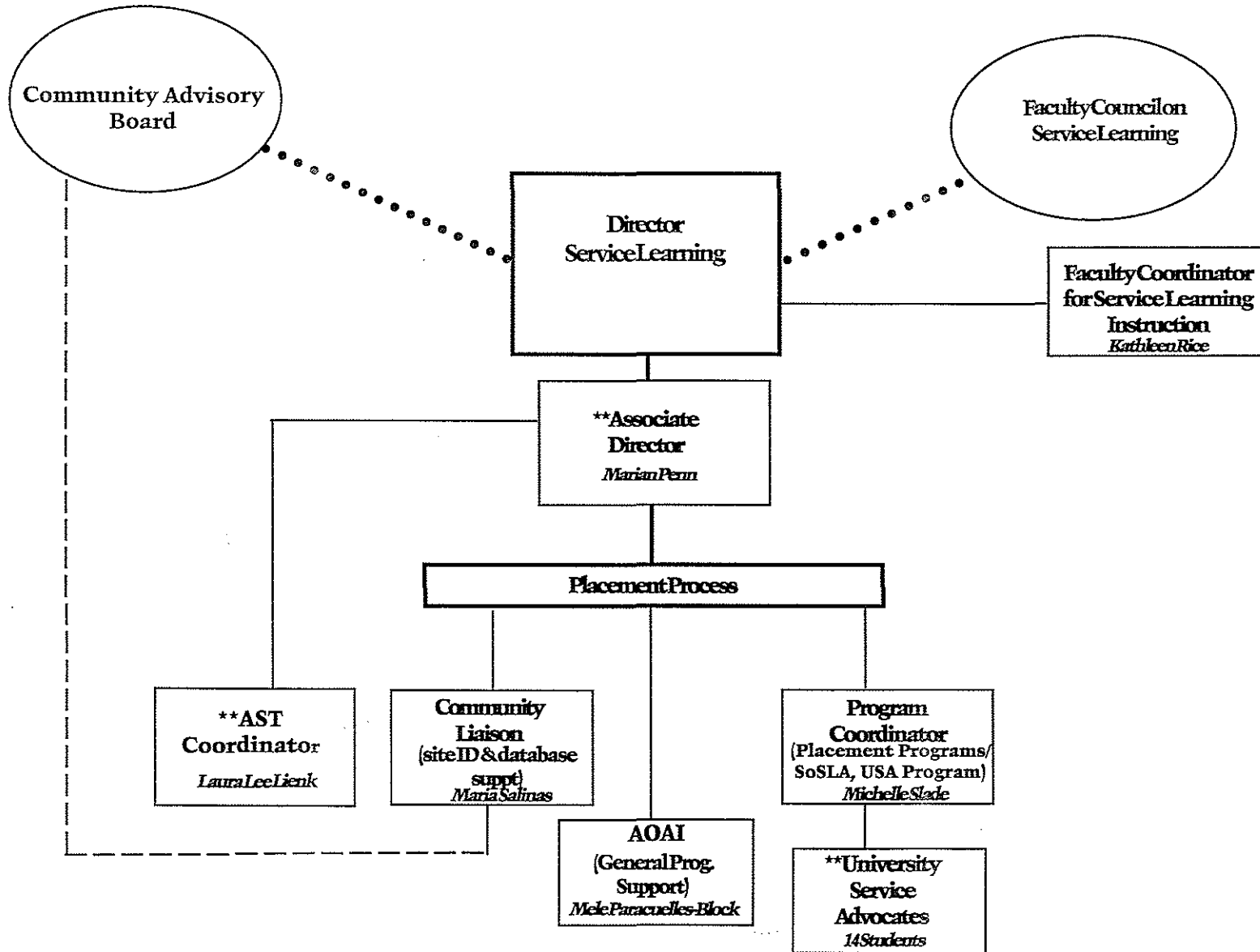
The Summer of Service Leadership Academy '97 is an intensive four week program during the summer. SoSLA '97 activities begin with a Welcome Weekend on Saturday, July 26 - Sunday, July 27 with a regularly occurring schedule of Monday - Friday, 9:00 am - 4:00 pm, July 28 - August 22.

## PARTICIPANTS

Fourteen CSUMB students with prior service learning experience were selected to participate in SoSLA '97 based on an application and interview process. The SoSLA '97 team is diverse - they represent many cultures and backgrounds, range in ages from 18 to 46 years old, and are majoring in the following CSUMB programs: Management & International Entrepreneurship, Earth Systems Science & Policy, Human Communication, Integrated Studies, Liberal Studies, Social and Behavioral Science and World Languages & Cultures.

For more information, please contact Michelle Slade, Program Coordinator at (408) 582-3631.

# 1997 - 98 Proposed Service Learning Institute Structure



\*\*These positions are totally or in part supported by external funds.

# CSUMB Vision Statement

California State University, Monterey Bay (CSUMB) is envisioned as a comprehensive state university which values service through high-quality education. The campus will be distinctive in serving the diverse people of California, especially the working class and historically under-educated and low-income populations. It will feature an enriched living and learning environment and year-round operation. The identity of the University will be framed by substantive commitment to a multilingual, multicultural, intellectual community distinguished by partnerships with existing institutions, both public and private, and by cooperative agreements which enable students, faculty, and staff to cross institutional boundaries for innovative instruction, broadly defined scholarly and creative activity, and coordinated community service.

The University will invest in preparation for the future through integrated and experimental use of technologies as resources to people, catalysts for learning, and providers of increased access and enriched quality learning. The curricula of CSUMB will be student and society-centered and of sufficient breadth and depth to meet statewide and regional needs, specifically those involving both inner city and isolated rural populations (Monterey, Santa Cruz, and San Benito). The programs of instruction will strive for distinction, building on regional assets in developing specialty clusters in such areas as the sciences (marine, atmospheric, and environmental); visual and performing arts and related humanities; language, culture, and international studies; education, business, studies of human behavior, information, and communication, within broad curricular areas; and professional study.

The University will develop a culture of innovation in its overall conceptual design and organization, and will utilize new and varied pedagogical and instructional approaches including distance learning. Institutional programs will value and cultivate creative and productive talents of students, faculty, and staff, and seek ways to contribute to the economy of the state, the well-being of our communities, and the quality of life and development of its students, faculty, and service areas.

The education programs at CSUMB will:

- Integrate the sciences and the arts and humanities, liberal studies and professional training.
- Integrate modern learning technology and pedagogy to create liberal education adequate for the contemporary world.
- Integrate work and learning, service and reflection.

- Recognize the importance of global interdependence.
- Invest in languages and cross-cultural competence.
- Emphasize those topics most central to the local area's economy and accessible residential learning environment.

The University will provide a new model of organizing, managing, and financing higher education:

- The University will be integrated with other institutions, essentially collaborative in its orientation, and active in seeking partnerships across institutional boundaries. It will develop and implement various arrangements for sharing courses, curriculum, faculty, students, and facilities with other institutions.
- The organizational structure of the University will reflect a belief in the importance of each administrative staff and faculty member, working to integrate the university community across "staff" and "faculty" lines.
- The financial aid system will emphasize a fundamental commitment to equity and access.
- The budget and financial systems, including student fees, will provide for efficient and effective operation of the University.
- University governance will be exercised with a substantial amount of autonomy and independence within a very broad, CSU systemwide policy context.

Accountability will emphasize careful evaluation and assessment of results and student learning goals.

Our vision of the goals of California State University, Monterey Bay includes a model, pluralistic, academic community where all learn and teach one another in an atmosphere of mutual respect and pursuit of excellence, and a faculty and staff motivated to excel in their respective fields as well as contribute to the broadly defined university environment. Our graduates will have an understanding of interdependence and global competence, distinctive technical and educational skills, the experience and abilities to contribute to California's high-quality work force, the critical thinking abilities to be productive citizens, and the social responsibility and skills to be community builders. CSUMB will dynamically link the past, present, and future by responding to historical and changing conditions, experimenting with strategies which increase access, improving quality, and lowering costs through education in a distinctive CSU environment.

University students and personnel will attempt analytically and creatively to meet critical state and regional needs and to provide California with responsible and creative leadership for the global 21st century.



## GUIDE TO THE CSUMB SERVICE LEARNING REQUIREMENT

---

**General Requirement:** CSUMB students who enter the university as freshman or as transfer students with less than 56 transferable units are required to satisfy the Community Participation University Learning Requirement through lower division course work (i.e, SL 200 - Introduction to Service in Multicultural Communities) and to complete an additional course/experience with a service learning (SL) designation.

**Upper Division Requirement:** All transfer students with 56 units or above entering during the 1995-96 and 1996-97 academic years are subject to a "one SL course" requirement. These students are not specifically required to meet the community participation ULR but must complete one course/experience with a (SL) designation. This policy may change in future years, upon recommendation from the faculty.

*Note:* Although some majors may require students to complete a (SL) designated course within the major, the university-wide SL requirement does not mandate that a SL course or experience be within a student's major to meet the graduation requirement.

# SLI Growth

	1995 - 96	1996-97
<b>Students:</b>	384	643
<b>Courses:</b>	25	49
<b>Service Hours:</b>	11,520	19,290
<b>Value to Community:</b>	\$57,600	\$91,350
<b>Partners:</b>	65	112

Attachment 3



**University Service Advocate Program  
Service Learning Institute**

The University Service Advocate Program (USA Program) is designed to involve students as leaders in service learning at CSUMB. Students chosen to participate in the program will serve as University Service Advocates (USAs) by supporting service learning at CSUMB and student initiated service projects. Their training will involve direct community outreach experience as they serve as liaisons with faculty, academic centers, community partners, and fellow students.

**Time Requirement:**

The University Service Advocacy Program requires an average time commitment from the USAs of 10-12 hours per week over 15 weeks. As such, USAs are required to participate in a one day USA Program orientation prior to the beginning of each academic semester and will attend weekly USA trainings at the Service Learning Institute.

In addition, USAs will support a service learning course as part of their ongoing leadership development. Although USAs are not required to attend each class meeting, they should avoid scheduling classes or other activities during that period. This will allow the USAs to participate in direct, hands-on training in the service learning class as needed. Furthermore, USAs will participate on a regularly scheduled basis in the work of the Service Learning Institute as part of their individual training.

**Activities:**

Responsibilities of USAs include the following:

1. Identifying and investigating potential placement sites for service learning courses;
2. Assisting instructors in linking community agencies to their academic courses;
3. Coordinating site placements between agencies, students, and faculty for service learning courses;
4. Assisting in Faculty, Community Partner, and New Student Orientations;
5. Promoting an ethic of service by providing outreach to the Campus and surrounding communities;
6. Covering policies and procedures with faculty, students and agencies;
7. Following-up with agencies regarding SL student progress during course, troubleshooting potential problems;
8. Writing service related articles for the student newspaper, *Otter Realm*, the SLI newsletter, *At Your Service*, and the updating *First Class* Electronic Bulletin Board regarding service learning news and volunteer opportunities;
9. Assisting in planning and coordination of campus-wide special service events (i.e., the Service Opportunities Fair, Service Fest Week, etc.) and student initiated service activities;
10. Assisting in the evaluation of program effectiveness; and
11. Supporting Service Learning Institute functions.

**Desired Knowledge, Skills, & Abilities:**

1. Successful completion of the Summer of Service Leadership Academy;
2. Knowledge of community agencies and Service Opportunities Database;
3. Strong oral and written communication skills;
4. Ability to plan, organize, prioritize work and adhere to deadlines; and
5. Ability to work cooperatively with faculty, staff, agencies, and students.

**Compensation:**

Outside of the personal development each will receive through intensive training in service and leadership, USAs will receive a stipend of up to \$1800 per semester depending on their level of participation in the program.

## Summer of Service Leadership Academy '97 Draft Curriculum

The SoSLA '97 schedule is Monday - Friday, 9:00 am - 4:00 pm, beginning July 28 and ending August 22 with the exception of the Welcome Weekend, Saturday, July 26 and Sunday, July 27 and the Service Project: Chaperoning Boys & Girls Club Members to Great America on Friday, August 1. The following schedule is a draft of activities scheduled to date.

### Welcome Weekend

7/26/97 \*Introduce SLI Staff (including USAs) to new SoSLA participants  
11:00 am - \*Focus on getting to know each other better, forming sense of team  
2:00 pm \*Everyone asked to bring a dish

Type of  Panel/Guest Speaker: Community Issues  Skill Building Workshop by SLI Staff  Service Project  
Activity:  Skill Building Workshop by CP  Action Planning/Site Visit  Skill Building Activity

### Welcome Weekend

7/27/97 \*For SoSLA Participants Only  
10:00 am - \*Focus on getting to know each other better, trust and team building activities - developing groundrules and  
1:00 pm common definitions of leadership. Participants will also receive an overview of SoSLA.

Type of  Panel/Guest Speaker: Community Issues  Skill Building Workshop by SLI Staff  Service Project  
Activity:  Skill Building Workshop by CP  Action Planning/Site Visit  Skill Building Activity

### Welcome Weekend - Team Building Initiatives

7/27/97 \*For SoSLA Participants Only  
1:00 pm - \*Robert Alexander, Outdoor Education Program Coordinator for the CSUMB Wellness, Recreation & Sport  
5:00 pm Institute will lead team building initiatives.

Type of  Panel/Guest Speaker: Community Issues  Skill Building Workshop by SLI Staff  Service Project  
Activity:  Skill Building Workshop by CP  Action Planning/Site Visit  Skill Building Activity

### Welcome & Orientation

7/28/97 Participants will continue to get to know each other through team building exercises and will receive an  
9:00 am - detailed orientation to SoSLA. An exercise on Expectations will be facilitated.  
10:00 am

Type of  Panel/Guest Speaker: Community Issues  Skill Building Workshop by SLI Staff  Service Project  
Activity:  Skill Building Workshop by CP  Action Planning/Site Visit  Skill Building Activity

### Key Components of SoSLA

7/28/97 The Key Components of SoSLA will be discussed and relevant contracts, paperwork will be distributed.  
10:00 am -  
11:00 am

Type of  Panel/Guest Speaker: Community Issues  Skill Building Workshop by SLI Staff  Service Project  
Activity:  Skill Building Workshop by CP  Action Planning/Site Visit  Skill Building Activity

**Vision & History of the Service Learning Institute**

7/28/97 \* Marian Penn, Founder of the Service Learning Institute will share the vision and history of the Service Learning Institute.  
11:00 am -  
12:00 pm

**Type of**  Panel/Guest Speaker: Community Issues  Skill Building Workshop by SLI Staff  Service Project  
**Activity:**  Skill Building Workshop by CP  Action Planning/Site Visit  Skill Building Activity

**Training: Service Opportunities Database - A Resource for Community**

7/28/97 \*To train SoSLA participants in the basics of utilizing the database as a resource for community partner information \*Each participant required to choose 3 agencies from the database to learn more about how service learners fit with site - will report on during final presentations  
1:00 pm -  
2:00 pm

**Type of**  Panel/Guest Speaker: Community Issues  Skill Building Workshop by SLI Staff  Service Project  
**Activity:**  Skill Building Workshop by CP  Action Planning/Site Visit  Skill Building Activity

**Facilitating Reflection**

7/28/97 Julie Reed - SLI Intern, Indiana University Doctoral Student and Service Learning Practitioner will provide an interactive workshop on how to facilitate reflection.  
2:00 pm -  
3:30 pm

**Type of**  Panel/Guest Speaker: Community Issues  Skill Building Workshop by SLI Staff  Service Project  
**Activity:**  Skill Building Workshop by CP  Action Planning/Site Visit  Skill Building Activity

**Closing Activity**

7/28/97 A closing activity will be facilitated to bring closure to the day and provide participants an opportunity to reflect and share questions, comments, and/or concerns from the day.  
3:30 pm -  
4:00 pm

**Type of**  Panel/Guest Speaker: Community Issues  Skill Building Workshop by SLI Staff  Service Project  
**Activity:**  Skill Building Workshop by CP  Action Planning/Site Visit  Skill Building Activity

**Morning Energizer & Reflection**

7/29/97 This is an opportunity to experience different icebreakers, energizers and reflection activities.  
9:00 am -  
9:15 am

**Type of**  Panel/Guest Speaker: Community Issues  Skill Building Workshop by SLI Staff  Service Project  
**Activity:**  Skill Building Workshop by CP  Action Planning/Site Visit  Skill Building Activity

**Leadership Styles: Part I**

7/29/97 The goal of this workshop is to assist participants in realizing their leadership style and how to work effectively with other leaders who have different leadership styles.  
9:15 am -  
10:00 am

Type of  Panel/Guest Speaker: Community Issues  Skill Building Workshop by SLI Staff  Service Project  
Activity:  Skill Building Workshop by CP  Action Planning/Site Visit  Skill Building Activity

**Defensive Driving Training**

7/29/97 \*Sergeant Jay McTaggart of CSUMB's University Police Department will provide this Defensive Driving Training to qualify SoSLA participants for the University Car/Van Pool and for general liability coverage while driving their own cars during SoSLA hours.  
10:00 am -  
11:00 am

Type of  Panel/Guest Speaker: Community Issues  Skill Building Workshop by SLI Staff  Service Project  
Activity:  Skill Building Workshop by CP  Action Planning/Site Visit  Skill Building Activity

**Introduction to Monterey County: History, Peoples, Economics &**

7/29/97 \*Local historian and Cabrillo College Professor Sandy Lydon will provide SoSLA participants information on surrounding communities (e.g., history, people, economic factors, "hot topics"/special issues, etc.) which will provide participants a basic foundation of community knowledge that SoSLA will build upon.  
1:00 pm -  
4:00 pm

Type of  Panel/Guest Speaker: Community Issues  Skill Building Workshop by SLI Staff  Service Project  
Activity:  Skill Building Workshop by CP  Action Planning/Site Visit  Skill Building Activity

**Morning Energizer & Reflection**

7/30/97 This is an opportunity to experience different icebreakers, energizers and reflection activities.  
9:00 am -  
9:15 am

Type of  Panel/Guest Speaker: Community Issues  Skill Building Workshop by SLI Staff  Service Project  
Activity:  Skill Building Workshop by CP  Action Planning/Site Visit  Skill Building Activity

**Leadership Styles: Part II**

7/30/97 The goal of this workshop is to assist participants in realizing their leadership style and how to work effectively with other leaders who have different leadership styles.  
9:15 am -  
10:00 am

Type of  Panel/Guest Speaker: Community Issues  Skill Building Workshop by SLI Staff  Service Project  
Activity:  Skill Building Workshop by CP  Action Planning/Site Visit  Skill Building Activity

## SoSLA '97 Draft Curriculum

**Using Your Passion to Make Your Visions a Reality**

7/30/97 \*CSUMB's own Cecilia Burciaga, Executive Assistant to the President, will provide an inspirational and interactive workshop to assist participants in tapping their passions to make their visions a reality.  
10:00 am -  
12:00 pm

**Type of**  Panel/Guest Speaker: Community Issues  Skill Building Workshop by SLI Staff  Service Project  
**Activity:**  Skill Building Workshop by CP  Action Planning/Site Visit  Skill Building Activity

**Creative Leadership**

7/30/97 \*Betsy Tummelson, President of Systems Excellence (a local community leadership consulting program) will provide an informative and interactive workshop on the necessity of creative leadership.  
1:00 pm -  
4:00 pm

**Type of**  Panel/Guest Speaker: Community Issues  Skill Building Workshop by SLI Staff  Service Project  
**Activity:**  Skill Building Workshop by CP  Action Planning/Site Visit  Skill Building Activity

**Morning Energizer & Reflection**

7/31/97 This is an opportunity to experience different icebreakers, energizers and reflection activities.  
9:00 am -  
9:15 am

**Type of**  Panel/Guest Speaker: Community Issues  Skill Building Workshop by SLI Staff  Service Project  
**Activity:**  Skill Building Workshop by CP  Action Planning/Site Visit  Skill Building Activity

**Leadership Styles: Part III**

7/31/97 The goal of this workshop is to assist participants in realizing their leadership style and how to work effectively with other leaders who have different leadership styles.  
9:15 am -  
10:00 am

**Type of**  Panel/Guest Speaker: Community Issues  Skill Building Workshop by SLI Staff  Service Project  
**Activity:**  Skill Building Workshop by CP  Action Planning/Site Visit  Skill Building Activity

**Project Development & Implementation - Part I**

7/31/97 This workshop will provide participants basic knowledge and skills in project development and implementation, including goal setting and the PEAR model. Participants are provided an opportunity to apply this information during Action Planning.  
10:00 am -  
11:00 am

**Type of**  Panel/Guest Speaker: Community Issues  Skill Building Workshop by SLI Staff  Service Project  
**Activity:**  Skill Building Workshop by CP  Action Planning/Site Visit  Skill Building Activity

## SoSLA '97 Draft Curriculum

**Training: Connecting With Community Through Site Visits**

7/31/97 \*Concha Salinas, Community Liaison with the Service Learning Institute will introduce SoSLA participants to the community partnership building process at the SLI.  
11:00 am - 12:00 pm \*Each SoSLA participant will sign up to join Concha on at least one site visit during SoSLA.

**Type of**  Panel/Guest Speaker: Community Issues  Skill Building Workshop by SLI Staff  Service Project  
**Activity:**  Skill Building Workshop by CP  Action Planning/Site Visit  Skill Building Activity

**Planting a Winter Garden w/Children at CSI**

7/31/97 We will join children in planting a Winter Garden on site at Children's Services International. Be sure to wear your "grubbies."  
1:00 pm - 4:00 pm

**Type of**  Panel/Guest Speaker: Community Issues  Skill Building Workshop by SLI Staff  Service Project  
**Activity:**  Skill Building Workshop by CP  Action Planning/Site Visit  Skill Building Activity

**Chaperoning Boys & Girls Club Members to Great America**

8/1/97 We will chaperone Boys & Girls Club Members to Great America. Great opportunity to get to know children from the local community!  
7:30 am - 7:30 pm

**Type of**  Panel/Guest Speaker: Community Issues  Skill Building Workshop by SLI Staff  Service Project  
**Activity:**  Skill Building Workshop by CP  Action Planning/Site Visit  Skill Building Activity

**Morning Energizer & Reflection**

8/4/97 This is an opportunity to experience different icebreakers, energizers and reflection activities.  
9:00 am - 9:30 am

**Type of**  Panel/Guest Speaker: Community Issues  Skill Building Workshop by SLI Staff  Service Project  
**Activity:**  Skill Building Workshop by CP  Action Planning/Site Visit  Skill Building Activity

**Community Scan: East Alisal**

8/4/97 \*Laura Lee Lienk, Applied Science & Technology Coordinator with the Service Learning Institute will facilitate this experiential activity that will engage SoSLA students in the surrounding community by experiencing it firsthand.  
10:00 am - 2:00 pm

**Type of**  Panel/Guest Speaker: Community Issues  Skill Building Workshop by SLI Staff  Service Project  
**Activity:**  Skill Building Workshop by CP  Action Planning/Site Visit  Skill Building Activity

### SoSLA '97 Draft Curriculum

#### Community Building: East Alisal

8/4/97 Four dynamic community leaders will share their stories, passions and successes in community building.  
 2:00 pm - Distinguished Panel Members: Terry Espinoza-Baumgart, Coordinator, Alisal Community Healthy Start;  
 4:00 pm Brian Contreras, Executive Director, Second Chance Youth Program; Lupe Garcia, Coordinator, PeaceBuilders; and Devorah Duncan, Coordinator, Juvenile Delinquency Prevention.

Type of  Panel/Guest Speaker: Community Issues  Skill Building Workshop by SLI Staff  Service Project  
 Activity:  Skill Building Workshop by CP  Action Planning/Site Visit  Skill Building Activity

#### Morning Energizer & Reflection

8/5/97 This is an opportunity to experience different icebreakers, energizers and reflection activities.  
 9:00 am -  
 9:15 am

Type of  Panel/Guest Speaker: Community Issues  Skill Building Workshop by SLI Staff  Service Project  
 Activity:  Skill Building Workshop by CP  Action Planning/Site Visit  Skill Building Activity

#### Workshop - Project Development & Implementation - Part II

8/5/97 This workshop will provide participants basic knowledge and skills in project development and implementation, including goal setting and the PEAR model. Participants are provided an opportunity to apply this information during Action Planning.  
 9:15 am -  
 10:00 am

Type of  Panel/Guest Speaker: Community Issues  Skill Building Workshop by SLI Staff  Service Project  
 Activity:  Skill Building Workshop by CP  Action Planning/Site Visit  Skill Building Activity

#### Funding Community Building: Communities 2000

8/5/97 \*Maria Holguin-Guerrero, Program Director of the Community Foundation of Monterey County will provide information on the innovative Communities 2000 program and share practical grantwriting/fundraising tips.  
 10:00 am -  
 11:00 am

Type of  Panel/Guest Speaker: Community Issues  Skill Building Workshop by SLI Staff  Service Project  
 Activity:  Skill Building Workshop by CP  Action Planning/Site Visit  Skill Building Activity

#### Working With the Media/Having the Media Work for You

8/5/97 Representatives from the local media will share their organizations philosophy in supporting community programs and will offer practical tips on public service announcements and others means of marketing events. Distinguished Panel Members: Theresa Wright, Director of Community Relations, KSBW-TV; Teri Addison, Administrative Assistant to Marketing, The Californian; Holly White, News & Public Information Officer, CSUMB and Bob Benaderet, Intern, KMBY Radio.  
 12:30 pm -  
 2:00 pm

Type of  Panel/Guest Speaker: Community Issues  Skill Building Workshop by SLI Staff  Service Project  
 Activity:  Skill Building Workshop by CP  Action Planning/Site Visit  Skill Building Activity

**Action Planning/Site Visit #1-Cannery Row Foundation**

8/5/97 SoSLA participants will use this time to:  
 2:00 pm - \*make a site visit with Concha  
 3:30 pm \*collaborate, research and plan their Team Service Projects and "Each One, Teach One workshops;  
 \*develop their SoSLA presentations.

**Type of**  Panel/Guest Speaker: Community Issues  Skill Building Workshop by SLI Staff  Service Project  
**Activity:**  Skill Building Workshop by CP  Action Planning/Site Visit  Skill Building Activity

**Closing Activity**

8/5/97 A closing activity will be facilitated to bring closure to the day and provide participants an opportunity to  
 3:30 pm - reflect and share questions, comments, and/or concerns from the day.  
 4:00 pm

**Type of**  Panel/Guest Speaker: Community Issues  Skill Building Workshop by SLI Staff  Service Project  
**Activity:**  Skill Building Workshop by CP  Action Planning/Site Visit  Skill Building Activity

**Morning Energizer & Reflection**

8/6/97 This is an opportunity to experience different icebreakers, energizers and reflection activities.  
 9:00 am -  
 10:00 am

**Type of**  Panel/Guest Speaker: Community Issues  Skill Building Workshop by SLI Staff  Service Project  
**Activity:**  Skill Building Workshop by CP  Action Planning/Site Visit  Skill Building Activity

**Communication Skills for Conflict Management**

8/6/97 This experiential workshop will focus on enhancing participant skills in active listening and other  
 9:15 am - communication techniques necessary for conflict management.  
 11:00 am

**Type of**  Panel/Guest Speaker: Community Issues  Skill Building Workshop by SLI Staff  Service Project  
**Activity:**  Skill Building Workshop by CP  Action Planning/Site Visit  Skill Building Activity

**The Changing Role of Non-Profits & the Role of Service in**

8/6/97 Nolan Finn, Chief Financial Officer of the United Way of Salinas Valley and Jane Maines, Executive  
 11:00 am - Director of the Volunteer Center of Monterey County will share their perspectives on non-profits and  
 12:00 pm service. They will also share more information on the Community Based University Service Advocate  
 position with the United Way.

**Type of**  Panel/Guest Speaker: Community Issues  Skill Building Workshop by SLI Staff  Service Project  
**Activity:**  Skill Building Workshop by CP  Action Planning/Site Visit  Skill Building Activity



## SoSLA '97 Draft Curriculum

**Cultural Awareness & Sensitivity**

8/6/97 Back by popular demand and outstanding evaluations from SoSLA '96, Larry Walker with Upward Bound will facilitate a powerful workshop to increase participants cultural awareness and Sensitivity.  
1:00 pm -  
3:30 pm

**Type of**  Panel/Guest Speaker: Community Issues  Skill Building Workshop by SLI Staff  Service Project  
**Activity:**  Skill Building Workshop by CP  Action Planning/Site Visit  Skill Building Activity

**Closing Activity**

8/6/97 A closing activity will be facilitated to bring closure to the day and provide participants an opportunity to reflect and share questions, comments, and/or concerns from the day.  
3:30 pm -  
4:00 pm

**Type of**  Panel/Guest Speaker: Community Issues  Skill Building Workshop by SLI Staff  Service Project  
**Activity:**  Skill Building Workshop by CP  Action Planning/Site Visit  Skill Building Activity

**Morning Energizer & Reflection**

8/7/97 This is an opportunity to experience different icebreakers, energizers and reflection activities.  
9:00 am -  
9:15 am

**Type of**  Panel/Guest Speaker: Community Issues  Skill Building Workshop by SLI Staff  Service Project  
**Activity:**  Skill Building Workshop by CP  Action Planning/Site Visit  Skill Building Activity

**Service Learning, Charity & Social Change - Part I**

8/7/97 Participants will engage in thoughtful dialogue and processing of the concepts of service learning, charity and social change. They will examine SoSLA service projects and will discuss themes of service learning, charity and social change for each. Also, this activity will assist participants in further developing their projects.  
9:15 am -  
10:30 am

**Type of**  Panel/Guest Speaker: Community Issues  Skill Building Workshop by SLI Staff  Service Project  
**Activity:**  Skill Building Workshop by CP  Action Planning/Site Visit  Skill Building Activity

**Community Issue: Homelessness**

8/7/97 Robert Smith, Founder and Executive Director of Dorothy's Hospitality Center and Bob Glick, Executive Director of Shelter Plus will share their insights into the community issue of homelessness.  
10:30 am -  
12:00 pm

**Type of**  Panel/Guest Speaker: Community Issues  Skill Building Workshop by SLI Staff  Service Project  
**Activity:**  Skill Building Workshop by CP  Action Planning/Site Visit  Skill Building Activity

### SoSLA '97 Draft Curriculum

#### Service Learning, Charity & Social Change - Part II

8/7/97 Participants will engage in thoughtful dialogue and processing of the concepts of service learning, charity and social change. They will examine SoSLA service projects and will discuss themes of service learning, charity and social change for each. Also, this activity will assist participants in further developing their projects.

1:00 pm -  
2:00 pm

- Type of  Panel/Guest Speaker: Community Issues  Skill Building Workshop by SLI Staff  Service Project  
 Activity:  Skill Building Workshop by CP  Action Planning/Site Visit  Skill Building Activity

#### Action Planning/Site Visit #2-OmBuddies

8/7/97 SoSLA participants will use this time to:

2:00 pm - \*schedule a site visit with Concha  
 3:30 pm \*collaborate, research and plan their Team Service Projects and "Each One, Teach One workshops;  
 \*develop their SoSLA presentations.

- Type of  Panel/Guest Speaker: Community Issues  Skill Building Workshop by SLI Staff  Service Project  
 Activity:  Skill Building Workshop by CP  Action Planning/Site Visit  Skill Building Activity

#### Closing Activity

8/7/97 A closing activity will be facilitated to bring closure to the day and provide participants an opportunity to reflect and share questions, comments, and/or concerns from the day.

3:30 pm -  
4:00 pm

- Type of  Panel/Guest Speaker: Community Issues  Skill Building Workshop by SLI Staff  Service Project  
 Activity:  Skill Building Workshop by CP  Action Planning/Site Visit  Skill Building Activity

#### Morning Energizer & Reflection

8/8/97 This is an opportunity to experience different icebreakers, energizers and reflection activities.

9:00 am -  
10:00 am

- Type of  Panel/Guest Speaker: Community Issues  Skill Building Workshop by SLI Staff  Service Project  
 Activity:  Skill Building Workshop by CP  Action Planning/Site Visit  Skill Building Activity

#### Serving with Dorothy's Hospitality Center

8/8/97 We will join Robert Smith for a day of service at Dorothy's Hospitality Center. We will prepare and serve food, serve in the day room and do yard work.

10:00 am -  
2:00 pm

- Type of  Panel/Guest Speaker: Community Issues  Skill Building Workshop by SLI Staff  Service Project  
 Activity:  Skill Building Workshop by CP  Action Planning/Site Visit  Skill Building Activity

**Reflection: Serving with Dorothy's Hospitality Center**

8/8/97 \*Structured reflection time will be provided to process service experience with Dorothy's.

2:00 am -  
4:00 pm

**Type of**  Panel/Guest Speaker: Community Issues  Skill Building Workshop by SLI Staff  Service Project  
**Activity:**  Skill Building Workshop by CP  Action Planning/Site Visit  Skill Building Activity

**Morning Energizer & Reflection**

8/11/97 This is an opportunity to experience different icebreakers, energizers and reflection activities.

9:00 am -  
9:30 am

**Type of**  Panel/Guest Speaker: Community Issues  Skill Building Workshop by SLI Staff  Service Project  
**Activity:**  Skill Building Workshop by CP  Action Planning/Site Visit  Skill Building Activity

**"Each One, Teach One"**

8/11/97 Each participant will have a maximum of 15 minutes to present on a leadership topic of his/her choice to other SoSLA participants.

9:30 am -  
10:00 am

**Type of**  Panel/Guest Speaker: Community Issues  Skill Building Workshop by SLI Staff  Service Project  
**Activity:**  Skill Building Workshop by CP  Action Planning/Site Visit  Skill Building Activity

**Seaside Community Building**

8/11/97 \*Special Guests: Helen Rucker - Co-Founder of Del Monte Manor After School Program and Mayor Pro-Tem of the City of Seaside and Richard Osloch, Founding Member of the Yellow Jackets, Donna Farraro, Associate Director of the Boys & Girls Club of the Monterey Peninsula will share their experiences in community building.

10:00 am -

12:00 pm

**Type of**  Panel/Guest Speaker: Community Issues  Skill Building Workshop by SLI Staff  Service Project  
**Activity:**  Skill Building Workshop by CP  Action Planning/Site Visit  Skill Building Activity

**Making Effective Presentations**

8/11/97 Participants will learn the elements of making effective presentations.

1:00 pm -  
2:00 pm

**Type of**  Panel/Guest Speaker: Community Issues  Skill Building Workshop by SLI Staff  Service Project  
**Activity:**  Skill Building Workshop by CP  Action Planning/Site Visit  Skill Building Activity

**Action Planning/Site Visit #3**

8/11/97 SoSLA participants will use this time to:  
 2:00 pm - \*schedule a site visit with Concha  
 3:30 pm \*collaborate, research and plan their Team Service Projects and "Each One, Teach One" workshops;  
 \*develop their SoSLA presentations.

**Type of**  Panel/Guest Speaker: Community Issues  Skill Building Workshop by SLI Staff  Service Project  
**Activity:**  Skill Building Workshop by CP  Action Planning/Site Visit  Skill Building Activity

**Closing Activity**

8/11/97 A closing activity will be facilitated to bring closure to the day and provide participants an opportunity to  
 3:30 pm - reflect and share questions, comments, and/or concerns from the day.  
 4:00 pm

**Type of**  Panel/Guest Speaker: Community Issues  Skill Building Workshop by SLI Staff  Service Project  
**Activity:**  Skill Building Workshop by CP  Action Planning/Site Visit  Skill Building Activity

**Morning Energizer & Reflection**

8/12/97 This is an opportunity to experience different icebreakers, energizers and reflection activities.  
 9:00 am -  
 9:30 am

**Type of**  Panel/Guest Speaker: Community Issues  Skill Building Workshop by SLI Staff  Service Project  
**Activity:**  Skill Building Workshop by CP  Action Planning/Site Visit  Skill Building Activity

**"Each One, Teach One"**

8/12/97 Each participant will have a maximum of 15 minutes to present on a leadership topic of his/her choice to  
 9:30 am - other SoSLA participants.  
 10:00 am

**Type of**  Panel/Guest Speaker: Community Issues  Skill Building Workshop by SLI Staff  Service Project  
**Activity:**  Skill Building Workshop by CP  Action Planning/Site Visit  Skill Building Activity

**Developing & Maintaining Partnerships**

8/12/97 \*Betsy Herbert, Special Consultant with California Campus Compact will provide an interactive workshop  
 10:00 am - to deepen our understanding and skills in developing and maintaining partnerships.  
 12:00 pm

**Type of**  Panel/Guest Speaker: Community Issues  Skill Building Workshop by SLI Staff  Service Project  
**Activity:**  Skill Building Workshop by CP  Action Planning/Site Visit  Skill Building Activity

## SoSLA '97 Draft Curriculum

**"Each One, Teach One"**

8/12/97 Each participant will have a maximum of 15 minutes to present on a leadership topic of his/her choice to other SoSLA participants.  
1:00 pm -  
2:00 pm

**Type of**  Panel/Guest Speaker: Community Issues  Skill Building Workshop by SLI Staff  Service Project  
**Activity:**  Skill Building Workshop by CP  Action Planning/Site Visit  Skill Building Activity

**Action Planning/Site Visit #4**

8/12/97 SoSLA participants will use this time to:  
2:00 pm - \*schedule a site visit with Concha  
3:00 pm \*collaborate, research and plan their Team Service Projects and "Each One, Teach One workshops;  
\*develop their SoSLA presentations.

**Type of**  Panel/Guest Speaker: Community Issues  Skill Building Workshop by SLI Staff  Service Project  
**Activity:**  Skill Building Workshop by CP  Action Planning/Site Visit  Skill Building Activity

**"Each One, Teach One"**

8/12/97 Each participant will have a maximum of 15 minutes to present on a leadership topic of his/her choice to other SoSLA participants.  
3:00 pm -  
3:30 pm

**Type of**  Panel/Guest Speaker: Community Issues  Skill Building Workshop by SLI Staff  Service Project  
**Activity:**  Skill Building Workshop by CP  Action Planning/Site Visit  Skill Building Activity

**Closing Activity**

8/12/97 A closing activity will be facilitated to bring closure to the day and provide participants an opportunity to reflect and share questions, comments, and/or concerns from the day.  
3:30 pm -  
4:00 pm

**Type of**  Panel/Guest Speaker: Community Issues  Skill Building Workshop by SLI Staff  Service Project  
**Activity:**  Skill Building Workshop by CP  Action Planning/Site Visit  Skill Building Activity

**Morning Energizer & Reflection**

8/13/97 This is an opportunity to experience different icebreakers, energizers and reflection activities.  
9:00 am -  
9:30 am

**Type of**  Panel/Guest Speaker: Community Issues  Skill Building Workshop by SLI Staff  Service Project  
**Activity:**  Skill Building Workshop by CP  Action Planning/Site Visit  Skill Building Activity

SoSLA '97 Draft Curriculum

**Facilitating Discussion on Issues Difficult to Talk About**

8/13/97 Susan Parris and LaVerne Baker Levya of the National Coalition Building Institute will facilitate an interactive, experiential workshop to enhance leadership skills in facilitating discussion on difficult issues (e.g., racism, sexism, heterosexism, etc.)  
 9:30 am -  
 2:00 pm

Type of  Panel/Guest Speaker: Community Issues  Skill Building Workshop by SLI Staff  Service Project  
 Activity:  Skill Building Workshop by CP  Action Planning/Site Visit  Skill Building Activity

**Action Planning/Site Visit #5**

8/13/97 SoSLA participants will use this time to:  
 2:00 pm - \*schedule a site visit with Concha  
 3:00 pm \*collaborate, research and plan their Team Service Projects and "Each One, Teach One workshops;  
 \*develop their SoSLA presentations.

Type of  Panel/Guest Speaker: Community Issues  Skill Building Workshop by SLI Staff  Service Project  
 Activity:  Skill Building Workshop by CP  Action Planning/Site Visit  Skill Building Activity

**"Each One, Teach One"**

8/13/97 Each participant will have a maximum of 15 minutes to present on a leadership topic of his/her choice to other SoSLA participants.  
 3:00 pm -  
 3:30 pm

Type of  Panel/Guest Speaker: Community Issues  Skill Building Workshop by SLI Staff  Service Project  
 Activity:  Skill Building Workshop by CP  Action Planning/Site Visit  Skill Building Activity

**Closing Activity**

8/13/97 A closing activity will be facilitated to bring closure to the day and provide participants an opportunity to reflect and share questions, comments, and/or concerns from the day.  
 3:30 pm -  
 4:00 pm

Type of  Panel/Guest Speaker: Community Issues  Skill Building Workshop by SLI Staff  Service Project  
 Activity:  Skill Building Workshop by CP  Action Planning/Site Visit  Skill Building Activity

**Morning Energizer & Reflection**

8/14/97 This is an opportunity to experience different icebreakers, energizers and reflection activities.  
 9:00 am -  
 9:30 am

Type of  Panel/Guest Speaker: Community Issues  Skill Building Workshop by SLI Staff  Service Project  
 Activity:  Skill Building Workshop by CP  Action Planning/Site Visit  Skill Building Activity

## SoSLA '97 Draft Curriculum

**Community Panel: City Mayors - Vision & Leadership for Marina,**

8/14/97 The following distinguished community leaders will share their visions and experiences in community leadership with SoSLA participants:  
 9:30 am - \*Mayor Alan Styles, City of Salinas  
 11:00 pm \*Mayor Jim Voceleka, City of Marina  
 \*Mayor Don Jordan, City of Seaside

**Type of**  Panel/Guest Speaker: Community Issues  Skill Building Workshop by SLI Staff  Service Project  
**Activity:**  Skill Building Workshop by CP  Action Planning/Site Visit  Skill Building Activity

**Roundtable w/SL 200 Faculty: Preparation & Reflection**

8/14/97 SoSLA participants will share and engage in dialogue with SL 200 Faculty regarding their experiences with preparation and reflection in service learning.  
 12:30 am -  
 2:00 pm

**Type of**  Panel/Guest Speaker: Community Issues  Skill Building Workshop by SLI Staff  Service Project  
**Activity:**  Skill Building Workshop by CP  Action Planning/Site Visit  Skill Building Activity

**Action Planning/Site Visit #6-P.A.R.T.S.**

8/14/97 SoSLA participants will use this time to:  
 2:00 pm - \*schedule a site visit with Concha  
 3:00 pm \*collaborate, research and plan their Team Service Projects and "Each One, Teach One workshops;  
 \*develop their SoSLA presentations.

**Type of**  Panel/Guest Speaker: Community Issues  Skill Building Workshop by SLI Staff  Service Project  
**Activity:**  Skill Building Workshop by CP  Action Planning/Site Visit  Skill Building Activity

**"Each One, Teach One"**

8/14/97 Each participant will have a maximum of 15 minutes to present on a leadership topic of his/her choice to other SoSLA participants.  
 3:00 pm -  
 3:30 pm

**Type of**  Panel/Guest Speaker: Community Issues  Skill Building Workshop by SLI Staff  Service Project  
**Activity:**  Skill Building Workshop by CP  Action Planning/Site Visit  Skill Building Activity

**Closing Activity**

8/14/97 A closing activity will be facilitated to bring closure to the day and provide participants an opportunity to reflect and share questions, comments, and/or concerns from the day.  
 3:30 pm -  
 4:00 pm

**Type of**  Panel/Guest Speaker: Community Issues  Skill Building Workshop by SLI Staff  Service Project  
**Activity:**  Skill Building Workshop by CP  Action Planning/Site Visit  Skill Building Activity

## SoSLA '97 Draft Curriculum

**Morning Energizer & Reflection**

8/15/97 This is an opportunity to experience different icebreakers, energizers and reflection activities.

9:00 am -  
10:00 am

**Type of**  Panel/Guest Speaker: Community Issues  Skill Building Workshop by SLI Staff  Service Project  
**Activity:**  Skill Building Workshop by CP  Action Planning/Site Visit  Skill Building Activity

**Environmental Project**

8/15/97 \*Laura Lee Lienk will switch to her other hat as Coordinator with CSUMB's Watershed Institute to provide a meaningful service opportunity to allow participants to reconnect with nature.

10:00 am -  
3:00 pm

**Type of**  Panel/Guest Speaker: Community Issues  Skill Building Workshop by SLI Staff  Service Project  
**Activity:**  Skill Building Workshop by CP  Action Planning/Site Visit  Skill Building Activity

**Reflection: Environmental Project**

8/15/97 SoSLA participants will lead and engage in reflection on Environmental Project with SL 200 Faculty.

3:00 am -  
4:00 pm

**Type of**  Panel/Guest Speaker: Community Issues  Skill Building Workshop by SLI Staff  Service Project  
**Activity:**  Skill Building Workshop by CP  Action Planning/Site Visit  Skill Building Activity

**Morning Energizer & Reflection**

8/18/97 This is an opportunity to experience different icebreakers, energizers and reflection activities.

9:00 am -  
10:00 am

**Type of**  Panel/Guest Speaker: Community Issues  Skill Building Workshop by SLI Staff  Service Project  
**Activity:**  Skill Building Workshop by CP  Action Planning/Site Visit  Skill Building Activity

**Stress Management**

8/18/97 \*Barbara Sayad, Faculty Member of CSUMB's Wellness, Recreation and Sport Institute will provide an interactive and practical workshop on Managing Stress.

10:00 am -  
12:00 pm

**Type of**  Panel/Guest Speaker: Community Issues  Skill Building Workshop by SLI Staff  Service Project  
**Activity:**  Skill Building Workshop by CP  Action Planning/Site Visit  Skill Building Activity



**Personal Awareness**

8/18/97 Several activities will be facilitated to assist participants in enhancing their awareness of their strengths/weaknesses, motivations, passions, commitment and life goals as related to leadership.  
1:00 pm -  
2:00 pm

**Type of**  Panel/Guest Speaker: Community Issues  Skill Building Workshop by SLI Staff  Service Project  
**Activity:**  Skill Building Workshop by CP  Action Planning/Site Visit  Skill Building Activity

**Action Planning/Site Visit #7**

8/18/97 SoSLA participants will use this time to:  
2:00 pm - \*schedule a site visit with Concha  
3:30 pm \*collaborate, research and plan their Team Service Projects and "Each One, Teach One workshops;  
\*develop their SoSLA presentations.

**Type of**  Panel/Guest Speaker: Community Issues  Skill Building Workshop by SLI Staff  Service Project  
**Activity:**  Skill Building Workshop by CP  Action Planning/Site Visit  Skill Building Activity

**Closing Activity**

8/18/97 A closing activity will be facilitated to bring closure to the day and provide participants an opportunity to reflect and share questions, comments, and/or concerns from the day.  
3:30 pm -  
4:00 pm

**Type of**  Panel/Guest Speaker: Community Issues  Skill Building Workshop by SLI Staff  Service Project  
**Activity:**  Skill Building Workshop by CP  Action Planning/Site Visit  Skill Building Activity

**Morning Energizer & Reflection**

8/19/97 This is an opportunity to experience different icebreakers, energizers and reflection activities.  
9:00 am -  
10:00 am

**Type of**  Panel/Guest Speaker: Community Issues  Skill Building Workshop by SLI Staff  Service Project  
**Activity:**  Skill Building Workshop by CP  Action Planning/Site Visit  Skill Building Activity

**Variety of activities w/the SPCA of Monterey County**

8/19/97 \*Sheila McMahon, Humane Educator with the SPCA, will provide an orientation to the SPCA and its service learning opportunities for CSUMB students and will give an informative presentation on the connections between animal and child abuse. SoSLA participants will serve in many capacities - Be sure to wear your "grubbies."  
10:00 am -  
3:00 pm

**Type of**  Panel/Guest Speaker: Community Issues  Skill Building Workshop by SLI Staff  Service Project  
**Activity:**  Skill Building Workshop by CP  Action Planning/Site Visit  Skill Building Activity

SoSLA '97 Draft Curriculum

Closing Activity

8/19/97 A closing activity will be facilitated to bring closure to the day and provide participants an opportunity to reflect and share questions, comments, and/or concerns from the day.  
3:00 pm -  
4:00 pm

- Type of  Panel/Guest Speaker: Community Issues  Skill Building Workshop by SLI Staff  Service Project  
Activity:  Skill Building Workshop by CP  Action Planning/Site Visit  Skill Building Activity

Morning Energizer & Reflection

8/20/97 This is an opportunity to experience different icebreakers, energizers and reflection activities.  
9:00 am -  
10:00 am

- Type of  Panel/Guest Speaker: Community Issues  Skill Building Workshop by SLI Staff  Service Project  
Activity:  Skill Building Workshop by CP  Action Planning/Site Visit  Skill Building Activity

Serving in Classrooms

8/20/97 \*Introduce SoSLA participant to Chular community  
10:00 am - \*Market Community Based USA position at Chular  
3:00 pm \*Provide opportunity for SoSLA participants to discuss with teachers how college students (particularly service learners) can be assets in the classroom

- Type of  Panel/Guest Speaker: Community Issues  Skill Building Workshop by SLI Staff  Service Project  
Activity:  Skill Building Workshop by CP  Action Planning/Site Visit  Skill Building Activity

Closing Activity

8/20/97 A closing activity will be facilitated to bring closure to the day and provide participants an opportunity to reflect and share questions, comments, and/or concerns from the day.  
3:00 pm -  
4:00 pm

- Type of  Panel/Guest Speaker: Community Issues  Skill Building Workshop by SLI Staff  Service Project  
Activity:  Skill Building Workshop by CP  Action Planning/Site Visit  Skill Building Activity

Morning Energizer & Reflection

8/21/97 This is an opportunity to experience different icebreakers, energizers and reflection activities.  
9:00 am -  
10:00 am

- Type of  Panel/Guest Speaker: Community Issues  Skill Building Workshop by SLI Staff  Service Project  
Activity:  Skill Building Workshop by CP  Action Planning/Site Visit  Skill Building Activity

## SoSLA '97 Draft Curriculum

**Presentations: Site Visits, Projects & Learnings**

8/21/97 SoSLA Participants will share and present what they learned from their Site Visits, SoSLA and their Team Service Projects.  
10:00 am -  
3:00 pm

**Type of**  Panel/Guest Speaker: Community Issues  Skill Building Workshop by SLI Staff  Service Project  
**Activity:**  Skill Building Workshop by CP  Action Planning/Site Visit  Skill Building Activity

**Closing Activity**

8/21/97 A closing activity will be facilitated to bring closure to the day and provide participants an opportunity to reflect and share questions, comments, and/or concerns from the day.  
3:00 pm -  
4:00 pm

**Type of**  Panel/Guest Speaker: Community Issues  Skill Building Workshop by SLI Staff  Service Project  
**Activity:**  Skill Building Workshop by CP  Action Planning/Site Visit  Skill Building Activity

**Evaluations, Wrap-Up & Clean-Up**

8/22/97 SoSLA participants complete evaluations of their SoSLA experience. Wrap-up activities scheduled. Will clean up and prepare for Celebration.  
9:00 am -  
12:30 pm

**Type of**  Panel/Guest Speaker: Community Issues  Skill Building Workshop by SLI Staff  Service Project  
**Activity:**  Skill Building Workshop by CP  Action Planning/Site Visit  Skill Building Activity

**SoSLA Celebration**

8/22/97 SLI Staff will join SoSLA participants at the Steinbeck House in Salinas in celebration of their completion of an intense, meaningful community leadership program =)  
1:15 pm -  
4:00 pm

**Type of**  Panel/Guest Speaker: Community Issues  Skill Building Workshop by SLI Staff  Service Project  
**Activity:**  Skill Building Workshop by CP  Action Planning/Site Visit  Skill Building Activity