


Fall 2013

## Enrollment Report - Fall 2013

UNO Office of Institutional Effectiveness  
*University of Nebraska at Omaha*

Follow this and additional works at: <https://digitalcommons.unomaha.edu/oieenrollment>

 Part of the [Educational Assessment, Evaluation, and Research Commons](#), and the [Higher Education Commons](#)

Please take our feedback survey at: [https://unomaha.az1.qualtrics.com/jfe/form/SV\\_8cchtFmpDyGfBLE](https://unomaha.az1.qualtrics.com/jfe/form/SV_8cchtFmpDyGfBLE)

---

### Recommended Citation

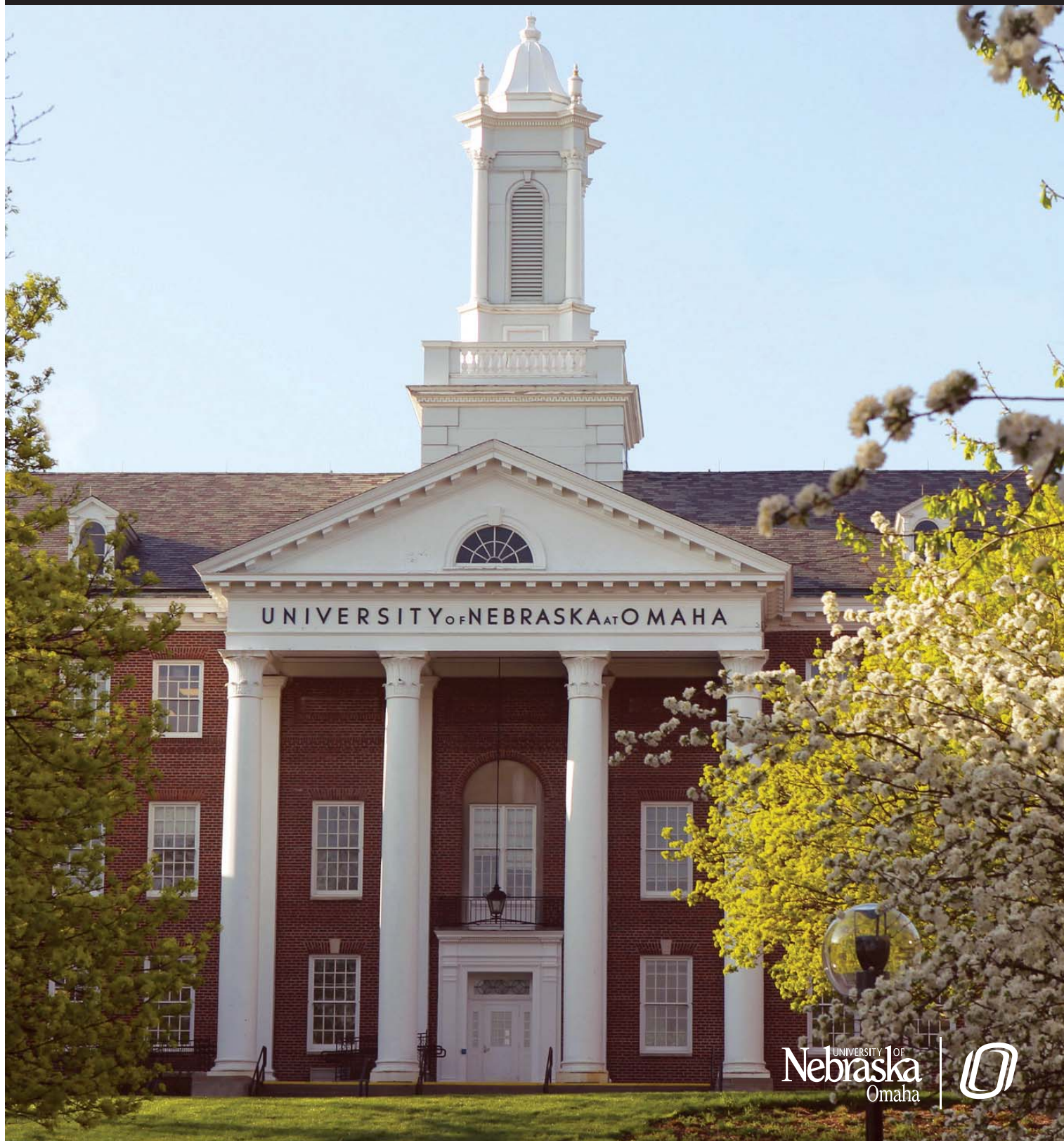
Office of Institutional Effectiveness, UNO, "Enrollment Report - Fall 2013" (2013). *Enrollment Reports*. 8. <https://digitalcommons.unomaha.edu/oieenrollment/8>

This Report is brought to you for free and open access by the Systems Intelligence and Data Analytics (SIDA) at DigitalCommons@UNO. It has been accepted for inclusion in Enrollment Reports by an authorized administrator of DigitalCommons@UNO. For more information, please contact [unodigitalcommons@unomaha.edu](mailto:unodigitalcommons@unomaha.edu).

OFFICE OF INSTITUTIONAL EFFECTIVENESS

# ENROLLMENT PROFILE REPORT

FALL 2013



UNIVERSITY OF  
**Nebraska**  
Omaha



**University of Nebraska at Omaha**  
**Enrollment Profile Report:**  
**Fall 2013**

**Office of Institutional Effectiveness**  
**Institutional Research**

**<http://www.unomaha.edu/oie/>**

**September, 2013**

# EXECUTIVE SUMMARY

This Enrollment Profile Report provides administrative- and delivery-site information on enrollment headcount and student credit hours, as well as the demographic characteristics of enrolled students. Delivery-site reporting counts all students, including those in UNL programs delivered at UNO, but excludes UNO programs delivered in Lincoln (CPACS programs). Administrative-site reporting counts students enrolled in UNO programs only (including the CPACS programs delivered in Lincoln).

The purpose of this profile is to provide the undergraduate and graduate enrollments and student credit hour information by college or equivalent academic unit, class, gender and ethnicity. A glossary at the end of the report provides a list of definitions for headings. All information in this report was produced from the fall 2013 Census Enrollment Snapshot file. The Census Snapshot date was September 3, 2013.

## Administrative-Site Campus Summary

- Fall 2013 head count enrollment is 15,227, a 3.0% increase compared to the fall 2012 enrollment of 14,786 (see Figure 1).
- Fall 2013 undergraduate head count enrollment is 12,335, a 1.6% increase compared to the fall 2012 enrollment of 12,136 (see Figure 5).
- Fall 2013 graduate headcount enrollment is 2,892, a 9.1% increase compared to the fall 2012 enrollment of 2,650 (see Figure 5).
- Fall 2013 student credit hours are 168,421, a 2.0% increase compared to the fall 2012 credit hours of 165,170 (see Figure 6).
- Fall 2013 undergraduate credit hours are 152,161, up from fall 2012 by 1.0% (see Figure 6).
- Fall 2013 graduate credit hours are 16,260, up from fall 2012 by 12% (see Figure 6).

## Delivery-Site Campus Summary

- Fall 2013 head count enrollment is 15,714, a 2.0% increase compared to the fall 2012 enrollment of 15,394 (see Figure 1).
- Fall 2013 undergraduate head count is 12,805, a 0.6% increase compared to the fall 2012 enrollment of 12,730 (see Figure 2).
- Fall 2013 graduate head count enrollment is 2,909, a 9.2% increase compared to the fall 2012 enrollment of 2,664 (see Figure 2).
- Fall 2013 student credit hours are 172,231, a 1.6% increase compared to the fall 2012 credit hours of 169,478 (see Figure 3).
- Fall 2013 undergraduate credit hours are 154,657, up from fall 2012 by 0.7% (see Figure 3).
- Fall 2013 graduate credit hours are 17,574, up from fall 2012 by 10.6% (see Figure 3).



## Contents

Executive Summary.....i

### List of Figures:

Figure 1: Delivery-Site & Administrative-Site Head Count Enrollment: Fall 1990 – 2013.....	5
Figure 2: UNO Delivery-Site Head Count by Student Level: Fall 2003-2013.....	6
Figure 3: UNO Delivery-Site Student Credit Hours by Student Level: Fall 2003-2013 .....	6
Figure 4: UNO Delivery-Site Head Count by Ethnicity by Gender: Fall 2013 .....	7
Figure 5: UNO Administrative-Site Head Count by Student Level: Fall 2003-2013 .....	9
Figure 6: UNO Administrative-Site Student Credit Hours: Fall 2003-2013 .....	9
Figure 7: UNO Administrative-Site Head Count by Ethnicity by Gender: Fall 2013 .....	10
Figure 8: College of Arts & Sciences Head Count: Fall 2003-2013.....	12
Figure 9: College of Arts & Sciences Student Credit Hours: Fall 2003-2013.....	12
Figure 10: College of Arts & Sciences Head Count by Ethnicity by Gender: Fall 2013.....	13
Figure 11: College of Business Administration Head Count: Fall 2003-2013 .....	15
Figure 12: College of Business Administration Student Credit Hours: Fall 2003-2013.....	15
Figure 13: College of Business Administration Head Count by Ethnicity by Gender: Fall 2013 .....	16
Figure 14: College of Communication, Fine Arts and Media Delivery-Site Head Count: Fall 2005-2013.....	18
Figure 15: College of Communication, Fine Arts and Media Delivery-Site Student Credit Hours: Fall 2005-2013 ..	18
Figure 16: College of Communication, Fine Arts and Media Delivery-Site Head Count by Ethnicity by Gender: Fall 2013 .....	19
Figure 17: College of Communication, Fine Arts and Media: Administrative-Site Head Count: Fall 2005-2013.....	21
Figure 18: College of Communication, Fine Arts and Media: Administrative-Site Student Credit Hours: Fall 2005-2013 .....	21
Figure 19: College of Communication, Fine Arts and Media: Administrative-Site Head Count by Ethnicity by Gender: Fall 2013 .....	22
Figure 20: College of Education Head Count: Fall 2003-2013 .....	24
Figure 21: College of Education Student Credit Hours: Fall 2003-2013.....	24
Figure 22: College of Education Head Count by Ethnicity by Gender: Fall 2013 .....	25
Figure 23: College of Information Science & Technology Head Count: Fall 2003-2013 .....	27
Figure 24: College of Information Science & Technology Student Credit Hours: Fall 2003-2013 .....	27
Figure 25: College of Information Science & Technology Student Credit Hours: Fall 2003-2013 .....	28
Figure 26: College of Public Affairs & Community Service Delivery-Site Head Count: Fall 2003-2013.....	31
Figure 27: College of Public Affairs & Community Service Delivery-Site Student Credit Hours: Fall 2003-2013 ...	31
Figure 28: College of Public Affairs & Community Service Delivery-Site Head Count by Ethnicity by Gender: Fall 2013 .....	32
Figure 29: College of Public Affairs & Community Service Administrative-Site Head Count: Fall 2003-2013.....	34

Figure 30: College of Public Affairs & Community Service Administrative-Site Student Credit Hours: Fall 2003-2013 .....	34
Figure 31: College of Public Affairs & Community Service Administrative-Site Head Count by Ethnicity by Gender: Fall 2013 .....	35
Figure 32: College of CPACS, Division of Continuing Studies Head Count: Fall 2003-2013 .....	37
Figure 33: College of CPACS, Division of Continuing Studies Head Count by Ethnicity by Gender: Fall 2013 .....	37
Figure 34: University Division Head Count: Fall 2003-2013.....	40
Figure 35: University Division Student Credit Hours: Fall 2003-2013 .....	40
Figure 36: University Division Head Count by Ethnicity by Gender: Fall 2013.....	41
Figure 37: Non-Degree/Intercampus Special Undergraduate Students Head Count: Fall 2003-2013.....	43
Figure 38: Non-Degree/Intercampus Special Undergraduate Students Head Count by Ethnicity by Gender: Fall 2013 .....	43
Figure 39: Non-Degree/Inter Campus Special Graduate Students Head Count: Fall 2003-2013 .....	45
Figure 40: Non-Degree/Intercampus Special Graduate Students Head Count by Ethnicity by Gender: Fall 2013.....	45
Figure 41: Other Honors Student Credit Hours by Level of Instruction: Fall 2003-2013 .....	47
Figure 42: College of Agriculture Delivery-Site Head Count: Fall 2003-2013.....	48
Figure 43: College of Agriculture Delivery-Site Student Credit Hours: Fall 2003-2013 .....	48
Figure 44: College of Agriculture Delivery-Site Head Count by Ethnicity by Gender: Fall 2013.....	49
Figure 45: College of Architecture Delivery-Site Head Count: Fall 2003-2013 .....	51
Figure 46: College of Architecture Delivery-Site Student Credit Hours: Fall 2003-2013.....	51
Figure 47: College of Architecture Delivery-Site Head Count by Ethnicity by Gender: Fall 2013 .....	52
Figure 48: College of Engineering Delivery-Site Head Count: Fall 2003-2013.....	54
Figure 49: College of Engineering Delivery-Site Student Credit Hours: Fall 2003-2013.....	54
Figure 50: College of Engineering Delivery-Site Head Count by Ethnicity by Gender: Fall 2013.....	55
Figure 51: College of Education and Human Sciences Delivery-Site Head Count: Fall 2003-2013.....	57
Figure 52: College of Education and Human Sciences Delivery-Site Student Credit Hours: Fall 2003-2013 .....	57
Figure 53: College of Education and Human Sciences Delivery-Site Head Count by Ethnicity by Gender: Fall 2003-2013 .....	58

List of Tables:

Table 1: UNO Delivery-Site and Administrative-Site Head Count Enrollment and Comparison: Fall Semester, 2013 .....	4
Table 2: Total UNO Delivery-Site Head Count Summary for Undergraduate and Graduate Students Fall and Part-Time by Gender and Race Classification: Fall 2013 .....	8
Table 3: Total UNO Administrative-Site Head Count Summary for Undergraduate and Graduate Students by Full and Part-Time by Gender and Race Classification: Fall 2013.....	11
Table 4: College of Arts & Sciences Head Count Summary for Undergraduate and Graduate Students by Full and Part-Time by Gender and Race Classification: Fall 2013.....	14
Table 5: College of Business Administration Head Count Summary for Undergraduate and Graduate Students by Full and Part-Time by Gender and Race Classification: Fall 2013 .....	17

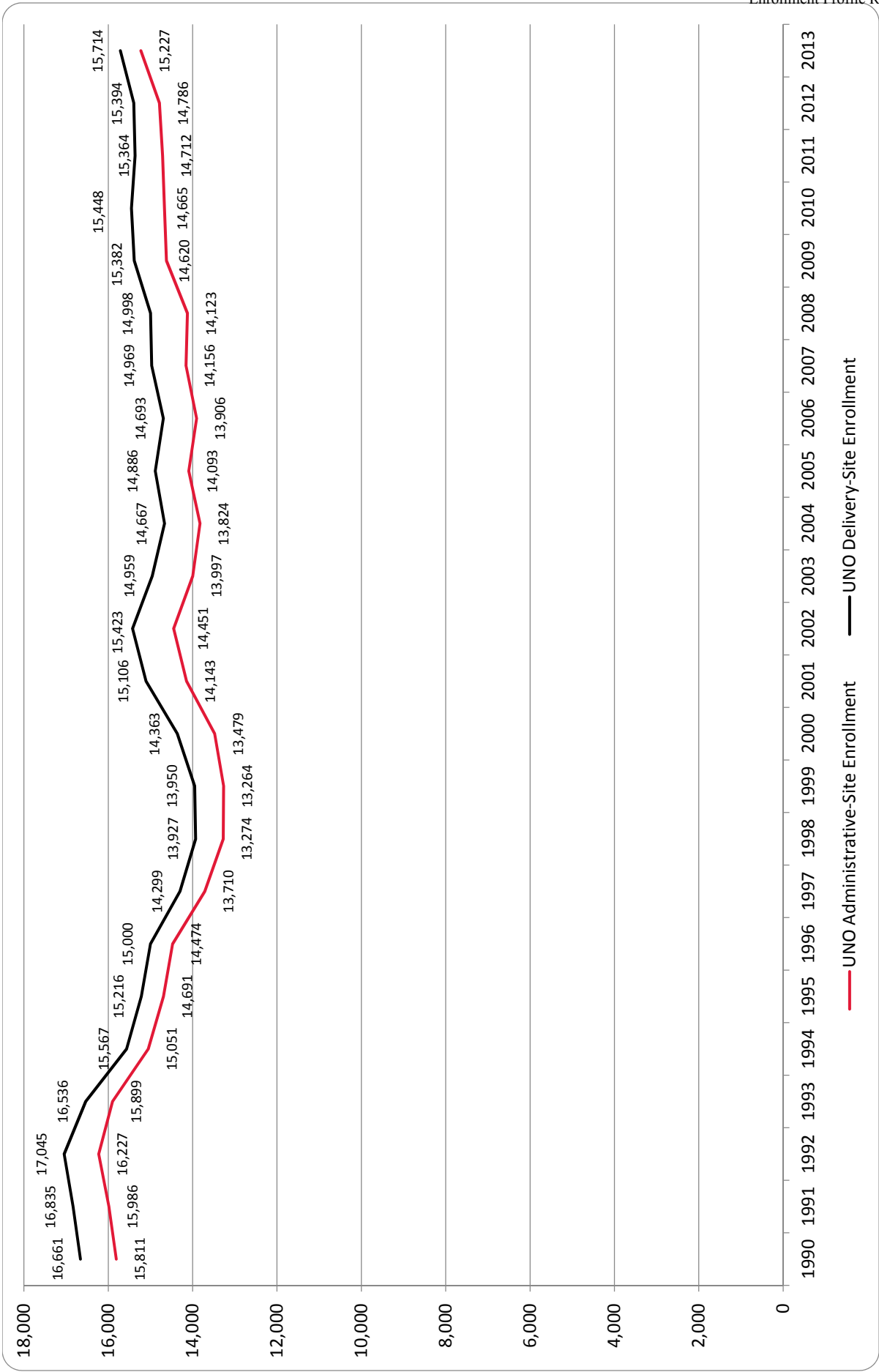
Table 6: College of Communication, Fine Arts and Media Delivery-Site Head Count Summary for Undergraduate and Graduate Students by Full and Part-Time by Gender and Race Classification: Fall 2013.....	20
Table 7: College of Communication, Fine Arts and Media Administrative-Site Head Count Summary for Undergraduate and Graduate Students by Full and Part-Time by Gender and Race Classification: Fall 2013 .....	23
Table 8: College of Education Head Count Summary for Undergraduate and Graduate Students by Full and Part-Time by Gender and Race Classification: Fall 2013 .....	26
Table 9: College of Information Science and Technology Head Count Summary for Undergraduate and Graduate Summary by Full and Part-Time by Gender and Race Classification: Fall 2013 .....	29
Table 10: College of Public Affairs and Community Service Delivery-Site Head Count Summary for Undergraduate and Graduate Students by Full and Part-Time by Gender and Race Classification: Fall 2013.....	33
Table 11: College of Public Affairs & Community Service Administrative-Site Head Count Summary for Undergraduate and Graduate Students by Full and Part-Time by Gender and Race Classification: Fall 2013 .....	36
Table 12: College of CPACS Division of Continuing Studies Head Count Summary for Undergraduate Students by Full and Part-Time by Gender and Race Classification: Fall 2013 .....	38
Table 13: Cooperative Graduate Program Head Count Summary for Graduate Students by Full and Part-Time by Gender and Race Classification: Fall 2013.....	39
Table 14: University Division Head Count Summary for Undergraduate Students by Full and Part-Time by Gender and Race Classification: Fall 2013 .....	42
Table 15: Non-Degree/Intercampus Head Count Summary for Special Undergraduate Students by Full and Part-Time by Gender and Race Classification: Fall 2013 .....	44
Table 16: Non-Degree/Intercampus Head Count Summary for Special Graduate Students by Full and Part-Time by Gender and Race Classification: Fall 2013.....	46
Table 17: College of Agriculture Head Count Summary for Undergraduate Students by Full and Part-Time by Gender and Race Classification: Fall 2013.....	50
Table 18: College of Architecture Head Count Summary for Undergraduate Students by Full and Part-Time by Gender and Race Classification: Fall 2013.....	53
Table 19: College of Engineering Head Count Summary for Undergraduate Students by Full and Part-Time by Gender and Race Classification: Fall 2013.....	56
Table 20: College of Education and Human Sciences Head Count Summary for Undergraduate Students by Full and Part-Time by Gender and Race Classification: Fall 2013.....	59
Glossary.....	60



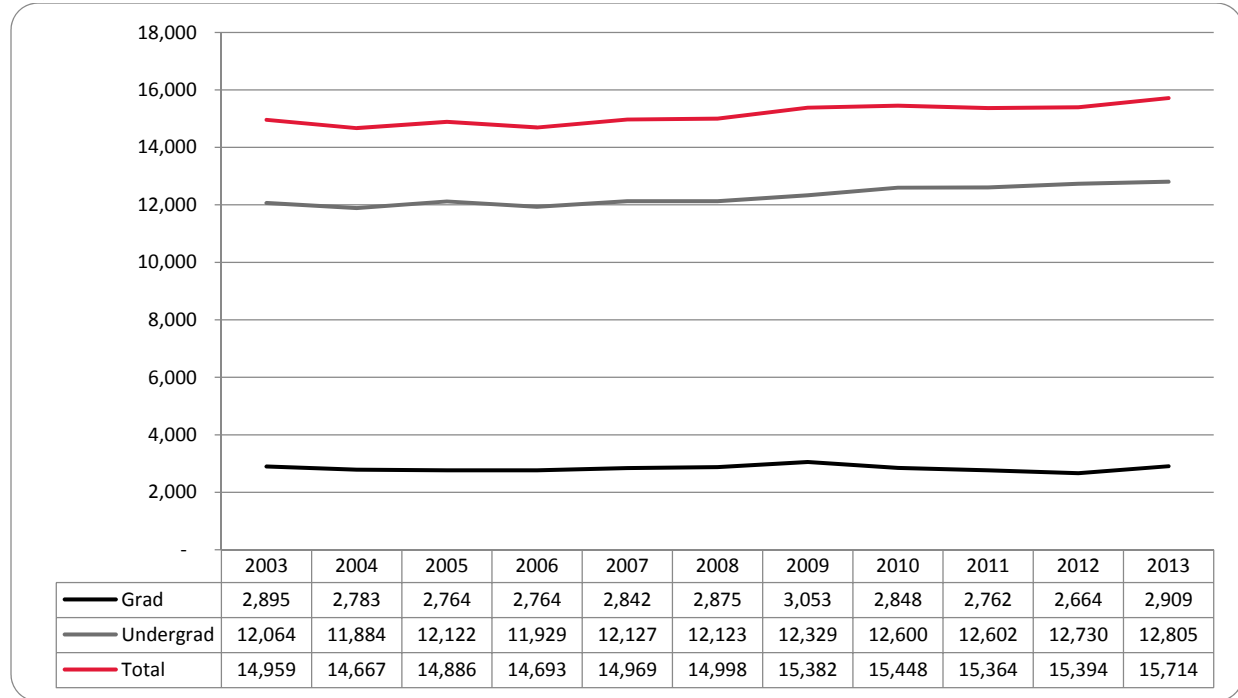
**Table 1: UNO Delivery-Site and Administrative-Site Head Count Enrollment and Comparison: Fall Semester, 2013**

	Fall 2013		Fall 2012	Fall 2012-13 Administrative-Site	
	Delivery-Site	Administrative-Site	Administrative-Site	Numerical Change	Percent Change
<b>UNO:</b>					
<i>Undergraduate</i>					
Arts & Science	3,601	3,601	3,708	-107	-2.9%
Business Administration	1,941	1,941	1,835	106	5.8%
Communication, Fine Arts & Media	1,093	1,093	1,098	-5	-0.5%
Education	1,553	1,553	1,576	-23	-1.5%
Information Science and Technology	752	752	668	84	12.6%
Public Affairs & Community Services	705	1,063	931	132	14.2%
Division of Continuing Studies	1,270	1,270	1,339	-69	-5.2%
Sub-total CPACS including Cont. Studies	1,975	2,333	2,270	63	2.8%
Non-Degree	270	270	313	-43	-13.7%
University Division	792	792	668	124	18.6%
<b>Total Undergraduate</b>	11,977	12,335	12,136	199	1.6%
<i>Graduate</i>					
Arts & Science	414	414	385	29	7.5%
Business Administration	424	424	414	10	2.4%
Communication, Fine Arts & Media	101	84	96	-12	-12.5%
Education	811	811	708	103	14.5%
Information Science and Technology	270	270	250	20	8.0%
Public Affairs & Community Services	508	508	448	60	13.4%
New Cooperative Graduate Programs	9	9	4	5	125.0%
Undeclared	372	372	345	27	7.8%
<b>Total Graduate</b>	2,909	2,892	2,650	242	9.1%
<b>UNO Administrative-Site Total</b>		15,227	14,786	441	3.0%
<b>UNL:</b>	<b>Fall 2013</b>		<b>Delivery Fall 2012</b>	<b>Numerical Change</b>	<b>Percent Change</b>
Agriculture	15		17		
Architecture	30		32		
Engineering & Technology	4		790		
Education and Human Science	779		27		
<b>Total UNL in Omaha</b>	828		866	-38	-4.4%
	<b>Fall 2013</b>		<b>Fall 2012</b>	<b>Numerical Change</b>	<b>Percent Change</b>
<b>UNO Delivery-Site Total</b>	15,714		15,394	320	2.1%

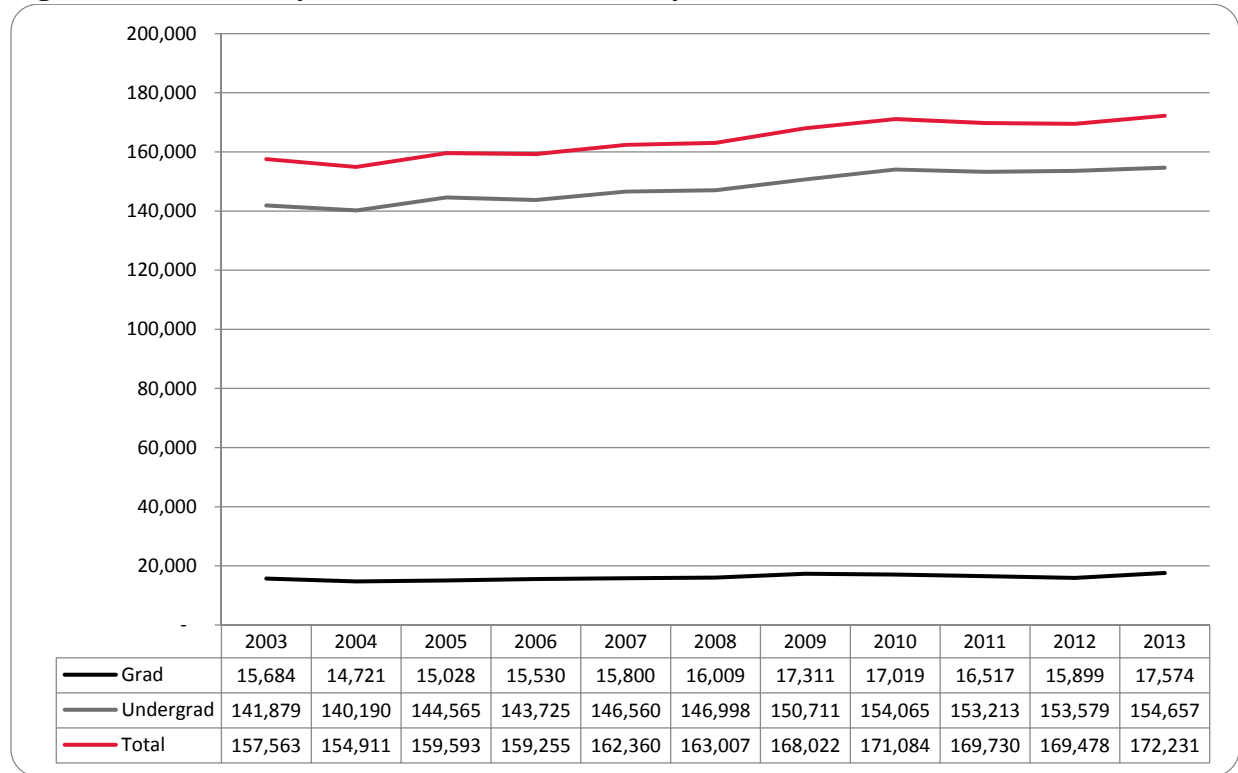
**Figure 1: Delivery-Site & Administrative-Site Head Count Enrollment: Fall 1990 – 2013**



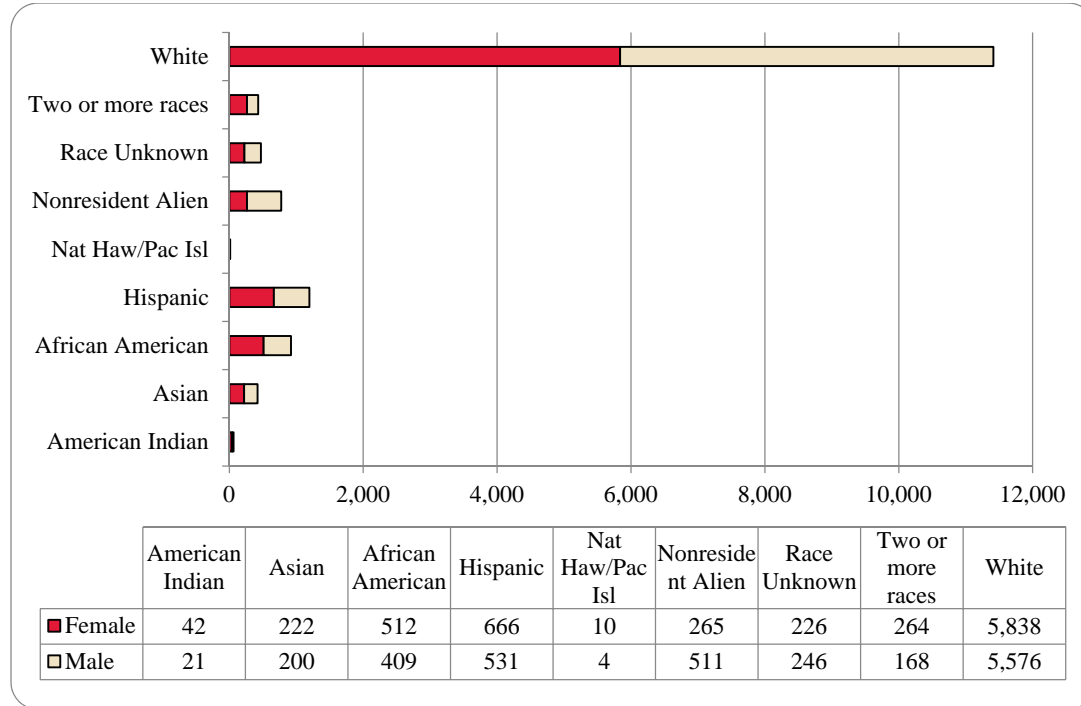
**Figure 2: UNO Delivery-Site Head Count by Student Level: Fall 2003-2013**



**Figure 3: UNO Delivery-Site Student Credit Hours by Student Level: Fall 2003-2013**



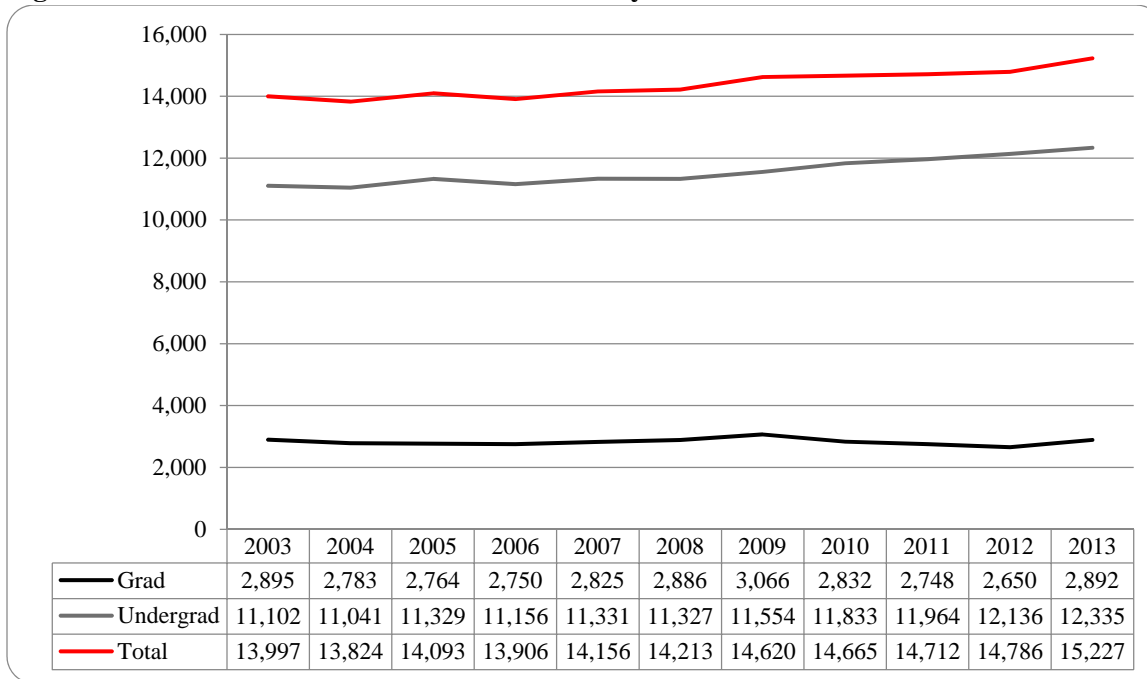
**Figure 4: UNO Delivery-Site Head Count by Ethnicity by Gender: Fall 2013**



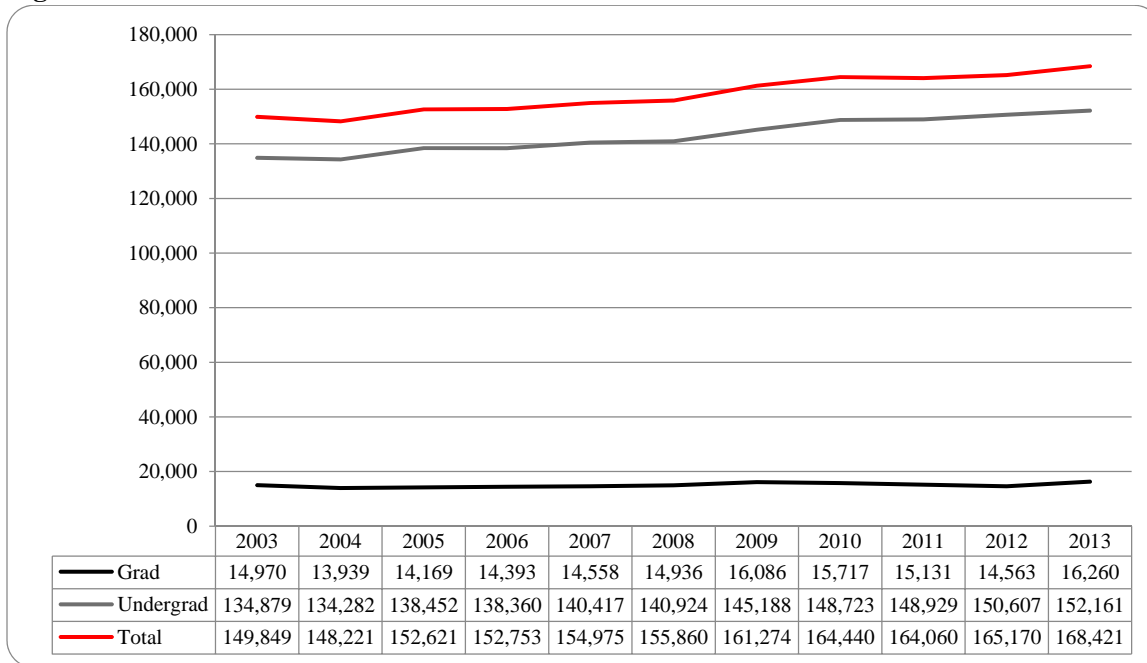
**Table 2: Total UNO Delivery-Site Head Count Summary for Undergraduate and Graduate Students Fall and Part-Time by Gender and Race Classification: Fall 2013**

	American Indian		Asian		African American		Hispanics		Nat Haw / Pac Isl		Race Unknown		Two or more races		White		Nonresident Alien		Total			
	F	M	F	M	F	M	F	M	F	M	F	M	F	M	F	M	F	M	F	M	Total	
	<b>Undergraduate</b>																					
<b>Full-Time</b>																						
First-Time Freshmen	4	1	29	28	66	45	143	113	2	1	17	35	49	40	617	655	25	40	952	958	1,910	
Other Freshmen	2		14	14	46	43	44	36		1	6	6	27	12	242	284	42	72	423	468	891	
Sophomores	5	4	42	29	63	50	93	109	2		31	29	53	31	811	776	23	70	1,123	1,098	2,221	
Juniors	4	2	26	28	75	58	104	71	1	1	54	48	46	31	881	870	16	39	1,207	1,148	2,355	
Seniors	9	5	31	24	75	60	95	61	1		33	27	20	9	972	901	19	48	1,255	1,135	2,390	
Special	1		3	3	3	2	2	4			2	2	3	1	52	73	3	3	66	88	154	
<b>Total Full-Time</b>	25	12	142	126	328	258	481	394	6	3	143	147	198	124	3,575	3,559	128	272	5,026	4,895	9,921	
<b>Part-Time</b>																						
First-Time Freshmen	1		1	1	3	5	10	7	1			4	6	2	19	33	4	3	45	55	100	
Other Freshmen	2	2	7	9	16	14	12	13	1		3	8	9	4	90	129	9	4	149	183	332	
Sophomores	1	1	7	9	18	17	30	20			4	12	3	1	150	191	1	9	214	260	474	
Juniors	3		7	4	29	30	22	16			10	14	8	9	233	257	4	6	316	336	652	
Seniors	1	4	13	14	45	31	35	21		1	21	27	3	3	356	424	10	13	484	538	1,022	
Special	2	1	5	4	7	8	9	11	2		5	7	3	4	125	105		6	158	146	304	
<b>Total Part-Time</b>	10	8	40	41	118	105	118	88	4	1	43	72	32	23	973	1,139	28	41	1,366	1,518	2,884	
<b>Total Undergraduate</b>	35	20	182	167	446	363	599	482	10	4	186	219	230	147	4,548	4,698	156	313	6,392	6,413	12,805	
<b>Graduate</b>																						
<b>Full-Time</b>																						
Certificate			1		1										2	1			4	1	5	
Masters	2		6	9	16	11	18	15			9	9	6	5	289	168	62	83	408	300	708	
Doctoral				1			1	2					1	1	9	11	5	14	16	29	45	
Special Graduate			2	1	2	3	1					1			14	31	11	56	30	92	122	
<b>Total Full-Time</b>	2		9	11	19	14	20	17			9	10	7	6	314	211	78	153	458	422	880	
<b>Part-Time</b>																						
Certificate			1	2	4	1	2				1				16	17	2	1	26	21	47	
Masters	4	1	24	17	31	22	31	25			22	14	22	13	760	515	19	25	913	632	1,545	
Doctoral			1		2	3	1	2			1	1	2		53	52	3	8	63	66	129	
Special Graduate	1		5	3	10	6	13	5			7	5	3	2	147	83	7	11	193	115	308	
<b>Total Part-Time</b>	5	1	31	22	47	32	47	32			31	20	27	15	976	667	31	45	1,195	834	2,029	
<b>Total Graduate</b>	7	1	40	33	66	46	67	49			40	30	34	21	1,290	878	109	198	1,653	1,256	2,909	
<b>Total All Students</b>	42	21	222	200	512	409	666	531	10	4	226	249	264	168	5,838	5,576	265	511	8,045	7,669	15,714	
Previous before Correction																						
	42	21	221	200	512	407	678	544	10	4	227	249	264	166	5,825	5,567	266	511	8,045	7,669	15,714	

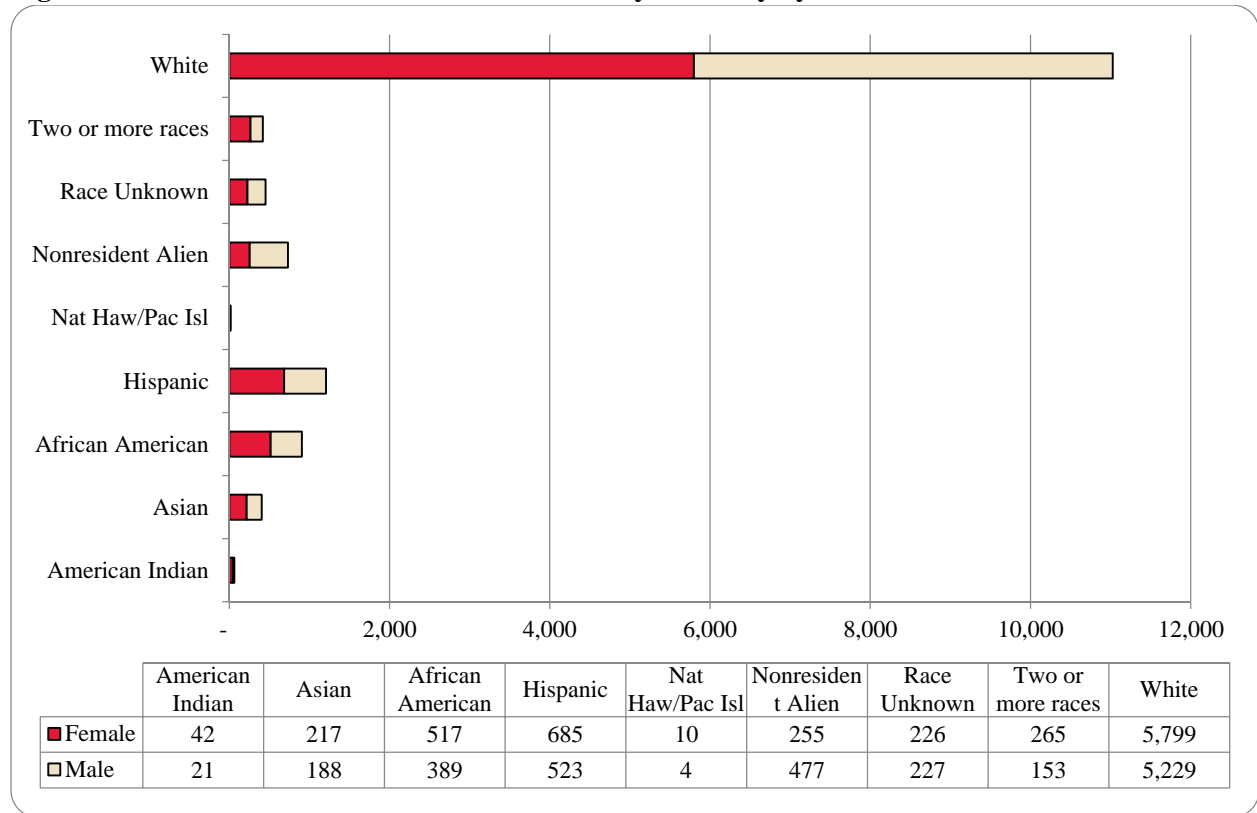
**Figure 5: UNO Administrative-Site Head Count by Student Level: Fall 2003-2013**



**Figure 6: UNO Administrative-Site Student Credit Hours: Fall 2003-2013**



**Figure 7: UNO Administrative-Site Head Count by Ethnicity by Gender: Fall 2013**

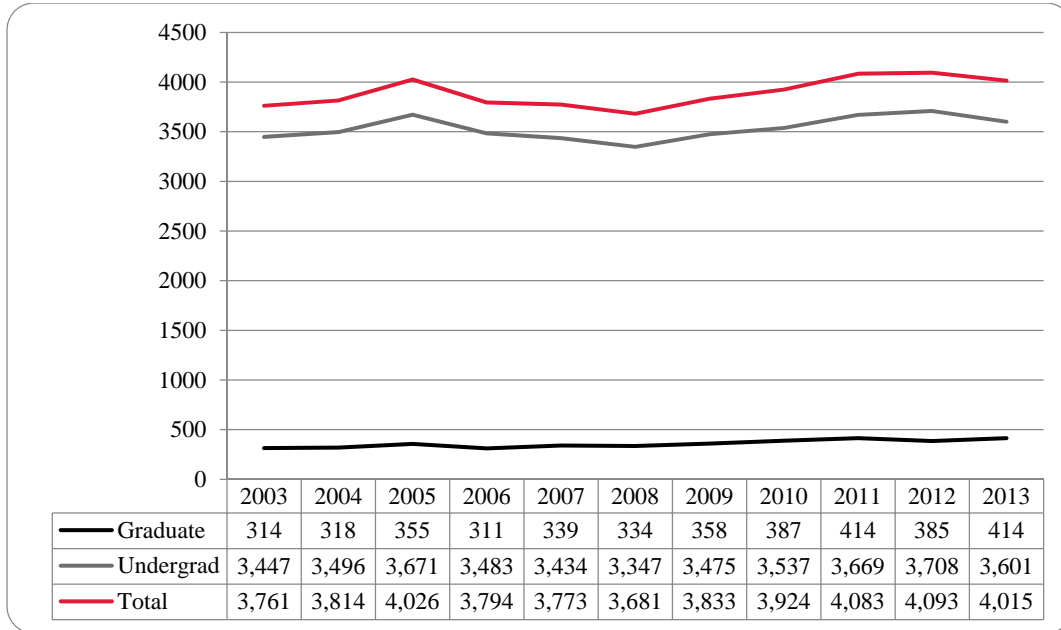


**Table 3: Total UNO Administrative-Site Head Count Summary for Undergraduate and Graduate Students by Full and Part-Time by Gender and Race Classification: Fall 2013**

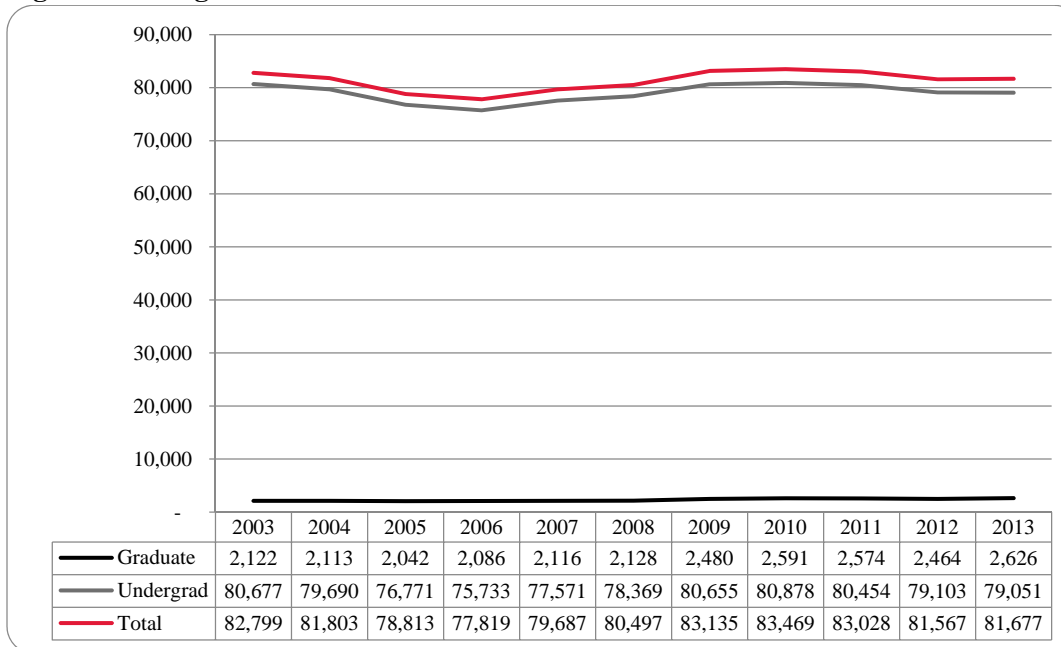
	American Indian		Asian		African American		Hispanics		Nat Haw / Pac Isl		Race Unknown		Two or more races		White		Nonresident Alien		Total		
	F	M	F	M	F	M	F	M	F	M	F	M	F	M	F	M	F	M	F	M	Total
<b>Undergraduate</b>																					
<b>Full-Time</b>																					
First-Time Freshmen	4	1	28	23	68	44	143	110	2	1	17	32	50	36	612	563	25	36	949	846	1,795
Other Freshmen	2		14	14	46	43	44	36		1	7	6	26	13	244	268	39	60	422	441	863
Sophomores	5	4	41	26	65	47	94	101	2		31	25	54	26	798	709	19	60	1,109	998	2,107
Juniors	4	2	25	28	76	59	108	67	1	1	56	42	46	27	891	828	16	38	1,223	1,092	2,315
Seniors	9	5	31	21	73	56	95	59	1		32	23	20	8	964	837	19	45	1,244	1,054	2,298
Special	1				3	3	2	3			2	1	3	1	48	60	2	2	61	72	133
<b>Total Full-Time</b>	25	12	139	115	331	251	486	376	6	3	145	129	199	111	3,557	3,265	120	241	5,008	4,503	9,511
<b>Part-Time</b>																					
First-Time Freshmen	1		1	1	3	4	10	7	1			4	6	2	19	29	4	3	45	50	95
Other Freshmen	2	2	7	9	17	14	12	12	1		3	8	9	4	91	131	8	4	150	184	334
Sophomores	1	1	7	9	19	13	30	19			4	12	3	1	152	186		9	216	250	466
Juniors	3		7	4	29	25	21	17			9	14	8	9	230	245	4	5	311	319	630
Seniors	1	4	12	13	46	29	38	20		1	21	24	4	3	360	409	9	12	491	515	1,006
Special	2	1	5	4	7	8	9	11	2		5	6	3	4	121	100		5	154	139	293
<b>Total Part-Time</b>	10	8	39	40	121	93	120	86	4	1	42	68	33	23	973	1,100	25	38	1,367	1,457	2,824
<b>Total Undergraduate</b>	35	20	178	155	452	344	606	462	10	4	187	197	232	134	4,530	4,365	145	279	6,375	5,960	12,335
<b>Graduate</b>																					
<b>Full-Time</b>																					
Certificate																					
Masters	2		6	9	15	11	18	15			7	9	5	5	281	163	62	83	396	295	691
Doctoral																					
Special Graduate																					
<b>Total Full-Time</b>	2		9	11	18	14	20	17			7	10	6	6	306	206	78	153	446	417	863
<b>Part-Time</b>																					
Certificate																					
Masters	4	1	24	17	31	22	31	25			22	14	22	13	760	515	19	25	913	632	1,545
Doctoral																					
Special Graduate	1																				
<b>Total Part-Time</b>	5	1	31	22	47	32	47	32			31	20	27	15	976	667	31	45	1,195	834	2,029
<b>Total Graduate</b>	7	1	40	33	65	46	67	49			38	30	33	21	1,282	873	109	198	1,641	1,251	2,892
<b>Total All Students</b>	42	21	218	188	517	390	673	511	10	4	225	227	265	155	5,812	5,238	254	477	8,016	7,211	15,227
Previous before Correction	42	21	217	188	517	389	685	523	10	4	226	227	265	153	5,799	5,229	255	477	8,016	7,211	15,227



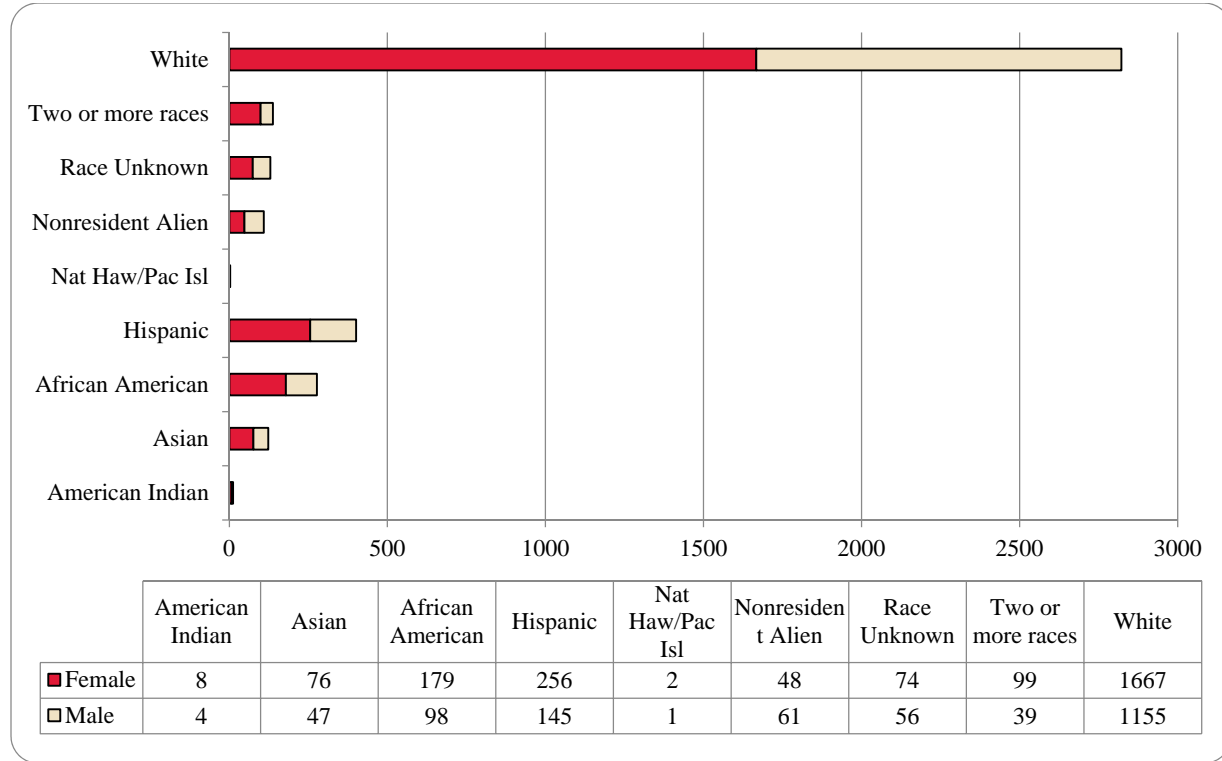
**Figure 8: College of Arts & Sciences Head Count: Fall 2003-2013**



**Figure 9: College of Arts & Sciences Student Credit Hours: Fall 2003-2013**



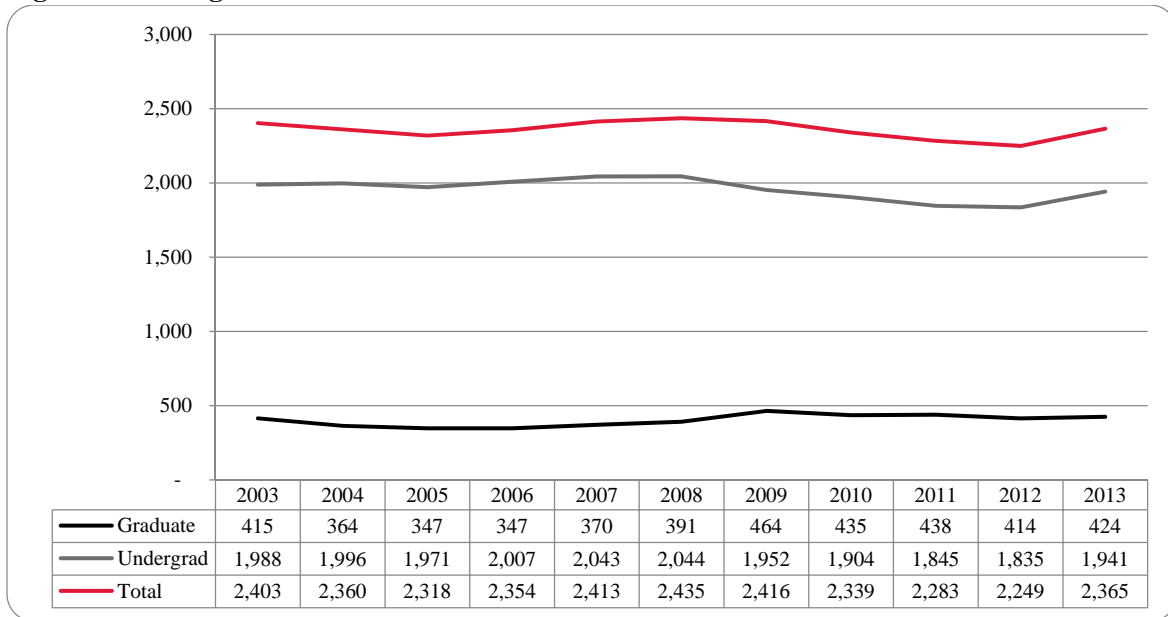
**Figure 10: College of Arts & Sciences Head Count by Ethnicity by Gender: Fall 2013**



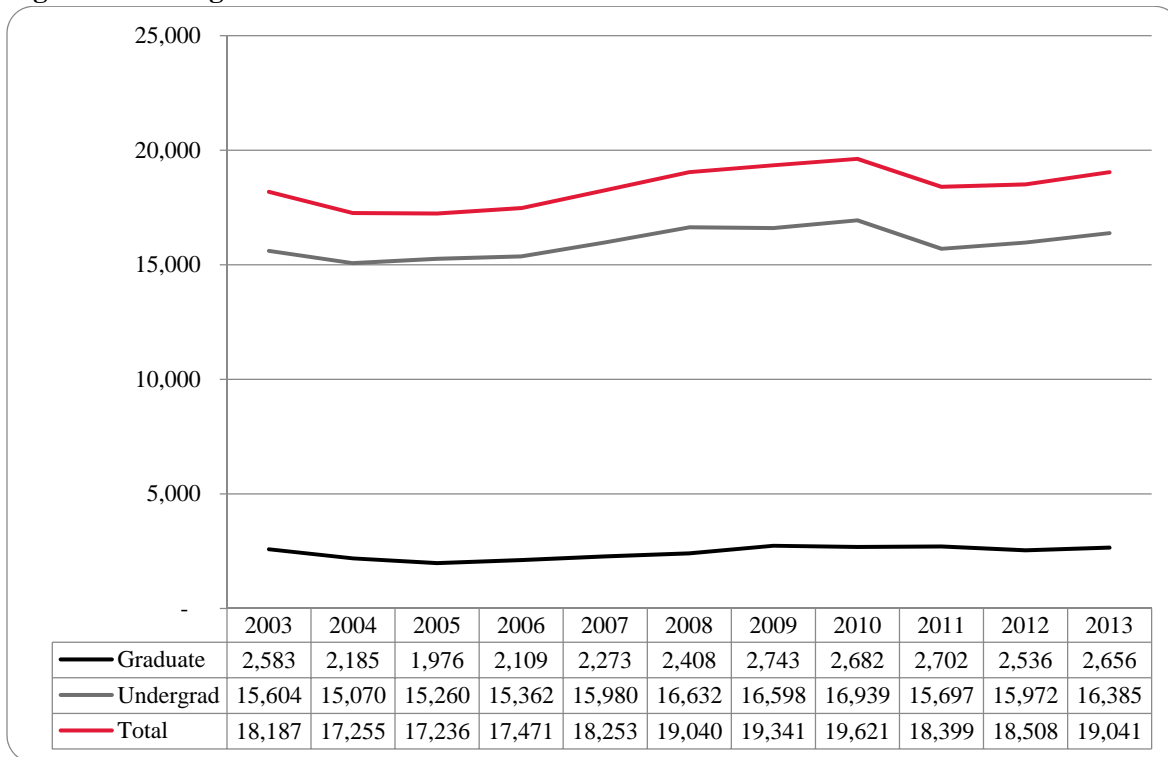
**Table 4: College of Arts & Sciences Head Count Summary for Undergraduate and Graduate Students by Full and Part-Time by Gender and Race Classification: Fall 2013**

	American Indian		Asian		African American		Hispanics		Nat Haw / Pac Isl		Race Unknown		Two or more races		White		Nonresident Alien		Total		
	F	M	F	M	F	M	F	M	F	M	F	M	F	M	F	M	F	M	F	M	Total
<b>Undergraduate</b>																					
<b>Full-Time</b>																					
First-Time Freshmen	1		12	6	38	14	60	27	1		5	7	20	11	228	106	12	5	377	176	553
Other Freshmen			8	2	20	12	23	9			1	2	6	4	78	66	6	11	142	106	248
Sophomores	2	3	28	7	30	19	42	40			15	6	28	6	317	178	5	14	467	273	740
Juniors			11	11	29	16	44	23			1	15	17	9	313	201	5	5	434	277	711
Seniors	2		8	8	17	12	33	21			13	5	4	2	265	192	4	7	346	247	593
Special				2	1	1	1	1				1			6	15	2	2	8	22	30
<b>Total Full-Time</b>	5	3	67	36	135	74	203	121	1	1	49	32	75	32	1,207	758	32	44	1,774	1,101	2,875
<b>Part-Time</b>																					
First-Time Freshmen						1	4					1	4		7	7	1	1	16	10	26
Other Freshmen			1		3	2	4	1	1		1	1	4		18	21	3		35	25	60
Sophomores			3	3	6	3	16	4			2	5	2		43	43		3	72	61	133
Juniors	1		2	2	7	2	8				3	6	4	4	55	56	3	2	83	72	155
Seniors		1	2	4	18	8	13	6			10	3	3	3	96	99	4	2	146	123	269
Special					4	2	3	3			3	2	3	1	39	21		2	52	31	83
<b>Total Part-Time</b>	1	1	8	9	38	18	48	14	1	1	19	18	20	5	258	247	11	10	404	322	726
<b>Total Undergraduate</b>	6	4	75	45	173	92	251	135	2	1	68	50	95	37	1,465	1,005	43	54	2,178	1,423	3,601
<b>Graduate</b>																					
<b>Full-Time</b>																					
Certificate															1				1		1
Masters	1			1	2	3	1	3			1	1	1		58	32	3	6	67	46	113
Doctoral								2							3	1			3	3	6
Special Graduate																					
<b>Total Full-Time</b>	1		1	1	2	3	1	5			1	1	1		62	33	3	6	71	49	120
<b>Part-Time</b>																					
Certificate					1										3	3			4	3	7
Masters	1		1	1	2	3	4	4			5	5	3	2	124	109	2		142	124	266
Doctoral					1			1							12	5		1	13	7	20
Special Graduate															1				1		1
<b>Total Part-Time</b>	1		1	1	4	3	4	5			5	5	3	2	140	117	2	1	160	134	294
<b>Total Graduate</b>	2		1	2	6	6	5	10			6	6	4	2	202	150	5	7	231	183	414
<b>Total All Students</b>	8	4	76	47	179	98	256	145	2	1	74	56	99	39	1,667	1,155	48	61	2,409	1,606	4,015
Previous before Correction	8	4	76	47	179	98	257	147	2	1	74	56	99	39	1,666	1,153	48	61	2,409	1,606	4,015

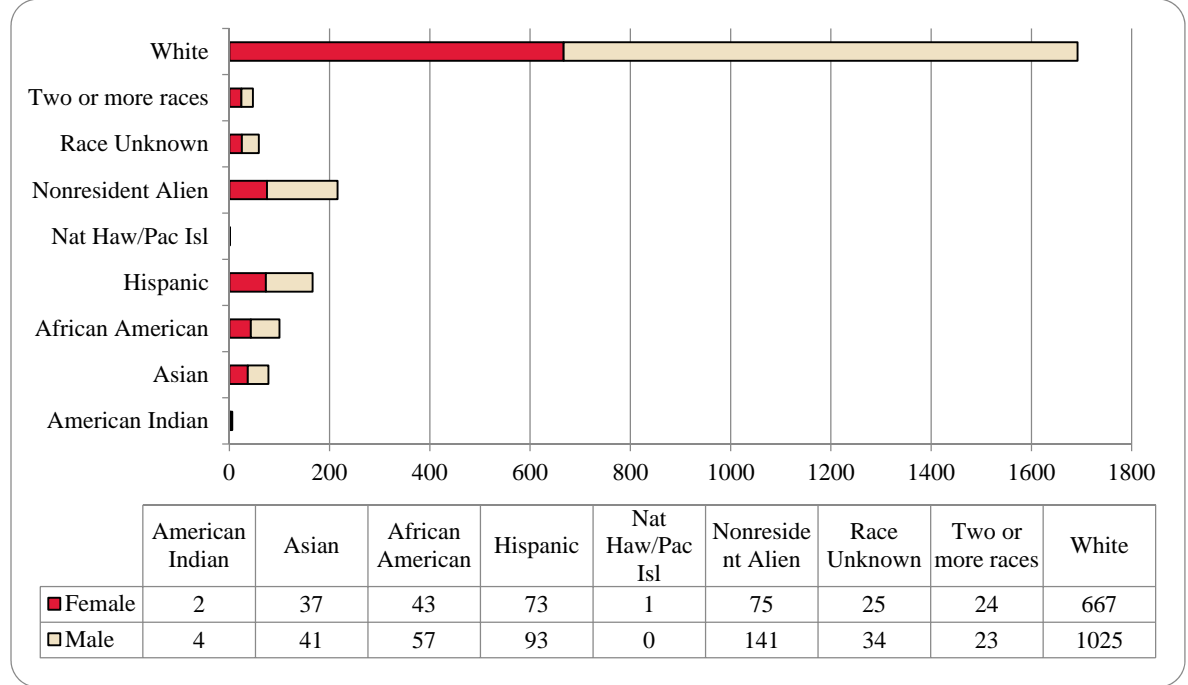
**Figure 11: College of Business Administration Head Count: Fall 2003-2013**



**Figure 12: College of Business Administration Student Credit Hours: Fall 2003-2013**



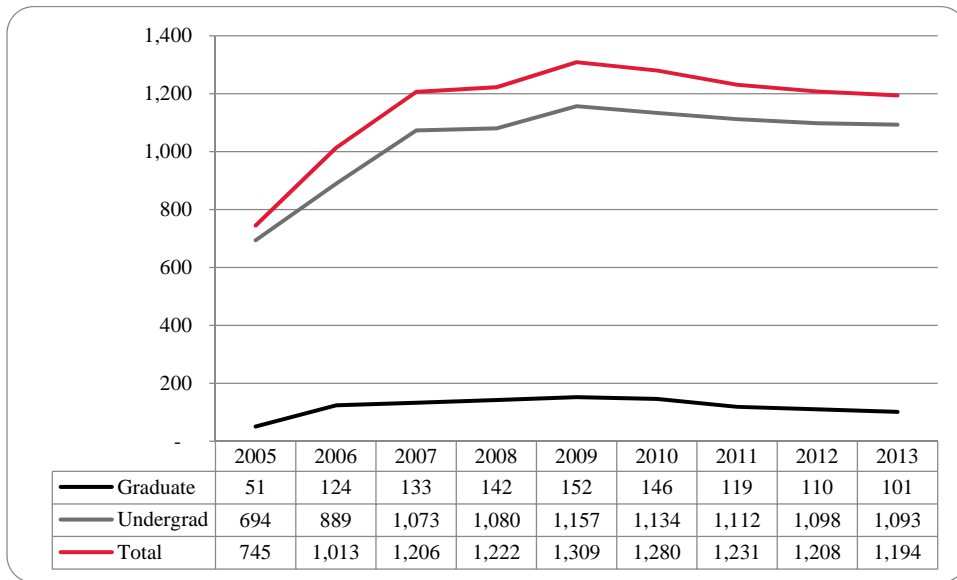
**Figure 13: College of Business Administration Head Count by Ethnicity by Gender: Fall 2013**



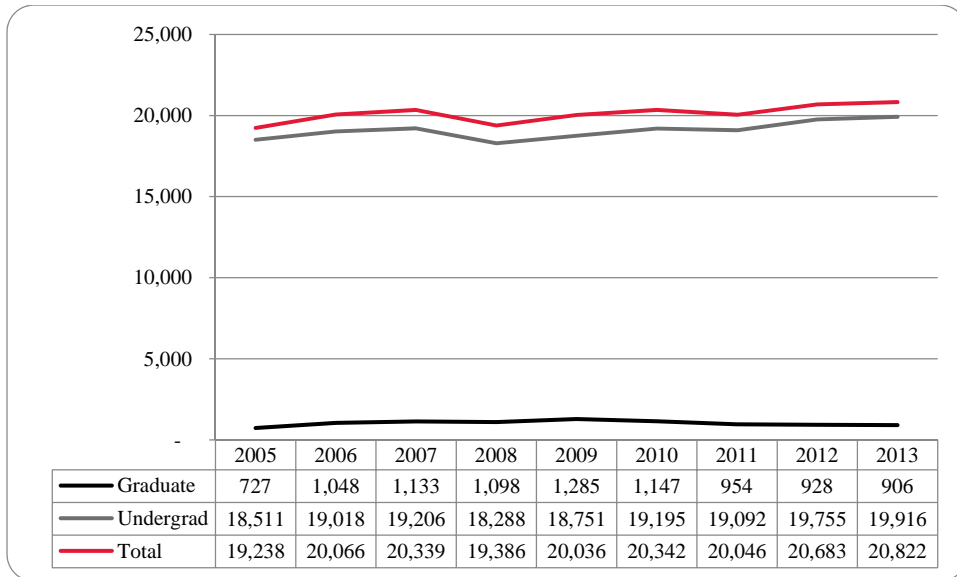
**Table 5: College of Business Administration Head Count Summary for Undergraduate and Graduate Students by Full and Part-Time by Gender and Race Classification: Fall 2013**

	American Indian		Asian		African American		Hispanics		Nat Haw / Pac Isl		Race Unknown		Two or more races		White		Nonresident Alien		Total			
	F	M	F	M	F	M	F	M	F	M	F	M	F	M	F	M	F	M	F	M	Total	
<b>Undergraduate</b>																						
<b>Full-Time</b>																						
First-Time Freshmen			2	5	3	6	15	19				3	3	5	2	56	92	8	16	92	143	235
Other Freshmen			1	3	1	6	2	5				2	2	1	2	14	25	9	12	30	55	85
Sophomores			5	5	7	7	7	20				1	5	3	5	90	127	8	28	121	197	318
Juniors	1	1	5	6	6	10	11	12				9	8	5	6	123	181	9	21	169	245	414
Seniors	1	1	8	5	10	8	15	7				3	4	4		135	178	7	18	183	221	404
Special														1	1	4	7			5	8	13
<b>Total Full-Time</b>	2	2	21	24	27	37	50	63				18	22	19	16	422	610	41	95	600	869	1,469
<b>Part-Time</b>																						
First-Time Freshmen			1	1	1	1	2						1			7	2	2	2	6	12	18
Other Freshmen				2	2	2	1	7						1		4	13	1	1	7	18	25
Sophomores			2	2	2	1	2	7								16	29	3	3	22	41	63
Juniors			2	2	7	5	7	6				2	3	1	1	40	52	1	2	60	69	129
Seniors	1	3	3	3	2	5	6	3				2	4	1	1	60	91	4	3	77	111	188
Special	1				1	2	2	2				1			20	18			2	24	25	49
<b>Total Part-Time</b>	2	4	8	5	12	15	19	20				5	8	3	3	140	210	8	13	196	276	472
<b>Total Undergraduates</b>	2	4	29	29	39	52	69	83				23	30	22	19	562	820	49	108	796	1,145	1,941
<b>Graduate</b>																						
<b>Full-Time</b>																						
Certificate																						
Masters																						
Doctoral																						
Special Graduate																						
<b>Total Full-Time</b>			2	5	1	2	3	5				3			17	39	20	27	42	81	123	
<b>Part-Time</b>																						
Certificate																						
Masters			6	7	3	3	1	5				2	1	2	4	87	163	6	5	107	188	295
Doctoral																						
Special Graduate																						
<b>Total Part-Time</b>			6	7	3	3	1	5				2	1	2	4	88	166	6	6	108	192	300
<b>Total Graduate</b>			8	12	4	5	4	10				2	4	2	4	105	205	26	33	151	273	424
<b>Total All S tudents</b>	2	4	37	41	43	57	73	93				25	34	24	23	667	1,025	75	141	947	1,418	2,365

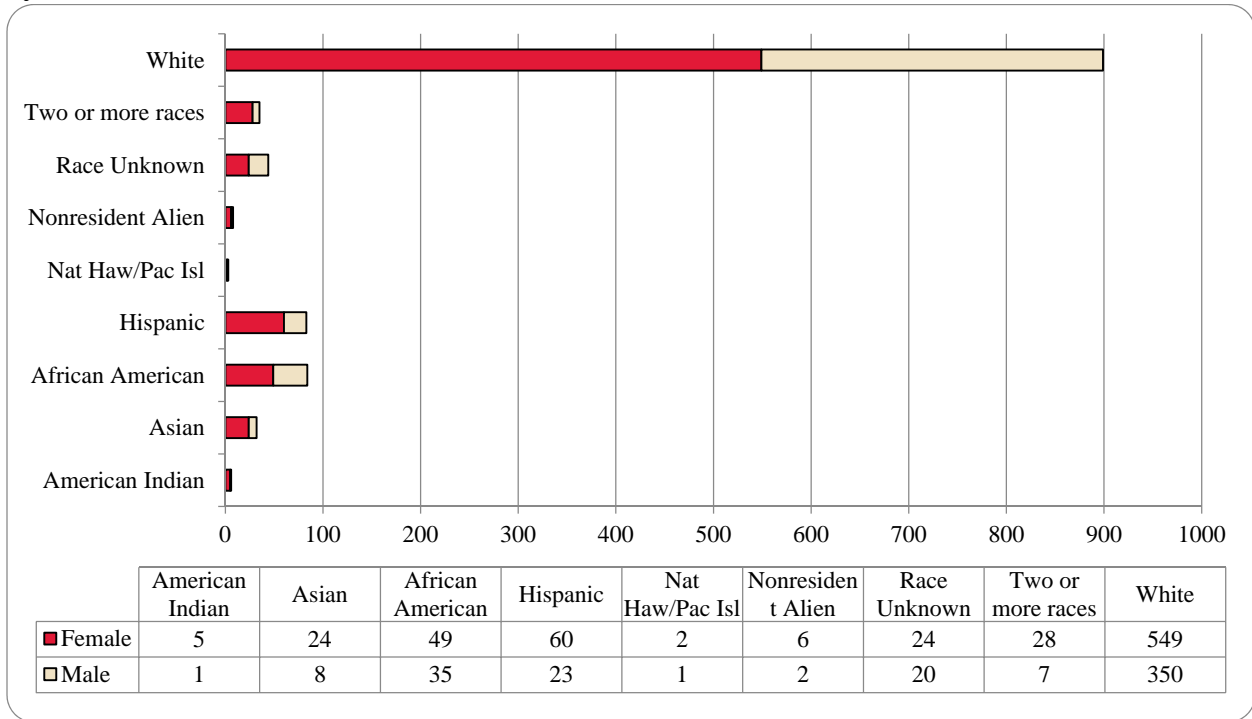
**Figure 14: College of Communication, Fine Arts and Media Delivery-Site Head Count: Fall 2005-2013**



**Figure 15: College of Communication, Fine Arts and Media Delivery-Site Student Credit Hours: Fall 2005-2013**



**Figure 16: College of Communication, Fine Arts and Media Delivery-Site Head Count by Ethnicity by Gender: Fall 2013**

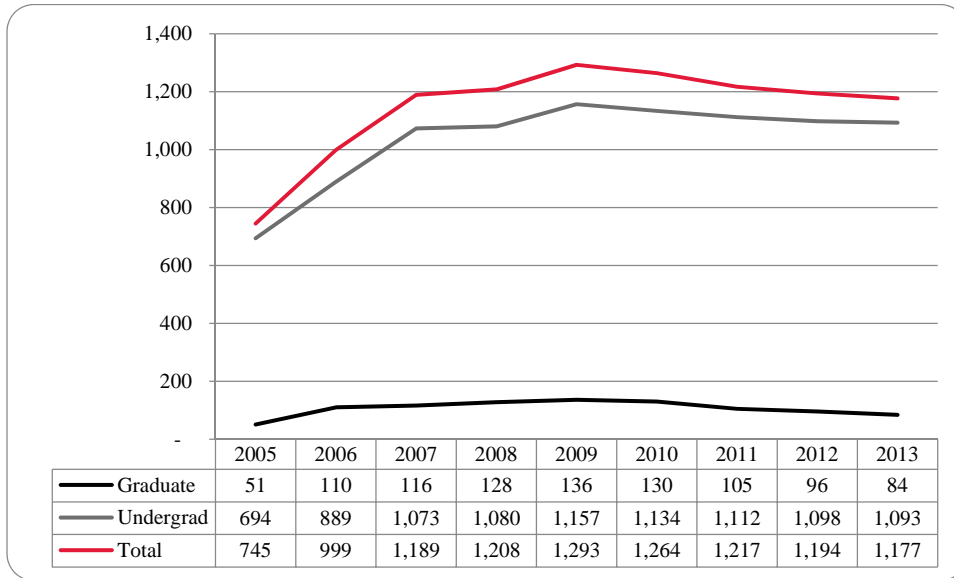




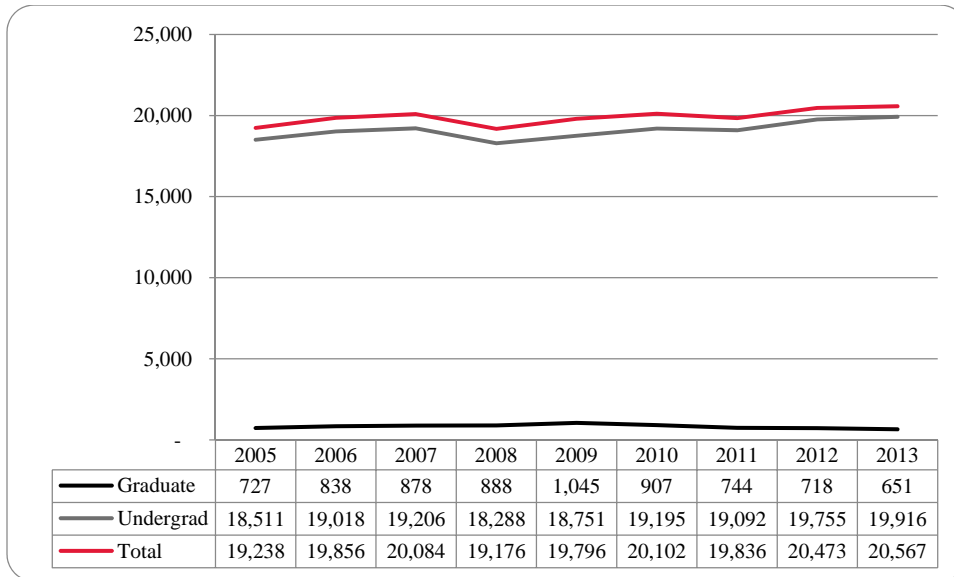
**Table 6: College of Communication, Fine Arts and Media Delivery-Site Head Count Summary for Undergraduate and Graduate Students by Full and Part-Time by Gender and Race Classification: Fall 2013**

	American Indian		Asian		African American		Hispanics		Nat Haw / Pac Isl		Race Unknown		Two or more races		White		Nonresident Alien		Total		
	F	M	F	M	F	M	F	M	F	M	F	M	F	M	F	M	F	M	F	M	Total
<b>Undergraduate</b>																					
<b>Full-Time</b>																					
First-Time Freshmen	1		5		5	10	9	6		1	3	3	1	67	39	2		93	60	153	
Other Freshmen					1	6	4	6			1	3	1	25	10	2		43	17	60	
Sophomores	1		3		2	7	5	4	6		4	1	9	93	65			121	79	200	
Juniors			1		2	11	2	15	6	1	10	4	5	118	70			161	86	247	
Seniors	2	1	7			6	17	2		4	3	3	1	108	61		1	153	75	228	
Special	1													2	3			3	3	6	
<b>Total Full-Time</b>	5	1	16	5	41	27	51	20	1	1	20	12	23	5	413	248	4	1	574	320	894
<b>Part-Time</b>																					
First-Time Freshmen						1	1					1			1	1			2	3	5
Other Freshmen						1		1							3	7			4	8	12
Sophomores						2	2						1		10	12			12	15	27
Juniors			1	1	1	2	3					1	2		21	15			28	19	47
Seniors			5		2	3	2				2	5		43	35			54	43	97	
Special			1	1					1	1				3	4			5	6	11	
<b>Total Part-Time</b>			7	2	4	8	8	2	1	1	2	7	2	1	81	74			105	94	199
<b>Total Undergraduates</b>	5	1	23	7	45	35	59	22	2	1	22	19	25	6	494	322	4	1	679	414	1,093
<b>Graduate</b>																					
<b>Full-Time</b>																					
Certificate																					
Masters						3					2	1	1	1	26	14	1	1	33	17	50
Doctoral																					
Special Graduate																					
<b>Total Full-Time</b>						3					2	1	1	1	26	14	1	1	33	17	50
<b>Part-Time</b>																					
Certificate						1									1	1			1	2	3
Masters			1		1		1	1				2		28	13	1		34	14	48	
Doctoral																					
Special Graduate																					
<b>Total Part-Time</b>			1	1	1	1	1				2	1	3	1	55	28	2	1	68	33	101
<b>Total Graduate</b>			1	1	4		1	1			2	1	3	1	55	28	2	1	68	33	101
<b>Total All Students</b>	5	1	24	8	49	35	60	23	2	1	24	20	28	7	549	350	6	2	747	447	1,194

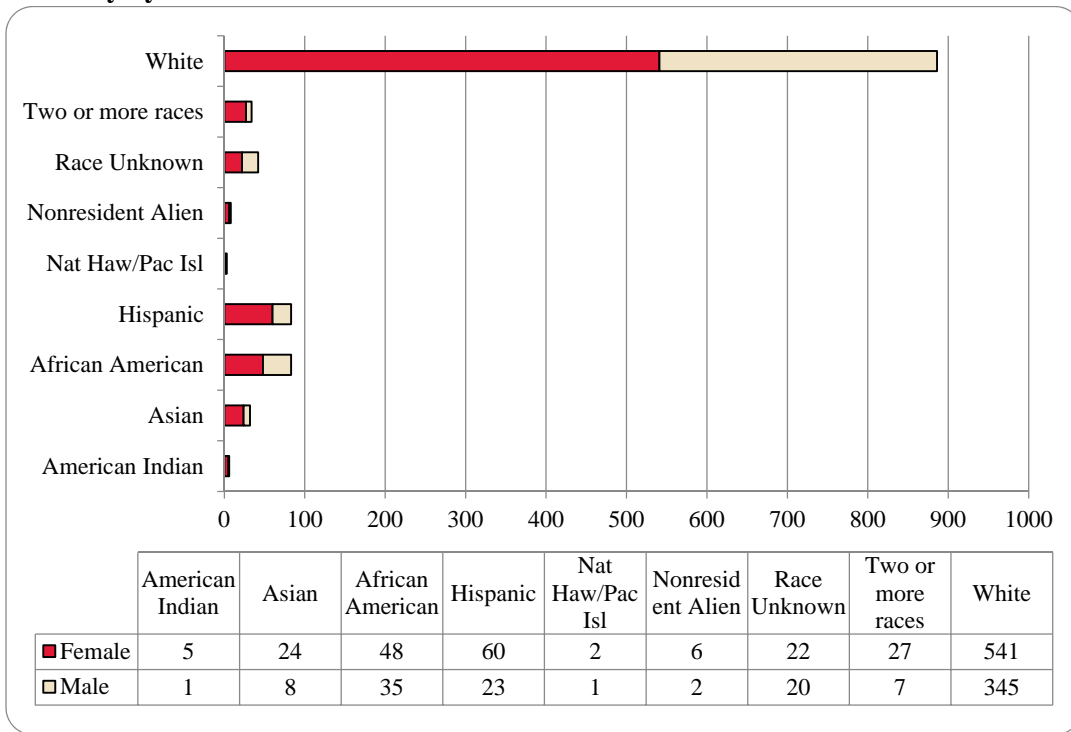
**Figure 17: College of Communication, Fine Arts and Media: Administrative-Site Head Count: Fall 2005-2013**



**Figure 18: College of Communication, Fine Arts and Media: Administrative-Site Student Credit Hours: Fall 2005-2013**



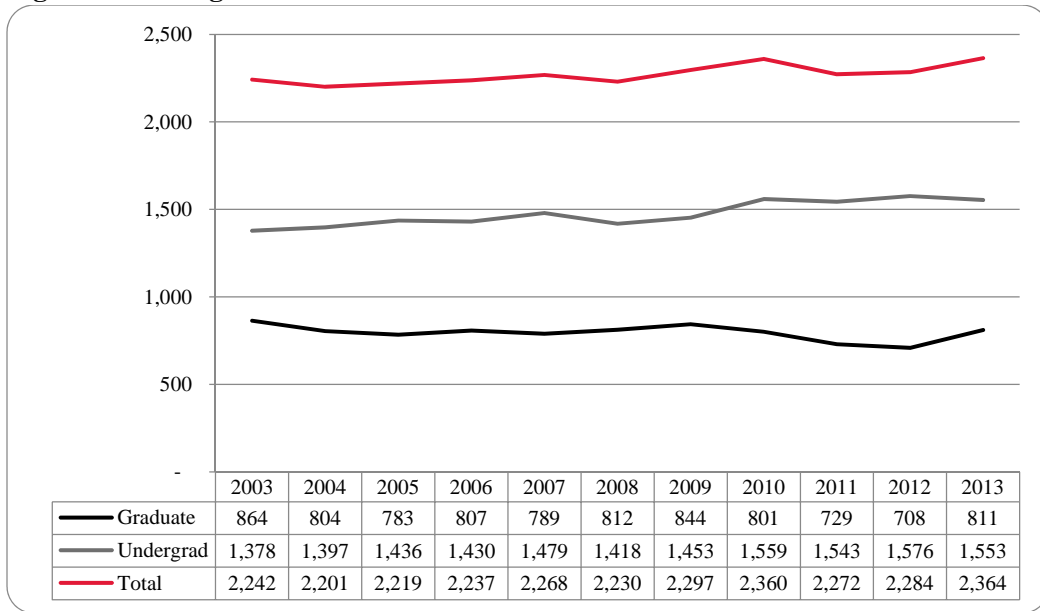
**Figure 19: College of Communication, Fine Arts and Media: Administrative-Site Head Count by Ethnicity by Gender: Fall 2013**



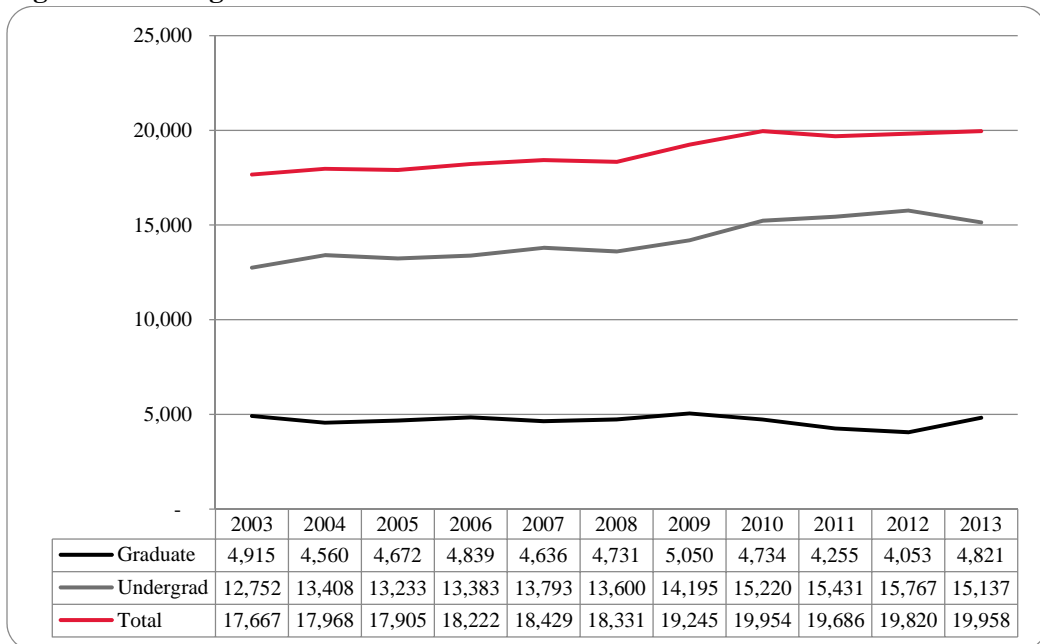
**Table 7: College of Communication, Fine Arts and Media Administrative-Site Head Count Summary for Undergraduate and Graduate Students by Full and Part-Time by Gender and Race Classification: Fall 2013**

	American Indian		Asian		African American		Hispanics		Nat Haw /Pac Isl		Race Unknown		Two or more races		White		Nonresident Alien		Total			
	F	M	F	M	F	M	F	M	F	M	F	M	F	M	F	M	F	M	F	M	Total	
<b>Undergraduate</b>																						
<b>Full-Time</b>																						
First-Time Freshmen	1		5		5	10	9	6		1	3	1	3	3	1	67	39	2		93	60	153
Other Freshmen				1	6	4	6				1	1	3	1	3	25	10	2		43	17	60
Sophomores	1		3	2	7	5	4	6			4	1	9			93	65			121	79	200
Juniors			1	2	11	2	15	6	1		10	4	5	2	2	118	70			161	86	247
Seniors	2	1	7		12	6	17	2			4	3	3	1	108	61		1	153	75	228	
Special	1														2	3			3	3	6	
<b>Total Full-Time</b>	5	1	16	5	41	27	51	20	1	1	20	12	23	5	413	248	4	1	574	320	894	
<b>Part-Time</b>																						
First-Time Freshmen					1	1						1				1	1			2	3	5
Other Freshmen					1			1							3	7			4	8	12	
Sophomores					2	2	2						1		10	12			12	15	27	
Juniors			1	1	1	2	3					1	2		21	15			28	19	47	
Seniors			5		2	3	2				2	5			43	35			54	43	97	
Special			1	1				1	1						3	4			5	6	11	
<b>Total Part-Time</b>			7	2	4	8	8	2	2	1	2	7	2	1	81	74			105	94	199	
<b>Total Undergraduates</b>	5	1	23	7	45	35	59	22	2	1	22	19	25	6	494	322	4	1	679	414	1,093	
<b>Graduate</b>																						
<b>Full-Time</b>																						
Certificate																						
Masters					2							1		1	18	9	1	1	21	12	33	
Doctoral																						
Special Graduate																						
<b>Total Full-Time</b>					2							1		1	18	9	1	1	21	12	33	
<b>Part-Time</b>																						
Certificate					1										1	1			1	2	3	
Masters			1		1		1	1					2		28	13	1		34	14	48	
Doctoral																						
Special Graduate																						
<b>Total Part-Time</b>			1	1	1	1	1	1				2	2		29	14	1		35	16	51	
<b>Total Graduate</b>			1	1	3		1	1			1	2	1	2	47	23	2	1	56	28	84	
<b>Total All Students</b>	5	1	24	8	48	35	60	23	2	1	22	20	27	7	541	345	6	2	735	442	1,177	

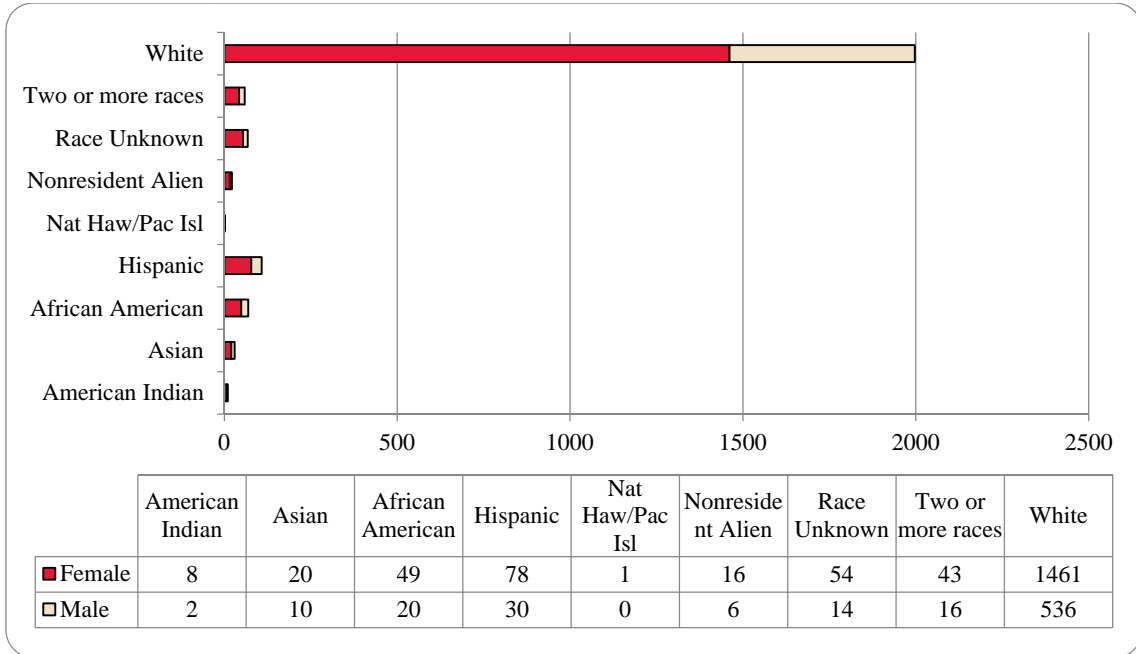
**Figure 20: College of Education Head Count: Fall 2003-2013**



**Figure 21: College of Education Student Credit Hours: Fall 2003-2013**



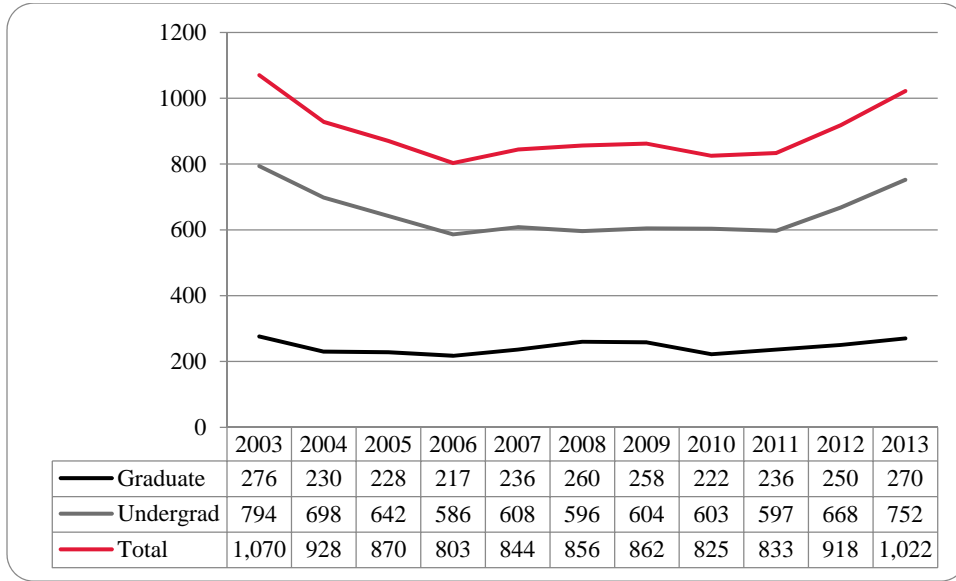
**Figure 22: College of Education Head Count by Ethnicity by Gender: Fall 2013**



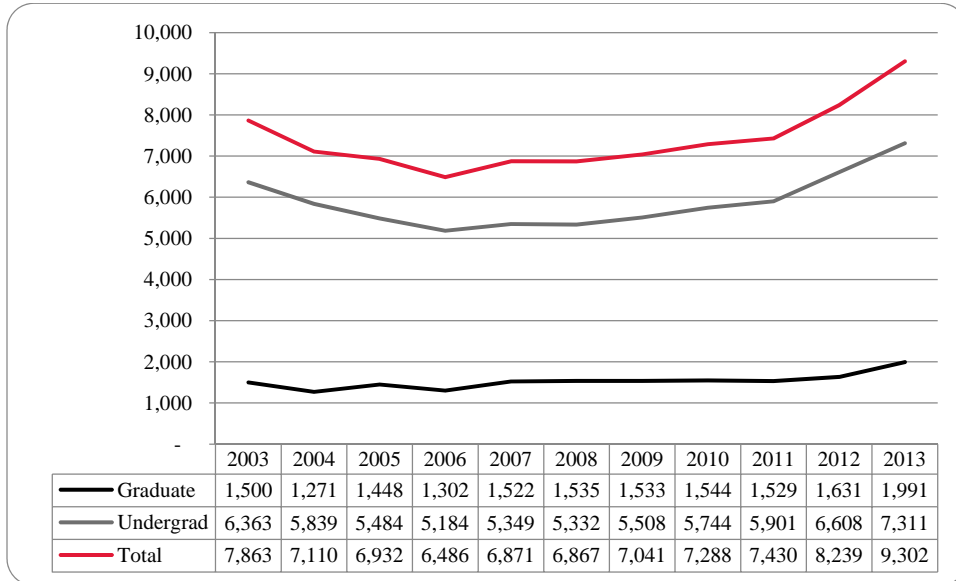
**Table 8: College of Education Head Count Summary for Undergraduate and Graduate Students by Full and Part-Time by Gender and Race Classification: Fall 2013**

	American Indian		Asian		African American		Hispanics		Nat Haw / Pac Isl		Race Unknown		Two or more races		White		Nonresident Alien		Total		
	F	M	F	M	F	M	F	M	F	M	F	M	F	M	F	M	F	M	F	M	Total
<b>Undergraduate</b>																					
<b>Full-Time</b>																					
First-Time Freshmen																					
Other Freshmen																					
Sophomores	1	1	1	2	3	1	13	4	1		10		5	3	152	57	3		188	68	256
Juniors	1	1	3	2	7	3	13	3			13	2	8	2	187	70	1		233	83	316
Seniors	4		4		9	4	9	9			8	5	4	2	305	111	1	1	344	132	476
Special					2			1					1		28	23	1		32	24	56
<b>Total Full-Time</b>	5	2	8	5	26	9	48	21	1		35	9	26	9	791	304	8	1	948	360	1,308
<b>Part-Time</b>																					
First-Time Freshmen					2								1		1				4		4
Other Freshmen			1		1	1									5	3			7	4	11
Sophomores			1									1	1		24	9			26	10	36
Juniors	1		1		3	2	1	1			2	2	1		50	16			59	19	78
Seniors			1	1	3		1				2	2			43	25			50	28	78
Special			1		1	1	1	1			1	1			17	13			21	17	38
<b>Total Part-Time</b>	1		5	1	10	4	3	2			5	4	3		140	66			167	78	245
<b>Total Undergraduate</b>	6	2	13	6	36	13	51	23	1		40	13	29	9	931	370	8	2	1,115	438	1,553
<b>Graduate</b>																					
<b>Full-Time</b>																					
Certificate																					
Masters			1	1	3	2	6	3			2	1	1	2	100	47	6	3	119	59	178
Doctoral														1	2	2	1		3	3	6
Special Graduate					1														1		1
<b>Total Full-Time</b>	1	1	4	2	6	3	6	3			2	1	1	3	102	49	7	3	123	62	185
<b>Part-Time</b>																					
Certificate																			1		1
Masters	2		5	3	7	2	13	3			11		11	4	354	85	1	1	404	98	502
Doctoral			1		1	3	1						1		32	28			36	31	67
Special Graduate					1		7	1			1		1		41	4			51	5	56
<b>Total Part-Time</b>	2		6	3	9	5	21	4			12		13	4	428	117	1	1	492	134	626
<b>Total Graduate</b>	2		7	4	13	7	27	7			14	1	14	7	530	166	8	4	615	196	811
<b>Total All Students</b>	8	2	20	10	49	20	78	30	1		54	14	43	16	1,461	536	16	6	1,730	634	2,364
Previous before Correction	8	2	20	10	49	19	82	32	1		54	14	43	16	1,457	535	16	6	1,730	634	2,364

**Figure 23: College of Information Science & Technology Head Count: Fall 2003-2013**

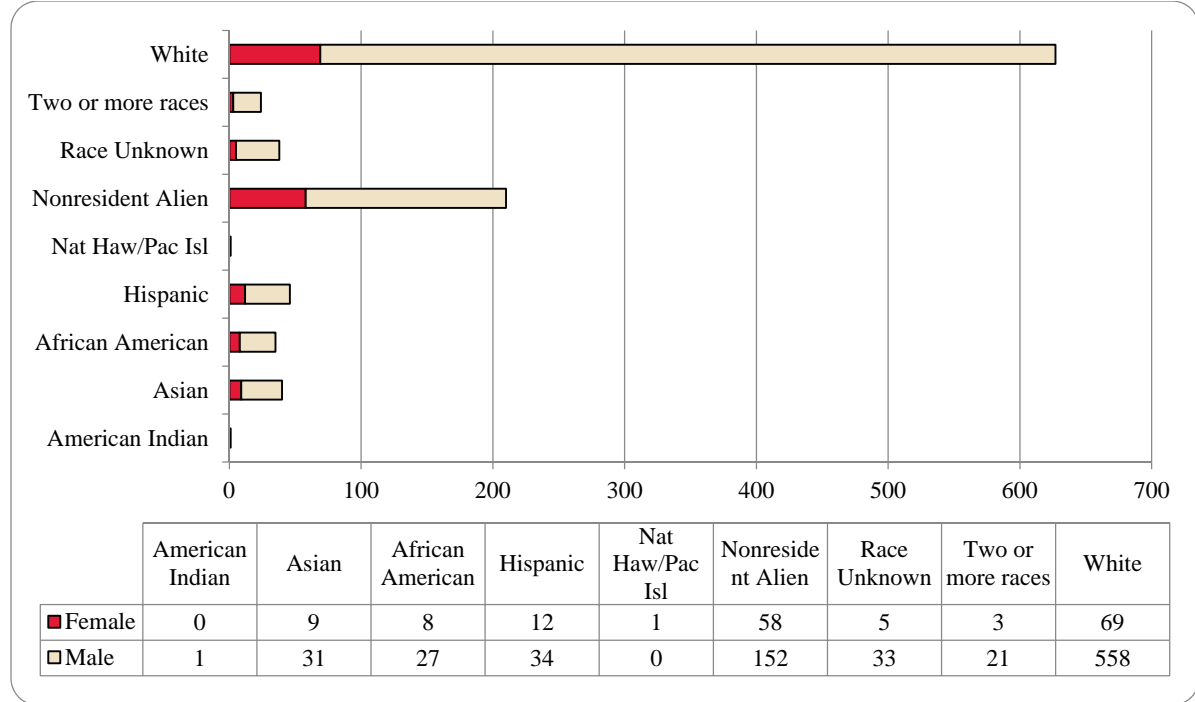


**Figure 24: College of Information Science & Technology Student Credit Hours: Fall 2003-2013**





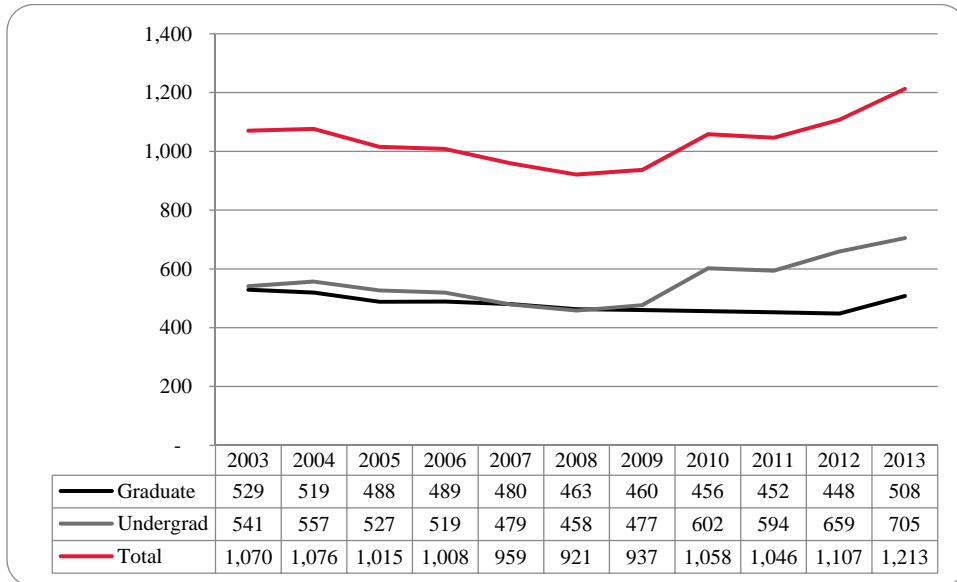
**Figure 25: College of Information Science & Technology Student Credit Hours: Fall 2003-2013**



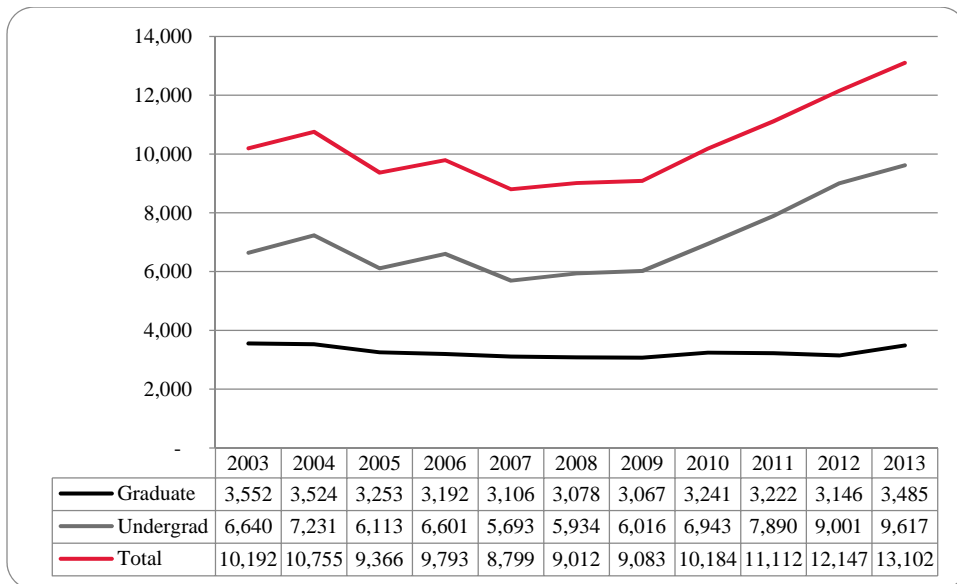
**Table 9: College of Information Science and Technology Head Count Summary for Undergraduate and Graduate Summary by Full and Part-Time by Gender and Race Classification: Fall 2013**

	American Indian		Asian		African American		Hispanics		Nat Haw / Pac Isl		Race Unknown		Two or more races		White		Nonresident Alien		Total		
	F	M	F	M	F	M	F	M	F	M	F	M	F	M	F	M	F	M	F	M	Total
<b>Undergraduate</b>																					
<b>Full-Time</b>																					
First-Time Freshmen			2	4		1	3	4				3	9	8	79	1	13	14	113	14	127
Other Freshmen				2		1	2						2	2	20	1	16	3	43	3	46
Sop homores				4		2	2	6				5	3	8	83	3	13	13	116	129	
Juniors				5		1	3	5			1	7	1	9	88	1	8	15	115	130	
Seniors	1			3		2	2	2	1		1	4	1	2	9	89	5	16	21	119	140
Special						1	1				1			5	5		1	7	7	14	
<b>Total Full-Time</b>	1		2	18		8	10	20	1		3	19	2	17	41	364	12	66	73	513	586
<b>Part-Time</b>																					
First-Time Freshmen																					
Other Freshmen																4	1		1	4	5
Sop homores				1							1	1			8		2		12	12	
Juniors				3		2		1			1	1			2	20	3		30	34	
Seniors				1		4		3			2				1	21			2	30	32
Special				1		3		3			1	1			5	41	1	6	7	55	62
<b>Total Part-Time</b>				6		3	11	2	7		1	7	2	2	10	104	2	11	18	148	166
<b>Total Undergraduate</b>	1		2	24		5	19	12	27	1	4	26	2	19	51	468	14	77	91	661	752
<b>Graduate</b>																					
<b>Full-Time</b>																					
Certificate																					
Masters				1																1	1
Doctoral				2		1	2		1			2	1	1	2	14	32	44	38	63	101
Special Graduate				1											2		3	8	3	11	14
<b>Total Full-Time</b>				3		2	2		1			2	1	1	2	16	35	52	42	74	116
<b>Part-Time</b>																					
Certificate																					
Masters				4		5	1	8	6		1	5	1	1	15	64	7	19	28	108	136
Doctoral															1	6	1	4	3	10	13
Special Graduate																					
<b>Total Part-Time</b>				4		5	1	8	6		1	5	1	1	16	74	9	23	32	122	154
<b>Total Graduate</b>				7		7	3	8	7		1	7	1	2	18	90	44	75	74	196	270
<b>Total All Students</b>	1		9	31		8	27	12	34	1	5	33	3	21	69	558	58	152	165	857	1022
Previous before Correction				1		9	31	8	27	1	6	33	3	21	68	556	58	152	165	857	1,022

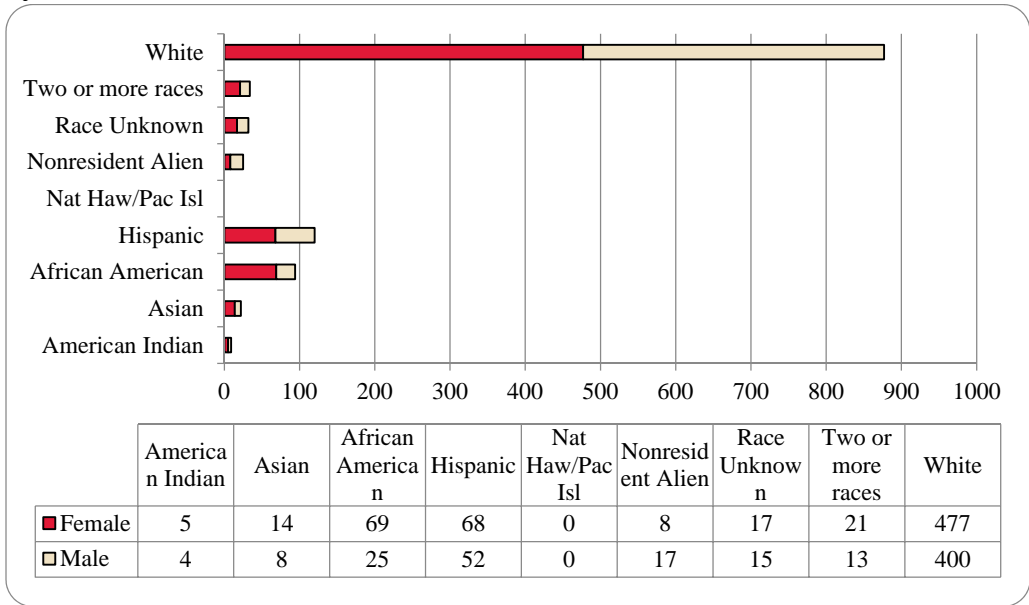
**Figure 26: College of Public Affairs & Community Service Delivery-Site Head Count: Fall 2003-2013**



**Figure 27: College of Public Affairs & Community Service Delivery-Site Student Credit Hours: Fall 2003-2013**



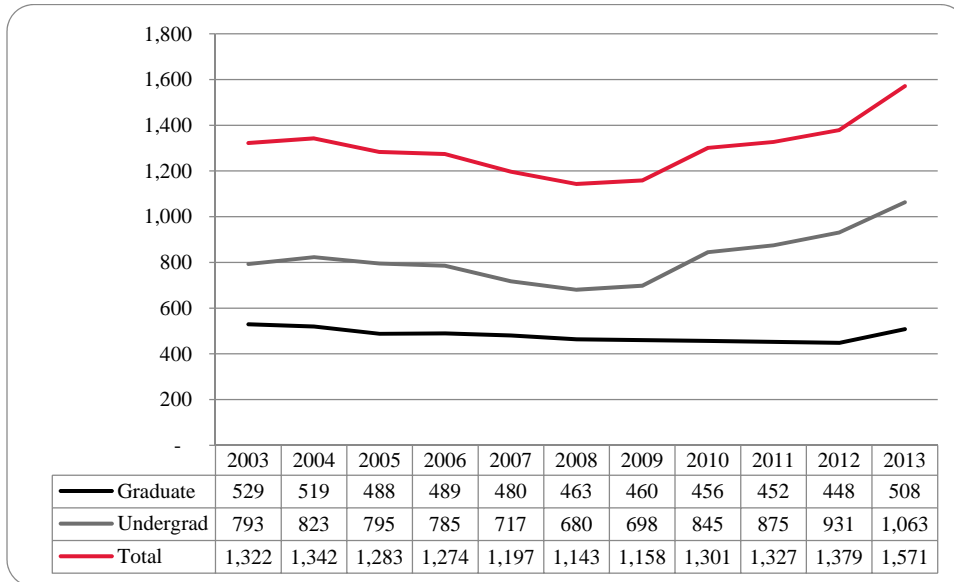
**Figure 28: College of Public Affairs & Community Service Delivery-Site Head Count by Ethnicity by Gender: Fall 2013**



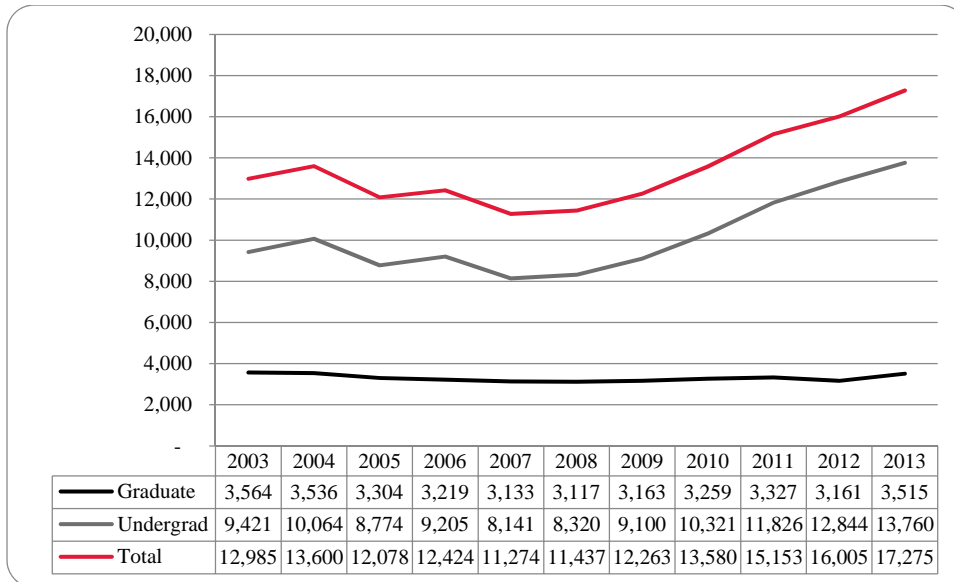
**Table 10: College of Public Affairs and Community Service Delivery-Site Head Count Summary for Undergraduate and Graduate Students by Full and Part-Time by Gender and Race Classification: Fall 2013**

	American Indian		Asian		African American		Hispanics		Nat Haw / Pac Isl		Race Unknown		Two or more races		White		Nonresident Alien		Total		
	F	M	F	M	F	M	F	M	F	M	F	M	F	M	F	M	F	M	F	M	Total
<b>Undergraduate</b>																					
<b>Full-Time</b>																					
First-Time Freshmen	1	1	1	1	4	1	10	6			1	2	4	2	26	33		2	47	47	94
Other Freshmen	1				5	1	4	4					2		11	17	2		25	22	47
Sophomores	1		1	3	9		10	10			1	2	3	6	49	62		2	74	85	159
Juniors			1	1	9	4	13	9			3	4	3	2	56	68		2	85	90	175
Seniors			1	2	10	7	7	7			1				43	48			63	63	126
Special											1								1	1	1
<b>Total Full-Time</b>	3	2	5	4	37	13	44	36			7	8	12	10	185	228	2	6	295	307	602
<b>Part-Time</b>																					
First-Time Freshmen								2							1	4			1	6	7
Other Freshmen	1										1	1			2	7			3	9	12
Sophomores					1			1			1				8	9			9	11	20
Juniors					3	1		3			1				12	10			16	14	30
Seniors				1	2	1					1				11	15			14	17	31
Special					1			1							1				3	3	3
<b>Total Part-Time</b>	1		1	1	7	2	1	6			2	2	1	1	35	45			46	57	103
<b>Total Undergraduates</b>	3	3	5	5	44	15	45	42			9	10	13	10	220	273	2	6	341	364	705
<b>Graduate</b>																					
<b>Full-Time</b>																					
Certificate																					
Masters	1		1	1	6	4	8	3			4	1	3	1	86	22		2	109	34	143
Doctoral							1						1		4	6	1	6	7	12	19
Special Graduate																					
<b>Total Full-Time</b>	1		1	1	6	4	9	3			4	1	4	1	90	28	1	8	116	46	162
<b>Part-Time</b>																					
Certificate																					
Masters	1	1	7	1	17	6	12	6			3	3	4	2	152	81	2		198	100	298
Doctoral								1			1	1			8	13	2	3	11	18	29
Special Graduate																					
<b>Total Part-Time</b>	1	1	8	2	19	6	14	7			4	4	4	2	167	99	5	3	222	124	346
<b>Total Graduate</b>	2	1	9	3	25	10	23	10			8	5	8	3	257	127	6	11	338	170	508
<b>Total All S tudents</b>	5	4	14	8	69	25	68	52			17	15	21	13	477	400	8	17	679	534	1,213

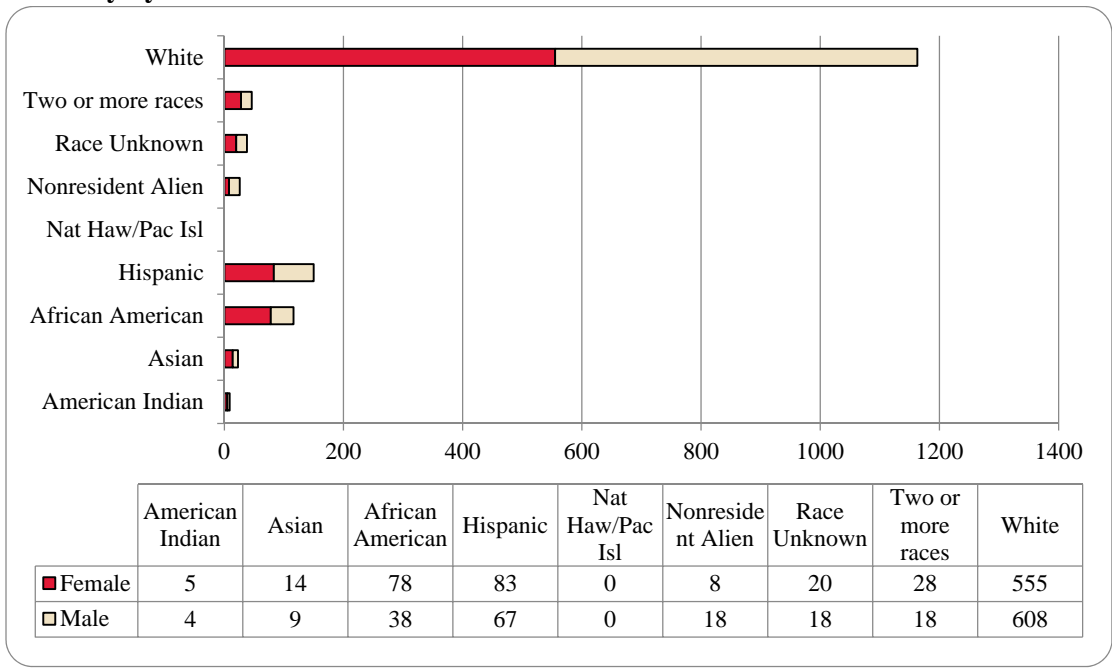
**Figure 29: College of Public Affairs & Community Service Administrative-Site Head Count: Fall 2003-2013**



**Figure 30: College of Public Affairs & Community Service Administrative-Site Student Credit Hours: Fall 2003-2013**



**Figure 31: College of Public Affairs & Community Service Administrative-Site Head Count by Ethnicity by Gender: Fall 2013**

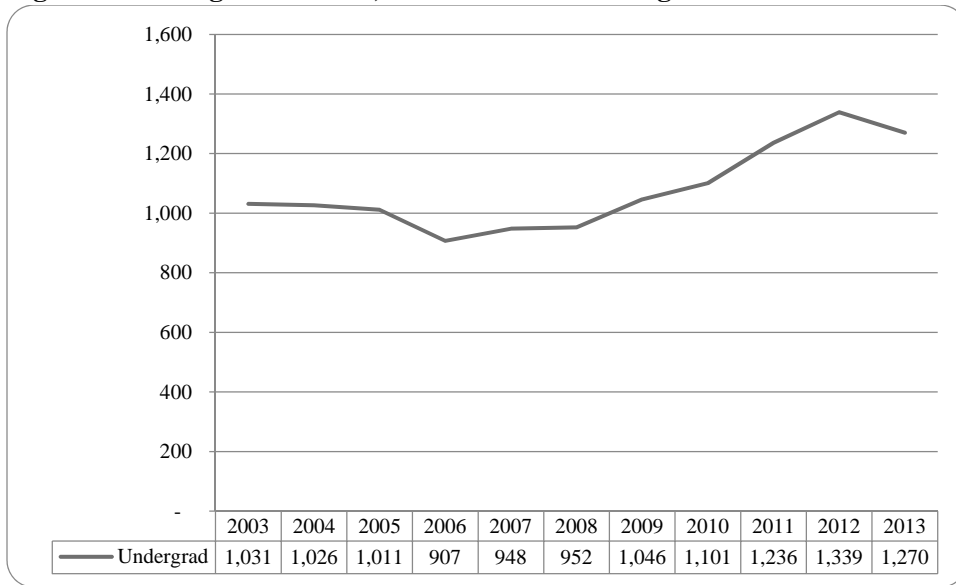


**Table 11: College of Public Affairs & Community Service Administrative-Site Head Count Summary for Undergraduate and Graduate Students by Full and Part-Time by Gender and Race Classification: Fall 2013**

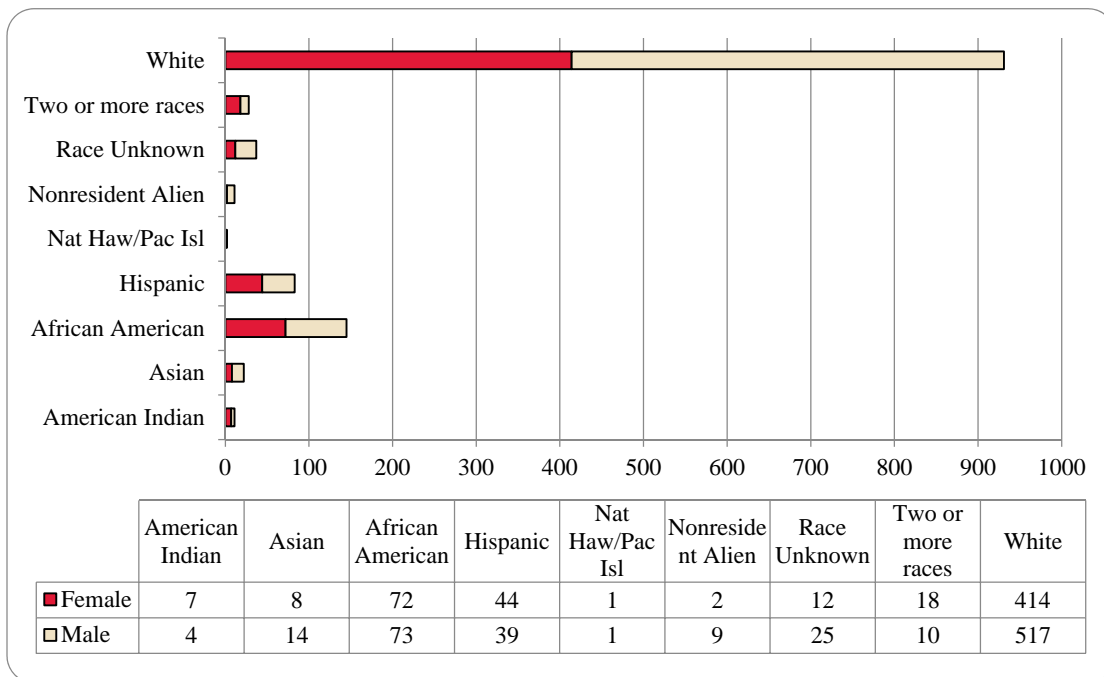
	American Indian		Asian		African American		Hispanics		Nat Haw / Pac Isl		Race Unknown		Two or more races		White		Nonresident Alien		Total		
	F	M	F	M	F	M	F	M	F	M	F	M	F	M	F	M	F	M	F	M	Total
<b>Undergraduate</b>																					
<b>Full-Time</b>																					
First-Time Freshmen	1	1	1	1	6	3	12	11			1	3	6	3	38	61	2	65	85	150	
Other Freshmen	1				5	1	4	4			1		2	1	14	21	2	29	27	56	
Sophomores	1		1	3	11	2	11	10			1	2	5	6	64	90	2	94	115	209	
Juniors			1	1	11	9	18	14			5	6	4	4	76	131	2	115	167	282	
Seniors	1	2			10	10	10	10			1	1	1	1	59	105		83	127	210	
Special											1							1	1	1	
<b>Total Full-Time</b>	3	2	5	5	43	25	55	49			10	11	18	15	251	408	2	387	521	908	
<b>Part-Time</b>																					
First-Time Freshmen																					
Other Freshmen	1				1	1		2							2	5		2	7	9	
Sophomores					2	1	1	1			1	1	1	1	3	15	1	5	19	24	
Juniors					3	1	5	5			1				12	13		15	15	30	
Seniors					3	1	3	3			1				16	25		24	27	51	
Special					1	1	1	1							1			3	3	3	
<b>Total Part-Time</b>	1	1	1	1	10	3	5	8			2	2	2	2	47	73	1	66	89	155	
<b>Total Undergraduates</b>	3	3	5	6	53	28	60	57			12	13	20	15	298	481	2	453	610	1,063	
<b>Graduate</b>																					
<b>Full-Time</b>																					
Certificate																					
Masters	1		1	1	6	4	8	3			4	1	3	1	86	22	2	109	34	143	
Doctoral							1						1		4	6	1	6	7	12	
Special Graduate																					
<b>Total Full-Time</b>	1	1	1	1	6	4	9	3			4	1	4	1	90	28	1	8	116	162	
<b>Part-Time</b>																					
Certificate					1	1	2	2							7	5	1	13	6	19	
Masters	1	1	7	1	17	6	12	6			3	3	4	2	152	81	2	198	100	298	
Doctoral								1			1	1			8	13	2	11	18	29	
Special Graduate																					
<b>Total Part-Time</b>	1	1	8	2	19	6	14	7			4	4	4	2	167	99	5	3	222	346	
<b>Total Graduate</b>	2	1	9	3	25	10	23	10			8	5	8	3	257	127	6	11	338	508	
<b>Total All Students</b>	5	4	14	9	78	38	83	67			20	18	28	18	555	608	8	18	791	1,571	



**Figure 32: College of CPACS, Division of Continuing Studies Head Count: Fall 2003-2013**



**Figure 33: College of CPACS, Division of Continuing Studies Head Count by Ethnicity by Gender: Fall 2013**



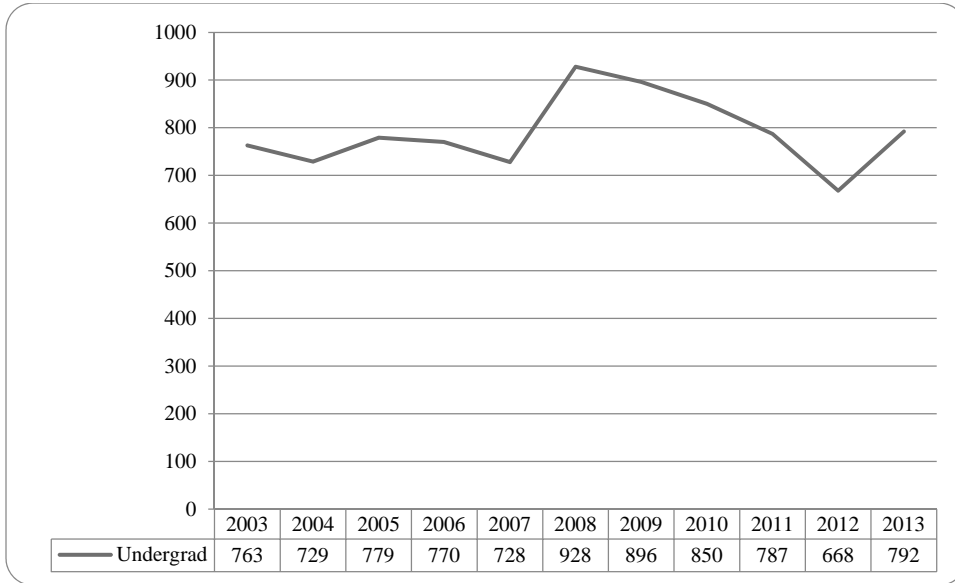
**Table 12: College of CPACS Division of Continuing Studies Head Count Summary for Undergraduate Students by Full and Part-Time by Gender and Race Classification: Fall 2013**

	American Indian		Asian		African American		Hispanics		Nat Haw / Pac Isl		Race Unknown		Two or more races		White		Nonresident Alien		Total		
	F	M	F	M	F	M	F	M	F	M	F	M	F	M	F	M	F	M	F	M	Total
<b>Undergraduate</b>																					
<b>Full-Time</b>																					
First-Time Freshmen					1										1	1					2
Other Freshmen	1		1	1	4	4	1	2					5	1	18	30	1				39
Sophomores	1		1	1	6	8	10	8	1				4	4	45	66	2				88
Juniors	2		4	1	12	18	4	4					6	2	61	84	2				115
Seniors	1		2	5	13	14	9	8					3		83	99	2				131
Special															3	4					4
<b>Total Full-Time</b>	4	1	7	8	35	45	24	22	1			5	9	18	3	211	284	2	7	307	686
<b>Part-Time</b>																					
First-Time Freshmen																					
Other Freshmen																					
Sophomores	1		1	1	4	3	2	2							12	17					3
Juniors	1		1	1	7	5	4	4							37	48					24
Seniors	1		1	1	7	9	2	3							49	69					62
Special	1	2	1	3	18	9	12	7							2	95	88				89
<b>Total Part-Time</b>	3	3	1	6	37	28	20	17				7	16	7	203	233			2	271	584
<b>Total Undergraduate</b>	7	4	8	14	72	73	44	39	1	1	12	25	18	10	414	517	2	9	578	692	1,270
Previous before Correction	7	4	8	14	72	73	46	41	1	1	12	25	18	10	412	515	2	9	578	692	1,270

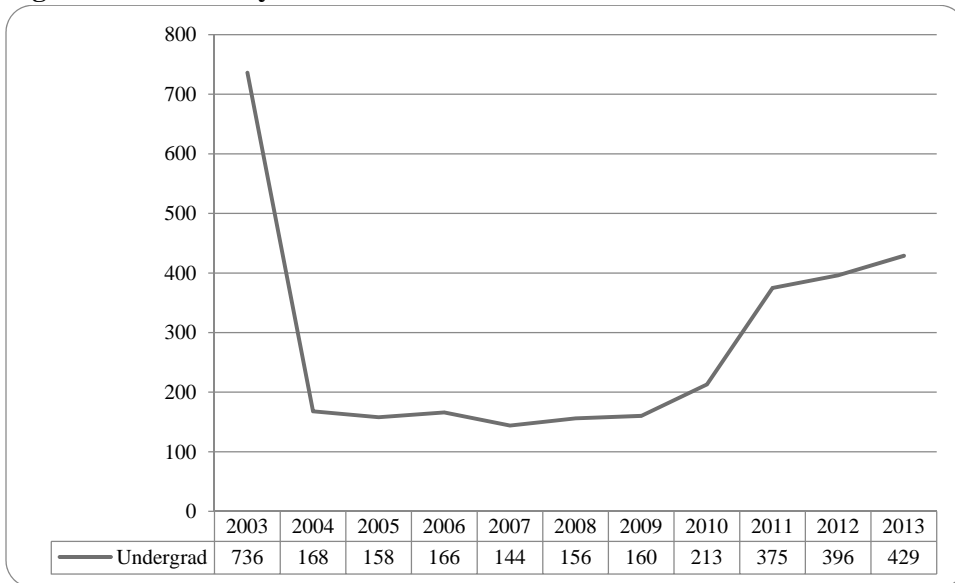
**Table 13: Cooperative Graduate Program Head Count Summary for Graduate Students by Full and Part-Time by Gender and Race Classification: Fall 2013**

	American Indian		Asian		African American		Hispanics		Nat Haw / Pac Isl		Race Unknown		Two or more races		White		Nonresident Alien		Total		
	F	M	F	M	F	M	F	M	F	M	F	M	F	M	F	M	F	M	F	M	Total
<b>Graduate</b>																					
<b>Full-Time</b>																					
Certificate																					
Masters																					
Doctoral																					
Special Graduate																					
<b>Total Full-Time</b>																					
<b>Part-Time</b>																					
Certificate																					
Masters																					
Doctoral																					
Special Graduate																					
<b>Total Part-Time</b>																					
<b>Total Graduate</b>																					
<b>Total All Students</b>																					

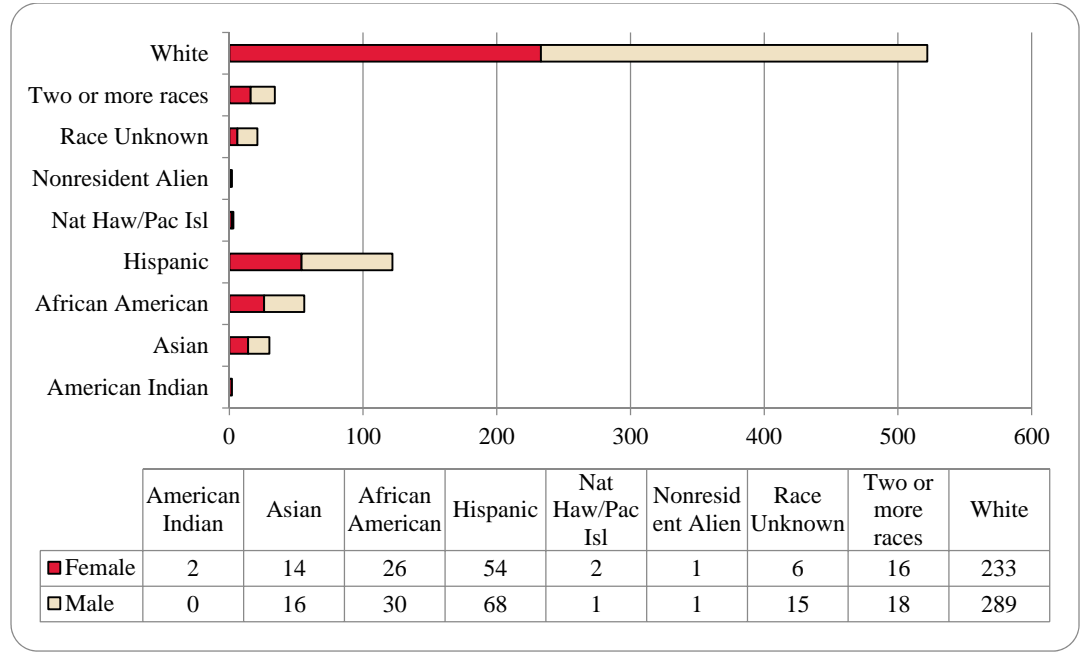
**Figure 34: University Division Head Count: Fall 2003-2013**



**Figure 35: University Division Student Credit Hours: Fall 2003-2013**



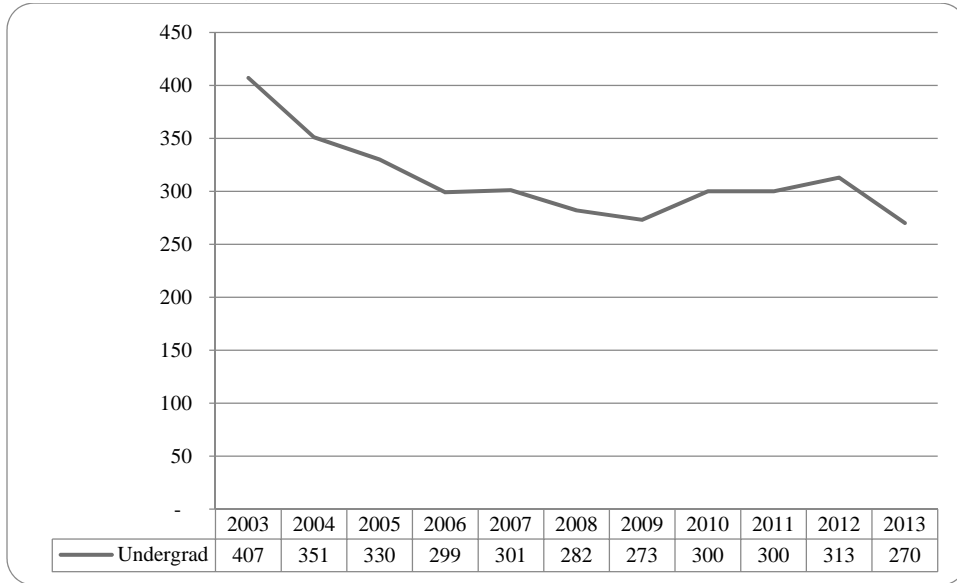
**Figure 36: University Division Head Count by Ethnicity by Gender: Fall 2013**



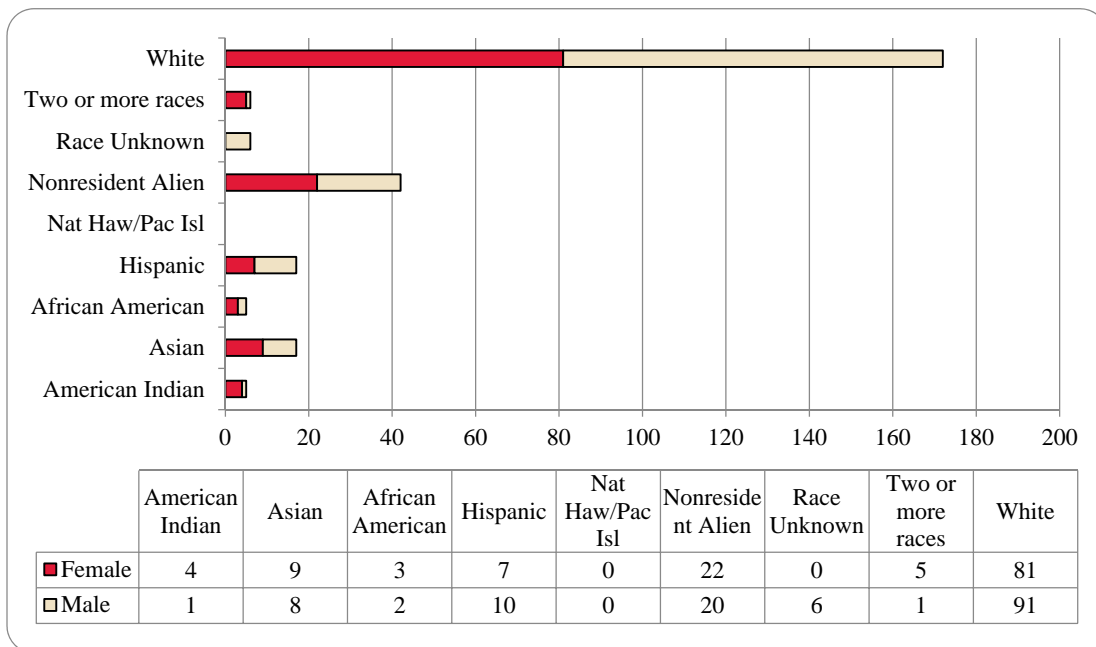
**Table 14: University Division Head Count Summary for Undergraduate Students by Full and Part-Time by Gender and Race Classification: Fall 2013**

	American Indian		Asian		African American		Hispanics		Nat Haw / Pac Isl		Race Unknown		Two or more races		White		Nonresident Alien		Total		
	F	M	F	M	F	M	F	M	F	M	F	M	F	M	F	M	F	M	F	M	Total
<b>Undergraduate</b>																					
<b>Full-Time</b>																					
First-Time Freshmen	1		6	7	12	7	33	41	1		3	11	8	120	151	1		188	225	413	
Other Freshmen			4	4	9	15	5	12			2		5	59	71			84	105	189	
Sophomores			3	2	1	3	5	6				3	3	28	39			37	57	94	
Juniors												1	1	1				1	1	2	
Seniors																					
Special																					
<b>Total Full-Time</b>	1		13	13	22	25	43	59	1	1	5	14	14	208	261	1	1	310	388	698	
<b>Part-Time</b>																					
First-Time Freshmen	1			1	1	4	3	1				1	1	7	4			13	11	24	
Other Freshmen			1	1	4	4	2	4					3	12	16			19	28	47	
Sophomores				1			5	2			1			5	8			11	11	22	
Juniors																					
Seniors																					
Special																					
<b>Total Part-Time</b>	1		1	3	4	5	11	9	1	1	1	1	4	25	28			44	50	94	
<b>Total Undergraduates</b>	2		14	16	26	30	54	68	2	1	6	15	18	233	289	1	1	354	438	792	
Previous before Correction	2		14	16	26	30	55	70	2	1	6	15	16	232	288	1	1	354	438	792	

**Figure 37: Non-Degree/Intercampus Special Undergraduate Students Head Count: Fall 2003-2013**



**Figure 38: Non-Degree/Intercampus Special Undergraduate Students Head Count by Ethnicity by Gender: Fall 2013**

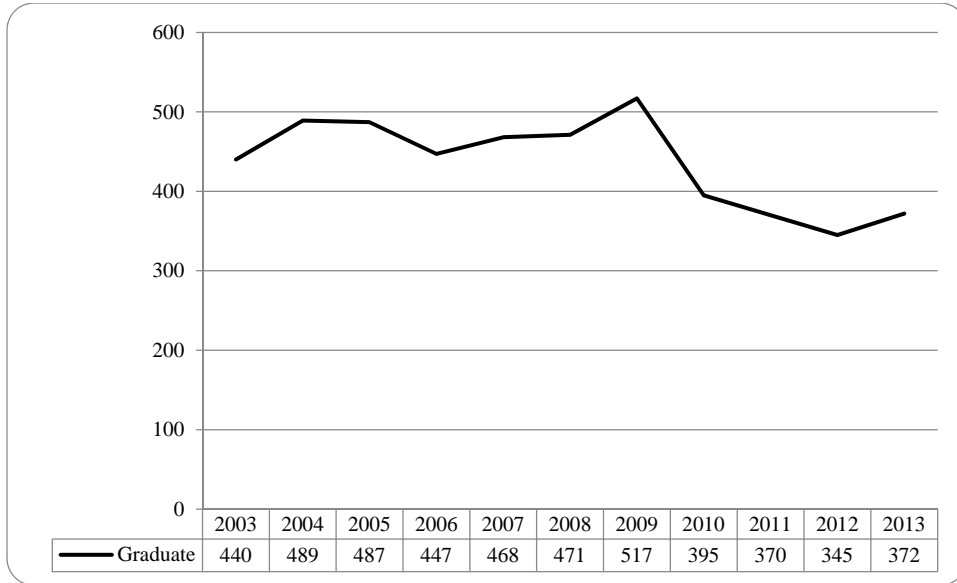


**Table 15: Non-Degree/Intercampus Head Count Summary for Special Undergraduate Students by Full and Part-Time by Gender and Race Classification: Fall 2013**

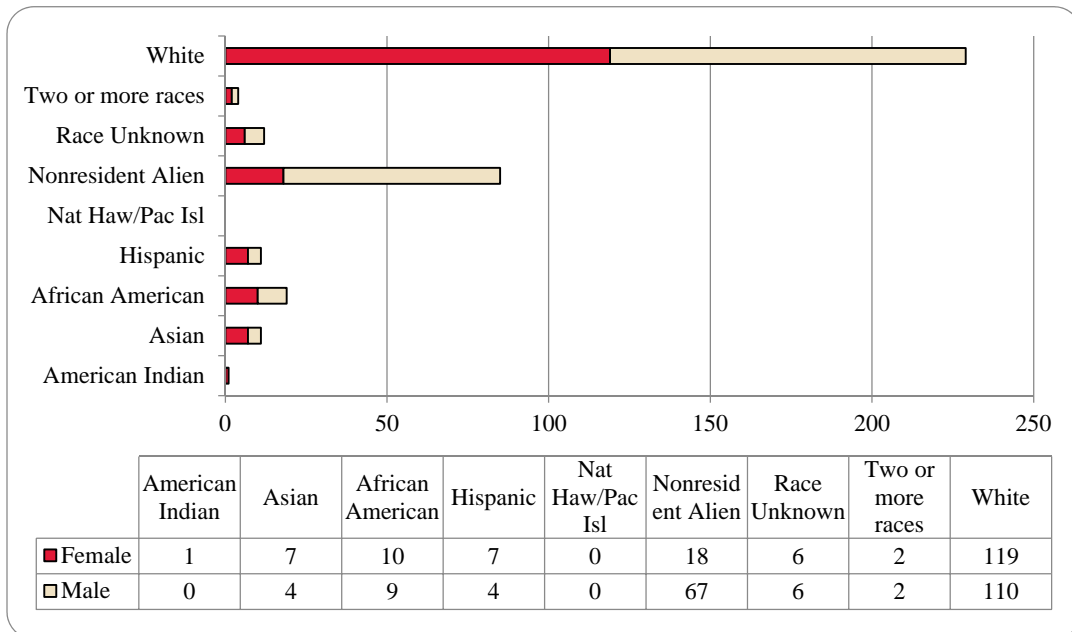
	American Indian		Asian		African American		Hispanics		Nat Haw / Pac Isl		Race Unknown		Two or more races		White		Nonresident Alien		Total		
	F	M	F	M	F	M	F	M	F	M	F	M	F	M	F	M	F	M	F	M	Total
<b>Undergraduate</b>																					
<b>Full-Time</b>																					
First-Time Freshmen					1	1									6	5			7	6	13
Other Freshmen											1	1			3	11	18	20	22	32	54
Sophomores							1								1	4			1	5	6
Juniors															3	3			3	3	6
Seniors															2	2			2	2	2
Special					1	1		1					1			3			2	4	6
<b>Total Full-Time</b>					1	1	2	1			1	2		2	13	28	18	20	35	52	87
<b>Part-Time</b>																					
First-Time Freshmen																					
Other Freshmen	2	1	4	4	3	1	3	4				4	3	1	34	31	4		53	46	99
Sophomores			1	1				1							3	3			4	5	9
Juniors				1											1	1			2	2	2
Seniors								2	1						1	5			3	6	9
Special	2		3	2				3				1			28	24			33	30	63
<b>Total Part-Time</b>	4	1	9	7	3	1	5	9			5	3	1	68	63	4		96	87	183	
<b>Total Undergraduate</b>	4	1	9	8	3	2	7	10			6	5	1	81	91	22	20	131	139	270	
Previous before Correction	4	1	8	8	3	2	7	10			6	5		81	92	23	20	131	139	270	



**Figure 39: Non-Degree/Inter Campus Special Graduate Students Head Count: Fall 2003-2013**



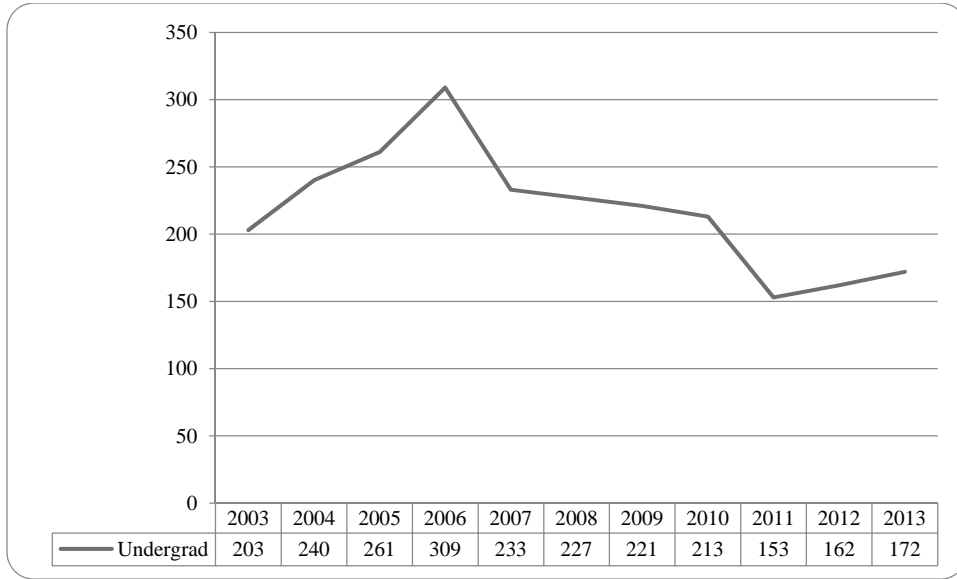
**Figure 40: Non-Degree/Intercampus Special Graduate Students Head Count by Ethnicity by Gender: Fall 2013**



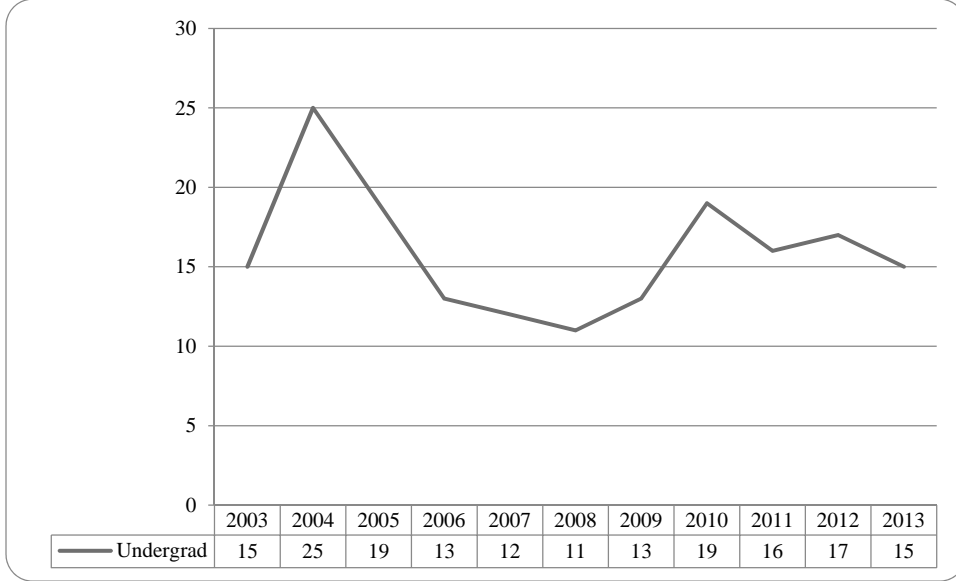
**Table 16: Non-Degree/Intercampus Head Count Summary for Special Graduate Students by Full and Part-Time by Gender and Race Classification: Fall 2013**

	American Indian		Asian		African American		Hispanics		Nat Haw / Pac Isl		Race Unknown		Two or more races		White		Nonresident Alien		Total		
	F	M	F	M	F	M	F	M	F	M	F	M	F	M	F	M	F	M	F	M	Total
<b>Graduate</b>																					
<b>Full-Time</b>																					
Certificate																					
Masters																					
Doctoral																					
Special Graduate			2	1	1	1	3	1				1			14	31	11	56	29	92	121
<b>Total Full-Time</b>			2	1	1	1	3	1				1			14	31	11	56	29	92	121
<b>Part-Time</b>																					
Certificate																					
Masters																					
Doctoral																					
Special Graduate	1		5	3	9	6	6	4				6	5	2	105	79	7	11	141	110	251
<b>Total Part-Time</b>	1		5	3	9	6	6	4				6	5	2	105	79	7	11	141	110	251
<b>Total Graduates</b>	1		7	4	10	9	7	4				6	6	2	119	110	18	67	170	202	372
Previous before Correction	1		7	4	10	9	10	4				6	6	2	116	110	18	67	170	202	372

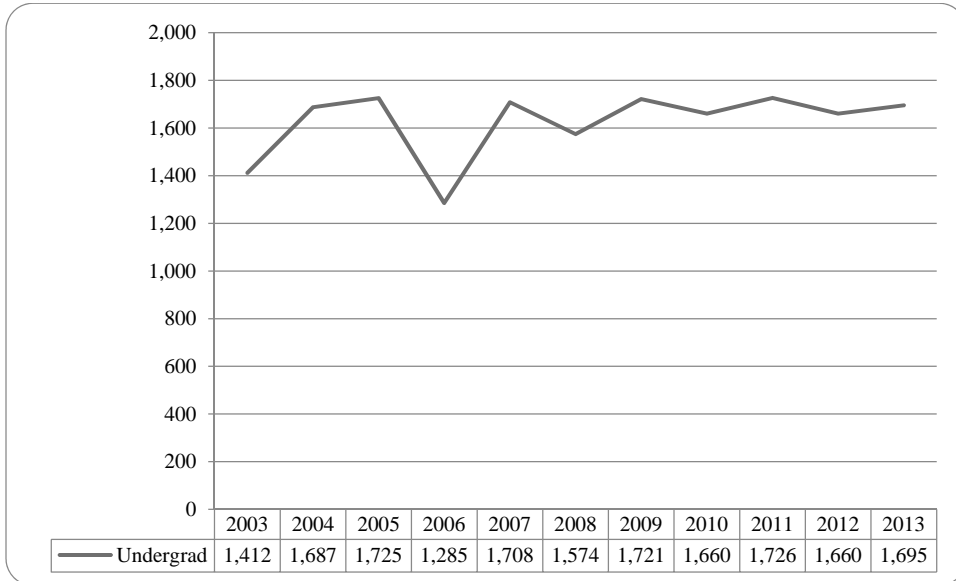
**Figure 41: Other Honors Student Credit Hours by Level of Instruction: Fall 2003-2013**



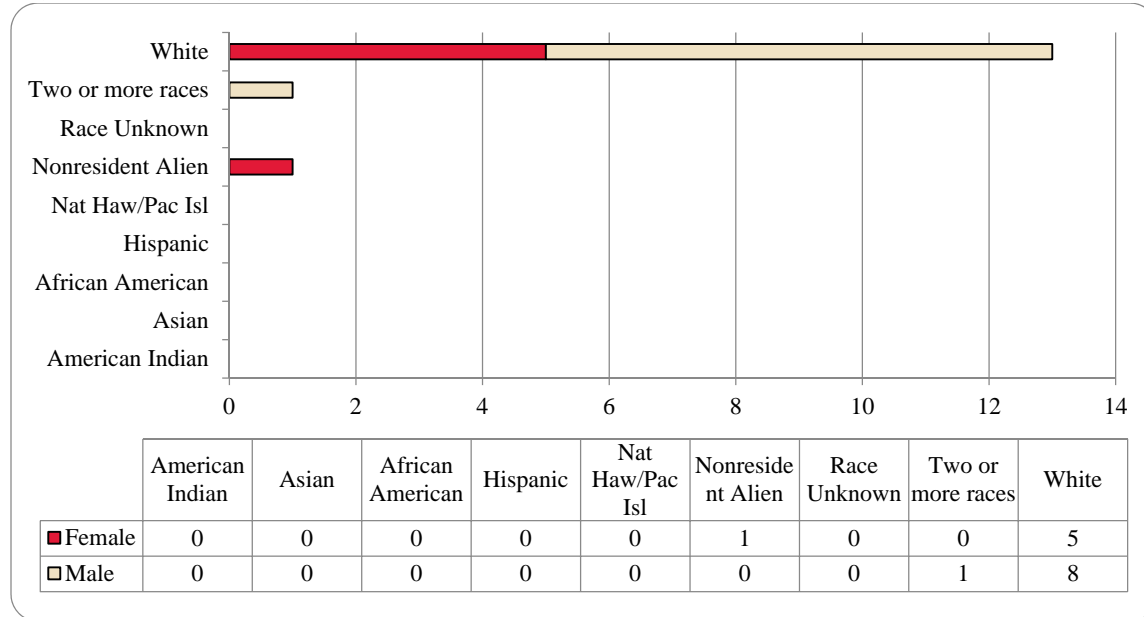
**Figure 42: College of Agriculture Delivery-Site Head Count: Fall 2003-2013**



**Figure 43: College of Agriculture Delivery-Site Student Credit Hours: Fall 2003-2013**



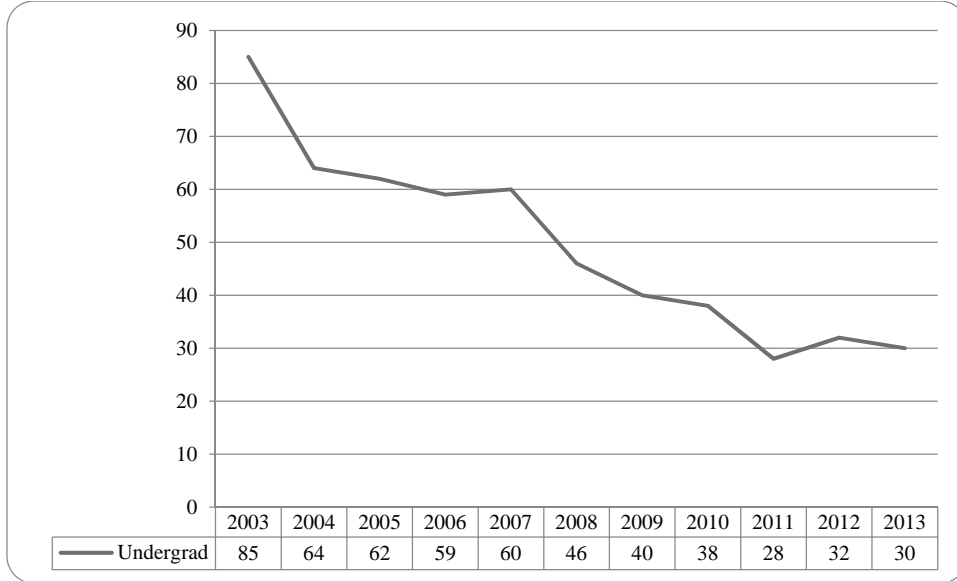
**Figure 44: College of Agriculture Delivery-Site Head Count by Ethnicity by Gender: Fall 2013**



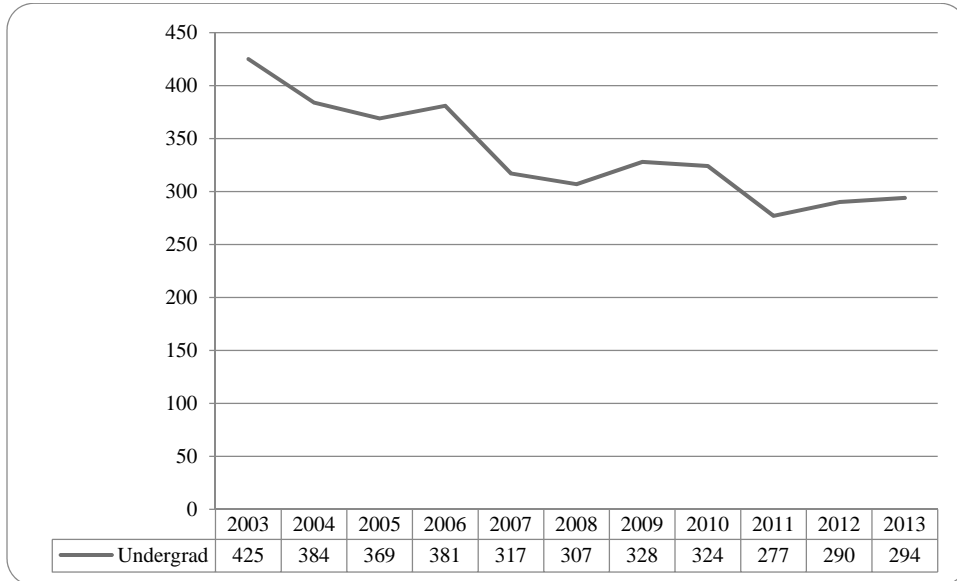
**Table 17: College of Agriculture Head Count Summary for Undergraduate Students by Full and Part-Time by Gender and Race Classification: Fall 2013**

	American Indian		Asian		African American		Hispanics		Nat Haw / Pac Isl		Race Unknown		Two or more races		White		Nonresident Alien		Total			
	F	M	F	M	F	M	F	M	F	M	F	M	F	M	F	M	F	M	F	M	Total	
<b>Full-Time</b>																						
<b>Undergraduate</b>																						
First-Time Freshmen														1		1	2			1	3	4
Other Freshmen																	1			1	1	
Sophomores																2	1			2	1	3
Juniors																	2				2	2
Seniors																						
Special																						
<b>Total Full-Time</b>														1	3	6	1	1		4	7	11
<b>Part-Time</b>																						
First-Time Freshmen																1					1	1
Other Freshmen																	2				2	2
Sophomores																						
Juniors																						
Seniors																						
Special																1				1	1	1
<b>Total Part-Time</b>																2	2			2	2	4
<b>Total Undergraduates</b>														1	5	8	1	1		6	9	15
<b>Total All S students</b>													1	5	8	1	1		6	9	15	15

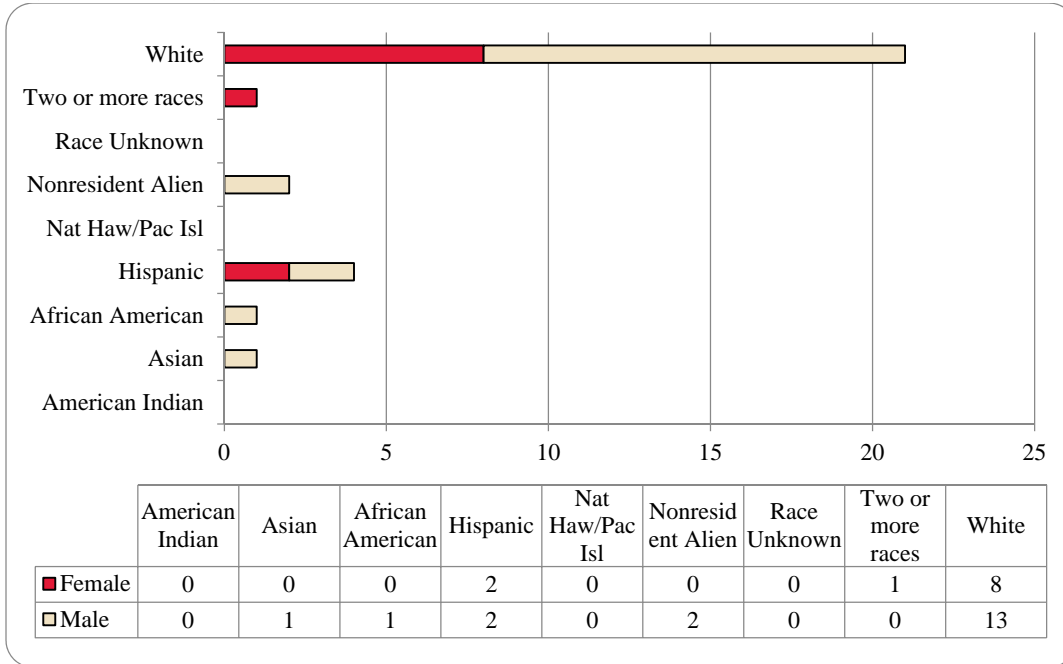
**Figure 45: College of Architecture Delivery-Site Head Count: Fall 2003-2013**



**Figure 46: College of Architecture Delivery-Site Student Credit Hours: Fall 2003-2013**



**Figure 47: College of Architecture Delivery-Site Head Count by Ethnicity by Gender: Fall 2013**

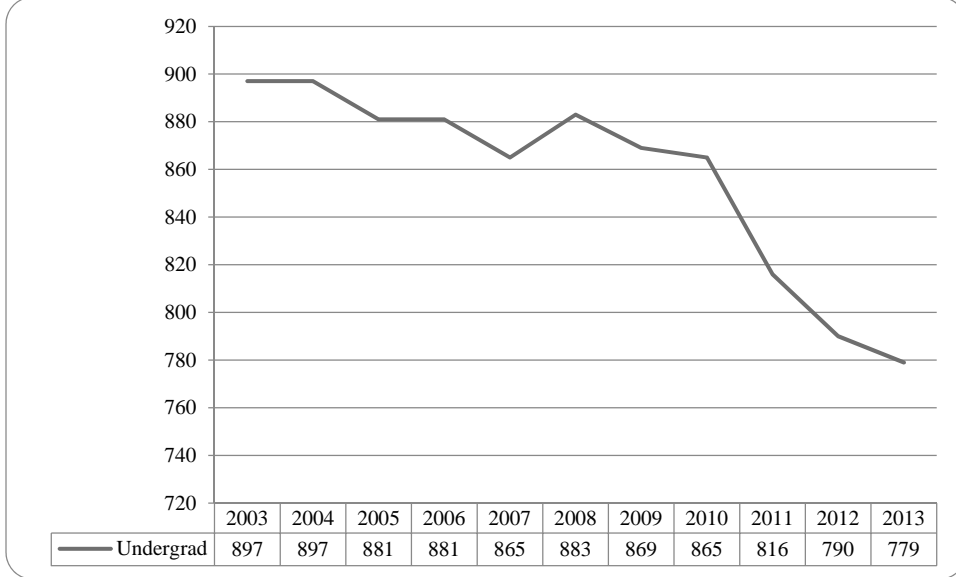




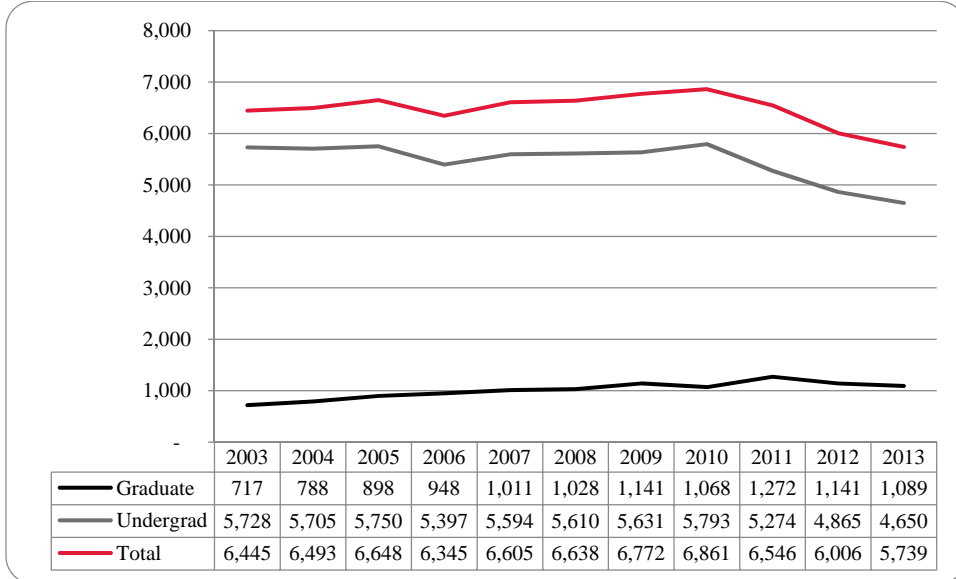
**Table 18: College of Architecture Head Count Summary for Undergraduate Students by Full and Part-Time by Gender and Race Classification: Fall 2013**

	American Indian		Asian		African American		Hispanics		Nat Haw / Pac Isl		Race Unknown		Two or more races		White		Nonresident Alien		Total		
	F	M	F	M	F	M	F	M	F	M	F	M	F	M	F	M	F	M	F	M	Total
<b>Full-Time</b>																					
<b>Undergraduate</b>																					
First-Time Freshmen					1										1	4					6
Other Freshmen															1						1
Sop homores							1								4	2		2			5
Juniors							1						1		1						3
Seniors																					
Special																					
<b>Total Full-Time</b>					1		1	2					1		6	7		2		7	20
<b>Part-Time</b>																					
First-Time Freshmen																					
Other Freshmen																					
Sop homores																					
Juniors																					
Seniors																					
Special																					
<b>Total Part-Time</b>																					
<b>Total Undergraduate</b>					1		1	2					1		8	13		2		11	30
<b>Total All Students</b>					1		1	2	2				1		8	13		2		11	30

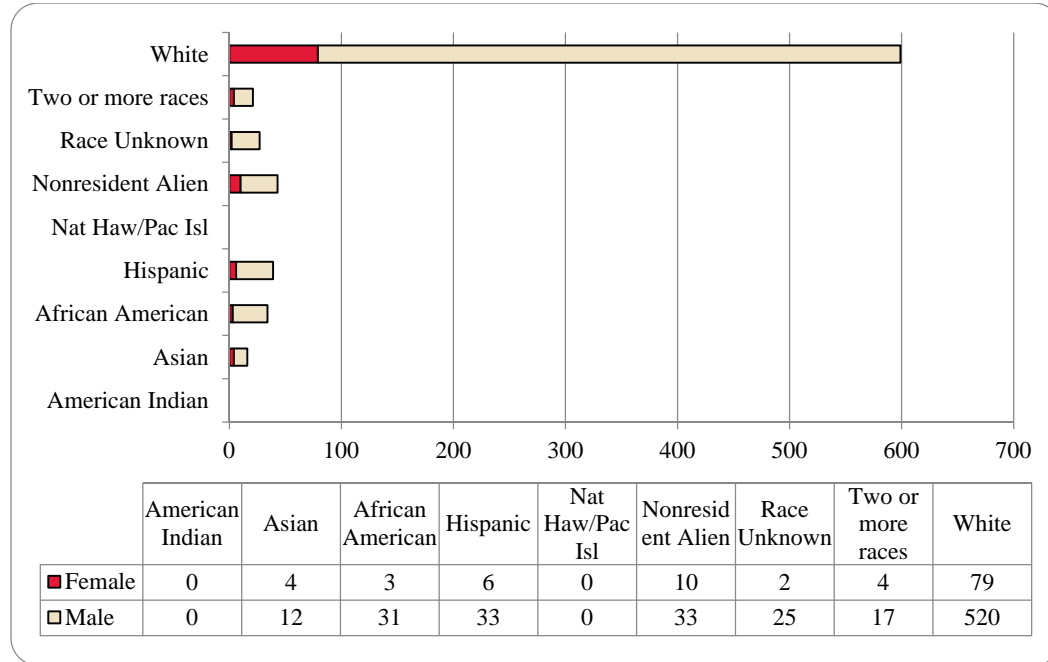
**Figure 48: College of Engineering Delivery-Site Head Count: Fall 2003-2013**



**Figure 49: College of Engineering Delivery-Site Student Credit Hours: Fall 2003-2013**



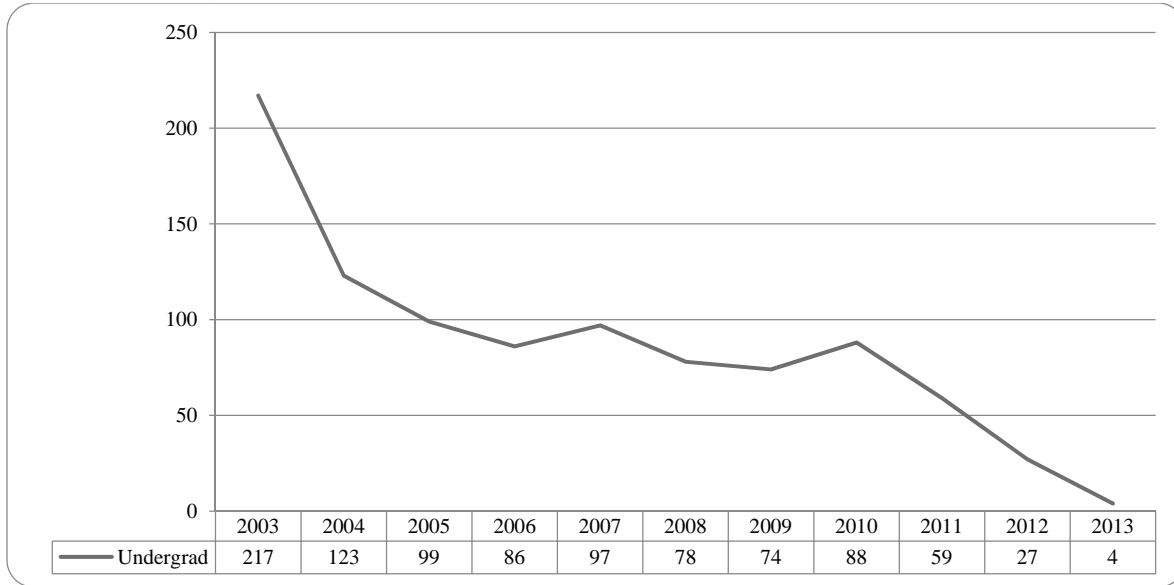
**Figure 50: College of Engineering Delivery-Site Head Count by Ethnicity by Gender: Fall 2013**



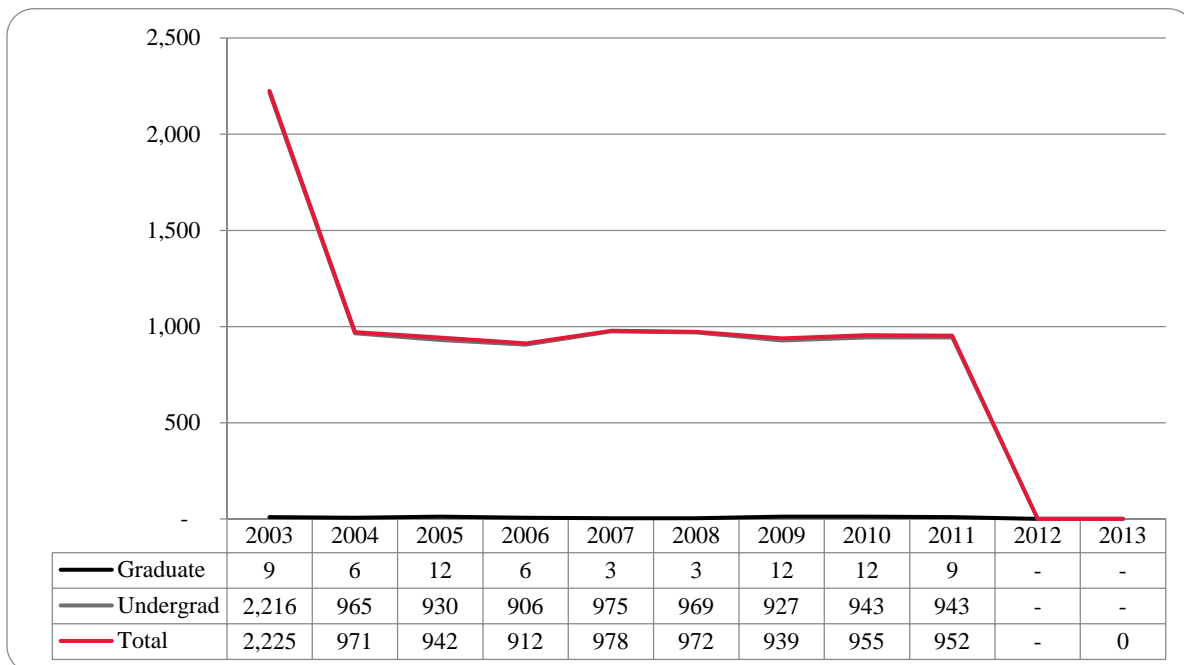
**Table 19: College of Engineering Head Count Summary for Undergraduate Students by Full and Part-Time by Gender and Race Classification: Fall 2013**

	American Indian		Asian		African American		Hispanics		Nat Haw / Pac Isl		Race Unknown		Two or more races		White		Nonresident Alien		Total		
	F	M	F	M	F	M	F	M	F	M	F	M	F	M	F	M	F	M	F	M	Total
<b>Undergraduate</b>																					
<b>Full-Time</b>																					
First-Time Freshmen			1	5		2	2	8			4	4	1	4	15	114		4	19	141	160
Other Freshmen													1		1	18	3	12	5	30	35
Sophomores			1	3		5		7			4	1	5		22	92	4	8	28	124	152
Juniors			1		1	4	1	8			8	6			9	103		1	12	130	142
Seniors			3	2	7	3	5			1	4	1	2		22	121		3	29	145	174
Special							1				1				4	13		1	4	16	20
<b>Total Full-Time</b>			3	11	3	18	6	29			1	21	4	17	73	461	7	29	97	586	683
<b>Part-Time</b>																					
First-Time Freshmen						1										5				6	6
Other Freshmen						1		1								4	1	1	1	7	8
Sophomores						4		1							2	7	1		3	12	15
Juniors						5		1			1				1	13		1	2	20	22
Seniors			1	1	2		1				3				1	25	1	1	3	33	36
Special											1				2	5		1	2	7	9
<b>Total Part-Time</b>			1	1	13		4			1	4				6	59	3	4	11	85	96
<b>Total Undergraduates</b>			4	12	3	31	6	33			2	25	4	17	79	520	10	33	108	671	779
Previous before Correction			4	12	3	30	6	34			2	25	4	17	79	520	10	33	108	671	779

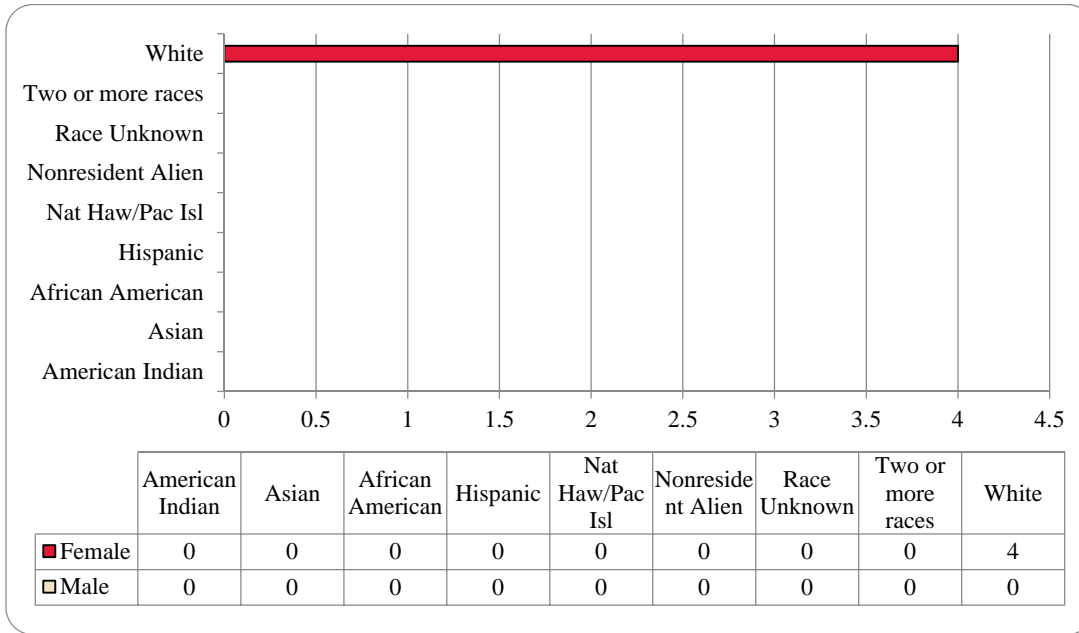
**Figure 51: College of Education and Human Sciences Delivery-Site Head Count: Fall 2003-2013**



**Figure 52: College of Education and Human Sciences Delivery-Site Student Credit Hours: Fall 2003-2013**



**Figure 53: College of Education and Human Sciences Delivery-Site Head Count by Ethnicity by Gender: Fall 2003-2013**



**Table 20: College of Education and Human Sciences Head Count Summary for Undergraduate Students by Full and Part-Time by Gender and Race Classification: Fall 2013**

	American Indian		Asian		African American		Hispanics		Nat Haw/ Pac Isl		Race Unknown		Two or more races		White		Nonresident Alien		Total		
	F	M	F	M	F	M	F	M	F	M	F	M	F	M	F	M	F	M	F	M	Total
<b>Full-Time</b>																					
<b>Undergraduate</b>																					
First-Time Freshmen																					0
Other Freshmen																					0
Sophomores																					0
Juniors																					0
Seniors																					2
Special																					0
<b>Total Full-Time</b>	0	0	0	0	0	0	0	0	0	0	0	0	0	0	2	0	0	0	0	2	0
<b>Part-Time</b>																					
First-Time Freshmen																					0
Other Freshmen																					0
Sophomores																					0
Juniors																					2
Seniors																					0
Special																					0
<b>Total Part-Time</b>	0	0	0	0	0	0	0	0	0	0	0	0	0	0	2	0	0	0	0	2	0
<b>Total Undergraduate</b>	0	0	0	0	0	0	0	0	0	0	0	0	0	0	4	0	0	0	0	4	0
<b>Total All Students</b>	0	0	0	0	0	0	0	0	0	0	0	0	0	0	4	0	0	0	4	0	4

## Glossary

The total head count and student credit hours in this enrollment report are provided on both a delivery-site and administrative-site basis. Delivery-site includes enrollment in all courses taught at UNO regardless of “home” campus. This means that student credit hours are reported for courses in the colleges. Student enrollment is counted in the college declared by the student. Specifically, the delivery-site enrollment numbers include students in degree programs in the UNL Colleges of Agriculture, Architecture, Engineering and Technology, and Education and Human Science.

**FIRST-TIME, Entering (freshmen) Student:** Students attending any institution for the first time at the undergraduate level. For students entering the fall term, this includes students enrolled in the fall term who attended college for the first time in the prior summer term. Also included are students who entered with advanced standing, i.e. college credits earned before graduation from high school.

**OTHER FRESHMEN:** At the beginning of the current semester, undergraduate students who (1) are not First-Time Freshmen and (2) have less than 27 semester hours earned from all institutions of higher education attended.

**SOPHOMORES:** At the beginning of the current semester, undergraduate students who have at least 27, but not more than 57, semester hours earned from all institutions of higher education attended.

**JUNIORS:** At the beginning of the current semester, undergraduate students who have at least 58, but not more than 90, semester hours earned from all institutions of higher education attended.

**SENIORS:** At the beginning of the current semester, undergraduate students who have at least 91 semester hours earned from all institutions of higher education attended.

**NON-DEGREE/INTER-CAMPUS/SPECIAL UNDERGRADUATES:** Special undergraduates not pursuing a degree at UNO in various programs: Inter-Campus UNMC, UNK, UNL, and Non-Degree.

**NON-DEGREE/INTER-CAMPUS/SPECIAL GRADUATE STUDENTS:** Special graduate students not pursuing a degree at UNO in various programs: Engineering Transfer Program, Inter-Campus UNMC, UNK, UNL, Inter-Campus UNL Graduate Psychology and Non-Degree.

**MASTERS/SPECIALIST:** Graduate students pursuing a degree less than doctoral.

**CERTIFICATE:** These students are not enrolled in a degree program, but only a certificate.

**DOCTORAL:** Graduate students who have been accepted into a doctoral program.

**FULL-TIME:** In the current semester, undergraduate students enrolled for 12 or more semester hours, or graduate students enrolled for 9 or more semester hours.

**PART-TIME:** In the current semester, undergraduate students enrolled for less than 12 semester hours, or graduate students enrolled for less than 9 semester hours.

**COOPERATIVE GRADUATE PROGRAM:** Graduate students enrolled in Human Resources and Training or Global Information Operations offered cooperatively by two or more colleges.





**OFFICE OF INSTITUTIONAL EFFECTIVENESS**

[www.unomaha.edu/oie/](http://www.unomaha.edu/oie/)

402-554-2367 | 402-554-4896 (Fax)

**T. Hank Robinson, Director Office of Institutional Effectiveness**

**Jenny Liu, Director of Institutional Research**

**Daniel O'Dell, Web & Communications Coordinator**

**Andrew Jacobsen, Business Analyst**

**Rita Sterkel, Management Information Coordinator**

**Jeanie Gutheil-Bykerk, Research Analyst**