

10-18-2011

Migration in Nebraska and Washington County

David J. Drozd

University of Nebraska at Omaha, ddrozd@unomaha.edu

Follow this and additional works at: <https://digitalcommons.unomaha.edu/cparpresentations>

 Part of the [Demography, Population, and Ecology Commons](#), and the [Public Affairs Commons](#)

Recommended Citation

Drozd, David J., "Migration in Nebraska and Washington County" (2011). *Presentations*. 5.
<https://digitalcommons.unomaha.edu/cparpresentations/5>

This Presentation is brought to you for free and open access by the Center for Public Affairs Research at DigitalCommons@UNO. It has been accepted for inclusion in Presentations by an authorized administrator of DigitalCommons@UNO. For more information, please contact unodigitalcommons@unomaha.edu.



Migration in Nebraska and Washington County

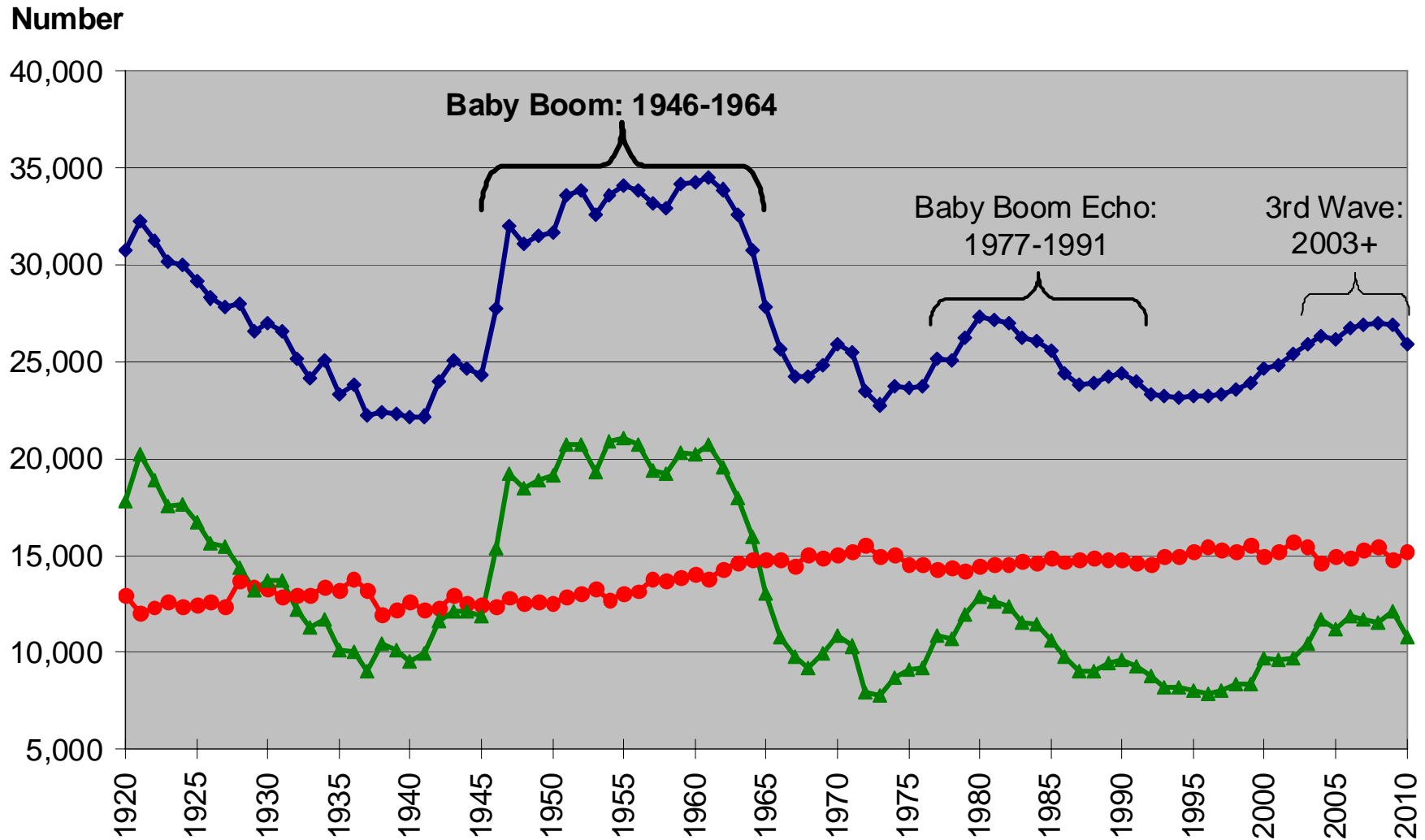
Fort Calhoun English Class
October 18, 2011

David Drozd, M.S. – Data Specialist and Census Expert
Center for Public Affairs Research, UNO
402-554-2132 ddrozd@unomaha.edu
www.unomaha.edu/cpar

- Washington County has had its population increase for 6 straight decades, each one after World War II (1950s and every decade since)
 - That has happened in only 9 of Nebraska's 93 counties
 - The location of being near Omaha (part of the Omaha metro area) is a helpful factor
 - Interestingly, the county had lost population in each decade from 1900 through the 1940s

- Understanding population change is easy!!
 - 2 “Components” of Population change
 - Natural Change: Births – Deaths
 - Net Migration: Inmovers – Outmovers
 - The sum of these two components equals total population change
 - Note: Migration can be split into domestic and international
- The way that Nebraska and Washington County’s population has changed is different today than in the past.

Nebraska Births, Deaths, and Natural Change: 1920-2010

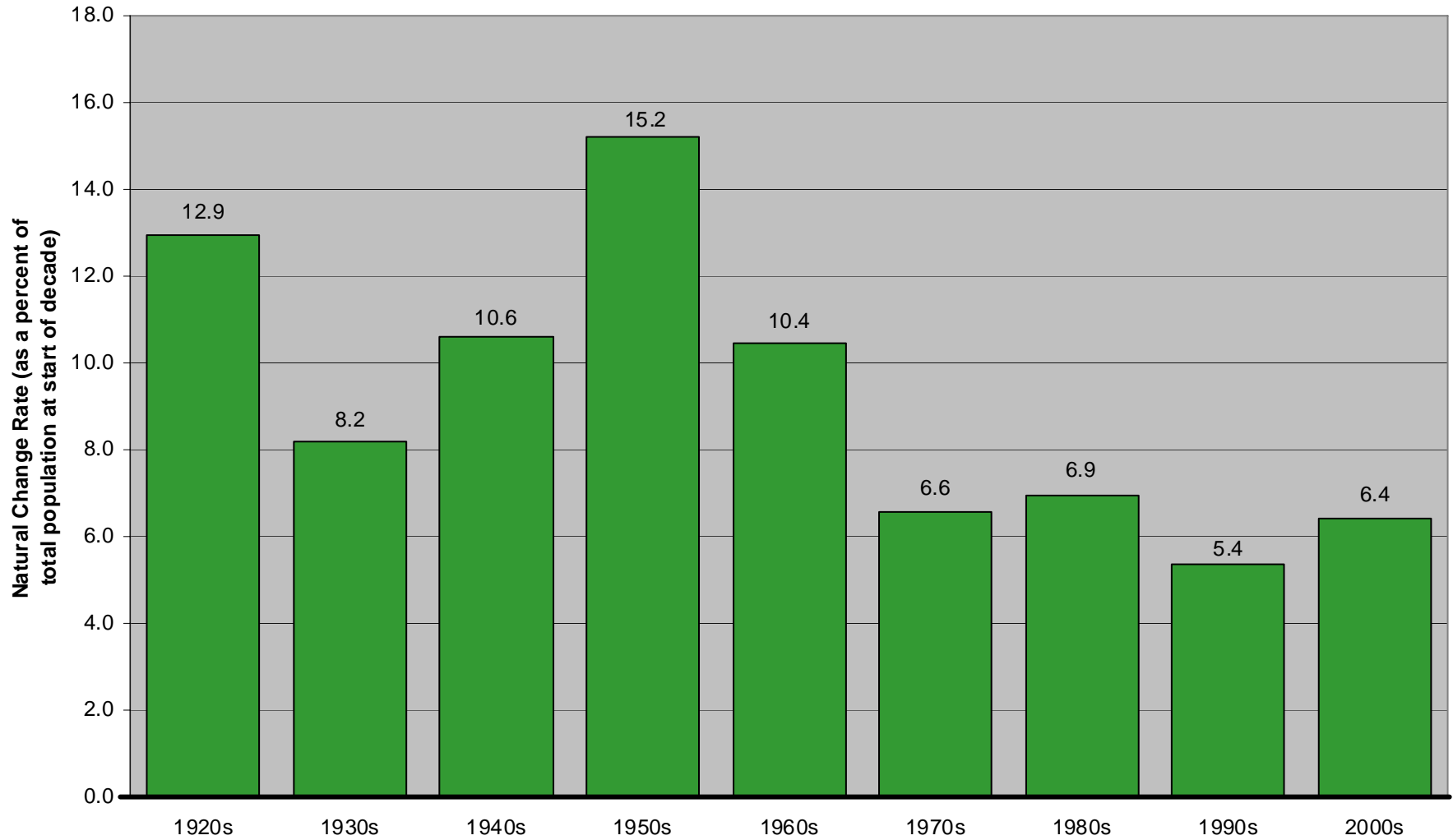


Source: Vital Statistics Reports, Nebraska Department of Health and Human Services

◆ Births ● Deaths ▲ Natural Change

Prepared by: David Drozd, CPAR @ UNO

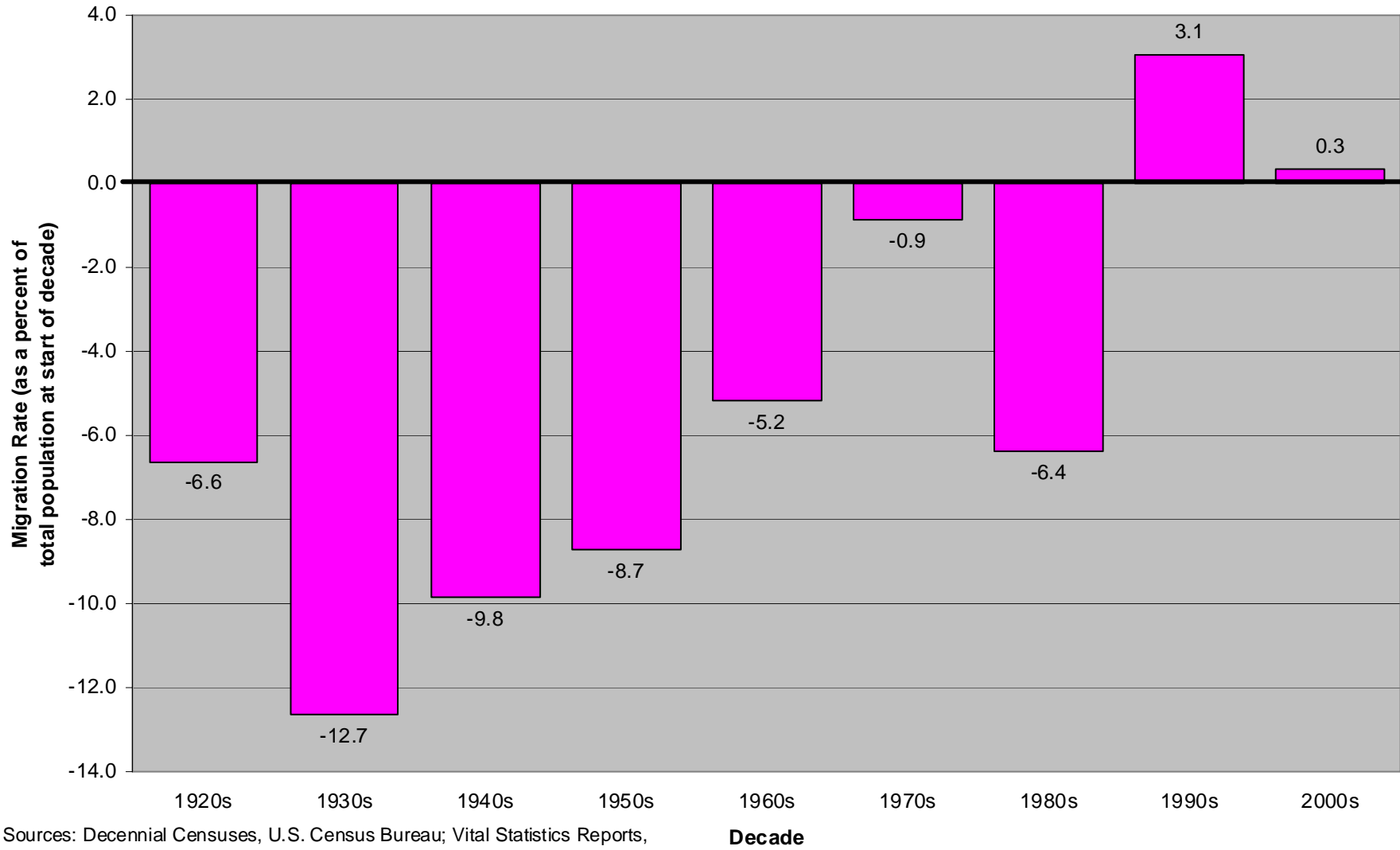
Nebraska Natural Change Rate by Decade: 1920s to 2000s



Sources: Decennial Censuses, U.S. Census Bureau; Vital Statistics Reports, Nebraska Department of Health and Human Services

Decade

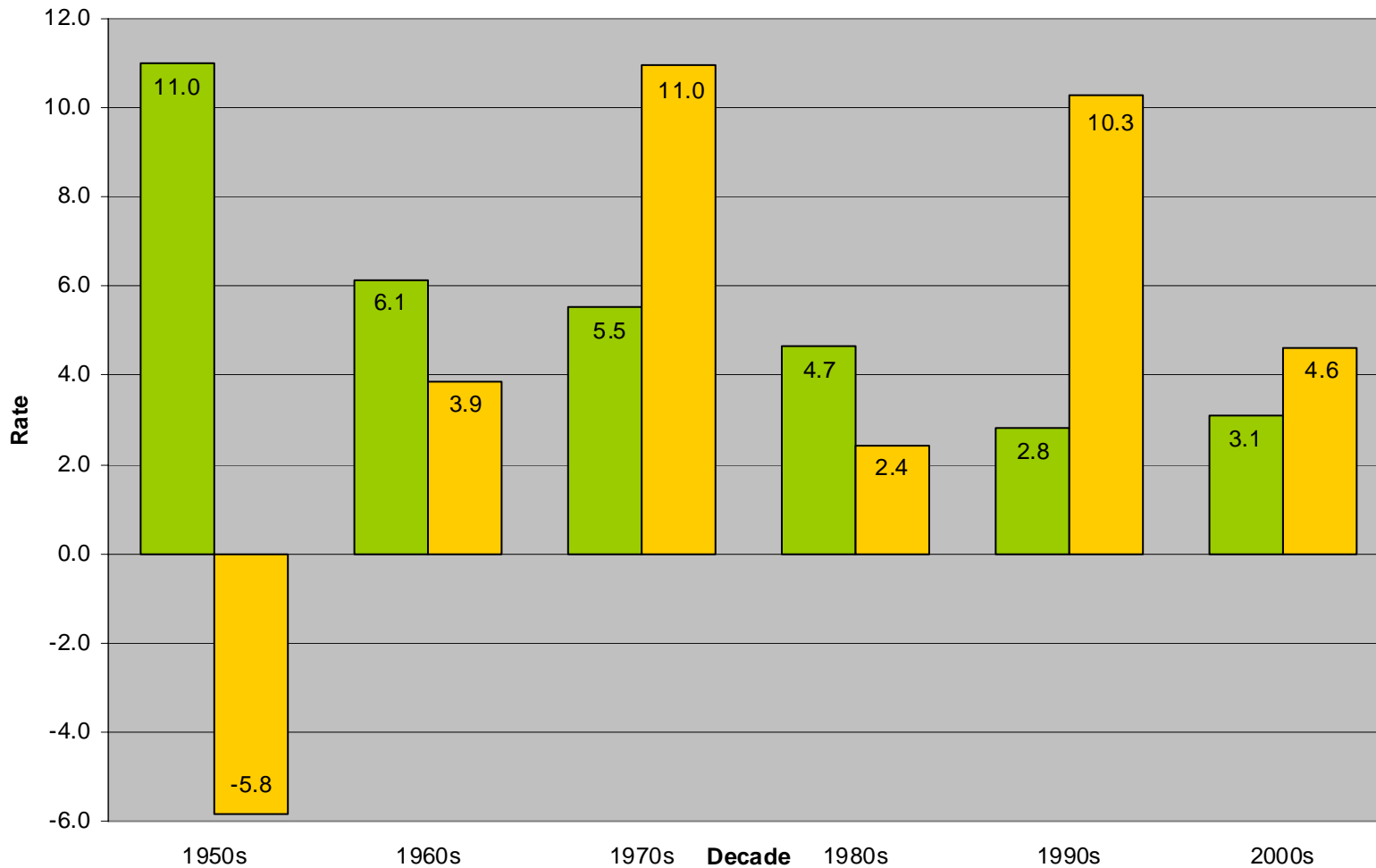
Nebraska Net Migration Rate by Decade: 1920s to 2000s



Sources: Decennial Censuses, U.S. Census Bureau; Vital Statistics Reports, Nebraska Department of Health and Human Services

Rate of Natural Change (Births - Deaths) & Net Migration in Washington County: 1950 to 2010

Prepared by: Center for Public Affairs Research, UNO



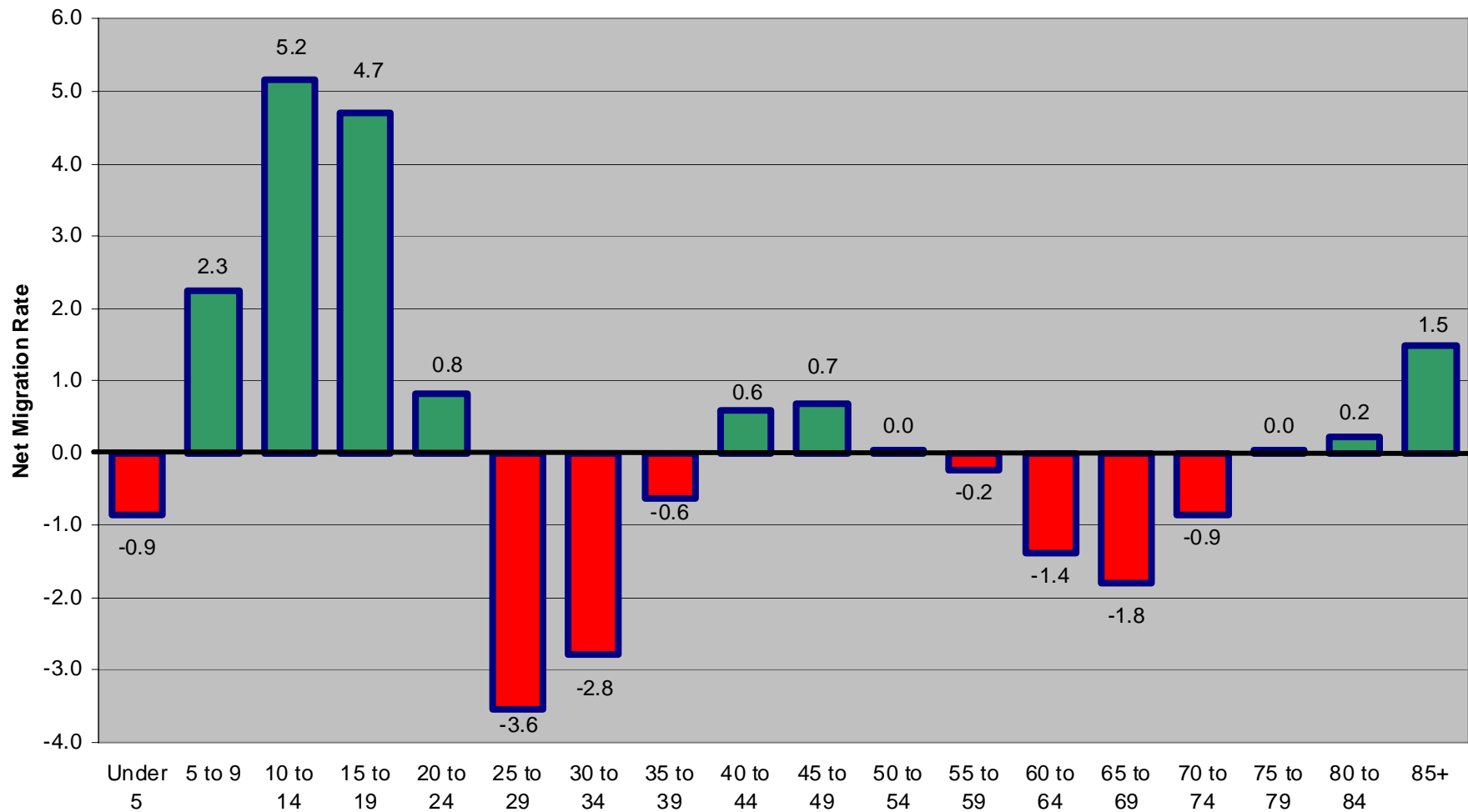
Sources: Decennial Censuses, U.S. Census Bureau; Vital Statistics Reports, NE Dept of HHS

■ Natural Change Rate ■ Net Migration Rate

Note: A positive natural change rate and positive net migration rate are typically desired from a population growth standpoint.

Nebraska Net Migration Rate by Age during 2000 to 2010 timeframe

Overall Net Migration Rate = 0.3

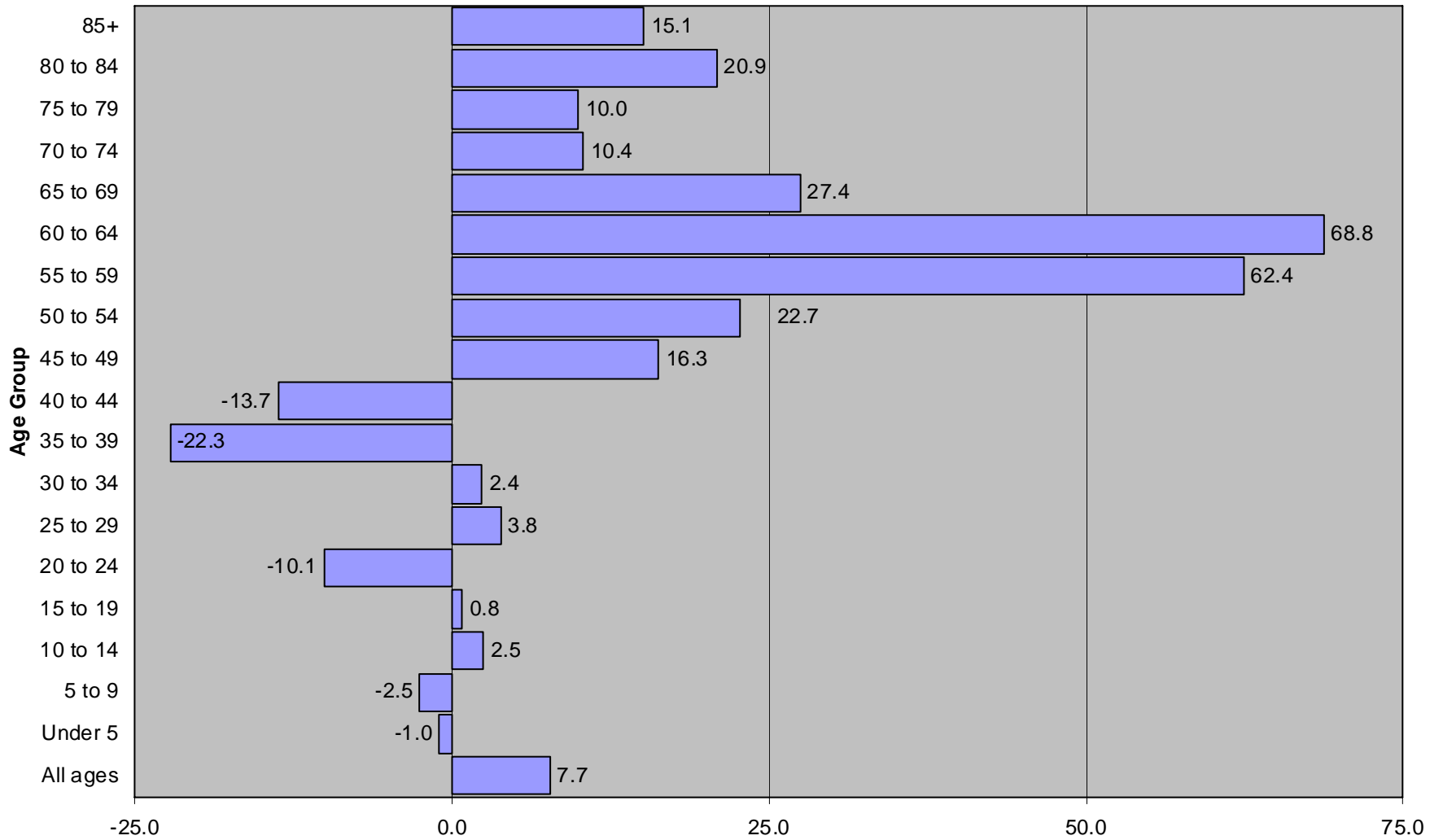


Sources: 2000 and 2010 Censuses, U.S. Census Bureau, Annual Births and Deaths by Single Year of Age, NE Dept of HHS

Age Group

Compiled and Prepared by: David Drozd,
UNO Center for Public Affairs Research

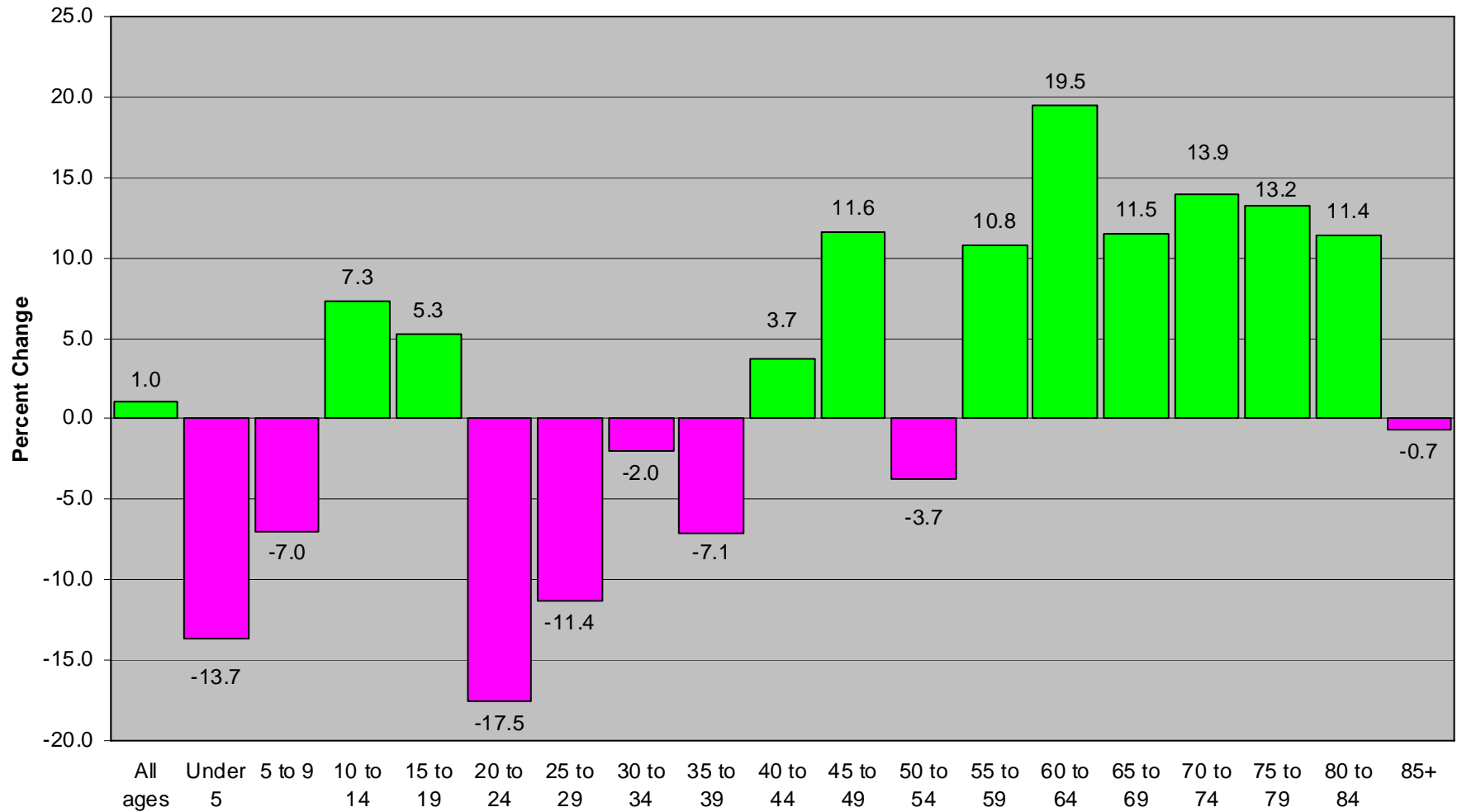
Percentage Change in Population by 5-Year Age Group in Washington County: 2000 to 2010



Sources: 2000 and 2010 Censuses, U.S. Census Bureau

Percent Change

Net Difference in Percentage Change in Population by 5-Year Age Group -- Washington County vs. Nebraska: 2000 to 2010

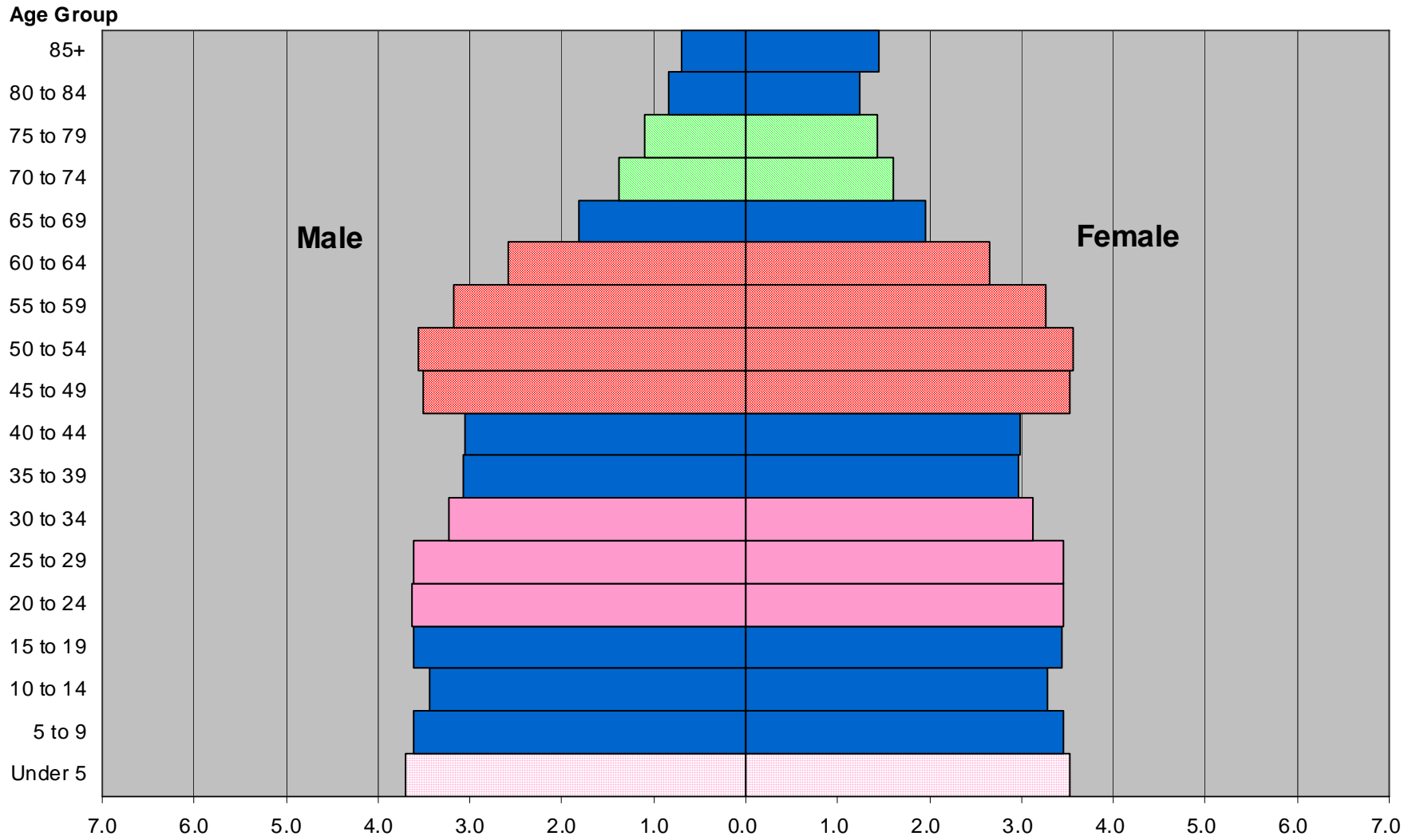


Sources: 2000 and 2010 Censuses, U.S. Census Bureau

Age Group

Age groups shown in green are where Washington County exceeded the Nebraska change rate.

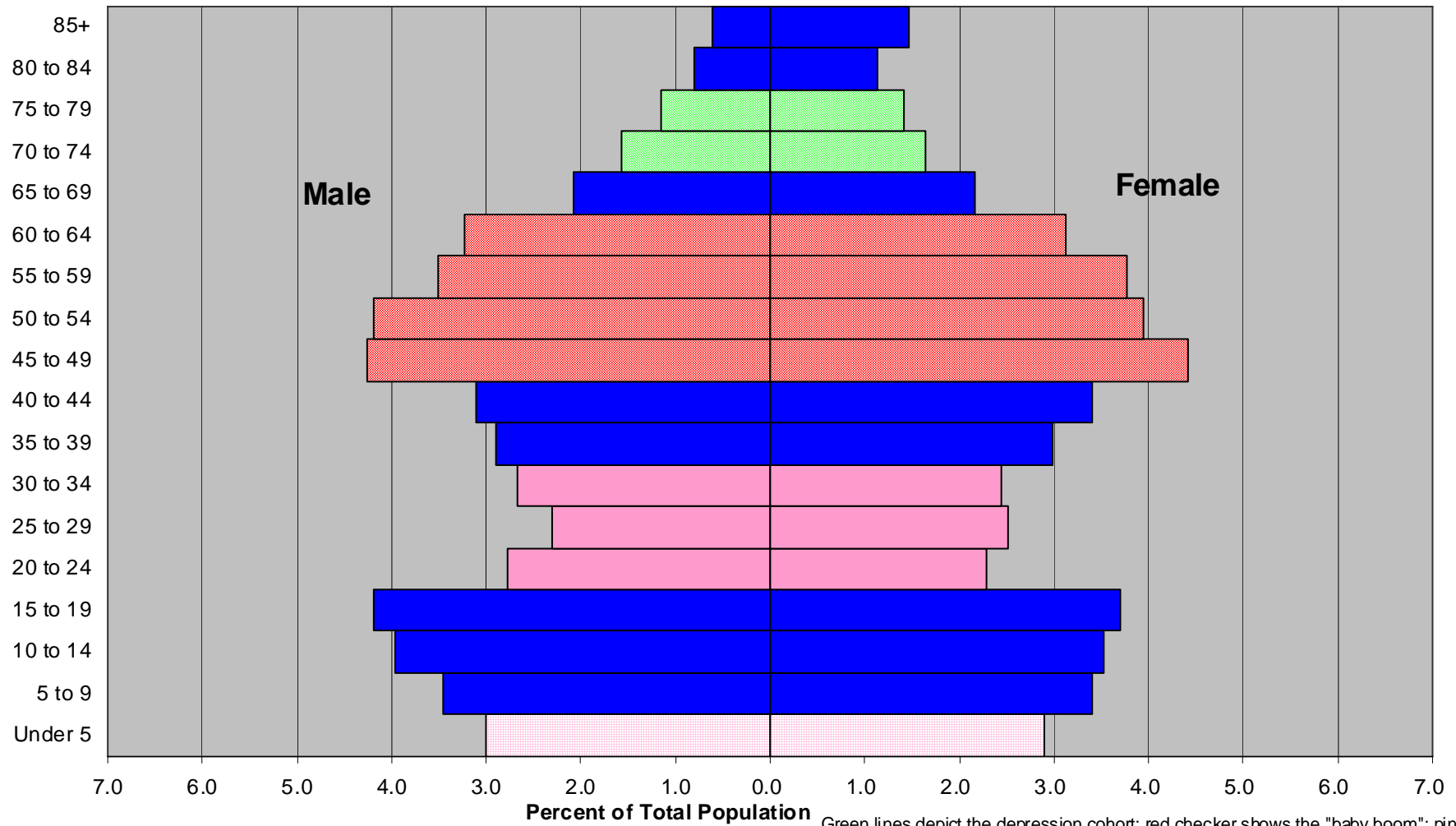
2010 Nebraska Population by Sex and Five-Year Age Group



Source: 2010 Census, U.S. Census Bureau

Percent of Total Population Green lines depict the depression cohort; red checker shows the "baby boom"; pink represents the "baby boom echo"; pink crosshatch shows the "3rd wave"

2010 Washington County Population by Sex and Five-Year Age Group: Total Population



Source: 2010 Census (DP-1), U.S. Census Bureau

Green lines depict the depression cohort; red checker shows the "baby boom"; pink represents the "baby boom echo"; pink crosshatch shows the "3rd wave"

- Most news reports showed Dana had about 600 students at the time it closed (7-1-10)
 - The 2010 census showed 357 or about 60% of Dana's students living in campus dorms
 - Pretty safe estimate that 400-500 students moved out of county
 - Based on census data, half likely age 18-19 and half age 20-24
 - That would equate to a decline of 15-20% of those aged 15-19 and 20-24 counted as of the April 1, 2010 census
- Some faculty & staff likely stayed in Washington County, others likely moved away

Net Migration by Location for Washington County, NE

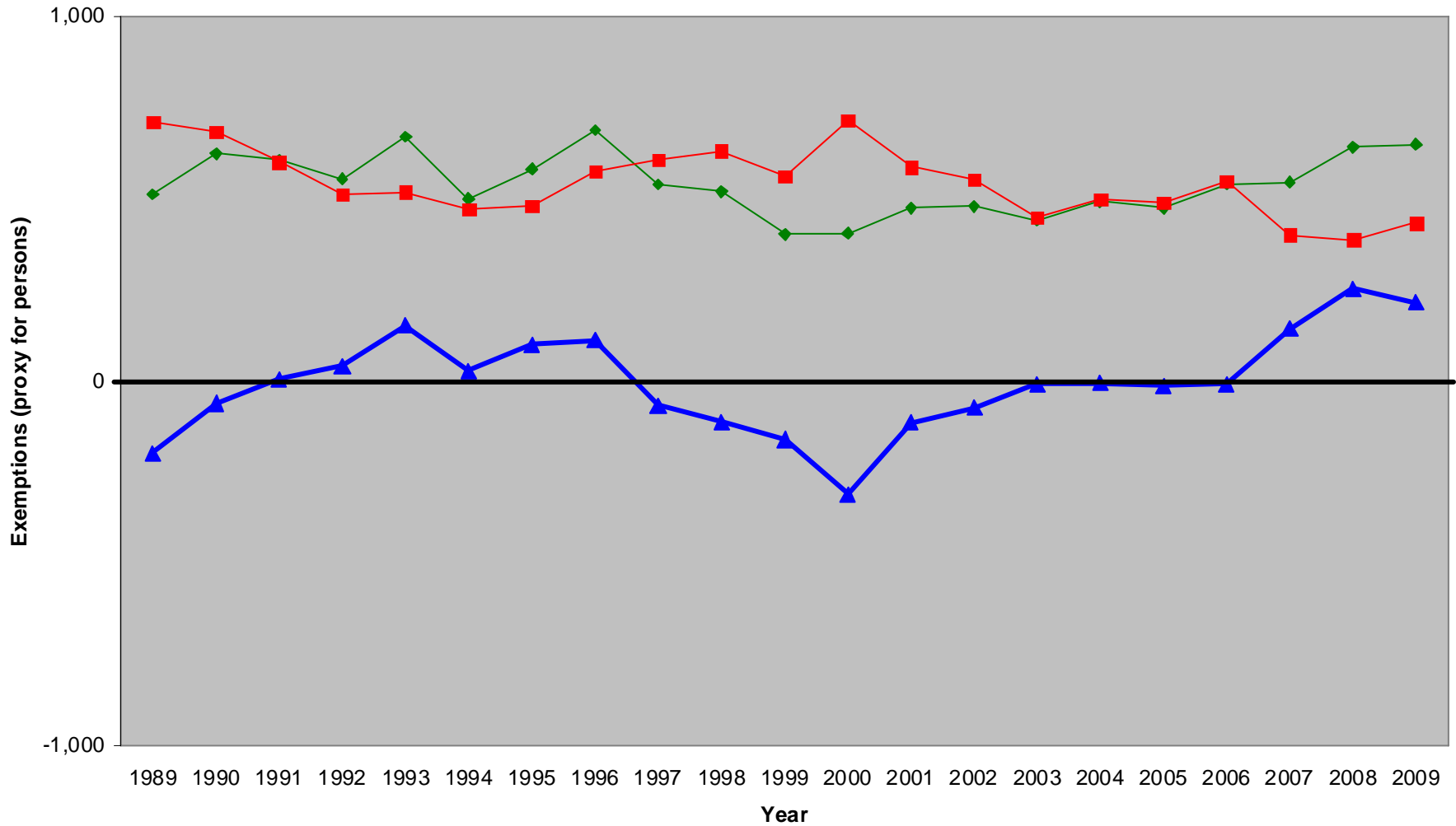


Year	Douglas County	Other NE counties	Out-of-State	Total Migration
2000	131	-7	-76	48
2001	59	138	-5	192
2002	64	45	-31	78
2003	171	57	5	233
2004	59	-70	8	-3
2005	105	4	50	159
2006	97	-22	-17	58
2007	85	-12	-6	67
2008	1	-64	-47	-110
2009	50	-17	-27	6
Totals	822	52	-146	728

Source: IRS county-to-county migration statistics,
compiled by David Drozd

- Chicken or the egg
 - I've become a believer that people follow jobs, not jobs come to where people are
- People adapt and are price sensitive
 - Desire to commute wanes as gas prices increase
- People choose to live in places in their best interest (what's best for them/their family)
 - People are coming to Nebraska for jobs right now
 - Nebraska has typically lost people to states with a lower tax burden

Number of Tax Return Exemptions for Movers between Nebraska and Michigan: 1989 to 2009

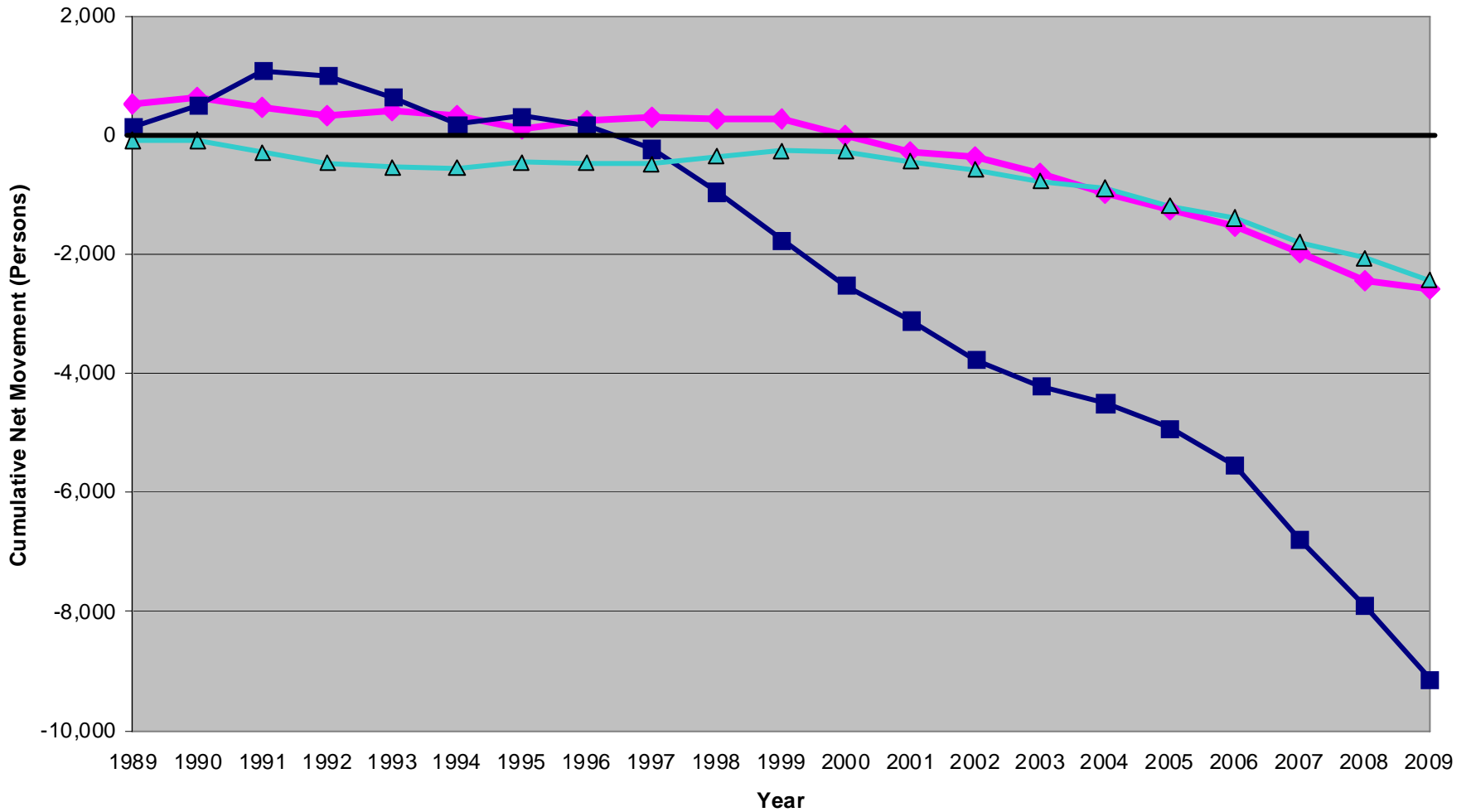


Source: IRS State-to-State Migration Files

◆ Total Inflow ■ Total Outflow ▲ Total Net Flow

Compiled and Prepared by: David Drozd, CPAR @ UNO 7-25-11

Cumulative Net Person Movement between Nebraska and South Dakota, Texas, and Wyoming: 1989-2009



Source: IRS State-to-State Migration Files

◆ South Dakota
 ■ Texas
 ▲ Wyoming

Compiled and Prepared by: David Drozd, CPAR @ UNO 7-25-11

- Washington County has a relatively small 20-something population and an expanding older population
 - Impacts demand for certain products/services
 - Would you rather start a daycare or elder-care business here?
- Many residents are likely working in Omaha and spending money there (lunch, shopping)
 - Need to focus on local jobs/employer recruitment
- What will happen if baby boomers nearing retirement move out of state per the past trends?
 - Who will be here to care for the population aged 70+
- It's easier to try to keep people in the local area than to entice them to move back once they've moved away
 - What incentives/positive attributes exist for staying here?
 - One exception is that people do often return for family reasons