


Fall 2014

Enrollment Report - Fall 2014

UNO Office of Institutional Effectiveness
University of Nebraska at Omaha

Follow this and additional works at: <https://digitalcommons.unomaha.edu/oieenrollment>

 Part of the [Educational Assessment, Evaluation, and Research Commons](#), and the [Higher Education Commons](#)

Please take our feedback survey at: https://unomaha.az1.qualtrics.com/jfe/form/SV_8cchtFmpDyGfBLE

Recommended Citation

Office of Institutional Effectiveness, UNO, "Enrollment Report - Fall 2014" (2014). *Enrollment Reports*. 7. <https://digitalcommons.unomaha.edu/oieenrollment/7>

This Report is brought to you for free and open access by the Systems Intelligence and Data Analytics (SIDA) at DigitalCommons@UNO. It has been accepted for inclusion in Enrollment Reports by an authorized administrator of DigitalCommons@UNO. For more information, please contact unodigitalcommons@unomaha.edu.

OFFICE OF INSTITUTIONAL EFFECTIVENESS

ENROLLMENT PROFILE REPORT

FALL 2014



UNIVERSITY OF
Nebraska
Omaha



University of Nebraska at Omaha
Enrollment Profile Report:
Fall 2014

Office of Institutional Effectiveness
Institutional Research

<http://www.unomaha.edu/oie/>

September, 2014

EXECUTIVE SUMMARY

This Enrollment Profile Report provides administrative- and delivery-site information on enrollment headcount and student credit hours, as well as the demographic characteristics of enrolled students. Delivery-site reporting counts all students, including those in UNL programs delivered at UNO, but excludes UNO programs delivered in Lincoln (CPACS programs). Administrative-site reporting counts students enrolled in UNO programs only (including the CPACS programs delivered in Lincoln).

The purpose of this profile is to provide the undergraduate and graduate enrollments and student credit hour information by college or equivalent academic unit, class, gender and ethnicity. A glossary at the end of the report provides a list of definitions for headings. All information in this report was produced from the fall 2014 Census Enrollment Snapshot file. The Census Snapshot date was September 2, 2014.

Administrative-Site Campus Summary

- Fall 2014 head count enrollment is 15,227, a 0% increase compared to the fall 2013 enrollment of 15,227 (see Figure 1).
- Fall 2014 undergraduate head count enrollment is 12,221, a 0.9% decrease compared to the fall 2013 enrollment of 12,335 (see Figure 5).
- Fall 2014 graduate headcount enrollment is 3,006, a 3.9% increase compared to the fall 2013 enrollment of 2,892 (see Figure 5).
- Fall 2014 student credit hours are 169,533, a 0.7% increase compared to the fall 2013 credit hours of 168,421 (see Figure 6).
- Fall 2014 undergraduate credit hours are 151,901, down from fall 2013 by 0.2% (see Figure 6).
- Fall 2014 graduate credit hours are 17,632, up from fall 2013 by 8.4% (see Figure 6).

Delivery-Site Campus Summary

- Fall 2014 head count enrollment is 15,723, a 0.1% increase compared to the fall 2013 enrollment of 15,714 (see Figure 1).
- Fall 2014 undergraduate head count is 12,717, a 0.7% decrease compared to the fall 2013 enrollment of 12,805 (see Figure 2).
- Fall 2014 graduate head count enrollment is 3,006, a 3.3% increase compared to the fall 2013 enrollment of 2,909 (see Figure 2).
- Fall 2014 student credit hours are 172,063, a 0.1% decrease compared to the fall 2013 credit hours of 172,231 (see Figure 3).
- Fall 2014 undergraduate credit hours are 153,663, down from fall 2013 by 0.6% (see Figure 3).
- Fall 2014 graduate credit hours are 18,400, up from fall 2013 by 4.7% (see Figure 3).

Contents

Executive Summary.....	i
------------------------	---

List of Tables:

Table 1: UNO Delivery-Site and Administrative-Site Head Count Enrollment and Comparison: Fall Semester, 2014.....	5
Table 2: Total UNO Delivery-Site Head Count Summary for Undergraduate and Graduate Students Full and Part-Time by Gender and Race Classification: Fall 2014.....	9
Table 3: Total UNO Administrative-Site Head Count Summary for Undergraduate and Graduate Students by Full and Part-Time by Gender and Race Classification: Fall 2014.....	12
Table 4: College of Arts & Sciences Head Count Summary for Undergraduate and Graduate Students by Full and Part-Time by Gender and Race Classification: Fall 2014.....	15
Table 5: College of Business Administration Head Count Summary for Undergraduate and Graduate Students by Full and Part-Time by Gender and Race Classification: Fall 2014.....	18
Table 6: College of Communication, Fine Arts and Media Delivery-Site Head Count Summary for Undergraduate and Graduate Students by Full and Part-Time by Gender and Race Classification: Fall 2014.....	21
Table 7: College of Communication, Fine Arts and Media Administrative-Site Head Count Summary for Undergraduate and Graduate Students by Full and Part-Time by Gender and Race Classification: Fall 2014.....	24
Table 8: College of Education Head Count Summary for Undergraduate and Graduate Students by Full and Part-Time by Gender and Race Classification: Fall 2014.....	27
Table 9: College of Information Science and Technology Head Count Summary for Undergraduate and Graduate Summary by Full and Part-Time by Gender and Race Classification: Fall 2014.....	30
Table 10: College of Public Affairs and Community Service Delivery-Site Head Count Summary for Undergraduate and Graduate Students by Full and Part-Time by Gender and Race Classification: Fall 2014.....	33
Table 11: College of Public Affairs & Community Service Administrative-Site Head Count Summary for Undergraduate and Graduate Students by Full and Part-Time by Gender and Race Classification: Fall 2014.....	36
Table 12: College of CPACS Division of Continuing Studies Head Count Summary for Undergraduate Students by Full and Part-Time by Gender and Race Classification: Fall 2014.....	38
Table 13: Cooperative Graduate Program Head Count Summary for Graduate Students by Full and Part-Time by Gender and Race Classification: Fall 2014.....	39
Table 14: University Division Head Count Summary for Undergraduate Students by Full and Part-Time by Gender and Race Classification: Fall 2014.....	42
Table 15: Non-Degree/Intercampus Head Count Summary for Special Undergraduate Students by Full and Part-Time by Gender and Race Classification: Fall 2014.....	44
Table 16: Non-Degree/Intercampus Head Count Summary for Special Graduate Students by Full and Part-Time by Gender and Race Classification: Fall 2014.....	46

Table 17: College of Agriculture Head Count Summary for Undergraduate Students by Full and Part-Time by Gender and Race Classification: Fall 2014.....	50
Table 18: College of Architecture Head Count Summary for Undergraduate Students by Full and Part-Time by Gender and Race Classification: Fall 2014.....	53
Table 19: College of Engineering Head Count Summary for Undergraduate Students by Full and Part-Time by Gender and Race Classification: Fall 2014.....	56
Table 20: College of Education and Human Sciences Head Count Summary for Undergraduate Students by Full and Part-Time by Gender and Race Classification: Fall 2014.....	59
List of Figures:	
Figure 1: Delivery-Site & Administrative-Site Head Count Enrollment: Fall 1990 – 2014.....	6
Figure 2: UNO Delivery-Site Head Count by Student Level: Fall 2003-2014.....	7
Figure 3: UNO Delivery-Site Student Credit Hours by Student Level: Fall 2003-2014.....	7
Figure 4: UNO Delivery-Site Head Count by Ethnicity by Gender: Fall 2014.....	8
Figure 5: UNO Administrative-Site Head Count by Student Level: Fall 2003-2014.....	10
Figure 6: UNO Administrative-Site Student Credit Hours: Fall 2003-2014.....	10
Figure 7: UNO Administrative-Site Head Count by Ethnicity by Gender: Fall 2014.....	11
Figure 8: College of Arts & Sciences Head Count: Fall 2003-2014.....	13
Figure 9: College of Arts & Sciences Student Credit Hours: Fall 2003-2014.....	13
Figure 10: College of Arts & Sciences Head Count by Ethnicity by Gender: Fall 2014.....	14
Figure 11: College of Business Administration Head Count: Fall 2003-2014.....	16
Figure 12: College of Business Administration Student Credit Hours: Fall 2003-2014.....	16
Figure 13: College of Business Administration Head Count by Ethnicity by Gender: Fall 2014.....	17
Figure 14: College of Communication, Fine Arts and Media Delivery-Site Head Count: Fall 2005-2014.....	19
Figure 15: College of Communication, Fine Arts and Media Delivery-Site Student Credit Hours: Fall 2005-2014.....	19
Figure 16: College of Communication, Fine Arts and Media Delivery-Site Head Count by Ethnicity by Gender: Fall 2014.....	20
Figure 17: College of Communication, Fine Arts and Media: Administrative-Site Head Count: Fall 2005-2014.....	22
Figure 18: College of Communication, Fine Arts and Media: Administrative-Site Student Credit Hours: Fall 2005-2014.....	22
Figure 19: College of Communication, Fine Arts and Media: Administrative-Site Head Count by Ethnicity by Gender: Fall 2014.....	23
Figure 20: College of Education Head Count: Fall 2003-2014.....	25
Figure 21: College of Education Student Credit Hours: Fall 2003-2014.....	25
Figure 22: College of Education Head Count by Ethnicity by Gender: Fall 2014.....	26
Figure 23: College of Information Science & Technology Head Count: Fall 2003-2014.....	28

Figure 24: College of Information Science & Technology Student Credit Hours: Fall 2003-2014.....	28
Figure 25: College of Information Science & Technology Student Credit Hours: Fall 2003-2014.....	29
Figure 26: College of Public Affairs & Community Service Delivery-Site Head Count: Fall 2003-2014	31
Figure 27: College of Public Affairs & Community Service Delivery-Site Student Credit Hours: Fall 2003-2014	31
Figure 28: College of Public Affairs & Community Service Delivery-Site Head Count by Ethnicity by Gender: Fall 2014.....	32
Figure 29: College of Public Affairs & Community Service Administrative-Site Head Count: Fall 2003-2014.....	34
Figure 30: College of Public Affairs & Community Service Administrative-Site Student Credit Hours: Fall 2003-2014	34
Figure 31: College of Public Affairs & Community Service Administrative-Site Head Count by Ethnicity by Gender: Fall 2014	35
Figure 32: College of CPACS, Division of Continuing Studies Head Count: Fall 2003-2014	37
Figure 33: College of CPACS, Division of Continuing Studies Head Count by Ethnicity by Gender: Fall 2014.....	37
Figure 34: University Division Head Count: Fall 2003-2014.....	40
Figure 35: University Division Student Credit Hours: Fall 2003-2014.....	40
Figure 36: University Division Head Count by Ethnicity by Gender: Fall 2014	41
Figure 37: Non-Degree/Intercampus Special Undergraduate Students Head Count: Fall 2003-2014	43
Figure 38: Non-Degree/Intercampus Special Undergraduate Students Head Count by Ethnicity by Gender: Fall 2014.....	43
Figure 39: Non-Degree/Inter Campus Special Graduate Students Head Count: Fall 2003-2014	45
Figure 40: Non-Degree/Intercampus Special Graduate Students Head Count by Ethnicity by Gender: Fall 2014.....	45
Figure 41: Other Honors Student Credit Hours by Level of Instruction: Fall 2003-2014.....	47
Figure 42: College of Agriculture Delivery-Site Head Count: Fall 2003-2014.....	48
Figure 43: College of Agriculture Delivery-Site Student Credit Hours: Fall 2003-2014.....	48
Figure 44: College of Agriculture Delivery-Site Head Count by Ethnicity by Gender: Fall 2014	49
Figure 45: College of Architecture Delivery-Site Head Count: Fall 2003-2014	51
Figure 46: College of Architecture Delivery-Site Student Credit Hours: Fall 2003-2014	51
Figure 47: College of Architecture Delivery-Site Head Count by Ethnicity by Gender: Fall 2014.....	52
Figure 48: College of Engineering Delivery-Site Head Count: Fall 2003-2014.....	54
Figure 49: College of Engineering Delivery-Site Student Credit Hours: Fall 2003-2014.....	54
Figure 50: College of Engineering Delivery-Site Head Count by Ethnicity by Gender: Fall 2014	55
Figure 51: College of Education and Human Sciences Delivery-Site Head Count: Fall 2003-2014	57

Figure 52: College of Education and Human Sciences Delivery-Site Student Credit Hours: Fall 2003-2014.....	57
Figure 53: College of Education and Human Sciences Delivery-Site Head Count by Ethnicity by Gender: Fall 2003-2014.....	58
Glossary.....	60

Table 1: UNO Delivery-Site and Administrative-Site Head Count Enrollment and Comparison: Fall Semester, 2014

	Fall 2014		Fall 2013	Fall 2013-14 Administrative-Site	
	Delivery-Site	Administrative-Site	Administrative-Site	Numerical Change	Percent Change
UNO:					
<i>Undergraduate</i>					
Arts & Science	3,513	3,513	3,601	-88	-2.4%
Business Administration	1,995	1,995	1,941	54	2.8%
Communication, Fine Arts & Media	972	972	1,093	-121	-11.1%
Education	1,500	1,500	1,553	-53	-3.4%
Information Science and Technology	796	796	752	44	5.9%
Public Affairs & Community Services	748	1,080	1,063	17	1.6%
Division of Continuing Studies	1,250	1,250	1,270	-20	-1.6%
Sub-total CPACS including Cont. Studies	1,998	2,330	2,333	-3	-0.1%
Non-Degree	310	310	270	40	14.8%
University Division	805	805	792	13	1.6%
Total Undergraduate	11,889	12,221	12,335	-114	-0.9%
<i>Graduate</i>					
Arts & Science	449	449	414	35	8.5%
Business Administration	415	415	424	-9	-2.1%
Communication, Fine Arts & Media	83	83	84	-1	-1.2%
Education	867	867	811	56	6.9%
Information Science and Technology	359	359	270	89	33.0%
Public Affairs & Community Services	513	513	508	5	1.0%
New Cooperative Graduate Programs	6	6	9	-3	-33.3%
Undeclared	314	314	372	-58	-15.6%
Total Graduate	3,006	3,006	2,892	114	3.9%
UNO Administrative-Site Total		15,227	15,227	0	0.0%
UNL:	Fall 2014		Delivery Fall 2013	Numerical Change	Percent Change
Agriculture	14		15		
Architecture	16		30		
Engineering & Technology	795		779		
Education and Human Science	3		4		
Total UNL in Omaha	828		828	0	0.0%
	Fall 2014		Fall 2013	Numerical Change	Percent Change
UNO Delivery-Site Total	15,723		15,714	9	0.1%

Figure 1: Delivery-Site & Administrative-Site Head Count Enrollment: Fall 1990 – 2014

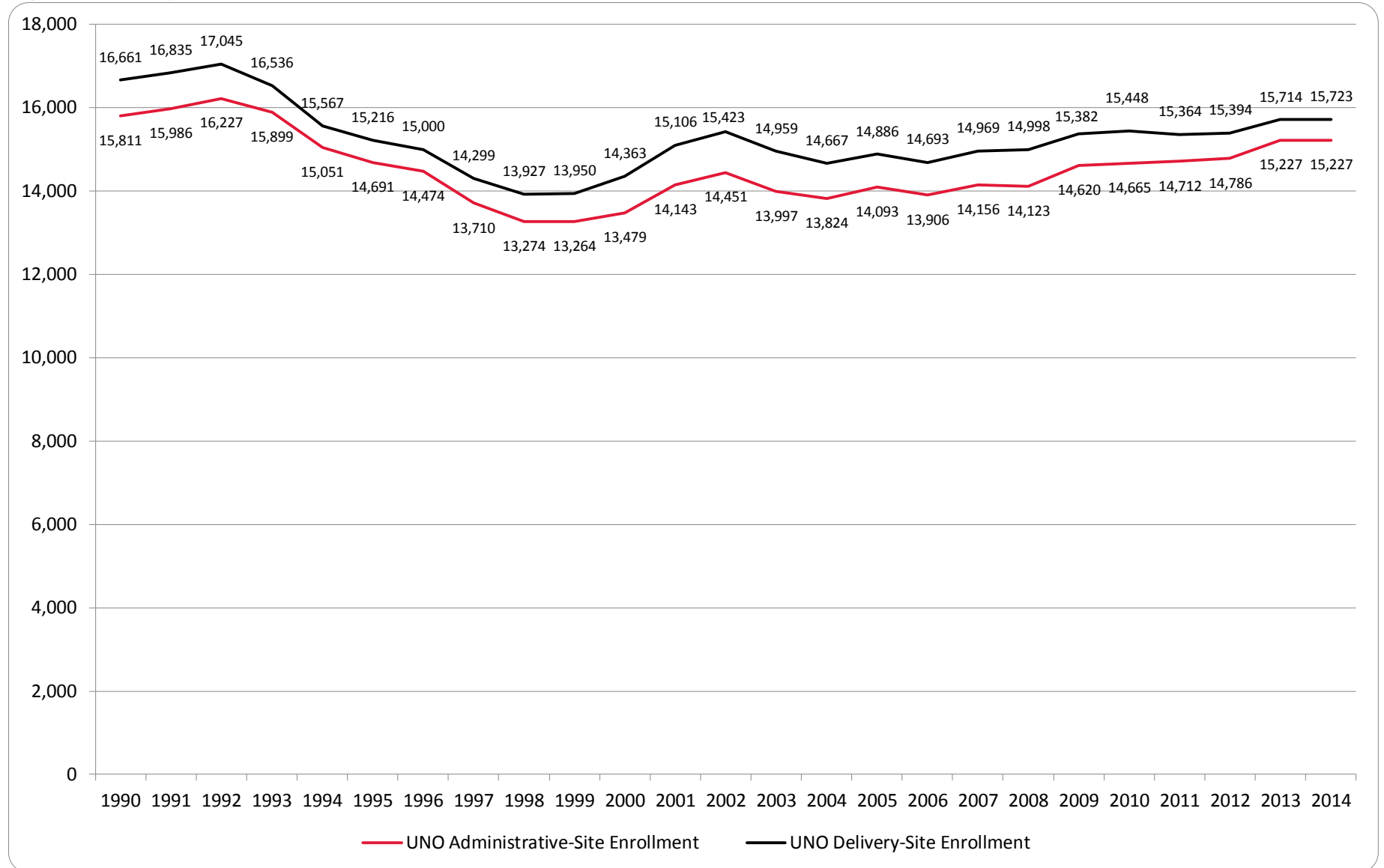


Figure 2: UNO Delivery-Site Head Count by Student Level: Fall 2003-2014

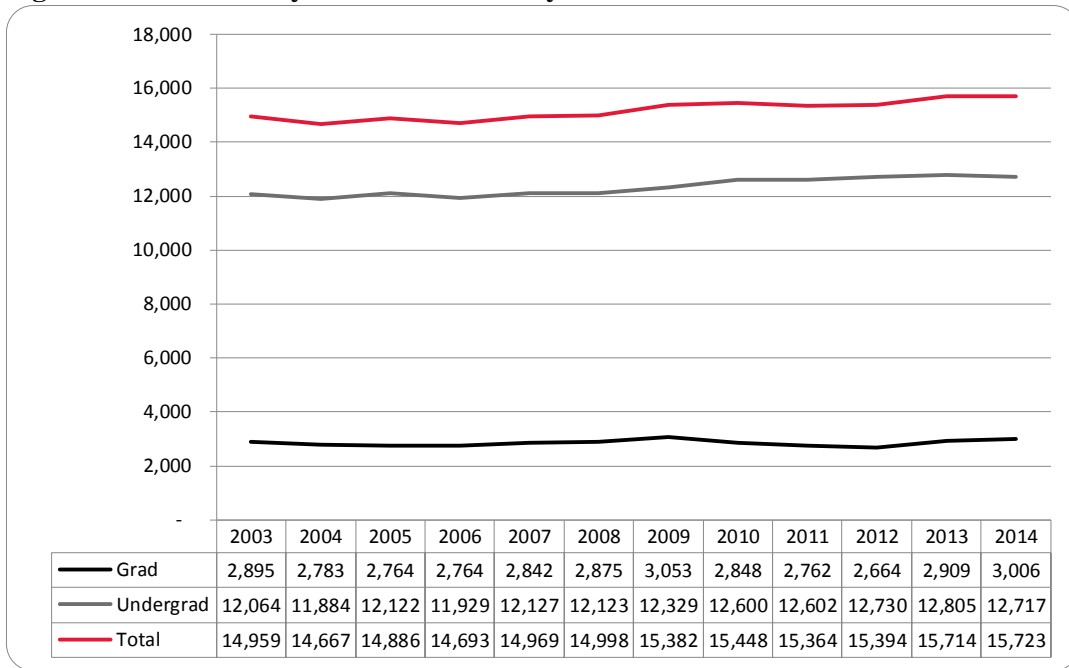


Figure 3: UNO Delivery-Site Student Credit Hours by Student Level: Fall 2003-2014

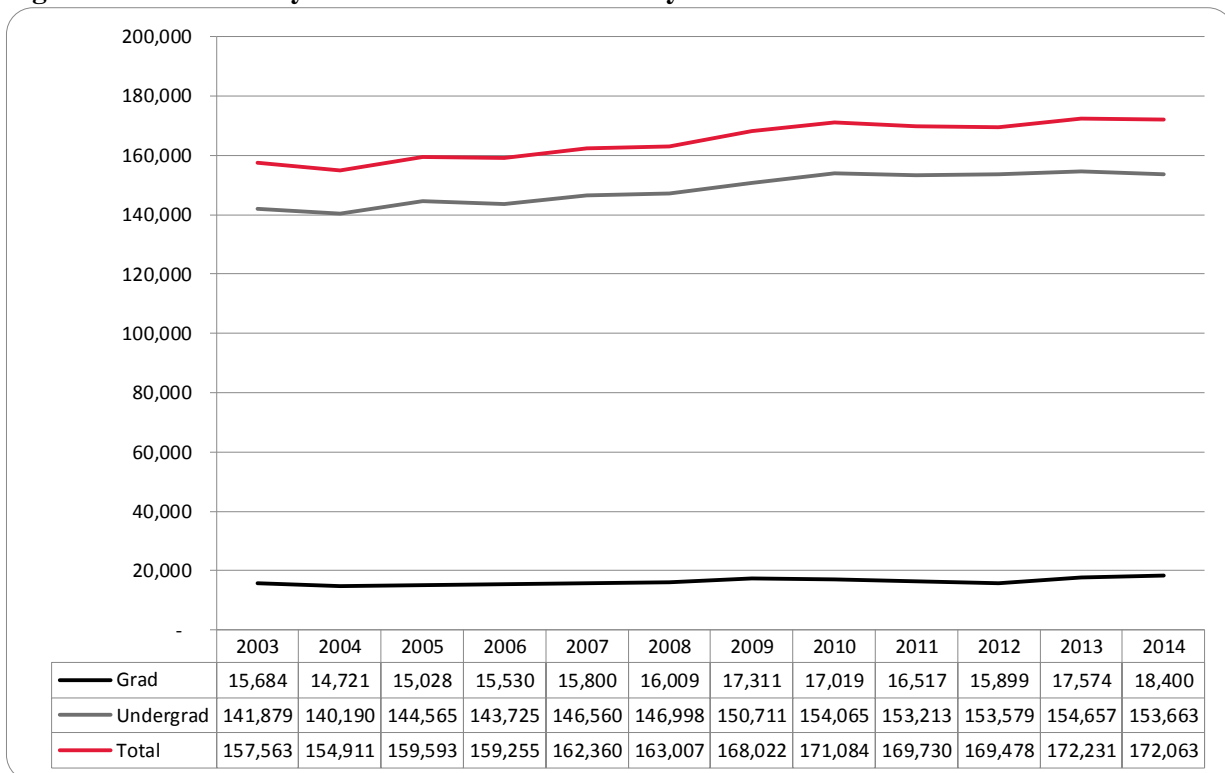


Figure 4: UNO Delivery-Site Head Count by Ethnicity by Gender: Fall 2014

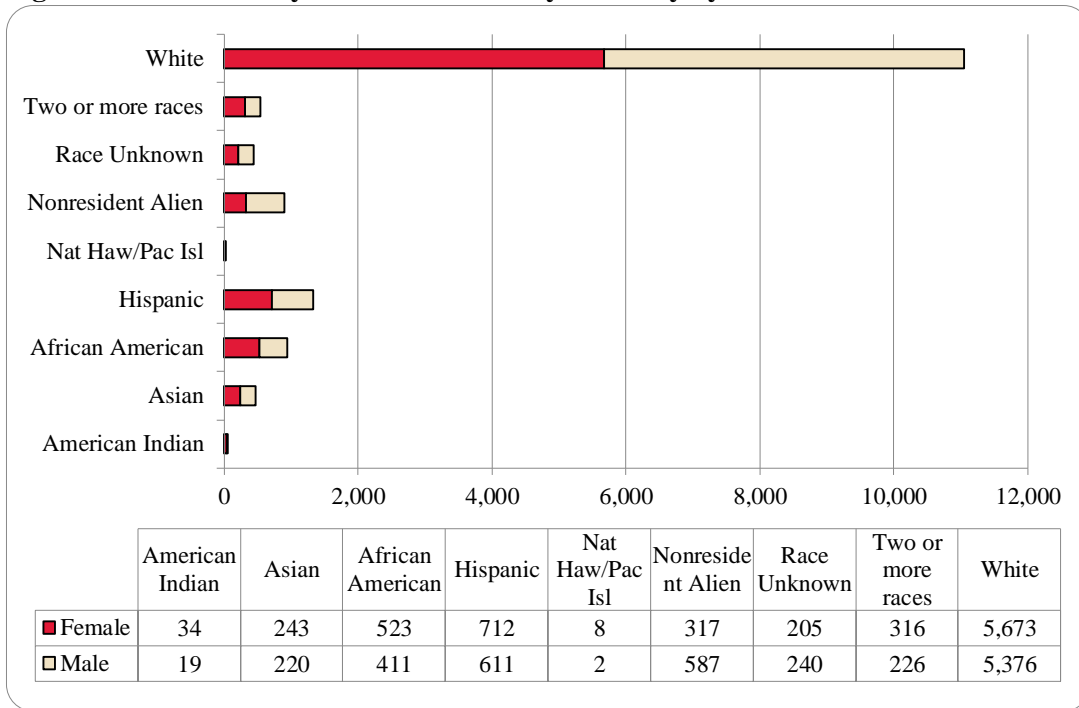


Table 2: Total UNO Delivery-Site Head Count Summary for Undergraduate and Graduate Students Full and Part-Time by Gender and Race Classification: Fall 2014

	American Indian		Asian		African American		Hispanics		Nat Haw / Pac Isl		Race Unknown		Two or more races		White		Nonresident Alien		Total			
	F	M	F	M	F	M	F	M	F	M	F	M	F	M	F	M	F	M	F	M	Total	
Undergraduate																						
Full-Time																						
First-Time Freshmen	4	1	49	32	72	37	135	113	1		24	17	60	41	640	639	22	50	1,007	930	1,937	
Other Freshmen	2	4	9	16	40	34	46	60		1	5	17	17	18	174	274	40	82	333	506	839	
Sophomores	4	1	35	33	73	63	139	91	3		19	31	54	41	774	748	40	77	1,141	1,085	2,226	
Juniors	5	3	34	32	85	62	106	110	2		39	35	59	37	863	908	24	55	1,217	1,242	2,459	
Seniors	7	3	36	31	56	51	97	66	1		49	46	34	24	885	828	17	41	1,182	1,090	2,272	
Special			4	3	2	2		3			2	1	1		30	55	1	2	40	66	106	
Total Full-Time	22	12	167	147	328	249	523	443	7	1	138	147	225	161	3,366	3,452	144	307	4,920	4,919	9,839	
Part-Time																						
First-Time Freshmen			1	2	3	5	5	12				2	3	2	27	33	2	6	41	62	103	
Other Freshmen	2		6	2	15	9	22	21		1	3	7	1	8	79	96	7	7	135	151	286	
Sophomores			6	10	21	13	18	17			3	5	8	7	139	173	4	1	199	226	425	
Juniors	3	2	13	8	26	25	26	29			13	12	10	6	244	252	2	4	337	338	675	
Seniors	1	1	8	12	57	44	40	34			16	21	12	12	362	438	8	15	504	577	1,081	
Special	1	2	3	6	7	11	7	12	1		5	10	5	4	125	107	2		156	152	308	
Total Part-Time	7	5	37	40	129	107	118	125	1	1	40	57	39	39	976	1,099	25	33	1,372	1,506	2,878	
Total Undergraduate	29	17	204	187	457	356	641	568	8	2	178	204	264	200	4,342	4,551	169	340	6,292	6,425	12,717	
Graduate																						
Full-Time																						
Certificate				1											1				1	1	2	
Masters	1	1	5	9	13	14	15	14			7	7	16	10	308	159	87	145	452	359	811	
Doctoral			1		2	1	2				1		3	1	14	13	5	10	28	25	53	
Special Graduate				1		1		2				1		1	20	21	11	30	31	57	88	
Total Full-Time	1	1	6	11	15	16	17	16			8	8	19	12	343	193	103	185	512	442	954	
Part-Time																						
Certificate			2			4	1						1		16	14	1	3	21	21	42	
Masters	3	1	25	16	44	30	42	19			17	20	23	10	781	490	32	38	967	624	1,591	
Doctoral			2	1	2	2	4	4			1	2	2	1	60	50	5	9	76	69	145	
Special Graduate	1		4	5	5	3	7	4			1	6	7	3	131	78	7	12	163	111	274	
Total Part-Time	4	1	33	22	51	39	54	27			19	28	33	14	988	632	45	62	1,227	825	2,052	
Total Graduate	5	2	39	33	66	55	71	43			27	36	52	26	1,331	825	148	247	1,739	1,267	3,006	
Total All Students	34	19	243	220	523	411	712	611	8	2	205	240	316	226	5,673	5,376	317	587	8,031	7,692	15,723	

Figure 5: UNO Administrative-Site Head Count by Student Level: Fall 2003-2014

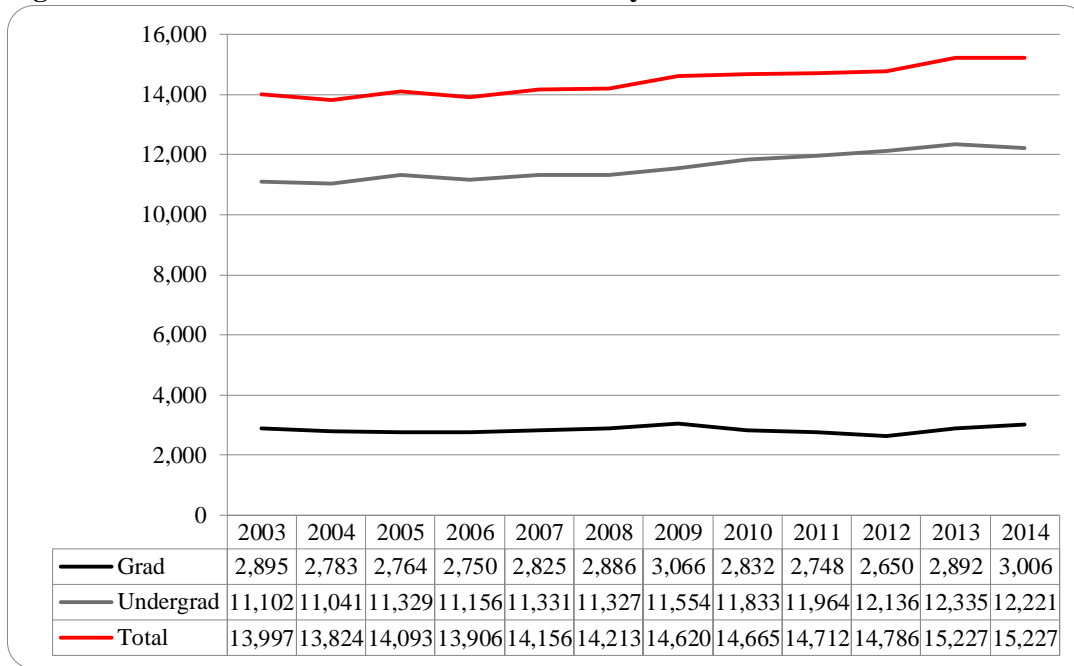


Figure 6: UNO Administrative-Site Student Credit Hours: Fall 2003-2014

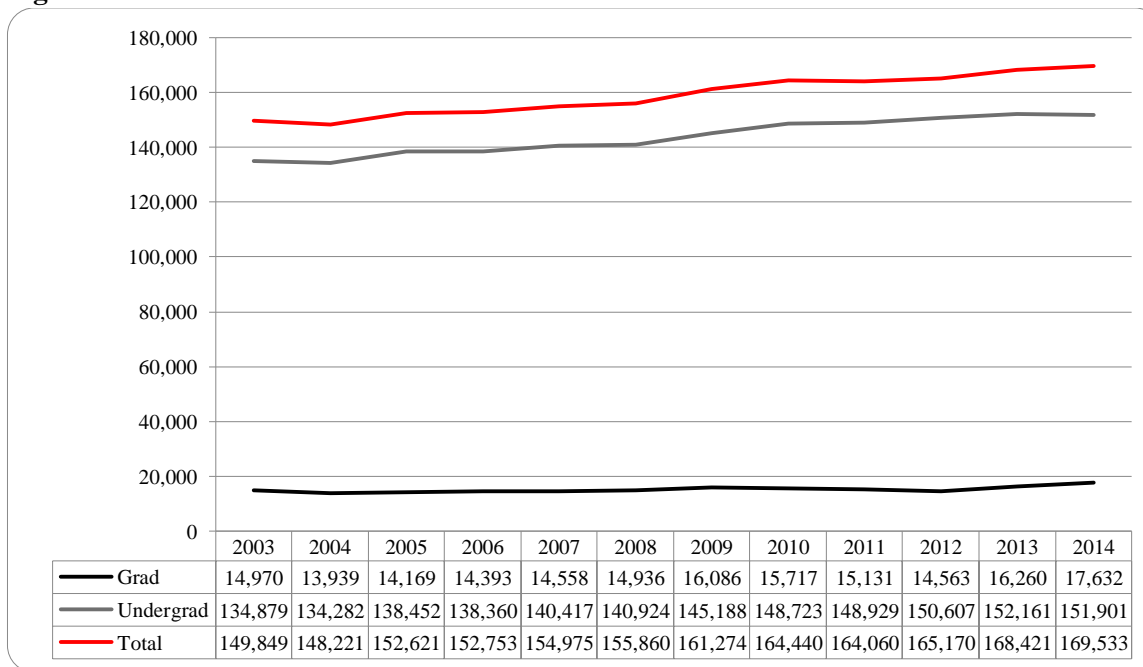


Figure 7: UNO Administrative-Site Head Count by Ethnicity by Gender: Fall 2014

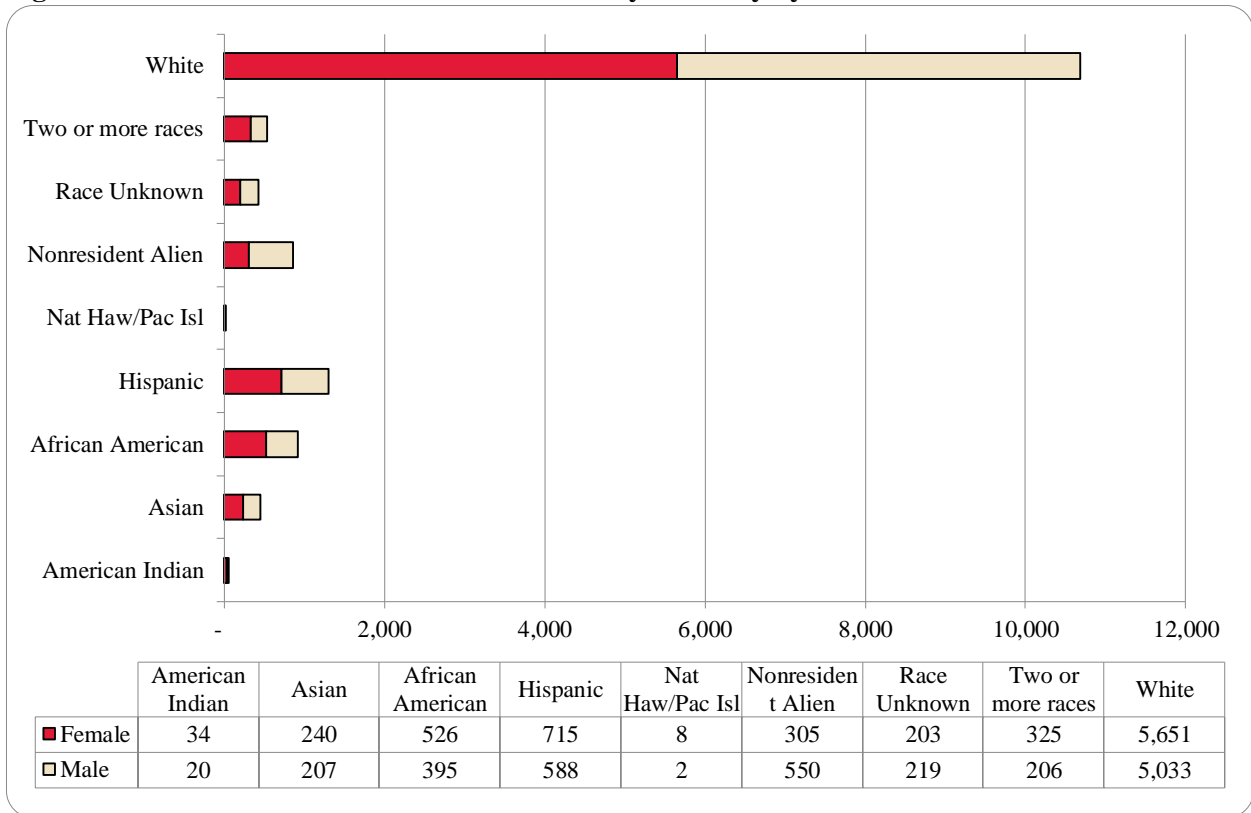


Table 3: Total UNO Administrative-Site Head Count Summary for Undergraduate and Graduate Students by Full and Part-Time by Gender and Race Classification: Fall 2014

	American Indian		Asian		African American		Hispanics		Nat Haw / Pac Isl		Race Unknown		Two or more races		White		Nonresident Alien		Total			
	F	M	F	M	F	M	F	M	F	M	F	M	F	M	F	M	F	M	F	M	Total	
Undergraduate																						
Full-Time																						
First-Time Freshmen	4	1	48	30	70	36	133	108	1		22	15	59	34	612	517	19	43	968	784	1,752	
Other Freshmen	2	4	9	15	42	37	47	61		1	5	17	19	18	189	282	40	78	353	513	866	
Sophomores	4	1	35	29	74	59	140	86	3		19	31	58	37	767	688	36	65	1,136	996	2,132	
Juniors	5	4	33	29	87	59	106	111	2		39	29	62	33	871	856	22	49	1,227	1,170	2,397	
Seniors	7	3	35	29	56	50	102	60	1		50	40	34	22	882	755	16	37	1,183	996	2,179	
Special			4	3	2	2		3			2		1		29	44		1	38	53	91	
Total Full-Time	22	13	164	135	331	243	528	429	7	1	137	132	233	144	3,350	3,142	133	273	4,905	4,512	9,417	
Part-Time																						
First-Time Freshmen			1	2	3	5	5	11				2	3	2	27	28	2	5	41	55	96	
Other Freshmen	2		6	2	15	9	22	21		1	3	6	1	7	79	92	7	7	135	145	280	
Sophomores			6	10	21	10	18	16			3	4	8	6	137	167	4		197	213	410	
Juniors	3	2	13	8	26	22	24	27			12	11	10	6	242	241	1	4	331	321	652	
Seniors	1	1	8	11	57	41	40	30			16	20	13	11	363	434	8	14	506	562	1,068	
Special	1	2	3	6	7	10	7	11	1		5	8	5	4	122	104	2		153	145	298	
Total Part-Time	7	5	37	39	129	97	116	116	1	1	39	51	40	36	970	1,066	24	30	1,363	1,441	2,804	
Total Undergraduate	29	18	201	174	460	340	644	545	8	2	176	183	273	180	4,320	4,208	157	303	6,268	5,953	12,221	
Graduate																						
Full-Time																						
Certificate				1											1				1	1	2	
Masters	1	1	5	9	13	14	15	14			7	7	16	10	308	159	87	145	452	359	811	
Doctoral			1		2	1	2				1		3	1	14	13	5	10	28	25	53	
Special Graduate				1		1		2				1		1	20	21	11	30	31	57	88	
Total Full-Time	1	1	6	11	15	16	17	16			8	8	19	12	343	193	103	185	512	442	954	
Part-Time																						
Certificate			2			4	1						1		16	14	1	3	21	21	42	
Masters	3	1	25	16	44	30	42	19			17	20	23	10	781	490	32	38	967	624	1,591	
Doctoral			2	1	2	2	4	4			1	2	2	1	60	50	5	9	76	69	145	
Special Graduate	1		4	5	5	3	7	4			1	6	7	3	131	78	7	12	163	111	274	
Total Part-Time	4	1	33	22	51	39	54	27			19	28	33	14	988	632	45	62	1,227	825	2,052	
Total Graduate	5	2	39	33	66	55	71	43			27	36	52	26	1,331	825	148	247	1,739	1,267	3,006	
Total All Students	34	20	240	207	526	395	715	588	8	2	203	219	325	206	5,651	5,033	305	550	8,007	7,220	15,227	

Figure 8: College of Arts & Sciences Head Count: Fall 2003-2014

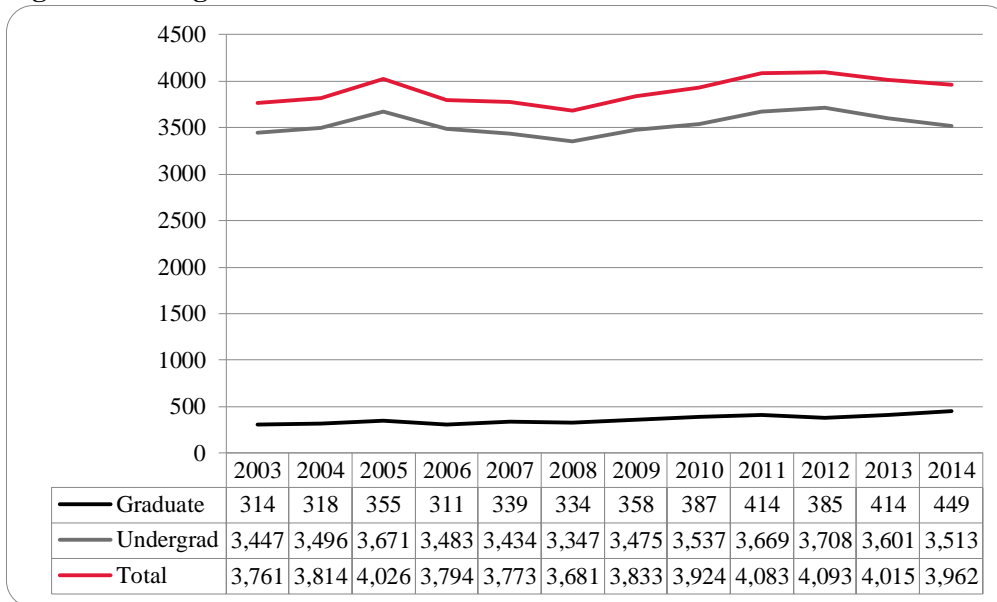


Figure 9: College of Arts & Sciences Student Credit Hours: Fall 2003-2014

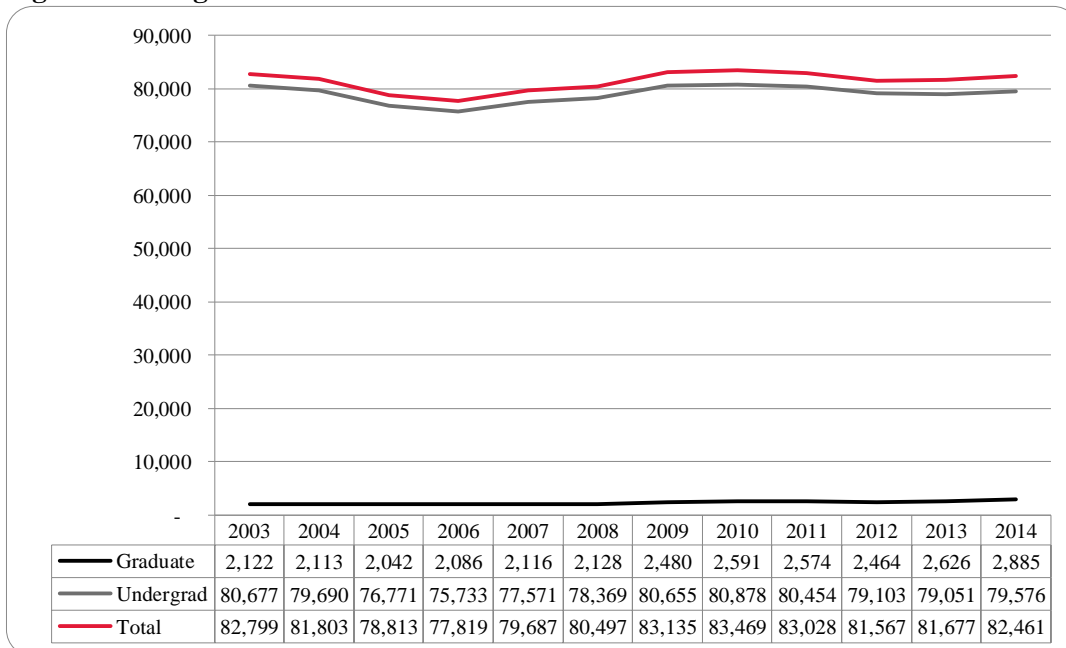


Figure 10: College of Arts & Sciences Head Count by Ethnicity by Gender: Fall 2014

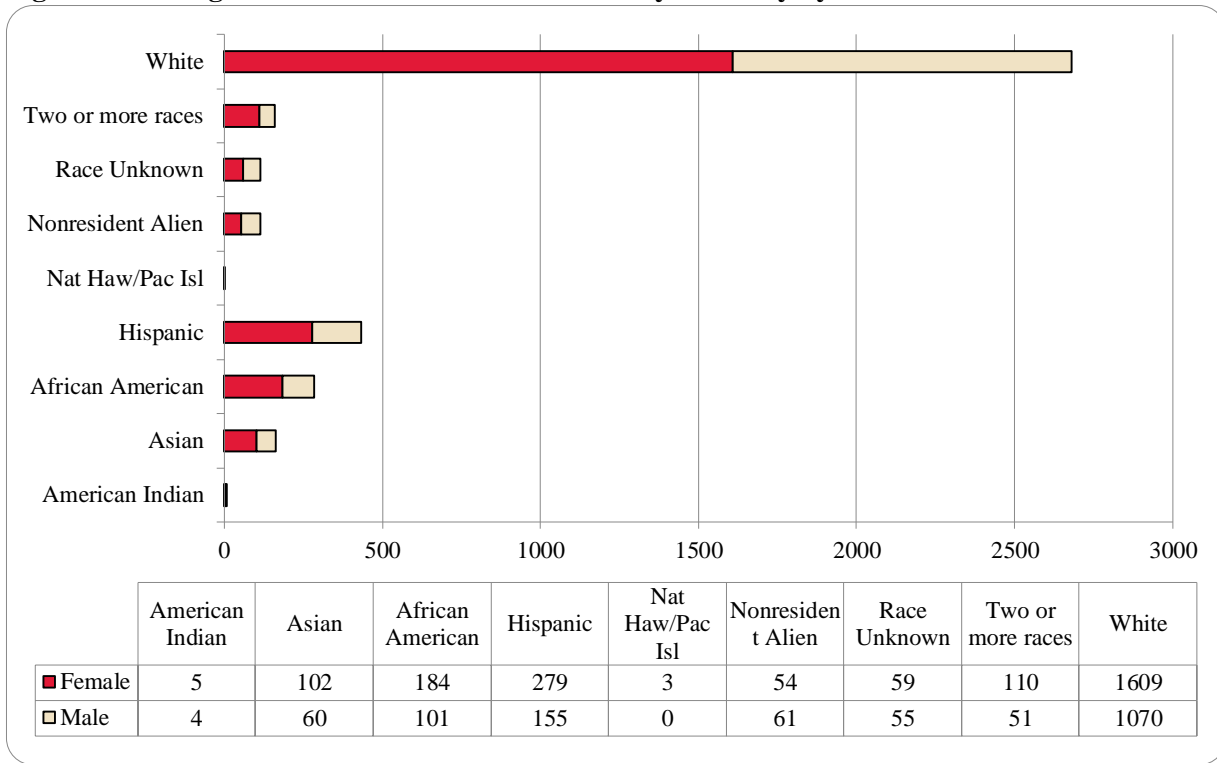


Table 4: College of Arts & Sciences Head Count Summary for Undergraduate and Graduate Students by Full and Part-Time by Gender and Race Classification: Fall 2014

	American Indian		Asian		African American		Hispanics		Nat Haw / Pac Isl		Race Unknown		Two or more races		White		Nonresident Alien		Total			
	F	M	F	M	F	M	F	M	F	M	F	M	F	M	F	M	F	M	F	M	Total	
Undergraduate																						
Full-Time																						
First-Time Freshmen	1		28	11	31	13	45	19			8	3	26	12	242	103	6	10	387	171	558	
Other Freshmen		2	4	5	20	10	20	13			4	1	6	5	56	47	5	12	115	95	210	
Sophomores			17	8	35	21	72	36	3		3	9	25	10	305	163	12	13	472	260	732	
Juniors	2	1	19	12	22	18	47	41			13	10	23	10	289	195	7	7	422	294	716	
Seniors	2		11	12	16	13	44	18			13	9	11	6	232	164	6	3	335	225	560	
Special			2	1	1								1		6	14		1	10	16	26	
Total Full-Time	5	3	81	49	125	75	228	127	3		41	32	92	43	1,130	686	36	46	1,741	1,061	2,802	
Part-Time																						
First-Time Freshmen			1		3	1	3	1					2		9	4	2		20	6	26	
Other Freshmen			5		3		7	1							21	10			36	11	47	
Sophomores			4	4	10	1	6	2			1	2	3	2	35	35	4		63	46	109	
Juniors			6	5	8	1	7	3			4	4	3		69	65			97	78	175	
Seniors		1	1	1	22	11	13	9			5	4	5	4	111	90	1	4	158	124	282	
Special			1		5	3	3	1			2	4	2		29	21	1		43	29	72	
Total Part-Time		1	18	10	51	17	39	17			12	14	15	6	274	225	8	4	417	294	711	
Total Undergraduate	5	4	99	59	176	92	267	144	3		53	46	107	49	1,404	911	44	50	2,158	1,355	3,513	
Graduate																						
Full-Time																						
Certificate																						
Masters					2	2	2	5			2	2	1	1	68	39	7	9	82	58	140	
Doctoral			1												5	1			6	1	7	
Special Graduate																						
Total Full-Time			1		2	2	2	5			2	2	1	1	73	40	7	9	88	59	147	
Part-Time																						
Certificate						1									3	4			3	5	8	
Masters			1	1	5	6	9	3			4	6	2	1	116	108	3	2	140	127	267	
Doctoral			1		1		1	3				1			12	7			15	11	26	
Special Graduate															1				1		1	
Total Part-Time			2	1	6	7	10	6			4	7	2	1	132	119	3	2	159	143	302	
Total Graduate			3	1	8	9	12	11			6	9	3	2	205	159	10	11	247	202	449	
Total All Students	5	4	102	60	184	101	279	155	3		59	55	110	51	1,609	1,070	54	61	2,405	1,557	3,962	

Figure 11: College of Business Administration Head Count: Fall 2003-2014

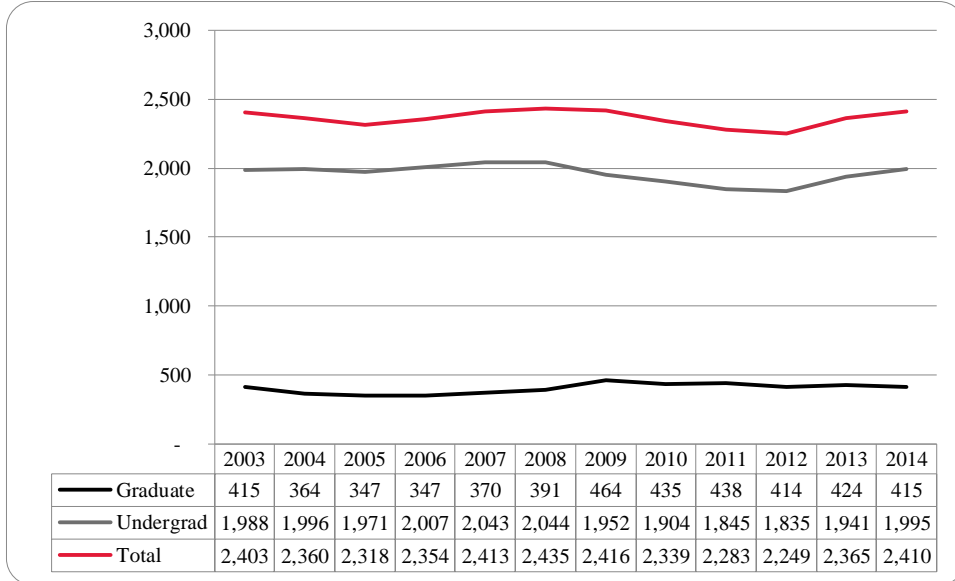


Figure 12: College of Business Administration Student Credit Hours: Fall 2003-2014

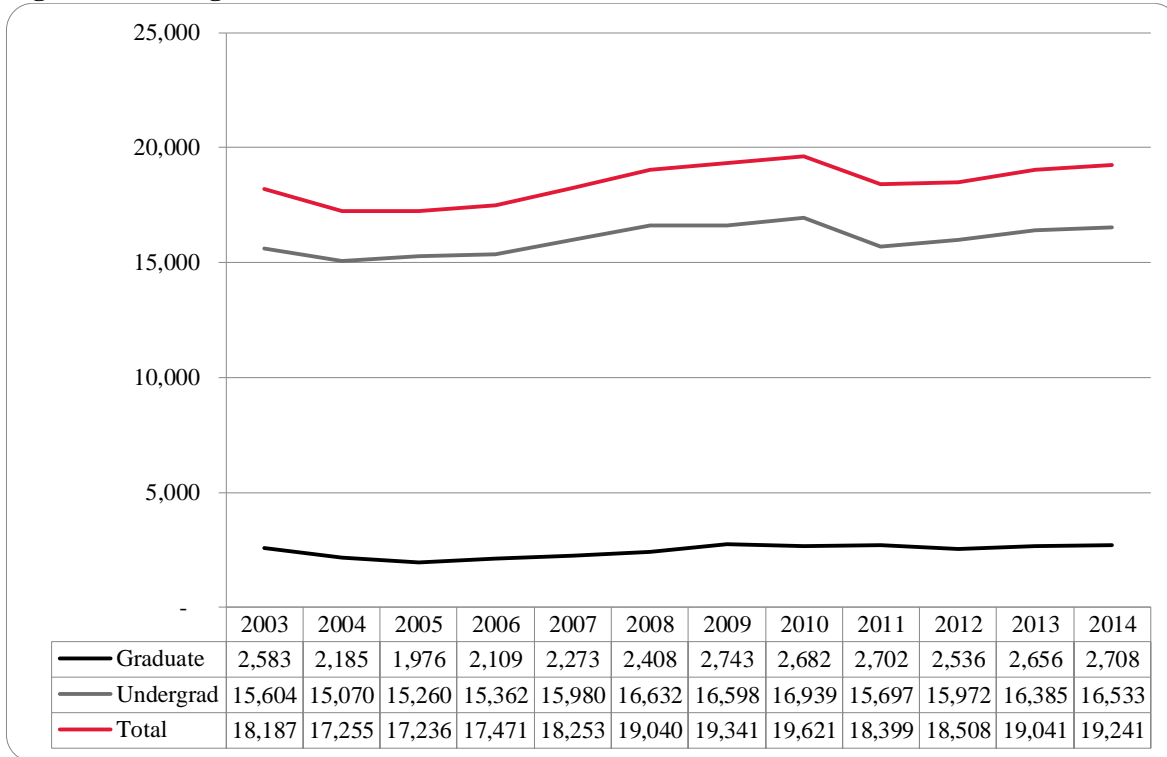


Figure 13: College of Business Administration Head Count by Ethnicity by Gender: Fall 2014

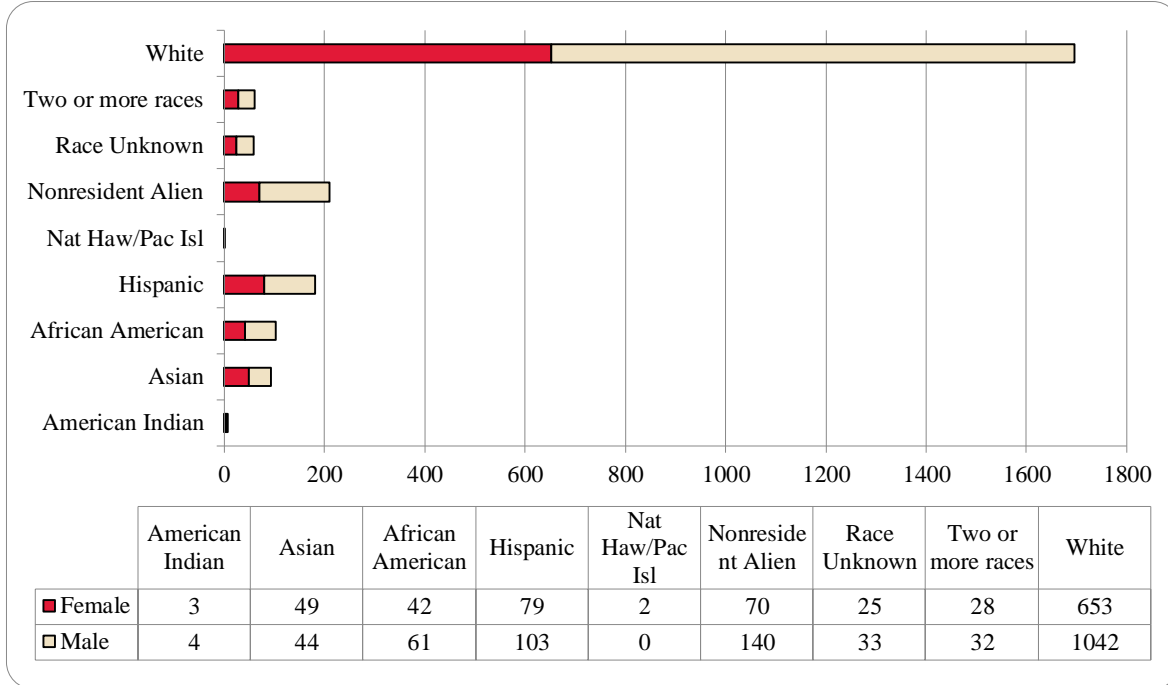


Table 5: College of Business Administration Head Count Summary for Undergraduate and Graduate Students by Full and Part-Time by Gender and Race Classification: Fall 2014

	American Indian		Asian		African American		Hispanics		Nat Haw / Pac Isl		Race Unknown		Two or more races		White		Nonresident Alien		Total		
	F	M	F	M	F	M	F	M	F	M	F	M	F	M	F	M	F	M	F	M	Total
Undergraduate																					
Full-Time																					
First-Time Freshmen			5	4	6	4	16	20	1		1	4	6	7	55	93	4	10	94	142	236
Other Freshmen			2	2	4	4	6	5				2	1	1	16	37	9	14	38	65	103
Sophomores			11	9	6	8	16	16			7	3	4	3	91	147	15	25	150	211	361
Juniors		1	5	5	9	5	10	22			2	5	4	8	104	187	10	22	144	255	399
Seniors	2	1	8	5	4	13	13	11			6	7	4	5	127	171	6	20	170	233	403
Special						1					1				3	4			4	5	9
Total Full-Time	2	2	31	25	29	35	61	74	1		17	21	19	24	396	639	44	91	600	911	1,511
Part-Time																					
First-Time Freshmen				1		1	2	3							3	2		3	5	10	15
Other Freshmen							2	1				1			5	5	2	2	9	9	18
Sophomores			2	2	3	1	3	3					2	2	22	26			32	34	66
Juniors	1		4	1	5	5	5	8			2	2			45	52		3	62	71	133
Seniors			3	4	4	8	5	3			2	5	1	3	67	90	4	3	86	116	202
Special		1		1		3		2	1		1			1	19	21			21	29	50
Total Part-Time	1	1	9	9	12	18	17	20	1		5	8	3	6	161	196	6	11	215	269	484
Total Undergraduate	3	3	40	34	41	53	78	94	2		22	29	22	30	557	835	50	102	815	1,180	1,995
Graduate																					
Full-Time																					
Certificate																					
Masters		1	1	5		4		2				3		1	18	41	13	31	32	88	120
Doctoral																					
Special Graduate																					
Total Full-Time		1	1	5		4		2				3		1	18	41	13	31	32	88	120
Part-Time																					
Certificate																1				1	1
Masters			8	5	1	4	1	7			3	1	6	1	78	165	7	7	104	190	294
Doctoral																					
Special Graduate																					
Total Part-Time			8	5	1	4	1	7			3	1	6	1	78	166	7	7	104	191	295
Total Graduate		1	9	10	1	8	1	9			3	4	6	2	96	207	20	38	136	279	415
Total All Students	3	4	49	44	42	61	79	103	2		25	33	28	32	653	1,042	70	140	951	1,459	2,410

Figure 14: College of Communication, Fine Arts and Media Delivery-Site Head Count: Fall 2005-2014

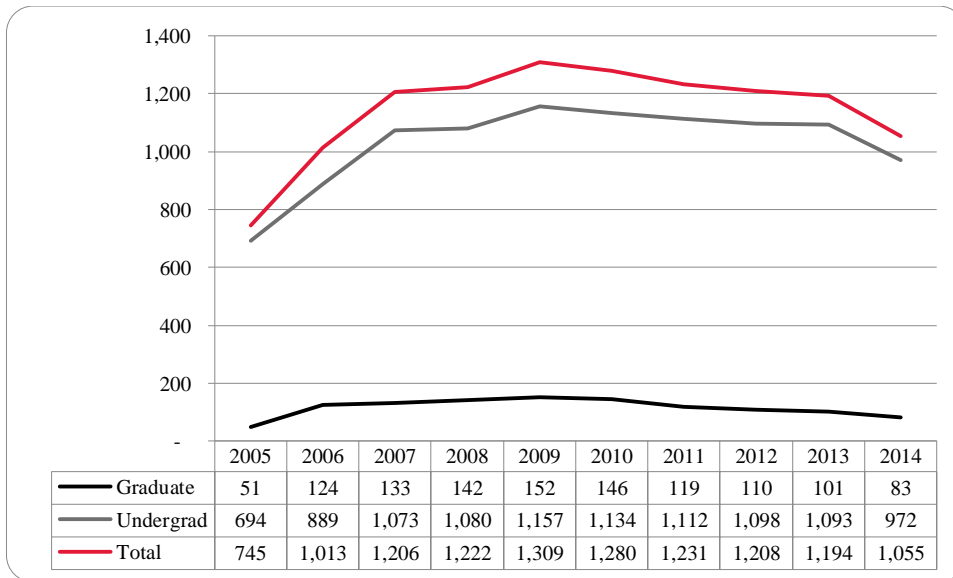


Figure 15: College of Communication, Fine Arts and Media Delivery-Site Student Credit Hours: Fall 2005-2014

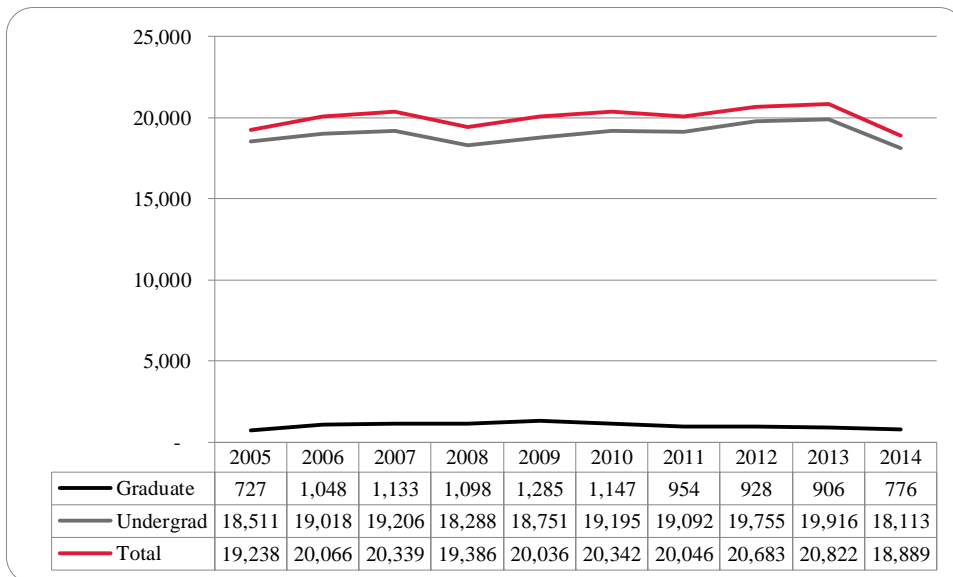


Figure 16: College of Communication, Fine Arts and Media Delivery-Site Head Count by Ethnicity by Gender: Fall 2014

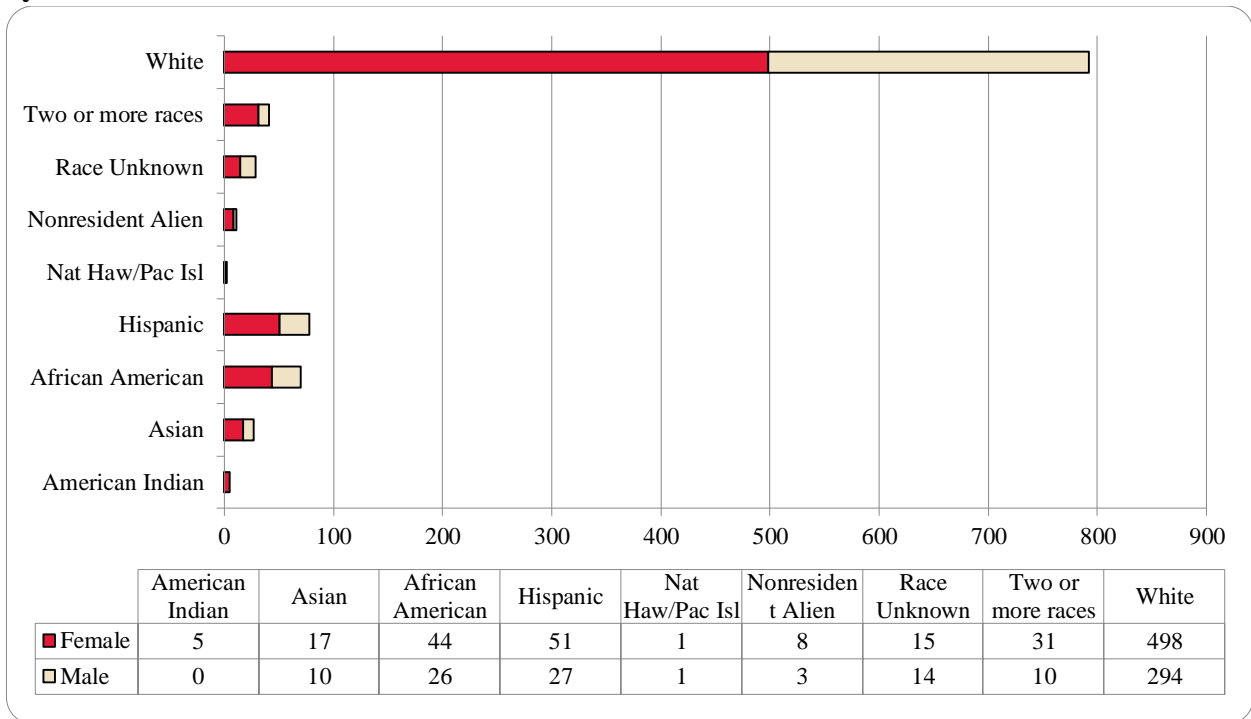


Table 6: College of Communication, Fine Arts and Media Delivery-Site Head Count Summary for Undergraduate and Graduate Students by Full and Part-Time by Gender and Race Classification: Fall 2014

	American Indian		Asian		African American		Hispanics		Nat Haw / Pac Isl		Race Unknown		Two or more races		White		Nonresident Alien		Total			
	F	M	F	M	F	M	F	M	F	M	F	M	F	M	F	M	F	M	F	M	Total	
Undergraduate																						
Full-Time																						
First-Time Freshmen	1			2	4	3	7	7			2	5	1	45	22		1	62	38	100		
Other Freshmen	1		1		2	4	5	4			2		1	22	19	1		32	30	62		
Sophomores	1		2	1	5	3	9	1			2	1	4	1	88	41	3		114	48	162	
Juniors	1		4	4	15	9	4	4			4	1	13	2	109	68	1		151	88	239	
Seniors			6	1	6	2	12	2	1		6	5	4	2	110	54			145	66	211	
Special			1											1	4			2	4	6		
Total Full-Time	4		14	8	32	21	37	18	1	1	12	11	26	7	375	208	5	1	506	274	780	
Part-Time																						
First-Time Freshmen														4	2			4	2	6		
Other Freshmen					1	1	1		1				1	4	5		1	6	9	15		
Sophomores					1	2	3	2					1	12	15			17	19	36		
Juniors	1				1		4				1	1		20	9			27	10	37		
Seniors			2		5	2	6	3			2	2	1	35	28			51	35	86		
Special				2			3							4	3			4	8	12		
Total Part-Time	1		2	2	8	5	14	8	1	1	2	3	3	1	79	62	1	1	109	83	192	
Total Undergraduate	5		16	10	40	26	51	26	1	1	14	14	29	8	454	270	5	2	615	357	972	
Graduate																						
Full-Time																						
Certificate																						
Masters					3						1		2	2	18	18	2	1	26	21	47	
Doctoral																						
Special Graduate																						
Total Full-Time					3						1		2	2	18	18	2	1	26	21	47	
Part-Time																						
Certificate														1	1			1	1	2		
Masters			1		1		1							25	5	1		28	6	34		
Doctoral																						
Special Graduate																						
Total Part-Time			1		1		1							26	6	1		29	7	36		
Total Graduate			1		4		1				1		2	2	44	24	3	1	55	28	83	
Total All Students	5		17	10	44	26	51	27	1	1	15	14	31	10	498	294	8	3	670	385	1,055	

Figure 17: College of Communication, Fine Arts and Media: Administrative-Site Head Count: Fall 2005-2014

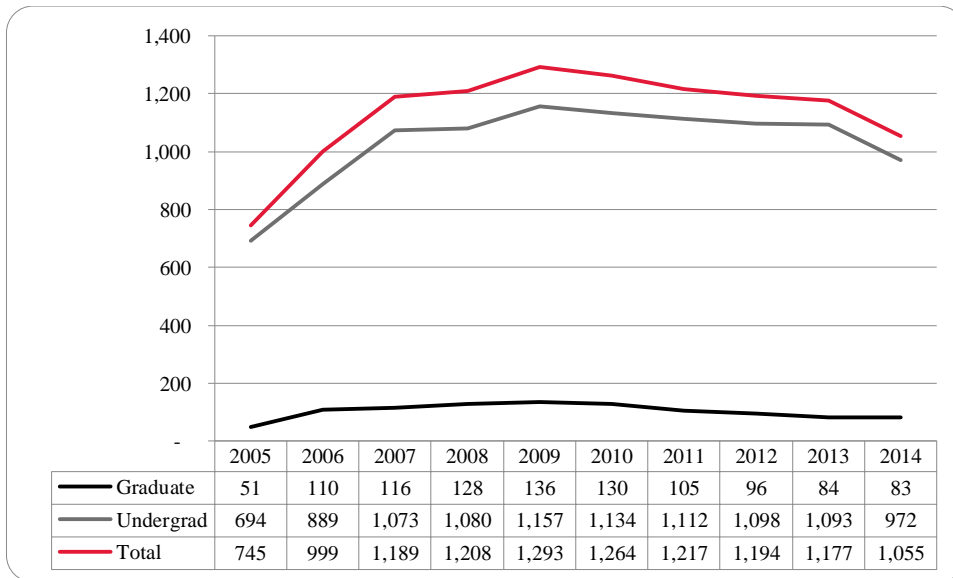


Figure 18: College of Communication, Fine Arts and Media: Administrative-Site Student Credit Hours: Fall 2005-2014

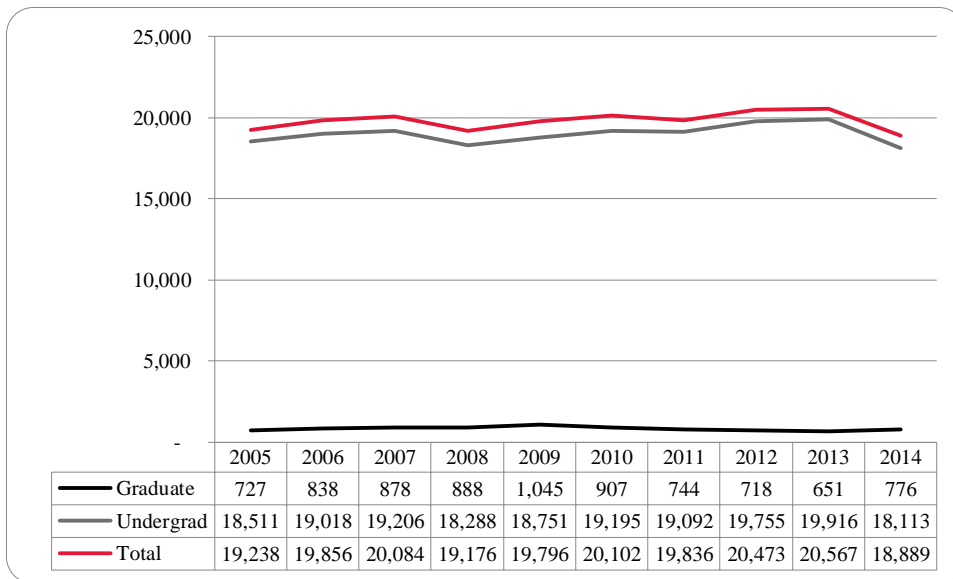


Figure 19: College of Communication, Fine Arts and Media: Administrative-Site Head Count by Ethnicity by Gender: Fall 2014

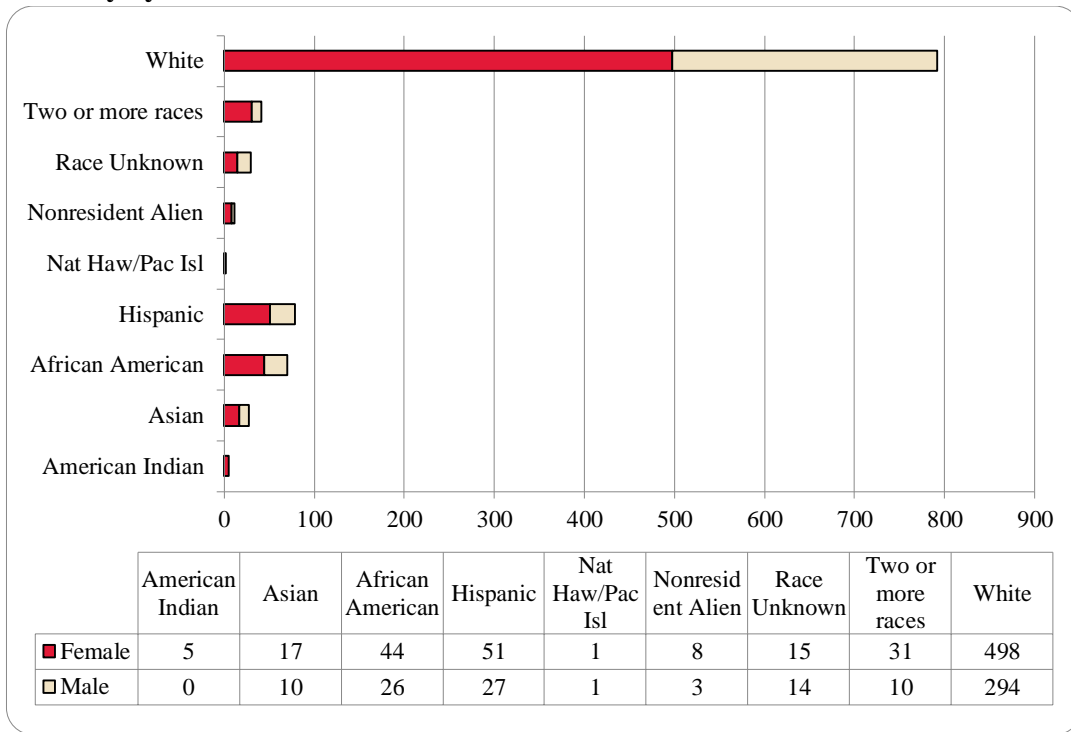


Table 7: College of Communication, Fine Arts and Media Administrative-Site Head Count Summary for Undergraduate and Graduate Students by Full and Part-Time by Gender and Race Classification: Fall 2014

	American Indian		Asian		African American		Hispanics		Nat Haw / Pac Isl		Race Unknown		Two or more races		White		Nonresident Alien		Total		
	F	M	F	M	F	M	F	M	F	M	F	M	F	M	F	M	F	M	F	M	Total
Undergraduate																					
Full-Time																					
First-Time Freshmen	1			2	4	3	7	7				2	5	1	45	22		1	62	38	100
Other Freshmen	1		1		2	4	5	4				2		1	22	19	1		32	30	62
Sophomores	1		2	1	5	3	9	1			2	1	4	1	88	41	3		114	48	162
Juniors	1		4	4	15	9	4	4			4	1	13	2	109	68	1		151	88	239
Seniors			6	1	6	2	12	2	1		6	5	4	2	110	54			145	66	211
Special			1												1	4			2	4	6
Total Full-Time	4		14	8	32	21	37	18	1		12	11	26	7	375	208	5	1	506	274	780
Part-Time																					
First-Time Freshmen															4	2			4	2	6
Other Freshmen					1	1	1			1				1	4	5		1	6	9	15
Sophomores					1	2	3	2					1		12	15			17	19	36
Juniors	1				1		4					1	1		20	9			27	10	37
Seniors			2		5	2	6	3			2	2	1		35	28			51	35	86
Special				2				3							4	3			4	8	12
Total Part-Time	1		2	2	8	5	14	8		1	2	3	3	1	79	62		1	109	83	192
Total Undergraduate	5		16	10	40	26	51	26	1	1	14	14	29	8	454	270	5	2	615	357	972
Graduate																					
Full-Time																					
Certificate																					
Masters					3						1		2	2	18	18	2	1	26	21	47
Doctoral																					
Special Graduate																					
Total Full-Time					3						1		2	2	18	18	2	1	26	21	47
Part-Time																					
Certificate															1	1			1	1	2
Masters			1		1			1							25	5	1		28	6	34
Doctoral																					
Special Graduate																					
Total Part-Time			1		1			1							26	6	1		29	7	36
Total Graduate			1		4			1			1		2	2	44	24	3	1	55	28	83
Total All Students	5		17	10	44	26	51	27	1	1	15	14	31	10	498	294	8	3	670	385	1,055

Figure 20: College of Education Head Count: Fall 2003-2014

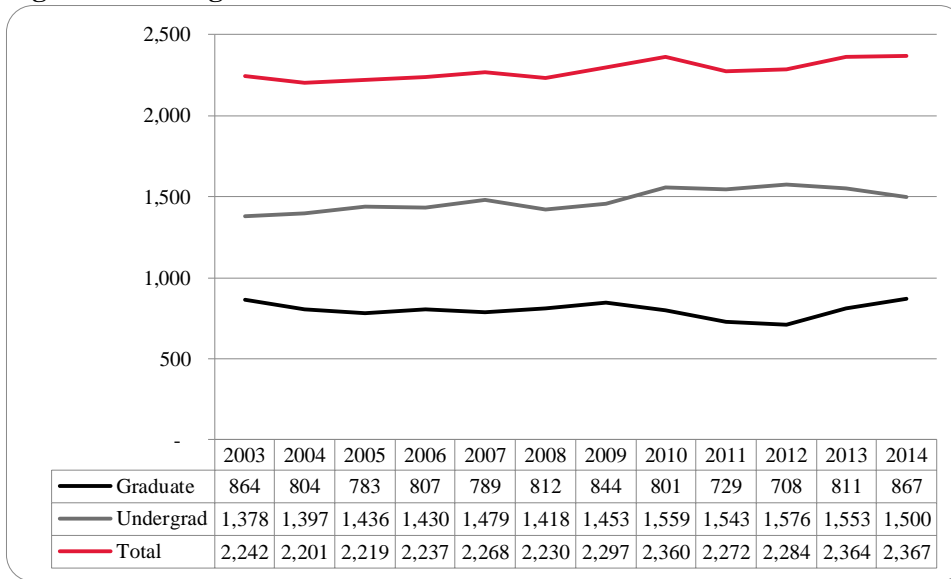


Figure 21: College of Education Student Credit Hours: Fall 2003-2014

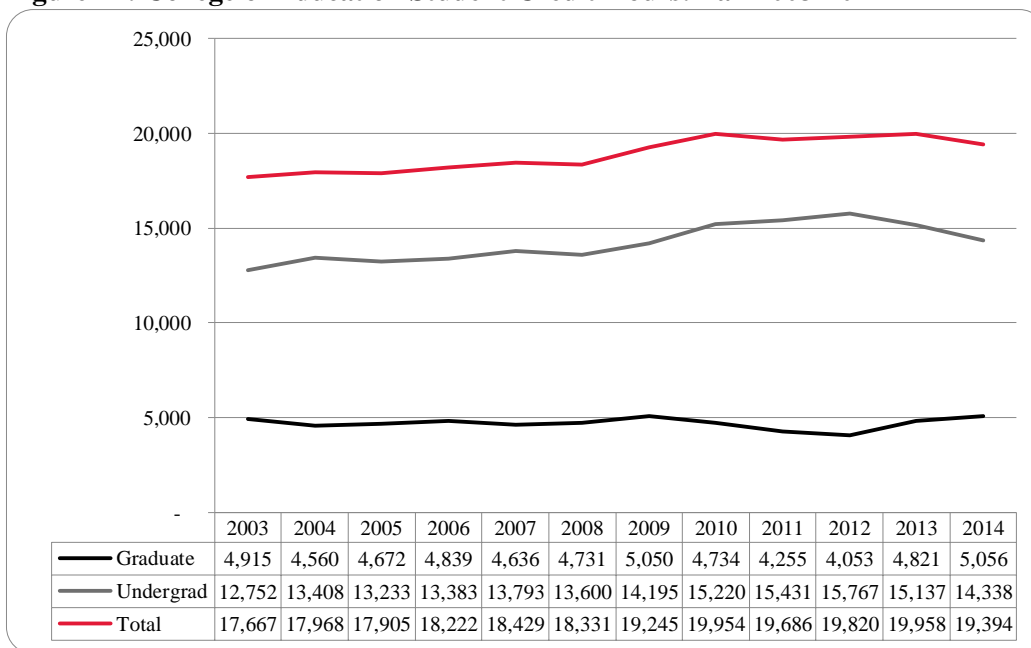


Figure 22: College of Education Head Count by Ethnicity by Gender: Fall 2014

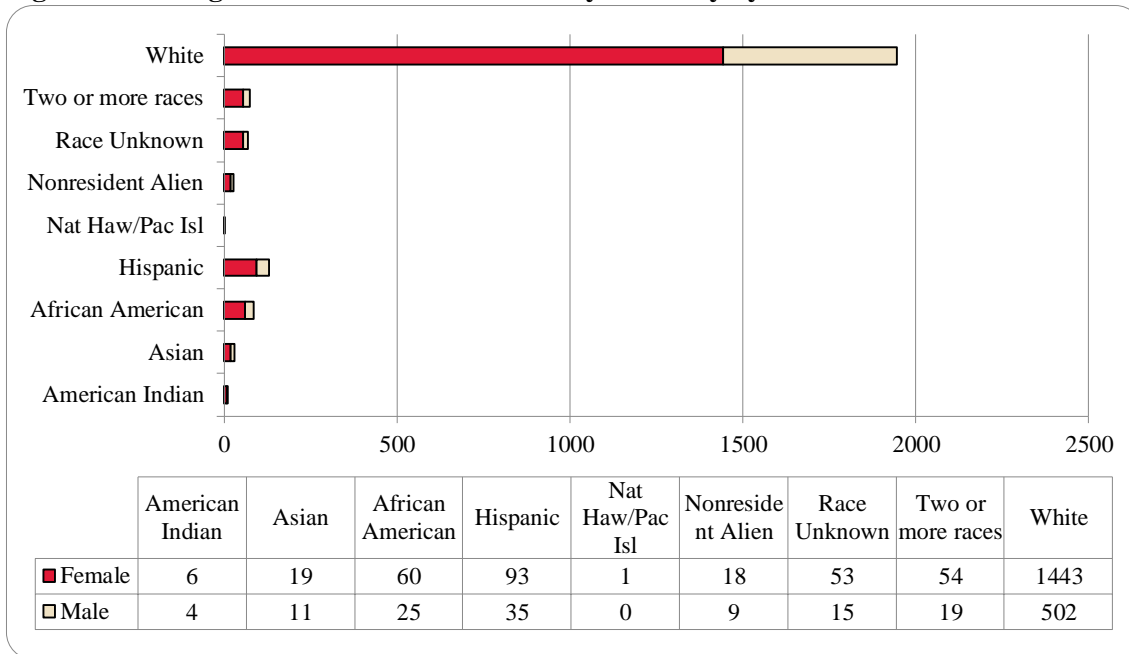


Table 8: College of Education Head Count Summary for Undergraduate and Graduate Students by Full and Part-Time by Gender and Race Classification: Fall 2014

	American Indian		Asian		African American		Hispanics		Nat Haw / Pac Isl		Race Unknown		Two or more races		White		Nonresident Alien		Total			
	F	M	F	M	F	M	F	M	F	M	F	M	F	M	F	M	F	M	F	M	Total	
Undergraduate																						
Full-Time																						
First-Time Freshmen			2	1	5	1	13				4	1	7	1	97	30	2	1	130	35	165	
Other Freshmen					2		2	2				2	2	1	23	8	1		30	13	43	
Sophomores	1		1	2	6	1	12	5			4	1	10	1	133	49	2	1	169	60	229	
Juniors	1	1	3	1	8	3	19	4	1		14	1	8	1	191	75	1	1	246	87	333	
Seniors	2	1	4	1	9	3	13	7			14	4	6	2	267	104	1		316	122	438	
Special			1		1	1	1	1							16	14			18	16	34	
Total Full-Time	4	2	11	5	31	9	59	19	1		36	9	33	6	727	280	7	3	909	333	1,242	
Part-Time																						
First-Time Freshmen								1							2	3			2	4	6	
Other Freshmen								1			1	1			5	1			6	3	9	
Sophomores								2					1		21	7			22	9	31	
Juniors		1			2	1	3	2			1	1	2	2	40	17			48	24	72	
Seniors				1	2	2	3	3			4				49	37			58	43	101	
Special		1	1		1	1	1	1					1	23	9	1			27	12	39	
Total Part-Time		2	1	1	5	4	7	9			6	2	3	3	140	74	1		163	95	258	
Total Undergraduate	4	4	12	6	36	13	66	28	1		42	11	36	9	867	354	8	3	1,072	428	1,500	
Graduate																						
Full-Time																						
Certificate																						
Masters				1	2	3	3	2			1	1	3	3	92	34	7	5	108	49	157	
Doctoral					2						1			1	6	5	2		11	6	17	
Special Graduate																						
Total Full-Time				1	4	3	3	2			2	1	3	4	98	39	9	5	119	55	174	
Part-Time																						
Certificate															1				1		1	
Masters	2		6	3	17	7	21	5			8	3	11	4	400	83	1	1	466	106	572	
Doctoral			1	1	1	2	3						2	1	39	23			46	27	73	
Special Graduate					2						1		2	1	38	3			43	4	47	
Total Part-Time	2		7	4	20	9	24	5			9	3	15	6	478	109	1	1	556	137	693	
Total Graduate	2		7	5	24	12	27	7			11	4	18	10	576	148	10	6	675	192	867	
Total All Students	6	4	19	11	60	25	93	35	1		53	15	54	19	1,443	502	18	9	1,747	620	2,367	

Figure 23: College of Information Science & Technology Head Count: Fall 2003-2014

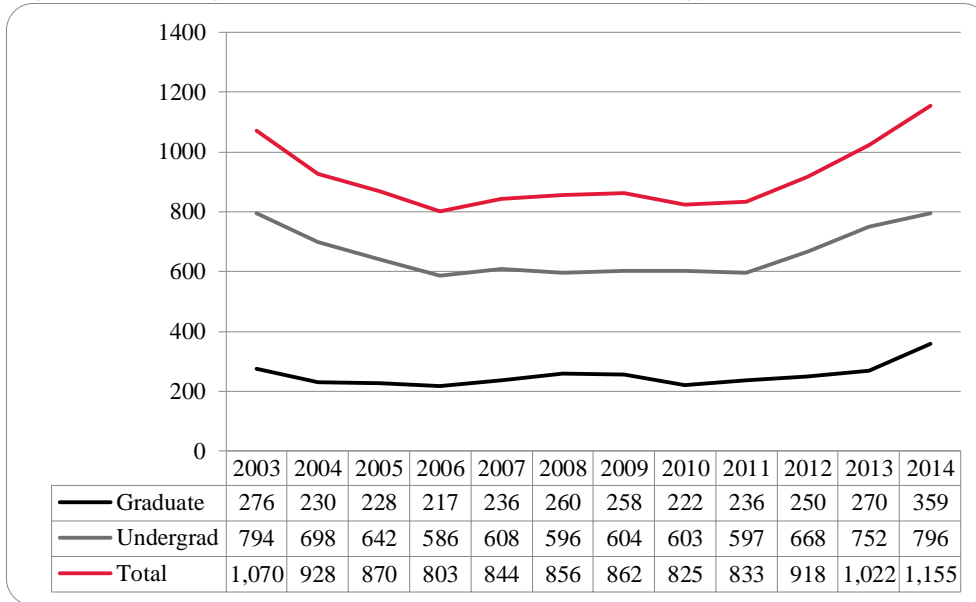


Figure 24: College of Information Science & Technology Student Credit Hours: Fall 2003-2014

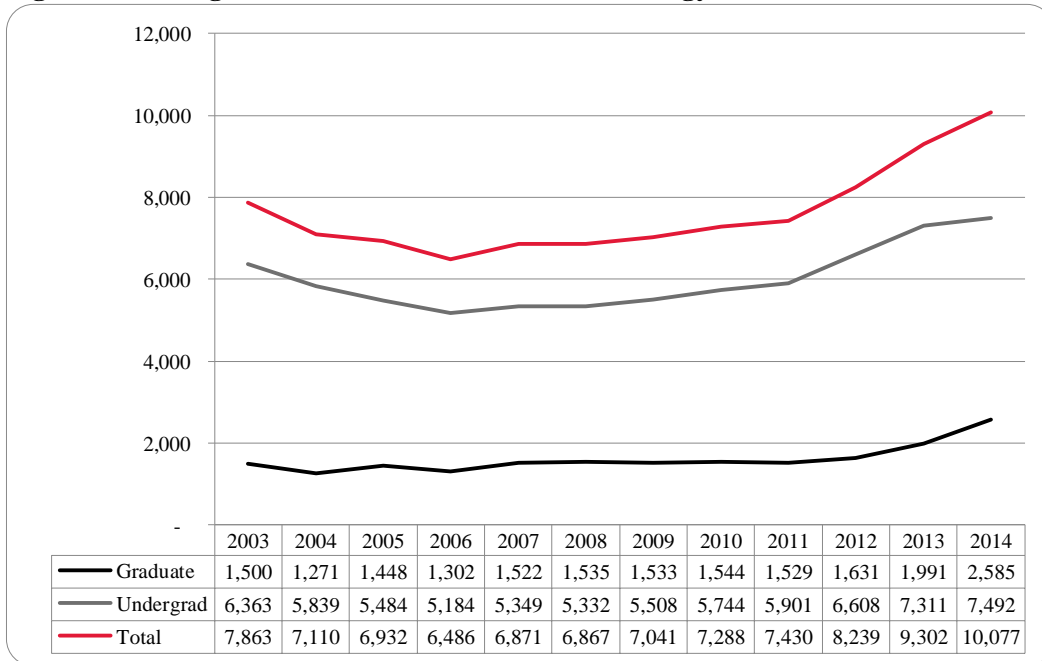


Figure 25: College of Information Science & Technology Student Credit Hours: Fall 2003-2014

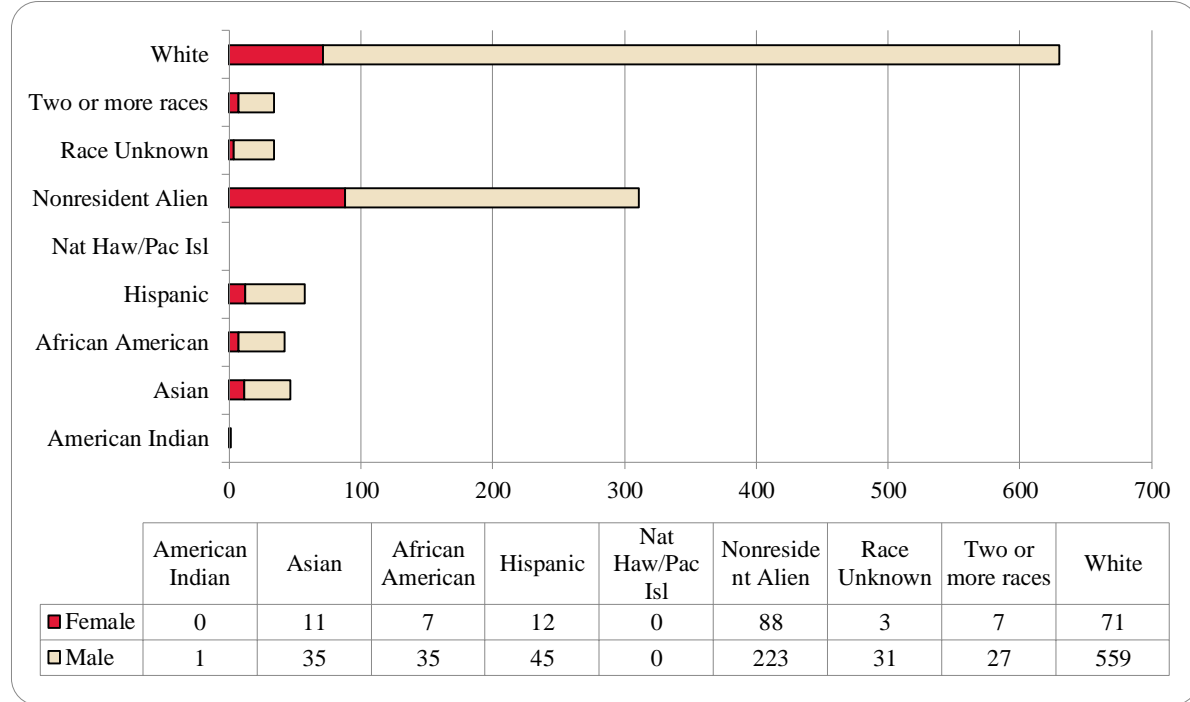


Table 9: College of Information Science and Technology Head Count Summary for Undergraduate and Graduate Summary by Full and Part-Time by Gender and Race Classification: Fall 2014

	American Indian		Asian		African American		Hispanics		Nat Haw / Pac Isl		Race Unknown		Two or more races		White		Nonresident Alien		Total			
	F	M	F	M	F	M	F	M	F	M	F	M	F	M	F	M	F	M	F	M	Total	
Undergraduate																						
Full-Time																						
First-Time Freshmen				3			3	9			1	2		7	11	92	1	9	16	122	138	
Other Freshmen				1		2		3					3	1	18	1	15	2	42	44		
Sophomores			2	3		4	2	5			6		11	11	76	2	23	17	128	145		
Juniors				6	1	6	2	10			4	2		15	109	2	16	22	151	173		
Seniors				6		2	1	4			1	7	1	2	9	80		11	12	112	124	
Special				2				1						1	6				1	9	10	
Total Full-Time			2	21	1	14	8	32			2	19	3	23	48	381	6	74	70	564	634	
Part-Time																						
First-Time Freshmen								1										1		2	2	
Other Freshmen															7		2		9	9		
Sophomores				2		1		1			1			1	24			1	29	30		
Juniors			1	1	1	4		5			1		2	2	20		1	4	34	38		
Seniors				1	2	2	2	3			2			5	41	2	5	11	54	65		
Special				1	1	1	1	1			1	1		1	9			4	14	18		
Total Part-Time			1	5	4	8	3	11			1	5	3	3	9	101	2	9	20	142	162	
Total Undergraduate			3	26	5	22	11	43			3	24	3	26	57	482	8	83	90	706	796	
Graduate																						
Full-Time																						
Certificate				1																1	1	
Masters			2	2		3					1	1		3	11	56	98	62	115	177		
Doctoral												2			3	2	7	4	10	14		
Special Graduate																						
Total Full-Time			2	3		3					1	3		3	14	58	105	66	126	192		
Part-Time																						
Certificate				1		3						1			3	1	3	3	9	12		
Masters		1	5	6	2	7	1	2			6		1	11	54	18	28	37	105	142		
Doctoral															6	3	4	3	10	13		
Special Graduate																						
Total Part-Time		1	6	6	2	10	1	2			6	1	1	11	63	22	35	43	124	167		
Total Graduate		1	8	9	2	13	1	2			7	4	1	14	77	80	140	109	250	359		
Total All Students		1	11	35	7	35	12	45			3	31	7	27	71	559	88	223	199	956	1,155	

Figure 26: College of Public Affairs & Community Service Delivery-Site Head Count: Fall 2003-2014

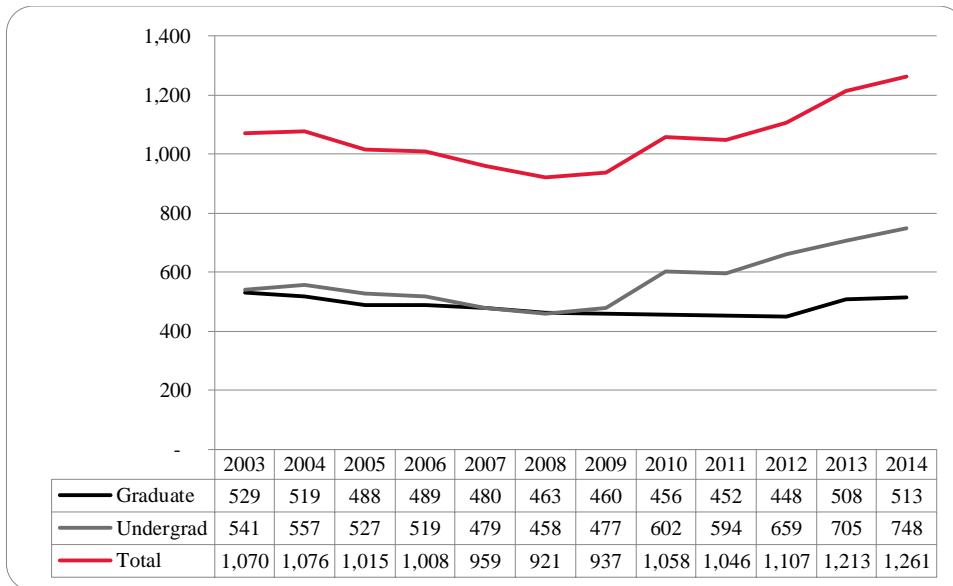


Figure 27: College of Public Affairs & Community Service Delivery-Site Student Credit Hours: Fall 2003-2014

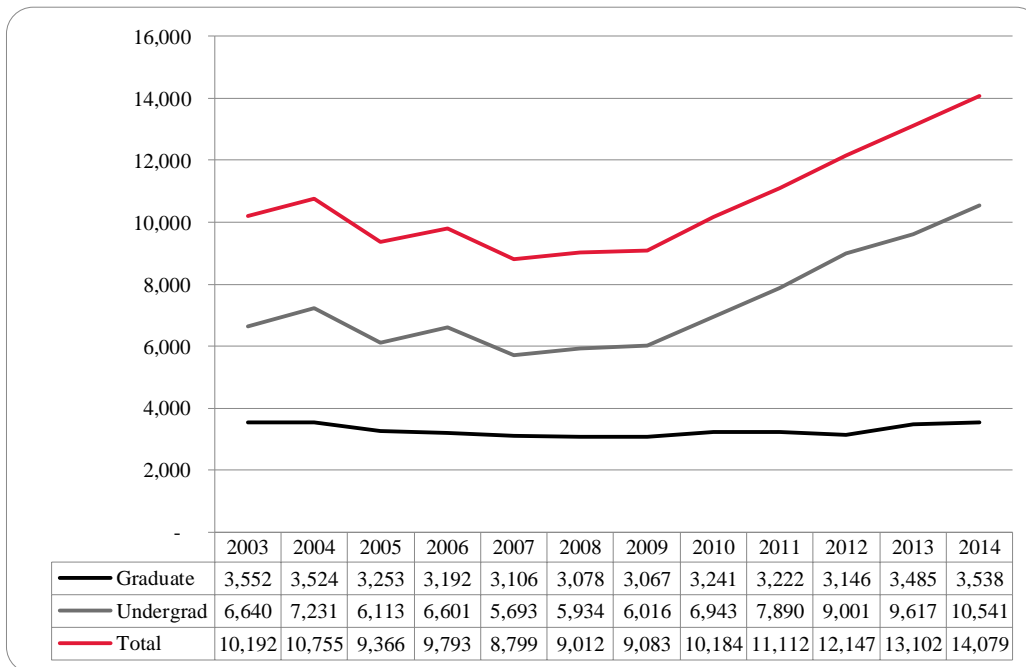


Figure 28: College of Public Affairs & Community Service Delivery-Site Head Count by Ethnicity by Gender: Fall 2014

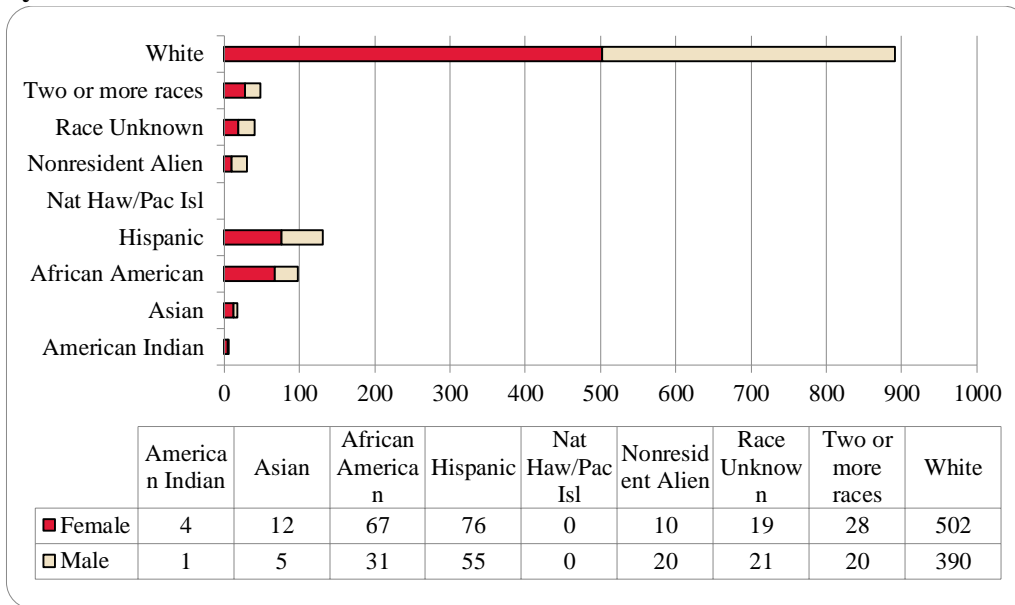


Table 10: College of Public Affairs and Community Service Delivery-Site Head Count Summary for Undergraduate and Graduate Students by Full and Part-Time by Gender and Race Classification: Fall 2014

	American Indian		Asian		African American		Hispanics		Nat Haw / Pac Isl		Race Unknown		Two or more races		White		Nonresident Alien		Total			
	F	M	F	M	F	M	F	M	F	M	F	M	F	M	F	M	F	M	F	M	Total	
Undergraduate																						
Full-Time																						
First-Time Freshmen			3		8	2	13	16			1	1	3	2	23	43	2	3	53	67	120	
Other Freshmen		1				1	3	5				1		1	8	16		2	11	27	38	
Sophomores	1		1	1	9	5	9	3			2	6	5	2	48	58		2	75	77	152	
Juniors	1			1	10	2	13	10			4	3	3	6	67	70		3	98	95	193	
Seniors			1		9	5	9	6			4	2	2	3	51	45		1	76	62	138	
Special											1								1		1	
Total Full-Time	2	1	5	2	36	15	47	40			12	13	13	14	197	232	2	11	314	328	642	
Part-Time																						
First-Time Freshmen						1		1							2	2			2	4	6	
Other Freshmen					2	2	3	2				1			3	2	1		9	7	16	
Sophomores					2		2	2				1			6	9			10	12	22	
Juniors					1	1	1	1			1	1			8	16			11	19	30	
Seniors				1	2	3	1	2					1		7	15			11	21	32	
Special																						
Total Part-Time				1	7	7	7	8			1	3	1		26	44	1		43	63	106	
Total Undergraduate	2	1	5	3	43	22	54	48			13	16	14	14	223	276	3	11	357	391	748	
Graduate																						
Full-Time																						
Certificate																						
Masters	1		2	1	6	2	10	5			3		9	3	109	16	2	1	142	28	170	
Doctoral						1	2						1		3	4	1	3	7	8	15	
Special Graduate																						
Total Full-Time	1		2	1	6	3	12	5			3		10	3	112	20	3	4	149	36	185	
Part-Time																						
Certificate			1												7	5			8	5	13	
Masters	1		4	1	18	6	10	1			2	4	4	3	151	75	2		192	90	282	
Doctoral								1			1	1			9	14	2	5	12	21	33	
Special Graduate																						
Total Part-Time	1		5	1	18	6	10	2			3	5	4	3	167	94	4	5	212	116	328	
Total Graduate	2		7	2	24	9	22	7			6	5	14	6	279	114	7	9	361	152	513	
Total All Students	4	1	12	5	67	31	76	55			19	21	28	20	502	390	10	20	718	543	1,261	

Figure 29: College of Public Affairs & Community Service Administrative-Site Head Count: Fall 2003-2014

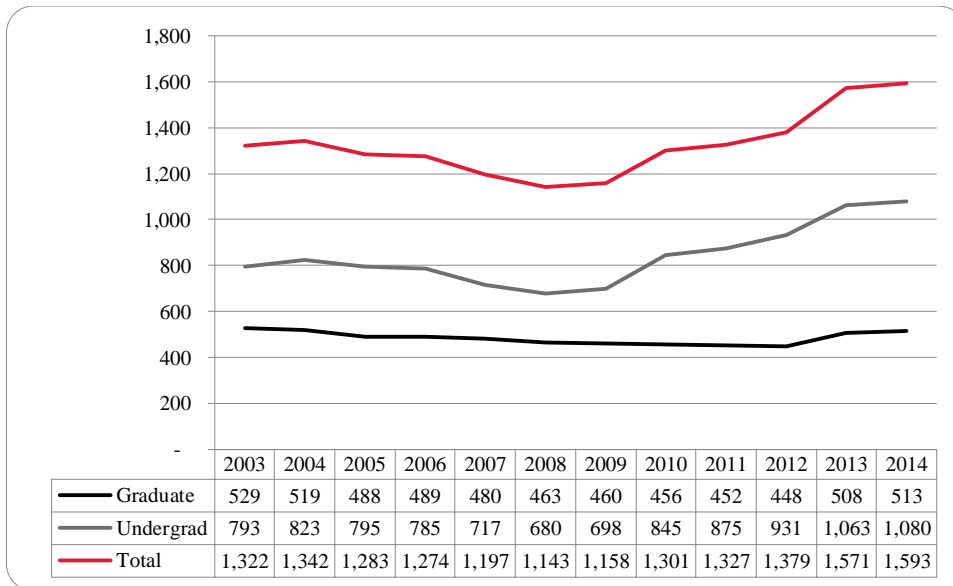


Figure 30: College of Public Affairs & Community Service Administrative-Site Student Credit Hours: Fall 2003-2014

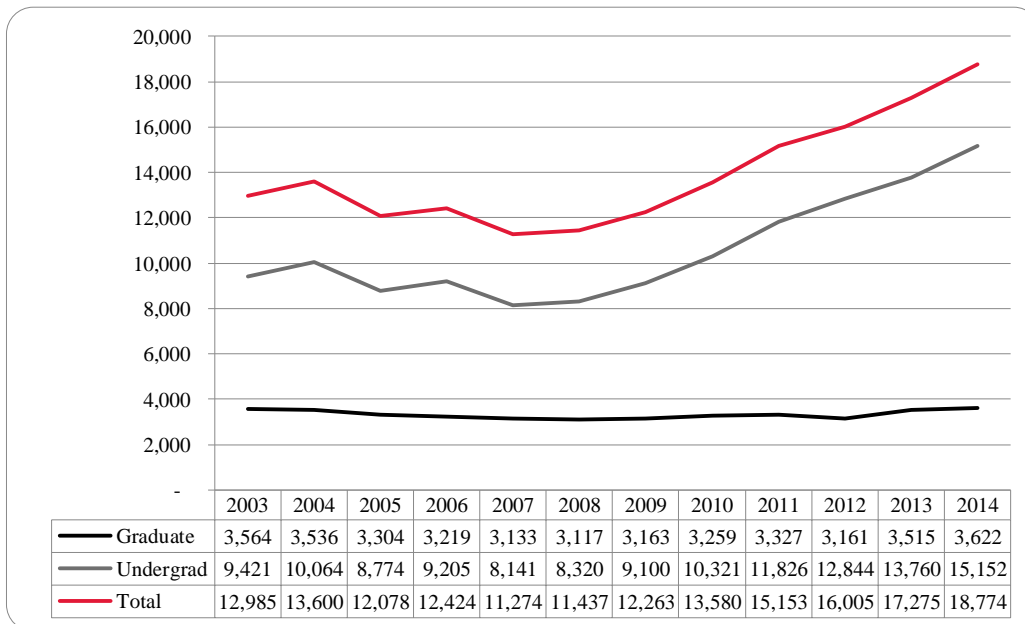


Figure 31: College of Public Affairs & Community Service Administrative-Site Head Count by Ethnicity by Gender: Fall 2014

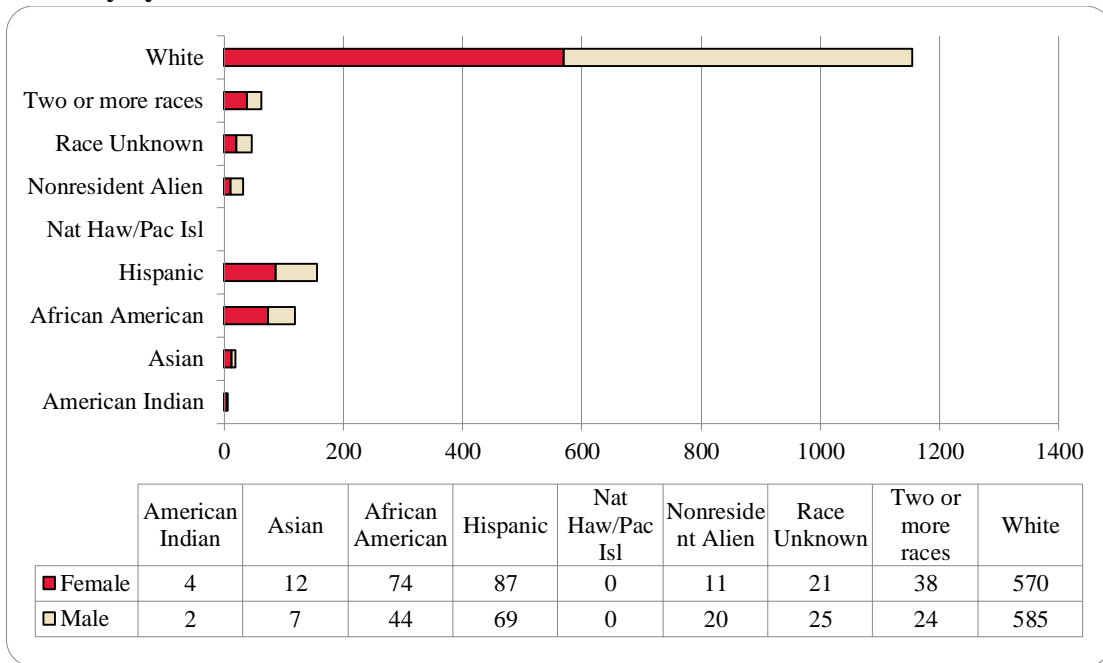


Table 11: College of Public Affairs & Community Service Administrative-Site Head Count Summary for Undergraduate and Graduate Students by Full and Part-Time by Gender and Race Classification: Fall 2014

	American Indian		Asian		African American		Hispanics		Nat Haw / Pac Isl		Race Unknown		Two or more races		White		Nonresident Alien		Total			
	F	M	F	M	F	M	F	M	F	M	F	M	F	M	F	M	F	M	F	M	Total	
Undergraduate																						
Full-Time																						
First-Time Freshmen			3		8	2	13	16			1	1	3	2	23	43	2	3	53	67	120	
Other Freshmen		1		1	2	4	5	9			2	2	1	25	47	1	2	35	67	102		
Sophomores	1		1	2	10	6	10	5			2	7	9	4	60	104		2	93	130	223	
Juniors	1	1		1	13	7	14	15			4	4	6	7	89	120		3	127	158	285	
Seniors			1		10	8	15	9			6	3	2	4	64	100		1	98	125	223	
Special											1								1		1	
Total Full-Time	2	2	5	4	43	27	57	54			14	17	22	18	261	414	3	11	407	547	954	
Part-Time																						
First-Time Freshmen						1		1							2	2			2	4	6	
Other Freshmen					2	2	3	2			1				3	2	1		9	7	16	
Sophomores					2		2	2			1				7	11			11	14	25	
Juniors					1	1	1	1			1	1			8	17			11	20	31	
Seniors				1	2	4	2	2					2		10	25			16	32	48	
Special																						
Total Part-Time				1	7	8	8	8			1	3	2		30	57	1		49	77	126	
Total Undergraduate	2	2	5	5	50	35	65	62			15	20	24	18	291	471	4	11	456	624	1,080	
Graduate																						
Full-Time																						
Certificate																						
Masters	1		2	1	6	2	10	5			3		9	3	109	16	2	1	142	28	170	
Doctoral						1	2						1		3	4	1	3	7	8	15	
Special Graduate																						
Total Full-Time	1		2	1	6	3	12	5			3		10	3	112	20	3	4	149	36	185	
Part-Time																						
Certificate			1												7	5			8	5	13	
Masters	1		4	1	18	6	10	1			2	4	4	3	151	75	2		192	90	282	
Doctoral								1			1	1			9	14	2	5	12	21	33	
Special Graduate																						
Total Part-Time	1		5	1	18	6	10	2			3	5	4	3	167	94	4	5	212	116	328	
Total Graduate	2		7	2	24	9	22	7			6	5	14	6	279	114	7	9	361	152	513	
Total All Students	4	2	12	7	74	44	87	69			21	25	38	24	570	585	11	20	817	776	1,593	

Figure 32: College of CPACS, Division of Continuing Studies Head Count: Fall 2003-2014

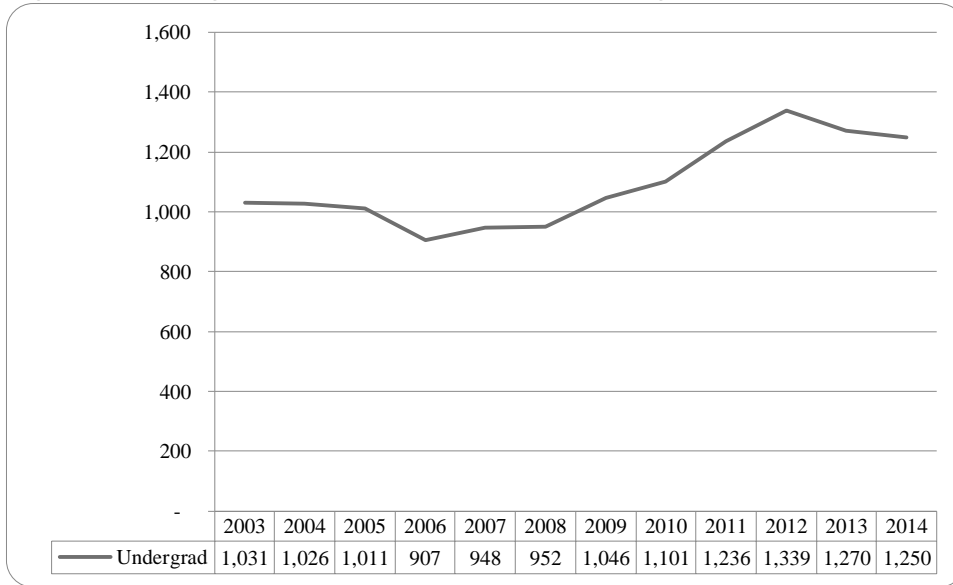


Figure 33: College of CPACS, Division of Continuing Studies Head Count by Ethnicity by Gender: Fall 2014

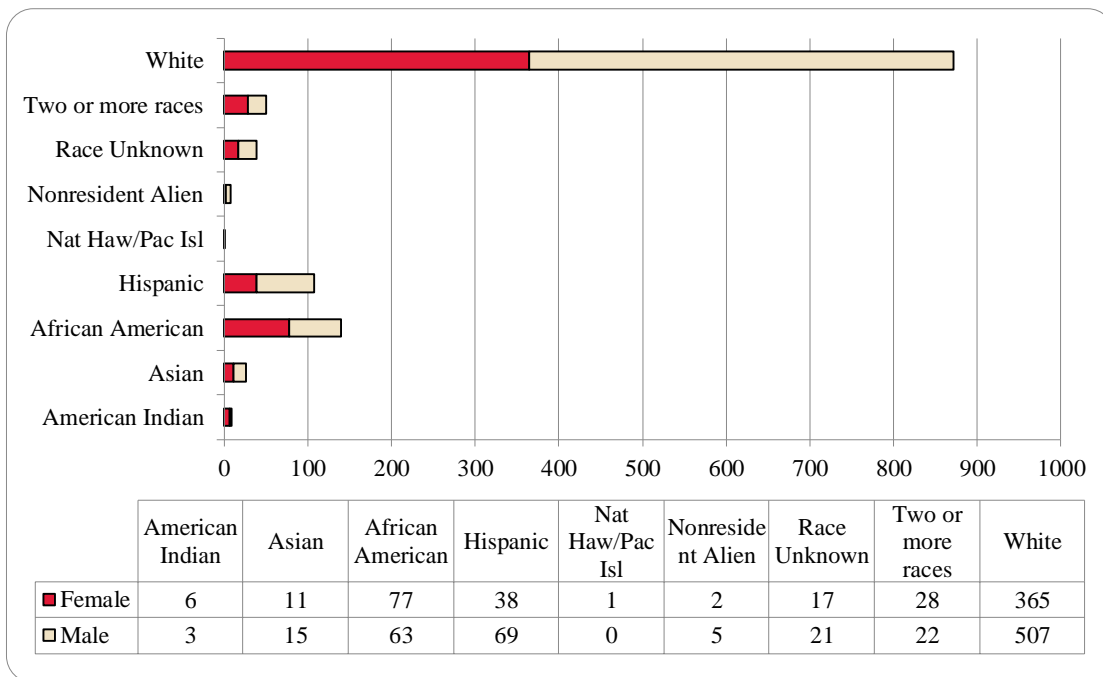


Table 12: College of CPACS Division of Continuing Studies Head Count Summary for Undergraduate Students by Full and Part-Time by Gender and Race Classification: Fall 2014

	American Indian		Asian		African American		Hispanics		Nat Haw / Pac Isl		Race Unknown		Two or more races		White		Nonresident Alien		Total			
	F	M	F	M	F	M	F	M	F	M	F	M	F	M	F	M	F	M	F	M	Total	
Undergraduate																						
Full-Time																						
First-Time Freshmen							1		1						1	3			1	5	6	
Other Freshmen				2	4	4	1	6			1	3	2	6	26	1	2	15	43	58		
Sophomores	1	1		2	11	13	6	8			1	2	4	5	32	53			55	84	139	
Juniors			2		19	11	9	14	1		2	4	6	5	70	102			109	136	245	
Seniors	1	1	4	4	11	9	3	9			4	5	6	1	73	81			102	110	212	
Special																						
Total Full-Time	2	2	6	8	45	38	19	38	1		7	12	19	13	182	265	1	2	282	378	660	
Part-Time																						
First-Time Freshmen							1	2			1	1			7		1	1	12	13		
Other Freshmen	1		1	1	4	1	2	8			1	1	2	4	10		1	14	23	37		
Sophomores				1	2	4	4	3			2		1	27	37			35	46	81		
Juniors	1	1	2	1	8	7	4	8			4	1	1	2	58	57			78	77	155	
Seniors	1		2	3	18	12	9	7			3	7	4	4	84	120	1	1	122	154	276	
Special	1			1				3					2		10	11			13	15	28	
Total Part-Time	4	1	5	7	32	25	19	31			10	9	9	9	183	242	1	3	263	327	590	
Total Undergraduate	6	3	11	15	77	63	38	69	1		17	21	28	22	365	507	2	5	545	705	1,250	
Total All Students	6	3	11	15	77	63	38	69	1		17	21	28	22	365	507	2	5	545	705	1,250	

Table 13: Cooperative Graduate Program Head Count Summary for Graduate Students by Full and Part-Time by Gender and Race Classification: Fall 2014

	American Indian		Asian		African American		Hispanics		Nat Haw / Pac Isl		Race Unknown		Two or more races		White		Nonresident Alien		Total			
	F	M	F	M	F	M	F	M	F	M	F	M	F	M	F	M	F	M	F	M	Total	
Graduate																						
Full-Time																						
Certificate															1						1	1
Masters																						
Doctoral																						
Special Graduate																						
Total Full-Time															1						1	1
Part-Time																						
Certificate								1							4						5	5
Masters																						
Doctoral																						
Special Graduate																						
Total Part-Time								1							4						5	5
Total Graduate								1							5						6	6
Total All Students								1							5						6	6

Figure 34: University Division Head Count: Fall 2003-2014

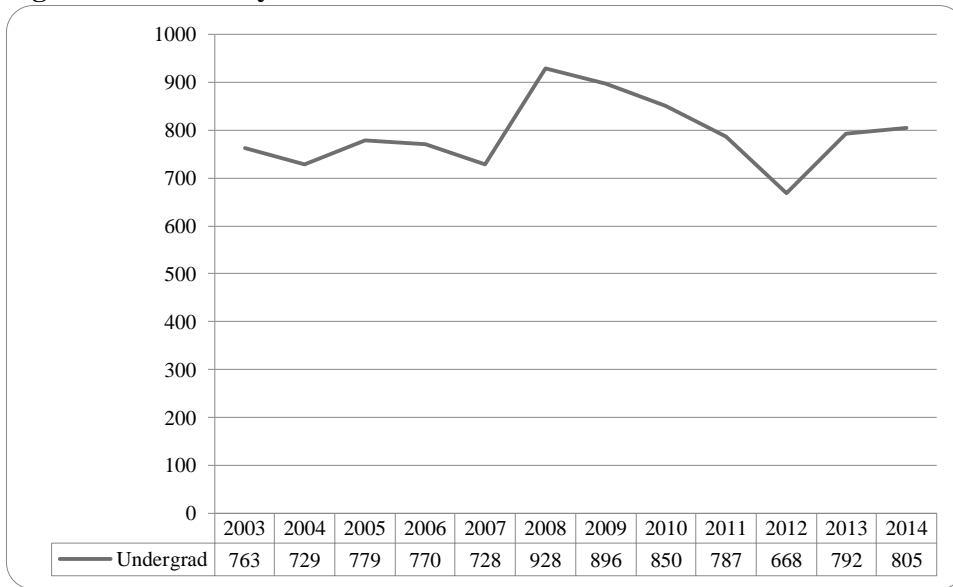


Figure 35: University Division Student Credit Hours: Fall 2003-2014

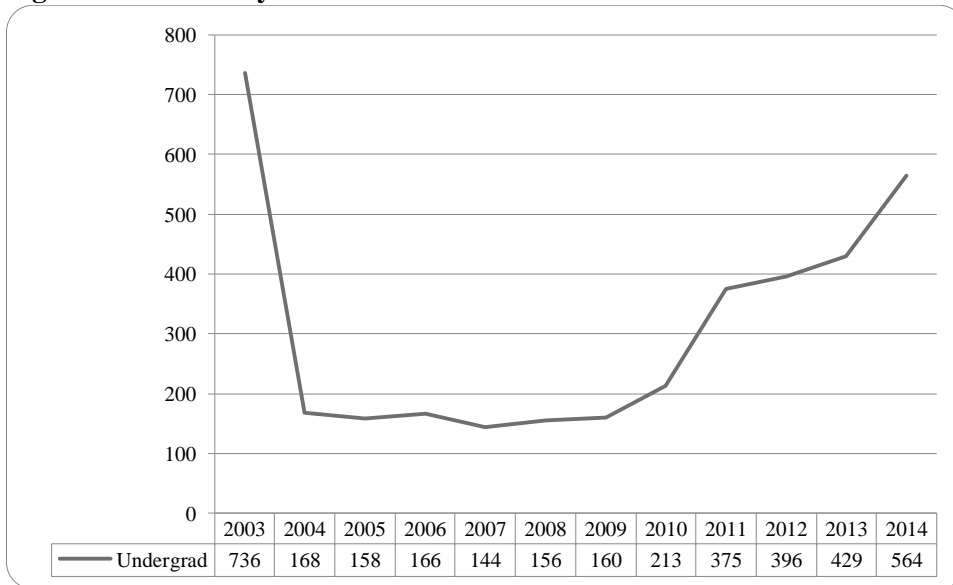


Figure 36: University Division Head Count by Ethnicity by Gender: Fall 2014

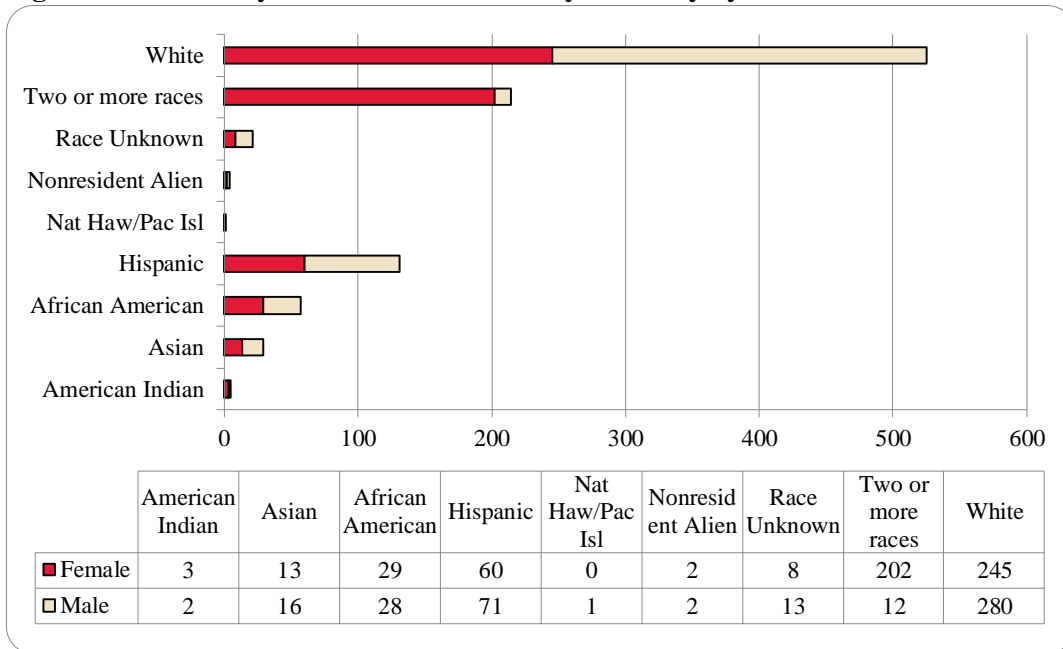


Table 14: University Division Head Count Summary for Undergraduate Students by Full and Part-Time by Gender and Race Classification: Fall 2014

	American Indian		Asian		African American		Hispanics		Nat Haw / Pac Isl		Race Unknown		Two or more races		White		Nonresident Alien		Total			
	F	M	F	M	F	M	F	M	F	M	F	M	F	M	F	M	F	M	F	M	Total	
Undergraduate																						
Full-Time																						
First-Time Freshmen	2	1	10	9	16	12	36	36			7	2	12	4	138	131	2	2	223	197	420	
Other Freshmen	1	1	2	4	8	8	8	19		1	1	6	5	3	38	72			63	114	177	
Sophomores			1	2	1	3	13	10				2	2	2	45	50			62	69	131	
Juniors							1								2				3		3	
Seniors																						
Special																						
Total Full-Time	3	2	13	15	25	23	58	65		1	8	10	19	9	223	253	2	2	351	380	731	
Part-Time																						
First-Time Freshmen				1		1		2				1		2	6	8			6	15	21	
Other Freshmen					2	3	2	3				2			5	12			9	20	29	
Sophomores					2	1		1					1	1	11	6			14	9	23	
Juniors																1				1	1	
Seniors																						
Special																						
Total Part-Time				1	4	5	2	6				3	1	3	22	27			29	45	74	
Total Undergraduate	3	2	13	16	29	28	60	71		1	8	13	20	12	245	280	2	2	380	425	805	
Total All Students	3	2	13	16	29	28	60	71		1	8	13	20	12	245	280	2	2	380	425	805	

Figure 37: Non-Degree/Intercampus Special Undergraduate Students Head Count: Fall 2003-2014

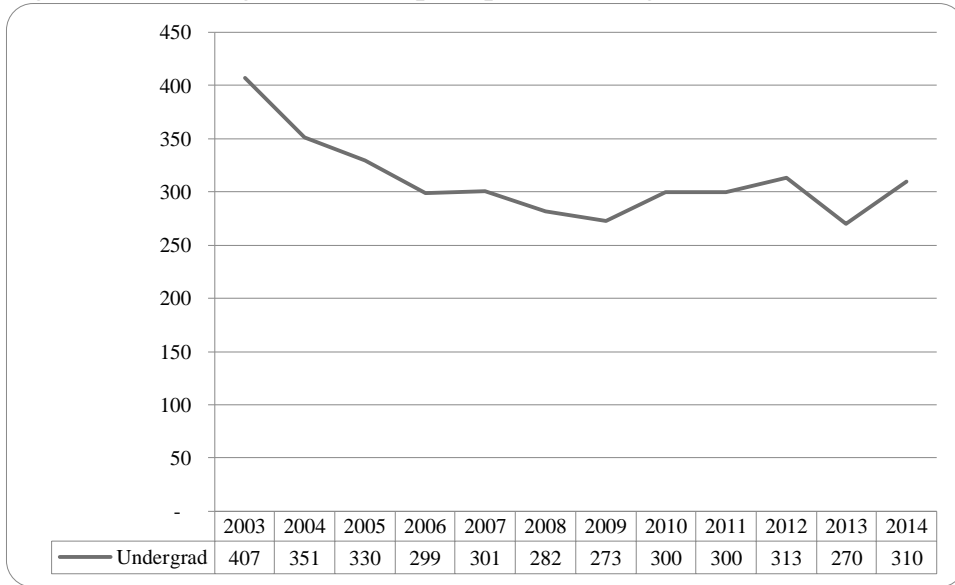


Figure 38: Non-Degree/Intercampus Special Undergraduate Students Head Count by Ethnicity by Gender: Fall 2014

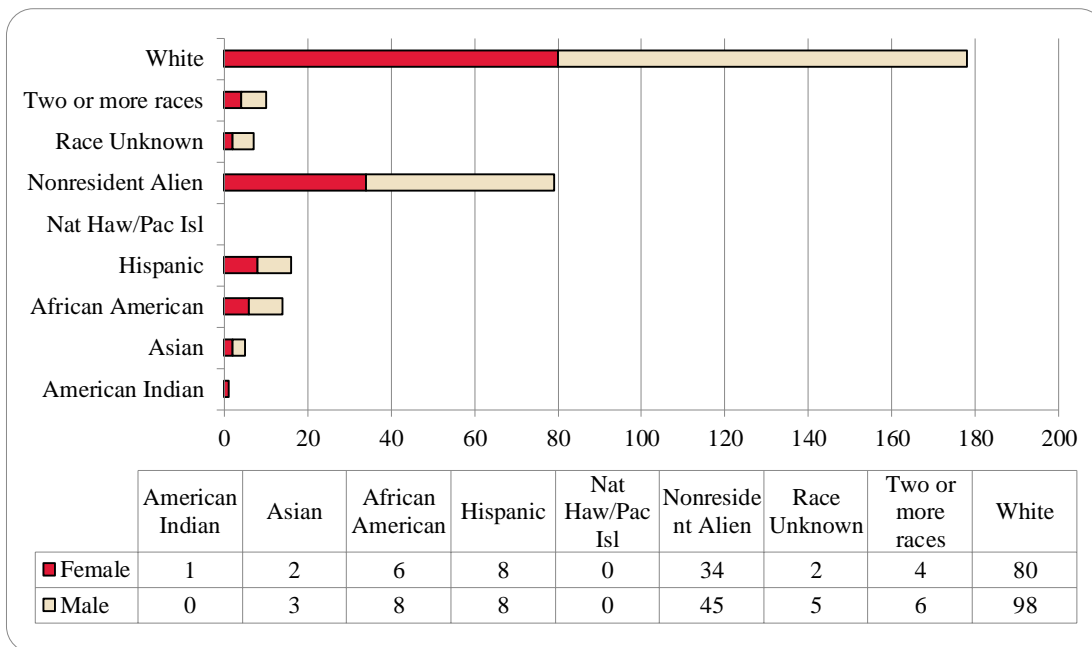


Table 15: Non-Degree/Intercampus Head Count Summary for Special Undergraduate Students by Full and Part-Time by Gender and Race Classification: Fall 2014

	American Indian		Asian		African American		Hispanics		Nat Haw / Pac Isl		Race Unknown		Two or more races		White		Nonresident Alien		Total			
	F	M	F	M	F	M	F	M	F	M	F	M	F	M	F	M	F	M	F	M	Total	
Undergraduate																						
Full-Time																						
First-Time Freshmen																	2	7	2	7	9	
Other Freshmen						1					1		1	2	8	21	33	23	44	67		
Sophomores														2	5	2	1	4	6	10		
Juniors								1						2		1		3	1	4		
Seniors			1				1								1	3	2	5	3	8		
Special							1		1					2	2			2	3	5		
Total Full-Time			1			1	1	2			1		1	8	16	29	43	39	64	103		
Part-Time																						
First-Time Freshmen														1				1		1		
Other Freshmen	1			1	3	2	5	5			1	1		4	32	40	4	1	46	54	100	
Sophomores				1	1										1	6			2	7	9	
Juniors						3								3		3	1		4	6	10	
Seniors					2										2	3		1	4	4	8	
Special			1	1		2	2	1			1	3	1	1	36	30			41	38	79	
Total Part-Time	1		1	3	6	7	7	6			2	4	4	5	72	82	5	2	98	109	207	
Total Undergraduate	1		2	3	6	8	8	8			2	5	4	6	80	98	34	45	137	173	310	
Total All Students	1		2	3	6	8	8	8			2	5	4	6	80	98	34	45	137	173	310	

Figure 39: Non-Degree/Inter Campus Special Graduate Students Head Count: Fall 2003-2014

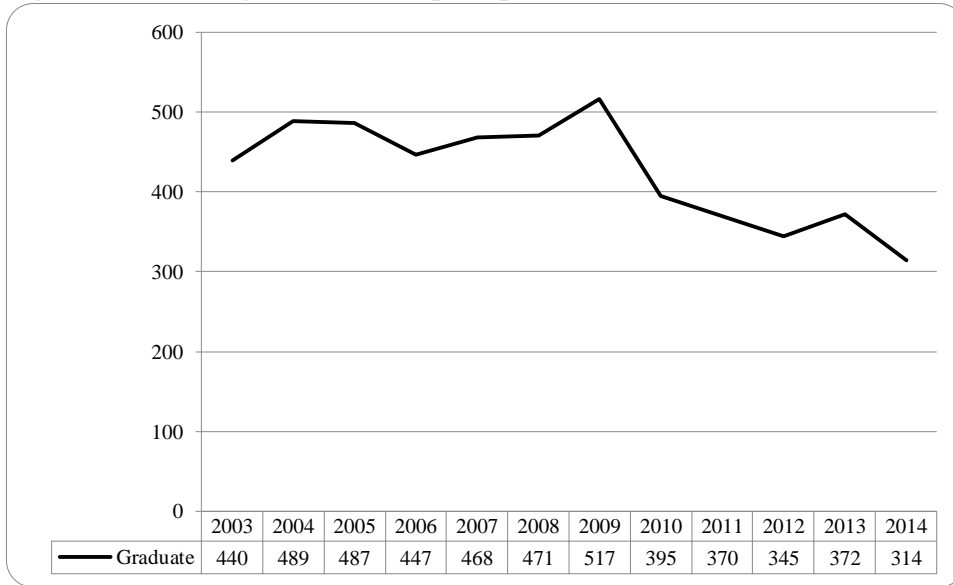


Figure 40: Non-Degree/Intercampus Special Graduate Students Head Count by Ethnicity by Gender: Fall 2014

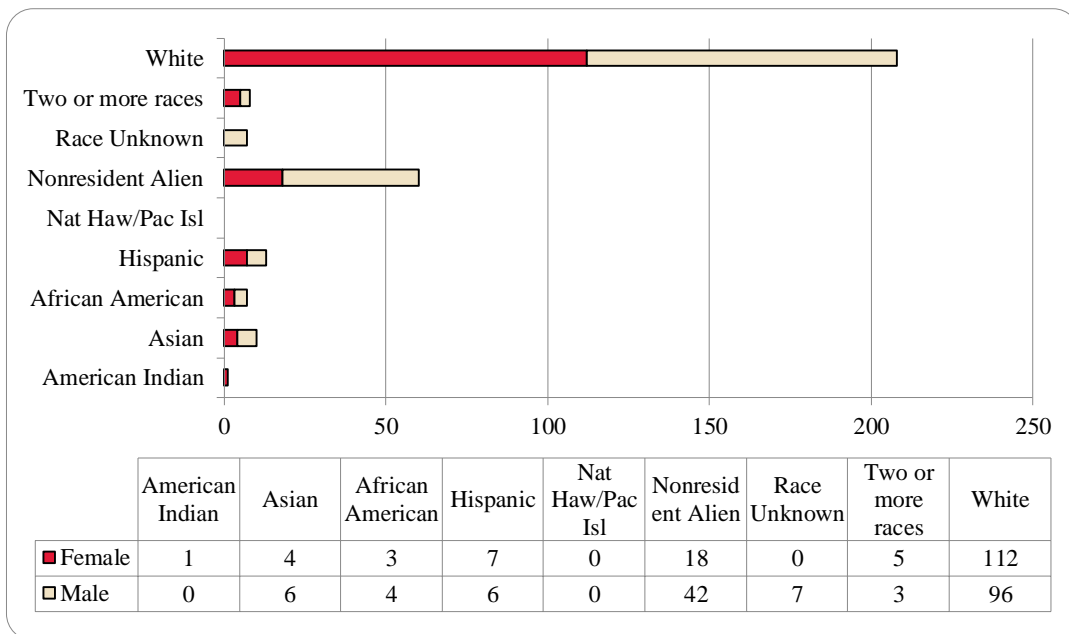


Table 16: Non-Degree/Intercampus Head Count Summary for Special Graduate Students by Full and Part-Time by Gender and Race Classification: Fall 2014

	American Indian		Asian		African American		Hispanics		Nat Haw / Pac Isl		Race Unknown		Two or more races		White		Nonresident Alien		Total			
	F	M	F	M	F	M	F	M	F	M	F	M	F	M	F	M	F	M	F	M	Total	
Graduate																						
Full-Time																						
Certificate																						
Masters																						
Doctoral																						
Special Graduate				1		1		2				1		1	20	21	11	30	31	57	88	
Total Full-Time				1		1		2				1		1	20	21	11	30	31	57	88	
Part-Time																						
Certificate																						
Masters																						
Doctoral																						
Special Graduate	1		4	5	3	3	7	4				6	5	2	92	75	7	12	119	107	226	
Total Part-Time	1		4	5	3	3	7	4				6	5	2	92	75	7	12	119	107	226	
Total Graduate	1		4	6	3	4	7	6				7	5	3	112	96	18	42	150	164	314	
Total All Students	1		4	6	3	4	7	6				7	5	3	112	96	18	42	150	164	314	

Figure 41: Other Honors Student Credit Hours by Level of Instruction: Fall 2003-2014

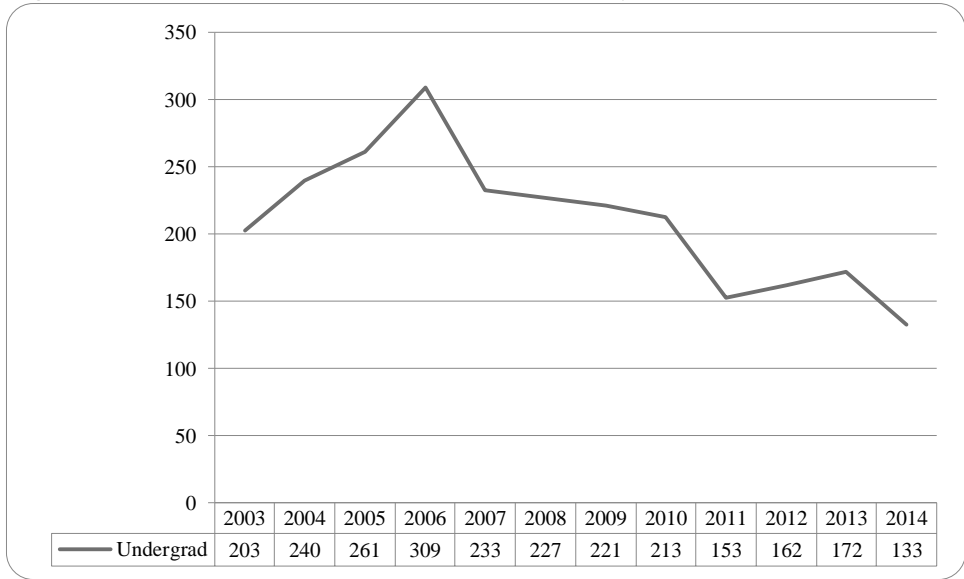


Figure 42: College of Agriculture Delivery-Site Head Count: Fall 2003-2014

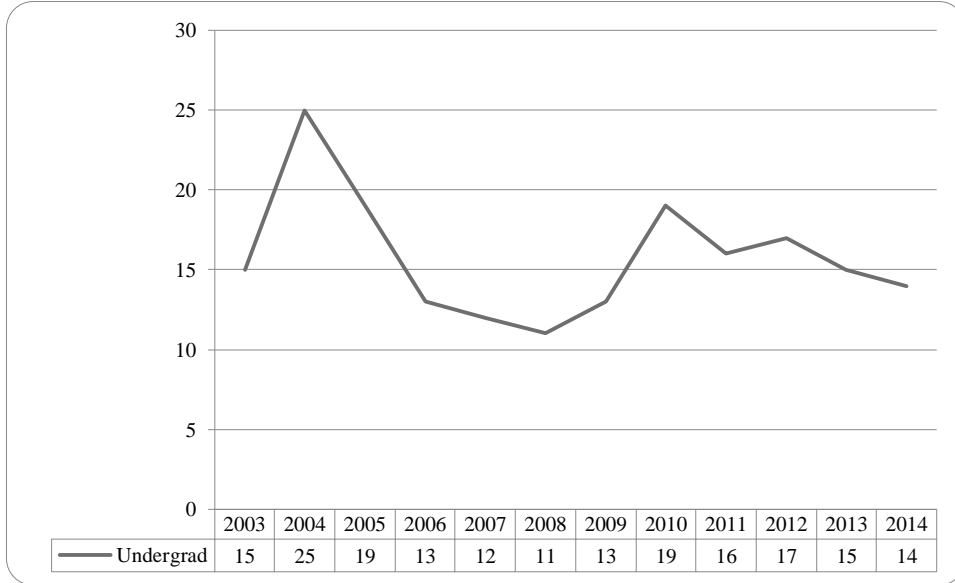


Figure 43: College of Agriculture Delivery-Site Student Credit Hours: Fall 2003-2014

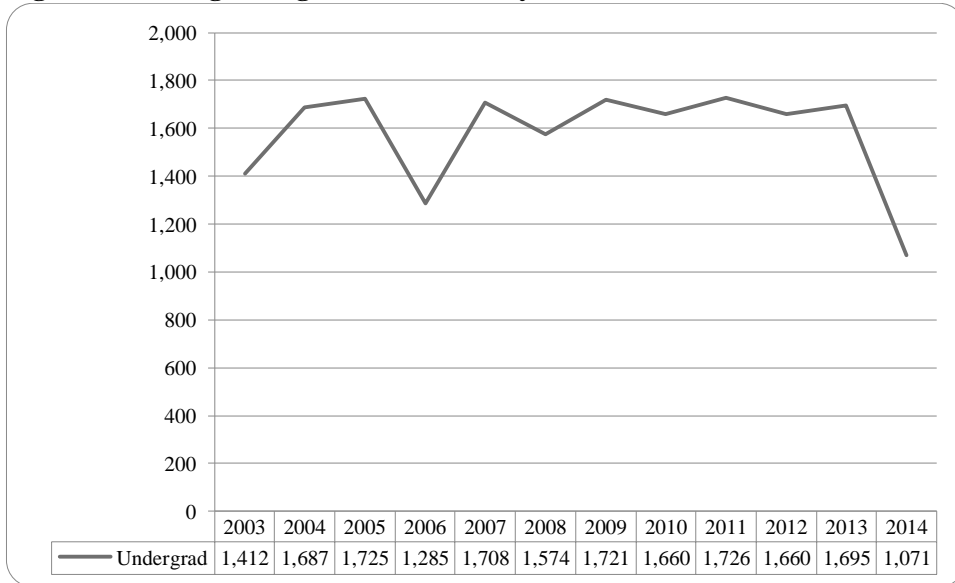


Figure 44: College of Agriculture Delivery-Site Head Count by Ethnicity by Gender: Fall 2014

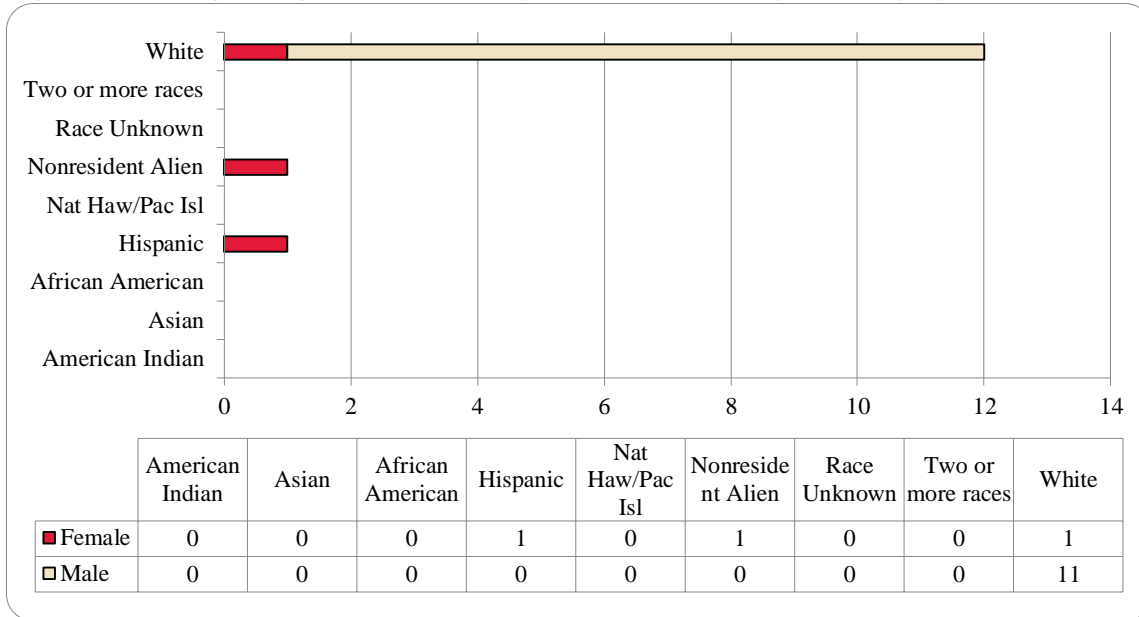


Table 17: College of Agriculture Head Count Summary for Undergraduate Students by Full and Part-Time by Gender and Race Classification: Fall 2014

	American Indian		Asian		African American		Hispanics		Nat Haw / Pac Isl		Race Unknown		Two or more races		White		Nonresident Alien		Total				
	F	M	F	M	F	M	F	M	F	M	F	M	F	M	F	M	F	M	F	M	Total		
Undergraduate																							
Full-Time																							
First-Time Freshmen																5					5	5	
Other Freshmen															1						1	1	
Sophomores																2					2	2	
Juniors																							
Seniors																							
Special																		1			1	1	
Total Full-Time															1	7	1				2	7	9
Part-Time																							
First-Time Freshmen																1					1	1	
Other Freshmen																1					1	1	
Sophomores																1					1	1	
Juniors								1								1					1	2	
Seniors																							
Special																							
Total Part-Time								1								4					1	4	5
Total Undergraduate								1							1	11	1				3	11	14
Total All Students								1							1	11	1				3	11	14

Figure 45: College of Architecture Delivery-Site Head Count: Fall 2003-2014

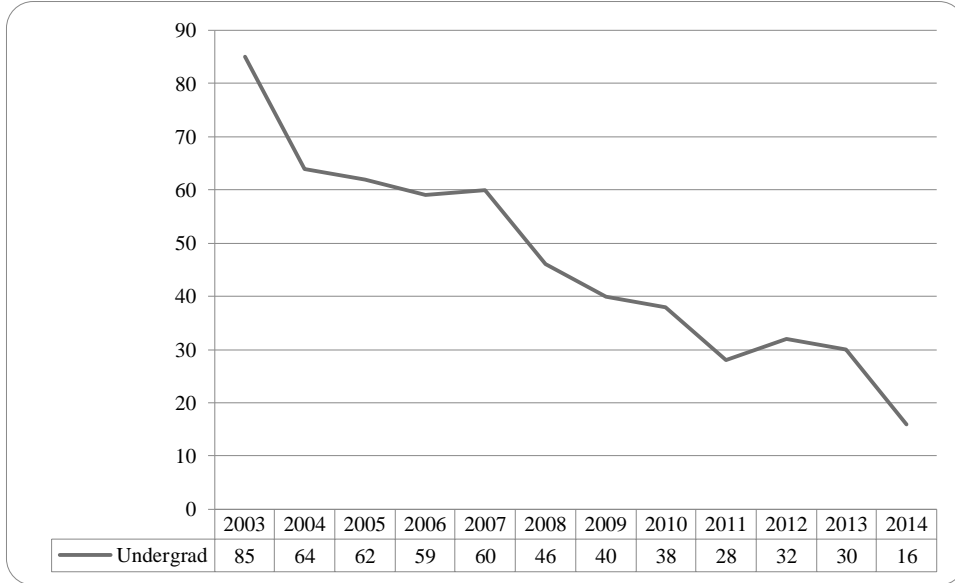


Figure 46: College of Architecture Delivery-Site Student Credit Hours: Fall 2003-2014

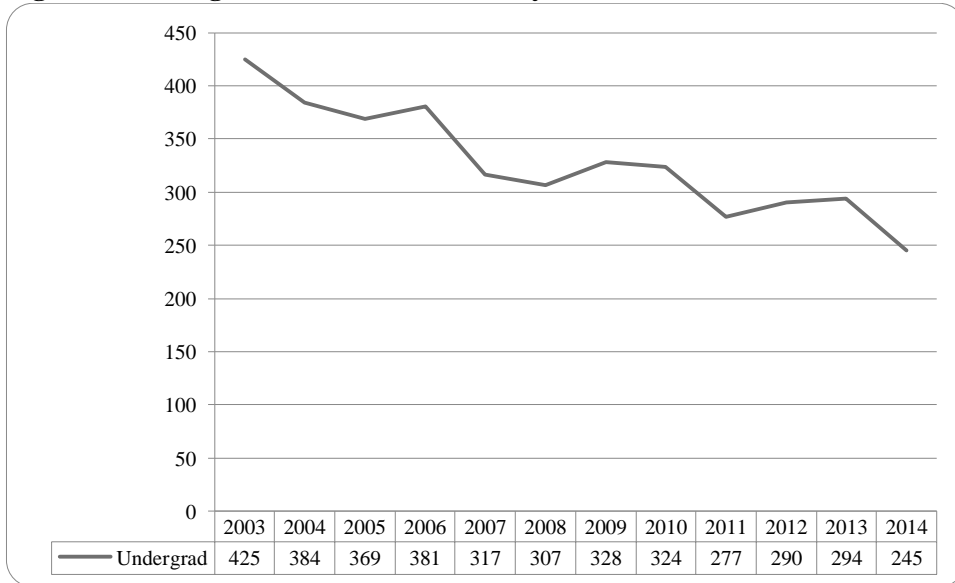


Figure 47: College of Architecture Delivery-Site Head Count by Ethnicity by Gender: Fall 2014

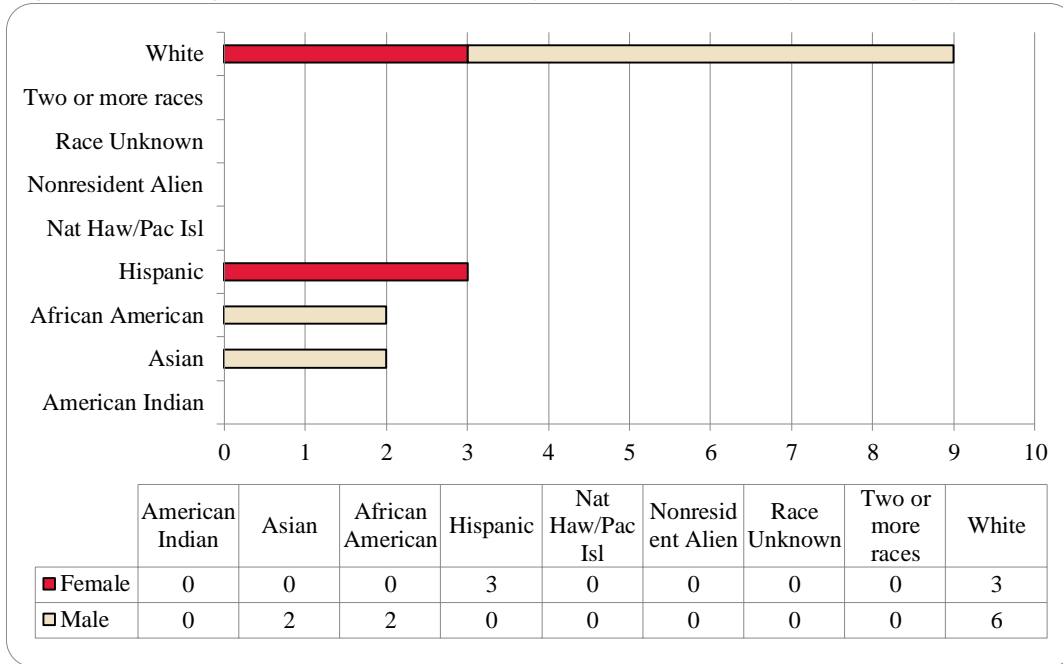


Table 18: College of Architecture Head Count Summary for Undergraduate Students by Full and Part-Time by Gender and Race Classification: Fall 2014

	American Indian		Asian		African American		Hispanics		Nat Haw / Pac Isl		Race Unknown		Two or more races		White		Nonresident Alien		Total			
	F	M	F	M	F	M	F	M	F	M	F	M	F	M	F	M	F	M	F	M	Total	
Undergraduate																						
Full-Time																						
First-Time Freshmen							2								2	2			4	2	6	
Other Freshmen																1				1	1	
Sophomores				2		2									1	3			1	7	8	
Juniors																						
Seniors																						
Special																						
Total Full-Time				2		2	2								3	6			5	10	15	
Part-Time																						
First-Time Freshmen																						
Other Freshmen																						
Sophomores																						
Juniors							1												1		1	
Seniors																						
Special																						
Total Part-Time							1												1		1	
Total Undergraduate				2		2	3								3	6			6	10	16	
Total All Students				2		2	3								3	6			6	10	16	

Figure 48: College of Engineering Delivery-Site Head Count: Fall 2003-2014

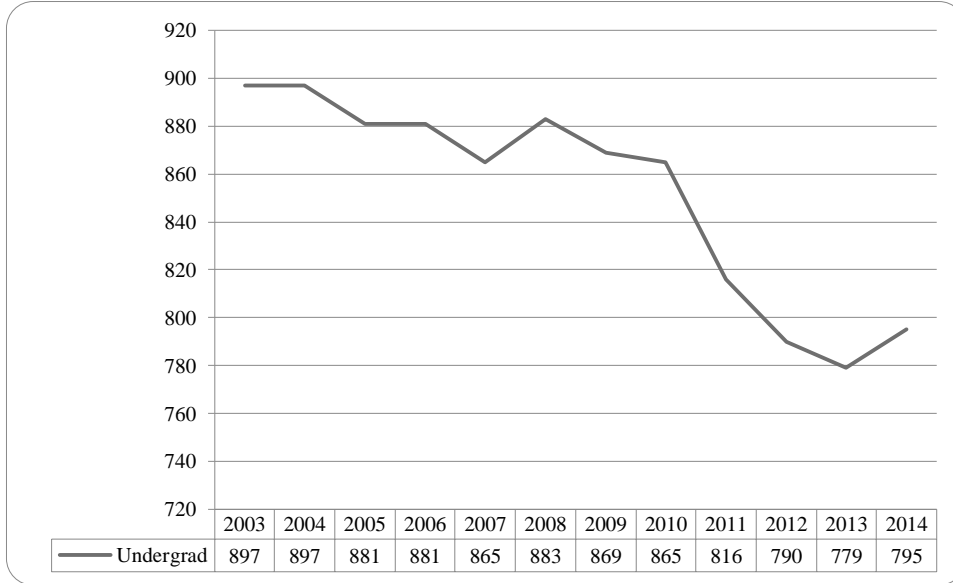


Figure 49: College of Engineering Delivery-Site Student Credit Hours: Fall 2003-2014

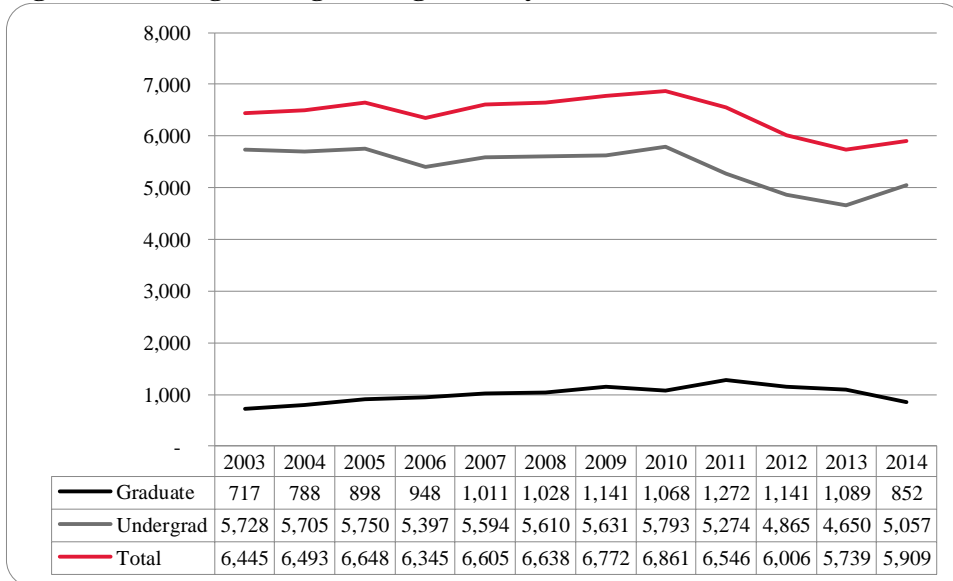


Figure 50: College of Engineering Delivery-Site Head Count by Ethnicity by Gender: Fall 2014

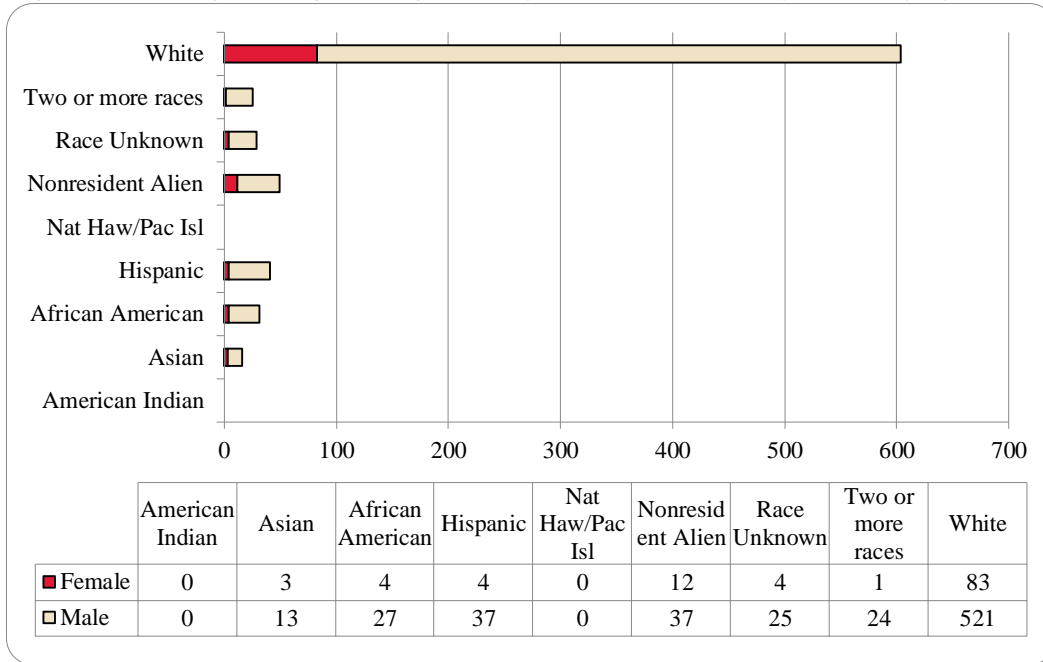


Table 19: College of Engineering Head Count Summary for Undergraduate Students by Full and Part-Time by Gender and Race Classification: Fall 2014

	American Indian		Asian		African American		Hispanics		Nat Haw / Pac Isl		Race Unknown		Two or more races		White		Nonresident Alien		Total			
	F	M	F	M	F	M	F	M	F	M	F	M	F	M	F	M	F	M	F	M	Total	
Undergraduate																						
Full-Time																						
First-Time Freshmen			1	2	2	1		5			2	2	1	7	26	115	3	7	35	139	174	
Other Freshmen				2			1	3				1			1	22	1	4	3	32	35	
Sophomores				3			3	7				1		6	18	101	4	12	22	133	155	
Juniors			1	3	1	8	1	4				7		5	14	102	2	6	19	135	154	
Seniors			1	2	1	4	1	9			1	7		3	14	128	1	4	19	157	176	
Special												1			1	11		1	1	13	14	
Total Full-Time			3	12	4	16	3	28			3	19	1	21	74	479	11	34	99	609	708	
Part-Time																						
First-Time Freshmen								1							4		1		6	6	6	
Other Freshmen												1	1		3				5	5	5	
Sophomores							3	1				1	1	3	7		1	3	14	17	17	
Juniors							3	2			1	1		2	11	1		4	17	21	21	
Seniors				1		4	1	4				1	1	1	14		1	2	26	28	28	
Special							1	1				2		3	3			3	7	10	10	
Total Part-Time				1		11	1	9			1	6	3	9	42	1	3	12	75	87	87	
Total Undergraduate			3	13	4	27	4	37			4	25	1	24	83	521	12	37	111	684	795	
Total All Students			3	13	4	27	4	37			4	25	1	24	83	521	12	37	111	684	795	

Figure 51: College of Education and Human Sciences Delivery-Site Head Count: Fall 2003-2014

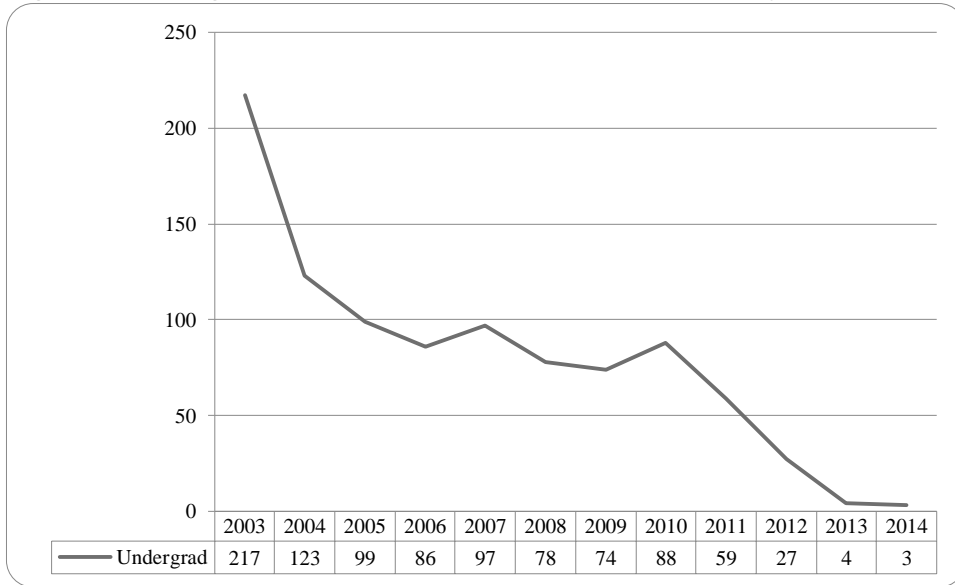


Figure 52: College of Education and Human Sciences Delivery-Site Student Credit Hours: Fall 2003-2014

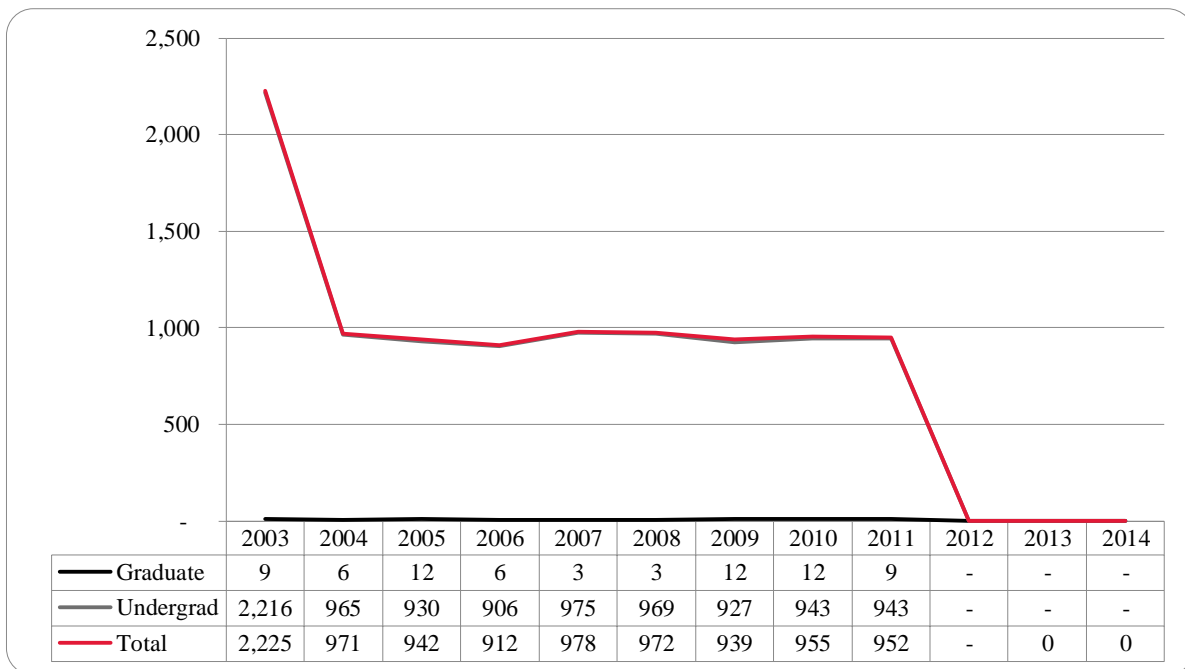


Figure 53: College of Education and Human Sciences Delivery-Site Head Count by Ethnicity by Gender: Fall 2003-2014

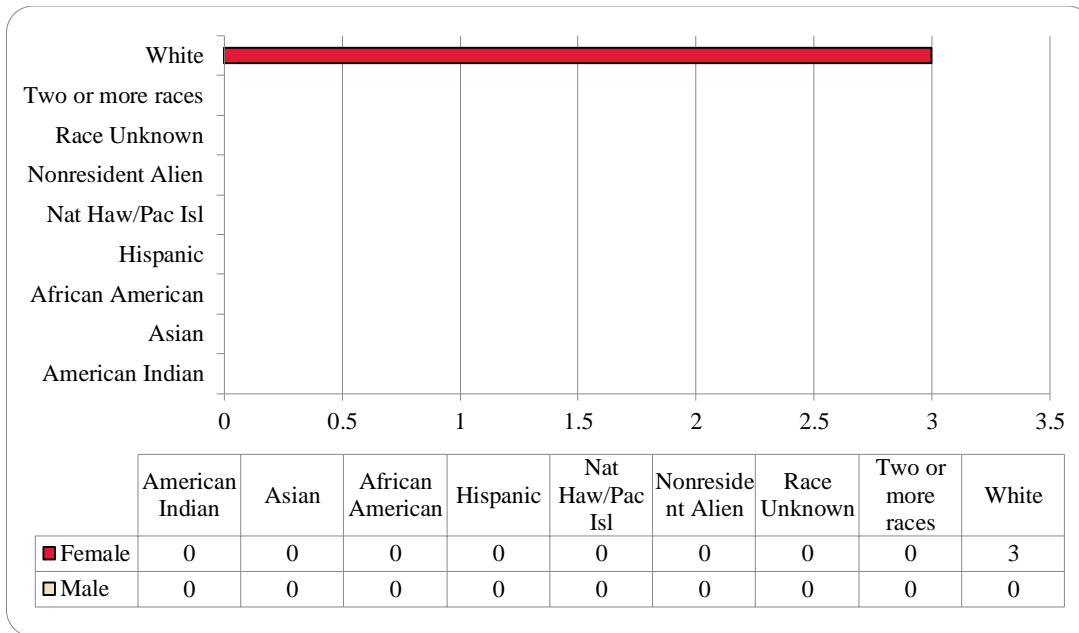


Table 20: College of Education and Human Sciences Head Count Summary for Undergraduate Students by Full and Part-Time by Gender and Race Classification: Fall 2014

	American Indian		Asian		African American		Hispanics		Nat Haw / Pac Isl		Race Unknown		Two or more races		White		Nonresident Alien		Total			
	F	M	F	M	F	M	F	M	F	M	F	M	F	M	F	M	F	M	F	M	Total	
Undergraduate																						
Full-Time																						
First-Time Freshmen																						
Other Freshmen																						
Sophomores																						
Juniors																						
Seniors															2						2	2
Special																						
Total Full-Time															2						2	2
Part-Time																						
First-Time Freshmen																						
Other Freshmen																						
Sophomores																						
Juniors																						
Seniors															1						1	1
Special																						
Total Part-Time															1						1	1
Total Undergraduate															3						3	3
Total All Students															3						3	3

Glossary

The total head count and student credit hours in this enrollment report are provided on both a delivery-site and administrative-site basis. Delivery-site includes enrollment in all courses taught at UNO regardless of “home” campus. This means that student credit hours are reported for courses in the colleges. Student enrollment is counted in the college declared by the student. Specifically, the delivery-site enrollment numbers include students in degree programs in the UNL Colleges of Agriculture, Architecture, Engineering and Technology, and Education and Human Science.

FIRST-TIME, Entering (freshmen) Student: Students attending any institution for the first time at the undergraduate level. For students entering the fall term, this includes students enrolled in the fall term who attended college for the first time in the prior summer term. Also included are students who entered with advanced standing, i.e. college credits earned before graduation from high school.

OTHER FRESHMEN: At the beginning of the current semester, undergraduate students who (1) are not First-Time Freshmen and (2) have less than 27 semester hours earned from all institutions of higher education attended.

SOPHOMORES: At the beginning of the current semester, undergraduate students who have at least 27, but not more than 57, semester hours earned from all institutions of higher education attended.

JUNIORS: At the beginning of the current semester, undergraduate students who have at least 58, but not more than 90, semester hours earned from all institutions of higher education attended.

SENIORS: At the beginning of the current semester, undergraduate students who have at least 91 semester hours earned from all institutions of higher education attended.

NON-DEGREE/INTER-CAMPUS/SPECIAL UNDERGRADUATES: Special undergraduates not pursuing a degree at UNO in various programs: Inter-Campus UNMC, UNK, UNL, and Non-Degree.

NON-DEGREE/INTER-CAMPUS/SPECIAL GRADUATE STUDENTS: Special graduate students not pursuing a degree at UNO in various programs: Engineering Transfer Program, Inter-Campus UNMC, UNK, UNL, Inter-Campus UNL Graduate Psychology and Non-Degree.

MASTERS/SPECIALIST: Graduate students pursuing a degree less than doctoral.

CERTIFICATE: These students are not enrolled in a degree program, but only a certificate.

DOCTORAL: Graduate students who have been accepted into a doctoral program.

FULL-TIME: In the current semester, undergraduate students enrolled for 12 or more semester hours, or graduate students enrolled for 9 or more semester hours.

PART-TIME: In the current semester, undergraduate students enrolled for less than 12 semester hours, or graduate students enrolled for less than 9 semester hours.

COOPERATIVE GRADUATE PROGRAM: Graduate students enrolled in Human Resources and Training or Global Information Operations offered cooperatively by two or more colleges.



OFFICE OF INSTITUTIONAL EFFECTIVENESS

www.unomaha.edu/oie/

402-554-2367 | 402-554-4896 (Fax)

T Hank Robinson, Director

Jenny Liu, Director of Institutional Research

Daniel O'Dell, Web & Communications Coordinator

Andrew Jacobsen, Business Analyst

Rita Sterkel, Management Information Coordinator

Jeanie Gutheil-Bykerk, Research Analyst