


Summer 2012

Enrollment Report - Summer 2012

UNO Office of Institutional Effectiveness
University of Nebraska at Omaha

Follow this and additional works at: <https://digitalcommons.unomaha.edu/oieenrollment>

 Part of the [Educational Assessment, Evaluation, and Research Commons](#), and the [Higher Education Commons](#)

Please take our feedback survey at: https://unomaha.az1.qualtrics.com/jfe/form/SV_8cchtFmpDyGfBLE

Recommended Citation

Office of Institutional Effectiveness, UNO, "Enrollment Report - Summer 2012" (2012). *Enrollment Reports*. 6.
<https://digitalcommons.unomaha.edu/oieenrollment/6>

This Report is brought to you for free and open access by the Systems Intelligence and Data Analytics (SIDA) at DigitalCommons@UNO. It has been accepted for inclusion in Enrollment Reports by an authorized administrator of DigitalCommons@UNO. For more information, please contact unodigitalcommons@unomaha.edu.

OFFICE OF INSTITUTIONAL EFFECTIVENESS

ENROLLMENT PROFILE REPORT

SUMMER 2012



UNIVERSITY OF
Nebraska
Omaha



Contents

EXECUTIVE SUMMARY	4
Table 1: UNO Delivery and Administrative-Site Head Count Enrollment and Comparison: Summer 2012	5
Figure 1: Delivery-Site & Administrative-Site Head Count Enrollment: Summer 2001 – 2012	6
Figure 2: UNO Delivery-Site Head Count by Student Level: Summer 2003-2012.....	7
Figure 3: UNO Delivery-Site Student Credit Hours by Student Level: Summer 2003-2012.....	7
Figure 4: UNO Delivery-Site Head Count by Ethnicity by Gender: Summer 2012	8
Table 2: Total UNO Delivery-Site Head Count Summary for Undergraduate and Graduate Students Full and Part-Time by Gender and Race Classification: Summer 2012	9
Figure 5: UNO Administrative-Site Head Count by Student Level: Summer 2003-2012	10
Figure 6: UNO Administrative-Site Student Credit Hours: Summer 2003-2012.....	10
Figure 7: UNO Administrative-Site Head Count by Ethnicity by Gender: Summer 2012.....	11
Table 3: Total UNO Administrative-Site Head Count Summary for Undergraduate and Graduate Students by Full and Part-Time by Gender and Race Classification: Summer 2012	12
Figure 8: College of Arts & Sciences Head Count: Summer 2003 -2012.....	13
Figure 9: College of Arts & Sciences Student Credit Hours: Summer 2003-2012.....	13
Figure 10: College of Arts & Sciences Head Count by Ethnicity by Gender: Summer 2012	14
Table 4: College of Arts & Sciences Head Count Summary for Undergraduate and Graduate Students by Full and Part-Time by Gender and Race Classification: Summer 2012.....	15
Figure 11: College of Business Administration Head Count: Summer 2012.....	16
Figure 12: College of Business Administration Student Credit Hours: Summer 2003-2012.....	16
Figure 13: College of Business Administration Head Count by Ethnicity by Gender: Summer 2012	17
Table 5: College of Business Administration Head Count Summary for Undergraduate and Graduate Students by Full and Part-Time by Gender and Race Classification: Summer 2012.....	18
Figure 14: College of Communication, Fine Arts and Media Delivery and Administrative-Site Head Count: Summer 2003-2012	19
Figure 15: College of Communication, Fine Arts and Media Administrative-Site Student Credit Hours: Summer 2003-2012	19
Figure 16: College of Communication, Fine Arts and Media Delivery-Site Head Count by Ethnicity by Gender: Summer 2012.....	20
Table 6: College of Communication, Fine Arts and Media Delivery-Site Head Count Summary for Undergraduate and Graduate Students by Full and Part-Time by Gender and Race Classification: Summer 2012	21

Figure 17: College of Education Head Count: Summer 2003-2012 22

Figure 18: College of Education Student Credit Hours: Summer 2003-2012 22

Figure 19: College of Education Head Count by Ethnicity by Gender: Summer 2012 23

Table 8: College of Education Head Count Summary for Undergraduate and Graduate Summary for Full and Part-Time by Gender and Race Classification: Summer 2012 24

Figure 20: College of Information Science & Technology Head Count: Summer 2003-2012 25

Figure 21: College of Information Science & Technology Student Credit Hours: Summer 2003-2012 25

Figure 22: College of Information Science & Technology Head Count by Ethnicity by Gender: Summer 2012 26

Table 9: College of Information Science and Technology Head Count Summary for Undergraduate and Graduate Summary for Full and Part-time by Gender and Race Classification: Summer 2012 27

Figure 23: College of Public Affairs & Community Service Delivery-Site Head Count: Summer 2003-2012 28

Figure 24: College of Public Affairs & Community Service Delivery-Site Student Credit Hours: Summer 2003-2012 28

Figure 25: College of Public Affairs & Community Service Delivery-Site Head Count by Ethnicity by Gender: Summer 2012 29

Table 10: College of Public Affairs and Community Service Delivery-Site Head Count for Undergraduate and Graduate Students by Full and Part-Time by Gender and Race Classification: Summer 2012 30

Figure 26: College of Public Affairs & Community Service Administrative-Site Head Count: Summer 2003-2012 31

Figure 27: College of Public Affairs & Community Service Administrative-Site Student Credit Hours: Summer 2003-2012 31

Figure 28: College of Public Affairs & Community Service Administrative-Site Head Count by Ethnicity by Gender: Summer 2012 32

Table 11: College of Public Affairs and Community Service Administrative-Site Head Count Summary for Undergraduate and Graduate Students by Full and Part-Time by Gender and Race Classification: Summer 2012 33

Figure 29: College of CPACS, Division of Continuing Studies Head Count: Summer 2003-2013 34

Table 12: College of CPACS Division of Continuing Studies Head Count Summary for Undergraduate Students by Full and Part-Time by Gender and Race Classification: Summer 2012 35

Figure 30: University Division Head Count: Summer 2003-2012 36

Figure 31: University Division Student Credit Hours: Summer 2003-2012 36

Figure 32: University Division Head Count by Ethnicity by Gender: Summer 2012 37

Table 13: University Division Head Count Summary for Undergraduate Students by Full and Part-Time by Gender and Race Classification: Summer 2012 38

Figure 33: Non-Degree/Intercampus Special Undergraduate Students Head Count: Summer 2003-2012 39

Figure 34: Non-Degree/Intercampus Special Undergraduate Students Head Count by Ethnicity by Gender: Summer 2012..... 39

Table 14: Non-Degree/Intercampus Head Count Summary for Special Undergraduate Students by Full and Part-Time by Gender and Race Classification: Summer 2012 40

Figure 35: Non-Degree/Intercampus Special Graduate Students Head Count: Summer 2003-2012 41

Figure 36: Non-Degree/Intercampus Special Graduate Students Head Count by Ethnicity by Gender: Summer 2012..... 41

Table 15: Non-Degree/Intercampus Head Count Summary for Special Graduate Students by Full and Part-Time by Gender and Race Classification: Summer 2012 42

Figure 37: Other Honors and Library Hours Student Credit Hours by Level of Instruction: Summer 2012 43

Figure 38: College of Agriculture Delivery-Site Head Count: Summer 2003-2012 44

Figure 39: College of Agriculture Delivery-Site Student Credit Hours: Summer 2003-2012 44

Table 16: College of Agriculture Head Count Summary for Undergraduate Students by Full and Part-Time by Gender and Race Classification: Summer 2012 45

Figure 40: College of Architecture Delivery-Site Head Count: Summer 2003-2012 46

Table 17: College of Architecture Head Count Summary for Undergraduate Students by Full and Part-Time by Gender and Race Classification: Summer 2012 47

Figure 41: College of Engineering Delivery-Site Head Count: Summer 2003-2012 48

Figure 42: College of Enigeering Delivery-Site Student Credit Hours: Summer 2003-2012 48

Figure 43: College of Engineering Delivery-Site Head Count by Ethnicity by Gender: Summer 2012..... 49

Table 18: College of Engineering Head Count Summary for Undergraduate Students by Full and Part-Time by Gender and Race Classification: Summer 2012 50

Figure 44: College of Education and Human Sciences Delivery-Site Head Count: Summer 2003-2012..... 51

Figure 45: College of Education and Human Sciences Delivery-Site Student Credit Hours: Summer 2003-2012 51

Figure 46: College of Education and Human Sciences Delivery-Site Head Count by Ethnicity by Gender: Summer 2003-2012 52

Table 19: College of Education and Human Sciences Head Count Summary for Undergraduate Students by Full and Part-Time by Gender and Race Classification: Summer 2012 53

GLOSSARY..... 54

EXECUTIVE SUMMARY

This Enrollment Statistical Summary provides delivery-site information. Administrative-site headcounts, since they are most closely related to the budgetary authority exercised by the campus, are officially reported to the Board of Regents. Delivery site reporting counts all students, including those in UNL programs delivered at UNO, but excludes UNO programs delivered in Lincoln (CPACS programs). Administrative-site reporting counts students enrolled in UNO programs only (including the CPACS programs delivered in Lincoln).

The Office of Institutional Research has found delivery-site counts to be the most frequently requested figures by campus units for academic and administrative planning purposes. The purpose of this summary is to provide the undergraduate and graduate enrollments and student credit hour information by college or equivalent academic unit, class, gender and ethnicity.

A glossary at the end of the report provides a list of definitions for headings and categories found in the report.

Summer 2012 Delivery-Site Campus Summary

A campus summary of changes in delivery-site head count enrollment and student credit hours compared to summer 2011 is below.

- Summer 2012 head count enrollment 6,367, a 2.7% decrease compared to the summer 2011 enrollment of 6,550 (Figure 1).
- Summer 2012 undergraduate head count enrollment is 5,018, a 0.4% decrease compared to the summer 2011 enrolled of 5,039 (Figure 2).
- Summer 2012 graduate head count enrollment is 1,349, a -10.7% decrease compared to the summer 2011 enrollment of 1,511 (see Figure 2).
- Summer 2012 student credit hours are 35,011, a 2.9% decrease compared to the summer 2011 credit hours of 36,089 (see Figure 3).
- Summer 2012 undergraduate credit hours are 28,774, down from summer 2011 by 1.4% (see Figure 3).
- Summer 2012 graduate credit hours are 6,237, down from summer 2011 by 9.8% (see Figure 3).

Administrative-Site

- Summer 2012 administrative-site head count enrollment is 6,104, a 2.6% decrease from the previous summer and administrative-site credit hours are 34,707, down 2.1% (see Figures 5 & 6)

Table 1: UNO Delivery and Administrative-Site Head Count Enrollment and Comparison: Summer 2012

	Summer 2012		Summer 2011	Summer 11-12 Administrative-Site	
	Delivery-Site	Administrative-Site	Administrative-Site	Numerical Change	Percent Change
UNO:					
<i>Undergraduate</i>					
Arts & Science	1,232	1,232	1,291	-59	-4.6%
Business Administration	798	798	776	22	2.8%
Communication, Fine Arts & Media	347	347	388	-41	-10.6%
Education	664	664	640	24	3.8%
Information Science and Technology	257	257	231	26	11.3%
Public Affairs & Community Services	244	275	258	17	6.6%
Division of Continuing Studies	594	594	581	13	2.2%
Sub-total CPACS including Cont. Studies	838	869	839	30	3.6%
Non-Degree	500	500	494	6	1.2%
University Division	88	88	98	-10	-10.2%
Total Undergraduate	4,724	4,755	4,757	-2	0.0%
<i>Graduate</i>					
Arts & Science	142	142	176	-34	-19.3%
Business Administration	191	191	215	-24	-11.2%
Communication, Fine Arts & Media	35	35	36	-1	-2.8%
Education	529	529	604	-75	-12.4%
Information Science and Technology	94	94	93	1	1.1%
Public Affairs & Community Services	178	178	192	-14	-7.3%
Undeclared	180	180	195	-15	-7.7%
Total Graduate	1,349	1,349	1,511	-162	-10.7%
<i>UNO Administrative-Site Total</i>		6,104	6,268	-164	-2.6%
UNL:	Summer 2012		Summer 2011	Numerical Change	Percent Change
Agriculture	1		3		
Architecture	6		3		
Engineering & Technology	260		309		
Education and Human Science	27		38		
Total UNL in Omaha	294		353	-59	-16.7%
	Summer 2012		Summer 2011	Numerical Change	Percent Change
<i>UNO Delivery-Site Total</i>	6,367		6,621	-254	-3.8%

Figure 1: Delivery-Site & Administrative-Site Head Count Enrollment: Summer 2001 – 2012

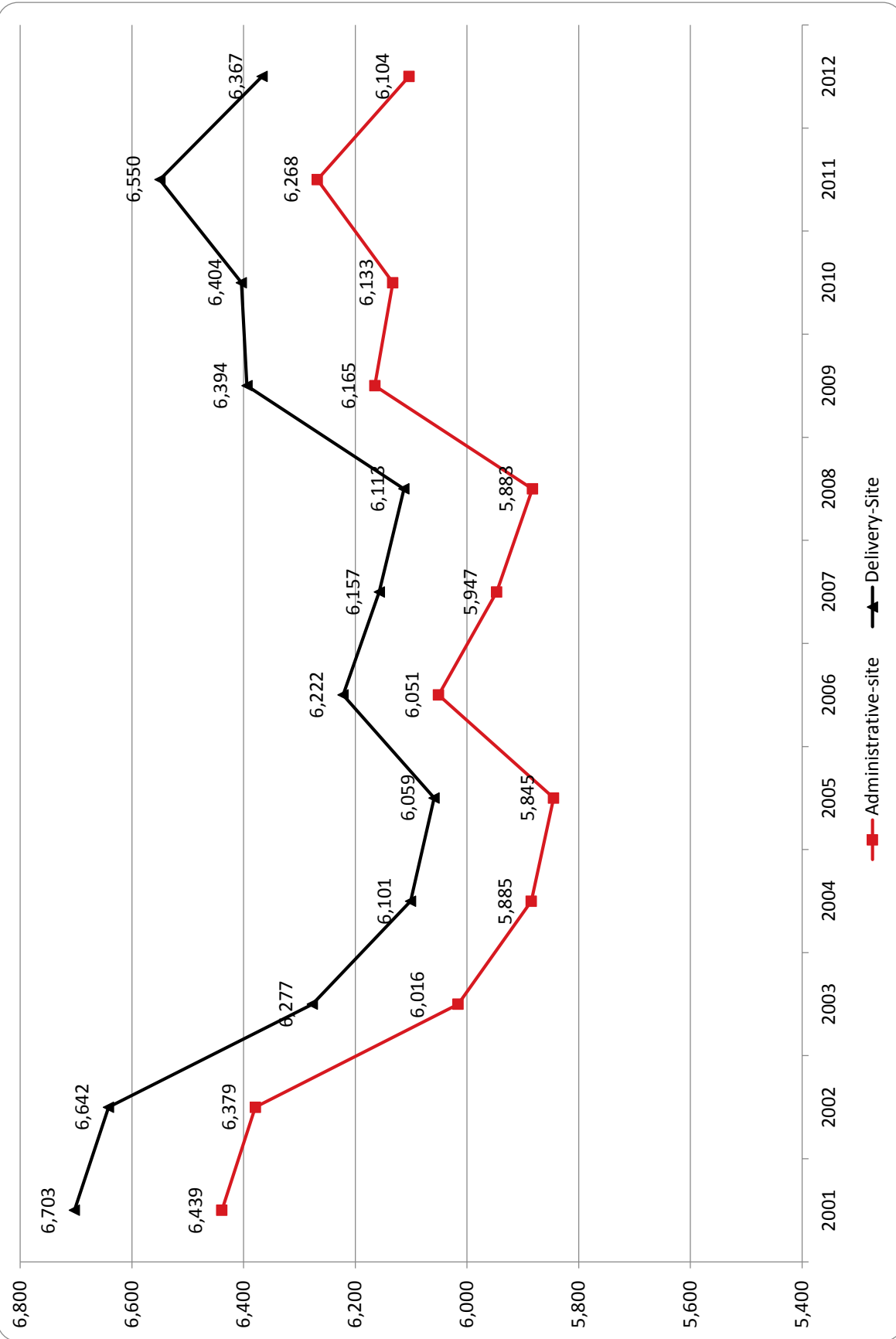


Figure 2: UNO Delivery-Site Head Count by Student Level: Summer 2003-2012

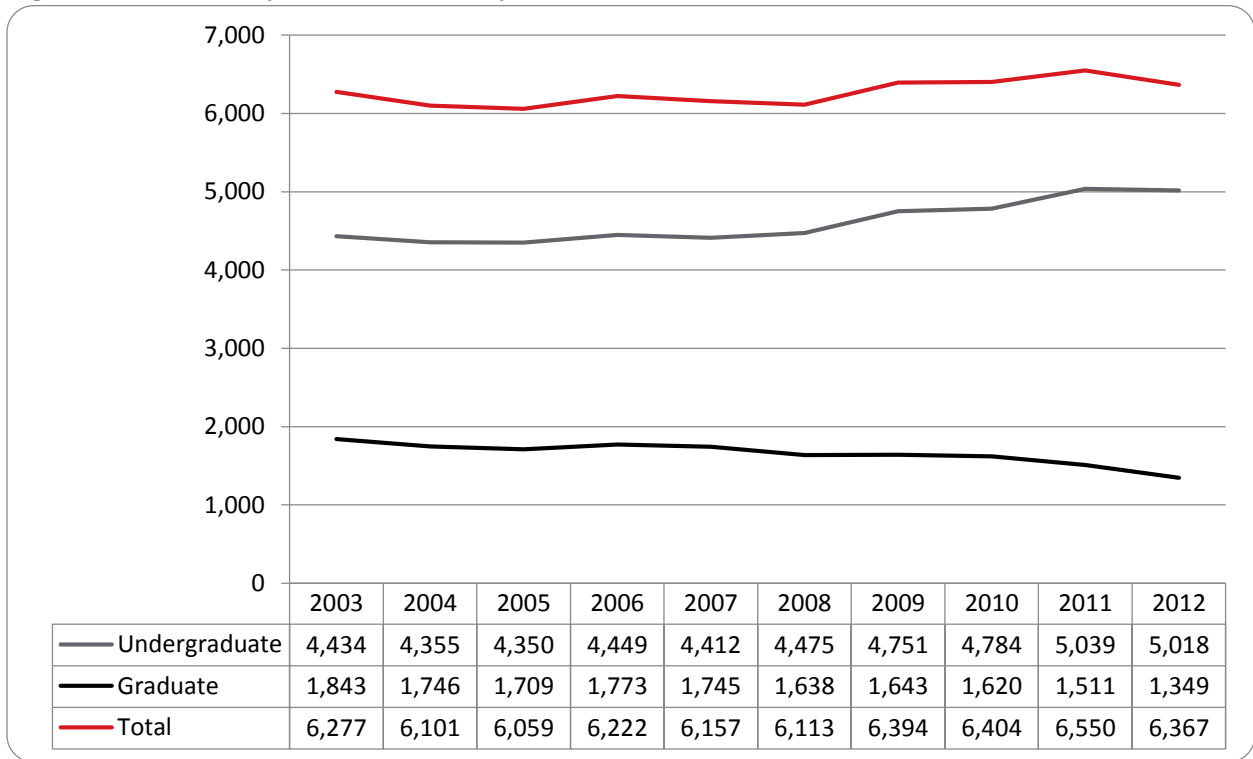


Figure 3: UNO Delivery-Site Student Credit Hours by Student Level: Summer 2003-2012

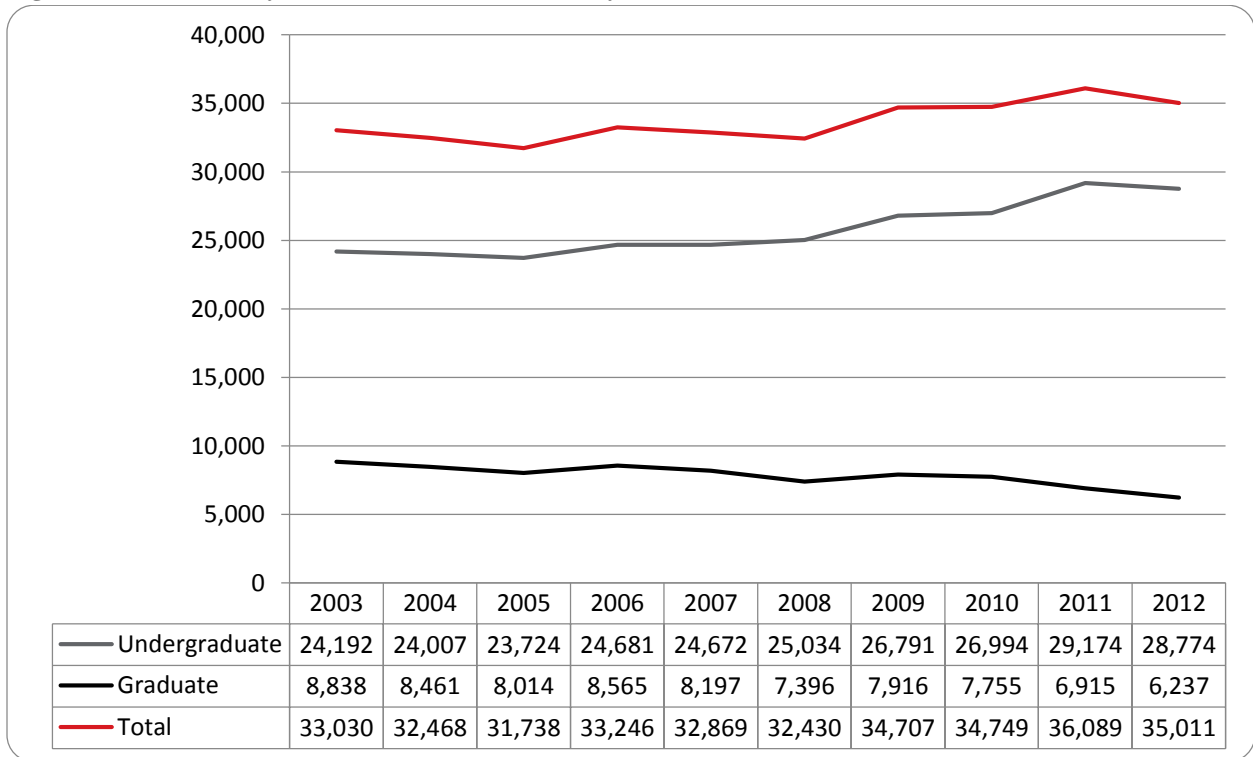


Figure 4: UNO Delivery-Site Head Count by Ethnicity by Gender: Summer 2012

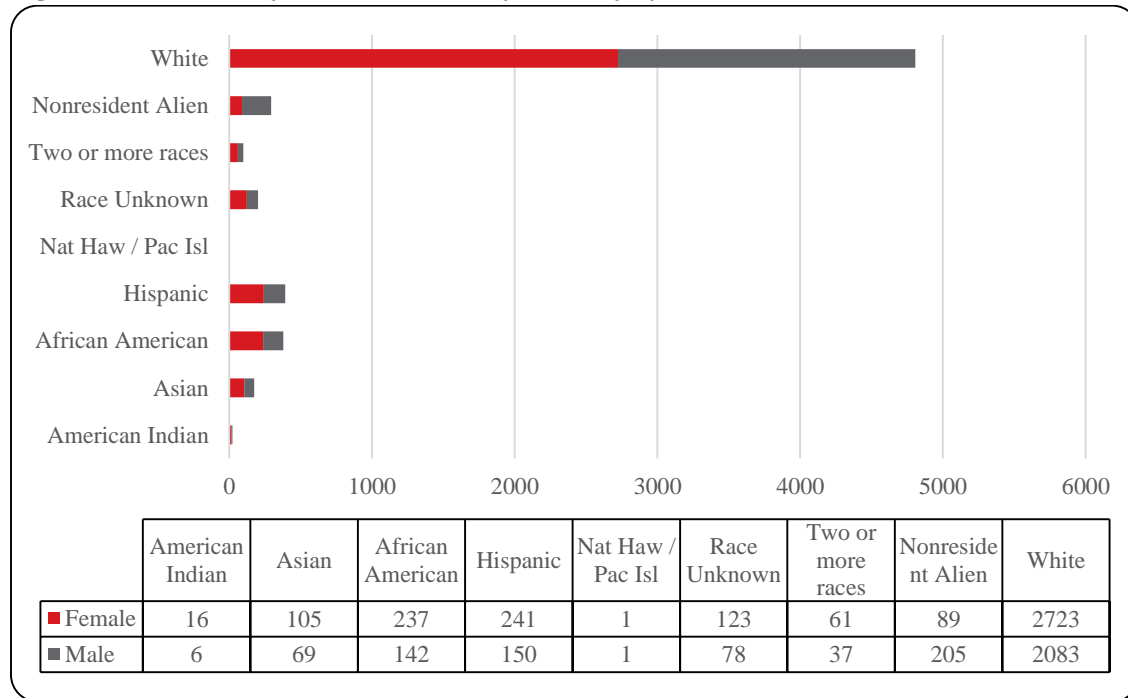


Table 2: Total UNO Delivery-Site Head Count Summary for Undergraduate and Graduate Students Full and Part-Time by Gender and Race Classification: Summer 2012

	American Indian		Asian		African American		Hispanic		Nat Haw / Pac Isl		Race Unknown		Two or more races		White		Nonresident Alien		Total		
	F	M	F	M	F	M	F	M	F	M	F	M	F	M	F	M	F	M	F	M	Total
Undergraduate																					
Full-Time																					
First-Time Freshmen																					
Other Freshmen					2	1	2	1					1		5	6			9	9	18
Sophomores			1		4		1				3		1		15	16	1	4	26	20	46
Juniors	1			1	7	2	3	3			2				34	39	4	4	47	51	98
Seniors	2		3		4	3	9	1			6	3	1	1	60	62	1	2	86	72	158
Special				1			1								3	5			4	6	10
Total Full-Time	3		4	2	17	6	16	5			11	5	2	2	117	128	2	10	172	158	330
Part-Time																					
First-Time Freshmen				1																	
Other Freshmen	2		19	8	25	19	48	24			6	5	13	8	247	196	6	23	366	284	650
Sophomores			13	12	46	22	44	33		1	33	18	12	12	287	230	6	20	441	347	788
Juniors	5	2	25	11	47	31	48	29	1		12	15	12	5	513	393	14	39	677	525	1,202
Seniors	5	3	21	20	69	47	57	35			32	30	12	2	717	665	22	36	935	838	1,773
Special	1		10	2	4	3	8	7			6		2	3	98	98	4	5	132	119	251
Total Part-Time	12	6	89	53	191	122	205	128	1	1	89	68	51	30	1,863	1,589	55	135	2,556	2,132	4,688
Total Undergraduate	15	6	93	55	208	128	221	133	1	1	100	73	53	32	1,980	1,717	57	145	2,728	2,290	5,018
Graduate																					
Full-Time																					
Certificate																					
Masters			3	1	4	3	2	1			2		2	1	88	29	2	1	103	36	139
Doctoral															1	1		1	1	2	3
Special Graduate				1									1		3	4		1	4	6	10
Total Full-Time			3	2	4	3	2	1			2		3	1	92	34	2	3	108	44	152
Part-Time																					
Certificate																					
Masters	1		7	11	19	7	16	9			17	5	3	4	495	272	23	38	581	346	927
Doctoral					1	2	3								21	16		4	22	25	47
Special Graduate			2		5	2	2	4			4		1		131	41	6	15	151	62	213
Total Part-Time	1		9	12	25	11	18	16			21	5	4	5	651	332	30	57	760	437	1,197
Total Graduate	1		12	14	29	14	20	17			23	5	8	5	743	366	32	60	868	481	1,349
Total All Students	16	6	105	69	237	142	241	150	1	1	123	78	61	37	2,723	2,083	89	205	3,596	2,771	6,367

Figure 5: UNO Administrative-Site Head Count by Student Level: Summer 2003-2012

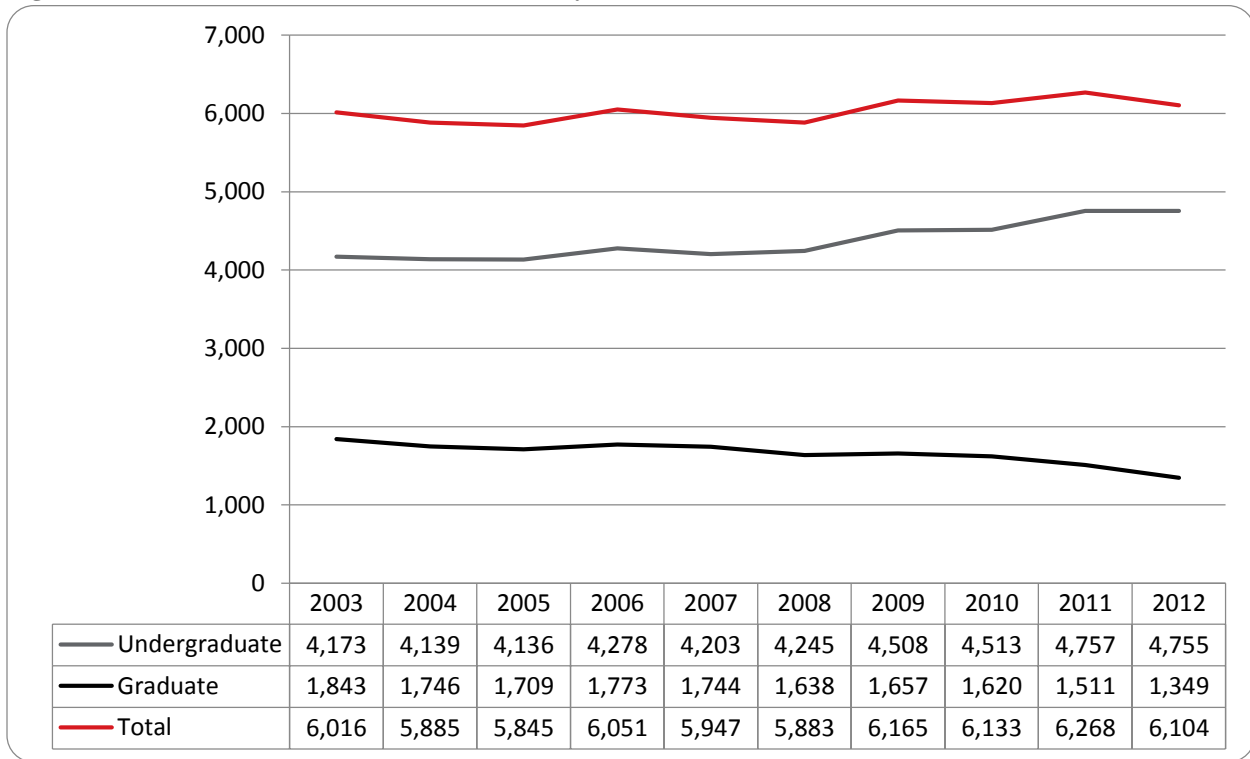


Figure 6: UNO Administrative-Site Student Credit Hours: Summer 2003-2012

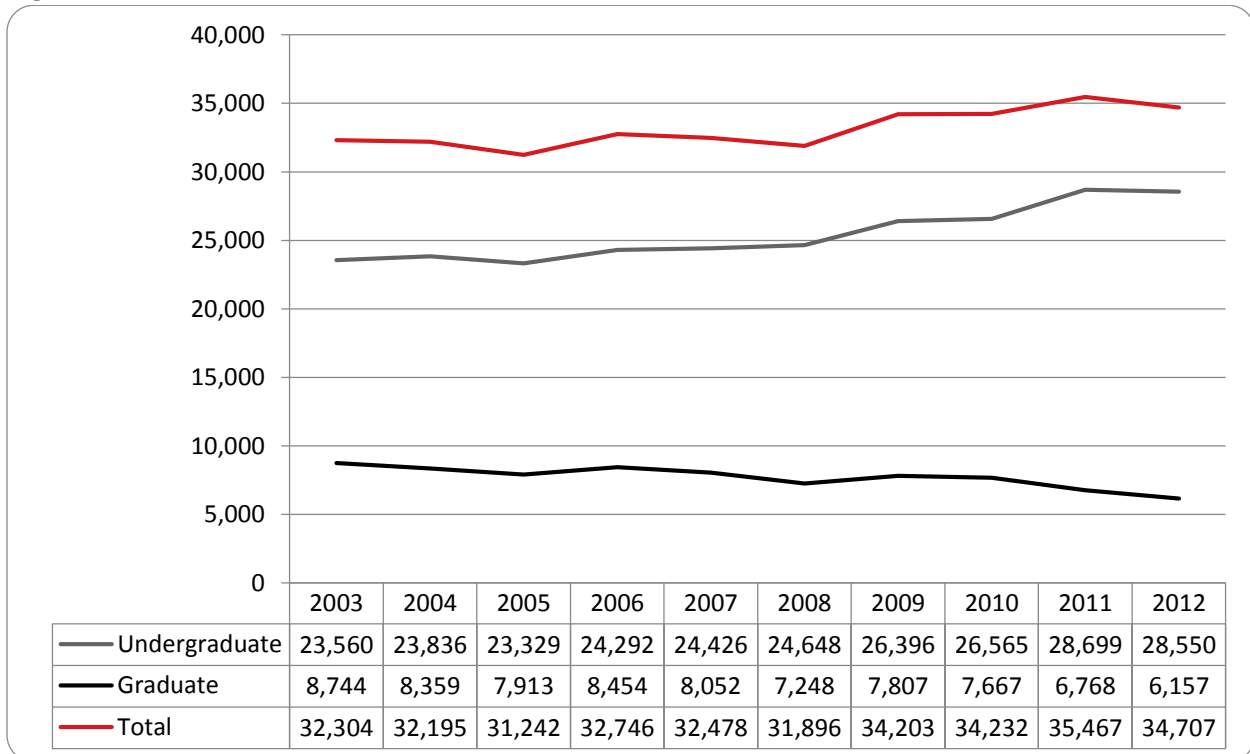


Figure 7: UNO Administrative-Site Head Count by Ethnicity by Gender: Summer 2012

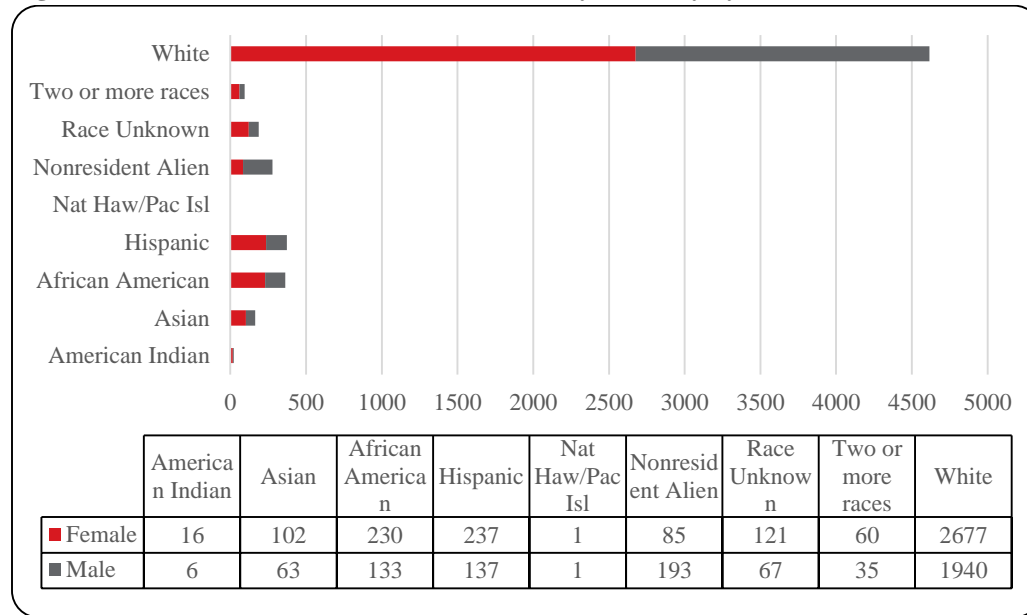


Table 3: Total UNO Administrative-Site Head Count Summary for Undergraduate and Graduate Students by Full and Part-Time by Gender and Race Classification: Summer 2012

	American Indian		Asian		African American		Hispanic		Nat Haw / Pac Isl		Race Unknown		Two or more races		White		Nonresident Alien		Total		
	F	M	F	M	F	M	F	M	F	M	F	M	F	M	F	M	F	M	F	M	Total
Undergraduate																					
Full-Time																					
First-Time Freshmen																					
Other Freshmen																					
Sophomores			1		3		1				3		1		5	6			9	9	18
Juniors	1			1	5	2	3	3			2	2			32	37		4	25	20	45
Seniors	2		3		4	3	9	1			6	3	1		59	60		2	43	49	92
Special				1			1								3	4			85	70	155
Total Full-Time	3		4	2	14	6	16	5			11	5	2	2	114	123	2	10	166	153	319
Part-Time																					
First-Time Freshmen			1																		
Other Freshmen	2		18	8	25	19	48	23		1	6	5	13	8	247	189	5	20	364	273	637
Sophomores			13	12	46	21	41	29			32	12	11	11	276	190	6	20	425	295	720
Juniors	5	2	24	8	46	29	49	27	1		12	13	12	4	498	358	13	37	660	478	1,138
Seniors	5	3	20	17	66	41	55	30			31	27	12	2	701	615	22	31	912	766	1,678
Special		1	10	2	4	3	8	6			6	6	2	3	97	92	4	5	131	112	243
Total Part-Time	12	6	86	47	187	113	201	115	1	1	87	57	50	28	1,820	1,451	51	123	2,495	1,941	4,436
Total Undergraduate	15	6	90	49	201	119	217	120	1	1	98	62	52	30	1,934	1,574	53	133	2,661	2,094	4,755
Graduate																					
Full-Time																					
Certificate																					
Masters			3	1	4	3	2	1			2	2	1	2	88	29	2	1	103	36	139
Doctoral																					
Special Graduate																					
Total Full-Time			3	2	4	3	2	1			2	3	1	3	92	34	2	3	108	44	152
Part-Time																					
Certificate																					
Masters	1		7	11	19	7	16	9			17	5	3	4	495	272	23	38	581	346	927
Doctoral						1	2	3							21	16		4	22	25	47
Special Graduate			2		5	2	2	4			4		1		131	41	6	15	151	62	213
Total Part-Time	1		9	12	25	11	18	16			21	5	5	4	651	332	30	57	760	437	1,197
Total Graduate	1		12	14	29	14	20	17			23	5	8	5	743	366	32	60	868	481	1,349
Total All Students	16	6	102	63	230	133	237	137	1	1	121	67	60	35	2,677	1,940	85	193	3,529	2,575	6,104

Figure 8: College of Arts & Sciences Head Count: Summer 2003 -2012

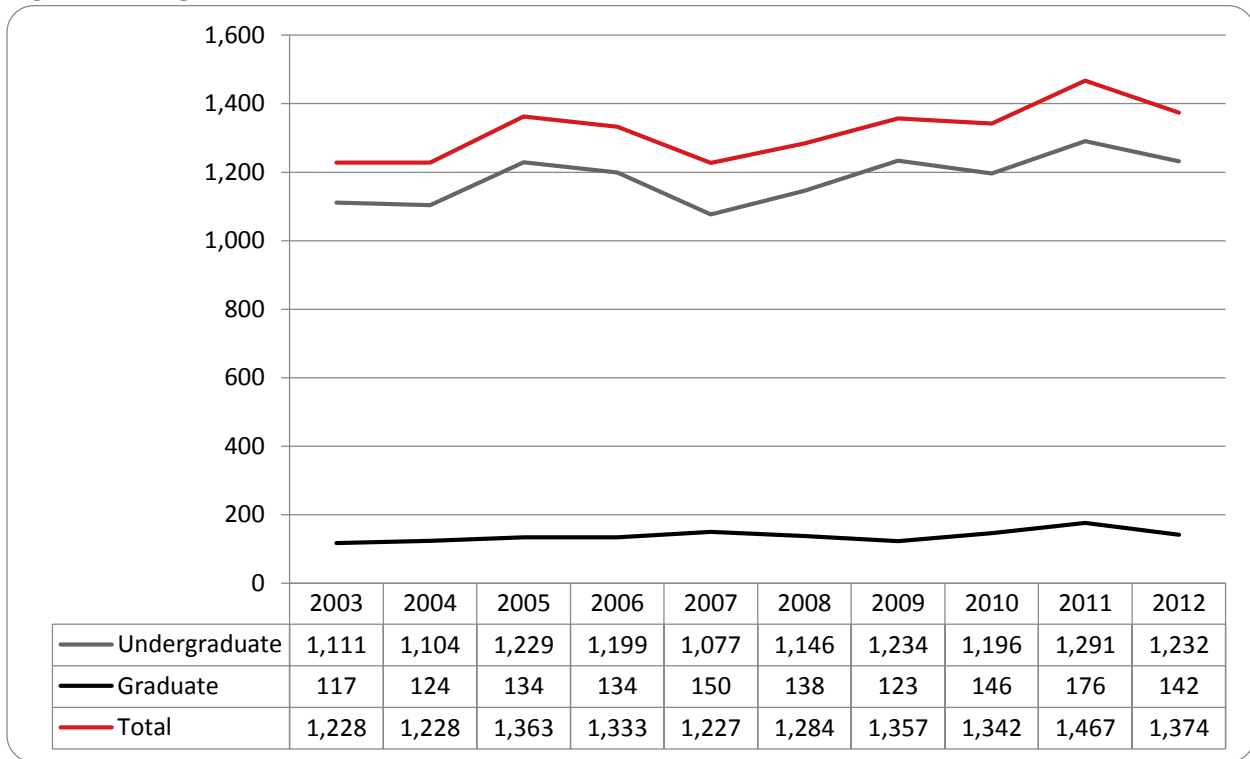


Figure 9: College of Arts & Sciences Student Credit Hours: Summer 2003-2012

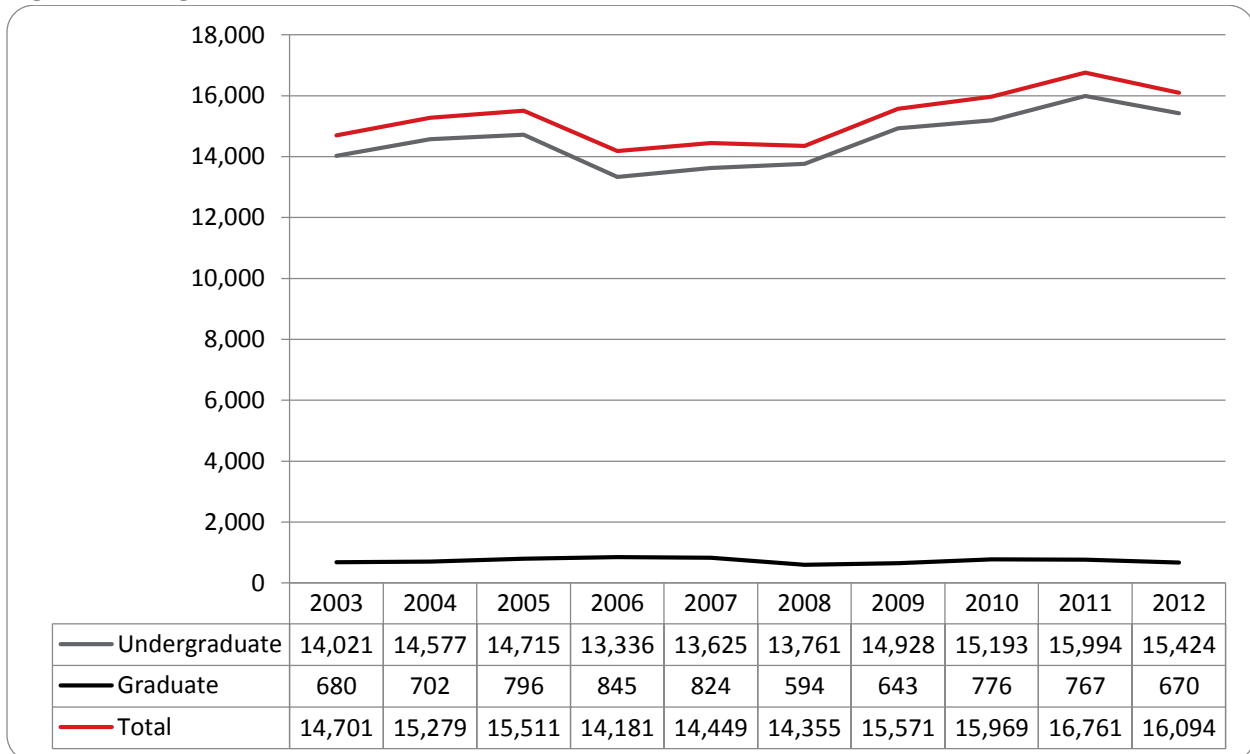


Figure 10: College of Arts & Sciences Head Count by Ethnicity by Gender: Summer 2012

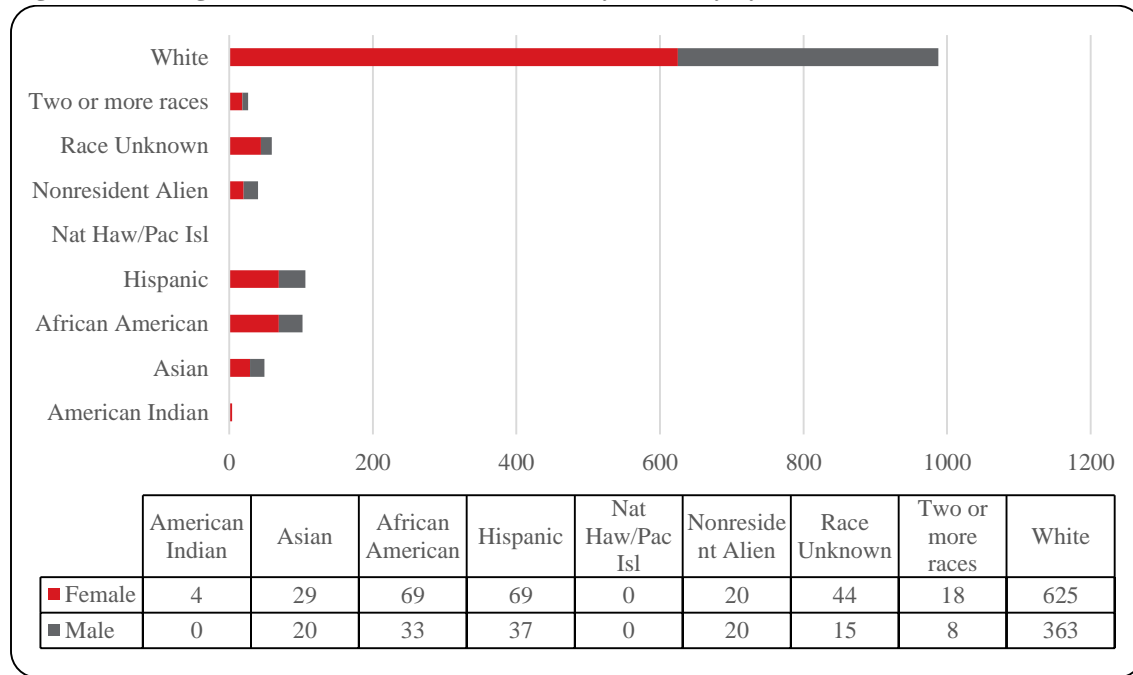


Table 4: College of Arts & Sciences Head Count Summary for Undergraduate and Graduate Students by Full and Part-Time by Gender and Race Classification: Summer 2012

	American Indian		Asian		African American		Hispanic		Nat Haw / Pac Isl		Race Unknown		Two or more races		White		Nonresident Alien		Total			
	F	M	F	M	F	M	F	M	F	M	F	M	F	M	F	M	F	M	F	M	Total	
Undergraduate																						
Full-Time																						
First-Time Freshmen																						
Other Freshmen																						
Sophomores					2																	
Juniors				1	2	1																
Seniors			1		1			5				2	1									
Special																						
Total Full-Time			1	1	5	1	5	2			2	1					28	29		41	34	75
Part-Time																						
First-Time Freshmen																						
Other Freshmen			2	2	5	5	1					3	1	6	1	34	16	1	4	56	30	86
Sophomores			8	6	22	9	18	10				17	4	3	4	124	40	1	3	193	76	269
Juniors	3		10	5	19	4	23	8				4	3	6	2	157	89	4	4	226	115	341
Seniors	1		5	4	16	11	14	11				14	4	3		187	120	11	5	251	155	406
Special					1	1	2	1				2				18	20	2	22	28	28	50
Total Part-Time	4		26	18	63	31	61	32			40	12	18	8	520	286	18	20	750	407	1,157	
Total Undergraduates	4		27	19	68	32	66	34			42	13	18	8	548	315	18	20	791	441	1,232	
Graduate																						
Full-Time																						
Certificate																						
Masters						1										6	3			6	5	11
Doctoral																1				1		1
Special Graduate																						
Total Full-Time						1										7	3			7	5	12
Part-Time																						
Certificate																						
Masters			2	1	1		3	1			2	2			66	43	2		76	47	123	
Doctoral																2	2			2	3	5
Special Graduate																						
Total Part-Time			2	1	1		3	2			2	2			70	45	2		80	50	130	
Total Graduate			2	1	1	1	3	3			2	2			77	48	2		87	55	142	
Total All Students	4		29	20	69	33	69	37			44	15	18	8	625	363	20	20	878	496	1,374	

Figure 11: College of Business Administration Head Count: Summer 2012

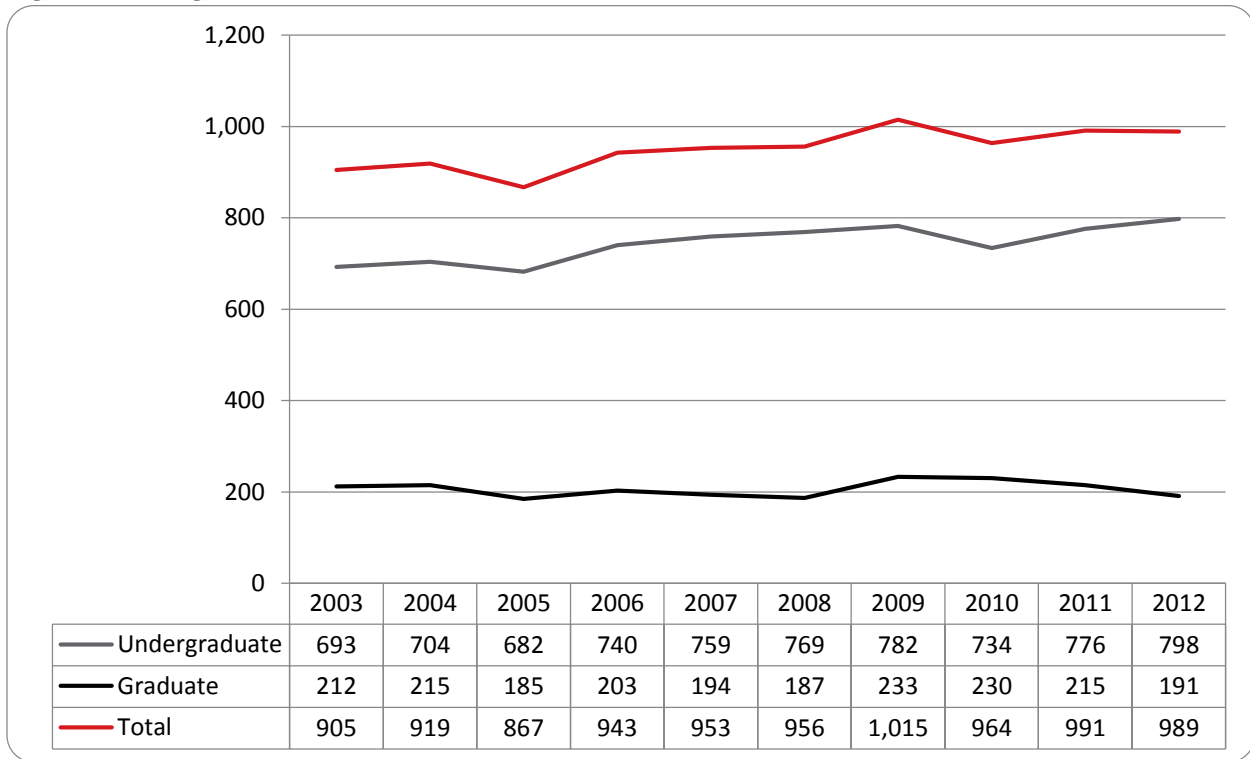


Figure 12: College of Business Administration Student Credit Hours: Summer 2003-2012

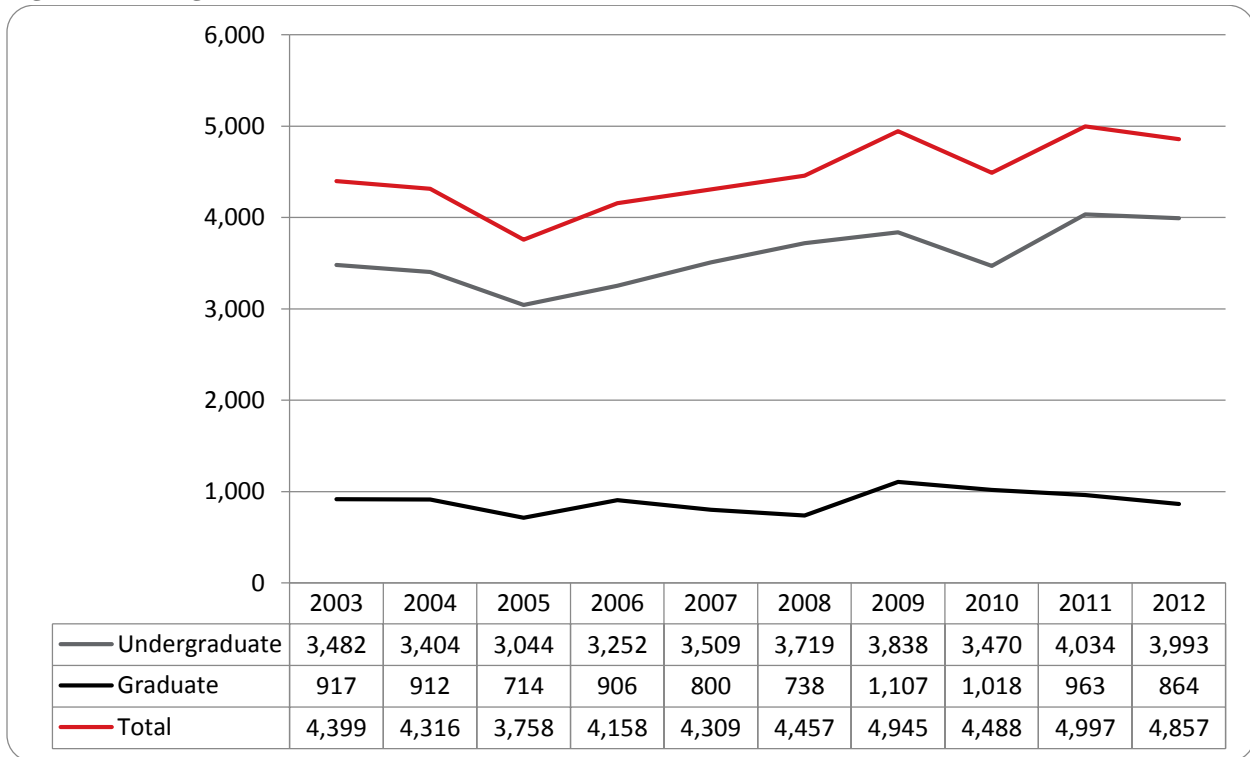


Figure 13: College of Business Administration Head Count by Ethnicity by Gender: Summer 2012

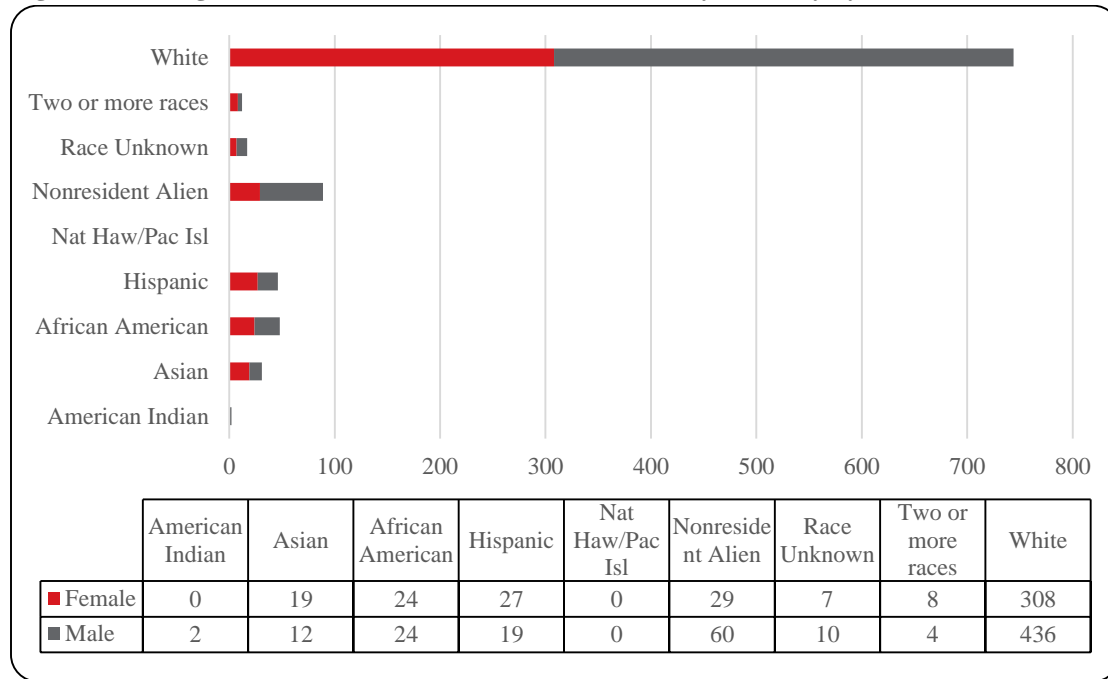


Table 5: College of Business Administration Head Count Summary for Undergraduate and Graduate Students by Full and Part-Time by Gender and Race Classification: Summer 2012

	American Indian		Asian		African American		Hispanic		Nat Haw / Pac Isl		Race Unknown		Two or more races		White		Nonresident Alien		Total				
	F	M	F	M	F	M	F	M	F	M	F	M	F	M	F	M	F	M	F	M	Total		
Undergraduate																							
Full-Time																							
First-Time Freshmen																							
Other Freshmen																							
Sophomores																							
Juniors							1																
Seniors					2			1															
Special																							
Total Full-Time					2		2	1	1			2					16	23	2	4	21	30	51
Part-Time																							
First-Time Freshmen																							
Other Freshmen					1																		
Sophomores					2		5	1	7		5		1	2	3		23	37	4	9	44	56	100
Juniors					6		6	5	2		6		4	3			86	98	5	15	108	130	238
Seniors					1		5	4	10		9		1	4	2		110	146	9	9	149	176	325
Special					1		4				1		1				13	17	1	1	21	20	41
Total Part-Time					2		17	7	21		18		3	9	7		243	312	20	46	335	412	747
Total Undergraduate					2		17	7	21		20		5	9	7		259	335	22	50	356	442	798
Graduate																							
Full-Time																							
Certificate																							
Masters										1													
Doctoral																							
Special Graduate																							
Total Full-Time										1													
Part-Time																							
Certificate																							
Masters					2		5	3	3		3		2	1	1		47	93	5	9	62	115	177
Doctoral																							
Special Graduate																							
Total Part-Time					2		5	3	3		3		2	1	1		1	1			1	1	2
Total Graduate					2		5	3	4		3		2	2	1		48	95	6	9	64	117	181
Total All Students					2		19	12	24		24		7	10	8		308	436	29	60	422	567	989

Figure 14: College of Communication, Fine Arts and Media Delivery and Administrative-Site Head Count: Summer 2003-2012

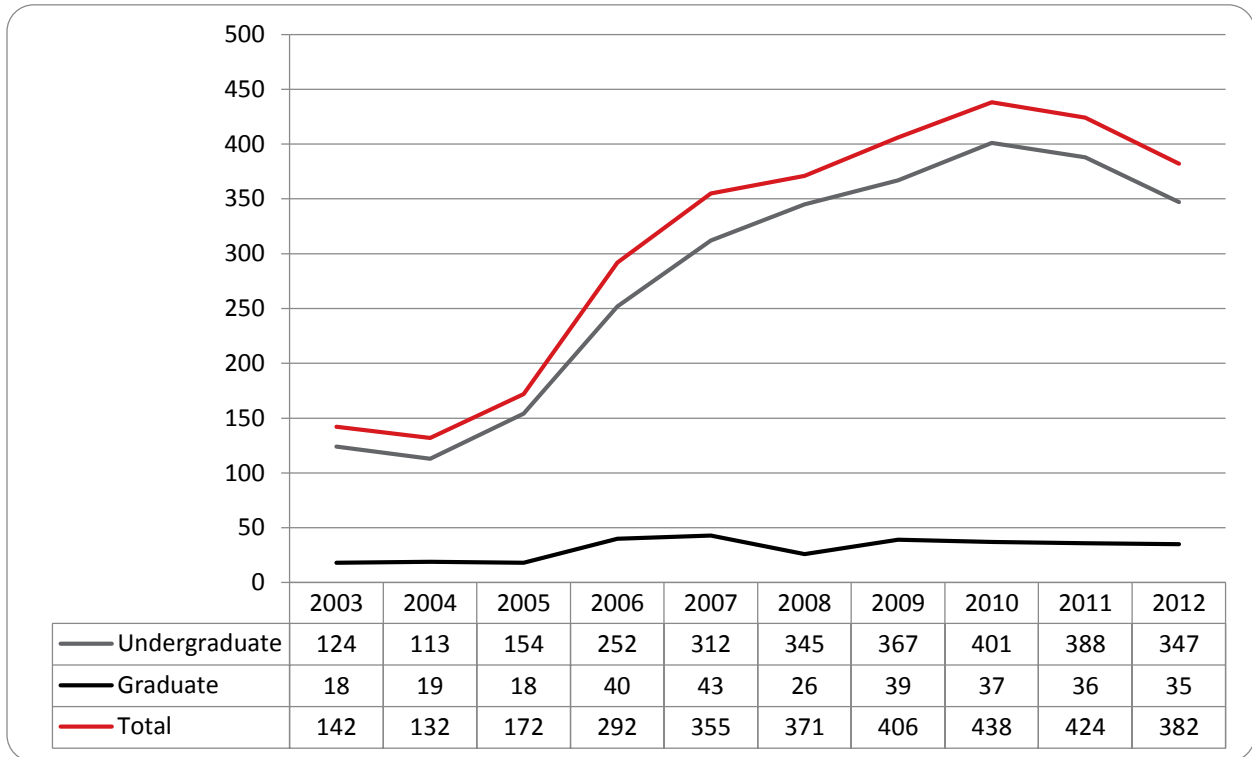


Figure 15: College of Communication, Fine Arts and Media Administrative-Site Student Credit Hours: Summer 2003-2012

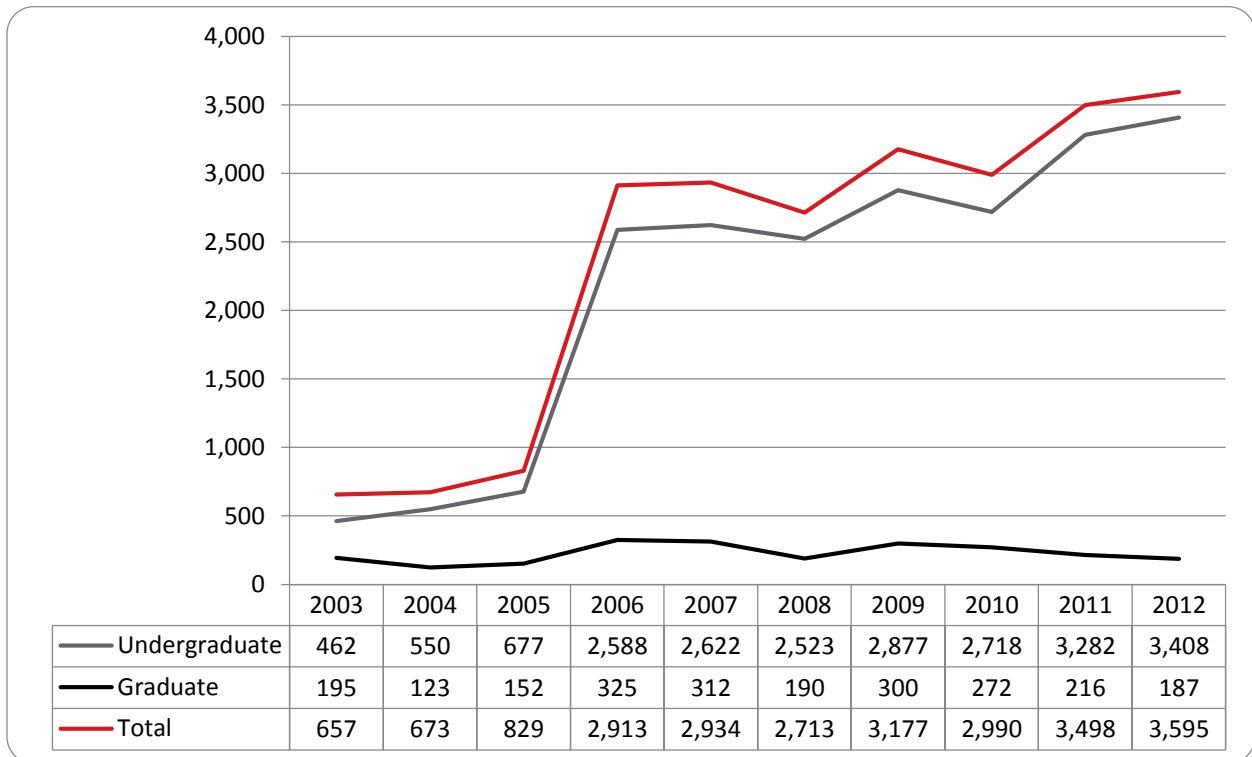


Figure 16: College of Communication, Fine Arts and Media Delivery-Site Head Count by Ethnicity by Gender: Summer 2012

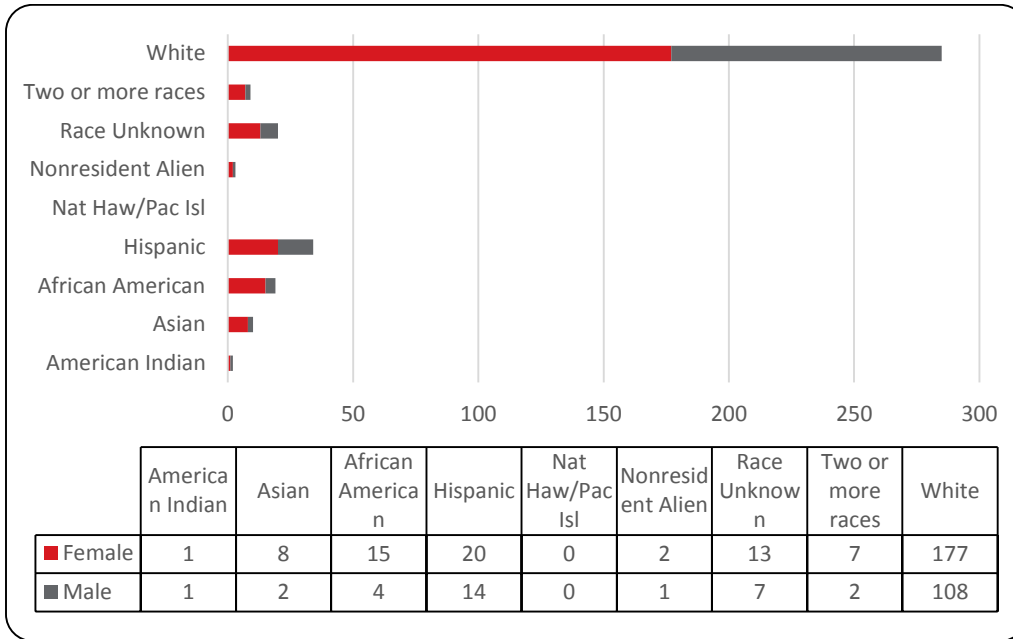


Table 6: College of Communication, Fine Arts and Media Delivery-Site Head Count Summary for Undergraduate and Graduate Students by Full and Part-Time by Gender and Race Classification: Summer 2012

	American Indian		Asian		African American		Hispanic		Nat Haw / Pac Isl		Race Unknown		Two or more races		White		Nonresident Alien		Total		
	F	M	F	M	F	M	F	M	F	M	F	M	F	M	F	M	F	M	F	M	Total
Undergraduate																					
Full-Time																					
First-Time Freshmen																					
Other Freshmen																					
Sophomores							1														1
Juniors											2										4
Seniors						1		1				1									2
Special																					3
Total Full-Time					1		2				2	2				6	7			11	20
Part-Time																					
First-Time Freshmen																					
Other Freshmen																					
Sophomores					2		1						2								6
Juniors			2		3	1	3	6			3	1	3		23	13					37
Seniors	1	1	3		4	1	10	3			2	1	2		45	23		1			68
Special			3		5	2	5	3			6	3	2		75	50					96
Total Part-Time	1	1	8	2	14	4	18	13			11	5	7	2	149	90				2	3
Total Undergraduate	1	1	8	2	15	4	20	13			13	7	7	2	155	97				1	209
Graduate																					
Full-Time																					
Certificate																					
Masters																					
Doctoral																					
Special Graduate																					
Total Full-Time																					
Part-Time																					
Certificate																					
Masters								1													
Doctoral																					
Special Graduate																					
Total Part-Time								1													1
Total Graduate								1													22
Total All Students	1	1	8	2	15	4	20	14			13	7	7	2	177	108				243	382

Figure 17: College of Education Head Count: Summer 2003-2012

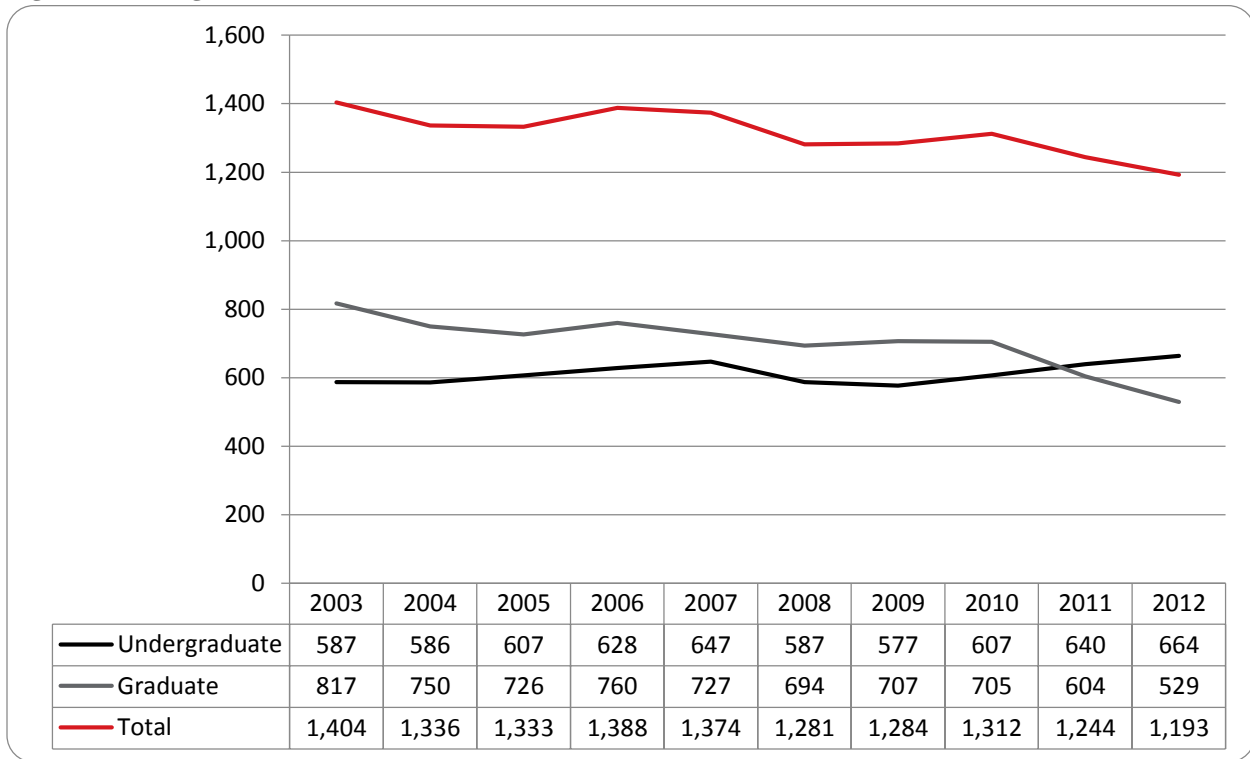


Figure 18: College of Education Student Credit Hours: Summer 2003-2012

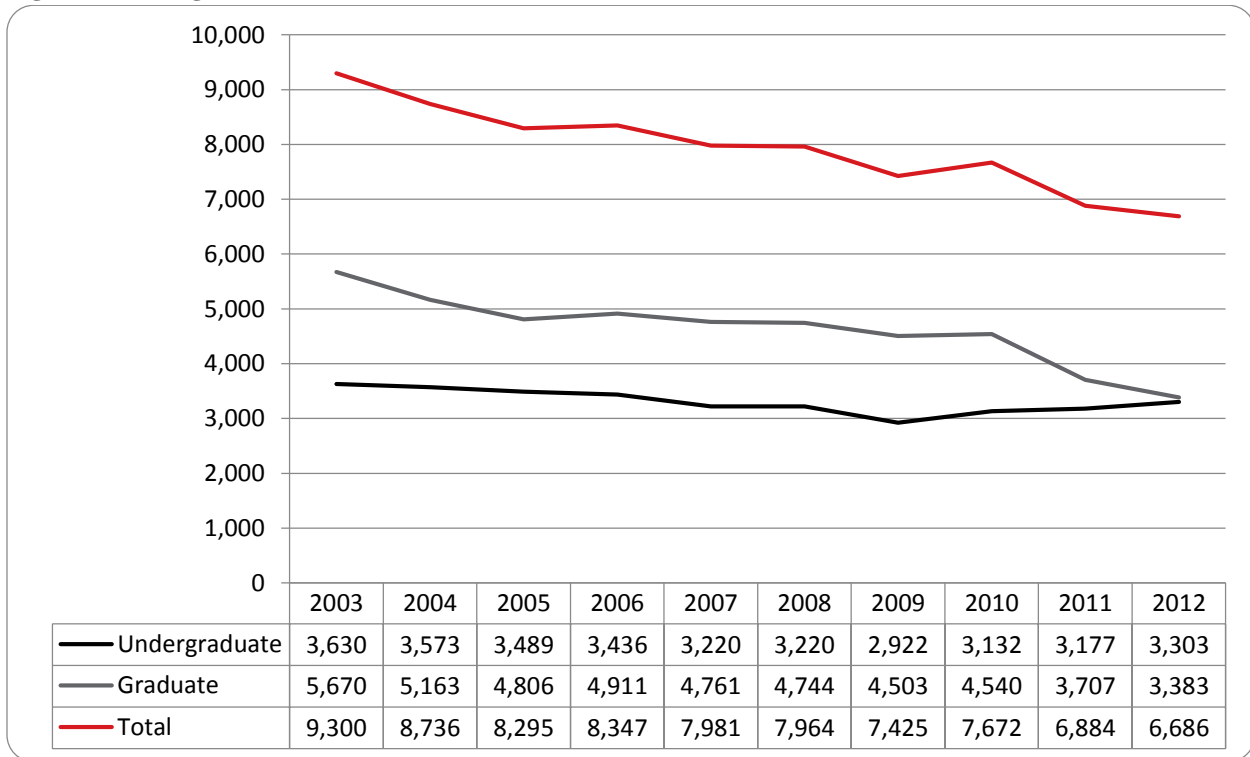


Figure 19: College of Education Head Count by Ethnicity by Gender: Summer 2012

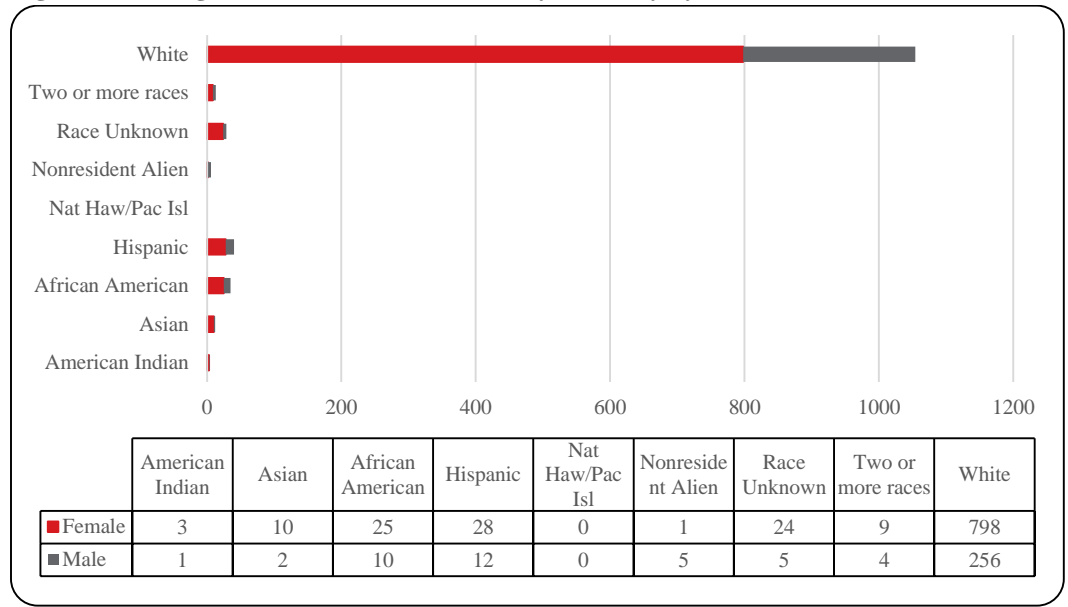


Table 8: College of Education Head Count Summary for Undergraduate and Graduate Summary for Full and Part-Time by Gender and Race Classification: Summer 2012

	American Indian		Asian		African American		Hispanic		Nat Haw / Pac Isl		Race Unknown		Two or more races		White		Nonresident Alien		Total		
	F	M	F	M	F	M	F	M	F	M	F	M	F	M	F	M	F	M	F	M	Total
Undergraduate																					
Full-Time																					
First-Time Freshmen																					
Other Freshmen																					
Sophomores					1																
Juniors	1										1										
Seniors			1				1						1								
Special																					
Total Full-Time	1	1	1	1	1	1	1	1	1	1	1	1	1	1	1	1	1	1	1	1	2
Part-Time																					
First-Time Freshmen																					
Other Freshmen																					
Sophomores							1														
Juniors			1		4	4	7	1			5	1	2	1	52	17					
Seniors	1	1	3		7	2	11	4			3	3	2	186	75						
Special			1		2		1	2			2		1	30	13						
Total Part-Time	1	1	5		13	7	20	10			13	4	5	2	404	145					
Total Undergraduate	2	1	6		14	7	21	10			13	5	6	3	423	149					
Graduate																					
Full-Time																					
Certificate																					
Masters			3	1	2	1	2				2		2		76	20					
Doctoral																					
Special Graduate																					
Total Full-Time			3	1	2	1	2				2		3		77	21					
Part-Time																					
Certificate																					
Masters	1				1	7	4	1			8		1		255	70					
Doctoral						1	2	1							14	11					
Special Graduate			1		1	1	1				1				28	5					
Total Part-Time	1	1	1	1	9	2	5	2			9		1		298	86					
Total Graduate	1		4	2	11	3	7	2			11		3	1	375	107					
Total All Students	3	1	10	2	25	10	28	12			24	5	9	4	798	256	1	5	898	295	1,193

Figure 20: College of Information Science & Technology Head Count: Summer 2003-2012

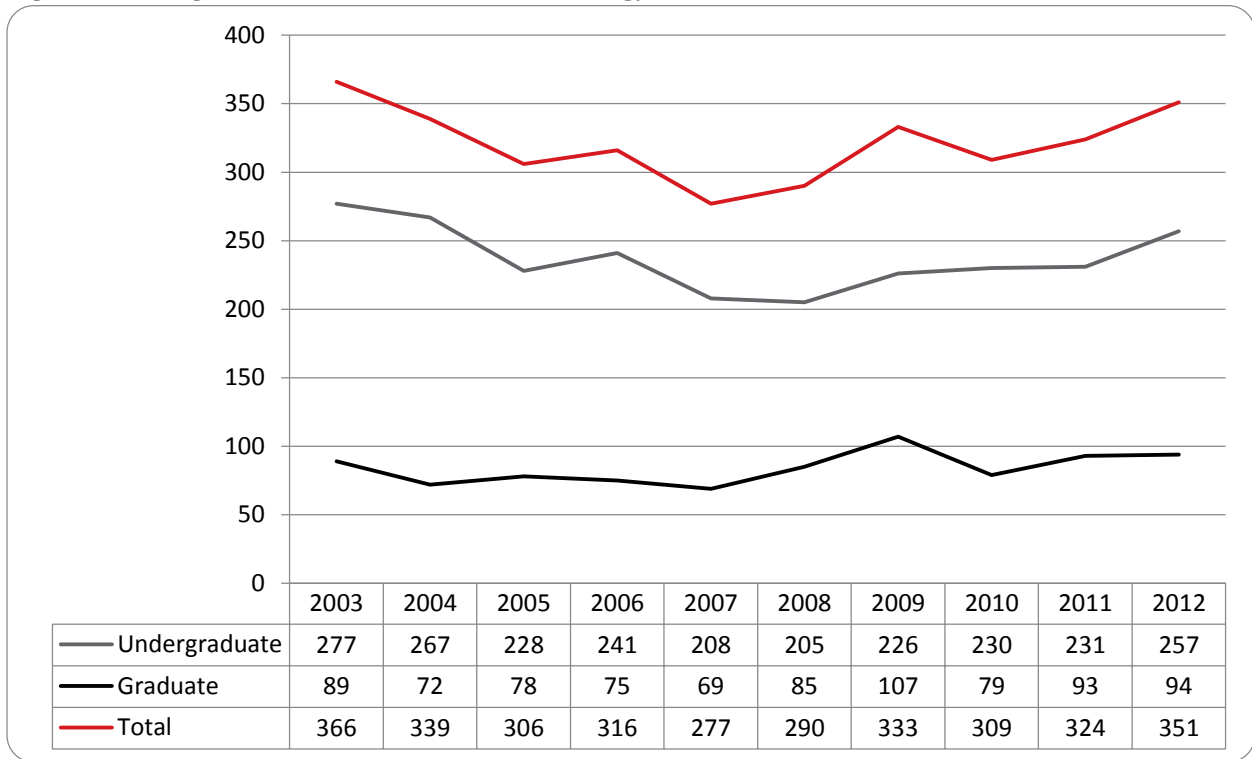


Figure 21: College of Information Science & Technology Student Credit Hours: Summer 2003-2012

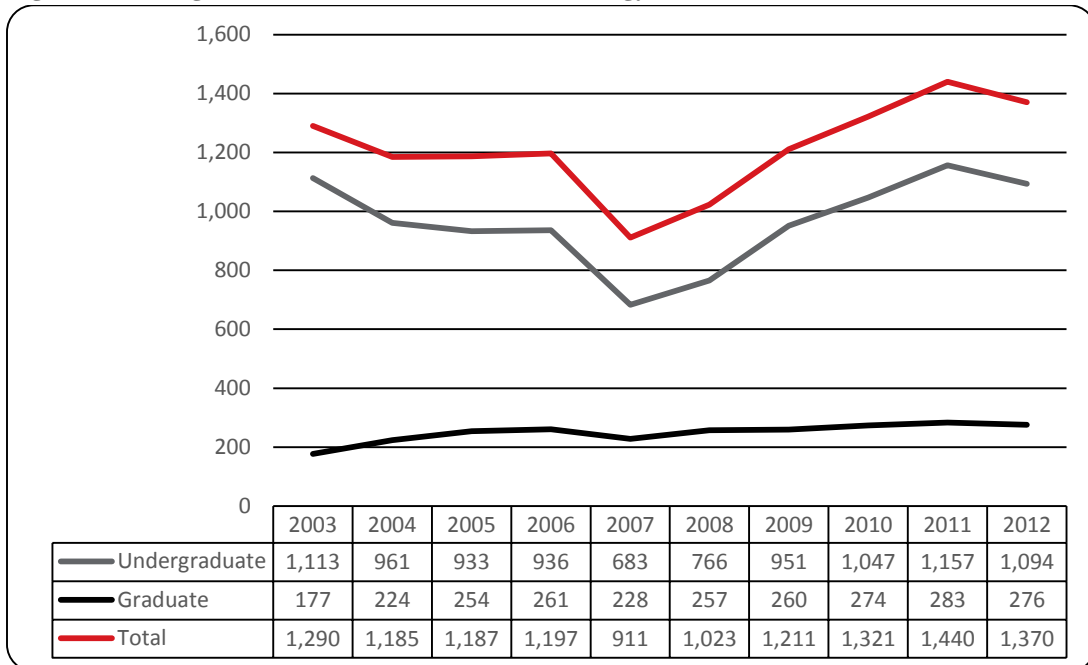


Figure 22: College of Information Science & Technology Head Count by Ethnicity by Gender: Summer 2012

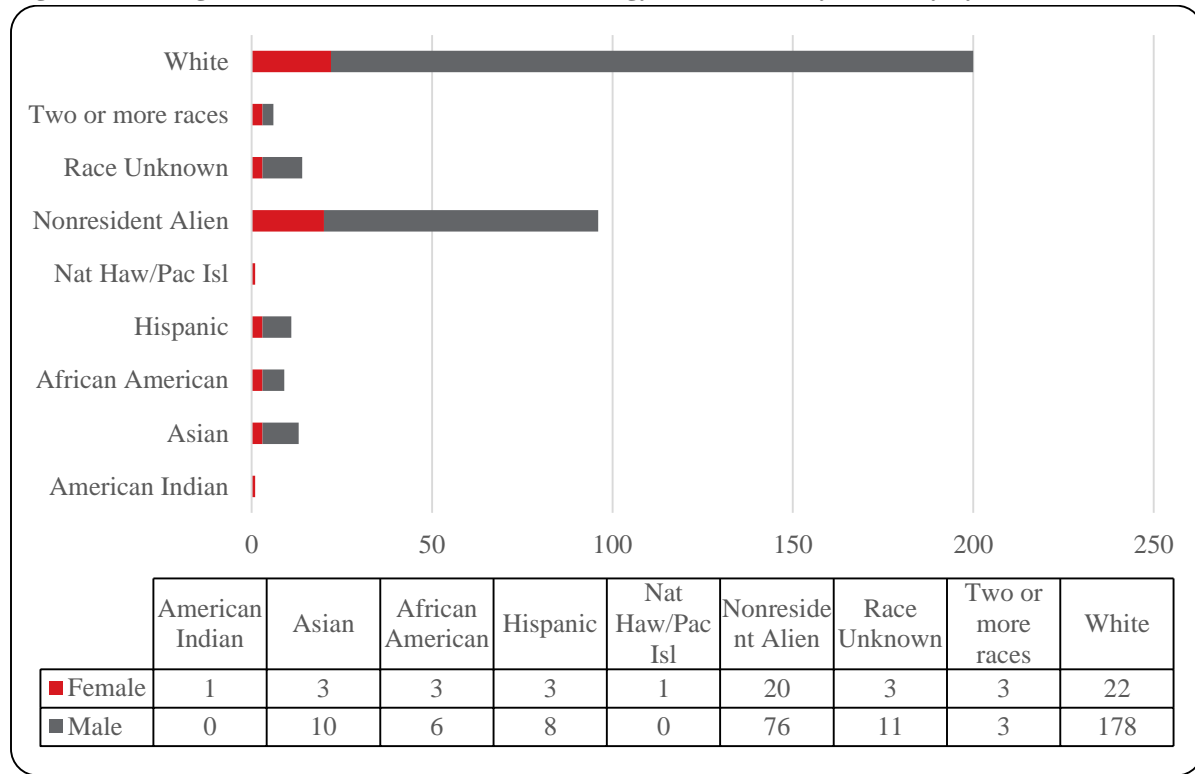


Table 9: College of Information Science and Technology Head Count Summary for Undergraduate and Graduate Summary for Full and Part-time by Gender and Race Classification: Summer 2012

	American Indian		Asian		African American		Hispanic		Nat Haw / Pac Isl		Race Unknown		Two or more races		White		Nonresident Alien		Total		
	F	M	F	M	F	M	F	M	F	M	F	M	F	M	F	M	F	M	F	M	Total
Undergraduate																					
Full-Time																					
First-Time Freshmen																					
Other Freshmen																					
Sophomores																					
Juniors																					
Seniors																					
Special																					
Total Full-Time	1	1	1	1	1	1	2	1	1	1	1	1	1	1	1	12	5	5	20	25	
Part-Time																					
First-Time Freshmen																					
Other Freshmen																					
Sophomores																					
Juniors																					
Seniors																					
Special																					
Total Part-Time																					
Total Undergraduate	1		2	2	2	2	3	3	7	1	3	10	1	1	17	150	6	44	36	221	257
Graduate																					
Full-Time																					
Certificate																					
Masters																					
Doctoral																					
Special Graduate																					
Total Full-Time																					
Part-Time																					
Certificate																					
Masters																					
Doctoral																					
Special Graduate																					
Total Part-Time																					
Total																					
Total Graduate																					
Total All Students	1		3	10	3	6	3	8	1	3	11	3	3	22	178	20	76	59	292	351	27

Figure 23: College of Public Affairs & Community Service Delivery-Site Head Count: Summer 2003-2012

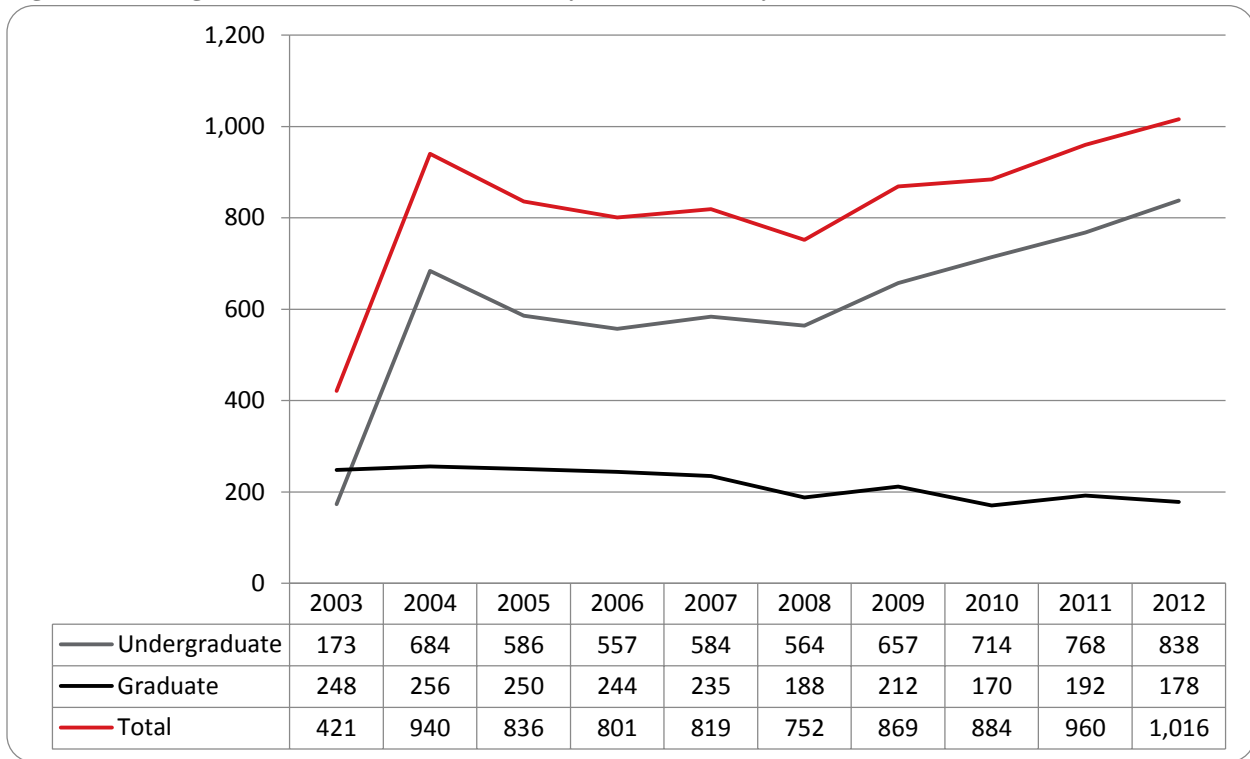


Figure 24: College of Public Affairs & Community Service Delivery-Site Student Credit Hours: Summer 2003-2012

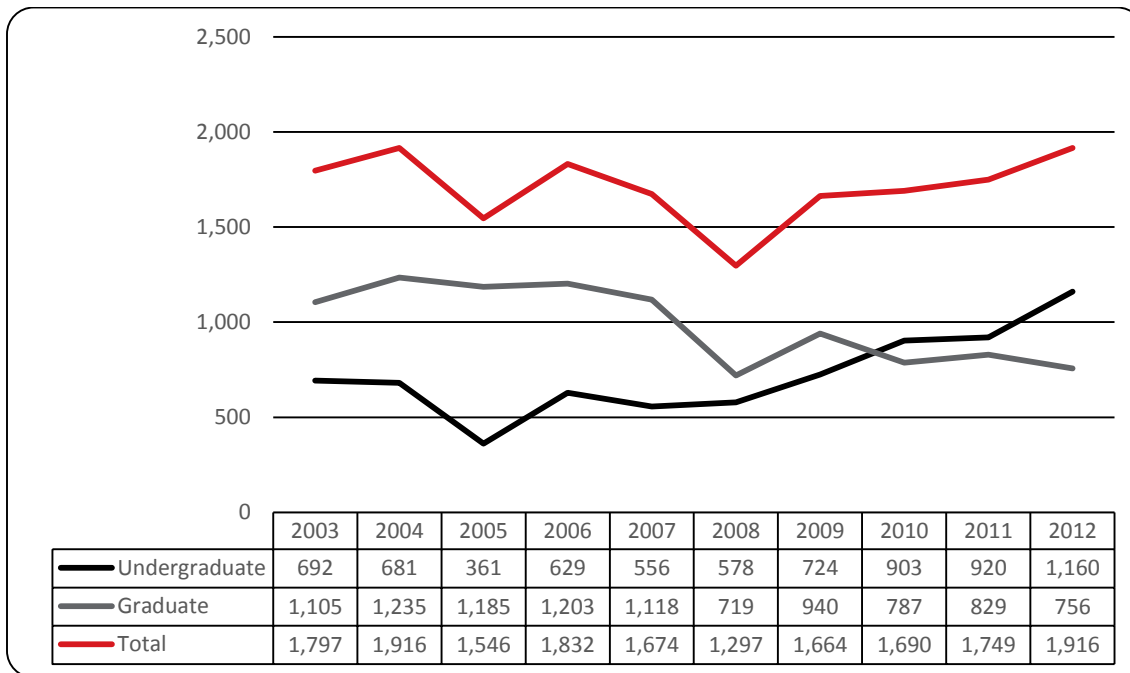


Figure 25: College of Public Affairs & Community Service Delivery-Site Head Count by Ethnicity by Gender: Summer 2012

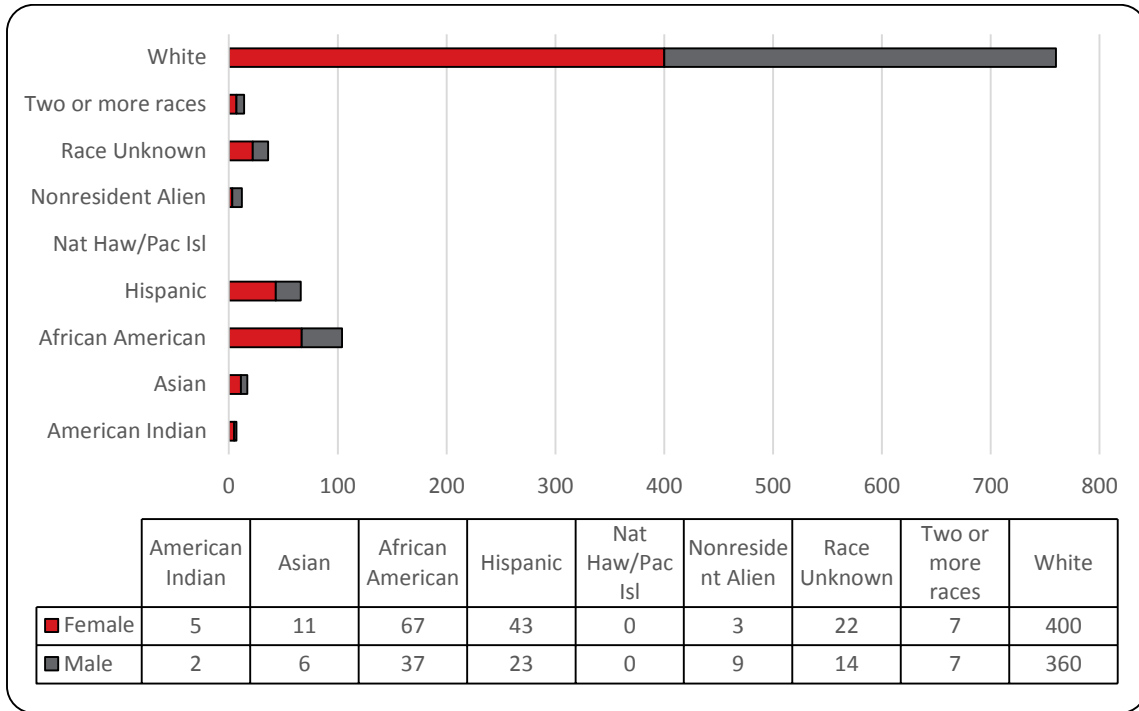


Table 10: College of Public Affairs and Community Service Delivery-Site Head Count for Undergraduate and Graduate Students by Full and Part-Time by Gender and Race Classification: Summer 2012

	American Indian		Asian		African American		Hispanic		Nat Haw / Pac Isl		Race Unknown		Two or more races		White		Nonresident Alien		Total		
	F	M	F	M	F	M	F	M	F	M	F	M	F	M	F	M	F	M	F	M	Total
Undergraduate																					
Full-Time																					
First-Time Freshmen																					
Other Freshmen					1	1															
Sophomores															1	1					2
Juniors							1								3	3					2
Seniors															9	8					8
Special																1					1
Total Full-Time					1	1	1	1	1	2	2	13	13	13	13	13	13	16	15	15	31
Part-Time																					
First-Time Freshmen																					
Other Freshmen																					
Sophomores					1	4	1	6	1					1	4	2					9
Juniors						3	2	1	3						24	22			1		52
Seniors					1	3	4	5	3						36	36					60
Special																1					91
Total Part-Time					2	11	7	13	7			5	3	1	2	81	79			1	1
Total Undergraduate					2	12	8	13	8			7	3	1	2	94	92			1	213
Graduate																					
Full-Time																					
Certificate																					
Masters															1	4					7
Doctoral																					
Special Graduate																					
Total Full-Time															1	4					7
Part-Time																					
Certificate																					
Masters																					
Doctoral																					
Special Graduate																					
Total Part-Time					2	1	7	1	7	2		5	1	1	103	32	2				171
Total Graduate					2	1	9	1	7	3		5	1	1	112	33	2				178
Total All Students					4	2	21	9	20	11		12	4	2	3	206	125	2	1	267	422

Figure 26: College of Public Affairs & Community Service Administrative-Site Head Count: Summer 2003-2012



Figure 27: College of Public Affairs & Community Service Administrative-Site Student Credit Hours: Summer 2003-2012

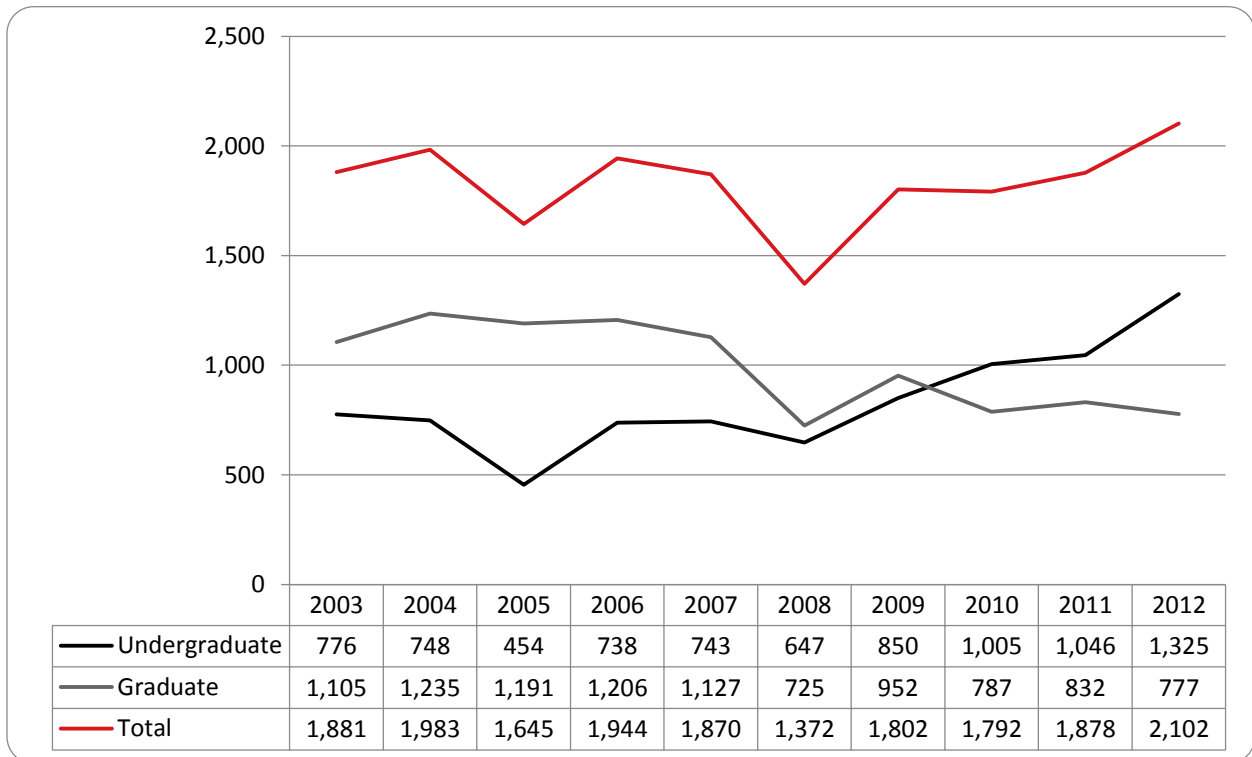


Figure 28: College of Public Affairs & Community Service Administrative-Site Head Count by Ethnicity by Gender: Summer 2012

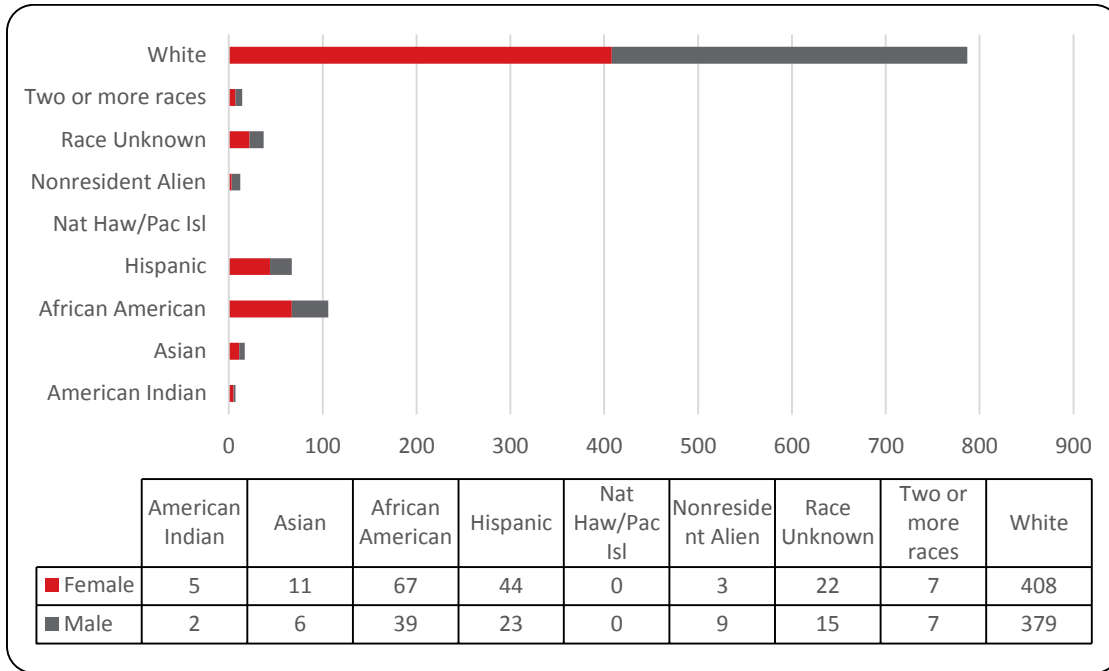


Table 11: College of Public Affairs and Community Service Administrative-Site Head Count Summary for Undergraduate and Graduate Students by Full and Part-Time by Gender and Race Classification: Summer 2012

	American Indian		Asian		African American		Hispanic		Nat Haw / Pac Isl		Race Unknown		Two or more races		White		Nonresident Alien		Total		
	F	M	F	M	F	M	F	M	F	M	F	M	F	M	F	M	F	M	F	M	Total
Undergraduate																					
Full-Time																					
First-Time Freshmen																					
Other Freshmen																					
Sophomores																					
Juniors																					
Seniors																					
Special																					
Total Full-Time																					
Part-Time																					
First-Time Freshmen																					
Other Freshmen																					
Sophomores																					
Juniors																					
Seniors																					
Special																					
Total Part-Time																					
Total Undergraduate																					
Graduate																					
Full-Time																					
Certificate																					
Masters																					
Doctoral																					
Special Graduate																					
Total Full-Time																					
Part-Time																					
Certificate																					
Masters																					
Doctoral																					
Special Graduate																					
Total Part-Time																					
Total Graduate																					
Total All Students																					

Figure 29: College of CPACS, Division of Continuing Studies Head Count: Summer 2003-2013

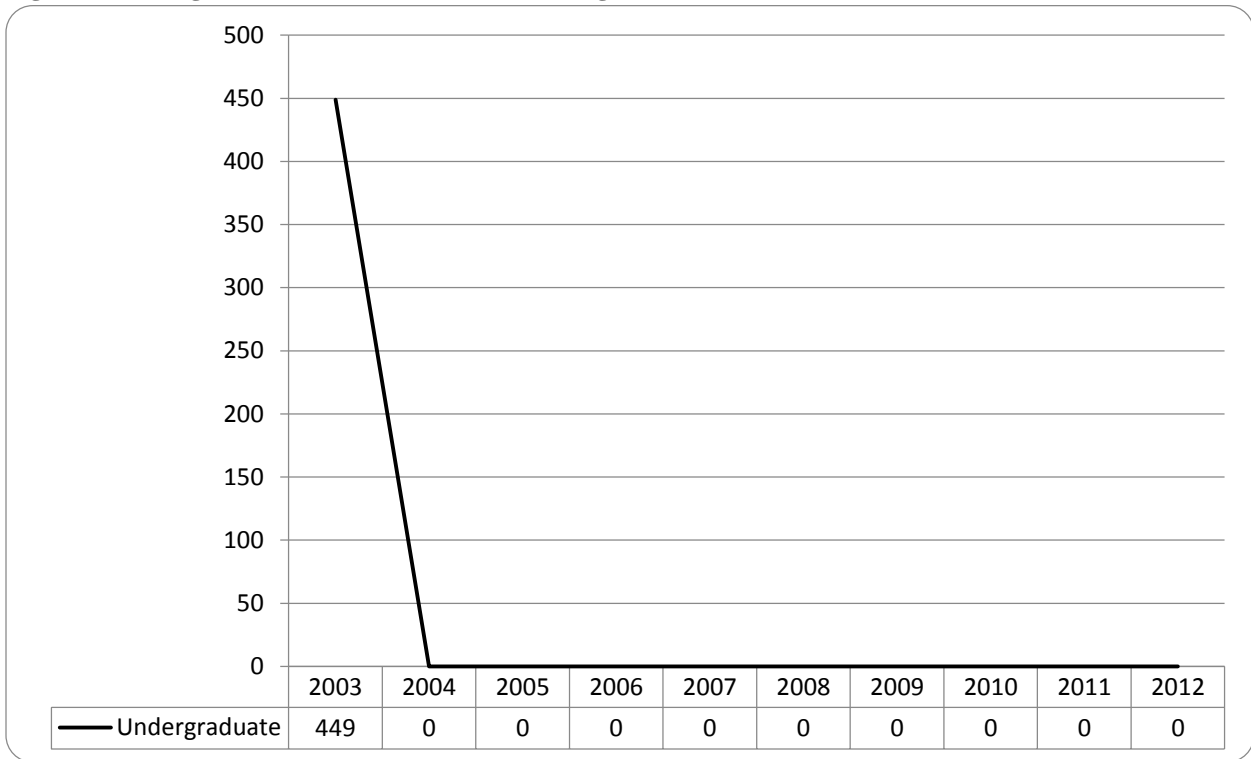


Table 12: College of CPACS Division of Continuing Studies Head Count Summary for Undergraduate Students by Full and Part-Time by Gender and Race Classification: Summer 2012

	American Indian		Asian		African American		Hispanic		Nat Haw / Pac Isl		Race Unknown		Two or more races		White		Nonresident Alien		Total		
	F	M	F	M	F	M	F	M	F	M	F	M	F	M	F	M	F	M	F	M	Total
Undergraduate																					
Full-Time																					
First-Time Freshmen																					
Other Freshmen																					
Sophomores								1							2	3			3	3	6
Juniors													1		2	5			3	5	8
Seniors					3		1								8	9		1	12	10	22
Special	1		1		2	1	1	1			2	1	1		15	16			22	19	41
Total Full-Time	1		1		5	1	3				2	1	1	1	27	34			40	38	78
Part-Time																					
First-Time Freshmen																					
Other Freshmen																					
Sophomores																					
Juniors																					
Seniors																					
Special																					
Total Part-Time																					
Total Undergraduate																					
Total All Students	5	2	7	4	46	28	23	12			10	10	5	4	194	235			291	303	594

Figure 30: University Division Head Count: Summer 2003-2012

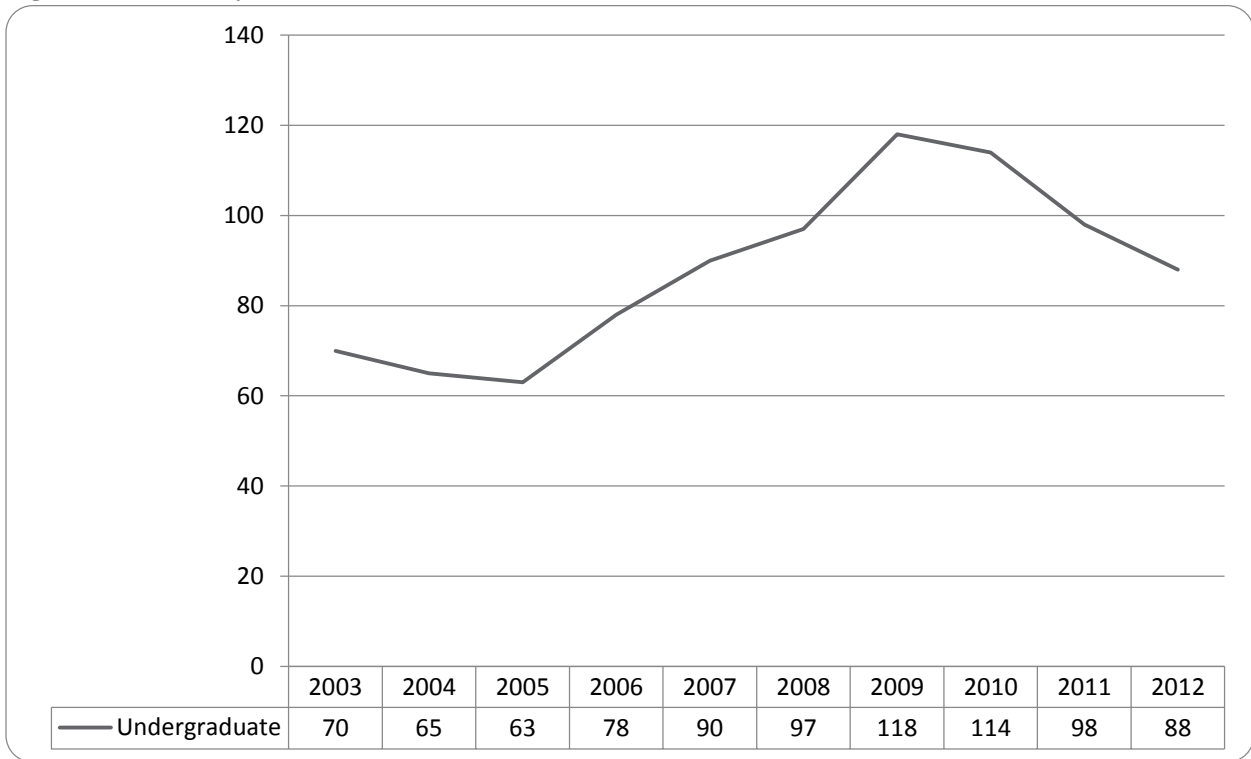


Figure 31: University Division Student Credit Hours: Summer 2003-2012

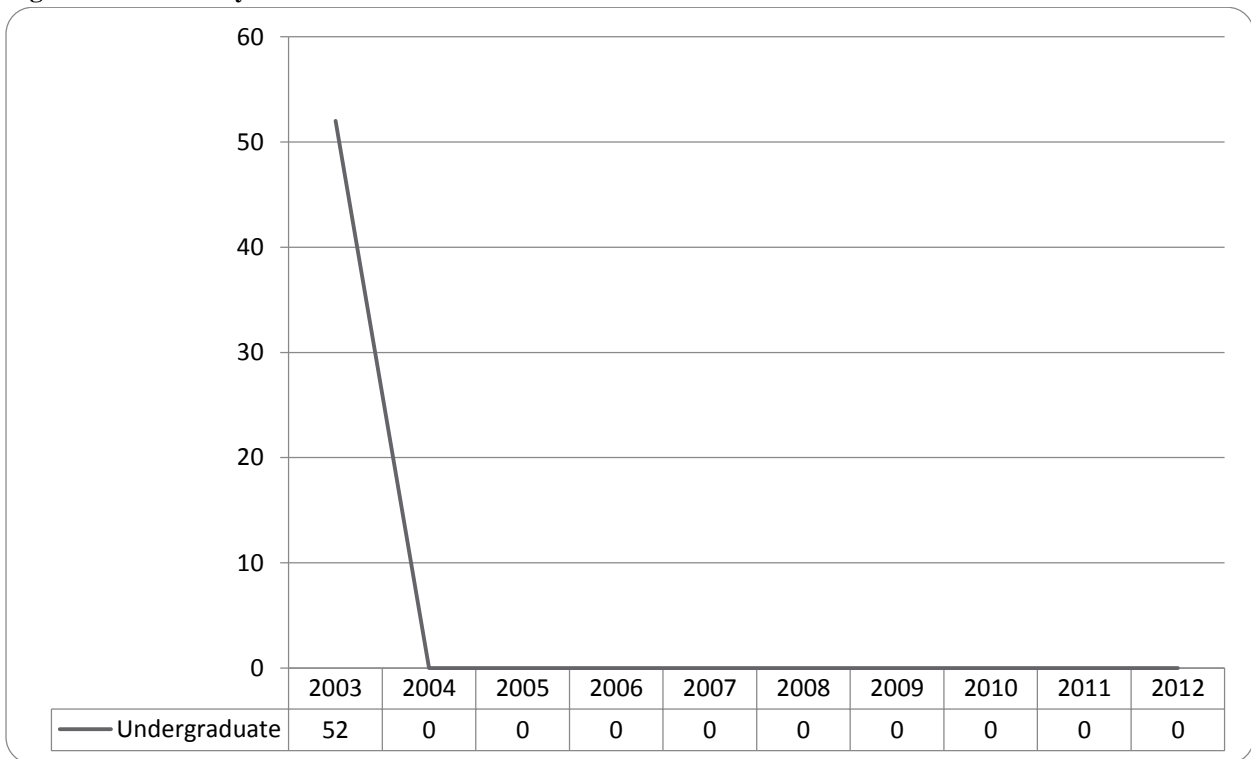


Figure 32: University Division Head Count by Ethnicity by Gender: Summer 2012

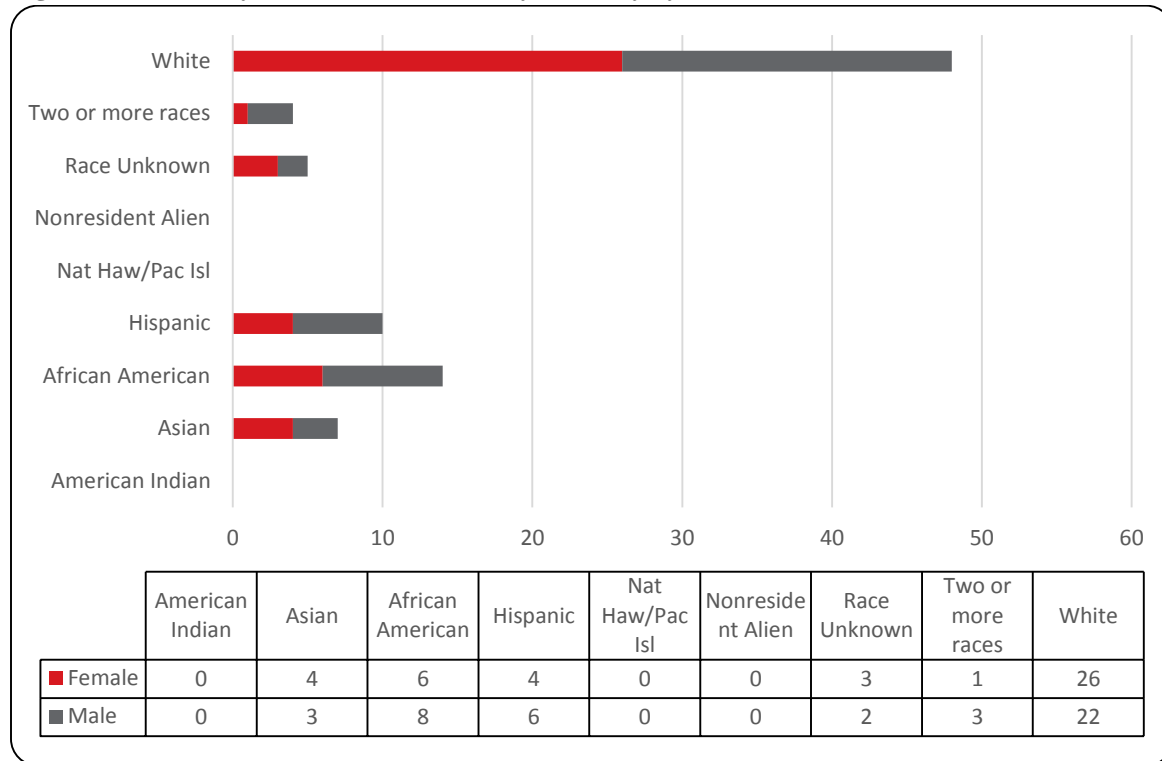


Table 13: University Division Head Count Summary for Undergraduate Students by Full and Part-Time by Gender and Race Classification: Summer 2012

	American Indian		Asian		African American		Hispanic		Nat Haw / Pac Isl		Race Unknown		Two or more races		White		Nonresident Alien		Total		
	F	M	F	M	F	M	F	M	F	M	F	M	F	M	F	M	F	M	F	M	Total
Undergraduate																					
Full-Time																					
First-Time Freshmen																					
Other Freshmen							1									1				1	2
Sophomores				1											2					3	3
Juniors																					
Seniors																					
Special																					
Total Full-Time			1				1								2	1			4	1	5
Part-Time																					
First-Time Freshmen																					
Other Freshmen			3	1	2	2	4				1	2	1	2	10	13			1	1	2
Sophomores				2	4	5	1	2			2	2	1	1	13	7			20	19	39
Juniors						1														1	1
Seniors																					
Special																					
Total Part-Time			3	3	6	8	3	6			3	2	1	3	24	21			40	43	83
Total Undergraduate			4	3	6	8	4	6			3	2	1	3	26	22			44	44	88

Figure 33: Non-Degree/Intercampus Special Undergraduate Students Head Count: Summer 2003-2012

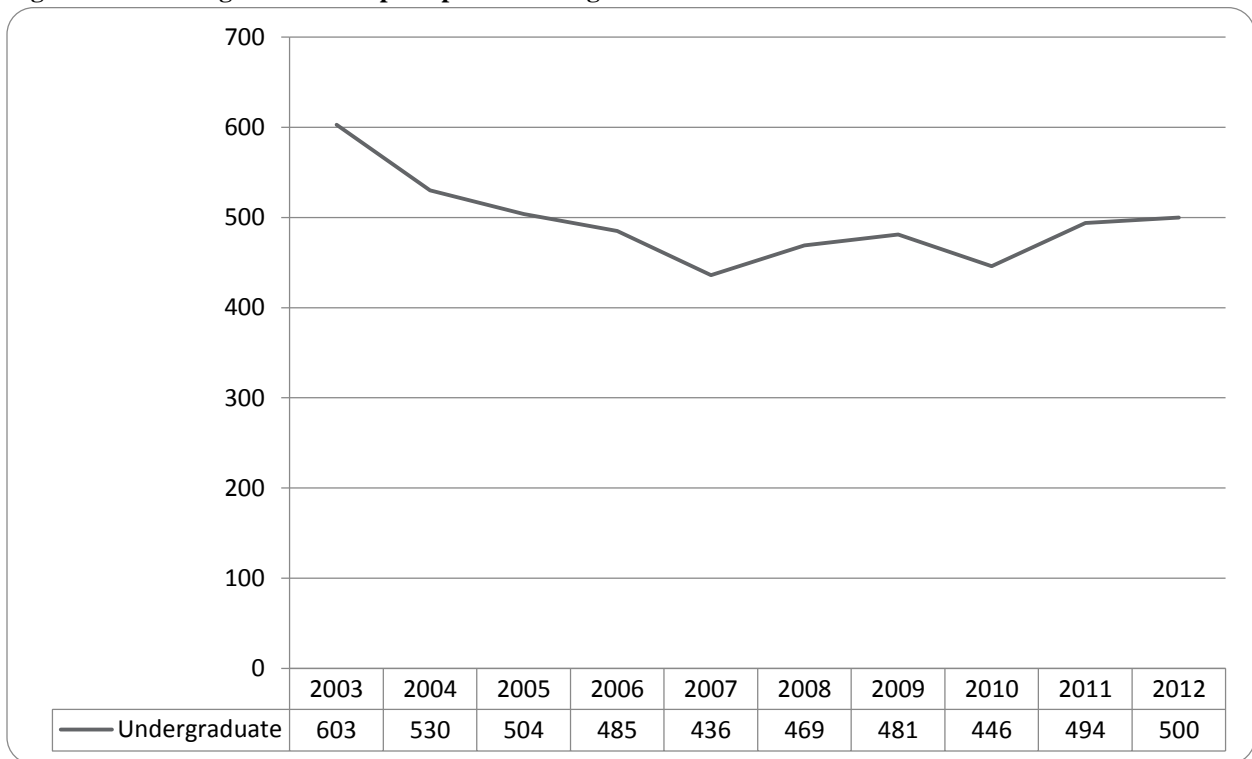


Figure 34: Non-Degree/Intercampus Special Undergraduate Students Head Count by Ethnicity by Gender: Summer 2012

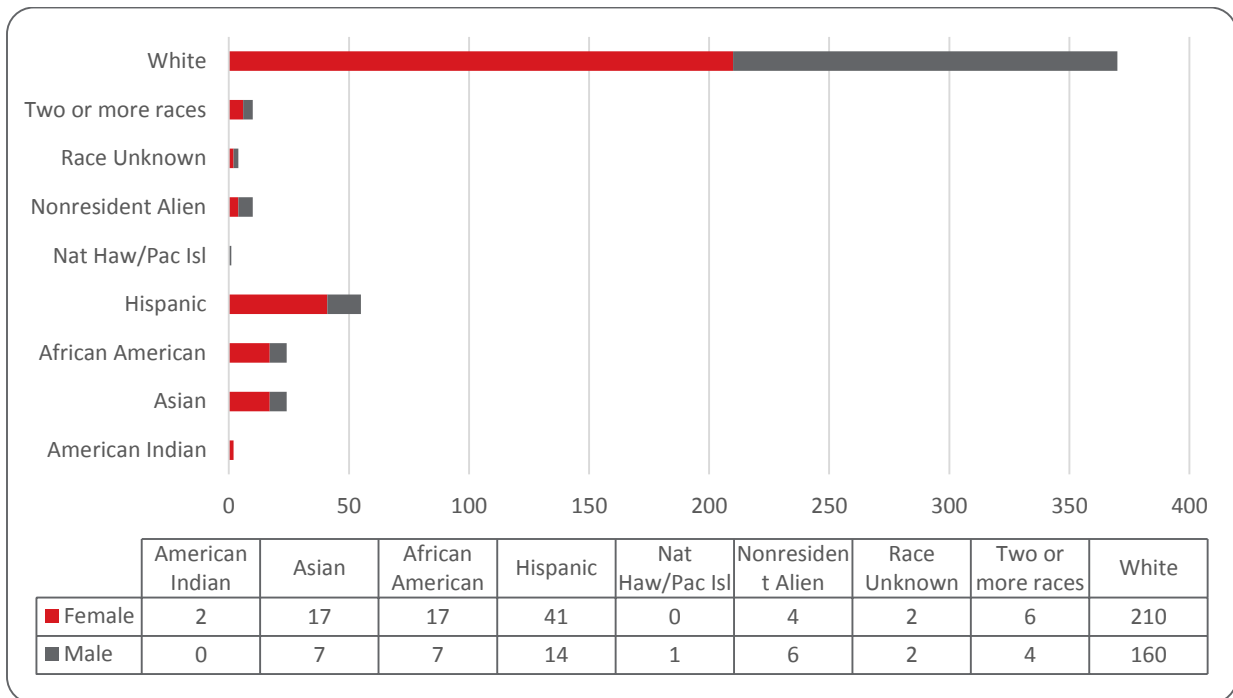


Table 14: Non-Degree/Intercampus Head Count Summary for Special Undergraduate Students by Full and Part-Time by Gender and Race Classification: Summer 2012

	American Indian		Asian		African American		Hispanic		Nat Haw / Pac Isl		Race Unknown		Two or more races		White		Nonresident Alien		Total		
	F	M	F	M	F	M	F	M	F	M	F	M	F	M	F	M	F	M	F	M	Total
Undergraduate																					
Full-Time																					
First-Time Freshmen																					
Other Freshmen					1														1		1
Sophomores																					
Juniors																					
Seniors															1				1		1
Special							1								1				2		2
Total Full-Time					1		1								2				4		4
Part-Time																					
First-Time Freshmen																					
Other Freshmen	2		13	4	14	7	38	12	1	2	2	2	5	2	159	124	3	4	236	156	392
Sophomores					2	1							1	1	9	9			11	12	23
Juniors															12	3	1		13	3	16
Seniors															5	3		1	5	5	10
Special					4	1	2	1						1	23	21		1	30	25	55
Total Part-Time	2		17	7	16	7	40	14	1	2	2	6	4	4	208	160	4	6	295	201	496
Total Undergraduates	2		17	7	17	7	41	14	1	2	2	6	4	4	210	160	4	6	299	201	500

Figure 35: Non-Degree/Intercampus Special Graduate Students Head Count: Summer 2003-2012

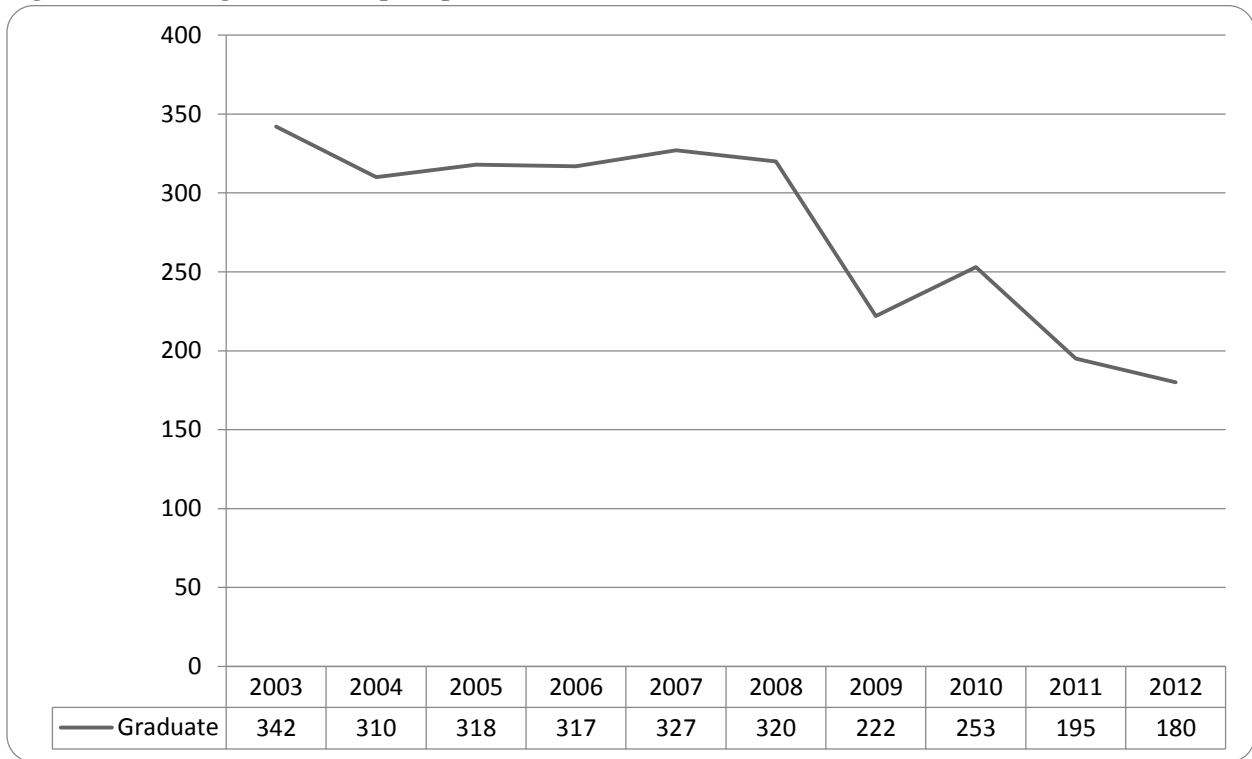


Figure 36: Non-Degree/Intercampus Special Graduate Students Head Count by Ethnicity by Gender: Summer 2012

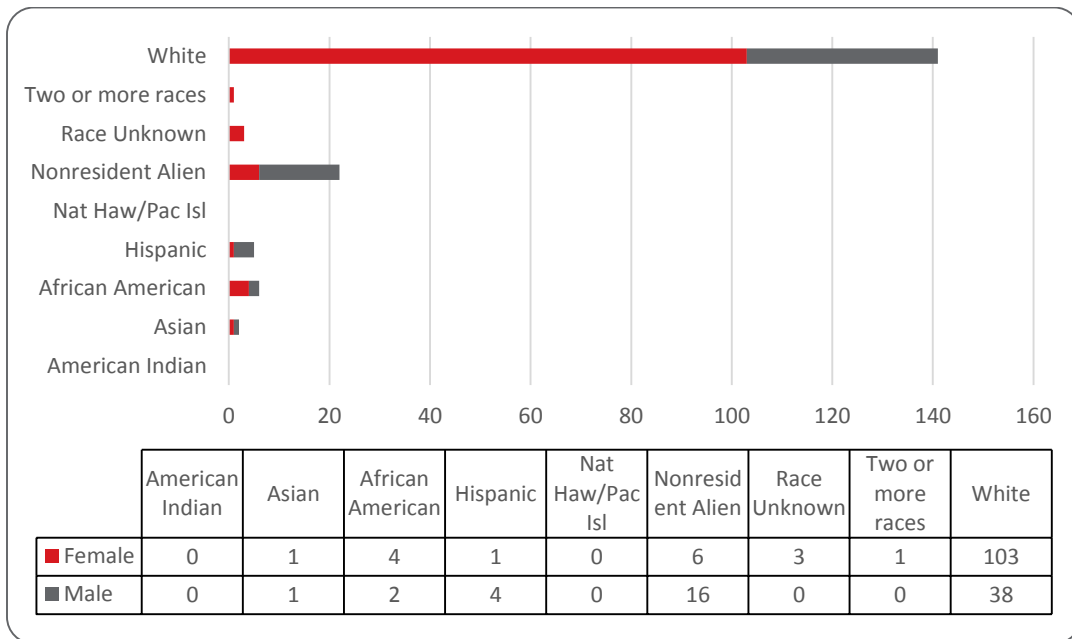


Table 15: Non-Degree/Intercampus Head Count Summary for Special Graduate Students by Full and Part-Time by Gender and Race Classification: Summer 2012

	American Indian		Asian		African American		Hispanic		Nat Haw / Pac Isl		Race Unknown		Two or more races		White		Nonresident Alien		Total		
	F	M	F	M	F	M	F	M	F	M	F	M	F	M	F	M	F	M	F	M	Total
Graduate																					
Full-Time																					
Certificate																					
Masters																					
Doctoral																					
Special Graduate				1											2	3		1	2	5	7
Total Full-Time				1											2	3		1	2	5	7
Part-Time																					
Certificate																					
Masters																					
Doctoral																					
Special Graduate			1		4	2	1	4			3	1			101	35	6	15	117	56	173
Total Part-Time			1		4	2	1	4			3	1			101	35	6	15	117	56	173
Total All Students			1	1	4	2	1	4			3	1			103	38	6	16	119	61	180

Figure 37: Other Honors and Library Hours Student Credit Hours by Level of Instruction: Summer 2012

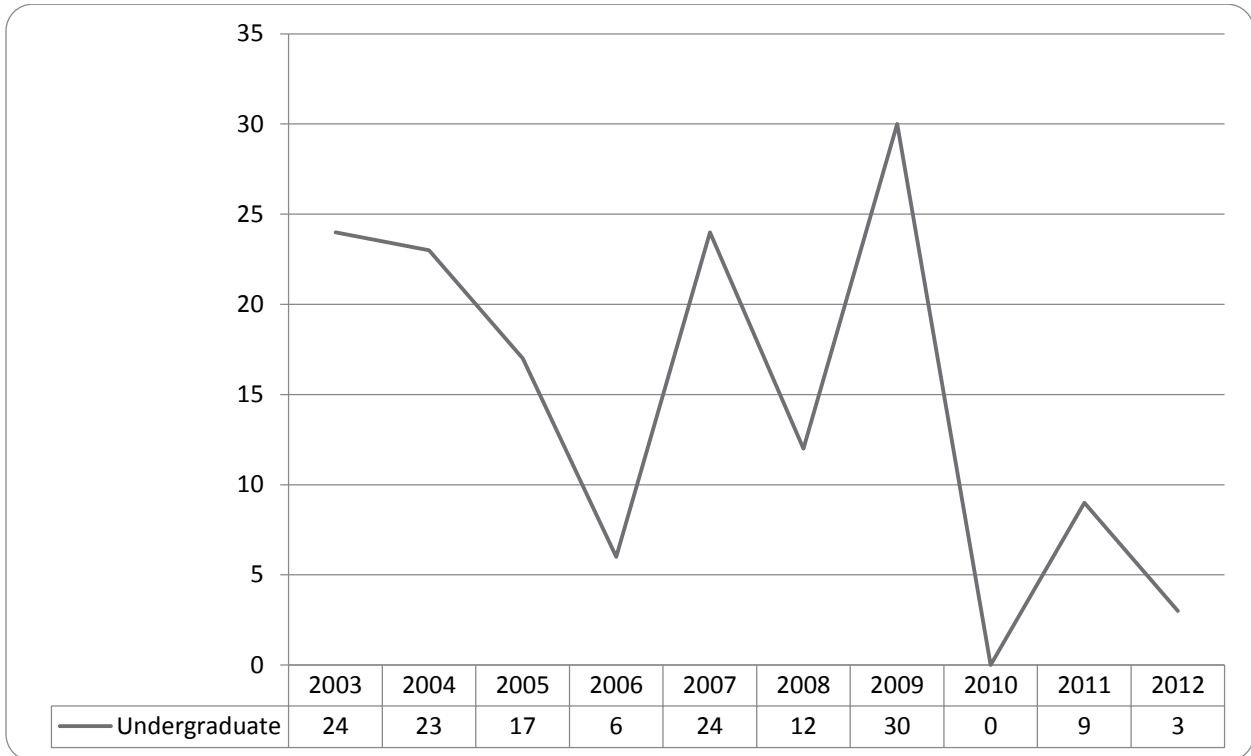


Figure 38: College of Agriculture Delivery-Site Head Count: Summer 2003-2012

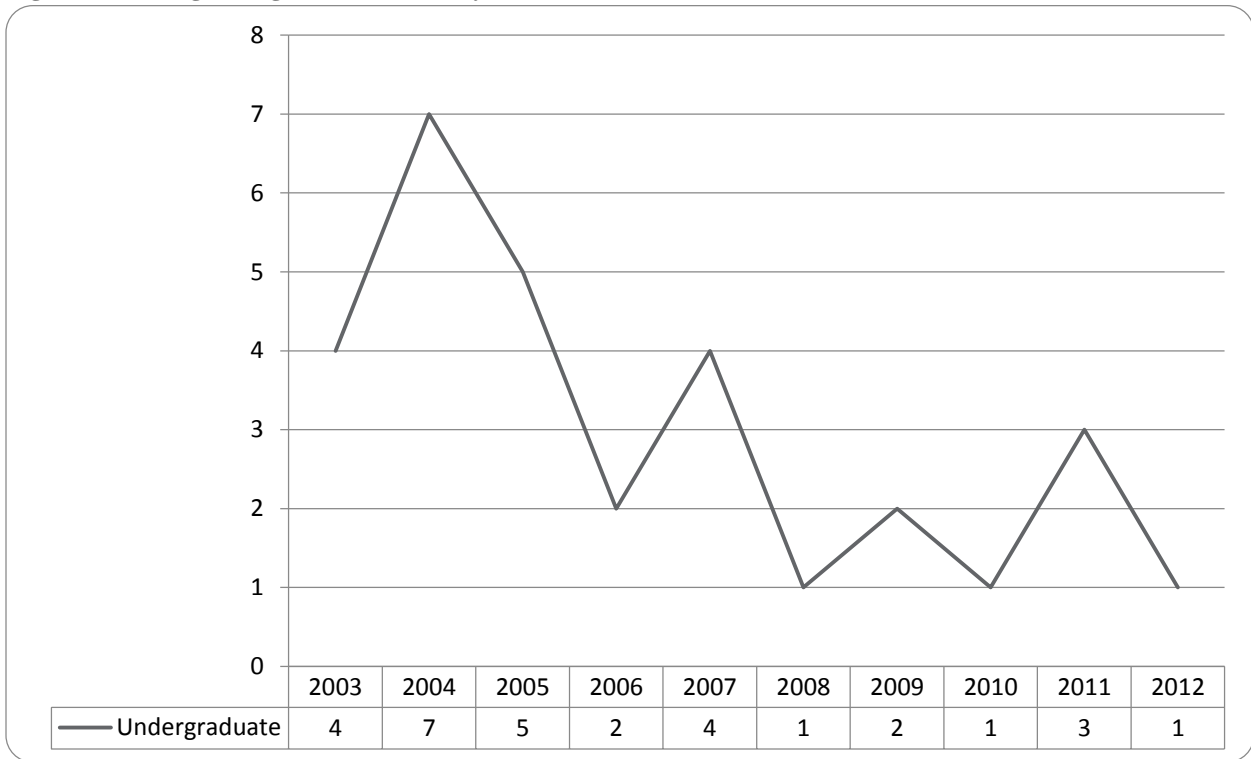


Figure 39: College of Agriculture Delivery-Site Student Credit Hours: Summer 2003-2012

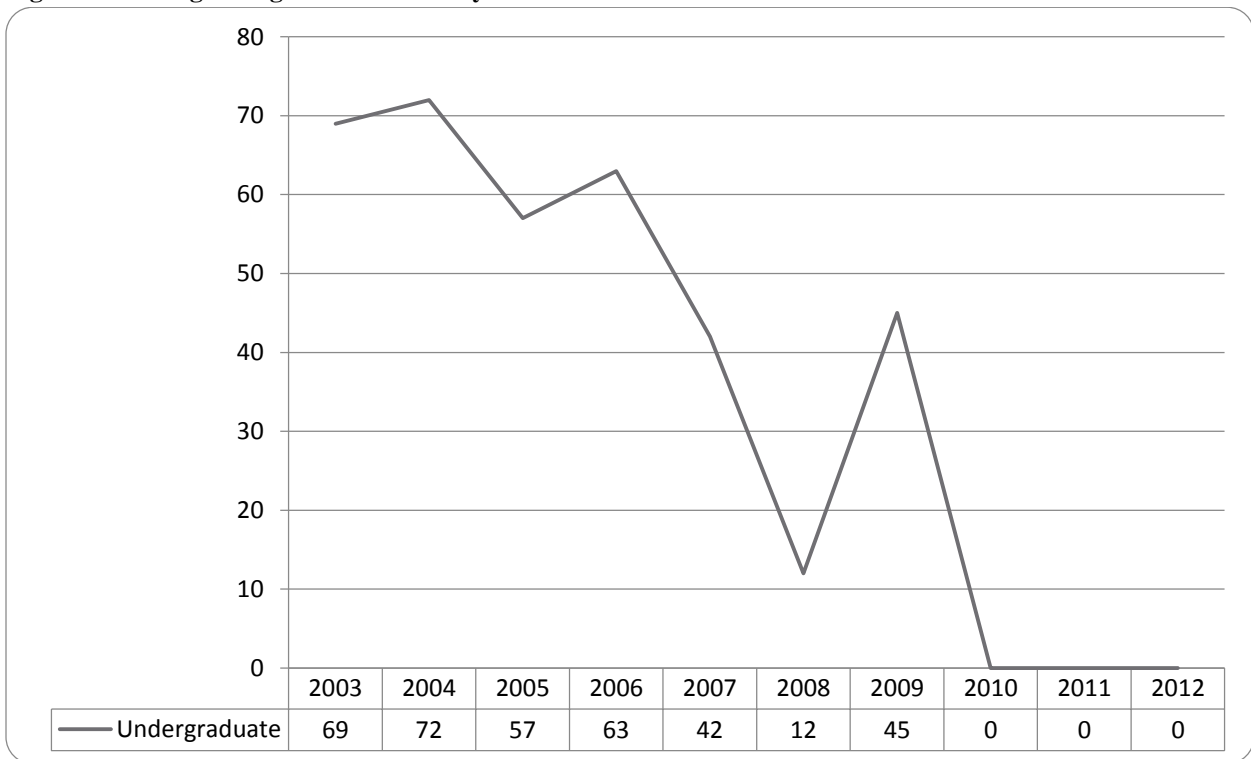


Table 16: College of Agriculture Head Count Summary for Undergraduate Students by Full and Part-Time by Gender and Race Classification: Summer 2012

	American Indian		Asian		African American		Hispanic		Nat Haw / Pac Isl		Race Unknown		Two or more races		White		Nonresident Alien		Total		
	F	M	F	M	F	M	F	M	F	M	F	M	F	M	F	M	F	M	F	M	Total
Full-Time																					
Undergraduate																					
First-Time Freshmen																					
Other Freshmen																					
Sophomores																					
Juniors																					
Seniors																					
Special																					
Total Full-Time																					
Part-Time																					
First-Time Freshmen																					
Other Freshmen																					
Sophomores																					
Juniors																					
Seniors																					
Special																					
Total Part-Time																					
Total All Students																					

Figure 40: College of Architecture Delivery-Site Head Count: Summer 2003-2012

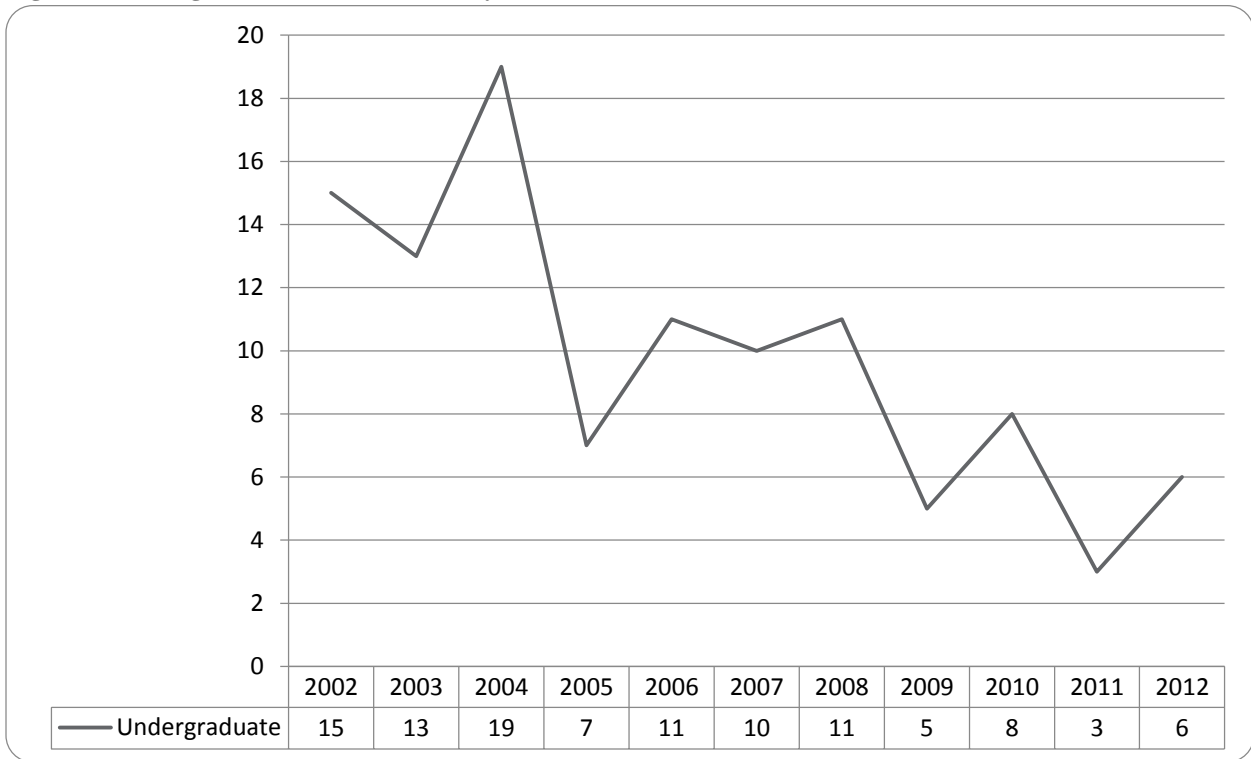


Figure 41: College of Engineering Delivery-Site Head Count: Summer 2003-2012

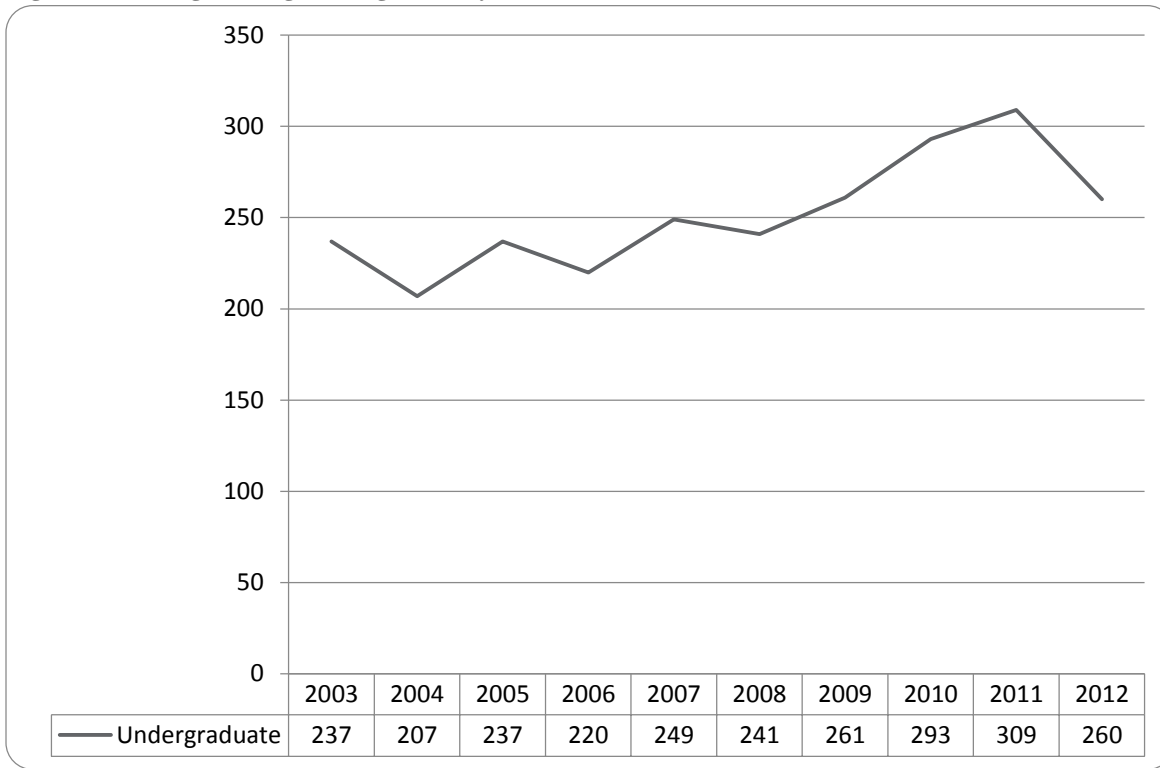


Figure 42: College of Engineering Delivery-Site Student Credit Hours: Summer 2003-2012

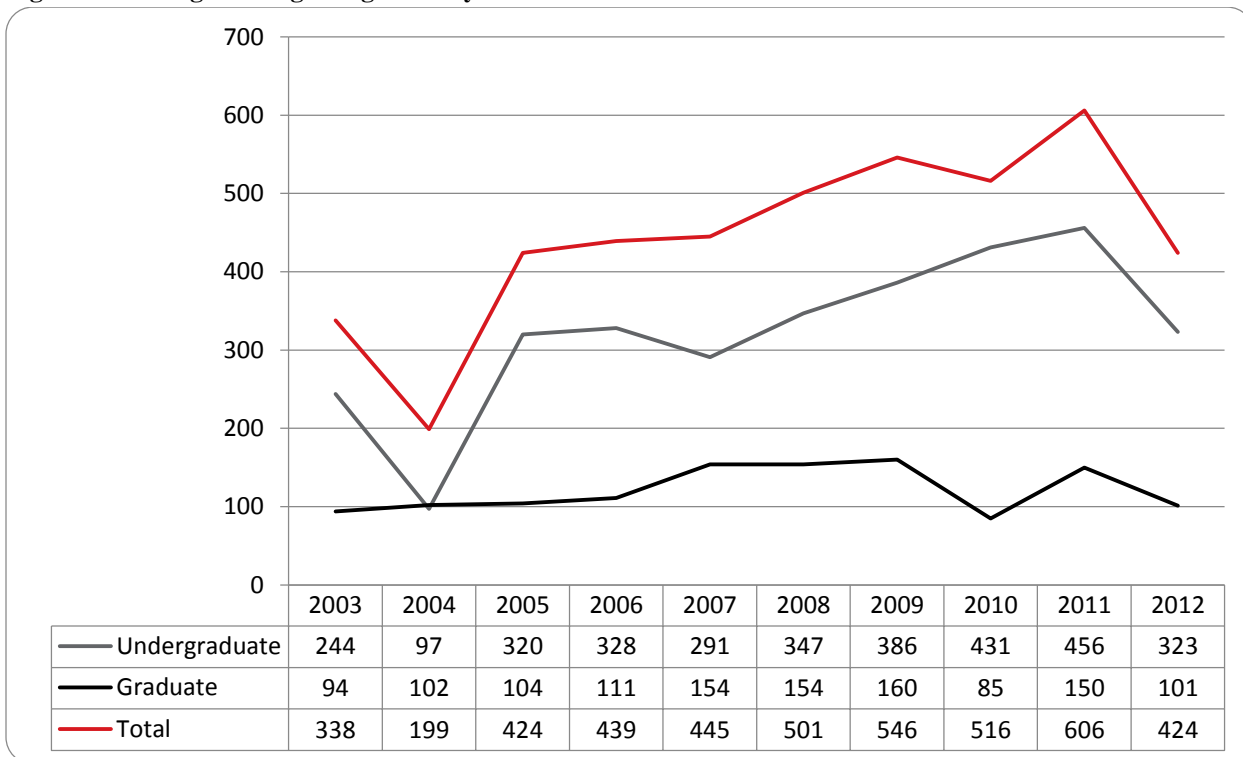


Figure 43: College of Engineering Delivery-Site Head Count by Ethnicity by Gender: Summer 2012

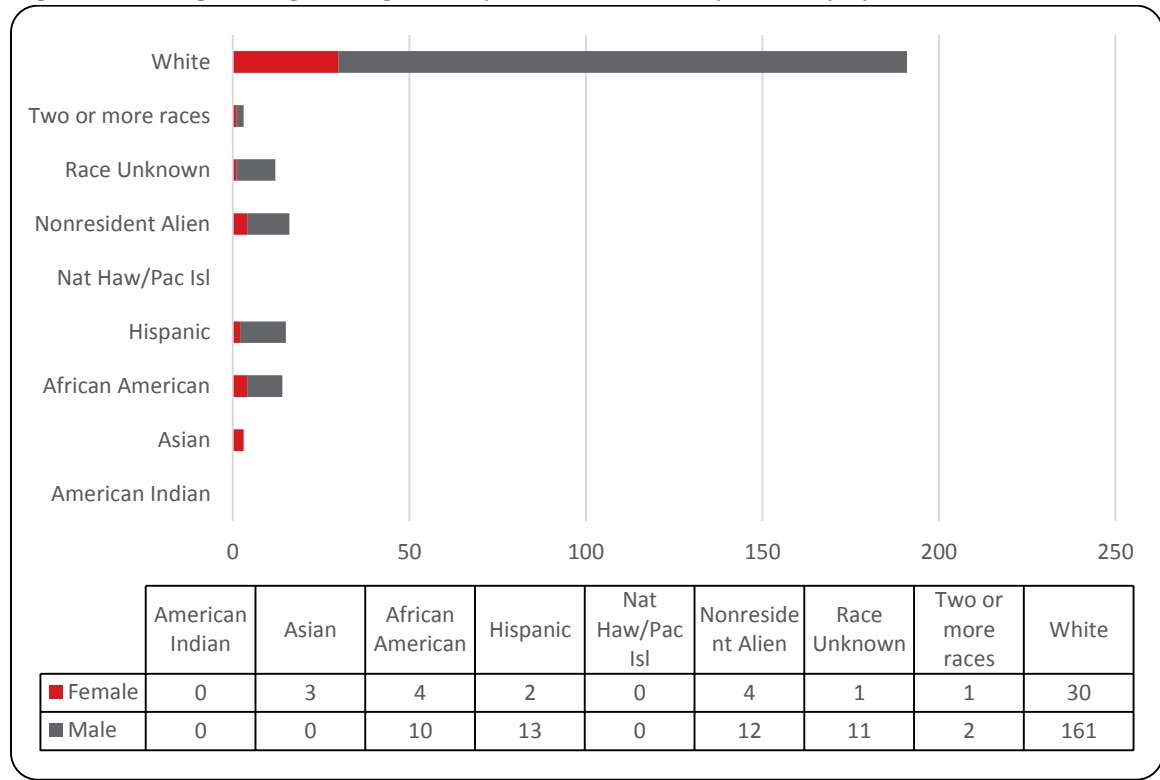


Table 18: College of Engineering Head Count Summary for Undergraduate Students by Full and Part-Time by Gender and Race Classification: Summer 2012

	American Indian		Asian		African American		Hispanic		Nat Haw / Pac Isl		Race Unknown		Two or more races		White		Nonresident Alien		Total		
	F	M	F	M	F	M	F	M	F	M	F	M	F	M	F	M	F	M	F	M	Total
Full-Time																					
Undergraduate																					
First-Time Freshmen																					
Other Freshmen																					
Sophomores					1														1		1
Juniors					2										1	2			3		5
Seniors															2						2
Special															1						1
Total Full-Time					3										1	5			4		9
Part-Time																					
First-Time Freshmen																					
Other Freshmen																					
Sophomores																					
Juniors																					
Seniors																					
Special																					
Total Part-Time																					
Total All Students																					

Figure 44: College of Education and Human Sciences Delivery-Site Head Count: Summer 2003-2012

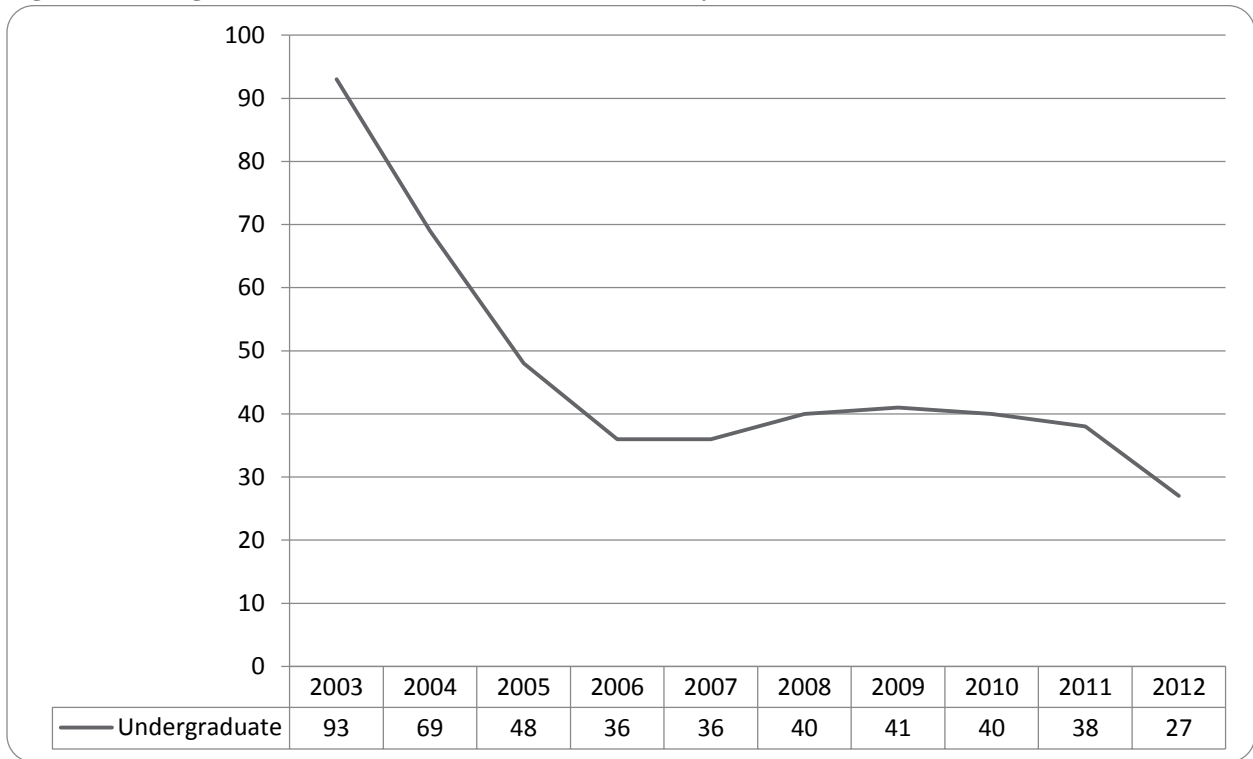


Figure 45: College of Education and Human Sciences Delivery-Site Student Credit Hours: Summer 2003-2012

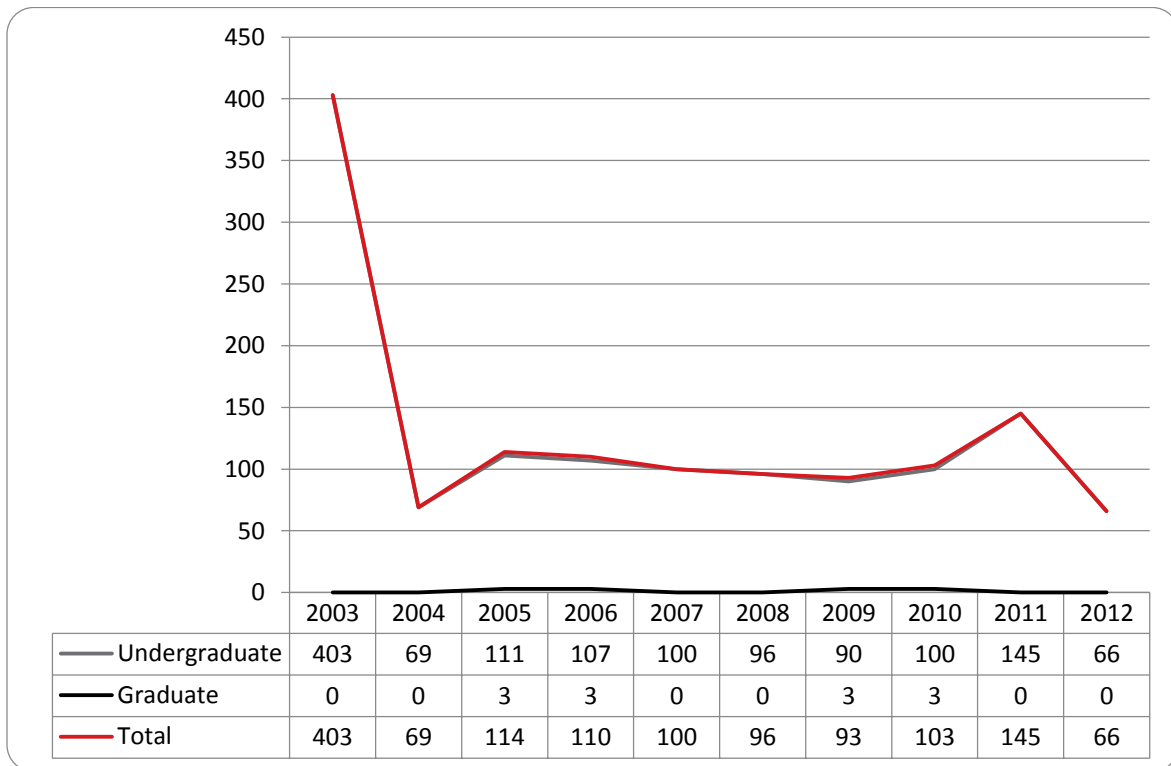


Figure 46: College of Education and Human Sciences Delivery-Site Head Count by Ethnicity by Gender: Summer 2003-2012

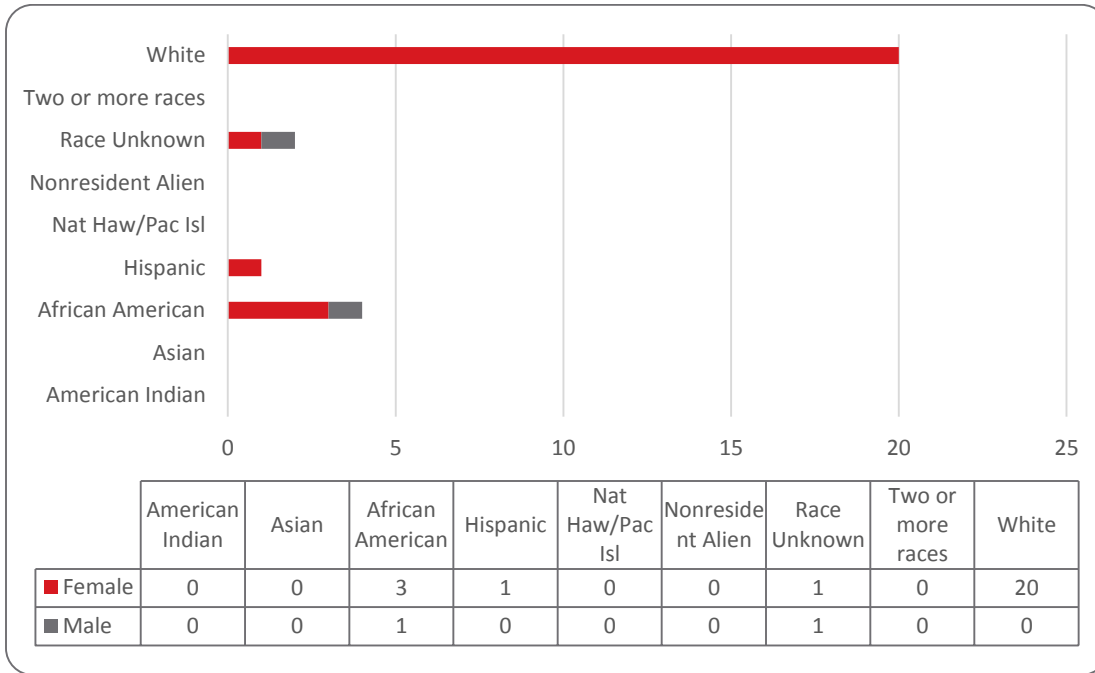


Table 19: College of Education and Human Sciences Head Count Summary for Undergraduate Students by Full and Part-Time by Gender and Race Classification: Summer 2012

	American Indian		Asian		African American		Hispanic		Nat Haw / Pac Isl		Race Unknown		Two or more races		White		Nonresident Alien		Total		
	F	M	F	M	F	M	F	M	F	M	F	M	F	M	F	M	F	M	F	M	Total
Full-Time																					
Undergraduate																					
First-Time Freshmen																					
Other Freshmen																					
Sophomores																					
Juniors																					1
Seniors																					1
Special																					
Total Full-Time																					2
Part-Time																					
First-Time Freshmen																					
Other Freshmen																					
Sophomores																					
Juniors		1																			1
Seniors		2	1																		2
Special																					
Total Part-Time		3	1																		25
Total All Students		3	1																		27

GLOSSARY

The total head count and student credit hours in this enrollment report are provided on both a delivery-site and administrative-site basis. Delivery-site includes enrollment in all courses taught at UNO regardless of “home” campus. This means that student credit hours are reported for courses in the colleges. Student enrollment is counted in the college declared by the student. Specifically, the delivery-site enrollment numbers include students in degree programs in the UNL Colleges of Agriculture, Architecture, Engineering and Technology, and Education and Human Science.

FIRST-TIME, Entering (freshmen) Student: Students attending any institution for the first time at the undergraduate level. For students entering the fall term, this includes students enrolled in the fall term who attended college for the first time in the prior summer term. Also included are students who entered with advanced standing, i.e. college credits earned before graduation from high school.

OTHER FRESHMEN: At the beginning of the current semester, undergraduate students who (1) are not First-Time Freshmen and (2) have less than 27 semester hours earned from all institutions of higher education attended.

SOPHOMORES: At the beginning of the current semester, undergraduate students who have at least 27, but not more than 57, semester hours earned from all institutions of higher education attended.

JUNIORS: At the beginning of the current semester, undergraduate students who have at least 58, but not more than 90, semester hours earned from all institutions of higher education attended.

SENIORS: At the beginning of the current semester, undergraduate students who have at least 91 semester hours earned from all institutions of higher education attended.

NON-DEGREE/INTER-CAMPUS/SPECIAL UNDERGRADUATES: Special undergraduates not pursuing a degree at UNO in various programs: Inter-Campus UNMC, UNK, UNL, and Non-Degree.

NON-DEGREE/INTER-CAMPUS/SPECIAL GRADUATE STUDENTS: Special graduate students not pursuing a degree at UNO in various programs: Engineering Transfer Program, Inter-Campus UNMC, UNK, UNL, Inter-Campus UNL Graduate Psychology and Non-Degree.

MASTERS/SPECIALIST: Graduate students pursuing a degree less than doctoral.

CERTIFICATE: These students are not enrolled in a degree program, but only a certificate.

DOCTORAL: Graduate students who have been accepted into a doctoral program.

FULL-TIME: In the current semester, undergraduate students enrolled for 12 or more semester hours, or graduate students enrolled for 9 or more semester hours.

PART-TIME: In the current semester, undergraduate students enrolled for less than 12 semester hours, or graduate students enrolled for less than 9 semester hours.



OFFICE OF INSTITUTIONAL EFFECTIVENESS

www.unomaha.edu/oie/

402-554-2367 | 402-554-2367 (Fax)

Russell Smith, Director

Jenny Liu, Associate Director

Daniel O'Dell, Web & Communications Coordinator

Andrew Jacobsen, Business Analyst

Rita Sterkel, Management Information Coordinator

Jeanie Gutheil-Bykerk, Research Analyst