

Summer 2014

Enrollment Report - Summer 2014

UNO Office of Institutional Effectiveness
University of Nebraska at Omaha

Follow this and additional works at: <https://digitalcommons.unomaha.edu/oieenrollment>

 Part of the [Educational Assessment, Evaluation, and Research Commons](#), and the [Higher Education Commons](#)

Please take our feedback survey at: https://unomaha.az1.qualtrics.com/jfe/form/SV_8cchtFmpDyGfBLE

Recommended Citation

Office of Institutional Effectiveness, UNO, "Enrollment Report - Summer 2014" (2014). *Enrollment Reports*.
4.
<https://digitalcommons.unomaha.edu/oieenrollment/4>

This Report is brought to you for free and open access by the Systems Intelligence and Data Analytics (SIDA) at DigitalCommons@UNO. It has been accepted for inclusion in Enrollment Reports by an authorized administrator of DigitalCommons@UNO. For more information, please contact unodigitalcommons@unomaha.edu.

OFFICE OF INSTITUTIONAL EFFECTIVENESS

ENROLLMENT PROFILE REPORT

SUMMER 2014



UNIVERSITY OF
Nebraska
Omaha



University of Nebraska at Omaha
Enrollment Profile Report:
Summer 2014

Office of Institutional Effectiveness
Institutional Research

<http://www.unomaha.edu/oie/>

Contents

Executive Summary..... 4

List of Tables:

Table 1: UNO Delivery and Administrative-Site Head Count Enrollment and Comparison: Summer 2014 . 5

Table 2: Total UNO Delivery-Site Head Count Summary for Undergraduate and Graduate Students Full and Part-Time by Gender and Race Classification: Summer 2014 9

Table 3: Total UNO Administrative-Site Head Count Summary for Undergraduate and Graduate Students by Full and Part-Time by Gender and Race Classification: Summer 2014 12

Table 4: College of Arts & Sciences Head Count Summary for Undergraduate and Graduate Students by Full and Part-Time by Gender and Race Classification: Summer 2014..... 15

Table 5: College of Business Administration Head Count Summary for Undergraduate and Graduate Students by Full and Part-Time by Gender and Race Classification: Summer 2014..... 18

Table 6: College of Communication, Fine Arts and Media Delivery and Administrative Site Head Count Summary for Undergraduate and Graduate Students by Full and Part-Time by Gender and Race Classification: Summer 2014..... 21

Table 7: College of Education Head Count Summary for Undergraduate and Graduate Summary for Full and Part-Time by Gender and Race Classification: Summer 2014 24

Table 8: College of Information Science and Technology Head Count Summary for Undergraduate and Graduate Students for Full and Part-Time by Gender and Race Classification: Summer 2014 27

Table 9: College of Public Affairs and Community Service Delivery-Site Head Count for Undergraduate and Graduate Students by Full and Part-Time by Gender and Race Classification: Summer 2014..... 30

Table 10: College of Public Affairs & Community Service Administrative-Site Head Count Summary for Undergraduate and Graduate Students by Full and Part-Time by Gender and Race Classification: Summer 2014 33

Table 11: College of CPACS Division of Continuing Studies Head Count Summary for Undergraduate Students by Full and Part-Time by Gender and Race Classification: Summer 2014..... 35

Table 12: University Division Head Count Summary for Undergraduate Students by Full and Part-Time by Gender and Race Classification: Summer 2014 38

Table 13: Non-Degree/Intercampus Head Count Summary for Special Undergraduate Students by Full and Part-Time by Gender and Race Classification: Summer 2014 40

Table 14: Non-Degree/Intercampus Head Count Summary for Special Graduate Students by Full and Part-Time by Gender and Race Classification: Summer 2014 42

Table 15: Cooperative Graduate Program Head Count Summary for Graduate Students by Full and Part-Time by Gender and Race Classification: Fall 2014 43

Table 16: College of Agriculture Head Count Summary for Undergraduate Students by Full and Part-Time by Gender and Race Classification: Summer 2014	46
Table 17: College of Architecture Head Count Summary for Undergraduate Students by Full and Part-Time by Gender and Race Classification: Summer 2014	48
Table 18: College of Engineering Head Count Summary for Undergraduate Students by Full and Part-Time by Gender and Race Classification: Summer 2014	50
Table 19: College of Education and Human Sciences Head Count Summary for Undergraduate Students by Full and Part-Time by Gender and Race Classification: Summer 2014	52

List of Figures:

Figure 1: Delivery-Site & Administrative-Site Head Count Enrollment: Summer 2001-2014.....	6
Figure 2: UNO Delivery-Site Head Count by Student Level: Summer 2003-2014.....	7
Figure 3: UNO Delivery-Site Student Credit Hours by Student Level: Summer 2003-2014.....	7
Figure 4: UNO Delivery-Site Head Count by Ethnicity by Gender: Summer 2014	8
Figure 5: UNO Administrative-Site Head Count by Student Level: Summer 2003-2014	10
Figure 6: UNO Administrative-Site Student Credit Hours: Summer 2003-2014	10
Figure 7: Uno Administrative-Site Head Count by Ethnicity by Gender: Summer 2014.....	11
Figure 8: College of Arts & Sciences Head Count: Summer 2003-2014.....	13
Figure 9: College of Arts & Sciences Student Credit Hours: Summer 2003-2014.....	13
Figure 10: College of Arts & Sciences Head Count by Ethnicity by Gender: Summer 2014	14
Figure 11: College of Business Administration Head Count: Summer 2014.....	16
Figure 12: College of Business Administration Student Credit Hours: Summer 2003-2014.....	16
Figure 13: College of Business Administration Head Count by Ethnicity by Gender: Summer 2014	17
Figure 14: College of Communication, Fine Arts and Media Delivery and Administration-Site Head Count: Summer 2003-2014	19
Figure 15: College of Communication, Fine Arts and Media Administrative-Site Student Credit Hours: Summer 2003-2014	19
Figure 16: College of Communication, Fine Arts and Media Delivery-Site Head Count by Ethnicity by Gender: Summer 2014.....	20
Figure 17: College of Education Head Count: Summer 2003-2014	22
Figure 18: College of Education Student Credit Hours: Summer 2003-2014	22
Figure 19: College of Education Head Count by Ethnicity by Gender: Summer 2014	23
Figure 20: College of Information Science & Technology Head Count: Summer 2003-2014.....	25
Figure 21: College of Information Science & Technology Student Credit Hours: Summer 2003-2014	25
Figure 22: College of Information Science & Technology Head Count by Ethnicity by Gender: Summer 2014	26

Figure 23: College of Public Affairs & Community Service Delivery-Site Head Count: Summer 2003-2014	28
Figure 24: College of Public Affairs & Community Service Delivery-Site Student Credit Hours: Summer 2003-2014	28
Figure 25: College of Public Affairs & Community Service Delivery-Site Head Count by Ethnicity by Gender: Summer 2014	29
Figure 26: College of Public Affairs & Community Service Administrative-Site Head Count: Summer 2003-2014	31
Figure 27: College of Public Affairs & Community Service Administrative-Site Student Credit Hours: Summer 2003-2014	31
Figure 28: College of Public Affairs & Community Service Administrative-Site Head Count by Ethnicity by Gender: Summer 2014	32
Figure 29: College of CPACS, Division of Continuing Studies Head Count: Summer 2003-2014	34
Figure 30: University Division Head Count: Summer 2003-2014	36
Figure 31: University Division Student Credit Hours: Summer 2003-2014	36
Figure 32: University Division Head Count by Ethnicity by Gender: Summer 2014	37
Figure 33: Non-Degree/Intercampus Special Undergraduate Students Head Count: Summer 2003-2014	39
Figure 34: Non-Degree/Intercampus Special Undergraduate Students Head Count by Ethnicity by Gender: Summer 2014	39
Figure 35: Non-Degree/Intercampus Special Graduate Students Head Count: summer 2003-2014	41
Figure 36: Non-Degree/Intercampus Special Graduate Students Head Count by Ethnicity by Gender: Summer 2014	41
Figure 37: Other Honors Student Credit Hours by Level of Instruction: Summer 2014	44
Figure 38: College of Agriculture Delivery-Site Head Count: Summer 2014	45
Figure 39: College of Agriculture Delivery-Site Student Credit Hours: Summer 2003-2014	45
Figure 40: College of Architecture Delivery-Site Head Count: Summer 2003-2014	47
Figure 41: College of Engineering Delivery-Site Head Count: Summer 2003-2014	49
Figure 42: College of Engineering Delivery-Site Student Credit Hours: Summer 2003-2014	49
Figure 43: College of Education and Human Sciences Delivery-Site Head Count: Summer 2003-2014	51
Figure 44: College of Education and Human Sciences Delivery-Site Student Credit Hours: Summer 2003-2014	51
GLOSSARY	53

Executive Summary

This Enrollment Statistical Summary provides delivery-site information. Administrative-site headcounts, since they are most closely related to the budgetary authority exercised by the campus, are officially reported to the Board of Regents. Delivery site reporting counts all students, including those in UNL programs delivered at UNO, but excludes UNO programs delivered in Lincoln (CPACS programs). Administrative-site reporting counts students enrolled in UNO programs only (including the CPACS programs delivered in Lincoln).

The Office of Institutional Effectiveness has found delivery-site counts to be the most frequently requested figured by campus units for academic and administrative planning purposes. The purpose of this summary is to provide the undergraduate and graduate enrollments and student credit hour information by college or equivalent academic unit.

A glossary at the end of the report provides a list of definitions for headings and categories found in the report.

Summer 2014 Delivery-Site Campus Summary

A campus summary of changes in delivery-site head count enrollment and student credit hours compared to the summer 2013 is below.

- Summer 2014 head count enrollment 6,947, a 2.0% increase compared to the summer 2013 enrollment of 6,813 (see Figure 1).
- Summer 2014 undergraduate head count enrollment is 5,214, a 0.6% increase compared to the summer 2013 enrollment of 5,187 (see Figure 2).
- Summer 2014 graduate head count enrollment is 1,733, a 6.6% increase compared to the summer 2013 enrollment of 1,626 (see Figure 2).
- Summer 2014 student credit hours are 38,393, a 2.2% increase compared to the summer 2013 credit hours of 37,576 (see Figure 3).
- Summer 2014 undergraduate credit hours are 29,817, up from summer 2013 by .02% (see Figure 3).
- Summer 2014 graduate credit hours are 8,576, up from summer 2013 by 10.4% (see Figure 3).

Administrative-Site

- Summer 2014 administrative-site head count enrollment is 6,732, a 2.4% increase from the previous summer and administrative-site credit hours are 38,332, up 2.5% (see Figures 5 & 6).

Table 1: UNO Delivery and Administrative-Site Head Count Enrollment and Comparison: Summer 2014

	Summer 2014		Summer 2013	Summer 13-14 Administrative-Site	
	Delivery-Site	Administrative-Site	Administrative-Site	Numerical Change	Percent Change
UNO:					
<i>Undergraduate</i>					
Arts & Science	1,307	1,307	1,308	-1	-0.1%
Business Administration	885	885	851	34	4.0%
Communication, Fine Arts & Media	320	320	338	-18	-5.3%
Education	615	615	667	-52	-7.8%
Information Science and Technology	298	298	276	22	8.0%
Public Affairs & Community Services	290	393	326	67	20.6%
Division of Continuing Studies	643	643	615	28	4.6%
Sub-total CPACS including Cont. Studies	933	1,036	941	95	10.1%
Non-Degree	448	448	489	-41	-8.4%
University Division	90	90	81	9	11.1%
Total Undergraduate	4,896	4,999	4,951	48	1.0%
<i>Graduate</i>					
Arts & Science	178	178	158	20	12.7%
Business Administration	242	242	214	28	13.1%
Communication, Fine Arts & Media	31	31	49	-18	-36.7%
Education	721	721	695	26	3.7%
Information Science and Technology	155	155	106	49	46.2%
Public Affairs & Community Services	229	229	183	46	25.1%
Undeclared	177	177	221	-44	-19.9%
Total Graduate	1,733	1,733	1,626	107	6.6%
<i>UNO Administrative-Site Total</i>		6,732	6,577	155	2.4%
UNL:	Summer 2014		Summer 2013	Numerical Change	Percent Change
Agriculture	2		2		
Architecture	5		9		
Engineering & Technology	308		272		
Education and Human Science	3		3		
Total UNL in Omaha	318		286	32	11.2%
	Summer 2014		Summer 2013	Numerical Change	Percent Change
<i>UNO Delivery-Site Total</i>	6,947		6,813	134	2.0%

Figure 1: Delivery-Site & Administrative-Site Head Count Enrollment: Summer 2001-2014

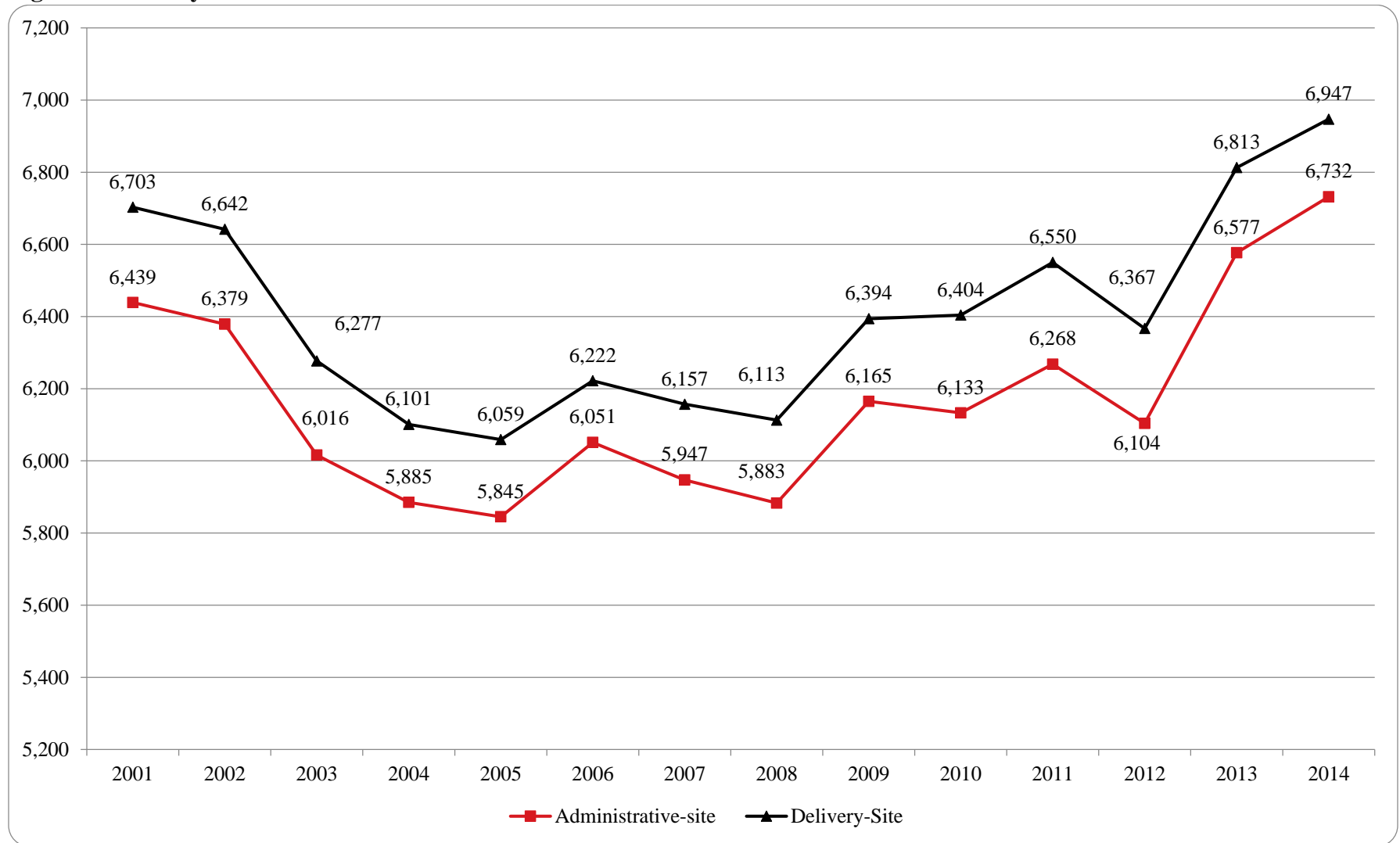


Figure 2: UNO Delivery-Site Head Count by Student Level: Summer 2003-2014

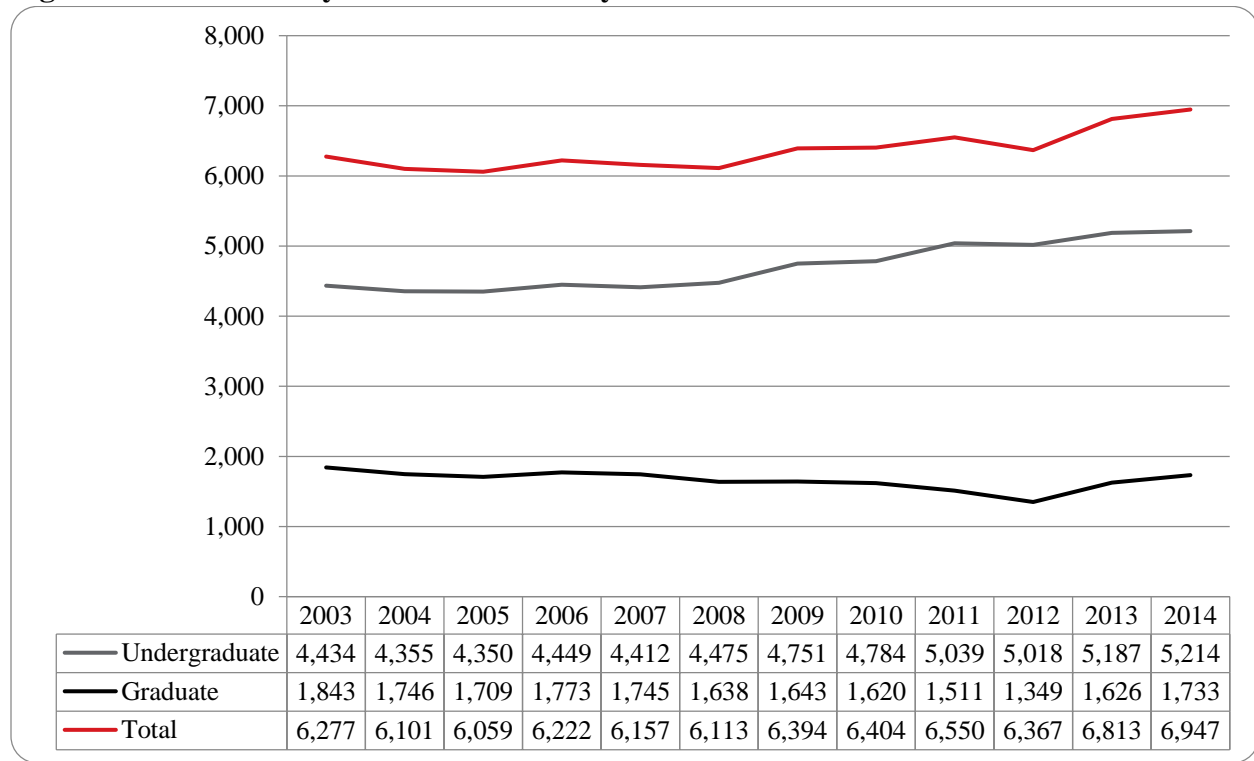


Figure 3: UNO Delivery-Site Student Credit Hours by Student Level: Summer 2003-2014

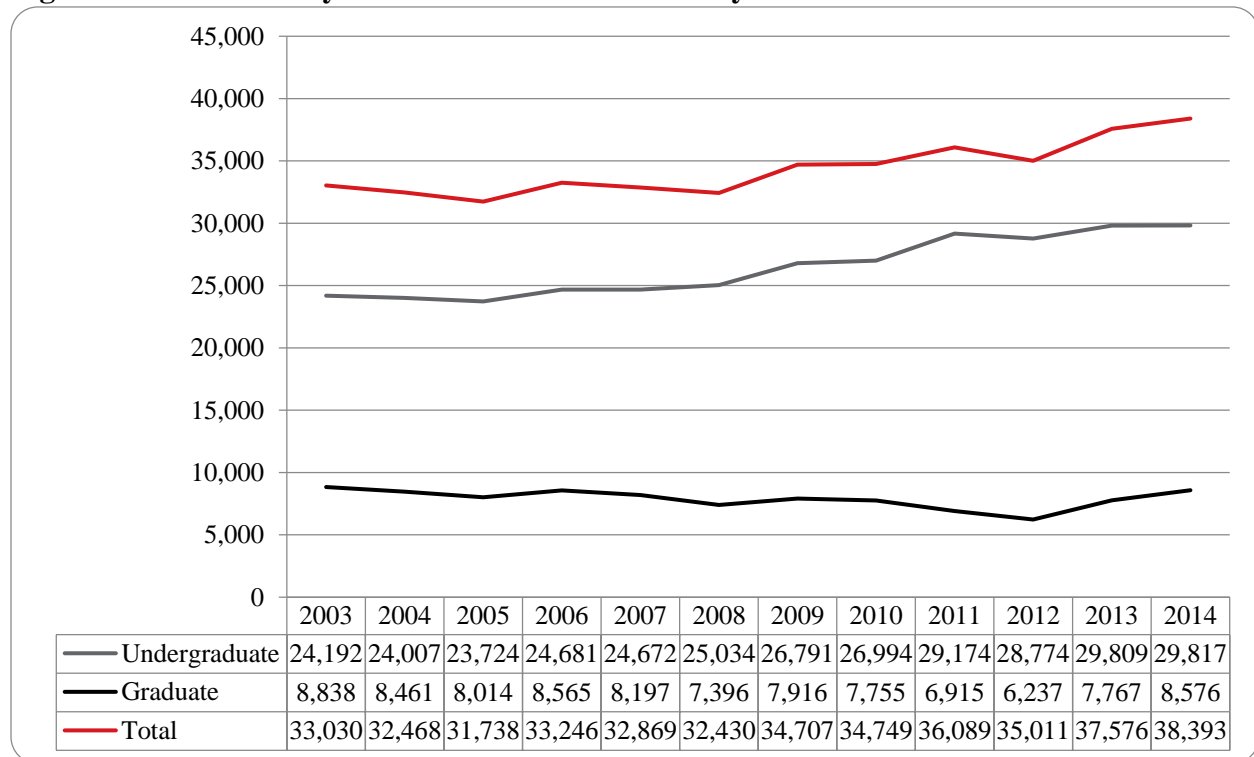


Figure 4: UNO Delivery-Site Head Count by Ethnicity by Gender: Summer 2014

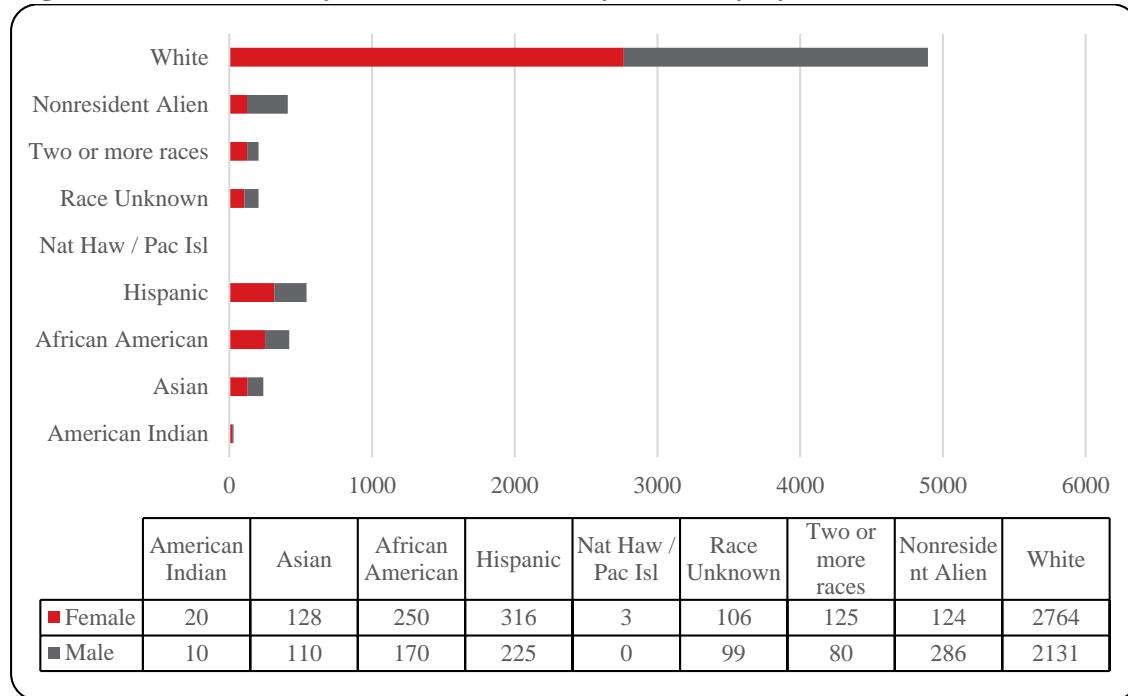


Table 2: Total UNO Delivery-Site Head Count Summary for Undergraduate and Graduate Students Full and Part-Time by Gender and Race Classification: Summer 2014

	American Indian		Asian		African American		Hispanic		Nat Haw / Pac Isl	Race Unknown		Two or more races		White		Nonresident Alien		Total			
	F	M	F	M	F	M	F	M	F		F	M	F	M	F	M	F	M	F	M	Total
Undergraduate																					
Full-Time																					
First-Time Freshmen			1																1		1
Other Freshmen		1			1	2		1					2		6	11			9	15	24
Sophomores		1		2	2	1								12	20	1		15	24	39	
Juniors			2	1	1	1	3	1		1	3	2	1	45	34		4	54	45	99	
Seniors	2	1	1	5	10	3	12	3		3	2	1	1	70	43	4	2	103	60	163	
Special					1			1						4	7			5	8	13	
Total Full-Time	2	3	4	8	15	7	15	6		4	5	5	2	137	115	5	6	187	152	339	
Part-Time																					
First-Time Freshmen			1			3	1				1	1		6	9	4	14	13	27	40	
Other Freshmen	2	3	18	15	39	17	59	32	1	11	10	13	12	179	186	9	29	331	304	635	
Sophomores	1		26	20	36	32	42	44	1	7	15	28	17	302	249	14	52	457	429	886	
Juniors	7		20	16	47	36	69	49	1	24	18	21	17	506	414	10	42	705	592	1,297	
Seniors	3	2	28	32	69	49	85	61		33	26	30	15	670	654	16	33	934	872	1,806	
Special	1		3	4	2	5	4	8		4	5	2	2	88	79	2	2	106	105	211	
Total Part-Time	14	5	96	87	193	142	260	194	3	79	75	95	63	1,751	1,591	55	172	2,546	2,329	4,875	
Total Undergraduate	16	8	100	95	208	149	275	200	3	83	80	100	65	1,888	1,706	60	178	2,733	2,481	5,214	
Graduate																					
Full-Time																					
Certificate																					
Masters		1	2	2	6	1	7	2		8	2	4	2	123	40	1	4	151	54	205	
Doctoral													1	2	2			2	3	5	
Special Graduate											1	1		5	3		2	6	6	12	
Total Full-Time		1	2	2	6	1	7	2		8	3	5	3	130	45	1	6	159	63	222	
Part-Time																					
Certificate				1	1	1						1		8	10		2	10	14	24	
Masters	3	1	22	11	29	17	27	19		13	12	18	9	586	320	56	81	754	470	1,224	
Doctoral			2				2			1		1	1	29	16	3	5	38	22	60	
Special Graduate	1		2	1	6	2	5	4		1	4		2	123	34	4	14	142	61	203	
Total Part-Time	4	1	26	13	36	20	34	23		15	16	20	12	746	380	63	102	944	567	1,511	
Total Graduate	4	2	28	15	42	21	41	25		23	19	25	15	876	425	64	108	1,103	630	1,733	
Total All Students	20	10	128	110	250	170	316	225	3	106	99	125	80	2,764	2,131	124	286	3,836	3,111	6,947	

Figure 5: UNO Administrative-Site Head Count by Student Level: Summer 2003-2014

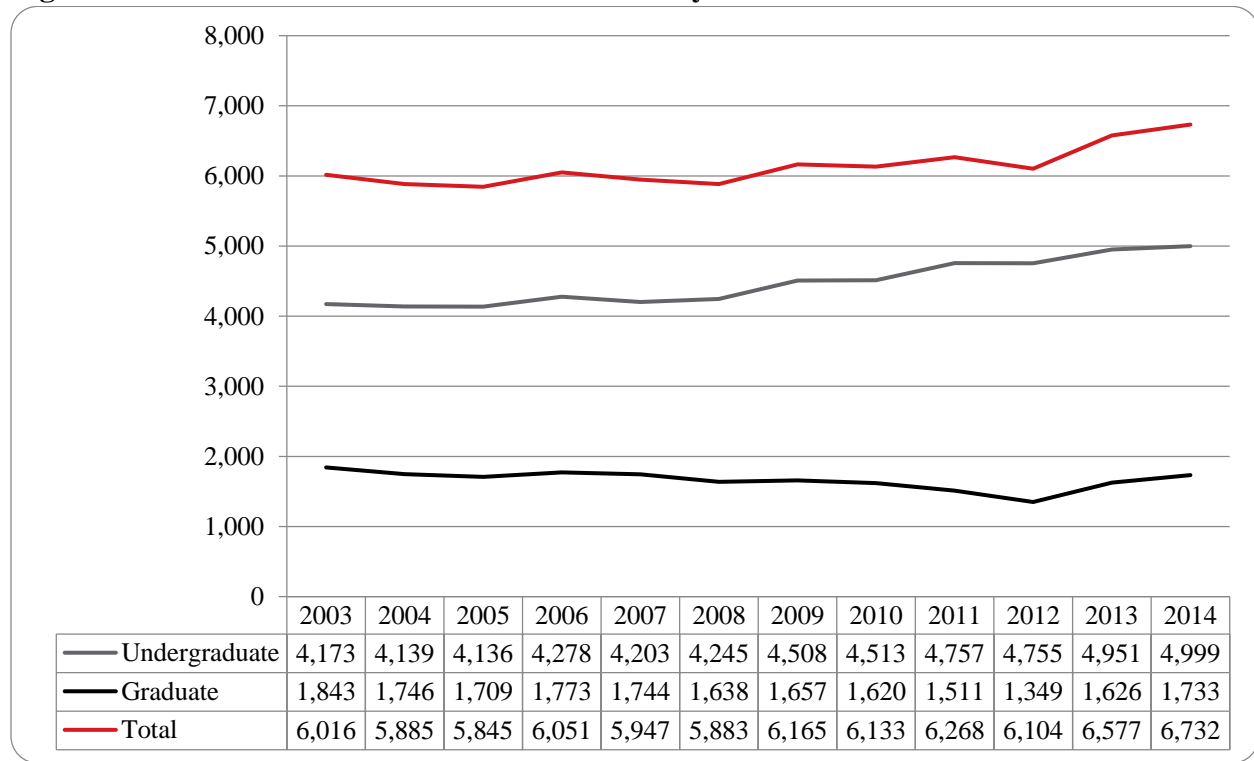


Figure 6: UNO Administrative-Site Student Credit Hours: Summer 2003-2014

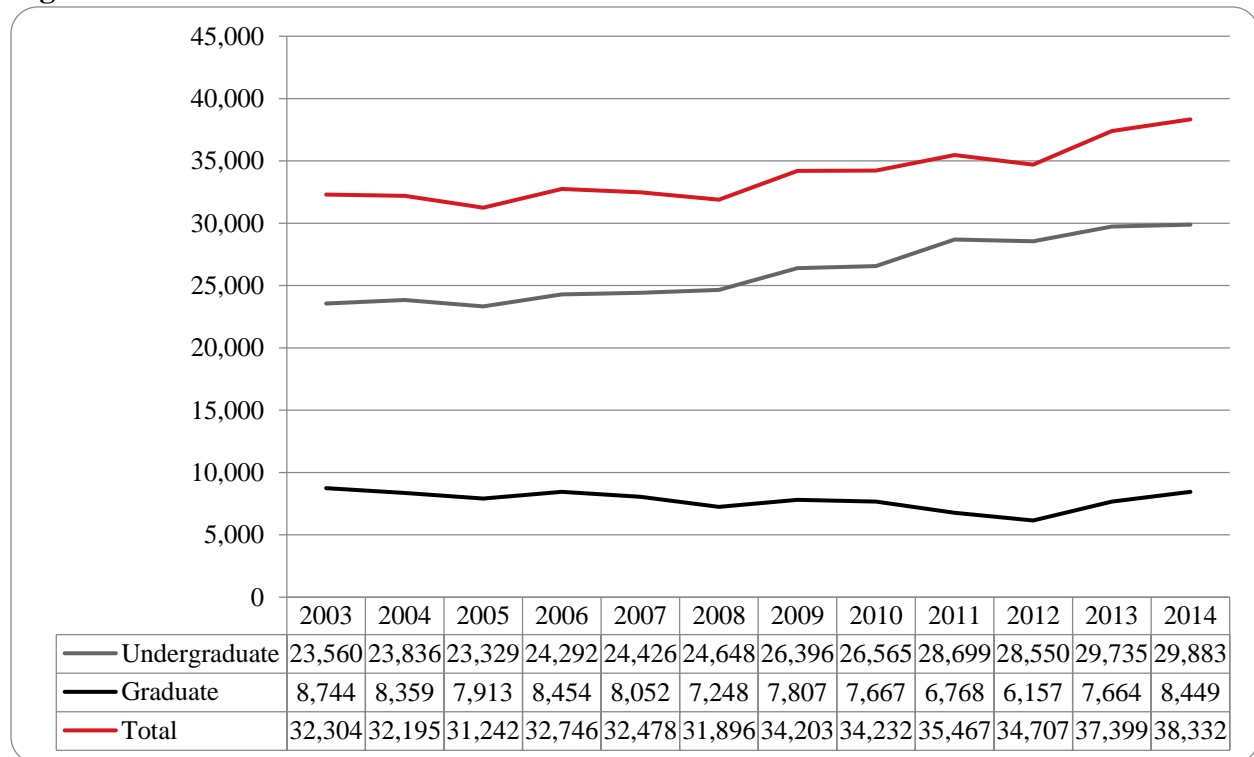


Figure 7: Uno Administrative-Site Head Count by Ethnicity by Gender: Summer 2014

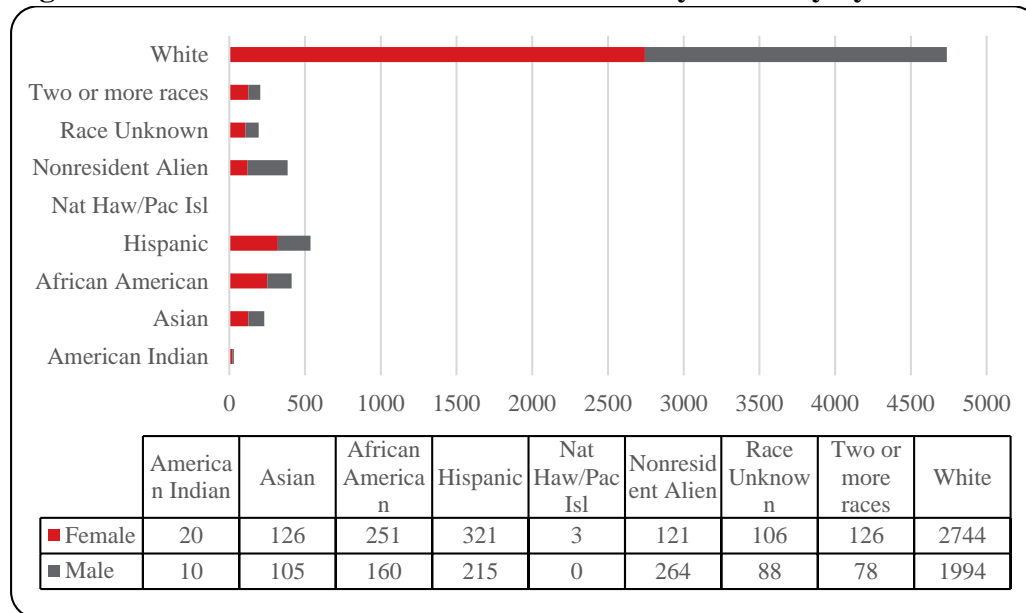


Table 3: Total UNO Administrative-Site Head Count Summary for Undergraduate and Graduate Students by Full and Part-Time by Gender and Race Classification: Summer 2014

	American Indian		Asian		African American		Hispanic		Nat Haw / Pac Isl	Race Unknown		Two or more races		White		Nonresident Alien		Total			
	F	M	F	M	F	M	F	M	F	M	F	M	F	M	F	M	F	M	F	M	Total
Undergraduate																					
Full-Time																					
First-Time Freshmen			1																1		1
Other Freshmen		1			1	2		1				2		6	10			9	14	23	
Sophomores		1		1	2	1							12	19	1	1	15	23	38		
Juniors			2	1	1	1	3	1		1	3	2	1	45	34		4	54	45	99	
Seniors	2	1	1	5	10	3	12	3		3	1	1		69	43	4	2	102	58	160	
Special					1		1						4	6			5	7	12		
Total Full-Time	2	3	4	7	15	7	15	6		4	4	5	1	136	112	5	7	186	147	333	
Part-Time																					
First-Time Freshmen			1			3	1			1	1		5	9	4	12	12	25	37		
Other Freshmen	2	3	18	15	39	16	59	32	1	11	10	13	9	177	182	9	27	329	294	623	
Sophomores	1		25	20	36	28	42	40	1	7	13	28	17	290	215	13	42	443	375	818	
Juniors	7		20	15	48	34	70	47	1	24	16	21	19	500	373	9	36	700	540	1,240	
Seniors	3	2	27	29	69	46	88	57		33	21	31	15	673	603	15	31	939	804	1,743	
Special	1		3	4	2	5	5	8		4	4	2	2	87	75	2	1	106	99	205	
Total Part-Time	14	5	94	83	194	132	265	184	3	79	65	96	62	1,732	1,457	52	149	2,529	2,137	4,666	
Total Undergraduate	16	8	98	90	209	139	280	190	3	83	69	101	63	1,868	1,569	57	156	2,715	2,284	4,999	
Graduate																					
Full-Time																					
Certificate																					
Masters		1	2	2	6	1	7	2		8	2	4	2	123	40	1	4	151	54	205	
Doctoral													1	2	2			2	3	5	
Special Graduate											1	1		5	3		2	6	6	12	
Total Full-Time		1	2	2	6	1	7	2		8	3	5	3	130	45	1	6	159	63	222	
Part-Time																					
Certificate				1	1	1						1		8	10		2	10	14	24	
Masters	3	1	22	11	29	17	27	19		13	12	18	9	586	320	56	81	754	470	1,224	
Doctoral			2				2			1		1	1	29	16	3	5	38	22	60	
Special Graduate	1		2	1	6	2	5	4		1	4		2	123	34	4	14	142	61	203	
Total Part-Time	4	1	26	13	36	20	34	23		15	16	20	12	746	380	63	102	944	567	1,511	
Total Graduate	4	2	28	15	42	21	41	25		23	19	25	15	876	425	64	108	1,103	630	1,733	
Total All Students	20	10	126	105	251	160	321	215	3	106	88	126	78	2,744	1,994	121	264	3,818	2,914	6,732	

Figure 8: College of Arts & Sciences Head Count: Summer 2003-2014

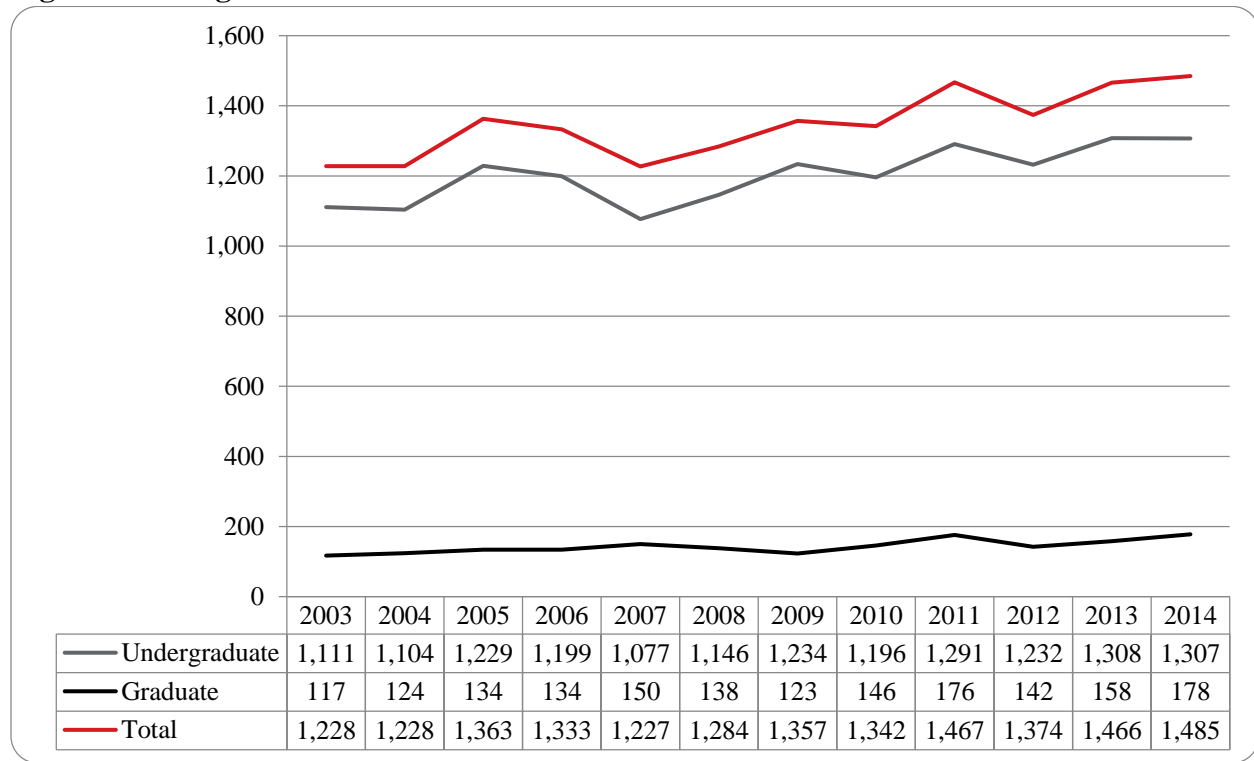


Figure 9: College of Arts & Sciences Student Credit Hours: Summer 2003-2014

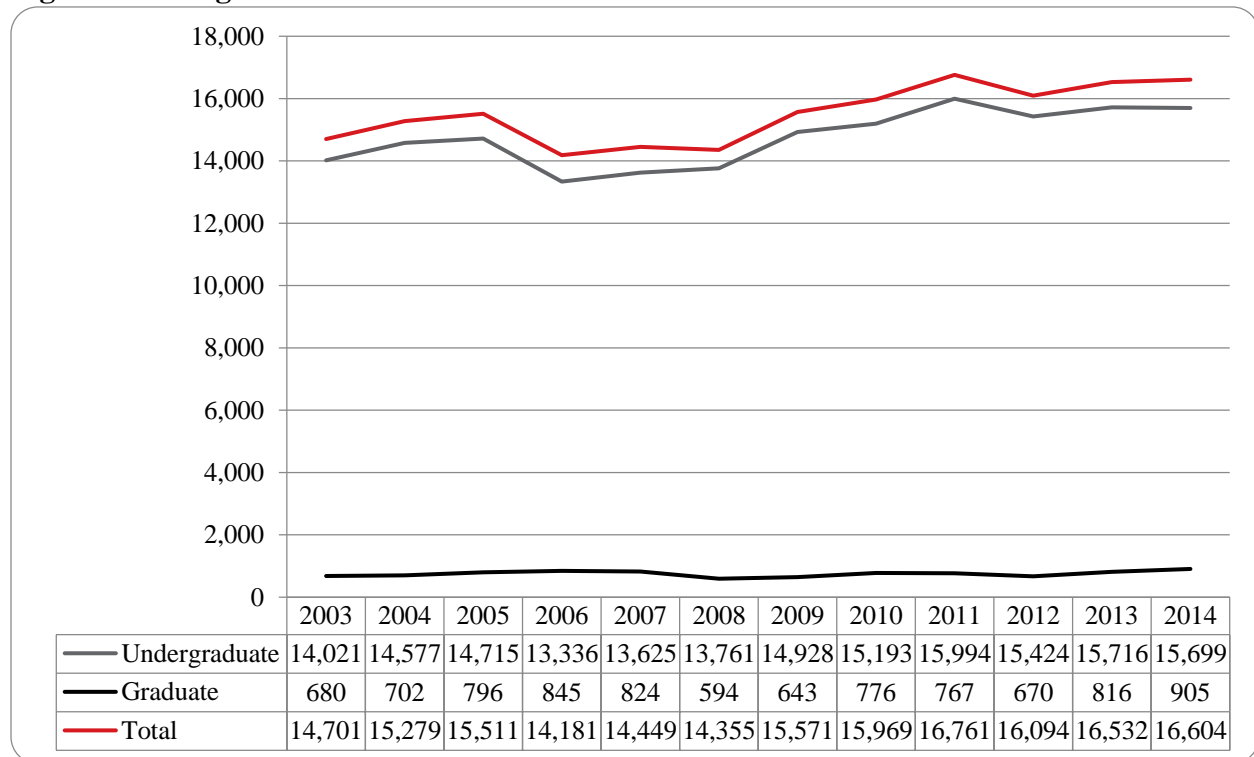


Figure 10: College of Arts & Sciences Head Count by Ethnicity by Gender: Summer 2014

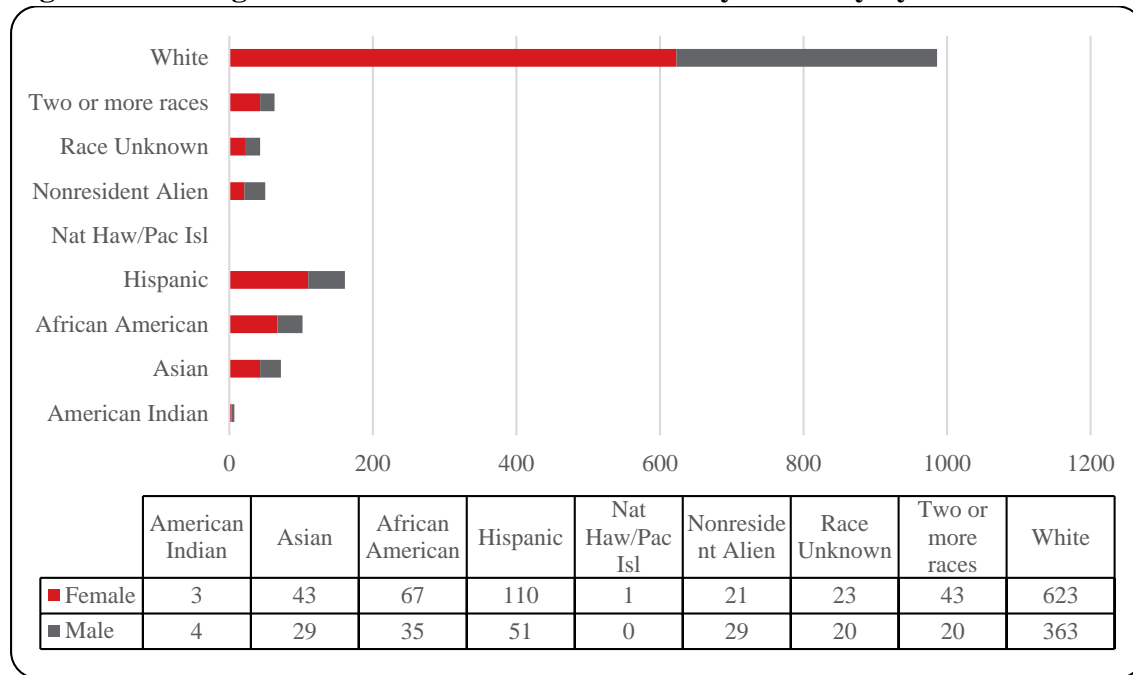


Table 4: College of Arts & Sciences Head Count Summary for Undergraduate and Graduate Students by Full and Part-Time by Gender and Race Classification: Summer 2014

	American Indian		Asian		African American		Hispanic		Nat Haw / Pac Isl	Race Unknown		Two or more races		White		Nonresident Alien		Total			
	F	M	F	M	F	M	F	M	F	F	M	F	M	F	M	F	M	F	M	Total	
Undergraduate																					
Full-Time																					
First-Time Freshmen			1																1		1
Other Freshmen												1		2	4				3	4	7
Sophomores		1		1										7	6	1			8	8	16
Juniors			1		1		2	1			2		1	15	4				19	8	27
Seniors					4		3	1			2			8	3	1			18	4	22
Special					1										2				1	2	3
Total Full-Time		1	2	1	6		5	2			2	2	1	1	32	19	2		50	26	76
Part-Time																					
First-Time Freshmen			1			1								2		2	5	5	6	11	
Other Freshmen		2	3		7	3	7	1			2	1	6	4	22	9	2	4	49	24	73
Sophomores			13	8	19	7	26	17	1		2	4	12	6	117	54	7	8	197	104	301
Juniors	2		11	6	13	10	28	12			6	6	12	4	148	84	1	3	221	125	346
Seniors	1	1	9	12	19	9	40	15			7	2	9	4	206	119	4	3	295	165	460
Special			1	1	1	2	1				1	3	1		19	10			24	16	40
Total Part-Time	3	3	38	27	59	32	102	45	1		18	16	40	18	514	276	16	23	791	440	1,231
Total Undergraduate	3	4	40	28	65	32	107	47	1		20	18	41	19	546	295	18	23	841	466	1,307
Graduate																					
Full-Time																					
Certificate																					
Masters						1	1	1			1	1		5	3		1	7	7	14	
Doctoral														1				1		1	
Special Graduate																					
Total Full-Time						1	1	1			1	1		6	3		1	8	7	15	
Part-Time																					
Certificate															3				3	3	
Masters			2	1	2	2	2	3			2	1	2	1	67	62	3	5	80	75	155
Doctoral			1											2				3		3	
Special Graduate														2				2		2	
Total Part-Time			3	1	2	2	2	3			2	1	2	1	71	65	3	5	85	78	163
Total Graduate			3	1	2	3	3	4			3	2	2	1	77	68	3	6	93	85	178
Total All Students	3	4	43	29	67	35	110	51	1		23	20	43	20	623	363	21	29	934	551	1,485

Figure 11: College of Business Administration Head Count: Summer 2014

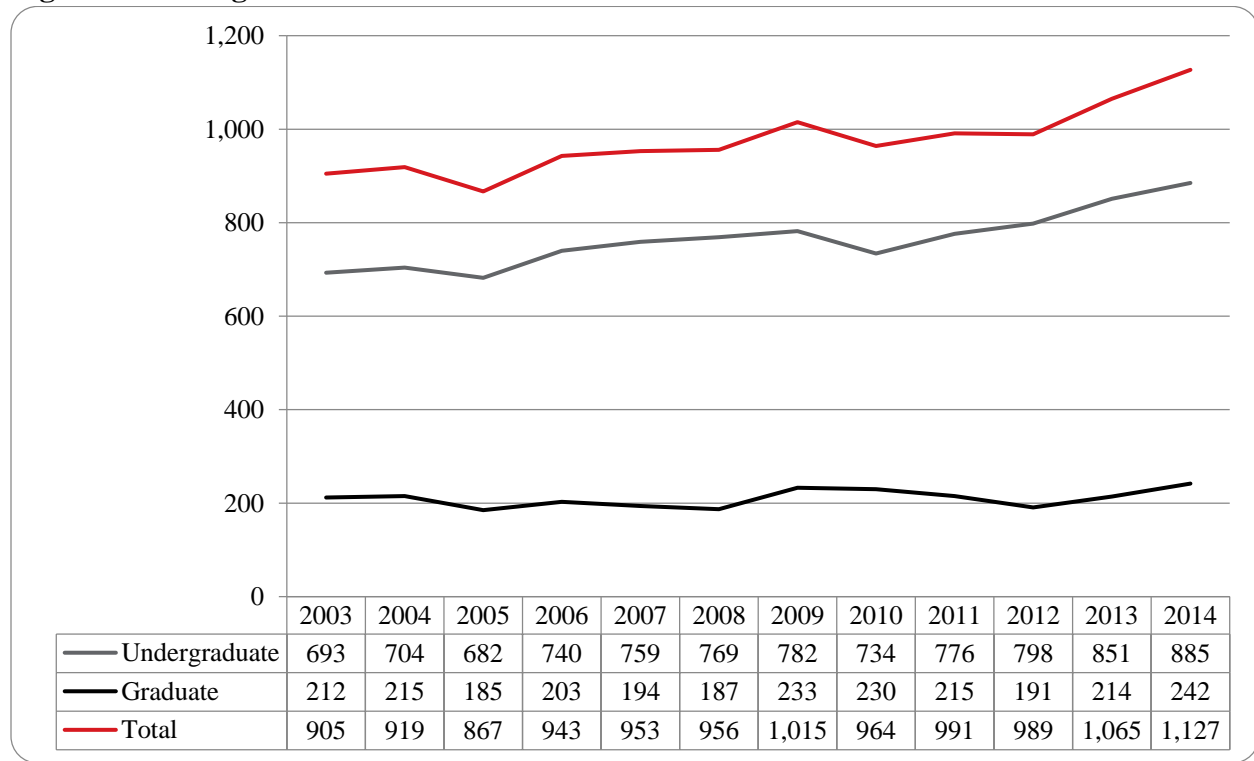


Figure 12: College of Business Administration Student Credit Hours: Summer 2003-2014

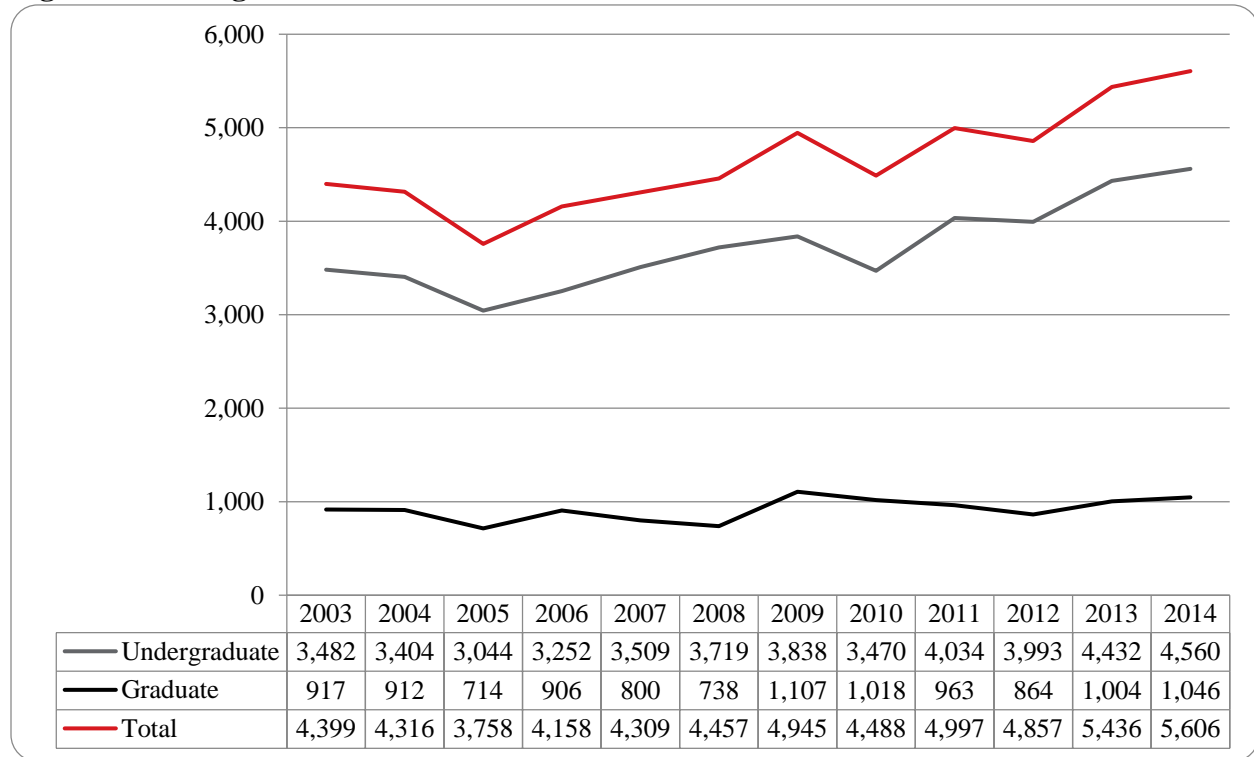


Figure 13: College of Business Administration Head Count by Ethnicity by Gender: Summer 2014

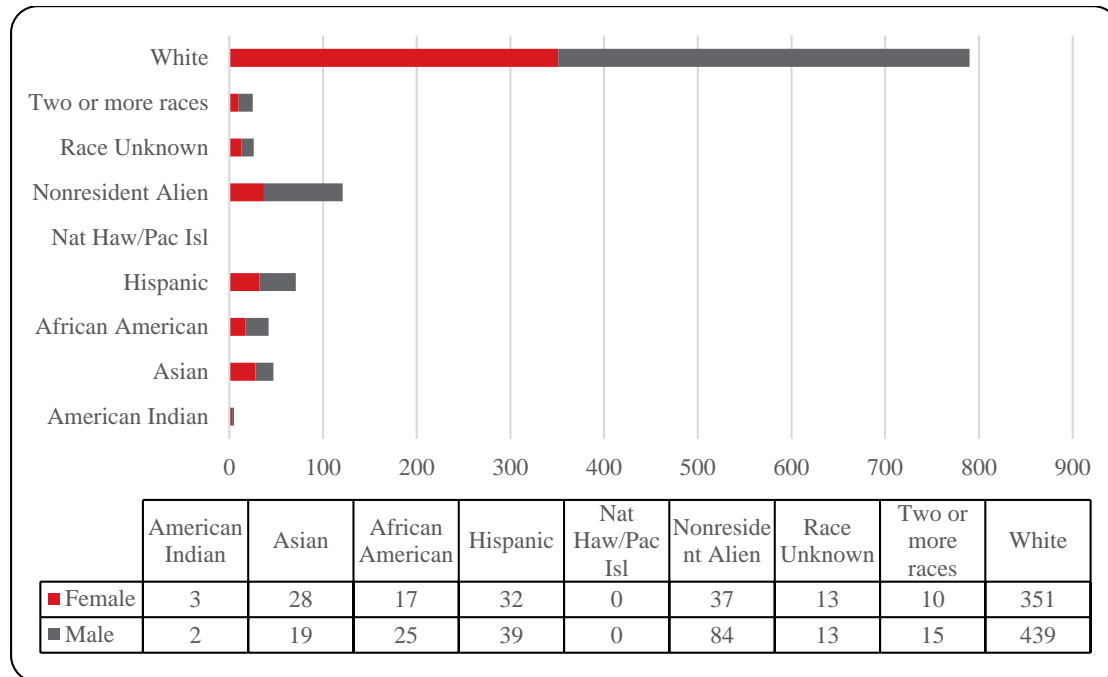


Table 5: College of Business Administration Head Count Summary for Undergraduate and Graduate Students by Full and Part-Time by Gender and Race Classification: Summer 2014

	American Indian		Asian		African American		Hispanic		Nat Haw / Pac Isl		Race Unknown		Two or more races		White		Nonresident Alien		Total			
	F	M	F	M	F	M	F	M	F		F	M	F	M	F	M	F	M	F	M	Total	
Undergraduate																						
Full-Time																						
First-Time Freshmen																						
Other Freshmen															1					1		1
Sophomores															1	4				1	4	5
Juniors							1	1							7	6		1		8	8	16
Seniors	1	1	1	2	1	2	5								25	12	3	2	36	19	55	
Special															3				3		3	
Total Full-Time	1	1	1	2	1	3	6								37	22	3	3	49	31	80	
Part-Time																						
First-Time Freshmen						1	1								1	3	2	4	4	8	12	
Other Freshmen	1		1	2	1	1	4	2					1		6	12	4	8	18	25	43	
Sophomores			9	4	4	5	1	9			2	2	4	3	33	39	5	11	58	73	131	
Juniors			3	1	5	2	8	10			2	3		7	77	80	7	21	102	124	226	
Seniors	1		9	6	4	11	11	11			7	4	3	3	118	150	6	14	159	199	358	
Special								2			1				15	15	1	1	17	18	35	
Total Part-Time	2		22	13	14	20	25	34			12	9	8	13	250	299	25	59	358	447	805	
Total Undergraduate	3	1	23	15	15	23	31	34			12	9	8	13	287	321	28	62	407	478	885	
Graduate																						
Full-Time																						
Certificate																						
Masters		1										1			5	6		1	5	9	14	
Doctoral																						
Special Graduate																						
Total Full-Time		1										1			5	6		1	5	9	14	
Part-Time																						
Certificate					1											1			1	1	2	
Masters			5	4	1	2	1	5			1	3	2	2	59	111	9	21	78	148	226	
Doctoral																						
Special Graduate																						
Total Part-Time			5	4	2	2	1	5			1	3	2	2	59	112	9	21	79	149	228	
Total Graduate		1	5	4	2	2	1	5			1	4	2	2	64	118	9	22	84	158	242	
Total All Students	3	2	28	19	17	25	32	39			13	13	10	15	351	439	37	84	491	636	1,127	

Figure 14: College of Communication, Fine Arts and Media Delivery and Administration-Site Head Count: Summer 2003-2014

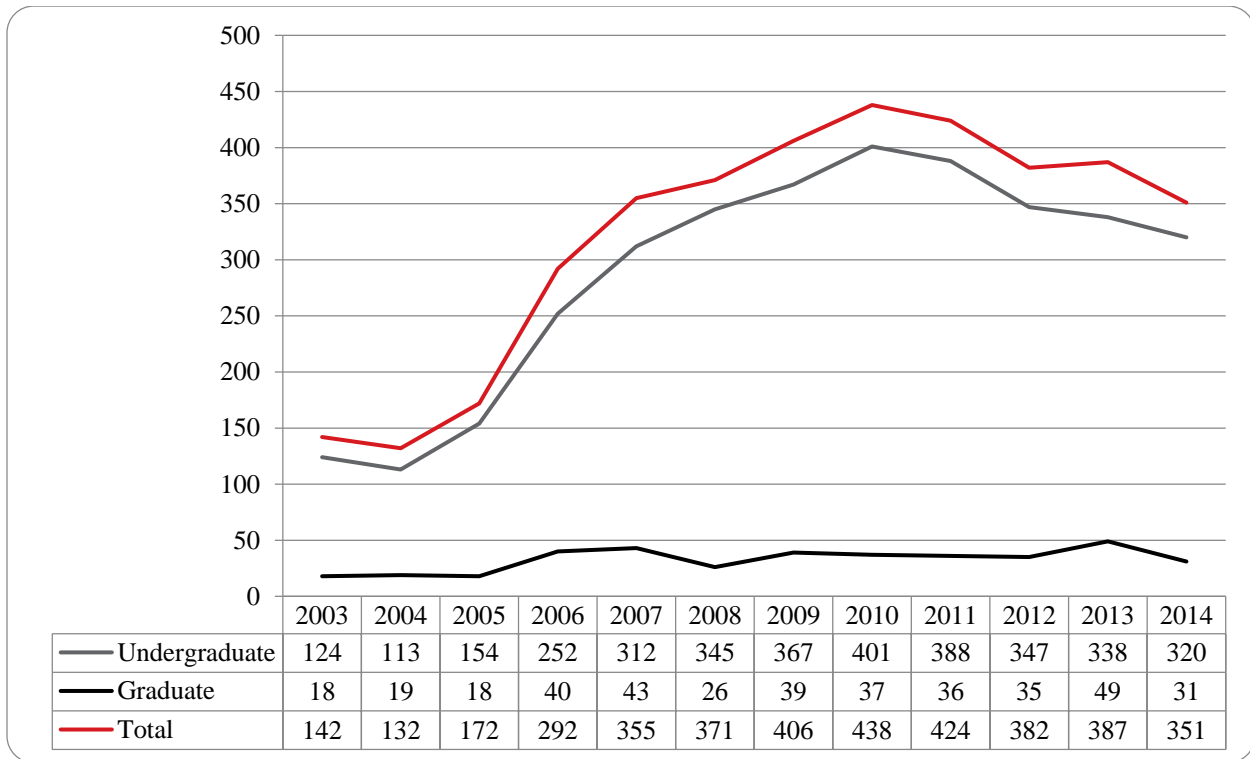


Figure 15: College of Communication, Fine Arts and Media Administrative-Site Student Credit Hours: Summer 2003-2014

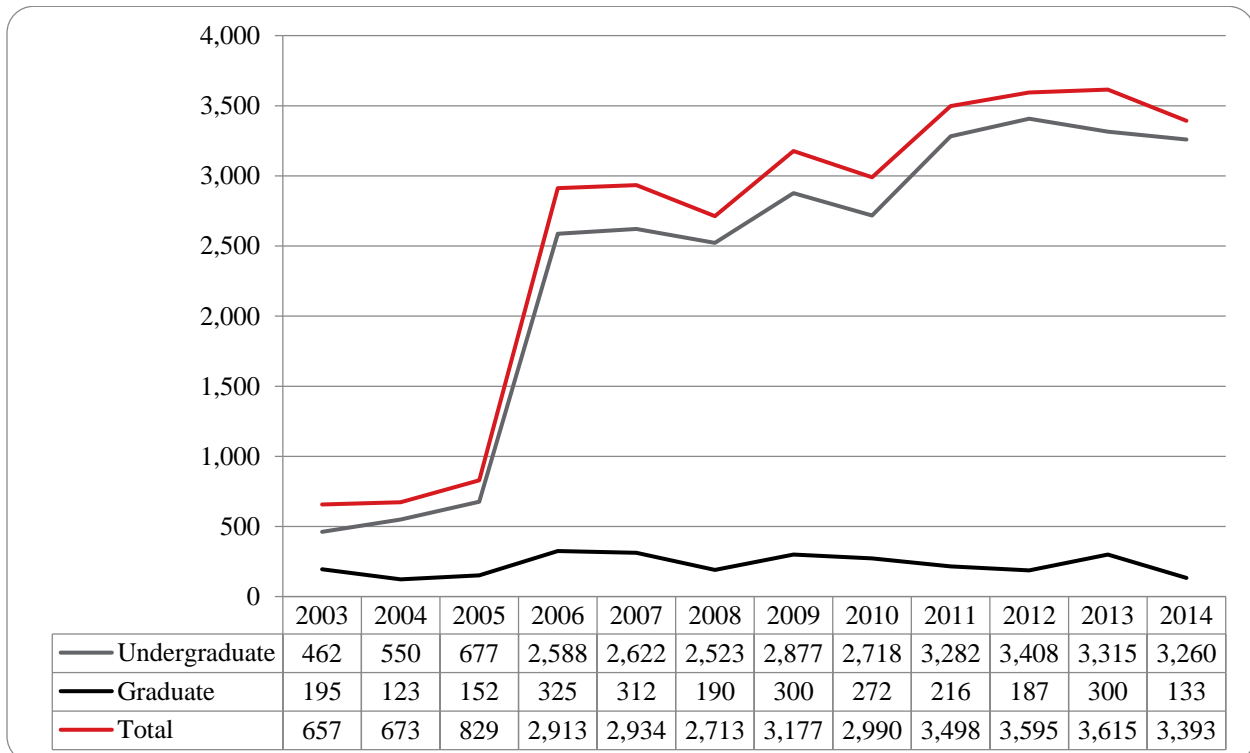


Figure 16: College of Communication, Fine Arts and Media Delivery-Site Head Count by Ethnicity by Gender: Summer 2014

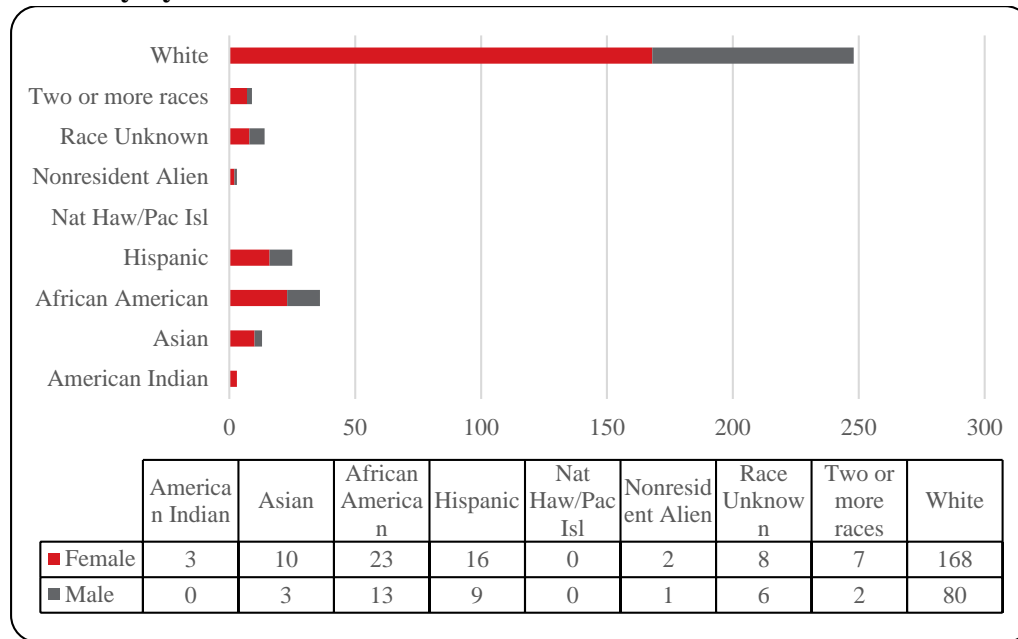


Table 6: College of Communication, Fine Arts and Media Delivery and Administrative Site Head Count Summary for Undergraduate and Graduate Students by Full and Part-Time by Gender and Race Classification: Summer 2014

	American Indian		Asian		African American		Hispanic		Nat Haw / Pac Isl		Race Unknown		Two or more races		White		Nonresident Alien		Total				
	F	M	F	M	F	M	F	M	F		F	M	F	M	F	M	F	M	F	M	Total		
Undergraduate																							
Full-Time																							
First-Time Freshmen																							
Other Freshmen																							
Sophomores																1					1	1	
Juniors													1		1	3					2	3	5
Seniors					1		1								2	3					4	3	7
Special																1						1	1
Total Full-Time					1		1						1		3	8					6	8	14
Part-Time																							
First-Time Freshmen																							
Other Freshmen			1		1	2	2	1					1	6	5						10	9	19
Sophomores			2	1	3	2	1	1			1	1		23	10	1					31	15	46
Juniors	2		3	1	7	6	6	2			1	1	4	1	56	18					79	29	108
Seniors	1		2	1	10	3	5	3			6	4	2		60	27					86	38	124
Special			1					1							3	4					4	5	9
Total Part-Time	3		9	3	21	13	14	8			8	6	6	2	148	64	1				210	96	306
Total Undergraduate	3		9	3	22	13	15	8			8	6	7	2	151	72	1				216	104	320
Graduate																							
Full-Time																							
Certificate																							
Masters															1						1		1
Doctoral																							
Special Graduate																							
Total Full-Time															1						1		1
Part-Time																							
Certificate																							
Masters			1		1		1	1							16	8	1	1			20	10	30
Doctoral																							
Special Graduate																							
Total Part-Time			1		1		1	1							16	8	1	1			20	10	30
Total Graduate			1		1		1	1							17	8	1	1			21	10	31
Total All Students	3		10	3	23	13	16	9			8	6	7	2	168	80	2	1			237	114	351

Figure 17: College of Education Head Count: Summer 2003-2014

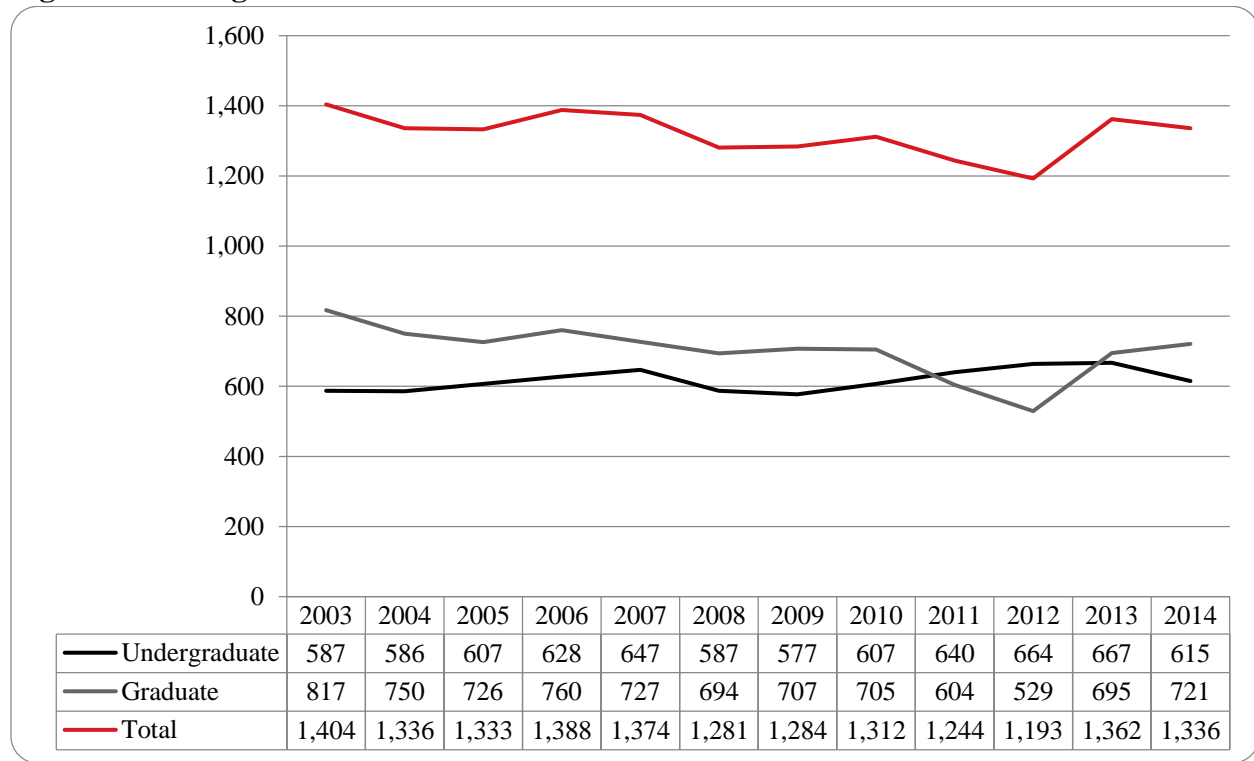


Figure 18: College of Education Student Credit Hours: Summer 2003-2014

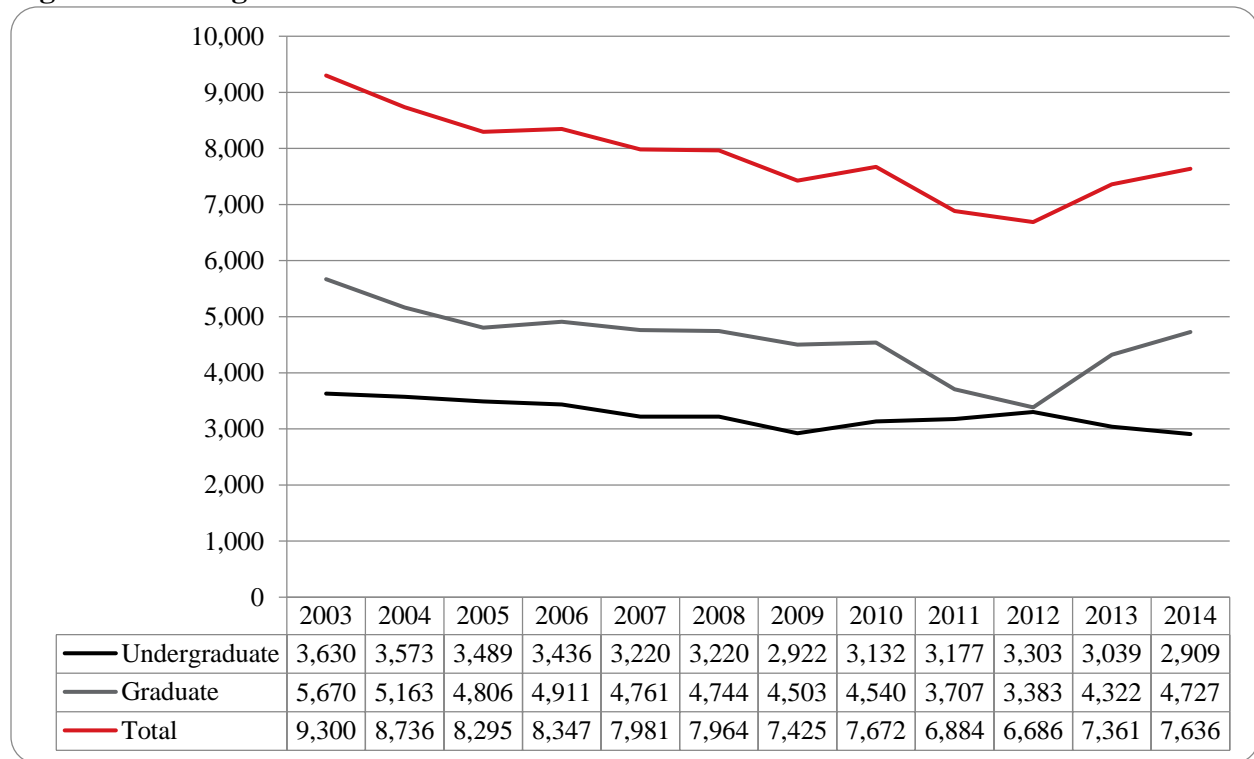


Figure 19: College of Education Head Count by Ethnicity by Gender: Summer 2014

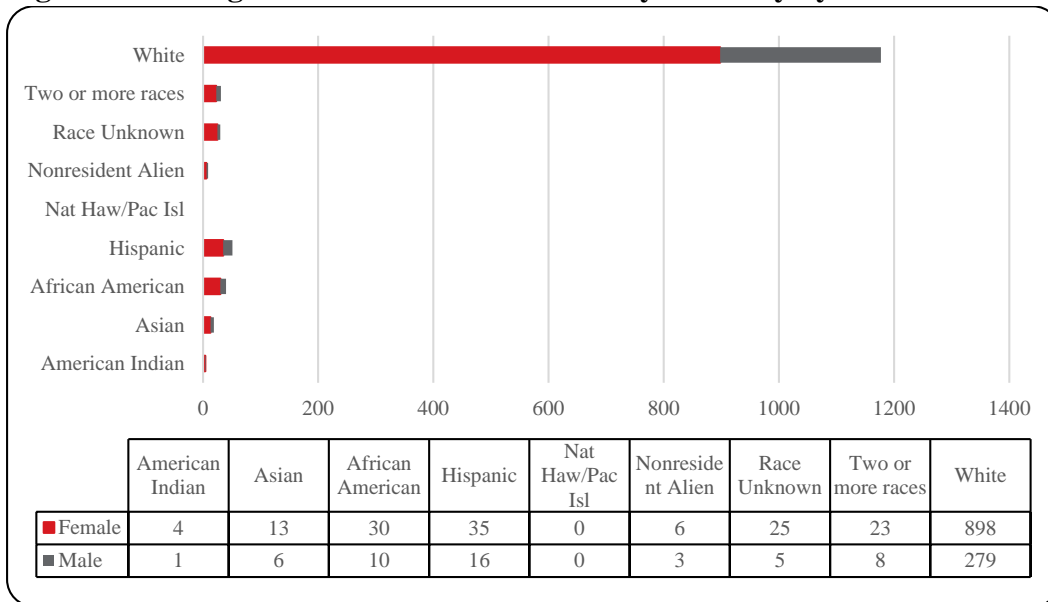


Table 7: College of Education Head Count Summary for Undergraduate and Graduate Summary for Full and Part-Time by Gender and Race Classification: Summer 2014

	American Indian		Asian		African American		Hispanic		Nat Haw / Pac Isl	Race Unknown		Two or more races		White		Nonresident Alien		Total				
	F	M	F	M	F	M	F	M	F	F	M	F	M	F	M	F	M	F	M	Total		
Undergraduate																						
Full-Time																						
First-Time Freshmen																						
Other Freshmen															1					1	1	
Sophomores														1	2					1	2	3
Juniors														7	6					7	6	13
Seniors	1				1		2							17	5					21	5	26
Special															1					1	1	
Total Full-Time	1				1		2							25	15					29	15	44
Part-Time																						
First-Time Freshmen																						
Other Freshmen					2					2	1	3		9	4					16	5	21
Sophomores	1			1	2		7	2		1		4	1	53	17		1		68	22	90	
Juniors				1	5	2	8	2	1	8		1	1	108	33	1			132	39	171	
Seniors			2	1	6	2	8	7		9	1	6	1	138	77	1			170	89	259	
Special					1			1						19	8	1			21	9	30	
Total Part-Time	1		2	3	16	4	23	12	1	20	2	14	3	327	139	3	1		407	164	571	
Total Undergraduate	2		2	3	17	4	25	12	1	20	2	14	3	352	154	3	1		436	179	615	
Graduate																						
Full-Time																						
Certificate																						
Masters			2	1	5		6	1		6		4	2	102	30		1		125	35	160	
Doctoral													1	1	2				1	3	4	
Special Graduate												1		4					5		5	
Total Full-Time			2	1	5		6	1		6		5	3	107	32		1		131	38	169	
Part-Time																						
Certificate														1					1		1	
Masters	2		3	3	14	5	14	5		5	3	9	3	320	70	4	7		371	96	467	
Doctoral			1				2					1	1	27	15	1			32	16	48	
Special Graduate					2		1							31	2				34	2	36	
Total Part-Time	2		4	3	16	5	17	5		5	3	10	4	379	87	5	7		438	114	552	
Total Graduate	2		6	4	21	5	23	6		11	3	15	7	486	119	5	8		569	152	721	
Total All Students	4		8	7	38	9	48	18	1	31	5	29	10	838	273	8	9		1,005	331	1,336	

Figure 20: College of Information Science & Technology Head Count: Summer 2003-2014

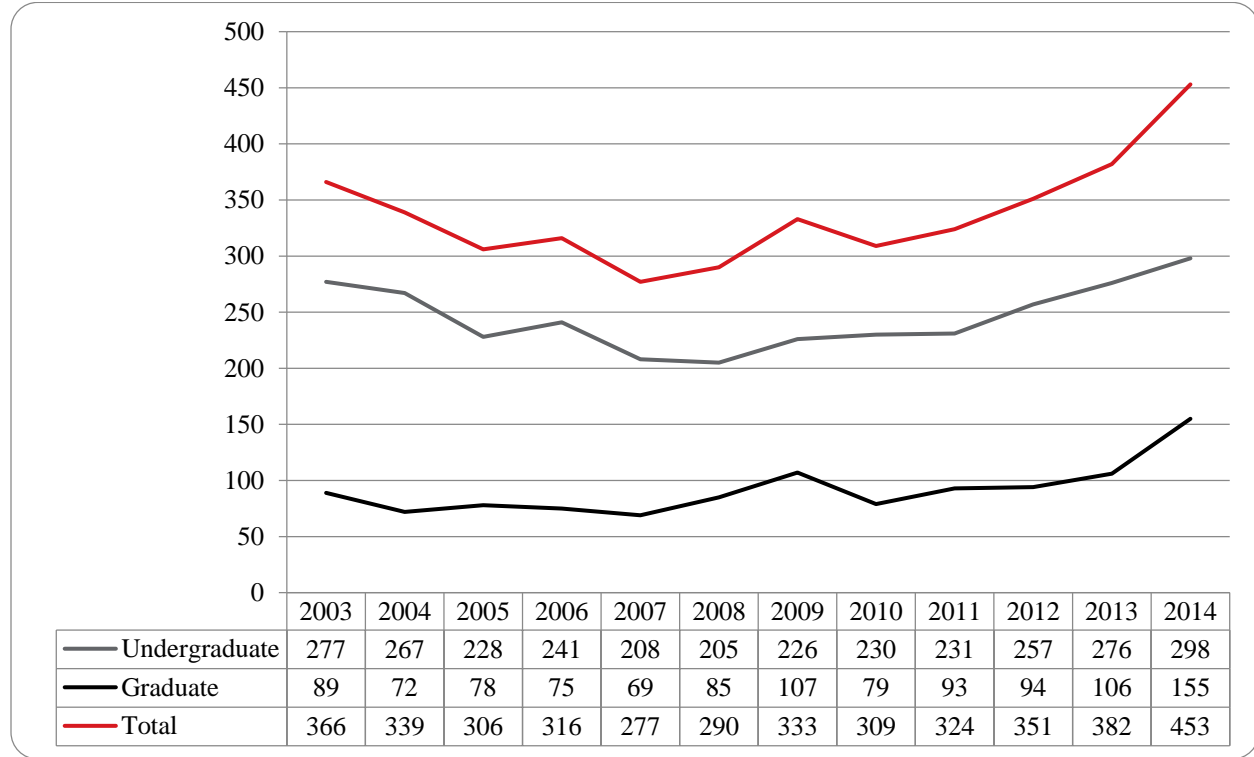


Figure 21: College of Information Science & Technology Student Credit Hours: Summer 2003-2014

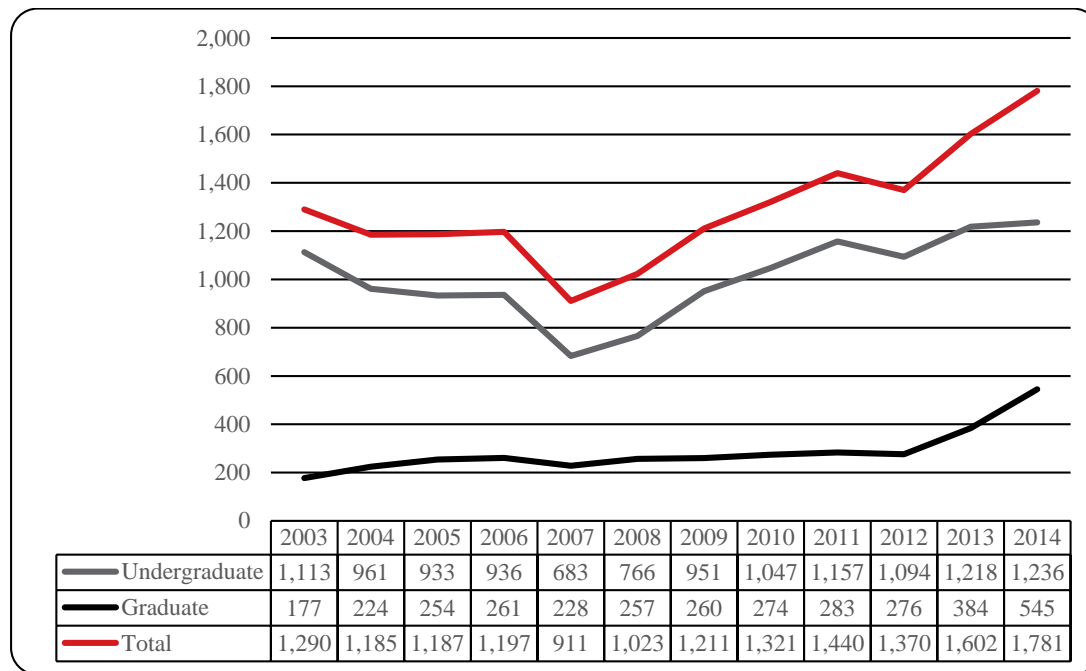


Figure 22: College of Information Science & Technology Head Count by Ethnicity by Gender: Summer 2014

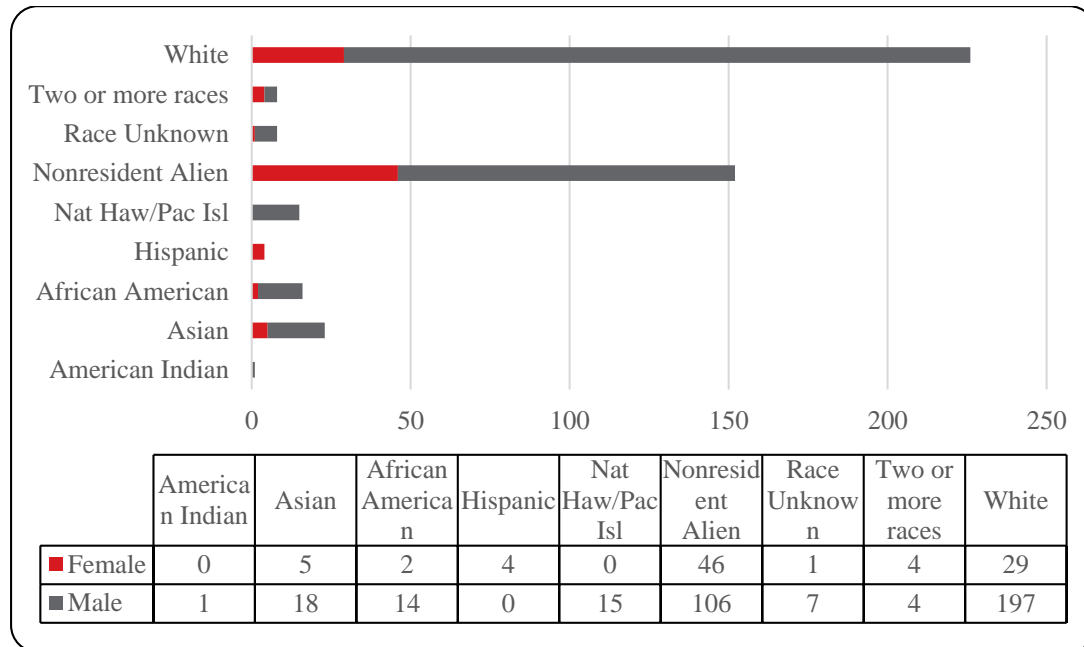


Table 8: College of Information Science and Technology Head Count Summary for Undergraduate and Graduate Students for Full and Part-Time by Gender and Race Classification: Summer 2014

	American Indian		Asian		African American		Hispanic		Nat Haw / Pac Isl		Race Unknown		Two or more races		White		Nonresident Alien		Total			
	F	M	F	M	F	M	F	M	F		F	M	F	M	F	M	F	M	F	M	Total	
Undergraduate																						
Full-Time																						
First-Time Freshmen																						
Other Freshmen																						
Sophomores																						
Juniors				1													2			3	3	
Seniors				1			1								2				1	3	4	
Special								1												1	1	
Total Full-Time				2			1	1							2		2		1	7	8	
Part-Time																						
First-Time Freshmen																		2		2	2	
Other Freshmen				1				1							13	1	8	1	23	24		
Sophomores				2		3	1	3			1	1	2	4	28		17	6	56	62		
Juniors				3		1		6			1	2		7	50		10	8	72	80		
Seniors				3	1	3	1	3			1	1		10	65	3	13	16	88	104		
Special				3		1	1	1				1	2	9				3	15	18		
Total Part-Time				12	1	8	3	14			1	4	2	3	23	165	4	50	34	256	290	
Total Undergraduate				14	1	8	4	15			1	4	2	3	23	167	4	52	35	263	298	
Graduate																						
Full-Time																						
Certificate																						
Masters																	1	1	1	1	2	
Doctoral																						
Special Graduate																						
Total Full-Time																	1	1	1	1	2	
Part-Time																						
Certificate				1		1						1		1	2		2	2	6	8		
Masters		1	5	3	1	5					3	1	1	5	27	39	46	51	86	137		
Doctoral															1	2	5	2	6	8		
Special Graduate																						
Total Part-Time		1	5	4	1	6					3	2	1	6	30	41	53	55	98	153		
Total Graduate		1	5	4	1	6					3	2	1	6	30	42	54	56	99	155		
Total All Students		1	5	18	2	14	4	15			1	7	4	4	29	197	46	106	91	362	453	

Figure 23: College of Public Affairs & Community Service Delivery-Site Head Count: Summer 2003-2014

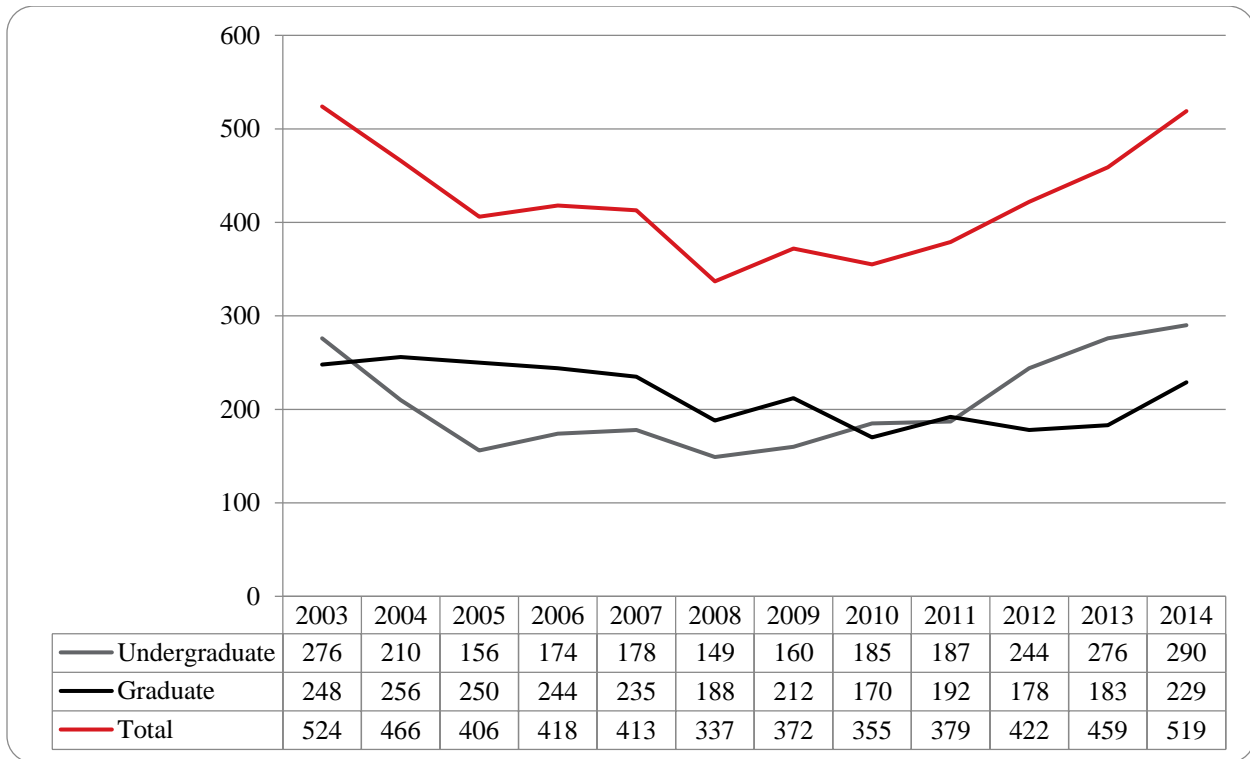


Figure 24: College of Public Affairs & Community Service Delivery-Site Student Credit Hours: Summer 2003-2014

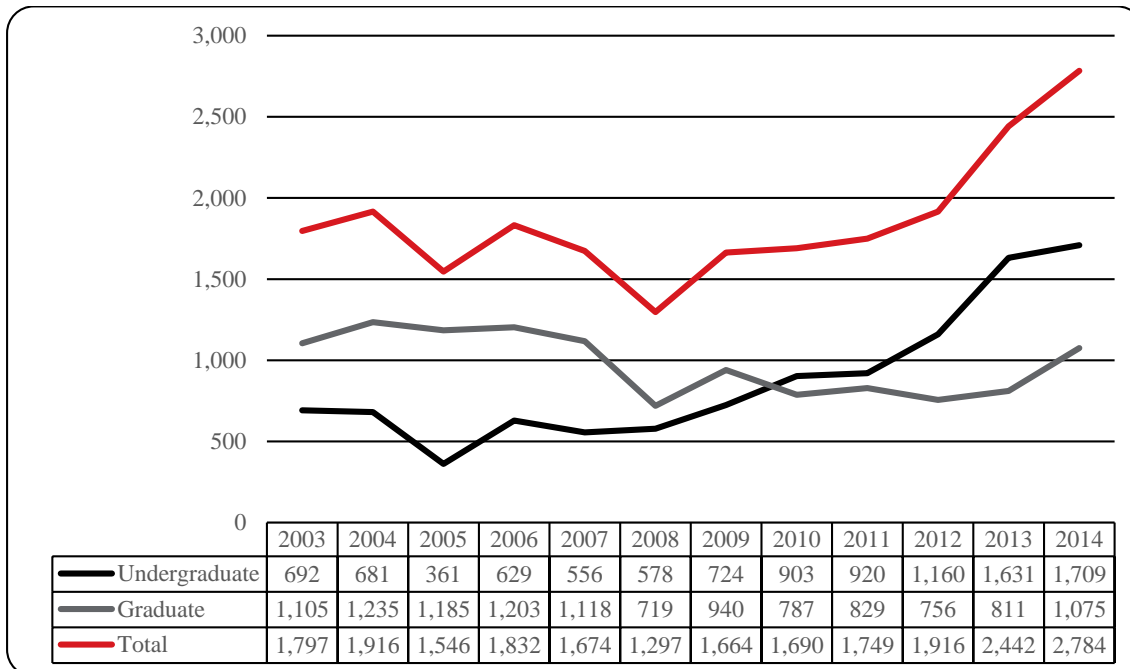


Figure 25: College of Public Affairs & Community Service Delivery-Site Head Count by Ethnicity by Gender: Summer 2014

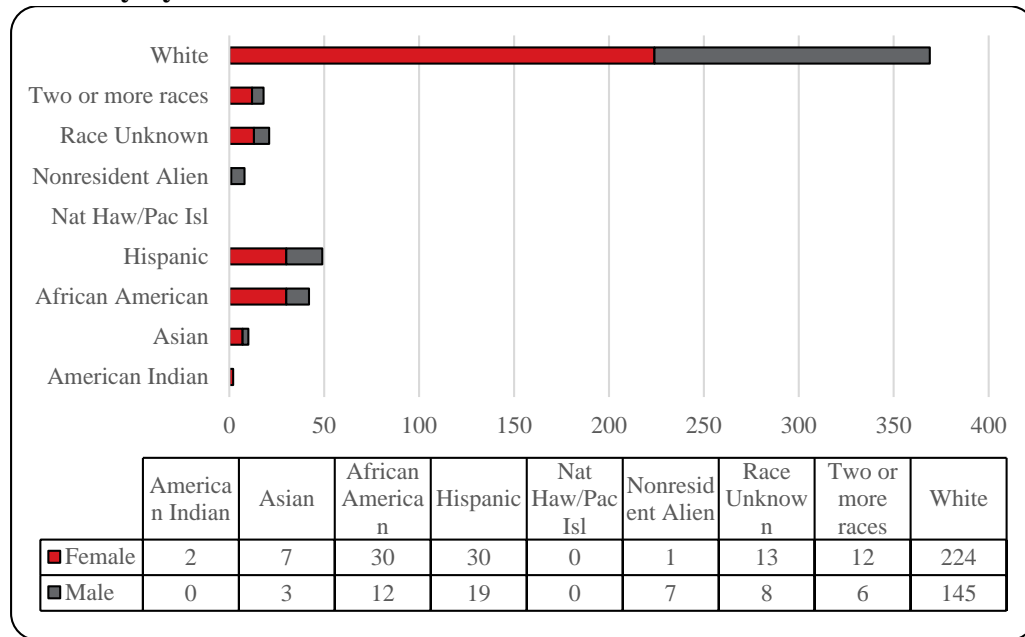


Table 9: College of Public Affairs and Community Service Delivery-Site Head Count for Undergraduate and Graduate Students by Full and Part-Time by Gender and Race Classification: Summer 2014

	American Indian		Asian		African American		Hispanic		Nat Haw / Pac Isl		Race Unknown		Two or more races		White		Nonresident Alien		Total		
	F	M	F	M	F	M	F	M	F		F	M	F	M	F	M	F	M	F	M	Total
Undergraduate																					
Full-Time																					
First-Time Freshmen																					
Other Freshmen																					
Sophomores																					
Juniors											1				6	6		1	7	7	14
Seniors					1	1		1							1	2			2	4	6
Special																					
Total Full-Time					1	1		1			1				7	8		1	9	11	20
Part-Time																					
First-Time Freshmen																1				1	1
Other Freshmen							2	2			1				5	4	1	1	8	8	16
Sophomores					2	3	1	1			2	2	1	18	12		2	23	21	44	
Juniors	1				6		8	4		4	1	2	1	28	34		2	49	42	91	
Seniors			1	2	10	5	10	6			2	4	2	33	39			58	56	114	
Special											1			2	1			3	1	4	
Total Part-Time	1		1	2	18	8	21	13			5	6	8	4	86	91	1	5	141	129	270
Total Undergraduate	1		1	2	19	9	21	14			6	6	8	4	93	99	1	6	150	140	290
Graduate																					
Full-Time																					
Certificate																					
Masters				1	1						1				10	1			12	2	14
Doctoral																					
Special Graduate																					
Total Full-Time				1	1						1				10	1			12	2	14
Part-Time																					
Certificate															1	3			1	3	4
Masters	1		6		10	3	9	5			5	2	4	2	119	42		1	154	55	209
Doctoral											1								1		1
Special Graduate															1				1		1
Total Part-Time	1		6		10	3	9	5			6	2	4	2	121	45		1	157	58	215
Total Graduate	1		6	1	11	3	9	5			7	2	4	2	131	46		1	169	60	229
Total All Students	2		7	3	30	12	30	19			13	8	12	6	224	145	1	7	319	200	519

Figure 26: College of Public Affairs & Community Service Administrative-Site Head Count: Summer 2003-2014

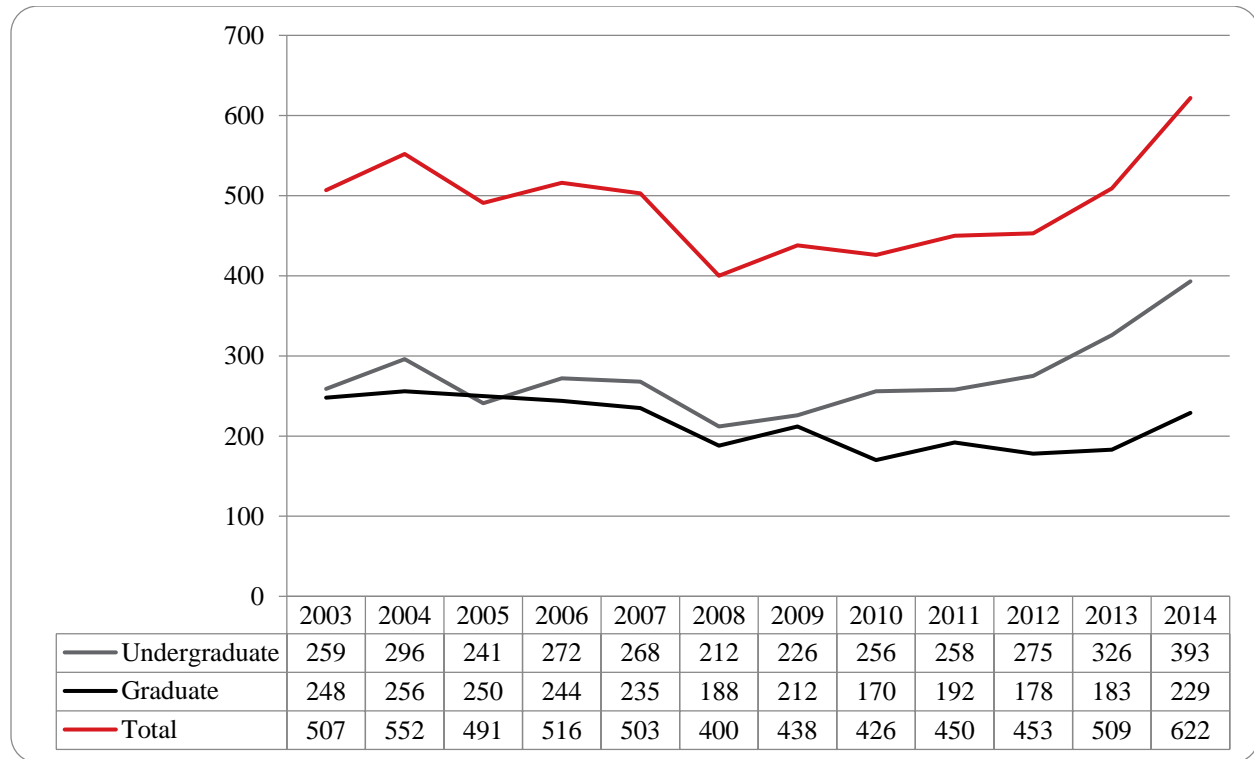


Figure 27: College of Public Affairs & Community Service Administrative-Site Student Credit Hours: Summer 2003-2014

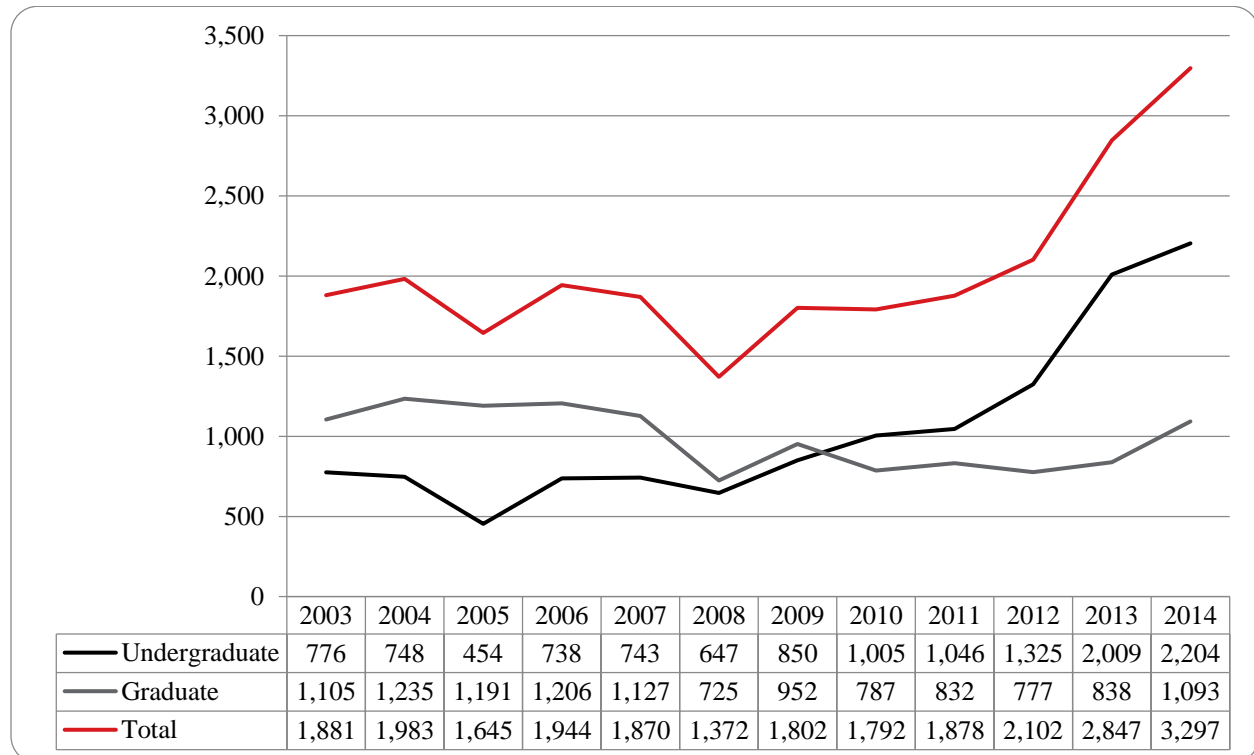


Figure 28: College of Public Affairs & Community Service Administrative-Site Head Count by Ethnicity by Gender: Summer 2014

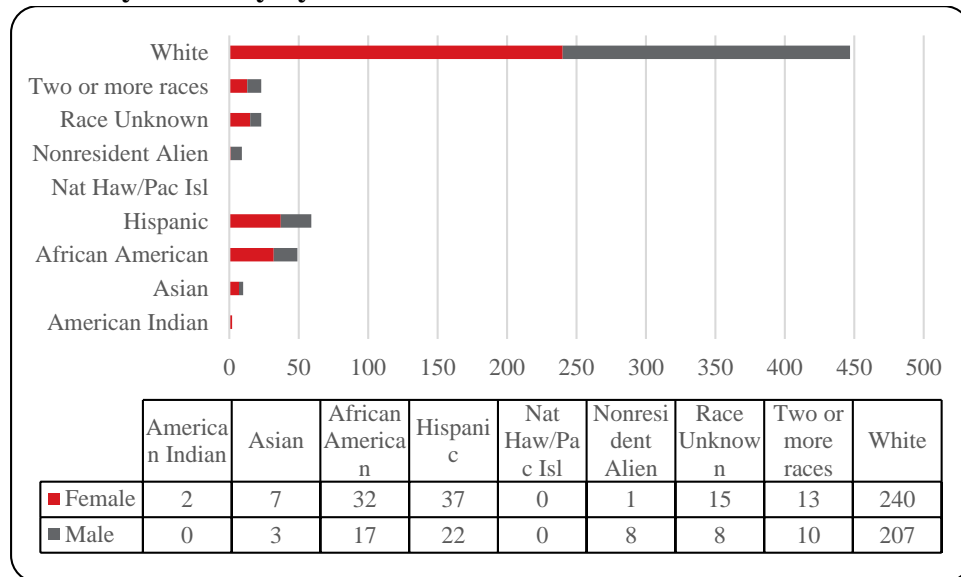


Table 10: College of Public Affairs & Community Service Administrative-Site Head Count Summary for Undergraduate and Graduate Students by Full and Part-Time by Gender and Race Classification: Summer 2014

	American Indian		Asian		African American		Hispanic		Nat Haw / Pac Isl		Race Unknown		Two or more races		White		Nonresident Alien		Total		
	F	M	F	M	F	M	F	M	F		F	M	F	M	F	M	F	M	F	M	Total
Undergraduate																					
Full-Time																					
First-Time Freshmen																					
Other Freshmen																					
Sophomores																		1		1	1
Juniors											1				6	6		1	7	7	14
Seniors					1	1		1							1	5			2	7	9
Special																					
Total Full-Time					1	1		1			1				7	11		2	9	15	24
Part-Time																					
First-Time Freshmen																1				1	1
Other Freshmen							2	3			1				5	9	1	1	8	14	22
Sophomores					2	3	1	1			2	2	2	18	19		2	23	29	52	
Juniors	1				7	3	11	5			5	1	2	3	36	49		2	62	63	125
Seniors			1	2	11	7	13	7			1	2	5	3	41	71			72	92	164
Special							1				1				2	1			4	1	5
Total Part-Time	1		1	2	20	13	28	16			7	6	9	8	102	150	1	5	169	200	369
Total Undergraduate	1		1	2	21	14	28	17			8	6	9	8	109	161	1	7	178	215	393
Graduate																					
Full-Time																					
Certificate																					
Masters				1	1						1				10	1			12	2	14
Doctoral																					
Special Graduate																					
Total Full-Time				1	1						1				10	1			12	2	14
Part-Time																					
Certificate															1	3			1	3	4
Masters	1		6		10	3	9	5			5	2	4	2	119	42		1	154	55	209
Doctoral											1								1		1
Special Graduate															1				1		1
Total Part-Time	1		6		10	3	9	5			6	2	4	2	121	45		1	157	58	215
Total Graduate	1		6	1	11	3	9	5			7	2	4	2	131	46		1	169	60	229
Total All Students	2		7	3	32	17	37	22			15	8	13	10	240	207	1	8	347	275	622

Figure 29: College of CPACS, Division of Continuing Studies Head Count: Summer 2003-2014

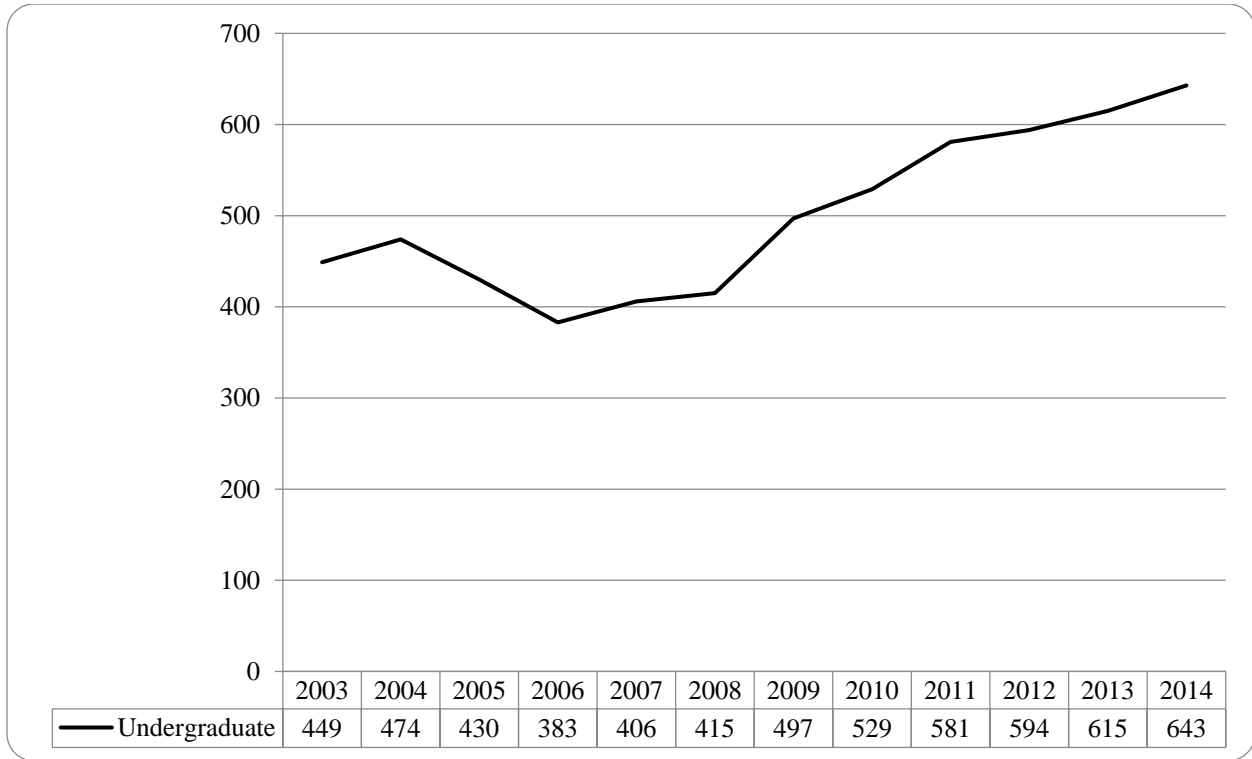


Table 11: College of CPACS Division of Continuing Studies Head Count Summary for Undergraduate Students by Full and Part-Time by Gender and Race Classification: Summer 2014

	American Indian		Asian		African American		Hispanic		Nat Haw / Pac Isl		Race Unknown		Two or more races		White		Nonresident Alien		Total			
	F	M	F	M	F	M	F	M	F		F	M	F	M	F	M	F	M	F	M	Total	
Undergraduate																						
Full-Time																						
First-Time Freshmen																						
Other Freshmen		1						1					1		2	3			3	5	8	
Sophomores						2									3	6			5	6	11	
Juniors			1								1	1			9	9			11	10	21	
Seniors				2	2			1		1	1	1		15	13			19	17	36		
Special																						
Total Full-Time		1	1	2	4			2		1	2	3		29	31			38	38	76		
Part-Time																						
First-Time Freshmen											1	1			3		1	1	5	6		
Other Freshmen					6	5	1	2			1	1	1	7	13		1	15	23	38		
Sophomores			1	3	5	6	2	1		1	2	3	3	21	25		1	33	41	74		
Juniors	2		2	1	10	8	8	10		1	3	2	2	64	54			89	78	167		
Seniors		1	3	4	16	11	9	9		3	7	5	3	95	93	1	1	132	129	261		
Special	1						2	1				1		9	7			11	10	21		
Total Part-Time	3	1	6	8	37	32	20	23		5	14	13	9	196	195	1	4	281	286	567		
Total Undergraduate	3	2	7	10	41	32	20	25		6	16	16	9	225	226	1	4	319	324	643		
Total All Students	3	2	7	10	41	32	20	25		6	16	16	9	225	226	1	4	319	324	643		

Figure 30: University Division Head Count: Summer 2003-2014

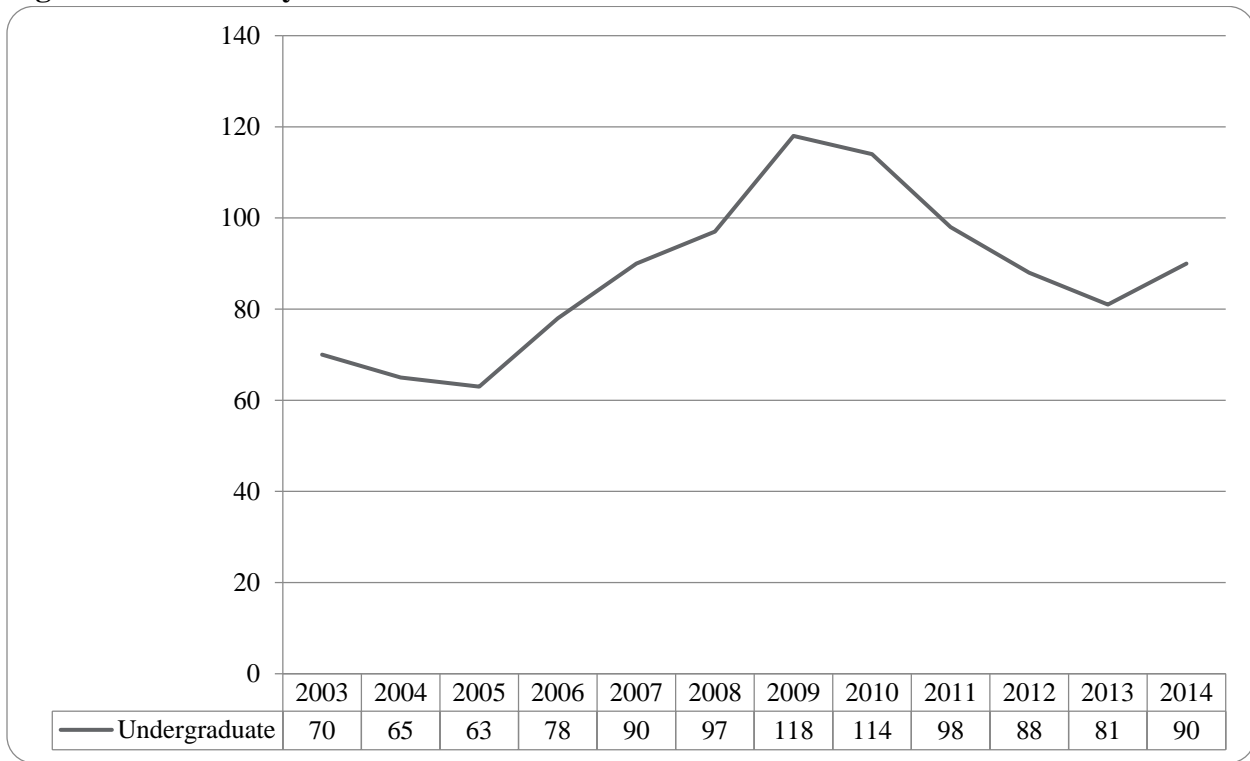


Figure 31: University Division Student Credit Hours: Summer 2003-2014

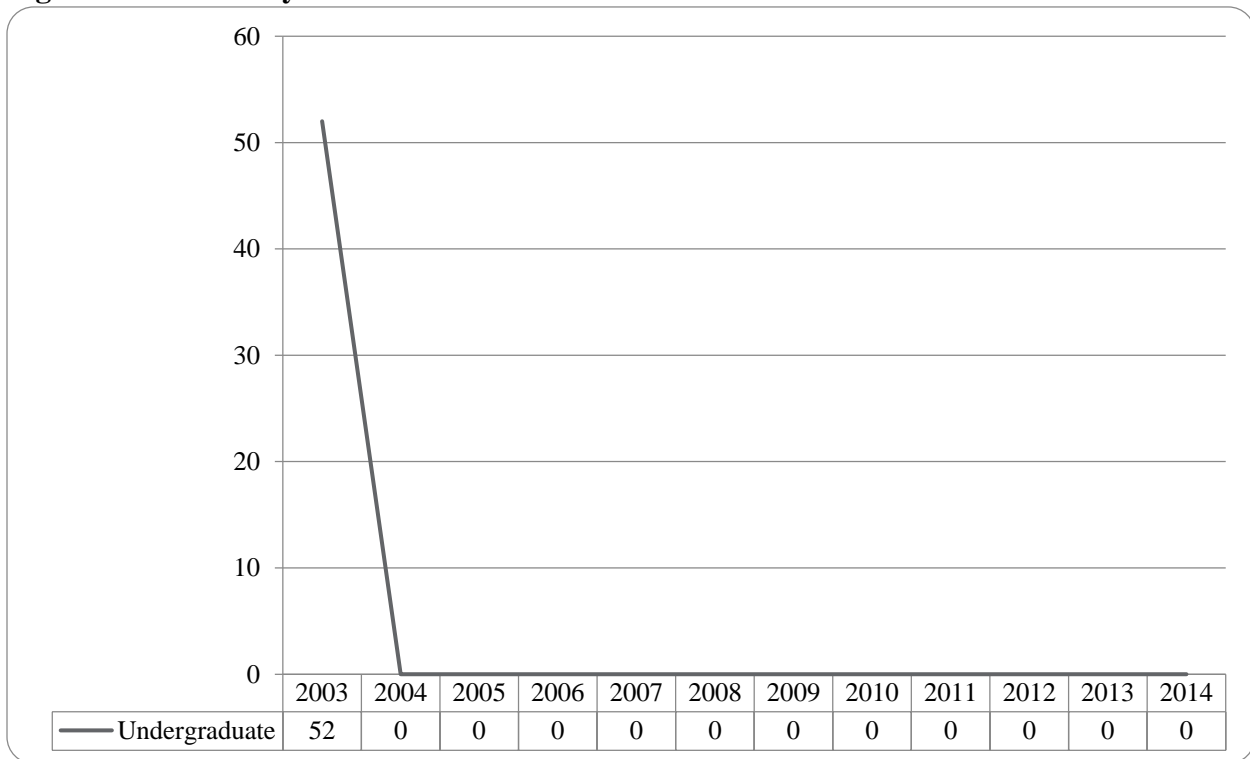


Figure 32: University Division Head Count by Ethnicity by Gender: Summer 2014

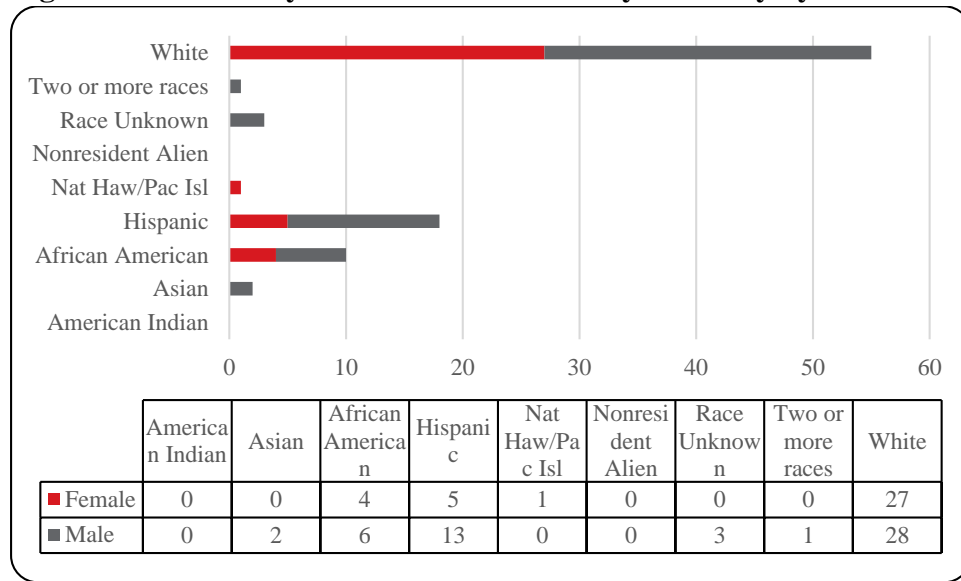


Table 12: University Division Head Count Summary for Undergraduate Students by Full and Part-Time by Gender and Race Classification: Summer 2014

	American Indian		Asian		African American		Hispanic		Nat Haw / Pac Isl		Race Unknown		Two or more races		White		Nonresident Alien		Total			
	F	M	F	M	F	M	F	M	F	M	F	M	F	M	F	M	F	M	F	M	Total	
Undergraduate																						
Full-Time																						
First-Time Freshmen																						
Other Freshmen					1	2														1	2	3
Sophomores						1															1	1
Juniors																						
Seniors																						
Special																						
Total Full-Time					1	3														1	3	4
Part-Time																						
First-Time Freshmen						1									2	2			2	3	5	
Other Freshmen				1	3	1	3	7	1			2	1	14	14				21	26	47	
Sophomores				1		1	2	6				1		11	12				13	21	34	
Juniors																						
Seniors																						
Special																						
Total Part-Time				2	3	3	5	13	1			3	1	27	28				36	50	86	
Total All Students				2	4	6	5	13	1			3	1	27	28				37	53	90	

Figure 33: Non-Degree/Intercampus Special Undergraduate Students Head Count: Summer 2003-2014

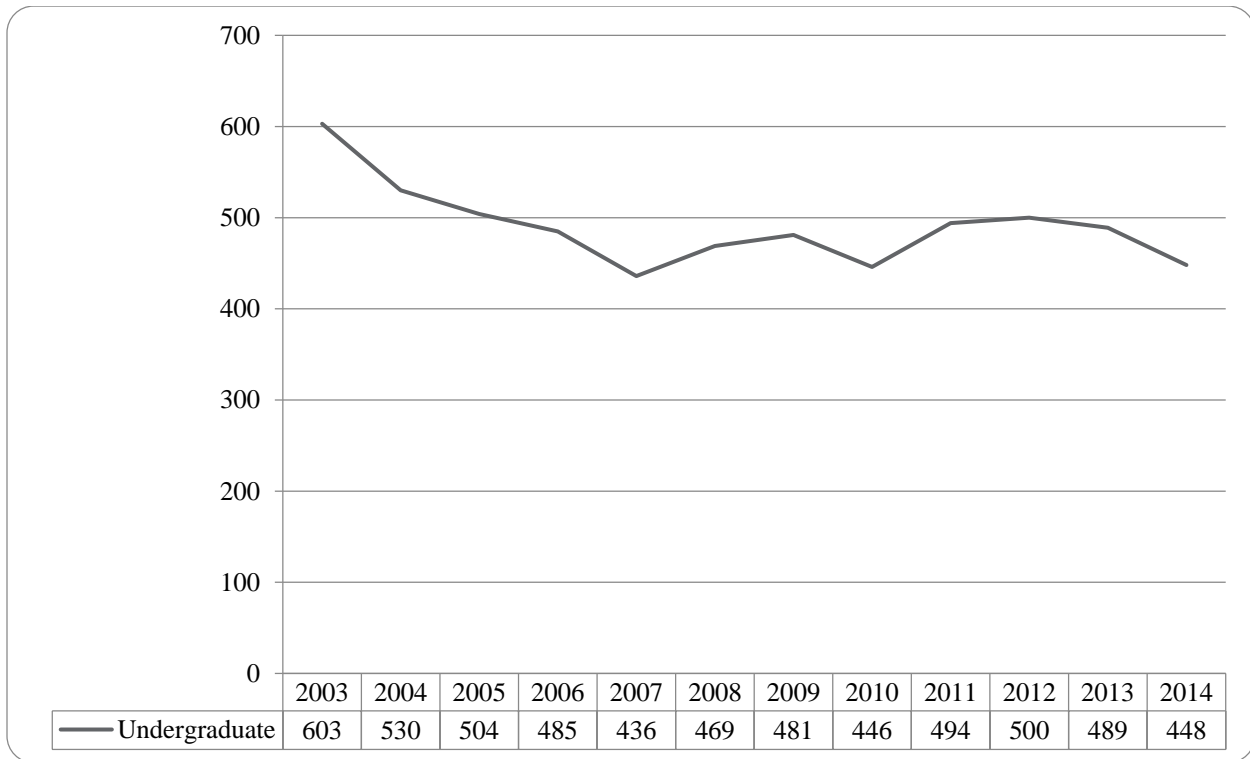


Figure 34: Non-Degree/Intercampus Special Undergraduate Students Head Count by Ethnicity by Gender: Summer 2014

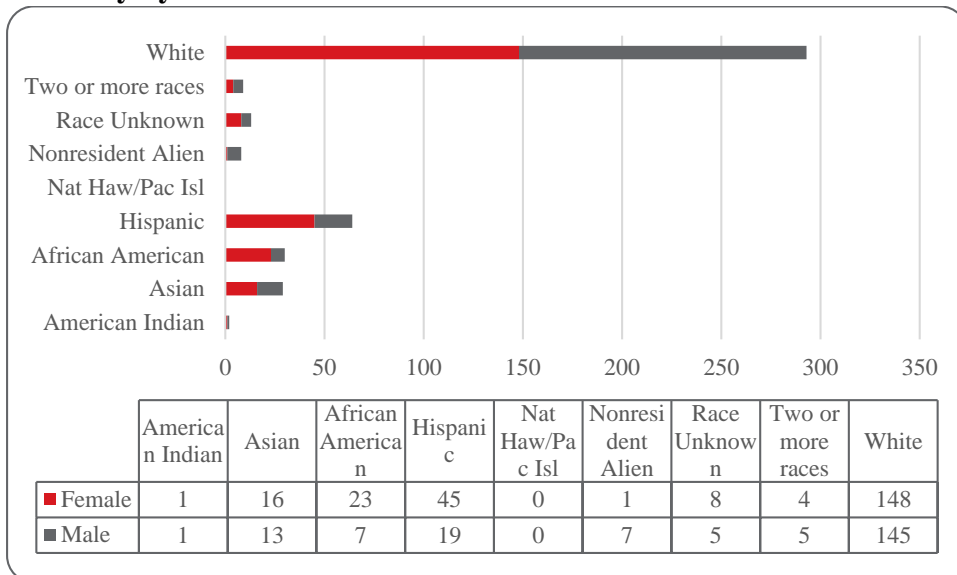


Table 13: Non-Degree/Intercampus Head Count Summary for Special Undergraduate Students by Full and Part-Time by Gender and Race Classification: Summer 2014

	American Indian		Asian		African American		Hispanic		Nat Haw / Pac Isl		Race Unknown		Two or more races		White		Nonresident Alien		Total			
	F	M	F	M	F	M	F	M	F	M	F	M	F	M	F	M	F	M	F	M	Total	
Undergraduate																						
Full-Time																						
First-Time Freshmen																						
Other Freshmen															1	2				1	2	3
Sophomores																						
Juniors																						
Seniors															1					1		1
Special															1	2				1	2	3
Total Full-Time															3	4				3	4	7
Part-Time																						
First-Time Freshmen																						
Other Freshmen	1	1	13	11	19	4	40	15			7	4	2	2	108	103	1	5	191	145	336	
Sophomores					1	1	1						2		10	11		2	14	14	28	
Juniors			1	2	1	2	1							1	4	5			7	10	17	
Seniors			1		2		1	2					1	5	1				9	4	13	
Special			1				2	2			1	1		1	18	21			22	25	47	
Total Part-Time	1	1	16	13	23	7	45	19			8	5	4	5	145	141	1	7	243	198	441	
Total All Students	1	1	16	13	23	7	45	19			8	5	4	5	148	145	1	7	246	202	448	

Figure 35: Non-Degree/Intercampus Special Graduate Students Head Count: summer 2003-2014

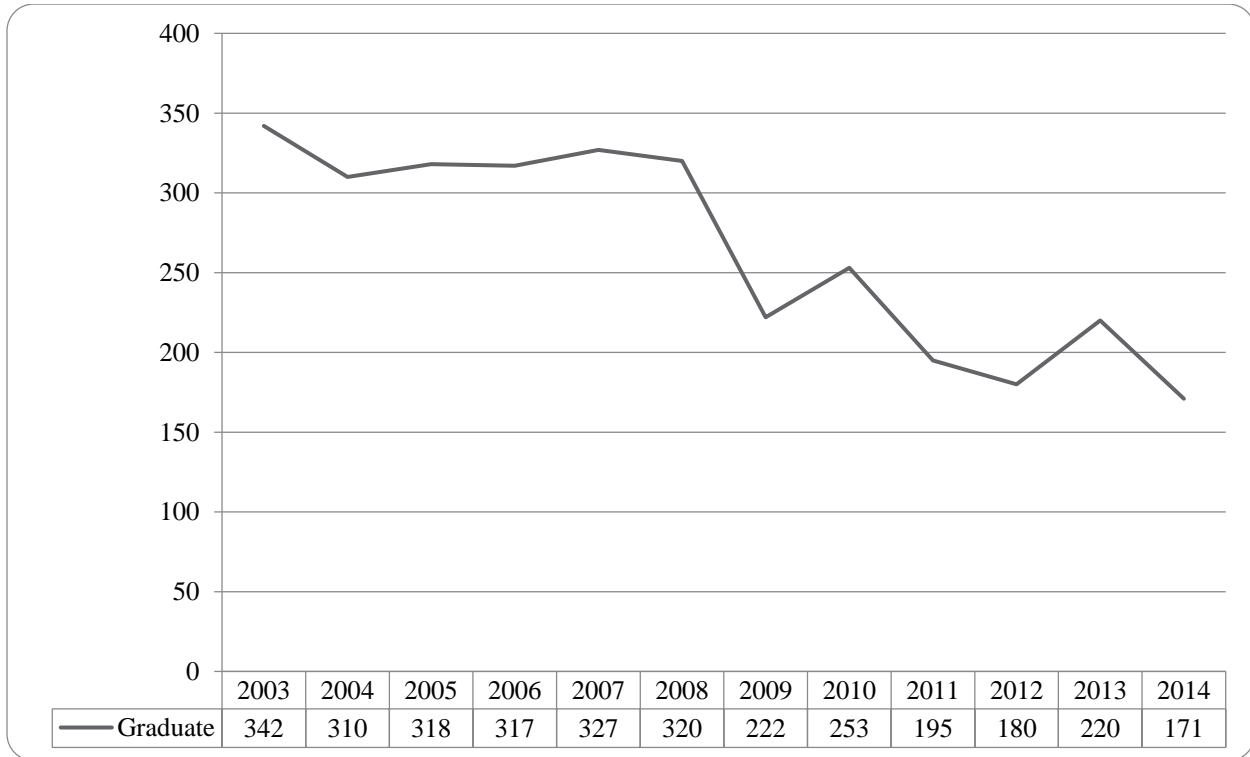


Figure 36: Non-Degree/Intercampus Special Graduate Students Head Count by Ethnicity by Gender: Summer 2014

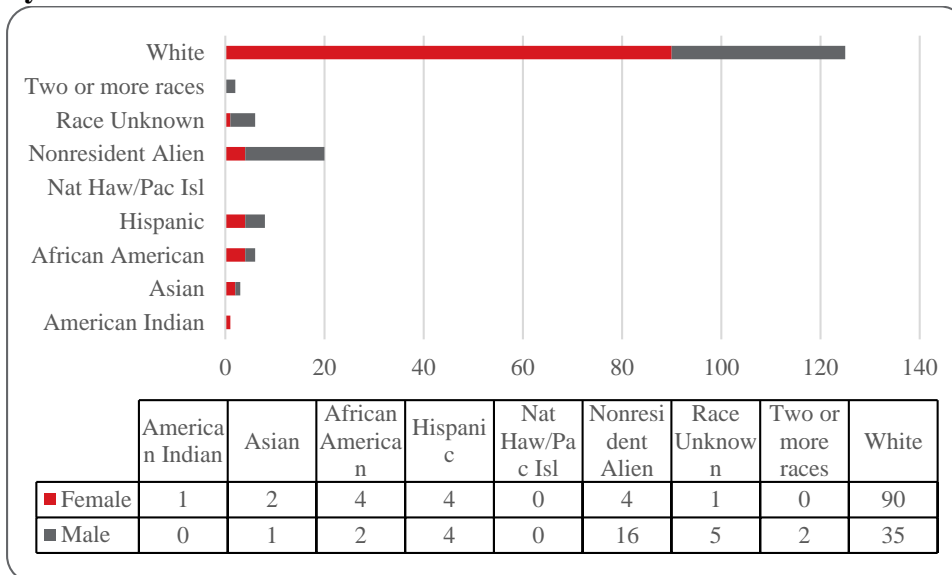


Table 14: Non-Degree/Intercampus Head Count Summary for Special Graduate Students by Full and Part-Time by Gender and Race Classification: Summer 2014

	American Indian		Asian		African American		Hispanic		Nat Haw / Pac Isl		Race Unknown		Two or more races		White		Nonresident Alien		Total			
	F	M	F	M	F	M	F	M	F	M	F	M	F	M	F	M	F	M	F	M	Total	
Graduate																						
Full-Time																						
Certificate																						
Masters																						
Doctoral																						
Special Graduate												1			1	3		2	1	6	7	
Total Full-Time												1			1	3		2	1	6	7	
Part-Time																						
Certificate																						
Masters																						
Doctoral																						
Special Graduate	1		2	1	4	2	4	4			1	4	2	89	32	4	14	105	59	164		
Total Part-Time	1		2	1	4	2	4	4			1	4	2	89	32	4	14	105	59	164		
Total All Students	1		2	1	4	2	4	4			1	5	2	90	35	4	16	106	65	171		

Table 15: Cooperative Graduate Program Head Count Summary for Graduate Students by Full and Part-Time by Gender and Race Classification: Fall 2014

	American Indian		Asian		African American		Hispanic		Nat Haw / Pac Isl		Race Unknown		Two or more races		White		Nonresident Alien		Total				
	F	M	F	M	F	M	F	M	F	M	F	M	F	M	F	M	F	M	F	M	Total		
Graduate																							
Full-Time																							
Certificate																							
Masters																							
Doctoral																							
Special Graduate																							
Total Full-Time																							
Part-Time																							
Certificate															5	1					5	1	6
Masters																							
Doctoral																							
Special Graduate																							
Total Part-Time															5	1					5	1	6
Total All Students															5	1					5	1	6

Figure 37: Other Honors Student Credit Hours by Level of Instruction: Summer 2014

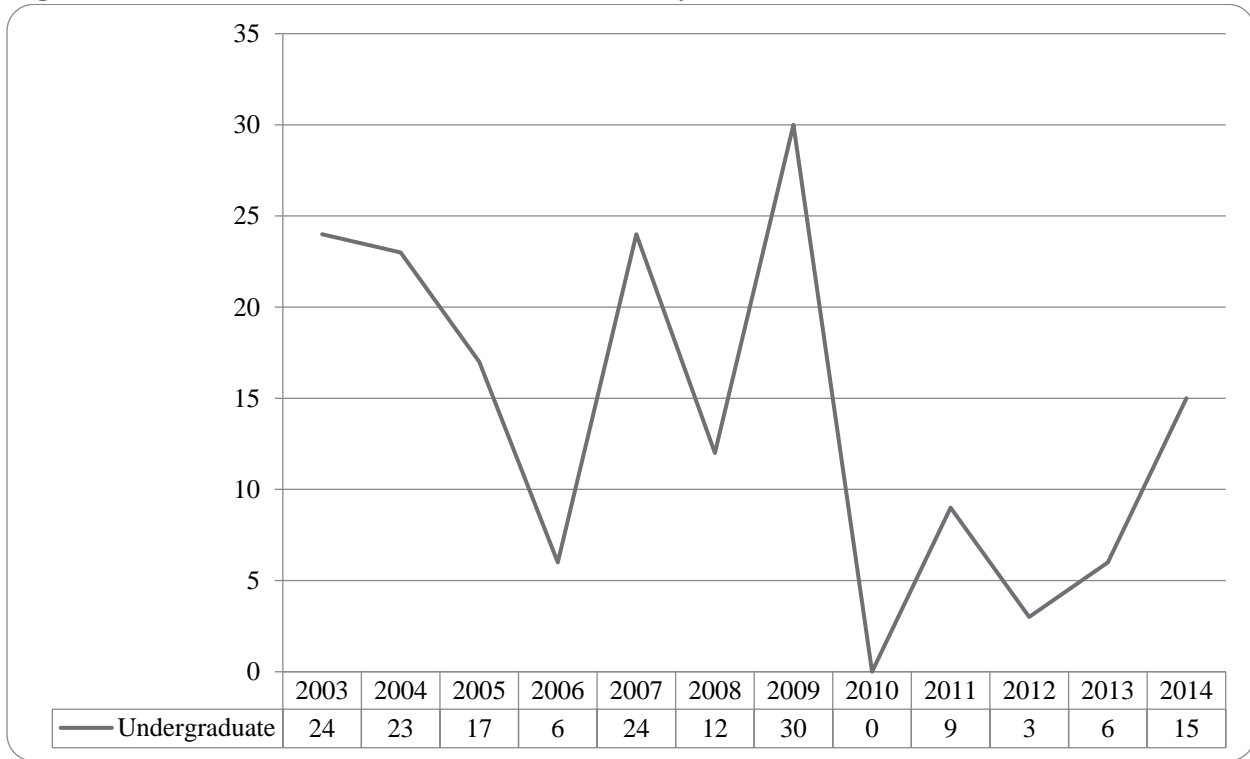


Figure 38: College of Agriculture Delivery-Site Head Count: Summer 2014

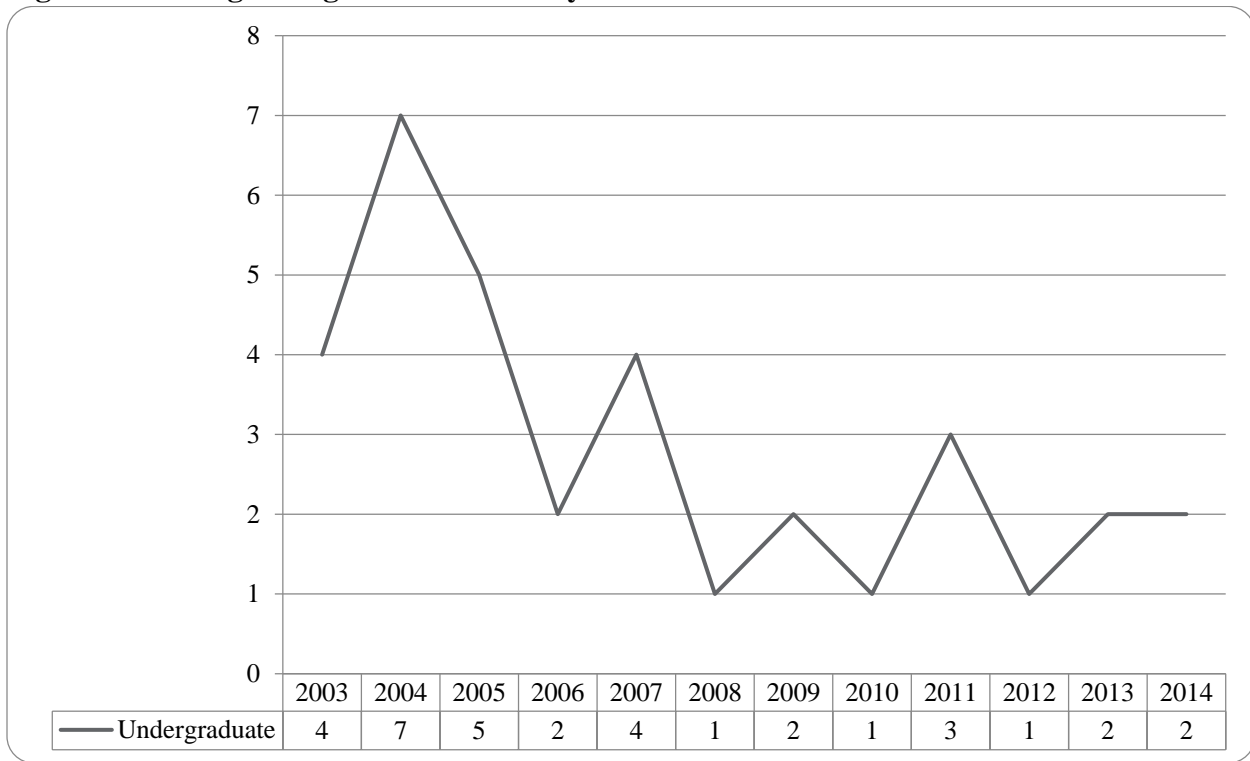


Figure 39: College of Agriculture Delivery-Site Student Credit Hours: Summer 2003-2014

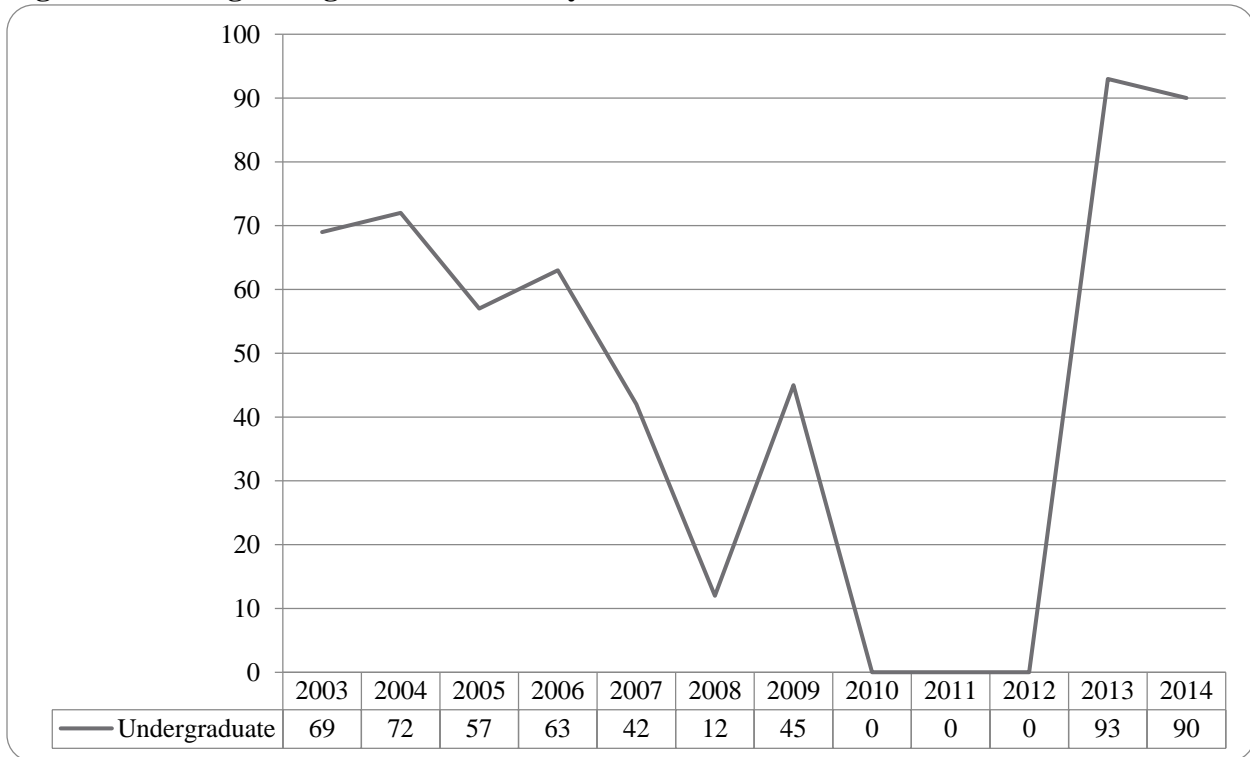


Table 16: College of Agriculture Head Count Summary for Undergraduate Students by Full and Part-Time by Gender and Race Classification: Summer 2014

	American Indian		Asian		African American		Hispanic		Nat Haw / Pac Isl		Race Unknown		Two or more races		White		Nonresident Alien		Total			
	F	M	F	M	F	M	F	M	F	M	F	M	F	M	F	M	F	M	F	M	Total	
Full-Time																						
Undergraduate																						
First-Time Freshmen																						
Other Freshmen																						
Sophomores																						
Juniors																						
Seniors																						
Special																						
Total Full-Time																						
Part-Time																						
First-Time Freshmen																						
Other Freshmen																1				1		1
Sophomores																	1				1	1
Juniors																						
Seniors																						
Special																						
Total Part-Time																1	1			1	1	2
Total All Students																1	1			1	1	2

Figure 40: College of Architecture Delivery-Site Head Count: Summer 2003-2014

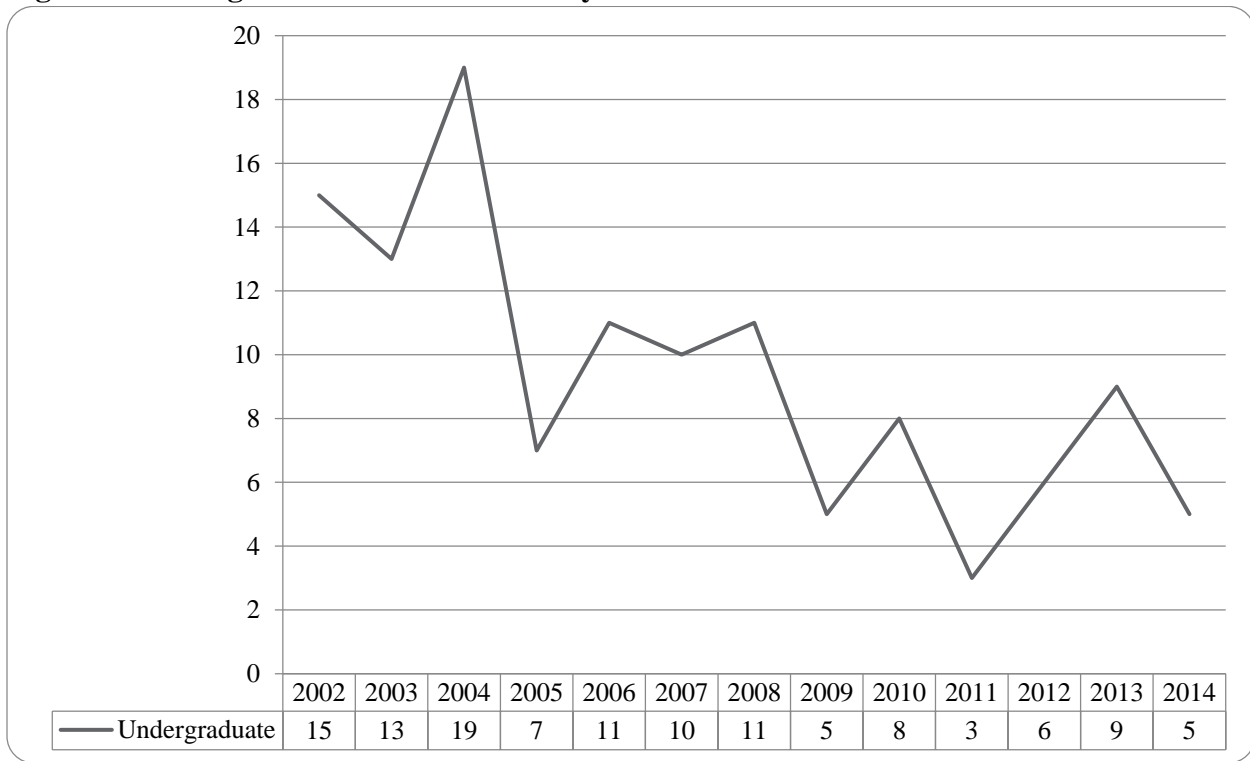


Table 17: College of Architecture Head Count Summary for Undergraduate Students by Full and Part-Time by Gender and Race Classification: Summer 2014

	American Indian		Asian		African American		Hispanic		Nat Haw / Pac Isl		Race Unknown		Two or more races		White		Nonresident Alien		Total			
	F	M	F	M	F	M	F	M	F	M	F	M	F	M	F	M	F	M	F	M	Total	
Undergraduate																						
Full-Time																						
First-Time Freshmen																						
Other Freshmen																						
Sophomores																						
Juniors																						
Seniors																						
Special																						
Total Full-Time																						
Part-Time																						
First-Time Freshmen																						
Other Freshmen							1														1	1
Sophomores																						
Juniors								1							1	2					2	4
Seniors																						
Special																						
Total Part-Time							1	1							1	2					2	5
Total Undergraduate							1	1							1	2					2	5

Figure 41: College of Engineering Delivery-Site Head Count: Summer 2003-2014

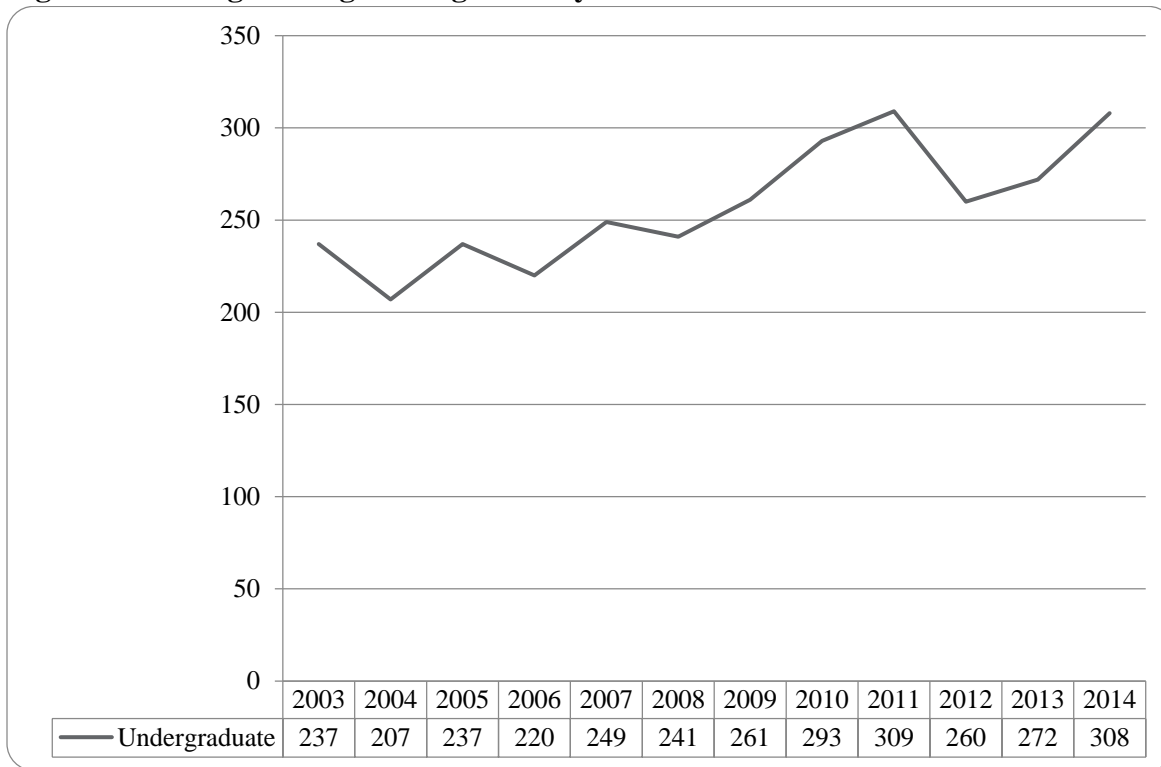


Figure 42: College of Engineering Delivery-Site Student Credit Hours: Summer 2003-2014

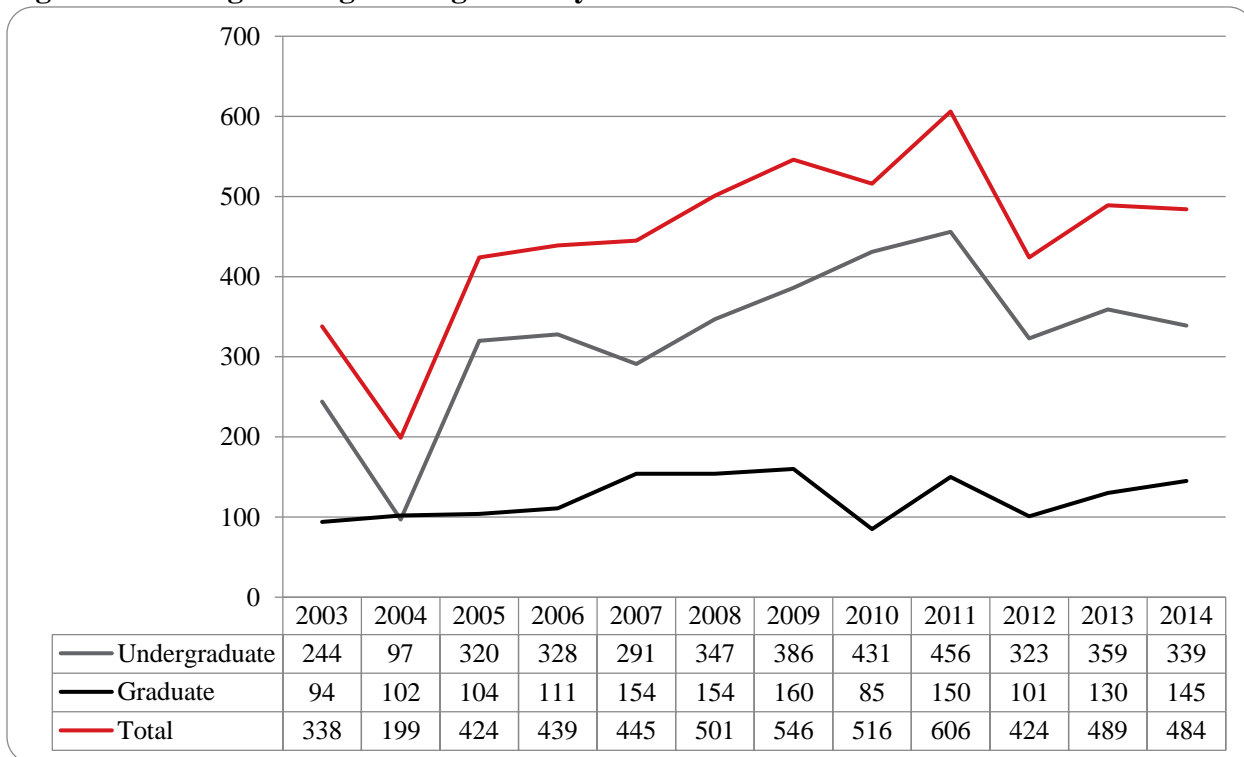


Table 18: College of Engineering Head Count Summary for Undergraduate Students by Full and Part-Time by Gender and Race Classification: Summer 2014

	American Indian		Asian		African American		Hispanic		Nat Haw / Pac Isl		Race Unknown		Two or more races		White		Nonresident Alien		Total				
	F	M	F	M	F	M	F	M	F	M	F	M	F	M	F	M	F	M	F	M	Total		
Undergraduate																							
Full-Time																							
First-Time Freshmen																							
Other Freshmen																1					1	1	
Sophomores				1												1						2	2
Juniors																							
Seniors												1		1	1	3					1	5	6
Special																1						1	1
Total Full-Time				1								1		1	1	6					1	9	10
Part-Time																							
First-Time Freshmen															1			2		1	2	3	3
Other Freshmen									1					3	1	9		2		1	15	16	16
Sophomores			1			4		4			2		1	12	40	1	10	14		61	75	75	
Juniors				1		5	1	3			1	2		11	54	1	6	14		71	85	85	
Seniors			1	3	1	5		5			1	5		1	4	83	1	2	8	104	112	112	
Special												1		1	4		1		1	6	7	7	
Total Part-Time			2	4	1	14	1	13			2	10		5	30	190	3	23	39	259	298	298	
Total All Students			2	5	1	14	1	13			2	11		6	31	196	3	23	40	268	308	308	

Figure 43: College of Education and Human Sciences Delivery-Site Head Count: Summer 2003-2014

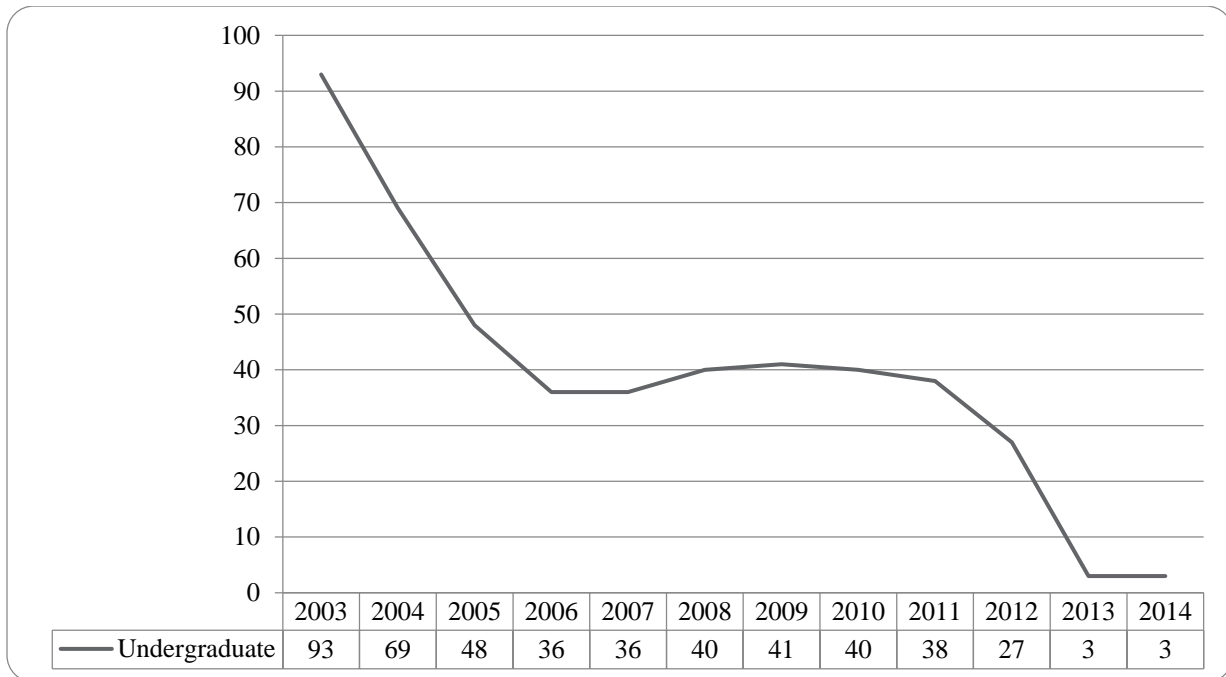


Figure 44: College of Education and Human Sciences Delivery-Site Student Credit Hours: Summer 2003-2014

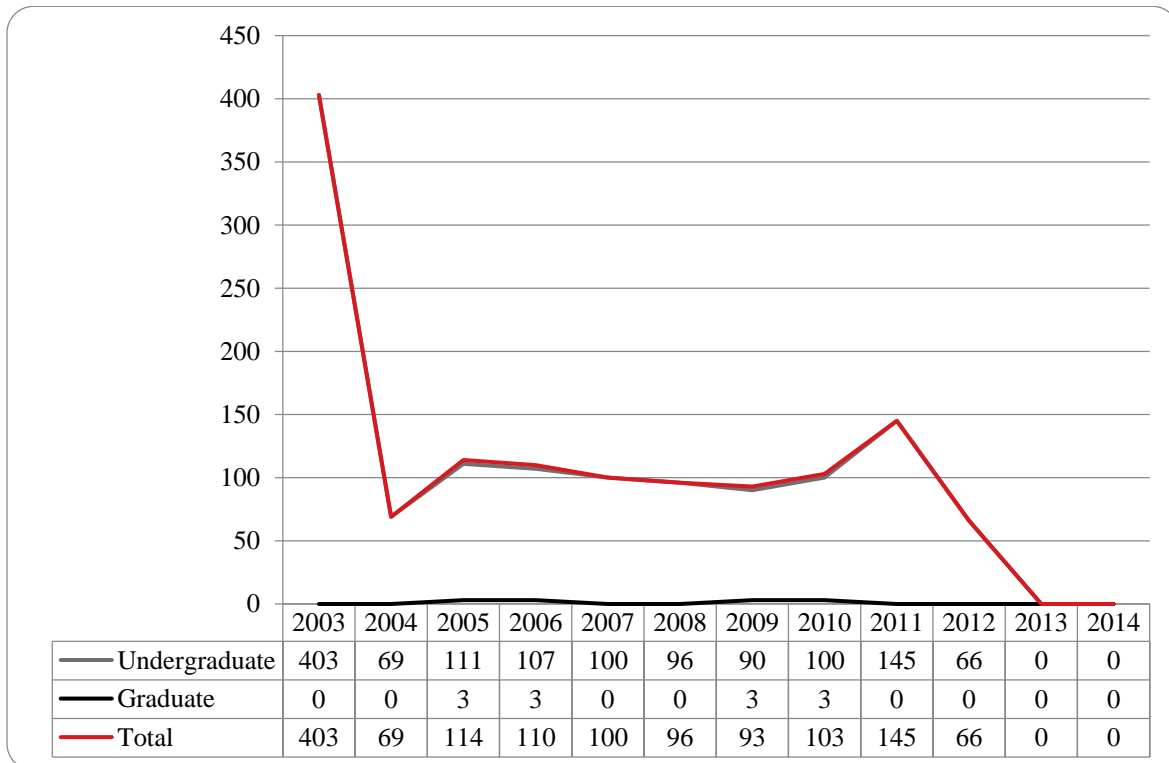


Table 19: College of Education and Human Sciences Head Count Summary for Undergraduate Students by Full and Part-Time by Gender and Race Classification: Summer 2014

	American Indian		Asian		African American		Hispanic		Nat Haw / Pac Isl		Race Unknown		Two or more races		White		Nonresident Alien		Total			
	F	M	F	M	F	M	F	M	F	M	F	M	F	M	F	M	F	M	F	M	Total	
Undergraduate																						
Full-Time																						
First-Time Freshmen																						
Other Freshmen																						
Sophomores																						
Juniors																						
Seniors																						
Special																						
Total Full-Time																						
Part-Time																						
First-Time Freshmen																						
Other Freshmen																						
Sophomores																						
Juniors																2					2	2
Seniors																1					1	1
Special																						
Total Part-Time																3					3	3
Total Undergraduate																3					3	3
Total All Students																3					3	3

GLOSSARY

The total head count and student credit hours in this enrollment report are provided on both a delivery-site and administrative-site basis. Delivery-site includes enrollment in all courses taught at UNO regardless of “home” campus. This means that student credit hours are reported for courses in the colleges. Student enrollment is counted in the college declared by the student. Specifically, the delivery-site enrollment numbers include students in degree programs in the UNL Colleges of Agriculture, Architecture, Engineering and Technology, and Education and Human Science.

FIRST-TIME, Entering (freshmen) Student: Students attending any institution for the first time at the undergraduate level. For students entering the fall term, this includes students enrolled in the fall term who attended college for the first time in the prior summer term. Also included are students who entered with advanced standing, i.e. college credits earned before graduation from high school.

OTHER FRESHMEN: At the beginning of the current semester, undergraduate students who (1) are not First-Time Freshmen and (2) have less than 27 semester hours earned from all institutions of higher education attended.

SOPHOMORES: At the beginning of the current semester, undergraduate students who have at least 27, but not more than 57, semester hours earned from all institutions of higher education attended.

JUNIORS: At the beginning of the current semester, undergraduate students who have at least 58, but not more than 90, semester hours earned from all institutions of higher education attended.

SENIORS: At the beginning of the current semester, undergraduate students who have at least 91 semester hours earned from all institutions of higher education attended.

NON-DEGREE/INTER-CAMPUS/SPECIAL UNDERGRADUATES: Special undergraduates not pursuing a degree at UNO in various programs: Inter-Campus UNMC, UNK, UNL, and Non-Degree.

NON-DEGREE/INTER-CAMPUS/SPECIAL GRADUATE STUDENTS: Special graduate students not pursuing a degree at UNO in various programs: Engineering Transfer Program, Inter-Campus UNMC, UNK, UNL, Inter-Campus UNL Graduate Psychology and Non-Degree.

MASTERS/SPECIALIST: Graduate students pursuing a degree less than doctoral.

CERTIFICATE: These students are not enrolled in a degree program, but only a certificate.

DOCTORAL: Graduate students who have been accepted into a doctoral program.

FULL-TIME: In the current semester, undergraduate students enrolled for 12 or more semester hours, or graduate students enrolled for 9 or more semester hours.

PART-TIME: In the current semester, undergraduate students enrolled for less than 12 semester hours, or graduate students enrolled for less than 9 semester hours.

COOPERATIVE GRADUATE PROGRAM: Graduate students enrolled in Human Resources and Training or Global Information Operations offered cooperatively by two or more colleges.



OFFICE OF INSTITUTIONAL EFFECTIVENESS

www.unomaha.edu/oie/

402-554-2367 | 402-554-4896 (Fax)

T Hank Robinson, Director

Jenny Liu, Director Institutional Research

Daniel O'Dell, Web & Communications Coordinator

Andrew Jacobsen, Business Analyst

Rita Sterkel, Management Information Coordinator

Jeanie Gutheil-Bykerk, Research Analyst