

Fall 1997

Fact Book 1997

UNO Office of Institutional Effectiveness
University of Nebraska at Omaha

Follow this and additional works at: <https://digitalcommons.unomaha.edu/oiefactbooks>



Part of the [Educational Assessment, Evaluation, and Research Commons](#), and the [Higher Education Commons](#)

Please take our feedback survey at: https://unomaha.az1.qualtrics.com/jfe/form/SV_8cchtFmpDyGfBLE

Recommended Citation

Office of Institutional Effectiveness, UNO, "Fact Book 1997" (1997). *Fact Book*. 20.
<https://digitalcommons.unomaha.edu/oiefactbooks/20>

This Report is brought to you for free and open access by the Systems Intelligence and Data Analytics (SIDA) at DigitalCommons@UNO. It has been accepted for inclusion in Fact Book by an authorized administrator of DigitalCommons@UNO. For more information, please contact unodigitalcommons@unomaha.edu.

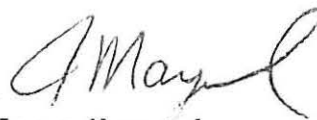
1997-98

July, 1997

This sixteenth edition of the University of Nebraska at Omaha Fact Book has been designed to present a variety of information and data, about the University, in a concise, easily-used format. I hope this provides a profile that will expand your understanding of our institution.

I wish to thank the many individuals and departments at the University for their contributions to the Fact Book. Sources for the data are listed at the bottom of each table and illustration, and the cooperation of these sources made the project possible.

Finally, again we solicit your comments and suggestions on the Fact Book so future issues will be more helpful to you.



James Maynard
Director of Institutional Research
July 1997

TABLE OF CONTENTS

GENERAL INFORMATION	1
The Board of Regents, the Administration, and the Colleges	2
Academic Department Chairpersons	3
Role and Mission	4
General Description	4
History	5
Accreditations	6
Degrees and Programs Currently Offered	7
Academic Calendar 1997-98.	11
 STUDENTS AND ALUMNI	 13
Head Count Enrollment Summary; by College: Fall 1996	14
Delivery-Site Head Count Summary; Undergraduate and Graduate Students Separate, by Gender and Race Classification: Fall 1996.	16
Delivery-Site Head Count Enrollment by Age Group and Sex; Undergraduate Students: Fall 1996	19
Delivery-Site Head Count Enrollment by Age Group and Sex; Graduate Students: Fall 1996	20
Delivery-Site Head Count Enrollment by College, Sex, and Class: Fall 1996	24
Student Credit Hours Enrolled; by College and Curriculum: Academic Years 1995-96 and 1996-97 (Administrative-Site Basis)	29
Average Student Credit Hours Enrolled; by College and Curriculum: Academic Years 1991-92 Thru 1993-94 and 1994-95 Thru 1996-97 (Administrative-Site Basis).	33
Delivery-Site Head Count Enrollment by College and Major: Falls 1994, 1995 and 1996	36
Distribution of Delivery-Site Head Count Freshmen Class by Locale of High School Graduated From: Fall 1996	42
New Delivery-Site Head Count Undergraduate Transfer Students; by Last Institution Attended: Fall 1996	46
Number of Degrees Conferred; by College of Major or Concentration and Level of Degree: 1991-92 through 1995-96 (Administrative-Site Basis)	49

Tuition Rates and General Student Fees:	
1977-78 through 1996-97	52
Student Financial Aid; Need and Ability Based:	
1994-95 and 1995-96 (Delivery-Site Basis).	53
Analysis of Scores on American College Testing (ACT) Enhanced	
Examination by UNO First-Time Freshmen: 1996	54
Comprehensive Scores on American College Testing (ACT) Examination	
By UNO and National First-Time Freshmen: Fall 1989 through 1996	55
FACULTY	57
Average Age, Average Years in Rank, and Average Years at UNO of	
All Full-Time Faculty; by College and Rank: 1996-97	58
Full-Time Faculty Highest Earned Degree by College and Academic	
Rank: 1996-97	59
Distribution of Full-Time Faculty by College, Rank, and Tenure	
Status: 1996-97	60
Full-Time Graduate Faculty Status; by College and Academic	
Rank: 1996-97	63
Selected Demographic Measures of the Full-Time UNO Faculty:	
1973-74, 1981-82, 1990-91 and 1996-97.	64
PHYSICAL PLANT AND BUDGET	67
University Building Space Summary as of December 1996.	68
Map of Campus of the University of Nebraska at Omaha	69
Current Revenues and Expenditures: 1980-81, 1994-95, and	
1995-96	70
LIBRARY	75
University Library	76
RESEARCH	77
Research Expenditures 1986-87 Through 1995-96	78
NON-CREDIT PROGRAMS	79
Non-Credit Programs	80

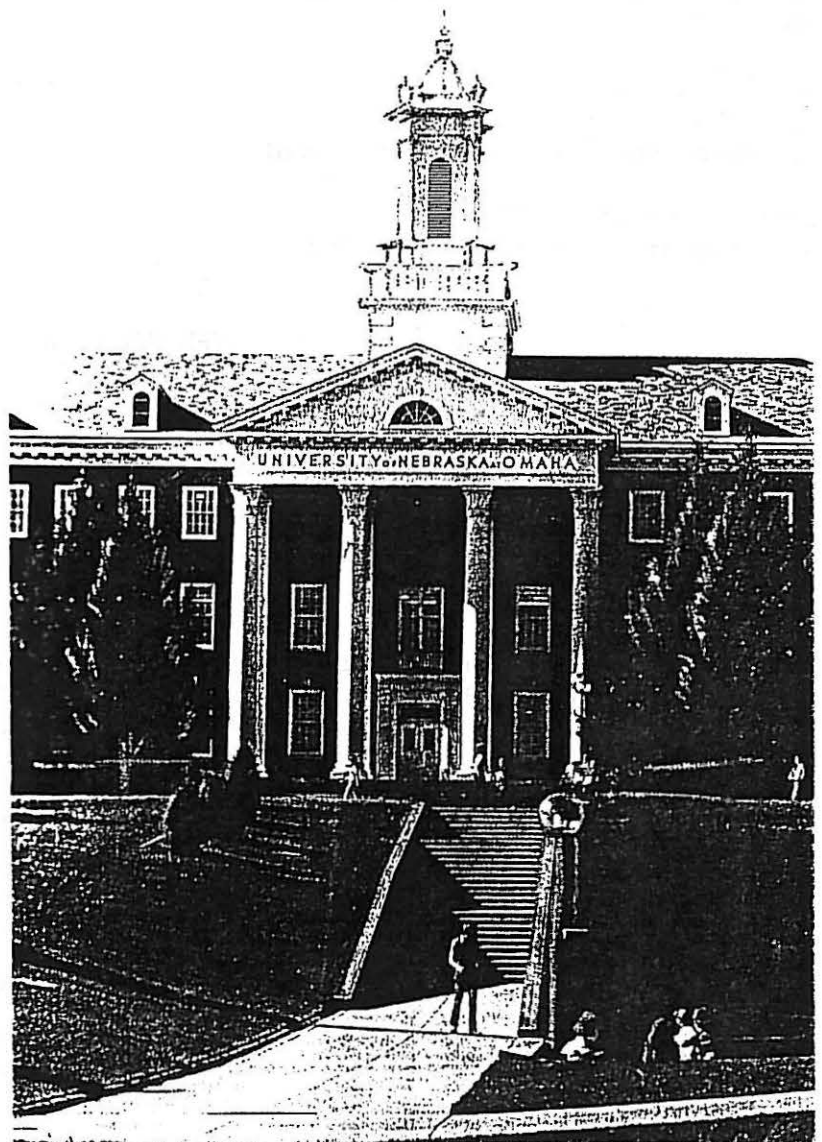
LIST OF ILLUSTRATIONS

Administrative-Site Head Count Enrollment; Fall Semesters: 1982 through 1996	15
Sources of Change, Delivery-Site Head Count Enrollment: Fall 1995 to Fall 1996	17
Delivery-Site Head Count Enrollment Fall Semesters: 1971 through 1996	18
Age Distribution of Delivery-Site Head Count Undergraduate and Graduate Students; By Sex: Fall 1996	21
Average Age of Delivery-Site Head Count Undergraduate Students: Fall Semesters 1980 through 1996	22
Average Age of Delivery-Site Head Count Graduate Students: Fall Semesters 1980 through 1996	23
Delivery-Site Head Count Undergraduate Students; By Class: Fall Semesters: 1987 through 1996	26
Percent of Delivery-Site Head Count Undergraduate Students: By Sex: Selected Fall Semesters: 1973 through 1996	27
Percent of Delivery-Site Head Count Graduate Students: By Sex: Selected Fall Semesters: 1973 through 1996.	28
Ten Largest Curricula; Academic Year Student Credit Hours: Average, 1995-96 and 1996-97 (Administrative-Site Basis)	32
Distribution of Delivery-Site Head Count Freshmen Class By Locale of High School Graduated From: Fall 1996.	44
Ten Largest Sources of Delivery-Site Head Count Freshmen; 20 & Younger: Fall 1996	45
Delivery-Site Head Count Undergraduate Student Body By Status: Fall 1996	47
Delivery-Site Head Count Undergraduate Transfer Students; by State of Transfer College/University: Fall 1996	48
Number of Degrees Conferred; Total UNO: 1981-82 through 1995-96 (Administrative-Site Basis).	50
Number of Degrees Conferred; By College of Major: 1991-92 through 1995-96 (Administrative-Site Basis).	51
Residence of Alumni: 1996	56
Rank Distribution of the Full-Time UNO Faculty: 1970-71, 1981-82, 1990-91 and 1996-97.	61
Percent of Full-Time Faculty Holding Tenure; By College: 1994-95 to 1996-97	62

Average Age, Average Years-In-Rank, and Average Years-At-UNO; Full-Time Faculty: 1973-74, 1981-82, 1990-91 and 1996-97.	65
Distribution of Current Revenues for the Year Ended June 30, 1996	71
Distribution of Current Expenditures for the Year Ended June 30, 1996	72
Percent Growth; Educational & General Expenditures & Revenues: 1980-81 to 1995-96	73

THE UNIVERSITY OF NEBRASKA AT OMAHA

General Information



THE BOARD OF REGENTS
University of Nebraska

Robert Allen, Hastings
Don S. Blank, D.D.S., McCook
Drew Miller, Papillion
Nancy O'Brien, Ph.D., Waterloo
John W. Payne, Kearney

Charles Hassebrook, Walthill
Rosemary Skrupa, J.D., Omaha
Charles Wilson, M.D., Lincoln
J. B. Milliken, Corporation Secretary
L. Dennis Smith, Ph.D., President

Bryan Reichmuth - UNK Student Regent
Sarah Svoboda - UNMC Student Regent

Curtis Ruwe - UNL Student Regent
Jason Winterboer - UNO Student Regent

THE ADMINISTRATION
University of Nebraska at Omaha

Ernest J. Peck, Jr. Ph.D.
Vice Chancellor for Academic Affairs
and Dean for Graduate Studies and
Research

Gary L. Carrico, M.B.A.
Vice Chancellor for Business & Finance

Mary A. Mudd, Ed.D
Vice Chancellor for Student
Services and Enrollment Management

Robert Danenhauer, M.S.
Director of Intercollegiate Athletics

Louis F. Cartier, Jr., M.A.
Director of University Relations

Richard M. Snowden, M.P.A.
Director of Campus Computing

THE COLLEGES

The College of Agricultural Sciences and
Natural Resources
Dean, Donald M. Edwards, Ph.D.

The College of Fine Arts
Dean, Karen A. White, D.M.A.

The College of Architecture
Dean, Cecil Steward, M.S.

The College of Human Resources and
Family Sciences
Dean, Karen E. Craig, Ph.D.

The College of Arts and Sciences
Dean, John Flocken, Ph.D.

The College of Information Science
and Technology
Dean, Michael C. Mulder, Ph.D.

The College of Business Administration
Dean, Stanley J. Hille, Ph.D.

The College of Public Affairs and
Community Service
Dean, David W. Hinton, Ph.D.

The College of Continuing Studies
Dean, Mary G. Bruning, Ph.D.

International Studies and Programs
(UNO/UNMC)
Dean, Thomas Gouttierre, M.A.

The College of Education
Dean, Richard B. Flynn, Ed.D.

The University Library
Director, Robert S. Runyon, M.L.S.

The College of Engineering and Technology
Dean, James Hendrix, Ph.D.

UNIVERSITY OF NEBRASKA AT OMAHA
ACADEMIC DEPARTMENT DIRECTORS & CHAIRPERSONS
1997-1998

ARTS & SCIENCES

Biology	William O'Dell	History	Bruce Garver
Black Studies	James Conyers	Mathematics	Scott Downing
Chemistry	Roger Hoburg	Philosophy & Religion	Richard Freund
Communication	Deborah Smith-Howell	Physics	Robert Graham
English	Gregory Sadlek	Political Science	James Johnson
Foreign Languages	Elvira Garcia	Psychology	Kenneth Deffenbacher
Geography-Geology	John Shroder	Sociology	Mark Rousseau

BUSINESS ADMINISTRATION

Economics	Kim Sosin	Marketing/Management	Robert Ottemann
Finance, Banking and Law	Fuad Abdullah	Professional Accounting	Judith Watanabe

EDUCATION

Counseling	Joe Davis	Special Education & Communication Disorders	John Christensen
Educational Administration & Supervision	John McKay	Teacher Education	John Langan
Health, Physical Education & Recreation	Daniel Blanke		

FINE ARTS

Art & Art History	Gary Day	Music	James Saker
Dramatic Arts	Robert Welk	Writer's Workshop	Richard Duggin

PUBLIC AFFAIRS AND COMMUNITY SERVICE

Center for Public Affairs Research	Russell Smith	Goodrich Program Public Administration	Donald Dendinger Burton Reed
Criminal Justice	Susan Jacobs	Social Work	Sunny Andrews
Gerontology	James Thorson		

UNIVERSITY LIBRARY

Bibliographic Access	Ella Jane Bailey	Public Services	Linda Parker
Collections Management	John Reidelbach		

OTHER UNITS

Air Force ROTC	Lt Col Scott Hutt	Center for the Management of Information Technology	Tom McClung
Army ROTC	LTC Dale Lazo	University Division	Vance Valerio

UNIVERSITY OF NEBRASKA AT OMAHA

ROLE AND MISSION

The role and mission of the University of Nebraska at Omaha reflects a distinctively metropolitan emphasis. Accordingly, many of the academic majors, research activities, and public service programs are designed to respond to its urban/suburban environment. The University also has state-wide responsibility for providing programs and services in criminal justice, gerontology, public administration, urban studies, and social work. The Nebraska Business Development Center (NBDC) is a cooperative program of the U.S. Small Business Administration and the University of Nebraska at Omaha. NBDC administers its small business program at locations throughout Nebraska. The Strategic Training and Resource Targeting (START) program, developed jointly by the Center for Public Affairs Research and Department of Public Administration, is a self-help approach to local economic development. START helps communities in Nebraska define their strengths and weaknesses and develop a strategic plan to improve their local economies.

GENERAL DESCRIPTION

The University of Nebraska at Omaha (UNO) is a comprehensive, public university located in the heart of Nebraska's largest city. It is the second-largest higher education campus in the state. The University of Nebraska at Omaha is part of the University of Nebraska system, which also includes the University of Nebraska-Lincoln, the University of Nebraska at Kearney and the University of Nebraska Medical Center.

The University of Nebraska at Omaha, with more than 430 full-time faculty members, offers approximately 80 baccalaureate degree programs and more than 40 masters and doctoral degree programs. Undergraduate degree programs are offered in the colleges of Arts and Sciences, Business Administration, Continuing Studies, Education, Fine Arts, Information Science and Technology, and Public Affairs and Community Service. Programs and courses also are offered in the College of Human Resources and Family Sciences, the College of Engineering and Technology, the College of Agriculture, and the College of Architecture, which are administered by the University of Nebraska-Lincoln. The College of Public Affairs and Community Service is administered by the University of Nebraska at Omaha on both the Omaha and Lincoln campuses.

With a student body of approximately 15,000 undergraduate and graduate students, the University strives to treat each student as an individual. The UNO student population is a diverse mix of full and part-time students, men and women, and traditional- and non-traditional-age enrollees. Students come from all walks of life, from business professionals to international students. Such broad backgrounds and experiences enrich the classroom atmosphere. Ample opportunity is provided for specialized study in terms of interest, talent, and ultimate vocational objective. Thus, the University is concerned that its graduates be good citizens who earn a better living and live a richer, fuller life.

The University, in addition to offering courses for college credit, designs training courses for thousands of business and industrial employees; provides in-service training for elementary and secondary school teachers; conducts television classes for college credit on both commercial television and its own educational channel (KYNE-TV); and sponsors a wide variety of conferences, workshops, lectures, and fine art events to enrich the college credit offerings.

Opportunities for teaching and research abroad, coordinated by the Office of International Studies and Programs, exist through the University's network of sister institutions in Germany, Japan, the Philippines, Romania, and Czechoslovakia, and through exchange programs with China, Austria, Russia, Belgium, and Mexico.

The University of Nebraska at Omaha is a commuter campus, and has no on-campus housing for students.

HISTORY

What is now the University of Nebraska at Omaha was founded in 1908 as the University of Omaha, a private non-sectarian college, with a campus at 24th and Pratt Streets in northeast Omaha. The first term of the co-educational college began in 1909, under the leadership of Dr. Daniel E. Jenkins, with twenty students.

The movement to make the University a municipal institution began in 1929, and in May, 1930 the citizens of Omaha voted to establish the Municipal University of Omaha. In the summer of 1930, the Omaha Board of Education selected the first University Board of Regents who were inducted into office on July 1, 1930. In January, 1931 the new Board of Regents took over the University of Omaha and its properties.

The expansion of the Municipal University of Omaha in the early 1930's led to a decision to move the campus to a 52-acre site southwest of Dodge and 60th Streets. In November 1936, the University secured a grant from the Works Progress Administration which, together with some accrued building funds, financed the construction of a Georgian-style building. This building, now called Arts and Sciences Hall, was finished in 1938 and served as the sole campus building until the 1950's.

In July 1968, the citizens of Omaha voted to transfer all University property to the University of Nebraska, and the former Municipal University of Omaha became the University of Nebraska at Omaha.

The University began rapid growth when it became a part of the University of Nebraska System. Enrollment was 8,730 in Fall, 1967 which was the last year as the Municipal University of Omaha. Three years later, enrollment was 13,185, a growth of 51 percent in the first three years as the University of Nebraska at Omaha. Fall, 1996 enrollment was 15,000.

The Dodge Street campus has expanded from its original 52 acres to the current 88.5 acres. Recent new structures on the Dodge Street campus are the Fine Arts building, the Durham Science Center, and the Henningson Memorial Campanile, a bell tower rising nearly one hundred seventy feet.

ACCREDITATIONS

The University of Nebraska at Omaha is accredited by the North Central Association of Colleges and Secondary Schools, and has programs which are accredited or approved by the National Council for Accreditation of Teacher Education, the Council for Accreditation of Counseling and Related Educational Programs, the National Council on Social Work Education, the Engineers Council for Professional Development, Technology Accreditation Commission/Accreditation Board for Engineering and Technology, National Association for Industrial Technology, the American Home Economics Association (for undergraduate programs), the American Dietetic Association, the American Assembly of Collegiate Schools of Business, the National Association of School of Music, the National Association of Schools of Public Affairs and Administration, the Educational Standards Board of the Board of Examiners in Speech-Language Pathology and Audiology, the National Recreation and Park Association/American Association for Leisure and Recreation and the American Chemical Society.

Course credits from the University of Nebraska at Omaha are accepted by other colleges and universities which are members of the North Central Association and by other regional accrediting agencies.

UNIVERSITY OF NEBRASKA AT OMAHA

DEGREES AND PROGRAMS CURRENTLY OFFERED

COLLEGE OF AGRICULTURAL SCIENCES AND NATURAL RESOURCES:

The College of Agricultural Sciences and Natural Resources offers the following pre-professional programs:

Agricultural Sciences, Food Science & Technology, Horticulture and Natural Resources.

COLLEGE OF ARCHITECTURE:

The College of Architecture offers the following pre-professional programs:
Architecture and Interior Design.

COLLEGE OF ARTS AND SCIENCES:

Bachelor of Arts degree programs in:

Biology, Black Studies, Broadcasting, Chemistry, Computer Science, Economics, English, French, General Science, Geography, Geology, German, History, Interdisciplinary Studies, International Studies, Journalism, Mathematics, Philosophy, Physics, Political Science, Psychology, Religion, Sociology, Spanish, and Speech Communication.

Bachelor of Science degree programs in:

Biology, Biotechnology, Broadcasting, Chemistry, Computer Science, Economics, Engineering Physics, Environmental Studies, Geography, Geology, History, Interdisciplinary Studies, Journalism, Mathematics, Physics, Political Science, Psychology, and Speech Communication.

Master of Arts degree programs in:

Biology, Communication, Computer Science, English, Geography, History, Mathematics, Psychology, and Sociology.

Master of Science degree programs in:

Biology, Computer Science, School Psychology, Industrial/Organizational Psychology, and Mathematics.

Master of Arts for Teachers of Mathematics.

Specialist in Education in School Psychology.

Certificate in School Psychology.

Cooperative Doctor of Philosophy (with the University of Nebraska-Lincoln) degree programs in:

Developmental Psychobiology, Experimental Child Psychology, and Industrial/Organizational Psychology.

In addition, the College of Arts and Sciences also offers the following pre-professional programs:

Chiropractic, Dental, Dental Hygiene, Law, Medicine, Medical Technology, Nursing, Occupational Therapy, Optometry, Pharmacy, Physical Therapy, Physician's Assistant, Radiation Science Technology, Respiratory Care, Technical Sciences and Veterinarian Medicine.

COLLEGE OF BUSINESS ADMINISTRATION:

Bachelor of Science in Business Administration degree programs in:

Advertising Management, Banking and Financial Markets, Business Economics, Business Finance, Decision Sciences, Economics, Fashion Merchandising, Industrial Marketing, Management, Management Information Systems, Marketing, Marketing Management, Marketing Research, Personnel/Human Resources Management, Production/Operations Management, Professional Accounting, Real Estate & Land Use Economics, Retail Management, Sales & Sales Management, and Small Business Management.

Master of Business Administration.

Master of Arts degree program in Economics.

Master of Science degree program in Economics and Management Information Systems.

Master of Professional Accounting.

In addition, the College of Business Administration also offers the Pre-Law Program.

COLLEGE OF CONTINUING STUDIES:

Bachelor of General Studies degree programs in:

Art, Aviation Administration, Aviation Studies, Biology, Black Studies, Broadcasting, Chemistry, Communication, Computer Science, Criminal Justice, Dramatic Arts, Economics, English, French, General Administration, General Science, General Studies, Geology, Geography, German, Gerontology, History, International Studies, Journalism, Library Media, Mathematics, Music, Paralegal Studies, Philosophy, Physics, Political Science, Psychology, Recreation/Leisure Studies, Religion, Sociology, Spanish, and Speech.

COLLEGE OF EDUCATION:

Bachelor of Science in Education degree programs in:

Education of the Hearing Impaired, Elementary Education, Health Education, Library Science, Physical Education, Recreation/Leisure Studies, Secondary Education, Speech Language Pathology and Teaching the Mildly/Moderately Handicapped.

Master of Arts degree programs in:

Community Counseling, Counseling/Gerontology, Elementary Education, Health/Physical Education and Recreation, Mental Retardation, School Counseling/Elementary Level, School Counseling/Secondary Level, Secondary Education, Speech-Language Pathology and Student Affairs Practice in Higher Education.

Master of Science degree programs in:

Behavioral Disorders, Community Counseling, Counseling/Gerontology, Educational Administration & Supervision, Elementary Education, Health/Physical Educational & Recreation, Reading, Resource Teaching & Learning Disabilities, School Counseling/Elementary Level, School Counseling/Secondary Level, Secondary Education, Speech-Language Pathology, Student Affairs Practice in Higher Education, Teaching Hearing Impaired, and Teaching Mentally Retarded.

Specialist in Education in Educational Administration & Supervision.

Joint Doctor of Education (with the University of Nebraska-Lincoln) in Educational Administration.

COLLEGE OF ENGINEERING AND TECHNOLOGY:

Associate of Science in Engineering Technology degree programs in:
Manufacturing Engineering Technology and Fire Protection Technology.

Bachelor of Science in Civil Engineering, Computer Engineering and Electronics Engineering.

Bachelor of Science in Engineering Technology degree programs in:
Construction Engineering Technology, Electronics Engineering Technology, and Manufacturing Engineering Technology.

Bachelor of Science in Industrial Technology.

Master of Science in Civil Engineering.

The College of Engineering and Technology offers the following pre-professional programs:

Agricultural Engineering, Biological Systems Engineering, Chemical Engineering, Computer Engineering, Electrical Engineering, Industrial Engineering and Mechanical Engineering.

COLLEGE OF FINE ARTS:

Bachelor of Arts in Dramatic Arts.

Bachelor of Arts in Art History.

Bachelor of Fine Arts degree programs in:
Creative Writing, Individually Designed, and Studio Art.

Bachelor of Arts in Studio Art.

Bachelor of Music degree programs in:
Music Education and Professional Degree Programs.

Master of Arts in Dramatic Arts.

Master of Music in Music.

COLLEGE OF HUMAN RESOURCES AND FAMILY SCIENCES:

Bachelor of Science degree programs in:
Child Development/Early Childhood Education, Child Development Studies, Dietetics, Family and Consumer Sciences/Communication, Family and Consumer Sciences Education, Family Financial Management, Family Science, Foods, Merchandising, Nutrition Science, Restaurant and Foodservice Administration, Textile and Apparel Design, and Textile Science.

COLLEGE OF PUBLIC AFFAIRS AND COMMUNITY SERVICE:

Bachelor of Science in Public Administration.

Bachelor of Science in Urban Studies.

Bachelor of Science in Social Work.

Bachelor of Science in Criminal Justice.

Certificate programs (undergraduate and graduate) in Social Gerontology.

Master of Arts degree programs in:
Criminal Justice and Social Gerontology.

Master of Science degree programs in:
Criminal Justice and Urban Studies.

Master of Social Work.

Master of Public Administration.

Doctor of Philosophy in Criminal Justice and Public Administration.

University of Nebraska at Omaha

ACADEMIC CALENDAR
1997-98

Fall 1997, First Semester 1997-98:

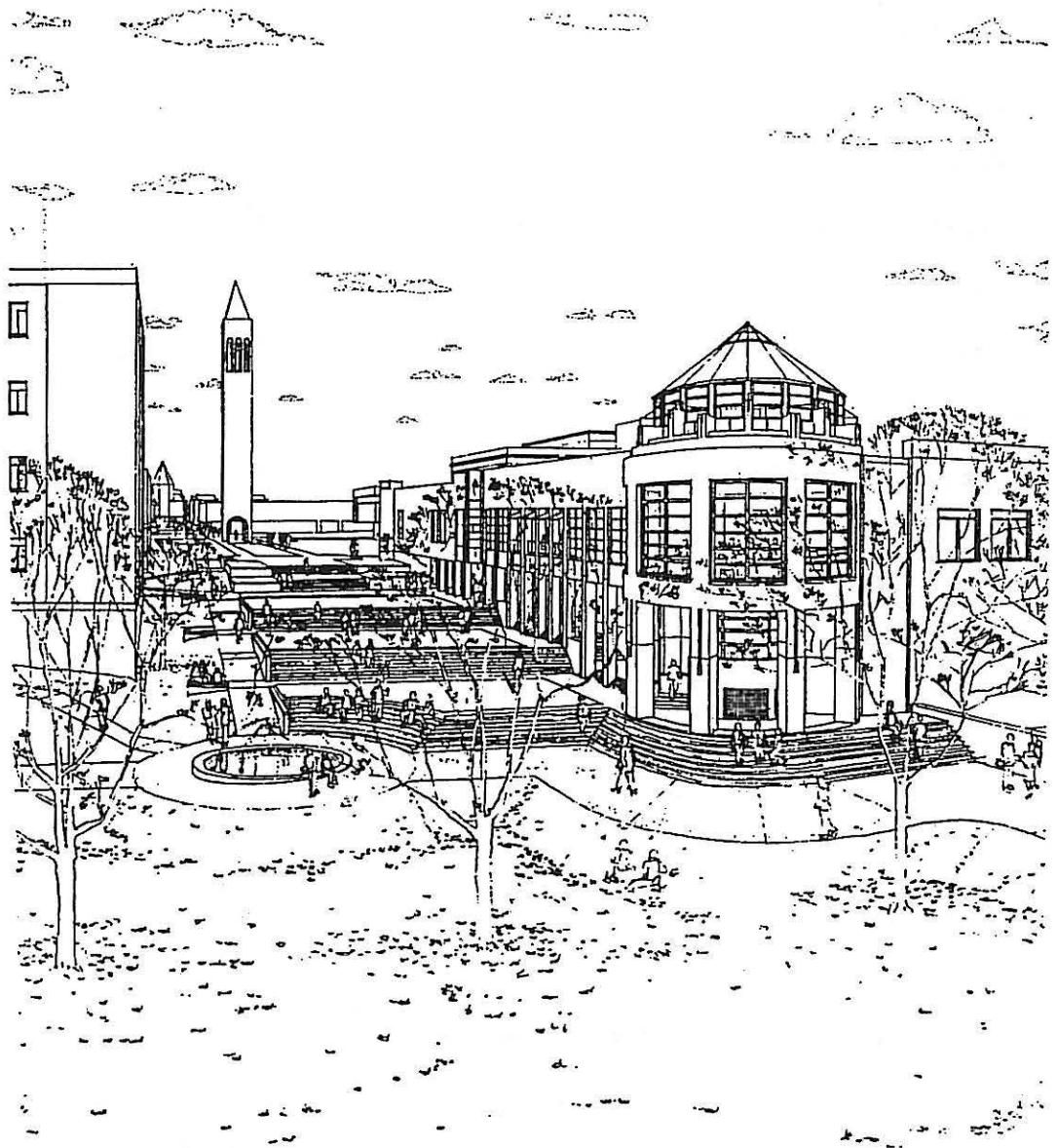
Classes begin, Monday:	August 25
Labor Day Holidays, Monday and Tuesday:	September 1-2
Mid-Term, Friday:	October 17
Thanksgiving Holidays, Wednesday, Thursday and Friday:	November 26-28
Classes end, Friday:	December 12
Final Exams, Saturday to Friday:	December 13-19
Commencement Exercises, Saturday	December 20

Spring 1998, Second Semester 1997-98:

Classes begin, Monday:	January 12
Mid-Term, Friday:	March 6
Spring Break, Sunday to Sunday:	March 22-29
Last day of classes, Saturday:	May 2
Final Exams, Monday to Friday:	May 4-8
Commencement Exercises, Saturday	May 9

THE UNIVERSITY OF NEBRASKA AT OMAHA

Students and Alumni

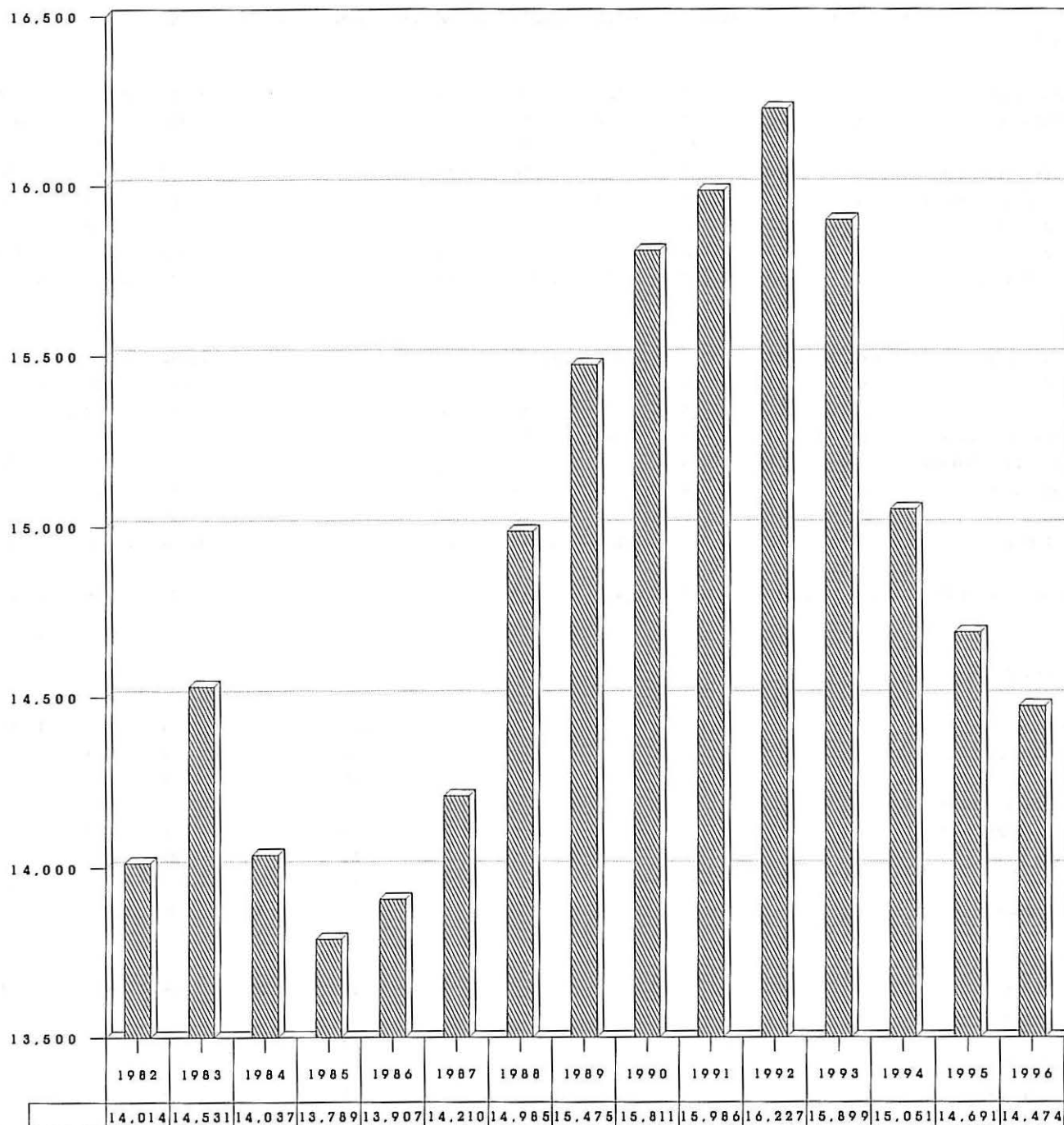


UNIVERSITY OF NEBRASKA AT OMAHA
 HEAD COUNT ENROLLMENT SUMMARY; BY COLLEGE:
 FALL 1996

<u>College (or equivalent) of Student</u>	<u>Administrative Site</u>	<u>Delivery Site</u>
Arts and Sciences	3,553	3,553
Business Administration	2,361	2,361
Education	1,492	1,492
Fine Arts	470	470
Information Science & Technology	124	124
Public Affairs & Community Service	1,044	651
Continuing Studies	1,417	1,417
Non-Degree/Intercampus	735	735
University Division	499	499
Graduate	2,779	2,779
Agriculture	--	19
Architecture	--	113
Engineering-Technology	--	522
Human Resources & Family Sciences	--	265
	<hr/>	<hr/>
	14,474	15,000

Source: Office of Institutional Research

University of Nebraska at Omaha
 Administrative-Site Head Count Enrollment
 Fall Semesters: 1982 Through 1996



Fall Semester

Source: Office of Institutional Research

University of Nebraska at Omaha
OFFICE OF INSTITUTIONAL RESEARCH
Delivery-Site Head Count Summary; Undergraduate and Graduate Students
Separate, By Gender and Race Classification: Fall 1996

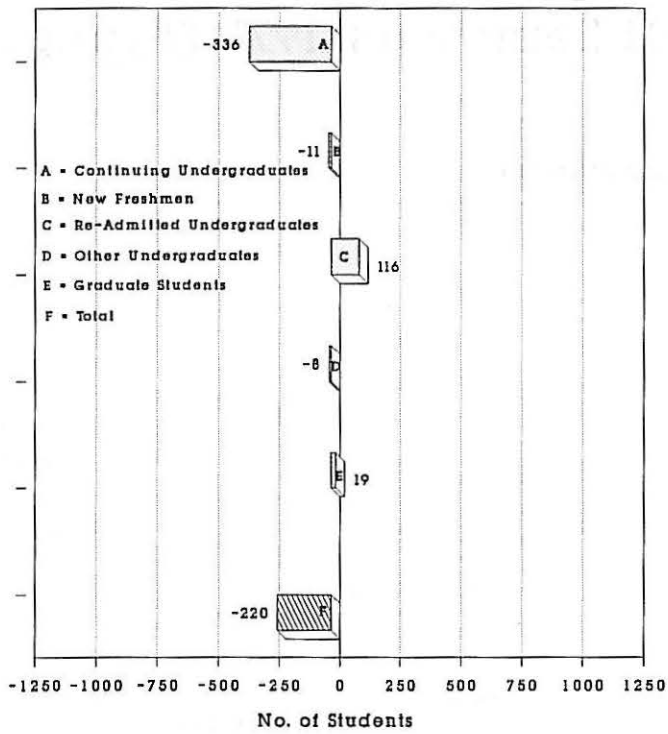
* * * TOTAL UNO * * *

* * * * * CLASS OF STUDENT * * * * *

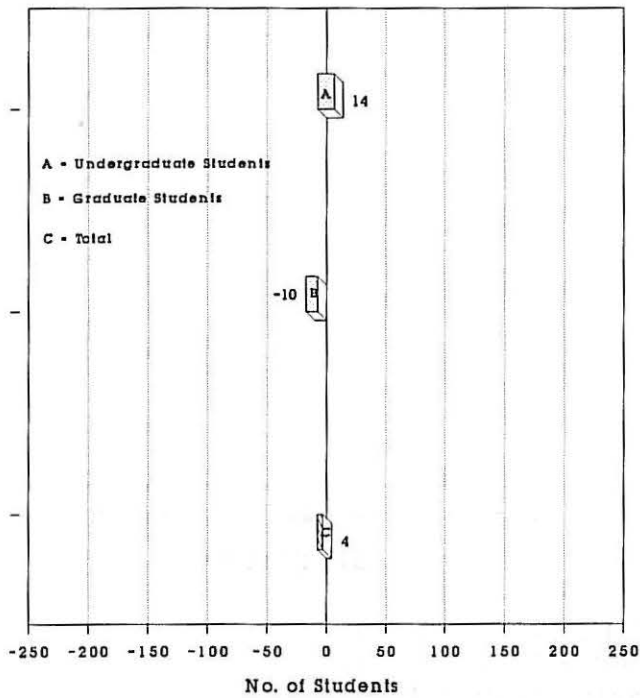
	First-	Other	Soph-				Graduate			Total		
	Time	Fresh	omores	Juniors	Seniors	Special	Less-than	Full-	Part-		Last	
	<u>Freshmen</u>	<u>Fresh</u>	<u>omores</u>	<u>Juniors</u>	<u>Seniors</u>	<u>UGrad</u>	<u>Doctoral</u>	<u>Doctoral</u>	<u>Time</u>	<u>Time</u>	<u>Total</u>	<u>Fall</u>
UNDERGRADUATES:												
FEMALE:												
White Non-Hispanic	592	739	973	1,123	1,326	464			3,125	2,092	5,217	5,340
Black Non-Hispanic	66	95	102	82	88	30			300	163	463	427
Hispanic	40	24	32	33	34	6			114	55	169	153
Asian/Pacific Islander	15	18	27	24	26	18			87	41	128	128
Amer Indian/Alask Native	2	4	10	10	6	2			22	12	34	40
Non-Resident Alien	6	22	16	24	19	17			61	43	104	87
No Response	14	35	42	45	63	30			115	114	229	271
Sub-Total Female	735	937	1,202	1,341	1,562	567			3,824	2,520	6,344	6,446
MALES:												
White Non-Hispanic	599	781	875	934	1,205	439			2,783	2,050	4,833	4,956
Black Non-Hispanic	45	71	65	67	80	16			223	121	344	325
Hispanic	26	21	45	34	36	8			108	62	170	147
Asian/Pacific Islander	18	17	31	24	28	13			82	49	131	117
Amer Indian/Alask Native	2	8	4	5	7	-			19	7	26	30
Non-Resident Alien	14	20	24	33	24	22			86	51	137	134
No Response	17	34	39	44	75	27			110	126	236	291
Sub-Total Male	721	952	1,083	1,141	1,455	525			3,411	2,466	5,877	6,000
Sub-Total Undergrad	1,456	1,889	2,285	2,482	3,017	1,092			7,235	4,986	12,221	12,446
GRADUATE STUDENTS:												
FEMALE:												
White Non-Hispanic							1,520	23	294	1,249	1,543	1,570
Black Non-Hispanic							50	1	17	34	51	59
Hispanic							19	-	7	12	19	23
Asian/Pacific Islander							19	-	3	16	19	16
Amer Indian/Alask Native							4	-	1	3	4	2
Non-Resident Alien							51	-	29	22	51	45
No Response							68	1	13	56	69	77
Sub-Total Female							1,731	25	364	1,392	1,756	1,792
MALES:												
White Non-Hispanic							812	22	149	685	834	819
Black Non-Hispanic							31	-	9	22	31	23
Hispanic							13	-	3	10	13	11
Asian/Pacific Islander							9	-	4	5	9	10
Amer Indian/Alask Native							1	-	-	1	1	2
Non-Resident Alien							84	1	45	40	85	58
No Response							49	1	10	40	50	55
Sub-Total Male							999	24	220	803	1,023	978
Sub-Total Graduates							2,730	49	584	2,195	2,779	2,770
TOTAL ALL STUDENTS	1,456	1,889	2,285	2,482	3,017	1,092	2,730	49	7,819	7,181	15,000	15,216

University of Nebraska at Omaha
Sources of Change, Delivery-Site Head Count
Enrollment; Fall 1995 to Fall 1996

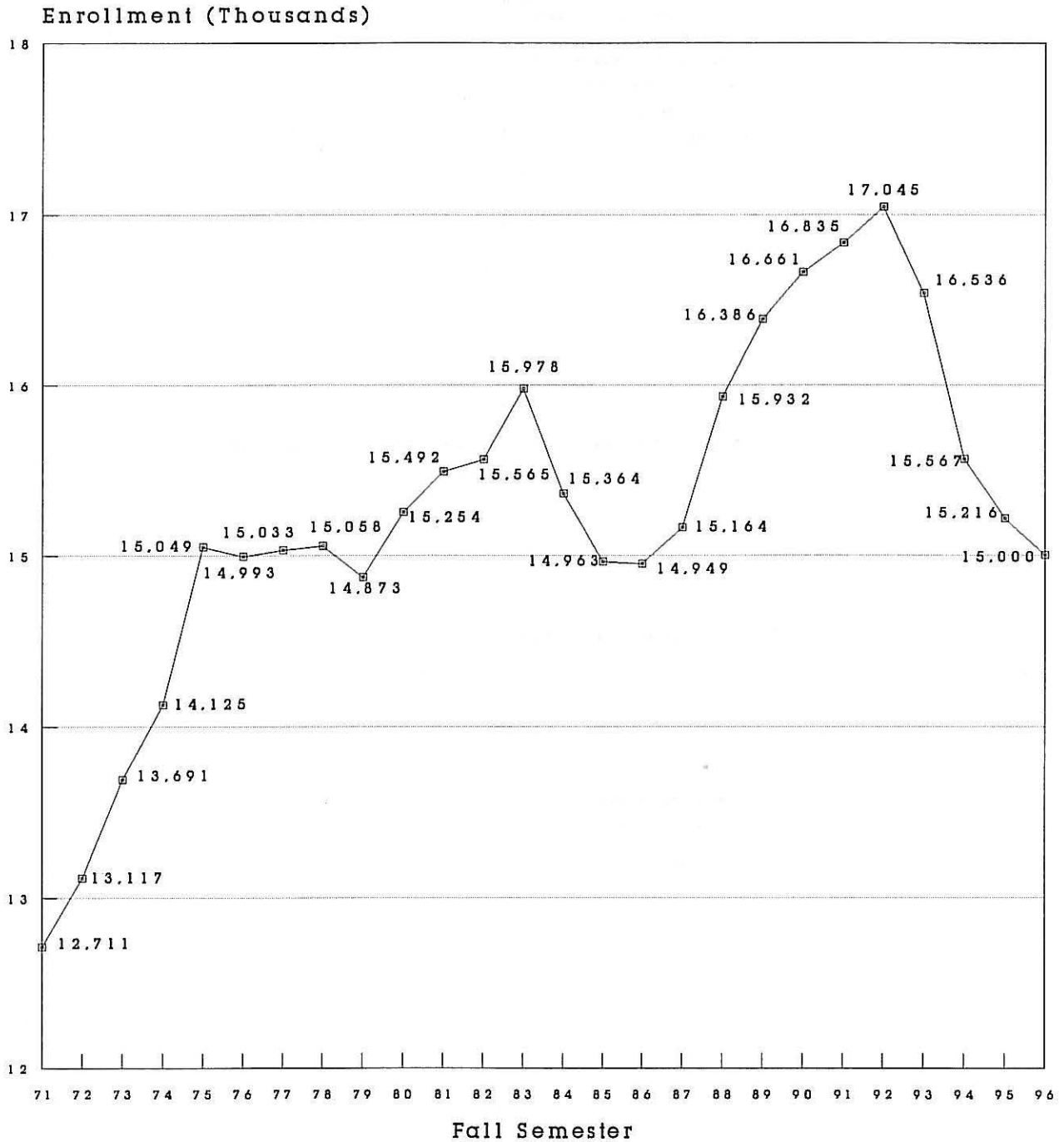
Students Taking At Least One Course At 60th & Dodge Campus



Students Taking Only CCS Courses



University of Nebraska at Omaha Delivery-Site Head Count Enrollment Fall Semesters: 1971 Through 1996



Fall, 1971 = 12,711; Fall, 1996 = 15,000
 Percent Increase, 1971 - 1996 = 18.0%
 Source: Office of Institutional Research

UNIVERSITY OF NEBRASKA AT OMAHA

DELIVERY-SITE HEAD COUNT ENROLLMENT BY AGE GROUP AND SEX;
UNDERGRADUATE STUDENTS: FALL 1996

<u>Age Group</u>	<u>Female</u>		<u>Male</u>		<u>Total</u>	
	<u>Number</u>	<u>Percent of Whole</u>	<u>Number</u>	<u>Percent of Whole</u>	<u>Number</u>	<u>Percent of Whole</u>
14 - 19	1,052	16.6	872	14.8	1,924	15.7
20 - 24	2,756	43.4	2,528	43.0	5,284	43.3
25 - 29	1,109	17.5	1,315	22.4	2,424	19.8
30 - 34	499	7.9	520	8.9	1,019	8.3
35 - 39	365	5.8	300	5.1	665	5.4
40 - 44	287	4.5	185	3.1	472	3.9
45 - 49	187	2.9	92	1.6	279	2.3
50 - 54	56	0.9	31	0.5	87	0.7
55 - 59	18	0.3	15	0.3	33	0.3
60 & Over	14	0.2	11	0.2	25	0.2
Unknown	<u>1</u>	<u>0.0</u>	<u>8</u>	<u>0.1</u>	<u>9</u>	<u>0.1</u>
TOTAL	6,344	100.0	5,877	100.0	12,221	100.0

AVERAGE AGE: 25.6

Source: Office of Institutional Research

UNIVERSITY OF NEBRASKA AT OMAHA

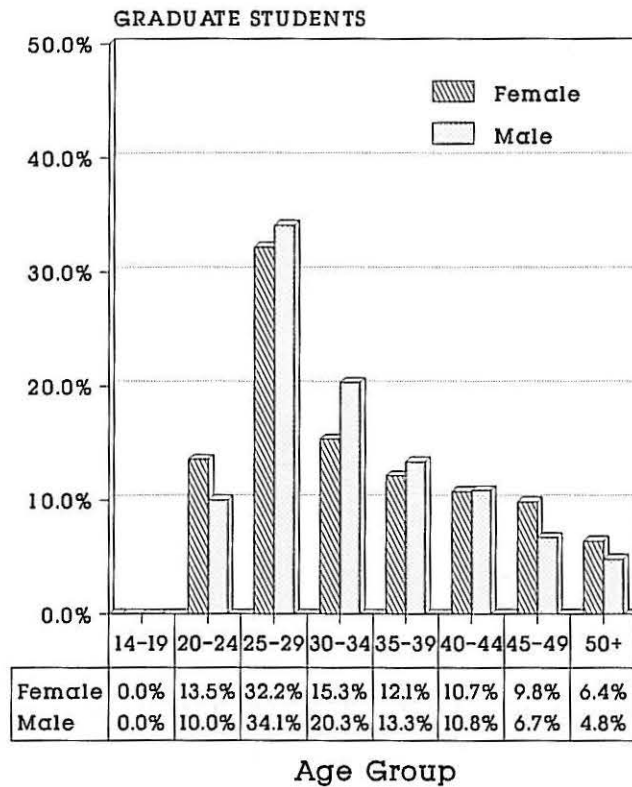
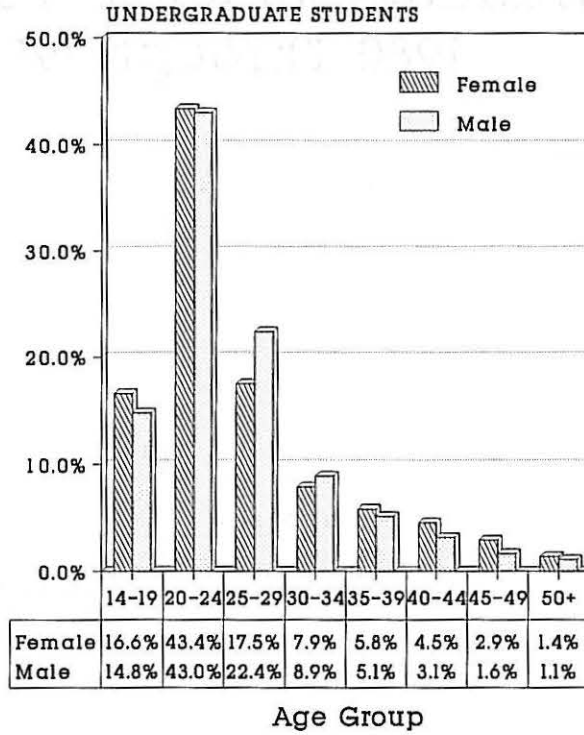
DELIVERY-SITE HEAD COUNT ENROLLMENT BY AGE GROUP AND SEX;
GRADUATE STUDENTS: FALL 1996

<u>Age Group</u>	<u>Female</u>		<u>Male</u>		<u>Total</u>	
	<u>Number</u>	<u>Percent of Whole</u>	<u>Number</u>	<u>Percent of Whole</u>	<u>Number</u>	<u>Percent of Whole</u>
14 - 19	n.a.	n.a.	n.a.	n.a.	n.a.	n.a.
20 - 24	237	13.5	102	10.0	339	12.2
25 - 29	565	32.2	349	34.1	914	32.9
30 - 34	269	15.3	208	20.3	477	17.2
35 - 39	212	12.1	136	13.3	348	12.5
40 - 44	188	10.7	110	10.8	298	10.7
45 - 49	172	9.8	69	6.7	241	8.7
50 - 54	82	4.7	36	3.5	118	4.2
55 - 59	27	1.5	7	0.7	34	1.2
60 & Over	2	0.1	3	0.3	5	0.2
Unknown	<u>2</u>	<u>0.1</u>	<u>3</u>	<u>0.3</u>	<u>5</u>	<u>0.2</u>
TOTAL	1,756	100.0	1,023	100.0	2,779	100.0

AVERAGE AGE: 33.3

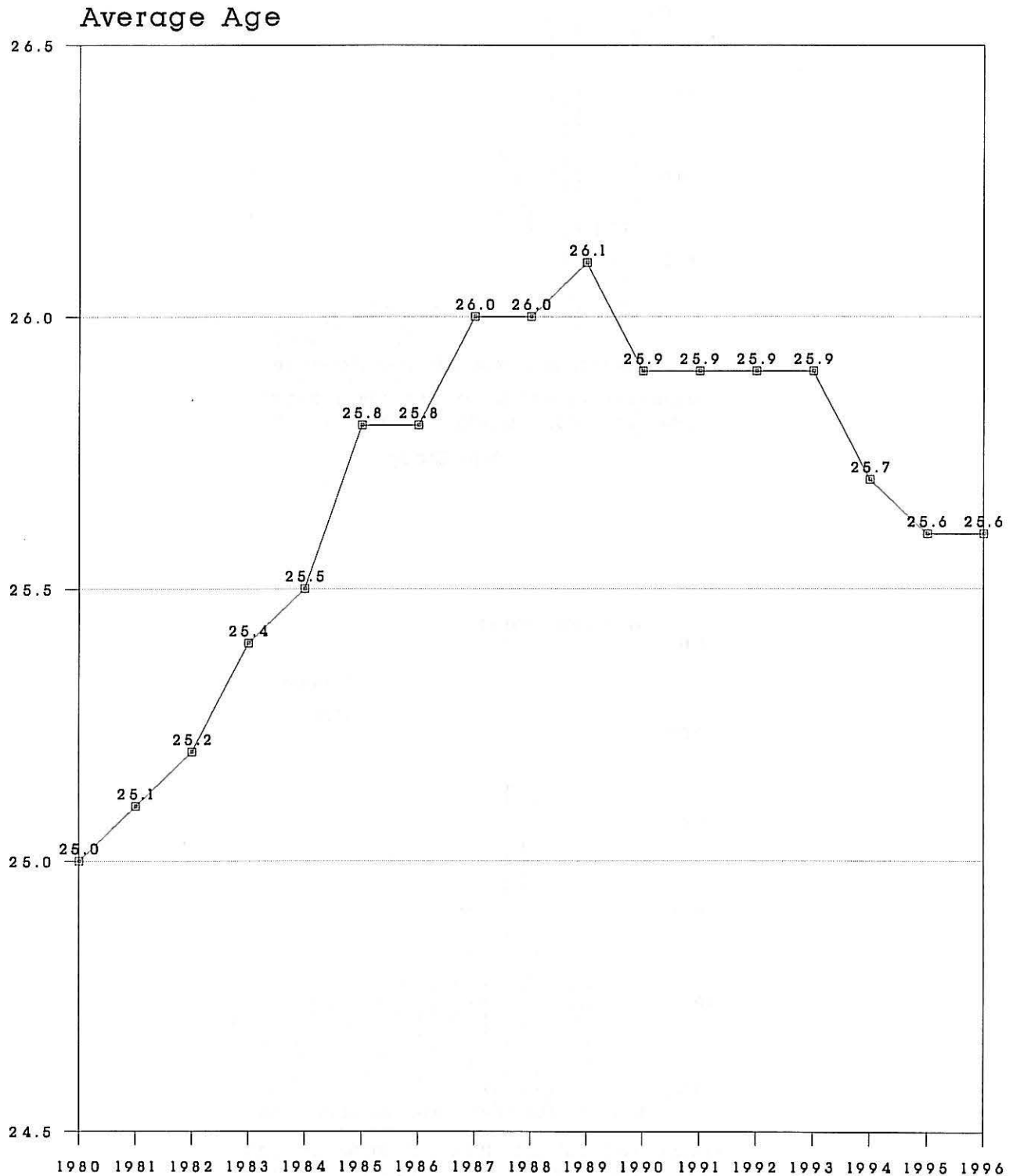
Source: Office of Institutional Research

University of Nebraska at Omaha
 Age Distribution of Delivery-Site Head Count
 Undergraduate and Graduate Students; By Sex:
 Fall 1996



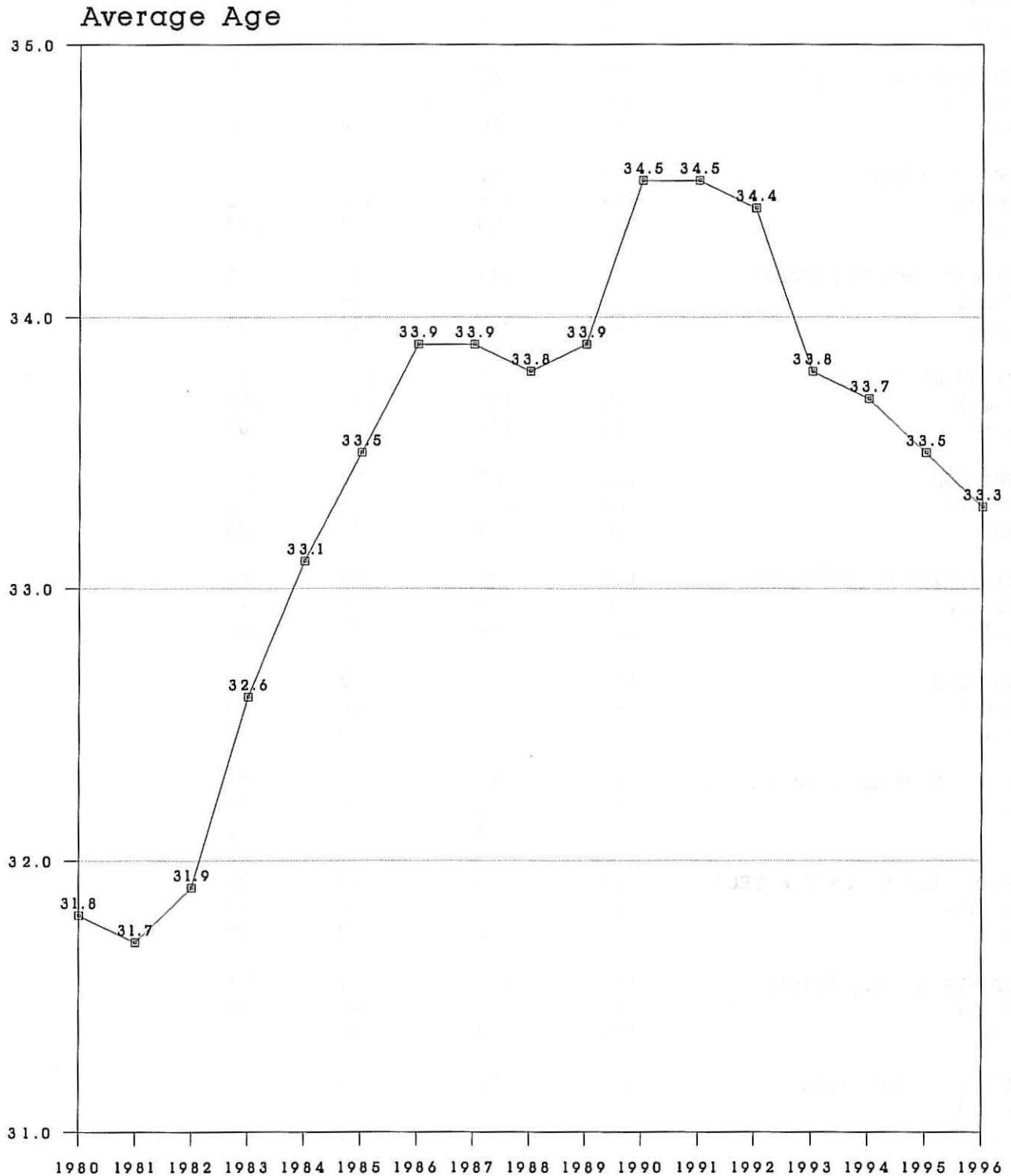
Source: Office of Institutional Research

University of Nebraska at Omaha
Average Age of Delivery-Site Head Count
Undergraduate Students: Fall Semesters
1980 Through 1996



Source: Office of Institutional Research

University of Nebraska at Omaha Average Age of Delivery-Site Head Count Graduate Students: Fall Semesters 1980 Through 1996



Source: Office of Institutional Research

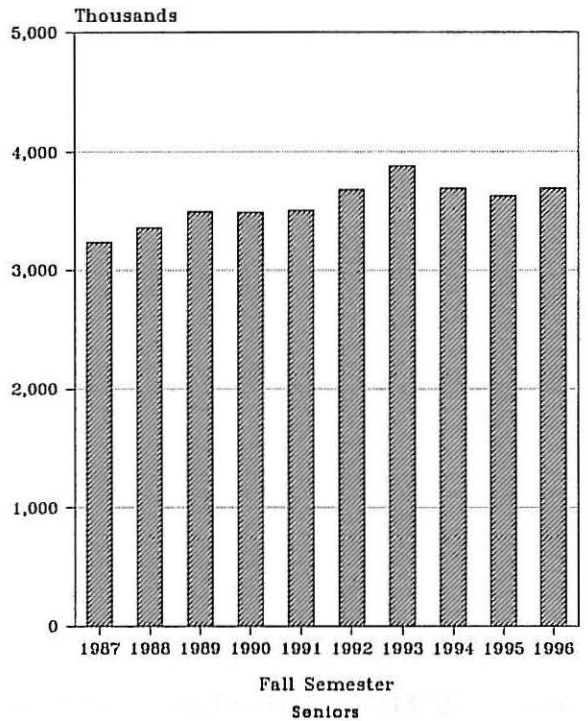
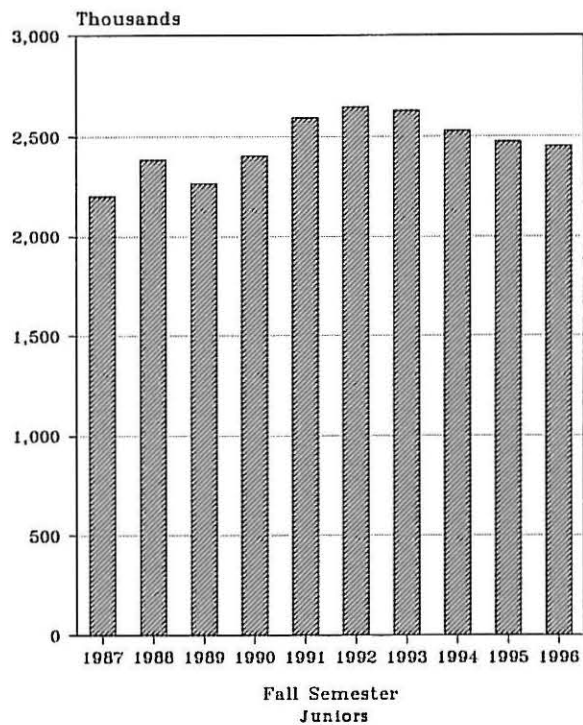
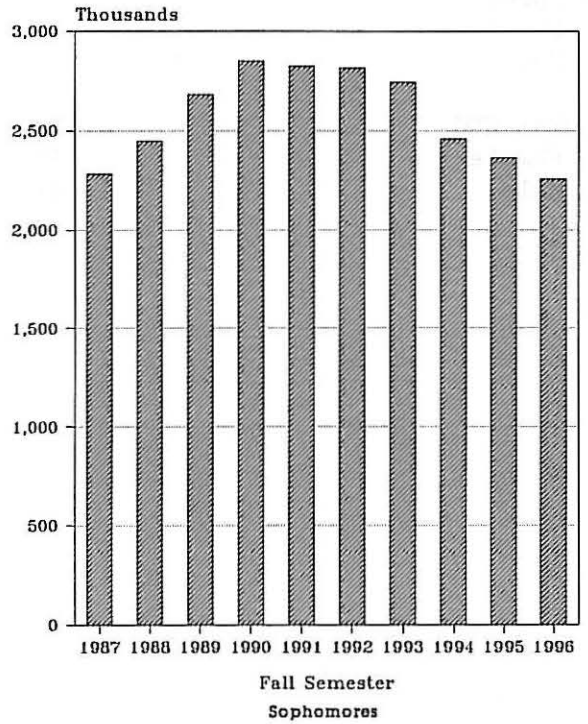
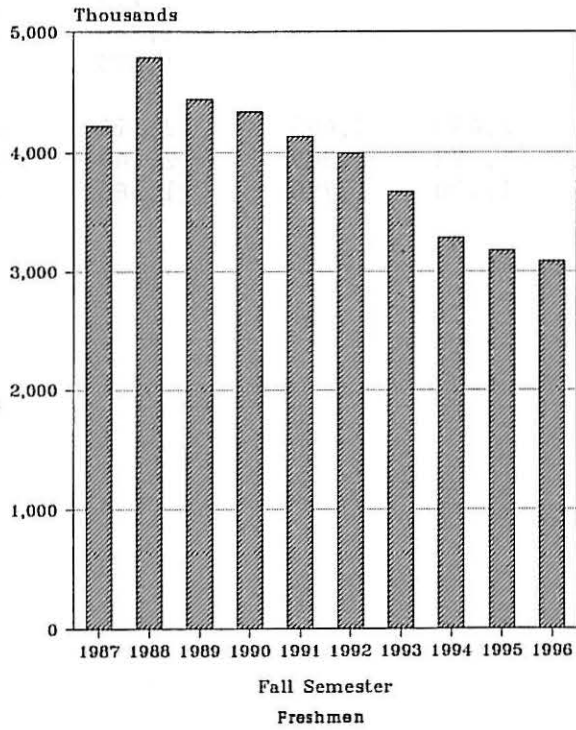
UNIVERSITY OF NEBRASKA AT OMAHA

DELIVERY-SITE HEAD COUNT ENROLLMENT BY COLLEGE, SEX, AND CLASS: FALL 1996

<u>College, Sex</u>	<u>Freshmen</u>	<u>Sophomores</u>	<u>Juniors</u>	<u>Seniors & Special</u>	<u>Graduate or Unclassified</u>	<u>Total</u>
AGRICULTURE	9	5	2	3		19
Female	6	1	1	2		10
Male	3	4	1	1		9
ARCHITECTURE	51	29	19	14		113
Female	20	13	9	7		49
Male	31	16	10	7		64
ARTS & SCIENCES	997	811	793	952		3,553
Female	595	461	454	500		2,010
Male	402	350	339	452		1,543
BUSINESS ADMINISTRATION	596	482	558	725		2,361
Female	255	242	249	326		1,072
Male	341	240	309	399		1,289
CONTINUING STUDIES	207	231	365	614		1,417
Female	88	103	153	252		596
Male	119	128	212	362		821
EDUCATION	244	200	292	756		1,492
Female	188	154	236	532		1,110
Male	56	46	56	224		382
ENGINEERING & TECHNOLOGY	130	98	93	201		522
Female	6	9	6	15		36
Male	124	89	87	186		486
FINE ARTS	135	92	93	150		470
Female	61	47	54	83		245
Male	74	45	39	67		225
HUMAN RESOURCES & FAMILY SCI	52	46	75	92		265
Female	52	44	72	89		257
Male	-	2	3	3		8
INFORMATION SCIENCE & TECH	59	25	10	30		124
Female	13	7	2	11		33
Male	46	18	8	19		91
PUB AFF & COMM SERVICE	193	149	151	158		651
Female	77	61	86	88		312
Male	116	88	65	70		339
UNIVERSITY DIVISION	412	86	1	-		499
Female	177	45	-	-		222
Male	235	41	1	-		277
INTER-CAMPUS					218	218
Female					112	112
Male					106	106

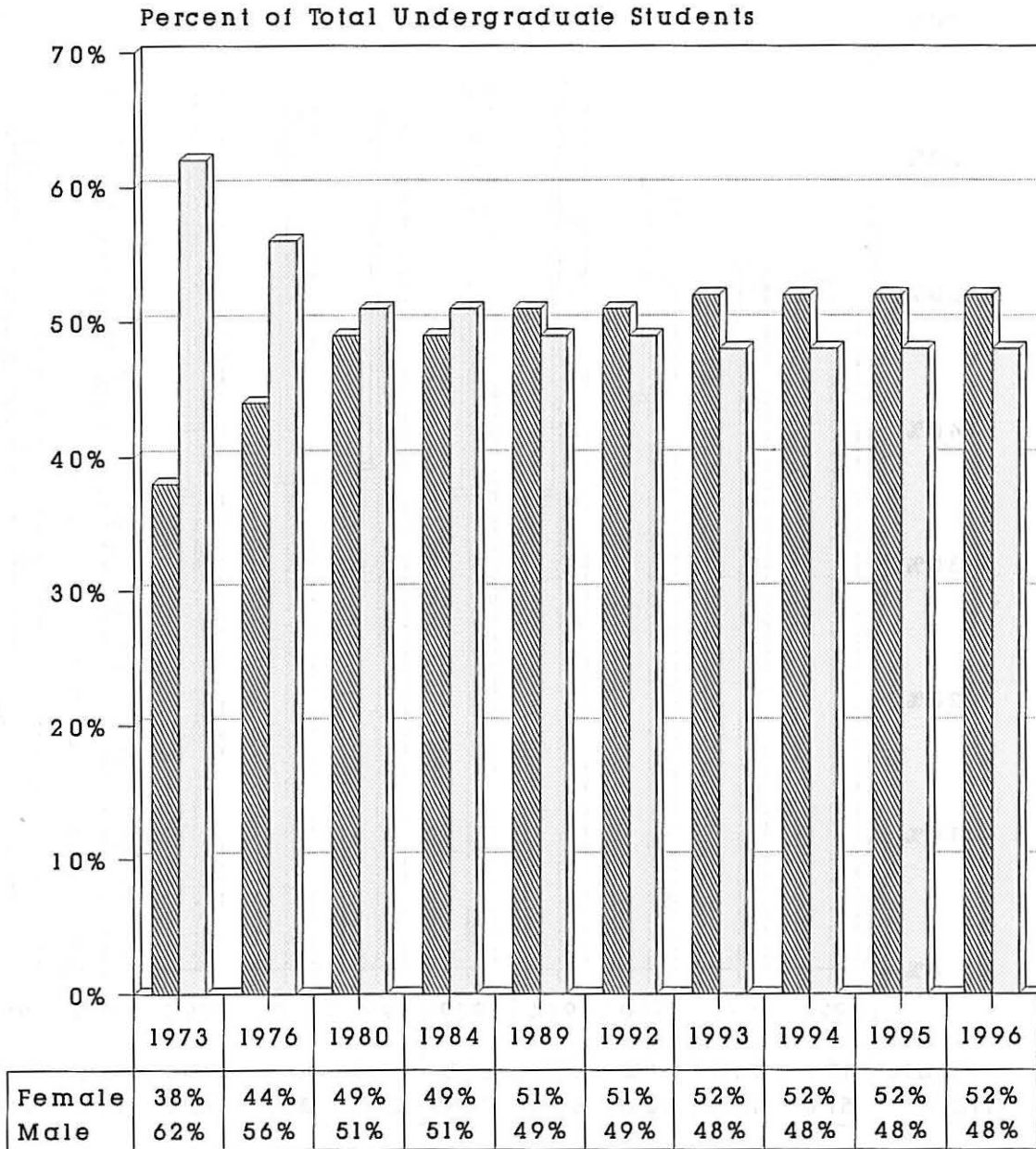
<u>College, Sex</u>	<u>Freshmen</u>	<u>Sophomores</u>	<u>Juniors</u>	<u>Seniors & Special</u>	<u>Graduate or Unclassified</u>	<u>Total</u>
NON-DEGREE					517	517
Female					280	280
Male					237	237
GRADUATE					2,779	2,779
Female					1,756	1,756
Male					1,023	1,023
TOTAL UNO	3,085	2,254	2,452	3,695	3,514	15,000
Female	1,538	1,187	1,322	1,905	2,148	8,100
Male	1,547	1,067	1,130	1,790	1,366	6,900

University of Nebraska at Omaha
 Delivery-Site Head Count Undergraduate Students;
 By Class: Fall Semesters: 1987 Through 1996
 (Excludes Inter-Campus and Non-Degree)



Source: Office of Institutional Research

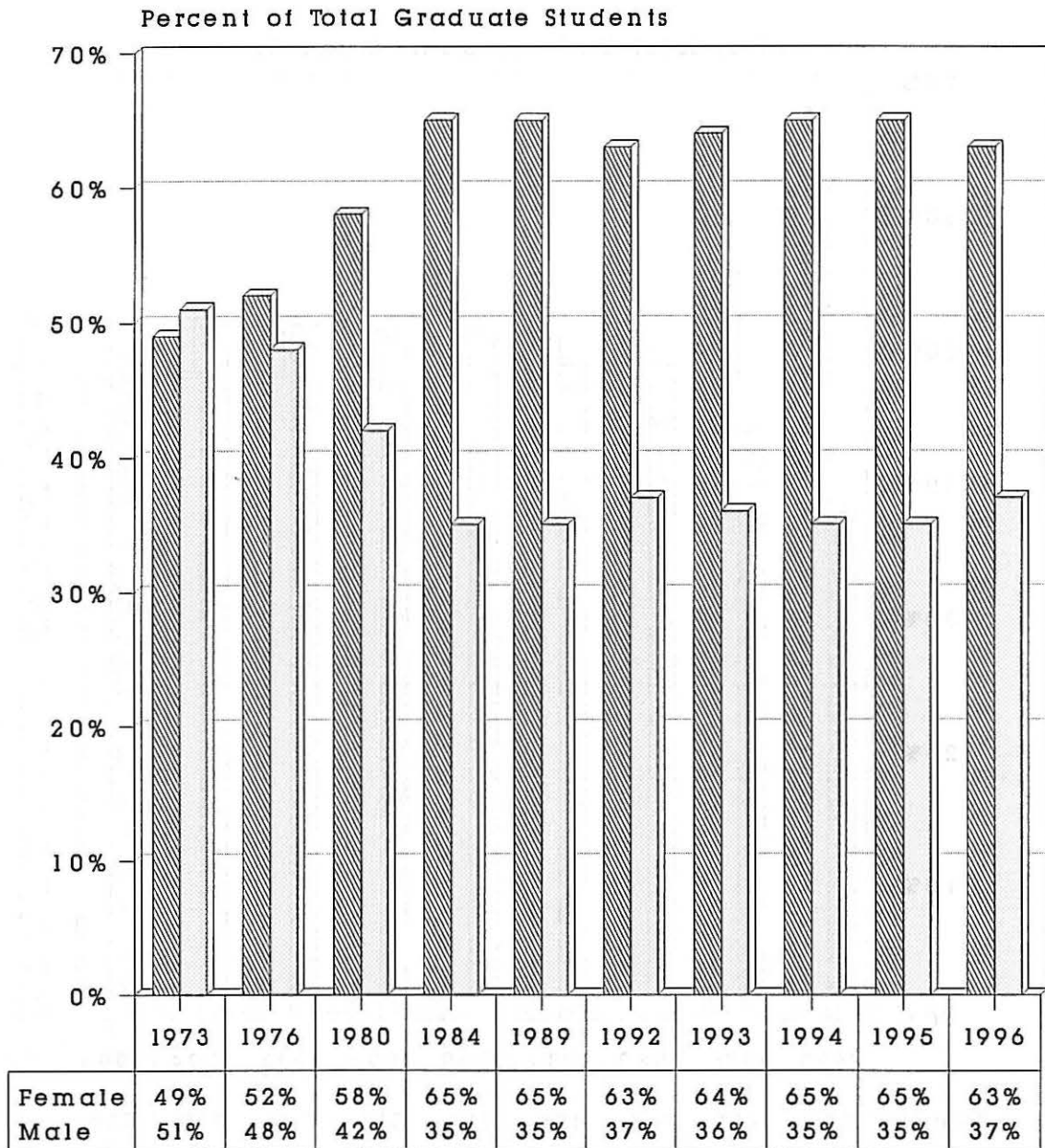
University of Nebraska at Omaha Percent of Delivery-Site Head Count Undergraduate Students; By Sex: Selected Fall Semesters: 1973 - 1996



Female
 Male

University of Nebraska at Omaha

Percent of Delivery-Site Head Count Graduate Students; By Sex: Selected Fall Semesters: 1973 - 1996



Female
 Male

Source: Office of Institutional Research

UNIVERSITY OF NEBRASKA AT OMAHA

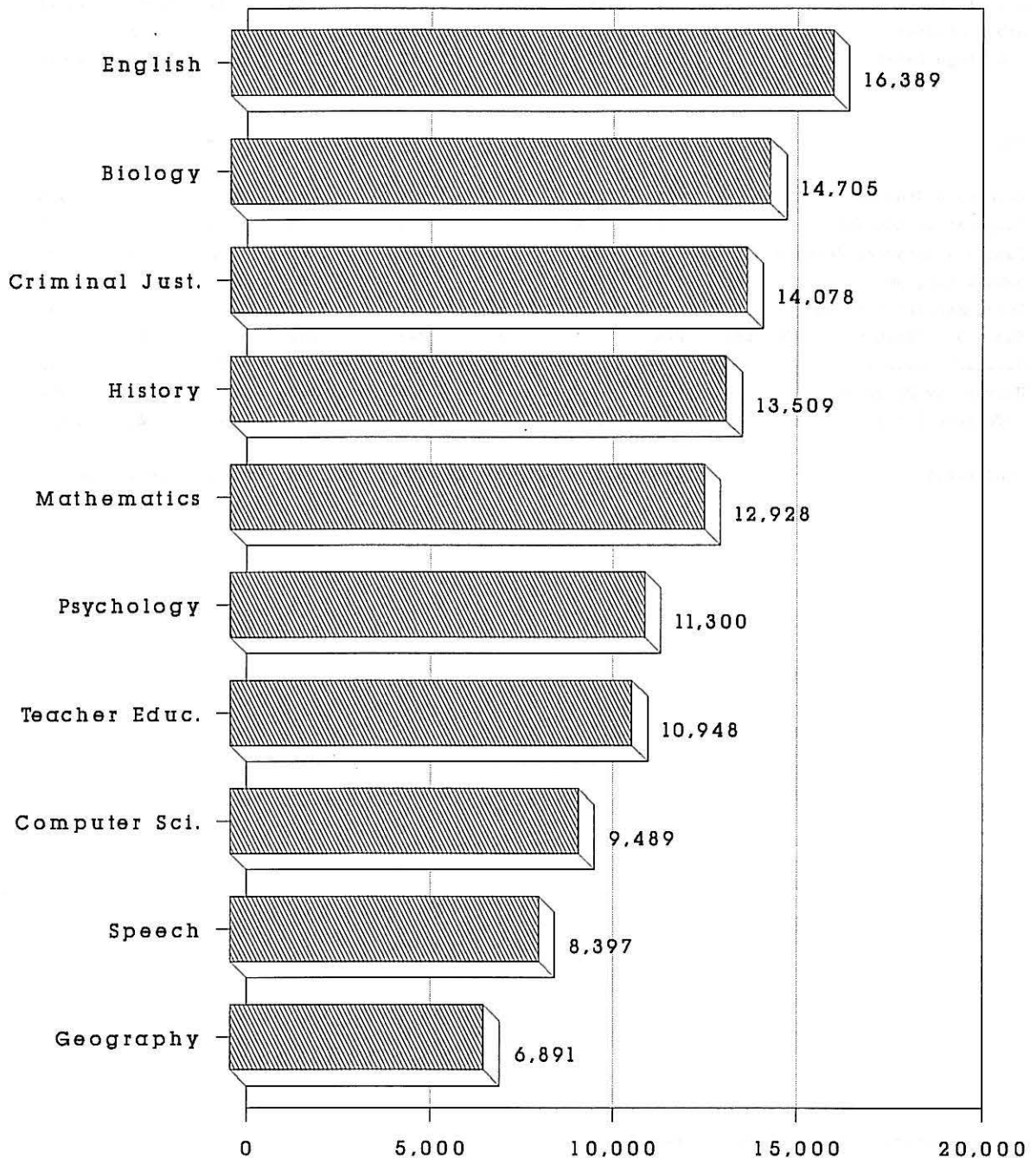
STUDENT CREDIT HOURS ENROLLED; BY COLLEGE AND CURRICULUM:
ACADEMIC YEARS 1995-96 AND 1996-97
(ADMINISTRATIVE-SITE BASIS)

	* * * 1995-96 * * *				* * * 1996-97 * * *				95-96 to 96-97
	<u>Lower</u>	<u>Upper</u>	<u>Grad</u>	<u>Total</u>	<u>Lower</u>	<u>Upper</u>	<u>Grad</u>	<u>Total</u>	<u>Pct Change</u>
ARTS & SCIENCES:									
Anthropology	1,424	393	9	1,826	1,434	255	3	1,692	(7.34)
Biology	12,221	2,419	595	15,235	10,590	3,021	563	14,174	(6.96)
Black Studies	4,923	405		5,328	4,755	300	9	5,064	(4.95)
Broadcasting	726	489	36	1,251	687	531	42	1,260	0.72
Chemistry	6,002	686	9	6,697	5,229	671	35	5,935	(11.38)
Chinese	42			42	99			99	135.71
Communication			470	470			337	337	(28.30)
English	13,035	2,538	573	16,146	13,580	2,415	636	16,631	3.00
Foreign Languages	72	29		101	28			28	(72.28)
French	981	254	18	1,253	916	237		1,153	(7.98)
Geography	5,419	1,195	322	6,936	5,379	1,133	334	6,846	(1.30)
Geology	1,799	248		2,047	1,566	146		1,712	(16.37)
German	786	139		925	817	104		921	(0.43)
History	11,334	1,724	320	13,378	11,601	1,797	242	13,640	1.96
Humanities	1,005			1,005	1,245			1,245	23.88
International Studies	624	126		750	732	63		795	6.00
Italian	202			202	192			192	(4.95)
Japanese	205			205	256			256	24.88
Journalism	1,488	2,257	126	3,871	1,452	2,009	84	3,545	(8.42)
Mathematics	11,560	894	291	12,745	12,249	718	144	13,111	2.87
Natural Science	264			264	258	13		271	2.65
New Start	15			15	11			11	(26.67)
Philosophy	2,094	576		2,670	2,175	516		2,691	0.79
Physics	6,581	123	6	6,710	6,447	191	3	6,641	(1.03)
Political Science	4,176	1,188	12	5,376	4,053	1,221	27	5,301	(1.40)
Psychology	6,175	4,094	1,346	11,615	5,817	3,907	1,260	10,984	(5.43)
Religion	2,361	612		2,973	2,511	737	6	3,254	9.45
Russian	122	15		137	115	114		229	67.15
Sociology	5,148	1,338	202	6,688	4,680	1,713	179	6,572	(1.73)
Spanish	3,155	665	1	3,821	3,241	649	3	3,893	1.88
Speech	6,747	1,469	75	8,291	6,819	1,597	87	8,503	2.56
Statistics		288	123	411		297	105	402	(2.19)
Women Studies	201	3		204	222			222	8.82
College Total	110,887	24,167	4,534	139,588	109,156	24,355	4,099	137,610	(1.42)

	* * * 1995-96 * * *				* * * 1996-97 * * *				95-96 to 96-97
	<u>Lower</u>	<u>Upper</u>	<u>Grad</u>	<u>Total</u>	<u>Lower</u>	<u>Upper</u>	<u>Grad</u>	<u>Total</u>	<u>Total Pct Change</u>
BUSINESS ADMINISTRATION									
Business Administration	-	-	-	-	717	1,632		2,349	-
Economics	4,110	497	537	5,144	3,318	462	492	4,272	(16.95)
Finance, Banking & Insurance	195	3,048		3,243	177	2,701		2,878	(11.26)
Law & Society		2,628		2,628		2,343		2,343	(10.84)
Management	777	4,902		5,679	558	5,052		5,610	(1.22)
Marketing	99	2,896		2,995	138	3,050		3,188	6.44
MBA			4,170	4,170			3,828	3,828	(8.20)
Professional Accounting	3,807	2,641	144	6,592	3,108	2,289	144	5,541	(15.94)
Real Estate-Land Use Economics	528	360		888	480	492		972	9.46
College Total	9,516	16,972	4,851	31,339	8,496	18,021	4,464	30,981	(1.14)
EDUCATION									
Counseling & Guidance		75	2,411	2,486		76	2,367	2,443	(1.73)
Education Core Program	4,890			4,890	4,653			4,653	(4.85)
Educational Administration			1,288	1,288			1,684	1,684	30.75
Health Education	1,755	2,539	456	4,750	1,842	2,669	447	4,958	4.38
HPER	453		245	698	414		276	690	(1.15)
Physical Education Activities	1,520			1,520	1,635			1,635	7.57
Physical Education	1,521	2,096	462	4,079	1,697	2,261	441	4,399	7.85
Recreation-Leisure Study	222	319	186	727	363	293	156	812	11.69
Special Education	342	2,317	1,629	4,288	330	2,430	1,450	4,210	(1.82)
Teacher Education	171	7,375	3,299	10,845	105	7,651	3,294	11,050	1.89
College Total	10,874	14,721	9,976	35,571	11,039	15,380	10,115	36,534	2.71
FINE ARTS									
Art	4,014	1,922	79	6,015	3,684	1,635	66	5,385	(10.47)
Dramatic Arts	2,006	78	95	2,179	1,955	174	108	2,237	2.66
Fine Arts			6	6	-	-	-	-	-
Music	5,103	959	299	6,361	5,351	760	319	6,430	1.08
Writer's Workshop	957	228	12	1,197	889	331	20	1,240	3.59
College Total	12,080	3,187	491	15,758	11,879	2,900	513	15,292	(2.96)
INFORMATION SCIENCE & TECHNOLOGY									
Computer Science	6,966	1,245	1,008	9,219	7,650	1,165	943	9,758	5.85
Info Systems & Quant Analysis	1,769	4,926	147	6,842	1,090	3,189	543	4,822	(29.52)
College Total	8,735	6,171	1,155	16,061	8,740	4,354	1,486	14,580	(9.22)

	* * * 1995-96 * * *				* * * 1996-97 * * *				95-96 to 96-97
	<u>Lower</u>	<u>Upper</u>	<u>Grad</u>	<u>Total</u>	<u>Lower</u>	<u>Upper</u>	<u>Grad</u>	<u>Total</u>	<u>Total</u> <u>Pct Change</u>
PUBLIC AFFAIRS & COMMUNITY SERVICE									
Aviation	1,855	620	80	2,555	1,826	629	93	2,548	(0.27)
Criminal Justice	7,134	6,148	953	14,235	6,816	6,140	965	13,921	(2.21)
Gerontology	1,209	877	355	2,441	1,227	1,110	366	2,703	10.73
Goodrich	1,161			1,161	1,095			1,095	(5.68)
Public Administration	429	304	2,337	3,070	525	240	2,406	3,171	3.29
Social Work	762	1,065	3,251	5,078	672	1,086	2,983	4,741	(6.64)
Urban Studies	180	186	191	557	147	143	172	462	(17.06)
College Total	12,730	9,200	7,167	29,097	12,308	9,348	6,985	28,641	(1.57)
OTHER									
Aerospace Studies	61	327		388	81	384		465	19.85
Cooperative Education	3	3		6	3	4		7	16.67
Family & Consumer Science	228	282	3	513	129	252	6	387	(24.56)
Honors Program		164		164	66	147		213	29.88
Human Resources & Family Sci	-	-	-	-	46			46	-
Human Nutrition & Food Service	276		3	279	243		14	257	(7.89)
Military Science	48	79		127	16	56		72	(43.31)
University Division	408			408	982			982	140.69
College Total	1,024	855	6	1,885	1,566	843	20	2,429	28.86
UNO Total	165,846	75,273	28,180	269,299	163,184	75,201	27,682	266,067	(1.20)

University of Nebraska at Omaha
 Ten Largest Curricula; Academic Year
 Student Credit Hours: Average, 1995-96 & 1996-97
 (Administrative-Site Basis)



Source: Office of Institutional Research

UNIVERSITY OF NEBRASKA AT OMAHA

AVERAGE STUDENT CREDIT HOURS ENROLLED; BY COLLEGE AND CURRICULUM:
 ACADEMIC YEARS 1991-92 THRU 1993-94 AND 1994-95 THRU 1996-97
 (ADMINISTRATIVE-SITE BASIS)

	* * * * * *AVERAGE* * * * * *				* * * * * *AVERAGE* * * * * *				Total
	* * *1991-92 THUR 1993-94* * *				* * *1994-95 THUR 1996-97* * *				Pct Change
	Lower	Upper	Grad	Total	Lower	Upper	Grad	Total	
ARTS & SCIENCES									
Anthropology	2,285	370	5	2,660	1,466	344	7	1,817	(31.69)
Biology	15,026	2,034	590	17,650	11,998	2,712	615	15,325	(13.17)
Black Studies	4,435	699	10	5,144	4,926	416	3	5,345	3.91
Broadcasting	697	546	44	1,287	658	496	34	1,188	(7.69)
Chemistry	6,534	664	34	7,232	5,866	700	30	6,596	(8.79)
Chinese	45			45	57			57	26.67
Communication			320	320			413	413	29.06
English	15,299	2,334	663	18,296	13,757	2,459	584	16,800	(8.18)
Foreign Languages	36	69		105	45	58		103	(1.90)
French	1,630	257	4	1,891	984	254	6	1,244	(34.21)
Geography	6,288	1,220	292	7,800	5,495	1,172	299	6,966	(10.69)
Geology	1,867	174		2,041	1,660	216	1	1,877	(8.04)
German	1,324	258	3	1,585	774	151		925	(41.64)
History	12,486	1,525	389	14,400	11,517	1,666	334	13,517	(6.13)
Humanities	419			419	960			960	129.12
International Studies	774	87		861	683	89		772	(10.34)
Italian	175			175	181			181	3.43
Japanese	114			114	200			200	75.44
Journalism	1,568	2,356	126	4,050	1,483	2,139	110	3,732	(7.85)
Mathematics	15,345	784	303	16,432	11,919	819	247	12,985	(20.98)
Natural Science	207			207	261	4		265	28.02
New Start	117			117	23			23	(80.34)
Philosophy	2,303	692	5	3,000	1,991	513	2	2,506	(16.47)
Physics	7,579	285	4	7,868	6,601	170	6	6,777	(13.87)
Political Science	4,984	1,407	32	6,423	4,099	1,191	22	5,312	(17.30)
Psychology	8,140	4,274	1,480	13,894	6,065	4,126	1,296	11,487	(17.32)
Religion	2,062	664	13	2,739	2,508	680	16	3,204	16.98
Russian	282			282	151	43		194	(31.21)
Sociology	8,253	1,381	162	9,796	5,224	1,492	232	6,948	(29.07)
Spanish	3,470	649	3	4,122	3,278	658	7	3,944	(4.32)
Speech	7,667	1,580	75	9,323	6,856	1,589	71	8,516	(8.66)
Statistics		289	149	438		311	113	424	(3.20)
Women Studies	74			74	216	2		218	194.59
College Total	131,527	24,600	4,706	160,833	111,900	24,471	4,450	140,821	(12.44)

* * * * *AVERAGE* * * * *
* * *1991-92 THUR 1993-94* * *

* * * * *AVERAGE* * * * *
* * *1994-95 THUR 1996-97* * *

	<u>Lower</u>	<u>Upper</u>	<u>Grad</u>	<u>Total</u>	<u>Lower</u>	<u>Upper</u>	<u>Grad</u>	<u>Total</u>	<u>Total Pct Change</u>
BUSINESS ADMINISTRATION									
Business Administration	-	-	-	-	239	544		783	-
Economics	5,118	711	344	6,173	3,896	510	513	4,919	(20.31)
Finance, Banking & Insurance	149	3,758		3,907	190	2,990		3,180	(18.61)
Law & Society		2,858		2,858		2,550		2,550	(10.78)
Management	697	5,330		6,027	687	5,112		5,799	(3.78)
Marketing	138	3,629		3,767	79	3,141		3,220	(14.52)
MBA			3,865	3,865			3,942	3,942	1.99
Professional Accounting	4,570	3,275	226	8,071	3,670	2,509	161	6,340	(21.45)
Real Estate-Land Use Economics	637	429		1,066	556	449		1,005	(5.72)
College Total	11,309	19,990	4,435	35,734	9,317	17,805	4,616	31,738	(11.18)
EDUCATION									
Counseling & Guidance		87	1,876	1,963		77	2,372	2,449	24.76
Education Core Program	4,743			4,743	4,716			4,716	(0.57)
Educational Administration			1,181	1,181			1,332	1,332	12.79
Health Education	1,628	2,443	421	4,492	1,804	2,573	487	4,864	8.28
HPER	433		236	669	438		245	683	2.09
Physical Education Activities	1,864			1,864	1,563			1,563	(16.15)
Physical Education	1,926	1,887	573	4,386	1,652	2,149	498	4,299	(1.98)
Recreation-Leisure Study	238	249	189	676	305	308	187	800	18.34
Special Education	312	2,191	1,627	4,130	340	2,387	1,585	4,312	4.41
Teacher Education	736	6,986	2,782	10,504	137	7,507	3,281	10,925	4.01
College Total	11,881	13,843	8,884	34,609	10,954	15,001	9,986	35,941	3.85
FINE ARTS									
Art	4,336	1,732	42	6,110	3,971	1,693	64	5,728	(6.25)
Dramatic Arts	2,354	121	59	2,534	1,987	152	96	2,235	(11.80)
Fine Arts		4		4			4	4	0.00
Music	6,095	488	195	6,778	5,294	829	266	6,389	(5.74)
Writer's Workshop	810	144	1	955	964	256	12	1,232	29.01
College Total	13,595	2,489	298	16,382	12,216	2,931	443	15,590	(4.83)
INFORMATION SCIENCE & TECHNOLOGY									
Computer Science	6,811	1,308	1,206	9,325	7,129	1,209	1,041	9,379	0.58
Info Systems & Quant Analysis	2,477	3,839		6,316	1,609	4,235	230	6,074	(3.83)
College Total	9,288	5,147	1,206	15,641	8,738	5,445	1,271	15,454	(1.20)

	* * * * * AVERAGE * * * * *				* * * * * AVERAGE * * * * *				Total
	Lower	Upper	Grad	Total	Lower	Upper	Grad	Total	Pct Change
* * * 1991-92 THUR 1993-94 * * *									
* * * 1994-95 THUR 1996-97 * * *									
PUBLIC AFFAIRS & COMMUNITY SERV									
Aviation	1,896	568		2,464	1,798	668	67	2,533	2.80
Criminal Justice	7,127	6,178	442	13,747	6,960	6,122	932	14,014	1.94
Gerontology	1,256	1,061	484	2,801	1,242	957	389	2,588	(7.60)
Goodrich	1,096			1,096	1,123			1,123	2.46
Public Administration	412	344	2,194	2,950	493	303	2,376	3,172	7.53
Social Work	786	1,377	3,041	5,204	764	1,028	3,140	4,932	(5.23)
Urban Studies	201	108	149	458	186	154	189	529	15.50
College Total	12,774	9,636	6,310	28,720	12,566	9,230	7,093	28,889	0.59
OTHER									
Aerospace Studies	58	53		111	78	289		367	230.63
Community & Regional Planning		3	1	4	-	-	-	-	-
Cooperative Education	2	2		4	2	2		4	0.00
Family & Consumer Science	-	-	-	-	119	178	3	300	-
Honors Program	58	182		240	25	163		188	(21.67)
Human Development & Family	432	320	4	756	87	102	2	191	(74.74)
Human Nutrition & Food Serv	204			204	257		10	267	30.88
Military Science	14	53		67	31	67		98	46.27
Textiles, Clothing & Design	42	48		90	-	-	-	-	-
University Division	485			485	592			592	22.06
College Total	1,295	661	5	1,961	1,207	801	15	2,023	3.16
UNO Total	191,668	76,367	25,845	293,880	166,899	75,684	27,874	270,457	(7.97)

NOTE: Totals may not add due to rounding.

UNIVERSITY OF NEBRASKA AT OMAHA

DELIVERY-SITE HEAD COUNT ENROLLMENT BY COLLEGE AND MAJOR:
FALLS 1994, 1995, AND 1996

<u>College, Major</u>	<u>1994</u>	<u>1995</u>	<u>1996</u>
AGRICULTURE	8	12	19
Pre-Agriculture Sciences	3	5	6
Pre-Food Science & Technology	-	1	-
Pre-Horticulture	3	2	9
Pre-Natural Resources	2	4	4
ARCHITECTURE	75	109	113
Pre-Architecture	47	77	84
Pre-Interior Design	28	32	29
ARTS & SCIENCES	4,064	3,907	3,553
Biology	408	415	401
Biotechnology	29	32	43
Black Studies	8	7	5
Broadcasting	114	121	107
Chemistry	49	42	30
Communication	48	65	69
Computer Science	294	308	227
Early Entry Students	19	34	17
Economics	18	14	7
English	95	118	122
Environmental Studies	113	127	130
French	9	7	10
General Science	12	10	12
General Studies	1	3	-
Geography	28	31	24
Geology	37	28	25
German	11	6	5
History	86	89	88
Interdisciplinary Studies	7	4	3
International Studies	113	101	93
Journalism	185	171	150
Liberal Studies	5	1	1
Mathematics	82	67	58
Philosophy	21	18	18
Physics	38	32	29
Physics-Engineering	6	4	10
Political Science	79	80	76
Pre-Agricultural Science	1	-	-
Pre-Architecture	26	-	-
Pre-Chiropractic Medicine	9	5	8
Pre-Counseling	1	-	-
Pre-Dental Hygiene	7	19	18
Pre-Dentistry	16	17	17
Pre-Horticulture	-	1	-
Pre-Law	41	46	33

<u>College, Major</u>	<u>1994</u>	<u>* * * * * * * * * FALL * * * * * * * * *</u> <u>1995</u>	<u>1996</u>
ARTS & SCIENCES (Cont'd)			
Pre-Medical Technology	23	17	8
Pre-Medicine	138	180	173
Pre-Nuclear Medicine Technology	5	-	-
Pre-Nursing	254	232	181
Pre-Occupational Therapy	29	25	24
Pre-Optometry	5	5	6
Pre-Pharmacy	85	75	71
Pre-Physical Therapy	135	144	135
Pre-Physician's Assistant	49	56	41
Pre-Radiation Science	10	7	3
Pre-Radiologic Technology	38	23	23
Pre-Respiratory Therapy	13	11	8
Pre-Technical Science	74	65	66
Pre-Veterinarian Medicine	24	33	39
Psychology	405	396	396
Religion	11	6	11
Sociology	56	63	66
Spanish	23	27	27
Speech Communication	53	28	27
Undeclared Major	618	491	412
BUSINESS ADMINISTRATION			
Banking & Financial Markets	2,538	2,424	2,361
Banking and Finance	24	21	17
Business Administration	35	49	55
Business Economics	-	1	-
Business Finance	-	-	5
Business Information Systems	52	36	30
Decision Sciences	1	-	-
Economics	8	11	6
Fashion Merchandising	11	7	9
Individually Designed Major	1	1	1
M.B.A. Preparatory	3	3	6
Management	23	18	16
Management Info Systems	111	93	78
Marketing	45	68	70
Marketing Management	109	111	111
Marketing Research	1	2	-
Personnel Management	2	2	1
Pre-Business	10	21	28
Pre-Law	1,834	1,731	1,698
Production/Operations Management	2	7	-
Professional Accounting	-	1	1
Real Estate & Land Use Economics	202	194	201
Retail Management	15	16	19
Sales and Sales Management	1	-	-
Small Business Management	-	5	2
Undeclared Major	-	3	7
	48	23	-

	* * * * * * * * * * *FALL* * * * * * * * *		
<u>College. Major</u>	<u>1994</u>	<u>1995</u>	<u>1996</u>
CONTINUING STUDIES	1,416	1,357	1,417
Art	21	14	11
Aviation Administration	29	17	19
Aviation Studies	61	83	64
Biology	31	32	38
Black Studies	4	5	4
Broadcasting	8	12	11
Chemistry	6	5	8
Communication	41	46	43
Computer Science	122	126	145
Criminal Justice	104	96	119
Dramatic Arts	2	1	1
Economics	5	4	8
English	20	20	22
French	3	2	1
General Administration	193	141	167
General Science	10	7	8
General Studies	110	124	99
Geography	10	17	17
Geology	4	3	1
German	4	2	3
Gerontology	16	15	14
Health Education	19	14	5
History	27	24	40
Human Services Delivery	1	-	-
International Studies	5	4	3
Journalism	9	7	6
Library Media	6	4	8
Mathematics	13	21	23
Music	5	3	4
Paralegal Studies	11	13	11
Philosophy	4	3	3
Physical Education	18	10	8
Physical Education, K-12	-	-	1
Physics	6	7	3
Political Science	14	16	18
Pre-Aviation			5
Psychology	70	75	70
Recreation/Leisure Studies	4	6	13
Religion	4	7	7
Sociology	20	26	34
Spanish	3	2	9
Speech Communication	3	3	4
Undeclared Major	370	340	339
EDUCATION	1,553	1,465	1,492
Community Health	20	20	21
Elementary Educ/Special Educ	3	1	3
Elementary Education	734	730	770
Exercise Science	82	83	93
Health Education	3	1	1
Library Science	10	5	7
Physical Education	-	-	1
Physical Education, K-12	-	-	1
Recreation/Leisure Studies	25	24	22

<u>College, Major</u>	<u>1994</u>	<u>* * * * * * * * *FALL* * * * * * * * *</u> <u>1995</u>	<u>1996</u>
EDUCATION (Cont'd)			
Secondary Educ/Special Educ	33	30	17
Secondary Education	564	489	494
Speech Pathology	66	57	62
Undeclared Major	13	25	-
ENGINEERING & TECHNOLOGY			
Civil Engineering	595	553	522
Computer Engineering	102	101	81
Construction Engineering Tech	-	1	8
Drafting Design Engr Tech	133	143	134
Electronics Engineering Tech	44	26	17
Engineering Transfer Program	128	110	120
Fire Protection Technology	51	46	-
Industrial Technology	52	56	50
Manufacturing Engr Tech	35	21	25
Pre-Biological Systems Engr	50	48	50
Pre-Chemical Engineering	-	1	1
Pre-Electrical Engineering	-	-	7
Pre-Industrial Engineering	-	-	11
Pre-Mechanical Engineering	-	-	1
FINE ARTS	395	463	470
Art History	30	28	26
Art Studio	149	185	179
Creative Writing-Combined	-	7	22
Creative Writing-Fiction	-	-	2
Creative Writing-Poetry	-	1	2
Dramatic Arts	36	54	54
Individually Designed Major	4	4	2
Music	-	3	3
Music Educ K-12-Brass	16	12	18
Music Educ K-12-Keyboard	9	8	11
Music Educ K-12-Percussion	8	4	4
Music Educ K-12-String	7	10	7
Music Educ K-12-Voice	32	37	32
Music Educ K-12-Woodwind	11	11	13
Music Performance-Brass	4	2	4
Music Performance-Keyboard	4	12	13
Music Performance-Percussion	4	2	2
Music Performance-String	15	19	15
Music Performance-Theory Comp	5	6	4
Music Performance-Voice	7	6	10
Music Performance-Woodwind	2	3	7
Undeclared Major	5	4	2
Writer's Workshop	47	43	37
Writer's Workshop w/Sr Thesis	-	2	1

	* * * * * * * * * * FALL * * * * * * * * *		
<u>College, Major</u>	<u>1994</u>	<u>1995</u>	<u>1996</u>
HUMAN RESOURCES & FAMILY SCIENCES	216	231	265
Child Development Studies	-	21	21
Consumer Science & Education	9	2	-
Dietetics	-	60	74
Early Childhood Education	-	-	2
Education and Family Resources	2	-	-
Family & Consumer Sci Communication	-	6	13
Family & Consumer Sci Education	-	7	6
Family Financial Management	-	1	6
Family & Individual in Later Years	1	-	-
Family Science	-	51	80
Home Economics/Communication	6	1	-
Human Devlpt & The Family	72	15	1
Human Nutrition & Food Serv Mgt	80	12	3
Merchandising	1	16	19
Nutritional Science	-	3	9
Restaurant & Food Service Management	4	4	6
Textile/Fashion Apparel & Design	-	5	18
Textiles, Clothing & Design	39	10	2
Textile Science	-	-	1
Undeclared Major	2	17	4
INFORMATION SCIENCE & TECHNOLOGY			124
Computer Science	-	-	112
Management Information Systems	-	-	12
PUBLIC AFFAIRS & COMM SERVICE	650	650	651
Criminal Justice	239	172	160
Gerontology	3	3	2
Pre-Aviation	56	58	55
Pre-Criminal Justice	196	264	302
Pre-Social Work	42	73	66
Public Administration	1	1	5
Social Work	100	61	54
Undeclared Major	5	4	1
Urban Studies	8	14	6
INTER-CAMPUS	258	181	218
NON-DEGREE	639	622	517
UNIVERSITY DIVISION	453	472	499
GRADUATE	2,707	2,770	2,779
Agency Counseling	120	132	92
Applied Sociology	2	2	-
Art	1	-	-
Behavioral Disorders	1	7	11
Biology	52	41	41
Business Administration	395	418	344
Chemistry	-	-	-
Communication	75	63	60
Community Counseling	-	-	35
Computer Science	118	93	86

<u>College, Major</u>	* * * * * * * * * * FALL * * * * * * * * *		
	<u>1994</u>	<u>1995</u>	<u>1996</u>
GRADUATE (Cont'd)			
Counseling Gerontology	3	1	3
Criminal Justice	70	75	68
Dramatic Arts	7	7	7
Economics	36	46	46
Educational Admin & Supervision	99	99	142
Educational Administration	6	13	18
Educational Psychology	3	3	1
Elementary Administration	2	1	-
Elementary Education	197	144	144
English	54	46	47
Exp Child Psychology	1	-	1
French	-	1	-
Geography	19	20	25
Gerontology	19	12	9
Health, Phys Ed & Recreation	154	116	132
History	54	32	32
Industrial/Org Psychology	14	17	18
Management Info Systems	-	3	46
Mathematics	36	26	21
Mental Retardation	4	2	-
Music	18	22	28
Non-Degree	173	461	484
Physics	-	-	1
Political Science	1	1	-
Professional Accounting	23	18	14
Psychology	61	52	38
Public Administration	212	200	210
Reading	51	59	52
Res Tchng in Learning Disabilities	59	43	38
School Coun & Guid Gerontology	8	4	1
School Coun/Elementary Level	31	25	21
School Coun/Secondary Level	24	22	19
School Psychology	19	18	24
Secondary Administration	2	1	1
Secondary Education	110	88	97
Social Gerontology	1	1	2
Social Work	204	210	197
Sociology	22	16	14
Speech Pathology	53	43	49
Student Affairs Practice in Higher Educ	15	17	17
Teacher Education	6	2	2
Teaching Emotionally Disturbed	29	12	6
Teaching Hearing Impaired	4	5	3
Teaching Mentally Retarded	13	10	10
Urban Education	-	2	1
Urban Studies	26	18	21
TOTAL UNO	15,567	15,216	15,000

Source: Office of Institutional Research

UNIVERSITY OF NEBRASKA AT OMAHA

DISTRIBUTION OF DELIVERY-SITE HEAD COUNT FRESHMAN CLASS
BY LOCALE OF HIGH SCHOOL GRADUATED FROM: FALL 1996

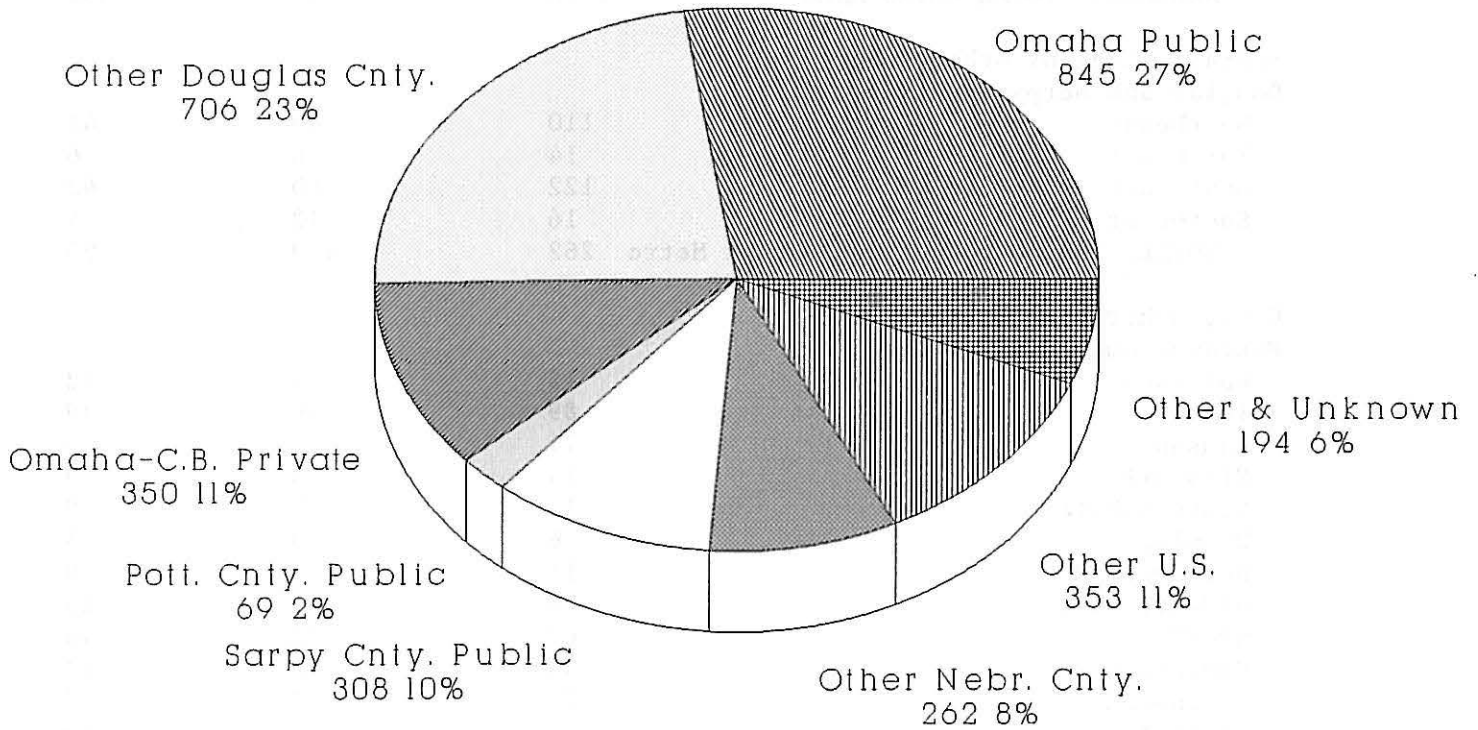
(Includes Only Freshmen in Degree-Granting Colleges & University Division)

	<u>All Ages</u>	<u>20 & Younger</u>	<u>21 & Older</u>
Omaha School District:			
Benson	73	54	19
Bryan	106	80	26
Burke	134	96	38
Central	173	124	49
North	133	106	27
Northwest	130	87	43
South	89	62	27
Tech	6	-	6
Individual Study Center	1	1	-
TOTAL, Omaha School District	845	610	235
Other Douglas County Public:			
Bennington	10	8	2
Elkhorn	39	33	6
Millard North	184	149	35
Millard South	204	159	45
Millard West	35	35	-
Ralston	97	76	21
Valley	9	7	2
Waterloo	8	7	1
Westside	120	94	26
TOTAL, Other Douglas County Public	706	568	138
Sarpy County Public:			
Bellevue East	63	49	14
Bellevue West	78	66	12
Gretna	14	11	3
Papillion/La Vista	134	108	26
Platteview/Springfield	19	14	5
TOTAL, Sarpy County Public	308	248	60
Pottawattamie County Public:			
Abraham Lincoln	35	27	8
Lewis Central	9	8	1
Thomas Jefferson	25	18	7
TOTAL, Pottawattamie County Public	69	53	16
Omaha-Council Bluffs Private:			
Bellevue Christian	15	15	-
Boy's Town	6	3	3
Brownell-Talbot	8	7	1
Creighton Prep	64	47	17
Cross Lutheran	1	1	-
Duchesne	5	2	3
Flanagan	8	5	3
Gross	100	85	15

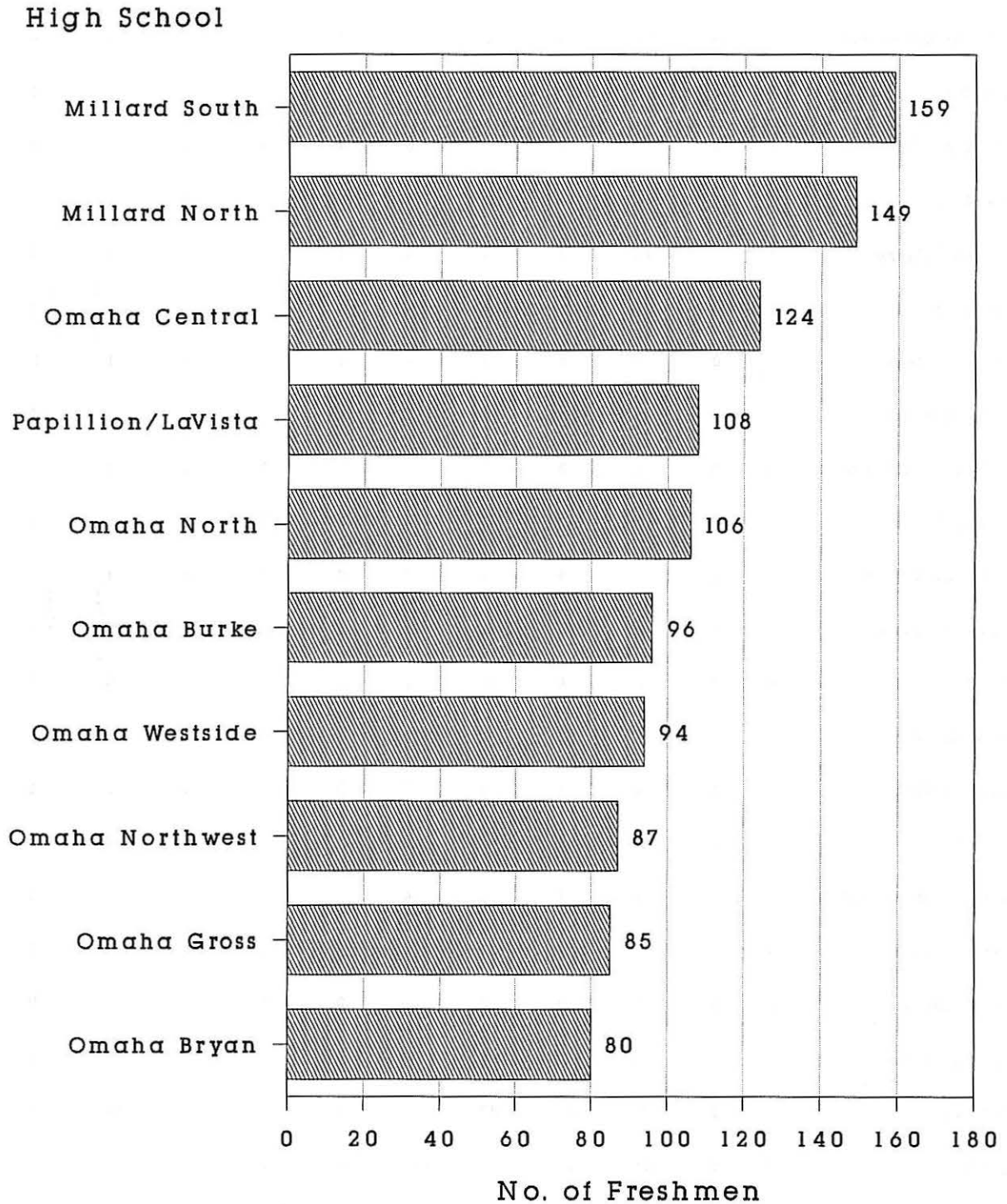
	<u>All Ages</u>	<u>20 & Younger</u>	<u>21 & Older</u>
Holy Name	1	-	1
Marian	33	27	6
Mercy	22	18	4
Midwestern Baptist Academy	1	1	-
Mt. Michael	8	3	5
Omaha Christian	10	9	1
Parrish Alternative	1	1	-
Roncalli	41	31	10
Ryan	2	-	2
Skutt Catholic	4	4	-
St. Alberts	11	9	2
St. Cecelia-Cathedral	4	-	4
St. Joseph's	5	-	5
TOTAL, Omaha-Council Bluffs Private	350	268	82
ADDENDA: TOTAL METRO AREA	2,278	1,747	531
 Nebraska Regions other than Douglas and Sarpy Counties:			
Northeast	110	69	41
Northwest	14	8	6
Southeast	122	80	42
Southwest	16	12	4
TOTAL, Nebraska Counties except Metro	262	169	93
 U.S., other than Nebraska and Pottawattamie County, Iowa:			
Colorado	16	4	12
Iowa	89	50	39
Kansas	11	2	9
Missouri	14	5	9
South Dakota	11	2	9
Wyoming	6	3	3
New England	11	3	8
Mid-Atlantic	30	7	23
Mid-West	62	22	40
Southeastern	35	12	23
Southwest	25	8	17
Mountain	14	4	10
Far West	29	9	20
TOTAL, U.S. other than Nebraska and Pottawattamie County, Iowa	353	131	222
GED Completion	87	8	79
Foreign Countries & Territories	79	15	64
Unknown/Miscellaneous	28	8	20
TOTAL UNO	3,087	2,078	1,009

Source: Office of Institutional Research

University of Nebraska at Omaha Distribution of Delivery-Site Head Count Freshmen Class By Locale of High School Graduated From: Fall 1996



University of Nebraska at Omaha Ten Largest Sources of Delivery-Site Head Count Freshmen 20 & Younger: Fall 1996



Source: Office of Institutional Research

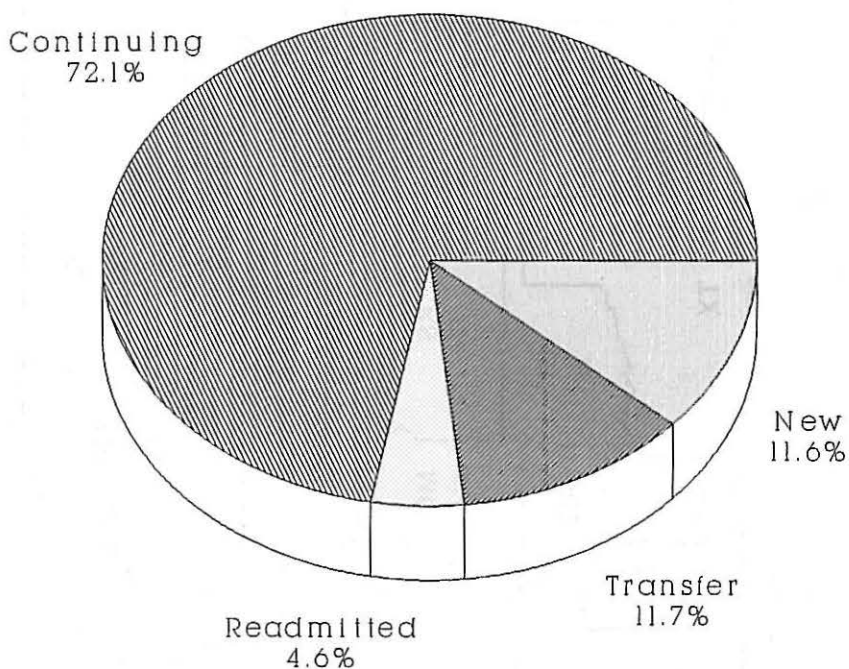
UNIVERSITY OF NEBRASKA AT OMAHA

NEW DELIVERY-SITE HEAD COUNT UNDERGRADUATE TRANSFER STUDENTS; BY LAST INSTITUTION ATTENDED: FALL 1996
 (Excludes Inter-Campus, Non-Degree, and Early Entry Students)

	<u>Agri</u>	<u>Arch</u>	<u>Arts & Sciences</u>	<u>Bus Admin</u>	<u>Cont Studies</u>	<u>Educ</u>	<u>Public Affairs</u>	<u>Fine Arts</u>	<u>Engi Tech</u>	<u>Info Sci & Tech</u>	<u>Human Res & Fam Sci</u>	<u>Other</u>	<u>Total</u>
Metropolitan Comm College	1	1	50	34	41	19	13	6	16	12	3	16	212
Univ of NE-Lincoln	1	1	45	35	11	22	5	1	5	6	5	23	160
University of NE-Kearney	0	0	11	19	6	6	3	3	1	2	0	4	55
Creighton University	2	0	13	11	8	6	1	2	0	1	1	5	50
Comm Col of Air Force	0	0	3	0	42	0	0	0	2	0	0	0	47
Foreign College	0	0	11	14	1	4	0	3	0	4	1	0	38
Iowa Western College	0	0	15	3	4	8	1	0	0	3	0	0	34
Bellevue University	1	0	7	6	8	2	1	0	1	0	1	1	28
Wayne State College	0	0	9	5	0	4	1	2	1	1	2	0	25
Iowa State University	0	0	3	1	6	2	1	0	2	1	1	1	18
SE Comm College-Lincoln	0	0	2	3	2	2	1	1	1	1	0	1	14
NE Tech Comm College	0	0	1	2	2	2	2	0	2	2	0	0	13
College of Saint Mary	0	1	5	4	1	0	0	1	0	1	0	0	13
University of Kansas	0	0	3	5	1	1	0	0	0	1	0	2	13
NWest Mo State Univ	0	0	2	4	0	1	0	0	1	0	1	2	11
Peru State College	0	0	1	1	1	1	1	0	1	2	0	3	11
Grace College Bible	0	1	0	4	0	1	0	2	1	1	1	0	11
Dana College	0	0	2	6	1	0	1	0	0	0	0	0	10
Univ South Dakota-Vermillion	0	0	1	1	3	4	0	0	0	0	1	0	10
University of Iowa	0	0	1	1	1	1	0	1	0	2	1	0	8
Nebraska Wesleyan	0	0	1	0	0	1	0	0	0	0	0	2	4
Univ Neb Med Center	0	0	0	0	0	3	0	0	0	0	0	0	3
Other Colleges	2	1	129	66	89	49	12	10	17	18	8	26	427
Total UNO	7	5	315	225	228	139	43	32	51	58	26	86	1,215

NOTE: "New Undergraduate Transfer Students" are those attending UNO for the first time in Fall 1996.
 Source: Office of Institutional Research

University of Nebraska at Omaha
Delivery-Site Head Count Undergraduate
Student Body By Status:
Fall 1996



Continuing Students: Attended UNO in 1994-95 and/or 1995-96

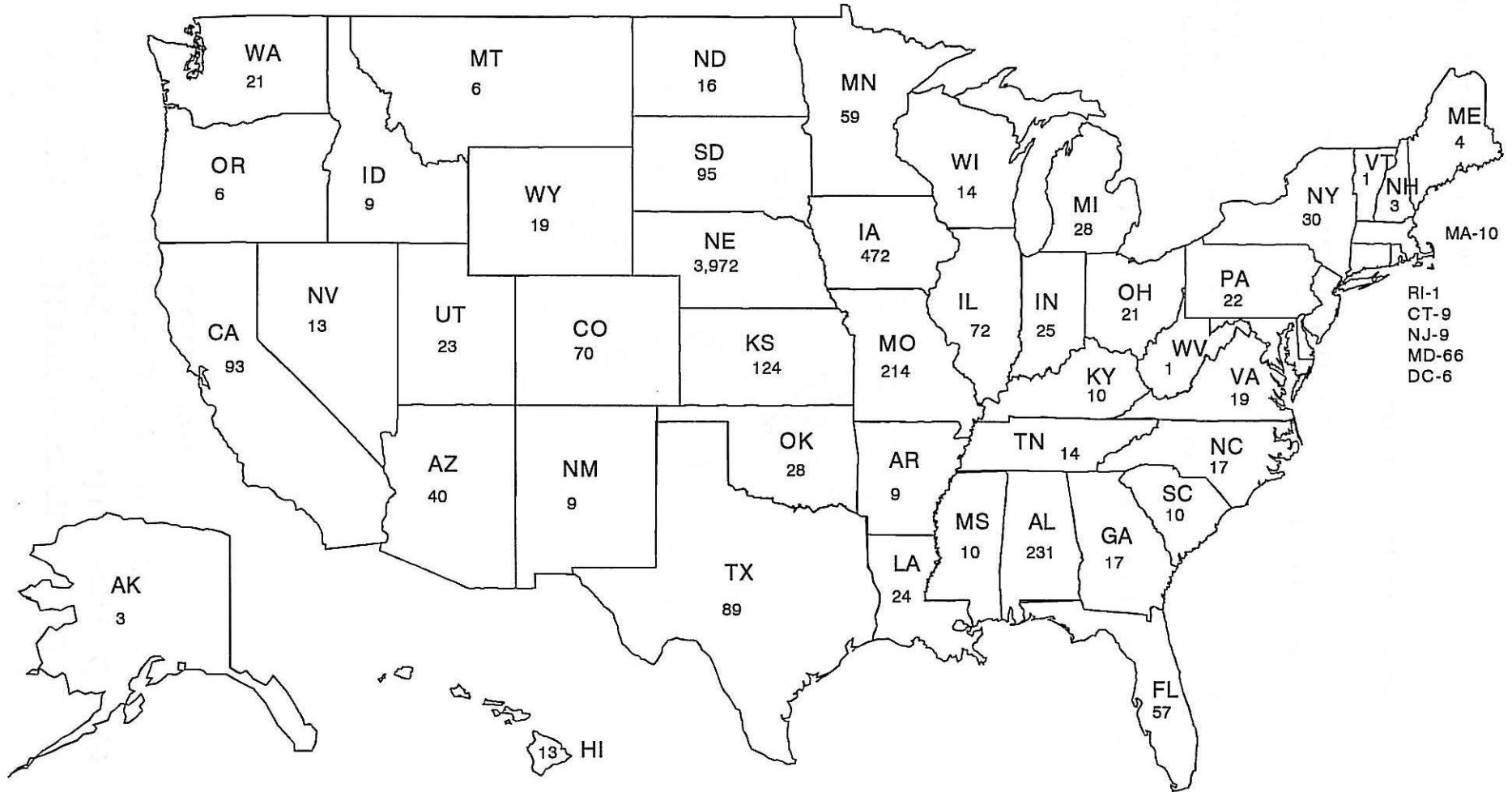
Readmitted Students: Attended UNO before 1994-95, and did not attend any other college/university before returning to UNO in Fall 1996

Transfer Students: Attended another college/university before coming to UNO in Fall 1996

New Students: UNO in 1996 was their first college/university

University of Nebraska at Omaha

Delivery-Site Head Count Undergraduate Transfer Students;
 By State of Transfer College/University: Fall 1996
 (Excludes Inter-Campus, Non-Degree and Early Entry Students)
 Total = 6,251



Outside the United States: 109

Other: 8

Source: Office of Institutional Research

UNIVERSITY OF NEBRASKA AT OMAHA

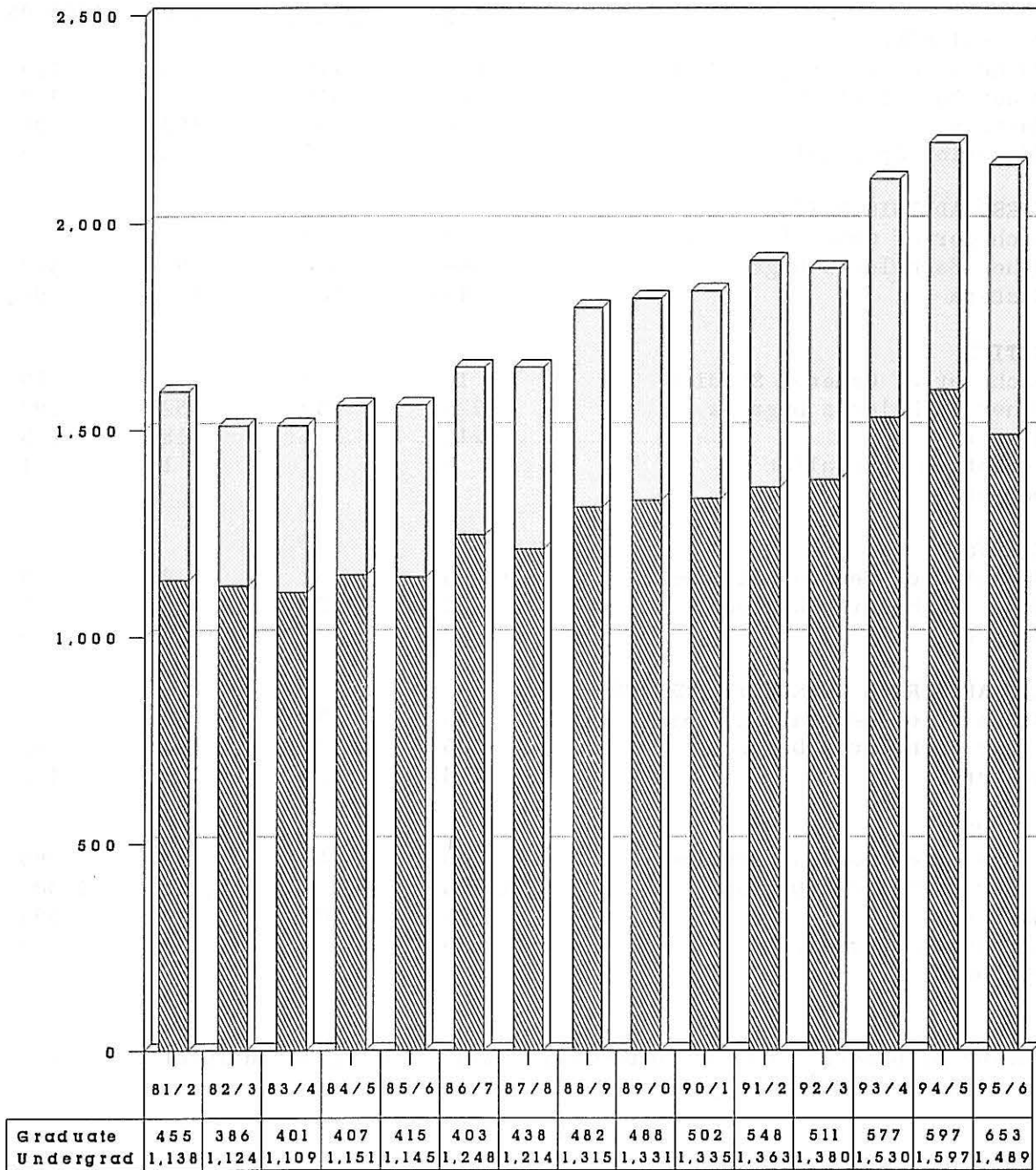
NUMBER OF DEGREES CONFERRED;
 BY COLLEGE OF MAJOR OR CONCENTRATION AND LEVEL OF DEGREE:
 1991-92 THROUGH 1995-96
 ADMINISTRATIVE-SITE BASIS

	<u>1991-92</u>	<u>1992-93</u>	<u>1993-94</u>	<u>1994-95</u>	<u>1995-96</u>
ARTS & SCIENCES					
*Bachelor of General Studies	127	119	133	129	148
Other Bachelor's Degrees	301	318	395	382	364
Masters	76	84	102	91	100
Education Specialist	7	3	3	2	5
BUSINESS ADMINISTRATION					
*Bachelor of General Studies	3	2	3	-	1
Other Bachelor's Degrees	366	376	391	382	316
Masters	114	106	114	96	125
EDUCATION					
*Bachelor of General Studies	16	9	7	15	8
Other Bachelor's Degrees	228	230	252	293	270
Masters	215	191	218	255	256
Education Specialist	9	1	1	1	1
Doctoral					1
FINE ARTS					
*Bachelor of General Studies	5	2	2	8	3
Other Bachelor's Degrees	23	29	30	48	53
Masters	9	6	7	5	9
PUBLIC AFFAIRS & COMMUNITY SERVICE					
*Bachelor of General Studies	28	35	33	37	69
Other Bachelor's Degrees	205	181	194	202	196
Masters	118	120	132	147	156
TOTAL UNO					
*Bachelor of General Studies	240	246	268	290	290
Other Bachelor's Degrees	1,123	1,134	1,262	1,307	1,199
Masters	532	507	573	594	646
Education Specialist	16	4	4	3	6
Doctoral					1

*Bachelor of General Studies in General Administration is an inter-college program; thus these are listed only under "TOTAL UNO."

Source: Office of Institutional Research

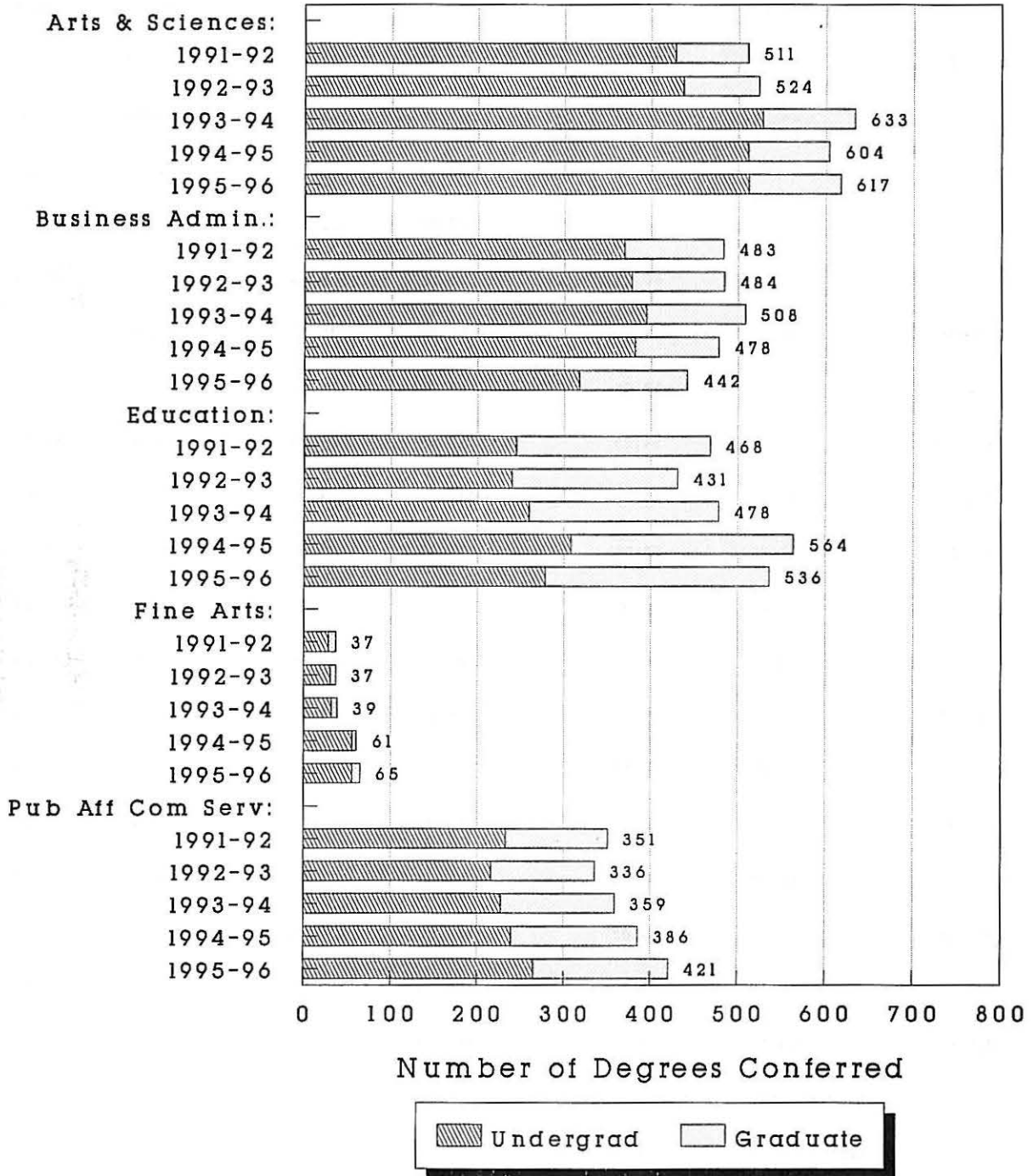
University of Nebraska at Omaha Number of Degrees Conferred; Total UNO 1981-82 Through 1995-96 Administrative-Site Basis



Undergrad
 Graduate

University of Nebraska at Omaha Number of Degrees Conferred; By College Of Major: 1991-92 Through 1995-96 Administrative-Site Basis

College/Year



UNIVERSITY OF NEBRASKA AT OMAHA
 TUITION RATES AND GENERAL STUDENT FEES
 1977-78 THROUGH 1996-97

<u>Year</u>	<u>Tuition Rate per Credit Hour</u>				<u>General</u>	
	<u>** Resident **</u>		<u>** Non-Resident **</u>		<u>** Student Fees **</u>	
	<u>Undergraduate</u>	<u>Graduate</u>	<u>Undergraduate</u>	<u>Graduate</u>	<u>Full-Time</u>	<u>Part-Time</u>
1977-78	\$21.00	\$21.00	\$57.00	\$57.00	\$36.00	\$18.00
1978-79	22.50	22.50	61.00	61.00	36.00	18.00
1979-80	24.00	24.00	65.00	65.00	43.00	25.00
1980-81	26.50	26.50	72.00	72.00	43.00	25.00
1981-82	29.25	31.25	79.25	81.25	43.00	25.00
1982-83*	35.48	40.15	95.97	100.65	43.00	25.00
1983-84	34.50	41.00	93.50	100.00	44.50	26.50
1984-85	38.00	47.00	103.00	112.00	46.50	28.00
1985-86*	43.75	54.25	119.00	129.25	54.25	33.00
1986-87	41.75	51.75	113.25	123.25	59.25	36.00
1987-88	42.75	53.00	115.50	125.75	50.00	50.00
1988-89	45.25	56.50	122.25	134.00	52.00	52.00
1989-90	45.25	56.50	122.25	134.00	53.25	53.25
1990-91	47.50	59.25	128.25	140.75	55.75	55.75
1991-92	51.75	64.50	139.75	154.00	57.25	57.25
1992-93	56.25	70.25	152.00	169.00	57.50	57.50
1993-94	59.00	73.75	159.50	177.50	58.50	58.50
1994-95	62.50	78.00	169.00	188.00	91.00	91.00
1995-96	66.50	83.00	179.50	199.75	96.50	96.50
1996-97	68.50	85.50	185.00	205.75	102.00	92.00

*Includes one-time surcharge on tuition rates.

Source: Assistant Vice Chancellor for Finance

UNIVERSITY OF NEBRASKA AT OMAHA

STUDENT FINANCIAL AID; NEED AND ABILITY BASED:
1994-95 and 1995-96
DELIVERY-SITE BASIS

	Number of Recipients		Dollar Value	
	<u>1994-95</u>	<u>1995-96</u>	<u>1994-95</u>	<u>1995-96</u>
NEED BASED:				
Tuition Remission	311	518	\$ 514,187	\$ 615,631
Regents' Special Aid	444	470	479,891	605,490
Pell Grants	2,566	2,462	3,574,189	3,544,637
SSIG, SAP, & SSAP	301	218	202,320	206,017
SEOG	721	822	533,995	748,971
Stafford Student Loans	5,701	5,690	14,361,362	19,164,073
Perkins Student Loans	535	482	842,354	745,259
Other Programs	352	473	557,282	652,386
TOTAL NEED BASED	10,931	11,135	\$21,065,580	\$26,282,464
ABILITY BASED:				
Regents' Special Aid	244	263	\$ 401,904	\$ 432,327
U of N Foundation Aid	206	232	193,478	205,381
Honors Scholarship	43	33	67,740	56,439
UNO Alumni Association	136	145	86,588	82,044
Other Scholarships	670	805	536,827	868,555
TOTAL ABILITY BASED	1,299	1,478	\$ 1,286,537	1,644,746
Total	12,230	12,613	\$22,352,117	\$27,927,210

Source: University of Nebraska Supplemental Form

UNIVERSITY OF NEBRASKA AT OMAHA

ANALYSIS OF SCORES ON AMERICAN COLLEGE
TESTING (ACT) ENHANCED EXAMINATION BY UNO FIRST-TIME FRESHMEN

1996

***** PERCENTILES *****

<u>Standard Score</u>	<u>English</u>	<u>Mathematics</u>	<u>Composite</u>
36	99	99	99
32	99	99	99
28	95	97	96
24	80	85	82
20	53	59	48
16	20	23	12
12	3	1	1
8	1	1	1
4	1	1	1
UNO Mean Scores	20.5	19.8	20.9
UNO Std. Deviation	4.7	4.2	3.9

NOTE: The "UNO Freshmen" group consisted of 1,149 first-time Freshmen enrolled at UNO in Fall 1996. Each of these students took the ACT test in the 1994-95 or 1995-96 testing cycles.

Source: Office of Student Development Services

UNIVERSITY OF NEBRASKA
COMPREHENSIVE SCORES ON AMERICAN COLLEGE
TESTING (ACT) EXAMINATION BY UNO AND
NATIONAL FIRST-TIME FRESHMEN:

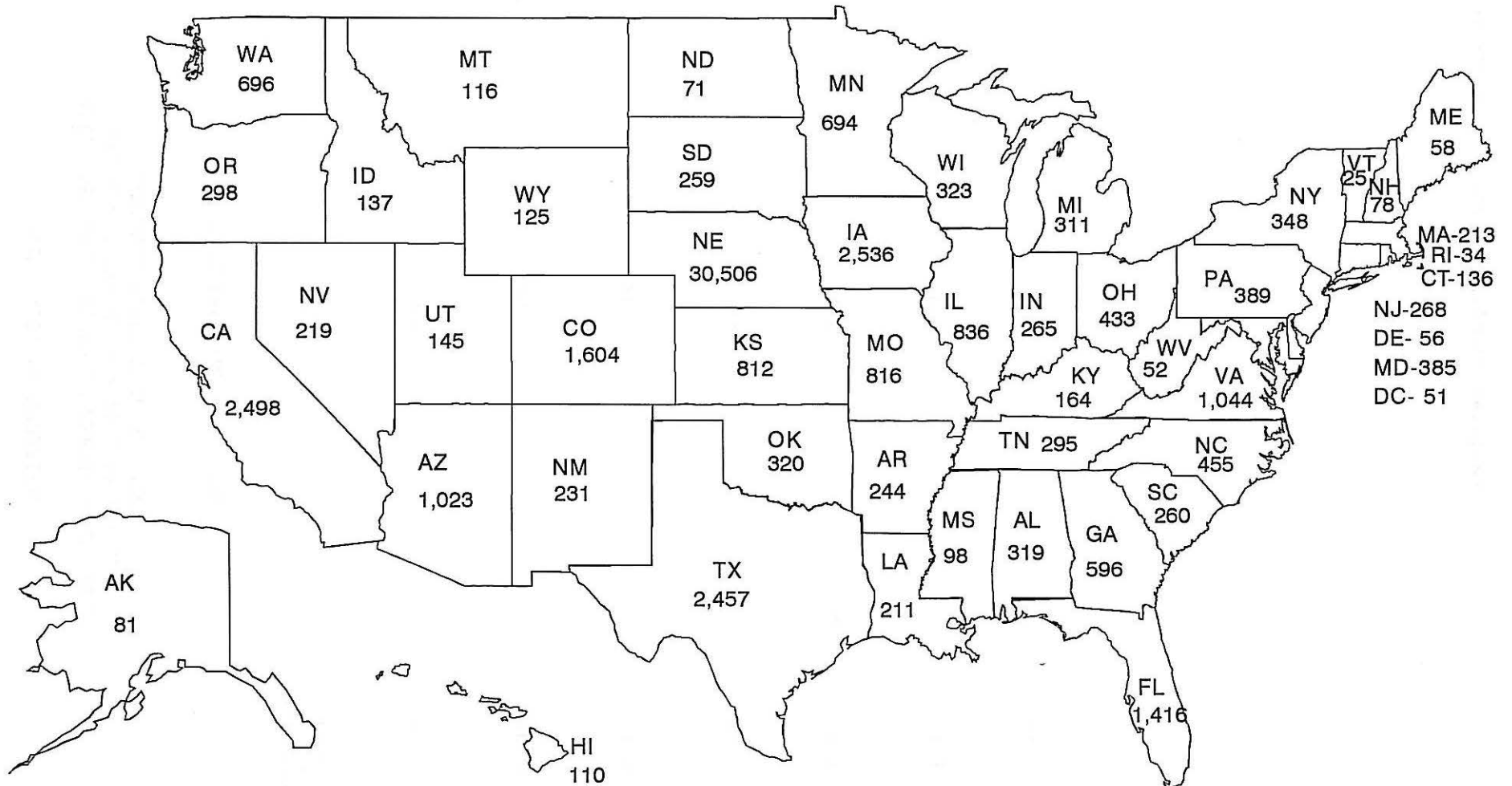
FALL 1989 THROUGH 1996

<u>FALL</u> 1996	<u>UNO</u> 20.9	<u>NATIONAL</u> n.a.
1995	20.9	20.9
1994	20.9	20.8
1993	20.9	21.4
1992	20.7	21.2
1991	21.0	21.1
1990	20.7	21.1
1989	20.8	21.2

UNIVERSITY OF NEBRASKA AT OMAHA

RESIDENCE OF ALUMNI: 1996

TOTAL = 56,027



Outside the United States: 910

THE UNIVERSITY OF NEBRASKA AT OMAHA

Faculty



UNIVERSITY OF NEBRASKA AT OMAHA
 AVERAGE AGE, AVERAGE YEARS IN RANK, AND AVERAGE YEARS AT UNO
 OF ALL FULL-TIME FACULTY; BY COLLEGE AND RANK: 1996-97

	<u>Total Number</u>	<u>Average Age</u>	<u>**Average In Rank</u>	<u>Years** At UNO</u>
ARTS & SCIENCES				
Professor	74	56.9	13.5	25.2
Associate Professor	58	50.7	10.3	17.5
Assistant Professor	38	44.3	6.7	7.9
Instructor	12	44.3	3.8	3.8
Assistant Instructor	5	45.4	2.0	2.0
College Total	187	51.3	10.2	17.3
BUSINESS ADMINISTRATION				
Professor	19	55.4	12.9	19.1
Associate Professor	20	47.8	7.9	13.7
Assistant Professor	11	43.2	7.9	8.8
Instructor	7	44.7	3.4	3.4
College Total	57	49.1	9.0	13.3
EDUCATION				
Professor	18	57.3	14.1	22.3
Associate Professor	24	52.5	11.8	16.8
Assistant Professor	15	45.7	4.1	4.4
Instructor	1	43.0	2.0	2.0
College Total	58	52.0	10.4	15.1
FINE ARTS				
Professor	15	52.0	9.7	20.1
Associate Professor	8	50.5	7.6	16.5
Assistant Professor	8	37.5	2.9	2.9
Lecturer	1	46.0	0.0	0.0
College Total	32	47.8	7.2	14.3
INFORMATION SCIENCE & TECHNOLOGY				
Professor	3	51.3	10.0	19.0
Associate Professor	11	43.7	2.2	8.1
Assistant Professor	6	38.5	2.5	2.5
Instructor	3	44.7	2.0	2.0
Assistant Instructor	1	27.0	2.0	2.0
College Total	24	42.8	3.2	7.0
PUBLIC AFFAIRS AND COMMUNITY SERVICE				
Professor	29	54.2	7.2	17.5
Associate Professor	13	48.9	5.3	8.9
Assistant Professor	13	43.3	3.1	5.0
Instructor	6	39.2	2.8	2.8
Lecturer	1	43.0	2.0	2.0
College Total	62	49.2	5.4	11.4
LIBRARY				
Professor	1	42.0	2.0	13.0
Associate Professor	6	49.5	7.0	12.3
Assistant Professor	5	54.4	12.2	14.4
Instructor	3	42.0	2.0	2.0
College Total	15	49.1	7.4	11.0
TOTAL UNO				
Professor	159	55.6	11.8	22.1
Associate Professor	140	49.8	8.8	15.0
Assistant Professor	96	43.8	5.6	6.7
Instructor	32	43.2	3.2	3.2
Assistant Instructor	6	42.3	2.0	2.0
Lecturer	2	44.5	1.0	1.0
University Total	435	50.0	8.7	14.6

Source: Office of Institutional Research

UNIVERSITY OF NEBRASKA AT OMAHA
 FULL-TIME FACULTY HIGHEST EARNED DEGREE
 BY COLLEGE AND ACADEMIC RANK: 1996-97

	<u>Total</u> <u>Number</u>	<u>Less-Than</u> <u>Doctoral</u>	<u>Doctoral</u>
ARTS & SCIENCES			
Professor	74	0.0%	100.0%
Associate Professor	58	5.2%	94.8%
Assistant Professor	38	18.4%	81.6%
Instructor	12	100.0%	0.0%
Assistant Instructor	5	80.0%	20.0%
College Total	187	13.9%	86.1%
BUSINESS ADMINISTRATION			
Professor	19	0.0%	100.0%
Associate Professor	20	5.0%	95.0%
Assistant Professor	11	18.2%	81.8%
Instructor	7	100.0%	0.0%
College Total	57	17.5%	82.5%
EDUCATION			
Professor	18	5.6%	94.4%
Associate Professor	24	0.0%	100.0%
Assistant Professor	15	0.0%	100.0%
Instructor	1	0.0%	100.0%
College Total	58	1.7%	98.3%
FINE ARTS			
Professor	15	0.0%	100.0%
Associate Professor	8	25.0%	75.0%
Assistant Professor	8	62.5%	37.5%
Lecturer	1	100.0%	0.0%
College Total	32	25.0%	75.0%
INFORMATION SCIENCE & TECHNOLOGY			
Professor	3	33.3%	66.7%
Associate Professor	11	0.0%	100.0%
Assistant Professor	6	16.7%	83.3%
Instructor	3	100.0%	0.0%
Assistant Instructor	1	100.0%	0.0%
College Total	24	25.0%	75.0%
PUBLIC AFFAIRS AND COMMUNITY SERVICE			
Professor	29	0.0%	100.0%
Associate Professor	13	0.0%	100.0%
Assistant Professor	13	30.8%	69.2%
Instructor	6	83.3%	16.7%
Lecturer	1	100.0%	0.0%
College Total	62	16.1%	83.9%
LIBRARY			
Professor	1	100.0%	0.0%
Associate Professor	6	83.3%	16.7%
Assistant Professor	5	100.0%	0.0%
Instructor	3	100.0%	0.0%
College Total	15	93.3%	6.7%
TOTAL UNO			
Professor	159	1.9%	98.1%
Associate Professor	140	7.9%	92.1%
Assistant Professor	96	25.0%	75.0%
Instructor	32	93.8%	6.2%
Assistant Instructor	6	83.3%	16.7%
Lecturer	2	100.0%	0.0%
University Total	435	17.2%	82.8%

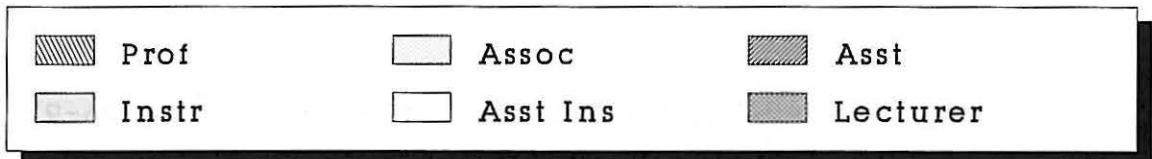
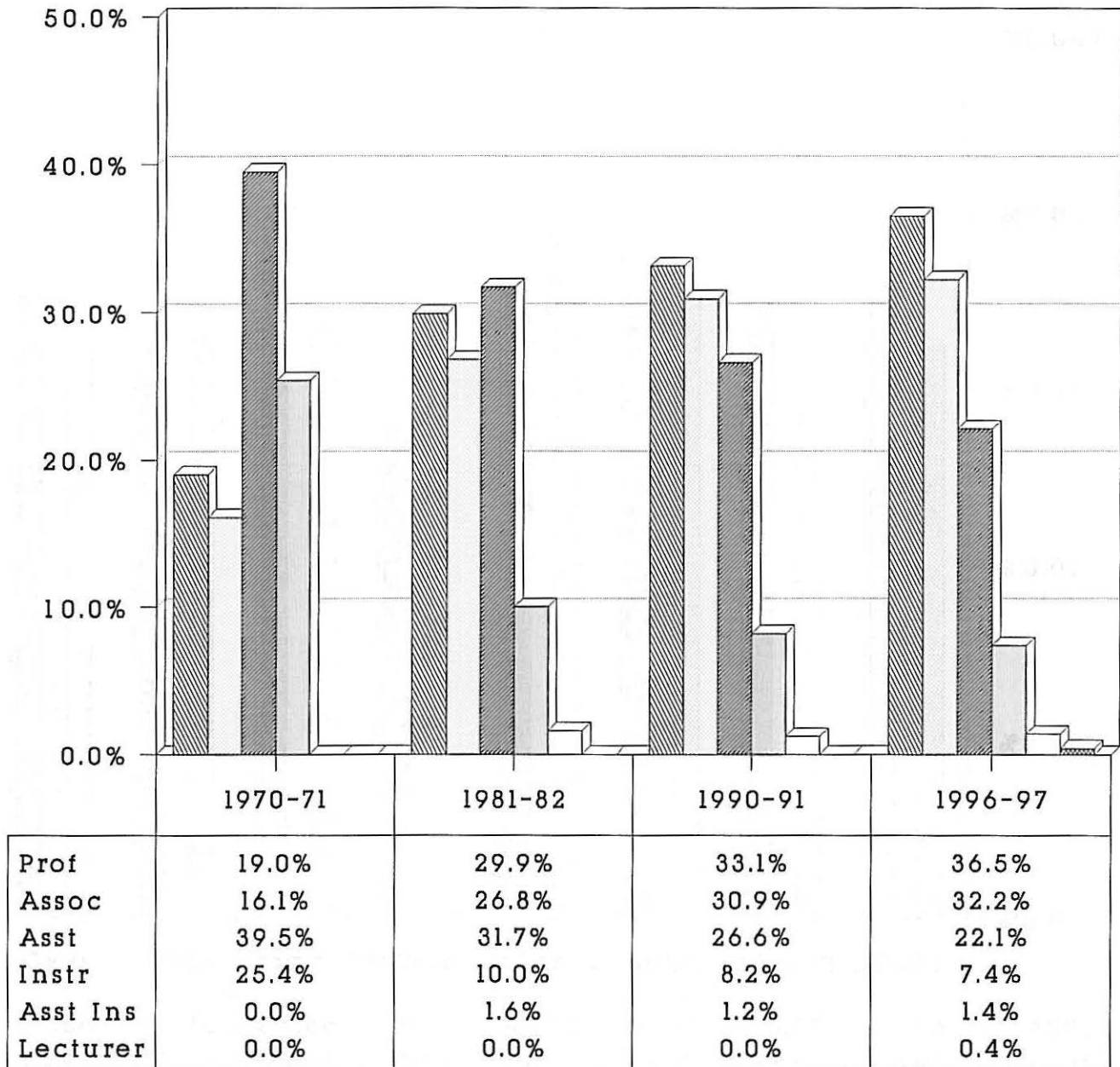
Source: Office of Institutional Research

UNIVERSITY OF NEBRASKA AT OMAHA
DISTRIBUTION OF FULL-TIME FACULTY
BY COLLEGE, RANK, AND TENURE STATUS: 1996-97

	<u>Total</u> <u>Number</u>	<u>Non-Tenured</u> <u>Number</u>	<u>Tenured</u> <u>Number</u>	<u>Tenured</u> <u>Percentage</u>
ARTS & SCIENCES				
Professor	74	0	74	100.0%
Associate Professor	58	4	54	93.1%
Assistant Professor	38	31	7	18.4%
Instructor	12	12	0	0.0%
Assistant Instructor	5	5	0	0.0%
College Total	187	52	135	72.2%
BUSINESS ADMINISTRATION				
Professor	19	0	19	100.0%
Associate Professor	20	1	19	95.0%
Assistant Professor	11	9	2	18.2%
Instructor	7	7	0	0.0%
College Total	57	17	40	70.2%
EDUCATION				
Professor	18	1	17	94.4%
Associate Professor	24	0	24	100.0%
Assistant Professor	15	13	2	13.3%
Instructor	1	1	0	0.0%
College Total	58	15	43	74.1%
FINE ARTS				
Professor	15	0	15	100.0%
Associate Professor	8	0	8	100.0%
Assistant Professor	8	8	0	0.0%
Lecturer	1	1	0	0.0%
College Total	32	9	23	71.9%
INFORMATION SCIENCE & TECHNOLOGY				
Professor	3	0	3	100.0%
Associate Professor	11	1	10	90.9%
Assistant Professor	6	6	0	0.0%
Instructor	3	3	0	0.0%
Assistant Instructor	1	1	0	0.0%
College Total	24	11	13	54.2%
PUBLIC AFFAIRS AND COMMUNITY SERVICE				
Professor	29	2	27	93.1%
Associate Professor	13	1	12	92.3%
Assistant Professor	13	12	1	7.7%
Instructor	6	6	0	0.0%
Lecturer	1	1	0	0.0%
College Total	62	22	40	64.5%
LIBRARY				
Professor	1	0	1	100.0%
Associate Professor	6	0	6	100.0%
Assistant Professor	5	0	5	100.0%
Instructor	3	3	0	0.0%
College Total	15	3	12	80.0%
TOTAL UNO				
Professor	159	3	156	98.1%
Associate Professor	140	7	133	95.0%
Assistant Professor	96	79	17	17.7%
Instructor	32	32	0	0.0%
Assistant Instructor	6	6	0	0.0%
Lecturer	2	2	0	0.0%
University Total	435	129	306	70.3%

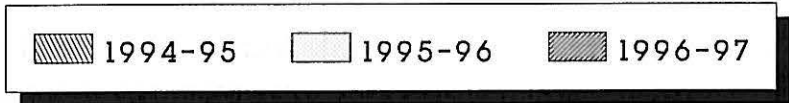
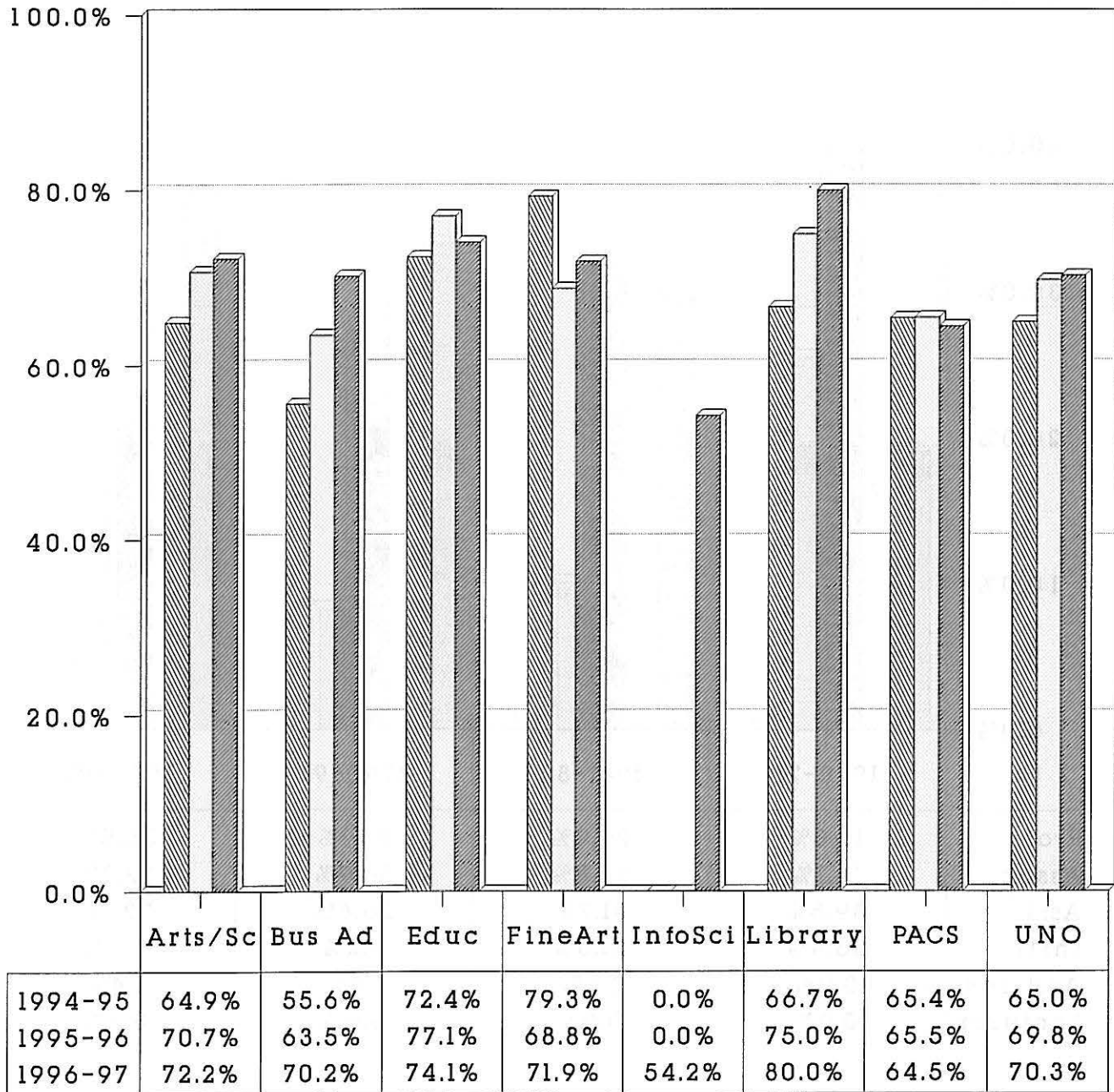
Source: Office of Institutional Research

University of Nebraska at Omaha Rank Distribution of the Full-Time UNO Faculty: 1970-71, 1981-82, 1990-91 and 1996-97



Source: Office of Institutional Research

University of Nebraska at Omaha Percent of Full-Time Faculty Holding Tenure; By College: 1994-95 To 1996-97



UNIVERSITY OF NEBRASKA AT OMAHA
 FULL-TIME GRADUATE FACULTY STATUS;
 BY COLLEGE AND ACADEMIC RANK: 1996-97

	Total Number	Not Grad Faculty	*Graduate Member	Faculty* Fellow
ARTS & SCIENCES				
Professor	74	1.4%	29.7%	68.9%
Associate Professor	58	10.3%	58.6%	31.1%
Assistant Professor	38	52.6%	42.1%	5.3%
Instructor	12	100.0%	0.0%	0.0%
Assistant Instructor	5	100.0%	0.0%	0.0%
College Total	187	23.5%	38.5%	38.0%
BUSINESS ADMINISTRATION				
Professor	19	0.0%	15.8%	84.2%
Associate Professor	20	5.0%	90.0%	5.0%
Assistant Professor	11	63.6%	36.4%	0.0%
Instructor	7	100.0%	0.0%	0.0%
College Total	57	26.3%	43.9%	29.8%
EDUCATION				
Professor	18	0.0%	38.9%	61.1%
Associate Professor	24	0.0%	70.8%	29.2%
Assistant Professor	15	53.3%	46.7%	0.0%
Instructor	1	100.0%	0.0%	0.0%
College Total	58	15.5%	53.5%	31.0%
FINE ARTS				
Professor	15	0.0%	20.0%	80.0%
Associate Professor	8	0.0%	87.5%	12.5%
Assistant Professor	8	50.0%	50.0%	0.0%
Lecturer	1	100.0%	0.0%	0.0%
College Total	32	15.6%	43.8%	40.6%
INFORMATION SCIENCE & TECHNOLOGY				
Professor	3	0.0%	33.3%	66.7%
Associate Professor	11	0.0%	45.5%	54.5%
Assistant Professor	6	66.7%	33.3%	0.0%
Instructor	3	100.0%	0.0%	0.0%
Assistant Instructor	1	100.0%	0.0%	0.0%
College Total	24	33.3%	33.3%	33.3%
PUBLIC AFFAIRS AND COMMUNITY SERVICE				
Professor	29	3.4%	20.7%	75.9%
Associate Professor	13	23.1%	69.2%	7.7%
Assistant Professor	13	69.2%	30.8%	0.0%
Instructor	6	100.0%	0.0%	0.0%
Lecturer	1	100.0%	0.0%	0.0%
College Total	62	32.3%	30.6%	37.1%
LIBRARY				
Professor	1	100.0%	0.0%	0.0%
Associate Professor	6	100.0%	0.0%	0.0%
Assistant Professor	5	100.0%	0.0%	0.0%
Instructor	3	100.0%	0.0%	0.0%
College Total	15	100.0%	0.0%	0.0%
TOTAL UNO				
Professor	159	1.9%	26.4%	71.7%
Associate Professor	140	11.4%	64.3%	24.3%
Assistant Professor	96	59.4%	38.5%	2.1%
Instructor	32	100.0%	0.0%	0.0%
Assistant Instructor	6	100.0%	0.0%	0.0%
Lecturer	2	100.0%	0.0%	0.0%
University Total	435	26.6%	38.9%	34.5%

Source: Office of Institutional Research

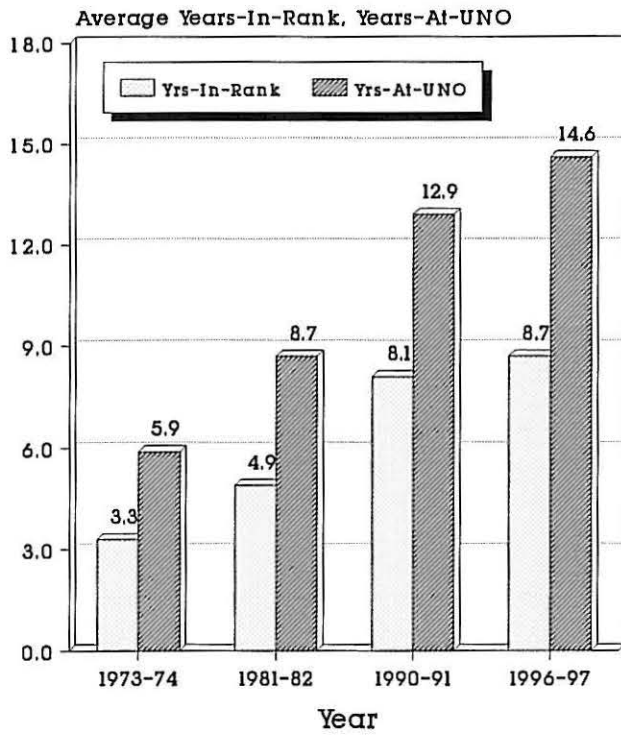
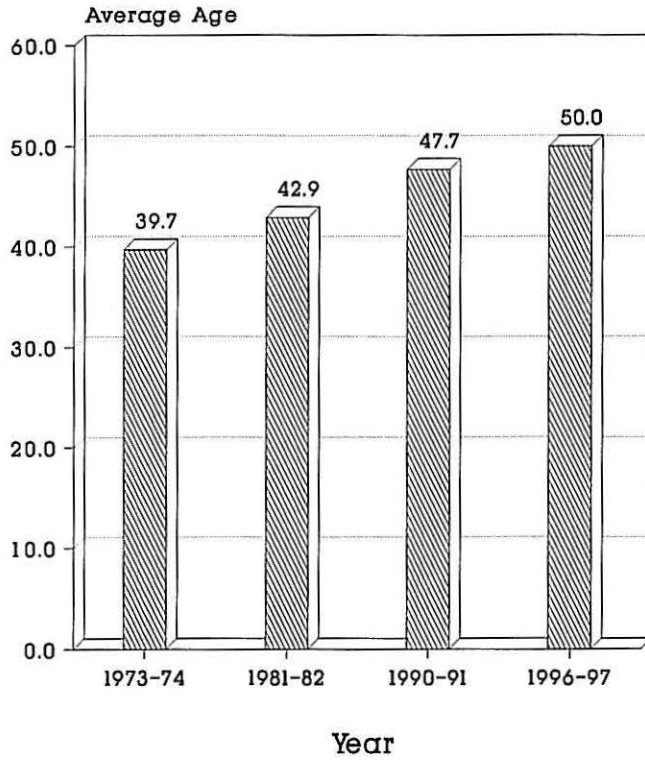
UNIVERSITY OF NEBRASKA AT OMAHA

SELECTED DEMOGRAPHIC MEASURES OF THE
 FULL-TIME UNO FACULTY:
 1973-74, 1981-82, 1990-91 and 1996-97

	<u>1973-74</u>	<u>1981-82</u>	<u>1990-91</u>	<u>1996-97</u>
Average Age	39.7 Yrs	42.9 Yrs	47.7 Yrs	50.0 Yrs
Average Years-in-Rank	3.3 Yrs	4.9 Yrs	8.1 Yrs	8.7 Yrs
Average Years-at-UNO	5.9 Yrs	8.7 Yrs	12.9 Yrs	14.6 Yrs
Percent Tenured	48.0%	60.0%	63.5%	70.3%
Percent Professor	22.6%	29.9%	33.1%	36.5%
Percent Associate Professor	20.8%	26.8%	30.9%	32.2%
Percent Assistant Professor	35.3%	31.7%	26.6%	22.1%
Percent Instructor	18.3%	10.0%	8.2%	7.4%
Percent Assistant Instructor	3.0%	1.6%	1.2%	1.4%
Percent Lecturer	0.0%	0.0%	0.0%	0.4%

Source: Office of Institutional Research

University of Nebraska at Omaha
Average Age, Years-In-Rank, Years-At-UNO
Full-Time Faculty: 1973-74, 81-82, 90-91 and 96-97



Source: Office of Institutional Research

**THE UNIVERSITY OF NEBRASKA
AT OMAHA**

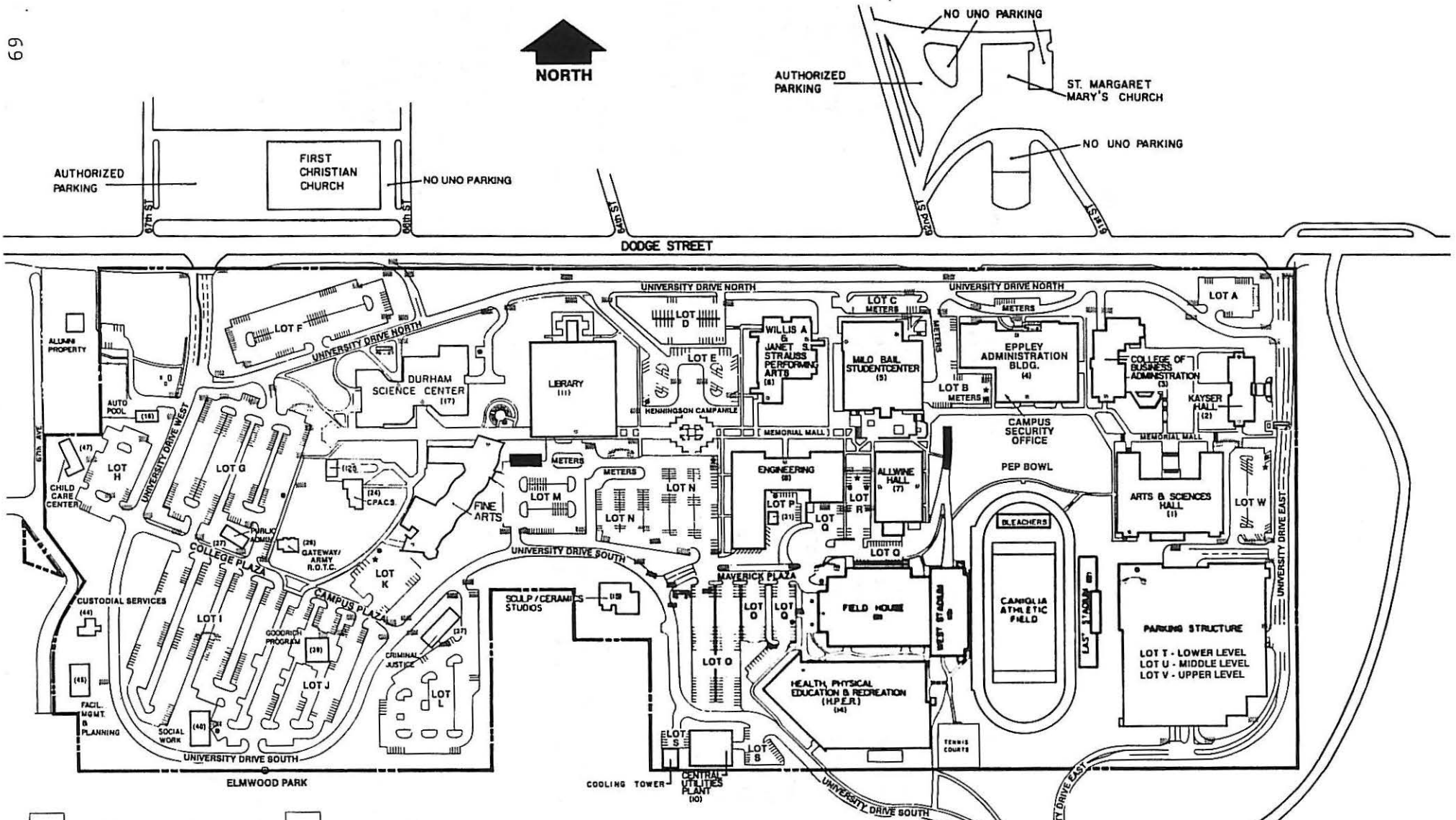
**Physical Plant
and
Budget**

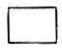


UNIVERSITY OF NEBRASKA AT OMAHA
UNIVERSITY BUILDING SPACE SUMMARY
AS OF JUNE 3, 1997

<u>Building Name</u>	<u>Assignable Square Feet</u>	<u>Total Gross Square Feet</u>
Allwine Farm Residence	1,324	1,642
Allwine Hall	74,488	119,063
Arts & Science Hall	74,239	155,997
Center Urban Education	8,263	15,082
Central Utilities Plant	2,876	13,369
College of Business Administration	49,199	93,017
Durham Science Center	91,910	168,939
East Stadium	1,521	3,183
Engineering	61,165	106,624
Eppley Administration Building	67,041	108,133
Eppley Airfield Hangar	16,423	22,354
Field House	54,870	62,402
Fine Arts Building	48,913	82,495
Health, Phys. Educ. & Recreation	112,418	168,116
Henningson Memorial Campanile	685	2,130
Kayser Hall	33,448	60,166
Library	133,716	155,331
Milo Bail Student Center	102,479	149,910
Peter Kiewit Conference Center	58,459	80,048
Sculpture/Ceramics Studios	6,627	7,607
Solar Research Facility	884	1,024
West Stadium	18,281	27,076
Willis A. & Janet S. Strauss		
Performing Arts Center	<u>30,513</u>	<u>58,785</u>
Permanent Bldg Sub-Total	1,049,742 ASF	1,662,493 GSF
Auto Pool - Annex 16	2,990	3,748
Public Affairs & Comm Serv - Annex 24	6,726	11,005
Ground Services - Annex 25	1,334	1,799
Public Affairs & Comm Serv - Annex 26	3,086	4,832
Public Administration - Annex 27	2,961	5,608
Engineering Lab - Annex 31	791	880
Criminal Justice - Annex 37	3,490	5,947
Goodrich Program - Annex 39	4,919	7,840
Social Work - Annex 40	4,676	8,489
Environmental/Grounds Serv - Annex 44	1,530	2,553
Facilities Mgmt & Planning - Annex 45	3,783	5,100
Child Care Center - Annex 47	<u>3,508</u>	<u>5,260</u>
Temporary Bldg Sub-Total	39,794 ASF	63,061 GSF
GRAND TOTAL	1,089,536 ASF	1,725,554 GSF

Source: Director Facilities Planning & Management



 FACULTY AND STAFF

 METERED AREAS

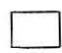
 STUDENTS

 SHUTTLE BUS STOP

 TWO WHEEL VEHICLES

 MAIN HANDICAP ENTRANCES

 HANDICAP PARKING STALLS

 DUAL PURPOSE (READ SIGNS FOR TIME)

 HANDICAP VAN ACCESS

 HANDICAP SIDEWALK/ROADWAY ACCESS

 EMERGENCY PHONES

ANNEX LEGEND

- 16 AUTO POOL
- 24 PUBLIC AFFAIRS & COMM. SERVICES
- 25 GROUNDS OFFICE & SHOP
- 26 GATEWAY/ARMY R.O.T.C.
- 27 DEPT. PUBLIC ADMINISTRATION
- 31 ENGINEERING LAB
- 37 CRIMINAL JUSTICE
- 39 GOODRICH PROGRAM
- 40 SOCIAL WORK
- 44 CUSTODIAL SERVICES
- 45 FACILITIES MANAGEMENT & PLANNING
- 47 CHILD CARE CENTER

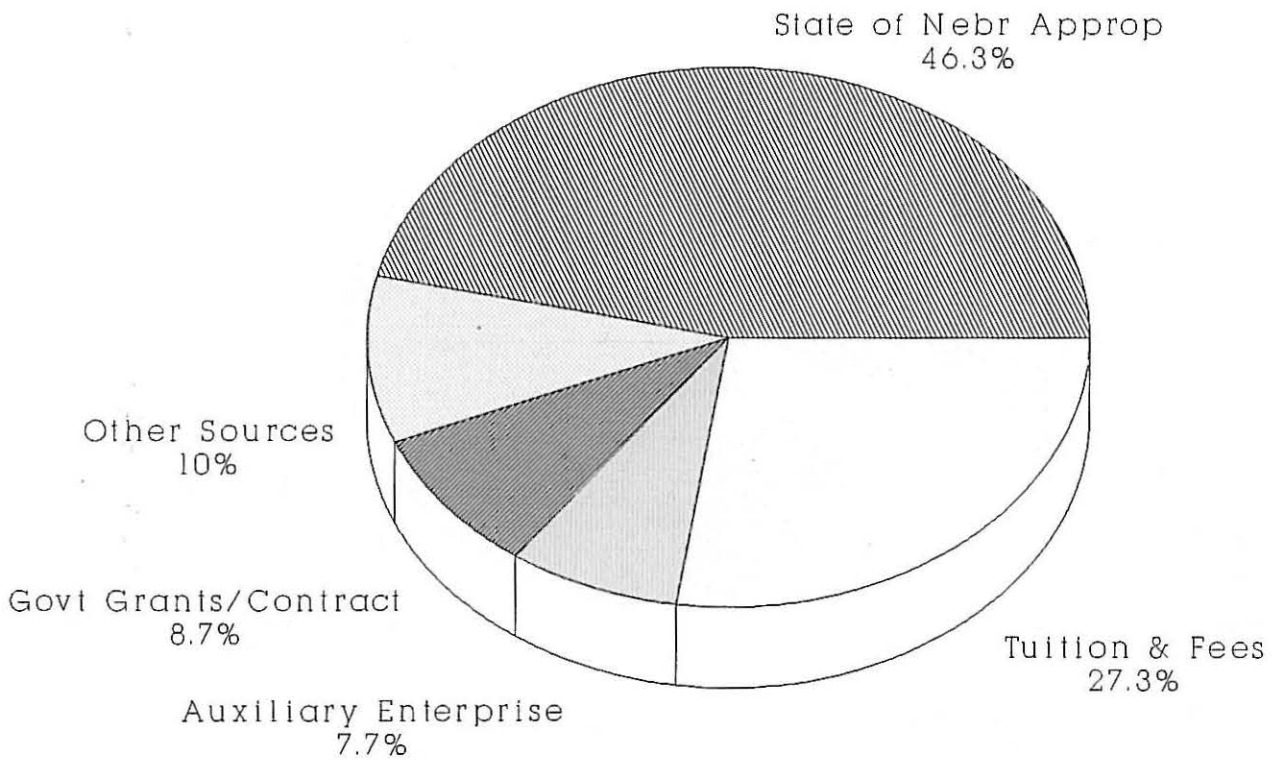
UNIVERSITY OF NEBRASKA AT OMAHA

CURRENT REVENUES AND EXPENDITURES: 1980-81, 1994-95 AND 1995-96

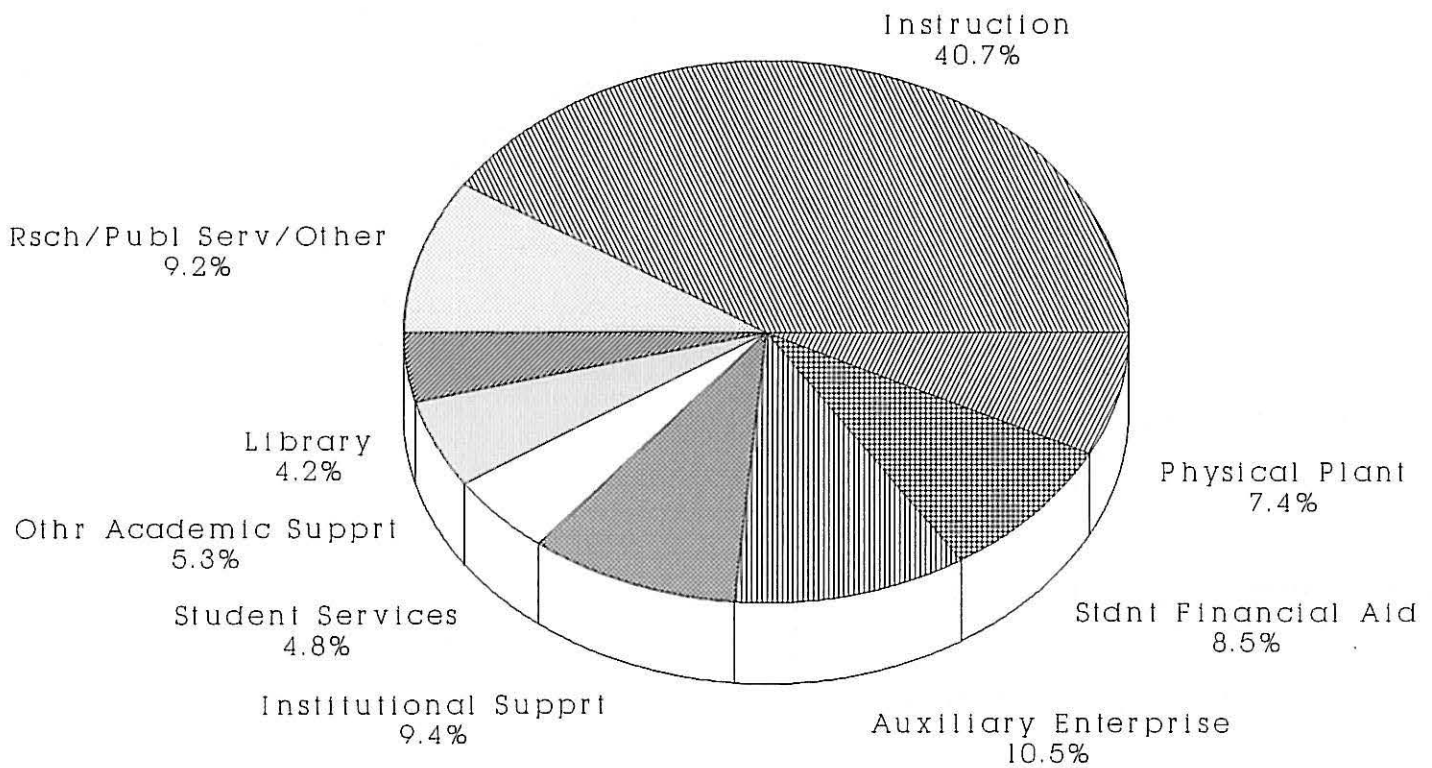
	1980-81		1994-95		1995-96		** Percent Change **	
	<u>Amount</u>	<u>Pct of Whole</u>	<u>Amount</u>	<u>Pct of Whole</u>	<u>Amount</u>	<u>Pct of Whole</u>	<u>80-81 to 95-96</u>	<u>94-95 to 95-96</u>
CURRENT REVENUES:								
State of Nebraska Appropriations	\$19,095,701	49.3	\$43,466,651	46.9	\$45,236,769	46.3	136.9	4.1
Student Tuition & Fees	9,187,332	23.7	25,240,338	27.3	26,700,227	27.3	190.6	5.8
Government Grants & Contracts	4,227,188	10.9	7,883,405	8.5	8,525,853	8.7	101.7	8.2
Private Gifts, Grants & Contracts	804,460	2.1	3,108,040	3.4	2,775,266	2.8	245.0	(10.7)
Endowment Income	39,604	0.1	289,504	0.3	185,938	0.2	369.5	(35.8)
Sales & Services	656,866	1.7	4,475,214	4.8	5,483,098	5.6	734.7	22.5
Other Sources	831,342	2.1	1,468,057	1.6	1,245,922	1.3	49.9	(15.1)
Sub-Total,								
Educational & General	\$34,842,483	89.9	\$85,931,209	92.8	\$90,153,073	92.3	158.7	4.9
Auxiliary Enterprises	3,922,997	10.1	6,694,079	7.2	7,490,639	7.7	90.9	11.9
TOTAL CURRENT REVENUES	\$38,765,480	100.0	\$92,625,288	100.0	\$97,643,712	100.0	151.9	5.4
CURRENT EXPENDITURES:								
Instruction	\$15,988,248	41.8	\$37,315,048	41.1	\$39,606,664	40.7	147.7	6.1
Research	698,381	1.8	2,373,144	2.6	2,523,873	2.6	261.4	6.4
Public Service	512,621	1.4	2,984,591	3.3	5,007,678	5.2	876.9	67.8
Library	1,722,580	4.5	3,783,324	4.2	4,063,321	4.2	135.9	7.4
Other Academic Support	2,951,943	7.7	6,314,719	7.0	5,131,259	5.3	73.8	(18.7)
Student Services	2,580,939	6.8	6,245,384	6.9	4,692,214	4.8	81.8	(24.9)
Institutional Support	3,339,837	8.7	8,962,619	9.9	9,100,370	9.4	172.5	1.5
Physical Plant	3,273,477	8.6	7,044,649	7.7	7,181,696	7.4	119.4	2.0
Student Financial Aid	3,489,061	9.1	7,461,735	8.2	8,310,463	8.5	138.2	11.4
Other Expenditures	25,853	0.1	1,108,910	1.2	1,444,961	1.4	5,489.1	30.3
Sub-Total								
Educational & General	\$34,583,480	90.5	\$83,594,123	92.1	\$87,062,499	89.5	151.8	4.2
Auxiliary Enterprises	3,645,332	9.5	7,134,311	7.9	10,204,343	10.5	179.9	43.0
TOTAL CURRENT EXPENDITURES	\$38,228,272	100.0	\$90,728,434	100.0	\$97,266,842	100.0	154.4	7.2

Source: Assistant Vice Chancellor for Finance

University of Nebraska at Omaha Distribution of Current Revenues For the Year Ended June 30, 1996

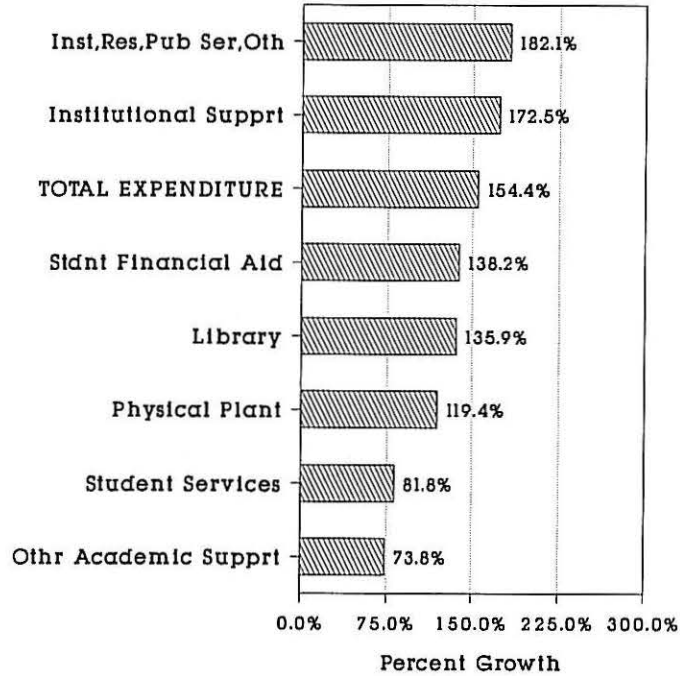


University of Nebraska at Omaha Distribution of Current Expenditures For the Year Ended June 30, 1996

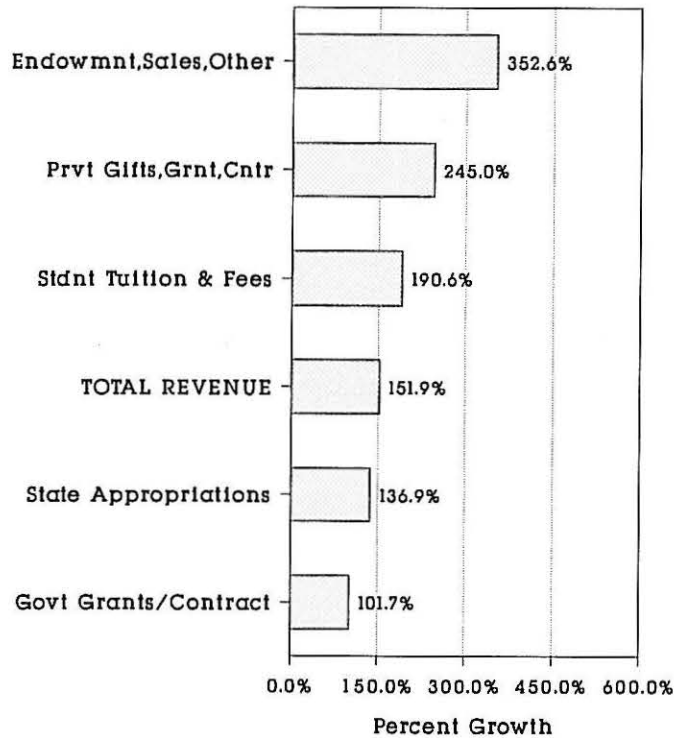


University of Nebraska at Omaha
 Percent Growth; Educational & General
 Expenditure & Revenue: 1980-81 - 1995-96

EXPENDITURE



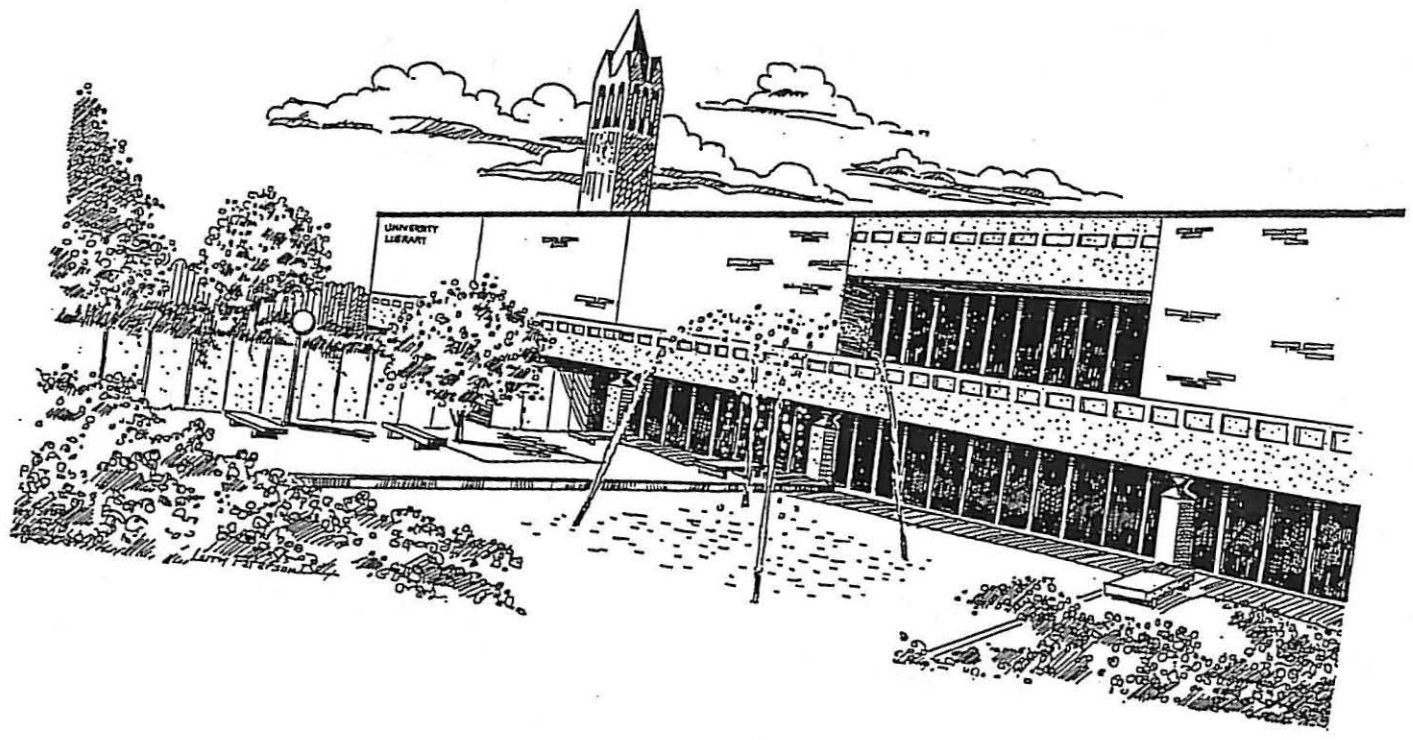
REVENUE



Source: Office of Institutional Research

THE UNIVERSITY OF NEBRASKA AT OMAHA

Library



UNIVERSITY OF NEBRASKA AT OMAHA

UNIVERSITY LIBRARY
General Information

The University Library offers many services and contains materials and facilities for study and research. The collection includes nearly 737,000 volumes, more than 1,700,000 microforms, approximately 7,000 pieces of audio-visual material, and over 3,000 serial subscriptions, including almost 200 newspapers from around the world. As a government document depository, the University Library collects most federal and Nebraska state publications. Nearly all of the Library's collection is on open shelves and is arranged according to the Library of Congress classification system. The holdings of the Library are available on-line through UNO's General Information System (GENISYS). GENISYS is available through terminals in the library, via Ethernet, and by modem from remote locations. Many databases are available for searching on CD-ROM and via the Internet. Detailed information is available at <http://revelation.unomaha.edu>.

Growth of Collections
June 30, 1995 through June 30, 1996

	<u>Total</u> <u>6/30/95</u>	<u>Net Added</u> <u>1995-96</u>	<u>Total</u> <u>6/30/96</u>	<u>Pct Change</u> <u>1995-96</u>
Books & Serials: Titles	562,999	15,814	578,813	2.8%
Books & Serials: Volumes	715,553	21,365	736,918	3.0%
Government Document Titles	461,553	-57	461,496	0%
Total Microforms	1,720,938	32,976	1,753,914	1.9%

Budget Allocations for Materials Purchases
1992-93 through 1996-97

	<u>1992-93</u>	<u>1993-94</u>	<u>1994-95</u>	<u>1995-96</u>	<u>1996-97</u>	<u>Pct Change</u> <u>1992-93 to 1996-97</u>
Books	\$ 396,824	\$ 446,824	\$ 396,824	\$ 461,824	\$ 540,268	36.1%
Doctoral	53,045	49,106	49,106	52,106	55,232	4.1%
Serials	754,535	777,562	811,721	941,298	1,148,383	52.2%
Binding	43,427	39,596	30,698	31,158	32,093	(26.1%)
Total	\$1,247,831	\$1,313,088	\$1,288,349	\$1,486,386	\$1,775,976	42.3%

Source: The University Library Administrative Office

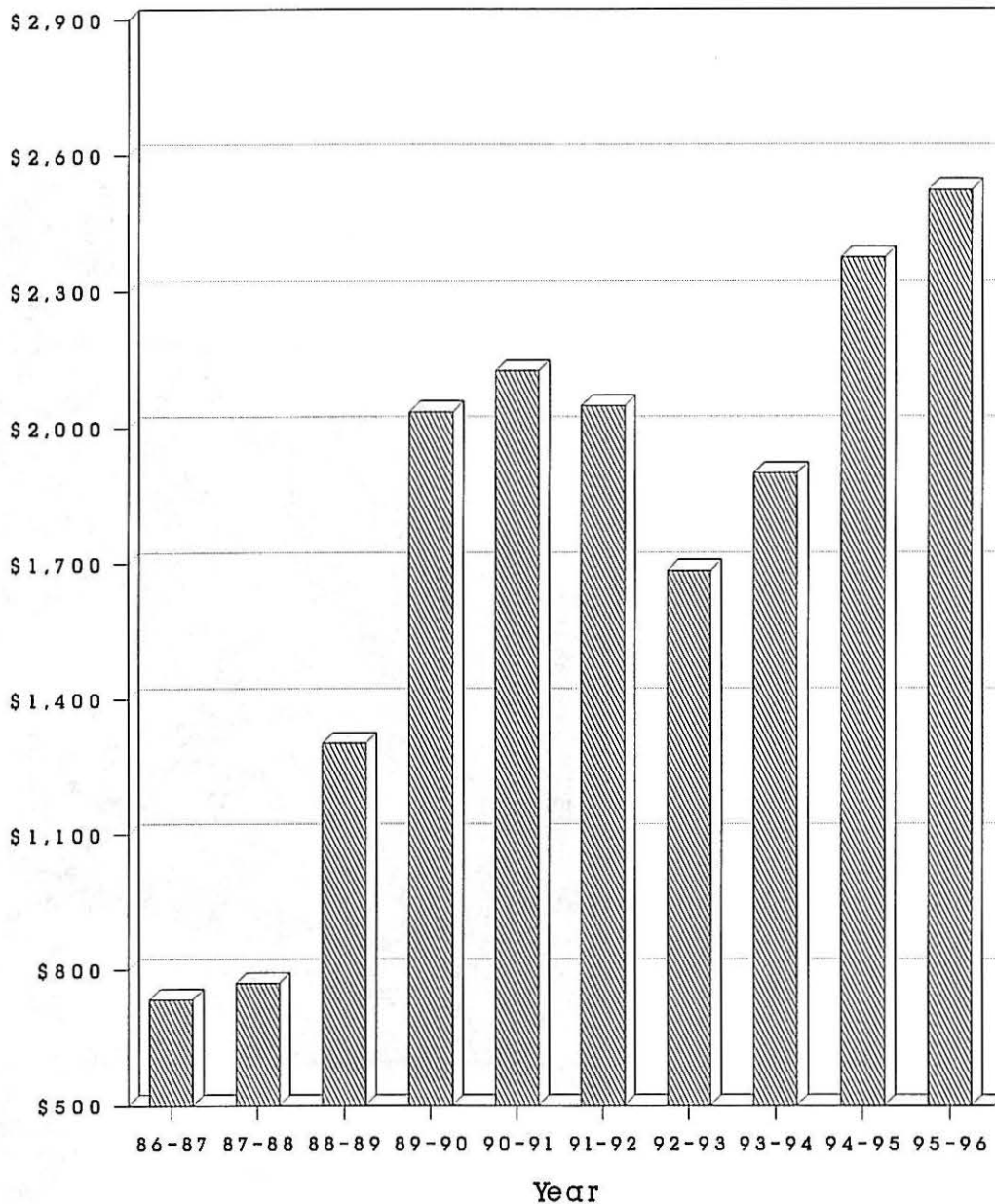
THE UNIVERSITY OF NEBRASKA AT OMAHA

Research



University of Nebraska at Omaha Research Expenditures 1986-87 Through 1995-96

Expenditures for Research in 1995-96 were \$2,523,873. This is a 243.8 percent increase from 1986-87. The graph below traces research expenditures for the past 10 years.



Source: Asst. Vice Chancellor Finance

THE UNIVERSITY OF NEBRASKA AT OMAHA

Non-Credit Programs



UNIVERSITY OF NEBRASKA AT OMAHA

NON-CREDIT PROGRAMS

College of Continuing Studies

The College of Continuing Studies (CCS) serves more than 15,000 individuals each year through its noncredit programs. Each year, CCS offers more than 300 noncredit programs, including short courses, workshops, seminars, conferences, and videoconferences. These programs cover a wide range of subjects; some are intended for business or professional development, while others emphasize personal enrichment and life-long learning.

Certificate programs provide guided study through a series of courses focused on a specific subject area. In 1996-97, CCS offered certificates in seven areas: management, fund-raising management, training, communication technology, project management, nonprofit management and measuring training and performance.

CCS sponsors academic conferences in cooperation with other UNO colleges. These conferences attract scholars of national and international stature. Each year, CCS also sponsors conferences on cutting-edge issues which are directed toward the general public and which bring nationally-known experts to Omaha as speakers.

More than 5,000 individuals attend the CCS-sponsored ABC Breakfast Series each year. This series, now in its 22nd year, features presentations by prominent figures in business, government, and the arts.

Contract training programs provide customized, on-site training and development programs for businesses and organizations. The William Brennan Institute for Labor Studies specializes in meeting the educational needs of unions and union members in Nebraska.

As part of its mission, the College of Continuing Studies administers the operation of UNO's Peter Kiewit Conference Center. The Conference Center offers specialized meeting and educational facilities, including a Distance Education Classroom and a Computer Training and Board Room. Via satellite, CCS offers noncredit courses in Norfolk, Grand Island, and Scottsbluff. CCS also provides hands-on information technology training, including an array of courses related to the Internet.

Center for Public Affairs Research

The Center for Public Affairs Research (CPAR) supports applied research and community service projects undertaken by faculty within the College of Public Affairs and Community Service. The Center has a full-time professional staff supporting applied research on a range of current community problems and issues of local, regional, state, national and international concern.

CPAR also serves as the lead organization for the Nebraska State Data Center, a federal-state program to promote dissemination and utilization of federal census and other statistical products.

Nebraska Business Development Center

The Nebraska Business Development Center (NBDC) is a unit of the College of Business Administration. It provides management and technical assistance to businesses in Nebraska and provides training in business applications software designed for a personal computer or distributed computing environment. NBDC was organized in 1977.

Management and technical assistance are provided in these areas:

- Business Formation
- Business Planning
- Strategic Planning
- Market Research
- Market Planning
- Safety and Personnel Manuals
- Manufacturing Management Assistance
- Loan Packaging
- Financial Analysis and Business Review
- Export Assistance
- Procurement Technical Assistance (bidding on government contracts)

NBDC provides general services to small businesses under a cooperative agreement with the U.S. Small Business Administration. It provides management assistance to manufacturers under a cooperative agreement with the U.S. Department of Commerce (National Institute of Standards and Technology). It provides procurement technical assistance under a cooperative agreement with the U.S. Department of Defense (Defense Logistics Agency).

NBDC operates offices in Omaha, North Omaha, Lincoln, Norfolk, Grand Island, North Platte and Scottsbluff. NBDC funds small business assistance offices at the University of Nebraska at Kearney, Wayne State College, Chadron State College, and Peru State College. NBDC conducts computer training programs in classrooms at the Peter Kiewit Conference Center at 1313 Farnam and at the Nebraska Furniture Mart Mega Mart on 72nd Street in Omaha.

In 1996 NBDC provided management and technical assistance to 1,639 businesses in 246 Nebraska communities. It worked 150 loan applications, of which 86 were approved and 19 were pending at the close of 1996. The approved loans were for a total of \$13,438,180, representing about 20% of SBA guaranteed small business loans made in Nebraska for the year. The loans created 268 full-time and 121 part-time jobs. The NBDC computer training program provided training to 4,876 students in 1996.

Center for Management of Information Technology

The Center for Management of Information Technology (CMIT) supports the development of a strategic advantage among Nebraska businesses and organizations in the application of information technologies. It provides academic instruction, research, and consulting services. It has several objectives in providing assistance to Nebraska businesses. These include: the solving of business problems by applying Information Technology (IT), business expertise, and academic resources; anticipating Information Technology products, processes, and trends; developing new applications for Information Technology and improving existing ones; improving the skills of managers and employees in the use of information technologies through credit and non-credit instruction; identifying and addressing community needs with existing and emergent information technologies; and pursuing Information Technology consulting opportunities, business partnerships, government grants, and private and corporate grants.

CMIT is funded under the Nebraska Research Initiative. It conducted applied research in 1996 in the areas of expert systems, fault-tolerant computing, distributed computing, artificial-intelligence-based decision support systems, and computer-based instruction. Programs were funded by the Battelle Memorial Institute, Environmental Protection Agency, NASA Space Grant Consortium, and local companies.

International Studies and Programs

The Office of International Studies and Programs was established in 1973 to provide for the encouragement, development, and coordination of the University's rapidly growing international dimensions. Non-credit programs conducted by the Office include:

- The Intensive Language Program (ILUNO) is a widely recognized, high-quality program in the specialized field of intensive English as a Second Language (ESL) instruction. Classes are designed to prepare international students for academic study at colleges and universities in the United States. ILUNO offers instruction at six levels of proficiency with emphasis on the development of writing, listening, pronunciation, reading and communication skills. Classes meet 25 hours per week and are offered in eight-week sessions scheduled throughout the year. In addition to English, students receive cross-cultural instruction and numerous opportunities for cross-cultural activities. In addition to preparing international students for academic studies in the U.S., ILUNO has designed and implemented standard and customized instruction in ESL for international professionals, international teaching assistants, and non-native speakers in the Omaha work force.

- The Center for Afghanistan Studies serves as the only institutional base in the United States specifically and exclusively concerned with Afghanistan affairs. As such, it has unique resources to conduct research concerning Afghan culture and education. The Center disseminates information on Afghanistan to other institutions, provides

language and cross-cultural training, and publishes the Afghanistan Studies Journal. Staff members are frequently called upon to provide language translations and expertise on matters related to Afghanistan. The Center assisted in establishing the Arthur Paul Afghanistan Collection at the University Library, a collection of Afghan primary and secondary materials. The U.S. Department of State enlisted the Center to help in the rebuilding of Afghanistan's education system. Through UNO's Education Sector Support Project, nearly 1000 grade schools and adult literacy centers were established inside Afghanistan.

- The Program for International Professional Development (IPD) was established in 1989 to offer training for domestic and international clients. Addressing a wide range of cultural, linguistic, and professional topics, IPD helps individuals and organizations increase the success of their global activities. Among the courses, seminars and workshops of the IPD Program is the International Business and Communication course. This course trains professionals from around the world in business English, cross-cultural communication, international and U.S. workplace customs, and related issues. IPD also conducts several customized and standard short-term training programs. These programs are intensive and designed to give participants an in-depth look at a particular industry or business practice.

- The UNO Study Abroad Program provides students with a wide variety of information about overseas study, scholarship opportunities, travel and volunteer/work programs. UNO has sister university linkages in several countries, including Afghanistan, Austria, China, the Czech Republic, Germany, Japan, Moldova, the Philippines, Romania, Russia and Tajikistan. UNO also maintains connections with universities in Pakistan, Belgium, Malawi, Israel and Mexico. Opportunities for UNO students to study abroad are enhanced by these relationships.

- The Japanese Studies Exchange Program. Through an agreement with the Ueno College System (UCS) in Hiroshima, Japan, UNO is able to expand its course offerings in areas related to Japanese language, business and culture. The agreement also provides study abroad opportunities for UCS students who spend 12 months at UNO studying English and participating in a cultural orientation program.

- The Community Outreach Program provides opportunities for Nebraskans to interact with UNO's international students in a variety of cross-cultural activities. There are opportunities for UNO students, both foreign and American, to become involved as education "ambassadors" for K-12 classrooms.