

1-22-2016

Academic Priority: Graduate/Doctoral Research

B. J. Reed

University of Nebraska at Omaha, breed@unomaha.edu

Deborah Smith-Howell

University of Nebraska at Omaha, dsmith-howell@unomaha.edu

Jodi Kreiling

University of Nebraska at Omaha, jkreiling@unomaha.edu

Nancy Edick

University of Nebraska at Omaha, nedick@unomaha.edu

Anthony Starke

University of Nebraska at Omaha

Below this page for additional works: <https://digitalcommons.unomaha.edu/oiestrategicplanningforums>



Part of the [Higher Education Commons](#), and the [Higher Education Administration Commons](#)

Please take our feedback survey at: https://unomaha.az1.qualtrics.com/jfe/form/SV_8cchtFmpDyGfBLE

Recommended Citation

Reed, B. J.; Smith-Howell, Deborah; Kreiling, Jodi; Edick, Nancy; Starke, Anthony; and Snyder, Scott D., "Academic Priority: Graduate/Doctoral Research" (2016). *Strategic Planning Forums*. 2.
<https://digitalcommons.unomaha.edu/oiestrategicplanningforums/2>

This Presentation is brought to you for free and open access by the Strategic Planning at DigitalCommons@UNO. It has been accepted for inclusion in Strategic Planning Forums by an authorized administrator of DigitalCommons@UNO. For more information, please contact unodigitalcommons@unomaha.edu.

Authors

B. J. Reed, Deborah Smith-Howell, Jodi Kreiling, Nancy Edick, Anthony Starke, and Scott D. Snyder

Academic Priority: Graduate/Doctoral Research

UNO Strategic Planning Forum
January 22, 2016

Presenters

- B.J. Reed, Sr. Vice Chancellor for Academic and Student Affairs
- Deborah Smith-Howell, Associate Vice Chancellor for Academic Affairs & Dean for Graduate Studies
- Jodi Kreiling, Associate Professor, Chemistry; Chair Faculty Senate Academic and Curricular Affairs
- Nancy Edick, Lois Roskens Dean College of Education
- Anthony Starke, Doctoral Student, Public Administration
- Scott Snyder, Associate Vice Chancellor for Research & Creative Activity

Overview Doctoral Education at UNO: Past, Present, and Future

Doctoral Education at UNO

- Initial programs “collaborative” with UNL
 - Educational Administration
 - Psychology
- First UNO only programs in early 1990s
 - Criminology and Criminal Justice
 - Public Administration
- Information Technology

Doctoral Education

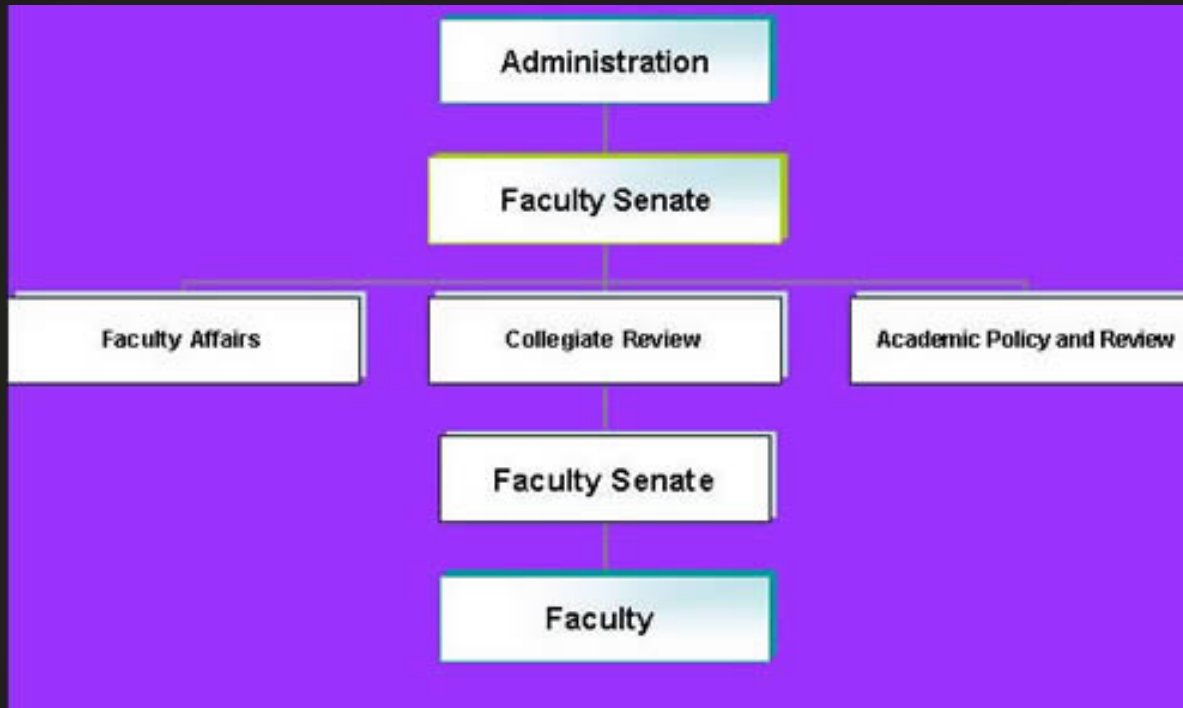
- Recent additions
 - Exercise Science
 - Biomedical Informatics (with UNMC)
- In progress programs
 - Translational Biology
 - Gerontology

Doctoral Education

- Doctoral Research University classification
 - 2010 classification
 - Minimum of 20 doctoral degrees annually
- Doctoral programs of the future
 - Focused on UNO's unique expertise and mission
 - Collaborative (interdisciplinary; UNMC)
 - Targeted audiences with need and demand

Role of the Faculty Senate and the Academic & Curricular Affairs Committee in Program/Proposal Approval

Roles of Faculty Senate and Academic and Curricular Affairs Committee



Role in Proposal Approval: Academic and Curricular Affairs Committee

- *Responsibilities of committee for the Faculty Senate:*
 - Coordination of curricular review procedures
 - Oversight of academic standards
 - Write resolutions in favor or against a proposal to be voted on by Faculty Senate

Role in Proposal Approval: Academic and Curricular Affairs Committee

- *Role of committee for administration:*
 - Check proposals for clarity and understanding
 - Determine the overall fit of the proposal for UNO
 - Need/demand of the program
 - Determine if the proposal represents the faculty voice
 - Maintain an efficient turnaround time
 - Offer feedback/critiques and suggestions



Role in Proposal Approval: Faculty Senate

- Representative from A&CA discusses proposal and resolution
- Faculty Senate discussion of resolution
 - Amendments if necessary
 - Comments can be forwarded
- Faculty Senate votes on resolution



College of Education Doctoral Programs

College of Education Doctoral Programs

Doctor of Education in Educational Administration (EdD)

- **From 1987 to 2015, 175 graduates**
- **2015 – 18 hooded**
- **2015 – 20 admitted**

Doctor of Philosophy in Exercise Science (PhD)

- **Started in 2011**
- **First graduate, Fall 2015**
- **2015-16, 10 students in program**



Doctor of Education in Educational Administration (EdD)

- 9 hours of doctoral seminars
- 12 hours of research
- 12 or more electives
- 12 dissertation hours
- Total 96 required hours



Doctor of Philosophy in Exercise Science (PhD)

- Tracks
 - Biomechanics
 - Physiology of Exercise
 - Motor Development and Control
 - Physical Activity Promotion
- 21 hours of research core
- 15 hours of track courses
- 9 hours elective
- 15 dissertation hours
- Total 60 hours + 30 hours from MS required

Educational Administration Community Partnerships

- Symposium in School Leadership
- Superintendent Internship
- Assessment Taskforce/Research Design
- NBPTS Certificate support program
- Midwest Superintendents' Academy
- District Leadership Focus Groups
- Nationally recognized speakers forums



Exercise Science Collaborations and Partnerships

- UNMC
- Veterans' Affairs Medical Center
- CHI Health
- Autism Speaks
- NASA Nebraska Space Grant
- US Department of Defense
- Quality Living, Inc.
- Many others



Exercise Science Seminar Series



- Brings prominent scientists to speak to our students and faculty
- More than 40 national speakers since program's inception
- Also forum for students to present work and receive crucial feedback



2 Highly Successful Programs!

Educational Administration EdD

- A practitioner's degree, research that is embedded in the issues of school leadership:
 - Social justice
 - Program effectiveness
 - Technology
 - Curriculum application
 - Leadership

Exercise Science Ph.D

- Prepare graduates to conduct research in an academic setting:
 - Design and evaluate research projects
 - Determine funding sources and write grants
 - Teaching and mentoring



Contact information:

Kay Keiser, Educational Leadership

Department Chair

kkeiser@unomaha.edu

Sara Myers, Exercise Science Doctoral

Program Committee Chair

samyers@unomaha.edu

The Doctoral Student Perspective

Recruitment

- Involved multiple faculty members
- Emphasized interest and fit
- Campus visits
 - consisted of a purposefully developed itinerary that highlighted engagement



Onboarding & Acculturation



- Doctoral students in our program are situated in an interesting nexus between student and colleague
- Doctoral student orientation
- Annual reviews and meetings

Matriculation

- Cohort model
- Balanced research and teaching experience



Placement

- Students are viewed as the product of our program, not that of an individual/group of faculty.
- Professional development
 - Mock interviews, personal phone calls, letters of recommendation, co-authoring and lots of opportunities to travel to conferences (including inter-departmental presentations prior to conference presentation).



UNIVERSITY OF
Nebraska
Omaha

