


Fall 2010

Enrollment Report - Fall 2010

UNO Office of Institutional Effectiveness
University of Nebraska at Omaha

Follow this and additional works at: <http://digitalcommons.unomaha.edu/oienrollment>

 Part of the [Educational Assessment, Evaluation, and Research Commons](#), and the [Higher Education Commons](#)

Recommended Citation

Office of Institutional Effectiveness, UNO, "Enrollment Report - Fall 2010" (2010). *Enrollment Reports*. Paper 35.
<http://digitalcommons.unomaha.edu/oienrollment/35>

This Report is brought to you for free and open access by the Office of Institutional Effectiveness at DigitalCommons@UNO. It has been accepted for inclusion in Enrollment Reports by an authorized administrator of DigitalCommons@UNO. For more information, please contact unodigitalcommons@unomaha.edu.



ENROLLMENT STATISTICAL SUMMARY

FALL 2010

AS OF AUGUST 30, 2010

EXECUTIVE SUMMARY

This Enrollment Statistical Summary provides delivery-site information. Administrative-site headcounts, since they are more closely related to the budgetary authority exercised by the campus, are officially reported to the Board of Regents. Delivery site reporting counts all students, including those in UNL programs delivered at UNO, but excludes UNO programs delivered in Lincoln (CPACS programs). Administrative-site reporting counts students enrolled in UNO programs only (including the CPACS programs delivered in Lincoln.)

The Office of Institutional Research has found delivery-site counts to be the most frequently requested figures by campus units for academic and administrative planning purposes. The purpose of this summary is to provide the undergraduate and graduate enrollments and student credit hour information by college or equivalent academic unit, class, gender and ethnicity.

A glossary at the end of the report provides a list of definitions for headings and categories found in the report.

Fall 2010 Delivery-Site Campus Summary

A campus summary of changes in delivery-site head count enrollment and student credit hours compared to fall 2009 is below.

- Fall 2010 head count enrollment is 15,448, a 0.4% increase compared to the fall 2009 enrollment of 15,382 (see Figure 1).
- Fall 2010 undergraduate head count enrollment is 12,600, a 2.2% increase compared to the fall 2009 enrollment of 12,329 (see Figure 2A).
- Fall 2010 graduate head count enrollment is 2,848, a 6.7% decrease compared to the fall 2009 enrollment of 3,053 (see Figure 2A).
- Fall 2010 student credit hours are 171,084, a 1.8% increase compared to the fall 2009 credit hours of 168,022 (see Figure 3A).
- Fall 2010 undergraduate credit hours are 154,065, up from fall 2009 by 2.2% (see Figure 3A).
- Fall 2010 graduate credit hours are 17,019, down from fall 2009 by 1.7% (see Figure 3A).

Administrative-Site

- Fall 2010 administrative-site head count enrollment is 14,665, a 0.3% increase from the previous fall and administrative-site credit hours are 164,440, up 2.0% (see Figures 2B & 3B).

TABLE OF CONTENTS

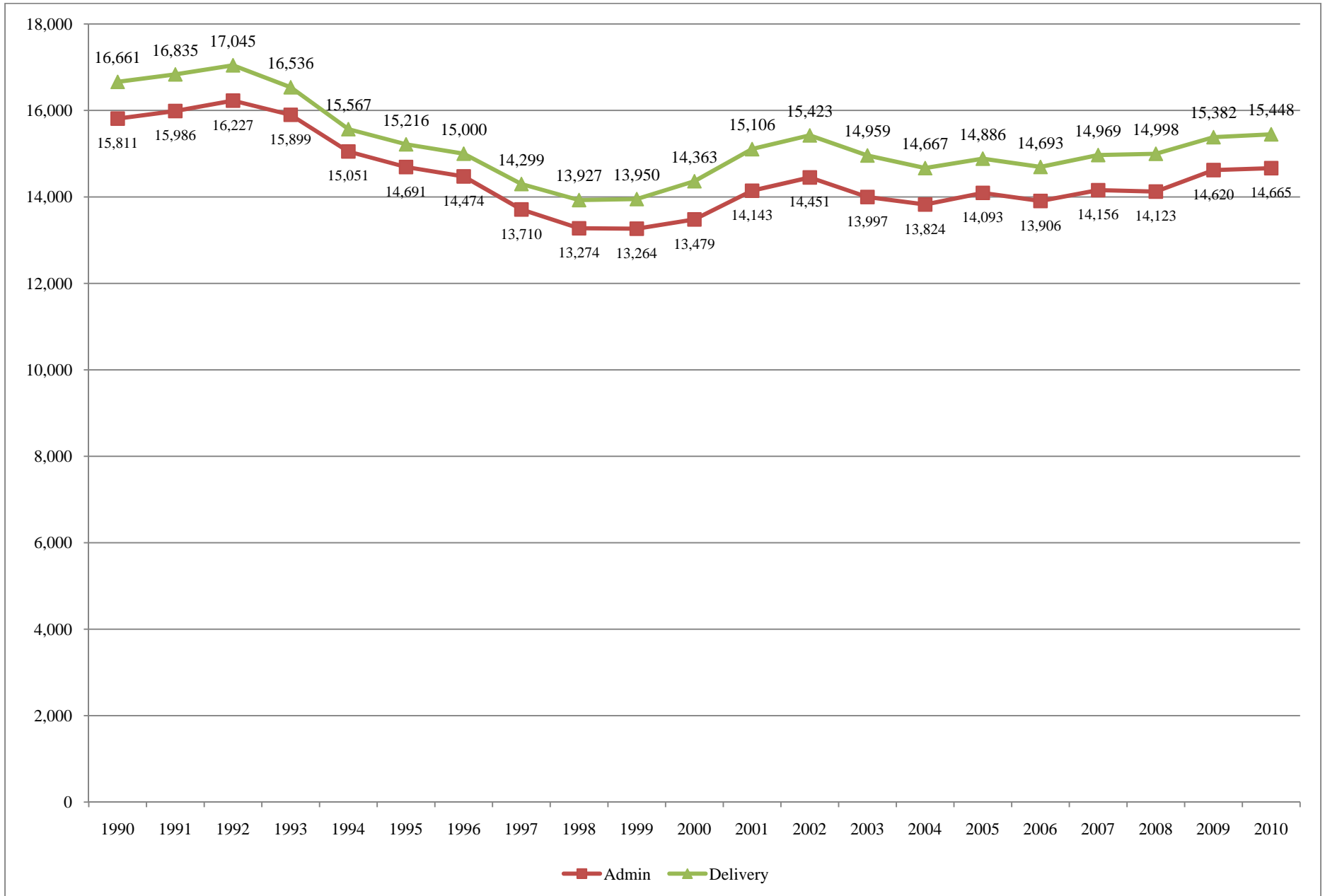
		PAGE
Table 1	UNO Delivery-Site and Administrative-Site Head Count Enrollment and Comparison.....	1
Figure 1	Delivery-Site & Administrative-Site Head Count, Fall 1990 through Fall 2010.....	2
Figures 2A & 3A	Total UNO Delivery-Site Head Count and Student Credit Hours: Fall 2000 through Fall 2010.....	3
Table 2A	Total UNO Delivery-Site Head Count Summary for Full and Part-Time Undergraduate and Graduate Students by Gender and Race Classification: Fall 2010.....	4-5
Figures 2B & 3B	Total UNO Administrative-Site Head Count and Student Credit Hours: Fall 2000 through Fall 2007.....	6
Table 2B	Total UNO Administrative-Site Head Count Summary for Full and Part-Time Undergraduate and Graduate Students by Gender and Race Classification: Fall 2010.....	7-8
Figures 4 & 5	Arts & Science Administrative-Site Head Count and Student Credit Hours: Fall 2000 through Fall 2010.....	9
Table 3	Arts & Science Head Count Summary for Full and Part-Time Undergraduate and Graduate Students by Gender and Race Classification: Fall 2010.....	10-11
Figures 6 & 7	Business Administration Administrative-Site Head Count and Student Credit Hours: Fall 2000 through Fall 2010.....	12
Table 4	Business Administration Head Count Summary for Full and Part-Time Undergraduate and Graduate Students by Gender and Race Classification: Fall 2010.....	13-14
Figures 8A & 9A	Communication, Fine Arts & Media Delivery-Site Head Count and Student Credit Hours: Fall 2000 through Fall 2010.....	15
Table 5A.	Communication, Fine Arts & Media Delivery-Site Head Count Summary for Full and Part-Time Undergraduate and Graduate Students by Gender and Race Classification: Fall 2010.....	16-17
Figures 8B & 9B	Communication, Fine Arts & Media Administrative-Site Head Count Summary for Full and Part-Time Undergraduate and Graduate Students by Gender and Race Classification: Fall 2010.....	18
Table 5B	Communication, Fine Arts & Media Administrative-Site Head Count Summary for Full and Part-Time Undergraduate and Graduate Students by Gender and Race Classification: Fall 2010.....	19-20
Figures 10 & 11	Education Administrative-Site Head Count and Student Credit Hours: Fall 2000 through Fall 2010.....	21
Table 6	Education Head Count Summary for Full and Part-Time Undergraduate and Graduate Students by Gender and Race Classification: Fall 2010.....	22-23
Figures 12 & 13	Information Science & Technology Administrative-Site Head Count and Student Credit Hours: Fall 2000 through Fall 2010.....	24
Table 7	Information Science & Technology Head Count Summary for Full and Part-Time Undergraduate and Graduate Students by Gender and Race Classification: Fall 2010.....	25-26
Figures 14A & 15A	Public Affairs & Community Service Delivery-Site Head Count and Student Credit Hours: Fall 2000 through Fall 2010.....	27
Table 8A	Public Affairs & Community Service Delivery-Site Head Count Summary for Full and Part-Time Undergraduate and Graduate Students by Gender and Race Classification: Fall 2010.....	28-29

Figures 14B & 15B	Public Affairs & Community Service Administrative-Site Head Count and Student Credit Hours: Fall 2000 through Fall 2010.....	30
Table 8A	Public Affairs & Community Service Administrative-Site Head Count Summary for Full and Part-Time Undergraduate and Graduate Students by Gender and Race Classification: Fall 2010.....	31-32
Figure 16	CPACS Division of Continuing Studies Administrative-Site Head Count: Fall 2000 through Fall 2010.....	33
Table 9	CPACS Division of Continuing Studies Head Count Summary for Full and Part-Time Undergraduate Students by Gender and Race Classification: Fall 2010.....	34
Table 10	Cooperative Graduate Program Head Count Summary for Full and Part-Time Graduate Students by Gender and Race Classification: Fall 2010.....	35
Figures 17 & 18	University Division Administrative-Site Head Count and Student Credit Hours: Fall 2000 through Fall 2010.....	36
Table 11	University Division Head Count Summary for Full and Part-Time Undergraduate Students by Gender and Race Classification: Fall 2010.....	37
Figure 19	Non-Degree/Intercampus Special Undergraduate Administrative-Site Head Count: Fall 2000 through Fall 2010.....	38
Table 12	Non-Degree/Intercampus Head Count Summary for Full and Part-Time Special Undergraduate Students by Gender and Race Classification: Fall 2010.....	39
Figure 20	Non-Degree/Intercampus Special Graduate Administrative-Site Head Count: Fall 2000 through Fall 2010.....	40
Table 13	Non-Degree/Intercampus Head Count Summary for Full and Part-Time Special Graduate Students by Gender and Race Classification: Fall 2010.....	41
Figures 21 & 22	Agriculture Delivery-Site Head Count and Students Credit Hours: Fall 2000 through Fall 2010.....	42
Table 14	Agriculture Head Count Summary for Full and Part-Time Undergraduate Students by Gender and Race Classification: Fall 2010.....	43
Figures 23 & 24	Architecture Delivery-Site Head Count and Student Credit Hours: Fall 2000 through Fall 2010.....	44
Table 15	Architecture Head Count Summary for Full and Part-Time Undergraduate Students by Gender and Race Classification: Fall 2010.....	45
Figures 25 & 26	Engineering Delivery-Site Head Count and Student Credit Hours: Fall 2000 through Fall 2010.....	46
Table 16	Engineering Head Count for Full and Part-Time Undergraduate Students by Gender and Race Classification: Fall 2010.....	47
Figures 27 & 28	Education and Human Sciences Delivery-Site Head Count and Student Credit Hours: Fall 2000 through Fall 2010.....	48
Table 17	Education and Human Sciences Head Count Summary for Full and Part-Time Undergraduate Students by Gender and Race Classification: Fall 2010.....	49
Figure 29	Other: Honors and Library Student Credit Hours: Fall 2000 through Fall 2010.....	50
	Glossary.....	51

Table 1
 UNO Delivery-Site and Administrative-Site
 Head Count Enrollment and Comparison
 Fall Semester, 2010

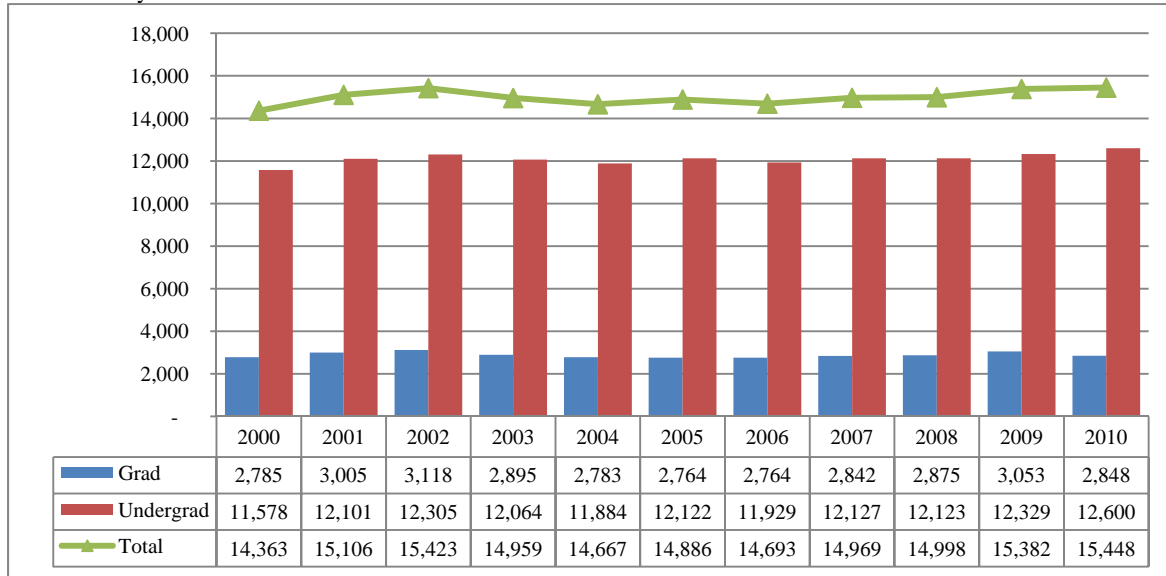
	Delivery-Site		Administrative-Site Fall 2010	Administrative-Site Fall 2009
	<u>UNL</u>	<u>UNO</u>	<u>Total</u>	<u>Total</u>
UNO:				
Undergraduate				
Arts & Science		3,537	3,537	3,475
Business Administration		1,904	1,904	1,952
Communication, Fine Arts & Media		1,134	1,134	1,157
Education		1,559	1,559	1,453
Information Science and Technology		603	603	604
Public Affairs & Community Services	243	602	845	698
Division of Continuing Studies		1,101	1,101	1,046
Sub-total CPACS including Cont. Studies		1,703	1,946	1,744
Non-Degree		300	300	273
University Division		850	850	896
Total Undergraduate		11,590	11,833	11,554
Graduate				
Arts & Sciences		387	387	358
Business Administration		435	435	464
Communication, Fine Arts & Media		146	130	136
Education		801	801	844
Information Science and Technology		222	222	258
Public Affairs & Community Services		456	456	460
Public Health (Joint UNMC program)		0	0	29
New Cooperative Graduate Programs		6	6	0
Undeclared		395	395	517
Total Graduate		2,848	2,832	3,066
UNL:				
Agriculture		19		
Architecture		38		
Engineering & Technology		865		
Education and Human Science		88		
Total UNL		1,010		
UNO Totals		15,448	14,665	14,620

Figure 1
 Delivery-Site & Administrative-Site Head Count Enrollment
 Fall 1990 through Fall 2010



Figures 2A & 3A
 Total UNO
 Delivery-Site Head Count and Student Credit Hours
 Fall 2000 through Fall 2010

Head Count by Student Level



Student Credit Hours by Course Level

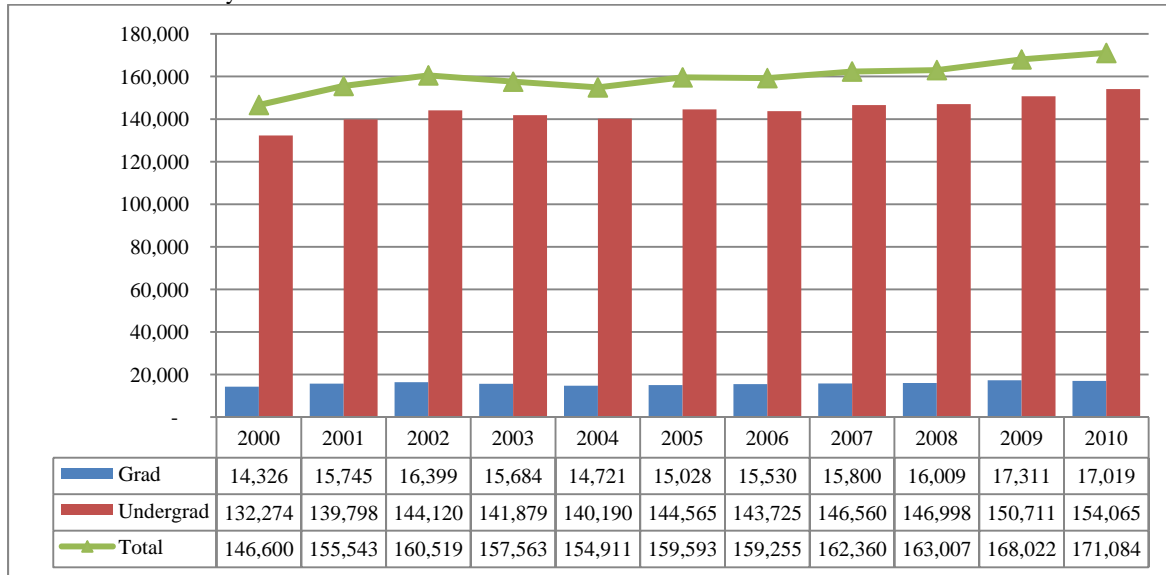


Table 2A
Total UNO Delivery-Site Head Count Summary for Full and Part-Time, Undergraduate and
Graduate Students by Gender and Race Classification: Fall 2010

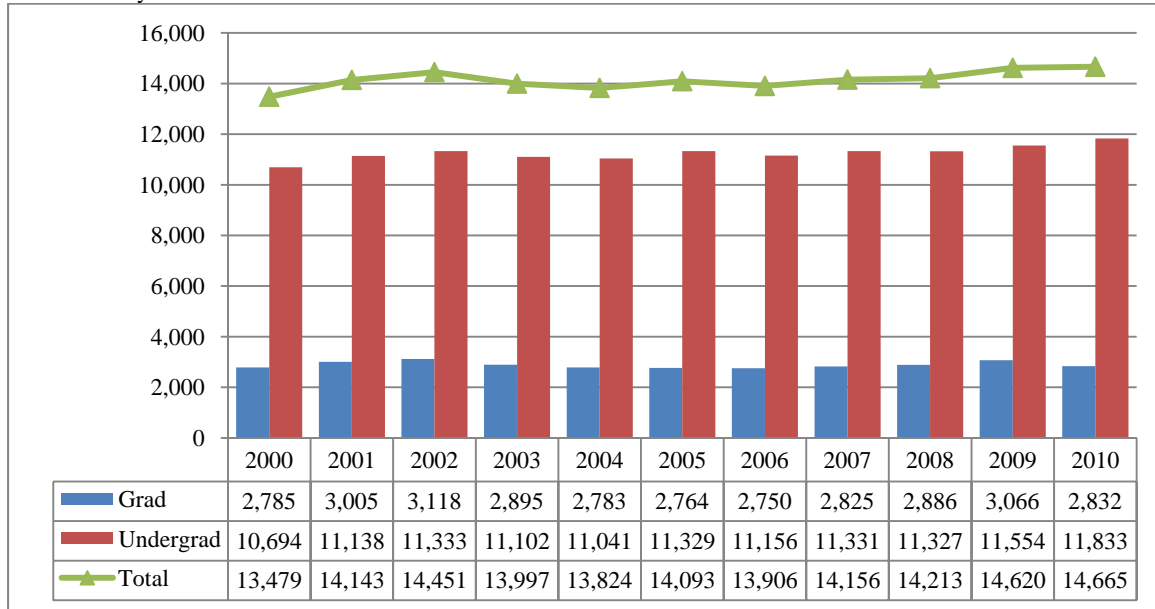
	White		African American		Hispanic		Asian		American Indian		Nat Haw / Pac Isl		Nonresident Alien		Race Unknown		Two or more races		Total		
	F	M	F	M	F	M	F	M	F	M	F	M	F	M	F	M	F	M	F	M	Total
Full-Time																					
Undergraduate																					
First-Time Freshmen	719	699	66	45	96	76	21	22	3		2		11	16	8	21	27	33	953	912	1,865
Other Freshmen	382	482	68	54	40	34	10	16	8	2		1	32	71	28	19	8	5	576	684	1,260
Sophomores	853	892	67	47	64	46	26	19	12	2	1		14	23	35	28	6	3	1,078	1,060	2,138
Juniors	859	893	67	61	45	41	28	27	6	6			26	36	36	32	5	3	1,072	1,099	2,171
Seniors	965	1,022	72	48	52	37	31	22	14	6			31	43	35	46	2		1,202	1,224	2,426
Special	59	63	4	2	1	3	3	4	1				3	3	1	4	1	1	73	80	153
Total	3,837	4,051	344	257	298	237	119	110	44	16	3	1	117	192	143	150	49	45	4,954	5,059	10,013
Graduate																					
Certificate	3	4																	3	4	7
Masters	306	179	9	10	8	14	10	6	1				47	72	4	13	2	1	387	295	682
Doctoral	7	6				1	1	1					8	7					15	15	30
Special Graduate	11	37		1			1	2					14	40		2		1	26	83	109
Total	327	226	9	11	8	15	11	9	1	0	0	0	69	119	4	15	2	2	431	397	828
Total Full-Time	4,164	4,277	353	268	306	252	130	119	45	16	3	1	186	311	147	165	51	47	5,385	5,456	10,841
Part-Time																					
Undergraduate																					
First-Time Freshmen	17	18	4	3	6	2	1						4	12	2	2		2	34	39	73
Other Freshmen	127	130	15	12	12	8	9	6	3	1	1		7	13	18	31	4	4	196	205	401
Sophomores	136	141	18	7	7	11	4	2	1	3			5	1	3	10	2		176	175	351
Juniors	210	218	22	15	11	14	9	8		1			2	1	9	13		2	263	272	535
Seniors	347	380	33	30	27	17	12	17	1	2	1		2	12	16	21			439	479	918
Special	121	116	5	10	7	7	5	5		1			2	3	9	16	1	1	150	159	309
Total	958	1,003	97	77	70	59	40	38	5	8	2	0	22	42	57	93	7	9	1,258	1,329	2,587
Graduate																					
Certificate	25	10	2	3		1	1	1					1	1	1				30	16	46
Masters	765	500	38	26	13	21	12	13	2	4			22	31	28	19	1	2	881	616	1,497
Doctoral	42	44	4	3			1			1			4	5	2	1			53	54	107
Special Graduate	198	92	12	3	5	5	4	5	1				6	18	10	9		2	236	134	370
Total	1,030	646	56	35	18	27	18	19	3	5	0	0	33	55	41	29	1	4	1,200	820	2,020
Total Part-Time	1,988	1,649	153	112	88	86	58	57	8	13	2	0	55	97	98	122	8	13	2,458	2,149	4,607

Table 2A (Continued)

	White		African American		Hispanic		Asian		American Indian		Nat Haw / Pac Isl		Nonresident Alien		Race Unknown		Two or more races		Total			
	F	M	F	M	F	M	F	M	F	M	F	M	F	M	F	M	F	M	F	M	Total	
Total																						
Undergraduate																						
First-Time Freshmen	736	717	70	48	102	78	22	22	3		2		15	28	10	23	27	35	987	951	1,938	
Other Freshmen	509	612	83	66	52	42	19	22	11	3	1	1	39	84	46	50	12	9	772	889	1,661	
Sophomores	989	1,033	85	54	71	57	30	21	13	5	1		19	24	38	38	8	3	1,254	1,235	2,489	
Juniors	1,069	1,111	89	76	56	55	37	35	6	7			28	37	45	45	5	5	1,335	1,371	2,706	
Seniors	1,312	1,402	105	78	79	54	43	39	15	8	1		33	55	51	67	2		1,641	1,703	3,344	
Special	180	179	9	12	8	10	8	9	1	1			5	6	10	20	2	2	223	239	462	
Total	4,795	5,054	441	334	368	296	159	148	49	24	5	1	139	234	200	243	56	54	6,212	6,388	12,600	
Graduate																						
Certificate	28	14	2	3		1	1	1					1	1	1				33	20	53	
Masters	1,071	679	47	36	21	35	22	19	3	4			69	103	32	32	3	3	1,268	911	2,179	
Doctoral	49	50	4	3		1	1	1		1			12	12	2	1			68	69	137	
Special Graduate	209	129	12	4	5	5	5	7	1				20	58	10	11		3	262	217	479	
Total	1,357	872	65	46	26	42	29	28	4	5	0	0	102	174	45	44	3	6	1,631	1,217	2,848	
Total All Students	6,152	5,926	506	380	394	338	188	176	53	29	5	1	241	408	245	287	59	60	7,843	7,605	15,448	

Figures 2B & 3B
 Total UNO
 Administrative-Site Head Count and Student Credit Hours
 Fall 2000 through Fall 2010

Head Count by Student Level



Student Credit Hours by Course Level

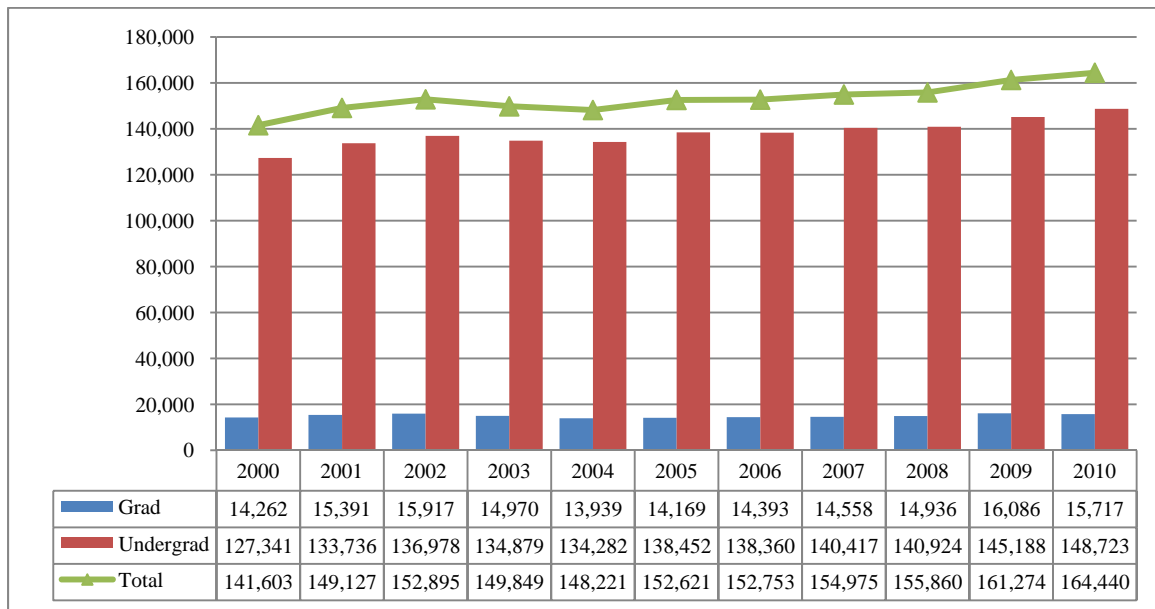


Table 2B
Total UNO Administrative-Site Head Count Summary for Full and Part-Time, Undergraduate and Graduate Students by Gender and Race Classification: Fall 2010

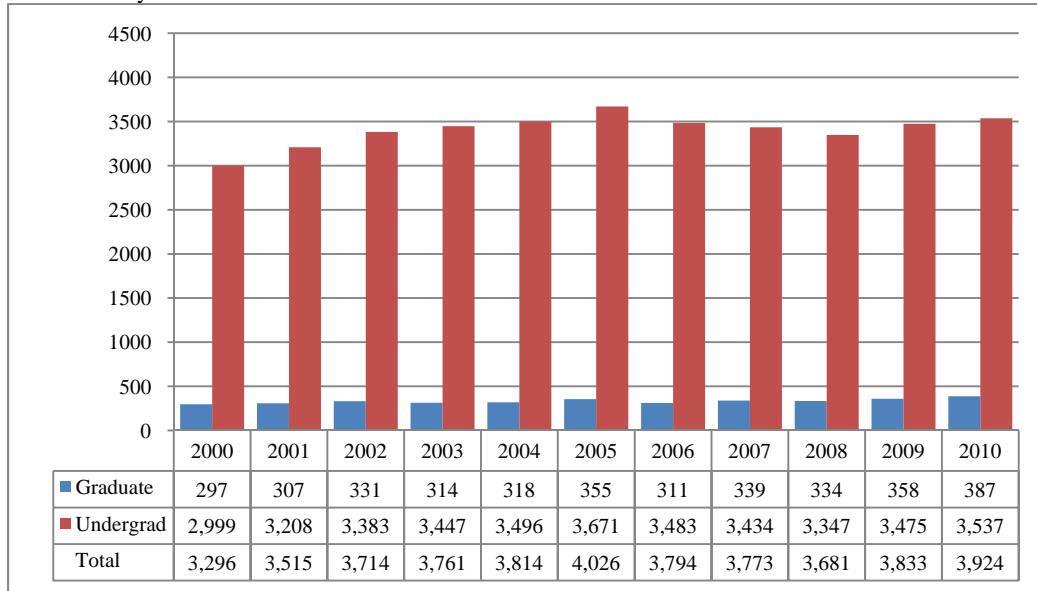
	White		African American		Hispanic		Asian		American Indian		Nat Haw / Pac Isl		Nonresident Alien		Race Unknown		Two or more races		Total		
	F	M	F	M	F	M	F	M	F	M	F	M	F	M	F	M	F	M	F	M	Total
Full-Time																					
Undergraduate																					
First-Time Freshmen	704	592	64	43	96	73	18	20	3		2		11	16	8	19	26	26	932	789	1,721
Other Freshmen	372	452	66	53	38	34	10	16	8	2		1	32	68	28	19	8	5	562	650	1,212
Sophomores	827	786	67	44	63	41	25	15	11	2	1		14	20	33	26	6	3	1,047	937	1,984
Juniors	841	831	65	61	42	37	28	26	6	6			25	32	37	27	5	4	1,049	1,024	2,073
Seniors	947	868	69	40	52	34	31	20	14	6			29	40	31	43	2		1,175	1,051	2,226
Special	57	54	4	2	1	3	3	2	1				3	3	1	4	1	1	71	69	140
Total	3,748	3,583	335	243	292	222	115	99	43	16	3	1	114	179	138	138	48	39	4,836	4,520	9,356
Graduate																					
Certificate	3	4																	3	4	7
Masters	301	169	9	10	8	13	10	6	1				47	72	4	13	2	1	382	284	666
Doctoral	7	6				1		1					8	7					15	15	30
Special Graduate	11	37		1			1	2					14	40		2		1	26	83	109
Total	322	216	9	11	8	14	11	9	1	0	0	0	69	119	4	15	2	2	426	386	812
Total Full-Time	4,070	3,799	344	254	300	236	126	108	44	16	3	1	183	298	142	153	50	41	5,262	4,906	10,168
Part-Time																					
Undergraduate																					
First-Time Freshmen	17	16	3	3	6	2	1						4	12	2	2		2	33	37	70
Other Freshmen	123	122	15	11	12	8	9	6	3	1	1		6	13	18	31	4	3	191	195	386
Sophomores	127	137	16	7	7	11	4	1	1	3			5	1	3	9	2		165	169	334
Juniors	204	205	21	12	11	13	9	8		1			2	1	9	13		2	256	255	511
Seniors	345	358	32	25	26	15	12	16	1	2	1		2	11	16	18	1		436	445	881
Special	119	107	5	9	7	6	5	5		1			2	3	9	16		1	147	148	295
Total	935	945	92	67	69	55	40	36	5	8	2	0	21	41	57	89	7	8	1,228	1,249	2,477
Graduate																					
Certificate	25	10	2	3		1	1	1					1	1	1				30	16	46
Masters	765	500	38	26	13	21	12	13	2	4			22	31	28	19	1	2	881	616	1,497
Doctoral	42	44	4	3			1			1			4	5	2	1			53	54	107
Special Graduate	198	92	12	3	5	5	4	5	1				6	18	10	9		2	236	134	370
Total	1,030	646	56	35	18	27	18	19	3	5	0	0	33	55	41	29	1	4	1,200	820	2,020
Total Part-Time	1,965	1,591	148	102	87	82	58	55	8	13	2	0	54	96	98	118	8	12	2,428	2,069	4,497

Table 2B (Continued)

	White		African American		Hispanic		Asian		American Indian		Nat Haw / Pac Isl		Nonresident Alien		Race Unknown		Two or more races		Total			
	F	M	F	M	F	M	F	M	F	M	F	M	F	M	F	M	F	M	F	M	Total	
Total																						
Undergraduate																						
First-Time Freshmen	721	608	67	46	102	75	19	20	3		2		15	28	10	21	26	28	965	826	1,791	
Other Freshmen	495	574	81	64	50	42	19	22	11	3	1	1	38	81	46	50	12	8	753	845	1,598	
Sophomores	954	923	83	51	70	52	29	16	12	5	1		19	21	36	35	8	3	1,212	1,106	2,318	
Juniors	1,045	1,036	86	73	53	50	37	34	6	7			27	33	46	40	5	6	1,305	1,279	2,584	
Seniors	1,292	1,226	101	65	78	49	43	36	15	8	1		31	51	47	61	3		1,611	1,496	3,107	
Special	176	161	9	11	8	9	8	7	1	1			5	6	10	20	1	2	218	217	435	
Total	4,683	4,528	427	310	361	277	155	135	48	24	5	1	135	220	195	227	55	47	6,064	5,769	11,833	
Graduate																						
Certificate	28	14	2	3		1	1	1					1	1	1				33	20	53	
Masters	1,066	669	47	36	21	34	22	19	3	4			69	103	32	32	3	3	1,263	900	2,163	
Doctoral	49	50	4	3		1	1	1		1			12	12	2	1			68	69	137	
Special Graduate	209	129	12	4	5	5	5	7	1				20	58	10	11		3	262	217	479	
Total	1,352	862	65	46	26	41	29	28	4	5	0	0	102	174	45	44	3	6	1,626	1,206	2,832	
Total All Students	6,035	5,390	492	356	387	318	184	163	52	29	5	1	237	394	240	271	58	53	7,690	6,975	14,665	

Figures 4 & 5
 College of Arts & Sciences
 Administrative-Site Head Count and Student Credit Hours
 Fall 2000 through Fall 2010

Head Count by Student Level



Student Credit Hours by Course Level

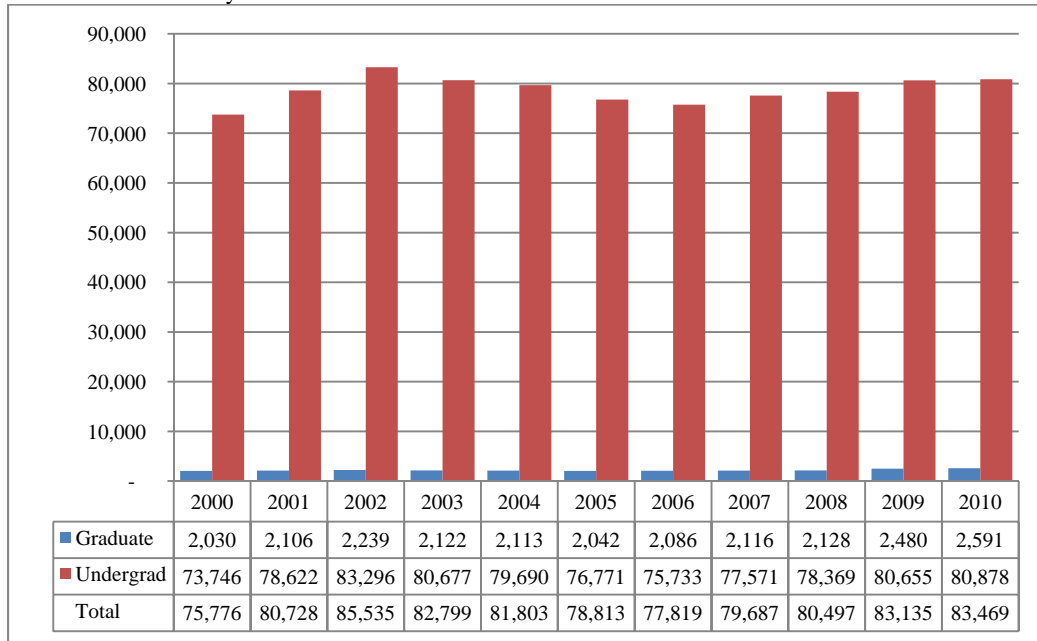


Table 3
College of Arts & Sciences Head Count Summary for Full and Part-Time,
Undergraduate and Graduate Students by Gender and Race Classification: Fall 2010

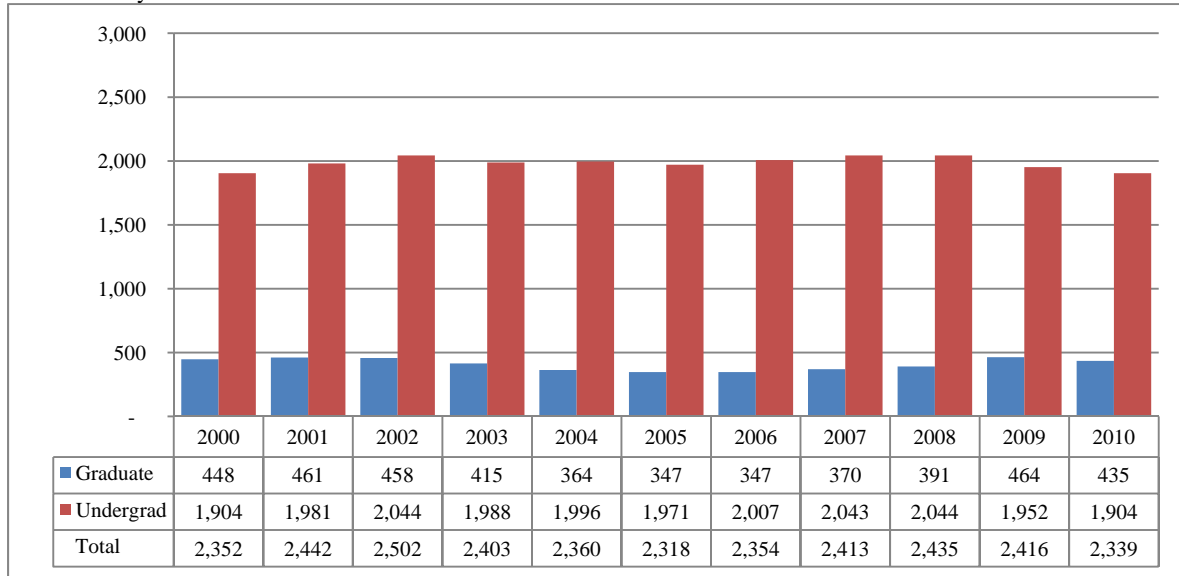
	White		African American		Hispanic		Asian		American Indian		Nat Haw / Pac Isl		Nonresident Alien		Race Unknown		Two or more races		Total		
	F	M	F	M	F	M	F	M	F	M	F	M	F	M	F	M	F	M	F	M	Total
Full-Time																					
Undergraduate																					
First-Time Freshmen	302	157	37	6	38	16	9	7			1		4	1	2	5	12	3	405	195	600
Other Freshmen	137	120	29	15	15	11	6	6	3	1			8	9	14	5	2		214	167	381
Sophomores	363	225	28	11	27	15	11	6	5		1		4	7	21	8	2		462	272	734
Juniors	277	210	20	16	14	14	12	8	3	2			9	4	18	8	4	1	357	263	620
Seniors	226	211	18	10	15	12	9	6	5	2			9	5	8	15			290	261	551
Special	8	15	1				1	1					2	2		1		1	12	20	32
Total	1,313	938	133	58	109	68	48	34	16	5	2	0	36	28	63	42	20	5	1,740	1,178	2,918
Graduate																					
Certificate	1	3																	1	3	4
Masters	56	40	1	2		6	1						2	3	1	3	1	1	62	55	117
Doctoral	1	1											2						3	1	4
Special Graduate													1						1	0	1
Total	58	44	1	2	0	6	1	0	0	0	0	0	5	3	1	3	1	1	67	59	126
Total Full-Time	1,371	982	134	60	109	74	49	34	16	5	2	0	41	31	64	45	21	6	1,807	1,237	3,044
Part-Time																					
Undergraduate																					
First-Time Freshmen	5	3	2	2	2	1							2	4				1	11	11	22
Other Freshmen	18	18	6	3	2	1	3	2					2	1	4	7	2		37	32	69
Sophomores	54	37	5	1		3	1			1					1	3	1		62	45	107
Juniors	52	62	3	3	1	6	4	3					2		2	4			64	78	142
Seniors	97	78	6	3	8	1	3	3		1	1			3	5	5			120	94	214
Special	27	23		1	4		3								3	4			37	28	65
Total	253	221	22	13	17	12	14	8	0	2	1	0	6	8	15	23	3	1	331	288	619
Graduate																					
Certificate	8	5		1									1		1				10	6	16
Masters	109	82	1	2	5	7	2	1	1	2			2	4	6	6	1		127	104	231
Doctoral	8	3	1							1									9	4	13
Special Graduate	1																		1	0	1
Total	126	90	2	3	5	7	2	1	1	3	0	0	3	4	7	6	1	0	147	114	261
Total Part-Time	379	311	24	16	22	19	16	9	1	5	1	0	9	12	22	29	4	1	478	402	880

Table 3 (Continued)

	White		African American		Hispanic		Asian		American Indian		Nat Haw / Pac Isl		Nonresident Alien		Race Unknown		Two or more races		Total			
	F	M	F	M	F	M	F	M	F	M	F	M	F	M	F	M	F	M	F	M	Total	
Total																						
Undergraduate																						
First-Time Freshmen	307	160	39	8	40	17	9	7			1		6	5	2	5	12	4	416	206	622	
Other Freshmen	155	138	35	18	17	12	9	8	3	1			10	10	18	12	4		251	199	450	
Sophomores	417	262	33	12	27	18	12	6	5	1	1		4	7	22	11	3		524	317	841	
Juniors	329	272	23	19	15	20	16	11	3	2			11	4	20	12	4	1	421	341	762	
Seniors	323	289	24	13	23	13	12	9	5	3	1		9	8	13	20			410	355	765	
Special	35	38	1	1	4		4	1					2	2	3	5		1	49	48	97	
Total	1,566	1,159	155	71	126	80	62	42	16	7	3	0	42	36	78	65	23	6	2,071	1,466	3,537	
Graduate																						
Certificate	9	8		1									1		1				11	9	20	
Masters	165	122	2	4	5	13	3	1	1	2			4	7	7	9	2	1	189	159	348	
Doctoral	9	4	1							1			2						12	5	17	
Special Graduate	1												1						2	0	2	
Total	184	134	3	5	5	13	3	1	1	3	0	0	8	7	8	9	2	1	214	173	387	
Total All Students	1,750	1,293	158	76	131	93	65	43	17	10	3	0	50	43	86	74	25	7	2,285	1,639	3,924	

Figures 6 & 7
 College of Business Administration
 Administrative-Site Head Count and Student Credit Hours
 Fall 2000 through Fall 2010

Head Count by Student Level



Student Credit Hours by Course Level

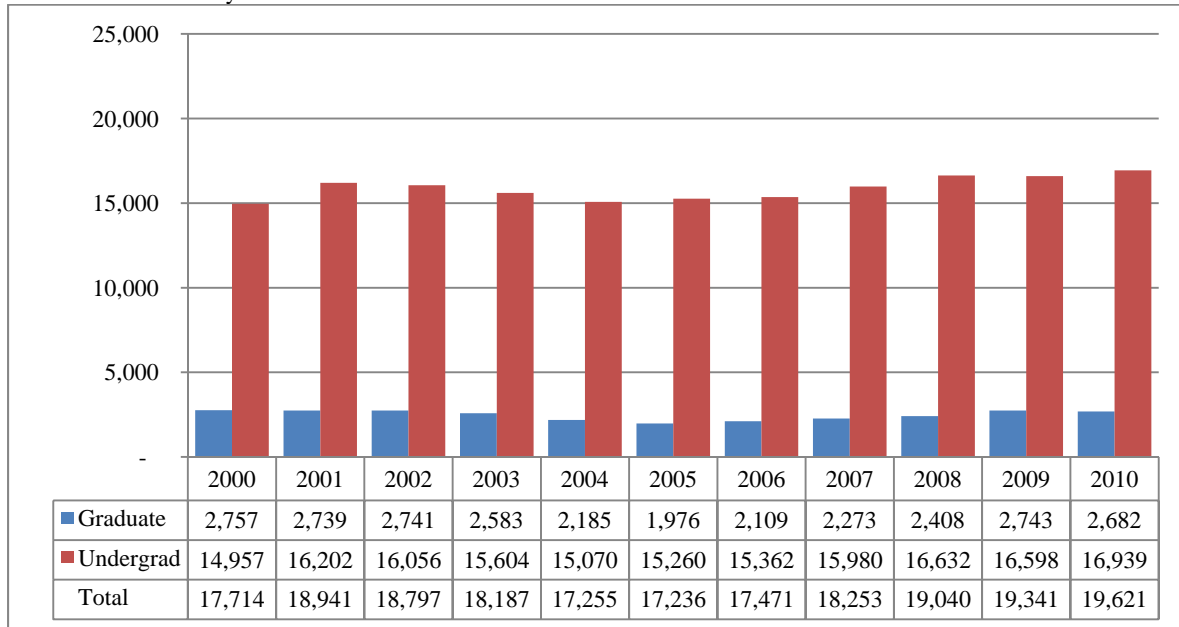


Table 4
College of Business Administration Head Count Summary for Full and Part-Time,
Undergraduate and Graduate Students by Gender and Race Classification: Fall 2010

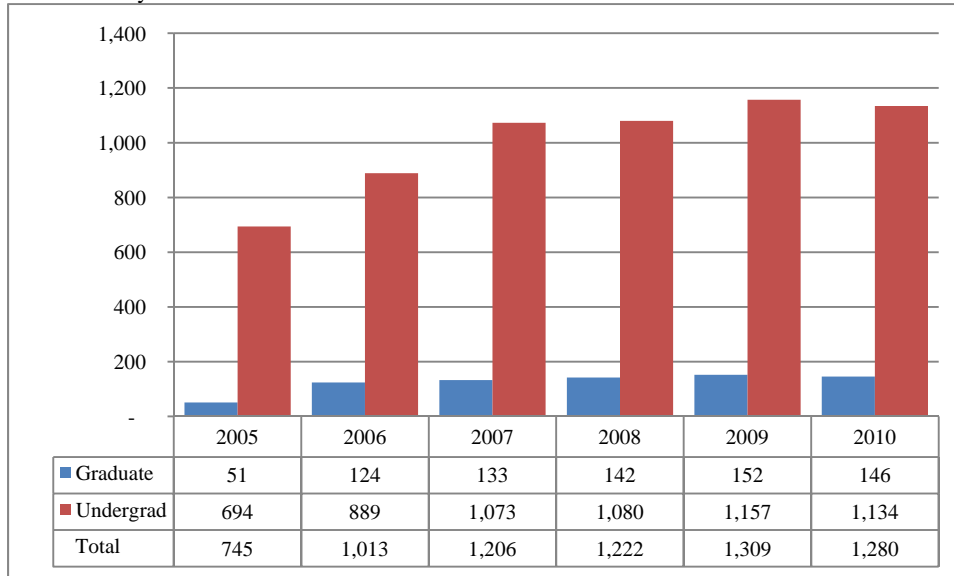
	White		African American		Hispanic		Asian		American Indian		Nat Haw / Pac Isl		Nonresident Alien		Race Unknown		Two or more races		Total		
	F	M	F	M	F	M	F	M	F	M	F	M	F	M	F	M	F	M	F	M	Total
Full-Time																					
Undergraduate																					
First-Time Freshmen	63	101	3	7	8	10	3	3					3	8		3	3	2	83	134	217
Other Freshmen	33	64	5	1	4	1		1					7	16	3	2			52	85	137
Sophomores	81	137	6	6	10	3	6	2	3	1			6	5	1	4	1		114	158	272
Juniors	134	183	8	10	6	6	3	5		1			9	16	3	4		1	163	226	389
Seniors	161	233	7	8	5	9	5	3		1			9	10	3	4			190	268	458
Special	4	6	1	1	1	1								1		1	1		7	10	17
Total	476	724	30	33	34	30	17	14	3	3	0	0	34	56	10	18	5	3	609	881	1,490
Graduate																					
Certificate																			0	0	0
Masters	24	43	1	6		5	4	2					18	21	1	5			48	82	130
Doctoral																			0	0	0
Special Graduate																			0	0	0
Total	24	43	1	6	0	5	4	2	0	0	0	0	18	21	1	5	0	0	48	82	130
Total Full-Time	500	767	31	39	34	35	21	16	3	3	0	0	52	77	11	23	5	3	657	963	1,620
Part-Time																					
Undergraduate																					
First-Time Freshmen		3			1		1						2	5					4	8	12
Other Freshmen	11	10	1	2	2		3						2	4		2			19	18	37
Sophomores	17	19	1		2	2							3	1					23	22	45
Juniors	38	36	5	2		1	2								1	2			46	41	87
Seniors	76	74	4	7	5	4	4	5					1	4	1	2			91	96	187
Special	14	18		4	1	1	1	2					2	2		1			18	28	46
Total	156	160	11	15	11	8	11	7	0	0	0	0	10	16	2	7	0	0	201	213	414
Graduate																					
Certificate		1												1					0	2	2
Masters	83	164	2	9	2	3	3	8		1			2	10	6	3			98	198	296
Doctoral																			0	0	0
Special Graduate		5				1		1											0	7	7
Total	83	170	2	9	2	4	3	9	0	1	0	0	2	11	6	3	0	0	98	207	305
Total Part-Time	239	330	13	24	13	12	14	16	0	1	0	0	12	27	8	10	0	0	299	420	719

Table 4 (Continued)

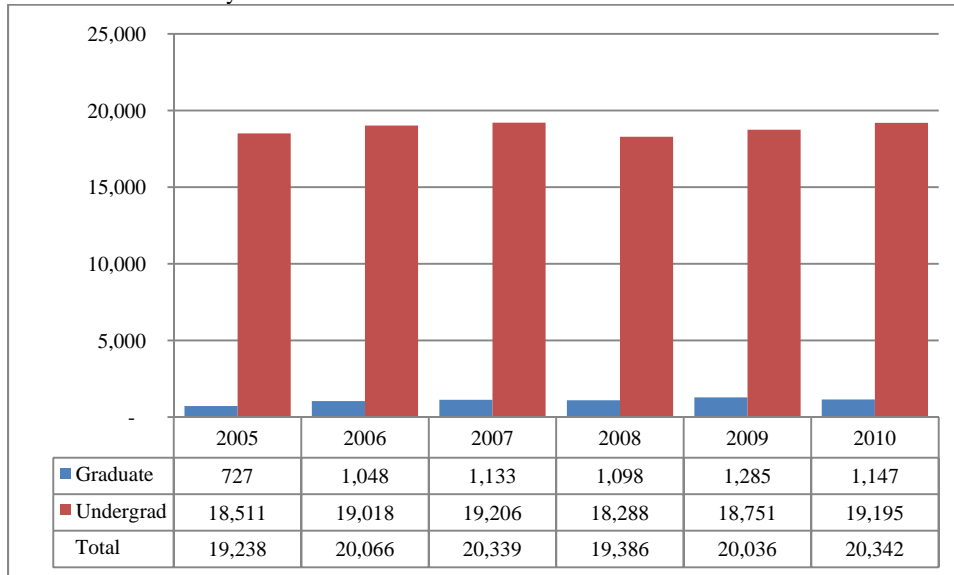
	White		African American		Hispanic		Asian		American Indian		Nat Haw / Pac Isl		Nonresident Alien		Race Unknown		Two or more races		Total			
	F	M	F	M	F	M	F	M	F	M	F	M	F	M	F	M	F	M	F	M	Total	
Total																						
Undergraduate																						
First-Time Freshmen	63	104	3	7	9	10	4	3					5	13		3	3	2	87	142	229	
Other Freshmen	44	74	6	3	6	1	3	1					9	20	3	4			71	103	174	
Sophomores	98	156	7	6	12	5	6	2	3	1			9	6	1	4	1		137	180	317	
Juniors	172	219	13	12	6	7	5	5		1			9	16	4	6		1	209	267	476	
Seniors	237	307	11	15	10	13	9	8		1			10	14	4	6			281	364	645	
Special	18	24	1	5	2	2	1	2					2	3		2	1		25	38	63	
Total	632	884	41	48	45	38	28	21	3	3	0	0	44	72	12	25	5	3	810	1,094	1,904	
Graduate																						
Certificate		1												1					0	2	2	
Masters	107	207	3	15	2	8	7	10		1			20	31	7	8			146	280	426	
Doctoral																			0	0	0	
Special Graduate		5				1		1											0	7	7	
Total	107	213	3	15	2	9	7	11	0	1	0	0	20	32	7	8	0	0	146	289	435	
Total All Students	739	1,097	44	63	47	47	35	32	3	4	0	0	64	104	19	33	5	3	956	1,383	2,339	

Figures 8A & 9A
 College of Communication, Fine Arts and Media
 Delivery-Site Head Count and Student Credit Hours
 Fall 2000 through Fall 2010

Head Count by Student Level¹



Student Credit Hours by Course Level¹



¹ College of Fine Arts existed until July 2005. College of Communication, Fine Arts and Media was formed Fall 2005. Communication majors, in addition to previously reported fine arts majors, are included Fall 2005 and after.

Table 5A
College of Communication, Fine Arts and Media Delivery-Site Head Count Summary for Full and Part-Time,
Undergraduate and Graduate Students by Gender and Race Classification

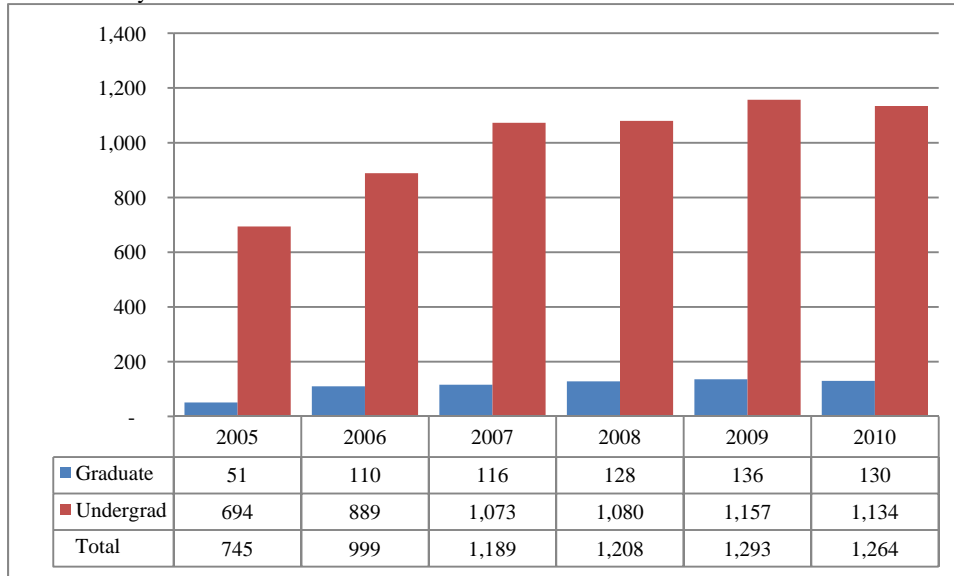
	White		African American		Hispanic		Asian		American Indian		Nat Haw / Pac Isl		Nonresident Alien		Race Unknown		Two or more races		Total			
	F	M	F	M	F	M	F	M	F	M	F	M	F	M	F	M	F	M	F	M	Total	
Full-Time																						
Undergraduate																						
First-Time Freshmen	79	41	4	4	12	8	2	2					1		1	1	2	3	101	59	160	
Other Freshmen	44	26	2	3	3	4		2	1				2		3		1	1	56	36	92	
Sophomores	96	69	4	5	7	2	3		1						4	2	2		117	78	195	
Juniors	108	90	7	7	6	1	5	5		1			2	1	4	4			132	109	241	
Seniors	124	85	9	5	8		8	1							6	5			155	96	251	
Special	1	3																	1	3	4	
Total	452	314	26	24	36	15	18	10	2	1	0	0	5	1	18	12	5	4	562	381	943	
Graduate																						
Certificate																			0	0	0	
Masters	22	23	2		2	1							1		1	1			28	25	53	
Doctoral																			0	0	0	
Special Graduate																			0	0	0	
Total	22	23	2	0	2	1	0	0	0	0	0	0	1	0	1	1	0	0	28	25	53	
Total Full-Time	474	337	28	24	38	16	18	10	2	1	0	0	6	1	19	13	5	4	590	406	996	
Part-Time																						
Undergraduate																						
First-Time Freshmen	3				2	1											1		5	2	7	
Other Freshmen	6	11	1			1				1	1				1	1		1	9	15	24	
Sophomores	7	9		2	1		1									1			9	12	21	
Juniors	22	12	2	1	4			1							3	2			31	16	47	
Seniors	34	37	3	2		2	1	1					1		1	1			40	43	83	
Special	5	2	1					1											6	3	9	
Total	77	71	7	5	7	4	2	3	0	1	1	0	1	0	5	5	0	2	100	91	191	
Graduate																						
Certificate	1																		1	0	1	
Masters	50	24	3	5			3	1					1		1				58	30	88	
Doctoral																			0	0	0	
Special Graduate	2	1	1																3	1	4	
Total	53	25	4	5	0	0	3	1	0	0	0	0	1	0	1	0	0	0	62	31	93	
Total Part-Time	130	96	11	10	7	4	5	4	0	1	1	0	2	0	6	5	0	2	162	122	284	

Table 5A (Continued)

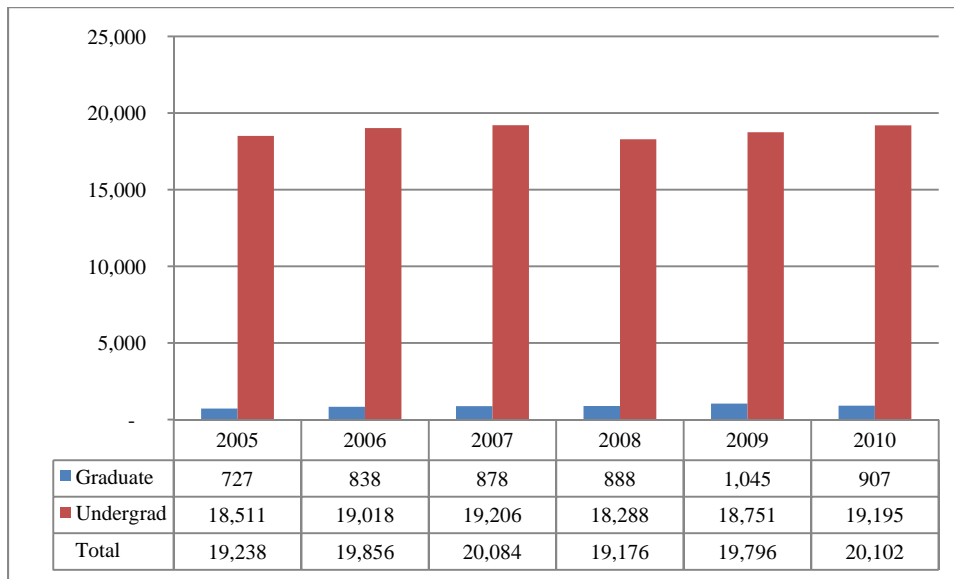
	White		African American		Hispanic		Asian		American Indian		Nat Haw / Pac Isl		Nonresident Alien		Race Unknown		Two or more races		Total			
	F	M	F	M	F	M	F	M	F	M	F	M	F	M	F	M	F	M	F	M	Total	
Total																						
Undergraduate																						
First-Time Freshmen	82	41	4	4	14	9	2	2					1		1	1	2	4	106	61	167	
Other Freshmen	50	37	3	3	3	5		2	1	1	1		2		4	1	1	2	65	51	116	
Sophomores	103	78	4	7	8	2	4		1						4	3	2		126	90	216	
Juniors	130	102	9	8	10	1	5	6		1			2	1	7	6			163	125	288	
Seniors	158	122	12	7	8	2	9	2					1		7	6			195	139	334	
Special	6	5	1					1											7	6	13	
Total	529	385	33	29	43	19	20	13	2	2	1	0	6	1	23	17	5	6	662	472	1,134	
Graduate																						
Certificate	1																		1	0	1	
Masters	72	47	5	5	2	1	3	1					2		2	1			86	55	141	
Doctoral																			0	0	0	
Special Graduate	2	1	1																3	1	4	
Total	75	48	6	5	2	1	3	1	0	0	0	0	2	0	2	1	0	0	90	56	146	
Total All Students	604	433	39	34	45	20	23	14	2	2	1	0	8	1	25	18	5	6	752	528	1,280	

Figures 8B & 9B
 College of Communication, Fine Arts and Media
 Administrative-Site Head Count and Student Credit Hours
 Fall 2000 through Fall 2010

Head Count by Student Level¹



Student Credit Hours by Course Level¹



¹ College of Fine Arts existed until July 2005. College of Communication, Fine Arts and Media was formed Fall 2005. Communication majors, in addition to the previously reported fine arts majors, are included Fall 2005 and later. Head Count and SCH for Master Fine Arts Writing are shared with UNK.

Table 5B
College of Communication, Fine Arts and Media Administrative-Site Head Count Summary for Full and Part-Time,
Undergraduate and Graduate Students by Gender and Race Classification: Fall 2010

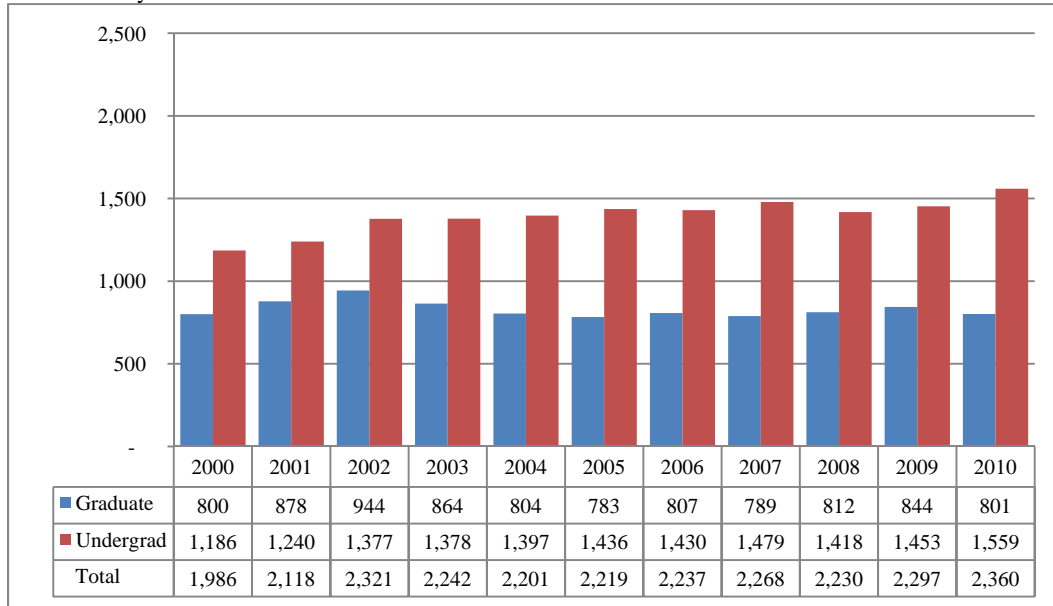
	White		African American		Hispanic		Asian		American Indian		Nat Haw / Pac Isl		Nonresident Alien		Race Unknown		Two or more races		Total			
	F	M	F	M	F	M	F	M	F	M	F	M	F	M	F	M	F	M	F	M	Total	
Total																						
Undergraduate																						
First-Time Freshmen	79	41	4	4	12	8	2	2					1		1	1	2	3	101	59	160	
Other Freshmen	44	26	2	3	3	4		2	1				2		3		1	1	56	36	92	
Sophomores	96	69	4	5	7	2	3		1						4	2	2		117	78	195	
Juniors	108	90	7	7	6	1	5	5		1			2	1	4	4			132	109	241	
Seniors	124	85	9	5	8		8	1							6	5			155	96	251	
Special	1	3																	1	3	4	
Total	452	314	26	24	36	15	18	10	2	1	0	0	5	1	18	12	5	4	562	381	943	
Graduate																						
Certificate																			0	0	0	
Masters	17	13	2		2								1		1	1			23	14	37	
Doctoral																			0	0	0	
Special Graduate																			0	0	0	
Total	17	13	2	0	2	0	0	0	0	0	0	0	1	0	1	1	0	0	23	14	37	
Total Full-Time	469	327	28	24	38	15	18	10	2	1	0	0	6	1	19	13	5	4	585	395	980	
Part-Time																						
Undergraduate																						
First-Time Freshmen	3				2	1												1	5	2	7	
Other Freshmen	6	11	1			1				1	1				1	1		1	9	15	24	
Sophomores	7	9		2	1		1									1			9	12	21	
Juniors	22	12	2	1	4			1							3	2			31	16	47	
Seniors	34	37	3	2		2	1	1					1		1	1			40	43	83	
Special	5	2	1					1											6	3	9	
Total	77	71	7	5	7	4	2	3	0	1	1	0	1	0	5	5	0	2	100	91	191	
Graduate																						
Certificate	1																		1	0	1	
Masters	50	24	3	5			3	1					1		1				58	30	88	
Doctoral																			0	0	0	
Special Graduate	2	1	1																3	1	4	
Total	53	25	4	5	0	0	3	1	0	0	0	0	1	0	1	0	0	0	62	31	93	
Total Part-Time	130	96	11	10	7	4	5	4	0	1	1	0	2	0	6	5	0	2	162	122	284	

Table 5B (Continued)

	White		African American		Hispanic		Asian		American Indian		Nat Haw / Pac Isl		Nonresident Alien		Race Unknown		Two or more races		Total			
	F	M	F	M	F	M	F	M	F	M	F	M	F	M	F	M	F	M	F	M	Total	
Total																						
Undergraduate																						
First-Time Freshmen	82	41	4	4	14	9	2	2					1		1	1	2	4	106	61	167	
Other Freshmen	50	37	3	3	3	5		2	1	1	1		2		4	1	1	2	65	51	116	
Sophomores	103	78	4	7	8	2	4		1						4	3	2		126	90	216	
Juniors	130	102	9	8	10	1	5	6		1			2	1	7	6			163	125	288	
Seniors	158	122	12	7	8	2	9	2					1		7	6			195	139	334	
Special	6	5	1					1											7	6	13	
Total	529	385	33	29	43	19	20	13	2	2	1	0	6	1	23	17	5	6	662	472	1,134	
Graduate																						
Certificate	1																		1	0	1	
Masters	67	37	5	5	2		3	1					2		2	1			81	44	125	
Doctoral																			0	0	0	
Special Graduate	2	1	1																3	1	4	
Total	70	38	6	5	2	0	3	1	0	0	0	0	2	0	2	1	0	0	85	45	130	
Total All Students	599	423	39	34	45	19	23	14	2	2	1	0	8	1	25	18	5	6	747	517	1,264	

Figures 10 & 11
 College of Education
 Administrative-Site Head Count and Student Credit Hours
 Fall 2000 through Fall 2010

Head Count by Student Level



Student Credit Hours by Course Level

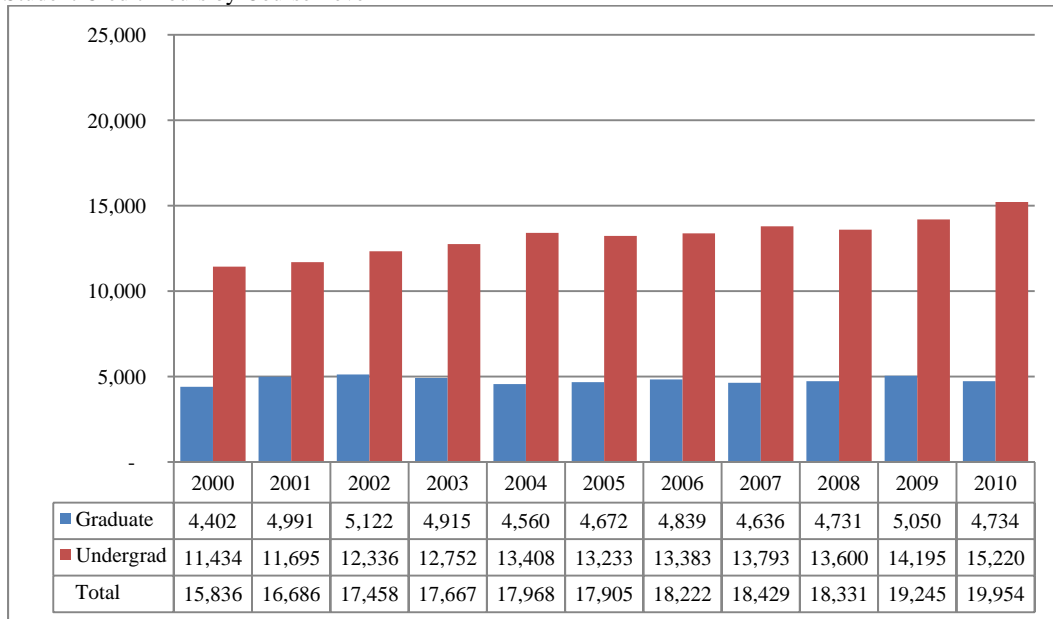


Table 6
College of Education Head Count Summary for Full and Part-Time,
Undergraduate and Graduate Students by Gender and Race Classification: Fall 2010

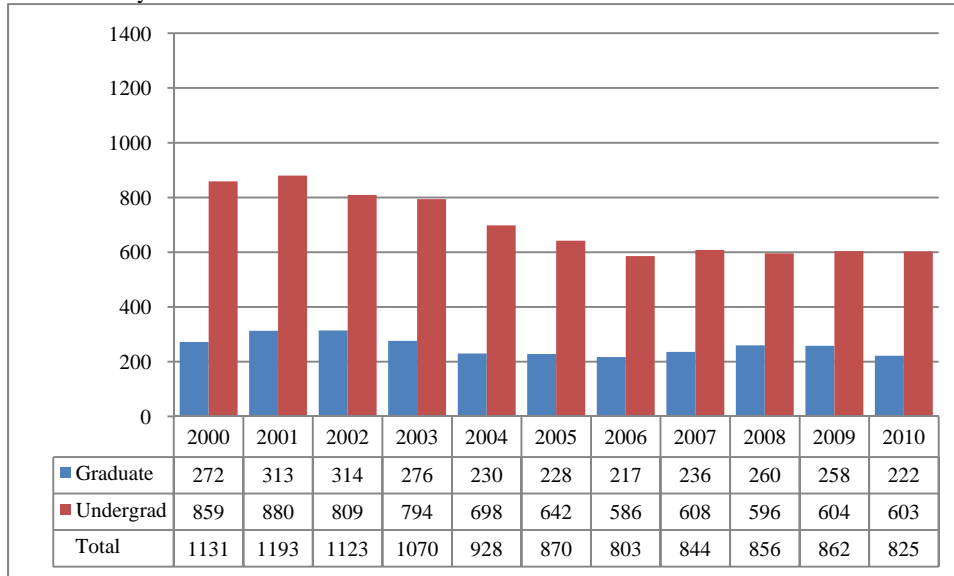
	White		African American		Hispanic		Asian		American Indian		Nat Haw / Pac Isl		Nonresident Alien		Race Unknown		Two or more races		Total			
	F	M	F	M	F	M	F	M	F	M	F	M	F	M	F	M	F	M	F	M	Total	
Full-Time																						
Undergraduate																						
First-Time Freshmen	111	42	4	1	12	6		1	1				2		2		5	3	137	53	190	
Other Freshmen	40	19	5	2	2	1			1				1		3		3		55	22	77	
Sophomores	135	52	8	2	5	3	1								4	1			153	58	211	
Juniors	205	85	4	3	10	2	3	1	1	1				1	4	3		1	227	97	324	
Seniors	296	115	11	3	13	3	7	2	5	1					7	7	2		341	131	472	
Special	38	24	2	1		2									1				41	27	68	
Total	825	337	34	12	42	17	11	4	8	2	0	0	3	1	21	11	10	4	954	388	1,342	
Graduate																						
Certificate																			0	0	0	
Masters	95	35	1	1	2	2	2	1					2	5	1	2			103	46	149	
Doctoral	2																		2	0	2	
Special Graduate	1													1					1	1	2	
Total	98	35	1	1	2	2	2	1	0	0	0	0	2	6	1	2	0	0	106	47	153	
Total Full-Time	923	372	35	13	44	19	13	5	8	2	0	0	5	7	22	13	10	4	1,060	435	1,495	
Part-Time																						
Undergraduate																						
First-Time Freshmen	2	1														1			2	2	4	
Other Freshmen	11	4			2									1		1			13	6	19	
Sophomores	13	9				1	1										1		15	10	25	
Juniors	21	15		1	4	1									1	1			26	18	44	
Seniors	42	18		1	5														47	19	66	
Special	29	21	1	3	1	2									1	1			32	27	59	
Total	118	68	1	5	12	4	1	0	0	0	0	0	0	1	2	4	1	0	135	82	217	
Graduate																						
Certificate	7																		7	0	7	
Masters	374	92	22	4	5	3	2		1	1			3		8	1			415	101	516	
Doctoral	25	25	2	2												1			27	28	55	
Special Graduate	55	7	1	1	1	1									3	1			60	10	70	
Total	461	124	25	7	6	4	2	0	1	1	0	0	3	0	11	3	0	0	509	139	648	
Total Part-Time	579	192	26	12	18	8	3	0	1	1	0	0	3	1	13	7	1	0	644	221	865	

Table 6 (Continued)

	White		African American		Hispanic		Asian		American Indian		Nat Haw / Pac Isl		Nonresident Alien		Race Unknown		Two or more races		Total			
	F	M	F	M	F	M	F	M	F	M	F	M	F	M	F	M	F	M	F	M	Total	
Total																						
Undergraduate																						
First-Time Freshmen	113	43	4	1	12	6		1	1				2		2	1	5	3	139	55	194	
Other Freshmen	51	23	5	2	4	1			1				1	1	3	1	3		68	28	96	
Sophomores	148	61	8	2	5	4	2								4	1	1		168	68	236	
Juniors	226	100	4	4	14	3	3	1	1	1				1	5	4		1	253	115	368	
Seniors	338	133	11	4	18	3	7	2	5	1					7	7	2		388	150	538	
Special	67	45	3	4	1	4									2	1			73	54	127	
Total	943	405	35	17	54	21	12	4	8	2	0	0	3	2	23	15	11	4	1,089	470	1,559	
Graduate																						
Certificate	7																		7	0	7	
Masters	469	127	23	5	7	5	4	1	1	1			5	5	9	3			518	147	665	
Doctoral	27	25	2	2												1			29	28	57	
Special Graduate	56	7	1	1	1	1								1	3	1			61	11	72	
Total	559	159	26	8	8	6	4	1	1	1	0	0	5	6	12	5	0	0	615	186	801	
Total All Students	1,502	564	61	25	62	27	16	5	9	3	0	0	8	8	35	20	11	4	1,704	656	2,360	

Figures 12 & 13
 College of Information Science & Technology
 Administrative-Site Head Count and Student Credit Hours
 Fall 2000 through Fall 2010

Head Count by Student Level



Student Credit Hours by Course Level

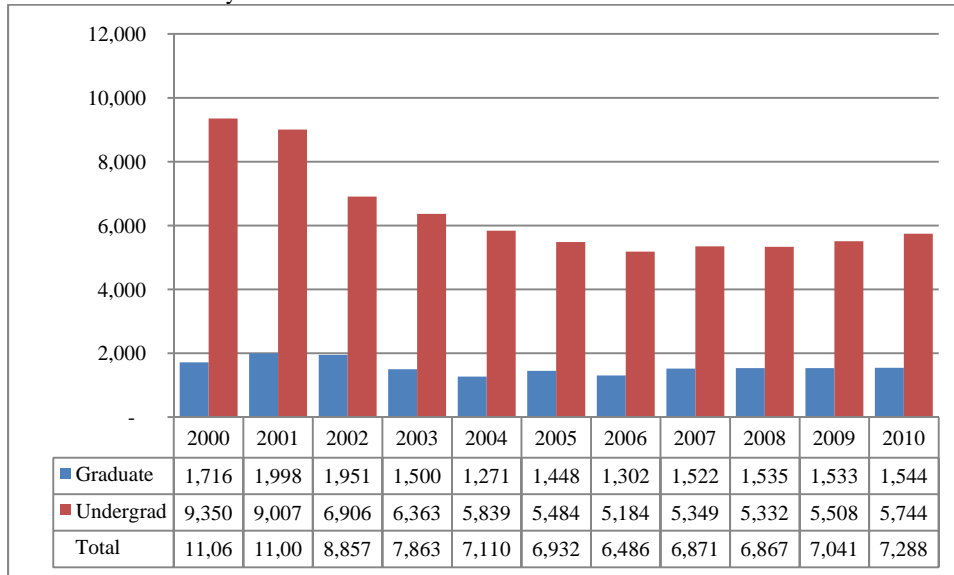


Table 7
College of Information Science and Technology Head Count Summary for Full and Part-Time,
Undergraduate and Graduate Students by Gender and Race Classification: Fall 2010

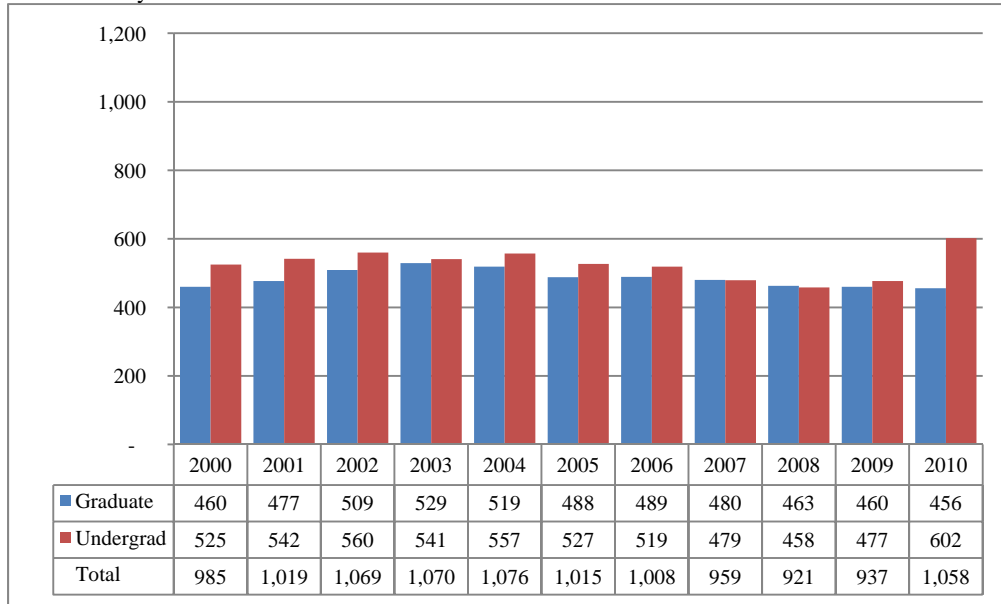
	White		African American		Hispanic		Asian		American Indian		Nat Haw / Pac Isl		Nonresident Alien		Race Unknown		Two or more races		Total		
	F	M	F	M	F	M	F	M	F	M	F	M	F	M	F	M	F	M	F	M	Total
Full-Time																					
Undergraduate																					
First-Time Freshmen	7	64	1	1	1	5	1	2			1		1	6		2		2	12	82	94
Other Freshmen	4	30	1	1		1		3					2	10		1			7	46	53
Sophomores	6	77	1	4	1	3	1	3					2	7	1	3		1	12	98	110
Juniors	7	70	1	4	1	5	1	2					2	7	1	2			13	90	103
Seniors	12	78		2		4	1	4	1				8	22		1			22	111	133
Special	1	3						1					1			1			2	5	7
Total	37	322	4	12	3	18	4	15	1	0	1	0	16	52	2	10	0	3	68	432	500
Graduate																					
Certificate																			0	0	0
Masters		12						1					19	42					19	55	74
Doctoral		2						1					3	3					3	6	9
Special Graduate																			0	0	0
Total	0	14	0	0	0	0	0	2	0	0	0	0	22	45	0	0	0	0	22	61	83
Total Full-Time	37	336	4	12	3	18	4	17	1	0	1	0	38	97	2	10	0	3	90	493	583
Part-Time																					
Undergraduate																					
First-Time Freshmen														3					0	3	3
Other Freshmen		7				1								4		1		1	0	14	14
Sophomores	1	11	1				1						1						4	11	15
Juniors		12	1					3								1			1	16	17
Seniors	2	26	1	3		4		3						4		2			3	42	45
Special	1	4												1		3			1	8	9
Total	4	60	3	3	0	5	1	6	0	0	0	0	1	12	0	7	0	1	9	94	103
Graduate																					
Certificate	1	1		1		1	1	1											2	4	6
Masters	15	58	2	4		2		2					13	17	1	5		1	31	89	120
Doctoral	1	4											3	3	1				5	7	12
Special Graduate		1																	0	1	1
Total	17	64	2	5	0	3	1	3	0	0	0	0	16	20	2	5	0	1	38	101	139
Total Part-Time	21	124	5	8	0	8	2	9	0	0	0	0	17	32	2	12	0	2	47	195	242

Table 7 (Continued)

	White		African American		Hispanic		Asian		American Indian		Nat Haw / Pac Isl		Nonresident Alien		Race Unknown		Two or more races		Total		
	F	M	F	M	F	M	F	M	F	M	F	M	F	M	F	M	F	M	F	M	Total
Total																					
Undergraduate																					
First-Time Freshmen	7	64	1	1	1	5	1	2			1		1	9		2		2	12	85	97
Other Freshmen	4	37	1	1		2		3					2	14		2		1	7	60	67
Sophomores	7	88	2	4	1	3	2	3					3	7	1	3		1	16	109	125
Juniors	7	82	2	4	1	5	1	5					2	7	1	3			14	106	120
Seniors	14	104	1	5		8	1	7	1				8	26		3			25	153	178
Special	2	7						1					1	1		4			3	13	16
Total	41	382	7	15	3	23	5	21	1	0	1	0	17	64	2	17	0	4	77	526	603
Graduate																					
Certificate	1	1		1		1	1	1											2	4	6
Masters	15	70	2	4		2		3					32	59	1	5		1	50	144	194
Doctoral	1	6						1					6	6	1				8	13	21
Special Graduate		1																	0	1	1
Total	17	78	2	5	0	3	1	5	0	0	0	0	38	65	2	5	0	1	60	162	222
Total All Students	58	460	9	20	3	26	6	26	1	0	1	0	55	129	4	22	0	5	137	688	825

Figures 14A & 15A
 College of Public Affairs & Community Service
 Delivery-Site Head Count and Student Credit Hours
 Fall 2000 through Fall 2010

Head Count by Student Level



Student Credit Hours by Course Level

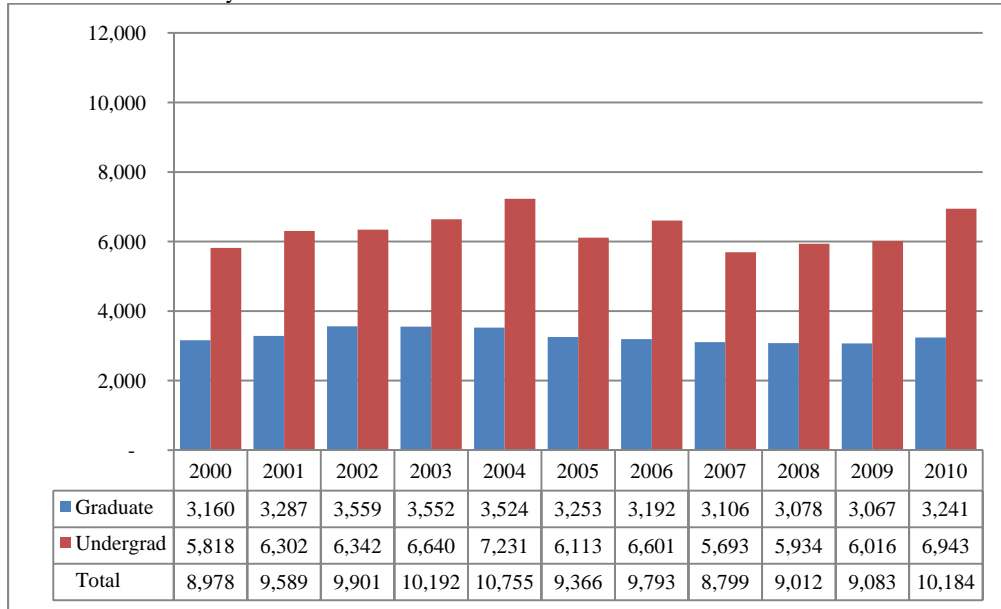


Table 8A
College of Public Affairs and Community Service Delivery-Site Head Count Summary for Full and Part-Time,
Undergraduate and Graduate Students by Gender and Race Classification: Fall 2010

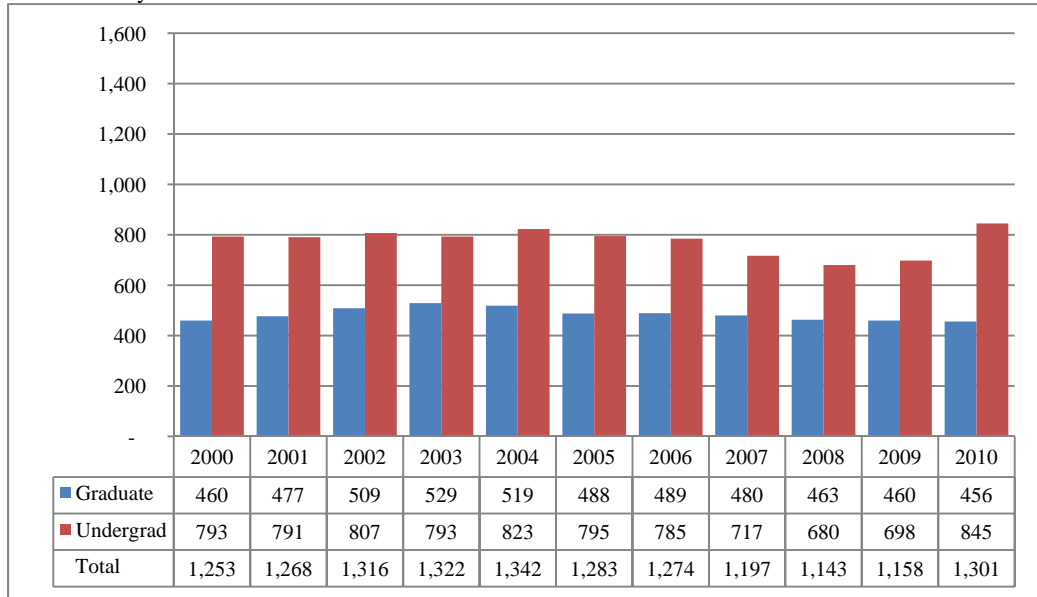
	White		African American		Hispanic		Asian		American Indian		Nat Haw / Pac Isl		Nonresident Alien		Race Unknown		Two or more races		Total		
	F	M	F	M	F	M	F	M	F	M	F	M	F	M	F	M	F	M	F	M	Total
Full-Time																					
Undergraduate																					
First-Time Freshmen	12	39	6	3	4	8		1						1			2	2	24	54	78
Other Freshmen	18	26	9		2	3			2							1	1	1	32	31	63
Sophomores	29	62	8	6	2	6		1	1						1	1			41	76	117
Juniors	28	69	1	3	5	3	1	3					1	1	1	1			37	80	117
Seniors	50	53	10	1	5	5			1				2		2	1			70	60	130
Special	1																		1	0	1
Total	138	249	34	13	18	25	1	5	4	0	0	0	3	2	4	4	3	3	205	301	506
Graduate																					
Certificate	1	1																	1	1	2
Masters	109	26	4	1	4		3	2	1				5	1		2	1		127	32	159
Doctoral	4	3				1							3	4					7	8	15
Special Graduate																			0	0	0
Total	114	30	4	1	4	1	3	2	1	0	0	0	8	5	0	2	1	0	135	41	176
Total Full-Time	252	279	38	14	22	26	4	7	5	0	0	0	11	7	4	6	4	3	340	342	682
Part-Time																					
Undergraduate																					
First-Time Freshmen	2	4			1										1				4	4	8
Other Freshmen	2		1		1								1			1			4	2	6
Sophomores	9	9	2	2	2								1						14	11	25
Juniors	11	8	2	1															13	9	22
Seniors	8	19	2	2	2			1											12	22	34
Special			1																1	0	1
Total	32	40	8	5	6	0	0	1	0	0	0	0	1	1	1	1	0	0	48	48	96
Graduate																					
Certificate	6	2	1																7	2	9
Masters	133	78	8	2	1	6	2	1					1		6	4		1	151	92	243
Doctoral	8	12	1	1			1						1	2	1				12	15	27
Special Graduate	1																		1	0	1
Total	148	92	10	3	1	6	3	1	0	0	0	0	2	2	7	4	0	1	171	109	280
Total Part-Time	180	132	18	8	7	6	3	2	0	0	0	0	3	3	8	5	0	1	219	157	376

Table 8A (Continued)

	White		African American		Hispanic		Asian		American Indian		Nat Haw / Pac Isl		Nonresident Alien		Race Unknown		Two or more races		Total			
	F	M	F	M	F	M	F	M	F	M	F	M	F	M	F	M	F	M	F	M	Total	
Total																						
Undergraduate																						
First-Time Freshmen	14	43	6	3	5	8		1					1	1			2	2	28	58	86	
Other Freshmen	20	26	10		3	3			2				1		2		1	1	36	33	69	
Sophomores	38	71	10	8	4	6		1	1				1	1	1				55	87	142	
Juniors	39	77	3	4	5	3	1	3					1	1	1	1			50	89	139	
Seniors	58	72	12	3	7	5		1	1				2		2	1			82	82	164	
Special	1		1																2	0	2	
Total	170	289	42	18	24	25	1	6	4	0	0	0	4	3	5	5	3	3	253	349	602	
Graduate																						
Certificate	7	3	1																8	3	11	
Masters	242	104	12	3	5	6	5	3	1				6	1	6	6	1	1	278	124	402	
Doctoral	12	15	1	1		1	1						4	6	1				19	23	42	
Special Graduate	1																		1	0	1	
Total	262	122	14	4	5	7	6	3	1	0	0	0	10	7	7	6	1	1	306	150	456	
Total All Students	432	411	56	22	29	32	7	9	5	0	0	0	14	10	12	11	4	4	559	499	1,058	

Figures 14B & 15B
 College of Public Affairs & Community Service
 Administrative-Site Head Count and Student Credit Hours
 Fall 2000 through Fall 2010

Head Count by Student Level



Student Credit Hours by Course Level

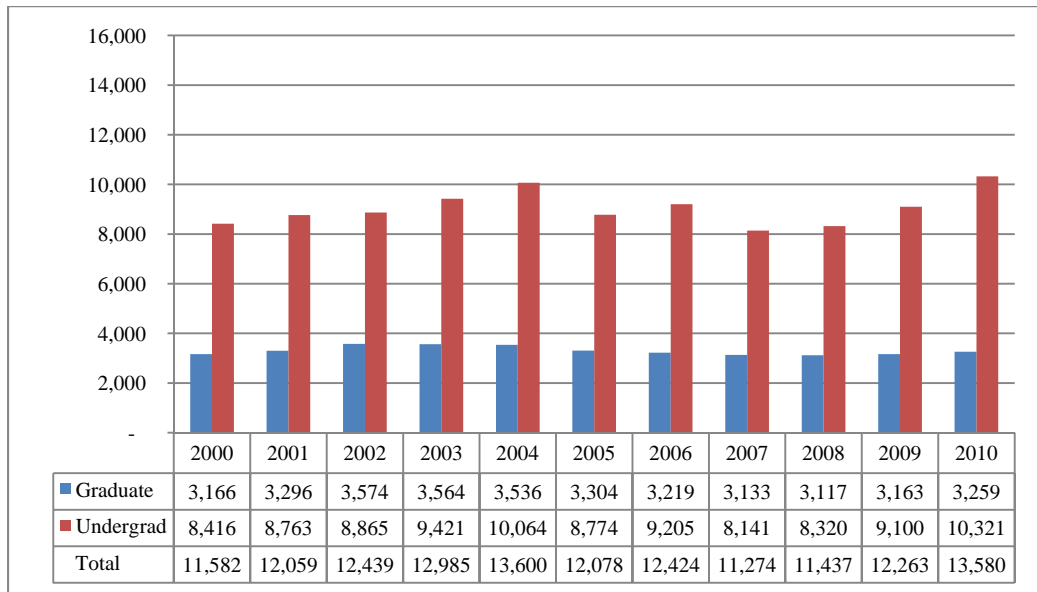


Table 8B
College of Public Affairs & Community Service Administrative-Site Head Count Summary for Full and Part-Time,
Undergraduate and Graduate Students by Gender and Race Classification: Fall 2010

	White		African American		Hispanic		Asian		American Indian		Nat Haw / Pac Isl		Nonresident Alien		Race Unknown		Two or more races		Total			
	F	M	F	M	F	M	F	M	F	M	F	M	F	M	F	M	F	M	F	M	Total	
Full-Time																						
Undergraduate																						
First-Time Freshmen	25	64	6	5	6	12		1						1			2	2	39	85	124	
Other Freshmen	19	31	9	1	2	4			3						1	1	1	1	34	38	72	
Sophomores	35	83	10	6	2	8		1	1						1	2			49	100	149	
Juniors	41	116	2	9	5	7	2	3		1			1	1	2	1		1	53	139	192	
Seniors	70	87	12	2	6	6			1				2	1	2	4			93	100	193	
Special	1																		1	0	1	
Total	191	381	39	23	21	37	2	5	5	1	0	0	3	3	5	8	3	4	269	462	731	
Graduate																						
Certificate	1	1																	1	1	2	
Masters	109	26	4	1	4		3	2	1				5	1		2	1		127	32	159	
Doctoral	4	3				1							3	4					7	8	15	
Special Graduate																			0	0	0	
Total	114	30	4	1	4	1	3	2	1	0	0	0	8	5	0	2	1	0	135	41	176	
Total Full-Time	305	411	43	24	25	38	5	7	6	1	0	0	11	8	5	10	4	4	404	503	907	
Part-Time																						
Undergraduate																						
First-Time Freshmen	2	4			1										1				4	4	8	
Other Freshmen	2		1		1									1		1			4	2	6	
Sophomores	9	10	2	2	2								1						14	12	26	
Juniors	11	9	2	1															13	10	23	
Seniors	12	29	2	2	3			1									1		18	32	50	
Special			1																1	0	1	
Total	36	52	8	5	7	0	0	1	0	0	0	0	1	1	1	1	1	0	54	60	114	
Graduate																						
Certificate	6	2	1																7	2	9	
Masters	133	78	8	2	1	6	2	1					1		6	4		1	151	92	243	
Doctoral	8	12	1	1			1						1	2	1				12	15	27	
Special Graduate	1																		1	0	1	
Total	148	92	10	3	1	6	3	1	0	0	0	0	2	2	7	4	0	1	171	109	280	
Total Part-Time	184	144	18	8	8	6	3	2	0	0	0	0	3	3	8	5	1	1	225	169	394	

Table 8B (Continued)

	White		African American		Hispanic		Asian		American Indian		Nat Haw / Pac Isl		Nonresident Alien		Race Unknown		Two or more races		Total			
	F	M	F	M	F	M	F	M	F	M	F	M	F	M	F	M	F	M	F	M	Total	
Total																						
Undergraduate																						
First-Time Freshmen	27	68	6	5	7	12		1					1	1		2	2	43	89	132		
Other Freshmen	21	31	10	1	3	4			3				1		2	1	1	38	40	78		
Sophomores	44	93	12	8	4	8		1	1			1		1	2			63	112	175		
Juniors	52	125	4	10	5	7	2	3		1			1	1	2	1		1	66	149	215	
Seniors	82	116	14	4	9	6		1	1				2	1	2	4	1		111	132	243	
Special	1		1																2	0	2	
Total	227	433	47	28	28	37	2	6	5	1	0	0	4	4	6	9	4	4	323	522	845	
Graduate																						
Certificate	7	3	1																8	3	11	
Masters	242	104	12	3	5	6	5	3	1				6	1	6	6	1	1	278	124	402	
Doctoral	12	15	1	1		1	1						4	6	1				19	23	42	
Special Graduate	1																		1	0	1	
Total	262	122	14	4	5	7	6	3	1	0	0	0	10	7	7	6	1	1	306	150	456	
Total All Students	489	555	61	32	33	44	8	9	6	1	0	0	14	11	13	15	5	5	629	672	1,301	

Figure 16
 College of CPACS, Division of Continuing Studies
 Administrative-Site Head Count Fall 2000 through Fall 2010

Head Count by Student Level

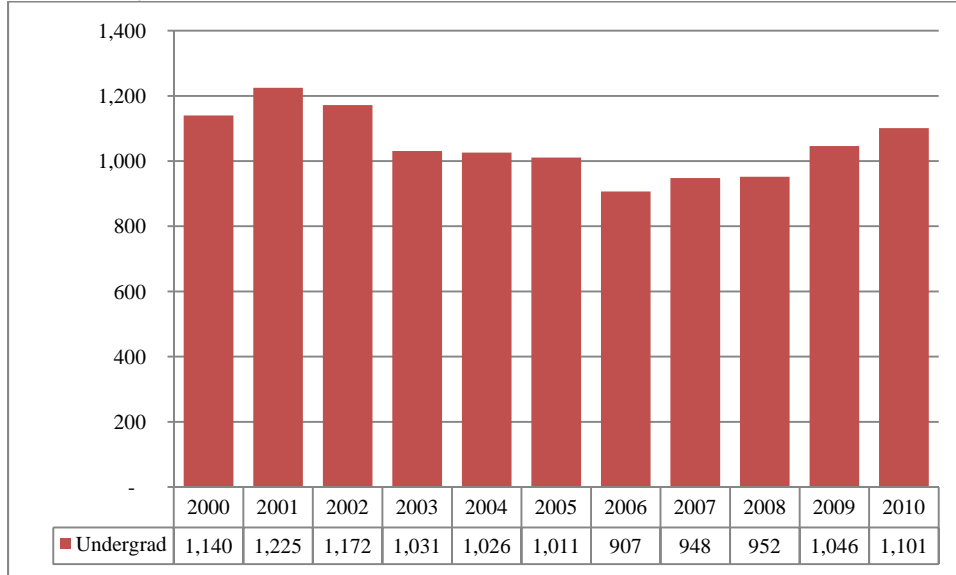


Table 9
College of CPACS Division of Continuing Studies Head Count Summary for Full and Part-Time,
Undergraduate Students by Gender and Race Classification: Fall 2010

	White		African American		Hispanic		Asian		American Indian		Nat Haw / Pac Isl		Nonresident Alien		Race Unknown		Two or more races		Total			
	F	M	F	M	F	M	F	M	F	M	F	M	F	M	F	M	F	M	F	M	Total	
Full-Time																						
Undergraduate																						
First-Time Freshmen		1													1				0	2	2	
Other Freshmen	20	48	7	5	1	3	1	1					1	2	8			31	66	97		
Sophomores	22	58	5	4	3	3		1	1				1	1	6	1		34	73	107		
Juniors	59	67	22	11		1	2	1	2				2	1	5	5	1	93	86	179		
Seniors	57	57	12	10	5			4	2	2			1	2	5	6		82	81	163		
Special	1	2					1											2	2	4		
Total	159	233	46	30	9	7	4	7	5	2	0	0	4	5	13	26	2	0	242	310	552	
Total Full-Time	159	233	46	30	9	7	4	7	5	2	0	0	4	5	13	26	2	0	242	310	552	
Part-Time																						
Undergraduate																						
First-Time Freshmen		2													1			0	3	3		
Other Freshmen	28	40	4	3	3	3	1	2	1					7	9	1	1	45	58	103		
Sophomores	16	27	6		2	3		1	1					1	3			26	34	60		
Juniors	57	55	8	4	2	5	2	1		1				2	3		2	71	71	142		
Seniors	71	87	14	7	5	4	3	3	1	1				9	6			103	108	211		
Special	10	10	2	1	1	1								3	2			16	14	30		
Total	182	221	34	15	13	16	6	7	3	2	0	0	0	0	22	24	1	3	261	288	549	
Total Part-Time	182	221	34	15	13	16	6	7	3	2	0	0	0	0	22	24	1	3	261	288	549	
Total																						
Undergraduate																						
First-Time Freshmen		3													2			0	5	5		
Other Freshmen	48	88	11	8	4	6	2	3	1				1	9	17	1	1	76	124	200		
Sophomores	38	85	11	4	5	6		2	2				1	1	2	9	1	60	107	167		
Juniors	116	122	30	15	2	6	4	2	2	1			2	1	7	8	1	2	164	157	321	
Seniors	128	144	26	17	10	4	3	7	3	3			1	2	14	12		185	189	374		
Special	11	12	2	1	1	1	1							3	2			18	16	34		
Total	341	454	80	45	22	23	10	14	8	4	0	0	4	5	35	50	3	3	503	598	1,101	
Total All Students	341	454	80	45	22	23	10	14	8	4	0	0	4	5	35	50	3	3	503	598	1,101	

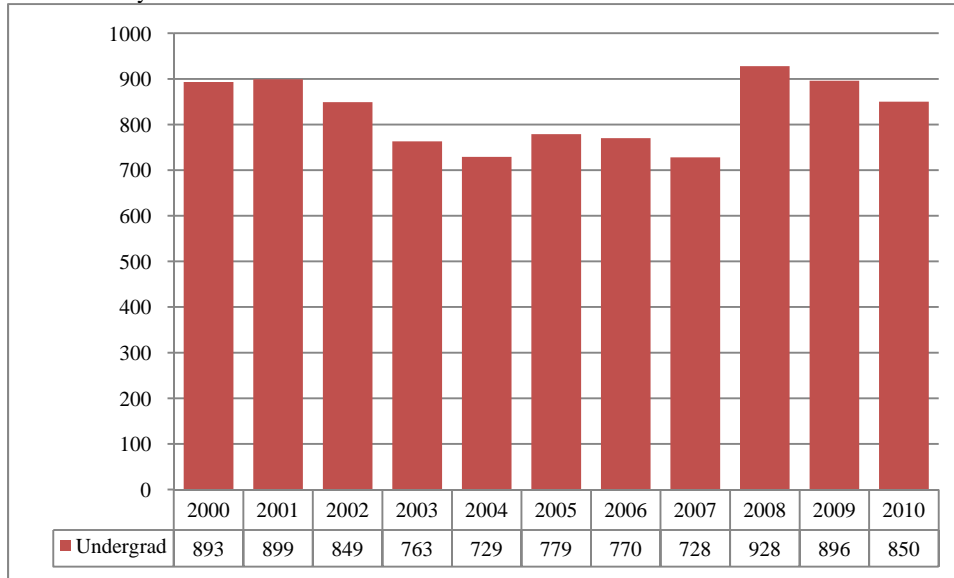
Table 10
 Cooperative Graduate Program Head Count Summary for Full and Part-Time,
 Graduate Students by Gender and Race Classification: Fall 2010

	White		African American		Hispanic		Asian		American Indian		Nat Haw / Pac Is		Nonresident Alien		Race Unknown		Two or more races		Total			
	F	M	F	M	F	M	F	M	F	M	F	M	F	M	F	M	F	M	F	M	Total	
Full-Time																						
Graduate																						
Certificate																				0	0	0
Masters																				0	0	0
Doctoral																				0	0	0
Special Graduate	1																			1	0	1
Total	1	0	0	0	0	0	0	0	0	0	0	0	0	0	0	0	0	0	0	1	0	1
Total Full-Time	1	0	0	0	0	0	0	0	0	0	0	0	0	0	0	0	0	0	0	1	0	1
Part-Time																						
Graduate																						
Certificate	2	1	1	1																3	2	5
Masters																				0	0	0
Doctoral																				0	0	0
Special Graduate																				0	0	0
Total	2	1	1	1	0	0	0	0	0	0	0	0	0	0	0	0	0	0	0	3	2	5
Total Part-Time	2	1	1	1	0	0	0	0	0	0	0	0	0	0	0	0	0	0	0	3	2	5
Total																						
Graduate																						
Certificate	2	1	1	1																3	2	5
Masters																				0	0	0
Doctoral																				0	0	0
Special Graduate	1																			1	0	1
Total	3	1	1	1	0	0	0	0	0	0	0	0	0	0	0	0	0	0	0	4	2	6
Total All Students	3	1	1	1	0	0	0	0	0	0	0	0	0	0	0	0	0	0	0	4	2	6

* These students are in the Human Resources and Training certificate program.

Figures 17 & 18
 University Division
 Administrative-Site Head Count and Student Credit Hours
 Fall 2000 through Fall 2010

Head Count by Student Level



Student Credit Hours by Course Level

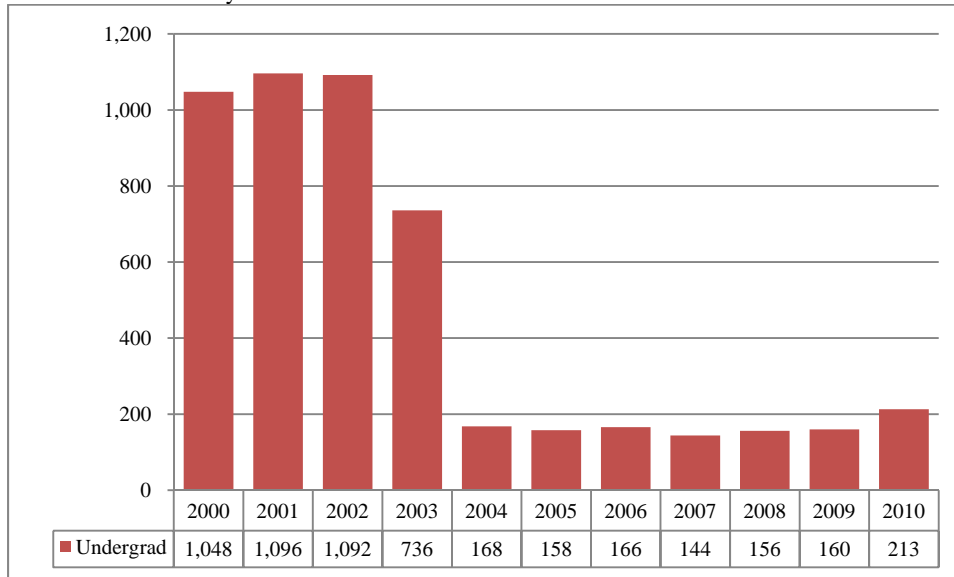


Table 11
 University Division Head Count Summary for Full and Part-Time,
 Undergraduate Students by Gender and Race Classification: Fall 2010

	White		African American		Hispanic		Asian		American Indian		Nat Haw / Pac Isl		Nonresident Alien		Race Unknown		Two or more races		Total		
	F	M	F	M	F	M	F	M	F	M	F	M	F	M	F	M	F	M	F	M	Total
Full-Time																					
Undergraduate																					
First-Time Freshmen	117	121	9	19	19	16	3	4	2						3	7	2	11	155	178	333
Other Freshmen	67	106	8	25	11	8	2	3		1		1		1	1	2	1	3	90	150	240
Sophomores	87	81	5	6	7	4	3	2		1			1					2	103	96	199
Juniors	6	5	1			1		1											7	7	14
Seniors																			0	0	0
Special																			0	0	0
Total	277	313	23	50	37	29	8	10	2	2	0	1	1	1	4	9	3	16	355	431	786
Total Full-Time	277	313	23	50	37	29	8	10	2	2	0	1	1	1	4	9	3	16	355	431	786
Part-Time																					
Undergraduate																					
First-Time Freshmen	3	3	1	1											1				5	4	9
Other Freshmen	7	11	1	1		1		1	2							2			10	16	26
Sophomores	6	12	1	2		2				1					1				8	17	25
Juniors		2																	0	2	2
Seniors																			0	0	0
Special	1															1			1	1	2
Total	17	28	3	4	0	3	0	1	2	1	0	0	0	0	2	3	0	0	24	40	64
Total Part-Time	17	28	3	4	0	3	0	1	2	1	0	0	0	0	2	3	0	0	24	40	64
Total																					
Undergraduate																					
First-Time Freshmen	120	124	10	20	19	16	3	4	2						4	7	2	11	160	182	342
Other Freshmen	74	117	9	26	11	9	2	4	2	1		1		1	1	4	1	3	100	166	266
Sophomores	93	93	6	8	7	6	3	2		2			1		1			2	111	113	224
Juniors	6	7	1			1		1											7	9	16
Seniors																			0	0	0
Special	1															1			1	1	2
Total	294	341	26	54	37	32	8	11	4	3	0	1	1	1	6	12	3	16	379	471	850
Total All Students	294	341	26	54	37	32	8	11	4	3	0	1	1	1	6	12	3	16	379	471	850

Figure 19
 Non-Degree/Intercampus Special Undergraduate Students
 Administrative-Site Head Count Fall 2000 through Fall 2010

Head Count by Student Level

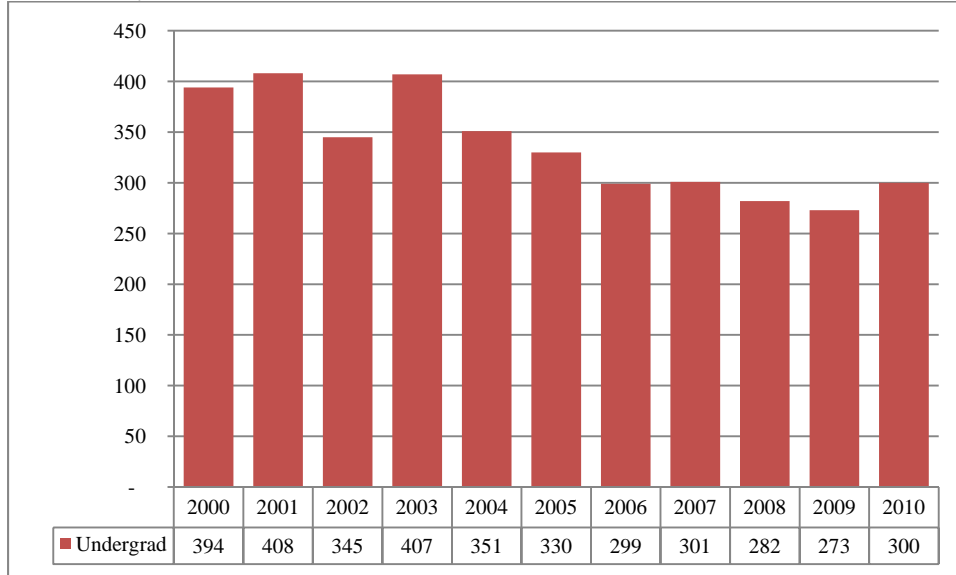


Table 12
 Non-Degree/Intercampus Head Count Summary for Full and Part-Time,
 Special Undergraduate Students by Gender and Race Classification: Fall 2010

	White		African American		Hispanic		Asian		American Indian		Nat Haw / Pac Isl		Nonresident Alien		Race Unknown		Two or more races		Total			
	F	M	F	M	F	M	F	M	F	M	F	M	F	M	F	M	F	M	F	M	Total	
Full-Time																						
Undergraduate																						
First-Time Freshmen		1																		0	1	1
Other Freshmen	8	8				1	1						12	31	2				23	40	63	
Sophomores	2	4			1														3	4	7	
Juniors	4	5		1										1					4	7	11	
Seniors	1	2					1								1				2	3	5	
Special	3	1					1		1						1				5	2	7	
Total	18	21	0	1	1	1	3	0	1	0	0	0	12	32	2	2	0	0	37	57	94	
Total Full-Time	18	21	0	1	1	1	3	0	1	0	0	0	12	32	2	2	0	0	37	57	94	
Part-Time																						
Undergraduate																						
First-Time Freshmen	2																		2	0	2	
Other Freshmen	40	21	1	2	2	1	2	1					2	2	6	7	1		54	34	88	
Sophomores	4	3								1					2				4	6	10	
Juniors	3	2					1							1					4	3	7	
Seniors	11	9	2				1								2				14	11	25	
Special	32	29				2	1	2		1				2	4		1		35	39	74	
Total	92	64	3	2	2	3	5	3	0	2	0	0	2	3	8	15	1	1	113	93	206	
Total Part-Time	92	64	3	2	2	3	5	3	0	2	0	0	2	3	8	15	1	1	113	93	206	
Total																						
Undergraduate																						
First-Time Freshmen	2	1																	2	1	3	
Other Freshmen	48	29	1	2	2	2	3	1					14	33	8	7	1		77	74	151	
Sophomores	6	7			1					1					2				7	10	17	
Juniors	7	7		1			1							2					8	10	18	
Seniors	12	11	2				2								3				16	14	30	
Special	35	30				2	2	2	1	1				2	5		1		40	41	81	
Total	110	85	3	3	3	4	8	3	1	2	0	0	14	35	10	17	1	1	150	150	300	
Total All Students	110	85	3	3	3	4	8	3	1	2	0	0	14	35	10	17	1	1	150	150	300	

Figure 20
 Non-Degree/Inter-Campus Special Graduate Students
 Administrative-Site Head Count
 Fall 2000 through Fall 2010

Head Count by Student Level

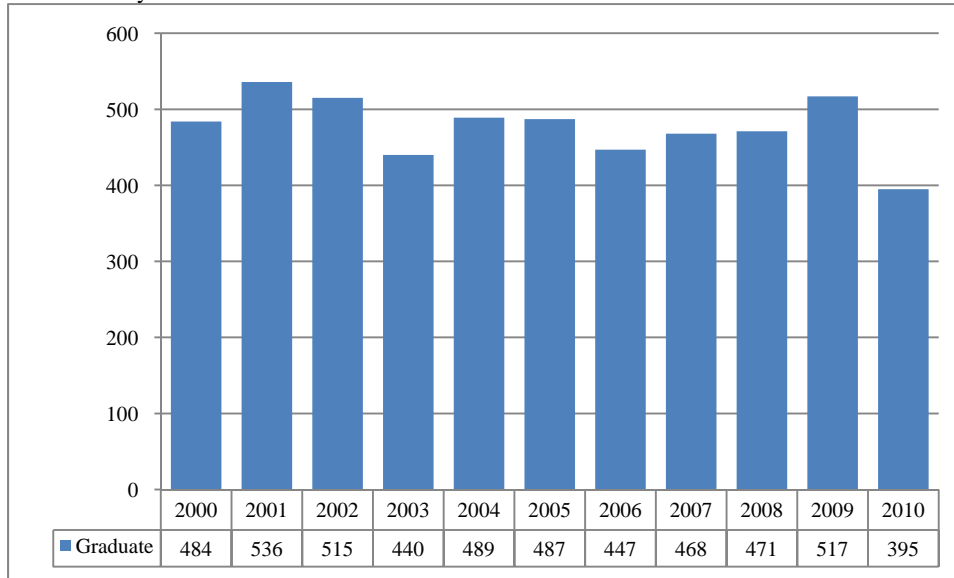


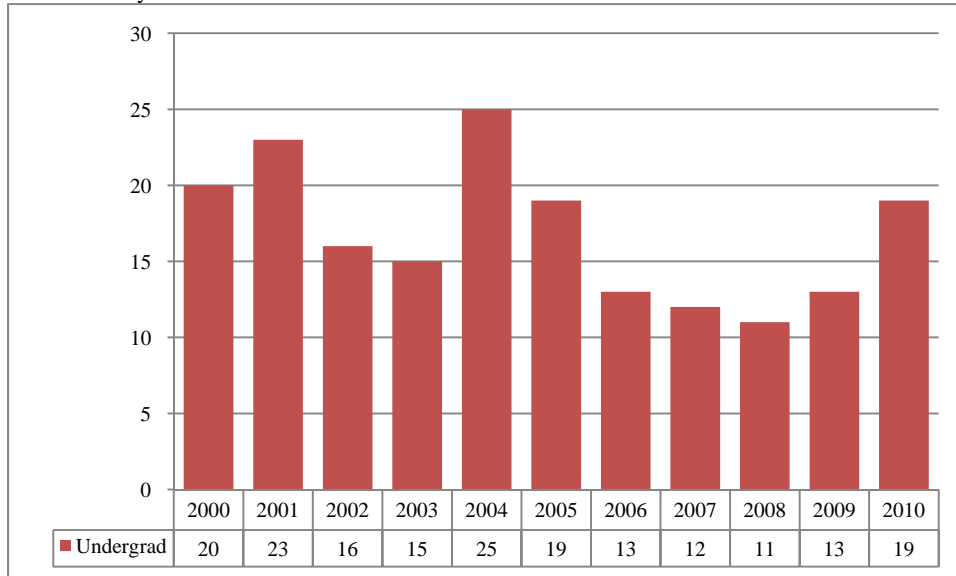
Table 13
 Non-Degree/Inter-campus Head Count Summary for Full and Part-Time,
 Special Graduate Students by Gender and Race Classification: Fall 2010

	White		African American		Hispanic		Asian		American Indian		Nat Haw / Pac Isl		Nonresident Alien		Race Unknown		Two or more races		Total			
	F	M	F	M	F	M	F	M	F	M	F	M	F	M	F	M	F	M	F	M	Total	
Full-Time																						
Undergraduate																						
Certificate	1																		1	0	1	
Masters																			0	0	0	
Doctoral																			0	0	0	
Special Graduate	9	37		1			1	2					13	39		2		1	23	82	105	
Total	10	37	0	1	0	0	1	2	0	0	0	0	13	39	0	2	0	1	24	82	106	
Total Full-Time	10	37	0	1	0	0	1	2	0	0	0	0	13	39	0	2	0	1	24	82	106	
Part-Time																						
Graduate																						
Certificate																			0	0	0	
Masters	1	2																	1	2	3	
Doctoral																			0	0	0	
Special Graduate	139	78	10	2	4	3	4	4	1				6	18	7	8		2	171	115	286	
Total	140	80	10	2	4	3	4	4	1	0	0	0	6	18	7	8	0	2	172	117	289	
Total Part-Time	140	80	10	2	4	3	4	4	1	0	0	0	6	18	7	8	0	2	172	117	289	
Total																						
Graduate																						
Certificate	1																		1	0	1	
Masters	1	2																	1	2	3	
Doctoral																			0	0	0	
Special Graduate	148	115	10	3	4	3	5	6	1				19	57	7	10		3	194	197	391	
Total	150	117	10	3	4	3	5	6	1	0	0	0	19	57	7	10	0	3	196	199	395	
Total All Students	150	117	10	3	4	3	5	6	1	0	0	0	19	57	7	10	0	3	196	199	395	

* 127 students are Engineering students.

Figures 21 & 22
 College of Agriculture
 Delivery-Site Head Count and Student Credit Hours
 Fall 2000 through Fall 2010

Head Count by Student Level



Student Credit Hours by Course Level

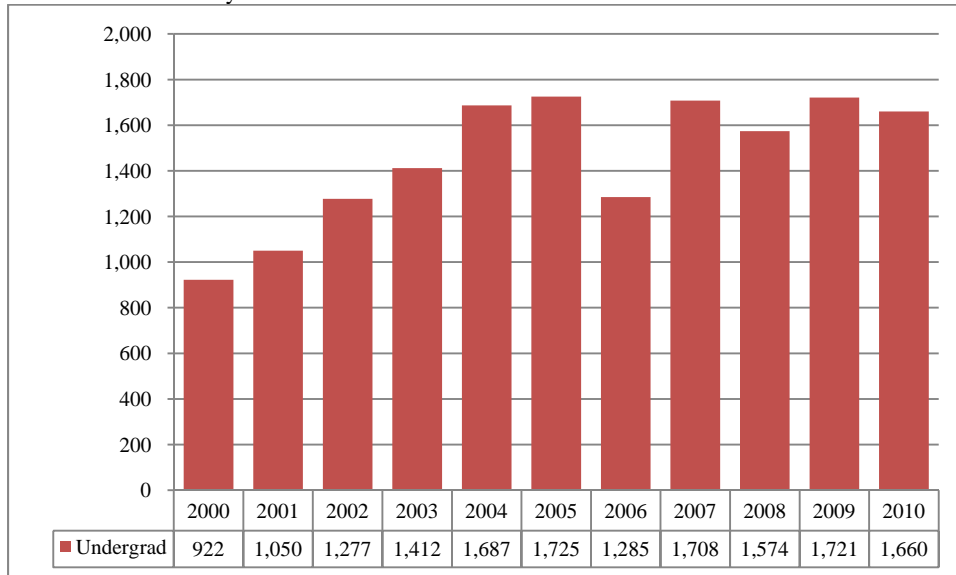
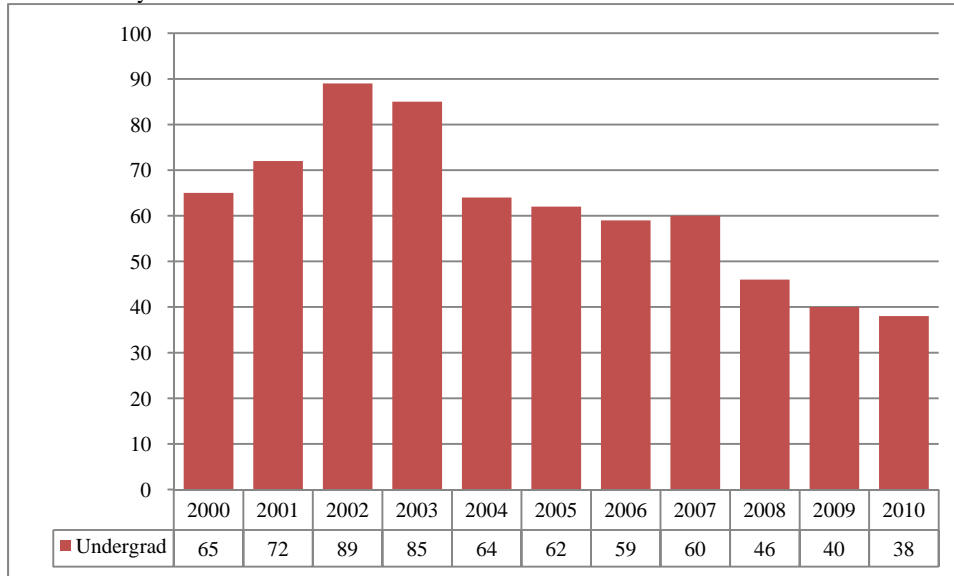


Table 14
College of Agriculture Head Count Summary for Full and Part-Time,
Undergraduate Students by Gender and Race Classification: Fall 2010

	White		African American		Hispanic		Asian		American Indian		Nat Haw / Pac Isl		Nonresident Alien		Race Unknown		Two or more races		Total			
	F	M	F	M	F	M	F	M	F	M	F	M	F	M	F	M	F	M	F	M	Total	
Full-Time																						
Undergraduate																						
First-Time Freshmen		2																		0	2	2
Other Freshmen	2	1								1										3	1	4
Sophomores																				0	0	0
Juniors	1	1																		1	1	2
Seniors	1	1																		1	1	2
Special																				0	0	0
Total	4	5	0	0	0	0	0	0	1	0	0	0	0	0	0	0	0	0	5	5	10	
Total Full-Time	4	5	0	0	0	0	0	0	1	0	0	0	0	0	0	0	0	0	5	5	10	
Part-Time																						
Undergraduate																						
First-Time Freshmen																				0	0	0
Other Freshmen	1																			1	0	1
Sophomores	3	1																		3	1	4
Juniors																				0	0	0
Seniors		2														1				0	3	3
Special		1																		0	1	1
Total	4	4	0	0	0	0	0	0	0	0	0	0	0	0	0	1	0	0	4	5	9	
Total Part-Time	4	4	0	0	0	0	0	0	0	0	0	0	0	0	0	1	0	0	4	5	9	
Total																						
Undergraduate																						
First-Time Freshmen		2																		0	2	2
Other Freshmen	3	1								1										4	1	5
Sophomores	3	1																		3	1	4
Juniors	1	1																		1	1	2
Seniors	1	3														1				1	4	5
Special		1																		0	1	1
Total	8	9	0	0	0	0	0	0	1	0	0	0	0	0	0	1	0	0	9	10	19	
Total All Students	8	9	0	0	0	0	0	0	1	0	0	0	0	0	0	1	0	0	9	10	19	

Figures 23 & 24
 College of Architecture
 Delivery-Site Head Count and Student Credit Hours
 Fall 2000 through Fall 2010

Head Count by Student Level



Student Credit Hours by Course Level

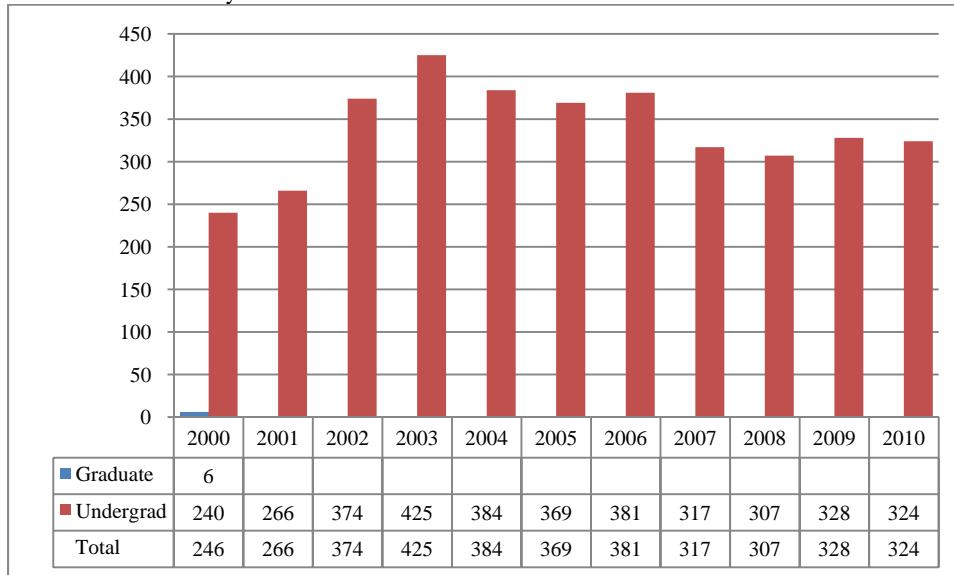
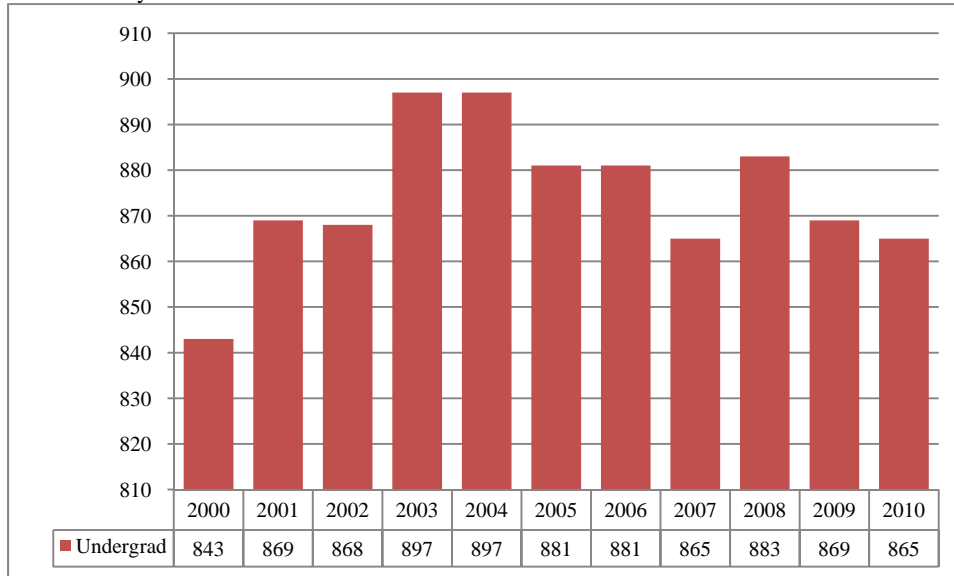


Table 16
College of Architecture Head Count Summary for Full and Part-Time,
Undergraduate Students by Gender and Race Classification: Fall 2010

	White		African American		Hispanic		Asian		American Indian		Nat Haw / Pac Isl		Nonresident Alien		Race Unknown		Two or more races		Total			
	F	M	F	M	F	M	F	M	F	M	F	M	F	M	F	M	F	M	F	M	Total	
Full-Time																						
Undergraduate																						
First-Time Freshmen	3	10		1																3	11	14
Other Freshmen		4																		0	4	4
Sophomores	9	3																		9	3	12
Juniors	2		1																	3	0	3
Seniors	1																			1	0	1
Special																				0	0	0
Total	15	17	1	1	0	0	0	0	0	0	0	0	0	0	0	0	0	0	16	18	34	
Total Full-Time	15	17	1	1	0	0	0	0	0	0	0	0	0	0	0	0	0	0	16	18	34	
Part-Time																						
Undergraduate																						
First-Time Freshmen																				0	0	0
Other Freshmen		1																		0	1	1
Sophomores																				0	0	0
Juniors	2																			2	0	2
Seniors																				0	0	0
Special	1																			1	0	1
Total	3	1	0	0	0	0	0	0	0	0	0	0	0	0	0	0	0	0	3	1	4	
Total Part-Time	3	1	0	0	0	0	0	0	0	0	0	0	0	0	0	0	0	0	3	1	4	
Total																						
Undergraduate																						
First-Time Freshmen	3	10		1																3	11	14
Other Freshmen		5																		0	5	5
Sophomores	9	3																		9	3	12
Juniors	4		1																	5	0	5
Seniors	1																			1	0	1
Special	1																			1	0	1
Total	18	18	1	1	0	0	0	0	0	0	0	0	0	0	0	0	0	0	19	19	38	
Total All Students	18	18	1	1	0	0	0	0	0	0	0	0	0	0	0	0	0	0	19	19	38	

Figures 25 & 26
 College of Engineering
 Delivery-Site Head Count and Student Credit Hours
 Fall 2000 through Fall 2010

Head Count by Student Level



Student Credit Hours by Course Level

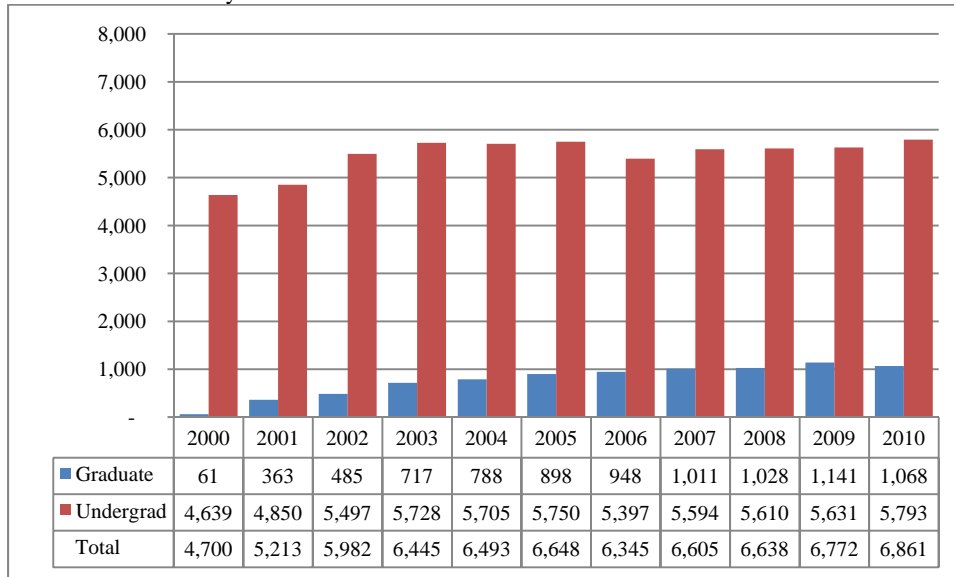
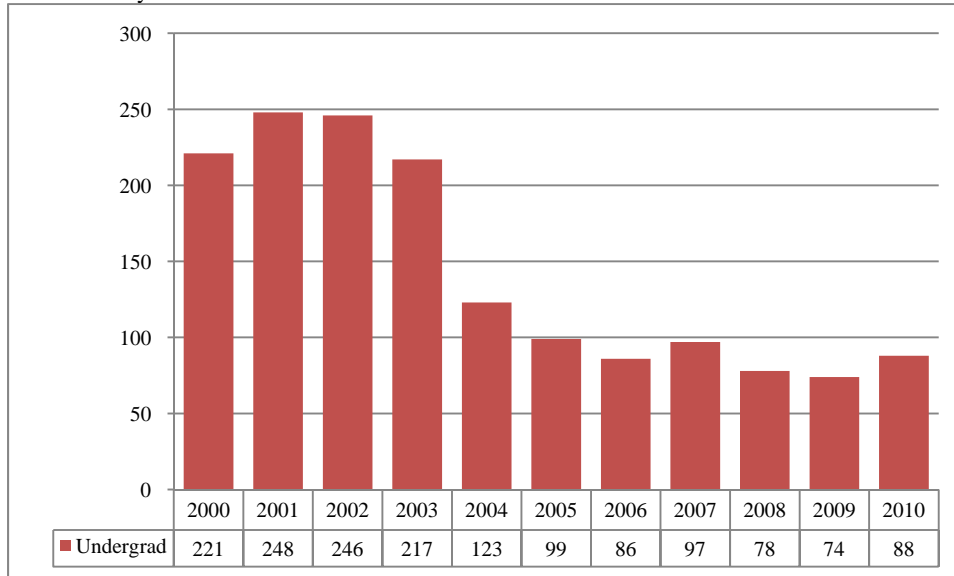


Table 16
College of Engineering Head Count Summary for Full and Part-Time,
Undergraduate Students by Gender and Race Classification: Fall 2010

	White		African American		Hispanic		Asian		American Indian		Nat Haw / Pac Isl		Nonresident Alien		Race Unknown		Two or more races		Total		
	F	M	F	M	F	M	F	M	F	M	F	M	F	M	F	M	F	M	F	M	Total
Full-Time																					
Undergraduate																					
First-Time Freshmen	19	119	1	3		7	2	2								2	1	7	23	140	163
Other Freshmen	6	30	1	1	1	1								3					8	35	43
Sophomores	15	124		3	1	7	1	4						3	1	3			18	144	162
Juniors	14	108		6	1	8		1		1			1	4		5			16	133	149
Seniors	22	187		8	1	4		2					2	4	4	6			29	211	240
Special	2	9						2											2	11	13
Total	78	577	2	21	4	27	3	11		1			3	14	5	16	1	7	96	674	770
Total Full-Time	78	577	2	21	4	27	3	11		1			3	14	5	16	1	7	96	674	770
Part-Time																					
Undergraduate																					
First-Time Freshmen		2																		2	2
Other Freshmen	1	7											1					1	2	8	10
Sophomores	1	4	1					1								1			2	6	8
Juniors	1	14		3		1													1	18	19
Seniors		30	1	5	2	2		1						1		2			3	41	44
Special	1	8		1		1											1		2	10	12
Total	4	65	2	9	2	4		2					1	1	3	1	1		10	85	95
Total Part-Time	4	65	2	9	2	4		2					1	1	3	1	1		10	85	95
Total																					
Undergraduate																					
First-Time Freshmen	19	121	1	3		7	2	2								2	1	7	23	142	165
Other Freshmen	7	37	1	1	1	1							1	3				1	10	43	53
Sophomores	16	128	1	3	1	7	1	5						3	1	4			20	150	170
Juniors	15	122		9	1	9		1		1			1	4		5			17	151	168
Seniors	22	217	1	13	3	6		3					2	5	4	8			32	252	284
Special	3	17		1		1		2									1		4	21	25
Total	82	642	4	30	6	31	3	13		1			4	15	5	19	2	8	106	759	865
Total All Students	82	642	4	30	6	31	3	13		1			4	15	5	19	2	8	106	759	865

Figures 27 & 28
 College of Education and Human Sciences
 Delivery-Site Head Count and Student Credit Hours
 Fall 2000 through Fall 2010

Head Count by Student Level



Student Credit Hours by Course Level

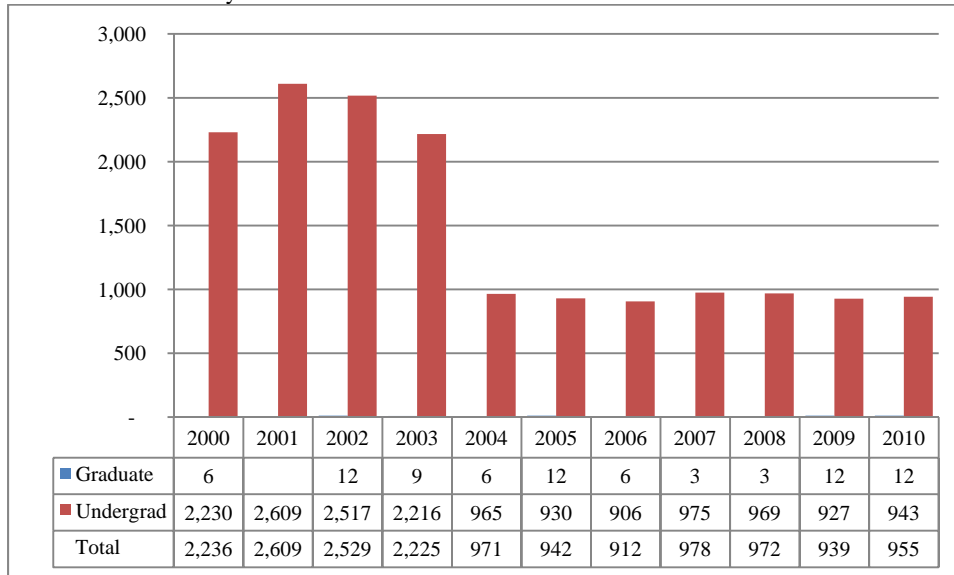
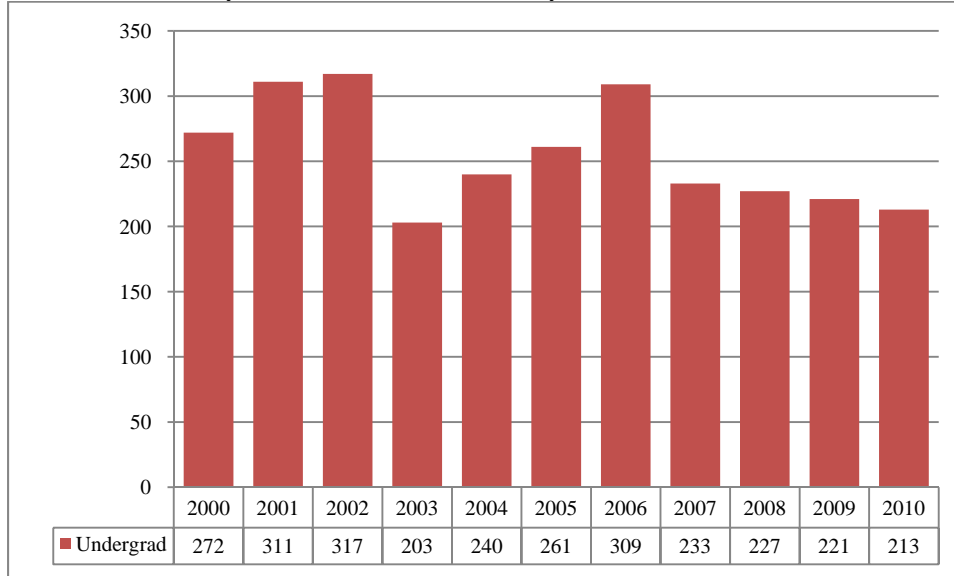


Table 17
College of Education and Human Sciences Head Count Summary for Full and Part-Time,
Undergraduate Students by Gender and Race Classification: Fall 2010

	White		African American		Hispanic		Asian		American Indian		Nat Haw / Pac Isl		Nonresident Alien		Race Unknown		Two or more races		Total			
	F	M	F	M	F	M	F	M	F	M	F	M	F	M	F	M	F	M	F	M	Total	
Full-Time																						
Undergraduate																						
First-Time Freshmen	6	1	1		2		1													10	1	11
Other Freshmen	3		1	1	1															5	1	6
Sophomores	8		2						1						1					12	0	12
Juniors	14		2		2		1													19	0	19
Seniors	14		5	1																19	1	20
Special																				0	0	0
Total	45	1	11	2	5	0	2	0	1	0	0	0	0	0	1	0	0	0	65	3	68	
Total Full-Time	45	1	11	2	5	0	2	0	1	0	0	0	0	0	1	0	0	0	65	3	68	
Part-Time																						
Undergraduate																						
First-Time Freshmen			1																	1	0	1
Other Freshmen	2			1																2	1	3
Sophomores	5		1																	6	0	6
Juniors	3		1																	4	0	4
Seniors	6																			6	0	6
Special																				0	0	0
Total	16	0	3	1	0	0	0	0	0	0	0	0	0	0	0	0	0	0	19	1	20	
Total Part-Time	16	0	3	1	0	0	0	0	0	0	0	0	0	0	0	0	0	0	19	1	20	
Total																						
Undergraduate																						
First-Time Freshmen	6	1	2		2		1													11	1	12
Other Freshmen	5		1	2	1															7	2	9
Sophomores	13		3						1						1					18	0	18
Juniors	17		3		2		1													23	0	23
Seniors	20		5	1																25	1	26
Special																				0	0	0
Total	61	1	14	3	5	0	2	0	1	0	0	0	0	0	1	0	0	0	84	4	88	
Total All Students	61	1	14	3	5	0	2	0	1	0	0	0	0	0	1	0	0	0	84	4	88	

Figure 29
 Other: Honors and Library Hours
 Student Credit Hours by Level of Instruction
 Fall 2000 through Fall 2010

Student Credit Hours by Level of Instruction Produced by Other Courses



Glossary

Except where noted, the total head count and student credit hours in this enrollment report are provided on a delivery-site basis. Delivery-site includes enrollment in all courses taught at UNO regardless of “home” campus. This means that student credit hours are reported for courses in the colleges. Student enrollment is counted in the college declared by the student. Specifically, the delivery-site enrollment numbers include students in degree programs in the UNL Colleges of Agriculture, Architecture, Engineering and Technology, and Education and Human Science.

FIRST-TIME, Entering (freshmen) Student: Students attending any institution for the first time at the undergraduate level. For students entering the fall term, this includes students enrolled in the fall term who attended college for the first time in the prior summer term. Also included are students who entered with advanced standing, i.e. college credits earned before graduation from high school.

OTHER FRESHMEN: At the beginning of the current semester, undergraduate students who (1) are not First-Time Freshmen and (2) have less than 27 semester hours earned from all institutions of higher education attended.

SOPHOMORES: At the beginning of the current semester, undergraduate students who have at least 27, but not more than 57, semester hours earned from all institutions of higher education attended.

JUNIORS: At the beginning of the current semester, undergraduate students who have at least 58, but not more than 90, semester hours earned from all institutions of higher education attended.

SENIORS: At the beginning of the current semester, undergraduate students who have at least 91 semester hours earned from all institutions of higher education attended.

NON-DEGREE/INTER-CAMPUS/SPECIAL UNDERGRADUATES: Special undergraduates not pursuing a degree at UNO in various programs: Inter-Campus UNMC, UNK, UNL, and Non-Degree.

NON-DEGREE/INTER-CAMPUS/SPECIAL GRADUATE STUDENTS: Special graduate students not pursuing a degree at UNO in various programs: Engineering Transfer Program, Inter-Campus UNMC, UNK, UNL, Inter-Campus UNL Graduate Psychology and Non-Degree.

MASTERS/SPECIALIST: Graduate students pursuing a degree less than doctoral.

DOCTORAL: Graduate students who have been accepted into a doctoral program.

FULL-TIME: In the current semester, undergraduate students enrolled for 12 or more semester hours, or graduate students enrolled for 9 or more semester hours.

PART-TIME: In the current semester, undergraduate students enrolled for less than 12 semester hours, or graduate students enrolled for less than 9 semester hours.