

5-2006

2004 Nebraska Population Report

David J. Drozd
University of Nebraska at Omaha, ddrozd@unomaha.edu

Jerry Deichert
University of Nebraska at Omaha, jdeicher@unomaha.edu

Follow this and additional works at: <https://digitalcommons.unomaha.edu/cparpublications>

 Part of the [Public Affairs Commons](#)

Please take our feedback survey at: https://unomaha.az1.qualtrics.com/jfe/form/SV_8cchtFmpDyGfBLE

Recommended Citation

Drozd, David J. and Deichert, Jerry, "2004 Nebraska Population Report" (2006). *Publications since 2000*. 12.

<https://digitalcommons.unomaha.edu/cparpublications/12>

This Report is brought to you for free and open access by the Center for Public Affairs Research at DigitalCommons@UNO. It has been accepted for inclusion in Publications since 2000 by an authorized administrator of DigitalCommons@UNO. For more information, please contact unodigitalcommons@unomaha.edu.

2004 Nebraska Population Report

- **Historical State Population Counts and Trends**
- **Historical State Components of Population Change**
- **2000 – 2004 State, County, and City Population Estimates**
- **2000 – 2004 State and County Components of Population Change**
- **2000 and 2004 State and County Demographic Characteristics**
- **2000 and 2004 State Population Pyramids by Race and Ethnicity**
- **2000 to 2004 Population Change by City Size**

**Prepared By:
David Drozd, Jerry Deichert
The Center for Public Affairs Research
University of Nebraska at Omaha
6001 Dodge Street
Omaha, NE 68182**

May 2006

TABLE OF CONTENTS

Highlights.....	4
Release Schedule of Annual Population Estimates	6
Terms and Definitions.....	7
PART 1: STATE DATA.....	8
Table 1: Annual Population Estimates and Changes from Previous Year: U.S. and Nebraska.....	9
Figure 1: July 1 Annual U.S. and Nebraska Population: 1900 to 2004.....	11
Figure 2: Nebraska Population and Population Change: 1900 to 2004.....	12
Figure 3: Annual U.S. and Nebraska Percent Population Change: 1900 to 2004 ..	12
Table 2: Nebraska Population and Components of Change: 1930 to 2004.....	13
Figure 4: Nebraska Births, Deaths, and Natural Change: 1930 to 2004.....	15
Figure 5: Nebraska Components of Population Change: 1930 to 2004.....	15
Table 3: Annual Nebraska Population Estimates by Sex and Age: April 1, 2000 to July 1, 2004	16
Figure 6: 2004 Nebraska Population by Sex and Five-Year Age Group: Total Population.....	19
Table 4: Nebraska Population by Race and Ethnicity: April 1, 2000 and July 1, 2004.....	19
Figure 7: 2004 Nebraska Population by Sex and Five-Year Age Group: White Alone not Hispanic or Latino/a (Majority Population)	20
Figure 8: 2004 Nebraska Population by Sex and Five-Year Age Group: Non-White or Hispanic or Latino/a (Minority Population)	20
Figure 9: 2004 Nebraska Population by Sex and Five-Year Age Group: Non-White or Hispanic or Latino/a (Minorities) as a Percent of the State Total ..	21
Figure 10: 2000 Nebraska Population by Sex and Five-Year Age Group: Total Population.....	21
Figure 11: 2000 Nebraska Population by Sex and Five-Year Age Group: White Alone	22
Figure 12: 2000 Nebraska Population by Sex and Five-Year Age Group: Black or African American Alone	22
Figure 13: 2000 Nebraska Population by Sex and Five-Year Age Group: Asian Alone	23

Figure 14: 2000 Nebraska Population by Sex and Five-Year Age Group: American Indian or Alaska Native Alone.....	23
Figure 15: 2000 Nebraska Population by Sex and Five-Year Age Group: Hispanic or Latino/a.....	24
Figure 16: 2000 Nebraska Population by Sex and Five-Year Age Group: White Alone not Hispanic or Latino/a (Majority Population)	24
Figure 17: 2000 Nebraska Population by Sex and Five-Year Age Group: Non-White or Hispanic or Latino/a (Minority Population)	25
Figure 18: 2000 Nebraska Population by Sex and Five-Year Age Group: Non-White or Hispanic or Latino/a (Minorities) as a Percent of the State Total ..	25
 PART 2: COUNTY DATA	 26
Map 1: Nebraska Counties Classified by Modified Urban Influence Code	27
Table 5: Listing of Nebraska Counties Classified by Modified Urban Influence Code	28
Table 6: Annual Estimates of the Population for Nebraska Counties: April 1, 2000 to July 1, 2004	29
Table 7: Nebraska Population Estimates, Changes, and Rankings: April 1, 2000 to July 1, 2004	31
Map 2: Population Change in Nebraska Counties: 1990-2000 and 2000-2004.....	33
Table 8: Nebraska Population Change Component Estimates: April 1, 2000 to July 1, 2004	34
Map 3: Natural Change in Nebraska Counties: 1990-2000 and 2000-2004	36
Map 4: Net Migration in Nebraska Counties: 1990-2000 and 2000-2004	37
Table 9: County Population by Major Age Groups: July 1, 2004	38
 PART 3: CITY AND TOWN DATA	 40
Table 10: Ranking of the Population of Nebraska Incorporated Cities: July 1, 2004.....	41
Figure 19: Number of Nebraska Cities and Towns by Size Category: 2004.....	44
Table 11: Comparison of Nebraska Place Population: July 1, 2004 and April 1, 2000.....	45
Figure 20: Percent Population Change for All Cities in Various City Size Categories: April 1, 2000 to July 1, 2004	51
Figure 21: Percent of Nebraska Cities within City Size Category Having Population Growth: April 1, 2000 to July 1, 2004.....	51
Table 12: Population Added to Incorporated Cities Due to Annexation: April 1, 2000 to July 1, 2004	52

HIGHLIGHTS

This report shows annual estimates of the population for Nebraska and its counties and cities. Demographic patterns and trends, including changes in the components of population change, are illustrated. As the passage of time takes us further from Census 2000 and closer to the 2010 Census, it is important to see how changes have been occurring at both the local and statewide level. A summary of important aspects to note as one peruses the tables and figures in this report follows below:

- The state's population has grown in 80 of the 104 years between 1900 and 2004. Most of the years having population declines occurred during World Wars I and II or during or immediately following the Great Depression. The state's population has grown every year since 1987.
- The rate of population growth within Nebraska since 2000 has averaged about 0.5 percent annually. This growth rate is similar to the mid 1970s to mid 1980s while annual growth rates were around 1.0 percent during the 1990s. The current rate of growth within Nebraska is about half of the overall U.S. growth rate. The last time the annual growth rate in Nebraska was higher than the overall U.S. average was 1961.
- Nebraska continues to gain population through natural increase—the annual number of births being larger than the annual number of deaths. Net migration has tended to vary, with some years having net immigration and net outmigration occurring in other years. The level of net migration is typically lower than that of natural change.
- Sex and age pyramids show the White Non-Hispanic population to be relatively older than the minority population.
- Populations in metropolitan counties have grown since 2000, while remaining about the same in micropolitan counties and declining in the remaining non-metropolitan and non-micropolitan counties (to view the geographical distribution or a list of the counties in each of these categories, see Map 1 and Table 5). Sarpy County had the largest growth rate at 10.9 percent between 2000 and 2004 while Thomas County had the most pronounced decline at 11.9 percent.
- The population has grown between 2000 and 2004 in 23 of 93 Nebraska counties. These counties tend to be located in the eastern 1/3 of the state or along Interstate 80. Eighteen counties that experienced growth during the 1990s have had their populations decline between 2000 and 2004.
- While natural change has been positive at the state level every year since 1900, only half of Nebraska's counties experienced more births than deaths between 2000 and 2004. Natural increases tended to occur in the eastern 1/3 of the state and counties located along Interstate 80.

- Net migration occurred between 2000 and 2004 in 17 of Nebraska's 93 counties. These counties tended to be located near Nebraska's metropolitan centers of Lincoln and Omaha. Net migration gains during the 1990s have not continued in 28 counties as more residents have moved out than moved in between 2000 and 2004.
- The percentage of county residents ages 65 and over increases as the county type becomes increasingly rural. Those 65 and older comprise 10.4 percent of the population in metropolitan counties, 14.9 percent in micropolitan counties, 17.8 percent in non-metro/micro counties having a city with at least 2,500 residents, and 21.4 percent in non-metro/micro counties without a city of 2,500 residents.
- 40 percent of Nebraska's cities and towns had fewer than 250 persons in 2004. The median size city had 338 persons (Brule, NE).
- By city size category, aggregate population change was similar among four city size classifications under 1,000 residents at an approximate 2.6 percent decline. Those city size categories over 1,000 residents had more variability, with those having 1,000 to 2,499 residents as well as 10,000 or more residents experiencing 1 and 5 percent growth respectively. Nearly all cities with 10,000 or more residents experienced growth, while only 35 percent of cities having between 1,000 and 9,999 residents grew while approximately 20 percent of those cities having fewer than 1,000 persons had growth between 2000 and 2004.

RELEASE SCHEDULE OF ANNUAL POPULATION ESTIMATES

The following tables detail the schedule for data releases for annual population estimates prepared by the Population Division of the United States Census Bureau. These estimates are made for the nation, states, counties, and cities and towns. Estimates by sex, age, race, and Hispanic origin are made for certain levels of geography. Released estimates generally measure the population on July 1 of the previous year. The release dates below are approximate and the exact month data are released may vary from year to year. New estimates released often have adjustments to prior year’s estimates and supersede previous releases.

<u>Data Description</u>	<u>Month Released</u>
National and State population estimates	December (for July of that year)
National and State components of population change	December (for July of that year)
State estimates by sex and age	March (for July of previous year)
County population estimates	April (for July of previous year)
County components of population change	April (for July of previous year)
National estimates by sex, age, race, and Hispanic origin	May (for July of previous year)
City and Town population estimates	June (for July of previous year)
State estimates by sex, age, race, and Hispanic origin	July (for July of previous year)
County estimates by sex, age, race, and Hispanic origin	August (for July of previous year)

Timeline Display of Annual Population Estimates Release Schedule

Data Released	July 1	Aug	Sep	Oct	Nov	Dec	Jan	Feb	Mar	Apr	May	Jun	Jul	Aug
Population estimates						N, S				C		P		
Components of change						N, S				C				
Population by sex and age									S					
Population by sex, age, race, and Hispanic origin											N		S	C

Key: N = National; S = State; C = County; P = Place (city or town)

TERMS AND DEFINITIONS

We obtained the following terms and definitions from the Census Bureau estimates website for reference. See <http://www.census.gov/popest/topics/terms/> for more information.

Estimated Components of Population Change - occurrences used by the Census Bureau to estimate changes in the population during a time period. These components consist of births, deaths, net internal migration and net international migration.

Estimates Base - the population count used as the starting point in the estimates process. It can be equal to the last decennial Census count or incorporate changes to the reference area (boundaries, annexation, etc.) since the last decennial Census.

Natural Increase - births minus deaths. The rate of natural increase expresses natural increase during a time period as a percentage of an area's population at the midpoint of the time period.

Net Internal Migration - the difference between internal in-migration to an area and internal out-migration from the same area during a time period. Internal in- and out-migration consist of moves where both the origin and the destination are within the United States (excluding Puerto Rico). The net internal migration rate expresses net internal migration during a time period as a percentage of an area's population at the midpoint of the time period.

Net International Migration - International migration, in its simplest form, is defined as any movement across U.S. (50 states and District of Columbia) borders. The U.S. Census Bureau makes estimates of net international migration for the nation, states, and counties. We estimate net international migration as: (1) net migration of the foreign born, (2) net movement from Puerto Rico, (3) net movement of the U.S. Armed Forces, and (4) emigration of the native born. The largest component, net migration of the foreign born, includes lawful permanent residents (immigrants), temporary migrants (such as students), humanitarian migrants (such as refugees), and people illegally present in the United States. Currently, we do not estimate these components individually. The Census definition of foreign born is available on the foreign-born population page. (<http://www.census.gov/population/www/socdemo/foreign.html>)

Net migration - net internal migration plus net international migration. The net migration rate expresses net migration during a time period as a percentage of an area's population at the midpoint of the time period.

Percent Population Change - the difference between the population of an area at the beginning and end of a time period, expressed as a percentage of the beginning population.

Population Estimate - the calculated number of people living in an area as of July 1. The estimated population is calculated from a components of change model that incorporates information on natural change (births, deaths) and net migration (net internal migration, net international migration) that has occurred in an area since a Census 2000 reference date.

Residual - The residual results from the application of a national population control to state and county population estimates. The residual is the difference in state and county population before and after the application of the control. The residual is not a demographic component of population change.

PART 1: STATE DATA

The U.S. Census Bureau releases annual estimates of each state's population as of the year's midpoint, July 1. These figures usually are released in late December of each year, along with major components of population change such as birth, deaths, and migration. Estimates for years in the interim between decennial censuses are sometimes revised. A consistent source for historical population figures, including revisions, is the Bureau of Economic Analysis (<http://www.bea.gov/beat/regional/reis/>), from which we obtained July 1 population totals and cross-referenced them against Census Bureau records. We took estimates for the post 2000 period directly from releases by the Census Bureau. (<http://www.census.gov/popest/states/>)

Additional information, including historical data on deaths and births, was taken from vital statistics records of the Nebraska Health and Human Services System. (<http://www.hhs.state.ne.us/ced/tbl1.htm>) The Census Bureau also releases state population estimates as of July 1 by sex and age in March of the following year. We used these data to create population pyramids that follow in this report. Pyramids using exact counts from Census 2000 also are presented for the total population and major race and ethnic groups. July 1 intercensal estimates by race and ethnicity are released by the Census Bureau in July of the following year.

Table 1: Annual Population Estimates and Changes from Previous Year: U.S. and Nebraska

Year	Population		Actual Change		Percent Change	
	United States	Nebraska	United States	Nebraska	United States	Nebraska
July 1, 1900	76,094,000	1,067,000	--	--	--	--
July 1, 1901	77,585,000	1,078,000	1,491,000	11,000	1.96	1.03
July 1, 1902	79,160,000	1,089,000	1,575,000	11,000	2.03	1.02
July 1, 1903	80,632,000	1,104,000	1,472,000	15,000	1.86	1.38
July 1, 1904	82,165,000	1,119,000	1,533,000	15,000	1.90	1.36
July 1, 1905	83,820,000	1,129,000	1,655,000	10,000	2.01	0.89
July 1, 1906	85,437,000	1,138,000	1,617,000	9,000	1.93	0.80
July 1, 1907	87,000,000	1,149,000	1,563,000	11,000	1.83	0.97
July 1, 1908	88,709,000	1,161,000	1,709,000	12,000	1.96	1.04
July 1, 1909	90,492,000	1,177,000	1,783,000	16,000	2.01	1.38
July 1, 1910	92,407,000	1,198,000	1,915,000	21,000	2.12	1.78
July 1, 1911	93,868,000	1,216,000	1,461,000	18,000	1.58	1.50
July 1, 1912	95,331,000	1,232,000	1,463,000	16,000	1.56	1.32
July 1, 1913	97,227,000	1,246,000	1,896,000	14,000	1.99	1.14
July 1, 1914	99,118,000	1,264,000	1,891,000	18,000	1.94	1.44
July 1, 1915	100,549,000	1,272,000	1,431,000	8,000	1.44	0.63
July 1, 1916	101,966,000	1,275,000	1,417,000	3,000	1.41	0.24
July 1, 1917	103,266,000	1,285,000	1,300,000	10,000	1.27	0.78
July 1, 1918	103,203,000	1,266,000	-63,000	-19,000	-0.06	-1.48
July 1, 1919	104,512,000	1,290,000	1,309,000	24,000	1.27	1.90
July 1, 1920	106,466,000	1,300,000	1,954,000	10,000	1.87	0.78
July 1, 1921	108,541,000	1,309,000	2,075,000	9,000	1.95	0.69
July 1, 1922	110,055,000	1,312,000	1,514,000	3,000	1.39	0.23
July 1, 1923	111,950,000	1,321,000	1,895,000	9,000	1.72	0.69
July 1, 1924	114,113,000	1,333,000	2,163,000	12,000	1.93	0.91
July 1, 1925	115,832,000	1,343,000	1,719,000	10,000	1.51	0.75
July 1, 1926	117,399,000	1,353,000	1,567,000	10,000	1.35	0.74
July 1, 1927	119,038,000	1,365,000	1,639,000	12,000	1.40	0.89
July 1, 1928	120,501,000	1,371,000	1,463,000	6,000	1.23	0.44
July 1, 1929	121,770,000	1,375,000	1,269,000	4,000	1.05	0.29
July 1, 1930	123,075,000	1,380,000	1,305,000	5,000	1.07	0.36
July 1, 1931	124,038,000	1,384,000	963,000	4,000	0.78	0.29
July 1, 1932	124,839,000	1,386,000	801,000	2,000	0.65	0.14
July 1, 1933	125,580,000	1,385,000	741,000	-1,000	0.59	-0.07
July 1, 1934	126,372,000	1,382,000	792,000	-3,000	0.63	-0.22
July 1, 1935	127,251,000	1,375,000	879,000	-7,000	0.70	-0.51
July 1, 1936	128,054,000	1,358,000	803,000	-17,000	0.63	-1.24
July 1, 1937	128,822,000	1,339,000	768,000	-19,000	0.60	-1.40
July 1, 1938	129,824,000	1,326,000	1,002,000	-13,000	0.78	-0.97
July 1, 1939	130,884,000	1,318,000	1,060,000	-8,000	0.82	-0.60
July 1, 1940	131,955,000	1,316,000	1,071,000	-2,000	0.82	-0.15
July 1, 1941	133,417,000	1,272,000	1,462,000	-44,000	1.11	-3.34
July 1, 1942	134,670,000	1,245,000	1,253,000	-27,000	0.94	-2.12
July 1, 1943	134,697,000	1,235,000	27,000	-10,000	0.02	-0.80
July 1, 1944	134,075,000	1,214,000	-622,000	-21,000	-0.46	-1.70
July 1, 1945	133,387,000	1,210,000	-688,000	-4,000	-0.51	-0.33
July 1, 1946	140,638,000	1,256,000	7,251,000	46,000	5.44	3.80
July 1, 1947	143,665,000	1,266,000	3,027,000	10,000	2.15	0.80
July 1, 1948	146,091,000	1,265,000	2,426,000	-1,000	1.69	-0.08
July 1, 1949	148,666,000	1,302,000	2,575,000	37,000	1.76	2.92

Year	Population		Actual Change		Percent Change	
	United States	Nebraska	United States	Nebraska	United States	Nebraska
July 1, 1950	151,871,000	1,327,000	3,205,000	25,000	2.16	1.92
July 1, 1951	153,970,000	1,316,000	2,099,000	-11,000	1.38	-0.83
July 1, 1952	156,369,000	1,311,000	2,399,000	-5,000	1.56	-0.38
July 1, 1953	158,946,000	1,318,000	2,577,000	7,000	1.65	0.53
July 1, 1954	161,881,000	1,340,000	2,935,000	22,000	1.85	1.67
July 1, 1955	165,058,000	1,374,000	3,177,000	34,000	1.96	2.54
July 1, 1956	168,078,000	1,397,000	3,020,000	23,000	1.83	1.67
July 1, 1957	171,178,000	1,394,000	3,100,000	-3,000	1.84	-0.21
July 1, 1958	174,153,000	1,383,000	2,975,000	-11,000	1.74	-0.79
July 1, 1959	177,136,000	1,397,000	2,983,000	14,000	1.71	1.01
July 1, 1960	179,972,000	1,417,000	2,836,000	20,000	1.60	1.43
July 1, 1961	182,976,000	1,446,000	3,004,000	29,000	1.67	2.05
July 1, 1962	185,739,000	1,464,000	2,763,000	18,000	1.51	1.24
July 1, 1963	188,434,000	1,476,000	2,695,000	12,000	1.45	0.82
July 1, 1964	191,085,000	1,482,000	2,651,000	6,000	1.41	0.41
July 1, 1965	193,457,000	1,471,000	2,372,000	-11,000	1.24	-0.74
July 1, 1966	195,499,000	1,456,000	2,042,000	-15,000	1.06	-1.02
July 1, 1967	197,375,000	1,457,000	1,876,000	1,000	0.96	0.07
July 1, 1968	199,312,000	1,467,000	1,937,000	10,000	0.98	0.69
July 1, 1969	201,298,000	1,474,000	1,986,000	7,000	1.00	0.48
July 1, 1970	203,798,722	1,487,963	2,500,722	13,963	1.24	0.95
July 1, 1971	206,817,509	1,504,208	3,018,787	16,245	1.48	1.09
July 1, 1972	209,274,882	1,518,293	2,457,373	14,085	1.19	0.94
July 1, 1973	211,349,205	1,528,517	2,074,323	10,224	0.99	0.67
July 1, 1974	213,333,635	1,537,809	1,984,430	9,292	0.94	0.61
July 1, 1975	215,456,585	1,541,440	2,122,950	3,631	1.00	0.24
July 1, 1976	217,553,859	1,548,901	2,097,274	7,461	0.97	0.48
July 1, 1977	219,760,875	1,554,466	2,207,016	5,565	1.01	0.36
July 1, 1978	222,098,244	1,560,826	2,337,369	6,360	1.06	0.41
July 1, 1979	224,568,579	1,564,356	2,470,335	3,530	1.11	0.23
July 1, 1980	227,224,719	1,572,296	2,656,140	7,940	1.18	0.51
July 1, 1981	229,465,744	1,578,517	2,241,025	6,221	0.99	0.40
July 1, 1982	231,664,432	1,581,776	2,198,688	3,259	0.96	0.21
July 1, 1983	233,792,014	1,584,293	2,127,582	2,517	0.92	0.16
July 1, 1984	235,824,907	1,588,638	2,032,893	4,345	0.87	0.27
July 1, 1985	237,923,734	1,584,661	2,098,827	-3,977	0.89	-0.25
July 1, 1986	240,132,831	1,574,328	2,209,097	-10,333	0.93	-0.65
July 1, 1987	242,288,936	1,566,544	2,156,105	-7,784	0.90	-0.49
July 1, 1988	244,499,004	1,571,477	2,210,068	4,933	0.91	0.31
July 1, 1989	246,819,222	1,574,858	2,320,218	3,381	0.95	0.22
July 1, 1990	249,622,814	1,581,660	2,803,592	6,802	1.14	0.43
July 1, 1991	252,980,941	1,595,919	3,358,127	14,259	1.35	0.90
July 1, 1992	256,514,224	1,611,687	3,533,283	15,768	1.40	0.99
July 1, 1993	259,918,588	1,625,590	3,404,364	13,903	1.33	0.86
July 1, 1994	263,125,821	1,639,041	3,207,233	13,451	1.23	0.83
July 1, 1995	266,278,393	1,656,992	3,152,572	17,951	1.20	1.10
July 1, 1996	269,394,284	1,673,740	3,115,891	16,748	1.17	1.01
July 1, 1997	272,646,925	1,686,418	3,252,641	12,678	1.21	0.76
July 1, 1998	275,854,104	1,695,816	3,207,179	9,398	1.18	0.56
July 1, 1999	279,040,168	1,704,764	3,186,064	8,948	1.15	0.53

Year	Population		Actual Change		Percent Change	
	United States	Nebraska	United States	Nebraska	United States	Nebraska
July 1, 2000	282,192,162	1,713,239	3,151,994	8,475	1.13	0.50
July 1, 2001	285,102,075	1,718,840	2,909,913	5,601	1.03	0.33
July 1, 2002	287,941,220	1,726,437	2,839,145	7,597	1.00	0.44
July 1, 2003	290,788,976	1,737,475	2,847,756	11,038	0.99	0.64
July 1, 2004	293,655,404	1,747,214	2,866,428	9,739	0.99	0.56

Sources: (All data downloaded April 10, 2006)

1900-1929 Historical Annual Time Series of State Population Estimates 1900 to 1990: Total Population
Internet Release February 1996; http://www.census.gov/popest/archives/1980s/80s_st_totals.html

1930-1999 Regional Economic Information System, Bureau of Economic Analysis, U.S. Department of Commerce
Data as of March 28, 2006: <http://www.bea.gov/bea/regional/spi/default.cfm?satable=summary>

2000-2004 Table 1: Annual Estimates of the Population for the United States and States: April 1, 2000 to July 1, 2004
Population Division, U.S. Census Bureau; Released December 22, 2004
<http://www.census.gov/popest/states/tables/NST-EST2004-01.xls>

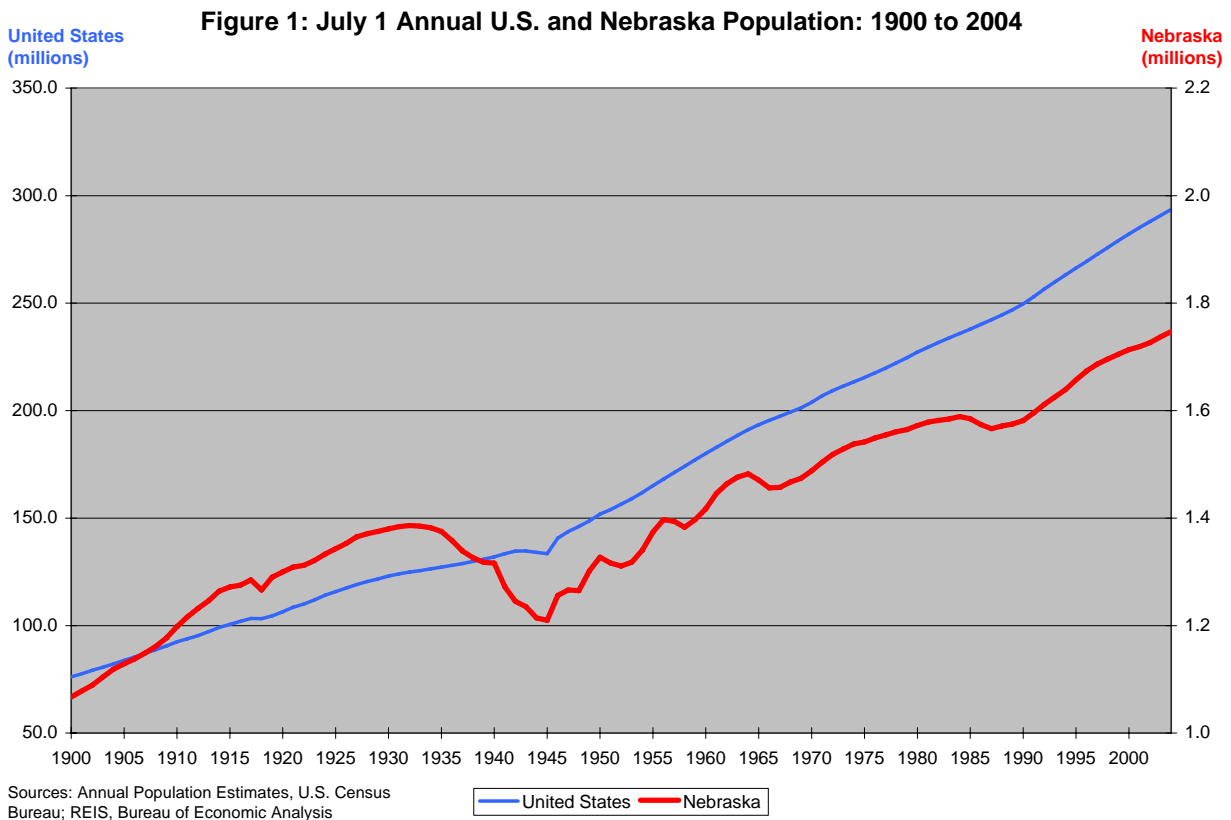


Figure 2: Nebraska Population and Population Change: 1900-2004

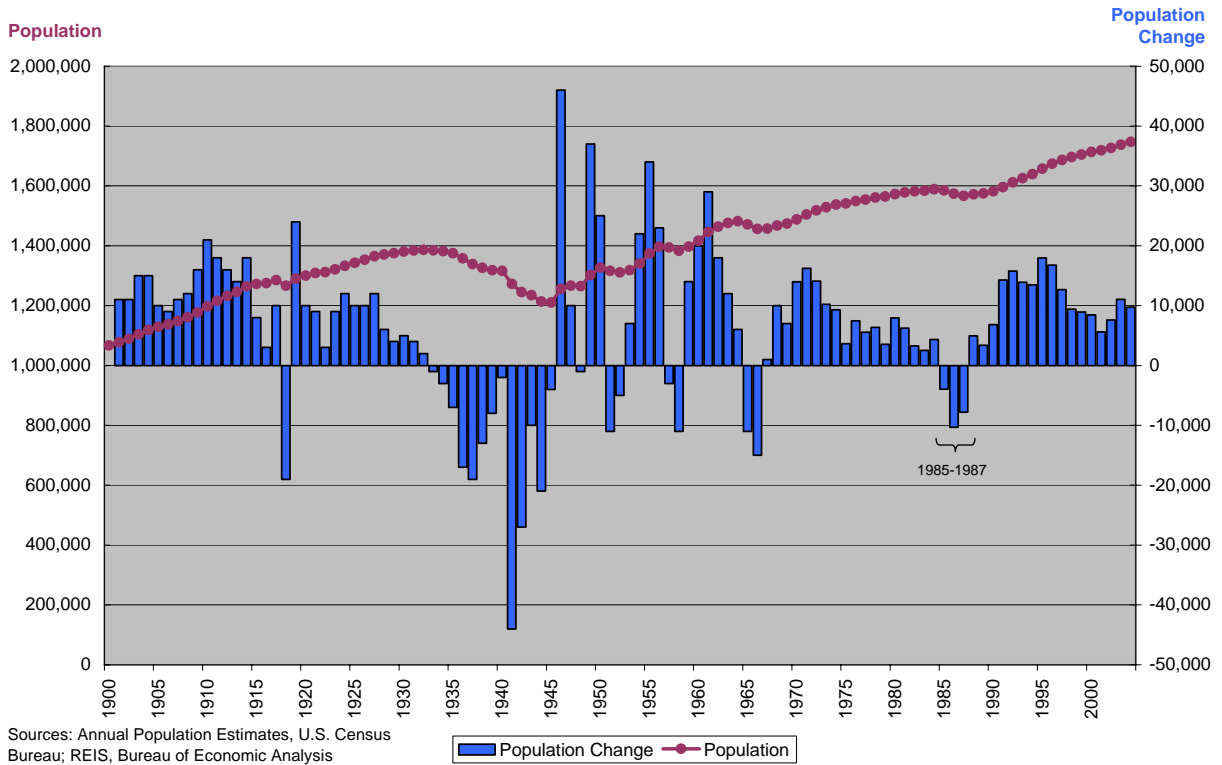


Figure 3: Annual U.S. and Nebraska Percent Population Change: 1900 to 2004

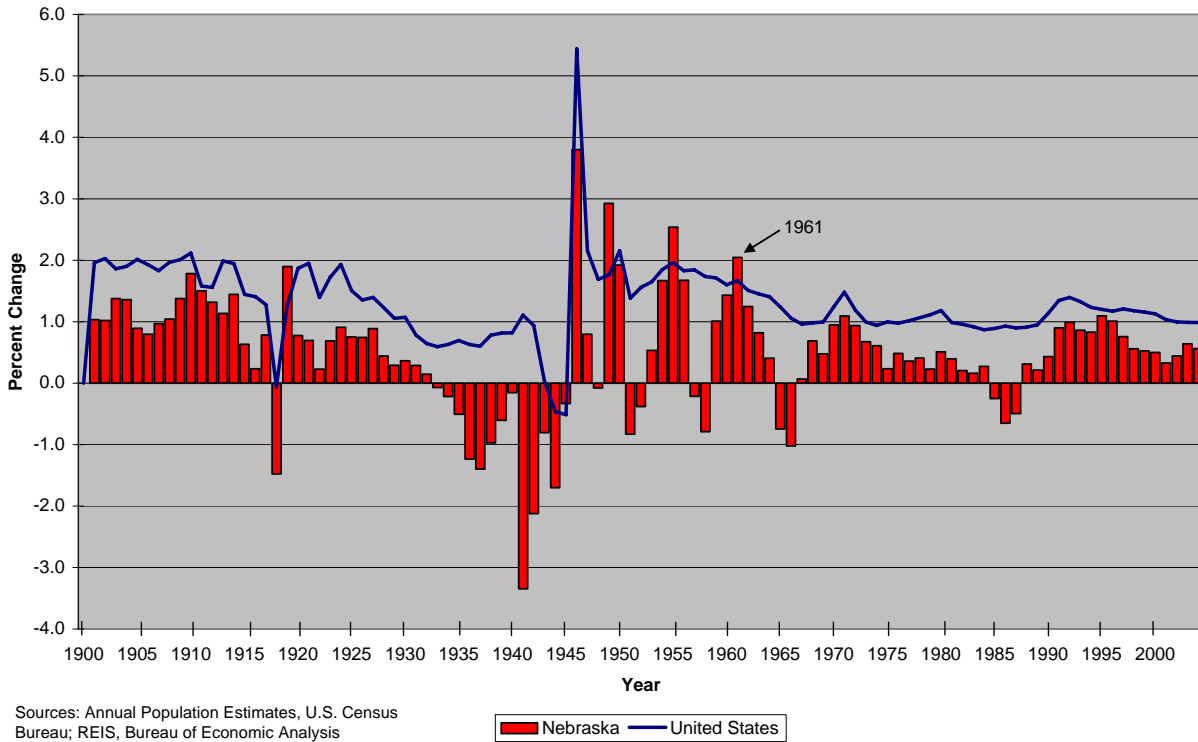


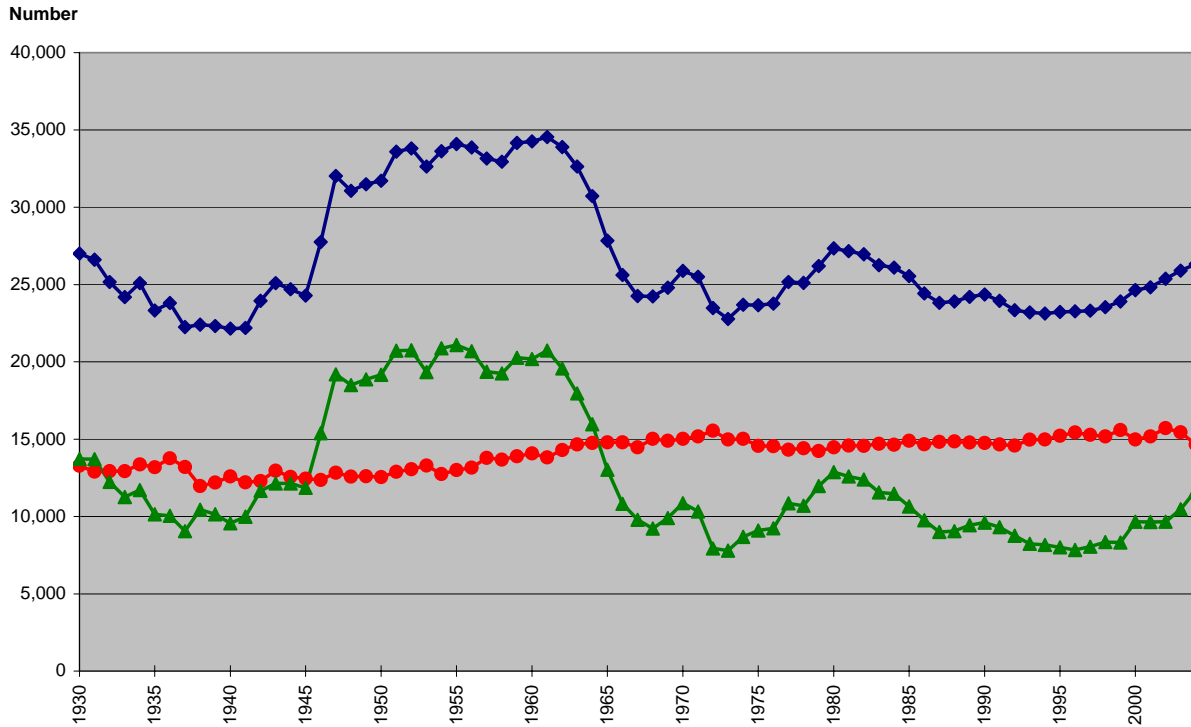
Table 2: Nebraska Population and Components of Change: 1930-2004

Sources: Regional Economic Information System, Bureau of Economic Analysis
 Vital Statistics, Nebraska Health and Human Services
 Annual Estimates of the Population, U.S. Census Bureau, Released 12-22-04

Year	Estimated July 1 Population	Births	Deaths	Natural Increase	Actual Change	Net Migration
Number of Persons						
1930	1,380,000	27,006	13,280	13,726	5,000	-8,726
1931	1,384,000	26,610	12,905	13,705	4,000	-9,716
1932	1,386,000	25,160	12,923	12,237	2,000	-10,971
1933	1,385,000	24,187	12,925	11,262	-1,000	-12,750
1934	1,382,000	25,087	13,372	11,715	-3,000	-14,489
1935	1,375,000	23,326	13,179	10,147	-7,000	-17,931
1936	1,358,000	23,799	13,756	10,043	-17,000	-27,095
1937	1,339,000	22,256	13,200	9,056	-19,000	-28,550
1938	1,326,000	22,402	11,960	10,442	-13,000	-22,749
1939	1,318,000	22,326	12,188	10,138	-8,000	-18,290
1940	1,316,000	22,153	12,593	9,560	-2,000	-11,849
1941	1,272,000	22,186	12,203	9,983	-44,000	-53,772
1942	1,245,000	23,950	12,293	11,657	-27,000	-37,820
1943	1,235,000	25,091	12,956	12,135	-10,000	-21,896
1944	1,214,000	24,694	12,560	12,134	-21,000	-33,135
1945	1,210,000	24,292	12,446	11,846	-4,000	-15,990
1946	1,256,000	27,753	12,365	15,388	46,000	32,383
1947	1,266,000	32,018	12,823	19,195	10,000	-7,292
1948	1,265,000	31,066	12,569	18,497	-1,000	-19,846
1949	1,302,000	31,482	12,607	18,875	37,000	18,314
1950	1,327,000	31,713	12,548	19,165	25,000	5,980
1951	1,316,000	33,595	12,880	20,715	-11,000	-30,940
1952	1,311,000	33,809	13,056	20,753	-5,000	-25,734
1953	1,318,000	32,633	13,298	19,335	7,000	-13,044
1954	1,340,000	33,617	12,741	20,876	22,000	1,895
1955	1,374,000	34,087	13,001	21,086	34,000	13,019
1956	1,397,000	33,855	13,161	20,694	23,000	2,110
1957	1,394,000	33,161	13,797	19,364	-3,000	-23,029
1958	1,383,000	32,935	13,680	19,255	-11,000	-30,310
1959	1,397,000	34,162	13,887	20,275	14,000	-5,765
1960	1,417,000	34,257	14,071	20,186	20,000	-231
1961	1,446,000	34,544	13,812	20,732	29,000	8,541
1962	1,464,000	33,886	14,305	19,581	18,000	-2,157
1963	1,476,000	32,624	14,657	17,967	12,000	-6,774
1964	1,482,000	30,727	14,758	15,969	6,000	-10,968
1965	1,471,000	27,829	14,799	13,030	-11,000	-25,500
1966	1,456,000	25,618	14,799	10,819	-15,000	-26,925
1967	1,457,000	24,259	14,465	9,794	1,000	-9,307
1968	1,467,000	24,236	15,017	9,219	10,000	494
1969	1,474,000	24,801	14,898	9,903	7,000	-2,561

Year	Estimated July 1 Population	Births	Deaths	Natural Increase	Actual Change	Net Migration
Number of Persons						
1970	1,487,963	25,877	15,016	10,861	13,963	3,581
1971	1,504,208	25,507	15,182	10,325	16,245	5,652
1972	1,518,293	23,473	15,540	7,933	14,085	4,956
1973	1,528,517	22,771	14,977	7,794	10,224	2,361
1974	1,537,809	23,695	15,016	8,679	9,292	1,056
1975	1,541,440	23,658	14,569	9,089	3,631	-5,253
1976	1,548,901	23,767	14,536	9,231	7,461	-1,699
1977	1,554,466	25,158	14,316	10,842	5,565	-4,472
1978	1,560,826	25,103	14,408	10,695	6,360	-4,409
1979	1,564,356	26,199	14,228	11,971	3,530	-7,803
1980	1,572,296	27,335	14,465	12,870	7,940	-4,481
1981	1,578,517	27,164	14,580	12,584	6,221	-6,506
1982	1,581,776	26,954	14,567	12,387	3,259	-9,227
1983	1,584,293	26,254	14,695	11,559	2,517	-9,456
1984	1,588,638	26,099	14,633	11,466	4,345	-7,168
1985	1,584,661	25,540	14,895	10,645	-3,977	-15,033
1986	1,574,328	24,425	14,662	9,763	-10,333	-20,537
1987	1,566,544	23,813	14,820	8,993	-7,784	-17,162
1988	1,571,477	23,904	14,858	9,046	4,933	-4,087
1989	1,574,858	24,205	14,776	9,429	3,381	-5,857
1990	1,581,660	24,362	14,751	9,611	6,802	-2,718
1991	1,595,919	23,947	14,647	9,300	14,259	4,804
1992	1,611,687	23,336	14,577	8,759	15,768	6,739
1993	1,625,590	23,196	14,967	8,229	13,903	5,409
1994	1,639,041	23,131	14,974	8,157	13,451	5,258
1995	1,656,992	23,221	15,216	8,005	17,951	9,870
1996	1,673,740	23,271	15,435	7,836	16,748	8,828
1997	1,686,418	23,313	15,271	8,042	12,678	4,739
1998	1,695,816	23,533	15,181	8,352	9,398	1,201
1999	1,704,764	23,900	15,580	8,320	8,948	612
2000	1,713,239	24,643	14,979	9,664	8,475	-517
2001	1,718,840	24,818	15,171	9,647	5,601	-4,055
2002	1,726,437	25,381	15,721	9,660	7,597	-2,057
2003	1,737,475	25,900	15,439	10,461	11,038	978
2004	1,747,214	26,324	14,647	11,677	9,739	-1,330

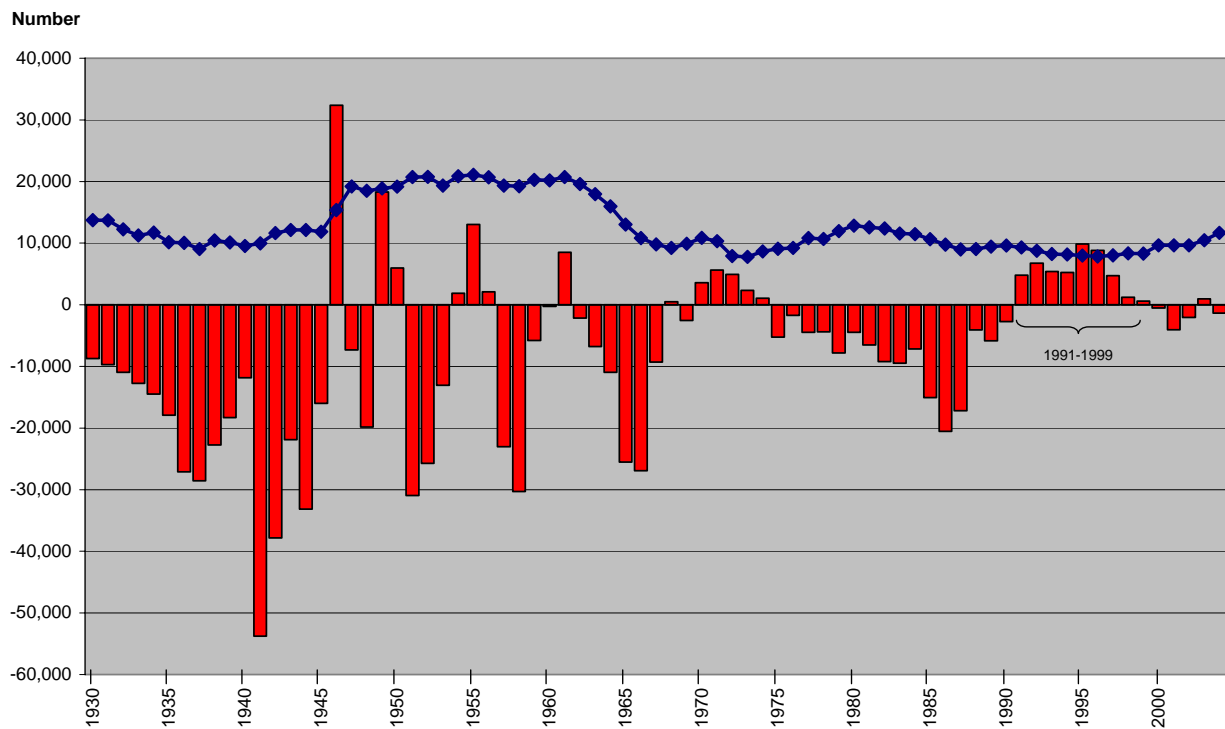
Figure 4: Nebraska Births, Deaths, and Natural Change: 1930-2004



Source: Vital Statistics, Nebraska Health and Human Services System

◆ Births ● Deaths ▲ Natural Change

Figure 5: Nebraska Components of Population Change: 1930-2004



Source: Vital Statistics, Nebraska Health and Human Services System; Annual Estimates, U.S. Census Bureau

■ Net Migration ◆ Natural Change

Table 3: Annual Nebraska Population Estimates by Sex and Age: April 1, 2000 to July 1, 2004

Source: Annual Estimates of the Population by Sex and Age, U.S. Census Bureau, Released March 2005

Sex and age	Population estimates					April 1, 2000	
	July 1, 2004	July 1, 2003	July 1, 2002	July 1, 2001	July 1, 2000	Estimates base	Census
BOTH SEXES	1,747,214	1,737,475	1,726,437	1,718,840	1,713,239	1,711,265	1,711,263
Under 5 years	122,049	120,284	118,911	116,806	116,908	117,048	117,048
5 to 9 years	114,520	116,078	118,364	119,798	122,738	123,445	123,445
10 to 14 years	122,450	124,817	126,812	126,758	128,611	128,934	128,934
15 to 19 years	129,578	130,986	132,663	133,708	134,718	134,909	134,909
20 to 24 years	136,736	134,625	130,842	127,045	121,716	120,331	120,331
25 to 29 years	117,910	114,264	111,314	111,077	112,004	112,049	112,049
30 to 34 years	111,363	111,826	111,554	111,485	111,189	111,224	111,224
35 to 39 years	112,058	114,801	118,794	124,152	129,087	130,027	130,027
40 to 44 years	132,306	133,673	134,083	134,700	133,986	133,807	133,807
45 to 49 years	130,995	129,632	127,222	125,691	123,428	122,714	122,714
50 to 54 years	118,271	115,170	112,051	110,867	104,471	103,041	103,040
55 to 59 years	95,269	90,210	85,767	79,702	78,001	77,585	77,584
60 to 64 years	71,906	69,147	66,012	64,770	64,085	63,956	63,956
65 to 69 years	56,943	56,853	57,318	57,862	58,999	59,391	59,391
70 to 74 years	54,409	55,063	55,849	56,628	56,447	56,308	56,308
75 to 79 years	48,681	48,953	48,332	48,124	48,062	47,991	47,991
80 to 84 years	35,860	35,559	35,546	34,760	34,576	34,552	34,552
85 years or more	35,910	35,534	35,003	34,907	34,213	33,953	33,953
Under 18 years	434,566	437,950	442,737	442,867	448,898	450,242	450,242
Under 5 years	122,049	120,284	118,911	116,806	116,908	117,048	117,048
5 to 13 years	211,271	215,915	220,019	221,169	225,122	225,909	225,909
14 to 17 years	101,246	101,751	103,807	104,892	106,868	107,285	107,285
18 to 64 years	1,080,845	1,067,563	1,051,652	1,043,692	1,032,044	1,028,828	1,028,826
18 to 24 years	190,767	188,840	184,855	181,248	175,793	174,425	174,425
25 to 44 years	473,637	474,564	475,745	481,414	486,266	487,107	487,107
45 to 64 years	416,441	404,159	391,052	381,030	369,985	367,296	367,294
65 years and over	231,803	231,962	232,048	232,281	232,297	232,195	232,195
16 years and over	1,363,419	1,351,350	1,336,858	1,329,456	1,318,090	1,314,976	1,314,974
18 years and over	1,312,648	1,299,525	1,283,700	1,275,973	1,264,341	1,261,023	1,261,021
15 to 44 years	739,951	740,175	739,250	742,167	742,700	742,347	742,347
Median age (years)	35.9	35.7	35.6	35.6	35.4	35.3	35.3

Sex and age	Population estimates					April 1, 2000	
	July 1, 2004	July 1, 2003	July 1, 2002	July 1, 2001	July 1, 2000	Estimates base	Census
MALE	863,628	858,305	852,388	848,178	844,576	843,352	843,351
Under 5 years	62,699	61,722	60,852	59,644	59,605	59,681	59,681
5 to 9 years	58,371	59,098	60,423	61,142	62,640	63,001	63,001
10 to 14 years	62,560	63,996	64,966	65,059	66,004	66,180	66,180
15 to 19 years	66,459	67,054	68,007	68,559	69,140	69,235	69,235
20 to 24 years	70,109	69,067	66,962	64,836	62,065	61,301	61,301
25 to 29 years	60,360	58,445	57,095	56,998	57,390	57,373	57,373
30 to 34 years	57,005	57,087	56,874	56,810	56,679	56,673	56,673
35 to 39 years	56,839	58,200	60,196	62,675	64,906	65,339	65,339
40 to 44 years	66,244	67,009	67,057	67,551	67,376	67,281	67,281
45 to 49 years	65,562	64,769	63,547	62,724	61,414	61,050	61,050
50 to 54 years	58,624	57,178	55,772	55,283	52,272	51,557	51,556
55 to 59 years	47,291	44,880	42,649	39,595	38,488	38,280	38,280
60 to 64 years	34,994	33,449	31,832	31,129	30,845	30,771	30,771
65 to 69 years	26,724	26,638	26,603	26,919	27,521	27,728	27,728
70 to 74 years	23,652	24,182	24,869	25,367	25,368	25,337	25,337
75 to 79 years	21,034	21,016	20,709	20,652	20,406	20,320	20,320
80 to 84 years	14,302	13,982	13,793	13,156	12,771	12,683	12,683
85 years or more	10,799	10,533	10,182	10,079	9,686	9,562	9,562
Under 18 years	222,433	224,050	226,502	226,546	229,661	230,386	230,386
Under 5 years	62,699	61,722	60,852	59,644	59,605	59,681	59,681
5 to 13 years	107,665	110,177	112,527	113,196	115,284	115,686	115,686
14 to 17 years	52,069	52,151	53,123	53,706	54,772	55,019	55,019
18 to 64 years	544,684	537,904	529,730	525,459	519,163	517,336	517,335
18 to 24 years	97,765	96,887	94,708	92,694	89,793	89,012	89,012
25 to 44 years	240,448	240,741	241,222	244,034	246,351	246,666	246,666
45 to 64 years	206,471	200,276	193,800	188,731	183,019	181,658	181,657
65 years and over	96,511	96,351	96,156	96,173	95,752	95,630	95,630
16 years and over	667,186	660,735	653,088	649,077	642,513	640,685	640,684
18 years and over	641,195	634,255	625,886	621,632	614,915	612,966	612,965
15 to 44 years	377,016	376,862	376,191	377,429	377,556	377,202	377,202
Median age (years)	34.5	34.3	34.2	34.2	34.0	34.0	34.0

Sex and age	Population estimates					April 1, 2000	
	July 1, 2004	July 1, 2003	July 1, 2002	July 1, 2001	July 1, 2000	Estimates base	Census
FEMALE	883,586	879,170	874,049	870,662	868,663	867,913	867,912
Under 5 years	59,350	58,562	58,059	57,162	57,303	57,367	57,367
5 to 9 years	56,149	56,980	57,941	58,656	60,098	60,444	60,444
10 to 14 years	59,890	60,821	61,846	61,699	62,607	62,754	62,754
15 to 19 years	63,119	63,932	64,656	65,149	65,578	65,674	65,674
20 to 24 years	66,627	65,558	63,880	62,209	59,651	59,030	59,030
25 to 29 years	57,550	55,819	54,219	54,079	54,614	54,676	54,676
30 to 34 years	54,358	54,739	54,680	54,675	54,510	54,551	54,551
35 to 39 years	55,219	56,601	58,598	61,477	64,181	64,688	64,688
40 to 44 years	66,062	66,664	67,026	67,149	66,610	66,526	66,526
45 to 49 years	65,433	64,863	63,675	62,967	62,014	61,664	61,664
50 to 54 years	59,647	57,992	56,279	55,584	52,199	51,484	51,484
55 to 59 years	47,978	45,330	43,118	40,107	39,513	39,305	39,304
60 to 64 years	36,912	35,698	34,180	33,641	33,240	33,185	33,185
65 to 69 years	30,219	30,215	30,715	30,943	31,478	31,663	31,663
70 to 74 years	30,757	30,881	30,980	31,261	31,079	30,971	30,971
75 to 79 years	27,647	27,937	27,623	27,472	27,656	27,671	27,671
80 to 84 years	21,558	21,577	21,753	21,604	21,805	21,869	21,869
85 years or more	25,111	25,001	24,821	24,828	24,527	24,391	24,391
Under 18 years	212,133	213,900	216,235	216,321	219,237	219,856	219,856
Under 5 years	59,350	58,562	58,059	57,162	57,303	57,367	57,367
5 to 13 years	103,606	105,738	107,492	107,973	109,838	110,223	110,223
14 to 17 years	49,177	49,600	50,684	51,186	52,096	52,266	52,266
18 to 64 years	536,161	529,659	521,922	518,233	512,881	511,492	511,491
18 to 24 years	93,002	91,953	90,147	88,554	86,000	85,413	85,413
25 to 44 years	233,189	233,823	234,523	237,380	239,915	240,441	240,441
45 to 64 years	209,970	203,883	197,252	192,299	186,966	185,638	185,637
65 years and over	135,292	135,611	135,892	136,108	136,545	136,565	136,565
16 years and over	696,233	690,615	683,770	680,379	675,577	674,291	674,290
18 years and over	671,453	665,270	657,814	654,341	649,426	648,057	648,056
15 to 44 years	362,935	363,313	363,059	364,738	365,144	365,145	365,145
Median age (years)	37.3	37.2	37.0	36.9	36.6	36.6	36.6

**Figure 6: 2004 Nebraska Population by Sex and Five-Year Age Group:
Total Population**

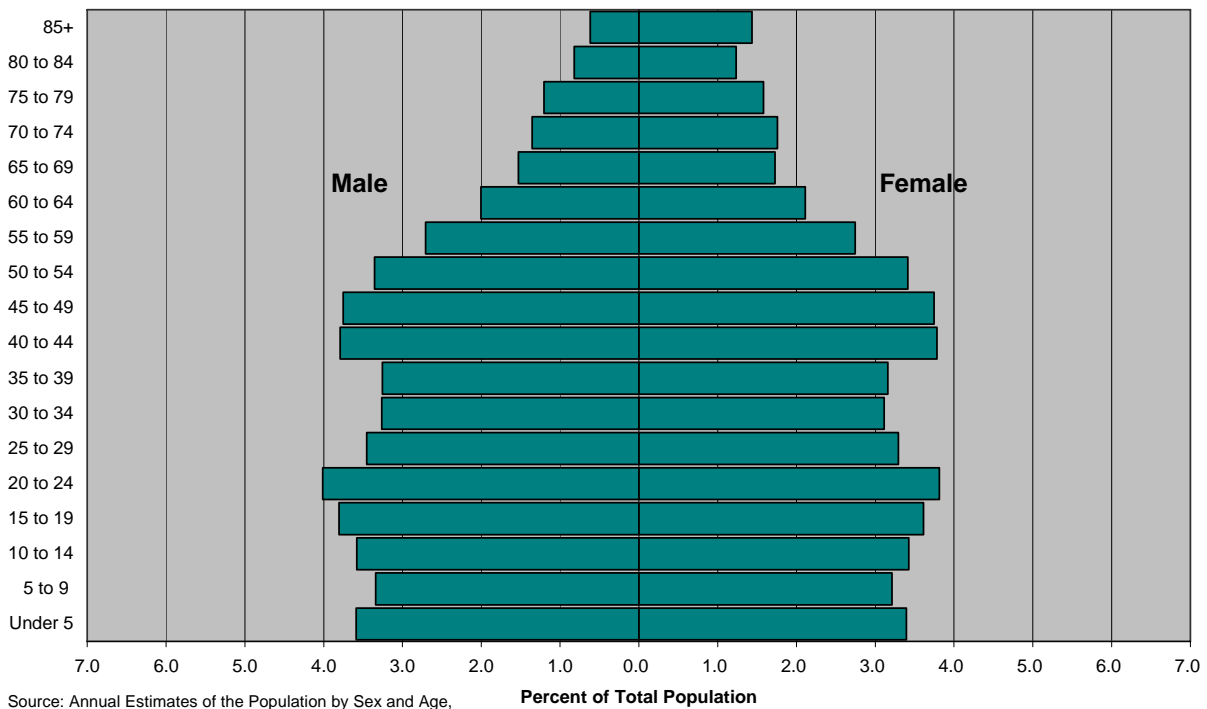


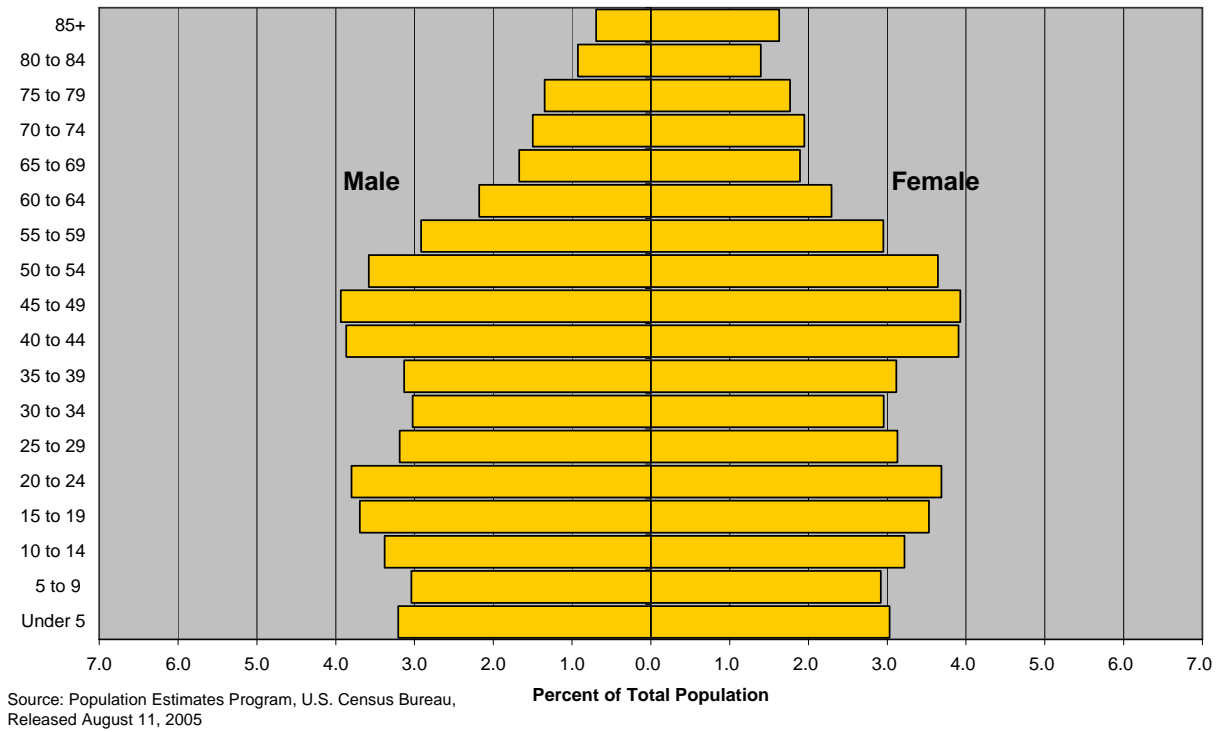
Table 4: Nebraska Population by Race and Ethnicity: April 1, 2000 and July 1, 2004

Source: Population Estimates Program, U.S. Census Bureau, Released August 11, 2005

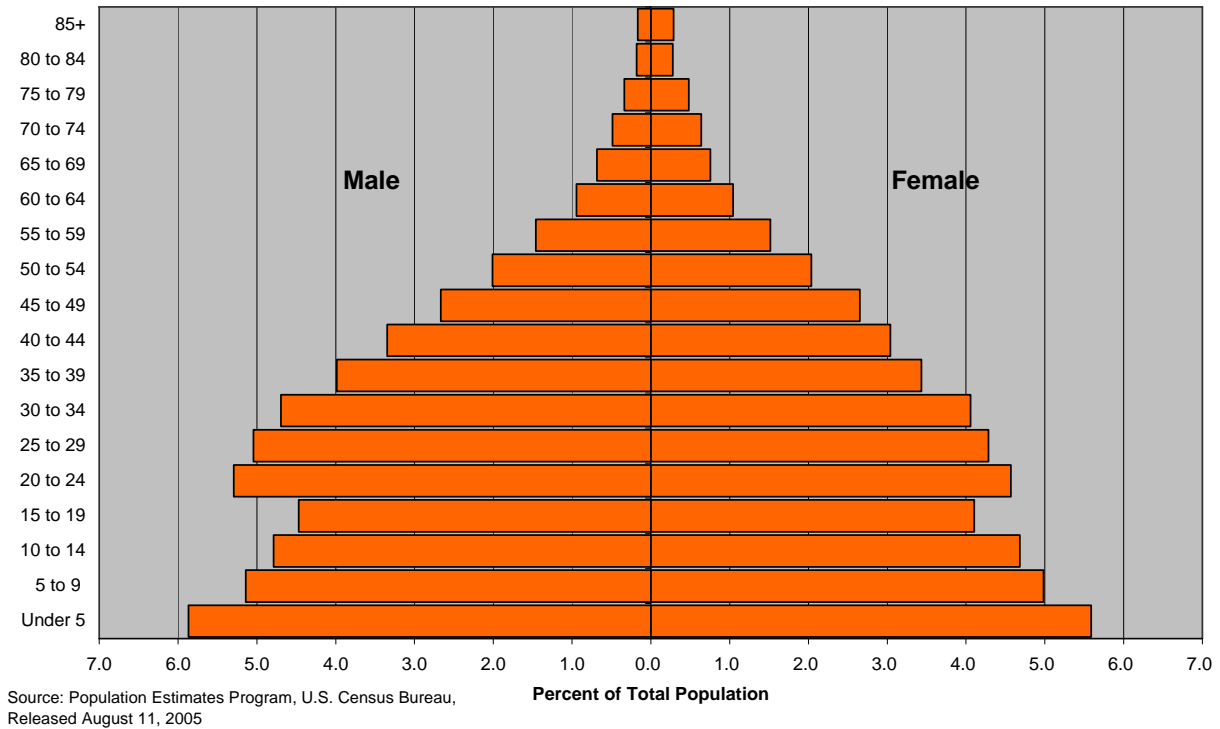
Race	Population ¹				Percent of Population	
	July 1, 2004	April 1, 2000	Change	Percent Change	July 1, 2004	April 1, 2000
Total Population	1,747,214	1,711,263	35,951	2.1	100.0	100.0
White alone	1,609,056	1,585,617	23,439	1.5	92.1	92.7
Black alone	74,815	70,043	4,772	6.8	4.3	4.1
American Indian or Alaska Native alone	16,562	15,634	928	5.9	0.9	0.9
Asian alone	26,746	22,528	4,218	18.7	1.5	1.3
Hispanic	119,975	94,425	25,550	27.1	6.9	5.5
White alone, not Hispanic (majority)	1,496,640	1,497,111	-471	0.0	85.7	87.5
Minority Population	250,574	214,152	36,422	17.0	14.3	12.5

¹ The April 1, 2000 population by race and ethnicity presented here will differ from released Census 2000 figures as the original data from Census 2000 incorporate a "some other race" category. 2004 estimates data do not incorporate the "some other race" category and thus the Census 2000 figures are adjusted to make appropriate comparisons.

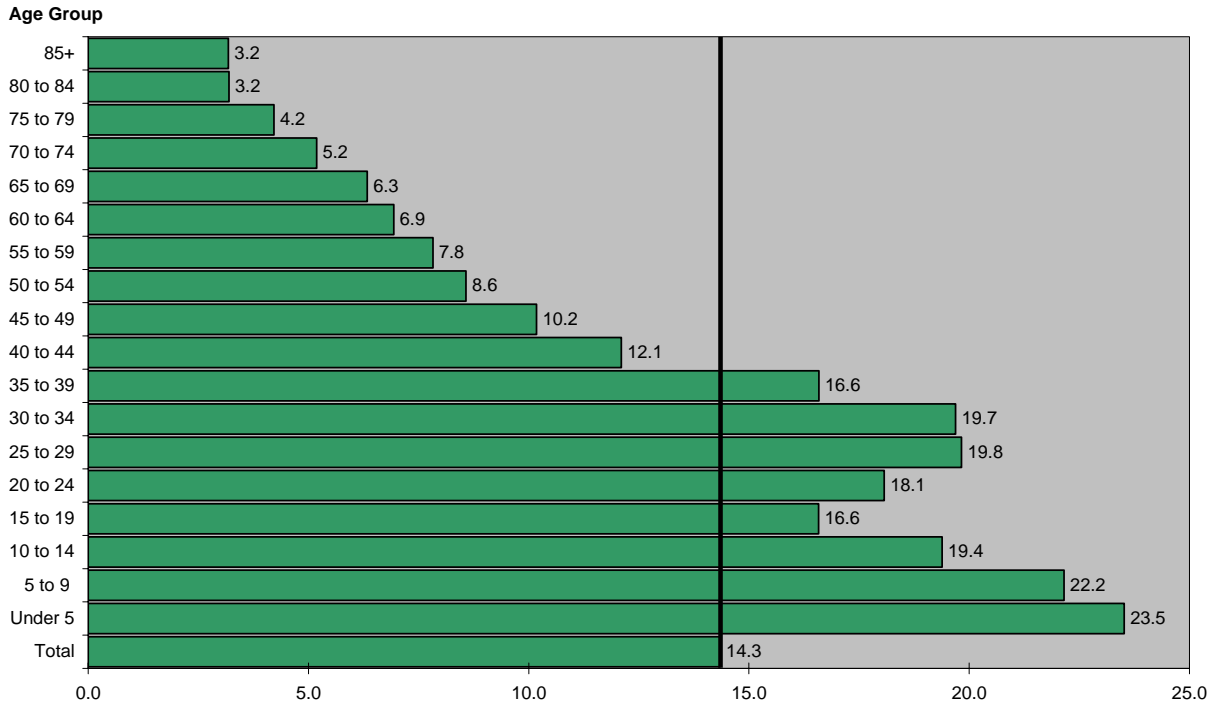
**Figure 7: 2004 Nebraska Population by Sex and Five-Year Age Group:
White Alone not Hispanic or Latino/a (Majority Population)**



**Figure 8: 2004 Nebraska Population by Sex and Five-Year Age Group:
Non-White or Hispanic or Latino/a (Minority Population)**

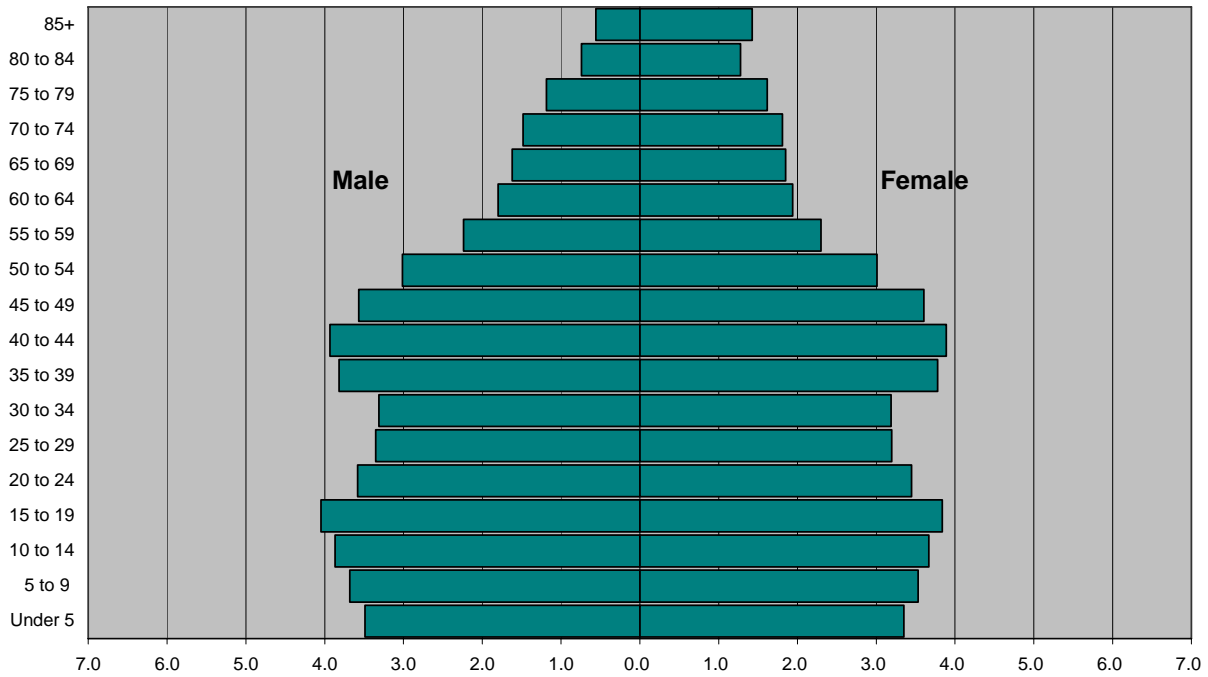


**Figure 9: 2004 Nebraska Population by Sex and Five-Year Age Group:
Non-White or Hispanic or Latino/a (Minorities) as a Percent of the State Total**



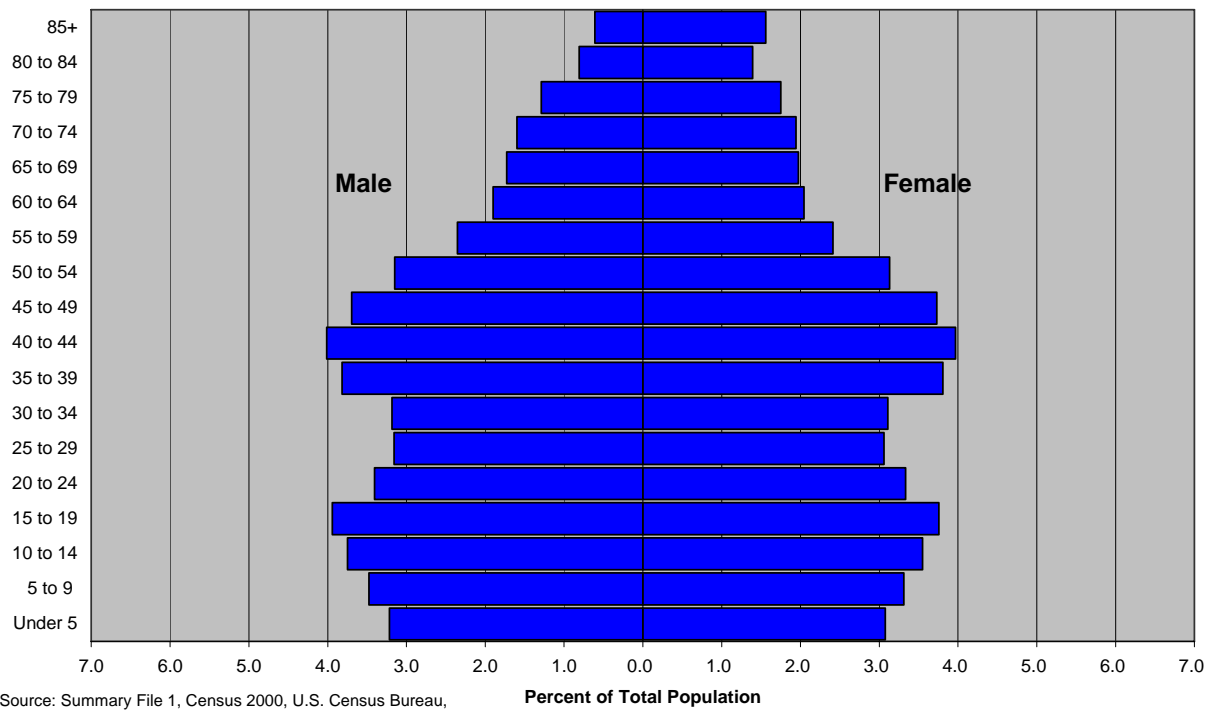
Source: Population Estimates Program, U.S. Census Bureau, Released August 11, 2005

**Figure 10: 2000 Nebraska Population by Sex and Five-Year Age Group:
Total Population**

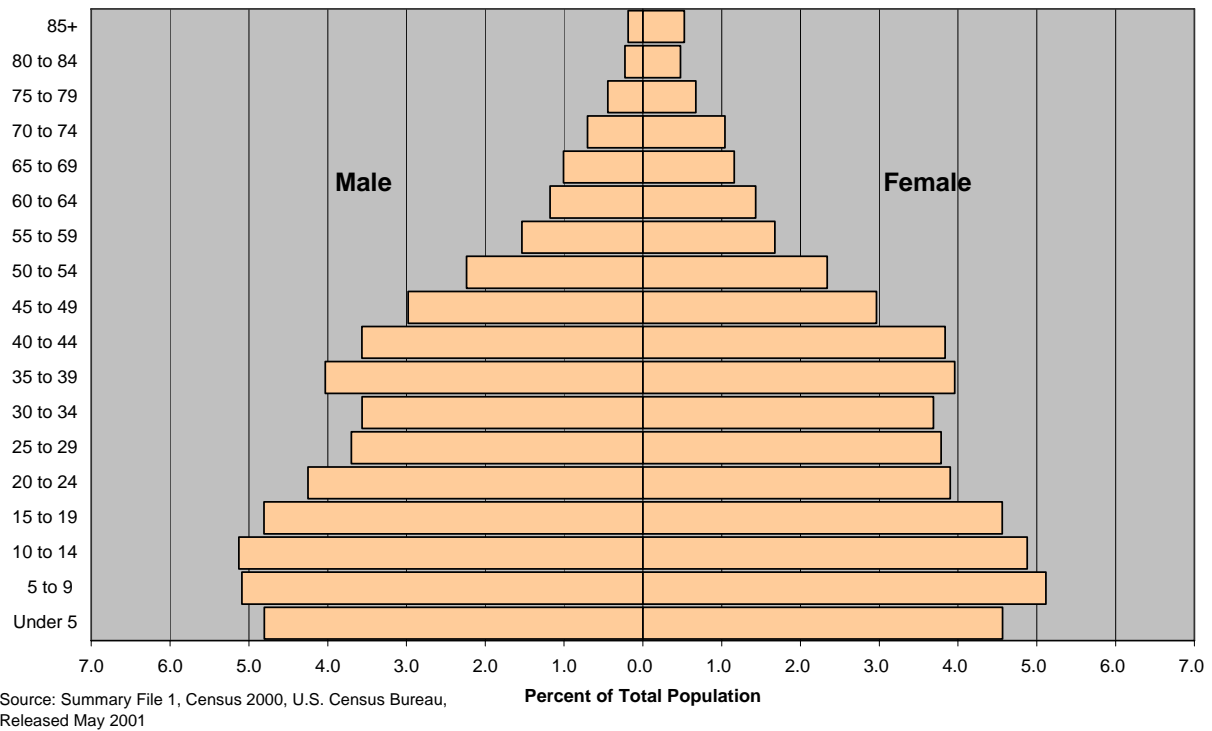


Source: Summary File 1, Census 2000, U.S. Census Bureau, Released May 2001

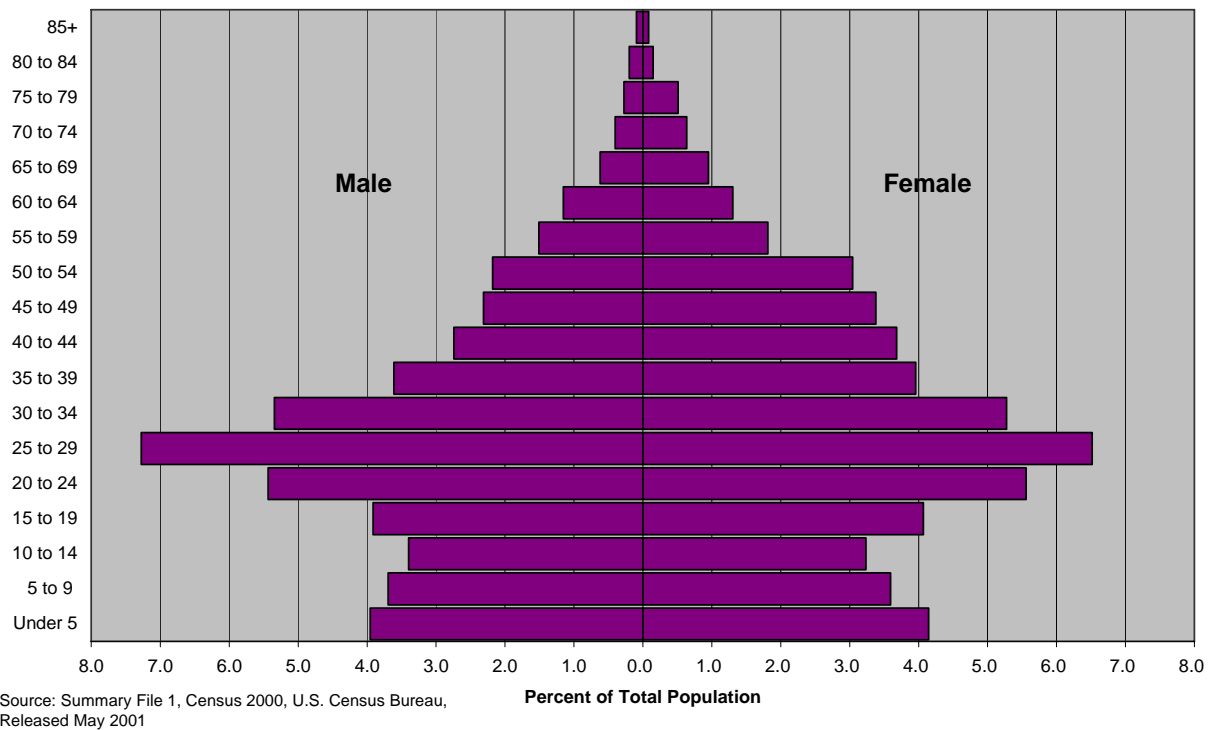
**Figure 11: 2000 Nebraska Population by Sex and Five-Year Age Group:
White Alone**



**Figure 12: 2000 Nebraska Population by Sex and Five-Year Age Group:
Black or African American Alone**



**Figure 13: 2000 Nebraska Population by Sex and Five-Year Age Group:
Asian Alone**



**Figure 14: 2000 Nebraska Population by Sex and Five-Year Age Group:
American Indian and Alaska Native Alone**

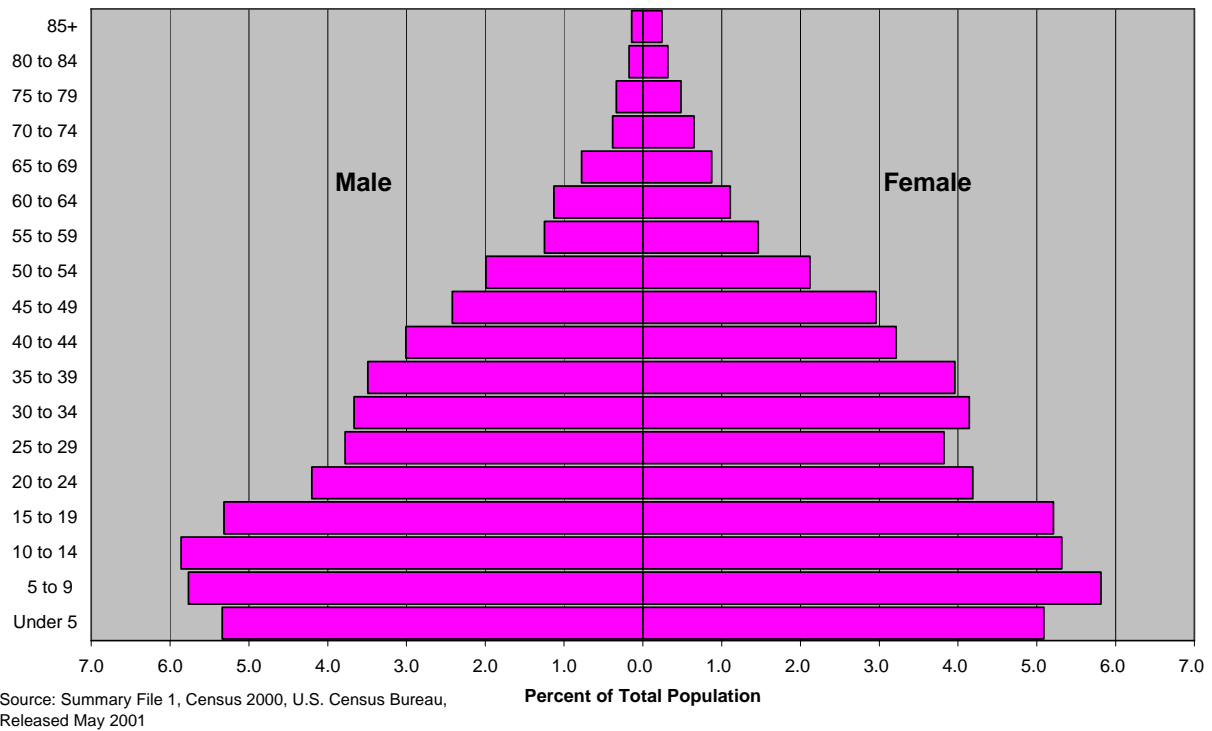


Figure 15: 2000 Nebraska Population by Sex and Five-Year Age Group: Hispanic or Latino/a

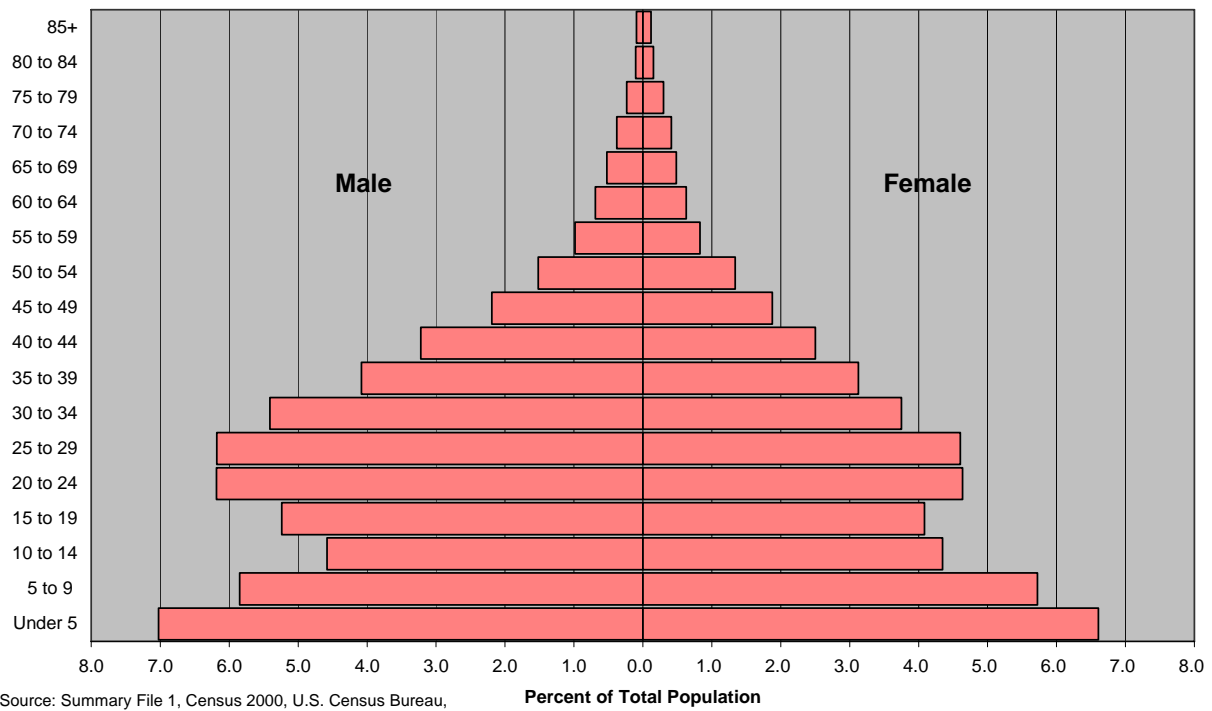
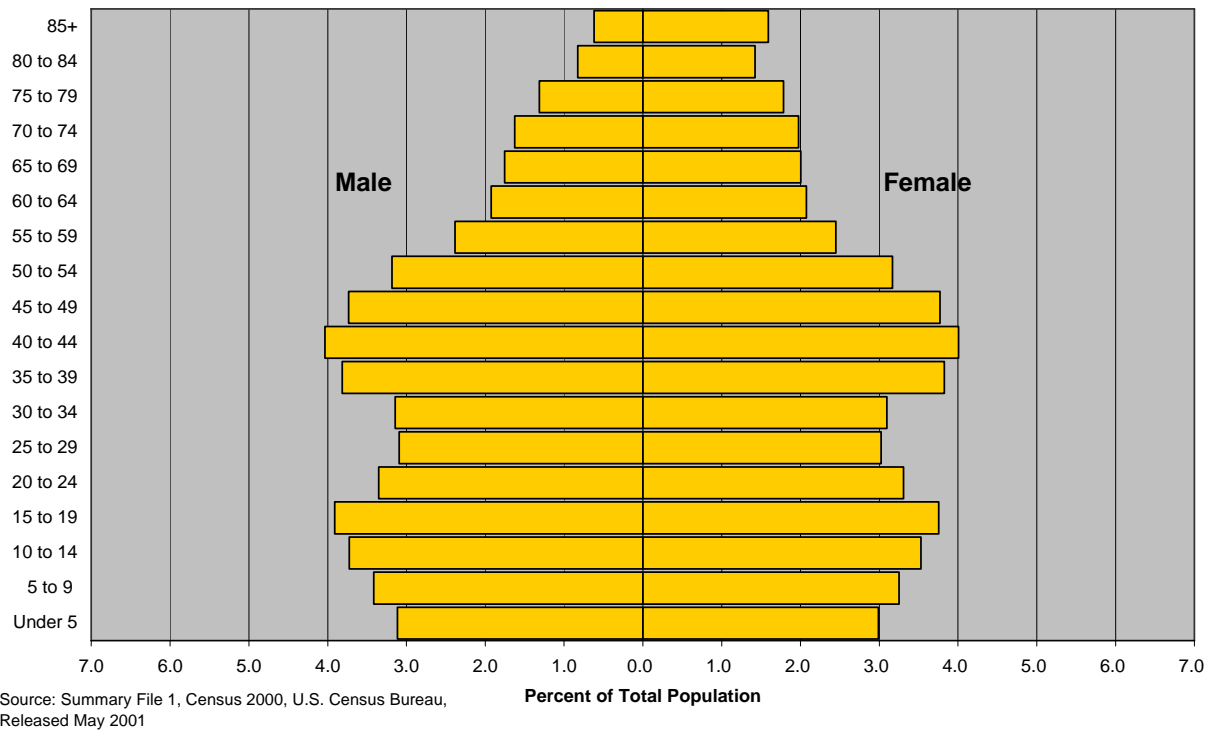
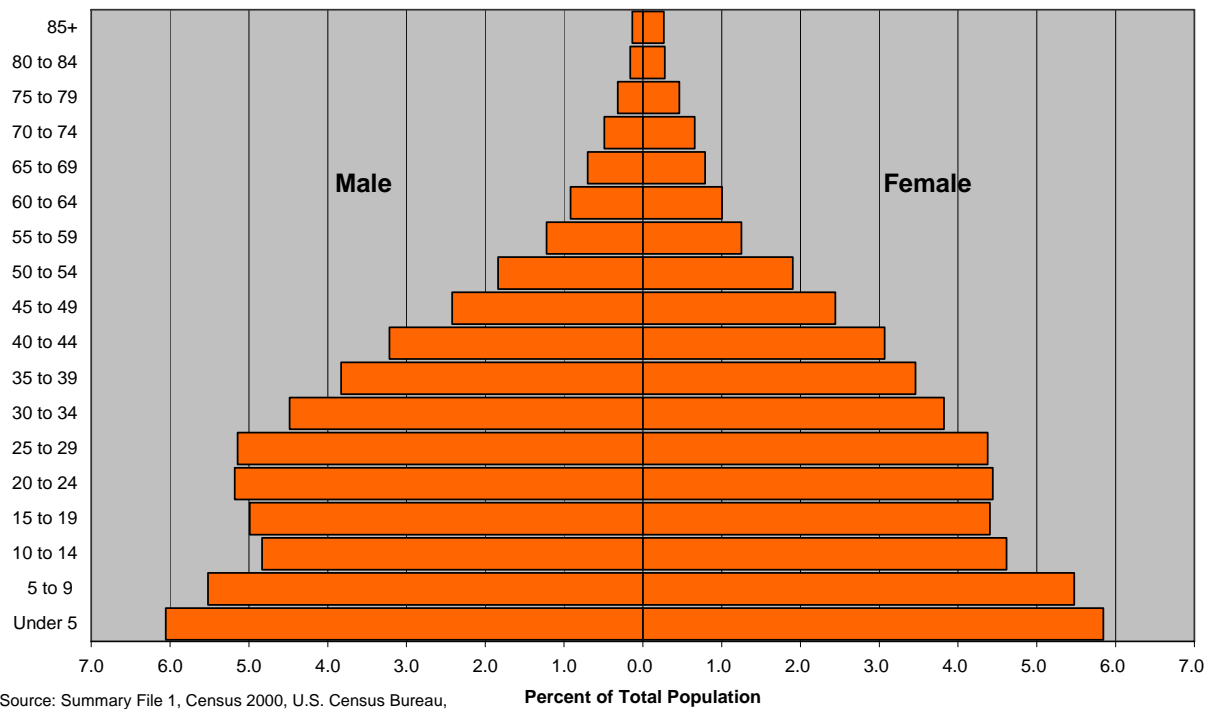


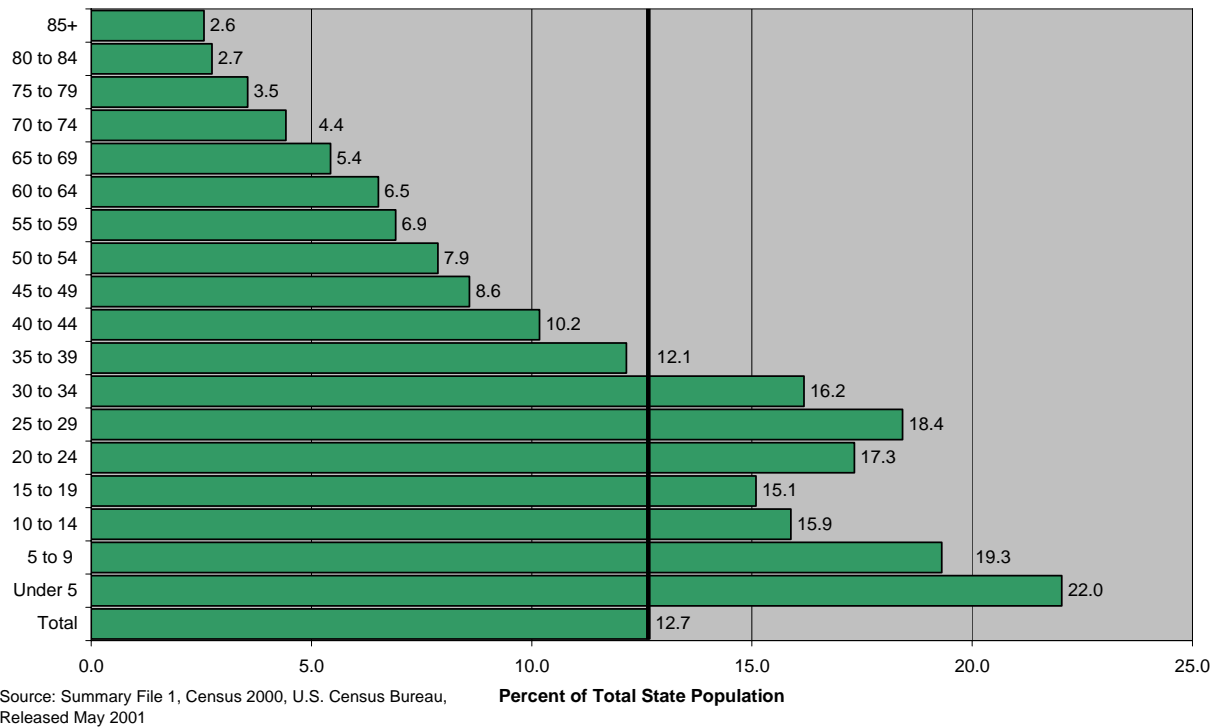
Figure 16: 2000 Nebraska Population by Sex and Five-Year Age Group: White Alone not Hispanic or Latino/a (Majority Population)



**Figure 17: 2000 Nebraska Population by Sex and Five-Year Age Group:
Non-White or Hispanic or Latino/a (Minority Population)**



**Figure 18: 2000 Nebraska Population by Sex and Five-Year Age Group:
Non-White or Hispanic or Latino/a (Minorities) as a Percent of the State Total**



PART 2: COUNTY DATA

The U.S. Census Bureau releases annual estimates of each county's population as of the year's midpoint, July 1. These figures typically are released in April of the following year. The Census Bureau provides change and percentage change statistics and additionally ranks the counties according to these factors in their prepared tables. Estimates of major components of population change such as birth, deaths, and net migration also are released in April. We incorporated these figures with changes occurring between the past two decennial censuses in 1990 and 2000 to create several maps showing demographic trends at the county level in Nebraska. We took estimates directly from Census Bureau releases. (<http://www.census.gov/popest/counties/>)

The Census Bureau also releases county population estimates as of July 1 by sex, age, race, and ethnicity in August of the following year. Since intercensal population estimates and demographic characteristics are only approximations, this report provides only summary information by major age groups.

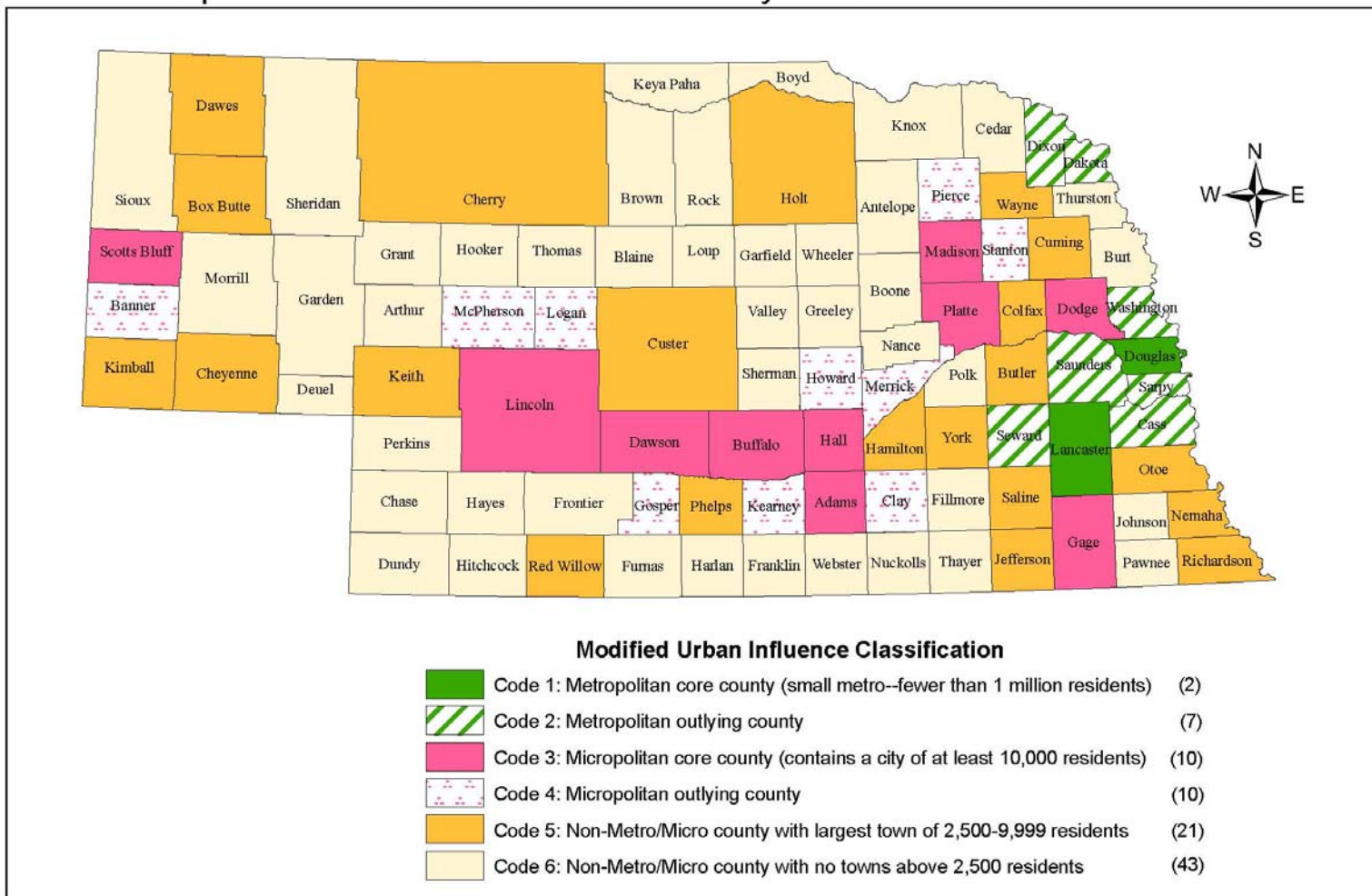
In order to show demographic trends by county type, we modified a classification system for defining counties by their size and proximity to metropolitan areas. The system merged measurement concepts used by the Census Bureau, in particular its newly employed micropolitan counties, and the Urban Influence Codes used by the USDA Economic Research Service. The classification scheme is based on county characteristics. The Modified Urban Influence Codes used in this report include six classification categories, with code 1 representing the most urban counties and code 6 corresponding to the more rural counties:

- Code 1: Metropolitan core county (contains a city with more than 50,000 residents);
- Code 2: Metropolitan outlying county;
- Code 3: Micropolitan core county (contains a city with more than 10,000 residents);
- Code 4: Micropolitan outlying county;
- Code 5: County with the largest town having between 2,500 and 9,999 residents; and
- Code 6: County with the largest town having fewer than 2,500 residents.

See Map 1 for the geographical distribution of the six codes and the associated Table 5 for an alphabetized list of counties in each category. The classification scheme first determined whether the county had metropolitan or micropolitan status and then analyzed the size of the largest town in non-metropolitan and non-micropolitan counties. The tables that follow in this report summarize information by some of the county codes shown above.

Of Nebraska's 93 counties, 84 meet the definition of a non-metropolitan county; of these, 20 exist within a micropolitan area, either core or outlying; 21 non-metropolitan counties are classified by their largest town having 2,500 to 9,999 people; and 43 counties are in the category of not having a town with at least 2,500 residents.

Map 1: Nebraska Counties Classified by Modified Urban Influence Code



Source: U.S. Census Bureau, USDA Economic Research Service; Compiled by: Center for Public Affairs Research (CPAR), University of Nebraska at Omaha
 Prepared by: David Drozd, CPAR - April 12, 2006

Table 5: Listing of Nebraska Counties Classified by Modified Urban Influence Code

Metropolitan Counties

Metropolitan core county (small metro--fewer than 1 million residents)

Douglas	Lancaster
---------	-----------

Metropolitan outlying county (small metro)

Cass	Dixon	Saunders	Washington
Dakota	Sarpy	Seward	

Non-metropolitan Counties

Microopolitan core county (contains a city of at least 10,000 residents)

Adams	Dodge	Lincoln	Platte
Buffalo	Gage	Madison	Scotts Bluff
Dawson	Hall		

Microopolitan outlying county

Banner	Howard	McPherson	Pierce
Clay	Kearney	Merrick	Stanton
Gosper	Logan		

County with largest town of 2,500-9,999 residents

Box Butte	Custer	Keith	Red Willow
Butler	Dawes	Kimball	Richardson
Cherry	Hamilton	Nemaha	Saline
Cheyenne	Holt	Otoe	Wayne
Colfax	Jefferson	Phelps	York
Cuming			

County with largest town having less than 2,500 residents

Antelope	Fillmore	Hooker	Rock
Arthur	Franklin	Johnson	Sheridan
Blaine	Frontier	Keya Paha	Sherman
Boone	Furnas	Knox	Sioux
Boyd	Garden	Loup	Thayer
Brown	Garfield	Morrill	Thomas
Burt	Grant	Nance	Thurston
Cedar	Greeley	Nuckolls	Valley
Chase	Harlan	Pawnee	Webster
Deuel	Hayes	Perkins	Wheeler
Dundy	Hitchcock	Polk	

Table 6: Annual Estimates of the Population for Nebraska Counties: April 1, 2000 to July 1, 2004

Source: Annual Estimates of the Population by County, U.S. Census Bureau, Released April 14, 2005

Geographic Area	Population estimates					April 1, 2000	
	July 1, 2004	July 1, 2003	July 1, 2002	July 1, 2001	July 1, 2000	Estimates base ¹	Census
Nebraska	1,747,214	1,737,475	1,726,437	1,718,840	1,713,239	1,711,265	1,711,263
Adams County ²	30,913	30,979	30,943	31,123	31,169	31,151	31,151
Antelope County	7,111	7,204	7,262	7,255	7,446	7,452	7,452
Arthur County	402	408	399	411	442	444	444
Banner County	762	767	763	810	824	819	819
Blaine County	518	537	551	567	582	583	583
Boone County	5,831	5,902	6,080	6,153	6,217	6,259	6,259
Box Butte County	11,388	11,610	11,852	11,897	12,116	12,158	12,158
Boyd County	2,267	2,315	2,355	2,386	2,427	2,438	2,438
Brown County	3,430	3,472	3,485	3,501	3,521	3,525	3,525
Buffalo County	43,406	43,053	42,802	42,333	42,315	42,259	42,259
Burt County	7,490	7,492	7,571	7,696	7,796	7,791	7,791
Butler County ¹	8,813	8,853	8,902	8,916	8,863	8,861	8,767
Cass County	25,671	25,274	24,833	24,593	24,399	24,334	24,334
Cedar County	9,059	9,209	9,326	9,441	9,586	9,615	9,615
Chase County	3,961	4,030	4,000	3,987	4,048	4,068	4,068
Cherry County	6,071	6,047	6,080	6,090	6,143	6,148	6,148
Cheyenne County	9,902	9,921	9,938	9,932	9,831	9,830	9,830
Clay County	6,778	6,876	6,894	6,925	7,032	7,039	7,039
Colfax County	10,498	10,494	10,504	10,472	10,446	10,441	10,441
Cuming County	9,786	9,854	10,003	10,109	10,172	10,203	10,203
Custer County	11,515	11,508	11,566	11,670	11,800	11,793	11,793
Dakota County	20,612	20,609	20,409	20,382	20,284	20,253	20,253
Dawes County	8,746	8,985	9,037	9,017	9,029	9,060	9,060
Dawson County	24,532	24,568	24,416	24,549	24,409	24,365	24,365
Deuel County	2,019	2,052	2,051	2,083	2,108	2,098	2,098
Dixon County	6,110	6,141	6,186	6,230	6,315	6,339	6,339
Dodge County	36,066	36,043	35,973	36,130	36,229	36,160	36,160
Douglas County	482,112	476,464	471,355	467,841	464,546	463,585	463,585
Dundy County	2,202	2,213	2,203	2,207	2,293	2,292	2,292
Fillmore County	6,462	6,467	6,469	6,564	6,620	6,634	6,634
Franklin County	3,425	3,462	3,487	3,471	3,548	3,574	3,574
Frontier County	2,875	2,908	2,985	3,040	3,089	3,099	3,099
Furnas County	5,128	5,203	5,247	5,243	5,303	5,324	5,324
Gage County	23,436	23,379	23,270	23,184	22,986	22,993	22,993
Garden County	2,170	2,219	2,204	2,258	2,279	2,292	2,292
Garfield County	1,838	1,846	1,895	1,897	1,896	1,902	1,902
Gosper County	2,034	2,076	2,074	2,087	2,143	2,143	2,143
Grant County	670	695	723	751	747	747	747
Greeley County	2,537	2,613	2,651	2,692	2,705	2,714	2,714
Hall County	54,862	54,306	53,831	53,560	53,502	53,534	53,534
Hamilton County	9,484	9,472	9,408	9,376	9,391	9,403	9,403
Harlan County	3,641	3,677	3,657	3,740	3,775	3,786	3,786
Hayes County	1,115	1,100	1,107	1,088	1,072	1,068	1,068
Hitchcock County	3,021	3,038	3,047	3,090	3,102	3,111	3,111
Holt County	10,858	11,094	11,228	11,369	11,494	11,551	11,551
Hooker County	749	744	738	754	780	783	783
Howard County	6,722	6,640	6,531	6,512	6,555	6,567	6,567
Jefferson County	8,090	8,108	8,230	8,291	8,336	8,333	8,333
Johnson County	4,563	4,515	4,371	4,381	4,485	4,488	4,488

Geographic Area	Population estimates					April 1, 2000	
	July 1, 2004	July 1, 2003	July 1, 2002	July 1, 2001	July 1, 2000	Estimates base ¹	Census
Kearney County	6,880	6,849	6,821	6,860	6,885	6,882	6,882
Keith County	8,401	8,481	8,732	8,768	8,854	8,875	8,875
Keya Paha County	938	948	946	953	978	983	983
Kimball County	3,783	3,844	3,971	4,009	4,063	4,089	4,089
Knox County	8,995	9,058	9,103	9,181	9,344	9,374	9,374
Lancaster County	261,545	260,007	256,443	253,234	251,147	250,291	250,291
Lincoln County	34,979	34,721	34,510	34,658	34,658	34,632	34,632
Logan County	710	713	751	768	771	774	774
Loup County	703	742	751	731	713	712	712
McPherson County	524	533	548	533	531	533	533
Madison County	35,752	35,812	35,944	35,645	35,164	35,226	35,226
Merrick County	8,101	8,108	8,099	8,078	8,169	8,204	8,204
Morrill County	5,252	5,294	5,291	5,390	5,446	5,440	5,440
Nance County	3,751	3,764	3,884	3,986	4,042	4,038	4,038
Nemaha County	7,067	7,144	7,287	7,414	7,568	7,576	7,576
Nuckolls County	4,833	4,858	4,860	4,959	5,026	5,057	5,057
Otoe County	15,488	15,438	15,461	15,485	15,425	15,396	15,396
Pawnee County	2,842	2,889	3,008	3,007	3,084	3,087	3,087
Perkins County	3,081	3,044	3,083	3,127	3,176	3,200	3,200
Phelps County	9,632	9,618	9,703	9,733	9,740	9,747	9,747
Pierce County	7,692	7,715	7,737	7,808	7,851	7,857	7,857
Platte County ¹	31,245	31,223	31,273	31,498	31,532	31,568	31,662
Polk County	5,408	5,480	5,518	5,528	5,615	5,639	5,639
Red Willow County	11,131	11,221	11,302	11,399	11,450	11,450	11,448
Richardson County	8,884	8,956	9,115	9,244	9,513	9,531	9,531
Rock County	1,579	1,606	1,684	1,721	1,757	1,756	1,756
Saline County	14,275	14,258	14,078	13,941	13,863	13,843	13,843
Sarpy County	135,973	132,090	129,182	126,218	123,215	122,595	122,595
Saunders County	20,344	20,065	19,886	19,985	19,854	19,830	19,830
Scotts Bluff County	36,631	36,804	36,745	36,623	36,988	36,951	36,951
Seward County	16,656	16,552	16,637	16,662	16,532	16,496	16,496
Sheridan County	5,817	5,841	5,997	5,977	6,182	6,198	6,198
Sherman County	3,175	3,148	3,174	3,241	3,295	3,318	3,318
Sioux County	1,447	1,485	1,456	1,428	1,472	1,475	1,475
Stanton County	6,520	6,574	6,527	6,409	6,425	6,455	6,455
Thayer County	5,498	5,627	5,737	5,913	6,046	6,055	6,055
Thomas County	642	670	681	708	734	729	729
Thurston County	7,134	7,136	7,093	7,141	7,181	7,171	7,171
Valley County	4,521	4,611	4,559	4,636	4,646	4,647	4,647
Washington County	19,605	19,549	19,304	19,128	18,798	18,780	18,780
Wayne County	9,214	9,491	9,553	9,684	9,800	9,851	9,851
Webster County	3,876	3,887	3,892	3,989	4,055	4,061	4,061
Wheeler County	811	828	841	858	886	886	886
York County	14,228	14,351	14,378	14,528	14,569	14,598	14,598
Metropolitan	988,628	976,751	964,235	954,273	945,090	942,503	942,503
Non-Metropolitan	758,586	760,724	762,202	764,567	768,149	768,762	768,760
Micropolitan	398,545	397,739	396,452	396,093	396,138	396,112	396,206
Non-Metro/Micro	360,041	362,985	365,750	368,474	372,011	372,650	372,554
Town Over 2500	207,254	208,748	210,328	211,344	212,466	212,737	212,641
No Town Over 2500	152,787	154,237	155,422	157,130	159,545	159,913	159,913

¹ A January 1, 2001 boundary change resulted in a population gain for Butler County and a corresponding loss in Platte County.

² The 2004 population estimate was revised upward for Hastings but the Adams County estimate was not revised.

Table 7: Nebraska Population Estimates, Changes, and Rankings: April 1, 2000 to July 1, 2004

Source: Cumulative Estimates of Population Change, U.S. Census Bureau, Released April 14, 2005

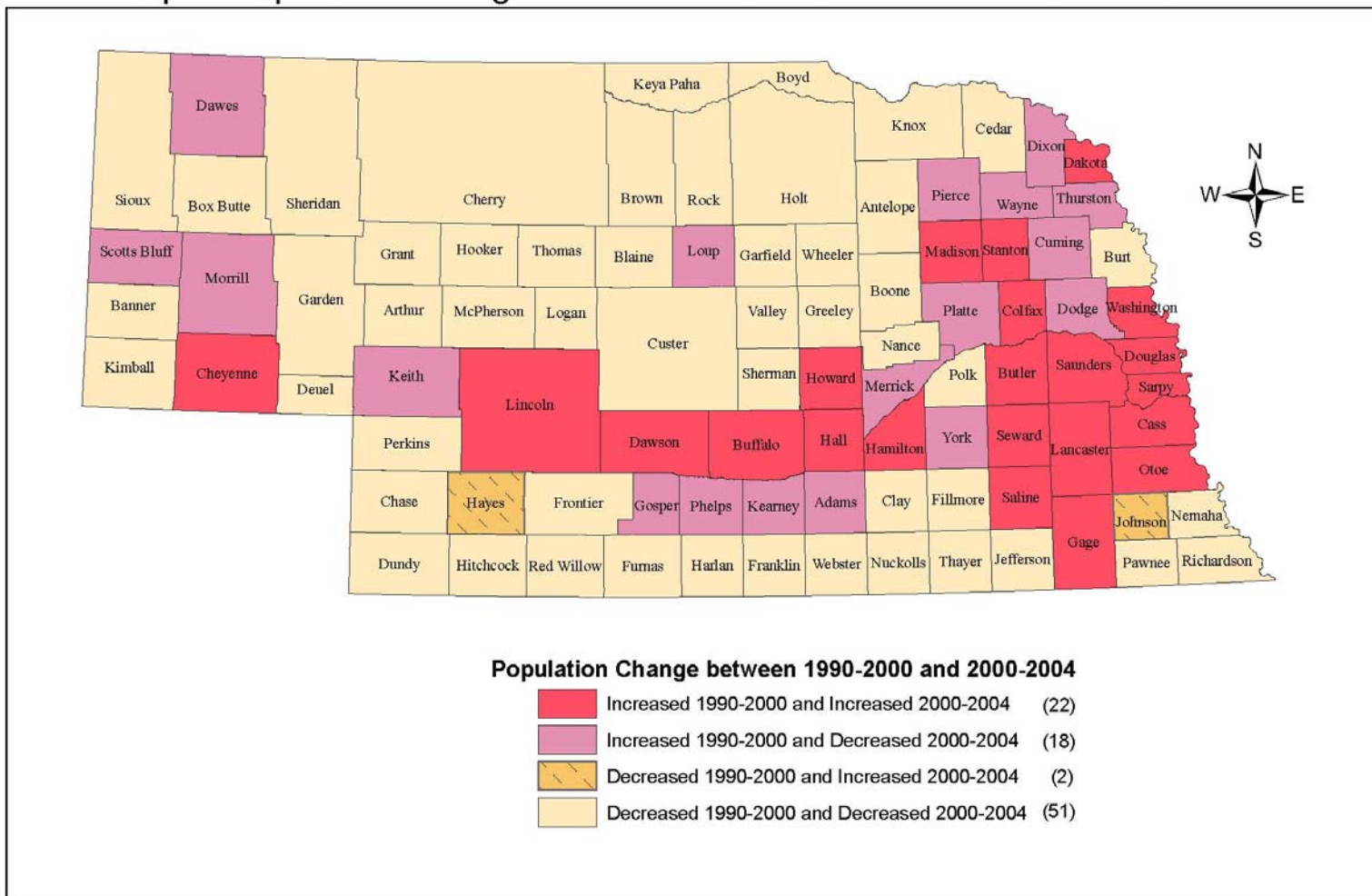
Geographic Area	Population estimates		Change, 2000 to 2004		State ranking of counties			
	July 1, 2004	April 1, 2000 estimates base ¹	Number	Percent	Population		Change, 2000 to 2004	
					July 1, 2004	April 1, 2000 estimates base ¹	Number	Percent
Nebraska	1,747,214	1,711,265	35,949	2.1	(X)	(X)	(X)	(X)
Adams County ²	30,913	31,151	-238	-0.8	11	11	68	28
Antelope County	7,111	7,452	-341	-4.6	43	43	80	66
Arthur County	402	444	-42	-9.5	93	93	30	89
Banner County	762	819	-57	-7.0	85	85	33	80
Blaine County	518	583	-65	-11.1	92	91	36	92
Boone County	5,831	6,259	-428	-6.8	52	51	85	79
Box Butte County	11,388	12,158	-770	-6.3	23	22	93	74
Boyd County	2,267	2,438	-171	-7.0	74	74	57	81
Brown County	3,430	3,525	-95	-2.7	66	67	45	42
Buffalo County	43,406	42,259	1,147	2.7	5	5	6	8
Burt County	7,490	7,791	-301	-3.9	41	41	74	56
Butler County ¹	8,813	8,861	-48	-0.5	35	37	32	27
Cass County	25,671	24,334	1,337	5.5	12	13	4	2
Cedar County	9,059	9,615	-556	-5.8	32	31	88	71
Chase County	3,961	4,068	-107	-2.6	61	62	47	41
Cherry County	6,071	6,148	-77	-1.3	51	53	39	32
Cheyenne County	9,902	9,830	72	0.7	27	29	20	20
Clay County	6,778	7,039	-261	-3.7	46	45	71	52
Colfax County	10,498	10,441	57	0.5	26	26	22	23
Cuming County	9,786	10,203	-417	-4.1	28	27	84	59
Custer County	11,515	11,793	-278	-2.4	22	23	72	38
Dakota County	20,612	20,253	359	1.8	15	15	12	13
Dawes County	8,746	9,060	-314	-3.5	36	35	76	49
Dawson County	24,532	24,365	167	0.7	13	12	14	21
Deuel County	2,019	2,098	-79	-3.8	78	78	40	54
Dixon County	6,110	6,339	-229	-3.6	50	50	66	50
Dodge County	36,066	36,160	-94	-0.3	7	7	44	25
Douglas County	482,112	463,585	18,527	4.0	1	1	1	6
Dundy County	2,202	2,292	-90	-3.9	75	75	43	57
Fillmore County	6,462	6,634	-172	-2.6	49	47	58	40
Franklin County	3,425	3,574	-149	-4.2	67	66	55	61
Frontier County	2,875	3,099	-224	-7.2	71	71	65	83
Furnas County	5,128	5,324	-196	-3.7	57	57	63	51
Gage County	23,436	22,993	443	1.9	14	14	10	12
Garden County	2,170	2,292	-122	-5.3	76	75	51	69
Garfield County	1,838	1,902	-64	-3.4	79	79	35	47
Gosper County	2,034	2,143	-109	-5.1	77	77	48	68
Grant County	670	747	-77	-10.3	89	88	39	91
Greeley County	2,537	2,714	-177	-6.5	73	73	60	76
Hall County	54,862	53,534	1,328	2.5	4	4	5	10
Hamilton County	9,484	9,403	81	0.9	30	33	18	19
Harlan County	3,641	3,786	-145	-3.8	65	65	54	55
Hayes County	1,115	1,068	47	4.4	82	82	23	4
Hitchcock County	3,021	3,111	-90	-2.9	70	70	43	45
Holt County	10,858	11,551	-693	-6.0	25	24	92	72

Geographic Area	Population estimates		Change, 2000 to 2004		State ranking of counties			
	July 1, 2004	April 1, 2000 estimates base ¹	Number	Percent	Population		Change, 2000 to 2004	
					July 1, 2004	April 1, 2000 estimates base ¹	Number	Percent
Hooker County	749	783	-34	-4.3	86	86	28	63
Howard County	6,722	6,567	155	2.4	47	48	16	11
Jefferson County	8,090	8,333	-243	-2.9	39	38	69	46
Johnson County	4,563	4,488	75	1.7	59	60	19	14
Kearney County	6,880	6,882	-2	0.0	45	46	24	24
Keith County	8,401	8,875	-474	-5.3	37	36	86	70
Keya Paha County	938	983	-45	-4.6	83	83	31	67
Kimball County	3,783	4,089	-306	-7.5	63	61	75	84
Knox County	8,995	9,374	-379	-4.0	33	34	82	58
Lancaster County	261,545	250,291	11,254	4.5	2	2	3	3
Lincoln County	34,979	34,632	347	1.0	9	9	13	17
Logan County	710	774	-64	-8.3	87	87	35	86
Loup County	703	712	-9	-1.3	88	90	26	34
McPherson County	524	533	-9	-1.7	91	92	26	35
Madison County	35,752	35,226	526	1.5	8	8	8	15
Merrick County	8,101	8,204	-103	-1.3	38	39	46	33
Morrill County	5,252	5,440	-188	-3.5	56	56	62	48
Nance County	3,751	4,038	-287	-7.1	64	64	73	82
Nemaha County	7,067	7,576	-509	-6.7	44	42	87	77
Nuckolls County	4,833	5,057	-224	-4.4	58	58	65	64
Otoe County	15,488	15,396	92	0.6	19	19	17	22
Pawnee County	2,842	3,087	-245	-7.9	72	72	70	85
Perkins County	3,081	3,200	-119	-3.7	69	69	50	53
Phelps County	9,632	9,747	-115	-1.2	29	30	49	31
Pierce County	7,692	7,857	-165	-2.1	40	40	56	37
Platte County ¹	31,245	31,568	-323	-1.0	10	10	79	30
Polk County	5,408	5,639	-231	-4.1	55	55	67	60
Red Willow County	11,131	11,450	-319	-2.8	24	25	77	44
Richardson County	8,884	9,531	-647	-6.8	34	32	91	78
Rock County	1,579	1,756	-177	-10.1	80	80	60	90
Saline County	14,275	13,843	432	3.1	20	21	11	7
Sarpy County	135,973	122,595	13,378	10.9	3	3	2	1
Saunders County	20,344	19,830	514	2.6	16	16	9	9
Scotts Bluff County	36,631	36,951	-320	-0.9	6	6	78	29
Seward County	16,656	16,496	160	1.0	18	18	15	18
Sheridan County	5,817	6,198	-381	-6.1	53	52	83	73
Sherman County	3,175	3,318	-143	-4.3	68	68	53	62
Sioux County	1,447	1,475	-28	-1.9	81	81	27	36
Stanton County	6,520	6,455	65	1.0	48	49	21	16
Thayer County	5,498	6,055	-557	-9.2	54	54	89	88
Thomas County	642	729	-87	-11.9	90	89	41	93
Thurston County	7,134	7,171	-37	-0.5	42	44	29	26
Valley County	4,521	4,647	-126	-2.7	60	59	52	43
Washington County	19,605	18,780	825	4.4	17	17	7	5
Wayne County	9,214	9,851	-637	-6.5	31	28	90	75
Webster County	3,876	4,061	-185	-4.6	62	63	61	65
Wheeler County	811	886	-75	-8.5	84	84	37	87
York County	14,228	14,598	-370	-2.5	21	20	81	39

¹ The estimates base incorporates adjustments from the January 1, 2001 boundary change between Butler and Platte Counties.

² The 2004 population estimate was revised upward for Hastings but the Adams County estimate was not revised.

Map 2: Population Change in Nebraska Counties: 1990-2000 and 2000-2004



Sources: 1990 and 2000 Decennial Censuses; Population Estimates Program, U.S. Census Bureau

Prepared by: David Drozd, Center for Public Affairs Research, University of Nebraska at Omaha - April 12, 2006

Table 8: Nebraska Population Change Component Estimates: April 1, 2000 to July 1, 2004

Source: Cumulative Estimates of the Components of Population Change, U.S. Census Bureau, 4-14-05

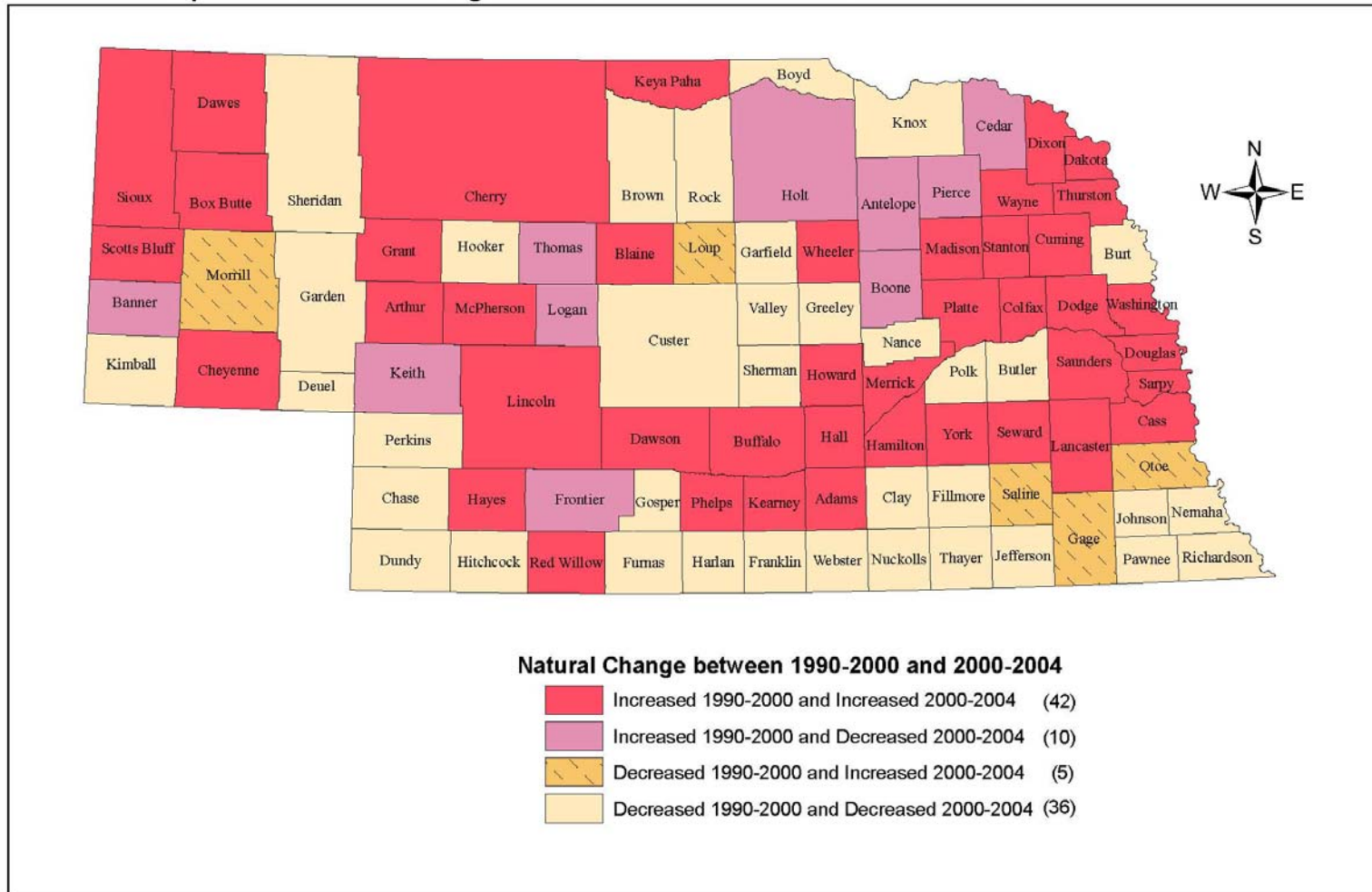
Geographic Area	Total Population Change ¹	Natural Increase			Net Migration		
		Total	Births	Deaths	Total	Net International Migration	Net Internal Migration
Nebraska	35,949	41,632	106,706	65,074	-4,883	18,789	-23,672
Adams County ²	-238	385	1,680	1,295	-611	506	-1,117
Antelope County	-341	-39	286	325	-298	-1	-297
Arthur County	-42	0	27	27	-42	-1	-41
Banner County	-57	-3	16	19	-52	-1	-51
Blaine County	-65	8	16	8	-72	-1	-71
Boone County	-428	-42	248	290	-381	3	-384
Box Butte County	-770	114	653	539	-876	74	-950
Boyd County	-171	-75	77	152	-95	-1	-94
Brown County	-95	-46	143	189	-46	-1	-45
Buffalo County	1,147	1,160	2,502	1,342	1	234	-233
Burt County	-301	-147	333	480	-147	0	-147
Butler County	-48	-37	443	480	-9	24	-33
Cass County	1,337	475	1,347	872	878	39	839
Cedar County	-556	-60	420	480	-492	-1	-491
Chase County	-107	-31	186	217	-73	-1	-72
Cherry County	-77	19	307	288	-90	15	-105
Cheyenne County	72	37	525	488	35	16	19
Clay County	-261	-35	324	359	-225	20	-245
Colfax County	57	353	775	422	-285	394	-679
Cuming County	-417	42	534	492	-454	84	-538
Custer County	-278	-120	563	683	-152	0	-152
Dakota County	359	1,065	1,706	641	-697	666	-1,363
Dawes County	-314	19	415	396	-324	17	-341
Dawson County	167	855	1,785	930	-679	910	-1,589
Deuel County	-79	-66	66	132	-11	-1	-10
Dixon County	-229	37	326	289	-262	56	-318
Dodge County	-94	327	2,014	1,687	-404	153	-557
Douglas County	18,527	18,078	33,620	15,542	610	7,504	-6,894
Dundy County	-90	-6	111	117	-83	11	-94
Fillmore County	-172	-107	315	422	-64	11	-75
Franklin County	-149	-106	143	249	-41	3	-44
Frontier County	-224	-21	124	145	-199	3	-202
Furnas County	-196	-139	220	359	-54	-1	-53
Gage County	443	51	1,175	1,124	405	16	389
Garden County	-122	-77	69	146	-41	-1	-40
Garfield County	-64	-77	78	155	15	2	13
Gosper County	-109	-20	101	121	-86	-1	-85
Grant County	-77	8	26	18	-86	-1	-85
Greeley County	-177	-34	132	166	-140	-1	-139
Hall County	1,328	1,771	3,825	2,054	-421	1,138	-1,559
Hamilton County	81	44	500	456	38	-1	39
Harlan County	-145	-61	116	177	-79	-1	-78
Hayes County	47	24	55	31	25	-1	26
Hitchcock County	-90	-60	136	196	-29	0	-29
Holt County	-693	-49	526	575	-637	12	-649
Hooker County	-34	-13	41	54	-21	-1	-20
Howard County	155	23	299	276	137	3	134
Jefferson County	-243	-87	388	475	-150	-1	-149
Johnson County	75	-44	191	235	124	20	104

Geographic Area	Total Population Change ¹	Natural Increase			Net Migration		
		Total	Births	Deaths	Total	Net International Migration	Net Internal Migration
Kearney County	-2	6	302	296	-1	0	-1
Keith County	-474	-15	380	395	-452	20	-472
Keya Paha County	-45	5	41	36	-49	-1	-48
Kimball County	-306	-94	158	252	-210	3	-213
Knox County	-379	-160	428	588	-213	3	-216
Lancaster County	11,254	8,784	15,977	7,193	2,564	4,460	-1,896
Lincoln County	347	491	1,935	1,444	-135	89	-224
Logan County	-64	-10	48	58	-53	0	-53
Loup County	-9	17	44	27	-26	0	-26
McPherson County	-9	3	17	14	-9	0	-9
Madison County	526	940	2,393	1,453	-390	370	-760
Merrick County	-103	27	392	365	-126	8	-134
Morrill County	-188	35	276	241	-223	7	-230
Nance County	-287	-36	179	215	-246	0	-246
Nemaha County	-509	-87	309	396	-418	0	-418
Nuckolls County	-224	-94	242	336	-126	20	-146
Otoe County	92	27	844	817	73	16	57
Pawnee County	-245	-148	88	236	-94	0	-94
Perkins County	-119	-56	135	191	-62	0	-62
Phelps County	-115	40	500	460	-147	4	-151
Pierce County	-165	-11	365	376	-150	4	-154
Platte County	-323	697	1,812	1,115	-987	295	-1,282
Polk County	-231	-23	274	297	-205	12	-217
Red Willow County	-319	103	632	529	-414	21	-435
Richardson County	-647	-251	373	624	-392	4	-396
Rock County	-177	-48	45	93	-128	0	-128
Saline County	432	80	769	689	359	277	82
Sarpy County	13,378	6,991	9,613	2,622	6,444	572	5,872
Saunders County	514	293	1,066	773	233	51	182
Scotts Bluff County	-320	279	2,223	1,944	-587	279	-866
Seward County	160	94	740	646	75	59	16
Sheridan County	-381	-34	314	348	-343	0	-343
Sherman County	-143	-39	142	181	-101	0	-101
Sioux County	-28	8	27	19	-34	0	-34
Stanton County	65	120	359	239	-52	31	-83
Thayer County	-557	-184	204	388	-371	0	-371
Thomas County	-87	-17	23	40	-68	0	-68
Thurston County	-37	277	645	368	-311	44	-355
Valley County	-126	-58	196	254	-63	1	-64
Washington County	825	259	946	687	571	89	482
Wayne County	-637	85	387	302	-713	51	-764
Webster County	-185	-58	181	239	-125	3	-128
Wheeler County	-75	6	47	41	-79	0	-79
York County	-370	95	727	632	-459	82	-541
Metropolitan	46,125	36,076	65,341	29,265	10,416	13,496	-3,080
Nonmetropolitan	-10,176	5,556	41,365	35,809	-15,299	5,293	-20,592
Micropolitan	2,433	7,056	23,567	16,511	-4,425	4,054	-8,479
Non-Metro/Micro	-12,609	-1,500	17,798	19,298	-10,874	1,239	-12,113
Town Over 2500	-5,483	318	10,708	10,390	-5,677	1,112	-6,789
No Town Over 2500	-7,126	-1,818	7,090	8,908	-5,197	127	-5,324

¹ Total population change includes an unlisted residual.

² The 2004 population estimate was revised upward for Hastings but the Adams County estimate was not revised.

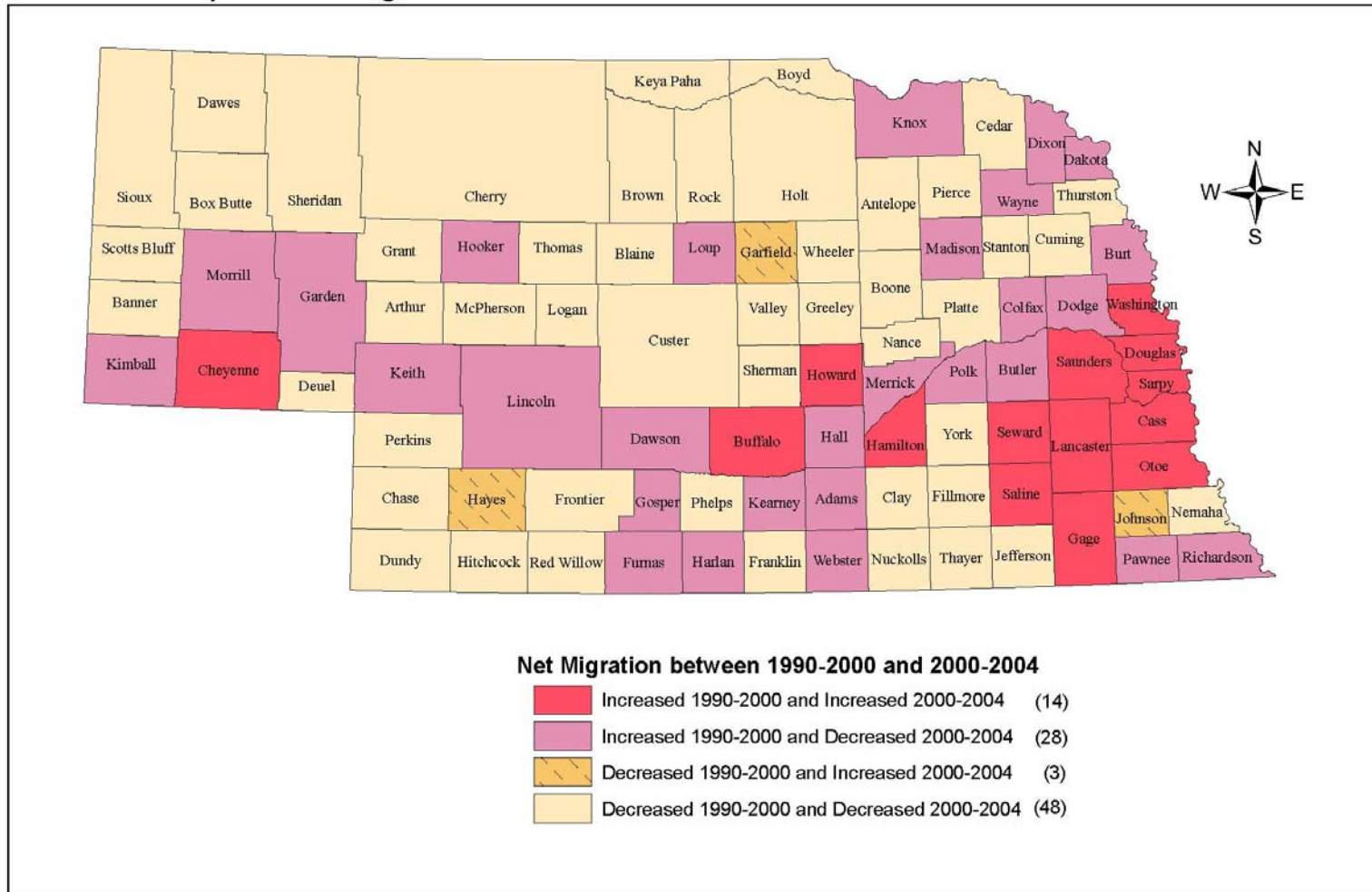
Map 3: Natural Change in Nebraska Counties: 1990-2000 and 2000-2004



Sources: 1990 and 2000 Decennial Censuses; Population Estimates Program, U.S. Census Bureau

Prepared by: David Drozd, Center for Public Affairs Research, University of Nebraska at Omaha - April 12, 2006

Map 4: Net Migration in Nebraska Counties: 1990-2000 and 2000-2004



Sources: 1990 and 2000 Decennial Censuses; Population Estimates Program, U.S. Census Bureau

Prepared by: David Drozd, Center for Public Affairs Research, University of Nebraska at Omaha - April 12, 2006

Table 9: County Population by Major Age Groups: July 1, 2004

Source: Annual Estimates of the Population by Age and Sex, U.S. Census Bureau, Released 8-11-05

Geographic Area	Population Under 18	Population 18-64	Population 65 & Over	Total Population	Percent Under 18	Percent 18-64	Percent 65 & Over
Nebraska	434,566	1,080,845	231,803	1,747,214	24.9	61.9	13.3
Adams ¹	7,106	19,036	4,771	30,913	23.0	61.6	15.4
Antelope	1,649	4,040	1,422	7,111	23.2	56.8	20.0
Arthur	88	232	82	402	21.9	57.7	20.4
Banner	174	463	125	762	22.8	60.8	16.4
Blaine	95	296	127	518	18.3	57.1	24.5
Boone	1,453	3,167	1,211	5,831	24.9	54.3	20.8
Box Butte	2,865	6,862	1,661	11,388	25.2	60.3	14.6
Boyd	477	1,247	543	2,267	21.0	55.0	24.0
Brown	732	1,935	763	3,430	21.3	56.4	22.2
Buffalo	10,100	28,405	4,901	43,406	23.3	65.4	11.3
Burt	1,725	4,230	1,535	7,490	23.0	56.5	20.5
Butler	2,175	5,118	1,520	8,813	24.7	58.1	17.2
Cass	6,476	16,047	3,148	25,671	25.2	62.5	12.3
Cedar	2,335	4,934	1,790	9,059	25.8	54.5	19.8
Chase	856	2,274	831	3,961	21.6	57.4	21.0
Cherry	1,470	3,547	1,054	6,071	24.2	58.4	17.4
Cheyenne	2,339	5,984	1,579	9,902	23.6	60.4	15.9
Clay	1,601	3,966	1,211	6,778	23.6	58.5	17.9
Colfax	2,828	5,911	1,759	10,498	26.9	56.3	16.8
Cuming	2,403	5,393	1,990	9,786	24.6	55.1	20.3
Custer	2,773	6,382	2,360	11,515	24.1	55.4	20.5
Dakota	6,246	12,245	2,121	20,612	30.3	59.4	10.3
Dawes	1,704	5,703	1,339	8,746	19.5	65.2	15.3
Dawson	7,005	14,313	3,214	24,532	28.6	58.3	13.1
Deuel	404	1,175	440	2,019	20.0	58.2	21.8
Dixon	1,504	3,553	1,053	6,110	24.6	58.2	17.2
Dodge	8,353	21,443	6,270	36,066	23.2	59.5	17.4
Douglas	125,719	304,990	51,403	482,112	26.1	63.3	10.7
Dundy	456	1,275	471	2,202	20.7	57.9	21.4
Fillmore	1,545	3,531	1,386	6,462	23.9	54.6	21.4
Franklin	740	1,861	824	3,425	21.6	54.3	24.1
Frontier	623	1,744	508	2,875	21.7	60.7	17.7
Furnas	1,086	2,836	1,206	5,128	21.2	55.3	23.5
Gage	5,181	13,960	4,295	23,436	22.1	59.6	18.3
Garden	382	1,200	588	2,170	17.6	55.3	27.1
Garfield	393	1,016	429	1,838	21.4	55.3	23.3
Gosper	430	1,162	442	2,034	21.1	57.1	21.7
Grant	139	417	114	670	20.7	62.2	17.0
Greeley	599	1,338	600	2,537	23.6	52.7	23.6
Hall	14,594	32,786	7,482	54,862	26.6	59.8	13.6
Hamilton	2,443	5,657	1,384	9,484	25.8	59.6	14.6
Harlan	735	2,017	889	3,641	20.2	55.4	24.4
Hayes	256	620	239	1,115	23.0	55.6	21.4
Hitchcock	605	1,733	683	3,021	20.0	57.4	22.6
Holt	2,588	6,066	2,204	10,858	23.8	55.9	20.3
Hooker	162	389	198	749	21.6	51.9	26.4
Howard	1,621	3,937	1,164	6,722	24.1	58.6	17.3
Jefferson	1,717	4,556	1,817	8,090	21.2	56.3	22.5
Johnson	977	2,624	962	4,563	21.4	57.5	21.1

Geographic Area	Population Under 18	Population 18-64	Population 65 & Over	Total Population	Percent Under 18	Percent 18-64	Percent 65 & Over
Kearney	1,591	4,170	1,119	6,880	23.1	60.6	16.3
Keith	1,858	4,889	1,654	8,401	22.1	58.2	19.7
Keya Paha	211	502	225	938	22.5	53.5	24.0
Kimball	840	2,111	832	3,783	22.2	55.8	22.0
Knox	2,041	4,877	2,077	8,995	22.7	54.2	23.1
Lancaster	60,091	174,486	26,968	261,545	23.0	66.7	10.3
Lincoln	8,510	21,260	5,209	34,979	24.3	60.8	14.9
Logan	161	418	131	710	22.7	58.9	18.5
Loup	176	389	138	703	25.0	55.3	19.6
McPherson	118	304	102	524	22.5	58.0	19.5
Madison	9,124	21,591	5,037	35,752	25.5	60.4	14.1
Merrick	1,989	4,703	1,409	8,101	24.6	58.1	17.4
Morrill	1,258	3,084	910	5,252	24.0	58.7	17.3
Nance	904	2,061	786	3,751	24.1	54.9	21.0
Nemaha	1,467	4,361	1,239	7,067	20.8	61.7	17.5
Nuckolls	1,006	2,697	1,130	4,833	20.8	55.8	23.4
Otoe	3,738	9,039	2,711	15,488	24.1	58.4	17.5
Pawnee	569	1,546	727	2,842	20.0	54.4	25.6
Perkins	691	1,791	599	3,081	22.4	58.1	19.4
Phelps	2,312	5,531	1,789	9,632	24.0	57.4	18.6
Pierce	1,921	4,508	1,263	7,692	25.0	58.6	16.4
Platte	8,340	18,821	4,084	31,245	26.7	60.2	13.1
Polk	1,217	3,080	1,111	5,408	22.5	57.0	20.5
Red Willow	2,612	6,434	2,085	11,131	23.5	57.8	18.7
Richardson	1,983	5,012	1,889	8,884	22.3	56.4	21.3
Rock	293	929	357	1,579	18.6	58.8	22.6
Saline	3,395	8,643	2,237	14,275	23.8	60.5	15.7
Sarpy	38,983	86,904	10,086	135,973	28.7	63.9	7.4
Saunders	5,075	12,175	3,094	20,344	24.9	59.8	15.2
Scotts Bluff	8,957	21,487	6,187	36,631	24.5	58.7	16.9
Seward	3,604	10,521	2,531	16,656	21.6	63.2	15.2
Sheridan	1,354	3,224	1,239	5,817	23.3	55.4	21.3
Sherman	676	1,751	748	3,175	21.3	55.1	23.6
Sioux	268	907	272	1,447	18.5	62.7	18.8
Stanton	1,729	4,004	787	6,520	26.5	61.4	12.1
Thayer	1,173	2,925	1,400	5,498	21.3	53.2	25.5
Thomas	108	409	125	642	16.8	63.7	19.5
Thurston	2,516	3,726	892	7,134	35.3	52.2	12.5
Valley	998	2,458	1,065	4,521	22.1	54.4	23.6
Washington	4,707	12,333	2,565	19,605	24.0	62.9	13.1
Wayne	1,776	6,169	1,269	9,214	19.3	67.0	13.8
Webster	839	2,063	974	3,876	21.6	53.2	25.1
Wheeler	208	476	127	811	25.6	58.7	15.7
York	3,252	8,460	2,516	14,228	22.9	59.5	17.7
Metropolitan	252,405	633,254	102,969	988,628	25.5	64.1	10.4
Nonmetropolitan	182,161	447,591	128,834	758,586	24.0	59.0	17.0
Micropolitan	98,605	240,737	59,203	398,545	24.7	60.4	14.9
Non-Metro/Micro	83,556	206,854	69,631	360,041	23.2	57.5	19.3
Town Over 2500	48,538	121,828	36,888	207,254	23.4	58.8	17.8
No Town Over 2500	35,018	85,026	32,743	152,787	22.9	55.7	21.4

¹ The 2004 population estimate was revised upward for Hastings but the Adams County estimate was not revised.

PART 3: CITY AND TOWN DATA

The U.S. Census Bureau releases annual estimates of each city or town's population as of the year's midpoint, July 1. These figures are released in approximately June of the following year. Along with the annual estimates, the Census Bureau provides figures from Census 2000. We calculated change and percentage change figures as well as some rankings from the provided data. We took estimates directly from Census Bureau releases. (<http://www.census.gov/popest/cities/>)

We also calculated changes since 2000 for categories of cities based on their population size from Census 2000. These figures show population trends that account for the relative size of the city. We used the population in 2000 as the base given its increased accuracy being a 100 percent Census count and for replication purposes of having a consistent base for making the calculations as post 2004 data become available.

No intercensal estimates are made by gender, age, race, or ethnicity at the city and town level. However, each year the Census Bureau may revise the April 1, 2000 estimates base. The estimates base incorporates city boundary changes and other adjustments that have occurred since Census 2000 was conducted. Thus, by comparing the estimates base to the Census 2000 population total, an estimate of population increase due to annexation since 2000 can be made. We provide a table summarizing the expected changes due to annexation since 2000 at the end of this report.

Table 10: Ranking of the Population of Nebraska Incorporated Cities: July 1, 2004

Source: Annual Estimates for Incorporated Places, U.S. Census Bureau, Released June 30, 2005

Rank	Place	Number	Rank	Place	Number	Rank	Place	Number
1	Omaha	409,416	47	Valentine	2,774	93	Bayard	1,180
2	Lincoln	236,146	48	Waverly	2,637	94	Battle Creek	1,175
3	Bellevue	47,347	49	David City	2,581	95	Alma	1,168
4	Grand Island	44,287	50	Ashland	2,444	96	Atkinson	1,163
5	Kearney	28,640	51	Kimball	2,346	97	Stromsburg	1,160
6	Fremont	25,272	52	Madison	2,336	98	Grant	1,157
7	Hastings ¹	25,107	53	St. Paul	2,276	99	Eagle	1,145
8	Norfolk	24,072	54	Ord	2,188	100	Shelton	1,140
9	North Platte	23,944	55	Geneva	2,182	101	Pender	1,133
10	Columbus	20,881	56	Milford	2,064	102	Weeping Water	1,132
11	Papillion	19,497	57	Superior	1,930	103	Burwell	1,077
12	Scottsbluff	14,767	58	Imperial	1,921	104	Louisville	1,075
13	La Vista	14,685	59	Dakota City	1,891	105	Tilden	1,073
14	Beatrice	12,963	60	Valley	1,829	106	Bloomfield	1,066
15	South Sioux City	12,142	61	Tekamah	1,822	107	Red Cloud	1,061
16	Lexington	10,056	62	Syracuse	1,821	108	Crawford	1,050
17	Alliance	8,351	63	Wilber	1,803	109	Ponca	1,029
18	Elkhorn	8,040	64	Mitchell	1,796	110	Cambridge	996
19	York	7,796	65	Ainsworth	1,776	111	Henderson	993
20	McCook	7,742	66	Gibbon	1,771	112	Franklin	982
21	Gering	7,740	67	Tecumseh	1,770	113	Arapahoe	976
22	Blair	7,706	68	Pierce	1,752	114	Harvard	951
23	Plattsmouth	7,075	69	Albion	1,686	115	Benkelman	947
24	Nebraska City	7,067	70	Stanton	1,633	116	Scribner	944
25	Seward	6,664	71	Gordon	1,631	117	Chappell	943
26	Sidney	6,381	72	Wymore	1,629	118	Loup City	939
27	Crete	6,332	73	Hartington	1,585	119	Pawnee City	937
28	Ralston	6,220	74	Neligh	1,570	120	Morrill	936
29	Holdrege	5,481	75	Bridgeport	1,516	121	Rushville	926
30	Chadron	5,402	76	Springfield	1,494	122	Laurel	925
31	Schuyler	5,364	77	Hebron	1,423	123	Hemingford	919
32	Wayne	5,179	78	Sutton	1,404	124	Bennington	916
33	Ogallala	4,728	79	Wakefield	1,331	125	Boys Town	915
34	Gretna	4,510	80	Plainview	1,304	125	Lyons	915
35	Falls City	4,296	81	Oakland	1,302	127	Genoa	909
36	Aurora	4,243	82	Ravenna	1,300	128	Fort Calhoun	908
37	Cozad	4,207	83	Fullerton	1,285	129	Osceola	901
38	Fairbury	4,109	84	Hickman	1,274	130	Ceresco	897
39	Wahoo	4,035	85	Yutan	1,217	131	Randolph	890
40	Gothenburg	3,681	86	North Bend	1,216	131	Walthill	890
41	O'Neill	3,513	87	Wisner	1,214	133	Elm Creek	880
42	West Point	3,509	88	Friend	1,207	134	Humboldt	869
43	Broken Bow	3,350	89	Creighton	1,206	135	Kenesaw	864
44	Auburn	3,103	90	Wood River	1,205	136	Utica	835
45	Minden	2,965	91	Arlington	1,202	137	Oxford	833
46	Central City	2,919	92	Sutherland	1,195	138	Oshkosh	828

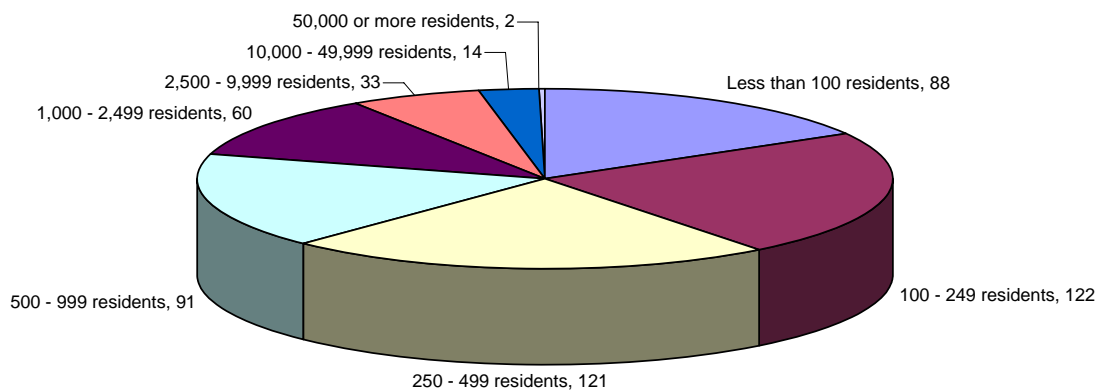
Rank	Place	Number	Rank	Place	Number	Rank	Place	Number
138	Peru	828	194	Nelson	554	249	Wilcox	358
140	Blue Hill	824	195	Palmyra	543	250	Hildreth	353
141	Clay Center	820	196	Edgar	513	251	Brainard	350
142	Emerson	815	197	Sterling	507	251	Platte Center	350
143	Bertrand	812	198	Spalding	506	253	Bartley	349
144	Hooper	799	199	Spencer	504	253	Lodgepole	349
145	Deshler	795	200	Ansley	501	255	Dannebrog	348
146	Cairo	790	201	Coleridge	499	256	Arcadia	346
147	Newman Grove	788	202	Bancroft	497	256	Long Pine	346
148	Minatare	785	203	Murray	495	258	Clarks	345
149	Winnebago	774	204	Cortland	494	258	Pleasanton	345
150	Humphrey	768	204	Verdigre	494	260	Butte	344
151	Doniphan	765	206	Adams	487	261	Duncan	342
152	Curtis	759	207	Trenton	486	261	Petersburg	342
153	Osmond	757	208	Greeley Center	485	263	Odell	340
154	St. Edward	743	209	Waterloo	472	263	Unadilla	340
155	Beemer	726	210	Mullen	464	265	Brule	338
156	Axtell	722	211	Palmer	460	266	Phillips	336
157	Elwood	718	212	Plymouth	454	267	Chapman	334
158	Crofton	717	213	Beaver Crossing	447	268	Prague	332
159	Elmwood	715	214	Fairfield	445	269	Oakdale	326
160	Elgin	695	215	Bellwood	442	270	Bradshaw	325
161	Exeter	689	216	Malcolm	438	270	North Loup	325
162	Juniata	687	217	Hampton	436	272	Hadar	323
163	Dodge	686	217	Leigh	436	273	Dalton	322
164	Clarkson	684	219	Winside	435	274	Wallace	319
165	Bennet	671	220	Nickerson	432	275	Maxwell	318
166	Fairmont	669	221	Silver Creek	431	276	Cook	316
167	Bassett	666	222	Eustis	425	277	Chambers	314
168	Alda	656	223	Ewing	412	277	Glenvil	314
169	Overton	653	224	Cedar Creek	410	279	Weston	308
170	Firth	651	225	Lyman	408	280	Meadow Grove	306
170	Terrytown	651	226	Potter	406	280	Snyder	306
172	Shelby	650	227	McCool Junction	405	282	Herman	304
173	Howells	636	228	Big Springs	402	282	Lawrence	304
174	Dorchester	632	229	Orleans	399	282	Maywood	304
175	Callaway	630	230	Giltner	397	282	Milligan	304
176	Arnold	623	231	Allen	395	286	Polk	302
177	Mead	622	232	Kennard	389	287	Davenport	300
178	Cedar Bluffs	621	233	Merna	387	287	Monroe	300
179	Sargent	620	234	Loomis	385	289	Santee	296
180	Indianola	613	234	Rising City	385	290	Western	290
181	Homer	608	236	Inglewood	383	291	Scotia	289
182	Beaver City	607	236	Palisade	383	292	Diller	284
183	Hay Springs	602	238	Blue Springs	378	293	Bladen	283
184	Wausa	597	239	Stratton	377	293	Newcastle	283
185	Greenwood	595	240	Cedar Rapids	376	295	Marquette	280
186	Wauneta	594	241	Brady	375	296	Avoca	276
187	Valparaiso	586	241	Hallam	375	296	Stapleton	276
188	Decatur	584	243	Campbell	371	298	Murdock	275
189	De Witt	583	243	Pilger	371	299	Amherst	274
190	Stuart	582	245	Orchard	366	299	Harrison	274
191	Culbertson	570	246	Shickley	363	301	Benedict	272
192	Hershey	563	247	Clearwater	362	301	Clatonia	272
193	Paxton	555	248	Niobrara	360	303	Wolbach	270

Rank	Place	Number	Rank	Place	Number	Rank	Place	Number
304	Lindsay	269	358	Taylor	199	414	Colon	132
304	Ulysses	269	360	Alexandria	198	415	Arthur	131
306	Litchfield	267	360	Republican City	198	415	Atlanta	131
306	Uehling	267	362	Funk	197	417	Naponee	126
308	Bruning	266	362	Manley	197	417	Salem	126
308	Talmage	266	364	Stamford	196	419	Carleton	125
308	Union	266	365	Raymond	193	419	Danbury	125
311	Lewellen	264	366	Rosalie	191	421	Belgrade	124
312	Hoskins	262	367	Ruskin	189	421	Cordova	124
313	Chester	260	368	Theford	185	423	Barneston	123
313	Gresham	260	369	Pickrell	184	423	Belden	123
313	Madrid	260	370	Goehner	179	423	Thurston	123
313	Staplehurst	260	370	Nemaha	179	426	Bloomington	118
317	Dwight	258	372	Filley	176	426	Linwood	118
318	Hyannis	257	373	Mason City	175	428	Merriman	117
318	Johnson	257	374	Hardy	174	429	Wilsonville	116
320	Waco	256	374	Wynot	174	430	Elk Creek	114
321	Panama	253	376	Fordyce	172	431	Bartlett	113
322	Garland	249	377	Daykin	171	432	Memphis	111
323	Hayes Center	247	378	Brunswick	170	433	Leshara	110
324	Hubbard	246	378	Upland	170	434	Abie	108
324	Pleasant Dale	246	380	Ithaca	168	435	Bruno	107
326	Dix	245	381	Venango	164	435	Swanton	107
326	Table Rock	245	382	Henry	162	437	Rockville	106
328	Elba	241	383	Tobias	160	438	Dixon	105
328	Lynch	241	384	Davey	158	438	Malmo	105
330	Shubert	240	385	Miller	156	440	Comstock	104
331	Roseland	239	386	Concord	155	441	Winslow	101
332	Craig	235	387	Anselmo	154	442	Martinsburg	100
332	Dunbar	235	388	Du Bois	152	442	McGrew	100
332	Sumner	235	389	Edison	151	444	Eddyville	99
335	Nehawka	231	390	Brock	149	444	Kilgore	99
336	Farnam	230	390	Hordville	149	446	Naper	98
337	Douglas	229	392	Bushnell	148	447	Ayr	97
338	Guide Rock	228	392	Cody	148	447	Dunning	97
338	Gurley	228	394	Grafton	147	449	Ericson	96
338	Springview	228	394	Page	147	450	Burchard	95
341	Holstein	226	394	Sprague	147	451	Crookston	94
342	Ashton	225	397	Farwell	146	452	Prosser	93
343	Holbrook	221	398	Alvo	145	452	Rogers	93
344	Howard City	219	398	Octavia	145	454	Belvidere	90
345	Bee	218	400	Jansen	142	454	Richland	90
345	Carroll	218	401	Melbeta	139	456	Newport	89
347	Rulo	216	401	Oconto	139	457	South Bend	88
348	Otoe	215	403	Brownville	138	457	Whitney	88
349	Roca	214	403	Riverton	138	459	Liberty	87
350	Creston	213	405	Broadwater	137	459	Reynolds	87
351	Denton	212	405	Endicott	137	461	Waterbury	86
352	Stella	210	405	Ohiowa	137	462	Center	84
353	Riverdale	207	408	Elsie	136	463	Steele City	83
354	Haigler	206	409	Inman	134	464	Bristow	82
354	Jackson	206	409	Morse Bluff	134	464	Heartwell	82
356	Verdon	204	409	Washington	134	464	St. Helena	82
357	Trumbull	203	412	Berwyn	133	467	Lewiston	80
358	Dawson	199	412	Byron	133	468	Deweese	79

Rank	Place	Number	Rank	Place	Number	Rank	Place	Number
469	Wellfleet	77	490	Foster	62	511	Lorton	39
470	Magnet	75	490	Tarnov	62	512	Gilead	37
471	Emmet	73	492	Saronville	60	512	Hendley	37
472	Wood Lake	72	492	Stockham	60	512	McLean	37
473	Julian	71	494	Oak	58	515	Stockville	34
473	Royal	71	495	Hamlet	56	516	Lushton	33
475	Lebanon	69	495	Verdel	56	517	Strang	32
475	Thayer	69	497	Harbine	55	518	Cushing	31
477	Steinauer	68	498	Elyria	52	519	Clinton	29
477	Virginia	68	498	Halsey	52	520	Barada	27
479	Garrison	67	498	Johnstown	52	520	Gandy	27
479	Hubbell	67	501	Crab Orchard	50	522	Brewster	26
479	Winnetoon	67	501	Norman	50	523	Bazile Mills	25
482	Burr	66	503	Moorefield	49	524	Sholes	23
482	Ong	66	504	Preston	48	525	Lamar	19
484	Cotesfield	65	505	Cowles	47	525	Nora	19
484	Huntley	65	506	Obert	46	527	Nenzel	13
484	Maskell	65	507	Ragan	45	528	Burton	10
484	Primrose	65	507	Seneca	45	529	Anoka	9
488	Smithfield	64	509	Surprise	44	530	Gross	5
489	Hazard	63	510	Cornlea	41	531	Monowi	2

¹ The original 2004 estimate for Hastings of 23,404 was revised to 25,107 after a challenge process was completed/accepted on 10-26-2005.

Figure 19: Number of Nebraska Cities and Towns by Size Category: 2004



Source: Annual Estimates for Incorporated Places,
U.S. Census Bureau, Released June 30, 2005

Table 11: Comparison of Nebraska Place Population: July 1, 2004 and April 1, 2000

Source: Annual Estimates for Incorporated Places, U.S. Census Bureau, Released June 30, 2005

Place	7-1-2004 Estimate	4-1-2000 Census ¹	2000- 2004 Change	2000-04 Percent Change	Place	7-1-2004 Estimate	4-1-2000 Census ¹	2000- 2004 Change	2000-04 Percent Change
Abie	108	108	0	0.0	Bennington	916	937	-21	-2.2
Adams	487	489	-2	-0.4	Bertrand	812	786	26	3.3
Ainsworth	1,776	1,862	-86	-4.6	Berwyn	133	134	-1	-0.7
Albion	1,686	1,797	-111	-6.2	Big Springs	402	418	-16	-3.8
Alda	656	652	4	0.6	Bladen	283	291	-8	-2.7
Alexandria	198	216	-18	-8.3	Blair	7,706	7,512	194	2.6
Allen	395	411	-16	-3.9	Bloomfield	1,066	1,126	-60	-5.3
Alliance	8,351	8,959	-608	-6.8	Bloomington	118	124	-6	-4.8
Alma	1,168	1,214	-46	-3.8	Blue Hill	824	867	-43	-5.0
Alvo	145	142	3	2.1	Blue Springs	378	383	-5	-1.3
Amherst	274	277	-3	-1.1	Boys Town	915	818	97	11.9
Anoka	9	10	-1	-10.0	Bradshaw	325	336	-11	-3.3
Anselmo	154	159	-5	-3.1	Brady	375	366	9	2.5
Ansley	501	520	-19	-3.7	Brainard	350	351	-1	-0.3
Arapahoe	976	1,028	-52	-5.1	Brewster	26	29	-3	-10.3
Arcadia	346	359	-13	-3.6	Bridgeport	1,516	1,594	-78	-4.9
Arlington	1,202	1,197	5	0.4	Bristow	82	88	-6	-6.8
Arnold	623	630	-7	-1.1	Broadwater	137	140	-3	-2.1
Arthur	131	145	-14	-9.7	Brock	149	162	-13	-8.0
Ashland	2,444	2,262	182	8.0	Broken Bow	3,350	3,491	-141	-4.0
Ashton	225	237	-12	-5.1	Brownville	138	146	-8	-5.5
Atkinson	1,163	1,244	-81	-6.5	Brule	338	372	-34	-9.1
Atlanta	131	130	1	0.8	Bruning	266	300	-34	-11.3
Auburn	3,103	3,350	-247	-7.4	Bruno	107	112	-5	-4.5
Aurora	4,243	4,225	18	0.4	Brunswick	170	179	-9	-5.0
Avoca	276	270	6	2.2	Burchard	95	103	-8	-7.8
Axtell	722	696	26	3.7	Burr	66	66	0	0.0
Ayr	97	98	-1	-1.0	Burton	10	11	-1	-9.1
Bancroft	497	520	-23	-4.4	Burwell	1,077	1,130	-53	-4.7
Barada	27	28	-1	-3.6	Bushnell	148	162	-14	-8.6
Barneston	123	122	1	0.8	Butte	344	366	-22	-6.0
Bartlett	113	128	-15	-11.7	Byron	133	144	-11	-7.6
Bartley	349	355	-6	-1.7	Cairo	790	790	0	0.0
Bassett	666	743	-77	-10.4	Callaway	630	637	-7	-1.1
Battle Creek	1,175	1,158	17	1.5	Cambridge	996	1,041	-45	-4.3
Bayard	1,180	1,247	-67	-5.4	Campbell	371	387	-16	-4.1
Bazile Mills	25	26	-1	-3.8	Carleton	125	136	-11	-8.1
Beatrice ¹	12,963	12,510	453	3.6	Carroll	218	238	-20	-8.4
Beaver City	607	641	-34	-5.3	Cedar Bluffs	621	615	6	1.0
Beaver Crossing	447	457	-10	-2.2	Cedar Creek	410	396	14	3.5
Bee	218	223	-5	-2.2	Cedar Rapids	376	407	-31	-7.6
Beemer	726	773	-47	-6.1	Center	84	90	-6	-6.7
Belden	123	131	-8	-6.1	Central City	2,919	2,998	-79	-2.6
Belgrade	124	134	-10	-7.5	Ceresco	897	920	-23	-2.5
Bellevue	47,347	44,382	2,965	6.7	Chadron	5,402	5,634	-232	-4.1
Bellwood	442	446	-4	-0.9	Chambers	314	333	-19	-5.7
Belvidere	90	98	-8	-8.2	Chapman	334	341	-7	-2.1
Benedict	272	278	-6	-2.2	Chappell	943	983	-40	-4.1
Benkelman	947	1,006	-59	-5.9	Chester	260	294	-34	-11.6
Bennet	671	570	101	17.7	Clarks	345	361	-16	-4.4

Place	7-1-2004 Estimate	4-1-2000 Census ¹	2000- 2004 Change	2000-04 Percent Change	Place	7-1-2004 Estimate	4-1-2000 Census ¹	2000- 2004 Change	2000-04 Percent Change
Clarkson	684	685	-1	-0.1	Dunning	97	109	-12	-11.0
Clatonia	272	275	-3	-1.1	Dwight	258	259	-1	-0.4
Clay Center	820	861	-41	-4.8	Eagle	1,145	1,105	40	3.6
Clearwater	362	384	-22	-5.7	Eddyville	99	96	3	3.1
Clinton	29	30	-1	-3.3	Edgar	513	539	-26	-4.8
Cody	148	149	-1	-0.7	Edison	151	154	-3	-1.9
Coleridge	499	541	-42	-7.8	Elba	241	243	-2	-0.8
Colon	132	138	-6	-4.3	Elgin	695	735	-40	-5.4
Columbus	20,881	20,971	-90	-0.4	Elk Creek	114	112	2	1.8
Comstock	104	110	-6	-5.5	Elkhorn	8,040	6,062	1,978	32.6
Concord	155	160	-5	-3.1	Elm Creek	880	894	-14	-1.6
Cook	316	322	-6	-1.9	Elmwood	715	668	47	7.0
Cordova	124	127	-3	-2.4	Elsie	136	139	-3	-2.2
Cornlea	41	41	0	0.0	Elwood	718	761	-43	-5.7
Cortland	494	488	6	1.2	Elyria	52	54	-2	-3.7
Cotesfield	65	66	-1	-1.5	Emerson	815	817	-2	-0.2
Cowles	47	48	-1	-2.1	Emmet	73	77	-4	-5.2
Cozad	4,207	4,163	44	1.1	Endicott	137	139	-2	-1.4
Crab Orchard	50	49	1	2.0	Ericson	96	104	-8	-7.7
Craig	235	241	-6	-2.5	Eustis	425	464	-39	-8.4
Crawford	1,050	1,107	-57	-5.1	Ewing	412	433	-21	-4.8
Creighton	1,206	1,270	-64	-5.0	Exeter	689	712	-23	-3.2
Creston	213	215	-2	-0.9	Fairbury	4,109	4,262	-153	-3.6
Crete	6,332	6,028	304	5.0	Fairfield	445	467	-22	-4.7
Crofton	717	754	-37	-4.9	Fairmont	669	691	-22	-3.2
Crookston	94	98	-4	-4.1	Falls City	4,296	4,671	-375	-8.0
Culbertson	570	594	-24	-4.0	Farnam	230	223	7	3.1
Curtis	759	832	-73	-8.8	Farwell	146	148	-2	-1.4
Cushing	31	31	0	0.0	Filley	176	174	2	1.1
Dakota City	1,891	1,821	70	3.8	Firth	651	564	87	15.4
Dalton	322	332	-10	-3.0	Fordyce	172	182	-10	-5.5
Danbury	125	127	-2	-1.6	Fort Calhoun	908	856	52	6.1
Dannebrog	348	352	-4	-1.1	Foster	62	63	-1	-1.6
Davenport	300	339	-39	-11.5	Franklin	982	1,026	-44	-4.3
Davey	158	153	5	3.3	Fremont	25,272	25,174	98	0.4
David City	2,581	2,597	-16	-0.6	Friend	1,207	1,174	33	2.8
Dawson	199	209	-10	-4.8	Fullerton	1,285	1,378	-93	-6.7
Daykin	171	177	-6	-3.4	Funk	197	204	-7	-3.4
Decatur	584	618	-34	-5.5	Gandy	27	30	-3	-10.0
Denton	212	189	23	12.2	Garland	249	247	2	0.8
Deshler	795	879	-84	-9.6	Garrison	67	67	0	0.0
Deweese	79	80	-1	-1.3	Geneva	2,182	2,226	-44	-2.0
De Witt	583	572	11	1.9	Genoa	909	981	-72	-7.3
Diller	284	287	-3	-1.0	Gering	7,740	7,751	-11	-0.1
Dix	245	267	-22	-8.2	Gibbon	1,771	1,759	12	0.7
Dixon	105	108	-3	-2.8	Gilead	37	40	-3	-7.5
Dodge	686	700	-14	-2.0	Giltner	397	389	8	2.1
Doniphan	765	763	2	0.3	Glenvil	314	332	-18	-5.4
Dorchester	632	615	17	2.8	Goehner	179	186	-7	-3.8
Douglas	229	231	-2	-0.9	Gordon	1,631	1,756	-125	-7.1
Du Bois	152	166	-14	-8.4	Gothenburg	3,681	3,619	62	1.7
Dunbar	235	237	-2	-0.8	Grafton	147	152	-5	-3.3
Duncan	342	359	-17	-4.7	Grand Island	44,287	42,940	1,347	3.1

Place	7-1-2004 Estimate	4-1-2000 Census ¹	2000- 2004 Change	2000-04 Percent Change	Place	7-1-2004 Estimate	4-1-2000 Census ¹	2000- 2004 Change	2000-04 Percent Change
Grant	1,157	1,225	-68	-5.6	Jackson	206	205	1	0.5
Greeley Center	485	531	-46	-8.7	Jansen	142	143	-1	-0.7
Greenwood	595	544	51	9.4	Johnson	257	280	-23	-8.2
Gresham	260	270	-10	-3.7	Johnstown	52	53	-1	-1.9
Gretna	4,510	2,355	2,155	91.5	Julian	71	63	8	12.7
Gross	5	5	0	0.0	Juniata	687	693	-6	-0.9
Guide Rock	228	245	-17	-6.9	Kearney	28,640	27,431	1,209	4.4
Gurley	228	228	0	0.0	Kenesaw	864	873	-9	-1.0
Hadar	323	312	11	3.5	Kennard	389	371	18	4.9
Haigler	206	211	-5	-2.4	Kilgore	99	99	0	0.0
Hallam	375	276	99	35.9	Kimball	2,346	2,559	-213	-8.3
Halsey	52	59	-7	-11.9	Lamar	19	19	0	0.0
Hamlet	56	54	2	3.7	Laurel	925	986	-61	-6.2
Hampton	436	439	-3	-0.7	La Vista	14,685	11,699	2,986	25.5
Harbine	55	56	-1	-1.8	Lawrence	304	312	-8	-2.6
Hardy	174	179	-5	-2.8	Lebanon	69	70	-1	-1.4
Harrison	274	279	-5	-1.8	Leigh	436	442	-6	-1.4
Hartington	1,585	1,640	-55	-3.4	Leshara	110	111	-1	-0.9
Harvard	951	998	-47	-4.7	Lewellen	264	282	-18	-6.4
Hastings ²	25,107	24,064	1,043	4.3	Lewiston	80	86	-6	-7.0
Hayes Center	247	240	7	2.9	Lexington	10,056	10,011	45	0.4
Hay Springs	602	652	-50	-7.7	Liberty	87	86	1	1.2
Hazard	63	66	-3	-4.5	Lincoln	236,146	225,581	10,565	4.7
Heartwell	82	80	2	2.5	Lindsay	269	276	-7	-2.5
Hebron	1,423	1,565	-142	-9.1	Linwood	118	118	0	0.0
Hemingford	919	993	-74	-7.5	Litchfield	267	280	-13	-4.6
Henderson	993	986	7	0.7	Lodgepole	349	348	1	0.3
Hendley	37	38	-1	-2.6	Long Pine	346	341	5	1.5
Henry	162	162	0	0.0	Loomis	385	397	-12	-3.0
Herman	304	310	-6	-1.9	Lorton	39	39	0	0.0
Hershey	563	572	-9	-1.6	Louisville	1,075	1,046	29	2.8
Hickman ¹	1,274	1,111	163	14.7	Loup City	939	996	-57	-5.7
Hildreth	353	370	-17	-4.6	Lushton	33	33	0	0.0
Holbrook	221	225	-4	-1.8	Lyman	408	421	-13	-3.1
Holdrege	5,481	5,636	-155	-2.8	Lynch	241	269	-28	-10.4
Holstein	226	229	-3	-1.3	Lyons	915	963	-48	-5.0
Homer	608	590	18	3.1	McCook ¹	7,742	7,996	-254	-3.2
Hooper	799	827	-28	-3.4	McCool Junction	405	385	20	5.2
Hordville	149	150	-1	-0.7	McGrew	100	103	-3	-2.9
Hoskins	262	283	-21	-7.4	McLean	37	38	-1	-2.6
Howard City	219	221	-2	-0.9	Madison	2,336	2,367	-31	-1.3
Howells	636	632	4	0.6	Madrid	260	265	-5	-1.9
Hubbard	246	234	12	5.1	Magnet	75	79	-4	-5.1
Hubbell	67	73	-6	-8.2	Malcolm	438	413	25	6.1
Humboldt	869	941	-72	-7.7	Malmo	105	109	-4	-3.7
Humphrey	768	786	-18	-2.3	Manley	197	191	6	3.1
Huntley	65	67	-2	-3.0	Marquette	280	282	-2	-0.7
Hyannis	257	287	-30	-10.5	Martinsburg	100	103	-3	-2.9
Imperial	1,921	1,982	-61	-3.1	Maskell	65	67	-2	-3.0
Indianola	613	642	-29	-4.5	Mason City	175	178	-3	-1.7
Inglewood	383	382	1	0.3	Maxwell	318	315	3	1.0
Inman	134	148	-14	-9.5	Maywood	304	331	-27	-8.2
Ithaca	168	168	0	0.0	Mead	622	564	58	10.3

Place	7-1-2004 Estimate	4-1-2000 Census ¹	2000- 2004 Change	2000-04 Percent Change	Place	7-1-2004 Estimate	4-1-2000 Census ¹	2000- 2004 Change	2000-04 Percent Change
Meadow Grove	306	311	-5	-1.6	Osceola	901	921	-20	-2.2
Melbeta	139	138	1	0.7	Oshkosh	828	887	-59	-6.7
Memphis	111	106	5	4.7	Osmond	757	796	-39	-4.9
Merna	387	391	-4	-1.0	Otoe	215	217	-2	-0.9
Merriman	117	118	-1	-0.8	Overton	653	646	7	1.1
Milford	2,064	2,070	-6	-0.3	Oxford	833	876	-43	-4.9
Miller	156	156	0	0.0	Page	147	157	-10	-6.4
Milligan	304	315	-11	-3.5	Palisade	383	386	-3	-0.8
Minatare	785	810	-25	-3.1	Palmer	460	472	-12	-2.5
Minden	2,965	2,964	1	0.0	Palmyra	543	546	-3	-0.5
Mitchell	1,796	1,831	-35	-1.9	Panama	253	253	0	0.0
Monowi	2	2	0	0.0	Papillion	19,497	16,363	3,134	19.2
Monroe	300	307	-7	-2.3	Pawnee City	937	1,033	-96	-9.3
Moorefield	49	52	-3	-5.8	Paxton	555	614	-59	-9.6
Morrill	936	957	-21	-2.2	Pender	1,133	1,148	-15	-1.3
Morse Bluff	134	134	0	0.0	Peru ¹	828	922	-94	-10.2
Mullen	464	491	-27	-5.5	Petersburg	342	374	-32	-8.6
Murdock	275	269	6	2.2	Phillips	336	336	0	0.0
Murray	495	481	14	2.9	Pickrell	184	182	2	1.1
Naper	98	105	-7	-6.7	Pierce	1,752	1,774	-22	-1.2
Naponee	126	132	-6	-4.5	Pilger	371	378	-7	-1.9
Nebraska City	7,067	7,228	-161	-2.2	Plainview	1,304	1,353	-49	-3.6
Nehawka	231	232	-1	-0.4	Platte Center	350	359	-9	-2.5
Neligh	1,570	1,651	-81	-4.9	Plattsmouth	7,075	6,887	188	2.7
Nelson	554	587	-33	-5.6	Pleasant Dale	246	245	1	0.4
Nemaha	179	178	1	0.6	Pleasanton	345	360	-15	-4.2
Nenzel	13	13	0	0.0	Plymouth	454	477	-23	-4.8
Newcastle	283	299	-16	-5.4	Polk	302	322	-20	-6.2
Newman Grove	788	797	-9	-1.1	Ponca	1,029	1,062	-33	-3.1
Newport	89	98	-9	-9.2	Potter	406	390	16	4.1
Nickerson	432	431	1	0.2	Prague	332	346	-14	-4.0
Niobrara	360	379	-19	-5.0	Preston	48	50	-2	-4.0
Nora	19	20	-1	-5.0	Primrose	65	69	-4	-5.8
Norfolk	24,072	23,516	556	2.4	Prosser	93	94	-1	-1.1
Norman	50	49	1	2.0	Ragan	45	46	-1	-2.2
North Bend	1,216	1,213	3	0.2	Ralston	6,220	6,314	-94	-1.5
North Loup	325	339	-14	-4.1	Randolph	890	955	-65	-6.8
North Platte	23,944	23,878	66	0.3	Ravenna	1,300	1,341	-41	-3.1
Oak	58	60	-2	-3.3	Raymond	193	186	7	3.8
Oakdale	326	345	-19	-5.5	Red Cloud	1,061	1,131	-70	-6.2
Oakland	1,302	1,367	-65	-4.8	Republican City	198	209	-11	-5.3
Obert	46	49	-3	-6.1	Reynolds	87	88	-1	-1.1
Oconto	139	141	-2	-1.4	Richland	90	89	1	1.1
Octavia	145	145	0	0.0	Rising City	385	386	-1	-0.3
Odell	340	345	-5	-1.4	Riverdale	207	213	-6	-2.8
Ogallala	4,728	4,930	-202	-4.1	Riverton	138	145	-7	-4.8
Ohio	137	142	-5	-3.5	Roca	214	220	-6	-2.7
Omaha	409,416	390,007	19,409	5.0	Rockville	106	111	-5	-4.5
O'Neill	3,513	3,733	-220	-5.9	Rogers	93	95	-2	-2.1
Ong	66	67	-1	-1.5	Rosalie	191	194	-3	-1.5
Orchard	366	391	-25	-6.4	Roseland	239	242	-3	-1.2
Ord	2,188	2,269	-81	-3.6	Royal	71	75	-4	-5.3
Orleans	399	425	-26	-6.1	Rulo	216	226	-10	-4.4

Place	7-1-2004 Estimate	4-1-2000 Census ¹	2000- 2004 Change	2000-04 Percent Change	Place	7-1-2004 Estimate	4-1-2000 Census ¹	2000- 2004 Change	2000-04 Percent Change
Rushville	926	999	-73	-7.3	Talmage	266	268	-2	-0.7
Ruskin	189	195	-6	-3.1	Tarnov	62	63	-1	-1.6
St. Edward	743	796	-53	-6.7	Taylor	199	207	-8	-3.9
St. Helena	82	86	-4	-4.7	Tecumseh	1,770	1,716	54	3.1
St. Paul	2,276	2,218	58	2.6	Tekamah	1,822	1,892	-70	-3.7
Salem	126	138	-12	-8.7	Terrytown	651	646	5	0.8
Santee	296	302	-6	-2.0	Thayer	69	71	-2	-2.8
Sargent	620	649	-29	-4.5	Theford	185	211	-26	-12.3
Saronville	60	61	-1	-1.6	Thurston	123	125	-2	-1.6
Schuyler	5,364	5,371	-7	-0.1	Tilden	1,073	1,078	-5	-0.5
Scotia	289	308	-19	-6.2	Tobias	160	158	2	1.3
Scottsbluff	14,767	14,732	35	0.2	Trenton	486	507	-21	-4.1
Scribner	944	971	-27	-2.8	Trumbull	203	212	-9	-4.2
Seneca	45	51	-6	-11.8	Uehling	267	275	-8	-2.9
Seward	6,664	6,319	345	5.5	Ulysses	269	276	-7	-2.5
Shelby	650	690	-40	-5.8	Unadilla	340	342	-2	-0.6
Shelton	1,140	1,140	0	0.0	Union	266	260	6	2.3
Shickley	363	376	-13	-3.5	Upland	170	179	-9	-5.0
Sholes	23	24	-1	-4.2	Utica	835	844	-9	-1.1
Shubert	240	252	-12	-4.8	Valentine	2,774	2,820	-46	-1.6
Sidney	6,381	6,282	99	1.6	Valley	1,829	1,788	41	2.3
Silver Creek	431	441	-10	-2.3	Valparaiso	586	563	23	4.1
Smithfield	64	68	-4	-5.9	Venango	164	175	-11	-6.3
Snyder	306	318	-12	-3.8	Verdel	56	58	-2	-3.4
South Bend	88	86	2	2.3	Verdigre	494	519	-25	-4.8
So Sioux City	12,142	11,925	217	1.8	Verdon	204	223	-19	-8.5
Spalding	506	537	-31	-5.8	Virginia	68	67	1	1.5
Spencer	504	541	-37	-6.8	Waco	256	256	0	0.0
Sprague	147	146	1	0.7	Wahoo	4,035	3,942	93	2.4
Springfield	1,494	1,450	44	3.0	Wakefield	1,331	1,411	-80	-5.7
Springview	228	244	-16	-6.6	Wallace	319	329	-10	-3.0
Stamford	196	202	-6	-3.0	Walthill	890	909	-19	-2.1
Stanton	1,633	1,627	6	0.4	Washington	134	126	8	6.3
Staplehurst	260	270	-10	-3.7	Waterbury	86	89	-3	-3.4
Stapleton	276	301	-25	-8.3	Waterloo	472	459	13	2.8
Steele City	83	84	-1	-1.2	Wauneta	594	625	-31	-5.0
Steinauer	68	74	-6	-8.1	Wausa	597	636	-39	-6.1
Stella	210	220	-10	-4.5	Waverly	2,637	2,448	189	7.7
Sterling	507	507	0	0.0	Wayne	5,179	5,583	-404	-7.2
Stockham	60	60	0	0.0	Weeping Water	1,132	1,103	29	2.6
Stockville	34	36	-2	-5.6	Wellfleet	77	76	1	1.3
Strang	32	32	0	0.0	Western	290	287	3	1.0
Stratton	377	396	-19	-4.8	Weston	308	310	-2	-0.6
Stromsburg	1,160	1,232	-72	-5.8	West Point	3,509	3,660	-151	-4.1
Stuart	582	625	-43	-6.9	Whitney	88	87	1	1.1
Sumner	235	237	-2	-0.8	Wilber	1,803	1,761	42	2.4
Superior	1,930	2,055	-125	-6.1	Wilcox	358	360	-2	-0.6
Surprise	44	44	0	0.0	Wilsonville	116	118	-2	-1.7
Sutherland	1,195	1,129	66	5.8	Winnebago	774	768	6	0.8
Sutton	1,404	1,447	-43	-3.0	Winnetoon	67	70	-3	-4.3
Swanton	107	106	1	0.9	Winside	435	468	-33	-7.1
Syracuse	1,821	1,762	59	3.3	Winslow	101	104	-3	-2.9
Table Rock	245	264	-19	-7.2	Wisner	1,214	1,270	-56	-4.4

Place	7-1-2004 Estimate	4-1-2000 Census ¹	2000- 2004 Change	2000-04 Percent Change	Place	7-1-2004 Estimate	4-1-2000 Census ¹	2000- 2004 Change	2000-04 Percent Change
Wolbach	270	287	-17	-5.9	Wynot	174	191	-17	-8.9
Wood Lake	72	72	0	0.0	York	7,796	8,081	-285	-3.5
Wood River	1,205	1,204	1	0.1	Yutan	1,217	1,216	1	0.1
Wymore	1,629	1,656	-27	-1.6					

¹ The Census 2000 counts reflect revisions made for Beatrice, Hickman, McCook, and Peru, Nebraska.

² The original 2004 estimate for Hastings of 23,404 was revised to 25,107 after a challenge process was completed/accepted on 10-26-2005.

Figure 20: Percent Population Change for All Cities in Various City Size Categories: April 1, 2000 to July 1, 2004

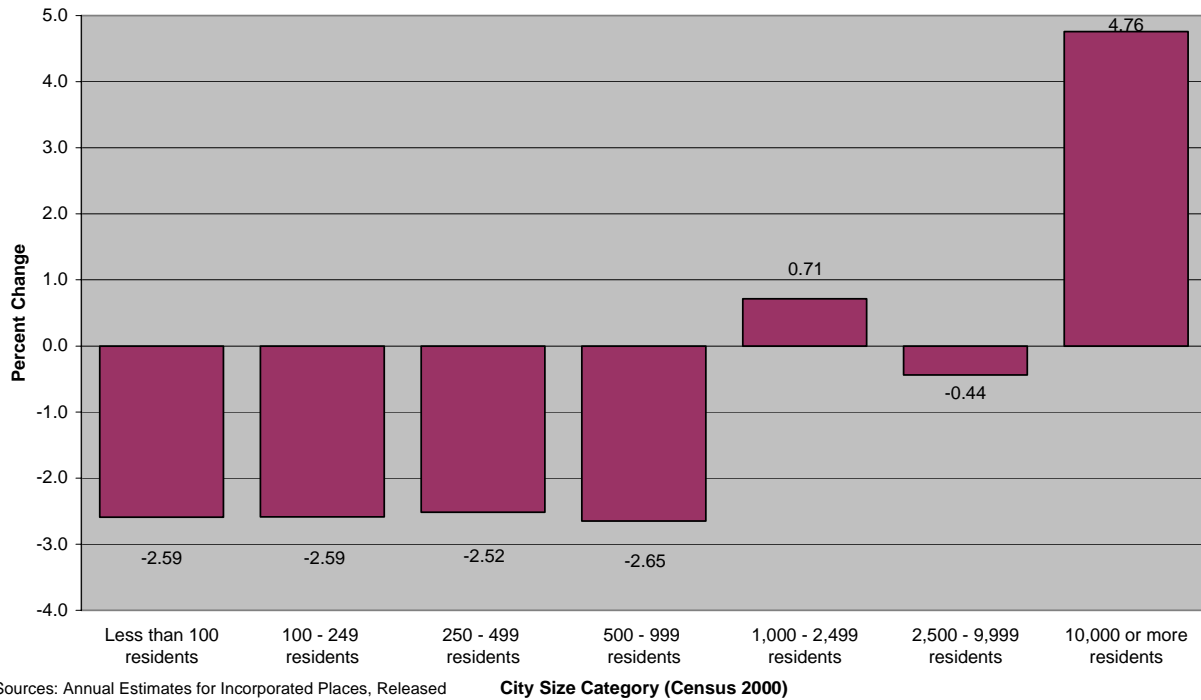
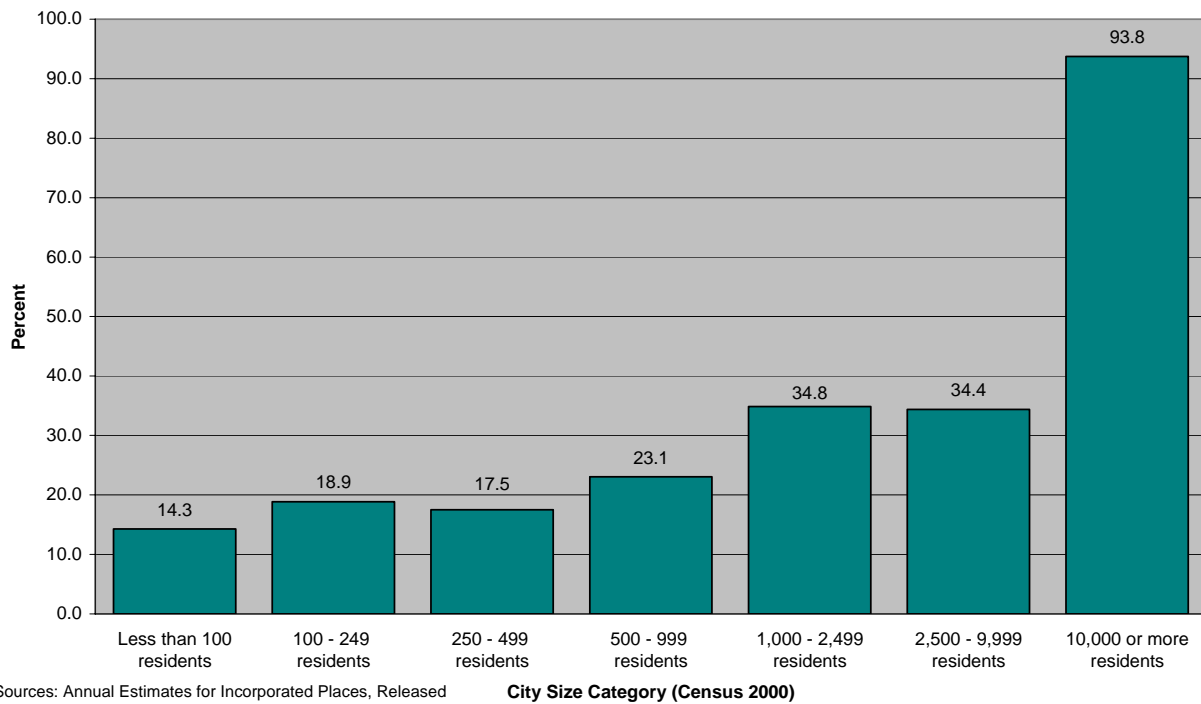


Figure 21: Percent of Nebraska Cities within City Size Category Having Population Growth: April 1, 2000 to July 1, 2004



**Table 12: Population Added to Incorporated Cities Due to Annexation:
April 1, 2000 to July 1, 2004**

Source: Annual Estimates for Incorporated Places, U.S. Census Bureau,
Released June 30, 2005

Sorted Alphabetically		Sorted by Number	
Place	Number	Place	Number
Aurora	2	Elkhorn	1,561
Beatrice ¹	41	Papillion	1,474
Blair	5	Omaha	1,014
Brainard	12	Ogallala	192
Columbus	124	Grand Island	155
Crete	42	Scottsbluff	133
Elkhorn	1,561	Seward	130
Fairbury	18	Columbus	124
Fremont	31	Sidney	87
Gering	8	Lincoln	73
Gothenburg	55	Gothenburg	55
Grand Island	155	North Platte	53
Hastings ²	7	Crete	42
Kearney	6	Beatrice ¹	41
Lincoln	73	Sutherland	36
Nebraska City	2	Fremont	31
Norfolk	5	Fairbury	18
North Platte	53	Valentine	17
Ogallala	192	Brainard	12
Omaha	1,014	Gering	8
O'Neill	8	O'Neill	8
Papillion	1,474	Hastings ²	7
Plattsmouth	5	York	7
Pleasant Dale	6	Kearney	6
Scottsbluff	133	Pleasant Dale	6
Seward	130	South Sioux City	6
Sidney	87	West Point	6
South Sioux City	6	Blair	5
Staplehurst	1	Norfolk	5
Sutherland	36	Plattsmouth	5
Valentine	17	Aurora	2
West Point	6	Nebraska City	2
York	7	Staplehurst	1

Note: The number of persons gained through annexation was determined by comparing the Census 2000 population figure¹ versus the April 1, 2000 population base for estimates. Adjustments to the base most likely reflect annexations but some other changes could also be included in these figures.

¹ The Census 2000 counts reflect revisions made for Beatrice, Hickman, McCook, and Peru, Nebraska.

² Hastings 2004 population estimate was revised; associated adjustments to the 2000 estimates base will not be known until 2005 estimates are released (scheduled for June 2006).