


Spring 2-10-2016

Enrollment Report - Spring 2016

UNO Office of Institutional Effectiveness
University of Nebraska at Omaha

Follow this and additional works at: <https://digitalcommons.unomaha.edu/oieenrollment>

 Part of the [Educational Assessment, Evaluation, and Research Commons](#), and the [Higher Education Commons](#)

Please take our feedback survey at: https://unomaha.az1.qualtrics.com/jfe/form/SV_8cchtFmpDyGfBLE

Recommended Citation

Office of Institutional Effectiveness, UNO, "Enrollment Report - Spring 2016" (2016). *Enrollment Reports*. 70.

<https://digitalcommons.unomaha.edu/oieenrollment/70>

This Report is brought to you for free and open access by the Systems Intelligence and Data Analytics (SIDA) at DigitalCommons@UNO. It has been accepted for inclusion in Enrollment Reports by an authorized administrator of DigitalCommons@UNO. For more information, please contact unodigitalcommons@unomaha.edu.

OFFICE OF INSTITUTIONAL EFFECTIVENESS

ENROLLMENT PROFILE REPORT

SPRING 2016



UNIVERSITY OF
Nebraska
Omaha



University of Nebraska at Omaha

Enrollment Profile Report: Spring 2016

Office of Institutional Effectiveness

Institutional Research

<http://www.unomaha.edu/oie/>

January 2016

EXECUTIVE SUMMARY

This Enrollment Statistical Summary provides delivery and administrative-site information on enrollment headcount and student credit hours. Delivery site reporting counts all students, including those in UNL programs delivered at UNO, but excludes UNO programs only (including the CPACS program delivered in Lincoln).

The purpose of this summary is to provide the undergraduate and graduate enrollments and student credit hour information by college of equivalent academic unit, class, gender and ethnicity. A glossary at the end of the report provides a list of definitions for headings and categories found in the report.

Administrative-Site Campus Summary

- Spring 2016 head count enrollment is 14,445 a 0.8% increase compared to the spring 2015 enrollment of 14,331 (see Figure 1).
- Spring 2016 undergraduate head count enrollment is 11,542 a 0.8% increase compared to the spring 2015 enrollment of 11,449 (see figure 5).
- Spring 2016 graduate head count enrollment is 2,903 a 0.7% increase compared to the spring 2015 of 2,882 (see Figure 5).
- Spring 2016 student credit hours are 159,141 a 0.7% increase compared to the spring 2015 credit hours of 158,014 (see figure 6).
- Spring 2016 undergraduate credit hours are 142,798 up from spring 2015 by 1.0% (see figure 6).
- Spring 2016 graduate credit hours are 16,343 down from spring 2015 by 2.0% (see figure 6).

Delivery-Site

- Spring 2016 head count enrollment is 14,900 a 1.0% increase compared to the spring 2015 enrollment of 14,755 (see Figure 1).
- Spring 2016 undergraduate head count enrollment is 11,997 a 1.0% increase compared to the spring 2015 enrollment of 11,873 (see figure 2).
- Spring 2016 graduate head count enrollment is 2,903 a 0.7% increase compared to the spring 2015 enrollment of 2,882 (see figure 2).
- Spring 2016 student credit hours are 161,136 a 0.4% increase compared to the spring 2015 credit hours of 160,469 (see figure 3).
- Spring 2016 undergraduate credit hours are 144,084 up from spring 2015 by 0.8% (see figure 3).
- Spring 2016 graduate credit hours are 17,052 down from spring 2015 by 2.9% (see figure 3).

Contents

EXECUTIVE SUMMARY	2
Table 1: UNO Delivery-Site and Administrative-Site Head Count Enrollment and Comparison: Spring 2016	6
Figure 1: Delivery-Site & Administrative-Site Head Count Enrollment: Spring 1988-2016.....	7
Figure 2: UNO Delivery-Site Head Count: Spring 2004-2016.....	8
Figure 3: UNO Delivery-Site Student Credit Hours by Student Level: Spring 2004-2016.....	8
Figure 4: UNO Delivery-Site Head Count by Ethnicity by Gender: Spring 2016.....	9
Table 2: Total Uno Delivery-Site Head Count Summary for Undergraduate and Graduate Students Full and Part-Time by Gender and Race Classification: Spring 2016.....	10
Figure 5: UNO Administrative-Site Head Count: Spring 2004-2016.....	11
Figure 6: UNO Administrative-Site Student Credit Hours: Spring 2004-2016	11
Figure 7: UNO Administrative-Site Head Count by Ethnicity by Gender: Spring 2016.....	12
Table 3: Total UNO Administrative-Site Head Count Summary for Undergraduate and Graduate Students by Full and Part-Time by Gender and Race Classification: Spring 2016	13
Figure 8: College of Arts & Science Head Count: Spring 2004-2016.....	14
Figure 9: College of Arts & Sciences Student Credit Hours: Spring 2004-2016.....	14
Figure 10: College of Arts & Sciences Head Count by Ethnicity by Gender: Spring 2016	15
Table 4: College of Arts & Sciences Head Count Summary for Undergraduate and Graduate Students by Full and Part-time by Gender and Race Classification: Spring 2016	16
Figure 11: College of Business Administration Head Count: Spring 2004-2016.....	17
Figure 12: College of Business Administration Student Credit Hours: Spring 2004-2016	17
Figure 13: College of Business Administration Head Count by Ethnicity by Gender: Spring 2016.....	18
Table 5: College of Business Administration Head Count Summary for Undergraduate and Graduate Students by Full and Part-Time by Gender and Race Classification: Spring 2016.....	19
Figure 14: College of Communication, Fine Arts and Media Delivery-Site Head Count: Spring 2006-2016	20
Figure 15: College of Communication, Fine Arts and Media Delivery-Site Student Credit Hours: Spring 2006-2016	20
Figure 16: College of Communication, Fine Arts and Media Delivery-Site Head Count by Ethnicity by Gender: Spring 2016	21
Table 6: College of Communication, Fine Arts and Media Delivery-Site Head Count Summary for Undergraduate and Graduate Students by Full and Part-Time by Gender and Race Classification: Spring 2016	22
Figure 17: College of Communication, Fine Arts and Media: Administrative-Site Head Count: Spring 2006-2016	23
Figure 18: College of Communication, Fine Arts and Media: Administrative-Site Student Credit Hours: Spring 2006-2016.....	23
Figure 19: College of Communication, Fine Arts and Media: Administrative-Site Head Count by Ethnicity by Gender: Spring 2016.....	24
Table 7: College of Communication, Fine Arts and Media Administrative-Site Head Count Summary for Undergraduate and Graduate Students by Full and Part-Time by Gender and Race Classification: Spring 2016.....	25
Figure 20: College of Education Head Count: Spring 2004-2016.....	26
Figure 21: College of Education Student Credit Hours: Spring 2004-2016	26

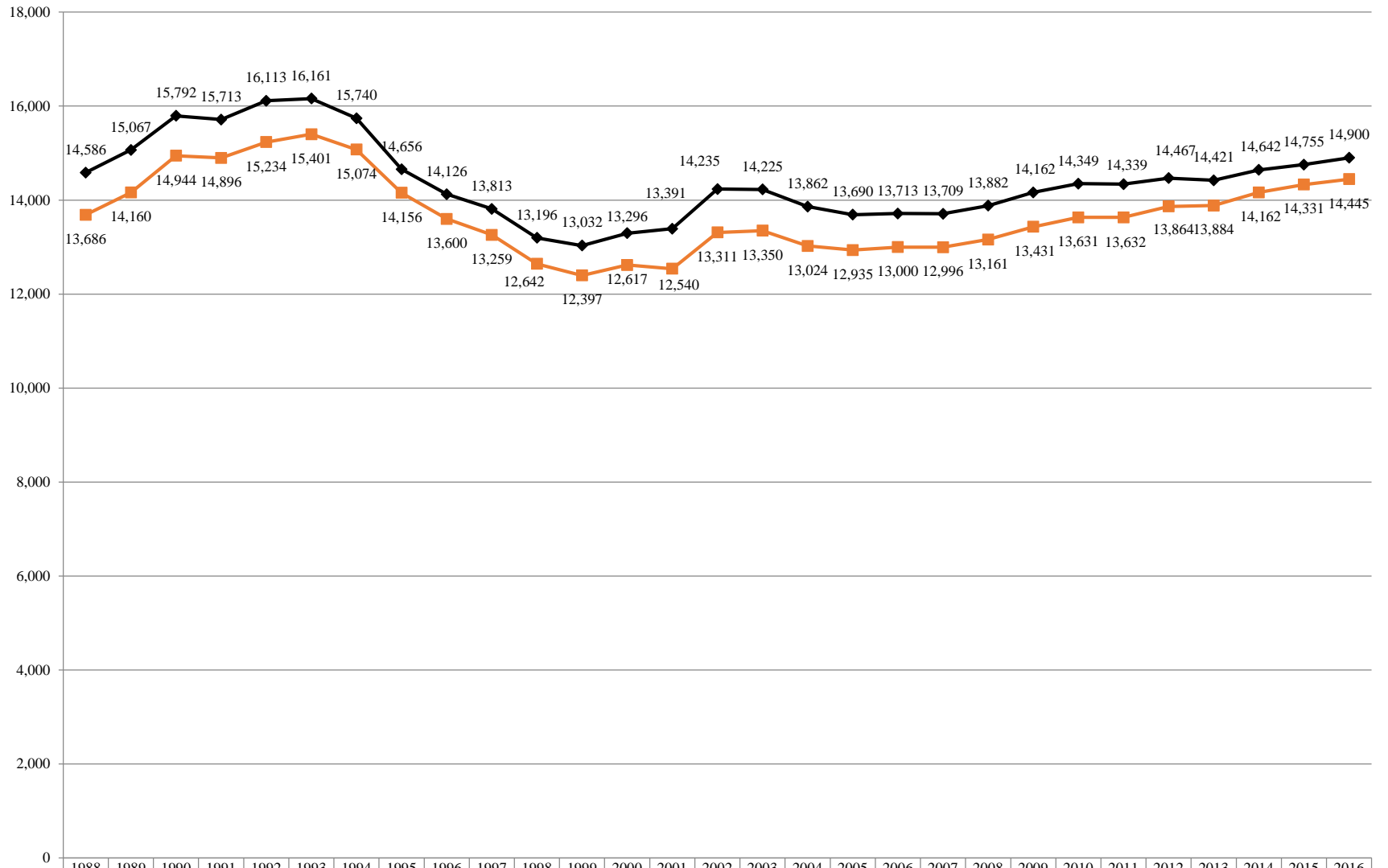
Figure 22: College of Education Head Count by Ethnicity by Gender: Spring 2016.....	27
Table 8: College of Education Head Count Summary for Undergraduate and Graduate Students by Full and Part-Time by Gender and Race Classification: Spring 2016.....	28
Figure 23: College of Information Science & Technology Head Count: Spring 2004-2016.....	29
Figure 24: College of Information Science & Technology Student Credit Hours: Spring 2004-2016.....	29
Figure 25: College of Information Science & Technology Head Count by Ethnicity by Gender: Spring 2016.....	30
Table 9: College of Information Science and Technology Head Count Summary for Undergraduate and Graduate Summary for Full and Part-Time by Gender and Race Classification: Spring 2016.....	31
Figure 26: College of Public Affairs & Community Service Delivery-Site Head Count: Spring 2004-2016	32
Figure 27: College of Public Affairs & Community Service Delivery-Site Student Credit Hours: Spring 2004-2016	32
Figure 28: College of Public Affairs & Community Service Delivery-Site Head Count by Ethnicity by Gender: Spring 2016	33
Table 10: College of Public Affairs & Community Service Delivery-Site Head Count for Undergraduate and Graduate Students by Full and Part-time by Gender and Race Classification: Spring 2016	34
Figure 29: College of Public Affairs & Community Service Administrative-Site Head Count: Spring 2004-2016 ...	35
Figure 30: College of Public Affairs & Community Service Administrative-Site Student Credit Hours: Spring 2004-2016.....	35
Figure 31: College of Public Affairs & Community Service Administrative-Site Head Count by Ethnicity by Gender: Spring 2016.....	36
Table 11: College of Public Affairs & Community Service Administrative-Site Head Count Summary for Undergraduate Graduate Students by Full and Part-Time by Gender and Race Classification: Spring 2016	37
Figure 32: College of CPACS, Division of Continuing Studies Head Count: Spring 2004-2016.....	38
Figure 33: College of CPACS, Division of Continuing Studies Head Count by Ethnicity by Gender: Spring 2016 ..	38
Table 12: College of CPACS Division of Continuing Studies Head Count Summary for Undergraduate Students by Full and Part-Time by Gender and Race Classification: Spring 2016.....	39
Table 13: Cooperative Graduate Program Head Count Summary for Graduate Students by Full and Part-time by Gender and Race Classification: Spring 2016	40
Figure 34: University Division Head Count: Spring 2004-2016	41
Figure 35: University Division Student Credit Hours: Spring 2004-2016.....	41
Figure 36: University Division Head Count by Ethnicity by Gender: Spring 2016	41
Table 14: University Division Head Count Summary for Undergraduate Students by Full and Part-Time by Gender and Race Classification: Spring 2016.....	42
Figure 37: Non-Degree/Intercampus Special Undergraduate Students Head Count: Spring 2004-2016	43
Figure 38: Non-Degree/Intercampus Special Undergraduate Students Head Count by Ethnicity by Gender: Spring 2016.....	43
Table 15: Non-Degree/Intercampus Head Count Summary for Special Undergraduate Students by Full and Part-Time by Gender and Race Classification: Spring 2016.....	44
Figure 39: Non-Degree/Intercampus Special Graduate Students Head Count: Spring 2004-2016	45
Figure 40: Non-Degree/Intercampus Special Graduate Students Head Count by Ethnicity by Gender: Spring 2016 45	45

Table 16: Non-Degree/Intercampus Head Count Summary for Special Graduate Students by Full and Part-time by Gender and Race Classification: Spring 2016	46
Figure 41: Other Honors and Library Hours Student Credit Hours by Level of Instruction: Spring 2004-2016	47
Figure 42: College of Agriculture Delivery-Site Head Count: Spring 2004-2016	48
Figure 43: College of Agriculture Delivery-Site Student Credit Hours: Spring 2004-2016.....	48
Figure 44: College of Agriculture Delivery-Site Head Count by Ethnicity by Gender: Spring 2016	48
Table 17: College of Agriculture Head Count Summary for Undergraduate Students by Full and Part-Time by Gender and Race Classification: Spring 2016	49
Figure 45: College of Architecture Delivery-Site Head Count: Spring 2004-2016.....	50
Figure 46: College of Architecture Delivery-Site Student Credit Hours: Spring 2004-2016.....	50
Figure 47: College of Architecture Delivery-Site Head Count by Ethnicity by Gender: Spring 2016.....	50
Table 18: College of Architecture Head Count Summary for Undergraduate Students by Full and Part-Time by Gender and Race Classification: Spring 2016	51
Figure 48: College of Engineering Delivery-Site Head Count: Spring 2004-2016	52
Figure 49: College of Engineering Delivery-Site Student Credit Hours: Spring 2004-2016.....	52
Figure 50: College of Engineering Delivery-Site Head Count by Ethnicity by Gender: Spring 2016	53
Table 19: College of Engineering Head count Summary for Undergraduate Students by Full and Part-Time by Gender and Race Classification: Spring 2016	54
Figure 51: College of Education and Human Science Delivery-Site Head Count: Spring 2004-2016.....	55
Figure 52: College of Education and Human Sciences Delivery-Site Student Credit Hours: Spring 2004-2016.....	55
Glossary.....	56

Table 1: UNO Delivery-Site and Administrative-Site Head Count Enrollment and Comparison: Spring 2016

	Spring 2016		Spring 2015	Spring 15-16 Administrative-Site	
	Delivery-Site	Administrative-Site	Administrative-Site	Numerical Change	Percent Change
UNO:					
<i>Undergraduate</i>					
Arts & Science	3,214	3,214	3,277	-63	-1.9%
Business Administration	1,906	1,906	1,867	39	2.1%
Communication, Fine Arts & Media	935	935	929	6	0.6%
Education	1,339	1,339	1,345	-6	-0.4%
Information Science and Technology	854	854	772	82	10.6%
Public Affairs & Community Services	920	1,247	1,149	98	8.5%
Division of Continuing Studies	1,174	1,174	1,217	-43	-3.5%
Sub-total CPACS including Cont. Studies	2,094	2,421	2,366	55	2.3%
Non-Degree	303	303	277	26	9.4%
University Division	570	570	616	-46	-7.5%
Total Undergraduate	11,215	11,542	11,449	93	0.8%
<i>Graduate</i>					
Arts & Science	423	423	420	3	0.7%
Business Administration	342	342	386	-44	-11.4%
Communication, Fine Arts & Media	87	87	84	3	3.6%
Education	828	828	797	31	3.9%
Information Science and Technology	401	401	328	73	22.3%
Public Affairs & Community Services	525	525	501	24	4.8%
New Cooperative Graduate Programs	6	6	8	-2	-25.0%
Undeclared	291	291	358	-67	-18.7%
Total Graduate	2,903	2,903	2,882	21	0.7%
UNO Administrative-Site Total		14,445	14,331	114	0.8%
UNL:	Spring 2016		Spring 2015	Numerical Change	Percent Change
Agriculture	10		14		
Architecture	13		15		
Engineering & Technology	759		770		
Education and Human Science	0		1		
Total UNL in Omaha	782		800	-18	-2.3%
	Spring 2016		Spring 2015	Numerical Change	Percent Change
UNO Delivery-Site Total	14,900		14,421	479	3.3%

Figure 1: Delivery-Site & Administrative-Site Head Count Enrollment: Spring 1988-2016



	1988	1989	1990	1991	1992	1993	1994	1995	1996	1997	1998	1999	2000	2001	2002	2003	2004	2005	2006	2007	2008	2009	2010	2011	2012	2013	2014	2015	2016
Delivery-Site	14,586	15,067	15,792	15,713	16,113	16,161	15,740	14,656	14,126	13,813	13,196	13,032	13,296	13,391	14,235	14,225	13,862	13,690	13,713	13,709	13,882	14,162	14,349	14,339	14,467	14,421	14,642	14,755	14,900
Administrative-Site	13,686	14,160	14,944	14,896	15,234	15,401	15,074	14,156	13,600	13,259	12,642	12,397	12,617	12,540	13,311	13,350	13,024	12,935	13,000	12,996	13,161	13,431	13,631	13,632	13,864	13,884	14,162	14,331	14,445

Figure 2: UNO Delivery-Site Head Count: Spring 2004-2016

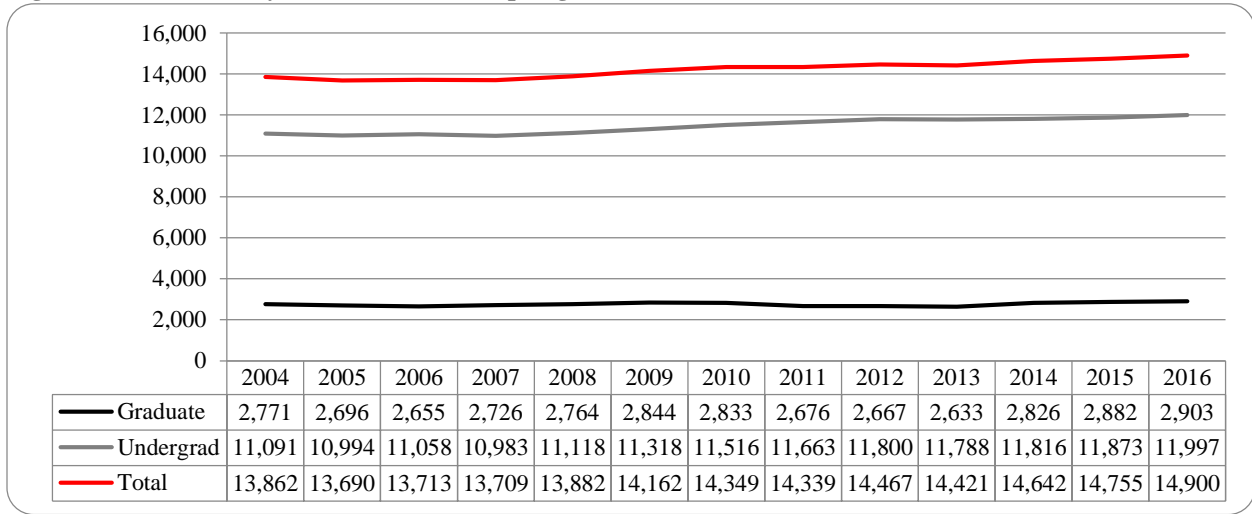


Figure 3: UNO Delivery-Site Student Credit Hours by Student Level: Spring 2004-2016

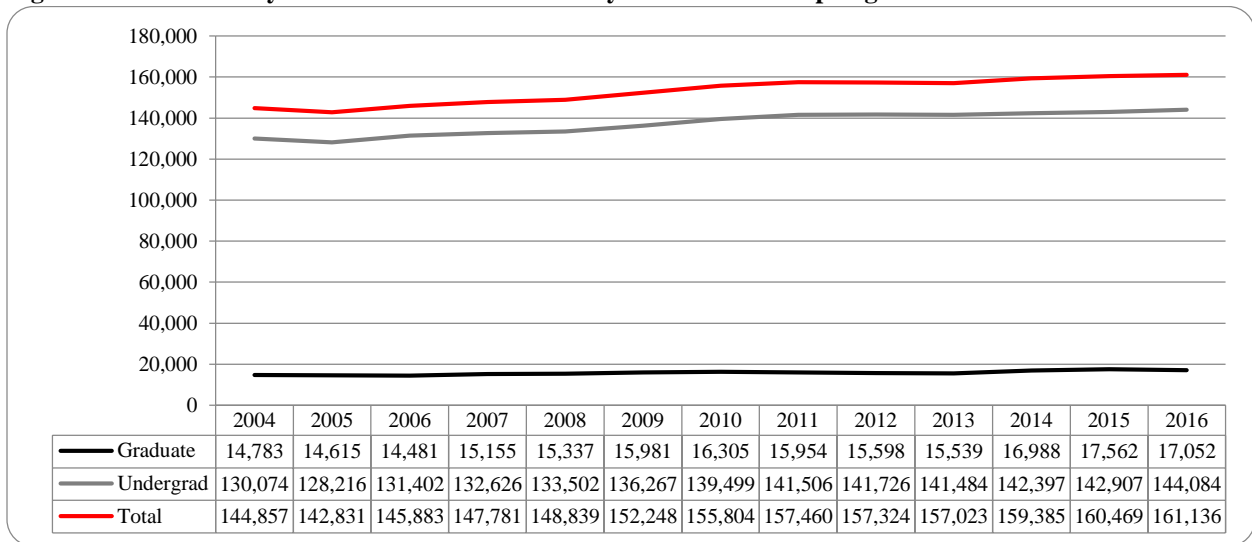


Figure 4: UNO Delivery-Site Head Count by Ethnicity by Gender: Spring 2016

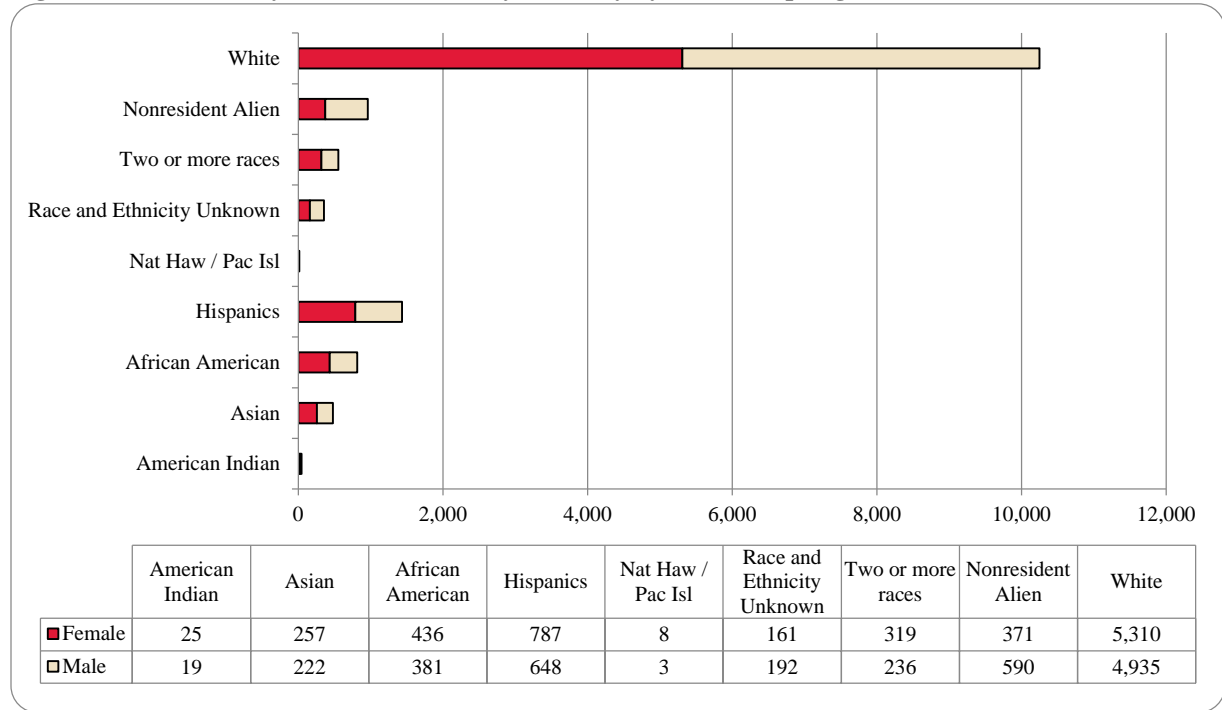


Table 2: Total Uno Delivery-Site Head Count Summary for Undergraduate and Graduate Students Full and Part-Time by Gender and Race Classification: Spring 2016

	American Indian		Asian		African American		Hispanics		Nat Haw / Pac Isl		Race Unknown		Two or more races		White		Nonresident Alien		Total			
	F	M	F	M	F	M	F	M	F	M	F	M	F	M	F	M	F	M	F	M	Total	
Undergraduate																						
Full-Time																						
First-Time Freshmen			3	1		3	1	3				1	1		10	11	6	17	21	36	57	
Other Freshmen	3	4	43	27	74	40	141	112	2	2	14	22	56	42	576	560	43	71	952	880	1,832	
Sophomores	2	1	54	41	66	39	159	143	2	1	21	33	51	40	690	730	45	77	1,090	1,105	2,195	
Juniors	5	3	40	31	68	61	140	100	1		20	28	63	46	819	816	54	70	1,210	1,155	2,365	
Seniors	3	2	56	38	63	62	132	91			35	33	45	27	889	879	30	60	1,253	1,192	2,445	
Special		1	2		1	2	4	4			4	1		4	39	42	2	6	52	60	112	
Total Full-Time	13	11	198	138	272	207	577	453	5	3	94	118	216	159	3,023	3,038	180	301	4,578	4,428	9,006	
Part-Time																						
First-Time Freshmen						1					1				3		4	4	8	5	13	
Other Freshmen		1	6	9	22	8	22	33			7	4	10	8	110	128	1	1	178	192	370	
Sophomores	1	2	6	7	10	16	31	25	1		4	3	12	9	143	145	5	4	213	211	424	
Juniors	3		6	17	29	40	34	27			7	11	15	11	262	270	3	4	359	380	739	
Seniors	5	1	7	15	40	46	45	59	2		17	22	11	21	391	443	5	7	523	614	1,137	
Special		1	7	8	5	9	8	9			6	7	2	1	119	123	2	1	149	159	308	
Total Part-Time	9	5	32	56	106	120	140	153	3		42	47	50	50	1,028	1,109	20	21	1,430	1,561	2,991	
Total Undergraduate	22	16	230	194	378	327	717	606	8	3	136	165	266	209	4,051	4,147	200	322	6,008	5,989	11,997	
Graduate																						
Full-Time																						
Certificate																1					1	1
Masters	1	1	2	3	13	10	18	6			4	1	13	8	274	133	93	144	418	306	724	
Doctoral			1									1	2	1	14	13	4	11	21	26	47	
Special Graduate				1		1		1			1	1	1		9	26	3	20	14	50	64	
Total Full-Time	1	1	3	4	13	11	18	7			5	3	16	9	297	173	100	175	453	383	836	
Part-time																						
Certificate			2	2	1	2	1				2		1		25	12	2	1	34	17	51	
Masters	2	2	17	15	36	29	37	27			11	17	29	13	727	473	54	64	913	640	1,553	
Doctoral			2	1	1	6	4	2			2		3	2	58	43	5	11	75	65	140	
Special Graduate			3	6	7	6	10	6			5	7	4	3	152	87	10	17	191	132	323	
Total Part-Time	2	2	24	24	45	43	52	35			20	24	37	18	962	615	71	93	1,213	854	2,067	
Total Graduate	3	3	27	28	58	54	70	42			25	27	53	27	1,259	788	171	268	1,666	1,237	2,903	
Total All Students	25	19	257	222	436	381	787	648	8	3	161	192	319	236	5,310	4,935	371	590	7,674	7,226	14,900	

Figure 5: UNO Administrative-Site Head Count: Spring 2004-2016

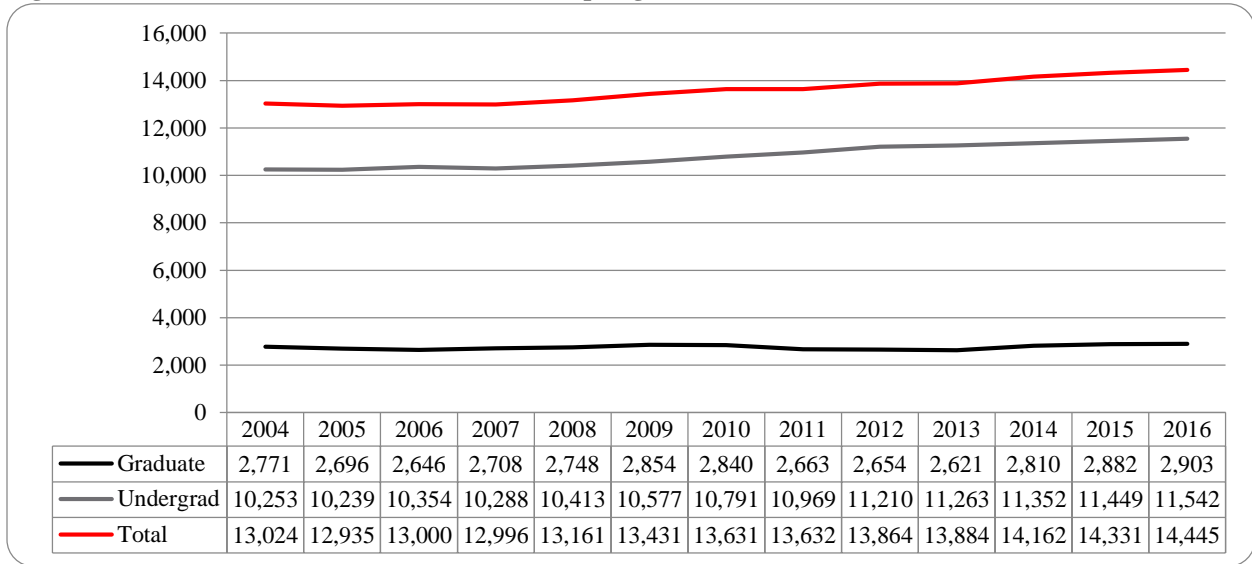


Figure 6: UNO Administrative-Site Student Credit Hours: Spring 2004-2016

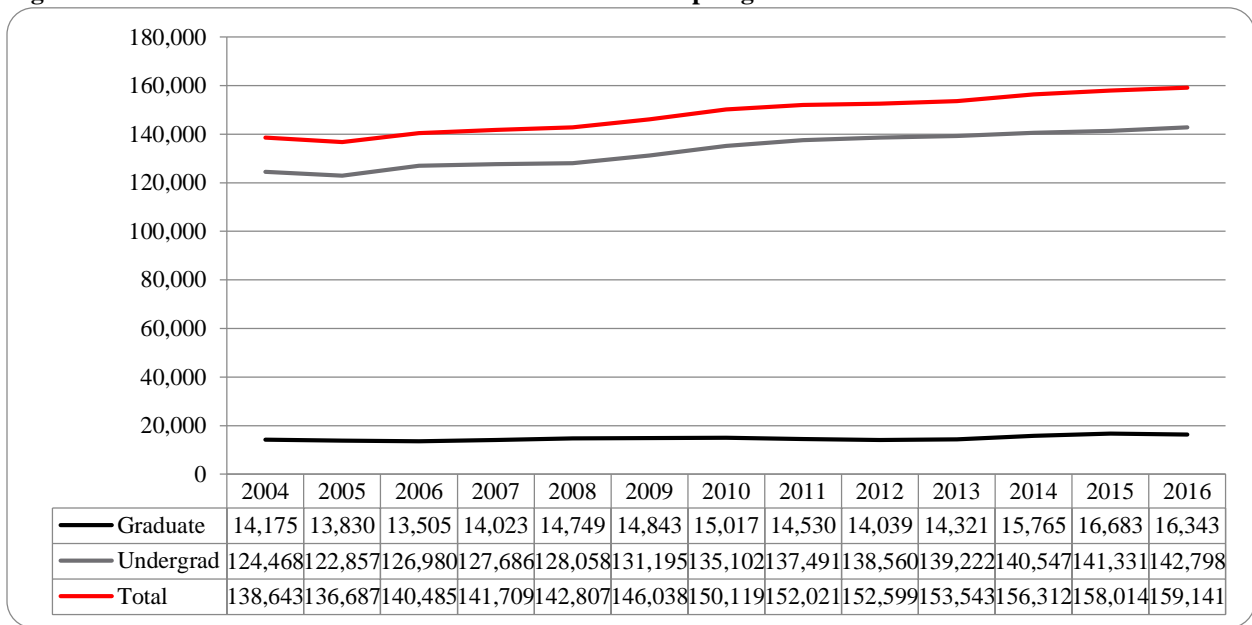


Figure 7: UNO Administrative-Site Head Count by Ethnicity by Gender: Spring 2016

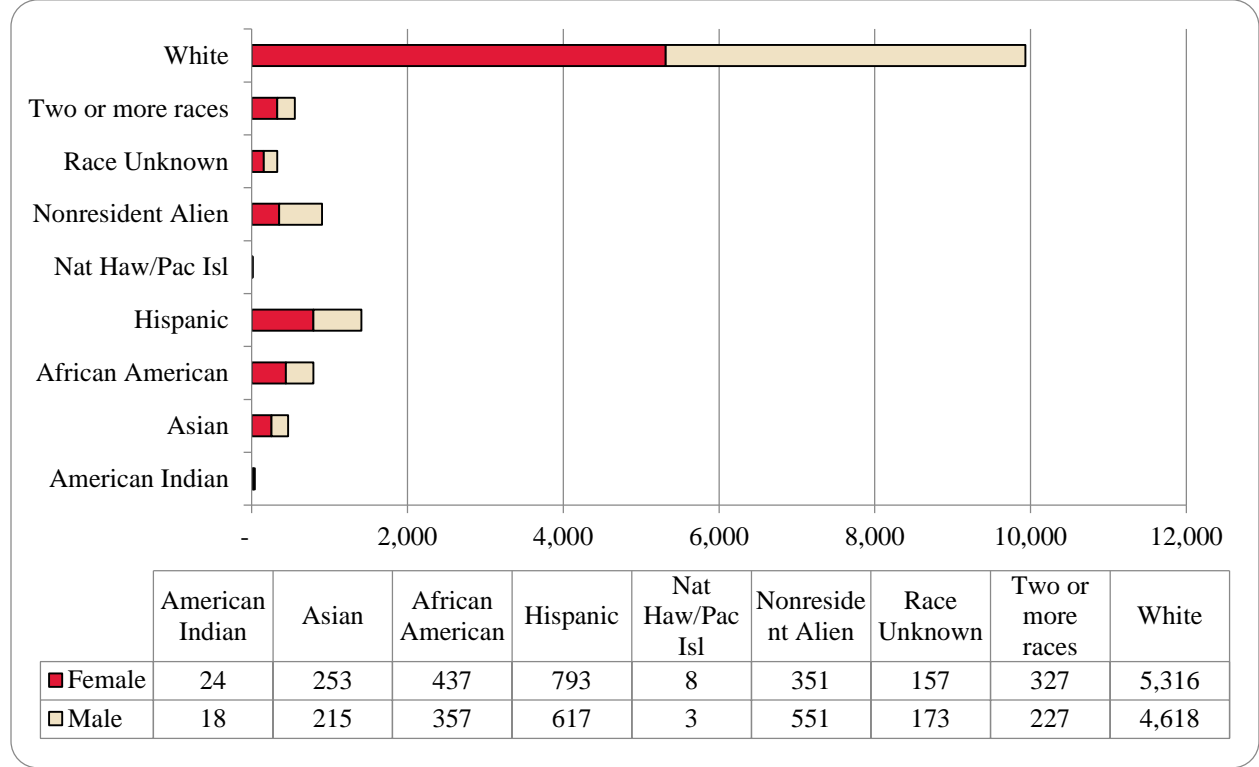


Table 3: Total UNO Administrative-Site Head Count Summary for Undergraduate and Graduate Students by Full and Part-Time by Gender and Race Classification: Spring 2016

	American Indian		Asian		African American		Hispanics		Nat Haw / Pac Isl		Race Unknown		Two or more races		White		Nonresident Alien		Total		
	F	M	F	M	F	M	F	M	F	M	F	M	F	M	F	M	F	M	F	M	Total
Undergraduate																					
Full-Time																					
First-Time Freshmen			3	1		1	1	3				1	1		10	10	6	16	21	32	53
Other Freshmen	3	3	42	26	74	40	144	110	2	2	14	18	56	42	581	516	37	60	953	817	1,770
Sophomores	1	1	54	37	65	40	158	131	2	1	20	30	51	38	697	661	40	74	1,088	1,013	2,101
Juniors	5	3	39	32	69	58	144	100	1		19	27	67	42	829	785	48	62	1,221	1,109	2,330
Seniors	3	2	54	37	64	55	132	85			35	23	49	28	881	761	28	46	1,246	1,037	2,283
Special		1	2		1	2	4	3			4	1		4	39	39	2	5	52	55	107
Total Full-Time	12	10	194	133	273	196	583	432	5	3	92	100	224	154	3,037	2,772	161	263	4,581	4,063	8,644
Part-Time																					
First-Time Freshmen						1					1				3		4	4	8	5	13
Other Freshmen		1	6	9	22	8	22	33			7	4	10	8	109	122	1	1	177	186	363
Sophomores	1	2	6	7	10	15	30	24	1		3	3	12	8	144	136	5	4	212	199	411
Juniors	3		6	16	28	33	34	23			7	11	15	10	259	258	3	4	355	355	710
Seniors	5	1	7	14	41	42	46	54	2		16	22	11	19	389	423	4	6	521	581	1,102
Special		1	7	8	5	8	8	9			6	6	2	1	116	119	2	1	146	153	299
Total Part-Time	9	5	32	54	106	107	140	143	3		40	46	50	46	1,020	1,058	19	20	1,419	1,479	2,898
Total Undergraduate	21	15	226	187	379	303	723	575	8	3	132	146	274	200	4,057	3,830	180	283	6,000	5,542	11,542
Graduate																					
Full-Time																					
Certificate															1					1	1
Masters	1	1	2	3	13	10	18	6			4	1	13	8	274	133	93	144	418	306	724
Doctoral			1									1	2	1	14	13	4	11	21	26	47
Special Graduate				1		1		1			1	1	1		9	26	3	20	14	50	64
Total Full-Time	1	1	3	4	13	11	18	7			5	3	16	9	297	173	100	175	453	383	836
Part-Time																					
Certificate			2	2	1	2	1				2		1		25	12	2	1	34	17	51
Masters	2	2	17	15	36	29	37	27			11	17	29	13	727	473	54	64	913	640	1,553
Doctoral			2	1	1	6	4	2			2		3	2	58	43	5	11	75	65	140
Special Graduate			3	6	7	6	10	6			5	7	4	3	152	87	10	17	191	132	323
Total Part-Time	2	2	24	24	45	43	52	35			20	24	37	18	962	615	71	93	1,213	854	2,067
Total Graduate	3	3	27	28	58	54	70	42			25	27	53	27	1,259	788	171	268	1,666	1,237	2,903
Total All Students	24	18	253	215	437	357	793	617	8	3	157	173	327	227	5,316	4,618	351	551	7,666	6,779	14,445

Figure 8: College of Arts & Science Head Count: Spring 2004-2016

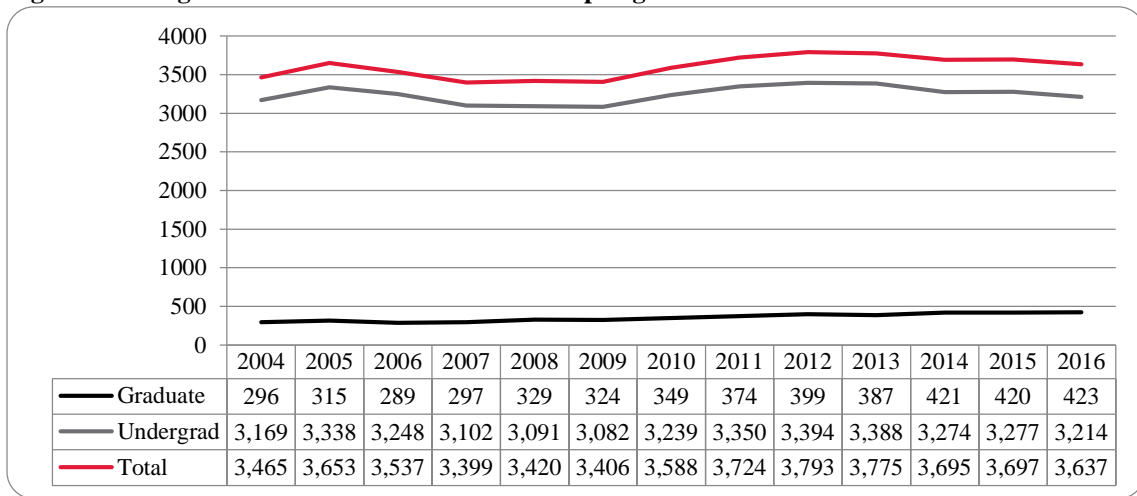


Figure 9: College of Arts & Sciences Student Credit Hours: Spring 2004-2016

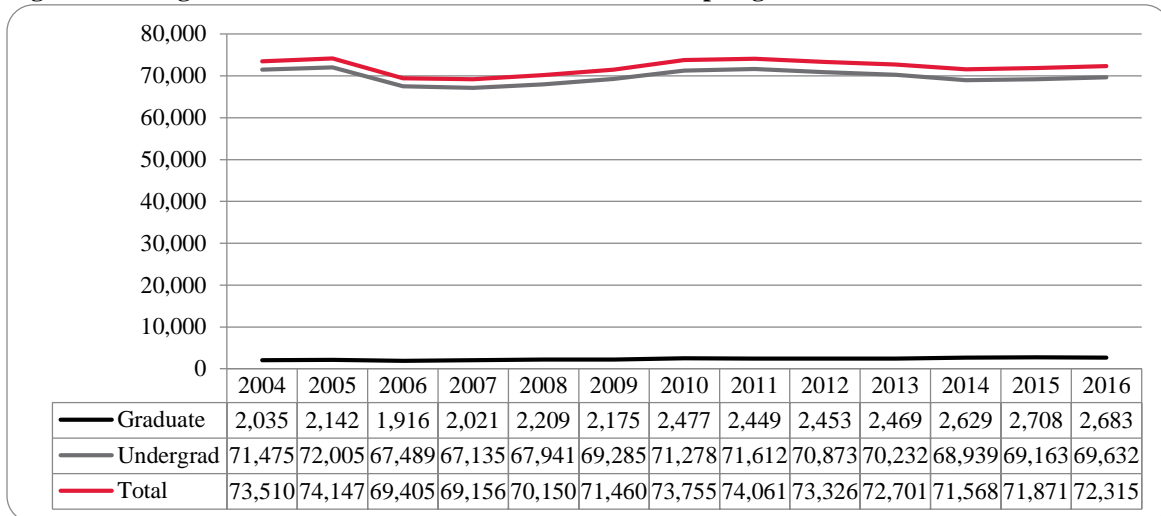


Figure 10: College of Arts & Sciences Head Count by Ethnicity by Gender: Spring 2016

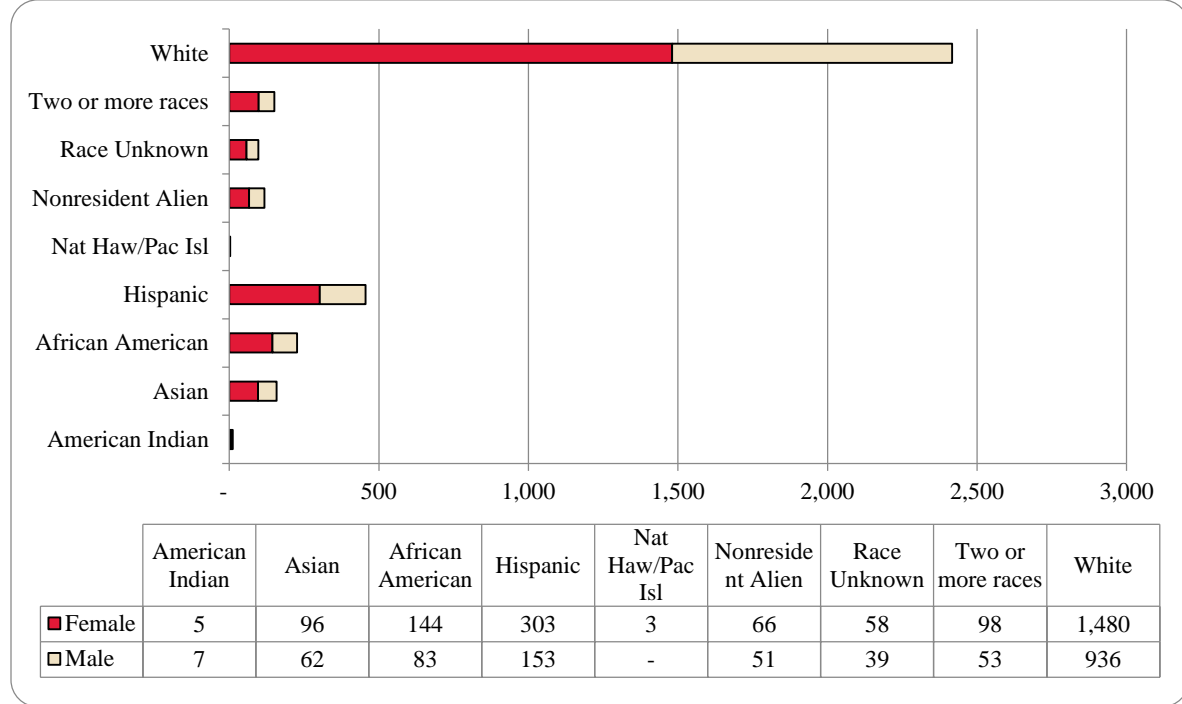


Table 4: College of Arts & Sciences Head Count Summary for Undergraduate and Graduate Students by Full and Part-time by Gender and Race Classification: Spring 2016

	American Indian		Asian		African American		Hispanics		Nat Haw / Pac Isl		Race Unknown		Two or more races		White		Nonresident Alien		Total			
	F	M	F	M	F	M	F	M	F	M	F	M	F	M	F	M	F	M	F	M	Total	
Undergraduate																						
Full-Time																						
First-Time Freshmen			1				1	1				1			6	2	2	1	10	5	15	
Other Freshmen		2	19	7	28	5	68	18	1		6	1	21	9	229	89	16	10	388	141	529	
Sophomores	1		30	12	35	14	59	33	1		13	9	19	10	252	153	9	11	419	242	661	
Juniors	1	2	12	13	24	22	60	33	1		7	6	17	14	261	161	15	10	398	261	659	
Seniors	1		24	11	20	11	52	27			9	6	15	10	248	153	8	3	377	221	598	
Special		1				1	1	2			2				11	7		2	14	13	27	
Total Full-Time	3	5	86	43	107	53	241	114	3		37	23	72	43	1,007	565	50	37	1,606	883	2,489	
Part-Time																						
First-Time Freshmen											1							1	1	1	2	
Other Freshmen			1		10	1	5	6			2		3		32	15	1		54	22	76	
Sophomores	1	1	1	2	3	3	13	3			2		2	3	43	29	2		67	41	108	
Juniors			1	7	7	6	16	3			2	5	8	1	75	60		2	109	84	193	
Seniors		1	1	7	11	6	15	15			8	6	5	4	106	90	3		149	129	278	
Special			3	3	1	4	3	2			1	1		1	24	25			32	36	68	
Total Part-Time	1	2	7	19	32	20	52	29			16	12	18	9	280	219	6	3	412	313	725	
Total Part-Time	4	7	93	62	139	73	293	143	3		53	35	90	52	1,287	784	56	40	2,018	1,196	3,214	
Graduate																						
Full-Time																						
Certificate																						
Masters	1				2	4	3	1			1		2		56	33	5	7	70	45	115	
Doctoral			1									1	1		6	4			8	5	13	
Special Graduate																						
Total Full-Time	1		1		2	4	3	1			1	1	3		62	37	5	7	78	50	128	
Part-Time																						
Certificate											1		1		4	1			6	1	7	
Masters			1		3	6	7	8			3	3	4	1	117	108	5	4	140	130	270	
Doctoral			1					1							10	6			11	7	18	
Special Graduate																						
Total Part-Time			2		3	6	7	9			4	3	5	1	131	115	5	4	157	138	295	
Total Graduate	1		3		5	10	10	10			5	4	8	1	193	152	10	11	235	188	423	
Total All Students	5	7	96	62	144	83	303	153	3		58	39	98	53	1,480	936	66	51	2,253	1,384	3,637	

Figure 11: College of Business Administration Head Count: Spring 2004-2016

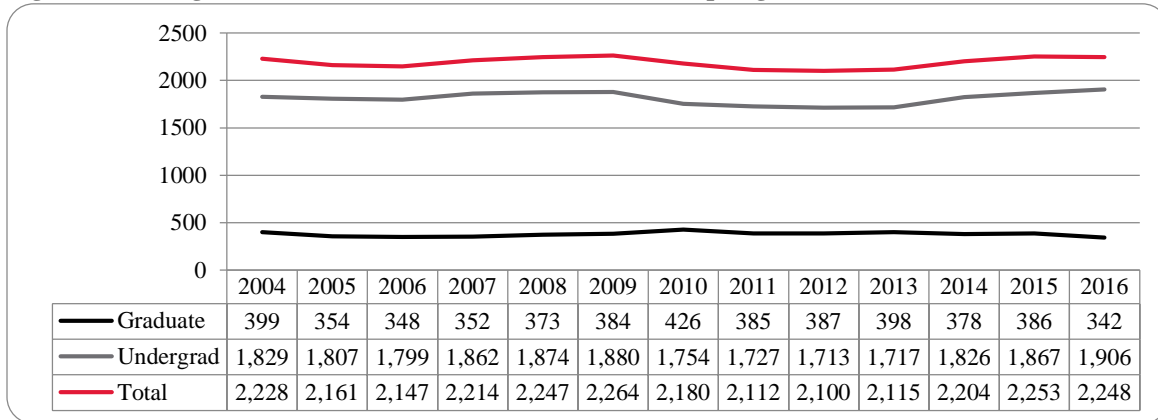


Figure 12: College of Business Administration Student Credit Hours: Spring 2004-2016

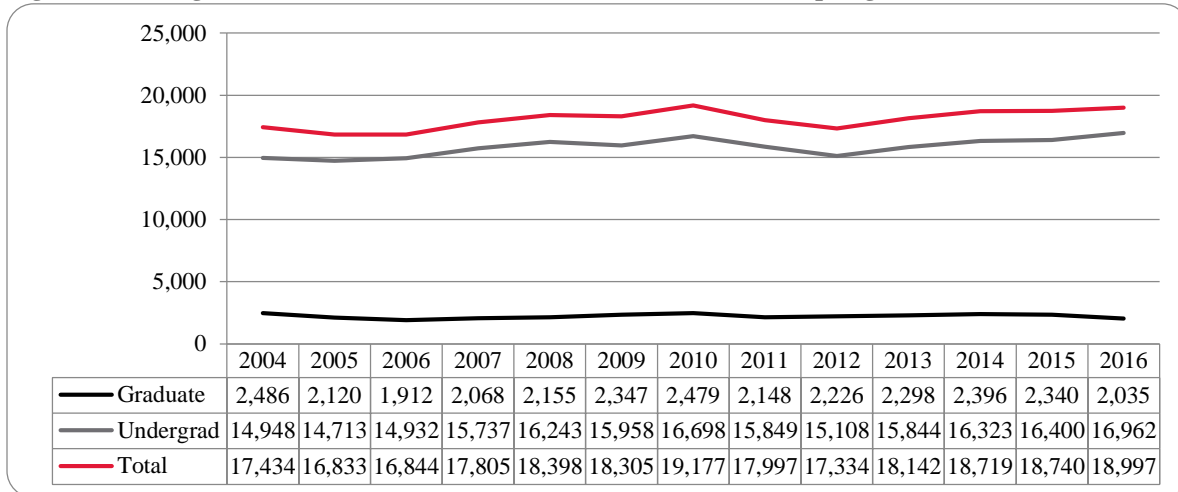


Figure 13: College of Business Administration Head Count by Ethnicity by Gender: Spring 2016

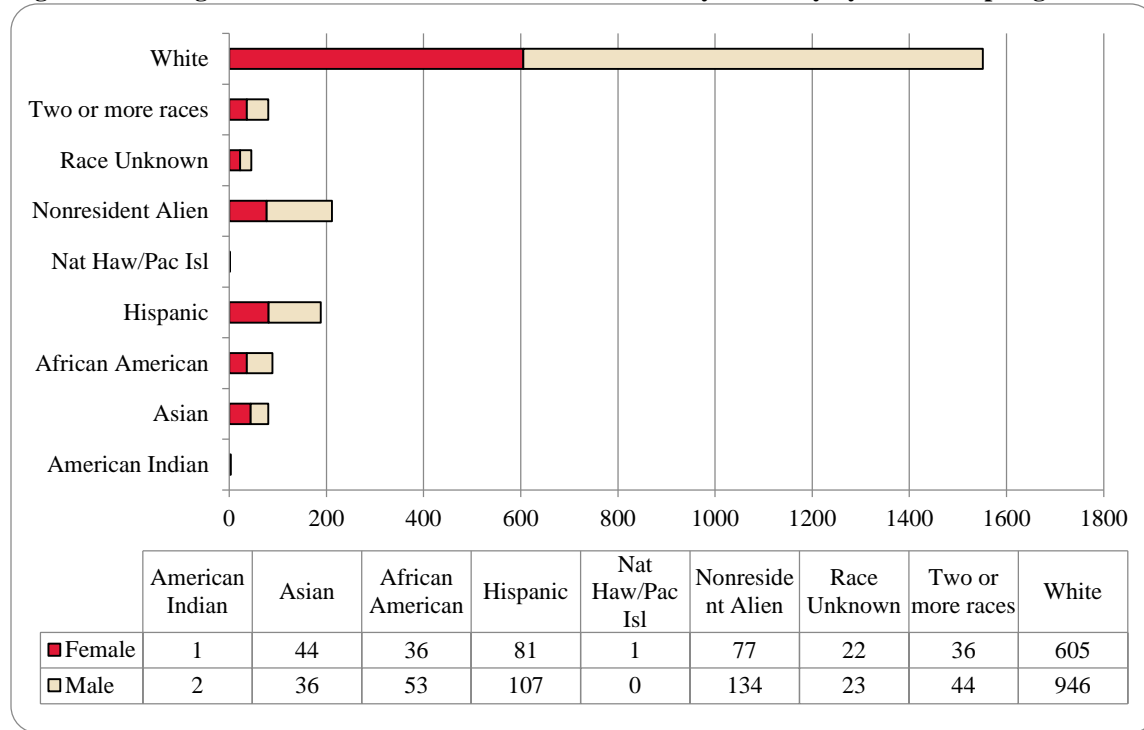


Table 5: College of Business Administration Head Count Summary for Undergraduate and Graduate Students by Full and Part-Time by Gender and Race Classification: Spring 2016

	American Indian		Asian		African American		Hispanics		Nat Haw / Pac Isl		Race Unknown		Two or more races		White		Nonresident Alien		Total			
	F	M	F	M	F	M	F	M	F	M	F	M	F	M	F	M	F	M	F	M	Total	
Undergraduate																						
Full-Time																						
First-Time Freshmen							1								2	1	1	4	3	6	9	
Other Freshmen	1		3	1	7	6	8	9			3	5	5	6	56	76	7	18	90	121	211	
Sophomores			4	8	4	4	25	27	1		2	3	10	8	87	135	11	27	144	212	356	
Juniors			13	2	3	4	18	26			8	5	9	8	112	196	17	22	180	263	443	
Seniors			14	9	6	13	14	16			1	3	2	7	101	165	12	23	150	236	386	
Special											1	1			4	3	1		6	4	10	
Total Full-Time	1		34	20	20	28	65	78	1		15	17	26	29	362	576	49	94	573	842	1,415	
Part-Time																						
First-Time Freshmen															1		2	2	3	2	5	
Other Freshmen				1	2		1	6					1	10	10		1	13	19	32		
Sophomores			3	1		2	3	6					2	1	15	23	2	1	25	34	59	
Juniors			2	4	5	7	3	6				2		3	60	70	1	1	71	93	164	
Seniors			2	2	4	8	5	6			3	2		6	57	90	1	2	72	116	188	
Special		1	1		1	1					2		1		18	16	2		25	18	43	
Total Part-Time		1	8	8	12	18	12	24			5	4	3	11	161	209	8	7	209	282	491	
Total Undergraduate	1	1	42	28	32	46	77	102	1		20	21	29	40	523	785	57	101	782	1,124	1,906	
Graduate																						
Full-Time																						
Certificate																						
Masters		1		1	1	2	3						2	2	12	21	12	25	30	52	82	
Doctoral																						
Special Graduate																						
Total Full-Time		1		1	1	2	3						2	2	12	21	12	25	30	52	82	
Part-Time																						
Certificate															1				1		1	
Masters			2	7	3	5	1	5			2	2	5	2	69	140	8	8	90	169	259	
Doctoral																						
Special Graduate																						
Total Part-Time			2	7	3	5	1	5			2	2	5	2	70	140	8	8	91	169	260	
Total Graduate		1	2	8	4	7	4	5			2	2	7	4	82	161	20	33	121	221	342	
Total All Students	1	2	44	36	36	53	81	107	1		22	23	36	44	605	946	77	134	903	1,345	2,248	

Figure 14: College of Communication, Fine Arts and Media Delivery-Site Head Count: Spring 2006-2016

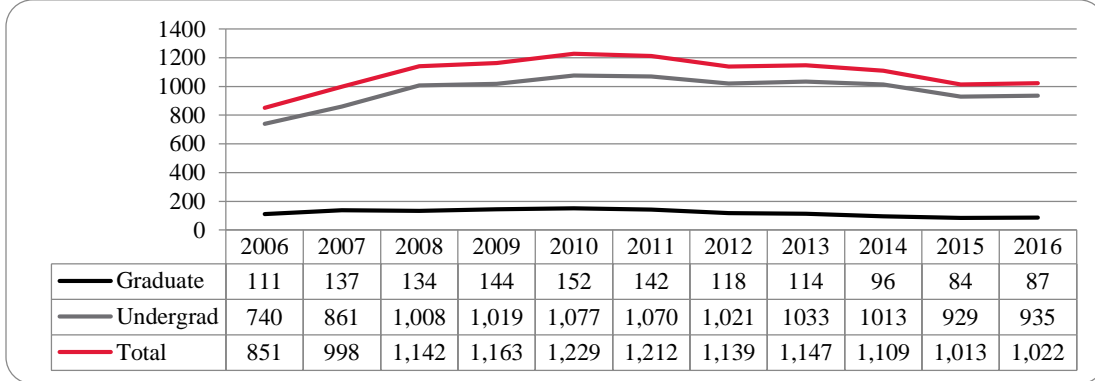


Figure 15: College of Communication, Fine Arts and Media Delivery-Site Student Credit Hours: Spring 2006-2016

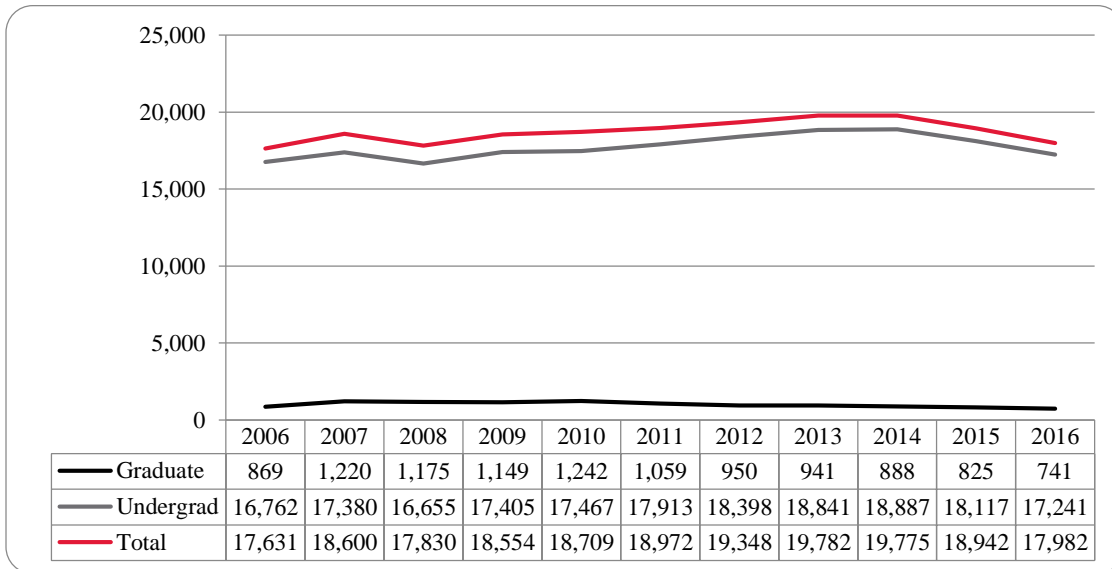


Figure 16: College of Communication, Fine Arts and Media Delivery-Site Head Count by Ethnicity by Gender: Spring 2016

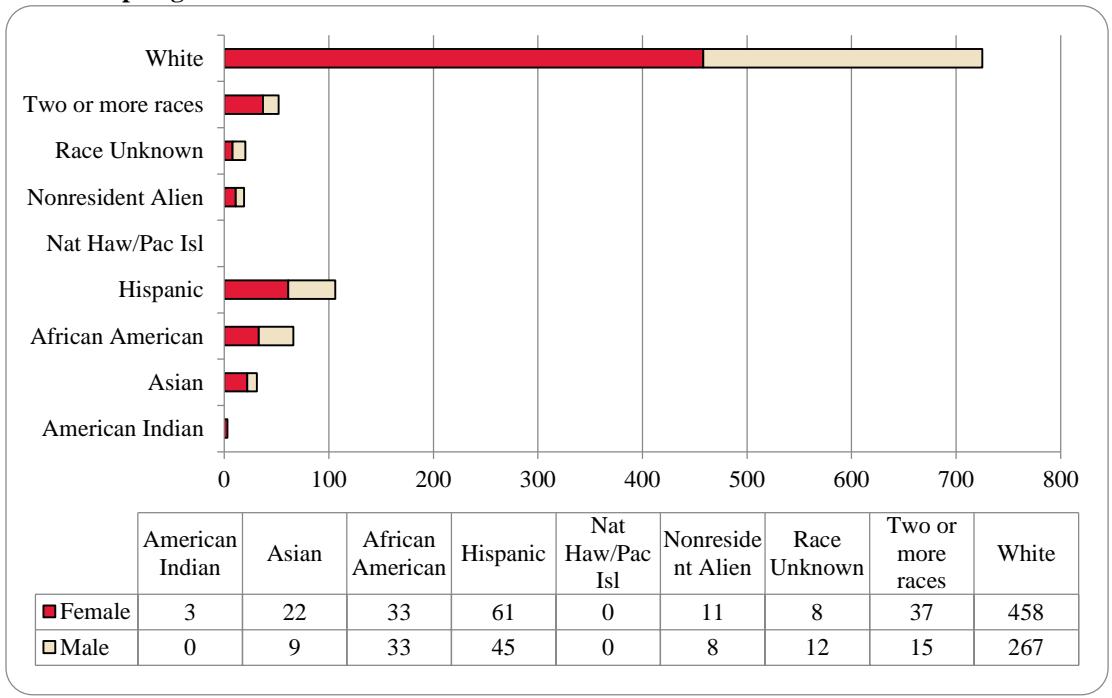


Table 6: College of Communication, Fine Arts and Media Delivery-Site Head Count Summary for Undergraduate and Graduate Students by Full and Part-Time by Gender and Race Classification: Spring 2016

	American Indian		Asian		African American		Hispanics		Nat Haw / Pac Isl		Race Unknown		Two or more races		White		Nonresident Alien		Total			
	F	M	F	M	F	M	F	M	F	M	F	M	F	M	F	M	F	M	F	M	Total	
Undergraduate																						
Full-Time																						
First-Time Freshmen																		1		1	1	
Other Freshmen			6		7	10	9	12			1		7	3	46	33	1	2	77	60	137	
Sophomores			7	1	4	5	15	9			1	4	6	4	67	37	2		102	60	162	
Juniors	1		4	4	6	5	12	7				4	8	1	113	59	3	1	147	81	228	
Seniors			1	2	8	4	12	5			5	1	9		103	59	1	1	139	72	211	
Special															1	2		1	1	3	4	
Total Full-Time	1		18	7	25	24	48	33			7	9	30	8	330	190	7	6	466	277	743	
Part-time																						
First-Time Freshmen																						
Other Freshmen						1	1	3					1	1	7	4			9	9	18	
Sophomores				1		1	3				1	1			13	8			17	11	28	
Juniors	1				4	1	3	4					2	2	17	15	1		28	22	50	
Seniors	1		3		1	5	5	3			1	1	2	1	41	21			54	31	85	
Special							1	1							3	6			4	7	11	
Total Part-Time	2		3	1	5	8	13	11			1	2	6	4	81	54	1		112	80	192	
Total Undergraduate	3		21	8	30	32	61	44			8	11	36	12	411	244	8	6	578	357	935	
Graduate																						
Full-Time																						
Certificate																						
Masters					1						1		1	18	9	2	2	21	13	34		
Doctoral																						
Special Graduate																						
Total Full-Time					1						1		1	18	9	2	2	21	13	34		
Part-Time																						
Certificate																1				1	1	
Masters			1	1	2	1		1					1	2	29	13	1		34	18	52	
Doctoral																						
Special Graduate																						
Total Part-Time			1	1	2	1		1					1	2	29	14	1		34	19	53	
Total Graduate			1	1	3	1		1			1	1	3	47	23	3	2	55	32	87		
Total All Students	3		22	9	33	33	61	45			8	12	37	15	458	267	11	8	633	389	1,022	

Figure 17: College of Communication, Fine Arts and Media: Administrative-Site Head Count: Spring 2006-2016

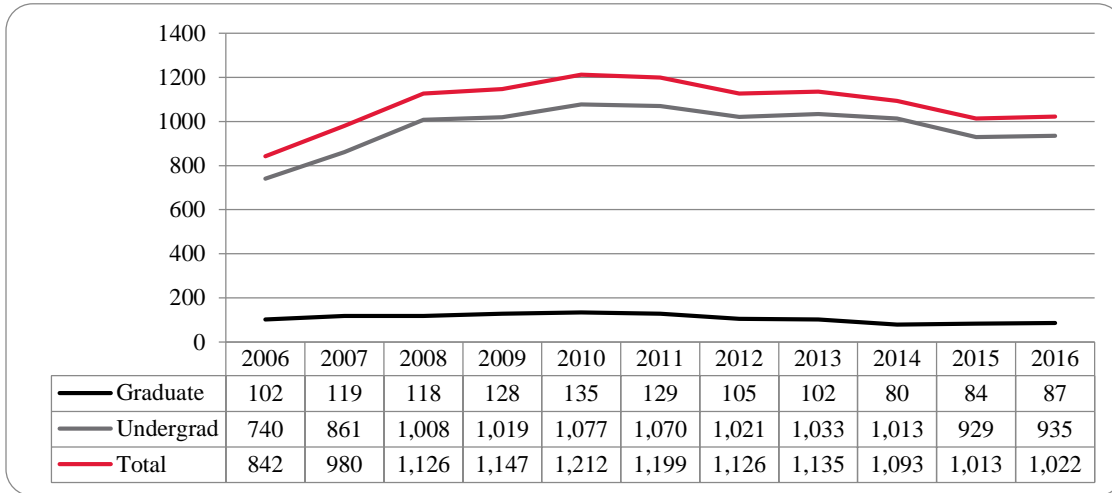


Figure 18: College of Communication, Fine Arts and Media: Administrative-Site Student Credit Hours: Spring 2006-2016

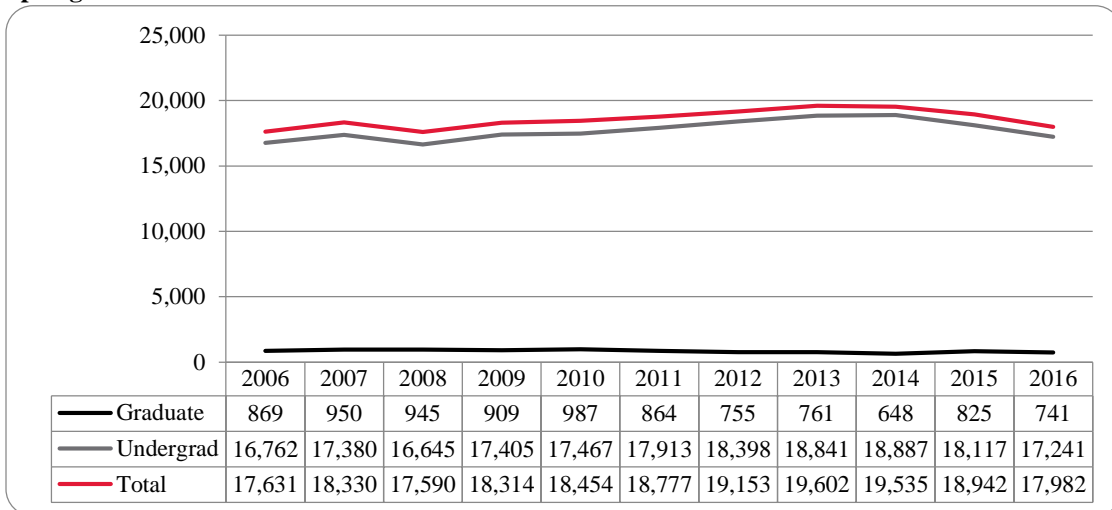


Figure 19: College of Communication, Fine Arts and Media: Administrative-Site Head Count by Ethnicity by Gender: Spring 2016

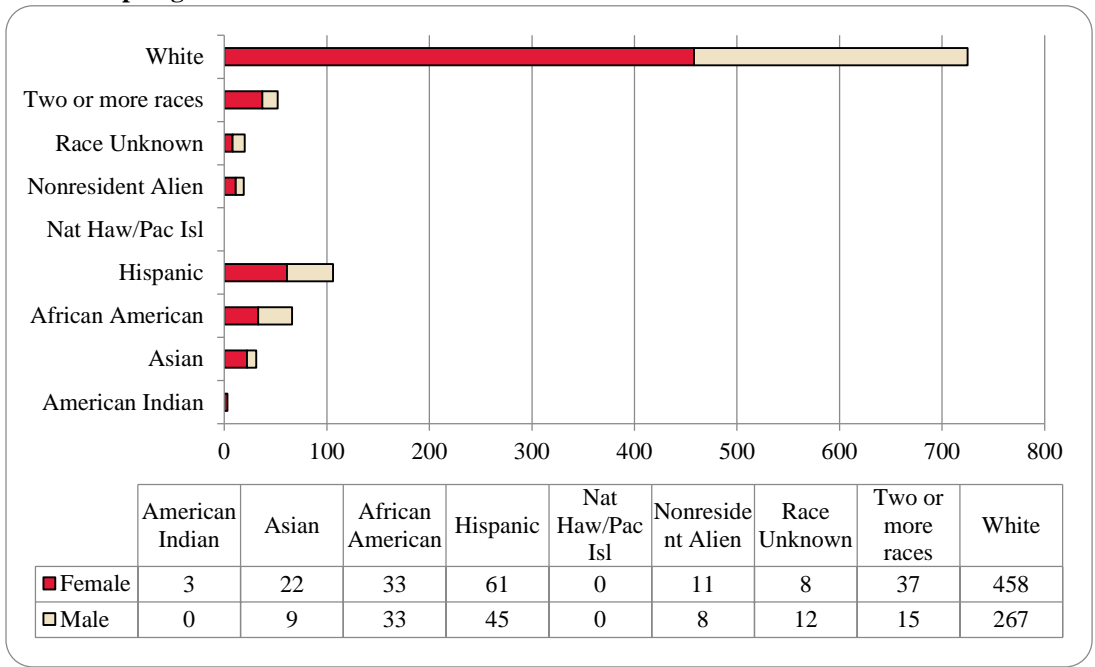


Table 7: College of Communication, Fine Arts and Media Administrative-Site Head Count Summary for Undergraduate and Graduate Students by Full and Part-Time by Gender and Race Classification: Spring 2016

	American Indian		Asian		African American		Hispanics		Nat Haw / Pac Isl		Race Unknown		Two or more races		White		Nonresident Alien		Total		
	F	M	F	M	F	M	F	M	F	M	F	M	F	M	F	M	F	M	F	M	Total
Undergraduate																					
Full-Time																					
First-Time Freshmen																		1		1	1
Other Freshmen			6		7	10	9	12			1		7	3	46	33	1	2	77	60	137
Sophomores			7	1	4	5	15	9			1	4	6	4	67	37	2		102	60	162
Juniors	1		4	4	6	5	12	7				4	8	1	113	59	3	1	147	81	228
Seniors			1	2	8	4	12	5			5	1	9		103	59	1	1	139	72	211
Special															1	2		1	1	3	4
Total Full-Time	1		18	7	25	24	48	33			7	9	30	8	330	190	7	6	466	277	743
Part-Time																					
First-Time Freshmen																					
Other Freshmen						1	1	3					1	1	7	4			9	9	18
Sophomores				1		1	3					1	1		13	8			17	11	28
Juniors	1				4	1	3	4					2	2	17	15	1		28	22	50
Seniors	1		3		1	5	5	3			1	1	2	1	41	21			54	31	85
Special							1	1							3	6			4	7	11
Total Part-Time	2		3	1	5	8	13	11			1	2	6	4	81	54	1		112	80	192
Total Undergraduate	3		21	8	30	32	61	44			8	11	36	12	411	244	8	6	578	357	935
Graduate																					
Full-Time																					
Certificate																					
Masters						1						1		1	18	9	2	2	21	13	34
Doctoral																					
Special Graduate																					
Total Full-Time						1						1		1	18	9	2	2	21	13	34
Part-Time																					
Certificate																1				1	1
Masters			1	1	2	1		1					1	2	29	13	1		34	18	52
Doctoral																					
Special Graduate																					
Total Part-Time			1	1	2	1		1					1	2	29	14	1		34	19	53
Total Graduate			1	1	3	1		1				1	1	3	47	23	3	2	55	32	87
Total All Students	3		22	9	33	33	61	45			8	12	37	15	458	267	11	8	633	389	1,022

Figure 20: College of Education Head Count: Spring 2004-2016

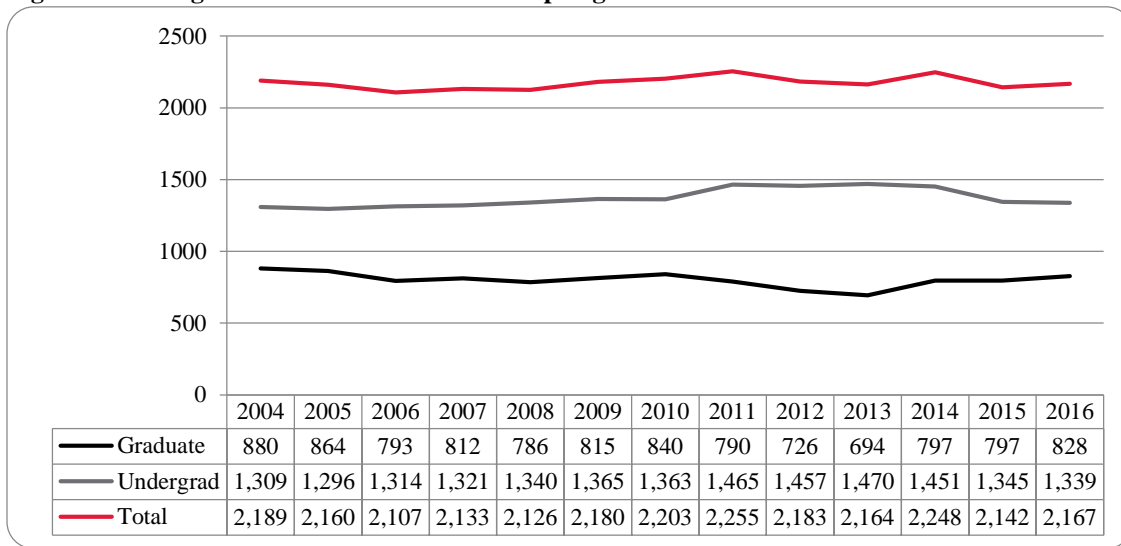


Figure 21: College of Education Student Credit Hours: Spring 2004-2016

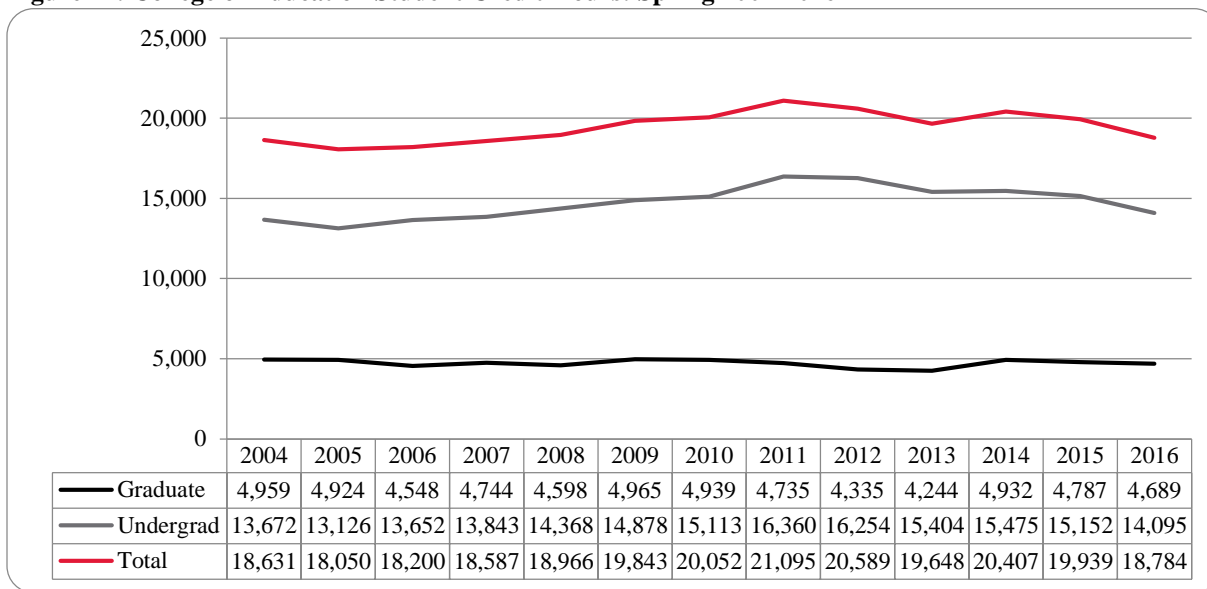


Figure 22: College of Education Head Count by Ethnicity by Gender: Spring 2016

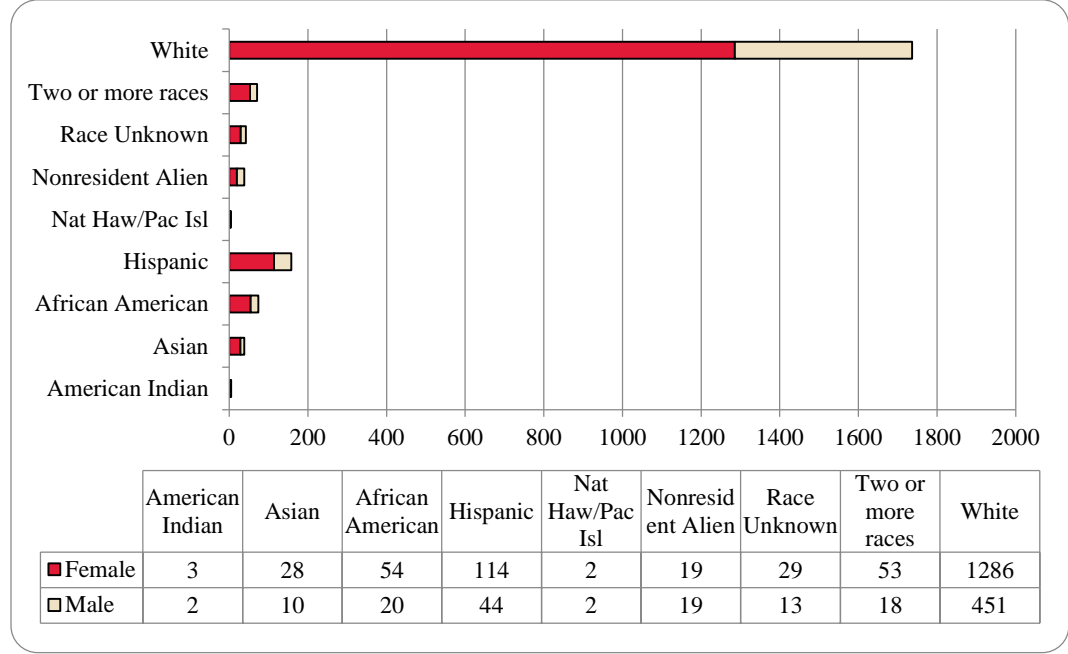


Table 8: College of Education Head Count Summary for Undergraduate and Graduate Students by Full and Part-Time by Gender and Race Classification: Spring 2016

	American Indian		Asian		African American		Hispanics		Nat Haw / Pac Isl		Race Unknown		Two or more races		White		Nonresident Alien		Total			
	F	M	F	M	F	M	F	M	F	M	F	M	F	M	F	M	F	M	F	M	Total	
Undergraduate																						
Full-Time																						
First-Time Freshmen			1														1		2		2	
Other Freshmen			4		8		22	7	1	1	1		10	2	75	24	1		122	34	156	
Sophomores			3	3	3		18	8		1	3	1	1	2	125	47	1	1	154	63	217	
Juniors	1		4		8	1	14	4			1	2	12	3	148	64	4	1	192	75	267	
Seniors		2	7	5	8	4	25	6			15	2	14	2	250	97	1	1	320	119	439	
Special						1	1	1							16	11		1	17	14	31	
Total Full-Time	1	2	19	8	27	6	80	26	1	2	20	5	37	9	614	243	8	4	807	305	1,112	
Part-Time																						
First-Time Freshmen															1				1		1	
Other Freshmen					1		1	1							7	4			9	5	14	
Sophomores							1	2					2		21	6			24	8	32	
Juniors					2	1	5				3		2		34	13			46	14	60	
Seniors					1		2	6	1			2	1	2	42	28			47	38	85	
Special			1		1		1	2				2			15	13			18	17	35	
Total Part-Time			1		5	1	10	11	1		3	4	5	2	120	64			145	82	227	
Total Undergraduate	1	2	20	8	32	7	90	37	2	2	23	9	42	11	734	307	8	4	952	387	1,339	
Graduate																						
Full-Time																						
Certificate																						
Masters			2		1	4	5	1			2		1	2	84	40	6	13	101	60	161	
Doctoral													1	3	3	3	1	1	4	5	9	
Special Graduate															1	1			1	1	2	
Total Full-Time			2		1	4	5	1			2		1	3	88	44	7	14	106	66	172	
Part-Time																						
Certificate																						
Masters	2		5	1	18	4	12	5			2	4	7	2	354	69	3	1	403	86	489	
Doctoral			1	1	1	4	2				1		2	2	41	18			48	25	73	
Special Graduate					2	1	5	1			1		1		69	13	1		79	15	94	
Total Part-Time	2		6	2	21	9	19	6			4	4	10	4	464	100	4	1	530	126	656	
Total Graduate	2		8	2	22	13	24	7			6	4	11	7	552	144	11	15	636	192	828	
Total All Students	3	2	28	10	54	20	114	44	2	2	29	13	53	18	1,286	451	19	19	1,588	579	2,167	

Figure 23: College of Information Science & Technology Head Count: Spring 2004-2016

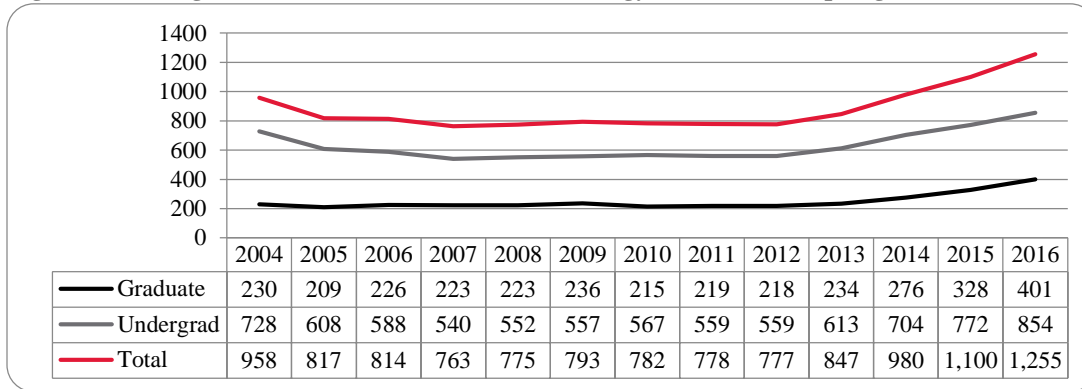


Figure 24: College of Information Science & Technology Student Credit Hours: Spring 2004-2016

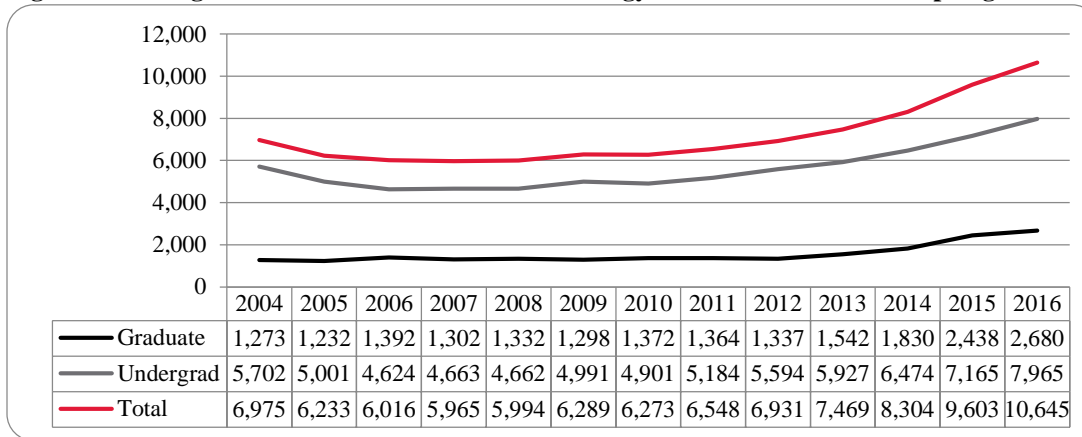


Figure 25: College of Information Science & Technology Head Count by Ethnicity by Gender: Spring 2016

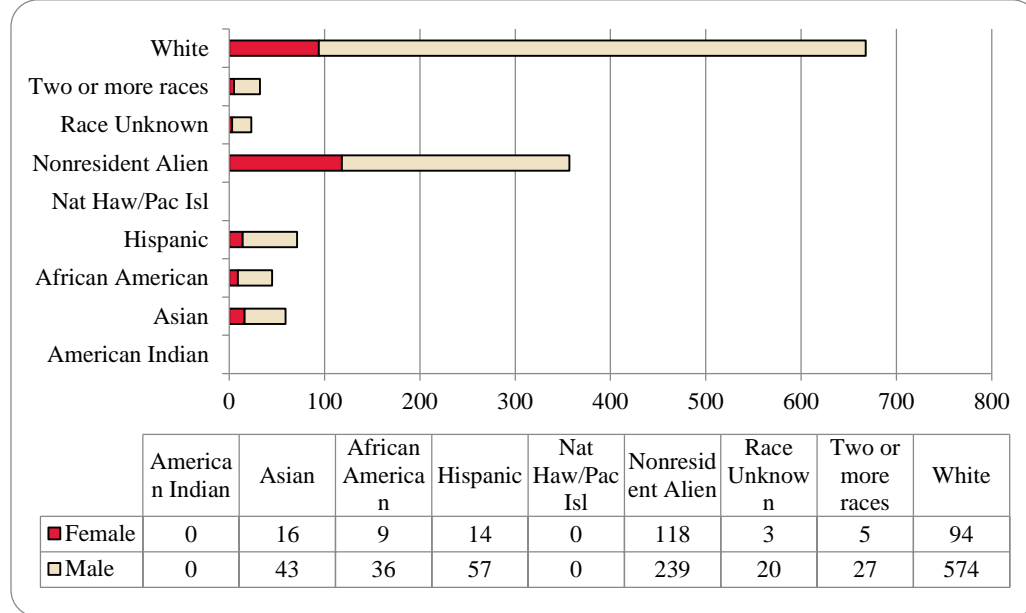


Table 9: College of Information Science and Technology Head Count Summary for Undergraduate and Graduate Summary for Full and Part-Time by Gender and Race Classification: Spring 2016

	American Indian		Asian		African American		Hispanics		Nat Haw / Pac Isl		Race Unknown		Two or more races		White		Nonresident Alien		Total			
	F	M	F	M	F	M	F	M	F	M	F	M	F	M	F	M	F	M	F	M	Total	
Undergraduate																						
Full-Time																						
First-Time Freshmen																	1	8	1	8	9	
Other Freshmen				6		1		8				3		5	8	76	3	16	11	115	126	
Sophomores			2	5		2	2	14				4	1	5	20	96	2	14	27	140	167	
Juniors			1	9	2	7	7	7				2		9	14	85	1	22	25	141	166	
Seniors			3	5		4	1	12				5		1	19	117	3	14	26	158	184	
Special			2										1	4	10	1	1	7	12	19		
Total Full-Time			8	25	2	14	10	41				14	1	21	65	384	11	75	97	574	671	
Part-Time																						
First-Time Freshmen																	1		1		1	
Other Freshmen				1				2							1	11			1	14	15	
Sophomores				1		2		1				1		1	2	17		1	2	24	26	
Juniors			2	3	1	4		4			1			2	3	27		1	7	41	48	
Seniors				4	2	4	3	3				1			2	38		3	7	53	60	
Special				1	1	1		1			1	2			9	17			11	22	33	
Total Part-Time			2	10	4	11	3	11			2	4		3	17	110	1	5	29	154	183	
Total Undergraduate			10	35	6	25	13	52				18	1	24	82	494	12	80	126	728	854	
Graduate																						
Full-Time																						
Certificate																1				1	1	
Masters				1	1			1					1	2	8	65	96	68	107	175		
Doctoral													1		2	1	8	2	10	12		
Special Graduate																						
Total Full-Time				1	1			1					1	1	2	11	66	104	70	118	188	
Part-Time																						
Certificate				1	2		2								1	5	1	1	3	10	13	
Masters				5	5	2	9	1	4			2	3	2	9	59	35	51	55	132	187	
Doctoral											1				5	4	3	5	8	13		
Special Graduate																						
Total Part-Time				6	7	2	11	1	4			1	2	3	2	10	69	40	55	63	150	213
Total Graduate				6	8	3	11	1	5			1	2	4	3	12	80	106	133	268	401	
Total All Students			16	43	9	36	14	57			3	20	5	27	94	574	118	239	259	996	1,255	

Figure 26: College of Public Affairs & Community Service Delivery-Site Head Count: Spring 2004-2016

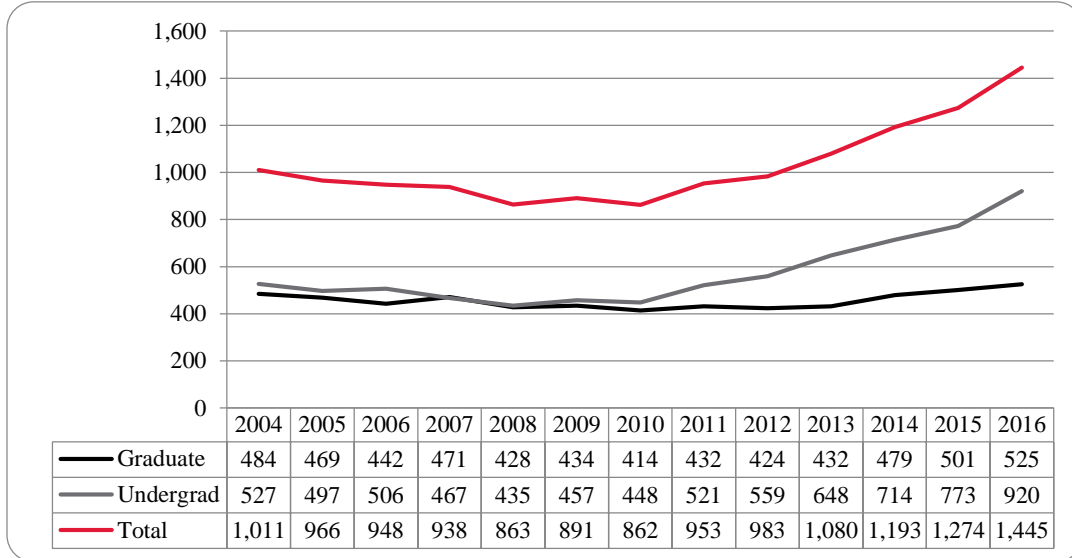


Figure 27: College of Public Affairs & Community Service Delivery-Site Student Credit Hours: Spring 2004-2016

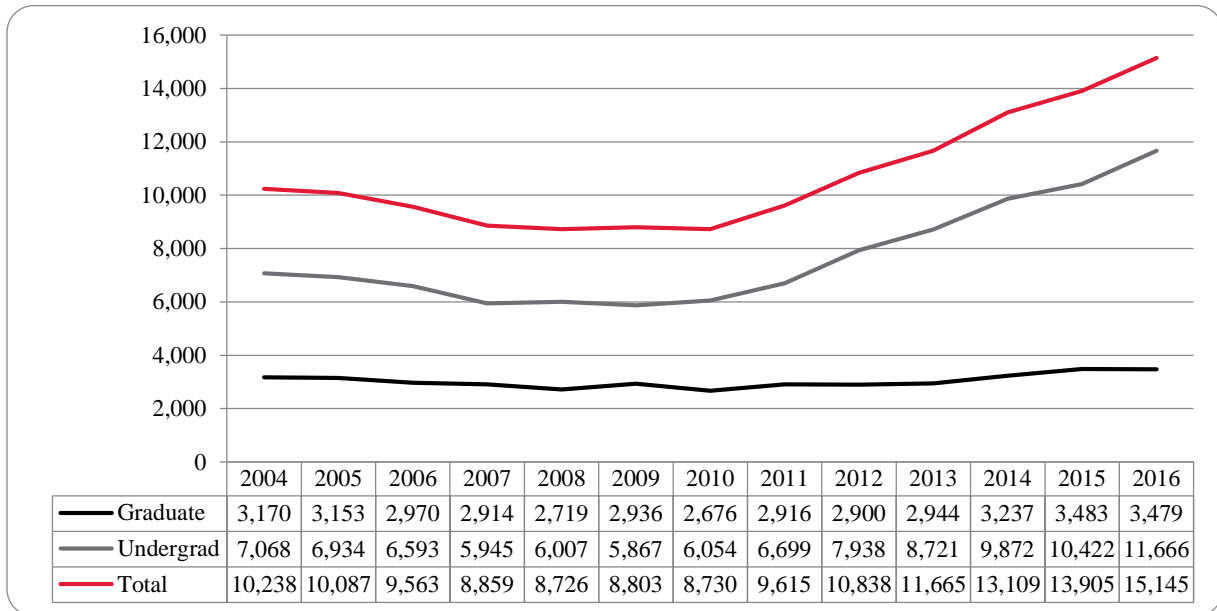


Figure 28: College of Public Affairs & Community Service Delivery-Site Head Count by Ethnicity by Gender: Spring 2016

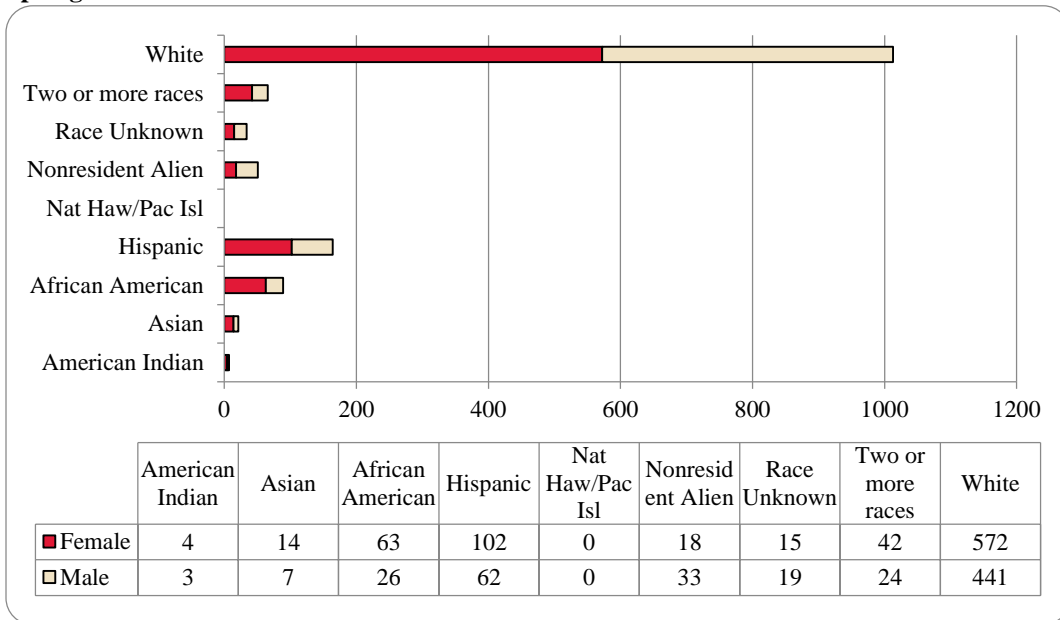


Table 10: College of Public Affairs & Community Service Delivery-Site Head Count for Undergraduate and Graduate Students by Full and Part-time by Gender and Race Classification: Spring 2016

	American Indian		Asian		African American		Hispanics		Nat Haw / Pac Isl		Race Unknown		Two or more races		White		Nonresident Alien		Total		
	F	M	F	M	F	M	F	M	F	M	F	M	F	M	F	M	F	M	F	M	Total
Undergraduate																					
Full-Time																					
First-Time Freshmen			1												1				1	1	2
Other Freshmen	1		2		7	3	10	10			1	4	4	34	38	4	6	62	62	124	
Sophomores		1	4	2	6	1	21	17			1	2	10	5	60	74	5	10	107	112	219
Juniors	1		1	1	13	7	19	9			2	7	7	2	97	79		3	140	108	248
Seniors	2		1	1	10	2	19	6			2	1	1	5	64	61		2	99	78	177
Special							1						2		2				1	4	5
Total Full-Time	4	1	9	4	36	13	70	42			5	11	22	18	255	255	9	21	410	365	775
Part-Time																					
First-Time Freshmen						1												1		2	2
Other Freshmen			1		4		1	2							5				6	7	13
Sophomores			1		2		2	2			1		1		6	11			13	13	26
Juniors				1	3	3	2	3			1		1		7	13			14	20	34
Seniors					2	3	1	5			2	2			25	26			30	36	66
Special															2	2			2	2	4
Total Part-Time			2	1	11	7	6	12			4	2	2		40	57		1	65	80	145
Total Undergraduate	4	1	11	5	47	20	76	54			9	13	24	18	295	312	9	22	475	445	920
Graduate																					
Full-Time																					
Certificate																					
Masters				1	7		7	3			1		8	2	102	22	3	1	128	29	157
Doctoral															5	4	2	2	7	6	13
Special Graduate																					
Total Full-Time				1	7		7	3			1		8	2	107	26	5	3	135	35	170
Part-Time																					
Certificate					1		1				1				14	5	1		18	5	23
Masters		2	3	1	8	4	16	4			4	6	9	4	149	84	2		191	105	296
Doctoral						2	2	1					1		7	14	1	8	11	25	36
Special Graduate																					
Total Part-Time		2	3	1	9	6	19	5			5	6	10	4	170	103	4	8	220	135	355
Total Graduate		2	3	2	16	6	26	8			6	6	18	6	277	129	9	11	355	170	525
Total All Students	4	3	14	7	63	26	102	62			15	19	42	24	572	441	18	33	830	615	1,445

Figure 29: College of Public Affairs & Community Service Administrative-Site Head Count: Spring 2004-2016

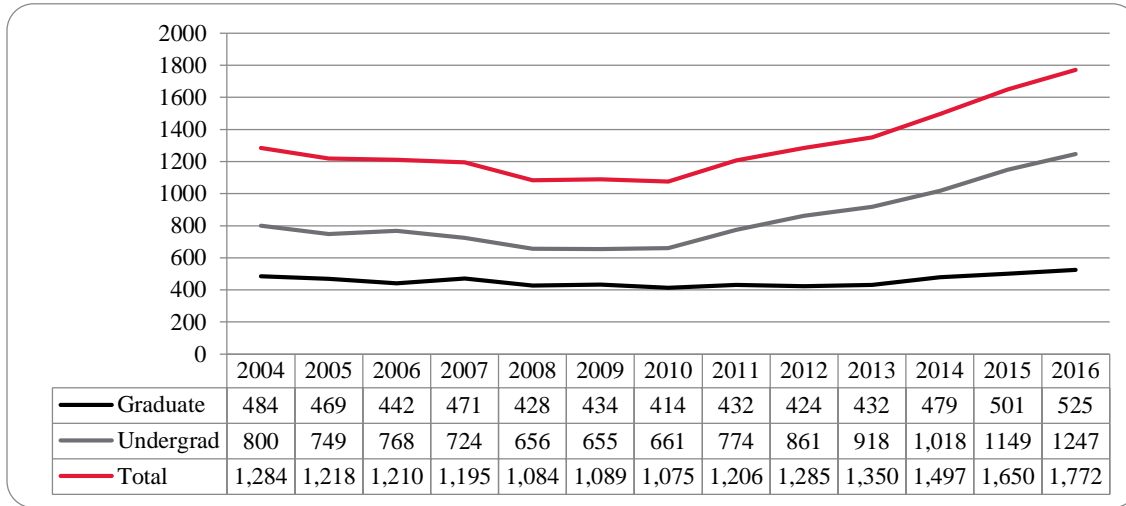


Figure 30: College of Public Affairs & Community Service Administrative-Site Student Credit Hours: Spring 2004-2016

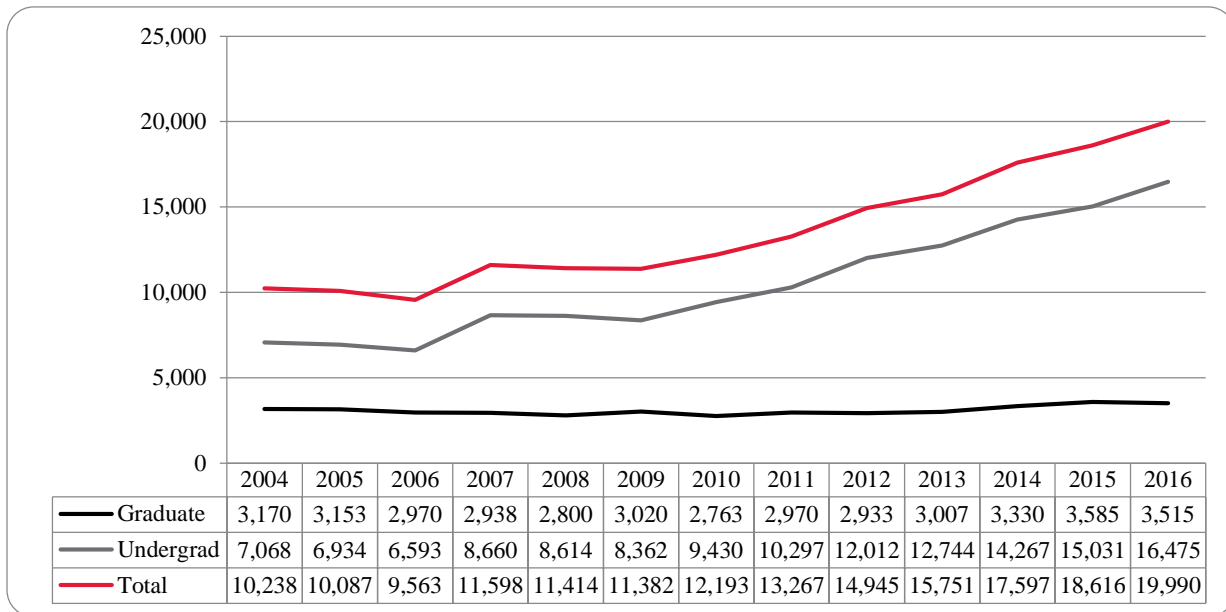


Figure 31: College of Public Affairs & Community Service Administrative-Site Head Count by Ethnicity by Gender: Spring 2016

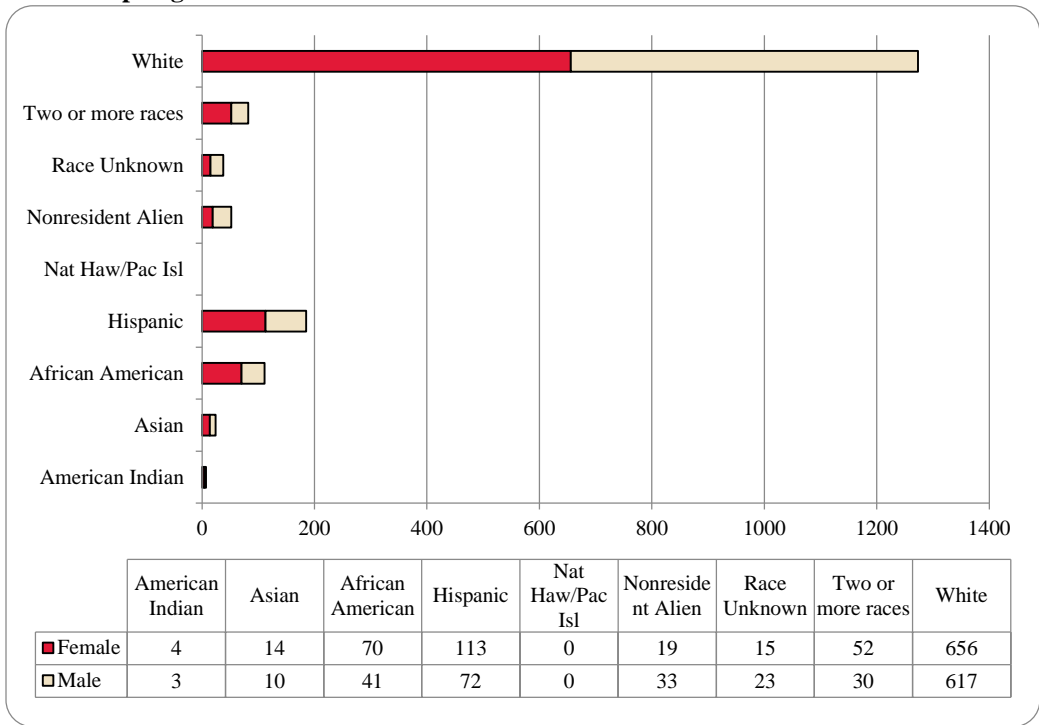


Table 11: College of Public Affairs & Community Service Administrative-Site Head Count Summary for Undergraduate Graduate Students by Full and Part-Time by Gender and Race Classification: Spring 2016

	American Indian		Asian		African American		Hispanics		Nat Haw / Pac Isl		Race Unknown		Two or more races		White		Nonresident Alien		Total			
	F	M	F	M	F	M	F	M	F	M	F	M	F	M	F	M	F	M	F	M	Total	
Undergraduate																						
Full-Time																						
First-Time Freshmen			1												1				1	1	2	
Other Freshmen	1		2		8	6	14	13			1	4	6	55	68	4	6	88	100	188		
Sophomores		1	4	2	7	4	23	18			1	4	11	6	80	109	5	10	131	154	285	
Juniors	1		1	3	15	10	23	13			2	8	12	3	123	137	1	3	178	177	355	
Seniors	2		1	2	12	7	19	8			2	2	5	7	78	96	2	2	119	124	243	
Special							1						2		2				1	4	5	
Total Full-Time	4	1	9	7	42	27	80	52			5	15	32	24	336	413	10	21	518	560	1,078	
Part-Time																						
First-Time Freshmen							1											1		2	2	
Other Freshmen			1		4		1	2							6			6	8	14		
Sophomores			1		2		2	2			1		1		8	11			15	13	28	
Juniors				1	3	3	2	3			1		1		7	16			14	23	37	
Seniors					3	4	2	5			2	2			26	40			33	51	84	
Special															2	2			2	2	4	
Total Part-Time			2	1	12	8	7	12			4	2	2		43	75		1	70	99	169	
Total Undergraduate	4	1	11	8	54	35	87	64			9	17	34	24	379	488	10	22	588	659	1,247	
Graduate																						
Full-Time																						
Certificate																						
Masters				1	7		7	3			1		8	2	102	22	3	1	128	29	157	
Doctoral															5	4	2	2	7	6	13	
Special Graduate																						
Total Full-Time				1	7		7	3			1		8	2	107	26	5	3	135	35	170	
Part-Time																						
Certificate					1		1				1				14	5	1		18	5	23	
Masters		2	3	1	8	4	16	4			4	6	9	4	149	84	2		191	105	296	
Doctoral					2	2	1						1		7	14	1	8	11	25	36	
Special Graduate																						
Total Part-Time		2	3	1	9	6	19	5			5	6	10	4	170	103	4	8	220	135	355	
Total Graduate		2	3	2	16	6	26	8			6	6	18	6	277	129	9	11	355	170	525	
Total All Students	4	3	14	10	70	41	113	72			15	23	52	30	656	617	19	33	943	829	1,772	

Figure 32: College of CPACS, Division of Continuing Studies Head Count: Spring 2004-2016

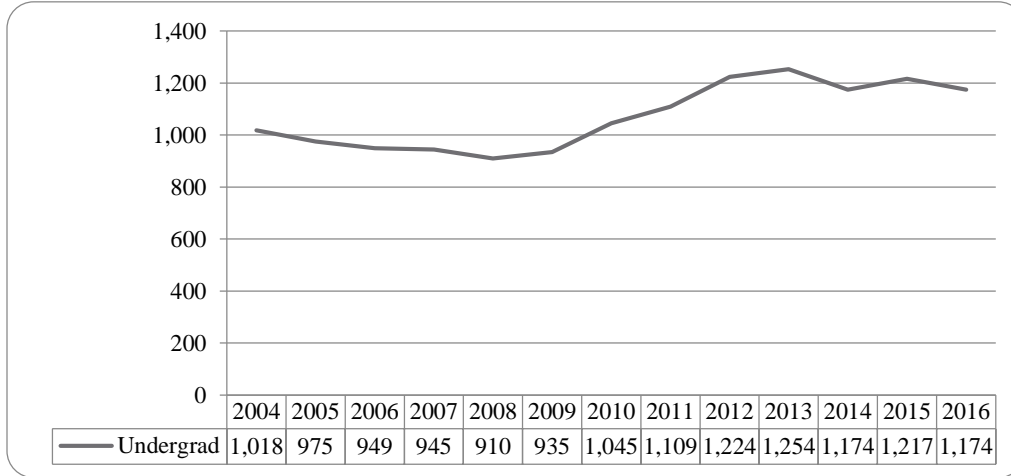


Figure 33: College of CPACS, Division of Continuing Studies Head Count by Ethnicity by Gender: Spring 2016

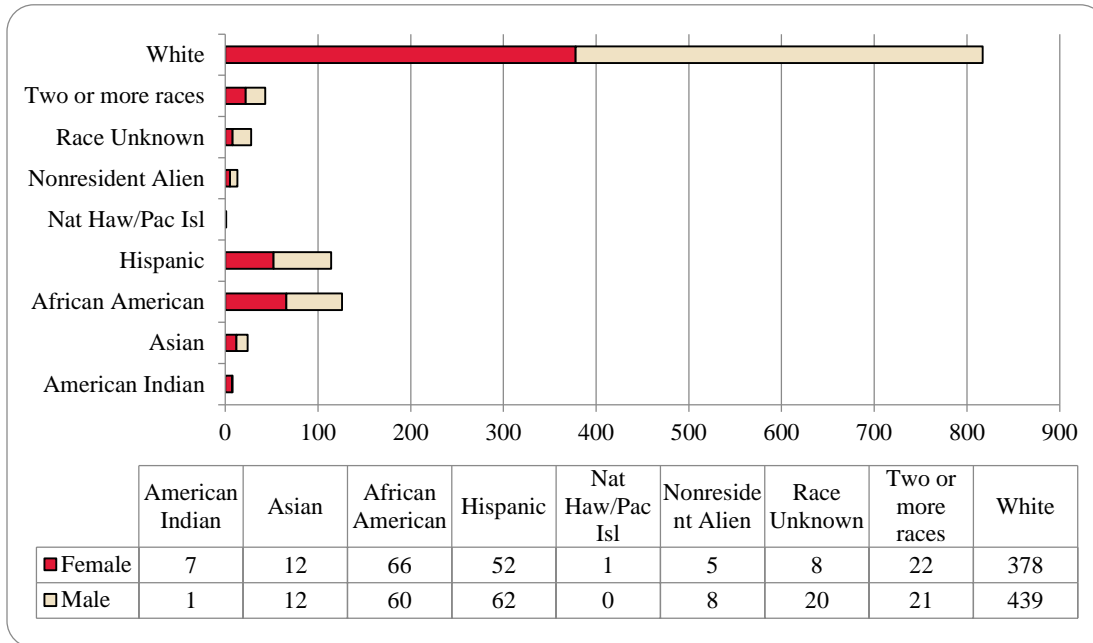


Table 12: College of CPACS Division of Continuing Studies Head Count Summary for Undergraduate Students by Full and Part-Time by Gender and Race Classification: Spring 2016

	American Indian		Asian		African American		Hispanics		Nat Haw / Pac Isl		Race Unknown		Two or more races		White		Nonresident Alien		Total			
	F	M	F	M	F	M	F	M	F	M	F	M	F	M	F	M	F	M	F	M	Total	
Undergraduate																						
Full-Time																						
First-Time Freshmen															2	1			1	2	3	
Other Freshmen				1	4	2	2	3			1		1	3	7	24		2	15	35	50	
Sophomores			1	1	8	6	4	7				3		1	24	39	1	4	38	61	99	
Juniors	1	1	4	1	11	8	10	10			1		9	4	55	79	2		93	103	196	
Seniors			4	3	10	11	9	11			3	4	4	1	82	73		1	112	104	216	
Special					1						1				2	3			4	3	7	
Total Full-Time	1	1	9	6	34	27	25	31			6	7	14	9	170	220	4	7	263	308	571	
Part-Time																						
First-Time Freshmen															1		1		2		2	
Other Freshmen			1	2	3	2	1	4			1		1	7	16			13	25	38		
Sophomores				2	4	7	7	8				1	3	3	22	27			36	48	84	
Juniors	2		1		6	9	5	3				4	2	2	60	54			76	72	148	
Seniors	4			1	19	15	14	16	1		1	8	3	6	113	112		1	155	159	314	
Special			1	1											5	10			6	11	17	
Total Part-Time	6		3	6	32	33	27	31	1		2	13	8	12	208	219	1	1	288	315	603	
Total Undergraduate	7	1	12	12	66	60	52	62	1		8	20	22	21	378	439	5	8	551	623	1,174	
Total All Students	7	1	12	12	66	60	52	62	1		8	20	22	21	378	439	5	8	551	623	1,174	

Table 13: Cooperative Graduate Program Head Count Summary for Graduate Students by Full and Part-time by Gender and Race Classification: Spring 2016

	American Indian		Asian		African American		Hispanics		Nat Haw / Pac Isl		Race Unknown		Two or more races		White		Nonresident Alien		Total			
	F	M	F	M	F	M	F	M	F	M	F	M	F	M	F	M	F	M	F	M	Total	
Graduate																						
Full-Time																						
Certificate																						
Masters																						
Doctoral																						
Special Graduate																						
Total Full-Time																						
Part-Time																						
Certificate			1												5					6		6
Masters																						
Doctoral																						
Special Graduate																						
Total Part-Time			1												5					6		6
Total Graduate			1												5					6		6
Total All Students			1												5					6		6

Figure 34: University Division Head Count: Spring 2004-2016

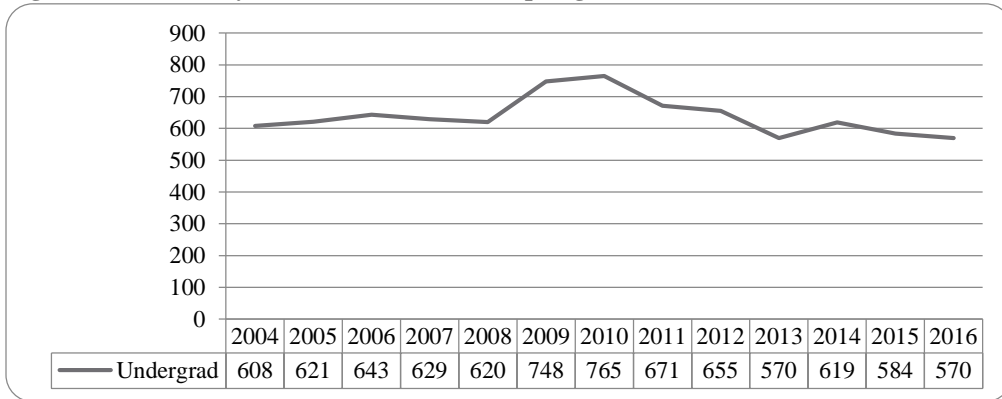


Figure 35: University Division Student Credit Hours: Spring 2004-2016

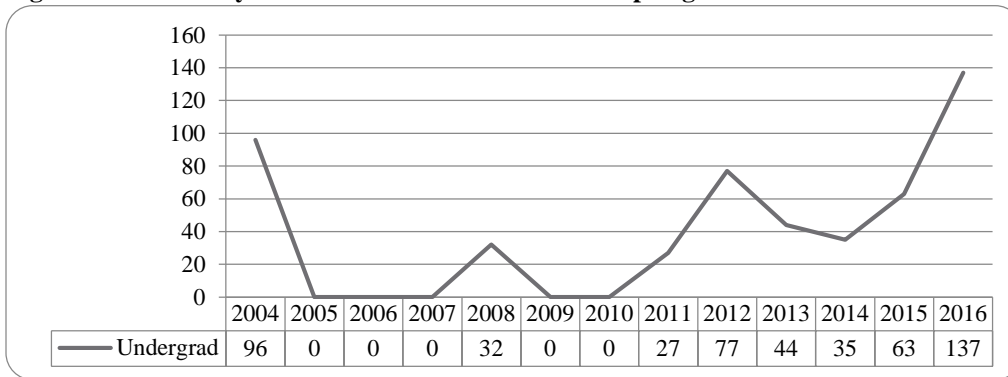


Figure 36: University Division Head Count by Ethnicity by Gender: Spring 2016

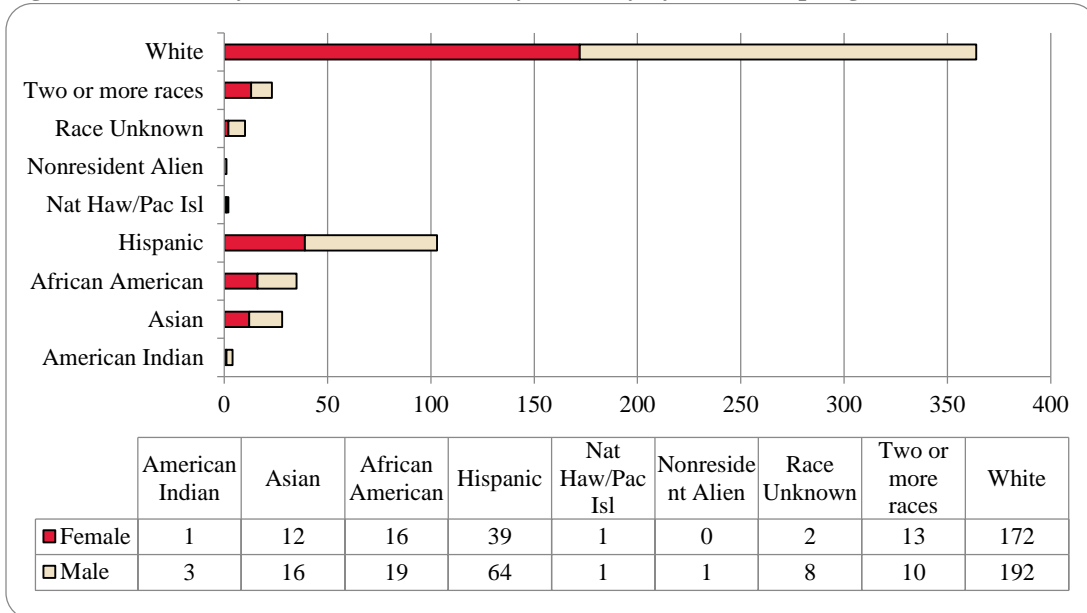


Table 14: University Division Head Count Summary for Undergraduate Students by Full and Part-Time by Gender and Race Classification: Spring 2016

	American Indian		Asian		African American		Hispanics		Nat Haw / Pac Isl		Race Unknown		Two or more races		White		Nonresident Alien		Total			
	F	M	F	M	F	M	F	M	F	M	F	M	F	M	F	M	F	M	F	M	Total	
Undergraduate																						
Full-Time																						
First-Time Freshmen				1				2					1		2	4			3	7	10	
Other Freshmen	1	1	8	10	11	10	21	40		1	2	6	7	7	100	117		1	150	193	343	
Sophomores			3	4	4	5	12	15				1	3	2	40	44			62	71	133	
Juniors															3				3		3	
Seniors																						
Special																						
Total Full-Time	1	1	11	15	15	15	33	57		1	2	7	11	9	145	165		1	218	271	489	
Part-Time																						
First-Time Freshmen																						
Other Freshmen		1	1	1		4	5	5				1	1	1	15	18			22	31	53	
Sophomores		1				1		2	1					1	12	9			16	12	28	
Juniors																						
Seniors																						
Special																						
Total Part-Time		2	1	1	1	4	6	7	1			1	2	1	27	27			38	43	81	
Total Undergraduate	1	3	12	16	16	19	39	64	1	1	2	8	13	10	172	192		1	256	314	570	
Total All Students	1	3	12	16	16	19	39	64	1	1	2	8	13	10	172	192		1	256	314	570	

Figure 37: Non-Degree/Intercampus Special Undergraduate Students Head Count: Spring 2004-2016

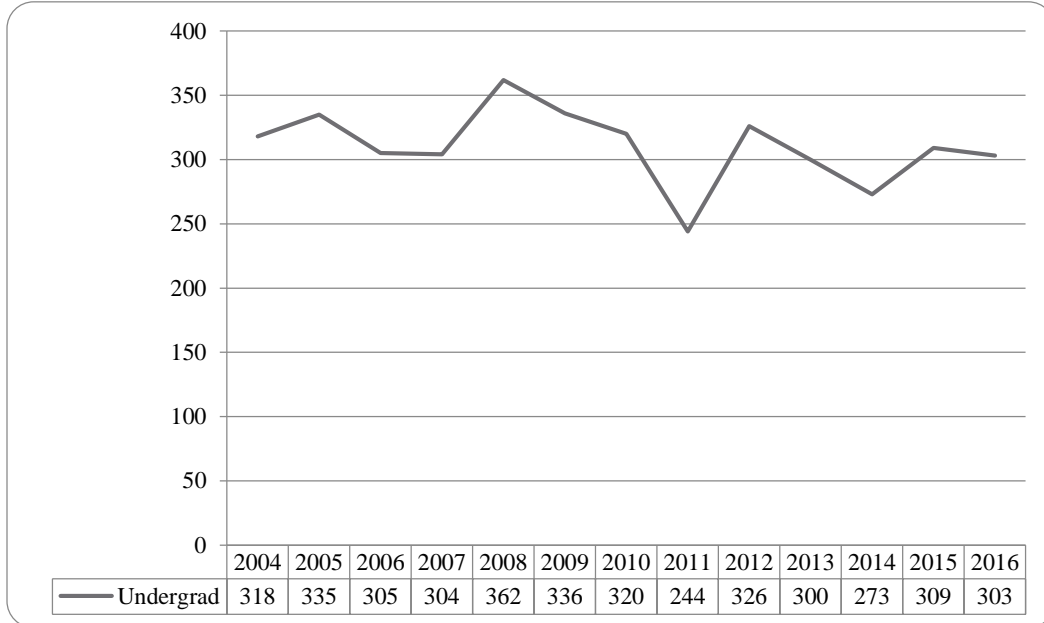


Figure 38: Non-Degree/Intercampus Special Undergraduate Students Head Count by Ethnicity by Gender: Spring 2016

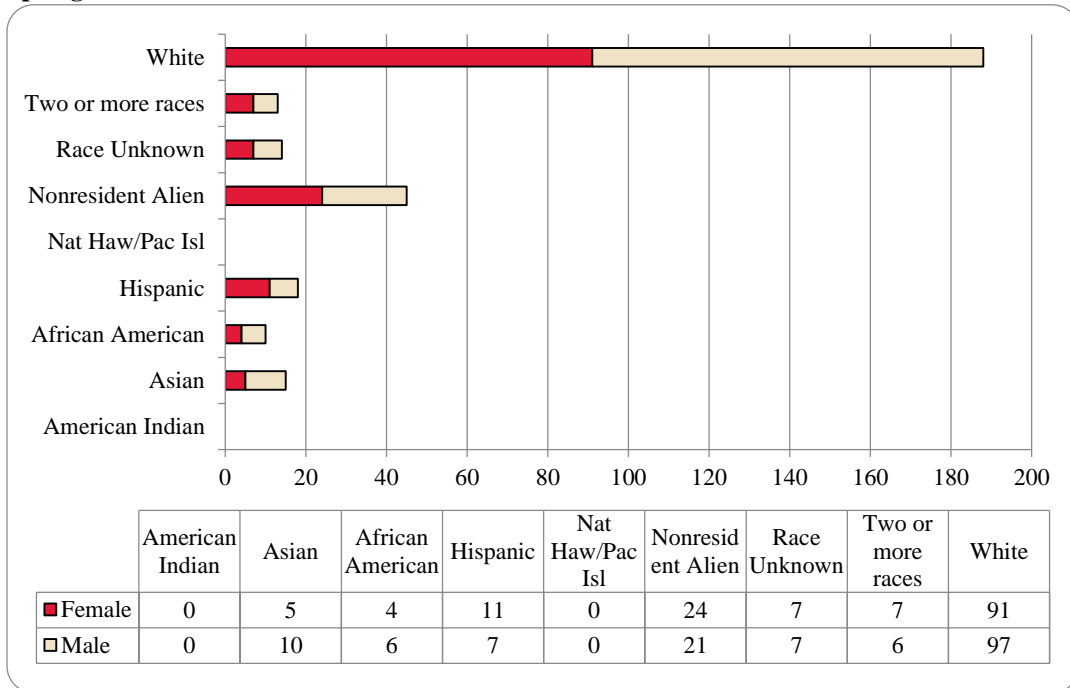


Table 15: Non-Degree/Intercampus Head Count Summary for Special Undergraduate Students by Full and Part-Time by Gender and Race Classification: Spring 2016

	American Indian		Asian		African American		Hispanics		Nat Haw / Pac Isl		Race Unknown		Two or more races		White		Nonresident Alien		Total			
	F	M	F	M	F	M	F	M	F	M	F	M	F	M	F	M	F	M	F	M	Total	
Undergraduate																						
Full-Time																						
First-Time Freshmen																		2		2	2	
Other Freshmen				1	1							2	1	1	5	9	5	5	12	18	30	
Sophomores				1								1			2	1	9	7	11	10	21	
Juniors						1									4	5	3	5	8	13		
Seniors						1									1	3	1	3	3	6		
Special							1						1	1	1				2	2	4	
Total Full-Time				2	1	2	1					3	1	2	8	16	22	18	33	43	76	
Part-Time																						
First-Time Freshmen																						
Other Freshmen			2	4	2		7	4			4	3	5	4	30	38			50	53	103	
Sophomores			1												8	6	1	2	10	8	18	
Juniors				1		2									3	3	1		4	6	10	
Seniors			1								1				2	4			4	4	8	
Special			1	3	1	2	3	3			2	1	1		40	30		1	48	40	88	
Total Part-Time			5	8	3	4	10	7			7	4	6	4	83	81	2	3	116	111	227	
Total Undergraduate			5	10	4	6	11	7			7	7	7	6	91	97	24	21	149	154	303	
Total All Students			5	10	4	6	11	7			7	7	7	6	91	97	24	21	149	154	303	

Figure 39: Non-Degree/Intercampus Special Graduate Students Head Count: Spring 2004-2016

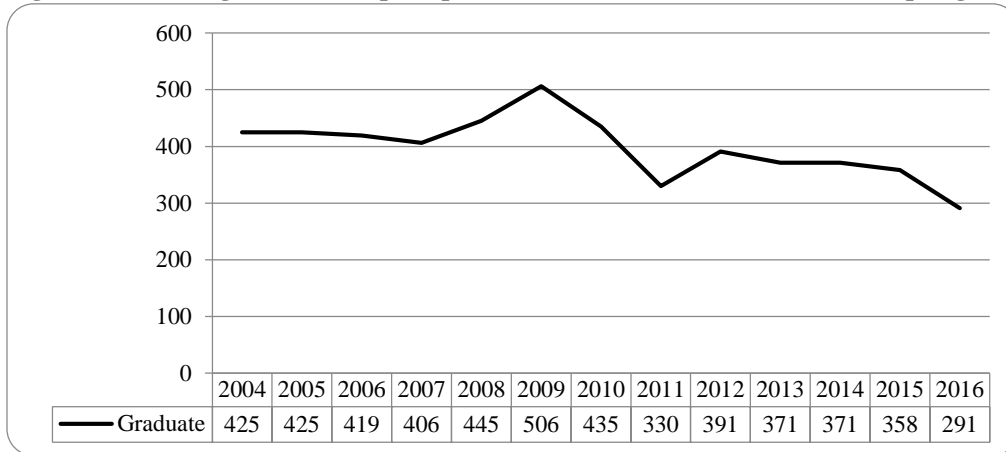


Figure 40: Non-Degree/Intercampus Special Graduate Students Head Count by Ethnicity by Gender: Spring 2016

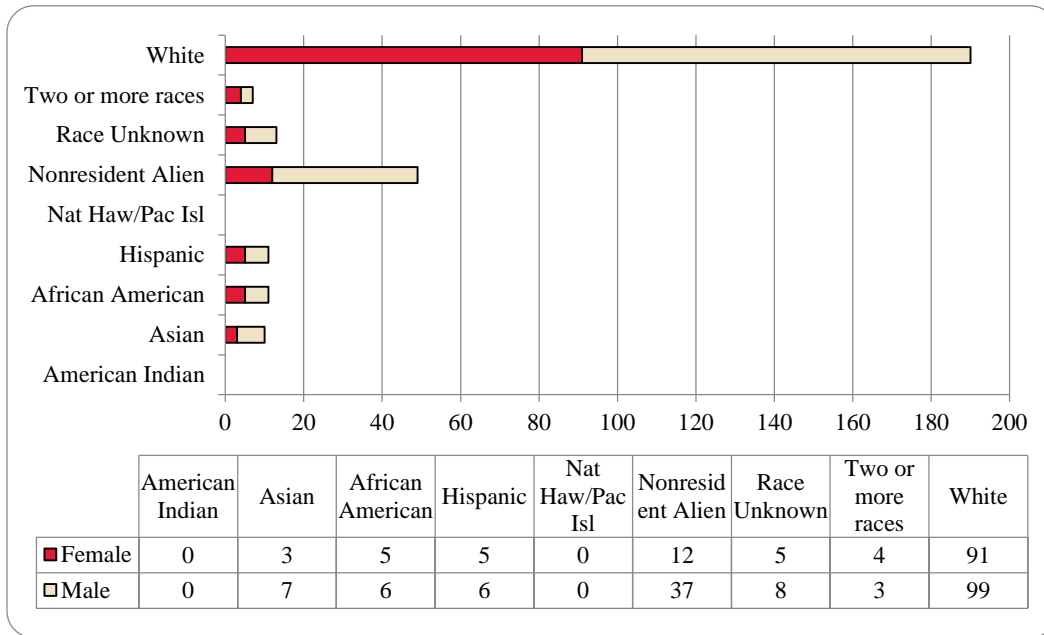


Table 16: Non-Degree/Intercampus Head Count Summary for Special Graduate Students by Full and Part-time by Gender and Race Classification: Spring 2016

	American Indian		Asian		African American		Hispanics		Nat Haw / Pac Isl		Race Unknown		Two or more races		White		Nonresident Alien		Total			
	F	M	F	M	F	M	F	M	F	M	F	M	F	M	F	M	F	M	F	M	Total	
Graduate																						
Full-Time																						
Certificate																						
Masters																						
Doctoral																						
Special Graduate				1		1		1			1	1	1		8	25	3	20	13	49	62	
Total Full-Time				1		1		1			1	1	1		8	25	3	20	13	49	62	
Part-Time																						
Certificate																						
Masters																						
Doctoral																						
Special Graduate			3	6	5	5	5	5			4	7	3	3	83	74	9	17	112	117	229	
Total Part-Time			3	6	5	5	5	5			4	7	3	3	83	74	9	17	112	117	229	
Total Graduate			3	7	5	6	5	6			5	8	4	3	91	99	12	37	125	166	291	
Total All Students			3	7	5	6	5	6			5	8	4	3	91	99	12	37	125	166	291	

Figure 41: Other Honors and Library Hours Student Credit Hours by Level of Instruction: Spring 2004-2016

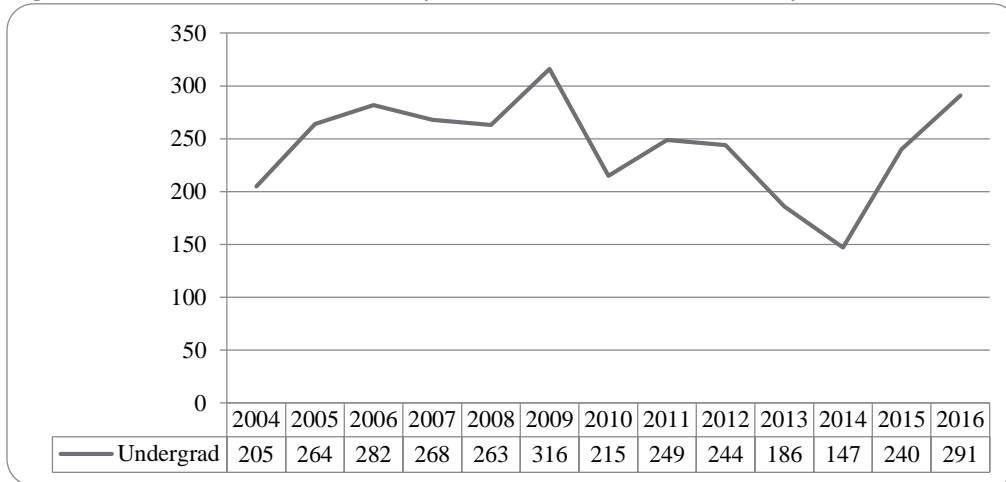


Figure 42: College of Agriculture Delivery-Site Head Count: Spring 2004-2016

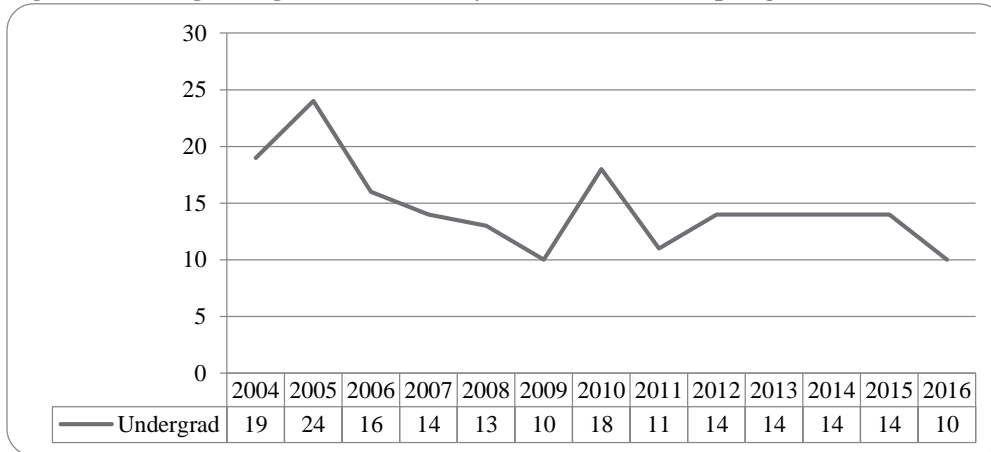


Figure 43: College of Agriculture Delivery-Site Student Credit Hours: Spring 2004-2016

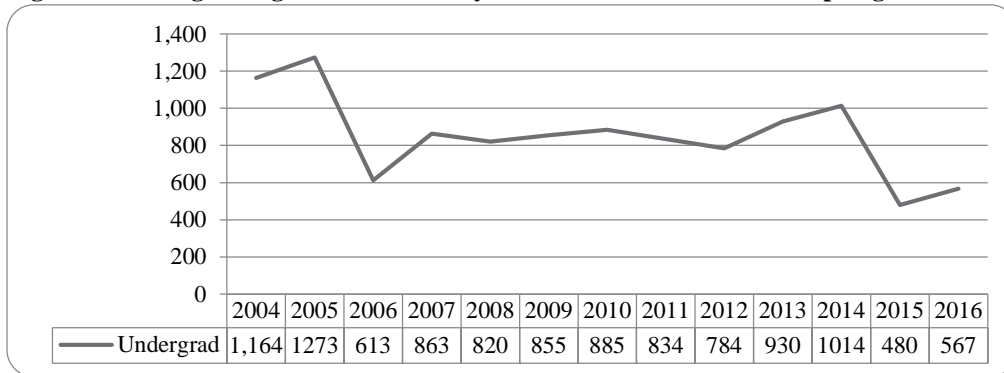


Figure 44: College of Agriculture Delivery-Site Head Count by Ethnicity by Gender: Spring 2016

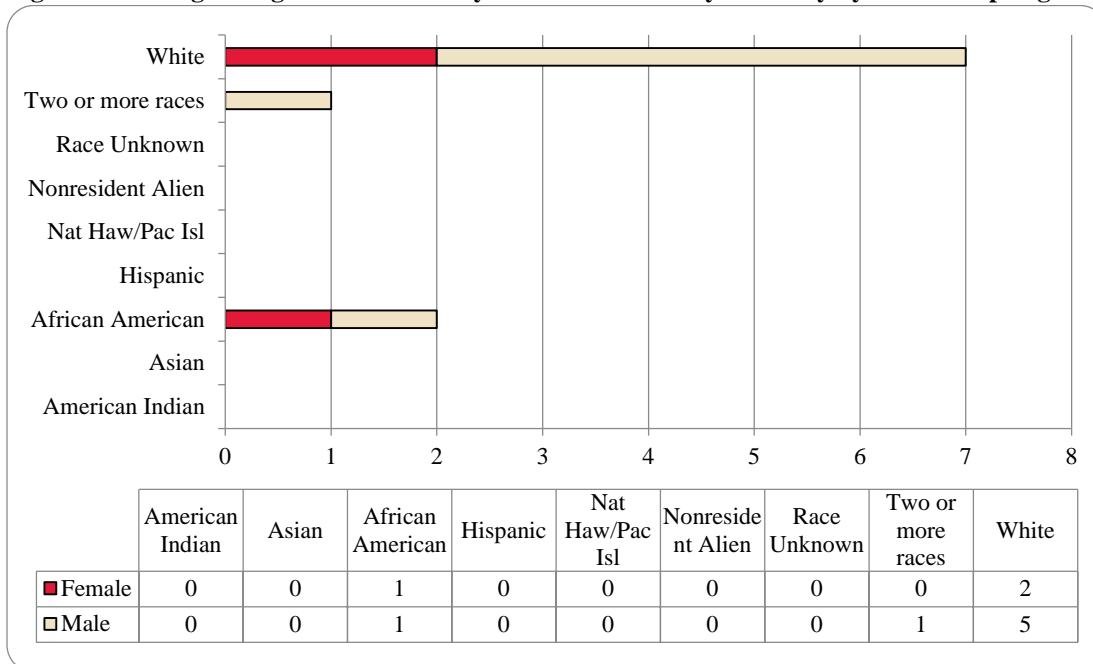


Table 17: College of Agriculture Head Count Summary for Undergraduate Students by Full and Part-Time by Gender and Race Classification: Spring 2016

	American Indian		Asian		African American		Hispanics		Nat Haw / Pac Isl		Race Unknown		Two or more races		White		Nonresident Alien		Total			
	F	M	F	M	F	M	F	M	F	M	F	M	F	M	F	M	F	M	F	M	Total	
Undergraduate																						
Full-Time																						
First-Time Freshmen																						
Other Freshmen					1	1									1					2	1	3
Sophomores																3					3	3
Juniors													1								1	1
Seniors																						
Special																						
Total Full-Time					1	1							1	1	3					2	5	7
Part-Time																						
First-Time Freshmen																						
Other Freshmen																						
Sophomores																						
Juniors																2					2	2
Seniors																						
Special															1					1		1
Total Part-Time															1	2				1	2	3
Total Undergraduate					1	1							1	2	5				3	7	10	
Total All Students					1	1							1	2	5				3	7	10	

Figure 45: College of Architecture Delivery-Site Head Count: Spring 2004-2016

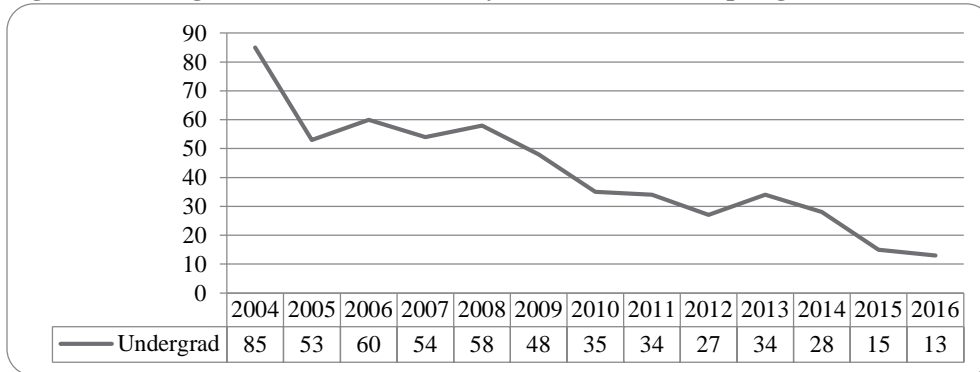


Figure 46: College of Architecture Delivery-Site Student Credit Hours: Spring 2004-2016

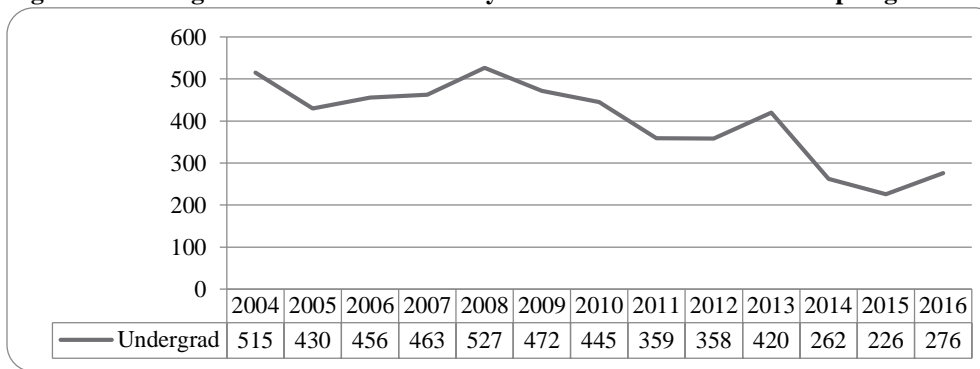


Figure 47: College of Architecture Delivery-Site Head Count by Ethnicity by Gender: Spring 2016

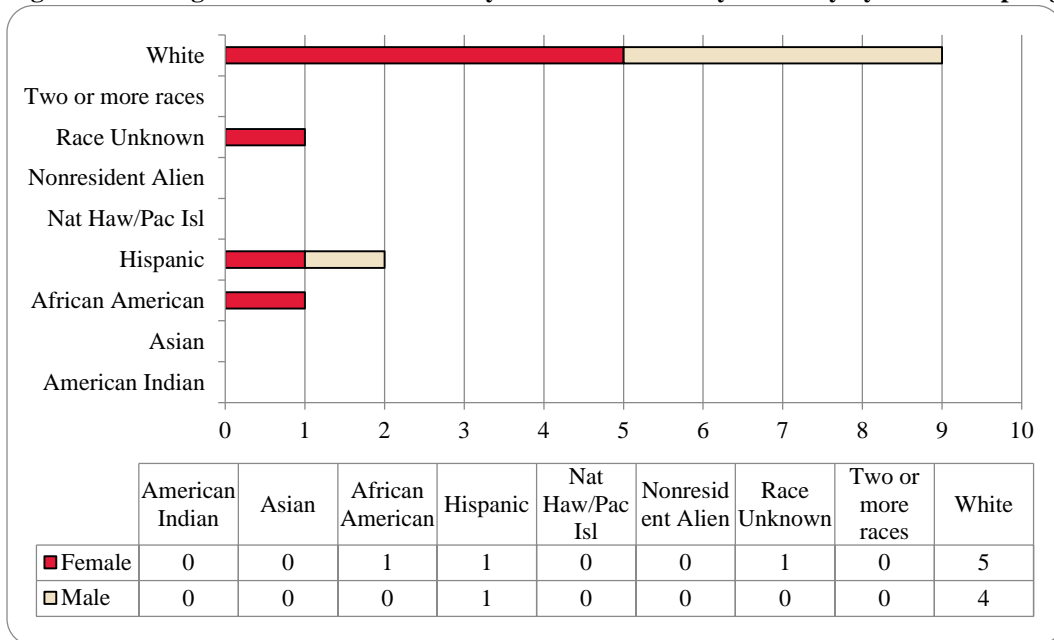


Table 18: College of Architecture Head Count Summary for Undergraduate Students by Full and Part-Time by Gender and Race Classification: Spring 2016

	American Indian		Asian		African American		Hispanics		Nat Haw / Pac Isl		Race Unknown		Two or more races		White		Nonresident Alien		Total			
	F	M	F	M	F	M	F	M	F	M	F	M	F	M	F	M	F	M	F	M	Total	
Undergraduate																						
Full-Time																						
First-Time Freshmen																						
Other Freshmen															1	2				1	3	4
Sophomores					1		1								2	1				4	1	5
Juniors																						
Seniors																						
Special																						
Total Full-Time					1		1	1							3	3				5	4	9
Part-Time																						
First-Time Freshmen																						
Other Freshmen															1					1		1
Sophomores												1								1		1
Juniors																						
Seniors																						
Special															1	1				1	1	2
Total Part-Time												1			2	1				3	1	4
Total Undergraduate					1		1	1				1			5	4				8	5	13
Total All Students					1		1	1				1			5	4				8	5	13

Figure 48: College of Engineering Delivery-Site Head Count: Spring 2004-2016

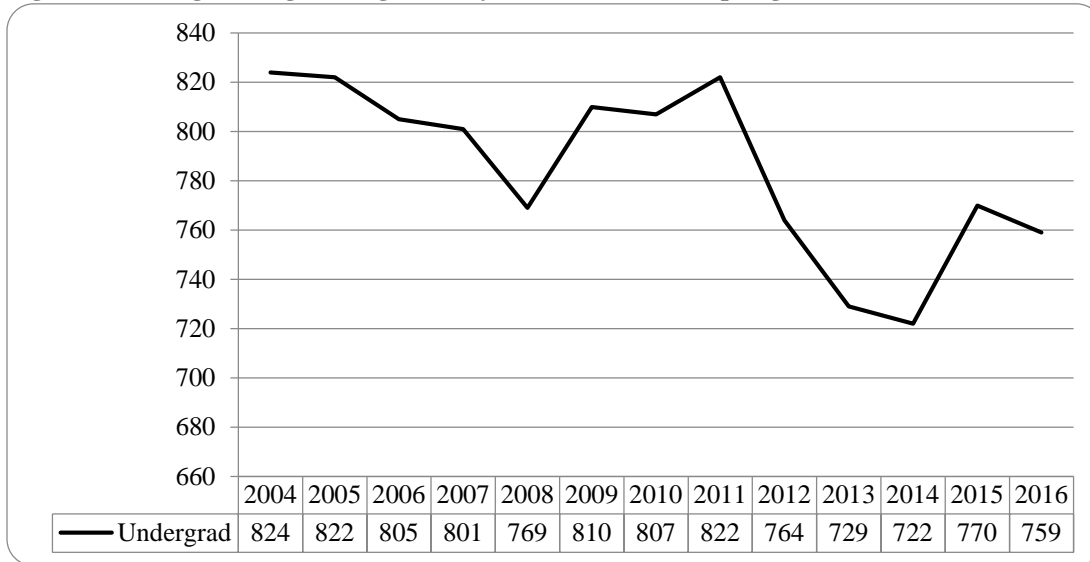


Figure 49: College of Engineering Delivery-Site Student Credit Hours: Spring 2004-2016

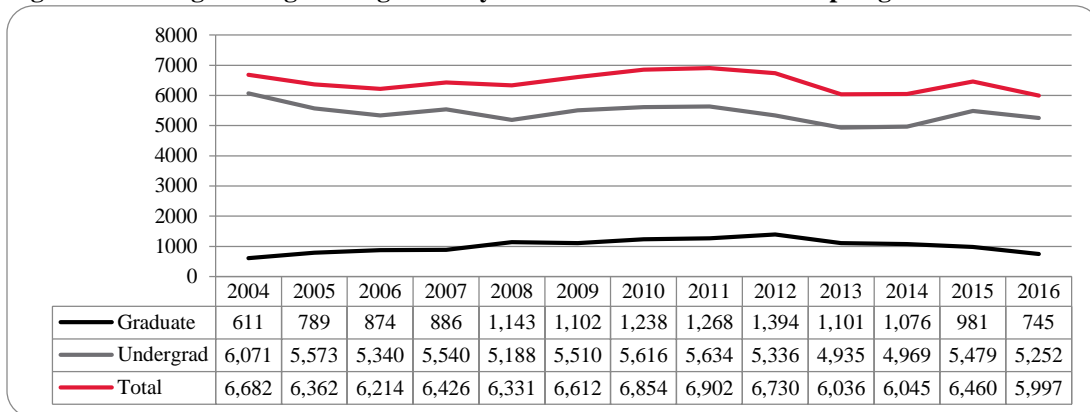


Figure 50: College of Engineering Delivery-Site Head Count by Ethnicity by Gender: Spring 2016

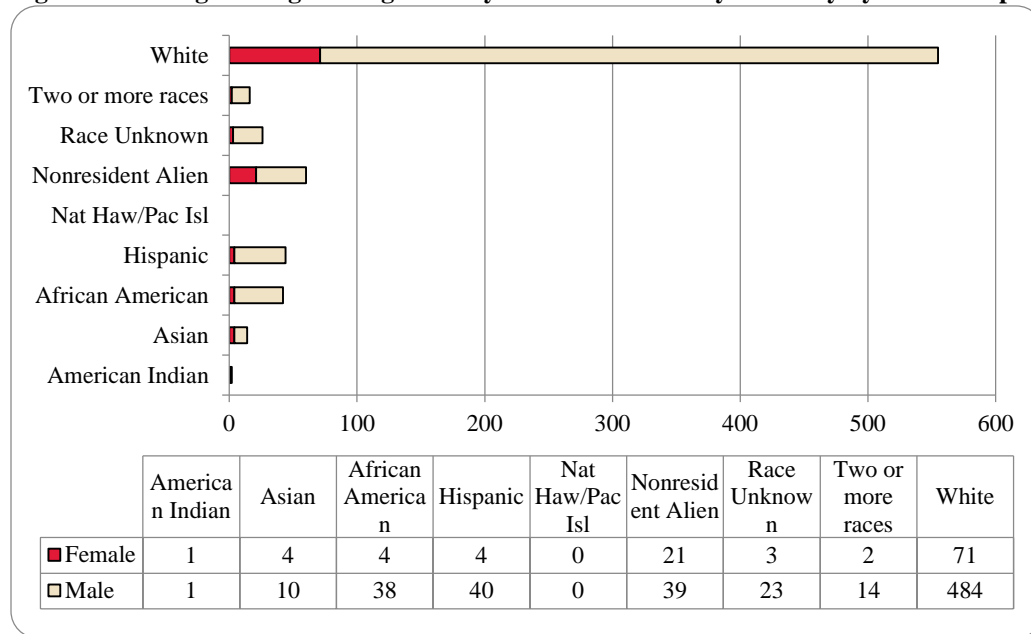


Table 19: College of Engineering Head count Summary for Undergraduate Students by Full and Part-Time by Gender and Race Classification: Spring 2016

	American Indian		Asian		African American		Hispanics		Nat Haw / Pac Isl		Race Unknown		Two or more races		White		Nonresident Alien		Total			
	F	M	F	M	F	M	F	M	F	M	F	M	F	M	F	M	F	M	F	M	Total	
Undergraduate																						
Full-Time																						
First-Time Freshmen							2								1		1			4	4	
Other Freshmen		1	1	1		2	1	4				4		2	14	72	6	11	22	97	119	
Sophomores	1			4	1	2	2	13			1	5	1	3	11	100	5	3	22	130	152	
Juniors			1	1	1	6		4			1	2	1	4	16	89	7	8	27	114	141	
Seniors			2	2	1	12		8				11		1	22	153	2	14	27	201	228	
Special								1								3		1		5	5	
Total Full-Time	1	1	4	8	3	24	3	30			2	22	2	10	63	418	20	38	98	551	649	
Part-Time																						
First-Time Freshmen																						
Other Freshmen																7				7	7	
Sophomores						1	1	1					1	1	9				2	12	14	
Juniors				1	1	7		4					1	3	13				4	26	30	
Seniors				1		5		5			1		2	3	34	1	1	5	48	53	53	
Special						1						1			1	3			1	5	6	
Total Part-Time				2	1	14	1	10			1	1		4	8	66	1	1	12	98	110	
Total Undergraduate	1	1	4	10	4	38	4	40			3	23	2	14	71	484	21	39	110	649	759	
Total All Students	1	1	4	10	4	38	4	40			3	23	2	14	71	484	21	39	110	649	759	

Figure 51: College of Education and Human Science Delivery-Site Head Count: Spring 2004-2016

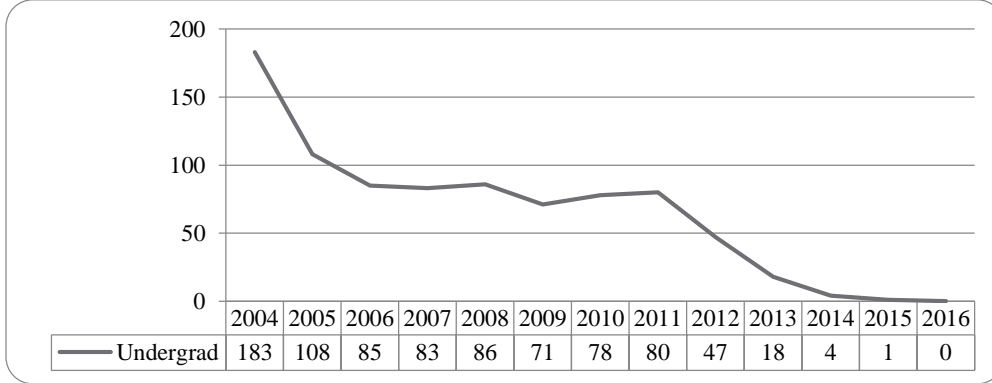
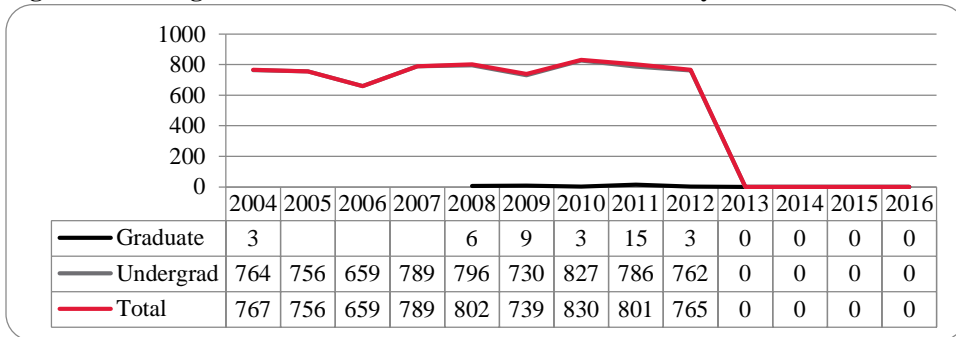


Figure 52: College of Education and Human Sciences Delivery-Site Student Credit Hours: Spring 2004-2016



Glossary

The total head count and student credit hours in this enrollment report are provided on both a delivery-site and administrative-site basis. Delivery-site includes enrollment in all courses taught at UNO regardless of “home” campus. This means that student credit hours are reported for courses in the colleges. Student enrollment is counted in the college declared by the student. Specifically, the delivery-site enrollment numbers include students in degree programs in the UNL Colleges of Agriculture, Architecture, Engineering and Technology, and Education and Human Science.

FIRST-TIME, Entering (freshmen) Student: Students attending any institution for the first time at the undergraduate level. For students entering the fall term, this includes students enrolled in the fall term who attended college for the first time in the prior summer term. Also included are students who entered with advanced standing, i.e. college credits earned before graduation from high school.

OTHER FRESHMEN: At the beginning of the current semester, undergraduate students who (1) are not First-Time Freshmen and (2) have less than 27 semester hours earned from all institutions of higher education attended.

SOPHOMORES: At the beginning of the current semester, undergraduate students who have at least 27, but not more than 57, semester hours earned from all institutions of higher education attended.

JUNIORS: At the beginning of the current semester, undergraduate students who have at least 58, but not more than 90, semester hours earned from all institutions of higher education attended.

SENIORS: At the beginning of the current semester, undergraduate students who have at least 91 semester hours earned from all institutions of higher education attended.

NON-DEGREE/INTER-CAMPUS/SPECIAL UNDERGRADUATES: Special undergraduates not pursuing a degree at UNO in various programs: Inter-Campus UNMC, UNK, UNL, and Non-Degree.

NON-DEGREE/INTER-CAMPUS/SPECIAL GRADUATE STUDENTS: Special graduate students not pursuing a degree at UNO in various programs: Engineering Transfer Program, Inter-Campus UNMC, UNK, UNL, Inter-Campus UNL Graduate Psychology and Non-Degree.

MASTERS/SPECIALIST: Graduate students pursuing a degree less than doctoral.

CERTIFICATE: These students are not enrolled in a degree program, but only a certificate.

DOCTORAL: Graduate students who have been accepted into a doctoral program.

FULL-TIME: In the current semester, undergraduate students enrolled for 12 or more semester hours, or graduate students enrolled for 9 or more semester hours.

PART-TIME: In the current semester, undergraduate students enrolled for less than 12 semester hours, or graduate students enrolled for less than 9 semester hours.

COOPERATIVE GRADUATE PROGRAM: Graduate students enrolled in Human Resources and Training or Global Information Operations offered cooperatively by two or more colleges.



OFFICE OF INSTITUTIONAL EFFECTIVENESS

www.unomaha.edu/oie/

402-554-2367 | 402-554-4896 (Fax)

T. Hank Robinson, Director

Jenny Liu, Director Institutional Research

Daniel O'Dell, Applications Administrator

Andrew Jacobsen, Business Analyst

Lindsey Bandow, Research Analyst II

Jeanie Gutheil-Bykerk, Research Analyst