

Spring 3-13-2015

Enrollment Report - Spring 2015

UNO Office of Institutional Effectiveness
University of Nebraska at Omaha

Follow this and additional works at: <https://digitalcommons.unomaha.edu/oieenrollment>

 Part of the [Educational Assessment, Evaluation, and Research Commons](#), and the [Higher Education Commons](#)

Please take our feedback survey at: https://unomaha.az1.qualtrics.com/jfe/form/SV_8cchtFmpDyGfBLE

Recommended Citation

Office of Institutional Effectiveness, UNO, "Enrollment Report - Spring 2015" (2015). *Enrollment Reports*. 72.

<https://digitalcommons.unomaha.edu/oieenrollment/72>

This Report is brought to you for free and open access by the Systems Intelligence and Data Analytics (SIDA) at DigitalCommons@UNO. It has been accepted for inclusion in Enrollment Reports by an authorized administrator of DigitalCommons@UNO. For more information, please contact unodigitalcommons@unomaha.edu.

OFFICE OF INSTITUTIONAL EFFECTIVENESS

ENROLLMENT PROFILE REPORT

SPRING 2015



UNIVERSITY OF
Nebraska
Omaha



University of Nebraska at Omaha

Enrollment Profile Report:

Spring 2015

Office of Institutional Effectiveness

Institutional Research

<http://www.unomaha.edu/oie/>

January 2015

EXECUTIVE SUMMARY

This Enrollment Statistical Summary provides delivery and administrative-site information on enrollment headcount and student credit hours. Delivery site reporting counts all students, including those in UNL programs delivered at UNO, but excludes UNO programs only (including the CPACS program delivered in Lincoln).

The purpose of this summary is to provide the undergraduate and graduate enrollments and student credit hour information by college of equivalent academic unit, class, gender and ethnicity. A glossary at the end of the report provides a list of definitions for headings and categories found in the report.

Administrative-Site Campus Summary

- Spring 2015 head count enrollment is 14,331 a 1.2% increase compared to the spring 2014 enrollment of 14,162 (see Figure 1).
- Spring 2015 undergraduate head count enrollment is 11,449 a 0.9% increase compared to the spring 2014 enrollment of 11,352 (see figure 5).
- Spring 2015 graduate head count enrollment is 2,882 a 2.6% increase compared to the spring 2014 of 2,810 (see Figure 5).
- Spring 2015 student credit hours are 158,014 a 1.1% increase compared to the spring 2014 credit hours of 156,312 (see figure 6).
- Spring 2015 undergraduate credit hours are 141,331 up from spring 2014 by 0.6% (see figure 6).
- Spring 2015 graduate credit hours are 16,683 up from spring 2014 by 5.8% (see figure 6).

Delivery-Site

- Spring 2015 head count enrollment is 14,755 a 2.3% increase compared to the spring 2014 enrollment of 14,642 (see Figure 1).
- Spring 2015 undergraduate head count enrollment is 11,873 a 0.5% increase compared to the spring 2014 enrollment of 11,816 (see figure 2).
- Spring 2015 graduate head count enrollment is 2,882 a 2.0% increase compared to the spring 2014 enrollment of 2,826 (see figure 2).
- Spring 2015 student credit hours are 160,469 a 0.7% increase compared to the spring 2014 credit hours of 159,385 (see figure 3).
- Spring 2015 undergraduate credit hours are 142,907 up from spring 2014 by 0.4% (see figure 3).
- Spring 2015 graduate credit hours are 17,562 up from spring 2014 by 3.4% (see figure 3).

Contents

Executive Summary.....i

List of Figures:

Figure 1: Delivery-Site & Administrative-Site Head Count Enrollment: Spring 1988-20157

Figure 2: UNO Delivery-Site Head Count: Spring 2004-2015.....8

Figure 3: UNO Delivery-Site Student Credit Hours by Student Level: Spring 2004-20158

Figure 4: UNO Delivery-Site Head Count by Ethnicity by Gender: Spring 20159

Figure 5: UNO Administrative-Site Head Count: Spring 2004-2015.....11

Figure 6: UNO Administrative-Site Student Credit Hours: Spring 2004-201511

Figure 7: UNO Administrative-Site Head Count by Ethnicity by Gender: Spring 201512

Figure 8: College of Arts & Science Head Count: Spring 2004-2015.....14

Figure 9: College of Arts & Sciences Student Credit Hours: Spring 2004-2015.....14

Figure 10: College of Arts & Sciences Head Count by Ethnicity by Gender: Spring 201515

Figure 11: College of Business Administration Head Count: Spring 2004-2015.....17

Figure 12: College of Business Administration Student Credit Hours: Spring 2004-201517

Figure 13: College of Business Administration Head Count by Ethnicity by Gender: Spring 201518

Figure 14: College of Communication, Fine Arts and Media Delivery-Site Head Count: Spring 2006-201520

Figure 15: College of Communication, Fine Arts and Media Delivery-Site Student Credit Hours: Spring 2006-2015
.....20

Figure 16: College of Communication, Fine Arts and Media Delivery-Site Head Count by Ethnicity by Gender:
Spring 201521

Figure 17: College of Communication, Fine Arts and Media: Administrative-Site Head Count: Spring 2006-2015 .23

Figure 18: College of Communication, Fine Arts and Media: Administrative-Site Student Credit Hours: Spring
2006-2015.....23

Figure 19: College of Communication, Fine Arts and Media: Administrative-Site Head Count by Ethnicity by
Gender: Spring 2015.....24

Figure 20: College of Education Head Count: Spring 2004-2015.....26

Figure 21: College of Education Student Credit Hours: Spring 2004-201526

Figure 22: College of Education Head Count by Ethnicity by Gender: Spring 201527

Figure 23: College of Information Science & Technology Head Count: Spring 2004-2015.....29

Figure 24: College of Information Science & Technology Student Credit Hours: Spring 2004-201529

Figure 25: College of Information Science & Technology Head Count by Ethnicity by Gender: Spring 2015.....30

Figure 26: College of Public Affairs & Community Service Delivery-Site Head Count: Spring 2004-201532

Figure 27: College of Public Affairs & Community Service Delivery-Site Student Credit Hours: Spring 2004-2015
.....32

Figure 28: College of Public Affairs & Community Service Delivery-Site Head Count by Ethnicity by Gender:
Spring 201533

Figure 29: College of Public Affairs & Community Service Administrative-Site Head Count: Spring 2004-2015 ...35

Figure 30: College of Public Affairs & Community Service Administrative-Site Student Credit Hours: Spring 2004-2015	35
Figure 31: College of Public Affairs & Community Service Administrative-Site Head Count by Ethnicity by Gender: Spring 2015	36
Figure 32: College of CPACS, Division of Continuing Studies Head Count: Spring 2004-2015	38
Figure 33: College of CPACS, Division of Continuing Studies Head Count by Ethnicity by Gender: Spring 2015 ..	38
Figure 34: University Division Head Count: Spring 2004-2015	41
Figure 35: University Division Student Credit Hours: Spring 2004-2015.....	41
Figure 36: University Division Head Count by Ethnicity by Gender: Spring 2015	41
Figure 37: Non-Degree/Intercampus Special Undergraduate Students Head Count: Spring 2004-2015.....	43
Figure 38: Non-Degree/Intercampus Special Undergraduate Students Head Count by Ethnicity by Gender: Spring 2015	43
Figure 39: Non-Degree/Intercampus Special Graduate Students Head Count: Spring 2004-2015	45
Figure 40: Non-Degree/Intercampus Special Graduate Students Head Count by Ethnicity by Gender: Spring 2015.	45
Figure 41: Other Honors and Library Hours Student Credit Hours by Level of Instruction: Spring 2004-2015.....	47
Figure 42: College of Agriculture Delivery-Site Head Count: Spring 2004-2015	48
Figure 43: College of Agriculture Delivery-Site Student Credit Hours: Spring 2004-2015.....	48
Figure 44: College of Agriculture Delivery-Site Head Count by Ethnicity by Gender: Spring 2015.....	48
Figure 45: College of Architecture Delivery-Site Head Count: Spring 2004-2015.....	50
Figure 46: College of Architecture Delivery-Site Student Credit Hours: Spring 2004-2015	50
Figure 47: College of Architecture Delivery-Site Head Count by Ethnicity by Gender: Spring 2015	50
Figure 48: College of Engineering Delivery-Site Head Count: Spring 2004-2015	52
Figure 49: College of Engineering Delivery-Site Student Credit Hours: Spring 2004-2015.....	52
Figure 50: College of Engineering Delivery-Site Head Count by Ethnicity by Gender: Spring 2015	52
Figure 51: College of Education and Human Science Delivery-Site Head Count: Spring 2004-2015.....	54
Figure 52: College of Education and Human Sciences Delivery-Site Student Credit Hours: Spring 2004-2015.....	54
Figure 53: College of Education and Human Sciences Delivery-Site Head Count by Ethnicity by Gender: Spring 2004-2015.....	54

List of Tables:

Table 1: UNO Delivery-Site and Administrative-Site Head Count Enrollment and Comparison: Spring 2015	6
Table 2: Total Uno Delivery-Site Head Count Summary for Undergraduate and Graduate Students Full and Part-Time by Gender and Race Classification: Spring 2015	10
Table 3: Total UNO Administrative-Site Head Count Summary for Undergraduate and Graduate Students by Full and Part-Time by Gender and Race Classification: Spring 2015.....	13
Table 4: College of Arts & Sciences Head Count Summary for Undergraduate and Graduate Students by Full and Part-time by Gender and Race Classification: Spring 2015.....	16
Table 5: College of Business Administration Head Count Summary for Undergraduate and Graduate Students by Full and Part-Time by Gender and Race Classification: Spring 2015	19

Table 6: College of Communication, Fine Arts and Media Delivery-Site Head Count Summary for Undergraduate and Graduate Students by Full and Part-Time by Gender and Race Classification: Spring 2015	22
Table 7: College of Communication, Fine Arts and Media Administrative-Site Head Count Summary for Undergraduate and Graduate Students by Full and Part-Time by Gender and Race Classification: Spring 2015	25
Table 8: College of Education Head Count Summary for Undergraduate and Graduate Students by Full and Part-Time by Gender and Race Classification: Spring 2015	28
Table 9: College of Information Science and Technology Head Count Summary for Undergraduate and Graduate Summary for Full and Part-Time by Gender and Race Classification: Spring 2015	31
Table 10: College of Public Affairs & Community Service Delivery-Site Head Count for Undergraduate and Graduate Students by Full and Part-time by Gender and Race Classification: Spring 2015	34
Table 11: College of Public Affairs & Community Service Administrative-Site Head Count Summary for Undergraduate Graduate Students by Full and Part-Time by Gender and Race Classification: Spring 2015	37
Table 12: College of CPACS Division of Continuing Studies Head Count Summary for Undergraduate Students by Full and Part-Time by Gender and Race Classification: Spring 2015	39
Table 13: Cooperative Graduate Program Head Count Summary for Graduate Students by Full and Part-time by Gender and Race Classification: Spring 2015	40
Table 14: University Division Head Count Summary for Undergraduate Students by Full and Part-Time by Gender and Race Classification: Spring 2015	42
Table 15: Non-Degree/Intercampus Head Count Summary for Special Undergraduate Students by Full and Part-Time by Gender and Race Classification: Spring 2015	44
Table 16: Non-Degree/Intercampus Head Count Summary for Special Graduate Students by Full and Part-time by Gender and Race Classification: Spring 2015	46
Table 17: College of Agriculture Head Count Summary for Undergraduate Students by Full and Part-Time by Gender and Race Classification: Spring 2015	49
Table 18: College of Architecture Head Count Summary for Undergraduate Students by Full and Part-Time by Gender and Race Classification: Spring 2015	51
Table 19: College of Engineering Head count Summary for Undergraduate Students by Full and Part-Time by Gender and Race Classification: Spring 2015	53
Table 20: College of Education and Human Sciences Head Count Summary for Undergraduate Students by Full and Part-Time by Gender and Race Classification: Spring 2015	55
Glossary	56

Table 1: UNO Delivery-Site and Administrative-Site Head Count Enrollment and Comparison: Spring 2015

	Spring 2015		Spring 2014	Spring 14-15 Administrative-Site	
	Delivery-Site	Administrative-Site	Administrative-Site	Numerical Change	Percent Change
UNO:					
<i>Undergraduate</i>					
Arts & Science	3,277	3,277	3,274	3	0.1%
Business Administration	1,867	1,867	1,826	41	2.2%
Communication, Fine Arts & Media	929	929	1,013	-84	-8.3%
Education	1,345	1,345	1,451	-106	-7.3%
Information Science and Technology	772	772	704	68	9.7%
Public Affairs & Community Services	773	1,149	1,018	131	12.9%
Division of Continuing Studies	1,217	1,217	1,174	43	3.7%
Sub-total CPACS including Cont. Studies	1,990	2,366	2,192	174	7.9%
Non-Degree	277	277	273	4	1.5%
University Division	616	616	619	-3	-0.5%
Total Undergraduate	11,073	11,449	11,352	97	0.9%
<i>Graduate</i>					
Arts & Science	420	420	421	-1	-0.2%
Business Administration	386	386	378	8	2.1%
Communication, Fine Arts & Media	84	84	80	4	5.0%
Education	797	797	797	0	0.0%
Information Science and Technology	328	328	276	52	18.8%
Public Affairs & Community Services	501	501	479	22	4.6%
New Cooperative Graduate Programs	8	8	8	0	0.0%
Undeclared	358	358	371	-13	-3.5%
Total Graduate	2,882	2,882	2,810	72	2.6%
UNO Administrative-Site Total		14,331	14,162	169	1.2%
UNL:	Spring 2015		Spring 2014	Numerical Change	Percent Change
Agriculture	14		14		
Architecture	15		28		
Engineering & Technology	770		722		
Education and Human Science	1		4		
Total UNL in Omaha	800		768	32	4.2%
	Spring 2015		Spring 2014	Numerical Change	Percent Change
UNO Delivery-Site Total	14,755		14,421	334	2.3%

Figure 1: Delivery-Site & Administrative-Site Head Count Enrollment: Spring 1988-2015

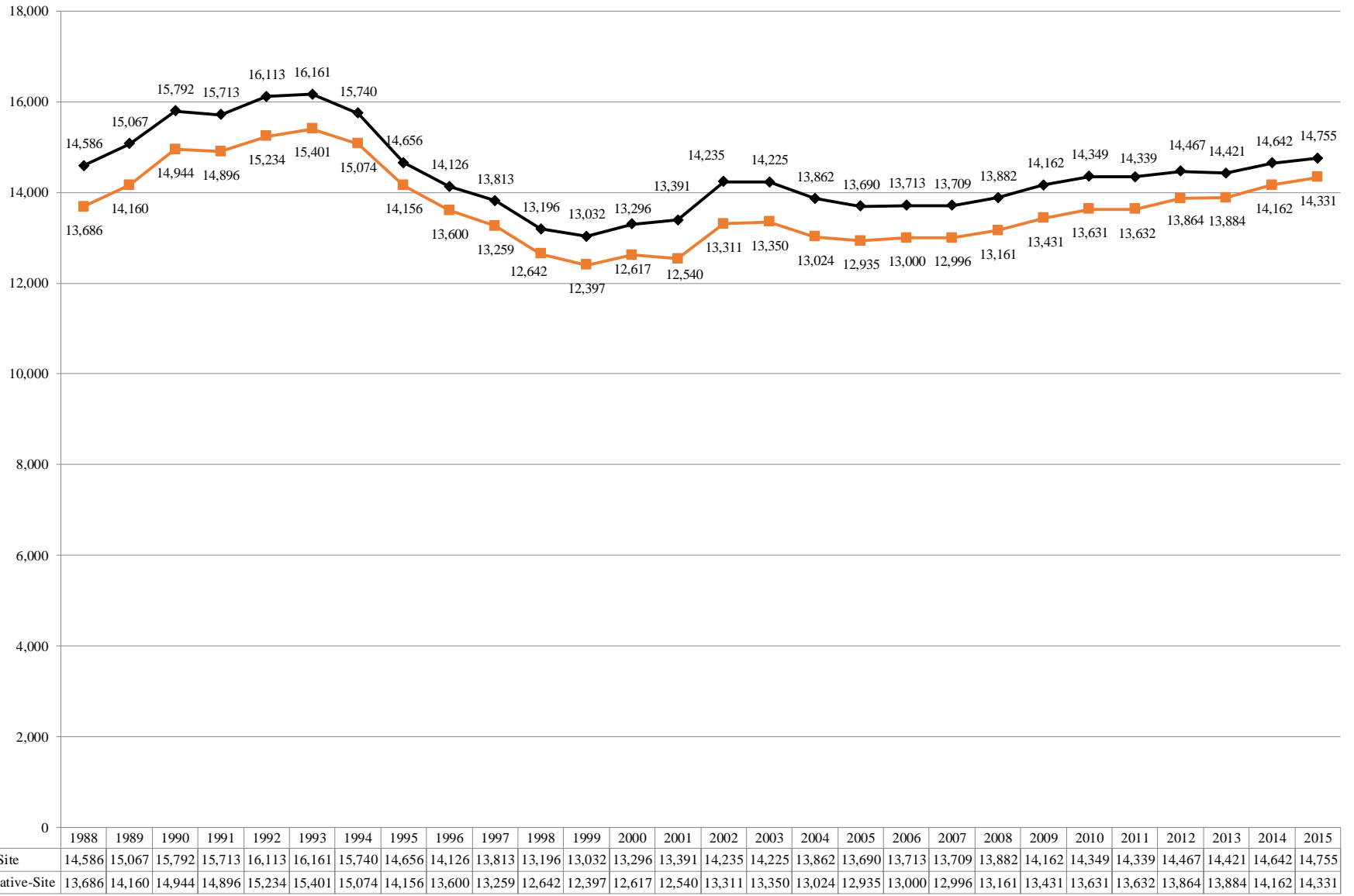


Figure 2: UNO Delivery-Site Head Count: Spring 2004-2015

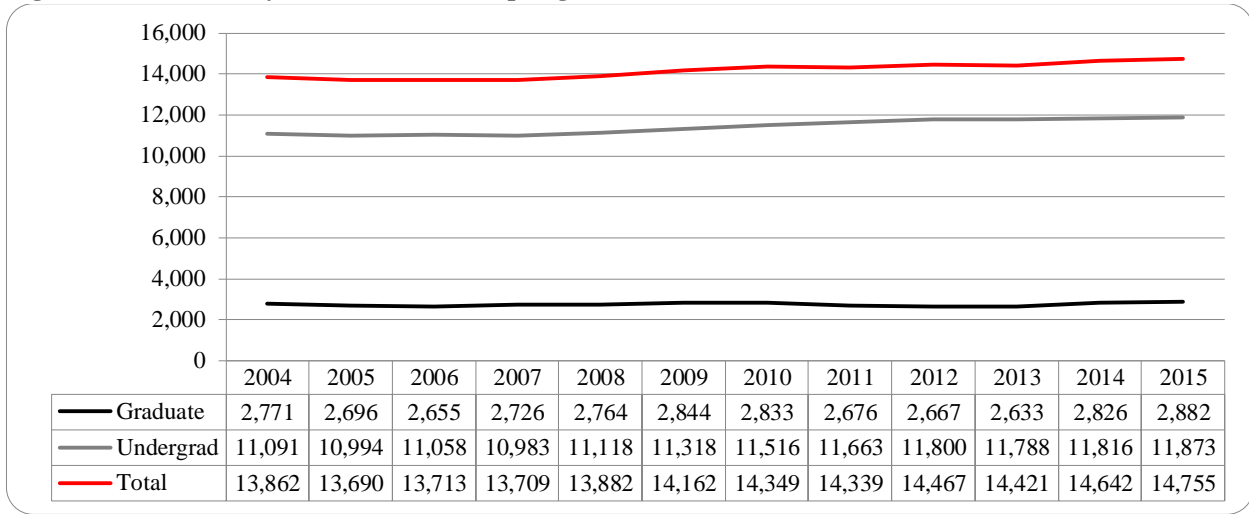


Figure 3: UNO Delivery-Site Student Credit Hours by Student Level: Spring 2004-2015

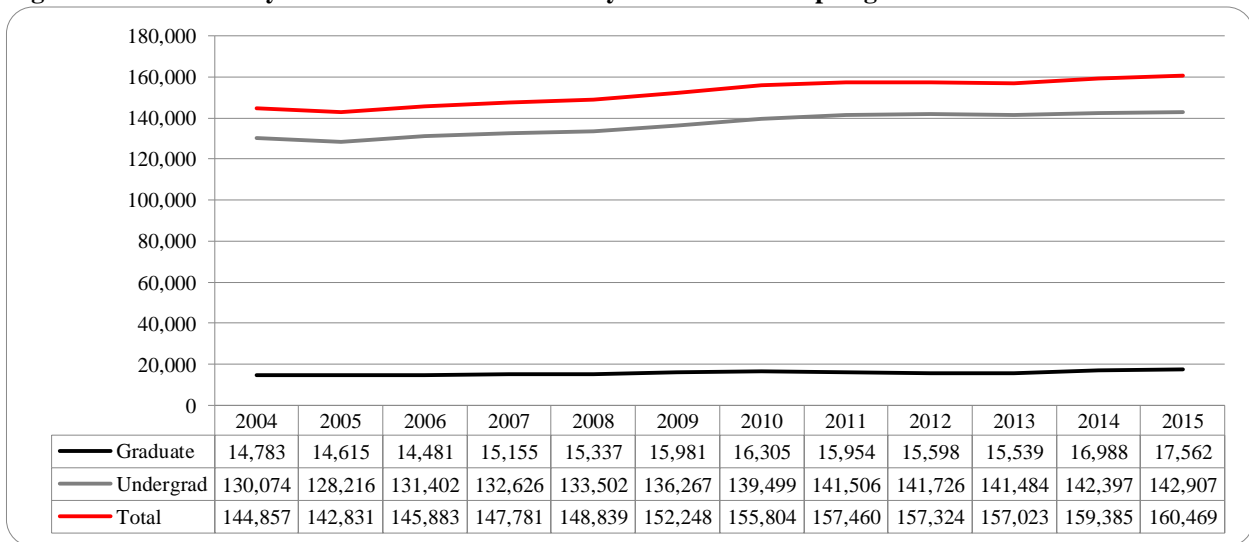
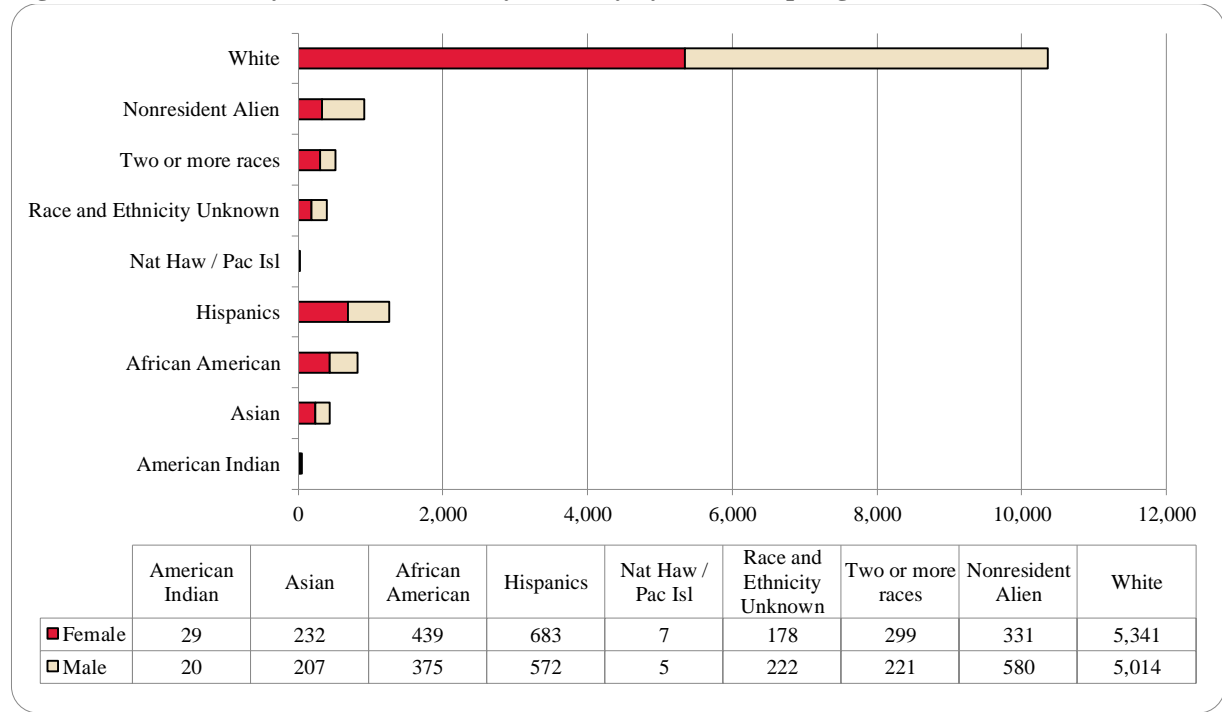


Figure 4: UNO Delivery-Site Head Count by Ethnicity by Gender: Spring 2015



**Table 2: Total Uno Delivery-Site Head Count Summary for Undergraduate and Graduate Students Full and Part-Time by Gender and Race
Classification: Spring 2015**

	American Indian		Asian		African American		Hispanics		Nat Haw / Pac Isl		Race Unknown		Two or more races		White		Nonresident Alien		Total			
	F	M	F	M	F	M	F	M	F	M	F	M	F	M	F	M	F	M	F	M	Total	
Undergraduate																						
Full-Time																						
First-Time Freshmen		1	1			1	3	4				1	2	1	12	18	14	26	32	52	84	
Other Freshmen	1	4	39	29	66	34	106	118	1	1	17	24	53	37	507	577	56	98	846	922	1,768	
Sophomores	5	2	30	29	66	54	141	111	3		21	31	60	48	722	711	44	77	1,092	1,063	2,155	
Juniors	6	3	47	43	72	52	118	96	1		25	34	53	24	852	891	28	65	1,202	1,208	2,410	
Seniors	9	5	36	27	67	54	114	84	1	1	52	48	37	40	939	885	22	46	1,277	1,190	2,467	
Special		1	2	3	2	2	2	5			3	1		1	38	52		3	47	68	115	
Total Full-Time	21	16	155	131	273	197	484	418	6	2	118	139	205	151	3,070	3,134	164	315	4,496	4,503	8,999	
Part-Time																						
First-Time Freshmen					3	1	1						1		3	5	5	2	13	8	21	
Other Freshmen	1		7	10	12	16	22	21		2	5	5	7	9	98	106	5	9	157	178	335	
Sophomores			7	7	16	23	26	18			1	7	8	8	133	170	2	3	193	236	429	
Juniors	2	2	10	12	29	34	32	28			8	13	8	7	268	247	2	3	359	346	705	
Seniors	1		13	14	39	46	40	34	1	1	19	22	16	15	365	456	3	11	497	599	1,096	
Special	1	1	6	5	6	10	9	11			3	6	4	4	121	100	1		151	137	288	
Total Part-Time	5	3	43	48	105	130	130	112	1	3	36	53	44	43	988	1,084	18	28	1,370	1,504	2,874	
Total Undergraduate	26	19	198	179	378	327	614	530	7	5	154	192	249	194	4,058	4,218	182	343	5,866	6,007	11,873	
Graduate																						
Full-Time																						
Certificate															2				2		2	
Masters			4	4	15	10	12	11			7	2	13	8	291	133	93	141	435	309	744	
Doctoral			1		1	1	3				1		3	1	12	10	8	8	29	20	49	
Special Graduate				1			1	2					1	1	17	27	6	30	25	61	86	
Total Full-Time			5	5	16	11	16	13			8	2	17	10	322	170	107	179	491	390	881	
Part-Time																						
Certificate			1	1	1	1					1				18	10	2	1	23	13	36	
Masters	2	1	20	15	37	26	44	20			12	19	26	13	735	480	29	34	905	608	1,513	
Doctoral			2	1	1	3	2	3				2	2	1	62	50	2	9	71	69	140	
Special Graduate	1		6	6	6	7	7	6			3	7	5	3	146	86	9	14	183	129	312	
Total Part-Time	3	1	29	23	45	37	53	29			16	28	33	17	961	626	42	58	1,182	819	2,001	
Total Graduate	3	1	34	28	61	48	69	42			24	30	50	27	1,283	796	149	237	1,673	1,209	2,882	
Total All Students	29	20	232	207	439	375	683	572	7	5	178	222	299	221	5,341	5,014	331	580	7,539	7,216	14,755	

Figure 5: UNO Administrative-Site Head Count: Spring 2004-2015

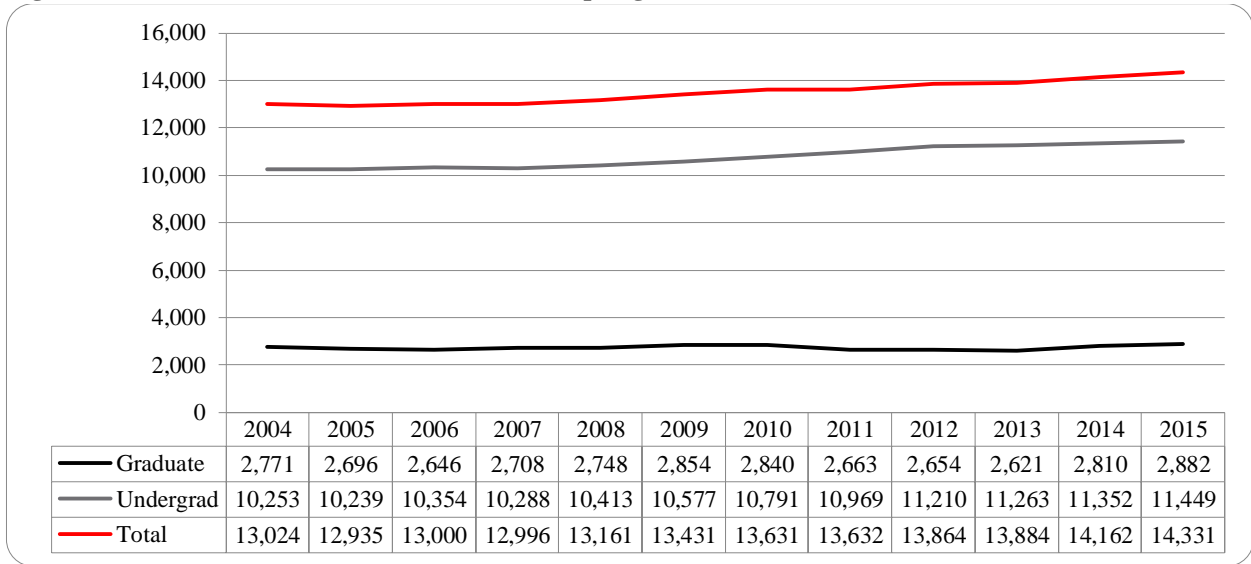


Figure 6: UNO Administrative-Site Student Credit Hours: Spring 2004-2015

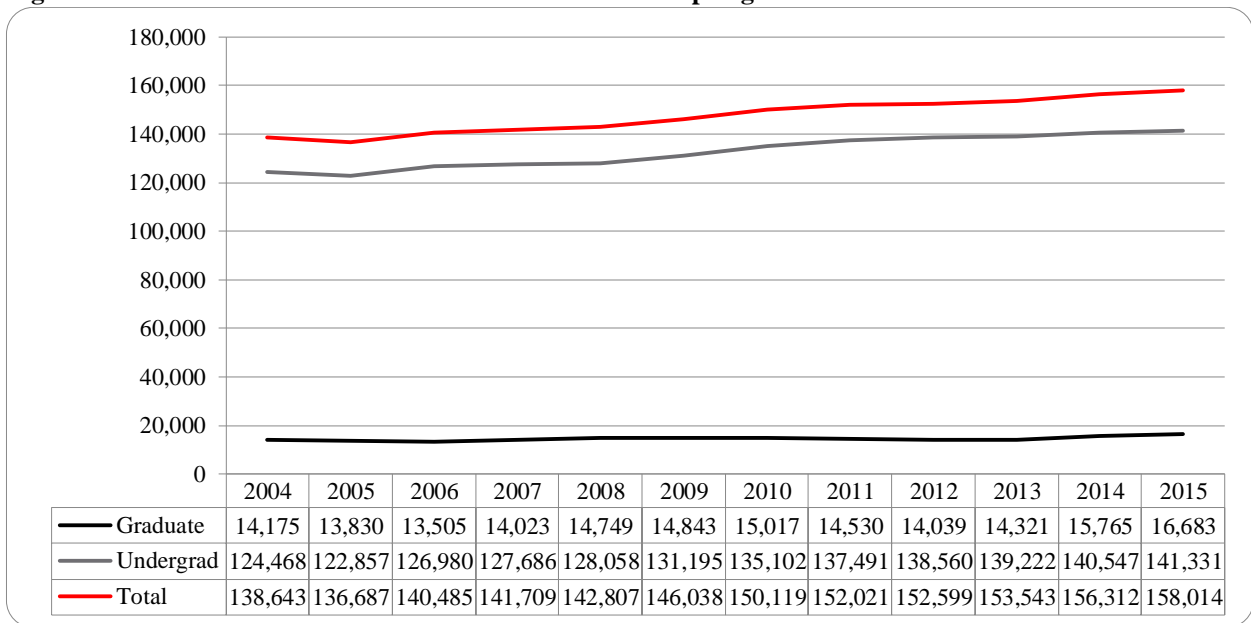


Figure 7: UNO Administrative-Site Head Count by Ethnicity by Gender: Spring 2015

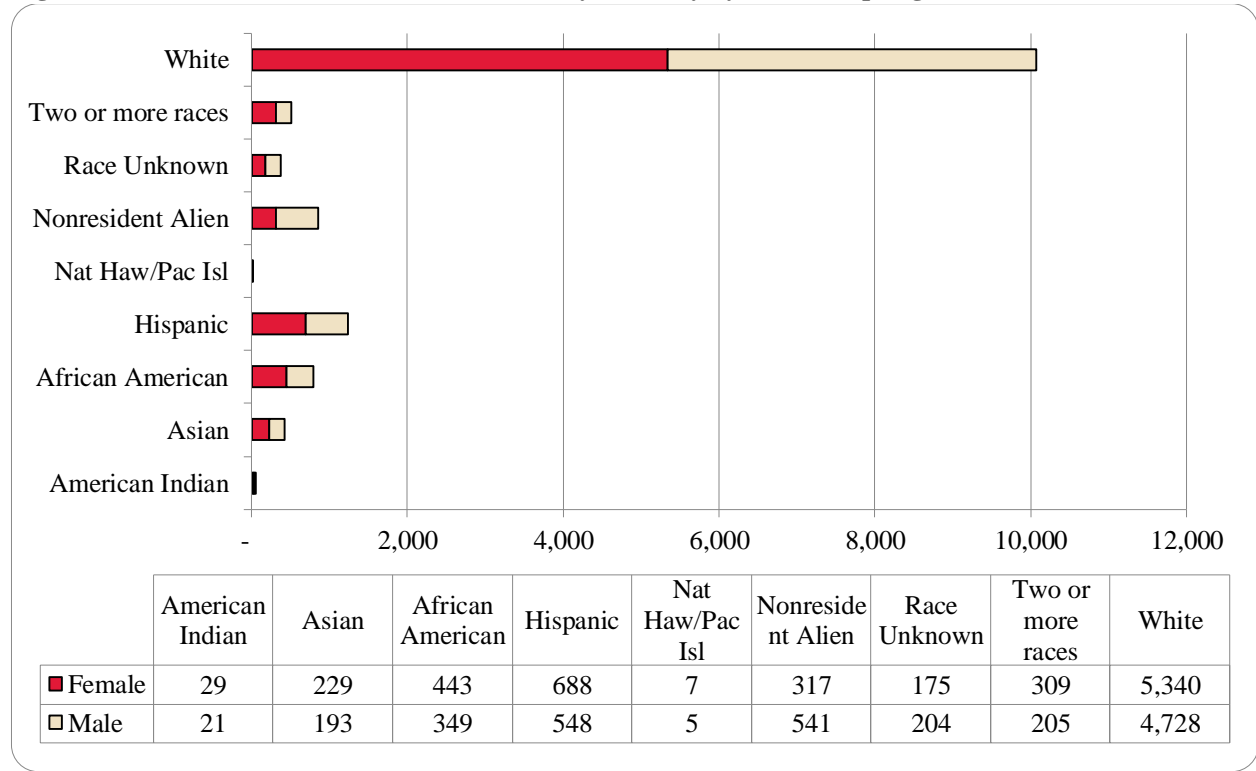


Table 3: Total UNO Administrative-Site Head Count Summary for Undergraduate and Graduate Students by Full and Part-Time by Gender and Race Classification: Spring 2015

	American Indian		Asian		African American		Hispanics		Nat Haw / Pac Isl		Race Unknown		Two or more races		White		Nonresident Alien		Total			
	F	M	F	M	F	M	F	M	F	M	F	M	F	M	F	M	F	M	F	M	Total	
Undergraduate																						
Full-Time																						
First-Time Freshmen		1	1			1	3	4				1	2	1	12	15	11	25	29	48	77	
Other Freshmen	1	4	39	27	67	33	106	113	1	1	17	21	55	33	507	528	52	89	845	849	1,694	
Sophomores	5	2	30	26	67	50	141	106	3		19	30	62	43	714	660	40	68	1,081	985	2,066	
Juniors	6	4	45	40	73	46	118	95	1		25	32	58	22	852	828	25	50	1,203	1,117	2,320	
Seniors	9	5	35	23	67	50	120	79	1	1	52	40	37	37	943	802	22	42	1,286	1,079	2,365	
Special		1	2	2	2	2	2	5			3			1	36	45		2	45	58	103	
Total Full-Time	21	17	152	118	276	182	490	402	6	2	116	124	214	137	3,064	2,878	150	276	4,489	4,136	8,625	
Part-Time																						
First-Time Freshmen					3	1	1						1		3	5	5	2	13	8	21	
Other Freshmen	1		7	10	13	17	23	21		2	5	5	7	9	100	105	5	9	161	178	339	
Sophomores			7	7	16	19	26	17			1	7	9	7	137	162	2	4	198	223	421	
Juniors	2	2	10	12	29	30	31	24			8	13	8	7	268	239	2	2	358	329	687	
Seniors	1		13	13	39	43	39	32	1	1	18	19	16	14	364	448	3	11	494	581	1,075	
Special	1	1	6	5	6	9	9	10			3	6	4	4	121	95	1		151	130	281	
Total Part-Time	5	3	43	47	106	119	129	104	1	3	35	50	45	41	993	1,054	18	28	1,375	1,449	2,824	
Total Undergraduate	26	20	195	165	382	301	619	506	7	5	151	174	259	178	4,057	3,932	168	304	5,864	5,585	11,449	
Graduate																						
Full-Time																						
Certificate															2					2	2	
Masters			4	4	15	10	12	11			7	2	13	8	291	133	93	141	435	309	744	
Doctoral			1		1	1	3				1		3	1	12	10	8	8	29	20	49	
Special Graduate				1			1	2					1	1	17	27	6	30	25	61	86	
Total Full-Time			5	5	16	11	16	13			8	2	17	10	322	170	107	179	491	390	881	
Part-Time																						
Certificate			1	1	1	1					1				18	10	2	1	23	13	36	
Masters	2	1	20	15	37	26	44	20			12	19	26	13	735	480	29	34	905	608	1,513	
Doctoral			2	1	1	3	2	3				2	2	1	62	50	2	9	71	69	140	
Special Graduate	1		6	6	6	7	7	6			3	7	5	3	146	86	9	14	183	129	312	
Total Part-Time	3	1	29	23	45	37	53	29			16	28	33	17	961	626	42	58	1,182	819	2,001	
Total Graduate	3	1	34	28	61	48	69	42			24	30	50	27	1,283	796	149	237	1,673	1,209	2,882	
Total All Students	29	21	229	193	443	349	688	548	7	5	175	204	309	205	5,340	4,728	317	541	7,537	6,794	14,331	

Figure 8: College of Arts & Science Head Count: Spring 2004-2015

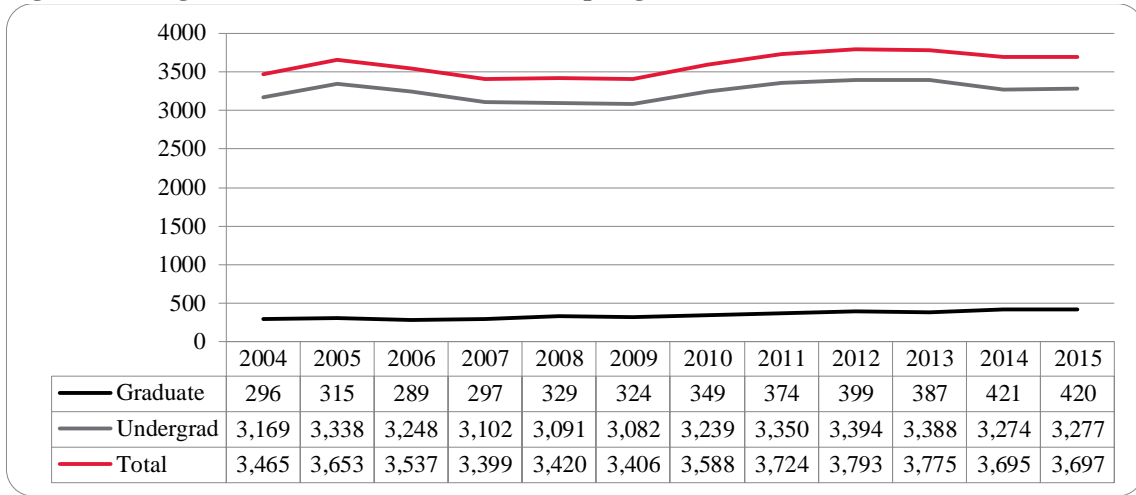


Figure 9: College of Arts & Sciences Student Credit Hours: Spring 2004-2015

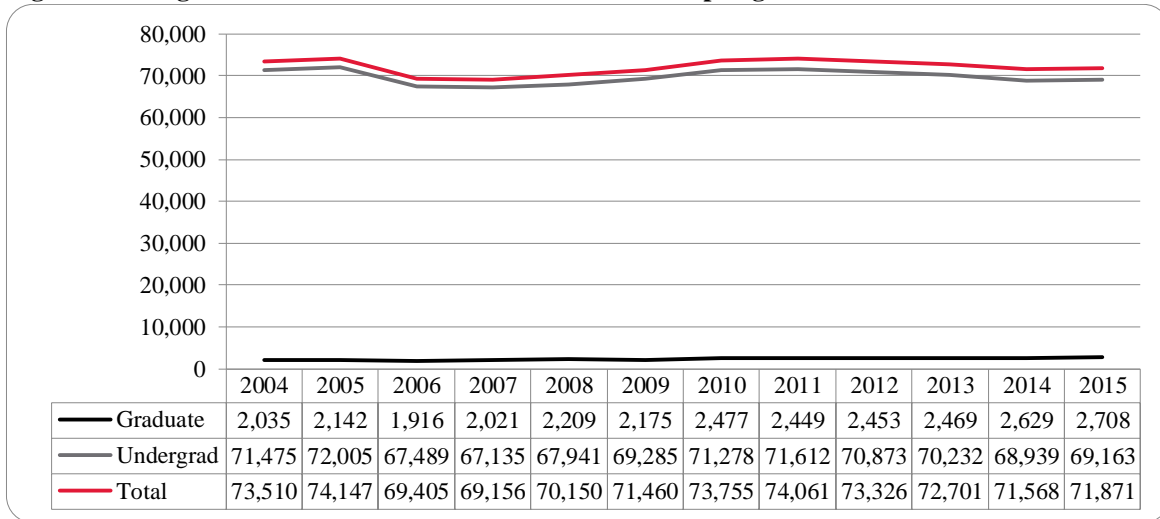


Figure 10: College of Arts & Sciences Head Count by Ethnicity by Gender: Spring 2015

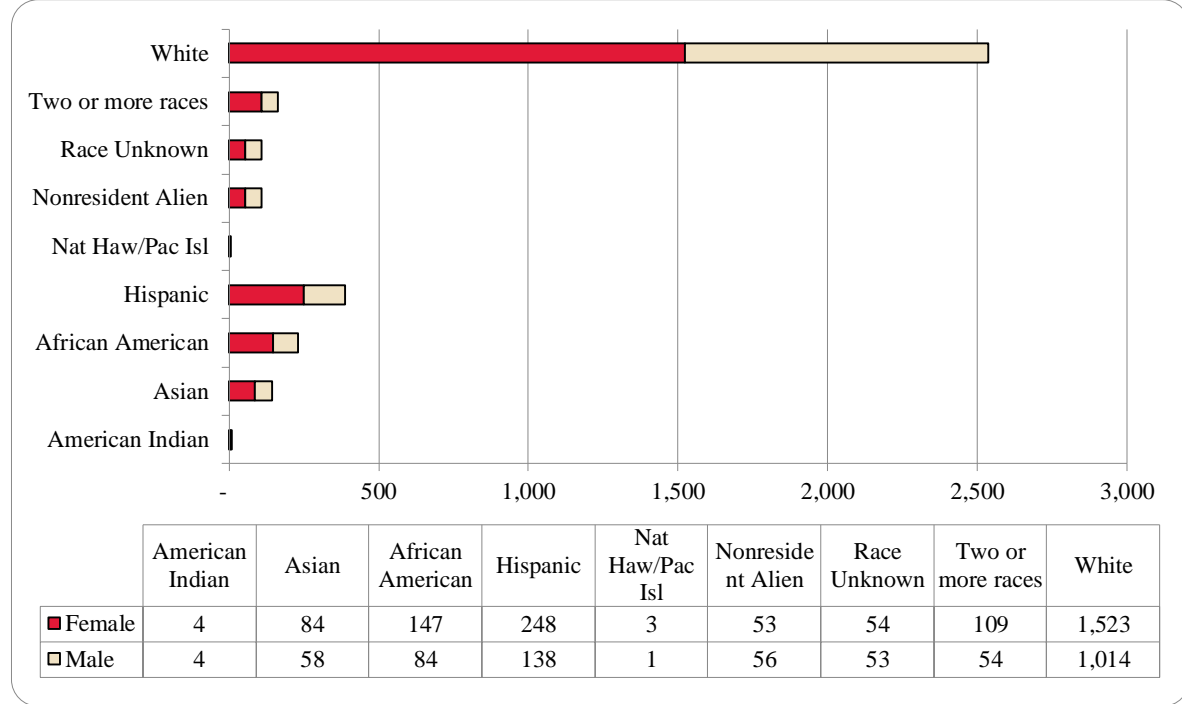


Table 4: College of Arts & Sciences Head Count Summary for Undergraduate and Graduate Students by Full and Part-time by Gender and Race Classification: Spring 2015

	American Indian		Asian		African American		Hispanics		Nat Haw / Pac Isl		Race Unknown		Two or more races		White		Nonresident Alien		Total			
	F	M	F	M	F	M	F	M	F	M	F	M	F	M	F	M	F	M	F	M	Total	
Undergraduate																						
Full-Time																						
First-Time Freshmen			1			1	2	1					1		6	4	4	6	14	12	26	
Other Freshmen		2	21	12	34	10	36	21			11	7	24	7	193	107	8	15	327	181	508	
Sophomores	1		16	8	33	19	65	33	3		6	6	27	21	288	155	11	12	450	254	704	
Juniors	1		20	15	24	15	46	36			8	8	22	8	305	184	7	4	433	270	703	
Seniors	2	1	16	6	17	9	45	23	1	12	12	16	8	251	178	5	5	364	243	607		
Special			2		2	1	1							5	16		1	10	18	28		
Total Full-Time	4	3	76	41	110	55	195	114	3	1	37	33	90	44	1,048	644	35	43	1,598	978	2,576	
Part-Time																						
First-Time Freshmen					1	1							1				2		4	1	5	
Other Freshmen			1	2	5	2	7	3			1		1	1	25	5		1	40	14	54	
Sophomores			4		5	2	6	2				2	4	1	50	31	2		71	38	109	
Juniors		1	5	4	5	6	12	2			4	4	4		66	63	1		97	80	177	
Seniors			4	7	11	10	15	7			6	3	2	5	106	97	1	1	145	130	275	
Special			2	1	4	2	3				2	3	3		39	22			53	28	81	
Total Part-Time		1	16	14	31	23	43	14			13	12	15	7	286	218	6	2	410	291	701	
Total Undergraduate	4	4	92	55	141	78	238	128	3	1	50	45	105	51	1,334	862	41	45	2,008	1,269	3,277	
Graduate																						
Full-Time																						
Certificate																						
Masters					3	2	3	2			2		1	1	61	35	8	7	78	47	125	
Doctoral			1												4				5		5	
Special Graduate																						
Total Full-Time			1		3	2	3	2			2		1	1	65	35	8	7	83	47	130	
Part-Time																						
Certificate															5	2			5	2	7	
Masters				3	2	4	7	6			2	7	3	2	108	106	4	4	126	132	258	
Doctoral			1		1			2				1			11	9			13	12	25	
Special Graduate																						
Total Part-Time			1	3	3	4	7	8			2	8	3	2	124	117	4	4	144	146	290	
Total Graduate			2	3	6	6	10	10			4	8	4	3	189	152	12	11	227	193	420	
Total All Students	4	4	94	58	147	84	248	138	3	1	54	53	109	54	1,523	1,014	53	56	2,235	1,462	3,697	

Figure 11: College of Business Administration Head Count: Spring 2004-2015

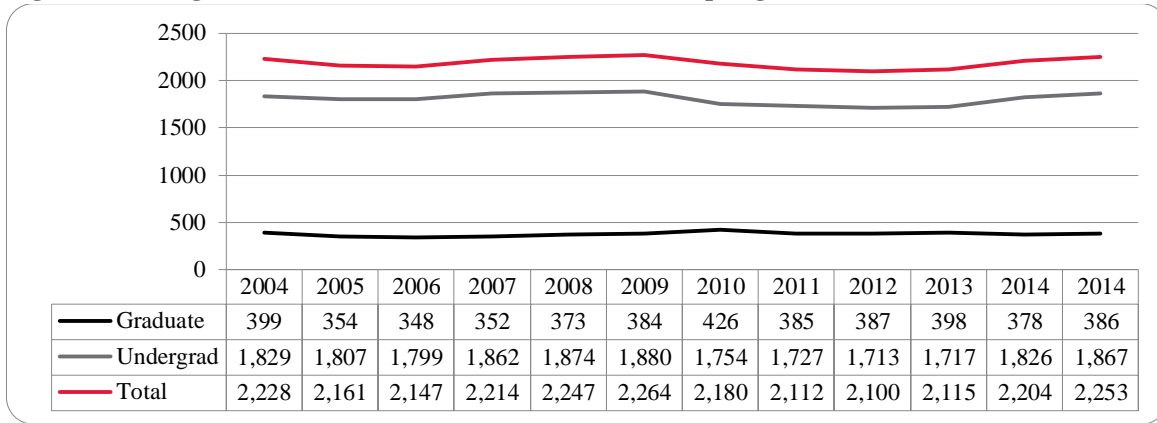


Figure 12: College of Business Administration Student Credit Hours: Spring 2004-2015

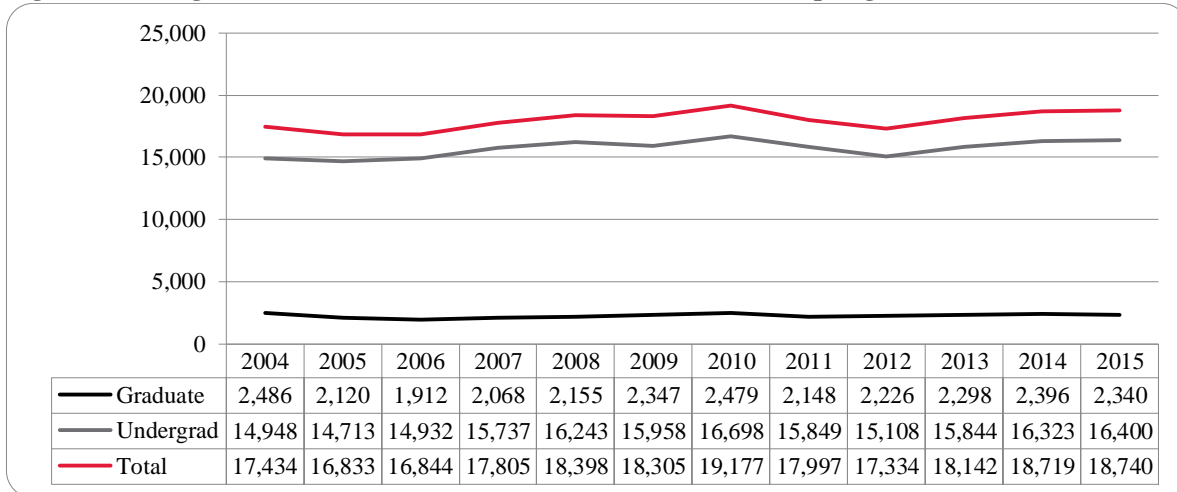


Figure 13: College of Business Administration Head Count by Ethnicity by Gender: Spring 2015

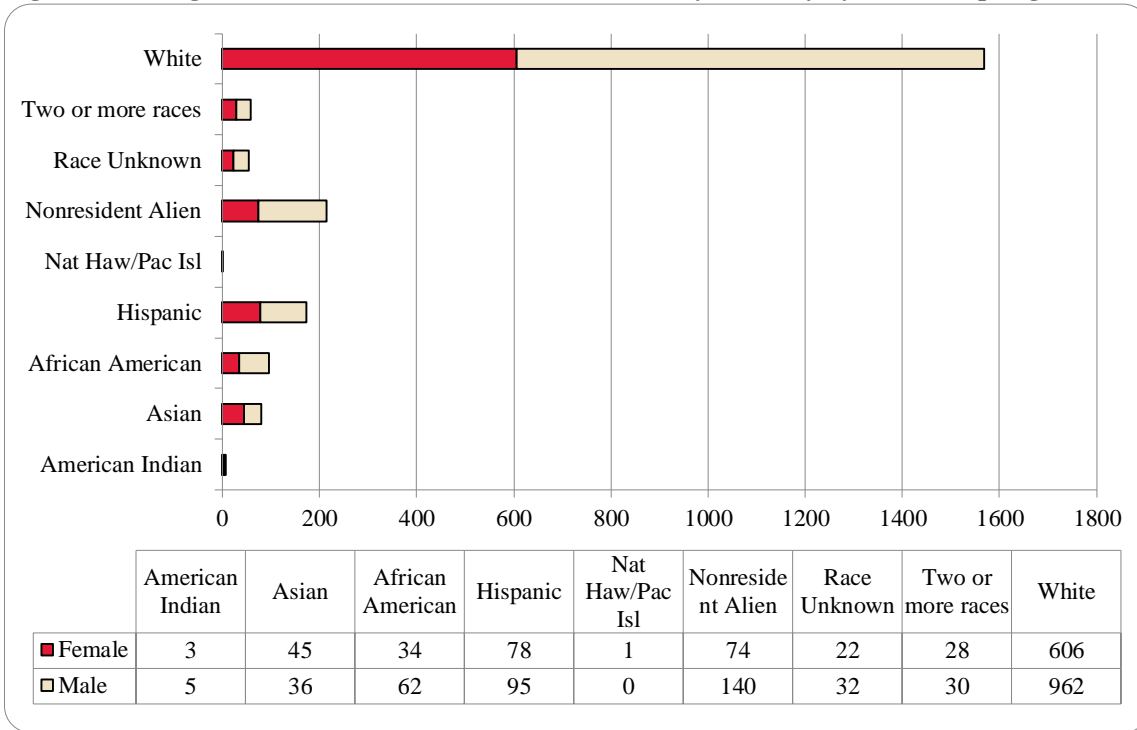


Table 5: College of Business Administration Head Count Summary for Undergraduate and Graduate Students by Full and Part-Time by Gender and Race Classification: Spring 2015

	American Indian		Asian		African American		Hispanics		Nat Haw / Pac Isl		Race Unknown		Two or more races		White		Nonresident Alien		Total			
	F	M	F	M	F	M	F	M	F	M	F	M	F	M	F	M	F	M	F	M	Total	
Undergraduate																						
Full-Time																						
First-Time Freshmen													1		1	1	3	7	5	8	13	
Other Freshmen			4	1	4	3	11	20	1			2	5	6	44	83	6	18	75	133	208	
Sophomores			7	8	3	8	25	18				6	6	5	3	66	132	17	23	129	198	327
Juniors		1	14	8	7	6	9	18				4	6	2	2	117	203	8	25	161	269	430
Seniors	2	2	5	5	6	11	18	16				4	8	2	10	129	158	11	19	177	229	406
Special						1						1				4	6			5	7	12
Total Full-Time	2	3	30	22	20	29	63	72	1			15	22	15	21	361	583	45	92	552	844	1,396
Part-Time																						
First-Time Freshmen							1								1	2	1	2	3	4	7	
Other Freshmen						3	2	1				1		2	5	6	1	3	9	15	24	
Sophomores			3	2	2	5	4	2				1	2	1	16	26		1	27	38	65	
Juniors	1		1	4	6	6	4	6				1	2	1	2	56	56	1	1	71	77	148
Seniors			4	3	4	8	3	4				3	4	3	2	65	86	2	3	84	110	194
Special		1				1		2							14	15			14	19	33	
Total Part-Time	1	1	8	9	12	23	14	15				5	7	6	7	157	191	5	10	208	263	471
Total Undergraduate	3	4	38	31	32	52	77	87	1			20	29	21	28	518	774	50	102	760	1,107	1,867
Graduate																						
Full-Time																						
Certificate																						
Masters			1	1		2						1		1	23	31	19	29	43	65	108	
Doctoral																						
Special Graduate																						
Total Full-Time			1	1		2						1		1	23	31	19	29	43	65	108	
Part-Time																						
Certificate																1				1	1	
Masters		1	6	4	2	8	1	8				2	2	7	1	65	156	5	9	88	189	277
Doctoral																						
Special Graduate																						
Total Part-Time		1	6	4	2	8	1	8				2	2	7	1	65	157	5	9	88	190	278
Total Graduate		1	7	5	2	10	1	8				2	3	7	2	88	188	24	38	131	255	386
Total All Students	3	5	45	36	34	62	78	95	1			22	32	28	30	606	962	74	140	891	1,362	2,253

Figure 14: College of Communication, Fine Arts and Media Delivery-Site Head Count: Spring 2006-2015

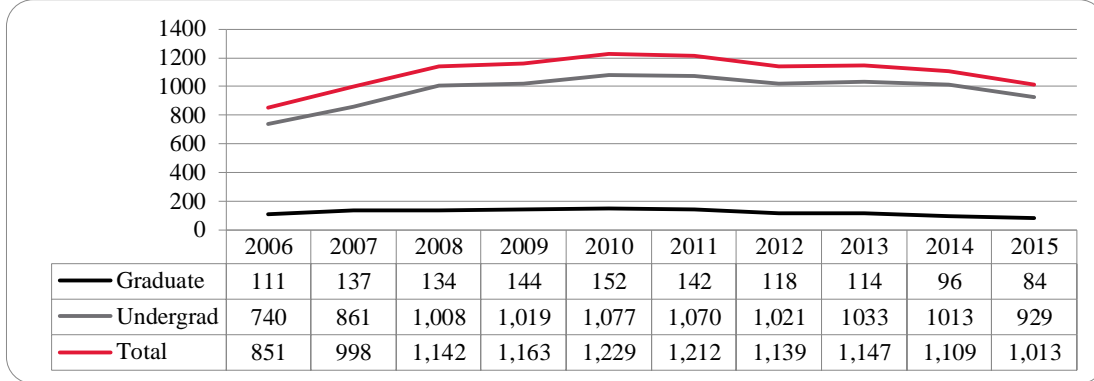


Figure 15: College of Communication, Fine Arts and Media Delivery-Site Student Credit Hours: Spring 2006-2015

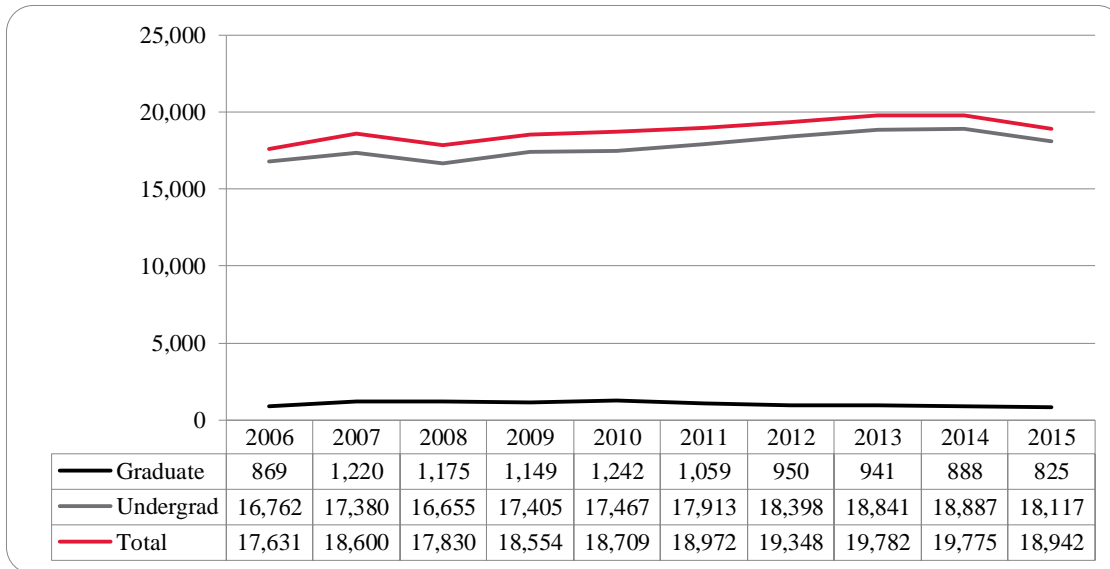


Figure 16: College of Communication, Fine Arts and Media Delivery-Site Head Count by Ethnicity by Gender: Spring 2015

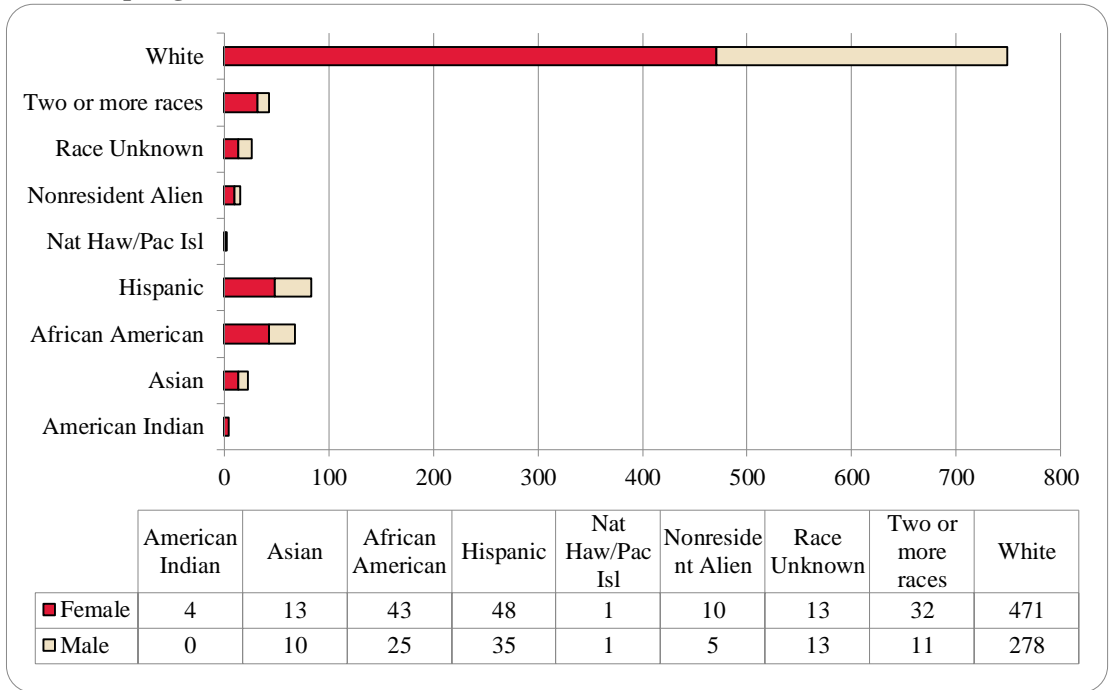


Table 6: College of Communication, Fine Arts and Media Delivery-Site Head Count Summary for Undergraduate and Graduate Students by Full and Part-Time by Gender and Race Classification: Spring 2015

	American Indian		Asian		African American		Hispanics		Nat Haw / Pac Isl		Race Unknown		Two or more races		White		Nonresident Alien		Total			
	F	M	F	M	F	M	F	M	F	M	F	M	F	M	F	M	F	M	F	M	Total	
Undergraduate																						
Full-Time																						
First-Time Freshmen															1		1	1	2	3	5	
Other Freshmen	1		2	2	5	5	6	8				3	4	2	37	19	1	1	56	40	96	
Sophomores	1		2	1	4	5	11	8			1	1	5	2	90	45	3		117	62	179	
Juniors	2		1	4	11	5	8	3			1	1	10		101	66	1	1	135	80	215	
Seniors			5	2	10	4	14	5	1		8	3	4	2	128	54	1		171	70	241	
Special								1								3				4	4	
Total Full-Time	4		10	9	30	19	39	27	1		10	8	23	6	357	187	7	3	481	259	740	
Part-Time																						
First-Time Freshmen															2				2		2	
Other Freshmen					1		1			1					3	4			5	5	10	
Sophomores					2	3	4	3				1	1	1	9	11			16	19	35	
Juniors			1		3	1	3						1	1	19	13			27	15	42	
Seniors			1		2	2	1	2			2	3	5	1	32	36			43	44	87	
Special			1	1				2							5	4			6	7	13	
Total Part-Time			3	1	8	6	9	7		1	2	4	7	3	70	68			99	90	189	
Total Undergraduate	4		13	10	38	25	48	34	1	1	12	12	30	9	427	255	7	3	580	349	929	
Graduate																						
Full-Time																						
Certificate																						
Masters					3			1			1	1	2	2	18	16	2	1	26	21	47	
Doctoral																						
Special Graduate																						
Total Full-Time					3			1			1	1	2	2	18	16	2	1	26	21	47	
Part-Time																						
Certificate															1	1			1	1	2	
Masters					2										25	6	1	1	28	7	35	
Doctoral																						
Special Graduate																						
Total Part-Time					2										26	7	1	1	29	8	37	
Total Graduate					5			1			1	1	2	2	44	23	3	2	55	29	84	
Total All Students	4		13	10	43	25	48	35	1	1	13	13	32	11	471	278	10	5	635	378	1,013	

Figure 17: College of Communication, Fine Arts and Media: Administrative-Site Head Count: Spring 2006-2015

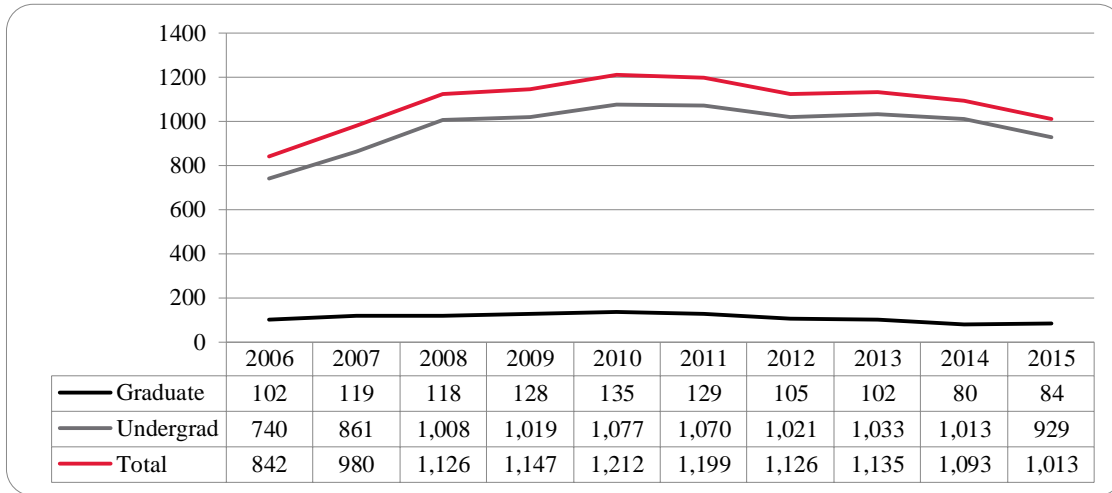


Figure 18: College of Communication, Fine Arts and Media: Administrative-Site Student Credit Hours: Spring 2006-2015

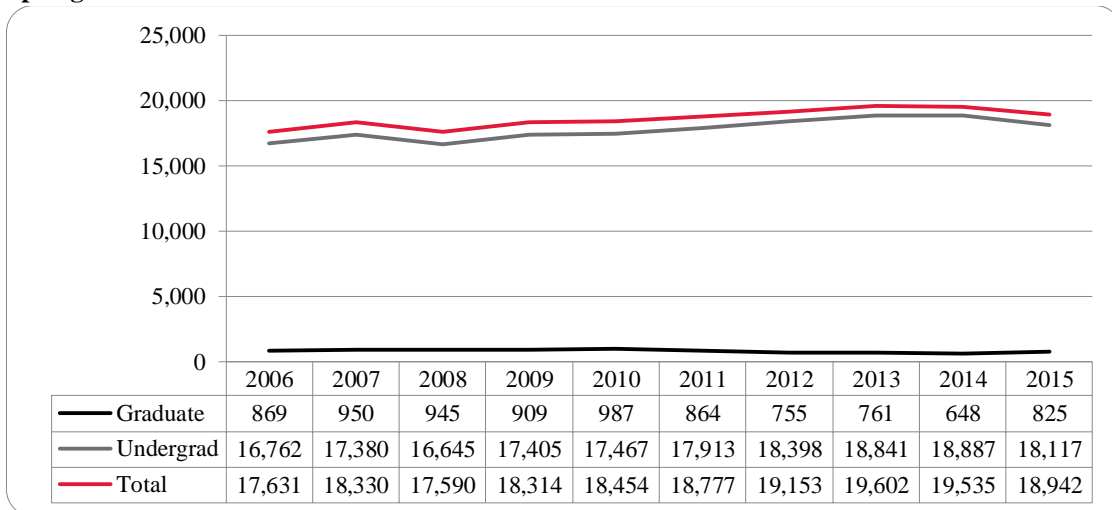


Figure 19: College of Communication, Fine Arts and Media: Administrative-Site Head Count by Ethnicity by Gender: Spring 2015

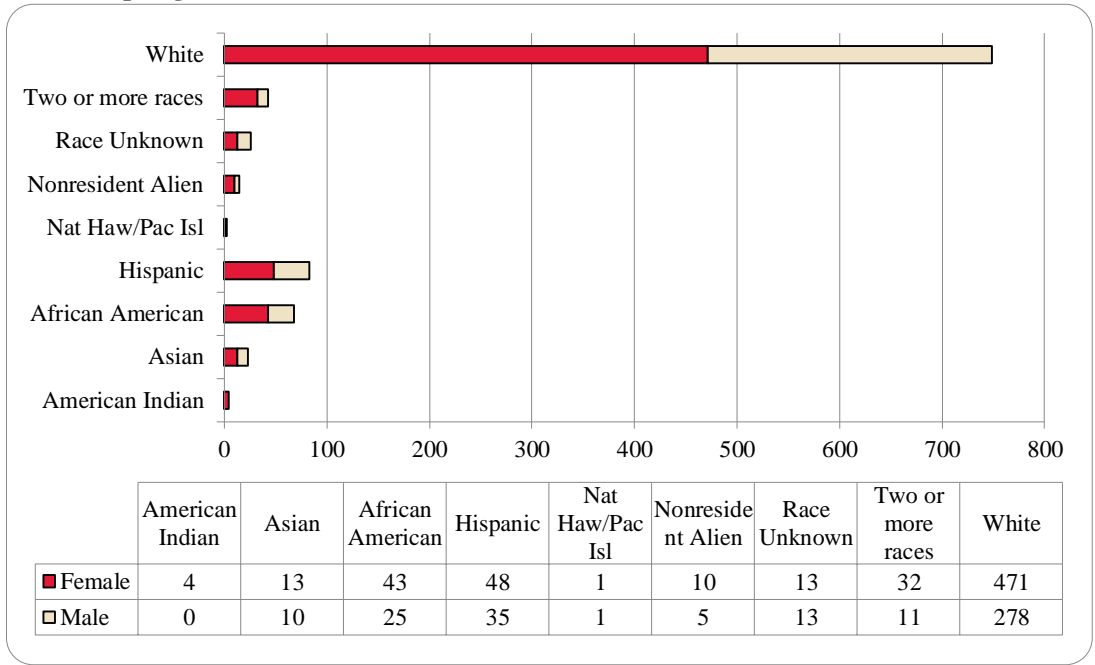


Table 7: College of Communication, Fine Arts and Media Administrative-Site Head Count Summary for Undergraduate and Graduate Students by Full and Part-Time by Gender and Race Classification: Spring 2015

	American Indian		Asian		African American		Hispanics		Nat Haw / Pac Isl		Race Unknown		Two or more races		White		Nonresident Alien		Total		
	F	M	F	M	F	M	F	M	F	M	F	M	F	M	F	M	F	M	F	M	Total
Undergraduate																					
Full-Time																					
First-Time Freshmen								2							1		1	1	2	3	5
Other Freshmen	1		2	2	5	5	6	8				3	4	2	37	19	1	1	56	40	96
Sophomores	1		2	1	4	5	11	8			1	1	5	2	90	45	3		117	62	179
Juniors	2		1	4	11	5	8	3			1	1	10		101	66	1	1	135	80	215
Seniors			5	2	10	4	14	5	1		8	3	4	2	128	54	1		171	70	241
Special								1								3				4	4
Total Full-Time	4		10	9	30	19	39	27	1		10	8	23	6	357	187	7	3	481	259	740
Part-Time																					
First-Time Freshmen															2				2		2
Other Freshmen					1		1			1					3	4			5	5	10
Sophomores					2	3	4	3				1	1	1	9	11			16	19	35
Juniors			1		3	1	3						1	1	19	13			27	15	42
Seniors			1		2	2	1	2			2	3	5	1	32	36			43	44	87
Special			1	1				2							5	4			6	7	13
Total Part-Time			3	1	8	6	9	7		1	2	4	7	3	70	68			99	90	189
Total Undergraduate	4		13	10	38	25	48	34	1	1	12	12	30	9	427	255	7	3	580	349	929
Graduate																					
Full-time																					
Certificate																					
Masters					3			1			1	1	2	2	18	16	2	1	26	21	47
Doctoral																					
Special Graduate																					
Total Full-Time					3			1			1	1	2	2	18	16	2	1	26	21	47
Part-Time																					
Certificate															1	1			1	1	2
Masters					2										25	6	1	1	28	7	35
Doctoral																					
Special Graduate																					
Total Part-Time					2										26	7	1	1	29	8	37
Total Graduate					5			1			1	1	2	2	44	23	3	2	55	29	84
Total All Students	4		13	10	43	25	48	35	1	1	13	13	32	11	471	278	10	5	635	378	1,013

Figure 20: College of Education Head Count: Spring 2004-2015

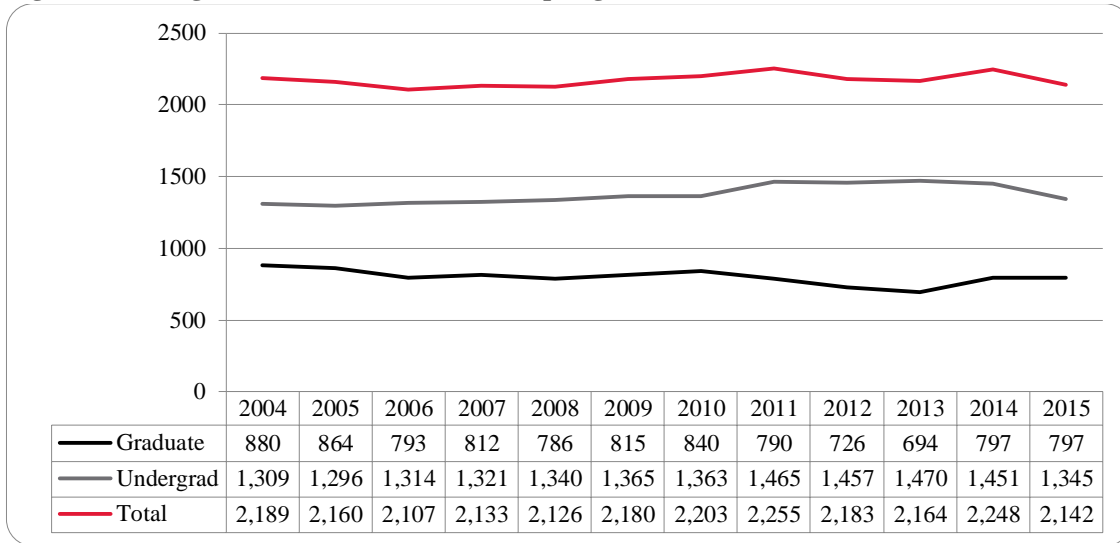


Figure 21: College of Education Student Credit Hours: Spring 2004-2015

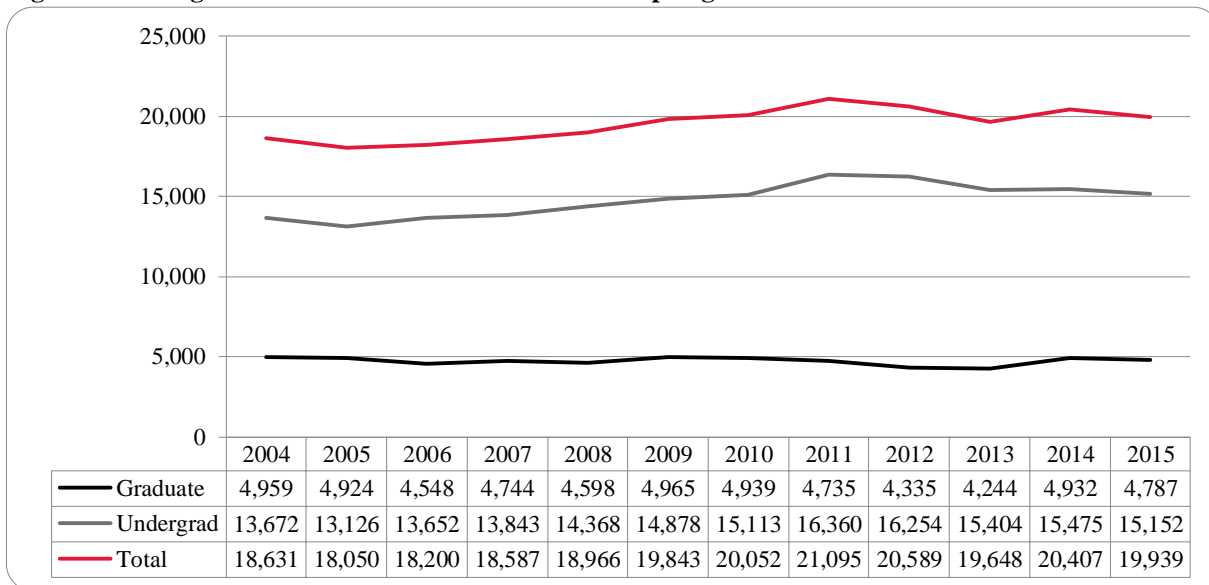
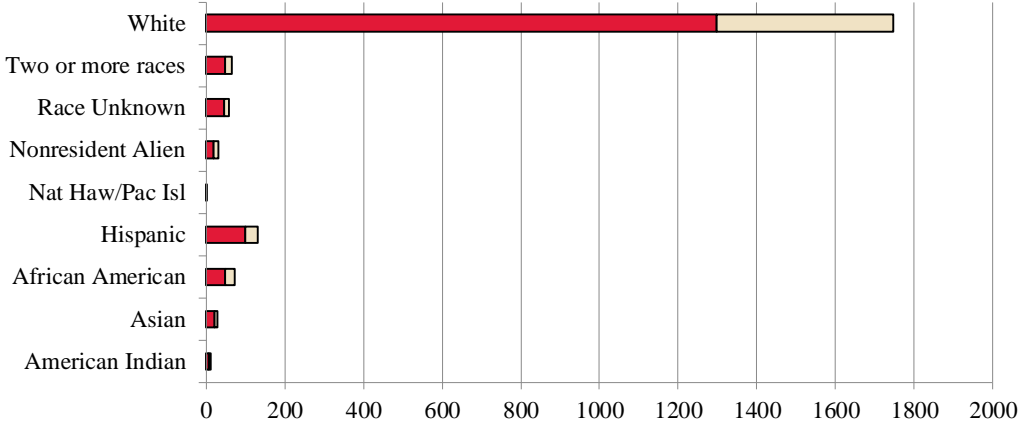


Figure 22: College of Education Head Count by Ethnicity by Gender: Spring 2015



	American Indian	Asian	African American	Hispanic	Nat Haw/Pac Isl	Nonresident Alien	Race Unknown	Two or more races	White
■ Female	6	20	49	98	1	18	46	49	1298
□ Male	4	9	24	32	0	12	12	16	448

Table 8: College of Education Head Count Summary for Undergraduate and Graduate Students by Full and Part-Time by Gender and Race Classification: Spring 2015

	American Indian		Asian		African American		Hispanics		Nat Haw / Pac Isl		Race Unknown		Two or more races		White		Nonresident Alien		Total			
	F	M	F	M	F	M	F	M	F	M	F	M	F	M	F	M	F	M	F	M	Total	
Undergraduate																						
Full-Time																						
First-Time Freshmen															1	1		1	1	2	3	
Other Freshmen			1	1	5	1	13	3			2		3	1	66	32	1	1	91	39	130	
Sophomores	1		2		6		10	4			4	4	10	2	125	37	3	1	161	48	209	
Juniors		1	1	3	7	3	25	8	1		6	3	12		157	73	2		211	91	302	
Seniors	3	1	5	2	11	5	17	5			21	2	5	3	264	101	1	1	327	120	447	
Special		1					1	1			1				20	12		1	22	15	37	
Total Full-Time	4	3	9	6	29	9	66	21	1		34	9	30	6	633	256	7	5	813	315	1,128	
Part-Time																						
First-Time Freshmen																1				1	1	
Other Freshmen													1		6	2			7	2	9	
Sophomores							1								18	8			19	8	27	
Juniors		1				1	1	2			1		1		39	10			42	14	56	
Seniors			2		2	1	1	3			4		1		44	32			54	36	90	
Special			2		1	1	2	1						1	16	9	1		22	12	34	
Total Part-Time		1	4		3	3	5	6			5		3	1	123	62	1		144	73	217	
Total Undergraduate	4	4	13	6	32	12	71	27	1		39	9	33	7	756	318	8	5	957	388	1,345	
Graduate																						
Full-Time																						
Certificate																						
Masters			1	1	3	2	4	2			2		5	2	87	26	7	6	109	39	148	
Doctoral					1		1				1			1	4	3	2		9	4	13	
Special Graduate																		1		1	1	
Total Full-Time			1	1	4	2	5	2			3		5	3	91	29	9	7	118	44	162	
Part-Time																						
Certificate															1				1		1	
Masters	2		5	1	12	8	20	3			4	3	9	5	377	72	1		430	92	522	
Doctoral			1	1		2	2						2	1	42	22			47	26	73	
Special Graduate					1										31	7			32	7	39	
Total Part-Time	2		6	2	13	10	22	3			4	3	11	6	451	101	1		510	125	635	
Total Graduate	2		7	3	17	12	27	5			7	3	16	9	542	130	10	7	628	169	797	
Total All Students	6	4	20	9	49	24	98	32	1		46	12	49	16	1,298	448	18	12	1,585	557	2,142	

Figure 23: College of Information Science & Technology Head Count: Spring 2004-2015

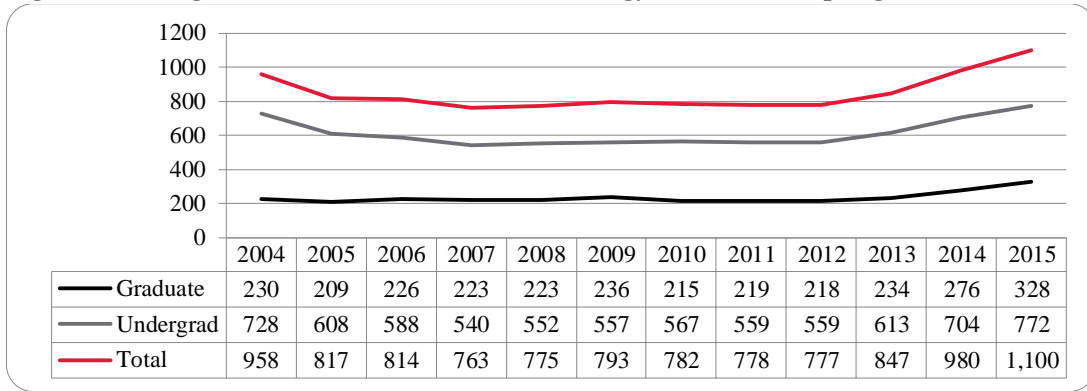


Figure 24: College of Information Science & Technology Student Credit Hours: Spring 2004-2015

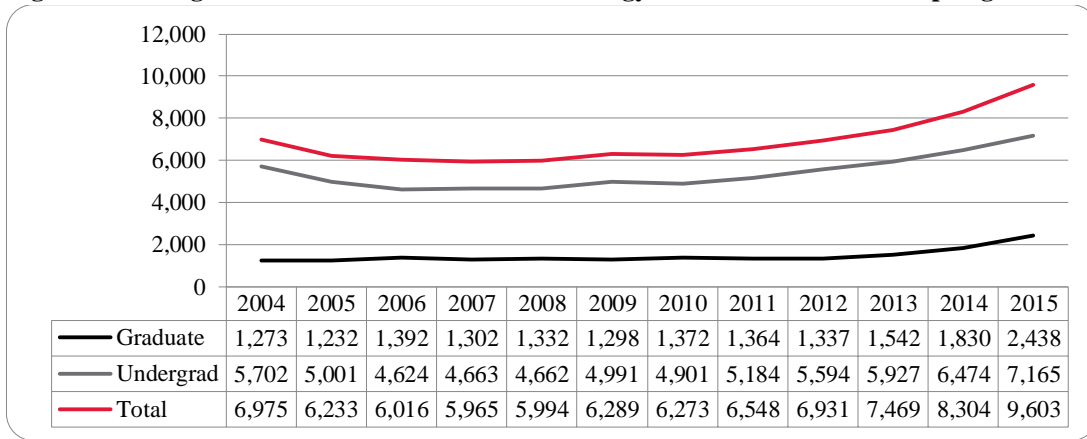


Figure 25: College of Information Science & Technology Head Count by Ethnicity by Gender: Spring 2015

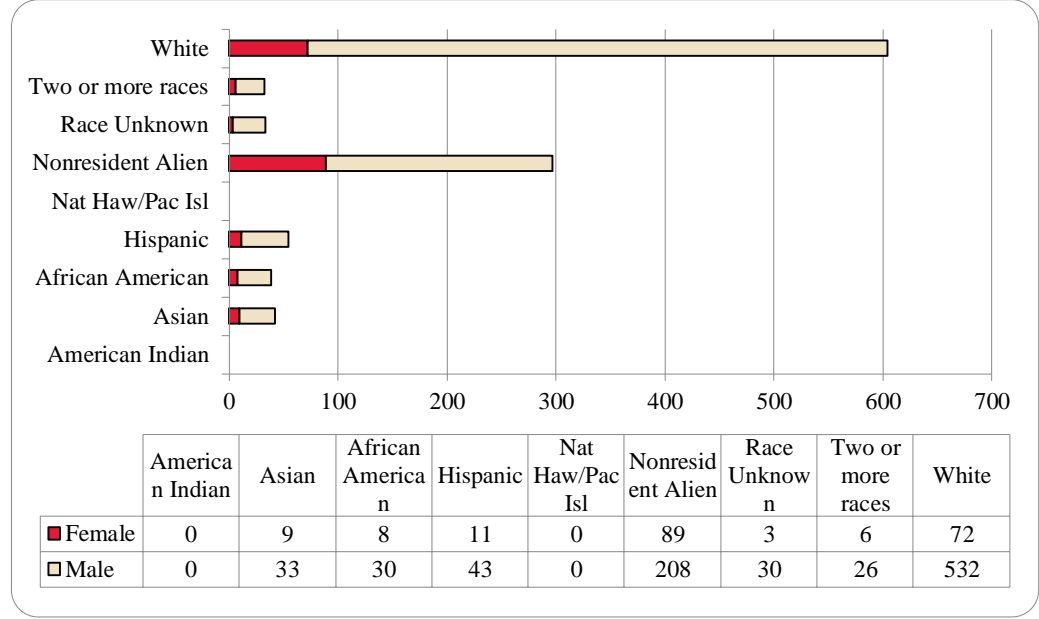


Table 9: College of Information Science and Technology Head Count Summary for Undergraduate and Graduate Summary for Full and Part-Time by Gender and Race Classification: Spring 2015

	American Indian		Asian		African American		Hispanics		Nat Haw / Pac Isl		Race Unknown		Two or more races		White		Nonresident Alien		Total			
	F	M	F	M	F	M	F	M	F	M	F	M	F	M	F	M	F	M	F	M	Total	
Undergraduate																						
Full-Time																						
First-Time Freshmen															1	1	1	3	2	4	6	
Other Freshmen				2			2	8			1	3	1	7	8	65	2	15	14	100	114	
Sophomores			1	3			2	1	10			1		9	12	83	3	25	17	133	150	
Juniors			2	6			4	2	7			7	1	2	13	116	3	18	21	160	181	
Seniors				6	1		4	1	7			1	8	1	2	12	86	1	11	17	124	141
Special				1				1							3	5			3	7	10	
Total Full-Time			3	18	1		10	6	33			2	19	3	20	49	356	10	72	74	528	602
Part-Time																						
First-Time Freshmen																1				1	1	
Other Freshmen				1								1				8		1		11	11	
Sophomores				3			2	1	1			2		2	2	17		1	3	28	31	
Juniors			1	2	1		5		4			3		2	2	18		1	4	35	39	
Seniors					1		4	2	2			1			4	42		6	7	55	62	
Special				1	1		2	1	1			1	1	1	2	15			5	21	26	
Total Part-Time			1	7	3		13	4	8			1	8	5	10	101		9	19	151	170	
Total Undergraduate			4	25	4		23	10	41			3	27	3	25	59	457	10	81	93	679	772
Graduate																						
Full-Time																						
Certificate																						
Masters				2			1								2	7	55	97	57	107	164	
Doctoral														2		4	4	7	6	11	17	
Special Graduate																						
Total Full-Time				2			1							2	2	11	59	104	63	118	181	
Part-Time																						
Certificate				1			1									4	2	1	2	7	9	
Masters			5	5	4		5	1	2			3	1	1	11	55	17	20	39	91	130	
Doctoral															5	1	2	1	7	8		
Special Graduate																						
Total Part-Time			5	6	4		6	1	2			3	1	1	11	64	20	23	42	105	147	
Total Graduate			5	8	4		7	1	2			3	3	1	13	75	79	127	105	223	328	
Total All Students			9	33	8		30	11	43			3	30	6	26	72	532	89	208	198	902	1,100

Figure 26: College of Public Affairs & Community Service Delivery-Site Head Count: Spring 2004-2015

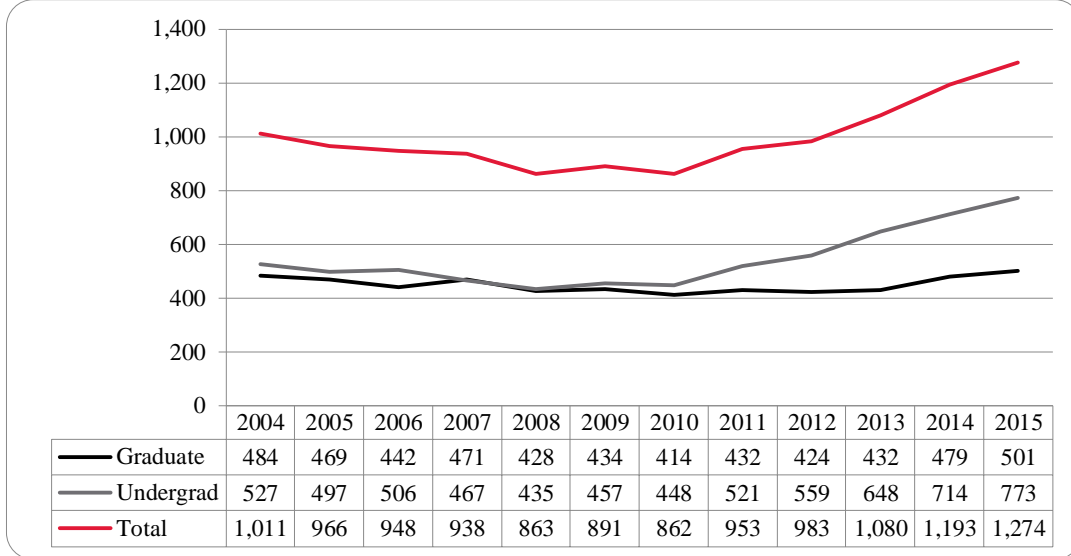


Figure 27: College of Public Affairs & Community Service Delivery-Site Student Credit Hours: Spring 2004-2015

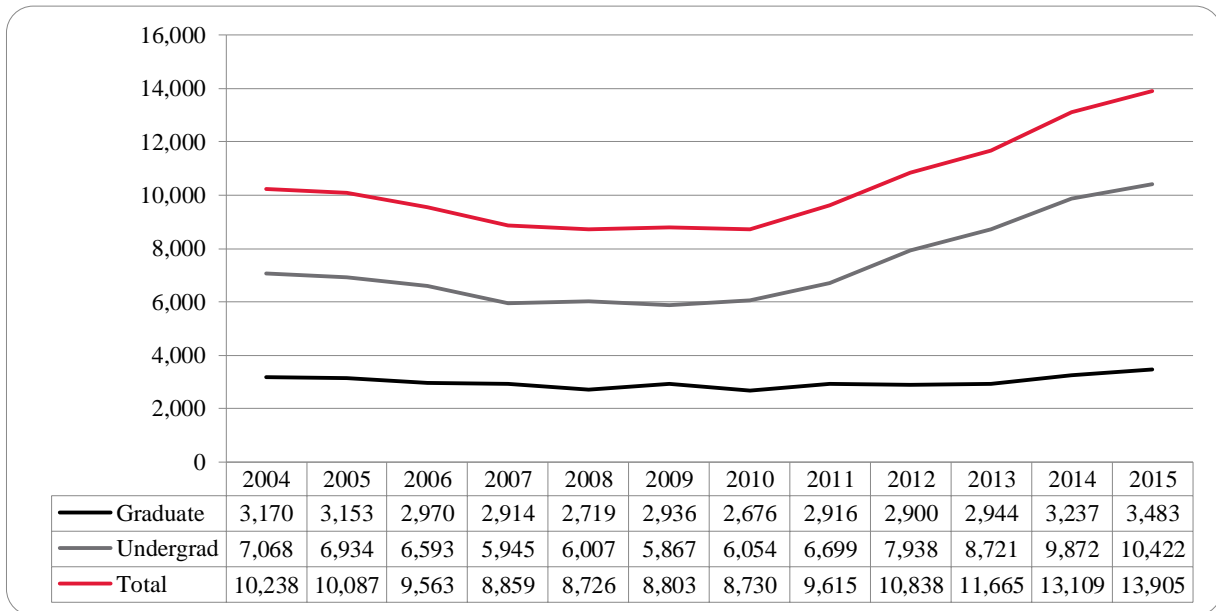


Figure 28: College of Public Affairs & Community Service Delivery-Site Head Count by Ethnicity by Gender: Spring 2015

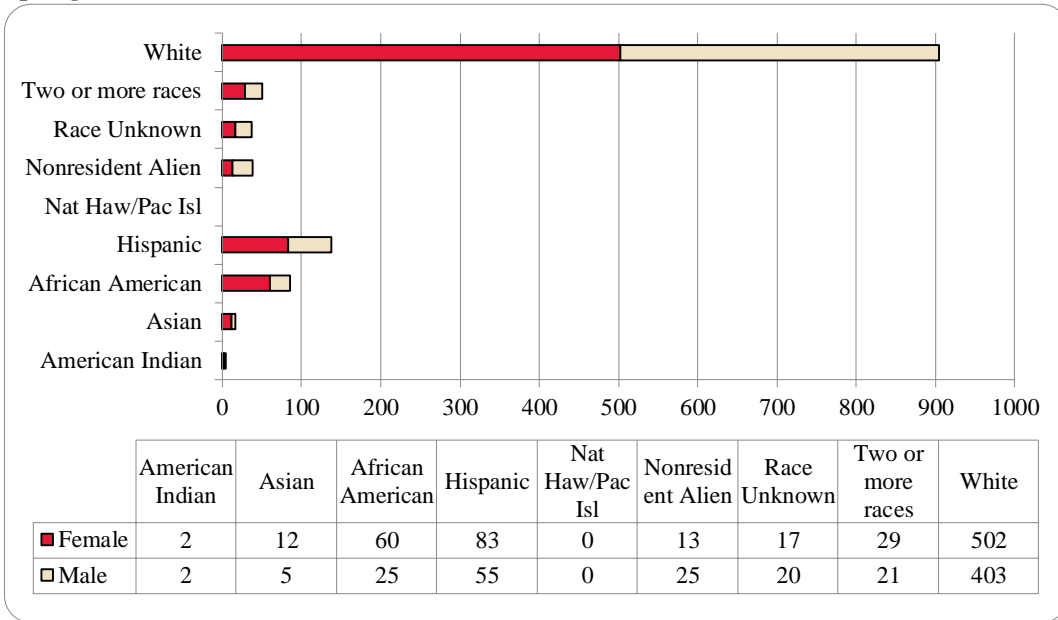


Table 10: College of Public Affairs & Community Service Delivery-Site Head Count for Undergraduate and Graduate Students by Full and Part-time by Gender and Race Classification: Spring 2015

	American Indian		Asian		African American		Hispanics		Nat Haw / Pac Isl		Race Unknown		Two or more races		White		Nonresident Alien		Total		
	F	M	F	M	F	M	F	M	F	M	F	M	F	M	F	M	F	M	F	M	Total
Undergraduate																					
Full-Time																					
First-Time Freshmen		1					1							1	1	2	3	4	5	9	
Other Freshmen		1	2		6	1	13	16			1	2	4	2	25	51	4	3	55	76	131
Sophomores				1	6	6	14	10			1	7	6	1	45	61		5	72	91	163
Juniors	2		2	1	10	2	9	6			4	2	3	6	68	66		1	98	84	182
Seniors			1		7	1	12	6			3	3	2	5	54	61		4	79	80	159
Special													1							1	1
Total Full-Time	2	2	5	2	29	10	49	38			9	14	15	15	193	240	6	16	308	337	645
Part-Time																					
First-Time Freshmen					1												1		2		2
Other Freshmen					1	3	2	2							3	3			6	8	14
Sophomores					1		4	1							3	7			8	8	16
Juniors					3	2	4	3				1	1		16	11			24	17	41
Seniors				1	3	4	2	3			1		1		19	20			26	28	54
Special															1				1		1
Total Part-Time				1	9	9	12	9			1	1	2		42	41	1		67	61	128
Total Undergraduate	2	2	5	3	38	19	61	47			10	15	17	15	235	281	7	16	375	398	773
Graduate																					
Full-Time																					
Certificate																					
Masters			2		6	3	5	6			2		5	2	100	18	2	1	122	30	152
Doctoral						1	2						1		4	3	2	1	9	5	14
Special Graduate																					
Total Full-Time			2		6	4	7	6			2		6	2	104	21	4	2	131	35	166
Part-Time																					
Certificate			1		1						1				5	2			8	2	10
Masters			4	2	15	1	15	1			4	4	6	4	149	85	1		194	97	291
Doctoral						1		1				1			9	14	1	7	10	24	34
Special Graduate																					
Total Part-Time			5	2	16	2	15	2			5	5	6	4	163	101	2	7	212	123	335
Total Graduate			7	2	22	6	22	8			7	5	12	6	267	122	6	9	343	158	501
Total	2	2	12	5	60	25	83	55			17	20	29	21	502	403	13	25	718	556	1,274

Figure 29: College of Public Affairs & Community Service Administrative-Site Head Count: Spring 2004-2015

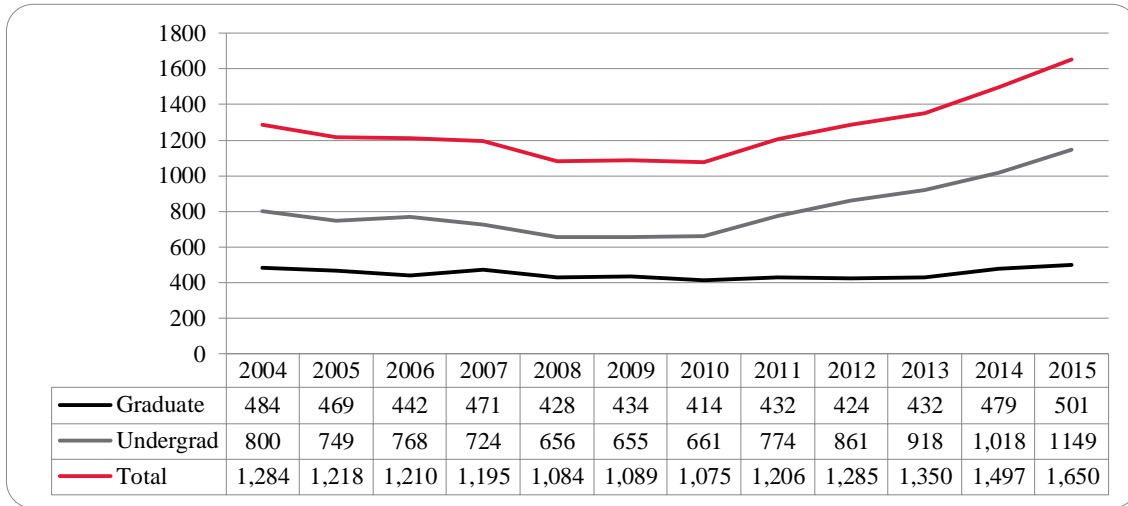


Figure 30: College of Public Affairs & Community Service Administrative-Site Student Credit Hours: Spring 2004-2015

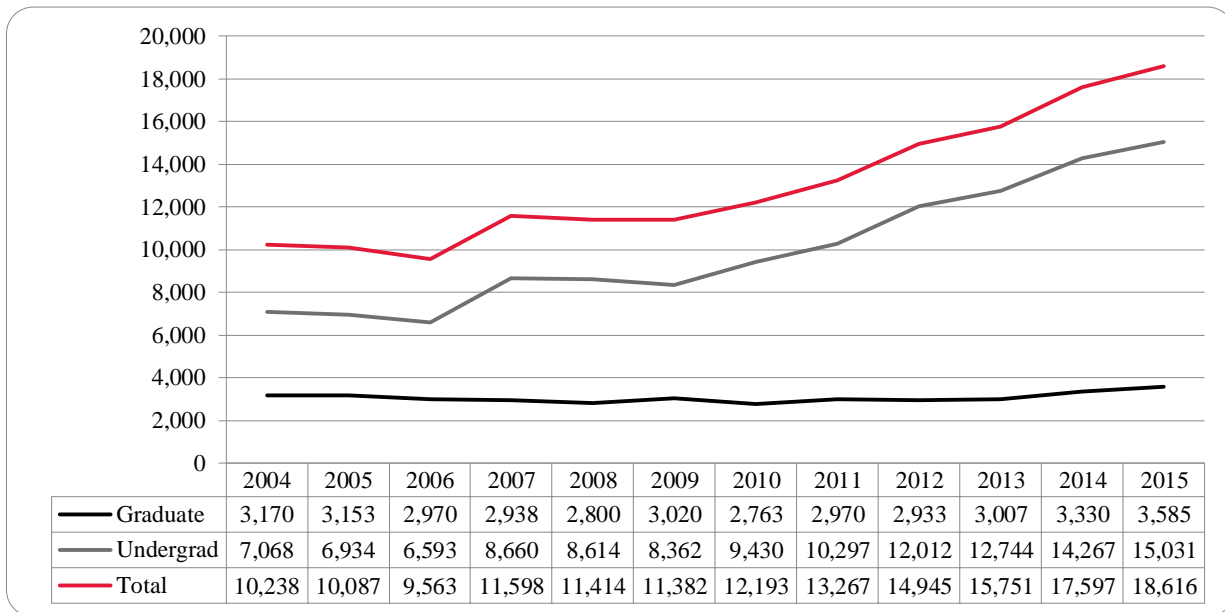


Figure 31: College of Public Affairs & Community Service Administrative-Site Head Count by Ethnicity by Gender: Spring 2015

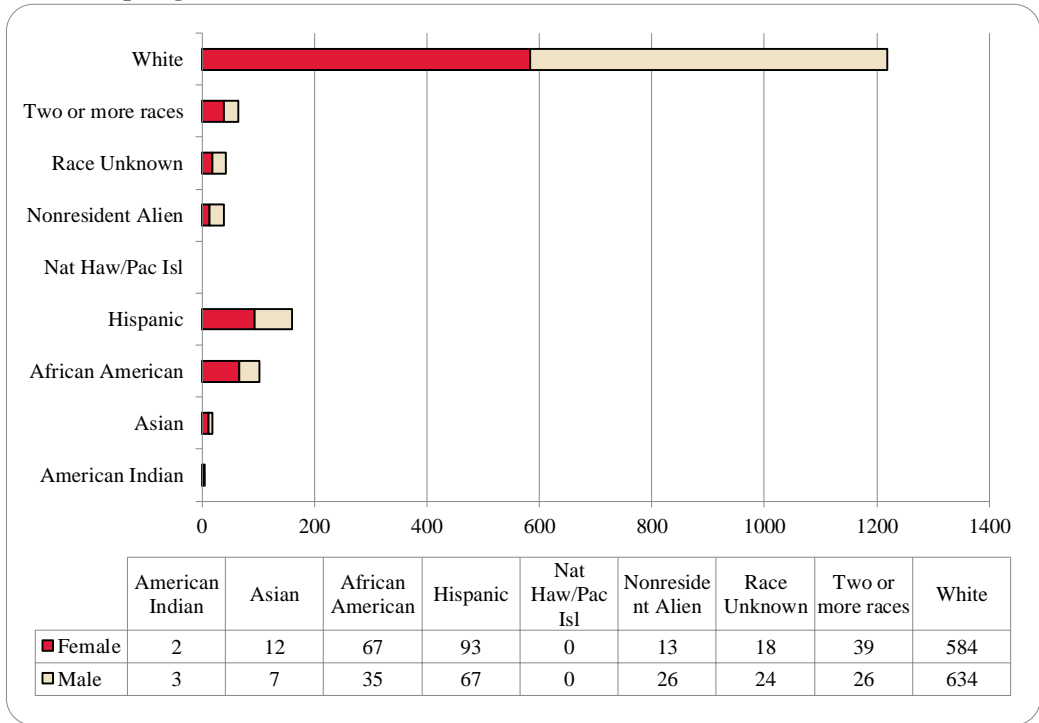


Table 11: College of Public Affairs & Community Service Administrative-Site Head Count Summary for Undergraduate Graduate Students by Full and Part-Time by Gender and Race Classification: Spring 2015

	American Indian		Asian		African American		Hispanics		Nat Haw / Pac Isl		Race Unknown		Two or more races		White		Nonresident Alien		Total		
	F	M	F	M	F	M	F	M	F	M	F	M	F	M	F	M	F	M	F	M	Total
Undergraduate																					
Full-Time																					
First-Time Freshmen		1					1							1	1	2	3	4	5	9	
Other Freshmen		1	2		7	2	14	17			1	2	6	3	42	82	4	3	76	110	186
Sophomores				3	8	8	15	12			1	8	8	1	57	111		5	89	148	237
Juniors	2	1	2	1	12	5	10	9			4	3	8	9	86	111		1	124	140	264
Seniors			1		8	2	18	11			4	5	2	6	76	123		4	109	151	260
Special													1							1	1
Total Full-Time	2	3	5	4	35	17	58	49			10	18	24	20	262	428	6	16	402	555	957
Part-Time																					
First-Time Freshmen					1												1		2		2
Other Freshmen					2	4	3	3						5	10			10	17	27	
Sophomores					1	1	4	1					1	9	15		1	15	18	33	
Juniors					3	2	4	3				1	1	19	19			27	25	52	
Seniors				1	3	5	2	3			1		1	21	40			28	49	77	
Special														1				1		1	
Total Part-Time				1	10	12	13	10			1	1	3	55	84	1	1	83	109	192	
Total Undergraduate	2	3	5	5	45	29	71	59			11	19	27	20	317	512	7	17	485	664	1,149
Graduate																					
Full-Time																					
Certificate																					
Masters			2		6	3	5	6			2		5	2	100	18	2	1	122	30	152
Doctoral						1	2						1		4	3	2	1	9	5	14
Special Graduate																					
Total Full-Time			2		6	4	7	6			2		6	2	104	21	4	2	131	35	166
Part-Time																					
Certificate			1		1						1			5	2			8	2	10	
Masters			4	2	15	1	15	1			4	4	6	4	149	85	1		194	97	291
Doctoral						1		1				1		9	14	1	7	10	24	34	
Special Graduate																					
Total Part-Time			5	2	16	2	15	2			5	5	6	4	163	101	2	7	212	123	335
Total Graduate			7	2	22	6	22	8			7	5	12	6	267	122	6	9	343	158	501
Total All Students	2	3	12	7	67	35	93	67			18	24	39	26	584	634	13	26	828	822	1,650

Figure 32: College of CPACS, Division of Continuing Studies Head Count: Spring 2004-2015

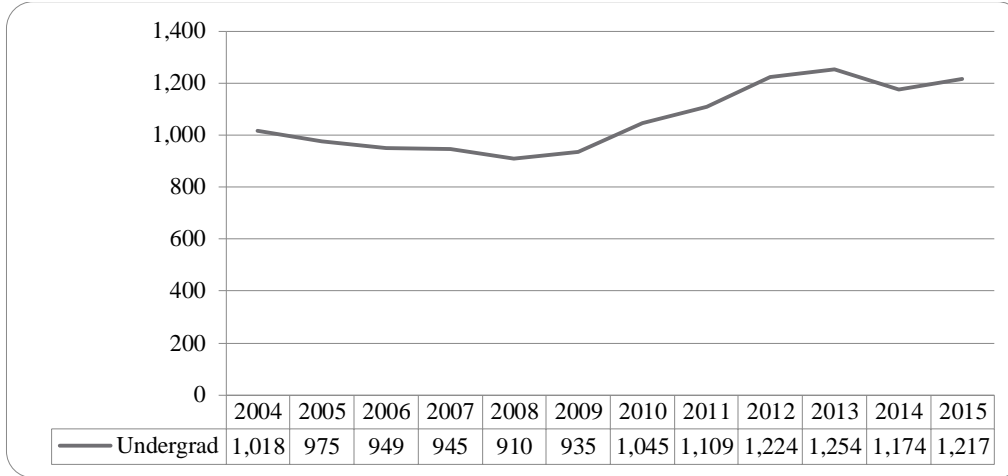


Figure 33: College of CPACS, Division of Continuing Studies Head Count by Ethnicity by Gender: Spring 2015

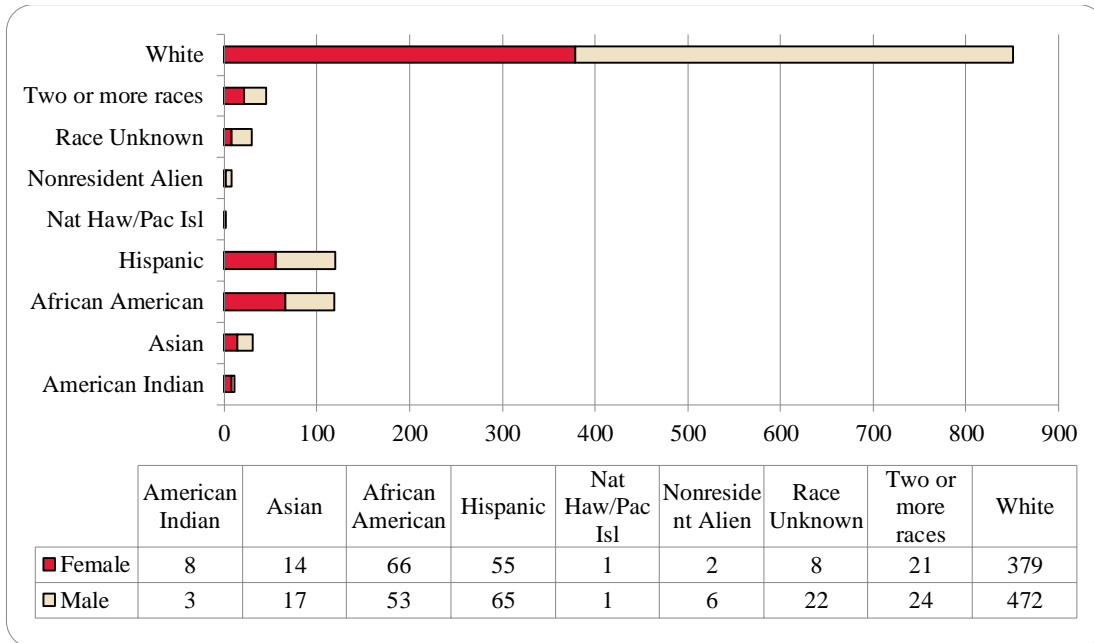


Table 12: College of CPACS Division of Continuing Studies Head Count Summary for Undergraduate Students by Full and Part-Time by Gender and Race Classification: Spring 2015

	American Indian		Asian		African American		Hispanics		Nat Haw / Pac Isl		Race Unknown		Two or more races		White		Nonresident Alien		Total			
	F	M	F	M	F	M	F	M	F	M	F	M	F	M	F	M	F	M	F	M	Total	
Undergraduate																						
Full-Time																						
First-Time Freshmen								1							2		1			4	4	
Other Freshmen					3	2		5				2	1	1	5	18	2	2	11	30	41	
Sophomores	1	1	1	2	7	5	3	6				1	4	4	24	41		2	40	62	102	
Juniors	1	1	5	2	12	8	18	13			2	4	3	1	72	73			113	102	215	
Seniors	2	1	3	2	14	15	7	12			2	2	7	6	82	101			117	139	256	
Special				1				1							2	2			2	4	6	
Total Full-Time	4	3	9	7	36	30	28	38			4	9	15	12	185	237	2	5	283	341	624	
Part-Time																						
First-Time Freshmen					1											1			1	1	2	
Other Freshmen	1			4			4	5				1	1	3	6	18			12	31	43	
Sophomores				1	2	4	4	2				1		1	23	40			29	49	78	
Juniors	1		2	2	11	7	5	7			2	3		2	67	57			88	78	166	
Seniors	1		2	2	16	12	14	11	1	1	2	8	4	5	90	113		1	130	153	283	
Special	1		1	1				2					1	1	8	6			11	10	21	
Total Part-Time	4		5	10	30	23	27	27	1	1	4	13	6	12	194	235		1	271	322	593	
Total Undergraduate	8	3	14	17	66	53	55	65	1	1	8	22	21	24	379	472	2	6	554	663	1,217	
Total All Students	8	3	14	17	66	53	55	65	1	1	8	22	21	24	379	472	2	6	554	663	1,217	

Table 13: Cooperative Graduate Program Head Count Summary for Graduate Students by Full and Part-time by Gender and Race Classification: Spring 2015

	American Indian		Asian		African American		Hispanics		Nat Haw / Pac Isl		Race Unknown		Two or more races		White		Nonresident Alien		Total			
	F	M	F	M	F	M	F	M	F	M	F	M	F	M	F	M	F	M	F	M	Total	
Graduate																						
Full-Time																						
Certificate														2						2		2
Masters																						
Doctoral																						
Special Graduate																						
Total Full-Time														2						2		2
Part-Time																						
Certificate														6						6		6
Masters																						
Doctoral																						
Special Graduate																						
Total Part-Time														6						6		6
Total Graduate														8						8		8
Total All Students														8						8		8

Figure 34: University Division Head Count: Spring 2004-2015

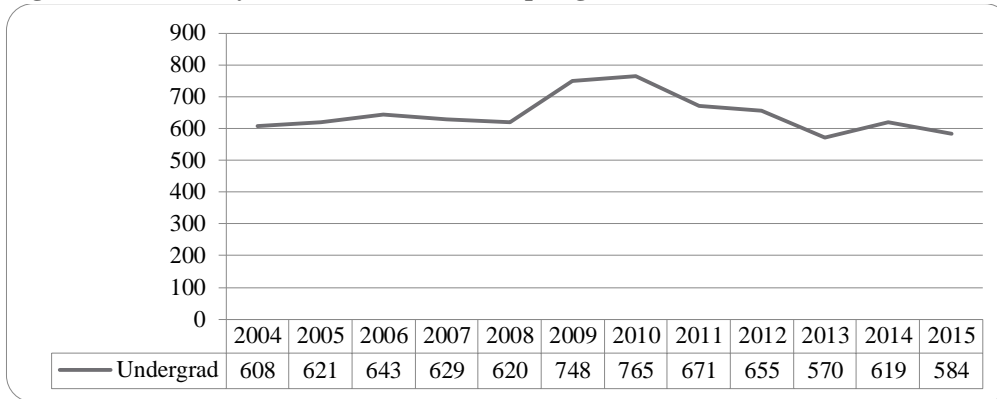


Figure 35: University Division Student Credit Hours: Spring 2004-2015

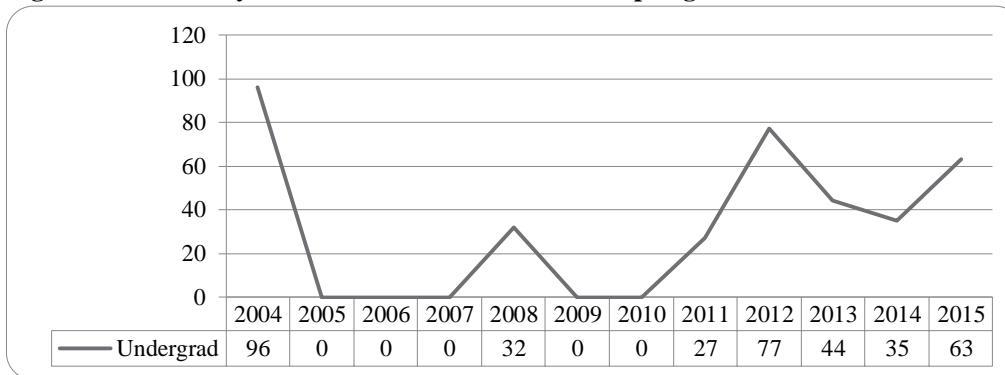


Figure 36: University Division Head Count by Ethnicity by Gender: Spring 2015

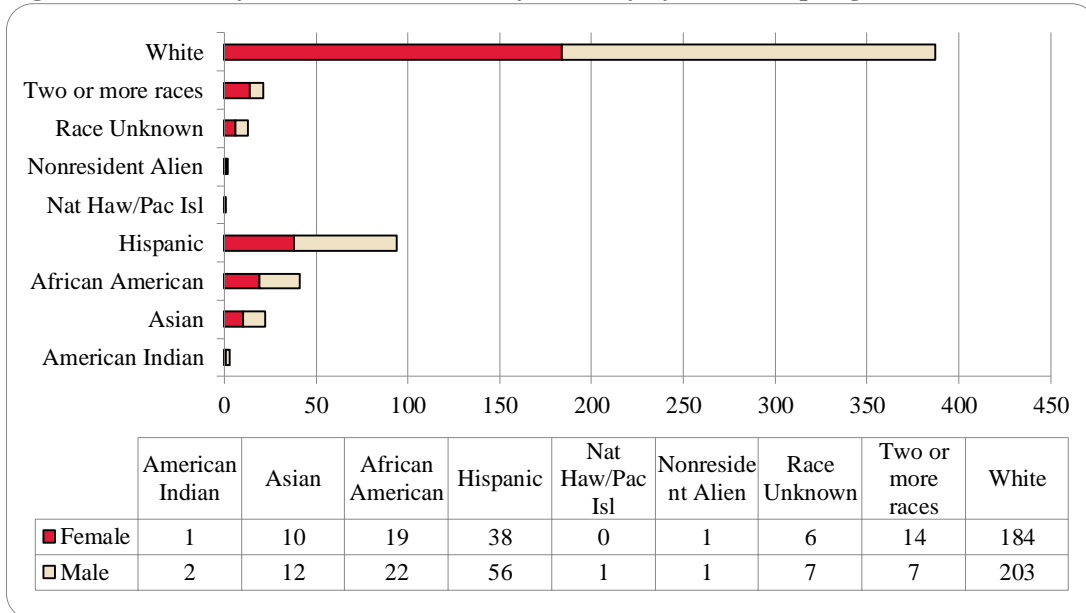


Table 14: University Division Head Count Summary for Undergraduate Students by Full and Part-Time by Gender and Race Classification: Spring 2015

	American Indian		Asian		African American		Hispanics		Nat Haw / Pac Isl		Race Unknown		Two or more races		White		Nonresident Alien		Total			
	F	M	F	M	F	M	F	M	F	M	F	M	F	M	F	M	F	M	F	M	Total	
Undergraduate																						
Full-Time																						
First-Time Freshmen												1		1	1	5				1	7	8
Other Freshmen			1	9	9	9	10	24	30		1	2	2	10	4	107	116		1	161	174	335
Sophomores	1	1	1	1	6	3	11	15			1	3	3	1	51	53			74	77	151	
Juniors				1											1	1			1	2	3	
Seniors																						
Special											1									1		1
Total Full-Time	1	2	10	11	15	13	35	45		1	4	6	13	6	160	175		1	238	260	498	
Part-Time																						
First-Time Freshmen																						
Other Freshmen				1	1	7	2	6			2	1		1	17	17	1		23	33	56	
Sophomores					3	2	1	5					1		6	11			11	18	29	
Juniors																						
Seniors															1				1		1	
Special																						
Total Part-Time				1	4	9	3	11			2	1	1	1	24	28	1		35	51	86	
Total Undergraduate	1	2	10	12	19	22	38	56		1	6	7	14	7	184	203	1	1	273	311	584	
Total All Students	1	2	10	12	19	22	38	56		1	6	7	14	7	184	203	1	1	273	311	584	

Figure 37: Non-Degree/Intercampus Special Undergraduate Students Head Count: Spring 2004-2015

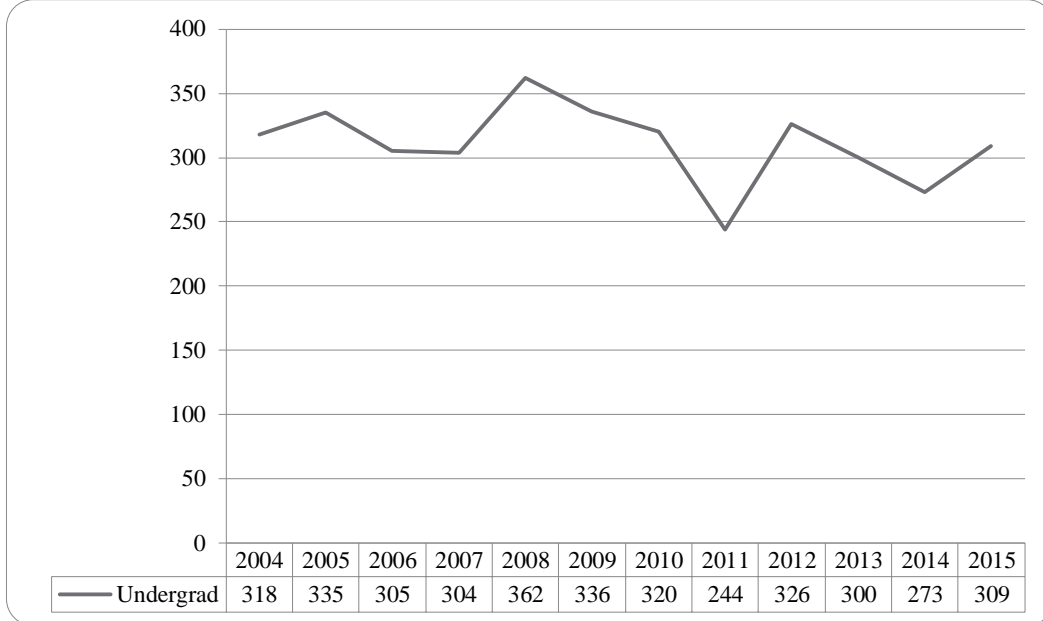


Figure 38: Non-Degree/Intercampus Special Undergraduate Students Head Count by Ethnicity by Gender: Spring 2015

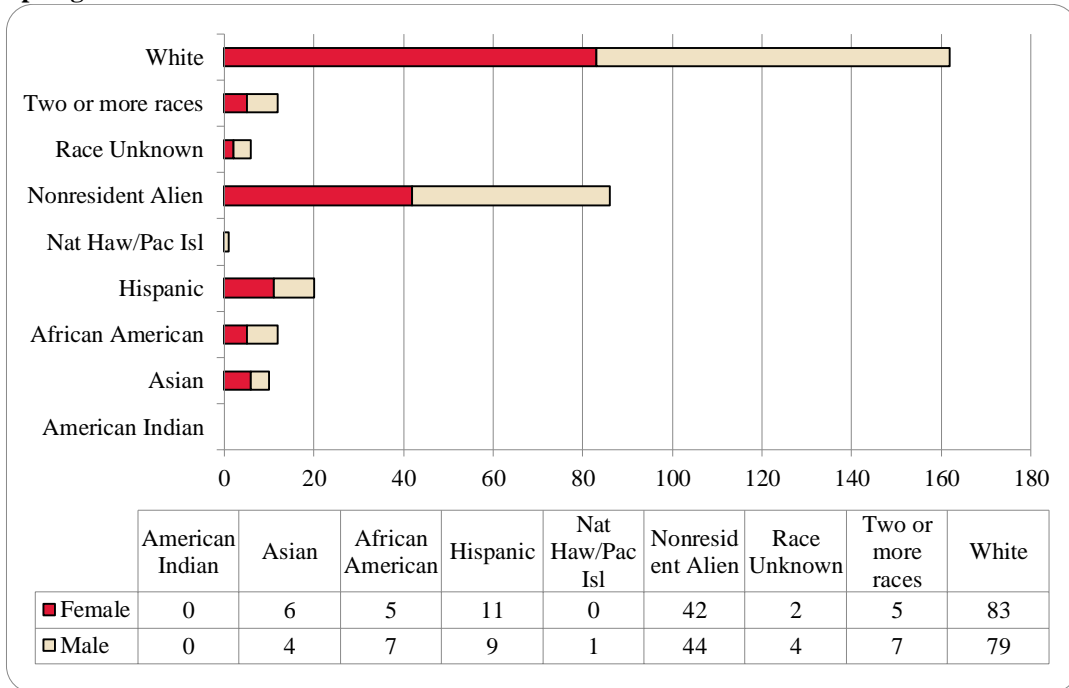


Table 15: Non-Degree/Intercampus Head Count Summary for Special Undergraduate Students by Full and Part-Time by Gender and Race Classification: Spring 2015

	American Indian		Asian		African American		Hispanics		Nat Haw / Pac Isl		Race Unknown		Two or more races		White		Nonresident Alien		Total			
	F	M	F	M	F	M	F	M	F	M	F	M	F	M	F	M	F	M	F	M	Total	
Undergraduate																						
Full-Time																						
First-Time Freshmen																		3		3	3	
Other Freshmen								1					1	2	5	6	28	33	34	42	76	
Sophomores															1	3	3		4	3	7	
Juniors								1									1	4	1	4	3	7
Seniors															1	1	3	2	4	3	7	
Special								1							2	1			2	2	4	
Total Full-Time								3					1	2	9	12	38	39	48	56	104	
Part-Time																						
First-Time Freshmen																	1		1		1	
Other Freshmen				6	2	4	1	4	3		1	1	2	4	2	33	35	3	4	55	50	105
Sophomores					1	1		1	1			1			1	4	3		1	7	7	14
Juniors							2	2									3			2	5	7
Seniors							1	1						1	1	2			2	4	6	
Special					1		3	3	2			2		1	36	24			39	33	72	
Total Part-Time				6	4	5	7	11	6		1	2	4	4	5	74	67	4	5	106	99	205
Total Undergraduate				6	4	5	7	11	9		1	2	4	5	7	83	79	42	44	154	155	309
Total All Students				6	4	5	7	11	9		1	2	4	5	7	83	79	42	44	154	155	309

Figure 39: Non-Degree/Intercampus Special Graduate Students Head Count: Spring 2004-2015

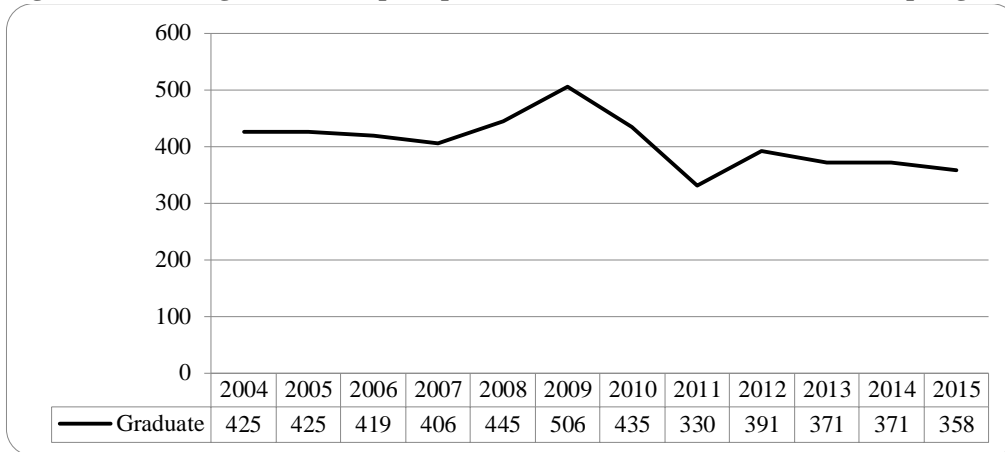


Figure 40: Non-Degree/Intercampus Special Graduate Students Head Count by Ethnicity by Gender: Spring 2015

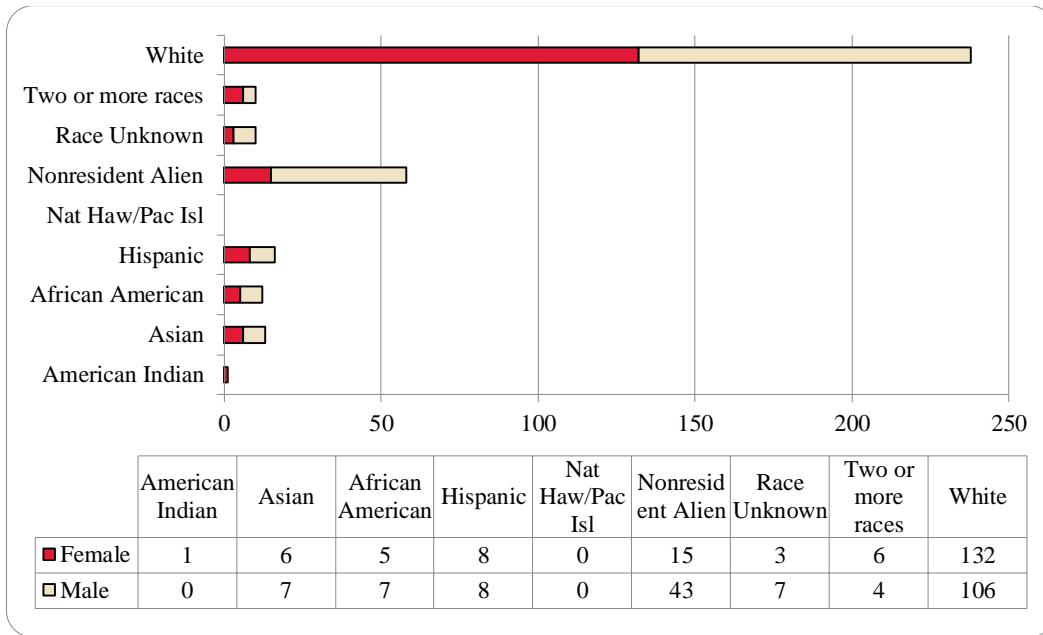


Table 16: Non-Degree/Intercampus Head Count Summary for Special Graduate Students by Full and Part-time by Gender and Race Classification: Spring 2015

	American Indian		Asian		African American		Hispanics		Nat Haw / Pac Isl		Race Unknown		Two or more races		White		Nonresident Alien		Total			
	F	M	F	M	F	M	F	M	F	M	F	M	F	M	F	M	F	M	F	M	Total	
Graduate																						
Full-Time																						
Certificate																						
Masters																						
Doctoral																						
Special Graduate				1			1	2					1	1	17	27	6	29	25	60	85	
Total Full-Time				1			1	2					1	1	17	27	6	29	25	60	85	
Part-Time																						
Certificate																						
Masters																						
Doctoral																						
Special Graduate	1		6	6	5	7	7	6			3	7	5	3	115	79	9	14	151	122	273	
Total Part-Time	1		6	6	5	7	7	6			3	7	5	3	115	79	9	14	151	122	273	
Total Graduate	1		6	7	5	7	8	8			3	7	6	4	132	106	15	43	176	182	358	
Total All Students	1		6	7	5	7	8	8			3	7	6	4	132	106	15	43	176	182	358	

Figure 41: Other Honors and Library Hours Student Credit Hours by Level of Instruction: Spring 2004-2015

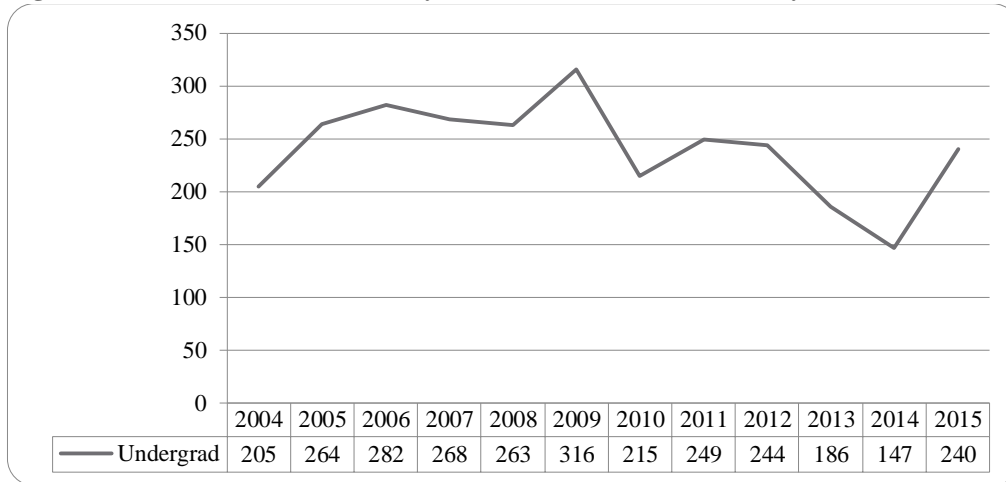


Table 17: College of Agriculture Head Count Summary for Undergraduate Students by Full and Part-Time by Gender and Race Classification: Spring 2015

	American Indian		Asian		African American		Hispanics		Nat Haw / Pac Isl		Race Unknown		Two or more races		White		Nonresident Alien		Total			
	F	M	F	M	F	M	F	M	F	M	F	M	F	M	F	M	F	M	F	M	Total	
Undergraduate																						
Full-Time																						
First-Time Freshmen																						
Other Freshmen															1	5				1	5	6
Sophomores																1					1	1
Juniors																1					1	1
Seniors															1					1		1
Special																						
Total Full-Time															2	7				2	7	9
Part-Time																						
First-Time Freshmen																						
Other Freshmen																1					1	1
Sophomores																2					2	2
Juniors								1							1					2		2
Seniors																						
Special																						
Total Part-Time								1							1	3				2	3	5
Total Undergraduate								1							3	10				4	10	14
Total All Students								1							3	10				4	10	14

Figure 45: College of Architecture Delivery-Site Head Count: Spring 2004-2015

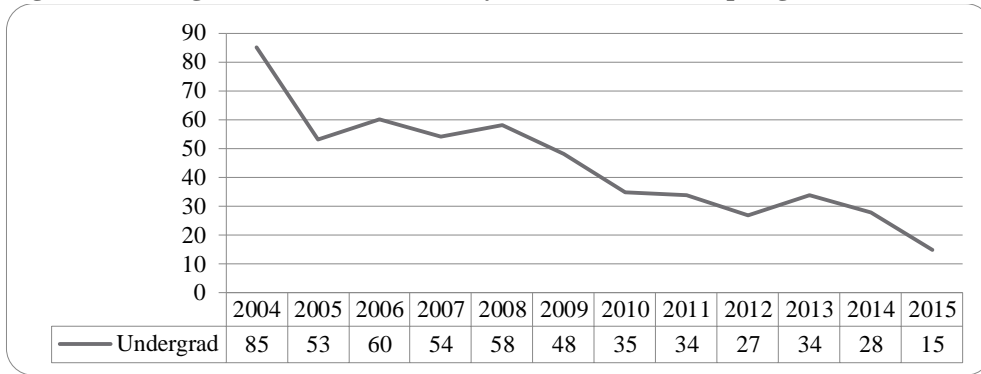


Figure 46: College of Architecture Delivery-Site Student Credit Hours: Spring 2004-2015

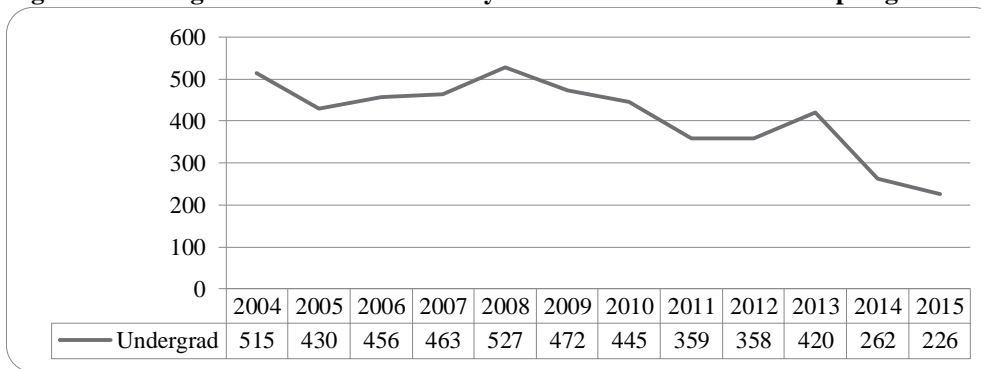


Figure 47: College of Architecture Delivery-Site Head Count by Ethnicity by Gender: Spring 2015

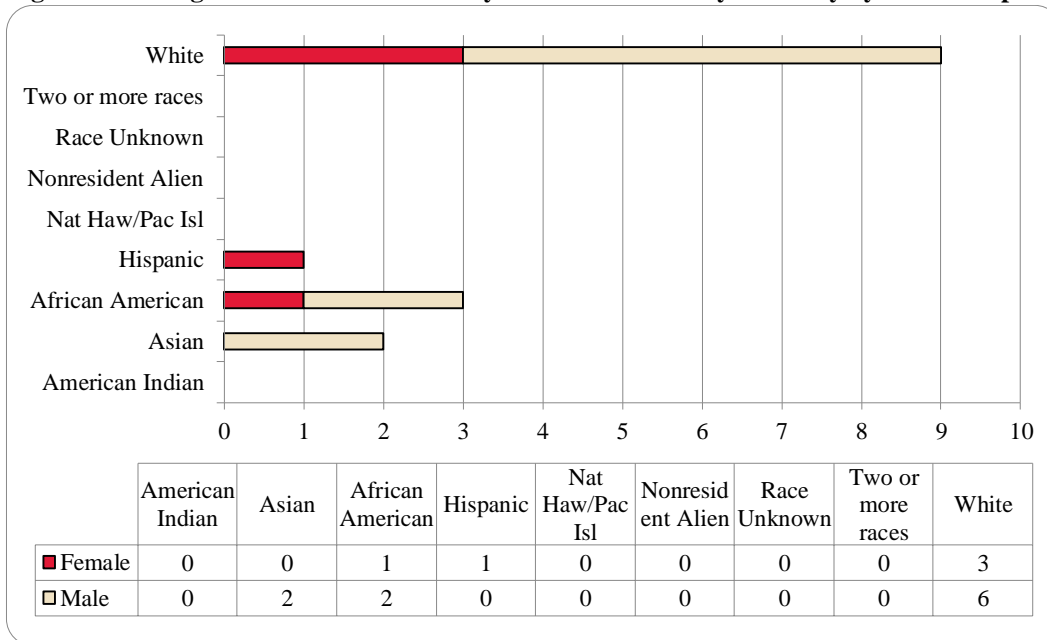


Table 18: College of Architecture Head Count Summary for Undergraduate Students by Full and Part-Time by Gender and Race Classification: Spring 2015

	American Indian		Asian		African American		Hispanics		Nat Haw / Pac Isl		Race Unknown		Two or more races		White		Nonresident Alien		Total			
	F	M	F	M	F	M	F	M	F	M	F	M	F	M	F	M	F	M	F	M	Total	
Undergraduate																						
Full-Time																						
First-Time Freshmen																						
Other Freshmen							1							2	1				3	1	4	
Sophomores				2	1	2								1	5				2	9	11	
Juniors																						
Seniors																						
Special																						
Total Full-Time				2	1	2	1							3	6				5	10	15	
Part-Time																						
First-Time Freshmen																						
Other Freshmen																						
Sophomores																						
Juniors																						
Seniors																						
Special																						
Total Part-Time																						
Total Undergraduate				2	1	2	1							3	6				5	10	15	
Total All Students				2	1	2	1							3	6				5	10	15	

Figure 48: College of Engineering Delivery-Site Head Count: Spring 2004-2015

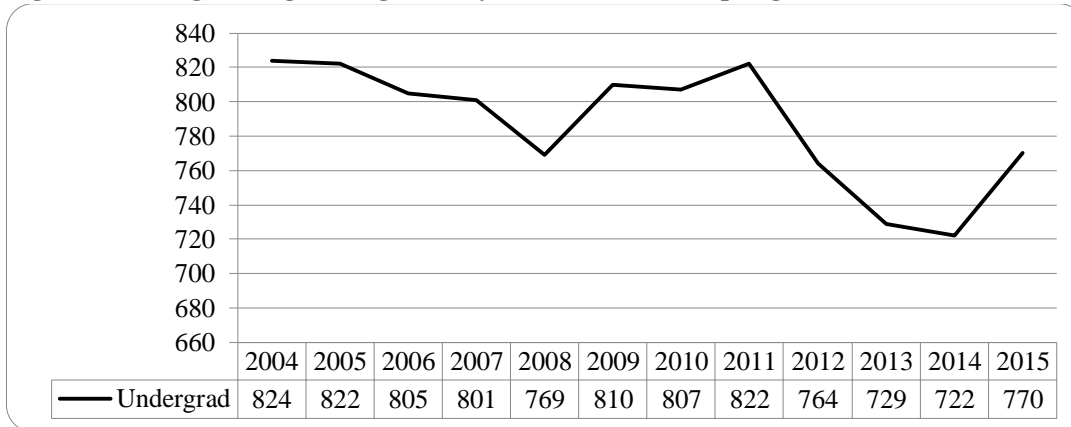


Figure 49: College of Engineering Delivery-Site Student Credit Hours: Spring 2004-2015

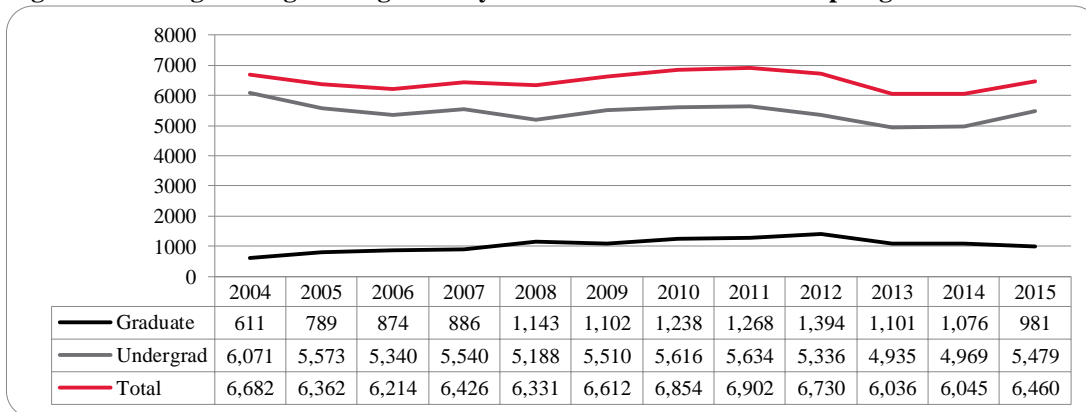


Figure 50: College of Engineering Delivery-Site Head Count by Ethnicity by Gender: Spring 2015

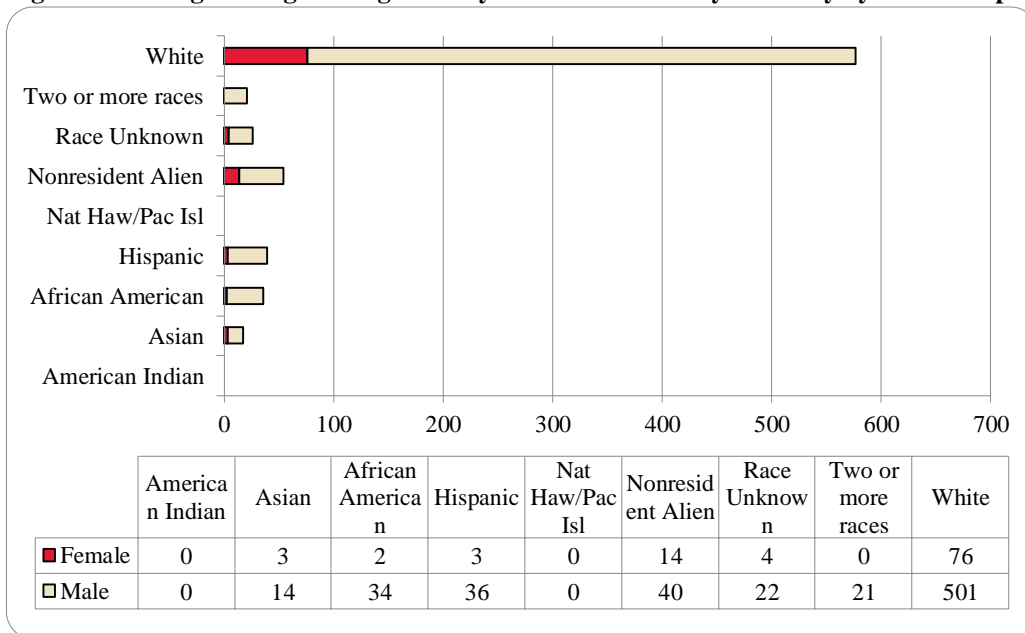


Table 19: College of Engineering Head count Summary for Undergraduate Students by Full and Part-Time by Gender and Race Classification: Spring 2015

	American Indian		Asian		African American		Hispanics		Nat Haw / Pac Isl		Race Unknown		Two or more races		White		Nonresident Alien		Total			
	F	M	F	M	F	M	F	M	F	M	F	M	F	M	F	M	F	M	F	M	Total	
Undergraduate																						
Full-Time																						
First-Time Freshmen															3	3	1	3	4	7		
Other Freshmen				2		2		6			3		5	14	74	4	9	18	101	119		
Sophomores				3		4	1	7			2	2	5	19	95	4	9	26	125	151		
Juniors			2	3	1	9	1	4			3		5	18	107	3	15	25	146	171		
Seniors			1	4	1	5		10			1	10	4	17	145		4	20	182	202		
Special				1								1		2	7		1	2	10	12		
Total Full-Time			3	13	2	20	2	27			3	19		19	70	431	14	39	94	568	662	
Part-Time																						
First-Time Freshmen																						
Other Freshmen								1							7				8	8		
Sophomores						5		1					1	2	14			2	21	23		
Juniors						4		4						2	16		1	2	25	27		
Seniors				1		4	1	2			1	3		1	2	28		4	39	43		
Special						1		1							5				7	7		
Total Part-Time				1		14	1	9			1	3		2	6	70		1	8	100	108	
Total Undergraduate			3	14	2	34	3	36			4	22		21	76	501	14	40	102	668	770	
Total All Students			3	14	2	34	3	36			4	22		21	76	501	14	40	102	668	770	

Table 20: College of Education and Human Sciences Head Count Summary for Undergraduate Students by Full and Part-Time by Gender and Race Classification: Spring 2015

	American Indian		Asian		African American		Hispanics		Nat Haw / Pac Isl		Race Unknown		Two or more races		White		Nonresident Alien		Total			
	F	M	F	M	F	M	F	M	F	M	F	M	F	M	F	M	F	M	F	M	Total	
Undergraduate																						
Full-Time																						
First-Time Freshmen																						
Other Freshmen																						
Sophomores																						
Juniors																						
Seniors																						
Special																						
Total Full-Time																						
Part-Time																						
First-Time Freshmen																						
Other Freshmen																						
Sophomores																						
Juniors																						
Seniors																1					1	1
Special																						
Total Part-Time																1					1	1
Total Undergraduate																1					1	1
Total All Students																1					1	1

Glossary

The total head count and student credit hours in this enrollment report are provided on both a delivery-site and administrative-site basis. Delivery-site includes enrollment in all courses taught at UNO regardless of “home” campus. This means that student credit hours are reported for courses in the colleges. Student enrollment is counted in the college declared by the student. Specifically, the delivery-site enrollment numbers include students in degree programs in the UNL Colleges of Agriculture, Architecture, Engineering and Technology, and Education and Human Science.

FIRST-TIME, Entering (freshmen) Student: Students attending any institution for the first time at the undergraduate level. For students entering the fall term, this includes students enrolled in the fall term who attended college for the first time in the prior summer term. Also included are students who entered with advanced standing, i.e. college credits earned before graduation from high school.

OTHER FRESHMEN: At the beginning of the current semester, undergraduate students who (1) are not First-Time Freshmen and (2) have less than 27 semester hours earned from all institutions of higher education attended.

SOPHOMORES: At the beginning of the current semester, undergraduate students who have at least 27, but not more than 57, semester hours earned from all institutions of higher education attended.

JUNIORS: At the beginning of the current semester, undergraduate students who have at least 58, but not more than 90, semester hours earned from all institutions of higher education attended.

SENIORS: At the beginning of the current semester, undergraduate students who have at least 91 semester hours earned from all institutions of higher education attended.

NON-DEGREE/INTER-CAMPUS/SPECIAL UNDERGRADUATES: Special undergraduates not pursuing a degree at UNO in various programs: Inter-Campus UNMC, UNK, UNL, and Non-Degree.

NON-DEGREE/INTER-CAMPUS/SPECIAL GRADUATE STUDENTS: Special graduate students not pursuing a degree at UNO in various programs: Engineering Transfer Program, Inter-Campus UNMC, UNK, UNL, Inter-Campus UNL Graduate Psychology and Non-Degree.

MASTERS/SPECIALIST: Graduate students pursuing a degree less than doctoral.

CERTIFICATE: These students are not enrolled in a degree program, but only a certificate.

DOCTORAL: Graduate students who have been accepted into a doctoral program.

FULL-TIME: In the current semester, undergraduate students enrolled for 12 or more semester hours, or graduate students enrolled for 9 or more semester hours.

PART-TIME: In the current semester, undergraduate students enrolled for less than 12 semester hours, or graduate students enrolled for less than 9 semester hours.

COOPERATIVE GRADUATE PROGRAM: Graduate students enrolled in Human Resources and Training or Global Information Operations offered cooperatively by two or more colleges.



OFFICE OF INSTITUTIONAL EFFECTIVENESS

www.unomaha.edu/oie/

402-554-2367 | 402-554-4896 (Fax)

T. Hank Robinson, Director

Jenny Liu, Director of Institutional Research

Daniel O'Dell, Web & Communications Coordinator

Andrew Jacobsen, Business Analyst

Rita Sterkel, Management Information Coordinator

Jeanie Gutheil-Bykerk, Research Analyst