

Fall 9-2016

Enrollment Report - Fall 2016

UNO Office of Institutional Effectiveness

Follow this and additional works at: <https://digitalcommons.unomaha.edu/oieenrollment>



Part of the [Educational Assessment, Evaluation, and Research Commons](#), and the [Higher Education Commons](#)

Please take our feedback survey at: https://unomaha.az1.qualtrics.com/jfe/form/SV_8cchtFmpDyGfBLE

Recommended Citation

Office of Institutional Effectiveness, UNO, "Enrollment Report - Fall 2016" (2016). *Enrollment Reports*. 74. <https://digitalcommons.unomaha.edu/oieenrollment/74>

This Report is brought to you for free and open access by the Systems Intelligence and Data Analytics (SIDA) at DigitalCommons@UNO. It has been accepted for inclusion in Enrollment Reports by an authorized administrator of DigitalCommons@UNO. For more information, please contact unodigitalcommons@unomaha.edu.

OFFICE OF INSTITUTIONAL EFFECTIVENESS

ENROLLMENT PROFILE REPORT

FALL 2016



UNIVERSITY OF
Nebraska
Omaha



University of Nebraska at Omaha
Enrollment Profile Report:
Fall 2016

Office of Institutional Effectiveness
Institutional Research

<http://www.unomaha.edu/oie/>

September, 2016

EXECUTIVE SUMMARY

This Enrollment Profile Report provides administrative- and delivery-site information on enrollment headcount and student credit hours, as well as the demographic characteristics of enrolled students. Delivery-site reporting counts all students, including those in UNL programs delivered at UNO, but excludes UNO programs delivered in Lincoln (CPACS programs). Administrative-site reporting counts students enrolled in UNO programs only (including the CPACS programs delivered in Lincoln).

The purpose of this profile is to provide the undergraduate and graduate enrollments and student credit hour information by college or equivalent academic unit, class, gender and ethnicity. A glossary at the end of the report provides a list of definitions for headings. All information in this report was produced from the Fall 2016 Census Enrollment Snapshot file. The Census Snapshot date was August 29th, 2016.

Administrative-Site Campus Summary

- Fall 2016 head count enrollment is 15,627, a 1% increase compared to the fall 2015 enrollment of 15,526 (see Figure 1).
- Fall 2016 undergraduate head count enrollment is 12,536, a 0.4% increase compared to the fall 2015 enrollment of 12,488 (see Figure 5).
- Fall 2016 graduate headcount enrollment is 3,091, a 1.7% increase compared to the fall 2015 enrollment of 3,038 (see Figure 5).
- Fall 2016 student credit hours are 175,611, a 2.2% increase compared to the fall 2015 credit hours of 171,809 (see Figure 6).
- Fall 2016 undergraduate credit hours are 157,129, up from fall 2015 by 2.0% (see Figure 6).
- Fall 2016 graduate credit hours are 18,482, up from fall 2015 by 3.1% (see Figure 6).

Delivery-Site Campus Summary

- Fall 2016 head count enrollment is 16,125, a 0.6% increase compared to the fall 2015 enrollment of 16,031 (see Figure 1).
- Fall 2016 undergraduate head count is 13,034, a 0.3% increase compared to the fall 2015 enrollment of 12,993 (see Figure 2).
- Fall 2016 graduate head count enrollment is 3,091, a 1.7% increase compared to the fall 2015 enrollment of 3,038 (see Figure 2).
- Fall 2016 student credit hours are 177,425, a 1.5% increase compared to the fall 2015 credit hours of 174,684 (see Figure 3).
- Fall 2016 undergraduate credit hours are 158,251, up from fall 2015 by 1.4% (see Figure 3).
- Fall 2016 graduate credit hours are 19,174, up from fall 2015 by 3.1% (see Figure 3).

Contents

| | |
|------------------------|---|
| Executive Summary..... | i |
|------------------------|---|

List of Tables:

| | |
|----------------------------------------------------------------------------------------------------------------------------------------------------------------------------------------------------------|----|
| Table 1: UNO Delivery-Site and Administrative-Site Head Count Enrollment and Comparison: Fall Semester, 2016 | 1 |
| Figure 1: Delivery-Site & Administrative-Site Head Count Enrollment: Fall 1990 – 2016 | 2 |
| Figure 2: UNO Delivery-Site Head Count by Student Level: Fall 2006-2016..... | 3 |
| Figure 3: UNO Delivery-Site Student Credit Hours by Student Level: Fall 2006-2016..... | 3 |
| Figure 4: UNO Delivery-Site Head Count by Ethnicity by Gender: Fall 2016 | 4 |
| Table 2: Total UNO Delivery-Site Head Count Summary for Undergraduate and Graduate Students Full and Part-Time by Gender and Race Classification: Fall 2016..... | 5 |
| Figure 5: UNO Administrative-Site Head Count by Student Level: Fall 2006-2016 | 6 |
| Figure 6: UNO Administrative-Site Student Credit Hours: Fall 2006-2016 | 6 |
| Figure 7: UNO Administrative-Site Head Count by Ethnicity by Gender: Fall 2016..... | 7 |
| Table 3: Total UNO Administrative-Site Head Count Summary for Undergraduate and Graduate Students by Full and Part-Time by Gender and Race Classification: Fall 2016 | 8 |
| Figure 8: College of Arts & Sciences Head Count: Fall 2006-2016..... | 9 |
| Figure 9: College of Arts & Sciences Student Credit Hours: Fall 2006-2016..... | 9 |
| Figure 10: College of Arts & Sciences Head Count by Ethnicity by Gender: Fall 2016 | 10 |
| Table 4: College of Arts & Sciences Head Count Summary for Undergraduate and Graduate Students by Full and Part-Time by Gender and Race Classification: Fall 2016..... | 11 |
| Figure 11: College of Business Administration Head Count: Fall 2006-2016..... | 12 |
| Figure 12: College of Business Administration Student Credit Hours: Fall 2006-2016..... | 12 |
| Figure 13: College of Business Administration Head Count by Ethnicity by Gender: Fall 2016 | 13 |
| Table 5: College of Business Administration Head Count Summary for Undergraduate and Graduate Students by Full and Part-Time by Gender and Race Classification: Fall 2016..... | 14 |
| Figure 14: College of Communication, Fine Arts and Media Delivery-Site Head Count: Fall 2006-2016 ... | 15 |
| Figure 15: College of Communication, Fine Arts and Media Delivery-Site Student Credit Hours: Fall 2006-2016 | 15 |
| Figure 16: College of Communication, Fine Arts and Media Delivery-Site Head Count by Ethnicity by Gender: Fall 2016..... | 16 |
| Table 6: College of Communication, Fine Arts and Media Delivery-Site Head Count Summary for Undergraduate and Graduate Students by Full and Part-Time by Gender and Race Classification: Fall 2016 | 17 |

| | |
|-----------------------------------------------------------------------------------------------------------------------------------------------------------------------------------------------------------------|----|
| Figure 17: College of Communication, Fine Arts and Media: Administrative-Site Head Count: Fall 2006-2016 | 18 |
| Figure 18: College of Communication, Fine Arts and Media: Administrative-Site Student Credit Hours: Fall 2006-2016..... | 18 |
| Figure 19: College of Communication, Fine Arts and Media: Administrative-Site Head Count by Ethnicity by Gender: Fall 2016 | 19 |
| Table 7: College of Communication, Fine Arts and Media Administrative-Site Head Count Summary for Undergraduate and Graduate Students by Full and Part-Time by Gender and Race Classification: Fall 2016 | 20 |
| Figure 20: College of Education Head Count: Fall 2006-2016 | 21 |
| Figure 21: College of Education Student Credit Hours: Fall 2006-2016 | 21 |
| Figure 22: College of Education Head Count by Ethnicity by Gender: Fall 2016 | 22 |
| Table 8: College of Education Head Count Summary for Undergraduate and Graduate Students by Full and Part-Time by Gender and Race Classification: Fall 2016..... | 23 |
| Figure 23: College of Information Science & Technology Head Count: Fall 2006-2016 | 24 |
| Figure 24: College of Information Science & Technology Student Credit Hours: Fall 2006-2016 | 24 |
| Figure 25: College of Information Science & Technology Student Credit Hours: Fall 2006-2016 | 25 |
| Table 9: College of Information Science and Technology Head Count Summary for Undergraduate and Graduate Summary by Full and Part-Time by Gender and Race Classification: Fall 2016..... | 26 |
| Figure 26: College of Public Affairs & Community Service Delivery-Site Head Count: Fall 2006-2016 | 27 |
| Figure 27: College of Public Affairs & Community Service Delivery-Site Student Credit Hours: Fall 2006-2016 | 27 |
| Figure 28: College of Public Affairs & Community Service Delivery-Site Head Count by Ethnicity by Gender: Fall 2016..... | 28 |
| Table 10: College of Public Affairs and Community Service Delivery-Site Head Count Summary for Undergraduate and Graduate Students by Full and Part-Time by Gender and Race Classification: Fall 2016 | 29 |
| Figure 29: College of Public Affairs & Community Service Administrative-Site Head Count: Fall 2006-2016 | 30 |
| Figure 30: College of Public Affairs & Community Service Administrative-Site Student Credit Hours: Fall 2006-2016 | 30 |
| Figure 31: College of Public Affairs & Community Service Administrative-Site Head Count by Ethnicity by Gender: Fall 2016..... | 31 |
| Table 11: College of Public Affairs & Community Service Administrative-Site Head Count Summary for Undergraduate and Graduate Students by Full and Part-Time by Gender and Race Classification: Fall 2016 | 32 |
| Figure 32: College of CPACS, Division of Continuing Studies Head Count: Fall 2006-2016..... | 33 |

| | |
|---------------------------------------------------------------------------------------------------------------------------------------------------------------------------------|----|
| Figure 33: College of CPACS, Division of Continuing Studies Head Count by Ethnicity by Gender: Fall 2016 | 33 |
| Table 12: College of CPACS Division of Continuing Studies Head Count Summary for Undergraduate Students by Full and Part-Time by Gender and Race Classification: Fall 2016..... | 34 |
| Table 13: Cooperative Graduate Program Head Count Summary for Graduate Students by Full and Part-Time by Gender and Race Classification: Fall 2016 | 35 |
| Figure 34: University Division Head Count: Fall 2006-2016..... | 36 |
| Figure 35: University Division Student Credit Hours: Fall 2006-2016..... | 36 |
| Figure 36: University Division Head Count by Ethnicity by Gender: Fall 2016 | 37 |
| Table 14: University Division Head Count Summary for Undergraduate Students by Full and Part-Time by Gender and Race Classification: Fall 2016 | 38 |
| Figure 37: Non-Degree/Intercampus Special Undergraduate Students Head Count: Fall 2006-2016 | 39 |
| Figure 38: Non-Degree/Intercampus Special Undergraduate Students Head Count by Ethnicity by Gender: Fall 2016 | 39 |
| Table 15: Non-Degree/Intercampus Head Count Summary for Special Undergraduate Students by Full and Part-Time by Gender and Race Classification: Fall 2016..... | 40 |
| Figure 39: Non-Degree/Inter Campus Special Graduate Students Head Count: Fall 2006-2016 | 41 |
| Figure 40: Non-Degree/Intercampus Special Graduate Students Head Count by Ethnicity by Gender: Fall 2016 | 41 |
| Table 16: Non-Degree/Intercampus Head Count Summary for Special Graduate Students by Full and Part-Time by Gender and Race Classification: Fall 2016..... | 42 |
| Figure 41: Other Honors Student Credit Hours by Level of Instruction: Fall 2006-2016..... | 43 |
| Figure 42: College of Agriculture Delivery-Site Head Count: Fall 2006-2016 | 44 |
| Figure 43: College of Agriculture Delivery-Site Student Credit Hours: Fall 2006-2016 | 44 |
| Figure 44: College of Agriculture Delivery-Site Head Count by Ethnicity by Gender: Fall 2016..... | 45 |
| Table 17: College of Agriculture Head Count Summary for Undergraduate Students by Full and Part-Time by Gender and Race Classification: Fall 2016 | 46 |
| Figure 45: College of Architecture Delivery-Site Head Count: Fall 2006-2016..... | 47 |
| Figure 46: College of Architecture Delivery-Site Student Credit Hours: Fall 2006-2016 | 47 |
| Figure 47: College of Architecture Delivery-Site Head Count by Ethnicity by Gender: Fall 2016..... | 48 |
| Table 18: College of Architecture Head Count Summary for Undergraduate Students by Full and Part-Time by Gender and Race Classification: Fall 2016 | 49 |
| Figure 48: College of Engineering Delivery-Site Head Count: Fall 2006-2016..... | 50 |
| Figure 49: College of Engineering Delivery-Site Student Credit Hours: Fall 2006-2016 | 50 |
| Figure 50: College of Engineering Delivery-Site Head Count by Ethnicity by Gender: Fall 2016..... | 51 |

| | |
|---------------------------------------------------------------------------------------------------------------------------------------------------------|----|
| Table 19: College of Engineering Head Count Summary for Undergraduate Students by Full and Part-Time by Gender and Race Classification: Fall 2016 | 52 |
| Figure 51: College of Education and Human Sciences Delivery-Site Head Count: Fall 2006-2016..... | 53 |
| Figure 52: College of Education and Human Sciences Delivery-Site Student Credit Hours: Fall 2006-2016 | 53 |
| Glossary..... | 54 |

Table 1: UNO Delivery-Site and Administrative-Site Head Count Enrollment and Comparison: Fall Semester, 2016

| | Fall 2016 | | Fall 2015 | Fall 2015-16 Administrative-Site | |
|-----------------------------------------|------------------|---------------------|---------------------------|----------------------------------|-----------------------|
| | Delivery-Site | Administrative-Site | Administrative-Site | Numerical Change | Percent Change |
| UNO: | | | | | |
| <i>Undergraduate</i> | | | | | |
| Arts & Science | 3,469 | 3,469 | 3,542 | -73 | -2.1% |
| Business Administration | 2,074 | 2,074 | 2,043 | 31 | 1.5% |
| Communication, Fine Arts & Media | 970 | 970 | 979 | -9 | -0.9% |
| Education | 1,395 | 1,395 | 1,472 | -77 | -5.2% |
| Information Science and Technology | 971 | 971 | 899 | 72 | 8.0% |
| Public Affairs & Community Services | 980 | 1,312 | 1,252 | 60 | 4.8% |
| Division of Continuing Studies | 1,197 | 1,197 | 1,309 | -112 | -8.6% |
| Sub-total CPACS including Cont. Studies | 2,177 | 2,509 | 2,561 | -52 | -2.0% |
| Non-Degree | 272 | 272 | 273 | -1 | -0.4% |
| University Division | 876 | 876 | 719 | 157 | 21.8% |
| Total Undergraduate | 12,204 | 12,536 | 12,488 | 48 | 0.4% |
| <i>Graduate</i> | | | | | |
| Arts & Science | 444 | 444 | 431 | 13 | 3.0% |
| Business Administration | 360 | 360 | 386 | -26 | -6.7% |
| Communication, Fine Arts & Media | 89 | 89 | 77 | 12 | 15.6% |
| Education | 895 | 895 | 820 | 75 | 9.1% |
| Information Science and Technology | 412 | 412 | 406 | 6 | 1.5% |
| Public Affairs & Community Services | 629 | 629 | 575 | 54 | 9.4% |
| New Cooperative Graduate Programs | 3 | 3 | 8 | -5 | -62.5% |
| Undeclared | 259 | 259 | 335 | -76 | -22.7% |
| Total Graduate | 3,091 | 3,091 | 3,038 | 53 | 1.7% |
| UNO Administrative-Site Total | | 15,627 | 15,526 | 101 | 0.7% |
| UNL: | Fall 2016 | | Delivery Fall 2015 | Numerical Change | Percent Change |
| Agriculture | 8 | | 13 | | |
| Architecture | 13 | | 10 | | |
| Engineering & Technology | 809 | | 819 | | |
| Education and Human Science | 0 | | 0 | | |
| Total UNL in Omaha | 830 | | 842 | -12 | -1.4% |
| | Fall 2016 | | Fall 2015 | Numerical Change | Percent Change |
| UNO Delivery-Site Total | 16,125 | | 16,031 | 94 | 0.6% |

Figure 1: Delivery-Site & Administrative-Site Head Count Enrollment: Fall 1990 – 2016

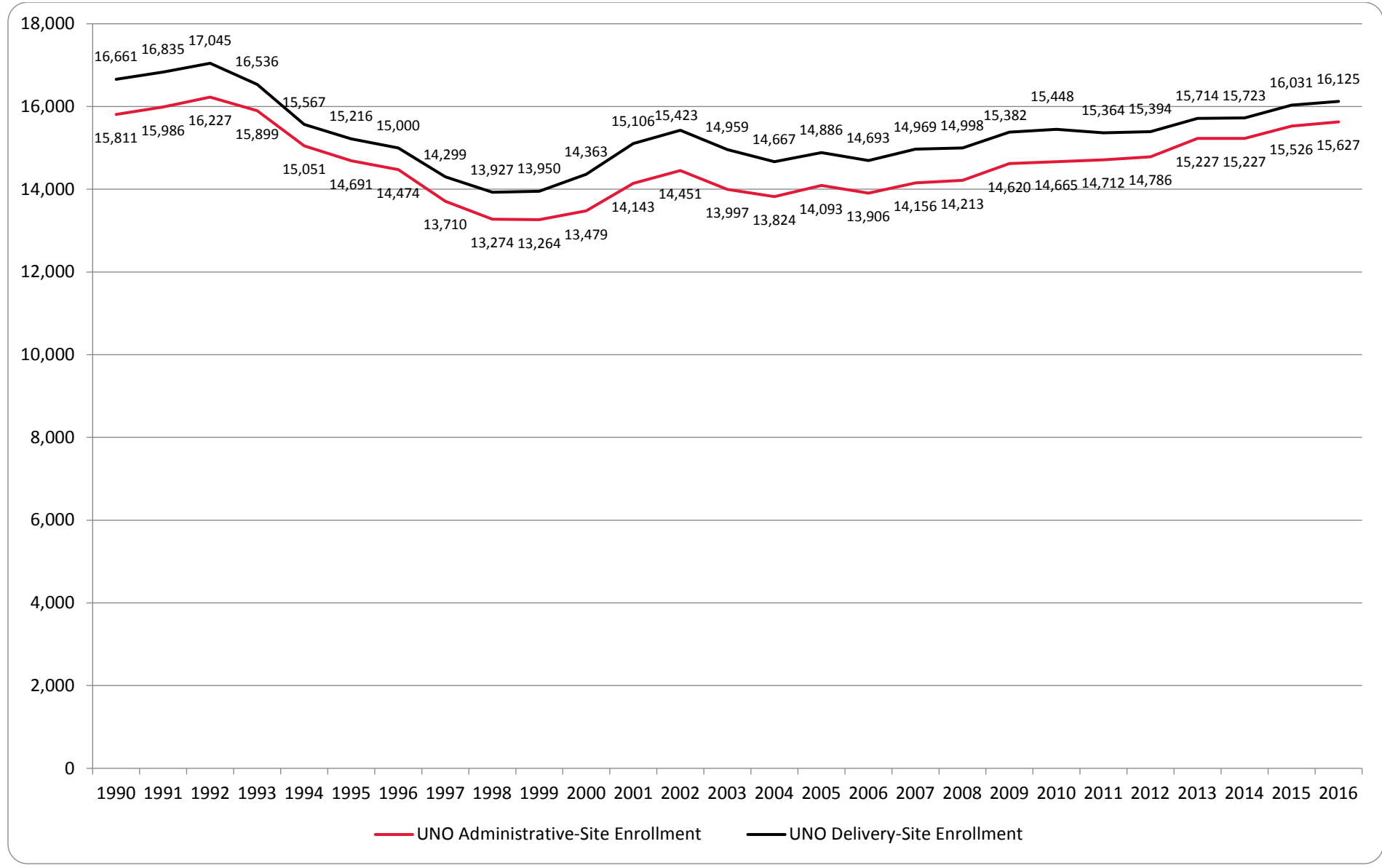


Figure 2: UNO Delivery-Site Head Count by Student Level: Fall 2006-2016

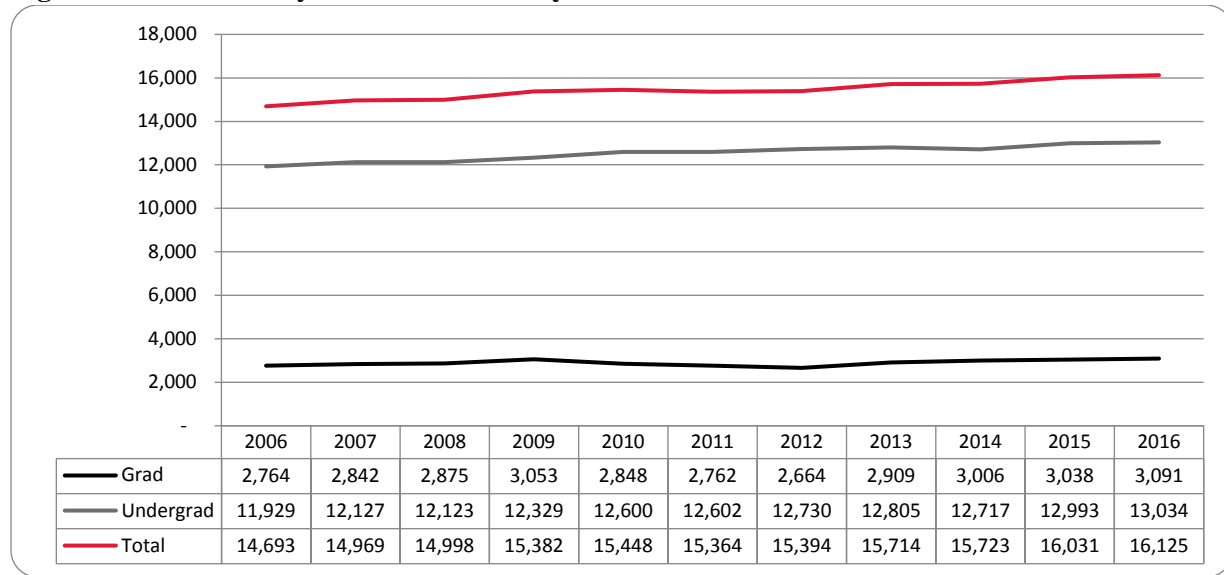


Figure 3: UNO Delivery-Site Student Credit Hours by Student Level: Fall 2006-2016

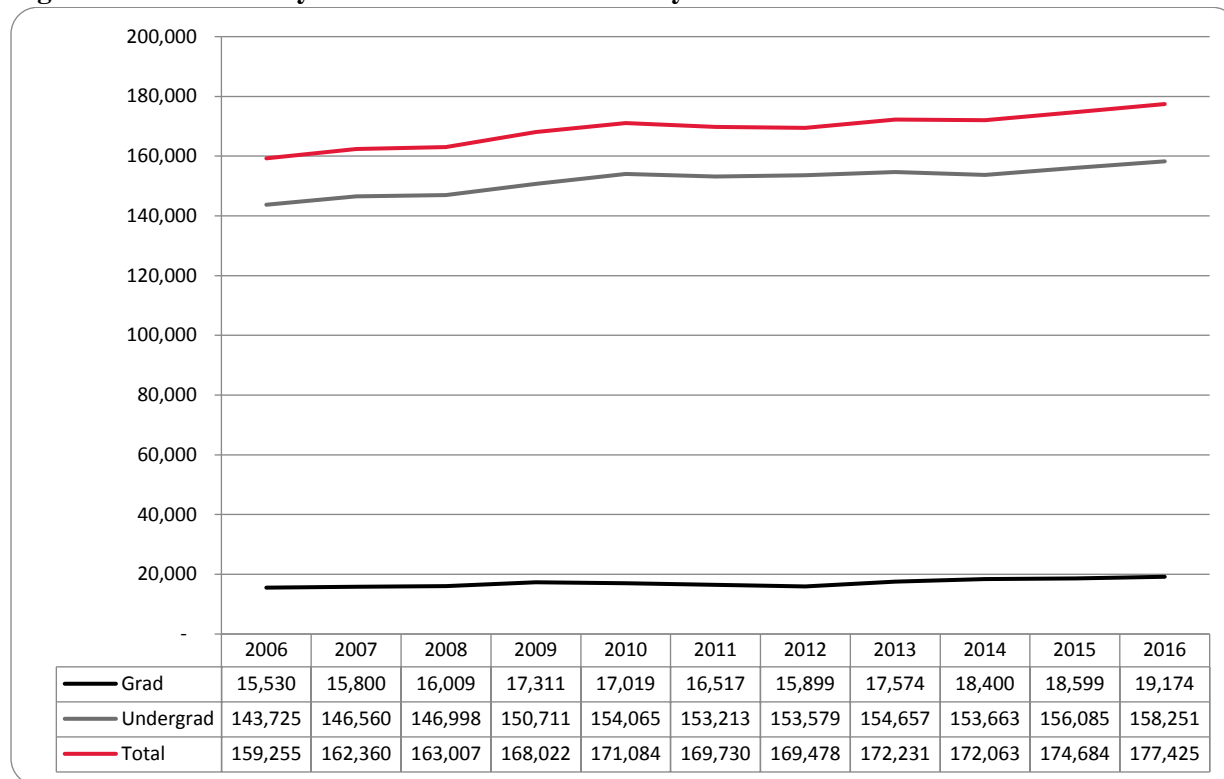


Figure 4: UNO Delivery-Site Head Count by Ethnicity by Gender: Fall 2016

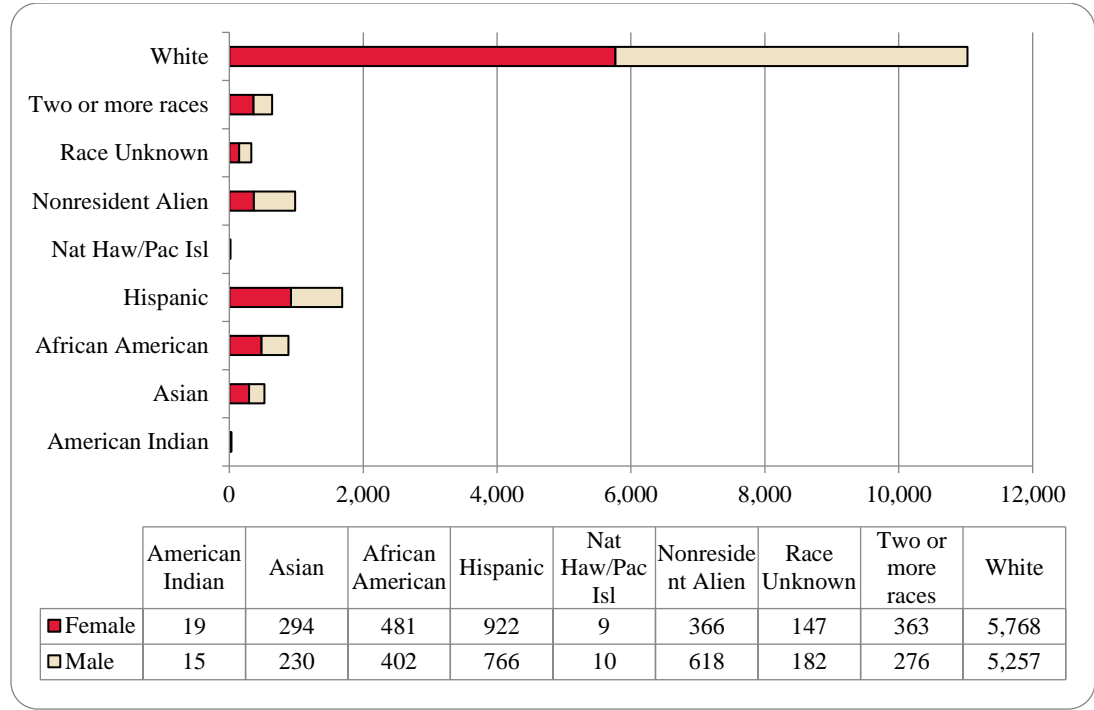


Table 2: Total UNO Delivery-Site Head Count Summary for Undergraduate and Graduate Students Full and Part-Time by Gender and Race Classification: Fall 2016

| | American Indian | | Asian | | African American | | Hispanics | | Nat Haw / Pac Isl | | Race Unknown | | Two or more races | | White | | Nonresident Alien | | Total | | | |
|----------------------------|-----------------|----|-------|-----|------------------|-----|-----------|-----|-------------------|----|--------------|-----|-------------------|-----|-------|-------|-------------------|-----|-------|-------|--------|--|
| | F | M | F | M | F | M | F | M | F | M | F | M | F | M | F | M | F | M | F | M | Total | |
| Undergraduate | | | | | | | | | | | | | | | | | | | | | | |
| Full-Time | | | | | | | | | | | | | | | | | | | | | | |
| First-Time Freshmen | 2 | 2 | 56 | 36 | 81 | 39 | 187 | 136 | 2 | 4 | 17 | 17 | 67 | 41 | 669 | 673 | 22 | 46 | 1,103 | 994 | 2,097 | |
| Other Freshmen | 2 | 2 | 16 | 9 | 44 | 27 | 61 | 71 | 1 | | 6 | 6 | 30 | 17 | 189 | 235 | 32 | 45 | 381 | 412 | 793 | |
| Sophomores | 1 | 2 | 55 | 37 | 70 | 45 | 170 | 138 | 2 | 3 | 23 | 28 | 57 | 47 | 793 | 801 | 41 | 90 | 1,212 | 1,191 | 2,403 | |
| Juniors | 5 | 1 | 41 | 37 | 67 | 74 | 146 | 129 | | 1 | 18 | 32 | 64 | 54 | 868 | 868 | 47 | 63 | 1,256 | 1,259 | 2,515 | |
| Seniors | 4 | 4 | 47 | 33 | 69 | 57 | 140 | 99 | 1 | | 28 | 26 | 51 | 35 | 819 | 819 | 43 | 65 | 1,202 | 1,138 | 2,340 | |
| Special | | | 3 | 2 | 1 | 1 | 5 | 5 | | | 2 | 3 | 3 | 5 | 40 | 46 | 3 | 3 | 57 | 65 | 122 | |
| Total Full-Time | 14 | 11 | 218 | 154 | 332 | 243 | 709 | 578 | 6 | 8 | 94 | 112 | 272 | 199 | 3,378 | 3,442 | 188 | 312 | 5,211 | 5,059 | 10,270 | |
| | | | | | | | | | | | | | | | | | | | | | | |
| Part-Time | | | | | | | | | | | | | | | | | | | | | | |
| First-Time Freshmen | | | 3 | 2 | 3 | 3 | 4 | 4 | | | | 1 | 4 | | 21 | 22 | 2 | 6 | 37 | 38 | 75 | |
| Other Freshmen | | | 6 | 6 | 7 | 6 | 17 | 21 | | | 5 | 4 | 4 | 4 | 69 | 104 | | 4 | 108 | 149 | 257 | |
| Sophomores | 1 | 1 | 5 | 7 | 15 | 9 | 18 | 22 | | 1 | 6 | 5 | 8 | 14 | 136 | 157 | 2 | 4 | 191 | 220 | 411 | |
| Juniors | 2 | | 8 | 9 | 27 | 27 | 37 | 38 | | | 7 | 14 | 11 | 14 | 241 | 240 | 5 | 3 | 338 | 345 | 683 | |
| Seniors | | | 13 | 13 | 31 | 49 | 41 | 45 | 1 | | 13 | 21 | 14 | 11 | 360 | 403 | 5 | 14 | 478 | 556 | 1,034 | |
| Special | | 1 | 8 | 5 | 10 | 11 | 8 | 10 | 1 | | 4 | 4 | 2 | 1 | 126 | 112 | 1 | | 160 | 144 | 304 | |
| Total Part-Time | 3 | 2 | 43 | 42 | 93 | 105 | 125 | 140 | 2 | 1 | 35 | 49 | 43 | 44 | 953 | 1,038 | 15 | 31 | 1,312 | 1,452 | 2,764 | |
| Total Undergraduate | 17 | 13 | 261 | 196 | 425 | 348 | 834 | 718 | 8 | 9 | 129 | 161 | 315 | 243 | 4,331 | 4,480 | 203 | 343 | 6,523 | 6,511 | 13,034 | |
| | | | | | | | | | | | | | | | | | | | | | | |
| Graduate | | | | | | | | | | | | | | | | | | | | | | |
| Full-Time | | | | | | | | | | | | | | | | | | | | | | |
| Certificate | | | | | | | | | | | | | | | 1 | 4 | 1 | | 2 | 4 | 6 | |
| Masters | 1 | | 7 | 12 | 15 | 12 | 24 | 16 | | | 2 | 4 | 12 | 9 | 345 | 166 | 99 | 167 | 505 | 386 | 891 | |
| Doctoral | | | 1 | 1 | | | | | | | | | 2 | 1 | 14 | 13 | 6 | 12 | 23 | 27 | 50 | |
| Special Graduate | | | 4 | 2 | | | 2 | | | | 1 | 1 | 1 | 2 | 15 | 35 | 9 | 36 | 30 | 78 | 108 | |
| Total Full-Time | 1 | | 12 | 15 | 15 | 12 | 24 | 18 | | | 3 | 5 | 15 | 12 | 375 | 218 | 115 | 215 | 560 | 495 | 1,055 | |
| | | | | | | | | | | | | | | | | | | | | | | |
| Part-Time | | | | | | | | | | | | | | | | | | | | | | |
| Certificate | | | 1 | | 2 | 1 | 5 | 1 | | | | | | | 29 | 14 | | | 37 | 16 | 53 | |
| Masters | 1 | 2 | 17 | 16 | 34 | 30 | 45 | 26 | 1 | 1 | 10 | 10 | 29 | 16 | 823 | 456 | 38 | 43 | 998 | 600 | 1,598 | |
| Doctoral | | | 1 | | 1 | 5 | 5 | 2 | | | 1 | 1 | 3 | 2 | 64 | 38 | 5 | 12 | 80 | 60 | 140 | |
| Special Graduate | | | 2 | 3 | 4 | 6 | 9 | 1 | | | 4 | 5 | 1 | 3 | 146 | 51 | 5 | 5 | 171 | 74 | 245 | |
| Total Part-Time | 1 | 2 | 21 | 19 | 41 | 42 | 64 | 30 | 1 | 1 | 15 | 16 | 33 | 21 | 1,062 | 559 | 48 | 60 | 1,286 | 750 | 2,036 | |
| Total Graduate | 2 | 2 | 33 | 34 | 56 | 54 | 88 | 48 | 1 | 1 | 18 | 21 | 48 | 33 | 1,437 | 777 | 163 | 275 | 1,846 | 1,245 | 3,091 | |
| | | | | | | | | | | | | | | | | | | | | | | |
| Total All Students | 19 | 15 | 294 | 230 | 481 | 402 | 922 | 766 | 9 | 10 | 147 | 182 | 363 | 276 | 5,768 | 5,257 | 366 | 618 | 8,369 | 7,756 | 16,125 | |

Figure 5: UNO Administrative-Site Head Count by Student Level: Fall 2006-2016

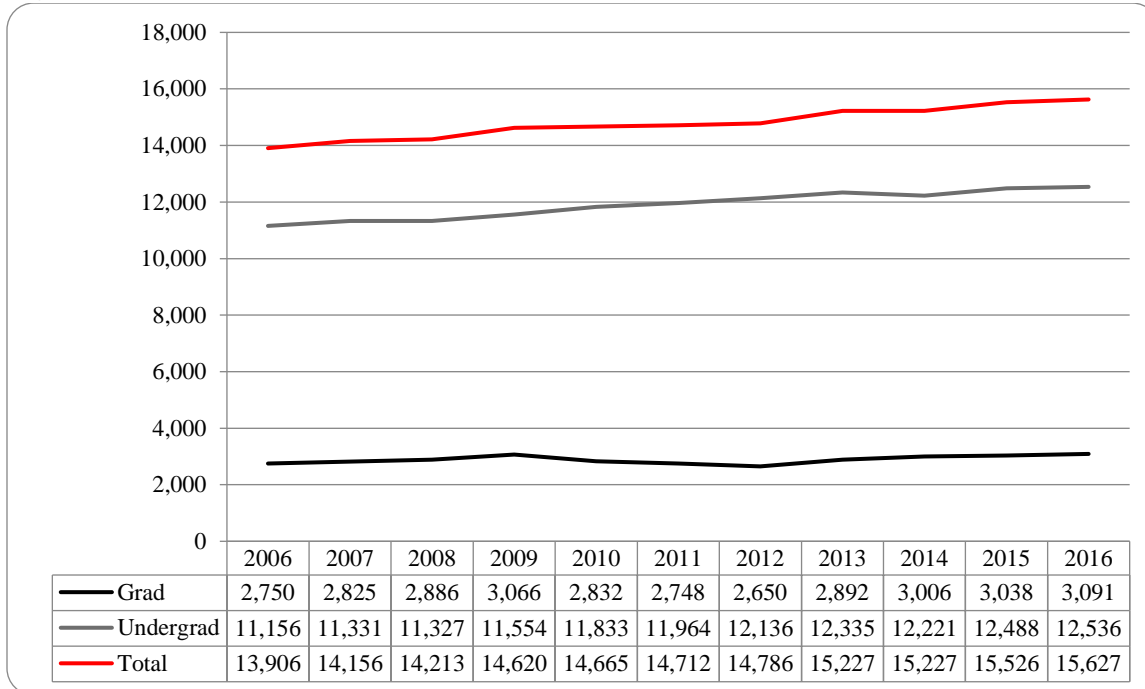


Figure 6: UNO Administrative-Site Student Credit Hours: Fall 2006-2016

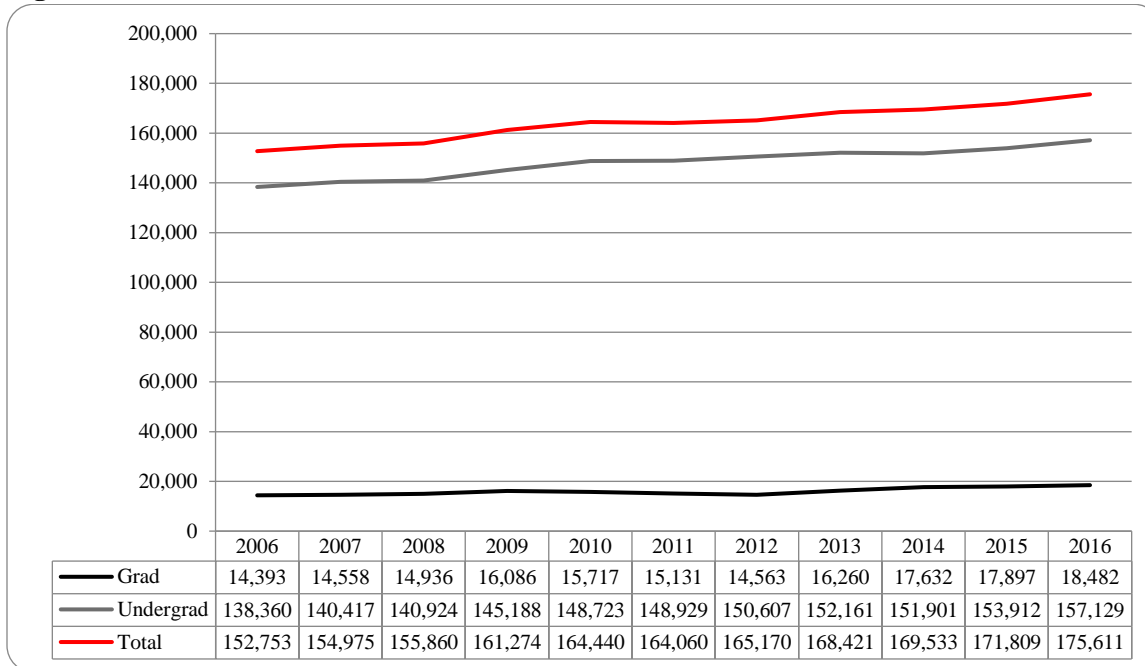


Figure 7: UNO Administrative-Site Head Count by Ethnicity by Gender: Fall 2016

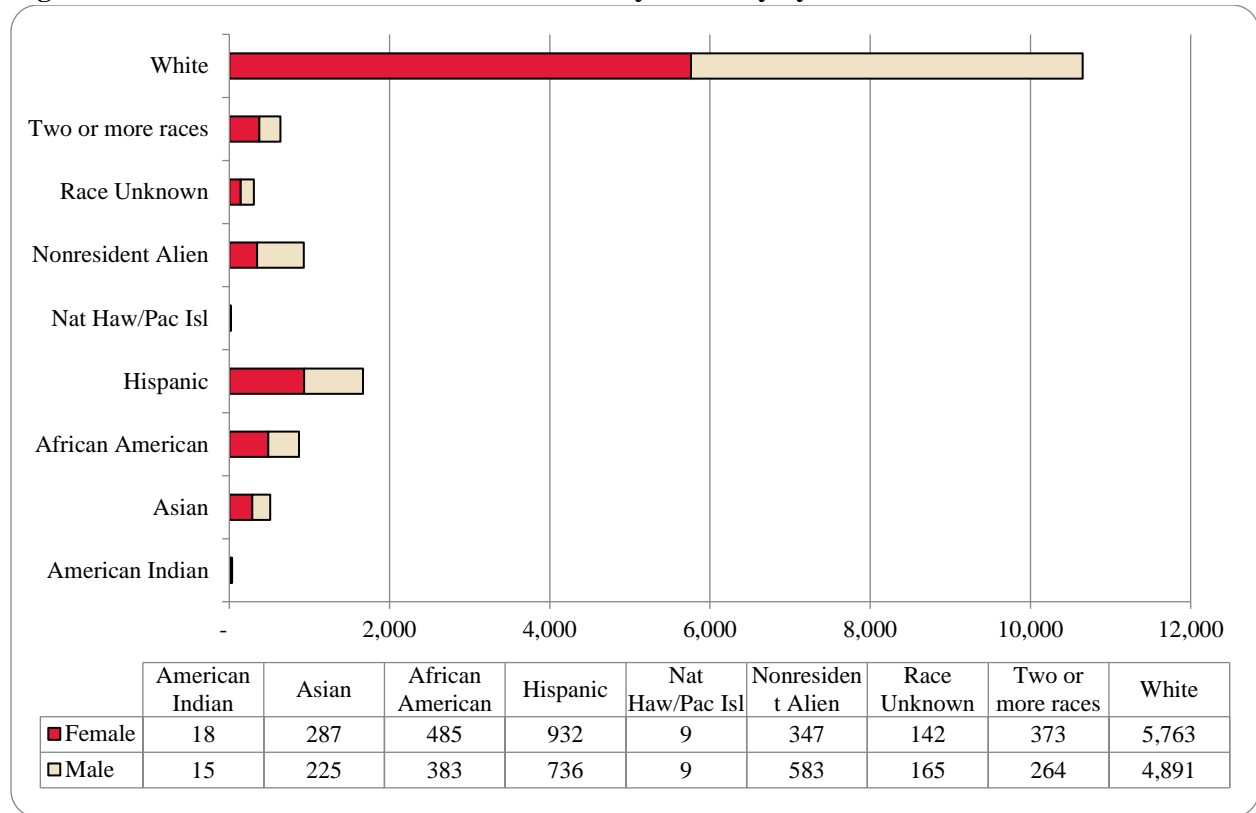


Table 3: Total UNO Administrative-Site Head Count Summary for Undergraduate and Graduate Students by Full and Part-Time by Gender and Race Classification: Fall 2016

| | American Indian | | Asian | | African American | | Hispanics | | Nat Haw / Pac Isl | | Race Unknown | | Two or more races | | White | | Nonresident Alien | | Total | | | |
|----------------------------|-----------------|----|-------|-----|------------------|-----|-----------|-----|-------------------|---|--------------|-----|-------------------|-----|-------|-------|-------------------|-----|-------|-------|--------|-------|
| | F | M | F | M | F | M | F | M | F | M | F | M | F | M | F | M | F | M | F | M | Total | |
| Undergraduate | | | | | | | | | | | | | | | | | | | | | | |
| Full-Time | | | | | | | | | | | | | | | | | | | | | | |
| First-Time Freshmen | 2 | 2 | 55 | 37 | 84 | 43 | 190 | 132 | 2 | 4 | 17 | 13 | 66 | 36 | 661 | 588 | 22 | 43 | 1,099 | 898 | 1,997 | |
| Other Freshmen | 2 | 2 | 16 | 9 | 45 | 27 | 61 | 70 | 1 | | 6 | 5 | 32 | 17 | 189 | 223 | 31 | 42 | 383 | 395 | 778 | |
| Sophomores | 1 | 2 | 53 | 35 | 71 | 44 | 174 | 135 | 2 | 3 | 22 | 25 | 59 | 46 | 794 | 724 | 36 | 83 | 1,212 | 1,097 | 2,309 | |
| Juniors | 4 | 1 | 40 | 36 | 66 | 68 | 149 | 122 | | 1 | 17 | 31 | 68 | 51 | 880 | 818 | 42 | 60 | 1,266 | 1,188 | 2,454 | |
| Seniors | 4 | 4 | 46 | 33 | 70 | 50 | 142 | 96 | 1 | | 27 | 21 | 54 | 35 | 814 | 746 | 36 | 49 | 1,194 | 1,034 | 2,228 | |
| Special | | | 3 | 2 | 1 | 1 | 5 | 4 | | | 2 | 3 | 3 | 5 | 37 | 43 | 3 | 2 | 54 | 60 | 114 | |
| Total Full-Time | 13 | 11 | 213 | 152 | 337 | 233 | 721 | 559 | 6 | 8 | 91 | 98 | 282 | 190 | 3,375 | 3,142 | 170 | 279 | 5,208 | 4,672 | 9,880 | |
| Part-Time | | | | | | | | | | | | | | | | | | | | | | |
| First-Time Freshmen | | | 2 | 2 | 3 | 3 | 4 | 4 | | | | 1 | 4 | | 21 | 20 | 2 | 6 | 36 | 36 | 72 | |
| Other Freshmen | | | 6 | 5 | 7 | 6 | 17 | 21 | | | | 5 | 4 | 4 | 4 | 70 | 99 | | 4 | 109 | 143 | 252 |
| Sophomores | 1 | 1 | 5 | 7 | 15 | 9 | 17 | 21 | | | | 5 | 4 | 8 | 12 | 135 | 147 | 2 | 4 | 188 | 205 | 393 |
| Juniors | 2 | | 8 | 8 | 26 | 23 | 37 | 34 | | | | 7 | 14 | 11 | 12 | 241 | 226 | 5 | 3 | 337 | 320 | 657 |
| Seniors | | | 12 | 13 | 31 | 44 | 40 | 40 | 1 | | | 12 | 20 | 14 | 12 | 360 | 378 | 4 | 12 | 474 | 519 | 993 |
| Special | | 1 | 8 | 4 | 10 | 11 | 8 | 9 | 1 | | | 4 | 3 | 2 | 1 | 124 | 102 | 1 | | 158 | 131 | 289 |
| Total Part-Time | 3 | 2 | 41 | 39 | 92 | 96 | 123 | 129 | 2 | | | 33 | 46 | 43 | 41 | 951 | 972 | 14 | 29 | 1,302 | 1,354 | 2,656 |
| Total Undergraduate | 16 | 13 | 254 | 191 | 429 | 329 | 844 | 688 | 8 | 8 | 124 | 144 | 325 | 231 | 4,326 | 4,114 | 184 | 308 | 6,510 | 6,026 | 12,536 | |
| Graduate | | | | | | | | | | | | | | | | | | | | | | |
| Full-Time | | | | | | | | | | | | | | | | | | | | | | |
| Certificate | | | | | | | | | | | | | | | 1 | 4 | 1 | | 2 | 4 | 6 | |
| Masters | 1 | | 7 | 12 | 15 | 12 | 24 | 16 | | | | 2 | 4 | 12 | 9 | 345 | 166 | 99 | 167 | 505 | 386 | 891 |
| Doctoral | | | 1 | 1 | | | | | | | | | | 2 | 1 | 14 | 13 | 6 | 12 | 23 | 27 | 50 |
| Special Graduate | | | 4 | 2 | | | | 2 | | | | 1 | 1 | 1 | 2 | 15 | 35 | 9 | 36 | 30 | 78 | 108 |
| Total Full-Time | 1 | | 12 | 15 | 15 | 12 | 24 | 18 | | | | 3 | 5 | 15 | 12 | 375 | 218 | 115 | 215 | 560 | 495 | 1,055 |
| Part-Time | | | | | | | | | | | | | | | | | | | | | | |
| Certificate | | | 1 | | 2 | 1 | 5 | 1 | | | | | | | 29 | 14 | | | 37 | 16 | 53 | |
| Masters | 1 | 2 | 17 | 16 | 34 | 30 | 45 | 26 | 1 | 1 | 10 | 10 | 29 | 16 | 823 | 456 | 38 | 43 | 998 | 600 | 1,598 | |
| Doctoral | | | 1 | | 1 | 5 | 5 | 2 | | | | 1 | 1 | 3 | 2 | 64 | 38 | 5 | 12 | 80 | 60 | 140 |
| Special Graduate | | | 2 | 3 | 4 | 6 | 9 | 1 | | | | 4 | 5 | 1 | 3 | 146 | 51 | 5 | 5 | 171 | 74 | 245 |
| Total Part-Time | 1 | 2 | 21 | 19 | 41 | 42 | 64 | 30 | 1 | 1 | 15 | 16 | 33 | 21 | 1,062 | 559 | 48 | 60 | 1,286 | 750 | 2,036 | |
| Total Graduate | 2 | 2 | 33 | 34 | 56 | 54 | 88 | 48 | 1 | 1 | 18 | 21 | 48 | 33 | 1,437 | 777 | 163 | 275 | 1,846 | 1,245 | 3,091 | |
| Total All Students | 18 | 15 | 287 | 225 | 485 | 383 | 932 | 736 | 9 | 9 | 142 | 165 | 373 | 264 | 5,763 | 4,891 | 347 | 583 | 8,356 | 7,271 | 15,627 | |

Figure 8: College of Arts & Sciences Head Count: Fall 2006-2016

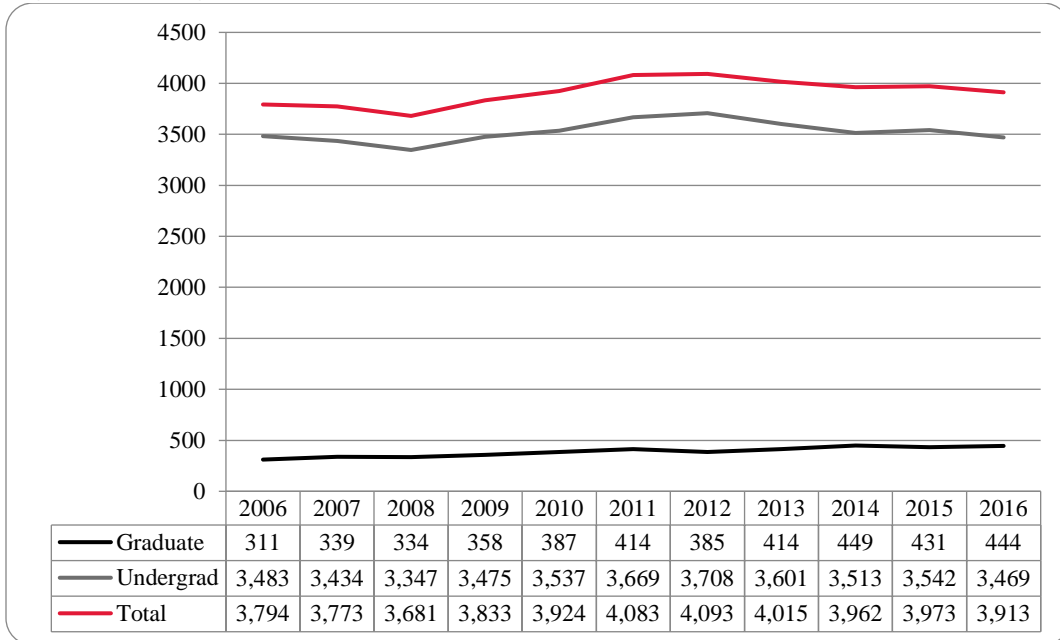


Figure 9: College of Arts & Sciences Student Credit Hours: Fall 2006-2016

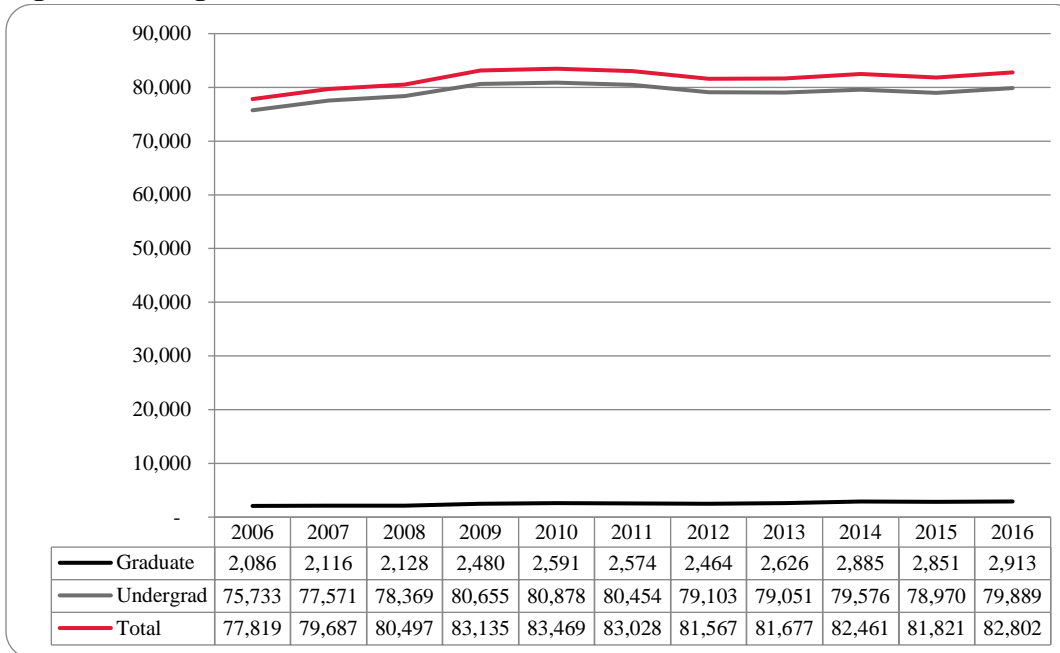


Figure 10: College of Arts & Sciences Head Count by Ethnicity by Gender: Fall 2016

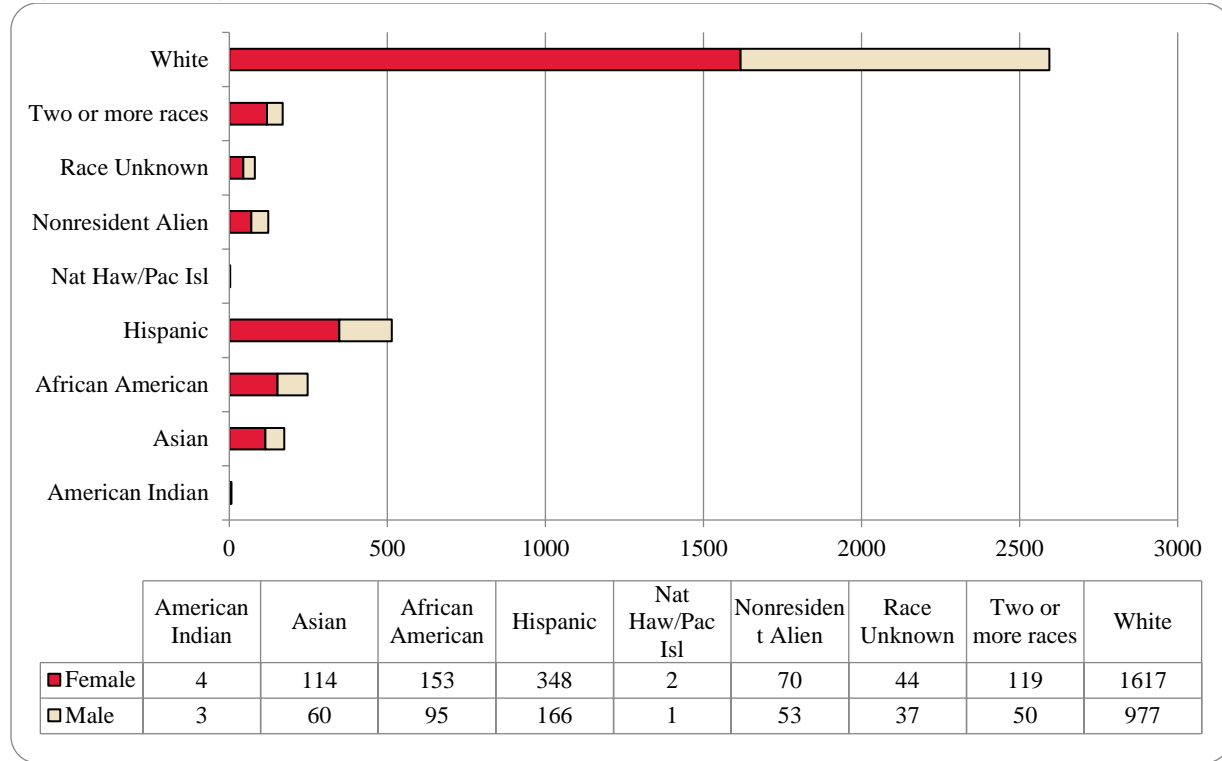


Table 4: College of Arts & Sciences Head Count Summary for Undergraduate and Graduate Students by Full and Part-Time by Gender and Race Classification: Fall 2016

| | American Indian | | Asian | | African American | | Hispanics | | Nat Haw / Pac Isl | | Race Unknown | | Two or more races | | White | | Nonresident Alien | | Total | | | |
|----------------------------|-----------------|---|-------|----|------------------|----|-----------|-----|-------------------|---|--------------|----|-------------------|----|-------|-----|-------------------|----|-------|-------|-------|---|
| | F | M | F | M | F | M | F | M | F | M | F | M | F | M | F | M | F | M | F | M | Total | |
| Undergraduate | | | | | | | | | | | | | | | | | | | | | | |
| Full-Time | | | | | | | | | | | | | | | | | | | | | | |
| First-Time Freshmen | | | 32 | 12 | 29 | 5 | 82 | 23 | | | 6 | 4 | 31 | 5 | 269 | 101 | 9 | 10 | 458 | 160 | 618 | |
| Other Freshmen | | 1 | 6 | 2 | 15 | 5 | 24 | 7 | | | 4 | 1 | 13 | 2 | 64 | 30 | 8 | 6 | 134 | 54 | 188 | |
| Sophomores | 1 | | 25 | 12 | 37 | 13 | 80 | 41 | 1 | | 9 | 5 | 23 | 10 | 315 | 172 | 11 | 13 | 502 | 266 | 768 | |
| Juniors | 2 | 1 | 21 | 11 | 24 | 24 | 62 | 29 | | | 8 | 6 | 20 | 16 | 265 | 168 | 12 | 8 | 414 | 263 | 677 | |
| Seniors | | | 15 | 9 | 23 | 14 | 48 | 31 | 1 | | 7 | 6 | 13 | 9 | 205 | 147 | 11 | 4 | 323 | 220 | 543 | |
| Special | | | 1 | | | 1 | 1 | 1 | | | 1 | | 2 | 1 | 6 | 13 | 1 | | 12 | 16 | 28 | |
| Total Full-Time | 3 | 2 | 100 | 46 | 128 | 62 | 297 | 132 | 2 | | 35 | 22 | 102 | 43 | 1,124 | 631 | 52 | 41 | 1,843 | 979 | 2,822 | |
| Part-Time | | | | | | | | | | | | | | | | | | | | | | |
| First-Time Freshmen | | | 1 | | | | 1 | 2 | | | | | 1 | | 8 | 1 | 1 | | 12 | 3 | 15 | |
| Other Freshmen | | | 1 | 1 | 1 | 1 | 2 | 2 | | | | | | | 15 | 12 | | | 19 | 16 | 35 | |
| Sophomores | | 1 | 3 | 2 | 5 | 4 | 3 | 3 | | | 4 | | 3 | 2 | 44 | 34 | | | 62 | 46 | 108 | |
| Juniors | | | 1 | 2 | 6 | 5 | 15 | 8 | | | | 4 | 2 | | 69 | 41 | 1 | | 94 | 60 | 154 | |
| Seniors | | | 3 | 6 | 7 | 8 | 17 | 9 | | | 2 | 5 | 5 | 3 | 113 | 81 | 3 | 3 | 150 | 115 | 265 | |
| Special | | | 2 | | 2 | 2 | 3 | 1 | | | 1 | 1 | | | 35 | 23 | | | 43 | 27 | 70 | |
| Total Part-Time | | 1 | 11 | 11 | 21 | 20 | 41 | 25 | | | 7 | 10 | 11 | 5 | 284 | 192 | 5 | 3 | 380 | 267 | 647 | |
| Total Undergraduate | 3 | 3 | 111 | 57 | 149 | 82 | 338 | 157 | 2 | | 42 | 32 | 113 | 48 | 1,408 | 823 | 57 | 44 | 2,223 | 1,246 | 3,469 | |
| Graduate | | | | | | | | | | | | | | | | | | | | | | |
| Full-Time | | | | | | | | | | | | | | | | | | | | | | |
| Certificate | | | | | | | | | | | | | | | | 2 | | | | | 2 | 2 |
| Masters | | | 1 | | 3 | 3 | 4 | 4 | | | | 2 | 1 | | 70 | 32 | 6 | 6 | 85 | 47 | 132 | |
| Doctoral | | | 1 | | | | | | | | | | 1 | | 3 | 3 | | | 5 | 3 | 8 | |
| Special Graduate | | | | | | | | | | | | | | | | | | | | | | |
| Total Full-Time | | | 2 | | 3 | 3 | 4 | 4 | | | | 2 | 2 | | 73 | 37 | 6 | 6 | 90 | 52 | 142 | |
| Part-Time | | | | | | | | | | | | | | | | | | | | | | |
| Certificate | | | | | | | | | | | | | | | 4 | 1 | | | 4 | 1 | 5 | |
| Masters | 1 | | 1 | 3 | 1 | 10 | 6 | 4 | | 1 | 2 | 2 | 4 | 2 | 119 | 106 | 7 | 3 | 141 | 131 | 272 | |
| Doctoral | | | | | | | | 1 | | | | | 1 | | 13 | 10 | | | 13 | 12 | 25 | |
| Special Graduate | | | | | | | | | | | | | | | | | | | | | | |
| Total Part-Time | 1 | | 1 | 3 | 1 | 10 | 6 | 5 | | 1 | 2 | 3 | 4 | 2 | 136 | 117 | 7 | 3 | 158 | 144 | 302 | |
| Total Graduate | 1 | | 3 | 3 | 4 | 13 | 10 | 9 | | 1 | 2 | 5 | 6 | 2 | 209 | 154 | 13 | 9 | 248 | 196 | 444 | |
| Total All Students | 4 | 3 | 114 | 60 | 153 | 95 | 348 | 166 | 2 | 1 | 44 | 37 | 119 | 50 | 1,617 | 977 | 70 | 53 | 2,471 | 1,442 | 3,913 | |

Figure 11: College of Business Administration Head Count: Fall 2006-2016

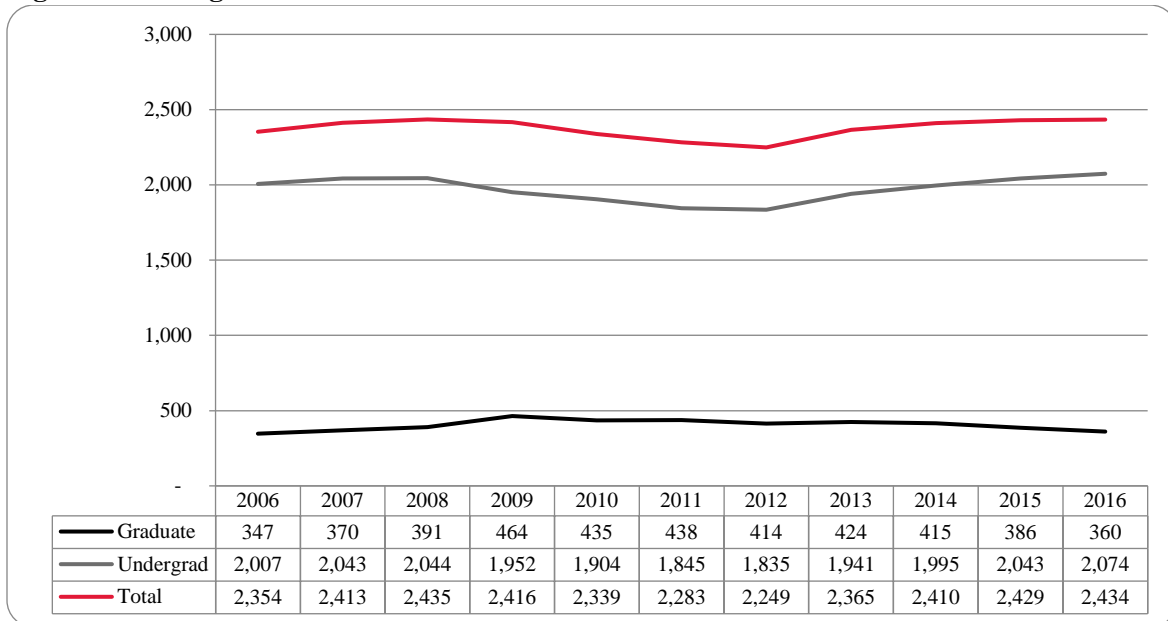


Figure 12: College of Business Administration Student Credit Hours: Fall 2006-2016

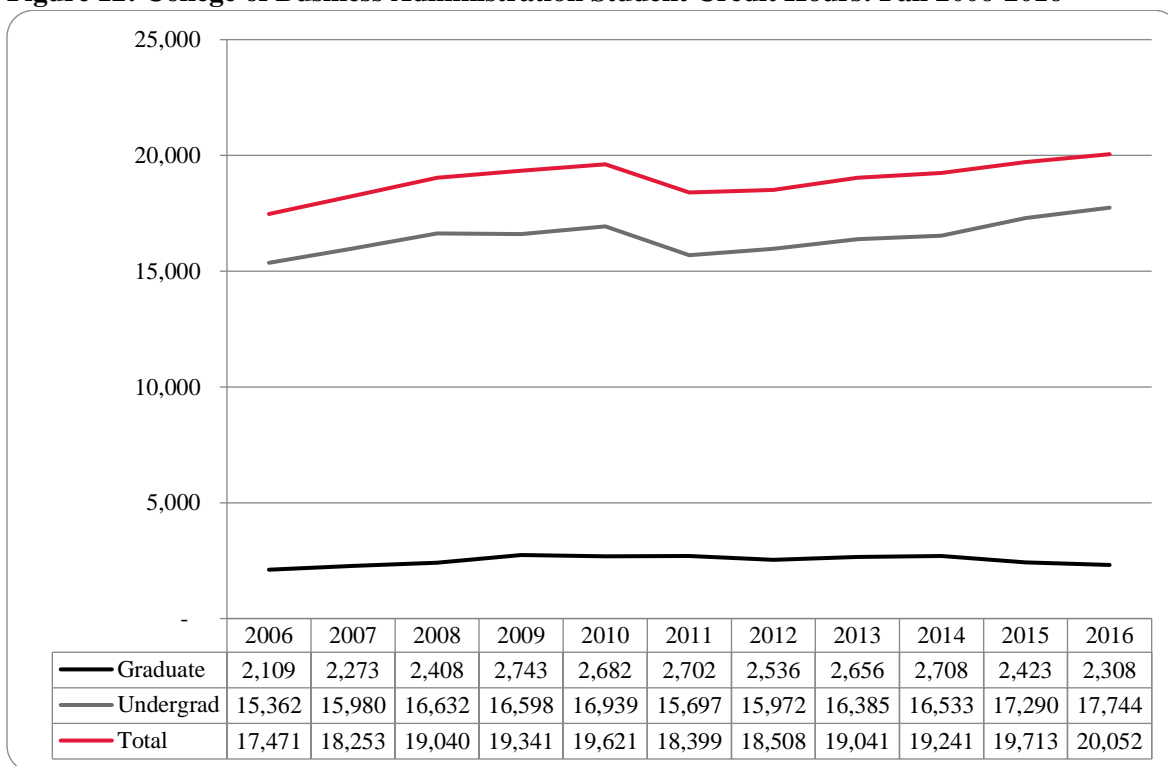


Figure 13: College of Business Administration Head Count by Ethnicity by Gender: Fall 2016

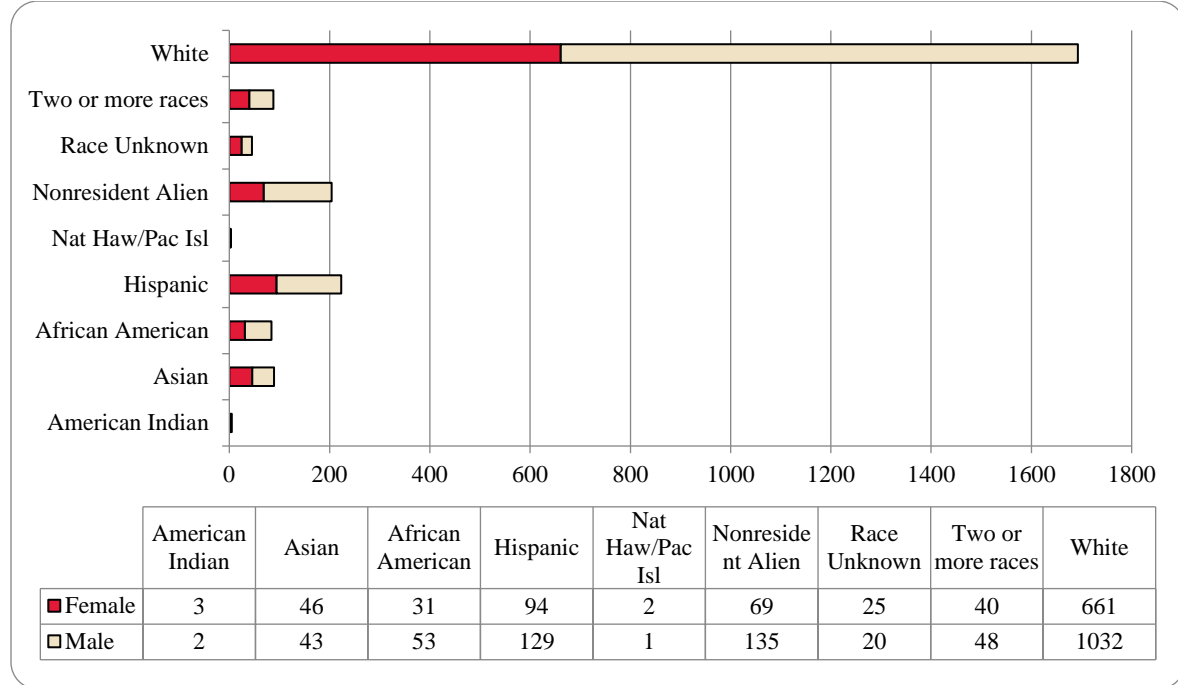


Table 5: College of Business Administration Head Count Summary for Undergraduate and Graduate Students by Full and Part-Time by Gender and Race Classification: Fall 2016

| | American Indian | | Asian | | African American | | Hispanics | | Nat Haw / Pac Isl | | Race Unknown | | Two or more races | | White | | Nonresident Alien | | Total | | | |
|----------------------------|-----------------|---|-------|----|------------------|----|-----------|-----|-------------------|---|--------------|----|-------------------|----|-------|-------|-------------------|-----|-------|-------|-------|--|
| | F | M | F | M | F | M | F | M | F | M | F | M | F | M | F | M | F | M | F | M | Total | |
| Undergraduate | | | | | | | | | | | | | | | | | | | | | | |
| Full-Time | | | | | | | | | | | | | | | | | | | | | | |
| First-Time Freshmen | | 1 | 3 | 3 | 1 | 4 | 20 | 23 | | 1 | 3 | | 7 | 6 | 61 | 118 | 4 | 14 | 99 | 170 | 269 | |
| Other Freshmen | 1 | | 3 | 1 | 5 | 1 | 5 | 8 | | | 1 | 1 | 1 | 3 | 16 | 25 | 7 | 12 | 39 | 51 | 90 | |
| Sophomores | | | 6 | 4 | 7 | 10 | 17 | 21 | 1 | | 5 | 5 | 11 | 8 | 103 | 157 | 7 | 25 | 157 | 230 | 387 | |
| Juniors | | | 9 | 7 | 3 | 8 | 18 | 29 | | | 3 | 5 | 7 | 11 | 119 | 206 | 15 | 19 | 174 | 285 | 459 | |
| Seniors | | | 14 | 6 | 5 | 8 | 17 | 15 | | | 4 | 4 | 3 | 9 | 110 | 177 | 15 | 19 | 168 | 238 | 406 | |
| Special | | | | 1 | | | | | | | 1 | 1 | | | 2 | 3 | | | 3 | 5 | 8 | |
| Total Full-Time | 1 | 1 | 35 | 22 | 21 | 31 | 77 | 96 | 1 | 1 | 17 | 16 | 29 | 37 | 411 | 686 | 48 | 89 | 640 | 979 | 1,619 | |
| | | | | | | | | | | | | | | | | | | | | | | |
| Part-Time | | | | | | | | | | | | | | | | | | | | | | |
| First-Time Freshmen | | | | | | | | 1 | | | | | | | 4 | 3 | | 5 | 4 | 9 | 13 | |
| Other Freshmen | | | | 1 | | 1 | 1 | 2 | | | | | | 1 | 6 | 4 | | 1 | 7 | 10 | 17 | |
| Sophomores | 1 | | | 2 | | 1 | 1 | 2 | | | 1 | 1 | 1 | 23 | 33 | | 3 | 26 | 43 | 69 | | |
| Juniors | | | 3 | 1 | 3 | 3 | 4 | 7 | | | 1 | 4 | 3 | 51 | 54 | 2 | 1 | 67 | 70 | 137 | | |
| Seniors | | | 5 | 4 | 3 | 7 | 5 | 8 | | | 4 | 1 | 1 | 54 | 75 | 1 | 4 | 73 | 100 | 173 | | |
| Special | | 1 | 1 | | 2 | 2 | 1 | 5 | 1 | | 2 | | | 14 | 16 | 1 | | 22 | 24 | 46 | | |
| Total Part-Time | 1 | 1 | 9 | 8 | 8 | 14 | 12 | 25 | 1 | | 6 | 3 | 6 | 6 | 152 | 185 | 4 | 14 | 199 | 256 | 455 | |
| Total Undergraduate | 2 | 2 | 44 | 30 | 29 | 45 | 89 | 121 | 2 | 1 | 23 | 19 | 35 | 43 | 563 | 871 | 52 | 103 | 839 | 1,235 | 2,074 | |
| | | | | | | | | | | | | | | | | | | | | | | |
| Graduate | | | | | | | | | | | | | | | | | | | | | | |
| Full-Time | | | | | | | | | | | | | | | | | | | | | | |
| Certificate | | | | | | | | | | | | | | | | | | | | | | |
| Masters | 1 | | 1 | 8 | | 5 | 3 | 3 | | | 1 | | 3 | 21 | 33 | 12 | 27 | 39 | 79 | 118 | | |
| Doctoral | | | | | | | | | | | | | | | | | | | | | | |
| Special Graduate | | | | | | | | | | | | | | | | | | | | | | |
| Total Full-Time | 1 | | 1 | 8 | | 5 | 3 | 3 | | | 1 | | 3 | 21 | 33 | 12 | 27 | 39 | 79 | 118 | | |
| | | | | | | | | | | | | | | | | | | | | | | |
| Part-Time | | | | | | | | | | | | | | | | | | | | | | |
| Certificate | | | | | | | | | | | | | | | 1 | | | | 1 | | 1 | |
| Masters | | | 1 | 5 | 2 | 3 | 2 | 5 | | | 1 | 1 | 5 | 2 | 76 | 128 | 5 | 5 | 92 | 149 | 241 | |
| Doctoral | | | | | | | | | | | | | | | | | | | | | | |
| Special Graduate | | | | | | | | | | | | | | | | | | | | | | |
| Total Part-Time | | | 1 | 5 | 2 | 3 | 2 | 5 | | | 1 | 1 | 5 | 2 | 77 | 128 | 5 | 5 | 93 | 149 | 242 | |
| Total Graduate | 1 | | 2 | 13 | 2 | 8 | 5 | 8 | | | 2 | 1 | 5 | 5 | 98 | 161 | 17 | 32 | 132 | 228 | 360 | |
| | | | | | | | | | | | | | | | | | | | | | | |
| Total All Students | 3 | 2 | 46 | 43 | 31 | 53 | 94 | 129 | 2 | 1 | 25 | 20 | 40 | 48 | 661 | 1,032 | 69 | 135 | 971 | 1,463 | 2,434 | |

Figure 14: College of Communication, Fine Arts and Media Delivery-Site Head Count: Fall 2006-2016

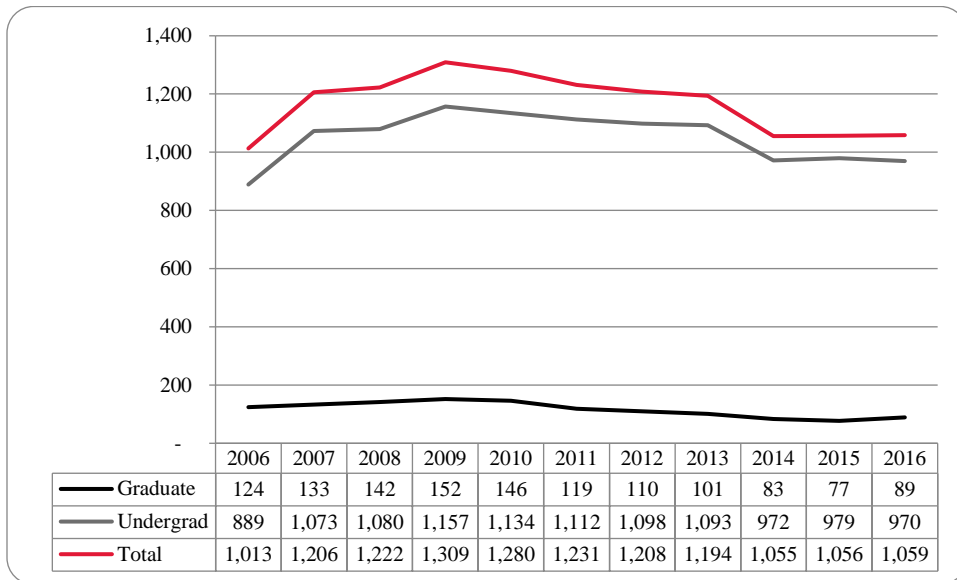


Figure 15: College of Communication, Fine Arts and Media Delivery-Site Student Credit Hours: Fall 2006-2016

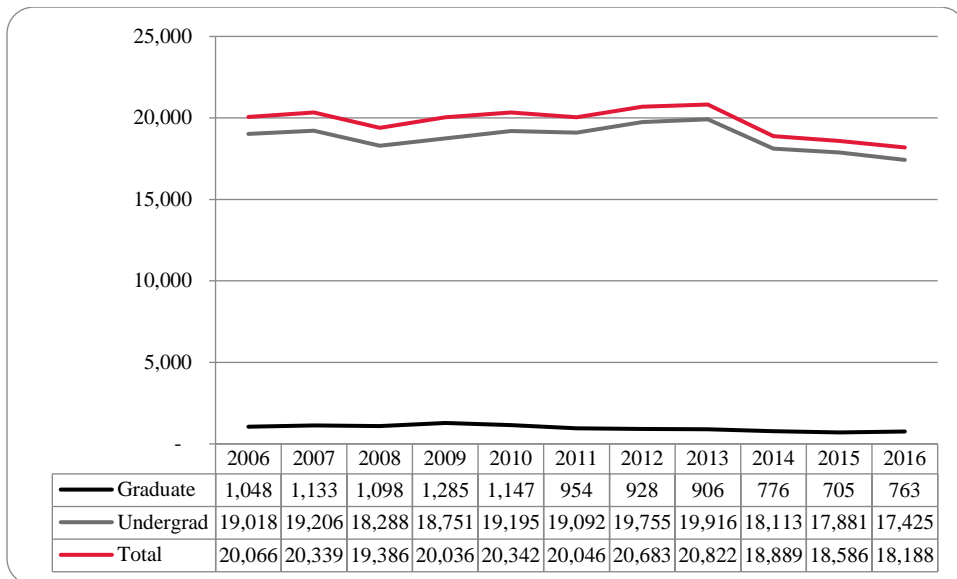


Figure 16: College of Communication, Fine Arts and Media Delivery-Site Head Count by Ethnicity by Gender: Fall 2016

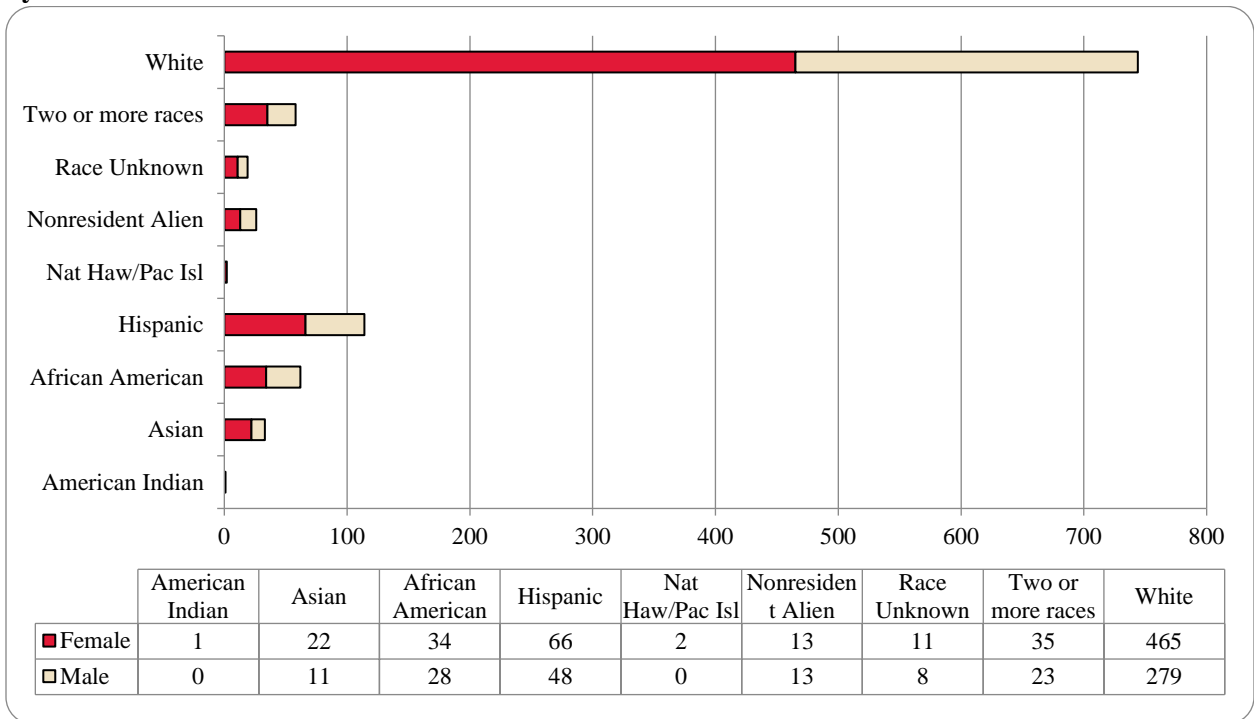


Table 6: College of Communication, Fine Arts and Media Delivery-Site Head Count Summary for Undergraduate and Graduate Students by Full and Part-Time by Gender and Race Classification: Fall 2016

| | American Indian | | Asian | | African American | | Hispanics | | Nat Haw / Pac Isl | | Race Unknown | | Two or more races | | White | | Nonresident Alien | | Total | | |
|----------------------------|-----------------|---|-------|----|------------------|----|-----------|----|-------------------|---|--------------|---|-------------------|----|-------|-----|-------------------|----|-------|-----|-------|
| | F | M | F | M | F | M | F | M | F | M | F | M | F | M | F | M | F | M | F | M | Total |
| Undergraduate | | | | | | | | | | | | | | | | | | | | | |
| Full-Time | | | | | | | | | | | | | | | | | | | | | |
| First-Time Freshmen | | | 5 | 2 | 8 | 4 | 8 | 5 | 2 | | 2 | | 7 | 3 | 46 | 34 | 1 | 3 | 79 | 51 | 130 |
| Other Freshmen | | | 1 | | 6 | 2 | 5 | 3 | | | | | 4 | 3 | 20 | 13 | 2 | 3 | 38 | 24 | 62 |
| Sophomores | | | 9 | 2 | 4 | 9 | 13 | 11 | | | 2 | 1 | 7 | 7 | 72 | 40 | 1 | 1 | 108 | 71 | 179 |
| Juniors | 1 | | 4 | 3 | 5 | 4 | 12 | 13 | | | | 4 | 8 | 2 | 106 | 50 | 2 | 1 | 138 | 77 | 215 |
| Seniors | | | 2 | 2 | 8 | 3 | 19 | 6 | | | 2 | 1 | 6 | 2 | 107 | 53 | 3 | 2 | 147 | 69 | 216 |
| Special | | | | | | | | 1 | | | | | | | 2 | 2 | | 1 | 2 | 4 | 6 |
| Total Full-Time | 1 | | 21 | 9 | 31 | 22 | 57 | 39 | 2 | | 6 | 6 | 32 | 17 | 353 | 192 | 9 | 11 | 512 | 296 | 808 |
| Part-Time | | | | | | | | | | | | | | | | | | | | | |
| First-Time Freshmen | | | | | | | 1 | | | | | | | | 2 | 4 | | | 2 | 5 | 7 |
| Other Freshmen | | | | | | 1 | 1 | 1 | | | | | | | | 3 | | | 1 | 5 | 6 |
| Sophomores | | | | 1 | | | 2 | 1 | | | 1 | 1 | | 1 | 9 | 5 | 1 | | 13 | 9 | 22 |
| Juniors | | | | | 2 | | 1 | 4 | | | 1 | | 1 | 2 | 23 | 20 | 1 | | 29 | 26 | 55 |
| Seniors | | | 1 | | | 3 | 2 | 1 | | | 3 | | 1 | | 30 | 22 | | | 37 | 26 | 63 |
| Special | | | | | | | 1 | | | | | | | | 3 | 5 | | | 4 | 5 | 9 |
| Total Part-Time | | | 1 | 1 | 2 | 5 | 7 | 7 | | | 5 | 1 | 2 | 3 | 67 | 59 | 2 | | 86 | 76 | 162 |
| Total Undergraduate | 1 | | 22 | 10 | 33 | 27 | 64 | 46 | 2 | | 11 | 7 | 34 | 20 | 420 | 251 | 11 | 11 | 598 | 372 | 970 |
| Graduate | | | | | | | | | | | | | | | | | | | | | |
| Full-Time | | | | | | | | | | | | | | | | | | | | | |
| Certificate | | | | | | | | | | | | | | | | | | | | | |
| Masters | | | | | | | 1 | 2 | | | | 1 | 1 | 1 | 20 | 11 | 1 | 1 | 23 | 16 | 39 |
| Doctoral | | | | | | | | | | | | | | | | | | | | | |
| Special Graduate | | | | | | | | | | | | | | | | | | | | | |
| Total Full-Time | | | | | | | 1 | 2 | | | | 1 | 1 | 1 | 20 | 11 | 1 | 1 | 23 | 16 | 39 |
| Part-Time | | | | | | | | | | | | | | | | | | | | | |
| Certificate | | | | | | | | | | | | | | | | 3 | | | | 3 | 3 |
| Masters | | | | 1 | 1 | 1 | 1 | | | | | | 2 | 25 | 14 | 1 | 1 | 28 | 19 | 47 | |
| Doctoral | | | | | | | | | | | | | | | | | | | | | |
| Special Graduate | | | | | | | | | | | | | | | | | | | | | |
| Total Part-Time | | | | 1 | 1 | 1 | 1 | | | | | | 2 | 25 | 17 | 1 | 1 | 28 | 22 | 50 | |
| Total Graduate | | | | 1 | 1 | 1 | 2 | 2 | | | | 1 | 1 | 3 | 45 | 28 | 2 | 2 | 51 | 38 | 89 |
| Total All Students | 1 | | 22 | 11 | 34 | 28 | 66 | 48 | 2 | | 11 | 8 | 35 | 23 | 465 | 279 | 13 | 13 | 649 | 410 | 1,059 |

Figure 17: College of Communication, Fine Arts and Media: Administrative-Site Head Count: Fall 2006-2016

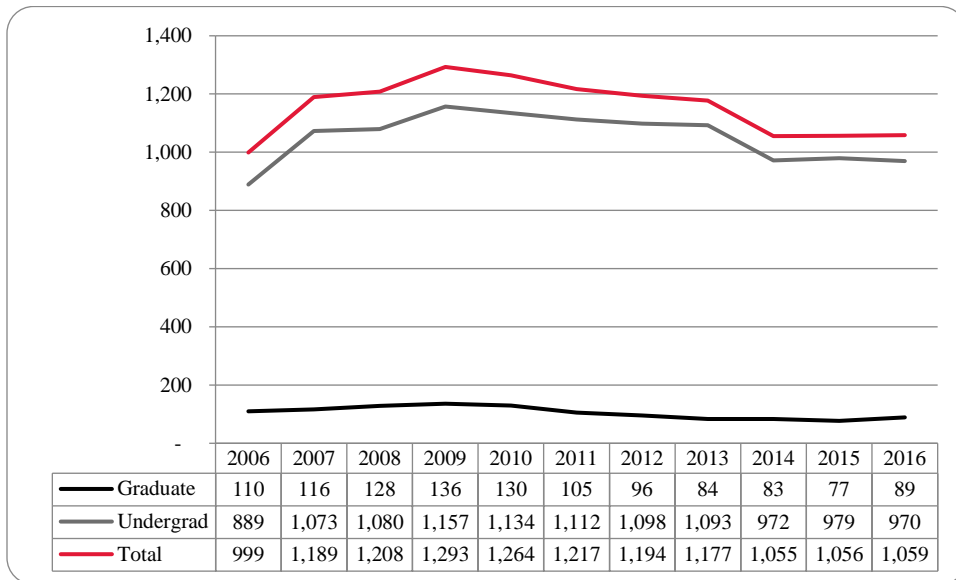


Figure 18: College of Communication, Fine Arts and Media: Administrative-Site Student Credit Hours: Fall 2006-2016

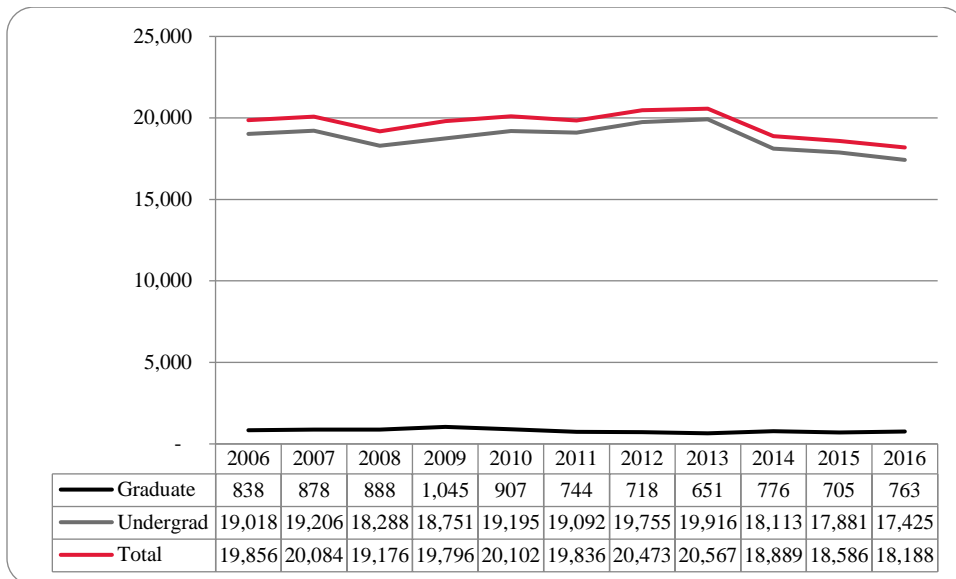


Figure 19: College of Communication, Fine Arts and Media: Administrative-Site Head Count by Ethnicity by Gender: Fall 2016

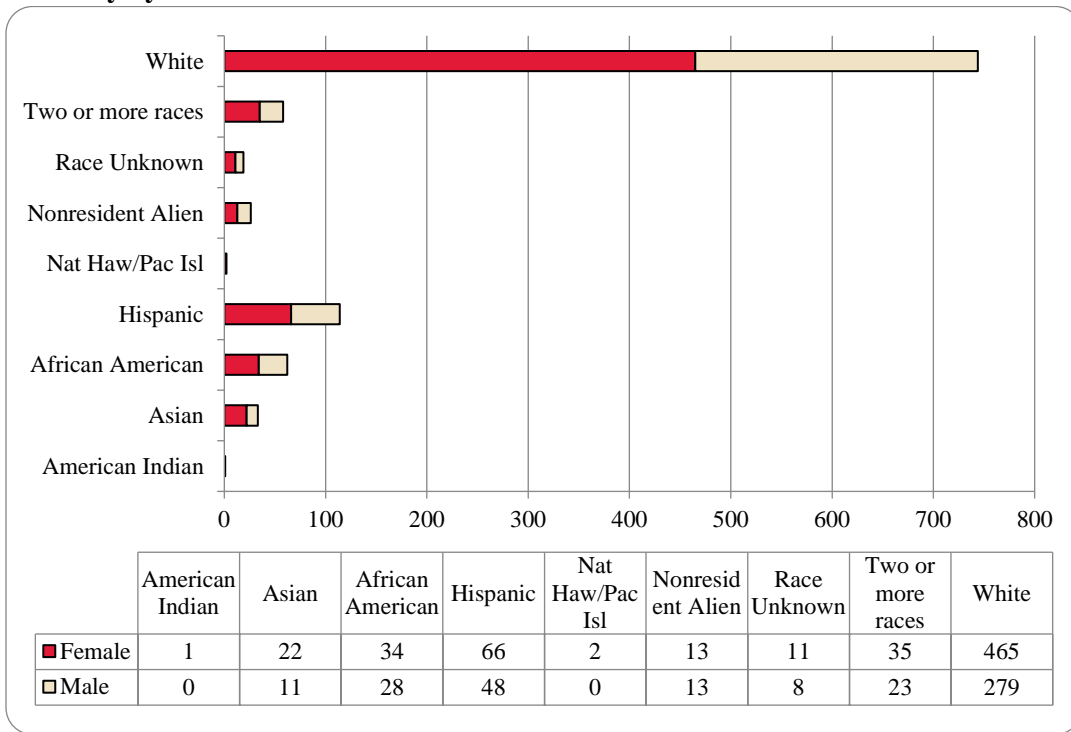


Table 7: College of Communication, Fine Arts and Media Administrative-Site Head Count Summary for Undergraduate and Graduate Students by Full and Part-Time by Gender and Race Classification: Fall 2016

| | American Indian | | Asian | | African American | | Hispanics | | Nat Haw / Pac Isl | | Race Unknown | | Two or more races | | White | | Nonresident Alien | | Total | | |
|----------------------------|-----------------|---|-------|----|------------------|----|-----------|----|-------------------|---|--------------|---|-------------------|----|-------|-----|-------------------|----|-------|-----|-------|
| | F | M | F | M | F | M | F | M | F | M | F | M | F | M | F | M | F | M | F | M | Total |
| Undergraduate | | | | | | | | | | | | | | | | | | | | | |
| Full-Time | | | | | | | | | | | | | | | | | | | | | |
| First-Time Freshmen | | | 5 | 2 | 8 | 4 | 8 | 5 | 2 | | 2 | | 7 | 3 | 46 | 34 | 1 | 3 | 79 | 51 | 130 |
| Other Freshmen | | | 1 | | 6 | 2 | 5 | 3 | | | | | 4 | 3 | 20 | 13 | 2 | 3 | 38 | 24 | 62 |
| Sophomores | | | 9 | 2 | 4 | 9 | 13 | 11 | | | 2 | 1 | 7 | 7 | 72 | 40 | 1 | 1 | 108 | 71 | 179 |
| Juniors | 1 | | 4 | 3 | 5 | 4 | 12 | 13 | | | | 4 | 8 | 2 | 106 | 50 | 2 | 1 | 138 | 77 | 215 |
| Seniors | | | 2 | 2 | 8 | 3 | 19 | 6 | | | 2 | 1 | 6 | 2 | 107 | 53 | 3 | 2 | 147 | 69 | 216 |
| Special | | | | | | | | 1 | | | | | | | 2 | 2 | | 1 | 2 | 4 | 6 |
| Total Full-Time | 1 | | 21 | 9 | 31 | 22 | 57 | 39 | 2 | | 6 | 6 | 32 | 17 | 353 | 192 | 9 | 11 | 512 | 296 | 808 |
| Part-Time | | | | | | | | | | | | | | | | | | | | | |
| First-Time Freshmen | | | | | | 1 | | | | | | | | | 2 | 4 | | | 2 | 5 | 7 |
| Other Freshmen | | | | | | 1 | 1 | 1 | | | | | | | | 3 | | | 1 | 5 | 6 |
| Sophomores | | | | 1 | | | 2 | 1 | | | 1 | 1 | | 1 | 9 | 5 | 1 | | 13 | 9 | 22 |
| Juniors | | | | | 2 | | 1 | 4 | | | 1 | | 1 | 2 | 23 | 20 | 1 | | 29 | 26 | 55 |
| Seniors | | | 1 | | | 3 | 2 | 1 | | | 3 | | 1 | | 30 | 22 | | | 37 | 26 | 63 |
| Special | | | | | | | 1 | | | | | | | | 3 | 5 | | | 4 | 5 | 9 |
| Total Part-Time | | | 1 | 1 | 2 | 5 | 7 | 7 | | | 5 | 1 | 2 | 3 | 67 | 59 | 2 | | 86 | 76 | 162 |
| Total Undergraduate | 1 | | 22 | 10 | 33 | 27 | 64 | 46 | 2 | | 11 | 7 | 34 | 20 | 420 | 251 | 11 | 11 | 598 | 372 | 970 |
| Graduate | | | | | | | | | | | | | | | | | | | | | |
| Full-Time | | | | | | | | | | | | | | | | | | | | | |
| Certificate | | | | | | | | | | | | | | | | | | | | | |
| Masters | | | | | | | 1 | 2 | | | | 1 | 1 | 1 | 20 | 11 | 1 | 1 | 23 | 16 | 39 |
| Doctoral | | | | | | | | | | | | | | | | | | | | | |
| Special Graduate | | | | | | | | | | | | | | | | | | | | | |
| Total Full-Time | | | | | | | 1 | 2 | | | | 1 | 1 | 1 | 20 | 11 | 1 | 1 | 23 | 16 | 39 |
| Part-Time | | | | | | | | | | | | | | | | | | | | | |
| Certificate | | | | | | | | | | | | | | | | 3 | | | | 3 | 3 |
| Masters | | | | 1 | 1 | 1 | 1 | | | | | | 2 | 25 | 14 | 1 | 1 | 28 | 19 | 47 | |
| Doctoral | | | | | | | | | | | | | | | | | | | | | |
| Special Graduate | | | | | | | | | | | | | | | | | | | | | |
| Total Part-Time | | | | 1 | 1 | 1 | 1 | | | | | | 2 | 25 | 17 | 1 | 1 | 28 | 22 | 50 | |
| Total Graduate | | | | 1 | 1 | 1 | 2 | 2 | | | | 1 | 1 | 3 | 45 | 28 | 2 | 2 | 51 | 38 | 89 |
| Total All Students | 1 | | 22 | 11 | 34 | 28 | 66 | 48 | 2 | | 11 | 8 | 35 | 23 | 465 | 279 | 13 | 13 | 649 | 410 | 1,059 |

Figure 20: College of Education Head Count: Fall 2006-2016

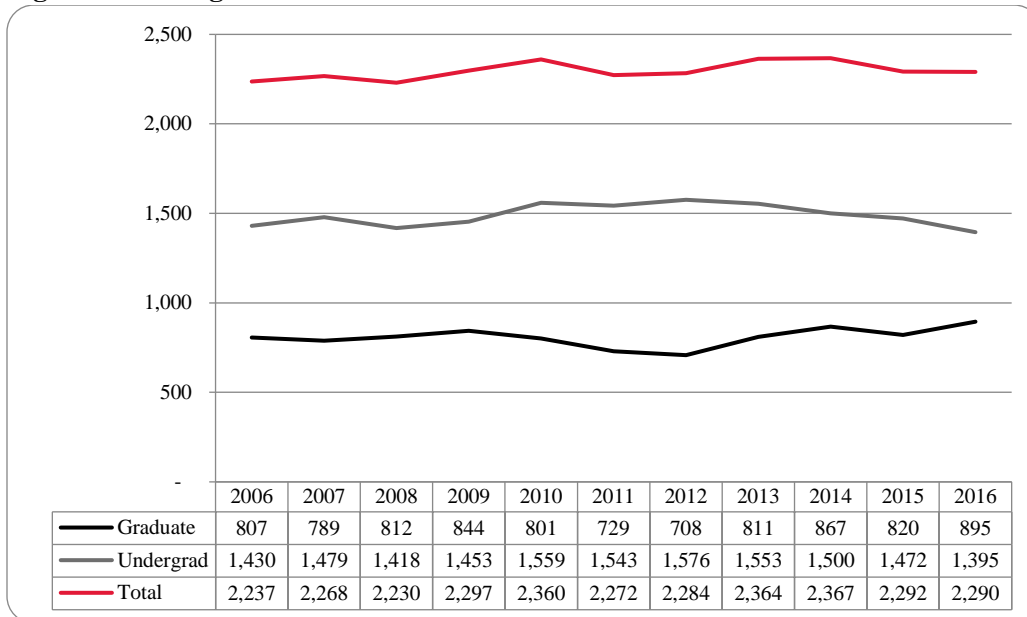


Figure 21: College of Education Student Credit Hours: Fall 2006-2016

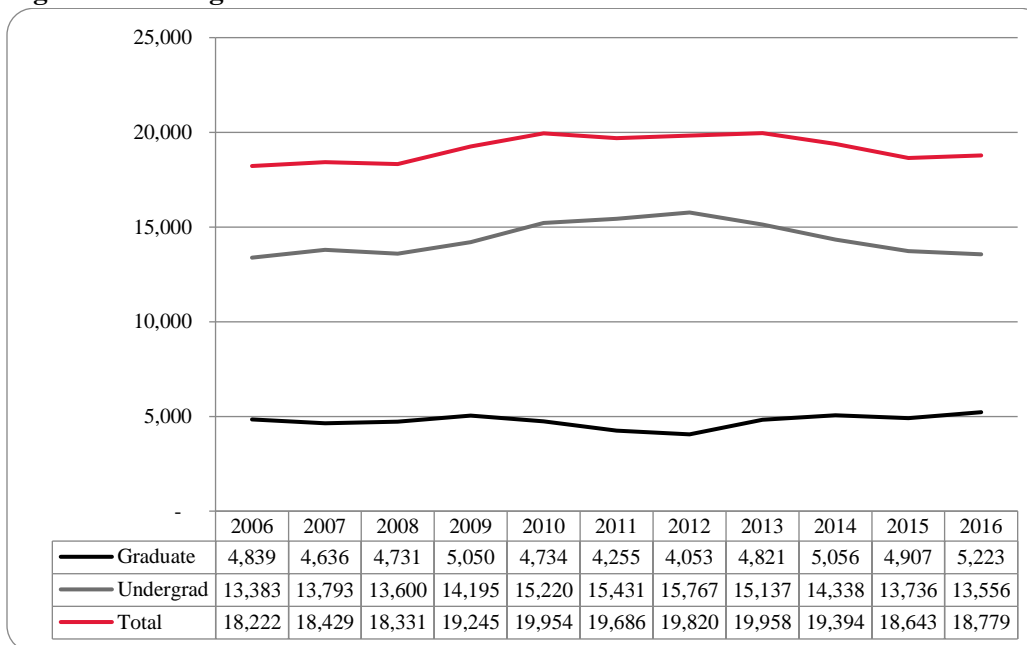


Figure 22: College of Education Head Count by Ethnicity by Gender: Fall 2016

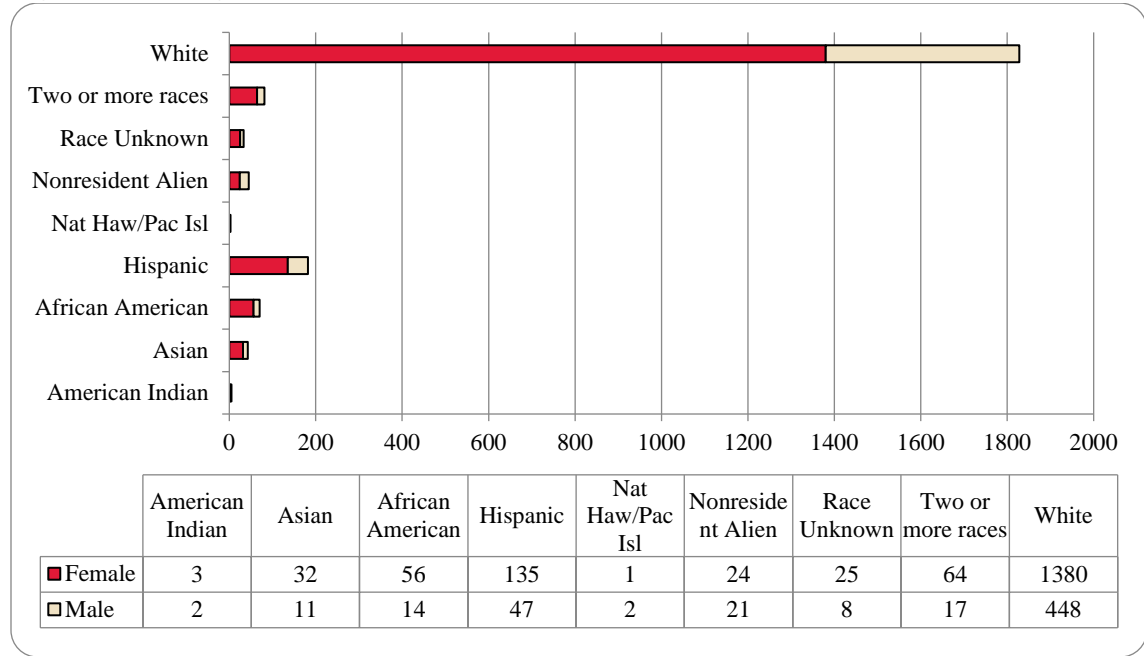


Table 8: College of Education Head Count Summary for Undergraduate and Graduate Students by Full and Part-Time by Gender and Race Classification: Fall 2016

| | American Indian | | Asian | | African American | | Hispanics | | Nat Haw / Pac Isl | | Race Unknown | | Two or more races | | White | | Nonresident Alien | | Total | | | |
|----------------------------|-----------------|---|-------|----|------------------|----|-----------|----|-------------------|---|--------------|---|-------------------|----|-------|-----|-------------------|----|-------|-----|-------|--|
| | F | M | F | M | F | M | F | M | F | M | F | M | F | M | F | M | F | M | F | M | Total | |
| Undergraduate | | | | | | | | | | | | | | | | | | | | | | |
| Full-Time | | | | | | | | | | | | | | | | | | | | | | |
| First-Time Freshmen | | | 3 | 1 | 8 | | 17 | 5 | | | 3 | | 7 | 1 | 83 | 36 | 3 | 2 | 124 | 45 | 169 | |
| Other Freshmen | | | 2 | 1 | 5 | | 12 | 3 | 1 | | | | 4 | | 25 | 12 | 1 | | 50 | 16 | 66 | |
| Sophomores | | 1 | 2 | 1 | 2 | | 23 | 8 | | 1 | 2 | | 6 | 2 | 142 | 45 | 2 | 1 | 179 | 59 | 238 | |
| Juniors | 1 | | 3 | 2 | 8 | | 18 | 10 | | 1 | 4 | 1 | 9 | 3 | 181 | 64 | 3 | 1 | 227 | 82 | 309 | |
| Seniors | 2 | 1 | 4 | 4 | 10 | 1 | 26 | 9 | | | 7 | 1 | 19 | 1 | 206 | 88 | 3 | 2 | 277 | 107 | 384 | |
| Special | | | | | 1 | | 1 | | | | | 1 | | 1 | 17 | 6 | 1 | | 20 | 8 | 28 | |
| Total Full-Time | 3 | 2 | 14 | 9 | 34 | 1 | 97 | 35 | 1 | 2 | 16 | 3 | 45 | 8 | 654 | 251 | 13 | 6 | 877 | 317 | 1,194 | |
| Part-Time | | | | | | | | | | | | | | | | | | | | | | |
| First-Time Freshmen | | | | | | | 1 | | | | | | | | 1 | | | | 2 | | 2 | |
| Other Freshmen | | | | | 1 | | 1 | | | | | | | | 2 | 2 | | | 4 | 2 | 6 | |
| Sophomores | | | 1 | | | | 4 | 2 | | | | | 1 | | 26 | 3 | | | 32 | 5 | 37 | |
| Juniors | | | 1 | | | | 6 | | | | 2 | | 3 | 1 | 22 | 6 | | | 34 | 7 | 41 | |
| Seniors | | | 1 | | | 3 | 2 | 1 | | | | 2 | 2 | 2 | 41 | 30 | | | 46 | 38 | 84 | |
| Special | | | | | 1 | | 1 | 2 | | | | | | | 16 | 11 | | | 18 | 13 | 31 | |
| Total Part-Time | | | 3 | | 2 | 3 | 15 | 5 | | | 2 | 2 | 6 | 3 | 108 | 52 | | | 136 | 65 | 201 | |
| Total Undergraduate | 3 | 2 | 17 | 9 | 36 | 4 | 112 | 40 | 1 | 2 | 18 | 5 | 51 | 11 | 762 | 303 | 13 | 6 | 1,013 | 382 | 1,395 | |
| Graduate | | | | | | | | | | | | | | | | | | | | | | |
| Full-Time | | | | | | | | | | | | | | | | | | | | | | |
| Certificate | | | | | | | | | | | | | | | | | | | | | | |
| Masters | | | 3 | | 3 | 1 | 6 | | | | 1 | 1 | 1 | 1 | 96 | 55 | 9 | 12 | 119 | 70 | 189 | |
| Doctoral | | | | 1 | | | | | | | | | | 1 | 6 | 2 | 2 | | 8 | 4 | 12 | |
| Special Graduate | | | | | | | | | | | | | | | | 2 | | | | 2 | 2 | |
| Total Full-Time | | | 3 | 1 | 3 | 1 | 6 | | | | 1 | 1 | 1 | 2 | 102 | 59 | 11 | 12 | 127 | 76 | 203 | |
| Part-Time | | | | | | | | | | | | | | | | | | | | | | |
| Certificate | | | | | | | | | | | | | | | | | | | | | | |
| Masters | | | 10 | 1 | 14 | 4 | 12 | 7 | | | 3 | 2 | 9 | 2 | 398 | 63 | | 2 | 446 | 81 | 527 | |
| Doctoral | | | 1 | | 1 | 4 | 3 | | | | 1 | | 2 | 2 | 43 | 15 | | 1 | 51 | 22 | 73 | |
| Special Graduate | | | 1 | | 2 | 1 | 2 | | | | 2 | | 1 | | 75 | 8 | | | 83 | 9 | 92 | |
| Total Part-Time | | | 12 | 1 | 17 | 9 | 17 | 7 | | | 6 | 2 | 12 | 4 | 516 | 86 | | 3 | 580 | 112 | 692 | |
| Total Graduate | | | 15 | 2 | 20 | 10 | 23 | 7 | | | 7 | 3 | 13 | 6 | 618 | 145 | 11 | 15 | 707 | 188 | 895 | |
| Total All Students | 3 | 2 | 32 | 11 | 56 | 14 | 135 | 47 | 1 | 2 | 25 | 8 | 64 | 17 | 1,380 | 448 | 24 | 21 | 1,720 | 570 | 2,290 | |

Figure 23: College of Information Science & Technology Head Count: Fall 2006-2016

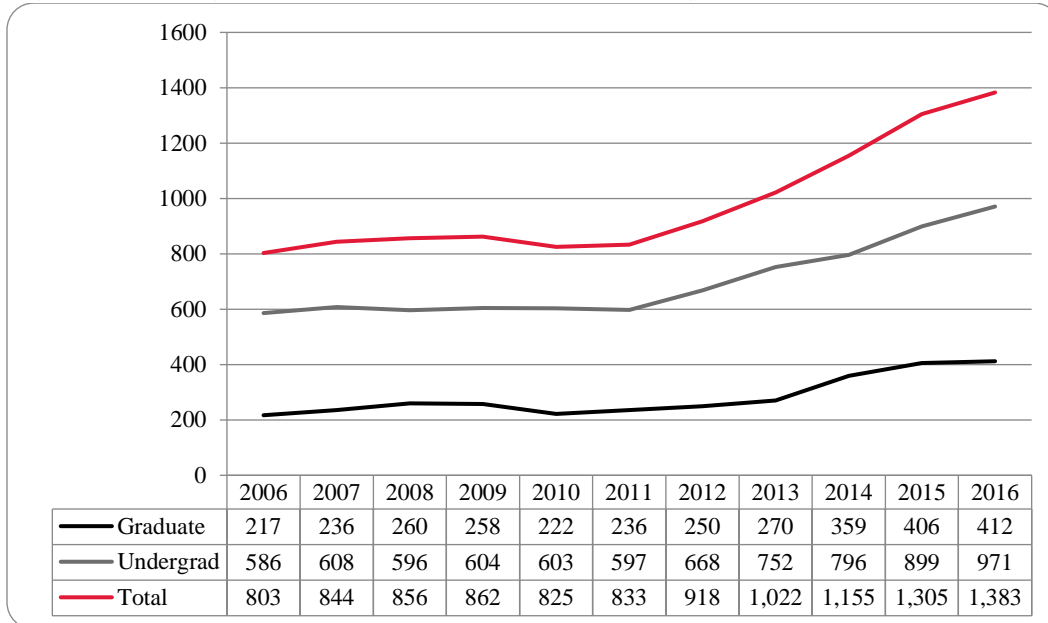


Figure 24: College of Information Science & Technology Student Credit Hours: Fall 2006-2016

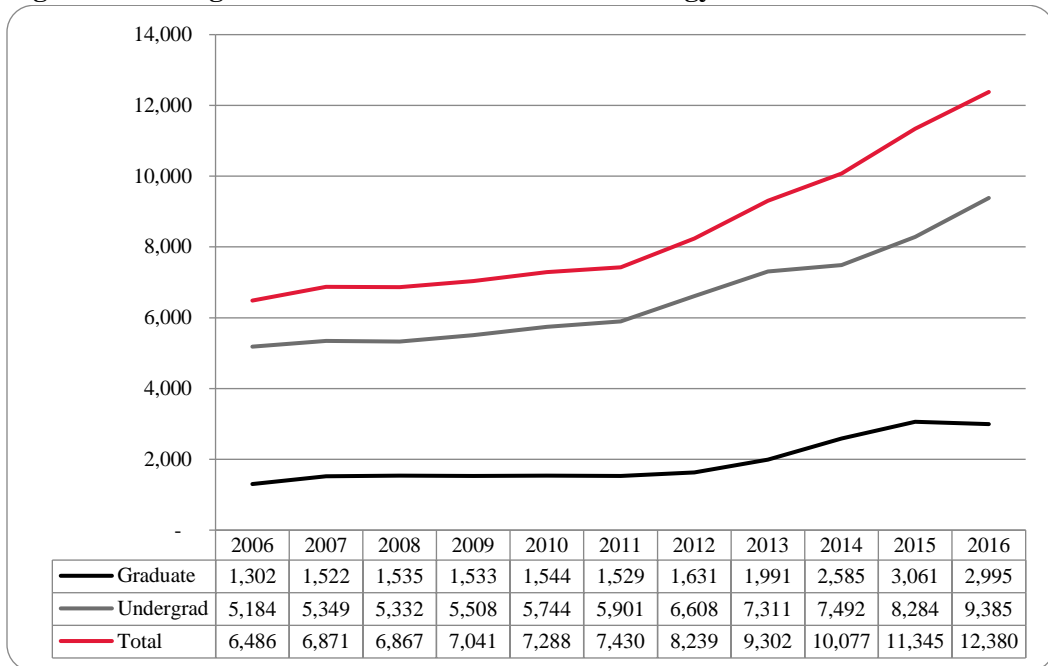


Figure 25: College of Information Science & Technology Student Credit Hours: Fall 2006-2016

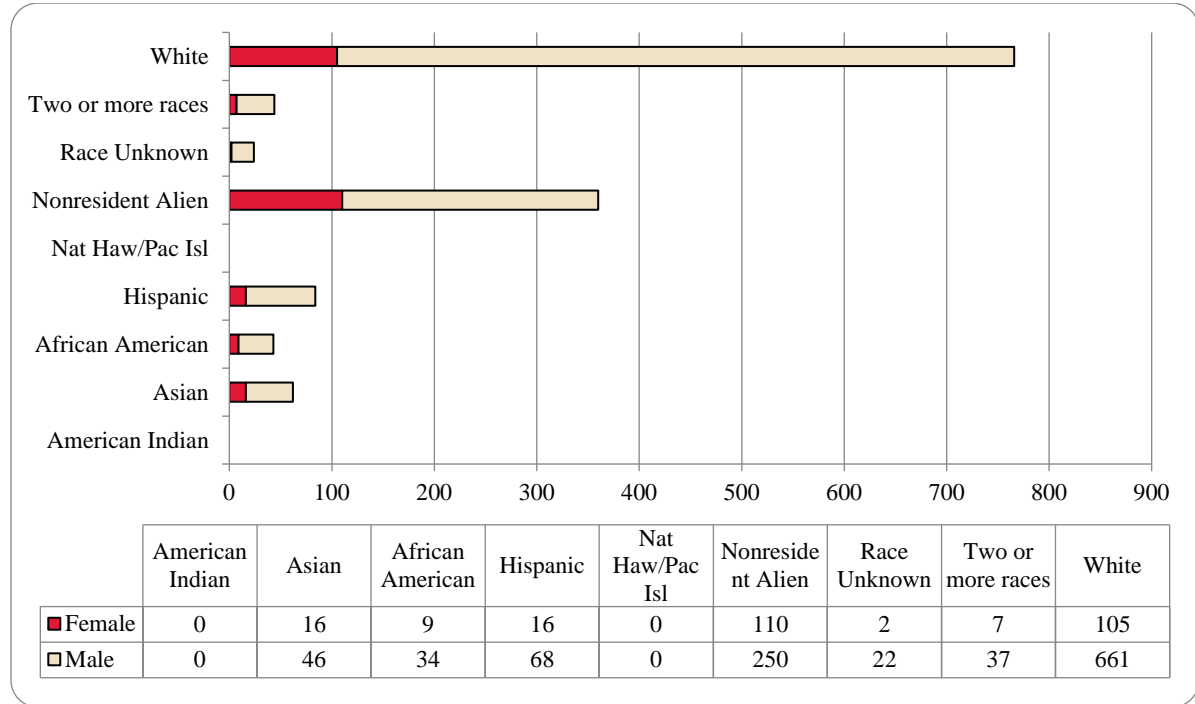


Table 9: College of Information Science and Technology Head Count Summary for Undergraduate and Graduate Summary by Full and Part-Time by Gender and Race Classification: Fall 2016

| | American Indian | | Asian | | African American | | Hispanics | | Nat Haw / Pac Isl | | Race Unknown | | Two or more races | | White | | Nonresident Alien | | Total | | | |
|----------------------------|-----------------|---|-------|----|------------------|----|-----------|----|-------------------|---|--------------|----|-------------------|----|-------|-----|-------------------|-----|-------|-------|-------|--|
| | F | M | F | M | F | M | F | M | F | M | F | M | F | M | F | M | F | M | F | M | Total | |
| Undergraduate | | | | | | | | | | | | | | | | | | | | | | |
| Full-Time | | | | | | | | | | | | | | | | | | | | | | |
| First-Time Freshmen | | | 2 | 4 | | | 3 | 8 | | | 2 | | 6 | 10 | 106 | 1 | 5 | 16 | 131 | 147 | | |
| Other Freshmen | | | | 1 | | 1 | | 3 | | | | | 2 | 2 | 20 | 3 | 14 | 5 | 41 | 46 | | |
| Sophomores | | | 1 | 10 | | | 3 | 13 | | | 5 | | 10 | 15 | 105 | 2 | 21 | 21 | 167 | 188 | | |
| Juniors | | | 1 | 9 | 1 | 4 | 3 | 15 | | | 4 | 1 | 6 | 20 | 117 | 3 | 20 | 29 | 175 | 204 | | |
| Seniors | | | 3 | 7 | | 4 | 3 | 11 | | | 2 | 1 | 6 | 17 | 108 | 3 | 17 | 27 | 155 | 182 | | |
| Special | | | 2 | | | | 1 | 1 | | | 1 | | | 4 | 10 | 1 | 1 | 8 | 13 | 21 | | |
| Total Full-Time | | | 9 | 31 | 1 | 12 | 13 | 51 | | | 14 | 2 | 30 | 68 | 466 | 13 | 78 | 106 | 682 | 788 | | |
| | | | | | | | | | | | | | | | | | | | | | | |
| Part-Time | | | | | | | | | | | | | | | | | | | | | | |
| First-Time Freshmen | | | | | | | | 1 | | | | | | | 3 | | | | 4 | 4 | | |
| Other Freshmen | | | | | | | | | | | | | 1 | | 10 | | 2 | | 13 | 13 | | |
| Sophomores | | | | | | 1 | | 2 | | | 1 | | 2 | 19 | | 1 | 2 | 24 | 26 | | | |
| Juniors | | | 2 | 4 | 1 | 4 | 1 | 4 | | | 1 | 2 | 1 | 2 | 25 | | 2 | 7 | 42 | 49 | | |
| Seniors | | | | 3 | 1 | 5 | 1 | 2 | | | 2 | 1 | | 3 | 35 | | 5 | 6 | 52 | 58 | | |
| Special | | | | 1 | 2 | 2 | | | | | 1 | 2 | 1 | 1 | 11 | 12 | | 15 | 18 | 33 | | |
| Total Part-Time | | | 2 | 8 | 4 | 12 | 2 | 9 | | | 2 | 7 | 2 | 3 | 18 | 104 | | 10 | 30 | 153 | 183 | |
| Total Undergraduate | | | 11 | 39 | 5 | 24 | 15 | 60 | | | 2 | 21 | 4 | 33 | 86 | 570 | 13 | 88 | 136 | 835 | 971 | |
| | | | | | | | | | | | | | | | | | | | | | | |
| Graduate | | | | | | | | | | | | | | | | | | | | | | |
| Full-Time | | | | | | | | | | | | | | | | | | | | | | |
| Certificate | | | | | | | | | | | | | | | 1 | | | | 1 | 1 | | |
| Masters | | | 1 | 2 | 1 | 2 | | 4 | | | | | 2 | 7 | 14 | 70 | 118 | 79 | 142 | 221 | | |
| Doctoral | | | | | | | | | | | | | | | 5 | 1 | 7 | 1 | 12 | 13 | | |
| Special Graduate | | | | | | | | | | | | | | | | | | | | | | |
| Total Full-Time | | | 1 | 2 | 1 | 2 | | 4 | | | | | 2 | 7 | 20 | 71 | 125 | 80 | 155 | 235 | | |
| | | | | | | | | | | | | | | | | | | | | | | |
| Part-Time | | | | | | | | | | | | | | | | | | | | | | |
| Certificate | | | | | | 1 | | 1 | | | | | | 2 | 4 | | | 2 | 6 | 8 | | |
| Masters | | | 4 | 5 | 3 | 7 | 1 | 3 | | | 1 | 3 | 2 | 10 | 65 | 23 | 32 | 44 | 115 | 159 | | |
| Doctoral | | | | | | | | | | | | | | | 2 | 3 | 5 | 3 | 7 | 10 | | |
| Special Graduate | | | | | | | | | | | | | | | | | | | | | | |
| Total Part-Time | | | 4 | 5 | 3 | 8 | 1 | 4 | | | 1 | 3 | 2 | 12 | 71 | 26 | 37 | 49 | 128 | 177 | | |
| Total Graduate | | | 5 | 7 | 4 | 10 | 1 | 8 | | | 1 | 3 | 4 | 19 | 91 | 97 | 162 | 129 | 283 | 412 | | |
| | | | | | | | | | | | | | | | | | | | | | | |
| Total All Students | | | 16 | 46 | 9 | 34 | 16 | 68 | | | 2 | 22 | 7 | 37 | 105 | 661 | 110 | 250 | 265 | 1,118 | 1,383 | |

Figure 26: College of Public Affairs & Community Service Delivery-Site Head Count: Fall 2006-2016

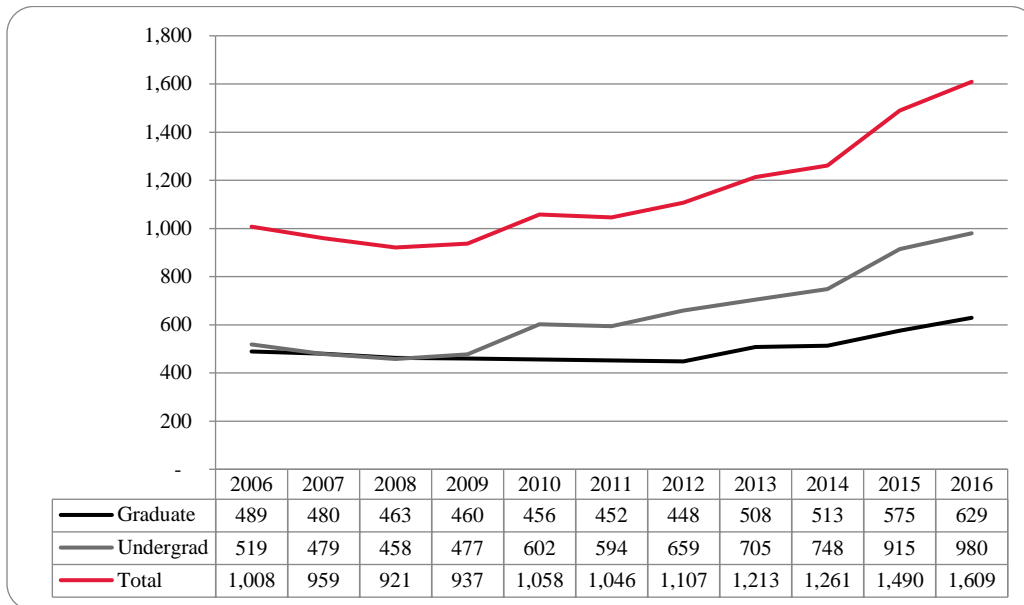


Figure 27: College of Public Affairs & Community Service Delivery-Site Student Credit Hours: Fall 2006-2016

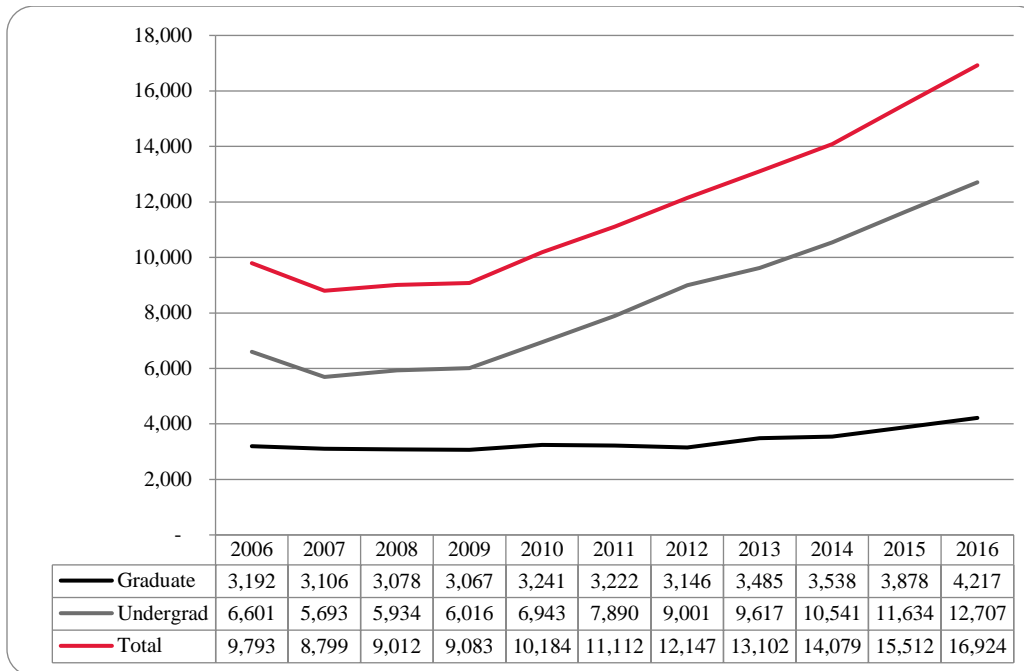


Figure 28: College of Public Affairs & Community Service Delivery-Site Head Count by Ethnicity by Gender: Fall 2016

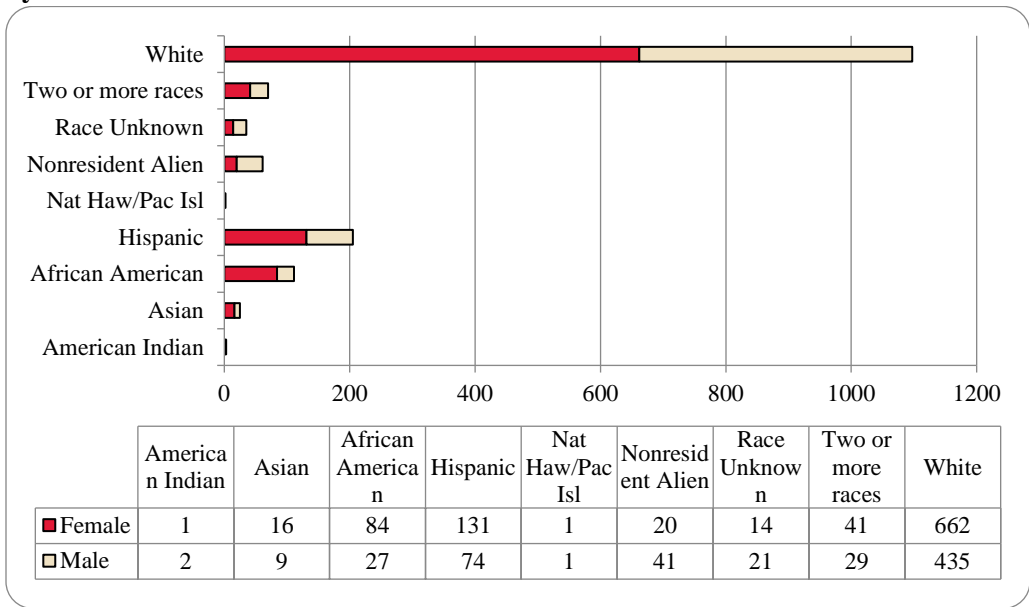


Table 10: College of Public Affairs and Community Service Delivery-Site Head Count Summary for Undergraduate and Graduate Students by Full and Part-Time by Gender and Race Classification: Fall 2016

| | American Indian | | Asian | | African American | | Hispanics | | Nat Haw / Pac Isl | | Race Unknown | | Two or more races | | White | | Nonresident Alien | | Total | | | |
|----------------------------|-----------------|---|-------|---|------------------|----|-----------|----|-------------------|---|--------------|----|-------------------|----|-------|-----|-------------------|----|-------|-----|-------|---|
| | F | M | F | M | F | M | F | M | F | M | F | M | F | M | F | M | F | M | F | M | Total | |
| Undergraduate | | | | | | | | | | | | | | | | | | | | | | |
| Full-Time | | | | | | | | | | | | | | | | | | | | | | |
| First-Time Freshmen | | | 2 | 2 | 13 | 1 | 12 | 8 | | | 2 | 2 | 2 | 3 | 31 | 39 | 2 | 5 | 64 | 60 | 124 | |
| Other Freshmen | | | 1 | | 6 | 2 | 3 | 6 | | | | | 3 | 1 | 10 | 15 | 1 | | 24 | 24 | 48 | |
| Sophomores | | | 9 | 1 | 7 | | 22 | 16 | | 1 | 1 | 4 | 4 | 3 | 57 | 74 | 6 | 11 | 106 | 110 | 216 | |
| Juniors | | | 2 | 2 | 14 | 6 | 23 | 16 | | | 2 | 4 | 9 | 5 | 85 | 77 | 3 | 7 | 138 | 117 | 255 | |
| Seniors | 1 | | | 1 | 12 | 7 | 18 | 6 | | | 3 | 3 | 3 | 4 | 87 | 62 | | 2 | 124 | 85 | 209 | |
| Special | | | | | | | 1 | 1 | | | | | | 2 | | 4 | | | | 1 | 7 | 8 |
| Total Full-Time | 1 | | 14 | 6 | 52 | 16 | 79 | 53 | | 1 | 8 | 13 | 21 | 18 | 270 | 271 | 12 | 25 | 457 | 403 | 860 | |
| Part-Time | | | | | | | | | | | | | | | | | | | | | | |
| First-Time Freshmen | | | | | | | | | | | | | | | | | | 1 | | 1 | 1 | |
| Other Freshmen | | | | | | | 1 | | | | | | 1 | | 2 | 1 | | 1 | 4 | 2 | 6 | |
| Sophomores | | | | | 2 | | 3 | 1 | | | | | | 3 | 4 | 7 | | | 9 | 11 | 20 | |
| Juniors | | | | | 6 | 2 | 6 | 2 | | | 1 | 1 | | | 17 | 15 | | | 30 | 20 | 50 | |
| Seniors | | | | | 1 | 1 | 3 | 7 | | | 1 | 3 | | | 7 | 19 | | | 12 | 30 | 42 | |
| Special | | | | | | 1 | | | | | | | | | | | | | | 1 | 1 | |
| Total Part-Time | | | | | 9 | 4 | 13 | 10 | | | 2 | 4 | 1 | 3 | 30 | 42 | | 2 | 55 | 65 | 120 | |
| Total Undergraduate | 1 | | 14 | 6 | 61 | 20 | 92 | 63 | | 1 | 10 | 17 | 22 | 21 | 300 | 313 | 12 | 27 | 512 | 468 | 980 | |
| Graduate | | | | | | | | | | | | | | | | | | | | | | |
| Full-Time | | | | | | | | | | | | | | | | | | | | | | |
| Certificate | | | | | | | | | | | | | | | 1 | 1 | | | 1 | 1 | 2 | |
| Masters | | | 1 | 2 | 8 | 1 | 10 | 3 | | | | | 9 | 2 | 131 | 21 | 1 | 3 | 160 | 32 | 192 | |
| Doctoral | | | | | | | | | | | | | 1 | | 5 | 3 | 3 | 5 | 9 | 8 | 17 | |
| Special Graduate | | | | | | | | | | | | | | | | | | | | | | |
| Total Full-Time | | | 1 | 2 | 8 | 1 | 10 | 3 | | | | | 10 | 2 | 137 | 25 | 4 | 8 | 170 | 41 | 211 | |
| Part-Time | | | | | | | | | | | | | | | | | | | | | | |
| Certificate | | | | | 2 | | 4 | | | | | | | | 22 | 6 | | | 28 | 6 | 34 | |
| Masters | | 2 | 1 | 1 | 13 | 5 | 23 | 7 | 1 | | 4 | 4 | 8 | 6 | 195 | 80 | 2 | | 247 | 105 | 352 | |
| Doctoral | | | | | 1 | 2 | 1 | | | | | | 1 | | 8 | 11 | 2 | 6 | 13 | 19 | 32 | |
| Special Graduate | | | | | | | | | | | | | | | | | | | | | | |
| Total Part-Time | | 2 | 1 | 1 | 15 | 6 | 29 | 8 | 1 | | 4 | 4 | 9 | 6 | 225 | 97 | 4 | 6 | 288 | 130 | 418 | |
| Total Graduate | | 2 | 2 | 3 | 23 | 7 | 39 | 11 | 1 | | 4 | 4 | 19 | 8 | 362 | 122 | 8 | 14 | 458 | 171 | 629 | |
| Total All Students | 1 | 2 | 16 | 9 | 84 | 27 | 131 | 74 | 1 | 1 | 14 | 21 | 41 | 29 | 662 | 435 | 20 | 41 | 970 | 639 | 1,609 | |

Figure 29: College of Public Affairs & Community Service Administrative-Site Head Count: Fall 2006-2016

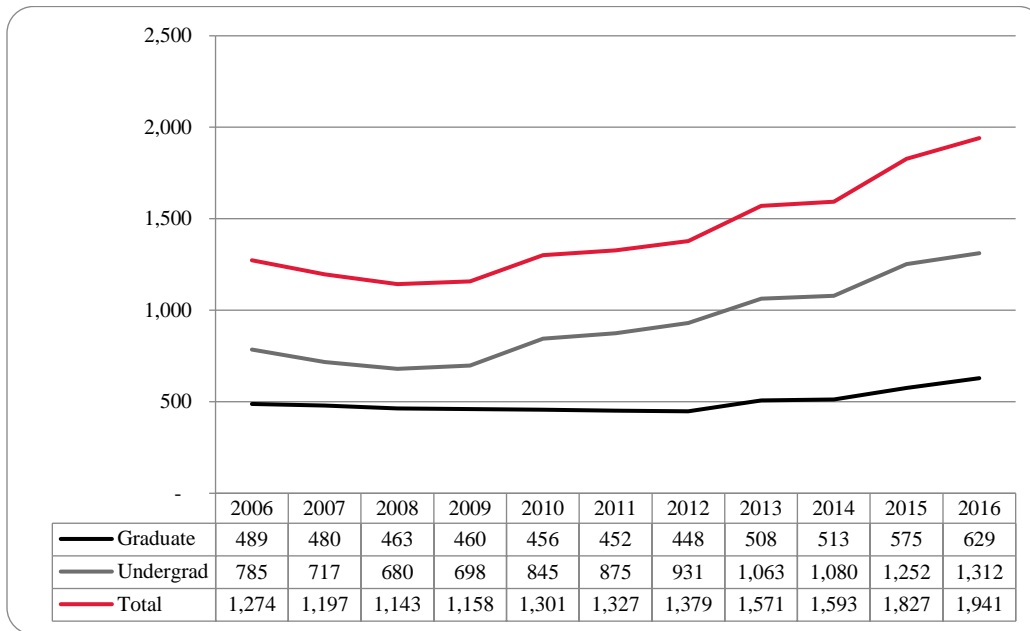


Figure 30: College of Public Affairs & Community Service Administrative-Site Student Credit Hours: Fall 2006-2016

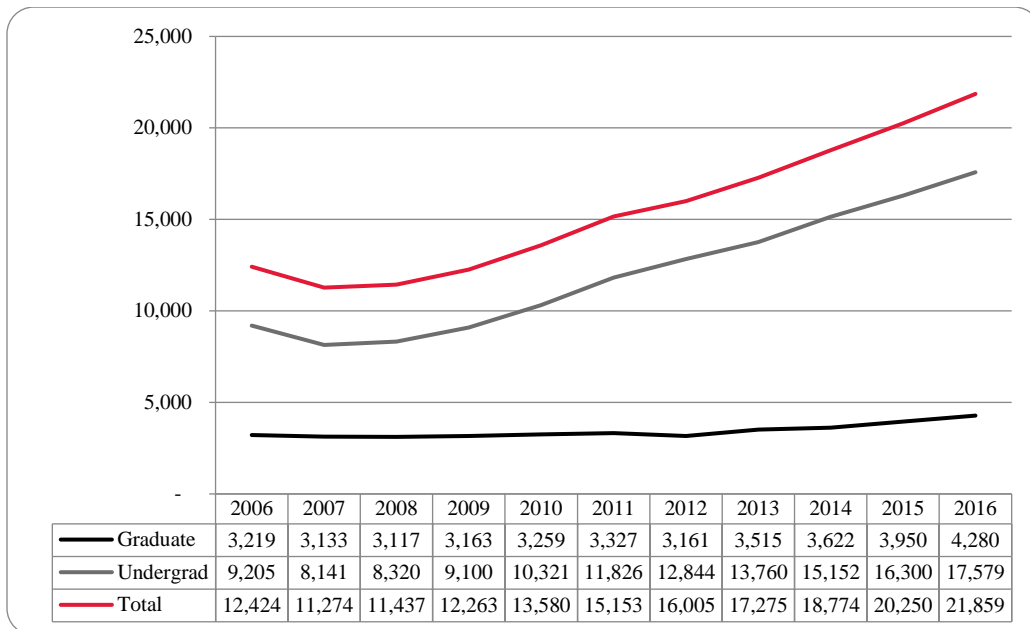


Figure 31: College of Public Affairs & Community Service Administrative-Site Head Count by Ethnicity by Gender: Fall 2016

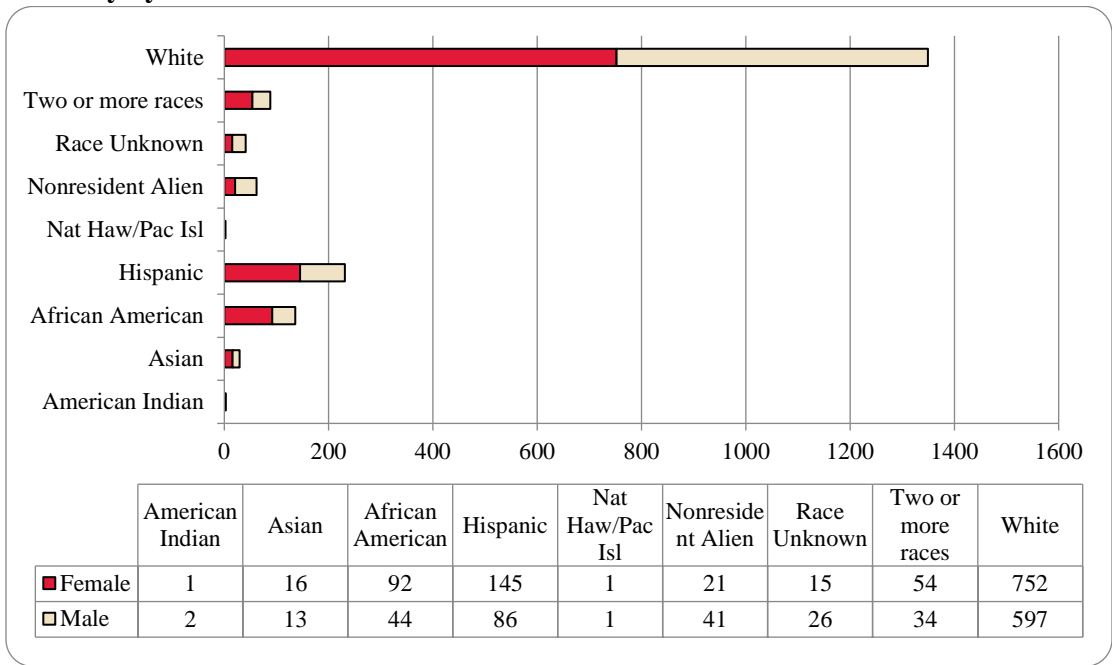


Table 11: College of Public Affairs & Community Service Administrative-Site Head Count Summary for Undergraduate and Graduate Students by Full and Part-Time by Gender and Race Classification: Fall 2016

| | American Indian | | Asian | | African American | | Hispanics | | Nat Haw / Pac Isl | | Race Unknown | | Two or more races | | White | | Nonresident Alien | | Total | | | |
|----------------------------|-----------------|---|-------|----|------------------|----|-----------|----|-------------------|---|--------------|----|-------------------|----|-------|-----|-------------------|----|-------|-----|-------|--|
| | F | M | F | M | F | M | F | M | F | M | F | M | F | M | F | M | F | M | F | M | Total | |
| Undergraduate | | | | | | | | | | | | | | | | | | | | | | |
| Full-Time | | | | | | | | | | | | | | | | | | | | | | |
| First-Time Freshmen | | | 2 | 3 | 16 | 5 | 16 | 10 | | | 2 | 2 | 2 | 3 | 47 | 58 | 2 | 5 | 87 | 86 | 173 | |
| Other Freshmen | | | 1 | | 7 | 3 | 3 | 6 | | | | | 5 | 1 | 12 | 22 | 1 | | 29 | 32 | 61 | |
| Sophomores | | | 9 | 1 | 8 | 3 | 26 | 19 | | 1 | 2 | 6 | 6 | 4 | 79 | 95 | 6 | 11 | 136 | 140 | 276 | |
| Juniors | | | 2 | 3 | 15 | 9 | 27 | 18 | | | 2 | 6 | 14 | 6 | 112 | 132 | 4 | 7 | 176 | 181 | 357 | |
| Seniors | 1 | | | 3 | 14 | 11 | 20 | 11 | | | 3 | 3 | 7 | 6 | 106 | 111 | 2 | | 151 | 147 | 298 | |
| Special | | | | | | | 1 | 1 | | | | | | 2 | | 4 | | | 1 | 7 | 8 | |
| Total Full-Time | 1 | | 14 | 10 | 60 | 31 | 93 | 65 | | 1 | 9 | 17 | 34 | 22 | 356 | 422 | 13 | 25 | 580 | 593 | 1,173 | |
| Part-Time | | | | | | | | | | | | | | | | | | | | | | |
| First-Time Freshmen | | | | | | | | | | | | | | | | | | 1 | | 1 | 1 | |
| Other Freshmen | | | | | | | | 1 | | | | | 1 | | 3 | 1 | | 1 | 5 | 2 | 7 | |
| Sophomores | | | | | 2 | | 3 | 1 | | | | | 3 | 4 | 7 | | | | 9 | 11 | 20 | |
| Juniors | | | | | 6 | 3 | 6 | 2 | | | 1 | 1 | | | 19 | 17 | | | 32 | 23 | 55 | |
| Seniors | | | | | 1 | 2 | 3 | 7 | | | 1 | 4 | | 1 | 8 | 28 | | | 13 | 42 | 55 | |
| Special | | | | | | 1 | | | | | | | | | | | | | | 1 | 1 | |
| Total Part-Time | | | | | 9 | 6 | 13 | 10 | | | 2 | 5 | 1 | 4 | 34 | 53 | | 2 | 59 | 80 | 139 | |
| Total Undergraduate | 1 | | 14 | 10 | 69 | 37 | 106 | 75 | | 1 | 11 | 22 | 35 | 26 | 390 | 475 | 13 | 27 | 639 | 673 | 1,312 | |
| Graduate | | | | | | | | | | | | | | | | | | | | | | |
| Full-Time | | | | | | | | | | | | | | | 1 | 1 | | | 1 | 1 | 2 | |
| Certificate | | | | | | | | | | | | | | | | | | | | | | |
| Masters | | | 1 | 2 | 8 | 1 | 10 | 3 | | | | | 9 | 2 | 131 | 21 | 1 | 3 | 160 | 32 | 192 | |
| Doctoral | | | | | | | | | | | | | 1 | | 5 | 3 | 3 | 5 | 9 | 8 | 17 | |
| Special Graduate | | | | | | | | | | | | | | | | | | | | | | |
| Total Full-Time | | | 1 | 2 | 8 | 1 | 10 | 3 | | | | | 10 | 2 | 137 | 25 | 4 | 8 | 170 | 41 | 211 | |
| Part-Time | | | | | | | | | | | | | | | | | | | | | | |
| Certificate | | | | | 2 | | 4 | | | | | | | | 22 | 6 | | | 28 | 6 | 34 | |
| Masters | | 2 | 1 | 1 | 13 | 5 | 23 | 7 | 1 | | 4 | 4 | 8 | 6 | 195 | 80 | 2 | | 247 | 105 | 352 | |
| Doctoral | | | | | | 1 | 2 | 1 | | | | | 1 | | 8 | 11 | 2 | 6 | 13 | 19 | 32 | |
| Special Graduate | | | | | | | | | | | | | | | | | | | | | | |
| Total Part-Time | | 2 | 1 | 1 | 15 | 6 | 29 | 8 | 1 | | 4 | 4 | 9 | 6 | 225 | 97 | 4 | 6 | 288 | 130 | 418 | |
| Total Graduate | | 2 | 2 | 3 | 23 | 7 | 39 | 11 | 1 | | 4 | 4 | 19 | 8 | 362 | 122 | 8 | 14 | 458 | 171 | 629 | |
| Total All Students | 1 | 2 | 16 | 13 | 92 | 44 | 145 | 86 | 1 | 1 | 15 | 26 | 54 | 34 | 752 | 597 | 21 | 41 | 1,097 | 844 | 1,941 | |

Figure 32: College of CPACS, Division of Continuing Studies Head Count: Fall 2006-2016

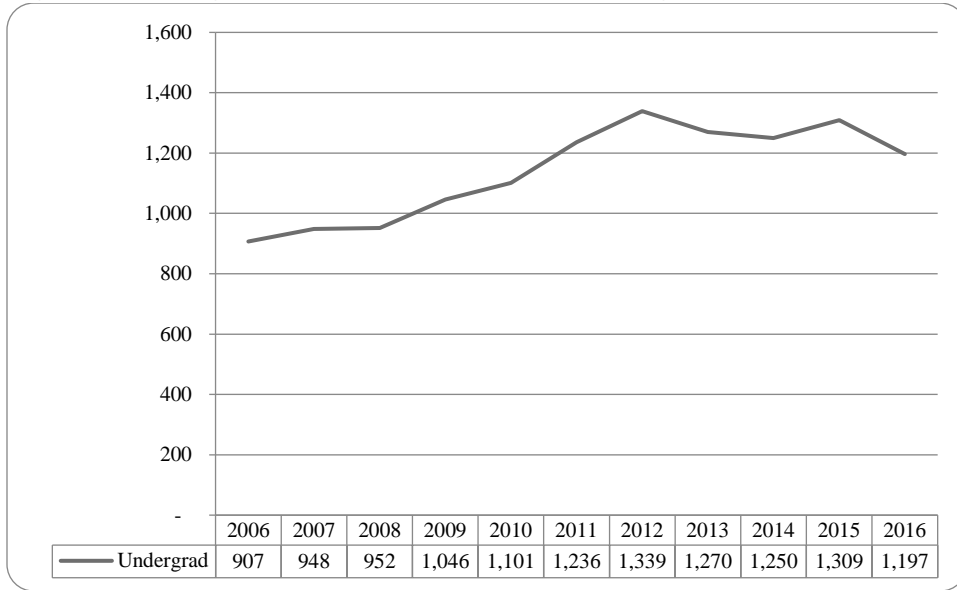


Figure 33: College of CPACS, Division of Continuing Studies Head Count by Ethnicity by Gender: Fall 2016

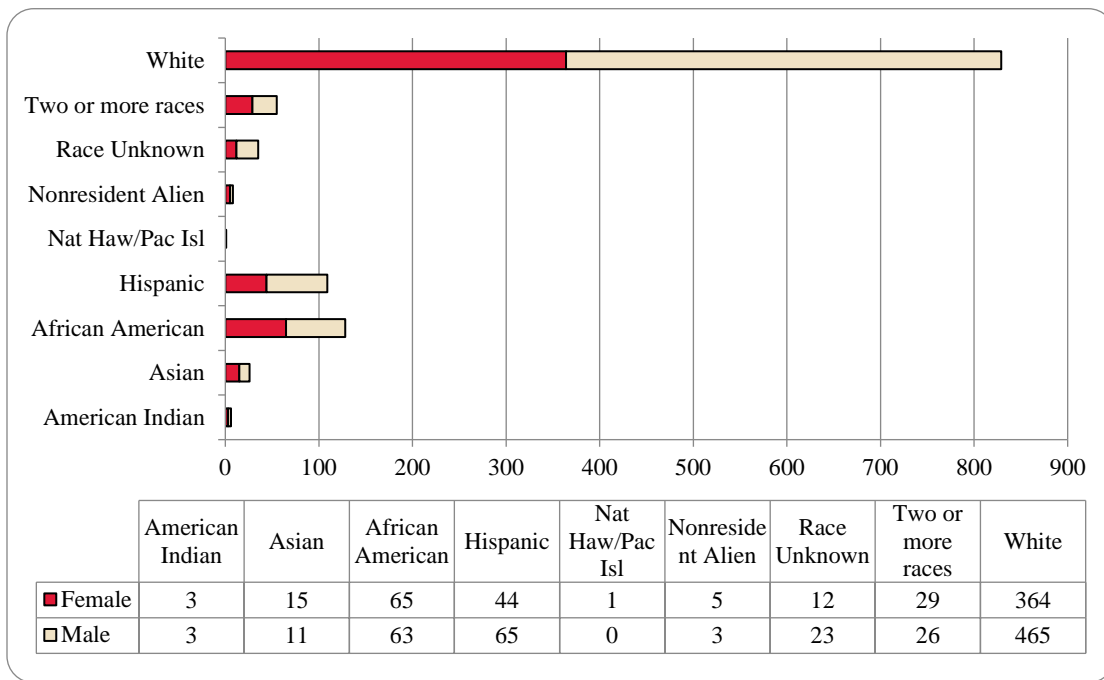


Table 12: College of CPACS Division of Continuing Studies Head Count Summary for Undergraduate Students by Full and Part-Time by Gender and Race Classification: Fall 2016

| | American Indian | | Asian | | African American | | Hispanics | | Nat Haw / Pac Isl | | Race Unknown | | Two or more races | | White | | Nonresident Alien | | Total | | | |
|----------------------------|-----------------|---|-------|----|------------------|----|-----------|----|-------------------|---|--------------|----|-------------------|----|-------|-----|-------------------|---|-------|-----|-------|-------|
| | F | M | F | M | F | M | F | M | F | M | F | M | F | M | F | M | F | M | F | M | Total | |
| Undergraduate | | | | | | | | | | | | | | | | | | | | | | |
| Full-Time | | | | | | | | | | | | | | | | | | | | | | |
| First-Time Freshmen | | | | | | | | | | | | | | | 2 | | | | | | 2 | 2 |
| Other Freshmen | | | | | 3 | 1 | 2 | 5 | | | 1 | | 1 | 1 | 9 | 25 | 2 | | | 18 | 32 | 50 |
| Sophomores | | | | 3 | 8 | 4 | 4 | 11 | | | 1 | 2 | 5 | 2 | 30 | 69 | | | | 48 | 91 | 139 |
| Juniors | | | | 1 | 10 | 18 | 9 | 8 | | | | 5 | 9 | 7 | 74 | 76 | 1 | 1 | | 103 | 116 | 219 |
| Seniors | 1 | 3 | 8 | 2 | 10 | 9 | 9 | 12 | | | 4 | 4 | 5 | 2 | 63 | 61 | 1 | 2 | | 101 | 95 | 196 |
| Special | | | | | | | 1 | | | | | | | | 2 | 3 | | | | 3 | 3 | 6 |
| Total Full-Time | 1 | 3 | 8 | 6 | 31 | 32 | 25 | 36 | | | 6 | 11 | 20 | 12 | 178 | 236 | 4 | 3 | | 273 | 339 | 612 |
| Part-Time | | | | | | | | | | | | | | | | | | | | | | |
| First-Time Freshmen | | | | | | | | | | | | | | | | 2 | | | | | | 2 |
| Other Freshmen | | | 2 | 2 | | 1 | 1 | 2 | | | 2 | | 1 | | 6 | 21 | | | | 12 | 26 | 38 |
| Sophomores | | | | 2 | 7 | 3 | 4 | 7 | | | | | 3 | 5 | 17 | 31 | | | | 31 | 48 | 79 |
| Juniors | 2 | | 1 | 1 | 8 | 8 | 4 | 8 | | | 2 | 6 | 1 | 4 | 48 | 59 | 1 | | | 67 | 86 | 153 |
| Seniors | | | 2 | | 18 | 16 | 10 | 12 | 1 | | 2 | 6 | 4 | 5 | 108 | 105 | | | | 145 | 144 | 289 |
| Special | | | 2 | | 1 | 3 | | | | | | | | | 7 | 11 | | | | 10 | 14 | 24 |
| Total Part-Time | 2 | | 7 | 5 | 34 | 31 | 19 | 29 | 1 | | 6 | 12 | 9 | 14 | 186 | 229 | 1 | | | 265 | 320 | 585 |
| Total Undergraduate | 3 | 3 | 15 | 11 | 65 | 63 | 44 | 65 | 1 | | 12 | 23 | 29 | 26 | 364 | 465 | 5 | 3 | | 538 | 659 | 1,197 |
| Total All Students | 3 | 3 | 15 | 11 | 65 | 63 | 44 | 65 | 1 | | 12 | 23 | 29 | 26 | 364 | 465 | 5 | 3 | | 538 | 659 | 1,197 |

Table 13: Cooperative Graduate Program Head Count Summary for Graduate Students by Full and Part-Time by Gender and Race Classification: Fall 2016

| | American Indian | | Asian | | African American | | Hispanics | | Nat Haw / Pac Isl | | Race Unknown | | Two or more races | | White | | Nonresident Alien | | Total | | | |
|---------------------------|-----------------|---|-------|---|------------------|---|-----------|---|-------------------|---|--------------|---|-------------------|---|-------|---|-------------------|---|-------|---|-------|---|
| | F | M | F | M | F | M | F | M | F | M | F | M | F | M | F | M | F | M | F | M | Total | |
| Graduate | | | | | | | | | | | | | | | | | | | | | | |
| Full-Time | | | | | | | | | | | | | | | | | | | | | | |
| Certificate | | | | | | | | | | | | | | | | | | 1 | | | 1 | 1 |
| Masters | | | | | | | | | | | | | | | | | | | | | | |
| Doctoral | | | | | | | | | | | | | | | | | | | | | | |
| Special Graduate | | | | | | | | | | | | | | | | | | | | | | |
| Total Full-Time | | | | | | | | | | | | | | | | | | 1 | | | 1 | 1 |
| Part-Time | | | | | | | | | | | | | | | | | | | | | | |
| Certificate | | | | 1 | | | | 1 | | | | | | | | | | | | | 2 | 2 |
| Masters | | | | | | | | | | | | | | | | | | | | | | |
| Doctoral | | | | | | | | | | | | | | | | | | | | | | |
| Special Graduate | | | | | | | | | | | | | | | | | | | | | | |
| Total Part-Time | | | | 1 | | | | 1 | | | | | | | | | | | | | 2 | 2 |
| Total Graduate | | | | 1 | | | | 1 | | | | | | | | | | 1 | | | 3 | 3 |
| Total All Students | | | | 1 | | | | 1 | | | | | | | | | | 1 | | | 3 | 3 |

Figure 34: University Division Head Count: Fall 2006-2016

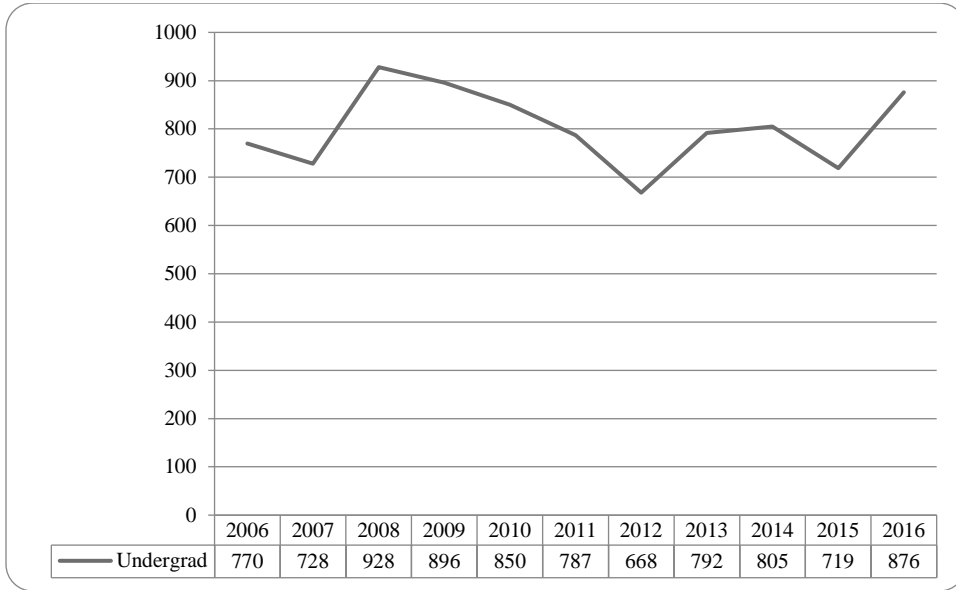


Figure 35: University Division Student Credit Hours: Fall 2006-2016

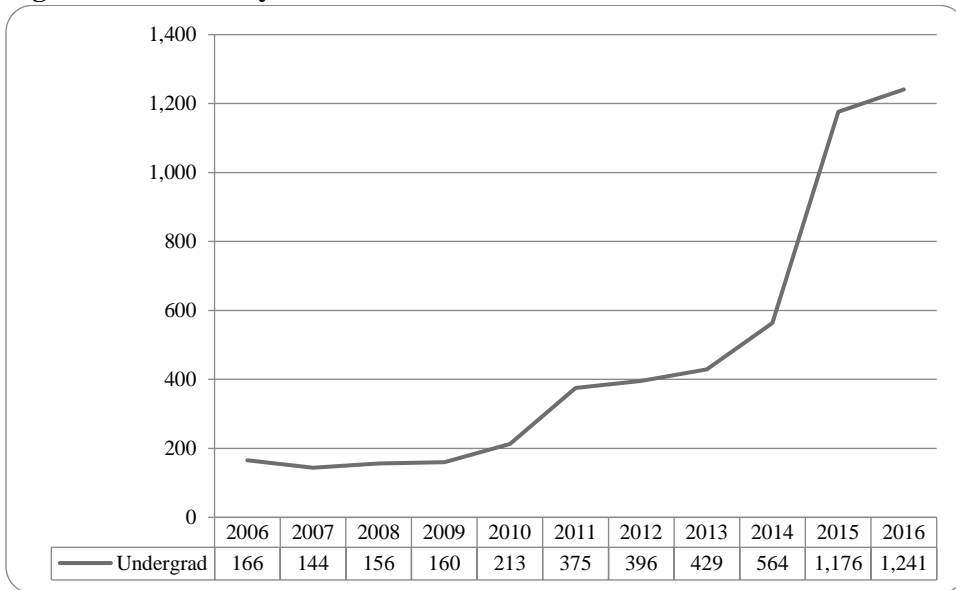


Figure 36: University Division Head Count by Ethnicity by Gender: Fall 2016

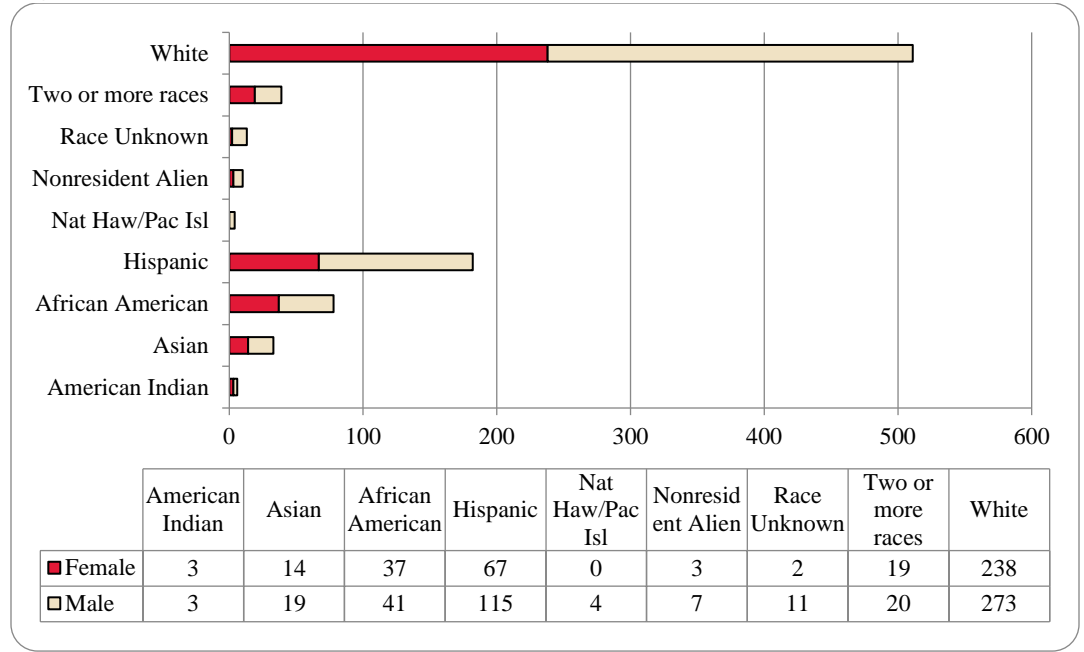


Table 14: University Division Head Count Summary for Undergraduate Students by Full and Part-Time by Gender and Race Classification: Fall 2016

| | American Indian | | Asian | | African American | | Hispanics | | Nat Haw / Pac Isl | | Race Unknown | | Two or more races | | White | | Nonresident Alien | | Total | | | |
|----------------------------|-----------------|---|-------|----|------------------|----|-----------|-----|-------------------|---|--------------|----|-------------------|----|-------|-----|-------------------|---|-------|-----|-------|---|
| | F | M | F | M | F | M | F | M | F | M | F | M | F | M | F | M | F | M | F | M | Total | |
| Undergraduate | | | | | | | | | | | | | | | | | | | | | | |
| Full-Time | | | | | | | | | | | | | | | | | | | | | | |
| First-Time Freshmen | 2 | 1 | 8 | 12 | 22 | 25 | 44 | 58 | | 3 | 1 | 5 | 12 | 12 | 145 | 133 | 2 | 4 | 236 | 253 | 489 | |
| Other Freshmen | 1 | 1 | 2 | 3 | 4 | 13 | 9 | 35 | | | | 3 | 4 | 5 | 34 | 66 | | 1 | 54 | 127 | 181 | |
| Sophomores | | 1 | 1 | 2 | 5 | 2 | 8 | 11 | | 1 | 1 | 1 | 1 | 3 | 36 | 40 | | 2 | 52 | 63 | 115 | |
| Juniors | | | | | | 1 | | | | | | | | | | 1 | | | | | 2 | 2 |
| Seniors | | | | | | | | | | | | | | | | | | | | | | |
| Special | | | | | | | | | | | | | | | | | | | | | | |
| Total Full-Time | 3 | 3 | 11 | 17 | 31 | 41 | 61 | 104 | | 4 | 2 | 9 | 17 | 20 | 215 | 240 | 2 | 7 | 342 | 445 | 787 | |
| Part-Time | | | | | | | | | | | | | | | | | | | | | | |
| First-Time Freshmen | | | 1 | 2 | 1 | | 2 | | | | 1 | 1 | | | 5 | 7 | 1 | | 11 | 10 | 21 | |
| Other Freshmen | | | 1 | | 4 | | 4 | 7 | | | | | 1 | | 13 | 15 | | | 23 | 22 | 45 | |
| Sophomores | | | 1 | | 1 | | | 3 | | | 1 | | | | 5 | 11 | | | 7 | 15 | 22 | |
| Juniors | | | | | | | | 1 | | | | | | | | | | | | 1 | 1 | |
| Seniors | | | | | | | | | | | | | | | | | | | | | | |
| Special | | | | | | | | | | | | | | | | | | | | | | |
| Total Part-Time | | | 3 | 2 | 6 | | 6 | 11 | | | 2 | 2 | | | 23 | 33 | 1 | | 41 | 48 | 89 | |
| Total Undergraduate | 3 | 3 | 14 | 19 | 37 | 41 | 67 | 115 | | 4 | 2 | 11 | 19 | 20 | 238 | 273 | 3 | 7 | 383 | 493 | 876 | |
| Total All Students | 3 | 3 | 14 | 19 | 37 | 41 | 67 | 115 | | 4 | 2 | 11 | 19 | 20 | 238 | 273 | 3 | 7 | 383 | 493 | 876 | |

Figure 37: Non-Degree/Intercampus Special Undergraduate Students Head Count: Fall 2006-2016

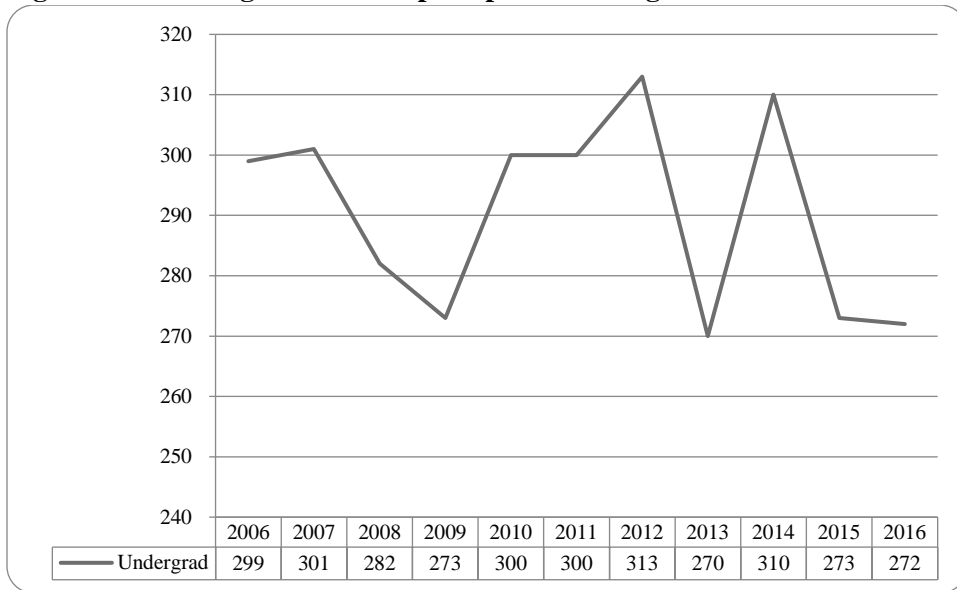


Figure 38: Non-Degree/Intercampus Special Undergraduate Students Head Count by Ethnicity by Gender: Fall 2016

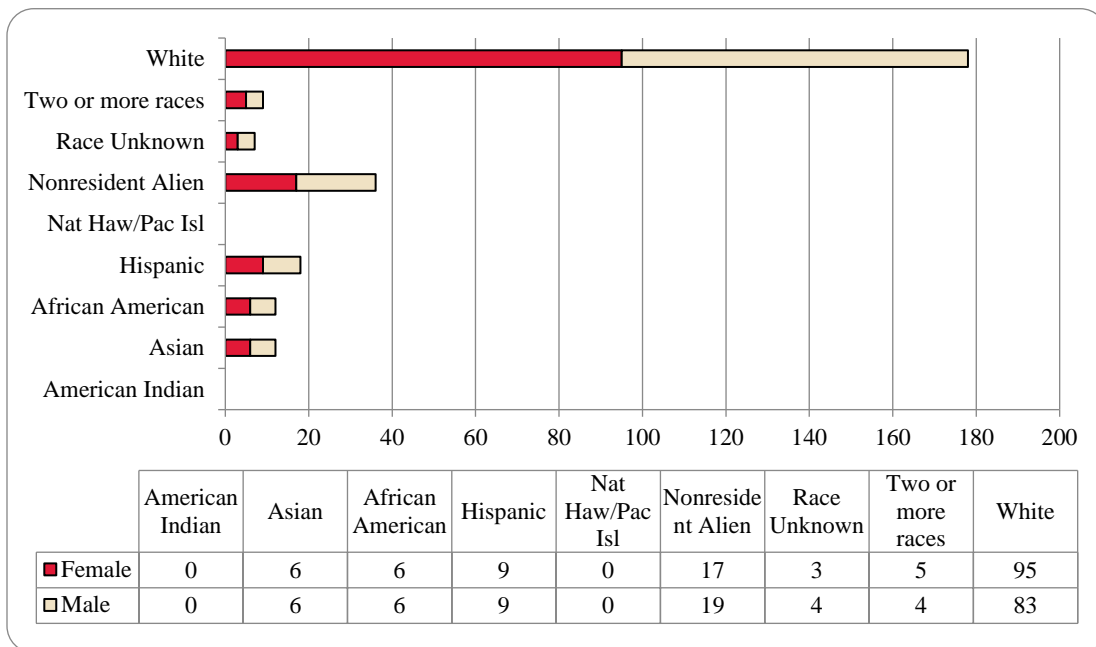


Table 15: Non-Degree/Intercampus Head Count Summary for Special Undergraduate Students by Full and Part-Time by Gender and Race Classification: Fall 2016

| | American Indian | | Asian | | African American | | Hispanics | | Nat Haw / Pac Isl | | Race Unknown | | Two or more races | | White | | Nonresident Alien | | Total | | | |
|----------------------------|-----------------|---|-------|---|------------------|---|-----------|---|-------------------|---|--------------|---|-------------------|---|-------|----|-------------------|----|-------|-----|-------|--|
| | F | M | F | M | F | M | F | M | F | M | F | M | F | M | F | M | F | M | F | M | Total | |
| Undergraduate | | | | | | | | | | | | | | | | | | | | | | |
| Full-Time | | | | | | | | | | | | | | | | | | | | | | |
| First-Time Freshmen | | | | | | | | | | | | | | | | | | | | | | |
| Other Freshmen | | | 1 | 1 | 1 | 1 | | | | | | | | | 7 | 10 | 7 | 6 | 16 | 18 | 34 | |
| Sophomores | | | | | | | | | | | | | | | 2 | 1 | 7 | 9 | 9 | 10 | 19 | |
| Juniors | | | | | | | | | | | | | | | 3 | 4 | 2 | 3 | 5 | 7 | 12 | |
| Seniors | | | | | | | | 1 | | | | | | | | 1 | | 1 | | 3 | 3 | |
| Special | | | | 1 | | | | | | | | | 1 | 1 | 4 | 2 | | | 5 | 4 | 9 | |
| Total Full-Time | | | 1 | 2 | 1 | 1 | 1 | 1 | | | | | 1 | 1 | 16 | 18 | 16 | 19 | 35 | 42 | 77 | |
| Part-Time | | | | | | | | | | | | | | | | | | | | | | |
| First-Time Freshmen | | | | | 2 | 2 | | | | | | | 2 | | 1 | | | | 5 | 2 | 7 | |
| Other Freshmen | | | 2 | 1 | 1 | 2 | 6 | 7 | | | 3 | 4 | 1 | 2 | 25 | 31 | | | 38 | 47 | 85 | |
| Sophomores | | | | | | | | | | | | | | | 5 | 4 | 1 | | 6 | 4 | 10 | |
| Juniors | | | | | | | | | | | | | 1 | | 7 | 4 | | | 7 | 5 | 12 | |
| Seniors | | | | | 1 | | | | | | | | | | 3 | 2 | | | 4 | 2 | 6 | |
| Special | | | 3 | 3 | 2 | 1 | 2 | 1 | | | | | 1 | | 38 | 24 | | | 46 | 29 | 75 | |
| Total Part-Time | | | 5 | 4 | 6 | 5 | 8 | 8 | | | 3 | 4 | 4 | 3 | 79 | 65 | 1 | | 106 | 89 | 195 | |
| Total Undergraduate | | | 6 | 6 | 6 | 6 | 9 | 9 | | | 3 | 4 | 5 | 4 | 95 | 83 | 17 | 19 | 141 | 131 | 272 | |
| Total All Students | | | 6 | 6 | 6 | 6 | 9 | 9 | | | 3 | 4 | 5 | 4 | 95 | 83 | 17 | 19 | 141 | 131 | 272 | |

Figure 39: Non-Degree/Inter Campus Special Graduate Students Head Count: Fall 2006-2016

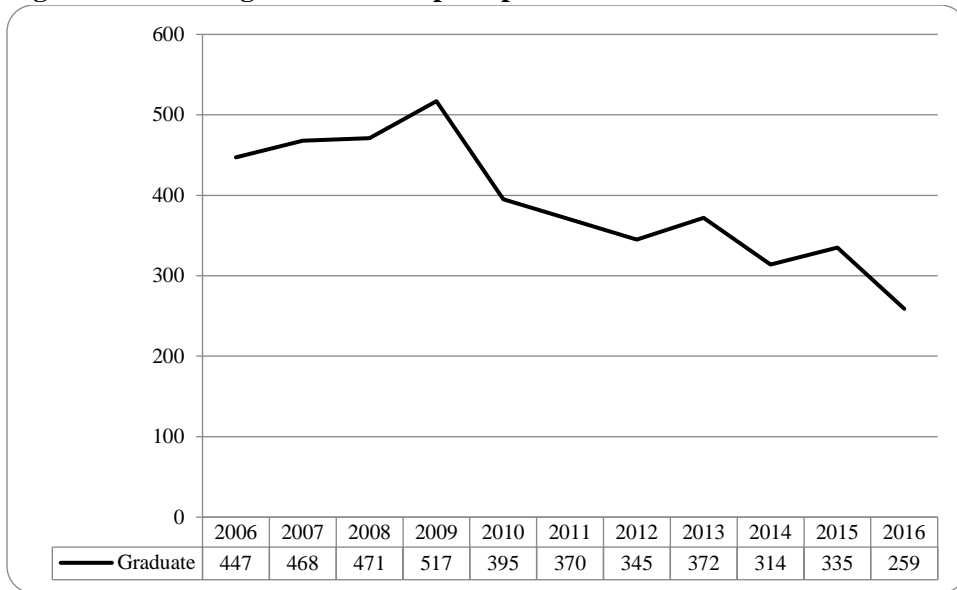


Figure 40: Non-Degree/Intercampus Special Graduate Students Head Count by Ethnicity by Gender: Fall 2016

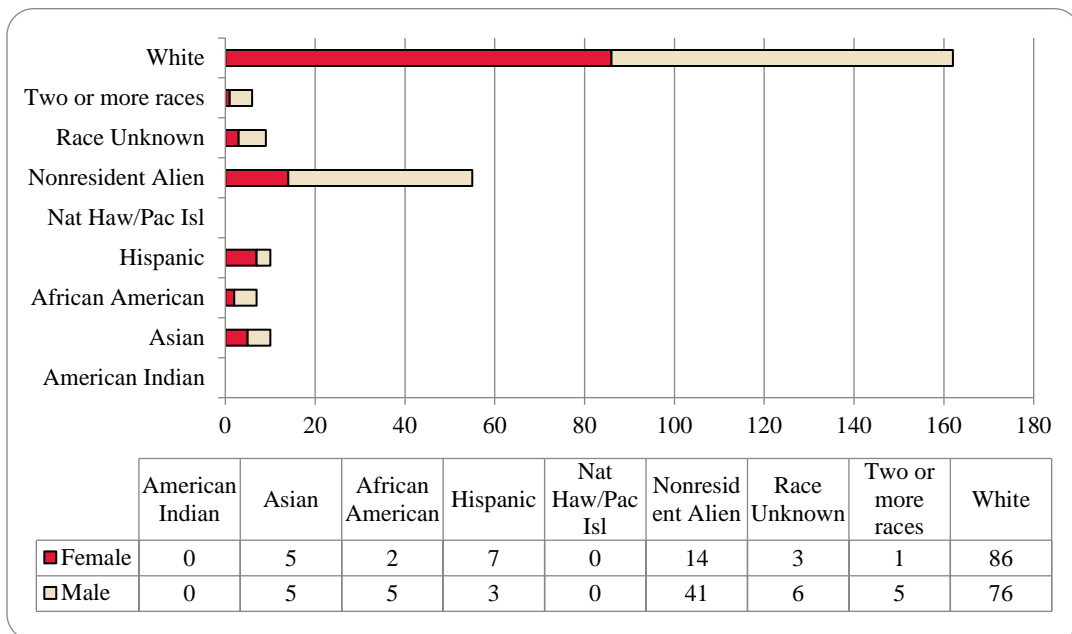


Table 16: Non-Degree/Intercampus Head Count Summary for Special Graduate Students by Full and Part-Time by Gender and Race Classification: Fall 2016

| | American Indian | | Asian | | African American | | Hispanics | | Nat Haw / Pac Isl | | Race Unknown | | Two or more races | | White | | Nonresident Alien | | Total | | | |
|---------------------------|-----------------|---|-------|---|------------------|---|-----------|---|-------------------|---|--------------|---|-------------------|---|-------|----|-------------------|----|-------|-----|-------|--|
| | F | M | F | M | F | M | F | M | F | M | F | M | F | M | F | M | F | M | F | M | Total | |
| Graduate | | | | | | | | | | | | | | | | | | | | | | |
| Full-Time | | | | | | | | | | | | | | | | | | | | | | |
| Certificate | | | | | | | | | | | | | | | | | | | | | | |
| Masters | | | | | | | | | | | | | | | | | | | | | | |
| Doctoral | | | | | | | | | | | | | | | | | | | | | | |
| Special Graduate | | | 4 | 2 | | | | 2 | | | 1 | 1 | 1 | 2 | 15 | 33 | 9 | 36 | 30 | 76 | 106 | |
| Total Full-Time | | | 4 | 2 | | | | 2 | | | 1 | 1 | 1 | 2 | 15 | 33 | 9 | 36 | 30 | 76 | 106 | |
| | | | | | | | | | | | | | | | | | | | | | | |
| Part-Time | | | | | | | | | | | | | | | | | | | | | | |
| Certificate | | | | | | | | | | | | | | | | | | | | | | |
| Masters | | | | | | | | | | | | | | | | | | | | | | |
| Doctoral | | | | | | | | | | | | | | | | | | | | | | |
| Special Graduate | | | 1 | 3 | 2 | 5 | 7 | 1 | | | 2 | 5 | | 3 | 71 | 43 | 5 | 5 | 88 | 65 | 153 | |
| Total Part-Time | | | 1 | 3 | 2 | 5 | 7 | 1 | | | 2 | 5 | | 3 | 71 | 43 | 5 | 5 | 88 | 65 | 153 | |
| Total Graduate | | | 5 | 5 | 2 | 5 | 7 | 3 | | | 3 | 6 | 1 | 5 | 86 | 76 | 14 | 41 | 118 | 141 | 259 | |
| | | | | | | | | | | | | | | | | | | | | | | |
| Total All Students | | | 5 | 5 | 2 | 5 | 7 | 3 | | | 3 | 6 | 1 | 5 | 86 | 76 | 14 | 41 | 118 | 141 | 259 | |

Figure 41: Other Honors Student Credit Hours by Level of Instruction: Fall 2006-2016

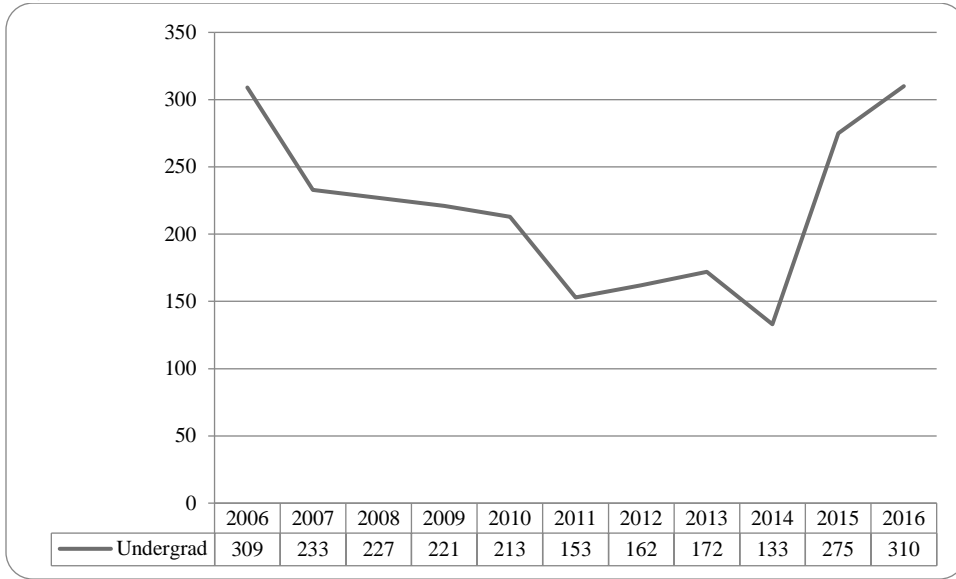


Figure 42: College of Agriculture Delivery-Site Head Count: Fall 2006-2016

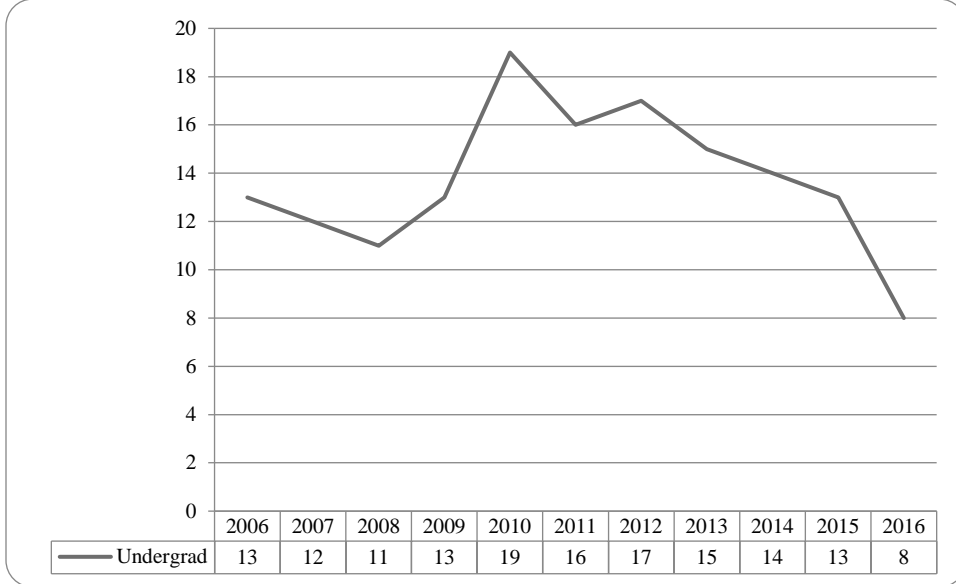


Figure 43: College of Agriculture Delivery-Site Student Credit Hours: Fall 2006-2016

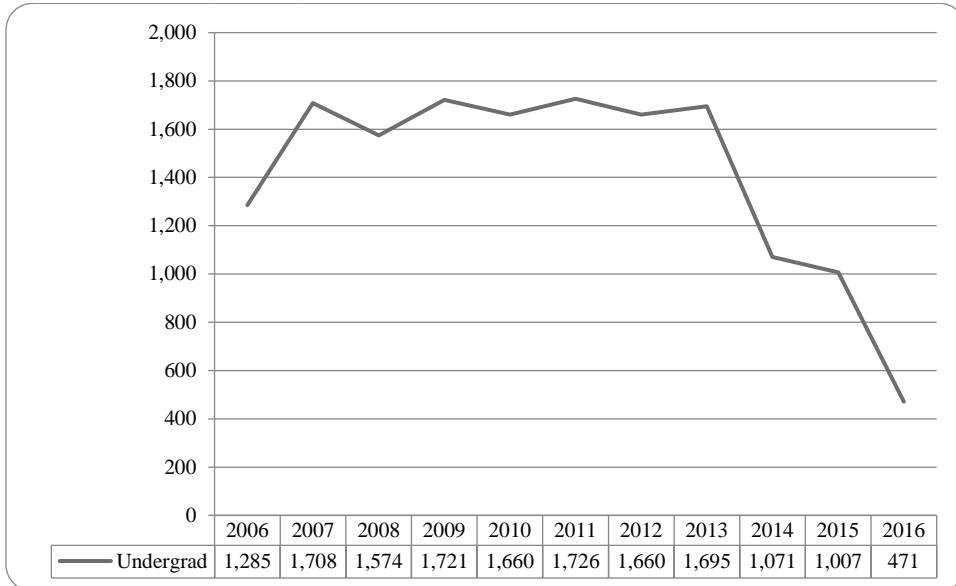


Figure 44: College of Agriculture Delivery-Site Head Count by Ethnicity by Gender: Fall 2016

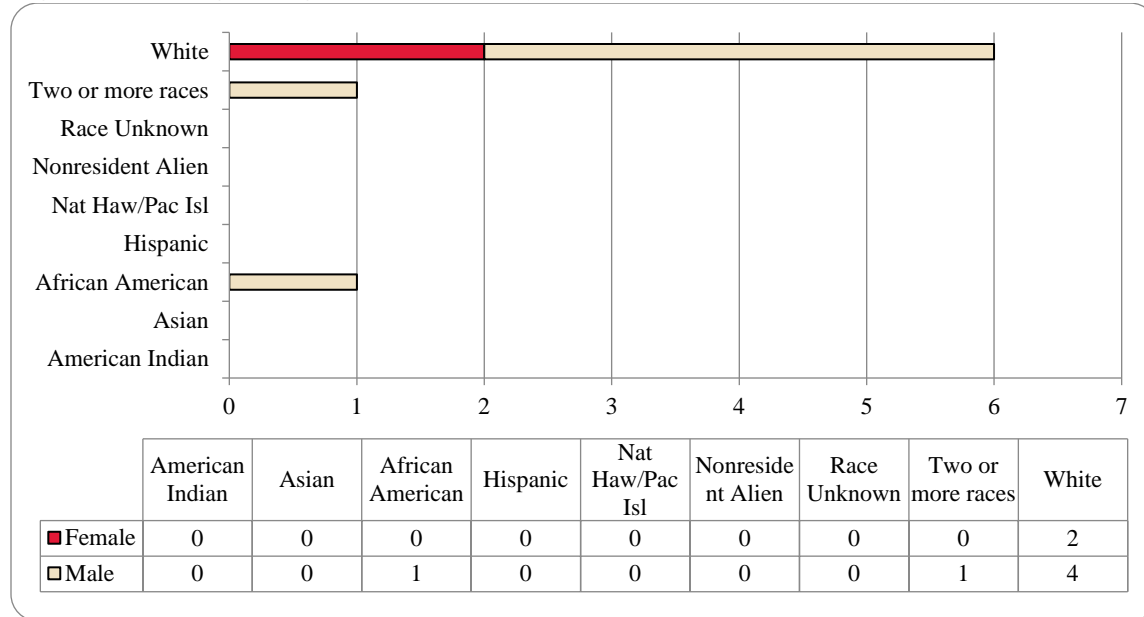


Table 17: College of Agriculture Head Count Summary for Undergraduate Students by Full and Part-Time by Gender and Race Classification: Fall 2016

| | American Indian | | Asian | | African American | | Hispanics | | Nat Haw / Pac Isl | | Race Unknown | | Two or more races | | White | | Nonresident Alien | | Total | | | |
|----------------------------|-----------------|---|-------|---|------------------|---|-----------|---|-------------------|---|--------------|---|-------------------|---|-------|---|-------------------|---|-------|---|-------|---|
| | F | M | F | M | F | M | F | M | F | M | F | M | F | M | F | M | F | M | F | M | Total | |
| Undergraduate | | | | | | | | | | | | | | | | | | | | | | |
| Full-Time | | | | | | | | | | | | | | | | | | | | | | |
| First-Time Freshmen | | | | | | | | | | | | | | | 2 | 3 | | | | 2 | 3 | 5 |
| Other Freshmen | | | | | | | 1 | | | | | | | | | 1 | | | | | 2 | 2 |
| Sophomores | | | | | | | | | | | | | | | | | | | | | | |
| Juniors | | | | | | | | | | | | | | | | | | | | | | |
| Seniors | | | | | | | | | | | | | | | | | | | | | | |
| Special | | | | | | | | | | | | | | | | | | | | | | |
| Total Full-Time | | | | | | | 1 | | | | | | | | 2 | 4 | | | | 2 | 5 | 7 |
| Part-Time | | | | | | | | | | | | | | | | | | | | | | |
| First-Time Freshmen | | | | | | | | | | | | | | | | | | | | | | |
| Other Freshmen | | | | | | | | | | | | | | | | | | | | | | |
| Sophomores | | | | | | | | | | | | | | | | | | | | | | |
| Juniors | | | | | | | | | | | | | | 1 | | | | | | | 1 | 1 |
| Seniors | | | | | | | | | | | | | | | | | | | | | | |
| Special | | | | | | | | | | | | | | | | | | | | | | |
| Total Part-Time | | | | | | | | | | | | | | 1 | | | | | | | 1 | 1 |
| Total Undergraduate | | | | | | | 1 | | | | | | | 1 | 2 | 4 | | | | 2 | 6 | 8 |
| Total All Students | | | | | | | 1 | | | | | | | 1 | 2 | 4 | | | | 2 | 6 | 8 |

Figure 45: College of Architecture Delivery-Site Head Count: Fall 2006-2016

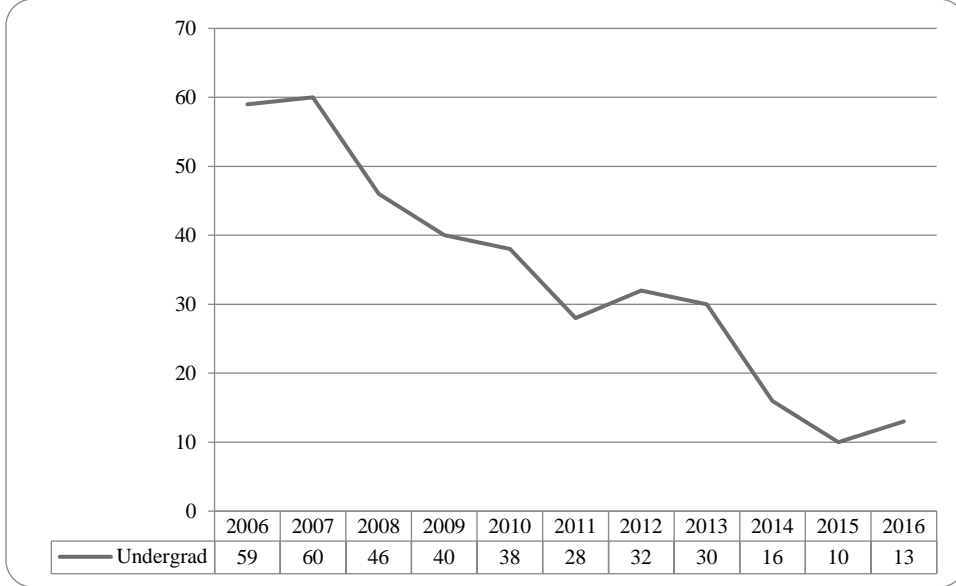


Figure 46: College of Architecture Delivery-Site Student Credit Hours: Fall 2006-2016

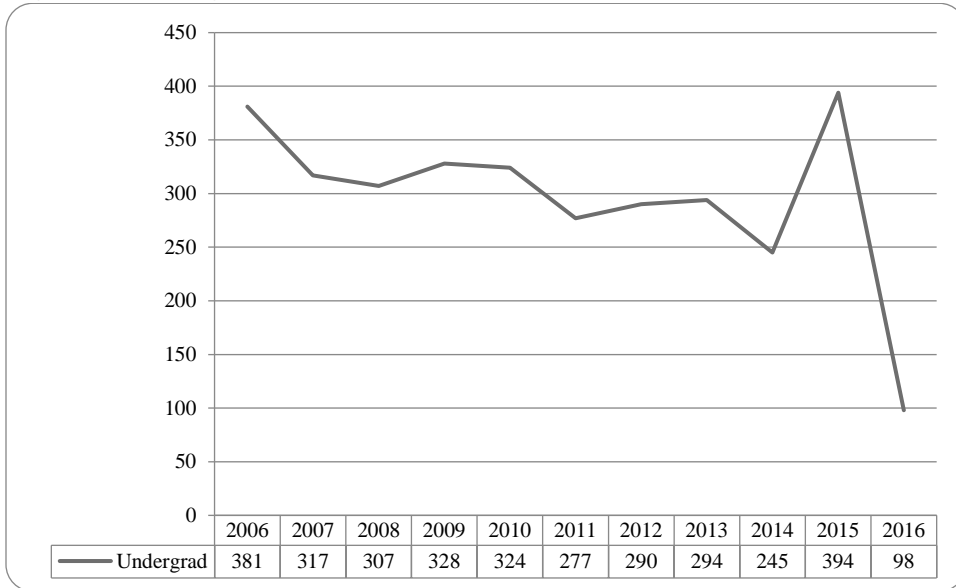


Figure 47: College of Architecture Delivery-Site Head Count by Ethnicity by Gender: Fall 2016

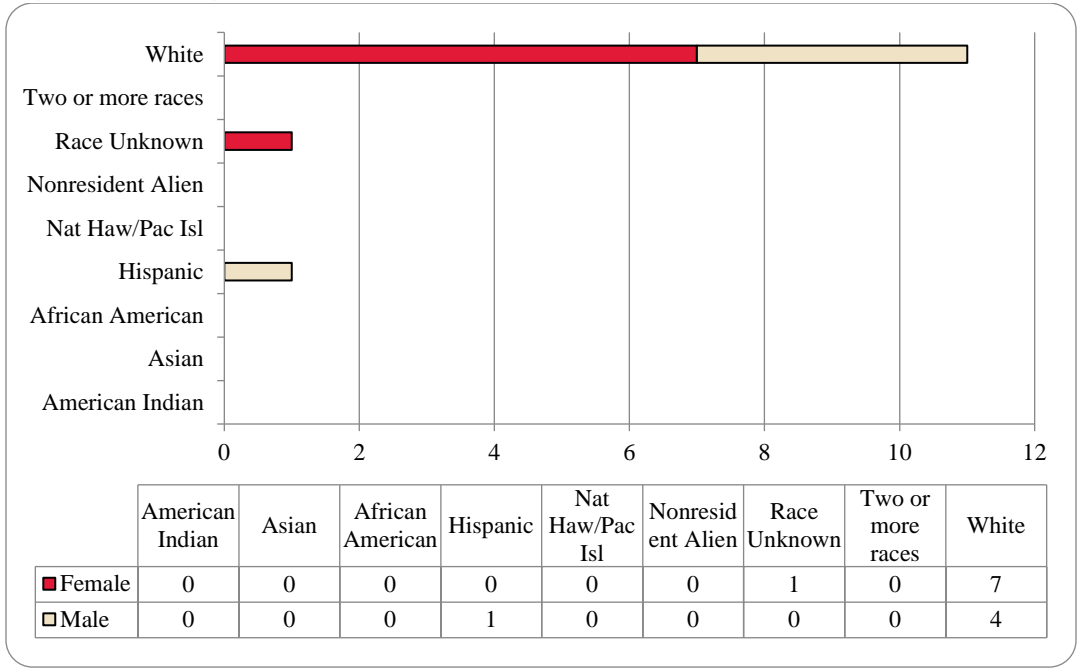


Table 18: College of Architecture Head Count Summary for Undergraduate Students by Full and Part-Time by Gender and Race Classification: Fall 2016

| | American Indian | | Asian | | African American | | Hispanics | | Nat Haw / Pac Isl | | Race Unknown | | Two or more races | | White | | Nonresident Alien | | Total | | | | |
|----------------------------|-----------------|---|-------|---|------------------|---|-----------|---|-------------------|---|--------------|---|-------------------|---|-------|---|-------------------|---|-------|---|-------|---|----|
| | F | M | F | M | F | M | F | M | F | M | F | M | F | M | F | M | F | M | F | M | Total | | |
| Undergraduate | | | | | | | | | | | | | | | | | | | | | | | |
| Full-Time | | | | | | | | | | | | | | | | | | | | | | | |
| First-Time Freshmen | | | | | | | | | | | | | | | 3 | 1 | | | | | 3 | 1 | 4 |
| Other Freshmen | | | | | | | | | | | | | | | | | | | | | | | |
| Sophomores | | | | | | | | | | | | | | | 2 | | | | | | 2 | | 2 |
| Juniors | | | | | | | | | | | | 1 | | | | | | | | | 1 | | 1 |
| Seniors | | | | | | | | | | | | | | | | | | | | | | | |
| Special | | | | | | | | | | | | | | | 1 | | | | | | 1 | | 1 |
| Total Full-Time | | | | | | | | | | | | 1 | | | 6 | 1 | | | | | 7 | 1 | 8 |
| Part-Time | | | | | | | | | | | | | | | | | | | | | | | |
| First-Time Freshmen | | | | | | | | | | | | | | | | | | | | | | | |
| Other Freshmen | | | | | | | | | | | | | | | | | | | | | | | |
| Sophomores | | | | | | | | | 1 | | | | | | | | 1 | | | | | 2 | 2 |
| Juniors | | | | | | | | | | | | | | | | | | | | | | | |
| Seniors | | | | | | | | | | | | | | | | | | | | | | | |
| Special | | | | | | | | | | | | | | | 1 | 2 | | | | | 1 | 2 | 3 |
| Total Part-Time | | | | | | | | | 1 | | | | | | 1 | 3 | | | | | 1 | 4 | 5 |
| Total Undergraduate | | | | | | | | | 1 | | | 1 | | | 7 | 4 | | | | | 8 | 5 | 13 |
| Total All Students | | | | | | | | | 1 | | | 1 | | | 7 | 4 | | | | | 8 | 5 | 13 |

Figure 48: College of Engineering Delivery-Site Head Count: Fall 2006-2016

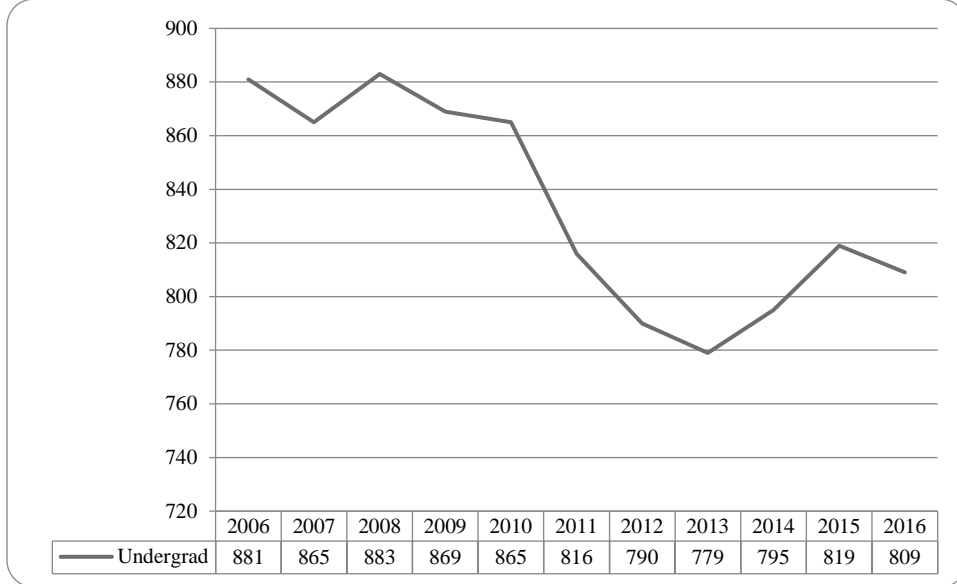


Figure 49: College of Engineering Delivery-Site Student Credit Hours: Fall 2006-2016

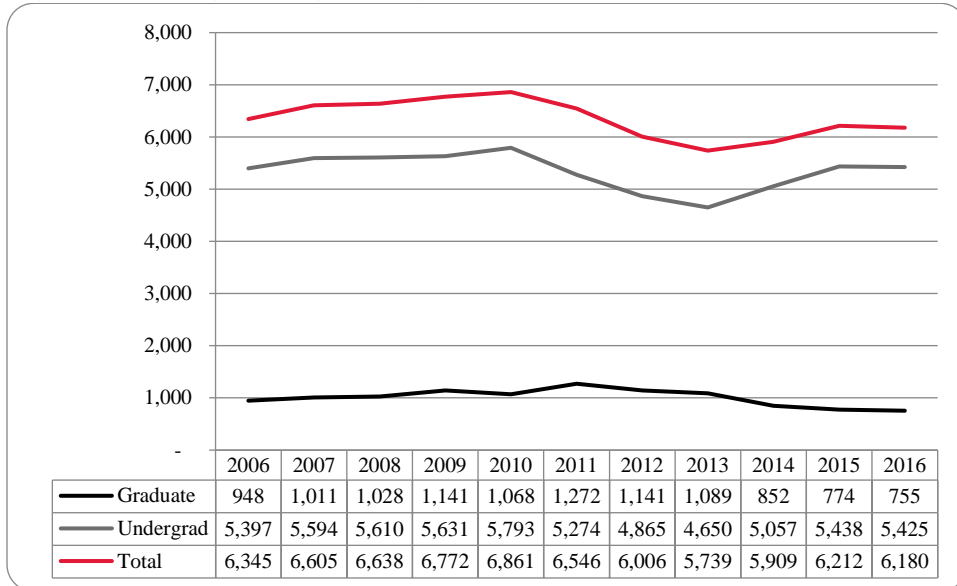


Figure 50: College of Engineering Delivery-Site Head Count by Ethnicity by Gender: Fall 2016

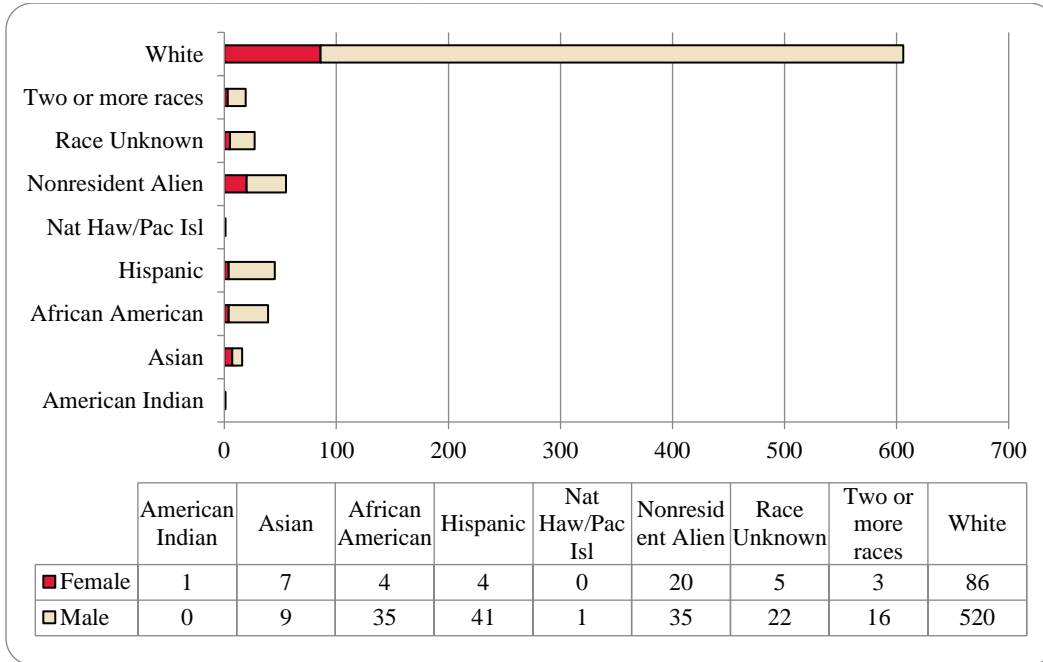


Table 19: College of Engineering Head Count Summary for Undergraduate Students by Full and Part-Time by Gender and Race Classification: Fall 2016

| | American Indian | | Asian | | African American | | Hispanics | | Nat Haw / Pac Isl | | Race Unknown | | Two or more races | | White | | Nonresident Alien | | Total | | | |
|----------------------------|-----------------|---|-------|---|------------------|----|-----------|----|-------------------|---|--------------|----|-------------------|----|-------|-----|-------------------|-----|-------|-----|-------|--|
| | F | M | F | M | F | M | F | M | F | M | F | M | F | M | F | M | F | M | F | M | Total | |
| Undergraduate | | | | | | | | | | | | | | | | | | | | | | |
| Full-Time | | | | | | | | | | | | | | | | | | | | | | |
| First-Time Freshmen | | | 1 | | | | 1 | 6 | | | 4 | 1 | 5 | 19 | 100 | | 3 | 22 | 118 | 140 | | |
| Other Freshmen | | | | | | | | 1 | | | 1 | | | 2 | 18 | 1 | 3 | 3 | 23 | 26 | | |
| Sophomores | | | 2 | 2 | | 4 | 6 | | | 2 | 5 | 2 | 19 | 98 | 5 | 7 | 28 | 124 | 152 | | | |
| Juniors | 1 | | 1 | 2 | 2 | 9 | 1 | 9 | | | 3 | 1 | 4 | 15 | 105 | 6 | 3 | 27 | 135 | 162 | | |
| Seniors | | | 1 | 2 | 1 | 11 | 8 | | | 1 | 5 | 1 | 2 | 24 | 122 | 7 | 16 | 35 | 166 | 201 | | |
| Special | | | | | | | 1 | | | | | | | 2 | 3 | | 1 | 2 | 5 | 7 | | |
| Total Full-Time | 1 | | 5 | 6 | 3 | 24 | 2 | 31 | | | 3 | 18 | 3 | 13 | 81 | 446 | 19 | 33 | 117 | 571 | 688 | |
| Part-Time | | | | | | | | | | | | | | | | | | | | | | |
| First-Time Freshmen | | | 1 | | | | | | | | | | | | 2 | | | 1 | 2 | 3 | | |
| Other Freshmen | | | | 1 | | | | | | | | | | | 5 | | | | 6 | 6 | | |
| Sophomores | | | | | | | 1 | | 1 | 1 | 1 | | 2 | 1 | 9 | | | 3 | 13 | 16 | | |
| Juniors | | | | 1 | 1 | 5 | 4 | | | | | | 1 | 2 | 16 | | | 3 | 27 | 30 | | |
| Seniors | | | 1 | | | 6 | 1 | 5 | | | 1 | 2 | | 1 | 34 | 1 | 2 | 5 | 49 | 54 | | |
| Special | | | | 1 | | | 1 | | | | 1 | | | 1 | 8 | | | 1 | 11 | 12 | | |
| Total Part-Time | | | 2 | 3 | 1 | 11 | 2 | 10 | 1 | 2 | 4 | | 3 | 5 | 74 | 1 | 2 | 13 | 108 | 121 | | |
| Total Undergraduate | 1 | | 7 | 9 | 4 | 35 | 4 | 41 | 1 | 5 | 22 | 3 | 16 | 86 | 520 | 20 | 35 | 130 | 679 | 809 | | |
| Total All Students | 1 | | 7 | 9 | 4 | 35 | 4 | 41 | 1 | 5 | 22 | 3 | 16 | 86 | 520 | 20 | 35 | 130 | 679 | 809 | | |

Figure 51: College of Education and Human Sciences Delivery-Site Head Count: Fall 2006-2016

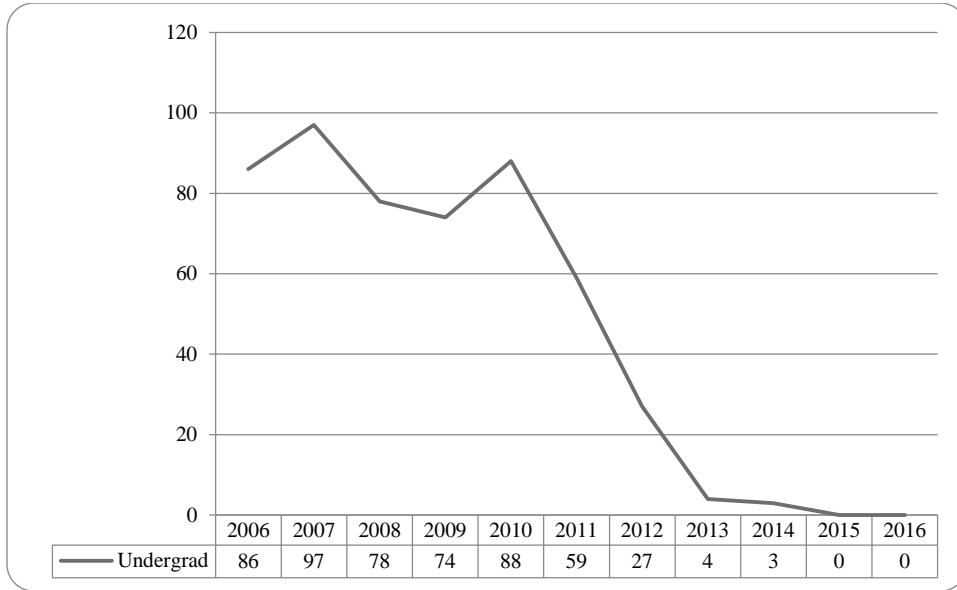
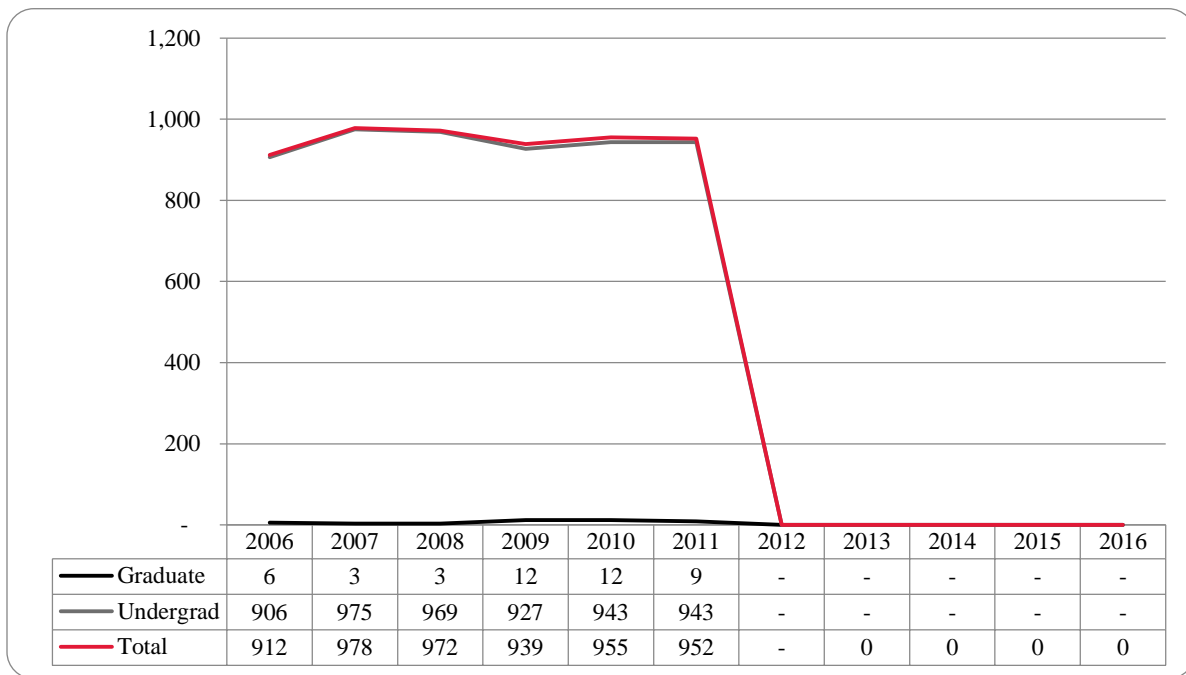


Figure 52: College of Education and Human Sciences Delivery-Site Student Credit Hours: Fall 2006-2016



Glossary

The total head count and student credit hours in this enrollment report are provided on both a delivery-site and administrative-site basis. Delivery-site includes enrollment in all courses taught at UNO regardless of “home” campus. This means that student credit hours are reported for courses in the colleges. Student enrollment is counted in the college declared by the student. Specifically, the delivery-site enrollment numbers include students in degree programs in the UNL Colleges of Agriculture, Architecture, Engineering and Technology, and Education and Human Science.

FIRST-TIME, Entering (freshmen) Student: Students attending any institution for the first time at the undergraduate level. For students entering the fall term, this includes students enrolled in the fall term who attended college for the first time in the prior summer term. Also included are students who entered with advanced standing, i.e. college credits earned before graduation from high school.

OTHER FRESHMEN: At the beginning of the current semester, undergraduate students who (1) are not First-Time Freshmen and (2) have less than 27 semester hours earned from all institutions of higher education attended.

SOPHOMORES: At the beginning of the current semester, undergraduate students who have at least 27, but not more than 57, semester hours earned from all institutions of higher education attended.

JUNIORS: At the beginning of the current semester, undergraduate students who have at least 58, but not more than 90, semester hours earned from all institutions of higher education attended.

SENIORS: At the beginning of the current semester, undergraduate students who have at least 91 semester hours earned from all institutions of higher education attended.

NON-DEGREE/INTER-CAMPUS/SPECIAL UNDERGRADUATES: Special undergraduates not pursuing a degree at UNO in various programs: Inter-Campus UNMC, UNK, UNL, and Non-Degree.

NON-DEGREE/INTER-CAMPUS/SPECIAL GRADUATE STUDENTS: Special graduate students not pursuing a degree at UNO in various programs: Engineering Transfer Program, Inter-Campus UNMC, UNK, UNL, Inter-Campus UNL Graduate Psychology and Non-Degree.

MASTERS/SPECIALIST: Graduate students pursuing a degree less than doctoral.

CERTIFICATE: These students are not enrolled in a degree program, but only a certificate.

DOCTORAL: Graduate students who have been accepted into a doctoral program.

FULL-TIME: In the current semester, undergraduate students enrolled for 12 or more semester hours, or graduate students enrolled for 9 or more semester hours.

PART-TIME: In the current semester, undergraduate students enrolled for less than 12 semester hours, or graduate students enrolled for less than 9 semester hours.

COOPERATIVE GRADUATE PROGRAM: Graduate students enrolled in Human Resources and Training or Global Information Operations offered cooperatively by two or more colleges.



OFFICE OF INSTITUTIONAL EFFECTIVENESS

www.unomaha.edu/oie/

402-554-2367 | 402-554-4896 (Fax)

T Hank Robinson, Director

Jenny Liu, Director Institutional Research

Daniel O'Dell, Applications Administrator

Andrew Jacobsen, Business Analyst

Thomas Walker, Business Analyst

Lindsey Bandow, Research Analyst II

Jeanie Gutheil-Bykerk, Research Analyst