

Fall 9-2012

Enrollment Report - Fall 2012

UNO Office of Institutional Effectiveness
University of Nebraska at Omaha

Follow this and additional works at: <https://digitalcommons.unomaha.edu/oieenrollment>



Part of the [Educational Assessment, Evaluation, and Research Commons](#), and the [Higher Education Commons](#)

Please take our feedback survey at: https://unomaha.az1.qualtrics.com/jfe/form/SV_8cchtFmpDyGfBLE

Recommended Citation

Office of Institutional Effectiveness, UNO, "Enrollment Report - Fall 2012" (2012). *Enrollment Reports*. 76. <https://digitalcommons.unomaha.edu/oieenrollment/76>

This Report is brought to you for free and open access by the Systems Intelligence and Data Analytics (SIDA) at DigitalCommons@UNO. It has been accepted for inclusion in Enrollment Reports by an authorized administrator of DigitalCommons@UNO. For more information, please contact unodigitalcommons@unomaha.edu.

Enrollment Profile Report

Fall 2012



UNIVERSITY OF
Nebraska
Omaha



University of Nebraska at Omaha

Enrollment Profile Report:

FALL 2012

Office of Institutional Effectiveness

Institutional Research

<http://www.unomaha.edu/oie/>

September, 2012

EXECUTIVE SUMMARY

This Enrollment Profile Report provides administrative- and delivery-site information on enrollment headcount and student credit hours, as well as the demographic characteristics of enrolled students. Delivery-site reporting counts all students, including those in UNL programs delivered at UNO, but excludes UNO programs delivered in Lincoln (CPACS programs). Administrative-site reporting counts students enrolled in UNO programs only (including the CPACS programs delivered in Lincoln).

The purpose of this profile is to provide the undergraduate and graduate enrollments and student credit hour information by college or equivalent academic unit, class, gender and ethnicity. A glossary at the end of the report provides a list of definitions for headings. All information in this report was produced from the fall 2012 Census Enrollment Snapshot file. The Census Snapshot date was August 30, 2012.

Administrative-Site Campus Summary

- Fall 2012 head count enrollment is 14,786, a 0.5% increase compared to the fall 2011 enrollment of 14,712 (see Figure 1).
- Fall 2012 undergraduate head count enrollment is 12,136, a slight increase compared to the fall 2011 enrollment of 11,964 (see Figure 5).
- Fall 2012 graduate head count enrollment is 2,650, a 3.5% decrease compared to the fall 2011 enrollment of 2,748 (see Figure 5).
- Fall 2012 student credit hours are 165,170, a 0.67% increase compared to the fall 2011 credit hours of 164,060 (see Figure 6).
- Fall 2012 undergraduate credit hours are 150,607, up from fall 2011 by 1.1% (see Figure 6).
- Fall 2012 graduate credit hours are 14,563, down from fall 2011 by 3.8% (see Figure 6)

Delivery-Site Campus Summary

- Fall 2012 head count enrollment is 15,394, a 0.19% increase compared to the fall 2011 enrollment of 15,364 (see Figure 1).
- Fall 2012 undergraduate head count enrollment is 12,730, a 1.0% increase compared to the fall 2011 enrollment of 12,602 (see Figure 2).
- Fall 2012 graduate head count enrollment is 2,664, a 3.5% decrease compared to the fall 2011 enrollment of 2,762 (see Figure 2).
- Fall 2012 student credit hours are 169,478, a 0.15% decrease compared to the fall 2011 credit hours of 169,730 (see Figure 3).
- Fall 2012 undergraduate credit hours are 153,579, up from fall 2011 by 0.24% (see Figure 3).
- Fall 2012 graduate credit hours are 15,899, down from fall 2011 by 3.7% (see Figure 3).

Contents

Executive Summary.....	i
List of Figures:	
Figure 1: Delivery-Site & Administrative-Site Head Count Enrollment: Fall 1990 – 2012	6
Figure 2: UNO Delivery-Site Head Count by Student Level: Fall 2003-2012.....	7
Figure 3: UNO Delivery-Site Student Credit Hours by Student Level: Fall 2003-2012	7
Figure 4: UNO Delivery-Site Head Count by Ethnicity by Gender: Fall 2012	8
Figure 5: UNO Administrative-Site Student Credit Hours Fall 2003-2012	10
Figure 6: UNO Administrative-Site Student Credit Hours Fall 2003-2012	10
Figure 7: UNO Administrative-Site Head Count by Ethnicity by Gender Fall 2012.....	11
Figure 8: College of Arts & Sciences Head Count Fall 2003-2012	13
Figure 9: College of Arts & Sciences Student Credit Hours Fall 2003-2012	13
Figure 10: College of Arts & Sciences Head Count by Ethnicity by Gender: Fall 2012	14
Figure 11: College of Business Administration Head Count: Fall 2003-2012.....	16
Figure 12: College of Business Administration Student Credit Hours: Fall 2003-2012.....	16
Figure 13: College of Business Administration Head Count by Ethnicity by Gender: Fall 2012	17
Figure 14: College of Communication, Fine Arts and Media Delivery-Site Head Count: Fall 2005-2012 ...	19
Figure 15: College of Communication, Fine Arts and Media Delivery-Site Student Credit Hours: Fall 2005-2012	19
Figure 16: College of Communication, Fine Arts and Media Delivery-Site Head Count by Ethnicity by Gender: Fall 2012.....	20
Figure 17: College of Communication, Fine Arts and Media: Administrative-Site Head Count: Fall 2005-2012	22
Figure 18: College of Communication, Fine Arts and Media: Administrative-Site Student Credit Hours: Fall 2005-2012	22
Figure 19: College of Communication, Fine Arts and Media: Administrative-Site Head Count by Ethnicity by Gender: Fall 2012.....	23
Figure 20: College of Education Head Count: Fall 2003-2012	25
Figure 21: College of Education Student Credit Hours: Fall 2003-2012	25
Figure 22: College of Education Head Count by Ethnicity by Gender: Fall 2012	26
Figure 23: College of Information Science & Technology Head Count: Fall 2003-2012	28
Figure 24: College of Information Science & Technology Student Credit Hours: Fall 2003-2012	28
Figure 25: College of Public Affairs & Community Service Delivery-Site Head Count: Fall 2003-2012	30

Figure 26: College of Public Affairs & Community Service Delivery-Site Student Credit Hours: Fall 2003-2012	30
Figure 27: College of Public Affairs & Community Service Delivery-Site Head Count by Ethnicity by Gender: Fall 2012.....	31
Figure 28: College of Public Affairs & Community Service Administrative-Site Head Count: Fall 2003-2012	33
Figure 29: College of Public Affairs & Community Service Administrative-Site Student Credit Hours: Fall 2003-2012.....	33
Figure 30: College of Public Affairs & Community Service Administrative-Site Head Count by Ethnicity by Gender: Fall 2012.....	34
Figure 31: College of CPACS, Division of Continuing Studies Head Count: Fall 2003-2012	36
Figure 32: College of CPACS, Division of Continuing Studies Head Count by Ethnicity by Gender	36
Figure 33: University Division Head Count: Fall 2003-2012.....	39
Figure 34: University Division Student Credit Hours: Fall 2003-2012.....	39
Figure 35: University Division Head Count by Ethnicity by Gender: Fall 2012	40
Figure 36: Non-Degree/Intercampus Special Undergraduate Students Head Count: Fall 2003-2012	42
Figure 37: Non-Degree/Intercampus Special Undergraduate Students Head Count by Ethnicity by Gender: Fall 2012.....	42
Figure 38: Non-Degree/InterCampus Special Graduate Students Head Count: Fall 2003-2012	44
Figure 39: Non-Degree/Intercampus Special Graduate Students Head Count by Ethnicity by Gender: Fall 2012	44
Figure 40: Other Honors and Library Hours Student Credit Hours by Level of Instruction: Fall 2003-2012	46
Figure 41: College of Agriculture Delivery-Site Head Count: Fall 2003-2012	47
Figure 42: College of Agriculture Delivery-Site Student Credit Hours: Fall 2003-2012	47
Figure 43: College of Agriculture Delivery-Site Head Count by Ethnicity by Gender: Fall 2012.....	48
Figure 44: College of Architecture Delivery-Site Head Count: Fall 2003-2012	50
Figure 45: College of Architecture Delivery-Site Student Credit Hours: Fall 2003-2012	50
Figure 46: College of Architecture Delivery-Site Head Count by Ethnicity by Gender: Fall 2012.....	51
Figure 47: College of Engineering Delivery-Site Head Count: Fall 2003-2012	53
Figure 48: College of Engineering Delivery-Site Student Credit Hours: Fall 2003-2012	53
Figure 49: College of Engineering Delivery-Site Head Count by Ethnicity by Gender: Fall 2012.....	54
Figure 50: College of Education and Human Sciences Delivery-Site Head Count: Fall 2003-2012.....	56
Figure 51: College of Education and Human Sciences Delivery-Site Student Credit Hours: Fall 2003-2012	56

Figure 52: College of Education and Human Sciences Delivery-Site Head Count by Ethnicity by Gender: Fall 2003-2012	57
---	----

List of Tables

Table 1: UNO Delivery-Site and Administrative-Site Head Count Enrollment and Comparison: Fall Semester, 2012	5
Table 2: Total UNO Delivery-Site Head Count Summary for Undergraduate and Graduate Students Full and Part-time by Gender and Race Classification: Fall 2012.....	9
Table 3: Total UNO Administrative-Site Head Count Summary for Undergraduate and Graduate Students by Full and Part-Time by Gender and Race Classification: Fall 2012.....	12
Table 4: College of Arts & Sciences Head Count Summary for Undergraduate and Graduate Students by Full and Part-Time by Gender and Race Classification: Fall 2012.....	15
Table 5: College of Business Administration Head Count Summary for Undergraduate and Graduate Students by Full and Part-Time by Gender and Race Classification: Fall 2012.....	18
Table 6: College of Communication, Fine Arts and Media Delivery-Site Head Count Summary for Undergraduate and Graduate Students by Full and Part-Time by Gender and Race Classification: Fall 2012	21
Table 7: College of Communication, Fine Arts and Media Administrative-Site Head Count Summary for Undergraduate and Graduate Students by Full and Part-Time by Gender and Race Classification: Fall 2012	24
Table 8: College of Education Head Count Summary for Undergraduate and Graduate Students by Full and Part-Time by Gender and Race Classification: Fall 2012	27
Table 9: College of Information Science and Technology Head Count Summary for Undergraduate and Graduate Summary by Full and Part-Time by Gender and Race Classification: Fall 2012	29
Table 10: College of Public Affairs and Community Service Delivery-Site Head Count Summary for Undergraduate and Graduate Students by Full and Part-Time by Gender and Race Classification: Fall 2012	32
Table 11: College of Public Affairs & Community Service Administrative-Site Head Count Summary for Undergraduate and Graduate Students by Full and Part-Time by Gender and Race Classification: Fall 2012	35
Table 12: College of CPACS Division of Continuing Studies Head Count Summary for Undergraduate Students by Full and Part-Time by Gender and Race Classification: Fall 2012.....	37
Table 13: Cooperative Graduate Program Head Count Summary for Graduate Students by Full and Part-Time by Gender and Race Classification: Fall 2012	38
Table 14: University Division Head Count Summary for Undergraduate Students by Full and Part-Time by Gender and Race Classification: Fall 2012.....	41
Table 15: Non-Degree/Intercampus Head Count Summary for Special Undergraduate Students by Full and Part-Time by Gender and Race Classification: Fall 2012	43

Table 16: Non-Degree/Intercampus Head Count Summary for Special Graduate Students by Full and Part-Time by Gender and Race Classification: Fall 2012	45
Table 17: College of Agriculture Head Count Summary for Undergraduate Students by Full and Part-Time by Gender and Race Classification: Fall 2012	49
Table 18: College of Architecture Head Count Summary for Undergraduate Students by Full and Part-Time by Gender and Race Classification: Fall 2012	52
Table 19: College of Engineering Head Count Summary for Undergraduate Students by Full and Part-Time by Gender and Race Classification: Fall 2012	55
Table 20: College of Education and Human Sciences Head Count Summary for Undergraduate Students by Full and Part-Time by Gender and Race Classification: Fall 2012.....	58
GLOSSARY.....	59

Table 1: UNO Delivery-Site and Administrative-Site Head Count Enrollment and Comparison: Fall Semester, 2012

	Fall 2012		Fall 2011	Fall 2011-12 Administrative-Site	
	Delivery-Site	Administrative-Site	Administrative-Site	Numerical Change	Percent Change
UNO:					
<i>Undergraduate</i>					
Arts & Science	3,708	3,708	3,669	39	1.1%
Business Administration	1,835	1,835	1,845	-10	-0.5%
Communication, Fine Arts & Media	1,098	1,098	1,112	-14	-1.3%
Education	1,576	1,576	1,543	33	2.1%
Information Science and Technology	668	668	597	71	11.9%
Public Affairs & Community Services	659	931	875	56	6.4%
Division of Continuing Studies	1,339	1,339	1,236	103	8.3%
Sub-total CPACS including Cont. Studies	1,998	2,270	2,111	159	7.5%
Non-Degree	313	313	300	13	4.3%
University Division	668	668	787	-119	-15.1%
Total Undergraduate	11,864	12,136	11,964	172	1.4%
<i>Graduate</i>					
Arts & Science	385	385	414	-29	-7.0%
Business Administration	414	414	438	-24	-5.5%
Communication, Fine Arts & Media	110	96	105	-9	-8.6%
Education	708	708	729	-21	-2.9%
Information Science and Technology	250	250	236	14	5.9%
Public Affairs & Community Services	448	448	452	-4	-0.9%
New Cooperative Graduate Programs	4	4	4	0	0.0%
Undeclared	345	345	370	-25	-6.8%
Total Graduate	2,664	2,650	2,748	-98	-3.6%
<i>UNO Administrative-Site Total</i>		14,786	14,712	74	0.5%
UNL:	Fall 2012		Fall 2011	Numerical Change	Percent Change
Agriculture	17		16		
Architecture	32		28		
Engineering & Technology	790		816		
Education and Human Science	27		59		
Total UNL in Omaha	866		919	-53	-5.8%
	Fall 2012		Fall 2011	Numerical Change	Percent Change
<i>UNO Delivery-Site Total</i>	15,394		15,631	-237	-1.5%

Figure 1: Delivery-Site & Administrative-Site Head Count Enrollment: Fall 1990 – 2012

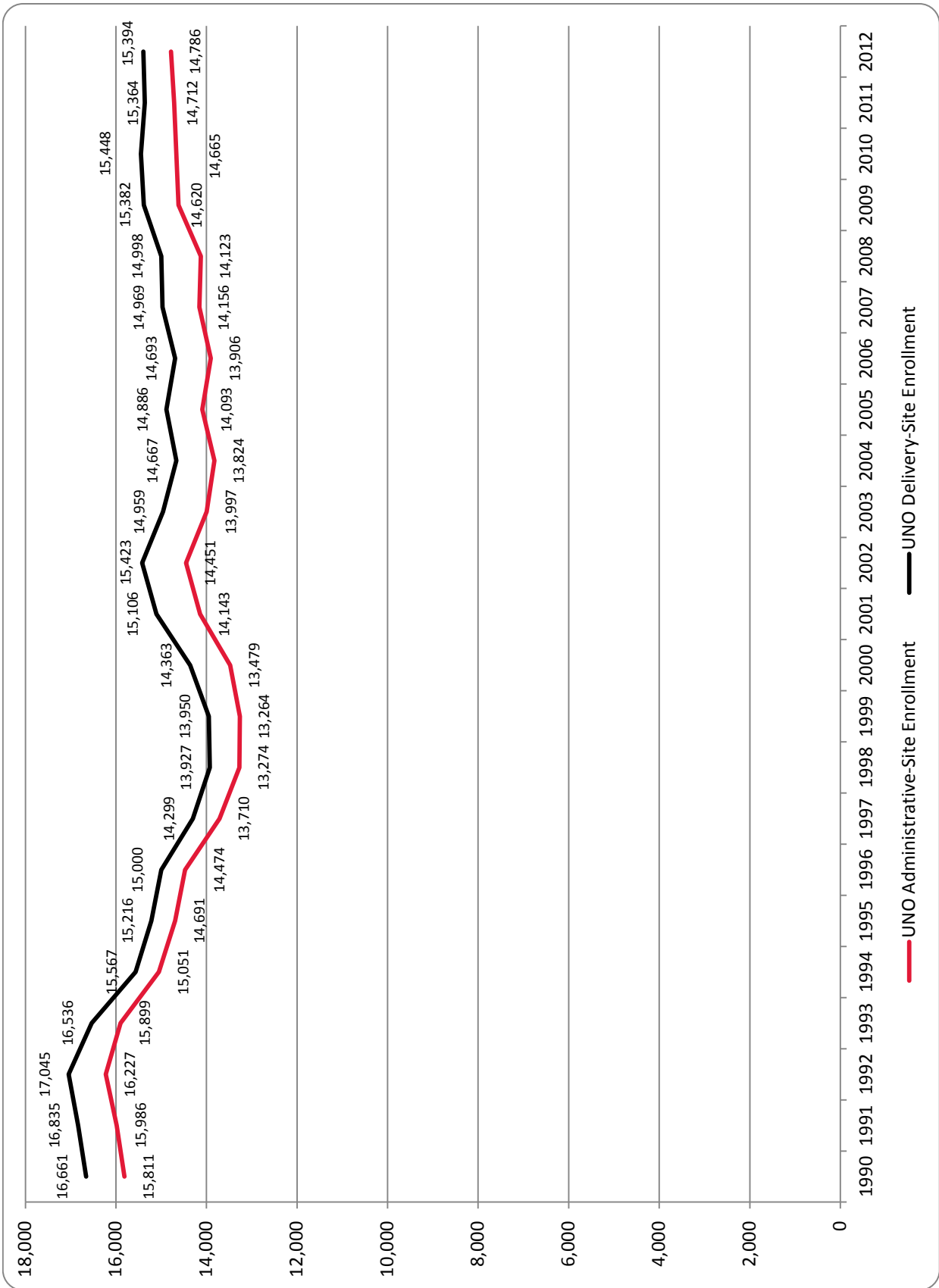


Figure 2: UNO Delivery-Site Head Count by Student Level: Fall 2003-2012

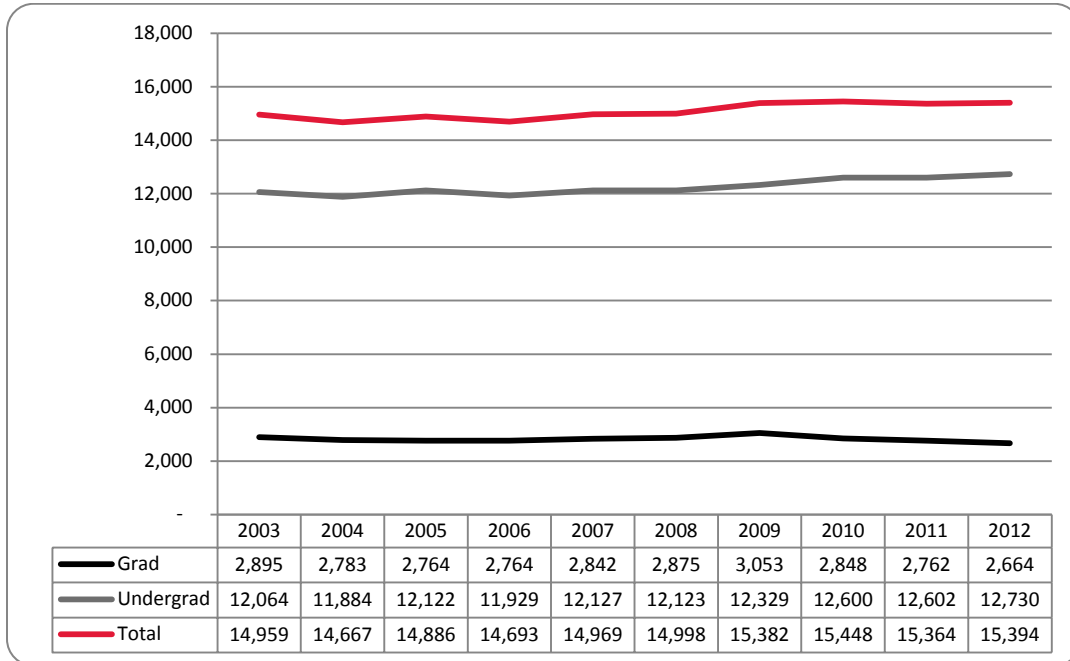


Figure 3: UNO Delivery-Site Student Credit Hours by Student Level: Fall 2003-2012

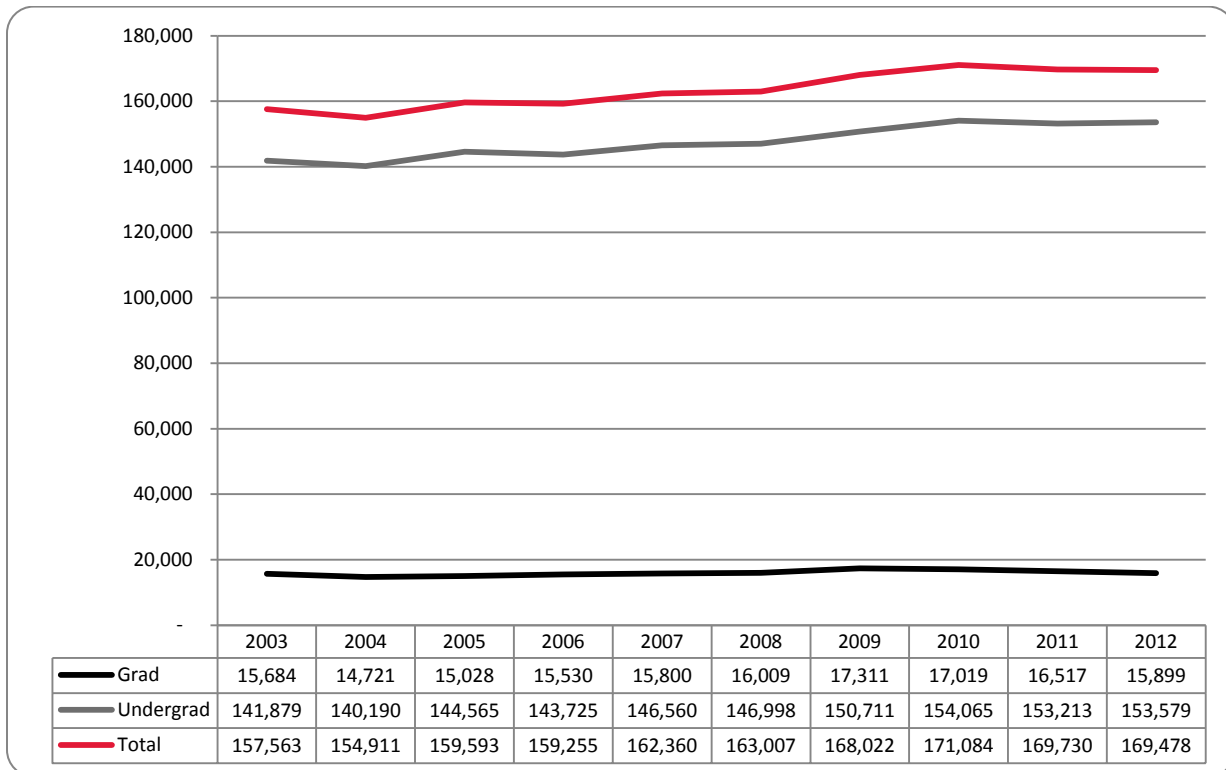


Figure 4: UNO Delivery-Site Head Count by Ethnicity by Gender: Fall 2012

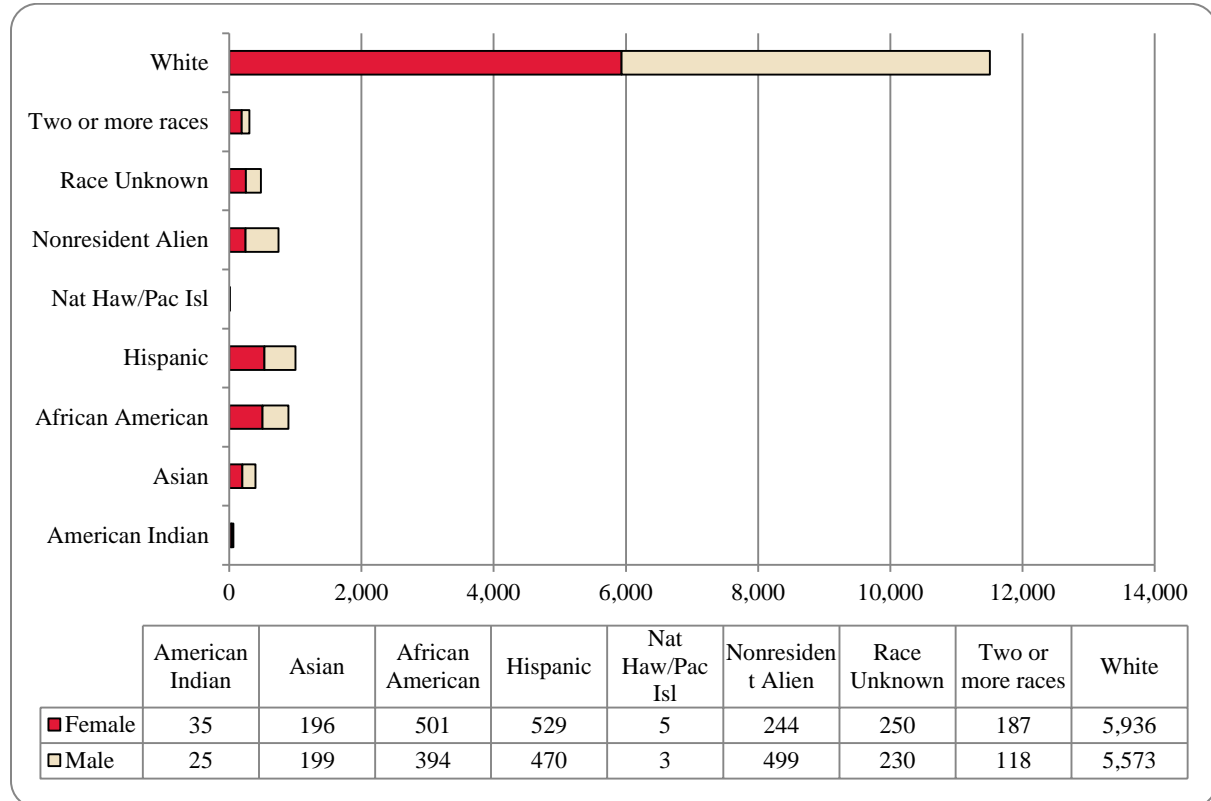


Table 2: Total UNO Delivery-Site Head Count Summary for Undergraduate and Graduate Students Full and Part-time by Gender and Race Classification: Fall 2012

	American Indian		Asian		African American		Hispanics		Nat Haw / Pac Isl		Race Unknown		Two or more races		White		Nonresident Alien		Total		
	F	M	F	M	F	M	F	M	F	M	F	M	F	M	F	M	F	M	F	M	Total
Undergraduate																					
Full-Time																					
First-Time Freshmen	1	1	36	37	61	53	104	89	1	1	8	9	51	28	647	636	8	36	917	890	1,807
Other Freshmen	4	3	8	8	29	29	36	54	1		16	15	14	13	246	311	40	96	394	529	923
Sophomores	3	3	26	27	84	52	113	83			56	54	35	28	837	800	13	42	1,167	1,089	2,256
Juniors	4	6	31	28	83	56	88	57	1		22	24	20	16	913	848	26	51	1,187	1,087	2,274
Seniors	10	4	31	25	72	63	68	57	1		51	41	15	6	968	966	20	43	1,236	1,205	2,441
Special			2	1	4	4	4	3			3	2	2	2	58	73	6	6	79	91	170
Total Full-Time	22	17	134	126	333	257	413	343	3	2	156	145	137	93	3,669	3,634	113	274	4,980	4,891	9,871
Part-Time																					
First-Time Freshmen			2	1	5	2	4	5			1	1	2	2	15	31	2	6	31	48	79
Other Freshmen	1	1	3	10	22	17	14	11			4	7	6	3	99	122	4	12	153	183	336
Sophomores	1		5	4	13	23	14	19			14	10	9	2	167	168	2	11	225	237	462
Juniors	1		6	9	30	23	16	13			10	12	4	1	231	245	1	8	299	311	610
Seniors	2	5	15	9	41	37	22	25			26	29	5	5	365	403	7	11	483	524	1,007
Special	1	1	6	3	6	9	6	5	2		3	6	4	4	153	145	9	2	190	175	365
Total Part-Time	6	7	37	36	117	111	76	78	2	1	58	64	30	17	1,030	1,114	25	50	1,381	1,478	2,859
Total Undergraduates	28	24	171	162	450	368	489	421	5	3	214	209	167	110	4,699	4,748	138	324	6,361	6,369	12,730
Graduate																					
Full-Time																					
Certificate																					
Masters	2		6	9	13	8	12	13			6	3	4	2	286	148	54	79	383	262	645
Doctoral					1	1	1	2							9	10	4	12	15	25	40
Special Graduate				2	1	1	1	1							12	40	12	41	24	85	109
Total Full-Time	2		6	11	14	10	13	16			6	3	4	2	309	198	70	132	424	372	796
Part-Time																					
Certificate																					
Masters	4	1	14	20	27	11	21	28			1	14	12	6	689	502	20	24	813	606	1,419
Doctoral			1	1	2	1	1	1			1	1	1		49	38	4	8	57	49	106
Special Graduate	1		4	4	8	2	5	4			2	3	4		170	71	10	11	204	95	299
Total Part-Time	5	1	19	26	37	16	27	33			30	18	16	6	928	627	36	43	1,098	770	1,868
Total Graduate	7	1	25	37	51	26	40	49			36	21	20	8	1,237	825	106	175	1,522	1,142	2,664
Total All Students	35	25	196	199	501	394	529	470	5	3	250	230	187	118	5,936	5,573	244	499	7,883	7,511	15,394

Figure 5: UNO Administrative-Site Student Credit Hours Fall 2003-2012

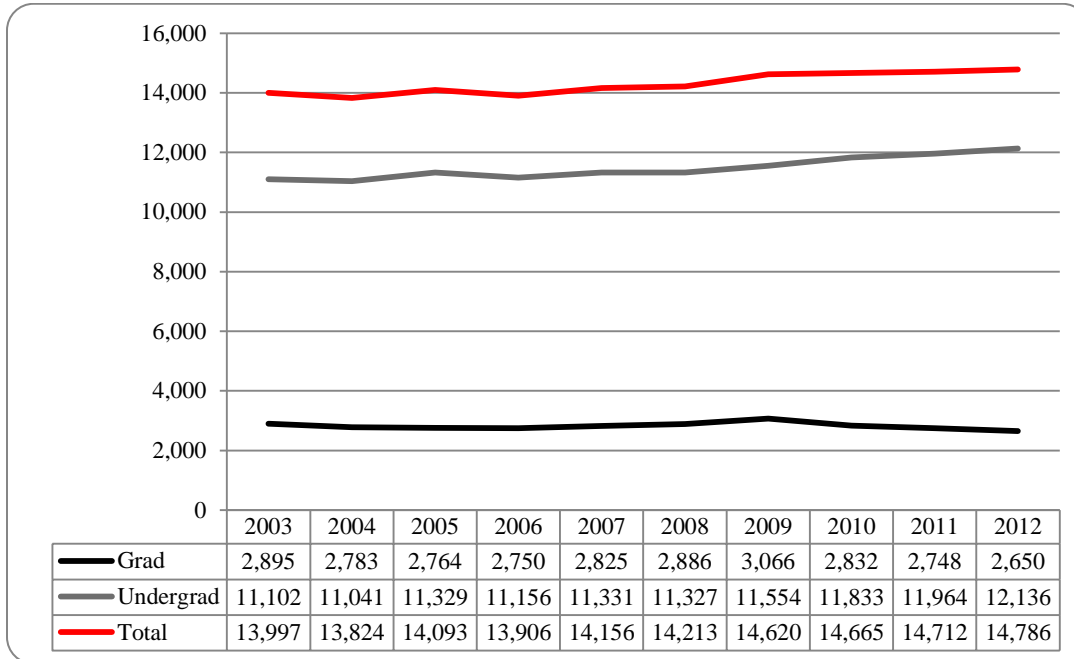


Figure 6: UNO Administrative-Site Student Credit Hours Fall 2003-2012

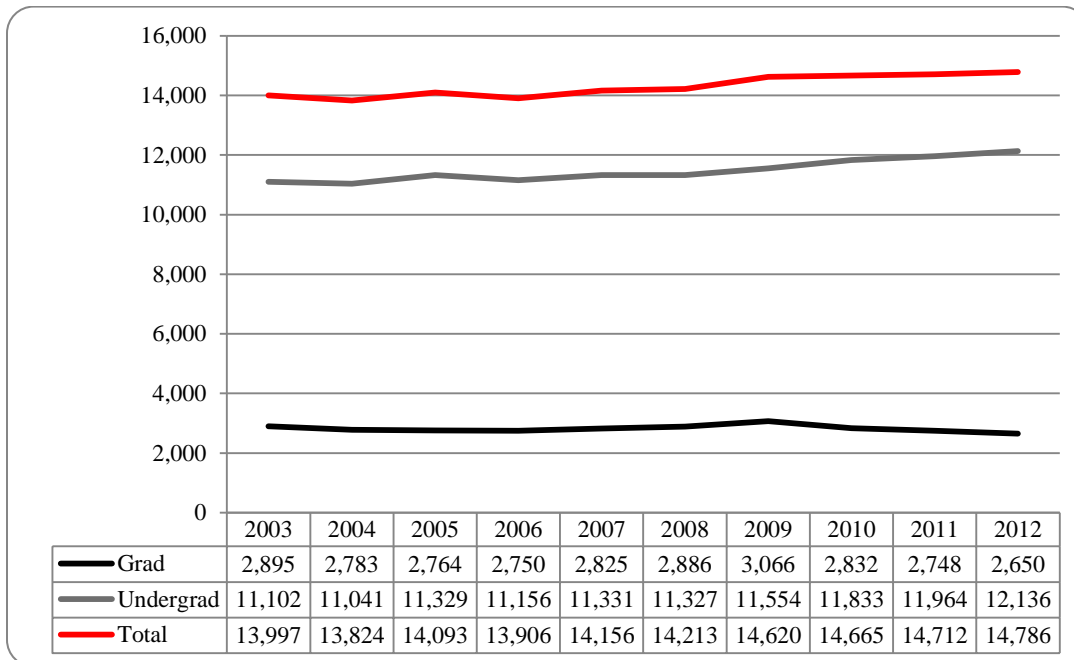
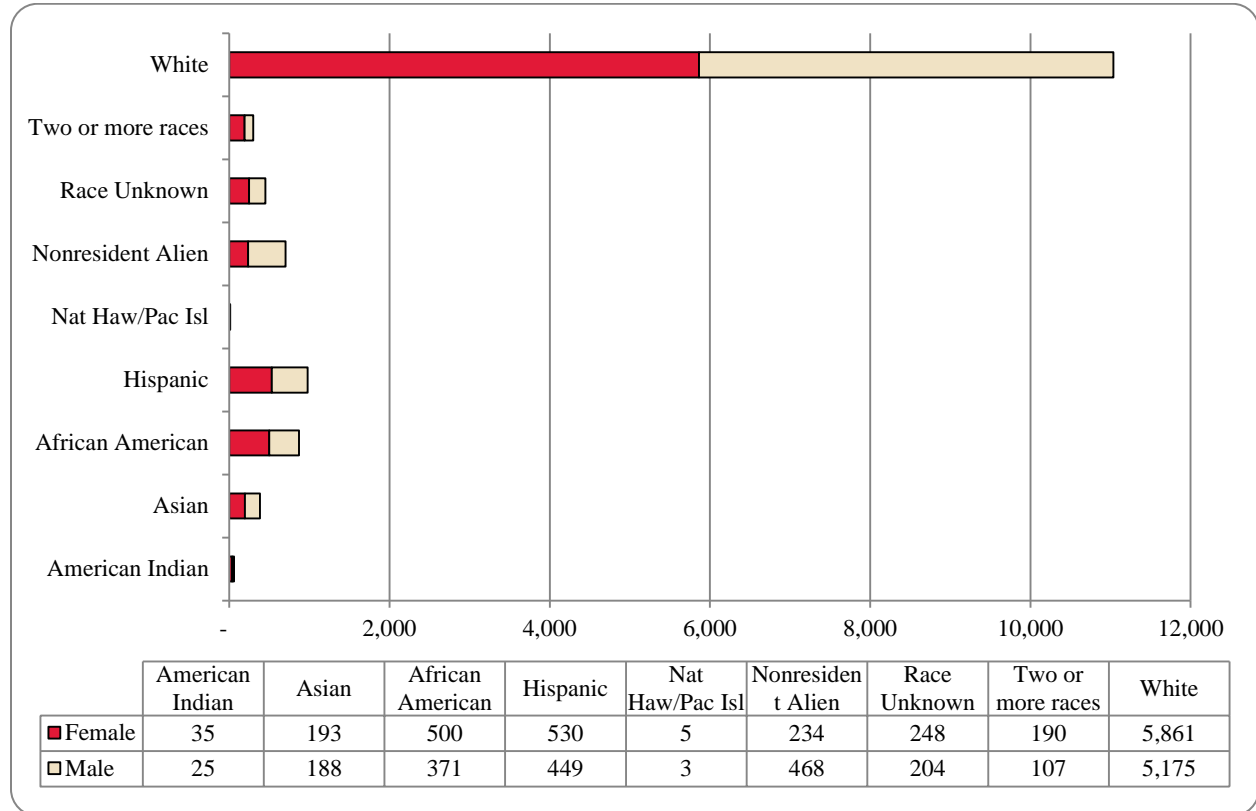


Figure 7: UNO Administrative-Site Head Count by Ethnicity by Gender Fall 2012



**Table 3: Total UNO Administrative-Site Head Count Summary for Undergraduate and Graduate Students by Full and Part-Time by Gender and Race
Classification: Fall 2012**

	American Indian		Asian		African American		Hispanics		Nat Haw / Pac Isl		Race Unknown		Two or more races		White		Nonresident Alien		Total		
	F	M	F	M	F	M	F	M	F	M	F	M	F	M	F	M	F	M	F	M	Total
Undergraduate																					
Full-Time																					
First-Time Freshmen	1	1	35	36	61	52	104	82	1	1	8	6	50	24	620	528	8	30	888	760	1,648
Other Freshmen	4	3	8	7	29	30	35	52	1		16	14	14	12	244	297	35	85	386	500	886
Sophomores	3	3	25	27	83	49	111	76			55	43	36	25	815	697	11	39	1,139	959	2,098
Juniors	4	6	31	24	82	53	86	52	1	1	21	22	19	12	893	741	26	49	1,162	960	2,122
Seniors	10	4	30	23	69	53	66	49	1		50	36	15	6	943	833	20	37	1,204	1,041	2,245
Special			2	1	4	4	4	2			3	1	2	2	56	57	5	5	76	72	148
Total Full-Time	22	17	131	118	328	241	406	313	3	2	153	122	136	81	3,571	3,153	105	245	4,855	4,292	9,147
Part-Time																					
First-Time Freshmen			2		6	2	4	7		1	1	1	2	3	25	54	2	6	42	74	116
Other Freshmen	1	1	3	10	24	18	15	13			4	7	7	2	102	122	4	13	160	186	346
Sophomores	1	5	5	3	14	24	19	20			15	11	9	2	177	187	1	10	241	257	498
Juniors	1	6	6	9	31	20	18	15			10	11	6	2	241	289	1	8	314	354	668
Seniors	2	5	15	8	41	32	22	27			27	26	6	5	371	411	7	10	491	524	1,015
Special	1	1	6	3	6	8	6	5	2		3	5	4	4	146	136	9	1	183	163	346
Total Part-Time	6	7	37	33	122	104	84	87	2	1	60	61	34	18	1,062	1,199	24	48	1,431	1,558	2,989
Total Undergraduates	28	24	168	151	450	345	490	400	5	3	213	183	170	99	4,633	4,352	129	293	6,286	5,850	12,136
Graduate																					
Full-Time																					
Certificate																					
Masters	2		6	9	12	8	12	13			5	3	4	2	277	146	53	79	371	260	631
Doctoral					1	1	1	2							9	10	4	12	15	25	40
Special Graduate				2		1	1	1							12	40	12	41	24	85	109
Total Full-Time	2		6	11	13	10	13	16			5	3	4	2	300	196	69	132	412	370	782
Part-Time																					
Certificate						2	1				1				20	16	2		24	20	44
Masters	4	1	14	20	27	11	21	28			26	14	12	6	689	502	20	24	813	606	1,419
Doctoral			1	1	2	1	1	1			1	1			49	38	4	8	57	49	106
Special Graduate	1		4	4	8	2	5	4			2	3	4		170	71	10	11	204	95	299
Total Part-Time	5	1	19	26	37	16	27	33			30	18	16	6	928	627	36	43	1,098	770	1,868
Total Graduates	7	1	25	37	50	26	40	49			35	21	20	8	1,228	823	105	175	1,510	1,140	2,650
Total All Students	35	25	193	188	500	371	530	449	5	3	248	204	190	107	5,861	5,175	234	468	7,796	6,990	14,786

Figure 8: College of Arts & Sciences Head Count Fall 2003-2012

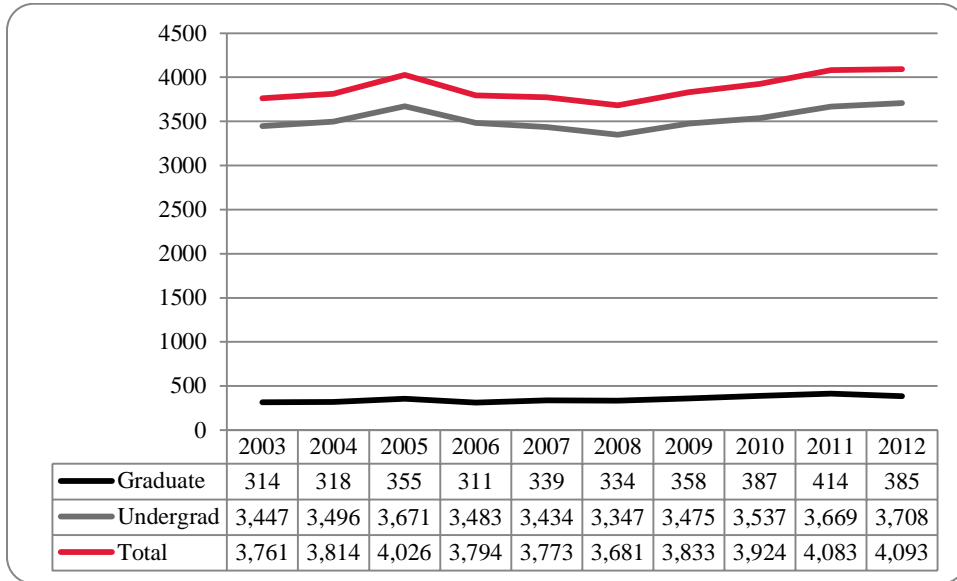


Figure 9: College of Arts & Sciences Student Credit Hours Fall 2003-2012

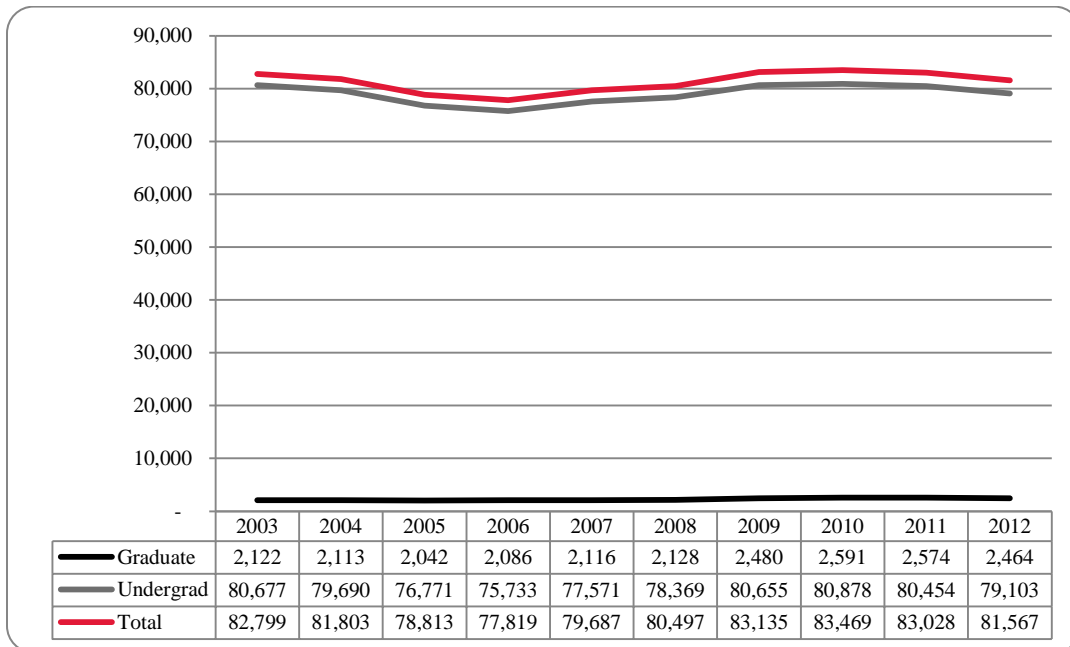
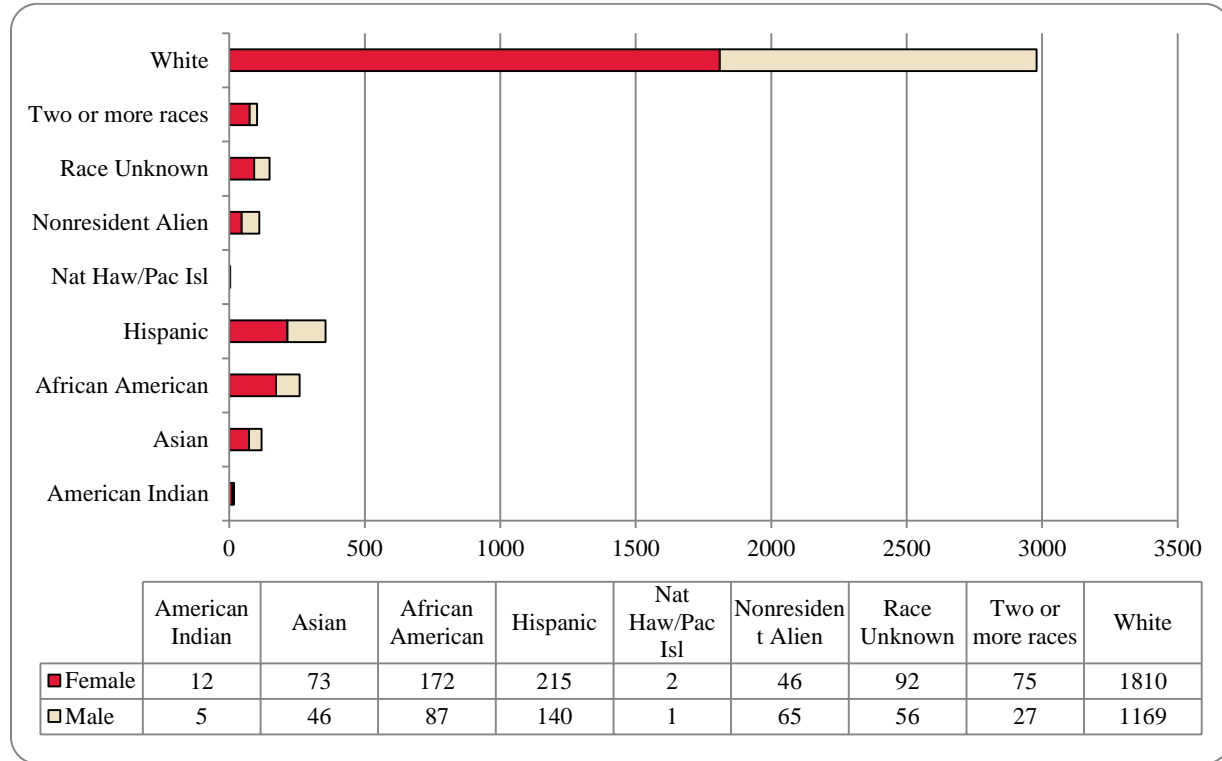


Figure 10: College of Arts & Sciences Head Count by Ethnicity by Gender: Fall 2012



**Table 4: College of Arts & Sciences Head Count Summary for Undergraduate and Graduate Students by Full and Part-Time by Gender and Race
Classification: Fall 2012**

	American Indian		Asian		African American		Hispanics		Nat Haw / Pac Isl		Race Unknown		Two or more races		White		Nonresident Alien		Total			
	F	M	F	M	F	M	F	M	F	M	F	M	F	M	F	M	F	M	F	M	Total	
Undergraduate																						
Full-Time																						
First-Time Freshmen	1	1	23	8	36	19	23	59	23	1	3	3	28	4	288	138	4	6	443	202	645	
Other Freshmen	3		3	1	11	7	15	18	1		4	2	5	2	93	61	6	16	141	107	248	
Sophomores	2		16	10	37	11	49	26			25	16	20	11	356	192	2	11	507	277	784	
Juniors	1		8	11	34	11	38	22	1		10	2	4	5	303	199	9	4	406	256	662	
Seniors	3	1	8	7	20	15	21	19			21	8	6	1	258	202	8	13	345	266	611	
Special					1	1	2						1		15	10	1	3	19	17	36	
Total Full-Time	9	3	58	38	139	65	184	108	2	1	63	31	63	24	1,313	802	30	53	1,861	1,125	2,986	
Part-Time																						
First-Time Freshmen			1					2					1		3	9	1	3	6	14	20	
Other Freshmen			1	2	6	1	2	3				2	2		19	19	1	1	31	28	59	
Sophomores			2		2	7	9	5			7	2	2		57	33	1	7	79	48	127	
Juniors	1		3	3	11	5	6	1			3	5	2		82	52	1	1	109	67	176	
Seniors		2	6	1	6	6	5	8			12	8	1	1	106	93	4	1	140	120	260	
Special					2	2	2				2	2	1		36	29	3		46	34	80	
Total Part-Time	1	2	13	6	27	19	24	21			24	19	9	2	303	235	10	7	411	311	722	
Total Undergraduate	10	5	71	44	166	84	208	129	2	1	87	50	72	26	1,616	1,037	40	60	2,272	1,436	3,708	
Graduate																						
Full-Time																						
Certificate																						
Masters	1			1	1	1	5	1			1	1			62	33	5	3	70	44	114	
Doctoral							1	1							4				5	1	6	
Special Graduate																						
Total Full-Time	1			1	1	1	2	6			1	1			67	33	5	3	76	45	121	
Part-Time																						
Certificate																						
Masters	1		2	1	5	2	5	5			4	5	3	1	114	92	1	1	135	107	242	
Doctoral					1										8	5		1	9	6	15	
Special Graduate																						
Total Part-Time	1		2	1	6	2	5	5			4	5	3	1	127	99	1	2	149	115	264	
Total Graduate	2		2	2	6	3	7	11			5	6	3	1	194	132	6	5	225	160	385	
Total All Students	12	5	73	46	172	87	215	140	2	1	92	56	75	27	1,810	1,169	46	65	2,497	1,596	4,093	

Figure 11: College of Business Administration Head Count: Fall 2003-2012

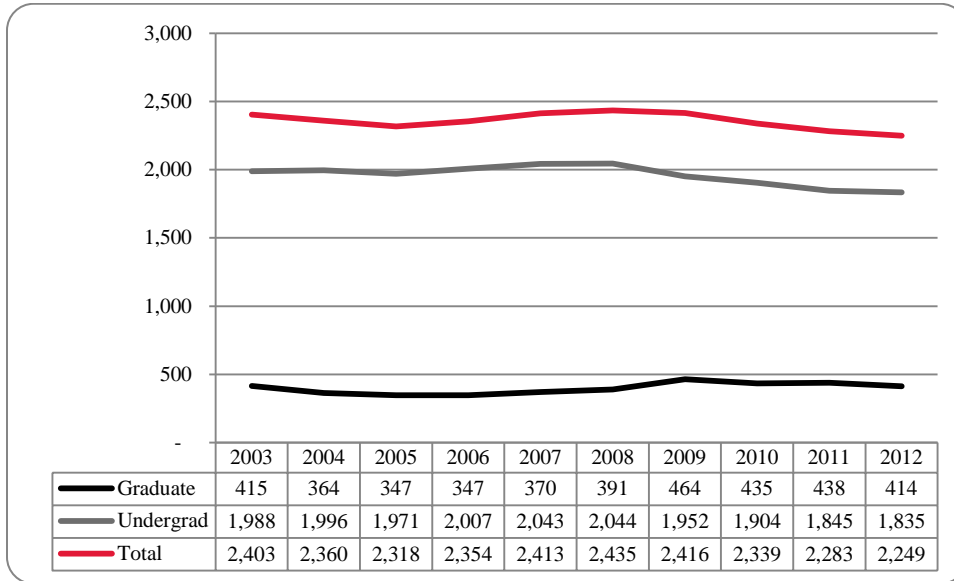


Figure 12: College of Business Administration Student Credit Hours: Fall 2003-2012

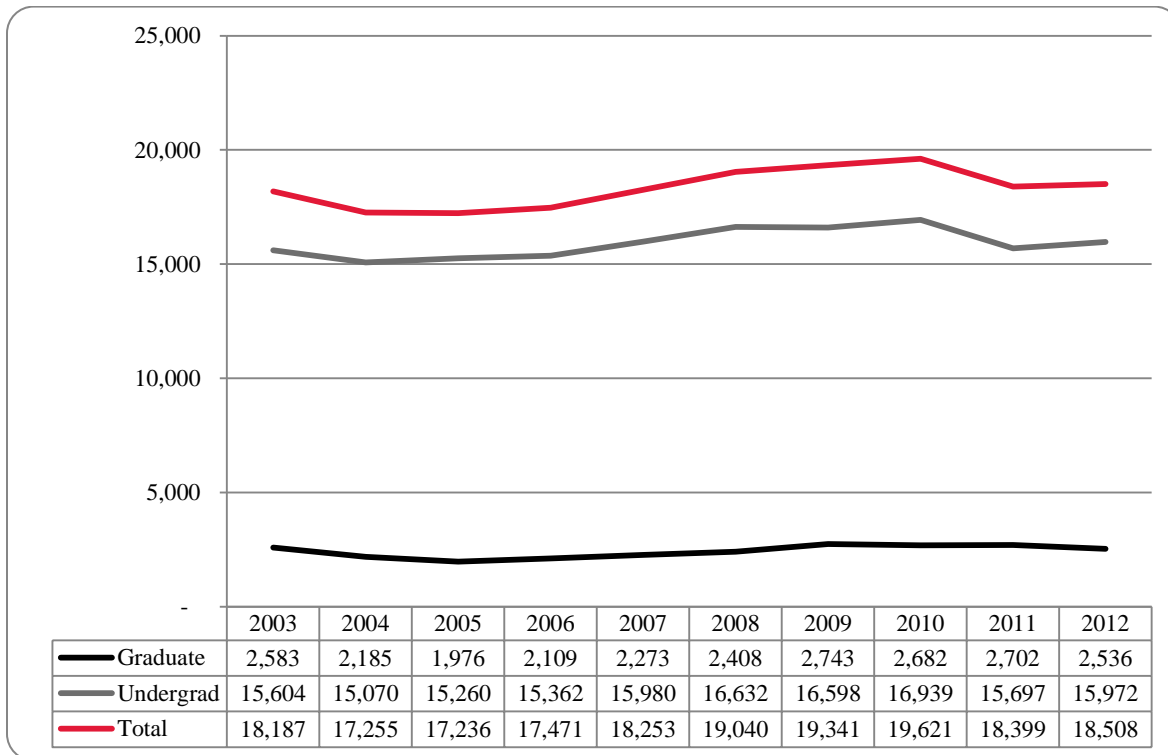


Figure 13: College of Business Administration Head Count by Ethnicity by Gender: Fall 2012

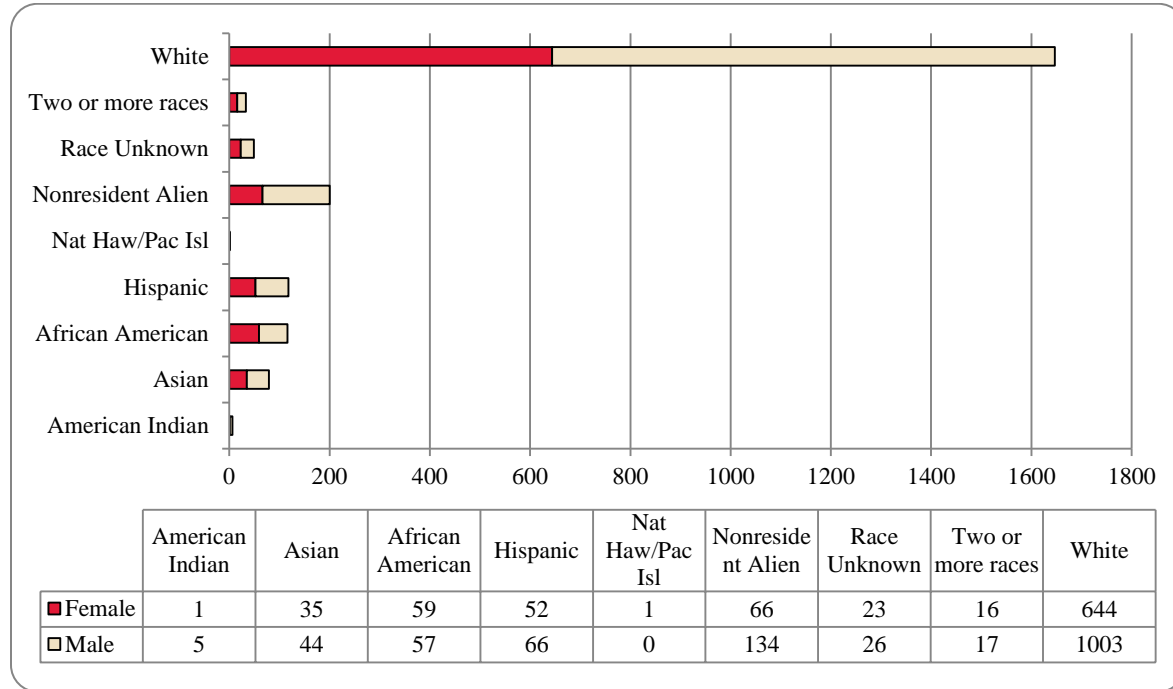


Table 5: College of Business Administration Head Count Summary for Undergraduate and Graduate Students by Full and Part-Time by Gender and Race Classification: Fall 2012

	American Indian		Asian		African American		Hispanics		Nat Haw / Pac Isl		Race Unknown		Two or more races		White		Nonresident Alien		Total			
	F	M	F	M	F	M	F	M	F	M	F	M	F	M	F	M	F	M	F	M	Total	
Undergraduate																						
Full-Time																						
First-Time Freshmen					7	6	5	4	14			2	1	1	5	64	83	3	12	80	127	207
Other Freshmen			2	2	2	3	4	1	6			1	2	1	1	17	40	3	18	28	73	101
Sophomores	1	2	4	4	11	6	13	13			4	6	6	4	87	118	8	18	131	170	301	
Juniors	1	10	7	13	8	11	6			3	6	4			119	171	6	24	166	223	389	
Seniors	2	6	3	9	9	10	6			4	4	2			116	185	11	9	158	218	376	
Special		1					2								2	12	1	1	5	13	18	
Total Full-Time	4	21	23	42	32	41	45			14	19	14	10	14	405	609	31	82	568	824	1,392	
Part-Time																						
First-Time Freshmen			1	1											2	5	1	1	5	6	11	
Other Freshmen			1	1	2	1	3								6	8	1	7	9	21	30	
Sophomores			1	1	4	2	4			1	1		1	1	19	26	1	6	24	42	66	
Juniors			2	1	3	3				2	2				40	64	3	4	45	77	122	
Seniors	1	2	4	8	8	4	1			2	3	1	1	1	56	66	2	4	76	87	163	
Special		1	2	1	3					1	1				21	20			26	25	51	
Total Part-Time	1	1	8	7	12	20	7	11		1	6	5	1	4	144	189	5	21	185	258	443	
Total Undergraduate	1	5	29	30	54	52	48	56		1	20	24	15	14	549	798	36	103	753	1,082	1,835	
Graduate																						
Full-Time																						
Certificate															1				1		1	
Masters			3	6	3	3	2	2					1		19	40	24	28	52	79	131	
Doctoral																						
Special Graduate																						
Total Full-Time			3	6	3	3	2	2					1		20	40	24	28	53	79	132	
Part-Time																						
Certificate																						
Masters			3	8	2	2	2	8			3	2		3	74	164	5	3	89	190	279	
Doctoral																						
Special Graduate															1				1		1	
Total Part-Time			3	8	2	2	2	8			3	2		3	75	165	6	3	91	191	282	
Total Graduate			6	14	5	5	4	10			3	2	1	3	95	205	30	31	144	270	414	
Total All Students	1	5	35	44	59	57	52	66		1	23	26	16	17	644	1,003	66	134	897	1,352	2,249	

Figure 14: College of Communication, Fine Arts and Media Delivery-Site Head Count: Fall 2005-2012

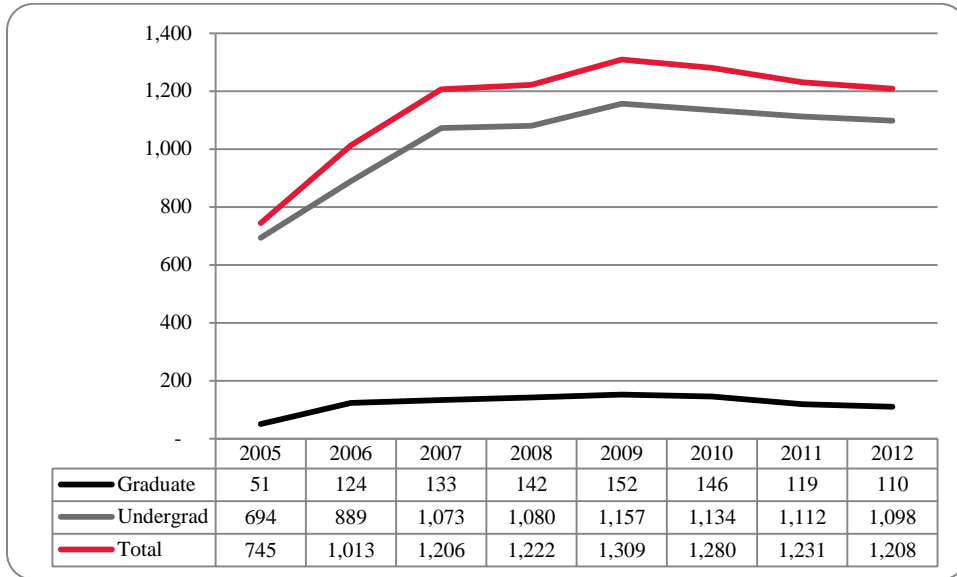


Figure 15: College of Communication, Fine Arts and Media Delivery-Site Student Credit Hours: Fall 2005-2012

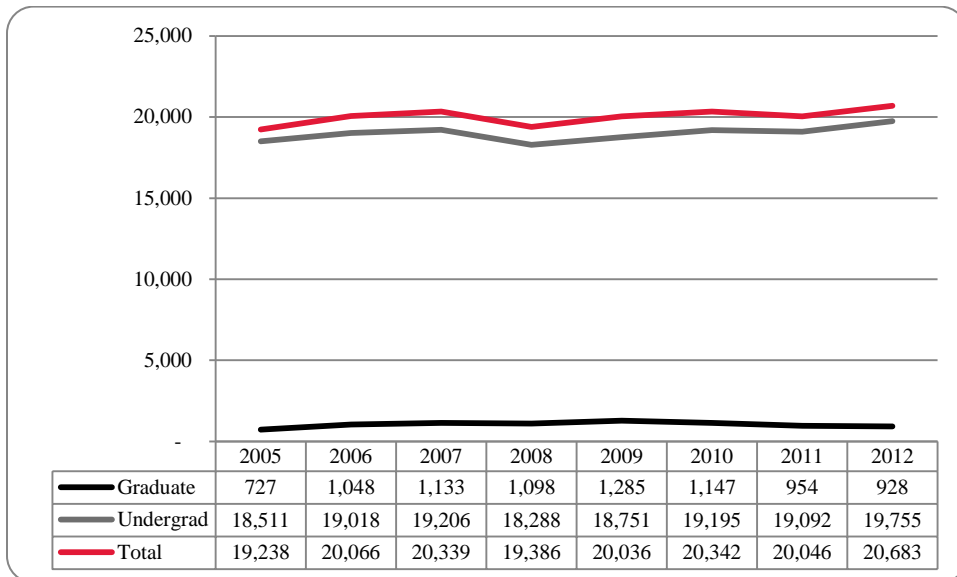


Figure 16: College of Communication, Fine Arts and Media Delivery-Site Head Count by Ethnicity by Gender: Fall 2012

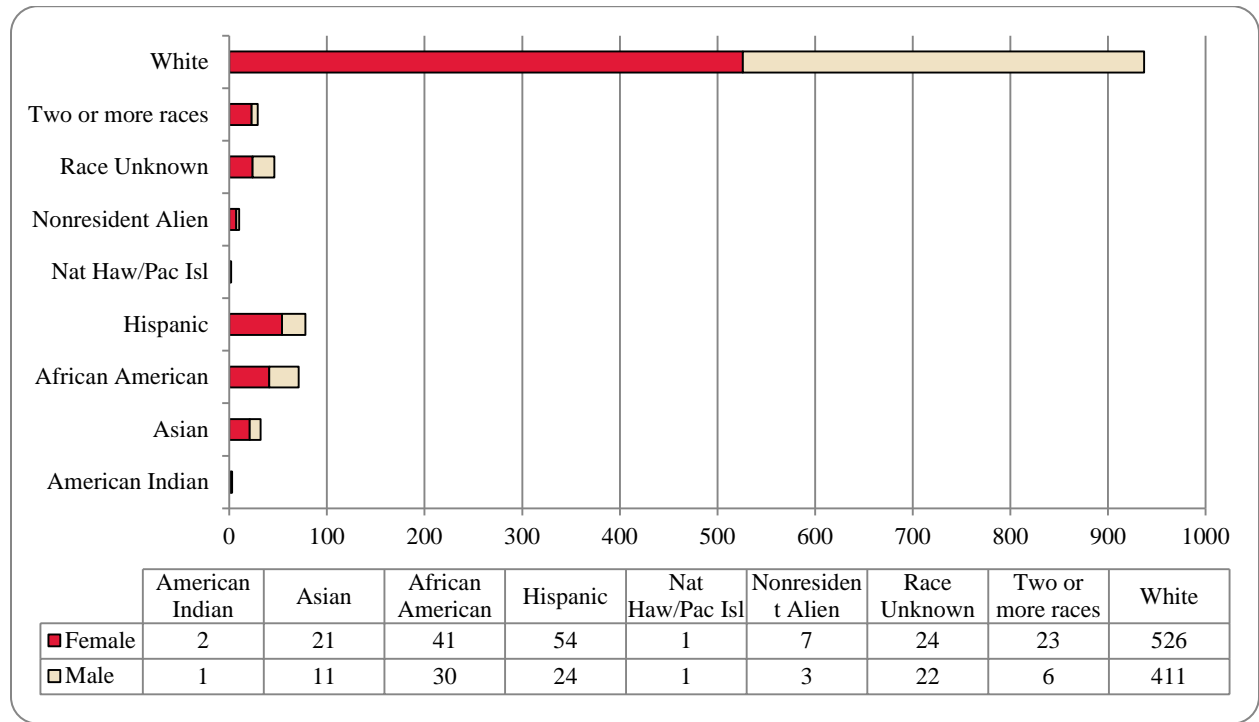


Table 6: College of Communication, Fine Arts and Media Delivery-Site Head Count Summary for Undergraduate and Graduate Students by Full and Part-Time by Gender and Race Classification: Fall 2012

	American Indian		Asian		African American		Hispanics		Nat Haw / Pac Isl		Race Unknown		Two or more races		White		Nonresident Alien		Total			
	F	M	F	M	F	M	F	M	F	M	F	M	F	M	F	M	F	M	F	M	Total	
Undergraduate																						
Full-Time																						
First-Time Freshmen			2	4	5	7	10	5			2	2	7		56	56			82	74	156	
Other Freshmen	1				4	1	2	1					4		23	21	1		35	25	60	
Sophomores			2	2	6	3	12	7			6	5	4	1	87	63	1	1	118	82	200	
Juniors	1	1	7	1	7	7	13	2			2	1	4		117	63	1		152	75	227	
Seniors			7	2	9	5	7	2			6	7	2		100	84		1	131	101	232	
Special													1		3	2			3	3	6	
Total Full-Time	2	1	18	9	31	23	44	17			16	15	21	4	386	289	3	2	521	360	881	
Part-Time																						
First-Time Freshmen					1		2								3	4			6	5	11	
Other Freshmen			1										1		8	7			10	7	17	
Sophomores					2	2		1			1	1	1		11	11			15	15	30	
Juniors			1		2		4					2			14	18			21	20	41	
Seniors			1		1	3	3	3			5	3			46	40			56	49	105	
Special															5	6			6	7	13	
Total Part-Time			3		6	5	9	5			6	6	2		87	86			114	103	217	
Total Undergraduates	2	1	21	9	37	28	53	22	1	1	22	21	23	4	473	375	3	2	635	463	1,098	
Graduate																						
Full-Time																						
Certificate																						
Masters					1	1					2		1		25	13	3	1	31	16	47	
Doctoral																						
Special Graduate																						
Total Full-Time					1	1					2		1		25	13	3	1	31	16	47	
Part-Time																						
Certificate					1	1																
Masters					1	3		1	2						28	21	1		33	26	59	
Doctoral																						
Special Graduate																						
Total Part-Time					2	3	1	1	2						28	23	1		33	30	63	
Total Graduate					2	4	2	1	2		2	1	2		53	36	4	1	64	46	110	
Total All Students	2	1	21	11	41	30	54	24	1	1	24	22	23	6	526	411	7	3	699	509	1,208	

Figure 17: College of Communication, Fine Arts and Media: Administrative-Site Head Count: Fall 2005-2012

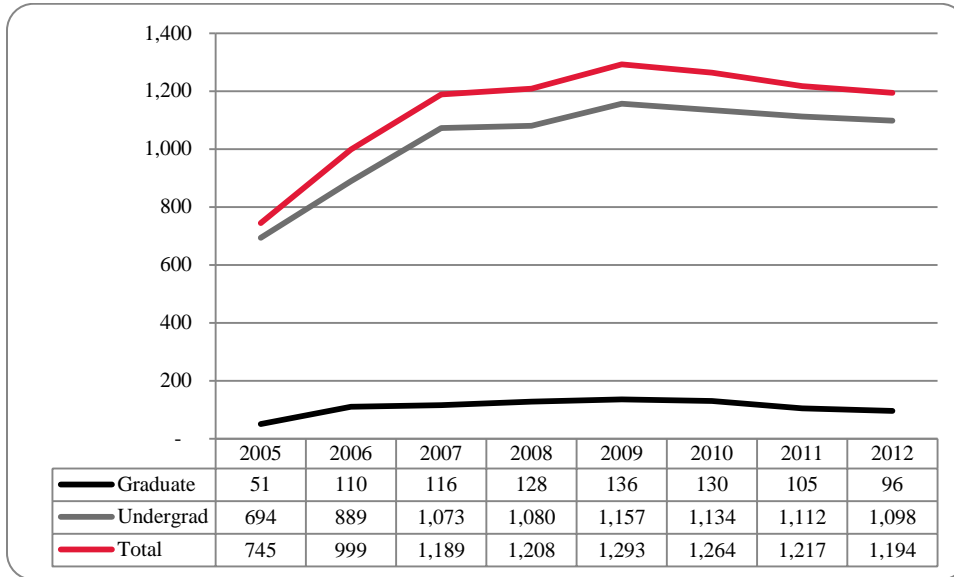


Figure 18: College of Communication, Fine Arts and Media: Administrative-Site Student Credit Hours: Fall 2005-2012

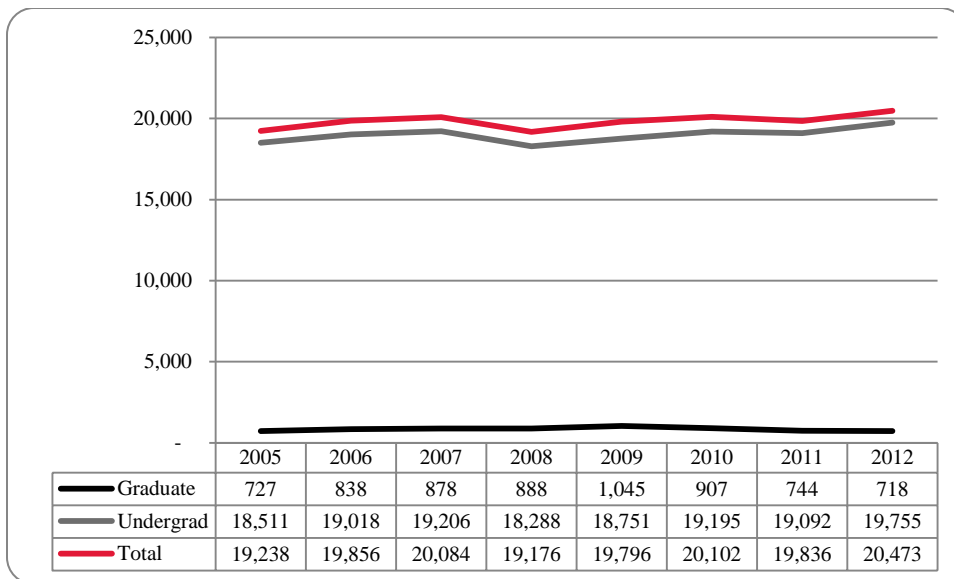


Figure 19: College of Communication, Fine Arts and Media: Administrative-Site Head Count by Ethnicity by Gender: Fall 2012

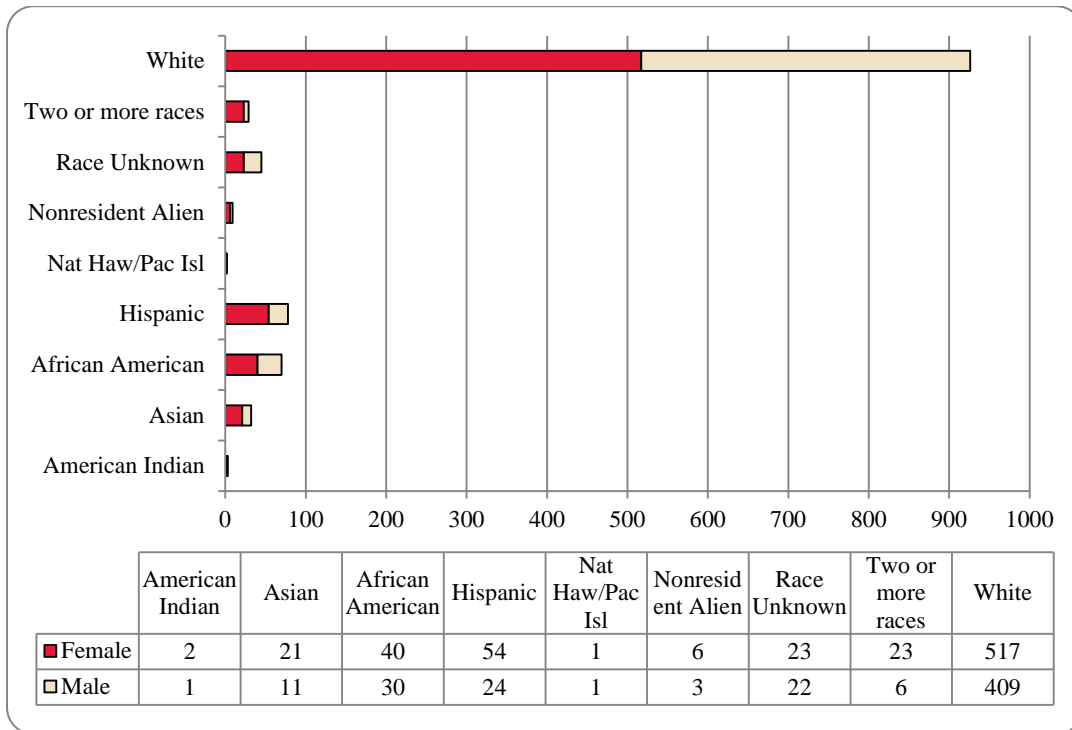


Table 7: College of Communication, Fine Arts and Media Administrative-Site Head Count Summary for Undergraduate and Graduate Students by Full and Part-Time by Gender and Race Classification: Fall 2012

	American Indian		Asian		African American		Hispanics		Nat Haw / Pac Isl		Race Unknown		Two or more races		White		Nonresident Alien		Total		
	F	M	F	M	F	M	F	M	F	M	F	M	F	M	F	M	F	M	F	M	Total
Undergraduate																					
Full-Time																					
First-Time Freshmen			2	4	5	7	10	5			2	2	7		56	56			82	74	156
Other Freshmen	1				4	1	2	1					4	2	23	21	1		35	25	60
Sophomores			2	2	6	3	12	7			6	5	4	1	87	63	1	1	118	82	200
Juniors	1	1	7	1	7	7	13	2			2	1	4		117	63	1		152	75	227
Seniors			7	2	9	5	7	2			6	7	2		100	84		1	131	101	232
Special													1	1	3	2			3	3	6
Total Full-Time	2	1	18	9	31	23	44	17			16	15	21	4	386	289	3	2	521	360	881
Part-Time																					
First-Time Freshmen					1		2			1					3	4			6	5	11
Other Freshmen			1										1		8	7			10	7	17
Sophomores					2	2		1			1	1	1		11	11			15	15	30
Juniors			1		2		4					2			14	18			21	20	41
Seniors			1		1	3	3	3			5	3			46	40			56	49	105
Special										1					5	6			6	7	13
Total Part-Time			3		6	5	9	5		1	6	6	2		87	86			114	103	217
Total Undergraduates	2	1	21	9	37	28	53	22	1	1	22	21	23	4	473	375	3	2	635	463	1,098
Graduate																					
Full-Time																					
Certificate																					
Masters						1					1		1	1	16	11	2	1	19	14	33
Doctoral																					
Special Graduate																					
Total Full-Time					1					1	1	1	1	1	16	11	2	1	19	14	33
Part-Time																					
Certificate					1																
Masters					1	3		1	2			1	1	1	28	21	1		33	26	59
Doctoral																					
Special Graduate																					
Total Part-Time					2	3	1	1	2						28	23	1		33	30	63
Total Graduate					2	3	2	1	2		1	1	2	2	44	34	3	1	52	44	96
Total All Students	2	1	21	11	40	30	54	24	1	1	23	22	23	6	517	409	6	3	687	507	1,194

Figure 20: College of Education Head Count: Fall 2003-2012

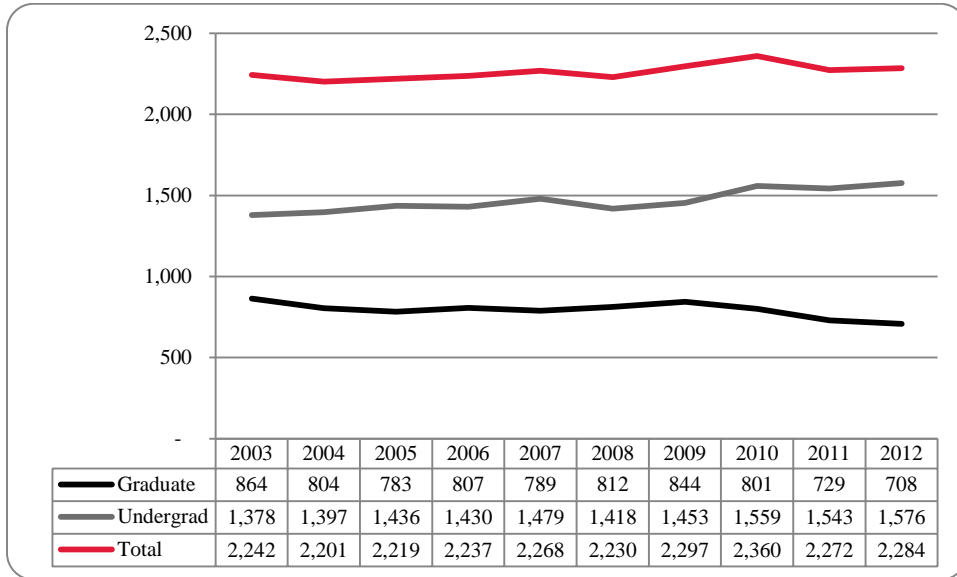


Figure 21: College of Education Student Credit Hours: Fall 2003-2012

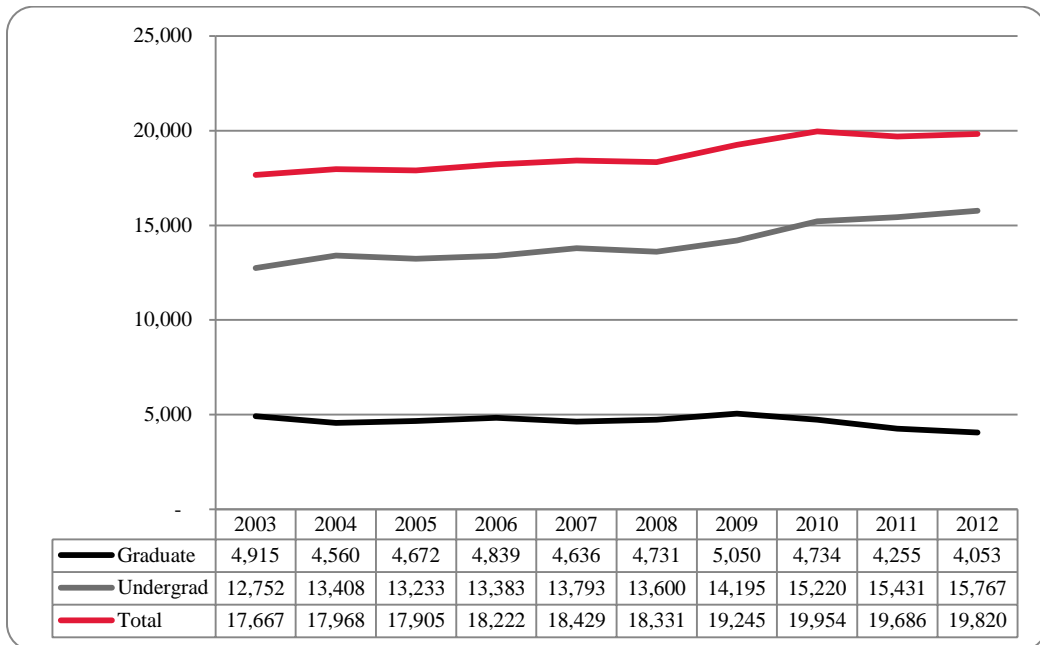


Figure 22: College of Education Head Count by Ethnicity by Gender: Fall 2012

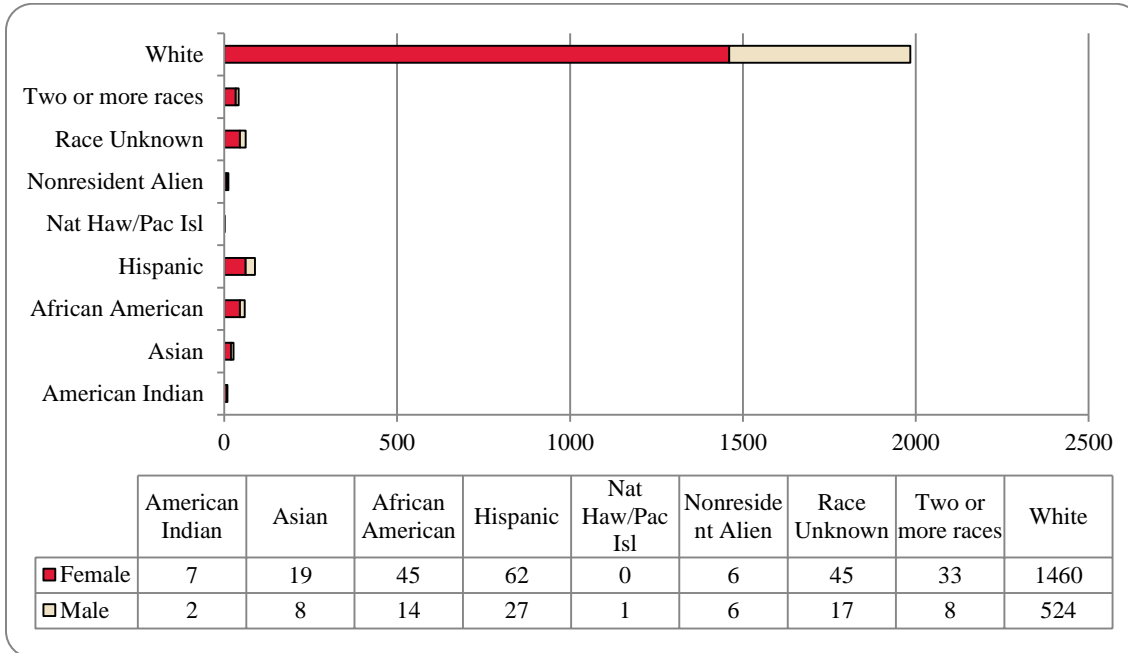


Table 8: College of Education Head Count Summary for Undergraduate and Graduate Students by Full and Part-Time by Gender and Race Classification: Fall 2012

	American Indian		Asian		African American		Hispanics		Nat Haw / Pac Isl		Race Unknown		Two or more races		White		Nonresident Alien		Total		
	F	M	F	M	F	M	F	M	F	M	F	M	F	M	F	M	F	M	F	M	Total
Undergraduate																					
Full-Time																					
First-Time Freshmen			3	3	2		8	2		1			3		91	38	1		108	44	152
Other Freshmen			1				1	1				3	2		27	11			35	14	49
Sophomores	1	1	2		5	1	8	6				12	4		145	56			177	66	243
Juniors	1		1		10	3	11	5				2	5		204	69	1		235	83	318
Seniors	3	1	6	2	10	4	15	5				10	2		333	129			379	149	528
Special					3	1		1				2	1		30	19	2	1	38	22	60
Total Full-Time	5	2	13	5	30	9	43	20		1	29	10	18	8	830	322	4	1	972	378	1,350
Part-Time																					
First-Time Freshmen													1		3	1			4	1	5
Other Freshmen							2					1	1		5				8	1	9
Sophomores					1		1	1				2	1		31	7			37	9	46
Juniors					2	1	2					3	1		28	13			36	14	50
Seniors			1		2		3	2				1	3		32	25		2	41	32	73
Special							1	1							26	15			27	16	43
Total Part-Time			1		5	1	9	4			6	5	7		125	61		2	153	73	226
Total Undergraduates	5	2	14	5	35	10	52	24		1	35	15	25	8	955	383	4	3	1,125	451	1,576
Graduate																					
Full-Time																					
Certificate																					
Masters			2	1	2	1	2	1				1	3		87	27	2	3	98	34	132
Doctoral					1	1									2	1			3	2	5
Special Graduate																1			1	1	1
Total Full-Time			2	1	3	2	2	1			1	3	3		89	29	2	3	101	37	138
Part-Time																					
Certificate																					
Masters	2		2	2	6	1	6	1			9	1	5		334	87			364	92	456
Doctoral					1	1		1							32	18			32	20	52
Special Graduate			1		1	1	2				1				49	6			54	6	60
Total Part-Time	2		3	2	7	2	8	2			10	1	5		416	112			451	119	570
Total Graduate	2		5	3	10	4	10	3			10	2	8		505	141	2	3	552	156	708
Total All Students	7	2	19	8	45	14	62	27		1	45	17	33	8	1,460	524	6	6	1,677	607	2,284

Figure 23: College of Information Science & Technology Head Count: Fall 2003-2012

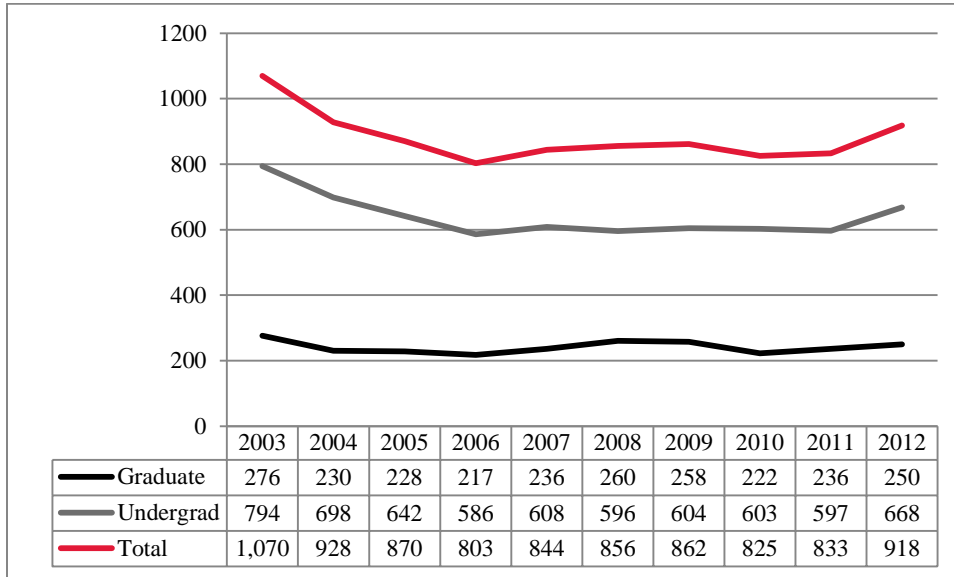


Figure 24: College of Information Science & Technology Student Credit Hours: Fall 2003-2012

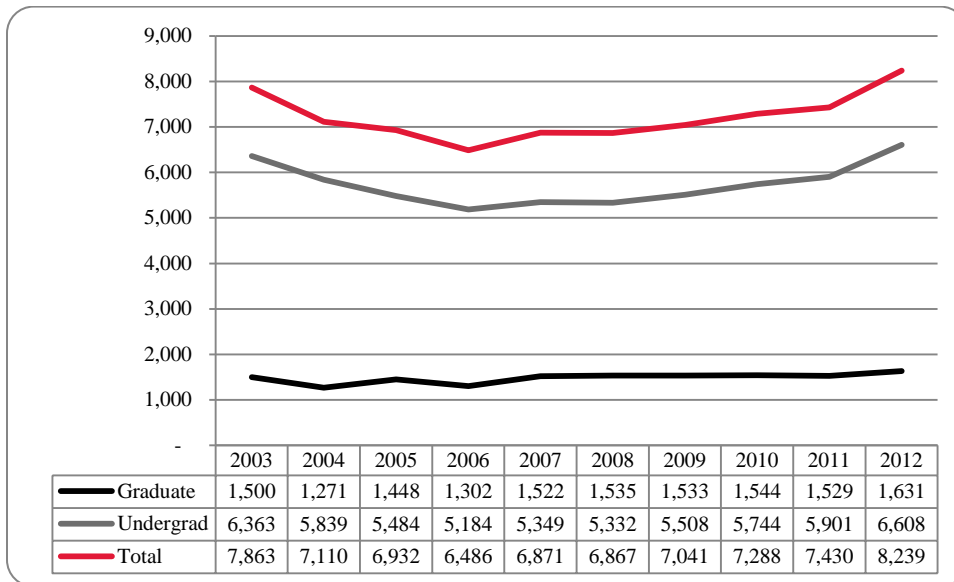


Table 9: College of Information Science and Technology Head Count Summary for Undergraduate and Graduate Summary by Full and Part-Time by Gender and Race Classification: Fall 2012

	American Indian		Asian		African American		Hispanics		Nat Haw / Pac Isl		Race Unknown		Two or more races		White		Nonresident Alien		Total		
	F	M	F	M	F	M	F	M	F	M	F	M	F	M	F	M	F	M	F	M	Total
Undergraduate																					
Full-Time																					
First-Time Freshmen				4				5						5	7	74	10		7	99	106
Other Freshmen								1						1	2	26	8		2	39	41
Sophomores	1			5	1	1	4	6					1	1	12	81		7	19	109	128
Juniors			1		2	2	2					1	2	1	10	78	8	16	22	101	123
Seniors			5	2	5	2	4		1	1	4	1	1	1	8	85	1	11	16	115	131
Special			1								1	1			1	7	2		5	9	14
Total Full-Time	1	2	14	3	10	8	18	1	1	17	2	9	40	351	11	52	71	472	543		
Part-Time																					
Full-Time																					
First-Time Freshmen																3		2		5	5
Other Freshmen																5		2		7	7
Sophomores			1									1			1	14		2	1	22	23
Juniors					1	1									1	13		2	2	17	19
Seniors			1	1	1		3				2				3	36	1	3	5	46	51
Special															1	13	1		5	15	20
Total Part-Time			2	2	4	1	7				3			1	8	84	2	11	13	112	125
Total Undergraduates	1	2	16	5	14	9	25	1	1	20	4	20	2	10	48	435	13	63	84	584	668
Graduate																					
Full-Time																					
Certificate																					
Masters					1					1	1				2	12	19	44	23	59	82
Doctoral																4	2	8	2	12	14
Special Graduate																					
Total Full-Time					1		1			1	1			1	2	16	21	52	25	71	96
Part-Time																					
Certificate																					
Masters			3	6		5	7				2	2	1	1	10	64	11	20	27	105	132
Doctoral																4	3	4	3	8	11
Special Graduate																					
Total Part-Time			3	7		5	7				2	2	1	1	13	75	14	24	33	121	154
Total Graduate			3	7	1	5	8				3	3	1	2	15	91	35	76	58	192	250
Total All Students	1	5	23	6	19	9	33	1	1	23	7	23	3	12	63	526	48	139	142	776	918

Figure 25: College of Public Affairs & Community Service Delivery-Site Head Count: Fall 2003-2012

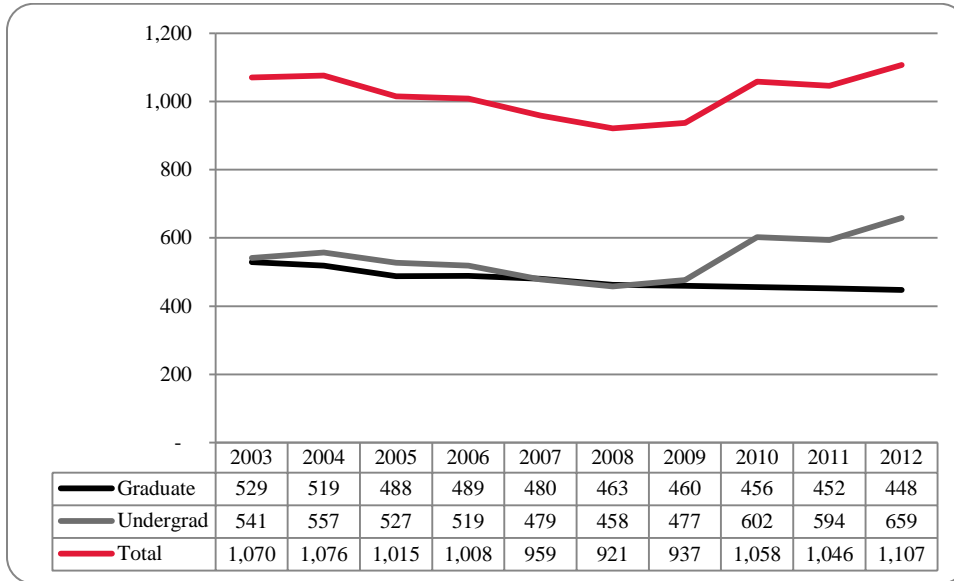


Figure 26: College of Public Affairs & Community Service Delivery-Site Student Credit Hours: Fall 2003-2012

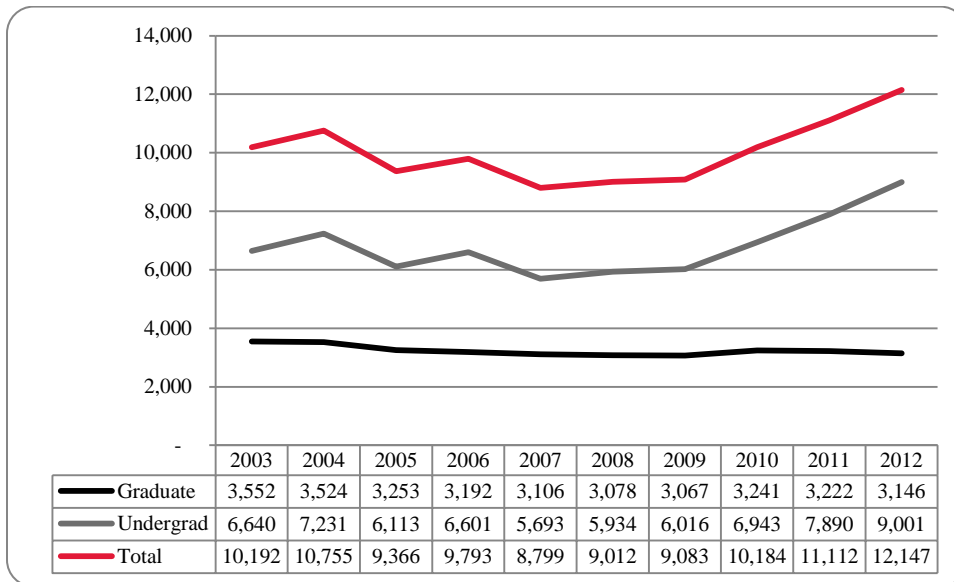


Figure 27: College of Public Affairs & Community Service Delivery-Site Head Count by Ethnicity by Gender: Fall 2012

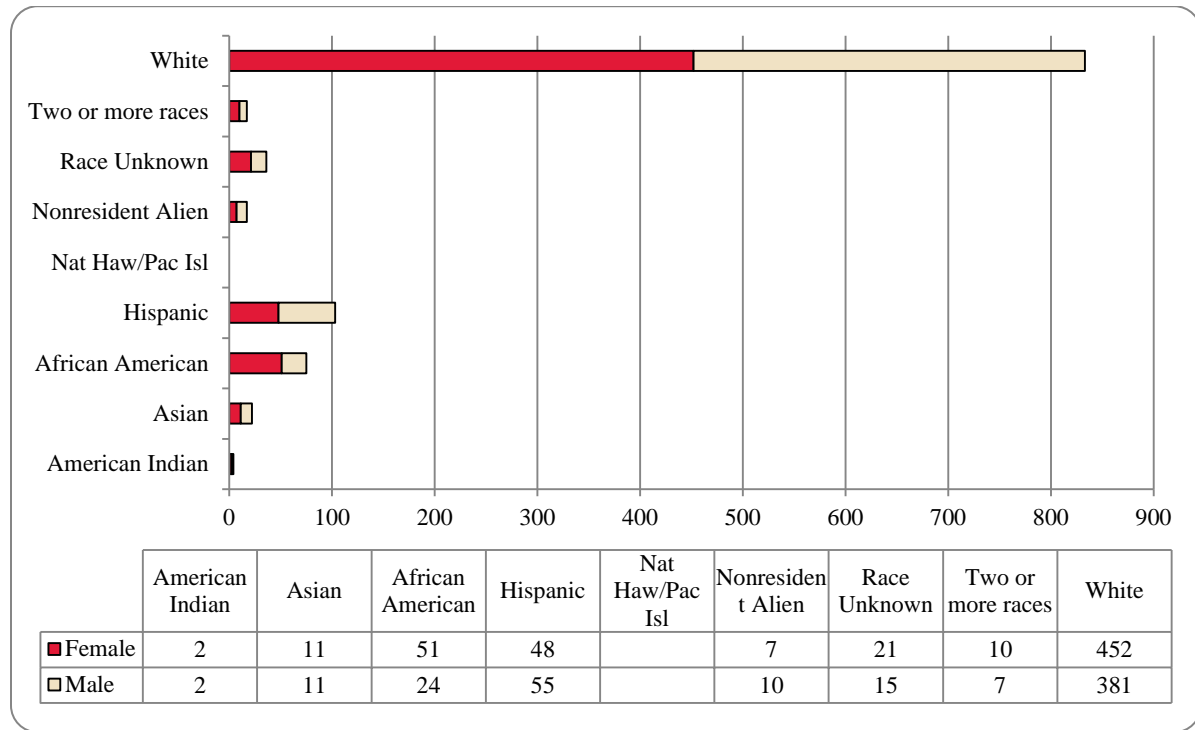


Table 10: College of Public Affairs and Community Service Delivery-Site Head Count Summary for Undergraduate and Graduate Students by Full and Part-Time by Gender and Race Classification: Fall 2012

	American Indian		Asian		African American		Hispanics		Nat Haw / Pac Isl		Race Unknown		Two or more races		White		Nonresident Alien		Total		
	F	M	F	M	F	M	F	M	F	M	F	M	F	M	F	M	F	M	F	M	Total
Undergraduate																					
Full-Time																					
First-Time Freshmen			1	3	3	1	6	10					6	3	25	42		1	41	60	101
Other Freshmen				1	4	2	4	5					1	1	11	16			21	26	47
Sophomores				1	10	3	13	9					3	3	46	64			72	83	155
Juniors	1		3	1	8	5	2	6					2	2	56	60		1	71	76	147
Seniors			1	2	5	3	5	9					3	3	44	52			59	69	128
Special																					
Total Full-Time	1		5	8	30	14	30	39				10	9	7	182	234		2	264	314	578
Part-Time																					
First-Time Freshmen								1													2
Other Freshmen							1								1	1			2	2	4
Sophomores					1	2	1	1							5	4		1	7	9	16
Juniors					1	2		3							6	8			7	13	20
Seniors					1	3		1							14	17			15	21	36
Special							1								1	1			2	1	3
Total Part-Time					3	7	3	6							27	32		1	33	48	81
Total Undergraduates	1		5	8	33	21	33	45				10	11	7	209	266		3	297	362	659
Graduate																					
Full-Time																					
Certificate																					
Masters	1		1	1	6	2	7	4				2			91	23	1		109	30	139
Doctoral								1							3	5	2	4	5	10	15
Special Graduate																					
Total Full-Time	1		1	1	6	2	7	5				2			94	28	3	4	114	40	154
Part-Time																					
Certificate							1								10	2	1		12	2	14
Masters	1		4	2	11	1	7	5				8	3	3	129	74	2		165	86	251
Doctoral			1	1	1							1	1		9	11	1	3	13	15	28
Special Graduate															1	1			1	1	1
Total Part-Time	1		5	2	12	1	8	5				9	4	3	149	87	4	3	191	103	294
Total Graduate	2		6	3	18	3	15	10				11	4	3	243	115	7	7	305	143	448
Total All Students	2		11	11	51	24	48	55				21	15	10	452	381	7	10	602	505	1,107

Figure 28: College of Public Affairs & Community Service Administrative-Site Head Count: Fall 2003-2012

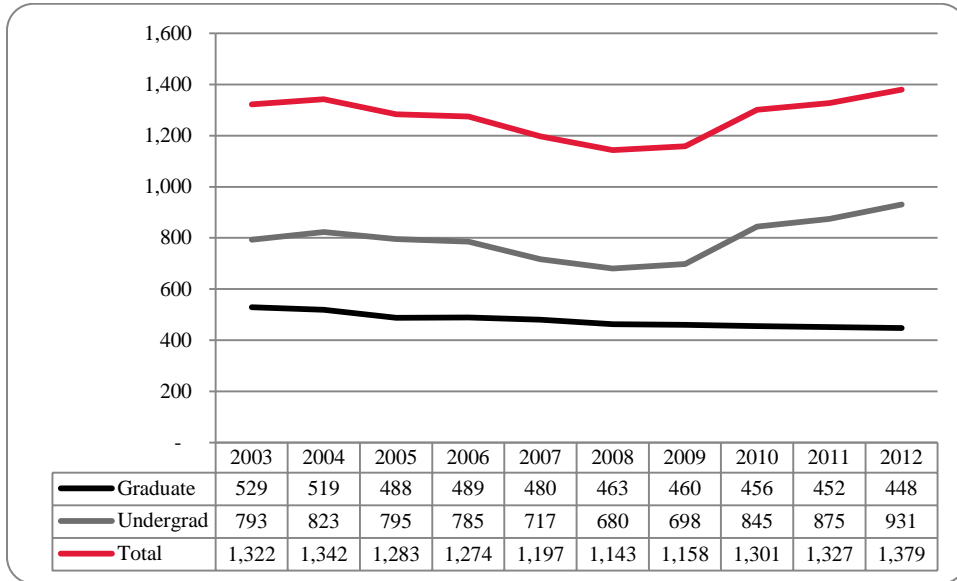


Figure 29: College of Public Affairs & Community Service Administrative-Site Student Credit Hours: Fall 2003-2012

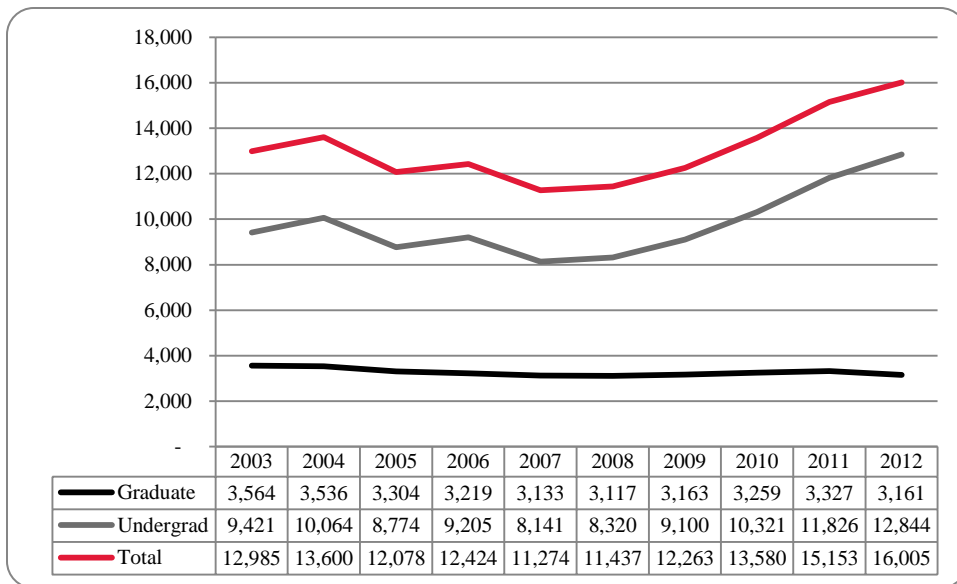


Figure 30: College of Public Affairs & Community Service Administrative-Site Head Count by Ethnicity by Gender: Fall 2012

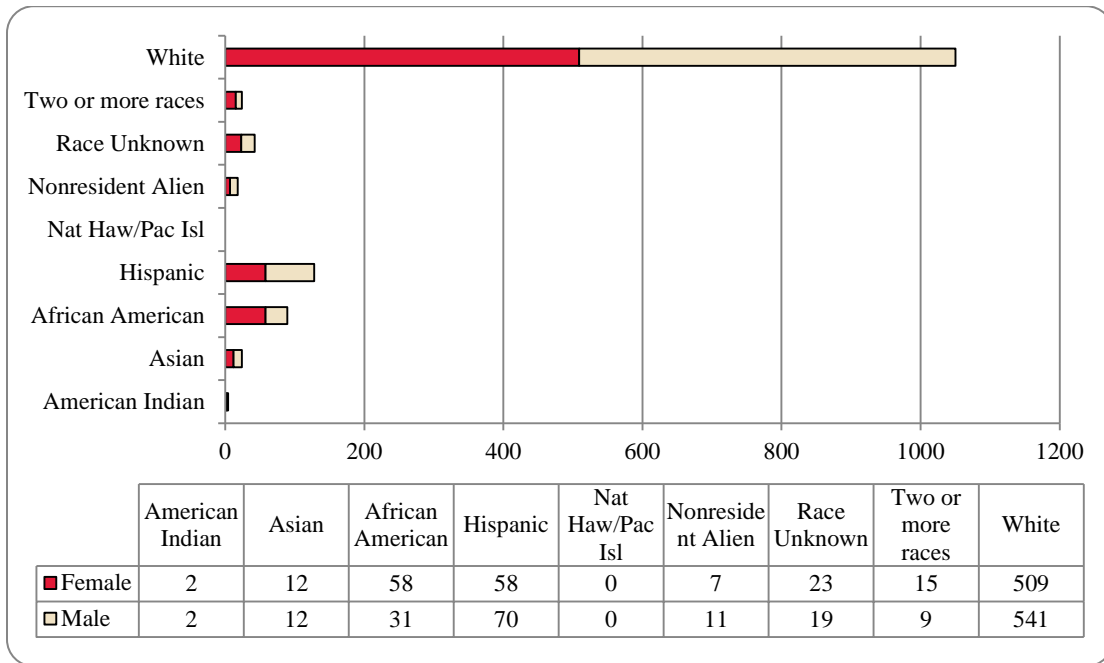


Table 11: College of Public Affairs & Community Service Administrative-Site Head Count Summary for Undergraduate and Graduate Students by Full and Part-Time by Gender and Race Classification: Fall 2012

	American Indian		Asian		African American		Hispanics		Nat Haw / Pac Isl		Race Unknown		Two or more races		White		Nonresident Alien		Total			
	F	M	F	M	F	M	F	M	F	M	F	M	F	M	F	M	F	M	F	M	Total	
Undergraduate																						
Full-Time																						
First-Time Freshmen			1	3	3	1	6	10					6	3	25	42		1	41	60	101	
Other Freshmen					4	3	4	5					1	1	11	17			21	28	49	
Sophomores					10	3	14	9					3	1	46	64			74	83	157	
Juniors	1		3	1	8	5	2	6					2	2	57	65		1	72	81	153	
Seniors			1	2	5	3	5	9					3	1	49	55			64	72	136	
Special																						
Total Full-Time	1		5	8	30	15	31	39			10	9	8	7	188	243		2	272	324	596	
Part-Time																						
First-Time Freshmen					1			3					1	1	10	25			11	30	41	
Other Freshmen					2	1	2	2					1	1	4	7			1	9	12	21
Sophomores					2	3	6	5					1	3	15	36			1	24	48	72
Juniors					2	4	2	7					2	1	20	61			26	73	99	
Seniors			1	1	3	5	1	4					1	1	28	53			35	64	99	
Special															1	1			2	1	3	
Total Part-Time					10	13	12	21			2	6	4	2	78	183			107	228	335	
Total Undergraduate	1		6	9	40	28	43	60			12	15	12	9	266	426		4	379	552	931	
Graduate																						
Full-Time																						
Certificate																						
Masters	1		1	1	6	2	7	4							91	23		1	109	30	139	
Doctoral								1							3	5		2	4	5	10	15
Total Full-Time	1		1	1	6	2	7	5			2				94	28		3	114	40	154	
Part-Time																						
Certificate																						
Masters	1		4	2	11	1	7	5							10	2		1	12	2	14	
Doctoral															129	74		2	165	86	251	
Total Part-Time															9	11		3	13	15	28	
Special Graduate															1	1			1	1	1	
Total Part-Time	1		5	2	12	1	8	5							149	87		4	191	103	294	
Total Graduate	2		1	6	3	18	3	15	10						243	115		7	305	143	448	
Total All Students	2		2	12	12	58	31	58	70		23	19	15	9	509	541		7	684	695	1,379	

Figure 31: College of CPACS, Division of Continuing Studies Head Count: Fall 2003-2012

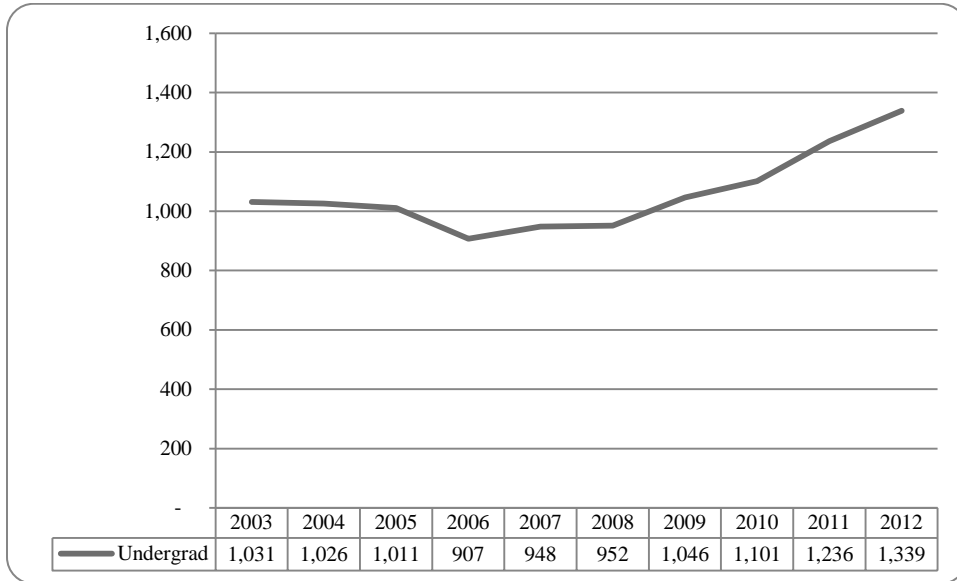
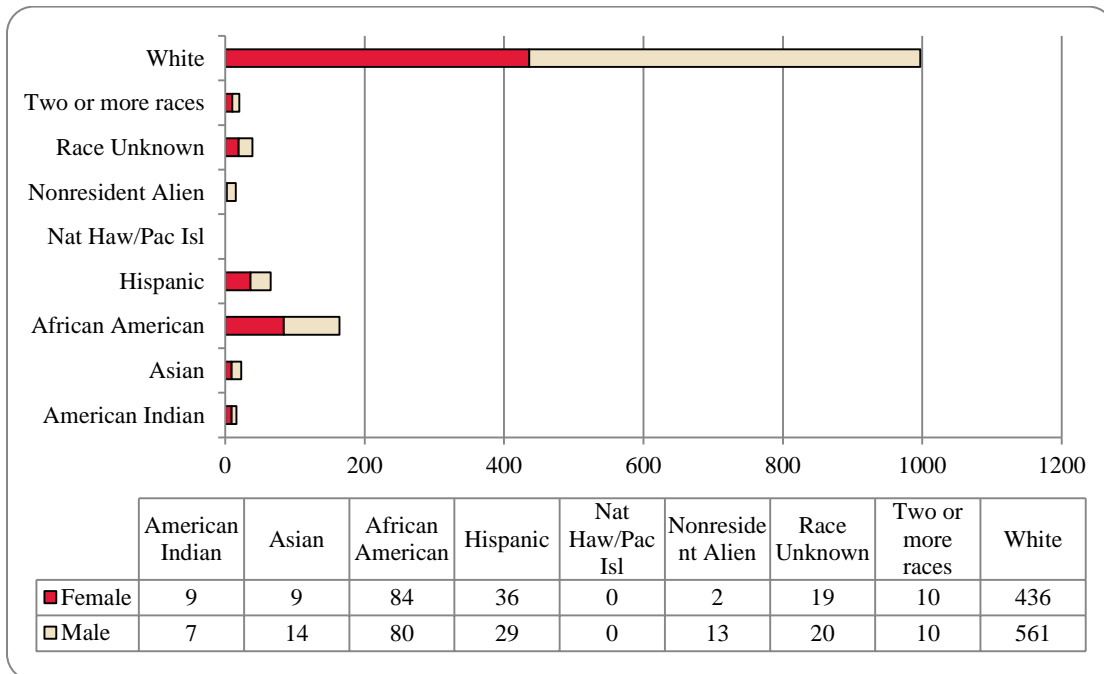


Figure 32: College of CPACS, Division of Continuing Studies Head Count by Ethnicity by Gender



**Table 12: College of CPACS Division of Continuing Studies Head Count Summary for Undergraduate Students by Full and Part-Time by Gender and Race Classification:
Fall 2012**

	American Indian		Asian		African American		Hispanics		Nat Haw / Pac Isl		Race Unknown		Two or more races		White		Nonresident Alien		Total		
	F	M	F	M	F	M	F	M	F	M	F	M	F	M	F	M	F	M	F	M	Total
Undergraduate																					
Full-Time																					
First-Time Freshmen					2										2	2				4	2
Other Freshmen		1			1	2		4							16	38		2	18	47	65
Sophomores			1	1	9	18	7	1			1			2	41	78		2	60	103	163
Juniors	2	2	1	4	10	17	9	9			1	7	2	2	83	95	1	4	109	140	249
Seniors	4		2	2	14	11	6	4			5	4	1	2	78	92	3	110	118	228	
Special								1					1		5	4		6	5	11	
Total Full-Time	6	3	4	7	36	48	22	19			9	12	4	6	225	309	1	11	307	415	722
Part-Time																					
First-Time Freshmen																					
Other Freshmen		1			6	9	4	2							16	23			27	35	62
Sophomores			1	1	7	7	1	1			2	2	3	1	33	52			48	64	112
Juniors				5	12	6	4	3			2	1	1		53	65		1	72	81	153
Seniors	1	3	3	1	19	7	5	4			6	5	1	3	98	98			133	121	254
Special				1	3	3									11	13	1	1	17	17	34
Total Part-Time	3	4	5	7	48	32	14	10			10	8	6	4	211	252	1	2	298	319	617
Total Undergraduate	9	7	9	14	84	80	36	29			19	20	10	10	436	561	2	13	605	734	1,339
Total All Students	9	7	9	14	84	80	36	29			19	20	10	10	436	561	2	13	605	734	1,339

Table 13: Cooperative Graduate Program Head Count Summary for Graduate Students by Full and Part-Time by Gender and Race Classification: Fall 2012

	American Indian		Asian		African American		Hispanics		Nat Haw / Pac Isl		Race Unknown		Two or more races		White		Nonresident Alien		Total			
	F	M	F	M	F	M	F	M	F	M	F	M	F	M	F	M	F	M	F	M	Total	
Graduate																						
Full-Time																						
Certificate																						
Masters																						
Doctoral																						
Special Graduate																						
Total Full-Time	-	-	-	-	-	-	-	-	-	-	-	-	-	-	-	-	-	-	-	-	-	-
Part-Time																						
Certificate																						
Masters																						
Doctoral																						
Special Graduate																						
Total Part-Time	-	-	-	-	-	-	-	-	-	-	-	-	-	-	-	-	-	-	-	-	-	-
Total All Students	-	-	-	-	-	-	-	-	-	-	-	-	-	-	-	-	-	-	-	-	-	-

Figure 33: University Division Head Count: Fall 2003-2012

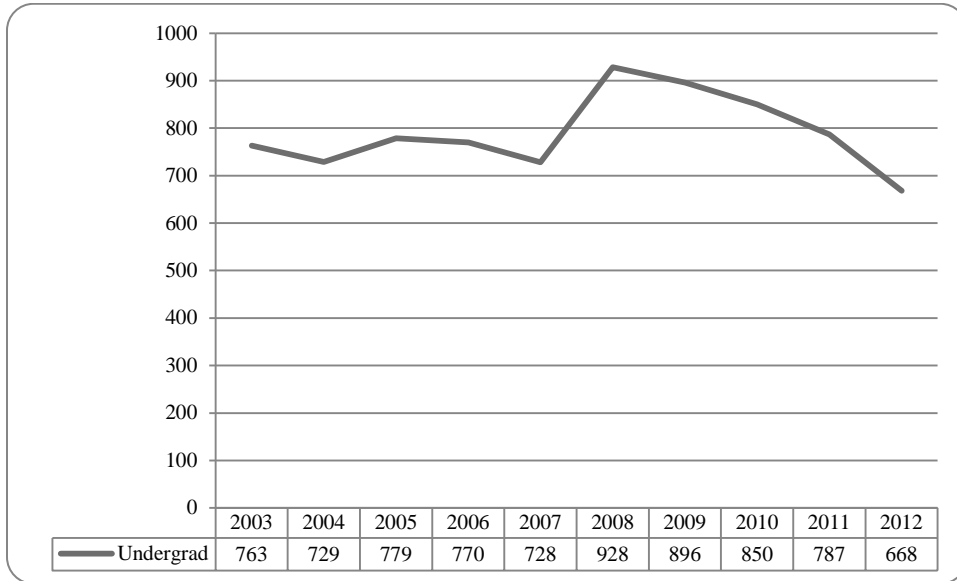


Figure 34: University Division Student Credit Hours: Fall 2003-2012

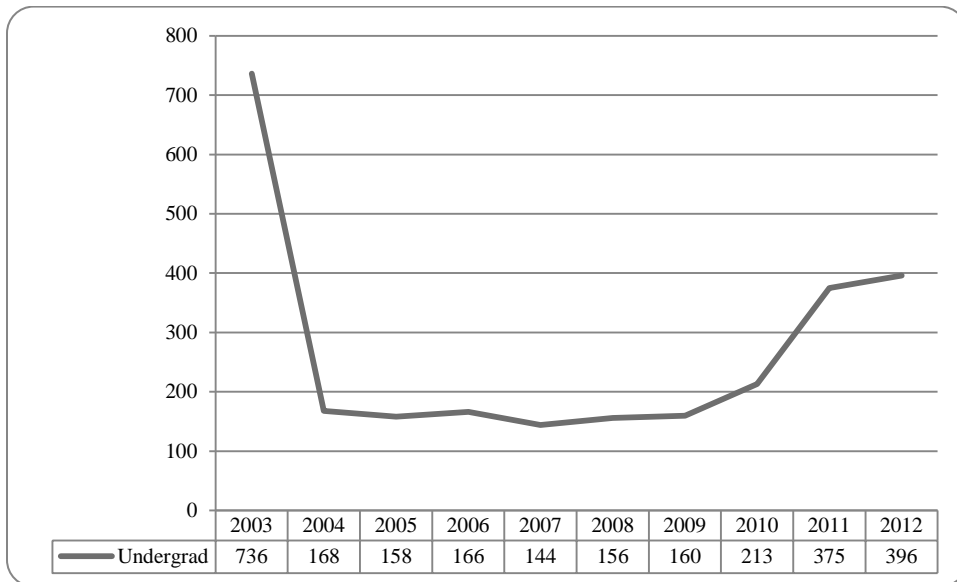


Figure 35: University Division Head Count by Ethnicity by Gender: Fall 2012

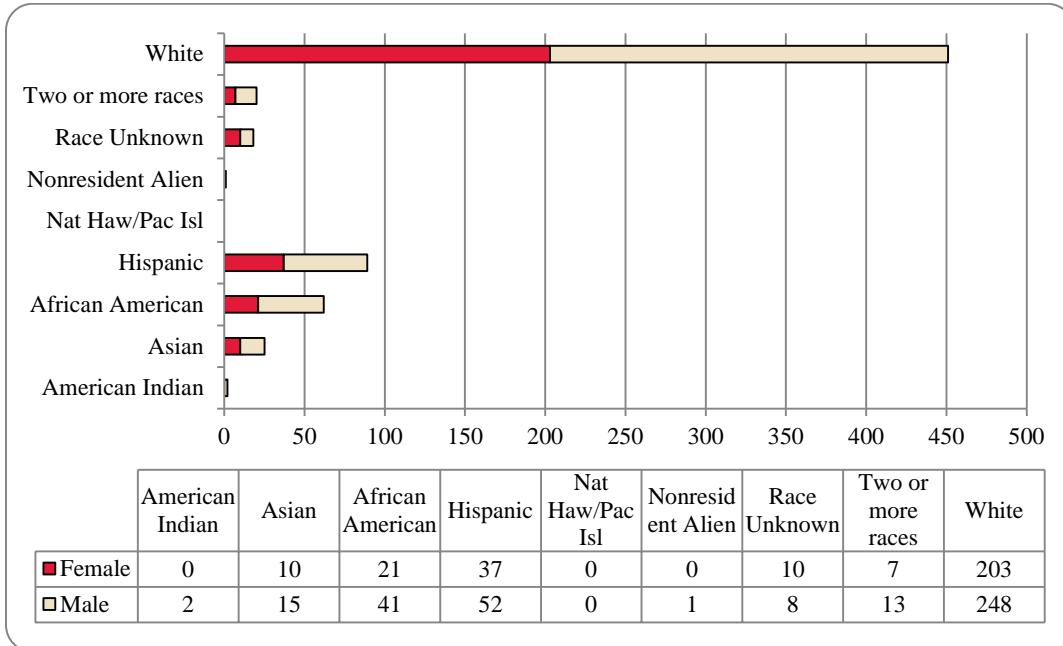


Table 14: University Division Head Count Summary for Undergraduate Students by Full and Part-Time by Gender and Race Classification: Fall 2012

	American Indian		Asian		African American		Hispanics		Nat Haw / Pac Isl		Race Unknown		Two or more races		White		Nonresident Alien		Total		
	F	M	F	M	F	M	F	M	F	M	F	M	F	M	F	M	F	M	F	M	Total
Undergraduate																					
Full-Time																					
First-Time Freshmen			6	7	7	19	16	23			1	5	7	87	95		1		122	152	274
Other Freshmen	2		2	3	6	13	12	16			5	1	2	53	77			79	118	197	
Sophomores			2	4	4	6	4	8			2	3	3	40	41			52	65	117	
Juniors															1				1	1	1
Seniors																					
Special																					
Total Full-Time	2		10	14	17	38	32	47			8	6	12	180	214		1	253	336	589	
Part-Time																					
First-Time Freshmen					1	1	2	2			1	1	1	4	6			8	10	18	
Other Freshmen					1	3	3	3						10	24			16	30	46	
Sophomores											1	1	1	9	4			11	4	15	
Juniors																					
Seniors																					
Special																					
Total Part-Time					1	4	3	5	5		2	1	1	23	34			35	44	79	
Total All Students	2		10	15	21	41	37	52			10	8	7	203	248		1	288	380	668	

Figure 36: Non-Degree/Intercampus Special Undergraduate Students Head Count: Fall 2003-2012

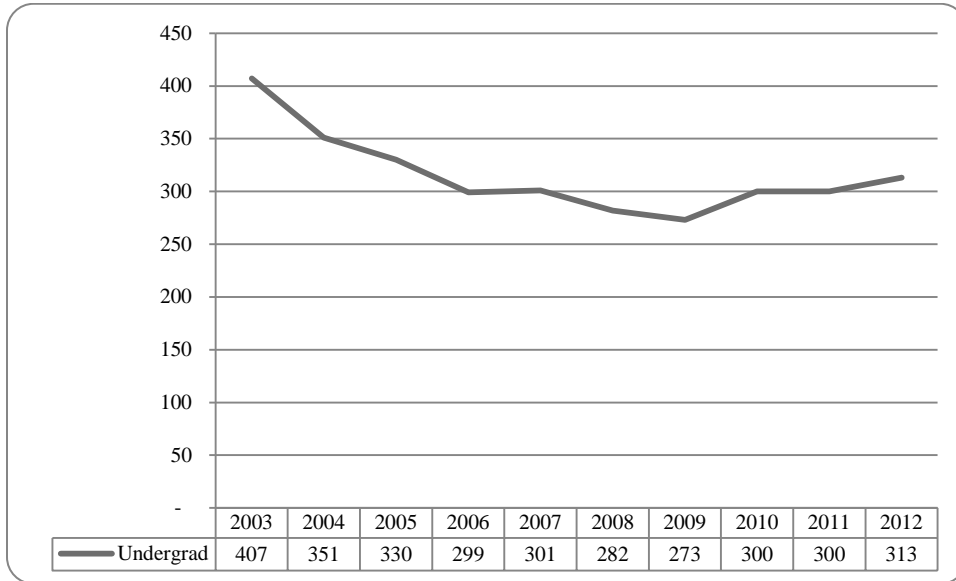


Figure 37: Non-Degree/Intercampus Special Undergraduate Students Head Count by Ethnicity by Gender: Fall 2012

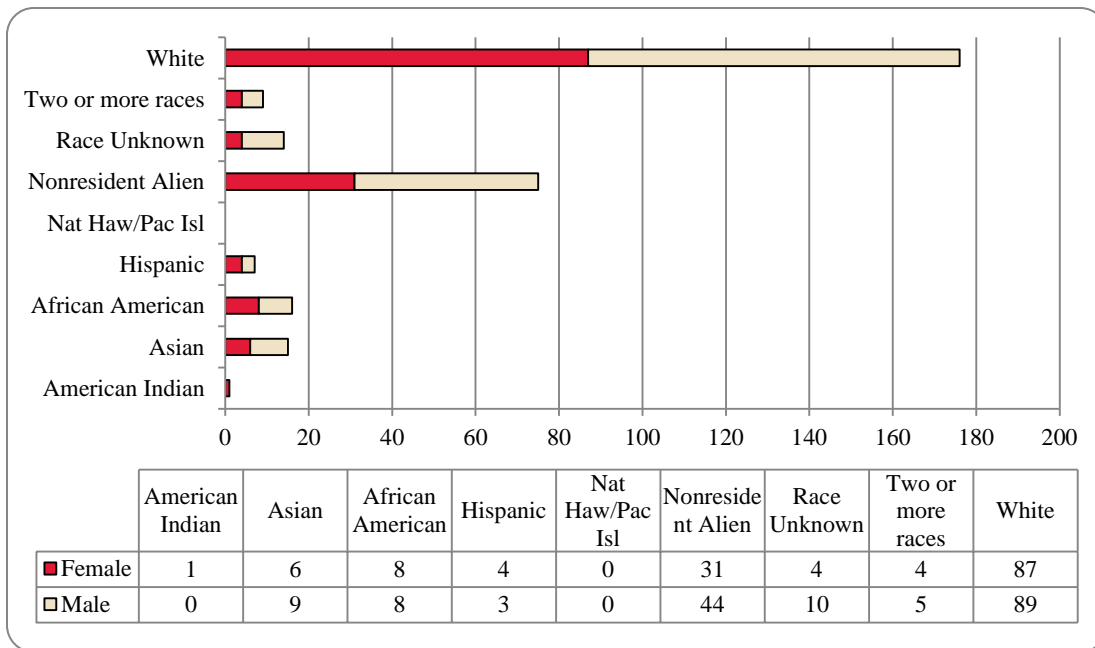


Figure 38: Non-Degree/InterCampus Special Graduate Students Head Count: Fall 2003-2012

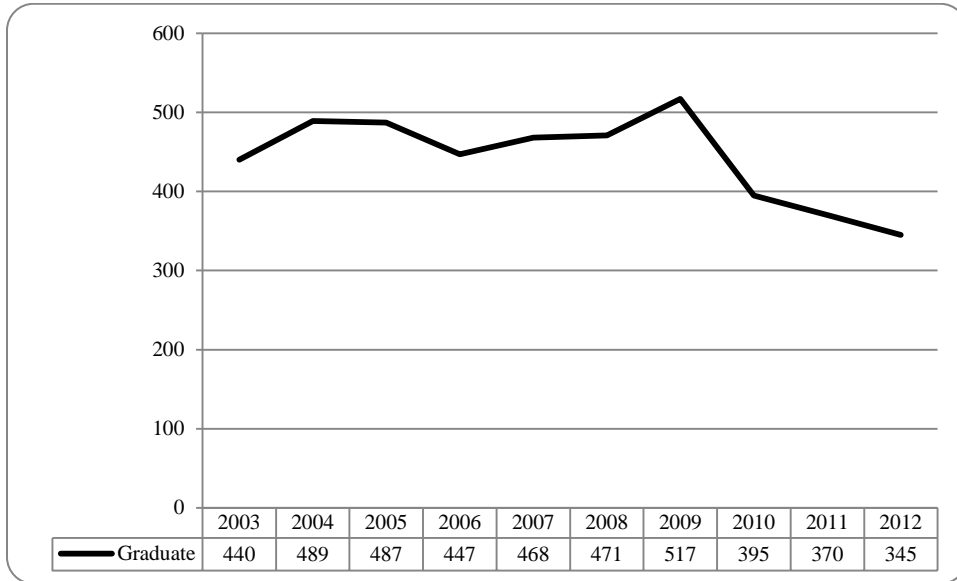


Figure 39: Non-Degree/InterCampus Special Graduate Students Head Count by Ethnicity by Gender: Fall 2012

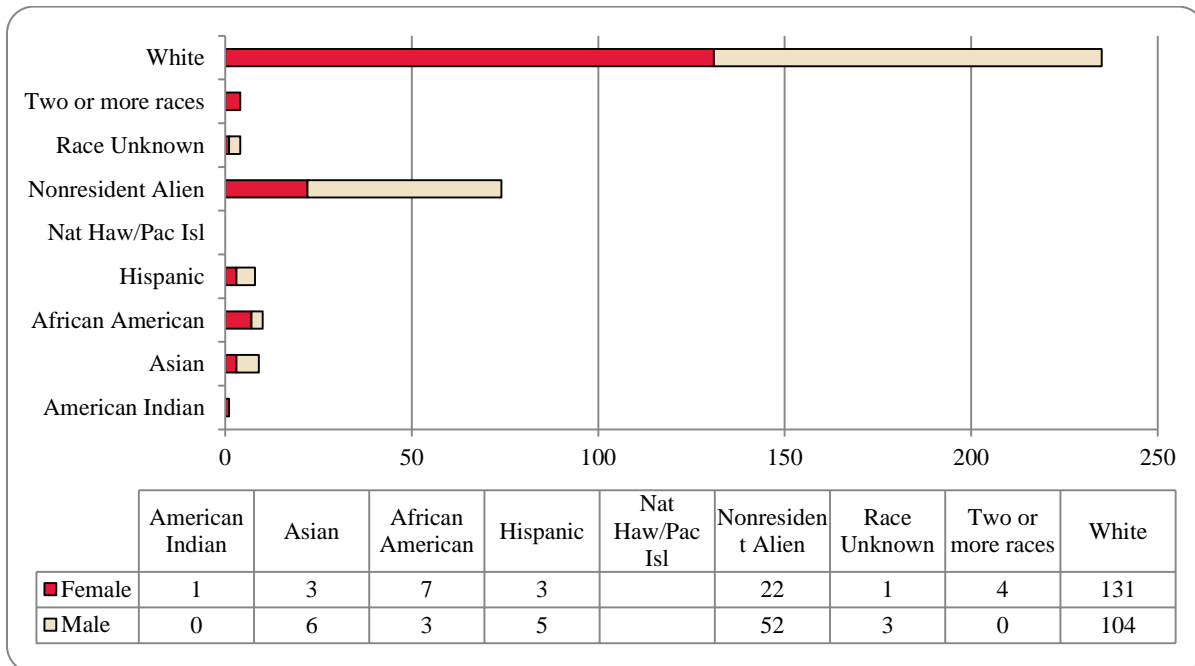


Table 16: Non-Degree/Intercampus Head Count Summary for Special Graduate Students by Full and Part-Time by Gender and Race Classification: Fall 2012

	American Indian		Asian		African American		Hispanics		Nat Haw / Pac Isl		Race Unknown		Two or more races		White		Nonresident Alien		Total		
	F	M	F	M	F	M	F	M	F	M	F	M	F	M	F	M	F	M	F	M	Total
Graduate																					
Full-Time																					
Certificate																					
Masters																					
Doctoral																					
Special Graduate			2		1		1								12	39	12	41	24	84	108
Total Full-Time	-	-	-	2	-	1	-	1	-	-	-	-	-	-	12	39	12	41	24	84	108
Part-Time																					
Graduate																					
Certificate																					
Masters																					
Doctoral																					
Special Graduate	1		3	4	7	2	3	4			1	3	4		119	65	10	11	148	89	237
Total Part-Time	1	-	3	4	7	2	3	4	-	-	1	3	4	-	119	65	10	11	148	89	237
Total All Students	1	-	3	6	7	3	3	5	-	-	1	3	4	-	131	104	22	52	172	173	345

Figure 40: Other Honors and Library Hours Student Credit Hours by Level of Instruction: Fall 2003-2012

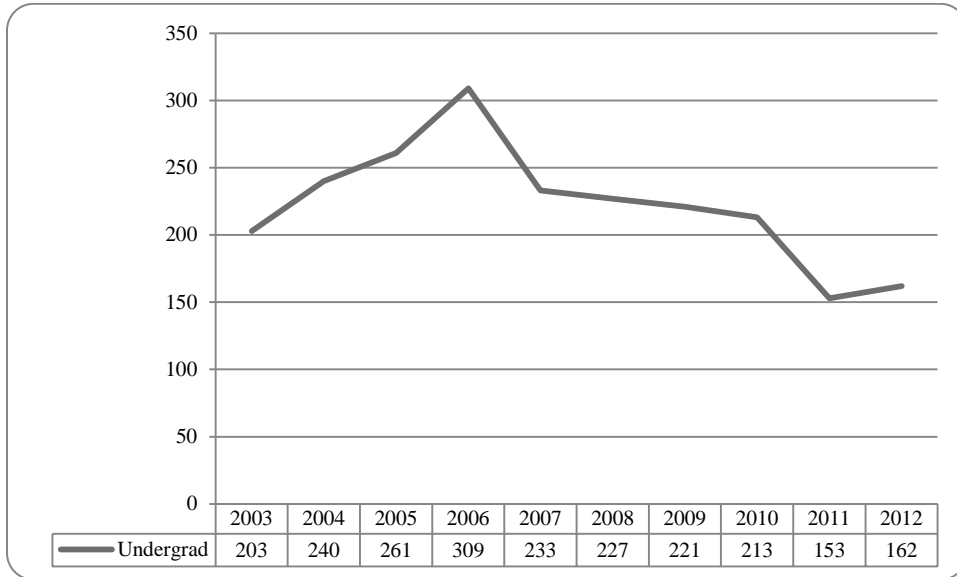


Figure 41: College of Agriculture Delivery-Site Head Count: Fall 2003-2012

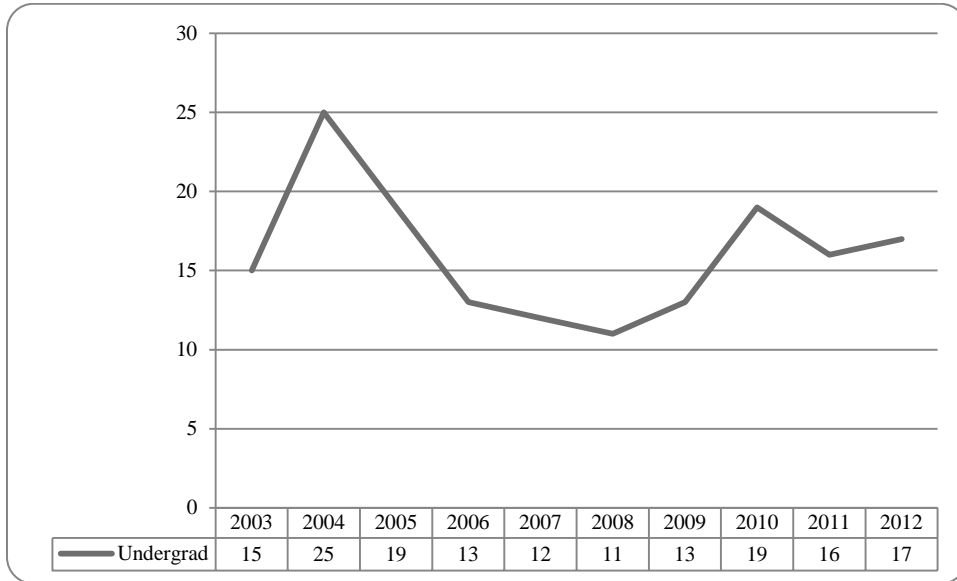


Figure 42: College of Agriculture Delivery-Site Student Credit Hours: Fall 2003-2012

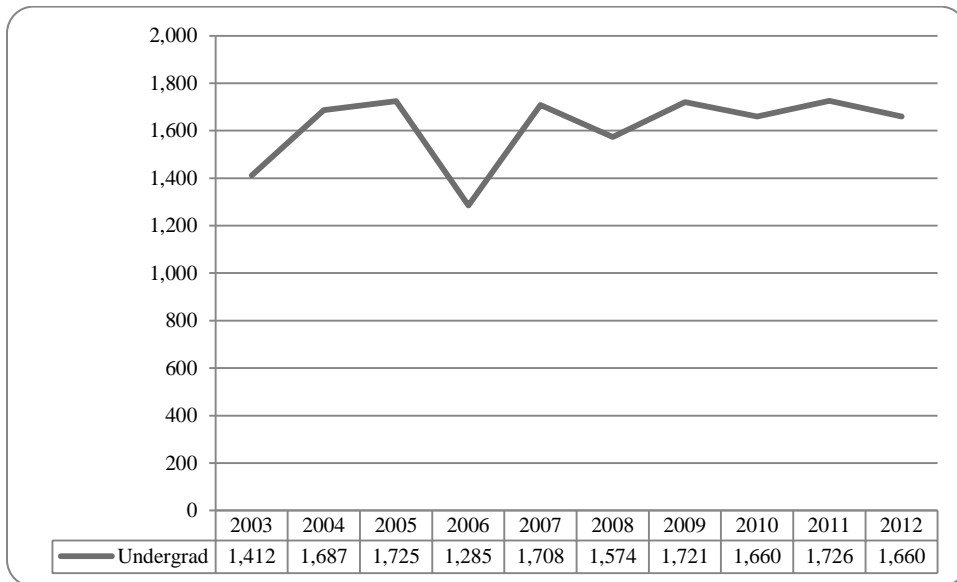


Figure 43: College of Agriculture Delivery-Site Head Count by Ethnicity by Gender: Fall 2012

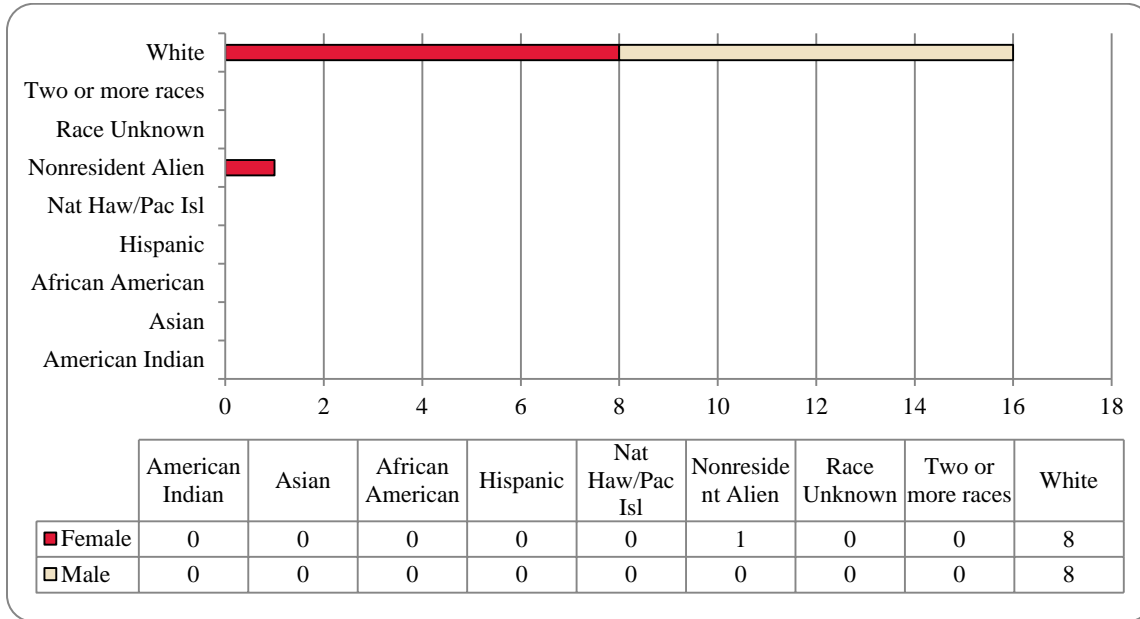


Table 17: College of Agriculture Head Count Summary for Undergraduate Students by Full and Part-Time by Gender and Race Classification: Fall 2012

	American Indian		Asian		African American		Hispanics		Nat Haw / Pac Isl		Race Unknown		Two or more races		White		Nonresident Alien		Total			
	F	M	F	M	F	M	F	M	F	M	F	M	F	M	F	M	F	M	F	M	Total	
Full-Time																						
Undergraduate																						
First-Time Freshmen																						
Other Freshmen																						
Sophomores																						
Juniors																						
Seniors																						
Special																						
Total Full-Time	0	0	0	0	0	0	0	0	0	0	0	0	0	0	0	6	5	1	0	7	5	12
Part-Time																						
First-Time Freshmen																						
Other Freshmen																						
Sophomores																						
Juniors																						
Seniors																						
Special																						
Total Part-Time	0	0	0	0	0	0	0	0	0	0	0	0	0	0	0	2	3	0	0	2	3	5
Total All Students	0	0	0	0	0	0	0	0	0	0	0	0	0	0	0	8	8	1	0	9	8	17

Figure 44: College of Architecture Delivery-Site Head Count: Fall 2003-2012

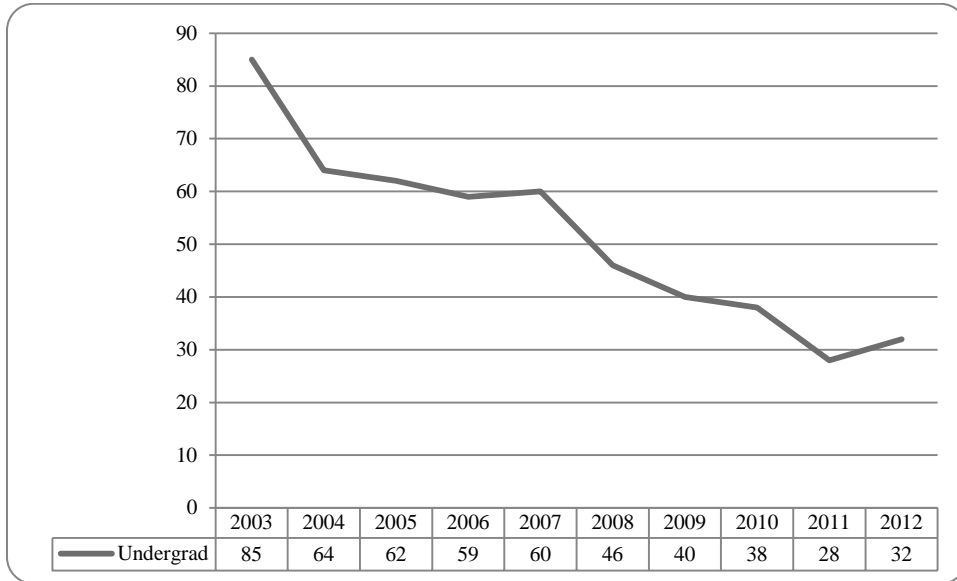


Figure 45: College of Architecture Delivery-Site Student Credit Hours: Fall 2003-2012

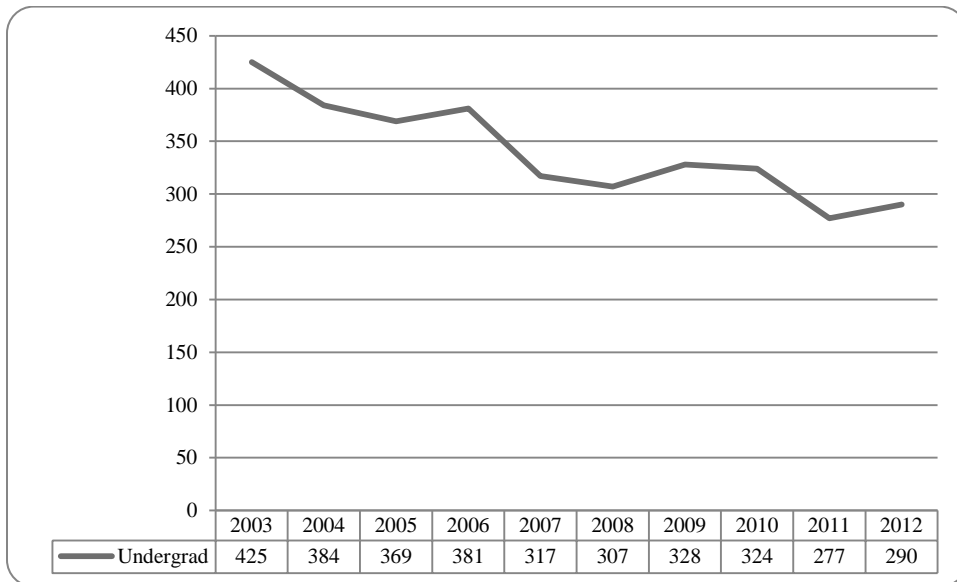


Figure 46: College of Architecture Delivery-Site Head Count by Ethnicity by Gender: Fall 2012

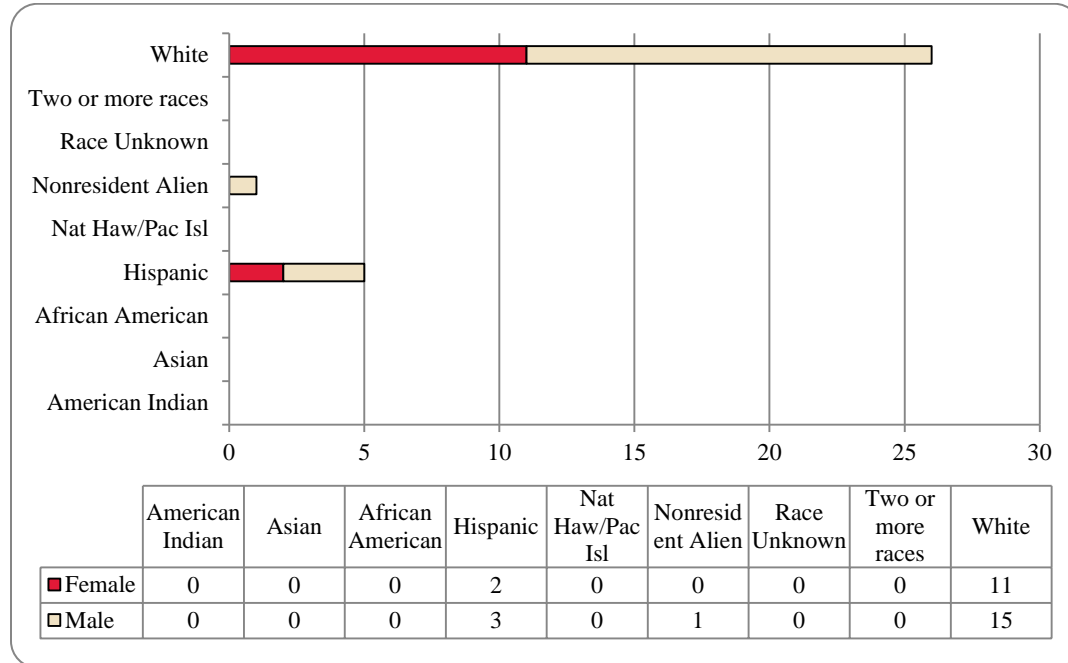


Table 18: College of Architecture Head Count Summary for Undergraduate Students by Full and Part-Time by Gender and Race Classification: Fall 2012

	American Indian		Asian		African American		Hispanics		Nat Haw / Pac Isl		Race Unknown		Two or more races		White		Nonresident Alien		Total		
	F	M	F	M	F	M	F	M	F	M	F	M	F	M	F	M	F	M	F	M	Total
Undergraduate																					
Full-Time																					
First-Time Freshmen							1								1	4			1	5	6
Other Freshmen															1	2			1	2	3
Sophomores							2								4	4			1	6	13
Juniors																2				2	2
Seniors																					
Special																					
Total Full-Time							2	3							6	12			1	8	16
Part-Time																					
First-Time Freshmen																					
Other Freshmen																2					2
Sophomores																					
Juniors																					
Seniors																					
Special																					
Total Part-Time																					
Total All Students							2	3							11	15			1	13	19
																					32

Figure 47: College of Engineering Delivery-Site Head Count: Fall 2003-2012

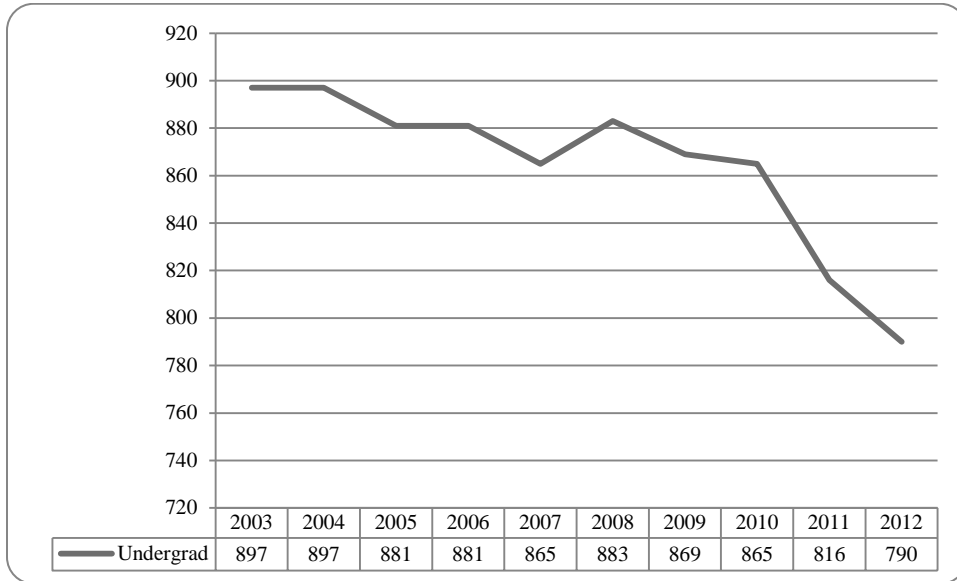


Figure 48: College of Engineering Delivery-Site Student Credit Hours: Fall 2003-2012

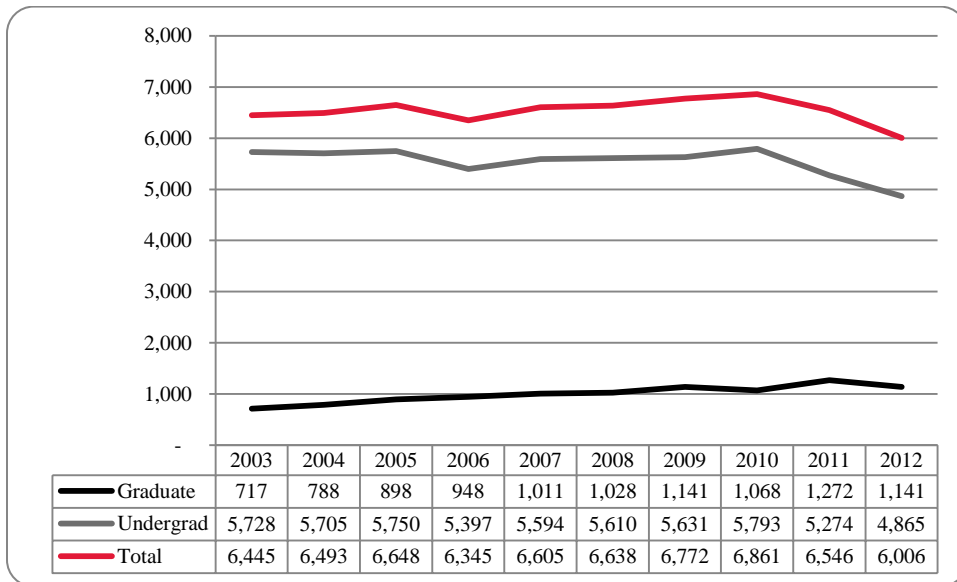


Figure 49: College of Engineering Delivery-Site Head Count by Ethnicity by Gender: Fall 2012

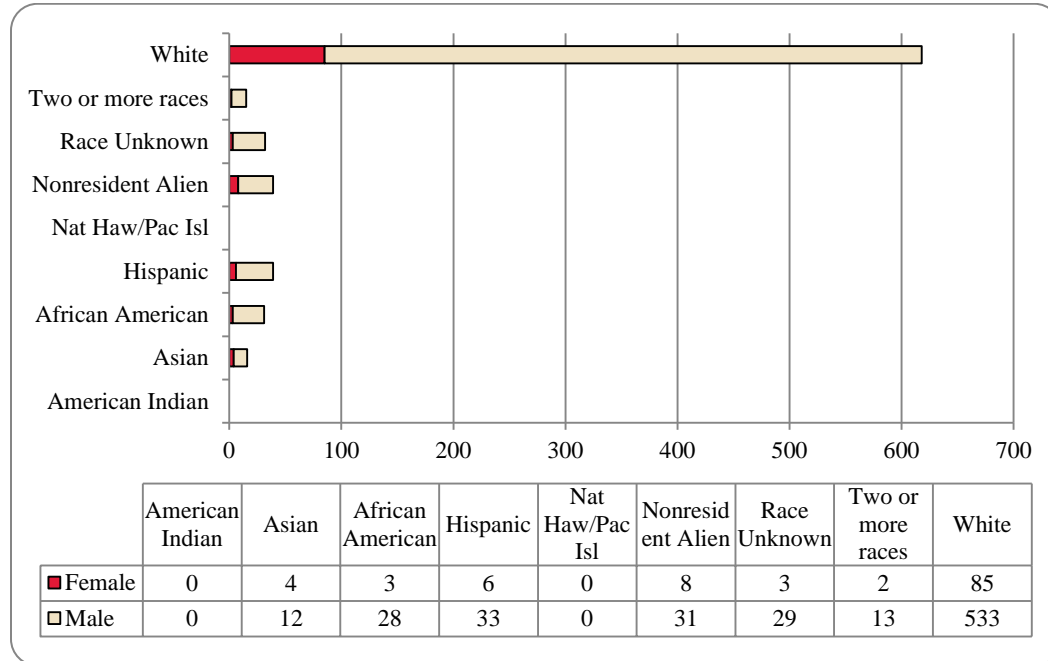


Table 19: College of Engineering Head Count Summary for Undergraduate Students by Full and Part-Time by Gender and Race Classification: Fall 2012

	American Indian		Asian		African American		Hispanics		Nat Haw / Pac Isl		Race Unknown		Two or more races		White		Nonresident Alien		Total		
	F	M	F	M	F	M	F	M	F	M	F	M	F	M	F	M	F	M	F	M	Total
Undergraduate																					
Full-Time																					
First-Time Freshmen			1	1	1	6					3	1	4		23	99	6		25	120	145
Other Freshmen				1		2					1	1			1	13	5	11	6	29	35
Sophomores			1		1	3	1	5			1	10	3		13	99	2		19	122	141
Juniors				4	1	3	2	5			1	2	1	4	16	110			21	130	151
Seniors			1	2	1	9	2	8			1	5			22	136	6		27	166	193
Special								1							2	16	1		2	19	21
Total Full-Time			3	8	3	16	5	27			3	22	2	12	77	473	7	28	100	586	686
Part-Time																					
First-Time Freshmen																					
Other Freshmen																					
Sophomores																					
Juniors																					
Seniors																					
Special																					
Total Part-Time																					
Total All Students			4	12	3	28	6	33			3	29	2	13	85	533	8	31	111	679	790

Figure 50: College of Education and Human Sciences Delivery-Site Head Count: Fall 2003-2012

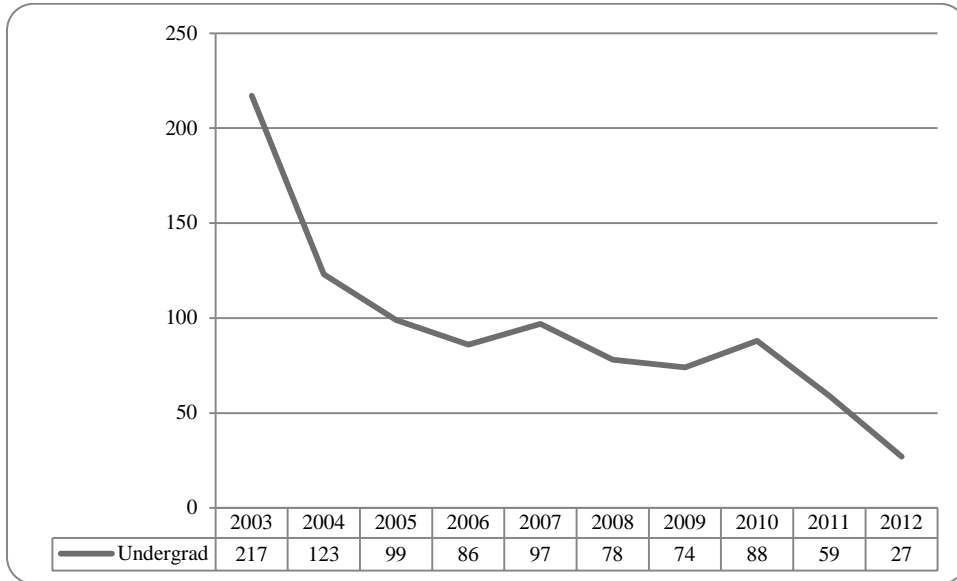


Figure 51: College of Education and Human Sciences Delivery-Site Student Credit Hours: Fall 2003-2012

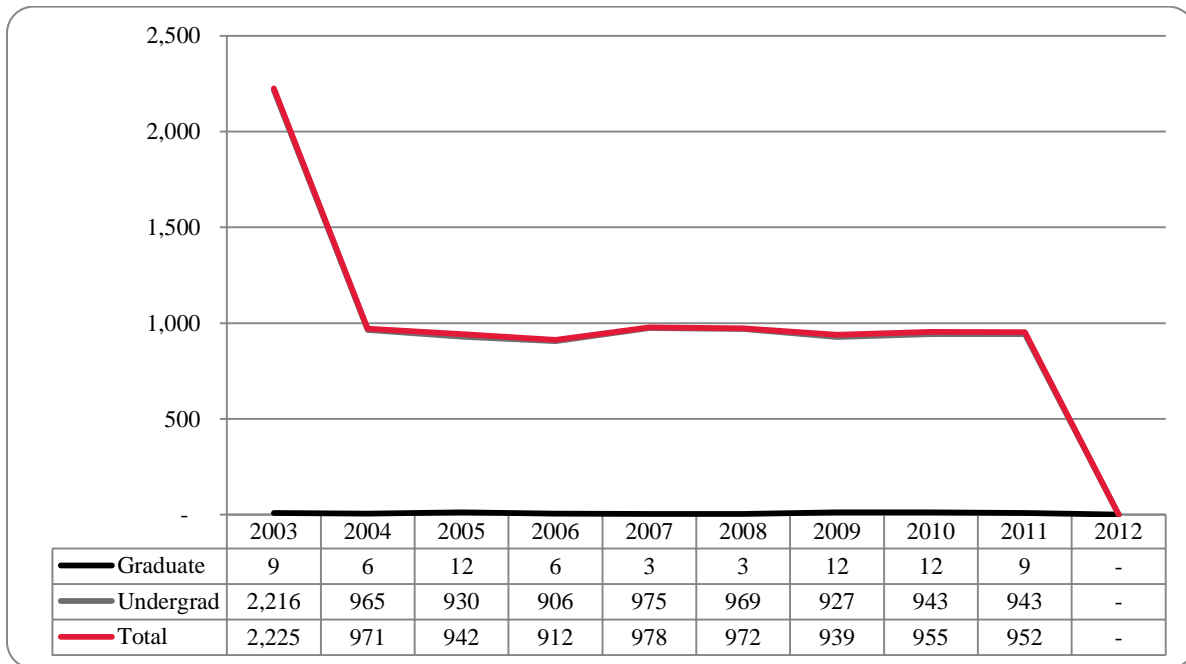


Figure 52: College of Education and Human Sciences Delivery-Site Head Count by Ethnicity by Gender: Fall 2003-2012

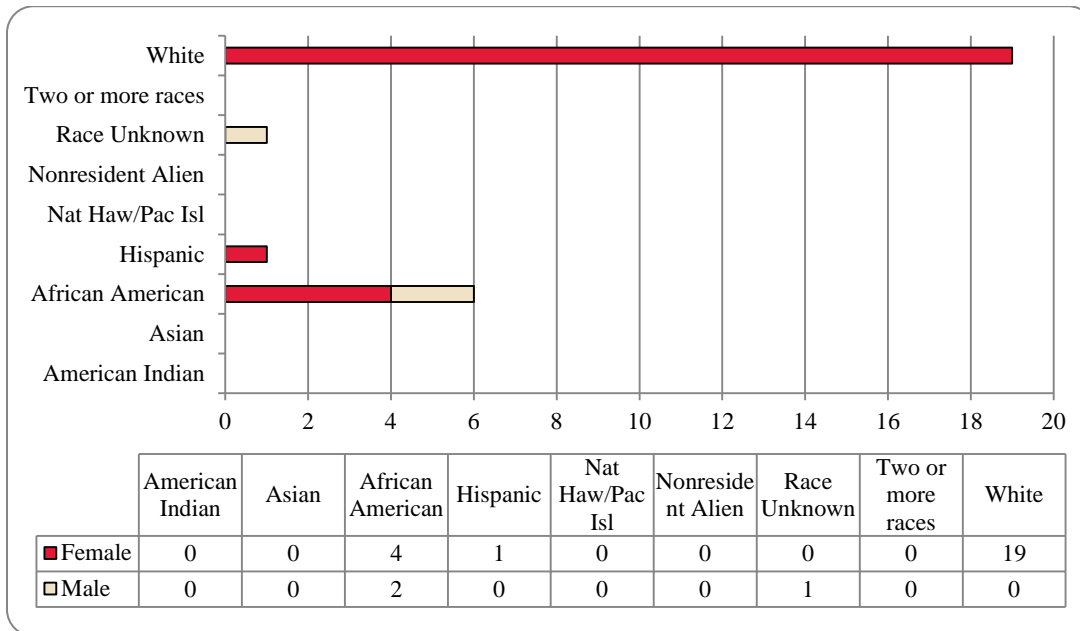


Table 20: College of Education and Human Sciences Head Count Summary for Undergraduate Students by Full and Part-Time by Gender and Race Classification: Fall 2012

	American Indian		Asian		African American		Hispanics		Nat Haw / Pac Isl		Race Unknown		Two or more races		White		Nonresident Alien		Total		
	F	M	F	M	F	M	F	M	F	M	F	M	F	M	F	M	F	M	F	M	Total
Undergraduate																					
Full-Time																					
First-Time Freshmen																					
Other Freshmen							1													1	1
Sophomores											1									2	1
Juniors																				5	5
Seniors						2														10	11
Special																					
Total Full-Time						2	1	1			1									18	2
Part-Time																					
First-Time Freshmen																					
Other Freshmen																					
Sophomores																					
Juniors																					
Seniors						2	1													6	1
Special																					
Total Part-Time						2	1													6	1
Total All Students						4	2	1			1									24	3
																				19	27

GLOSSARY

The total head count and student credit hours in this enrollment report are provided on both a delivery-Site and administrative-Site basis. Delivery-Site includes enrollment in all courses taught at UNO regardless of “home” campus. This means that student credit hours are reported for courses in the colleges. Student enrollment is counted in the college declared by the student. Specifically, the delivery-Site enrollment numbers include students in degree programs in the UNL Colleges of Agriculture, Architecture, Engineering and Technology, and Education and Human Science.

FIRST-TIME, Entering (freshmen) Student: Students attending any institution for the first time at the undergraduate level. For students entering the fall term, this includes students enrolled in the fall term who attended college for the first time in the prior summer term. Also included are students who entered with advanced standing, i.e. college credits earned before graduation from high school.

OTHER FRESHMEN: At the beginning of the current semester, undergraduate students who (1) are not First-Time Freshmen and (2) have less than 27 semester hours earned from all institutions of higher education attended.

SOPHOMORES: At the beginning of the current semester, undergraduate students who have at least 27, but not more than 57, semester hours earned from all institutions of higher education attended.

JUNIORS: At the beginning of the current semester, undergraduate students who have at least 58, but not more than 90, semester hours earned from all institutions of higher education attended.

SENIORS: At the beginning of the current semester, undergraduate students who have at least 91 semester hours earned from all institutions of higher education attended.

NON-DEGREE/INTER-CAMPUS/SPECIAL UNDERGRADUATES: Special undergraduates not pursuing a degree at UNO in various programs: Inter-Campus UNMC, UNK, UNL, and Non-Degree.

NON-DEGREE/INTER-CAMPUS/SPECIAL GRADUATE STUDENTS: Special graduate students not pursuing a degree at UNO in various programs: Engineering Transfer Program, Inter-Campus UNMC, UNK, UNL, Inter-Campus UNL Graduate Psychology and Non-Degree.

MASTERS/SPECIALIST: Graduate students pursuing a degree less than doctoral.

CERTIFICATE: These students are not enrolled in a degree program, but only a certificate.

DOCTORAL: Graduate students who have been accepted into a doctoral program.

FULL-TIME: In the current semester, undergraduate students enrolled for 12 or more semester hours, or graduate students enrolled for 9 or more semester hours.

PART-TIME: In the current semester, undergraduate students enrolled for less than 12 semester hours, or graduate students enrolled for less than 9 semester hours.

COOPERATIVE GRADUATE PROGRAM: Graduate students enrolled in Human Resources and Training or Global Information Operations offered cooperatively by two or more colleges.

Website:

<http://www.unomaha.edu/oie/>

Phone:

402-554-2367

Fax:

402-554-2367

Russell Smith
Director

Jenny Liu
Associate Director

Daniel O'Dell
Web & Communications
Coordinator

Andrew Jacobsen
Business Analyst

Jeanie Gutheil-Bykerk
Research Analyst

Rita Sterkel
Management Information
Coordinator

UNIVERSITY OF
Nebraska
Omaha

