

1-1-2011

## 2000s-1990s Migration by Age and Race

David Drozd

Follow this and additional works at: <https://digitalcommons.unomaha.edu/cparpublications>

 Part of the [Public Affairs Commons](#)

---

### Recommended Citation

Drozd, David, "2000s-1990s Migration by Age and Race" (2011). *Publications since 2000*. 98.  
<https://digitalcommons.unomaha.edu/cparpublications/98>

This Report is brought to you for free and open access by the Center for Public Affairs Research at DigitalCommons@UNO. It has been accepted for inclusion in Publications since 2000 by an authorized administrator of DigitalCommons@UNO. For more information, please contact [unodigitalcommons@unomaha.edu](mailto:unodigitalcommons@unomaha.edu).

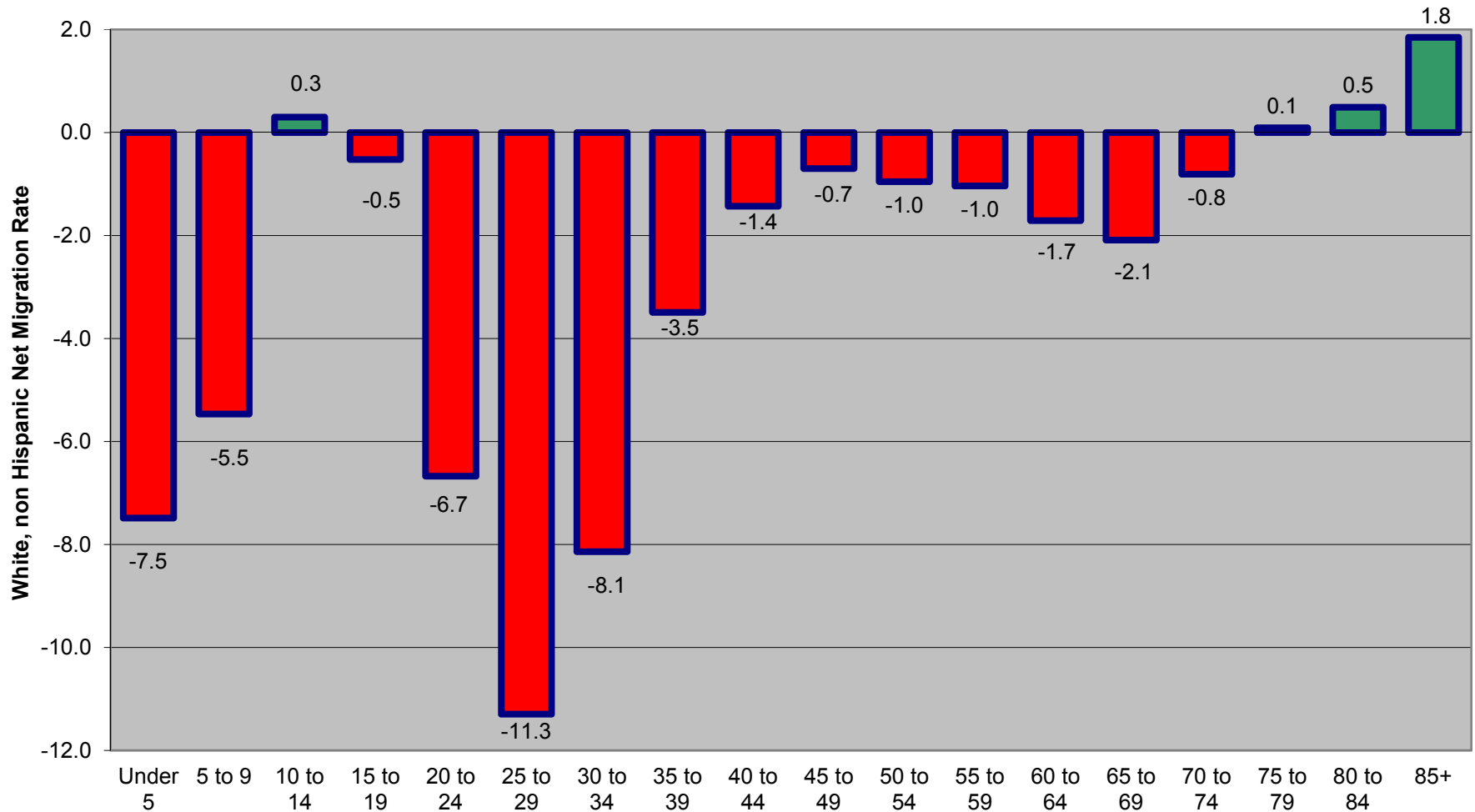


The following pages show migration rates by age during the 2000s decade for:

- Non-Hispanic Whites (page 2)
- All Minority Groups (page 3)
- The Total Population (page 4)

## Nebraska Net Migration Rate of Non-Hispanic Whites by Age: 2000 to 2010

Overall Net Migration Rate = -3.4

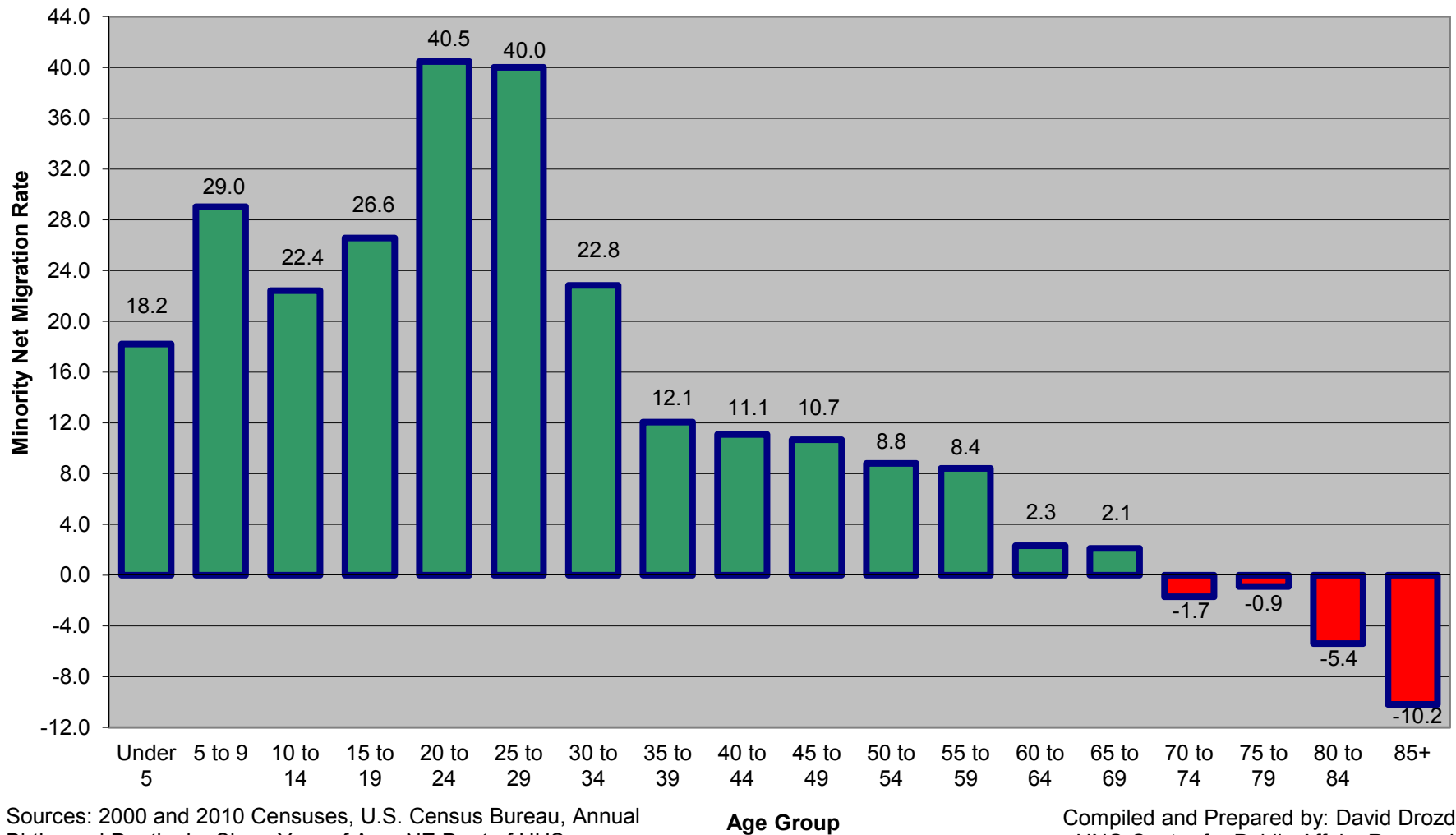


Sources: 2000 and 2010 Censuses, U.S. Census Bureau, Annual Births and Deaths by Single Year of Age, NE Dept of HHS

**Age Group**

Compiled and Prepared by: David Drozd,  
UNO Center for Public Affairs Research

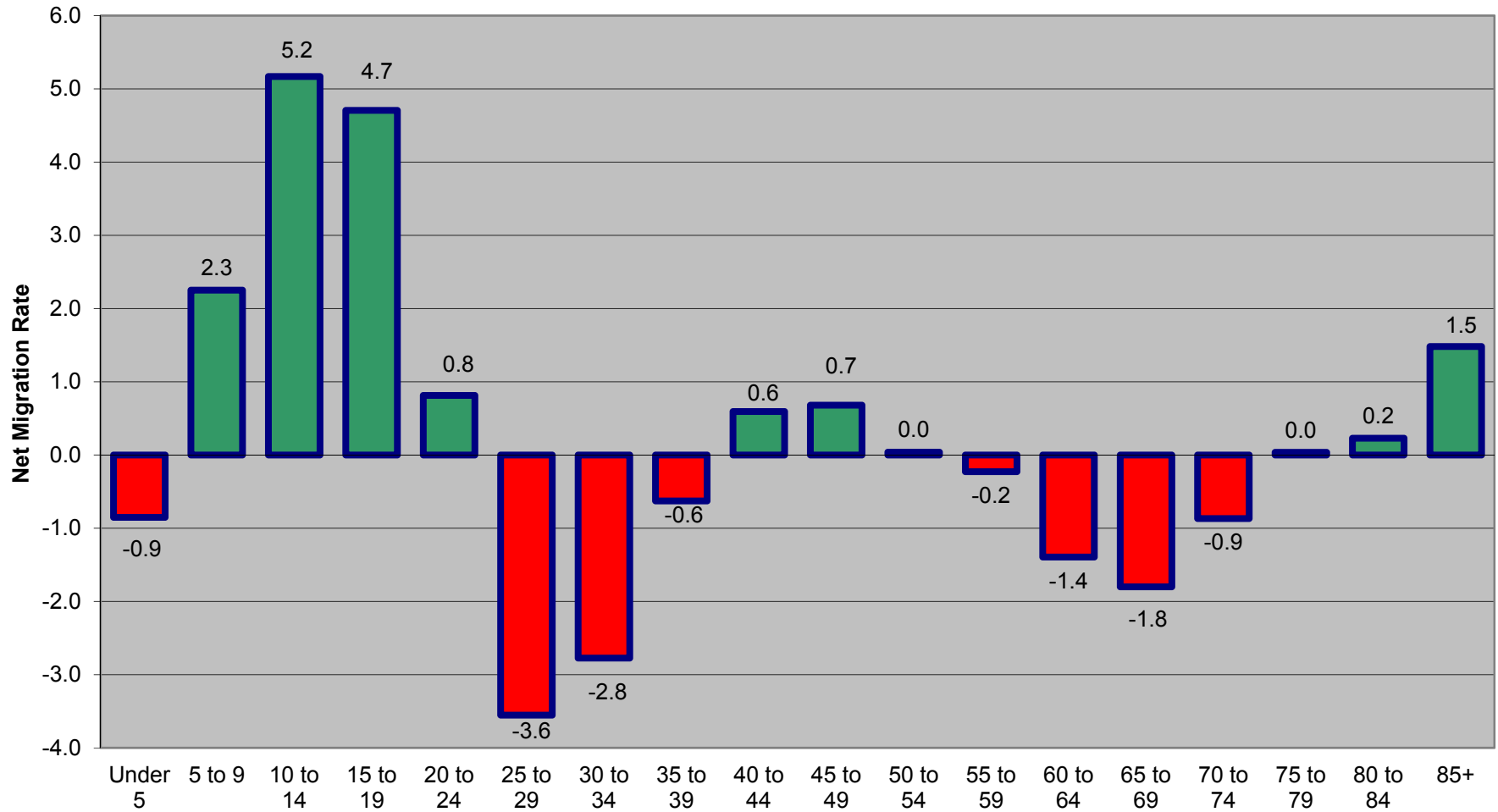
**Nebraska Net Migration Rate of Minority Population Groups by Age: 2000 - 2010**  
**Overall Net Migration Rate = 25.7**



Sources: 2000 and 2010 Censuses, U.S. Census Bureau, Annual Births and Deaths by Single Year of Age, NE Dept of HHS

Compiled and Prepared by: David Drozd, UNO Center for Public Affairs Research

**Nebraska Net Migration Rate by Age during 2000 to 2010 timeframe**  
**Overall Net Migration Rate = 0.3**



Sources: 2000 and 2010 Censuses, U.S. Census Bureau, Annual Births and Deaths by Single Year of Age, NE Dept of HHS

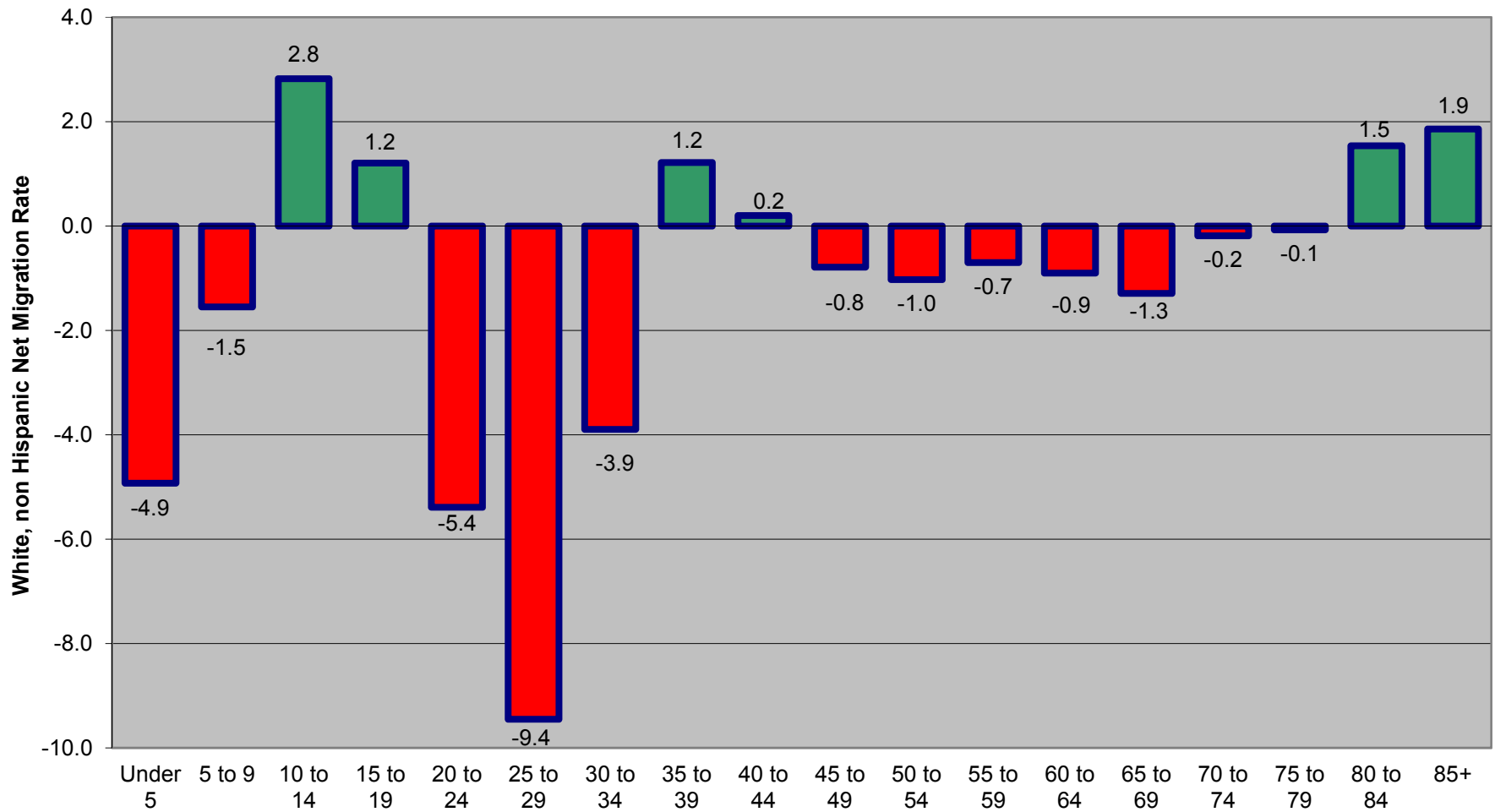
**Age Group**

Compiled and Prepared by: David Drozd,  
 UNO Center for Public Affairs Research

The following pages show migration rates by age during the 1990s decade for:

- Non-Hispanic Whites (page 6)
- All Minority Groups (page 7)
- The Total Population (page 8)

**Nebraska Net Migration Rate of Non-Hispanic Whites by Age: 1990 to 2000**  
**Overall Net Migration Rate = -1.4**

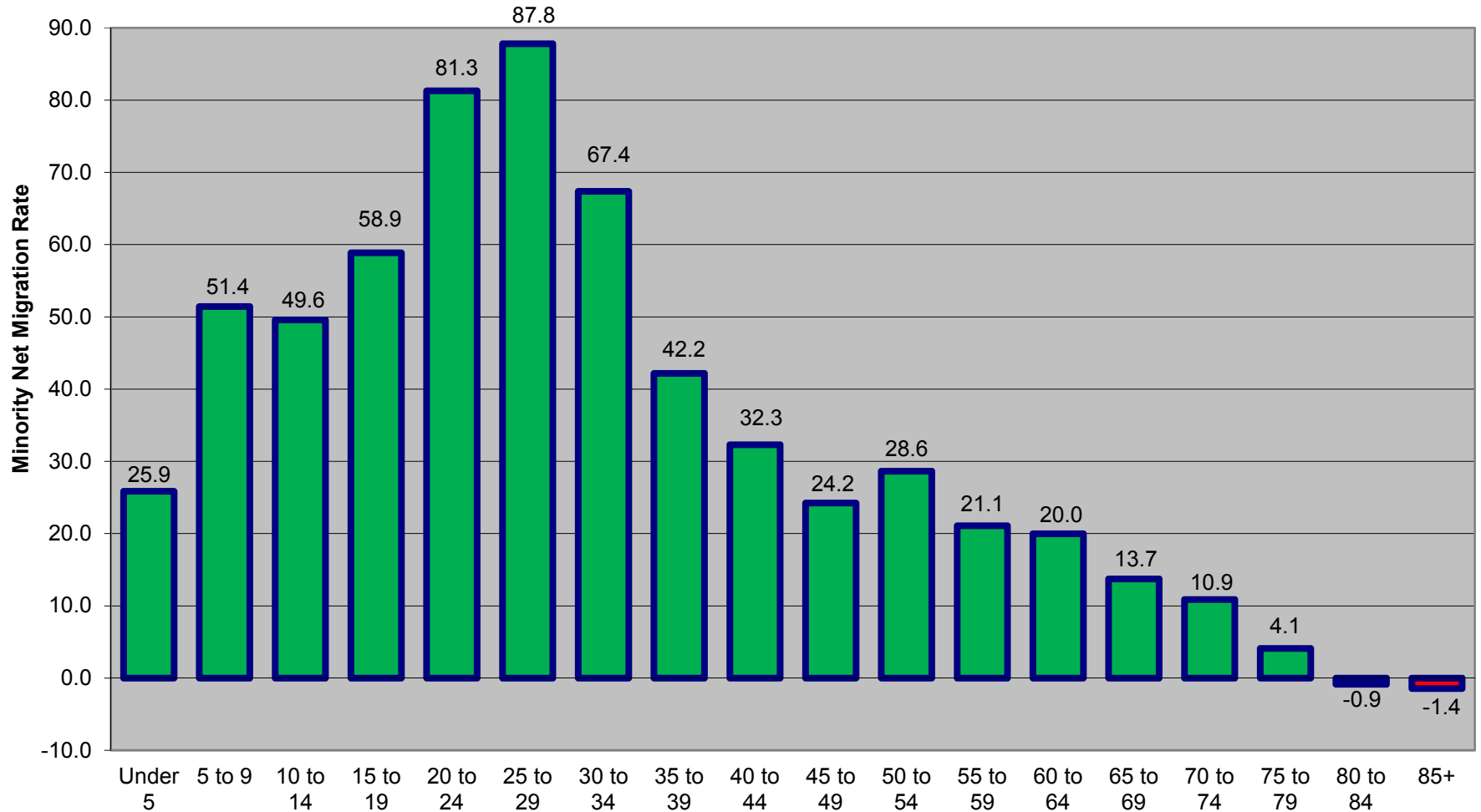


Sources: 1990 and 2000 Censuses, U.S. Census Bureau, Annual Births and Deaths by Single Year of Age, NE Dept of HHS

**Age Group**

Compiled and Prepared by: David Drozd,  
 UNO Center for Public Affairs Research

**Nebraska Net Migration Rate of Minority Population Groups by Age: 1990 - 2000**  
**Overall Net Migration Rate = 58.4**



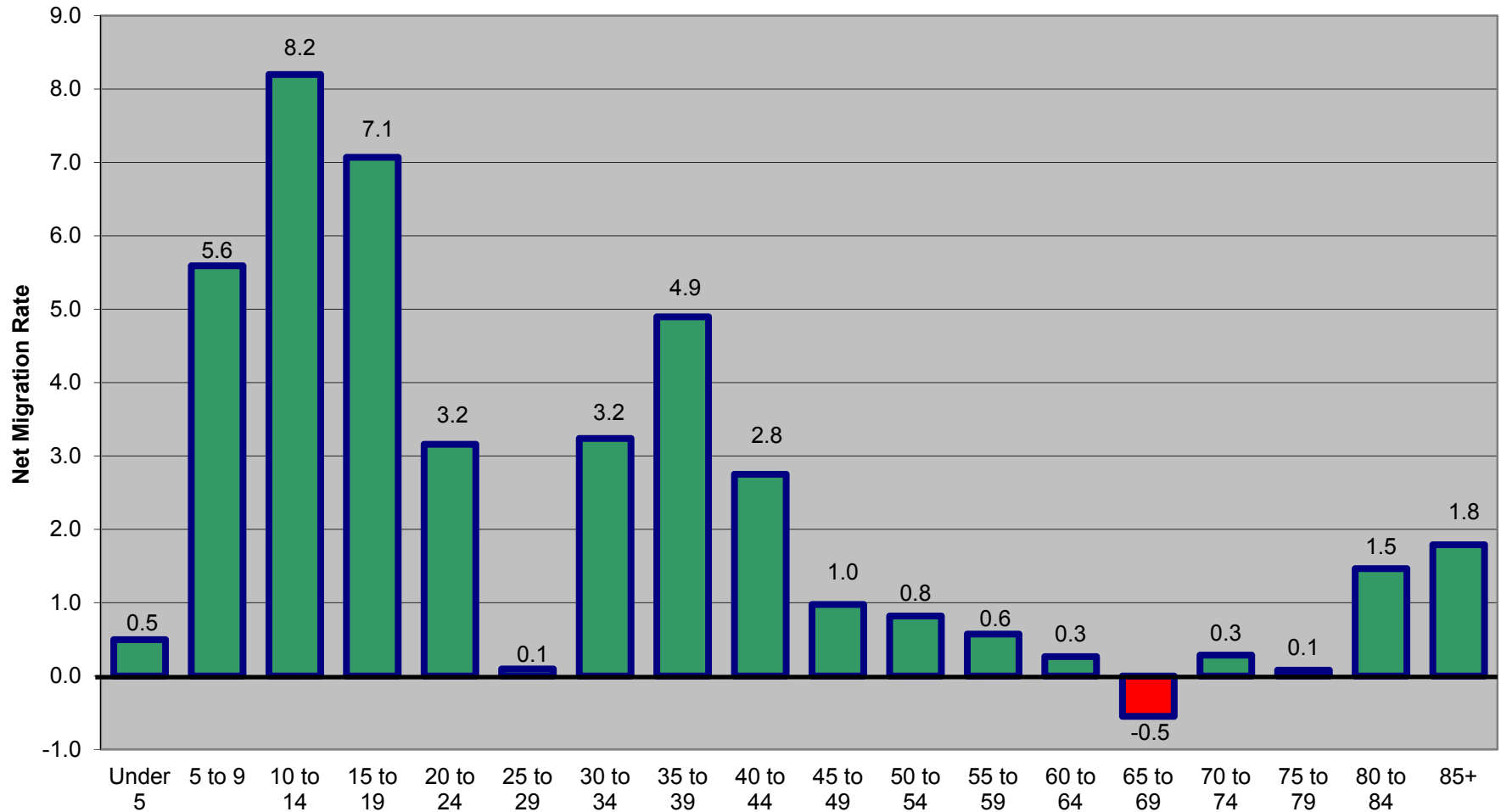
Sources: 1990 and 2000 Censuses, U.S. Census Bureau, Annual Births and Deaths by Single Year of Age, NE Dept of HHS

**Age Group**

Compiled and Prepared by: David Drozd,  
 UNO Center for Public Affairs Research



**Nebraska Net Migration Rate by Age during 1990 to 2000 timeframe**  
**Overall Net Migration Rate = 3.1**



Sources: 1990 and 2000 Censuses, U.S. Census Bureau, Annual Births and Deaths by Single Year of Age, NE Dept of HHS

**Age Group**

Compiled and Prepared by: David Drozd,  
 UNO Center for Public Affairs Research