

5-17-2011

2010 Census Demographic Profile Summary of Nebraska

David Drozd

Follow this and additional works at: <https://digitalcommons.unomaha.edu/cparpublications>

 Part of the [Public Affairs Commons](#)

Recommended Citation

Drozd, David, "2010 Census Demographic Profile Summary of Nebraska" (2011). *Publications since 2000*. 103.
<https://digitalcommons.unomaha.edu/cparpublications/103>

This Report is brought to you for free and open access by the Center for Public Affairs Research at DigitalCommons@UNO. It has been accepted for inclusion in Publications since 2000 by an authorized administrator of DigitalCommons@UNO. For more information, please contact unodigitalcommons@unomaha.edu.



2010 Census Demographic Profile Summary of Nebraska

May 17, 2011

Contact: David Drozd, Research Coordinator
Center for Public Affairs Research, University of Nebraska Omaha
Phone: 402-554-2132; email: ddrozd@unomaha.edu

Possible Storylines

- Men led Nebraska's population growth. Older men are among the state's fastest growing demographic groups.
- The state's population aged during the 2000s, but the median age had a relatively small increase. (Smallest increase for any decade in which the median increased since 1900.)
- Those aged 60 or older have their largest share of the Nebraska population ever, while those under age 20 represent the smallest share of the state population ever.
- The Nebraska average household size declined for the 7th straight decade. However, the amount of the decline for this decade was smaller than for any other decade since 1940. *Graph page 7.*
- Metro counties, those with a college/university, or those with a large minority presence differ from other Nebraska counties on many key metrics released with this set of commonly-used statistics from the Census.

Supporting Text

1. The number of men in Nebraska increased by nearly 63,000 or 7.5 percent from 2000 to 2010, sizably higher than the growth of about 52,000 women (6.0 percent). *Table page 5.*
2. For each 5-year age group for ages 60 and older, men had a better population change rate than women (faster increases, slower decreases). The differential in the percentage changes between men and women were at least 4.5 percent for each of these categories. For example, men aged 65-69 increased by 19.2 percent while women of the same age increased by 13.0 percent, a differential of 6.2 percent. *Graph page 5.*
3. While much attention is given to gains in the elderly female population, men aged 80 and over increased by about 5,800 while women only increased by about 2,800. Likewise, the depression-influenced cohort now in their 70s declined by only about 300 men but by more

than 3,000 women. Overall, there were still more women than men in each 5-year age group aged 70 or older. *Table page 5.*

4. Persons aged 80 and older, baby boomers aged 50 to 64, children of baby boomers now aged 25 to 29, and young children under age 5 grew faster than the Nebraska state average. Relatively high births in the late 2000s led the under 5 demographic to be Nebraska's most numerous in 2010 – in 2000, those aged 15-19 were Nebraska's largest demographic group. *Table and graph on page 4.*
5. While births and children under age 5 have risen, the entire population under age 20 now represents the smallest percentage of Nebraska's population ever. Those under 20 comprised nearly half the state's population in 1900 (46.8 percent), but this figure has steadily declined to currently be at 28.1 percent in 2010. Conversely, the share of the population aged 60 or older has steadily risen, and attained a new high of 18.7 percent of the state's population in 2010. *Graph page 8.*
6. The median (midpoint) age in Nebraska increased to 36.2 years, the highest on record. However, the median age increased by less than one year, much smaller than gains of 3.3 and 2.3 years in the preceding two decades. The increase of 0.9 years was the smallest of any increase since 1900, and represented one of the more stable decades regarding change in median age. *Graph page 7.*

County Data

7. The young working-age population is concentrated more heavily in the state's most populous counties. The state's most urban counties of Douglas, Lancaster, and Sarpy also have the state's highest percentage of those aged 25 to 44. Those counties, along with Johnson County where a correctional facility opened after Census 2000, and Hall and Dakota Counties where major meat processors are located, each have more than a quarter of their populations aged 25 to 44. *Table page 12.*
8. The baby boom generation aged 45 to 64 in 2010, has a larger presence in counties in the western part of the state. The top 23 counties regarding the percentage of the population aged 45 to 64 are all in the state's 3rd Congressional District, covering the western 3/4ths of the state. *Table page 12.*
9. Counties with a larger minority presence have a relatively high proportion of kids under age 5 as well as aged 5 to 17; these counties have a relatively lower percentage of boomers aged 45 to 64 and a low median age. *Tables pages 10, 13, and 15.*
10. The median age is above 50 years in four Nebraska counties (Keya Paha, Garfield, Boyd, Hooker). The state's most populous counties have relatively low median ages and have the smallest percentage of their populations aged 65 and over. *Table pages 14-15.*
11. The percentage of households that are comprised of married couple (husband and wife) families ranges from more than 70 percent in McPherson County to 45 percent in Douglas

County. *Table pages 18-19.* Statewide, just over half of Nebraska’s households are married couple families (50.8%) – in 2000, the figure stood somewhat higher at 54.2 percent.

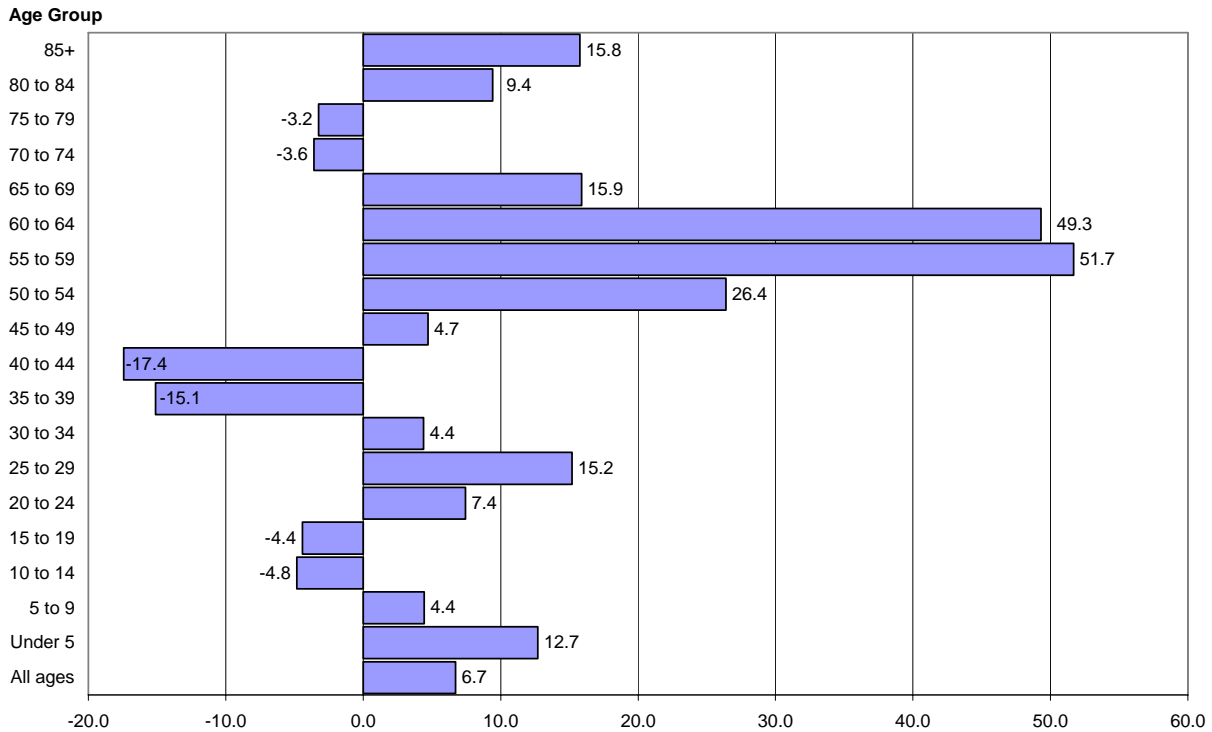
12. More than 10 percent of the households in Thurston County are comprised of a mother with her own child under age 18 with no husband present. Three other counties have more than 7 percent of their households with this type of composition (Dakota, Douglas, and Hall). *Table page 18.* Statewide, 6.2 percent of households were comprised of “single mothers”, up slightly from 6.0 percent in 2000.
13. Home ownership rates range from just above 60 percent in the college-influenced counties of Dawes and Lancaster to more than 80 percent in Cedar, Cass, and Franklin Counties. *Table pages 18-19.* Home ownership rates remained steady in Nebraska – 67.2 percent in 2010 versus 67.4 percent in 2000.

Nebraska Population by Age: 2000 to 2010

Sources: 2000 and 2010 Decennial Censuses, U.S. Census Bureau

Nebraska	2000	2010	Change	% Change
All ages	1,711,263	1,826,341	115,078	6.7
Under 5	117,048	131,908	14,860	12.7
5 to 9	123,445	128,928	5,483	4.4
10 to 14	128,934	122,706	-6,228	-4.8
15 to 19	134,909	128,930	-5,979	-4.4
20 to 24	120,331	129,276	8,945	7.4
25 to 29	112,049	129,076	17,027	15.2
30 to 34	111,224	116,100	4,876	4.4
35 to 39	130,027	110,361	-19,666	-15.1
40 to 44	133,807	110,477	-23,330	-17.4
45 to 49	122,714	128,491	5,777	4.7
50 to 54	103,040	130,235	27,195	26.4
55 to 59	77,584	117,686	40,102	51.7
60 to 64	63,956	95,490	31,534	49.3
65 to 69	59,391	68,834	9,443	15.9
70 to 74	56,308	54,292	-2,016	-3.6
75 to 79	47,991	46,435	-1,556	-3.2
80 to 84	34,552	37,808	3,256	9.4
85+	33,953	39,308	5,355	15.8

Percentage Change for 5-Year Age Groups in Nebraska: 2000 to 2010



Sources: 2000 and 2010 Censuses, U.S. Census Bureau

Percent Change

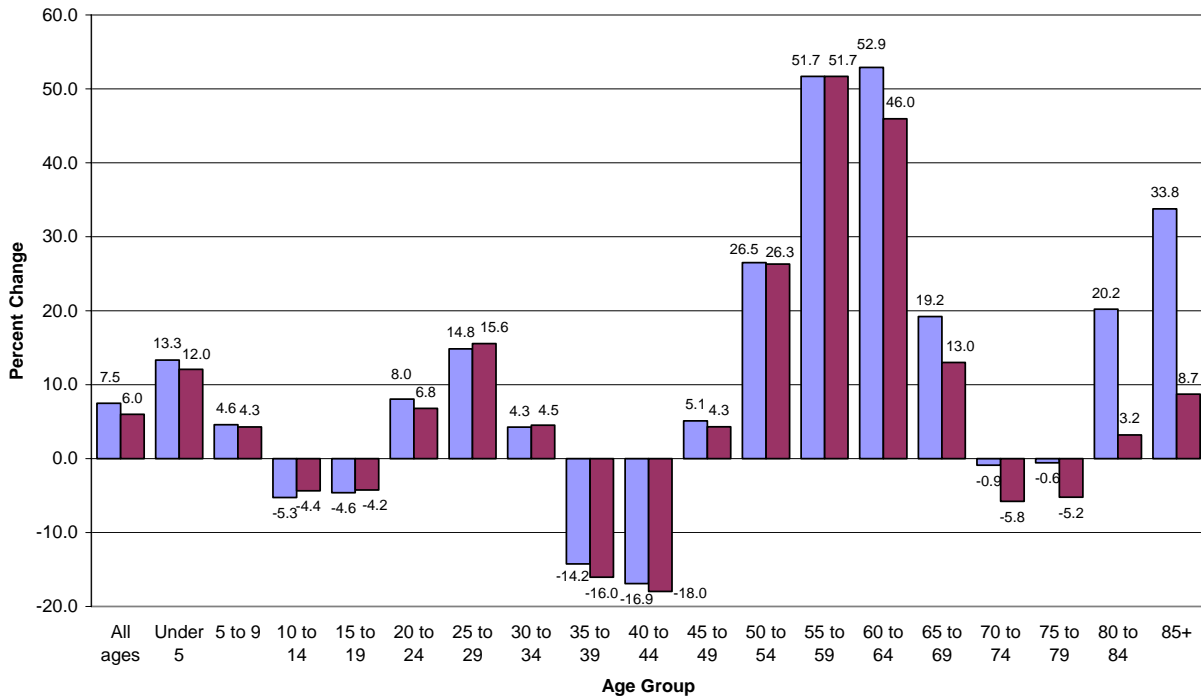
Prepared by: Center for Public Affairs Research, UNO

Nebraska Population by Sex and Age: 2000 to 2010

Sources: 2000 and 2010 Decennial Censuses, U.S. Census Bureau

Male	2000				2010			
	2000	2010	Change	% Change	2000	2010	Change	% Change
All ages	843,351	906,296	62,945	7.5	867,912	920,045	52,133	6.0
Under 5	59,681	67,630	7,949	13.3	57,367	64,278	6,911	12.0
5 to 9	63,001	65,888	2,887	4.6	60,444	63,040	2,596	4.3
10 to 14	66,180	62,686	-3,494	-5.3	62,754	60,020	-2,734	-4.4
15 to 19	69,235	66,033	-3,202	-4.6	65,674	62,897	-2,777	-4.2
20 to 24	61,301	66,232	4,931	8.0	59,030	63,044	4,014	6.8
25 to 29	57,373	65,891	8,518	14.8	54,676	63,185	8,509	15.6
30 to 34	56,673	59,085	2,412	4.3	54,551	57,015	2,464	4.5
35 to 39	65,339	56,043	-9,296	-14.2	64,688	54,318	-10,370	-16.0
40 to 44	67,281	55,905	-11,376	-16.9	66,526	54,572	-11,954	-18.0
45 to 49	61,050	64,171	3,121	5.1	61,664	64,320	2,656	4.3
50 to 54	51,556	65,210	13,654	26.5	51,484	65,025	13,541	26.3
55 to 59	38,280	58,068	19,788	51.7	39,304	59,618	20,314	51.7
60 to 64	30,771	47,051	16,280	52.9	33,185	48,439	15,254	46.0
65 to 69	27,728	33,056	5,328	19.2	31,663	35,778	4,115	13.0
70 to 74	25,337	25,108	-229	-0.9	30,971	29,184	-1,787	-5.8
75 to 79	20,320	20,206	-114	-0.6	27,671	26,229	-1,442	-5.2
80 to 84	12,683	15,243	2,560	20.2	21,869	22,565	696	3.2
85+	9,562	12,790	3,228	33.8	24,391	26,518	2,127	8.7

Percentage Change in 5-Year Age Groups by Gender for Nebraska: 2000-2010



Sources: 2000 and 2010 Censuses, U.S. Census Bureau

Male Female

Prepared by: David Drozd, UNO Center for Public Affairs Research

Nebraska Population for Select Age Groups: 1900 to 2010

Sources: Decennial Censuses, U.S. Census Bureau

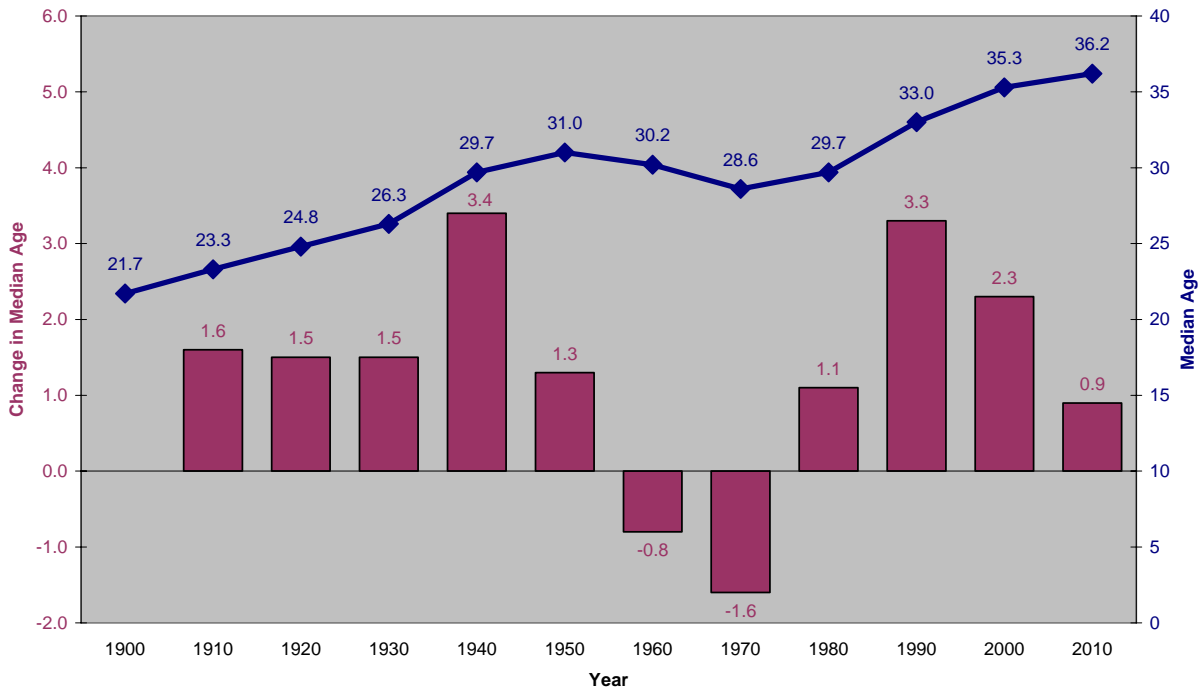
Compiled by: Center for Public Affairs Research, UNO

Category	1900	1910	1920	1930	1940	1950	1960	1970	1980	1990	2000	2010
Under 5	133,747	140,096	143,240	130,337	104,546	140,169	160,207	120,222	122,946	119,606	117,048	131,908
5 to 19	364,818	374,386	391,740	409,926	352,086	305,780	375,901	443,372	386,201	356,644	387,288	380,564
20 to 39	333,848	389,936	421,184	424,570	391,679	378,302	340,257	359,445	486,359	489,635	473,631	484,813
40 to 59	175,343	205,982	235,902	283,403	310,984	309,305	307,067	310,058	301,107	321,704	437,145	486,889
60 to 79	53,355	74,100	93,837	117,573	140,774	171,242	200,360	210,129	221,536	229,596	227,646	265,051
80 or older	3,527	5,745	7,923	11,404	15,765	20,712	27,538	40,267	51,676	61,200	68,505	77,116
unknown	1,662	1,969	2,546	750	0	0	0	0	0	0	0	0
Total Pop	1,066,300	1,192,214	1,296,372	1,377,963	1,315,834	1,325,510	1,411,330	1,483,493	1,569,825	1,578,385	1,711,263	1,826,341

Percent

Under 5	12.6	11.8	11.1	9.5	7.9	10.6	11.4	8.1	7.8	7.6	6.8	7.2
5 to 19	34.3	31.5	30.3	29.8	26.8	23.1	26.6	29.9	24.6	22.6	22.6	20.8
Under 20	46.8	43.2	41.3	39.2	34.7	33.6	38.0	38.0	32.4	30.2	29.5	28.1
20 to 39	31.4	32.8	32.6	30.8	29.8	28.5	24.1	24.2	31.0	31.0	27.7	26.5
40 to 59	16.5	17.3	18.2	20.6	23.6	23.3	21.8	20.9	19.2	20.4	25.5	26.7
60 to 79	5.0	6.2	7.3	8.5	10.7	12.9	14.2	14.2	14.1	14.5	13.3	14.5
80 or older	0.3	0.5	0.6	0.8	1.2	1.6	2.0	2.7	3.3	3.9	4.0	4.2
60 or older	5.3	6.7	7.9	9.4	11.9	14.5	16.1	16.9	17.4	18.4	17.3	18.7
Median age	21.7	23.3	24.8	26.3	29.7	31.0	30.2	28.6	29.7	33.0	35.3	36.2
Change	n/a	1.6	1.5	1.5	3.4	1.3	-0.8	-1.6	1.1	3.3	2.3	0.9
Avg household size					3.56	3.24	3.16	3.02	2.66	2.54	2.49	2.46
Change					n/a	-0.32	-0.08	-0.14	-0.36	-0.12	-0.05	-0.03

Median Age and Decade Change in Median Age: Nebraska 1900-2010

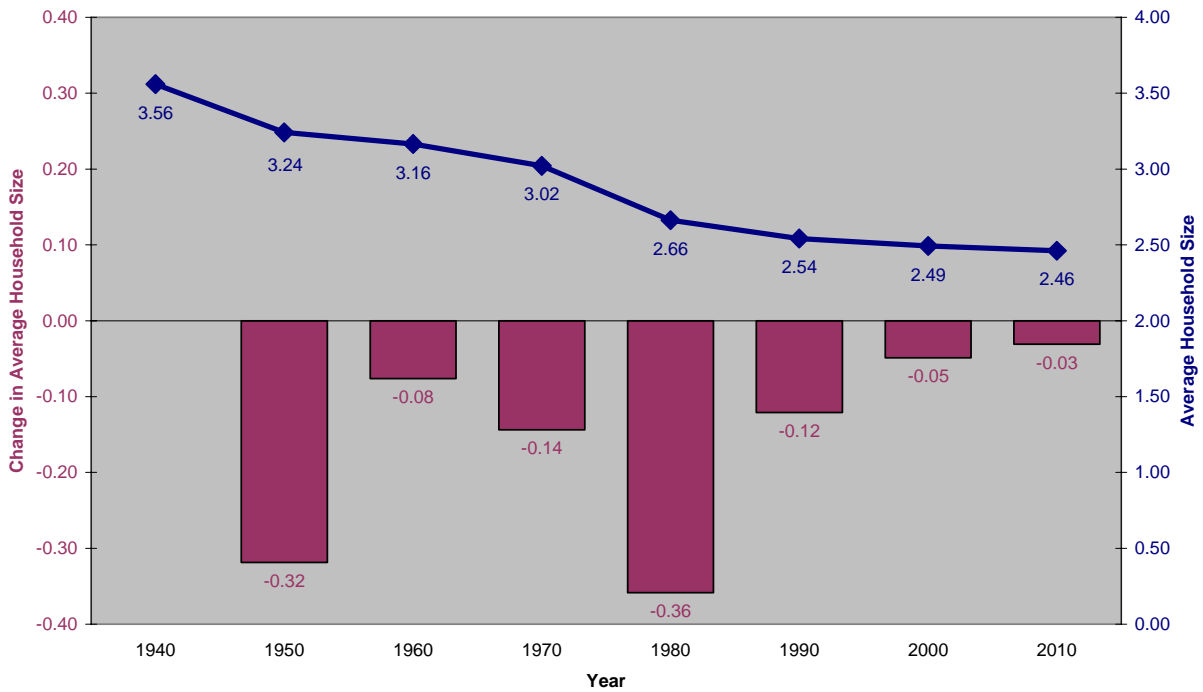


Sources: Decennial Censuses, U.S. Census Bureau

Change in Median Age Median Age

Prepared by: David Drozd, UNO Center for Public Affairs Research

Average Household Size and Change in Average Household Size: Nebraska 1940-2010

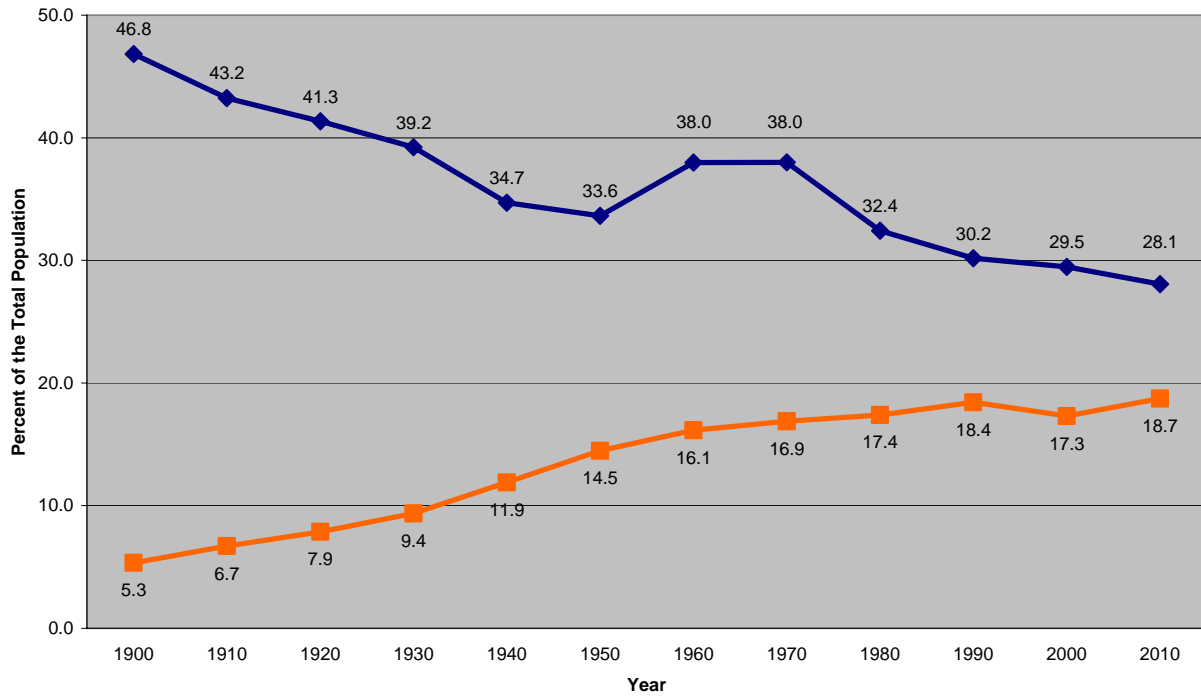


Sources: Decennial Censuses, U.S. Census Bureau

Change in Average Household Size Average Household Size

Prepared by: David Drozd, UNO Center for Public Affairs Research

Percentage of the Nebraska Population Under Age 20 and Age 60 or Older: 1900 to 2010

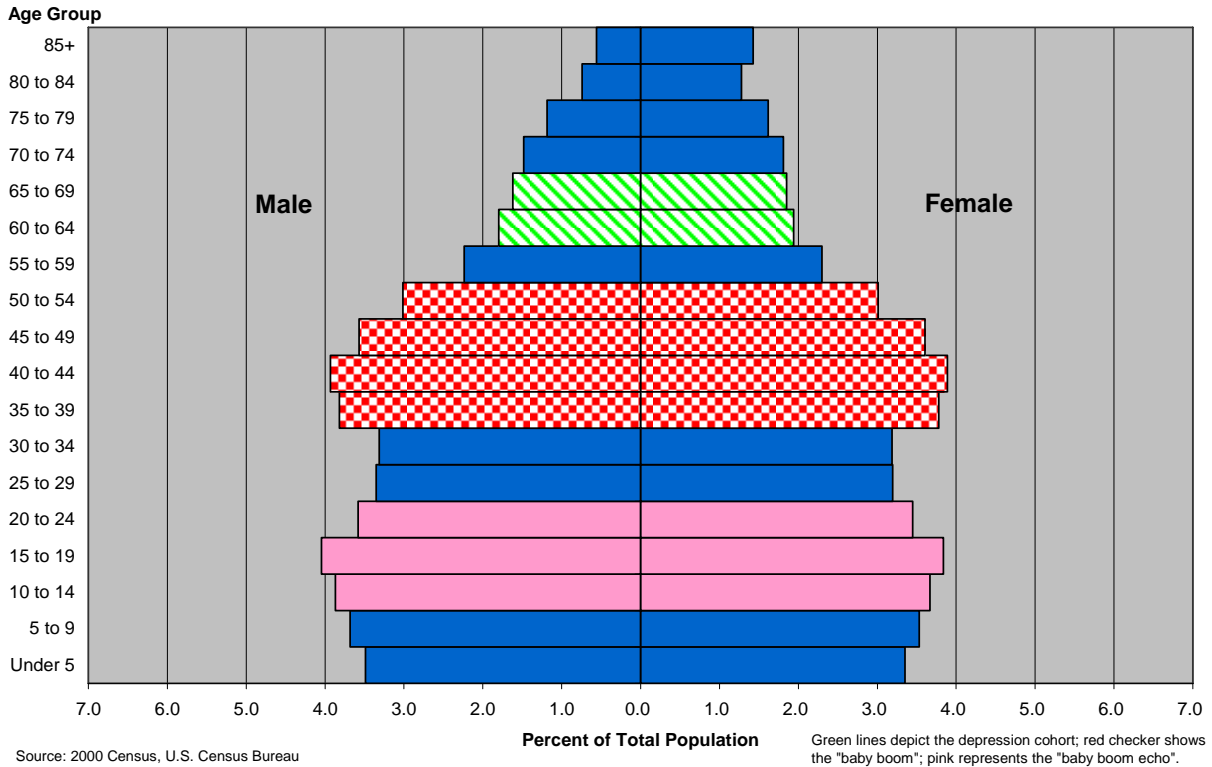


Sources: Decennial Censuses, U.S. Census Bureau

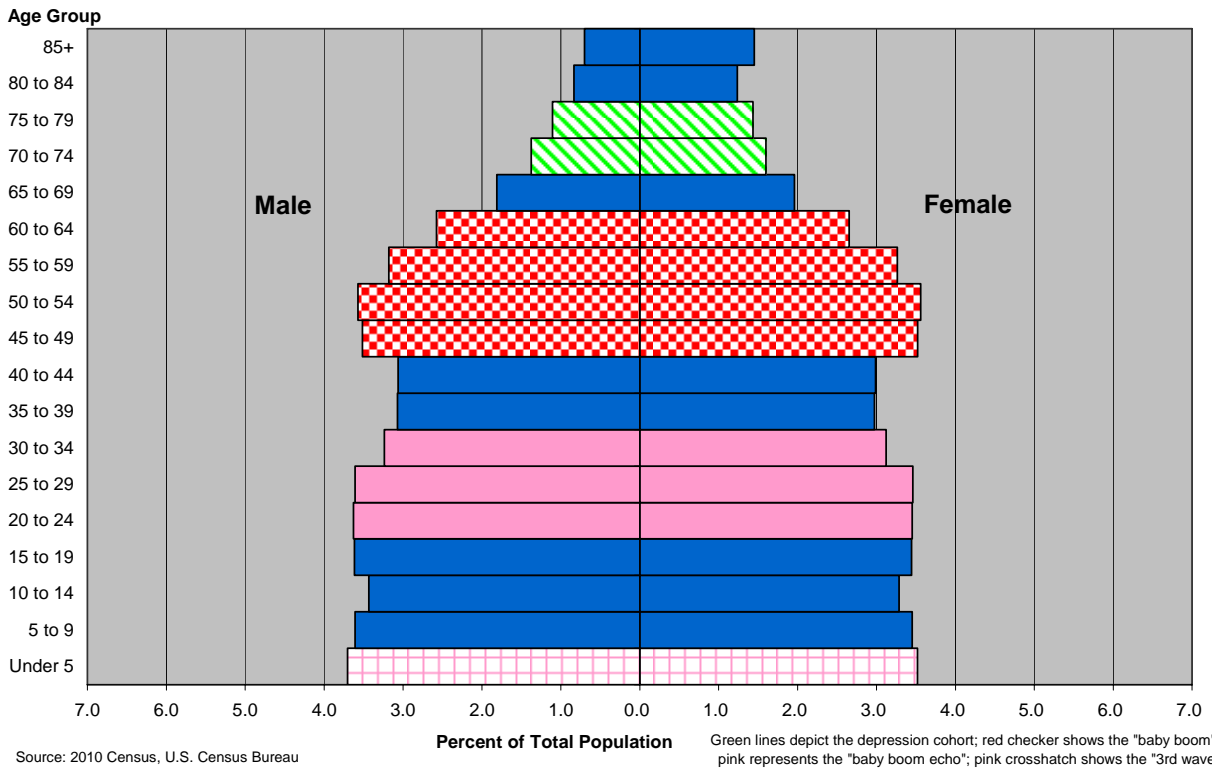
Under 20 60 or older

Prepared by: David Drozd, UNO
Center for Public Affairs Research

2000 Nebraska Population by Sex and Five-Year Age Group



2010 Nebraska Population by Sex and Five-Year Age Group



Nebraska County Ranking of Various Statistics: 2010

Source: 2010 Census, U.S. Census Bureau

Compiled by: David Drozd, UNO Center for Public Affairs Research on May 17, 2011

Under Age 5 Population			Age 5 to 17 Population			Age 18 to 24 Population		
Rank	County	Percent	Rank	County	Percent	Rank	County	Percent
n/a	Nebraska	7.2	n/a	Nebraska	17.9	n/a	Nebraska	10.0
1	Thurston	10.6	1	Thurston	24.9	1	Wayne	26.2
2	Colfax	9.3	2	Dakota	21.0	2	Dawes	21.6
3	Dakota	9.0	3	Dawson	20.6	3	Buffalo	15.8
4	McPherson	8.5	4	Sarpy	20.4	4	Lancaster	14.7
5	Sarpy	8.4	5	Stanton	19.9	5	Nemaha	13.4
6	Hall	8.1	6	Blaine	19.9	6	Seward	13.2
7	Dawson	7.9	7	Hamilton	19.9	7	Saline	12.6
8	Douglas	7.8	8	Colfax	19.8	8	Adams	12.0
9	Arthur	7.6	9	Pierce	19.7	9	Frontier	11.5
10	Stanton	7.6	10	Arthur	19.6	10	Madison	10.4
11	Madison	7.4	11	McPherson	19.5	11	Douglas	10.3
12	Platte	7.4	12	Washington	19.3	12	Thurston	9.7
13	Buffalo	7.2	13	Hall	19.2	13	Dakota	9.4
14	Scotts Bluff	7.2	14	Saunders	19.1	14	York	9.0
15	Saline	7.1	15	Clay	19.1	15	Colfax	9.0
16	Lincoln	7.1	16	Cass	19.0	16	Red Willow	8.9
17	Logan	7.1	17	Platte	19.0	17	Sarpy	8.8
18	Lancaster	7.1	18	Dixon	19.0	18	Scotts Bluff	8.7
19	Chase	7.1	19	Butler	18.9	19	Dodge	8.5
20	Box Butte	6.9	20	Merrick	18.8	20	Hall	8.3
21	Greeley	6.9	21	Cuming	18.7	21	Dawson	8.2
22	Cedar	6.9	22	Wheeler	18.7	22	Grant	8.1
23	Dodge	6.8	23	Cedar	18.5	23	Washington	8.0
24	Kearney	6.8	24	Polk	18.4	24	Platte	7.9
25	Saunders	6.7	25	Hayes	18.3	25	Lincoln	7.8
26	Adams	6.7	26	Douglas	18.3	26	Gage	7.1
27	Dixon	6.7	27	Box Butte	18.3	27	Clay	6.8
28	Cheyenne	6.6	28	Howard	18.3	28	Merrick	6.7
29	Perkins	6.5	29	Fillmore	18.2	29	Dixon	6.6
30	Antelope	6.5	30	Perkins	18.2	30	Kimball	6.5
31	Phelps	6.5	31	Furnas	18.1	31	Stanton	6.5
32	Morrill	6.4	32	Phelps	18.1	32	Otoe	6.5
33	Kimball	6.4	33	Knox	18.1	33	Morrill	6.5
34	Otoe	6.4	34	Logan	18.1	34	Cass	6.5
35	York	6.4	35	Lincoln	18.0	35	Chase	6.5
36	Holt	6.4	36	Thomas	17.8	36	Boone	6.5
37	Howard	6.3	37	Otoe	17.7	37	Johnson	6.4
38	Cass	6.3	38	Sheridan	17.6	38	Cheyenne	6.4
39	Custer	6.2	39	Boone	17.6	39	Nance	6.3
40	Pierce	6.2	40	Madison	17.6	40	Box Butte	6.3
41	Cuming	6.2	41	Scotts Bluff	17.6	41	Phelps	6.3
42	Gage	6.2	42	Seward	17.6	42	Saunders	6.3
43	Grant	6.2	43	Morrill	17.6	43	Greeley	6.3
44	Clay	6.2	44	Sioux	17.5	44	Cedar	6.2

Under Age 5 Population			Age 5 to 17 Population			Age 18 to 24 Population		
Rank	County	Percent	Rank	County	Percent	Rank	County	Percent
45	Nance	6.2	45	Kearney	17.4	45	Webster	6.2
46	Red Willow	6.1	46	Custer	17.4	46	Banner	6.1
47	Seward	6.1	47	Cheyenne	17.4	47	Richardson	6.0
48	Boone	6.1	48	Saline	17.4	48	Kearney	6.0
49	Webster	6.1	49	Nance	17.3	49	Perkins	6.0
50	Nemaha	6.0	50	Adams	17.3	50	Hamilton	6.0
51	Merrick	6.0	51	Holt	17.1	51	Howard	5.9
52	Loup	6.0	52	Banner	17.1	52	Keith	5.9
53	Knox	6.0	53	Dodge	17.1	53	Cherry	5.8
54	Sheridan	6.0	54	Antelope	17.0	54	Jefferson	5.8
55	Polk	6.0	55	Dundy	17.0	55	Antelope	5.8
56	Washington	5.9	56	Brown	16.9	56	Pierce	5.7
57	Wheeler	5.9	57	Red Willow	16.9	57	Loup	5.7
58	Butler	5.9	58	Burt	16.8	58	Butler	5.7
59	Valley	5.8	59	Buffalo	16.8	59	Hayes	5.7
60	Thayer	5.8	60	Boyd	16.8	60	Custer	5.7
61	Sherman	5.8	61	Pawnee	16.8	61	Cuming	5.7
62	Deuel	5.8	62	Gage	16.8	62	Holt	5.5
63	Hamilton	5.8	63	Chase	16.7	63	Garden	5.5
64	Gosper	5.7	64	Cherry	16.7	64	Deuel	5.5
65	Burt	5.7	65	Garfield	16.7	65	Sheridan	5.4
66	Jefferson	5.6	66	Gosper	16.7	66	Franklin	5.4
67	Fillmore	5.6	67	Sherman	16.7	67	Valley	5.4
68	Keith	5.6	68	Greeley	16.6	68	Sioux	5.3
69	Rock	5.6	69	Keya Paha	16.6	69	Knox	5.3
70	Franklin	5.6	70	Hooker	16.6	70	Wheeler	5.3
71	Hitchcock	5.5	71	Webster	16.5	71	Fillmore	5.2
72	Cherry	5.4	72	Richardson	16.4	72	Brown	5.2
73	Wayne	5.4	73	Loup	16.3	73	Sherman	5.1
74	Dawes	5.4	74	Valley	16.2	74	Furnas	5.1
75	Frontier	5.4	75	Harlan	16.2	75	Burt	5.1
76	Johnson	5.3	76	Frontier	16.2	76	Hitchcock	5.0
77	Harlan	5.3	77	Nuckolls	16.0	77	Logan	5.0
78	Pawnee	5.3	78	Franklin	16.0	78	Pawnee	5.0
79	Dundy	5.2	79	Lancaster	16.0	79	Boyd	5.0
80	Banner	5.2	80	York	16.0	80	Thayer	4.9
81	Nuckolls	5.2	81	Kimball	16.0	81	Polk	4.7
82	Furnas	5.2	82	Keith	16.0	82	Gosper	4.7
83	Thomas	5.1	83	Hitchcock	15.9	83	Garfield	4.7
84	Keya Paha	5.1	84	Jefferson	15.7	84	Harlan	4.5
85	Richardson	5.1	85	Nemaha	15.6	85	Nuckolls	4.4
86	Garden	5.1	86	Thayer	15.6	86	Arthur	4.3
87	Sioux	4.9	87	Deuel	15.2	87	Dundy	4.3
88	Hayes	4.8	88	Rock	14.7	88	Thomas	4.3
89	Hooker	4.8	89	Wayne	14.0	89	Rock	4.3
90	Brown	4.7	90	Dawes	13.8	90	Hooker	4.2
91	Boyd	4.7	91	Johnson	13.6	91	McPherson	3.2
92	Blaine	4.6	92	Garden	13.5	92	Blaine	3.1
93	Garfield	4.3	93	Grant	12.5	93	Keya Paha	1.7

Nebraska County Ranking of Various Statistics: 2010

Source: 2010 Census, U.S. Census Bureau

Compiled by: David Drozd, UNO Center for Public Affairs Research on May 17, 2011

Age 25 to 44 Population			Age 45 to 64 Population (Boomers)			Age 18 to 64 Population		
Rank	County	Percent	Rank	County	Percent	Rank	County	Percent
n/a	Nebraska	25.5	n/a	Nebraska	25.8	n/a	Nebraska	61.3
1	Sarpy	29.8	1	Banner	36.8	1	Wayne	66.9
2	Douglas	28.7	2	Grant	35.7	2	Lancaster	66.0
3	Lancaster	27.4	3	Hayes	34.9	3	Dawes	64.4
4	Johnson	26.8	4	Loup	34.3	4	Buffalo	63.9
5	Hall	25.9	5	Rock	33.9	5	Johnson	63.5
6	Dakota	25.2	6	Keya Paha	33.7	6	Douglas	63.3
7	Cheyenne	24.9	7	Blaine	32.4	7	Sarpy	62.7
8	Buffalo	24.7	8	Wheeler	32.4	8	Grant	61.9
9	Colfax	24.7	9	Gosper	32.2	9	Seward	61.2
10	Dawson	24.3	10	Sioux	31.9	10	Saline	60.9
11	Lincoln	23.9	11	Harlan	31.9	11	Washington	60.8
12	Stanton	23.8	12	Keith	31.9	12	Adams	60.6
13	Platte	23.7	13	Hitchcock	31.5	13	Nemaha	60.4
14	Cass	23.5	14	Thomas	31.4	14	Cass	60.4
15	Saline	23.3	15	Deuel	31.3	15	Madison	60.3
16	Dodge	23.1	16	Antelope	31.1	16	Cheyenne	60.1
17	Madison	23.0	17	Holt	31.1	17	Box Butte	59.7
18	Scotts Bluff	23.0	18	Franklin	31.0	18	Frontier	59.5
19	Box Butte	22.7	19	Nance	30.9	19	York	59.4
20	Saunders	22.5	20	Garden	30.8	20	Lincoln	59.4
21	Washington	22.3	21	Box Butte	30.6	21	Hall	59.3
22	Logan	22.1	22	Polk	30.6	22	Platte	58.7
23	Adams	22.1	23	Dundy	30.5	23	Saunders	58.6
24	Howard	22.0	24	Washington	30.4	24	Dakota	58.5
25	Arthur	22.0	25	Cass	30.4	25	Scotts Bluff	58.4
26	Kearney	21.8	26	Furnas	30.4	26	Stanton	58.4
27	Otoe	21.8	27	Hamilton	30.4	27	Red Willow	58.3
28	York	21.8	28	Garfield	30.4	28	Banner	58.0
29	Pierce	21.7	29	Boyd	30.3	29	Hamilton	57.9
30	Merrick	21.7	30	McPherson	30.2	30	Dodge	57.7
31	Hamilton	21.6	31	Richardson	30.2	31	Gage	57.6
32	Gage	21.5	32	Jefferson	30.2	32	Dawson	57.6
33	Cherry	21.5	33	Johnson	30.2	33	Nance	57.5
34	Phelps	21.5	34	Hooker	30.0	34	Kearney	57.5
35	Red Willow	21.4	35	Butler	30.0	35	Colfax	57.3
36	Dixon	21.3	36	Brown	30.0	36	Keith	57.3
37	Morrill	21.1	37	Sherman	29.9	37	Hayes	57.2
38	Seward	21.0	38	Burt	29.9	38	Merrick	57.2
39	Chase	21.0	39	Thayer	29.9	39	Otoe	57.0
40	Cuming	20.9	40	Saunders	29.9	40	Cherry	57.0
41	Thurston	20.9	41	Nuckolls	29.8	41	Clay	56.9
42	Jefferson	20.7	42	Clay	29.8	42	Jefferson	56.7
43	McPherson	20.6	43	Webster	29.7	43	Howard	56.7
44	Thomas	20.6	44	Kearney	29.7	44	Logan	56.6

Age 25 to 44 Population			Age 45 to 64 Population (Boomers)			Age 18 to 64 Population		
Rank	County	Percent	Rank	County	Percent	Rank	County	Percent
45	Perkins	20.5	45	Cherry	29.7	45	Dixon	56.6
46	Polk	20.5	46	Custer	29.6	46	Morrill	56.5
47	Butler	20.5	47	Knox	29.5	47	Gosper	56.5
48	Clay	20.4	48	Logan	29.5	48	Rock	56.5
49	Nance	20.2	49	Boone	29.4	49	Wheeler	56.5
50	Custer	20.2	50	Pawnee	29.4	50	Phelps	56.4
51	Blaine	20.1	51	Fillmore	29.3	51	Sioux	56.3
52	Valley	20.0	52	Frontier	29.2	52	Thomas	56.3
53	Dundy	20.0	53	Kimball	29.1	53	Butler	56.1
54	Dawes	19.9	54	Sheridan	29.1	54	Pierce	56.1
55	Kimball	19.8	55	Gage	29.0	55	Loup	56.0
56	Sheridan	19.7	56	Valley	29.0	56	Holt	56.0
57	Gosper	19.6	57	Morrill	29.0	57	Polk	55.8
58	Keith	19.5	58	Cedar	28.9	58	Hitchcock	55.8
59	Holt	19.4	59	Howard	28.8	59	Chase	55.8
60	Richardson	19.4	60	Cheyenne	28.8	60	Blaine	55.6
61	Burt	19.3	61	Merrick	28.8	61	Richardson	55.6
62	Hitchcock	19.3	62	Otoe	28.7	62	Custer	55.5
63	Fillmore	19.3	63	Pierce	28.7	63	Kimball	55.5
64	Nemaha	19.3	64	Dixon	28.7	64	Antelope	55.5
65	Boone	19.3	65	Phelps	28.6	65	Deuel	55.3
66	Sherman	19.2	66	York	28.6	66	Boone	55.2
67	Brown	19.1	67	Greeley	28.6	67	Perkins	55.0
68	Cedar	19.1	68	Perkins	28.5	68	Harlan	55.0
69	Sioux	19.1	69	Chase	28.3	69	Dundy	54.8
70	Wheeler	18.8	70	Stanton	28.1	70	Franklin	54.5
71	Frontier	18.7	71	Red Willow	28.0	71	Burt	54.4
72	Greeley	18.6	72	Nemaha	27.8	72	Valley	54.3
73	Harlan	18.6	73	Lincoln	27.7	73	Brown	54.3
74	Wayne	18.5	74	Cuming	27.7	74	Cuming	54.2
75	Antelope	18.5	75	Platte	27.1	75	Sherman	54.2
76	Deuel	18.5	76	Seward	26.9	76	Garden	54.2
77	Furnas	18.5	77	Madison	26.8	77	Cedar	54.2
78	Nuckolls	18.4	78	Scotts Bluff	26.7	78	Sheridan	54.2
79	Knox	18.3	79	Adams	26.5	79	McPherson	54.0
80	Rock	18.3	80	Dodge	26.2	80	Furnas	54.0
81	Hooker	18.2	81	Arthur	26.1	81	Fillmore	53.8
82	Thayer	18.1	82	Hall	25.1	82	Webster	53.8
83	Grant	18.1	83	Dawson	25.1	83	Greeley	53.4
84	Franklin	18.0	84	Saline	25.0	84	Knox	53.2
85	Garden	17.9	85	Douglas	24.4	85	Thayer	52.9
86	Webster	17.8	86	Sarpy	24.1	86	Keya Paha	52.7
87	Pawnee	17.6	87	Lancaster	23.9	87	Nuckolls	52.7
88	Keya Paha	17.2	88	Dakota	23.9	88	Thurston	52.6
89	Garfield	16.8	89	Colfax	23.7	89	Hooker	52.4
90	Boyd	16.8	90	Buffalo	23.4	90	Arthur	52.4
91	Hayes	16.6	91	Dawes	23.0	91	Pawnee	52.0
92	Loup	16.0	92	Wayne	22.1	92	Boyd	52.0
93	Banner	15.1	93	Thurston	22.0	93	Garfield	51.9

Nebraska County Ranking of Various Statistics: 2010

Source: 2010 Census, U.S. Census Bureau

Compiled by: David Drozd, UNO Center for Public Affairs Research on May 17, 2011

Age 65 and Over Population			Age 85 and Over Population			Median Age		
Rank	County	Percent	Rank	County	Percent	Rank	County	Median
n/a	Nebraska	13.5	n/a	Nebraska	2.15	n/a	Nebraska	36.2
1	Garden	27.2	1	Hooker	8.29	1	Keya Paha	50.7
2	Garfield	27.1	2	Thayer	5.57	2	Garfield	50.3
3	Boyd	26.5	3	Pawnee	4.98	3	Boyd	50.2
4	Hooker	26.2	4	Webster	4.96	4	Hooker	50.1
5	Nuckolls	26.1	5	Garfield	4.78	5	Rock	49.9
6	Pawnee	26.0	6	Garden	4.76	6	Garden	49.8
7	Thayer	25.8	7	Fillmore	4.72	7	Nuckolls	49.5
8	Keya Paha	25.6	8	Boyd	4.72	8	Pawnee	49.3
9	Brown	24.1	9	Nuckolls	4.60	9	Harlan	49.2
10	Franklin	23.9	10	Brown	4.58	9	Thayer	49.2
11	Deuel	23.7	11	Perkins	4.44	11	Loup	48.5
12	Webster	23.7	12	Dundy	4.38	12	Franklin	48.4
13	Valley	23.6	13	Sheridan	4.35	13	Deuel	48.3
14	Harlan	23.5	14	Rock	4.33	14	Grant	48.2
15	Sherman	23.4	15	Jefferson	4.28	14	Hitchcock	48.2
16	Rock	23.3	16	Richardson	4.27	16	Banner	48.1
17	Burt	23.1	17	Knox	4.23	17	Brown	47.9
18	Greeley	23.0	18	Deuel	4.17	17	Dundy	47.9
19	Dundy	23.0	19	Polk	4.14	19	Sherman	47.8
20	Richardson	22.9	20	Boone	4.12	19	Sioux	47.8
21	Hitchcock	22.9	21	Otoe	4.06	21	Hayes	47.7
22	Knox	22.7	22	Cuming	4.05	22	Furnas	47.4
23	Furnas	22.7	23	Franklin	4.00	23	Keith	47.3
24	Fillmore	22.3	24	Valley	3.92	24	Webster	47.2
25	Sheridan	22.2	25	Furnas	3.91	25	Burt	47.1
26	Kimball	22.1	26	Cedar	3.90	25	Gosper	47.1
27	Jefferson	22.0	27	Burt	3.81	25	Richardson	47.1
28	Loup	21.7	28	Hitchcock	3.78	28	Valley	46.9
29	Sioux	21.4	29	Chase	3.78	29	Jefferson	46.8
30	Keith	21.2	30	Antelope	3.74	30	Thomas	46.7
31	Boone	21.1	31	Sherman	3.68	31	Antelope	46.6
32	Gosper	21.1	32	Harlan	3.56	31	Knox	46.6
33	Antelope	21.0	33	Nance	3.56	33	Greeley	46.4
34	Custer	20.9	34	Thomas	3.55	34	Fillmore	46.3
35	Thomas	20.9	35	Keya Paha	3.52	35	Blaine	46.1
36	Cherry	20.8	36	Holt	3.52	35	Holt	46.1
37	Cuming	20.8	37	Phelps	3.52	35	Sheridan	46.1
38	Holt	20.5	38	Greeley	3.51	35	Wheeler	46.1
39	Arthur	20.4	39	Gage	3.49	39	Kimball	46.0
40	Chase	20.4	40	Kimball	3.48	40	Boone	45.5
41	Cedar	20.4	41	Butler	3.45	41	Cherry	45.4
42	Perkins	20.3	42	Custer	3.38	41	Custer	45.4
43	Blaine	19.9	43	Nemaha	3.38	43	Polk	45.3
44	Polk	19.8	44	Dixon	3.33	44	Nance	45.0

Age 65 and Over Population			Age 85 and Over Population			Median Age		
Rank	County	Percent	Rank	County	Percent	Rank	County	Median
45	Hayes	19.8	45	Dodge	3.32	45	Cedar	44.4
46	Banner	19.7	46	Johnson	3.24	46	Butler	44.3
47	Morrill	19.5	47	Kearney	3.24	47	Perkins	43.9
48	Gage	19.4	48	Red Willow	3.18	48	Cuming	43.7
49	Grant	19.4	49	Cherry	3.17	48	Gage	43.7
50	Butler	19.1	50	York	3.15	50	Chase	43.6
51	Nance	19.1	51	Pierce	3.11	50	McPherson	43.6
52	Phelps	19.0	52	Gosper	3.08	52	Morrill	43.4
53	Frontier	19.0	53	Saline	2.96	53	Howard	43.3
54	Wheeler	18.9	54	Howard	2.92	53	Johnson	43.3
55	Otoe	18.9	55	Clay	2.90	53	Kearney	43.3
56	Red Willow	18.7	56	Adams	2.82	53	Logan	43.3
57	Howard	18.7	57	Cheyenne	2.77	57	Clay	43.2
58	Dodge	18.4	58	Hamilton	2.71	58	Frontier	43.1
59	Kearney	18.3	59	Madison	2.70	59	Otoe	42.9
60	Logan	18.2	60	Morrill	2.70	60	Phelps	42.8
61	York	18.2	61	Scotts Bluff	2.69	61	Merrick	42.5
62	Merrick	18.0	62	Colfax	2.66	62	Hamilton	42.3
63	McPherson	18.0	63	Dawes	2.66	63	Pierce	42.2
64	Nemaha	18.0	64	McPherson	2.60	63	York	42.2
65	Pierce	17.9	65	Loup	2.53	65	Dixon	42.1
66	Clay	17.9	66	Keith	2.51	66	Red Willow	41.8
67	Dixon	17.8	67	Seward	2.50	67	Saunders	41.5
68	Johnson	17.6	68	Merrick	2.49	68	Arthur	41.4
69	Scotts Bluff	16.8	69	Frontier	2.47	69	Box Butte	41.3
70	Hamilton	16.4	70	Box Butte	2.42	70	Cass	41.1
71	Dawes	16.3	71	Platte	2.40	71	Nemaha	41.0
72	Cheyenne	15.9	72	Logan	2.36	72	Washington	40.8
73	Lincoln	15.6	73	Lincoln	2.34	73	Cheyenne	40.4
74	Saunders	15.5	74	Dawson	2.30	74	Dodge	40.3
75	Adams	15.4	75	Wayne	2.25	75	Lincoln	39.2
76	Seward	15.2	76	Hall	2.19	76	Scotts Bluff	39.0
77	Box Butte	15.1	77	Stanton	2.10	77	Stanton	38.6
78	Platte	14.9	78	Cass	2.10	78	Platte	38.2
79	Madison	14.7	79	Washington	2.07	79	Seward	38.0
80	Saline	14.6	80	Buffalo	2.04	80	Adams	37.9
81	Cass	14.3	81	Saunders	1.99	81	Madison	37.1
82	Stanton	14.1	82	Arthur	1.96	82	Saline	36.4
83	Washington	14.0	83	Lancaster	1.68	83	Dawson	36.2
84	Dawson	13.9	84	Blaine	1.67	84	Hall	35.8
85	Wayne	13.7	85	Dakota	1.63	85	Colfax	34.2
86	Colfax	13.6	86	Sioux	1.60	86	Douglas	33.5
87	Hall	13.4	87	Thurston	1.59	87	Dawes	33.0
88	Buffalo	12.1	88	Douglas	1.56	88	Sarpy	32.9
89	Thurston	11.9	89	Hayes	1.55	89	Dakota	32.8
90	Dakota	11.4	90	Wheeler	1.47	90	Lancaster	32.6
91	Lancaster	10.9	91	Banner	1.45	91	Buffalo	32.1
92	Douglas	10.6	92	Grant	1.14	92	Thurston	29.4
93	Sarpy	8.5	93	Sarpy	0.87	93	Wayne	29.2

Nebraska County Ranking of Various Statistics: 2010

Source: 2010 Census, U.S. Census Bureau

Compiled by: David Drozd, UNO Center for Public Affairs Research on May 17, 2011

Households with person < age 18			Households with person age 65+			1-Person households		
Rank	County	Percent	Rank	County	Percent	Rank	County	Percent
	n/a Nebraska	32.0		n/a Nebraska	23.9		n/a Nebraska	28.7
	1 Thurston	45.7		1 Boyd	40.8		1 Garfield	35.2
	2 Dakota	41.0		2 Garfield	40.6		2 Dundy	35.1
	3 Sarpy	40.8		3 Garden	40.4		3 Boyd	35.0
	4 Colfax	39.7		4 Pawnee	40.3		4 Valley	35.0
	5 Dawson	36.7		5 Thayer	38.6		5 Dawes	34.9
	6 Hall	35.1		6 Nuckolls	38.4		6 Furnas	34.9
	7 Stanton	35.0		7 Keya Paha	38.1		7 Nuckolls	34.9
	8 Arthur	34.8		8 Webster	38.0		8 Brown	34.7
	9 Washington	33.8		9 Franklin	36.9		9 Pawnee	34.5
	10 Cass	33.6		10 Hooker	36.8		10 Sheridan	33.7
	11 Saline	33.5		11 Loup	36.7		11 Richardson	33.6
	12 Saunders	33.3		12 Brown	36.7		12 Garden	33.6
	13 Douglas	33.2		13 Deuel	36.7		13 Cherry	33.6
	14 Platte	32.9		14 Burt	36.4		14 Thayer	33.0
	15 Hamilton	32.7		15 Valley	36.2		15 Thomas	33.0
	16 Pierce	32.1		16 Greeley	36.1		16 Hitchcock	32.9
	17 Madison	31.6		17 Arthur	35.8		17 Sherman	32.7
	18 Seward	31.5		18 Furnas	35.5		18 Harlan	32.5
	19 Lincoln	31.4		19 Knox	35.5		19 Hooker	32.5
	20 Buffalo	31.2		20 Harlan	35.4		20 Webster	32.4
	21 Scotts Bluff	31.0		21 Richardson	35.4		21 Greeley	32.2
	22 Dixon	30.9		22 Dundy	35.3		22 Knox	32.1
	23 McPherson	30.8		23 Hitchcock	35.0		23 Kimball	32.0
	24 Clay	30.7		24 Sioux	35.0		24 Nemaha	31.8
	25 Dodge	30.7		25 Fillmore	34.9		25 Keith	31.7
	26 Otoe	30.6		26 Sheridan	34.7		26 Jefferson	31.7
	27 Box Butte	30.4		27 Kimball	34.7		27 Red Willow	31.6
	28 Adams	30.4		28 Sherman	34.7		28 Franklin	31.4
	29 Merrick	30.3		29 Rock	34.5		29 Cheyenne	31.4
	30 Lancaster	30.2		30 Boone	34.1		30 Custer	31.2
	31 Kearney	30.1		31 Jefferson	33.8		31 Boone	31.2
	32 Phelps	30.0		32 Antelope	33.6		32 Nance	31.0
	33 Butler	29.6		33 Custer	33.5		33 Holt	30.7
	34 Morrill	29.5		34 Cuming	33.4		34 Fillmore	30.6
	35 Howard	29.1		35 Blaine	33.2		35 Box Butte	30.6
	36 Cedar	29.1		36 Johnson	33.0		36 Rock	30.5
	37 Blaine	29.1		37 Cedar	32.9		37 Keya Paha	30.4
	38 Polk	29.1		38 Keith	32.8		38 Gage	30.3
	39 Cheyenne	29.1		39 Cherry	32.8		39 Adams	30.3
	40 Perkins	29.1		40 Banner	32.8		40 Douglas	30.1
	41 Hayes	29.0		41 Perkins	32.7		41 Frontier	30.1
	42 Cuming	28.9		42 Holt	32.7		42 Madison	30.0
	43 Logan	28.6		43 Gosper	32.6		43 Antelope	30.0
	44 Gage	28.5		44 Thomas	32.3		44 Deuel	30.0

Households with person < age 18			Households with person age 65+			1-Person households		
Rank	County	Percent	Rank	County	Percent	Rank	County	Percent
	45 Chase	27.9		45 Howard	32.2		45 Lancaster	30.0
	46 Red Willow	27.9		46 Hayes	31.9		46 Lincoln	30.0
	47 Johnson	27.7		47 Frontier	31.8		47 Chase	29.9
	48 Banner	27.6		48 Chase	31.6		48 Johnson	29.9
	49 York	27.6		49 Morrill	31.5		49 Scotts Bluff	29.4
	50 Boone	27.5		50 Gage	31.3		50 Phelps	29.2
	51 Wayne	27.5		51 Wheeler	31.1		51 Dodge	29.2
	52 Holt	27.5		52 Dixon	31.1		52 Sioux	29.1
	53 Nance	27.3		53 Red Willow	31.1		53 York	29.1
	54 Wheeler	27.1		54 Polk	30.7		54 Perkins	28.9
	55 Webster	27.1		55 Butler	30.7		55 Grant	28.9
	56 Custer	27.0		56 Otoe	30.7		56 Burt	28.9
	57 Knox	27.0		57 Nemaha	30.6		57 Morrill	28.7
	58 Nemaha	26.8		58 Merrick	30.4		58 Howard	28.5
	59 Gosper	26.7		59 Dodge	30.3		59 Cuming	28.3
	60 Fillmore	26.7		60 Nance	30.3		60 Buffalo	28.1
	61 Antelope	26.6		61 Logan	30.2		61 Hayes	28.0
	62 Sheridan	26.6		62 York	30.0		62 Loup	28.0
	63 Frontier	26.5		63 Phelps	30.0		63 Clay	28.0
	64 Kimball	26.2		64 Kearney	29.7		64 Wayne	27.8
	65 Burt	25.8		65 Pierce	29.7		65 Wheeler	27.7
	66 Valley	25.8		66 McPherson	29.4		66 Hall	27.6
	67 Greeley	25.5		67 Clay	29.4		67 Polk	27.5
	68 Furnas	25.4		68 Dawes	29.1		68 Otoe	27.4
	69 Cherry	25.2		69 Grant	28.9		69 Logan	27.4
	70 Richardson	25.1		70 Scotts Bluff	28.9		70 Cedar	27.4
	71 Jefferson	24.9		71 Adams	27.7		71 Butler	27.3
	72 Loup	24.7		72 Hamilton	27.7		72 Kearney	27.1
	73 Deuel	24.7		73 Thurston	27.6		73 Dixon	26.9
	74 Dundy	24.6		74 Seward	27.5		74 Platte	26.8
	75 Sherman	24.6		75 Saunders	27.1		75 Saline	26.8
	76 Hooker	24.5		76 Colfax	26.9		76 Arthur	26.7
	77 Brown	24.5		77 Saline	26.9		77 Merrick	26.7
	78 Keith	24.4		78 Dawson	26.5		78 Gosper	26.6
	79 Dawes	24.3		79 Lincoln	26.2		79 Seward	26.1
	80 Harlan	24.1		80 Platte	26.0		80 Pierce	25.9
	81 Thomas	24.1		81 Cheyenne	26.0		81 Banner	25.6
	82 Pawnee	24.0		82 Stanton	25.8		82 Dawson	25.3
	83 Franklin	24.0		83 Wayne	25.6		83 Colfax	24.8
	84 Thayer	23.8		84 Cass	25.5		84 Stanton	24.2
	85 Hitchcock	23.8		85 Washington	25.1		85 Saunders	23.8
	86 Sioux	23.7		86 Box Butte	25.0		86 McPherson	23.2
	87 Rock	23.4		87 Hall	24.4		87 Washington	23.0
	88 Nuckolls	22.9		88 Madison	24.4		88 Hamilton	23.0
	89 Garden	22.2		89 Dakota	23.7		89 Dakota	22.8
	90 Garfield	22.1		90 Buffalo	21.4		90 Cass	22.2
	91 Grant	22.0		91 Douglas	19.8		91 Blaine	21.9
	92 Boyd	22.0		92 Lancaster	19.5		92 Sarpy	21.4
	93 Keya Paha	21.3		93 Sarpy	16.4		93 Thurston	21.3

Nebraska County Ranking of Various Statistics: 2010

Source: 2010 Census, U.S. Census Bureau

Compiled by: David Drozd, UNO Center for Public Affairs Research on May 17, 2011

Husband/Wife families			Mother/child < 18, no husband present			Home ownership		
Rank	County	Percent	Rank	County	Percent	Rank	County	Percent
n/a	Nebraska	50.8	n/a	Nebraska	6.2	n/a	Nebraska	67.2
1	McPherson	70.1	1	Thurston	11.8	1	Cedar	81.0
2	Blaine	69.9	2	Dakota	8.6	2	Cass	80.8
3	Banner	66.2	3	Douglas	7.7	3	Franklin	80.3
4	Hayes	65.0	4	Hall	7.3	4	Saunders	79.7
5	Grant	62.8	5	Dawson	6.9	5	Greeley	79.6
6	Hamilton	62.6	6	Scotts Bluff	6.8	6	Sherman	79.6
7	Cedar	62.4	7	Sarpy	6.8	7	Pawnee	79.6
8	Keya Paha	62.2	8	Dodge	6.4	8	Stanton	79.1
9	Arthur	62.0	9	Madison	6.3	9	Thayer	79.0
10	Wheeler	62.0	10	Box Butte	6.2	10	Pierce	78.9
11	Loup	61.8	11	Lancaster	6.2	11	Webster	78.9
12	Pierce	61.7	12	Lincoln	6.1	12	Harlan	78.5
13	Washington	61.5	13	Adams	6.1	13	Washington	78.4
14	Perkins	61.3	14	Buffalo	5.8	14	Boyd	78.3
15	Cass	61.1	15	Gage	5.7	15	Deuel	78.1
16	Gosper	61.1	16	Colfax	5.6	16	Keya Paha	78.0
17	Seward	61.1	17	Platte	5.6	17	Perkins	77.8
18	Stanton	60.9	18	Dawes	5.5	18	Rock	77.7
19	Saunders	60.8	19	Stanton	5.3	19	Butler	77.6
20	Sioux	60.1	20	Red Willow	5.3	20	Hooker	77.6
21	Polk	59.6	21	Cheyenne	5.2	21	Fillmore	77.3
22	Logan	59.1	22	Saline	5.2	22	Clay	77.3
23	Kearney	58.9	23	Richardson	5.2	23	Gosper	77.1
24	Sarpy	58.9	24	Otoe	5.1	24	Nuckolls	77.1
25	Cuming	58.8	25	Sheridan	5.0	25	Nance	76.9
26	Rock	58.8	26	Dixon	4.9	26	Polk	76.7
27	Thomas	58.8	27	Nemaha	4.9	27	Hamilton	76.7
28	Dixon	58.7	28	Deuel	4.8	28	Howard	76.7
29	Clay	58.6	29	Hitchcock	4.8	29	Dixon	76.5
30	Antelope	58.2	30	Washington	4.8	30	Antelope	76.0
31	Howard	57.9	31	Logan	4.6	31	Hitchcock	75.8
32	Butler	57.8	32	Cass	4.6	32	Knox	75.7
33	Phelps	57.4	33	Webster	4.5	33	Burt	75.6
34	Burt	57.2	34	Butler	4.5	34	Kearney	75.2
35	Colfax	57.2	35	Jefferson	4.5	35	Boone	75.0
36	Harlan	57.0	36	Keith	4.4	36	Thomas	74.9
37	Fillmore	56.9	37	Saunders	4.4	37	Richardson	74.7
38	Merrick	56.8	38	Phelps	4.4	38	Seward	74.5
39	York	56.8	39	Kimball	4.4	39	Merrick	74.4
40	Hooker	56.7	40	Nance	4.3	40	Chase	74.4
41	Thayer	56.7	41	Merrick	4.3	41	Colfax	74.2
42	Boone	56.6	42	Brown	4.3	42	Johnson	74.2
43	Holt	56.5	43	York	4.3	43	Furnas	74.1
44	Sherman	56.2	44	Howard	4.3	44	Jefferson	74.0

Husband/Wife families			Mother/child < 18, no husband present			Home ownership		
Rank	County	Percent	Rank	County	Percent	Rank	County	Percent
45	Chase	56.1	45	Clay	4.3	45	Logan	73.8
46	Platte	56.1	46	Johnson	4.2	46	Loup	73.5
47	Garfield	55.9	47	Furnas	4.2	47	Otoe	73.2
48	Morrill	55.9	48	Hamilton	4.2	48	Custer	73.1
49	Greeley	55.8	49	Kearney	4.2	49	Valley	73.0
50	Franklin	55.8	50	Knox	4.1	50	Brown	73.0
51	Frontier	55.7	51	Custer	4.1	51	Holt	73.0
52	Saline	55.6	52	Garden	4.1	52	Platte	72.8
53	Nance	55.4	53	Burt	4.0	53	Keith	72.8
54	Johnson	55.2	54	Polk	3.9	54	Kimball	72.6
55	Boyd	55.2	55	Nuckolls	3.9	55	Dundy	72.6
56	Otoe	55.2	56	Gosper	3.9	56	Wheeler	72.6
57	Dawson	55.1	57	Morrill	3.8	57	Phelps	72.0
58	Custer	55.0	58	Cherry	3.8	58	Morrill	71.2
59	Dundy	54.3	59	Holt	3.8	59	Sarpy	71.2
60	Hitchcock	54.3	60	Chase	3.8	60	Gage	71.1
61	Deuel	54.2	61	Wayne	3.8	61	McPherson	71.1
62	Valley	54.2	62	Cuming	3.7	62	Nemaha	71.0
63	Webster	53.9	63	Frontier	3.7	63	Cuming	71.0
64	Knox	53.9	64	Pierce	3.6	64	Sioux	70.9
65	Nuckolls	53.7	65	Pawnee	3.5	65	Frontier	70.6
66	Box Butte	53.4	66	Valley	3.5	66	Garfield	70.6
67	Keith	53.3	67	Sherman	3.4	67	York	70.6
68	Cherry	53.2	68	Hooker	3.4	68	Garden	70.4
69	Garden	52.7	69	McPherson	3.3	69	Cheyenne	70.1
70	Wayne	52.6	70	Antelope	3.3	70	Red Willow	70.1
71	Furnas	52.4	71	Arthur	3.2	71	Hayes	69.8
72	Gage	52.3	71	Garfield	3.2	72	Saline	69.7
73	Jefferson	52.3	73	Boone	3.2	73	Box Butte	69.7
74	Brown	52.1	74	Seward	3.1	74	Blaine	69.4
75	Dakota	52.0	75	Banner	3.1	75	Sheridan	69.4
76	Nemaha	51.9	76	Franklin	3.1	76	Dawson	68.8
77	Kimball	51.8	77	Fillmore	3.0	77	Banner	67.9
78	Red Willow	51.8	78	Thayer	2.7	78	Arthur	67.9
79	Lincoln	51.8	79	Harlan	2.7	79	Adams	67.6
80	Sheridan	51.7	80	Cedar	2.7	80	Lincoln	67.3
81	Pawnee	51.4	81	Keya Paha	2.6	81	Scotts Bluff	66.9
82	Cheyenne	51.4	82	Greeley	2.6	82	Dodge	66.0
83	Madison	50.9	83	Loup	2.5	83	Madison	65.8
84	Dodge	50.7	84	Dundy	2.5	84	Grant	65.7
85	Hall	50.6	85	Perkins	2.3	85	Cherry	64.6
86	Richardson	50.3	86	Boyd	2.2	86	Hall	64.6
87	Adams	50.1	87	Sioux	2.1	87	Wayne	64.3
88	Buffalo	50.0	88	Hayes	1.9	88	Dakota	63.9
89	Scotts Bluff	49.6	89	Rock	1.9	89	Thurston	63.7
90	Lancaster	46.5	90	Grant	1.8	90	Buffalo	63.3
91	Thurston	46.0	91	Blaine	1.5	91	Douglas	62.9
92	Dawes	45.7	92	Wheeler	1.4	92	Lancaster	61.1
93	Douglas	44.8	93	Thomas	1.4	93	Dawes	60.1