


Spring 1-2017

Enrollment Report - Spring 2017

UNO Office of Institutional Effectiveness
University of Nebraska at Omaha

Follow this and additional works at: <https://digitalcommons.unomaha.edu/oieenrollment>

 Part of the [Educational Assessment, Evaluation, and Research Commons](#), and the [Higher Education Commons](#)

Please take our feedback survey at: https://unomaha.az1.qualtrics.com/jfe/form/SV_8cchtFmpDyGfBLE

Recommended Citation

Office of Institutional Effectiveness, UNO, "Enrollment Report - Spring 2017" (2017). *Enrollment Reports*. 107.

<https://digitalcommons.unomaha.edu/oieenrollment/107>

This Report is brought to you for free and open access by the Systems Intelligence and Data Analytics (SIDA) at DigitalCommons@UNO. It has been accepted for inclusion in Enrollment Reports by an authorized administrator of DigitalCommons@UNO. For more information, please contact unodigitalcommons@unomaha.edu.

OFFICE OF INSTITUTIONAL EFFECTIVENESS

ENROLLMENT PROFILE REPORT

SPRING 2017



UNIVERSITY OF
Nebraska
Omaha



University of Nebraska at Omaha

Enrollment Profile Report: Spring 2017

Office of Institutional Effectiveness

Institutional Research

<http://www.unomaha.edu/oie/>

January 2017

EXECUTIVE SUMMARY

This Enrollment Statistical Summary provides delivery and administrative-site information on enrollment headcount and student credit hours. Delivery site reporting counts all students, including those in UNL programs delivered at UNO, but excludes UNO programs only (including the CPACS program delivered in Lincoln).

The purpose of this summary is to provide the undergraduate and graduate enrollments and student credit hour information by college of equivalent academic unit, class, gender and ethnicity. A glossary at the end of the report provides a list of definitions for headings and categories found in the report.

Administrative-Site Campus Summary

- Spring 2017 head count enrollment is 14,657 a 1.5% increase compared to the spring 2016 enrollment of 14,445 (see Figure 1).
- Spring 2017 undergraduate head count enrollment is 11,599 a 0.5% increase compared to the spring 2016 enrollment of 11,542 (see figure 5).
- Spring 2017 graduate head count enrollment is 3,058 a 5.3% increase compared to the spring 2016 of 2,903 (see Figure 5).
- Spring 2017 student credit hours are 162,765 a 2.3% increase compared to the spring 2016 credit hours of 159,141 (see figure 6).
- Spring 2017 undergraduate credit hours are 144,859 up from spring 2016 by 1.4% (see figure 6).
- Spring 2017 graduate credit hours are 17,706 up from spring 2016 by 9.5% (see figure 6).

Delivery-Site

- Spring 2017 head count enrollment is 15,100 a 1.3% increase compared to the spring 2016 enrollment of 14,900 (see Figure 1).
- Spring 2017 undergraduate head count enrollment is 12,042 a 0.4% increase compared to the spring 2016 enrollment of 11,997 (see figure 2).
- Spring 2017 graduate head count enrollment is 3,058 a 5.3% increase compared to the spring 2016 enrollment of 2,903 (see figure 2).
- Spring 2017 student credit hours are 164,090 a 1.8% increase compared to the spring 2016 credit hours of 161,136 (see figure 3).
- Spring 2017 undergraduate credit hours are 145,437 up from spring 2016 by 0.9% (see figure 3).
- Spring 2017 graduate credit hours are 18,653 up from spring 2016 by 8.6% (see figure 3).

Contents

EXECUTIVE SUMMARY	2
Table 1: UNO Delivery-Site and Administrative-Site Head Count Enrollment and Comparison: Spring 2017	6
Figure 1: Delivery-Site & Administrative-Site Head Count Enrollment: Spring 1988-2017	7
Figure 2: UNO Delivery-Site Head Count: Spring 2004-2017	8
Figure 3: UNO Delivery-Site Student Credit Hours by Student Level: Spring 2004-2017	8
Figure 4: UNO Delivery-Site Head Count by Ethnicity by Gender: Spring 2017	9
Table 2: Total Uno Delivery-Site Head Count Summary for Undergraduate and Graduate Students Full and Part-Time by Gender and Race Classification: Spring 2017	10
Figure 5: UNO Administrative-Site Head Count: Spring 2004-2017	11
Figure 6: UNO Administrative-Site Student Credit Hours: Spring 2004-2017	11
Figure 7: UNO Administrative-Site Head Count by Ethnicity by Gender: Spring 2017	12
Table 3: Total UNO Administrative-Site Head Count Summary for Undergraduate and Graduate Students by Full and Part-Time by Gender and Race Classification: Spring 2017	13
Figure 8: College of Arts & Science Head Count: Spring 2004-2017	14
Figure 9: College of Arts & Sciences Student Credit Hours: Spring 2004-2017	14
Figure 10: College of Arts & Sciences Head Count by Ethnicity by Gender: Spring 2017	15
Table 4: College of Arts & Sciences Head Count Summary for Undergraduate and Graduate Students by Full and Part-time by Gender and Race Classification: Spring 2017	16
Figure 11: College of Business Administration Head Count: Spring 2004-2017	17
Figure 12: College of Business Administration Student Credit Hours: Spring 2004-2017	17
Figure 13: College of Business Administration Head Count by Ethnicity by Gender: Spring 2017	18
Table 5: College of Business Administration Head Count Summary for Undergraduate and Graduate Students by Full and Part-Time by Gender and Race Classification: Spring 2017	19
Figure 14: College of Communication, Fine Arts and Media Delivery-Site Head Count: Spring 2006-2017	20
Figure 15: College of Communication, Fine Arts and Media Delivery-Site Student Credit Hours: Spring 2006-2017	20
Figure 16: College of Communication, Fine Arts and Media Delivery & Administrative-Site Head Count by Ethnicity by Gender: Spring 2017	21
Table 6: College of Communication, Fine Arts and Media Delivery & Administrative-Site Head Count Summary for Undergraduate and Graduate Students by Full and Part-Time by Gender and Race Classification: Spring 2017	22
Figure 17: College of Communication, Fine Arts and Media: Administrative-Site Head Count: Spring 2006-2017	23
Figure 18: College of Communication, Fine Arts and Media: Administrative-Site Student Credit Hours: Spring 2006-2017	23
Figure 20: College of Education Head Count: Spring 2004-2017	24
Figure 21: College of Education Student Credit Hours: Spring 2004-2017	24
Figure 22: College of Education Head Count by Ethnicity by Gender: Spring 2017	25
Table 8: College of Education Head Count Summary for Undergraduate and Graduate Students by Full and Part-Time by Gender and Race Classification: Spring 2017	26

Figure 23: College of Information Science & Technology Head Count: Spring 2004-2017.....	27
Figure 24: College of Information Science & Technology Student Credit Hours: Spring 2004-2017.....	27
Figure 25: College of Information Science & Technology Head Count by Ethnicity by Gender: Spring 2017.....	28
Table 9: College of Information Science and Technology Head Count Summary for Undergraduate and Graduate Summary for Full and Part-Time by Gender and Race Classification: Spring 2017.....	29
Figure 26: College of Public Affairs & Community Service Delivery-Site Head Count: Spring 2004-2017	30
Figure 27: College of Public Affairs & Community Service Delivery-Site Student Credit Hours: Spring 2004-2017	30
Figure 28: College of Public Affairs & Community Service Delivery-Site Head Count by Ethnicity by Gender: Spring 2017	31
Table 10: College of Public Affairs & Community Service Delivery-Site Head Count for Undergraduate and Graduate Students by Full and Part-time by Gender and Race Classification: Spring 2017	32
Figure 29: College of Public Affairs & Community Service Administrative-Site Head Count: Spring 2004-2017 ...	33
Figure 30: College of Public Affairs & Community Service Administrative-Site Student Credit Hours: Spring 2004- 2017.....	33
Figure 31: College of Public Affairs & Community Service Administrative-Site Head Count by Ethnicity by Gender: Spring 2017.....	34
Table 11: College of Public Affairs & Community Service Administrative-Site Head Count Summary for Undergraduate Graduate Students by Full and Part-Time by Gender and Race Classification: Spring 2017	35
Figure 32: College of CPACS, Division of Continuing Studies Head Count: Spring 2004-2017.....	36
Figure 33: College of CPACS, Division of Continuing Studies Head Count by Ethnicity by Gender: Spring 2017 ..	36
Table 12: College of CPACS Division of Continuing Studies Head Count Summary for Undergraduate Students by Full and Part-Time by Gender and Race Classification: Spring 2017	37
Table 13: Cooperative Graduate Program Head Count Summary for Graduate Students by Full and Part-time by Gender and Race Classification: Spring 2017	38
Figure 34: University Division Head Count: Spring 2004-2017	39
Figure 35: University Division Student Credit Hours: Spring 2004-2017.....	39
Figure 36: University Division Head Count by Ethnicity by Gender: Spring 2017	39
Table 14: University Division Head Count Summary for Undergraduate Students by Full and Part-Time by Gender and Race Classification: Spring 2017.....	40
Figure 37: Non-Degree/Intercampus Special Undergraduate Students Head Count: Spring 2004-2017	41
Figure 38: Non-Degree/Intercampus Special Undergraduate Students Head Count by Ethnicity by Gender: Spring 2017	41
Table 15: Non-Degree/Intercampus Head Count Summary for Special Undergraduate Students by Full and Part- Time by Gender and Race Classification: Spring 2017	42
Figure 39: Non-Degree/Intercampus Special Graduate Students Head Count: Spring 2004-2017	43
Figure 40: Non-Degree/Intercampus Special Graduate Students Head Count by Ethnicity by Gender: Spring 2017	43
Table 16: Non-Degree/Intercampus Head Count Summary for Special Graduate Students by Full and Part-time by Gender and Race Classification: Spring 2017	44
Figure 41: Other Honors and Library Hours Student Credit Hours by Level of Instruction: Spring 2004-2017	45
Figure 42: College of Agriculture Delivery-Site Head Count: Spring 2004-2017	46

Figure 43: College of Agriculture Delivery-Site Student Credit Hours: Spring 2004-2017	46
Figure 44: College of Agriculture Delivery-Site Head Count by Ethnicity by Gender: Spring 2017	46
Table 17: College of Agriculture Head Count Summary for Undergraduate Students by Full and Part-Time by Gender and Race Classification: Spring 2017	47
Figure 45: College of Architecture Delivery-Site Head Count: Spring 2004-2017	48
Figure 46: College of Architecture Delivery-Site Student Credit Hours: Spring 2004-2017	48
Figure 47: College of Architecture Delivery-Site Head Count by Ethnicity by Gender: Spring 2017	48
Table 18: College of Architecture Head Count Summary for Undergraduate Students by Full and Part-Time by Gender and Race Classification: Spring 2017	49
Figure 48: College of Engineering Delivery-Site Head Count: Spring 2004-2017	50
Figure 49: College of Engineering Delivery-Site Student Credit Hours: Spring 2004-2017	50
Figure 50: College of Engineering Delivery-Site Head Count by Ethnicity by Gender: Spring 2017	51
Table 19: College of Engineering Head count Summary for Undergraduate Students by Full and Part-Time by Gender and Race Classification: Spring 2017	52
Figure 51: College of Education and Human Science Delivery-Site Head Count: Spring 2004-2017	53
Figure 52: College of Education and Human Sciences Delivery-Site Student Credit Hours: Spring 2004-2017	53
Glossary	54

Table 1: UNO Delivery-Site and Administrative-Site Head Count Enrollment and Comparison: Spring 2017

	Spring 2017		Spring 2016	Spring 16-17 Administrative-Site	
	Delivery-Site	Administrative-Site	Administrative-Site	Numerical Change	Percent Change
UNO:					
<i>Undergraduate</i>					
Arts & Science	3,158	3,158	3,214	-56	-1.7%
Business Administration	1,914	1,914	1,906	8	0.4%
Communication, Fine Arts & Media	917	917	935	-18	-1.9%
Education	1,341	1,341	1,339	2	0.1%
Information Science and Technology	906	906	854	52	6.1%
Public Affairs & Community Services	958	1,272	1,247	25	2.0%
Division of Continuing Studies	1,132	1,132	1,174	-42	-3.6%
Sub-total CPACS including Cont. Studies	2,090	2,404	2,421	-17	-0.7%
Non-Degree	249	254	303	-49	-16.2%
University Division	705	705	570	135	23.7%
Total Undergraduate	11,280	11,599	11,542	57	0.5%
<i>Graduate</i>					
Arts & Science	441	441	423	18	4.3%
Business Administration	349	349	342	7	2.0%
Communication, Fine Arts & Media	81	81	87	-6	-6.9%
Education	922	922	828	94	11.4%
Information Science and Technology	384	384	401	-17	-4.2%
Public Affairs & Community Services	617	617	525	92	17.5%
New Cooperative Graduate Programs	8	8	6	2	33.3%
Undeclared	256	256	291	-35	-12.0%
Total Graduate	3,058	3,058	2,903	155	5.3%
UNO Administrative-Site Total		14,657	14,445	212	1.5%
UNL:	Spring 2017		Spring 2016	Numerical Change	Percent Change
Agriculture	6		10		
Architecture	10		13		
Engineering & Technology	746		759		
Education and Human Science	0		0		
Total UNL in Omaha	762		782	-20	-2.6%
	Spring 2017		Spring 2016	Numerical Change	Percent Change
UNO Delivery-Site Total	15,100		14,900	200	1.3%

Figure 1: Delivery-Site & Administrative-Site Head Count Enrollment: Spring 1988-2017

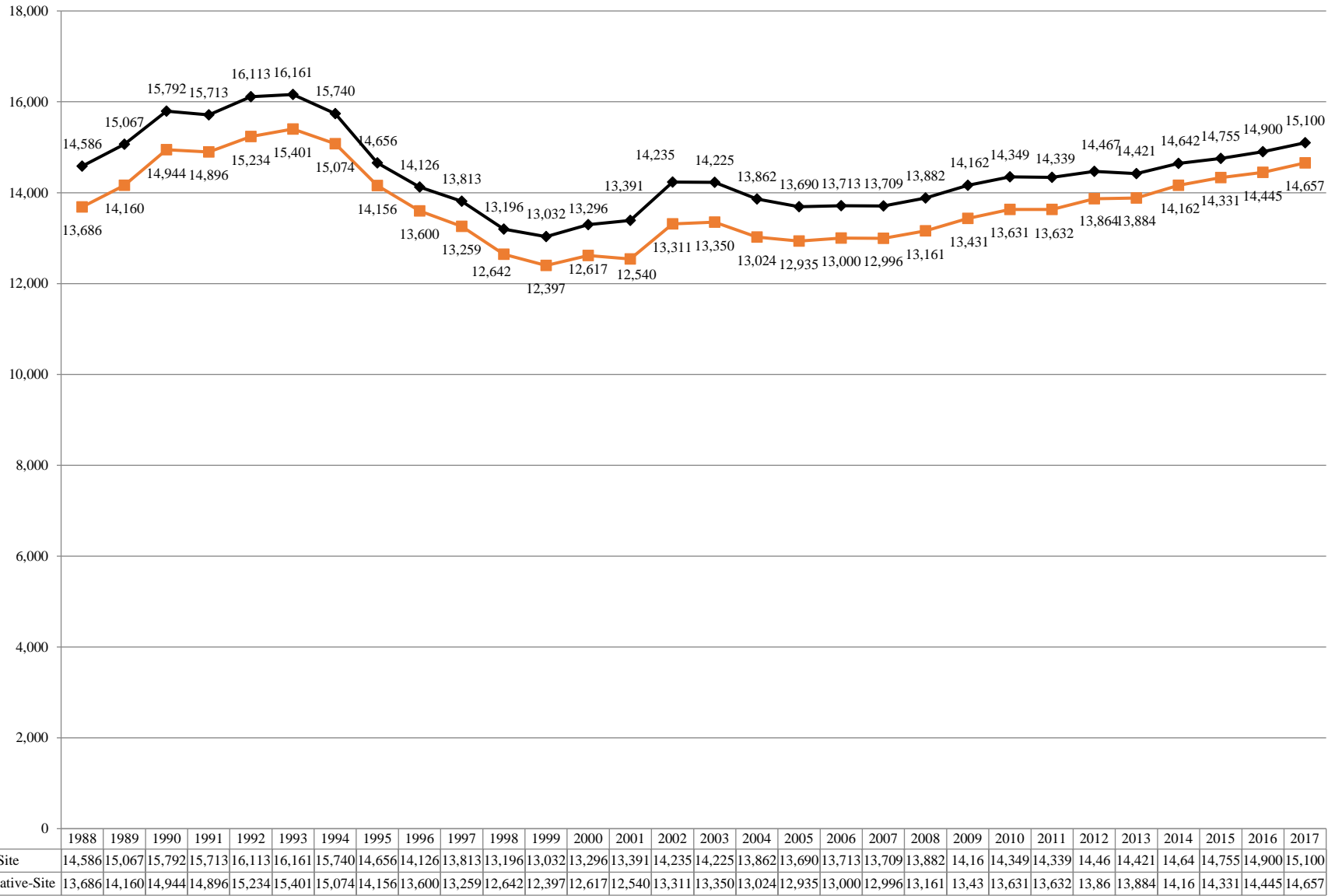


Figure 2: UNO Delivery-Site Head Count: Spring 2004-2017

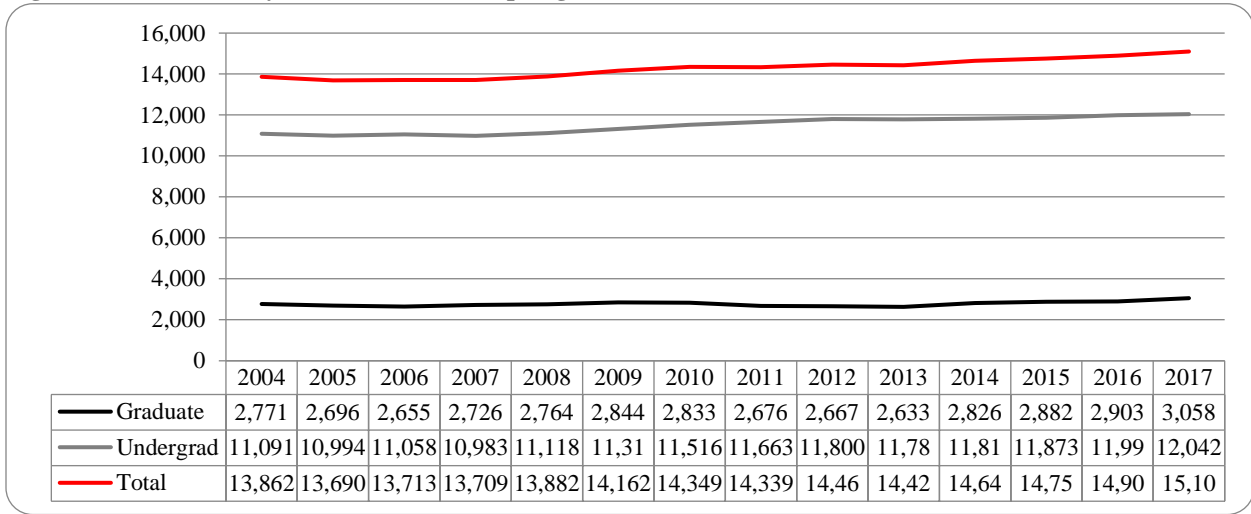


Figure 3: UNO Delivery-Site Student Credit Hours by Student Level: Spring 2004-2017

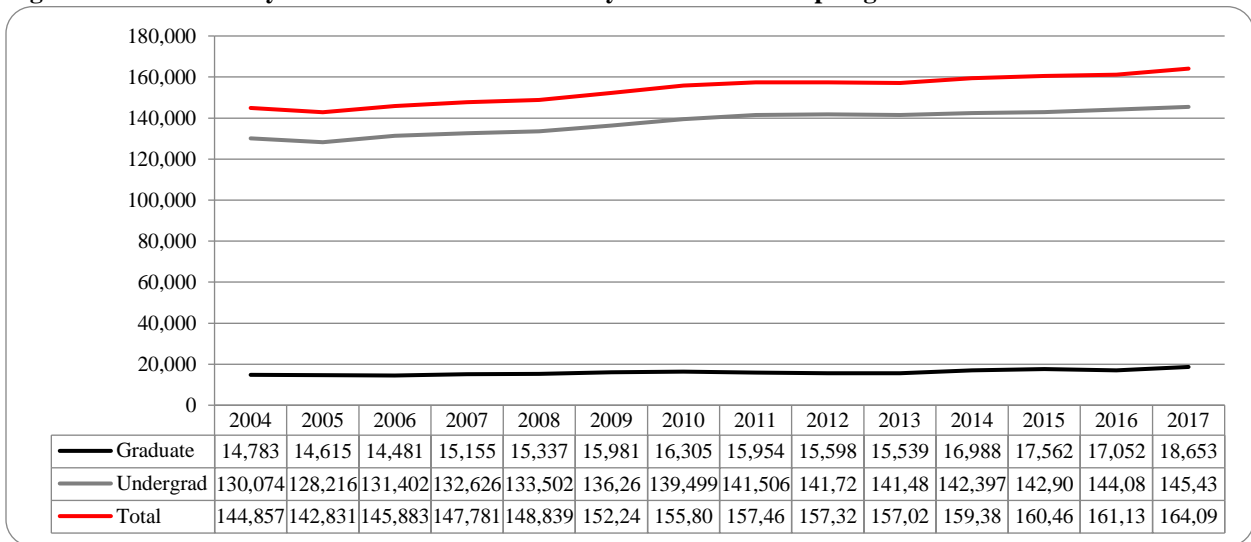


Figure 4: UNO Delivery-Site Head Count by Ethnicity by Gender: Spring 2017

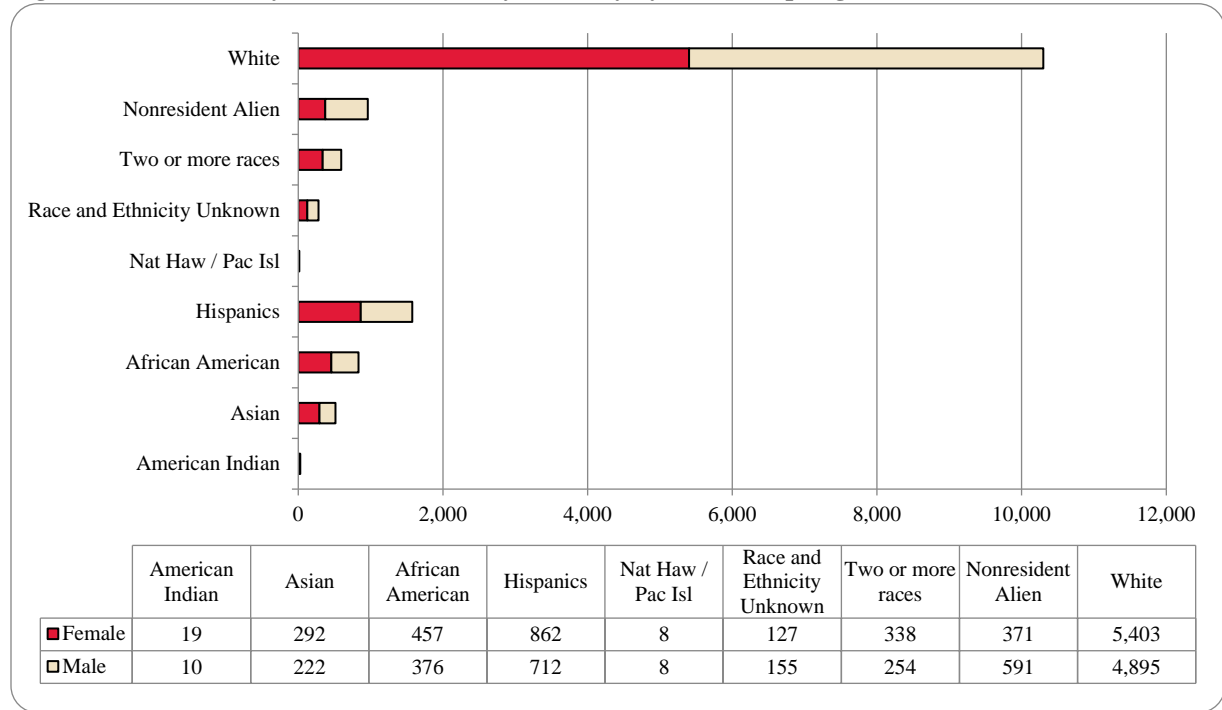


Table 2: Total Uno Delivery-Site Head Count Summary for Undergraduate and Graduate Students Full and Part-Time by Gender and Race Classification: Spring 2017

	American Indian		Asian		African American		Hispanics		Nat Haw / Pac Isl		Race Unknown		Two or more races		White		Nonresident Alien		Total			
	F	M	F	M	F	M	F	M	F	M	F	M	F	M	F	M	F	M	F	M	Total	
Undergraduate																						
Full-Time																						
First-Time Freshmen					4	3	2	5					1	1	6	15	7	13	20	37	57	
Other Freshmen	4	4	53	29	77	46	151	121	2	2	8	10	50	36	557	576	32	70	934	894	1,828	
Sophomores	2	1	48	38	77	40	171	148	1	1	30	20	74	43	708	721	43	92	1,154	1,104	2,258	
Juniors	4	1	54	42	69	74	158	143	1	2	20	36	66	43	861	859	45	70	1,278	1,270	2,548	
Seniors	2	2	45	37	61	60	154	97	1	1	23	27	54	36	817	859	54	59	1,211	1,178	2,389	
Special			4	1			3	5			1	1		6	27	57	3	2	38	72	110	
Total Full-Time	12	8	204	147	288	223	639	519	5	6	82	94	245	165	2,976	3,087	184	306	4,635	4,555	9,190	
Part-Time																						
First-Time Freshmen				1									1		1	3	1	1	3	5	8	
Other Freshmen			10	4	12	7	25	31			3	2	5	7	74	97	6	11	135	159	294	
Sophomores			5	7	18	15	30	24	2		3	5	8	12	159	161	3	6	228	230	458	
Juniors			7	6	26	16	28	34		1	7	9	7	17	245	254	4	6	324	343	667	
Seniors	5		20	14	45	48	48	43			12	20	21	16	388	443	7	11	546	595	1,141	
Special		1	10	4	10	14	10	10			5	5	4	3	110	94	3	1	152	132	284	
Total Part-Time	5	1	52	36	111	100	141	142	2	1	30	41	46	55	977	1,052	24	36	1,388	1,464	2,852	
Total Undergraduate	17	9	256	183	399	323	780	661	7	7	112	135	291	220	3,953	4,139	208	342	6,023	6,019	12,042	
Graduate																						
Full-Time																						
Certificate					1			1							5	4	1		7	5	12	
Masters	1		6	11	14	7	18	14			4	1	13	4	339	143	82	132	477	312	789	
Doctoral			2										3	2	13	15	10	15	28	32	60	
Special Graduate				1	1			2				1		1	19	30	6	33	26	68	94	
Total Full-Time	1		8	12	16	7	18	17			4	2	16	7	376	192	99	180	538	417	955	
Part-Time																						
Certificate			3	1			4	2							30	17	1		38	20	58	
Masters	1	1	21	20	35	34	50	28	1	1	11	13	27	22	806	433	54	54	1,006	606	1,612	
Doctoral			2	1		6	5	2				1	4	1	72	40	3	7	86	58	144	
Special Graduate			2	5	7	6	5	2				4		4	166	74	6	8	186	103	289	
Total Part-Time	1	1	28	27	42	46	64	34	1	1	11	18	31	27	1,074	564	64	69	1,316	787	2,103	
Total Graduate	2	1	36	39	58	53	82	51	1	1	15	20	47	34	1,450	756	163	249	1,854	1,204	3,058	
Total All Students	19	10	292	222	457	376	862	712	8	8	127	155	338	254	5,403	4,895	371	591	7,877	7,223	15,100	

Figure 5: UNO Administrative-Site Head Count: Spring 2004-2017

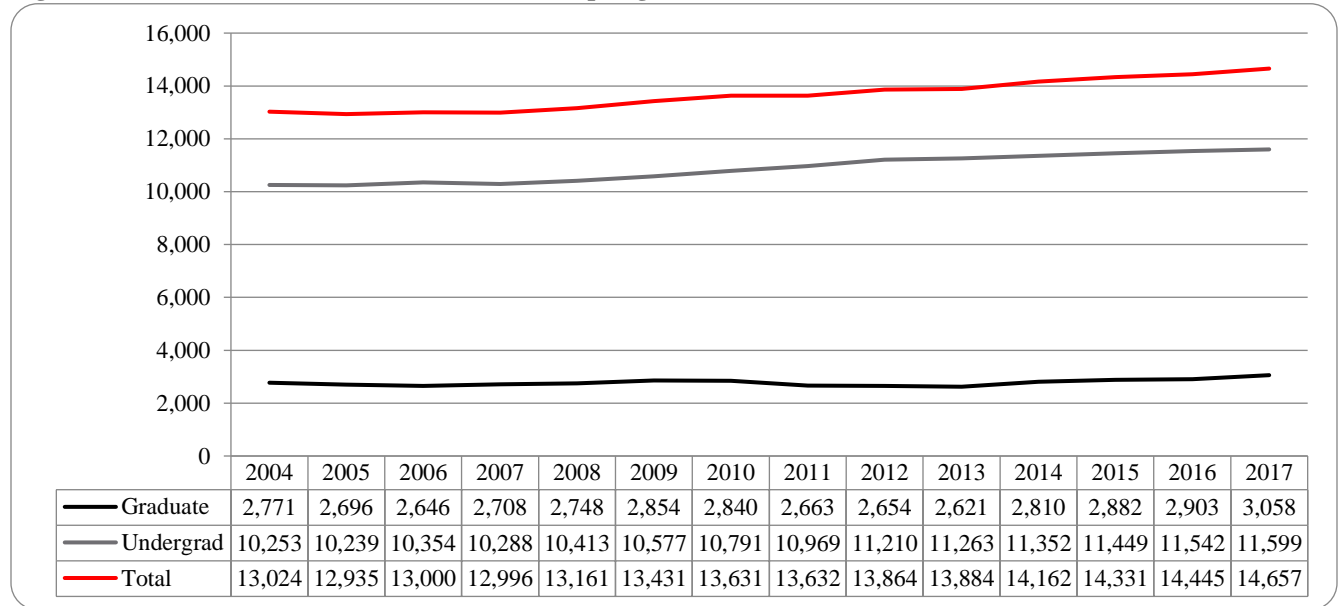


Figure 6: UNO Administrative-Site Student Credit Hours: Spring 2004-2017

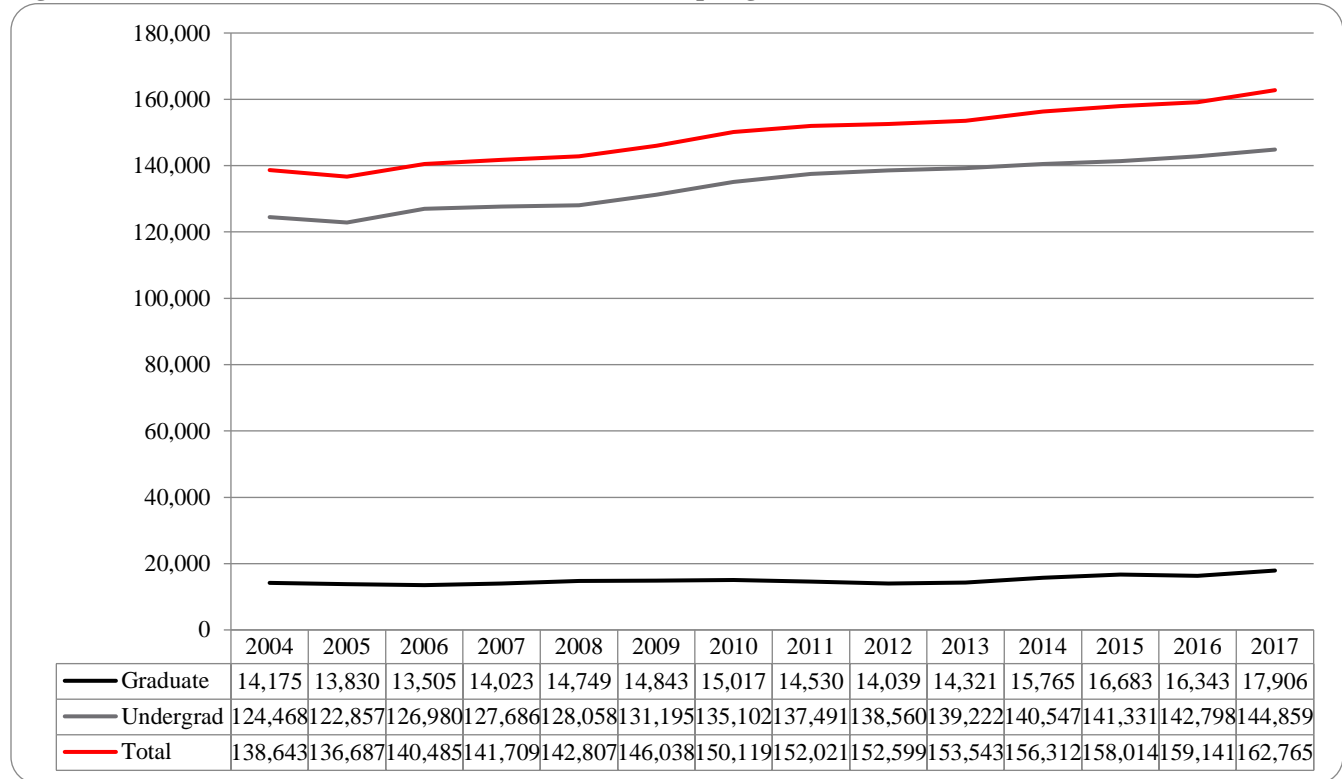


Figure 7: UNO Administrative-Site Head Count by Ethnicity by Gender: Spring 2017

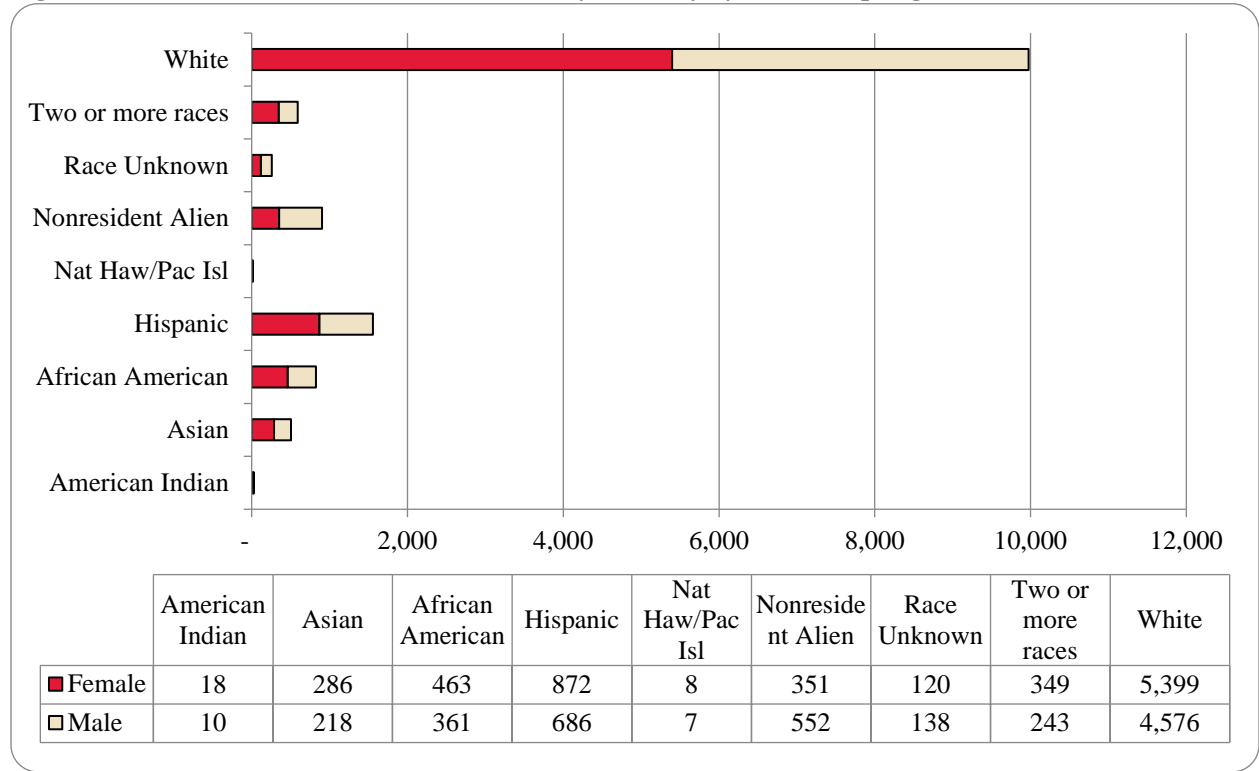


Table 3: Total UNO Administrative-Site Head Count Summary for Undergraduate and Graduate Students by Full and Part-Time by Gender and Race Classification: Spring 2017

	American Indian		Asian		African American		Hispanics		Nat Haw / Pac Isl		Race Unknown		Two or more races		White		Nonresident Alien		Total		
	F	M	F	M	F	M	F	M	F	M	F	M	F	M	F	M	F	M	F	M	Total
Undergraduate																					
Full-Time																					
First-Time Freshmen					4	3	2	5					1	1	6	15	7	12	20	36	56
Other Freshmen	4	4	53	30	81	49	152	126	2	2	8	9	51	31	553	541	32	62	936	854	1,790
Sophomores	2	1	46	38	80	44	175	141	1	1	27	16	77	44	718	650	37	84	1,163	1,019	2,182
Juniors	4	1	51	39	70	70	160	135	1	2	19	32	69	40	865	791	39	65	1,278	1,175	2,453
Seniors	1	2	44	36	61	52	157	95	1	1	22	24	58	36	813	785	47	47	1,204	1,078	2,282
Special			4	1			3	3			1	1		6	26	52	3	1	37	64	101
Total Full-Time	11	8	198	144	296	218	649	505	5	6	77	82	256	158	2,981	2,834	165	271	4,638	4,226	8,864
Part-Time																					
First-Time Freshmen				1									1		1	3	1	1	3	5	8
Other Freshmen			10	4	12	7	25	31			3	2	5	7	75	94	6	11	136	156	292
Sophomores			5	7	18	12	30	21	2		3	5	8	11	157	147	3	6	226	209	435
Juniors			7	6	26	13	28	31			6	8	7	15	242	243	4	6	320	322	642
Seniors	5		20	13	43	44	48	37			11	17	21	15	386	414	6	7	540	547	1,087
Special		1	10	4	10	14	10	10			5	4	4	3	107	85	3	1	149	122	271
Total Part-Time	5	1	52	35	109	90	141	130	2		28	36	46	51	968	986	23	32	1,374	1,361	2,735
Total Undergraduate	16	9	250	179	405	308	790	635	7	6	105	118	302	209	3,949	3,820	188	303	6,012	5,587	11,599
Graduate																					
Full-Time																					
Certificate					1			1							5	4	1		7	5	12
Masters	1		6	11	14	7	18	14			4	1	13	4	339	143	82	132	477	312	789
Doctoral			2										3	2	13	15	10	15	28	32	60
Special Graduate				1	1			2				1		1	19	30	6	33	26	68	94
Total Full-Time	1		8	12	16	7	18	17			4	2	16	7	376	192	99	180	538	417	955
Part-Time																					
Certificate			3	1			4	2							30	17	1		38	20	58
Masters	1	1	21	20	35	34	50	28	1	1	11	13	27	22	806	433	54	54	1,006	606	1,612
Doctoral			2	1		6	5	2				1	4	1	72	40	3	7	86	58	144
Special Graduate			2	5	7	6	5	2				4	4	4	166	74	6	8	186	103	289
Total Part-Time	1	1	28	27	42	46	64	34	1	1	11	18	31	27	1,074	564	64	69	1,316	787	2,103
Total Graduate	2	1	36	39	58	53	82	51	1	1	15	20	47	34	1,450	756	163	249	1,854	1,204	3,058
Total All Students	18	10	286	218	463	361	872	686	8	7	120	138	349	243	5,399	4,576	351	552	7,866	6,791	14,657

Figure 8: College of Arts & Science Head Count: Spring 2004-2017

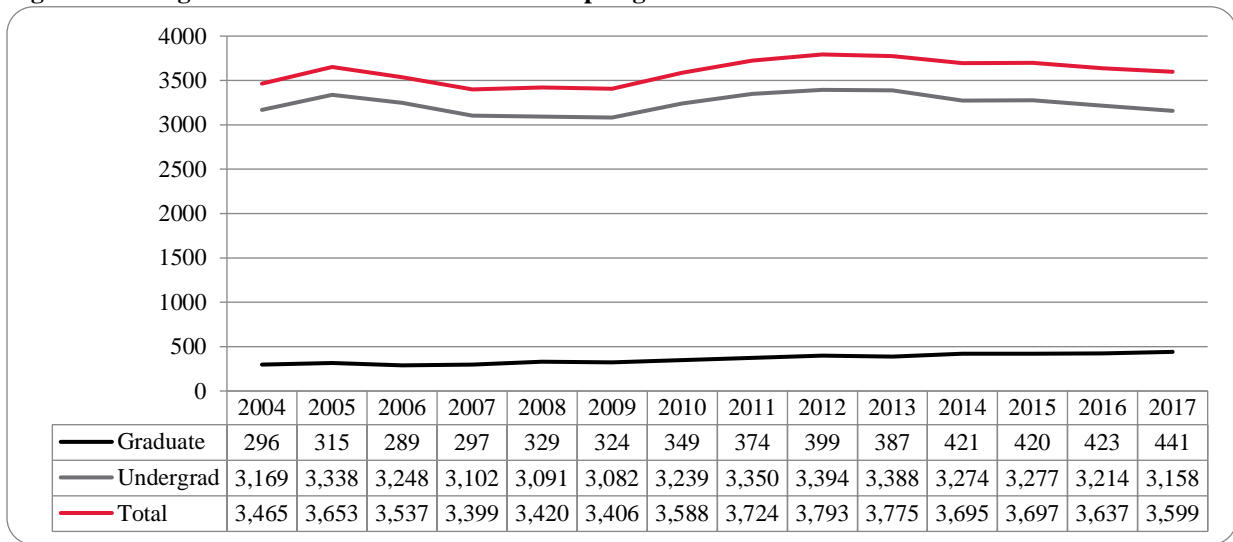


Figure 9: College of Arts & Sciences Student Credit Hours: Spring 2004-2017

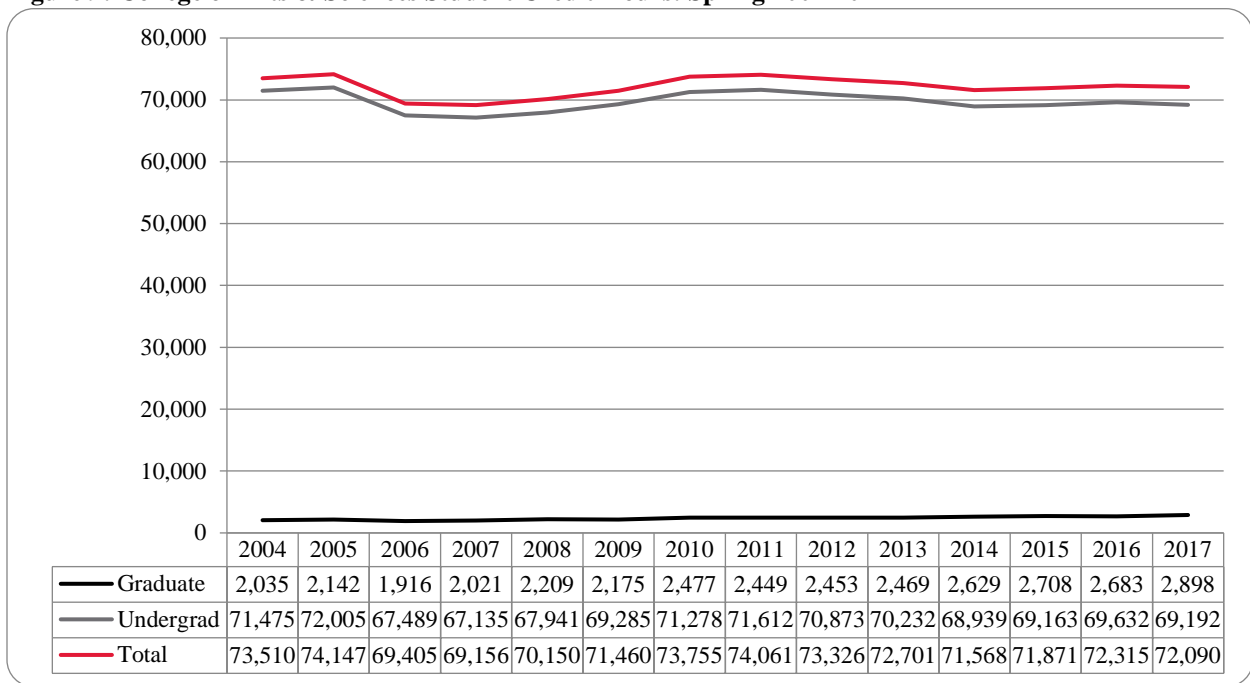


Figure 10: College of Arts & Sciences Head Count by Ethnicity by Gender: Spring 2017

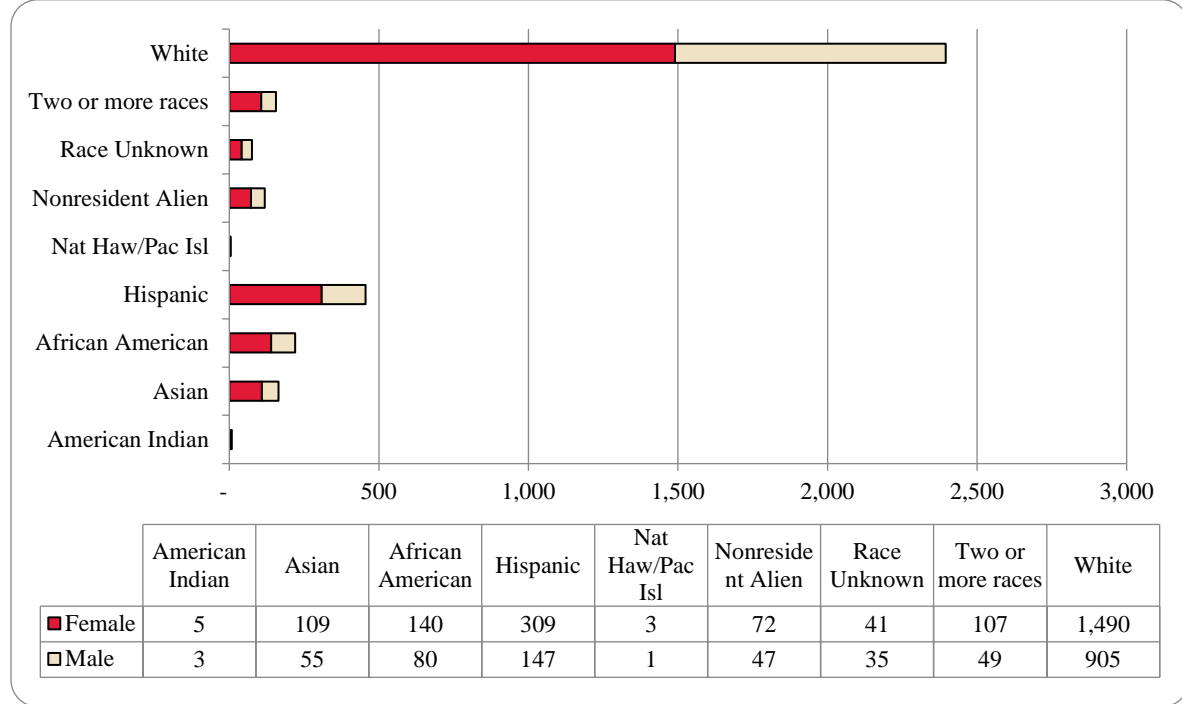


Table 4: College of Arts & Sciences Head Count Summary for Undergraduate and Graduate Students by Full and Part-time by Gender and Race Classification: Spring 2017

	American Indian		Asian		African American		Hispanics		Nat Haw / Pac Isl		Race Unknown		Two or more races		White		Nonresident Alien		Total		
	F	M	F	M	F	M	F	M	F	M	F	M	F	M	F	M	F	M	F	M	Total
Undergraduate																					
Full-Time																					
First-Time Freshmen					2	1	2							1	2	4			9	3	12
Other Freshmen		2	25	7	23	5	62	18			3	2	24	5	218	88	10	6	365	133	498
Sophomores	1		25	13	36	9	74	32			13	5	32	7	270	155	15	15	466	236	702
Juniors	2	1	22	11	25	21	56	37			9	4	18	11	270	165	10	8	412	258	670
Seniors			16	10	17	19	56	27	1		3	10	13	14	209	148	16	6	331	234	565
Special											1		1	6	12				7	13	20
Total Full-Time	3	3	88	41	103	55	250	114	1		29	21	87	38	974	570	55	35	1,590	877	2,467
Part-Time																					
First-Time Freshmen														1		1	1	2	1	3	
Other Freshmen			4	1	5		6	4			1	2	1	17	7	2	1	36	15	51	
Sophomores			1	2	8	3	12	3	2		3		2	60	27		1	86	38	124	
Juniors			3		8	1	10	4			1	1	3	78	44	1		101	53	154	
Seniors	1		6	6	13	8	20	13			5	6	8	118	89	1		172	123	295	
Special			2	2		2	1	3			1		1	31	20			36	28	64	
Total Part-Time	1		16	11	34	14	49	27	2		10	9	11	7	305	187	5	3	433	258	691
Total Undergraduate	4	3	104	52	137	69	299	141	3		39	30	98	45	1,279	757	60	38	2,023	1,135	3,158
Graduate																					
Full-Time																					
Certificate															1					1	1
Masters			2	1	3	3	1	2			1	2		58	33	9	6	75	46	121	
Doctoral			1									1		2	4			4	4	8	
Special Graduate																					
Total Full-Time			3	1	3	3	1	2			1	3		60	38	9	6	79	51	130	
Part-Time																					
Certificate			1											5	2			6	2	8	
Masters	1		1	2		8	9	4	1	2	3	6	4	134	99	3	3	156	124	280	
Doctoral								1			1			12	9			12	11	23	
Special Graduate																					
Total Part-Time	1		2	2		8	9	5	1	2	4	6	4	151	110	3	3	174	137	311	
Total Graduate	1		5	3	3	11	10	7	1	2	5	9	4	211	148	12	9	253	188	441	
Total All Students	5	3	109	55	140	80	309	148	3	1	41	35	107	49	1,490	905	72	47	2,276	1,323	3,599

Figure 11: College of Business Administration Head Count: Spring 2004-2017

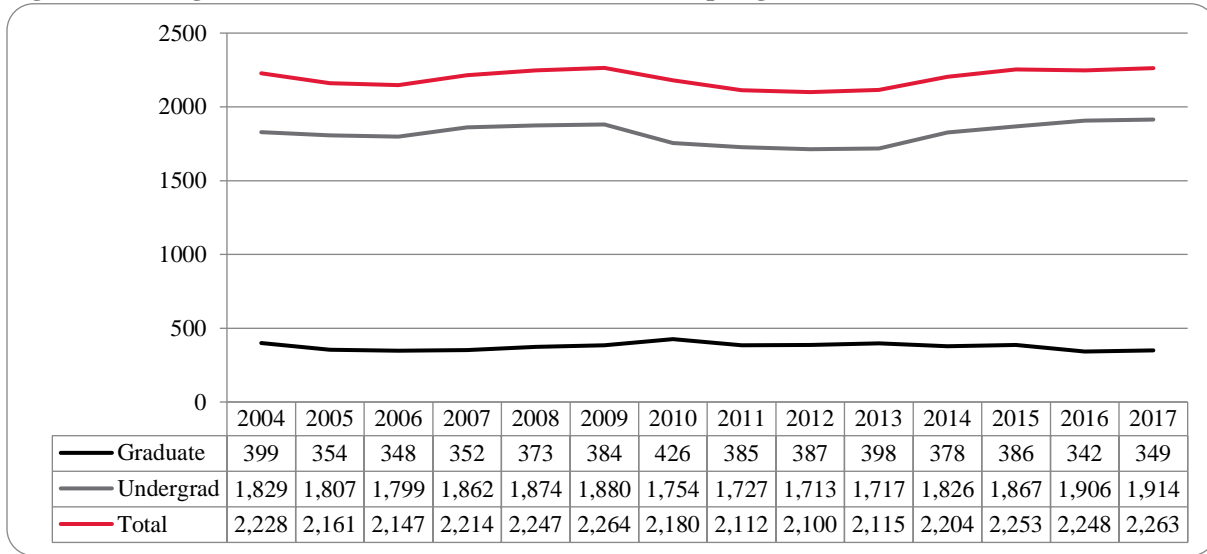


Figure 12: College of Business Administration Student Credit Hours: Spring 2004-2017

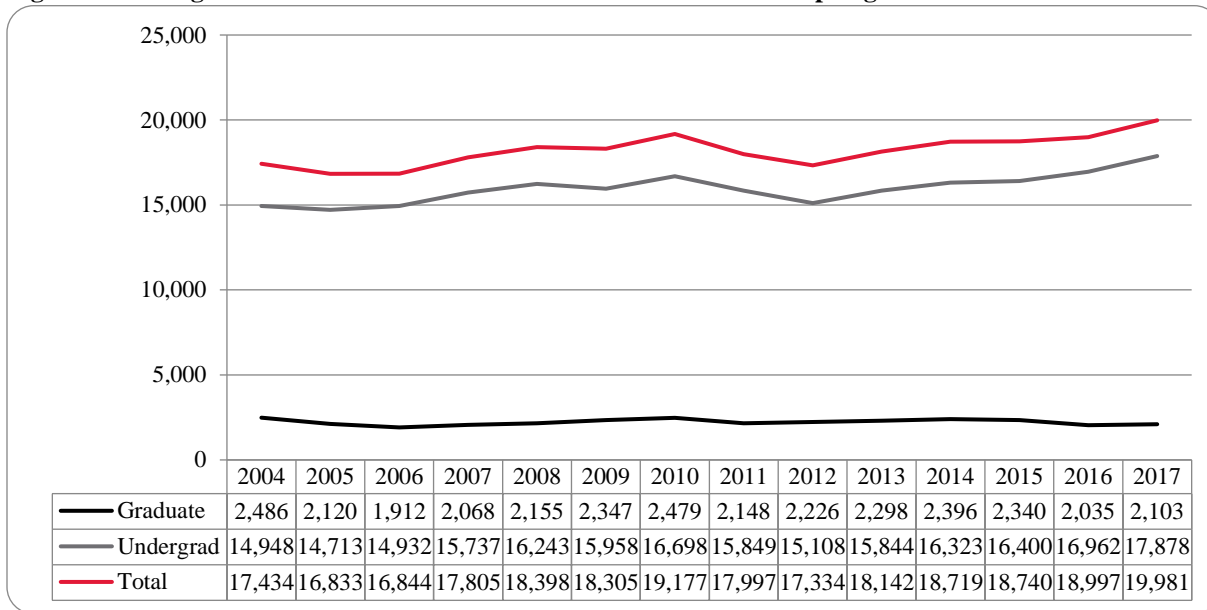


Figure 13: College of Business Administration Head Count by Ethnicity by Gender: Spring 2017

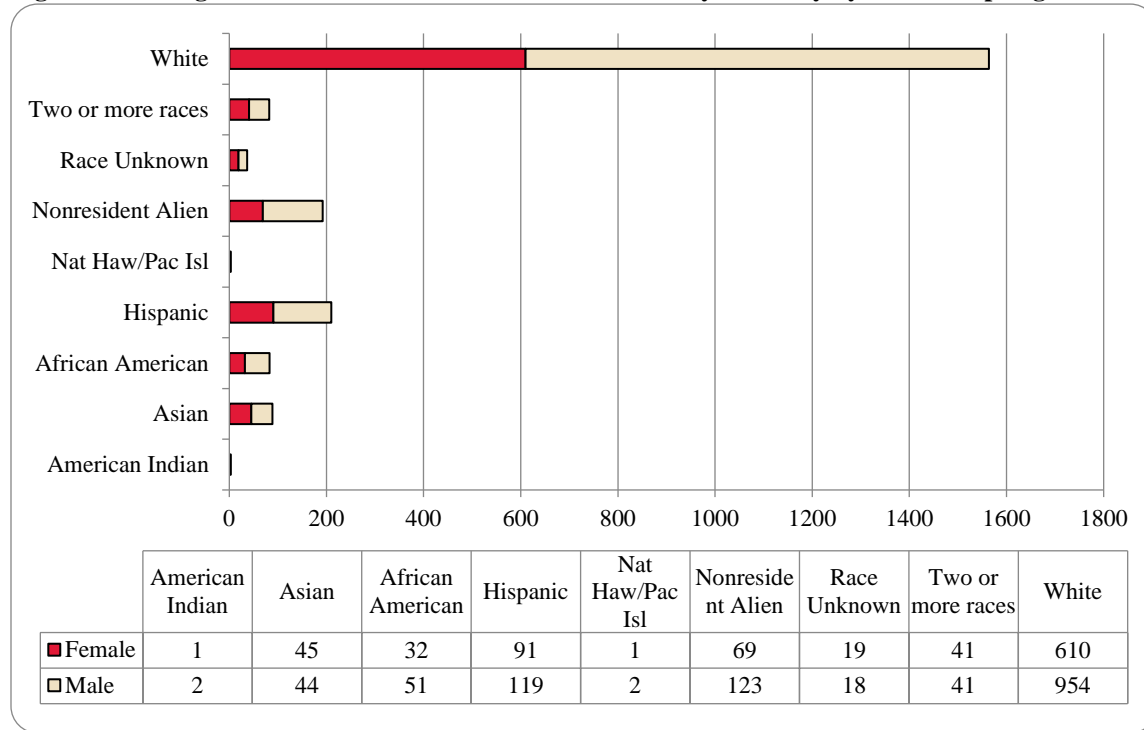


Table 5: College of Business Administration Head Count Summary for Undergraduate and Graduate Students by Full and Part-Time by Gender and Race Classification: Spring 2017

	American Indian		Asian		African American		Hispanics		Nat Haw / Pac Isl		Race Unknown		Two or more races		White		Nonresident Alien		Total			
	F	M	F	M	F	M	F	M	F	M	F	M	F	M	F	M	F	M	F	M	Total	
Undergraduate																						
Full-Time																						
First-Time Freshmen													1		1	1		5	2	6	8	
Other Freshmen		1	2	2	1	4	14	16		1		1	4	5	41	91	3	18	65	139	204	
Sophomores			9	5	7	6	18	20		1	6	1	8	8	98	147	9	27	155	215	370	
Juniors			7	9	6	13	17	33	1		2	8	11	9	111	186	13	20	168	278	446	
Seniors			13	5	5	3	21	18			5	3	5	4	111	189	19	17	179	239	418	
Special				1											3	6	1		4	7	11	
Total Full-Time		1	31	22	19	26	70	87	1	2	13	13	29	26	365	620	45	87	573	884	1,457	
Part-Time																						
First-Time Freshmen																1				1	1	
Other Freshmen				1		1	2	5					1	1	6	6	1	2	10	16	26	
Sophomores				2		2	3	4				1	1	1	20	24	2		26	34	60	
Juniors			2	1	3	3	5	8			1	1	3	5	49	60		2	63	80	143	
Seniors			7	5	4	10	6	4			1		2	3	57	84	2	2	79	108	187	
Special		1	2		4	2	1	2			2	1	1		13	11			23	17	40	
Total Part-Time		1	11	9	11	18	17	23			4	3	8	10	145	186	5	6	201	256	457	
Total Undergraduate		2	42	31	30	44	87	110	1	2	17	16	37	36	510	806	50	93	774	1,140	1,914	
Graduate																						
Full-Time																						
Certificate								1								1				2	2	
Masters	1		1	4		1	2	4			1		1	3	23	24	11	19	40	55	95	
Doctoral																						
Special Graduate																						
Total Full-Time	1		1	4		1	2	5			1		1	3	23	25	11	19	40	57	97	
Part-Time																						
Certificate															1				1		1	
Masters			2	9	2	6	2	4			1	2	3	2	76	123	8	11	94	157	251	
Doctoral																						
Special Graduate																						
Total Part-Time			2	9	2	6	2	4			1	2	3	2	77	123	8	11	95	157	252	
Total Graduate	1		3	13	2	7	4	9			2	2	4	5	100	148	19	30	135	214	349	
Total All Students	1	2	45	44	32	51	91	119	1	2	19	18	41	41	610	954	69	123	909	1,354	2,263	

Figure 14: College of Communication, Fine Arts and Media Delivery-Site Head Count: Spring 2006-2017

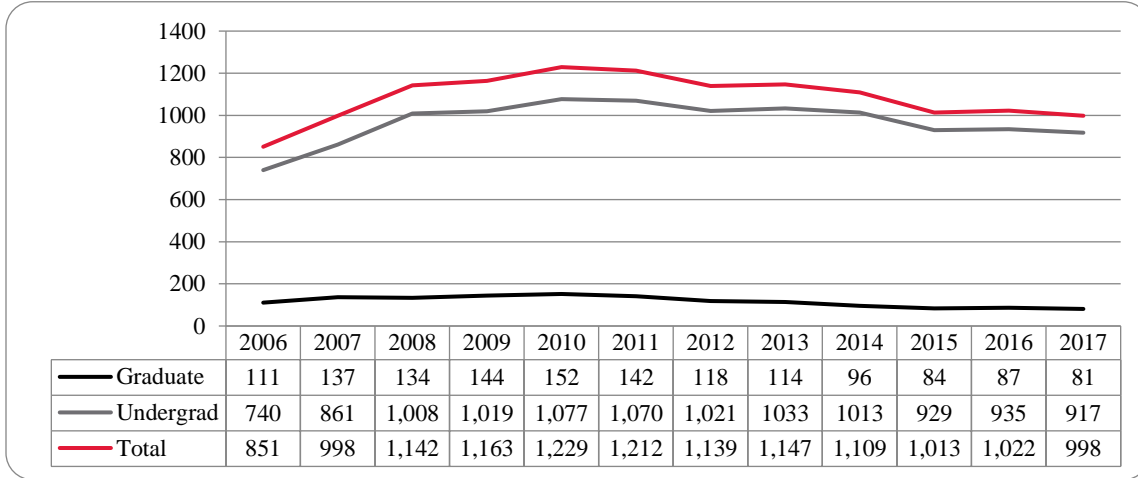


Figure 15: College of Communication, Fine Arts and Media Delivery-Site Student Credit Hours: Spring 2006-2017

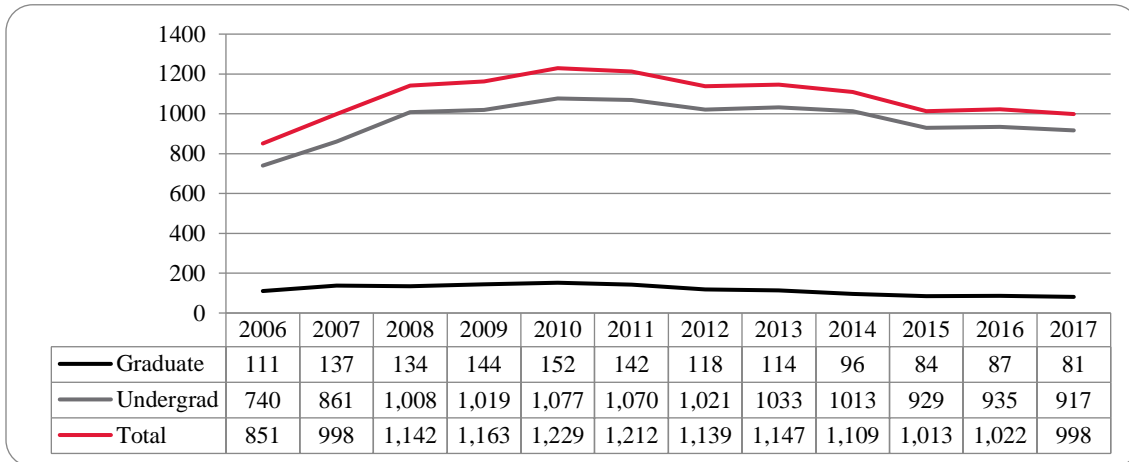


Figure 16: College of Communication, Fine Arts and Media Delivery & Administrative-Site Head Count by Ethnicity by Gender: Spring 2017

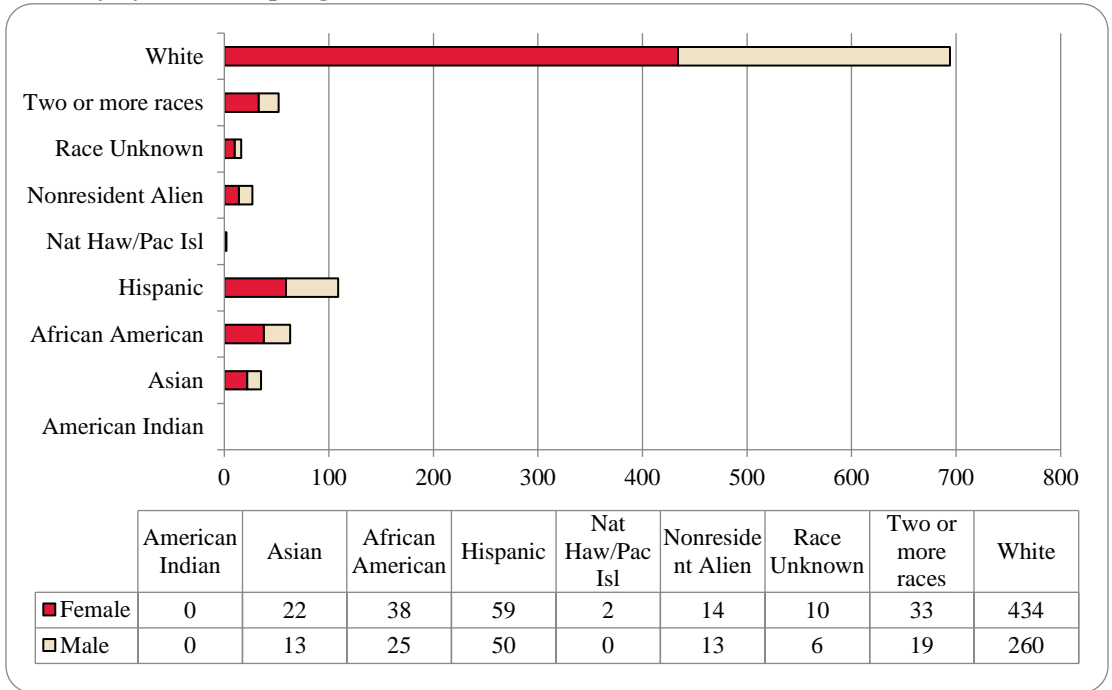


Table 6: College of Communication, Fine Arts and Media Delivery & Administrative-Site Head Count Summary for Undergraduate and Graduate Students by Full and Part-Time by Gender and Race Classification: Spring 2017

	American Indian		Asian		African American		Hispanics		Nat Haw / Pac Isl		Race Unknown		Two or more races		White		Nonresident Alien		Total			
	F	M	F	M	F	M	F	M	F	M	F	M	F	M	F	M	F	M	F	M	Total	
Undergraduate																						
Full-Time																						
First-Time Freshmen								1												1	1	
Other Freshmen			5	2	7	3	7	5	1		2		6	3	34	28	1	4	63	45	108	
Sophomores			3	4	8	11	9	11	1		3		6	4	70	38	3	4	103	72	175	
Juniors			8	3	9	6	18	17			1	2	10	3	99	58	3	1	148	90	238	
Seniors			2	3	5	3	14	9			3	1	6	2	108	49	3	1	141	68	209	
Special			1					1							2	2	1		4	3	7	
Total Full-Time			19	12	29	23	48	44	2		9	3	28	12	313	175	11	10	459	279	738	
Part-Time																						
First-Time Freshmen																						
Other Freshmen							1	1							5	5			6	6	12	
Sophomores			1		2		3					1	2		12	2			19	4	23	
Juniors					2	1	3	1			1	2		1	17	20			23	25	48	
Seniors			2		4	1	4	1			1	3	1	41	27	1		55	31	86		
Special															2	7		1	2	8	10	
Total Part-Time			3		8	2	11	3			1	3	4	4	77	61	1	1	105	74	179	
Total Undergraduate			22	12	37	25	59	47	2		10	6	32	16	390	236	12	11	564	353	917	
Graduate																						
Full-Time																						
Certificate																						
Masters				1				2							22	9	1	2	23	14	37	
Doctoral																						
Special Graduate																						
Total Full-Time				1				2							22	9	1	2	23	14	37	
Part-Time																						
Certificate															1	4			1	4	5	
Masters					1			1				1	3	21	11	1		24	15	39		
Doctoral																						
Special Graduate																						
Total Part-Time					1			1				1	3	22	15	1		25	19	44		
Total Graduate				1	1			3				1	3	44	24	2	2	48	33	81		
Total All Students			22	13	38	25	59	50	2		10	6	33	19	434	260	14	13	612	386	998	

Figure 17: College of Communication, Fine Arts and Media: Administrative-Site Head Count: Spring 2006-2017

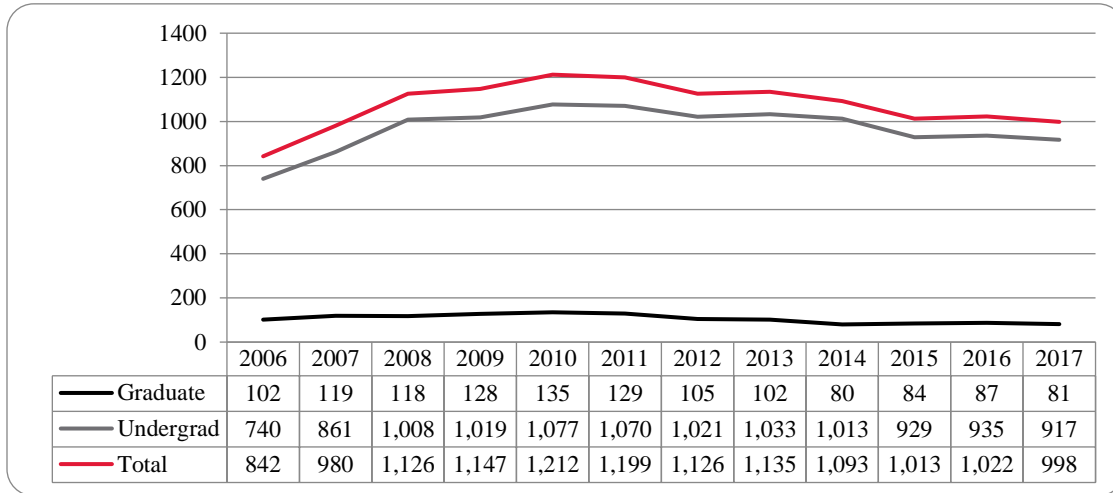


Figure 18: College of Communication, Fine Arts and Media: Administrative-Site Student Credit Hours: Spring 2006-2017

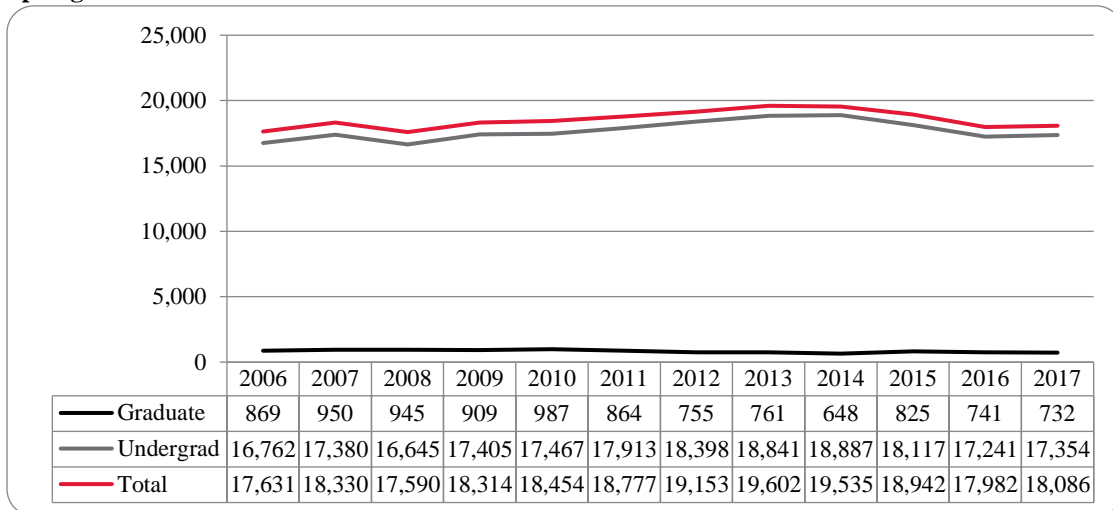


Figure 20: College of Education Head Count: Spring 2004-2017

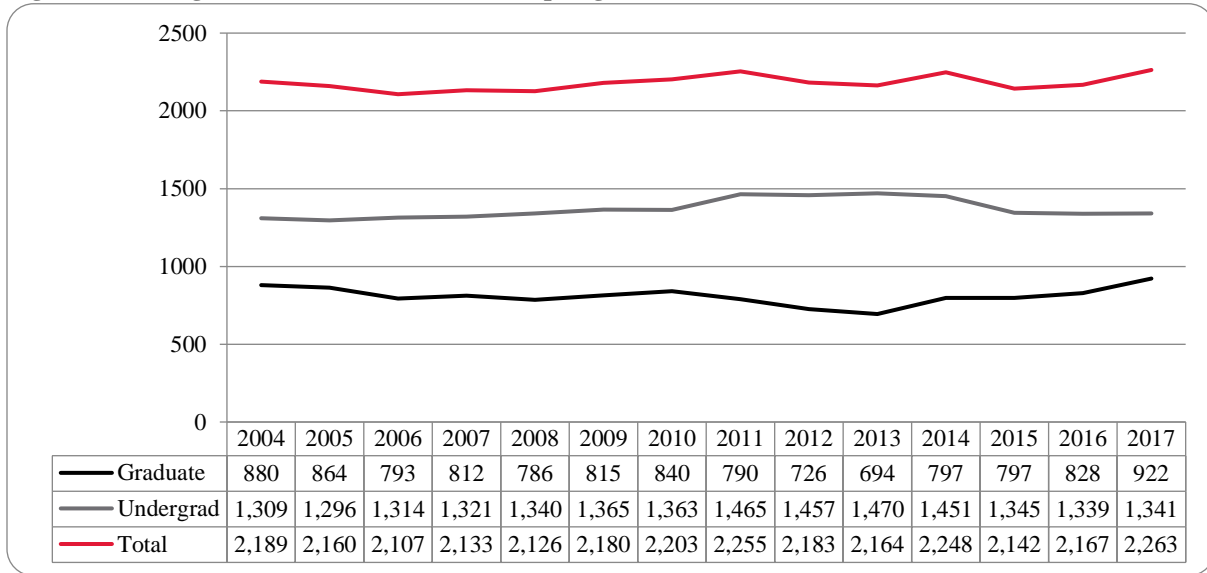


Figure 21: College of Education Student Credit Hours: Spring 2004-2017

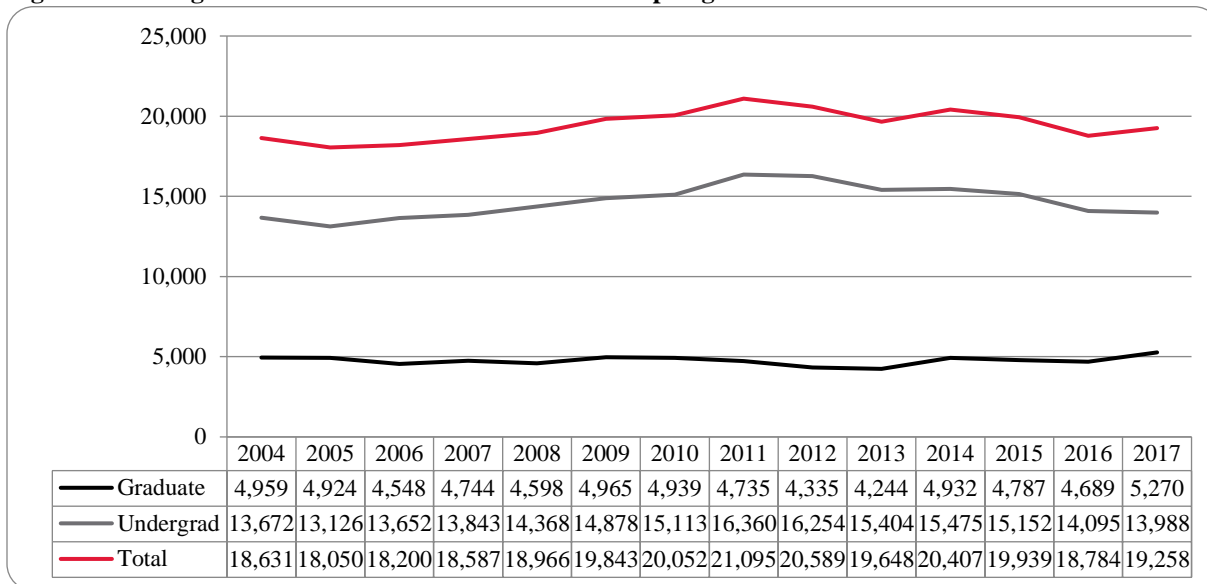


Figure 22: College of Education Head Count by Ethnicity by Gender: Spring 2017

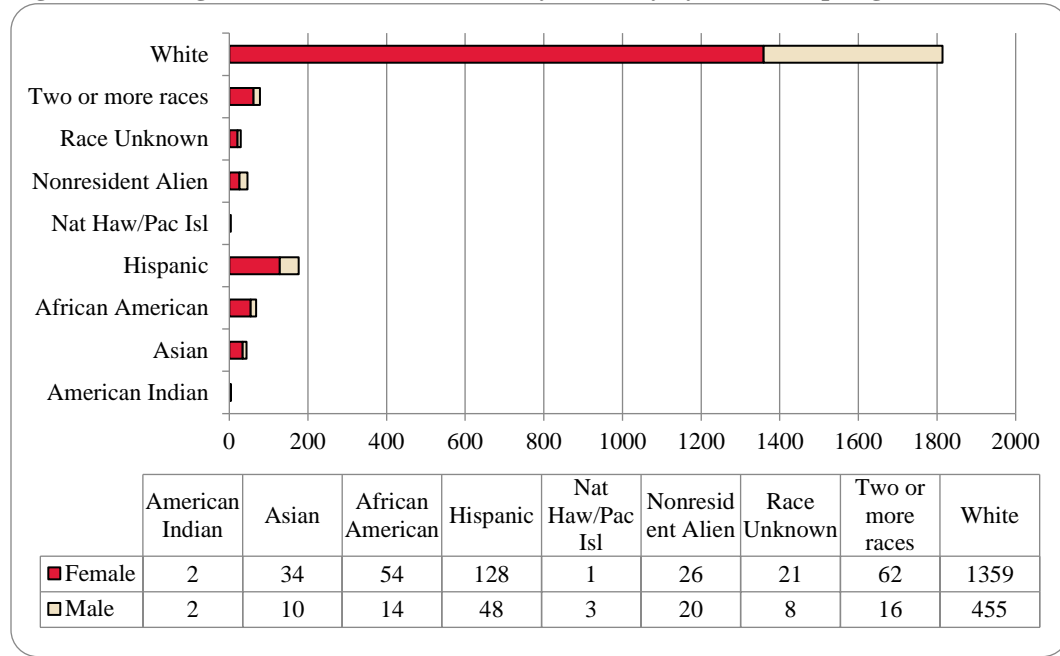


Table 8: College of Education Head Count Summary for Undergraduate and Graduate Students by Full and Part-Time by Gender and Race Classification: Spring 2017

	American Indian		Asian		African American		Hispanics		Nat Haw / Pac Isl		Race Unknown		Two or more races		White		Nonresident Alien		Total			
	F	M	F	M	F	M	F	M	F	M	F	M	F	M	F	M	F	M	F	M	Total	
Undergraduate																						
Full-Time																						
First-Time Freshmen																						
Other Freshmen			2	1	9		14	8	1		2		5	1	66	38	5	2	104	50	154	
Sophomores		1	3	1	6	1	23	9			2		11	1	132	45	2	2	179	60	239	
Juniors	1		5	3	4		21	12		2	4	1	8	2	186	65	1	1	230	86	316	
Seniors		1	4	2	13	2	28	6		1	6	1	17	3	216	93	4	1	288	110	398	
Special			1				1	1				1		1	8	14	1		11	17	28	
Total Full-Time	1	2	15	7	32	3	87	36	1	3	14	3	41	8	608	255	13	6	812	323	1,135	
Part-Time																						
First-Time Freshmen																						
Other Freshmen			2				2								3	1			7	1	8	
Sophomores							6	1					3		28	9			37	10	47	
Juniors					1		2	2			1		2		32	9			38	11	49	
Seniors	1		2			2	4	1					5	2	33	29	1		46	34	80	
Special							1	1							13	7			14	8	22	
Total Part-Time	1		4		1	2	15	5			1		10	2	109	55	1		142	64	206	
Total Undergraduate	2	2	19	7	33	5	102	41	1	3	15	3	51	10	717	310	14	6	954	387	1,341	
Graduate																						
Full-Time																						
Certificate																						
Masters			2	1	3	1	6				2		2		109	43	7	9	131	54	185	
Doctoral													2		8	5	2	1	10	8	18	
Special Graduate															3	2			3	2	5	
Total Full-Time			2	1	3	1	6				2		2	2	120	50	9	10	144	64	208	
Part-Time																						
Certificate															1				1		1	
Masters			11	1	14	4	15	7			4	4	7	2	379	65	2	4	432	87	519	
Doctoral			1	1		4	3						2	1	44	16			50	22	72	
Special Graduate			1		4		2				1		1		98	14	1		106	16	122	
Total Part-Time			13	2	18	8	20	7			4	5	9	4	522	95	3	4	589	125	714	
Total Graduate			15	3	21	9	26	7			6	5	11	6	642	145	12	14	733	189	922	
Total All Students	2	2	34	10	54	14	128	48	1	3	21	8	62	16	1,359	455	26	20	1,687	576	2,263	

Figure 23: College of Information Science & Technology Head Count: Spring 2004-2017

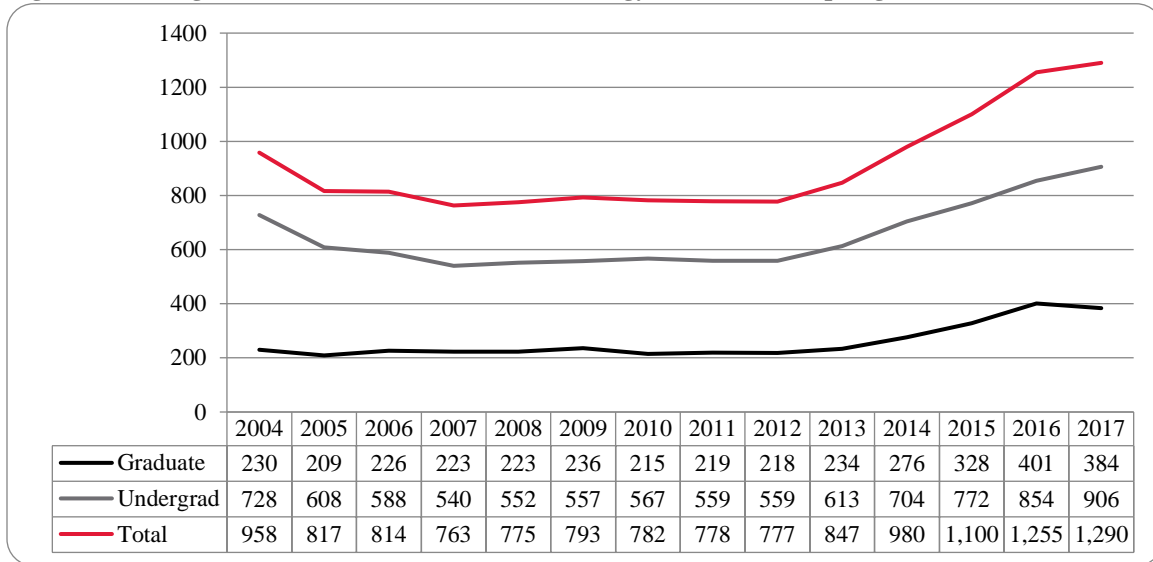


Figure 24: College of Information Science & Technology Student Credit Hours: Spring 2004-2017

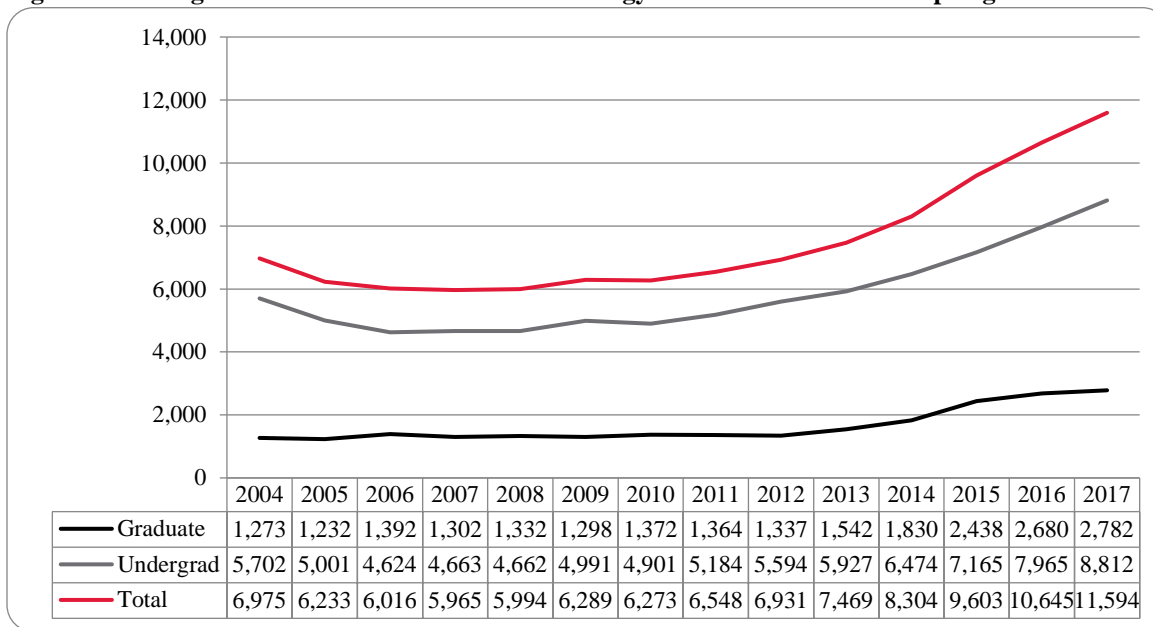


Figure 25: College of Information Science & Technology Head Count by Ethnicity by Gender: Spring 2017

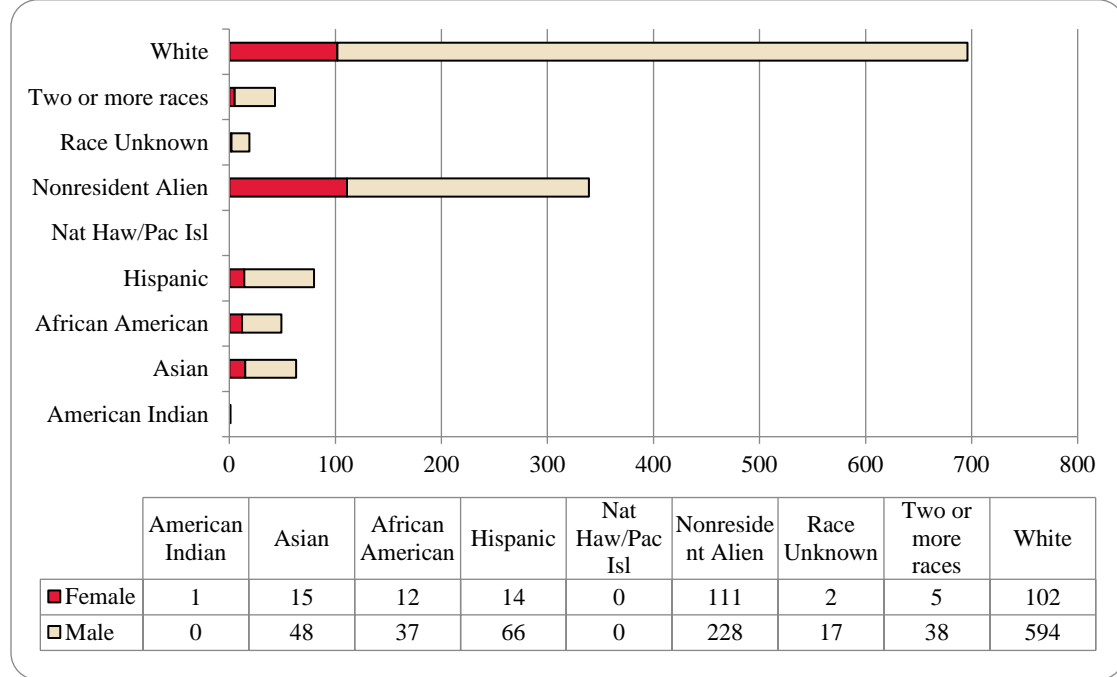


Table 9: College of Information Science and Technology Head Count Summary for Undergraduate and Graduate Summary for Full and Part-Time by Gender and Race Classification: Spring 2017

	American Indian		Asian		African American		Hispanics		Nat Haw / Pac Isl		Race Unknown		Two or more races		White		Nonresident Alien		Total			
	F	M	F	M	F	M	F	M	F	M	F	M	F	M	F	M	F	M	F	M	Total	
Undergraduate																						
Full-Time																						
First-Time Freshmen													1				1	4	1	5	6	
Other Freshmen			1	2			2	5			1		4	10	84	4	10	17	106	123		
Sophomores			2	9		2	4	17			3		13	11	96	2	24	19	164	183		
Juniors	1			10	1	6		12			2	1	3	23	104	4	23	30	160	190		
Seniors			3	10		3	4	13			2		8	19	115	2	18	28	169	197		
Special			2				1	1						3	7		1	6	9	15		
Total Full-Time	1		8	31	1	11	11	48			8	1	29	66	406	13	80	101	613	714		
Part-Time																						
First-Time Freshmen																						
Other Freshmen			1					2					1		11		1	1	15	16		
Sophomores				2		2					2			3	19		4	3	29	32		
Juniors				3		3	1	4			1	1	2	2	33		1	4	47	51		
Seniors				2	3	7	1	1			3	1	1	6	41		2	11	57	68		
Special					2	2		1			1	2	1	1	6	8	1		11	14	25	
Total Part-Time			1	7	5	14	2	8			2	8	2	5	17	112	1	8	30	162	192	
Total Undergraduate	1		9	38	6	25	13	56			2	16	3	34	83	518	14	88	131	775	906	
Graduate																						
Full-Time																						
Certificate														2	1	1		3	1	4		
Masters				2	2	1		3						4	13	53	93	59	112	171		
Doctoral															4	4	7	4	11	15		
Special Graduate																						
Total Full-Time				2	2	1		3						6	18	58	100	66	124	190		
Part-Time																						
Certificate			1	1				2						3	2			4	5	9		
Masters			5	7	4	11	1	5			1	1	4	10	53	38	36	59	117	176		
Doctoral												1			3	1	4	2	7	9		
Special Graduate																						
Total Part-Time			6	8	4	11	1	7			1	2	4	13	58	39	40	65	129	194		
Total Graduate			6	10	6	12	1	10			1	2	4	19	76	97	140	131	253	384		
Total All Students	1		15	48	12	37	14	66			2	17	5	38	102	594	111	228	262	1,028	1,290	

Figure 26: College of Public Affairs & Community Service Delivery-Site Head Count: Spring 2004-2017

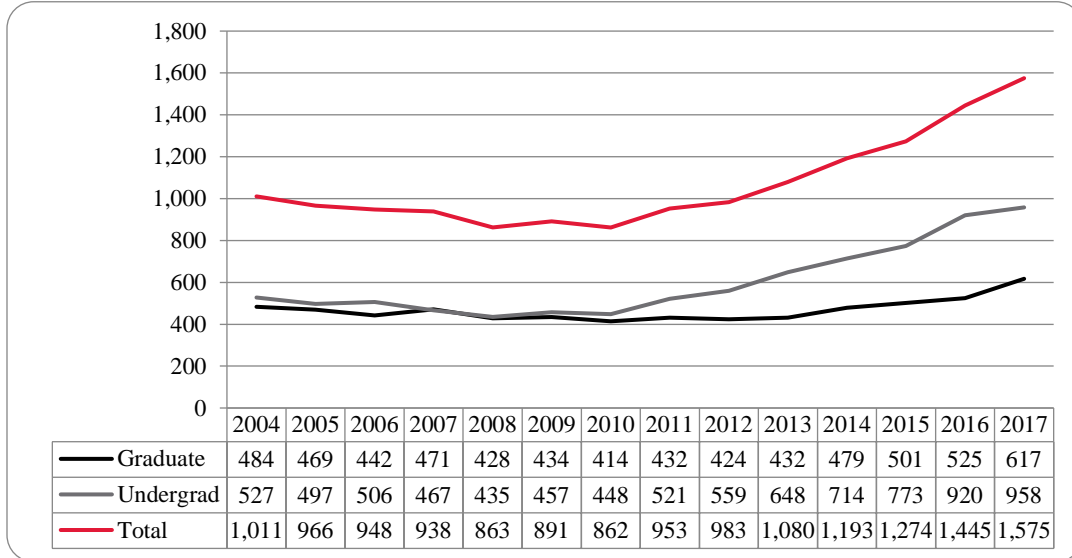


Figure 27: College of Public Affairs & Community Service Delivery-Site Student Credit Hours: Spring 2004-2017

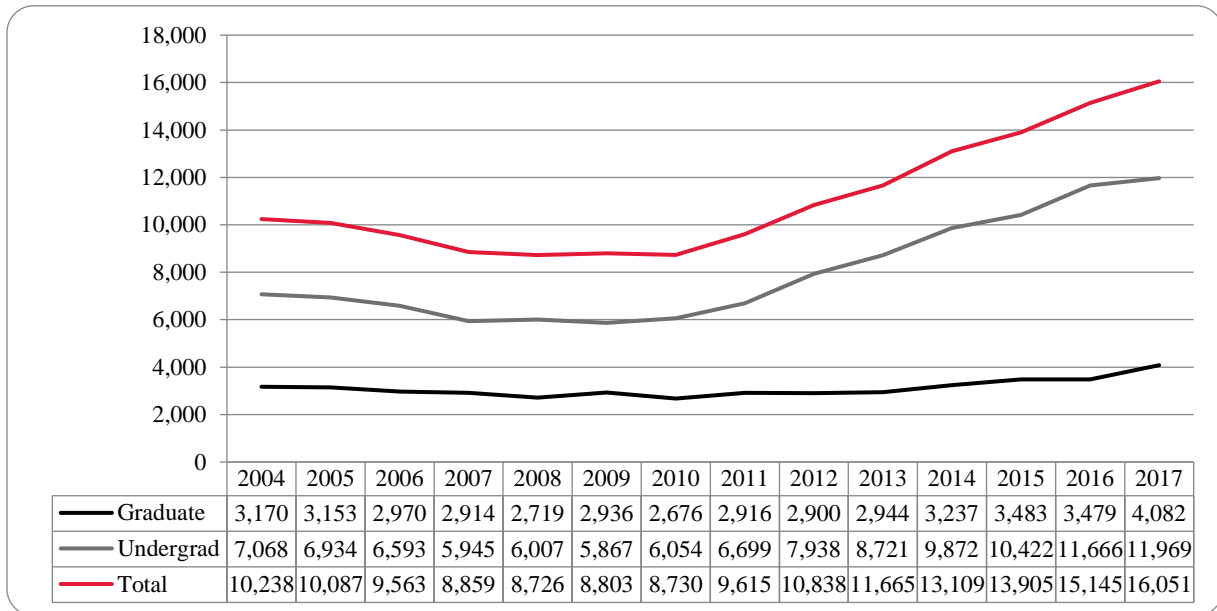


Figure 28: College of Public Affairs & Community Service Delivery-Site Head Count by Ethnicity by Gender: Spring 2017

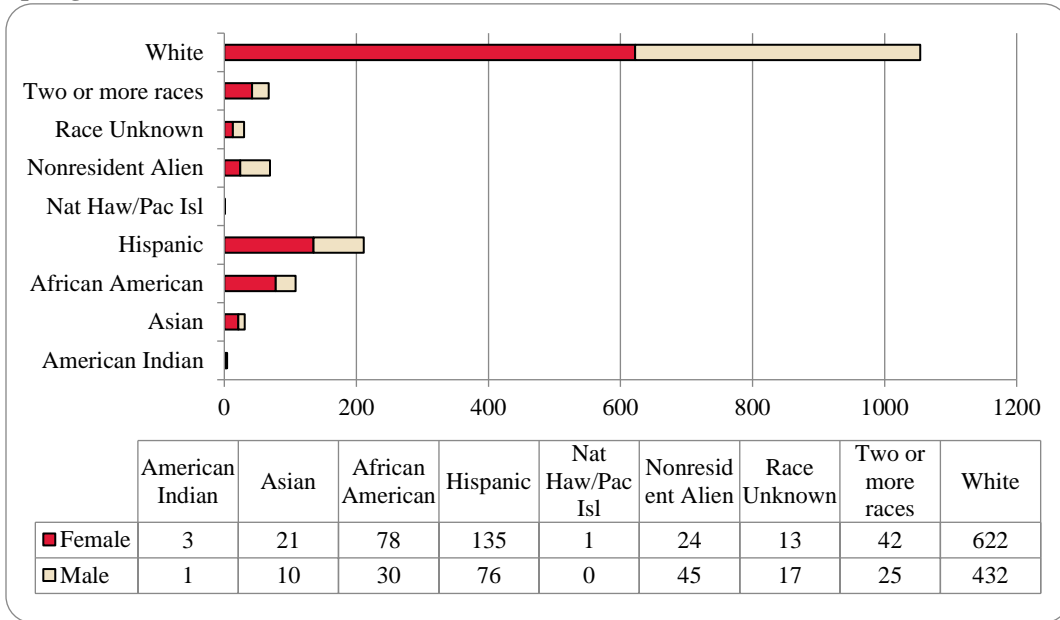


Table 10: College of Public Affairs & Community Service Delivery-Site Head Count for Undergraduate and Graduate Students by Full and Part-time by Gender and Race Classification: Spring 2017

	American Indian		Asian		African American		Hispanics		Nat Haw / Pac Isl		Race Unknown		Two or more races		White		Nonresident Alien		Total		
	F	M	F	M	F	M	F	M	F	M	F	M	F	M	F	M	F	M	F	M	Total
Undergraduate																					
Full-Time																					
First-Time Freshmen						1		1						2	4	2	3	4	9	13	
Other Freshmen	2		3	2	11	2	10	10			1		2	2	28	40	3	9	60	65	125
Sophomores			3	1	9	2	21	16			2	4	6	4	42	51	3	7	86	85	171
Juniors			8	2	17	3	32	14			2	5	10	5	92	100	6	7	167	136	303
Seniors				2	8	7	23	9			1	3	3	2	73	57		3	108	83	191
Special													2		5				7	7	
Total Full-Time	2		14	7	45	15	86	50			6	12	21	15	237	257	14	29	425	385	810
Part-Time																					
First-Time Freshmen															1				1	1	
Other Freshmen						1	2						1		5			3	6	9	
Sophomores			2		1	1	2	5						4	7	1	1	10	14	24	
Juniors					6	1	3	4						12	9		1	21	15	36	
Seniors	1				4	3	4	6			2	2	2	23	26		1	34	40	74	
Special					1	1	1								1			2	2	4	
Total Part-Time	1		2		12	7	12	15			2	2	1	2	39	49	1	3	70	78	148
Total Undergraduate	3		16	7	57	22	98	65			8	14	22	17	276	306	15	32	495	463	958
Graduate																					
Full-Time																					
Certificate					1									3	1			4	1	5	
Masters			1	2	6	1	9	3			1		8	1	123	21	1	3	149	31	180
Doctoral			1										2		3	2	4	7	10	9	19
Special Graduate																					
Total Full-Time			2	2	7	1	9	3			1		10	1	129	24	5	10	163	41	204
Part-Time																					
Certificate							3							15	8			18	8	26	
Masters		1	2	1	14	5	23	7	1		4	3	9	7	186	82	2		241	106	347
Doctoral			1			2	2	1					1		16	12	2	3	22	18	40
Special Graduate																					
Total Part-Time		1	3	1	14	7	28	8	1		4	3	10	7	217	102	4	3	281	132	413
Total Graduate		1	5	3	21	8	37	11	1		5	3	20	8	346	126	9	13	444	173	617
Total All Students	3	1	21	10	78	30	135	76	1		13	17	42	25	622	432	24	45	939	636	1,575

Figure 29: College of Public Affairs & Community Service Administrative-Site Head Count: Spring 2004-2017

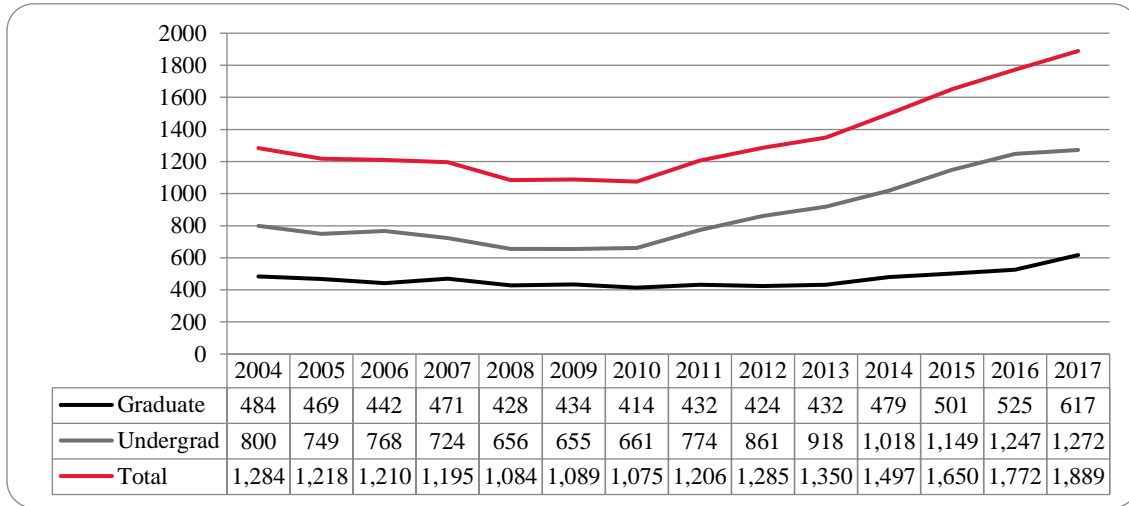


Figure 30: College of Public Affairs & Community Service Administrative-Site Student Credit Hours: Spring 2004-2017

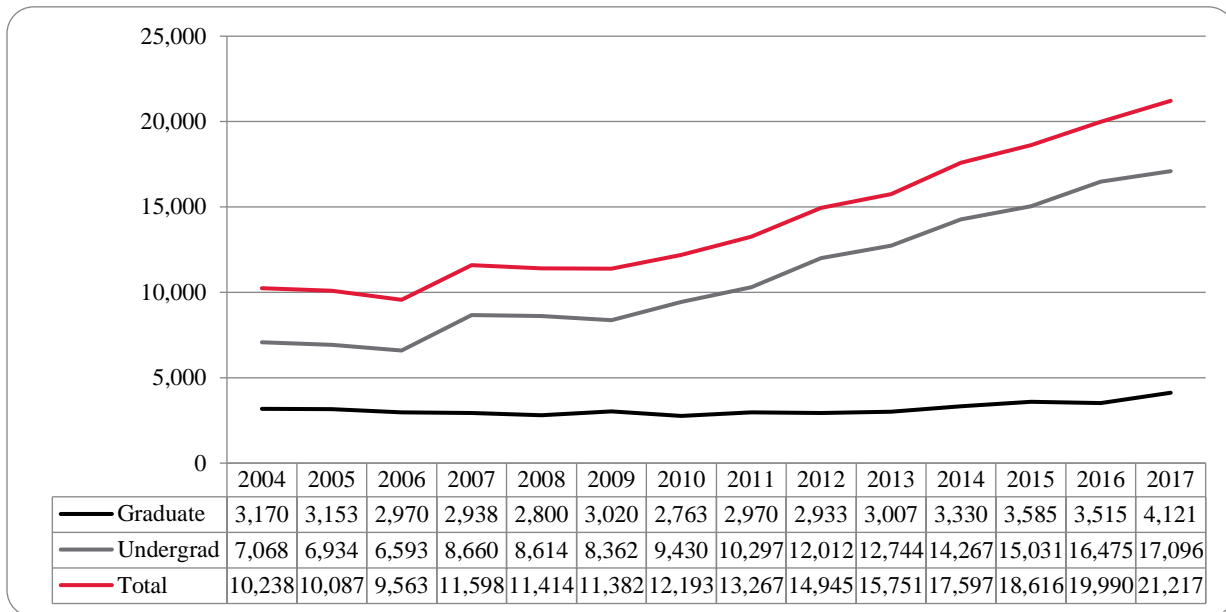


Figure 31: College of Public Affairs & Community Service Administrative-Site Head Count by Ethnicity by Gender: Spring 2017

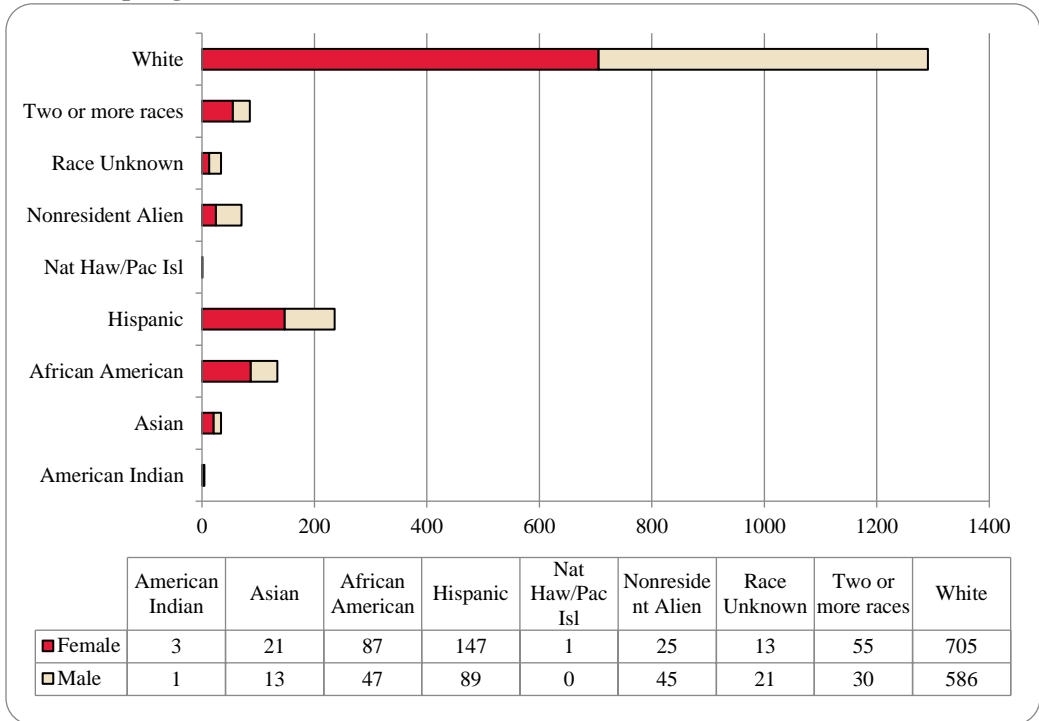


Table 11: College of Public Affairs & Community Service Administrative-Site Head Count Summary for Undergraduate Graduate Students by Full and Part-Time by Gender and Race Classification: Spring 2017

	American Indian		Asian		African American		Hispanics		Nat Haw / Pac Isl		Race Unknown		Two or more races		White		Nonresident Alien		Total			
	F	M	F	M	F	M	F	M	F	M	F	M	F	M	F	M	F	M	F	M	Total	
Undergraduate																						
Full-Time																						
First-Time Freshmen						1		1						2	4	2	3	4	9	13		
Other Freshmen	2		3	3	15	6	11	15			1		3	2	40	60	3	9	78	95	173	
Sophomores			3	1	12	7	26	18			2	5	10	6	65	72	3	7	121	116	237	
Juniors			8	3	18	7	35	16			2	7	13	6	116	148	6	7	198	194	392	
Seniors				3	9	11	26	13			1	4	8	4	94	112	1	3	139	150	289	
Special													2			5				7	7	
Total Full-Time	2		14	10	54	32	98	63			6	16	34	20	317	401	15	29	540	571	1,111	
Part-Time																						
First-Time Freshmen															1				1	1	1	
Other Freshmen						1	2						1		5			3	6	9		
Sophomores			2		1	1	2	5							4	7	1	1	10	14	24	
Juniors					6	1	3	4							13	10		1	22	16	38	
Seniors	1				4	3	4	6			2	2	2	2	25	35		1	36	49	85	
Special					1	1	1								1				2	2	4	
Total Part-Time	1		2		12	7	12	15			2	2	1	2	42	59	1	3	73	88	161	
Total Undergraduate	3		16	10	66	39	110	78			8	18	35	22	359	460	16	32	613	659	1,272	
Graduate																						
Full-Time																						
Certificate					1										3	1			4	1	5	
Masters			1	2	6	1	9	3			1		8	1	123	21	1	3	149	31	180	
Doctoral			1										2		3	2	4	7	10	9	19	
Special Graduate																						
Total Full-Time			2	2	7	1	9	3			1		10	1	129	24	5	10	163	41	204	
Part-Time																						
Certificate							3								15	8			18	8	26	
Masters		1	2	1	14	5	23	7	1		4	3	9	7	186	82	2		241	106	347	
Doctoral			1			2	2	1					1		16	12	2	3	22	18	40	
Special Graduate																						
Total Part-Time		1	3	1	14	7	28	8	1		4	3	10	7	217	102	4	3	281	132	413	
Total Graduate		1	5	3	21	8	37	11	1		5	3	20	8	346	126	9	13	444	173	617	
Total All Students	3	1	21	13	87	47	147	89	1		13	21	55	30	705	586	25	45	1,057	832	1,889	

Figure 32: College of CPACS, Division of Continuing Studies Head Count: Spring 2004-2017

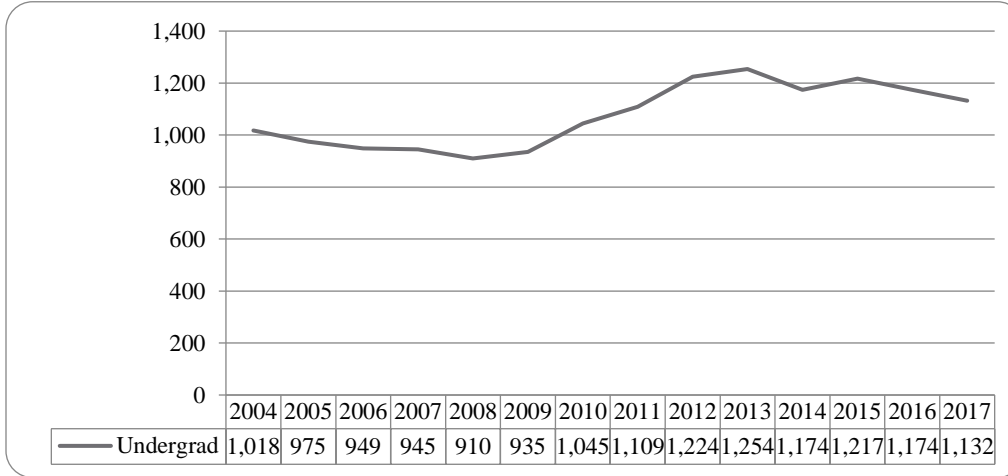


Figure 33: College of CPACS, Division of Continuing Studies Head Count by Ethnicity by Gender: Spring 2017

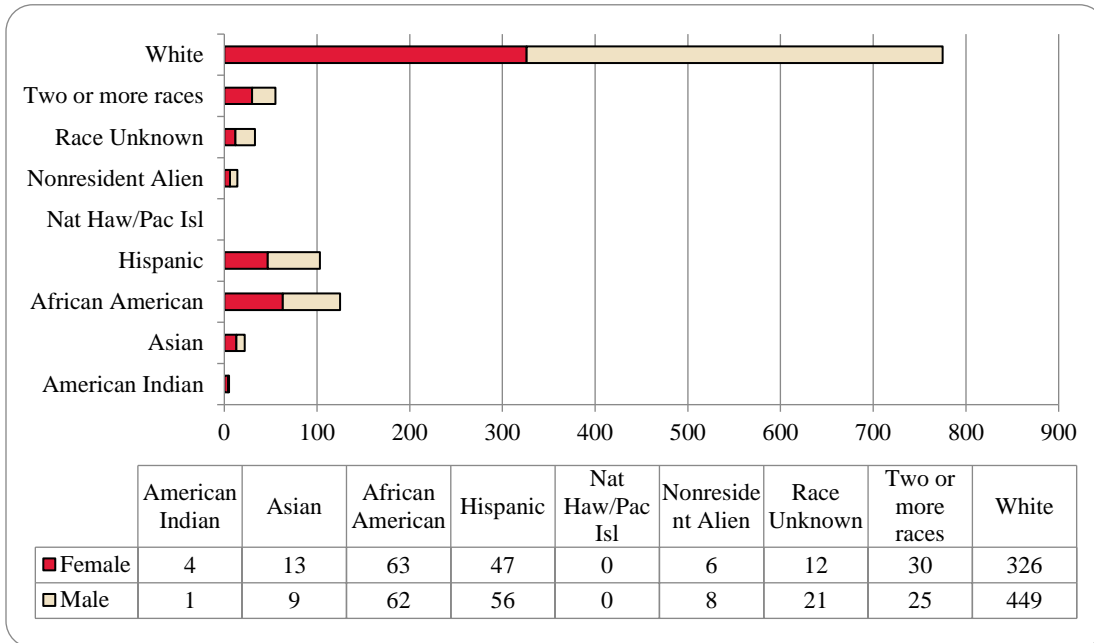


Table 12: College of CPACS Division of Continuing Studies Head Count Summary for Undergraduate Students by Full and Part-Time by Gender and Race Classification: Spring 2017

	American Indian		Asian		African American		Hispanics		Nat Haw / Pac Isl		Race Unknown		Two or more races		White		Nonresident Alien		Total			
	F	M	F	M	F	M	F	M	F	M	F	M	F	M	F	M	F	M	F	M	Total	
Undergraduate																						
Full-Time																						
First-Time Freshmen																						
Other Freshmen					3	4	1	1			1				7	19		3	11	28	39	
Sophomores	1			3	10	5	7	12			1		6	2	23	51	1	1	49	74	123	
Juniors					7	17	13	8			1	8	8	6	57	63		1	86	103	189	
Seniors	1	1	6	3	12	11	8	9			4	3	9	1	54	79	1		95	107	202	
Special							1							1	3	4			4	5	9	
Total Full-Time	2	1	6	6	32	37	30	30			6	12	23	10	144	216	2	5	245	317	562	
Part-Time																						
First-Time Freshmen																						
Other Freshmen					2		2	2			1		1		6	20			12	22	34	
Sophomores			1	1	7	4	2	6				1	3	6	18	36			31	54	85	
Juniors			1	2	6	4	4	7			2	3	1	4	46	61	3	1	63	82	145	
Seniors	2		3		15	13	8	11			3	5	2	5	105	107		2	138	143	281	
Special			2		1	4	1								7	9	1		12	13	25	
Total Part-Time	2		7	3	31	25	17	26			6	9	7	15	182	233	4	3	256	314	570	
Total Undergraduate	4	1	13	9	63	62	47	56			12	21	30	25	326	449	6	8	501	631	1,132	
Total All Students	4	1	13	9	63	62	47	56			12	21	30	25	326	449	6	8	501	631	1,132	

Table 13: Cooperative Graduate Program Head Count Summary for Graduate Students by Full and Part-time by Gender and Race Classification: Spring 2017

	American Indian		Asian		African American		Hispanics		Nat Haw / Pac Isl		Race Unknown		Two or more races		White		Nonresident Alien		Total			
	F	M	F	M	F	M	F	M	F	M	F	M	F	M	F	M	F	M	F	M	Total	
Graduate																						
Full-Time																						
Certificate																						
Masters																						
Doctoral																						
Special Graduate																						
Total Full-Time																						
Part-Time																						
Certificate			1				1							4	1	1			7	1	8	
Masters																						
Doctoral																						
Special Graduate																						
Total Part-Time			1				1							4	1	1			7	1	8	
Total Graduate			1				1							4	1	1			7	1	8	
Total All Students			1				1							4	1	1			7	1	8	

Figure 34: University Division Head Count: Spring 2004-2017

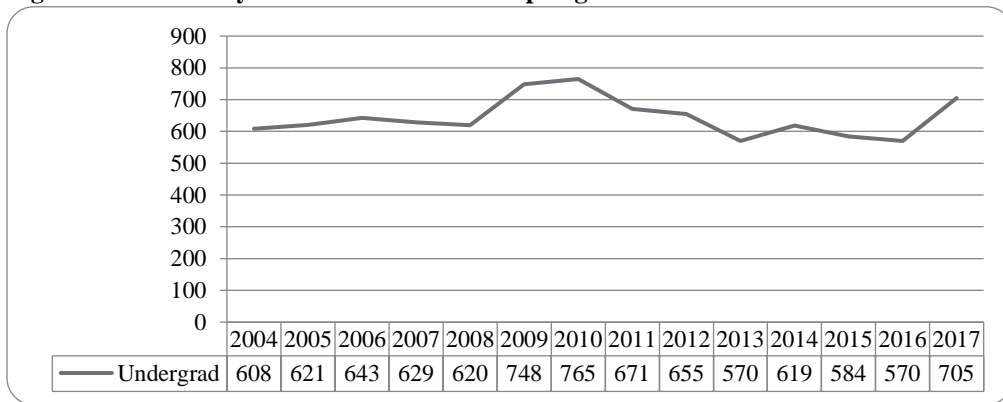


Figure 35: University Division Student Credit Hours: Spring 2004-2017

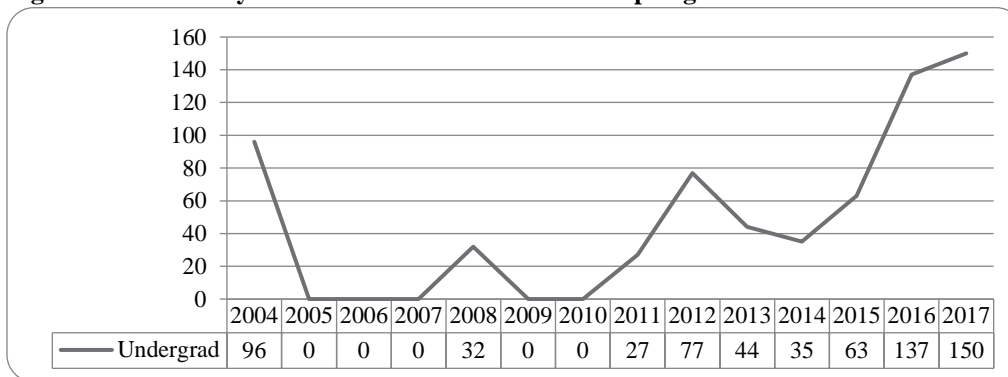


Figure 36: University Division Head Count by Ethnicity by Gender: Spring 2017

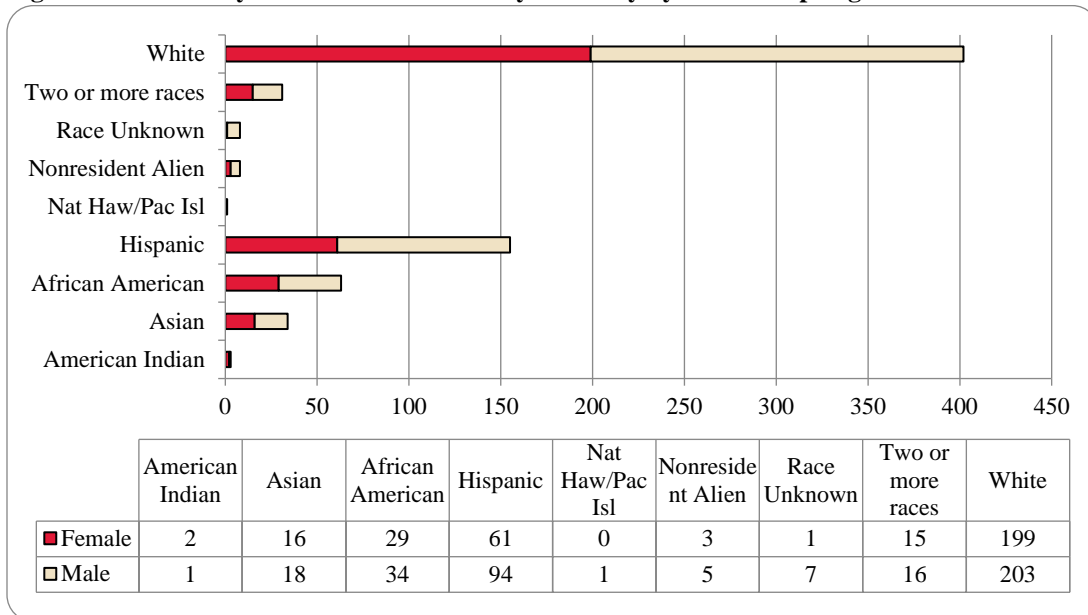


Table 14: University Division Head Count Summary for Undergraduate Students by Full and Part-Time by Gender and Race Classification: Spring 2017

	American Indian		Asian		African American		Hispanics		Nat Haw / Pac Isl		Race Unknown		Two or more races		White		Nonresident Alien		Total			
	F	M	F	M	F	M	F	M	F	M	F	M	F	M	F	M	F	M	F	M	Total	
Undergraduate																						
Full-Time																						
First-Time Freshmen					2	1		3						2	7			4	11	15		
Other Freshmen	2	1	14	13	23	27	41	56		1		4	9	11	126	116	3	3	218	232	450	
Sophomores				2	1	3	13	22				2	4	3	43	43		2	61	77	138	
Juniors															2				2		2	
Seniors																						
Special																						
Total Full-Time	2	1	14	15	26	31	54	81		1		6	13	14	173	166	3	5	285	320	605	
Part-Time																						
First-Time Freshmen				1									1						1	1	2	
Other Freshmen			2	2	3	3	5	10			1		1	2	16	19			28	36	64	
Sophomores							2	2				1			10	18			12	21	33	
Juniors								1												1	1	
Seniors																						
Special																						
Total Part-Time			2	3	3	3	7	13			1	1	2	2	26	37			41	59	100	
Total Undergraduate	2	1	16	18	29	34	61	94		1	1	7	15	16	199	203	3	5	326	379	705	
Total All Students	2	1	16	18	29	34	61	94		1	1	7	15	16	199	203	3	5	326	379	705	

Figure 37: Non-Degree/Intercampus Special Undergraduate Students Head Count: Spring 2004-2017

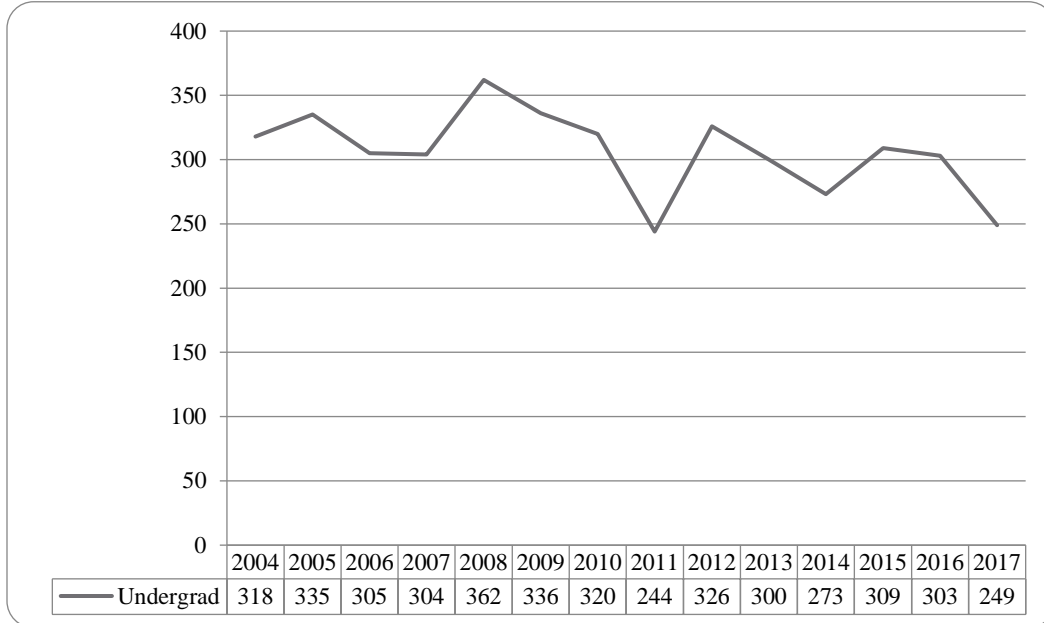


Figure 38: Non-Degree/Intercampus Special Undergraduate Students Head Count by Ethnicity by Gender: Spring 2017

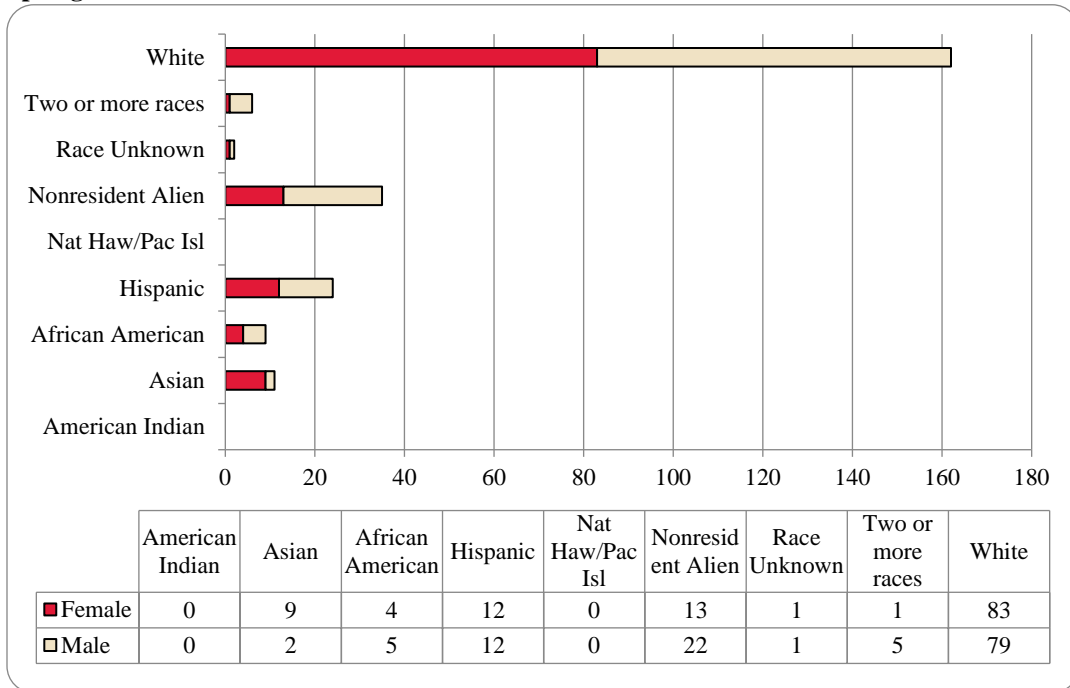


Table 15: Non-Degree/Intercampus Head Count Summary for Special Undergraduate Students by Full and Part-Time by Gender and Race Classification: Spring 2017

	American Indian		Asian		African American		Hispanics		Nat Haw / Pac Isl		Race Unknown		Two or more races		White		Nonresident Alien		Total			
	F	M	F	M	F	M	F	M	F	M	F	M	F	M	F	M	F	M	F	M	Total	
Undergraduate																						
Full-Time																						
First-Time Freshmen															1						1	1
Other Freshmen			1					2							10	15	3	7	14	24	38	
Sophomores			1				1							5	3	2	2	9	5	14		
Juniors			1											1	2	2	4	4	6	10		
Seniors														2		1	1	3	1	4		
Special													1	1	2				1	3	4	
Total Full-Time			3				1	2					1	19	23	8	14	31	40	71		
Part-Time																						
First-Time Freshmen															1					1	1	
Other Freshmen			1		2	2	5	7					3	21	20	3	7	32	39	71		
Sophomores														2	5			2	5	7		
Juniors			1											5	6		1	6	7	13		
Seniors							1							1	2	1		3	2	5		
Special			4	2	2	3	5	3			1	1	1	1	35	22	1		49	32	81	
Total Part-Time			6	2	4	5	11	10			1	1	1	4	64	56	5	8	92	86	178	
Total Undergraduate			9	2	4	5	12	12			1	1	1	5	83	79	13	22	123	126	249	
Total All Students			9	2	4	5	12	12			1	1	1	5	83	79	13	22	123	126	249	
Total Admin Site			9	2	4	5	12	12			1	1	1	5	86	81	13	22	126	128	254	

Figure 39: Non-Degree/Intercampus Special Graduate Students Head Count: Spring 2004-2017

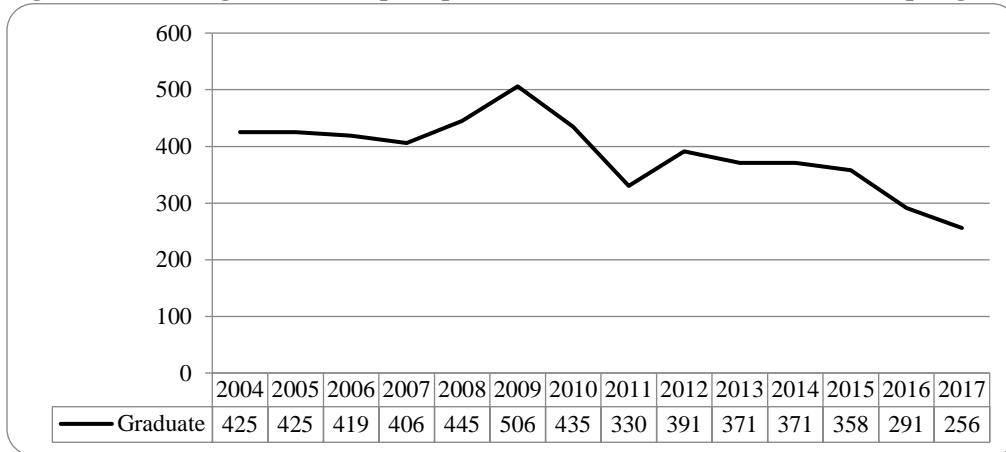


Figure 40: Non-Degree/Intercampus Special Graduate Students Head Count by Ethnicity by Gender: Spring 2017

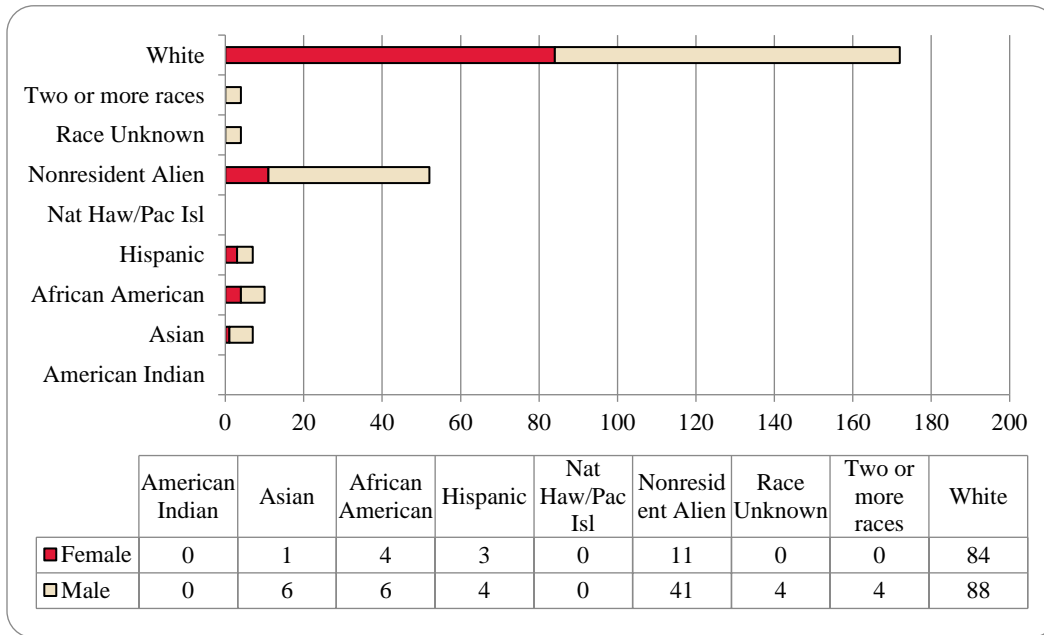


Table 16: Non-Degree/Intercampus Head Count Summary for Special Graduate Students by Full and Part-time by Gender and Race Classification: Spring 2017

	American Indian		Asian		African American		Hispanics		Nat Haw / Pac Isl		Race Unknown		Two or more races		White		Nonresident Alien		Total			
	F	M	F	M	F	M	F	M	F	M	F	M	F	M	F	M	F	M	F	M	Total	
Graduate																						
Full-Time																						
Certificate																						
Masters																						
Doctoral																						
Special Graduate				1	1			2			1		1	16	28	6	33	23	66	89		
Total Full-Time				1	1			2			1		1	16	28	6	33	23	66	89		
Part-Time																						
Certificate																						
Masters																						
Doctoral																						
Special Graduate			1	5	3	6	3	2			3		3	68	60	5	8	80	87	167		
Total Part-Time			1	5	3	6	3	2			3		3	68	60	5	8	80	87	167		
Total Graduate			1	6	4	6	3	4			4		4	84	88	11	41	103	153	256		
Total All Students			1	6	4	6	3	4			4		4	84	88	11	41	103	153	256		

Figure 41: Other Honors and Library Hours Student Credit Hours by Level of Instruction: Spring 2004-2017

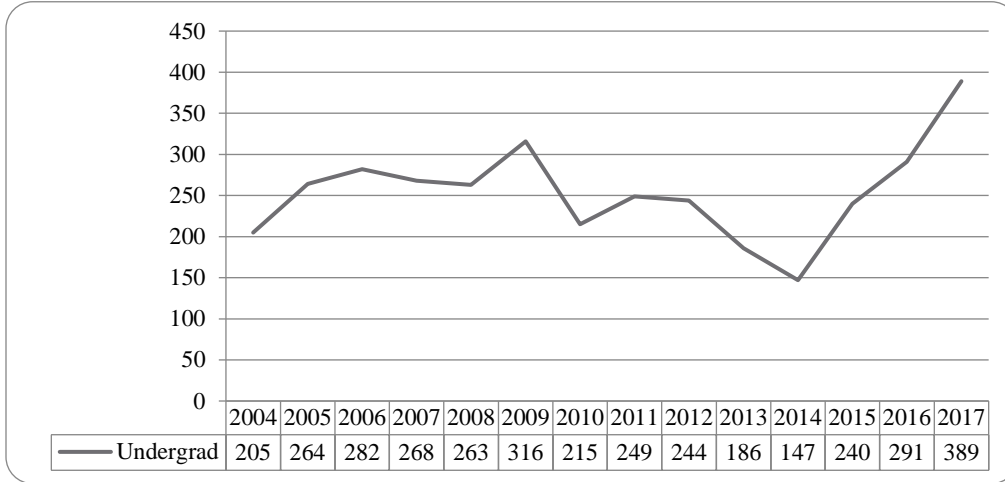


Figure 42: College of Agriculture Delivery-Site Head Count: Spring 2004-2017

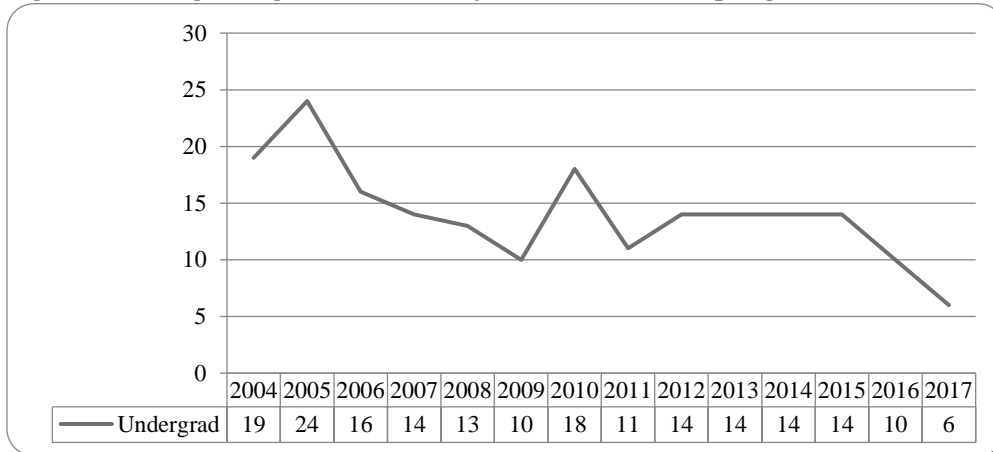


Figure 43: College of Agriculture Delivery-Site Student Credit Hours: Spring 2004-2017

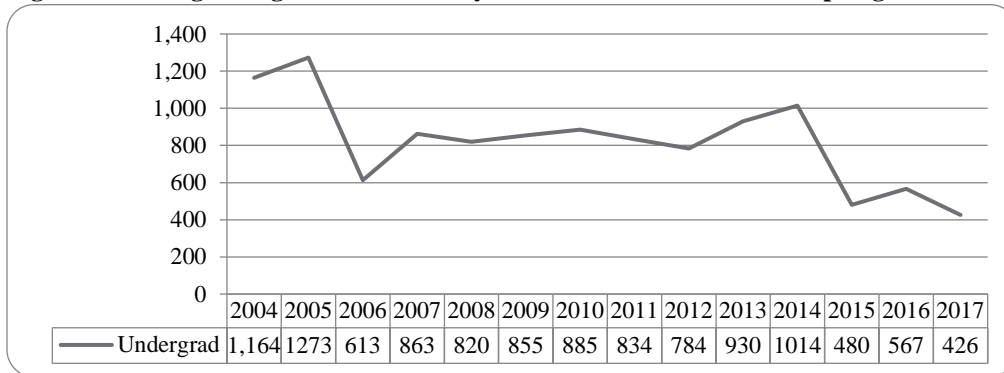


Figure 44: College of Agriculture Delivery-Site Head Count by Ethnicity by Gender: Spring 2017

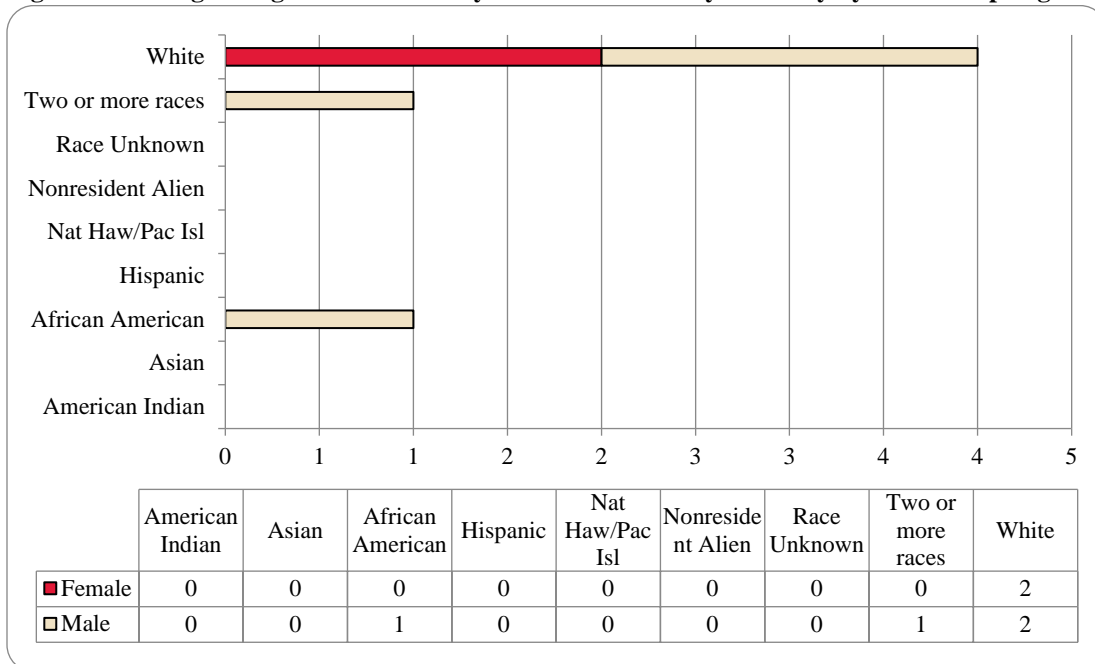


Table 17: College of Agriculture Head Count Summary for Undergraduate Students by Full and Part-Time by Gender and Race Classification: Spring 2017

	American Indian		Asian		African American		Hispanics		Nat Haw / Pac Isl		Race Unknown		Two or more races		White		Nonresident Alien		Total			
	F	M	F	M	F	M	F	M	F	M	F	M	F	M	F	M	F	M	F	M	Total	
Undergraduate																						
Full-Time																						
First-Time Freshmen																						
Other Freshmen															2	1				2	1	3
Sophomores																						
Juniors														1							1	1
Seniors																						
Special																						
Total Full-Time														1	2	1				2	2	4
Part-Time																						
First-Time Freshmen																						
Other Freshmen																						
Sophomores																	1				2	2
Juniors																						
Seniors																						
Special																						
Total Part-Time																	1				2	2
Total Undergraduate														1	2	2				2	4	6
Total All Students														1	2	2				2	4	6

Table 18: College of Architecture Head Count Summary for Undergraduate Students by Full and Part-Time by Gender and Race Classification: Spring 2017

	American Indian		Asian		African American		Hispanics		Nat Haw / Pac Isl		Race Unknown		Two or more races		White		Nonresident Alien		Total			
	F	M	F	M	F	M	F	M	F	M	F	M	F	M	F	M	F	M	F	M	Total	
Undergraduate																						
Full-Time																						
First-Time Freshmen																						
Other Freshmen															3					3		3
Sophomores															1	1				1	1	2
Juniors																						
Seniors																						
Special																						
Total Full-Time															4	1				4	1	5
Part-Time																						
First-Time Freshmen																						
Other Freshmen																						
Sophomores																	1				1	1
Juniors												1								1		1
Seniors																						
Special															1	2				1	2	3
Total Part-Time												1			1	3				2	3	5
Total Undergraduate												1			5	4				6	4	10
Total All Students												1			5	4				6	4	10

Figure 48: College of Engineering Delivery-Site Head Count: Spring 2004-2017

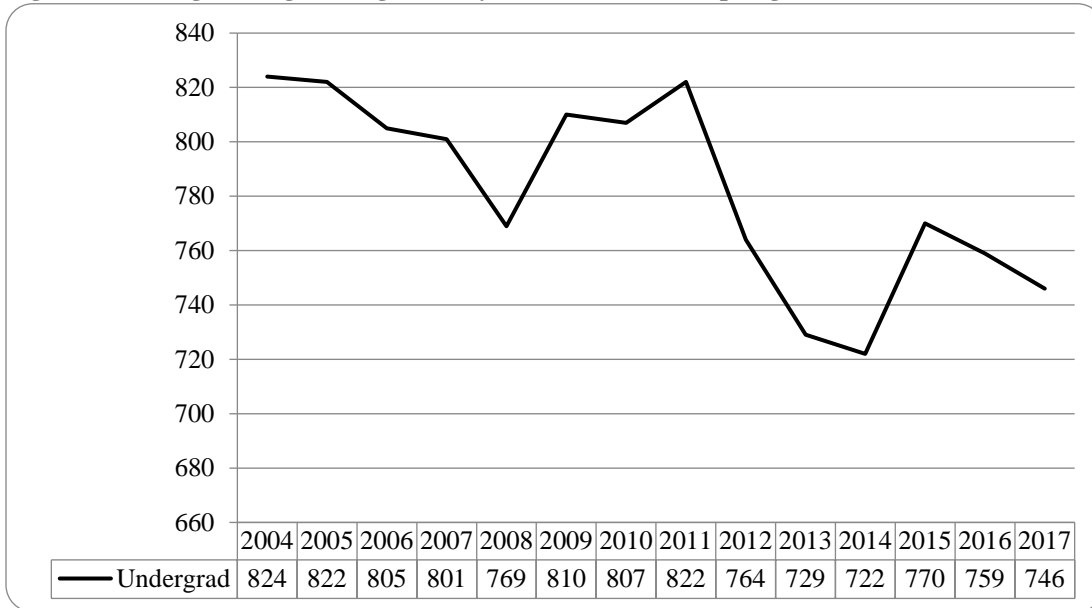


Figure 49: College of Engineering Delivery-Site Student Credit Hours: Spring 2004-2017

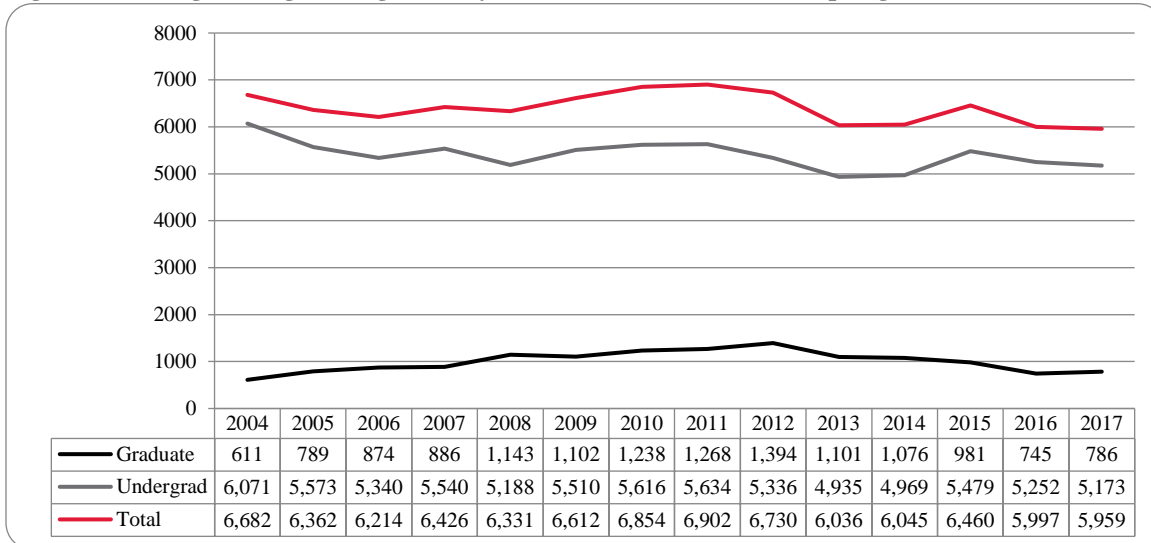


Figure 50: College of Engineering Delivery-Site Head Count by Ethnicity by Gender: Spring 2017

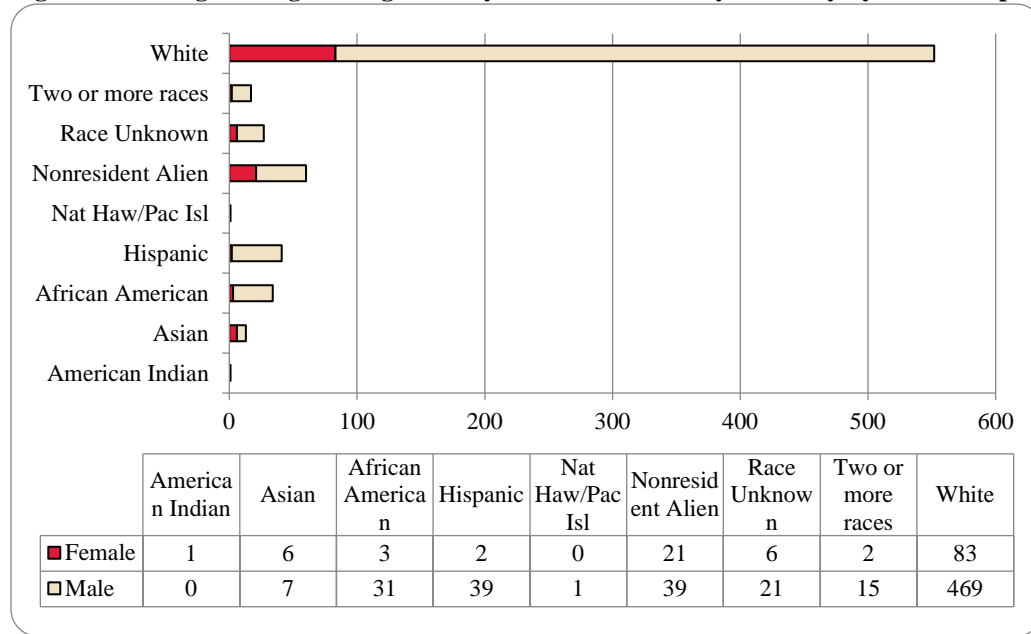


Table 19: College of Engineering Head count Summary for Undergraduate Students by Full and Part-Time by Gender and Race Classification: Spring 2017

	American Indian		Asian		African American		Hispanics		Nat Haw / Pac Isl		Race Unknown		Two or more races		White		Nonresident Alien		Total			
	F	M	F	M	F	M	F	M	F	M	F	M	F	M	F	M	F	M	F	M	Total	
Undergraduate																						
Full-Time																						
First-Time Freshmen																		1		1	1	
Other Freshmen						1					1		5	12	56		8	12	71	83		
Sophomores			2			1	1	9			3	5	1	1	13	91	6	8	26	115	141	
Juniors			3	4		8	1	10			1	6		3	20	116	6	5	31	152	183	
Seniors	1		1	2	1	12		6			1	4	1	2	25	129	8	12	38	167	205	
Special								2							1	5		1	1	8	9	
Total Full-Time	1		6	6	1	22	2	27			5	16	2	11	71	397	20	35	108	514	622	
Part-Time																						
First-Time Freshmen																						
Other Freshmen																3				3	3	
Sophomores						2		3					1	2	12				2	18	20	
Juniors						3		3	1		1		2	4	12				4	22	26	
Seniors				1	2	4		6			1	3		1	4	38	1	4	8	57	65	
Special											1				2	7			2	8	10	
Total Part-Time				1	2	9		12	1	1	5		4	12	72		1	4	16	108	124	
Total Undergraduate	1		6	7	3	31	2	39	1	6	21	2	15	83	469	21	39	124	622	746		
Total All Students	1		6	7	3	31	2	39	1	6	21	2	15	83	469	21	39	124	622	746		

Figure 51: College of Education and Human Science Delivery-Site Head Count: Spring 2004-2017

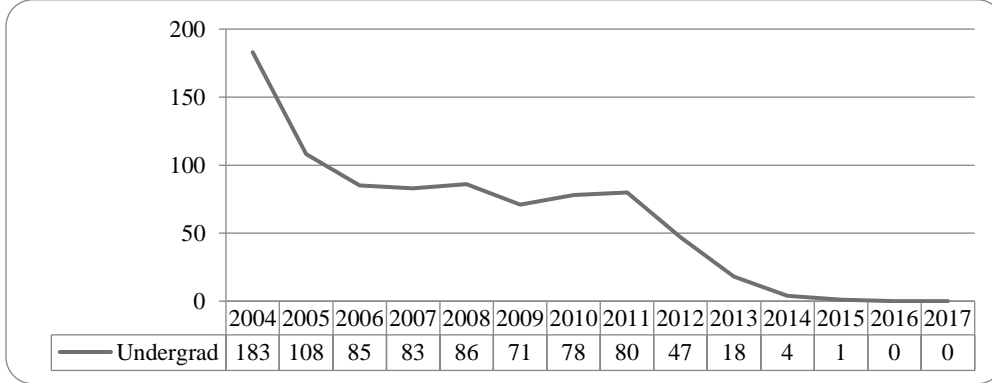
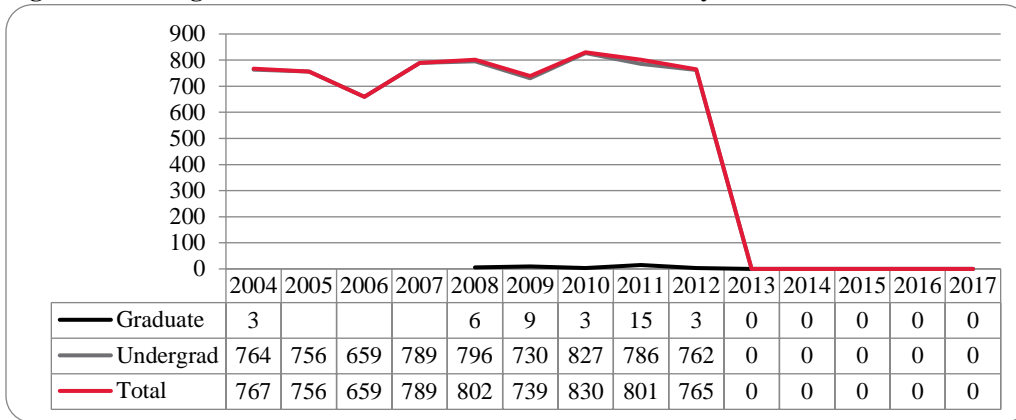


Figure 52: College of Education and Human Sciences Delivery-Site Student Credit Hours: Spring 2004-2017



Glossary

The total head count and student credit hours in this enrollment report are provided on both a delivery-site and administrative-site basis. Delivery-site includes enrollment in all courses taught at UNO regardless of “home” campus. This means that student credit hours are reported for courses in the colleges. Student enrollment is counted in the college declared by the student. Specifically, the delivery-site enrollment numbers include students in degree programs in the UNL Colleges of Agriculture, Architecture, Engineering and Technology, and Education and Human Science.

FIRST-TIME, Entering (freshmen) Student: Students attending any institution for the first time at the undergraduate level. For students entering the fall term, this includes students enrolled in the fall term who attended college for the first time in the prior summer term. Also included are students who entered with advanced standing, i.e. college credits earned before graduation from high school.

OTHER FRESHMEN: At the beginning of the current semester, undergraduate students who (1) are not First-Time Freshmen and (2) have less than 27 semester hours earned from all institutions of higher education attended.

SOPHOMORES: At the beginning of the current semester, undergraduate students who have at least 27, but not more than 57, semester hours earned from all institutions of higher education attended.

JUNIORS: At the beginning of the current semester, undergraduate students who have at least 58, but not more than 90, semester hours earned from all institutions of higher education attended.

SENIORS: At the beginning of the current semester, undergraduate students who have at least 91 semester hours earned from all institutions of higher education attended.

NON-DEGREE/INTER-CAMPUS/SPECIAL UNDERGRADUATES: Special undergraduates not pursuing a degree at UNO in various programs: Inter-Campus UNMC, UNK, UNL, and Non-Degree.

NON-DEGREE/INTER-CAMPUS/SPECIAL GRADUATE STUDENTS: Special graduate students not pursuing a degree at UNO in various programs: Engineering Transfer Program, Inter-Campus UNMC, UNK, UNL, Inter-Campus UNL Graduate Psychology and Non-Degree.

MASTERS/SPECIALIST: Graduate students pursuing a degree less than doctoral.

CERTIFICATE: These students are not enrolled in a degree program, but only a certificate.

DOCTORAL: Graduate students who have been accepted into a doctoral program.

FULL-TIME: In the current semester, undergraduate students enrolled for 12 or more semester hours, or graduate students enrolled for 9 or more semester hours.

PART-TIME: In the current semester, undergraduate students enrolled for less than 12 semester hours, or graduate students enrolled for less than 9 semester hours.

COOPERATIVE GRADUATE PROGRAM: Graduate students enrolled in Human Resources and Training or Global Information Operations offered cooperatively by two or more colleges.



OFFICE OF INSTITUTIONAL EFFECTIVENESS

www.unomaha.edu/oie/

402-554-2367 | 402-554-4896 (Fax)

T Hank Robinson, Director

Jenny Liu, Director Institutional Research

Daniel O'Dell, Web & Communications Coordinator

Andrew Jacobsen, Business Analyst

Thomas Walker, Business Analyst

Lindsey Bandow, Research Analyst II

Jeanie Gutheil-Bykerk, Research Analyst