

Fall 9-2017

## Enrollment Report - Fall 2017

UNO Office of Institutional Effectiveness

Follow this and additional works at: <https://digitalcommons.unomaha.edu/oieenrollment>



Part of the [Educational Assessment, Evaluation, and Research Commons](#), and the [Higher Education Commons](#)

Please take our feedback survey at: [https://unomaha.az1.qualtrics.com/jfe/form/SV\\_8cchtFmpDyGfBLE](https://unomaha.az1.qualtrics.com/jfe/form/SV_8cchtFmpDyGfBLE)

---

### Recommended Citation

UNO Office of Institutional Effectiveness, "Enrollment Report - Fall 2017" (2017). *Enrollment Reports*. 108. <https://digitalcommons.unomaha.edu/oieenrollment/108>

This Report is brought to you for free and open access by the Systems Intelligence and Data Analytics (SIDA) at DigitalCommons@UNO. It has been accepted for inclusion in Enrollment Reports by an authorized administrator of DigitalCommons@UNO. For more information, please contact [unodigitalcommons@unomaha.edu](mailto:unodigitalcommons@unomaha.edu).

OFFICE OF INSTITUTIONAL EFFECTIVENESS

# ENROLLMENT PROFILE REPORT

FALL 2017



UNIVERSITY OF  
**Nebraska**  
Omaha



**University of Nebraska at Omaha**  
**Enrollment Profile Report:**  
**Fall 2017**

**Office of Institutional Effectiveness**  
**Institutional Research**

**<http://www.unomaha.edu/oie/>**

**September, 2017**

# EXECUTIVE SUMMARY

This Enrollment Profile Report provides administrative- and delivery-site information on enrollment headcount and student credit hours, as well as the demographic characteristics of enrolled students. Delivery-site reporting counts all students, including those in UNL programs delivered at UNO, but excludes UNO programs delivered in Lincoln (CPACS programs). Administrative-site reporting counts students enrolled in UNO programs only (including the CPACS programs delivered in Lincoln).

The purpose of this profile is to provide the undergraduate and graduate enrollments and student credit hour information by college or equivalent academic unit, class, gender and ethnicity. A glossary at the end of the report provides a list of definitions for headings. All information in this report was produced from the Fall 2016 Census Enrollment Snapshot file. The Census Snapshot date was August 28<sup>th</sup>, 2017.

## Administrative-Site Campus Summary

- Fall 2017 head count enrollment is 15,731, a 1% increase compared to the fall 2016 enrollment of 15,627 (see Figure 1).
- Fall 2017 undergraduate head count enrollment is 12,624, a 0.7% increase compared to the fall 2016 enrollment of 12,536 (see Figure 5).
- Fall 2017 graduate headcount enrollment is 3,107, a 0.5% increase compared to the fall 2016 enrollment of 3,091 (see Figure 5).
- Fall 2017 student credit hours are 176,244, a 0.4% increase compared to the fall 2016 credit hours of 175,611 (see Figure 6).
- Fall 2017 undergraduate credit hours are 158,044, up from fall 2016 by 0.6% (see Figure 6).
- Fall 2017 graduate credit hours are 18,200, down from fall 2016 by 1.5% (see Figure 6).

## Delivery-Site Campus Summary

- Fall 2017 head count enrollment is 16,234, a 0.7% increase compared to the fall 2016 enrollment of 16,125 (see Figure 1).
- Fall 2017 undergraduate head count is 13,127, a 0.7% increase compared to the fall 2016 enrollment of 13,034 (see Figure 2).
- Fall 2017 graduate head count enrollment is 3,107, a 0.5% increase compared to the fall 2016 enrollment of 3,091 (see Figure 2).
- Fall 2017 student credit hours are 178,031, a 0.3% increase compared to the fall 2016 credit hours of 177,425 (see Figure 3).
- Fall 2017 undergraduate credit hours are 158,989, up from fall 2016 by 0.5% (see Figure 3).
- Fall 2017 graduate credit hours are 19,042, down from fall 2016 by 0.7% (see Figure 3).

## Contents

Executive Summary.....	i
Table 1: UNO Delivery-Site and Administrative-Site Head Count Enrollment and Comparison: Fall Semester, 2017 .....	1
Figure 1: Delivery-Site & Administrative-Site Head Count Enrollment: Fall 1990 – 2017 .....	2
Figure 2: UNO Delivery-Site Head Count by Student Level: Fall 2006-2017.....	3
Figure 3: UNO Delivery-Site Student Credit Hours by Student Level: Fall 2006-2017.....	3
Figure 4: UNO Delivery-Site Head Count by Ethnicity by Gender: Fall 2017 .....	4
Table 2: Total UNO Delivery-Site Head Count Summary for Undergraduate and Graduate Students Full and Part-Time by Gender and Race Classification: Fall 2017.....	5
Figure 5: UNO Administrative-Site Head Count by Student Level: Fall 2006-2017 .....	6
Figure 6: UNO Administrative-Site Student Credit Hours: Fall 2006-2017 .....	6
Figure 7: UNO Administrative-Site Head Count by Ethnicity by Gender: Fall 2017.....	7
Table 3: Total UNO Administrative-Site Head Count Summary for Undergraduate and Graduate Students by Full and Part-Time by Gender and Race Classification: Fall 2017 .....	8
Figure 8: College of Arts & Sciences Head Count: Fall 2006-2017 .....	9
Figure 9: College of Arts & Sciences Student Credit Hours: Fall 2006-2017.....	9
Figure 10: College of Arts & Sciences Head Count by Ethnicity by Gender: Fall 2017 .....	10
Table 4: College of Arts & Sciences Head Count Summary for Undergraduate and Graduate Students by Full and Part-Time by Gender and Race Classification: Fall 2017 .....	11
Figure 11: College of Business Administration Head Count: Fall 2006-2017.....	12
Figure 12: College of Business Administration Student Credit Hours: Fall 2006-2017.....	12
Figure 13: College of Business Administration Head Count by Ethnicity by Gender: Fall 2017 .....	13
Table 5: College of Business Administration Head Count Summary for Undergraduate and Graduate Students by Full and Part-Time by Gender and Race Classification: Fall 2017.....	14
Figure 14: College of Communication, Fine Arts and Media Delivery-Site Head Count: Fall 2006-2017 ...	15
Figure 15: College of Communication, Fine Arts and Media Delivery-Site Student Credit Hours: Fall 2006-2017 .....	15
Figure 16: College of Communication, Fine Arts and Media Delivery & Administrative-Site Head Count by Ethnicity by Gender: Fall 2017 .....	16
Table 6: College of Communication, Fine Arts and Media Delivery & Administrative-Site Head Count Summary for Undergraduate and Graduate Students by Full and Part-Time by Gender and Race Classification: Fall 2017 .....	17
Figure 17: College of Communication, Fine Arts and Media: Administrative-Site Head Count: Fall 2006-2017 .....	18

Figure 18: College of Communication, Fine Arts and Media: Administrative-Site Student Credit Hours: Fall 2006-2017.....	18
Figure 19: College of Education Head Count: Fall 2006-2017 .....	19
Figure 20: College of Education Student Credit Hours: Fall 2006-2017 .....	19
Figure 21: College of Education Head Count by Ethnicity by Gender: Fall 2017 .....	20
Table 7: College of Education Head Count Summary for Undergraduate and Graduate Students by Full and Part-Time by Gender and Race Classification: Fall 2017.....	21
Figure 22: College of Information Science & Technology Head Count: Fall 2006-2017 .....	22
Figure 23: College of Information Science & Technology Student Credit Hours: Fall 2006-2017 .....	22
Figure 24: College of Information Science & Technology Student Credit Hours: Fall 2006-2017 .....	23
Table 8: College of Information Science and Technology Head Count Summary for Undergraduate and Graduate Summary by Full and Part-Time by Gender and Race Classification: Fall 2017.....	24
Figure 25: College of Public Affairs & Community Service Delivery-Site Head Count: Fall 2006-2017 .....	25
Figure 26: College of Public Affairs & Community Service Delivery-Site Student Credit Hours: Fall 2006-2017 .....	25
Figure 27: College of Public Affairs & Community Service Delivery-Site Head Count by Ethnicity by Gender: Fall 2016.....	26
Table 9: College of Public Affairs and Community Service Delivery-Site Head Count Summary for Undergraduate and Graduate Students by Full and Part-Time by Gender and Race Classification: Fall 2017 .....	27
Figure 28: College of Public Affairs & Community Service Administrative-Site Head Count: Fall 2006-2017 .....	28
Figure 29: College of Public Affairs & Community Service Administrative-Site Student Credit Hours: Fall 2006-2017 .....	28
Figure 30: College of Public Affairs & Community Service Administrative-Site Head Count by Ethnicity by Gender: Fall 2017 .....	29
Table 10: College of Public Affairs & Community Service Administrative-Site Head Count Summary for Undergraduate and Graduate Students by Full and Part-Time by Gender and Race Classification: Fall 2017 .....	30
Figure 31: College of CPACS, Division of Continuing Studies Head Count: Fall 2006-2017 .....	31
Figure 32: College of CPACS, Division of Continuing Studies Head Count by Ethnicity by Gender: Fall 2017 .....	31
Table 11: College of CPACS Division of Continuing Studies Head Count Summary for Undergraduate Students by Full and Part-Time by Gender and Race Classification: Fall 2017.....	32
Table 12: Cooperative Graduate Program Head Count Summary for Graduate Students by Full and Part-Time by Gender and Race Classification: Fall 2017 .....	33
Figure 33: University Division Head Count: Fall 2006-2017.....	34



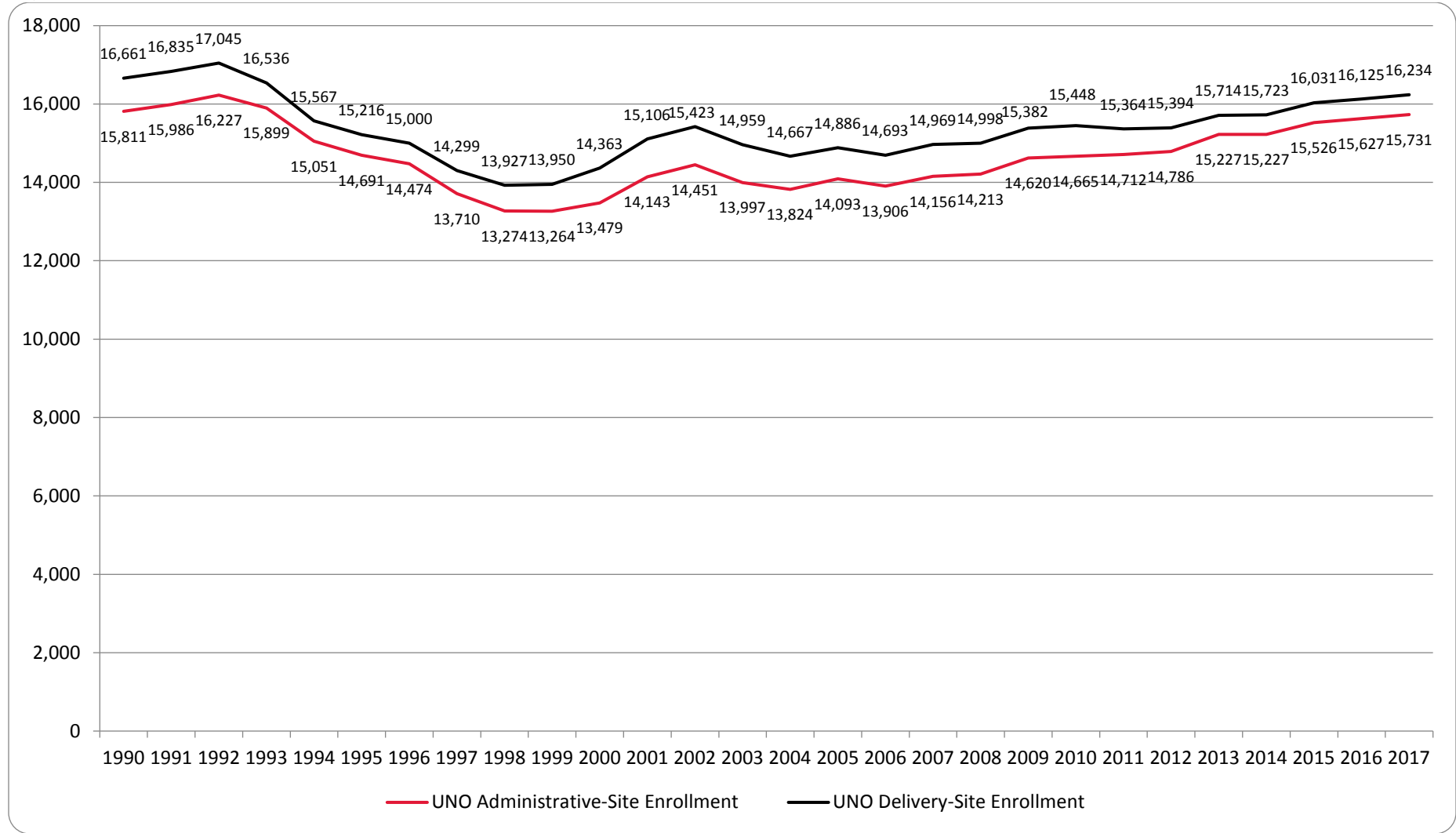
Figure 34: University Division Student Credit Hours: Fall 2006-2017.....	34
Figure 35: University Division Head Count by Ethnicity by Gender: Fall 2017 .....	35
Table 13: University Division Head Count Summary for Undergraduate Students by Full and Part-Time by Gender and Race Classification: Fall 2017 .....	36
Figure 36: Non-Degree/Intercampus Special Undergraduate Students Head Count: Fall 2006-2017 .....	37
Figure 37: Non-Degree/Intercampus Special Undergraduate Students Head Count by Ethnicity by Gender: Fall 2017 .....	37
Table 14: Non-Degree/Intercampus Head Count Summary for Special Undergraduate Students by Full and Part-Time by Gender and Race Classification: Fall 2017.....	38
Figure 38: Non-Degree/Inter Campus Special Graduate Students Head Count: Fall 2006-2017 .....	39
Figure 39: Non-Degree/Intercampus Special Graduate Students Head Count by Ethnicity by Gender: Fall 2017 .....	39
Table 15: Non-Degree/Intercampus Head Count Summary for Special Graduate Students by Full and Part-Time by Gender and Race Classification: Fall 2017.....	40
Figure 40: Other Honors Student Credit Hours by Level of Instruction: Fall 2006-2017 .....	41
Figure 41: College of Agriculture Delivery-Site Head Count: Fall 2006-2017 .....	42
Figure 42: College of Agriculture Delivery-Site Student Credit Hours: Fall 2006-2017 .....	42
Figure 43: College of Agriculture Delivery-Site Head Count by Ethnicity by Gender: Fall 2017 .....	43
Table 16: College of Agriculture Head Count Summary for Undergraduate Students by Full and Part-Time by Gender and Race Classification: Fall 2017 .....	44
Figure 44: College of Architecture Delivery-Site Head Count: Fall 2006-2017 .....	45
Figure 45: College of Architecture Delivery-Site Student Credit Hours: Fall 2006-2017 .....	45
Figure 46: College of Architecture Delivery-Site Head Count by Ethnicity by Gender: Fall 2017.....	46
Table 17: College of Architecture Head Count Summary for Undergraduate Students by Full and Part-Time by Gender and Race Classification: Fall 2017 .....	47
Figure 47: College of Engineering Delivery-Site Head Count: Fall 2006-2017 .....	48
Figure 48: College of Engineering Delivery-Site Student Credit Hours: Fall 2006-2017 .....	48
Figure 49: College of Engineering Delivery-Site Head Count by Ethnicity by Gender: Fall 2017.....	49
Table 18: College of Engineering Head Count Summary for Undergraduate Students by Full and Part-Time by Gender and Race Classification: Fall 2017 .....	50
Figure 50: College of Education and Human Sciences Delivery-Site Head Count: Fall 2006-2017.....	51
Figure 51: College of Education and Human Sciences Delivery-Site Student Credit Hours: Fall 2006-2017 .....	51
Glossary.....	52

**Table 1: UNO Delivery-Site and Administrative-Site Head Count Enrollment and Comparison: Fall Semester, 2017**

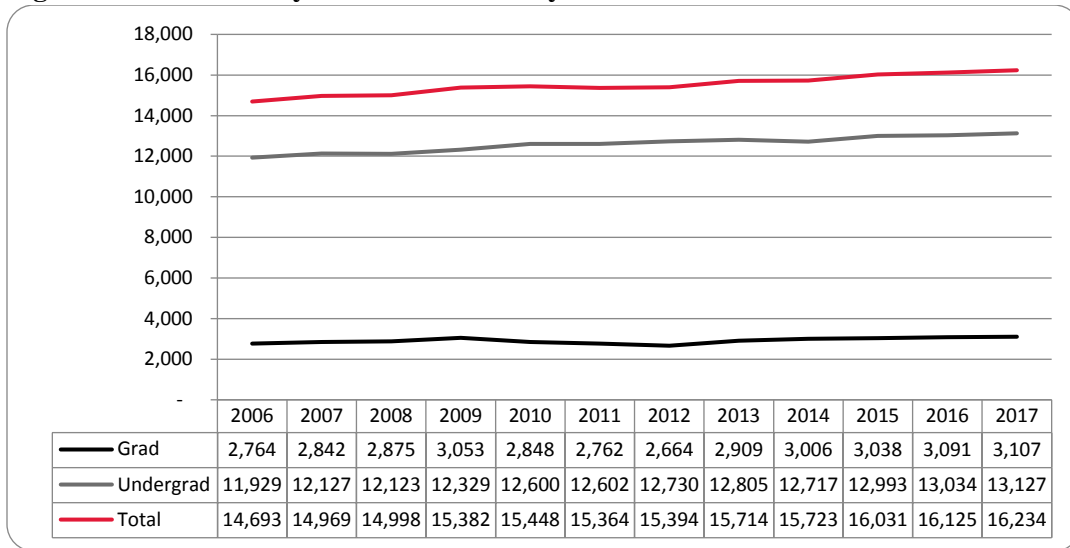
	Fall 2017		Fall 2016	Fall 2016-17 Administrative-Site	
	Delivery-Site	Administrative-Site	Administrative-Site	Numerical Change	Percent Change
<b>UNO:</b>					
<i>Undergraduate</i>					
Arts & Science	3,415	3,415	3,469	-54	-1.6%
Business Administration	1,971	1,971	2,074	-103	-5.0%
Communication, Fine Arts & Media	998	998	970	28	2.9%
Education	1,440	1,440	1,395	45	3.2%
Information Science and Technology	1,012	1,012	971	41	4.2%
Public Affairs & Community Services	1,047	1,341	1,312	29	2.2%
Division of Continuing Studies	1,138	1,138	1,197	-59	-4.9%
Sub-total CPACS including Cont. Studies	2,185	2,479	2,509	-30	-1.2%
Non-Degree	267	267	272	-5	-1.8%
University Division	1,042	1,042	876	166	18.9%
<b>Total Undergraduate</b>	12,330	12,624	12,536	88	0.7%
<i>Graduate</i>					
Arts & Science	462	462	444	18	4.1%
Business Administration	369	369	360	9	2.5%
Communication, Fine Arts & Media	75	75	89	-14	-15.7%
Education	907	907	895	12	1.3%
Information Science and Technology	364	364	412	-48	-11.7%
Public Affairs & Community Services	670	670	629	41	6.5%
New Cooperative Graduate Programs	6	6	3	3	100.0%
Undeclared	254	254	259	-5	-1.9%
<b>Total Graduate</b>	3,107	3,107	3,091	16	0.5%
<b>UNO Administrative-Site Total</b>		15,731	15,627	104	0.7%
<b>UNL:</b>	<b>Fall 2016</b>		<b>Delivery Fall 2015</b>	<b>Numerical Change</b>	<b>Percent Change</b>
Agriculture	4		8		
Architecture	2		13		
Engineering & Technology	791		809		
Education and Human Science	0		0		
<b>Total UNL in Omaha</b>	797		830	-33	-4.0%
	<b>Fall 2016</b>		<b>Fall 2015</b>	<b>Numerical Change</b>	<b>Percent Change</b>
<b>UNO Delivery-Site Total</b>	16,234		16,125	109	0.7%



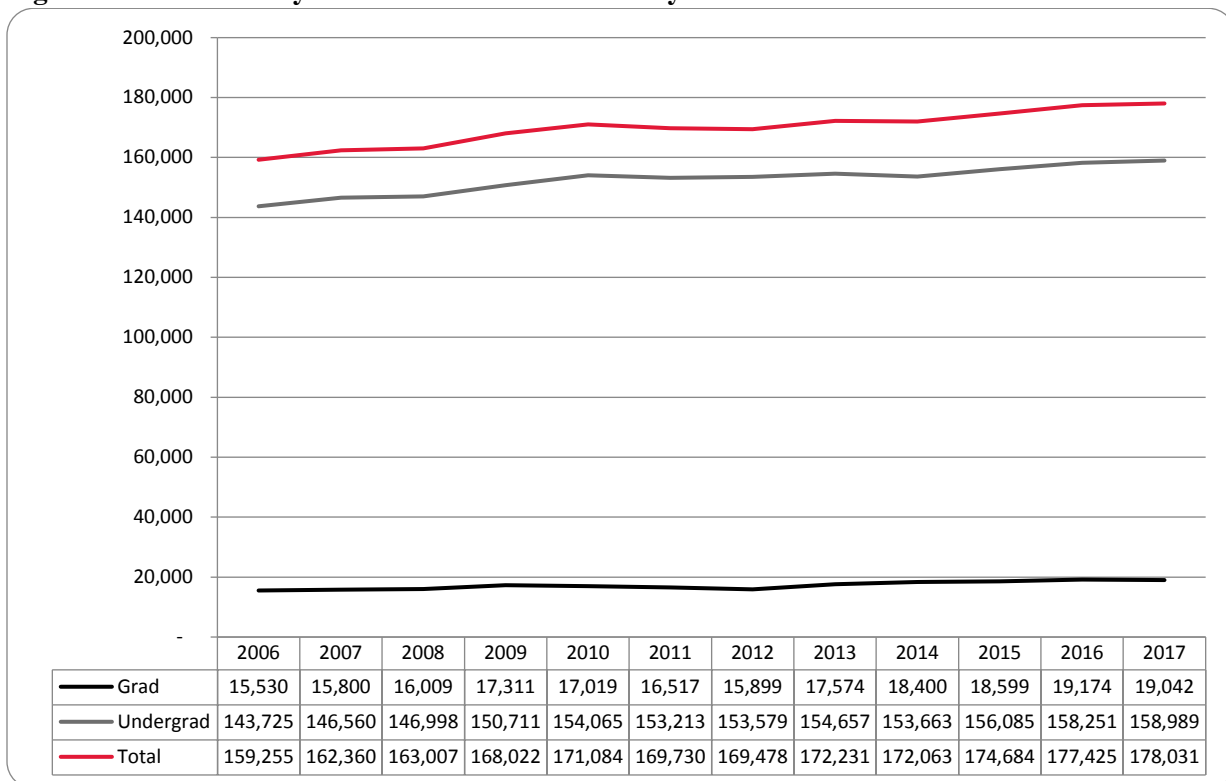
**Figure 1: Delivery-Site & Administrative-Site Head Count Enrollment: Fall 1990 – 2017**



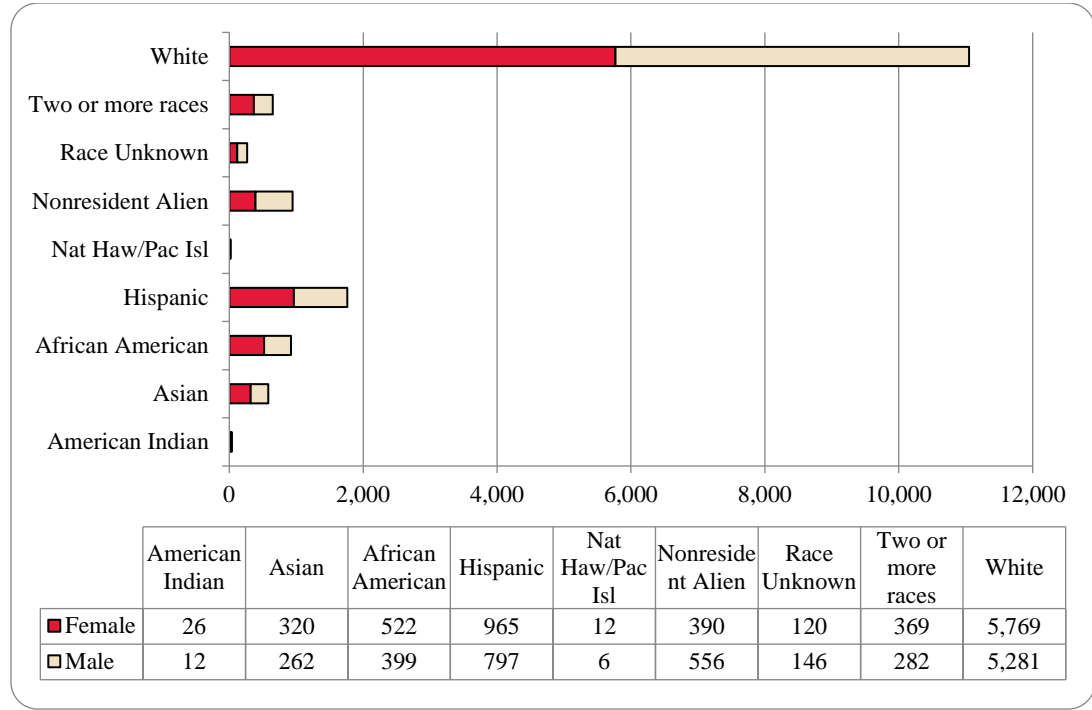
**Figure 2: UNO Delivery-Site Head Count by Student Level: Fall 2006-2017**



**Figure 3: UNO Delivery-Site Student Credit Hours by Student Level: Fall 2006-2017**



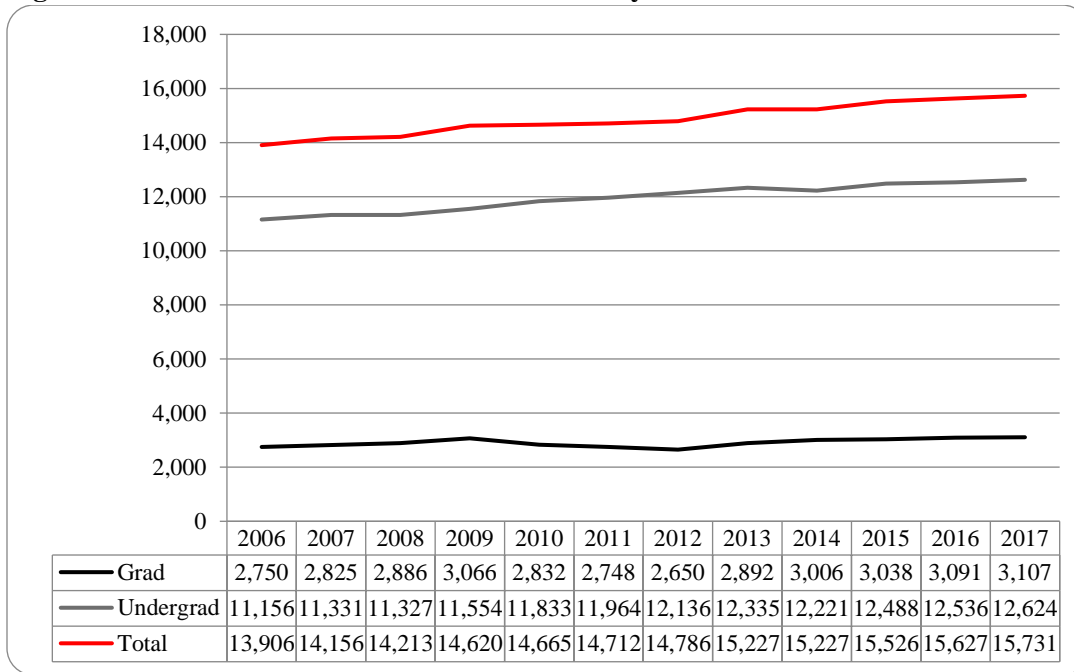
**Figure 4: UNO Delivery-Site Head Count by Ethnicity by Gender: Fall 2017**



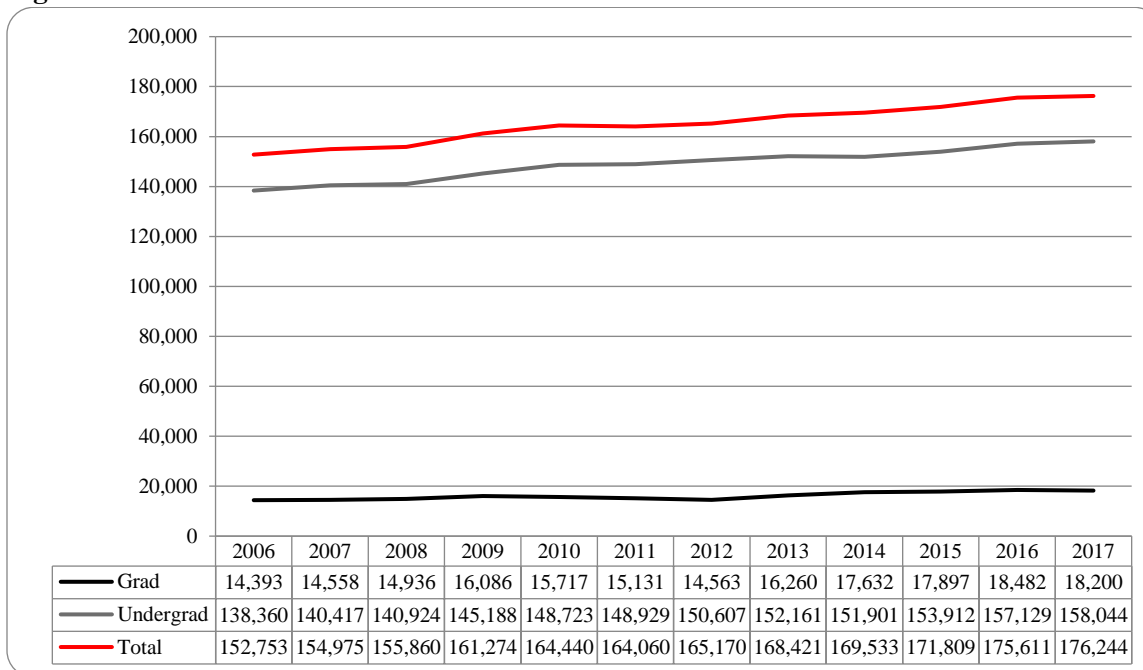
**Table 2: Total UNO Delivery-Site Head Count Summary for Undergraduate and Graduate Students Full and Part-Time by Gender and Race Classification: Fall 2017**

	American Indian		Asian		African American		Hispanics		Nat Haw / Pac Isl		Race Unknown		Two or more races		White		Nonresident Alien		Total			
	F	M	F	M	F	M	F	M	F	M	F	M	F	M	F	M	F	M	F	M	Total	
<b>Undergraduate</b>																						
<b>Full-Time</b>																						
First-Time Freshmen	4	2	53	49	90	44	178	132	2		13	8	53	37	714	695	42	27	1,149	994	2,143	
Other Freshmen	1	1	16	14	32	30	61	43	2		3	5	21	23	157	226	38	51	331	393	724	
Sophomores	2	2	62	38	94	39	170	147	1		18	19	64	38	744	775	45	83	1,200	1,141	2,341	
Juniors	2	1	58	40	68	62	163	134	2	2	22	29	78	49	903	895	40	74	1,336	1,286	2,622	
Seniors	8	1	46	30	56	56	142	107	2	2	22	32	53	45	788	804	48	64	1,165	1,141	2,306	
Special			2	1		4	2	3			2	1	2	3	32	42	3	2	43	56	99	
<b>Total Full-Time</b>	17	7	237	172	340	235	716	566	9	4	80	94	271	195	3,338	3,437	216	301	5,224	5,011	10,235	
<b>Part-Time</b>																						
First-Time Freshmen			2	1	5	1	11	10					3	1	16	32		2	37	47	84	
Other Freshmen	1	1	5	6	16	9	18	29			8	8	4	8	76	97		4	128	162	290	
Sophomores	1		5	11	16	12	21	24	1		2	6	7	13	142	163	2	4	197	233	430	
Juniors	1		8	12	24	17	36	44		1	7	9	13	17	244	265	5	5	338	370	708	
Seniors	2		19	16	34	50	57	55			7	10	17	11	351	432	12	13	499	587	1,086	
Special		1	7	7	9	18	6	9			2	4	3	9	108	106	5		140	154	294	
<b>Total Part-Time</b>	5	2	46	53	104	107	149	171	1	1	26	37	47	59	937	1,095	24	28	1,339	1,553	2,892	
<b>Total Undergraduate</b>	22	9	283	225	444	342	865	737	10	5	106	131	318	254	4,275	4,532	240	329	6,563	6,564	13,127	
<b>Graduate</b>																						
<b>Full-Time</b>																						
Certificate															3	3	1		4	3	7	
Masters	2		13	12	25	18	29	19			1	2	15	5	366	159	91	114	542	329	871	
Doctoral		1										1	3		14	9	9	3	26	14	40	
Special Graduate	1			1		1	1	1				1	1	14	30	11	50	28	84	112		
<b>Total Full-Time</b>	3	1	13	13	25	19	30	20			1	3	19	6	397	201	112	167	600	430	1,030	
<b>Part-Time</b>																						
Certificate			4	1	4	2	3					1			36	18		2	47	24	71	
Masters	1	2	16	20	44	24	52	34	2	1	8	7	27	20	833	422	29	37	1,012	567	1,579	
Doctoral			3		1	6	5	2			1	1	2	2	79	47	7	15	98	73	171	
Special Graduate			1	3	4	6	10	4			4	3	3		149	61	2	6	173	83	256	
<b>Total Part-Time</b>	1	2	24	24	53	38	70	40	2	1	13	12	32	22	1,097	548	38	60	1,330	747	2,077	
<b>Total Graduate</b>	4	3	37	37	78	57	100	60	2	1	14	15	51	28	1,494	749	150	227	1,930	1,177	3,107	
<b>Total All Students</b>	26	12	320	262	522	399	965	797	12	6	120	146	369	282	5,769	5,281	390	556	8,493	7,741	16,234	

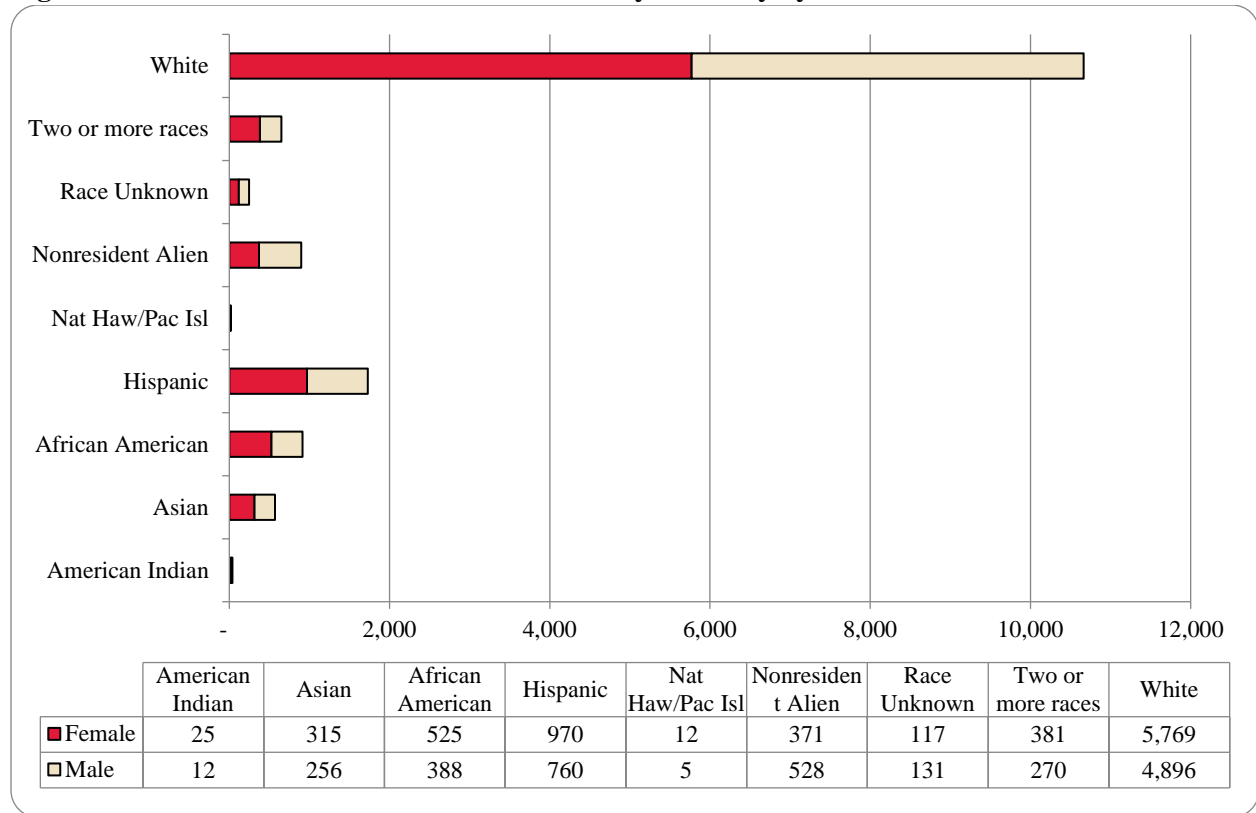
**Figure 5: UNO Administrative-Site Head Count by Student Level: Fall 2006-2017**



**Figure 6: UNO Administrative-Site Student Credit Hours: Fall 2006-2017**



**Figure 7: UNO Administrative-Site Head Count by Ethnicity by Gender: Fall 2017**

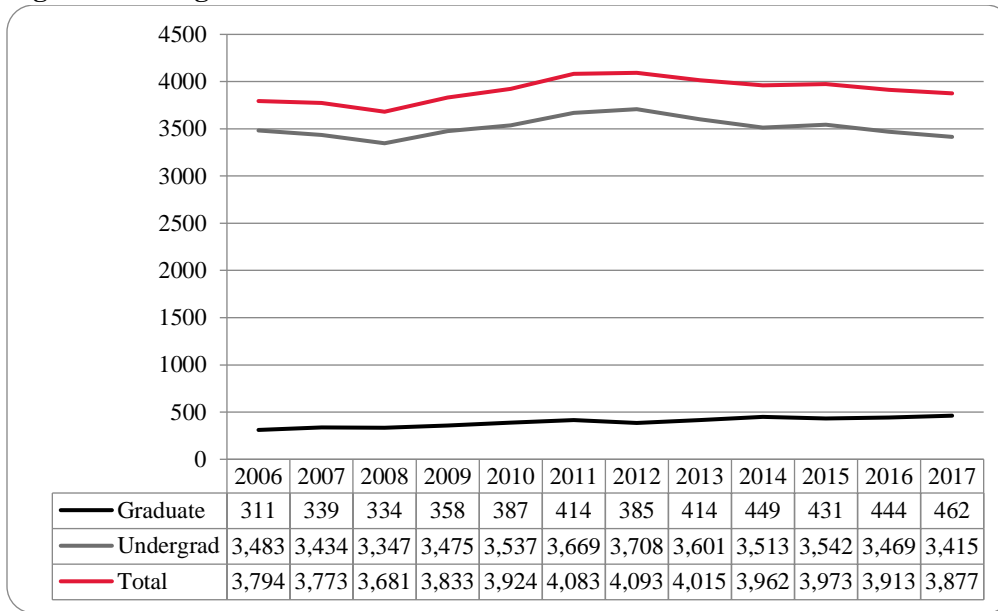


**Table 3: Total UNO Administrative-Site Head Count Summary for Undergraduate and Graduate Students by Full and Part-Time by Gender and Race Classification: Fall 2017**

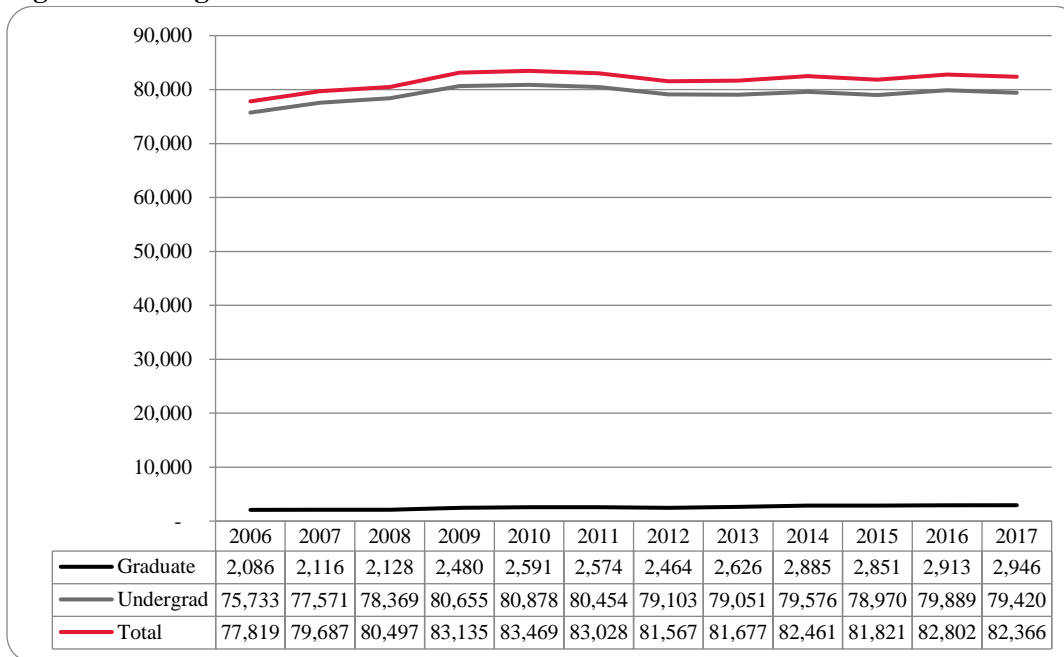
	American Indian		Asian		African American		Hispanics		Nat Haw / Pac Isl		Race Unknown		Two or more races		White		Nonresident Alien		Total			
	F	M	F	M	F	M	F	M	F	M	F	M	F	M	F	M	F	M	F	M	Total	
<b>Undergraduate</b>																						
<b>Full-Time</b>																						
First-Time Freshmen	4	2	52	48	90	43	181	127	2		13	6	57	35	714	582	42	25	1,155	868	2,023	
Other Freshmen	1	1	16	15	32	31	61	43	2		3	4	21	22	158	221	38	46	332	383	715	
Sophomores	2	2	62	37	97	41	170	146	1		18	16	66	34	750	710	43	74	1,209	1,060	2,269	
Juniors	2	1	55	37	70	65	164	125	2	2	22	27	80	47	902	827	33	69	1,330	1,200	2,530	
Seniors	7	1	46	30	55	46	144	98	2	2	21	29	55	44	788	727	40	59	1,158	1,036	2,194	
Special			2	1		4	2	3			2	1	2	2	30	35	3	2	41	48	89	
<b>Total Full-Time</b>	16	7	233	168	344	230	722	542	9	4	79	83	281	184	3,342	3,102	199	275	5,225	4,595	9,820	
<b>Part-Time</b>																						
First-Time Freshmen			2	1	5	1	11	10					3	1	16	30		2	37	45	82	
Other Freshmen	1	1	5	5	16	9	18	28			8	8	5	7	75	96		4	128	158	286	
Sophomores	1		5	11	16	12	21	21	1		1	5	7	13	139	151	2	4	193	217	410	
Juniors	1		8	12	24	15	35	39			7	8	13	17	245	251	5	5	338	347	685	
Seniors	2		18	15	33	46	57	51			6	9	18	11	350	420	10	11	494	563	1,057	
Special		1	7	7	9	18	6	9			2	3	3	9	108	97	5		140	144	284	
<b>Total Part-Time</b>	5	2	45	51	103	101	148	158	1		24	33	49	58	933	1,045	22	26	1,330	1,474	2,804	
<b>Total Undergraduate</b>	21	9	278	219	447	331	870	700	10	4	103	116	330	242	4,275	4,147	221	301	6,555	6,069	12,624	
<b>Graduate</b>																						
<b>Full-Time</b>																						
Certificate															3	3	1		4	3	7	
Masters	2		13	12	25	18	29	19			1	2	15	5	366	159	91	114	542	329	871	
Doctoral		1										1	3		14	9	9	3	26	14	40	
Special Graduate	1			1		1	1	1					1	1	14	30	11	50	28	84	112	
<b>Total Full-Time</b>	3	1	13	13	25	19	30	20			1	3	19	6	397	201	112	167	600	430	1,030	
<b>Part-Time</b>																						
Certificate			4	1	4	2	3					1			36	18		2	47	24	71	
Masters	1	2	16	20	44	24	52	34	2	1	8	7	27	20	833	422	29	37	1,012	567	1,579	
Doctoral			3		1	6	5	2			1	1	2	2	79	47	7	15	98	73	171	
Special Graduate			1	3	4	6	10	4			4	3	3		149	61	2	6	173	83	256	
<b>Total Part-Time</b>	1	2	24	24	53	38	70	40	2	1	13	12	32	22	1,097	548	38	60	1,330	747	2,077	
<b>Total Graduate</b>	4	3	37	37	78	57	100	60	2	1	14	15	51	28	1,494	749	150	227	1,930	1,177	3,107	
<b>Total All Students</b>	25	12	315	256	525	388	970	760	12	5	117	131	381	270	5,769	4,896	371	528	8,485	7,246	15,731	



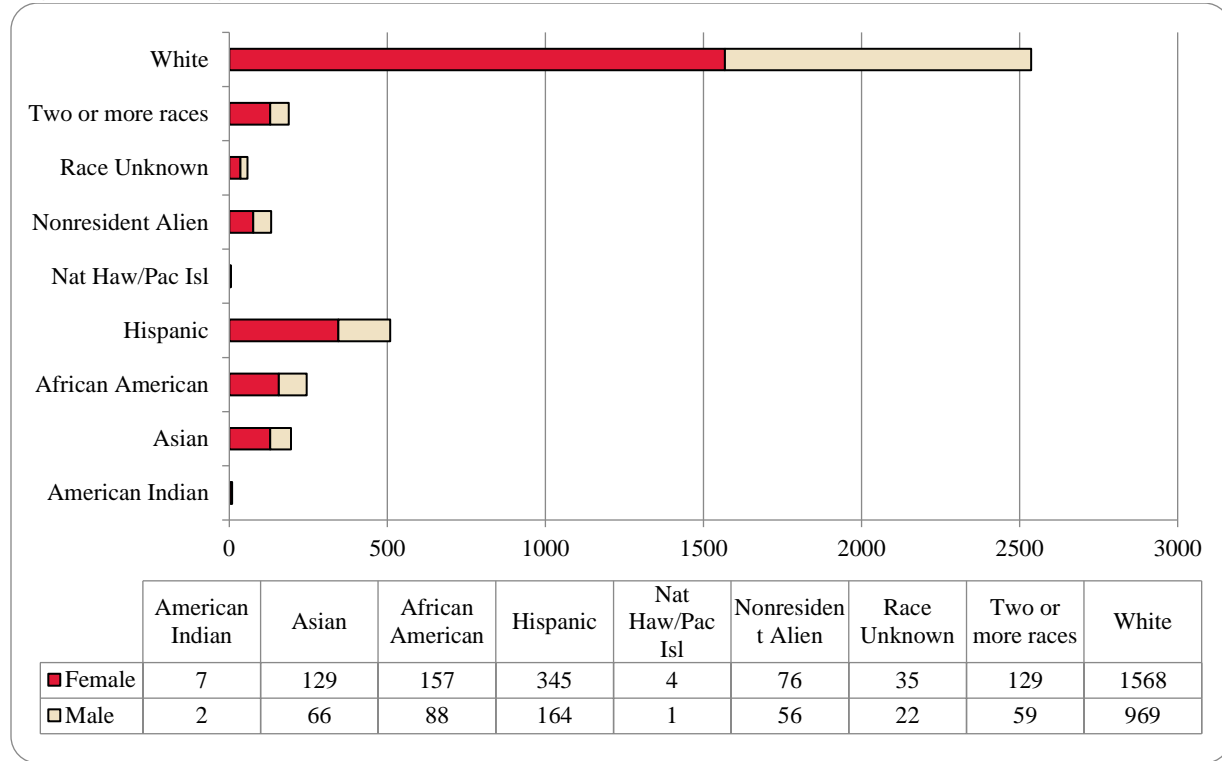
**Figure 8: College of Arts & Sciences Head Count: Fall 2006-2017**



**Figure 9: College of Arts & Sciences Student Credit Hours: Fall 2006-2017**



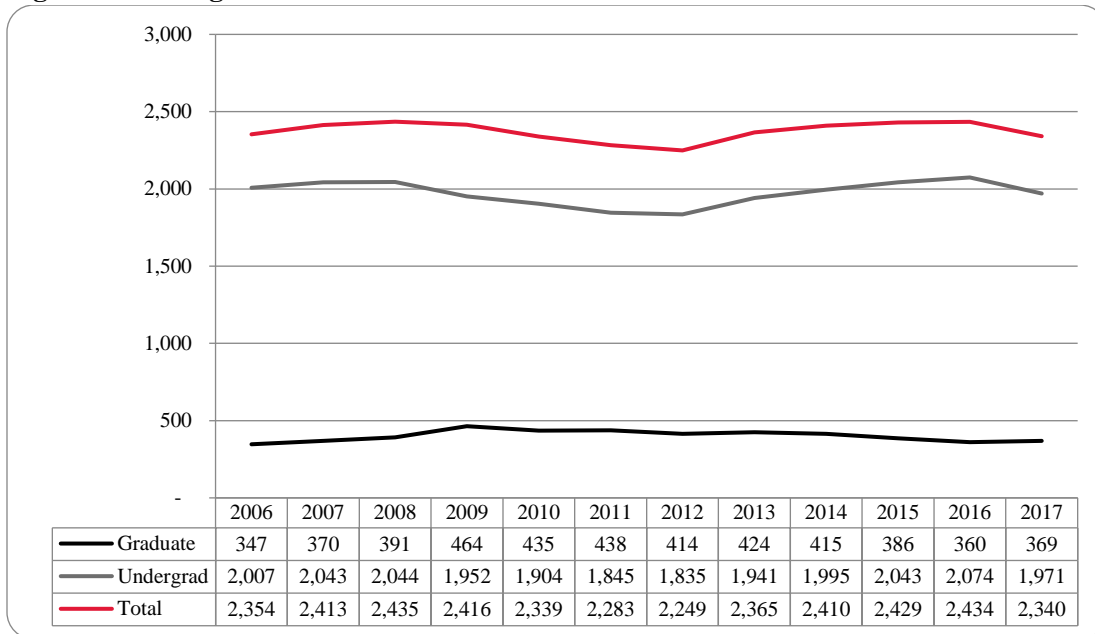
**Figure 10: College of Arts & Sciences Head Count by Ethnicity by Gender: Fall 2017**



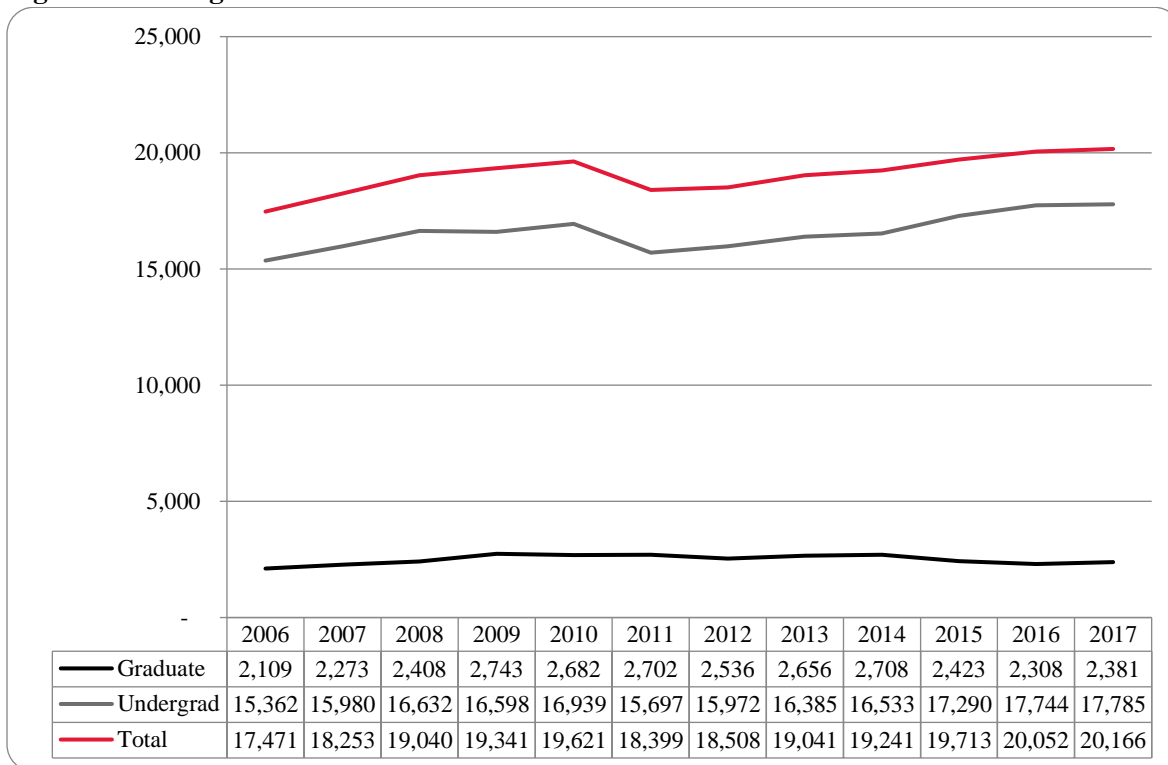
**Table 4: College of Arts & Sciences Head Count Summary for Undergraduate and Graduate Students by Full and Part-Time by Gender and Race Classification: Fall 2017**

	American Indian		Asian		African American		Hispanics		Nat Haw / Pac Isl		Race Unknown		Two or more races		White		Nonresident Alien		Total			
	F	M	F	M	F	M	F	M	F	M	F	M	F	M	F	M	F	M	F	M	Total	
<b>Undergraduate</b>																						
<b>Full-Time</b>																						
First-Time Freshmen	3		32	11	39	9	74	27	1		2		30	6	258	110	13	7	452	170	622	
Other Freshmen		1	4	3	9	4	22	10	1		1	1	8	5	47	33	9	2	101	59	160	
Sophomores			32	13	36	10	70	30			6	2	30	8	286	152	14	6	474	221	695	
Juniors	2		21	13	24	18	62	29	1		10	4	32	9	283	178	13	16	448	267	715	
Seniors	1	1	21	9	17	13	49	25	1		8	8	8	13	194	151	13	4	312	224	536	
Special						1	1	1			1		1	1	9	11		1	12	15	27	
<b>Total Full-Time</b>	6	2	110	49	125	55	278	122	4		28	15	109	42	1,077	635	62	36	1,799	956	2,755	
<b>Part-Time</b>																						
First-Time Freshmen			1				5	1					1		2	5			9	6	15	
Other Freshmen			1				4	3			1		2		16	5			24	8	32	
Sophomores			1	3	4	2	8	6			1	1	2	57	34		1	71	49	120		
Juniors			3	1	10	4	13	8			3	1	2	3	74	49	1	1	106	67	173	
Seniors			7	6	7	12	19	14				2	4	6	92	78	1	1	130	119	249	
Special			1	2	2	4	2	2			1		1	3	30	22	1		38	33	71	
<b>Total Part-Time</b>			14	12	23	22	51	34			5	4	11	14	271	193	3	3	378	282	660	
<b>Total Undergraduate</b>	6	2	124	61	148	77	329	156	4		33	19	120	56	1,348	828	65	39	2,177	1,238	3,415	
<b>Graduate</b>																						
<b>Full-Time</b>																						
Certificate																						
Masters			2	3	3	3	4	3			1	3		57	34	9	9	78	53	131		
Doctoral												1		4	4			5	4	9		
Special Graduate																						
<b>Total Full-Time</b>			2	3	3	3	4	3			1	4		61	38	9	9	83	57	140		
<b>Part-Time</b>																						
Certificate			1		1	1	1							7	1			10	2	12		
Masters	1		1	2	5	7	10	4		1	2	1	5	138	90	2	8	164	116	280		
Doctoral			1				1	1				1		14	12			16	14	30		
Special Graduate																						
<b>Total Part-Time</b>	1		3	2	6	8	12	5		1	2	2	5	3	159	103	2	8	190	132	322	
<b>Total Graduate</b>	1		5	5	9	11	16	8		1	2	3	9	3	220	141	11	17	273	189	462	
<b>Total All Students</b>	7	2	129	66	157	88	345	164	4	1	35	22	129	59	1,568	969	76	56	2,450	1,427	3,877	

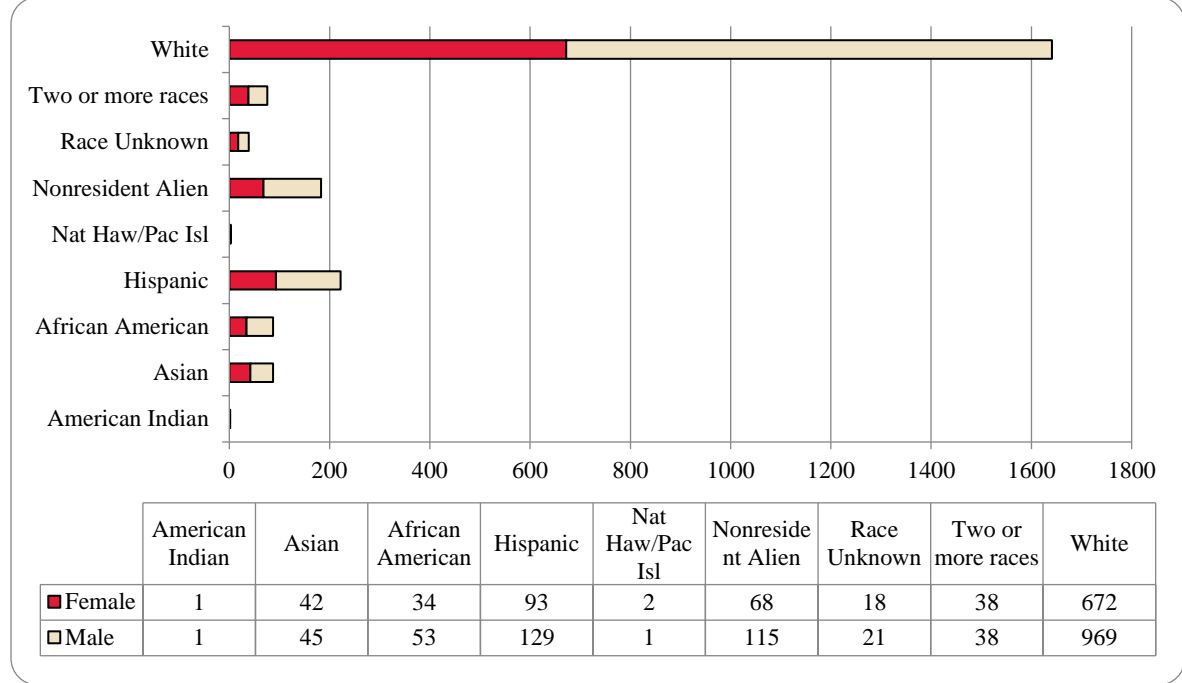
**Figure 11: College of Business Administration Head Count: Fall 2006-2017**



**Figure 12: College of Business Administration Student Credit Hours: Fall 2006-2017**



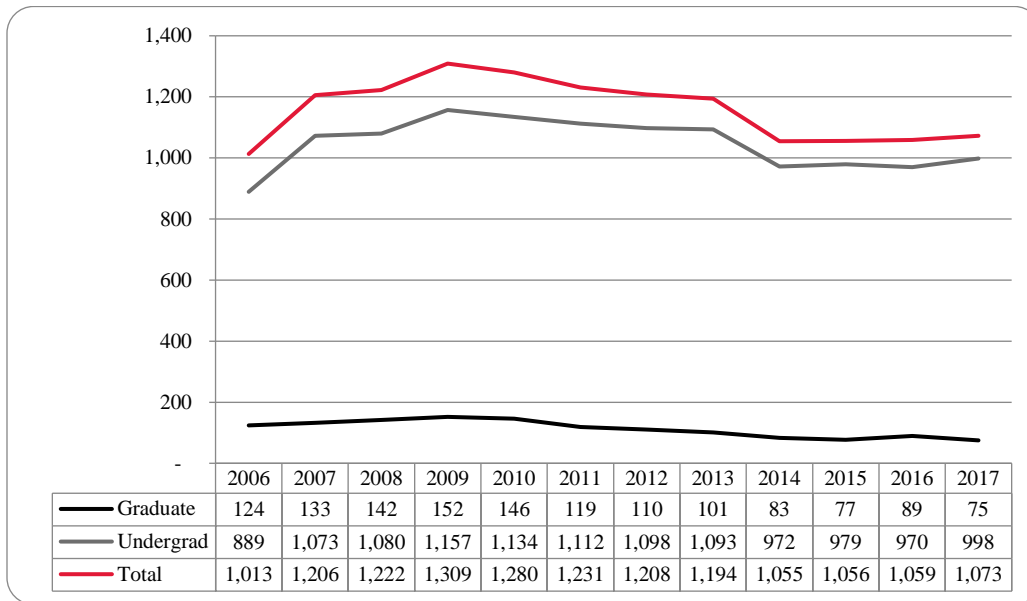
**Figure 13: College of Business Administration Head Count by Ethnicity by Gender: Fall 2017**



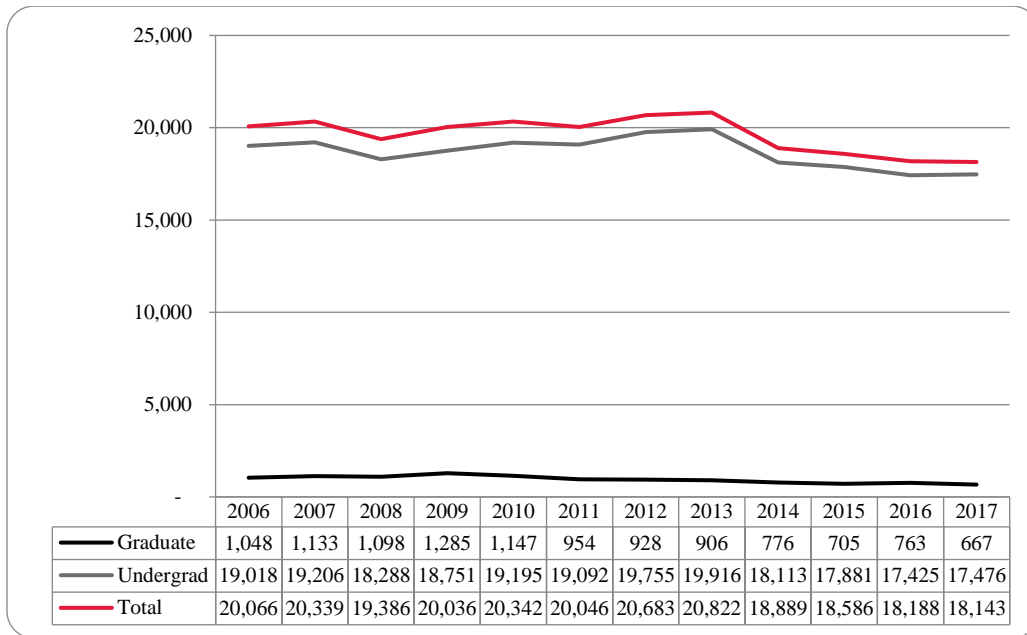
**Table 5: College of Business Administration Head Count Summary for Undergraduate and Graduate Students by Full and Part-Time by Gender and Race Classification: Fall 2017**

	American Indian		Asian		African American		Hispanics		Nat Haw / Pac Isl		Race Unknown		Two or more races		White		Nonresident Alien		Total			
	F	M	F	M	F	M	F	M	F	M	F	M	F	M	F	M	F	M	F	M	Total	
<b>Undergraduate</b>																						
<b>Full-Time</b>																						
First-Time Freshmen			4	3	4	3	9	9			1	2	4	58	78	8	5	85	103	188		
Other Freshmen			2	1		3	5	5			1		4	10	26	3	14	25	50	75		
Sophomores			5	6	5	5	20	31			3	4	7	97	152	8	25	145	227	372		
Juniors			10	8	6	14	21	23		1	5	5	7	125	205	5	23	179	284	463		
Seniors			9	6	3	6	19	23	1		4	4	7	129	174	17	23	189	246	435		
Special											1			1	1			2	1	3		
<b>Total Full-Time</b>			30	24	18	31	74	91	1	1	14	14	27	420	636	41	90	625	911	1,536		
<b>Part-Time</b>																						
First-Time Freshmen								1						1	2			1	3	4		
Other Freshmen				1		1	1	1					1	5	9			6	13	19		
Sophomores			1	1	1	1	1	4	1		2	2	2	18	26	1		25	36	61		
Juniors			1	3	1	3	3	12			2	5	1	45	46	1	2	56	69	125		
Seniors			5	1	3	10	10	5			3		1	53	83	5	3	80	105	185		
Special		1		2	4	2	1	2			1			12	14	2		19	22	41		
<b>Total Part-Time</b>		1	7	8	9	17	16	25	1	3	5	8	7	134	180	9	5	187	248	435		
<b>Total Undergraduate</b>		1	37	32	27	48	90	116	2	1	17	19	35	554	816	50	95	812	1,159	1,971		
<b>Graduate</b>																						
<b>Full-Time</b>																						
Certificate														1	1			1	1	2		
Masters	1		4	6	3	1	1	8			1		1	29	33	12	15	52	65	117		
Doctoral																						
Special Graduate																						
<b>Total Full-Time</b>	1		4	6	3	1	1	8			1		1	30	34	12	15	53	66	119		
<b>Part-Time</b>																						
Certificate																						
Masters			1	7	4	4	2	5			2	2	5	88	119	6	5	103	147	250		
Doctoral																						
Special Graduate																						
<b>Total Part-Time</b>			1	7	4	4	2	5			2	2	5	88	119	6	5	103	147	250		
<b>Total Graduate</b>	1		5	13	7	5	3	13			1	2	3	118	153	18	20	156	213	369		
<b>Total All Students</b>	1	1	42	45	34	53	93	129	2	1	18	21	38	672	969	68	115	968	1,372	2,340		

**Figure 14: College of Communication, Fine Arts and Media Delivery-Site Head Count: Fall 2006-2017**

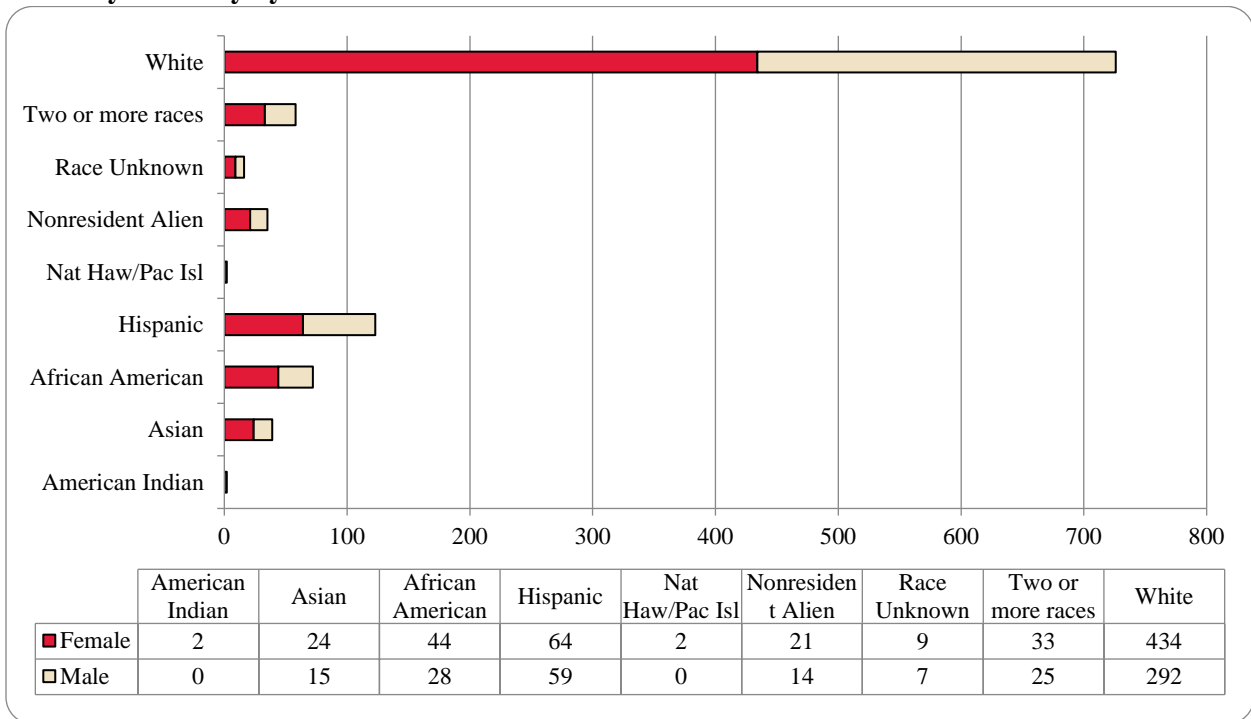


**Figure 15: College of Communication, Fine Arts and Media Delivery-Site Student Credit Hours: Fall 2006-2017**





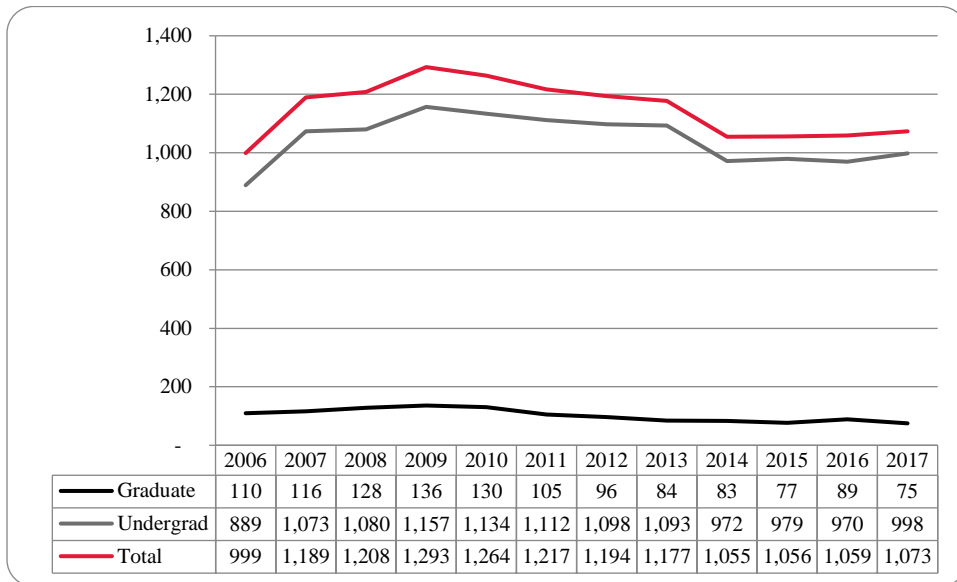
**Figure 16: College of Communication, Fine Arts and Media Delivery & Administrative-Site Head Count by Ethnicity by Gender: Fall 2017**



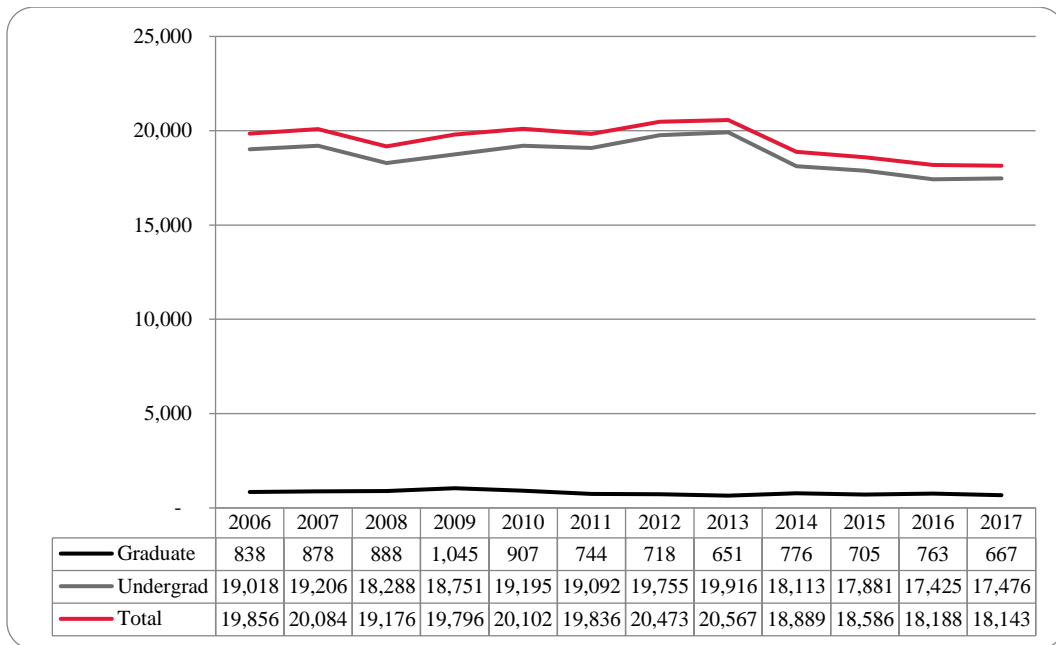
**Table 6: College of Communication, Fine Arts and Media Delivery & Administrative-Site Head Count Summary for Undergraduate and Graduate Students by Full and Part-Time by Gender and Race Classification: Fall 2017**

	American Indian		Asian		African American		Hispanics		Nat Haw / Pac Isl		Race Unknown		Two or more races		White		Nonresident Alien		Total			
	F	M	F	M	F	M	F	M	F	M	F	M	F	M	F	M	F	M	F	M	Total	
<b>Undergraduate</b>																						
<b>Full-Time</b>																						
First-Time Freshmen			2	4	7	4	6	7			1	1	2	4	45	42	7	2	70	64	134	
Other Freshmen			2		1	3	2	1			1		2	3	11	16	1		20	23	43	
Sophomores			6	2	9	3	11	12	1		4	1	8	3	69	43	4	5	112	69	181	
Juniors			7	2	13	9	14	18	1		2	2	8	7	109	70	1	2	155	110	265	
Seniors	1		3	2	6	4	13	9			1	2	8	1	83	36	3	3	118	57	175	
Special															3	2	2		5	2	7	
<b>Total Full-Time</b>	1		20	10	36	23	46	47	2		9	6	28	18	320	209	18	12	480	325	805	
<b>Part-Time</b>																						
First-Time Freshmen					1	1		1							1	4		1	2	7	9	
Other Freshmen						1	2	2							6	1			8	4	12	
Sophomores				1	2		2	1					1	1	8	6			13	9	22	
Juniors			1	1	2	1	2	2				1	1	2	16	18			22	25	47	
Seniors	1		2	2	1	2	8	5					2	1	41	33			55	43	98	
Special							1								1	3			2	3	5	
<b>Total Part-Time</b>	1		3	4	6	5	15	11			1	4	4	4	73	65		1	102	91	193	
<b>Total Undergraduate</b>	2		23	14	42	28	61	58	2		9	7	32	22	393	274	18	13	582	416	998	
<b>Graduate</b>																						
<b>Full-Time</b>																						
Certificate																						
Masters					1		1	1					1	21	7	2	1	25	10	35		
Doctoral																						
Special Graduate																						
<b>Total Full-Time</b>					1		1	1					1	21	7	2	1	25	10	35		
<b>Part-Time</b>																						
Certificate			1													2		1	2	3		
Masters				1	1		2					1	2	20	9	1		25	12	37		
Doctoral																						
Special Graduate																						
<b>Total Part-Time</b>			1	1	1		2					1	2	20	11	1		26	14	40		
<b>Total Graduate</b>			1	1	2		3	1				1	3	41	18	3	1	51	24	75		
<b>Total All Students</b>	2		24	15	44	28	64	59	2		9	7	33	25	434	292	21	14	633	440	1,073	

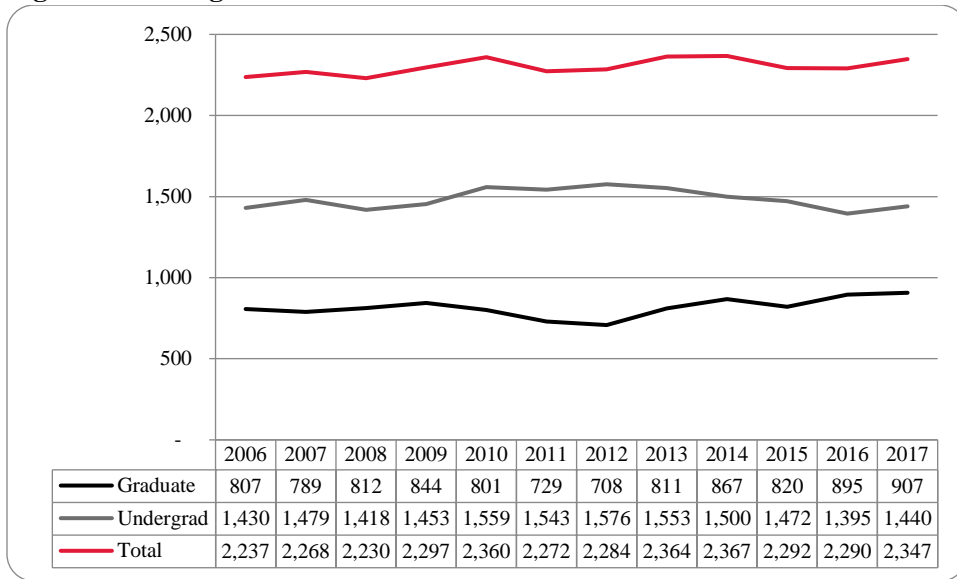
**Figure 17: College of Communication, Fine Arts and Media: Administrative-Site Head Count: Fall 2006-2017**



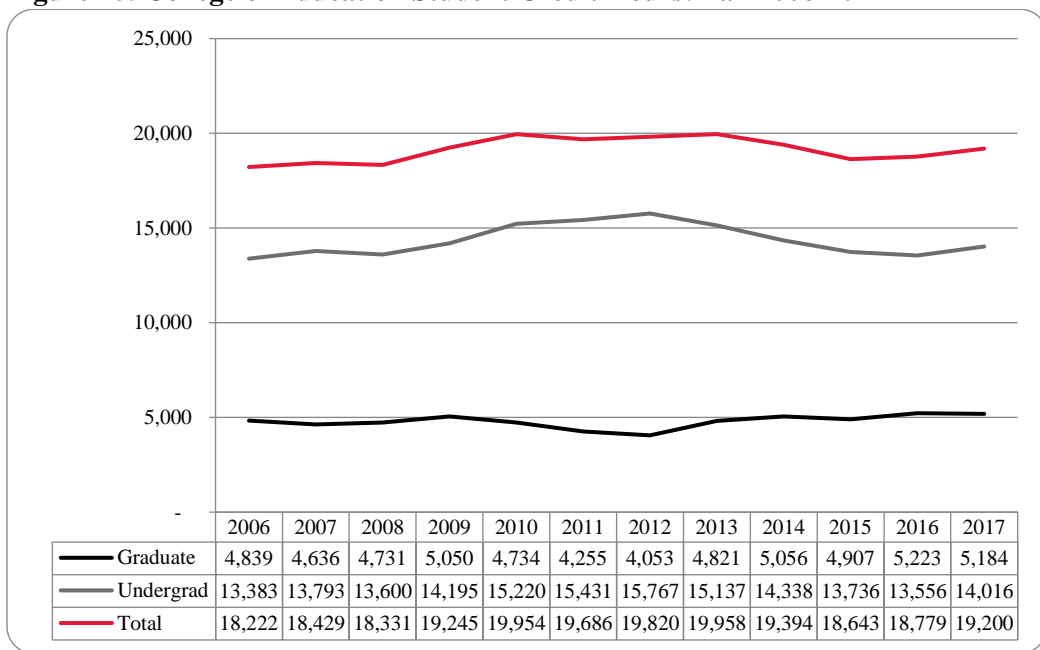
**Figure 18: College of Communication, Fine Arts and Media: Administrative-Site Student Credit Hours: Fall 2006-2017**



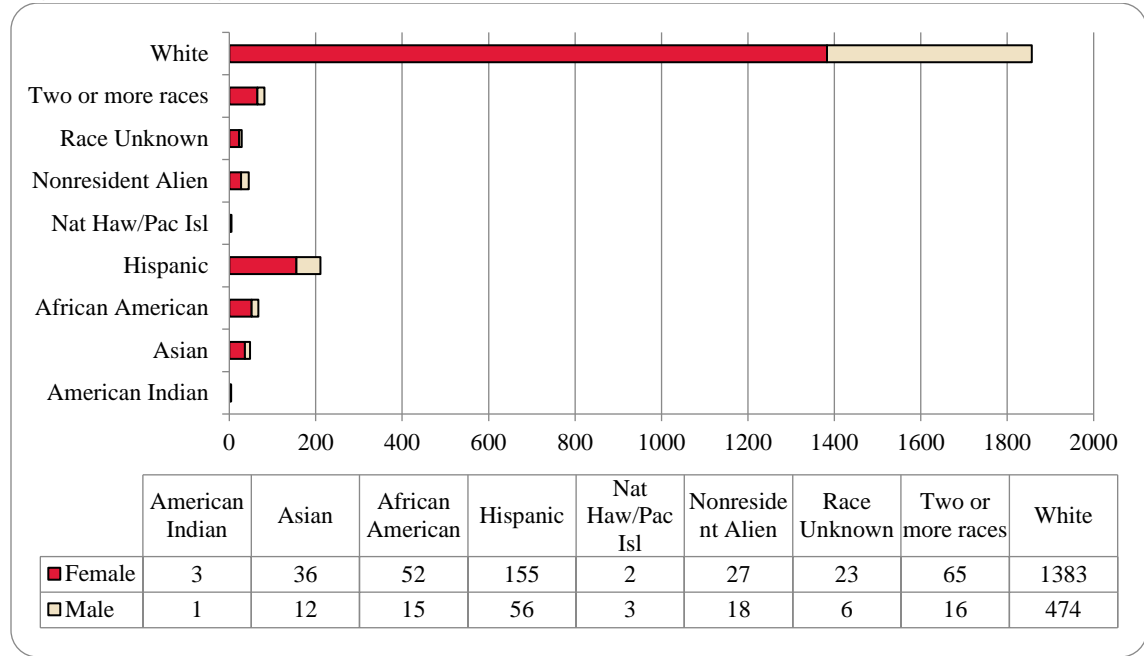
**Figure 19: College of Education Head Count: Fall 2006-2017**



**Figure 20: College of Education Student Credit Hours: Fall 2006-2017**



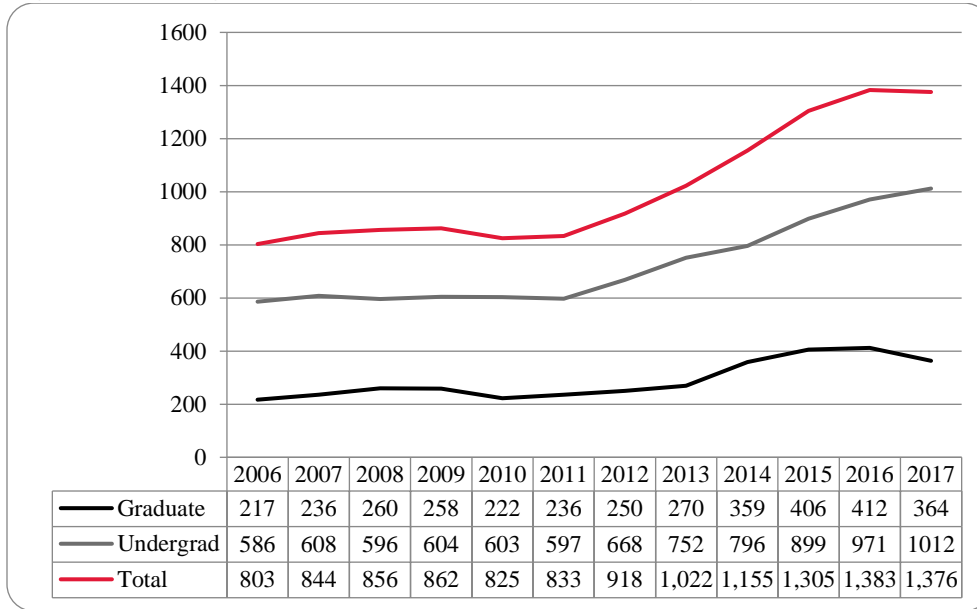
**Figure 21: College of Education Head Count by Ethnicity by Gender: Fall 2017**



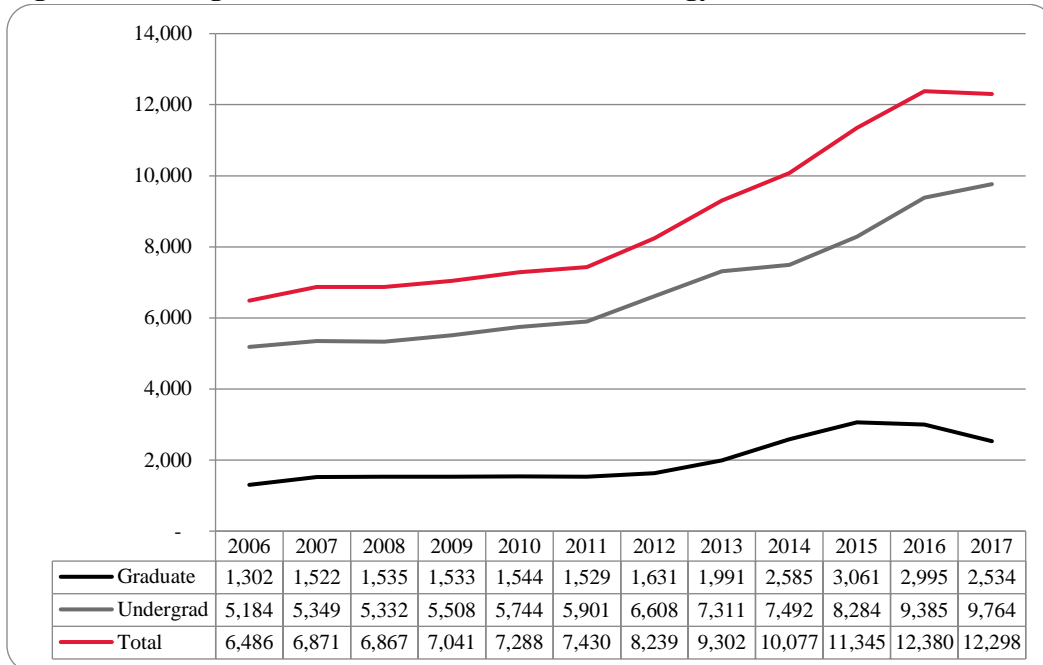
**Table 7: College of Education Head Count Summary for Undergraduate and Graduate Students by Full and Part-Time by Gender and Race Classification: Fall 2017**

	American Indian		Asian		African American		Hispanics		Nat Haw / Pac Isl		Race Unknown		Two or more races		White		Nonresident Alien		Total			
	F	M	F	M	F	M	F	M	F	M	F	M	F	M	F	M	F	M	F	M	Total	
<b>Undergraduate</b>																						
<b>Full-Time</b>																						
First-Time Freshmen	1		2	4	5	1	17	8			3		2		85	28	4	2	119	43	162	
Other Freshmen			3		4		6	1	1				3	1	20	14		1	37	17	54	
Sophomores			5	2	11	1	30	9			5	1	9	2	118	65	3	3	181	83	264	
Juniors		1	6	2	6	1	21	12		1	3		16	3	194	70	4	2	250	92	342	
Seniors	1		7	2	7	1	30	7		2	5	2	14	2	212	77	2		278	93	371	
Special						1	1	1				1			13	9	1		15	12	27	
<b>Total Full-Time</b>	<b>2</b>	<b>1</b>	<b>23</b>	<b>10</b>	<b>33</b>	<b>5</b>	<b>105</b>	<b>38</b>	<b>1</b>	<b>3</b>	<b>16</b>	<b>4</b>	<b>44</b>	<b>8</b>	<b>642</b>	<b>263</b>	<b>14</b>	<b>8</b>	<b>880</b>	<b>340</b>	<b>1,220</b>	
<b>Part-Time</b>																						
First-Time Freshmen							3						1		2	2			6	2	8	
Other Freshmen															3	2			3	2	5	
Sophomores	1					1	1	4			1				28	7	1		36	8	44	
Juniors			1				8	3					1	2	39	7			49	12	61	
Seniors			2				3	1					4		38	25			47	26	73	
Special			2					1						1	13	12			15	14	29	
<b>Total Part-Time</b>	<b>1</b>		<b>5</b>		<b>1</b>	<b>1</b>	<b>18</b>	<b>5</b>			<b>1</b>		<b>6</b>	<b>3</b>	<b>123</b>	<b>55</b>	<b>1</b>		<b>156</b>	<b>64</b>	<b>220</b>	
<b>Total Undergraduate</b>	<b>3</b>	<b>1</b>	<b>28</b>	<b>10</b>	<b>34</b>	<b>6</b>	<b>123</b>	<b>43</b>	<b>1</b>	<b>3</b>	<b>17</b>	<b>4</b>	<b>50</b>	<b>11</b>	<b>765</b>	<b>318</b>	<b>15</b>	<b>8</b>	<b>1,036</b>	<b>404</b>	<b>1,440</b>	
<b>Graduate</b>																						
<b>Full-Time</b>																						
Certificate																						
Masters			2	1	4	4	9	3			1	4	1	102	58	8	7	129	75	204		
Doctoral														4	3	2		6	3	9		
Special Graduate															2				2	2		
<b>Total Full-Time</b>			<b>2</b>	<b>1</b>	<b>4</b>	<b>4</b>	<b>9</b>	<b>3</b>			<b>1</b>	<b>4</b>	<b>1</b>	<b>106</b>	<b>63</b>	<b>10</b>	<b>7</b>	<b>135</b>	<b>80</b>	<b>215</b>		
<b>Part-Time</b>																						
Certificate																						
Masters			4	1	11	1	17	10	1		4	1	9	2	376	66	2	2	424	83	507	
Doctoral			1		1	4	2						1	2	45	16		1	50	23	73	
Special Graduate			1		2		4				2		1		91	11			101	11	112	
<b>Total Part-Time</b>			<b>6</b>	<b>1</b>	<b>14</b>	<b>5</b>	<b>23</b>	<b>10</b>	<b>1</b>		<b>6</b>	<b>1</b>	<b>11</b>	<b>4</b>	<b>512</b>	<b>93</b>	<b>2</b>	<b>3</b>	<b>575</b>	<b>117</b>	<b>692</b>	
<b>Total Graduate</b>			<b>8</b>	<b>2</b>	<b>18</b>	<b>9</b>	<b>32</b>	<b>13</b>	<b>1</b>		<b>6</b>	<b>2</b>	<b>15</b>	<b>5</b>	<b>618</b>	<b>156</b>	<b>12</b>	<b>10</b>	<b>710</b>	<b>197</b>	<b>907</b>	
<b>Total All Students</b>	<b>3</b>	<b>1</b>	<b>36</b>	<b>12</b>	<b>52</b>	<b>15</b>	<b>155</b>	<b>56</b>	<b>2</b>	<b>3</b>	<b>23</b>	<b>6</b>	<b>65</b>	<b>16</b>	<b>1,383</b>	<b>474</b>	<b>27</b>	<b>18</b>	<b>1,746</b>	<b>601</b>	<b>2,347</b>	

**Figure 22: College of Information Science & Technology Head Count: Fall 2006-2017**

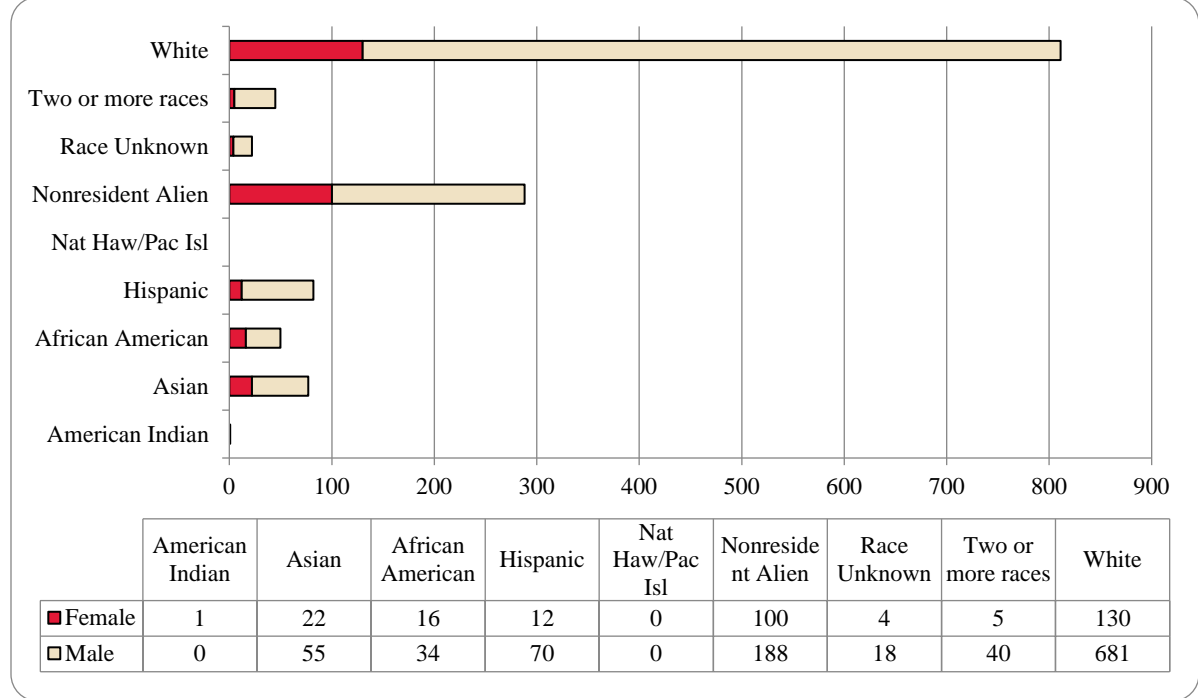


**Figure 23: College of Information Science & Technology Student Credit Hours: Fall 2006-2017**





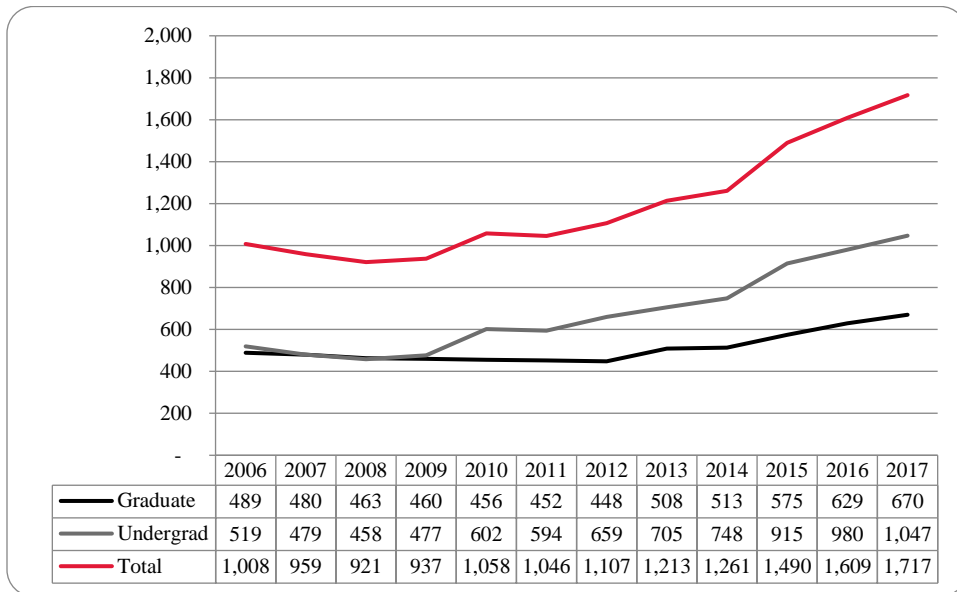
**Figure 24: College of Information Science & Technology Student Credit Hours: Fall 2006-2017**



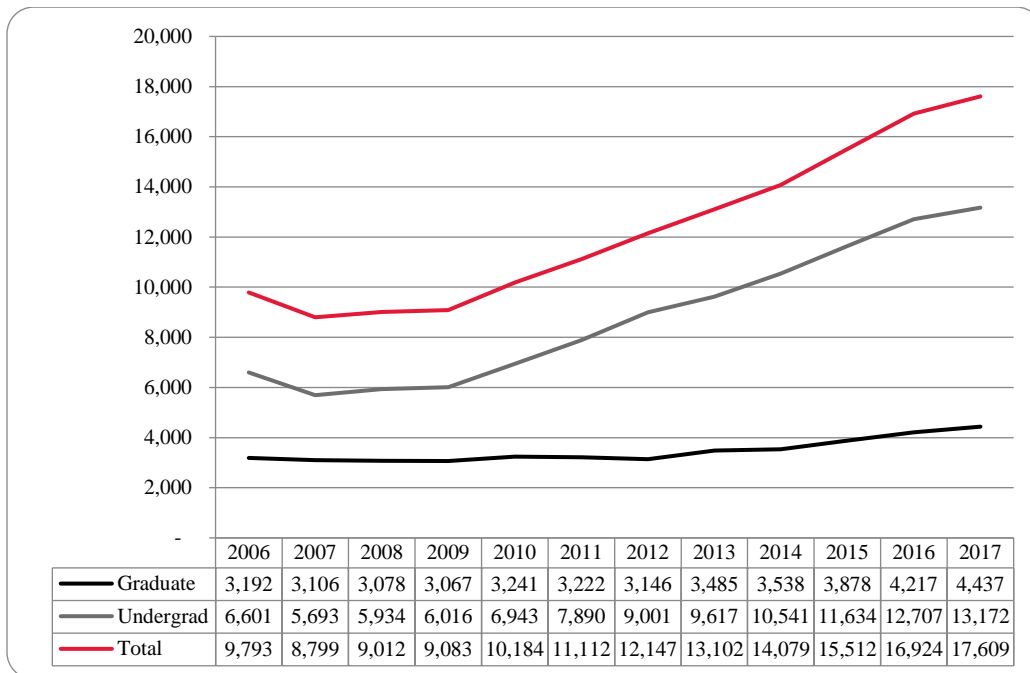
**Table 8: College of Information Science and Technology Head Count Summary for Undergraduate and Graduate Summary by Full and Part-Time by Gender and Race Classification: Fall 2017**

	American Indian		Asian		African American		Hispanics		Nat Haw / Pac Isl		Race Unknown		Two or more races		White		Nonresident Alien		Total			
	F	M	F	M	F	M	F	M	F	M	F	M	F	M	F	M	F	M	F	M	Total	
<b>Undergraduate</b>																						
<b>Full-Time</b>																						
First-Time Freshmen			2	8	1	1	1	5			2		1	5	14	92	3	5	24	116	140	
Other Freshmen			1	2		1	1	3				1		2	17	1	7	3	33	36		
Sophomores			3	6		2	2	10				4		8	16	124	6	21	27	175	202	
Juniors			2	9	1	5	2	19				3		10	11	119	4	15	20	180	200	
Seniors			1	8	2	2	3	9				3	1	9	26	115	1	21	34	167	201	
Special			2			1		1					1		7		1		4	10	14	
<b>Total Full-Time</b>			11	33	4	12	9	47			2	11	3	34	68	474	15	70	112	681	793	
<b>Part-Time</b>																						
First-Time Freshmen															1					1	1	
Other Freshmen				1											5				6	6		
Sophomores				2		2						1		1	2	21		3	2	30	32	
Juniors	1		1	4	1	1	1	4				1		2	4	41	1	1	9	54	63	
Seniors				5	3	5	1	8				1	1		6	51	2	5	13	75	88	
Special					2	4		2			1	1		1	9	9			12	17	29	
<b>Total Part-Time</b>	1		1	12	6	12	2	14			1	4	1	4	21	128	3	9	36	183	219	
<b>Total Undergraduate</b>	1		12	45	10	24	11	61			3	15	4	38	89	602	18	79	148	864	1,012	
<b>Graduate</b>																						
<b>Full-Time</b>																						
Certificate															1	1	1		2	1	3	
Masters			3	1		3		2					1		8	9	57	80	69	95	164	
Doctoral																1	4		4	1	5	
Special Graduate																						
<b>Total Full-Time</b>			3	1		3		2					1		9	11	62	80	75	97	172	
<b>Part-Time</b>																						
Certificate			1	1		1						1			10	6		2	11	11	22	
Masters			6	8	6	6	1	7				2		2	22	57	17	21	52	103	155	
Doctoral											1				5	3	6	4	11	15		
Special Graduate																						
<b>Total Part-Time</b>			7	9	6	7	1	7			1	3		2	32	68	20	29	67	125	192	
<b>Total Graduate</b>			10	10	6	10	1	9			1	3	1	2	41	79	82	109	142	222	364	
<b>Total All Students</b>	1		22	55	16	34	12	70			4	18	5	40	130	681	100	188	290	1,086	1,376	

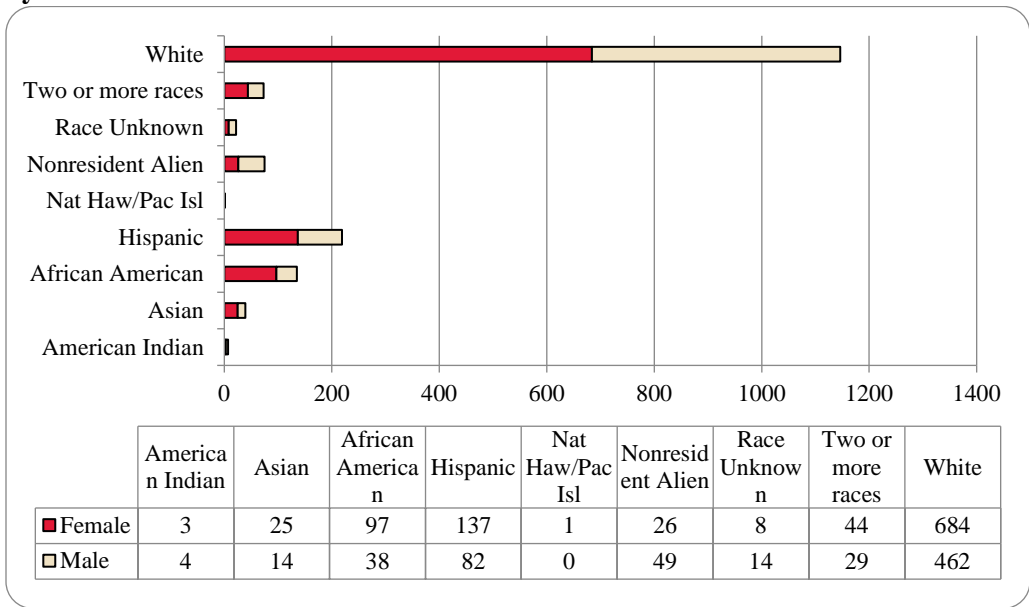
**Figure 25: College of Public Affairs & Community Service Delivery-Site Head Count: Fall 2006-2017**



**Figure 26: College of Public Affairs & Community Service Delivery-Site Student Credit Hours: Fall 2006-2017**



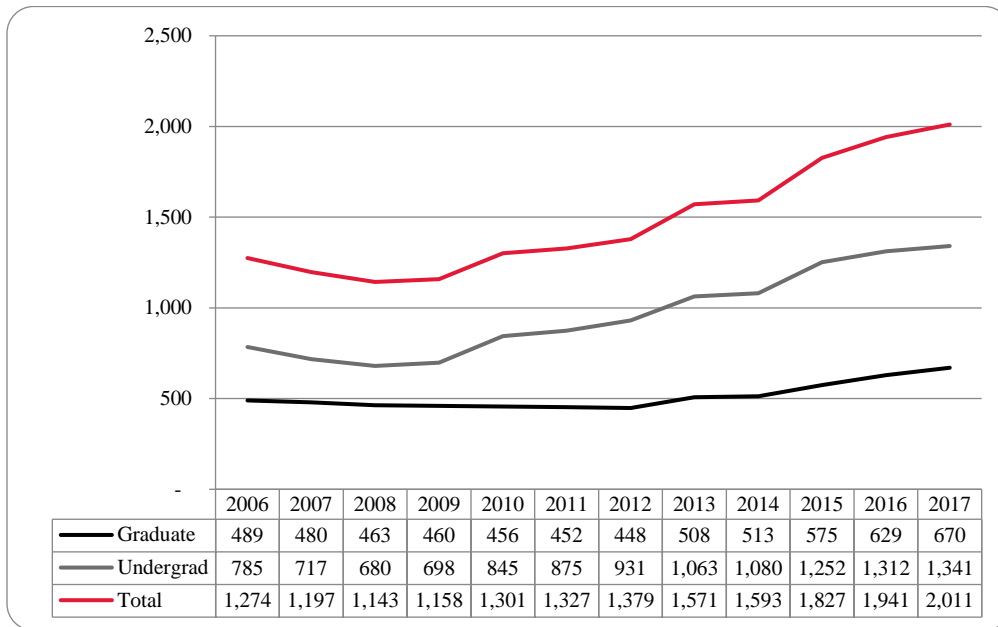
**Figure 27: College of Public Affairs & Community Service Delivery-Site Head Count by Ethnicity by Gender: Fall 2016**



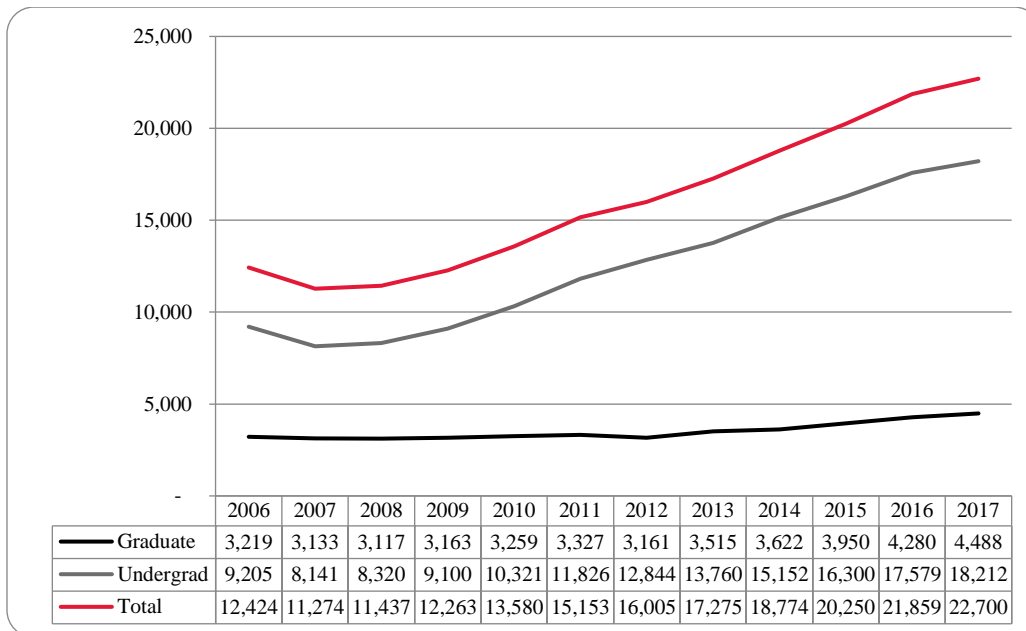
**Table 9: College of Public Affairs and Community Service Delivery-Site Head Count Summary for Undergraduate and Graduate Students by Full and Part-Time by Gender and Race Classification: Fall 2017**

	American Indian		Asian		African American		Hispanics		Nat Haw / Pac Isl		Race Unknown		Two or more races		White		Nonresident Alien		Total		
	F	M	F	M	F	M	F	M	F	M	F	M	F	M	F	M	F	M	F	M	Total
<b>Undergraduate</b>																					
<b>Full-Time</b>																					
First-Time Freshmen			1	5	5	3	13	6			1	1	4	3	47	45	1		72	63	135
Other Freshmen	1		2	2	7	3	5	6			1	1	2	9	16	4	7	29	37	66	
Sophomores	1	1	4	2	16	3	20	17			1	3	6	47	62	2	7	93	99	192	
Juniors			8	1	9	1	32	14			6	5	4	84	100	5	10	143	136	279	
Seniors			2	2	13	5	20	14			3	3	9	6	71	53	3	6	121	89	210
Special						1										2				3	3
<b>Total Full-Time</b>	2	1	17	12	50	16	90	57			4	12	22	21	258	278	15	30	458	427	885
<b>Part-Time</b>																					
First-Time Freshmen			1		1		1	1						1	4		1	4	6	6	10
Other Freshmen					2	1	1					1		2	3		2	6	6	12	
Sophomores					1	1	1	3				1		3	10			6	14	20	
Juniors					5	2	2	3			1		1	20	19			29	24	53	
Seniors					4	3	4	6			1			19	25		2	28	36	64	
Special							1						1	1				1	2	3	
<b>Total Part-Time</b>			1		13	7	9	14			2		3	1	46	61	5	74	88	162	
<b>Total Undergraduate</b>	2	1	18	12	63	23	99	71			6	12	25	22	304	339	15	35	532	515	1,047
<b>Graduate</b>																					
<b>Full-Time</b>																					
Certificate															1					1	1
Masters	1		2	1	14	7	14	2				6	1	149	18	3	2	189	31	220	
Doctoral		1									1	2		6	1	3	3	11	6	17	
Special Graduate																					
<b>Total Full-Time</b>	1	1	2	1	14	7	14	2			1	8	1	155	20	6	5	200	38	238	
<b>Part-Time</b>																					
Certificate					3		2							16	8			21	8	29	
Masters		2	4	1	17	6	20	8	1		2	1	10	6	189	81	1	1	244	106	350
Doctoral			1			2	2	1					1	20	14	4	8	28	25	53	
Special Graduate																					
<b>Total Part-Time</b>		2	5	1	20	8	24	9	1		2	1	11	6	225	103	5	9	293	139	432
<b>Total Graduate</b>	1	3	7	2	34	15	38	11	1		2	2	19	7	380	123	11	14	493	177	670
<b>Total All Students</b>	3	4	25	14	97	38	137	82	1		8	14	44	29	684	462	26	49	1,025	692	1,717

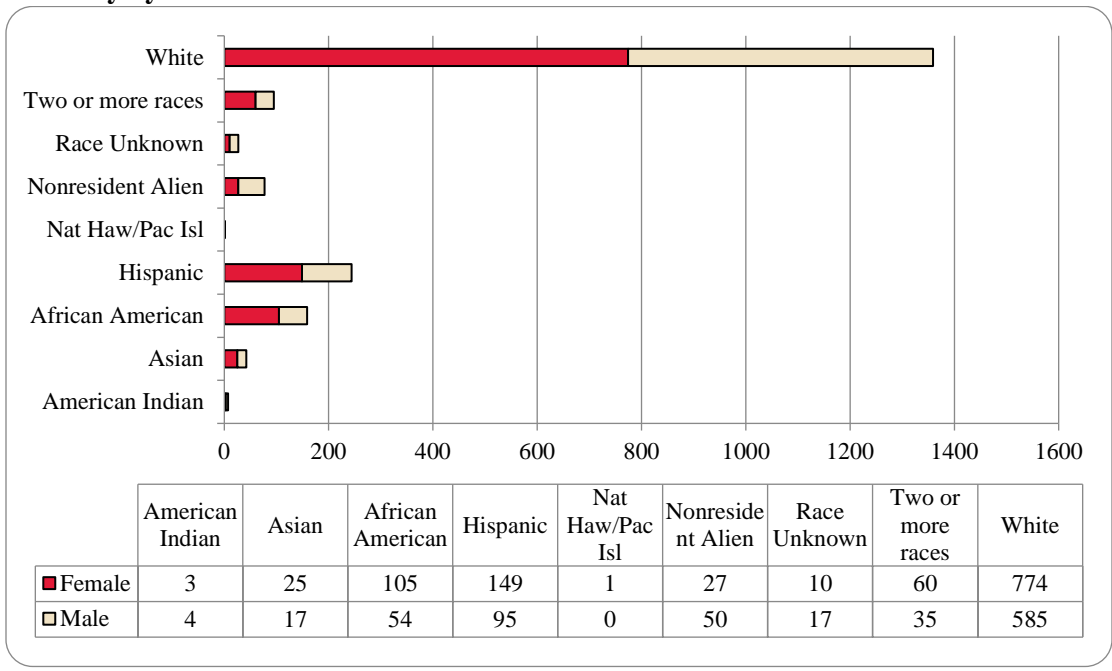
**Figure 28: College of Public Affairs & Community Service Administrative-Site Head Count: Fall 2006-2017**



**Figure 29: College of Public Affairs & Community Service Administrative-Site Student Credit Hours: Fall 2006-2017**



**Figure 30: College of Public Affairs & Community Service Administrative-Site Head Count by Ethnicity by Gender: Fall 2017**

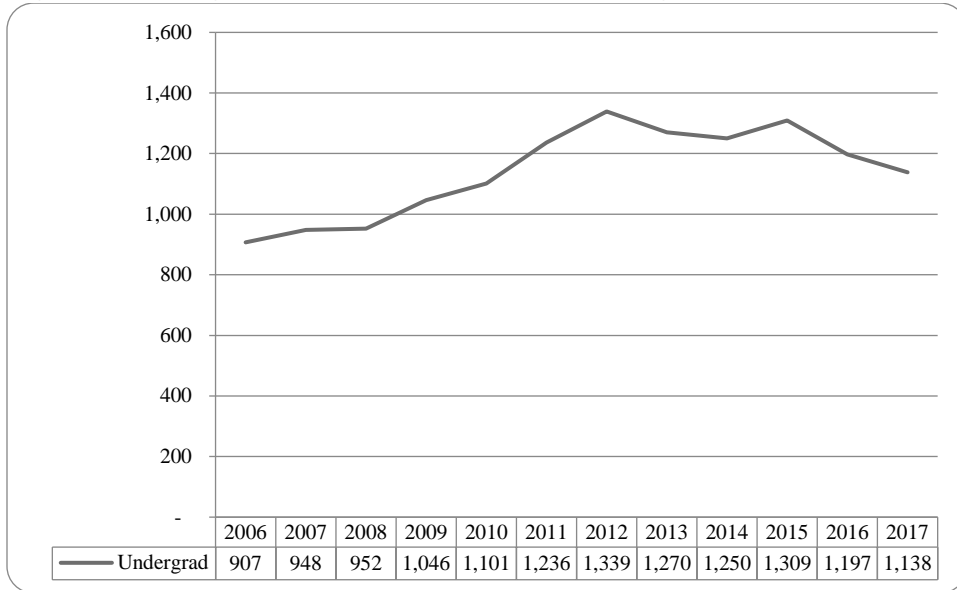




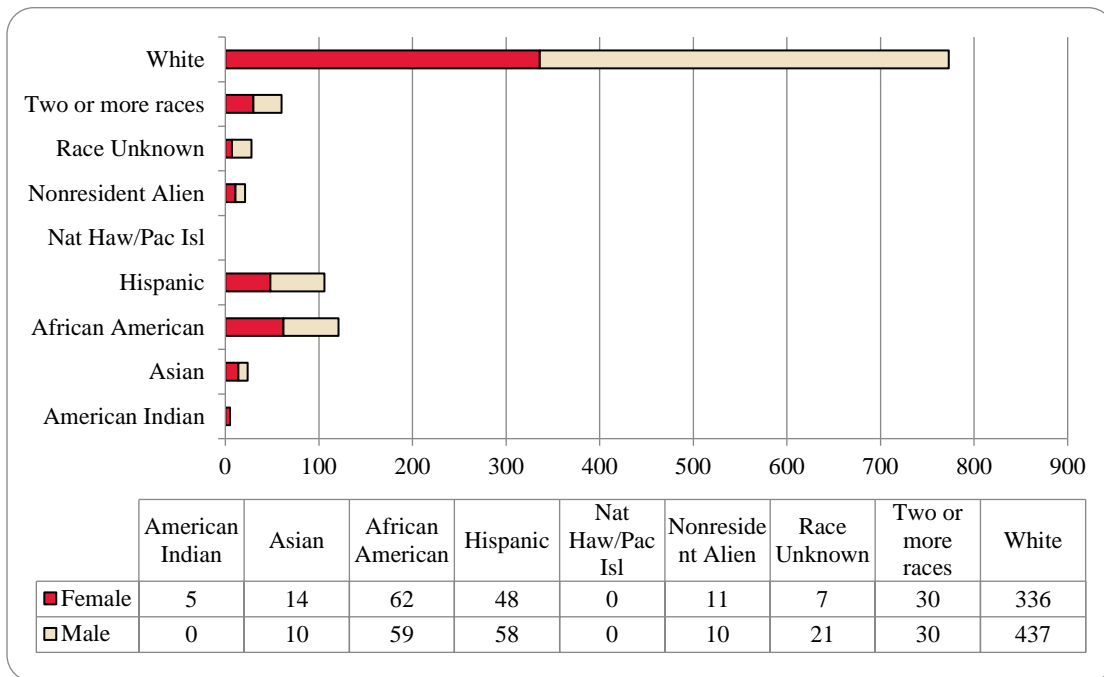
**Table 10: College of Public Affairs & Community Service Administrative-Site Head Count Summary for Undergraduate and Graduate Students by Full and Part-Time by Gender and Race Classification: Fall 2017**

	American Indian		Asian		African American		Hispanics		Nat Haw / Pac Isl		Race Unknown		Two or more races		White		Nonresident Alien		Total			
	F	M	F	M	F	M	F	M	F	M	F	M	F	M	F	M	F	M	F	M	Total	
<b>Undergraduate</b>																						
<b>Full-Time</b>																						
First-Time Freshmen			1	6	6	4	18	8			2	1	9	4	64	55	1	1	101	79	180	
Other Freshmen	1		2	3	7	4	5	6			1	1	2	10	19	4	7	30	42	72		
Sophomores	1	1	4	2	19	6	21	24			1	6	7	70	83	2	7	123	131	254		
Juniors			8	1	12	6	35	16			1	7	8	7	107	126	5	10	176	173	349	
Seniors			2	3	13	10	23	16			3	4	12	7	93	108	4	6	150	154	304	
Special						1									2					3	3	
<b>Total Full-Time</b>	2	1	17	15	57	31	102	70			6	14	36	27	344	393	16	31	580	582	1,162	
<b>Part-Time</b>																						
First-Time Freshmen			1		1		1	1							1	4		1	4	6	10	
Other Freshmen					2	1	1						2		2	4		2	7	7	14	
Sophomores					1	1	1	3					1		3	10			6	14	20	
Juniors					5	3	2	3			1		1		21	19			30	25	55	
Seniors					5	3	4	6			1	1	1		22	32		2	33	44	77	
Special							1						1	1					1	2	3	
<b>Total Part-Time</b>			1		14	8	9	14			2	1	5	1	50	69		5	81	98	179	
<b>Total Undergraduate</b>	2	1	18	15	71	39	111	84			8	15	41	28	394	462	16	36	661	680	1,341	
<b>Graduate</b>																						
<b>Full-Time</b>																						
Certificate																1				1	1	
Masters	1		2	1	14	7	14	2					6	1	149	18	3	2	189	31	220	
Doctoral		1										1	2		6	1	3	3	11	6	17	
Special Graduate																						
<b>Total Full-Time</b>	1	1	2	1	14	7	14	2			1	8	1	155	20	6	5	200	38	238		
<b>Part-Time</b>																						
Certificate					3		2								16	8			21	8	29	
Masters		2	4	1	17	6	20	8	1		2	1	10	6	189	81	1	1	244	106	350	
Doctoral			1			2	2	1					1		20	14	4	8	28	25	53	
Special Graduate																						
<b>Total Part-Time</b>		2	5	1	20	8	24	9	1		2	1	11	6	225	103	5	9	293	139	432	
<b>Total Graduate</b>	1	3	7	2	34	15	38	11	1		2	2	19	7	380	123	11	14	493	177	670	
<b>Total All Students</b>	3	4	25	17	105	54	149	95	1		10	17	60	35	774	585	27	50	1,154	857	2,011	

**Figure 31: College of CPACS, Division of Continuing Studies Head Count: Fall 2006-2017**



**Figure 32: College of CPACS, Division of Continuing Studies Head Count by Ethnicity by Gender: Fall 2017**



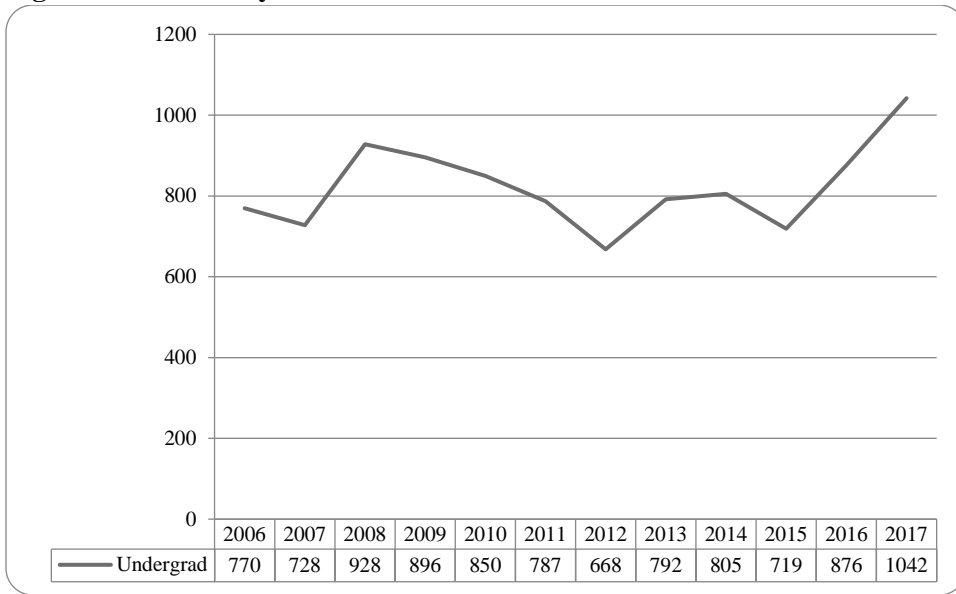
**Table 11: College of CPACS Division of Continuing Studies Head Count Summary for Undergraduate Students by Full and Part-Time by Gender and Race Classification: Fall 2017**

	American Indian		Asian		African American		Hispanics		Nat Haw / Pac Isl		Race Unknown		Two or more races		White		Nonresident Alien		Total			
	F	M	F	M	F	M	F	M	F	M	F	M	F	M	F	M	F	M	F	M	Total	
<b>Undergraduate</b>																						
<b>Full-Time</b>																						
First-Time Freshmen															1	2				1	2	3
Other Freshmen					1	4		1					1	2	6	15	1	1	9	23	32	
Sophomores			3	1	13	8	8	11					5	2	27	51	4	5	60	78	138	
Juniors			1	2	8	12	9	8			1	6	9	6	72	58	1	1	101	93	194	
Seniors	4		3		7	10	7	9			6	5	2	51	66		2	77	95	172		
Special				1										2	1			2	2	4		
<b>Total Full-Time</b>	4		7	4	29	34	24	29			1	12	20	12	159	193	6	9	250	293	543	
<b>Part-Time</b>																						
First-Time Freshmen					1										1	1			2	1	3	
Other Freshmen					6		5	5			1		1	1	10	17		1	23	24	47	
Sophomores			2	2	6	4	4	5			1	1	7	17	38			30	57	87		
Juniors			1	3	5	3	6	7			3	3	3	7	44	66	2		64	89	153	
Seniors	1		2	1	14	14	9	12			2	5	5	1	96	113	2		131	146	277	
Special			2		1	4							2	9	9	1		13	15	28		
<b>Total Part-Time</b>	1		7	6	33	25	24	29			6	9	10	18	177	244	5	1	263	332	595	
<b>Total Undergraduate</b>	5		14	10	62	59	48	58			7	21	30	30	336	437	11	10	513	625	1,138	
<b>Total All Students</b>	5		14	10	62	59	48	58			7	21	30	30	336	437	11	10	513	625	1,138	

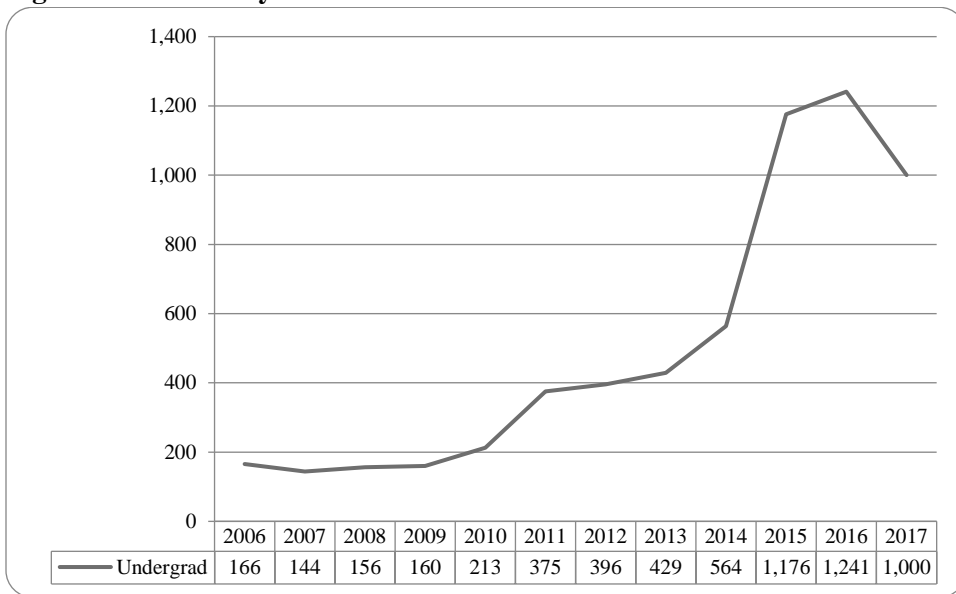
**Table 12: Cooperative Graduate Program Head Count Summary for Graduate Students by Full and Part-Time by Gender and Race Classification: Fall 2017**

	American Indian		Asian		African American		Hispanics		Nat Haw / Pac Isl		Race Unknown		Two or more races		White		Nonresident Alien		Total			
	F	M	F	M	F	M	F	M	F	M	F	M	F	M	F	M	F	M	F	M	Total	
<b>Graduate</b>																						
<b>Full-Time</b>																						
Certificate															1						1	1
Masters																						
Doctoral																						
Special Graduate																						
<b>Total Full-Time</b>															1						1	1
<b>Part-Time</b>																						
Certificate			1												3	1					4	5
Masters																						
Doctoral																						
Special Graduate																						
<b>Total Part-Time</b>			1												3	1					4	5
<b>Total Graduate</b>			1												4	1					5	6
<b>Total All Students</b>			1												4	1					5	6

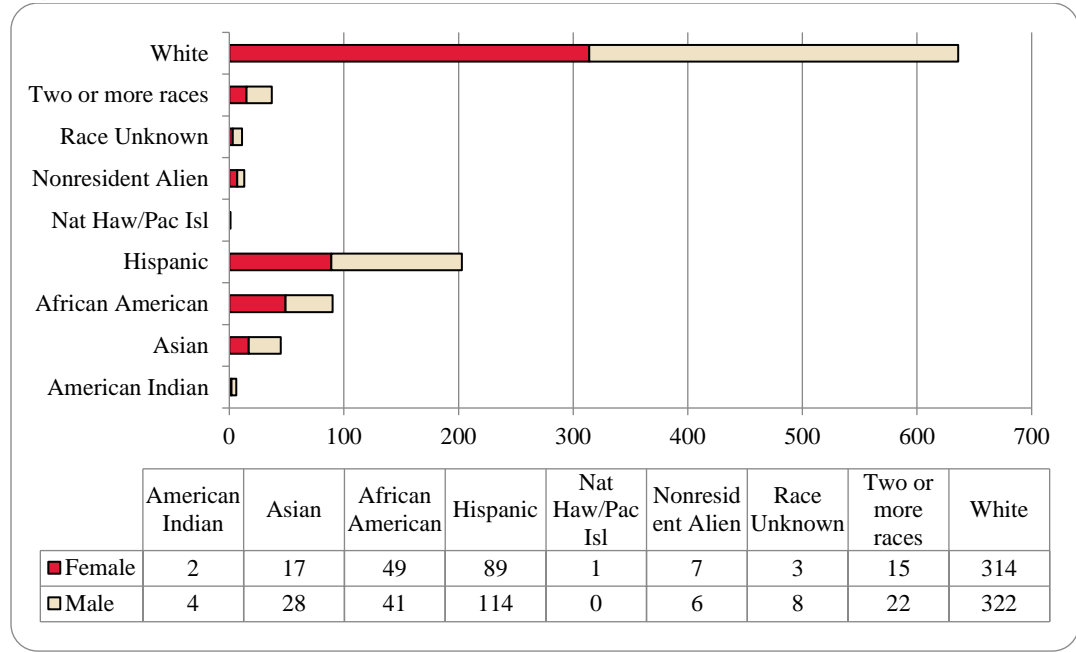
**Figure 33: University Division Head Count: Fall 2006-2017**



**Figure 34: University Division Student Credit Hours: Fall 2006-2017**



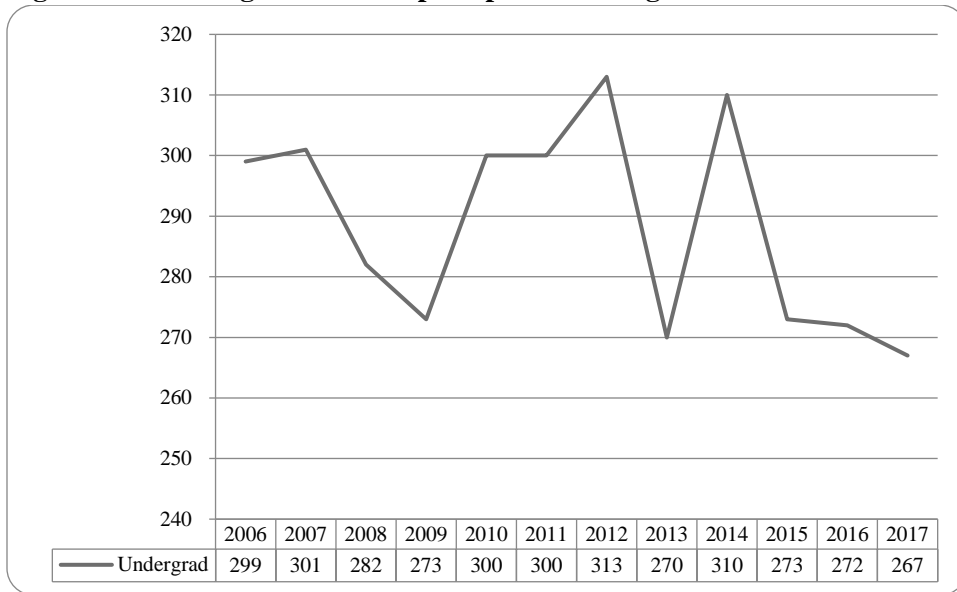
**Figure 35: University Division Head Count by Ethnicity by Gender: Fall 2017**



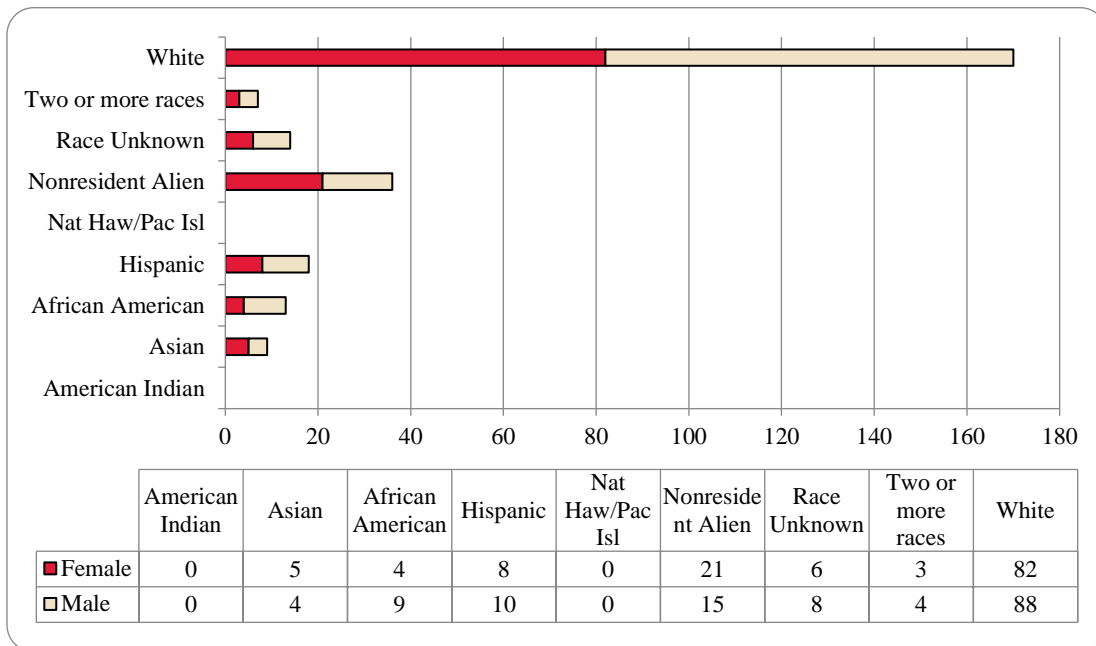
**Table 13: University Division Head Count Summary for Undergraduate Students by Full and Part-Time by Gender and Race Classification: Fall 2017**

	American Indian		Asian		African American		Hispanics		Nat Haw / Pac Isl		Race Unknown		Two or more races		White		Nonresident Alien		Total			
	F	M	F	M	F	M	F	M	F	M	F	M	F	M	F	M	F	M	F	M	Total	
<b>Undergraduate</b>																						
<b>Full-Time</b>																						
First-Time Freshmen		2	9	12	28	21	56	63	1		3	3	11	12	189	175	6	3	303	291	594	
Other Freshmen			1	5	10	12	20	16			1	2	6	43	69		1	76	110	186		
Sophomores	1	1	4	5	4	6	8	19			3	1		62	37	1	2	81	73	154		
Juniors																						
Seniors																						
Special																						
<b>Total Full-Time</b>	1	3	14	22	42	39	84	98	1		3	7	14	18	294	281	7	6	460	474	934	
<b>Part-Time</b>																						
First-Time Freshmen				1	2		2	6					1	8	11				12	19	31	
Other Freshmen	1	1	2	3	4	1	2	8			1		3	9	24				18	41	59	
Sophomores			1	2	1	1	1	2					1	3	6				7	11	18	
Juniors																						
Seniors																						
Special																						
<b>Total Part-Time</b>	1	1	3	6	7	2	5	16			1	1	4	20	41				37	71	108	
<b>Total Undergraduate</b>	2	4	17	28	49	41	89	114	1		3	8	15	22	314	322	7	6	497	545	1,042	
<b>Total All Students</b>	2	4	17	28	49	41	89	114	1		3	8	15	22	314	322	7	6	497	545	1,042	

**Figure 36: Non-Degree/Intercampus Special Undergraduate Students Head Count: Fall 2006-2017**



**Figure 37: Non-Degree/Intercampus Special Undergraduate Students Head Count by Ethnicity by Gender: Fall 2017**

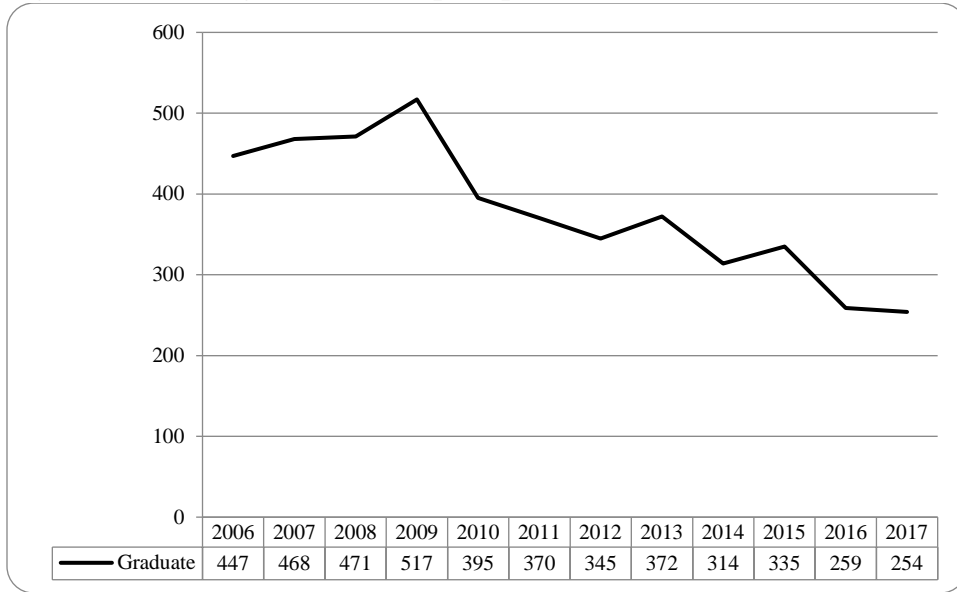




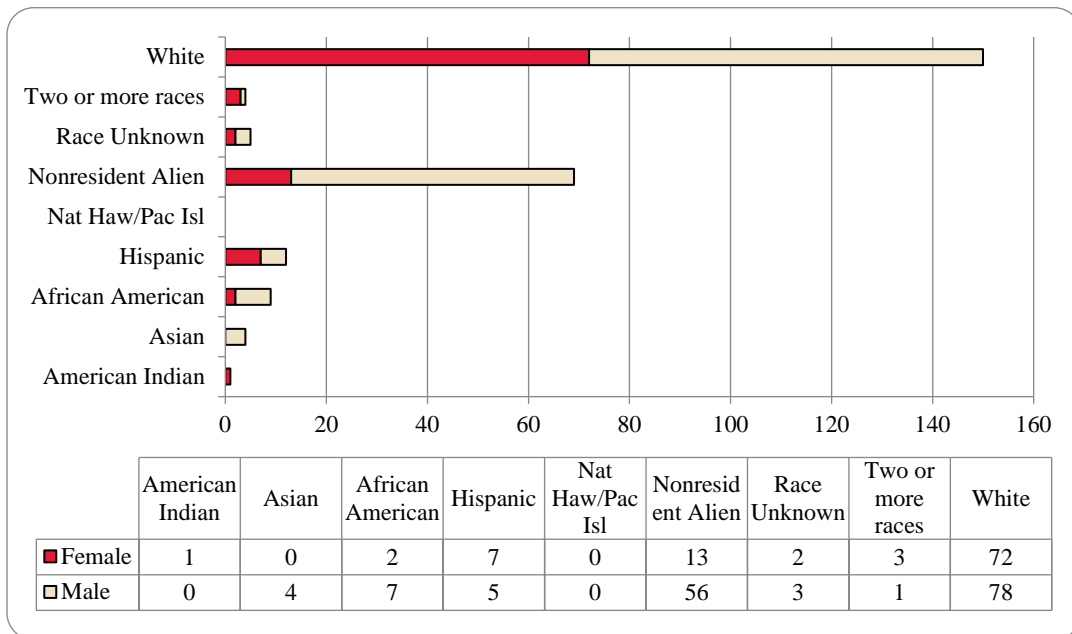
**Table 14: Non-Degree/Intercampus Head Count Summary for Special Undergraduate Students by Full and Part-Time by Gender and Race Classification: Fall 2017**

	American Indian		Asian		African American		Hispanics		Nat Haw / Pac Isl		Race Unknown		Two or more races		White		Nonresident Alien		Total			
	F	M	F	M	F	M	F	M	F	M	F	M	F	M	F	M	F	M	F	M	Total	
<b>Undergraduate</b>																						
<b>Full-Time</b>																						
First-Time Freshmen																						
Other Freshmen			1	1											11	12	19	13	31	26	57	
Sophomores															5	3	1		6	3	9	
Juniors															1	1			1	1	2	
Seniors																						
Special														1	1	2			1	3	4	
<b>Total Full-Time</b>			1	1										1	18	18	20	13	39	33	72	
<b>Part-Time</b>																						
First-Time Freshmen													1						1		1	
Other Freshmen			2		4	5	3	9			6	7		2	24	29		1	39	53	92	
Sophomores															3	3			3	3	6	
Juniors															2	5		1	2	6	8	
Seniors							3								2	5			5	5	10	
Special			2	3		4	2	1				1	2	1	33	28	1		40	38	78	
<b>Total Part-Time</b>			4	3	4	9	8	10			6	8	3	3	64	70	1	2	90	105	195	
<b>Total Undergraduate</b>			5	4	4	9	8	10			6	8	3	4	82	88	21	15	129	138	267	
<b>Total All Students</b>			5	4	4	9	8	10			6	8	3	4	82	88	21	15	129	138	267	

**Figure 38: Non-Degree/Inter Campus Special Graduate Students Head Count: Fall 2006-2017**



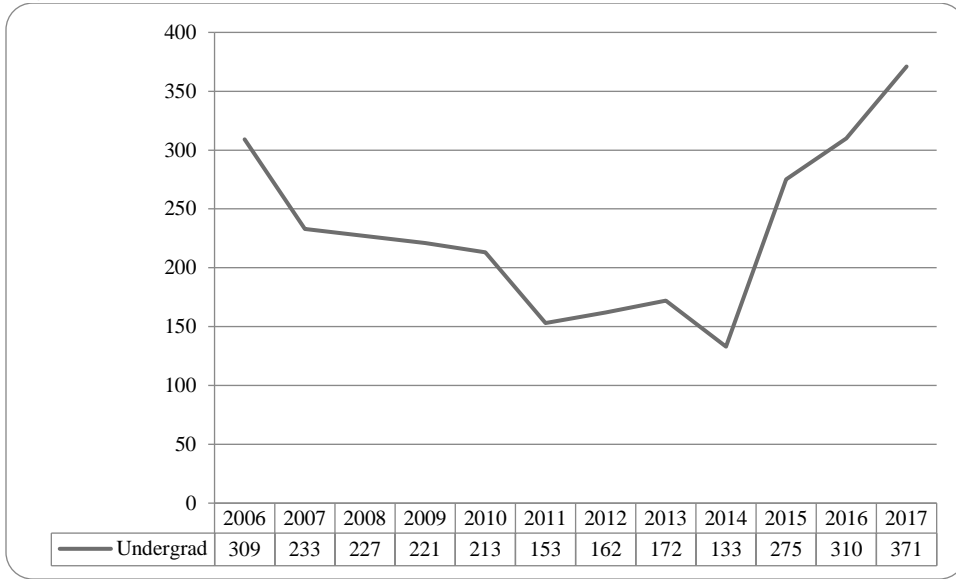
**Figure 39: Non-Degree/Intercampus Special Graduate Students Head Count by Ethnicity by Gender: Fall 2017**



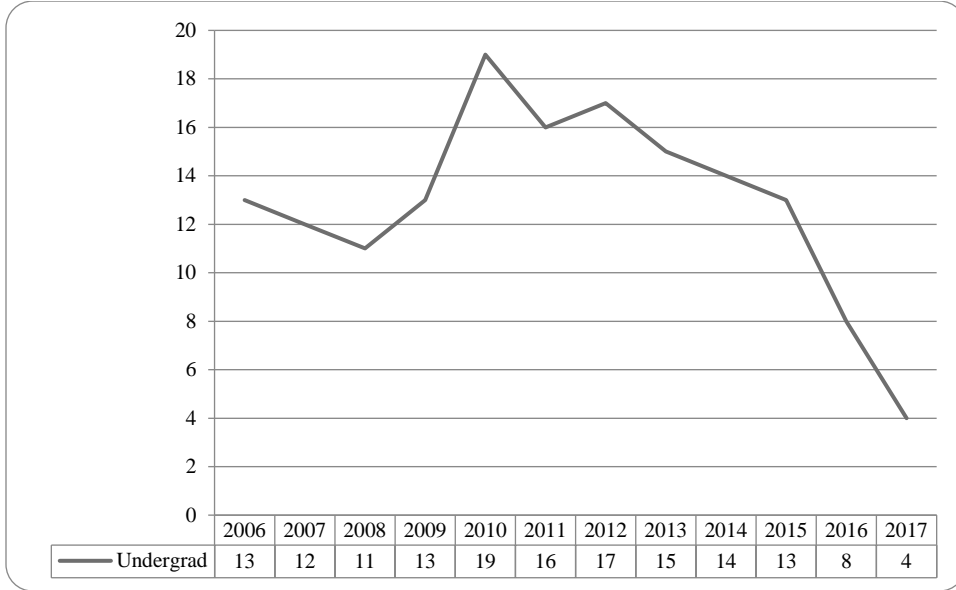
**Table 15: Non-Degree/Intercampus Head Count Summary for Special Graduate Students by Full and Part-Time by Gender and Race Classification: Fall 2017**

	American Indian		Asian		African American		Hispanics		Nat Haw / Pac Isl		Race Unknown		Two or more races		White		Nonresident Alien		Total			
	F	M	F	M	F	M	F	M	F	M	F	M	F	M	F	M	F	M	F	M	Total	
<b>Graduate</b>																						
<b>Full-Time</b>																						
Certificate																						
Masters																						
Doctoral																						
Special Graduate	1			1		1	1	1				1	1	14	28	11	50	28	82	110		
<b>Total Full-Time</b>	1			1		1	1	1				1	1	14	28	11	50	28	82	110		
<b>Part-Time</b>																						
Certificate																						
Masters																						
Doctoral																						
Special Graduate				3	2	6	6	4			2	3	2	58	50	2	6	72	72	144		
<b>Total Part-Time</b>				3	2	6	6	4			2	3	2	58	50	2	6	72	72	144		
<b>Total Graduate</b>	1			4	2	7	7	5			2	3	3	72	78	13	56	100	154	254		
<b>Total All Students</b>	1			4	2	7	7	5			2	3	3	72	78	13	56	100	154	254		

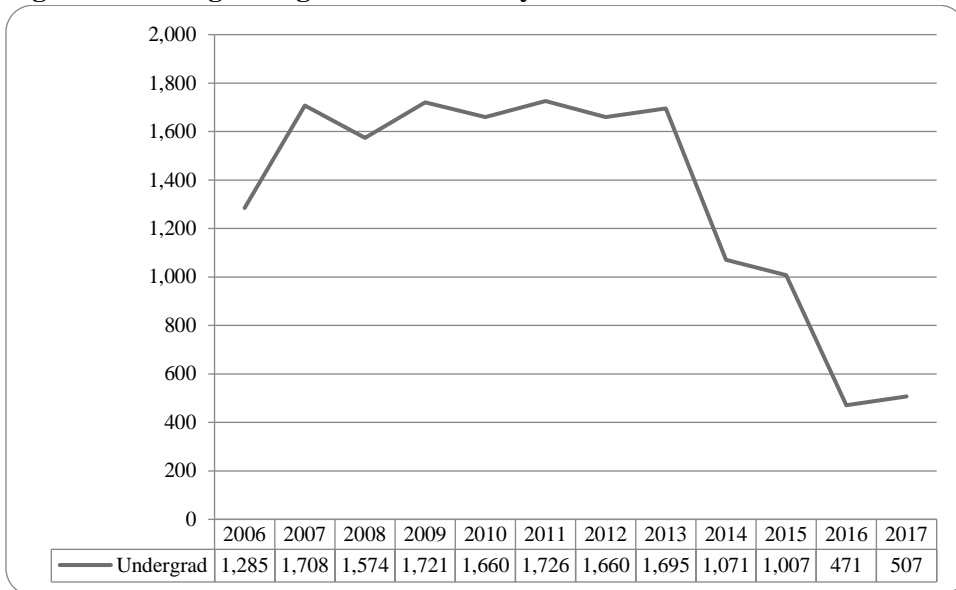
**Figure 40: Other Honors Student Credit Hours by Level of Instruction: Fall 2006-2017**



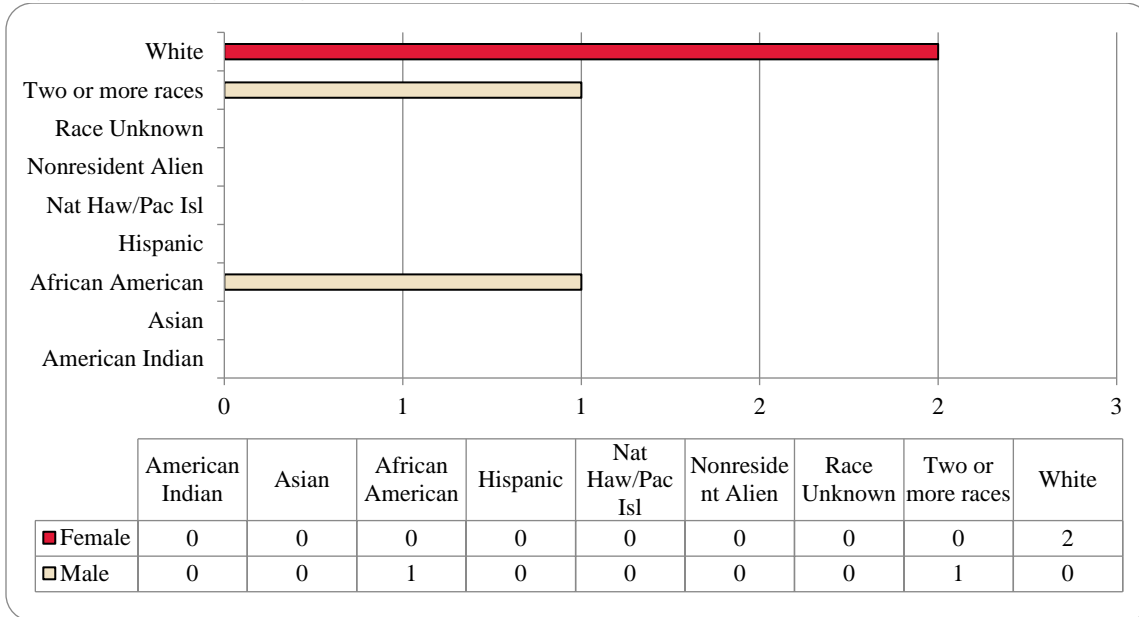
**Figure 41: College of Agriculture Delivery-Site Head Count: Fall 2006-2017**



**Figure 42: College of Agriculture Delivery-Site Student Credit Hours: Fall 2006-2017**



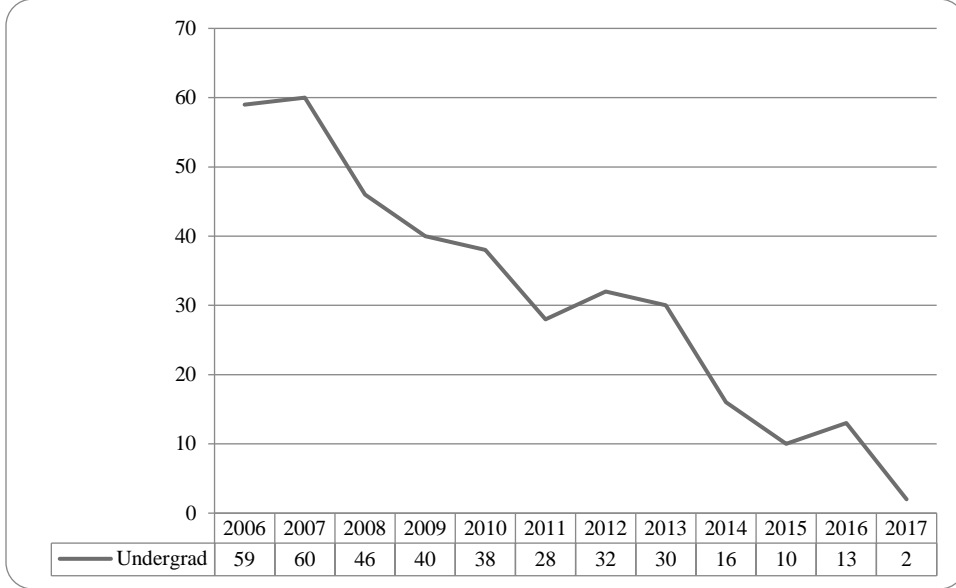
**Figure 43: College of Agriculture Delivery-Site Head Count by Ethnicity by Gender: Fall 2017**



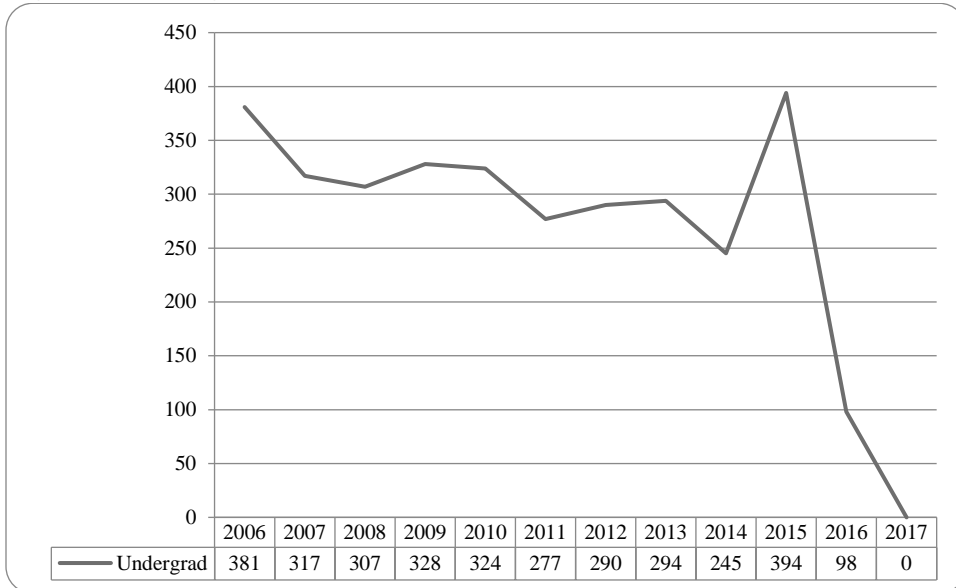
**Table 16: College of Agriculture Head Count Summary for Undergraduate Students by Full and Part-Time by Gender and Race  
Classification: Fall 2017**

	American Indian		Asian		African American		Hispanics		Nat Haw / Pac Isl		Race Unknown		Two or more races		White		Nonresident Alien		Total			
	F	M	F	M	F	M	F	M	F	M	F	M	F	M	F	M	F	M	F	M	Total	
<b>Undergraduate</b>																						
<b>Full-Time</b>																						
First-Time Freshmen															2						2	2
Other Freshmen																						
Sophomores																					1	1
Juniors																1						1
Seniors																						
Special																						
<b>Total Full-Time</b>															1	2					2	4
<b>Total Undergraduate</b>															1	2					2	4
<b>Total All Students</b>															1	2					2	4

**Figure 44: College of Architecture Delivery-Site Head Count: Fall 2006-2017**

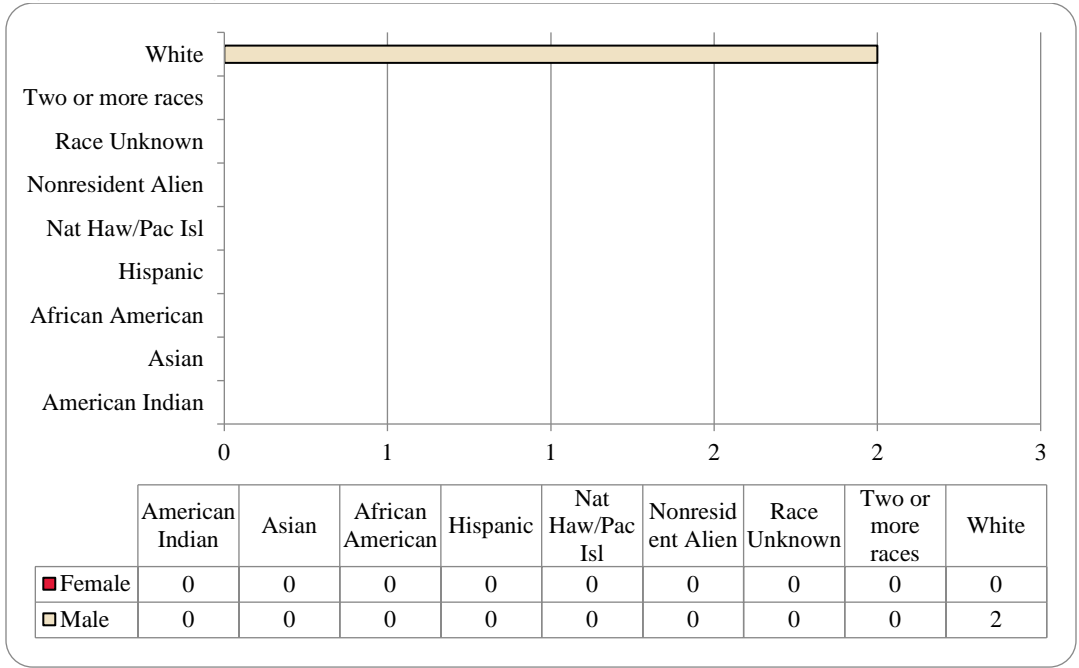


**Figure 45: College of Architecture Delivery-Site Student Credit Hours: Fall 2006-2017**





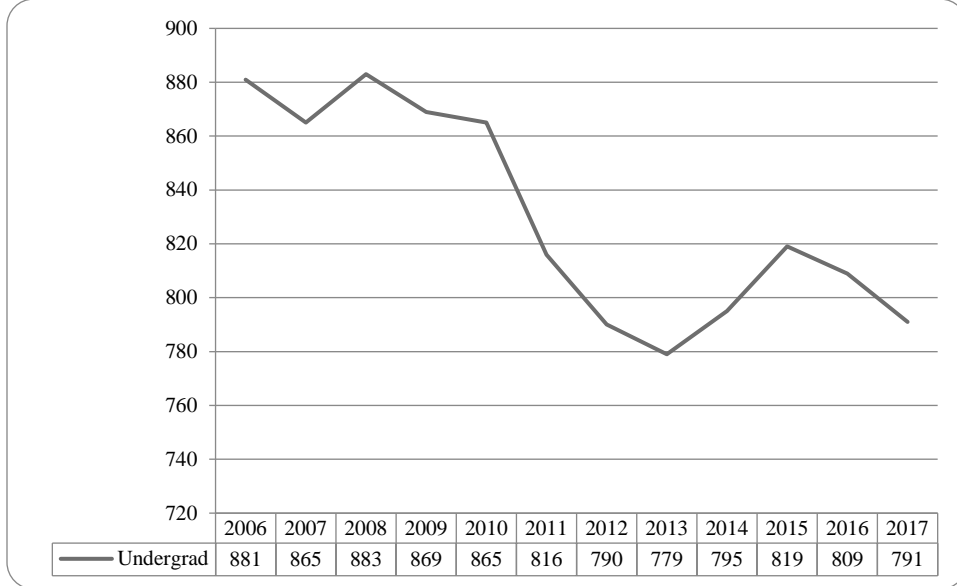
**Figure 46: College of Architecture Delivery-Site Head Count by Ethnicity by Gender: Fall 2017**



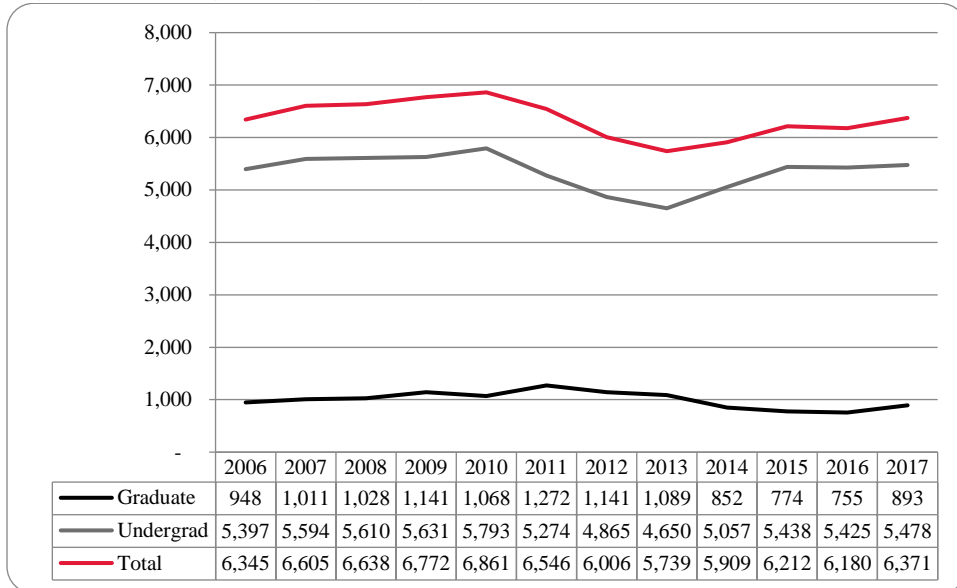
**Table 17: College of Architecture Head Count Summary for Undergraduate Students by Full and Part-Time by Gender and Race Classification: Fall 2017**

	American Indian		Asian		African American		Hispanics		Nat Haw / Pac Isl		Race Unknown		Two or more races		White		Nonresident Alien		Total			
	F	M	F	M	F	M	F	M	F	M	F	M	F	M	F	M	F	M	F	M	Total	
<b>Undergraduate</b>																						
<b>Full-Time</b>																						
First-Time Freshmen																						
Other Freshmen																						
Sophomores																						
Juniors																1					1	1
Seniors																						
Special																						
<b>Total Full-Time</b>																1					1	1
<b>Part-Time</b>																						
First-Time Freshmen																						
Other Freshmen																						
Sophomores																						
Juniors																						
Seniors																						
Special																1					1	1
<b>Total Part-Time</b>																1					1	1
<b>Total Undergraduate</b>																2					2	2
<b>Total All Students</b>																2					2	2

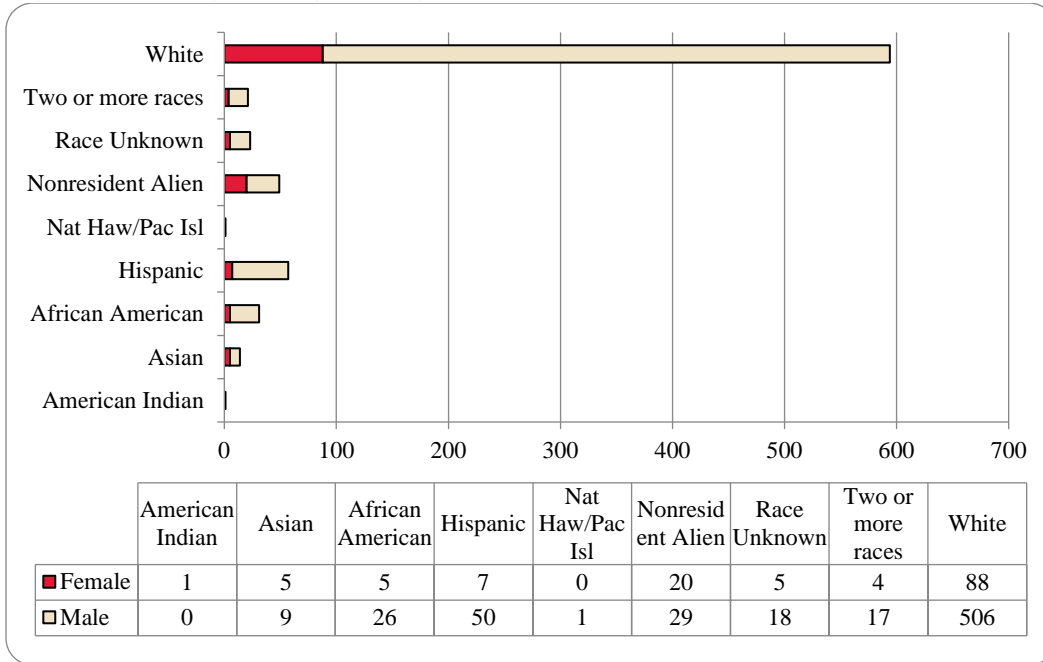
**Figure 47: College of Engineering Delivery-Site Head Count: Fall 2006-2017**



**Figure 48: College of Engineering Delivery-Site Student Credit Hours: Fall 2006-2017**



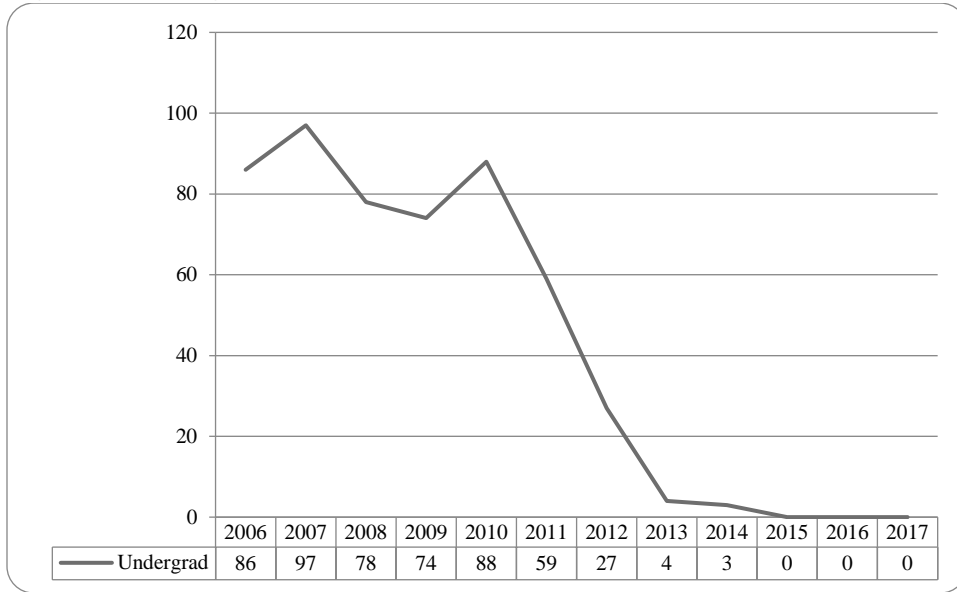
**Figure 49: College of Engineering Delivery-Site Head Count by Ethnicity by Gender: Fall 2017**



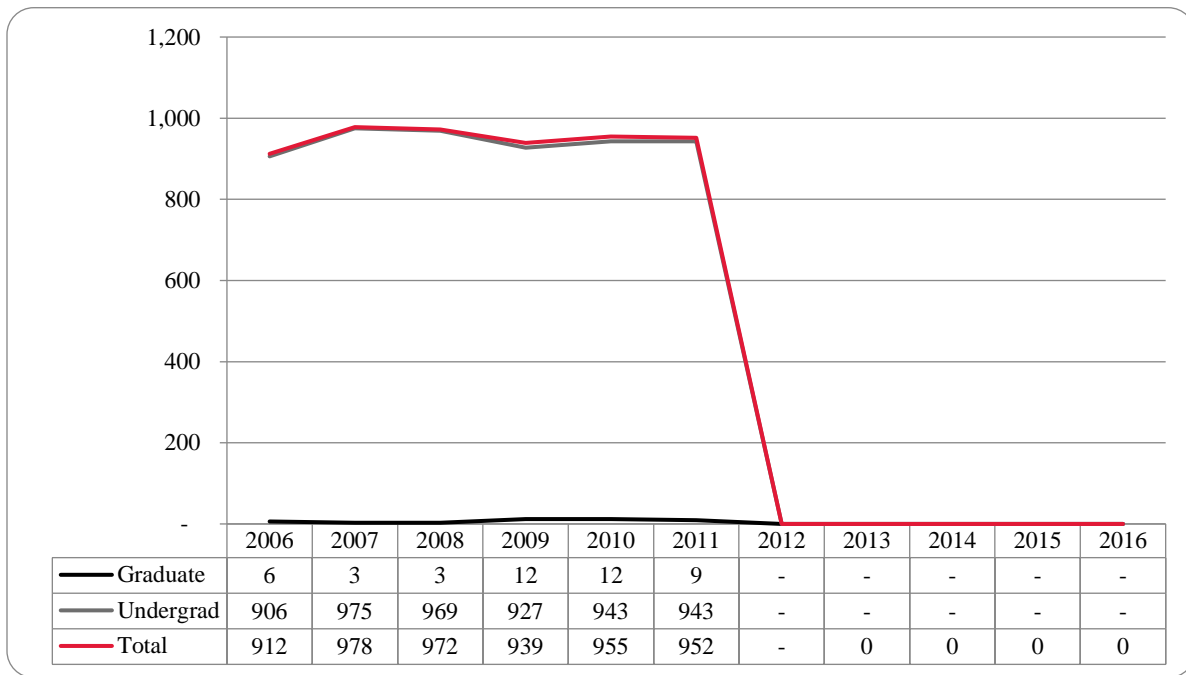
**Table 18: College of Engineering Head Count Summary for Undergraduate Students by Full and Part-Time by Gender and Race Classification: Fall 2017**

	American Indian		Asian		African American		Hispanics		Nat Haw / Pac Isl		Race Unknown		Two or more races		White		Nonresident Alien		Total			
	F	M	F	M	F	M	F	M	F	M	F	M	F	M	F	M	F	M	F	M	Total	
<b>Undergraduate</b>																						
<b>Full-Time</b>																						
First-Time Freshmen			1	2	1	2	2	7			1	2	1	3	15	123		3	21	142	163	
Other Freshmen												1	1		8		5		15	15		
Sophomores				1			1	8				3	1	5	17	86	2	9	21	112	133	
Juniors			3	3	1	2	2	11			1	3	1	4	24	93	7	5	39	121	160	
Seniors	1			1	1	15	1	11			1	4	1	2	22	132	9	5	36	170	206	
Special													1	2	7				2	8	10	
<b>Total Full-Time</b>	1		4	7	3	19	6	37			3	13	4	16	80	449	18	27	119	568	687	
<b>Part-Time</b>																						
First-Time Freshmen																2				2	2	
Other Freshmen				1				1					1	1	2				1	5	6	
Sophomores								3			1	1			3	12			4	16	20	
Juniors						3	1	5		1		1			14				1	24	25	
Seniors			1	1	2	4		4			1	2			4	19	2	2	10	32	42	
Special												1			8					9	9	
<b>Total Part-Time</b>			1	2	2	7	1	13		1	2	5		1	8	57	2	2	16	88	104	
<b>Total Undergraduate</b>	1		5	9	5	26	7	50		1	5	18	4	17	88	506	20	29	135	656	791	
<b>Total All Students</b>	1		5	9	5	26	7	50		1	5	18	4	17	88	506	20	29	135	656	791	

**Figure 50: College of Education and Human Sciences Delivery-Site Head Count: Fall 2006-2017**



**Figure 51: College of Education and Human Sciences Delivery-Site Student Credit Hours: Fall 2006-2017**



## Glossary

The total head count and student credit hours in this enrollment report are provided on both a delivery-site and administrative-site basis. Delivery-site includes enrollment in all courses taught at UNO regardless of “home” campus. This means that student credit hours are reported for courses in the colleges. Student enrollment is counted in the college declared by the student. Specifically, the delivery-site enrollment numbers include students in degree programs in the UNL Colleges of Agriculture, Architecture, Engineering and Technology, and Education and Human Science.

**FIRST-TIME, Entering (freshmen) Student:** Students attending any institution for the first time at the undergraduate level. For students entering the fall term, this includes students enrolled in the fall term who attended college for the first time in the prior summer term. Also included are students who entered with advanced standing, i.e. college credits earned before graduation from high school.

**OTHER FRESHMEN:** At the beginning of the current semester, undergraduate students who (1) are not First-Time Freshmen and (2) have less than 27 semester hours earned from all institutions of higher education attended.

**SOPHOMORES:** At the beginning of the current semester, undergraduate students who have at least 27, but not more than 57, semester hours earned from all institutions of higher education attended.

**JUNIORS:** At the beginning of the current semester, undergraduate students who have at least 58, but not more than 90, semester hours earned from all institutions of higher education attended.

**SENIORS:** At the beginning of the current semester, undergraduate students who have at least 91 semester hours earned from all institutions of higher education attended.

**NON-DEGREE/INTER-CAMPUS/SPECIAL UNDERGRADUATES:** Special undergraduates not pursuing a degree at UNO in various programs: Inter-Campus UNMC, UNK, UNL, and Non-Degree.

**NON-DEGREE/INTER-CAMPUS/SPECIAL GRADUATE STUDENTS:** Special graduate students not pursuing a degree at UNO in various programs: Engineering Transfer Program, Inter-Campus UNMC, UNK, UNL, Inter-Campus UNL Graduate Psychology and Non-Degree.

**MASTERS/SPECIALIST:** Graduate students pursuing a degree less than doctoral.

**CERTIFICATE:** These students are not enrolled in a degree program, but only a certificate.

**DOCTORAL:** Graduate students who have been accepted into a doctoral program.

**FULL-TIME:** In the current semester, undergraduate students enrolled for 12 or more semester hours, or graduate students enrolled for 9 or more semester hours.

**PART-TIME:** In the current semester, undergraduate students enrolled for less than 12 semester hours, or graduate students enrolled for less than 9 semester hours.

**COOPERATIVE GRADUATE PROGRAM:** Graduate students enrolled in Human Resources and Training or Global Information Operations offered cooperatively by two or more colleges.



**OFFICE OF INSTITUTIONAL EFFECTIVENESS**

[www.unomaha.edu/oie/](http://www.unomaha.edu/oie/)

402-554-2367 | 402-554-4896 (Fax)

**T Hank Robinson, Director**

**Jenny Liu, Director Institutional Research**

**Daniel O'Dell, Applications Administrator**

**Andrew Jacobsen, Business Analyst**

**Thomas Walker, Business Analyst**

**Lindsey Bandow, Research Analyst II**

**Jeanie Gutheil-Bykerk, Research Analyst**