

Summer 2017

Enrollment Report - Summer 2017

UNO Office of Institutional Effectiveness
University of Nebraska at Omaha

Follow this and additional works at: <https://digitalcommons.unomaha.edu/oieenrollment>

 Part of the [Educational Assessment, Evaluation, and Research Commons](#), and the [Higher Education Commons](#)

Please take our feedback survey at: https://unomaha.az1.qualtrics.com/jfe/form/SV_8cchtFmpDyGfBLE

Recommended Citation

Office of Institutional Effectiveness, UNO, "Enrollment Report - Summer 2017" (2017). *Enrollment Reports*. 109.

<https://digitalcommons.unomaha.edu/oieenrollment/109>

This Report is brought to you for free and open access by the Systems Intelligence and Data Analytics (SIDA) at DigitalCommons@UNO. It has been accepted for inclusion in Enrollment Reports by an authorized administrator of DigitalCommons@UNO. For more information, please contact unodigitalcommons@unomaha.edu.

OFFICE OF INSTITUTIONAL EFFECTIVENESS

ENROLLMENT PROFILE REPORT

SUMMER 2017



UNIVERSITY OF
Nebraska
Omaha



Contents

Executive Summary.....	1
Table 1: UNO Delivery and Administrative-Site Head Count Enrollment and Comparison: Summer 2017 .	2
Figure 1: Delivery-Site & Administrative-Site Head Count Enrollment: Summer 2001-2017.....	3
Figure 2: UNO Delivery-Site Head Count by Student Level: Summer 2006-2017.....	4
Figure 3: UNO Delivery-Site Student Credit Hours by Student Level: Summer 2006-2017.....	4
Figure 4: UNO Delivery-Site Head Count by Ethnicity by Gender: Summer 2017	5
Table 2: Total UNO Delivery-Site Head Count Summary for Undergraduate and Graduate Students Full and Part-Time by Gender and Race Classification: Summer 2017	6
Figure 5: UNO Administrative-Site Head Count by Student Level: Summer 2006-2017	7
Figure 6: UNO Administrative-Site Student Credit Hours: Summer 2006-2017	7
Figure 7: UNO Administrative-Site Head Count by Ethnicity by Gender: Summer 2017.....	8
Table 3: Total UNO Administrative-Site Head Count Summary for Undergraduate and Graduate Students by Full and Part-Time by Gender and Race Classification: Summer 2017	9
Figure 8: College of Arts & Sciences Head Count: Summer 2006-2017.....	10
Figure 9: College of Arts & Sciences Student Credit Hours: Summer 2006-2017.....	10
Figure 10: College of Arts & Sciences Head Count by Ethnicity by Gender: Summer 2017	11
Table 4: College of Arts & Sciences Head Count Summary for Undergraduate and Graduate Students by Full and Part-Time by Gender and Race Classification: Summer 2017.....	12
Figure 11: College of Business Administration Head Count: Summer 2006-2017.....	13
Figure 12: College of Business Administration Student Credit Hours: Summer 2006-2017.....	13
Figure 13: College of Business Administration Head Count by Ethnicity by Gender: Summer 2017	14
Table 5: College of Business Administration Head Count Summary for Undergraduate and Graduate Students by Full and Part-Time by Gender and Race Classification: Summer 2017.....	15
Figure 14: College of Communication, Fine Arts and Media Delivery and Administration-Site Head Count: Summer 2006-2017	16
Figure 15: College of Communication, Fine Arts and Media Administrative-Site Student Credit Hours: Summer 2006-2017	16
Figure 16: College of Communication, Fine Arts and Media Delivery-Site Head Count by Ethnicity by Gender: Summer 2017.....	17
Table 6: College of Communication, Fine Arts and Media Delivery and Administrative Site Head Count Summary for Undergraduate and Graduate Students by Full and Part-Time by Gender and Race Classification: Summer 2017.....	18

Figure 17: College of Education Head Count: Summer 2006-2017	19
Figure 18: College of Education Student Credit Hours: Summer 2006-2017	19
Figure 19: College of Education Head Count by Ethnicity by Gender: Summer 2017	20
Table 7: College of Education Head Count Summary for Undergraduate and Graduate Summary for Full and Part-Time by Gender and Race Classification: Summer 2017	21
Figure 20: College of Information Science & Technology Head Count: Summer 2006-2017	22
Figure 21: College of Information Science & Technology Student Credit Hours: Summer 2006-2017	22
Figure 22: College of Information Science & Technology Head Count by Ethnicity by Gender: Summer 2017	23
Table 8: College of Information Science and Technology Head Count Summary for Undergraduate and Graduate Students for Full and Part-Time by Gender and Race Classification: Summer 2017	24
Figure 23: College of Public Affairs & Community Service Delivery-Site Head Count: Summer 2006-2017	25
Figure 24: College of Public Affairs & Community Service Delivery-Site Student Credit Hours: Summer 2006-2017	25
Figure 25: College of Public Affairs & Community Service Delivery-Site Head Count by Ethnicity by Gender: Summer 2017	26
Table 9: College of Public Affairs and Community Service Delivery-Site Head Count for Undergraduate and Graduate Students by Full and Part-Time by Gender and Race Classification: Summer 2017	27
Figure 26: College of Public Affairs & Community Service Administrative-Site Head Count: Summer 2006-2017	28
Figure 27: College of Public Affairs & Community Service Administrative-Site Student Credit Hours: Summer 2006-2017	28
Figure 28: College of Public Affairs & Community Service Administrative-Site Head Count by Ethnicity by Gender: Summer 2017	29
Table 10: College of Public Affairs & Community Service Administrative-Site Head Count Summary for Undergraduate and Graduate Students by Full and Part-Time by Gender and Race Classification: Summer 2017	30
Figure 29: College of CPACS, Division of Continuing Studies Head Count: Summer 2006-2017	31
Table 11: College of CPACS Division of Continuing Studies Head Count Summary for Undergraduate Students by Full and Part-Time by Gender and Race Classification: Summer 2017	32
Figure 30: University Division Head Count: Summer 2006-2017	33
Figure 32: University Division Head Count by Ethnicity by Gender: Summer 2017	33
Table 12: University Division Head Count Summary for Undergraduate Students by Full and Part-Time by Gender and Race Classification: Summer 2017	34
Figure 33: Non-Degree/Intercampus Special Undergraduate Students Head Count: Summer 2006-2017	35

Figure 34: Non-Degree/Intercampus Special Undergraduate Students Head Count by Ethnicity by Gender: Summer 2017	35
Table 13: Non-Degree/Intercampus Head Count Summary for Special Undergraduate Students by Full and Part-Time by Gender and Race Classification: Summer 2017	36
Figure 35: Non-Degree/Intercampus Special Graduate Students Head Count: Summer 2006-2017	37
Figure 36: Non-Degree/Intercampus Special Graduate Students Head Count by Ethnicity by Gender: Summer 2017	37
Table 14: Non-Degree/Intercampus Head Count Summary for Special Graduate Students by Full and Part-Time by Gender and Race Classification: Summer 2017	38
Table 15: Cooperative Graduate Program Head Count Summary for Graduate Students by Full and Part-Time by Gender and Race Classification: Summer 2017	39
Figure 37: Other Honors Student Credit Hours by Level of Instruction: Summer 2017	40
Figure 38: College of Agriculture Delivery-Site Head Count: Summer 2017	41
Figure 39: College of Agriculture Delivery-Site Student Credit Hours: Summer 2006-2017	41
Table 16: College of Agriculture Head Count Summary for Undergraduate Students by Full and Part-Time by Gender and Race Classification: Summer 2017	42
Figure 40: College of Architecture Delivery-Site Head Count: Summer 2006-2017	43
Table 17: College of Architecture Head Count Summary for Undergraduate Students by Full and Part-Time by Gender and Race Classification: Summer 2017	44
Figure 41: College of Engineering Delivery-Site Head Count: Summer 2006-2017	45
Figure 42: College of Engineering Delivery-Site Student Credit Hours: Summer 2006-2017	45
Table 18: College of Engineering Head Count Summary for Undergraduate Students by Full and Part-Time by Gender and Race Classification: Summer 2017	46
Figure 43: College of Education and Human Sciences Delivery-Site Head Count: Summer 2006-2017.....	47
Figure 44: College of Education and Human Sciences Delivery-Site Student Credit Hours: Summer 2006-2017	47
GLOSSARY.....	48

Executive Summary

This Enrollment Statistical Summary provides delivery-site information. Administrative-site headcounts, since they are most closely related to the budgetary authority exercised by the campus, are officially reported to the Board of Regents. Delivery site reporting counts all students, including those in UNL programs delivered at UNO, but excludes UNO programs delivered in Lincoln (CPACS programs). Administrative-site reporting counts students enrolled in UNO programs only (including the CPACS programs delivered in Lincoln).

The Office of Institutional Effectiveness has found delivery-site counts to be the most frequently requested figured by campus units for academic and administrative planning purposes. The purpose of this summary is to provide the undergraduate and graduate enrollments and student credit hour information by college or equivalent academic unit.

A glossary at the end of the report provides a list of definitions for headings and categories found in the report.

Summer 2017 Delivery-Site Campus Summary

A campus summary of changes in delivery-site head count enrollment and student credit hours compared to the summer 2016 is below.

- Summer 2017 head count enrollment 7,394, a 2.7% increase compared to the summer 2016 enrollment of 7,202 (see Figure 1).
- Summer 2017 undergraduate head count enrollment is 5,507, a 1.8% increase compared to the summer 2016 enrollment of 5,408 (see Figure 2).
- Summer 2017 graduate head count enrollment is 1,887, a 5.2% increase compared to the summer 2016 enrollment of 1,794 (see Figure 2).
- Summer 2017 student credit hours are 42,078, a 4.1% increase compared to the summer 2016 credit hours of 40,416 (see Figure 3).
- Summer 2017 undergraduate credit hours are 32,583, up from summer 2016 by 3.1% (see Figure 3).
- Summer 2017 graduate credit hours are 9,495, up from summer 2016 by 7.7% (see Figure 3).

Administrative-Site

- Summer 2017 administrative-site head count enrollment is 7,201, a 3.3% increase from the previous summer and administrative-site credit hours are 42,335, up 4.9% (see Figures 5 & 6).

**Table 1: UNO Delivery and Administrative-Site Head Count Enrollment and Comparison:
Summer 2017**

	Summer 2017		Summer 2016	Summer 16-17 Administrative-Site	
	Delivery-Site	Administrative-Site	Administrative-Site	Numerical Change	Percent Change
UNO:					
<i>Undergraduate</i>					
Arts & Science	1,270	1,270	1,226	44	3.6%
Business Administration	984	984	966	18	1.9%
Communication, Fine Arts & Media	311	311	328	-17	-5.2%
Education	586	586	560	26	4.6%
Information Science and Technology	432	432	380	52	13.7%
Public Affairs & Community Services	449	580	514	66	12.8%
Division of Continuing Studies	560	560	633	-73	-11.5%
Sub-total CPACS including Cont. Studies	1,009	1,140	1,147	-7	-0.6%
Non-Degree	467	467	467	0	0.0%
University Division	124	124	100	24	24.0%
Total Undergraduate	5,183	5,314	5,174	140	2.7%
<i>Graduate</i>					
Arts & Science	208	208	195	13	6.7%
Business Administration	214	214	190	24	12.6%
Communication, Fine Arts & Media	27	27	34	-7	-20.6%
Education	710	710	750	-40	-5.3%
Information Science and Technology	212	212	189	23	12.2%
Public Affairs & Community Services	340	340	278	62	22.3%
New Cooperative Graduate Programs	4	4			
Undeclared	172	172	158	14	8.9%
Total Graduate	1,887	1,887	1,794	93	5.2%
<i>UNO Administrative-Site Total</i>		7,201	6,968	233	3.3%
UNL:	Summer 2017		Summer 2016	Numerical Change	Percent Change
Agriculture	1		2		
Architecture	1		2		
Engineering & Technology	322		334		
Education and Human Science	0		0		
Total UNL in Omaha	324		338	-14	-4.1%
	Summer 2017		Summer 2016	Numerical Change	Percent Change
<i>UNO Delivery-Site Total</i>	7,394		7,202	192	2.7%

Figure 1: Delivery-Site & Administrative-Site Head Count Enrollment: Summer 2001-2017

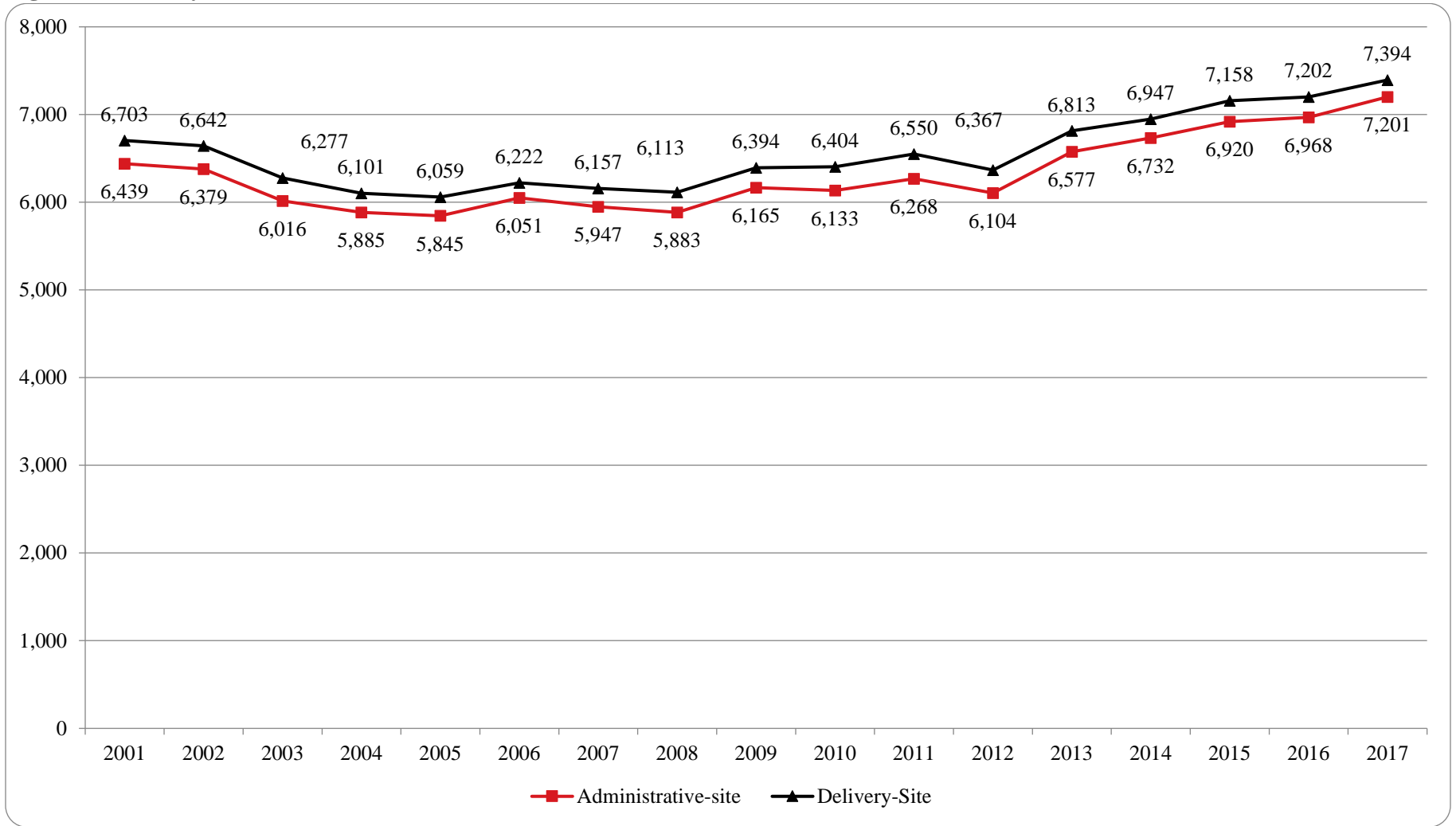


Figure 2: UNO Delivery-Site Head Count by Student Level: Summer 2006-2017

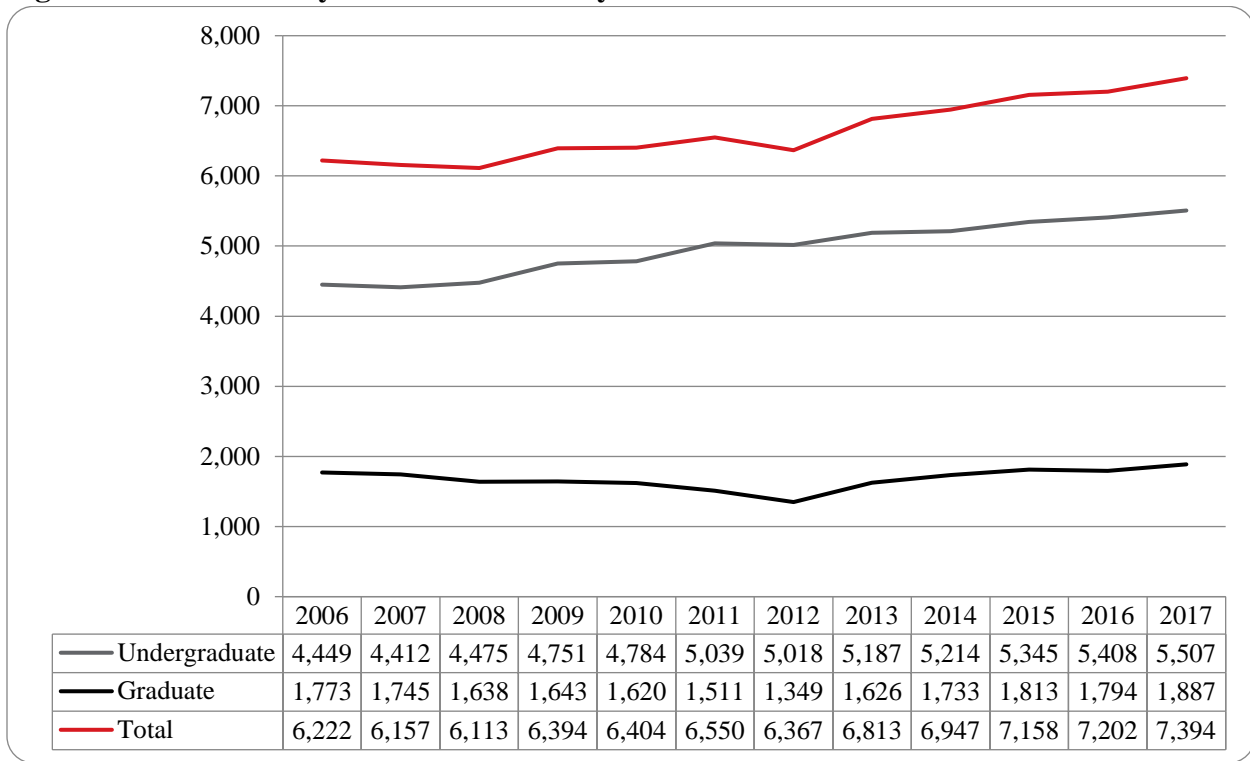


Figure 3: UNO Delivery-Site Student Credit Hours by Student Level: Summer 2006-2017

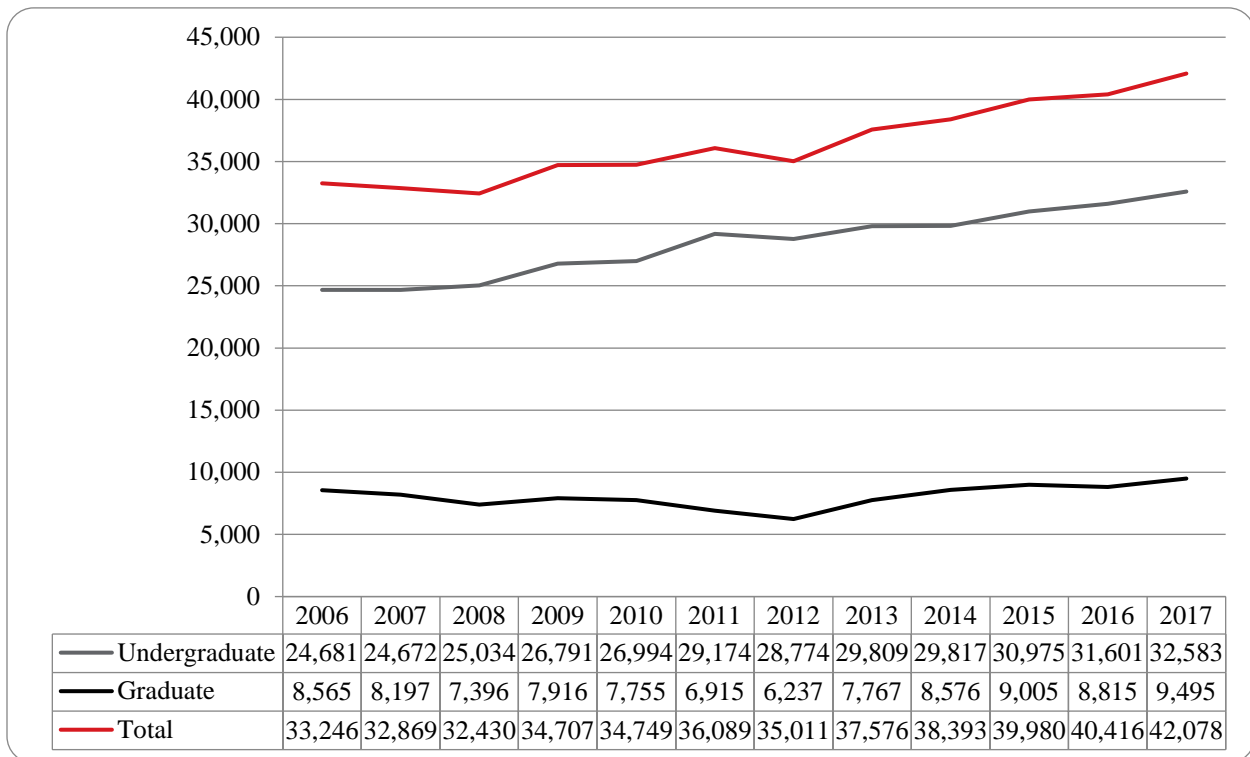


Figure 4: UNO Delivery-Site Head Count by Ethnicity by Gender: Summer 2017

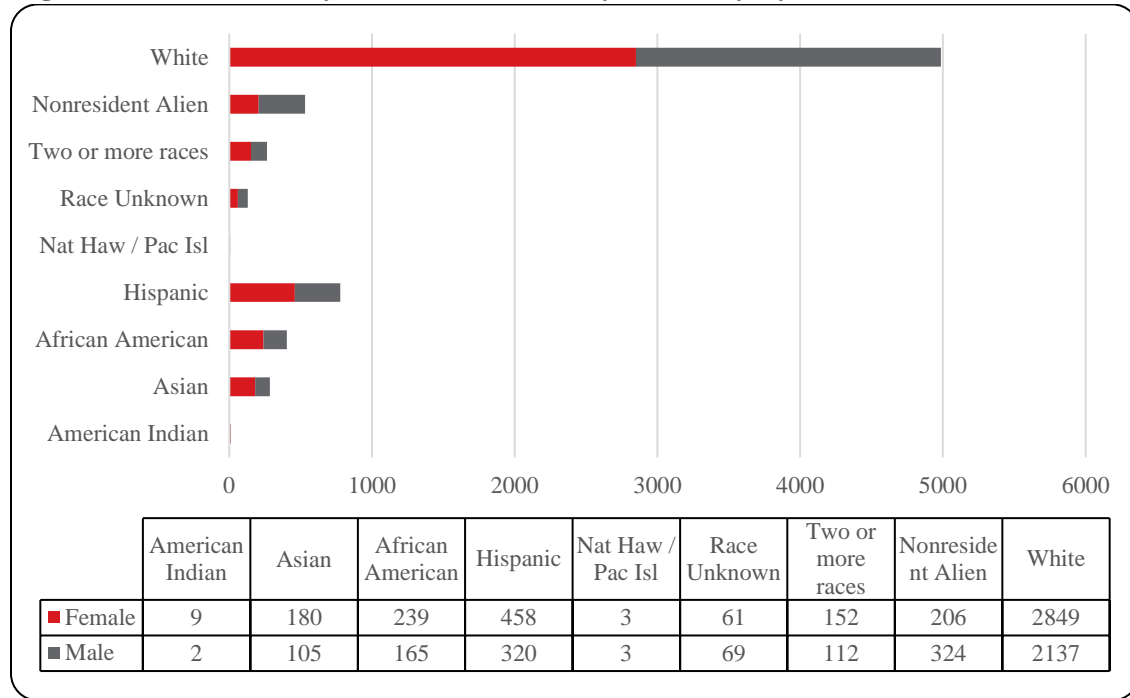


Table 2: Total UNO Delivery-Site Head Count Summary for Undergraduate and Graduate Students Full and Part-Time by Gender and Race Classification: Summer 2017

	American Indian		Asian		African American		Hispanics		Nat Haw / Pac Isl		Race Unknown		Two or more races		White		Nonresident Alien		Total			
	F	M	F	M	F	M	F	M	F	M	F	M	F	M	F	M	F	M	F	M	Total	
Undergraduate																						
Full-Time																						
First-Time Freshmen																2					2	2
Other Freshmen			1		2	2							1	10	10					13	13	26
Sophomores					2	3	6	3			2		5	2	19	13	2	4		36	25	61
Juniors			1	2	5	7	11	7			1	1	7	3	34	35	2	5		61	60	121
Seniors	1		1	1	8	5	15	10				1	2	4	62	62	8	8		97	91	188
Special						1							1	1	4		1			2	6	8
Total Full-Time	1		3	3	17	18	32	20			3	2	14	11	126	126	13	17		209	197	406
Part-Time																						
First-Time Freshmen			2		1								1	1	8	3	2	2		14	6	20
Other Freshmen			26	12	27	12	73	41			2	4	14	13	206	153	16	36		364	271	635
Sophomores	2		32	19	39	11	75	57			10	8	25	17	330	259	17	47		530	418	948
Juniors	2	1	48	20	48	38	89	75	2	1	11	20	29	27	513	466	26	56		768	704	1,472
Seniors	3	1	41	27	59	55	114	89		2	20	22	35	27	622	638	42	55		936	916	1,852
Special			9	2	1	8	6	8			2	2	2	2	60	68	4			84	90	174
Total Part-Time	7	2	158	80	175	124	357	270	2	3	45	56	106	87	1,739	1,587	107	196		2,696	2,405	5,101
Total Undergraduate	8	2	161	83	192	142	389	290	2	3	48	58	120	98	1,865	1,713	120	213		2,905	2,602	5,507
Graduate																						
Full-Time																						
Certificate																						
Masters			1	3	11	3	9	2	1		2	1	10	3	189	38	5	4		228	54	282
Doctoral							1								3					4		4
Special Graduate					2	1		1							12	5		1		14	8	22
Total Full-Time			1	3	13	4	10	3	1		2	1	10	3	204	43	5	5		246	62	308
Part-Time																						
Certificate				1	1		2	2				1			13	10	2	1		18	15	33
Masters	1		14	17	26	16	45	24			9	8	20	10	586	281	70	85		771	441	1,212
Doctoral			3		1	1	1						1	1	32	16	3	6		41	24	65
Special Graduate			1	1	6	2	11	1			2	1	1		149	74	6	14		176	93	269
Total Part-Time	1		18	19	34	19	59	27			11	10	22	11	780	381	81	106		1,006	573	1,579
Total Graduate	1		19	22	47	23	69	30	1		13	11	32	14	984	424	86	111		1,252	635	1,887
Total All Students	9	2	180	105	239	165	458	320	3	3	61	69	152	112	2,849	2,137	206	324		4,157	3,237	7,394

Figure 5: UNO Administrative-Site Head Count by Student Level: Summer 2006-2017

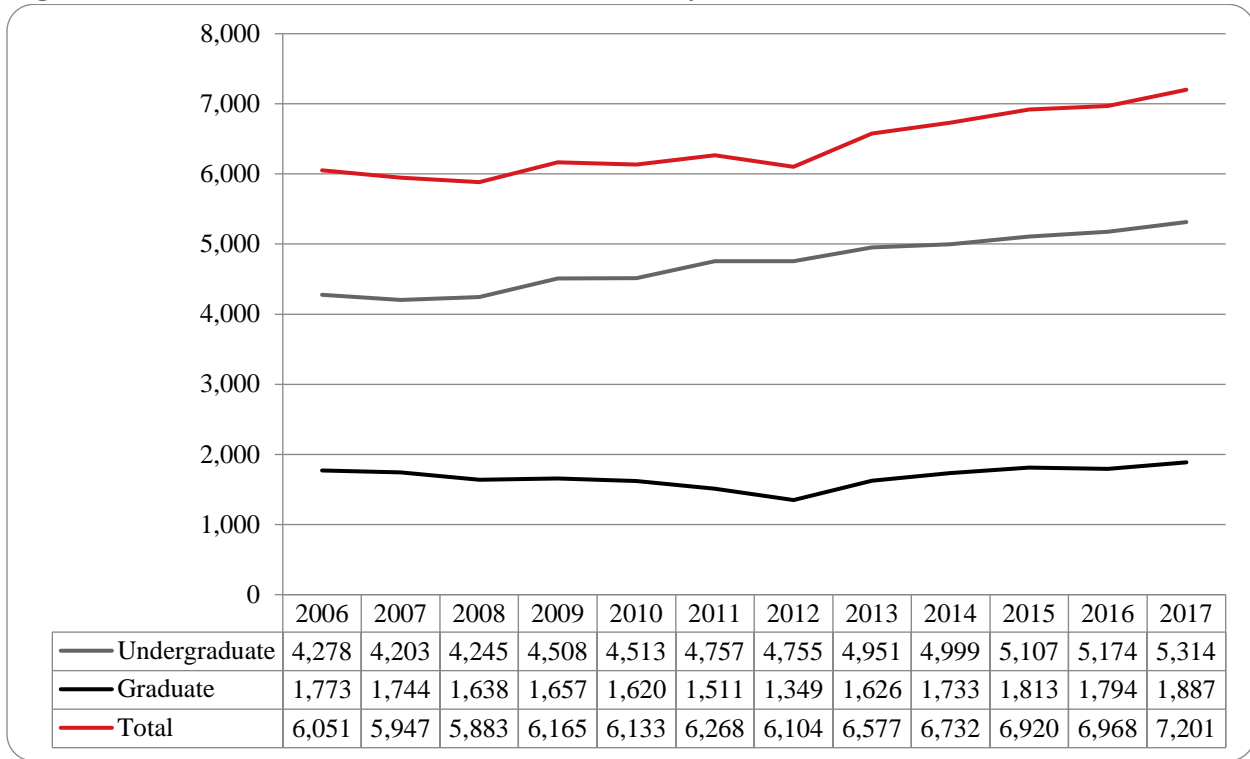


Figure 6: UNO Administrative-Site Student Credit Hours: Summer 2006-2017

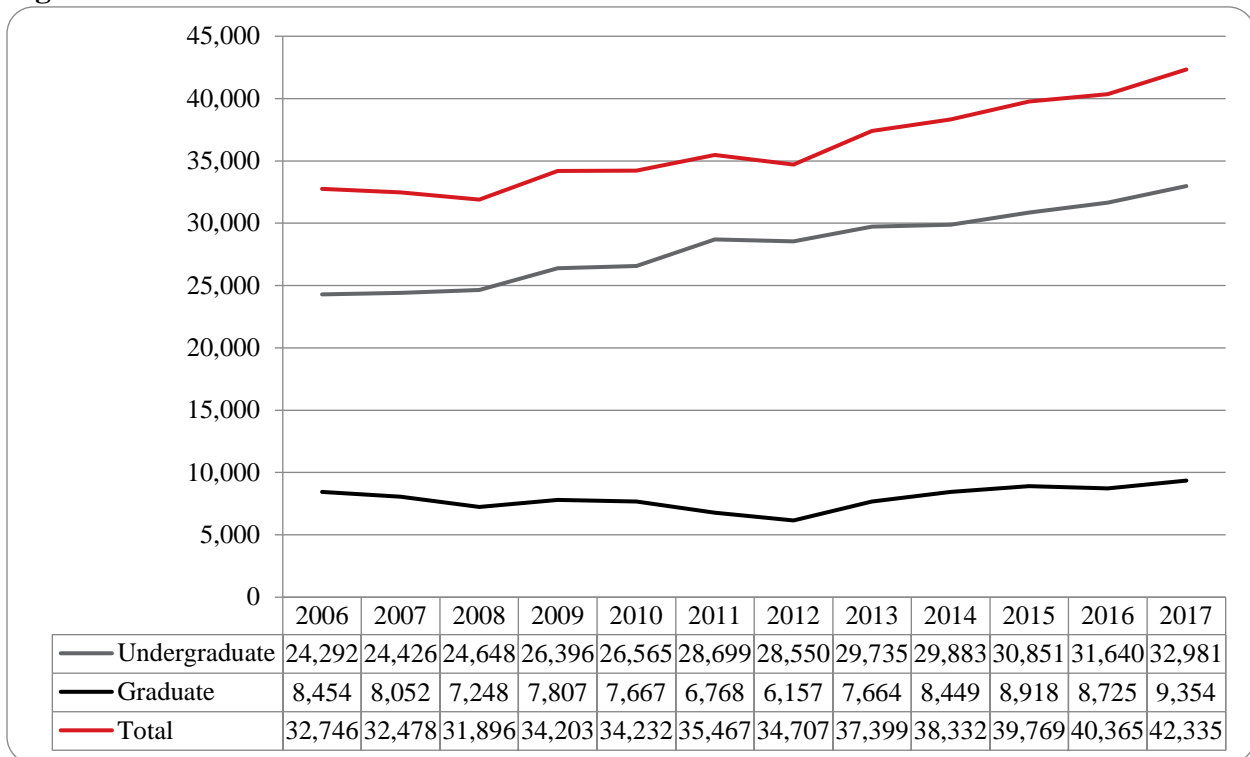


Figure 7: UNO Administrative-Site Head Count by Ethnicity by Gender: Summer 2017

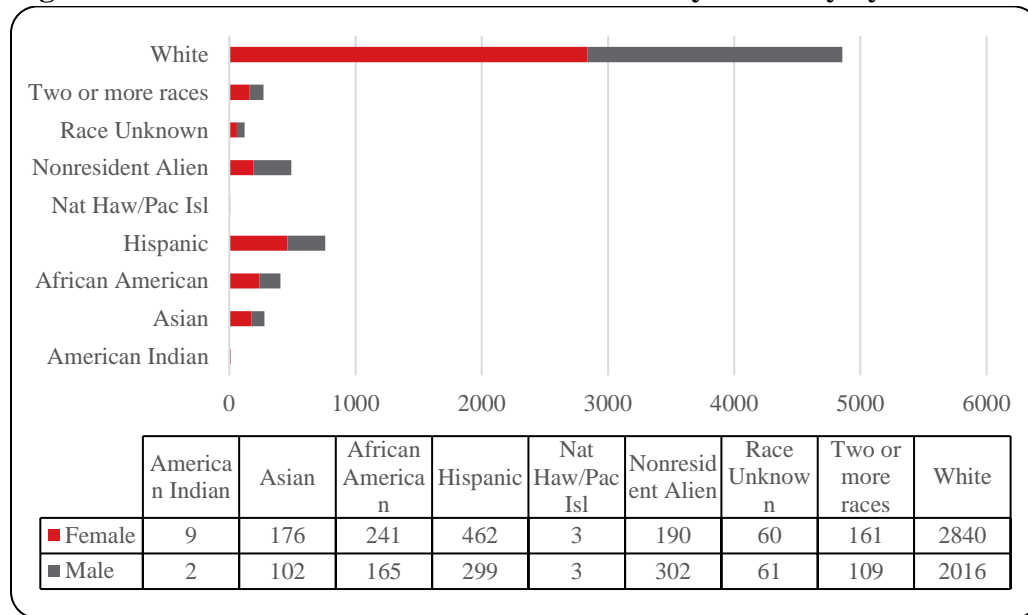


Table 3: Total UNO Administrative-Site Head Count Summary for Undergraduate and Graduate Students by Full and Part-Time by Gender and Race Classification: Summer 2017

	American Indian		Asian		African American		Hispanics		Nat Haw / Pac Isl		Race Unknown		Two or more races		White		Nonresident Alien		Total			
	F	M	F	M	F	M	F	M	F	M	F	M	F	M	F	M	F	M	F	M	Total	
Undergraduate																						
Full-Time																						
First-Time Freshmen																2					2	2
Other Freshmen			1		2	2							1	10	10					13	13	26
Sophomores					2	3	6	3			2		5	2	19	13	2	4	36	25	61	
Juniors			1	2	5	7	11	7			1		7	3	36	32	2	5	63	56	119	
Seniors	1		1	1	7	5	15	10			1		3	5	59	61	7	8	93	91	184	
Special						1									1	4	1		2	5	7	
Total Full-Time	1		3	3	16	18	32	20			3	1	15	11	125	122	12	17	207	192	399	
Part-Time																						
First-Time Freshmen			2		1	1							2	1	8	3	2	2	15	7	22	
Other Freshmen			26	12	27	12	73	41			2	4	15	12	206	150	16	31	365	262	627	
Sophomores	2		32	18	41	14	75	51			9	6	27	16	329	230	14	39	529	374	903	
Juniors	2	1	45	18	48	38	92	68	2	1	11	16	31	25	506	424	21	51	758	642	1,400	
Seniors	3	1	40	27	60	51	115	82		2	20	21	37	28	622	599	35	51	932	862	1,794	
Special			9	2	1	8	6	7			2	2	2	2	60	64	4		84	85	169	
Total Part-Time	7	2	154	77	178	124	361	249	2	3	44	49	114	84	1,731	1,470	92	174	2,683	2,232	4,915	
Total Undergraduate	8	2	157	80	194	142	393	269	2	3	47	50	129	95	1,856	1,592	104	191	2,890	2,424	5,314	
Graduate																						
Full-Time																						
Certificate																						
Masters			1	3	11	3	9	2	1		2	1	10	3	189	38	5	4	228	54	282	
Doctoral							1								3				4		4	
Special Graduate					2	1		1							12	5		1	14	8	22	
Total Full-Time			1	3	13	4	10	3	1		2	1	10	3	204	43	5	5	246	62	308	
Part-Time																						
Certificate				1	1		2	2				1			13	10	2	1	18	15	33	
Masters	1		14	17	26	16	45	24			9	8	20	10	586	281	70	85	771	441	1,212	
Doctoral			3		1	1	1						1	1	32	16	3	6	41	24	65	
Special Graduate			1	1	6	2	11	1			2	1	1		149	74	6	14	176	93	269	
Total Part-Time	1		18	19	34	19	59	27			11	10	22	11	780	381	81	106	1,006	573	1,579	
Total Graduate	1		19	22	47	23	69	30	1		13	11	32	14	984	424	86	111	1,252	635	1,887	
Total All Students	9	2	176	102	241	165	462	299	3	3	60	61	161	109	2,840	2,016	190	302	4,142	3,059	7,201	

Figure 8: College of Arts & Sciences Head Count: Summer 2006-2017

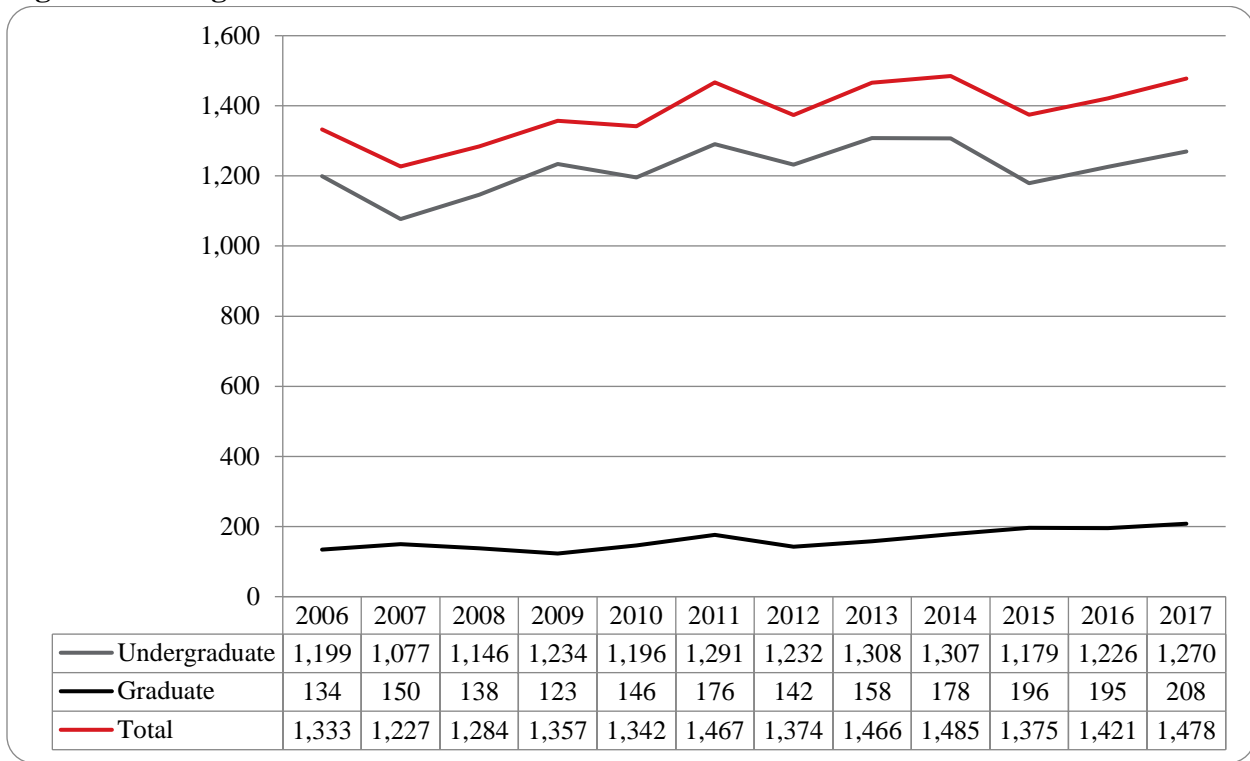


Figure 9: College of Arts & Sciences Student Credit Hours: Summer 2006-2017

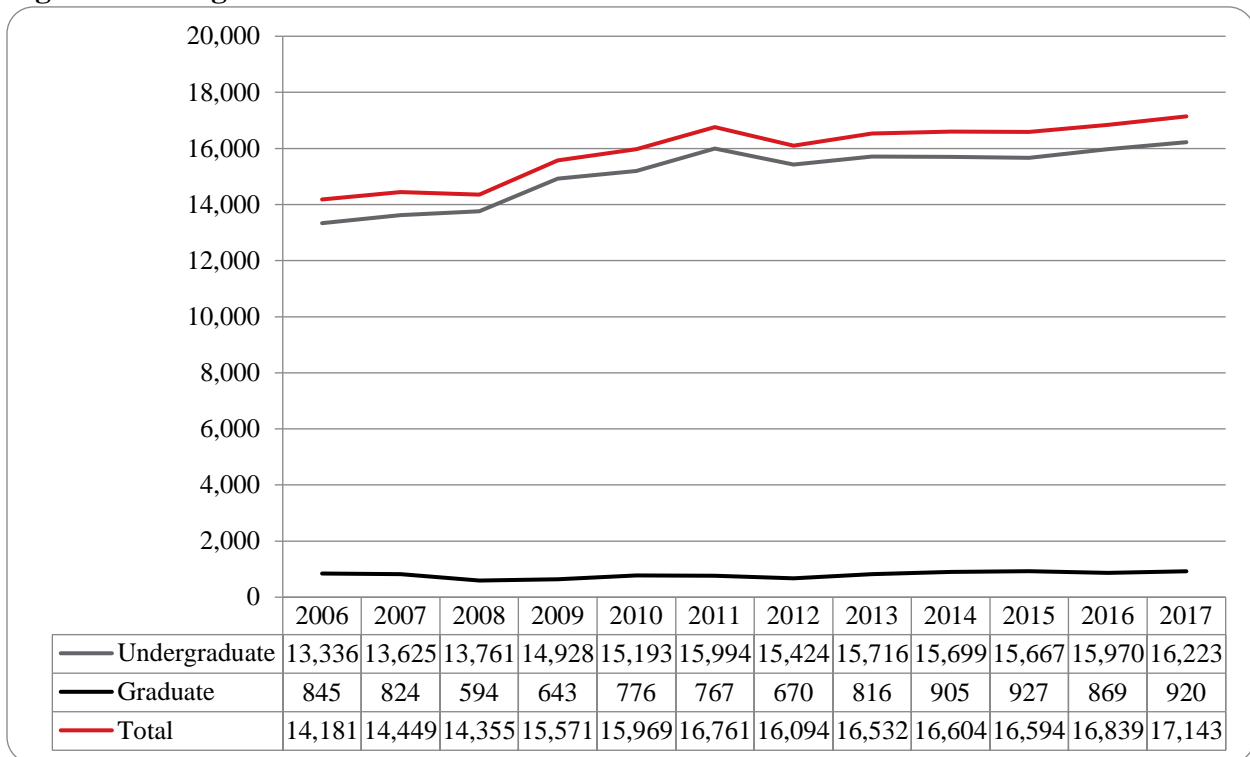


Figure 10: College of Arts & Sciences Head Count by Ethnicity by Gender: Summer 2017

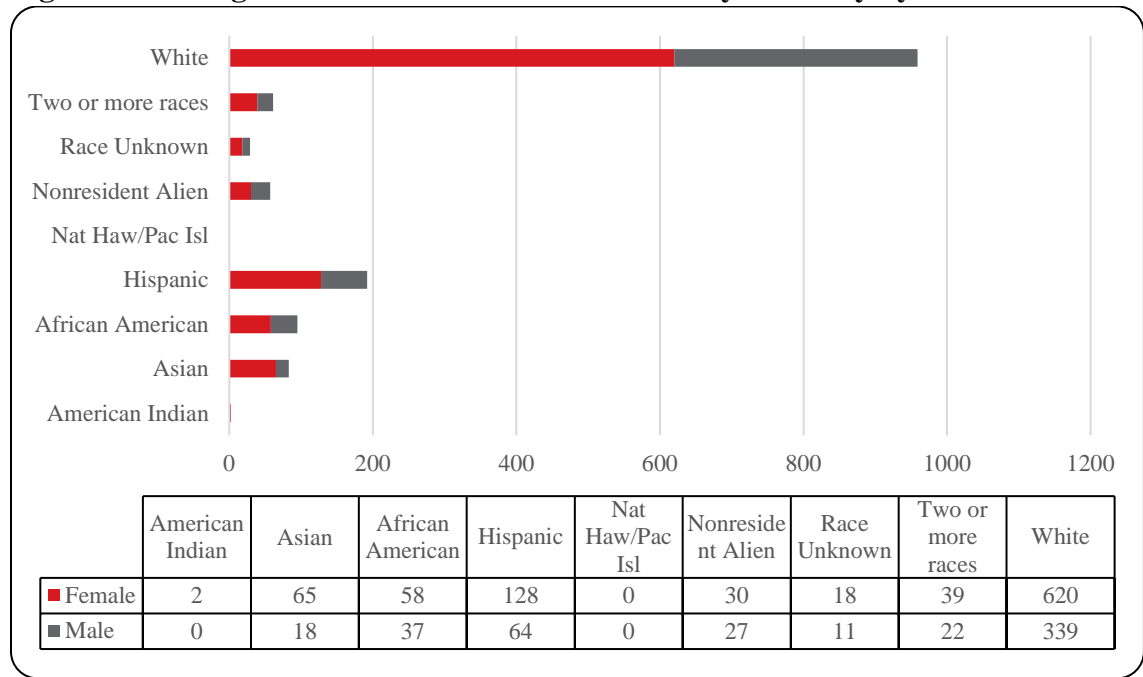


Table 4: College of Arts & Sciences Head Count Summary for Undergraduate and Graduate Students by Full and Part-Time by Gender and Race Classification: Summer 2017

	American Indian		Asian		African American		Hispanics		Nat Haw / Pac Isl		Race Unknown		Two or more races		White		Nonresident Alien		Total			
	F	M	F	M	F	M	F	M	F	M	F	M	F	M	F	M	F	M	F	M	Total	
Undergraduate																						
Full-Time																						
First-Time Freshmen																						
Other Freshmen			1			1									1	4				2	5	7
Sophomores						1		3			2		4		9	4		2		19	6	25
Juniors			1		3	4	5	1		1		4		9	10	1			24	15	39	
Seniors					2	1	3	2				1	17	8	1	1			23	13	36	
Special						1									1					2	2	
Total Full-Time			2		6	7	11	3		3		8	1	36	27	2	3		68	41	109	
Part-Time																						
First-Time Freshmen			1												2	1				3	1	4
Other Freshmen			7	3	2	1	5	7			1	1	1	25	8	4	5		44	26	70	
Sophomores			14	6	12	2	32	11			2		9	5	117	43	4	2	190	69	259	
Juniors	1		23	4	18	11	38	17			5	3	7	6	150	72	9	10	251	123	374	
Seniors	1		15	4	17	11	33	22			6	5	8	8	167	107	5	3	252	160	412	
Special			2		1		2						1		16	19	1		23	19	42	
Total Part-Time	2		62	17	50	25	110	57			13	9	26	20	477	250	23	20	763	398	1,161	
Total Undergraduate	2		64	17	56	32	121	60			16	9	34	21	513	277	25	23	831	439	1,270	
Graduate																						
Full-Time																						
Certificate																						
Masters							1						2		6	8				9	8	17
Doctoral																						
Special Graduate																						
Total Full-Time							1						2		6	8				9	8	17
Part-Time																						
Certificate							1								2	3				3	3	6
Masters				1	2	5	5	4			2	2	3	1	99	50	5	4	116	67	183	
Doctoral			1												1				1	1	2	
Special Graduate																						
Total Part-Time			1	1	2	5	6	4			2	2	3	1	101	54	5	4	120	71	191	
Total Graduate			1	1	2	5	7	4			2	2	5	1	107	62	5	4	129	79	208	
Total All Students	2		65	18	58	37	128	64			18	11	39	22	620	339	30	27	960	518	1,478	

Figure 11: College of Business Administration Head Count: Summer 2006-2017

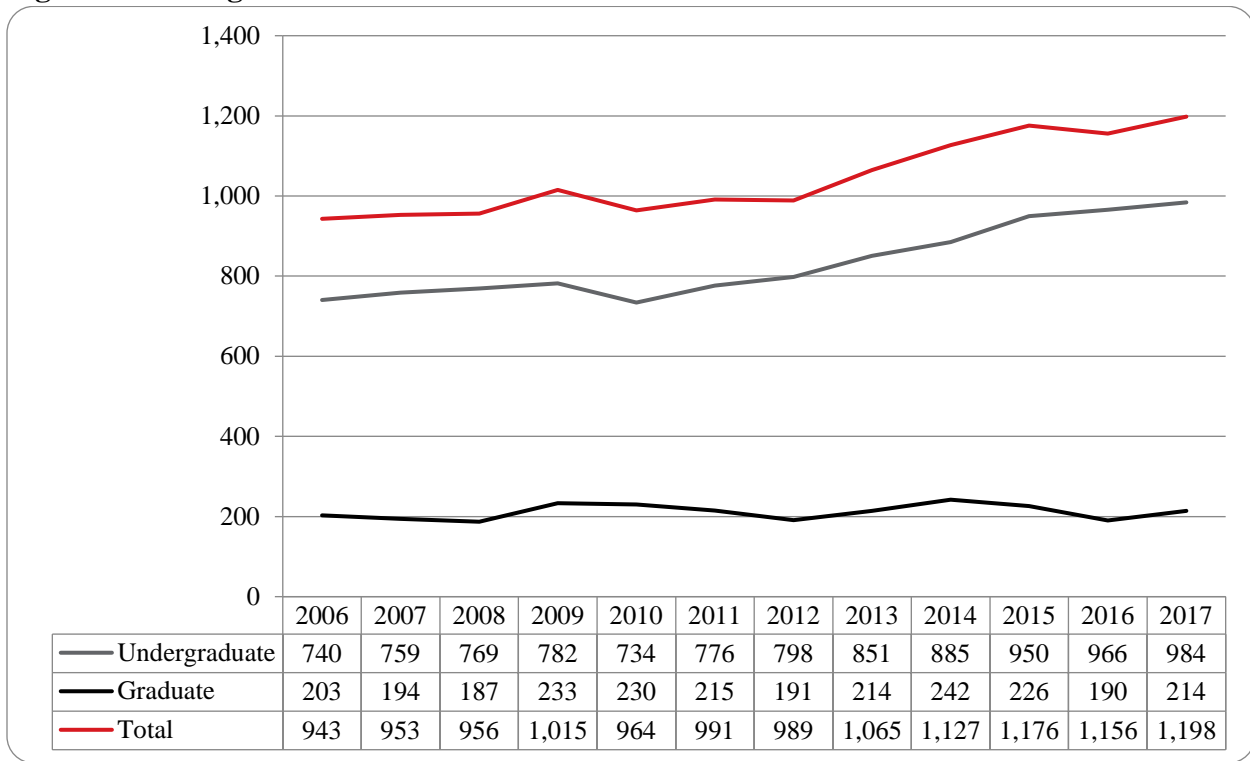


Figure 12: College of Business Administration Student Credit Hours: Summer 2006-2017

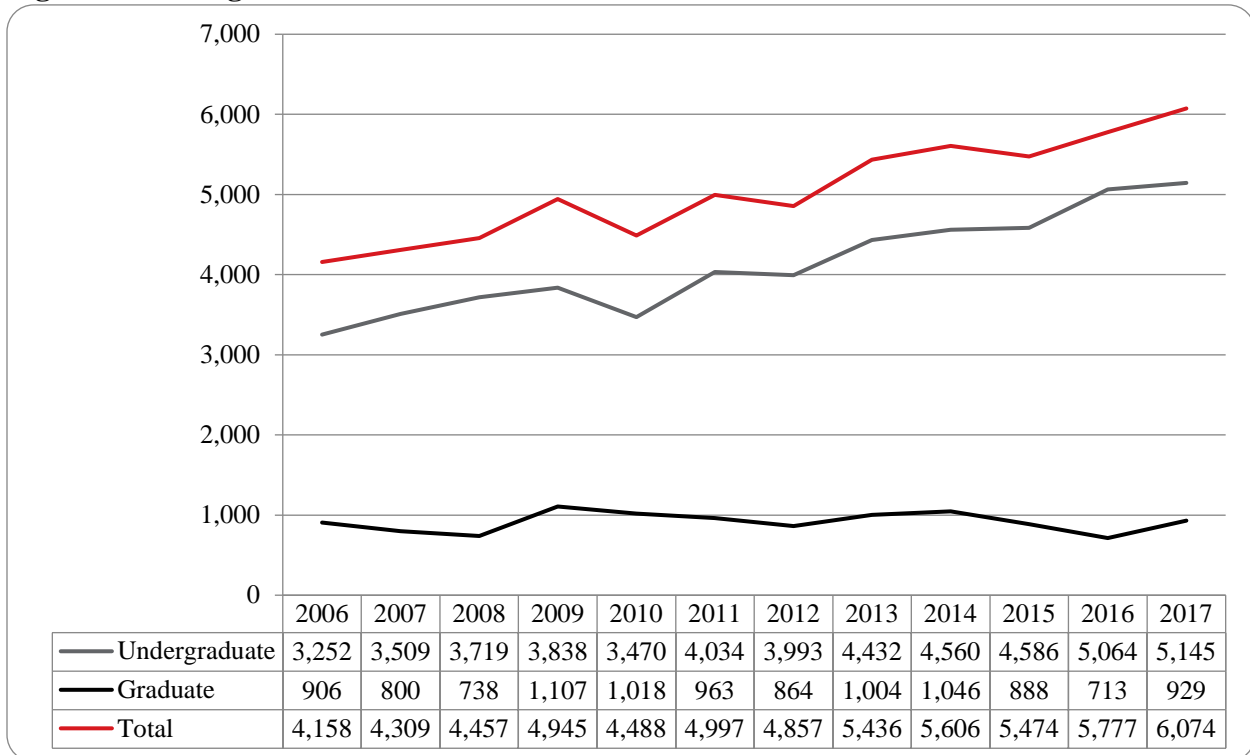


Figure 13: College of Business Administration Head Count by Ethnicity by Gender: Summer 2017

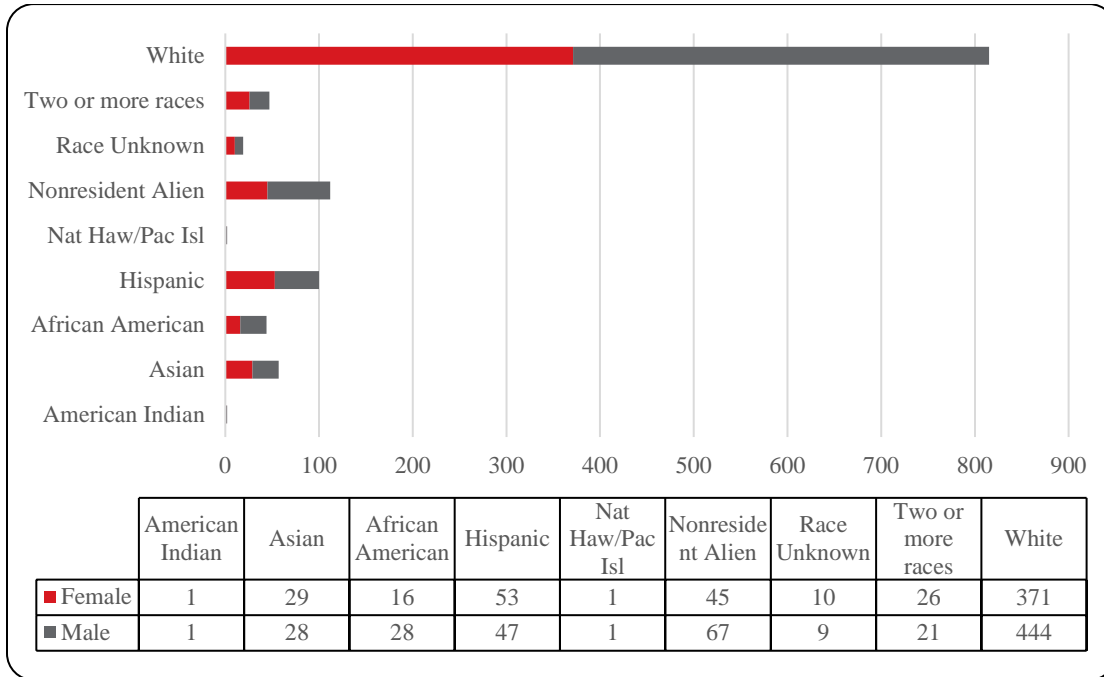


Table 5: College of Business Administration Head Count Summary for Undergraduate and Graduate Students by Full and Part-Time by Gender and Race Classification: Summer 2017

	American Indian		Asian		African American		Hispanics		Nat Haw / Pac Isl		Race Unknown		Two or more races		White		Nonresident Alien		Total				
	F	M	F	M	F	M	F	M	F	M	F	M	F	M	F	M	F	M	F	M	Total		
Undergraduate																							
Full-Time																							
First-Time Freshmen																							
Other Freshmen																1					1	1	
Sophomores								3							3	4				3	7	10	
Juniors							2	2	2					2	2	5	7			9	13	22	
Seniors							1	2	1						1	18	19	2	3	22	25	47	
Special																							
Total Full-Time							3	4	6					2	3	26	31	2	3	34	46	80	
Part-Time																							
First-Time Freshmen																		1	2	1	2	3	
Other Freshmen				1	1	1	1	3	1					2	1	6	9	2	8	15	21	36	
Sophomores				5	3	3	3	8	6			4	1	7	2	50	47	5	13	82	75	157	
Juniors				6	6	6	9	12	10	1	1	1	5	6	5	93	111	4	17	129	165	294	
Seniors				13	7	4	9	22	16			3	1	5	8	112	156	21	18	180	215	395	
Special				1	1		1	1				1			9	4	1			13	6	19	
Total Part-Time				1	26	18	14	23	46	33	1	1	9	7	20	16	270	327	34	58	420	484	904
Total Undergraduate				1	26	18	14	26	50	39	1	1	9	7	22	19	296	358	36	61	454	530	984
Graduate																							
Full-Time																							
Certificate																							
Masters																4	4	1	1	5	5	10	
Doctoral																							
Special Graduate																							
Total Full-Time																4	4	1	1	5	5	10	
Part-Time																							
Certificate								1								1	1			1	2	3	
Masters								3	7			1	2	4	2	70	81	8	5	92	109	201	
Doctoral																							
Special Graduate																							
Total Part-Time								3	8			1	2	4	2	71	82	8	5	93	111	204	
Total Graduate								3	8			1	2	4	2	75	86	9	6	98	116	214	
Total All Students								53	47			10	9	26	21	371	444	45	67	552	646	1,198	

Figure 14: College of Communication, Fine Arts and Media Delivery and Administration- Site Head Count: Summer 2006-2017

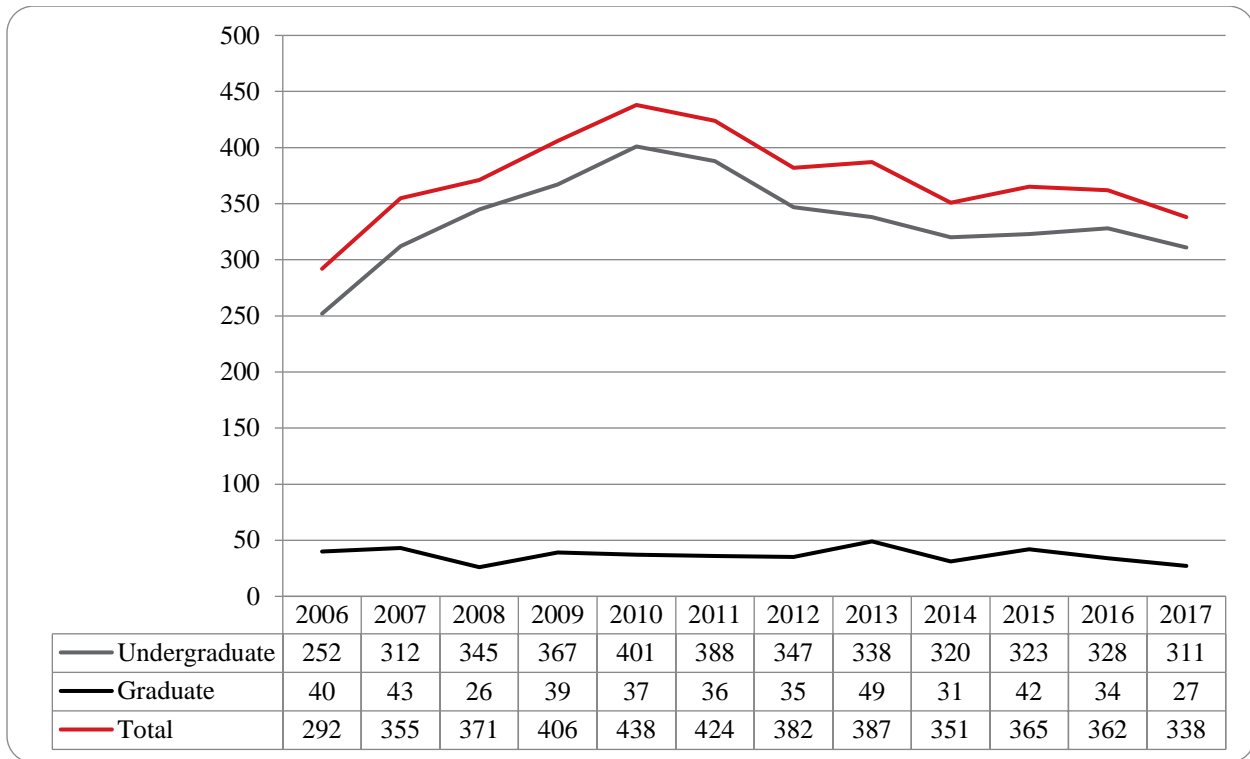


Figure 15: College of Communication, Fine Arts and Media Administrative-Site Student Credit Hours: Summer 2006-2017

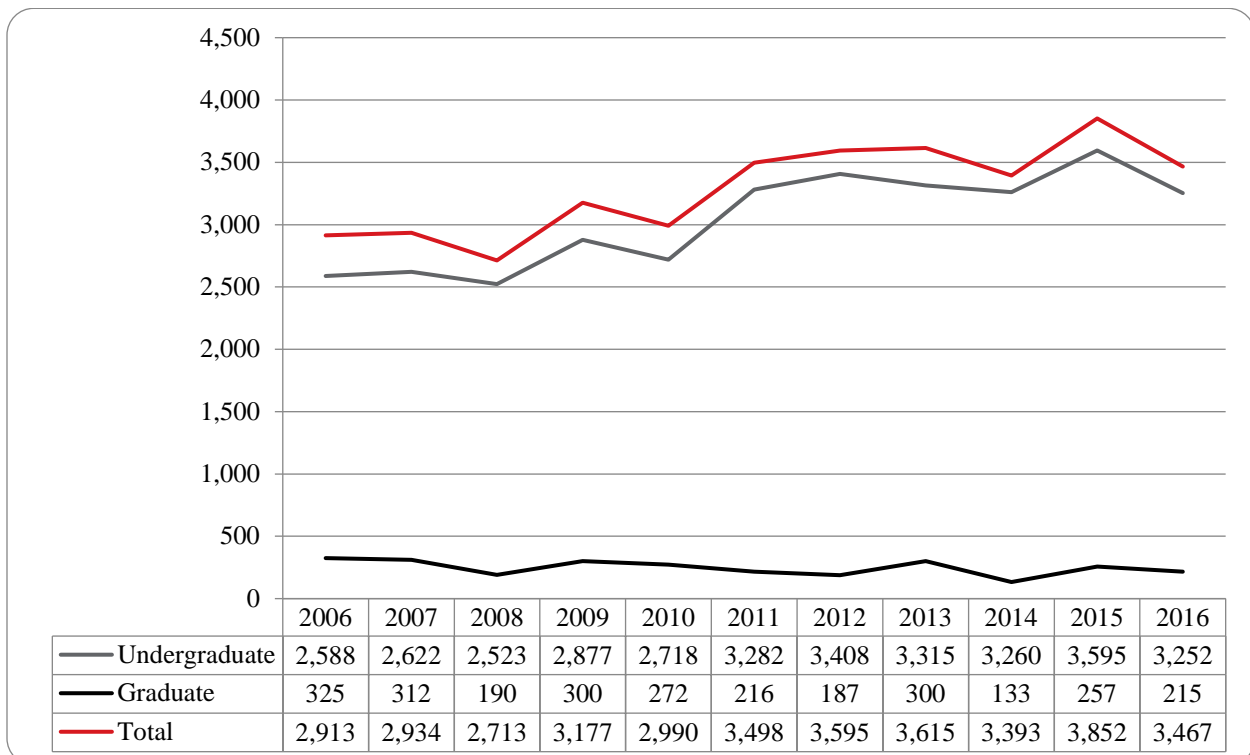


Figure 16: College of Communication, Fine Arts and Media Delivery-Site Head Count by Ethnicity by Gender: Summer 2017

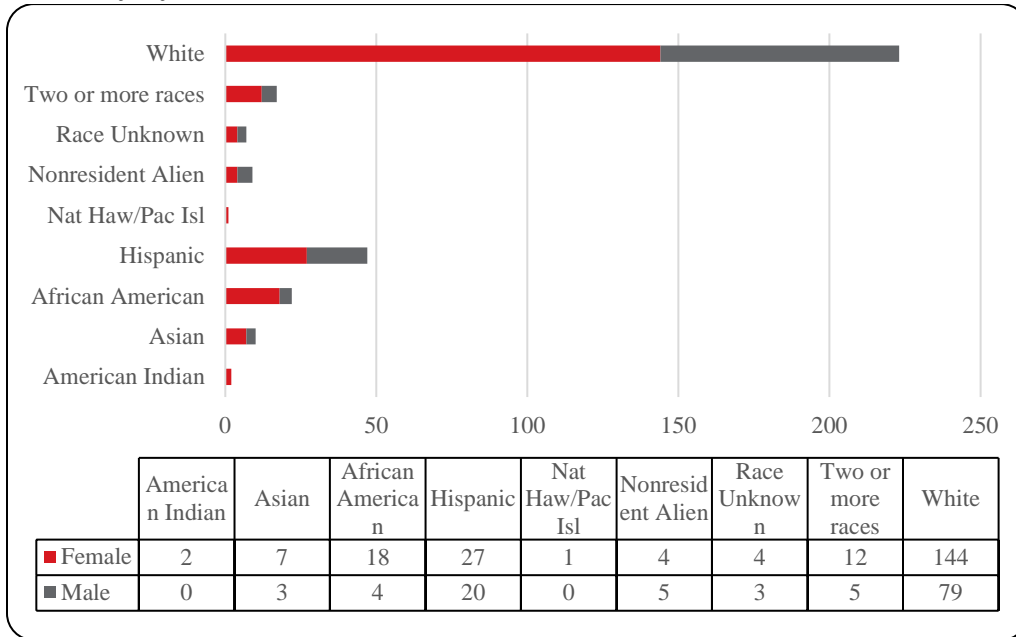


Table 6: College of Communication, Fine Arts and Media Delivery and Administrative Site Head Count Summary for Undergraduate and Graduate Students by Full and Part-Time by Gender and Race Classification: Summer 2017

	American Indian		Asian		African American		Hispanics		Nat Haw / Pac Isl		Race Unknown		Two or more races		White		Nonresident Alien		Total		Total
	F	M	F	M	F	M	F	M	F	M	F	M	F	M	F	M	F	M	F	M	
Undergraduate																					
Full-Time																					
First-Time Freshmen																					
Other Freshmen					1														1		1
Sophomores																					
Juniors															3	1		1	3	2	5
Seniors	1						1					1			3	1			5	2	7
Special																					
Total Full-Time	1				1		1					1			6	2		1	9	4	13
Part-Time																					
First-Time Freshmen																					
Other Freshmen											1		1		6	2		1	8	3	11
Sophomores					6	1	5	7			1	1	3		23	11	1	2	39	22	61
Juniors			3		4	2	10	5	1		1	1	5	2	50	29			74	39	113
Seniors	1		3	2	6	1	9	7			1		3	1	49	24	3		75	35	110
Special															1	2			1	2	3
Total Part-Time	1		6	2	16	4	24	19	1		4	2	12	3	129	68	4	3	197	101	298
Total Undergraduate	2		6	2	17	4	25	19	1		4	3	12	3	135	70	4	4	206	105	311
Graduate																					
Full-Time																					
Certificate																					
Masters														1	3	2			3	3	6
Doctoral																					
Special Graduate																					
Total Full-Time														1	3	2			3	3	6
Part-Time																					
Certificate																					
Masters			1	1	1		2	1						1	6	7		1	10	11	21
Doctoral																					
Special Graduate																					
Total Part-Time			1	1	1		2	1						1	6	7		1	10	11	21
Total Graduate			1	1	1		2	1						2	9	9		1	13	14	27
Total All Students	2		7	3	18	4	27	20	1		4	3	12	5	144	79	4	5	219	119	338

Figure 17: College of Education Head Count: Summer 2006-2017

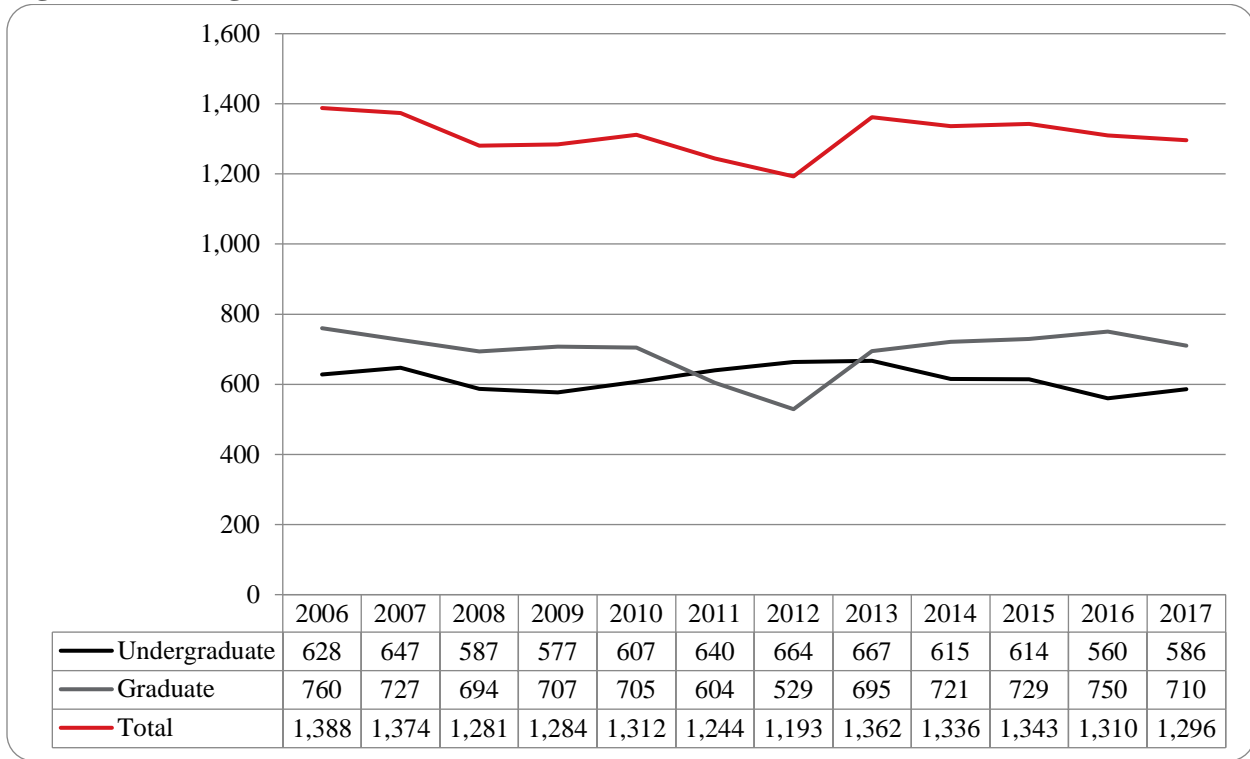


Figure 18: College of Education Student Credit Hours: Summer 2006-2017

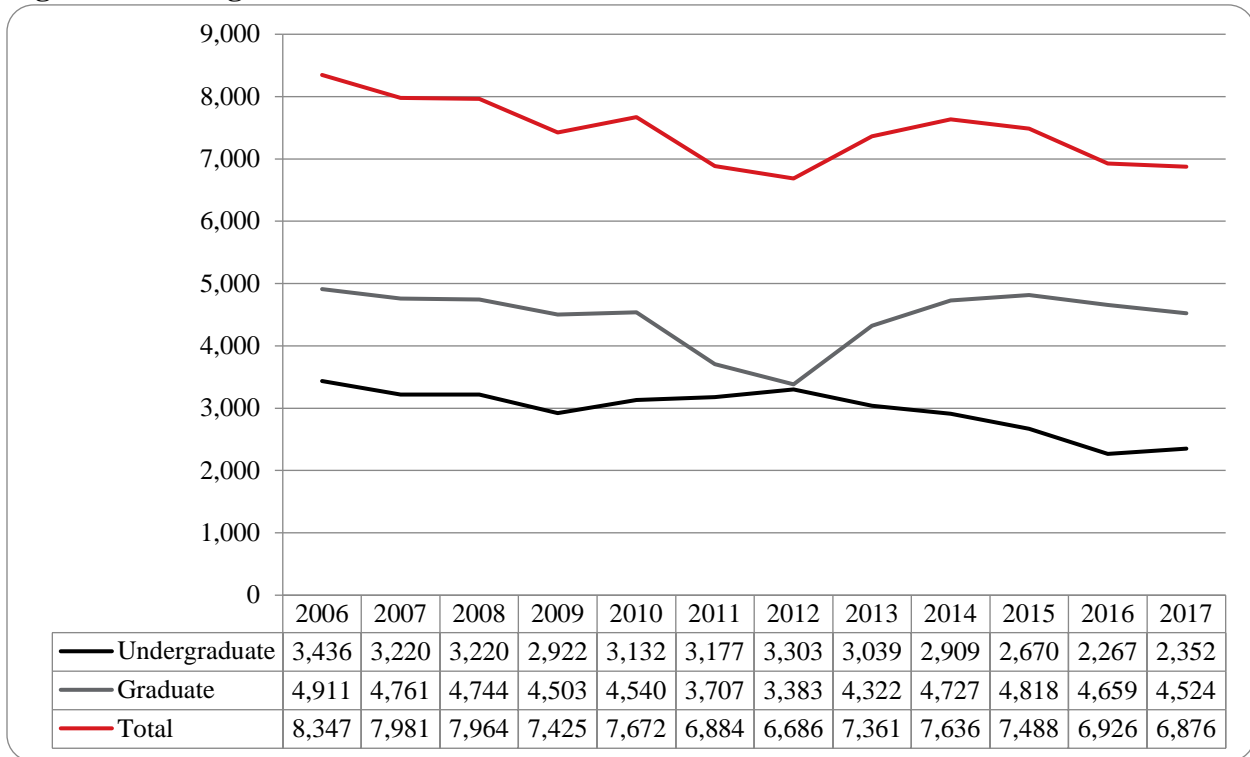


Figure 19: College of Education Head Count by Ethnicity by Gender: Summer 2017

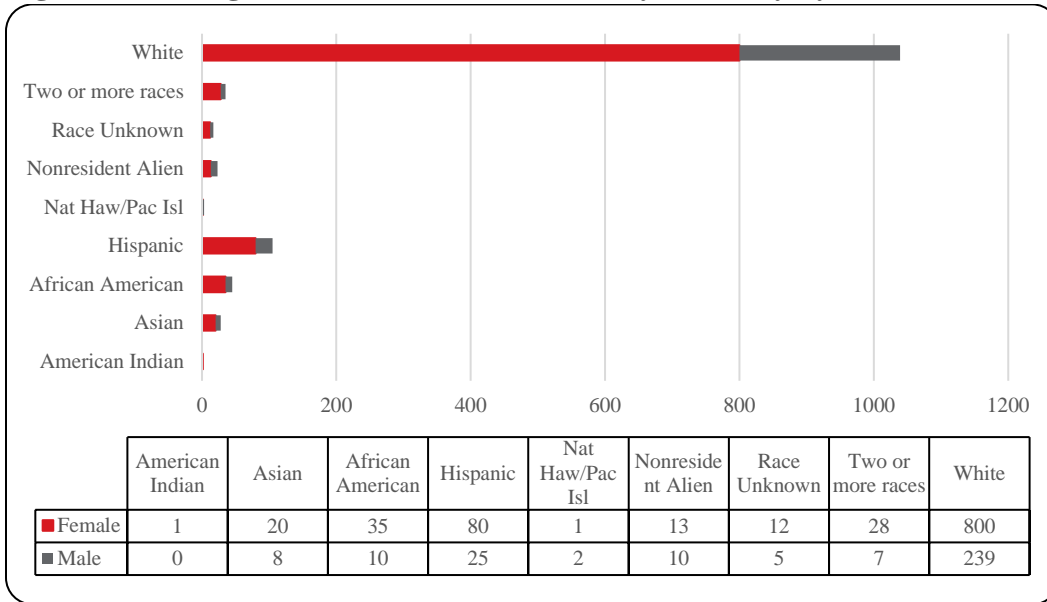


Table 7: College of Education Head Count Summary for Undergraduate and Graduate Summary for Full and Part-Time by Gender and Race Classification: Summer 2017

	American Indian		Asian		African American		Hispanics		Nat Haw / Pac Isl		Race Unknown		Two or more races		White		Nonresident Alien		Total			
	F	M	F	M	F	M	F	M	F	M	F	M	F	M	F	M	F	M	F	M	Total	
Undergraduate																						
Full-Time																						
First-Time Freshmen																						
Other Freshmen																1					1	1
Sophomores							1						1			2				1	3	4
Juniors								1							3	2				3	3	6
Seniors							1	1							4	6	1			6	7	13
Special																1					1	1
Total Full-Time							2	2						1	7	12	1			10	15	25
Part-Time																						
First-Time Freshmen																						
Other Freshmen				2		1		1					2		9	6	2	1		17	7	24
Sophomores	1			2	1	4	1	15	2			1	1	3	56	15		2		82	22	104
Juniors				6	1	5		11	7			2		5	93	28				122	37	159
Seniors				4	3	7	1	21	6		2	3	2	6	133	54	2	1		176	70	246
Special				1				1	1						13	12				15	13	28
Total Part-Time	1			15	5	17	2	49	16		2	6	3	16	2	304	115	4	4	412	149	561
Total Undergraduate	1			15	5	17	2	51	18		2	6	3	16	3	311	127	5	4	422	164	586
Graduate																						
Full-Time																						
Certificate																						
Masters				1	2	5	2	4		1		2	1	3	1	123	21			139	27	166
Doctoral								1								3				4		4
Special Graduate							1								6	3				6	4	10
Total Full-Time				1	2	5	3	5		1		2	1	3	1	132	24			149	31	180
Part-Time																						
Certificate																1				1		1
Masters				3	1	10	4	16	7			3	1	7	2	245	64	6	6	290	85	375
Doctoral				1		1	1	1						1	1	29	9	1		34	11	45
Special Graduate						2		7				1		1		82	15	1		94	15	109
Total Part-Time				4	1	13	5	24	7			4	1	9	3	357	88	8	6	419	111	530
Total Graduate				5	3	18	8	29	7	1		6	2	12	4	489	112	8	6	568	142	710
Total All Students	1			20	8	35	10	80	25	1	2	12	5	28	7	800	239	13	10	990	306	1,296

Figure 20: College of Information Science & Technology Head Count: Summer 2006-2017

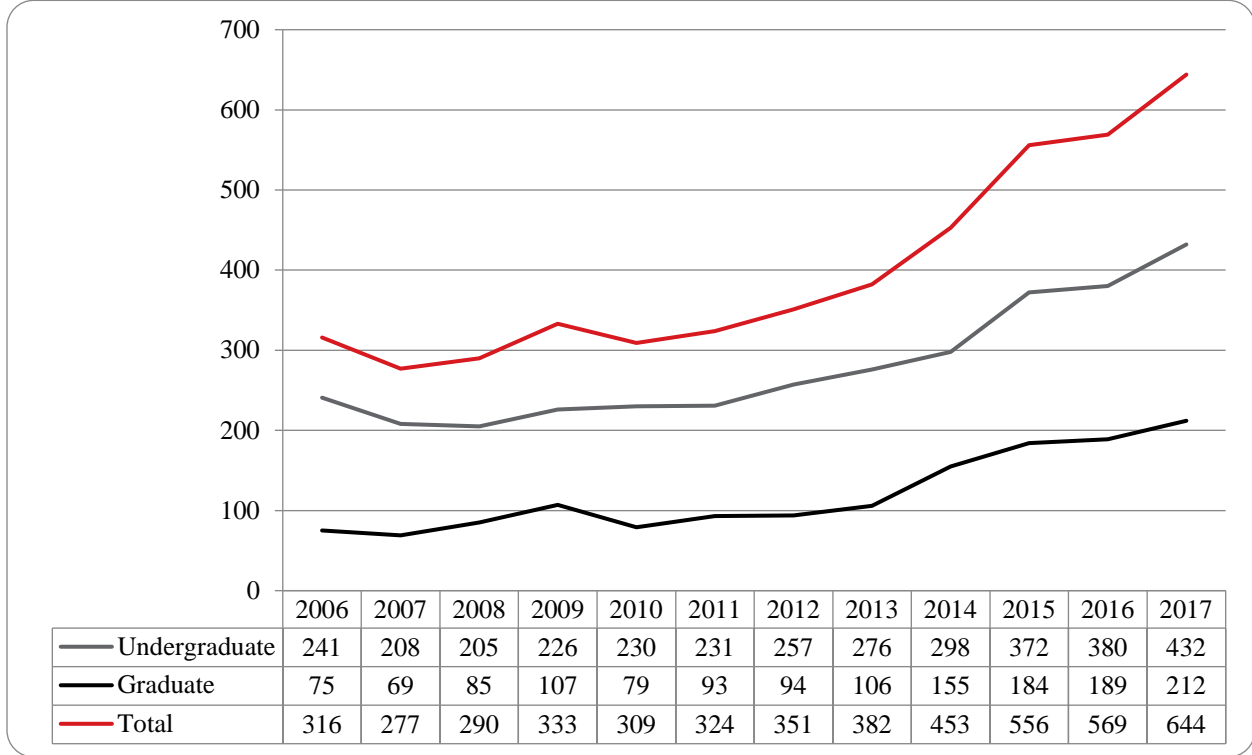


Figure 21: College of Information Science & Technology Student Credit Hours: Summer 2006-2017

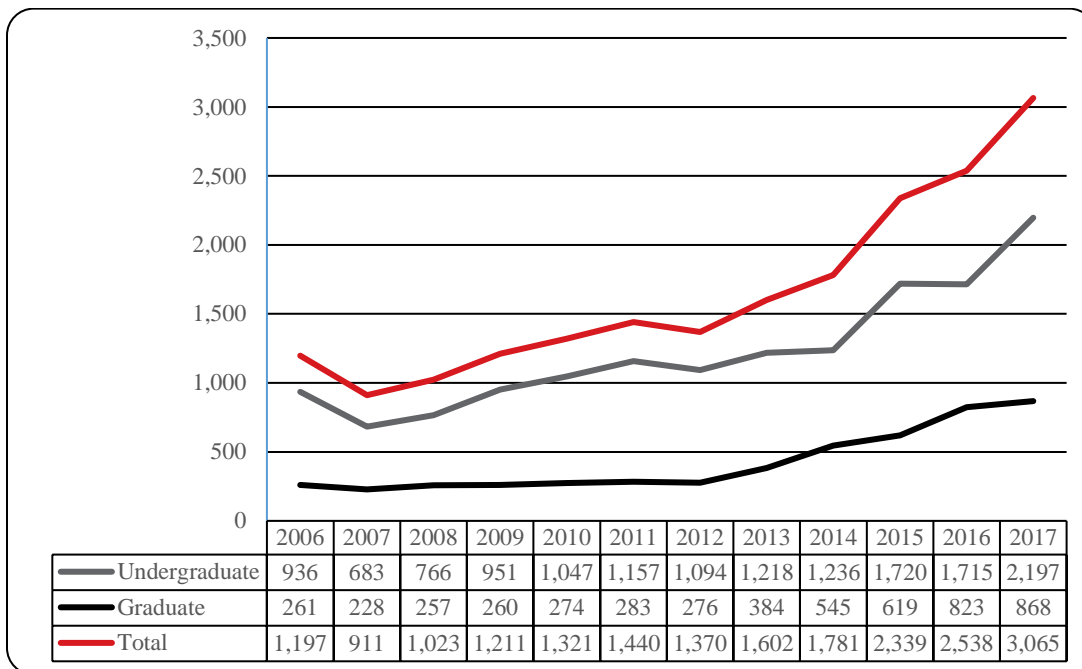


Figure 22: College of Information Science & Technology Head Count by Ethnicity by Gender: Summer 2017

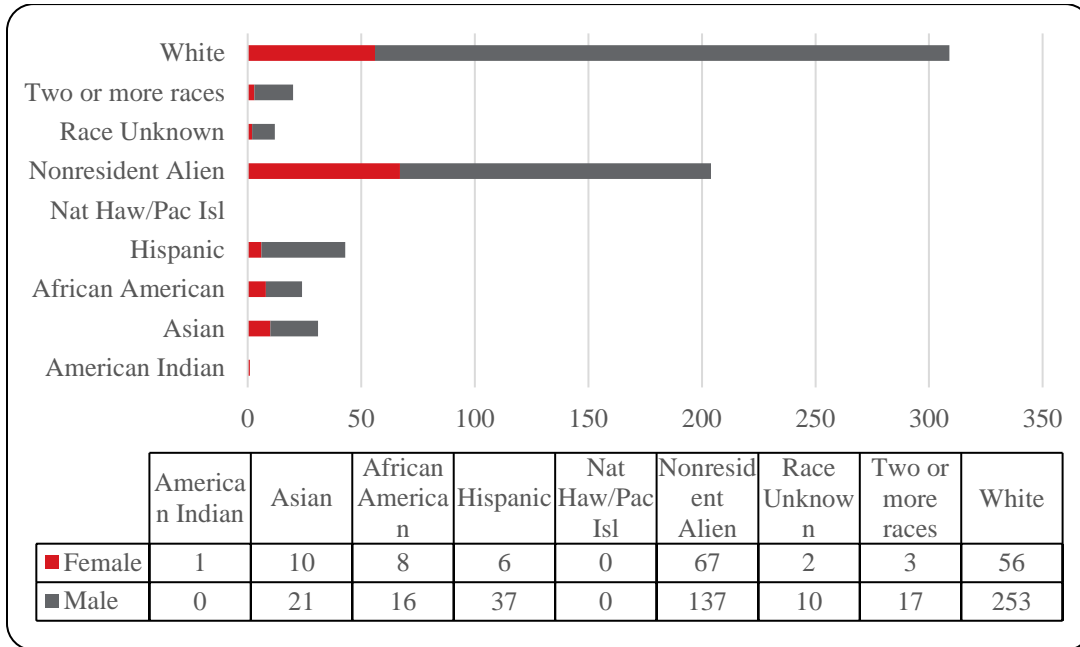


Table 8: College of Information Science and Technology Head Count Summary for Undergraduate and Graduate Students for Full and Part-Time by Gender and Race Classification: Summer 2017

	American Indian		Asian		African American		Hispanics		Nat Haw / Pac Isl		Race Unknown		Two or more races		White		Nonresident Alien		Total			
	F	M	F	M	F	M	F	M	F	M	F	M	F	M	F	M	F	M	F	M	Total	
Undergraduate																						
Full-Time																						
First-Time Freshmen																						
Other Freshmen																						
Sophomores													1		2			1			4	4
Juniors				1				2					1	1	3			2	1		9	10
Seniors				1				1						1	9		1	3	2		14	16
Special																						
Total Full-Time				2				3					2	2	14		1	6	3		27	30
Part-Time																						
First-Time Freshmen																	1		1			1
Other Freshmen							1								2	4	1	3	3		8	11
Sophomores			2	1			1	4			2		4	7	48	3	15	13		74	87	
Juniors	1		1	5	1	4		12			1		4	9	59	3	16	15		101	116	
Seniors			1	8	4	5	4	11			1	3	1	4	16	84	1	20	28		135	163
Special			2			2	1	3			1	1	1	1	3	9				8	16	24
Total Part-Time	1		6	14	5	12	6	30			2	7	2	13	37	204	9	54	68		334	402
Total Undergraduate	1		6	16	5	12	6	33			2	7	2	15	39	218	10	60	71		361	432
Graduate																						
Full-Time																						
Certificate																						
Masters				1	1			1					1		1		4	3	7		5	12
Doctoral																						
Special Graduate																						
Total Full-Time				1	1			1					1		1		4	3	7		5	12
Part-Time																						
Certificate								1				1			4	3	1	1	5		7	12
Masters			4	3	2	4		2				2		2	12	28	50	67	68		108	176
Doctoral															4		2	6	2		10	12
Special Graduate																						
Total Part-Time			4	4	2	4		3				3		2	16	35	53	74	75		125	200
Total Graduate			4	5	3	4		4				3	1	2	17	35	57	77	82		130	212
Total All Students	1		10	21	8	16	6	37			2	10	3	17	56	253	67	137	153		491	644

Figure 23: College of Public Affairs & Community Service Delivery-Site Head Count: Summer 2006-2017

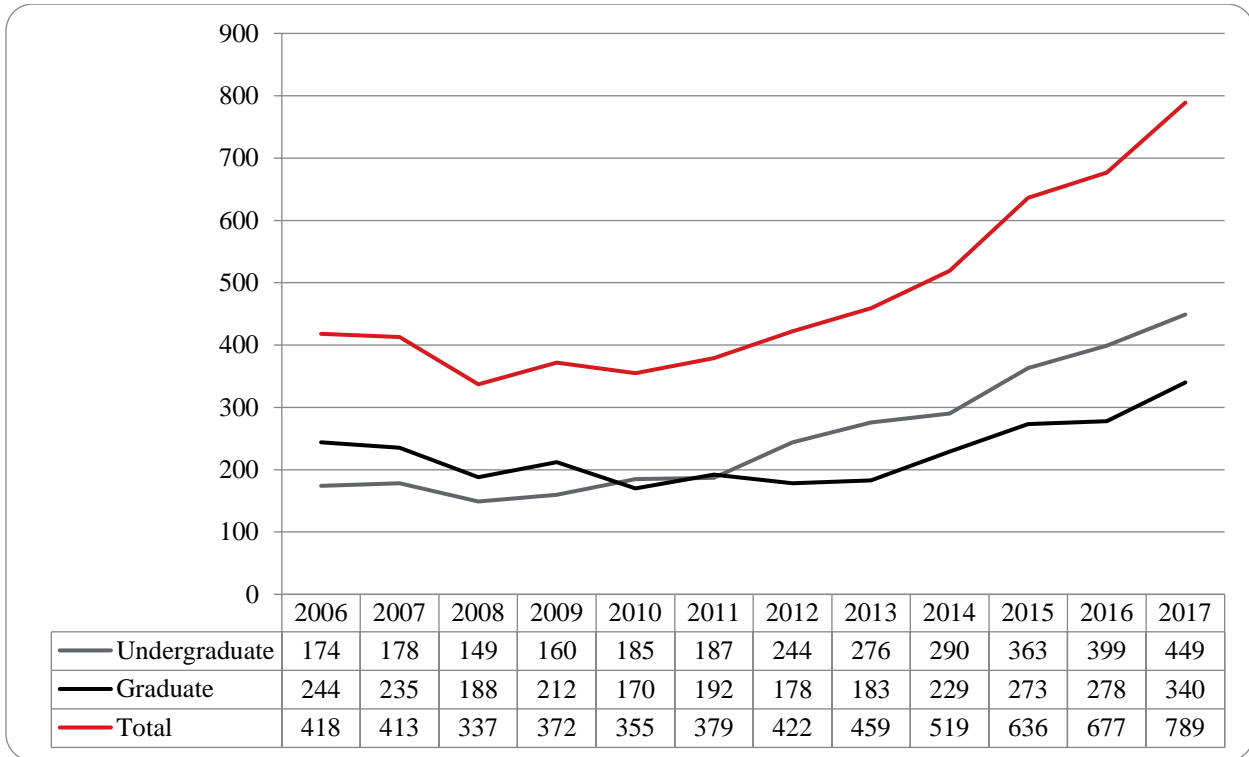


Figure 24: College of Public Affairs & Community Service Delivery-Site Student Credit Hours: Summer 2006-2017

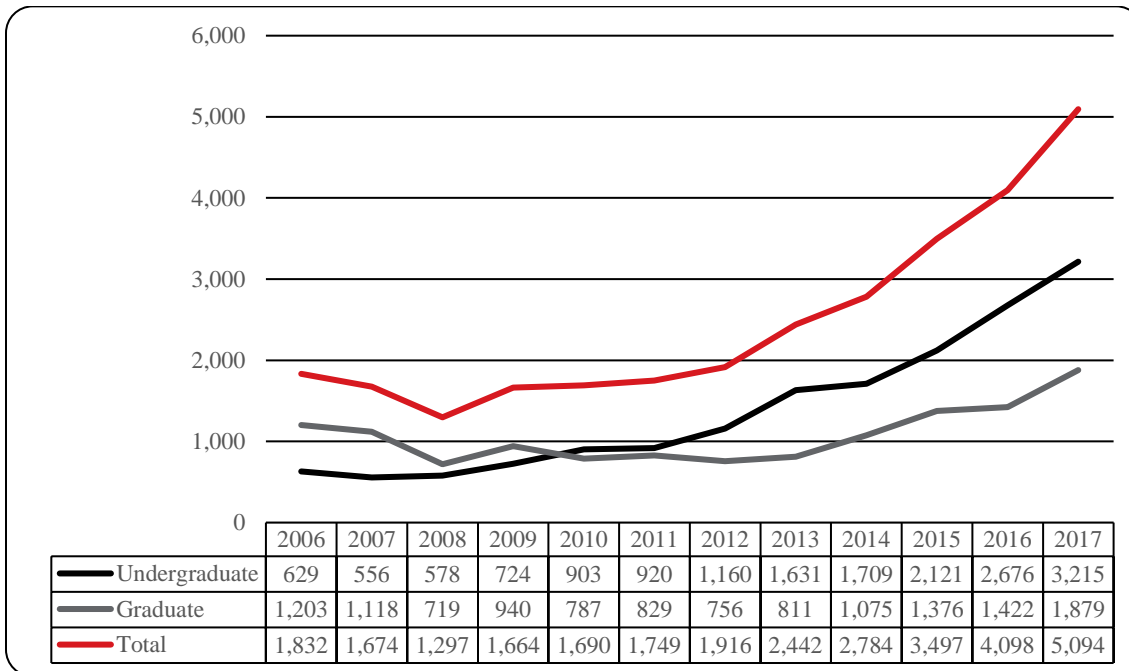


Figure 25: College of Public Affairs & Community Service Delivery-Site Head Count by Ethnicity by Gender: Summer 2017

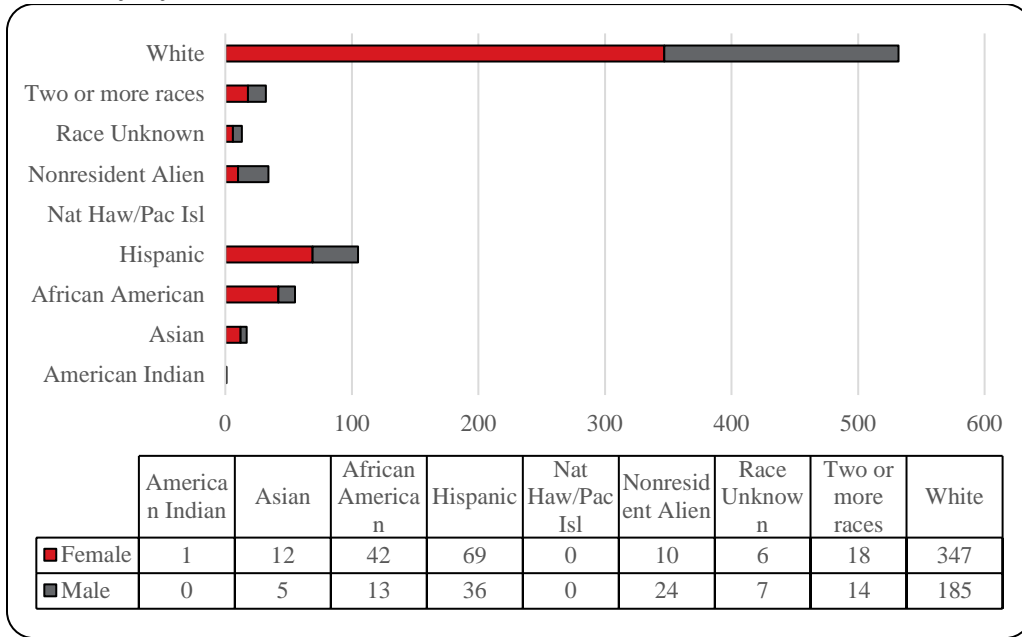


Table 9: College of Public Affairs and Community Service Delivery-Site Head Count for Undergraduate and Graduate Students by Full and Part-Time by Gender and Race Classification: Summer 2017

	American Indian		Asian		African American		Hispanics		Nat Haw / Pac Isl		Race Unknown		Two or more races		White		Nonresident Alien		Total		
	F	M	F	M	F	M	F	M	F	M	F	M	F	M	F	M	F	M	F	M	Total
Undergraduate																					
Full-Time																					
First-Time Freshmen																					
Other Freshmen													1	2					2	1	3
Sophomores					1		1							3	1		1		5	2	7
Juniors				1	1	1	2	1						7	6	1	2		11	11	22
Seniors					1	1	6	2					1	2	5	3	1	1	14	9	23
Special																					
Total Full-Time				1	3	2	9	3					1	3	17	10	2	4	32	23	55
Part-Time																					
First-Time Freshmen															1				1		1
Other Freshmen					4		1				1			5	9	1	3		11	13	24
Sophomores	1		2	1	5	2	11	7			1		2	15	22		2		34	37	71
Juniors			6	1	8	1	13	9			3		2	49	48	4	7		82	72	154
Seniors				1	7	5	12	13			3	1	5	47	37	1	6		75	65	140
Special						1								1	1	1			1	3	4
Total Part-Time	1		8	3	24	9	37	29			3	6	7	8	118	117	6	18	204	190	394
Total Undergraduate	1		8	4	27	11	46	32			3	6	8	11	135	127	8	22	236	213	449
Graduate																					
Full-Time																					
Certificate																					
Masters					5	1	4	1					4	1	52	3			65	6	71
Doctoral																					
Special Graduate																					
Total Full-Time					5	1	4	1					4	1	52	3			65	6	71
Part-Time																					
Certificate					1										3	2	1		5	2	7
Masters			3	1	9	1	19	3			3	1	6	2	154	51	1	2	195	61	256
Doctoral			1												3	2			4	2	6
Special Graduate																					
Total Part-Time			4	1	10	1	19	3			3	1	6	2	160	55	2	2	204	65	269
Total Graduate			4	1	15	2	23	4			3	1	10	3	212	58	2	2	269	71	340
Total All Students	1		12	5	42	13	69	36			6	7	18	14	347	185	10	24	505	284	789

Figure 26: College of Public Affairs & Community Service Administrative-Site Head Count: Summer 2006-2017

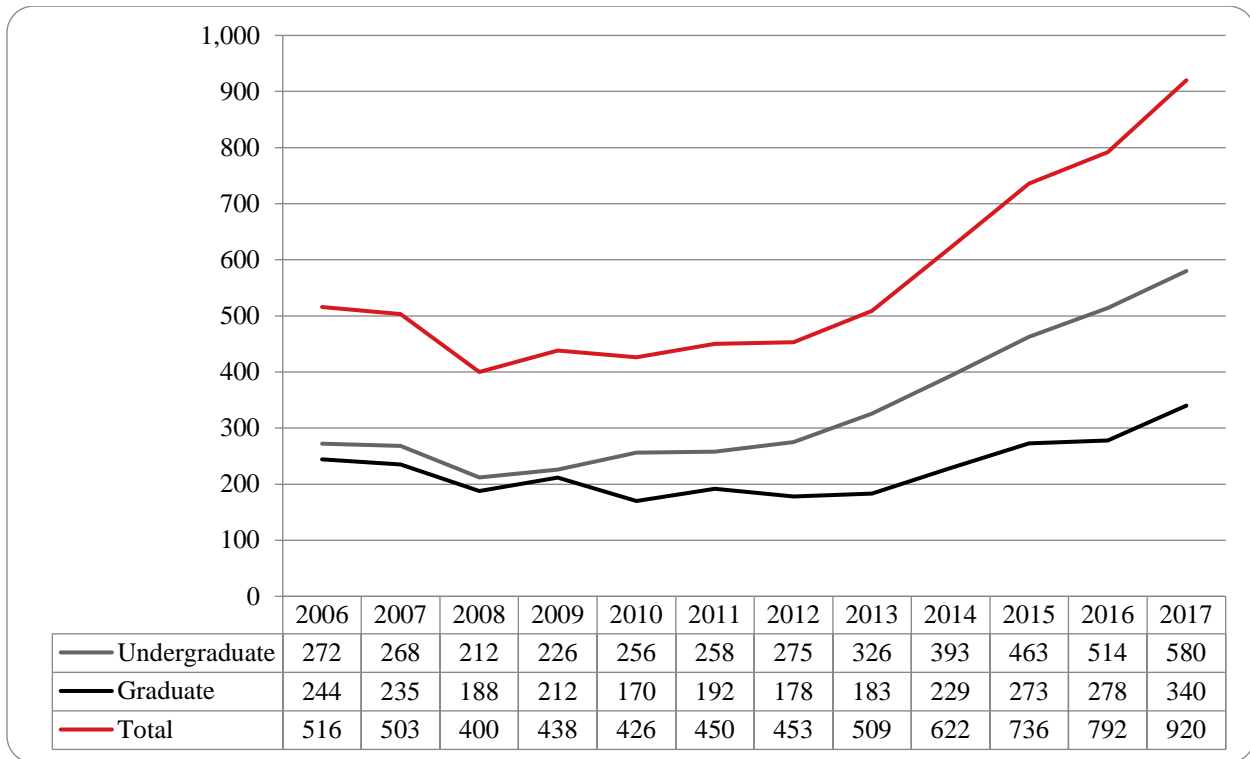


Figure 27: College of Public Affairs & Community Service Administrative-Site Student Credit Hours: Summer 2006-2017

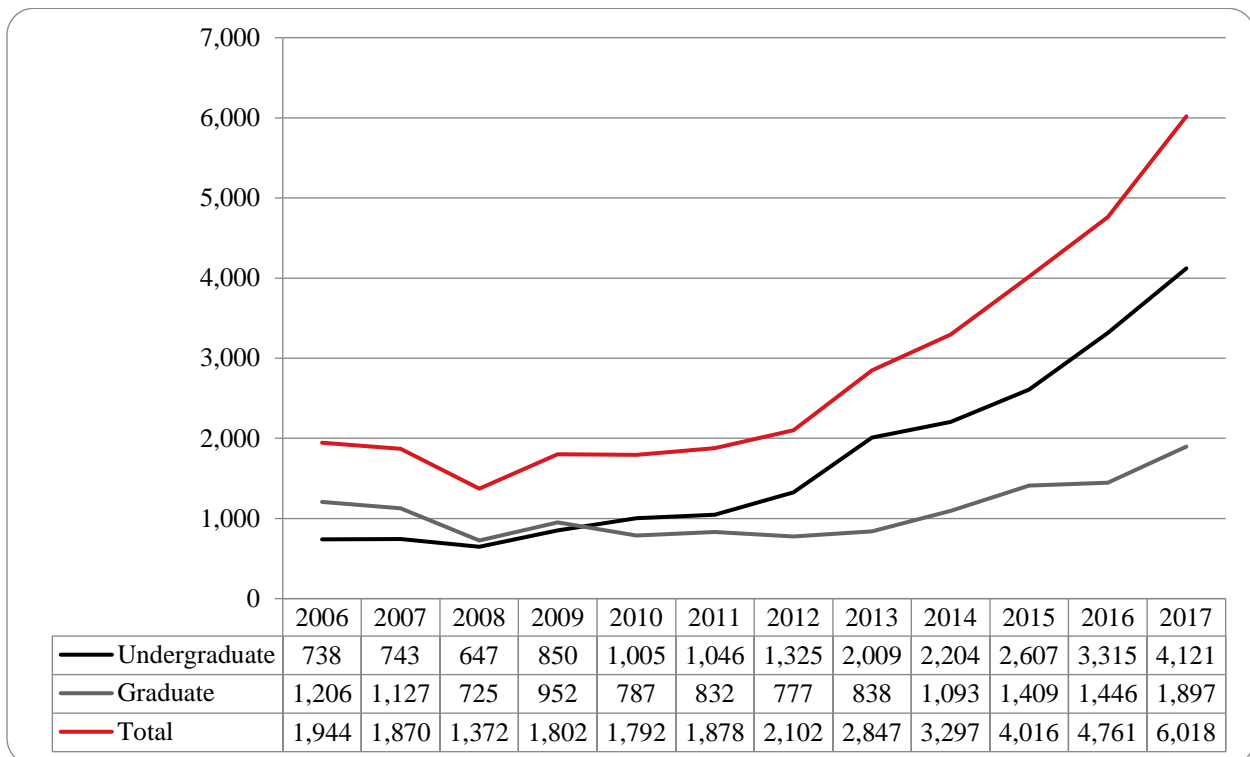


Figure 28: College of Public Affairs & Community Service Administrative-Site Head Count by Ethnicity by Gender: Summer 2017

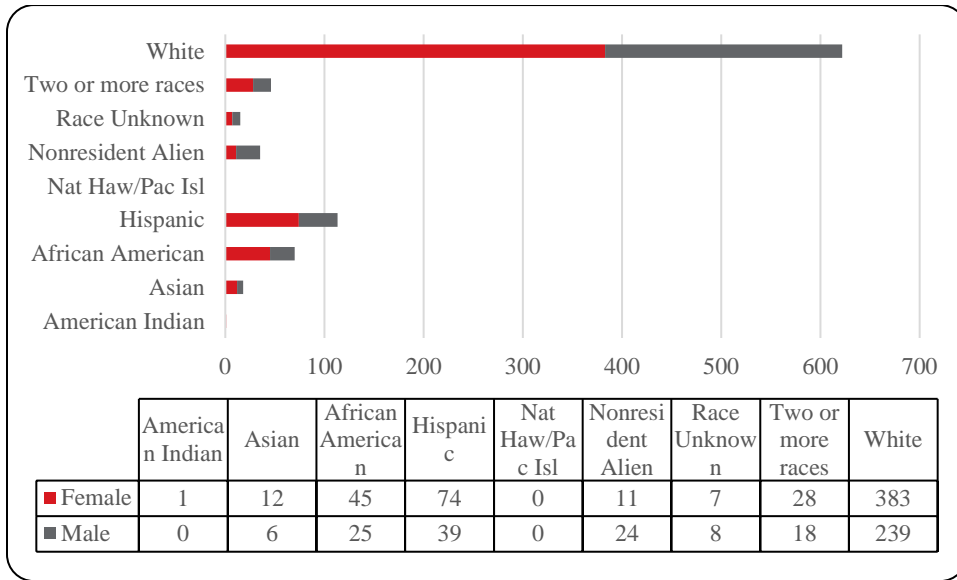


Table 10: College of Public Affairs & Community Service Administrative-Site Head Count Summary for Undergraduate and Graduate Students by Full and Part-Time by Gender and Race Classification: Summer 2017

	American Indian		Asian		African American		Hispanics		Nat Haw / Pac Isl		Race Unknown		Two or more races		White		Nonresident Alien		Total		
	F	M	F	M	F	M	F	M	F	M	F	M	F	M	F	M	F	M	F	M	Total
Undergraduate																					
Full-Time																					
First-Time Freshmen																					
Other Freshmen													1	2					2	1	3
Sophomores					1		1							3	1		1		5	2	7
Juniors				1	1	1	2	1						9	6	1	2	13	11	24	
Seniors					1	2	6	2				2	3	5	5	1	1	15	13	28	
Special																					
Total Full-Time				1	3	3	9	3				2	4	19	12	2	4	35	27	62	
Part-Time																					
First-Time Freshmen						1						1		1				2	1	3	
Other Freshmen					4		1				1	1		7	10	1	3	14	14	28	
Sophomores	1		2	1	7	5	12	8			1	2	3	23	27		2	47	47	94	
Juniors			6	1	8	5	16	10			1	3	4	4	59	65	4	7	98	95	193
Seniors				2	8	8	13	14			3	2	8	3	61	66	2	6	95	101	196
Special						1							1	1	1			1	3	4	
Total Part-Time	1		8	4	27	20	42	32			4	7	16	11	152	169	7	18	257	261	518
Total Undergraduate	1		8	5	30	23	51	35			4	7	18	15	171	181	9	22	292	288	580
Graduate																					
Full-Time																					
Certificate																					
Masters					5	1	4	1					4	1	52	3			65	6	71
Doctoral																					
Special Graduate																					
Total Full-Time					5	1	4	1					4	1	52	3			65	6	71
Part-Time																					
Certificate					1									3	2	1		5	2	7	
Masters			3	1	9	1	19	3			3	1	6	2	154	51	1	2	195	61	256
Doctoral			1											3	2			4	2	6	
Special Graduate																					
Total Part-Time			4	1	10	1	19	3			3	1	6	2	160	55	2	2	204	65	269
Total Graduate			4	1	15	2	23	4			3	1	10	3	212	58	2	2	269	71	340
Total All Students	1		12	6	45	25	74	39			7	8	28	18	383	239	11	24	561	359	920

Figure 29: College of CPACS, Division of Continuing Studies Head Count: Summer 2006-2017

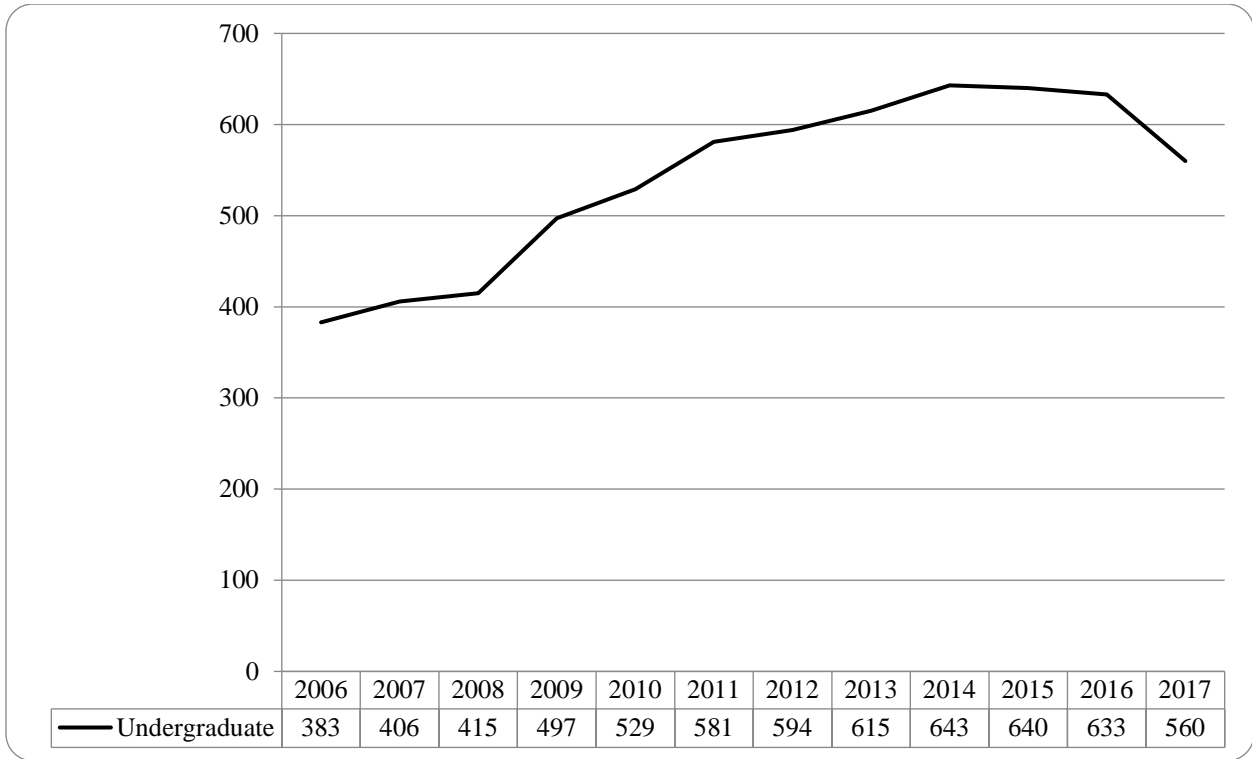


Table 11: College of CPACS Division of Continuing Studies Head Count Summary for Undergraduate Students by Full and Part-Time by Gender and Race Classification: Summer 2017

	American Indian		Asian		African American		Hispanics		Nat Haw / Pac Isl		Race Unknown		Two or more races		White		Nonresident Alien		Total			
	F	M	F	M	F	M	F	M	F	M	F	M	F	M	F	M	F	M	F	M	Total	
Undergraduate																						
Full-Time																						
First-Time Freshmen																						
Other Freshmen					1	1										2				1	3	4
Sophomores						3	1						1		4		2			8	3	11
Juniors					1		2						1		5	3				9	3	12
Seniors			1		4	1	2	3					1		11	13	1			20	17	37
Special															1		1			2		2
Total Full-Time				1	6	5	5	3					3		21	18	4			40	26	66
Part-Time																						
First-Time Freshmen					1										2					3		3
Other Freshmen				1	2	1	3	2							2	8		1		7	13	20
Sophomores			1		8	1		5					2	2	19	21	1	1		31	30	61
Juniors				1	6	7	5	7			1	2	3	3	41	53	1			57	73	130
Seniors	1	1	4	1	14	16	13	6			3	7	6	3	83	106	1	2		125	142	267
Special			1			3									4	5				5	8	13
Total Part-Time	1	1	6	3	31	28	21	20			4	9	11	8	151	193	3	4		228	266	494
Total Undergraduate	1	1	7	3	37	33	26	23			4	9	14	8	172	211	7	4		268	292	560
Total All Students	1	1	7	3	37	33	26	23			4	9	14	8	172	211	7	4		268	292	560

Figure 30: University Division Head Count: Summer 2006-2017

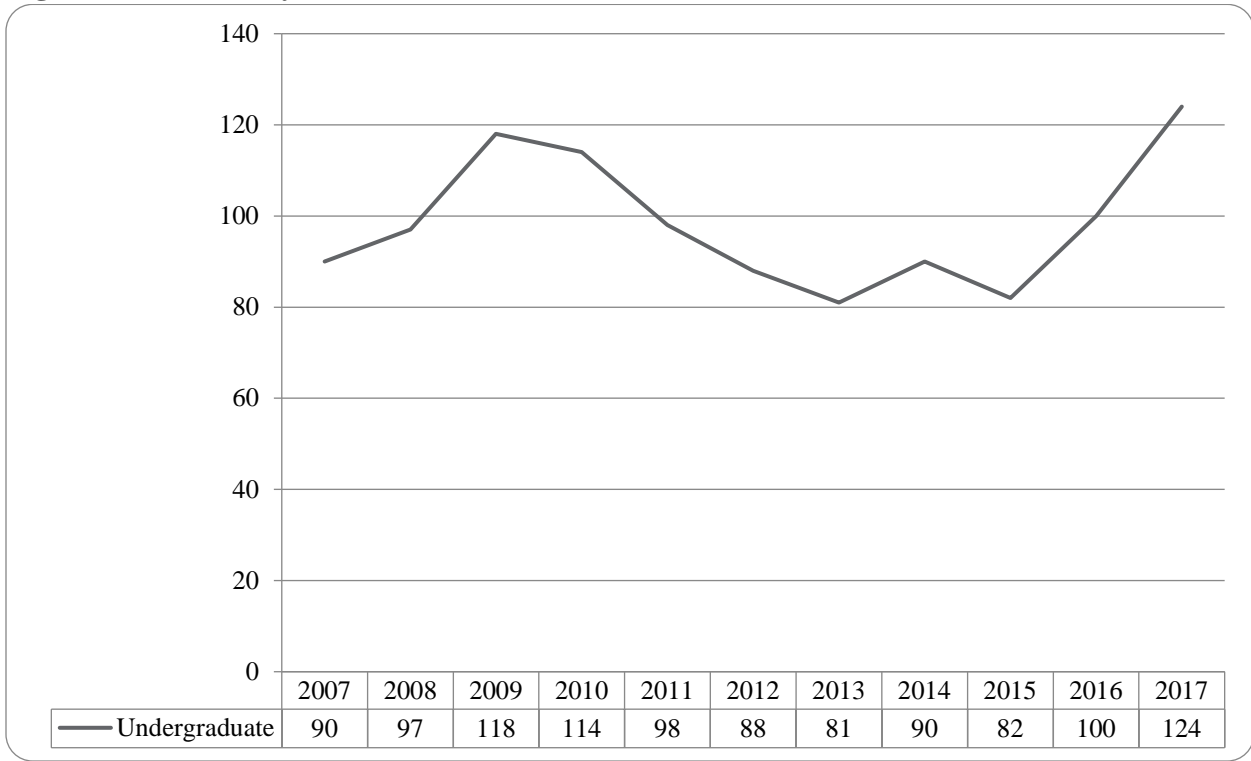


Figure 32: University Division Head Count by Ethnicity by Gender: Summer 2017

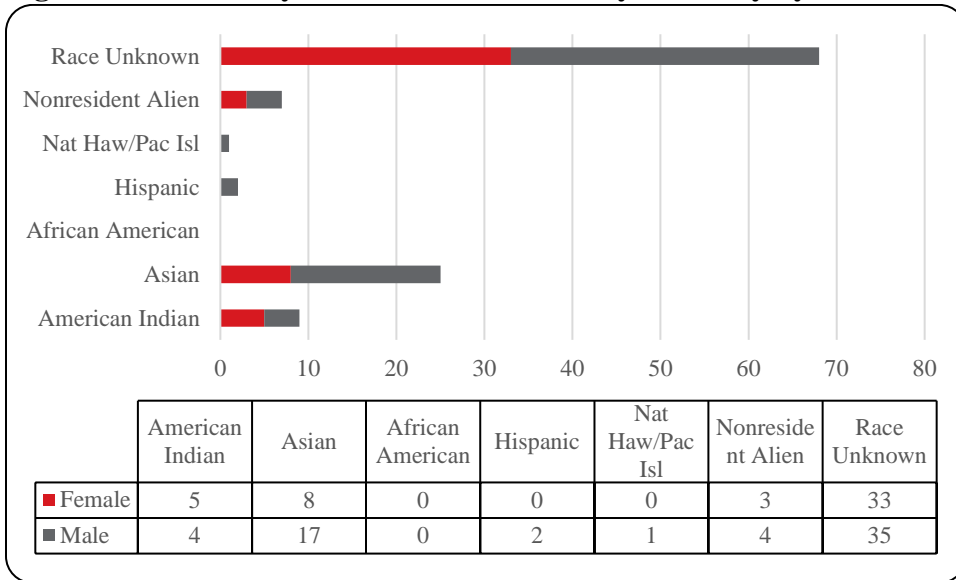


Table 12: University Division Head Count Summary for Undergraduate Students by Full and Part-Time by Gender and Race Classification: Summer 2017

	American Indian		Asian		African American		Hispanics		Nat Haw / Pac Isl		Race Unknown		Two or more races		White		Nonresident Alien		Total				
	F	M	F	M	F	M	F	M	F	M	F	M	F	M	F	M	F	M	F	M	Total		
Undergraduate																							
Full-Time																							
First-Time Freshmen																2					2	2	
Other Freshmen															1						1	1	
Sophomores																							
Juniors																							
Seniors																							
Special																							
Total Full-Time															1	2					1	2	3
Part-Time																							
First-Time Freshmen				1									1	1	2	2					4	3	7
Other Freshmen				3	2	5	3	6	9			1	2	3	15	23					31	41	72
Sophomores				2	4		1	2	8						15	8		2			19	23	42
Juniors																							
Seniors																							
Special																							
Total Part-Time				6	6	5	4	8	17			1	3	4	32	33		2			54	67	121
Total Undergraduate				6	6	5	4	8	17			1	3	4	33	35		2			55	69	124
Total All Students				6	6	5	4	8	17			1	3	4	33	35		2			55	69	124

Figure 33: Non-Degree/Intercampus Special Undergraduate Students Head Count: Summer 2006-2017

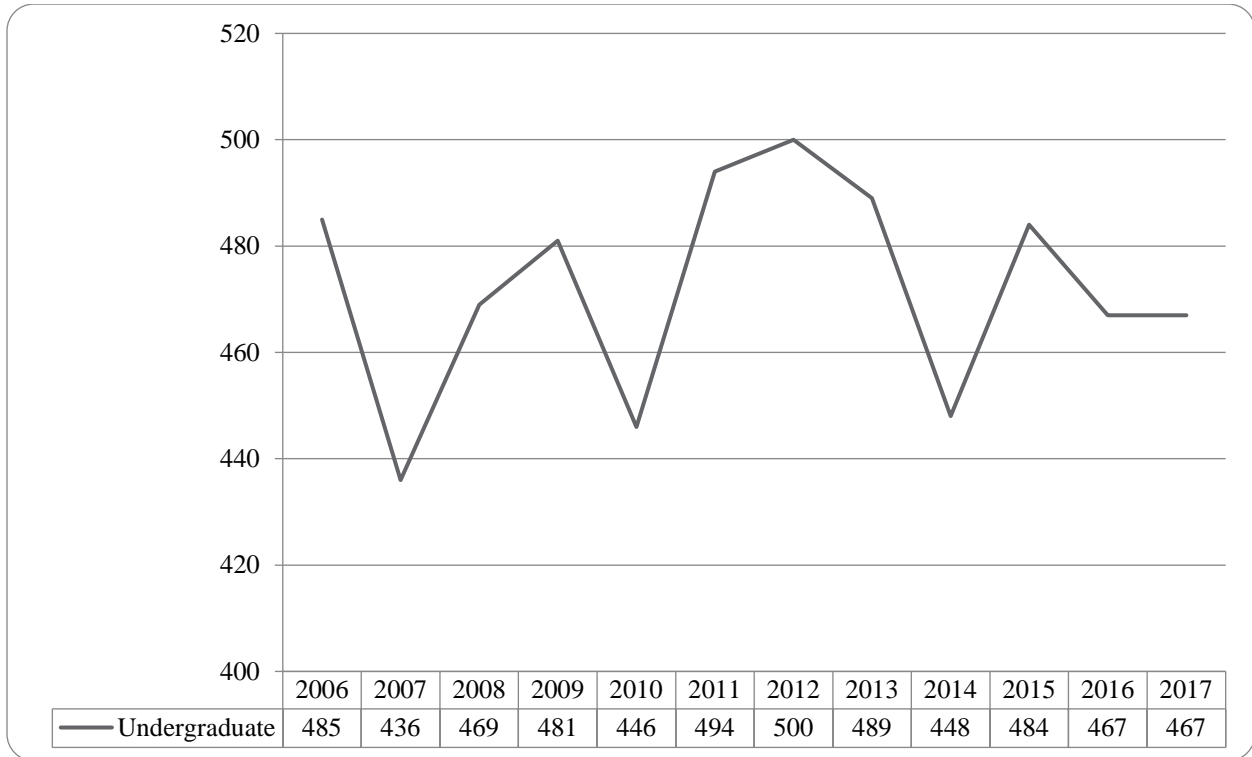


Figure 34: Non-Degree/Intercampus Special Undergraduate Students Head Count by Ethnicity by Gender: Summer 2017

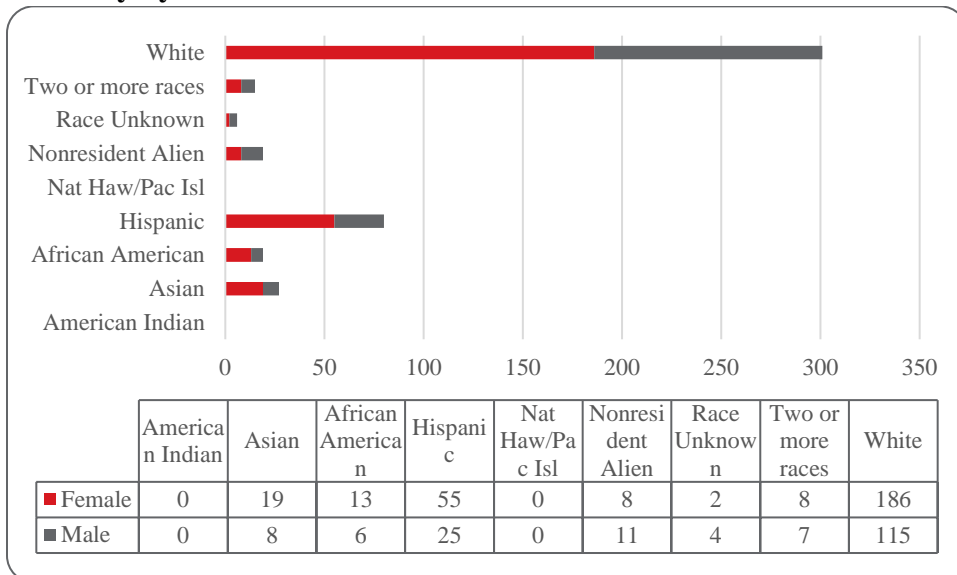


Table 13: Non-Degree/Intercampus Head Count Summary for Special Undergraduate Students by Full and Part-Time by Gender and Race Classification: Summer 2017

	American Indian		Asian		African American		Hispanics		Nat Haw / Pac Isl		Race Unknown		Two or more races		White		Nonresident Alien		Total			
	F	M	F	M	F	M	F	M	F	M	F	M	F	M	F	M	F	M	F	M	Total	
Undergraduate																						
Full-Time																						
First-Time Freshmen																						
Other Freshmen															6	2				6	2	8
Sophomores																						
Juniors															1					1		1
Seniors																						
Special																2					2	2
Total Full-Time															7	4				7	4	11
Part-Time																						
First-Time Freshmen															1					1		1
Other Freshmen				13	5	12	5	54	22		1	1	6	7	134	80	6	9	226	129	355	
Sophomores				4	2	1					1		1		19	10			26	12	38	
Juniors												1	1		11	7		1	12	9	21	
Seniors												1			1	2		1	1	4	5	
Special				2	1		1	1	3			1			13	12	2		18	18	36	
Total Part-Time				19	8	13	6	55	25		2	4	8	7	179	111	8	11	284	172	456	
Total Undergraduate				19	8	13	6	55	25		2	4	8	7	186	115	8	11	291	176	467	
Total All Students				19	8	13	6	55	25		2	4	8	7	186	115	8	11	291	176	467	

Figure 35: Non-Degree/Intercampus Special Graduate Students Head Count: Summer 2006-2017

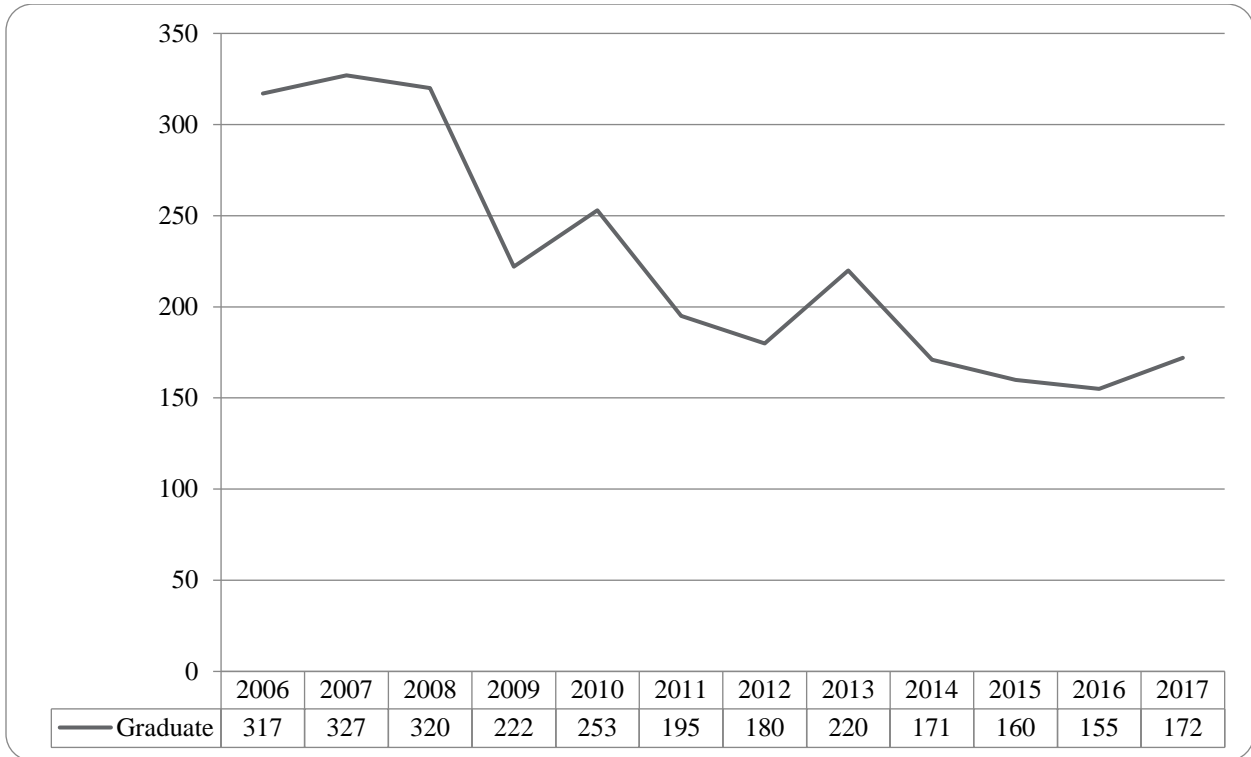


Figure 36: Non-Degree/Intercampus Special Graduate Students Head Count by Ethnicity by Gender: Summer 2017

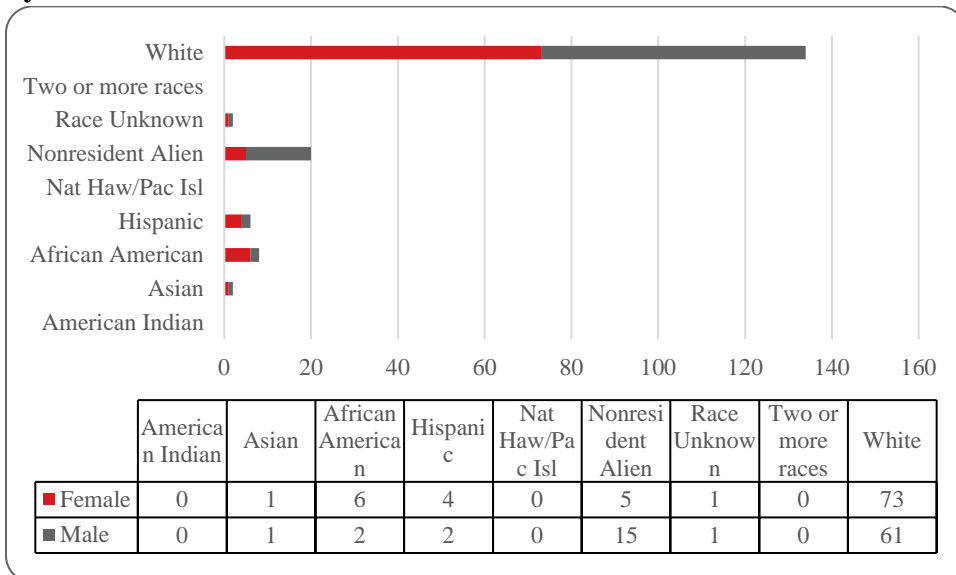


Table 14: Non-Degree/Intercampus Head Count Summary for Special Graduate Students by Full and Part-Time by Gender and Race Classification: Summer 2017

	American Indian		Asian		African American		Hispanics		Nat Haw / Pac Isl		Race Unknown		Two or more races		White		Nonresident Alien		Total			
	F	M	F	M	F	M	F	M	F	M	F	M	F	M	F	M	F	M	F	M	Total	
Graduate																						
Full-Time																						
Certificate																						
Masters																						
Doctoral																						
Special Graduate					2			1							6	2		1	8	4	12	
Total Full-Time					2			1							6	2		1	8	4	12	
Part-Time																						
Certificate																						
Masters																						
Doctoral																						
Special Graduate			1	1	4	2	4	1		1	1			67	59	5	14	82	78	160		
Total Part-Time			1	1	4	2	4	1		1	1			67	59	5	14	82	78	160		
Total Graduate			1	1	6	2	4	2		1	1			73	61	5	15	90	82	172		
Total All Students			1	1	6	2	4	2		1	1			73	61	5	15	90	82	172		

Table 15: Cooperative Graduate Program Head Count Summary for Graduate Students by Full and Part-Time by Gender and Race Classification: Summer 2017

	American Indian		Asian		African American		Hispanics		Nat Haw / Pac Isl		Race Unknown		Two or more races		White		Nonresident Alien		Total			
	F	M	F	M	F	M	F	M	F	M	F	M	F	M	F	M	F	M	F	M	Total	
Graduate																						
Full-Time																						
Certificate																						
Masters																						
Doctoral																						
Special Graduate																						
Total Full-Time																						
Part-Time																						
Certificate								1							2	1			3	1	4	
Masters																						
Doctoral																						
Special Graduate																						
Total Part-Time								1							2	1			3	1	4	
Total Graduate								1							2	1			3	1	4	
Total All Students								1							2	1			3	1	4	

Figure 37: Other Honors Student Credit Hours by Level of Instruction: Summer 2017

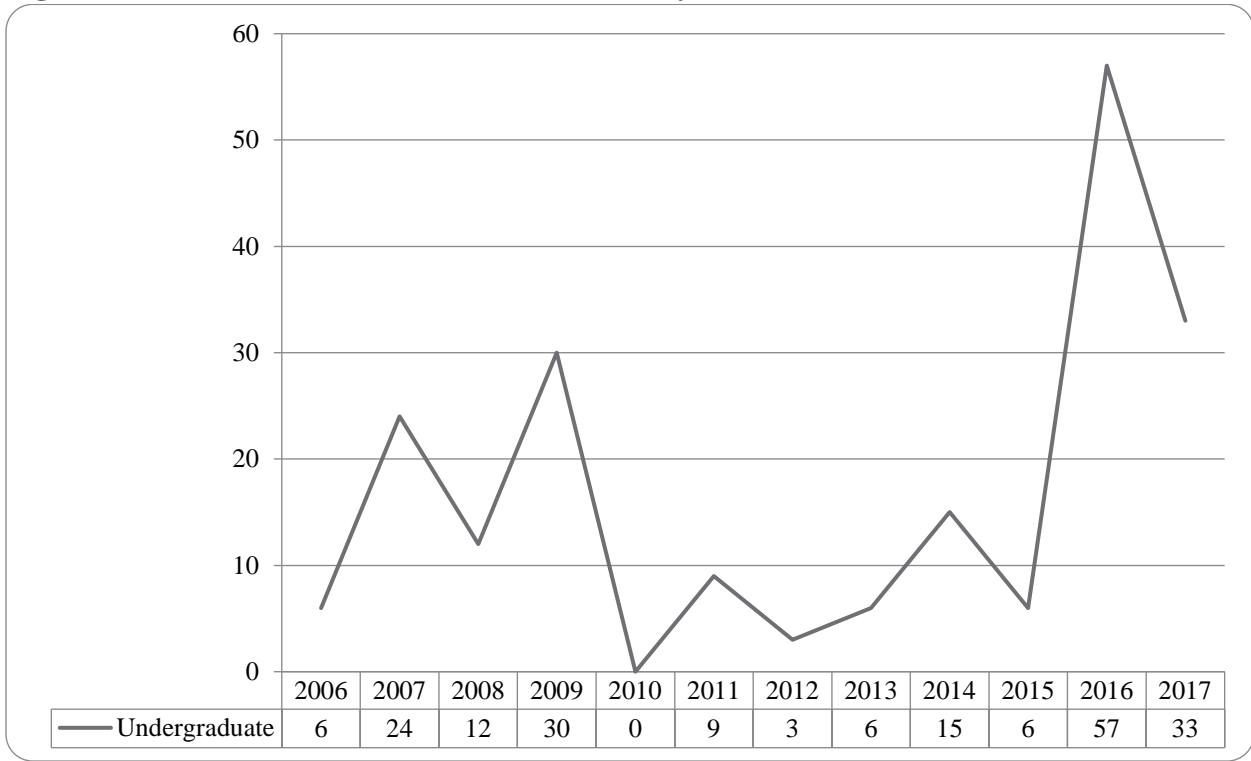


Figure 38: College of Agriculture Delivery-Site Head Count: Summer 2017

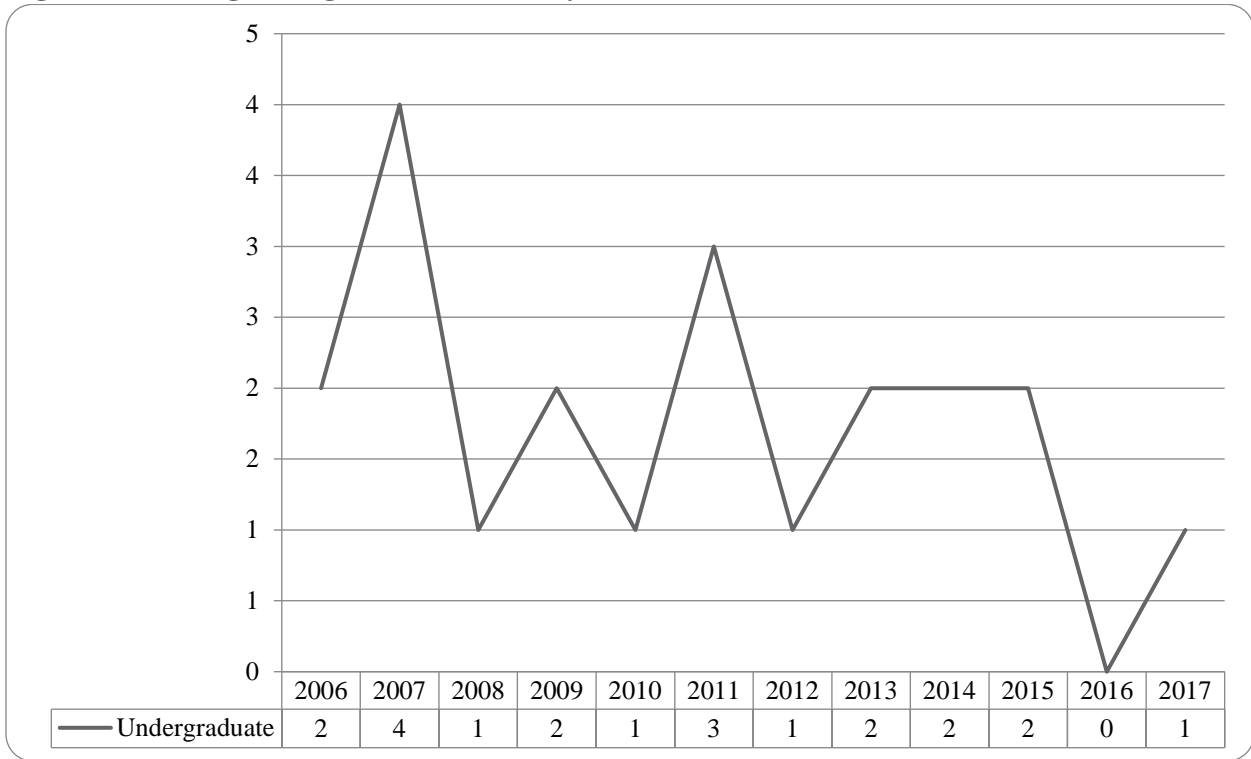


Figure 39: College of Agriculture Delivery-Site Student Credit Hours: Summer 2006-2017

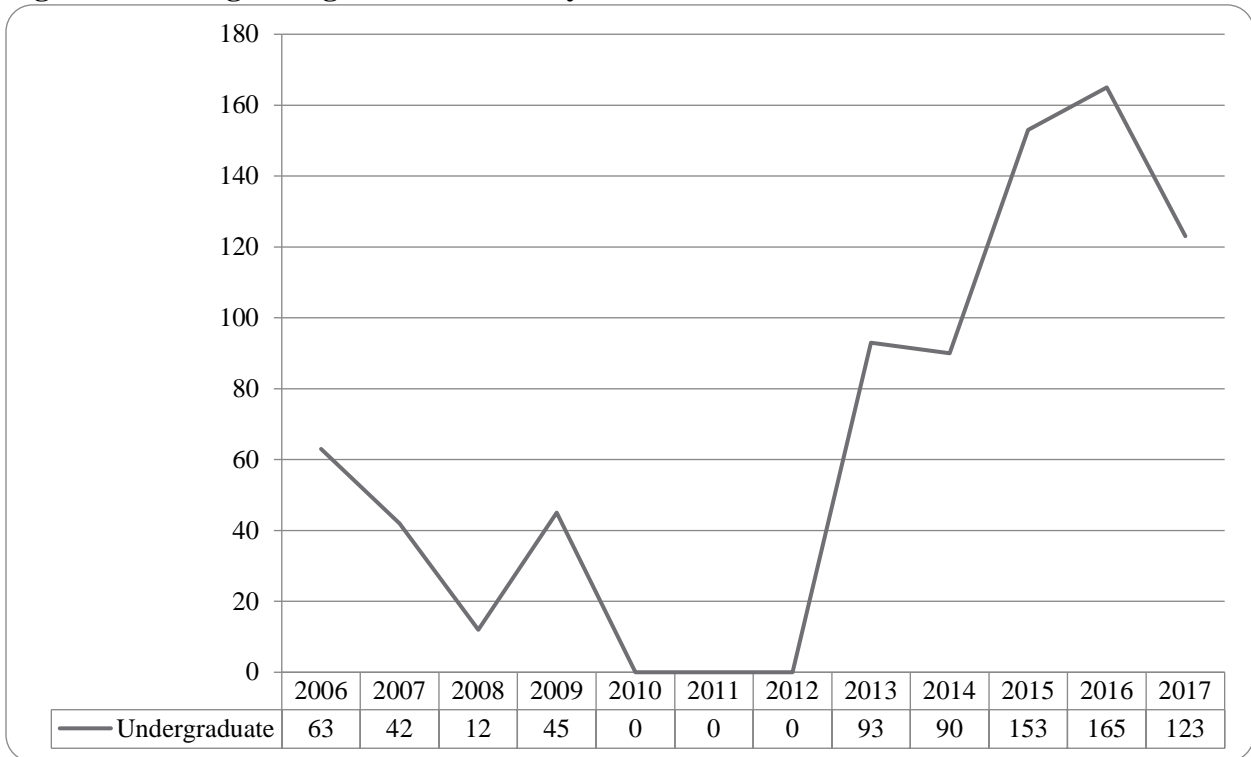


Table 16: College of Agriculture Head Count Summary for Undergraduate Students by Full and Part-Time by Gender and Race Classification: Summer 2017

	American Indian		Asian		African American		Hispanics		Nat Haw / Pac Isl		Race Unknown		Two or more races		White		Nonresident Alien		Total			
	F	M	F	M	F	M	F	M	F	M	F	M	F	M	F	M	F	M	F	M	Total	
Undergraduate																						
Full-Time																						
First-Time Freshmen																						
Other Freshmen																						
Sophomores																						
Juniors																						
Seniors																						
Special																						
Total Full-Time																						
Part-Time																						
First-Time Freshmen																						
Other Freshmen																						
Sophomores																						
Juniors																					1	1
Seniors																						
Special																						
Total Part-Time																					1	1
Total Undergraduate																					1	1
Total All Students																					1	1

Figure 40: College of Architecture Delivery-Site Head Count: Summer 2006-2017

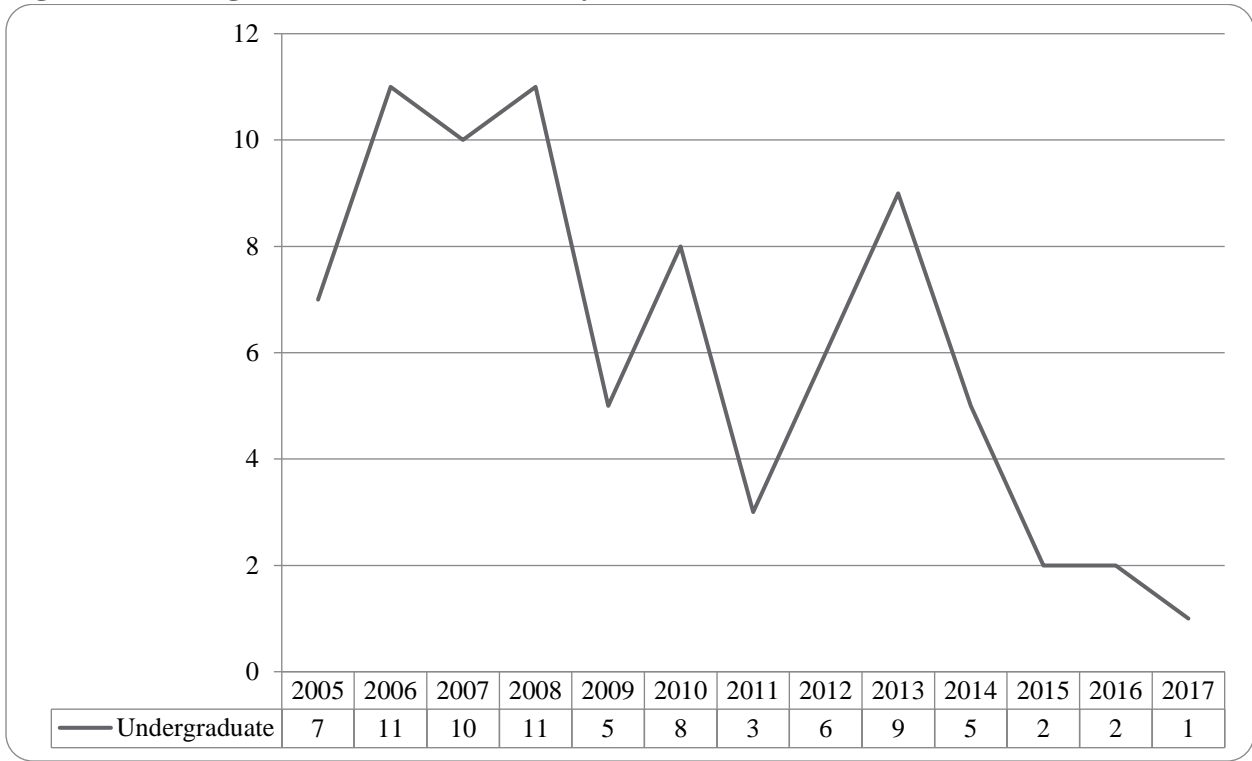


Table 17: College of Architecture Head Count Summary for Undergraduate Students by Full and Part-Time by Gender and Race Classification: Summer 2017

	American Indian		Asian		African American		Hispanics		Nat Haw / Pac Isl		Race Unknown		Two or more races		White		Nonresident Alien		Total			
	F	M	F	M	F	M	F	M	F	M	F	M	F	M	F	M	F	M	F	M	Total	
Undergraduate																						
Full-Time																						
First-Time Freshmen																						
Other Freshmen																						
Sophomores																						
Juniors																						
Seniors																						
Special																						
Total Full-Time																						
Part-Time																						
First-Time Freshmen																						
Other Freshmen																1					1	1
Sophomores																						
Juniors																						
Seniors																						
Special																						
Total Part-Time																1					1	1
Total Undergraduate																1					1	1
Total All Students																1					1	1

Figure 41: College of Engineering Delivery-Site Head Count: Summer 2006-2017

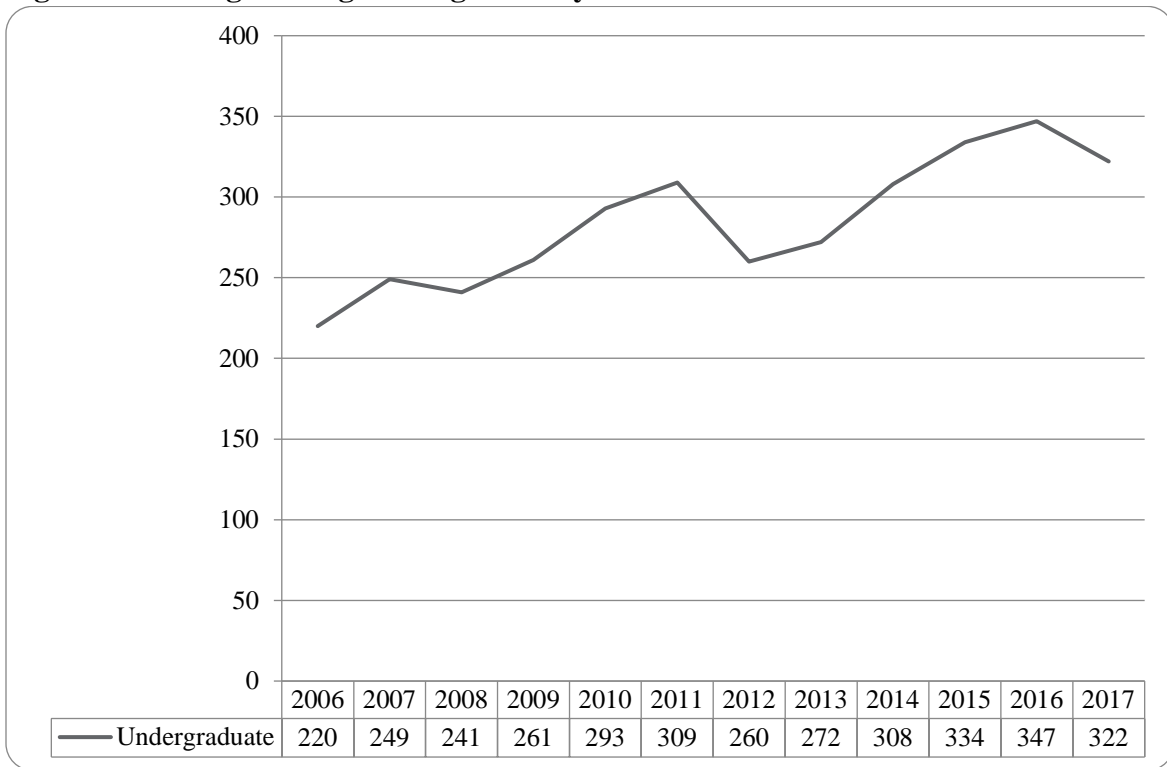


Figure 42: College of Engineering Delivery-Site Student Credit Hours: Summer 2006-2017

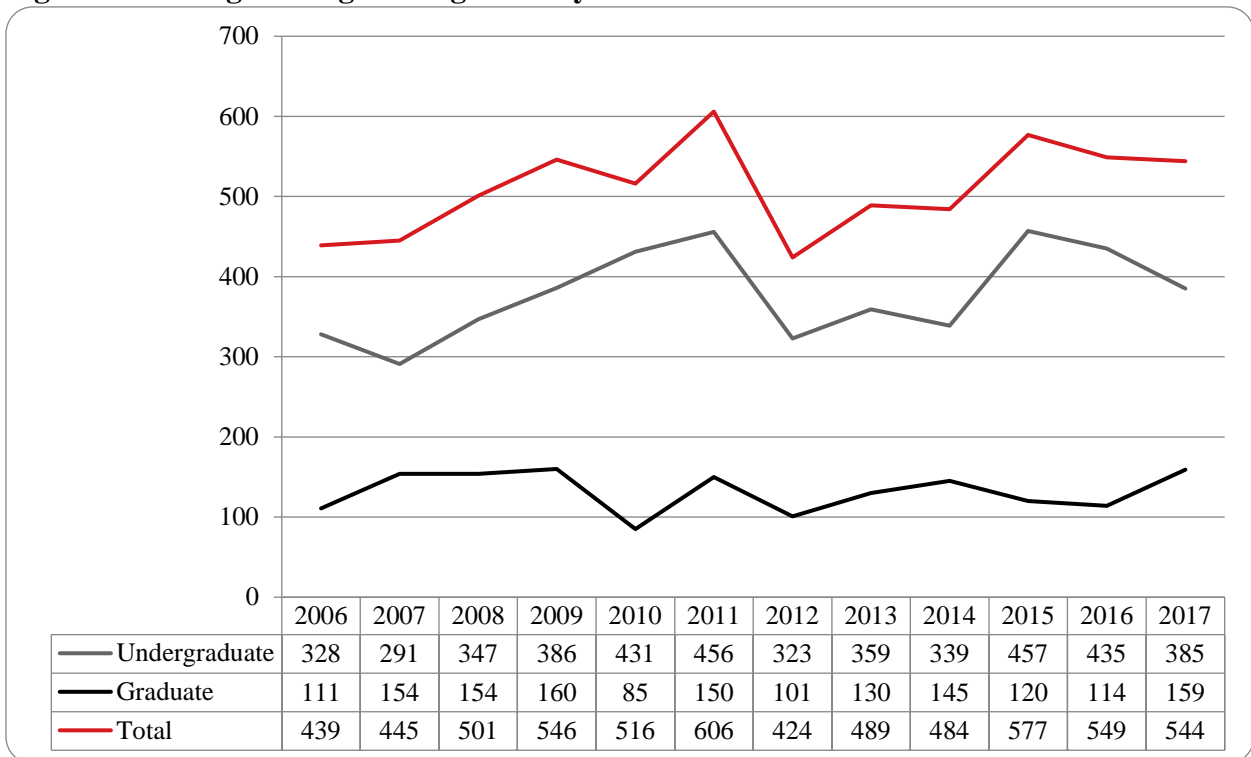


Table 18: College of Engineering Head Count Summary for Undergraduate Students by Full and Part-Time by Gender and Race Classification: Summer 2017

	American Indian		Asian		African American		Hispanics		Nat Haw / Pac Isl		Race Unknown		Two or more races		White		Nonresident Alien		Total				
	F	M	F	M	F	M	F	M	F	M	F	M	F	M	F	M	F	M	F	M	Total		
Undergraduate																							
Full-Time																							
First-Time Freshmen																							
Other Freshmen																							
Sophomores																							
Juniors											1					3					4	4	
Seniors					1	1									3	3	1				5	4	9
Special													1								1	1	
Total Full-Time					1	1					1		1		3	6	1				5	9	14
Part-Time																							
First-Time Freshmen																							
Other Freshmen													1	1	4			5	1		10	11	
Sophomores				1			1	7			1	2		2	9	34	3	8	14	54	68		
Juniors			3	2		4		8			1	4		2	17	59	5	5	26	84	110		
Seniors			1	1		7		8			2	1			14	68	8	4	24	90	114		
Special								1								4					5	5	
Total Part-Time			4	4		11	1	24			2	8	1	5	41	169	16	22	65	243	308		
Total Undergraduate			4	4	1	12	1	24			2	9	1	6	44	175	17	22	70	252	322		
Total All Students			4	4	1	12	1	24			2	9	1	6	44	175	17	22	70	252	322		

Figure 43: College of Education and Human Sciences Delivery-Site Head Count: Summer 2006-2017

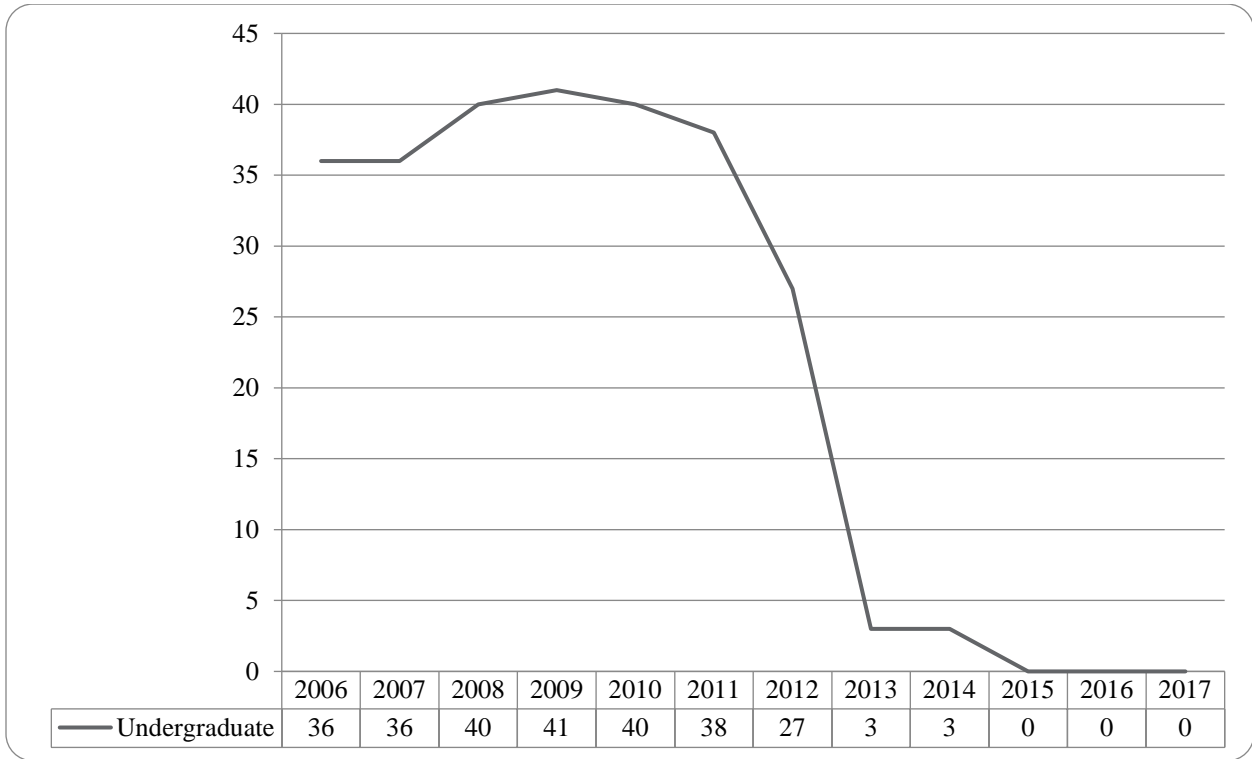
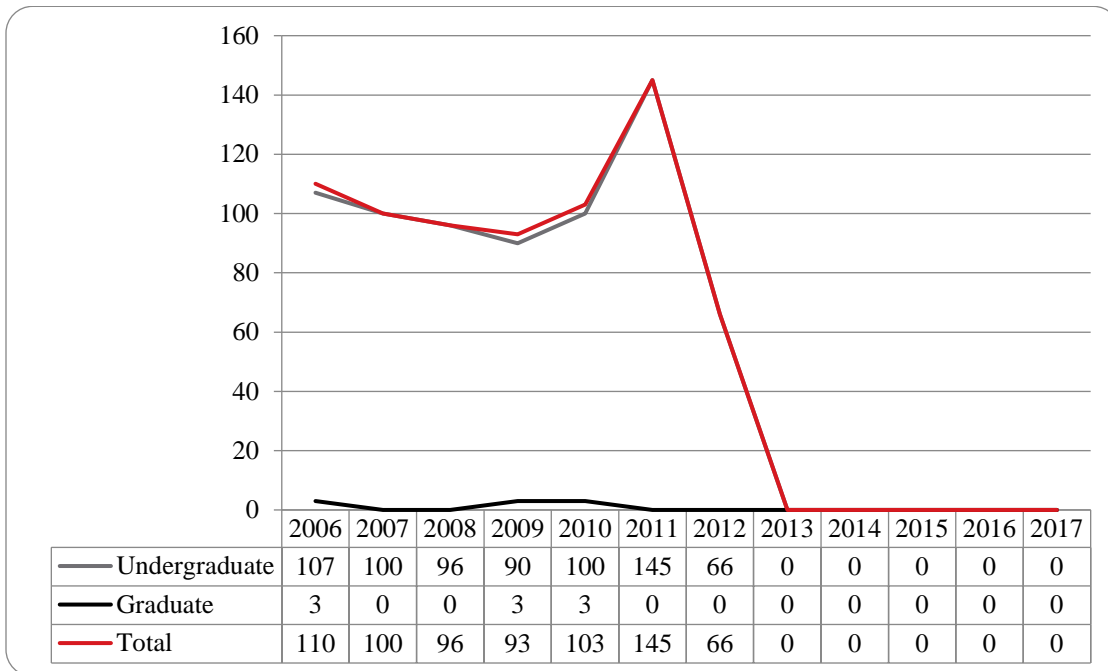


Figure 44: College of Education and Human Sciences Delivery-Site Student Credit Hours: Summer 2006-2017



GLOSSARY

The total head count and student credit hours in this enrollment report are provided on both a delivery-site and administrative-site basis. Delivery-site includes enrollment in all courses taught at UNO regardless of “home” campus. This means that student credit hours are reported for courses in the colleges. Student enrollment is counted in the college declared by the student. Specifically, the delivery-site enrollment numbers include students in degree programs in the UNL Colleges of Agriculture, Architecture, Engineering and Technology, and Education and Human Science.

FIRST-TIME, Entering (freshmen) Student: Students attending any institution for the first time at the undergraduate level. For students entering the fall term, this includes students enrolled in the fall term who attended college for the first time in the prior summer term. Also included are students who entered with advanced standing, i.e. college credits earned before graduation from high school.

OTHER FRESHMEN: At the beginning of the current semester, undergraduate students who (1) are not First-Time Freshmen and (2) have less than 27 semester hours earned from all institutions of higher education attended.

SOPHOMORES: At the beginning of the current semester, undergraduate students who have at least 27, but not more than 57, semester hours earned from all institutions of higher education attended.

JUNIORS: At the beginning of the current semester, undergraduate students who have at least 58, but not more than 90, semester hours earned from all institutions of higher education attended.

SENIORS: At the beginning of the current semester, undergraduate students who have at least 91 semester hours earned from all institutions of higher education attended.

NON-DEGREE/INTER-CAMPUS/SPECIAL UNDERGRADUATES: Special undergraduates not pursuing a degree at UNO in various programs: Inter-Campus UNMC, UNK, UNL, and Non-Degree.

NON-DEGREE/INTER-CAMPUS/SPECIAL GRADUATE STUDENTS: Special graduate students not pursuing a degree at UNO in various programs: Engineering Transfer Program, Inter-Campus UNMC, UNK, UNL, Inter-Campus UNL Graduate Psychology and Non-Degree.

MASTERS/SPECIALIST: Graduate students pursuing a degree less than doctoral.

CERTIFICATE: These students are not enrolled in a degree program, but only a certificate.

DOCTORAL: Graduate students who have been accepted into a doctoral program.

FULL-TIME: In the current semester, undergraduate students enrolled for 12 or more semester hours, or graduate students enrolled for 9 or more semester hours.

PART-TIME: In the current semester, undergraduate students enrolled for less than 12 semester hours, or graduate students enrolled for less than 9 semester hours.

COOPERATIVE GRADUATE PROGRAM: Graduate students enrolled in Human Resources and Training or Global Information Operations offered cooperatively by two or more colleges.



OFFICE OF INSTITUTIONAL EFFECTIVENESS

www.unomaha.edu/oie/

402-554-2367 | 402-554-4896 (Fax)

T Hank Robinson, Director

Jenny Liu, Director Institutional Research

Daniel O'Dell, Applications Administrator

Andrew Jacobsen, Business Analyst

Thomas Walker, Business Analyst

Lindsey Bandow, Research Analyst II

Jeanie Gutheil-Bykerk, Research Analyst