

Jodie

<https://networks.nebraska.gov/vosnet/Default.aspx>

<http://h3.ne.gov/H3/>

Catherine

PPT

[www.neopportunitymap.org](http://www.neopportunitymap.org)

Emily

PPT

Jill



# Nebraska Community Opportunity Map

---



A free tool putting  
vital community data  
at your fingertips  
– to ensure informed decisions  
for Nebraska's families.



# About the Community Opportunity Map



## **Easily Accessible**

This free tool is available to the public with the goal of increasing access to information relevant to the well-being of Nebraska's children and families.



## **High-quality Data**

Data represented on the map is comprised of select U.S. Census Bureau indicators, as well as indicators compiled from Nebraska state agencies.



## **Highlights Opportunities**

The map illustrates locations (counties, state administrative regions, county and district court regions) where families/children are at risk, but also the issues with which they struggle



## **Guiding Decisions**

The map gives policymakers and other stakeholders another tool for making data-informed decisions about resource allocation, service delivery, emergency planning, and other policies that affect families.

# PARTNERS

---



- Community Attributes, Inc.
- Casey Family Programs

## Nebraska stakeholders:

- Boys Town
- Nebraska Department of Health and Human Services
- Foster Care Review Office
- Nebraska Children and Families Foundation
- Nebraska Commission on Law Enforcement and Criminal Justice
- Nebraska Court Improvement Project
- Nebraska Department of Education
- Schmeeckle Research (Consultant/Facilitator)
- University of Nebraska at Omaha, Center for Public Affairs Research
- Voices for Children



# Nebraska Community Opportunity Map

Local Data on Community Well-Being to Support Strong Families and Safe Children

CHOOSE A LOCATION

Counties

DHHS Behavioral Health Regions

DHHS Children and Family Service Areas

District Courts

County Courts

Select a Custom Area

circle

rectangle

freeform

Search for a City or Address in NE

CHANGE MAP VIEW

Add a Demographic Layer

Population

Poverty Rate

Educational Attainment

Street Map

Satellite

Reset Map

Please tell us how you are using the Community Opportunity Map

Nebraska

Children & Families Data

Other Community Data

Totals within 93 Counties

Hover over an indicator to compare state, metropolitan, and non-metropolitan values. Sample sizes are provided for context.

Children and Family Well-Being

Work Hrs/Week to Rent 2-Bed Home

68.0

Children in Single Parent Households

26%

113,168 Children

Teen Births

Per 1,000

18.2

1,167 Births

High School Graduation Rate

89%

17,760 Graduates

Juvenile Arrests

Per 1,000

47.0

9,860 Arrests

53%

Proficient English Language Arts

Third Graders

12,655 Students

23%

Children Below Poverty Level

Under Age 5

24,015 Children

Children in Out of Home Care

Per 1,000

9.6

4,830 Children

Child Abuse / Neglect Reports

Per 1,000

4.3

2,163 Reports

Infant Deaths

Per 1,000

5.6

144 Deaths

Demographic Characteristics

5

A photograph of a man and a woman smiling, with the woman holding a baby. The man is wearing glasses and a red tank top. The woman has curly hair and is wearing a white top. The baby is wearing a pink outfit and a headband. The background is a brick wall.

# NEOpportunityMap.org

*Please use and share!*



**THANK YOU!**







# **BACKUP SLIDES**

## **Nebraska Community Opportunity Map**

---

# Search the Community Opportunity Map by:

- Nebraska County (can search by more than one county at once)
- DHHS Behavioral Health Regions
- DHHS Children and Family Service Areas
- District Court
- County Court
- City or Address







# Children and Family Well-Being Indicators (County level only)

- Work hours/week to rent a 2-bedroom home
- Children in Single Parent Households
- Teen Births
- High School Graduation Rate
- Juvenile Arrests
- Proficient in English Language Arts
- Children Below Poverty Level
- Children in Out of Home Care
- Child Abuse/Neglect Reports
- Infant Deaths



# Healthy Community Indicators/ Demographic Characteristics - ACS

- Vacant Housing
- Housing Cost Burden
- Resident Turnover
- Single Mother Families
- Child to Adult Ratio
- People 65 and Over
- Unemployment Rate
- Adults with High School Diploma/GED
- Poverty Rate
- Population
- Racial/Ethnic Heterogeneity



# THE LANDSCAPE



A data-driven reflection of the  
Omaha-Council Bluffs area.





# FOCUS AREAS



HEALTH



NEIGHBORHOODS



ARTS & CULTURE



SAFETY



TRANSPORTATION



CIVIC ENGAGEMENT



EDUCATION



WORKFORCE



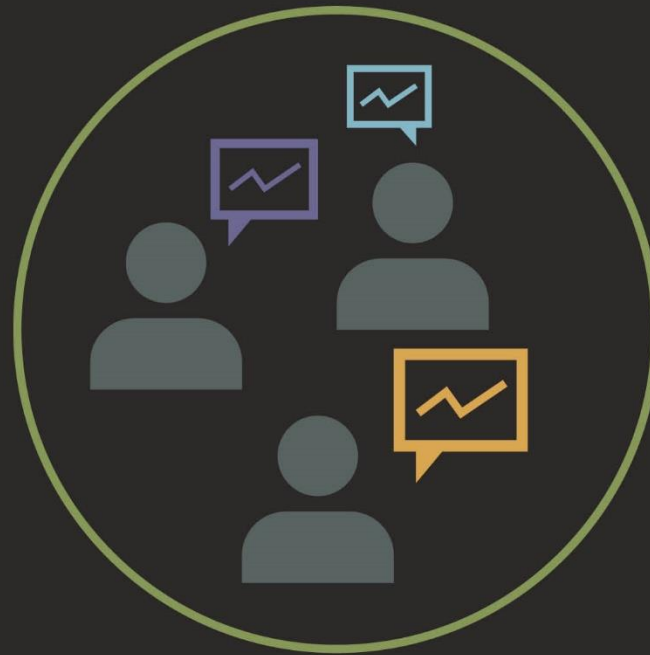




# DATA

(indicators within the  
Landscape)

+



# INSIGHT

(voice of local residents who may  
be experiencing these challenges)

=



# STRONGER COMMUNITY PROBLEM SOLVING



# Who can use it?

**RESIDENTS** // Ensure that their voice is incorporated into community problem solving

**DONORS** // Give to support initiatives or nonprofits addressing the focus areas

**NONPROFITS** // Align and strengthen work to address prioritized issues

**POLICYMAKERS** // Ensure we have smart policies and legislation in place

**ADVOCATES** // Vigorously share the information about the data and findings



# What are we asking people to do?

## PROVIDE FEEDBACK

- » Tell us what you think
- » Share your experience
- » Meet with OCF to discuss data or indicators

## FIND A NONPROFIT

- » Landing page on [omahagives24.org](http://omahagives24.org) for each focus area

## GET INVOLVED

- » Volunteer for a nonprofit or serve on a board
- » Advocate for your favorite causes
- » Share your knowledge or learning from others





# The Data

## SOURCES

- » Publicly available
- » Represents Douglas, Sarpy, and Pottawattamie Counties
- » Regularly produced

## UPDATES

- » Bi-annually unless data is available less frequently, ex. CHNA
- » As we learn about new sources



# Connected to the Community

*There's no need to reinvent the wheel. We worked to connect and incorporate these projects into The Landscape.*

- » Community Health Improvement Plan
- » Heartland 2050
- » United Way of the Midlands 2025 Goals
- » The Empowerment Network Transformation 2025
- » And so many more...

THE  MPOWERMENT  
NETWORK

Empower Omaha • Empower North Omaha  
The African-American Empowerment Network

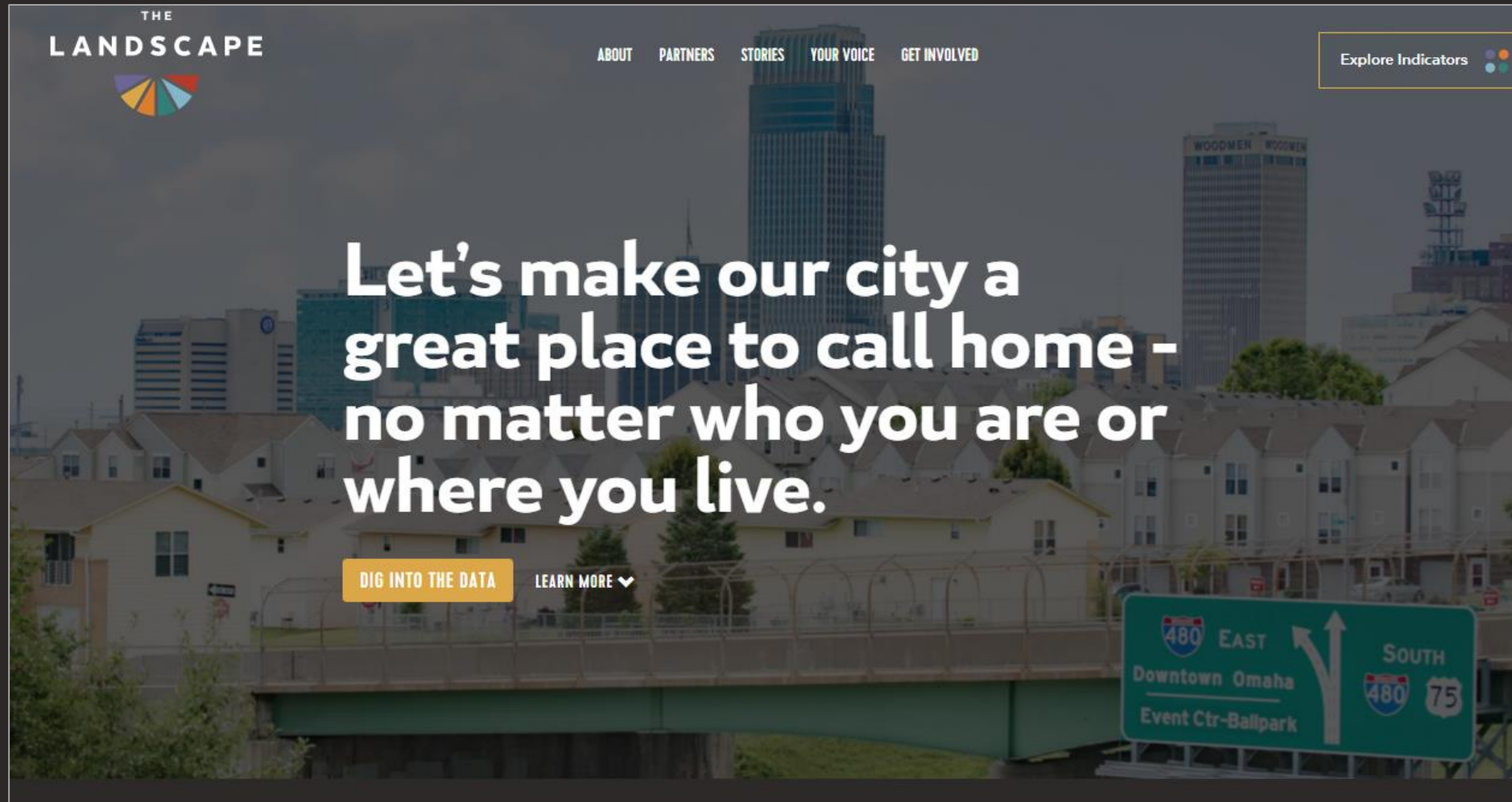
**COMMUNITY  
STRONG**  
unitedwaymidlands.org

**Heartland  
2050** 

**Health Matters  
in Douglas County  
Nebraska**



# Explore the Site- [www.TheLandscapeOmaha.org](http://www.TheLandscapeOmaha.org)



## Be Sure to Check-Out:

- » “Stories” to hear from local residents
- » “Get Involved” to take action around an issue important to you
  - » Go to “Find a Nonprofit” to visit the Omaha Gives platform



# The Landscape + Omaha Gives Platform

Unique page accessible only through The Landscape website

The screenshot shows the top section of the 'OMAHA GIVES!' website. At the top left is the logo for 'AMERICAN NATIONAL BANK PRESENTS OMAHA GIVES! powered by the Omaha Community Foundation'. To the right are links for 'SIGNUP', 'LOGIN', and a shopping cart icon showing '\$0'. Below these are navigation links: 'Nonprofits', 'Leaderboard', 'Toolkits', and 'About'. A search bar is present with the placeholder text 'Use keywords to search for nonprofits working in specific focus areas'. The search bar has a text input field labeled 'Name, Keyword' and a dropdown menu labeled 'All Categories'. Below the search bar, the text 'THE LANDSCAPE' is displayed above a semi-circular graphic composed of several colored segments. Below this graphic is a horizontal row of category tags: 'HEALTH', 'NEIGHBORHOODS', 'TRANSPORTATION', 'SAFETY', 'WORKFORCE', and 'EDUCATION'. A large black arrow points from the right towards the 'HEALTH' tag. Below the tags, a paragraph of text reads: 'The following nonprofits have identified that they are working within the broad area of Health. Browse through this list to understand how each is working to address local health challenges. You can use this resource to learn more about a specific nonprofit, to connect directly with them, or make a donation to support their work.'

Nonprofits are able to be organized by multiple categories

# Omaha Community Foundation's Promise

- » **TO INVEST** in a form of community knowledge and share that information with our stakeholders
- » **TO COMMUNICATE** how funding flowing through the Foundation relates to the areas of the Landscape
- » **TO INCORPORATE** the knowledge gained from The Landscape by aligning our own resources and implementing through our programs



# Thank you!

Emily Nguyen

[Emily@omahafoundation.org](mailto:Emily@omahafoundation.org)





# CCPE Data Dashboards



Jill Heese, MS  
Research Coordinator

Presented at the August 14, 2019, UNO Data Users Conference

# Who We Are

- Nebraska's Coordinating Commission for Postsecondary Education (CCPE) is a constitutional agency with a wide range of duties and responsibilities, including:
  - Administering various forms of financial aid
  - Approving academic programs and capital construction projects
  - Assembling and analyzing statewide data and publishing reports tied to the state's higher education goals
    - Ex., *2019 Factual Look at Higher Education in Nebraska: Degrees and Other Awards Conferred* analyzes postsecondary completion data that higher education institutions report to the Integrated Postsecondary Education Data System (IPEDS) (134 pages)

# The Problem

- Written reports and accompanying data files are great resources, but they have limitations:
  - Institutions report a vast amount of information to IPEDS
    - Not feasible to produce a report covering all possible data points
    - *Factual Look Degrees/Other Awards* report analyzes degrees by sector, institution, award level, gender, race/ethnicity, discipline, and it analyzes completers by age
    - Even with a 100+ page report, it is not feasible to analyze all combinations of those variables together
      - 7 award levels, 2 gender, 8 race/ethnicity, 7 discipline clusters, 5 sectors, and 55 institutions
  - Data users may not have the time or the know-how to program and analyze data in a csv or Excel file



# The Solution

- Data dashboards
  - Allow users to analyze and drill-down information
- Three dashboards are available on the Commission website:  
[ccpe.nebraska.gov/dashboards](https://ccpe.nebraska.gov/dashboards)
  - [College continuation rates](#)
  - [Postsecondary degrees/awards](#)
  - [Postsecondary enrollment](#)

# Software

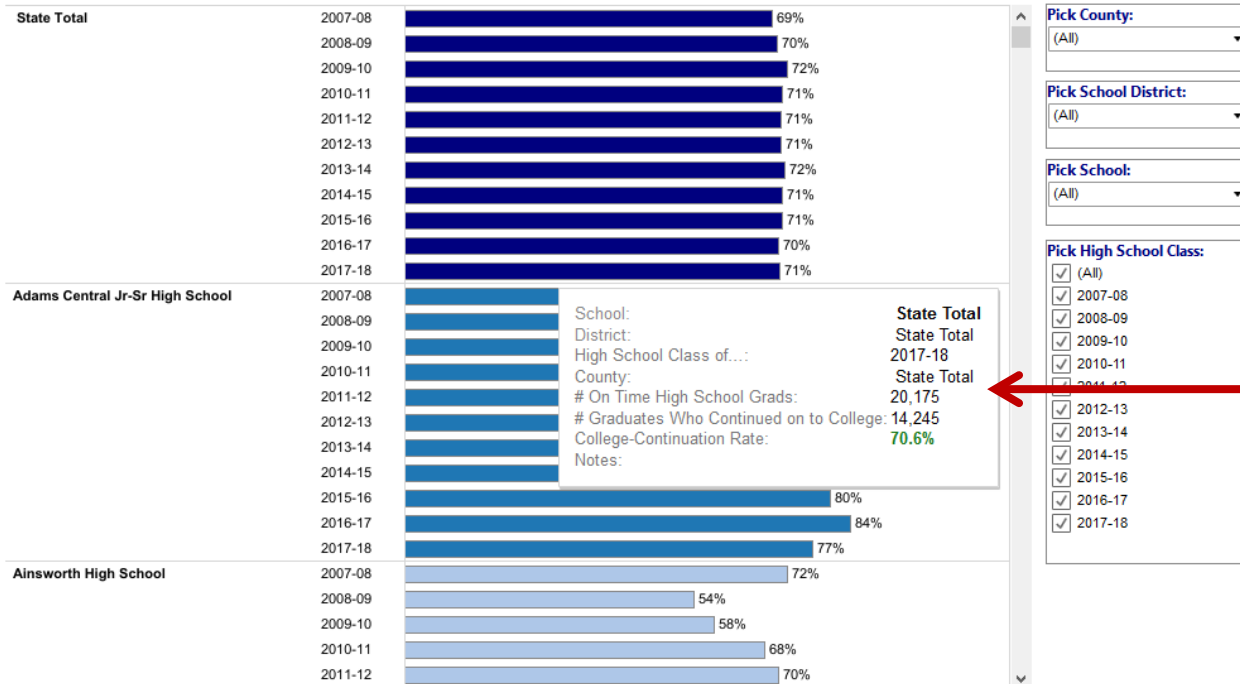
- Dashboards are made using Tableau Public
  - + Free
  - + User-friendly
  - + Can embed dashboards into our website
  - + Automatically tracks number of hits
  - + Very popular with institutional researchers
  - Early on, error messages seemed to be a common occurrence, but this has been resolved and Tableau updates the software often
- Tableau also has mapping features that we use to create graphs for reporting educational attainment by county

# College-Continuation Rates

## College Continuation Rates

This dashboard shows the calculated college-going rates for each of Nebraska's public high schools that awarded regular high school diplomas between 2007-08 and 2017-18. Hover your mouse over a data point to display additional information.

**College-continuation rate:** The percentage of on-time public high school graduates who continued on to college by the following April, according to enrollment records obtained from the National Student Clearinghouse.



*Note:* These rates are based on data obtained from the Nebraska Department of Education (NDE) and the National Student Clearinghouse (NSC). Only "on time" graduates--student who graduate from high school in four years or less--are included. These data do not include students who required longer than four years to graduate from high school or students who graduated from Nebraska's nonpublic (private) high schools. Only graduates who continue on to college at NSC-reporting institutions are included. As a result, college continuation rates reported here are underestimated to some degree. Data is masked if the number of graduates, or the number who continued on to college, is less than 10. Some schools/school districts have changed since 2007-08 due to school reorganization, new schools, etc. When available, this information is included as a note and can be found by hovering over a data point.

Questions? Contact Jill Heese at (402) 471-0031.

\*\* This page was last updated August 2, 2019. \*\*

To download an Excel file of the entire dataset, click the download button below:



- Use the filters to selected the needed information.
- Hover over a datapoint to display more information.
- Download an Excel file of the entire dataset by clicking the download button.



# Degrees and Other Awards (Page 1)

## Degrees and Other Awards Dashboard

Introduction Degrees and Other Awards 2007-2008 & 2017-2018 Completers by Age Group

### **2019 Factual Look at Higher Education in Nebraska: Degrees and Other Awards Conferred 2007-2008 through 2017-2018**

These dashboards summarize the number of degrees and awards reported through the IPEDS surveys of Nebraska's public and independent colleges and universities and for-profit/career schools.



The following information corresponds to the data presented in CCPE's 2019 Factual Look at Higher Education in Nebraska: Degrees and Other Awards Conferred 2007-2008 through 2017-2018. Institutions report the number of degrees and other awards conferred during a one-year period beginning on July 1. For example, degrees and awards reported for 2017-2018 were awarded between July 1, 2017 and June 30, 2018. Data presented are based on the Fall 2008 through Fall 2018 IPEDS completion surveys with adjustments made as necessary by CCPE to improve data accuracy. A few for-profit/career schools are not included in this analysis because: 1.) The institution is not required to report school statistics to IPEDS, or 2.) The institution reports school statistics to IPEDS, but it has campuses in multiple states and reports combined data for multiple campuses (known as "parent/child" reporting).

-> Click the 'Degrees and Other Awards' tab above to display awards conferred between 2007-2008 through 2017-2018. Data are displayed in table format by sector and institution. Choose any combination of filters (award level, gender, race/ethnicity, discipline cluster) to further drill-down the data.

-> Click the '2007-2008 & 2017-2018' tab above to display awards conferred in 2007-2008 and 2017-2018. Data are displayed in graphical format by award level, gender, race/ethnicity, and discipline cluster. Choose any combination of filters (sector, institution, award level, gender, race/ethnicity, discipline cluster) to further drill-down the data.

-> Click the 'Completers by Age Group' tab above to display the number of completers. Data is available for 2011-2012 through 2017-2018. Data are displayed in table format by sector, institution, and age group. Choose any combination of filters (sector, institution, age group, award level) to further drill-down the data.

*Note. Award level groupings for age data are slightly different than for gender, race/ethnicity, and discipline cluster. Additionally, analyses for age group data are based on the number of completers while analyses for gender, race/ethnicity, and discipline cluster are based on the number of completions. See pages 6.2 and 6.3 of the report for more information.*

-> Hover your mouse over a data point to display additional information.

-> Access definitions of key terms by clicking the 'Definitions' icon (above).

-> Download a copy of the report by clicking the 'Download Report' icon (above).

-> Download an Excel file of the entire dataset by clicking the 'Download Data' icon (above).

**Questions? Contact Jill Heese at (402) 471-0031.**

**\*\* This page was last updated July 19, 2019. \*\***

- There are 4 pages (intro and 3 DBs). Click the tabs to navigate between pages

- Download definitions, report, or data by clicking the appropriate icon.

# Degrees and Other Awards (Page 2)

## Degrees and Other Awards Dashboard

Introduction Degrees and Other Awards 2007-2008 & 2017-2018 Completers by Age Group

### 2019 Factual Look at Higher Education in Nebraska: Degrees and Other Awards Conferred 2007-2008 through 2017-2018

Pick Award Level: Less-than-Four-Year Certif... Pick Gender: Male Pick Race/Ethnicity: Hispanic Pick Discipline Cluster: Trades Note: Hover over circle for discipline desc...

#### Degrees and Other Awards Conferred by Academic Year and 10-Year Percentage Change

Sector	Institution	07-08	08-09	09-10	10-11	11-12	12-13	13-14	14-15	15-16	16-17	17-18
Nebraska Community Colleges	Central Community College	32	32	42	27	46	67	60	113	177	153	152 375.0%
	Metropolitan Community College	3	3	4	15	1	8					11
	Mid-Plains Community College	1	2	1	7	3	2					
	Northeast Community College	0	1	3	3	1	1					
	Southeast Community College	4	2	0	1	3	2					
	Western Nebraska Community College	2	1	0	1	1	2					
	<b>Total</b>	<b>42</b>	<b>41</b>	<b>50</b>	<b>54</b>	<b>55</b>	<b>82</b>	<b>77</b>	<b>136</b>	<b>197</b>	<b>178</b>	<b>175</b> 16.7%
Independent Colleges & Universities	Nebraska Indian Community College			0	0	0	0	0	0	0	0	
	Nebraska Wesleyan University	0	0	0	0	0	0	0	0	0	0	
	<b>Total</b>	<b>0</b>	<b>0</b>	<b>0</b>	<b>0</b>	<b>0</b>	<b>0</b>	<b>0</b>	<b>0</b>	<b>0</b>	<b>0</b>	
For-Profit/Career Schools	Capitol School of Hairstyling and Esthetics	0	0	0	0	0	1	0	0	2	2	0
	College of Hair Design-Downtown	0	0	0	2	2	3	1	4	3	5	6
	College of Hair Design-East Campus		0	0	0	2	0	0	0	0	0	1
	Fullen School of Hair Design	0	0	0	0	2	1	1	1			
	Joseph's College Cosmetology	1	4	1	0	3	1	1	0	1	0	1 0.0%
	La'James International College	0	0	0	0	1	0	0	0	0	0	0
	Paul Mitchell the School Lincoln								0	0	0	0
	Purdue University Global-Lincoln						0	0	0	0	0	

- The first DB, Degrees and Other Awards displays data in table format by sector and institution.

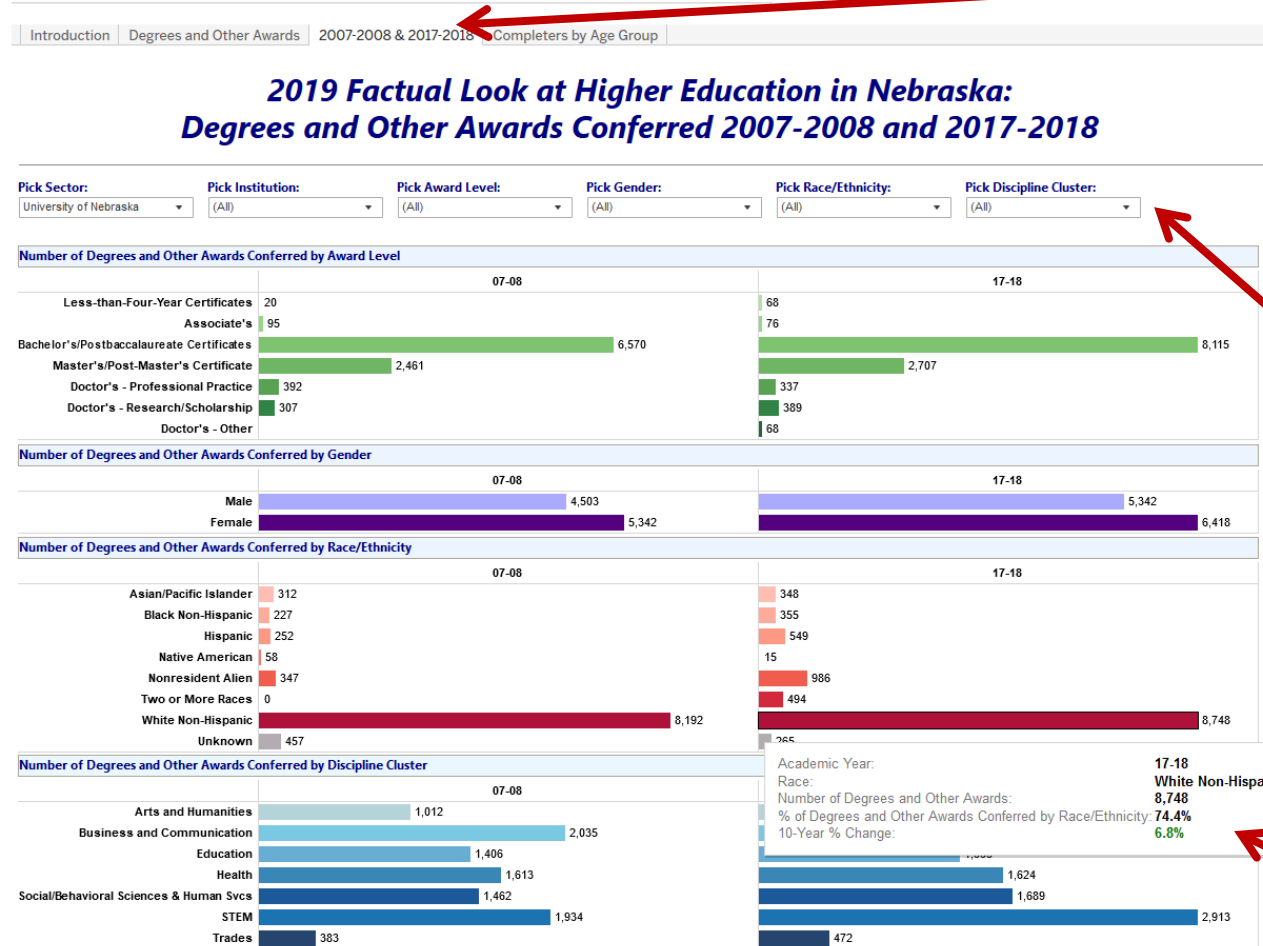
- Choose any combination of filters (award level, gender, race/ethnicity, discipline cluster) to further drill-down the data.

- Hover over a datapoint to display more information.

Example: At Central Community College, 152 less-than-four-year certificates were granted to Hispanic males in the trade discipline in 17-18, a 10-year increase of 375.0%.

# Degrees and Other Awards (Page 3)

## Degrees and Other Awards Dashboard



- The second DB, 2007-2008 - 2017-2018, displays data in graphical format by award level, gender, race/ethnicity, and discipline cluster.

- Choose any combination of filters (sector, institution, award level, gender, race/ethnicity, discipline cluster) to further drill-down the data.

- Hover over a datapoint to display more information.

Example: At the University of Nebraska, 8,748 awards were granted to white non-Hispanics 17-18, a 10-year increase of 6.8%.

# Additional Information

- The degrees dashboard also has a tab with age data for completers
- CCPE's enrollment dashboard has information on fall enrollment, first-time freshmen enrollment, 12-month enrollment, and FTE enrollment



# Questions?

**For further information, please contact:**

Jill Heese, MS  
Research Coordinator  
CCPE – Nebraska  
[jill.heese@nebraska.gov](mailto:jill.heese@nebraska.gov)  
(402) 471-0031

# New trends, resources, and applications | The future of Nebraska's data

Melanie Kiper, Community Service Specialist, UNO Center for Public Affairs Research

**Infographic** - allows people to easily understand and interpret complex data

Nebraska's Workforce

Two Nebraskas

Why the Census 2020 is Important to Nebraska

**Interactive Dashboard** - allows users to explore data

[cpar.unomaha.edu](http://cpar.unomaha.edu)

Poverty in Nebraska

Ranking of Legislative Districts

Quick Facts for Legislative Districts

Community Survey for Manhattan, Kansas

**Dissemination** - improves access to data

[#NebraskaByTheNumbers](#)

[Facebook/unocpar](#)

[@UNOmahaCPAR](#)

**Data Collection** - facilitates the gathering of new data

Nebraska Transit Manager Portal