

7-1-2006

2005 Nebraska Population Report

David Drozd

Follow this and additional works at: <https://digitalcommons.unomaha.edu/cparpublications>

 Part of the [Public Affairs Commons](#)

Recommended Citation

Drozd, David, "2005 Nebraska Population Report" (2006). *Publications since 2000*. 191.
<https://digitalcommons.unomaha.edu/cparpublications/191>

This Report is brought to you for free and open access by the Center for Public Affairs Research at DigitalCommons@UNO. It has been accepted for inclusion in Publications since 2000 by an authorized administrator of DigitalCommons@UNO. For more information, please contact unodigitalcommons@unomaha.edu.



2005 Nebraska Population Report

- **Historical State Population Counts and Trends**
- **Historical State Components of Population Change**
- **2000 – 2005 State, County, and City Population Estimates**
- **2000 – 2005 State and County Components of Population Change**
- **2000 and 2004 State and County Demographic Characteristics**
- **2000 and 2004 State Population Pyramids by Race and Ethnicity**
- **2000 to 2005 Population Change by City Size**

**Prepared By:
David Drozd, Jerry Deichert
The Center for Public Affairs Research
University of Nebraska at Omaha
6001 Dodge Street
Omaha, NE 68182**

July 2006

TABLE OF CONTENTS

Highlights.....	5
Release Schedule of Annual Population Estimates	7
Terms and Definitions.....	8
PART 1: STATE DATA.....	9
Table 1: Annual Population Estimates and Changes from Previous Year: U.S. and Nebraska.....	10
Figure 1: July 1 Annual U.S. and Nebraska Population: 1900 to 2005	12
Figure 2: Nebraska Population and Population Change: 1900 to 2005	13
Figure 3: Annual U.S. and Nebraska Percent Population Change: 1900 to 2005 .	13
Table 2: Nebraska Population and Components of Change: 1930 to 2004	14
Figure 4: Nebraska Births, Deaths, and Natural Change: 1930 to 2004.....	16
Figure 5: Nebraska Components of Population Change: 1930 to 2004.....	16
Table 3: Annual Nebraska Population Estimates by Sex and Age: April 1, 2000 to July 1, 2004	17
Figure 6: 2004 Nebraska Population by Sex and Five-Year Age Group: Total Population.....	20
Table 4: Nebraska Population by Race and Ethnicity: April 1, 2000 and July 1, 2004.....	20
Figure 7: 2004 Nebraska Population by Sex and Five-Year Age Group: White Alone not Hispanic or Latino/a (Majority Population)	21
Figure 8: 2004 Nebraska Population by Sex and Five-Year Age Group: Non-White or Hispanic or Latino/a (Minority Population)	21
Figure 9: 2004 Nebraska Population by Sex and Five-Year Age Group: Non-White or Hispanic or Latino/a (Minorities) as a Percent of the State Total ..	22
Figure 10: 2000 Nebraska Population by Sex and Five-Year Age Group: Total Population.....	22
Figure 11: 2000 Nebraska Population by Sex and Five-Year Age Group: White Alone	23
Figure 12: 2000 Nebraska Population by Sex and Five-Year Age Group: Black or African American Alone	23
Figure 13: 2000 Nebraska Population by Sex and Five-Year Age Group: Asian Alone	24

Figure 14: 2000 Nebraska Population by Sex and Five-Year Age Group: American Indian or Alaska Native Alone.....	24
Figure 15: 2000 Nebraska Population by Sex and Five-Year Age Group: Hispanic or Latino/a.....	25
Figure 16: 2000 Nebraska Population by Sex and Five-Year Age Group: White Alone not Hispanic or Latino/a (Majority Population)	25
Figure 17: 2000 Nebraska Population by Sex and Five-Year Age Group: Non-White or Hispanic or Latino/a (Minority Population)	26
Figure 18: 2000 Nebraska Population by Sex and Five-Year Age Group: Non-White or Hispanic or Latino/a (Minorities) as a Percent of the State Total ..	26
PART 2: COUNTY DATA	27
Map 1: Nebraska Counties Classified by Modified Urban Influence Code	28
Table 5: Listing of Nebraska Counties Classified by Modified Urban Influence Code	29
Table 6: Annual Estimates of the Population for Nebraska Counties: April 1, 2000 to July 1, 2005	30
Table 7: Nebraska Population Estimates, Changes, and Rankings: April 1, 2000 to July 1, 2005	32
Map 2: Population Change in Nebraska Counties: 1990-2000 and 2000-2005.....	34
Table 8: Nebraska Population Change Component Estimates: April 1, 2000 to July 1, 2005	35
Map 3: Natural Change in Nebraska Counties: 1990-2000 and 2000-2005	37
Map 4: Net Migration in Nebraska Counties: 1990-2000 and 2000-2005	38
Table 9: County Population by Major Age Groups: July 1, 2004	39
PART 3: CITY AND TOWN DATA	41
Table 10: Ranking of the Population of Nebraska Incorporated Cities: July 1, 2005	42
Figure 19a: Number and Percentage of Nebraska Cities and Towns by City Size Category: 2005	46
Figure 19b: Percentage of Nebraska Population Living in Cities by City Size Category: 2005.....	46
Table 11: Comparison of Nebraska Place Population: April 1, 2000 and July 1, 2005.....	47
Figure 20: Percent Population Change for All Cities in Various City Size Categories: April 1, 2000 to July 1, 2005	53

Figure 21: Percent of Nebraska Cities within City Size Category Having
Population Growth: April 1, 2000 to July 1, 2005.....53

Table 12: Population Added to Incorporated Cities Due to Annexation:
April 1, 2000 to July 1, 200554

HIGHLIGHTS

This report shows annual estimates of the population for Nebraska and its counties and cities. Demographic patterns and trends, including changes in the components of population change, are illustrated. As the passage of time takes us further from Census 2000 and closer to the 2010 Census, it is important to see how changes have been occurring at both the local and statewide level. A summary of important aspects to note as one peruses the tables and figures in this report follows below:

- The state's population has grown in 81 of the 105 years between 1900 and 2005. Most of the years having population declines occurred during World Wars I and II or during or immediately following the Great Depression. The state's population has grown every year since 1987.
- The rate of population growth within Nebraska since 2000 has averaged about 0.5 percent annually. This growth rate is similar to the mid 1970s to mid 1980s while annual growth rates were around 1.0 percent during the 1990s. The current rate of growth within Nebraska is about half of the overall U.S. growth rate. The last time the annual growth rate in Nebraska was higher than the overall U.S. average was 1961.
- Nebraska continues to gain population through natural increase—the annual number of births being larger than the annual number of deaths. Net migration has tended to vary, with some years having net immigration and net outmigration occurring in other years. The level of net migration is typically lower than that of natural change.
- Sex and age pyramids show the White Non-Hispanic population to be relatively older than the minority population.
- Populations in metropolitan counties have grown since 2000, while remaining about the same in micropolitan counties and declining in the remaining non-metropolitan and non-micropolitan counties (to view the geographical distribution or a list of the counties in each of these categories, see Map 1 and Table 5). Sarpy County had the largest growth rate at 13.7 percent between 2000 and 2005 while Blaine County had the most pronounced decline at 17.0 percent.
- The population has grown between 2000 and 2005 in 23 of 93 Nebraska counties. These counties tend to be located in the eastern 1/3 of the state or along Interstate 80. Eighteen counties that experienced growth during the 1990s have had their populations decline between 2000 and 2005.
- While natural change has been positive at the state level every year since 1900, only half of Nebraska's counties experienced more births than deaths between 2000 and 2005. Natural increases tended to occur in the eastern 1/3 of the state and counties located along Interstate 80 as well as some counties in the northwestern part of the state.

- Increases via net migration occurred between 2000 and 2005 in 16 of Nebraska's 93 counties. These counties tended to be located near Nebraska's metropolitan centers of Lincoln and Omaha. Net migration gains during the 1990s have not continued in 28 counties as more residents have moved out than moved in between 2000 and 2005.
- The percentage of county residents ages 65 and over increases as the county type becomes increasingly rural. Those 65 and older comprise 10.4 percent of the population in metropolitan counties, 14.9 percent in micropolitan counties, 17.8 percent in non-metro/micro counties having a city with at least 2,500 residents, and 21.4 percent in non-metro/micro counties without a city of 2,500 residents.
- 40 percent of Nebraska's cities and towns had fewer than 250 persons in 2005. These cities comprised less than 5 percent of the state's population living in cities and towns. The median size city in Nebraska had 334 persons (Brule, NE).
- By city size category, aggregate population change was similar among four city size classifications under 1,000 residents at an approximate three percent decline. Those city size categories over 1,000 residents had more variability, with those having 1,000 to 2,499 residents as well as 10,000 or more residents experiencing 1 and 6 percent growth respectively. Nearly all cities with 10,000 or more residents experienced growth, while only around 30 percent of cities having between 1,000 and 9,999 residents grew while approximately 20 percent of those cities having fewer than 1,000 persons had growth between 2000 and 2005.

RELEASE SCHEDULE OF ANNUAL POPULATION ESTIMATES

The following tables detail the schedule for data releases for annual population estimates prepared by the Population Division of the United States Census Bureau. These estimates are made for the nation, states, counties, and cities and towns. Estimates by sex, age, race, and Hispanic origin are made for certain levels of geography. Released estimates generally measure the population on July 1 of the previous year. The release dates below are approximate and the exact month data are released may vary from year to year. New estimates released often have adjustments to prior year's estimates and supersede previous releases.

Data Description

Month Released

National and State population estimates	December (for July of that year)
National and State components of population change	December (for July of that year)
State estimates by sex and age	March (for July of previous year)
County population estimates	April (for July of previous year)
County components of population change	April (for July of previous year)
National estimates by sex, age, race, and Hispanic origin	May (for July of previous year)
City and Town population estimates	June (for July of previous year)
State estimates by sex, age, race, and Hispanic origin	July (for July of previous year)
County estimates by sex, age, race, and Hispanic origin	August (for July of previous year)

Timeline Display of Annual Population Estimates Release Schedule

Data Released	July 1	Aug	Sep	Oct	Nov	Dec	Jan	Feb	Mar	Apr	May	Jun	Jul	Aug
Population estimates						N, S				C		P		
Components of change						N, S				C				
Population by sex and age									S					
Population by sex, age, race, and Hispanic origin											N		S	C

Key: N = National; S = State; C = County; P = Place (city or town)

TERMS AND DEFINITIONS

We obtained the following terms and definitions from the Census Bureau estimates website for reference. See <http://www.census.gov/popest/topics/terms/> for more information.

Estimated Components of Population Change - occurrences used by the Census Bureau to estimate changes in the population during a time period. These components consist of births, deaths, net internal migration and net international migration.

Estimates Base - the population count used as the starting point in the estimates process. It can be equal to the last decennial Census count or incorporate changes to the reference area (boundaries, annexation, etc.) since the last decennial Census.

Natural Increase - births minus deaths. The rate of natural increase expresses natural increase during a time period as a percentage of an area's population at the midpoint of the time period.

Net Internal Migration - the difference between internal in-migration to an area and internal out-migration from the same area during a time period. Internal in- and out-migration consist of moves where both the origin and the destination are within the United States (excluding Puerto Rico). The net internal migration rate expresses net internal migration during a time period as a percentage of an area's population at the midpoint of the time period.

Net International Migration - International migration, in its simplest form, is defined as any movement across U.S. (50 states and District of Columbia) borders. The U.S. Census Bureau makes estimates of net international migration for the nation, states, and counties. We estimate net international migration as: (1) net migration of the foreign born, (2) net movement from Puerto Rico, (3) net movement of the U.S. Armed Forces, and (4) emigration of the native born. The largest component, net migration of the foreign born, includes lawful permanent residents (immigrants), temporary migrants (such as students), humanitarian migrants (such as refugees), and people illegally present in the United States. Currently, we do not estimate these components individually. The Census definition of foreign born is available on the foreign-born population page. (<http://www.census.gov/population/www/socdemo/foreign.html>)

Net migration - net internal migration plus net international migration. The net migration rate expresses net migration during a time period as a percentage of an area's population at the midpoint of the time period.

Percent Population Change - the difference between the population of an area at the beginning and end of a time period, expressed as a percentage of the beginning population.

Population Estimate - the calculated number of people living in an area as of July 1. The estimated population is calculated from a components of change model that incorporates information on natural change (births, deaths) and net migration (net internal migration, net international migration) that has occurred in an area since a Census 2000 reference date.

Residual - The residual results from the application of a national population control to state and county population estimates. The residual is the difference in state and county population before and after the application of the control. The residual is not a demographic component of population change.

PART 1: STATE DATA

The U.S. Census Bureau releases annual estimates of each state's population as of the year's midpoint, July 1. These figures usually are released in late December of each year, along with major components of population change such as birth, deaths, and migration. Estimates for years in the interim between decennial censuses are sometimes revised. A consistent source for historical population figures, including revisions, is the Bureau of Economic Analysis (<http://www.bea.gov/bea/regional/reis/>), from which we obtained July 1 population totals and cross-referenced them against Census Bureau records. We took estimates for the post 2000 period directly from releases by the Census Bureau. (<http://www.census.gov/popest/states/>)

Additional information, including historical data on deaths and births, was taken from vital statistics records of the Nebraska Health and Human Services System. (<http://www.hhs.state.ne.us/ced/tbl1.htm>) The Census Bureau also releases state population estimates as of July 1 by sex and age in March of the following year. We used these data to create population pyramids that follow in this report. Pyramids using exact counts from Census 2000 also are presented for the total population and major race and ethnic groups. July 1 intercensal estimates by race and ethnicity are released by the Census Bureau in July of the following year.

Table 1: Annual Population Estimates and Changes from Previous Year: U.S. and Nebraska

Year	Population		Actual Change		Percent Change	
	United States	Nebraska	United States	Nebraska	United States	Nebraska
July 1, 1900	76,094,000	1,067,000	--	--	--	--
July 1, 1901	77,585,000	1,078,000	1,491,000	11,000	1.96	1.03
July 1, 1902	79,160,000	1,089,000	1,575,000	11,000	2.03	1.02
July 1, 1903	80,632,000	1,104,000	1,472,000	15,000	1.86	1.38
July 1, 1904	82,165,000	1,119,000	1,533,000	15,000	1.90	1.36
July 1, 1905	83,820,000	1,129,000	1,655,000	10,000	2.01	0.89
July 1, 1906	85,437,000	1,138,000	1,617,000	9,000	1.93	0.80
July 1, 1907	87,000,000	1,149,000	1,563,000	11,000	1.83	0.97
July 1, 1908	88,709,000	1,161,000	1,709,000	12,000	1.96	1.04
July 1, 1909	90,492,000	1,177,000	1,783,000	16,000	2.01	1.38
July 1, 1910	92,407,000	1,198,000	1,915,000	21,000	2.12	1.78
July 1, 1911	93,868,000	1,216,000	1,461,000	18,000	1.58	1.50
July 1, 1912	95,331,000	1,232,000	1,463,000	16,000	1.56	1.32
July 1, 1913	97,227,000	1,246,000	1,896,000	14,000	1.99	1.14
July 1, 1914	99,118,000	1,264,000	1,891,000	18,000	1.94	1.44
July 1, 1915	100,549,000	1,272,000	1,431,000	8,000	1.44	0.63
July 1, 1916	101,966,000	1,275,000	1,417,000	3,000	1.41	0.24
July 1, 1917	103,266,000	1,285,000	1,300,000	10,000	1.27	0.78
July 1, 1918	103,203,000	1,266,000	-63,000	-19,000	-0.06	-1.48
July 1, 1919	104,512,000	1,290,000	1,309,000	24,000	1.27	1.90
July 1, 1920	106,466,000	1,300,000	1,954,000	10,000	1.87	0.78
July 1, 1921	108,541,000	1,309,000	2,075,000	9,000	1.95	0.69
July 1, 1922	110,055,000	1,312,000	1,514,000	3,000	1.39	0.23
July 1, 1923	111,950,000	1,321,000	1,895,000	9,000	1.72	0.69
July 1, 1924	114,113,000	1,333,000	2,163,000	12,000	1.93	0.91
July 1, 1925	115,832,000	1,343,000	1,719,000	10,000	1.51	0.75
July 1, 1926	117,399,000	1,353,000	1,567,000	10,000	1.35	0.74
July 1, 1927	119,038,000	1,365,000	1,639,000	12,000	1.40	0.89
July 1, 1928	120,501,000	1,371,000	1,463,000	6,000	1.23	0.44
July 1, 1929	121,770,000	1,375,000	1,269,000	4,000	1.05	0.29
July 1, 1930	123,075,000	1,380,000	1,305,000	5,000	1.07	0.36
July 1, 1931	124,038,000	1,384,000	963,000	4,000	0.78	0.29
July 1, 1932	124,839,000	1,386,000	801,000	2,000	0.65	0.14
July 1, 1933	125,580,000	1,385,000	741,000	-1,000	0.59	-0.07
July 1, 1934	126,372,000	1,382,000	792,000	-3,000	0.63	-0.22
July 1, 1935	127,251,000	1,375,000	879,000	-7,000	0.70	-0.51
July 1, 1936	128,054,000	1,358,000	803,000	-17,000	0.63	-1.24
July 1, 1937	128,822,000	1,339,000	768,000	-19,000	0.60	-1.40
July 1, 1938	129,824,000	1,326,000	1,002,000	-13,000	0.78	-0.97
July 1, 1939	130,884,000	1,318,000	1,060,000	-8,000	0.82	-0.60
July 1, 1940	131,955,000	1,316,000	1,071,000	-2,000	0.82	-0.15
July 1, 1941	133,417,000	1,272,000	1,462,000	-44,000	1.11	-3.34
July 1, 1942	134,670,000	1,245,000	1,253,000	-27,000	0.94	-2.12
July 1, 1943	134,697,000	1,235,000	27,000	-10,000	0.02	-0.80
July 1, 1944	134,075,000	1,214,000	-622,000	-21,000	-0.46	-1.70
July 1, 1945	133,387,000	1,210,000	-688,000	-4,000	-0.51	-0.33
July 1, 1946	140,638,000	1,256,000	7,251,000	46,000	5.44	3.80
July 1, 1947	143,665,000	1,266,000	3,027,000	10,000	2.15	0.80
July 1, 1948	146,091,000	1,265,000	2,426,000	-1,000	1.69	-0.08
July 1, 1949	148,666,000	1,302,000	2,575,000	37,000	1.76	2.92

Year	Population		Actual Change		Percent Change	
	United States	Nebraska	United States	Nebraska	United States	Nebraska
July 1, 1950	151,871,000	1,327,000	3,205,000	25,000	2.16	1.92
July 1, 1951	153,970,000	1,316,000	2,099,000	-11,000	1.38	-0.83
July 1, 1952	156,369,000	1,311,000	2,399,000	-5,000	1.56	-0.38
July 1, 1953	158,946,000	1,318,000	2,577,000	7,000	1.65	0.53
July 1, 1954	161,881,000	1,340,000	2,935,000	22,000	1.85	1.67
July 1, 1955	165,058,000	1,374,000	3,177,000	34,000	1.96	2.54
July 1, 1956	168,078,000	1,397,000	3,020,000	23,000	1.83	1.67
July 1, 1957	171,178,000	1,394,000	3,100,000	-3,000	1.84	-0.21
July 1, 1958	174,153,000	1,383,000	2,975,000	-11,000	1.74	-0.79
July 1, 1959	177,136,000	1,397,000	2,983,000	14,000	1.71	1.01
July 1, 1960	179,972,000	1,417,000	2,836,000	20,000	1.60	1.43
July 1, 1961	182,976,000	1,446,000	3,004,000	29,000	1.67	2.05
July 1, 1962	185,739,000	1,464,000	2,763,000	18,000	1.51	1.24
July 1, 1963	188,434,000	1,476,000	2,695,000	12,000	1.45	0.82
July 1, 1964	191,085,000	1,482,000	2,651,000	6,000	1.41	0.41
July 1, 1965	193,457,000	1,471,000	2,372,000	-11,000	1.24	-0.74
July 1, 1966	195,499,000	1,456,000	2,042,000	-15,000	1.06	-1.02
July 1, 1967	197,375,000	1,457,000	1,876,000	1,000	0.96	0.07
July 1, 1968	199,312,000	1,467,000	1,937,000	10,000	0.98	0.69
July 1, 1969	201,298,000	1,474,000	1,986,000	7,000	1.00	0.48
July 1, 1970	203,798,722	1,487,963	2,500,722	13,963	1.24	0.95
July 1, 1971	206,817,509	1,504,208	3,018,787	16,245	1.48	1.09
July 1, 1972	209,274,882	1,518,293	2,457,373	14,085	1.19	0.94
July 1, 1973	211,349,205	1,528,517	2,074,323	10,224	0.99	0.67
July 1, 1974	213,333,635	1,537,809	1,984,430	9,292	0.94	0.61
July 1, 1975	215,456,585	1,541,440	2,122,950	3,631	1.00	0.24
July 1, 1976	217,553,859	1,548,901	2,097,274	7,461	0.97	0.48
July 1, 1977	219,760,875	1,554,466	2,207,016	5,565	1.01	0.36
July 1, 1978	222,098,244	1,560,826	2,337,369	6,360	1.06	0.41
July 1, 1979	224,568,579	1,564,356	2,470,335	3,530	1.11	0.23
July 1, 1980	227,224,719	1,572,296	2,656,140	7,940	1.18	0.51
July 1, 1981	229,465,744	1,578,517	2,241,025	6,221	0.99	0.40
July 1, 1982	231,664,432	1,581,776	2,198,688	3,259	0.96	0.21
July 1, 1983	233,792,014	1,584,293	2,127,582	2,517	0.92	0.16
July 1, 1984	235,824,907	1,588,638	2,032,893	4,345	0.87	0.27
July 1, 1985	237,923,734	1,584,661	2,098,827	-3,977	0.89	-0.25
July 1, 1986	240,132,831	1,574,328	2,209,097	-10,333	0.93	-0.65
July 1, 1987	242,288,936	1,566,544	2,156,105	-7,784	0.90	-0.49
July 1, 1988	244,499,004	1,571,477	2,210,068	4,933	0.91	0.31
July 1, 1989	246,819,222	1,574,858	2,320,218	3,381	0.95	0.22
July 1, 1990	249,622,814	1,581,660	2,803,592	6,802	1.14	0.43
July 1, 1991	252,980,941	1,595,919	3,358,127	14,259	1.35	0.90
July 1, 1992	256,514,224	1,611,687	3,533,283	15,768	1.40	0.99
July 1, 1993	259,918,588	1,625,590	3,404,364	13,903	1.33	0.86
July 1, 1994	263,125,821	1,639,041	3,207,233	13,451	1.23	0.83
July 1, 1995	266,278,393	1,656,992	3,152,572	17,951	1.20	1.10
July 1, 1996	269,394,284	1,673,740	3,115,891	16,748	1.17	1.01
July 1, 1997	272,646,925	1,686,418	3,252,641	12,678	1.21	0.76
July 1, 1998	275,854,104	1,695,816	3,207,179	9,398	1.18	0.56
July 1, 1999	279,040,168	1,704,764	3,186,064	8,948	1.15	0.53

Year	Population		Actual Change		Percent Change	
	United States	Nebraska	United States	Nebraska	United States	Nebraska
July 1, 2000	282,193,477	1,713,261	3,153,309	8,497	1.13	0.50
July 1, 2001	285,107,923	1,718,965	2,914,446	5,704	1.03	0.33
July 1, 2002	287,984,799	1,726,753	2,876,876	7,788	1.01	0.45
July 1, 2003	290,850,005	1,738,013	2,865,206	11,260	0.99	0.65
July 1, 2004	293,656,842	1,747,704	2,806,837	9,691	0.97	0.56
July 1, 2005	296,410,404	1,758,787	2,753,562	11,083	0.94	0.63

Sources:

1900-1929 Historical Annual Time Series of State Population Estimates 1900 to 1990: Total Population

Internet Release February 1996; http://www.census.gov/popest/archives/1980s/80s_st_totals.html

1930-1999 Regional Economic Information System, Bureau of Economic Analysis, U.S. Department of Commerce

Data as of March 28, 2006: <http://www.bea.gov/bea/regional/spi/default.cfm?satable=summary>

2000-2005 Table 1: Annual Estimates of the Population for the United States and States: April 1, 2000 to July 1, 2005

Population Division, U.S. Census Bureau; Released December 22, 2005

<http://www.census.gov/popest/states/tables/NST-EST2005-01.xls>

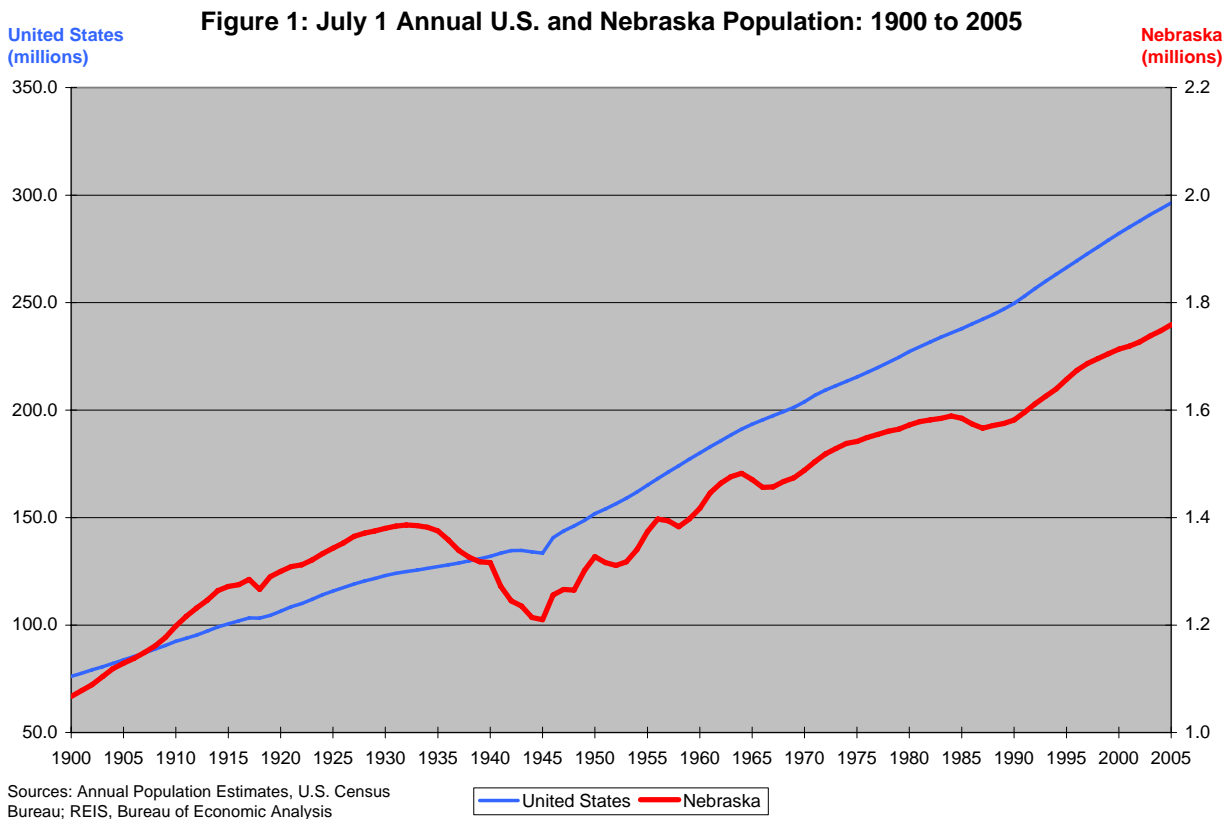


Figure 2: Nebraska Population and Population Change: 1900-2005

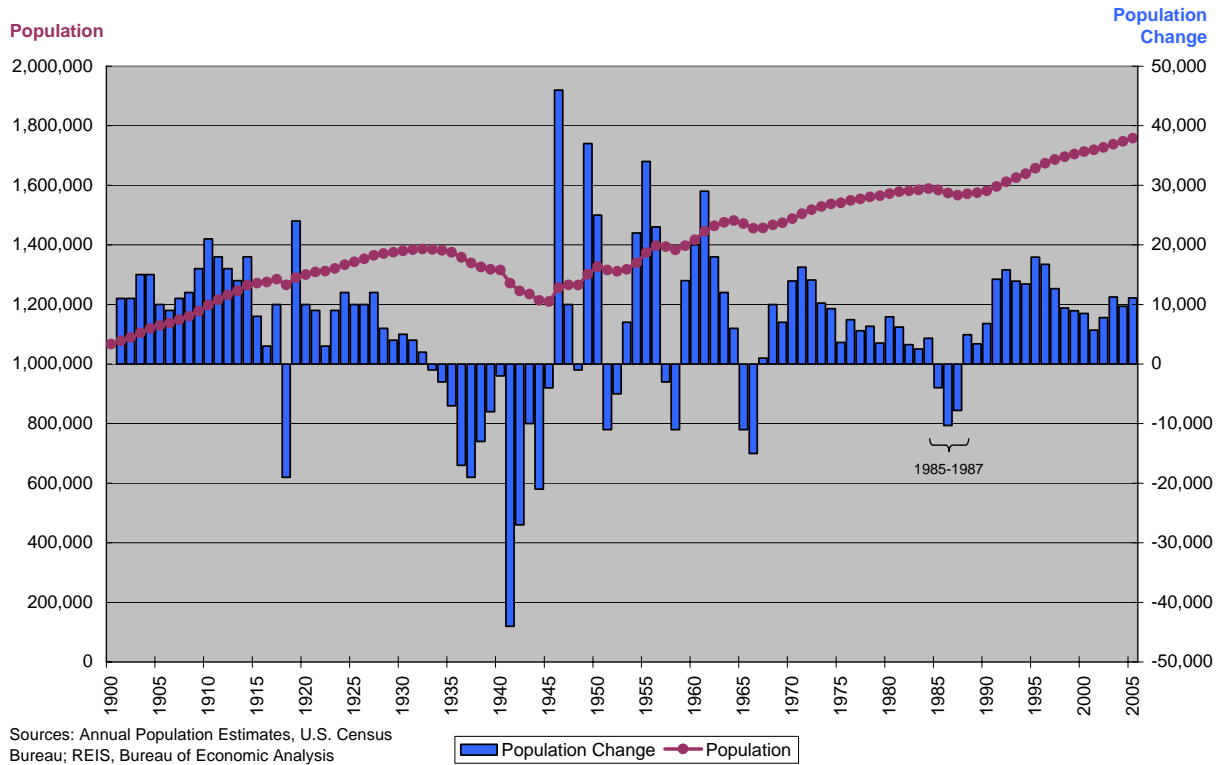


Figure 3: Annual U.S. and Nebraska Percent Population Change: 1900 to 2005

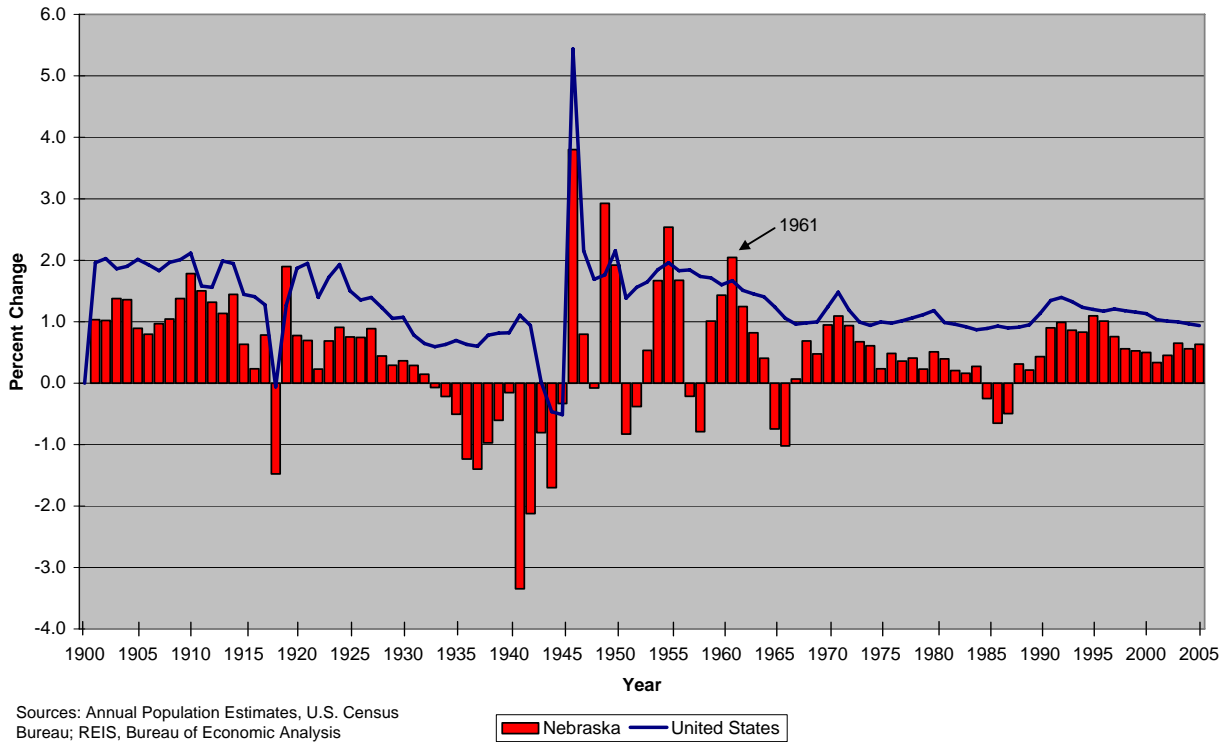


Table 2: Nebraska Population and Components of Change: 1930-2004

Sources: Regional Economic Information System, Bureau of Economic Analysis
 Vital Statistics, Nebraska Health and Human Services
 Annual Estimates of the Population, U.S. Census Bureau, Released 12-22-04

Year	Estimated July 1 Population	Births	Deaths	Natural Increase	Actual Change	Net Migration
Number of Persons						
1930	1,380,000	27,006	13,280	13,726	5,000	-8,726
1931	1,384,000	26,610	12,905	13,705	4,000	-9,716
1932	1,386,000	25,160	12,923	12,237	2,000	-10,971
1933	1,385,000	24,187	12,925	11,262	-1,000	-12,750
1934	1,382,000	25,087	13,372	11,715	-3,000	-14,489
1935	1,375,000	23,326	13,179	10,147	-7,000	-17,931
1936	1,358,000	23,799	13,756	10,043	-17,000	-27,095
1937	1,339,000	22,256	13,200	9,056	-19,000	-28,550
1938	1,326,000	22,402	11,960	10,442	-13,000	-22,749
1939	1,318,000	22,326	12,188	10,138	-8,000	-18,290
1940	1,316,000	22,153	12,593	9,560	-2,000	-11,849
1941	1,272,000	22,186	12,203	9,983	-44,000	-53,772
1942	1,245,000	23,950	12,293	11,657	-27,000	-37,820
1943	1,235,000	25,091	12,956	12,135	-10,000	-21,896
1944	1,214,000	24,694	12,560	12,134	-21,000	-33,135
1945	1,210,000	24,292	12,446	11,846	-4,000	-15,990
1946	1,256,000	27,753	12,365	15,388	46,000	32,383
1947	1,266,000	32,018	12,823	19,195	10,000	-7,292
1948	1,265,000	31,066	12,569	18,497	-1,000	-19,846
1949	1,302,000	31,482	12,607	18,875	37,000	18,314
1950	1,327,000	31,713	12,548	19,165	25,000	5,980
1951	1,316,000	33,595	12,880	20,715	-11,000	-30,940
1952	1,311,000	33,809	13,056	20,753	-5,000	-25,734
1953	1,318,000	32,633	13,298	19,335	7,000	-13,044
1954	1,340,000	33,617	12,741	20,876	22,000	1,895
1955	1,374,000	34,087	13,001	21,086	34,000	13,019
1956	1,397,000	33,855	13,161	20,694	23,000	2,110
1957	1,394,000	33,161	13,797	19,364	-3,000	-23,029
1958	1,383,000	32,935	13,680	19,255	-11,000	-30,310
1959	1,397,000	34,162	13,887	20,275	14,000	-5,765
1960	1,417,000	34,257	14,071	20,186	20,000	-231
1961	1,446,000	34,544	13,812	20,732	29,000	8,541
1962	1,464,000	33,886	14,305	19,581	18,000	-2,157
1963	1,476,000	32,624	14,657	17,967	12,000	-6,774
1964	1,482,000	30,727	14,758	15,969	6,000	-10,968
1965	1,471,000	27,829	14,799	13,030	-11,000	-25,500
1966	1,456,000	25,618	14,799	10,819	-15,000	-26,925
1967	1,457,000	24,259	14,465	9,794	1,000	-9,307
1968	1,467,000	24,236	15,017	9,219	10,000	494
1969	1,474,000	24,801	14,898	9,903	7,000	-2,561

Year	Estimated July 1 Population	Births	Deaths	Natural Increase	Actual Change	Net Migration
Number of Persons						
1970	1,487,963	25,877	15,016	10,861	13,963	3,581
1971	1,504,208	25,507	15,182	10,325	16,245	5,652
1972	1,518,293	23,473	15,540	7,933	14,085	4,956
1973	1,528,517	22,771	14,977	7,794	10,224	2,361
1974	1,537,809	23,695	15,016	8,679	9,292	1,056
1975	1,541,440	23,658	14,569	9,089	3,631	-5,253
1976	1,548,901	23,767	14,536	9,231	7,461	-1,699
1977	1,554,466	25,158	14,316	10,842	5,565	-4,472
1978	1,560,826	25,103	14,408	10,695	6,360	-4,409
1979	1,564,356	26,199	14,228	11,971	3,530	-7,803
1980	1,572,296	27,335	14,465	12,870	7,940	-4,481
1981	1,578,517	27,164	14,580	12,584	6,221	-6,506
1982	1,581,776	26,954	14,567	12,387	3,259	-9,227
1983	1,584,293	26,254	14,695	11,559	2,517	-9,456
1984	1,588,638	26,099	14,633	11,466	4,345	-7,168
1985	1,584,661	25,540	14,895	10,645	-3,977	-15,033
1986	1,574,328	24,425	14,662	9,763	-10,333	-20,537
1987	1,566,544	23,813	14,820	8,993	-7,784	-17,162
1988	1,571,477	23,904	14,858	9,046	4,933	-4,087
1989	1,574,858	24,205	14,776	9,429	3,381	-5,857
1990	1,581,660	24,362	14,751	9,611	6,802	-2,718
1991	1,595,919	23,947	14,647	9,300	14,259	4,804
1992	1,611,687	23,336	14,577	8,759	15,768	6,739
1993	1,625,590	23,196	14,967	8,229	13,903	5,409
1994	1,639,041	23,131	14,974	8,157	13,451	5,258
1995	1,656,992	23,221	15,216	8,005	17,951	9,870
1996	1,673,740	23,271	15,435	7,836	16,748	8,828
1997	1,686,418	23,313	15,271	8,042	12,678	4,739
1998	1,695,816	23,533	15,181	8,352	9,398	1,201
1999	1,704,764	23,900	15,580	8,320	8,948	612
2000	1,713,239	24,643	14,979	9,664	8,475	-517
2001	1,718,840	24,818	15,171	9,647	5,601	-4,055
2002	1,726,437	25,381	15,721	9,660	7,597	-2,057
2003	1,737,475	25,900	15,439	10,461	11,038	978
2004	1,747,214	26,324	14,647	11,677	9,739	-1,330

Figure 4: Nebraska Births, Deaths, and Natural Change: 1930-2004

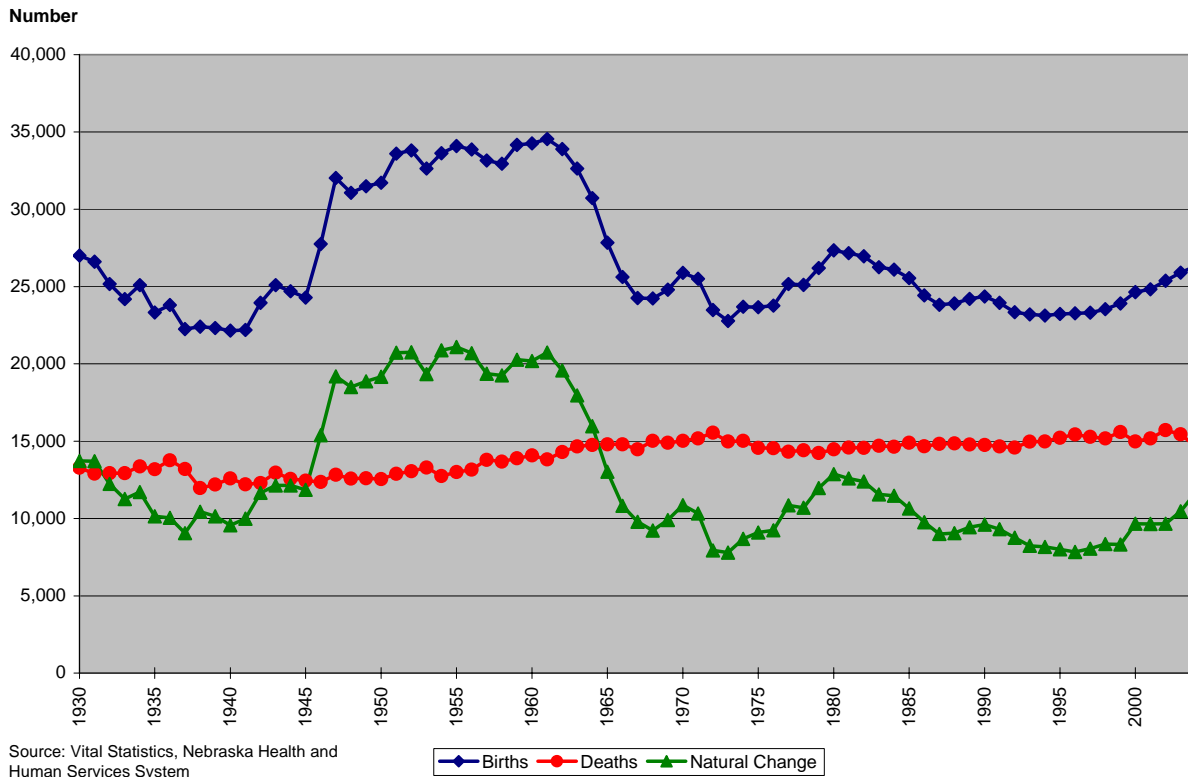


Figure 5: Nebraska Components of Population Change: 1930-2004

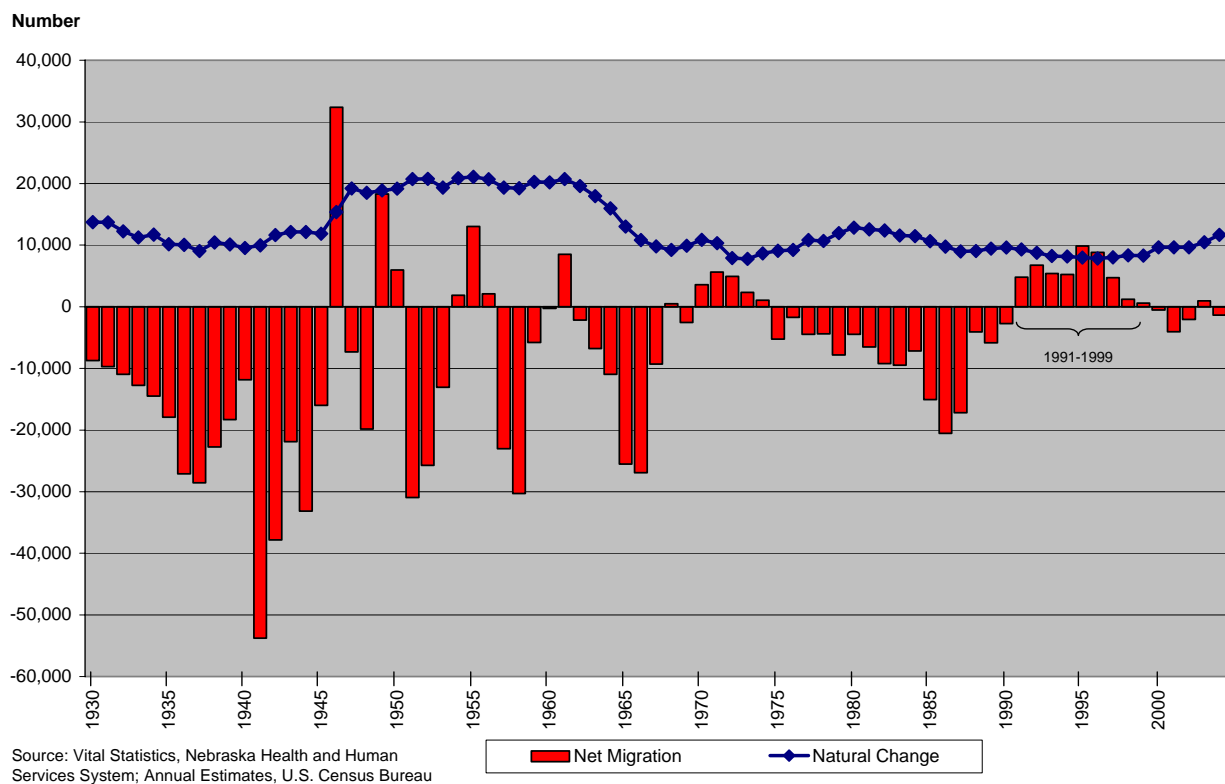


Table 3: Annual Nebraska Population Estimates by Sex and Age: April 1, 2000 to July 1, 2004

Source: Annual Estimates of the Population by Sex and Age, U.S. Census Bureau, Released March 2005

Sex and age	Population estimates					April 1, 2000	
	July 1, 2004	July 1, 2003	July 1, 2002	July 1, 2001	July 1, 2000	Estimates base	Census
BOTH SEXES	1,747,214	1,737,475	1,726,437	1,718,840	1,713,239	1,711,265	1,711,263
Under 5 years	122,049	120,284	118,911	116,806	116,908	117,048	117,048
5 to 9 years	114,520	116,078	118,364	119,798	122,738	123,445	123,445
10 to 14 years	122,450	124,817	126,812	126,758	128,611	128,934	128,934
15 to 19 years	129,578	130,986	132,663	133,708	134,718	134,909	134,909
20 to 24 years	136,736	134,625	130,842	127,045	121,716	120,331	120,331
25 to 29 years	117,910	114,264	111,314	111,077	112,004	112,049	112,049
30 to 34 years	111,363	111,826	111,554	111,485	111,189	111,224	111,224
35 to 39 years	112,058	114,801	118,794	124,152	129,087	130,027	130,027
40 to 44 years	132,306	133,673	134,083	134,700	133,986	133,807	133,807
45 to 49 years	130,995	129,632	127,222	125,691	123,428	122,714	122,714
50 to 54 years	118,271	115,170	112,051	110,867	104,471	103,041	103,040
55 to 59 years	95,269	90,210	85,767	79,702	78,001	77,585	77,584
60 to 64 years	71,906	69,147	66,012	64,770	64,085	63,956	63,956
65 to 69 years	56,943	56,853	57,318	57,862	58,999	59,391	59,391
70 to 74 years	54,409	55,063	55,849	56,628	56,447	56,308	56,308
75 to 79 years	48,681	48,953	48,332	48,124	48,062	47,991	47,991
80 to 84 years	35,860	35,559	35,546	34,760	34,576	34,552	34,552
85 years or more	35,910	35,534	35,003	34,907	34,213	33,953	33,953
Under 18 years	434,566	437,950	442,737	442,867	448,898	450,242	450,242
Under 5 years	122,049	120,284	118,911	116,806	116,908	117,048	117,048
5 to 13 years	211,271	215,915	220,019	221,169	225,122	225,909	225,909
14 to 17 years	101,246	101,751	103,807	104,892	106,868	107,285	107,285
18 to 64 years	1,080,845	1,067,563	1,051,652	1,043,692	1,032,044	1,028,828	1,028,826
18 to 24 years	190,767	188,840	184,855	181,248	175,793	174,425	174,425
25 to 44 years	473,637	474,564	475,745	481,414	486,266	487,107	487,107
45 to 64 years	416,441	404,159	391,052	381,030	369,985	367,296	367,294
65 years and over	231,803	231,962	232,048	232,281	232,297	232,195	232,195
16 years and over	1,363,419	1,351,350	1,336,858	1,329,456	1,318,090	1,314,976	1,314,974
18 years and over	1,312,648	1,299,525	1,283,700	1,275,973	1,264,341	1,261,023	1,261,021
15 to 44 years	739,951	740,175	739,250	742,167	742,700	742,347	742,347
Median age (years)	35.9	35.7	35.6	35.6	35.4	35.3	35.3

Sex and age	Population estimates					April 1, 2000	
	July 1, 2004	July 1, 2003	July 1, 2002	July 1, 2001	July 1, 2000	Estimates base	Census
MALE	863,628	858,305	852,388	848,178	844,576	843,352	843,351
Under 5 years	62,699	61,722	60,852	59,644	59,605	59,681	59,681
5 to 9 years	58,371	59,098	60,423	61,142	62,640	63,001	63,001
10 to 14 years	62,560	63,996	64,966	65,059	66,004	66,180	66,180
15 to 19 years	66,459	67,054	68,007	68,559	69,140	69,235	69,235
20 to 24 years	70,109	69,067	66,962	64,836	62,065	61,301	61,301
25 to 29 years	60,360	58,445	57,095	56,998	57,390	57,373	57,373
30 to 34 years	57,005	57,087	56,874	56,810	56,679	56,673	56,673
35 to 39 years	56,839	58,200	60,196	62,675	64,906	65,339	65,339
40 to 44 years	66,244	67,009	67,057	67,551	67,376	67,281	67,281
45 to 49 years	65,562	64,769	63,547	62,724	61,414	61,050	61,050
50 to 54 years	58,624	57,178	55,772	55,283	52,272	51,557	51,556
55 to 59 years	47,291	44,880	42,649	39,595	38,488	38,280	38,280
60 to 64 years	34,994	33,449	31,832	31,129	30,845	30,771	30,771
65 to 69 years	26,724	26,638	26,603	26,919	27,521	27,728	27,728
70 to 74 years	23,652	24,182	24,869	25,367	25,368	25,337	25,337
75 to 79 years	21,034	21,016	20,709	20,652	20,406	20,320	20,320
80 to 84 years	14,302	13,982	13,793	13,156	12,771	12,683	12,683
85 years or more	10,799	10,533	10,182	10,079	9,686	9,562	9,562
Under 18 years	222,433	224,050	226,502	226,546	229,661	230,386	230,386
Under 5 years	62,699	61,722	60,852	59,644	59,605	59,681	59,681
5 to 13 years	107,665	110,177	112,527	113,196	115,284	115,686	115,686
14 to 17 years	52,069	52,151	53,123	53,706	54,772	55,019	55,019
18 to 64 years	544,684	537,904	529,730	525,459	519,163	517,336	517,335
18 to 24 years	97,765	96,887	94,708	92,694	89,793	89,012	89,012
25 to 44 years	240,448	240,741	241,222	244,034	246,351	246,666	246,666
45 to 64 years	206,471	200,276	193,800	188,731	183,019	181,658	181,657
65 years and over	96,511	96,351	96,156	96,173	95,752	95,630	95,630
16 years and over	667,186	660,735	653,088	649,077	642,513	640,685	640,684
18 years and over	641,195	634,255	625,886	621,632	614,915	612,966	612,965
15 to 44 years	377,016	376,862	376,191	377,429	377,556	377,202	377,202
Median age (years)	34.5	34.3	34.2	34.2	34.0	34.0	34.0

Sex and age	Population estimates					April 1, 2000	
	July 1, 2004	July 1, 2003	July 1, 2002	July 1, 2001	July 1, 2000	Estimates base	Census
FEMALE	883,586	879,170	874,049	870,662	868,663	867,913	867,912
Under 5 years	59,350	58,562	58,059	57,162	57,303	57,367	57,367
5 to 9 years	56,149	56,980	57,941	58,656	60,098	60,444	60,444
10 to 14 years	59,890	60,821	61,846	61,699	62,607	62,754	62,754
15 to 19 years	63,119	63,932	64,656	65,149	65,578	65,674	65,674
20 to 24 years	66,627	65,558	63,880	62,209	59,651	59,030	59,030
25 to 29 years	57,550	55,819	54,219	54,079	54,614	54,676	54,676
30 to 34 years	54,358	54,739	54,680	54,675	54,510	54,551	54,551
35 to 39 years	55,219	56,601	58,598	61,477	64,181	64,688	64,688
40 to 44 years	66,062	66,664	67,026	67,149	66,610	66,526	66,526
45 to 49 years	65,433	64,863	63,675	62,967	62,014	61,664	61,664
50 to 54 years	59,647	57,992	56,279	55,584	52,199	51,484	51,484
55 to 59 years	47,978	45,330	43,118	40,107	39,513	39,305	39,304
60 to 64 years	36,912	35,698	34,180	33,641	33,240	33,185	33,185
65 to 69 years	30,219	30,215	30,715	30,943	31,478	31,663	31,663
70 to 74 years	30,757	30,881	30,980	31,261	31,079	30,971	30,971
75 to 79 years	27,647	27,937	27,623	27,472	27,656	27,671	27,671
80 to 84 years	21,558	21,577	21,753	21,604	21,805	21,869	21,869
85 years or more	25,111	25,001	24,821	24,828	24,527	24,391	24,391
Under 18 years	212,133	213,900	216,235	216,321	219,237	219,856	219,856
Under 5 years	59,350	58,562	58,059	57,162	57,303	57,367	57,367
5 to 13 years	103,606	105,738	107,492	107,973	109,838	110,223	110,223
14 to 17 years	49,177	49,600	50,684	51,186	52,096	52,266	52,266
18 to 64 years	536,161	529,659	521,922	518,233	512,881	511,492	511,491
18 to 24 years	93,002	91,953	90,147	88,554	86,000	85,413	85,413
25 to 44 years	233,189	233,823	234,523	237,380	239,915	240,441	240,441
45 to 64 years	209,970	203,883	197,252	192,299	186,966	185,638	185,637
65 years and over	135,292	135,611	135,892	136,108	136,545	136,565	136,565
16 years and over	696,233	690,615	683,770	680,379	675,577	674,291	674,290
18 years and over	671,453	665,270	657,814	654,341	649,426	648,057	648,056
15 to 44 years	362,935	363,313	363,059	364,738	365,144	365,145	365,145
Median age (years)	37.3	37.2	37.0	36.9	36.6	36.6	36.6

**Figure 6: 2004 Nebraska Population by Sex and Five-Year Age Group:
Total Population**

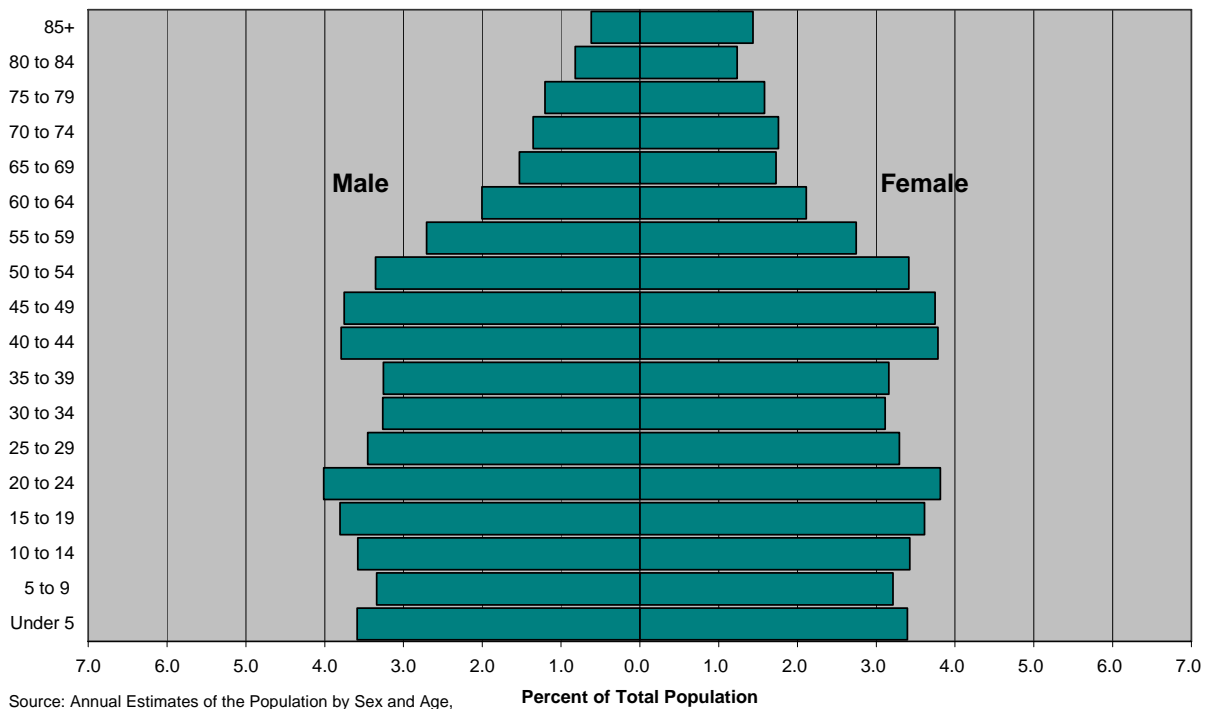


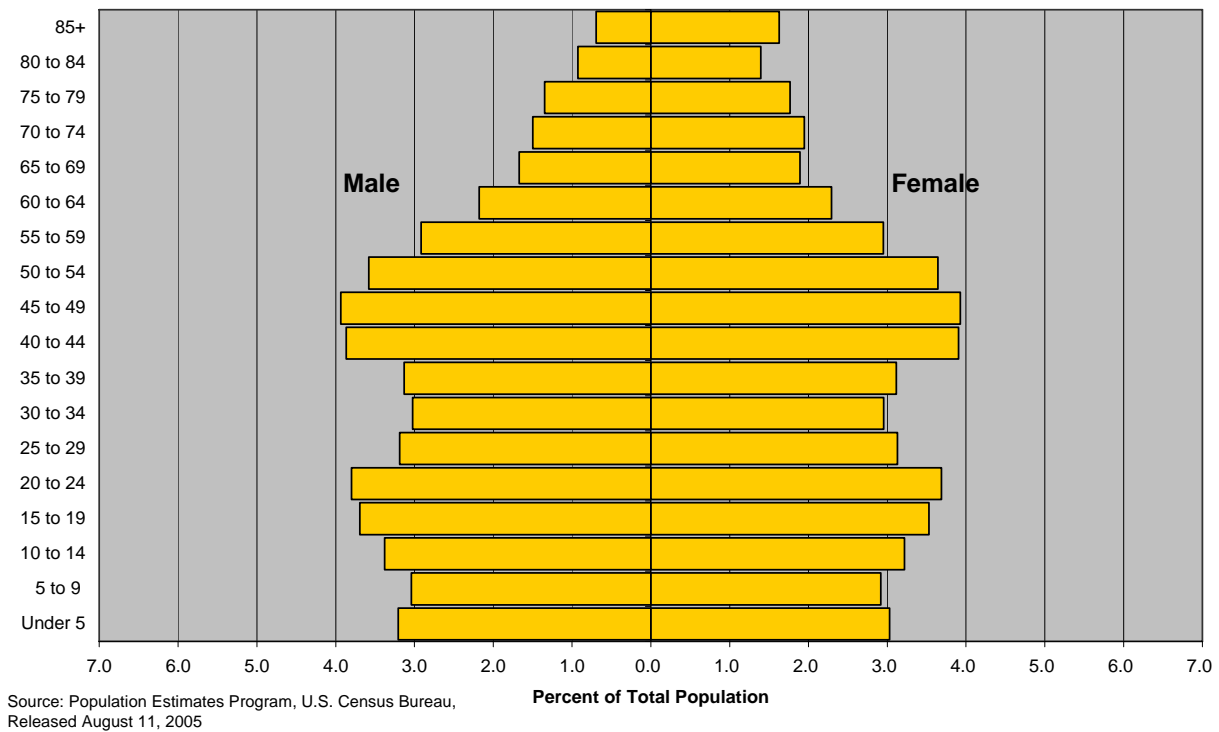
Table 4: Nebraska Population by Race and Ethnicity: April 1, 2000 and July 1, 2004

Source: Population Estimates Program, U.S. Census Bureau, Released August 11, 2005

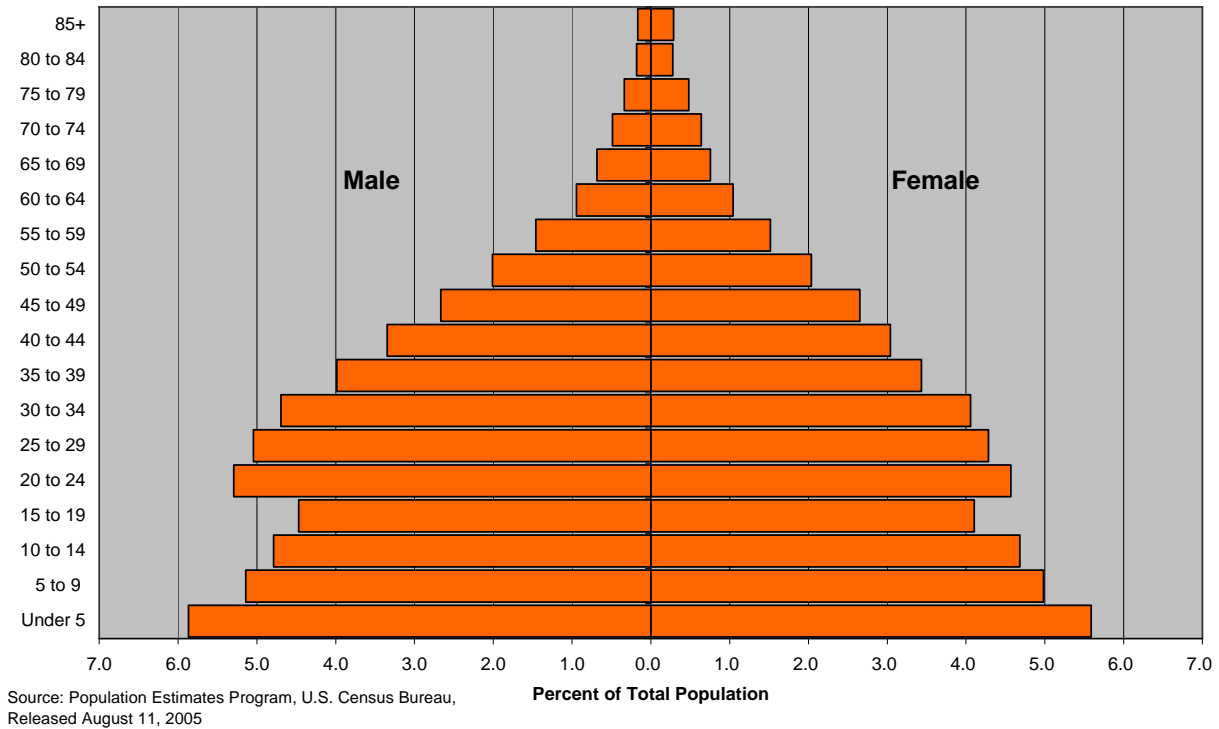
Race	Population ¹				Percent of Population	
	July 1, 2004	April 1, 2000	Change	Percent Change	July 1, 2004	April 1, 2000
Total Population	1,747,214	1,711,263	35,951	2.1	100.0	100.0
White alone	1,609,056	1,585,617	23,439	1.5	92.1	92.7
Black alone	74,815	70,043	4,772	6.8	4.3	4.1
American Indian or Alaska Native alone	16,562	15,634	928	5.9	0.9	0.9
Asian alone	26,746	22,528	4,218	18.7	1.5	1.3
Hispanic	119,975	94,425	25,550	27.1	6.9	5.5
White alone, not Hispanic (majority)	1,496,640	1,497,111	-471	0.0	85.7	87.5
Minority Population	250,574	214,152	36,422	17.0	14.3	12.5

¹ The April 1, 2000 population by race and ethnicity presented here will differ from released Census 2000 figures as the original data from Census 2000 incorporate a "some other race" category. 2004 estimates data do not incorporate the "some other race" category and thus the Census 2000 figures are adjusted to make appropriate comparisons.

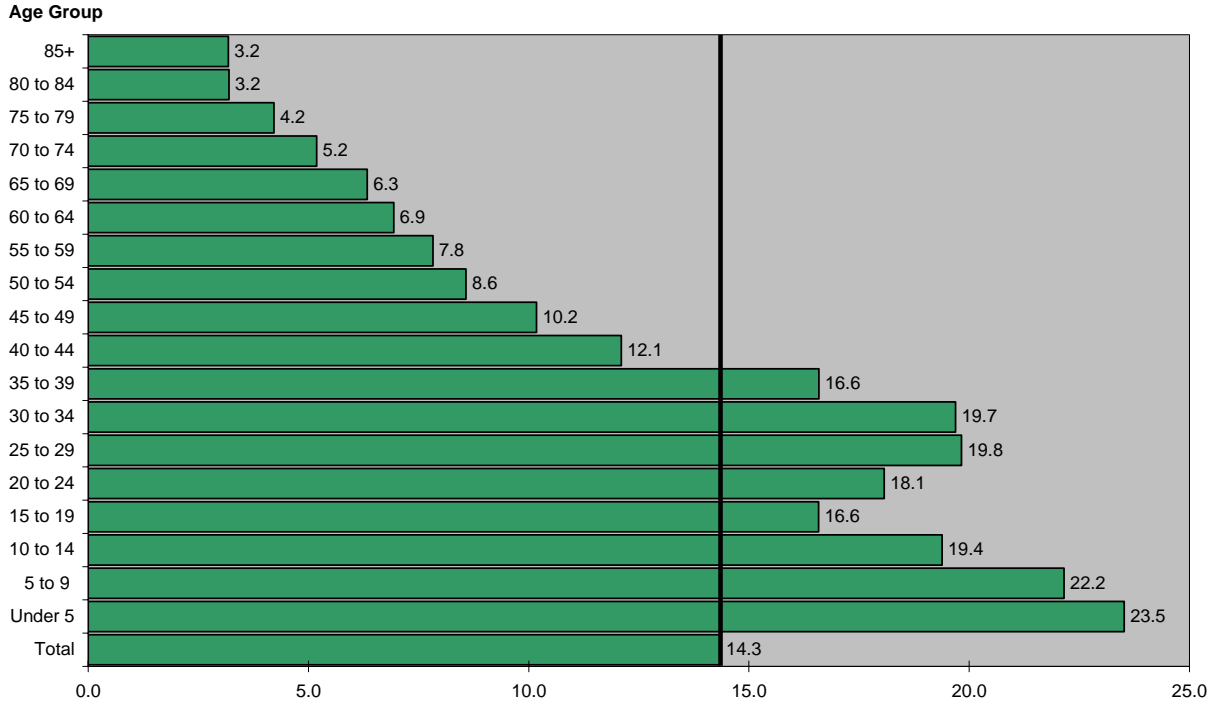
**Figure 7: 2004 Nebraska Population by Sex and Five-Year Age Group:
White Alone not Hispanic or Latino/a (Majority Population)**



**Figure 8: 2004 Nebraska Population by Sex and Five-Year Age Group:
Non-White or Hispanic or Latino/a (Minority Population)**

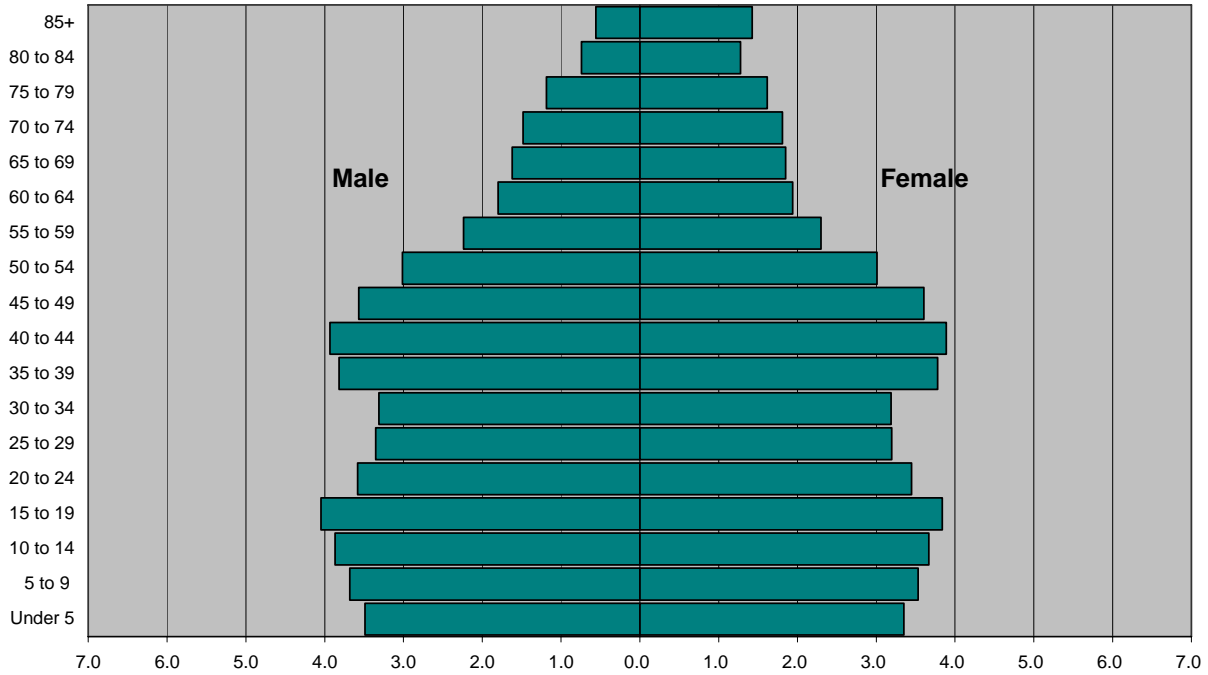


**Figure 9: 2004 Nebraska Population by Sex and Five-Year Age Group:
Non-White or Hispanic or Latino/a (Minorities) as a Percent of the State Total**



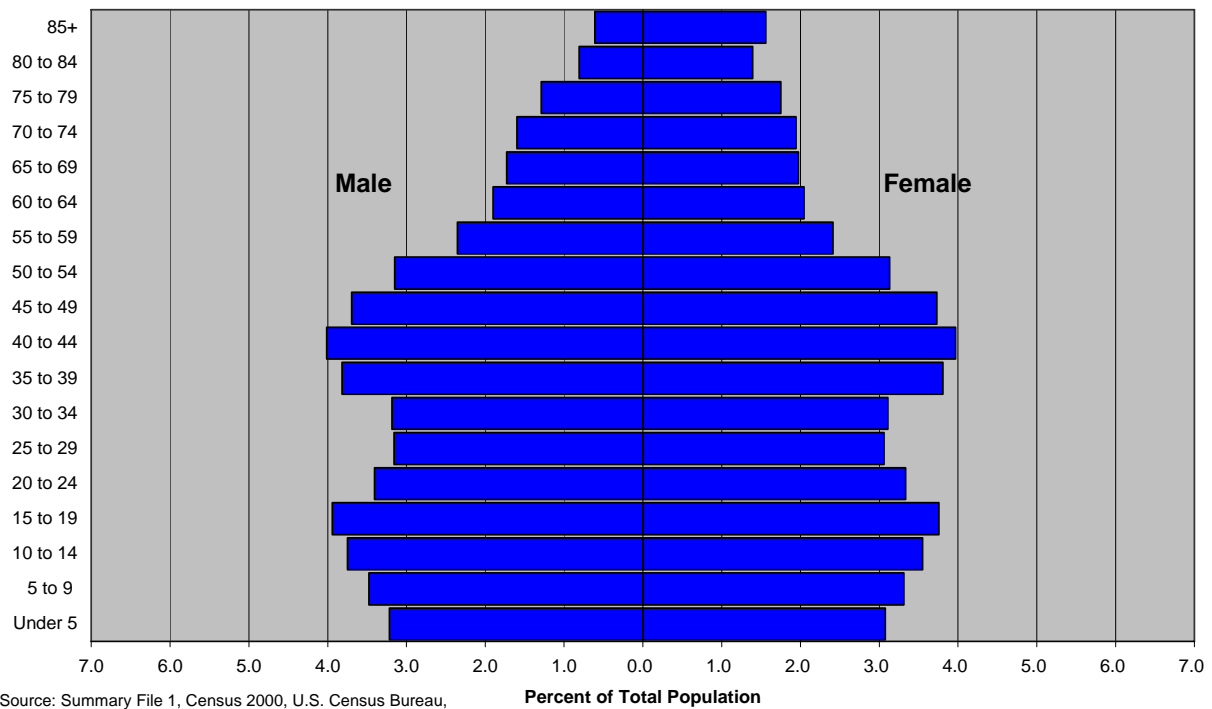
Source: Population Estimates Program, U.S. Census Bureau, Released August 11, 2005

**Figure 10: 2000 Nebraska Population by Sex and Five-Year Age Group:
Total Population**

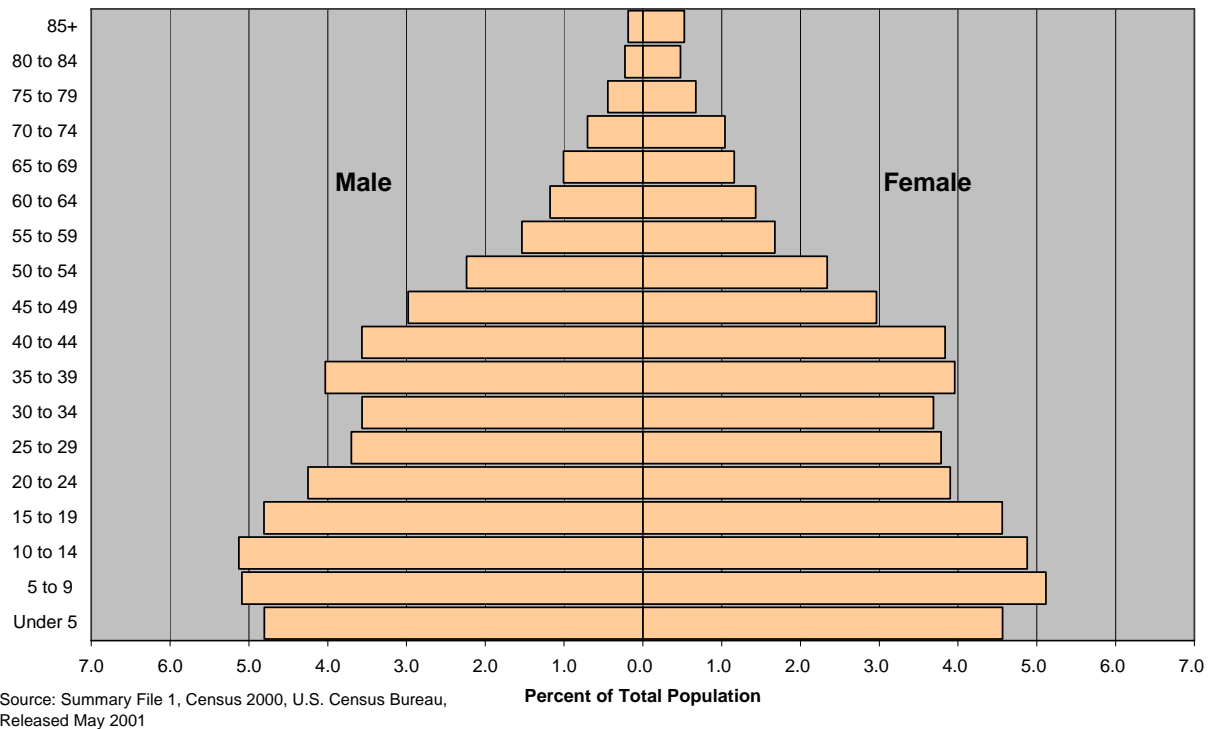


Source: Summary File 1, Census 2000, U.S. Census Bureau, Released May 2001

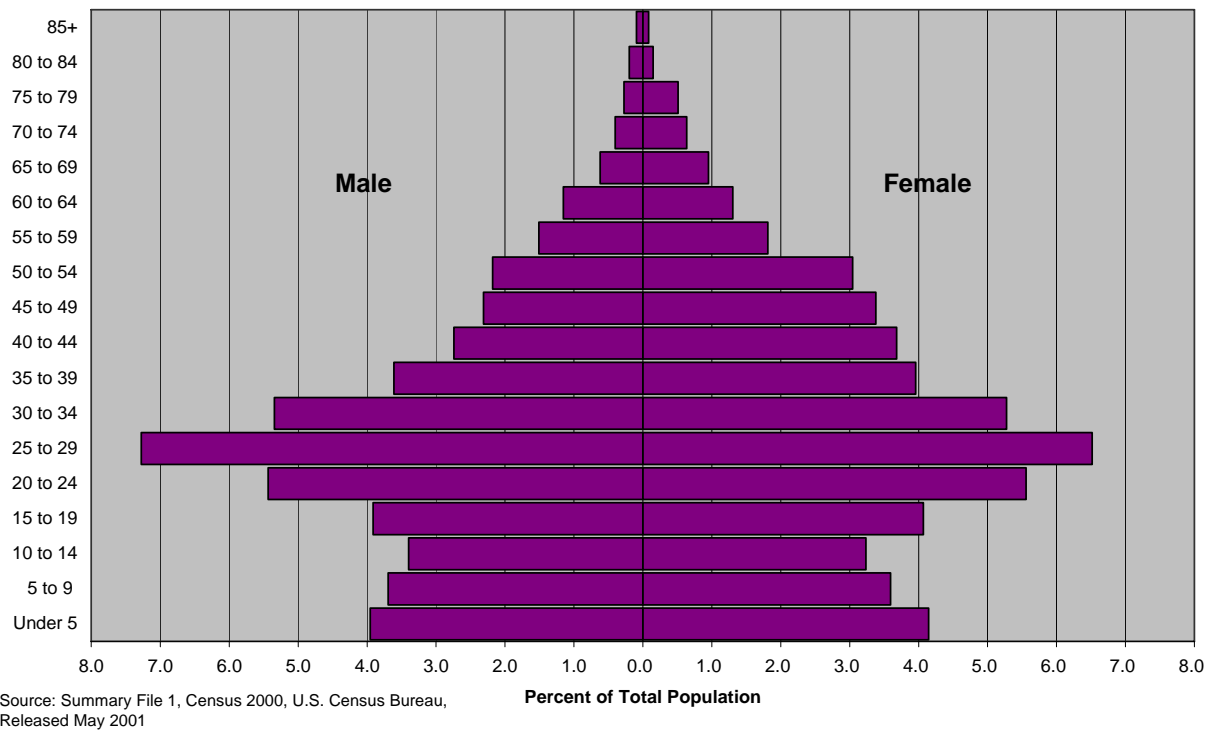
**Figure 11: 2000 Nebraska Population by Sex and Five-Year Age Group:
White Alone**



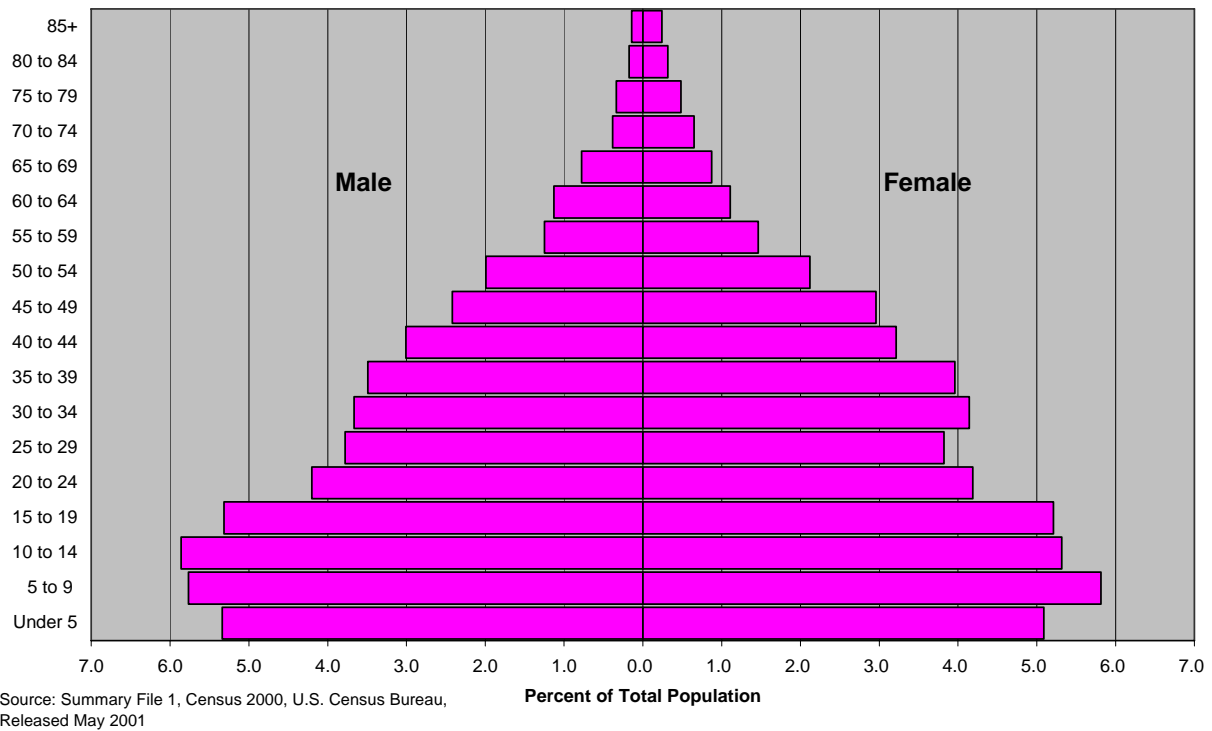
**Figure 12: 2000 Nebraska Population by Sex and Five-Year Age Group:
Black or African American Alone**



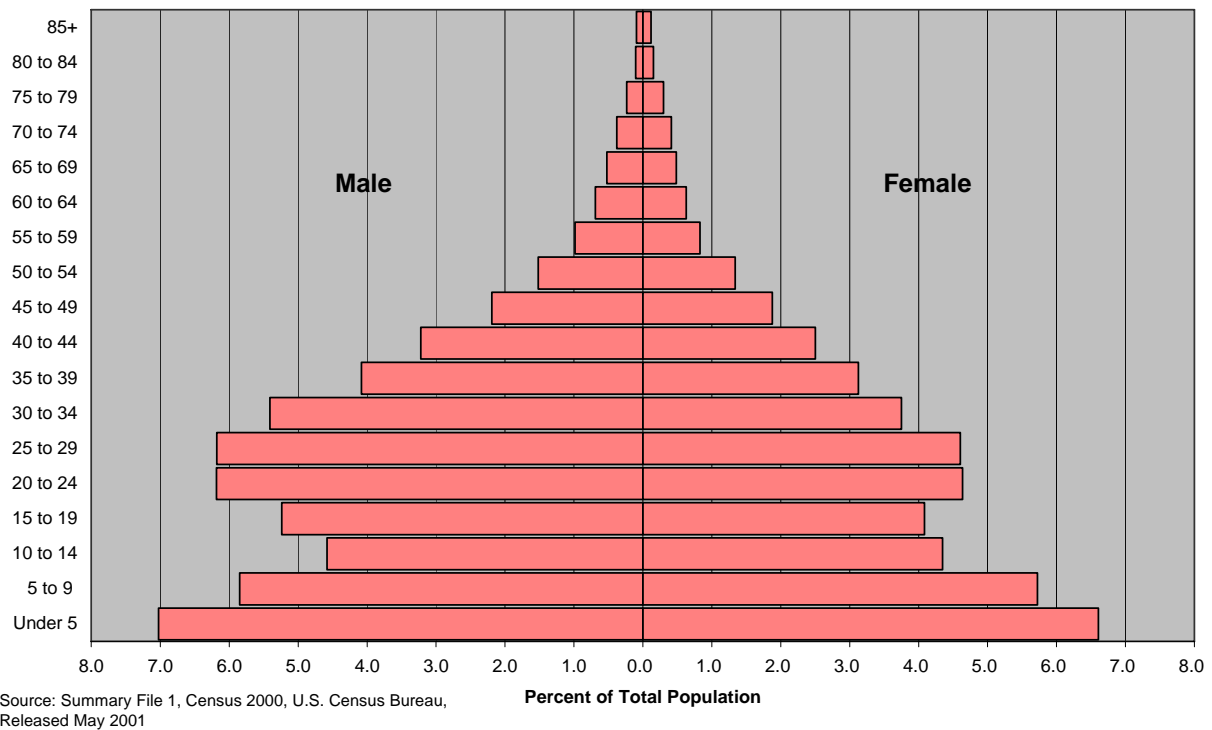
**Figure 13: 2000 Nebraska Population by Sex and Five-Year Age Group:
Asian Alone**



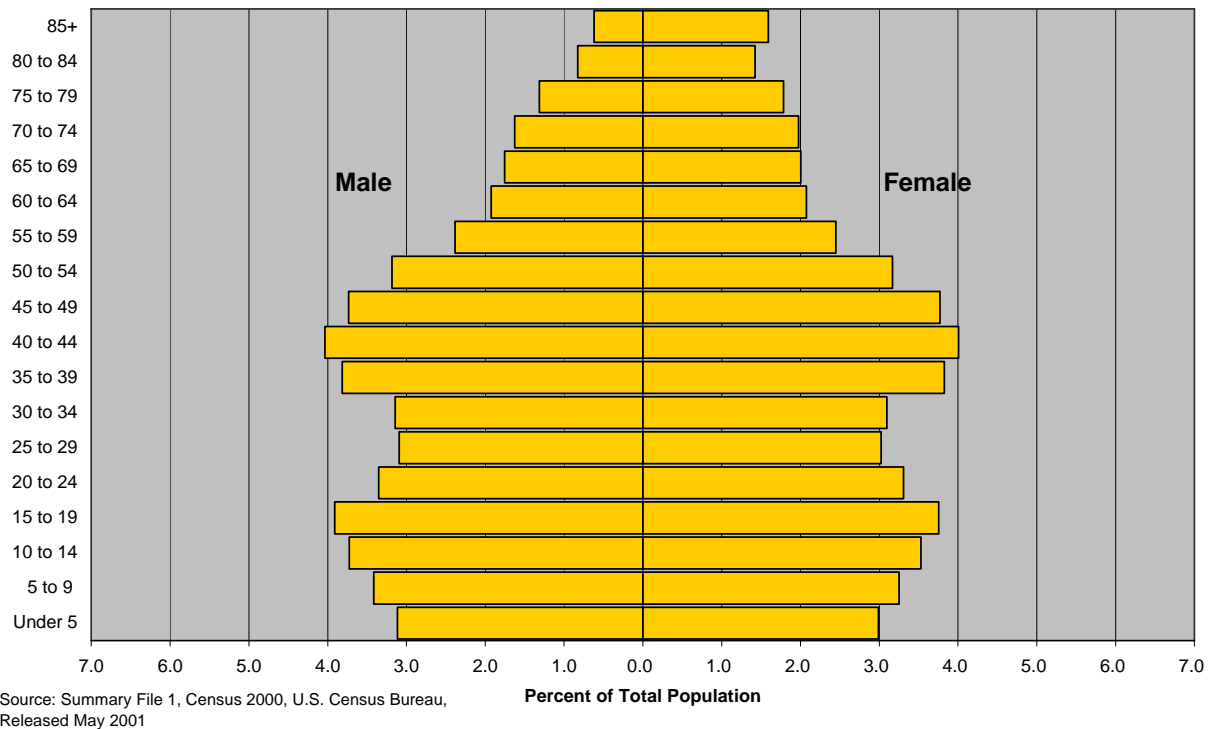
**Figure 14: 2000 Nebraska Population by Sex and Five-Year Age Group:
American Indian and Alaska Native Alone**



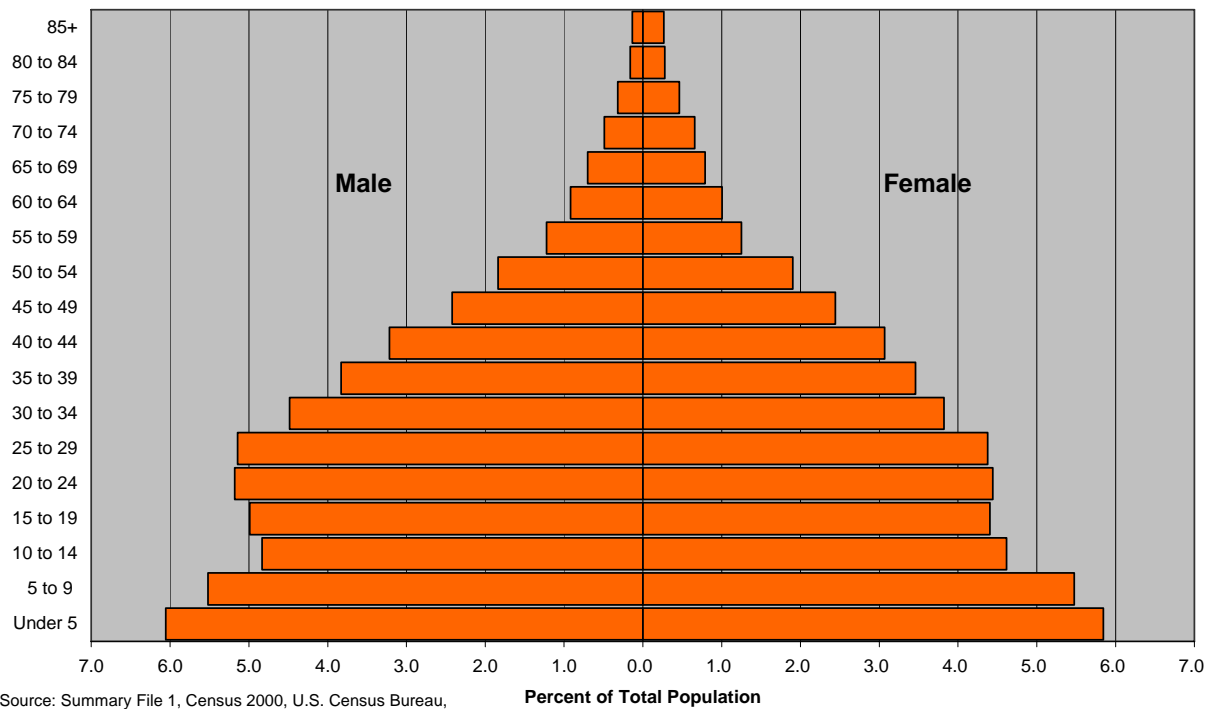
**Figure 15: 2000 Nebraska Population by Sex and Five-Year Age Group:
Hispanic or Latino/a**



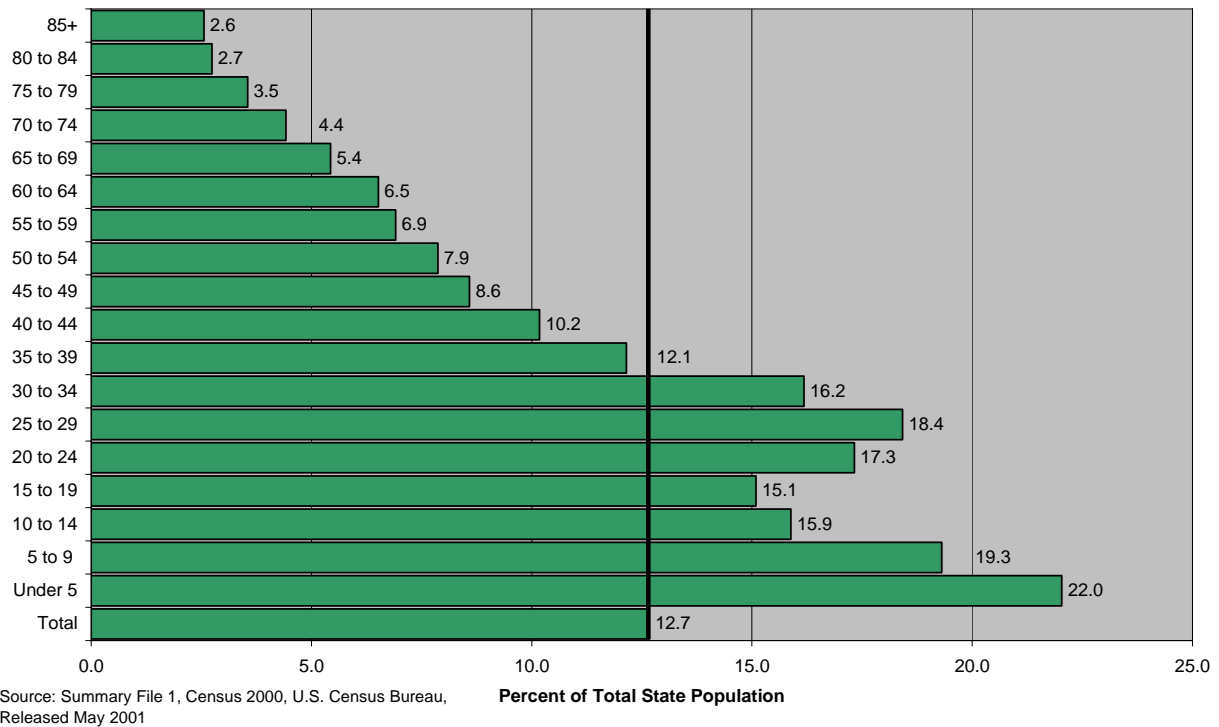
**Figure 16: 2000 Nebraska Population by Sex and Five-Year Age Group:
White Alone not Hispanic or Latino/a (Majority Population)**



**Figure 17: 2000 Nebraska Population by Sex and Five-Year Age Group:
Non-White or Hispanic or Latino/a (Minority Population)**



**Figure 18: 2000 Nebraska Population by Sex and Five-Year Age Group:
Non-White or Hispanic or Latino/a (Minorities) as a Percent of the State Total**



PART 2: COUNTY DATA

The U.S. Census Bureau releases annual estimates of each county's population as of the year's midpoint, July 1. These figures typically are released in April of the following year. The Census Bureau provides change and percentage change statistics and additionally ranks the counties according to these factors in their prepared tables. Estimates of major components of population change such as birth, deaths, and net migration also are released in April. We incorporated these figures with changes occurring between the past two decennial censuses in 1990 and 2000 to create several maps showing demographic trends at the county level in Nebraska. We took estimates directly from Census Bureau releases. (<http://www.census.gov/popest/counties/>)

The Census Bureau also releases county population estimates as of July 1 by sex, age, race, and ethnicity in August of the following year. Since intercensal population estimates and demographic characteristics are only approximations, this report provides only summary information by major age groups.

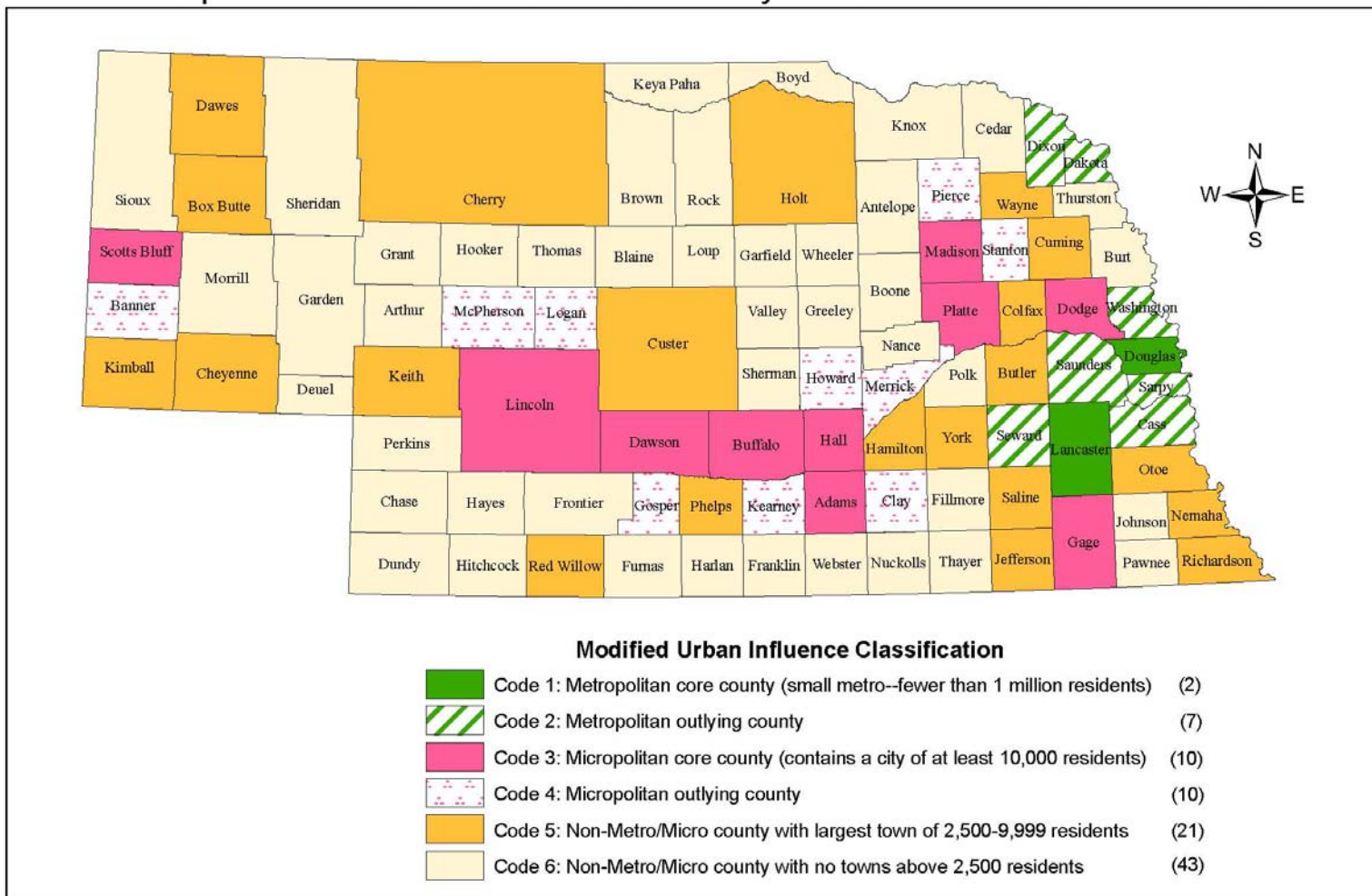
In order to show demographic trends by county type, we modified a classification system for defining counties by their size and proximity to metropolitan areas. The system merged measurement concepts used by the Census Bureau, in particular its newly employed micropolitan counties, and the Urban Influence Codes used by the USDA Economic Research Service. The classification scheme is based on county characteristics. The Modified Urban Influence Codes used in this report include six classification categories, with code 1 representing the most urban counties and code 6 corresponding to the more rural counties:

- Code 1: Metropolitan core county (contains a city with more than 50,000 residents);
- Code 2: Metropolitan outlying county;
- Code 3: Micropolitan core county (contains a city with more than 10,000 residents);
- Code 4: Micropolitan outlying county;
- Code 5: County with the largest town having between 2,500 and 9,999 residents; and
- Code 6: County with the largest town having fewer than 2,500 residents.

See Map 1 for the geographical distribution of the six codes and the associated Table 5 for an alphabetized list of counties in each category. The classification scheme first determined whether the county had metropolitan or micropolitan status and then analyzed the size of the largest town in non-metropolitan and non-micropolitan counties. The tables that follow in this report summarize information by some of the county codes shown above.

Of Nebraska's 93 counties, 84 meet the definition of a non-metropolitan county; of these, 20 exist within a micropolitan area, either core or outlying; 21 non-metropolitan counties are classified by their largest town having 2,500 to 9,999 people; and 43 counties are in the category of not having a town with at least 2,500 residents.

Map 1: Nebraska Counties Classified by Modified Urban Influence Code



Source: U.S. Census Bureau, USDA Economic Research Service; Compiled by: Center for Public Affairs Research (CPAR), University of Nebraska at Omaha
 Prepared by: David Drozd, CPAR - April 12, 2006

Table 5: Listing of Nebraska Counties Classified by Modified Urban Influence Code

Metropolitan Counties

Metropolitan core county (small metro--fewer than 1 million residents)

Douglas	Lancaster
---------	-----------

Metropolitan outlying county (small metro)

Cass	Dixon	Saunders	Washington
Dakota	Sarpy	Seward	

Non-metropolitan Counties

Microopolitan core county (contains a city of at least 10,000 residents)

Adams	Dodge	Lincoln	Platte
Buffalo	Gage	Madison	Scotts Bluff
Dawson	Hall		

Microopolitan outlying county

Banner	Howard	McPherson	Pierce
Clay	Kearney	Merrick	Stanton
Gosper	Logan		

County with largest town of 2,500-9,999 residents

Box Butte	Custer	Keith	Red Willow
Butler	Dawes	Kimball	Richardson
Cherry	Hamilton	Nemaha	Saline
Cheyenne	Holt	Otoe	Wayne
Colfax	Jefferson	Phelps	York
Cuming			

County with largest town having less than 2,500 residents

Antelope	Fillmore	Hooker	Rock
Arthur	Franklin	Johnson	Sheridan
Blaine	Frontier	Keya Paha	Sherman
Boone	Furnas	Knox	Sioux
Boyd	Garden	Loup	Thayer
Brown	Garfield	Morrill	Thomas
Burt	Grant	Nance	Thurston
Cedar	Greeley	Nuckolls	Valley
Chase	Harlan	Pawnee	Webster
Deuel	Hayes	Perkins	Wheeler
Dundy	Hitchcock	Polk	

Table 6: Annual Estimates of the Population for Nebraska Counties: April 1, 2000 to July 1, 2005

Source: Annual Estimates of the Population by County, U.S. Census Bureau, Released March 16, 2006

Geographic Area	Population estimates						April 1, 2000	
	July 1, 2005	July 1, 2004	July 1, 2003	July 1, 2002	July 1, 2001	July 1, 2000	Estimates base ¹	Census
Nebraska	1,758,787	1,747,704	1,738,013	1,726,753	1,718,965	1,713,261	1,711,265	1,711,263
Adams	33,070	32,769	32,314	31,845	31,623	31,168	31,151	31,151
Antelope	7,004	7,082	7,192	7,260	7,253	7,446	7,452	7,452
Arthur	378	392	407	400	412	443	444	444
Banner	733	759	767	763	810	824	819	819
Blaine	484	511	540	551	567	582	583	583
Boone	5,772	5,840	5,903	6,079	6,152	6,217	6,259	6,259
Box Butte	11,374	11,437	11,632	11,849	11,894	12,116	12,158	12,158
Boyd	2,261	2,277	2,314	2,354	2,385	2,427	2,438	2,438
Brown	3,328	3,443	3,478	3,484	3,501	3,521	3,525	3,525
Buffalo	43,572	43,411	43,056	42,788	42,325	42,316	42,259	42,259
Burt	7,455	7,547	7,488	7,569	7,695	7,797	7,791	7,791
Butler ¹	8,720	8,802	8,852	8,899	8,914	8,863	8,861	8,767
Cass	25,734	25,553	25,240	24,822	24,587	24,399	24,334	24,334
Cedar	9,066	9,083	9,199	9,323	9,438	9,586	9,615	9,615
Chase	3,866	3,947	4,036	3,998	3,986	4,048	4,068	4,068
Cherry	6,098	6,079	6,052	6,078	6,089	6,143	6,148	6,148
Cheyenne	9,993	9,896	9,905	9,934	9,929	9,831	9,830	9,830
Clay	6,733	6,814	6,869	6,892	6,923	7,032	7,039	7,039
Colfax	10,433	10,523	10,497	10,504	10,473	10,446	10,441	10,441
Cuming	9,688	9,787	9,864	9,996	10,105	10,172	10,203	10,203
Custer	11,410	11,483	11,503	11,562	11,667	11,800	11,793	11,793
Dakota	20,349	20,518	20,562	20,409	20,379	20,285	20,253	20,253
Dawes	8,636	8,741	8,976	9,032	9,015	9,028	9,060	9,060
Dawson	24,617	24,551	24,550	24,414	24,545	24,408	24,365	24,365
Deuel	2,004	2,030	2,049	2,051	2,083	2,109	2,098	2,098
Dixon	6,155	6,122	6,138	6,184	6,228	6,315	6,339	6,339
Dodge	36,078	36,000	36,003	35,964	36,128	36,229	36,160	36,160
Douglas	486,929	481,203	476,148	471,132	467,694	464,545	463,585	463,585
Dundy	2,133	2,184	2,205	2,202	2,207	2,293	2,292	2,292
Fillmore	6,385	6,442	6,475	6,467	6,564	6,621	6,634	6,634
Franklin	3,421	3,392	3,451	3,487	3,470	3,549	3,574	3,574
Frontier	2,795	2,881	2,898	2,984	3,040	3,089	3,099	3,099
Furnas	5,019	5,106	5,191	5,245	5,242	5,303	5,324	5,324
Gage	23,306	23,404	23,354	23,265	23,181	22,986	22,993	22,993
Garden	1,997	2,127	2,215	2,206	2,260	2,280	2,292	2,292
Garfield	1,816	1,843	1,843	1,894	1,897	1,896	1,902	1,902
Gosper	2,020	2,047	2,080	2,074	2,087	2,143	2,143	2,143
Grant	670	674	695	723	751	747	747	747
Greeley	2,512	2,540	2,610	2,650	2,691	2,705	2,714	2,714
Hall	55,104	54,816	54,294	53,817	53,550	53,502	53,534	53,534
Hamilton	9,568	9,494	9,466	9,405	9,373	9,391	9,403	9,403
Harlan	3,462	3,599	3,681	3,658	3,740	3,776	3,786	3,786
Hayes	1,027	1,070	1,098	1,107	1,088	1,073	1,068	1,068
Hitchcock	2,970	3,026	3,032	3,046	3,089	3,102	3,111	3,111
Holt	10,784	10,827	11,058	11,224	11,365	11,494	11,551	11,551
Hooker	744	746	741	738	754	780	783	783
Howard	6,708	6,727	6,661	6,528	6,512	6,556	6,567	6,567
Jefferson	7,925	8,042	8,104	8,228	8,288	8,337	8,333	8,333
Johnson	4,695	4,829	4,527	4,369	4,380	4,485	4,488	4,488

Geographic Area	Population estimates						April 1, 2000	
	July 1, 2005	July 1, 2004	July 1, 2003	July 1, 2002	July 1, 2001	July 1, 2000	Estimates base ¹	Census
Kearney	6,774	6,854	6,855	6,818	6,859	6,885	6,882	6,882
Keith	8,330	8,380	8,469	8,730	8,767	8,855	8,875	8,875
Keya Paha	902	929	950	946	953	978	983	983
Kimball	3,782	3,803	3,851	3,970	4,008	4,063	4,089	4,089
Knox	8,916	9,011	9,050	9,099	9,179	9,344	9,374	9,374
Lancaster	264,814	261,742	260,047	256,374	253,183	251,152	250,291	250,291
Lincoln	35,636	35,104	34,722	34,498	34,650	34,658	34,632	34,632
Logan	740	719	713	751	768	771	774	774
Loup	686	694	738	751	730	713	712	712
Madison	35,488	35,667	35,782	35,930	35,637	35,165	35,226	35,226
McPherson	507	527	530	548	533	531	533	533
Merrick	8,066	8,128	8,112	8,096	8,076	8,169	8,204	8,204
Morrill	5,165	5,218	5,285	5,288	5,389	5,446	5,440	5,440
Nance	3,666	3,700	3,749	3,881	3,986	4,042	4,038	4,038
Nemaha	6,965	7,032	7,135	7,284	7,412	7,568	7,576	7,576
Nuckolls	4,739	4,821	4,857	4,858	4,958	5,026	5,057	5,057
Otoe	15,509	15,477	15,432	15,455	15,482	15,425	15,396	15,396
Pawnee	2,878	2,872	2,886	3,008	3,008	3,084	3,087	3,087
Perkins	3,057	3,072	3,041	3,083	3,127	3,176	3,200	3,200
Phelps	9,449	9,563	9,602	9,698	9,730	9,740	9,747	9,747
Pierce	7,600	7,614	7,721	7,734	7,806	7,851	7,857	7,857
Platte ¹	31,262	31,282	31,243	31,263	31,492	31,532	31,568	31,662
Polk	5,421	5,419	5,473	5,516	5,527	5,615	5,639	5,639
Red Willow	11,060	11,082	11,195	11,297	11,396	11,449	11,450	11,448
Richardson	8,732	8,878	8,954	9,112	9,243	9,514	9,531	9,531
Rock	1,567	1,592	1,605	1,686	1,723	1,758	1,756	1,756
Saline	14,195	14,204	14,225	14,076	13,940	13,865	13,843	13,843
Sarpy	139,371	135,707	132,004	129,136	126,191	123,215	122,595	122,595
Saunders	20,458	20,235	20,052	19,878	19,980	19,854	19,830	19,830
Scotts Bluff	36,752	36,686	36,805	36,735	36,618	36,990	36,951	36,951
Seward	16,739	16,767	16,574	16,632	16,657	16,532	16,496	16,496
Sheridan	5,668	5,797	5,820	5,995	5,976	6,182	6,198	6,198
Sherman	3,112	3,159	3,144	3,173	3,241	3,295	3,318	3,318
Sioux	1,458	1,444	1,485	1,455	1,428	1,472	1,475	1,475
Stanton	6,534	6,545	6,559	6,525	6,407	6,425	6,455	6,455
Thayer	5,436	5,483	5,630	5,735	5,912	6,046	6,055	6,055
Thomas	623	643	672	681	708	734	729	729
Thurston	7,365	7,185	7,144	7,090	7,141	7,181	7,171	7,171
Valley	4,402	4,500	4,610	4,559	4,635	4,646	4,647	4,647
Washington	19,772	19,535	19,521	19,297	19,125	18,799	18,780	18,780
Wayne	9,211	9,343	9,490	9,550	9,682	9,800	9,851	9,851
Webster	3,762	3,834	3,879	3,890	3,988	4,055	4,061	4,061
Wheeler	820	816	825	841	857	886	886	886
York	14,397	14,225	14,364	14,378	14,528	14,570	14,598	14,598
Metropolitan	1,000,321	987,382	976,286	963,864	954,024	945,096	942,503	942,503
Non-Metropolitan	758,466	760,322	761,727	762,889	764,941	768,165	768,762	768,760
Micropolitan	401,300	400,424	398,990	397,248	396,530	396,141	396,112	396,206
Non-Metro/Micro	357,166	359,898	362,737	365,641	368,411	372,024	372,650	372,554
Town Over 2500	206,259	207,098	208,626	210,261	211,300	212,470	212,737	212,641
No Town Over 2500	150,907	152,800	154,111	155,380	157,111	159,554	159,913	159,913

¹ A January 1, 2001 boundary change resulted in a population gain for Butler County and a corresponding loss in Platte County.

Table 7: Nebraska Population Estimates, Changes, and Rankings: April 1, 2000 to July 1, 2005

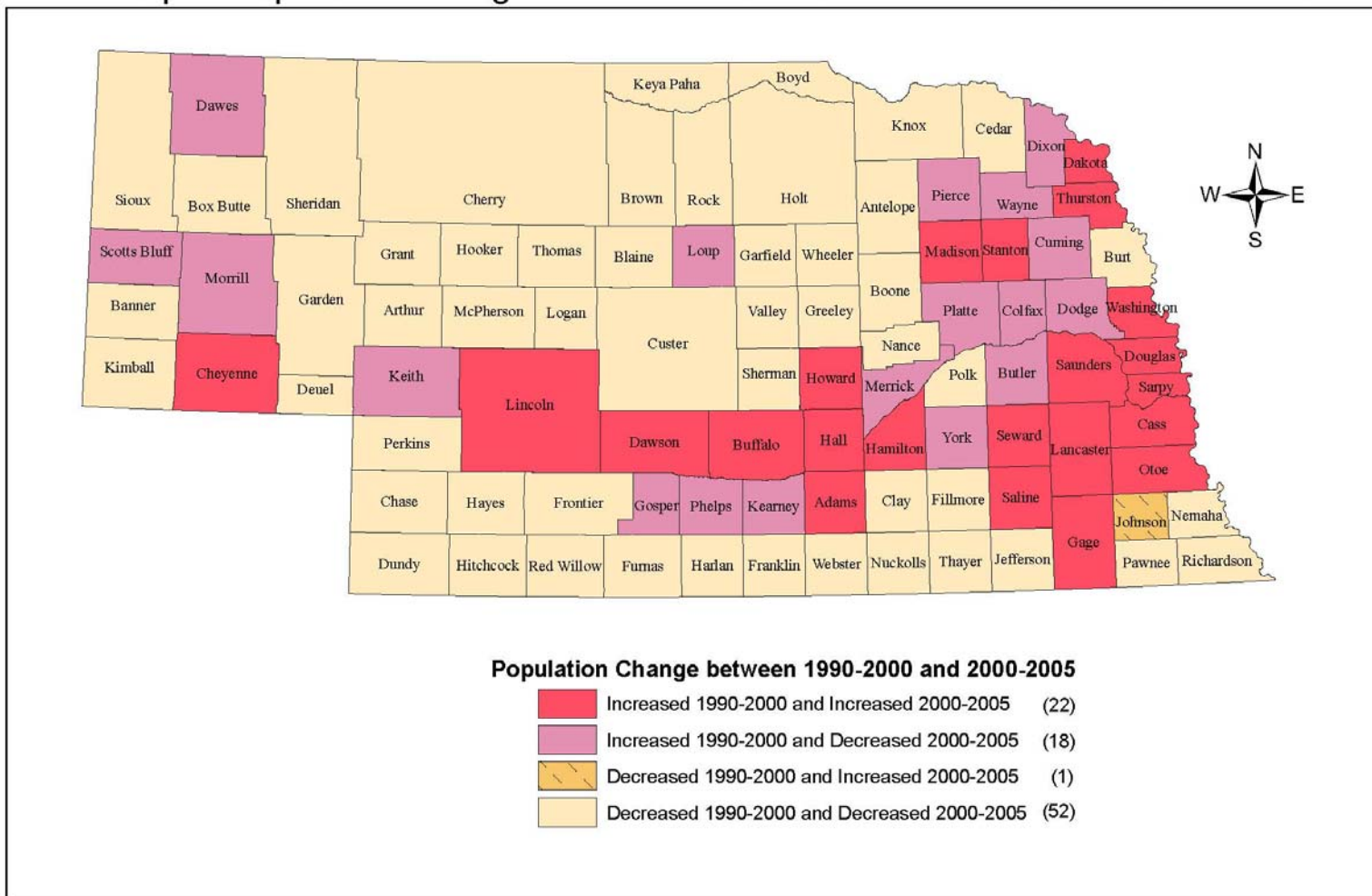
Source: Cumulative Estimates of Population Change, U.S. Census Bureau, Released March 16, 2006

Geographic Area	Population estimates		Change, 2000 to 2005		State ranking of counties			
	July 1, 2005	April 1, 2000 estimates base	Number	Percent	Population estimates		Change, 2000 to 2005	
					July 1, 2005	April 1, 2000 estimates base	Number	Percent
Nebraska	1,758,787	1,711,265	47,522	2.8	(X)	(X)	(X)	(X)
Adams	33,070	31,151	1,919	6.2	10	11	4	2
Antelope	7,004	7,452	-448	-6.0	43	43	81	64
Arthur	378	444	-66	-14.9	93	93	32	92
Banner	733	819	-86	-10.5	87	85	37	88
Blaine	484	583	-99	-17.0	92	91	40	93
Boone	5,772	6,259	-487	-7.8	52	51	83	78
Box Butte	11,374	12,158	-784	-6.4	23	22	92	68
Boyd	2,261	2,438	-177	-7.3	74	74	50	73
Brown	3,328	3,525	-197	-5.6	67	67	53	60
Buffalo	43,572	42,259	1,313	3.1	5	5	7	9
Burt	7,455	7,791	-336	-4.3	41	41	75	44
Butler ¹	8,720	8,861	-141	-1.6	35	37	45	32
Cass	25,734	24,334	1,400	5.8	12	13	6	4
Cedar	9,066	9,615	-549	-5.7	32	31	87	61
Chase	3,866	4,068	-202	-5.0	61	62	56	55
Cherry	6,098	6,148	-50	-0.8	51	53	31	27
Cheyenne	9,993	9,830	163	1.7	27	29	19	16
Clay	6,733	7,039	-306	-4.3	46	45	70	45
Colfax	10,433	10,441	-8	-0.1	26	26	24	24
Cuming	9,688	10,203	-515	-5.0	28	27	84	57
Custer	11,410	11,793	-383	-3.2	22	23	77	36
Dakota	20,349	20,253	96	0.5	16	15	22	23
Dawes	8,636	9,060	-424	-4.7	36	35	80	51
Dawson	24,617	24,365	252	1.0	13	12	14	20
Deuel	2,004	2,098	-94	-4.5	77	78	39	48
Dixon	6,155	6,339	-184	-2.9	50	50	51	34
Dodge	36,078	36,160	-82	-0.2	7	7	36	25
Douglas	486,929	463,585	23,344	5.0	1	1	1	6
Dundy	2,133	2,292	-159	-6.9	75	75	49	72
Fillmore	6,385	6,634	-249	-3.8	49	47	62	40
Franklin	3,421	3,574	-153	-4.3	66	66	48	43
Frontier	2,795	3,099	-304	-9.8	72	71	68	85
Furnas	5,019	5,324	-305	-5.7	57	57	69	62
Gage	23,306	22,993	313	1.4	14	14	12	18
Garden	1,997	2,292	-295	-12.9	78	75	65	90
Garfield	1,816	1,902	-86	-4.5	79	79	37	49
Gosper	2,020	2,143	-123	-5.7	76	77	43	63
Grant	670	747	-77	-10.3	89	88	34	87
Greeley	2,512	2,714	-202	-7.4	73	73	56	75
Hall	55,104	53,534	1,570	2.9	4	4	5	10
Hamilton	9,568	9,403	165	1.8	29	33	18	15
Harlan	3,462	3,786	-324	-8.6	65	65	74	83
Hayes	1,027	1,068	-41	-3.8	82	82	30	41
Hitchcock	2,970	3,111	-141	-4.5	70	70	45	50
Holt	10,784	11,551	-767	-6.6	25	24	91	70
Hooker	744	783	-39	-5.0	85	86	29	56
Howard	6,708	6,567	141	2.1	47	48	20	14

Geographic Area	Population estimates		Change, 2000 to 2005		State ranking of counties			
	July 1, 2005	April 1, 2000 estimates base	Number	Percent	Population estimates		Change, 2000 to 2005	
					July 1, 2005	April 1, 2000 estimates base	Number	Percent
Jefferson	7,925	8,333	-408	-4.9	39	38	79	54
Johnson	4,695	4,488	207	4.6	59	60	16	7
Kearney	6,774	6,882	-108	-1.6	45	46	42	31
Keith	8,330	8,875	-545	-6.1	37	36	86	65
Keya Paha	902	983	-81	-8.2	83	83	35	80
Kimball	3,782	4,089	-307	-7.5	62	61	72	77
Knox	8,916	9,374	-458	-4.9	33	34	82	53
Lancaster	264,814	250,291	14,523	5.8	2	2	3	3
Lincoln	35,636	34,632	1,004	2.9	8	9	8	11
Logan	740	774	-34	-4.4	86	87	28	46
Loup	686	712	-26	-3.7	88	90	26	39
Madison	35,488	35,226	262	0.7	9	8	13	21
McPherson	507	533	-26	-4.9	91	92	26	52
Merrick	8,066	8,204	-138	-1.7	38	39	44	33
Morrill	5,165	5,440	-275	-5.1	56	56	64	58
Nance	3,666	4,038	-372	-9.2	64	64	76	84
Nemaha	6,965	7,576	-611	-8.1	44	42	88	79
Nuckolls	4,739	5,057	-318	-6.3	58	58	73	67
Otoe	15,509	15,396	113	0.7	19	19	21	22
Pawnee	2,878	3,087	-209	-6.8	71	72	59	71
Perkins	3,057	3,200	-143	-4.5	69	69	47	47
Phelps	9,449	9,747	-298	-3.1	30	30	66	35
Pierce	7,600	7,857	-257	-3.3	40	40	63	37
Platte ¹	31,262	31,568	-306	-1.0	11	10	70	28
Polk	5,421	5,639	-218	-3.9	55	55	60	42
Red Willow	11,060	11,450	-390	-3.4	24	25	78	38
Richardson	8,732	9,531	-799	-8.4	34	32	93	81
Rock	1,567	1,756	-189	-10.8	80	80	52	89
Saline	14,195	13,843	352	2.5	21	21	11	13
Sarpy	139,371	122,595	16,776	13.7	3	3	2	1
Saunders	20,458	19,830	628	3.2	15	16	10	8
Scotts Bluff	36,752	36,951	-199	-0.5	6	6	54	26
Seward	16,739	16,496	243	1.5	18	18	15	17
Sheridan	5,668	6,198	-530	-8.6	53	52	85	82
Sherman	3,112	3,318	-206	-6.2	68	68	58	66
Sioux	1,458	1,475	-17	-1.2	81	81	25	29
Stanton	6,534	6,455	79	1.2	48	49	23	19
Thayer	5,436	6,055	-619	-10.2	54	54	89	86
Thomas	623	729	-106	-14.5	90	89	41	91
Thurston	7,365	7,171	194	2.7	42	44	17	12
Valley	4,402	4,647	-245	-5.3	60	59	61	59
Washington	19,772	18,780	992	5.3	17	17	9	5
Wayne	9,211	9,851	-640	-6.5	31	28	90	69
Webster	3,762	4,061	-299	-7.4	63	63	67	74
Wheeler	820	886	-66	-7.4	84	84	32	76
York	14,397	14,598	-201	-1.4	20	20	55	30

¹ The estimates base incorporates adjustments from the January 1, 2001 boundary change between Butler and Platte Counties.

Map 2: Population Change in Nebraska Counties: 1990-2000 and 2000-2005



Sources: 1990 and 2000 Decennial Censuses; Cumulative Estimates of Population Change - released March 16, 2006, U.S. Census Bureau

Prepared by: David Drozd, Center for Public Affairs Research, University of Nebraska at Omaha - May 26, 2006

Table 8: Nebraska Population Change Component Estimates: April 1, 2000 to July 1, 2005

Source: Cumulative Estimates of the Components of Population Change, U.S. Census Bureau, 3-16-06

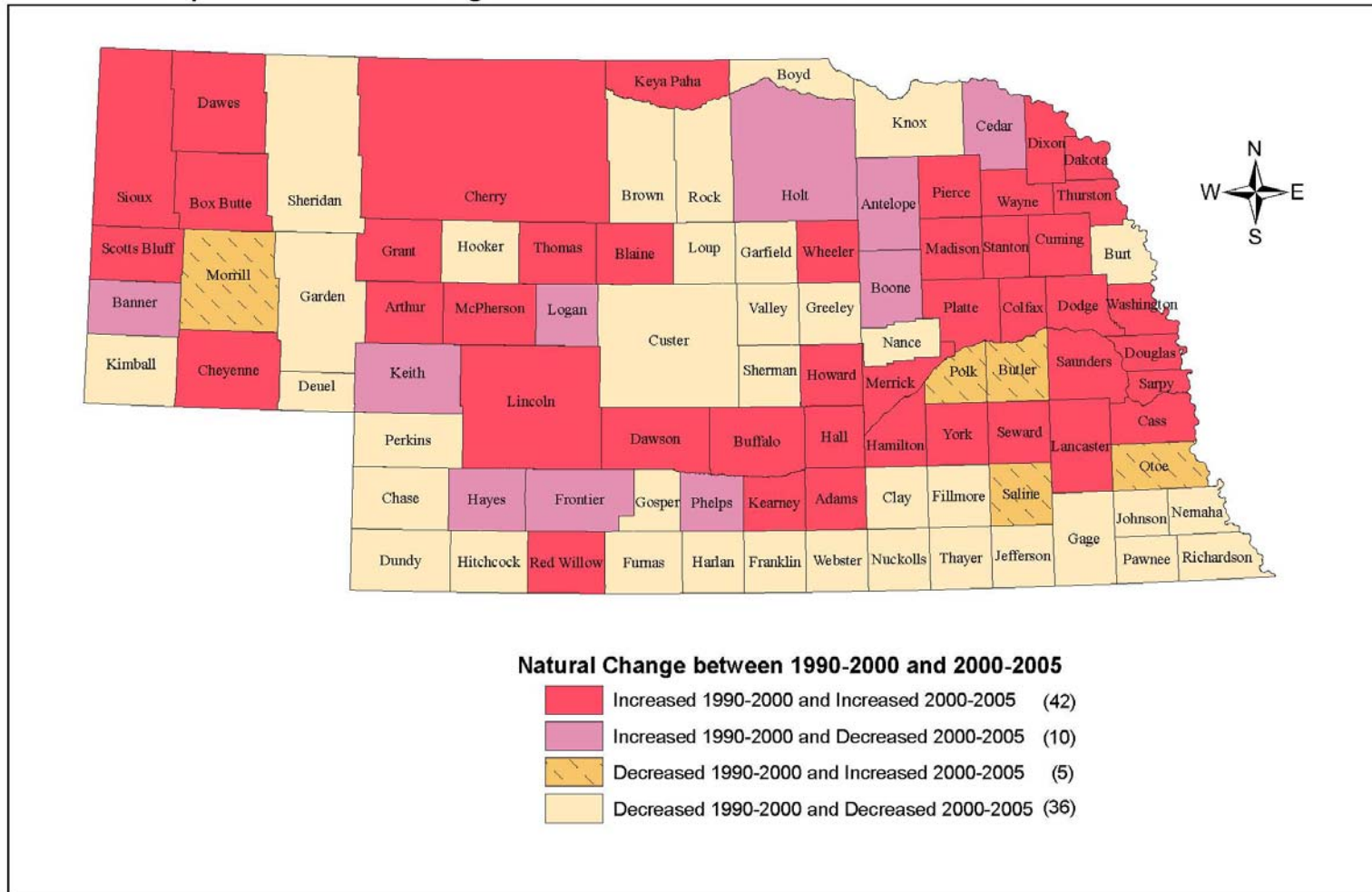
Geographic Area	Total Population Change ¹	Natural Increase			Net Migration		
		Total	Births	Deaths	Total	Net International	Net Internal
Nebraska	47,522	52,104	132,394	80,290	-4,007	22,199	-26,206
Adams	1,919	546	2,098	1,552	-340	605	-945
Antelope	-448	-66	359	425	-370	-1	-369
Arthur	-66	13	29	16	-75	-1	-74
Banner	-86	-2	19	21	-80	-1	-79
Blaine	-99	14	30	16	-108	-1	-107
Boone	-487	-69	282	351	-404	3	-407
Box Butte	-784	141	808	667	-909	87	-996
Boyd	-177	-83	97	180	-92	-1	-91
Brown	-197	-77	178	255	-107	-1	-106
Buffalo	1,313	1,400	3,191	1,791	-21	275	-296
Burt	-336	-183	425	608	-130	0	-130
Butler ²	-141	19	549	530	-146	28	-174
Cass	1,400	454	1,588	1,134	977	48	929
Cedar	-549	-72	543	615	-467	-1	-466
Chase	-202	-41	252	293	-155	-1	-154
Cherry	-50	10	373	363	-49	15	-64
Cheyenne	163	28	653	625	145	20	125
Clay	-306	-12	399	411	-284	22	-306
Colfax	-8	511	1,009	498	-501	456	-957
Cuming	-515	21	670	649	-522	106	-628
Custer	-383	-127	704	831	-243	0	-243
Dakota	96	1,243	2,026	783	-1,117	790	-1,907
Dawes	-424	77	550	473	-486	18	-504
Dawson	252	1,150	2,326	1,176	-864	1,083	-1,947
Deuel	-94	-65	108	173	-26	-1	-25
Dixon	-184	76	420	344	-254	62	-316
Dodge	-82	375	2,555	2,180	-409	188	-597
Douglas	23,344	22,190	41,320	19,130	1,635	8,691	-7,056
Dundy	-159	-52	106	158	-105	13	-118
Fillmore	-249	-96	384	480	-141	13	-154
Franklin	-153	-143	150	293	-5	3	-8
Frontier	-304	-3	138	141	-290	3	-293
Furnas	-305	-145	271	416	-148	-1	-147
Gage	313	-58	1,414	1,472	408	23	385
Garden	-295	-128	73	201	-155	-1	-154
Garfield	-86	-114	90	204	31	3	28
Gosper	-123	-34	124	158	-85	-1	-84
Grant	-77	5	40	35	-81	-1	-80
Greeley	-202	-7	178	185	-191	-1	-190
Hall	1,570	2,212	4,850	2,638	-578	1,361	-1,939
Hamilton	165	139	603	464	36	-1	37
Harlan	-324	-88	165	253	-219	-1	-218
Hayes	-41	-3	48	51	-32	-1	-31
Hitchcock	-141	-59	179	238	-77	0	-77
Holt	-767	-63	596	659	-690	15	-705
Hooker	-39	-33	33	66	-2	-1	-1
Howard	141	99	412	313	55	3	52
Jefferson	-408	-119	431	550	-274	-1	-273
Johnson	207	-55	253	308	298	21	277
Kearney	-108	39	393	354	-129	0	-129

Geographic Area	Total Population Change ¹	Natural Increase			Net Migration		
		Total	Births	Deaths	Total	Net International	Net Internal
Keith	-545	-51	480	531	-474	26	-500
Keya Paha	-81	31	70	39	-106	-1	-105
Kimball	-307	-92	210	302	-210	4	-214
Knox	-458	-159	514	673	-287	3	-290
Lancaster	14,523	11,266	20,146	8,880	3,548	5,301	-1,753
Lincoln	1,004	677	2,501	1,824	371	105	266
Logan	-34	-1	54	55	-30	0	-30
Loup	-26	-5	39	44	-18	0	-18
Madison	262	1,093	2,924	1,831	-762	435	-1,197
McPherson	-26	12	23	11	-34	0	-34
Merrick	-138	54	486	432	-180	10	-190
Morrill	-275	25	330	305	-291	9	-300
Nance	-372	-109	208	317	-257	0	-257
Nemaha	-611	-128	369	497	-472	0	-472
Nuckolls	-318	-110	278	388	-197	21	-218
Otoe	113	21	967	946	111	21	90
Pawnee	-209	-121	127	248	-83	0	-83
Perkins	-143	-30	183	213	-107	0	-107
Phelps	-298	-12	577	589	-272	5	-277
Pierce	-257	6	458	452	-239	5	-244
Platte ²	-306	926	2,258	1,332	-1,174	347	-1,521
Polk	-218	3	361	358	-208	13	-221
Red Willow	-390	30	706	676	-405	21	-426
Richardson	-799	-339	440	779	-448	4	-452
Rock	-189	-37	81	118	-150	0	-150
Saline	352	76	926	850	293	322	-29
Sarpy	16,776	8,634	11,861	3,227	8,308	800	7,508
Saunders	628	342	1,249	907	317	59	258
Scotts Bluff	-199	497	2,788	2,291	-657	327	-984
Seward	243	152	996	844	108	73	35
Sheridan	-530	-61	383	444	-460	0	-460
Sherman	-206	-38	186	224	-159	0	-159
Sioux	-17	17	47	30	-25	0	-25
Stanton	79	160	449	289	-72	37	-109
Thayer	-619	-209	282	491	-405	0	-405
Thomas	-106	0	31	31	-100	0	-100
Thurston	194	444	865	421	-242	44	-286
Valley	-245	-96	250	346	-142	0	-142
Washington	992	246	1,102	856	768	105	663
Wayne	-640	166	542	376	-789	59	-848
Webster	-299	-132	176	308	-162	4	-166
Wheeler	-66	1	52	51	-63	0	-63
York	-201	190	927	737	-375	104	-479
Metropolitan	57,818	44,603	80,708	36,105	14,290	15,929	-1,639
Non-Metropolitan	-10,296	7,501	51,686	44,185	-18,297	6,270	-24,567
Micropolitan	5,188	9,139	29,722	20,583	-5,104	4,824	-9,928
Non-Metro/Micro	-15,484	-1,638	21,964	23,602	-13,193	1,446	-14,639
Town Over 2500	-6,478	498	13,090	12,592	-6,680	1,309	-7,989
No Town Over 2500	-9,006	-2,136	8,874	11,010	-6,513	137	-6,650

¹ Total population change includes an unlisted residual.

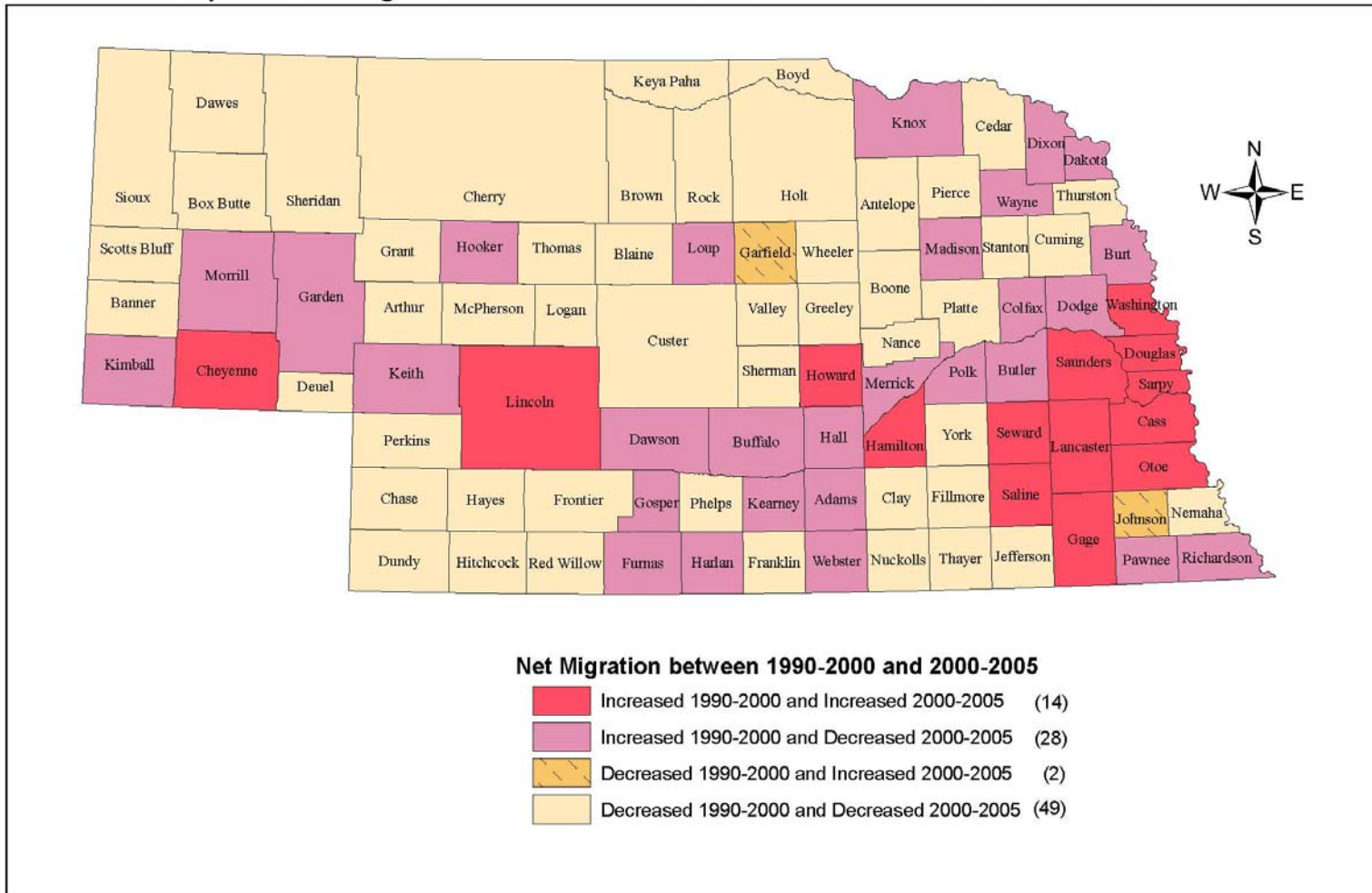
² The effect of the January 1, 2001 boundary change between Butler and Platte Counties is incorporated into the total population change.

Map 3: Natural Change in Nebraska Counties: 1990-2000 and 2000-2005



Sources: 1990 and 2000 Decennial Censuses; Cumulative Estimates of the Components of Population Change - released March 16, 2006, U.S. Census Bureau
 Prepared by: David Drozd, Center for Public Affairs Research, University of Nebraska at Omaha - May 26, 2006

Map 4: Net Migration in Nebraska Counties: 1990-2000 and 2000-2005



Sources: 1990 and 2000 Decennial Censuses; Cumulative Estimates of the Components of Population Change - released March 16, 2006, U.S. Census Bureau
 Prepared by: David Drozd, Center for Public Affairs Research, University of Nebraska at Omaha - May 26, 2006

Table 9: County Population by Major Age Groups: July 1, 2004

Source: Annual Estimates of the Population by Age and Sex, U.S. Census Bureau, Released 8-11-05

Geographic Area	Population Under 18	Population 18-64	Population 65 & Over	Total Population	Percent Under 18	Percent 18-64	Percent 65 & Over
Nebraska	434,566	1,080,845	231,803	1,747,214	24.9	61.9	13.3
Adams ¹	7,106	19,036	4,771	30,913	23.0	61.6	15.4
Antelope	1,649	4,040	1,422	7,111	23.2	56.8	20.0
Arthur	88	232	82	402	21.9	57.7	20.4
Banner	174	463	125	762	22.8	60.8	16.4
Blaine	95	296	127	518	18.3	57.1	24.5
Boone	1,453	3,167	1,211	5,831	24.9	54.3	20.8
Box Butte	2,865	6,862	1,661	11,388	25.2	60.3	14.6
Boyd	477	1,247	543	2,267	21.0	55.0	24.0
Brown	732	1,935	763	3,430	21.3	56.4	22.2
Buffalo	10,100	28,405	4,901	43,406	23.3	65.4	11.3
Burt	1,725	4,230	1,535	7,490	23.0	56.5	20.5
Butler	2,175	5,118	1,520	8,813	24.7	58.1	17.2
Cass	6,476	16,047	3,148	25,671	25.2	62.5	12.3
Cedar	2,335	4,934	1,790	9,059	25.8	54.5	19.8
Chase	856	2,274	831	3,961	21.6	57.4	21.0
Cherry	1,470	3,547	1,054	6,071	24.2	58.4	17.4
Cheyenne	2,339	5,984	1,579	9,902	23.6	60.4	15.9
Clay	1,601	3,966	1,211	6,778	23.6	58.5	17.9
Colfax	2,828	5,911	1,759	10,498	26.9	56.3	16.8
Cuming	2,403	5,393	1,990	9,786	24.6	55.1	20.3
Custer	2,773	6,382	2,360	11,515	24.1	55.4	20.5
Dakota	6,246	12,245	2,121	20,612	30.3	59.4	10.3
Dawes	1,704	5,703	1,339	8,746	19.5	65.2	15.3
Dawson	7,005	14,313	3,214	24,532	28.6	58.3	13.1
Deuel	404	1,175	440	2,019	20.0	58.2	21.8
Dixon	1,504	3,553	1,053	6,110	24.6	58.2	17.2
Dodge	8,353	21,443	6,270	36,066	23.2	59.5	17.4
Douglas	125,719	304,990	51,403	482,112	26.1	63.3	10.7
Dundy	456	1,275	471	2,202	20.7	57.9	21.4
Fillmore	1,545	3,531	1,386	6,462	23.9	54.6	21.4
Franklin	740	1,861	824	3,425	21.6	54.3	24.1
Frontier	623	1,744	508	2,875	21.7	60.7	17.7
Furnas	1,086	2,836	1,206	5,128	21.2	55.3	23.5
Gage	5,181	13,960	4,295	23,436	22.1	59.6	18.3
Garden	382	1,200	588	2,170	17.6	55.3	27.1
Garfield	393	1,016	429	1,838	21.4	55.3	23.3
Gosper	430	1,162	442	2,034	21.1	57.1	21.7
Grant	139	417	114	670	20.7	62.2	17.0
Greeley	599	1,338	600	2,537	23.6	52.7	23.6
Hall	14,594	32,786	7,482	54,862	26.6	59.8	13.6
Hamilton	2,443	5,657	1,384	9,484	25.8	59.6	14.6
Harlan	735	2,017	889	3,641	20.2	55.4	24.4
Hayes	256	620	239	1,115	23.0	55.6	21.4
Hitchcock	605	1,733	683	3,021	20.0	57.4	22.6
Holt	2,588	6,066	2,204	10,858	23.8	55.9	20.3
Hooker	162	389	198	749	21.6	51.9	26.4
Howard	1,621	3,937	1,164	6,722	24.1	58.6	17.3
Jefferson	1,717	4,556	1,817	8,090	21.2	56.3	22.5
Johnson	977	2,624	962	4,563	21.4	57.5	21.1

Geographic Area	Population Under 18	Population 18-64	Population 65 & Over	Total Population	Percent Under 18	Percent 18-64	Percent 65 & Over
Kearney	1,591	4,170	1,119	6,880	23.1	60.6	16.3
Keith	1,858	4,889	1,654	8,401	22.1	58.2	19.7
Keya Paha	211	502	225	938	22.5	53.5	24.0
Kimball	840	2,111	832	3,783	22.2	55.8	22.0
Knox	2,041	4,877	2,077	8,995	22.7	54.2	23.1
Lancaster	60,091	174,486	26,968	261,545	23.0	66.7	10.3
Lincoln	8,510	21,260	5,209	34,979	24.3	60.8	14.9
Logan	161	418	131	710	22.7	58.9	18.5
Loup	176	389	138	703	25.0	55.3	19.6
McPherson	118	304	102	524	22.5	58.0	19.5
Madison	9,124	21,591	5,037	35,752	25.5	60.4	14.1
Merrick	1,989	4,703	1,409	8,101	24.6	58.1	17.4
Morrill	1,258	3,084	910	5,252	24.0	58.7	17.3
Nance	904	2,061	786	3,751	24.1	54.9	21.0
Nemaha	1,467	4,361	1,239	7,067	20.8	61.7	17.5
Nuckolls	1,006	2,697	1,130	4,833	20.8	55.8	23.4
Otoe	3,738	9,039	2,711	15,488	24.1	58.4	17.5
Pawnee	569	1,546	727	2,842	20.0	54.4	25.6
Perkins	691	1,791	599	3,081	22.4	58.1	19.4
Phelps	2,312	5,531	1,789	9,632	24.0	57.4	18.6
Pierce	1,921	4,508	1,263	7,692	25.0	58.6	16.4
Platte	8,340	18,821	4,084	31,245	26.7	60.2	13.1
Polk	1,217	3,080	1,111	5,408	22.5	57.0	20.5
Red Willow	2,612	6,434	2,085	11,131	23.5	57.8	18.7
Richardson	1,983	5,012	1,889	8,884	22.3	56.4	21.3
Rock	293	929	357	1,579	18.6	58.8	22.6
Saline	3,395	8,643	2,237	14,275	23.8	60.5	15.7
Sarpy	38,983	86,904	10,086	135,973	28.7	63.9	7.4
Saunders	5,075	12,175	3,094	20,344	24.9	59.8	15.2
Scotts Bluff	8,957	21,487	6,187	36,631	24.5	58.7	16.9
Seward	3,604	10,521	2,531	16,656	21.6	63.2	15.2
Sheridan	1,354	3,224	1,239	5,817	23.3	55.4	21.3
Sherman	676	1,751	748	3,175	21.3	55.1	23.6
Sioux	268	907	272	1,447	18.5	62.7	18.8
Stanton	1,729	4,004	787	6,520	26.5	61.4	12.1
Thayer	1,173	2,925	1,400	5,498	21.3	53.2	25.5
Thomas	108	409	125	642	16.8	63.7	19.5
Thurston	2,516	3,726	892	7,134	35.3	52.2	12.5
Valley	998	2,458	1,065	4,521	22.1	54.4	23.6
Washington	4,707	12,333	2,565	19,605	24.0	62.9	13.1
Wayne	1,776	6,169	1,269	9,214	19.3	67.0	13.8
Webster	839	2,063	974	3,876	21.6	53.2	25.1
Wheeler	208	476	127	811	25.6	58.7	15.7
York	3,252	8,460	2,516	14,228	22.9	59.5	17.7
Metropolitan	252,405	633,254	102,969	988,628	25.5	64.1	10.4
Nonmetropolitan	182,161	447,591	128,834	758,586	24.0	59.0	17.0
Micropolitan	98,605	240,737	59,203	398,545	24.7	60.4	14.9
Non-Metro/Micro	83,556	206,854	69,631	360,041	23.2	57.5	19.3
Town Over 2500	48,538	121,828	36,888	207,254	23.4	58.8	17.8
No Town Over 2500	35,018	85,026	32,743	152,787	22.9	55.7	21.4

¹ The 2004 population estimate was revised upward for Hastings but the Adams County estimate was not revised.

PART 3: CITY AND TOWN DATA

The U.S. Census Bureau releases annual estimates of each city or town's population as of the year's midpoint, July 1. These figures are released in approximately June of the following year. Along with the annual estimates, the Census Bureau provides figures from Census 2000. We calculated change and percentage change figures as well as some rankings from the provided data. We took estimates directly from Census Bureau releases. (<http://www.census.gov/popest/cities/>)

We also calculated changes since 2000 for categories of cities based on their population size from Census 2000. These figures show population trends that account for the relative size of the city. We used the population in 2000 as the base given its increased accuracy being a 100 percent Census count and for replication purposes of having a consistent base for making the calculations as post 2004 data become available.

No intercensal estimates are made by gender, age, race, or ethnicity at the city and town level. However, each year the Census Bureau may revise the April 1, 2000 estimates base. The estimates base incorporates city boundary changes and other adjustments that have occurred since Census 2000 was conducted. Thus, by comparing the estimates base to the Census 2000 population total, an estimate of population increase due to annexation since 2000 can be made. We provide a table summarizing the expected changes due to annexation since 2000 at the end of this report.

Table 10: Ranking of the Population of Nebraska Incorporated Cities: July 1, 2005

Source: Annual Estimates for Incorporated Places, U.S. Census Bureau, Released June 21, 2006

Rank	Place	Number	Rank	Place	Number	Rank	Place	Number
1	Omaha	414,521	47	Valentine	2,786	93	Battle Creek	1,178
2	Lincoln	239,213	48	Waverly	2,693	94	Pender	1,165
3	Bellevue	47,334	49	David City	2,558	94	Stromsburg	1,165
4	Grand Island	44,546	50	Ashland	2,493	96	Eagle	1,155
5	Kearney	28,958	51	Kimball	2,341	96	Bayard	1,155
6	Hastings	25,437	52	Madison	2,309	98	Atkinson	1,151
7	Fremont	25,314	53	St. Paul	2,268	99	Grant	1,145
8	North Platte	24,324	54	Geneva	2,149	100	Shelton	1,125
9	Norfolk	23,946	55	Ord	2,129	101	Weeping Water	1,118
10	Columbus	20,909	56	Milford	2,053	102	Alma	1,110
11	Papillion	20,431	57	Tecumseh	1,951	103	Louisville	1,073
12	La Vista	15,692	58	Superior	1,903	104	Burwell	1,063
13	Scottsbluff	14,814	59	Dakota City	1,880	105	Tilden	1,053
14	Beatrice	12,890	60	Imperial	1,876	106	Bloomfield	1,049
15	South Sioux City	11,979	61	Syracuse	1,835	107	Ponca	1,042
16	Lexington	10,085	62	Valley	1,829	108	Crawford	1,035
17	Alliance	8,331	63	Tekamah	1,814	109	Red Cloud	1,029
18	Elkhorn	8,192	64	Wilber	1,799	110	Henderson	999
19	York	7,888	65	Mitchell	1,796	111	Franklin	980
20	Gering	7,767	66	Gibbon	1,753	112	Cambridge	971
21	Blair	7,765	67	Pierce	1,730	113	Scribner	968
22	McCook	7,680	68	Ainsworth	1,717	114	Arapahoe	954
23	Nebraska City	7,035	69	Albion	1,672	115	Pawnee City	946
24	Plattsmouth	7,023	70	Stanton	1,629	116	Harvard	943
25	Seward	6,776	71	Wymore	1,615	117	Morrill	941
26	Sidney	6,442	72	Gordon	1,589	118	Chappell	935
27	Crete	6,308	73	Hartington	1,587	119	Laurel	924
28	Ralston	6,193	74	Neligh	1,542	119	Loup City	924
29	Holdrege	5,349	75	Springfield	1,497	121	Fort Calhoun	917
30	Schuyler	5,327	76	Bridgeport	1,493	121	Walthill	917
31	Chadron	5,320	77	Hebron	1,410	123	Hemingford	916
32	Wayne	5,163	78	Sutton	1,394	124	Benkelman	914
33	Gretna	4,860	79	Hickman	1,356	125	Kenesaw	913
34	Ogallala	4,696	80	Wakefield	1,340	125	Bennington	913
35	Aurora	4,282	81	Oakland	1,298	127	Lyons	912
36	Cozad	4,222	82	Ravenna	1,281	128	Osceola	902
37	Falls City	4,218	83	Plainview	1,279	128	Rushville	902
38	Wahoo	4,063	84	Fullerton	1,259	130	Ceresco	899
39	Fairbury	4,020	85	Sutherland	1,223	131	Boys Town	891
40	Gothenburg	3,692	86	Yutan	1,217	132	Randolph	888
41	O'Neill	3,483	87	North Bend	1,211	133	Genoa	883
42	West Point	3,476	88	Friend	1,204	134	Elm Creek	867
43	Broken Bow	3,311	89	Wood River	1,200	135	Humboldt	852
44	Auburn	3,076	89	Wisner	1,200	136	Utica	825
45	Minden	2,913	91	Arlington	1,192	137	Emerson	816
46	Central City	2,891	92	Creighton	1,187	138	Clay Center	813

Rank	Place	Number	Rank	Place	Number	Rank	Place	Number
139	Oxford	806	188	De Witt	577	237	Brady	379
140	Winnebago	798	188	Stuart	577	238	Palisade	377
140	Hooper	798	188	Wauneta	577	239	Blue Springs	376
140	Blue Hill	798	191	Hershey	568	240	Loomis	375
143	Bertrand	791	192	Hallam ¹	566	241	Stratton	373
144	Deshler	790	193	Culbertson	559	242	Pilger	372
145	Cairo	787	194	Paxton	548	243	Cedar Rapids	371
146	Minatare	784	195	Palmyra	543	244	Campbell	370
147	Peru	778	196	Nelson	539	245	Lodgepole	359
148	Newman Grove	774	197	Edgar	508	245	Orchard	359
149	Humphrey	768	198	Waterloo	506	247	Shickley	358
150	Oshkosh	766	199	Spencer	504	247	Niobrara	358
151	Doniphan	762	200	Spalding	502	249	Clearwater	357
152	Osmond	746	201	Coleridge	501	250	Hildreth	352
153	Curtis	736	202	Mullen	497	251	Wilcox	351
154	St. Edward	733	203	Sterling	495	252	Platte Center	350
155	Juniata	729	204	Murray	494	253	Bartley	348
156	Beemer	717	205	Ansley	493	254	Brainard	346
157	Elmwood	715	206	Cortland	492	254	Dannebrog	346
158	Elwood	712	207	Bancroft	490	256	Pleasanton	344
159	Crofton	710	208	Adams	486	256	Butte	344
160	Axtell	708	208	Verdigre	486	258	Clarks	341
161	Firth	687	210	Trenton	477	259	Unadilla	340
162	Dodge	683	210	Greeley Center	477	259	Duncan	340
163	Bennet	681	212	Palmer	458	259	Petersburg	340
163	Elgin	681	213	Beaver Crossing	445	262	Long Pine	339
165	Clarkson	680	214	Plymouth	443	263	Phillips	337
166	Exeter	679	215	Malcolm	441	263	Arcadia	337
167	Bassett	660	215	Fairfield	441	265	Odell	336
168	Fairmont	659	217	Hampton	439	266	Brule ²	334
169	Overton	655	218	Bellwood	437	267	Chapman	331
170	Alda	651	219	Winside	433	267	Prague	331
171	Terrytown	650	220	Leigh	432	269	Bradshaw	326
172	Shelby	648	221	Nickerson	429	270	Hadar	325
173	Howells	635	222	Silver Creek	428	271	Maxwell	323
174	Dorchester	630	223	McCool Junction	418	272	Dalton	322
175	Callaway	625	224	Ewing	414	273	Wallace	321
176	Mead	623	225	Potter	411	273	Oakdale	321
177	Arnold	618	226	Eustis	410	275	North Loup	316
178	Cedar Bluffs	617	227	Cedar Creek	409	276	Chambers	312
179	Sargent	612	228	Lyman	408	277	Glenvil	311
180	Indianola	611	229	Giltner	400	278	Cook	309
181	Homer	603	229	Allen	400	279	Weston	307
182	Valparaiso	598	231	Big Springs	399	280	Snyder	304
183	Beaver City	597	232	Inglewood	391	281	Herman	301
184	Greenwood	590	233	Kennard	386	281	Meadow Grove	301
185	Wausa	587	234	Merna	384	281	Polk	301
186	Hay Springs	585	235	Rising City	381	284	Monroe	300
187	Decatur	583	236	Orleans	380	285	Milligan	299

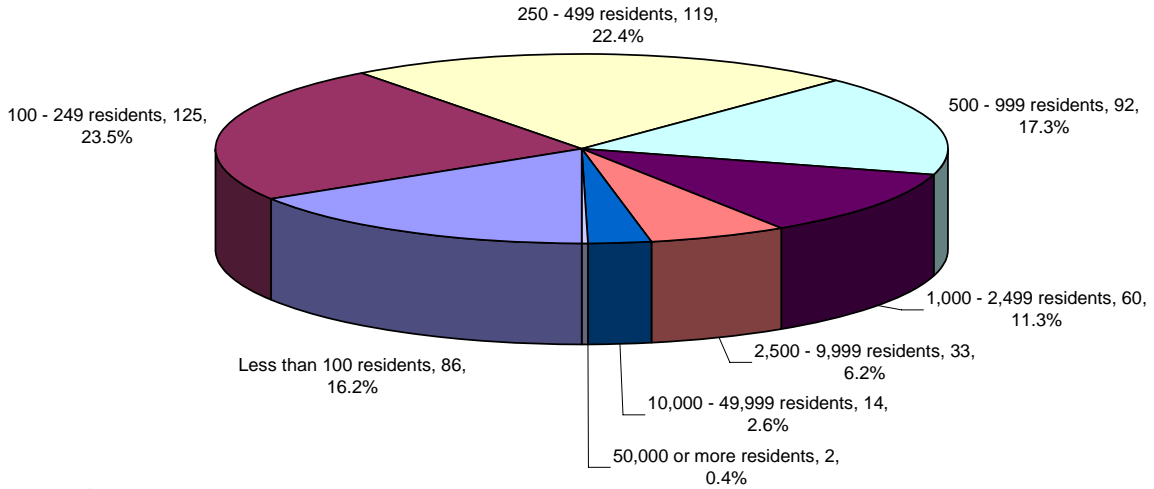
Rank	Place	Number	Rank	Place	Number	Rank	Place	Number
286	Lawrence	297	335	Farnam	232	384	Davey	156
287	Davenport	296	336	Gurley	230	384	Concord	156
288	Maywood	294	337	Douglas	229	386	Miller	154
289	Santee	293	338	Nehawka	228	386	Du Bois	154
290	Stapleton	288	339	Hayes Center	226	388	Anselmo	152
291	Western	287	340	Ashton	220	389	Hordville	150
291	Scotia	287	340	Guide Rock	220	390	Cody	148
293	Newcastle	285	342	Carroll	219	390	Edison	148
294	Marquette	281	343	Howard City	217	392	Sprague	147
295	Diller	279	343	Bee	217	392	Page	147
296	Harrison	277	343	Holbrook	217	392	Bushnell	147
297	Benedict	276	343	Springview	217	395	Brock	146
298	Bladen	275	347	Otoe	215	396	Farwell	145
299	Avoca	274	348	Creston	213	396	Grafton	145
300	Murdock	273	348	Roca	213	398	Alvo	144
301	Lindsay	270	350	Rulo	212	399	Octavia	143
302	Amherst	269	351	Denton	211	400	Melbeta	140
303	Clatonia	268	352	Jackson	207	401	Jansen	139
304	Wolbach	267	352	Stella	207	402	Oconto	138
305	Talmage	265	354	Riverdale	206	402	Riverton	138
306	Union	264	355	Trumbull	201	404	Brownville	137
306	Uehling	264	356	Haigler	199	405	Colon	136
306	Ulysses	264	356	Verdon	199	406	Elsie	135
309	Hoskins	263	358	Rosalie	197	406	Endicott	135
310	Bruning	262	358	Alexandria	197	406	Broadwater	135
311	Waco	261	360	Manley	196	406	Ohiowa	135
311	Gresham	261	360	Dawson	196	410	Washington	134
313	Litchfield	260	362	Raymond	195	411	Morse Bluff	133
314	Staplehurst	257	362	Taylor	195	412	Inman	132
314	Hyannis	257	364	Funk	193	413	Berwyn	131
316	Madrid	256	365	Stamford	187	413	Byron	131
316	Chester	256	365	Republican City	187	415	Atlanta	128
318	Dwight	255	367	Ruskin	185	416	Thurston	127
319	Roseland	254	368	Pickrell	183	417	Naponee	125
320	Johnson	253	369	Thedford	180	417	Salem	125
321	Panama	249	370	Nemaha	177	419	Danbury	124
321	Table Rock	249	371	Goehner	176	419	Belden	124
323	Dix	247	372	Filley	175	419	Carleton	124
324	Garland	246	372	Wynot	175	422	Arthur	123
325	Hubbard	244	374	Mason City	174	423	Barneston	122
325	Lewellen	244	375	Fordyce	173	423	Cordova	122
327	Pleasant Dale	243	376	Hardy	170	425	Belgrade	121
328	Sumner	241	376	Upland	170	426	Bloomington	118
329	Holstein	240	378	Ithaca	167	427	Merriman	117
330	Elba	239	378	Daykin	167	428	Linwood	116
330	Lynch	239	378	Brunswick	167	429	Bartlett	115
332	Shubert	236	381	Henry	162	430	Wilsonville	114
333	Dunbar	235	381	Venango	162	431	Elk Creek	112
333	Craig	235	383	Tobias	158	432	Leshara	110

Rank	Place	Number	Rank	Place	Number	Rank	Place	Number
433	Memphis	109	465	Steele City	81	498	Halsey	51
434	Abie	108	465	Lewiston	81	500	Norman	50
435	Swanton	106	468	Wellfleet	78	500	Elyria	50
436	Dixon	105	468	Deweese	78	502	Crab Orchard	49
437	Ayr	103	470	Magnet	75	503	Preston	47
437	Malmo	103	471	Julian	73	503	Moorefield	47
437	Comstock	103	472	Wood Lake	72	505	Obert	46
437	Rockville	103	472	Emmet	72	506	Cowles	45
437	Bruno	103	474	Steinauer	70	507	Surprise	44
442	Martinsburg	101	474	Royal	70	508	Ragan	43
443	Eddyville	100	476	Thayer	69	508	Seneca	43
443	McGrew	100	477	Lebanon	68	510	Cornlea	41
443	Winslow	100	478	Virginia	67	511	Lorton	39
446	Prosser	99	479	Garrison	66	512	Hendley	37
446	Kilgore	99	479	Winnetoon	66	513	McLean	36
448	Naper	98	479	Hubbell	66	513	Gilead	36
449	Burchard	97	482	Burr	65	515	Lushton	33
449	Ericson	97	482	Cotesfield	65	515	Stockville	33
451	Crookston	94	482	Maskell	65	517	Strang	32
452	Rogers	93	482	Ong	65	518	Cushing	31
453	Dunning	90	486	Primrose	64	519	Gandy	29
454	Richland	89	487	Smithfield	63	520	Clinton	28
454	Belvidere	89	488	Tarnov	62	521	Barada	26
454	Newport	89	488	Huntley	62	522	Bazile Mills	25
457	South Bend	88	490	Foster	61	523	Brewster	24
457	Whitney	88	490	Hazard	61	524	Sholes	23
459	Waterbury	87	492	Stockham	60	525	Nora	19
460	Liberty	86	493	Saronville	59	526	Lamar	18
460	Reynolds	86	494	Oak	57	527	Nenzel	13
462	Center	84	495	Verdel	56	528	Burton	10
463	St. Helena	82	496	Harbine	54	529	Anoka	9
463	Bristow	82	497	Hamlet	52	530	Gross	5
465	Heartwell	81	498	Johnstown	51	531	Monowi	2

¹ The 2005 estimate for Hallam is likely inflated from new home construction occurring after a tornado; demolitions stemming from the tornado are likely not accounted for in the data so "double-counting" in the estimate is probable.

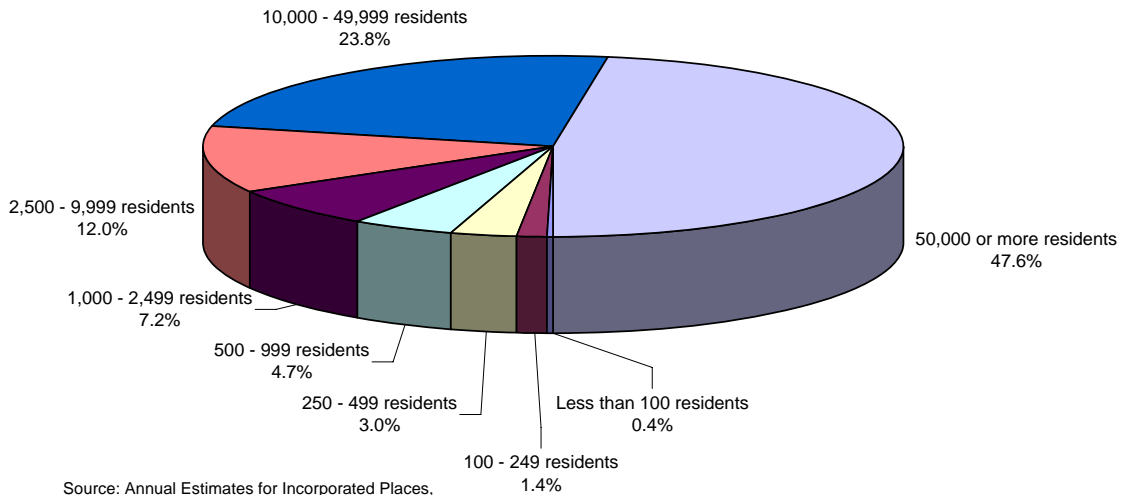
² The median size city among Nebraska's 531 incorporated places was Brule with a population of 334 persons.

Figure 19a: Number and Percentage of Nebraska Cities and Towns by City Size Category: 2005



Source: Annual Estimates for Incorporated Places, U.S. Census Bureau, Released June 21, 2006

Figure 19b: Percentage of Nebraska Population Living in Cities by City Size Category: 2005



Source: Annual Estimates for Incorporated Places, U.S. Census Bureau, Released June 21, 2006

Table 11: Comparison of Nebraska Place Population: April 1, 2000 and July 1, 2005

Source: Annual Estimates for Incorporated Places, U.S. Census Bureau, Released June 21, 2006

Place	4-1-2000 Census ¹	7-1-2005 Estimate	2000- 2005 Change	2000-05 Percent Change	Place	4-1-2000 Census ¹	7-1-2005 Estimate	2000- 2005 Change	2000-05 Percent Change
Abie	108	108	0	0.0	Bellevue	44,382	47,334	2,952	6.7
Adams	489	486	-3	-0.6	Bellwood	446	437	-9	-2.0
Ainsworth	1,862	1,717	-145	-7.8	Belvidere	98	89	-9	-9.2
Albion	1,797	1,672	-125	-7.0	Benedict	278	276	-2	-0.7
Alda	652	651	-1	-0.2	Benkelman	1,006	914	-92	-9.1
Alexandria	216	197	-19	-8.8	Bennet	570	681	111	19.5
Allen	411	400	-11	-2.7	Bennington	937	913	-24	-2.6
Alliance	8,959	8,331	-628	-7.0	Bertrand	786	791	5	0.6
Alma	1,214	1,110	-104	-8.6	Berwyn	134	131	-3	-2.2
Alvo	142	144	2	1.4	Big Springs	418	399	-19	-4.5
Amherst	277	269	-8	-2.9	Bladen	291	275	-16	-5.5
Anoka	10	9	-1	-10.0	Blair	7,512	7,765	253	3.4
Anselmo	159	152	-7	-4.4	Bloomfield	1,126	1,049	-77	-6.8
Ansley	520	493	-27	-5.2	Bloomington	124	118	-6	-4.8
Arapahoe	1,028	954	-74	-7.2	Blue Hill	867	798	-69	-8.0
Arcadia	359	337	-22	-6.1	Blue Springs	383	376	-7	-1.8
Arlington	1,197	1,192	-5	-0.4	Boys Town	818	891	73	8.9
Arnold	630	618	-12	-1.9	Bradshaw	336	326	-10	-3.0
Arthur	145	123	-22	-15.2	Brady	366	379	13	3.6
Ashland	2,262	2,493	231	10.2	Brainard	351	346	-5	-1.4
Ashton	237	220	-17	-7.2	Brewster	29	24	-5	-17.2
Atkinson	1,244	1,151	-93	-7.5	Bridgeport	1,594	1,493	-101	-6.3
Atlanta	130	128	-2	-1.5	Bristow	88	82	-6	-6.8
Auburn	3,350	3,076	-274	-8.2	Broadwater	140	135	-5	-3.6
Aurora	4,225	4,282	57	1.3	Brock	162	146	-16	-9.9
Avoca	270	274	4	1.5	Broken Bow	3,491	3,311	-180	-5.2
Axtell	696	708	12	1.7	Brownville	146	137	-9	-6.2
Ayr	98	103	5	5.1	Brule	372	334	-38	-10.2
Bancroft	520	490	-30	-5.8	Bruning	300	262	-38	-12.7
Barada	28	26	-2	-7.1	Bruno	112	103	-9	-8.0
Barneston	122	122	0	0.0	Brunswick	179	167	-12	-6.7
Bartlett	128	115	-13	-10.2	Burchard	103	97	-6	-5.8
Bartley	355	348	-7	-2.0	Burr	66	65	-1	-1.5
Bassett	743	660	-83	-11.2	Burton	11	10	-1	-9.1
Battle Creek	1,158	1,178	20	1.7	Burwell	1,130	1,063	-67	-5.9
Bayard	1,247	1,155	-92	-7.4	Bushnell	162	147	-15	-9.3
Bazile Mills	26	25	-1	-3.8	Butte	366	344	-22	-6.0
Beatrice ¹	12,510	12,890	380	3.0	Byron	144	131	-13	-9.0
Beaver City	641	597	-44	-6.9	Cairo	790	787	-3	-0.4
Beaver Crossing	457	445	-12	-2.6	Callaway	637	625	-12	-1.9
Bee	223	217	-6	-2.7	Cambridge	1,041	971	-70	-6.7
Beemer	773	717	-56	-7.2	Campbell	387	370	-17	-4.4
Belden	131	124	-7	-5.3	Carleton	136	124	-12	-8.8
Belgrade	134	121	-13	-9.7	Carroll	238	219	-19	-8.0

Place	4-1-2000 Census ¹	7-1-2005 Estimate	2000-2000-05		Place	4-1-2000 Census ¹	7-1-2005 Estimate	2000-2000-05	
			2005 Change	Percent Change				2005 Change	Percent Change
Cedar Bluffs	615	617	2	0.3	David City	2,597	2,558	-39	-1.5
Cedar Creek	396	409	13	3.3	Dawson	209	196	-13	-6.2
Cedar Rapids	407	371	-36	-8.8	Daykin	177	167	-10	-5.6
Center	90	84	-6	-6.7	De Witt	572	577	5	0.9
Central City	2,998	2,891	-107	-3.6	Decatur	618	583	-35	-5.7
Ceresco	920	899	-21	-2.3	Denton	189	211	22	11.6
Chadron	5,634	5,320	-314	-5.6	Deshler	879	790	-89	-10.1
Chambers	333	312	-21	-6.3	Deweese	80	78	-2	-2.5
Chapman	341	331	-10	-2.9	Diller	287	279	-8	-2.8
Chappell	983	935	-48	-4.9	Dix	267	247	-20	-7.5
Chester	294	256	-38	-12.9	Dixon	108	105	-3	-2.8
Clarks	361	341	-20	-5.5	Dodge	700	683	-17	-2.4
Clarkson	685	680	-5	-0.7	Doniphan	763	762	-1	-0.1
Clatonia	275	268	-7	-2.5	Dorchester	615	630	15	2.4
Clay Center	861	813	-48	-5.6	Douglas	231	229	-2	-0.9
Clearwater	384	357	-27	-7.0	Du Bois	166	154	-12	-7.2
Clinton	30	28	-2	-6.7	Dunbar	237	235	-2	-0.8
Cody	149	148	-1	-0.7	Duncan	359	340	-19	-5.3
Coleridge	541	501	-40	-7.4	Dunning	109	90	-19	-17.4
Colon	138	136	-2	-1.4	Dwight	259	255	-4	-1.5
Columbus	20,971	20,909	-62	-0.3	Eagle	1,105	1,155	50	4.5
Comstock	110	103	-7	-6.4	Eddyville	96	100	4	4.2
Concord	160	156	-4	-2.5	Edgar	539	508	-31	-5.8
Cook	322	309	-13	-4.0	Edison	154	148	-6	-3.9
Cordova	127	122	-5	-3.9	Elba	243	239	-4	-1.6
Cornlea	41	41	0	0.0	Elgin	735	681	-54	-7.3
Cortland	488	492	4	0.8	Elk Creek	112	112	0	0.0
Cotesfield	66	65	-1	-1.5	Elkhorn	6,062	8,192	2,130	35.1
Cowles	48	45	-3	-6.3	Elm Creek	894	867	-27	-3.0
Cozad	4,163	4,222	59	1.4	Elmwood	668	715	47	7.0
Crab Orchard	49	49	0	0.0	Elsie	139	135	-4	-2.9
Craig	241	235	-6	-2.5	Elwood	761	712	-49	-6.4
Crawford	1,107	1,035	-72	-6.5	Elyria	54	50	-4	-7.4
Creighton	1,270	1,187	-83	-6.5	Emerson	817	816	-1	-0.1
Creston	215	213	-2	-0.9	Emmet	77	72	-5	-6.5
Crete	6,028	6,308	280	4.6	Endicott	139	135	-4	-2.9
Crofton	754	710	-44	-5.8	Ericson	104	97	-7	-6.7
Crookston	98	94	-4	-4.1	Eustis	464	410	-54	-11.6
Culbertson	594	559	-35	-5.9	Ewing	433	414	-19	-4.4
Curtis	832	736	-96	-11.5	Exeter	712	679	-33	-4.6
Cushing	31	31	0	0.0	Fairbury	4,262	4,020	-242	-5.7
Dakota City	1,821	1,880	59	3.2	Fairfield	467	441	-26	-5.6
Dalton	332	322	-10	-3.0	Fairmont	691	659	-32	-4.6
Danbury	127	124	-3	-2.4	Falls City	4,671	4,218	-453	-9.7
Dannebrog	352	346	-6	-1.7	Farnam	223	232	9	4.0
Davenport	339	296	-43	-12.7	Farwell	148	145	-3	-2.0
Davey	153	156	3	2.0	Filley	174	175	1	0.6

Place	4-1-2000 Census ¹	7-1-2005 Estimate	2000-	2000-05	Place	4-1-2000 Census ¹	7-1-2005 Estimate	2000-	2000-05
			2005	Percent				2005	Percent
			Change	Change				Change	Change
Firth	564	687	123	21.8	Heartwell	80	81	1	1.3
Fordyce	182	173	-9	-4.9	Hebron	1,565	1,410	-155	-9.9
Fort Calhoun	856	917	61	7.1	Hemingford	993	916	-77	-7.8
Foster	63	61	-2	-3.2	Henderson	986	999	13	1.3
Franklin	1,026	980	-46	-4.5	Hendley	38	37	-1	-2.6
Fremont	25,174	25,314	140	0.6	Henry	162	162	0	0.0
Friend	1,174	1,204	30	2.6	Herman	310	301	-9	-2.9
Fullerton	1,378	1,259	-119	-8.6	Hershey	572	568	-4	-0.7
Funk	204	193	-11	-5.4	Hickman ¹	1,111	1,356	245	22.1
Gandy	30	29	-1	-3.3	Hildreth	370	352	-18	-4.9
Garland	247	246	-1	-0.4	Holbrook	225	217	-8	-3.6
Garrison	67	66	-1	-1.5	Holdrege	5,636	5,349	-287	-5.1
Geneva	2,226	2,149	-77	-3.5	Holstein	229	240	11	4.8
Genoa	981	883	-98	-10.0	Homer	590	603	13	2.2
Gering	7,751	7,767	16	0.2	Hooper	827	798	-29	-3.5
Gibbon	1,759	1,753	-6	-0.3	Hordville	150	150	0	0.0
Gilead	40	36	-4	-10.0	Hoskins	283	263	-20	-7.1
Giltner	389	400	11	2.8	Howard City	221	217	-4	-1.8
Glenvil	332	311	-21	-6.3	Howells	632	635	3	0.5
Goehner	186	176	-10	-5.4	Hubbard	234	244	10	4.3
Gordon	1,756	1,589	-167	-9.5	Hubbell	73	66	-7	-9.6
Gothenburg	3,619	3,692	73	2.0	Humboldt	941	852	-89	-9.5
Grafton	152	145	-7	-4.6	Humphrey	786	768	-18	-2.3
Grand Island	42,940	44,546	1,606	3.7	Huntley	67	62	-5	-7.5
Grant	1,225	1,145	-80	-6.5	Hyannis	287	257	-30	-10.5
Greeley Center	531	477	-54	-10.2	Imperial	1,982	1,876	-106	-5.3
Greenwood	544	590	46	8.5	Indianola	642	611	-31	-4.8
Gresham	270	261	-9	-3.3	Inglewood	382	391	9	2.4
Gretna	2,355	4,860	2,505	106.4	Inman	148	132	-16	-10.8
Gross	5	5	0	0.0	Ithaca	168	167	-1	-0.6
Guide Rock	245	220	-25	-10.2	Jackson	205	207	2	1.0
Gurley	228	230	2	0.9	Jansen	143	139	-4	-2.8
Hadar	312	325	13	4.2	Johnson	280	253	-27	-9.6
Haigler	211	199	-12	-5.7	Johnstown	53	51	-2	-3.8
Hallam ²	276	566	290	105.1	Julian	63	73	10	15.9
Halsey	59	51	-8	-13.6	Juniata	693	729	36	5.2
Hamlet	54	52	-2	-3.7	Kearney	27,431	28,958	1,527	5.6
Hampton	439	439	0	0.0	Kenesaw	873	913	40	4.6
Harbine	56	54	-2	-3.6	Kennard	371	386	15	4.0
Hardy	179	170	-9	-5.0	Kilgore	99	99	0	0.0
Harrison	279	277	-2	-0.7	Kimball	2,559	2,341	-218	-8.5
Hartington	1,640	1,587	-53	-3.2	La Vista	11,699	15,692	3,993	34.1
Harvard	998	943	-55	-5.5	Lamar	19	18	-1	-5.3
Hastings	24,064	25,437	1,373	5.7	Laurel	986	924	-62	-6.3
Hay Springs	652	585	-67	-10.3	Lawrence	312	297	-15	-4.8
Hayes Center	240	226	-14	-5.8	Lebanon	70	68	-2	-2.9
Hazard	66	61	-5	-7.6	Leigh	442	432	-10	-2.3

Place	4-1-2000	7-1-2005	2000-	2000-05	Place	4-1-2000	7-1-2005	2000-	2000-05
	Census ¹	Estimate	2005	Percent		Census ¹	Estimate	2005	Percent
Leshara	111	110	-1	-0.9	Monowi	2	2	0	0.0
Lewellen	282	244	-38	-13.5	Monroe	307	300	-7	-2.3
Lewiston	86	81	-5	-5.8	Moorefield	52	47	-5	-9.6
Lexington	10,011	10,085	74	0.7	Morrill	957	941	-16	-1.7
Liberty	86	86	0	0.0	Morse Bluff	134	133	-1	-0.7
Lincoln	225,581	239,213	13,632	6.0	Mullen	491	497	6	1.2
Lindsay	276	270	-6	-2.2	Murdock	269	273	4	1.5
Linwood	118	116	-2	-1.7	Murray	481	494	13	2.7
Litchfield	280	260	-20	-7.1	Naper	105	98	-7	-6.7
Lodgepole	348	359	11	3.2	Naponee	132	125	-7	-5.3
Long Pine	341	339	-2	-0.6	Nebraska City	7,228	7,035	-193	-2.7
Loomis	397	375	-22	-5.5	Nehawka	232	228	-4	-1.7
Lorton	39	39	0	0.0	Neligh	1,651	1,542	-109	-6.6
Louisville	1,046	1,073	27	2.6	Nelson	587	539	-48	-8.2
Loup City	996	924	-72	-7.2	Nemaha	178	177	-1	-0.6
Lushton	33	33	0	0.0	Nenzel	13	13	0	0.0
Lyman	421	408	-13	-3.1	Newcastle	299	285	-14	-4.7
Lynch	269	239	-30	-11.2	Newman Grove	797	774	-23	-2.9
Lyons	963	912	-51	-5.3	Newport	98	89	-9	-9.2
Madison	2,367	2,309	-58	-2.5	Nickerson	431	429	-2	-0.5
Madrid	265	256	-9	-3.4	Niobrara	379	358	-21	-5.5
Magnet	79	75	-4	-5.1	Nora	20	19	-1	-5.0
Malcolm	413	441	28	6.8	Norfolk	23,516	23,946	430	1.8
Malmo	109	103	-6	-5.5	Norman	49	50	1	2.0
Manley	191	196	5	2.6	North Bend	1,213	1,211	-2	-0.2
Marquette	282	281	-1	-0.4	North Loup	339	316	-23	-6.8
Martinsburg	103	101	-2	-1.9	North Platte	23,878	24,324	446	1.9
Maskell	67	65	-2	-3.0	Oak	60	57	-3	-5.0
Mason City	178	174	-4	-2.2	Oakdale	345	321	-24	-7.0
Maxwell	315	323	8	2.5	Oakland	1,367	1,298	-69	-5.0
Maywood	331	294	-37	-11.2	Obert	49	46	-3	-6.1
McCook ¹	7,996	7,680	-316	-4.0	Oconto	141	138	-3	-2.1
McCool Junction	385	418	33	8.6	Octavia	145	143	-2	-1.4
McGrew	103	100	-3	-2.9	Odell	345	336	-9	-2.6
McLean	38	36	-2	-5.3	Ogallala	4,930	4,696	-234	-4.7
Mead	564	623	59	10.5	Ohiowa	142	135	-7	-4.9
Meadow Grove	311	301	-10	-3.2	Omaha	390,007	414,521	24,514	6.3
Melbeta	138	140	2	1.4	O'Neill	3,733	3,483	-250	-6.7
Memphis	106	109	3	2.8	Ong	67	65	-2	-3.0
Merna	391	384	-7	-1.8	Orchard	391	359	-32	-8.2
Merriman	118	117	-1	-0.8	Ord	2,269	2,129	-140	-6.2
Milford	2,070	2,053	-17	-0.8	Orleans	425	380	-45	-10.6
Miller	156	154	-2	-1.3	Osceola	921	902	-19	-2.1
Milligan	315	299	-16	-5.1	Oshkosh	887	766	-121	-13.6
Minatare	810	784	-26	-3.2	Osmond	796	746	-50	-6.3
Minden	2,964	2,913	-51	-1.7	Otoe	217	215	-2	-0.9
Mitchell	1,831	1,796	-35	-1.9	Overton	646	655	9	1.4

Place	4-1-2000	7-1-2005	2000-	2000-05	Place	4-1-2000	7-1-2005	2000-	2000-05
	Census ¹	Estimate	2005	Percent		Census ¹	Estimate	2005	Percent
Oxford	876	806	-70	-8.0	Rulo	226	212	-14	-6.2
Page	157	147	-10	-6.4	Rushville	999	902	-97	-9.7
Palisade	386	377	-9	-2.3	Ruskin	195	185	-10	-5.1
Palmer	472	458	-14	-3.0	Salem	138	125	-13	-9.4
Palmyra	546	543	-3	-0.5	Santee	302	293	-9	-3.0
Panama	253	249	-4	-1.6	Sargent	649	612	-37	-5.7
Papillion	16,363	20,431	4,068	24.9	Saronville	61	59	-2	-3.3
Pawnee City	1,033	946	-87	-8.4	Schuyler	5,371	5,327	-44	-0.8
Paxton	614	548	-66	-10.7	Scotia	308	287	-21	-6.8
Pender	1,148	1,165	17	1.5	Scottsbluff	14,732	14,814	82	0.6
Peru ¹	922	778	-144	-15.6	Scribner	971	968	-3	-0.3
Petersburg	374	340	-34	-9.1	Seneca	51	43	-8	-15.7
Phillips	336	337	1	0.3	Seward	6,319	6,776	457	7.2
Pickrell	182	183	1	0.5	Shelby	690	648	-42	-6.1
Pierce	1,774	1,730	-44	-2.5	Shelton	1,140	1,125	-15	-1.3
Pilger	378	372	-6	-1.6	Shickley	376	358	-18	-4.8
Plainview	1,353	1,279	-74	-5.5	Sholes	24	23	-1	-4.2
Platte Center	359	350	-9	-2.5	Shubert	252	236	-16	-6.3
Plattsmouth	6,887	7,023	136	2.0	Sidney	6,282	6,442	160	2.5
Pleasant Dale	245	243	-2	-0.8	Silver Creek	441	428	-13	-2.9
Pleasanton	360	344	-16	-4.4	Smithfield	68	63	-5	-7.4
Plymouth	477	443	-34	-7.1	Snyder	318	304	-14	-4.4
Polk	322	301	-21	-6.5	South Bend	86	88	2	2.3
Ponca	1,062	1,042	-20	-1.9	South Sioux City	11,925	11,979	54	0.5
Potter	390	411	21	5.4	Spalding	537	502	-35	-6.5
Prague	346	331	-15	-4.3	Spencer	541	504	-37	-6.8
Preston	50	47	-3	-6.0	Sprague	146	147	1	0.7
Primrose	69	64	-5	-7.2	Springfield	1,450	1,497	47	3.2
Prosser	94	99	5	5.3	Springview	244	217	-27	-11.1
Ragan	46	43	-3	-6.5	St. Edward	796	733	-63	-7.9
Ralston	6,314	6,193	-121	-1.9	St. Helena	86	82	-4	-4.7
Randolph	955	888	-67	-7.0	St. Paul	2,218	2,268	50	2.3
Ravenna	1,341	1,281	-60	-4.5	Stamford	202	187	-15	-7.4
Raymond	186	195	9	4.8	Stanton	1,627	1,629	2	0.1
Red Cloud	1,131	1,029	-102	-9.0	Staplehurst	270	257	-13	-4.8
Republican City	209	187	-22	-10.5	Stapleton	301	288	-13	-4.3
Reynolds	88	86	-2	-2.3	Steele City	84	81	-3	-3.6
Richland	89	89	0	0.0	Steinauer	74	70	-4	-5.4
Rising City	386	381	-5	-1.3	Stella	220	207	-13	-5.9
Riverdale	213	206	-7	-3.3	Sterling	507	495	-12	-2.4
Riverton	145	138	-7	-4.8	Stockham	60	60	0	0.0
Roca	220	213	-7	-3.2	Stockville	36	33	-3	-8.3
Rockville	111	103	-8	-7.2	Strang	32	32	0	0.0
Rogers	95	93	-2	-2.1	Stratton	396	373	-23	-5.8
Rosalie	194	197	3	1.5	Stromsburg	1,232	1,165	-67	-5.4
Roseland	242	254	12	5.0	Stuart	625	577	-48	-7.7
Royal	75	70	-5	-6.7	Sumner	237	241	4	1.7

Place	4-1-2000 Census ¹	7-1-2005 Estimate	2000-	2000-05	Place	4-1-2000 Census ¹	7-1-2005 Estimate	2000-	2000-05
			2005	Percent				2005	Percent
Superior	2,055	1,903	-152	-7.4	Waco	256	261	5	2.0
Surprise	44	44	0	0.0	Wahoo	3,942	4,063	121	3.1
Sutherland	1,129	1,223	94	8.3	Wakefield	1,411	1,340	-71	-5.0
Sutton	1,447	1,394	-53	-3.7	Wallace	329	321	-8	-2.4
Swanton	106	106	0	0.0	Walthill	909	917	8	0.9
Syracuse	1,762	1,835	73	4.1	Washington	126	134	8	6.3
Table Rock	264	249	-15	-5.7	Waterbury	89	87	-2	-2.2
Talmage	268	265	-3	-1.1	Waterloo	459	506	47	10.2
Tarnov	63	62	-1	-1.6	Wauneta	625	577	-48	-7.7
Taylor	207	195	-12	-5.8	Wausa	636	587	-49	-7.7
Tecumseh	1,716	1,951	235	13.7	Waverly	2,448	2,693	245	10.0
Tekamah	1,892	1,814	-78	-4.1	Wayne	5,583	5,163	-420	-7.5
Terrytown	646	650	4	0.6	Weeping Water	1,103	1,118	15	1.4
Thayer	71	69	-2	-2.8	Wellfleet	76	78	2	2.6
Thedford	211	180	-31	-14.7	West Point	3,660	3,476	-184	-5.0
Thurston	125	127	2	1.6	Western	287	287	0	0.0
Tilden	1,078	1,053	-25	-2.3	Weston	310	307	-3	-1.0
Tobias	158	158	0	0.0	Whitney	87	88	1	1.1
Trenton	507	477	-30	-5.9	Wilber	1,761	1,799	38	2.2
Trumbull	212	201	-11	-5.2	Wilcox	360	351	-9	-2.5
Uehling	275	264	-11	-4.0	Wilsonville	118	114	-4	-3.4
Ulysses	276	264	-12	-4.3	Winnebago	768	798	30	3.9
Unadilla	342	340	-2	-0.6	Winnetoon	70	66	-4	-5.7
Union	260	264	4	1.5	Winside	468	433	-35	-7.5
Upland	179	170	-9	-5.0	Winslow	104	100	-4	-3.8
Utica	844	825	-19	-2.3	Wisner	1,270	1,200	-70	-5.5
Valentine	2,820	2,786	-34	-1.2	Wolbach	287	267	-20	-7.0
Valley	1,788	1,829	41	2.3	Wood Lake	72	72	0	0.0
Valparaiso	563	598	35	6.2	Wood River	1,204	1,200	-4	-0.3
Venango	175	162	-13	-7.4	Wymore	1,656	1,615	-41	-2.5
Verdel	58	56	-2	-3.4	Wynot	191	175	-16	-8.4
Verdigre	519	486	-33	-6.4	York	8,081	7,888	-193	-2.4
Verdon	223	199	-24	-10.8	Yutan	1,216	1,217	1	0.1
Virginia	67	67	0	0.0					

¹ The Census 2000 counts reflect revisions made for Beatrice, Hickman, McCook, and Peru, Nebraska.

² The 2005 estimate for Hallam is likely inflated from new home construction occurring after a tornado; demolitions stemming from the tornado are likely not accounted for in the data so "double-counting" in the estimate is probable.

Figure 20: Percent Population Change for All Cities in Various City Size Categories: April 1, 2000 to July 1, 2005

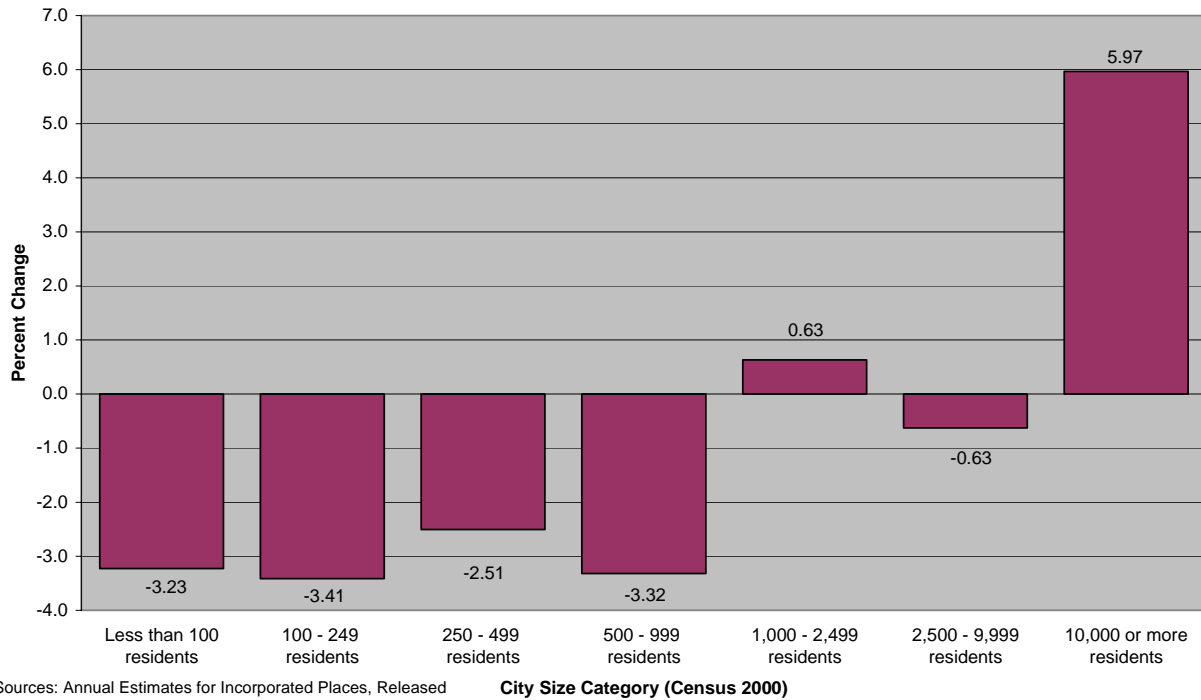
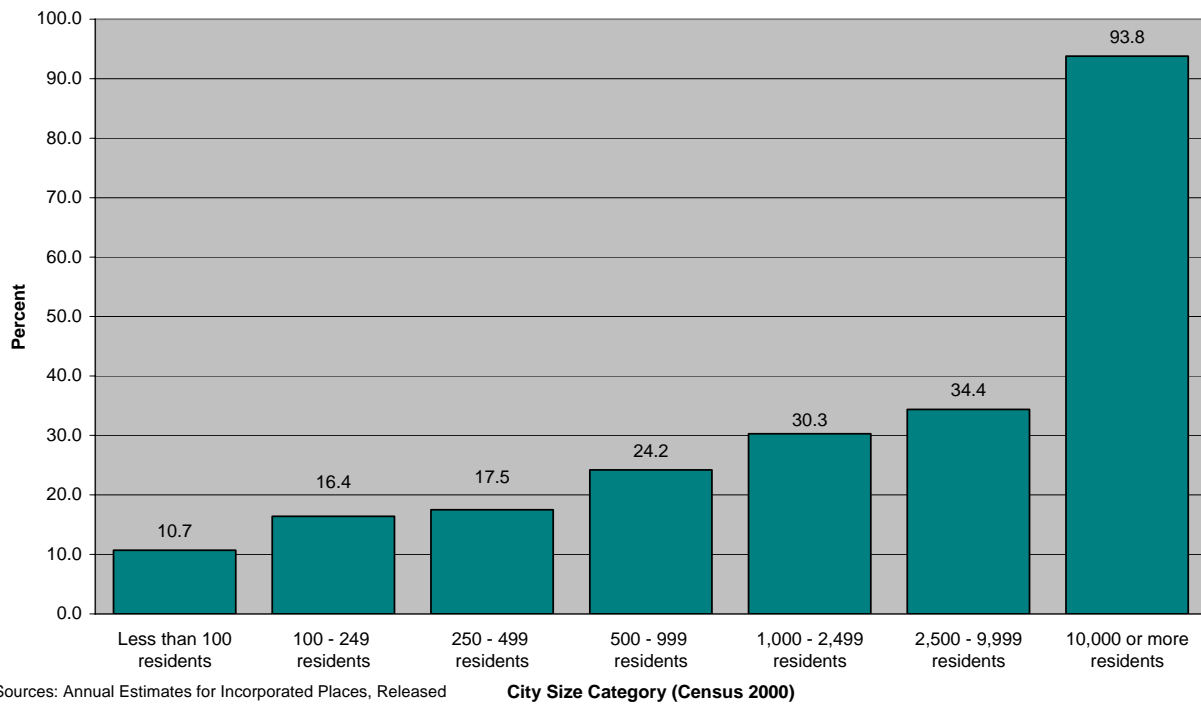


Figure 21: Percent of Nebraska Cities within City Size Category Having Population Growth: April 1, 2000 to July 1, 2005



**Table 12: Population Added to Incorporated Cities Due to Annexation:
April 1, 2000 to July 1, 2005**

Source: Annual Estimates for Incorporated Places, U.S. Census Bureau,
Released June 21, 2006

Sorted Alphabetically		Sorted by Number	
Place	Number	Place	Number
Abie	2	Elkhorn	1,552
Aurora	2	Papillion	1,474
Beatrice ¹	41	Omaha	1,398
Blair	5	Lincoln	729
Brainard	12	Hastings	519
Columbus	143	Ogallala	194
Crete	42	Grand Island	155
Elkhorn	1,552	Columbus	143
Fairbury	18	Scottsbluff	138
Fremont	38	Seward	132
Gering	8	Sidney	89
Gothenburg	55	Gothenburg	55
Grand Island	155	North Platte	55
Hastings	519	Crete	42
Kearney	4	Beatrice ¹	41
Lincoln	729	Fremont	38
Mullen	38	Mullen	38
Nebraska City	2	Sutherland	36
North Platte	55	Fairbury	18
Ogallala	194	Valentine	17
Omaha	1,398	Brainard	12
O'Neill	8	Gering	8
Papillion	1,474	O'Neill	8
Plattsmouth	5	York	7
Pleasant Dale	6	Pleasant Dale	6
Scottsbluff	138	South Sioux City	6
Seward	132	West Point	6
Sidney	89	Blair	5
South Sioux City	6	Plattsmouth	5
Staplehurst	1	Kearney	4
Sutherland	36	Abie	2
Valentine	17	Aurora	2
West Point	6	Nebraska City	2
York	7	Staplehurst	1

Note: The number of persons gained through annexation was determined by comparing the Census 2000 population figure¹ versus the April 1, 2000 population base for estimates. Adjustments to the base most likely reflect annexations but some other changes could also be included in these figures.

¹ The Census 2000 counts reflect revisions made for Beatrice, Hickman, McCook, and Peru, Nebraska.