

2010

Migration rates by age during the 2000s decade

David J. Drozd

University of Nebraska at Omaha, ddrozd@unomaha.edu

Follow this and additional works at: <https://digitalcommons.unomaha.edu/cparpublications>

 Part of the [Public Affairs Commons](#)

Recommended Citation

Drozd, David J., "Migration rates by age during the 2000s decade" (2010). *Publications since 2000*. 408.
<https://digitalcommons.unomaha.edu/cparpublications/408>

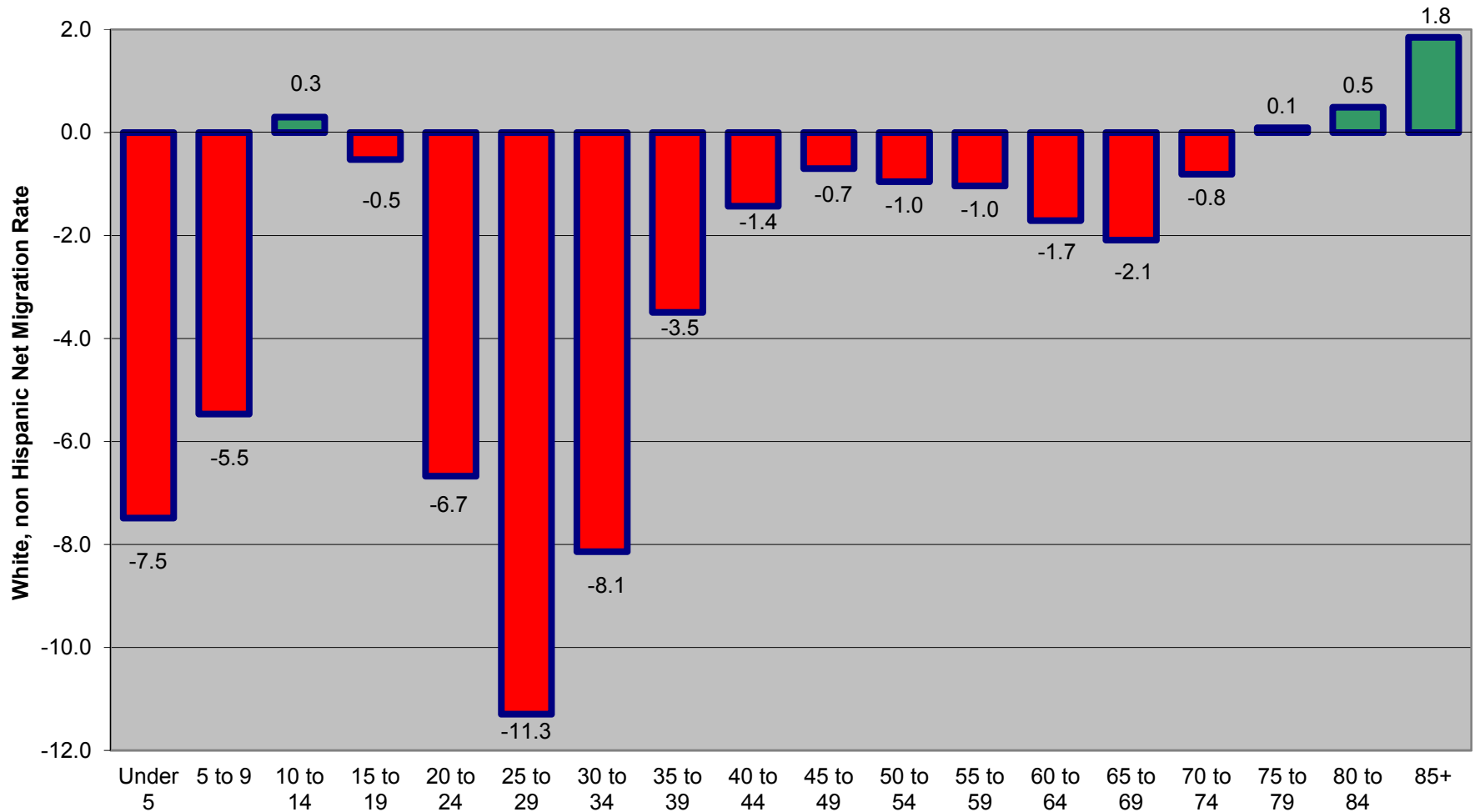
This Report is brought to you for free and open access by the Center for Public Affairs Research at DigitalCommons@UNO. It has been accepted for inclusion in Publications since 2000 by an authorized administrator of DigitalCommons@UNO. For more information, please contact unodigitalcommons@unomaha.edu.

The following pages show migration rates by age during the 2000s decade for:

- Non-Hispanic Whites (page 2)
- All Minority Groups (page 3)
- The Total Population (page 4)

Nebraska Net Migration Rate of Non-Hispanic Whites by Age: 2000 to 2010

Overall Net Migration Rate = -3.4



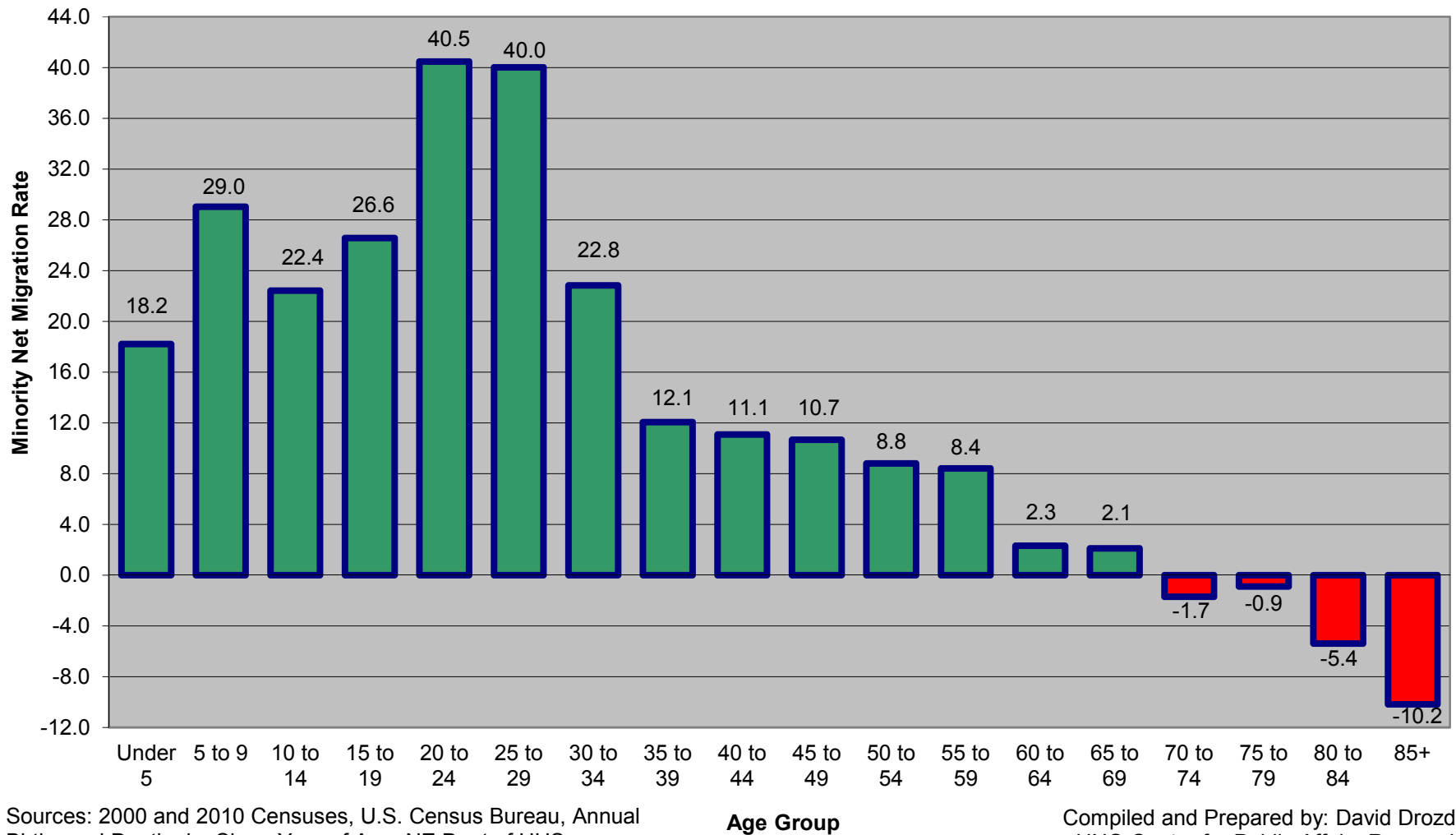
Sources: 2000 and 2010 Censuses, U.S. Census Bureau, Annual Births and Deaths by Single Year of Age, NE Dept of HHS

Age Group

Compiled and Prepared by: David Drozd,
UNO Center for Public Affairs Research

Nebraska Net Migration Rate of Minority Population Groups by Age: 2000 - 2010

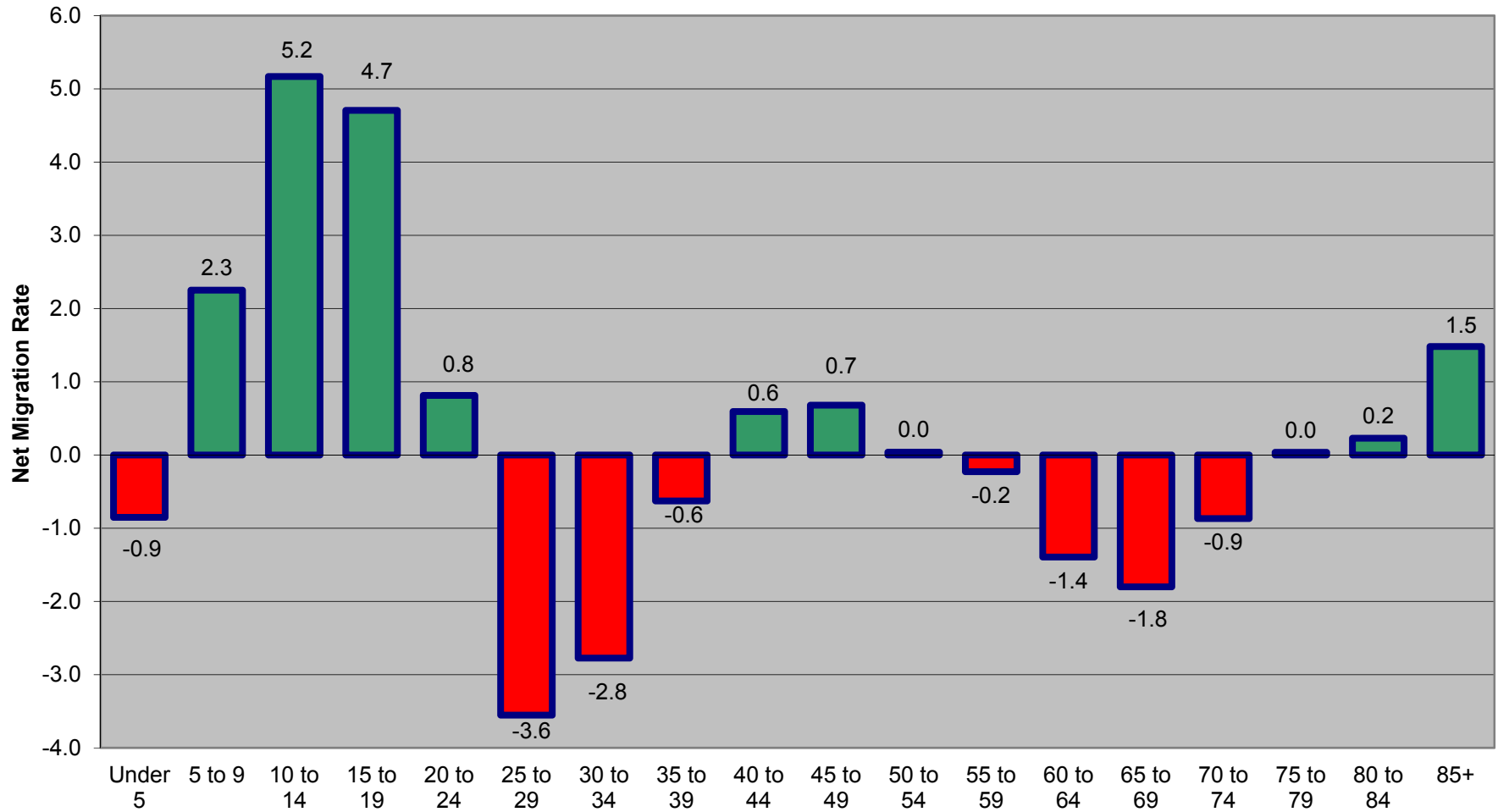
Overall Net Migration Rate = 25.7



Sources: 2000 and 2010 Censuses, U.S. Census Bureau, Annual Births and Deaths by Single Year of Age, NE Dept of HHS

Compiled and Prepared by: David Drozd, UNO Center for Public Affairs Research

Nebraska Net Migration Rate by Age during 2000 to 2010 timeframe
Overall Net Migration Rate = 0.3



Sources: 2000 and 2010 Censuses, U.S. Census Bureau, Annual Births and Deaths by Single Year of Age, NE Dept of HHS

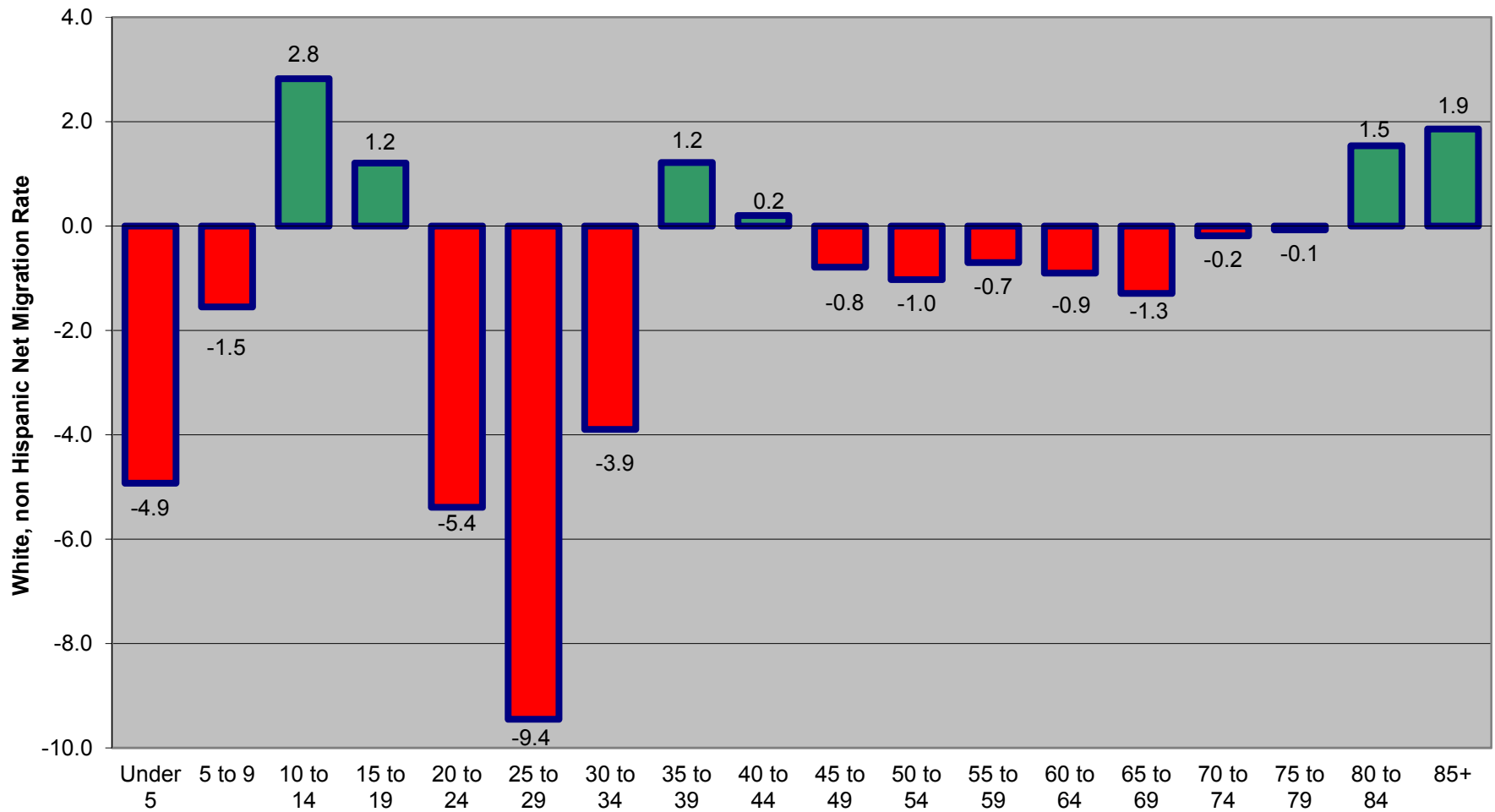
Age Group

Compiled and Prepared by: David Drozd,
 UNO Center for Public Affairs Research

The following pages show migration rates by age during the 1990s decade for:

- Non-Hispanic Whites (page 6)
- All Minority Groups (page 7)
- The Total Population (page 8)

Nebraska Net Migration Rate of Non-Hispanic Whites by Age: 1990 to 2000
Overall Net Migration Rate = -1.4

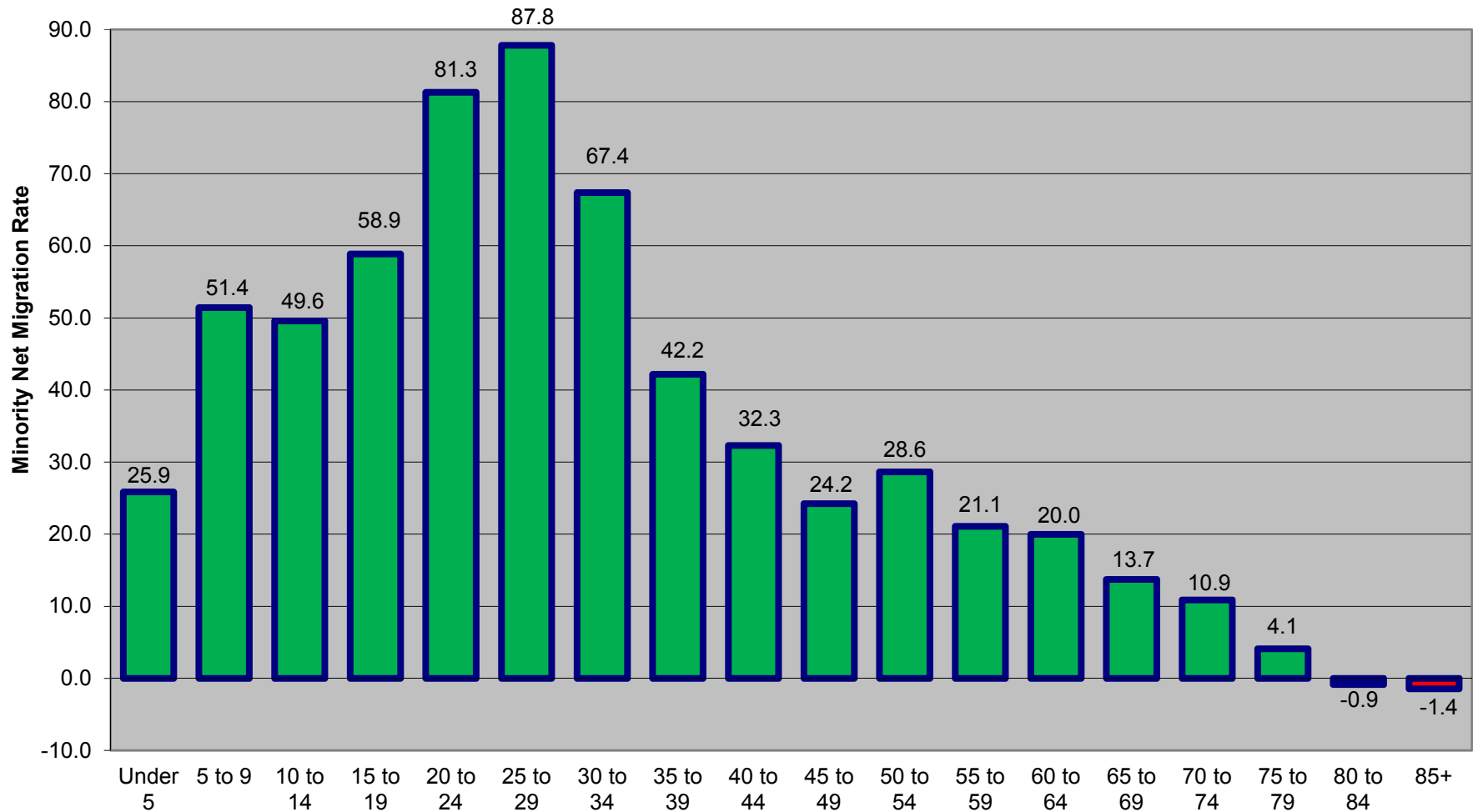


Sources: 1990 and 2000 Censuses, U.S. Census Bureau, Annual Births and Deaths by Single Year of Age, NE Dept of HHS

Age Group

Compiled and Prepared by: David Drozd,
 UNO Center for Public Affairs Research

Nebraska Net Migration Rate of Minority Population Groups by Age: 1990 - 2000
Overall Net Migration Rate = 58.4

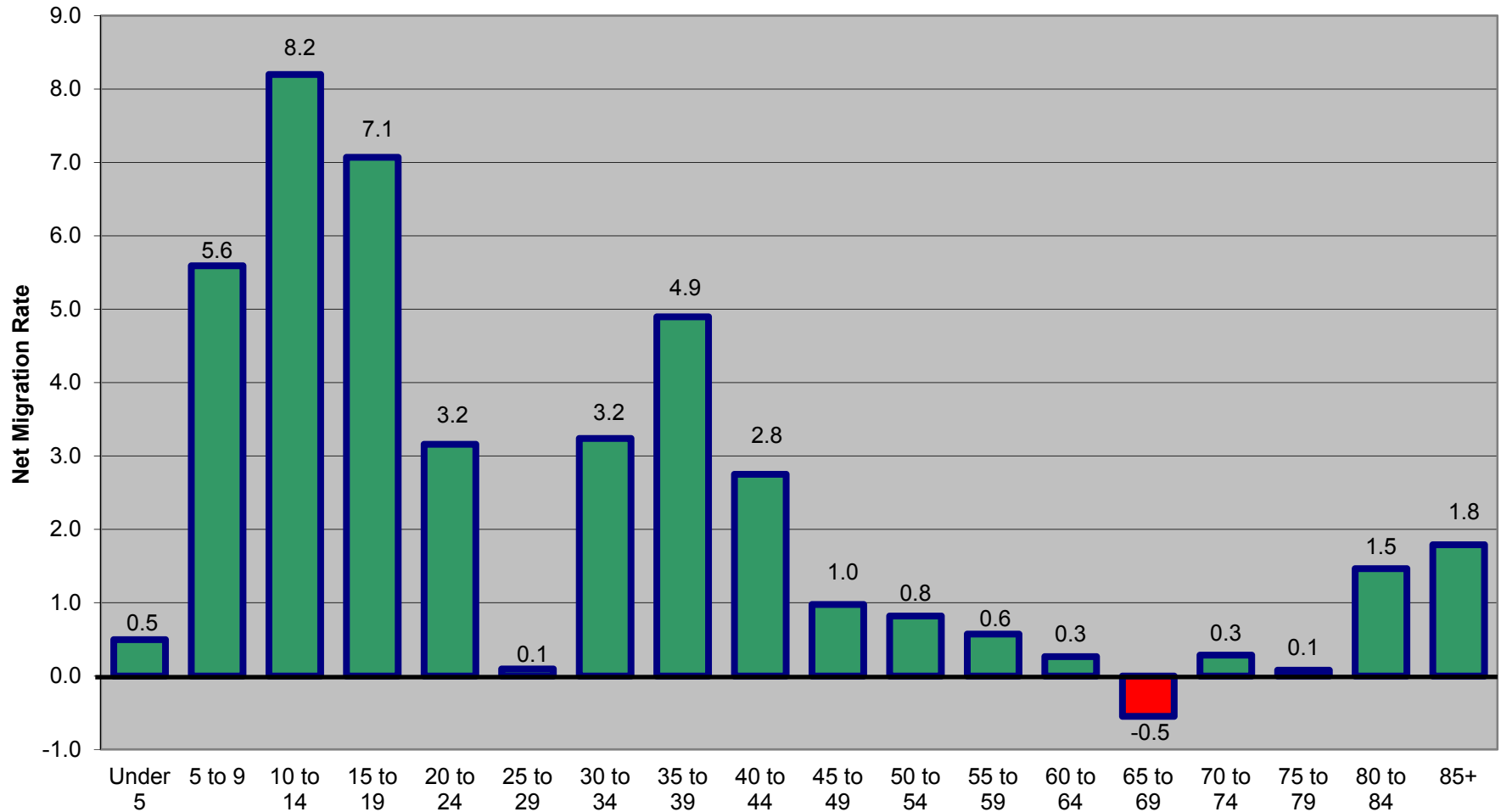


Sources: 1990 and 2000 Censuses, U.S. Census Bureau, Annual Births and Deaths by Single Year of Age, NE Dept of HHS

Age Group

Compiled and Prepared by: David Drozd,
 UNO Center for Public Affairs Research

Nebraska Net Migration Rate by Age during 1990 to 2000 timeframe
Overall Net Migration Rate = 3.1



Sources: 1990 and 2000 Censuses, U.S. Census Bureau, Annual Births and Deaths by Single Year of Age, NE Dept of HHS

Age Group

Compiled and Prepared by: David Drozd,
 UNO Center for Public Affairs Research