

2-2015

Own Children with All Parents in the Labor Force for the State of Nebraska and Legislative Districts and Counties from the 2009-2013 American Community Survey

Center for Public Affairs Research (CPAR)
University of Nebraska at Omaha

Follow this and additional works at: <https://digitalcommons.unomaha.edu/cparpublications>

 Part of the [Public Affairs Commons](#)

Please take our feedback survey at: https://unomaha.az1.qualtrics.com/jfe/form/SV_8cchtFmpDyGfBLE

Recommended Citation

(CPAR), Center for Public Affairs Research, "Own Children with All Parents in the Labor Force for the State of Nebraska and Legislative Districts and Counties from the 2009-2013 American Community Survey" (2015). *Publications since 2000*. 476.

<https://digitalcommons.unomaha.edu/cparpublications/476>

This Report is brought to you for free and open access by the Center for Public Affairs Research at DigitalCommons@UNO. It has been accepted for inclusion in Publications since 2000 by an authorized administrator of DigitalCommons@UNO. For more information, please contact unodigitalcommons@unomaha.edu.

**Own Children with All Parents
in the Labor Force
for the State of Nebraska and
Legislative Districts and Counties
from the 2009-2013 American
Community Survey**

**Center for Public Affairs Research
University of Nebraska at Omaha**

February 2015

Contact:

**Jerry Deichert
(402) 554.2134
jdeicher@unomaha.edu**

**UNIVERSITY OF
Nebraska
Omaha**

Legislature's Planning Committee: 2014 Associated Reports

The Nebraska Legislature's Planning Committee was created in 2009 with the passage of LB 653 in order to help establish a process of long-term state planning with the Nebraska Legislature. The committee was created to assist state government in identifying emerging trends, assets and challenges of the state and the long-term implications of the decisions made by the Nebraska Legislature.

Efforts during the first two years of the committee focused on the development of a database. The goals and benchmarks included in the database were developed and approved by the Legislature's Planning Committee to present a common-sense and data-driven assessment of key areas important to Nebraskans' quality of life. This database was a joint initiative with the Nebraska Legislature's Planning Committee and the University of Nebraska at Omaha's College of Public Affairs and Community Service (CPACS). The database was presented in a report that consisted of the data and summaries of the data for each of the nine categories of benchmarks established by the Planning Committee. Each year, the Planning Committee is in charge of updating the data for all benchmarks in each category. It is hoped that this will be of instrumental assistance to Legislators and staff as they craft and debate legislation each Session.

In addition to the statewide database, CPACS has prepared a series of Associated Reports for the Planning Committee that provides data for Legislative Districts, counties, and census tracts. These reports address the benchmarks established by the Planning Committee. These reports include:

- Nebraska Legislative District Quick Facts from the 2009-2013 American Community Survey
- Selected Characteristics for Nebraska Legislative Districts from the 2009-2013 American Community Survey
- Selected Characteristics for Nebraska Counties from the 2009-2013 American Community Survey
- Selected Characteristics for Census Tracts in Douglas, Sarpy, Lancaster, and Hall Counties, Nebraska, from the 2009-2013 American Community Survey
- Own Children with All Parents in the Labor Force for the State of Nebraska and Legislative Districts and Counties from the 2009-2013 American Community Survey
- Ratio of Income to Poverty Level for Children under 18 Years as a Percentage of the Population for Whom Poverty Is Determined for Nebraska Legislative Districts from the 2009-2013 American Community Survey

Contents

Introduction	1
District Boundaries for the 103rd Legislature (2011).....	2
Table 1. Percentage of Own Children under 6 Years Old with All Parents in the Labor Force, Regional Comparison: 2013.....	3
Figure 1. Percentage of Own Children under 6 Years Old with All Parents in the Labor Force, Nebraska and the United States: 2000 and 2005-2013	3
Table 2. Percentage of Own Children 6 to 17 Years Old with All Parents in the Labor Force, Regional Comparison: 2013.....	4
Figure 2. Percentage of Own Children 6 to 17 Years Old with All Parents in the Labor Force, Nebraska and the United States: 2000 and 2005-2013	4
Table 3. Own Children Aged under 18 Years with All Parents in Labor Force for Nebraska Legislative Districts: 2009-2013	5
Figure 3. Percentage of Own Children Aged under 6 Years with All Parents in Labor Force for Nebraska Legislative Districts: 2009-2013	6
Figure 4. Percentage of Own Children 6 to 17 Years with All Parents in Labor Force for Nebraska State Legislative Districts: 2009-2013	7
Table 4. Own Children under 18 Years with All Parents in Labor Force for Nebraska Counties: 2009-2013.....	8
Table 5. Ranking of the Percentage of Own Children under 6 Years with All Parents in Labor Force for Nebraska Counties: 2009-2013.....	10
Table 6. Ranking of the Percentage of Own Children 6 to 17 Years with All Parents in Labor Force for Nebraska Counties: 2009-2013.....	11
Figure 5. Own Children Aged under 6 Years with All Parents in Labor Force for Nebraska Counties: 2009-2013.....	12
Figure 6. Own Children Aged 6-17 Years with All Parents in Labor Force for Nebraska Counties: 2009-2013.....	12

Introduction

The following tables, graphs, and maps look at the number and percentage of own children living in families where all parents present are in the labor force. The data are from a U.S. Census Bureau program called the American Community Survey (ACS). The ACS is an ongoing, nation-wide survey conducted every month. Each year approximately 1 in 40 persons are sampled. During the past 5 years in Nebraska, there has been an average of about 40,000 persons interviewed per year.

While this annual number of interviews is adequate for state-level summaries, for smaller levels of geography like counties and legislative districts, only 5-year data are available for analysis. The estimates contained in this report are based on the both the single-year 2013 ACS and the 5-year 2009-2013 ACS. The 5-year estimates are period estimates. They represent the characteristics of the population over the specific data collection period.

The charts and tables in this report are based on the District Boundaries for the 103rd Legislature that were approved by the Legislature in 2011 and were based on the data from the 2010 Census. Because of changes in Legislative District boundaries, the charts and tables in this report are not directly comparable to prior reports using the previous boundaries.

Below are definitions of some of the terms used in this report.

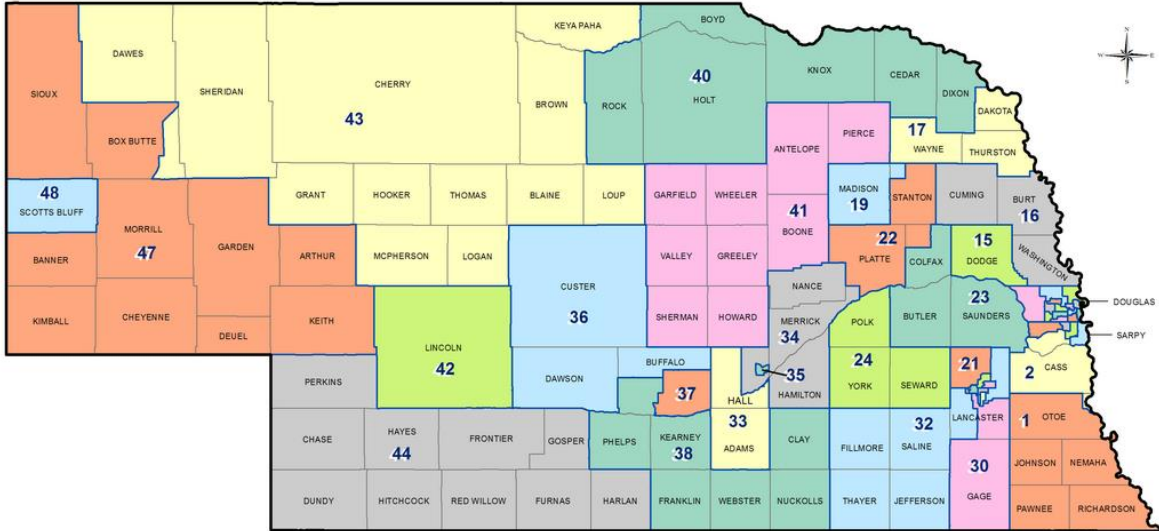
Own Child – An own child is a never-married child under 18 years who is a son or daughter by birth, a stepchild, or an adopted child of the householder. In certain tabulations, own children are further classified as living with two parents or with one parent only. Own children of the householder living with two parents are by definition found only in married-couple families. (Note: When used in “EMPLOYMENT STATUS” tabulations, own child refers to a never married child under the age of 18 in a family or a subfamily who is a son or daughter, by birth, marriage, or adoption, of a member of the householder’s family, but not necessarily of the householder.)

All Parents in the Labor Force – If a child lives with two parents, then both parents are in the labor force. If a child lives with one parent only, then that parent is in the labor force.

Labor Force – The labor force includes all people classified in the civilian labor force, plus members of the U.S. Armed Forces (people on active duty with the United States Army, Air Force, Navy, Marine Corps, or Coast Guard). The Civilian Labor Force consists of people classified as employed or unemployed.

Nebraska Legislative Districts - LB 703 (2011)

(Districts took effect May 27, 2011)



Geographic Information Systems
 Map Created by: Trisha Schlake, GIS Specialist
 Source: U.S. Census Bureau
 Date Created: 6-27-2011

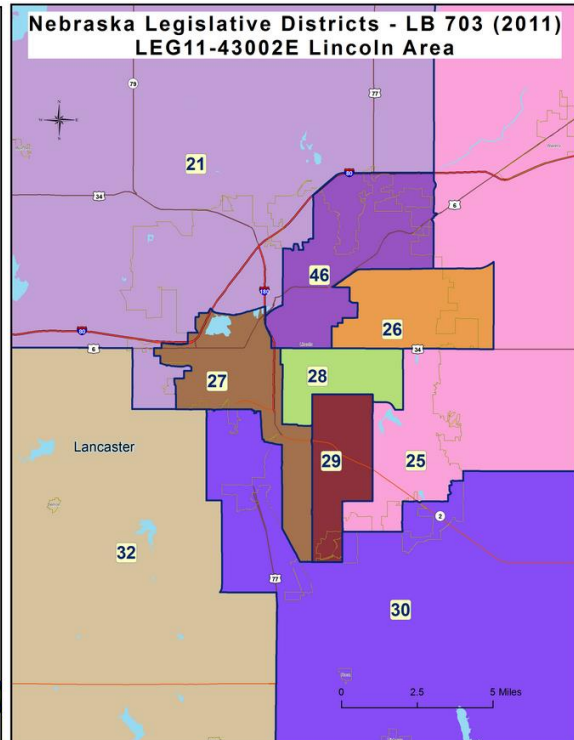
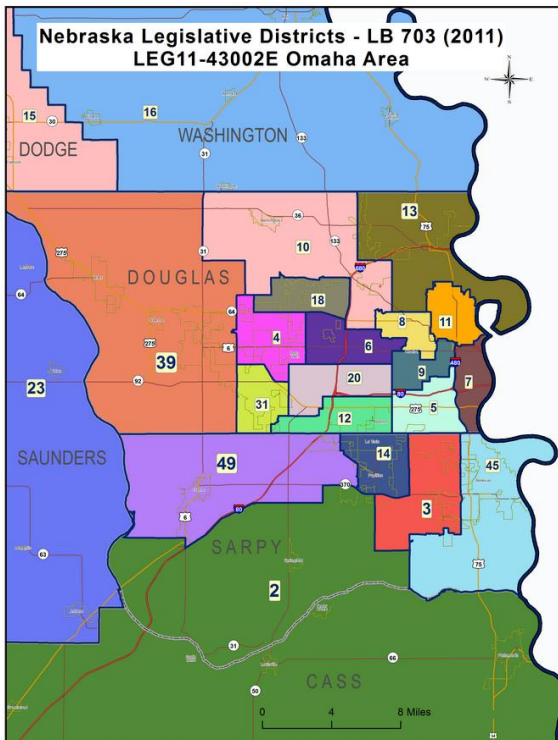
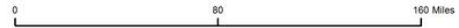
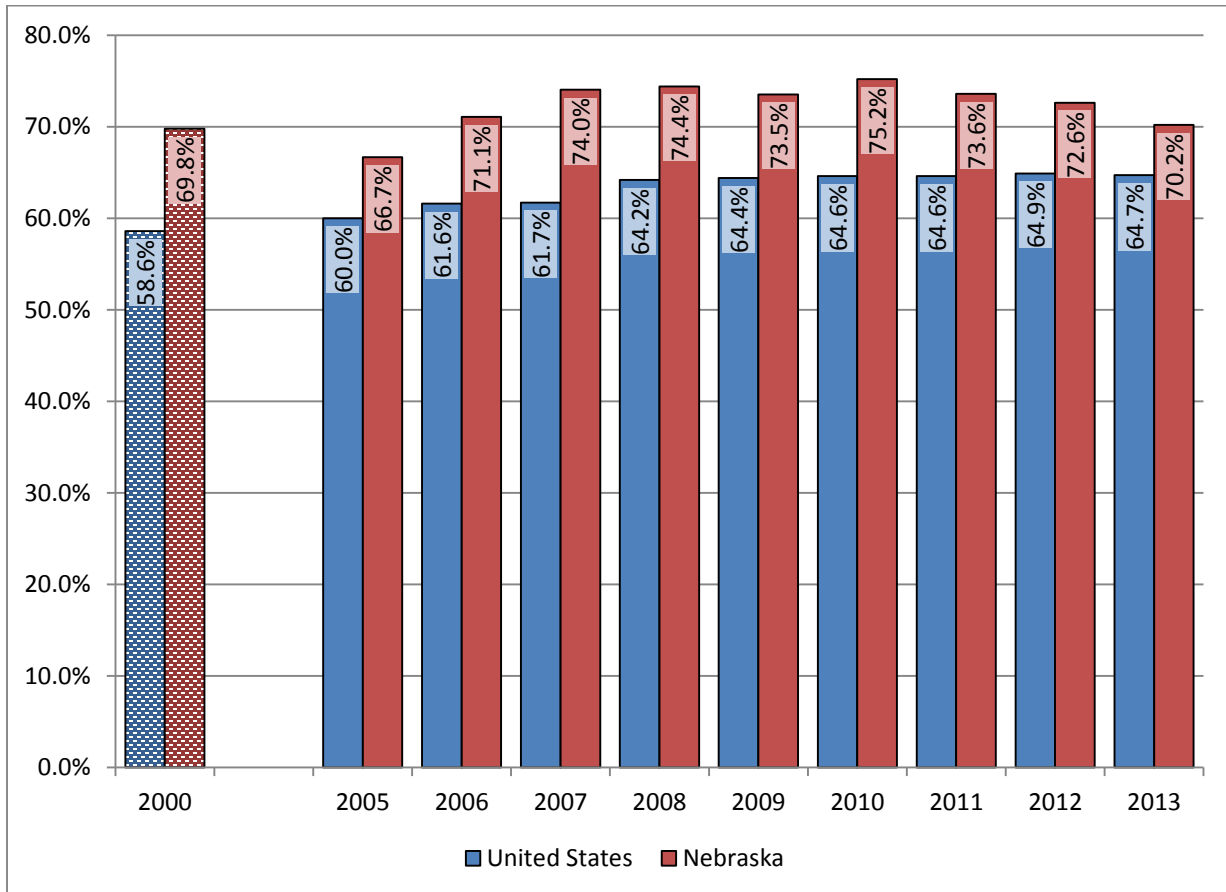


Table 1. Percentage of Own Children under 6 Years Old with All Parents in the Labor Force, Regional Comparison: 2013

	Own Children under 6 Years	National Rank
United States	64.7	
Iowa	76.8	1
South Dakota	76.5	2
Minnesota	73.8	4
Nebraska	70.2	8
North Dakota	70.1	9
Wyoming	67.6	21
Missouri	67.2	23
Kansas	65.9	29
Colorado	61.2	42

Source: U.S. Census Bureau, 2013 American Community Survey; prepared by UNO Center for Public Affairs Research, February 2015

Figure 1. Percentage of Own Children under 6 Years Old with All Parents in the Labor Force, Nebraska and the United States: 2000 and 2005-2013



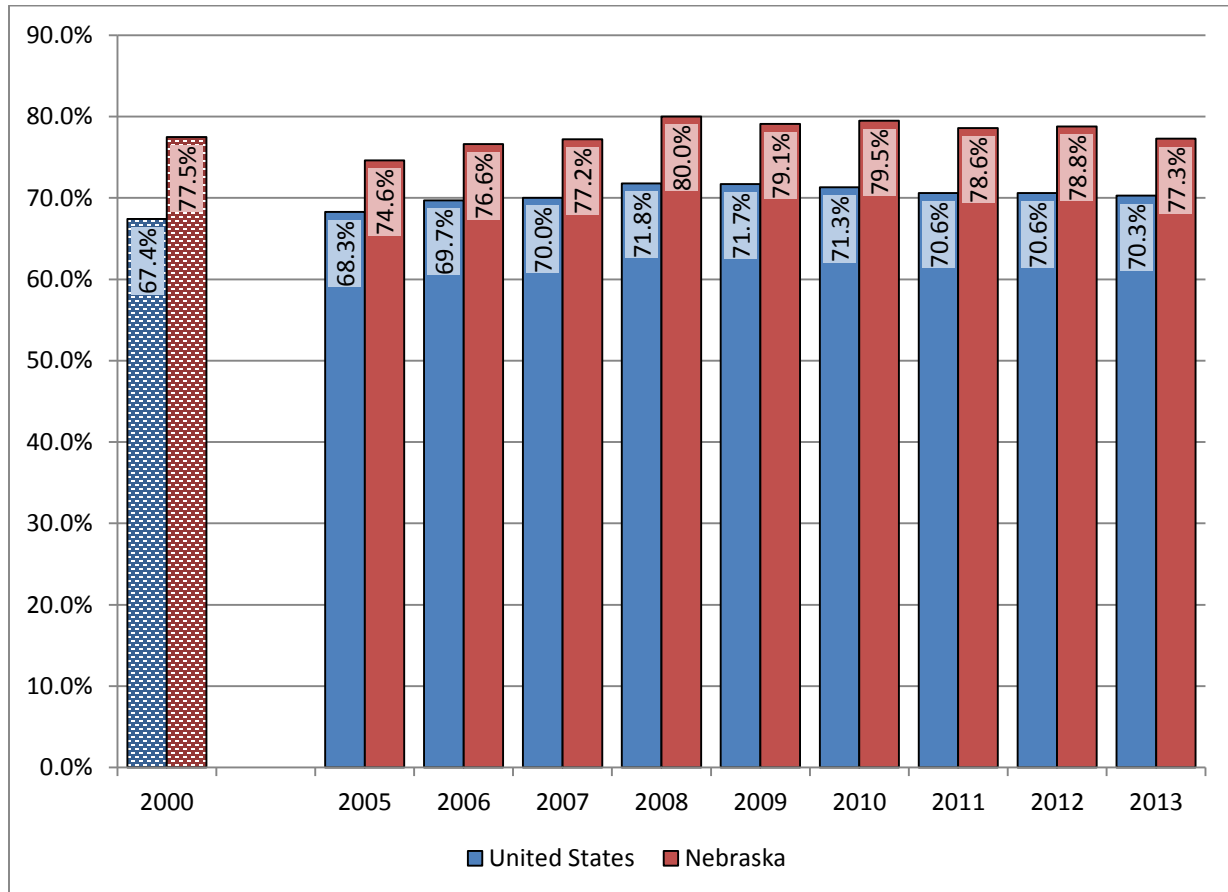
Source: U.S. Census Bureau, American Community Survey, 2002 to 2013 and 2000 Census of Population and Housing; prepared by UNO Center for Public Affairs Research, February 2015

Table 2. Percentage of Own Children 6 to 17 Years Old with All Parents in the Labor Force, Regional Comparison: 2013

	Own Children 6 to 17 Years	National Rank
United States	70.3	
South Dakota	81.5	1
Iowa	79.3	2
Minnesota	78.3	3
Nebraska	77.3	6
North Dakota	77.3	6
Kansas	75.1	13
Wyoming	75.0	14
Missouri	73.1	18
Colorado	72.1	24

Source: U.S. Census Bureau, 2011 American Community Survey; prepared by UNO Center for Public Affairs Research, February 2015

Figure 2. Percentage of Own Children 6 to 17 Years Old with All Parents in the Labor Force, Nebraska and the United States: 2000 and 2005-2013



Source: U.S. Census Bureau, American Community Survey, 2002 to 2013 and 2000 Census of Population and Housing; prepared by UNO Center for Public Affairs Research, February 2015

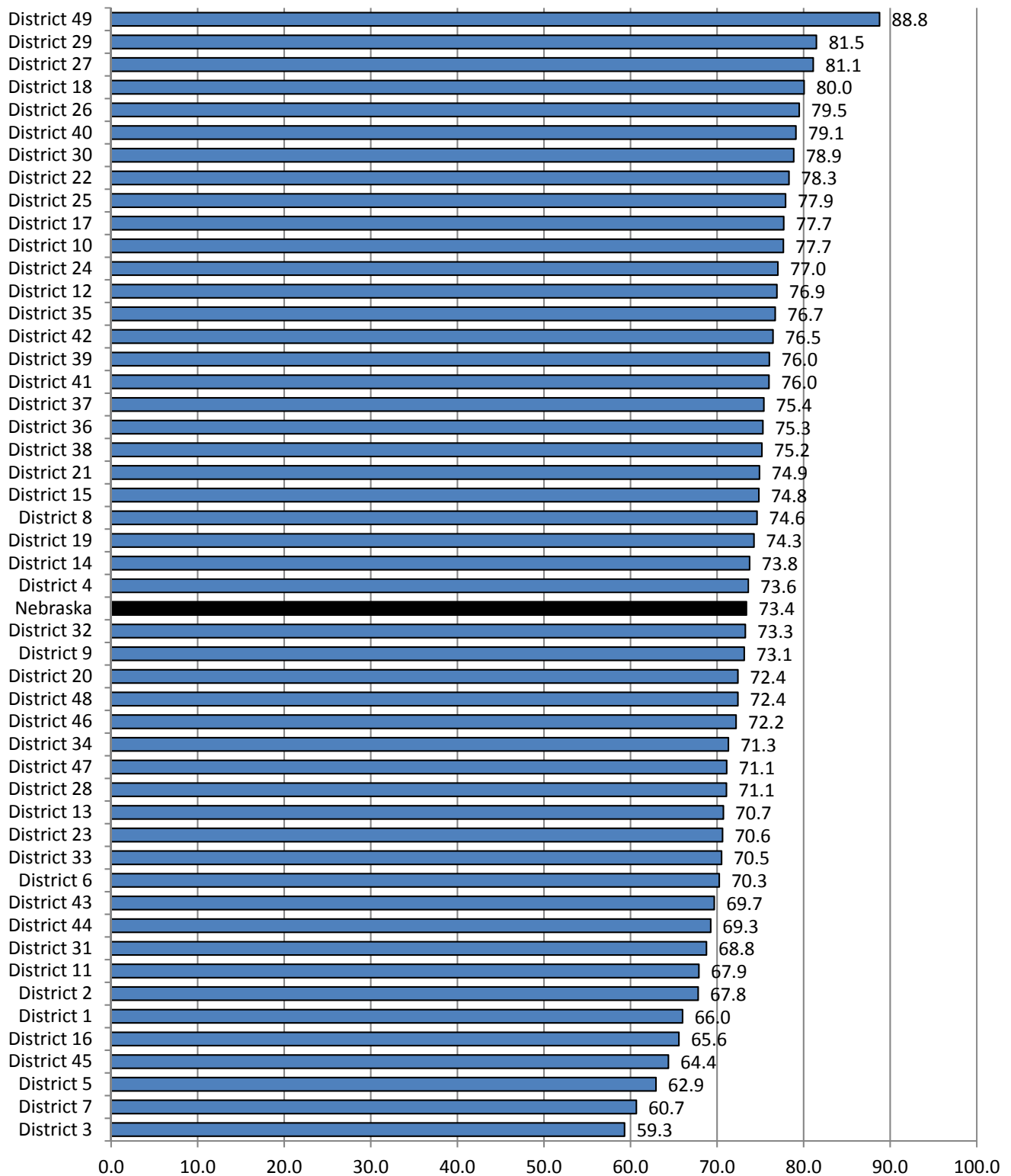
Table 3. Own Children Aged under 18 Years with All Parents in Labor Force for Nebraska Legislative Districts: 2009-2013

County	Children aged under 6 years			Children aged 6 to 17 years		
	Total (Persons)	With all parents in labor force (Persons) (Pct of total)		Total (Persons)	With all parents in labor force (Persons) (Pct of total)	
Nebraska	151,328	111,080	73.4	287,906	227,258	78.9
District 1	2,277	1,503	66.0	5,443	4,251	78.1
District 2	3,256	2,208	67.8	6,740	5,344	79.3
District 3	3,200	1,898	59.3	6,967	4,755	68.3
District 4	3,191	2,349	73.6	6,798	5,026	73.9
District 5	4,051	2,550	62.9	6,118	4,384	71.7
District 6	2,404	1,689	70.3	4,569	3,522	77.1
District 7	3,815	2,315	60.7	5,809	4,116	70.9
District 8	3,160	2,358	74.6	4,937	3,632	73.6
District 9	3,370	2,465	73.1	3,816	2,987	78.3
District 10	3,926	3,049	77.7	6,277	4,953	78.9
District 11	3,448	2,341	67.9	6,839	5,183	75.8
District 12	2,668	2,052	76.9	5,358	4,521	84.4
District 13	3,235	2,288	70.7	5,601	4,420	78.9
District 14	3,407	2,513	73.8	7,362	5,785	78.6
District 15	2,884	2,158	74.8	5,422	4,348	80.2
District 16	2,386	1,565	65.6	6,070	5,046	83.1
District 17	3,556	2,763	77.7	6,466	5,229	80.9
District 18	3,769	3,017	80.0	6,300	5,148	81.7
District 19	3,264	2,424	74.3	5,687	4,428	77.9
District 20	2,860	2,071	72.4	5,160	4,103	79.5
District 21	3,825	2,865	74.9	7,100	5,316	74.9
District 22	3,108	2,434	78.3	6,537	5,369	82.1
District 23	2,854	2,016	70.6	6,767	5,213	77.0
District 24	2,507	1,931	77.0	5,315	4,508	84.8
District 25	2,933	2,285	77.9	5,712	4,531	79.3
District 26	2,710	2,154	79.5	4,260	3,673	86.2
District 27	3,239	2,627	81.1	5,206	4,037	77.5
District 28	3,123	2,220	71.1	4,676	3,963	84.8
District 29	3,023	2,463	81.5	5,995	5,073	84.6
District 30	2,766	2,181	78.9	6,061	4,759	78.5
District 31	2,665	1,833	68.8	7,799	6,010	77.1
District 32	2,731	2,001	73.3	5,564	4,214	75.7
District 33	2,782	1,962	70.5	5,555	4,404	79.3
District 34	2,997	2,137	71.3	6,288	5,000	79.5
District 35	3,461	2,655	76.7	6,088	5,067	83.2
District 36	3,170	2,387	75.3	6,580	5,536	84.1
District 37	3,358	2,532	75.4	5,326	4,420	83.0
District 38	2,534	1,905	75.2	6,041	4,813	79.7
District 39	3,802	2,891	76.0	7,502	6,020	80.2
District 40	2,700	2,136	79.1	5,898	4,957	84.0
District 41	2,712	2,061	76.0	6,027	4,939	81.9
District 42	2,851	2,180	76.5	5,645	4,515	80.0
District 43	2,467	1,719	69.7	5,276	3,895	73.8
District 44	2,557	1,771	69.3	5,340	4,347	81.4
District 45	3,728	2,400	64.4	6,388	4,836	75.7
District 46	3,183	2,298	72.2	3,634	2,613	71.9
District 47	2,357	1,676	71.1	5,210	4,143	79.5
District 48	2,943	2,131	72.4	5,728	4,470	78.0
District 49	4,115	3,653	88.8	6,649	5,436	81.8

Source: U.S. Census Bureau, 2009-2013 American Community Survey

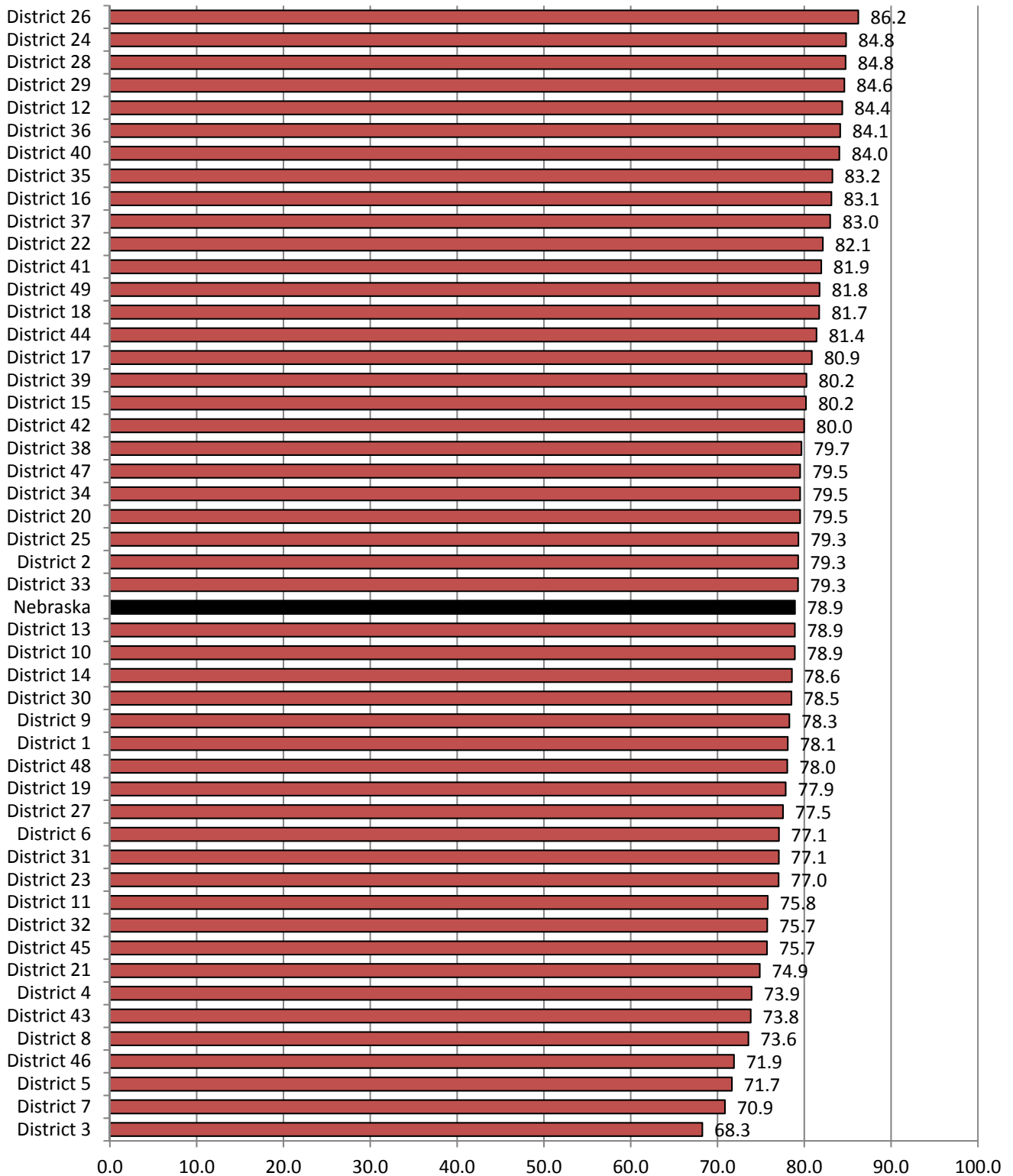
Prepared by: Center for Public Affairs Research, University of Nebraska at Omaha, December 2014

Figure 3. Percentage of Own Children under 6 Years with All Parents in Labor Force for Nebraska State Legislative Districts: 2009-2013



Source: U.S. Census Bureau, 2009-2013 American Community Survey
 Prepared by: Center for Public Affairs Research, University of Nebraska at Omaha, February 2015

Figure 4. Percentage of Own Children 6 to 17 Years with All Parents in Labor Force for Nebraska State Legislative Districts: 2009-2013



Source: U.S. Census Bureau, 2009-2013 American Community Survey
 Prepared by: Center for Public Affairs Research, University of Nebraska at Omaha, February 2015

Table 4. Own Children under 18 Years with All Parents in Labor Force for Nebraska Counties: 2009-2013

County	Own children under 6 years			Own children 6 to 17 years		
	Total (Persons)	With all parents in labor force (Persons) (Pct of total)		Total (Persons)	With all parents in labor force (Persons) (Pct of total)	
Nebraska	151,328	111,080	73.4	287,906	227,258	78.9
Adams	2,361	1,647	69.8	4,615	3,652	79.1
Antelope	507	377	74.4	998	840	84.2
Arthur	73	51	69.9	99	67	67.7
Banner	69	21	30.4	100	64	64.0
Blaine	48	33	68.8	95	69	72.6
Boone	344	285	82.8	883	740	83.8
Box Butte	767	457	59.6	1,914	1,479	77.3
Boyd	142	93	65.5	246	205	83.3
Brown	191	145	75.9	454	379	83.5
Buffalo	3,848	2,946	76.6	6,787	5,739	84.6
Burt	416	296	71.2	1,047	901	86.1
Butler	541	316	58.4	1,380	1,207	87.5
Cass	1,901	1,339	70.4	4,101	3,292	80.3
Cedar	662	495	74.8	1,510	1,309	86.7
Chase	366	210	57.4	585	483	82.6
Cherry	433	352	81.3	725	646	89.1
Cheyenne	750	526	70.1	1,489	1,206	81.0
Clay	413	239	57.9	1,063	790	74.3
Colfax	938	683	72.8	1,936	1,487	76.8
Cuming	641	456	71.1	1,517	1,235	81.4
Custer	789	555	70.3	1,631	1,333	81.7
Dakota	2,148	1,662	77.4	3,892	3,140	80.7
Dawes	557	366	65.7	985	579	58.8
Dawson	2,120	1,620	76.4	4,406	3,718	84.4
Deuel	95	76	80.0	284	264	93.0
Dixon	453	387	85.4	1,008	819	81.3
Dodge	2,884	2,158	74.8	5,422	4,348	80.2
Douglas	46,364	33,268	71.8	82,883	64,025	77.2
Dundy	115	78	67.8	269	225	83.6
Fillmore	385	312	81.0	763	647	84.8
Franklin	218	158	72.5	401	298	74.3
Frontier	153	80	52.3	340	287	84.4
Furnas	275	156	56.7	798	578	72.4
Gage	1,475	1,193	80.9	3,219	2,659	82.6
Garden	138	138	100.0	161	154	95.7
Garfield	96	92	95.8	297	282	94.9
Gosper	167	149	89.2	310	310	100.0
Grant	30	21	70.0	110	85	77.3
Greeley	188	116	61.7	402	251	62.4
Hall	5,433	4,042	74.4	9,931	7,942	80.0
Hamilton	653	409	62.6	1,573	1,230	78.2
Harlan	213	149	70.0	477	404	84.7
Hayes	69	45	65.2	159	98	61.6
Hitchcock	173	103	59.5	389	279	71.7
Holt	780	641	82.2	1,618	1,427	88.2
Hooker	51	38	74.5	100	93	93.0
Howard	481	354	73.6	1,012	838	82.8

Table 4. Own Children under 18 Years with All Parents in Labor Force for Nebraska Counties: 2009-2013

County	Own children under 6 years			Own children 6 to 17 years		
	Total (Persons)	With all parents in labor force (Persons)	(Pct of total)	Total (Persons)	With all parents in labor force (Persons)	(Pct of total)
Jefferson	487	450	92.4	1,087	838	77.1
Johnson	297	191	64.3	652	514	78.8
Kearney	461	369	80.0	1,080	851	78.8
Keith	485	428	88.2	1,113	997	89.6
Keya Paha	22	21	95.5	84	52	61.9
Kimball	285	195	68.4	597	399	66.8
Knox	588	470	79.9	1,328	1,074	80.9
Lancaster	23,700	18,162	76.6	40,337	31,910	79.1
Lincoln	2,851	2,180	76.5	5,645	4,515	80.0
Logan	50	23	46.0	116	85	73.3
Loup	24	22	91.7	116	53	45.7
McPherson	39	16	41.0	47	17	36.2
Madison	3,088	2,331	75.5	5,284	4,067	77.0
Merrick	512	393	76.8	1,234	1,117	90.5
Morrill	300	177	59.0	833	646	77.6
Nance	281	263	93.6	578	530	91.7
Nemaha	479	274	57.2	1,008	788	78.2
Nuckolls	252	210	83.3	615	426	69.3
Otoe	1,119	856	76.5	2,526	2,110	83.5
Pawnee	175	102	58.3	360	290	80.6
Perkins	218	182	83.5	430	355	82.6
Phelps	693	465	67.1	1,456	1,184	81.3
Pierce	555	471	84.9	1,229	1,031	83.9
Platte	2,671	2,087	78.1	5,584	4,532	81.2
Polk	363	322	88.7	891	750	84.2
Red Willow	808	619	76.6	1,583	1,328	83.9
Richardson	460	258	56.1	1,294	918	70.9
Rock	75	50	66.7	188	123	65.4
Saline	1,138	740	65.0	2,092	1,557	74.4
Sarpy	15,552	11,155	71.7	29,608	22,495	76.0
Saunders	1,506	1,123	74.6	3,659	2,713	74.1
Scotts Bluff	2,943	2,131	72.4	5,728	4,470	78.0
Seward	1,173	906	77.2	2,682	2,141	79.8
Sheridan	319	216	67.7	820	579	70.6
Sherman	209	129	61.7	488	362	74.2
Sioux	53	36	67.9	154	78	50.6
Stanton	482	334	69.3	1,148	1,004	87.5
Thayer	348	237	68.1	710	568	80.0
Thomas	45	37	82.2	90	47	52.2
Thurston	759	584	76.9	1,395	1,068	76.6
Valley	273	195	71.4	610	496	81.3
Washington	1,329	813	61.2	3,506	2,910	83.0
Wayne	649	517	79.7	1,179	1,021	86.6
Webster	268	262	97.8	508	430	84.6
Wheeler	59	42	71.2	108	99	91.7
York	971	703	72.4	1,742	1,617	92.8

Source: U.S. Census Bureau, 2009-2013 American Community Survey

Prepared by: Center for Public Affairs Research, University of Nebraska at Omaha, February 2015

Table 5. Ranking of the Percentage of Own Children under 6 Years with All Parents in Labor Force for Nebraska Counties: 2009-2013

County	Percent of own children under 6 years	Rank	County	Percent of own children under 6 years	Rank
Nebraska	73.4		Scotts Bluff	72.4	47
Garden	100.0	1	York	72.4	48
Webster	97.8	2	Douglas	71.8	49
Garfield	95.8	3	Sarpy	71.7	50
Keya Paha	95.5	4	Valley	71.4	51
Nance	93.6	5	Burt	71.2	52
Jefferson	92.4	6	Wheeler	71.2	53
Loup	91.7	7	Cuming	71.1	54
Gosper	89.2	8	Cass	70.4	55
Polk	88.7	9	Custer	70.3	56
Keith	88.2	10	Cheyenne	70.1	57
Dixon	85.4	11	Grant	70.0	58
Pierce	84.9	12	Harlan	70.0	59
Perkins	83.5	13	Arthur	69.9	60
Nuckolls	83.3	14	Adams	69.8	61
Boone	82.8	15	Stanton	69.3	62
Holt	82.2	16	Blaine	68.8	63
Thomas	82.2	17	Kimball	68.4	64
Cherry	81.3	18	Thayer	68.1	65
Fillmore	81.0	19	Sioux	67.9	66
Gage	80.9	20	Dundy	67.8	67
Deuel	80.0	21	Sheridan	67.7	68
Kearney	80.0	22	Phelps	67.1	69
Knox	79.9	23	Rock	66.7	70
Wayne	79.7	24	Dawes	65.7	71
Platte	78.1	25	Boyd	65.5	72
Dakota	77.4	26	Hayes	65.2	73
Seward	77.2	27	Saline	65.0	74
Thurston	76.9	28	Johnson	64.3	75
Merrick	76.8	29	Hamilton	62.6	76
Buffalo	76.6	30	Greeley	61.7	77
Lancaster	76.6	31	Sherman	61.7	78
Red Willow	76.6	32	Washington	61.2	79
Lincoln	76.5	33	Box Butte	59.6	80
Otoe	76.5	34	Hitchcock	59.5	81
Dawson	76.4	35	Morrill	59.0	82
Brown	75.9	36	Butler	58.4	83
Madison	75.5	37	Pawnee	58.3	84
Cedar	74.8	38	Clay	57.9	85
Dodge	74.8	39	Chase	57.4	86
Saunders	74.6	40	Nemaha	57.2	87
Hooker	74.5	41	Furnas	56.7	88
Antelope	74.4	42	Richardson	56.1	89
Hall	74.4	43	Frontier	52.3	90
Howard	73.6	44	Logan	46.0	91
Colfax	72.8	45	McPherson	41.0	92
Franklin	72.5	46	Banner	30.4	93

Source: U.S. Census Bureau, 2009-2013 American Community Survey

Prepared by: Center for Public Affairs Research, University of Nebraska at Omaha, February 2015

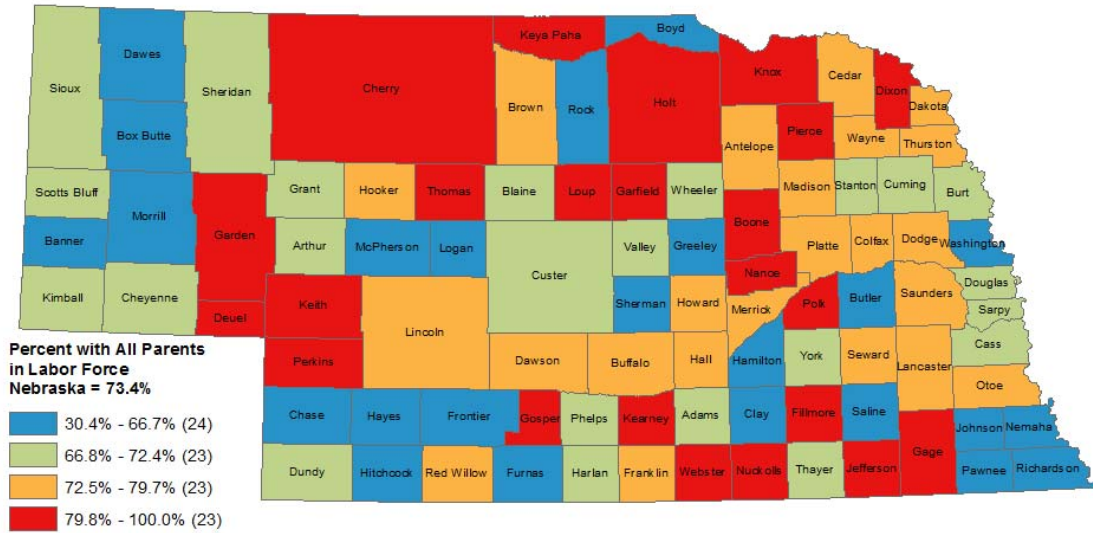
Table 6. Ranking of the Percentage of Own Children 6-17 Years with All Parents in Labor Force for Nebraska Counties: 2009-2013

County	Percent of own children 6 to 17 years old	Rank	County	Percent of own children 6 to 17 years old	Rank
Nebraska	78.9		Pawnee	80.6	47
Gosper	100.0	1	Cass	80.3	48
Garden	95.7	2	Dodge	80.2	49
Garfield	94.9	3	Hall	80.0	50
Deuel	93.0	4	Lincoln	80.0	51
Hooker	93.0	5	Thayer	80.0	52
York	92.8	6	Seward	79.8	53
Nance	91.7	7	Adams	79.1	54
Wheeler	91.7	8	Lancaster	79.1	55
Merrick	90.5	9	Johnson	78.8	56
Keith	89.6	10	Kearney	78.8	57
Cherry	89.1	11	Hamilton	78.2	58
Holt	88.2	12	Nemaha	78.2	59
Butler	87.5	13	Scotts Bluff	78.0	60
Stanton	87.5	14	Morrill	77.6	61
Cedar	86.7	15	Box Butte	77.3	62
Wayne	86.6	16	Grant	77.3	63
Burt	86.1	17	Douglas	77.2	64
Fillmore	84.8	18	Jefferson	77.1	65
Harlan	84.7	19	Madison	77.0	66
Buffalo	84.6	20	Colfax	76.8	67
Webster	84.6	21	Thurston	76.6	68
Dawson	84.4	22	Sarpy	76.0	69
Frontier	84.4	23	Saline	74.4	70
Antelope	84.2	24	Clay	74.3	71
Polk	84.2	25	Franklin	74.3	72
Pierce	83.9	26	Sherman	74.2	73
Red Willow	83.9	27	Saunders	74.1	74
Boone	83.8	28	Logan	73.3	75
Dundy	83.6	29	Blaine	72.6	76
Brown	83.5	30	Furnas	72.4	77
Otoe	83.5	31	Hitchcock	71.7	78
Boyd	83.3	32	Richardson	70.9	79
Washington	83.0	33	Sheridan	70.6	80
Howard	82.8	34	Nuckolls	69.3	81
Chase	82.6	35	Arthur	67.7	82
Gage	82.6	36	Kimball	66.8	83
Perkins	82.6	37	Rock	65.4	84
Custer	81.7	38	Banner	64.0	85
Cuming	81.4	39	Greeley	62.4	86
Dixon	81.3	40	Keya Paha	61.9	87
Phelps	81.3	41	Hayes	61.6	88
Valley	81.3	42	Dawes	58.8	89
Platte	81.2	43	Thomas	52.2	90
Cheyenne	81.0	44	Sioux	50.6	91
Knox	80.9	45	Loup	45.7	92
Dakota	80.7	46	McPherson	36.2	93

Source: U.S. Census Bureau, 2009-2013 American Community Survey

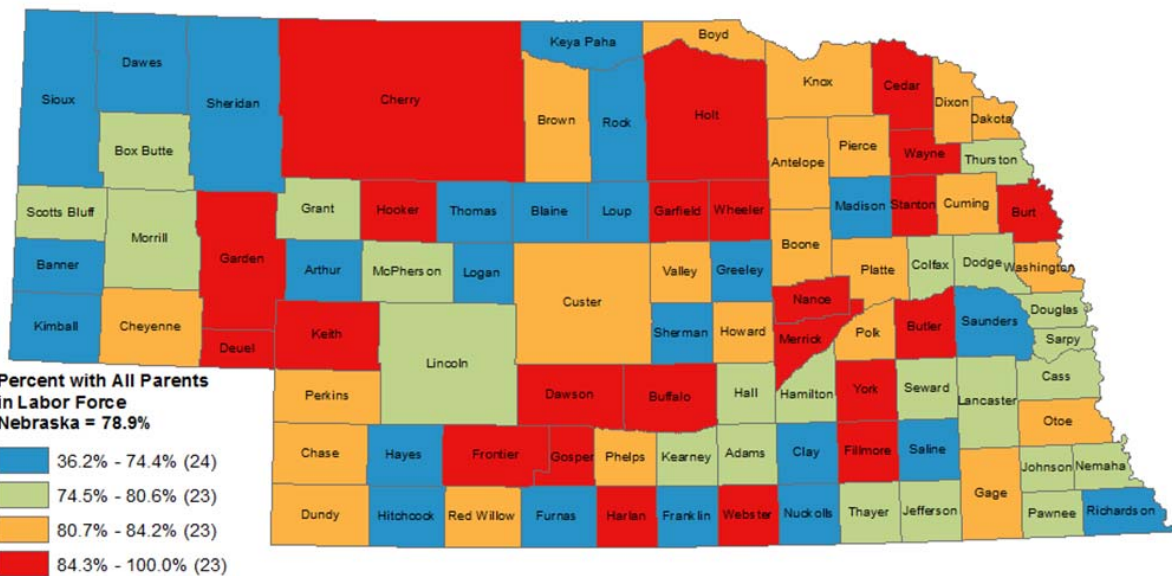
Prepared by: Center for Public Affairs Research, University of Nebraska at Omaha, February 2015

Figure 5. Own Children Aged under 6 Years with All Parents in Labor Force for Nebraska Counties: 2009-2013



Source: U.S. Census Bureau, 2009-2013 American Community Survey 5-Year Estimate
Prepared by: Center for Public Affairs Research, University of Nebraska at Omaha, February 2015

Figure 6. Own Children Aged 6-17 Years with All Parents in Labor Force for Nebraska Counties: 2009-2013



Source: U.S. Census Bureau, 2009-2013 American Community Survey 5-Year Estimate
Prepared by: Center for Public Affairs Research, University of Nebraska at Omaha, May 2015