

2018

Data Brief

Center for Public Affairs Research (CPAR)
University of Nebraska at Omaha

Follow this and additional works at: <https://digitalcommons.unomaha.edu/cparpublications>

 Part of the [Public Affairs Commons](#)

Please take our feedback survey at: https://unomaha.az1.qualtrics.com/jfe/form/SV_8cchtFmpDyGfBLE

Recommended Citation

(CPAR), Center for Public Affairs Research, "Data Brief" (2018). *Publications since 2000*. 506.
<https://digitalcommons.unomaha.edu/cparpublications/506>

This Data Brief is brought to you for free and open access by the Center for Public Affairs Research at DigitalCommons@UNO. It has been accepted for inclusion in Publications since 2000 by an authorized administrator of DigitalCommons@UNO. For more information, please contact unodigitalcommons@unomaha.edu.



UNIVERSITY OF NEBRASKA AT OMAHA

CENTER FOR PUBLIC AFFAIRS RESEARCH

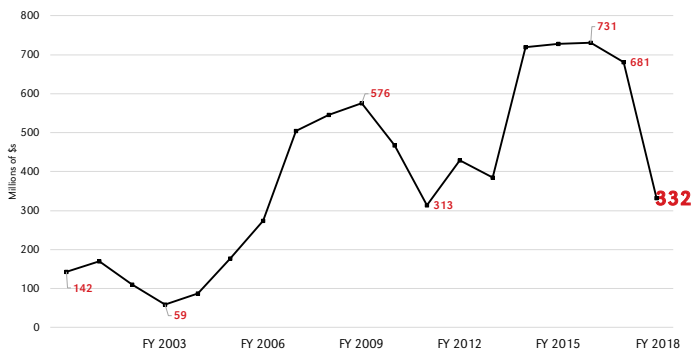
This brief examines two pressing concerns of the Planning Committee of the 105th Nebraska Legislature: 1. Rainy day fund balance and 2. Changing demographics of Nebraska

Rainy Day Fund Balance

Over the past several years, Nebraska has had lower than expected revenues. One response to budgeting during periods of fiscal distress is to draw down fiscal reserves, or “rainy-day” funds. Such a draw down of funds can be seen in the balance of Nebraska’s rainy day fund in fiscal year 2018.

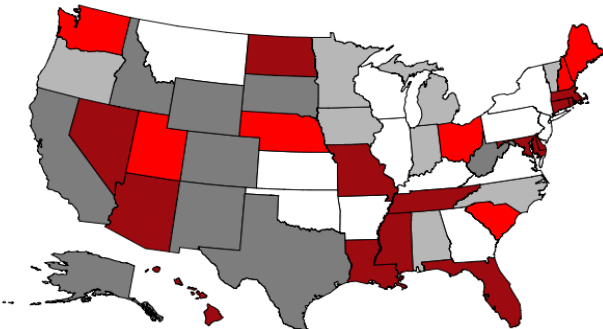
Nebraska rainy day fund balance

Millions of \$s



In Fiscal Year 2018, the rainy day fund balance as a percent of general fund expenditures is close to the U.S. median. However, the rainy day fund balance is critical for Nebraska because of constitutional limitations on debt.

□ 2% or less ■ 3% - 4% ■ 5% - 7% ■ 8 - 9% ■ 10% and above

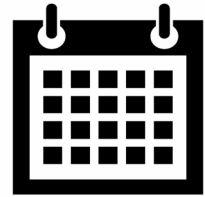


Source: Pew Research Center “Fiscal 50: State Trends and Analysis, Reserves and Balances”



7.6%

Nebraska rainy day fund balance as % of general expenditures
Iowa = 8.6%
U.S. Median = 5.5%



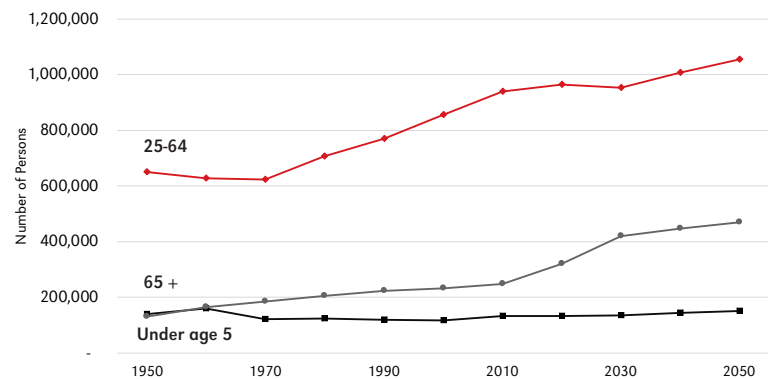
27.6

Number of days Nebraska could run on rainy day funds
Iowa = 31.5
U.S. Median = 20.2

The Changing Demographics of Nebraska

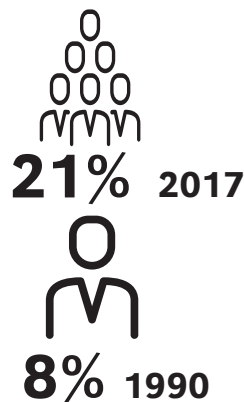
Sources: U.S. Census Bureau; Population projections by Center for Public Affairs Research

The ratio of working age to aging adults was 6:1 in 1950, **5:1** in 2010 and is expected to be 3:1 by 2050



Racial and Ethnic Minority Populations in Nebraska

% of total Nebraska population, 2017 break down

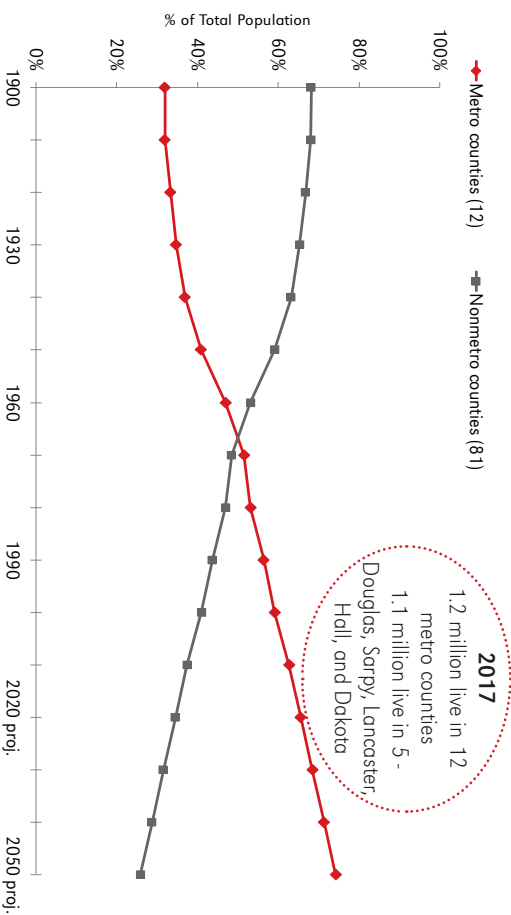


Latino	11.0%
Black	4.8%
Asian/Pacific Islander	2.6%
Two or more races	1.2%
American Indian	.8%

The Changing Demographics of Nebraska

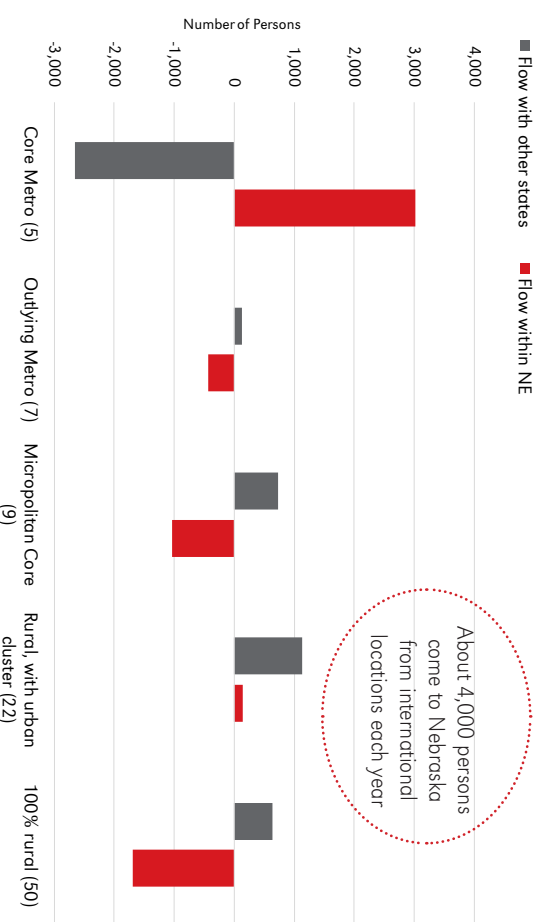
Sources: U.S. Census Bureau; Population projections by Center for Public Affairs Research

65% of Nebraskans will live in a metro county by 2020



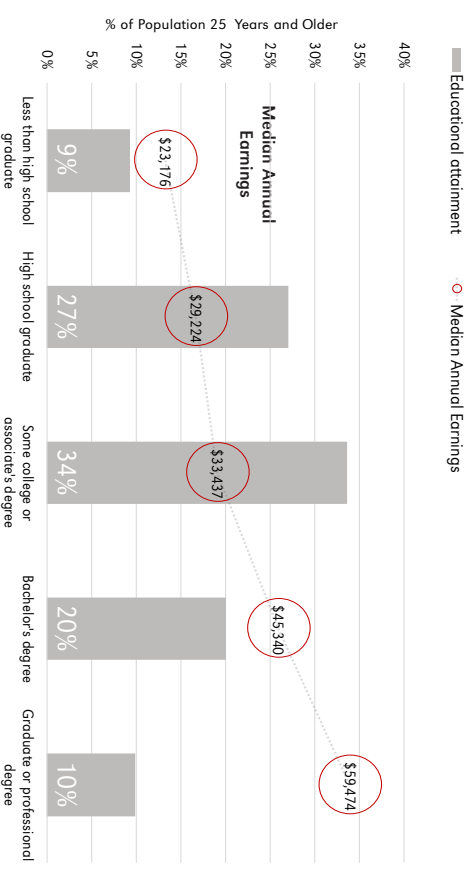
Nebraska is losing about 2,000 people a year to other states

Persons age 1 and older by area (no. of counties)



64% of Nebraskans have some higher education which results in higher salaries

Persons 25 years and older, educational attainment and earnings



Nebraska mean household income for the two lowest quintiles is **above** the U.S. means. The 3rd through highest quintiles are **below** the U.S. means.

Mean household income by quintile for region and U.S.

